

1  
2  
3  
4  
5  
6  
7  
8  
9  
10  
11  
12  
13  
14  
15  
16  
17  
18  
19  
20  
21  
22  
23  
24  
25  
26  
27  
28

IN THE SUPERIOR COURT OF THE STATE OF ARIZONA  
IN AND FOR THE COUNTY OF MARICOPA

IN RE THE GENERAL ADJUDICATION  
OF ALL RIGHTS TO USE WATER IN THE  
GILA RIVER SYSTEM AND SOURCE

Case No.: W-1, W-2, W-3, W-4  
(Consolidated)

Contested Case No. W1-11-3395

ORDER APPROVING PROPOSED  
WATER RIGHT ABSTRACTS

CONTESTED CASE NAME: *In re Karen C. LeCount*

HSR INVOLVED: San Pedro River Watershed Hydrographic Survey Report.

DESCRIPTIVE SUMMARY: Abstracts approved for proposed water rights.

NUMBER OF PAGES: 9

DATE OF FILING: June 3, 2021

On May 17, 2021, Salt River Project Agricultural Improvement and Power District and  
Salt River Valley Water Users' Association and the San Carlos Apache Tribe filed suggested

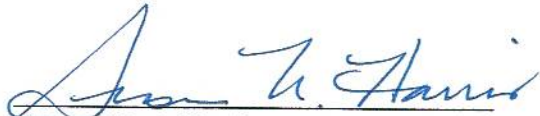
1  
2  
3  
4  
5  
6  
7  
8  
9  
10  
11  
12  
13  
14  
15  
16  
17  
18  
19  
20  
21  
22  
23  
24  
25  
26  
27  
28

corrections to the proposed abstracts prepared for the *de minimis* potential water rights for land included in the investigation for the Zone 2 Well Report No. 115-05-DA-001. No other suggested corrections were received.

**IT IS ORDERED** approving the following three proposed water right abstracts attached as Appendix A.

- 115-05-DA-001-DM001
- 115-05-DA-001-SP001
- 115-05-DA-001-SW001

The three abstracts will be included in a Catalog of Proposed Water Rights created pursuant to §15 of the Rules for Proceeding before the Special Master.

  
Susan Ward Harris  
Special Master

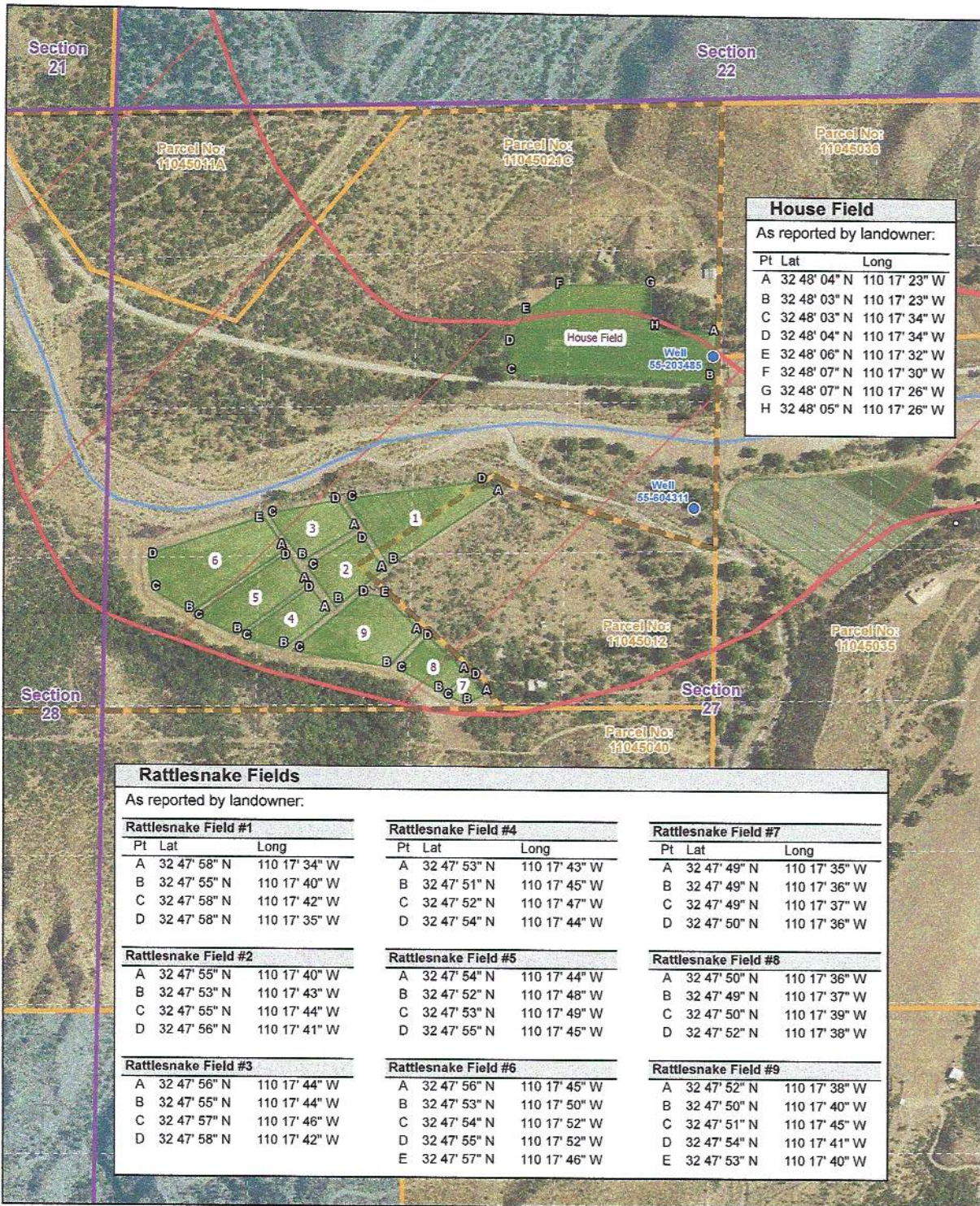
The original of the foregoing was delivered to the Clerk of the Maricopa County Superior Court June 3, 2021 for filing and distributing a copy to all persons listed on the Court approved mailing list for Contested Case No. W1-11-3395.

1  
2  
3  
4  
5  
6  
7  
8  
9  
10  
11  
12  
13  
14  
15  
16  
17  
18  
19  
20  
21  
22  
23  
24  
25  
26  
27  
28

# APPENDIX A

Abstract of Water Right  
San Pedro Watershed

Attribute	Proposed Abstract of Water Right
<b>1. Proposed Water Right No.:</b>	115-05-DA-001-DM001
<b>2. Owner of Water Right:</b>	Magoffin Family Trust
<b>3. Landowner:</b>	Magoffin Family Trust
<b>4. Statement of Claimant No.:</b>	39-120220
<b>5. Statement of Claimant Name:</b>	Magoffin Family Trust
<b>6. Lessee or Permittee:</b>	n/a
<b>7. Basis of Right:</b>	36-105984
<b>8. Beneficial Use:</b>	Domestic
<b>9. Priority Date:</b>	04/21/1910
<b>10. Quantity:</b>	Not to exceed 1 acre foot per year
<b>11. Place of Use:</b>	SENENW Sec. 27 T07S R20E of the Gila and Salt River Baseline and Meridian, Graham County, Arizona
<b>12. Point of Diversion:</b>	Well 55-203485 SENENW Sec. 27 T07S R20E of the Gila and Salt River Baseline and Meridian, Graham County, Arizona 32° 48' 02.98"N, 110° 17' 23.18"W (see attached map)
<b>13. Source of Water</b>	Subflow of Aravaipa Creek
<b>14. Name of Facility:</b>	House Well



House Field		
As reported by landowner:		
Pt	Lat	Long
A	32 48' 04" N	110 17' 23" W
B	32 48' 03" N	110 17' 23" W
C	32 48' 03" N	110 17' 34" W
D	32 48' 04" N	110 17' 34" W
E	32 48' 06" N	110 17' 32" W
F	32 48' 07" N	110 17' 30" W
G	32 48' 07" N	110 17' 26" W
H	32 48' 05" N	110 17' 26" W

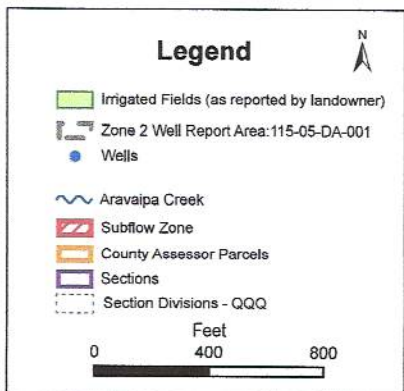
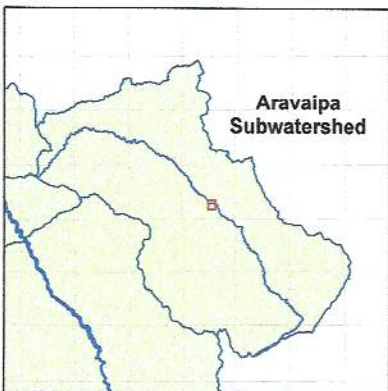
Rattlesnake Fields			
As reported by landowner:			
Rattlesnake Field #1			
Pt	Lat	Long	
A	32 47' 58" N	110 17' 34" W	
B	32 47' 55" N	110 17' 40" W	
C	32 47' 58" N	110 17' 42" W	
D	32 47' 58" N	110 17' 35" W	
Rattlesnake Field #2			
Pt	Lat	Long	
A	32 47' 55" N	110 17' 40" W	
B	32 47' 53" N	110 17' 43" W	
C	32 47' 55" N	110 17' 44" W	
D	32 47' 56" N	110 17' 41" W	
Rattlesnake Field #3			
Pt	Lat	Long	
A	32 47' 56" N	110 17' 44" W	
B	32 47' 55" N	110 17' 44" W	
C	32 47' 57" N	110 17' 46" W	
D	32 47' 58" N	110 17' 42" W	
Rattlesnake Field #4			
Pt	Lat	Long	
A	32 47' 53" N	110 17' 43" W	
B	32 47' 51" N	110 17' 45" W	
C	32 47' 52" N	110 17' 47" W	
D	32 47' 54" N	110 17' 44" W	
Rattlesnake Field #5			
Pt	Lat	Long	
A	32 47' 54" N	110 17' 44" W	
B	32 47' 52" N	110 17' 48" W	
C	32 47' 53" N	110 17' 49" W	
D	32 47' 55" N	110 17' 45" W	
Rattlesnake Field #6			
Pt	Lat	Long	
A	32 47' 56" N	110 17' 45" W	
B	32 47' 53" N	110 17' 50" W	
C	32 47' 54" N	110 17' 52" W	
D	32 47' 55" N	110 17' 52" W	
E	32 47' 57" N	110 17' 46" W	
Rattlesnake Field #7			
Pt	Lat	Long	
A	32 47' 49" N	110 17' 35" W	
B	32 47' 49" N	110 17' 36" W	
C	32 47' 49" N	110 17' 37" W	
D	32 47' 50" N	110 17' 36" W	
Rattlesnake Field #8			
Pt	Lat	Long	
A	32 47' 50" N	110 17' 36" W	
B	32 47' 49" N	110 17' 37" W	
C	32 47' 50" N	110 17' 39" W	
D	32 47' 52" N	110 17' 38" W	
Rattlesnake Field #9			
Pt	Lat	Long	
A	32 47' 52" N	110 17' 38" W	
B	32 47' 50" N	110 17' 40" W	
C	32 47' 51" N	110 17' 45" W	
D	32 47' 54" N	110 17' 41" W	
E	32 47' 53" N	110 17' 40" W	

**Mapped Irrigation Areas**  
Section 27 T07S R20E

*In re Karen C. LeCount*  
Contested Case W1-11-3395  
Zone 2 Well Report  
115-05-DA-001

May 2020

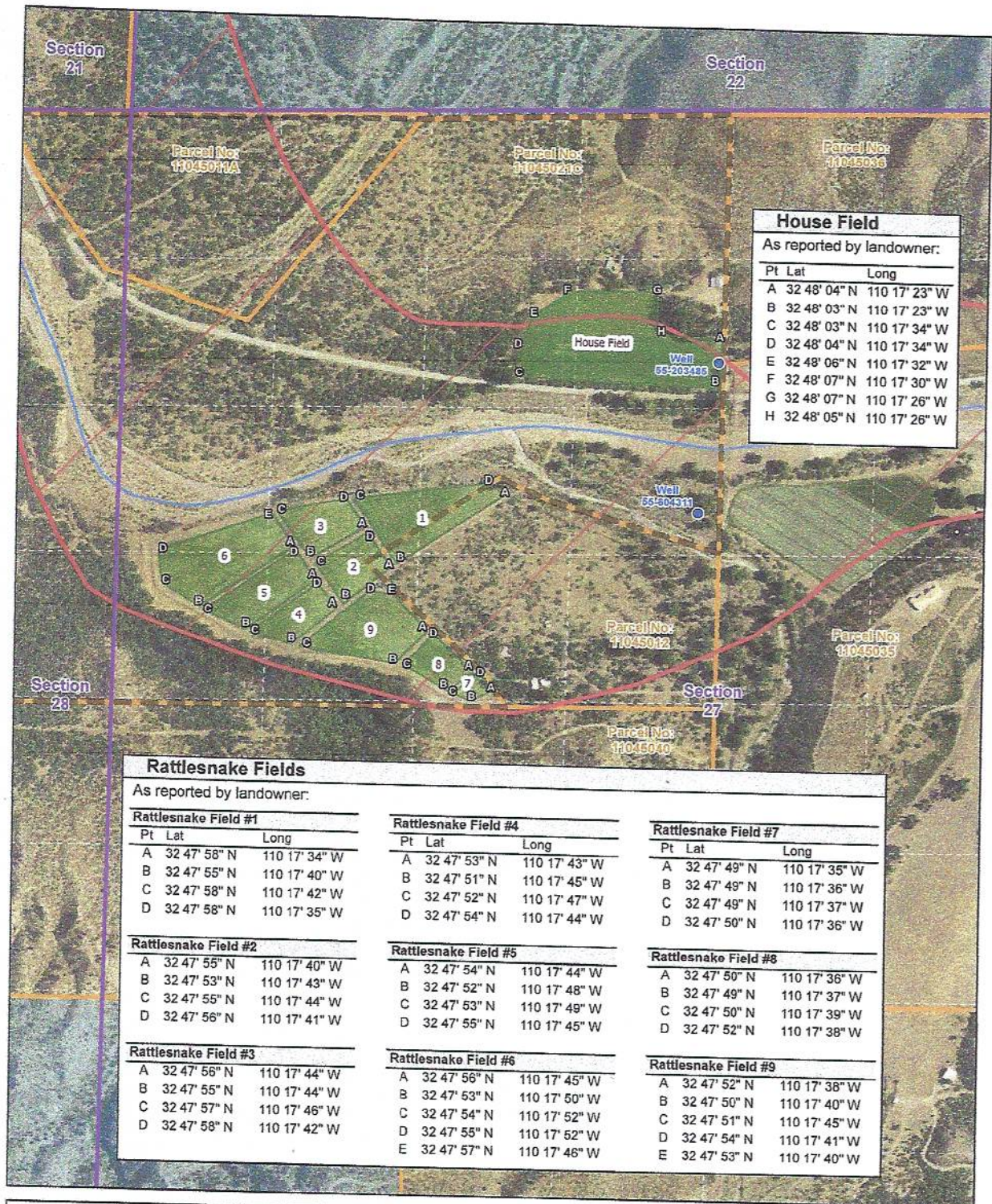
Arizona Department of Water Resources



Data sources include: NAIP 2017 (Background Imagery), Graham County Parcel Data / March 2020 (graphic representation only and not legal boundaries), Irrigated field data reported by the landowner, and other ADWR reference data sets.

Abstract of Water Right  
San Pedro Watershed

Attribute	Proposed Abstract of Water Right
<b>1. Proposed Water Right No.:</b>	115-05-DA-001-SP001
<b>2. Owner of Water Right:</b>	Magoffin Family Trust
<b>3. Landowner:</b>	Magoffin Family Trust
<b>4. Statement of Claimant No.:</b>	39-120220
<b>5. Statement of Claimant Name:</b>	Magoffin Family Trust
<b>6. Lessee or Permittee:</b>	n/a
<b>7. Basis of Right:</b>	36-105995
<b>8. Beneficial Use:</b>	Stock and wildlife watering from a stockpond
<b>9. Priority Date:</b>	04/21/1910
<b>10. Quantity:</b>	Not to exceed ( $\leq$ ) 4 acre feet annually with continuous fill
<b>11. Place of Use:</b>	SWNENW Sec. 27 T07S R20E of the Gila and Salt River Baseline and Meridian, Graham County, Arizona
<b>12. Point of Diversion:</b>	Well 55-604311 NESENW Sec. 27 T7S R20E of the Gila and Salt River Baseline and Meridian, Graham County, Arizona 32° 47' 56.49"N, 110° 17' 23.22"W (see attached map)
<b>13. Source of Water:</b>	Subflow of Aravaipa Creek
<b>14. Name of Facility</b>	Tail Water Pond below House Pasture



**House Field**  
As reported by landowner:

Pt	Lat	Long
A	32 48' 04" N	110 17' 23" W
B	32 48' 03" N	110 17' 23" W
C	32 48' 03" N	110 17' 34" W
D	32 48' 04" N	110 17' 34" W
E	32 48' 06" N	110 17' 32" W
F	32 48' 07" N	110 17' 30" W
G	32 48' 07" N	110 17' 26" W
H	32 48' 05" N	110 17' 26" W

**Rattlesnake Fields**  
As reported by landowner:

Rattlesnake Field #1			Rattlesnake Field #4			Rattlesnake Field #7		
Pt	Lat	Long	Pt	Lat	Long	Pt	Lat	Long
A	32 47' 58" N	110 17' 34" W	A	32 47' 53" N	110 17' 43" W	A	32 47' 49" N	110 17' 35" W
B	32 47' 55" N	110 17' 40" W	B	32 47' 51" N	110 17' 45" W	B	32 47' 49" N	110 17' 36" W
C	32 47' 58" N	110 17' 42" W	C	32 47' 52" N	110 17' 47" W	C	32 47' 49" N	110 17' 37" W
D	32 47' 58" N	110 17' 35" W	D	32 47' 54" N	110 17' 44" W	D	32 47' 50" N	110 17' 36" W

Rattlesnake Field #2			Rattlesnake Field #5			Rattlesnake Field #8		
Pt	Lat	Long	Pt	Lat	Long	Pt	Lat	Long
A	32 47' 55" N	110 17' 40" W	A	32 47' 54" N	110 17' 44" W	A	32 47' 50" N	110 17' 36" W
B	32 47' 53" N	110 17' 43" W	B	32 47' 52" N	110 17' 48" W	B	32 47' 49" N	110 17' 37" W
C	32 47' 55" N	110 17' 44" W	C	32 47' 53" N	110 17' 49" W	C	32 47' 50" N	110 17' 39" W
D	32 47' 56" N	110 17' 41" W	D	32 47' 55" N	110 17' 45" W	D	32 47' 52" N	110 17' 38" W

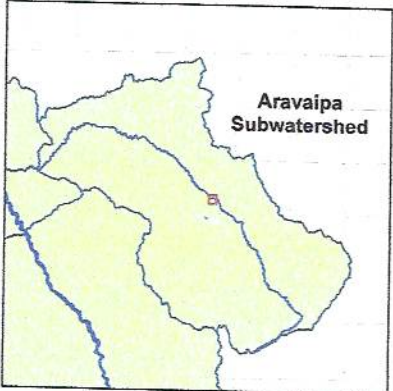
Rattlesnake Field #3			Rattlesnake Field #6			Rattlesnake Field #9		
Pt	Lat	Long	Pt	Lat	Long	Pt	Lat	Long
A	32 47' 56" N	110 17' 44" W	A	32 47' 56" N	110 17' 45" W	A	32 47' 52" N	110 17' 38" W
B	32 47' 55" N	110 17' 44" W	B	32 47' 53" N	110 17' 50" W	B	32 47' 50" N	110 17' 40" W
C	32 47' 57" N	110 17' 46" W	C	32 47' 54" N	110 17' 52" W	C	32 47' 51" N	110 17' 45" W
D	32 47' 58" N	110 17' 42" W	D	32 47' 55" N	110 17' 52" W	D	32 47' 54" N	110 17' 41" W
			E	32 47' 57" N	110 17' 46" W	E	32 47' 53" N	110 17' 40" W

**Mapped Irrigation Areas**  
Section 27 T07S R20E

*In re Karen C. LeCount*  
Contested Case W1-11-3395  
Zone 2 Well Report  
115-05-DA-001

May 2020

Arizona Department  
of Water Resources



**Legend**

- Irrigated Fields (as reported by landowner)
- Zone 2 Well Report Area: 115-05-DA-001
- Wells
- Aravaipa Creek
- Subflow Zone
- County Assessor Parcels
- Sections
- Section Divisions - QQQ

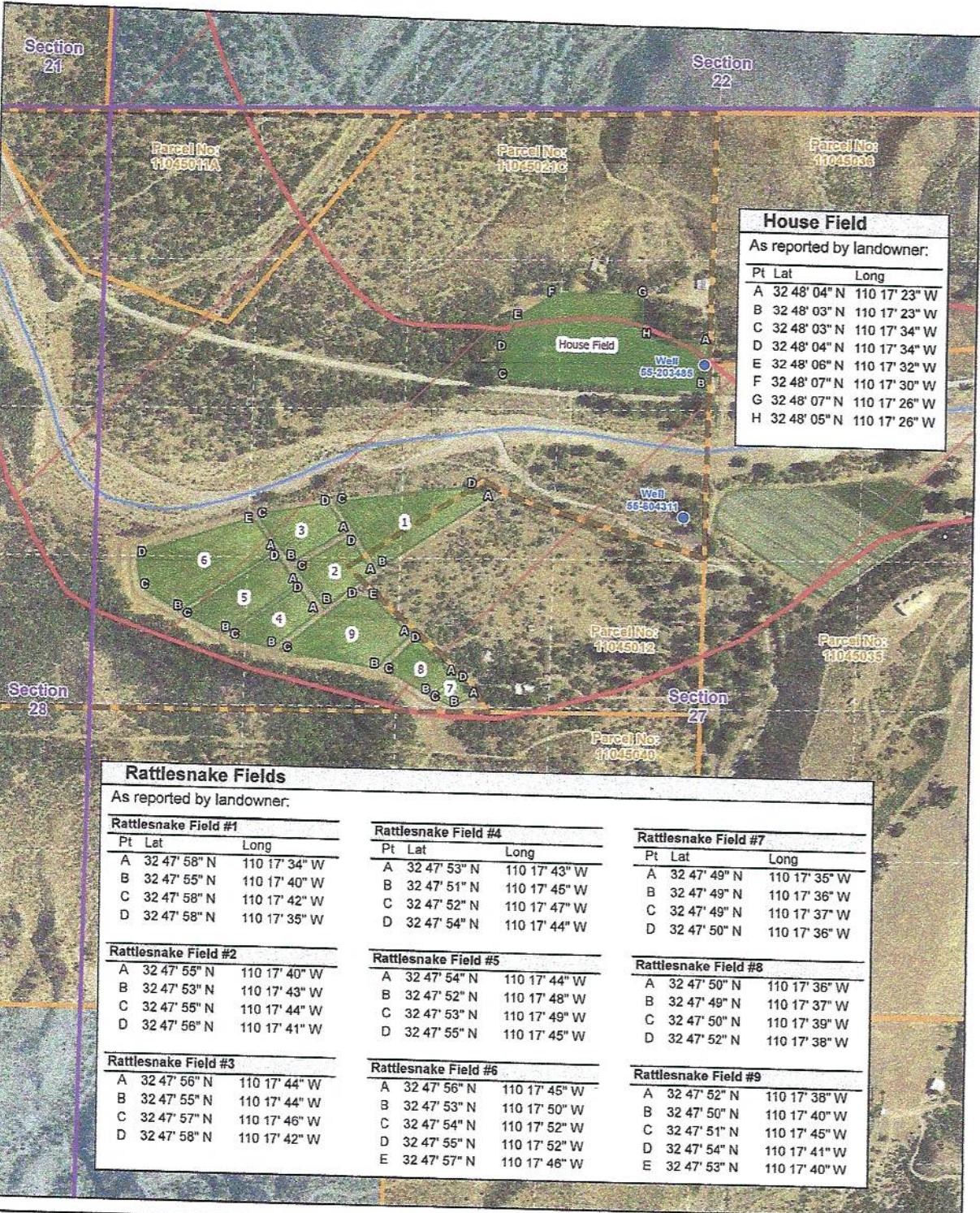
Feet  
0 400 800

Data sources include: NAIP 2017 (Background Imagery), Graham County Parcel Data / March 2020 (graphic representation only and not legal boundaries), Irrigated field data reported by the landowner, and other ADWR reference data sets.

Abstract of Water Right  
San Pedro Watershed

Attribute	Proposed Abstract of Water Right
<b>1. Proposed Water Right No.:</b>	115-05-DA-001-SW001
<b>2. Owner of Water Right:</b>	Magoffin Family Trust
<b>3. Landowner:</b>	Magoffin Family Trust
<b>4. Statement of Claimant No.:</b>	39-120220
<b>5. Statement of Claimant Name:</b>	Magoffin Family Trust
<b>6. Lessee or Permittee:</b>	n/a
<b>7. Basis of Right:</b>	36-105984
<b>8. Beneficial Use:</b>	Stock Watering and wildlife
<b>9. Priority Date:</b>	04/21/1910
<b>10. Quantity:</b>	Reasonable use
<b>11. Place of Use:</b>	SENENW Sec. 27 T07S R20E of the Gila and Salt River Baseline and Meridian, Graham County, Arizona
<b>12. Point of Diversion:</b>	Well 55-203485 SENENW Sec. 27 T07S R20E of the Gila and Salt River Baseline and Meridian, Graham County, Arizona 32° 48' 02.98"N, 110° 17' 23.18"W (see attached map)
<b>13. Source of Water:</b>	Subflow of Aravaipa Creek
<b>14. Name of Facility</b>	House Well





**House Field**  
As reported by landowner:

Pt	Lat	Long
A	32 48' 04" N	110 17' 23" W
B	32 48' 03" N	110 17' 23" W
C	32 48' 03" N	110 17' 34" W
D	32 48' 04" N	110 17' 34" W
E	32 48' 06" N	110 17' 32" W
F	32 48' 07" N	110 17' 30" W
G	32 48' 07" N	110 17' 26" W
H	32 48' 05" N	110 17' 26" W

**Rattlesnake Fields**  
As reported by landowner:

Rattlesnake Field #1			Rattlesnake Field #4			Rattlesnake Field #7		
Pt	Lat	Long	Pt	Lat	Long	Pt	Lat	Long
A	32 47' 58" N	110 17' 34" W	A	32 47' 53" N	110 17' 43" W	A	32 47' 49" N	110 17' 35" W
B	32 47' 55" N	110 17' 40" W	B	32 47' 51" N	110 17' 45" W	B	32 47' 49" N	110 17' 36" W
C	32 47' 58" N	110 17' 42" W	C	32 47' 52" N	110 17' 47" W	C	32 47' 49" N	110 17' 37" W
D	32 47' 58" N	110 17' 35" W	D	32 47' 54" N	110 17' 44" W	D	32 47' 50" N	110 17' 36" W

Rattlesnake Field #2			Rattlesnake Field #5			Rattlesnake Field #8		
Pt	Lat	Long	Pt	Lat	Long	Pt	Lat	Long
A	32 47' 55" N	110 17' 40" W	A	32 47' 54" N	110 17' 44" W	A	32 47' 50" N	110 17' 36" W
B	32 47' 53" N	110 17' 43" W	B	32 47' 52" N	110 17' 48" W	B	32 47' 49" N	110 17' 37" W
C	32 47' 55" N	110 17' 44" W	C	32 47' 53" N	110 17' 49" W	C	32 47' 50" N	110 17' 39" W
D	32 47' 56" N	110 17' 41" W	D	32 47' 55" N	110 17' 45" W	D	32 47' 52" N	110 17' 38" W

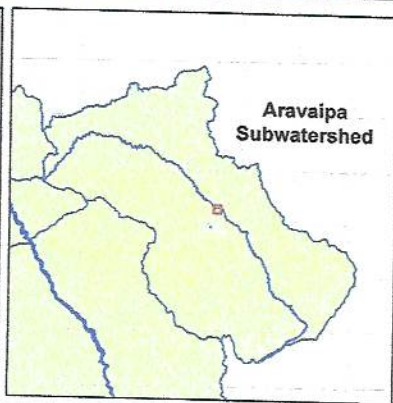
Rattlesnake Field #3			Rattlesnake Field #6			Rattlesnake Field #9		
Pt	Lat	Long	Pt	Lat	Long	Pt	Lat	Long
A	32 47' 56" N	110 17' 44" W	A	32 47' 56" N	110 17' 45" W	A	32 47' 52" N	110 17' 38" W
B	32 47' 55" N	110 17' 44" W	B	32 47' 53" N	110 17' 50" W	B	32 47' 50" N	110 17' 40" W
C	32 47' 57" N	110 17' 46" W	C	32 47' 54" N	110 17' 52" W	C	32 47' 51" N	110 17' 45" W
D	32 47' 58" N	110 17' 42" W	D	32 47' 55" N	110 17' 52" W	D	32 47' 54" N	110 17' 41" W
			E	32 47' 57" N	110 17' 46" W	E	32 47' 53" N	110 17' 40" W

**Mapped Irrigation Areas**  
Section 27 T07S R20E

*In re Karen C. LeCount*  
Contested Case W1-11-3395  
Zone 2 Well Report  
115-05-DA-001

May 2020

Arizona Department  
of Water Resources



**Legend**

- Irrigated Fields (as reported by landowner)
- Zone 2 Well Report Area: 115-05-DA-001
- Wells
- Aravaipa Creek
- Subflow Zone
- County Assessor Parcels
- Sections
- Section Divisions - QQQ

Feet

0      400      800

Data sources include: NAIP 2017 (Background Imagery), Graham County Parcel Data / March 2020 (graphic representation only and not legal boundaries), Irrigated field data reported by the landowner, and other ADWR reference data sets.