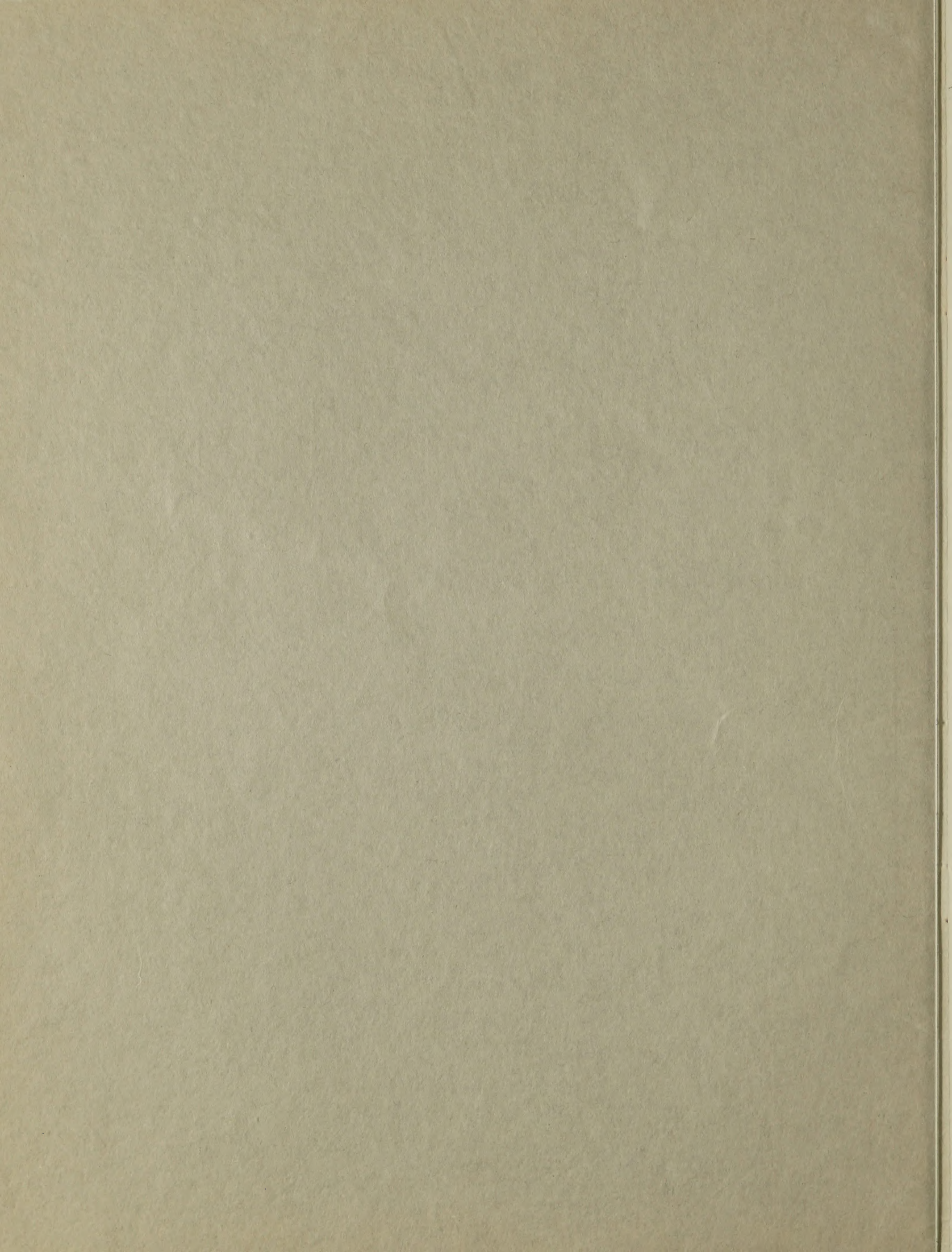


The

WHITE HOUSE

LINE



The **WHITE HOUSE** *Line*
TRADE MARK

OF

Sectional Steel Units

(PATENTED CONSTRUCTION)

CATALOGUE No. 6

JANES & KIRTLAND, INC.
101 PARK AVENUE, NEW YORK
FACTORY · ST · CHARLES · ILLINOIS

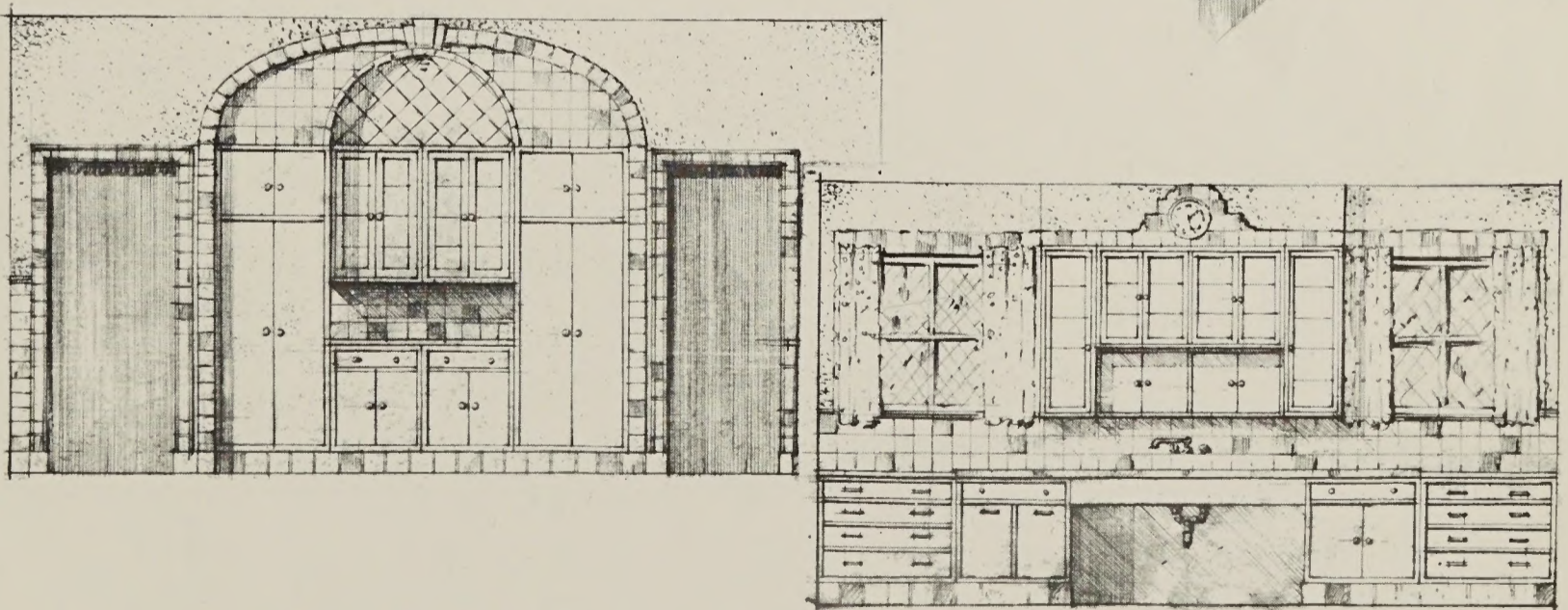
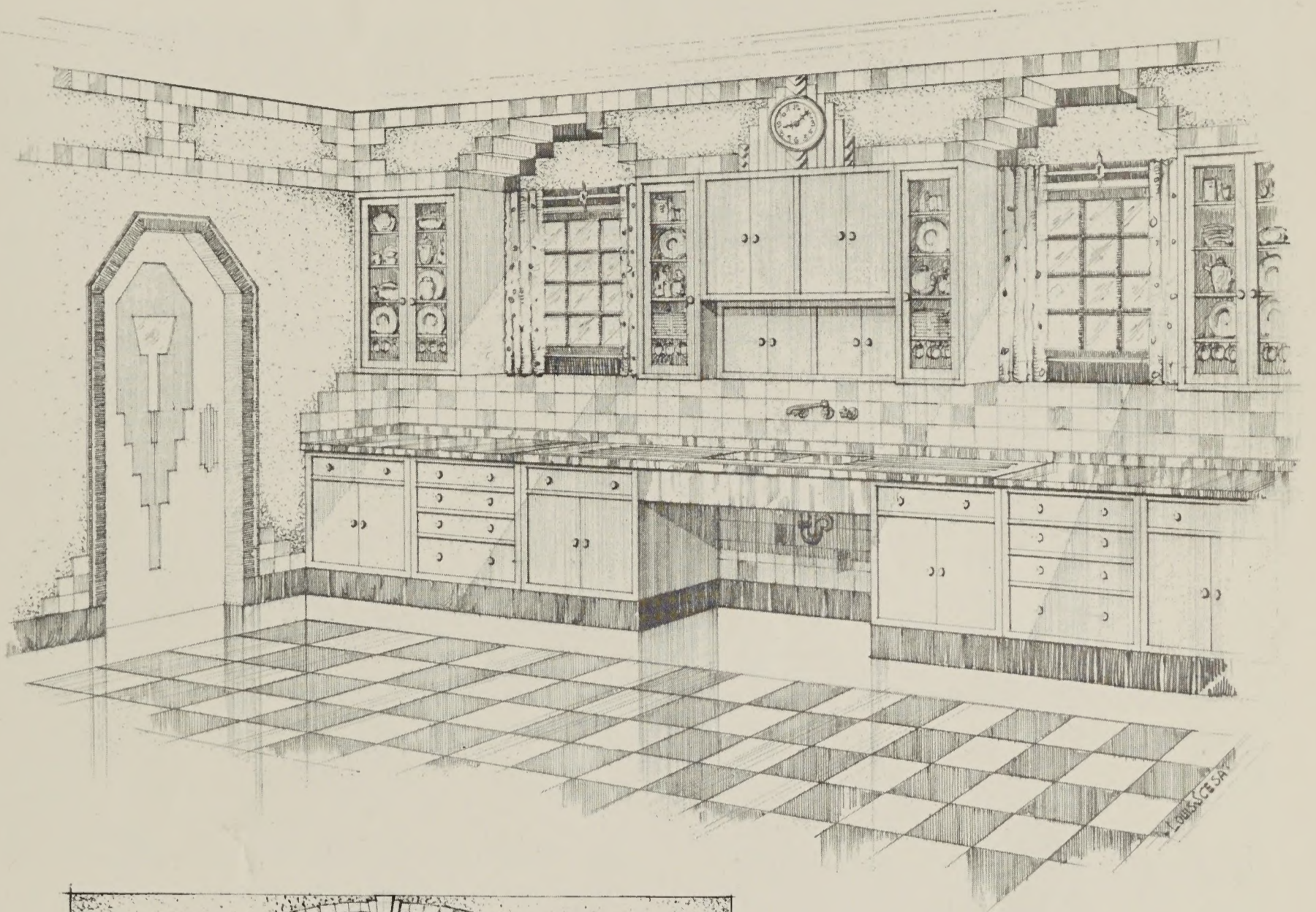
Foreword

JANES & KIRTLAND, INC., the creators and manufacturers of The WHITE HOUSE Line have been in business since 1840. As metalcrafters through all these years, their products have been known for their excellence of quality throughout the length and breadth of the land, even to foreign countries.

As they were pioneers in the metal working industry, so are they the originators of the unit system of sectional metal cabinets for kitchen and pantry. Recognizing the superiority and advantage of steel cabinets over wood for storage, preparation and serving of food, Janes & Kirtland have designed, built, and installed The WHITE HOUSE Line of kitchen and pantry cupboards, embodying numerous exclusive features, in many of America's outstanding residences, apartments, hospitals, and industrial plants.

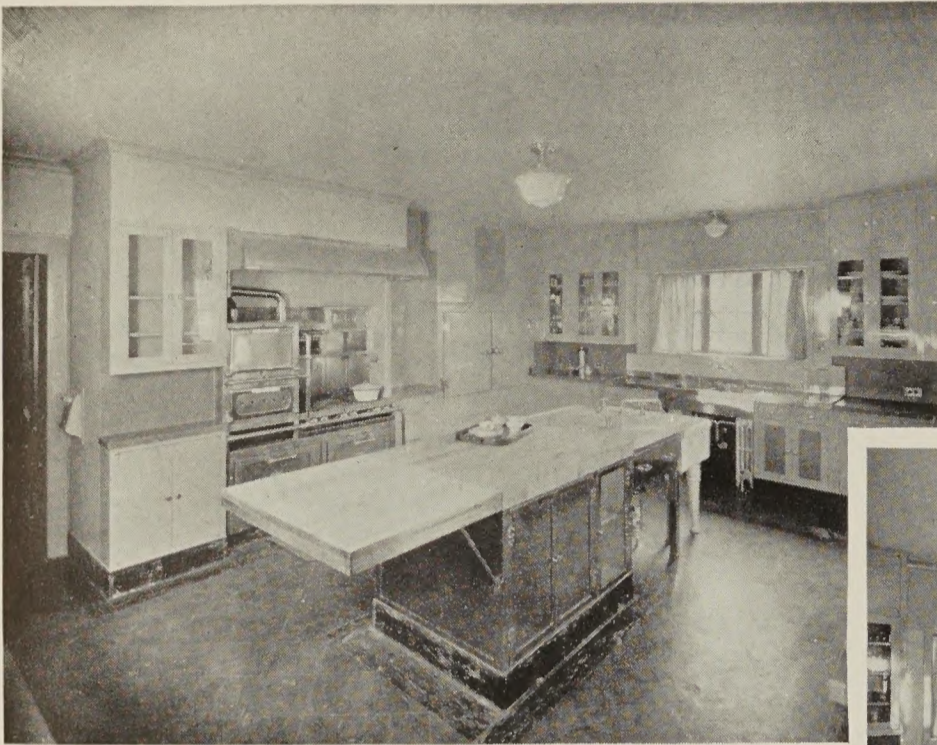
The WHITE HOUSE Line by its excellence of quality, beauty, efficiency and utility has established for itself the name and reputation of the De Luxe line of metal cupboards and cabinets for kitchen and pantry equipment. This new edition of catalog will help you to visualize the WHITE HOUSE product and the service it renders toward the arrangement of a well planned kitchen and pantry, for every type of home.

The
WHITE HOUSE
TRADE MARK
Line

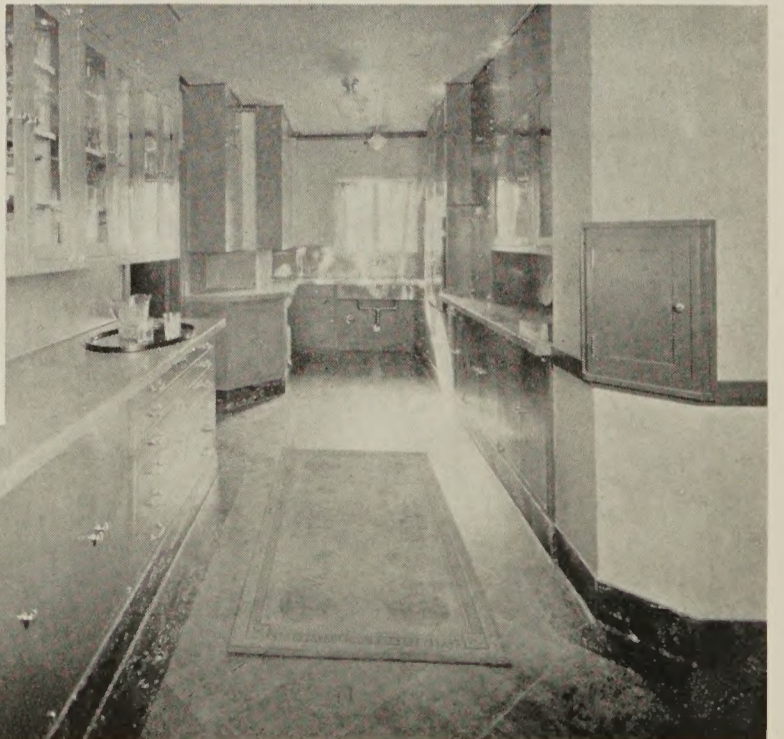
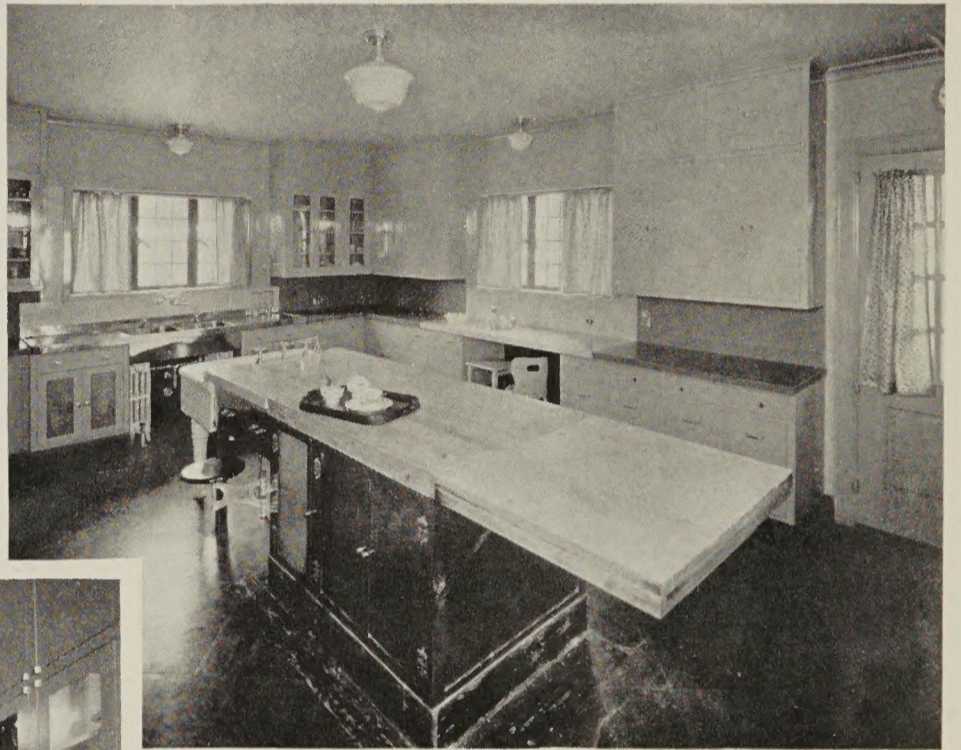


Good taste and design need not be sacrificed for efficiency when using WHITE HOUSE Units

The
WHITE HOUSE
TRADE MARK
Line



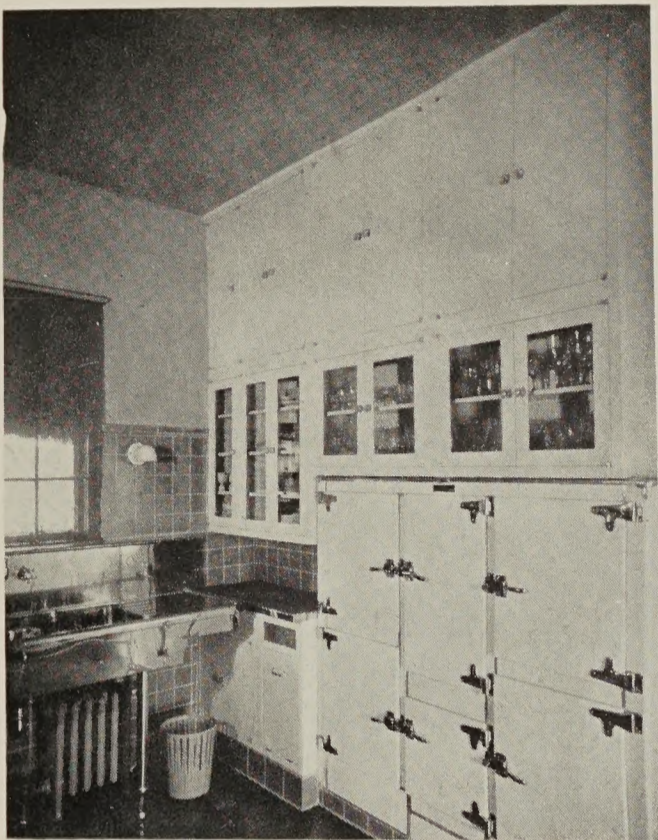
An interesting installation of WHITE HOUSE metal cabinets in the kitchen, pantry and silence pantry of a mid-western residence.



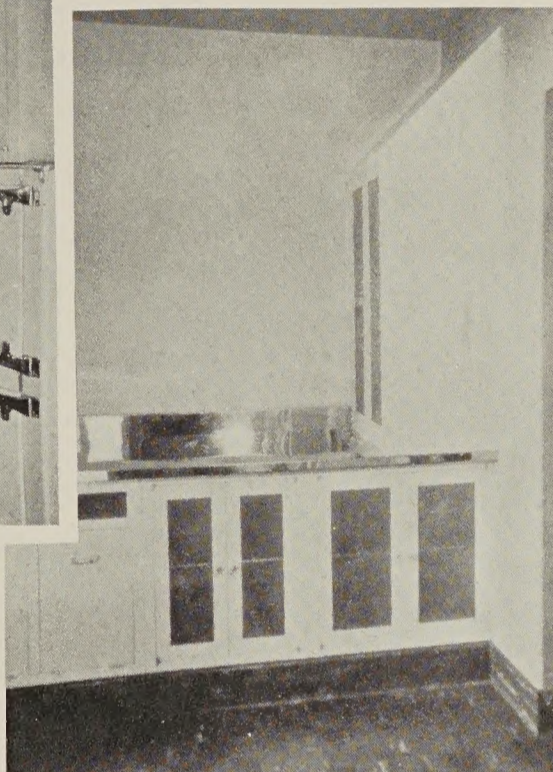
R. L. Jurden Residence
Kansas City, Mo.
Bryant Fleming, *Architect*

The
WHITE HOUSE
TRADE MARK
 Line

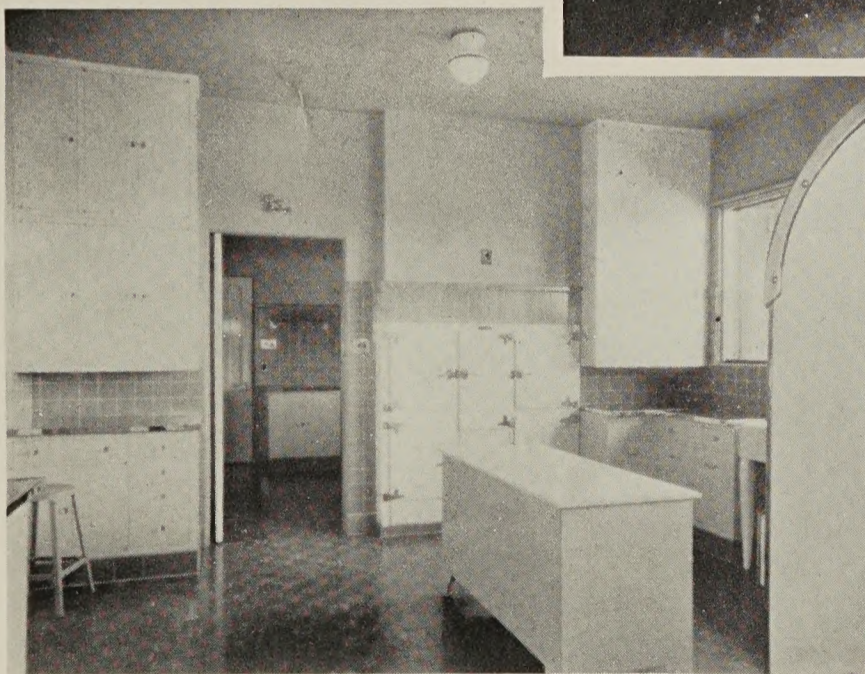
Views of a Western country house illustrating the completeness of the service quarters, executed in WHITE HOUSE metal cabinets.



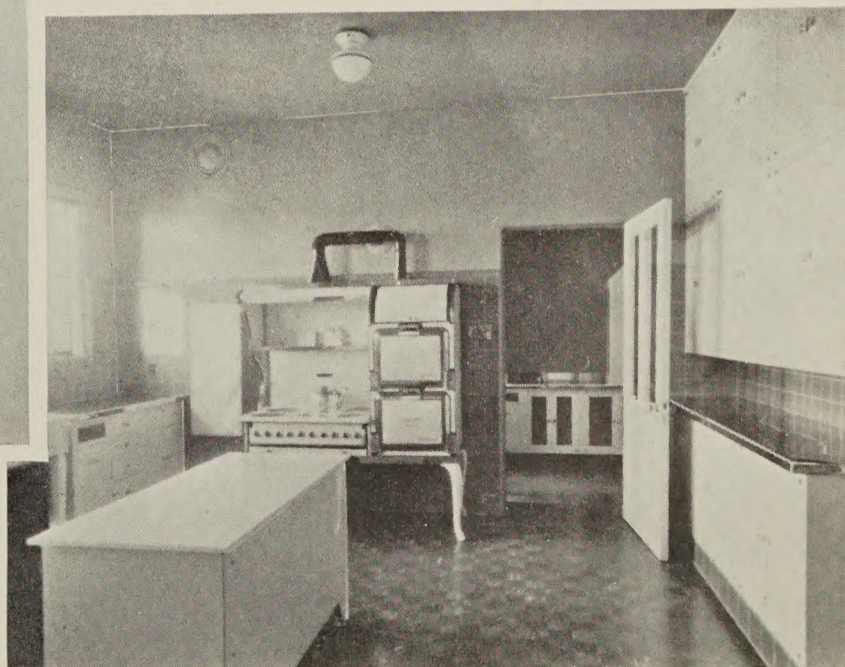
Butlers pantry



Cold room

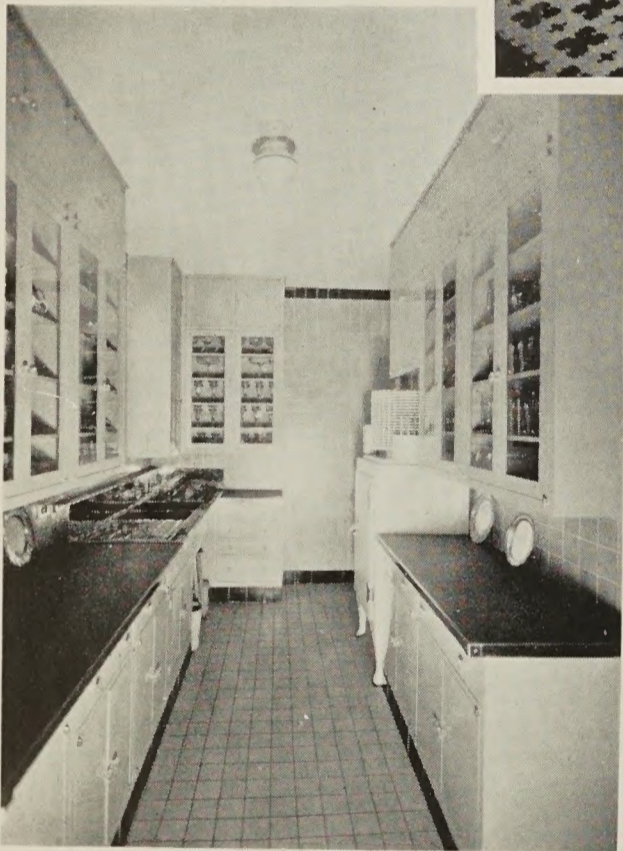


Kitchen views



J. B. Grant Residence
 Denver, Colorado
 Fisher & Fisher, *Architects*

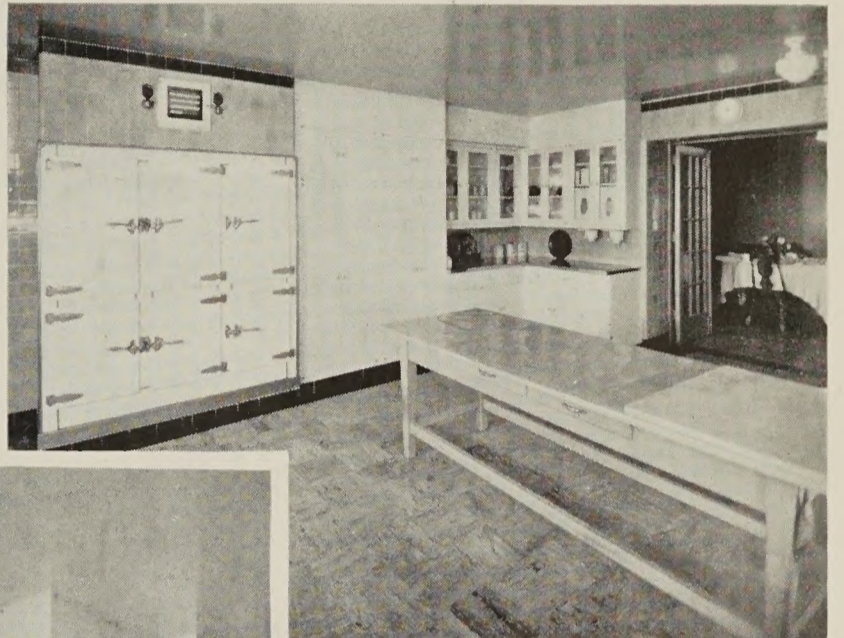
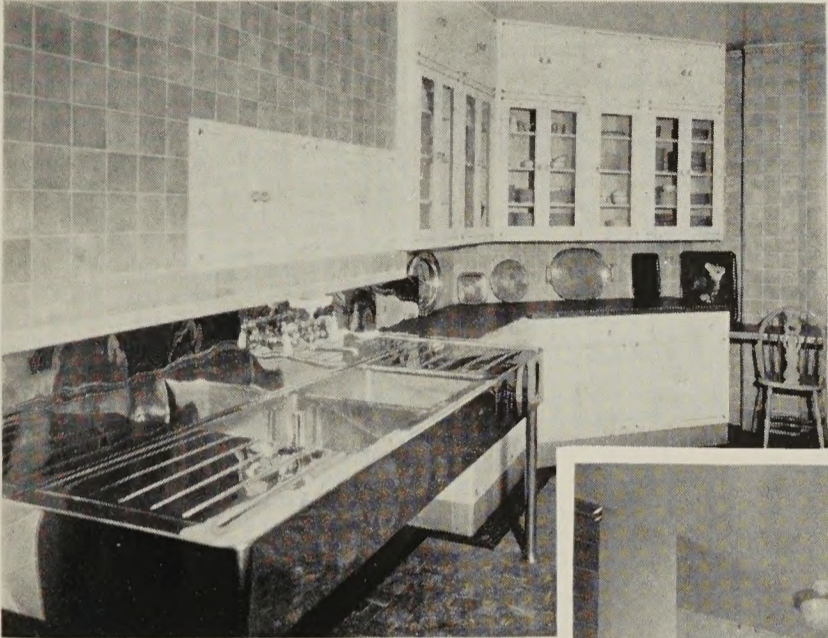
The
WHITE HOUSE
TRADE MARK
Line



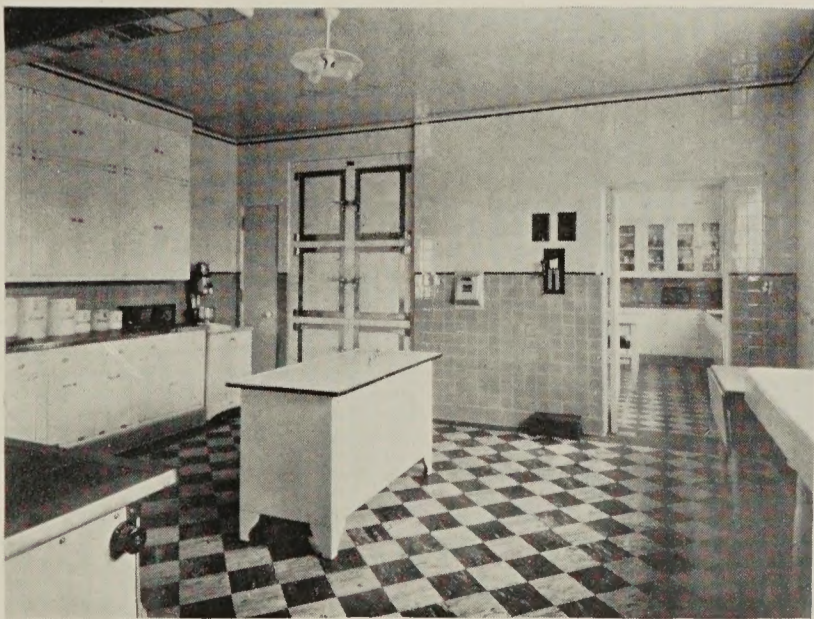
In remodeling the Montclair home of Mr. Robert Drysdale, WHITE HOUSE units played an important part in modernizing the kitchen and pantries

The
WHITE HOUSE
TRADE MARK
Line

WHITE HOUSE metal cabinets provide the most modern kitchen and pantry equipment for the new as well as the remodeled home. They are fire-resisting, moisture-proof, vermin-proof, sanitary and combine beauty and utility.

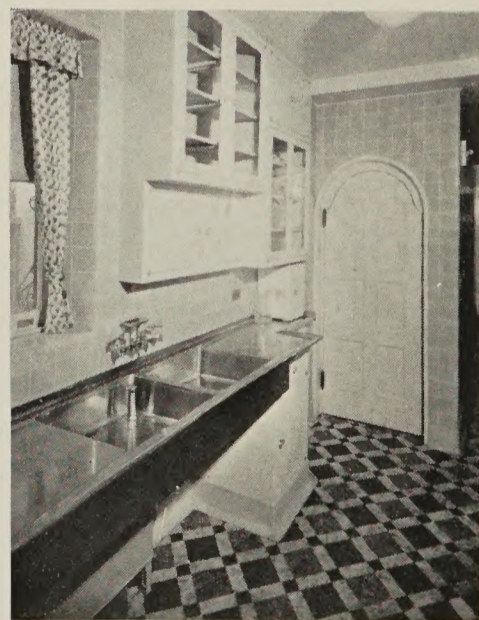
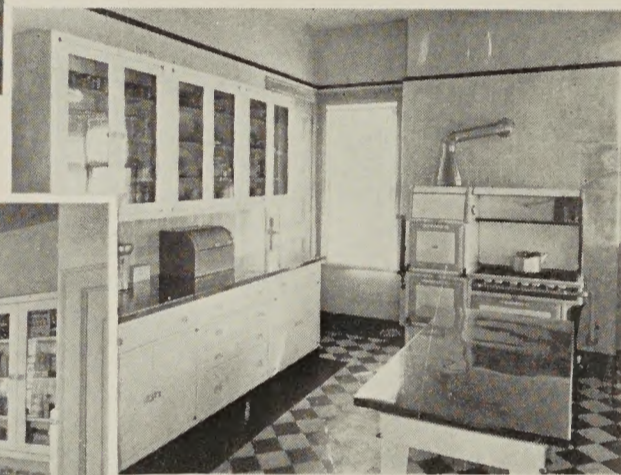
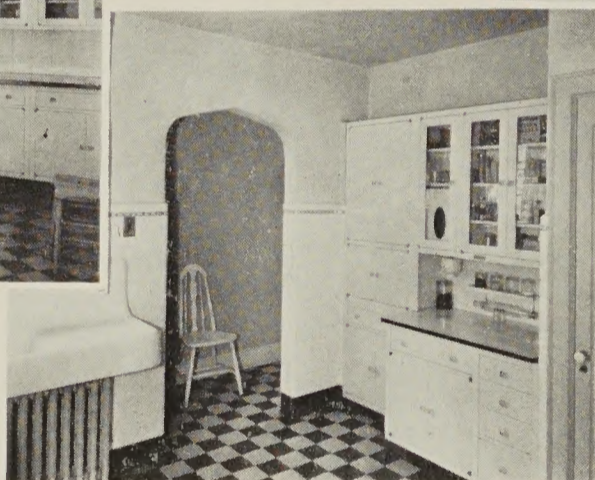
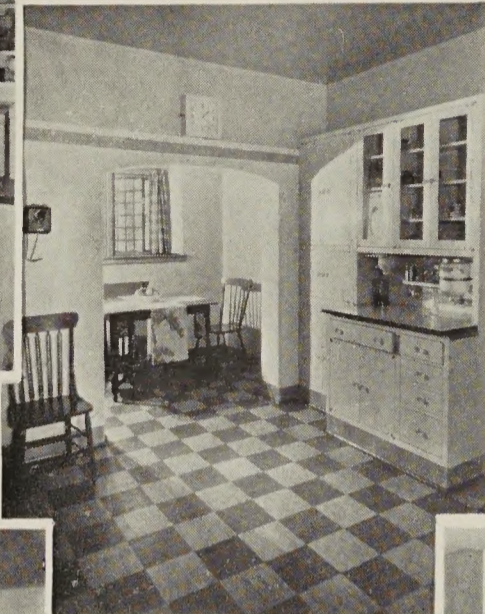
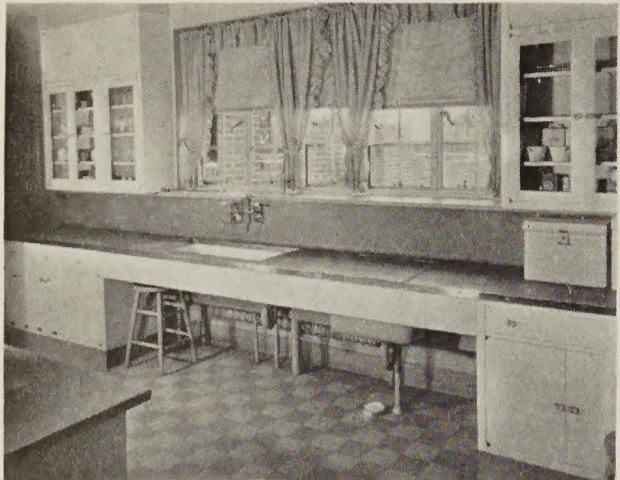


S. B. Colgate Residence
Orange, N. J.



Illustrations of well planned kitchen
and pantries in Detroit Residences
Richard H. Marr, *Architect*

The
WHITE HOUSE
TRADE MARK
Line

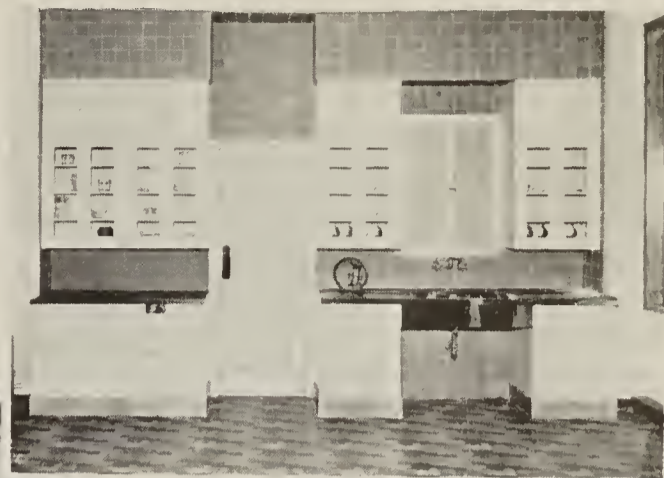
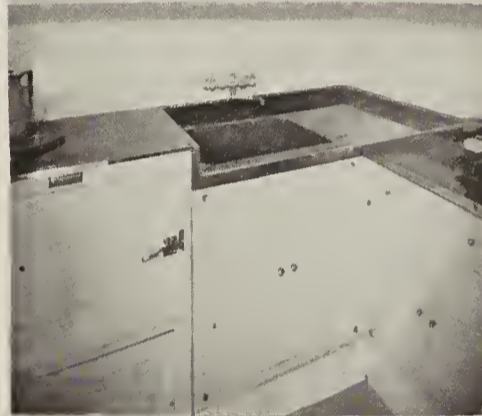
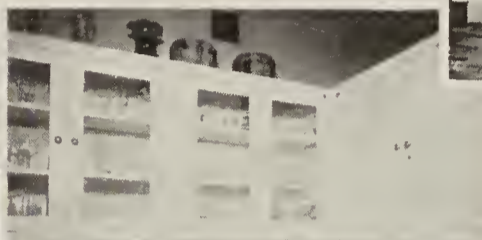


WHITE HOUSE cabinets and dressers were the recommendation of the architects and the selection of the owners for these medium size homes to provide maximum utility in the minimum of space.

The
WHITE HOUSE
TRADE MARK
 Line



The space beneath the drain boards is utilized for storage by using sanitary, moisture-proof metal base units of size and design desired.



Upper units are placed on the wall above giving convenient storage for dishes and glasses washed at the sink.



Metal sinks and drainboards for pantry use are most desirable. The metal surface is softer than porcelain or enameled iron. It minimizes the risk of china and glassware breakage and reduces the usual clatter attendant with dishwashing. These sinks are made to specified size; with or without backs, with single or double compartment bowls.

Attractive arrangements of metal sinks and WHITE HOUSE cabinets may be made for the flower room, a recognized addition to the modern house.

CONSTRUCTION

WHITE HOUSE Units are manufactured of first grade furniture steel. All joints are electrically welded. Doors and drawer fronts are double construction, fitting into full rabbetted frames. This interlocking rabbetted construction with double doors and drawers gives strength which is not obtainable with any other construction.

The doors are hung on patented, semi-concealed brass hinges and close on friction catches. Rubber

bumpers are provided on the doors. With this construction, it is possible to open and close each door independently and without noise. Our new shelf supports are provided at the back and front of the unit, the front support being located on a stile which closes the rabbet and makes a smooth finish on the inside.

The line comprises bases and upper units as hereinafter described.

FINISH

Each unit is full finished on the inside, outside, top, bottom and back in enamel of the highest quality, each coat baked. This finish thoroughly protects the steel. Our enameling process assures a finish which is very tough

and durable, and gives a glossy finish easily kept clean.

Layouts may be furnished in white or colored enamel as selected. White is our standard color. Other colors are matched to sample.

FITTINGS

All knobs are of glass or chromium plated brass.

Hinges are brass, semi-concealed, chromium plated.

All shelves are of steel, and enameled all sides.

Locks may be furnished on any door or drawer. These locks are brass, cylinder type with flat key.

Legs, where furnished, are 6" high, enameled and are equipped with domes of silence.

All sub-bases furnished by others unless otherwise specified.

Counter tops are of steel enameled and covered with monel metal for kitchen use,—and linoleum with monel metal nosing for pantry use. Special linoleum may be furnished to match color schemes.

All WHITE HOUSE Units are furnished complete, no extra hardware, glazing or painting necessary.

ARRANGEMENT

Standard units may be used with special interior arrangements. Aside from cupboards, drawers, flour and sugar bins, barrel compartments and electric plate warmers, we provide electric towel dryers, soiled linen bins, tray and platter storage, and many other interesting arrangements.

Cup hooks are provided on the shelves of upper units when specified.

Rolling ladders are furnished when specified for access to high units. These ladders are of wood, white enameled, fitted with rubber treads, and rubber tired wheels. The ladders travel on metal rails bracketed to the units.

INSTALLATION

WHITE HOUSE Units effect a saving in the cost of installation, especially where the walls are tiled. Each unit being a complete steel case makes it unnecessary to tile in back of the units.

Bases are set on our regular 6 inch legs, or more often are set on a composition sub-base 6 inches high, to maintain the accepted 3 foot counter height. This sub-base construction may be made of wood painted, concrete, or other material faced with tile or covering to match flooring.

Units are secured to the wall with bolts, etc., according to the construction of the walls, i.e.,

Hollow tile wall—toggle bolts.

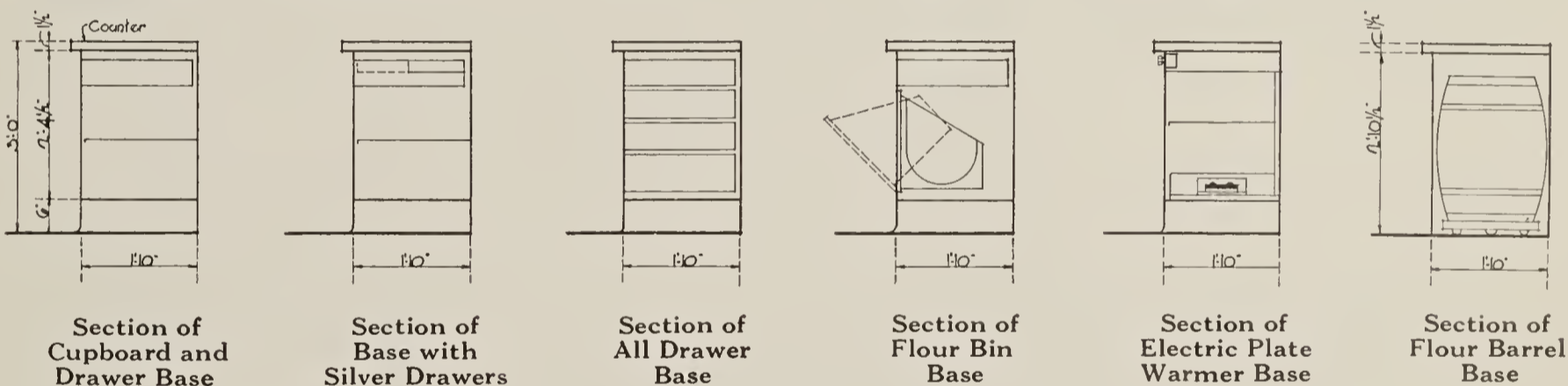
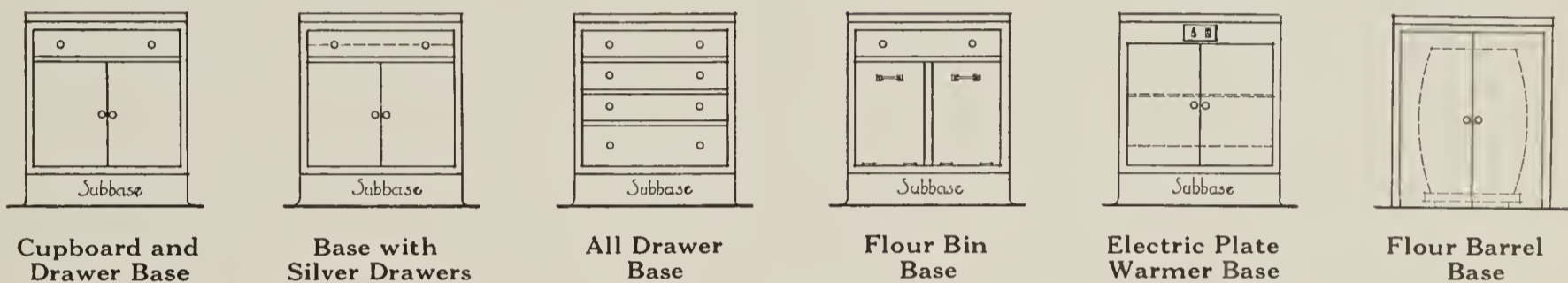
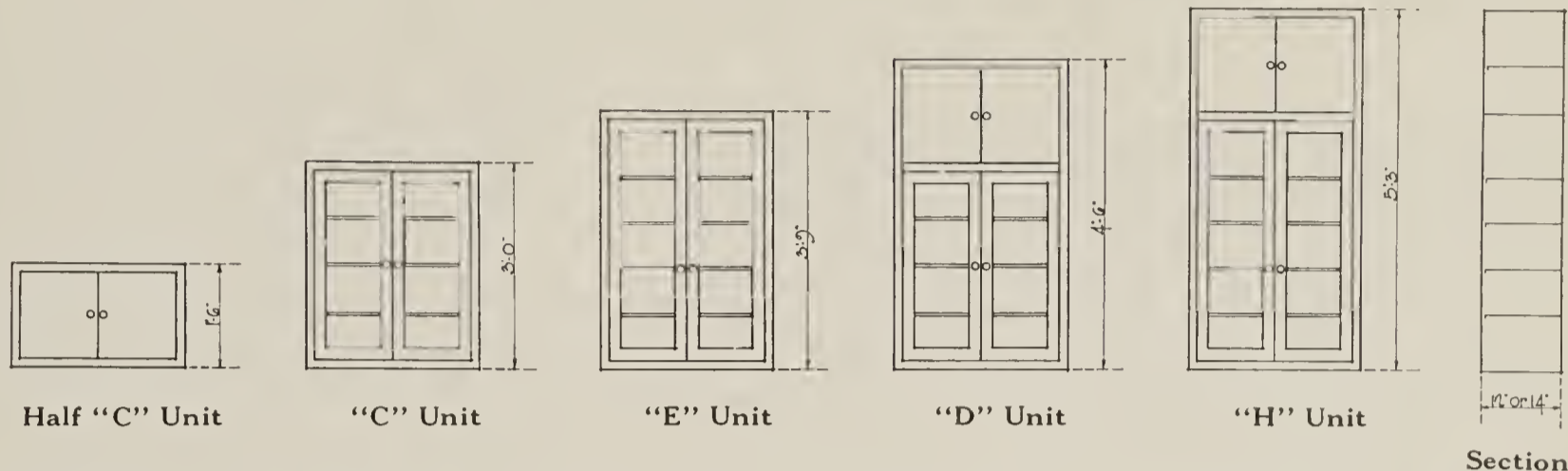
Brick wall—expansion bolts.

Lath and plaster wall—wood or lag screws in studding.

Gypsum Block partitions—screws in wood grounds, furnished by others, or bolted through the wall.

Wherever food is stored, prepared or served — use Steel!

DETAIL OF DESIGNS AND SIZES OF WHITE HOUSE SECTIONAL UNITS



WHITE HOUSE Units are furnished in the following widths:

14½ in., 16½ in., 18¾ in., 24 in., 26 in., 27½ in., 30 in., (as detailed above)
36 in., 39 in., and 50½ in.

Every upper unit has a base unit corresponding in width.

Upper units are not made deeper than 14 in. to hang on the wall.

Base units are made standard 22 in. deep. They may be made shallower when specified with the exception of the bin base (which necessitates minimum depth 16 in.). Plate warmer and barrel base made only 22 in. as detailed.

DOORS

14½ in., 16½ in., and 18¾ in., units have a single door; 24 in., 26 in., 27½ in., 30 in., and 36 in., units have a pair of doors. The 39 in. unit has a pair of doors and a single door. The 50½ in., unit has two pair of doors.

All sub-bases to be furnished by others,—6 in. high—to maintain the accepted 3 ft. counter-height.

Counters are provided for the base units when and as specified.

Monel metal counters are not made longer than 8 ft. in one piece. Longer counters are made in sections, bolted together. In the case of linoleum counters, the steel counters are made in sections and one continuous piece of linoleum provided to give the length required.

The
WHITE HOUSE
TRADE MARK
 Line

Illustrations on this page show some of the interesting new features created in standard units. These unusual features add to the utility and convenience of a WHITE HOUSE installation.



Soiled linen bin for pantry service



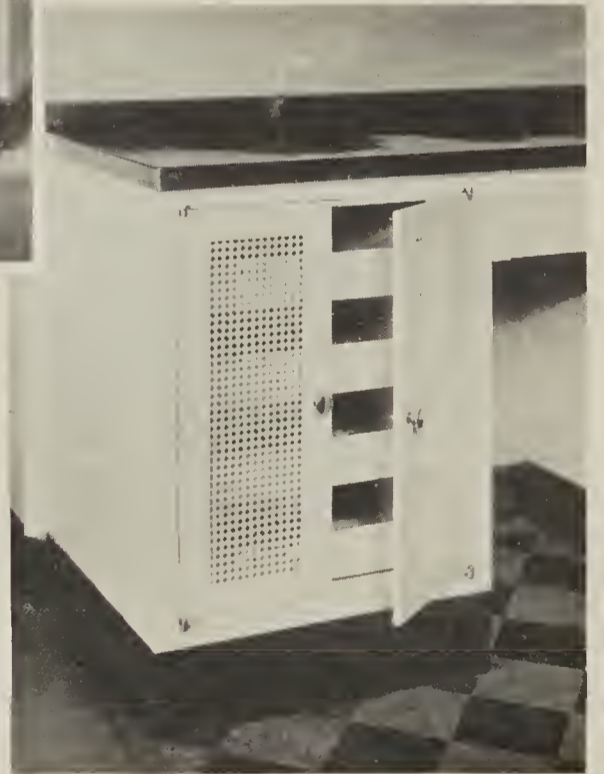
A grouping of units including linen and silver drawers, soiled linen bin, towel dryer, with plate warmer at counter height



Electric towel dryer that also eliminates the unsightly wall rack.



Tray rack for serving trays and large platters



Fruit and vegetable unit with trays, behind grille doors, provide assorted and ventilated storage.

Steel Units make it possible to carry out individual preference for a modern kitchen and pantry

The WHITE HOUSE TRADE MARK Line

The WHITE HOUSE electric plate warmer adds considerably to the efficiency of serving. Not only are plates, platters and dishes kept warm but the food may be kept warm between servings. It is entirely constructed of steel. There is no fire risk in a WHITE HOUSE plate warmer. The enamel finish harmonizes perfectly with the pantry layout.

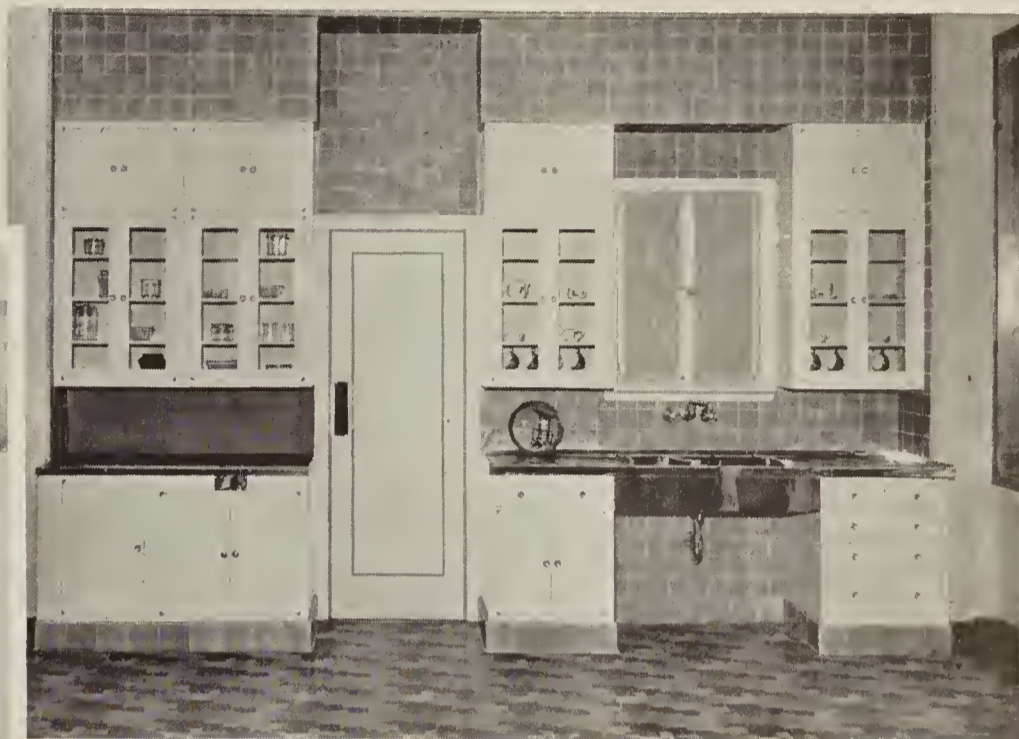
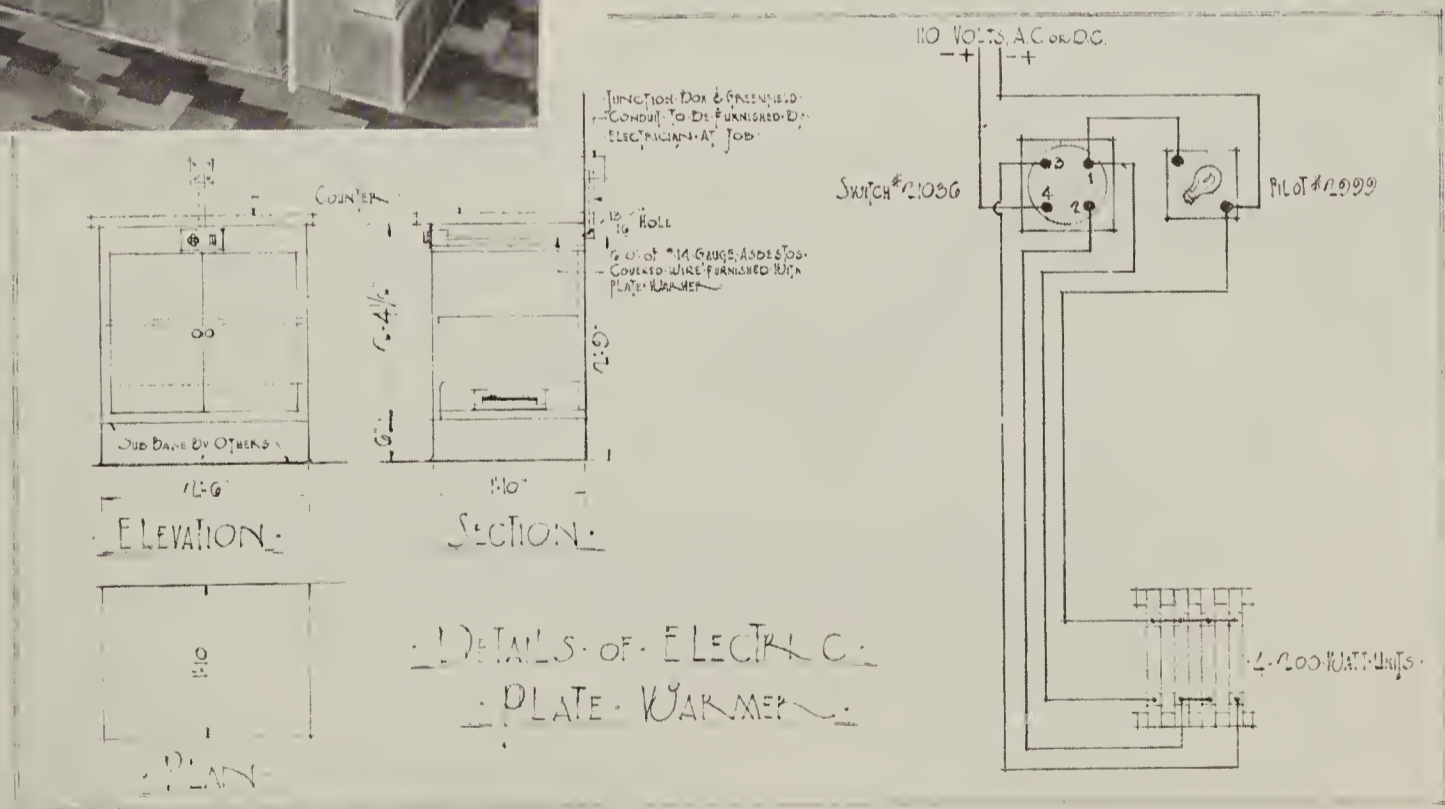


Plate warmers are made standard as detailed on this page. They are furnished for permanent installation with connection direct to house current, or portable, provided with cord and plug attachment.



The plate warmer is provided with an enclosed heating unit and arranged to distribute a uniform heat. A specially designed self contained three heat switch with pilot light controls temperature. The linings of monel metal are removable. The two shelves are monel metal and reinforced. All sides, top and bottom are heavily insulated.

See detailed drawing for wiring, voltage and current.

The
WHITE HOUSE
TRADE MARK
Line



Pent-house apartment of L. G. Kaufman
623 Park Avenue, New York City
J. E. R. Carpenter, *Architect*

WHITE HOUSE Metal Cabinets execute in a De Luxe manner the owner's individual requirements for the Service quarters of the apartment residence.

The
WHITE HOUSE
TRADE MARK
Line



Kitchen at No. 1 Beekman Place
Sloan & Robertson, *Architects*



Typical kitchen and pantry layout at
993 Fifth Avenue, New York City
Emery Roth, *Architect*



The important questions of space economy, sanitation, utility, and fire resistance for the kitchen and pantry of large and small apartments are solved with WHITE HOUSE Metal Cabinet installations.

The
WHITE HOUSE
TRADE MARK
 Line



No. 27 Dresser
 Height, 87 in.
 Width, 27½, in.
 Crated weight, 410 lbs.



No. 39 Dresser
 Height, 87 in.
 Width, 39 in.
 Crated weight, 475 lbs.



No. 50 Dresser
 Height, 87 in.
 Width, 50½ in.
 Crated weight, 600 lbs.



36 in. Broom and Linen Closet
 Height, 87 in.
 Width, 36 in.
 Depth, 12 in. (Also made 22 in. deep)
 Crated weight, 300 lbs.

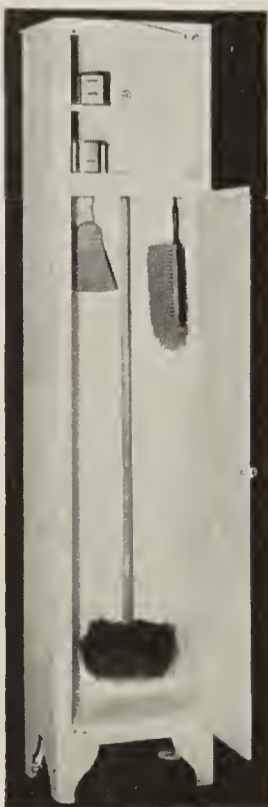
Upper sections are 12 inches deep; base sections are 22 inches deep;
 counters are 24 inches deep.



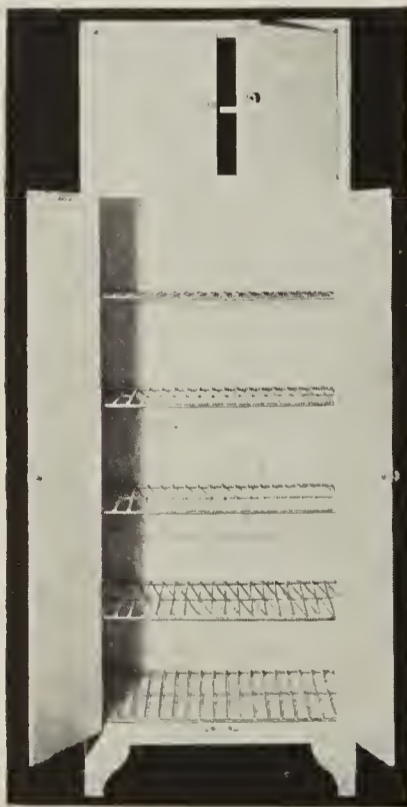
26 in. Side Unit
 Height, 87 in.
 Width, 26 in.
 Depth, 12 in.
 Crated weight,
 275 lbs.



26 in. Broom Closet
 Height, 87 in.
 Width, 26 in.
 Depth, 12 in.
 Crated weight,
 250 lbs.



18¾ in. Broom Closet
 Height, 87 in.
 Width, 18¾ in.
 Depth, 12 in.
 Crated weight
 190 lbs.



Pot Closet
 Height, 87 in.
 Width, 30 in.
 Depth, 22 in.
 Crated weight, 350 lbs.



Pantry Unit
 Height, 87 in.
 Width, 50½ in. (Also made 39 in. wide)
 Depth, 12 in.
 Crated weight, 495 lbs.

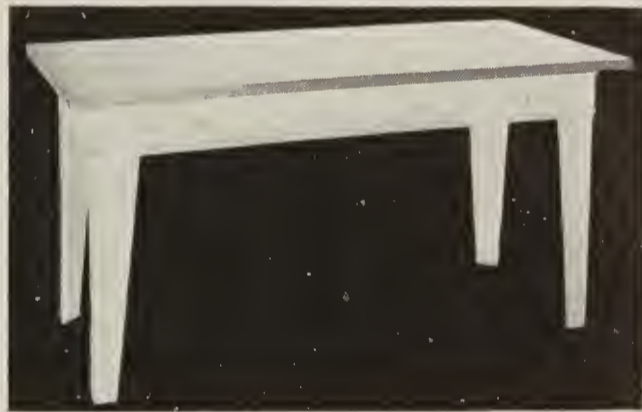
The
WHITE HOUSE
TRADE MARK
 Line



Combination layout—No. 50 Dresser with 26 in. Side Unit and 26 in. Broom Closet.



Sink Unit
 Height, 18 in.
 Depth, 6 in.
 Made in following widths, 14½ in.,
 27½ in., 36 in., 39 in. and 50½ in.



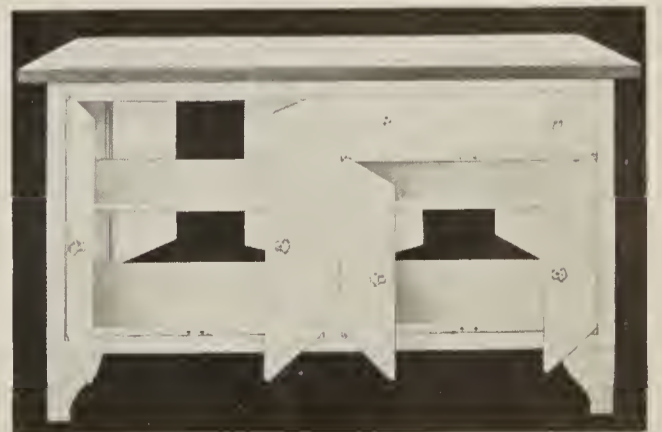
No. 60 table with monel metal
 top 28 in. x 60 in.,—32 in. high
 Crated weight 190 lbs.



No. 52 table with porcelain enamel top
 25 in. x 40 in., 32 in. high
 Crated weight, 120 lbs.



Domestic Science Table with porcelain
 enamel top
 26 in. x 48 in., 32 in high
 Crated weight, 260 lbs.



56 in. Service Table with porcelain
 enamel top or monel metal top
 26 in. x 56 in., 33 in. high
 Crated weight, 300 lbs.

The partial list of installations given below, indicate the wide-spread and general use of
The WHITE HOUSE Line

RESIDENCES

- | | | |
|---|---|--|
| C. M. JESPERSON,
Anniston, Ala. | W. W. MALLEY,
New Haven, Conn.
† <i>Architect:</i> Lewis Bowman | CHARLES HINES,
Chicago, Ill. |
| DR. CARLE E. BENTLEY,
Little Rock, Ark. | *HENRI BENDEL
Stamford, Conn. | GORDON L. PIRIE,
Hubbards Woods, Ill.
<i>Architects:</i> Clark & Walcott |
| *J. J. MURDOCK,
Beverly Hills, Calif. | BENJ. D. RIEGEL,
Southport, Conn. | MRS. WAYNE CHATFIELD TAYLOR,
Lake Forest, Ill. |
| MRS. G. S. COURTNEY,
Santa Barbara, Calif.
† <i>Architect:</i> Geo. Washington Smith | DR. JAMES P. RUYL,
Westport, Conn. | MRS. VAL CRANE,
St. Charles, Ill. |
| MRS. KIRK B. JOHNSON,
Santa Barbara, Calif.
† <i>Architect:</i> Geo. Washington Smith | *W. J. McANEENY,
Willimantic, Conn. | FRED EBERHART
Mishawaka, Md.
<i>Architects:</i> Austin & Shamblena |
| JAMES B. GRANT,
Denver, Colo.
<i>Architects:</i> Fisher & Fisher | FRANK V. DuPONT,
A. M. L. DuPONT,
Wilmington, Del.
† <i>Architect:</i> C. R. Hope | C. A. FARRINGTON,
Centerville, Iowa |
| *W. C. BRYANT,
Bridgeport, Conn. | IRENEE DuPONT
Wilmington, Del.
<i>Architect:</i> Albert H. Spahr | CARL WEEKS,
Des Moines, Iowa
<i>Architects:</i> Rasmussen & Wayland |
| ARTHUR C. POMEROY,
Darien, Conn.
† <i>Architect:</i> Ed. I. Howes | D. J. DUNIGAN,
Washington, D. C. | HENRY LASSEN,
Wichita, Kans.
Schollenberger Studios |
| *WICHELL SMITH
Farmington, Conn. | HUGH M. MATHESON,
Miami, Fla. | J. V. HALL,
Louisville, Ky. |
| BRIGGS CUNNINGHAM
Greens Farms, Conn.
<i>Architect:</i> Visscher & Burley | MRS. ED. C. ROMPH,
Miami, Fla. | MRS. DAN R. WELLER,
Baton Rouge, La. |
| HENRY N. FLINT,
Greenwich, Conn.
<i>Architect:</i> May & Hillard | *BYRON D. MILLER,
Miami Beach, Fla.
Tropical Homes, Inc. | JAMES FEIBLEMAN,
New Orleans, La.
† <i>Architect:</i> M. H. Goldstein |
| MRS. O. M. MITCHELL,
Greenwich, Conn.
† <i>Alfred Hopkins & Assoc.</i> | *J. W. DONAHUE,
Palm Beach, Fla.
† <i>Architect:</i> Marion Sims Wyeth | WM. PENN WHITEHOUSE, 2ND
Portland, Me. |
| MRS. GEO. N. MORGAN,
Greenwich, Conn.
<i>Architect:</i> Frank P. Whiting | E. F. HUTTON,
Palm Beach, Fla.
<i>Architects:</i> Joseph Urban and
Marion Sims Wyeth | A. E. DUNCAN,
Baltimore, Md. |
| HENRY W. NUCKOLS,
Greenwich, Conn.
<i>Architects:</i> Thompson & Churchill | E. T. STOTESBURY,
Palm Beach, Fla.
<i>Architect:</i> Addison C. Mizner | W. BARTLETT HAYWOOD
Baltimore, Md.
<i>Architects:</i> Wyatt & Nolting |
| G. L. OHRSTROM,
Greenwich, Conn.
† <i>Architect:</i> Lewis Bowman | HAROLD S. VANDERBILT,
Palm Beach, Fla.
† <i>Architects:</i> Traenor & Fatio | T. COLEMAN DuPONT
Cambridge, Md.
† <i>Architect:</i> C. R. Hope |
| COL. F. E. SMITH,
Greenwich, Conn.
<i>Architect:</i> F. G. C. Smith | JOSEPH E. WIDENER,
Palm Beach, Fla.
† <i>Architects:</i> Traenor & Fatio | MRS. HELENA S. RASKOB,
Centerville, Md.
† <i>Decorator:</i> T. D. Wadleton |
| PAUL STARRETT
Greenwich, Conn.
† <i>Architects:</i> Williams & Barrott | MRS. JOHN W. RINGLING,
Sarasota, Fla.
† <i>Architect:</i> Dwight James Baum | *THOS. W. PANGBORN
Hagerstown, Md.
† <i>Architect:</i> H. E. Yessler |
| MRS. M. F. MARKS,
Hartford, Conn. | ASA G. CANDLER, JR.,
Atlanta, Ga.
<i>Architect:</i> C. E. Frazier | S. DUNCAN BLACK,
Towson, Md.
<i>Architects:</i> Palmer & Lamdin |
| JOHN PORTER,
Hartford, Conn.
† <i>Architect:</i> R. W. Foote | HENRY C. HEINZ,
Atlanta, Ga.
<i>Architects:</i> G. Lloyd Preacher & Co. | GEORGE TYSON,
Boston, Mass.
<i>Architects:</i> Richardson, Baratt & Richardson |
| A. S. LANE,
Meriden, Conn. | SAPELOE PLANTATION,
Brunswick, Ga. | E. P. CHARLTON,
Westport Harbor, Mass. |
| WM. A. SCHENCK,
Meriden, Conn. | *D. C. HORGON,
Macon, Ga. | JOHN L. SALTONSTALL,
Topsfield, Mass.
† <i>Architects:</i> Richardson, Baratt & Richardson |
| MRS. THOS. B. ENDERS,
Mystic, Conn.
<i>Architect:</i> O. M. Townsend | | RODNEY JARVIS,
Great Barrington, Mass.
† <i>Architect:</i> E. Dean Parmelee |

*Owners using WHITE HOUSE Units in more than one house.

†Architects repeating on WHITE HOUSE layouts.

RESIDENCES—Continued

- ED K. DAVIS,
 Marstons Mills, Mass.
 †Architects: Parsons & Waite
- DANIEL E. BURBANK,
 Springfield, Mass.
 Architect: M. H. Westhoff
- GEO. C. FISHER,
 W. A. FISHER,
 A. J. FISHER,
 ED. F. FISHER,
 Detroit, Mich.
 †Architect: R. H. Marr
- M. L. PRENTIS,
 Detroit, Mich.
 †Architect: R. H. Marr
- MRS. B. E. TAYLOR,
 Grosse Pointe Farms, Mich.
- WM. VAN DYKE,
 Grosse Pointe Farms, Mich.
- MRS. H. E. DODGE, JR.,
 Grosse Pointe, Mich.
- W. E. SCRIPPS,
 Pontiac, Mich.
- W. H. TUSLER,
 Minneapolis, Minn.
- R. L. JURDEN,
 Kansas City, Mo.
 †Architect: Bryant Fleming
- ANTON A. RAVEN,
 Hanover, N. H.
- GEO. E. HARDY,
 Englewood, N. J.
 Architects: Van Pelt, Hardy & Goubert
- R. G. WARRINER,
 Essex Fells, N. J.
 Architect: Michael Stillman
- W. B. POTTS,
 Fairhaven, N. J.
- ROBT. C. ROEBLING,
 Lawrence Township, N. J.
 †Architect: Lewis Bowman
- C. T. LOVERING,
 Little Silver, N. J.
 Architect: J. L. Greenleaf
- *HUBERT T. PARSON
 West End, N. J.
 Architect: Horace Trumbauer
- WM. H. BAKER,
 Montclair, N. J.
 Architect: F. L. Ackerman
- ROBT. A. DRYSDALE,
 Montclair, N. J.
- S. B. GIRDLER,
 Montclair, N. J.
 †Architect: W. O. Bartlett
- E. R. F. JOHNSON,
 Moorestown, N. J.
 †Architect: Karcher & Smith
- EDWIN C. FEIGENSPAN,
 Newark, N. J.
- S. B. COLGATE,
 Orange, N. J.
- MRS. H. ALEXANDER SMITH,
 Princeton, N. J.
- WM. H. LA BOYTEAUX,
 Red Bank, N. J.
- *HERBERT STRAUS,
 Red Bank, N. J.
 †Architect: Alfred Hopkins
- MRS. M. B. METCALF,
 Rumson, N. J.
- DAVID BOFINGER,
 Teaneck, N. J.
 Architects: Holmes & Van Schmid
- CHESTER F. CHAPIN,
 Greensboro, N. C.
- J. H. ADAMS,
 High Point, N. C.
 †Architects: Northup & O'Brien
- HARVEY HINES
 Kinston, N. C.
 Architect: H. B. Hunter
- JEFFERSON PENN,
 Reidsville, N. C.
 Architect: H. C. Ingalls
- BOWMAN GRAY,
 Winston-Salem, N. C.
 †Architects: Northup & O'Brien
- P. R. ZENNER,
 Athens, Ohio
 Architect: Brandon Smith
- POWEL CROSLY, JR.
 Cincinnati, Ohio
 †Architect: Dwight James Baum
- FRED A. GEIER,
 Cincinnati, Ohio
 †Architects: Zettel & Rapp
- W. D. B. ALEXANDER,
 Cleveland, Ohio
- GEO. M. VERITY,
 Middletown, Ohio
- GEO. E. FAILING,
 Garber, Okla.
 †Architect: Dwight James Baum
- MRS. H. D. SOLLENBERGER,
 Allentown, Pa.
- H. S. SNYDER,
 Bethlehem, Pa.
 Architect: Duncan Fraser
- ALVAN MARKLE,
 Hazleton, Pa.
- *MRS. B. D. MILLER,
 Honesdale, Pa.
- W. H. WORRILOW,
 Lebanon, Pa.
 †Architects: Frohman, Robb & Little
- CHARLES M. SCHWAB,
 House-in-Woods, Pa.
 Architects: Murphy & Dana
 Loretta Road, Pa.
 Architect: Wm. Baumgarten
- WM. M. IRVINE,
 Mercersburg, Pa.
- J. H. WEAVER,
 Merion, Pa.
 Decorator: Catherine Field Comly
- *HERBERT C. MORRIS,
 Philadelphia, Pa.
 Architect: Edmund B. Gilchrist
- W. H. LUDEN,
 Reading, Pa.
 Architect: Ed. Z. Schall
- MICHAEL BOSAK,
 Scranton, Pa.
 Architects: Davis & Lewis
- G. OBERLAENDER,
 Reading, Pa.
- MRS. W. W. ORSWELL,
 Narragansett, R. I.
- †MRS. J. LORIMER WORDEN
 Newport, R. I.
- MRS. ROLAND P. ROBINSON,
 Wakefield, R. I.
 Architects: Howe & Church
- MRS. L. F. HARDER,
 Watch Hill, R. I.
- T. W. WORTHY,
 Charleston, S. C.
 Architect: James Gamble Rogers
- MRS. W. L. GASSAWAY,
 Greenville, S. C.
- MRS. HENRY O. EWING,
 Chattanooga, Tenn.
- HUGH VAN DEVENTER,
 Knoxville, Tenn.
 Architects: Barber & McMurry
- MRS. LESLIE CHEEK
 Nashville, Tenn.
 †Architect: Bryant Fleming
- MRS. BALLINGER MILLS,
 Galveston, Texas
- MRS. JAMES COLGATE,
 Bennington, Vt.
- *MRS. JOHN L. GIVEN
 Manchester, Vt.
- HORACE BROWN.
 Springfield, Vt.
- L. HERMAN,
 Danville, Va.
- MRS. A. G. BAILEY,
 Norfolk, Va.
- MRS. J. SCOTT PARRISH,
 Richmond, Va.
 †Architect: Wm. Lawrence Bottomley
- ARTHUR C. STIFEL,
 Wheeling, W. Va.
- THORVALD RASMUSSEN,
 Eagle River, Wisc.
 Architect: Jean B. Rahm & Son
- *MRS. Z. G. SIMMONS,
 Kenosha, Wisc.
- NATHAN PAINE,
 Oshkosh, Wisc.
 †Architect: Bryant Fleming
- DR. WALTER M. LACEY
 Cheyenne, Wyo.

*Owners using WHITE HOUSE Units in more than one house.

†Architects repeating on WHITE HOUSE layouts.

RESIDENCES—Continued

NEW YORK STATE

F. C. HUYCK,
 Albany, N. Y.
 †Architect: Norman E. Sturgis

ALFRED RENSCHAW,
 Albany, N. Y.
 †Architect: Norman R. Sturgis

R. B. MALTBY,
 Bronxville, N. Y.
 †Architect: Lewis Bowman

W. B. THOM,
 Bronxville, N. Y.
 †Architect: Lewis Bowman

MRS. CHAS. L. BUSSING,
 Brooklyn, N. Y.

MATTHEW SCOTT SLOAN,
 Brooklyn, N. Y.

SAM KATZ,
 Centenary, N. Y.
 †Architect: H. A. Jacobs

*MRS. STEPHEN CLARK,
 Cooperstown, N. Y.

WM. T. HYDE,
 Cooperstown, N. Y.
 †Architects: Alfred Hopkins & Assoc.

J. V. HEYNIGER,
 Corning, N. Y.
 Architect: Howard Greenley

MISS ANGELICA GERRY,
 Delhi, N. Y.
 Architects: Cram & Ferguson

COL. E. A. SIMMONS,
 Eagle Bay, N. Y.
 Decorator: James Duane Taylor

J. H. WARE,
 Fieldstone, N. Y.

DONALDSON BROWN,
 Fishers Island, N. Y.
 Architect: Henry Otis Chapman

T. P. ROWE,
 Fishkill, N. Y.
 Architect: J. Percy Hanford

MRS. JAMES BAIRD,
 Hartsdale, N. Y.
 Architect: Henry Bacon

I. G. MILLAR,
 Larchmont, N. Y.
 Architect: Hunter MacDonnell

J. S. MORGAN, JR.,
 Glen Cove, L. I.
 Architect: Robt. Bullard

MYRON C. TAYLOR,
 Locust Valley, L. I.
 †Architects: Richardson, Baratt & Richardson

MRS. GRAHAM FAIR VANDERBILT,
 Manhasset, L. I.

CALEB S. BRAGG,
 Montauk Beach, L. I.

HENRY BARKLIE,
 Old Westbury, L. I.
 †Architect: Noel & Miller

J. J. KERRIGAN,
 Oyster Bay, L. I.
 †Architect: John Russell Pope

WM. R. HEARST,
 Sands Point, L. I.

WILFRED J. FUNK,
 Southampton, L. I.
 †Architects: Peabody, Wilson & Brown

GEO. M. HERSEY,
 Pelham Manor, N. Y.
 Architect: Walter Haefeli

JOHN T. SNYDER,
 Pelham Manor, N. Y.
 Architect: Chas M. Hart

MISS SARAH CHOATE,
 Pleasantville, N. Y.
 †Architects: McKim, Meade & White

*FRANCIS GARVAN,
 Raquette Lake, N. Y.

D. R. HARTSHORNE,
 Rye, N. Y.
 Architects: Ewing, Romberg & Baehman

F. A. VANDERLIP,
 Scarborough, N. Y.
 Architect: W. W. Bosworth

*CHAS. E. BIRGE,
 Scarsdale, N. Y.
 †Architect: Chas. E. Birge

ALFRED M. MORRIS,
 Scarsdale, N. Y.
 Architect: John W. Walker

MRS. CHAS. S. RUFFNER,
 Schenectady, N. Y.

MRS. LOUISE McCYE,
 Tupper Lake, N. Y.

*JOHN A. HARTFORD,
 Valhalla, N. Y.
 †Architects: Mann & MacNeille

NEW YORK CITY

DR. PRESTON P. SATTERWHITE,
 960 Fifth Avenue, New York City

ANTON G. HARDY,
 60 East 42nd Street, New York City

*J. J. RASKOB,
 22 East 47th Street, New York City

MRS. ARTHUR LEHMAN,
 45 East 70th Street, New York City
 †Architect: Aymar Embury

*MARTIN BECK,
 166 East 64th Street, New York City
 †Architect: Harry Allen Jacobs

MRS. CHAS. SCRIBNER,
 9 East 66th Street, New York City

COL. MICHAEL FRIEDSAM,
 44 East 68th Street, New York City

PAUL PRYIBIL,
 25 East 69th Street, New York City
 †Architects: Noel & Miller

THOMAS W. LAMONT,
 105 East 70th Street, New York City

MRS. RICHARD F. HOYT,
 44 East 71st Street, New York City

J. L. LIVERMORE,
 8 West 76th Street, New York City

LIONELL PERRARA,
 49 East 80th Street, New York City
 †Architect: H. A. Jacobs

MRS. HENRY SLACK,
 53 East 80th Street, New York City

*MRS. E. L. DOHENY, JR.,
 15 East 84th Street, New York City

F. H. BENNETT,
 19 East 92nd Street, New York City
 Architect: W. G. Massarene

*HENRY A. MARK,
 1 East End Avenue, New York City

MRS. WESTMORE WILCOX,
 142 East End Avenue, New York City
 †Architect: Kenneth Murchison

WALTER P. CHRYSLER,
 Chrysler Building, New York City

*CHARLES P. ROGGE,
 70 Park Avenue, New York City

MRS. JESSE STRAUS,
 720 Park Avenue, New York City

S. MUNDHEIM,
 730 Park Avenue, New York City

*WM. R. HEARST,
 137 Riverside Drive, New York City

JEREMIAH MILLBANK,
 44 Wall Street, New York City

MRS. C. A. FRUEAUFF,
 29 Washington Square, New York City

APARTMENTS

277 PARK AVENUE
 623 PARK AVENUE
 660 PARK AVENUE
 820 PARK AVENUE
 825 FIFTH AVENUE

834 FIFTH AVENUE
 993 FIFTH AVENUE
 RITZ TOWER
 No. 1 SUTTON PLACE
 No. 4 SUTTON PLACE

101 WEST 55TH STREET
 136 EAST 67TH STREET
 120 EAST END AVENUE
 THE BERESFORD
 SAN REMO TOWERS

*Owners using WHITE HOUSE Units in more than one house.

†Architects repeating on WHITE HOUSE layouts.

