

NORTH DAKOTA

Office of Attorney General

Bureau of Criminal Investigation



Crime in North Dakota, 2000

Attorney General
Wayne Stenehjem

Office of Attorney General
Bureau of Criminal Investigation

Crime in North Dakota, 2000

A Summary of Uniform Crime Report Data

Wayne Stenehjem
Attorney General

Prepared by
Judith H. Volk
Research Analyst
2002

Data collection, report preparation and publication of this report are supported by a grant from the Bureau of Justice Statistics, U.S. Department of Justice

INTRODUCTION

The North Dakota Uniform Crime Reporting (UCR) program involves the collection, compilation, and analysis of crime and arrest statistics reported by the various local law enforcement agencies throughout the state. Forty-two sheriffs' departments and 33 police departments reported to the UCR program in 2000.

Law enforcement agencies may report UCR data in two ways:

INCIDENT-BASED REPORTING: Law enforcement agencies use a standard incident form to collect data on each incident reported to their respective agencies. This form collects much more detailed information than is collected using summary reporting. Data collected includes: type of incident, where and when the incident took place, victim characteristics, suspect/arrestee characteristics, property involved in the incident, etc. A total of 70 police departments and sheriffs' departments reported incident data for all or part of 2000.

In order to continue the statistical time-series begun with summary reporting, computer programs were written to extract summary data from the incident data reported. Crime in North Dakota, 2000 is a report on summary data.

SUMMARY REPORTING: Law enforcement agencies use a tally system to report the number of crime index offenses and arrests for each month. Five law enforcement agencies reported summary data in 2000.

The federal counterpart of the North Dakota UCR program is the National UCR program under the direction of the Federal Bureau of Investigation (FBI). The UCR program has been used nationally and in North Dakota for many years to measure the extent, distribution and fluctuation of crime through the crime index. The crime index is not an absolute measure, but rather an indication of the amount and type of crime occurring in any given jurisdiction. The index is composed of seven crimes that are sub-classified as follows:

VIOLENT CRIME: Murder/Non-Negligent Manslaughter
Forcible Rape
Robbery
Aggravated Assault

PROPERTY CRIME: Burglary
Larceny/Theft
Motor Vehicle Theft

A Modified Crime Index is also calculated at the federal level. This includes arson as the fourth property crime and the eighth index offense. Data on arson is not included in this report.

Prior to an offense becoming recorded in the UCR program, it must first be brought to the attention of local law enforcement officials and then must be reported by the local agency to the UCR program. Therefore, the UCR program can only reflect crime indirectly in its reports as the statistics gathered in the program are based on reported crimes only. No one can state precisely how much crime goes unreported each year. Reporting of crimes depends on several factors,

including actual perception of an act as a crime, the probability of loss of status for reporting (as in cases of rape), and the perceived probability of action on the part of the law enforcement agency contacted.

Several types of data are gathered, including:

Offense data

- Number of known crime index offenses
- Type and value of stolen property
- Additional information on homicides and arson
- Law enforcement officers killed or assaulted

Arrest and Clearance Data

- Number and type of offenses cleared
- Number and type of index offenses involving juveniles cleared
- Number of persons arrested, by offense
- Characteristics of persons arrested (age, sex, race)

To allow for comparison among several geographic or jurisdictional areas with differing populations or to allow comparisons across time in an area undergoing population fluctuations, the UCR program provides for the calculation of crime rates to remove any potential biases created by population differences. Because a rate relates the incidence of activity to population, it is possible to measure annual fluctuations in criminal activity by comparing rates of crime reported in any given year with those reported in other years. National publications report crime rates calculated based on the number of reported offenses per 100,000 population. This publication provides crime rate information calculated in the same manner.

TABLE OF CONTENTS

Introduction	i
Table of Contents	iii
North Dakota Crime Summary, 2000	v
Crime Index Offense Analysis	1
Violent Crime	7
Murder/Non-Negligent Manslaughter	9
Forcible Rape	11
Robbery	13
Aggravated Assault	16
Property Crime	18
Burglary	20
Larceny/Theft	23
Motor Vehicle Theft	26
Crime Index Offenses by Reporting Jurisdiction	29
Arrest Analysis	33
Arrests in 2000	35
Arrest Analysis by Reporting Jurisdiction	41
Arrests 1991-2000	44
Drug Arrest Analysis	50
DUI Arrest Analysis	54
UCR Offense Definitions	57
Full-Time Law Enforcement Employees	63

(This page intentionally left blank.)

NORTH DAKOTA CRIME SUMMARY, 2000

In 2000, 14,150 crime index offenses were reported by local law enforcement agencies. This is a decrease of 3.0 percent from the total of 14,590 reported in 1999.

Crime index offenses include: murder/non-negligent manslaughter, forcible rape, robbery, aggravated assault, burglary, larceny/theft, and motor vehicle theft.

The 2000 Census indicated a total North Dakota population of 642,200. The index crime rate per 100,000 population for 2000 was 2203.4. The index crime rate for 1999 was 2301.3 per 100,000 population. This is a 4.3 percent decrease in the crime rate.

The total number of reported violent index crimes (murder, rape, robbery, and aggravated assault) was 562. This represents an increase of 26.3 percent from the total of 445 reported in 1999. In 1998, 566 violent index crimes were reported.

Violent crime accounted for four percent of total index crimes reported in 2000.

Collectively, property crimes (burglary, larceny/theft and motor vehicle theft) decreased by 3.9 percent from 14,145 reported in 1999 to 13,588 reported in 2000.

Property crime accounted for 96 percent of total crime index offenses reported in 2000.

The 10,642 larceny/theft offenses reported in 2000 accounted for 75.2 percent of total index crimes.

More than \$10.3 million worth of property was reported stolen in 2000, with approximately 31 percent of that amount reported as recovered by law enforcement officials.

North Dakota law enforcement agencies reported 29,201 arrests in 2000. A total of 30,258 arrests were reported in 1999.

Approximately 29 percent of total arrests in 2000 were arrests of juveniles. Fifty-three percent of arrests for crime index offenses were arrests of juveniles.

The number of reported arrests for DUI decreased 16.9 percent from 5,179 reported in 1999 to 4,304 reported in 2000.

Arrests for drug offenses increased 3.1 percent from a 1999 total of 1,456 to 1,501 in 2000.

(This page intentionally left blank.)

CRIME INDEX OFFENSE ANALYSIS

(This page intentionally left blank.)

Crime Index Offenses

Crime index offenses include the violent crimes of murder/non-negligent manslaughter, forcible rape, robbery, and aggravated assault, and the property crimes of burglary, larceny/theft, and motor vehicle theft.

In 2000, 14,150 crime index offenses were reported by local law enforcement agencies. This is a decrease of three percent from the total of 14,590 reported in 1999.

The 2000 Census indicated a total population of 642,200 for North Dakota. Based on that total, the index crime rate per 100,000 population for 2000 was 2203.4, as compared to 2301.3 for 1999. See the crime index offense summary on page 5 for crime rate information for the period 1991-2000.

Approximately 23 percent of crime index offenses were reported as cleared by arrest or exceptional means. The UCR program defines an offense as “cleared” by law enforcement when at least one person is arrested, charged with the commission of the offense, and turned over to the court for prosecution. Several crimes may be cleared by the arrest of one person, while the arrests of many persons may clear only one offense. Law enforcement agencies may clear a crime by exceptional means when some element beyond law enforcement control precludes the placing of formal charges against the offender. Examples of circumstances that allow such clearances are the death of the offender (suicide, justifiably killed by police or private citizen, etc.); the victim’s refusal to cooperate with prosecution after the offender has been identified; or the denial of extradition.

In 2000, 3,030 arrests were reported for crime index offenses. Fifty-three percent of that total were arrests of juveniles.

More than \$10.3 million worth of property was reported stolen in 2000, with 31.3 percent of that amount reported as recovered by law enforcement officials.

Crime Index Offenses Reported, 2000

Crime Index Offense	Number Reported	Percent of Total Index Offenses
Murder/Non-Negligent Manslaughter	8	0.1 %
Forcible Rape	173	1.2
Robbery	62	0.4
Aggravated Assault	319	2.3
Violent Crime Subtotal	562	4.0
Burglary	2,004	14.2
Larceny/Theft	10,642	75.2
Motor Vehicle Theft	942	6.6
Property Crime Subtotal	13,588	96.0
Crime Index Offense Total	14,150	100.0

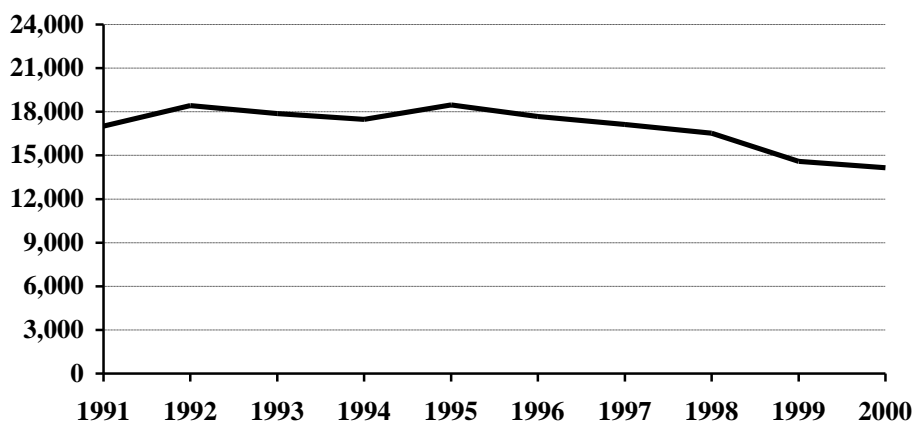
Comparison of Crime Index Offenses Reported, 1999-2000

Crime Index Offense	1999	2000	Percent Change
Murder/Non-Negligent Manslaughter	11	8	-27.3 %
Forcible Rape	147	173	17.7
Rape by Force	139	167	20.1
Attempts to Rape	8	6	-25.0
Robbery	70	62	-11.4
Firearm	16	27	68.8
Knife or Cutting Instrument	3	2	-33.3
Other Dangerous Weapon	11	5	-54.5
Strong Arm – No Weapon	40	28	-30.0
Aggravated Assault	217	319	47.0
Firearm	9	7	-22.2
Knife or Cutting Instrument	45	47	4.4
Other Dangerous Weapon	67	123	83.6
Hands, Fists, Feet, Etc.	96	142	47.9
Violent Crime Subtotal	445	562	26.3
Burglary	2,200	2,004	-8.9
Forcible Entry	1,268	1,048	-17.4
Unlawful Entry – No Force	739	764	3.4
Attempted Forcible Entry	193	192	-0.5
Larceny/Theft	10,956	10,642	-2.9
Motor Vehicle Theft	989	942	-4.8
Autos	814	796	-2.2
Trucks and Buses	99	82	-17.2
Other Vehicles	76	64	-15.8
Property Crime Subtotal	14,145	13,588	-3.9
Crime Index Offense Total	14,590	14,150	-3.0

Crime Index Offenses, 1991-2000

Crime Index Offense	1991	1992	1993	1994	1995	1996	1997	1998	1999	2000
Murder/Non-Neg. Mansl.	11	15	22	5	9	12	10	7	11	8
Forcible Rape	120	162	150	154	151	175	150	169	147	173
Robbery	47	52	54	70	64	72	45	78	70	62
Aggravated Assault	223	349	332	299	360	335	344	312	217	319
Burglary	2305	2440	2346	2080	2275	2008	2271	2194	2200	2004
Larceny/Theft	13543	14390	14031	13898	14435	13898	13163	12704	10956	10642
Motor Vehicle Theft	772	1023	940	981	1164	1182	1139	1073	989	942
Crime Index Offense Total	17021	18431	17875	17487	18458	17682	17122	16537	14590	14150

Crime Index Offense Totals, 1991-2000



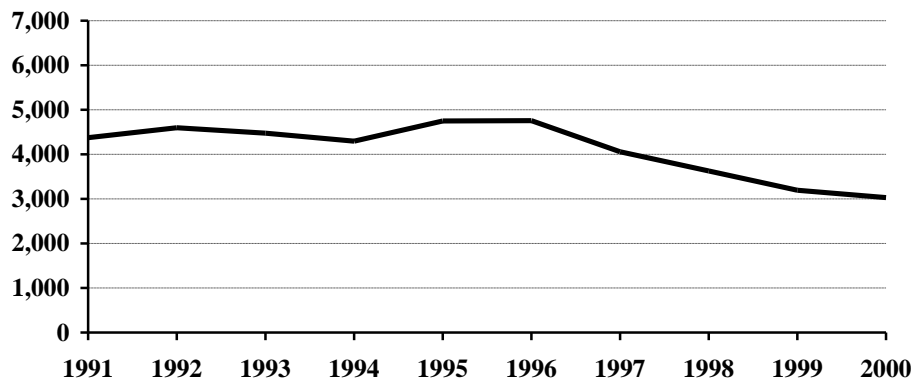
Crime Index Offense Summary

Year	Population	Crime Index Offense Total	% Change in Number from Previous Year	Crime Rate per 100,000 Population	% Change in Rate from Previous Year	Percent Cleared
1991	635,000	17,021	0.0 %	2680.5	0.6 %	26.2 %
1992	636,000	18,431	8.3	2898.0	8.1	25.9
1993	635,000	17,875	-3.0	2815.0	-2.9	26.7
1994	638,000	17,487	-2.2	2740.9	-2.6	25.7
1995	641,000	18,458	5.6	2879.6	5.1	28.1
1996	644,000	17,682	-4.2	2745.7	-4.6	29.9
1997	641,000	17,122	-3.2	2671.1	-2.7	29.0
1998	638,000	16,537	-3.4	2592.0	-3.0	26.5
1999	634,000	14,590	-11.8	2301.3	-11.2	27.2
2000	642,200	14,150	-3.0	2203.4	-4.3	22.9

Arrests for Crime Index Offenses, 1991-2000

Year	Juvenile	Adult	Age Not Reported	Total
1991	2,332	2,007	33	4,372
1992	2,506	2,063	28	4,597
1993	2,393	2,051	33	4,477
1994	2,324	1,926	43	4,293
1995	2,642	2,083	21	4,746
1996	2,523	2,221	11	4,755
1997	2,252	1,783	26	4,061
1998	1,803	1,813	12	3,628
1999	1,640	1,543	8	3,191
2000	1,599	1,417	14	3,030

Arrests for Crime Index Offenses, 1991-2000



Property Loss Due to Crime Index Offenses, 1991-2000

Year	Population	Total Property Loss	% Change from Previous Year	Property Loss per Capita	Percent Recovered
1991	635,000	\$ 8,443,034	-24.0 %	\$ 13.30	32.0 %
1992	636,000	11,216,943	32.9	17.64	22.8
1993	635,000	9,439,645	-15.8	14.87	33.6
1994	638,000	9,696,414	2.7	15.20	48.2
1995	641,000	11,070,248	14.2	17.27	32.2
1996	644,000	11,022,665	-0.4	17.12	34.4
1997	641,000	12,507,812	13.5	19.51	33.3
1998	638,000	11,429,270	-8.6	17.91	30.8
1999	634,000	11,201,544	-2.0	17.67	28.6
2000	642,200	10,308,899	-8.0	16.05	31.3

Violent Crime

Violent crime includes the offenses of murder/non-negligent manslaughter, forcible rape, robbery, and aggravated assault. (See the UCR offense definitions section beginning on page 57 of this publication for definitions of these and other offenses.)

In 2000, 562 violent crimes were reported in North Dakota. This is a 26.3 percent increase from the 1999 total of 445 violent offenses reported. In 1998, 566 violent index crimes were reported.

Violent crime comprised four percent of reported crime index offenses in North Dakota in 2000.

The violent crime rate for 2000 is 87.5 per 100,000, as compared to 70.2 per 100,000 in 1999. This is a 24.6 percent increase in the violent crime rate. In 1998, the violent crime rate was 88.7 per 100,000 population.

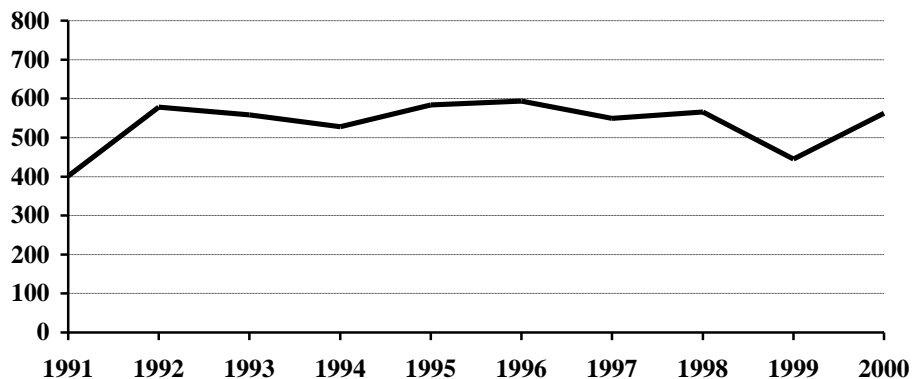
Approximately 51 percent of violent crimes were reported as cleared by arrest or exceptional means in 2000.

Of the 199 total arrests reported for violent crimes, 13.6 percent were arrests of juveniles.

Violent Crime Summary

Year	Population	Violent Index Offenses	% Change in Number from Previous Year	Rate per 100,000 Population	% Change in Rate from Previous Year	Percent Cleared
1991	635,000	401	9.9 %	63.1	10.5 %	56.1 %
1992	636,000	578	44.1	90.9	44.1	59.0
1993	635,000	558	-3.5	87.9	-3.3	64.0
1994	638,000	528	-5.4	82.8	-5.8	55.9
1995	641,000	584	10.6	91.1	10.0	67.6
1996	644,000	594	1.7	92.2	1.2	73.2
1997	641,000	549	-7.6	85.6	-7.2	66.8
1998	638,000	566	3.1	88.7	3.6	61.8
1999	634,000	445	-21.4	70.2	-20.9	67.0
2000	642,200	562	26.3	87.5	24.6	51.2

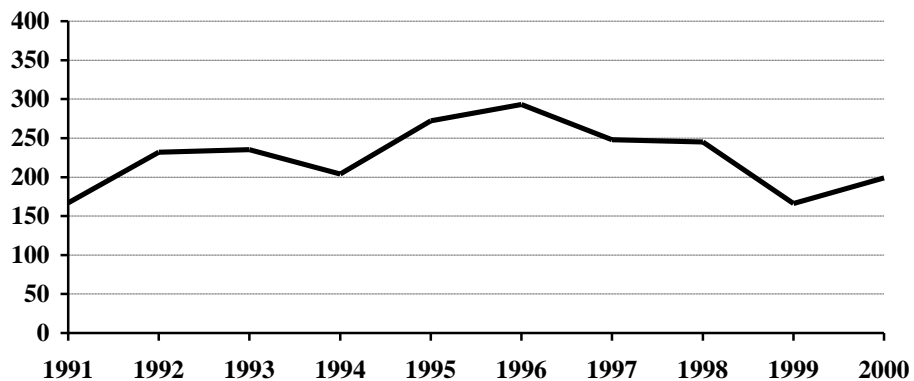
Violent Crime Totals, 1991-2000



Arrests for Violent Crimes, 1991-2000

Year	Juvenile	Adult	Age Not Reported	Total
1991	41	121	5	167
1992	51	178	3	232
1993	71	162	2	235
1994	58	144	2	204
1995	106	164	2	272
1996	68	224	1	293
1997	54	193	1	248
1998	68	177		245
1999	41	124	1	166
2000	27	171	1	199

Arrests for Violent Crimes, 1991-2000



Murder/Non-Negligent Manslaughter

The UCR program defines Murder/Non-Negligent Manslaughter as the “willful killing of one human being by another.” Attempts to murder, assaults to murder, suicides, accidental deaths, justifiable homicides, and deaths caused by gross negligence are not included in this category.

Eight murder/non-negligent manslaughter deaths were known to the North Dakota UCR program in 2000.

All of the victims were adults. “Adult” is defined as a person aged 18 years or older.

Half of the victims were male.

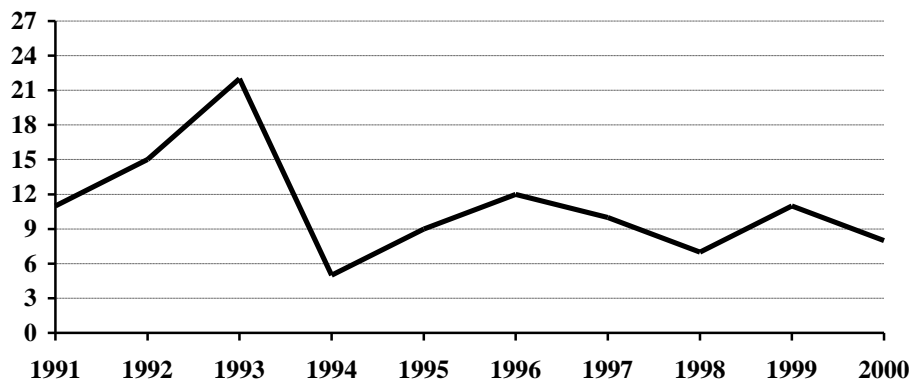
Three victims died as the result of gunshot wounds. (See the summary of homicide incidents and the weapons involved on page 10.)

The Office of Attorney General publishes a detailed report titled Homicide in North Dakota. The report provides an analysis of homicides for the period 1978-2000 and is available by request.

Murder/Non-Negligent Manslaughter Summary

Year	Population	Offense Total	% Change in Number from Previous Year	Rate per 100,000 Population	% Change in Rate from Previous Year	Percent Cleared
1991	635,000	11	37.5 %	1.7	30.8 %	81.8 %
1992	636,000	15	36.4	2.4	41.2	100.0
1993	635,000	22	46.7	3.5	45.8	100.0
1994	638,000	5	-77.3	0.8	-77.1	100.0
1995	641,000	9	80.0	1.4	75.0	100.0
1996	644,000	12	33.3	1.9	35.7	100.0
1997	641,000	10	-16.7	1.6	-15.8	100.0
1998	638,000	7	-30.0	1.1	-31.3	100.0
1999	634,000	11	57.1	1.7	54.5	100.0
2000	642,200	8	-27.3	1.2	-29.4	87.5

Murder/Non-Negligent Manslaughter Totals, 1991-2000



Summary of Murder/Non-Negligent Manslaughter Incidents, 2000

Date and Location of Incident	Victims		Assailants		Weapon Used	Relationship of Victim to Assailant	Circumstances
	Age	Sex	Age	Sex			
03/11/2000 Fargo	39	F			Unknown		Victim was a homeless woman found under a railroad bridge.
04/01/2000 Turtle Mt. Reservation	43	M	29 28	M M	Pick-Ax Hammer Knife	Acquaintance Acquaintance	Victim died of multiple blunt trauma wounds to the head and neck and stab wounds to the chest.
09/07/2000 Benson County	31	M	22	M	Blunt Object	Uncle	Victim was found in a home near Warwick. The victim died as the result of a skull fracture.
09/09/2000 Cannon Ball Standing Rock Res.	43	F	30	M	Beating	Girlfriend	Victim was hit and kicked when the couple got into an argument.
09/17/2000 Valley City	31	F	32	M	Firearm	Ex-wife	Murder-suicide.
11/02/2000 Watford City	41	M	55	F	Knife	Boyfriend	Victim was stabbed multiple times in the upper torso.
11/09/2000 Grand Forks	37	F	42	M	Handgun	Wife	Murder-suicide.
12/24/2000 Turtle Mt. Reservation	38	M	47	M	12 gauge shotgun	Boyfriend of the assailant's former wife	Victim was shot at the home of the assailant's former wife.

Forcible Rape

The UCR program defines Forcible Rape as “the carnal knowledge of a female forcibly and against her will.” Assaults to rape, attempts to commit rape by force or threat of force are included. Carnal abuse, statutory offenses (no force -- victim under age of consent), and other sex offenses are not included.

In 2000, 173 forcible rapes were reported to local law enforcement in North Dakota. This is an increase of 17.7 percent from the 1999 total of 147 offenses. A total of 169 forcible rapes was reported in 1998.

Because the UCR definition states that victims of rape must be female, the rate of occurrence for reported rapes is calculated based only on the female population. The 2000 Census of North Dakota’s total population was 642,200. The number of females is approximately half of that figure. The resulting rate for 2000 is 53.9 reported rapes per 100,000 females, compared with 46.4 rapes per 100,000 females in 1999. In 1998, the forcible rape rate was 53.0 per 100,000 females.

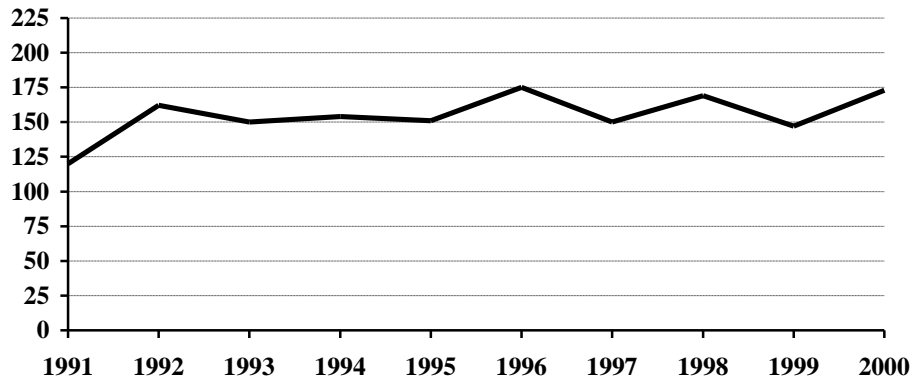
Approximately 30 percent of reported rapes were cleared by arrest or exceptional means in 2000.

Thirty-nine arrests for forcible rape were reported in 2000. Sixty-nine percent of those arrested were adults. In 1999, 24 arrests for rape were reported.

Forcible Rape Summary

Year	Population	Offense Total	% Change in Number from Previous Year	Rate per 100,000 Females	% Change in Rate from Previous Year	Percent Cleared
1991	635,000	120	22.4 %	37.8	23.1 %	42.5 %
1992	636,000	162	35.0	50.9	34.7	44.4
1993	635,000	150	-7.4	47.2	-7.3	56.0
1994	638,000	154	2.7	48.3	2.3	47.4
1995	641,000	151	-1.9	47.1	-2.5	68.2
1996	644,000	175	15.9	54.3	15.3	76.6
1997	641,000	150	-14.3	46.8	-13.8	57.3
1998	638,000	169	12.7	53.0	13.2	51.5
1999	634,000	147	-13.0	46.4	-12.5	67.3
2000	642,200	173	17.7	53.9	16.2	30.1

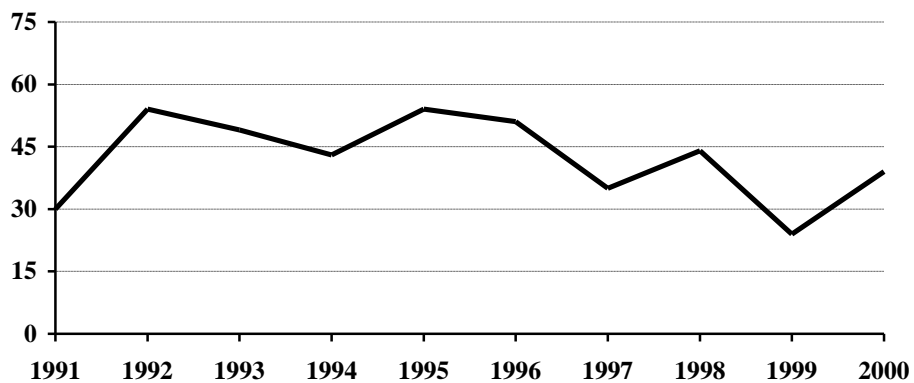
Forcible Rape Totals, 1991-2000



Arrests for Forcible Rape, 1991-2000

Year	Juvenile	Adult	Age Not Reported	Total
1991	6	23	1	30
1992	13	40	1	54
1993	8	40	1	49
1994	13	29	1	43
1995	16	36	2	54
1996	12	39		51
1997	6	29		35
1998	13	31		44
1999	6	18		24
2000	12	27		39

Arrests for Forcible Rape, 1991-2000



Robbery

Robbery is defined by the UCR program as “the taking or attempting to take anything of value from the care, custody, or control of a person or persons by force or threat of force or violence and/or by putting the victim in fear.”

Sixty-two robberies were reported in North Dakota in 2000, a decrease of 11.4 percent from the total of 70 reported in 1999. In 1998, 78 robberies were reported.

The robbery rate for 2000 was 9.7 per 100,000 population, as compared with 11.0 per 100,000 population in 1999. This is an 11.8 percent decrease in the robbery rate.

Approximately 24 percent of reported robberies were cleared by arrest or exceptional means.

Fifteen arrests for robbery were reported in 2000. All were arrests of adults.

Firearms were used in 43.5 percent of the reported robberies in 2000. Forty-five percent were strong-arm robberies where no weapon was used.

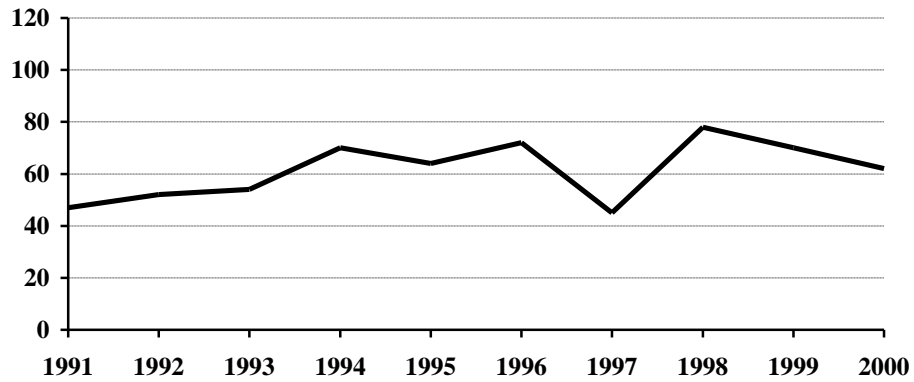
The value of property stolen in robbery incidents decreased from \$23,808 in 1999 to \$12,654 in 2000.

The average robbery in 2000 involved \$204 worth of property.

Robbery Summary

Year	Population	Offense Total	% Change in Number from Previous Year	Rate per 100,000 Population	% Change in Rate from Previous Year	Percent Cleared
1991	635,000	47	30.6 %	7.4	32.1 %	40.4 %
1992	636,000	52	10.6	8.2	10.8	53.8
1993	635,000	54	3.8	8.5	3.7	33.3
1994	638,000	70	29.6	11.0	29.4	44.3
1995	641,000	64	-8.6	10.0	-9.1	42.2
1996	644,000	72	12.5	11.2	12.0	48.6
1997	641,000	45	-37.5	7.0	-37.5	64.4
1998	638,000	78	73.3	12.2	74.3	41.0
1999	634,000	70	-10.3	11.0	-9.8	48.6
2000	642,200	62	-11.4	9.7	-11.8	24.2

Robbery Totals, 1991-2000



Robbery by Type of Weapon Involved, 2000

Type of Weapon	Number Reported	Percent of Total Offenses
Firearm	27	43.5 %
Knife or Cutting Instrument	2	3.2
Other Dangerous Weapon	5	8.1
Hands, Fists, Feet, etc.	28	45.2
Robbery Total	62	100.0

Robbery by Place of Occurrence and Value of Property, 2000

Place of Occurrence	Number Reported	Value of Property	Average Value per Robbery
Highway	12	\$ 1,079	\$ 89.92
Commercial House	19	4,773	251.21
Gas or Service Station	2	1,050	525.00
Convenience Store	6	2,973	495.50
Residence	12	1,424	118.67
Bank	1	0	0.00
Other	10	1,355	135.50
Robbery Total	62	12,654	204.10

Arrests for Robbery, 1991-2000

Year	Juvenile	Adult	Age Not Reported	Total
1991	1	16	1	18
1992	8	21		29
1993	14	8		22
1994	8	23		31
1995	13	18		31
1996	10	28		38
1997	13	17		30
1998	8	20		28
1999	9	19		28
2000	0	15		15

Property Loss Due to Robbery, 1991-2000

Year	Offense Total	Property Loss	Average Loss per Robbery
1991	47	\$ 22,989	\$ 489.13
1992	52	31,341	602.71
1993	54	37,608	696.44
1994	70	14,030	200.43
1995	64	20,515	320.55
1996	72	11,734	162.97
1997	45	7,029	156.20
1998	78	19,393	248.63
1999	70	23,808	340.11
2000	62	12,654	204.10

Aggravated Assault

The UCR program defines Aggravated Assault as “an unlawful attack by one person upon another for the purpose of inflicting severe or aggravated bodily injury. This type of assault is usually accompanied by the use of a weapon or by means likely to produce death or great bodily harm. Attempts are included because it is not necessary that an injury result when a gun, knife, or other weapon is used which could and probably would result in serious personal injury if the crime were successfully completed.”

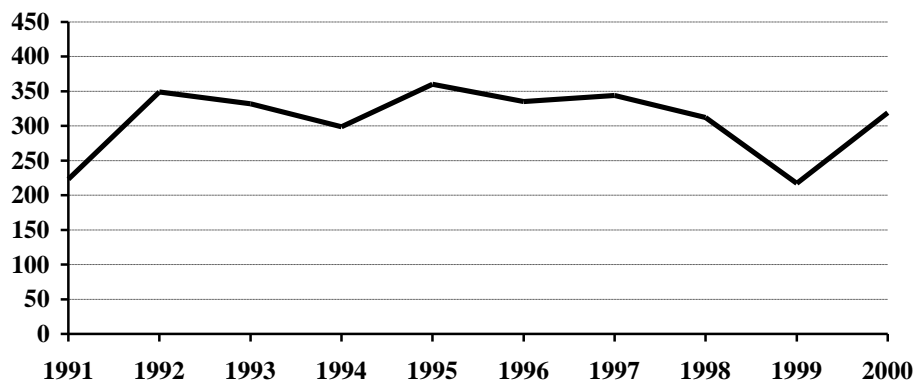
In 2000, 319 aggravated assaults were reported in North Dakota, an increase of 47 percent from the 217 aggravated assaults reported in 1999. In 1998, 312 aggravated assaults were reported.

The aggravated assault rate for North Dakota increased 45.3 percent from 34.2 per 100,000 population in 1999 to 49.7 per 100,000 population in 2000.

Aggravated Assault Summary

Year	Population	Offense Total	% Change in Number from Previous Year	Rate per 100,000 Population	% Change in Rate from Previous Year	Percent Cleared
1991	635,000	223	0.0 %	35.1	0.6 %	65.5 %
1992	636,000	349	56.5	54.9	56.4	64.8
1993	635,000	332	-4.9	52.3	-4.7	70.2
1994	638,000	299	-9.9	46.9	-10.3	62.2
1995	641,000	360	20.4	56.2	19.8	71.1
1996	644,000	335	-6.9	52.0	-7.5	75.8
1997	641,000	344	2.7	53.7	3.3	70.3
1998	638,000	312	-9.3	48.9	-8.9	71.8
1999	634,000	217	-30.4	34.2	-30.1	71.0
2000	642,200	319	47.0	49.7	45.3	67.1

Aggravated Assault Totals, 1991-2000



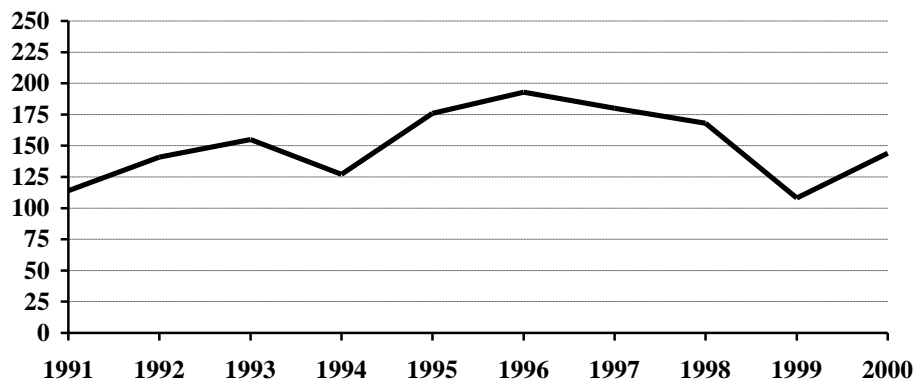
Aggravated Assault by Type of Weapon Involved, 2000

Type of Weapon	Number Reported	Percent of Total Offenses
Firearm	7	2.2 %
Knife or Cutting Instrument	47	14.7
Other Dangerous Weapon	123	38.6
Hands, Fists, Feet, etc.	142	44.5
Aggravated Assault Total	319	100.0

Arrests for Aggravated Assault, 1991-2000

Year	Juvenile	Adult	Age Not Reported	Total
1991	34	77	3	114
1992	30	110	1	141
1993	47	107	1	155
1994	37	89	1	127
1995	68	108		176
1996	45	147	1	193
1997	35	144	1	180
1998	47	121		168
1999	25	82	1	108
2000	15	128	1	144

Arrests for Aggravated Assault, 1991-2000



Property Crime

Property crime includes the offenses of burglary, larceny/theft, and motor vehicle theft.

In 2000, the total number of property crimes reported was 13,588. This is a decrease of 3.9 percent from the 1999 total of 14,145.

Property crime accounted for 96 percent of the index offenses reported in North Dakota.

The property crime rate declined 5.2 percent from 2231.1 per 100,000 population in 1999 to 2115.9 per 100,000 in 2000.

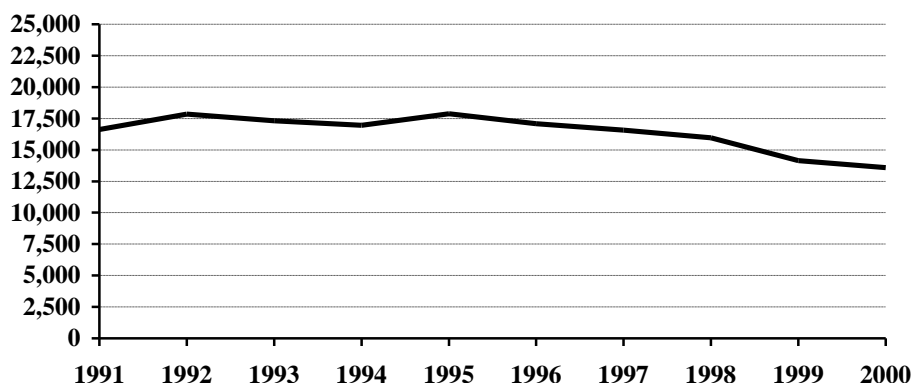
Approximately 22 percent of property crimes were cleared by arrest or exceptional means in 2000.

A total of 2,831 arrests was reported for property crimes. Of those, 55.5 percent were arrests of juveniles.

Property Crime Summary

Year	Population	Property Index Offenses	% Change in Number from Previous Year	Rate per 100,000 Population	% Change in Rate from Previous Year	Percent Cleared
1991	635,000	16,620	-0.2 %	2617.3	0.4 %	25.5 %
1992	636,000	17,853	7.4	2807.1	7.3	24.8
1993	635,000	17,317	-3.0	2727.1	-2.8	25.5
1994	638,000	16,959	-2.1	2658.2	-2.5	24.7
1995	641,000	17,874	5.4	2788.5	4.9	26.8
1996	644,000	17,088	-4.4	2653.4	-4.8	28.4
1997	641,000	16,573	-3.0	2585.5	-2.6	27.7
1998	638,000	15,971	-3.6	2503.3	-3.2	25.2
1999	634,000	14,145	-11.4	2231.1	-10.9	25.9
2000	642,200	13,588	-3.9	2115.9	-5.2	21.8

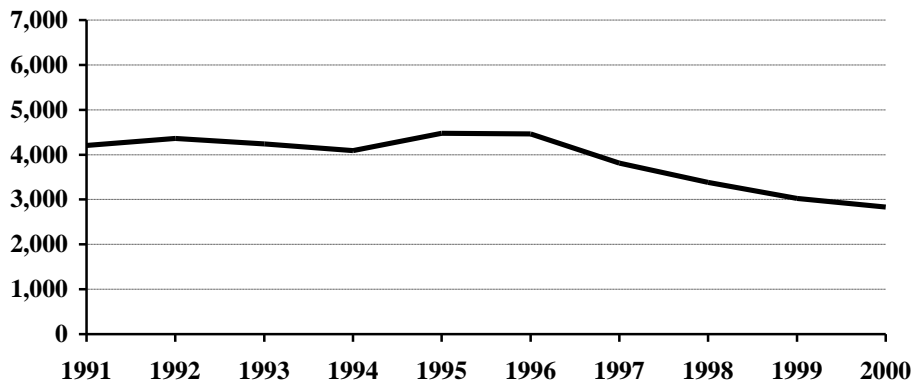
Property Crime Totals, 1991-2000



Arrests for Property Crimes, 1991-2000

Year	Juvenile	Adult	Age Not Reported	Total
1991	2,291	1,886	28	4,205
1992	2,455	1,885	25	4,365
1993	2,322	1,889	31	4,242
1994	2,266	1,782	41	4,089
1995	2,536	1,919	19	4,474
1996	2,455	1,997	10	4,462
1997	2,198	1,590	25	3,813
1998	1,735	1,636	12	3,383
1999	1,599	1,419	7	3,025
2000	1,572	1,246	13	2,831

Arrests for Property Crimes, 1991-2000



Burglary

The UCR program defines Burglary as the “unlawful entry of a structure to commit a felony or theft. The use of force to gain entry is not required to classify an offense as burglary.” Burglaries are classified into three categories: forcible entry, unlawful entry where no force is used, and attempted forcible entry.

In 2000, 2,004 burglaries were reported to the UCR program. This represents a decrease of 8.9 percent from the total of 2,200 burglaries reported in 1999.

The rate of burglaries based on population was 312.1 per 100,000 inhabitants for 2000. This is a 10.1 percent decrease from the rate of 347.0 per 100,000 population in 1999.

Approximately 16 percent of burglaries were cleared by arrest or exceptional means in 2000.

A total of 305 arrests for burglary was reported in 2000. Of these, 44 percent were juveniles.

The UCR program classifies burglaries by time of day and location of the incident. Approximately 50 percent were burglaries of residences. Sixty-three percent of burglaries were known to have been committed at night.

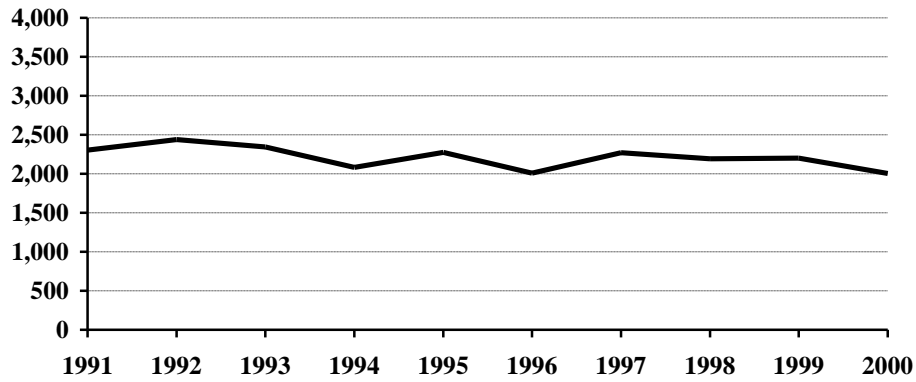
About 52 percent of burglaries involved forcible entry.

Property loss due to burglary is substantial. More than 1.7 million dollars worth of property was reported stolen in burglary incidents in 2000. The average burglary involved \$889 worth of property.

Burglary Summary

Year	Population	Offense Total	% Change in Number from Previous Year	Rate per 100,000 Population	% Change in Rate from Previous Year	Percent Cleared
1991	635,000	2,305	-2.2 %	363.0	-1.6 %	17.6 %
1992	636,000	2,440	5.9	383.6	5.7	17.6
1993	635,000	2,346	-3.9	369.4	-3.7	19.8
1994	638,000	2,080	-11.3	326.0	-11.7	17.7
1995	641,000	2,275	9.4	354.9	8.9	18.7
1996	644,000	2,008	-11.7	311.8	-12.1	20.7
1997	641,000	2,271	13.1	354.3	13.6	19.8
1998	638,000	2,194	-3.4	343.9	-2.9	19.5
1999	634,000	2,200	0.3	347.0	0.9	20.8
2000	642,200	2,004	-8.9	312.1	-10.1	16.2

Burglary Totals, 1991-2000



Burglary by Type of Entry, 2000

Type of Entry	Number Reported	Percent of Total Offenses
Forcible Entry	1,048	52.3 %
Unlawful Entry - No Force	764	38.1
Attempted Forcible Entry	192	9.6
Burglary Total	2,004	100.0

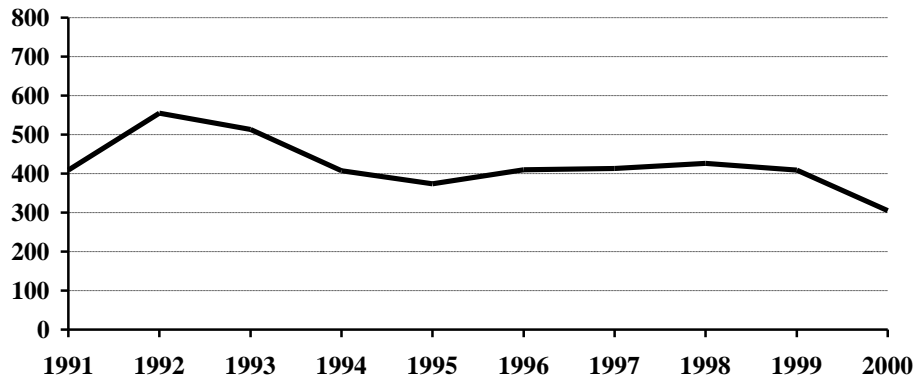
Burglary by Location and Value of Property, 2000

Location/Time	Number Reported	Value of Property	Average Value per Burglary
Residence - Night	541	\$ 358,580	\$ 662.81
Residence - Day	406	488,469	1,203.13
Residence - Unknown	50	21,325	426.50
Residence Subtotal	997	868,374	870.99
Non-Residence - Night	725	587,704	810.63
Non-Residence - Day	261	320,894	1,229.48
Non-Residence - Unknown	21	4,838	230.38
Non-Residence Subtotal	1,007	913,436	907.09
Burglary Total	2,004	1,781,810	889.13

Arrests for Burglary, 1991-2000

Year	Juvenile	Adult	Age Not Reported	Total
1991	166	240	3	409
1992	272	280	3	555
1993	226	283	4	513
1994	197	204	6	407
1995	208	164	2	374
1996	201	208	1	410
1997	222	185	6	413
1998	201	220	5	426
1999	202	205	2	409
2000	134	166	5	305

Arrests for Burglary, 1991-2000



Property Loss Due to Burglary, 1991-2000

Year	Offense Total	Property Loss	Average Loss per Burglary
1991	2,305	\$ 1,545,064	\$ 670.31
1992	2,440	2,101,987	861.47
1993	2,346	1,571,149	669.71
1994	2,080	1,696,717	815.73
1995	2,275	1,939,595	852.57
1996	2,008	1,404,087	699.25
1997	2,271	2,114,489	931.08
1998	2,194	1,630,902	743.35
1999	2,200	1,853,763	842.62
2000	2,004	1,781,810	889.13

Larceny/Theft

The UCR program defines Larceny/Theft as the “unlawful taking, carrying, leading, or riding away of property from the possession or constructive possession of another. It includes crimes such as shoplifting, pocket-picking, purse-snatching, thefts from motor vehicles, thefts of motor vehicle parts and accessories, bicycle thefts, etc., in which no use of force, violence or fraud occurs. In the Uniform Crime Reporting program, this crime category does not include embezzlement, confidence games, forgery, and worthless checks. Motor vehicle theft is also excluded from this category inasmuch as it is a separate crime index offense.”

A total of 10,642 larceny/theft offenses was reported in North Dakota in 2000. This is a 2.9 percent decrease from the 1999 total of 10,956.

The larceny/theft rate per 100,000 population was 1657.1 compared with 1728.1 in 1999, a 4.1 percent reduction in the rate.

Twenty-two percent of larceny/theft offenses were cleared by arrest or exceptional means in 2000.

The number of arrests for this offense decreased from 2,327 in 1999 to 2,279 in 2000. Fifty-six percent of those arrested for larceny/theft in 2000 were juveniles.

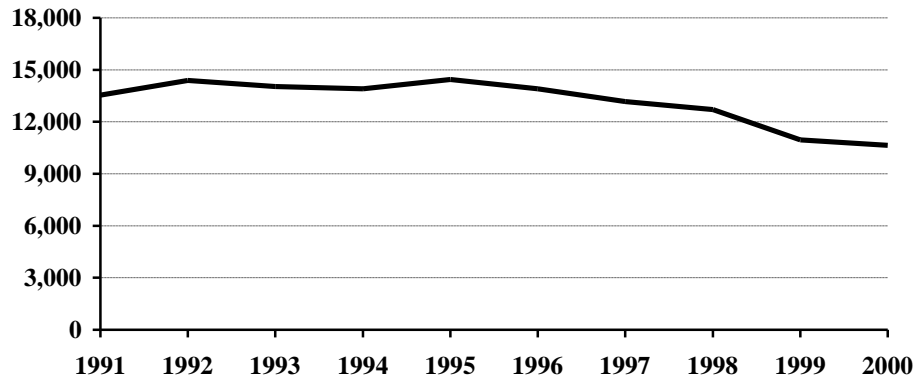
More than 4.6 million dollars worth of property was reported stolen as the result of larceny/theft offenses in the state. The average dollar value per offense decreased from \$519 in 1999 to \$434 in 2000.

Larceny/theft accounted for 75.2 percent of the total index offenses reported and amounted to approximately 45 percent of the total value of stolen property.

Larceny/Theft Summary

Year	Population	Offense Total	% Change in Number from Previous Year	Rate per 100,000 Population	% Change in Rate from Previous Year	Percent Cleared
1991	635,000	13,543	0.3 %	2132.8	0.9 %	25.9 %
1992	636,000	14,390	6.3	2262.6	6.1	25.0
1993	635,000	14,031	-2.5	2209.6	-2.3	25.6
1994	638,000	13,898	-0.9	2178.4	-1.4	25.0
1995	641,000	14,435	3.9	2252.0	3.4	27.2
1996	644,000	13,898	-3.7	2158.1	-4.2	28.6
1997	641,000	13,163	-5.3	2053.5	-4.8	28.3
1998	638,000	12,704	-3.5	1991.2	-3.0	25.4
1999	634,000	10,956	-13.8	1728.1	-13.2	25.9
2000	642,200	10,642	-2.9	1657.1	-4.1	22.0

Larceny/Theft Totals, 1991-2000



Monetary Value of Larceny/Theft, 2000

Value of Larceny/Theft	Number Reported	Percent of Total Offenses
Under \$50	3,859	36.3 %
\$50 to \$200	2,670	25.1
Over \$200	4,113	38.6
Larceny/Theft Total	10,642	100.0

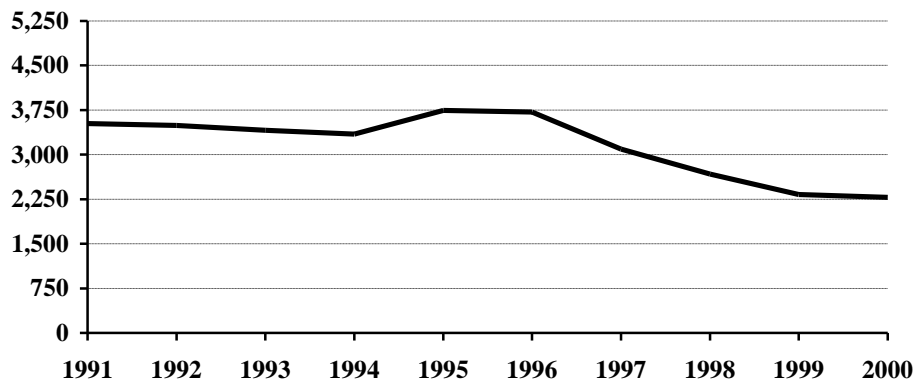
Larceny/Theft by Type and Value, 2000

Type of Larceny/Theft	Number Reported	Value of Property	Average Value per Larceny/Theft
From Motor Vehicle	2,729	\$ 1,334,221	\$ 488.90
From Building	1,529	933,477	610.51
Shoplifting	1,340	93,253	69.59
Bicycles	868	174,161	200.65
Motor Vehicle Parts, Accessories	472	129,658	274.70
From Coin-Operated Machine	83	10,948	131.90
Pocket Picking	22	10,579	480.86
Purse Snatching	20	2,509	125.45
All Other	3,579	1,939,030	541.78
Larceny/Theft Total	10,642	4,627,836	434.87

Arrests for Larceny/Theft, 1991-2000

Year	Juvenile	Adult	Age Not Reported	Total
1991	1,947	1,555	22	3,524
1992	1,972	1,505	15	3,492
1993	1,900	1,485	24	3,409
1994	1,846	1,472	28	3,346
1995	2,066	1,662	14	3,742
1996	2,056	1,656	6	3,718
1997	1,771	1,306	16	3,093
1998	1,372	1,292	7	2,671
1999	1,212	1,110	5	2,327
2000	1,285	987	7	2,279

Arrests for Larceny/Theft, 1991-2000



Property Loss Due to Larceny/Theft, 1991-2000

Year	Offense Total	Property Loss	Average Loss per Larceny/Theft
1991	13,543	\$ 4,713,264	\$ 348.02
1992	14,390	6,283,654	436.67
1993	14,031	4,819,935	343.52
1994	13,898	4,842,899	348.46
1995	14,435	5,394,911	373.74
1996	13,898	5,118,818	368.31
1997	13,163	5,680,026	431.51
1998	12,704	5,858,913	461.19
1999	10,956	5,690,080	519.36
2000	10,642	4,627,836	434.87

Motor Vehicle Theft

Motor Vehicle Theft is defined by the UCR program as “the theft or attempted theft of a motor vehicle; the offense category includes the stealing of automobiles, trucks, buses, motorcycles, motorscooters, snowmobiles, etc. The definition excludes the taking of a motor vehicle for temporary use by those persons having lawful access.”

A total of 942 motor vehicle thefts was reported in 2000. This is a decrease of 4.8 percent from the 1999 total of 989.

Based on the 2000 Census population of 642,200 for North Dakota, the resulting motor vehicle theft rate is 146.7 per 100,000 population.

Approximately 31 percent of reported motor vehicle thefts were cleared by arrest or exceptional means in 2000.

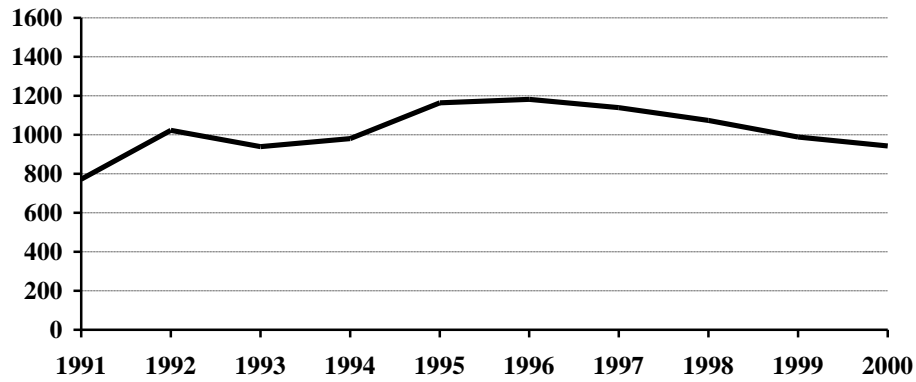
The number of arrests for motor vehicle theft decreased from 289 in 1999 to 247 in 2000.

The average value per motor vehicle theft was approximately \$4,125.

Motor Vehicle Theft Summary

Year	Population	Offense Total	% Change in Number from Previous Year	Rate per 100,000 Population	% Change in Rate from Previous Year	Percent Cleared
1991	635,000	772	-2.8 %	121.6	-2.2 %	41.8 %
1992	636,000	1,023	32.5	160.8	32.2	39.4
1993	635,000	940	-8.1	148.0	-8.0	38.3
1994	638,000	981	4.4	153.8	3.9	34.8
1995	641,000	1,164	18.7	181.6	18.1	37.3
1996	644,000	1,182	1.5	183.5	1.0	40.1
1997	641,000	1,139	-3.6	177.7	-3.2	37.1
1998	638,000	1,073	-5.8	168.2	-5.3	35.3
1999	634,000	989	-7.8	156.0	-7.3	37.0
2000	642,200	942	-4.8	146.7	-6.0	30.9

Motor Vehicle Theft Totals, 1991-2000



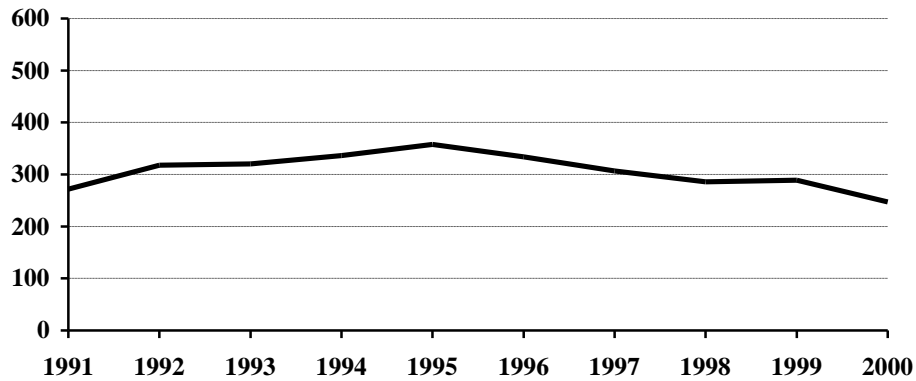
Type of Vehicle Stolen, 2000

Type of Vehicle	Number Reported	Percent of Total Offenses
Automobiles	796	84.5 %
Trucks and Buses	82	8.7
Other Vehicles	64	6.8
Motor Vehicle Theft Total	942	100.0

Arrests for Motor Vehicle Theft, 1991-2000

Year	Juvenile	Adult	Age Not Reported	Total
1991	178	91	3	272
1992	211	100	7	318
1993	196	121	3	320
1994	223	106	7	336
1995	262	93	3	358
1996	198	133	3	334
1997	205	99	3	307
1998	162	124		286
1999	185	104		289
2000	153	93	1	247

Arrests for Motor Vehicle Theft, 1991-2000



Property Loss Due to Motor Vehicle Theft, 1991-2000

Year	Offense Total	Property Loss	Average Loss per Offense
1991	772	\$ 2,161,717	\$ 2,800.15
1992	1,023	2,799,939	2,736.99
1993	940	3,010,954	3,203.14
1994	981	3,142,478	3,203.34
1995	1,164	3,714,582	3,191.22
1996	1,182	4,488,026	3,796.98
1997	1,139	4,706,068	4,131.75
1998	1,073	3,909,583	3,643.60
1999	989	3,633,353	3,673.76
2000	942	3,886,274	4,125.56

Crime Index Offenses by Reporting Jurisdiction

The rate per 100,000 population is shown immediately below the actual number of crime index offenses reported by each jurisdiction. A county total is also shown for each of those counties that have more than one reporting jurisdiction within its geographic boundaries. The rate is reported per 100,000 for easy comparison to national publications.

Number and Rate of Index Offenses, 2000

County	Reporting Jurisdiction	Population	Murder/ Non-Negligent Manslaughter	Forcible Rape	Robbery	Aggravated Assault	Burglary	Larceny/ Theft	Motor Vehicle Theft	Total Index Offenses
Adams	County SO					1	3	18	1	23
		2,593				38.6	115.7	694.2	38.6	887.0
Barnes	County SO	4,949					17	33	1	51
							343.5	666.8	20.2	1030.5
	Valley City PD	6,826	1			1	18	79	8	107
			14.6			14.6	263.7	1157.3	117.2	1567.5
County Total		11,775	1			1	35	112	9	158
			8.5			8.5	297.2	951.2	76.4	1341.8
Benson	County SO	6,964	DID NOT REPORT IN 2000							
Billings	County SO	888	DID NOT REPORT IN 2000							
Bottineau	County SO	7,149					7	23	2	32
							97.9	321.7	28.0	447.6
Bowman	County SO	1,642	DID NOT REPORT IN 2000							
	Bowman PD	1,600					3	12		15
							187.5	750.0		937.5
Burke	County SO						2	6		8
		2,242					89.2	267.6		356.8
Burleigh	County SO	13,884		3		6	30	40	5	84
				21.6		43.2	216.1	288.1	36.0	605.0
	Bismarck PD	55,532		6	9	16	235	1546	87	1899
			10.8	16.2	28.8	423.2	2784.0	156.7	3419.6	
County Total		69,416		9	9	22	265	1586	92	1983
				13.0	13.0	31.7	381.8	2284.8	132.5	2856.7
Cass	County SO	17,599		8	2	6	58	133	26	233
				45.5	11.4	34.1	329.6	755.7	147.7	1323.9
	Fargo PD*	90,599	1	50	24	83	332	2467	217	3174
			1.1	55.2	26.5	91.6	366.4	2723.0	239.5	3503.3
West Fargo PD	14,940			1	3	44	212	15	275	
					6.7	20.1	294.5	1419.0	100.4	1840.7
County Total		123,138	1	58	27	92	434	2812	258	3682
			0.8	47.1	21.9	74.7	352.5	2283.6	209.5	2990.1
Cavalier	County SO	4,831					17	64	1	82
							351.9	1324.8	20.7	1697.4
Dickey	County SO	3,778		1			8	34	1	44
				26.5			211.8	899.9	26.5	1164.6
	Oakes PD	1,979					1			1
							50.5			50.5
County Total		5,757		1			9	34	1	45
				17.4			156.3	590.6	17.4	781.7
Divide	County SO	1,194	DID NOT REPORT IN 2000							
	Crosby PD	1,089	DID NOT REPORT IN 2000							
Dunn	County SO	3,600								0
										0.0

* Includes 163 index offenses reported by the NDSU PD

County	Reporting Jurisdiction	Population	Murder/ Non-Negligent Manslaughter	Forcible Rape	Robbery	Aggravated Assault	Burglary	Larceny/ Theft	Motor Vehicle Theft	Total Index Offenses	
Eddy	County SO	2,757					7 253.9	16 580.3		23 834.2	
Emmons	County SO	3,010					11 365.4	16 531.6	1 33.2	28 930.2	
	Linton PD	1,321					1 75.7	3 227.1		4 302.8	
	County Total	4,331					12 277.1	19 438.7	1 23.1	32 738.9	
Foster	County SO	1,491								0	
	Carrington PD	2,268	DID NOT REPORT IN 2000								0.0
Golden Valley	County SO	1,924	DID NOT REPORT IN 2000								
Grand Forks	County SO	12,880		3 23.3		7 54.3	31 240.7	90 698.8	11 85.4	142 1102.5	
	Emerado PD	510	DID NOT REPORT IN 2000								
	Grand Forks PD**	49,321	1 2.0	37 75.0	11 22.3	50 101.4	281 569.7	1807 3663.8	190 385.2	2377 4819.4	
	Larimore PD	1,433								0 0.0	
	Northwood PD	959					1 104.3		3 312.8	4 417.1	
	Thompson PD	1,006	DID NOT REPORT IN 2000								
	Reporting Agency Total	64,593	1 1.5	40 61.9	11 17.0	57 88.2	313 484.6	1897 2936.9	204 315.8	2523 3906.0	
Grant	County SO	1,863		1 53.7			1 53.7		4 214.7	6 322.1	
	Carson PD	319					2 627.0			2 627.0	
	Elgin PD	659								0 0.0	
	County Total	2,841		1 35.2			3 105.6		4 140.8	8 281.6	
Griggs	County SO	1,701						2 117.6		2 117.6	
	Cooperstown PD	1,053	DID NOT REPORT IN 2000								
Hettinger	County SO	2,715					2 73.7	1 36.8		3 110.5	
Kidder	County SO	1,992				1 50.2	1 50.2	9 451.8		11 552.2	
	Steele PD	761					3 394.2	8 1051.2	1 131.4	12 1576.9	
	County Total	2,753				1 36.3	4 145.3	17 617.5	1 36.3	23 835.5	
LaMoure	County SO	4,701					11 234.0			11 234.0	
Logan	County SO	1,451					3 206.8	8 551.3	1 68.9	12 827.0	
	Napoleon PD	857	DID NOT REPORT IN 2000								
McHenry	County SO	5,987					17 283.9	29 484.4	4 66.8	50 835.1	
McIntosh	County SO	2,268					9 396.8	7 308.6		16 705.5	
	Wishek PD	1,122	DID NOT REPORT IN 2000								
McKenzie	County SO	4,302				3 69.7	5 116.2	21 488.1	2 46.5	31 720.6	
	Watford City PD	1,435	1 69.7			2 139.4	1 69.7	11 766.6	1 69.7	16 1115.0	
	County Total	5,737	1 17.4			5 87.2	6 104.6	32 557.8	3 52.3	47 819.2	
McLean	County SO	9,311					35 375.9	101 1084.7	4 43.0	140 1503.6	

** Includes 198 index offenses reported by UND PD.

County	Reporting Jurisdiction	Population	Murder/ Non-Negligent Manslaughter	Forcible Rape	Robbery	Aggravated Assault	Burglary	Larceny/ Theft	Motor Vehicle Theft	Total Index Offenses
Mercer	County SO	2,690				1 37.2	10 371.7	19 706.3		30 1115.2
	Beulah PD	3,152					9 285.5	62 1967.0	4 126.9	75 2379.4
	Hazen PD	2,457	DID NOT REPORT IN 2000							
	Stanton PD	345	DID NOT REPORT IN 2000							
	Reporting Agency Total	5,842				1 17.1	19 325.2	81 1386.5	4 68.5	105 1797.3
Morton	County SO	8,585		3 34.9		13 151.4	19 221.3	56 652.3	7 81.5	98 1141.5
	Mandan PD	16,718		6 35.9	1 6.0	17 101.7	50 299.1	458 2739.6	37 221.3	569 3403.5
	County Total	25,303		9 35.6	1 4.0	30 118.6	69 272.7	514 2031.4	44 173.9	667 2636.1
Mountrail	County SO	5,650				1 17.7	14 247.8	19 336.3	3 53.1	37 654.9
	Parshall PD	981						3 305.8		3 305.8
	County Total	6,631				1 15.1	14 211.1	22 331.8	3 45.2	40 603.2
Nelson	County SO	3,715	DID NOT REPORT IN 2000							
Oliver	County SO	2,065					2 96.9	11 532.7		13 629.5
Pembina	County SO	7,048		2 28.4		4 56.8	22 312.1	28 397.3	7 99.3	63 893.9
	Cavalier PD	1,537				1 65.1	1 65.1	21 1366.3	2 130.1	25 1626.5
	County Total	8,585		2 23.3		5 58.2	23 267.9	49 570.8	9 104.8	88 1025.0
Pierce	County SO	1,736				1 57.6	2 115.2	7 403.2	1 57.6	11 633.6
	Rugby PD	2,939				1 34.0	2 68.1	56 1905.4	1 34.0	60 2041.5
	County Total	4,675				2 42.8	4 85.6	63 1347.6	2 42.8	71 1518.7
Ramsey	County SO	4,844	DID NOT REPORT IN 2000							
	Devils Lake PD	7,222		2 27.7	2 27.7	18 249.2	68 941.6	353 4887.8	31 429.2	474 6563.3
Ransom	County SO	3,598				1 27.8	19 528.1	37 1028.3	3 83.4	60 1667.6
	Lisbon PD	2,292	DID NOT REPORT IN 2000							
Renville	County SO	2,610				3 114.9	3 114.9	16 613.0	5 191.6	27 1034.5
Richland	County SO	9,412		2 21.2		2 21.2	69 733.1	67 711.9	8 85.0	148 1572.5
	Wahpeton PD	8,586		6 69.9	1 11.6	2 23.3	49 570.7	249 2900.1	18 209.6	325 3785.2
	County Total	17,998		8 44.4	1 5.6	4 22.2	118 655.6	316 1755.8	26 144.5	473 2628.1
Rolette	County SO	13,674				2 14.6	24 175.5	40 292.5	4 29.3	70 511.9
Sargent	County SO	4,366				1 22.9	18 412.3	45 1030.7	1 22.9	65 1488.8
Sheridan	County SO	1,710					1 58.5	26 1520.5	5 292.4	32 1871.3
Sioux	County SO	4,044	DID NOT REPORT IN 2000							
Slope	County SO	767	DID NOT REPORT IN 2000							
Stark	County SO	6,626		1 15.1		3 45.3		20 301.8	1 15.1	25 377.3
	Dickinson PD	16,010		5 31.2	2 12.5	8 50.0	47 293.6	331 2067.5	22 137.4	415 2592.1
	County Total	22,636		6 26.5	2 8.8	11 48.6	47 207.6	351 1550.6	23 101.6	440 1943.8

County	Reporting Jurisdiction	Population	Murder/ Non-Negligent Manslaughter	Forcible Rape	Robbery	Aggravated Assault	Burglary	Larceny/ Theft	Motor Vehicle Theft	Total Index Offenses
Steele	County SO	2,258	DID NOT REPORT IN 2000							
Stutsman	County SO	6,381				3 47.0	24 376.1	32 501.5	7 109.7	66 1034.3
	Jamestown PD	15,527		6 38.6	2 12.9	5 32.2	48 309.1	291 1874.2	31 199.7	383 2466.7
	County Total	21,908		6 27.4	2 9.1	8 36.5	72 328.6	323 1474.3	38 173.5	449 2049.5
Towner	County SO	1,534	DID NOT REPORT IN 2000							
	Cando PD	1,342				2 149.0	2 149.0	3 223.5		7 521.6
Traill	County SO	3,650				4 109.6	10 274.0	8 219.2	14 383.6	36 986.3
	Mayville PD	1,953				2 102.4	2 102.4	6 307.2	1 51.2	11 563.2
	Hatton PD	707						7 990.1	5 707.2	12 1697.3
	Hillsboro PD	1,563	DID NOT REPORT IN 2000							
	Portland PD	604					2 331.1	1 165.6		3 496.7
	Reporting Agency Totals	6,914				6 86.8	14 202.5	22 318.2	20 289.3	62 896.7
Walsh	County SO	7,873				3 38.1	25 317.5	74 939.9	10 127.0	112 1422.6
	Grafton PD	4,516				5 110.7	23 509.3	137 3033.7	10 221.4	175 3875.1
	County Total	12,389				8 64.6	48 387.4	211 1703.1	20 161.4	287 2316.6
Ward	County SO	22,228		9 40.5		7 31.5	43 193.4	129 580.3	17 76.5	205 922.3
	Minot PD	36,567		16 43.8	7 19.1	18 49.2	148 404.7	978 2674.5	65 177.8	1232 3369.2
	County Total	58,795		25 42.5	7 11.9	25 42.5	191 324.9	1107 1882.8	82 139.5	1437 2444.1
Wells	County SO	2,488				2 80.4	9 361.7	10 401.9	1 40.2	22 884.2
	Harvey PD	1,989				1 50.3	3 150.8	5 251.4		9 452.5
	Fessenden PD	625	DID NOT REPORT IN 2000							
	Reporting Agency Totals	4,477				3 67.0	12 268.0	15 335.0	1 22.3	31 692.4
Williams	County SO	7,249				1 13.8	22 303.5	43 593.2	14 193.1	80 1103.6
	Williston PD	12,512		6 48.0		8 63.9	16 127.9	195 1558.5	21 167.8	246 1966.1
	County Total	19,761		6 30.4		9 45.5	38 192.3	238 1204.4	35 177.1	326 1649.7

ARREST ANALYSIS

(This page intentionally left blank.)

Arrests in 2000

Although primarily an indication of law enforcement activity, the number of arrests reported does provide a limited profile of the perpetrators of crime, especially for those crimes that have high clearance rates. Differing arrest practices, policies and enforcement emphases among agencies influence the volume of arrests for various offenses, particularly those against public order such as vagrancy, disorderly conduct, and related violations. However, arrests for serious crimes, e.g., robbery or burglary, are more likely to be consistent and uniform throughout all jurisdictions across the state.

The UCR program requires that an arrest be counted for each separate occasion an individual is taken into custody. Although several charges may be lodged against a person at the time of the arrest, one arrest is counted for each separate time the person is taken into custody.

North Dakota law enforcement agencies reported 29,201 arrests in 2000. A total of 30,258 arrests was reported in 1999.

In 2000, approximately 29 percent of total arrests were arrests of juveniles.

Seventy-one percent of the total were arrests of males.

Approximately ten percent of the reported arrests were arrests for crime index offenses. Fifty-three percent of the arrests for crime index offenses were arrests of juveniles. In 1999, 51 percent of arrests for crime index offenses were arrests of juveniles.

The total of 10,878 reported arrests for DUI and liquor law violations represents approximately 37 percent of the total arrests reported in the state of North Dakota in 2000. Arrests for DUI declined from 5,179 in 1999 to 4,304 in 2000. Liquor law violation arrests increased 3.1 percent from 6,377 in 1999 to 6,574 reported in 2000.

Approximately 86 percent of total arrests were white; about 12 percent were Native American.

These statistics are provided by local law enforcement agencies that contribute to the North Dakota UCR program. No arrest figures for reservations in the state are included in these totals. Tribal law enforcement agencies do not participate in the state UCR program.

Total Arrests Reported, 2000

Offense Classification	Number Reported	Percent of Total Arrests
Murder/Non-Negligent Manslaughter	1	*
Negligent Manslaughter	4	*
Forcible Rape	39	0.1 %
Robbery	15	0.1
Aggravated Assault	144	0.5
Burglary	305	1.0
Larceny/Theft	2,279	7.8
Motor Vehicle Theft	247	0.9
Other Assaults	1,704	5.8
Arson	24	0.1
Forgery and Counterfeiting	137	0.5
Fraud	2,532	8.7
Embezzlement	1	*
Stolen Property Offenses	98	0.3
Vandalism	671	2.3
Weapons Offenses	120	0.4
Prostitution	0	*
Other Sex Offenses	87	0.3
Drug Abuse Violations	1,501	5.1
Gambling	0	*
Offenses Against Family and Children	250	0.9
Driving Under the Influence	4,304	14.7
Liquor Law Violations	6,574	22.5
Disorderly Conduct	1,554	5.3
Vagrancy	2	*
All Other Offenses	5,285	18.1
Suspicion	0	*
Curfew and Loitering	345	1.2
Runaways	978	3.4
Arrest Total	29,201	100.0

* Less than 0.1 percent of total arrests.

Comparison of Reported Arrests, 1999-2000

Offense Classification	1999	2000	Percent Change
Murder/Non-Negligent Manslaughter	6	1	-83.3 %
Negligent Manslaughter	4	4	0.0
Forcible Rape	24	39	62.5
Robbery	28	15	-46.4
Aggravated Assault	108	144	33.3
Burglary	409	305	-25.4
Larceny/Theft	2,327	2,279	-2.1
Motor Vehicle Theft	289	247	-14.5
Other Assaults	1,651	1,704	3.2
Arson	16	24	50.0
Forgery and Counterfeiting	160	137	-14.4
Fraud	3,274	2,532	-22.7
Embezzlement	6	1	-83.3
Stolen Property Offenses	84	98	16.7
Vandalism	709	671	-5.4
Weapons Offenses	107	120	12.1
Prostitution	3	0	-100.0
Other Sex Offenses	76	87	14.5
Drug Abuse Violations	1,456	1,501	3.1
Gambling	5	0	-100.0
Offenses Against Family and Children	200	250	25.0
Driving Under the Influence	5,179	4,304	-16.9
Liquor Law Violations	6,377	6,574	3.1
Disorderly Conduct	1,568	1,554	-0.9
Vagrancy	8	2	-75.0
All Other Offenses	4,998	5,285	5.7
Suspicion	1	0	-100.0
Curfew and Loitering	382	345	-9.7
Runaways	803	978	21.8
Arrest Total	30,258	29,201	-3.5

Juvenile and Adult Arrests, 2000

Offense Classification	Juvenile	Adult	Age Not Reported	Total
Murder/Non-Negligent Manslaughter		1		1
Negligent Manslaughter	1	3		4
Forcible Rape	12	27		39
Robbery		15		15
Aggravated Assault	15	128	1	144
Burglary	134	166	5	305
Larceny/Theft	1,285	987	7	2,279
Motor Vehicle Theft	153	93	1	247
Other Assaults	448	1,249	7	1,704
Arson	17	7		24
Forgery and Counterfeiting	41	96		137
Fraud	16	2,482	34	2,532
Embezzlement		1		1
Stolen Property Offenses	51	46	1	98
Vandalism	423	246	2	671
Weapons Offenses	31	87	2	120
Prostitution				0
Other Sex Offenses	32	53	2	87
Drug Abuse Violations	292	1,206	3	1,501
Gambling				0
Offenses Against Family and Children	66	182	2	250
Driving Under the Influence	81	4,214	9	4,304
Liquor Law Violations	2,039	4,493	42	6,574
Disorderly Conduct	699	854	1	1,554
Vagrancy		2		2
All Other Offenses	1,277	3,974	34	5,285
Suspicion				0
Curfew and Loitering	344		1	345
Runaways	978			978
Arrest Total	8,435	20,612	154	29,201

Arrests by Gender, 2000

Offense Classification	Male	Female	Total
Murder/Non-Negligent Manslaughter		1	1
Negligent Manslaughter	4		4
Forcible Rape	38	1	39
Robbery	14	1	15
Aggravated Assault	122	22	144
Burglary	284	21	305
Larceny/Theft	1,530	749	2,279
Motor Vehicle Theft	198	49	247
Other Assaults	1,283	421	1,704
Arson	18	6	24
Forgery and Counterfeiting	91	46	137
Fraud	1,488	1,044	2,532
Embezzlement		1	1
Stolen Property Offenses	86	12	98
Vandalism	592	79	671
Weapons Offenses	114	6	120
Prostitution			0
Other Sex Offenses	81	6	87
Drug Abuse Violations	1,222	279	1,501
Gambling			0
Offenses Against Family and Children	183	67	250
Driving Under the Influence	3,437	867	4,304
Liquor Law Violations	4,358	2,216	6,574
Disorderly Conduct	1,210	344	1,554
Vagrancy	2		2
All Other Offenses	3,886	1,399	5,285
Suspicion			0
Curfew and Loitering	197	148	345
Runaways	416	562	978
Arrest Total	20,854	8,347	29,201

Arrests by Race, 2000

Offense Classification	White	Black	Native American	Asian	Total
Murder/Non-Negligent Manslaughter			1		1
Negligent Manslaughter	3		1		4
Forcible Rape	31	4	4		39
Robbery	10	2	3		15
Aggravated Assault	102	8	34		144
Burglary	247	9	49		305
Larceny/Theft	1,776	60	428	15	2,279
Motor Vehicle Theft	171	5	71		247
Other Assaults	1,361	78	260	5	1,704
Arson	22		2		24
Forgery and Counterfeiting	128	1	7	1	137
Fraud	2,409	41	79	3	2,532
Embezzlement	1				1
Stolen Property Offenses	76	3	19		98
Vandalism	581	9	79	2	671
Weapons Offenses	98	2	20		120
Prostitution					0
Other Sex Offenses	74	4	9		87
Drug Abuse Violations	1,317	31	150	3	1,501
Gambling					0
Offenses Against Family and Children	192	11	47		250
Driving Under the Influence	3,769	44	477	14	4,304
Liquor Law Violations	5,929	57	573	15	6,574
Disorderly Conduct	1,258	49	239	8	1,554
Vagrancy	2				2
All Other Offenses	4,405	114	738	28	5,285
Suspicion					0
Curfew and Loitering	268	2	75		345
Runaways	770	18	180	10	978
Arrest Total	25,000	552	3,545	104	29,201

Arrest Analysis by Reporting Jurisdiction

The table below contains arrest totals for each reporting agency in 2000. Juvenile and adult arrests as well as arrests reported without age information are included.

Arrests by Reporting Jurisdiction, 2000

Agency	Murder/Non-Neg. Mansl.	Negligent Manslaughter	Forcible Rape	Robbery	Aggravated Assault	Burglary	Larceny/Theft	Motor Vehicle Theft	Other Assault	Arson	Forgery/Counterfeiting	Fraud	Embezzlement	Stolen Property Offenses	Vandalism	Weapons Offenses	Prostitution	Other Sex Offenses	Drug Abuse Violations	Gambling Violations	Off. Against Fam & Children	DUI	Liquor Law Violations	Disorderly Conduct	Vagrancy	All Other Offenses	Suspicion	Curfew/Loitering	Runaway	Total
Adams SO					1	1	1		3						3							9	33			4				55
Barnes SO						3	2	2							2	1			1	1	14	19	1		4					50
Valley City PD					1	7	17	4	15	1	3		1		9	1				12		43	116	11		10	4	7	262	
Benson SO	Did not report in 2000																													
Billings SO	Did not report in 2000																													
Bottineau SO						4			1										5			15	150			15				190
Bowman SO	Did not report in 2000																													
Bowman PD						1																8	26			21				56
Burke SO							1		1			1				1			20			5	6	3		13				51
Burleigh SO		1	1		4		1	1	24			450							3	57		67	100			1		24	734	
Bismarck PD		1	2	2	6	16	518	17	229		25	13		14	141	13		21	102		1	356	396	266		404	78	191	2812	
Cass SO				2	3	3	7	2	20			467			7	2			33		17	70	230	3		33	4	2	905	
Fargo PD			13	4	38	44	477	66	305	6	15	18		27	66	23		5	243		123	649	713	197		314		57	3403	
West Fargo PD					1	1	26	2	50	2	2	3		6	9				67		5	185	160	23		88	10	28	668	
NDSU PD									1							1						24	112	1		3		2	144	
Cavalier SO					1		4		3													7								15
Dickey SO			1				2					34			1	1		1	1		30	4			1			2	78	
Oakes PD						1																								1
Divide SO	Did not report in 2000																													
Crosby PD	Did not report in 2000																													
Dunn SO																						14								14
Eddy SO									4			56										1	1							62
Emmons SO						8		1	4		1	7						1				3	57			9				91
Linton PD									2																					2
Foster SO																														0
Carrington PD	Did not report in 2000																													
Golden Valley SO	Did not report in 2000																													
Grand Forks SO					5	1	16	7	9			166			10	2			9			11	61	6		929		4	1236	
Emerado PD	Did not report in 2000																													
Grand Forks PD		1	8	2	19	37	295	32	212	3	21	4		13	65	25		2	97		17	286	572	308		358	35	260	2672	
Larimore PD																										1				1
Northwood PD									1																					1
Thompson PD	Did not report in 2000																													

Agency	Murder/Non-Neg. Mansl.	Negligent Manslaughter	Forcible Rape	Robbery	Aggravated Assault	Burglary	Larceny/Theft	Motor Vehicle Theft	Other Assault	Arson	Forgery/Counterfeiting	Fraud	Embezzlement	Stolen Property Offenses	Vandalism	Weapons Offenses	Prostitution	Other Sex Offenses	Drug Abuse Violations	Gambling Violations	Off. Against Fam & Children	DUI	Liquor Law Violations	Disorderly Conduct	Vagrancy	All Other Offenses	Suspicion	Curfew/Loitering	Runaway	Total
UND PD					1		3		7							1			9		1	73	134	8	1	20			1	259
Grant SO			1					5	6			1			3				6				4							26
Carson PD																						2	6			2				10
Elgin PD																							6	1						7
Griggs SO												1																		1
Cooperstown PD	Did not report in 2000																													
Hettinger SO									1																					1
Kidder SO					1							37																		38
Steele PD							1		3		1				1							2	12							20
LaMoure SO																		1												1
Logan SO									1			1										5	4			1				12
Napoleon PD	Did not report in 2000																													
McHenry SO					1		2	2	4						3				6			17	40	3		3		3		84
McIntosh SO							3		4						4							1	1			2				15
Wishek PD	Did not report in 2000																													
McKenzie SO							5		1							1	1					8	48	1						65
Watford City PD	1				2	1	1	1	5						8							4	17	2		2		1	1	46
McLean SO							1		2													25	20	1		9			1	59
Mercer SO																						13	18							31
Beulah PD						4	3	2	7						1			1	1			5	19	3		1		3		50
Hazen PD	Did not report in 2000																													
Stanton PD	Did not report in 2000																													
Morton SO			1		8	9	4	4	8		1				15	1			20			82	115	4		69			2	343
Mandan PD			1		6	18	51	9	96	2	7	4		3	33	9		2	81		1	278	172	61		414		12	19	1279
Mountrail SO					1		2		2										1			8	9			9				32
Parshall PD						1																								1
Nelson SO	Did not report in 2000																													
Oliver SO									1										2		1	2							1	7
Pembina SO					1	3	7	1	17		1				10	2		1	25			43	73	9		54		1	4	252
Cavalier PD					1		3		9	2					7	2		2	4			16	16	2		17			1	82
Pierce SO									6										1			6	36	5		6				60
Rugby PD							4		5		1				3							2	13	1		4			1	34
Ramsey SO	Did not report in 2000																													
Devils Lake PD					9	16	123	19	47	1	4	2		10	47	4		4	49		59	155	364	99		219		55	1	1287
Ransom SO						4	6		6			96			5	2			8			13	50	9		73			4	276
Lisbon PD	Did not report in 2000																													
Renville SO					1		1	2	1			10										7	1			22				48
Richland SO			1			10	8	2	6	3	1	150			8	2		4	3			39	195	19		19			4	474
Wahpeton PD				1	1	9	49	1	24		1	1			29	4		1	13			35	145	23		56		23	13	429
Rolette SO					1	4	20	2	4					1	3	1						1	3	5		16		13		78
Sargent SO					1		12	2	3		1	21			1							55	99	4		56				276
Sheridan SO							1	1														5	7	2		1				18
Sioux SO	Did not report in 2000																													

* Partial Year

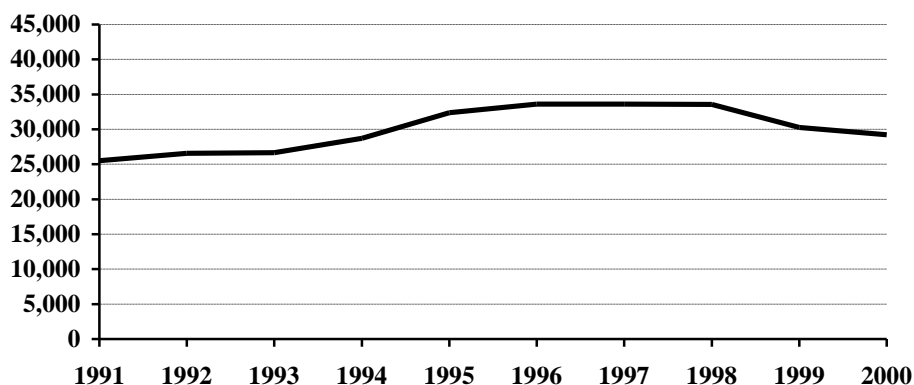
Agency	Murder/Non-Neg. Mansl.	Negligent Manslaughter	Forcible Rape	Robbery	Aggravated Assault	Burglary	Larceny/Theft	Motor Vehicle Theft	Other Assault	Arson	Forgery/Counterfeiting	Fraud	Embezzlement	Stolen Property Offenses	Vandalism	Weapons Offenses	Prostitution	Other Sex Offenses	Drug Abuse Violations	Gambling Violations	Off. Against Fam & Children	DUI	Liquor Law Violations	Disorderly Conduct	Vagrancy	All Other Offenses	Suspicion	Curfew/Loitering	Runaway	Total	
Slope SO	Did not report in 2000																														
Stark SO							2		2			411			2		1	4				14	53	2		116		1		608	
Dickinson PD					4	3	58	8	60	3	8	21		5	21	1		6	18		5	73	229	116		92		6	111	848	
Steele SO	Did not report in 2000																														
Stutsman SO					2	16	5	2	10						4							11	33	2		12			2	99	
Jamestown PD			4		3	7	127	8	123		10	1		7	48	4		6	11			123	273	65		489		7	29	1345	
Towner SO	Did not report in 2000																														
Cando PD					1		3														2	6	6			1				19	
Traill SO		1			4	6	4	5	9		1	100		3	4			5	7		1	22	26	4		38				240	
Mayville PD					1		3		1		1				4					2		11	32	5		1				61	
Hatton PD								3										1				1								5	
Hillsboro PD	Did not report in 2000																														
Portland PD						2																	2	2						6	
Walsh SO					1	5	7	3	4		3	1		1	6			4	7		1	26	15	2		14				100	
Grafton PD					3	8	28	5	27		12				8	4		2	19			19	11	13		35				194	
Ward SO					1	24	7		37			246			7	1					1	30	69	15		136			24	598	
Minot PD			2	4	6	15	263	15	156		11	10		6	54	6		8	39		13	193	410	210	1	527		52	147	2148	
Wells SO						2	2		6		1	42			1					1		2	4	1		25				87	
Harvey PD						2																									2
Fessenden PD	Did not report in 2000																														
Williams SO					1	8	4	3	19			157			2	1			6			15	116	7		159			2	500	
Williston PD			4		3	5	84	8	90	1	5			2	18	1		3	10		1	52	116	22		113		36	33	607	
Highway Patrol																			152			1005	790	9		83				2039	
Drug Task Forces						1										1			321				6			161		1		491	
Total	1	4	39	15	144	305	2279	247	1704	24	137	2532	1	98	671	120	0	87	1501	0	250	4304	6574	1554	2	5285	0	345	978	29201	

Arrests 1991-2000

Arrest Summary

Year	Population	Arrest Total	% Change from Previous Year	Rate per 100,000 Pop.
1991	635,000	25,532	0.1 %	4020.8
1992	636,000	26,571	4.1	4177.8
1993	635,000	26,670	0.4	4200.0
1994	638,000	28,737	7.8	4504.2
1995	641,000	32,399	12.7	5054.4
1996	644,000	33,614	3.8	5219.6
1997	641,000	33,634	0.1	5247.1
1998	638,000	33,548	-0.3	5258.3
1999	634,000	30,258	-9.8	4772.6
2000	642,200	29,201	-3.5	4547.0

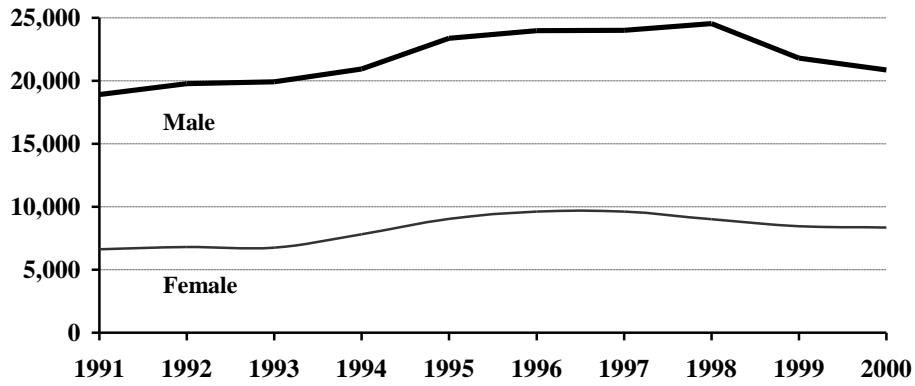
Arrest Totals, 1991-2000



Arrests by Gender, 1991-2000

Year	Male	% of Total	Female	% of Total	Total
1991	18,919	74.1 %	6,613	25.9 %	25,532
1992	19,768	74.4	6,803	25.6	26,571
1993	19,913	74.7	6,757	25.3	26,670
1994	20,931	72.8	7,806	27.2	28,737
1995	23,363	72.1	9,036	27.9	32,399
1996	23,992	71.4	9,622	28.6	33,614
1997	24,011	71.4	9,623	28.6	33,634
1998	24,538	73.1	9,010	26.9	33,548
1999	21,801	72.1	8,457	27.9	30,258
2000	20,854	71.4	8,347	28.6	29,201

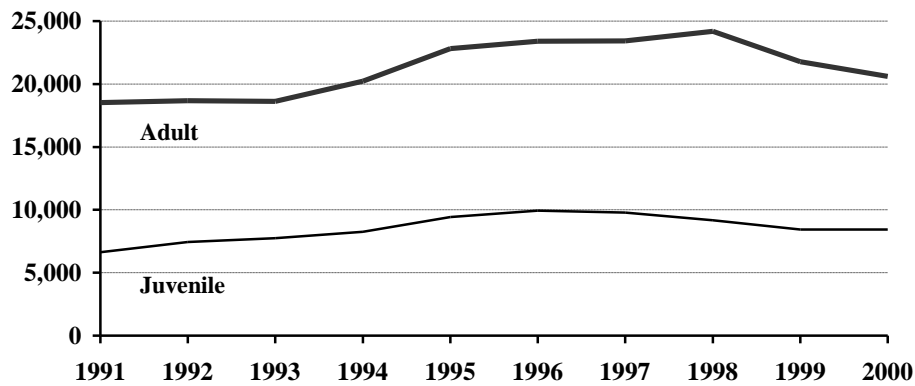
Arrests by Gender, 1991-2000



Juvenile and Adult Arrests, 1991-2000

Year	Juvenile	Percent of Total	Adult	Percent of Total	Age Not Reported	Percent of Total	Total
1991	6,625	25.9 %	18,514	72.5 %	393	1.5 %	25,532
1992	7,441	28.0	18,685	70.3	445	1.7	26,571
1993	7,743	29.0	18,617	69.8	310	1.2	26,670
1994	8,246	28.7	20,227	70.4	264	0.9	28,737
1995	9,432	29.1	22,820	70.4	147	0.5	32,399
1996	9,938	29.6	23,409	69.6	267	0.8	33,614
1997	9,780	29.1	23,428	69.7	426	1.3	33,634
1998	9,175	27.3	24,188	72.1	185	0.6	33,548
1999	8,429	27.9	21,769	71.9	60	0.2	30,258
2000	8,435	28.9	20,612	70.6	154	0.5	29,201

Juvenile and Adult Arrests, 1991-2000



Arrests by Age Group, 1991-2000

Age Group	1991	1992	1993	1994	1995	1996	1997	1998	1999	2000
Under 10	217	200	207	199	281	208	204	205	202	203
10-12	713	809	754	765	895	881	953	758	628	708
13-14	1677	1784	1827	2137	2396	2433	2429	2165	1877	1809
15	1223	1461	1395	1609	1796	2077	1980	1775	1586	1698
16	1340	1501	1873	1646	2044	2138	2115	2034	1977	1898
17	1455	1686	1687	1890	2020	2201	2099	2238	2159	2119
18	1906	1887	1810	1828	2306	2238	2210	2610	2356	2377
19	1878	2110	1783	2143	2238	2279	2330	2611	2693	2572
20	1777	1749	1753	1774	1997	1991	2170	2366	2220	2198
21	1081	1086	1057	1200	1320	1304	1240	1385	1186	1112
22	902	1029	1057	1057	1149	1163	1166	1063	1039	957
23	768	809	858	930	940	1026	922	1040	807	830
24	703	703	677	859	951	929	911	821	741	654
25-29	3104	2830	2841	3002	3242	3506	3451	3390	2858	2598
30-34	2214	2258	2347	2542	2910	3023	2709	2642	2230	2018
35-39	1587	1624	1711	1854	2278	2264	2494	2497	2166	1931
40-44	1012	1029	1046	1244	1431	1633	1710	1689	1500	1475
45-49	579	592	659	717	901	918	958	967	919	908
50-54	379	373	378	463	485	516	523	513	515	483
55-59	243	213	226	225	262	251	266	270	234	250
60-64	132	149	122	126	154	143	153	103	107	81
65 +	249	244	292	263	256	225	215	221	198	168
Age Not Reported	393	445	310	264	147	267	426	185	60	154
Arrest Total	25532	26571	26670	28737	32399	33614	33634	33548	30258	29201

Arrests by Offense, 1991-2000

Offense Classification	1991	1992	1993	1994	1995	1996	1997	1998	1999	2000
Murder/Non-Neg. Manslaughter	5	8	9	3	11	11	3	5	6	1
Negligent Manslaughter	3	3	2	2	1	1	1	2	4	4
Forcible Rape	30	54	49	43	54	51	35	44	24	39
Robbery	18	29	22	31	31	38	30	28	28	15
Aggravated Assault	114	141	155	127	176	193	180	168	108	144
Burglary	409	555	513	407	374	410	413	426	409	305
Larceny/Theft	3524	3492	3409	3346	3742	3718	3093	2671	2327	2279
Motor Vehicle Theft	272	318	320	336	358	334	307	286	289	247
Other Assaults	931	1067	1227	1337	1536	1671	1550	1567	1651	1704
Arson	55	31	19	25	34	24	36	33	16	24
Forgery and Counterfeiting	204	247	214	286	261	223	189	191	160	137
Fraud	4252	4205	4255	5661	5839	6006	5491	4291	3274	2532
Embezzlement	4		6	5	5	14	5	6	6	1
Stolen Property Offenses	196	176	172	140	156	204	159	150	84	98
Vandalism	678	819	874	844	806	631	855	774	709	671
Weapons Offenses	85	116	143	157	139	121	119	102	107	120
Prostitution	2	3	1	1	4	2		7	3	
Other Sex Offenses	95	85	85	72	89	103	99	82	76	87
Drug Abuse Violations	461	517	643	779	799	1106	1242	1517	1456	1501
Gambling	9	16	2	3	0	3	1	6	5	
Off. Against Family & Children	167	334	271	229	344	283	327	401	200	250
Driving Under the Influence	4607	4781	4418	4206	4439	4467	4777	5187	5179	4304
Liquor Law Violations	4448	4475	4188	4401	5109	5260	5521	6231	6377	6574
Disorderly Conduct	1132	1139	1253	1253	1579	1468	1487	1783	1568	1554
Vagrancy		6		1	20		4	2	8	2
All Other Offenses	2750	2722	3060	3509	4970	5602	6164	6392	4998	5285
Suspicion	38	6					17		1	
Curfew and Loitering	337	364	409	495	414	561	486	347	382	345
Runaways	706	862	951	1038	1109	1109	1043	849	803	978
Arrest Total	25532	26571	26670	28737	32399	33614	33634	33548	30258	29201

Juvenile Arrests by Offense, 1991-2000

Offense Classification	1991	1992	1993	1994	1995	1996	1997	1998	1999	2000
Murder/Non-Neg. Manslaughter			2		9	1			1	
Negligent Manslaughter	2			1					1	1
Forcible Rape	6	13	8	13	16	12	6	13	6	12
Robbery	1	8	14	8	13	10	13	8	9	
Aggravated Assault	34	30	47	37	68	45	35	47	25	15
Burglary	166	272	226	197	208	201	222	201	202	134
Larceny/Theft	1947	1972	1900	1846	2066	2056	1771	1372	1212	1285
Motor Vehicle Theft	178	211	196	223	262	198	205	162	185	153
Other Assaults	247	316	368	379	467	517	424	420	401	448
Arson	47	26	13	19	24	20	25	23	10	17
Forgery and Counterfeiting	49	52	51	77	65	54	46	42	37	41
Fraud	11	13	23	19	16	28	20	28	17	16
Embezzlement			1		1					
Stolen Property Offenses	132	93	109	86	83	138	105	81	49	51
Vandalism	455	551	605	609	569	420	654	532	420	423
Weapons Offenses	40	56	64	61	62	50	34	30	27	31
Prostitution						2				
Other Sex Offenses	28	28	34	25	31	30	32	32	18	32
Drug Offenses	26	27	63	84	136	205	229	269	284	292
Gambling										
Off. Against Family/Children	41	155	126	97	142	109	96	110	98	66
Driving Under the Influence	83	86	85	77	77	62	104	114	169	81
Liquor Law Violations	1143	1297	1291	1426	1712	1900	1976	2169	2176	2039
Disorderly Conduct	346	315	356	454	579	575	611	762	709	699
Vagrancy		2							1	
All Other Offenses	571	689	801	975	1303	1635	1643	1564	1187	1277
Suspicion	30	3								
Curfew and Loitering	337	364	409	495	414	561	486	347	382	344
Runaways	705	862	951	1038	1109	1109	1043	849	803	978
Juvenile Arrest Total	6625	7441	7743	8246	9432	9938	9780	9175	8429	8435

Juvenile Arrests by Gender, 1991-2000

Year	Male	% of Total	Female	% of Total	Total
1991	4,782	72.2 %	1,843	27.8 %	6,625
1992	5,241	70.4	2,200	29.6	7,441
1993	5,452	70.4	2,291	29.6	7,743
1994	5,726	69.4	2,520	30.6	8,246
1995	6,423	68.1	3,009	31.9	9,432
1996	6,512	65.5	3,426	34.5	9,938
1997	6,363	65.1	3,417	34.9	9,780
1998	6,129	66.8	3,046	33.2	9,175
1999	5,456	64.7	2,973	35.3	8,429
2000	5,387	63.9	3,048	36.1	8,435

Adult Arrests by Offense, 1991-2000

Offense Classification	1991	1992	1993	1994	1995	1996	1997	1998	1999	2000
Murder/Non-Neg. Manslaughter	5	7	7	3	2	10	3	5	5	1
Negligent Manslaughter	1	2	2	1	1	1	1	2	3	3
Forcible Rape	23	40	40	29	36	39	29	31	18	27
Robbery	16	21	8	23	18	28	17	20	19	15
Aggravated Assault	77	110	107	89	108	147	144	121	82	128
Burglary	240	280	283	204	164	208	185	220	205	166
Larceny/Theft	1555	1505	1485	1472	1662	1656	1306	1292	1110	987
Motor Vehicle Theft	91	100	121	106	93	133	99	124	104	93
Other Assaults	675	742	849	946	1067	1151	1106	1136	1244	1249
Arson	8	5	6	5	10	4	11	10	6	7
Forgery and Counterfeiting	152	189	157	207	195	169	140	148	123	96
Fraud	4058	3995	4108	5542	5771	5874	5354	4173	3243	2482
Embezzlement	3		5	5	4	13	5	6	6	1
Stolen Property Offenses	63	82	54	54	71	66	53	68	35	46
Vandalism	210	260	260	230	235	209	190	242	287	246
Weapons Offenses	44	60	78	96	77	69	83	72	80	87
Prostitution	2	3	1	1	4			7	3	
Other Sex Offenses	67	54	49	46	58	73	66	49	58	53
Drug Offenses	433	459	572	684	660	894	998	1248	1169	1206
Gambling	7	16	2	3		3	1	6	5	
Off. Against Family/Children	123	174	144	132	202	174	230	291	100	182
Driving Under the Influence	4494	4632	4289	4102	4351	4364	4629	5051	5005	4214
Liquor Law Violations	3241	3139	2884	2942	3370	3323	3462	4033	4191	4493
Disorderly Conduct	778	820	893	792	995	891	866	1017	856	854
Vagrancy		4		1	20		4	2	7	2
All Other Offenses	2140	1983	2213	2512	3646	3910	4429	4814	3804	3974
Suspicion	8	3					17		1	
Adult Arrest Total	18514	18685	18617	20227	22820	23409	23428	24188	21769	20612

Adult Arrests by Gender, 1991-2000

Year	Male	% of Total	Female	% of Total	Total
1991	13,845	74.8 %	4,669	25.2 %	18,514
1992	14,204	76.0	4,481	24.0	18,685
1993	14,225	76.4	4,392	23.6	18,617
1994	15,004	74.2	5,223	25.8	20,227
1995	16,828	73.7	5,992	26.3	22,820
1996	17,283	73.8	6,126	26.2	23,409
1997	17,354	74.1	6,074	25.9	23,428
1998	18,280	75.6	5,908	24.4	24,188
1999	16,304	74.9	5,465	25.1	21,769
2000	15,361	74.5	5,251	25.5	20,612

Drug Arrest Analysis

Drug offense arrests increased 3.1 percent from 1,456 in 1999 to 1,501 in 2000. The arrest totals shown should not be interpreted as the number of individuals arrested for drug offenses because it is possible that some individuals may have been arrested on more than one occasion for this offense.

Eighty-one percent of drug arrests in 2000 were arrests of males.

Juveniles, persons under the age of 18, comprised 19.5 percent of the total in 2000.

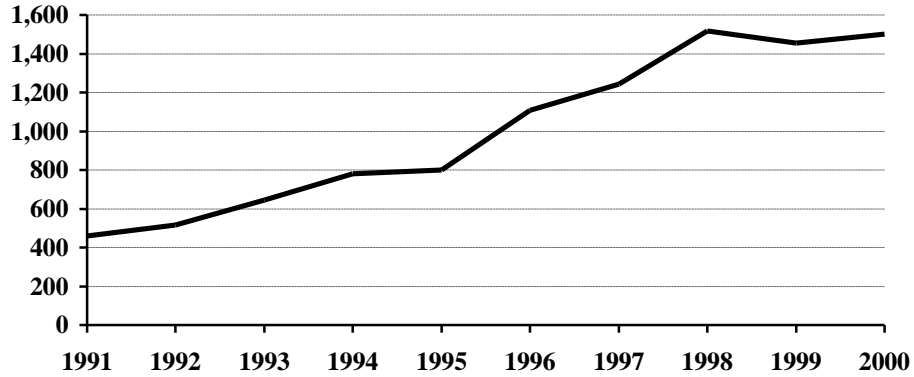
Approximately 84 percent of the drug arrests during the 10-year period were arrests for possession of drugs.

Eighty-three percent of the arrests for drug offenses during the period 1991-2000 involved marijuana.

Arrests for Drug Offenses, 1991-2000

Year	Total	Percent Change from Previous Year
1991	461	-38.1 %
1992	517	12.1
1993	643	24.4
1994	779	21.2
1995	799	2.6
1996	1,106	38.4
1997	1,242	12.3
1998	1,517	22.1
1999	1,456	-4.0
2000	1,501	3.1

Arrests for Drug Offenses, 1991-2000



Drug Arrests by Gender, 1991-2000

Year	Male	% of Total	Female	% of Total	Total
1991	380	82.4 %	81	17.6 %	461
1992	446	86.3	71	13.7	517
1993	546	84.9	97	15.1	643
1994	659	84.6	120	15.4	779
1995	646	80.9	153	19.1	799
1996	888	80.3	218	19.7	1,106
1997	1,035	83.3	207	16.7	1,242
1998	1,260	83.1	257	16.9	1,517
1999	1,161	79.7	295	20.3	1,456
2000	1,222	81.4	279	18.6	1,501

Drug Arrests by Age Category, 1991-2000

Year	Juvenile	Percent of Total	Adult	Percent of Total	Age Not Reported	Percent of Total	Total
1991	26	5.6 %	433	93.9 %	2	0.4 %	461
1992	27	5.2	459	88.8	31	6.0	517
1993	63	9.8	572	89.0	8	1.2	643
1994	84	10.8	684	87.8	11	1.4	779
1995	136	17.0	660	82.6	3	0.4	799
1996	205	18.5	894	80.8	7	0.6	1,106
1997	229	18.4	998	80.4	15	1.2	1,242
1998	269	17.7	1,248	82.3			1,517
1999	284	19.5	1,169	80.3	3	0.2	1,456
2000	292	19.5	1,206	80.3	3	0.2	1,501

Drug Arrests by Age Group, 1991-2000

Age Group	1991	1992	1993	1994	1995	1996	1997	1998	1999	2000
Under 10								1		
10-12		3		1	3	1	4	6	2	1
13-14	2	5	14	11	19	38	35	27	33	38
15	2	3	10	14	26	33	44	49	47	51
16	12	4	21	21	39	67	55	75	104	84
17	10	12	18	37	49	66	91	111	98	118
18	25	20	32	53	72	106	122	158	138	145
19	22	27	35	54	74	109	105	133	133	130
20	27	26	48	40	66	79	102	97	93	100
21	17	21	24	29	38	46	52	87	62	73
22	17	25	29	44	29	45	50	60	80	73
23	15	22	20	34	18	29	38	54	56	50
24	26	22	31	32	23	42	46	37	56	42
25-29	116	108	126	131	79	139	143	185	144	145
30-34	96	116	126	119	111	134	116	150	147	146
35-39	40	46	65	84	101	99	127	154	125	137
40-44	16	17	22	47	32	36	66	84	76	91
45-49	8	6	10	14	9	24	24	33	39	52
50-54	3	1	4	1	7	3	6	10	14	16
55-59	1			2		2	1	5	6	6
60-64	4	1			1	1		1		
65 +		1								
No Age Data	2	31	8	11	3	7	15		3	3
Total	461	517	643	779	799	1106	1242	1517	1456	1501

Drug Arrests by Type of Offense, 1991-2000

Year	Sale or Manufacture	% of Total	Possession	% of Total	Total
1991	124	26.9 %	337	73.1 %	461
1992	137	26.5	380	73.5	517
1993	132	20.5	511	79.5	643
1994	200	25.7	579	74.3	779
1995	92	11.5	707	88.5	799
1996	183	16.5	923	83.5	1,106
1997	109	8.8	1,133	91.2	1,242
1998	257	16.9	1,260	83.1	1,517
1999	159	10.9	1,297	89.1	1,456
2000	188	12.5	1,313	87.5	1,501

Drug Arrests by Age Category and Type of Offense, 1991-2000

Year	Juvenile		Adult		Age Not Reported	
	Sale or Manufacture	Possession	Sale or Manufacture	Possession	Sale or Manufacture	Possession
1991	10	16	113	320	1	1
1992	5	22	122	337	10	21
1993	8	55	116	456	8	
1994	14	70	184	500	2	9
1995	14	122	78	582		3
1996	23	182	158	736	2	5
1997	24	205	82	916	3	12
1998	37	232	220	1,028		
1999	11	273	145	1,024	3	
2000	32	260	156	1,050		3

Drug Arrests by Type of Drug, 1991-2000

Year	Opiates, Cocaine or Derivatives	Percent of Total	Marijuana	Percent of Total	Other Drugs or Narcotics	Percent of Total	Total
1991	23	5.0 %	352	76.4 %	86	18.7 %	461
1992	23	4.4	457	88.4	37	7.2	517
1993	23	3.6	585	91.0	35	5.4	643
1994	37	4.7	672	86.3	70	9.0	779
1995	21	2.6	687	86.0	91	11.4	799
1996	59	5.3	914	82.6	133	12.0	1,106
1997	39	3.1	1,050	84.5	153	12.3	1,242
1998	96	6.3	1,189	78.4	232	15.3	1,517
1999	53	3.6	1,173	80.6	230	15.8	1,456
2000	45	3.0	1,189	79.2	267	17.8	1,501

Drug Arrests by Age Category and Type of Drug, 1991-2000

Year	Juvenile			Adult			Age Not Reported		
	Opiates, Cocaine or Deriv.	Marijuana	Other Drugs or Narcotics	Opiates, Cocaine or Deriv.	Marijuana	Other Drugs or Narcotics	Opiates, Cocaine or Deriv.	Marijuana	Other Drugs or Narcotics
1991	1	20	5	22	331	80		1	1
1992	1	20	6	22	409	28		28	3
1993		61	2	23	518	31		6	2
1994	8	68	8	29	593	62		11	
1995		122	14	21	562	77		3	
1996	2	186	17	56	722	116	1	6	
1997	2	197	30	37	842	119		11	4
1998	5	227	37	91	962	195			
1999		260	24	52	911	206	1	2	
2000	4	263	25	41	925	240		1	2

DUI Arrest Analysis

Reported DUI arrests declined from 5,179 in 1999 to 4,304 in 2000. The arrest totals should not be interpreted as the number of individuals arrested for DUI offenses because it is possible that some individuals may have been arrested on more than one occasion.

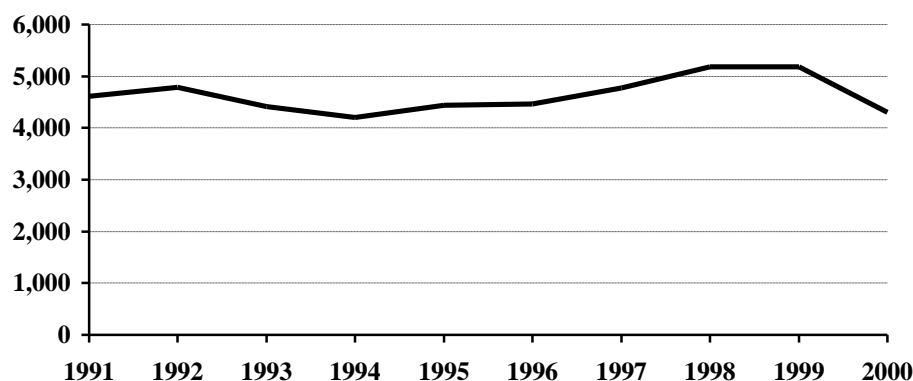
Approximately 80 percent of the DUI arrests in 2000 were arrests of males.

Juveniles, persons under the age of 18, made up 1.9 percent of the total in 2000.

DUI Arrests, 1991-2000

Year	DUI Arrests Reported	Percent Change from Previous Year
1991	4,607	6.6 %
1992	4,781	3.8
1993	4,418	-7.6
1994	4,206	-4.8
1995	4,439	5.5
1996	4,467	0.6
1997	4,777	6.9
1998	5,187	8.6
1999	5,179	-0.2
2000	4,304	-16.9

DUI Arrests, 1991-2000



DUI Arrests by Gender, 1991-2000

Year	Male	% of Total	Female	% of Total	Total
1991	3,830	83.1 %	777	16.9 %	4,607
1992	3,987	83.4	794	16.6	4,781
1993	3,651	82.6	767	17.4	4,418
1994	3,481	82.8	725	17.2	4,206
1995	3,672	82.7	767	17.3	4,439
1996	3,652	81.8	815	18.2	4,467
1997	3,917	82.0	860	18.0	4,777
1998	4,185	80.7	1,002	19.3	5,187
1999	4,149	80.1	1,030	19.9	5,179
2000	3,437	79.9	867	20.1	4,304

DUI Arrests by Age Category, 1991-2000

Year	Juvenile	Percent of Total	Adult	Percent of Total	Age Not Reported	Percent of Total	Total
1991	83	1.8 %	4,494	97.5 %	30	0.7 %	4,607
1992	86	1.8	4,632	96.9	63	1.3	4,781
1993	85	1.9	4,289	97.1	44	1.0	4,418
1994	77	1.8	4,102	97.5	27	0.6	4,206
1995	77	1.7	4,351	98.0	11	0.2	4,439
1996	62	1.4	4,364	97.7	41	0.9	4,467
1997	104	2.2	4,629	96.9	44	0.9	4,777
1998	114	2.2	5,051	97.4	22	0.4	5,187
1999	169	3.3	5,005	96.6	5	0.1	5,179
2000	81	1.9	4,214	97.9	9	0.2	4,304

DUI Arrests by Age Group, 1991-2000

Age Group	1991	1992	1993	1994	1995	1996	1997	1998	1999	2000
Under 10							1			
10-12			1		1				2	
13-14	4	1	1	1	2	2	3	2	4	1
15	6	10	10	9	9	10	8	10	14	3
16	21	22	22	12	16	13	40	42	32	30
17	52	53	51	55	49	37	52	60	117	47
18	160	116	104	100	94	107	103	158	141	125
19	170	162	130	123	121	112	143	174	228	146
20	191	166	151	139	143	144	180	181	228	155
21	231	231	224	222	205	214	234	272	274	251
22	187	237	226	195	203	212	225	203	269	240
23	192	186	183	175	163	195	156	234	220	205
24	156	193	141	143	189	185	162	194	203	170
25-29	875	868	760	670	690	702	755	777	770	640
30-34	772	812	778	751	756	713	711	713	641	520
35-39	542	587	575	565	617	624	717	752	754	529
40-44	372	416	375	383	435	475	506	566	493	473
45-49	250	238	255	262	313	295	293	396	351	349
50-54	154	145	149	162	173	159	191	188	207	185
55-59	101	100	88	86	111	88	110	107	101	116
60-64	64	73	54	52	59	56	69	58	50	42
65 +	77	102	96	74	79	83	74	78	75	68
No Age Data	30	63	44	27	11	41	44	22	5	9
Total	4607	4781	4418	4206	4439	4467	4777	5187	5179	4304

UCR OFFENSE DEFINITIONS

(This page intentionally left blank.)

UNIFORM CRIME REPORTING OFFENSE DEFINITIONS

Offenses in Uniform Crime Reporting are divided into two groups designated as Part I and Part II crimes. Information on the number of Part I offenses known to law enforcement, the number cleared by arrest or exceptional means, and the number of persons arrested is reported monthly. Arrest data are reported for Part I and Part II offenses. The Crime Index is composed of offenses 1-7 with the exception as noted in item 1 below.

NOTE: The classifications of these offenses for UCR reporting purposes are based on law enforcement investigation as opposed to determination by a court, medical examiner, jury, or other judicial hearing.

PART I OFFENSES:

1. CRIMINAL HOMICIDE

a. Murder and Non-Negligent Manslaughter

The willful (non-negligent) killing of one human being by another. Deaths caused by negligence, attempts to kill, assaults to kill, suicides, accidental deaths, and justifiable homicides are excluded. Justifiable homicides are limited to: (1) the killing of a felon by a law enforcement officer in the line of duty, and (2) the killing of a felon by a private citizen.

b. Manslaughter by Negligence

The killing of another person through gross negligence. Excludes traffic fatalities. While manslaughter by negligence is a Part I crime, it is not included in the Crime Index.

2. FORCIBLE RAPE

The carnal knowledge of a female forcibly and against her will. Included are rapes by force and attempts or assaults to rape. Statutory offenses (no force used -- victim under age of consent) are excluded.

3. ROBBERY

The taking or attempting to take anything of value from the care, custody, or control of a person or persons by force or threat of force or violence, or putting the victim in fear.

4. AGGRAVATED ASSAULT

An unlawful act by one person upon another for the purpose of inflicting severe or aggravated bodily injury. This type of assault usually is accompanied by the use of a weapon or by a means likely to produce death or great bodily harm. Simple assaults are excluded.

5. BURGLARY

Breaking or entering. The unlawful entry of a structure to commit a felony or theft. Attempted forcible entry is included.

6. LARCENY/THEFT

The unlawful taking, carrying, leading, or riding away of property from the possession or constructive possession of another. Examples are thefts of bicycles or automobile accessories, shoplifting, pocket-picking, or the stealing of any property or article which is not taken by force and violence or by fraud. Attempted larcenies are included. Embezzlement, "con" games, forgery, worthless checks, etc., are excluded.

7. MOTOR VEHICLE THEFT

The theft or attempted theft of a motor vehicle. A motor vehicle is self-propelled and runs on the surface and not on rails. Specifically excluded from this category are motorboats, construction equipment, airplanes, and farming equipment.

8. ARSON

Any willful or malicious burning or attempting to burn, with or without intent to defraud, a dwelling house, public building, motor vehicle, personal property of another, etc.

PART II OFFENSES:

9. OTHER ASSAULTS (SIMPLE)

Assaults or attempted assaults where no weapon was used or which did not result in serious or aggravated injury to the victim.

10. FORGERY AND COUNTERFEITING

Making, altering, uttering, or possessing, with the intent to defraud, anything false which is made to appear true. Attempts are included.

11. FRAUD

Fraudulent conversion and obtaining money or property by false pretenses. Included are larceny by bailee and bad checks except forgeries and counterfeiting. Attempts are included.

12. EMBEZZLEMENT

Misappropriation or misapplication of money or property entrusted to one's care, custody or control. Attempts are included.

13. STOLEN PROPERTY -- BUYING, RECEIVING, POSSESSING

Buying, receiving, or possessing stolen property, including attempts.

14. VANDALISM

Willful or malicious destruction, injury, disfigurement, or defacement of any public or private property, real or personal, without consent of the owner or person having custody or control. Attempts are included.

15. WEAPON OFFENSES -- CARRYING, POSSESSING, ETC.

All violations of regulations or statutes controlling the carrying, using, possessing, furnishing, and manufacturing of deadly weapons or silencers. Attempts are included.

16. PROSTITUTION AND COMMERCIALIZED VICE

Sex offenses of a commercialized nature, such as prostitution, keeping a bawdy house, procuring, or transporting women for immoral purposes. Attempts are included.

17. OTHER SEX OFFENSES (except forcible rape, prostitution and commercialized vice)

Statutory rape and offenses against chastity, common decency, morals and the like. Attempts are included.

18. DRUG ABUSE VIOLATIONS

State and local offenses relating to narcotic and non-narcotic drugs, such as unlawful possession, sale, use, growing and manufacturing of narcotic and non-narcotic drugs. Attempts are included.

19. GAMBLING

Promoting, permitting, or engaging in illegal gambling.

20. OFFENSES AGAINST FAMILY AND CHILDREN

Non-support, neglect, desertion, or abuse of family and children.

21. DRIVING UNDER THE INFLUENCE

Driving or operating any vehicle or common carrier while drunk or under the influence of liquor or drugs.

22. LIQUOR LAWS

State or local liquor law violations, except "drunkenness" (offense 23) and "driving under the influence" (offense 21).

23. DRUNKENNESS

Drunkenness or intoxication. Excluded is "driving under the influence" (offense 21). This is not a crime in North Dakota, but is included in the national program.

24. DISORDERLY CONDUCT

Breach of peace.

25. VAGRANCY

Vagabondage, begging, loitering, etc.

26. ALL OTHER OFFENSES

All violations of state or local laws, except offenses 1-25 and traffic offenses.

27. SUSPICION

No specific offense; suspect released without formal charges being placed.

28. CURFEW AND LOITERING

Offenses relating to violation of local curfew and loitering ordinances where such laws exist.

29. RUNAWAYS

Limited to juveniles taken into protective custody under provisions of local statutes.

**FULL-TIME LAW
ENFORCEMENT EMPLOYEES**

(This page intentionally left blank.)

**NUMBER OF FULL-TIME LAW ENFORCEMENT EMPLOYEES
REPORTED BY UCR AGENCIES
AS OF OCTOBER 31, 2000**

Agency	Law Enforcement Officers		Civilian Personnel		Total Full-Time			Population
	Male	Female	Male	Female	Male	Female	Total	
Adams SO	3				3		3	2,593
Barnes SO	6			1	6	1	7	4,949
Valley City PD	10	1	2	3	12	4	16	6,826
Benson SO	4				4		4	6,964
Billings SO	3			1	3	1	4	888
Bottineau SO	10		3	1	13	1	14	7,149
Bowman SO	1			1	1	1	2	1,642
Bowman PD	3				3		3	1,600
Burke SO	3	1			3	1	4	1,933
Powers Lake PD	1				1		1	309
Burleigh SO	30	5	16	7	46	12	58	13,884
Bismarck PD	77	6	5	21	82	27	109	55,532
Cass SO	41	9	9	12	50	21	71	17,599
Fargo PD	91	15	1	28	92	43	135	90,599
West Fargo PD	20	2	2	7	22	9	31	14,940
NDSU PD	9				9		9	
Cavalier SO	5		3	3	8	3	11	4,831
Dickey SO	5			1	5	1	6	3,778
Oakes PD	3				3		3	1,979
Divide SO	2				2		2	1,194
Crosby PD	2				2		2	1,089
Dunn SO	3			1	3	1	4	3,600
Eddy SO	4	1			4	1	5	2,757
Emmons SO	3				3		3	3,010
Linton PD	NR							1,321
Foster SO	2			1	2	1	3	1,491
Carrington PD	3				3		3	2,268
Golden Valley SO	2	1			2	1	3	1,924
Grand Forks SO	22			6	22	6	28	12,880
Grand Forks PD	72	10	6	10	78	20	98	49,321
Larimore PD	2				2		2	1,433
Northwood PD	3				3		3	959
Emerado PD	2			1	2	1	3	510
Thompson PD	1				1		1	1,006
UND PD	9		2	3	11	3	14	
Grant SO	2				2		2	1,863
Carson PD							0	319
Elgin PD	1				1		1	659
Griggs SO	2				2		2	1,701
Cooperstown PD	2				2		2	1,053
Hettinger SO	4				4		4	2,715
Kidder SO	2			1	2	1	3	1,992
Steele PD	1				1		1	761
LaMoure SO	2	1		1	2	2	4	3,757
LaMoure PD	1				1		1	944
Logan SO	2		1		3		3	1,451
Napoleon PD	1				1		1	857
McHenry SO	5			1	5	1	6	5,987
McIntosh SO	2				2		2	2,268
Wishek PD	2				2		2	1,122
McKenzie SO	5			4	5	4	9	4,302
Watford City PD	3	1			3	1	4	1,435
McLean SO	20		1	3	21	3	24	9,311
Mercer SO	7		6	6	13	6	19	2,690
Beulah PD	5			1	5	1	6	3,152
Hazen PD	4				4		4	2,457
Stanton PD	1				1		1	345
Morton SO	18		7	6	25	6	31	8,585
Mandan PD	26	1	2	6	28	7	35	16,718
Mountrail SO	5		1	3	6	3	9	5,650
Parshall PD	NR							981

Agency	Law Enforcement Officers		Civilian Personnel		Total Full-Time			Population
	Male	Female	Male	Female	Male	Female	Total	
Nelson SO	4			1	4	1	5	3,715
Oliver SO	2			1	2	1	3	2,065
Pembina SO	14		2	4	16	4	20	7,048
Cavalier PD	4				4		4	1,537
Pierce SO	3		1	3	4	3	7	1,736
Rugby PD	4				4		4	2,939
Ramsey SO	6			1	6	1	7	4,844
Devils Lake PD	13	2		2	13	4	17	7,222
Ransom SO	4	1			4	1	5	3,598
Lisbon PD	2	1			2	1	3	2,292
Renville SO	3	1			3	1	4	2,610
Richland SO	11		7	2	18	2	20	9,412
Wahpeton PD	13	1		1	13	2	15	8,586
Rolette SO	9		3	1	12	1	13	13,674
Sargent SO	3			1	3	1	4	4,366
Sheridan SO	3				3		3	1,710
Sioux SO	1				1		1	4,044
Slope SO	1				1		1	767
Stark SO	9			3	9	3	12	6,319
Dickinson PD	23	1	1	9	24	10	34	16,010
South Heart PD		1				1	1	307
Steele SO	NR							2,258
Stutsman SO	8			2	8	2	10	6,381
Jamestown PD	27	2		4	27	6	33	15,527
Towner SO	2			1	2	1	3	1,534
Cando PD	3				3		3	1,342
Traill SO	4			4	4	4	8	3,650
Hillsboro PD	2				2		2	1,563
Mayville/Portland PD	3				3		3	2,557
Hatton PD		1				1	1	707
Walsh SO	9		3	3	12	3	15	7,873
Grafton PD	10			1	10	1	11	4,516
Ward SO	17	2	11	12	28	14	42	22,228
Minot PD	51	4	5	17	56	21	77	36,567
Wells SO	3				3		3	2,488
Harvey PD	3				3		3	1,989
Fessenden PD	1				1		1	625
Williams SO	19	2	4	2	23	4	27	7,249
Williston PD	20	1	1	7	21	8	29	12,512
Highway Patrol	118	6	40	25	158	31	189	
Total	1,012	80	145	247	1,157	327	1,484	642,200