



NORTH DAKOTA

Office of Attorney General

Bureau of Criminal Investigation



Crime in North Dakota, 2001

Attorney General
Wayne Stenehjem

Office of Attorney General
Bureau of Criminal Investigation

Crime in North Dakota, 2001

A Summary of Uniform Crime Report Data

Wayne Stenehjem
Attorney General

Prepared by
Colleen Weltz
UCR Program Manager
2002

INTRODUCTION

The North Dakota Uniform Crime Reporting (UCR) program involves the collection, compilation, and analysis of crime and arrest statistics reported by the various local law enforcement agencies throughout the state. Forty-three sheriffs' departments and 28 police departments reported to the UCR program in 2001.

Law enforcement agencies may report UCR data in two ways:

INCIDENT-BASED REPORTING: Law enforcement agencies use a standard incident form to collect data on each incident reported to their respective agencies. This form collects much more detailed information than is collected using summary reporting. Data collected includes: type of incident, where and when the incident took place, victim characteristics, suspect/arrestee characteristics, property involved in the incident, etc. A total of 66 police departments and sheriffs' departments reported incident data for all or part of 2001.

In order to continue the statistical time-series begun with summary reporting, computer programs were written to extract summary data from the incident data reported. Crime in North Dakota, 2001 is a report on summary data.

SUMMARY REPORTING: Law enforcement agencies use a tally system to report the number of crime index offenses and arrests for each month. Five law enforcement agencies reported summary data in 2001.

The federal counterpart of the North Dakota UCR program is the National UCR program under the direction of the Federal Bureau of Investigation (FBI). The UCR program has been used nationally and in North Dakota for many years to measure the extent, distribution and fluctuation of crime through the crime index. The crime index is not an absolute measure, but rather an indication of the amount and type of crime occurring in any given jurisdiction. The index is composed of seven crimes that are sub-classified as follows:

VIOLENT CRIME: Murder/Non-Negligent Manslaughter
Forcible Rape
Robbery
Aggravated Assault

PROPERTY CRIME: Burglary
Larceny/Theft
Motor Vehicle Theft

A Modified Crime Index is also calculated at the federal level. This includes arson as the fourth property crime and the eighth index offense. Data on arson is not included in this report.

Prior to an offense becoming recorded in the UCR program, it must first be brought to the attention of local law enforcement officials and then must be reported by the local agency to the UCR program. Therefore, the UCR program can only reflect crime indirectly in its reports as the statistics gathered in the program are based on reported crimes only. No one can state precisely how much crime goes unreported each year. Reporting of crimes depends on several factors,

including actual perception of an act as a crime, the probability of loss of status for reporting (as in cases of rape), and the perceived probability of action on the part of the law enforcement agency contacted.

Several types of data are gathered, including:

Offense data

- Number of known crime index offenses
- Type and value of stolen property
- Additional information on homicides and arson
- Law enforcement officers killed or assaulted

Arrest and Clearance Data

- Number and type of offenses cleared
- Number and type of index offenses involving juveniles cleared
- Number of persons arrested, by offense
- Characteristics of persons arrested (age, sex, race)

To allow for comparison among several geographic or jurisdictional areas with differing populations or to allow comparisons across time in an area undergoing population fluctuations, the UCR program provides for the calculation of crime rates to remove any potential biases created by population differences. Because a rate relates the incidence of activity to population, it is possible to measure annual fluctuations in criminal activity by comparing rates of crime reported in any given year with those reported in other years. National publications report crime rates calculated based on the number of reported offenses per 100,000 population. This publication provides crime rate information calculated in the same manner.

TABLE OF CONTENTS

Introduction	i
Table of Contents	iii
North Dakota Crime Summary, 2001	v
Crime Index Offense Analysis	1
Violent Crime	7
Murder/Non-Negligent Manslaughter	9
Forcible Rape	11
Robbery	13
Aggravated Assault	16
Property Crime	18
Burglary	20
Larceny/Theft	23
Motor Vehicle Theft	26
Crime Index Offenses by Reporting Jurisdiction	29
Arrest Analysis	33
Arrests in 2001	35
Arrest Analysis by Reporting Jurisdiction	41
Arrests 1992-2001	44
Drug Arrest Analysis	50
DUI Arrest Analysis	54
UCR Offense Definitions	57
Full-Time Law Enforcement Employees	63

(This page intentionally left blank.)

NORTH DAKOTA CRIME SUMMARY, 2001

In 2001, 14,411 crime index offenses were reported by local law enforcement agencies. This is an increase of 1.8 percent from the total of 14,150 reported in 2000.

Crime index offenses include: murder/non-negligent manslaughter, forcible rape, robbery, aggravated assault, burglary, larceny/theft, and motor vehicle theft.

The Census Bureau estimate of North Dakota's population for 2001 is 634,450. The index crime rate per 100,000 population for 2001 was 2271.4. The index crime rate for 2000 was 2203.4 per 100,000 population. This is a 3.1 percent increase in the crime rate.

The total number of reported violent index crimes (murder, rape, robbery, and aggravated assault) was 514. This represents a decrease of 8.5 percent from the total of 562 reported in 2000. In 1999, 445 violent index crimes were reported.

Violent crime accounted for 3.6 percent of total index crimes reported in 2001.

Collectively, property crimes (burglary, larceny/theft and motor vehicle theft) increased by 2.3 percent from 13,588 reported in 2000 to 13,897 reported in 2001.

Property crime accounted for **96.4** percent of total crime index offenses reported in 2001.

The 10,870 larceny/theft offenses reported in 2001 accounted for 75.4 percent of total index crimes.

More than \$11.4 million worth of property was reported stolen in 2001, with 33.2 percent of that amount reported as recovered by law enforcement officials.

North Dakota law enforcement agencies reported 29,638 arrests in 2001. A total of 29,201 arrests were reported in 2000.

In 2001, juvenile arrests accounted for 28.2 percent of the total arrests. Juvenile arrests were 48.7 percent of the total arrests of crime index offenses.

The number of reported arrests for DUI decreased 0.1 percent from 4,304 reported in 2000 to 4,301 reported in 2001.

Arrests for drug offenses increased 10.5 percent from a 2000 total of 1,501 to 1,658 in 2001.

(This page intentionally left blank.)

CRIME INDEX OFFENSE ANALYSIS

(This page intentionally left blank.)

Crime Index Offenses

Crime index offenses include the violent crimes of murder/non-negligent manslaughter, forcible rape, robbery, and aggravated assault, and the property crimes of burglary, larceny/theft, and motor vehicle theft.

In 2001, 14,411 crime index offenses were reported by local law enforcement agencies. This is an increase of 1.9 percent from the total of 14,150 reported in 2000.

The Census Bureau estimate of North Dakota's population for 2001 is 634,450. Based on that total, the index crime rate per 100,000 population for 2001 was 2271.4, as compared to 2203.4 for 2000. See the crime index offense summary on page 5 for crime rate information for the period 1992-2001.

Approximately 22 percent of crime index offenses were reported as cleared by arrest or exceptional means. The UCR program defines an offense as "cleared" by law enforcement when at least one person is arrested, charged with the commission of the offense, and turned over to the court for prosecution. Several crimes may be cleared by the arrest of one person, while the arrests of many persons may clear only one offense. Law enforcement agencies may clear a crime by exceptional means when some element beyond law enforcement control precludes the placing of formal charges against the offender. Examples of circumstances that allow such clearances are the death of the offender (suicide, justifiably killed by police or private citizen, etc.); the victim's refusal to cooperate with prosecution after the offender has been identified; or the denial of extradition.

In 2001, 3,034 arrests were reported for crime index offenses. Of that total 48.7 percent were arrests of juveniles.

More than \$11.4 million worth of property was reported stolen in 2001, with 33.2 percent of that amount reported as recovered by law enforcement officials.

Crime Index Offenses Reported, 2001

Crime Index Offense	Number Reported	Percent of Total Index Offenses
Murder/Non-Negligent Manslaughter	9	0.1%
Forcible Rape	159	1.1
Robbery	71	0.5
Aggravated Assault	275	1.9
Violent Crime Subtotal	514	3.6
Burglary	2,027	14.1
Larceny/Theft	10,870	75.4
Motor Vehicle Theft	1,000	6.9
Property Crime Subtotal	13,897	96.4
Crime Index Offense Total	14,411	100.0

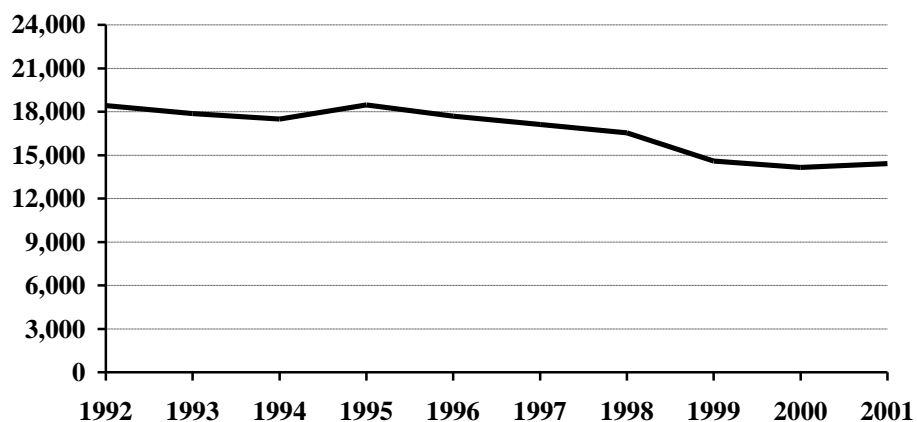
Comparison of Crime Index Offenses Reported, 2000-2001

Crime Index Offense	2000	2001	Percent Change
Murder/Non-Negligent Manslaughter	8	9	12.5%
Forcible Rape	173	159	-8.1
Rape by Force	167	153	-8.4
Attempts to Rape	6	6	0.0
Robbery	62	71	14.5
Firearm	27	19	-29.6
Knife or Cutting Instrument	2	7	250.0
Other Dangerous Weapon	5	13	160.0
Strong Arm – No Weapon	28	32	14.3
Aggravated Assault	319	275	-13.8
Firearm	7	11	57.1
Knife or Cutting Instrument	47	48	2.1
Other Dangerous Weapon	123	63	-48.8
Hands, Fists, Feet, Etc.	142	153	7.7
Violent Crime Subtotal	562	514	-8.5
Burglary	2,004	2,027	1.1
Forcible Entry	1,048	1,072	2.3
Unlawful Entry – No Force	764	810	6.0
Attempted Forcible Entry	192	145	-24.5
Larceny/Theft	10,642	10,870	2.1
Motor Vehicle Theft	942	1,000	6.2
Autos	796	823	3.4
Trucks and Buses	82	99	20.7
Other Vehicles	64	78	21.9
Property Crime Subtotal	13,588	13,897	2.3
Crime Index Offense Total	14,150	14,411	1.8

Crime Index Offenses, 1992-2001

Crime Index Offense	1992	1993	1994	1995	1996	1997	1998	1999	2000	2001
Murder/Non-Neg. Mansl.	15	22	5	9	12	10	7	11	8	9
Forcible Rape	162	150	154	151	175	150	169	147	173	159
Robbery	52	54	70	64	72	45	78	70	62	71
Aggravated Assault	349	332	299	360	335	344	312	217	319	275
Burglary	2440	2346	2080	2275	2008	2271	2194	2200	2004	2027
Larceny/Theft	14390	14031	13898	14435	13898	13163	12704	10956	10642	10870
Motor Vehicle Theft	1023	940	981	1164	1182	1139	1073	989	942	1000
Crime Index Offense Total	18431	17875	17487	18458	17682	17122	16537	14590	14150	14411

Crime Index Offense Totals, 1992-2001



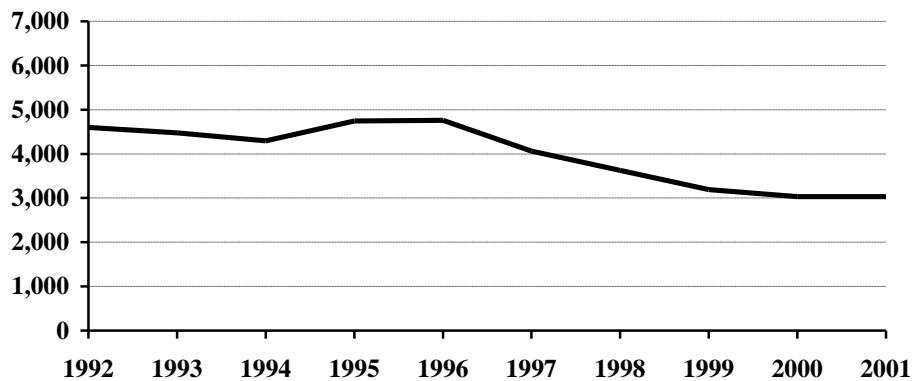
Crime Index Offense Summary

Year	Population	Crime Index Offense Total	% Change in Number from Previous Year	Crime Rate per 100,000 Population	% Change in Rate from Previous Year	Percent Cleared
1992	636,000	18,431	8.3%	2898.0	8.1%	25.9%
1993	635,000	17,875	-3.0	2815.0	-2.9	26.7
1994	638,000	17,487	-2.2	2740.9	-2.6	25.7
1995	641,000	18,458	5.6	2879.6	5.1	28.1
1996	644,000	17,682	-4.2	2745.7	-4.6	29.9
1997	641,000	17,122	-3.2	2671.1	-2.7	29.0
1998	638,000	16,537	-3.4	2592.0	-3.0	26.5
1999	634,000	14,590	-11.8	2301.3	-11.2	27.2
2000	642,200	14,150	-3.0	2203.4	-4.3	22.9
2001	634,450	14,411	1.8	2271.4	3.1	21.6

Arrests for Crime Index Offenses, 1992-2001

Year	Juvenile	Adult	Age Not Reported	Total
1992	2,506	2,063	28	4,597
1993	2,393	2,051	33	4,477
1994	2,324	1,926	43	4,293
1995	2,642	2,083	21	4,746
1996	2,523	2,221	11	4,755
1997	2,252	1,783	26	4,061
1998	1,803	1,813	12	3,628
1999	1,640	1,543	8	3,191
2000	1,599	1,417	14	3,030
2001	1,479	1,551	4	3,034

Arrests for Crime Index Offenses, 1992-2001



Property Loss Due to Crime Index Offenses, 1992-2001

Year	Population	Total Property Loss	% Change from Previous Year	Property Loss per Capita	Percent Recovered
1992	636,000	\$11,216,943	32.9%	\$17.64	22.8%
1993	635,000	9,439,645	-15.8	14.87	33.6
1994	638,000	9,696,414	2.7	15.20	48.2
1995	641,000	11,070,248	14.2	17.27	32.2
1996	644,000	11,022,665	-0.4	17.12	34.4
1997	641,000	12,507,812	13.5	19.51	33.3
1998	638,000	11,429,270	-8.6	17.91	30.8
1999	634,000	11,201,544	-2.0	17.67	28.6
2000	642,200	10,308,899	-8.0	16.05	31.3
2001	634,450	11,420,051	10.8	18.00	33.2

Violent Crime

Violent crime includes the offenses of murder/non-negligent manslaughter, forcible rape, robbery, and aggravated assault. (See the UCR offense definitions section beginning on page 57 of this publication for definitions of these and other offenses.)

In 2001, 514 violent crimes were reported in North Dakota. This is an 8.5 percent decrease from the 2000 total of 562 violent offenses reported. In 1999, 445 violent index crimes were reported.

Violent crime comprised 3.6 percent of reported crime index offenses in North Dakota in 2001.

The violent crime rate for 2001 is 81.0 per 100,000, as compared to 87.5 per 100,000 in 2000. This is a 7.4 percent decrease in the violent crime rate. In 1999, the violent crime rate was 70.2 per 100,000 population.

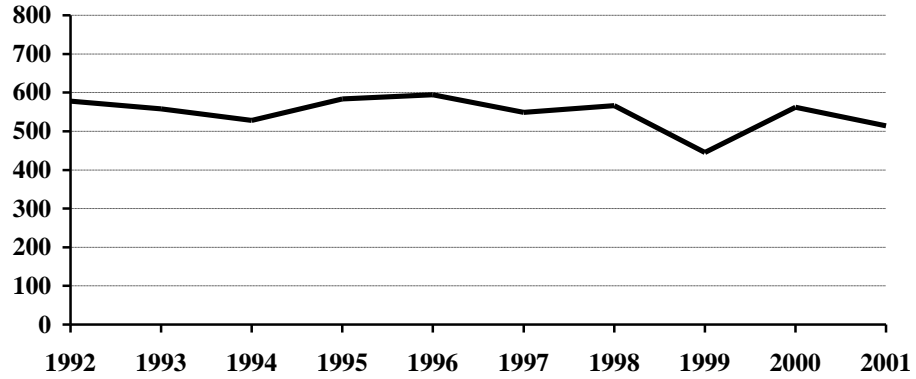
Approximately 49 percent of violent crimes were reported as cleared by arrest or exceptional means in 2001.

Of the 215 total arrests reported for violent crimes, 18.6 percent were arrests of juveniles.

Violent Crime Summary

Year	Population	Violent Index Offenses	% Change in Number from Previous Year	Rate per 100,000 Population	% Change in Rate from Previous Year	Percent Cleared
1992	636,000	578	44.1%	90.9	44.1%	59.0%
1993	635,000	558	-3.5	87.9	-3.3	64.0
1994	638,000	528	-5.4	82.8	-5.8	55.9
1995	641,000	584	10.6	91.1	10.0	67.6
1996	644,000	594	1.7	92.2	1.2	73.2
1997	641,000	549	-7.6	85.6	-7.2	66.8
1998	638,000	566	3.1	88.7	3.6	61.8
1999	634,000	445	-21.4	70.2	-20.9	67.0
2000	642,200	562	26.3	87.5	24.6	51.2
2001	634,450	514	-8.5	81.0	-7.4	49.4

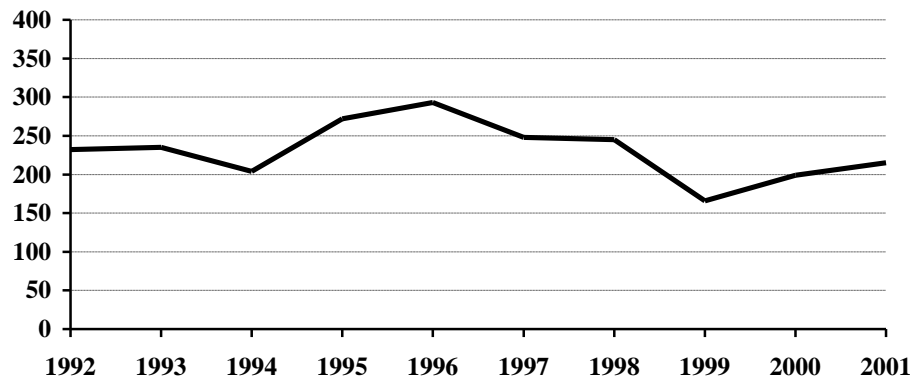
Violent Crime Totals, 1992-2001



Arrests for Violent Crimes, 1992-2001

Year	Juvenile	Adult	Age Not Reported	Total
1992	51	178	3	232
1993	71	162	2	235
1994	58	144	2	204
1995	106	164	2	272
1996	68	224	1	293
1997	54	193	1	248
1998	68	177		245
1999	41	124	1	166
2000	27	171	1	199
2001	40	175		215

Arrests for Violent Crimes, 1992-2001



Murder/Non-Negligent Manslaughter

The UCR program defines Murder/Non-Negligent Manslaughter as the “willful killing of one human being by another.” Attempts to murder, assaults to murder, suicides, accidental deaths, justifiable homicides, and deaths caused by gross negligence are not included in this category.

Nine murder/non-negligent manslaughter deaths were known to the North Dakota UCR program in 2001.

All of the victims were adults. “Adult” is defined as a person aged 18 years or older.

Seven of the victims were male.

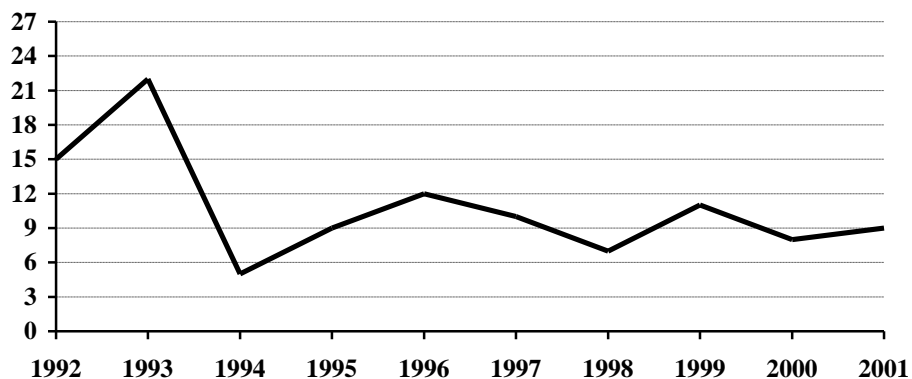
Four out of the nine victims died as the result of gunshot wounds. (See the summary of homicide incidents and the weapons involved on page 10.)

The Office of Attorney General publishes a detailed report titled Homicide in North Dakota. The report provides an analysis of homicides for the period 1978-2001 and is available by request.

Murder/Non-Negligent Manslaughter Summary

Year	Population	Offense Total	% Change in Number from Previous Year	Rate per 100,000 Population	% Change in Rate from Previous Year	Percent Cleared
1992	636,000	15	36.4%	2.4	41.2%	100.0%
1993	635,000	22	46.7	3.5	45.8	100.0
1994	638,000	5	-77.3	0.8	-77.1	100.0
1995	641,000	9	80.0	1.4	75.0	100.0
1996	644,000	12	33.3	1.9	35.7	100.0
1997	641,000	10	-16.7	1.6	-15.8	100.0
1998	638,000	7	-30.0	1.1	-31.3	100.0
1999	634,000	11	57.1	1.7	54.5	100.0
2000	642,200	8	-27.3	1.2	-29.4	87.5
2001	634,450	9	12.5	1.4	16.7	55.6

Murder/Non-Negligent Manslaughter Totals, 1992-2001



Summary of Murder/Non-Negligent Manslaughter Incidents, 2001

Date and Location of Incident	Victims		Assailants		Weapon Used	Relationship of Victim to Assailant	Circumstances
	Age	Sex	Age	Sex			
02/17/01 Rural Cogswell Sargent County	33	F	36	M	Rifle	Girlfriend	Domestic dispute. Assailant was arrested in South Dakota.
03/22/01 Jamestown	64	M	43	M	Shotgun	Neighbor	Victim and assailant lived in the same apartment building. The assailant forced his way into the victim's apartment and shot him with a shotgun.
03/25/01 Rural Dunseith Turtle Mt. Reservation	44	F	20 18 18	M M M	Knife	Stranger Stranger Stranger	Victim was stabbed multiple times.
05/12/01 Selfridge, Standing Rock Reservation	24	M	26	M	Personal Weapons	Acquaintance	Victim was found on a street near his home in Selfridge.
09/07/01 Grand Forks County	40 19	M M			Firearm		Victims were a father and son found shot to death on a gravel road southwest of Grand Forks.
09/01 Grand Forks	50	M			Not Reported		Victim was found dead in his apartment on 09/25/01.
12/01/01 Cass County	48	M			Not Reported		Victim was found in Wisconsin dismembered
12/21/01 Valley City	31	M	48	M	Personal Weapons	Acquaintance	Altercation between the two individuals

Forcible Rape

The UCR program defines Forcible Rape as “the carnal knowledge of a female forcibly and against her will.” Assaults to rape, attempts to commit rape by force or threat of force are included. Carnal abuse, statutory offenses (no force -- victim under age of consent), and other sex offenses are not included.

In 2001, 159 forcible rapes were reported to local law enforcement in North Dakota. This is a decrease of 8.1 percent from the 2000 total of 173 offenses. A total of 147 forcible rapes were reported in 1999.

Because the UCR definition states that victims of rape must be female, the rate of occurrence for reported rapes is calculated based only on the female population. The Census Bureau estimate of North Dakota’s population for 2001 is 634,450. The number of females is approximately half of that figure. The resulting rate for 2001 is 50.1 reported rapes per 100,000 females, compared with 53.9 rapes per 100,000 females in 2000. In 1999, the forcible rape rate was 46.4 per 100,000 females.

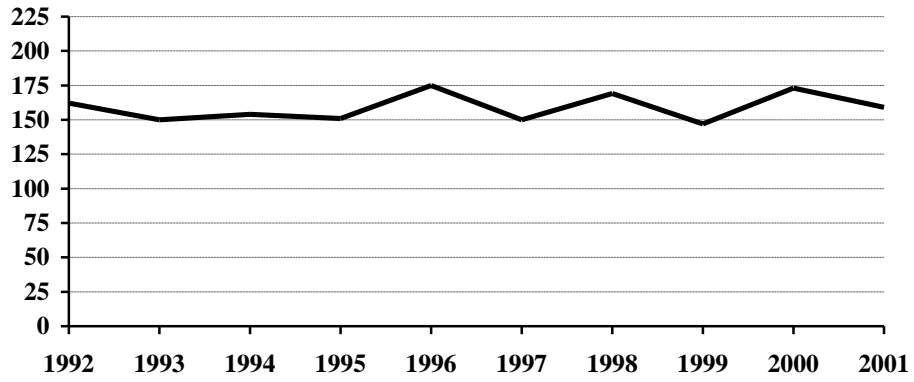
In 2001, 42.1 percent of reported rapes were cleared by arrest or exceptional means.

Thirty-two arrests for forcible rape were reported in 2001. Seventy-two percent of those arrested were adults. In 2000, 39 arrests for rape were reported.

Forcible Rape Summary

Year	Population	Offense Total	% Change in Number from Previous Year	Rate per 100,000 Females	% Change in Rate from Previous Year	Percent Cleared
1992	636,000	162	35.0%	50.9	34.7%	44.4%
1993	635,000	150	-7.4	47.2	-7.3	56.0
1994	638,000	154	2.7	48.3	2.3	47.4
1995	641,000	151	-1.9	47.1	-2.5	68.2
1996	644,000	175	15.9	54.3	15.3	76.6
1997	641,000	150	-14.3	46.8	-13.8	57.3
1998	638,000	169	12.7	53.0	13.2	51.5
1999	634,000	147	-13.0	46.4	-12.5	67.3
2000	642,200	173	17.7	53.9	16.2	30.1
2001	634,450	159	-8.1	50.1	-7.1	42.1

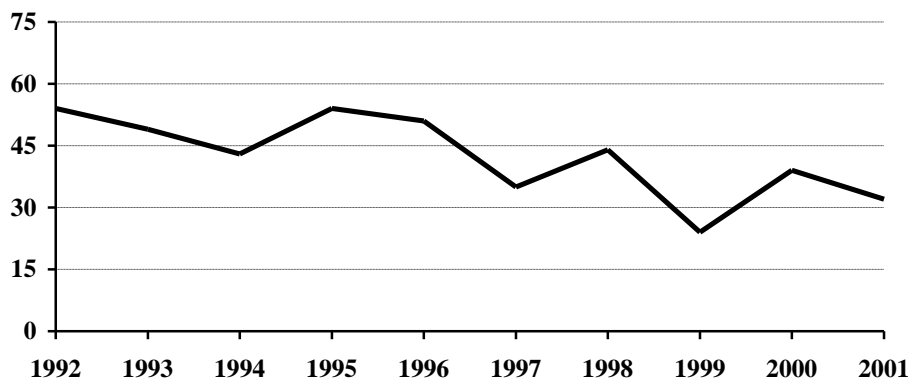
Forcible Rape Totals, 1992-2001



Arrests for Forcible Rape, 1992-2001

Year	Juvenile	Adult	Age Not Reported	Total
1992	13	40	1	54
1993	8	40	1	49
1994	13	29	1	43
1995	16	36	2	54
1996	12	39		51
1997	6	29		35
1998	13	31		44
1999	6	18		24
2000	12	27		39
2001	9	23		32

Arrests for Forcible Rape, 1992-2001



Robbery

Robbery is defined by the UCR program as “the taking or attempting to take anything of value from the care, custody, or control of a person or persons by force or threat of force or violence and/or by putting the victim in fear.”

Seventy-one robberies were reported in North Dakota in 2001, an increase of 14.5 percent from the total of 62 reported in 2000. In 1999, 70 robberies were reported.

The robbery rate for 2001 was 11.2 per 100,000 population, as compared with 9.7 per 100,000 population in 2000. This is a 15.5 percent increase in the robbery rate.

Approximately 24 percent of reported robberies were cleared by arrest or exceptional means.

Nineteen arrests for robbery were reported in 2001. Sixteen of those arrested were adults.

Firearms were used in 26.8 percent of the reported robberies in 2001. Forty-five percent were strong-arm robberies where no weapon was used.

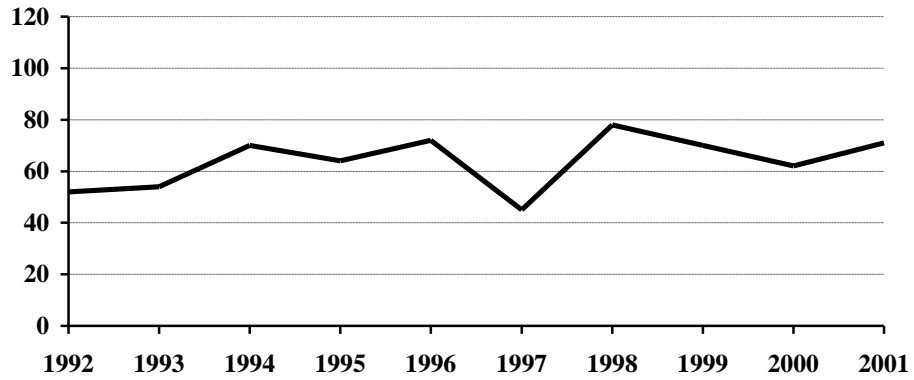
The value of property stolen in robbery incidents increased from \$12,654 in 2000 to \$45,051 in 2001.

The average robbery in 2001 involved \$635 worth of property.

Robbery Summary

Year	Population	Offense Total	% Change in Number from Previous Year	Rate per 100,000 Population	% Change in Rate from Previous Year	Percent Cleared
1992	636,000	52	10.6%	8.2	10.8%	53.8%
1993	635,000	54	3.8	8.5	3.7	33.3
1994	638,000	70	29.6	11.0	29.4	44.3
1995	641,000	64	-8.6	10.0	-9.1	42.2
1996	644,000	72	12.5	11.2	12.0	48.6
1997	641,000	45	-37.5	7.0	-37.5	64.4
1998	638,000	78	73.3	12.2	74.3	41.0
1999	634,000	70	-10.3	11.0	-9.8	48.6
2000	642,200	62	-11.4	9.7	-11.8	24.2
2001	634,450	71	14.5	11.2	15.5	23.9

Robbery Totals, 1992-2001



Robbery by Type of Weapon Involved, 2001

Type of Weapon	Number Reported	Percent of Total Offenses
Firearm	19	26.8%
Knife or Cutting Instrument	7	9.9
Other Dangerous Weapon	13	18.3
Hands, Fists, Feet, etc.	32	45.0
Robbery Total	71	100.0

Robbery by Place of Occurrence and Value of Property, 2001

Place of Occurrence	Number Reported	Value of Property	Average Value per Robbery
Highway	14	\$2,574	\$183.86
Commercial House	14	9,771	697.93
Gas or Service Station	1	200	200.00
Convenience Store	11	2,211	201.00
Residence	13	11,088	852.92
Bank	3	17,713	5,904.33
Other	15	1,494	99.60
Robbery Total	71	45,051	634.52

Arrests for Robbery, 1992-2001

Year	Juvenile	Adult	Total
1992	8	21	29
1993	14	8	22
1994	8	23	31
1995	13	18	31
1996	10	28	38
1997	13	17	30
1998	8	20	28
1999	9	19	28
2000	0	15	15
2001	3	16	19

Property Loss Due to Robbery, 1992-2001

Year	Offense Total	Property Loss	Average Loss per Robbery
1992	52	\$31,341	\$602.71
1993	54	37,608	696.44
1994	70	14,030	200.43
1995	64	20,515	320.55
1996	72	11,734	162.97
1997	45	7,029	156.20
1998	78	19,393	248.63
1999	70	23,808	340.11
2000	62	12,654	204.10
2001	71	45,051	634.52

Aggravated Assault

The UCR program defines Aggravated Assault as “an unlawful attack by one person upon another for the purpose of inflicting severe or aggravated bodily injury. This type of assault is usually accompanied by the use of a weapon or by means likely to produce death or great bodily harm. Attempts are included because it is not necessary that an injury result when a gun, knife, or other weapon is used which could and probably would result in serious personal injury if the crime were successfully completed.”

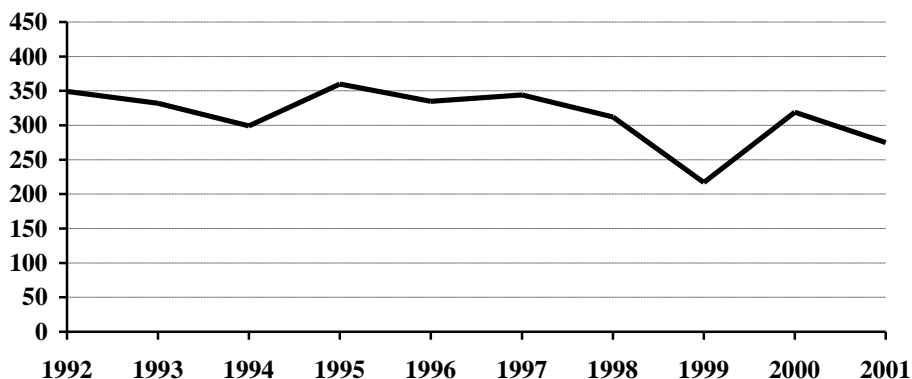
In 2001, 275 aggravated assaults were reported in North Dakota, a decrease of 13.8 percent from the 319 aggravated assaults reported in 2000. In 1999, 217 aggravated assaults were reported.

The aggravated assault rate for North Dakota decreased 12.9 percent from 49.7 per 100,000 population in 2000 to 43.3 per 100,000 population in 2001.

Aggravated Assault Summary

Year	Population	Offense Total	% Change in Number from Previous Year	Rate per 100,000 Population	% Change in Rate from Previous Year	Percent Cleared
1992	636,000	349	56.5%	54.9	56.4%	64.8%
1993	635,000	332	-4.9	52.3	-4.7	70.2
1994	638,000	299	-9.9	46.9	-10.3	62.2
1995	641,000	360	20.4	56.2	19.8	71.1
1996	644,000	335	-6.9	52.0	-7.5	75.8
1997	641,000	344	2.7	53.7	3.3	70.3
1998	638,000	312	-9.3	48.9	-8.9	71.8
1999	634,000	217	-30.4	34.2	-30.1	71.0
2000	642,200	319	47.0	49.7	45.3	67.1
2001	634,450	275	-13.8	43.3	-12.9	60.0

Aggravated Assault Totals, 1992-2001



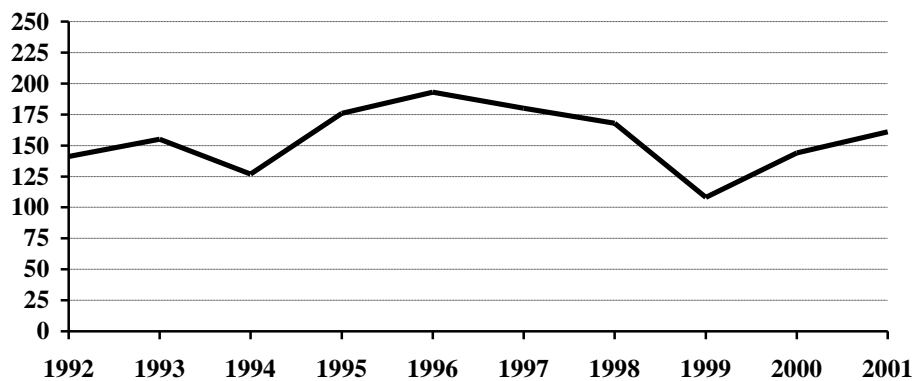
Aggravated Assault by Type of Weapon Involved, 2001

Type of Weapon	Number Reported	Percent of Total Offenses
Firearm	11	4.0%
Knife or Cutting Instrument	48	17.5
Other Dangerous Weapon	63	22.9
Hands, Fists, Feet, etc.	153	55.6
Aggravated Assault Total	275	100.0

Arrests for Aggravated Assault, 1992-2001

Year	Juvenile	Adult	Age Not Reported	Total
1992	30	110	1	141
1993	47	107	1	155
1994	37	89	1	127
1995	68	108		176
1996	45	147	1	193
1997	35	144	1	180
1998	47	121		168
1999	25	82	1	108
2000	15	128	1	144
2001	28	133		161

Arrests for Aggravated Assault, 1992-2001



Property Crime

Property crime includes the offenses of burglary, larceny/theft, and motor vehicle theft.

In 2001, the total number of property crimes reported was 13,897. This is an increase of 2.3 percent from the 2000 total of 13,588.

Property crime accounted for 96.4 percent of the index offenses reported in North Dakota.

The property crime rate increased 3.5 percent from 2115.9 per 100,000 population in 2000 to 2190.4 per 100,000 in 2001.

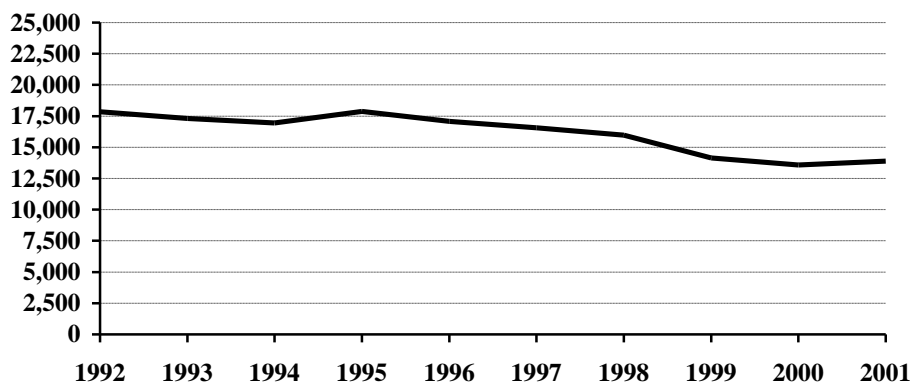
Approximately 20 percent of property crimes were cleared by arrest or exceptional means in 2001.

A total of 2,819 arrests was reported for property crimes. Of those, 51 percent were arrests of juveniles.

Property Crime Summary

Year	Population	Property Index Offenses	% Change in Number from Previous Year	Rate per 100,000 Population	% Change in Rate from Previous Year	Percent Cleared
1992	636,000	17,853	7.4%	2807.1	7.3%	24.8%
1993	635,000	17,317	-3.0	2727.1	-2.8	25.5
1994	638,000	16,959	-2.1	2658.2	-2.5	24.7
1995	641,000	17,874	5.4	2788.5	4.9	26.8
1996	644,000	17,088	-4.4	2653.4	-4.8	28.4
1997	641,000	16,573	-3.0	2585.5	-2.6	27.7
1998	638,000	15,971	-3.6	2503.3	-3.2	25.2
1999	634,000	14,145	-11.4	2231.1	-10.9	25.9
2000	642,200	13,588	-3.9	2115.9	-5.2	21.8
2001	634,450	13,897	2.3	2190.4	3.5	20.6

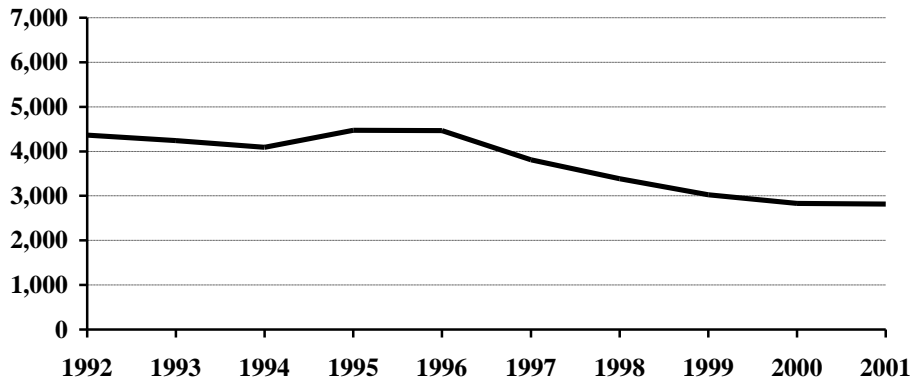
Property Crime Totals, 1992-2001



Arrests for Property Crimes, 1992-2001

Year	Juvenile	Adult	Age Not Reported	Total
1992	2,455	1,885	25	4,365
1993	2,322	1,889	31	4,242
1994	2,266	1,782	41	4,089
1995	2,536	1,919	19	4,474
1996	2,455	1,997	10	4,462
1997	2,198	1,590	25	3,813
1998	1,735	1,636	12	3,383
1999	1,599	1,419	7	3,025
2000	1,572	1,246	13	2,831
2001	1,439	1,376	4	2,819

Arrests for Property Crimes, 1992-2001



Burglary

The UCR program defines Burglary as the “unlawful entry of a structure to commit a felony or theft. The use of force to gain entry is not required to classify an offense as burglary.” Burglaries are classified into three categories: forcible entry, unlawful entry where no force is used, and attempted forcible entry.

In 2001, 2,027 burglaries were reported to the UCR program. This represents an increase of 1.1 percent from the total of 2,004 burglaries reported in 2000.

The rate of burglaries based on population was 319.5 per 100,000 inhabitants for 2001. This is a 2.4 percent increase from the rate of 312.1 per 100,000 population in 2000.

Approximately 15 percent of burglaries were cleared by arrest or exceptional means in 2001.

A total of 343 arrests for burglary was reported in 2001. Of these, 51 percent were juveniles.

The UCR program classifies burglaries by time of day and location of the incident. Approximately 50 percent were burglaries of residences. Fifty-nine percent of burglaries were known to have been committed at night.

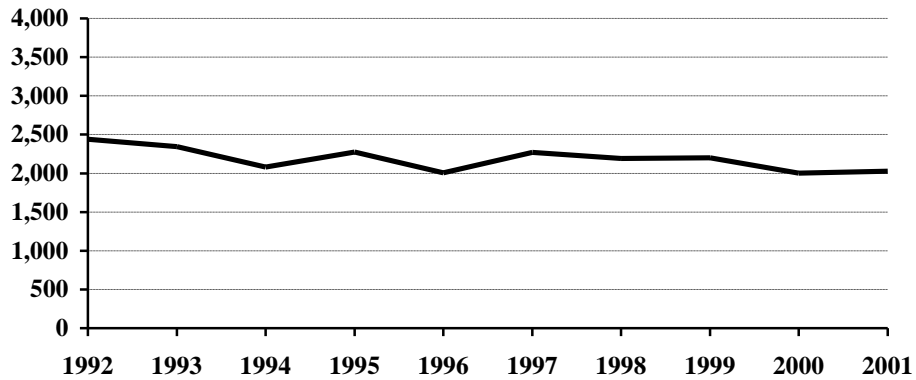
About 53 percent of burglaries involved forcible entry.

Property loss due to burglary is substantial. More than 1.5 million dollars worth of property was reported stolen in burglary incidents in 2001. The average burglary involved \$776 worth of property.

Burglary Summary

Year	Population	Offense Total	% Change in Number from Previous Year	Rate per 100,000 Population	% Change in Rate from Previous Year	Percent Cleared
1992	636,000	2,440	5.9%	383.6	5.7%	17.6%
1993	635,000	2,346	-3.9	369.4	-3.7	19.8
1994	638,000	2,080	-11.3	326.0	-11.7	17.7
1995	641,000	2,275	9.4	354.9	8.9	18.7
1996	644,000	2,008	-11.7	311.8	-12.1	20.7
1997	641,000	2,271	13.1	354.3	13.6	19.8
1998	638,000	2,194	-3.4	343.9	-2.9	19.5
1999	634,000	2,200	0.3	347.0	0.9	20.8
2000	642,200	2,004	-8.9	312.1	-10.1	16.2
2001	634,450	2,027	1.1	319.5	2.4	15.1

Burglary Totals, 1992-2001



Burglary by Type of Entry, 2001

Type of Entry	Number Reported	Percent of Total Offenses
Forcible Entry	1,072	52.9%
Unlawful Entry - No Force	810	40.0
Attempted Forcible Entry	145	7.1
Burglary Total	2,027	100.0

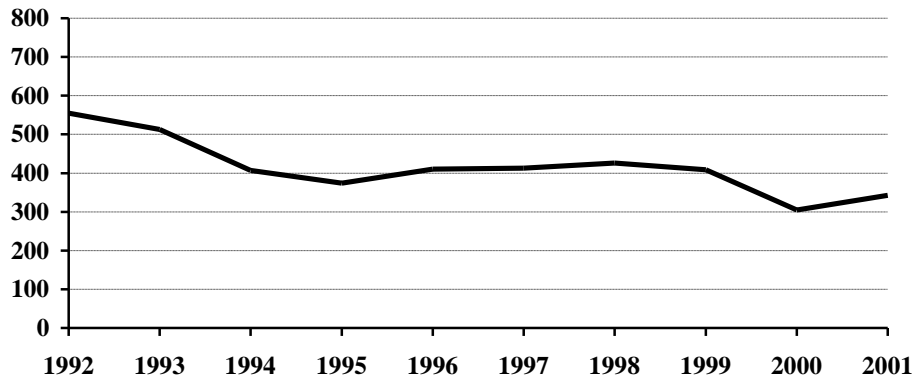
Burglary by Location and Value of Property, 2001

Location/Time	Number Reported	Value of Property	Average Value per Burglary
Residence - Night	527	\$391,719	\$743.30
Residence - Day	418	387,946	928.10
Residence - Unknown	72	39,050	542.36
Residence Subtotal	1,017	818,715	805.03
Non-Residence - Night	672	553,737	824.01
Non-Residence - Day	304	185,179	609.14
Non-Residence - Unknown	34	15,078	443.47
Non-Residence Subtotal	1,010	753,994	746.53
Burglary Total	2,027	1,572,709	775.88

Arrests for Burglary, 1992-2001

Year	Juvenile	Adult	Age Not Reported	Total
1992	272	280	3	555
1993	226	283	4	513
1994	197	204	6	407
1995	208	164	2	374
1996	201	208	1	410
1997	222	185	6	413
1998	201	220	5	426
1999	202	205	2	409
2000	134	166	5	305
2001	175	166	2	343

Arrests for Burglary, 1992-2001



Property Loss Due to Burglary, 1992-2001

Year	Offense Total	Property Loss	Average Loss per Burglary
1992	2,440	\$2,101,987	\$861.47
1993	2,346	1,571,149	669.71
1994	2,080	1,696,717	815.73
1995	2,275	1,939,595	852.57
1996	2,008	1,404,087	699.25
1997	2,271	2,114,489	931.08
1998	2,194	1,630,902	743.35
1999	2,200	1,853,763	842.62
2000	2,004	1,781,810	889.13
2001	2,027	1,572,709	775.88

Larceny/Theft

The UCR program defines Larceny/Theft as the “unlawful taking, carrying, leading, or riding away of property from the possession or constructive possession of another. It includes crimes such as shoplifting, pocket-picking, purse-snatching, thefts from motor vehicles, thefts of motor vehicle parts and accessories, bicycle thefts, etc., in which no use of force, violence or fraud occurs. In the Uniform Crime Reporting program, this crime category does not include embezzlement, confidence games, forgery, and worthless checks. Motor vehicle theft is also excluded from this category inasmuch as it is a separate crime index offense.”

A total of 10,870 larceny/theft offenses was reported in North Dakota in 2001. This is a 2.1 percent increase from the 2000 total of 10,642.

The larceny/theft rate per 100,000 population was 1713.3 compared with 1657.1 in 2000, a 3.4 percent increase in the rate.

Approximately 21 percent of larceny/theft offenses were cleared by arrest or exceptional means in 2001.

The number of arrests for this offense decreased from 2,279 in 2000 to 2,238 in 2001. Approximately 51 percent of those arrested for larceny/theft in 2001 were juveniles.

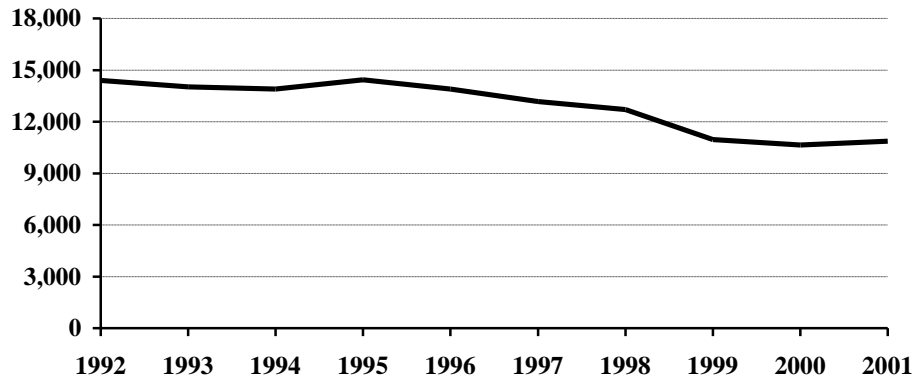
More than 5.4 million dollars worth of property was reported stolen as the result of larceny/theft offenses in the state. The average dollar value per offense increased from \$434 in 2000 to \$500 in 2001.

Larceny/theft accounted for 75.4 percent of the total index offenses reported and amounted to approximately 48 percent of the total value of stolen property.

Larceny/Theft Summary

Year	Population	Offense Total	% Change in Number from Previous Year	Rate per 100,000 Population	% Change in Rate from Previous Year	Percent Cleared
1992	636,000	14,390	6.3%	2262.6	6.1%	25.0%
1993	635,000	14,031	-2.5	2209.6	-2.3	25.6
1994	638,000	13,898	-0.9	2178.4	-1.4	25.0
1995	641,000	14,435	3.9	2252.0	3.4	27.2
1996	644,000	13,898	-3.7	2158.1	-4.2	28.6
1997	641,000	13,163	-5.3	2053.5	-4.8	28.3
1998	638,000	12,704	-3.5	1991.2	-3.0	25.4
1999	634,000	10,956	-13.8	1728.1	-13.2	25.9
2000	642,200	10,642	-2.9	1657.1	-4.1	22.0
2001	634,450	10,870	2.1	1713.3	3.4	20.9

Larceny/Theft Totals, 1992-2001



Monetary Value of Larceny/Theft, 2001

Value of Larceny/Theft	Number Reported	Percent of Total Offenses
Under \$50	4,257	39.2%
\$50 to \$200	2,762	25.4
Over \$200	3,851	35.4
Larceny/Theft Total	10,870	100.0

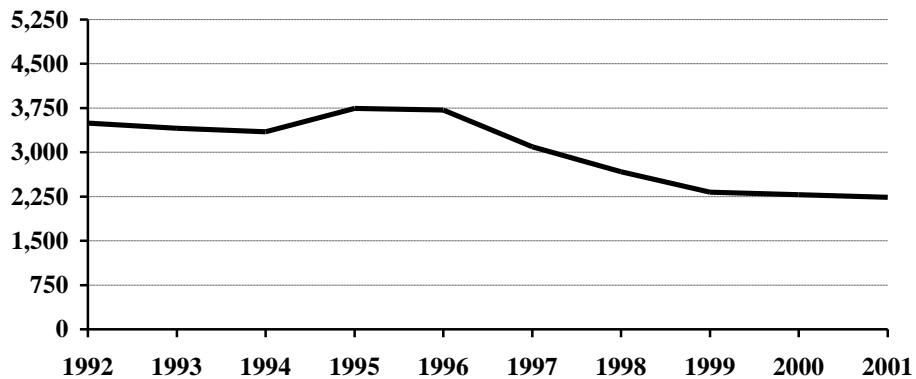
Larceny/Theft by Type and Value, 2001

Type of Larceny/Theft	Number Reported	Value of Property	Average Value per Larceny/Theft
From Motor Vehicle	2,647	\$1,375,370	\$519.60
From Building	1,315	852,198	648.06
Shoplifting	1,209	85,931	71.08
Bicycles	943	186,332	197.59
Motor Vehicle Parts, Accessories	477	206,287	432.47
From Coin-Operated Machine	87	16,911	194.38
Pocket Picking	20	11,763	588.15
Purse Snatching	18	2,263	125.72
All Other	4,154	2,695,195	648.82
Larceny/Theft Total	10,870	5,432,250	499.75

Arrests for Larceny/Theft, 1992-2001

Year	Juvenile	Adult	Age Not Reported	Total
1992	1,972	1,505	15	3,492
1993	1,900	1,485	24	3,409
1994	1,846	1,472	28	3,346
1995	2,066	1,662	14	3,742
1996	2,056	1,656	6	3,718
1997	1,771	1,306	16	3,093
1998	1,372	1,292	7	2,671
1999	1,212	1,110	5	2,327
2000	1,285	987	7	2,279
2001	1,134	1,102	2	2,238

Arrests for Larceny/Theft, 1992-2001



Property Loss Due to Larceny/Theft, 1992-2001

Year	Offense Total	Property Loss	Average Loss per Larceny/Theft
1992	14,390	\$6,283,654	\$436.67
1993	14,031	4,819,935	343.52
1994	13,898	4,842,899	348.46
1995	14,435	5,394,911	373.74
1996	13,898	5,118,818	368.31
1997	13,163	5,680,026	431.51
1998	12,704	5,858,913	461.19
1999	10,956	5,690,080	519.36
2000	10,642	4,627,836	434.87
2001	10,870	5,432,250	499.75

Motor Vehicle Theft

Motor Vehicle Theft is defined by the UCR program as “the theft or attempted theft of a motor vehicle; the offense category includes the stealing of automobiles, trucks, buses, motorcycles, motor scooters, snowmobiles, etc. The definition excludes the taking of a motor vehicle for temporary use by those persons having lawful access.”

A total of 1,000 motor vehicle thefts was reported in 2001. This is an increase of 6.2 percent from the 2000 total of 942.

Based on a Census Bureau population estimate of 634,450 for North Dakota, the resulting motor vehicle theft rate is 157.6 per 100,000 population.

Approximately 28 percent of reported motor vehicle thefts were cleared by arrest or exceptional means in 2001.

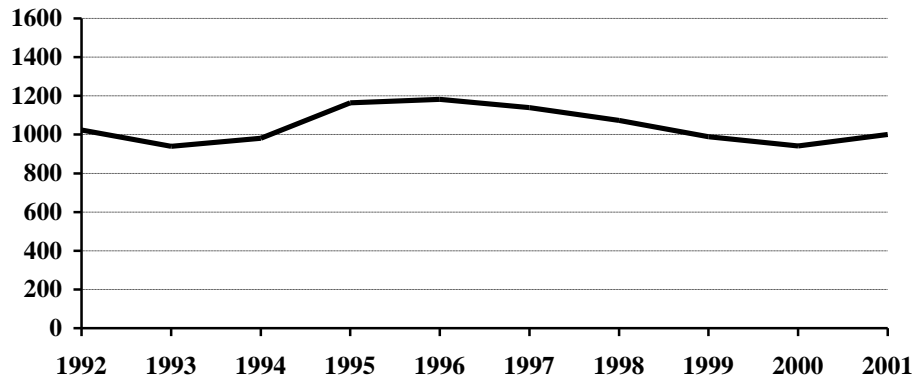
The number of arrests for motor vehicle theft decreased from 247 in 2000 to 238 in 2001.

The average value per motor vehicle theft was approximately \$4,414.

Motor Vehicle Theft Summary

Year	Population	Offense Total	% Change in Number from Previous Year	Rate per 100,000 Population	% Change in Rate from Previous Year	Percent Cleared
1992	636,000	1,023	32.5%	160.8	32.2%	39.4%
1993	635,000	940	-8.1	148.0	-8.0	38.3
1994	638,000	981	4.4	153.8	3.9	34.8
1995	641,000	1,164	18.7	181.6	18.1	37.3
1996	644,000	1,182	1.5	183.5	1.0	40.1
1997	641,000	1,139	-3.6	177.7	-3.2	37.1
1998	638,000	1,073	-5.8	168.2	-5.3	35.3
1999	634,000	989	-7.8	156.0	-7.3	37.0
2000	642,200	942	-4.8	146.7	-6.0	30.9
2001	634,450	1,000	6.2	157.6	7.4	27.8

Motor Vehicle Theft Totals, 1992-2001



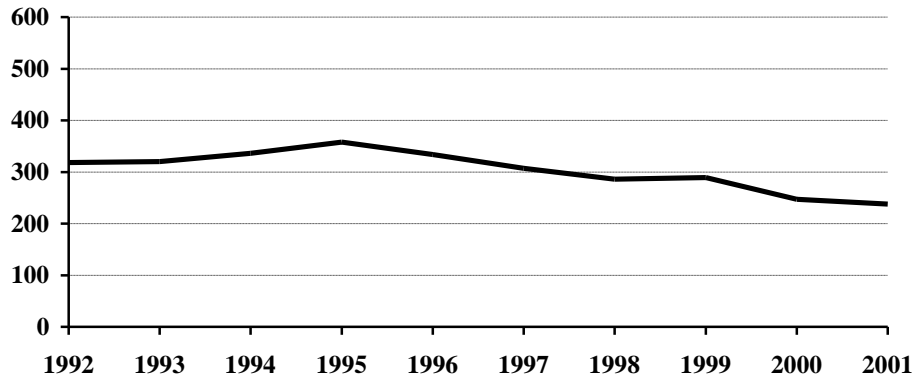
Type of Vehicle Stolen, 2001

Type of Vehicle	Number Reported	Percent of Total Offenses
Automobiles	823	82.3%
Trucks and Buses	99	9.9
Other Vehicles	78	7.8
Motor Vehicle Theft Total	1,000	100.0

Arrests for Motor Vehicle Theft, 1992-2001

Year	Juvenile	Adult	Age Not Reported	Total
1992	211	100	7	318
1993	196	121	3	320
1994	223	106	7	336
1995	262	93	3	358
1996	198	133	3	334
1997	205	99	3	307
1998	162	124		286
1999	185	104		289
2000	153	93	1	247
2001	130	108		238

Arrests for Motor Vehicle Theft, 1992-2001



Property Loss Due to Motor Vehicle Theft, 1992-2001

Year	Offense Total	Property Loss	Average Loss per Offense
1992	1,023	\$2,799,939	\$2,736.99
1993	940	3,010,954	3,203.14
1994	981	3,142,478	3,203.34
1995	1,164	3,714,582	3,191.22
1996	1,182	4,488,026	3,796.98
1997	1,139	4,706,068	4,131.75
1998	1,073	3,909,583	3,643.60
1999	989	3,633,353	3,673.76
2000	942	3,886,274	4,125.56
2001	1,000	4,414,621	4,414.62

Crime Index Offenses by Reporting Jurisdiction

The rate per 100,000 population is shown immediately below the actual number of crime index offenses reported by each jurisdiction. A county total is also shown for each of those counties that have more than one reporting jurisdiction within its geographic boundaries. The rate is reported per 100,000 for easy comparison to national publications.

Number and Rate of Index Offenses, 2001

County	Reporting Jurisdiction	Population	Murder/ Non-Negligent Manslaughter	Forcible Rape	Robbery	Aggravated Assault	Burglary	Larceny/ Theft	Motor Vehicle Theft	Total Index Offenses
Adams	County SO	2,562				1 39.0	3 117.1	9 351.3		13 507.4
	County SO	4,889					12 245.4	18 368.2	3 61.4	33 675.0
Barnes	Valley City PD	6,744	1 14.8				7 103.8	74 1097.3		82 1215.9
	County Total	11,633	1 8.6				19 163.3	92 790.9	3 25.8	115 988.6
	County SO	6,880	DID NOT REPORT IN 2001							
Billings	County SO	877	DID NOT REPORT IN 2001							
Bottineau	County SO	7,063		1 14.2			18 254.8	63 892.0	3 42.5	85 1203.5
Bowman	County SO	1,622	DID NOT REPORT IN 2001							
	Bowman PD	1,581				4 253.0	1 63.3	15 948.8	1 63.3	21 1328.3
Burke	County SO	2,215					2 90.3	4 180.6	1 45.1	7 316.0
Burleigh	County SO	13,716		1 7.3		2 14.6	27 196.9	39 284.3	3 21.9	72 524.9
	Bismarck PD	54,862		8 14.6	11 20.1	30 54.7	261 475.7	1375 2506.3	112 204.1	1797 3275.5
	County Total	68,578		9 13.1	11 16.0	32 46.7	288 420.0	1414 2061.9	115 167.7	1869 2725.4
Cass	County SO	17,384	1 5.8	5 28.8		6 34.5	54 310.6	106 609.8	23 132.3	195 1121.7
	Fargo PD*	89,507		66 73.7	27 30.2	71 79.3	401 448.0	2650 2960.7	205 229.0	3420 3820.9
	West Fargo PD	14,760		5 33.9		6 40.7	48 325.2	289 1958.0	32 216.8	380 2574.5
	County Total	121,651	1 0.8	76 62.5	27 22.2	83 68.2	503 413.5	3045 2503.1	260 213.7	3995 3284.0
Cavalier	County SO	4,773				1 21.0	15 314.3	51 1068.5	3 62.9	70 1466.6
Dickey	County SO	3,733				2 53.6	10 267.9	18 482.2	1 26.8	31 830.4
	Oakes PD	1,955					1 51.2	1 51.2		2 102.3
	County Total	5,688				2 35.2	11 193.4	19 334.0	1 17.6	33 580.2
Divide	County SO	1,179	DID NOT REPORT IN 2001							
	Crosby PD	1,076	DID NOT REPORT IN 2001							
Dunn	County SO	3,557								0 0.0

* Includes 165 index offenses reported by the NDSU PD

County	Reporting Jurisdiction	Population	Murder/ Non-Negligent Manslaughter	Forcible Rape	Robbery	Aggravated Assault	Burglary	Larceny/ Theft	Motor Vehicle Theft	Total Index Offenses
Eddy	County SO	2,724				1 36.7	8 293.7	23 844.3		32 1174.7
	Emmons									
Emmons	County SO	2,974		1 33.6			13 437.1	26 874.2	6 201.7	46 1546.7
	Linton PD	1,305					1 76.6		1 76.6	2 153.3
	County Total	4,279		1 23.4			14 327.2	26 607.6	7 163.6	48 1121.8
Foster	County SO	1,473					1 67.9	2 135.8	1 67.9	4 271.6
	Carrington PD	2,241	DID NOT REPORT IN 2001							
Golden Valley	County SO	1,901					4 210.4	14 736.5	4 210.4	22 1157.3
Grand Forks	County SO	12,724	2 15.7	2 15.7		6 47.2	30 235.8	105 825.2	17 133.6	162 1273.2
	Emerado PD	504	DID NOT REPORT IN 2001							
	Grand Forks PD**	48,726	1 2.1	18 36.9	10 20.5	46 94.4	273 560.3	1746 3583.3	177 363.3	2271 4660.8
	Larimore PD	1,416								0 0.0
	Northwood PD	947					3 316.8	2 211.2		5 528.0
	Thompson PD	994	DID NOT REPORT IN 2001							
	Reporting Agency Total	62,397	3 4.8	20 32.1	10 16.0	52 83.3	306 490.4	1853 2969.7	194 310.9	2438 3907.2
Grant	County SO	1,841				2 108.6	1 54.3	4 217.3	1 54.3	8 434.5
	Carson PD	315	DID NOT REPORT IN 2001							
	Elgin PD	651					1 153.6			1 153.6
	Reporting Agency Total	2,492				2 80.3	2 80.3	4 160.5	1 40.1	9 361.2
Griggs	County SO	1,681	DID NOT REPORT IN 2001							
	Cooperstown PD	1,040	DID NOT REPORT IN 2001							
Hettinger	County SO	2,682					2 74.6	4 149.1		6 223.7
Kidder	County SO	1,968					1 50.8	4 203.3		5 254.1
	Steele PD	752						8 1063.8		8 1063.8
	County Total	2,720					1 36.8	12 441.2		13 477.9
LaMoure	County SO	4,644					3 64.6		2 43.1	5 107.7
Logan	County SO	1,521				4 263.0	4 263.0	5 328.7		13 854.7
	Napoleon PD	847	DID NOT REPORT IN 2001							
McHenry	County SO	4,879				3 61.5	12 246.0	36 737.9	3 61.5	54 1106.8
	Velva PD	1,036					6 579.2	13 1254.8		19 1834.0
	County Total	5,915				3 50.7	18 304.3	49 828.4	3 50.7	73 1234.2
McIntosh	County SO	2,153				2 92.9	4 185.8	12 557.4		18 836.0
	Wishek PD	1,108					2 180.5	2 180.5		4 361.0
	County Total	3,261					2 61.3	6 184.0	14 429.3	22 674.6

** Includes 131 index offenses reported by UND PD.

County	Reporting Jurisdiction	Population	Murder/ Non-Negligent Manslaughter	Forcible Rape	Robbery	Aggravated Assault	Burglary	Larceny/ Theft	Motor Vehicle Theft	Total Index Offenses
McKenzie	County SO	4,250		1 23.5			10 235.3	12 282.4		23 541.2
	Watford City PD	1,418						11 775.7	1 70.5	12 846.3
	County Total	5,668		1 17.6			10 176.4	23 405.8	1 17.6	35 617.5
McLean	County SO	9,199				1 10.9	30 326.1	133 1445.8	5 54.4	169 1837.2
Mercer	County SO	2,658					2 75.2	10 376.2	1 37.6	13 489.1
	Beulah PD	3,114				2 64.2	15 481.7	83 2665.4	7 224.8	107 3436.1
	Hazen PD	2,427	DID NOT REPORT IN 2001							
	Stanton PD	341	DID NOT REPORT IN 2001							
	Reporting Agency Total	5,772					2 34.7	17 294.5	93 1611.2	8 138.6
Morton	County SO	8,482		4 47.2		2 23.6	16 188.6	78 919.6	8 94.3	108 1273.3
	Mandan PD	16,516		6 36.3	2 12.1	4 24.2	55 333.0	378 2288.7	36 218.0	481 2912.3
	County Total	24,998		10 40.0	2 8.0	6 24.0	71 284.0	456 1824.1	44 176.0	589 2356.2
Mountrail	County SO	6,551			1 15.3		12 183.2	20 305.3	1 15.3	34 519.0
Nelson	County SO	3,670	DID NOT REPORT IN 2001							
Oliver	County SO	2,040						9 441.2	3 147.1	12 588.2
Pembina	County SO	6,963		1 14.4		1 14.4	16 229.8	49 703.7	9 129.3	76 1091.5
	Cavalier PD	1,518					4 263.5	25 1646.9	1 65.9	30 1976.3
	County Total	8,481		1 11.8		1 11.8	20 235.8	74 872.5	10 117.9	106 1249.9
Pierce	County SO	1,715					1 58.3	12 699.7	1 58.3	14 816.3
	Rugby PD	2,904					7 241.0	53 1825.1		60 2066.1
	County Total	4,619					8 173.2	65 1407.2	1 21.6	74 1602.1
Ramsey	County SO	4,785	DID NOT REPORT IN 2001							
	Devils Lake PD	7,135		1 14.0	1 14.0	14 196.2	66 925.0	423 5928.5	25 350.4	530 7428.2
Ransom	County SO	3,555		1 28.1		3 84.4	13 365.7	47 1322.1	6 168.8	70 1969.1
	Lisbon PD	2,264	DID NOT REPORT IN 2001							
Renville	County SO	2,578					3 116.4	14 543.1	1 38.8	18 698.2
Richland	County SO	9,299			2 21.5	5 53.8	44 473.2	64 688.2	11 118.3	126 1355.0
	Wahpeton PD	8,482		1 11.8	1 11.8	2 23.6	28 330.1	241 2841.3	13 153.3	286 3371.8
	County Total	17,781		1 5.6	3 16.9	7 39.4	72 404.9	305 1715.3	24 135.0	412 2317.1
Rolette	County SO	13,509				2 14.8	15 111.0	20 148.0	6 44.4	43 318.3
Sargent	County SO	4,313	1 23.2	2 46.4		3 69.6	14 324.6	33 765.1	1 23.2	54 1252.0
Sheridan	County SO	1,689					20 1184.1	22 1302.5	1 59.2	43 2545.9
Sioux	County SO	3,995	DID NOT REPORT IN 2001							
Slope	County SO	758	DID NOT REPORT IN 2001							

County	Reporting Jurisdiction	Population	Murder/ Non-Negligent Manslaughter	Forcible Rape	Robbery	Aggravated Assault	Burglary	Larceny/ Theft	Motor Vehicle Theft	Total Index Offenses
Stark	County SO	6,546		1 15.3			1 15.3	46 702.7	2 30.6	50 763.8
	Dickinson PD	15,817			5 31.6	3 19.0	61 385.7	383 2421.4	21 132.8	473 2990.5
	County Total	22,363		1 4.5	5 22.4	3 13.4	62 277.2	429 1918.3	23 102.8	523 2338.7
Steele	County SO	2,231	DID NOT REPORT IN 2001							
Stutsman	County SO	6,304				2 31.7	16 253.8	28 444.2	5 79.3	51 809.0
	Jamestown PD	15,340	1 6.5	8 52.2	2 13.0	5 32.6	51 332.5	251 1636.2	42 273.8	360 2346.8
	County Total	21,644	1 4.6	8 37.0	2 9.2	7 32.3	67 309.6	279 1289.0	47 217.2	411 1898.9
Towner	County SO	1,515					2 132.0			2 132.0
	Cando PD	1,326					3 226.2	2 150.8		5 377.1
	County Total	2,841					5 176.0	2 70.4		7 246.4
Traill	County SO	3,607		1 27.7	1 27.7	5 138.6	13 360.4	21 582.2	20 554.5	61 1691.2
	Mayville PD	1,929	DID NOT REPORT IN 2001							
	Hatton PD	698					3 429.8	11 1575.9	9 1289.4	23 3295.1
	Hillsboro PD	1,544	DID NOT REPORT IN 2001							
	Portland PD	597	DID NOT REPORT IN 2001							
	Reporting Agency Total	4,305		1 23.2	1 23.2	5 116.1	16 371.7	32 743.3	29 673.6	84 1951.2
Walsh	County SO	7,778				4 51.4	36 462.8	76 977.1	11 141.4	127 1632.8
	Grafton PD	4,461			1 22.4	2 44.8	19 425.9	233 5223.0	10 224.2	265 5940.4
	County Total	12,239			1 8.2	6 49.0	55 449.4	309 2524.7	21 171.6	392 3202.9
Ward	County SO	21,959		4 18.2	1 4.6	6 27.3	39 177.6	129 587.5	12 54.6	191 869.8
	Minot PD	36,126		12 33.2	6 16.6	17 47.1	126 348.8	932 2579.9	78 215.9	1171 3241.4
	County Total	58,085		16 27.5	7 12.1	23 39.6	165 284.1	1061 1826.6	90 154.9	1362 2344.8
Wells	County SO	2,458				2 81.4	9 366.2	9 366.2	5 203.4	25 1017.1
	Harvey PD	1,965	DID NOT REPORT IN 2001							
	Fessenden PD	617	DID NOT REPORT IN 2001							
Williams	County SO	7,161		2 27.9			29 405.0	66 921.7	8 111.7	105 1466.3
	Williston PD	12,361		7 56.6		2 16.2	19 153.7	224 1812.2	41 331.7	293 2370.4
	County Total	19,522		9 46.1		2 10.2	48 245.9	290 1485.5	49 251.0	398 2038.7

ARREST ANALYSIS

(This page intentionally left blank.)

Arrests in 2001

Although primarily an indication of law enforcement activity, the number of arrests reported does provide a limited profile of the perpetrators of crime, especially for those crimes that have high clearance rates. Differing arrest practices, policies and enforcement emphases among agencies influence the volume of arrests for various offenses, particularly those against public order such as vagrancy, disorderly conduct, and related violations. However, arrests for serious crimes, e.g., robbery or burglary, are more likely to be consistent and uniform throughout all jurisdictions across the state.

The UCR program requires that an arrest be counted for each separate occasion an individual is taken into custody. Although several charges may be lodged against a person at the time of the arrest, one arrest is counted for each separate time the person is taken into custody.

North Dakota law enforcement agencies reported 29,638 arrests in 2001. A total of 29,201 arrests was reported in 2000.

In 2001, approximately 28 percent of total arrests were arrests of juveniles.

Seventy-one percent of the total were arrests of males.

Approximately ten percent of the reported arrests were arrests for crime index offenses. Forty-nine percent of the arrests for crime index offenses were arrests of juveniles. In 2000, 53 percent of arrests for crime index offenses were arrests of juveniles.

The total of 11,716 reported arrests for DUI and liquor law violations represents 39.5 percent of the total arrests reported in the state of North Dakota in 2001. Arrests for DUI declined slightly from 4,304 in 2000 to 4,301 in 2001. Liquor law violation arrests increased 12.8 percent from 6,574 in 2000 to 7,415 reported in 2001.

Approximately 85 percent of total arrests were white; about 12 percent were Native American.

These statistics are provided by local law enforcement agencies that contribute to the North Dakota UCR program. No arrest figures for reservations in the state are included in these totals. Tribal law enforcement agencies do not participate in the state UCR program.

Total Arrests Reported, 2001

Offense Classification	Number Reported	Percent of Total Arrests
Murder/Non-Negligent Manslaughter	3	*
Negligent Manslaughter	1	*
Forcible Rape	32	0.1%
Robbery	19	0.1
Aggravated Assault	161	0.5
Burglary	343	1.2
Larceny/Theft	2,238	7.6
Motor Vehicle Theft	238	0.8
Other Assaults	1,664	5.6
Arson	60	0.2
Forgery and Counterfeiting	186	0.6
Fraud	1,883	6.4
Embezzlement	6	*
Stolen Property Offenses	113	0.4
Vandalism	713	2.4
Weapons Offenses	138	0.5
Prostitution	4	*
Other Sex Offenses	87	0.3
Drug Abuse Violations	1,658	5.6
Gambling	4	*
Offenses Against Family and Children	245	0.8
Driving Under the Influence	4,301	14.5
Liquor Law Violations	7,415	25.0
Disorderly Conduct	1,636	5.5
Vagrancy	4	*
All Other Offenses	5,338	18.0
Suspicion	0	*
Curfew and Loitering	325	1.1
Runaways	823	2.8
Arrest Total	29,638	100.0

* Less than 0.1 percent of total arrests.

Comparison of Reported Arrests, 2000-2001

Offense Classification	2000	2001	Percent Change
Murder/Non-Negligent Manslaughter	1	3	200.0%
Negligent Manslaughter	4	1	-75.0
Forcible Rape	39	32	-17.9
Robbery	15	19	26.7
Aggravated Assault	144	161	11.8
Burglary	305	343	12.5
Larceny/Theft	2,279	2,238	-1.8
Motor Vehicle Theft	247	238	-3.6
Other Assaults	1,704	1,664	-2.3
Arson	24	60	150.0
Forgery and Counterfeiting	137	186	35.8
Fraud	2,532	1,883	-25.6
Embezzlement	1	6	500.0
Stolen Property Offenses	98	113	15.3
Vandalism	671	713	6.3
Weapons Offenses	120	138	15.0
Prostitution	0	4	----
Other Sex Offenses	87	87	0.0
Drug Abuse Violations	1,501	1,658	10.5
Gambling	0	4	----
Offenses Against Family and Children	250	245	-2.0
Driving Under the Influence	4,304	4,301	-0.1
Liquor Law Violations	6,574	7,415	12.8
Disorderly Conduct	1,554	1,636	5.3
Vagrancy	2	4	100.0
All Other Offenses	5,285	5,338	1.0
Suspicion	0	0	----
Curfew and Loitering	345	325	-5.8
Runaways	978	823	-15.8
Arrest Total	29,201	29,638	1.5

Juvenile and Adult Arrests, 2001

Offense Classification	Juvenile	Adult	Age Not Reported	Total
Murder/Non-Negligent Manslaughter		3		3
Negligent Manslaughter		1		1
Forcible Rape	9	23		32
Robbery	3	16		19
Aggravated Assault	28	133		161
Burglary	175	166	2	343
Larceny/Theft	1,134	1,102	2	2,238
Motor Vehicle Theft	130	108		238
Other Assaults	439	1,221	4	1,664
Arson	52	8		60
Forgery and Counterfeiting	29	157		186
Fraud	32	1,782	69	1,883
Embezzlement		6		6
Stolen Property Offenses	54	59		113
Vandalism	503	204	6	713
Weapons Offenses	40	98		138
Prostitution		4		4
Other Sex Offenses	26	61		87
Drug Abuse Violations	311	1,344	3	1,658
Gambling	1	2	1	4
Offenses Against Family and Children	86	159		245
Driving Under the Influence	90	4,207	4	4,301
Liquor Law Violations	1,890	5,520	5	7,415
Disorderly Conduct	785	851		1,636
Vagrancy	3	1		4
All Other Offenses	1,379	3,952	7	5,338
Suspicion				0
Curfew and Loitering	325			325
Runaways	823			823
Arrest Total	8,347	21,188	103	29,638

Arrests by Gender, 2001

Offense Classification	Male	Female	Total
Murder/Non-Negligent Manslaughter	3		3
Negligent Manslaughter	1		1
Forcible Rape	32		32
Robbery	16	3	19
Aggravated Assault	143	18	161
Burglary	322	21	343
Larceny/Theft	1,461	777	2,238
Motor Vehicle Theft	188	50	238
Other Assaults	1,264	400	1,664
Arson	57	3	60
Forgery and Counterfeiting	100	86	186
Fraud	1,076	807	1,883
Embezzlement	3	3	6
Stolen Property Offenses	99	14	113
Vandalism	629	84	713
Weapons Offenses	129	9	138
Prostitution	1	3	4
Other Sex Offenses	85	2	87
Drug Abuse Violations	1,298	360	1,658
Gambling	1	3	4
Offenses Against Family and Children	171	74	245
Driving Under the Influence	3,450	851	4,301
Liquor Law Violations	4,887	2,528	7,415
Disorderly Conduct	1,236	400	1,636
Vagrancy	4		4
All Other Offenses	4,007	1,331	5,338
Suspicion			0
Curfew and Loitering	202	123	325
Runaways	305	518	823
Arrest Total	21,170	8,468	29,638

Arrests by Race, 2001

Offense Classification	White	Black	Native American	Asian	Total
Murder/Non-Negligent Manslaughter	3				3
Negligent Manslaughter	1				1
Forcible Rape	29	3			32
Robbery	13	1	5		19
Aggravated Assault	111	16	33	1	161
Burglary	274	7	60	2	343
Larceny/Theft	1,748	65	416	9	2,238
Motor Vehicle Theft	169	10	57	2	238
Other Assaults	1,298	84	276	6	1,664
Arson	55		5		60
Forgery and Counterfeiting	161	7	18		186
Fraud	1,781	24	78		1,883
Embezzlement	6				6
Stolen Property Offenses	87	4	21	1	113
Vandalism	608	13	90	2	713
Weapons Offenses	123	3	11	1	138
Prostitution	1	3			4
Other Sex Offenses	78	3	6		87
Drug Abuse Violations	1,456	41	153	8	1,658
Gambling	3		1		4
Offenses Against Family and Children	175	16	54		245
Driving Under the Influence	3,728	61	504	8	4,301
Liquor Law Violations	6,669	73	651	22	7,415
Disorderly Conduct	1,261	52	320	3	1,636
Vagrancy	4				4
All Other Offenses	4,444	159	724	11	5,338
Suspicion					0
Curfew and Loitering	277	5	43		325
Runaways	689	23	107	4	823
Arrest Total	25,252	673	3,633	80	29,638

Arrest Analysis by Reporting Jurisdiction

The table below contains arrest totals for each reporting agency in 2001. Juvenile and adult arrests as well as arrests reported without age information are included.

Arrests by Reporting Jurisdiction, 2001

Agency	Murder/Non-Neg. Mansl.	Negligent Manslaughter	Forcible Rape	Robbery	Aggravated Assault	Burglary	Larceny/Theft	Motor Vehicle Theft	Other Assault	Arson	Forgery/Counterfeiting	Fraud	Embezzlement	Stolen Property Offenses	Vandalism	Weapons Offenses	Prostitution	Other Sex Offenses	Drug Abuse Violations	Gambling Violations	Off. Against Fam & Children	DUI	Liquor Law Violations	Disorderly Conduct	Vagrancy	All Other Offenses	Suspicion	Curfew/Loitering	Runaway	Total
Adams SO					1		7		1						4						1	7	30	2		2				55
Barnes SO						2	1								1				1			15	30			7				57
Valley City PD	1				3	2	35		11	1	1	1	2		9	1		3	11		1	69	202	11		31		7	8	410
Benson SO	Did not report in 2001																													
Billings SO	Did not report in 2001																													
Bottineau SO						4	16		1						3	1		1	9			25	174			14				248
Bowman SO	Did not report in 2001																													
Bowman PD				4			1		4		1				1	1		5	3			1	14			17				52
Burke SO								2								1		2	7			1				8				21
Burleigh SO					2	5	1	2	21			242				2		3	67			82	92			1			17	537
Bismarck PD			2	3	38	24	439	29	202	13	14	7		3	76	14	3	9	163		9	375	465	270		446		92	134	2830
Cass SO					1	6		2	10					3	8	2			17		5	75	159	6		19		2	1	316
Fargo PD			14	13	27	69	535	47	356	8	52	39	1	31	73	24		10	298		126	695	1319	211		395			55	4398
West Fargo PD					1	6	27	8	68	21	4	6		5	25	5		1	110			210	203	31		90		20	49	890
NDSU PD						6	7					1		1		1			5			21	238	1		7			2	290
Cavalier SO					1	2	2	2	3			1			7			1				4		1						24
Dickey SO					2		1		3			40			1				3			6	16			1			3	76
Oakes PD	Did not report in 2001																													
Divide SO	Did not report in 2001																													
Crosby PD	Did not report in 2001																													
Dunn SO																						10								10
Eddy SO							3		1			58			14							7	3	1		2				89
Emmons SO			1			6	6					14	1		5							4	26	2		7				72
Linton PD									1															1						2
Carrington PD	Did not report in 2001																													
Golden Valley SO						4	6		10						4				11				22	2		14				73
Grand Forks SO					1	4	17	3	22	2		139			1	1			18		8	7	48	5		876			3	1155
Emerado PD	Did not report in 2001																													
Grand Forks PD			1	1	19	21	283	26	203		22	28		9	35	16		3	118		9	291	646	294		422		17	165	2629
Larimore PD															1								1							2
Northwood PD																			1					1		1				3
Thompson PD	Did not report in 2001																													

Agency	Murder/Non-Neg. Mansl.	Negligent Manslaughter	Forcible Rape	Robbery	Aggravated Assault	Burglary	Larceny/Theft	Motor Vehicle Theft	Other Assault	Arson	Forgery/Counterfeiting	Fraud	Embezzlement	Stolen Property Offenses	Vandalism	Weapons Offenses	Prostitution	Other Sex Offenses	Drug Abuse Violations	Gambling Violations	Off. Against Fam & Children	DUI	Liquor Law Violations	Disorderly Conduct	Vagrancy	All Other Offenses	Suspicion	Curfew/Loitering	Runaway	Total	
UND PD					1	2	2		1										6			28	133	2		24		3	1	203	
Grant SO					2		2	1	3		1								4				4							17	
Carson PD	Did not report in 2001																														
Elgin PD																															
Griggs SO	Did not report in 2001																														
Cooperstown PD	Did not report in 2001																														
Hettinger SO						1	3		1													3	6	2		1			1	18	
Kidder SO	1												29					1												31	
Steele PD									3													1	8							12	
LaMoure SO																															
Logan SO					1	2										1						2								6	
Napoleon PD	Did not report in 2001																														
McHenry SO								1	6													5	10	2		1				25	
Velva PD									1										3								1			5	
McIntosh SO					1																	2		1		1				5	
Wishek PD						1								1										4						6	
McKenzie SO		1				2			5						1							7	10			2				28	
Watford City PD							9		3						2	1			2			2	16	5	1	2		5		48	
McLean SO						7	1	1														27	20			5				61	
Mercer SO								1														25	26	1		1				54	
Beulah PD					1	1	10		6	1												3						2		97	
Hazen PD	Did not report in 2001																														
Stanton PD	Did not report in 2001																														
Morton SO						4	15	1	11			1		6	2	2		1	5			86	142	8		52			3	339	
Mandan PD					2	5	41	5	90	1	4	5		5	28	8		5	38			4	212	188	86		361		15	31	1134
Mountrail SO						2	3	1	2					1	1							2		1		6			1	20	
Nelson SO	Did not report in 2001																														
Oliver SO					1		2	2														2	1			1			1	10	
Pembina SO		3				2	3	1	16		1				7				29			52	71	2		57			1	245	
Cavalier PD						1	7	2	3							2			4			19	11	1		14				64	
Pierce SO						1		2				3							4			12	30	2		6				60	
Rugby PD							8								5				3			2	3	1		3				25	
Ramsey SO	Did not report in 2001																														
Devils Lake PD				1	10	25	123	10	25		7	3		22	38	2		3	44		55	115	411	161		174		33		1262	
Ransom SO			1		2	3	4	1	4			99			4						1	7	50	5		38		6	2	227	
Lisbon PD	Did not report in 2001																														
Renville SO						2		1	3		1	3			2				1			11		1		22				47	
Richland SO						7	10	9	20	3	3	141			9	1		4	12			59	125	25		39			3	470	
Wahpeton PD				1	1	5	19	3	22		6	4			9	1		4	9			44	165	11		15		9	7	335	
Rolette SO					1	9	4	2	2	1			1		2				1				4	2		7				36	
Sargent SO	1		1		2	5	4	1	8	2		20			1	1			15			14	49	3		42				169	
Sheridan SO									2		1								2			1				1				7	
Sioux SO	Did not report in 2001																														

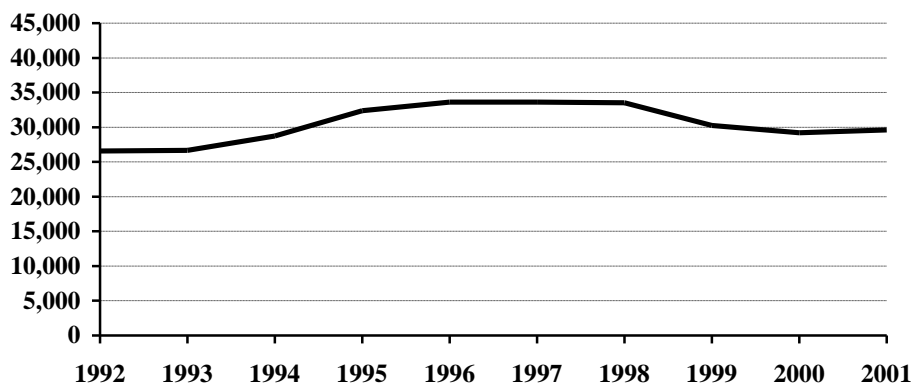
Agency	Murder/Non-Neg. Mansl.	Negligent Manslaughter	Forcible Rape	Robbery	Aggravated Assault	Burglary	Larceny/Theft	Motor Vehicle Theft	Other Assault	Arson	Forgery/Counterfeiting	Fraud	Embezzlement	Stolen Property Offenses	Vandalism	Weapons Offenses	Prostitution	Other Sex Offenses	Drug Abuse Violations	Gambling Violations	Off. Against Fam & Children	DUI	Liquor Law Violations	Disorderly Conduct	Vagrancy	All Other Offenses	Suspicion	Curfew/Loitering	Runaway	Total
Slope SO	Did not report in 2001																													
Stark SO							3		3			426							3			29	56	1		8				529
Dickinson PD					4	26	69	3	52	4	5	14		4	141	2		3	20		7	66	339	112		108		10	82	1071
Steele SO	Did not report in 2001																													
Stutsman SO						3	6	1	9						7			1	6			22	50	3		25			2	135
Jamestown PD	1		3		4	10	123	15	103	1	4	3		4	17	6	1	7	10		1	95	225	43		447		27	35	1185
Towner SO	Did not report in 2001																													
Cando PD									1			1			1				1			2	5							11
Traill SO					3	4	3	6	15					3					7	1	2	23	8			30			1	261
Mayville PD	Did not report in 2001																													
Hatton PD							5	7	2					1	1				1				3			1			7	28
Hillsboro PD	Did not report in 2001																													
Portland PD	Did not report in 2001																													
Walsh SO					3	9	7	2	5		2				1			5	4		1	18	38	1		10				106
Grafton PD					3		41	1	36		20				6	5		1	18			10	10	10	3	38				202
Ward SO			1		6	14	15	3	22		1	193			67				7			30	73	10		135			30	607
Minot PD			1		5	25	233	21	173	2	21	10	1	2	53	12		5	43	3	11	244	452	222		629		43	145	2356
Wells SO					2	5	2	1	10		3	40		1	5	3		2	7			3	42			34				160
Harvey PD	Did not report in 2001																													
Fessenden PD	Did not report in 2001																													
Williams SO						6	2		12						5				4			15	86	8		167			3	464
Williston PD			3		4		64	9	59		8	1		7	28	1		6	6		4	42	145	43		152		34	30	646
Highway Patrol								3	6		3			4	1	21		1	146			1028	692	9		112				2026
Drug Task Forces					2		2	1			1			1					348			1	3			187				546
Total	3	1	32	19	161	343	2238	238	1664	60	186	1883	6	113	713	138	4	87	1658	4	245	4301	7415	1636	4	5338	0	325	823	29638

Arrests 1992-2001

Arrest Summary

Year	Population	Arrest Total	% Change from Previous Year	Rate per 100,000 Pop.
1992	636,000	26,571	4.1%	4177.8
1993	635,000	26,670	0.4	4200.0
1994	638,000	28,737	7.8	4504.2
1995	641,000	32,399	12.7	5054.4
1996	644,000	33,614	3.8	5219.6
1997	641,000	33,634	0.1	5247.1
1998	638,000	33,548	-0.3	5258.3
1999	634,000	30,258	-9.8	4772.6
2000	642,200	29,201	-3.5	4547.0
2001	634,450	29,638	1.5	4671.5

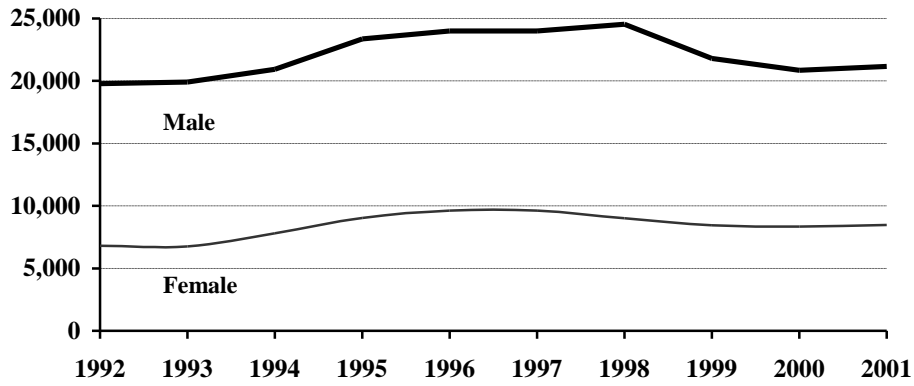
Arrest Totals, 1992-2001



Arrests by Gender, 1992-2001

Year	Male	% of Total	Female	% of Total	Total
1992	19,768	74.4%	6,803	25.6%	26,571
1993	19,913	74.7	6,757	25.3	26,670
1994	20,931	72.8	7,806	27.2	28,737
1995	23,363	72.1	9,036	27.9	32,399
1996	23,992	71.4	9,622	28.6	33,614
1997	24,011	71.4	9,623	28.6	33,634
1998	24,538	73.1	9,010	26.9	33,548
1999	21,801	72.1	8,457	27.9	30,258
2000	20,854	71.4	8,347	28.6	29,201
2001	21,170	71.4	8,468	28.6	29,638

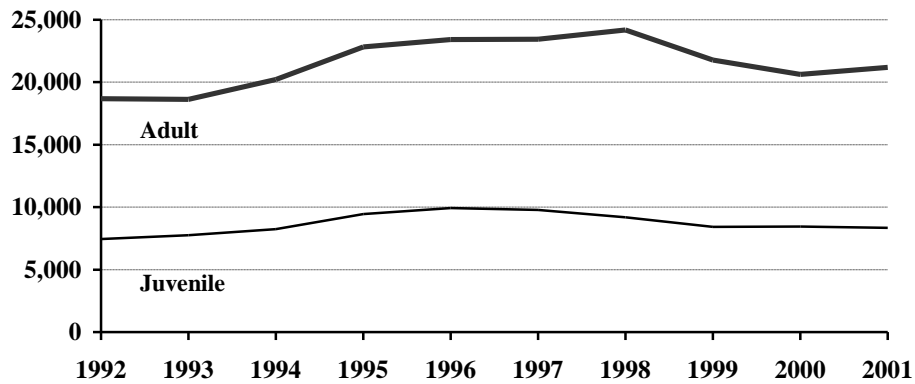
Arrests by Gender, 1992-2001



Juvenile and Adult Arrests, 1992-2001

Year	Juvenile	Percent of Total	Adult	Percent of Total	Age Not Reported	Percent of Total	Total
1992	7,441	28.0%	18,685	70.3%	445	1.7%	26,571
1993	7,743	29.0	18,617	69.8	310	1.2	26,670
1994	8,246	28.7	20,227	70.4	264	0.9	28,737
1995	9,432	29.1	22,820	70.4	147	0.5	32,399
1996	9,938	29.6	23,409	69.6	267	0.8	33,614
1997	9,780	29.1	23,428	69.7	426	1.3	33,634
1998	9,175	27.3	24,188	72.1	185	0.6	33,548
1999	8,429	27.9	21,769	71.9	60	0.2	30,258
2000	8,435	28.9	20,612	70.6	154	0.5	29,201
2001	8,347	28.2	21,188	71.5	103	0.3	29,638

Juvenile and Adult Arrests, 1992-2001



Arrests by Age Group, 1992-2001

Age Group	1992	1993	1994	1995	1996	1997	1998	1999	2000	2001
Under 10	200	207	199	281	208	204	205	202	203	186
10-12	809	754	765	895	881	953	758	628	708	819
13-14	1784	1827	2137	2396	2433	2429	2165	1877	1809	1686
15	1461	1395	1609	1796	2077	1980	1775	1586	1698	1629
16	1501	1873	1646	2044	2138	2115	2034	1977	1898	1943
17	1686	1687	1890	2020	2201	2099	2238	2159	2119	2084
18	1887	1810	1828	2306	2238	2210	2610	2356	2377	2501
19	2110	1783	2143	2238	2279	2330	2611	2693	2572	2845
20	1749	1753	1774	1997	1991	2170	2366	2220	2198	2565
21	1086	1057	1200	1320	1304	1240	1385	1186	1112	1220
22	1029	1057	1057	1149	1163	1166	1063	1039	957	913
23	809	858	930	940	1026	922	1040	807	830	817
24	703	677	859	951	929	911	821	741	654	739
25-29	2830	2841	3002	3242	3506	3451	3390	2858	2598	2397
30-34	2258	2347	2542	2910	3023	2709	2642	2230	2018	1932
35-39	1624	1711	1854	2278	2264	2494	2497	2166	1931	1926
40-44	1029	1046	1244	1431	1633	1710	1689	1500	1475	1536
45-49	592	659	717	901	918	958	967	919	908	895
50-54	373	378	463	485	516	523	513	515	483	448
55-59	213	226	225	262	251	266	270	234	250	191
60-64	149	122	126	154	143	153	103	107	81	77
65 +	244	292	263	256	225	215	221	198	168	186
Age Not Reported	445	310	264	147	267	426	185	60	154	103
Arrest Total	26571	26670	28737	32399	33614	33634	33548	30258	29201	29638

Arrests by Offense, 1992-2001

Offense Classification	1992	1993	1994	1995	1996	1997	1998	1999	2000	2001
Murder/Non-Neg. Manslaughter	8	9	3	11	11	3	5	6	1	3
Negligent Manslaughter	3	2	2	1	1	1	2	4	4	1
Forcible Rape	54	49	43	54	51	35	44	24	39	32
Robbery	29	22	31	31	38	30	28	28	15	19
Aggravated Assault	141	155	127	176	193	180	168	108	144	161
Burglary	555	513	407	374	410	413	426	409	305	343
Larceny/Theft	3492	3409	3346	3742	3718	3093	2671	2327	2279	2238
Motor Vehicle Theft	318	320	336	358	334	307	286	289	247	238
Other Assaults	1067	1227	1337	1536	1671	1550	1567	1651	1704	1664
Arson	31	19	25	34	24	36	33	16	24	60
Forgery and Counterfeiting	247	214	286	261	223	189	191	160	137	186
Fraud	4205	4255	5661	5839	6006	5491	4291	3274	2532	1883
Embezzlement		6	5	5	14	5	6	6	1	6
Stolen Property Offenses	176	172	140	156	204	159	150	84	98	113
Vandalism	819	874	844	806	631	855	774	709	671	713
Weapons Offenses	116	143	157	139	121	119	102	107	120	138
Prostitution	3	1	1	4	2		7	3		4
Other Sex Offenses	85	85	72	89	103	99	82	76	87	87
Drug Abuse Violations	517	643	779	799	1106	1242	1517	1456	1501	1658
Gambling	16	2	3	0	3	1	6	5		4
Off. Against Family & Children	334	271	229	344	283	327	401	200	250	245
Driving Under the Influence	4781	4418	4206	4439	4467	4777	5187	5179	4304	4301
Liquor Law Violations	4475	4188	4401	5109	5260	5521	6231	6377	6574	7415
Disorderly Conduct	1139	1253	1253	1579	1468	1487	1783	1568	1554	1636
Vagrancy	6		1	20		4	2	8	2	4
All Other Offenses	2722	3060	3509	4970	5602	6164	6392	4998	5285	5338
Suspicion	6					17		1		
Curfew and Loitering	364	409	495	414	561	486	347	382	345	325
Runaways	862	951	1038	1109	1109	1043	849	803	978	823
Arrest Total	26571	26670	28737	32399	33614	33634	33548	30258	29201	29638

Juvenile Arrests by Offense, 1992-2001

Offense Classification	1992	1993	1994	1995	1996	1997	1998	1999	2000	2001
Murder/Non-Neg. Manslaughter		2		9	1			1		
Negligent Manslaughter			1					1	1	
Forcible Rape	13	8	13	16	12	6	13	6	12	9
Robbery	8	14	8	13	10	13	8	9		3
Aggravated Assault	30	47	37	68	45	35	47	25	15	28
Burglary	272	226	197	208	201	222	201	202	134	175
Larceny/Theft	1972	1900	1846	2066	2056	1771	1372	1212	1285	1134
Motor Vehicle Theft	211	196	223	262	198	205	162	185	153	130
Other Assaults	316	368	379	467	517	424	420	401	448	439
Arson	26	13	19	24	20	25	23	10	17	52
Forgery and Counterfeiting	52	51	77	65	54	46	42	37	41	29
Fraud	13	23	19	16	28	20	28	17	16	32
Embezzlement		1		1						
Stolen Property Offenses	93	109	86	83	138	105	81	49	51	54
Vandalism	551	605	609	569	420	654	532	420	423	503
Weapons Offenses	56	64	61	62	50	34	30	27	31	40
Prostitution					2					
Other Sex Offenses	28	34	25	31	30	32	32	18	32	26
Drug Offenses	27	63	84	136	205	229	269	284	292	311
Gambling										1
Off. Against Family/Children	155	126	97	142	109	96	110	98	66	86
Driving Under the Influence	86	85	77	77	62	104	114	169	81	90
Liquor Law Violations	1297	1291	1426	1712	1900	1976	2169	2176	2039	1890
Disorderly Conduct	315	356	454	579	575	611	762	709	699	785
Vagrancy	2							1		3
All Other Offenses	689	801	975	1303	1635	1643	1564	1187	1277	1379
Suspicion	3									
Curfew and Loitering	364	409	495	414	561	486	347	382	344	325
Runaways	862	951	1038	1109	1109	1043	849	803	978	823
Juvenile Arrest Total	7441	7743	8246	9432	9938	9780	9175	8429	8435	8347

Juvenile Arrests by Gender, 1992-2001

Year	Male	% of Total	Female	% of Total	Total
1992	5,241	70.4%	2,200	29.6%	7,441
1993	5,452	70.4	2,291	29.6	7,743
1994	5,726	69.4	2,520	30.6	8,246
1995	6,423	68.1	3,009	31.9	9,432
1996	6,512	65.5	3,426	34.5	9,938
1997	6,363	65.1	3,417	34.9	9,780
1998	6,129	66.8	3,046	33.2	9,175
1999	5,456	64.7	2,973	35.3	8,429
2000	5,387	63.9	3,048	36.1	8,435
2001	5,298	63.5	3,049	36.5	8,347

Adult Arrests by Offense, 1992-2001

Offense Classification	1992	1993	1994	1995	1996	1997	1998	1999	2000	2001
Murder/Non-Neg. Manslaughter	7	7	3	2	10	3	5	5	1	3
Negligent Manslaughter	2	2	1	1	1	1	2	3	3	1
Forcible Rape	40	40	29	36	39	29	31	18	27	23
Robbery	21	8	23	18	28	17	20	19	15	16
Aggravated Assault	110	107	89	108	147	144	121	82	128	133
Burglary	280	283	204	164	208	185	220	205	166	166
Larceny/Theft	1505	1485	1472	1662	1656	1306	1292	1110	987	1102
Motor Vehicle Theft	100	121	106	93	133	99	124	104	93	108
Other Assaults	742	849	946	1067	1151	1106	1136	1244	1249	1221
Arson	5	6	5	10	4	11	10	6	7	8
Forgery and Counterfeiting	189	157	207	195	169	140	148	123	96	157
Fraud	3995	4108	5542	5771	5874	5354	4173	3243	2482	1782
Embezzlement		5	5	4	13	5	6	6	1	6
Stolen Property Offenses	82	54	54	71	66	53	68	35	46	59
Vandalism	260	260	230	235	209	190	242	287	246	204
Weapons Offenses	60	78	96	77	69	83	72	80	87	98
Prostitution	3	1	1	4			7	3		4
Other Sex Offenses	54	49	46	58	73	66	49	58	53	61
Drug Offenses	459	572	684	660	894	998	1248	1169	1206	1344
Gambling	16	2	3		3	1	6	5		2
Off. Against Family/Children	174	144	132	202	174	230	291	100	182	159
Driving Under the Influence	4632	4289	4102	4351	4364	4629	5051	5005	4214	4207
Liquor Law Violations	3139	2884	2942	3370	3323	3462	4033	4191	4493	5520
Disorderly Conduct	820	893	792	995	891	866	1017	856	854	851
Vagrancy	4		1	20		4	2	7	2	1
All Other Offenses	1983	2213	2512	3646	3910	4429	4814	3804	3974	3952
Suspicion	3					17		1		
Adult Arrest Total	18685	18617	20227	22820	23409	23428	24188	21769	20612	21188

Adult Arrests by Gender, 1992-2001

Year	Male	% of Total	Female	% of Total	Total
1992	14,204	76.0%	4,481	24.0%	18,685
1993	14,225	76.4	4,392	23.6	18,617
1994	15,004	74.2	5,223	25.8	20,227
1995	16,828	73.7	5,992	26.3	22,820
1996	17,283	73.8	6,126	26.2	23,409
1997	17,354	74.1	6,074	25.9	23,428
1998	18,280	75.6	5,908	24.4	24,188
1999	16,304	74.9	5,465	25.1	21,769
2000	15,361	74.5	5,251	25.5	20,612
2001	15,805	74.6	5,383	25.4	21,188

Drug Arrest Analysis

Drug offense arrests increased 10.5 percent from 1,501 in 2000 to 1,658 in 2001. The arrest totals shown should not be interpreted as the number of individuals arrested for drug offenses because it is possible that some individuals may have been arrested on more than one occasion for this offense.

Seventy-eight percent of drug arrests in 2001 were arrests of males.

Juveniles, persons under the age of 18, comprised 18.7 percent of the total in 2001.

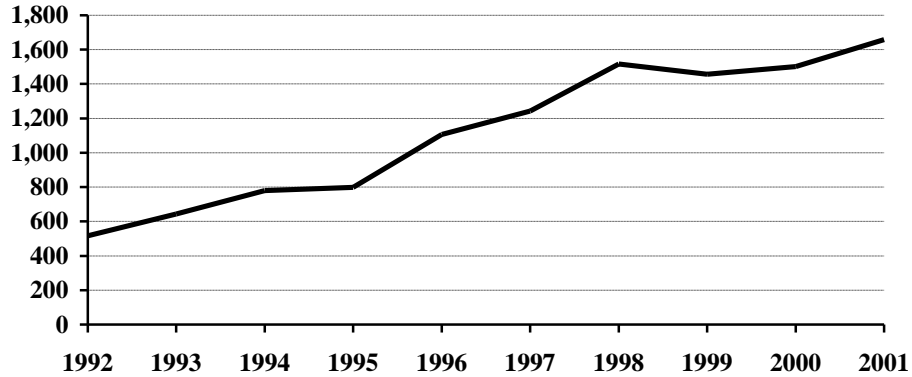
Approximately 86 percent of the drug arrests during the 10-year period were arrests for possession of drugs.

Eighty-one percent of the arrests for drug offenses during the period 1992-2001 involved marijuana.

Arrests for Drug Offenses, 1992-2001

Year	Total	Percent Change from Previous Year
1992	517	12.1%
1993	643	24.4
1994	779	21.2
1995	799	2.6
1996	1,106	38.4
1997	1,242	12.3
1998	1,517	22.1
1999	1,456	-4.0
2000	1,501	3.1
2001	1,658	10.5

Arrests for Drug Offenses, 1992-2001



Drug Arrests by Gender, 1992-2001

Year	Male	% of Total	Female	% of Total	Total
1992	446	86.3%	71	13.7%	517
1993	546	84.9	97	15.1	643
1994	659	84.6	120	15.4	779
1995	646	80.9	153	19.1	799
1996	888	80.3	218	19.7	1,106
1997	1,035	83.3	207	16.7	1,242
1998	1,260	83.1	257	16.9	1,517
1999	1,161	79.7	295	20.3	1,456
2000	1,222	81.4	279	18.6	1,501
2001	1,298	78.3	360	21.7	1,658

Drug Arrests by Age Category, 1992-2001

Year	Juvenile	Percent of Total	Adult	Percent of Total	Age Not Reported	Percent of Total	Total
1992	27	5.2%	459	88.8%	31	6.0%	517
1993	63	9.8	572	89.0	8	1.2	643
1994	84	10.8	684	87.8	11	1.4	779
1995	136	17.0	660	82.6	3	0.4	799
1996	205	18.5	894	80.8	7	0.6	1,106
1997	229	18.4	998	80.4	15	1.2	1,242
1998	269	17.7	1,248	82.3			1,517
1999	284	19.5	1,169	80.3	3	0.2	1,456
2000	292	19.5	1,206	80.3	3	0.2	1,501
2001	311	18.7	1,344	81.1	3	0.2	1,658

Drug Arrests by Age Group, 1992-2001

Age Group	1992	1993	1994	1995	1996	1997	1998	1999	2000	2001
Under 10							1			
10-12	3		1	3	1	4	6	2	1	3
13-14	5	14	11	19	38	35	27	33	38	36
15	3	10	14	26	33	44	49	47	51	50
16	4	21	21	39	67	55	75	104	84	95
17	12	18	37	49	66	91	111	98	118	127
18	20	32	53	72	106	122	158	138	145	151
19	27	35	54	74	109	105	133	133	130	172
20	26	48	40	66	79	102	97	93	100	143
21	21	24	29	38	46	52	87	62	73	115
22	25	29	44	29	45	50	60	80	73	75
23	22	20	34	18	29	38	54	56	50	63
24	22	31	32	23	42	46	37	56	42	42
25-29	108	126	131	79	139	143	185	144	145	155
30-34	116	126	119	111	134	116	150	147	146	131
35-39	46	65	84	101	99	127	154	125	137	133
40-44	17	22	47	32	36	66	84	76	91	103
45-49	6	10	14	9	24	24	33	39	52	43
50-54	1	4	1	7	3	6	10	14	16	12
55-59			2		2	1	5	6	6	3
60-64	1			1	1		1			2
65 +	1									1
No Age Data	31	8	11	3	7	15		3	3	3
Total	517	643	779	799	1106	1242	1517	1456	1501	1658

Drug Arrests by Type of Offense, 1992-2001

Year	Sale or Manufacture	% of Total	Possession	% of Total	Total
1992	137	26.5%	380	73.5%	517
1993	132	20.5	511	79.5	643
1994	200	25.7	579	74.3	779
1995	92	11.5	707	88.5	799
1996	183	16.5	923	83.5	1,106
1997	109	8.8	1,133	91.2	1,242
1998	257	16.9	1,260	83.1	1,517
1999	159	10.9	1,297	89.1	1,456
2000	188	12.5	1,313	87.5	1,501
2001	118	7.1	1,540	92.9	1,658

Drug Arrests by Age Category and Type of Offense, 1992-2001

Year	Juvenile		Adult		Age Not Reported	
	Sale or Manufacture	Possession	Sale or Manufacture	Possession	Sale or Manufacture	Possession
1992	5	22	122	337	10	21
1993	8	55	116	456	8	
1994	14	70	184	500	2	9
1995	14	122	78	582		3
1996	23	182	158	736	2	5
1997	24	205	82	916	3	12
1998	37	232	220	1,028		
1999	11	273	145	1,024	3	
2000	32	260	156	1,050		3
2001	7	304	111	1,233		3

Drug Arrests by Type of Drug, 1992-2001

Year	Opiates, Cocaine or Derivatives	Percent of Total	Marijuana	Percent of Total	Other Drugs or Narcotics	Percent of Total	Total
1992	23	4.4%	457	88.4%	37	7.2%	517
1993	23	3.6	585	91.0	35	5.4	643
1994	37	4.7	672	86.3	70	9.0	779
1995	21	2.6	687	86.0	91	11.4	799
1996	59	5.3	914	82.6	133	12.0	1,106
1997	39	3.1	1,050	84.5	153	12.3	1,242
1998	96	6.3	1,189	78.4	232	15.3	1,517
1999	53	3.6	1,173	80.6	230	15.8	1,456
2000	45	3.0	1,189	79.2	267	17.8	1,501
2001	33	2.0	1,221	73.6	404	24.4	1,658

Drug Arrests by Age Category and Type of Drug, 1992-2001

Year	Juvenile			Adult			Age Not Reported		
	Opiates, Cocaine or Deriv.	Marijuana	Other Drugs or Narcotics	Opiates, Cocaine or Deriv.	Marijuana	Other Drugs or Narcotics	Opiates, Cocaine or Deriv.	Marijuana	Other Drugs or Narcotics
1992	1	20	6	22	409	28		28	3
1993		61	2	23	518	31		6	2
1994	8	68	8	29	593	62		11	
1995		122	14	21	562	77		3	
1996	2	186	17	56	722	116	1	6	
1997	2	197	30	37	842	119		11	4
1998	5	227	37	91	962	195			
1999		260	24	52	911	206	1	2	
2000	4	263	25	41	925	240		1	2
2001		269	42	33	950	361		2	1

DUI Arrest Analysis

Reported DUI arrests declined from 4,304 in 2000 to 4,301 in 2001. The arrest totals should not be interpreted as the number of individuals arrested for DUI offenses because it is possible that some individuals may have been arrested on more than one occasion.

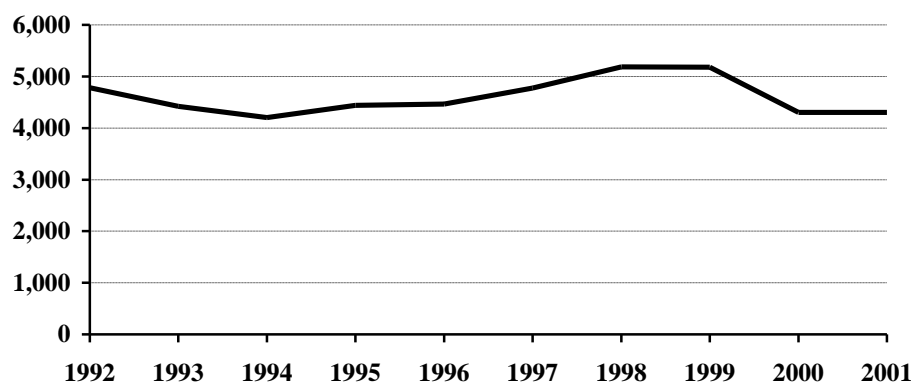
Approximately 80 percent of the DUI arrests in 2001 were arrests of males.

Juveniles, persons under the age of 18, made up 2.1 percent of the total in 2001.

DUI Arrests, 1992-2001

Year	DUI Arrests Reported	Percent Change from Previous Year
1992	4,781	3.8 %
1993	4,418	-7.6
1994	4,206	-4.8
1995	4,439	5.5
1996	4,467	0.6
1997	4,777	6.9
1998	5,187	8.6
1999	5,179	-0.2
2000	4,304	-16.9
2001	4,301	-0.1

DUI Arrests, 1992-2001



DUI Arrests by Gender, 1992-2001

Year	Male	% of Total	Female	% of Total	Total
1992	3,987	83.4%	794	16.6%	4,781
1993	3,651	82.6	767	17.4	4,418
1994	3,481	82.8	725	17.2	4,206
1995	3,672	82.7	767	17.3	4,439
1996	3,652	81.8	815	18.2	4,467
1997	3,917	82.0	860	18.0	4,777
1998	4,185	80.7	1,002	19.3	5,187
1999	4,149	80.1	1,030	19.9	5,179
2000	3,437	79.9	867	20.1	4,304
2001	3,450	80.2	851	19.8	4,301

DUI Arrests by Age Category, 1992-2001

Year	Juvenile	Percent of Total	Adult	Percent of Total	Age Not Reported	Percent of Total	Total
1992	86	1.8%	4,632	96.9%	63	1.3%	4,781
1993	85	1.9	4,289	97.1	44	1.0	4,418
1994	77	1.8	4,102	97.5	27	0.6	4,206
1995	77	1.7	4,351	98.0	11	0.2	4,439
1996	62	1.4	4,364	97.7	41	0.9	4,467
1997	104	2.2	4,629	96.9	44	0.9	4,777
1998	114	2.2	5,051	97.4	22	0.4	5,187
1999	169	3.3	5,005	96.6	5	0.1	5,179
2000	81	1.9	4,214	97.9	9	0.2	4,304
2001	90	2.1	4,207	97.8	4	0.1	4,301

DUI Arrests by Age Group, 1992-2001

Age Group	1992	1993	1994	1995	1996	1997	1998	1999	2000	2001
Under 10						1				
10-12		1		1				2		
13-14	1	1	1	2	2	3	2	4	1	1
15	10	10	9	9	10	8	10	14	3	6
16	22	22	12	16	13	40	42	32	30	35
17	53	51	55	49	37	52	60	117	47	48
18	116	104	100	94	107	103	158	141	125	112
19	162	130	123	121	112	143	174	228	146	135
20	166	151	139	143	144	180	181	228	155	145
21	231	224	222	205	214	234	272	274	251	269
22	237	226	195	203	212	225	203	269	240	232
23	186	183	175	163	195	156	234	220	205	197
24	193	141	143	189	185	162	194	203	170	209
25-29	868	760	670	690	702	755	777	770	640	641
30-34	812	778	751	756	713	711	713	641	520	526
35-39	587	575	565	617	624	717	752	754	529	519
40-44	416	375	383	435	475	506	566	493	473	499
45-49	238	255	262	313	295	293	396	351	349	337
50-54	145	149	162	173	159	191	188	207	185	187
55-59	100	88	86	111	88	110	107	101	116	78
60-64	73	54	52	59	56	69	58	50	42	43
65 +	102	96	74	79	83	74	78	75	68	78
No Age Data	63	44	27	11	41	44	22	5	9	4
Total	4781	4418	4206	4439	4467	4777	5187	5179	4304	4301

UCR OFFENSE DEFINITIONS

(This page intentionally left blank.)

UNIFORM CRIME REPORTING OFFENSE DEFINITIONS

Offenses in Uniform Crime Reporting are divided into two groups designated as Part I and Part II crimes. Information on the number of Part I offenses known to law enforcement, the number cleared by arrest or exceptional means, and the number of persons arrested is reported monthly. Arrest data are reported for Part I and Part II offenses. The Crime Index is composed of offenses 1-7 with the exception as noted in item 1 below.

NOTE: The classifications of these offenses for UCR reporting purposes are based on law enforcement investigation as opposed to determination by a court, medical examiner, jury, or other judicial hearing.

PART I OFFENSES:

1. CRIMINAL HOMICIDE

a. Murder and Non-Negligent Manslaughter

The willful (non-negligent) killing of one human being by another. Deaths caused by negligence, attempts to kill, assaults to kill, suicides, accidental deaths, and justifiable homicides are excluded. Justifiable homicides are limited to: (1) the killing of a felon by a law enforcement officer in the line of duty, and (2) the killing of a felon by a private citizen.

b. Manslaughter by Negligence

The killing of another person through gross negligence. Excludes traffic fatalities. While manslaughter by negligence is a Part I crime, it is not included in the Crime Index.

2. FORCIBLE RAPE

The carnal knowledge of a female forcibly and against her will. Included are rapes by force and attempts or assaults to rape. Statutory offenses (no force used -- victim under age of consent) are excluded.

3. ROBBERY

The taking or attempting to take anything of value from the care, custody, or control of a person or persons by force or threat of force or violence, or putting the victim in fear.

4. AGGRAVATED ASSAULT

An unlawful act by one person upon another for the purpose of inflicting severe or aggravated bodily injury. This type of assault usually is accompanied by the use of a weapon or by a means likely to produce death or great bodily harm. Simple assaults are excluded.

5. BURGLARY

Breaking or entering. The unlawful entry of a structure to commit a felony or theft. Attempted forcible entry is included.

6. LARCENY/THEFT

The unlawful taking, carrying, leading, or riding away of property from the possession or constructive possession of another. Examples are thefts of bicycles or automobile accessories, shoplifting, pocket-picking, or the stealing of any property or article that is not taken by force and violence or by fraud. Attempted larcenies are included. Embezzlement, "con" games, forgery, worthless checks, etc., are excluded.

7. MOTOR VEHICLE THEFT

The theft or attempted theft of a motor vehicle. A motor vehicle is self-propelled and runs on the surface and not on rails. Specifically excluded from this category are motorboats, construction equipment, airplanes, and farming equipment.

8. ARSON

Any willful or malicious burning or attempting to burn, with or without intent to defraud, a dwelling house, public building, motor vehicle, personal property of another, etc.

PART II OFFENSES:

9. OTHER ASSAULTS (SIMPLE)

Assaults or attempted assaults where no weapon was used or which did not result in serious or aggravated injury to the victim.

10. FORGERY AND COUNTERFEITING

Making, altering, uttering, or possessing, with the intent to defraud, anything false which is made to appear true. Attempts are included.

11. FRAUD

Fraudulent conversion and obtaining money or property by false pretenses. Included are larceny by bailee and bad checks except forgeries and counterfeiting. Attempts are included.

12. EMBEZZLEMENT

Misappropriation or misapplication of money or property entrusted to one's care, custody or control. Attempts are included.

13. STOLEN PROPERTY -- BUYING, RECEIVING, POSSESSING

Buying, receiving, or possessing stolen property, including attempts.

14. VANDALISM

Willful or malicious destruction, injury, disfigurement, or defacement of any public or private property, real or personal, without consent of the owner or person having custody or control. Attempts are included.

15. WEAPON OFFENSES -- CARRYING, POSSESSING, ETC.

All violations of regulations or statutes controlling the carrying, using, possessing, furnishing, and manufacturing of deadly weapons or silencers. Attempts are included.

16. PROSTITUTION AND COMMERCIALIZED VICE

Sex offenses of a commercialized nature, such as prostitution, keeping a bawdy house, procuring, or transporting women for immoral purposes. Attempts are included.

17. OTHER SEX OFFENSES (except forcible rape, prostitution and commercialized vice)

Statutory rape and offenses against chastity, common decency, morals and the like. Attempts are included.

18. DRUG ABUSE VIOLATIONS

State and local offenses relating to narcotic and non-narcotic drugs, such as unlawful possession, sale, use, growing and manufacturing of narcotic and non-narcotic drugs. Attempts are included.

19. GAMBLING

Promoting, permitting, or engaging in illegal gambling.

20. OFFENSES AGAINST FAMILY AND CHILDREN

Non-support, neglect, desertion, or abuse of family and children.

21. DRIVING UNDER THE INFLUENCE

Driving or operating any vehicle or common carrier while drunk or under the influence of liquor or drugs.

22. LIQUOR LAWS

State or local liquor law violations, except "drunkenness" (offense 23) and "driving under the influence" (offense 21).

23. DRUNKENNESS

Drunkenness or intoxication. Excluded is "driving under the influence" (offense 21). This is not a crime in North Dakota, but is included in the national program.

24. DISORDERLY CONDUCT

Breach of peace.

25. VAGRANCY

Vagabondage, begging, loitering, etc.

26. ALL OTHER OFFENSES

All violations of state or local laws, except offenses 1-25 and traffic offenses.

27. SUSPICION

No specific offense; suspect released without formal charges being placed.

28. CURFEW AND LOITERING

Offenses relating to violation of local curfew and loitering ordinances where such laws exist.

29. RUNAWAYS

Limited to juveniles taken into protective custody under provisions of local statutes.

**FULL-TIME LAW
ENFORCEMENT EMPLOYEES**

(This page intentionally left blank.)

**NUMBER OF FULL-TIME LAW ENFORCEMENT EMPLOYEES
REPORTED BY UCR AGENCIES
AS OF OCTOBER 31, 2001**

Agency	Law Enforcement Officers		Civilian Personnel		Total Full-Time			Population
	Male	Female	Male	Female	Male	Female	Total	
Adams SO	3				3		3	2,562
Barnes SO	5	1		1	5	2	7	4,889
Valley City PD	11	1	2	3	13	4	17	6,744
Benson SO	4				4		4	6,880
Billings SO	3			1	3	1	4	877
Bottineau SO	10		3	1	13	1	14	7,063
Bowman SO	2				2		2	1,622
Bowman PD	2	1			2	1	3	1,581
Burke SO	3	1			3	1	4	2,215
Burleigh SO	31	1	19	12	50	13	63	13,716
Bismarck PD	74	6	5	22	79	28	107	54,862
Cass SO	42	13	9	13	51	26	77	17,384
Fargo PD	94	14	1	33	95	47	142	89,507
West Fargo PD	21	2	2	8	23	10	33	14,760
NDSU PD	9		1	1	10	1	11	
Cavalier SO	5		3	3	8	3	11	4,773
Dickey SO	4		1		5		5	3,733
Oakes PD	3		1		4		4	1,955
Divide SO	2				2		2	1,179
Crosby PD	2				2		2	1,076
Dunn SO	3			1	3	1	4	3,557
Eddy SO	4	1			4	1	5	2,724
Emmons SO	2				2		2	2,974
Linton PD	2				2		2	1,305
Foster SO	2			1	2	1	3	1,473
Carrington PD	NR							2,241
Golden Valley SO	3			1	3	1	4	1,901
Grand Forks SO	21			6	21	6	27	12,724
Grand Forks PD	73	6	5	11	78	17	95	48,726
Larimore PD	2				2		2	1,416
Northwood PD	2				2		2	947
Emerado PD	NR							504
Thompson PD	1				1		1	994
UND PD	10		2	2	12	2	14	
Grant SO	2				2		2	1,841
Carson PD	NR							315
Elgin PD	1				1		1	651
Griggs SO	4				4		4	1,681
Cooperstown PD	NR							1,040
Hettinger SO	NR							2,682
Kidder SO	1			1	1	1	2	1,968
Steele PD	1				1		1	752
LaMoure SO	4			1	4	1	5	4,644
Logan SO	2				2		2	1,521
Napoleon PD	1				1		1	847
McHenry SO	4			1	4	1	5	4,879
Velva PD	1				1		1	1,036
McIntosh SO	3				3		3	2,153
Wishek PD	2				2		2	1,108
McKenzie SO	5			3	5	3	8	4,250
Wattford City PD	3	1			3	1	4	1,418
McLean SO	20		1	3	21	3	24	9,199
Mercer SO	12			5	12	5	17	2,658
Beulah PD	5			1	5	1	6	3,114
Hazen PD	4				4		4	2,427
Stanton PD	1				1		1	341
Morton SO	18		7	6	25	6	31	8,482
Mandan PD	27	1	2	5	29	6	35	16,516
Mountrail SO	4	1		4	4	5	9	6,551

Agency	Law Enforcement Officers		Civilian Personnel		Total Full-Time			Population
	Male	Female	Male	Female	Male	Female	Total	
Nelson SO	4			1	4	1	5	3,670
Oliver SO	2			1	2	1	3	2,040
Pembina SO	13		1	5	14	5	19	6,963
Cavalier PD	4				4		4	1,518
Pierce SO	3			4	3	4	7	1,715
Rugby PD	4				4		4	2,904
Ramsey SO	5			1	5	1	6	4,785
Devils Lake PD	12	3		2	12	5	17	7,135
Ransom SO	4	1			4	1	5	3,555
Lisbon PD	2	1			2	1	3	2,264
Renville SO	4	1			4	1	5	2,578
Richland SO	12		7	3	19	3	22	9,299
Wahpeton PD	11	2		1	11	3	14	8,482
Rolette SO	9		2	1	11	1	12	13,509
Sargent SO	3			1	3	1	4	4,313
Sheridan SO	2				2		2	1,689
Sioux SO	1				1		1	3,995
Slope SO	1				1		1	758
Stark SO	9			3	9	3	12	6,546
Dickinson PD	23	1	1	11	24	12	36	15,817
Steele SO	3				3		3	2,231
Stutsman SO	8		2		10		10	6,304
Jamestown PD	26	3		4	26	7	33	15,340
Towner SO	2			1	2	1	3	1,515
Cando PD	3				3		3	1,326
Traill SO	4			4	4	4	8	3,607
Hillsboro PD	2				2		2	1,544
Mayville/Portland PD	3				3		3	2,526
Hatton PD	1				1		1	698
Walsh SO	12		4	2	16	2	18	7,778
Grafton PD	10			1	10	1	11	4,461
Ward SO	19	2	9	12	28	14	42	21,959
Minot PD	53	4	5	17	58	21	79	36,126
Wells SO	3			1	3	1	4	2,458
Harvey PD	3				3		3	1,965
Fessenden PD	1				1		1	617
Williams SO	19	2	4	2	23	4	27	7,161
Williston PD	20	1	1	7	21	8	29	12,361
Highway Patrol	117	6	36	27	153	33	186	
Total	1,017	77	136	262	1,153	339	1,492	634,450