

**Office of Attorney General
Bureau of Criminal Investigation**

Crime in North Dakota, 2002

A Summary of Uniform Crime Report Data

**Wayne Stenehjem
Attorney General**

**Prepared by
Colleen Weltz
UCR Program Manager
2003**

INTRODUCTION

The North Dakota Uniform Crime Reporting (UCR) program involves the collection, compilation, and analysis of crime and arrest statistics reported by the various local law enforcement agencies throughout the state. Forty-two sheriffs' departments and 32 police departments reported to the UCR program in 2002.

Law enforcement agencies may report UCR data in two ways:

INCIDENT-BASED REPORTING: Law enforcement agencies use a standard incident form to collect data on each incident reported to their respective agencies. This form collects much more detailed information than is collected using summary reporting. Data collected includes: type of incident, where and when the incident took place, victim characteristics, suspect/arrestee characteristics, property involved in the incident, etc. A total of 71 police departments and sheriffs' departments reported incident data for all or part of 2002.

In order to continue the statistical time-series begun with summary reporting, computer programs were written to extract summary data from the incident data reported. Crime in North Dakota, 2002 is a report on summary data.

SUMMARY REPORTING: Law enforcement agencies use a tally system to report the number of crime index offenses and arrests for each month. Three law enforcement agencies reported summary data in 2002.

The federal counterpart of the North Dakota UCR program is the National UCR program under the direction of the Federal Bureau of Investigation (FBI). The UCR program has been used nationally and in North Dakota for many years to measure the extent, distribution and fluctuation of crime through the crime index. The crime index is not an absolute measure, but rather an indication of the amount and type of crime occurring in any given jurisdiction. The index is composed of seven crimes that are sub-classified as follows:

VIOLENT CRIME: Murder/Non-Negligent Manslaughter
Forcible Rape
Robbery
Aggravated Assault

PROPERTY CRIME: Burglary
Larceny/Theft
Motor Vehicle Theft

A Modified Crime Index is also calculated at the federal level. This includes arson as the fourth property crime and the eighth index offense. Data on arson is not included in this report.

Prior to an offense becoming recorded in the UCR program, it must be reported to the local law enforcement officials and reported by the local agency to the UCR program. Consequently, the UCR program only reflects reported crimes. Reporting of crimes depends on several factors,

including actual perception of an act as a crime, the probability of loss of status for reporting (as in cases of rape), and the perceived probability of action on the part of the law enforcement agency contacted.

Several types of data are gathered, including:

Offense data

- Number of known crime index offenses
- Type and value of stolen property
- Additional information on homicides and arson
- Law enforcement officers killed or assaulted

Arrest and Clearance Data

- Number and type of offenses cleared
- Number and type of index offenses involving juveniles cleared
- Number of persons arrested, by offense
- Characteristics of persons arrested (age, sex, race)

To allow for comparison among several geographic or jurisdictional areas with differing populations or to allow comparisons across time in an area undergoing population fluctuations, the UCR program provides for the calculation of crime rates to remove any potential biases created by population differences. Because a rate relates the incidence of activity to population, it is possible to measure annual fluctuations in criminal activity by comparing rates of crime reported in any given year with those reported in other years. National publications report crime rates calculated based on the number of reported offenses per 100,000 population. This publication provides crime rate information calculated in the same manner.

TABLE OF CONTENTS

Introduction	i
Table of Contents	iii
North Dakota Crime Summary, 2002	v
Crime Index Offense Analysis	1
Violent Crime	7
Murder/Non-Negligent Manslaughter	9
Forcible Rape	11
Robbery	13
Aggravated Assault	16
Property Crime	18
Burglary	20
Larceny/Theft	23
Motor Vehicle Theft	26
Crime Index Offenses by Reporting Jurisdiction	29
Arrest Analysis	33
Arrests in 2002	35
Arrest Analysis by Reporting Jurisdiction	41
Arrests 1993-2002	44
Drug Arrest Analysis	50
DUI Arrest Analysis	54
UCR Offense Definitions	57
Full-Time Law Enforcement Employees	63

(This page intentionally left blank.)

NORTH DAKOTA CRIME SUMMARY, 2002

In 2002, 15,239 crime index offenses were reported by local law enforcement agencies. This is an increase of 5.7 percent from the total of 14,411 reported in 2001.

Crime index offenses include: murder/non-negligent manslaughter, forcible rape, robbery, aggravated assault, burglary, larceny/theft, and motor vehicle theft.

The Census Bureau estimate of North Dakota's population for 2002 is 634,110. The index crime rate per 100,000 population for 2002 was 2403.2. The index crime rate for 2001 was 2271.4 per 100,000 population. This is a 5.8 percent increase in the crime rate.

The total number of reported violent index crimes (murder, rape, robbery, and aggravated assault) was 553. This represents an increase of 7.6 percent from the total of 514 reported in 2001. In 2000, 562 violent index crimes were reported.

Violent crime accounted for 3.6 percent of total index crimes reported in 2002.

Collectively, property crimes (burglary, larceny/theft and motor vehicle theft) increased by 5.7 percent from 13,897 reported in 2001 to 14,686 reported in 2002.

Property crime accounted for 96.4 percent of total crime index offenses reported in 2002.

The 11,399 larceny/theft offenses reported in 2002 accounted for 74.8 percent of total index crimes.

More than \$12.4 million worth of property was reported stolen in 2002, with 30.6 percent of that amount reported as recovered by law enforcement officials.

North Dakota law enforcement agencies reported 29,145 arrests in 2002. A total of 29,638 arrests was reported in 2001.

In 2002, juvenile arrests accounted for 26.6 percent of the total arrests. Juvenile arrests were 49.5 percent of the total arrests of crime index offenses.

The number of reported arrests for DUI increased from 4,301 reported in 2001 to 4,467 reported in 2002.

Arrests for drug offenses increased 5.7 percent from a 2001 total of 1,658 to 1,752 in 2002.

(This page intentionally left blank.)

CRIME INDEX OFFENSE ANALYSIS

(This page intentionally left blank.)

Crime Index Offenses

Crime index offenses include the violent crimes of murder/non-negligent manslaughter, forcible rape, robbery, and aggravated assault, and the property crimes of burglary, larceny/theft, and motor vehicle theft.

In 2002, 15,239 crime index offenses were reported by local law enforcement agencies. This is an increase of 5.7 percent from the total of 14,411 reported in 2001.

The Census Bureau estimate of North Dakota's population for 2002 is 634,110. Based on that total, the index crime rate per 100,000 population for 2002 was 2403.2, as compared to 2271.4 for 2001. See the crime index offense summary on page 5 for crime rate information for the period 1993-2002.

Approximately 21 percent of crime index offenses were reported as cleared by arrest or exceptional means. The UCR program defines an offense as "cleared" by law enforcement when at least one person is arrested, charged with the commission of the offense, and turned over to the court for prosecution. Several crimes may be cleared by the arrest of one person, while the arrests of many persons may clear only one offense. Law enforcement agencies may clear a crime by exceptional means when some element beyond law enforcement control precludes the placing of formal charges against the offender. Examples of circumstances that allow such clearances are the death of the offender (suicide, justifiably killed by police or private citizen, etc.); the victim's refusal to cooperate with prosecution after the offender has been identified; or the denial of extradition.

In 2002, 3,041 arrests were reported for crime index offenses. Of that total, 49.5 percent were arrests of juveniles.

More than \$12.4 million worth of property was reported stolen in 2002, with 30.6 percent of that amount reported as recovered by law enforcement officials.

Crime Index Offenses Reported, 2002

Crime Index Offense	Number Reported	Percent of Total Index Offenses
Murder/Non-Negligent Manslaughter	6	*
Forcible Rape	167	1.1%
Robbery	71	0.5
Aggravated Assault	309	2.0
Violent Crime Subtotal	553	3.6
Burglary	2,250	14.8
Larceny/Theft	11,399	74.8
Motor Vehicle Theft	1,037	6.8
Property Crime Subtotal	14,686	96.4
Crime Index Offense Total	15,239	100.0

*Less than 0.1 percent of total index offenses

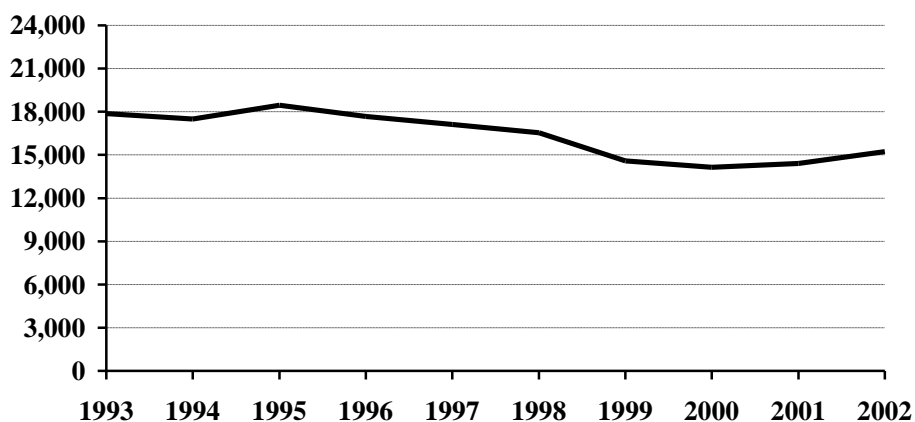
Comparison of Crime Index Offenses Reported, 2001-2002

Crime Index Offense	2001	2002	Percent Change
Murder/Non-Negligent Manslaughter	9	6	-33.3%
Forcible Rape	159	167	5.0
Rape by Force	153	158	3.3
Attempts to Rape	6	9	50.0
Robbery	71	71	0.0
Firearm	19	11	-42.1
Knife or Cutting Instrument	7	14	100.0
Other Dangerous Weapon	13	10	-23.1
Strong Arm – No Weapon	32	36	12.5
Aggravated Assault	275	309	12.4
Firearm	11	8	-27.3
Knife or Cutting Instrument	48	68	41.7
Other Dangerous Weapon	63	91	44.4
Hands, Fists, Feet, Etc.	153	142	-7.2
Violent Crime Subtotal	514	553	7.6
Burglary	2,027	2,250	11.0
Forcible Entry	1,072	1,067	-0.5
Unlawful Entry – No Force	810	1,020	25.9
Attempted Forcible Entry	145	163	12.4
Larceny/Theft	10,870	11,399	4.9
Motor Vehicle Theft	1,000	1,037	3.7
Autos	823	864	5.0
Trucks and Buses	99	101	2.0
Other Vehicles	78	72	-7.7
Property Crime Subtotal	13,897	14,686	5.7
Crime Index Offense Total	14,411	15,239	5.7

Crime Index Offenses, 1993-2002

Crime Index Offense	1993	1994	1995	1996	1997	1998	1999	2000	2001	2002
Murder/Non-Neg. Mansl.	22	5	9	12	10	7	11	8	9	6
Forcible Rape	150	154	151	175	150	169	147	173	159	167
Robbery	54	70	64	72	45	78	70	62	71	71
Aggravated Assault	332	299	360	335	344	312	217	319	275	309
Burglary	2346	2080	2275	2008	2271	2194	2200	2004	2027	2250
Larceny/Theft	14031	13898	14435	13898	13163	12704	10956	10642	10870	11399
Motor Vehicle Theft	940	981	1164	1182	1139	1073	989	942	1000	1037
Crime Index Offense Total	17875	17487	18458	17682	17122	16537	14590	14150	14411	15239

Crime Index Offense Totals, 1993-2002



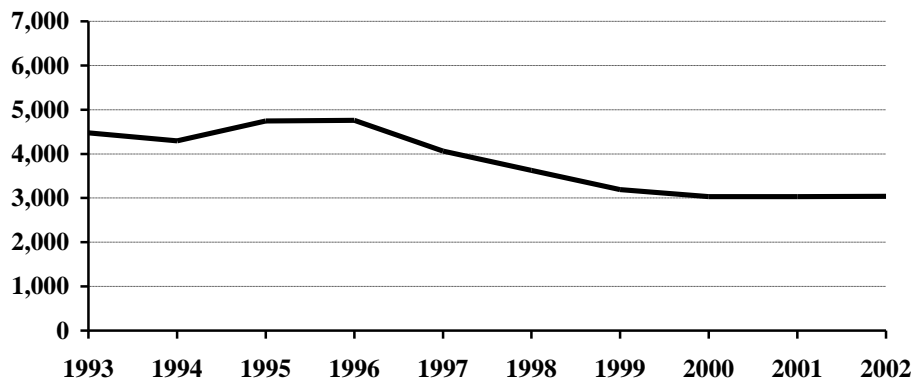
Crime Index Offense Summary

Year	Population	Crime Index Offense Total	% Change in Number from Previous Year	Crime Rate per 100,000 Population	% Change in Rate from Previous Year	Percent Cleared
1993	635,000	17,875	-3.0%	2815.0	-2.9%	26.7%
1994	638,000	17,487	-2.2	2740.9	-2.6	25.7
1995	641,000	18,458	5.6	2879.6	5.1	28.1
1996	644,000	17,682	-4.2	2745.7	-4.6	29.9
1997	641,000	17,122	-3.2	2671.1	-2.7	29.0
1998	638,000	16,537	-3.4	2592.0	-3.0	26.5
1999	634,000	14,590	-11.8	2301.3	-11.2	27.2
2000	642,200	14,150	-3.0	2203.4	-4.3	22.9
2001	634,450	14,411	1.8	2271.4	3.1	21.6
2002	634,110	15,239	5.7	2403.2	5.8	21.1

Arrests for Crime Index Offenses, 1993-2002

Year	Juvenile	Adult	Age Not Reported	Total
1993	2,393	2,051	33	4,477
1994	2,324	1,926	43	4,293
1995	2,642	2,083	21	4,746
1996	2,523	2,221	11	4,755
1997	2,252	1,783	26	4,061
1998	1,803	1,813	12	3,628
1999	1,640	1,543	8	3,191
2000	1,599	1,417	14	3,030
2001	1,479	1,551	4	3,034
2002	1,505	1,526	10	3,041

Arrests for Crime Index Offenses, 1993-2002



Property Loss Due to Crime Index Offenses, 1993-2002

Year	Population	Total Property Loss	% Change from Previous Year	Property Loss per Capita	Percent Recovered
1993	635,000	\$9,439,645	-15.8%	\$14.87	33.6%
1994	638,000	9,696,414	2.7	15.20	48.2
1995	641,000	11,070,248	14.2	17.27	32.2
1996	644,000	11,022,665	-0.4	17.12	34.4
1997	641,000	12,507,812	13.5	19.51	33.3
1998	638,000	11,429,270	-8.6	17.91	30.8
1999	634,000	11,201,544	-2.0	17.67	28.6
2000	642,200	10,308,899	-8.0	16.05	31.3
2001	634,450	11,420,051	10.8	18.00	33.2
2002	634,110	12,457,277	9.1	19.65	30.6

Violent Crime

Violent crime includes the offenses of murder/non-negligent manslaughter, forcible rape, robbery, and aggravated assault. (See the UCR offense definitions section beginning on page 57 of this publication for definitions of these and other offenses.)

In 2002, 553 violent crimes were reported in North Dakota. This is a 7.6 percent increase from the 2001 total of 514 violent offenses reported. In 2000, 562 violent crimes were reported.

Violent crime comprised 3.6 percent of reported crime index offenses in North Dakota in 2002.

The violent crime rate for 2002 is 87.2 per 100,000, as compared to 81.0 per 100,000 in 2001. This is a 7.7 percent increase in the violent crime rate. In 2000, the violent crime rate was 87.5 per 100,000 population.

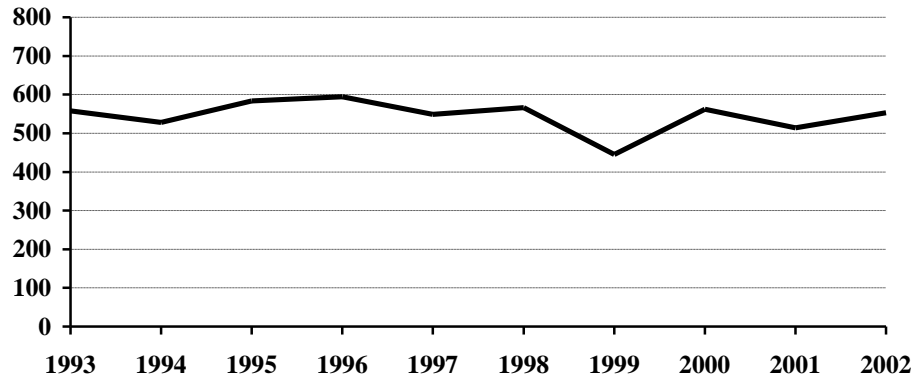
Approximately 50 percent of violent crimes in 2002 were reported as cleared by arrest or exceptional means.

Of the 200 total arrests reported for violent crimes, 23 percent were arrests of juveniles.

Violent Crime Summary

Year	Population	Violent Index Offenses	% Change in Number from Previous Year	Rate per 100,000 Population	% Change in Rate from Previous Year	Percent Cleared
1993	635,000	558	-3.5%	87.9	-3.3%	64.0%
1994	638,000	528	-5.4	82.8	-5.8	55.9
1995	641,000	584	10.6	91.1	10.0	67.6
1996	644,000	594	1.7	92.2	1.2	73.2
1997	641,000	549	-7.6	85.6	-7.2	66.8
1998	638,000	566	3.1	88.7	3.6	61.8
1999	634,000	445	-21.4	70.2	-20.9	67.0
2000	642,200	562	26.3	87.5	24.6	51.2
2001	634,450	514	-8.5	81.0	-7.4	49.4
2002	634,110	553	7.6	87.2	7.7	50.5

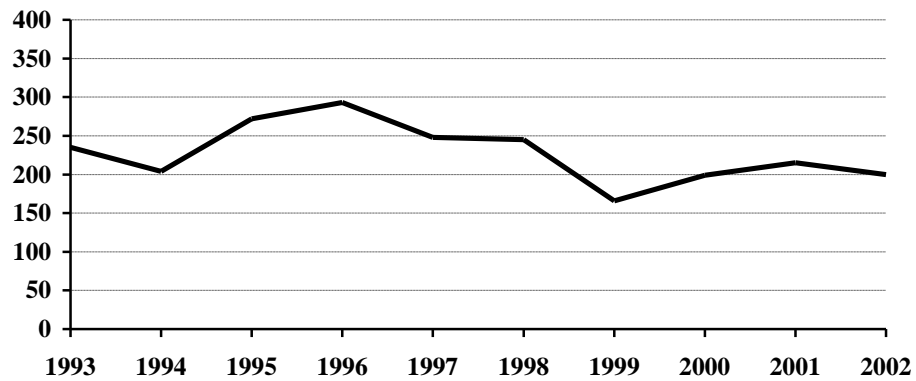
Violent Crime Totals, 1993-2002



Arrests for Violent Crimes, 1993-2002

Year	Juvenile	Adult	Age Not Reported	Total
1993	71	162	2	235
1994	58	144	2	204
1995	106	164	2	272
1996	68	224	1	293
1997	54	193	1	248
1998	68	177		245
1999	41	124	1	166
2000	27	171	1	199
2001	40	175		215
2002	46	154		200

Arrests for Violent Crimes, 1993-2002



Murder/Non-Negligent Manslaughter

The UCR program defines Murder/Non-Negligent Manslaughter as the “willful killing of one human being by another.” Attempts to murder, assaults to murder, suicides, accidental deaths, justifiable homicides, and deaths caused by gross negligence are not included in this category.

Six murder/non-negligent manslaughter deaths were known to the North Dakota UCR program in 2002.

Four of the six victims were adults. “Adult” is defined as a person aged 18 years or older.

Two of the victims were male.

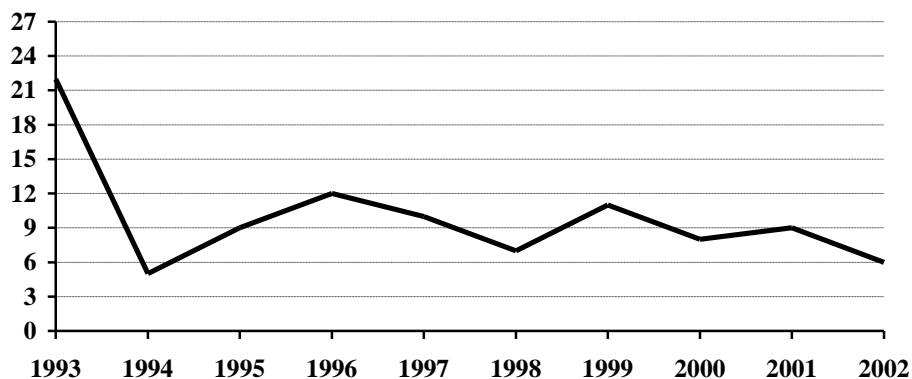
Two of the six victims died as the result of gunshot wounds. (See the summary of homicide incidents and the weapons involved on page 10.)

The Office of Attorney General publishes a detailed report titled Homicide in North Dakota. The report provides an analysis of homicides for the period 1978-2002 and is available by request.

Murder/Non-Negligent Manslaughter Summary

Year	Population	Offense Total	% Change in Number from Previous Year	Rate per 100,000 Population	% Change in Rate from Previous Year	Percent Cleared
1993	635,000	22	46.7%	3.5	45.8%	100.0%
1994	638,000	5	-77.3	0.8	-77.1	100.0
1995	641,000	9	80.0	1.4	75.0	100.0
1996	644,000	12	33.3	1.9	35.7	100.0
1997	641,000	10	-16.7	1.6	-15.8	100.0
1998	638,000	7	-30.0	1.1	-31.3	100.0
1999	634,000	11	57.1	1.7	54.5	100.0
2000	642,200	8	-27.3	1.2	-29.4	87.5
2001	634,450	9	12.5	1.4	16.7	55.6
2002	634,110	6	-33.3	0.9	-35.7	83.3

Murder/Non-Negligent Manslaughter Totals, 1993-2002



Summary of Murder/Non-Negligent Manslaughter Incidents, 2002

Date and Location of Incident	Victims		Assailants		Weapon Used	Relationship of Victim to Assailant	Circumstances
	Age	Sex	Age	Sex			
1/27/2002 Dickinson	28	F	28	M	Handgun	Ex-wife	Victim and assailant were found dead in home with single gunshot wounds. Apparent murder-suicide.
2/15/2002 Devils Lake	7-wk-old	M	28	M	Personal Weapon	Son	Victim was thrown across the room in an infant seat & suffered multiple internal injuries with head injuries.
8/1/2002 Spirit Lake Reservation	36	F	20	M	Firearm	Aunt	Domestic dispute.
10/15/2002 Bismarck	1	F	25	M	Personal Weapon	Daughter of Assailant's girlfriend	Domestic violence. Victim was discovered not breathing in bed.
11/5/2002 Penn Ramsey County	19	M			Not Reported		Victim was found dead in a shelterbelt.
12/27/2002 Driscoll Burleigh County	73	F	21	M	Strangulation	Acquaintance	Victim was sexually assaulted, and murdered.

Forcible Rape

The UCR program defines Forcible Rape as “the carnal knowledge of a female forcibly and against her will.” Assaults to rape, attempts to commit rape by force or threat of force are included. Carnal abuse, statutory offenses (no force -- victim under age of consent), and other sex offenses are not included.

In 2002, 167 forcible rapes were reported to local law enforcement in North Dakota. This is an increase of 5.0 percent from the 2001 total of 159 offenses. A total of 173 forcible rapes were reported in 2000.

Because the UCR definition states that victims of rape must be female, the rate of occurrence for reported rapes is calculated based only on the female population. The Census Bureau estimate of North Dakota’s population for 2002 is 634,110. The number of females is approximately half of that figure. The resulting rate for 2002 is 52.7 reported rapes per 100,000 females, compared with 50.1 rapes per 100,000 females in 2001. In 2000, the forcible rape rate was 53.9 per 100,000 females.

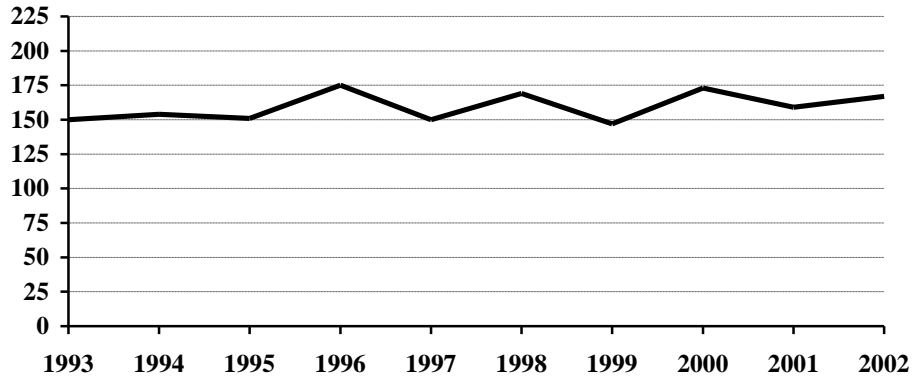
In 2002, 37.7 percent of reported rapes were cleared by arrest or exceptional means.

Forty-two arrests for forcible rape were reported in 2002. Approximately fifty-seven percent of those arrested were adults. In 2001, 32 arrests for rape were reported.

Forcible Rape Summary

Year	Population	Offense Total	% Change in Number from Previous Year	Rate per 100,000 Females	% Change in Rate from Previous Year	Percent Cleared
1993	635,000	150	-7.4%	47.2	-7.3%	56.0%
1994	638,000	154	2.7	48.3	2.3	47.4
1995	641,000	151	-1.9	47.1	-2.5	68.2
1996	644,000	175	15.9	54.3	15.3	76.6
1997	641,000	150	-14.3	46.8	-13.8	57.3
1998	638,000	169	12.7	53.0	13.2	51.5
1999	634,000	147	-13.0	46.4	-12.5	67.3
2000	642,200	173	17.7	53.9	16.2	30.1
2001	634,450	159	-8.1	50.1	-7.1	42.1
2002	634,110	167	5.0	52.7	5.2	37.7

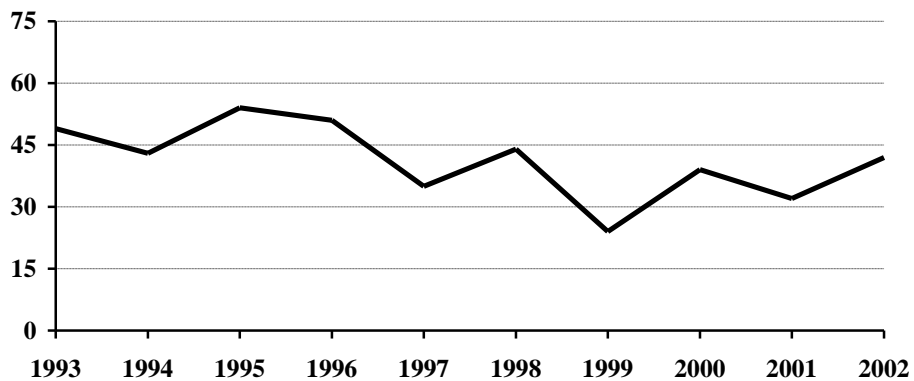
Forcible Rape Totals, 1993-2002



Arrests for Forcible Rape, 1993-2002

Year	Juvenile	Adult	Age Not Reported	Total
1993	8	40	1	49
1994	13	29	1	43
1995	16	36	2	54
1996	12	39		51
1997	6	29		35
1998	13	31		44
1999	6	18		24
2000	12	27		39
2001	9	23		32
2002	18	24		42

Arrests for Forcible Rape, 1993-2002



Robbery

Robbery is defined by the UCR program as “the taking or attempting to take anything of value from the care, custody, or control of a person or persons by force or threat of force or violence and/or by putting the victim in fear.”

Seventy-one robberies were reported in North Dakota in 2002. The same number of robberies was reported in 2001. In 2000, 62 robberies were reported.

The robbery rate for 2001 and 2002 was 11.2 per 100,000 population. In 2000, the robbery rate was 9.7 per 100,000 population.

Approximately 45 percent of reported robberies were cleared by arrest or exceptional means.

Twenty-five arrests for robbery were reported in 2002. Sixteen of those arrested were adults.

Firearms were used in 15.5 percent of the reported robberies in 2002. Approximately 51 percent were strong-arm robberies where no weapon was used.

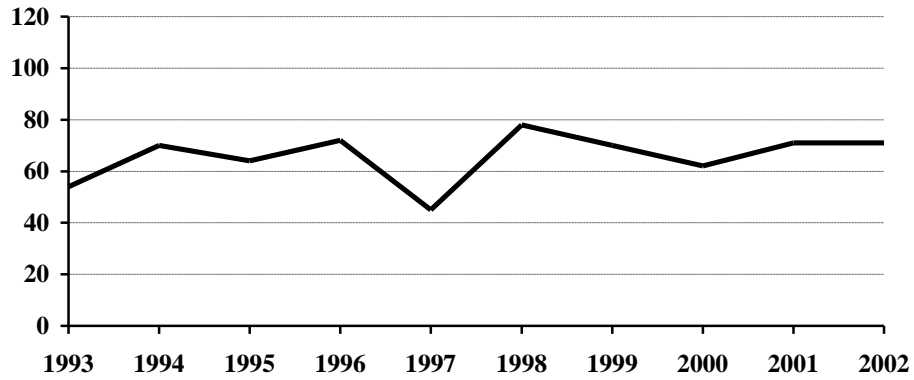
The value of property stolen in robbery incidents decreased from \$45,051 in 2001 to \$24,711 in 2002.

The average robbery in 2002 involved \$348 worth of property.

Robbery Summary

Year	Population	Offense Total	% Change in Number from Previous Year	Rate per 100,000 Population	% Change in Rate from Previous Year	Percent Cleared
1993	635,000	54	3.8%	8.5	3.7%	33.3%
1994	638,000	70	29.6	11.0	29.4	44.3
1995	641,000	64	-8.6	10.0	-9.1	42.2
1996	644,000	72	12.5	11.2	12.0	48.6
1997	641,000	45	-37.5	7.0	-37.5	64.4
1998	638,000	78	73.3	12.2	74.3	41.0
1999	634,000	70	-10.3	11.0	-9.8	48.6
2000	642,200	62	-11.4	9.7	-11.8	24.2
2001	634,450	71	14.5	11.2	15.5	23.9
2002	634,110	71	0.0	11.2	0.0	45.1

Robbery Totals, 1993-2002



Robbery by Type of Weapon Involved, 2002

Type of Weapon	Number Reported	Percent of Total Offenses
Firearm	11	15.5%
Knife or Cutting Instrument	14	19.7
Other Dangerous Weapon	10	14.1
Hands, Fists, Feet, etc.	36	50.7
Robbery Total	71	100.0

Robbery by Place of Occurrence and Value of Property, 2002

Place of Occurrence	Number Reported	Value of Property	Average Value per Robbery
Highway	10	\$995	\$99.50
Commercial House	20	11,722	586.10
Gas or Service Station	2	302	151.00
Convenience Store	5	2,167	433.40
Residence	20	6,510	325.50
Bank	0	0	0.00
Other	14	3,015	215.36
Robbery Total	71	24,711	348.04

Arrests for Robbery, 1993-2002

Year	Juvenile	Adult	Total
1993	14	8	22
1994	8	23	31
1995	13	18	31
1996	10	28	38
1997	13	17	30
1998	8	20	28
1999	9	19	28
2000	0	15	15
2001	3	16	19
2002	9	16	25

Property Loss Due to Robbery, 1993-2002

Year	Offense Total	Property Loss	Average Loss per Robbery
1993	54	\$37,608	\$696.44
1994	70	14,030	200.43
1995	64	20,515	320.55
1996	72	11,734	162.97
1997	45	7,029	156.20
1998	78	19,393	248.63
1999	70	23,808	340.11
2000	62	12,654	204.10
2001	71	45,051	634.52
2002	71	24,711	348.04

Aggravated Assault

The UCR program defines Aggravated Assault as “an unlawful attack by one person upon another for the purpose of inflicting severe or aggravated bodily injury. This type of assault is usually accompanied by the use of a weapon or by means likely to produce death or great bodily harm. Attempts are included because it is not necessary that an injury result when a gun, knife, or other weapon is used which could and probably would result in serious personal injury if the crime were successfully completed.”

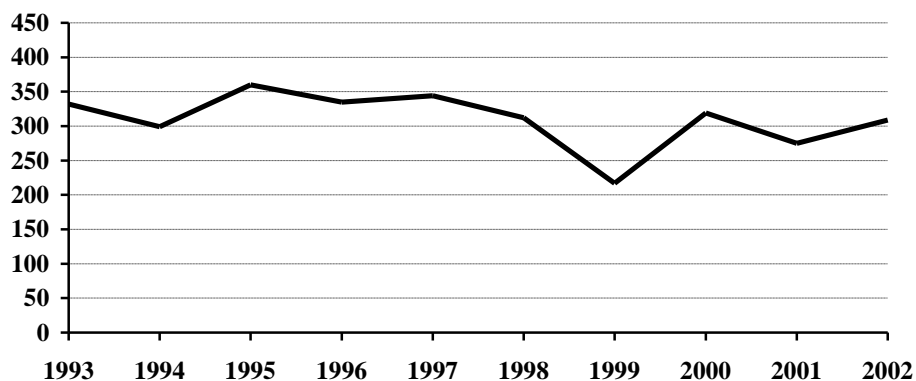
In 2002, 309 aggravated assaults were reported in North Dakota, an increase of 12.4 percent from the 275 aggravated assaults reported in 2001. In 2000, 319 aggravated assaults were reported.

The aggravated assault rate for North Dakota increased 12.5 percent from 43.3 per 100,000 population in 2001 to 48.7 per 100,000 population in 2002.

Aggravated Assault Summary

Year	Population	Offense Total	% Change in Number from Previous Year	Rate per 100,000 Population	% Change in Rate from Previous Year	Percent Cleared
1993	635,000	332	-4.9%	52.3	-4.7%	70.2%
1994	638,000	299	-9.9	46.9	-10.3	62.2
1995	641,000	360	20.4	56.2	19.8	71.1
1996	644,000	335	-6.9	52.0	-7.5	75.8
1997	641,000	344	2.7	53.7	3.3	70.3
1998	638,000	312	-9.3	48.9	-8.9	71.8
1999	634,000	217	-30.4	34.2	-30.1	71.0
2000	642,200	319	47.0	49.7	45.3	67.1
2001	634,450	275	-13.8	43.3	-12.9	60.0
2002	634,110	309	12.4	48.7	12.5	57.9

Aggravated Assault Totals, 1993-2002



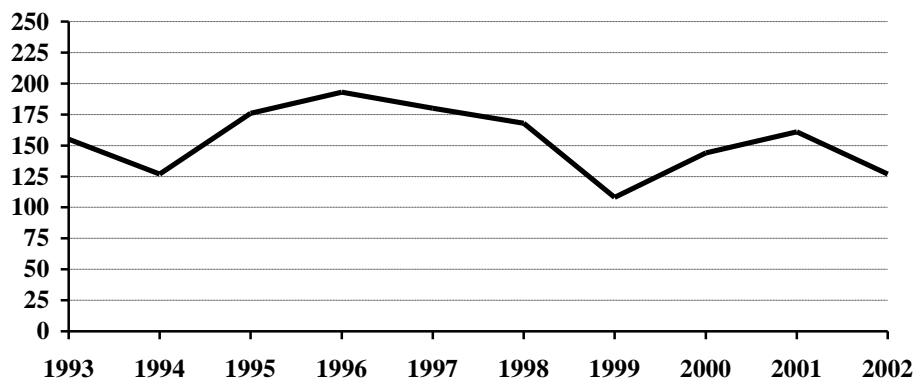
Aggravated Assault by Type of Weapon Involved, 2002

Type of Weapon	Number Reported	Percent of Total Offenses
Firearm	8	2.6%
Knife or Cutting Instrument	68	22.0
Other Dangerous Weapon	91	29.4
Hands, Fists, Feet, etc.	142	46.0
Aggravated Assault Total	309	100.0

Arrests for Aggravated Assault, 1993-2002

Year	Juvenile	Adult	Age Not Reported	Total
1993	47	107	1	155
1994	37	89	1	127
1995	68	108		176
1996	45	147	1	193
1997	35	144	1	180
1998	47	121		168
1999	25	82	1	108
2000	15	128	1	144
2001	28	133		161
2002	19	108		127

Arrests for Aggravated Assault, 1993-2002



Property Crime

Property crime includes the offenses of burglary, larceny/theft, and motor vehicle theft.

In 2002, the total number of property crimes reported was 14,686. This is an increase of 5.7 percent from the 2001 total of 13,897.

Property crime accounted for 96.4 percent of the index offenses reported in North Dakota.

The property crime rate increased 5.7 percent from 2190.4 per 100,000 population in 2001 to 2316.0 per 100,000 in 2002.

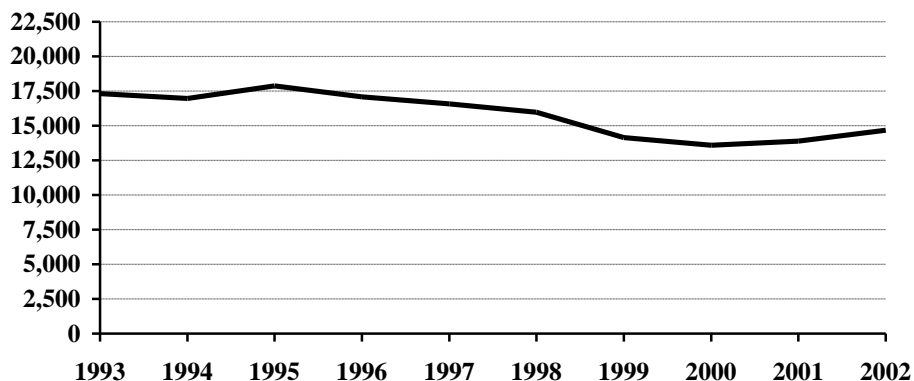
Twenty percent of property crimes were cleared by arrest or exceptional means in 2002.

A total of 2,841 arrests was reported for property crimes. Of those, 51.4 percent were arrests of juveniles.

Property Crime Summary

Year	Population	Property Index Offenses	% Change in Number from Previous Year	Rate per 100,000 Population	% Change in Rate from Previous Year	Percent Cleared
1993	635,000	17,317	-3.0%	2727.1	-2.8%	25.5%
1994	638,000	16,959	-2.1	2658.2	-2.5	24.7
1995	641,000	17,874	5.4	2788.5	4.9	26.8
1996	644,000	17,088	-4.4	2653.4	-4.8	28.4
1997	641,000	16,573	-3.0	2585.5	-2.6	27.7
1998	638,000	15,971	-3.6	2503.3	-3.2	25.2
1999	634,000	14,145	-11.4	2231.1	-10.9	25.9
2000	642,200	13,588	-3.9	2115.9	-5.2	21.8
2001	634,450	13,897	2.3	2190.4	3.5	20.6
2002	634,110	14,686	5.7	2316.0	5.7	20.0

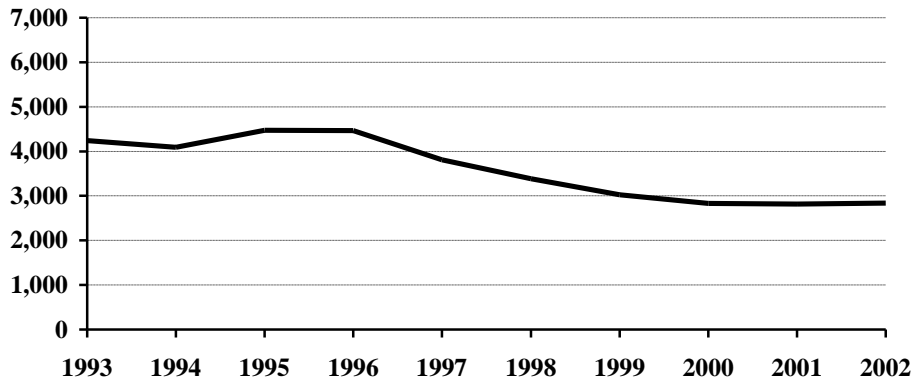
Property Crime Totals, 1993-2002



Arrests for Property Crimes, 1993-2002

Year	Juvenile	Adult	Age Not Reported	Total
1993	2,322	1,889	31	4,242
1994	2,266	1,782	41	4,089
1995	2,536	1,919	19	4,474
1996	2,455	1,997	10	4,462
1997	2,198	1,590	25	3,813
1998	1,735	1,636	12	3,383
1999	1,599	1,419	7	3,025
2000	1,572	1,246	13	2,831
2001	1,439	1,376	4	2,819
2002	1,459	1,372	10	2,841

Arrests for Property Crimes, 1993-2002



Burglary

The UCR program defines Burglary as the “unlawful entry of a structure to commit a felony or theft. The use of force to gain entry is not required to classify an offense as burglary.” Burglaries are classified into three categories: forcible entry, unlawful entry where no force is used, and attempted forcible entry.

In 2002, 2,250 burglaries were reported to the UCR program. This represents an increase of 11 percent from the total of 2,027 burglaries reported in 2001.

The rate of burglaries based on population was 354.8 per 100,000 inhabitants for 2002. This is an 11 percent increase from the rate of 319.5 per 100,000 population in 2001.

Fourteen percent of burglaries were cleared by arrest or exceptional means in 2002.

A total of 316 arrests for burglary was reported in 2002. Of these, 52.5 percent were juveniles.

The UCR program classifies burglaries by time of day and location of the incident. Approximately 52 percent were burglaries of residences. Nearly 56 percent of burglaries were known to have been committed at night.

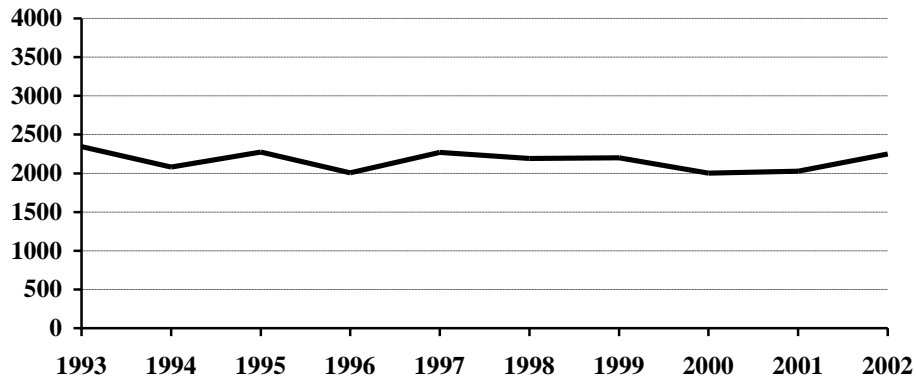
About 47 percent of burglaries involved forcible entry.

Property loss due to burglary is substantial. More than 2 million dollars worth of property was reported stolen in burglary incidents in 2002. The average burglary involved \$926 worth of property.

Burglary Summary

Year	Population	Offense Total	% Change in Number from Previous Year	Rate per 100,000 Population	% Change in Rate from Previous Year	Percent Cleared
1993	635,000	2,346	-3.9%	369.4	-3.7%	19.8%
1994	638,000	2,080	-11.3	326.0	-11.7	17.7
1995	641,000	2,275	9.4	354.9	8.9	18.7
1996	644,000	2,008	-11.7	311.8	-12.1	20.7
1997	641,000	2,271	13.1	354.3	13.6	19.8
1998	638,000	2,194	-3.4	343.9	-2.9	19.5
1999	634,000	2,200	0.3	347.0	0.9	20.8
2000	642,200	2,004	-8.9	312.1	-10.1	16.2
2001	634,450	2,027	1.1	319.5	2.4	15.1
2002	634,110	2,250	11.0	354.8	11.0	14.0

Burglary Totals, 1993-2002



Burglary by Type of Entry, 2002

Type of Entry	Number Reported	Percent of Total Offenses
Forcible Entry	1,067	47.4%
Unlawful Entry - No Force	1,020	45.3
Attempted Forcible Entry	163	7.3
Burglary Total	2,250	100.0

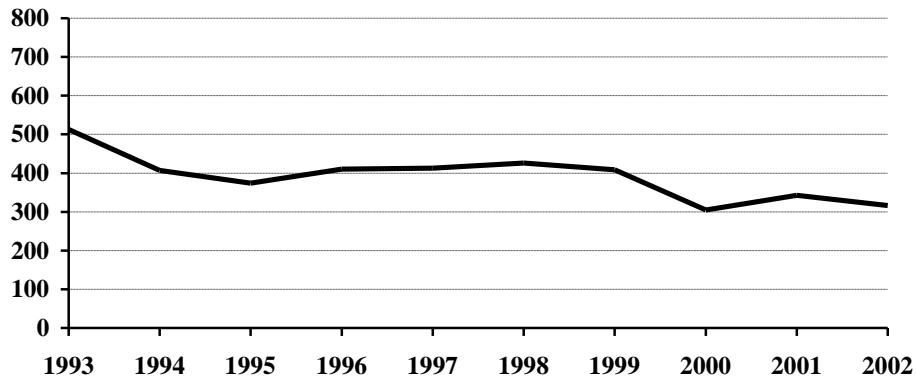
Burglary by Location and Value of Property, 2002

Location/Time	Number Reported	Value of Property	Average Value per Burglary
Residence - Night	582	\$459,037	\$788.72
Residence - Day	565	536,115	948.88
Residence - Unknown	14	8,050	575.00
Residence Subtotal	1,161	1,003,202	864.08
Non-Residence - Night	668	629,070	941.72
Non-Residence - Day	402	421,659	1,048.90
Non-Residence - Unknown	19	28,670	1,508.95
Non-Residence Subtotal	1,089	1,079,399	991.18
Burglary Total	2,250	2,082,601	925.60

Arrests for Burglary, 1993-2002

Year	Juvenile	Adult	Age Not Reported	Total
1993	226	283	4	513
1994	197	204	6	407
1995	208	164	2	374
1996	201	208	1	410
1997	222	185	6	413
1998	201	220	5	426
1999	202	205	2	409
2000	134	166	5	305
2001	175	166	2	343
2002	166	144	6	316

Arrests for Burglary, 1993-2002



Property Loss Due to Burglary, 1993-2002

Year	Offense Total	Property Loss	Average Loss per Burglary
1993	2,346	\$1,571,149	\$669.71
1994	2,080	1,696,717	815.73
1995	2,275	1,939,595	852.57
1996	2,008	1,404,087	699.25
1997	2,271	2,114,489	931.08
1998	2,194	1,630,902	743.35
1999	2,200	1,853,763	842.62
2000	2,004	1,781,810	889.13
2001	2,027	1,572,709	775.88
2002	2,250	2,082,601	925.60

Larceny/Theft

The UCR program defines Larceny/Theft as the “unlawful taking, carrying, leading, or riding away of property from the possession or constructive possession of another. It includes crimes such as shoplifting, pocket-picking, purse-snatching, thefts from motor vehicles, thefts of motor vehicle parts and accessories, bicycle thefts, etc., in which no use of force, violence or fraud occurs. In the Uniform Crime Reporting program, this crime category does not include embezzlement, confidence games, forgery, and worthless checks. Motor vehicle theft is also excluded from this category inasmuch as it is a separate crime index offense.”

A total of 11,399 larceny/theft offenses was reported in North Dakota in 2002. This is a 4.9 percent increase from the 2001 total of 10,870.

The larceny/theft rate per 100,000 population was 1797.6 compared with 1713.3 in 2001, a 4.9 percent increase in the rate.

Approximately 20 percent of larceny/theft offenses were cleared by arrest or exceptional means in 2002.

The number of arrests for this offense increased from 2,238 in 2001 to 2,264 in 2002. Approximately 51 percent of those arrested for larceny/theft in 2002 were juveniles.

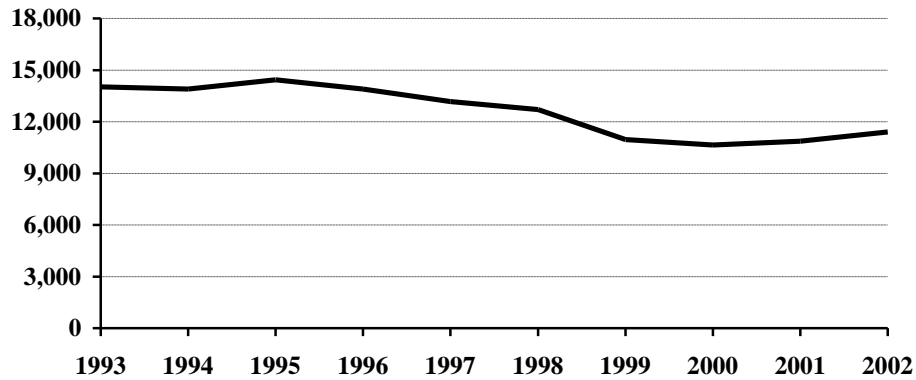
More than 5.7 million dollars worth of property was reported stolen as the result of larceny/theft offenses in the state. The average dollar value per offense remained unchanged at \$500.

Larceny/theft accounted for 74.8 percent of the total index offenses reported and amounted to approximately 46 percent of the total value of stolen property.

Larceny/Theft Summary

Year	Population	Offense Total	% Change in Number from Previous Year	Rate per 100,000 Population	% Change in Rate from Previous Year	Percent Cleared
1993	635,000	14,031	-2.5%	2209.6	-2.3%	25.6%
1994	638,000	13,898	-0.9	2178.4	-1.4	25.0
1995	641,000	14,435	3.9	2252.0	3.4	27.2
1996	644,000	13,898	-3.7	2158.1	-4.2	28.6
1997	641,000	13,163	-5.3	2053.5	-4.8	28.3
1998	638,000	12,704	-3.5	1991.2	-3.0	25.4
1999	634,000	10,956	-13.8	1728.1	-13.2	25.9
2000	642,200	10,642	-2.9	1657.1	-4.1	22.0
2001	634,450	10,870	2.1	1713.3	3.4	20.9
2002	634,110	11,399	4.9	1797.6	4.9	20.4

Larceny/Theft Totals, 1993-2002



Monetary Value of Larceny/Theft, 2002

Value of Larceny/Theft	Number Reported	Percent of Total Offenses
Under \$50	3,821	33.5%
\$50 to \$200	3,009	26.4
Over \$200	4,569	40.1
Larceny/Theft Total	11,399	100.0

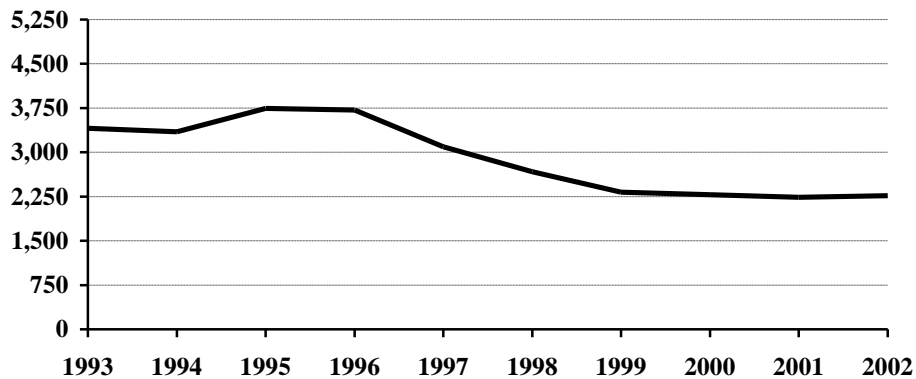
Larceny/Theft by Type and Value, 2002

Type of Larceny/Theft	Number Reported	Value of Property	Average Value per Larceny/Theft
From Motor Vehicle	2,840	\$1,536,680	\$541.08
Shoplifting	1,363	94,084	69.03
From Building	1,282	858,712	669.82
Bicycles	1,037	205,255	197.93
Motor Vehicle Parts, Accessories	529	182,866	345.68
From Coin-Operated Machine	93	22,735	244.46
Pocket Picking	25	3,604	144.16
Purse Snatching	18	3,309	183.83
All Other	4,212	2,794,249	663.40
Larceny/Theft Total	11,399	5,701,494	500.17

Arrests for Larceny/Theft, 1993-2002

Year	Juvenile	Adult	Age Not Reported	Total
1993	1,900	1,485	24	3,409
1994	1,846	1,472	28	3,346
1995	2,066	1,662	14	3,742
1996	2,056	1,656	6	3,718
1997	1,771	1,306	16	3,093
1998	1,372	1,292	7	2,671
1999	1,212	1,110	5	2,327
2000	1,285	987	7	2,279
2001	1,134	1,102	2	2,238
2002	1,147	1,114	3	2,264

Arrests for Larceny/Theft, 1993-2002



Property Loss Due to Larceny/Theft, 1993-2002

Year	Offense Total	Property Loss	Average Loss per Larceny/Theft
1993	14,031	\$4,819,935	\$343.52
1994	13,898	4,842,899	348.46
1995	14,435	5,394,911	373.74
1996	13,898	5,118,818	368.31
1997	13,163	5,680,026	431.51
1998	12,704	5,858,913	461.19
1999	10,956	5,690,080	519.36
2000	10,642	4,627,836	434.87
2001	10,870	5,432,250	499.75
2002	11,399	5,701,494	500.17

Motor Vehicle Theft

Motor Vehicle Theft is defined by the UCR program as “the theft or attempted theft of a motor vehicle; the offense category includes the stealing of automobiles, trucks, buses, motorcycles, motor scooters, snowmobiles, etc. The definition excludes the taking of a motor vehicle for temporary use by those persons having lawful access.”

A total of 1,037 motor vehicle thefts was reported in 2002. This is an increase of 3.7 percent from the 2001 total of 1,000.

Based on a Census Bureau population estimate of 634,110 for North Dakota, the resulting motor vehicle theft rate is 163.5 per 100,000 population.

Twenty-nine percent of reported motor vehicle thefts were cleared by arrest or exceptional means in 2002.

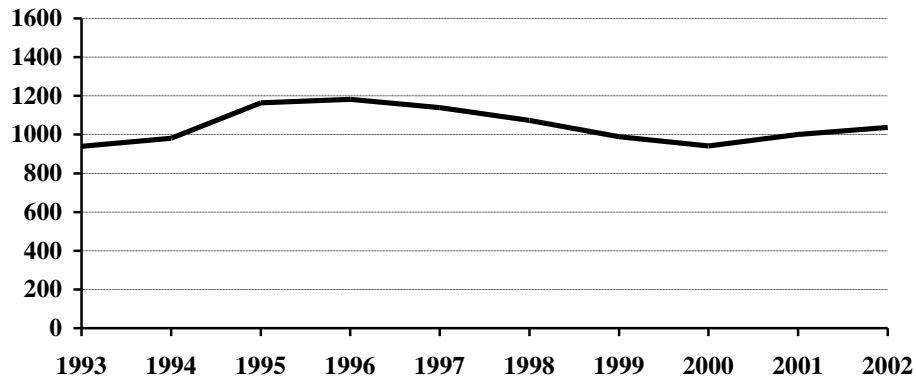
The number of arrests for motor vehicle theft increased from 238 in 2001 to 261 in 2002.

The average value per motor vehicle theft was approximately \$4,482.

Motor Vehicle Theft Summary

Year	Population	Offense Total	% Change in Number from Previous Year	Rate per 100,000 Population	% Change in Rate from Previous Year	Percent Cleared
1993	635,000	940	-8.1%	148.0	-8.0%	38.3%
1994	638,000	981	4.4	153.8	3.9	34.8
1995	641,000	1,164	18.7	181.6	18.1	37.3
1996	644,000	1,182	1.5	183.5	1.0	40.1
1997	641,000	1,139	-3.6	177.7	-3.2	37.1
1998	638,000	1,073	-5.8	168.2	-5.3	35.3
1999	634,000	989	-7.8	156.0	-7.3	37.0
2000	642,200	942	-4.8	146.7	-6.0	30.9
2001	634,450	1,000	6.2	157.6	7.4	27.8
2002	634,110	1,037	3.7	163.5	3.7	29.0

Motor Vehicle Theft Totals, 1993-2002



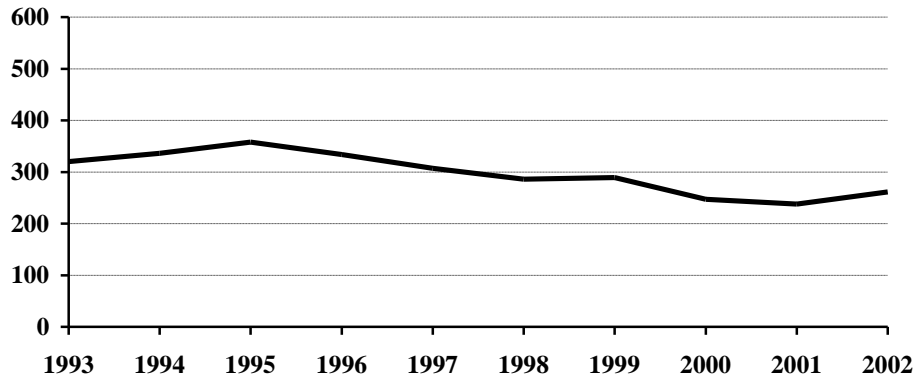
Type of Vehicle Stolen, 2002

Type of Vehicle	Number Reported	Percent of Total Offenses
Automobiles	864	83.3%
Trucks and Buses	101	9.7
Other Vehicles	72	7.0
Motor Vehicle Theft Total	1,037	100.0

Arrests for Motor Vehicle Theft, 1993-2002

Year	Juvenile	Adult	Age Not Reported	Total
1993	196	121	3	320
1994	223	106	7	336
1995	262	93	3	358
1996	198	133	3	334
1997	205	99	3	307
1998	162	124		286
1999	185	104		289
2000	153	93	1	247
2001	130	108		238
2002	146	114	1	261

Arrests for Motor Vehicle Theft, 1993-2002



Property Loss Due to Motor Vehicle Theft, 1993-2002

Year	Offense Total	Property Loss	Average Loss per Offense
1993	940	\$3,010,954	\$3,203.14
1994	981	3,142,478	3,203.34
1995	1,164	3,714,582	3,191.22
1996	1,182	4,488,026	3,796.98
1997	1,139	4,706,068	4,131.75
1998	1,073	3,909,583	3,643.60
1999	989	3,633,353	3,673.76
2000	942	3,886,274	4,125.56
2001	1,000	4,414,621	4,414.62
2002	1,037	4,647,821	4,481.99

Crime Index Offenses by Reporting Jurisdiction

The rate per 100,000 population is shown immediately below the actual number of crime index offenses reported by each jurisdiction. A county total is also shown for each of those counties that have more than one reporting jurisdiction within its geographic boundaries. The rate is reported per 100,000 for easy comparison to national publications.

Number and Rate of Index Offenses, 2002

County	Reporting Jurisdiction	Population	Murder/ Non-Negligent Manslaughter	Forcible Rape	Robbery	Aggravated Assault	Burglary	Larceny/ Theft	Motor Vehicle Theft	Total Index Offenses
Adams	County SO						3	9	3	15
		2,560					117.2	351.6	117.2	585.9
Barnes	County SO						16	22	1	39
		4,886					327.5	450.3	20.5	798.2
	Valley City PD			1		3	9	53	4	70
		6,740		14.8		44.5	133.5	786.4	59.3	1038.6
	County Total			1		3	25	75	5	109
		11,626		8.6		25.8	215.0	645.1	43.0	937.6
Benson	County SO	6,877	DID NOT REPORT IN 2002							
Billings	County SO	877	DID NOT REPORT IN 2002							
Bottineau	County SO						23	28	2	53
		7,059					325.8	396.7	28.3	750.8
Bowman	County SO	1,621	DID NOT REPORT IN 2002							
	Bowman PD						5	26	2	33
		1,580					316.5	1645.6	126.6	2088.6
Burke	County SO									0
		2,213								0.0
Burleigh	County SO		1	2	1	7	64	110	17	202
		13,709	7.3	14.6	7.3	51.1	466.8	802.4	124.0	1473.5
	Bismarck PD		1	5	14	25	181	1356	116	1698
		54,832	1.8	9.1	25.5	45.6	330.1	2473.0	211.6	3096.7
	County Total		2	7	15	32	245	1466	133	1900
		68,541	2.9	10.2	21.9	46.7	357.5	2138.9	194.0	2772.1
Cass	County SO			2	1	10	65	171	29	278
		17,376		11.5	5.8	57.6	374.1	984.1	166.9	1599.9
	Fargo PD*			53	21	86	450	2686	212	3508
		89,458		59.2	23.5	96.1	503.0	3002.5	237.0	3921.4
	West Fargo PD			3	2	11	108	374	29	527
	14,752		20.3	13.6	74.6	732.1	2535.2	196.6	3572.4	
	County Total		58	24	107	623	3231	270	4313	
		121,586	47.7	19.7	88.0	512.4	2657.4	222.1	3547.3	
Cavalier	County SO					1	11	51	5	68
		4,770				21.0	230.6	1069.2	104.8	1425.6
Dickey	County SO					2	2	25		29
		3,730				53.6	53.6	670.2		777.5
	Oakes PD					1	1	2	2	6
		1,954				51.2	51.2	102.4	102.4	307.1
	County Total					3	3	27	2	35
		5,684				52.8	52.8	475.0	35.2	615.8
Divide	County SO	1,179	DID NOT REPORT IN 2002							
	Crosby PD	1,075	DID NOT REPORT IN 2002							
Dunn	County SO									0
		3,554								0.0

* Includes 139 index offenses reported by the NDSU PD

County	Reporting Jurisdiction	Population	Murder/ Non-Negligent Manslaughter	Forcible Rape	Robbery	Aggravated Assault	Burglary	Larceny/ Theft	Motor Vehicle Theft	Total Index Offenses
Eddy	County SO	2,723					5 183.6	10 367.2	1 36.7	16 587.6
	Emmons	2,973					9 302.7	15 504.5		24 807.3
Emmons	Linton PD	1,304			1 76.7		1 76.7	3 230.1	1 76.7	6 460.1
	County Total	4,277			1 23.4		10 233.8	18 420.9	1 23.4	30 701.4
	Foster	1,473								0 0.0
Foster	Carrington PD	2,239	DID NOT REPORT IN 2002							
	Golden Valley	1,900					2 105.3	6 315.8	3 157.9	11 578.9
Grand Forks	County SO	12,717		2 15.7		1 7.9	28 220.2	92 723.4	15 118.0	138 1085.2
	Emerado PD	504					1 198.4	2 396.8	1 198.4	4 793.7
	Grand Forks PD**	48,700		19 39.0	9 18.5	44 90.3	361 741.3	2097 4306.0	183 375.8	2713 5570.8
	Larimore PD	1,415	DID NOT REPORT IN 2002							
	Northwood PD	947					5 528.0	5 528.0	2 211.2	12 1267.2
	Thompson PD	993	DID NOT REPORT IN 2002							
	Reporting Agency Total	62,868		21 33.4	9 14.3	45 71.6	395 628.3	2196 3493.0	201 319.7	2867 4560.3
Grant	County SO	1,840					3 163.0	5 271.7		8 434.8
	Carson PD	315				1 317.5	5 1587.3	1 317.5	1 317.5	8 2539.7
	Elgin PD	650					1 153.8	1 153.8		2 307.7
	Reporting Agency Total	2,805				1 35.7	9 320.9	7 249.6	1 35.7	18 641.7
Griggs	2,720	DID NOT REPORT IN 2002								
Hettinger	2,681					1 37.3	1 37.3	2 74.6		4 149.2
Kidder	County SO	1,968				1 50.8	7 355.7	2 101.6		10 508.1
	Steele PD	751		1 133.2			2 266.3	6 798.9		9 1198.4
	County Total	2,719		1 36.8		1 36.8	9 331.0	8 294.2		19 698.8
LaMoure	4,642					5 107.7	6 129.3		11 237.0	
Logan	County SO	1,521						4 263.0		4 263.0
	Napoleon PD	846	DID NOT REPORT IN 2002							
McHenry	County SO	4,875		1 20.5			12 246.2	42 861.5	8 164.1	63 1292.3
	Velva PD *	1,036					1 96.5		1 96.5	2 193.1
	County Total	5,911		1 16.9			13 219.9	42 710.5	9 152.3	65 1099.6
McIntosh	County SO	2,151					2 93.0			2 93.0
	Wishek PD	1,108	DID NOT REPORT IN 2002							

* Reported partial year.

** Includes 265 index offenses reported by UND PD.

County	Reporting Jurisdiction	Population	Murder/ Non-Negligent Manslaughter	Forcible Rape	Robbery	Aggravated Assault	Burglary	Larceny/ Theft	Motor Vehicle Theft	Total Index Offenses
McKenzie	County SO	4,248					3 70.6	34 800.4		37 871.0
	Watford City PD	1,417					4 282.3	11 776.3	1 70.6	16 1129.1
	County Total	5,665					7 123.6	45 794.4	1 17.7	53 935.6
McLean	County SO	9,194		1 10.9			14 152.3	85 924.5	5 54.4	105 1142.0
Mercer	County SO	2,656				1 37.7	6 225.9	16 602.4	5 188.3	28 1054.2
	Beulah PD	3,112					6 192.8	37 1188.9	2 64.3	45 1446.0
	Hazen PD	2,426		1 41.2			1 41.2	3 123.7		5 206.1
	County Total	8,194		1 12.2		1 12.2	13 158.7	56 683.4	7 85.4	78 951.9
Morton	County SO	8,477		6 70.8		3 35.4	10 118.0	65 766.8	10 118.0	94 1108.9
	Mandan PD	16,507		9 54.5	4 24.2	15 90.9	46 278.7	413 2502.0	49 296.8	536 3247.1
	County Total	24,984		15 60.0	4 16.0	18 72.0	56 224.1	478 1913.2	59 236.2	630 2521.6
Mountrail	County SO	6,548		1 15.3		3 45.8	10 152.7	32 488.7	4 61.1	50 763.6
Nelson	County SO	3,668	DID NOT REPORT IN 2002							
Oliver	County SO	2,039		1 49.0			3 147.1	17 833.7	1 49.0	22 1079.0
Pembina	County SO	6,959					17 244.3	32 459.8	9 129.3	58 833.5
	Cavalier PD	1,517				1 65.9	9 593.3	35 2307.2	3 197.8	48 3164.1
	County Total	8,476				1 11.8	26 306.7	67 790.5	12 141.6	106 1250.6
Pierce	County SO	1,714		1 58.3		1 58.3	2 116.7	10 583.4	3 175.0	17 991.8
	Rugby PD	2,902		1 34.5			2 68.9	39 1343.9	1 34.5	43 1481.7
	County Total	4,616		2 43.3		1 21.7	4 86.7	49 1061.5	4 86.7	60 1299.8
Ramsey	County SO	4,783	DID NOT REPORT IN 2002							
	Devils Lake PD	7,131	1 14.0		1 14.0	11 154.3	48 673.1	413 5791.6	17 238.4	491 6885.4
Ransom	County SO	3,553				2 56.3	23 647.3	33 928.8	9 253.3	67 1885.7
	Lisbon PD	2,263	DID NOT REPORT IN 2002							
Renville	County SO	2,577		1 38.8		2 77.6	1 38.8	10 388.0	1 38.8	15 582.1
Richland	County SO	9,295		3 32.3			75 806.9	101 1086.6	11 118.3	190 2044.1
	Wahpeton PD**	8,477				7 82.6	21 247.7	272 3208.7	7 82.6	307 3621.6
	County Total	17,772		3 16.9		7 39.4	96 540.2	373 2098.8	18 101.3	497 2796.5
Rolette	County SO	13,502			1 7.4		24 177.8	19 140.7	9 66.7	53 392.5
Sargent	County SO	4,311					18 417.5	51 1183.0	4 92.8	73 1693.3
Sheridan	County SO	1,689	DID NOT REPORT IN 2002							
Sioux	County SO	3,993	DID NOT REPORT IN 2002							
Slope	County SO	757	DID NOT REPORT IN 2002							

** Includes 45 index offenses reported by NDSCS PD.

County	Reporting Jurisdiction	Population	Murder/ Non-Negligent Manslaughter	Forcible Rape	Robbery	Aggravated Assault	Burglary	Larceny/ Theft	Motor Vehicle Theft	Total Index Offenses
Stark	County SO	6,543		1 15.3		1 15.3	1 15.3	36 550.2	5 76.4	44 672.5
	Dickinson PD	15,808	1 6.3	1 6.3	5 31.6	4 25.3	48 303.6	376 2378.5	24 151.8	459 2903.6
	County Total	22,351	1 4.5	2 8.9	5 22.4	5 22.4	49 219.2	412 1843.3	29 129.7	503 2250.5
Steele	County SO	2,229	DID NOT REPORT IN 2002							
Stutsman	County SO	6,301		2 31.7			10 158.7	44 698.3	5 79.4	61 968.1
	Jamestown PD	15,331		16 104.4	4 26.1	14 91.3	56 365.3	355 2315.6	21 137.0	466 3039.6
	County Total	21,632		18 83.2	4 18.5	14 64.7	66 305.1	399 1844.5	26 120.2	527 2436.2
Towner	County SO	1,515						2 132.0	2 132.0	4 264.0
	Cando PD	1,325				1 75.5	3 226.4	1 75.5	2 150.9	7 528.3
	County Total	2,840				1 35.2	3 105.6	3 105.6	4 140.8	11 387.3
Traill	County SO	3,603				3 83.3	6 166.5	19 527.3	9 249.8	37 1026.9
	Mayville PD	1,929	DID NOT REPORT IN 2002							
	Hatton PD *	698					1 143.3	4 573.1		5 716.3
	Hillsboro PD	1,543	DID NOT REPORT IN 2002							
	Reporting Agency Total	4,301				3 69.8	7 162.8	23 534.8	9 209.3	42 976.5
Walsh	County SO	7,774			1 12.9	5 64.3	42 540.3	84 1080.5	22 283.0	154 1981.0
	Grafton PD	4,459			1 22.4	4 89.7	50 1121.3	199 4462.9	13 291.5	267 5987.9
	County Total	12,233			2 16.3	9 73.6	92 752.1	283 2313.4	35 286.1	421 3441.5
Ward	County SO	21,949		8 36.4		6 27.3	44 200.5	132 601.4	22 100.2	212 965.9
	Minot PD	36,106		16 44.3	4 11.1	26 72.0	195 540.1	909 2517.6	77 213.3	1227 3398.3
	County Total	58,055		24 41.3	4 6.9	32 55.1	239 411.7	1041 1793.1	99 170.5	1439 2478.7
Wells	County SO	2,456					7 285.0	9 366.4	5 203.6	21 855.0
	Harvey PD	1,964	DID NOT REPORT IN 2002							
	Fessenden PD	618	DID NOT REPORT IN 2002							
Williams	County SO	7,158		1 14.0			33 461.0	61 852.2	10 139.7	105 1466.9
	Williston PD	12,354		8 64.8	1 8.1	4 32.4	19 153.8	226 1829.4	29 234.7	287 2323.1
	County Total	19,512		9 46.1	1 5.1	4 20.5	52 266.5	287 1470.9	39 199.9	392 2009.0

* Reported partial year

ARREST ANALYSIS

(This page intentionally left blank.)

Arrests in 2002

Although primarily an indication of law enforcement activity, the number of arrests reported does provide a limited profile of the perpetrators of crime, especially for those crimes that have high clearance rates. Differing arrest practices, policies and enforcement emphases among agencies influence the volume of arrests for various offenses, particularly those against public order such as vagrancy, disorderly conduct, and related violations. However, arrests for serious crimes, e.g., robbery or burglary, are more likely to be consistent and uniform throughout all jurisdictions across the state.

The UCR program requires that an arrest be counted for each separate occasion an individual is taken into custody. Although several charges may be lodged against a person at the time of the arrest, one arrest is counted for each separate time the person is taken into custody.

North Dakota law enforcement agencies reported 29,145 arrests in 2002. A total of 29,638 arrests was reported in 2001.

In 2002, approximately 27 percent of total arrests were arrests of juveniles.

Seventy-two percent of the total were arrests of males.

Approximately ten percent of the reported arrests were arrests for crime index offenses. Nearly fifty percent of the arrests for crime index offenses were arrests of juveniles. In 2001, 49 percent of arrests for crime index offenses were arrests of juveniles.

The total of 10,566 reported arrests for DUI and liquor law violations represents 36.3 percent of the total arrests reported in the state of North Dakota in 2002. Arrests for DUI increased from 4,301 in 2001 to 4,467 in 2002. Liquor law violation arrests decreased 17.7 percent from 7,415 in 2001 to 6,099 reported in 2002.

Approximately 84 percent of total arrests were white; about 13 percent were Native American.

These statistics are provided by local law enforcement agencies that contribute to the North Dakota UCR program. No arrest figures for reservations in the state are included in these totals. Tribal law enforcement agencies do not participate in the state UCR program.

Total Arrests Reported, 2002

Offense Classification	Number Reported	Percent of Total Arrests
Murder/Non-Negligent Manslaughter	6	*
Negligent Manslaughter	0	0.0%
Forcible Rape	42	0.1
Robbery	25	0.1
Aggravated Assault	127	0.4
Burglary	316	1.1
Larceny/Theft	2,264	7.8
Motor Vehicle Theft	261	0.9
Other Assaults	1,798	6.2
Arson	25	0.1
Forgery and Counterfeiting	192	0.7
Fraud	1,777	6.1
Embezzlement	4	*
Stolen Property Offenses	171	0.6
Vandalism	802	2.8
Weapons Offenses	140	0.5
Prostitution	0	0.0
Other Sex Offenses	83	0.3
Drug Abuse Violations	1,752	6.0
Gambling	4	*
Offenses Against Family and Children	228	0.8
Driving Under the Influence	4,467	15.3
Liquor Law Violations	6,099	20.9
Disorderly Conduct	1,565	5.4
Vagrancy	2	*
All Other Offenses	6,069	20.8
Suspicion	0	0.0
Curfew and Loitering	270	0.9
Runaways	656	2.3
Arrest Total	29,145	100.0

* Less than 0.1 percent of total arrests.

Comparison of Reported Arrests, 2001-2002

Offense Classification	2001	2002	Percent Change
Murder/Non-Negligent Manslaughter	3	6	100.0%
Negligent Manslaughter	1	0	-100.0
Forcible Rape	32	42	31.3
Robbery	19	25	31.6
Aggravated Assault	161	127	-21.1
Burglary	343	316	-7.9
Larceny/Theft	2,238	2,264	1.2
Motor Vehicle Theft	238	261	9.7
Other Assaults	1,664	1,798	8.1
Arson	60	25	-58.3
Forgery and Counterfeiting	186	192	3.2
Fraud	1,883	1,777	-5.6
Embezzlement	6	4	-33.3
Stolen Property Offenses	113	171	51.3
Vandalism	713	802	12.5
Weapons Offenses	138	140	1.4
Prostitution	4	0	-100.0
Other Sex Offenses	87	83	-4.6
Drug Abuse Violations	1,658	1,752	5.7
Gambling	4	4	0.0
Offenses Against Family and Children	245	228	-6.9
Driving Under the Influence	4,301	4,467	3.9
Liquor Law Violations	7,415	6,099	-17.7
Disorderly Conduct	1,636	1,565	-4.3
Vagrancy	4	2	-50.0
All Other Offenses	5,338	6,069	13.7
Suspicion	0	0	----
Curfew and Loitering	325	270	-16.9
Runaways	823	656	-20.3
Arrest Total	29,638	29,145	-1.7

Juvenile and Adult Arrests, 2002

Offense Classification	Juvenile	Adult	Age Not Reported	Total
Murder/Non-Negligent Manslaughter		6		6
Negligent Manslaughter				0
Forcible Rape	18	24		42
Robbery	9	16		25
Aggravated Assault	19	108		127
Burglary	166	144	6	316
Larceny/Theft	1,147	1,114	3	2,264
Motor Vehicle Theft	146	114	1	261
Other Assaults	485	1,311	2	1,798
Arson	15	10		25
Forgery and Counterfeiting	35	155	2	192
Fraud	18	1,701	58	1,777
Embezzlement		4		4
Stolen Property Offenses	90	80	1	171
Vandalism	538	264		802
Weapons Offenses	36	103	1	140
Prostitution				0
Other Sex Offenses	32	51		83
Drug Abuse Violations	289	1,438	25	1,752
Gambling		4		4
Offenses Against Family and Children	77	151		228
Driving Under the Influence	74	4,390	3	4,467
Liquor Law Violations	1,645	4,449	5	6,099
Disorderly Conduct	672	892	1	1,565
Vagrancy		2		2
All Other Offenses	1,305	4,748	16	6,069
Suspicion				0
Curfew and Loitering	270			270
Runaways	656			656
Arrest Total	7,742	21,279	124	29,145

Arrests by Gender, 2002

Offense Classification	Male	Female	Total
Murder/Non-Negligent Manslaughter	5	1	6
Negligent Manslaughter			0
Forcible Rape	39	3	42
Robbery	23	2	25
Aggravated Assault	111	16	127
Burglary	275	41	316
Larceny/Theft	1,439	825	2,264
Motor Vehicle Theft	209	52	261
Other Assaults	1,352	446	1,798
Arson	24	1	25
Forgery and Counterfeiting	115	77	192
Fraud	1,065	712	1,777
Embezzlement	2	2	4
Stolen Property Offenses	142	29	171
Vandalism	724	78	802
Weapons Offenses	136	4	140
Prostitution			0
Other Sex Offenses	83		83
Drug Abuse Violations	1,340	412	1,752
Gambling	3	1	4
Offenses Against Family and Children	154	74	228
Driving Under the Influence	3,545	922	4,467
Liquor Law Violations	4,163	1,936	6,099
Disorderly Conduct	1,193	372	1,565
Vagrancy		2	2
All Other Offenses	4,440	1,629	6,069
Suspicion			0
Curfew and Loitering	151	119	270
Runaways	258	398	656
Arrest Total	20,991	8,154	29,145

Arrests by Race, 2002

Offense Classification	White	Black	Native American	Asian	Total
Murder/Non-Negligent Manslaughter	4		2		6
Negligent Manslaughter					0
Forcible Rape	28	7	7		42
Robbery	17	5	3		25
Aggravated Assault	85	6	35	1	127
Burglary	261	9	46		316
Larceny/Theft	1,761	68	425	10	2,264
Motor Vehicle Theft	194	8	55	4	261
Other Assaults	1,395	98	302	3	1,798
Arson	20	1	3	1	25
Forgery and Counterfeiting	168	11	13		192
Fraud	1,669	25	79	4	1,777
Embezzlement	4				4
Stolen Property Offenses	126	15	30		171
Vandalism	686	29	84	3	802
Weapons Offenses	123	1	16		140
Prostitution					0
Other Sex Offenses	72	2	8	1	83
Drug Abuse Violations	1,504	64	180	4	1,752
Gambling	4				4
Offenses Against Family and Children	156	18	53	1	228
Driving Under the Influence	3,890	66	506	5	4,467
Liquor Law Violations	5,382	58	645	14	6,099
Disorderly Conduct	1,207	47	306	5	1,565
Vagrancy	2				2
All Other Offenses	5,025	178	857	9	6,069
Suspicion					0
Curfew and Loitering	223	2	44	1	270
Runaways	524	20	107	5	656
Arrest Total	24,530	738	3,806	71	29,145

Arrest Analysis by Reporting Jurisdiction

The table below contains arrest totals for each reporting agency in 2002. Juvenile and adult arrests as well as arrests reported without age information are included.

Arrests by Reporting Jurisdiction, 2002

Agency	Murder/Non-Neg. Mansl.	Negligent Manslaughter	Forcible Rape	Robbery	Aggravated Assault	Burglary	Larceny/Theft	Motor Vehicle Theft	Other Assault	Arson	Forgery/Counterfeiting	Fraud	Embezzlement	Stolen Property Offenses	Vandalism	Weapons Offenses	Prostitution	Other Sex Offenses	Drug Abuse Violations	Gambling Violations	Off. Against Fam & Children	DUI	Liquor Law Violations	Disorderly Conduct	Vagrancy	All Other Offenses	Suspicion	Curfew/Loitering	Runaway	Total
Adams SO							5	3														9	15	2		4				38
Barnes SO						1										1						13	16			2				33
Valley City PD					1	3	18	1	9		2			2	12	1		5	8			60	135	13		21			3	294
Benson SO	Did not report in 2002																													
Billings SO	Did not report in 2002																													
Bottineau SO						12	3	5	6						2							3	95	1		10				139
Bowman SO	Did not report in 2002																													
Bowman PD			1			1	11	1	2						8				1			12	10			2				49
Burke SO															1				2			1	1			5				10
Burleigh SO	1				5	3	6	5	25	1		212			5	3		1	92		4	154	121	3		51			7	699
Bismarck PD	1		5	9	14	44	537	22	253	6	52	39		29	183	15		25	198		12	345	501	276		485		72	91	3214
Cass SO					2	3	5	10	29					1	10				16		2	58	169	4		55				364
Fargo PD			12	6	24	66	547	41	362	3	22	33		32	48	21		8	259	1	103	723	631	196		451			34	3623
West Fargo PD			1		5	16	52	8	70			1	1	11	45	1		3	114		2	198	171	19		110		8	37	873
NDSU PD					1	3	1		1					1					4			28	175	1		4				219
Cavalier SO						5	8				1				8				1			9								32
Dickey SO					2				1	4	1	34	1		4				1			5	12			4				69
Oakes PD																														0
Divide SO	Did not report in 2002																													
Crosby PD	Did not report in 2002																													
Dunn SO																						6								6
Eddy SO						2	1		2			55			9							14		1						84
Emmons SO						3	6		5			11			5	2			2			2	34	1		13				84
Linton PD																														0
Carrington PD	Did not report in 2002																													
Foster SO																														0
Golden Valley SO							4	2	15				1					3	5							25				55
Grand Forks SO	2						2	4	25			130			10	1			4		9	8	23	4		982			4	1208
Emerado PD							1		4			1			3				2		1	5	7	3		3				30
Grand Forks PD			7	1	12	18	293	27	189	4	21	15		22	56	9		4	86	2	8	331	467	304		366		17	142	2401
Larimore PD	Did not report in 2002																													
Northwood PD									1																	2				3
Thompson PD	Did not report in 2002																													

Agency	Murder/Non-Neg. Mansl.	Negligent Manslaughter	Forcible Rape	Robbery	Aggravated Assault	Burglary	Larceny/Theft	Motor Vehicle Theft	Other Assault	Arson	Forgery/Counterfeiting	Fraud	Embezzlement	Stolen Property Offenses	Vandalism	Weapons Offenses	Prostitution	Other Sex Offenses	Drug Abuse Violations	Gambling Violations	Off. Against Fam & Children	DUI	Liquor Law Violations	Disorderly Conduct	Vagrancy	All Other Offenses	Suspicion	Curfew/Loitering	Runaway	Total	
UND PD						3	2	1	6										8			55	172	3		18				268	
Grant SO						1	6		3		1										1		11			2			1	26	
Carson PD					1	1		3															10			1				16	
Elgin PD							2								2							4								8	
Griggs SO	Did not report in 2002																														
Hettinger SO					1		2		1										1			1	6	1						13	
Kidder SO					1	1			2		2	22										2	11							41	
Steele PD						3	2		1		3				3								2	17						31	
LaMoure SO					1				1										1							2			5		
Logan SO						1															1		1			1			4		
Napoleon PD	Did not report in 2002																														
McHenry SO							7	2							3				2			1	12	1		5				33	
Velva PD *									2													3				1				6	
McIntosh SO																						1								1	
Wishek PD	Did not report in 2002																														
McKenzie SO							4		3									1	10			17	11			10				56	
Watford City PD							3	1	2						20	2							7	10		4	24			73	
McLean SO						1			3										3			19	26	2		4				58	
Mercer SO								1	1													33	41			6				82	
Beulah PD							4		10			1						1	1			32	25	8		23	3		108		
Hazen PD							2		1													2	2	1		1				9	
Morton SO						4	6	1	7					2	5	2			5		1	54	151	8		44		4		294	
Mandan PD			1		5		43	9	76	3	9	2		9	30	7		5	20			271	152	66		286	18	25		1037	
Mountrail SO						1	2	1	4		4				2				2			7		2		43				68	
Nelson SO	Did not report in 2002																														
Oliver SO			1				1		1													3		3		2				11	
Pembina SO						2	5	2	10					1	3	1			12			26	67	2		77	2			210	
Cavalier PD					1	3	2		12		2				2	3			7			17	34	7		26				116	
Pierce SO					1		4	1	2			9							4			21	41			8				91	
Rugby PD							1	1	1			1			3				1			6	25			5				44	
Ramsey SO	Did not report in 2002																														
Devils Lake PD	1			1	10	32	114	8	39		6	8		18	26	3		1	79		47	147	314	135		267	40	7		1303	
Ransom SO					1	1	1	7	5		1	91			3						1	6	28	13		42			1	201	
Lisbon PD	Did not report in 2002																														
Renville SO						2	3		2			5			3								6				9				30
Richland SO			1			5	6	5	12		1	171		5	11	2		2	14		11	64	125	15		115			3	568	
Wahpeton PD					2	5	21	1	18		2	2			8			3	7			25	82	10		17		8		211	
NDSOS PD						3								1					2				8	1		4				19	
Rolette SO					1	4	4	3	2					1	2								1			14				32	
Sargent SO						2	5	2	3		2	34			3			1	10			10	27	1		24				124	
Sheridan SO	Did not report in 2002																														
Sioux SO	Did not report in 2002																														

*Reported partial year.

Agency	Murder/Non-Neg. Mansl.	Negligent Manslaughter	Forcible Rape	Robbery	Aggravated Assault	Burglary	Larceny/Theft	Motor Vehicle Theft	Other Assault	Arson	Forgery/Counterfeiting	Fraud	Embezzlement	Stolen Property Offenses	Vandalism	Weapons Offenses	Prostitution	Other Sex Offenses	Drug Abuse Violations	Gambling Violations	Off. Against Fam & Children	DUI	Liquor Law Violations	Disorderly Conduct	Vagrancy	All Other Offenses	Suspicion	Curfew/Loitering	Runaway	Total
Slope SO	Did not report in 2002																													
Stark SO							1		4			551			3	2		1	2			13	51	4		37			1	670
Dickinson PD					4	9	49	7	64		10	11		9	104	3		5	8		10	71	245	96		127		2	66	900
Steele SO	Did not report in 2002																													
Stutsman SO			1			7	8	2	8						6				1			24	64	8		10			7	146
Jamestown PD	1		4	3	7	10	108	10	142		10	1		6	36	5		4	14		1	87	297	82		452		28	20	1328
Towner SO	Did not report in 2002																													
Cando PD					1			3				1							2			1	1			2				11
Traill SO					3		7	10	12		3	148			2				5		1	37	10	6		42			1	287
Mayville PD	Did not report in 2002																													
Hatton PD *									1						2				1			1	3	2		2				12
Hillsboro PD	Did not report in 2002																													
Portland PD	Did not report in 2002																													
Walsh SO				3	2	10	20	5	8	2	2	2			20			1	1		1	22	34	6		36			4	179
Grafton PD					2		25	4	24		1			3	9	4		4	8		2	8	8	14		36		2	7	161
Ward SO					2		6	1	27						7	1			10			36	72	18		31			35	246
Minot PD			4	2	10	15	208	19	183	2	22	6	1	3	43	11		3	29	1	3	231	327	181	2	757		29	98	2190
Wells SO					1		9	2	2			26							16			7	16			26			1	106
Harvey PD	Did not report in 2002																													
Fessenden PD	Did not report in 2002																													
Williams SO					1	3	15	5	10			154			3	1			5		2	13	61	5		201			3	482
Williston PD			4		3	6	55	5	76		9			4	23	2		2	6		1	29	120	21		280		25	45	716
Highway Patrol								8	8					11	6	33				173		1072	799	5		145				2260
Drug Task Forces						1	1	2			3					4				485			1			229			1	727
Total	6	0	42	25	127	316	2264	261	1798	25	192	1777	4	171	802	140	0	83	1752	4	228	4467	6099	1565	2	6069	0	270	656	29145

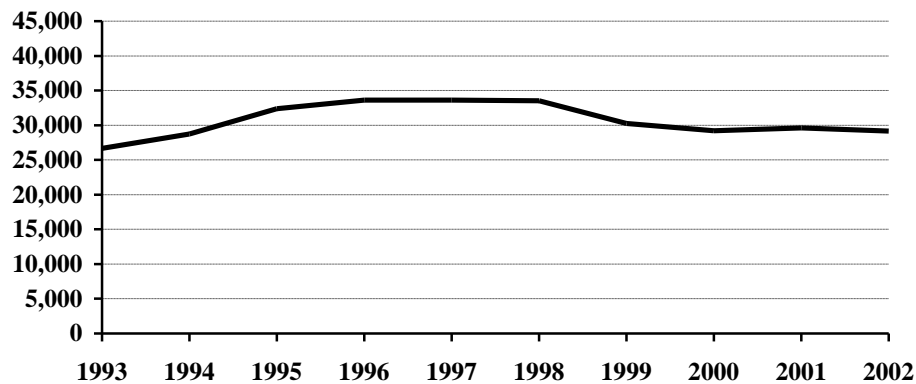
* Reported partial year

Arrests 1993-2002

Arrest Summary

Year	Population	Arrest Total	% Change from Previous Year	Rate per 100,000 Pop.
1993	635,000	26,670	0.4%	4200.0
1994	638,000	28,737	7.8	4504.2
1995	641,000	32,399	12.7	5054.4
1996	644,000	33,614	3.8	5219.6
1997	641,000	33,634	0.1	5247.1
1998	638,000	33,548	-0.3	5258.3
1999	634,000	30,258	-9.8	4772.6
2000	642,200	29,201	-3.5	4547.0
2001	634,450	29,638	1.5	4671.5
2002	634,110	29,145	-1.7	4596.2

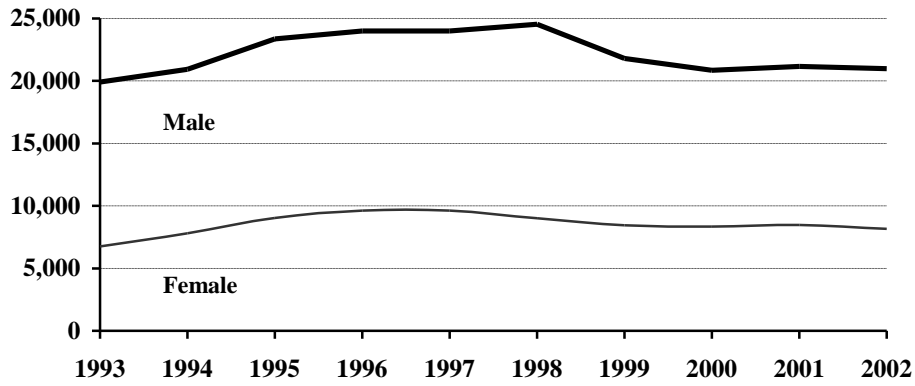
Arrest Totals, 1993-2002



Arrests by Gender, 1993-2002

Year	Male	% of Total	Female	% of Total	Total
1993	19,913	74.7%	6,757	25.3%	26,670
1994	20,931	72.8	7,806	27.2	28,737
1995	23,363	72.1	9,036	27.9	32,399
1996	23,992	71.4	9,622	28.6	33,614
1997	24,011	71.4	9,623	28.6	33,634
1998	24,538	73.1	9,010	26.9	33,548
1999	21,801	72.1	8,457	27.9	30,258
2000	20,854	71.4	8,347	28.6	29,201
2001	21,170	71.4	8,468	28.6	29,638
2002	20,991	72.0	8,154	28.0	29,145

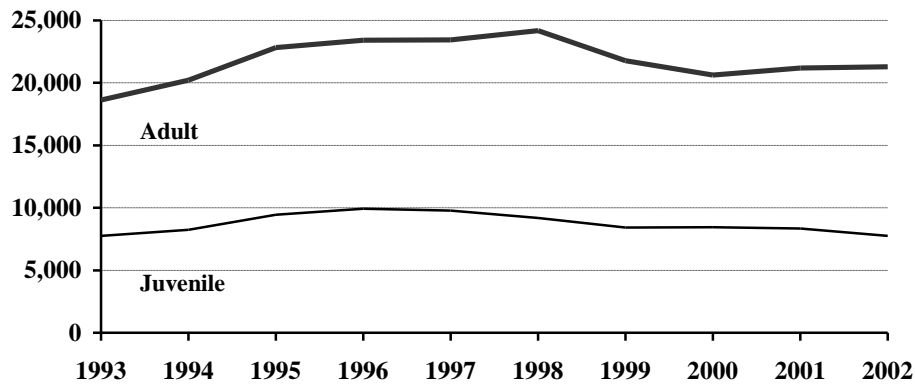
Arrests by Gender, 1993-2002



Juvenile and Adult Arrests, 1993-2002

Year	Juvenile	Percent of Total	Adult	Percent of Total	Age Not Reported	Percent of Total	Total
1993	7,743	29.0%	18,617	69.8%	310	1.2%	26,670
1994	8,246	28.7	20,227	70.4	264	0.9	28,737
1995	9,432	29.1	22,820	70.4	147	0.5	32,399
1996	9,938	29.6	23,409	69.6	267	0.8	33,614
1997	9,780	29.1	23,428	69.7	426	1.3	33,634
1998	9,175	27.3	24,188	72.1	185	0.6	33,548
1999	8,429	27.9	21,769	71.9	60	0.2	30,258
2000	8,435	28.9	20,612	70.6	154	0.5	29,201
2001	8,347	28.2	21,188	71.5	103	0.3	29,638
2002	7,742	26.6	21,279	73.0	124	0.4	29,145

Juvenile and Adult Arrests, 1993-2002



Arrests by Age Group, 1993-2002

Age Group	1993	1994	1995	1996	1997	1998	1999	2000	2001	2002
Under 10	207	199	281	208	204	205	202	203	186	168
10-12	754	765	895	881	953	758	628	708	819	638
13-14	1827	2137	2396	2433	2429	2165	1877	1809	1686	1736
15	1395	1609	1796	2077	1980	1775	1586	1698	1629	1459
16	1873	1646	2044	2138	2115	2034	1977	1898	1943	1810
17	1687	1890	2020	2201	2099	2238	2159	2119	2084	1931
18	1810	1828	2306	2238	2210	2610	2356	2377	2501	2248
19	1783	2143	2238	2279	2330	2611	2693	2572	2845	2528
20	1753	1774	1997	1991	2170	2366	2220	2198	2565	2224
21	1057	1200	1320	1304	1240	1385	1186	1112	1220	1323
22	1057	1057	1149	1163	1166	1063	1039	957	913	1010
23	858	930	940	1026	922	1040	807	830	817	904
24	677	859	951	929	911	821	741	654	739	753
25-29	2841	3002	3242	3506	3451	3390	2858	2598	2397	2562
30-34	2347	2542	2910	3023	2709	2642	2230	2018	1932	1990
35-39	1711	1854	2278	2264	2494	2497	2166	1931	1926	1931
40-44	1046	1244	1431	1633	1710	1689	1500	1475	1536	1711
45-49	659	717	901	918	958	967	919	908	895	1034
50-54	378	463	485	516	523	513	515	483	448	550
55-59	226	225	262	251	266	270	234	250	191	261
60-64	122	126	154	143	153	103	107	81	77	110
65 +	292	263	256	225	215	221	198	168	186	140
Age Not Reported	310	264	147	267	426	185	60	154	103	124
Arrest Total	26670	28737	32399	33614	33634	33548	30258	29201	29638	29145

Arrests by Offense, 1993-2002

Offense Classification	1993	1994	1995	1996	1997	1998	1999	2000	2001	2002
Murder/Non-Neg. Manslaughter	9	3	11	11	3	5	6	1	3	6
Negligent Manslaughter	2	2	1	1	1	2	4	4	1	
Forcible Rape	49	43	54	51	35	44	24	39	32	42
Robbery	22	31	31	38	30	28	28	15	19	25
Aggravated Assault	155	127	176	193	180	168	108	144	161	127
Burglary	513	407	374	410	413	426	409	305	343	316
Larceny/Theft	3409	3346	3742	3718	3093	2671	2327	2279	2238	2264
Motor Vehicle Theft	320	336	358	334	307	286	289	247	238	261
Other Assaults	1227	1337	1536	1671	1550	1567	1651	1704	1664	1798
Arson	19	25	34	24	36	33	16	24	60	25
Forgery and Counterfeiting	214	286	261	223	189	191	160	137	186	192
Fraud	4255	5661	5839	6006	5491	4291	3274	2532	1883	1777
Embezzlement	6	5	5	14	5	6	6	1	6	4
Stolen Property Offenses	172	140	156	204	159	150	84	98	113	171
Vandalism	874	844	806	631	855	774	709	671	713	802
Weapons Offenses	143	157	139	121	119	102	107	120	138	140
Prostitution	1	1	4	2		7	3		4	
Other Sex Offenses	85	72	89	103	99	82	76	87	87	83
Drug Abuse Violations	643	779	799	1106	1242	1517	1456	1501	1658	1752
Gambling	2	3		3	1	6	5		4	4
Off. Against Family & Children	271	229	344	283	327	401	200	250	245	228
Driving Under the Influence	4418	4206	4439	4467	4777	5187	5179	4304	4301	4467
Liquor Law Violations	4188	4401	5109	5260	5521	6231	6377	6574	7415	6099
Disorderly Conduct	1253	1253	1579	1468	1487	1783	1568	1554	1636	1565
Vagrancy		1	20		4	2	8	2	4	2
All Other Offenses	3060	3509	4970	5602	6164	6392	4998	5285	5338	6069
Suspicion					17		1			
Curfew and Loitering	409	495	414	561	486	347	382	345	325	270
Runaways	951	1038	1109	1109	1043	849	803	978	823	656
Arrest Total	26670	28737	32399	33614	33634	33548	30258	29201	29638	29145

Juvenile Arrests by Offense, 1993-2002

Offense Classification	1993	1994	1995	1996	1997	1998	1999	2000	2001	2002
Murder/Non-Neg. Manslaughter	2		9	1			1			
Negligent Manslaughter		1					1	1		
Forcible Rape	8	13	16	12	6	13	6	12	9	18
Robbery	14	8	13	10	13	8	9		3	9
Aggravated Assault	47	37	68	45	35	47	25	15	28	19
Burglary	226	197	208	201	222	201	202	134	175	166
Larceny/Theft	1900	1846	2066	2056	1771	1372	1212	1285	1134	1147
Motor Vehicle Theft	196	223	262	198	205	162	185	153	130	146
Other Assaults	368	379	467	517	424	420	401	448	439	485
Arson	13	19	24	20	25	23	10	17	52	15
Forgery and Counterfeiting	51	77	65	54	46	42	37	41	29	35
Fraud	23	19	16	28	20	28	17	16	32	18
Embezzlement	1		1							
Stolen Property Offenses	109	86	83	138	105	81	49	51	54	90
Vandalism	605	609	569	420	654	532	420	423	503	538
Weapons Offenses	64	61	62	50	34	30	27	31	40	36
Prostitution				2						
Other Sex Offenses	34	25	31	30	32	32	18	32	26	32
Drug Offenses	63	84	136	205	229	269	284	292	311	289
Gambling									1	
Off. Against Family/Children	126	97	142	109	96	110	98	66	86	77
Driving Under the Influence	85	77	77	62	104	114	169	81	90	74
Liquor Law Violations	1291	1426	1712	1900	1976	2169	2176	2039	1890	1645
Disorderly Conduct	356	454	579	575	611	762	709	699	785	672
Vagrancy							1		3	
All Other Offenses	801	975	1303	1635	1643	1564	1187	1277	1379	1305
Suspicion										
Curfew and Loitering	409	495	414	561	486	347	382	344	325	270
Runaways	951	1038	1109	1109	1043	849	803	978	823	656
Juvenile Arrest Total	7743	8246	9432	9938	9780	9175	8429	8435	8347	7742

Juvenile Arrests by Gender, 1993-2002

Year	Male	% of Total	Female	% of Total	Total
1993	5,452	70.4%	2,291	29.6%	7,743
1994	5,726	69.4	2,520	30.6	8,246
1995	6,423	68.1	3,009	31.9	9,432
1996	6,512	65.5	3,426	34.5	9,938
1997	6,363	65.1	3,417	34.9	9,780
1998	6,129	66.8	3,046	33.2	9,175
1999	5,456	64.7	2,973	35.3	8,429
2000	5,387	63.9	3,048	36.1	8,435
2001	5,298	63.5	3,049	36.5	8,347
2002	5,043	65.1	2,699	34.9	7,742

Adult Arrests by Offense, 1993-2002

Offense Classification	1993	1994	1995	1996	1997	1998	1999	2000	2001	2002
Murder/Non-Neg. Manslaughter	7	3	2	10	3	5	5	1	3	6
Negligent Manslaughter	2	1	1	1	1	2	3	3	1	
Forcible Rape	40	29	36	39	29	31	18	27	23	24
Robbery	8	23	18	28	17	20	19	15	16	16
Aggravated Assault	107	89	108	147	144	121	82	128	133	108
Burglary	283	204	164	208	185	220	205	166	166	144
Larceny/Theft	1485	1472	1662	1656	1306	1292	1110	987	1102	1114
Motor Vehicle Theft	121	106	93	133	99	124	104	93	108	114
Other Assaults	849	946	1067	1151	1106	1136	1244	1249	1221	1311
Arson	6	5	10	4	11	10	6	7	8	10
Forgery and Counterfeiting	157	207	195	169	140	148	123	96	157	155
Fraud	4108	5542	5771	5874	5354	4173	3243	2482	1782	1701
Embezzlement	5	5	4	13	5	6	6	1	6	4
Stolen Property Offenses	54	54	71	66	53	68	35	46	59	80
Vandalism	260	230	235	209	190	242	287	246	204	264
Weapons Offenses	78	96	77	69	83	72	80	87	98	103
Prostitution	1	1	4			7	3		4	
Other Sex Offenses	49	46	58	73	66	49	58	53	61	51
Drug Offenses	572	684	660	894	998	1248	1169	1206	1344	1438
Gambling	2	3		3	1	6	5		2	4
Off. Against Family/Children	144	132	202	174	230	291	100	182	159	151
Driving Under the Influence	4289	4102	4351	4364	4629	5051	5005	4214	4207	4390
Liquor Law Violations	2884	2942	3370	3323	3462	4033	4191	4493	5520	4449
Disorderly Conduct	893	792	995	891	866	1017	856	854	851	892
Vagrancy		1	20		4	2	7	2	1	2
All Other Offenses	2213	2512	3646	3910	4429	4814	3804	3974	3952	4748
Suspicion					17		1			
Adult Arrest Total	18617	20227	22820	23409	23428	24188	21769	20612	21188	21279

Adult Arrests by Gender, 1993-2002

Year	Male	% of Total	Female	% of Total	Total
1993	14,225	76.4%	4,392	23.6%	18,617
1994	15,004	74.2	5,223	25.8	20,227
1995	16,828	73.7	5,992	26.3	22,820
1996	17,283	73.8	6,126	26.2	23,409
1997	17,354	74.1	6,074	25.9	23,428
1998	18,280	75.6	5,908	24.4	24,188
1999	16,304	74.9	5,465	25.1	21,769
2000	15,361	74.5	5,251	25.5	20,612
2001	15,805	74.6	5,383	25.4	21,188
2002	15,859	74.5	5,420	25.5	21,279

Drug Arrest Analysis

Drug offense arrests increased 5.7 percent from 1,658 in 2001 to 1,752 in 2002. The arrest totals shown should not be interpreted as the number of individuals arrested for drug offenses because it is possible that some individuals may have been arrested on more than one occasion for this offense.

Approximately 76 percent of drug arrests in 2002 were arrests of males.

Juveniles, persons under the age of 18, comprised 16.5 percent of the total in 2002.

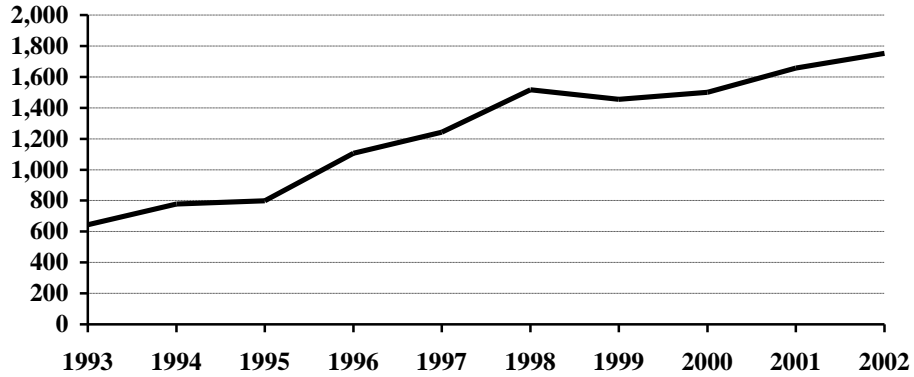
Approximately 87 percent of the drug arrests during the 10-year period were arrests for possession of drugs.

Seventy-nine percent of the arrests for drug offenses during the period 1993-2002 involved marijuana.

Arrests for Drug Offenses, 1993-2002

Year	Total	Percent Change from Previous Year
1993	643	24.4%
1994	779	21.2
1995	799	2.6
1996	1,106	38.4
1997	1,242	12.3
1998	1,517	22.1
1999	1,456	-4.0
2000	1,501	3.1
2001	1,658	10.5
2002	1,752	5.7

Arrests for Drug Offenses, 1993-2002



Drug Arrests by Gender, 1993-2002

Year	Male	% of Total	Female	% of Total	Total
1993	546	84.9%	97	15.1%	643
1994	659	84.6	120	15.4	779
1995	646	80.9	153	19.1	799
1996	888	80.3	218	19.7	1,106
1997	1,035	83.3	207	16.7	1,242
1998	1,260	83.1	257	16.9	1,517
1999	1,161	79.7	295	20.3	1,456
2000	1,222	81.4	279	18.6	1,501
2001	1,298	78.3	360	21.7	1,658
2002	1,340	76.5	412	23.5	1,752

Drug Arrests by Age Category, 1993-2002

Year	Juvenile	Percent of Total	Adult	Percent of Total	Age Not Reported	Percent of Total	Total
1993	63	9.8%	572	89.0%	8	1.2%	643
1994	84	10.8	684	87.8	11	1.4	779
1995	136	17.0	660	82.6	3	0.4	799
1996	205	18.5	894	80.8	7	0.6	1,106
1997	229	18.4	998	80.4	15	1.2	1,242
1998	269	17.7	1,248	82.3			1,517
1999	284	19.5	1,169	80.3	3	0.2	1,456
2000	292	19.5	1,206	80.3	3	0.2	1,501
2001	311	18.7	1,344	81.1	3	0.2	1,658
2002	289	16.5	1,438	82.1	25	1.4	1,752

Drug Arrests by Age Group, 1993-2002

Age Group	1993	1994	1995	1996	1997	1998	1999	2000	2001	2002
Under 10						1				
10-12		1	3	1	4	6	2	1	3	4
13-14	14	11	19	38	35	27	33	38	36	29
15	10	14	26	33	44	49	47	51	50	43
16	21	21	39	67	55	75	104	84	95	93
17	18	37	49	66	91	111	98	118	127	120
18	32	53	72	106	122	158	138	145	151	159
19	35	54	74	109	105	133	133	130	172	152
20	48	40	66	79	102	97	93	100	143	142
21	24	29	38	46	52	87	62	73	115	105
22	29	44	29	45	50	60	80	73	75	83
23	20	34	18	29	38	54	56	50	63	58
24	31	32	23	42	46	37	56	42	42	67
25-29	126	131	79	139	143	185	144	145	155	186
30-34	126	119	111	134	116	150	147	146	131	119
35-39	65	84	101	99	127	154	125	137	133	137
40-44	22	47	32	36	66	84	76	91	103	145
45-49	10	14	9	24	24	33	39	52	43	58
50-54	4	1	7	3	6	10	14	16	12	24
55-59		2		2	1	5	6	6	3	3
60-64			1	1		1			2	
65 +									1	
No Age Data	8	11	3	7	15		3	3	3	25
Total	643	779	799	1106	1242	1517	1456	1501	1658	1752

Drug Arrests by Type of Offense, 1993-2002

Year	Sale or Manufacture	% of Total	Possession	% of Total	Total
1993	132	20.5%	511	79.5%	643
1994	200	25.7	579	74.3	779
1995	92	11.5	707	88.5	799
1996	183	16.5	923	83.5	1,106
1997	109	8.8	1,133	91.2	1,242
1998	257	16.9	1,260	83.1	1,517
1999	159	10.9	1,297	89.1	1,456
2000	188	12.5	1,313	87.5	1,501
2001	118	7.1	1,540	92.9	1,658
2002	134	7.6	1,618	92.4	1,752

Drug Arrests by Age Category and Type of Offense, 1993-2002

Year	Juvenile		Adult		Age Not Reported	
	Sale or Manufacture	Possession	Sale or Manufacture	Possession	Sale or Manufacture	Possession
1993	8	55	116	456	8	
1994	14	70	184	500	2	9
1995	14	122	78	582		3
1996	23	182	158	736	2	5
1997	24	205	82	916	3	12
1998	37	232	220	1,028		
1999	11	273	145	1,024	3	
2000	32	260	156	1,050		3
2001	7	304	111	1,233		3
2002	20	269	110	1,328	4	21

Drug Arrests by Type of Drug, 1993-2002

Year	Opiates, Cocaine or Derivatives	Percent of Total	Marijuana	Percent of Total	Other Drugs or Narcotics	Percent of Total	Total
1993	23	3.6%	585	91.0%	35	5.4%	643
1994	37	4.7	672	86.3	70	9.0	779
1995	21	2.6	687	86.0	91	11.4	799
1996	59	5.3	914	82.6	133	12.0	1,106
1997	39	3.1	1,050	84.5	153	12.3	1,242
1998	96	6.3	1,189	78.4	232	15.3	1,517
1999	53	3.6	1,173	80.6	230	15.8	1,456
2000	45	3.0	1,189	79.2	267	17.8	1,501
2001	33	2.0	1,221	73.6	404	24.4	1,658
2002	61	3.5	1,189	67.9	502	28.6	1,752

Drug Arrests by Age Category and Type of Drug, 1993-2002

Year	Juvenile			Adult			Age Not Reported		
	Opiates, Cocaine or Deriv.	Marijuana	Other Drugs or Narcotics	Opiates, Cocaine or Deriv.	Marijuana	Other Drugs or Narcotics	Opiates, Cocaine or Deriv.	Marijuana	Other Drugs or Narcotics
1993		61	2	23	518	31		6	2
1994	8	68	8	29	593	62		11	
1995		122	14	21	562	77		3	
1996	2	186	17	56	722	116	1	6	
1997	2	197	30	37	842	119		11	4
1998	5	227	37	91	962	195			
1999		260	24	52	911	206	1	2	
2000	4	263	25	41	925	240		1	2
2001		269	42	33	950	361		2	1
2002	4	251	34	55	923	460	2	15	8

DUI Arrest Analysis

Reported DUI arrests increased 3.9 percent from 4,301 in 2001 to 4,467 in 2002. The arrest totals should not be interpreted as the number of individuals arrested for DUI offenses because it is possible that some individuals may have been arrested on more than one occasion.

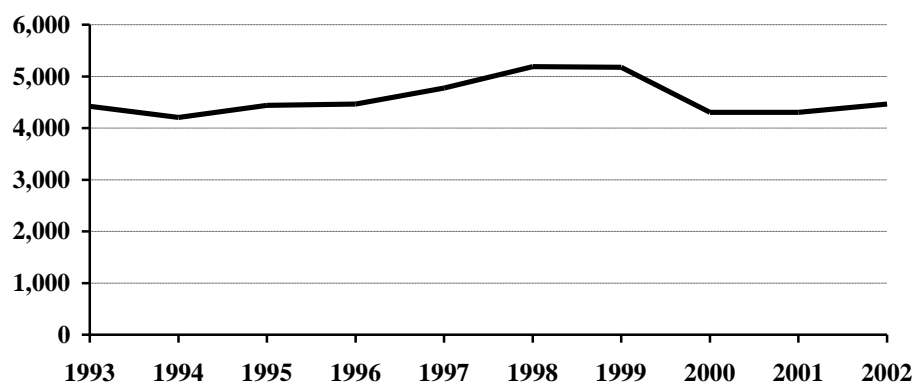
Approximately 79 percent of the DUI arrests in 2002 were arrests of males.

Juveniles, persons under the age of 18, made up 1.6 percent of the total in 2002.

DUI Arrests, 1993-2002

Year	DUI Arrests Reported	Percent Change from Previous Year
1993	4,418	-7.6%
1994	4,206	-4.8
1995	4,439	5.5
1996	4,467	0.6
1997	4,777	6.9
1998	5,187	8.6
1999	5,179	-0.2
2000	4,304	-16.9
2001	4,301	-0.1
2002	4,467	3.9

DUI Arrests, 1993-2002



DUI Arrests by Gender, 1993-2002

Year	Male	% of Total	Female	% of Total	Total
1993	3,651	82.6%	767	17.4%	4,418
1994	3,481	82.8	725	17.2	4,206
1995	3,672	82.7	767	17.3	4,439
1996	3,652	81.8	815	18.2	4,467
1997	3,917	82.0	860	18.0	4,777
1998	4,185	80.7	1,002	19.3	5,187
1999	4,149	80.1	1,030	19.9	5,179
2000	3,437	79.9	867	20.1	4,304
2001	3,450	80.2	851	19.8	4,301
2002	3,545	79.4	922	20.6	4,467

DUI Arrests by Age Category, 1993-2002

Year	Juvenile	Percent of Total	Adult	Percent of Total	Age Not Reported	Percent of Total	Total
1993	85	1.9%	4,289	97.1%	44	1.0%	4,418
1994	77	1.8	4,102	97.5	27	0.6	4,206
1995	77	1.7	4,351	98.0	11	0.2	4,439
1996	62	1.4	4,364	97.7	41	0.9	4,467
1997	104	2.2	4,629	96.9	44	0.9	4,777
1998	114	2.2	5,051	97.4	22	0.4	5,187
1999	169	3.3	5,005	96.6	5	0.1	5,179
2000	81	1.9	4,214	97.9	9	0.2	4,304
2001	90	2.1	4,207	97.8	4	0.1	4,301
2002	74	1.6	4,390	98.3	3	0.1	4,467

DUI Arrests by Age Group, 1993-2002

Age Group	1993	1994	1995	1996	1997	1998	1999	2000	2001	2002
Under 10					1					
10-12	1		1				2			
13-14	1	1	2	2	3	2	4	1	1	3
15	10	9	9	10	8	10	14	3	6	6
16	22	12	16	13	40	42	32	30	35	17
17	51	55	49	37	52	60	117	47	48	48
18	104	100	94	107	103	158	141	125	112	114
19	130	123	121	112	143	174	228	146	135	155
20	151	139	143	144	180	181	228	155	145	182
21	224	222	205	214	234	272	274	251	269	276
22	226	195	203	212	225	203	269	240	232	260
23	183	175	163	195	156	234	220	205	197	238
24	141	143	189	185	162	194	203	170	209	188
25-29	760	670	690	702	755	777	770	640	641	660
30-34	778	751	756	713	711	713	641	520	526	507
35-39	575	565	617	624	717	752	754	529	519	511
40-44	375	383	435	475	506	566	493	473	499	520
45-49	255	262	313	295	293	396	351	349	337	339
50-54	149	162	173	159	191	188	207	185	187	232
55-59	88	86	111	88	110	107	101	116	78	97
60-64	54	52	59	56	69	58	50	42	43	51
65 +	96	74	79	83	74	78	75	68	78	60
No Age Data	44	27	11	41	44	22	5	9	4	3
Total	4418	4206	4439	4467	4777	5187	5179	4304	4301	4467

UCR OFFENSE DEFINITIONS

(This page intentionally left blank.)

UNIFORM CRIME REPORTING OFFENSE DEFINITIONS

Offenses in Uniform Crime Reporting are divided into two groups designated as Part I and Part II crimes. Information on the number of Part I offenses known to law enforcement, the number cleared by arrest or exceptional means, and the number of persons arrested is reported monthly. Arrest data are reported for Part I and Part II offenses. The Crime Index is composed of offenses 1-7 with the exception as noted in item 1 below.

NOTE: The classifications of these offenses for UCR reporting purposes are based on law enforcement investigation as opposed to determination by a court, medical examiner, jury, or other judicial hearing.

PART I OFFENSES:

1. CRIMINAL HOMICIDE

a. Murder and Non-Negligent Manslaughter

The willful (non-negligent) killing of one human being by another. Deaths caused by negligence, attempts to kill, assaults to kill, suicides, accidental deaths, and justifiable homicides are excluded. Justifiable homicides are limited to: (1) the killing of a felon by a law enforcement officer in the line of duty, and (2) the killing of a felon by a private citizen.

b. Manslaughter by Negligence

The killing of another person through gross negligence. Excludes traffic fatalities. While manslaughter by negligence is a Part I crime, it is not included in the Crime Index.

2. FORCIBLE RAPE

The carnal knowledge of a female forcibly and against her will. Included are rapes by force and attempts or assaults to rape. Statutory offenses (no force used -- victim under age of consent) are excluded.

3. ROBBERY

The taking or attempting to take anything of value from the care, custody, or control of a person or persons by force or threat of force or violence, or putting the victim in fear.

4. AGGRAVATED ASSAULT

An unlawful act by one person upon another for the purpose of inflicting severe or aggravated bodily injury. This type of assault usually is accompanied by the use of a weapon or by a means likely to produce death or great bodily harm. Simple assaults are excluded.

5. BURGLARY

Breaking or entering. The unlawful entry of a structure to commit a felony or theft. Attempted forcible entry is included.

6. LARCENY/THEFT

The unlawful taking, carrying, leading, or riding away of property from the possession or constructive possession of another. Examples are thefts of bicycles or automobile accessories, shoplifting, pocket-picking, or the stealing of any property or article that is not taken by force and violence or by fraud. Attempted larcenies are included. Embezzlement, "con" games, forgery, worthless checks, etc., are excluded.

7. MOTOR VEHICLE THEFT

The theft or attempted theft of a motor vehicle. A motor vehicle is self-propelled and runs on the surface and not on rails. Specifically excluded from this category are motorboats, construction equipment, airplanes, and farming equipment.

8. ARSON

Any willful or malicious burning or attempting to burn, with or without intent to defraud, a dwelling house, public building, motor vehicle, personal property of another, etc.

PART II OFFENSES:

9. OTHER ASSAULTS (SIMPLE)

Assaults or attempted assaults where no weapon was used or which did not result in serious or aggravated injury to the victim.

10. FORGERY AND COUNTERFEITING

Making, altering, uttering, or possessing, with the intent to defraud, anything false which is made to appear true. Attempts are included.

11. FRAUD

Fraudulent conversion and obtaining money or property by false pretenses. Included are larceny by bailee and bad checks except forgeries and counterfeiting. Attempts are included.

12. EMBEZZLEMENT

Misappropriation or misapplication of money or property entrusted to one's care, custody or control. Attempts are included.

13. STOLEN PROPERTY -- BUYING, RECEIVING, POSSESSING

Buying, receiving, or possessing stolen property, including attempts.

14. VANDALISM

Willful or malicious destruction, injury, disfigurement, or defacement of any public or private property, real or personal, without consent of the owner or person having custody or control. Attempts are included.

15. WEAPON OFFENSES -- CARRYING, POSSESSING, ETC.

All violations of regulations or statutes controlling the carrying, using, possessing, furnishing, and manufacturing of deadly weapons or silencers. Attempts are included.

16. PROSTITUTION AND COMMERCIALIZED VICE

Sex offenses of a commercialized nature, such as prostitution, keeping a bawdy house, procuring, or transporting women for immoral purposes. Attempts are included.

17. OTHER SEX OFFENSES (except forcible rape, prostitution and commercialized vice)

Statutory rape and offenses against chastity, common decency, morals and the like. Attempts are included.

18. DRUG ABUSE VIOLATIONS

State and local offenses relating to narcotic and non-narcotic drugs, such as unlawful possession, sale, use, growing and manufacturing of narcotic and non-narcotic drugs. Attempts are included.

19. GAMBLING

Promoting, permitting, or engaging in illegal gambling.

20. OFFENSES AGAINST FAMILY AND CHILDREN

Non-support, neglect, desertion, or abuse of family and children.

21. DRIVING UNDER THE INFLUENCE

Driving or operating any vehicle or common carrier while drunk or under the influence of liquor or drugs.

22. LIQUOR LAWS

State or local liquor law violations, except "drunkenness" (offense 23) and "driving under the influence" (offense 21).

23. DRUNKENNESS

Drunkenness or intoxication. Excluded is "driving under the influence" (offense 21). This is not a crime in North Dakota, but is included in the national program.

24. DISORDERLY CONDUCT

Breach of peace.

25. VAGRANCY

Vagabondage, begging, loitering, etc.

26. ALL OTHER OFFENSES

All violations of state or local laws, except offenses 1-25 and traffic offenses.

27. SUSPICION

No specific offense; suspect released without formal charges being placed.

28. CURFEW AND LOITERING

Offenses relating to violation of local curfew and loitering ordinances where such laws exist.

29. RUNAWAYS

Limited to juveniles taken into protective custody under provisions of local statutes.

**FULL-TIME LAW
ENFORCEMENT EMPLOYEES**

(This page intentionally left blank.)

**NUMBER OF FULL-TIME LAW ENFORCEMENT EMPLOYEES
REPORTED BY UCR AGENCIES
AS OF OCTOBER 31, 2002**

Agency	Law Enforcement Officers		Civilian Personnel		Total Full-Time			Population
	Male	Female	Male	Female	Male	Female	Total	
Adams SO	3				3		3	2,560
Barnes SO	5	1		1	5	2	7	4,886
Valley City PD	11	1	2	3	13	4	17	6,740
Benson SO	4				4		4	6,877
Billings SO	3			1	3	1	4	877
Bottineau SO	9		3	1	12	1	13	7,059
Bowman SO	2				2		2	1,621
Bowman PD	1	1			1	1	2	1,580
Burke SO	3	1			3	1	4	2,213
Burleigh SO	32	4	18	8	50	12	62	13,709
Bismarck PD	78	6	4	22	82	28	110	54,832
Cass SO	46	13	32	27	78	40	118	17,376
Fargo PD	94	17	3	36	97	53	150	89,458
West Fargo PD	23	2	2	9	25	11	36	14,752
NDSU PD	9	1		1	9	2	11	
Cavalier SO	5		2	4	7	4	11	4,770
Dickey SO	4	1		1	4	2	6	3,730
Oakes PD	3			1	3	1	4	1,954
Divide SO	2				2		2	1,179
Crosby PD	2				2		2	1,075
Dunn SO	3			1	3	1	4	3,554
Eddy SO	4	1			4	1	5	2,723
Emmons SO	3				3		3	2,973
Linton PD	NR							1,304
Foster SO	2			1	2	1	3	1,473
Carrington PD	3				3		3	2,239
Golden Valley SO	4			1	4	1	5	1,900
Grand Forks SO	23			6	23	6	29	12,717
Grand Forks PD	71	6	5	11	76	17	93	48,700
Larimore PD	NR							1,415
Northwood PD	2				2		2	947
Emerado PD	NR							504
Thompson PD	1				1		1	993
UND PD	11		2	2	13	2	15	
Grant SO	2				2		2	1,840
Carson PD	1				1		1	315
Elgin PD	1				1		1	650
Griggs SO	4				4		4	2,720
Hettinger SO	4				4		4	2,681
Kidder SO	1			1	1	1	2	1,968
Steele PD	1				1		1	751
LaMoure SO	4			1	4	1	5	4,642
Logan SO	2		1		3		3	1,521
Napoleon PD	2				2		2	846
McHenry SO	5			1	5	1	6	4,875
Velva PD	NR							1,036
McIntosh SO	3				3		3	2,151
Wishek PD	2				2		2	1,108
McKenzie SO	5		1	6	6	6	12	4,248
Watford City PD	4				4		4	1,417
McLean SO	19		1	3	20	3	23	9,194
Mercer SO	7		6	6	13	6	19	2,656
Beulah PD	6			1	6	1	7	3,112
Hazen PD	4				4		4	2,426
Stanton PD	NR							341
Morton SO	20		7	6	27	6	33	8,477
Mandan PD	27	1		8	27	9	36	16,507
Mountrail SO	NR							6,548

Agency	Law Enforcement Officers		Civilian Personnel		Total Full-Time			Population
	Male	Female	Male	Female	Male	Female	Total	
Nelson SO	4			1	4	1	5	3,668
Oliver SO	2			1	2	1	3	2,039
Pembina SO	8		2	4	10	4	14	6,959
Cavalier PD	4				4		4	1,517
Pierce SO	3			4	3	4	7	1,714
Rugby PD	4				4		4	2,902
Ramsey SO	6			1	6	1	7	4,783
Devils Lake PD	11	3		2	11	5	16	7,131
Ransom SO	4	1			4	1	5	3,553
Lisbon PD	2	1			2	1	3	2,263
Renville SO	3	1			3	1	4	2,577
Richland SO	13		5	4	18	4	22	9,295
Wahpeton PD	11	2		1	11	3	14	8,477
NDSCS PD	3			1	3	1	4	
Rolette SO	9		2	1	11	1	12	13,502
Sargent SO	NR							4,311
Sheridan SO	NR							1,689
Sioux SO	NR							3,993
Slope SO	1				1		1	757
Stark SO	10			3	10	3	13	6,543
Dickinson PD	22	1	1	9	23	10	33	15,808
Steele SO	NR							2,229
Stutsman SO	8			2	8	2	10	6,301
Jamestown PD	27	2		4	27	6	33	15,331
Towner SO	2			1	2	1	3	1,515
Cando PD	3				3		3	1,325
Traill SO	4			3	4	3	7	3,603
Hillsboro PD	2				2		2	1,543
Mayville/Portland PD	3				3		3	2,526
Hatton PD								698
Walsh SO	12		4	2	16	2	18	7,774
Grafton PD	10			1	10	1	11	4,459
Ward SO	17	3	12	10	29	13	42	21,949
Minot PD	56	4	6	16	62	20	82	36,106
Wells SO	3			1	3	1	4	2,456
Harvey PD	3				3		3	1,964
Fessenden PD	1				1		1	618
Williams SO	19	3	5	2	24	5	29	7,158
Williston PD	21		1	7	22	7	29	12,354
Highway Patrol	121	5	45	16	166	21	187	
Total	1,022	82	172	267	1,194	349	1,543	634,110