

**Office of Attorney General
Bureau of Criminal Investigation**

Crime in North Dakota, 2003

A Summary of Uniform Crime Report Data

**Wayne Stenehjem
Attorney General**

**Prepared by
Colleen Weltz
UCR Program Manager
2004**

INTRODUCTION

The North Dakota Uniform Crime Reporting (UCR) program involves the collection, compilation, and analysis of crime and arrest statistics reported by the various local law enforcement agencies throughout the state. Thirty-nine sheriffs' departments and 28 police departments reported to the UCR program in 2003.

Law enforcement agencies may report UCR data in two ways:

INCIDENT-BASED REPORTING: Law enforcement agencies use a standard incident form to collect data on each incident reported to their respective agencies. This form collects much more detailed information than is collected using summary reporting. Data collected includes: type of incident, where and when the incident took place, victim characteristics, suspect/arrestee characteristics, property involved in the incident, etc. A total of 64 police departments and sheriffs' departments reported incident data for all or part of 2003.

In order to continue the statistical time-series begun with summary reporting, computer programs were written to extract summary data from the incident data reported. Crime in North Dakota, 2003 is a report on summary data.

SUMMARY REPORTING: Law enforcement agencies use a tally system to report the number of crime index offenses and arrests for each month. Three law enforcement agencies reported summary data in 2003.

The federal counterpart of the North Dakota UCR program is the National UCR program under the direction of the Federal Bureau of Investigation (FBI). The UCR program has been used nationally and in North Dakota for many years to measure the extent, distribution and fluctuation of crime through the crime index. The crime index is not an absolute measure, but rather an indication of the amount and type of crime occurring in any given jurisdiction. The index is composed of seven crimes that are sub-classified as follows:

VIOLENT CRIME: Murder/Non-Negligent Manslaughter
Forcible Rape
Robbery
Aggravated Assault

PROPERTY CRIME: Burglary
Larceny/Theft
Motor Vehicle Theft

A Modified Crime Index is also calculated at the federal level. This includes arson as the fourth property crime and the eighth index offense. Data on arson is not included in this report.

Prior to an offense becoming recorded in the UCR program, it must be reported to the local law enforcement officials and reported by the local agency to the UCR program. Consequently, the UCR program only reflects reported crimes. Reporting of crimes depends on several factors,

including actual perception of an act as a crime, the probability of loss of status for reporting (as in cases of rape), and the perceived probability of action on the part of the law enforcement agency contacted.

Several types of data are gathered, including:

Offense data

- Number of known crime index offenses
- Type and value of stolen property
- Additional information on homicides and arson
- Law enforcement officers killed or assaulted

Arrest and Clearance Data

- Number and type of offenses cleared
- Number and type of index offenses involving juveniles cleared
- Number of persons arrested, by offense
- Characteristics of persons arrested (age, sex, race)

To allow for comparison among several geographic or jurisdictional areas with differing populations or to allow comparisons across time in an area undergoing population fluctuations, the UCR program provides for the calculation of crime rates to remove any potential biases created by population differences. Because a rate relates the incidence of activity to population, it is possible to measure annual fluctuations in criminal activity by comparing rates of crime reported in any given year with those reported in other years. National publications report crime rates calculated based on the number of reported offenses per 100,000 population. This publication provides crime rate information calculated in the same manner.

TABLE OF CONTENTS

Introduction	i
Table of Contents	iii
North Dakota Crime Summary, 2003	v
Crime Index Offense Analysis	1
Violent Crime	7
Murder/Non-Negligent Manslaughter	9
Forcible Rape	11
Robbery	13
Aggravated Assault	16
Property Crime	18
Burglary	20
Larceny/Theft	23
Motor Vehicle Theft	26
Crime Index Offenses by Reporting Jurisdiction	29
Arrest Analysis	33
Arrests in 2003	35
Arrest Analysis by Reporting Jurisdiction	41
Arrests 1994-2003	44
Drug Arrest Analysis	50
DUI Arrest Analysis	54
UCR Offense Definitions	57
Full-Time Law Enforcement Employees	63

(This page intentionally left blank.)

NORTH DAKOTA CRIME SUMMARY, 2003

In 2003, 13,015 crime index offenses were reported by local law enforcement agencies. This is a decrease of 14.6 percent from the total of 15,239 reported in 2002.

Crime index offenses include: murder/non-negligent manslaughter, forcible rape, robbery, aggravated assault, burglary, larceny/theft, and motor vehicle theft.

The Census Bureau estimate of North Dakota's population for 2003 is 634,000. The index crime rate per 100,000 population for 2003 was 2052.8. The index crime rate for 2002 was 2403.2 per 100,000 population. This is a 14.6 percent decrease in the crime rate.

The total number of reported violent index crimes (murder, rape, robbery, and aggravated assault) was 499. This represents a decrease of 9.8 percent from the total of 553 reported in 2002. In 2001, 514 violent index crimes were reported.

Violent crime accounted for 3.8 percent of total index crimes reported in 2003.

Collectively, property crimes (burglary, larceny/theft and motor vehicle theft) decreased by 14.8 percent from 14,686 reported in 2002 to 12,516 reported in 2003.

Property crime accounted for 96.2 percent of total crime index offenses reported in 2003.

The 9,700 larceny/theft offenses reported in 2003 accounted for 74.5 percent of total index crimes.

More than \$11.4 million worth of property was reported stolen in 2003, with 31.5 percent of that amount reported as recovered by law enforcement officials.

North Dakota law enforcement agencies reported 30,334 arrests in 2003. A total of 29,145 arrests was reported in 2002.

In 2003, juvenile arrests accounted for 23.9 percent of the total arrests. Juvenile arrests were 45.3 percent of the total arrests of crime index offenses.

The number of reported arrests in 2003 for DUI increased to 4,854 from 4,467 reported in 2002.

Arrests for drug offenses increased 16.7 percent from a 2002 total of 1,752 to 2,045 in 2003.

(This page intentionally left blank.)

CRIME INDEX OFFENSE ANALYSIS

(This page intentionally left blank.)

Crime Index Offenses

Crime index offenses include the violent crimes of murder/non-negligent manslaughter, forcible rape, robbery, and aggravated assault, and the property crimes of burglary, larceny/theft, and motor vehicle theft.

In 2003, 13,015 crime index offenses were reported by local law enforcement agencies. This is a decrease of 14.6 percent from the total of 15,239 reported in 2002.

The Census Bureau estimate of North Dakota's population for 2003 is 634,000. Based on that total, the index crime rate per 100,000 population for 2003 was 2052.8, as compared to 2403.2 for 2002. See the crime index offense summary on page 5 for crime rate information for the period 1994-2003.

Nearly 21 percent of crime index offenses were reported as cleared by arrest or exceptional means. The UCR program defines an offense as "cleared" by law enforcement when at least one person is arrested, charged with the commission of the offense, and turned over to the court for prosecution. Several crimes may be cleared by the arrest of one person, while the arrests of many persons may clear only one offense. Law enforcement agencies may clear a crime by exceptional means when some element beyond law enforcement control precludes the placing of formal charges against the offender. Examples of circumstances that allow such clearances are the death of the offender (suicide, justifiably killed by police or private citizen, etc.); the victim's refusal to cooperate with prosecution after the offender has been identified; or the denial of extradition.

In 2003, 2,620 arrests were reported for crime index offenses. Of that total, 45.3 percent were arrests of juveniles.

More than \$11.4 million worth of property was reported stolen in 2003, with 31.5 percent of that amount reported as recovered by law enforcement officials.

Crime Index Offenses Reported, 2003

Crime Index Offense	Number Reported	Percent of Total Index Offenses
Murder/Non-Negligent Manslaughter	12	0.1%
Forcible Rape	143	1.1
Robbery	55	0.4
Aggravated Assault	289	2.2
Violent Crime Subtotal	499	3.8
Burglary	1,814	13.9
Larceny/Theft	9,700	74.5
Motor Vehicle Theft	1,002	7.7
Property Crime Subtotal	12,516	96.2
Crime Index Offense Total	13,015	100.0

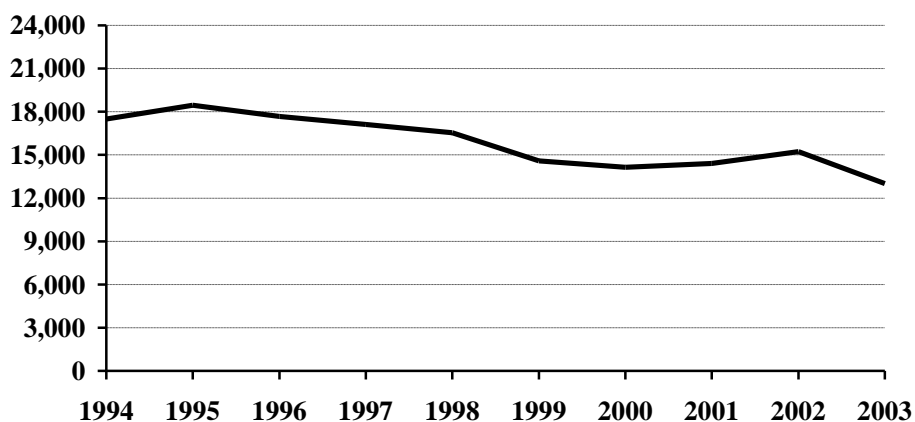
Comparison of Crime Index Offenses Reported, 2002-2003

Crime Index Offense	2002	2003	Percent Change
Murder/Non-Negligent Manslaughter	6	12	100.0%
Forcible Rape	167	143	-14.4
Rape by Force	158	136	-13.9
Attempts to Rape	9	7	-22.2
Robbery	71	55	-22.5
Firearm	11	11	0.0
Knife or Cutting Instrument	14	7	-50.0
Other Dangerous Weapon	10	10	0.0
Strong Arm – No Weapon	36	27	-25.0
Aggravated Assault	309	289	-6.5
Firearm	8	13	62.5
Knife or Cutting Instrument	68	55	-19.1
Other Dangerous Weapon	91	91	0.0
Hands, Fists, Feet, Etc.	142	130	-8.5
Violent Crime Subtotal	553	499	-9.8
Burglary	2,250	1,814	-19.4
Forcible Entry	1,067	920	-13.8
Unlawful Entry – No Force	1,020	760	-25.5
Attempted Forcible Entry	163	134	-17.8
Larceny/Theft	11,399	9,700	-14.9
Motor Vehicle Theft	1,037	1,002	-3.4
Autos	864	861	-0.3
Trucks and Buses	101	82	-18.8
Other Vehicles	72	59	-18.1
Property Crime Subtotal	14,686	12,516	-14.8
Crime Index Offense Total	15,239	13,015	-14.6

Crime Index Offenses, 1994-2003

Crime Index Offense	1994	1995	1996	1997	1998	1999	2000	2001	2002	2003
Murder/Non-Neg. Mansl.	5	9	12	10	7	11	8	9	6	12
Forcible Rape	154	151	175	150	169	147	173	159	167	143
Robbery	70	64	72	45	78	70	62	71	71	55
Aggravated Assault	299	360	335	344	312	217	319	275	309	289
Burglary	2080	2275	2008	2271	2194	2200	2004	2027	2250	1814
Larceny/Theft	13898	14435	13898	13163	12704	10956	10642	10870	11399	9700
Motor Vehicle Theft	981	1164	1182	1139	1073	989	942	1000	1037	1002
Crime Index Offense Total	17487	18458	17682	17122	16537	14590	14150	14411	15239	13015

Crime Index Offense Totals, 1994-2003



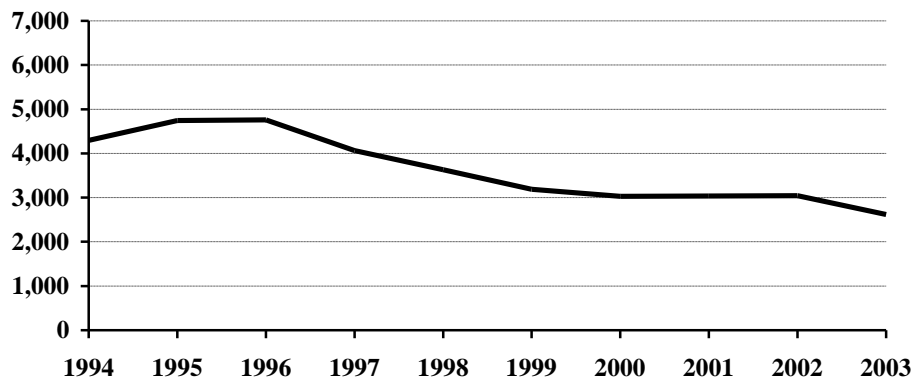
Crime Index Offense Summary

Year	Population	Crime Index Offense Total	% Change in Number from Previous Year	Crime Rate per 100,000 Population	% Change in Rate from Previous Year	Percent Cleared
1994	638,000	17,487	-2.2%	2740.9	-2.6%	25.7%
1995	641,000	18,458	5.6	2879.6	5.1	28.1
1996	644,000	17,682	-4.2	2745.7	-4.6	29.9
1997	641,000	17,122	-3.2	2671.1	-2.7	29.0
1998	638,000	16,537	-3.4	2592.0	-3.0	26.5
1999	634,000	14,590	-11.8	2301.3	-11.2	27.2
2000	642,200	14,150	-3.0	2203.4	-4.3	22.9
2001	634,450	14,411	1.8	2271.4	3.1	21.6
2002	634,110	15,239	5.7	2403.2	5.8	21.1
2003	634,000	13,015	-14.6	2052.8	-14.6	20.8

Arrests for Crime Index Offenses, 1994-2003

Year	Juvenile	Adult	Age Not Reported	Total
1994	2,324	1,926	43	4,293
1995	2,642	2,083	21	4,746
1996	2,523	2,221	11	4,755
1997	2,252	1,783	26	4,061
1998	1,803	1,813	12	3,628
1999	1,640	1,543	8	3,191
2000	1,599	1,417	14	3,030
2001	1,479	1,551	4	3,034
2002	1,505	1,526	10	3,041
2003	1,187	1,432	1	2,620

Arrests for Crime Index Offenses, 1994-2003



Property Loss Due to Crime Index Offenses, 1994-2003

Year	Population	Total Property Loss	% Change from Previous Year	Property Loss per Capita	Percent Recovered
1994	638,000	\$9,696,414	2.7%	\$15.20	48.2%
1995	641,000	11,070,248	14.2	17.27	32.2
1996	644,000	11,022,665	-0.4	17.12	34.4
1997	641,000	12,507,812	13.5	19.51	33.3
1998	638,000	11,429,270	-8.6	17.91	30.8
1999	634,000	11,201,544	-2.0	17.67	28.6
2000	642,200	10,308,899	-8.0	16.05	31.3
2001	634,450	11,420,051	10.8	18.00	33.2
2002	634,110	12,457,277	9.1	19.65	30.6
2003	634,000	11,457,228	-8.0	18.07	31.5

Violent Crime

Violent crime includes the offenses of murder/non-negligent manslaughter, forcible rape, robbery, and aggravated assault. (See the UCR offense definitions section beginning on page 57 of this publication for definitions of these and other offenses.)

In 2003, 499 violent crimes were reported in North Dakota. This is a 9.8 percent decrease from the 2002 total of 553 violent offenses reported. In 2001, 514 violent crimes were reported.

Violent crime comprised 3.8 percent of reported crime index offenses in North Dakota in 2003.

The violent crime rate for 2003 is 78.7 per 100,000, as compared to 87.2 per 100,000 in 2002. This is a 9.7 percent decrease in the violent crime rate. In 2001, the violent crime rate was 81.0 per 100,000 population.

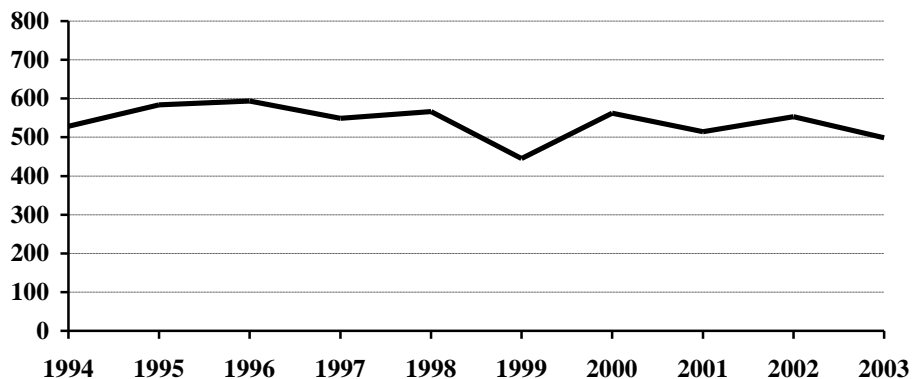
Approximately 57 percent of violent crimes in 2003 were reported as cleared by arrest or exceptional means.

Of the 203 total arrests reported for violent crimes, 15.3 percent were arrests of juveniles.

Violent Crime Summary

Year	Population	Violent Index Offenses	% Change in Number from Previous Year	Rate per 100,000 Population	% Change in Rate from Previous Year	Percent Cleared
1994	638,000	528	-5.4%	82.8	-5.8%	55.9%
1995	641,000	584	10.6	91.1	10.0	67.6
1996	644,000	594	1.7	92.2	1.2	73.2
1997	641,000	549	-7.6	85.6	-7.2	66.8
1998	638,000	566	3.1	88.7	3.6	61.8
1999	634,000	445	-21.4	70.2	-20.9	67.0
2000	642,200	562	26.3	87.5	24.6	51.2
2001	634,450	514	-8.5	81.0	-7.4	49.6
2002	634,110	553	7.6	87.2	7.7	50.5
2003	634,000	499	-9.8	78.7	-9.7	57.3

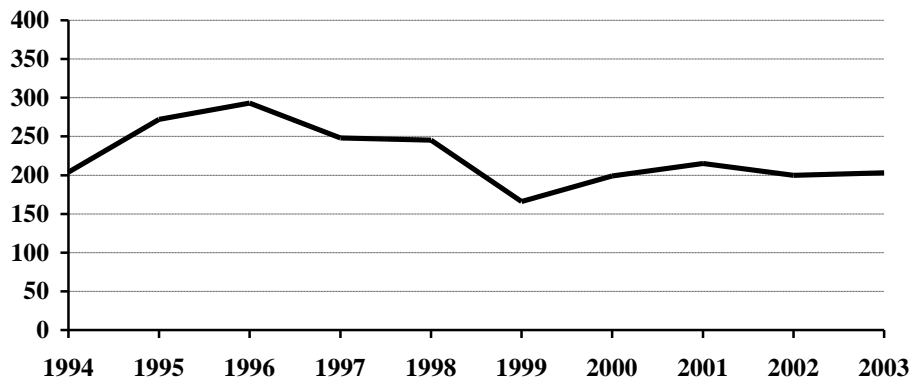
Violent Crime Totals, 1994-2003



Arrests for Violent Crimes, 1994-2003

Year	Juvenile	Adult	Age Not Reported	Total
1994	58	144	2	204
1995	106	164	2	272
1996	68	224	1	293
1997	54	193	1	248
1998	68	177		245
1999	41	124	1	166
2000	27	171	1	199
2001	40	175		215
2002	46	154		200
2003	31	172		203

Arrests for Violent Crimes, 1994-2003



Murder/Non-Negligent Manslaughter

The UCR program defines Murder/Non-Negligent Manslaughter as the “willful killing of one human being by another.” Not included in this category are attempts to murder, assaults to murder, suicides, accidental deaths, justifiable homicides, and deaths caused by gross negligence.

Twelve murder/non-negligent manslaughter deaths were known to the North Dakota UCR program in 2003.

Ten of the twelve victims were adults. “Adult” is defined as a person aged 18 years or older.

Six of the victims were male.

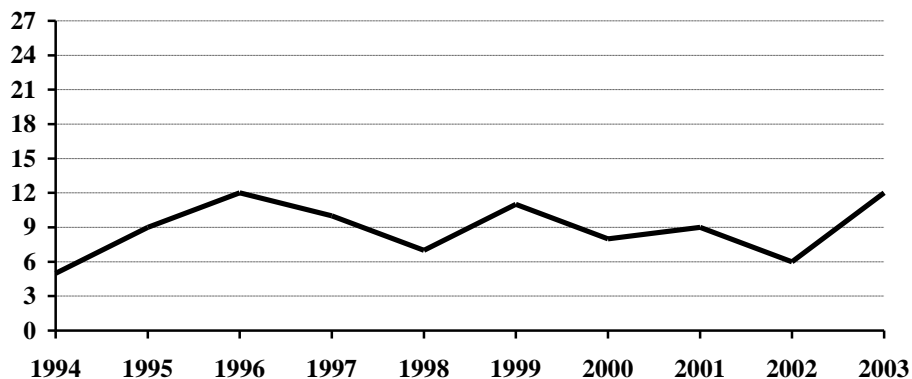
Eleven of the twelve victims died as the result of gunshot wounds. (See the summary of homicide incidents and the weapons involved on page 10.)

The Office of Attorney General publishes a detailed report titled Homicide in North Dakota. The report provides an analysis of homicides for the period 1978-2003 and is available by request.

Murder/Non-Negligent Manslaughter Summary

Year	Population	Offense Total	% Change in Number from Previous Year	Rate per 100,000 Population	% Change in Rate from Previous Year	Percent Cleared
1994	638,000	5	-77.3%	0.8	-77.1%	100.0%
1995	641,000	9	80.0	1.4	75.0	100.0
1996	644,000	12	33.3	1.9	35.7	100.0
1997	641,000	10	-16.7	1.6	-15.8	100.0
1998	638,000	7	-30.0	1.1	-31.3	100.0
1999	634,000	11	57.1	1.7	54.5	100.0
2000	642,200	8	-27.3	1.2	-29.4	87.5
2001	634,450	9	12.5	1.4	16.7	66.7
2002	634,110	6	-33.3	0.9	-35.7	83.3
2003	634,000	12	100.0	1.9	111.1	100.0

Murder/Non-Negligent Manslaughter Totals, 1994-2003



Summary of Murder/Non-Negligent Manslaughter Incidents, 2003

Date and Location of Incident	Victims		Assailants		Weapon Used	Relationship of Victim to Assailant	Circumstances
	Age	Sex	Age	Sex			
3/17/03 Spirit Lake Reservation	18	M	19	M	Firearm - 30 caliber handgun	Cousin	Domestic Violence Individuals drinking heavily and assailant shot victim in the head.
4/15/03 Valley City	42 16 21	F F M	56	M	Firearm	Ex-girlfriend Acquaintance Acquaintance	Domestic Violence Lovers Quarrel
5/14/03 Ellendale, Dickey County	32	F	38	M	Shotgun	Wife	Domestic Violence Victim shot while sleeping.
5/17/03 Williston	17	M	18	M	Personal weapon	Acquaintance	Victim struck in head from behind.
6/12/03 Morton County	20	F	21	M	Shotgun	Girlfriend	Domestic Violence Murder/Suicide
6/25/03 Valley City	33	M	23	M	Rifle	Brother	Domestic Violence Murder/Suicide
8/22/03 Traill County	45	F	24	M	Handgun 44 magnum	Mother	Domestic Violence Murder/Suicide
10/30 or 10/31/03 Bismarck	40 48	M M	45	M	Firearm .45 caliber handgun	Acquaintance	Victims found shot in house. Murder/Suicide
11/17/03 Minot	19	F	20	M	Shotgun	Acquaintance	Victim found shot at assailants home.

Forcible Rape

The UCR program defines Forcible Rape as “the carnal knowledge of a female forcibly and against her will.” Assaults to rape, attempts to commit rape by force or threat of force are included. Carnal abuse, statutory offenses (no force -- victim under age of consent), and other sex offenses are not included.

In 2003, 143 forcible rapes were reported to local law enforcement in North Dakota. This is a decrease of 14.4 percent from the 2002 total of 167 offenses. A total of 159 forcible rapes were reported in 2001.

Because the UCR definition states that victims of rape must be female, the rate of occurrence for reported rapes is calculated based only on the female population. The Census Bureau estimate of North Dakota’s population for 2003 is 634,000. The number of females is approximately half of that figure. The resulting rate for 2003 is 45.1 reported rapes per 100,000 females, compared with 52.7 rapes per 100,000 females in 2002. In 2001, the forcible rape rate was 50.1 per 100,000 females.

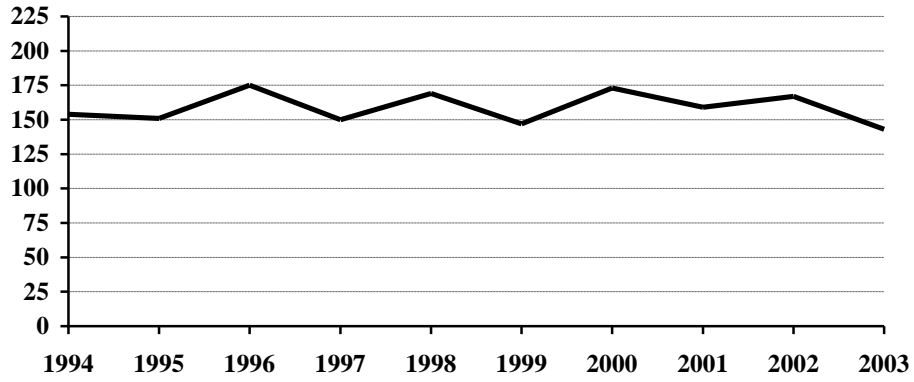
In 2003, 51.7 percent of reported rapes were cleared by arrest or exceptional means.

Forty arrests for forcible rape were reported in 2003. Approximately seventy-two percent of those arrested were adults. In 2002, 42 arrests for rape were reported.

Forcible Rape Summary

Year	Population	Offense Total	% Change in Number from Previous Year	Rate per 100,000 Females	% Change in Rate from Previous Year	Percent Cleared
1994	638,000	154	2.7%	48.3	2.3%	47.4%
1995	641,000	151	-1.9	47.1	-2.5	68.2
1996	644,000	175	15.9	54.3	15.3	76.6
1997	641,000	150	-14.3	46.8	-13.8	57.3
1998	638,000	169	12.7	53.0	13.2	51.5
1999	634,000	147	-13.0	46.4	-12.5	67.3
2000	642,200	173	17.7	53.9	16.2	30.1
2001	634,450	159	-8.1	50.1	-7.1	42.1
2002	634,110	167	5.0	52.7	5.2	37.7
2003	634,000	143	-14.4	45.1	-14.4	51.7

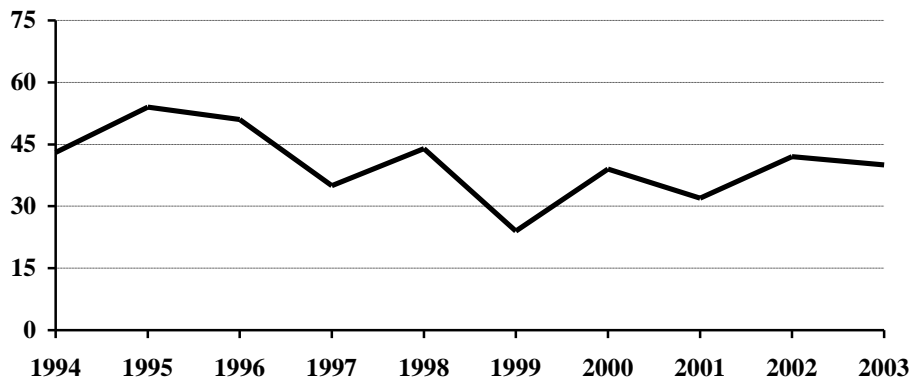
Forcible Rape Totals, 1994-2003



Arrests for Forcible Rape, 1994-2003

Year	Juvenile	Adult	Age Not Reported	Total
1994	13	29	1	43
1995	16	36	2	54
1996	12	39		51
1997	6	29		35
1998	13	31		44
1999	6	18		24
2000	12	27		39
2001	9	23		32
2002	18	24		42
2003	11	29		40

Arrests for Forcible Rape, 1994-2003



Robbery

Robbery is defined by the UCR program as “the taking or attempting to take anything of value from the care, custody, or control of a person or persons by force or threat of force or violence and/or by putting the victim in fear.”

Fifty-five robberies were reported in North Dakota in 2003, a decrease of 22.5 percent from the total of 71 reported in 2002. A total of seventy-one robberies was also reported in 2001.

The robbery rate for 2003 was 8.7 per 100,000 population, as compared with 11.2 per 100,000 population in 2002. This is a 22.3 percent decrease in the robbery rate.

Approximately 44 percent of reported robberies were cleared by arrest or exceptional means.

Twenty-five arrests for robbery were reported in 2003. Nineteen of those arrested were adults.

Firearms were used in 20 percent of the reported robberies in 2003.

Approximately 49 percent were strong-arm robberies where no weapon was used.

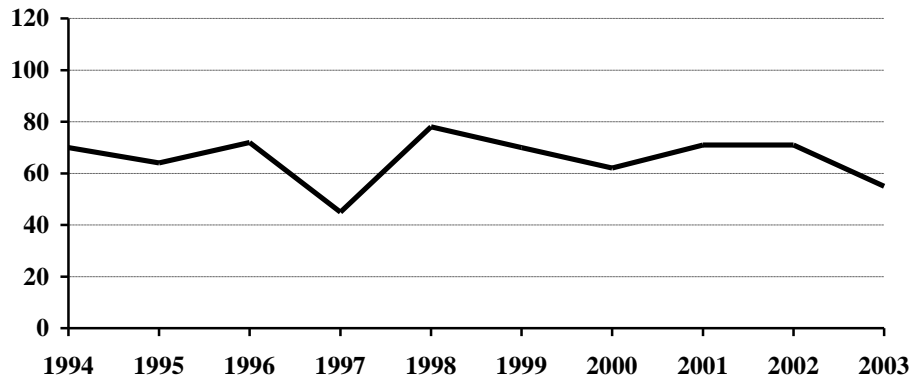
The value of property stolen in robbery incidents increased from \$24,711 in 2002 to \$50,180 in 2003.

The average robbery in 2003 involved \$912 worth of property.

Robbery Summary

Year	Population	Offense Total	% Change in Number from Previous Year	Rate per 100,000 Population	% Change in Rate from Previous Year	Percent Cleared
1994	638,000	70	29.6%	11.0	29.4%	44.3%
1995	641,000	64	-8.6	10.0	-9.1	42.2
1996	644,000	72	12.5	11.2	12.0	48.6
1997	641,000	45	-37.5	7.0	-37.5	64.4
1998	638,000	78	73.3	12.2	74.3	41.0
1999	634,000	70	-10.3	11.0	-9.8	48.6
2000	642,200	62	-11.4	9.7	-11.8	24.2
2001	634,450	71	14.5	11.2	15.5	23.9
2002	634,110	71	0.0	11.2	0.0	45.1
2003	634,000	55	-22.5	8.7	-22.3	43.6

Robbery Totals, 1994-2003



Robbery by Type of Weapon Involved, 2003

Type of Weapon	Number Reported	Percent of Total Offenses
Firearm	11	20.0%
Knife or Cutting Instrument	7	12.7
Other Dangerous Weapon	10	18.2
Hands, Fists, Feet, etc.	27	49.1
Robbery Total	55	100.0

Robbery by Place of Occurrence and Value of Property, 2003

Place of Occurrence	Number Reported	Value of Property	Average Value per Robbery
Highway	7	\$362	\$51.71
Commercial House	10	6,143	614.30
Gas or Service Station	0	0	0.00
Convenience Store	10	22,922	2,292.20
Residence	12	1,476	123.00
Bank	4	16,140	4,035.00
Other	12	3,137	261.42
Robbery Total	55	50,180	912.36

Arrests for Robbery, 1994-2003

Year	Juvenile	Adult	Total
1994	8	23	31
1995	13	18	31
1996	10	28	38
1997	13	17	30
1998	8	20	28
1999	9	19	28
2000	0	15	15
2001	3	16	19
2002	9	16	25
2003	6	19	25

Property Loss Due to Robbery, 1994-2003

Year	Offense Total	Property Loss	Average Loss per Robbery
1994	70	\$14,030	\$200.43
1995	64	20,515	320.55
1996	72	11,734	162.97
1997	45	7,029	156.20
1998	78	19,393	248.63
1999	70	23,808	340.11
2000	62	12,654	204.10
2001	71	45,051	634.52
2002	71	24,711	348.04
2003	55	50,180	912.36

Aggravated Assault

The UCR program defines Aggravated Assault as “an unlawful attack by one person upon another for the purpose of inflicting severe or aggravated bodily injury. This type of assault is usually accompanied by the use of a weapon or by means likely to produce death or great bodily harm. Attempts are included because it is not necessary that an injury result when a gun, knife, or other weapon is used which could and probably would result in serious personal injury if the crime were successfully completed.”

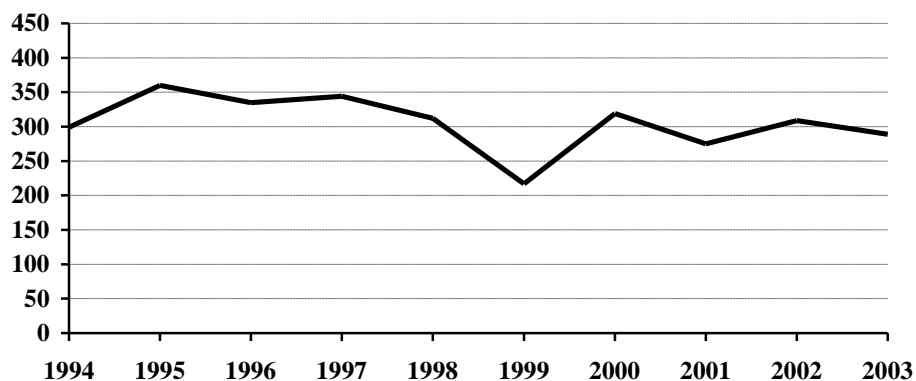
In 2003, 289 aggravated assaults were reported in North Dakota, a decrease of 6.5 percent from the 309 aggravated assaults reported in 2002. In 2001, 275 aggravated assaults were reported.

The aggravated assault rate for North Dakota decreased 6.4 percent from 48.7 per 100,000 population in 2002 to 45.6 per 100,000 population in 2003.

Aggravated Assault Summary

Year	Population	Offense Total	% Change in Number from Previous Year	Rate per 100,000 Population	% Change in Rate from Previous Year	Percent Cleared
1994	638,000	299	-9.9%	46.9	-10.3%	62.2%
1995	641,000	360	20.4	56.2	19.8	71.1
1996	644,000	335	-6.9	52.0	-7.5	75.8
1997	641,000	344	2.7	53.7	3.3	70.3
1998	638,000	312	-9.3	48.9	-8.9	71.8
1999	634,000	217	-30.4	34.2	-30.1	71.0
2000	642,200	319	47.0	49.7	45.3	67.1
2001	634,450	275	-13.8	43.3	-12.9	60.0
2002	634,110	309	12.4	48.7	12.5	57.9
2003	634,000	289	-6.5	45.6	-6.4	60.9

Aggravated Assault Totals, 1994-2003



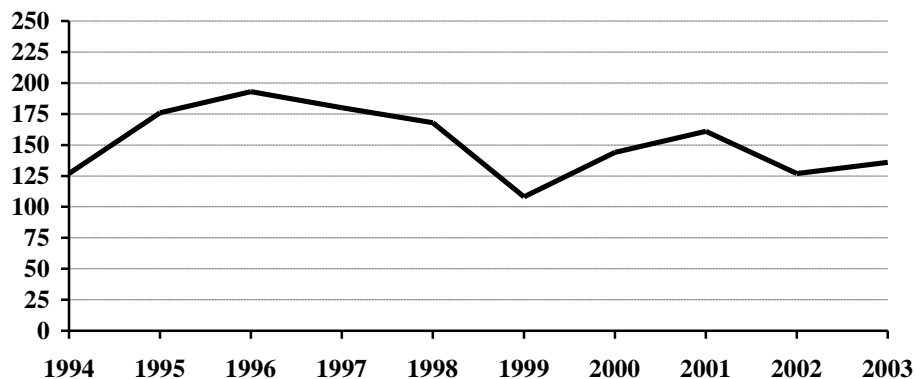
Aggravated Assault by Type of Weapon Involved, 2003

Type of Weapon	Number Reported	Percent of Total Offenses
Firearm	13	4.5%
Knife or Cutting Instrument	55	19.0
Other Dangerous Weapon	91	31.5
Hands, Fists, Feet, etc.	130	45.0
Aggravated Assault Total	289	100.0

Arrests for Aggravated Assault, 1994-2003

Year	Juvenile	Adult	Age Not Reported	Total
1994	37	89	1	127
1995	68	108		176
1996	45	147	1	193
1997	35	144	1	180
1998	47	121		168
1999	25	82	1	108
2000	15	128	1	144
2001	28	133		161
2002	19	108		127
2003	14	122		136

Arrests for Aggravated Assault, 1994-2003



Property Crime

Property crime includes the offenses of burglary, larceny/theft, and motor vehicle theft.

In 2003, the total number of property crimes reported was 12,516. This is a decrease of 14.8 percent from the 2002 total of 14,686.

Property crime accounted for 96.2 percent of the index offenses reported in North Dakota.

The property crime rate decreased 14.8 percent from 2316.0 per 100,000 population in 2002, to 1974.1 per 100,000 in 2003.

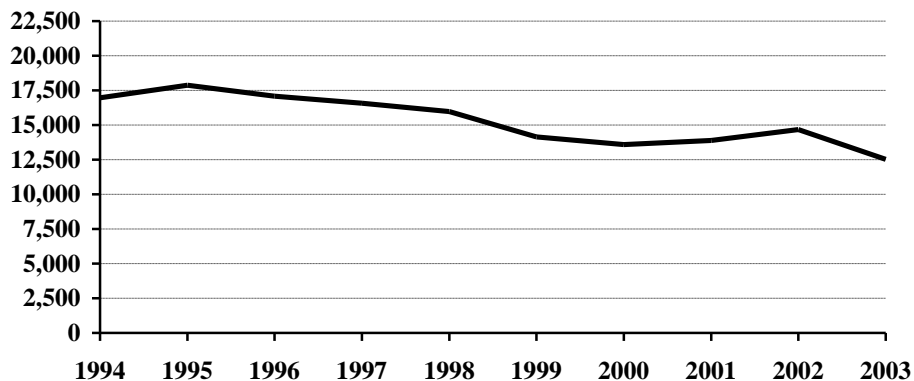
More than 19 percent of property crimes were cleared by arrest or exceptional means in 2003.

A total of 2,417 arrests was reported for property crimes. Of those, 47.8 percent were arrests of juveniles.

Property Crime Summary

Year	Population	Property Index Offenses	% Change in Number from Previous Year	Rate per 100,000 Population	% Change in Rate from Previous Year	Percent Cleared
1994	638,000	16,959	-2.1%	2658.2	-2.5%	24.7%
1995	641,000	17,874	5.4	2788.5	4.9	26.8
1996	644,000	17,088	-4.4	2653.4	-4.8	28.4
1997	641,000	16,573	-3.0	2585.5	-2.6	27.7
1998	638,000	15,971	-3.6	2503.3	-3.2	25.2
1999	634,000	14,145	-11.4	2231.1	-10.9	25.9
2000	642,200	13,588	-3.9	2115.9	-5.2	21.8
2001	634,450	13,897	2.3	2190.4	3.5	20.6
2002	634,110	14,686	5.7	2316.0	5.7	20.0
2003	634,000	12,516	-14.8	1974.1	-14.8	19.4

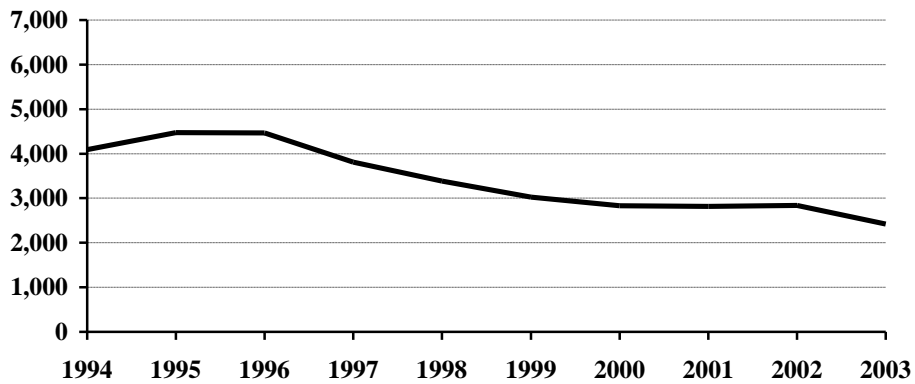
Property Crime Totals, 1994-2003



Arrests for Property Crimes, 1994-2003

Year	Juvenile	Adult	Age Not Reported	Total
1994	2,266	1,782	41	4,089
1995	2,536	1,919	19	4,474
1996	2,455	1,997	10	4,462
1997	2,198	1,590	25	3,813
1998	1,735	1,636	12	3,383
1999	1,599	1,419	7	3,025
2000	1,572	1,246	13	2,831
2001	1,439	1,376	4	2,819
2002	1,459	1,372	10	2,841
2003	1,156	1,260	1	2,417

Arrests for Property Crimes, 1994-2003



Burglary

The UCR program defines Burglary as the “unlawful entry of a structure to commit a felony or theft. The use of force to gain entry is not required to classify an offense as burglary.” Burglaries are classified into three categories: forcible entry, unlawful entry where no force is used, and attempted forcible entry.

In 2003, 1,814 burglaries were reported to the UCR program. This represents a decrease of 19.4 percent from the total of 2,250 burglaries reported in 2002.

The rate of burglaries based on population was 286.1 per 100,000 inhabitants for 2003. This is a 19.4 percent decrease from the rate of 354.8 per 100,000 population in 2002.

Nearly 14 percent of burglaries were cleared by arrest or exceptional means in 2003.

A total of 266 arrests for burglary was reported in 2003. Of these, 44.4 percent were juveniles.

The UCR program classifies burglaries by time of day and location of the incident. Approximately 47 percent were burglaries of residences. Fifty-five percent of burglaries were known to have been committed at night.

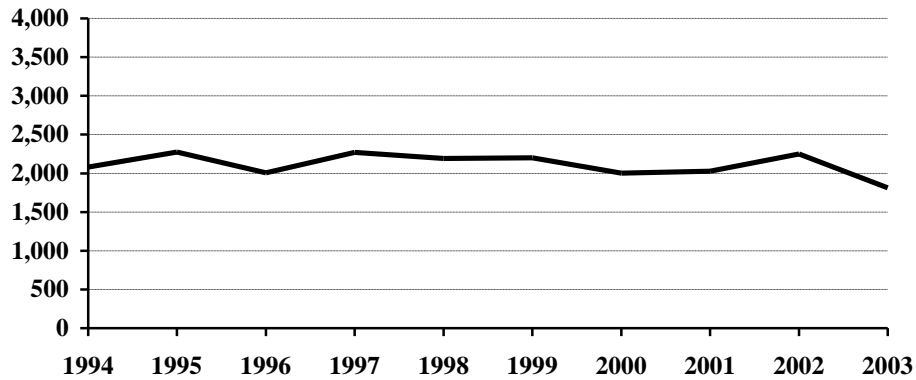
Nearly 51 percent of burglaries involved forcible entry.

Property loss due to burglary is substantial. More than 1.5 million dollars worth of property was reported stolen in burglary incidents in 2003. The average burglary involved \$861 worth of property.

Burglary Summary

Year	Population	Offense Total	% Change in Number from Previous Year	Rate per 100,000 Population	% Change in Rate from Previous Year	Percent Cleared
1994	638,000	2,080	-11.3%	326.0	-11.7%	17.7%
1995	641,000	2,275	9.4	354.9	8.9	18.7
1996	644,000	2,008	-11.7	311.8	-12.1	20.7
1997	641,000	2,271	13.1	354.3	13.6	19.8
1998	638,000	2,194	-3.4	343.9	-2.9	19.5
1999	634,000	2,200	0.3	347.0	0.9	20.8
2000	642,200	2,004	-8.9	312.1	-10.1	16.2
2001	634,450	2,027	1.1	319.5	2.4	15.1
2002	634,110	2,250	11.0	354.8	11.0	14.0
2003	634,000	1,814	-19.4	286.1	-19.4	13.8

Burglary Totals, 1994-2003



Burglary by Type of Entry, 2003

Type of Entry	Number Reported	Percent of Total Offenses
Forcible Entry	920	50.7%
Unlawful Entry - No Force	760	41.9
Attempted Forcible Entry	134	7.4
Burglary Total	1,814	100.0

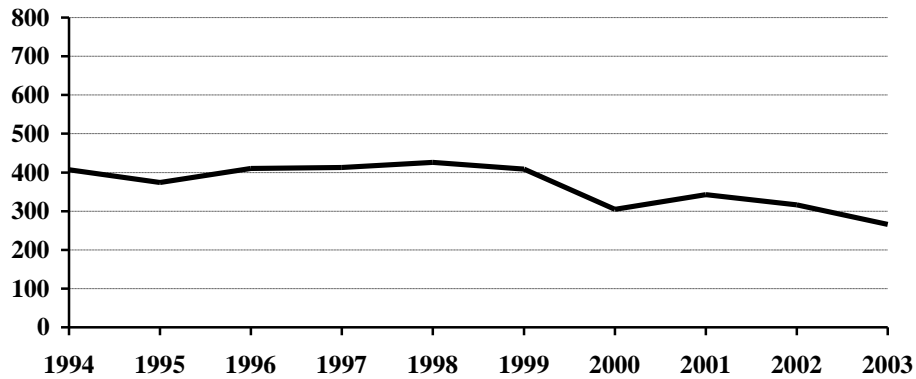
Burglary by Location and Value of Property, 2003

Location/Time	Number Reported	Value of Property	Average Value per Burglary
Residence - Night	442	\$351,999	\$796.38
Residence - Day	396	319,338	806.41
Residence - Unknown	17	32,643	1,920.18
Residence Subtotal	855	703,980	823.37
Non-Residence - Night	557	456,881	820.25
Non-Residence - Day	378	395,757	1,046.98
Non-Residence - Unknown	24	6,131	255.46
Non-Residence Subtotal	959	858,769	895.48
Burglary Total	1,814	1,562,749	861.49

Arrests for Burglary, 1994-2003

Year	Juvenile	Adult	Age Not Reported	Total
1994	197	204	6	407
1995	208	164	2	374
1996	201	208	1	410
1997	222	185	6	413
1998	201	220	5	426
1999	202	205	2	409
2000	134	166	5	305
2001	175	166	2	343
2002	166	144	6	316
2003	118	148		266

Arrests for Burglary, 1994-2003



Property Loss Due to Burglary, 1994-2003

Year	Offense Total	Property Loss	Average Loss per Burglary
1994	2,080	\$1,696,717	\$815.73
1995	2,275	1,939,595	852.57
1996	2,008	1,404,087	699.25
1997	2,271	2,114,489	931.08
1998	2,194	1,630,902	743.35
1999	2,200	1,853,763	842.62
2000	2,004	1,781,810	889.13
2001	2,027	1,572,709	775.88
2002	2,250	2,082,601	925.60
2003	1,814	1,562,749	861.49

Larceny/Theft

The UCR program defines Larceny/Theft as the “unlawful taking, carrying, leading, or riding away of property from the possession or constructive possession of another. It includes crimes such as shoplifting, pocket-picking, purse-snatching, thefts from motor vehicles, thefts of motor vehicle parts and accessories, bicycle thefts, etc., in which no use of force, violence or fraud occurs. In the Uniform Crime Reporting program, this crime category does not include embezzlement, confidence games, forgery, and worthless checks. Motor vehicle theft is also excluded from this category inasmuch as it is a separate crime index offense.”

A total of 9,700 larceny/theft offenses was reported in North Dakota in 2003. This is a 14.9 percent decrease from the 2002 total of 11,399.

The larceny/theft rate per 100,000 population was 1530.0 compared with 1797.6 in 2002, a 14.9 percent decrease in the rate.

Nearly 20 percent of larceny/theft offenses were cleared by arrest or exceptional means in 2003.

The number of arrests for this offense decreased from 2,264 in 2002 to 1,924 in 2003. Approximately 48 percent of those arrested for larceny/theft in 2003 were juveniles.

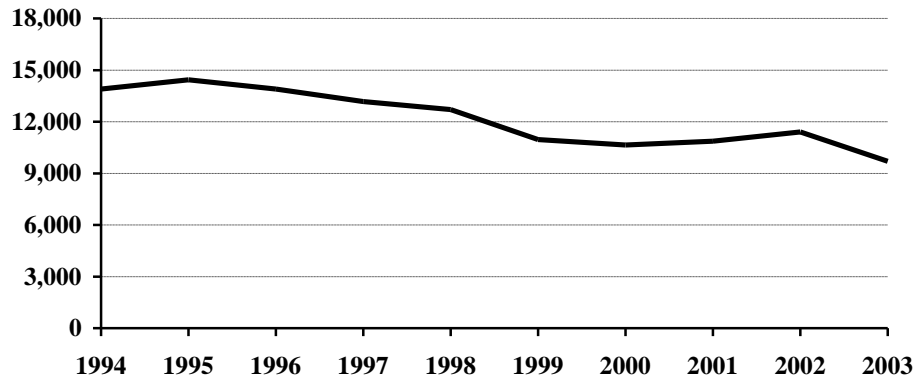
More than 5.2 million dollars worth of property was reported stolen as the result of larceny/theft offenses in the state. The average dollar value per offense is \$537.

Larceny/theft accounted for 74.5 percent of the total index offenses reported and amounted to approximately 45 percent of the total value of stolen property.

Larceny/Theft Summary

Year	Population	Offense Total	% Change in Number from Previous Year	Rate per 100,000 Population	% Change in Rate from Previous Year	Percent Cleared
1994	638,000	13,898	-0.9%	2178.4	-1.4%	25.0%
1995	641,000	14,435	3.9	2252.0	3.4	27.2
1996	644,000	13,898	-3.7	2158.1	-4.2	28.6
1997	641,000	13,163	-5.3	2053.5	-4.8	28.3
1998	638,000	12,704	-3.5	1991.2	-3.0	25.4
1999	634,000	10,956	-13.8	1728.1	-13.2	25.9
2000	642,200	10,642	-2.9	1657.1	-4.1	22.0
2001	634,450	10,870	2.1	1713.3	3.4	20.9
2002	634,110	11,399	4.9	1797.6	4.9	20.4
2003	634,000	9,700	-14.9	1530.0	-14.9	19.8

Larceny/Theft Totals, 1994-2003



Monetary Value of Larceny/Theft, 2003

Value of Larceny/Theft	Number Reported	Percent of Total Offenses
Under \$50	3,142	32.4%
\$50 to \$200	2,794	28.8
Over \$200	3,764	38.8
Larceny/Theft Total	9,700	100.0

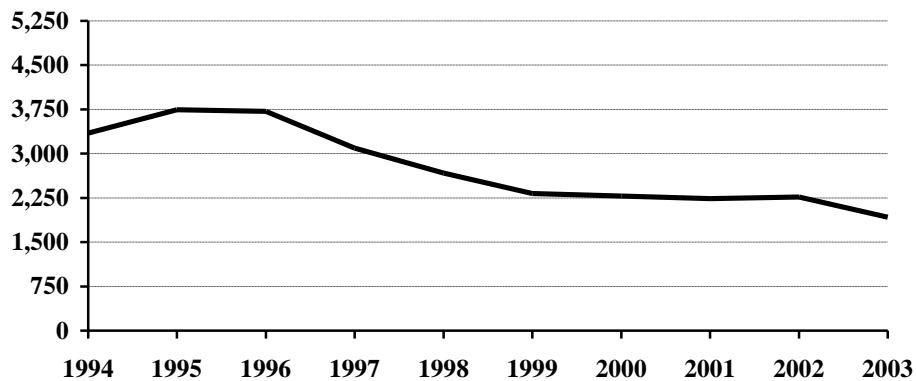
Larceny/Theft by Type and Value, 2003

Type of Larceny/Theft	Number Reported	Value of Property	Average Value per Larceny/Theft
From Motor Vehicle	2,331	\$1,260,790	\$540.88
Shoplifting	1,225	97,227	79.37
From Building	1,132	1,121,356	990.60
Bicycles	912	168,064	184.28
Motor Vehicle Parts, Accessories	431	172,832	401.00
From Coin-Operated Machine	67	8,683	129.60
Pocket Picking	21	8,751	416.71
Purse Snatching	18	4,132	229.56
All Other	3,563	2,365,421	663.88
Larceny/Theft Total	9,700	5,207,256	536.83

Arrests for Larceny/Theft, 1994-2003

Year	Juvenile	Adult	Age Not Reported	Total
1994	1,846	1,472	28	3,346
1995	2,066	1,662	14	3,742
1996	2,056	1,656	6	3,718
1997	1,771	1,306	16	3,093
1998	1,372	1,292	7	2,671
1999	1,212	1,110	5	2,327
2000	1,285	987	7	2,279
2001	1,134	1,102	2	2,238
2002	1,147	1,114	3	2,264
2003	919	1,004	1	1,924

Arrests for Larceny/Theft, 1994-2003



Property Loss Due to Larceny/Theft, 1994-2003

Year	Offense Total	Property Loss	Average Loss per Larceny/Theft
1994	13,898	\$4,842,899	\$348.46
1995	14,435	5,394,911	373.74
1996	13,898	5,118,818	368.31
1997	13,163	5,680,026	431.51
1998	12,704	5,858,913	461.19
1999	10,956	5,690,080	519.36
2000	10,642	4,627,836	434.87
2001	10,870	5,432,250	499.75
2002	11,399	5,701,494	500.17
2003	9,700	5,207,256	536.83

Motor Vehicle Theft

Motor Vehicle Theft is defined by the UCR program as “the theft or attempted theft of a motor vehicle; the offense category includes the stealing of automobiles, trucks, buses, motorcycles, motor scooters, snowmobiles, etc. The definition excludes the taking of a motor vehicle for temporary use by those persons having lawful access.”

A total of 1,002 motor vehicle thefts was reported in 2003. This is a decrease of 3.4 percent from the 2002 total of 1,037.

Based on a Census Bureau population estimate of 634,000 for North Dakota, the resulting motor vehicle theft rate is 158.0 per 100,000 population.

Approximately 25 percent of reported motor vehicle thefts were cleared by arrest or exceptional means in 2003.

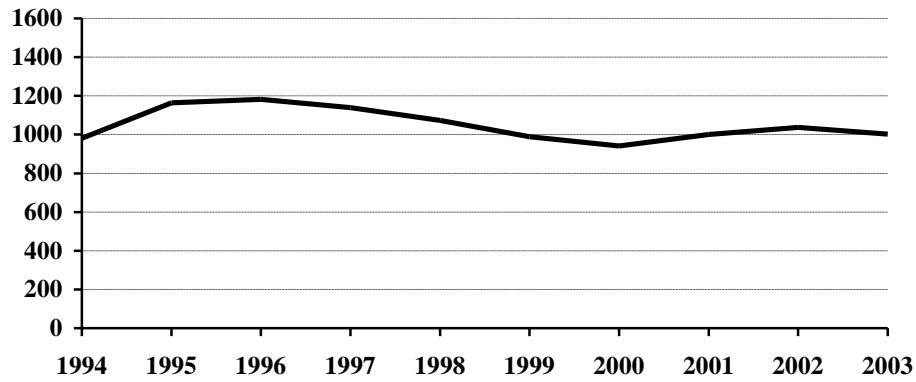
The number of arrests for motor vehicle theft decreased from 261 in 2002 to 227 in 2003.

The average value per motor vehicle theft was approximately \$4,628.

Motor Vehicle Theft Summary

Year	Population	Offense Total	% Change in Number from Previous Year	Rate per 100,000 Population	% Change in Rate from Previous Year	Percent Cleared
1994	638,000	981	4.4%	153.8	3.9%	34.8%
1995	641,000	1,164	18.7	181.6	18.1	37.3
1996	644,000	1,182	1.5	183.5	1.0	40.1
1997	641,000	1,139	-3.6	177.7	-3.2	37.1
1998	638,000	1,073	-5.8	168.2	-5.3	35.3
1999	634,000	989	-7.8	156.0	-7.3	37.0
2000	642,200	942	-4.8	146.7	-6.0	30.9
2001	634,450	1,000	6.2	157.6	7.4	27.8
2002	634,110	1,037	3.7	163.5	3.7	29.0
2003	634,000	1,002	-3.4	158.0	-3.4	25.2

Motor Vehicle Theft Totals, 1994-2003



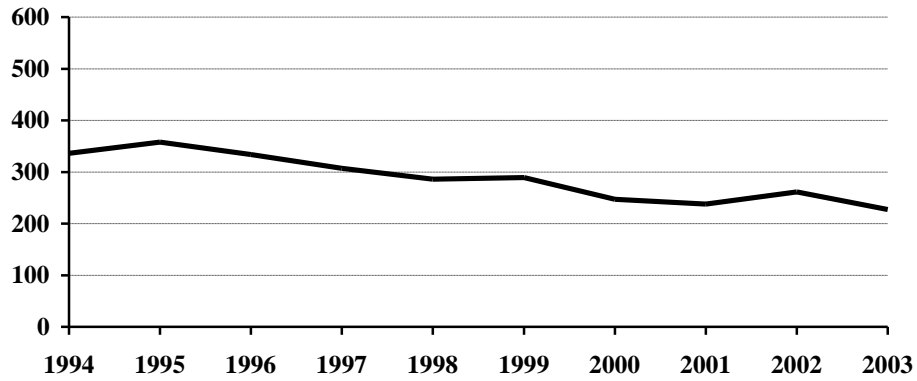
Type of Vehicle Stolen, 2003

Type of Vehicle	Number Reported	Percent of Total Offenses
Automobiles	861	85.9%
Trucks and Buses	82	8.2
Other Vehicles	59	5.9
Motor Vehicle Theft Total	1,002	100.0

Arrests for Motor Vehicle Theft, 1994-2003

Year	Juvenile	Adult	Age Not Reported	Total
1994	223	106	7	336
1995	262	93	3	358
1996	198	133	3	334
1997	205	99	3	307
1998	162	124		286
1999	185	104		289
2000	153	93	1	247
2001	130	108		238
2002	146	114	1	261
2003	119	108		227

Arrests for Motor Vehicle Theft, 1994-2003



Property Loss Due to Motor Vehicle Theft, 1994-2003

Year	Offense Total	Property Loss	Average Loss per Offense
1994	981	\$3,142,478	\$3,203.34
1995	1,164	3,714,582	3,191.22
1996	1,182	4,488,026	3,796.98
1997	1,139	4,706,068	4,131.75
1998	1,073	3,909,583	3,643.60
1999	989	3,633,353	3,673.76
2000	942	3,886,274	4,125.56
2001	1,000	4,414,621	4,414.62
2002	1,037	4,647,821	4,481.99
2003	1,002	4,637,043	4,627.79

Crime Index Offenses by Reporting Jurisdiction

The rate per 100,000 population is shown immediately below the actual number of crime index offenses reported by each jurisdiction. A county total is also shown for each of those counties that have more than one reporting jurisdiction within its geographic boundaries. The rate is reported per 100,000 for easy comparison to national publications.

Number and Rate of Index Offenses, 2003

County	Reporting Jurisdiction	Population	Murder/ Non-Negligent Manslaughter	Forcible Rape	Robbery	Aggravated Assault	Burglary	Larceny/ Theft	Motor Vehicle Theft	Total Index Offenses
Adams	County SO						3	3	1	7
		2,475					121.2	121.2	40.4	282.8
Barnes	County SO	4,717					6	12	3	21
	Valley City PD	6,523	4			1	10	72	10	97
			61.3			15.3	153.3	1103.8	153.3	1487.0
	County Total	11,240	4			1	16	84	13	118
			35.6			8.9	142.3	747.3	115.7	1049.8
Benson	County SO	6,896	DID NOT REPORT IN 2003							
Billings	County SO	842	DID NOT REPORT IN 2003							
Bottineau	County SO	6,877				1	17	33	13	64
						14.5	247.2	479.9	189.0	930.6
Bowman	County SO	1,579	DID NOT REPORT IN 2003							
	Bowman PD	1,550	DID NOT REPORT IN 2003							
Burke	County SO	2,142					2	5	1	8
							93.4	233.4	46.7	373.5
Burleigh	County SO	12,983		2		9	41	71	14	137
				15.4		69.3	315.8	546.9	107.8	1055.2
	Bismarck PD	56,210	2	1	5	18	122	1070	90	1308
			3.6	1.8	8.9	32.0	217.0	1903.6	160.1	2327.0
	Lincoln PD*	1,856					1	2		3
						53.9	107.8		161.6	
County Total	71,049	2	3	5	27	164	1143	104	1448	
			2.8	4.2	7.0	38.0	230.8	1608.7	146.4	2038.0
Cass	County SO	18,105		2		13	59	158	25	257
				11.0		71.8	325.9	872.7	138.1	1419.5
	Fargo PD**	91,328		43	16	35	377	1906	196	2573
				47.1	17.5	38.3	412.8	2087.0	214.6	2817.3
	West Fargo PD	15,794		3	3	17	116	326	37	502
			19.0	19.0	107.6	734.5	2064.1	234.3	3178.4	
County Total	125,227		48	19	65	552	2390	258	3332	
			38.3	15.2	51.9	440.8	1908.5	206.0	2660.8	
Cavalier	County SO	4,557					2	59	5	66
							43.9	1294.7	109.7	1448.3
Dickey	County SO	3,630	1			1	5	35	4	46
			27.5			27.5	137.7	964.2	110.2	1267.2
	Oakes PD	1,883	DID NOT REPORT IN 2003							
County Total	3,630	1			1	5	35	4	46	
			27.5		27.5	137.7	964.2	110.2	1267.2	
Divide	County SO	1,146	DID NOT REPORT IN 2003							
	Crosby PD	1,036	DID NOT REPORT IN 2003							
Dunn	County SO	3,540								0
										0.0

*Reported partial year

** Includes 139 index offenses reported by the NDSU PD

County	Reporting Jurisdiction	Population	Murder/ Non-Negligent Manslaughter	Forcible Rape	Robbery	Aggravated Assault	Burglary	Larceny/ Theft	Motor Vehicle Theft	Total Index Offenses
Eddy	County SO	2,628				1 38.1	2 76.1	18 684.9	1 38.1	22 837.1
Emmons	County SO	2,861					14 489.3	13 454.4	2 69.9	29 1013.6
	Linton PD	1,242	DID NOT REPORT IN 2003							
Foster	County SO	1,435					1 69.7	2 139.4		3 209.1
	Carrington PD	2,167	DID NOT REPORT IN 2003							
Golden Valley	County SO	1,833	DID NOT REPORT IN 2003							
Grand Forks	County SO	12,535		3 23.9		6 47.9	26 207.4	88 702.0	11 87.8	134 1069.0
	Emerado PD	510		1 196.1		3 588.2	4 784.3	9 1764.7	3 588.2	20 3921.6
	Grand Forks PD*	48,525		13 26.8	9 18.5	49 101.0	270 556.4	1863 3839.3	121 249.4	2325 4791.3
	Larimore PD	1,397	DID NOT REPORT IN 2003							
	Northwood PD	932					3 321.9	4 429.2		7 751.1
	Thompson PD	993					2 201.4	5 503.5		7 704.9
	Reporting Agency Total	63,495		17 26.8	9 14.2	58 91.3	305 480.4	1969 3101.0	135 212.6	2493 3926.3
Grant	County SO	2,071					4 193.1	3 144.9	3 144.9	10 482.9
	Elgin PD	623	DID NOT REPORT IN 2003							
Griggs	County SO	2,600	DID NOT REPORT IN 2003							
Hettinger	County SO	2,599				1 38.5		3 115.4		4 153.9
Kidder	County SO	1,858		1 53.8		1 53.8	7 376.7	10 538.2	2 107.6	21 1130.2
	Steele PD	720					9 1250.0	4 555.6	3 416.7	16 2222.2
	County Total	2,578		1 38.8		1 38.8	16 620.6	14 543.1	5 193.9	37 1435.2
LaMoure	County SO	4,509		1 22.2		1 22.2	3 66.5	6 133.1	1 22.2	12 266.1
Logan	County SO	1,459					1 68.5	2 137.1		3 205.6
	Napoleon PD	806	DID NOT REPORT IN 2003							
McHenry	County SO	4,687				4 85.3	5 106.7	23 490.7	4 85.3	36 768.1
	Velva PD	1,005	DID NOT REPORT IN 2003							
McIntosh	County SO	2,087	DID NOT REPORT IN 2003							
	Wishek PD	1,085	DID NOT REPORT IN 2003							
McKenzie	County SO	4,299	DID NOT REPORT IN 2003							
	Watford City PD	1,407						18 1279.3	2 142.1	20 1421.5
McLean	County SO	9,003			1 11.1		14 155.5	55 610.9	9 100.0	79 877.5
Mercer	County SO	3,005				1 33.3	3 99.8	7 232.9		11 366.1
	Beulah PD	3,113				3 96.4	9 289.1	31 995.8	5 160.6	48 1541.9
	Hazen PD	2,420					2 82.6	9 371.9	1 41.3	12 495.9
	County Total	8,538				4 46.8	14 164.0	47 550.5	6 70.3	71 831.6

* Includes 268 index offenses reported by UND PD.

County	Reporting Jurisdiction	Population	Murder/ Non-Negligent Manslaughter	Forcible Rape	Robbery	Aggravated Assault	Burglary	Larceny/ Theft	Motor Vehicle Theft	Total Index Offenses
Morton	County SO	8,496	1 11.8	7 82.4		2 23.5	13 153.0	87 1024.0	7 82.4	117 1377.1
	Mandan PD	16,762		4 23.9	1 6.0	21 125.3	40 238.6	356 2123.9	35 208.8	457 2726.4
	County Total	25,258	1 4.0	11 43.6	1 4.0	23 91.1	53 209.8	443 1753.9	42 166.3	574 2272.5
Mountrail	County SO	6,519				1 15.3	6 92.0	22 337.5	6 92.0	35 536.9
Nelson	County SO	3,398	DID NOT REPORT IN 2003							
Oliver	County SO	1,910						2 104.7		2 104.7
	County Total									
Pembina	County SO	6,777		1 14.8		4 59.0	9 132.8	29 427.9	5 73.8	48 708.3
	Cavalier PD	1,489					10 671.6	19 1276.0	1 67.2	30 2014.8
	County Total	8,266		1 12.1		4 48.4	19 229.9	48 580.7	6 72.6	78 943.6
Pierce	County SO	1,686		1 59.3				10 593.1		11 652.4
	Rugby PD	2,843				1 35.2		31 1090.4	5 175.9	37 1301.4
	County Total	4,529		1 22.1		1 22.1		41 905.3	5 110.4	48 1059.8
Ramsey	County SO	4,710	DID NOT REPORT IN 2003							
	Devils Lake PD	7,039			3 42.6	13 184.7	33 468.8	284 4034.7	19 269.9	352 5000.7
Ransom	County SO	3,530		1 28.3		2 56.7	15 424.9	23 651.6	1 28.3	42 1189.8
	Lisbon PD	2,262	DID NOT REPORT IN 2003							
Renville	County SO	2,545		1 39.3		1 39.3	3 117.9	12 471.5		17 668.0
Richland	County SO	9,125		1 11.0		3 32.9	44 482.2	79 865.8	15 164.4	142 1556.2
	Wahpeton PD*	8,436		1 11.9		3 35.6	35 414.9	290 3437.6	18 213.4	347 4113.3
	County Total	17,561		2 11.4		6 34.2	79 449.9	369 2101.2	33 187.9	489 2784.6
Rolette	County SO	13,796				1 7.2	5 36.2	11 79.7	3 21.7	20 145.0
Sargent	County SO	4,248				5 117.7	12 282.5	36 847.5	3 70.6	56 1318.3
Sheridan	County SO	1,560	DID NOT REPORT IN 2003							
Sioux	County SO	4,150	DID NOT REPORT IN 2003							
Slope	County SO	747	DID NOT REPORT IN 2003							
Stark	County SO	6,465		1 15.5				39 603.2	1 15.5	41 634.2
	Dickinson PD	15,672		4 25.5	6 38.3	8 51.0	60 382.8	463 2954.3	33 210.6	574 3662.6
	County Total	22,137		5 22.6	6 27.1	8 31.6	60 271.0	502 2267.7	34 153.6	615 2778.2
Steele	County SO	2,092	DID NOT REPORT IN 2003							
Stutsman	County SO	6,132				2 32.6	26 424.0	40 652.3	6 97.8	74 1206.8
	Jamestown PD	15,108		9 59.6	1 6.6	10 66.2	69 456.7	353 2336.5	25 165.5	467 3091.1
	County Total	21,240		9 42.4	1 4.7	12 56.5	95 447.3	393 1850.3	31 146.0	541 2547.1

* Includes 37 index offenses reported by NDSCS PD.

County	Reporting Jurisdiction	Population	Murder/ Non-Negligent Manslaughter	Forcible Rape	Robbery	Aggravated Assault	Burglary	Larceny/ Theft	Motor Vehicle Theft	Total Index Offenses
Towner	County SO	1,463					1 36.7	3 110.0	2 73.3	6 220.0
	Cando PD	1,264	DID NOT REPORT IN 2003							
Traill	County SO	3,577	1 28.0	1 28.0	1 28.0	1 28.0	23 643.0	28 782.8	19 531.2	74 2068.8
	Mayville PD	2,468	DID NOT REPORT IN 2003							
	Hatton PD	687	DID NOT REPORT IN 2003							
	Hillsboro PD	1,523	DID NOT REPORT IN 2003							
Walsh	County SO	7,593				3 39.5	41 540.0	114 1501.4	20 263.4	178 2344.3
	Grafton PD	4,381				3 68.5	21 479.3	136 3104.3	12 273.9	172 3926.0
	County Total	11,974				6 50.1	62 517.8	250 2087.9	32 267.2	350 2923.0
Ward	County SO	21,501		5 23.3	1 4.7	3 14.0	24 111.6	114 530.2	30 139.5	177 823.2
	Minot PD	35,602	1 2.8	22 61.8	7 19.7	26 73.0	125 351.1	938 2634.7	106 297.7	1225 3440.8
	County Total	57,103	1 1.8	27 47.3	8 14.0	29 50.8	149 260.9	1052 1842.3	136 238.2	1402 2455.2
Wells	County SO	2,363				2 84.6	13 550.1	12 507.8	3 127.0	30 1269.6
	Harvey PD*	1,875					5 266.7	4 213.3	1 53.3	10 533.3
	Fessenden PD*	586				1 170.6	1 170.6			2 341.3
	County Total	4,824				3 62.2	19 393.9	16 331.7	4 82.9	42 870.6
Williams	County SO	7,166		2 27.9		2 27.9	12 167.5	35 488.4	5 69.8	56 781.5
	Williston PD	12,371	1 8.1	12 97.0	1 8.1	6 48.5	28 226.3	201 1624.8	53 428.4	302 2441.2
	County Total	19,537	1 5.1	14 71.7	1 5.1	8 40.9	40 204.7	236 1208.0	58 296.9	358 1832.4

*Reported partial year

ARREST ANALYSIS

(This page intentionally left blank.)

Arrests in 2003

Although primarily an indication of law enforcement activity, the number of arrests reported does provide a limited profile of the perpetrators of crime, especially for those crimes that have high clearance rates. Differing arrest practices, policies, and enforcement emphases among agencies influence the volume of arrests for various offenses, particularly those against public order such as vagrancy, disorderly conduct, and related violations. However, arrests for serious crimes, e.g., robbery or burglary, are more likely to be uniform throughout all jurisdictions across the state.

The UCR program requires that an arrest be counted for each separate occasion an individual is taken into custody. Although several charges may be lodged against a person at the time of the arrest, only one arrest is counted for each time the person is taken into custody.

North Dakota law enforcement agencies reported 30,334 arrests in 2003. A total of 29,145 arrests was reported in 2002.

In 2003, nearly 24 percent of total arrests were arrests of juveniles.

Approximately 71 percent of the total were arrests of males.

Arrests for the crime index offenses of murder/non-negligent manslaughter, forcible rape, robbery, aggravated assault, burglary, larceny/theft and motor vehicle theft comprised 8.6 percent of the total reported arrests. Of the 2,620 reported arrests for crime index offenses, 45.3 percent were arrests of juveniles.

The total of 11,823 reported arrests for DUI and liquor law violations represents 39 percent of the total arrests reported in the state of North Dakota in 2003. Arrests for DUI increased from 4,467 in 2002 to 4,854 in 2003. Liquor law violation arrests increased 14.3 percent from 6,099 in 2002 to 6,969 reported in 2003.

Eighty-five percent of total arrests were white; about 12 percent were Native American.

These statistics are provided by local law enforcement agencies that contribute to the North Dakota UCR program. No arrest figures for reservations in the state are included in these totals. Tribal law enforcement agencies do not participate in the state UCR program.

Total Arrests Reported, 2003

Offense Classification	Number Reported	Percent of Total Arrests
Murder/Non-Negligent Manslaughter	2	*
Negligent Manslaughter	5	*
Forcible Rape	40	0.1%
Robbery	25	0.1
Aggravated Assault	136	0.4
Burglary	266	0.9
Larceny/Theft	1,924	6.3
Motor Vehicle Theft	227	0.7
Other Assaults	1,691	5.6
Arson	20	0.1
Forgery and Counterfeiting	202	0.7
Fraud	1,698	5.6
Embezzlement	8	*
Stolen Property Offenses	148	0.5
Vandalism	650	2.1
Weapons Offenses	136	0.4
Prostitution	5	*
Other Sex Offenses	92	0.3
Drug Abuse Violations	2,045	6.7
Gambling	0	0.0
Offenses Against Family and Children	205	0.7
Driving Under the Influence	4,854	16.0
Liquor Law Violations	6,969	23.0
Disorderly Conduct	1,691	5.6
Vagrancy	3	*
All Other Offenses	6,318	20.8
Suspicion	0	0.0
Curfew and Loitering	339	1.1
Runaways	635	2.1
Arrest Total	30,334	100.0

* Less than 0.1 percent of total arrests.

Comparison of Reported Arrests, 2002-2003

Offense Classification	2002	2003	Percent Change
Murder/Non-Negligent Manslaughter	6	2	-66.7%
Negligent Manslaughter	0	5	---
Forcible Rape	42	40	-4.8
Robbery	25	25	0.0
Aggravated Assault	127	136	7.1
Burglary	316	266	-15.8
Larceny/Theft	2,264	1,924	-15.0
Motor Vehicle Theft	261	227	-13.0
Other Assaults	1,798	1,691	-6.0
Arson	25	20	-20.0
Forgery and Counterfeiting	192	202	5.2
Fraud	1,777	1,698	-4.4
Embezzlement	4	8	100.0
Stolen Property Offenses	171	148	-13.5
Vandalism	802	650	-19.0
Weapons Offenses	140	136	-2.9
Prostitution	0	5	---
Other Sex Offenses	83	92	10.8
Drug Abuse Violations	1,752	2,045	16.7
Gambling	4	0	-100.0
Offenses Against Family and Children	228	205	-10.1
Driving Under the Influence	4,467	4,854	8.7
Liquor Law Violations	6,099	6,969	14.3
Disorderly Conduct	1,565	1,691	8.1
Vagrancy	2	3	50.0
All Other Offenses	6,069	6,318	4.1
Suspicion	0	0	----
Curfew and Loitering	270	339	25.6
Runaways	656	635	-3.2
Arrest Total	29,145	30,334	4.1

Juvenile and Adult Arrests, 2003

Offense Classification	Juvenile	Adult	Age Not Reported	Total
Murder/Non-Negligent Manslaughter		2		2
Negligent Manslaughter	1	4		5
Forcible Rape	11	29		40
Robbery	6	19		25
Aggravated Assault	14	122		136
Burglary	118	148		266
Larceny/Theft	919	1,004	1	1,924
Motor Vehicle Theft	119	108		227
Other Assaults	420	1,269	2	1,691
Arson	16	4		20
Forgery and Counterfeiting	22	180		202
Fraud	23	1,654	21	1,698
Embezzlement	2	6		8
Stolen Property Offenses	92	56		148
Vandalism	410	240		650
Weapons Offenses	22	114		136
Prostitution		5		5
Other Sex Offenses	31	61		92
Drug Abuse Violations	249	1,795	1	2,045
Gambling				
Offenses Against Family and Children	64	141		205
Driving Under the Influence	90	4,759	5	4,854
Liquor Law Violations	1,741	5,222	6	6,969
Disorderly Conduct	738	952	1	1,691
Vagrancy		3		3
All Other Offenses	1,168	5,147	3	6,318
Suspicion				
Curfew and Loitering	339			339
Runaways	635			635
Arrest Total	7,250	23,044	40	30,334

Arrests by Gender, 2003

Offense Classification	Male	Female	Total
Murder/Non-Negligent Manslaughter	2		2
Negligent Manslaughter	4	1	5
Forcible Rape	40		40
Robbery	23	2	25
Aggravated Assault	115	21	136
Burglary	238	28	266
Larceny/Theft	1,190	734	1,924
Motor Vehicle Theft	179	48	227
Other Assaults	1,255	436	1,691
Arson	20		20
Forgery and Counterfeiting	122	80	202
Fraud	977	721	1,698
Embezzlement	5	3	8
Stolen Property Offenses	110	38	148
Vandalism	562	88	650
Weapons Offenses	130	6	136
Prostitution	3	2	5
Other Sex Offenses	90	2	92
Drug Abuse Violations	1,593	452	2,045
Gambling			
Offenses Against Family and Children	126	79	205
Driving Under the Influence	3,763	1,091	4,854
Liquor Law Violations	4,624	2,345	6,969
Disorderly Conduct	1,306	385	1,691
Vagrancy	1	2	3
All Other Offenses	4,654	1,664	6,318
Suspicion			
Curfew and Loitering	186	153	339
Runaways	262	373	635
Arrest Total	21,580	8,754	30,334

Arrests by Race, 2003

Offense Classification	White	Black	Native American	Asian	Total
Murder/Non-Negligent Manslaughter	2				2
Negligent Manslaughter	4		1		5
Forcible Rape	32	3	5		40
Robbery	17	4	4		25
Aggravated Assault	88	10	38		136
Burglary	229	1	34	2	266
Larceny/Theft	1,472	73	375	4	1,924
Motor Vehicle Theft	164	10	53		227
Other Assaults	1,289	108	290	4	1,691
Arson	18		2		20
Forgery and Counterfeiting	170	9	21	2	202
Fraud	1,571	21	100	6	1,698
Embezzlement	8				8
Stolen Property Offenses	113	4	31		148
Vandalism	566	14	68	2	650
Weapons Offenses	118	9	9		136
Prostitution	4	1			5
Other Sex Offenses	78	1	13		92
Drug Abuse Violations	1,767	56	215	7	2,045
Gambling					
Offenses Against Family and Children	153	8	44		205
Driving Under the Influence	4,220	72	546	16	4,854
Liquor Law Violations	6,212	74	670	13	6,969
Disorderly Conduct	1,407	48	230	6	1,691
Vagrancy	2		1		3
All Other Offenses	5,307	163	822	26	6,318
Suspicion					
Curfew and Loitering	269	5	65		339
Runaways	526	16	91	2	635
Arrest Total	25,806	710	3,728	90	30,334

Arrest Analysis by Reporting Jurisdiction

The table below contains arrest totals for each reporting agency in 2003. Juvenile and adult arrests as well as arrests reported without age information are included.

Arrests by Reporting Jurisdiction, 2003

Agency	Murder/Non-Neg. Mansl.	Negligent Manslaughter	Forcible Rape	Robbery	Aggravated Assault	Burglary	Larceny/Theft	Motor Vehicle Theft	Other Assault	Arson	Forgery/Counterfeiting	Fraud	Embezzlement	Stolen Property Offenses	Vandalism	Weapons Offenses	Prostitution	Other Sex Offenses	Drug Abuse Violations	Gambling Violations	Off. Against Fam & Children	DUI	Liquor Law Violations	Disorderly Conduct	Vagrancy	All Other Offenses	Suspicion	Curfew/Loitering	Runaway	Total
Adams SO						1			1													7	5			1				15
Barnes SO									1			2				2		1				5	13							24
Valley City PD	1					6	26	5	15		6			4	14			4	15			59	162	21		10		8	7	363
Benson SO	Did not report in 2003																													
Billings SO	Did not report in 2003																													
Bottineau SO			1		1	3	3	9											12			18	93	1		16				157
Bowman SO	Did not report in 2003																													
Bowman PD	Did not report in 2003																													
Burke SO																			7								1			8
Burleigh SO					3		4	2	34	2	1	190		1	6	5		3	78		6	191	196	2		39				763
Bismarck PD			2	4	17	9	336	19	223	6	55	32	3	21	100	13		25	230		11	415	761	307		529		94	83	3295
Lincoln PD*									1													1				1				3
Cass SO			1		2	2	9	2	35						6	2			54		2	126	134	2		55				432
Fargo PD			9	8	10	67	408	34	361	3	35	46		20	90	10		6	247		73	806	649	282		586		3	26	3779
West Fargo PD			1	3	5	9	58	10	65	3	4	5	2	6	23	5		2	80		1	176	225	37	1	135		12	28	896
NDSU PD			1			2													3			27	173	6		16				228
Cavalier SO						2	1								3				4			4								14
Dickey SO					1	1		1	4		3	22		3		2			4			7	16	2		2				68
Oakes PD	Did not report in 2003																													
Divide SO	Did not report in 2003																													
Crosby PD	Did not report in 2003																													
Dunn SO																						5								5
Eddy SO					1				2			48										23		5		6				85
Emmons SO						2	1		2			9			4				1			6	45			15				85
Linton PD	Did not report in 2003																													
Foster SO																														0
Carrington PD	Did not report in 2003																													
Golden Valley SO	Did not report in 2003																													
Grand Forks SO			1		4	2	7	1	28			108			3	1			15		7	24	19	4		968			5	1197
Emerado PD					2		2	1	4			1							2			16	7	6		4				45
Grand Forks PD			6		15	18	302	26	164		26	23		15	40	12		3	128		4	324	658	273		328		30	121	2516
Larimore PD	Did not report in 2003																													
Northwood PD							1																1							2
Thompson PD						2																	1							3

*Reported partial year.

Agency	Murder/Non-Neg. Mansl.	Negligent Manslaughter	Forcible Rape	Robbery	Aggravated Assault	Burglary	Larceny/Theft	Motor Vehicle Theft	Other Assault	Arson	Forgery/Counterfeiting	Fraud	Embezzlement	Stolen Property Offenses	Vandalism	Weapons Offenses	Prostitution	Other Sex Offenses	Drug Abuse Violations	Gambling Violations	Off. Against Fam & Children	DUI	Liquor Law Violations	Disorderly Conduct	Vagrancy	All Other Offenses	Suspicion	Curfew/Loitering	Runaway	Total
UND PD					2		4		4								1		16			71	257	11		19			3	388
Grant SO						1		3	6		1	1			1				1			1	6	1		1			1	24
Elgin PD	Did not report in 2003																													
Griggs SO	Did not report in 2003																													
Hettinger SO					2				1	1									9				4	1		3				21
Kidder SO									4			29											2	2	2		1			40
Steele PD							2		3					1					4			1	4							15
LaMoure SO									2							2			1							1			6	
Logan SO									1						1							10	1			1			14	
Napoleon PD	Did not report in 2003																													
McHenry SO					1														2			10	14	2		8				37
Velva PD	Did not report in 2003																													
McIntosh SO	Did not report in 2003																													
Wishek PD	Did not report in 2003																													
McKenzie SO	Did not report in 2003																													
Watford City PD							7	1	14						10	1			10			2	33	2		14		2	1	97
McLean SO				1					3						1	1			2		1	12	16	3		4				44
Mercer SO									2													4	7			3				16
Beulah PD					2		2	1	5						1				3			40	68	15		20		1		158
Hazen PD						1			1							1			1			8	6	1		3				22
Morton SO					1		2	2	13		1			4	1		2	10		2	89	184	5		57			6	379	
Mandan PD			3		5	17	43	9	65	3	3	2		8	45	7		3	27		2	282	169	57		313		12	35	1108
Mountrail SO							2	1	3						1				5			9	7			55				83
Nelson SO	Did not report in 2003																													
Oliver SO																						2	5			1				8
Pembina SO			1		4	1			4					3	1	3			28			40	49	4		34			1	173
Cavalier PD						1	5		7		1				4			1	5			10	23	6		15				78
Pierce SO			1				4		2			9				1			12			11	25	4		13				82
Rugby PD							7									1			1			2	20	3		6				40
Ramsey SO	Did not report in 2003																													
Devils Lake PD				3	9	10	82	8	21		16	5		18	47	6		6	89		35	163	249	68		207		42	2	1086
Ransom SO					1	2	3		8		1	94			8				4			14	25	8		31			2	201
Lisbon PD	Did not report in 2003																													
Renville SO							1		1		1	6							3			5				12				29
Richland SO					1	18	9	7	24		5	183		7	6	2		3	14		33	45	64	6		127			7	561
Wahpeton PD					4	31	35	7	35			1		5	10			2	12			40	100	15		72		6	12	387
NDSCS PD							1		2														3			2				8
Rolette SO							1	1	2					1					1			2	1	1		3				13
Sargent SO					4		10	1				21			1				8			6	27			31				109
Sheridan SO	Did not report in 2003																													
Sioux SO	Did not report in 2003																													

Agency	Murder/Non-Neg. Mansl.	Negligent Manslaughter	Forcible Rape	Robbery	Aggravated Assault	Burglary	Larceny/Theft	Motor Vehicle Theft	Other Assault	Arson	Forgery/Counterfeiting	Fraud	Embezzlement	Stolen Property Offenses	Vandalism	Weapons Offenses	Prostitution	Other Sex Offenses	Drug Abuse Violations	Gambling Violations	Off. Against Fam & Children	DUI	Liquor Law Violations	Disorderly Conduct	Vagrancy	All Other Offenses	Suspicion	Curfew/Loitering	Runaway	Total	
Slope SO	Did not report in 2003																														
Stark SO									4			533				1			7				20	62			41		1	669	
Dickinson PD					4	7	77	8	64		6	69	1	4	29			7	12		12	114	329	147		144		17	54	1105	
Steele SO	Did not report in 2003																														
Stutsman SO					2	14	8	3	14			1			6				3		1	23	54	3		22			5	159	
Jamestown PD			6	2	7	6	83	16	76	2	9	5	1	6	43	3	1	6	23		2	99	217	113		404		21	32	1183	
Towner SO								1					1																	2	
Cando PD	Did not report in 2003																														
Traill SO			1	1	1	7	7	4	15		3	132		3	3			3	20		1	26	9	2		82				320	
Mayville PD	Did not report in 2003																														
Hatton PD	Did not report in 2003																														
Hillsboro PD	Did not report in 2003																														
Portland PD	Did not report in 2003																														
Walsh SO					1	2	13		9		5	1		5	18	2							20	35	4		32			147	
Grafton PD							19	1	14		2	1		9	18	2			13				49	10	15		24		1	3	181
Ward SO					2	2	6	4	25					1	6				21		2	94	151	11		40			60	425	
Minot PD			6	1	15	17	275	21	212		16	10		2	54	18	2	9	42		2	283	427	208	1	875		55	114	2665	
Wells SO					1		2	4	1						3	1			4			6	21	1		42				123	
Harvey PD *									1						1		1								2					5	
Fessenden PD *					1																									1	
Williams SO					1	5	5	1	8			72		1		1			2		3	13	62	4		134			4	316	
Williston PD	1			2	2	2	39	5	55		2			2	35			4	3		7	23	90	8	1	57		35	22	395	
Highway Patrol		5			2		8	7	20					2	4	26		1	251			963	969	10		384				2652	
Drug Task Forces							1									4	1		496				6			268				776	
Total	2	5	40	25	136	266	1924	227	1691	20	202	1698	8	148	650	136	5	92	2045	205	4854	6969	1691	3	6318	339	635	30334			

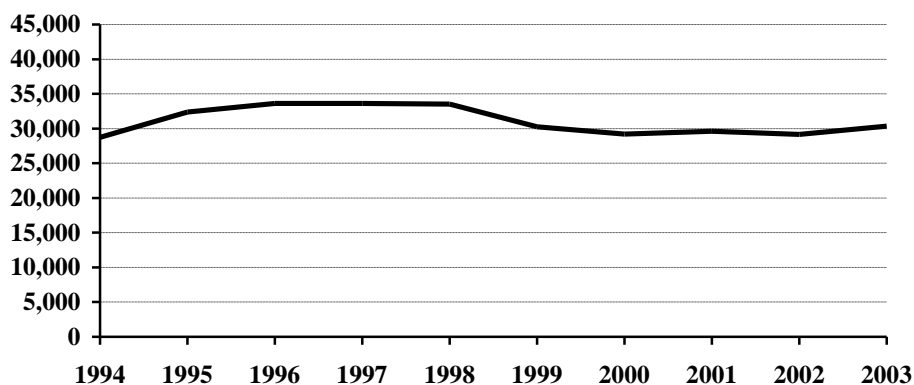
* Reported partial year

Arrests 1994-2003

Arrest Summary

Year	Population	Arrest Total	% Change from Previous Year	Rate per 100,000 Pop.
1994	638,000	28,737	7.8%	4504.2
1995	641,000	32,399	12.7	5054.4
1996	644,000	33,614	3.8	5219.6
1997	641,000	33,634	0.1	5247.1
1998	638,000	33,548	-0.3	5258.3
1999	634,000	30,258	-9.8	4772.6
2000	642,200	29,201	-3.5	4547.0
2001	634,450	29,638	1.5	4671.5
2002	634,110	29,145	-1.7	4596.2
2003	634,000	30,334	4.1	4784.5

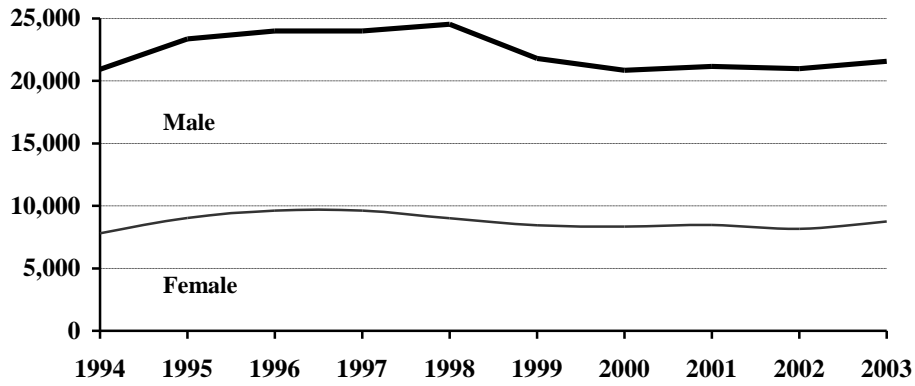
Arrest Totals, 1994-2003



Arrests by Gender, 1994-2003

Year	Male	% of Total	Female	% of Total	Total
1994	20,931	72.8%	7,806	27.2%	28,737
1995	23,363	72.1	9,036	27.9	32,399
1996	23,992	71.4	9,622	28.6	33,614
1997	24,011	71.4	9,623	28.6	33,634
1998	24,538	73.1	9,010	26.9	33,548
1999	21,801	72.1	8,457	27.9	30,258
2000	20,854	71.4	8,347	28.6	29,201
2001	21,170	71.4	8,468	28.6	29,638
2002	20,991	72.0	8,154	28.0	29,145
2003	21,580	71.1	8,754	28.9	30,334

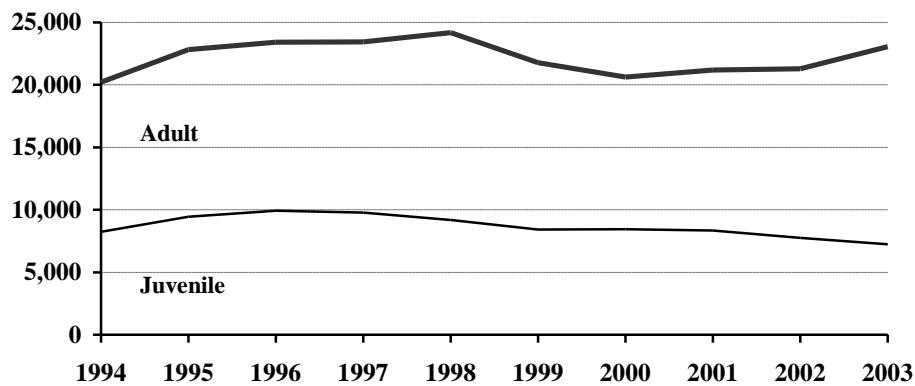
Arrests by Gender, 1994-2003



Juvenile and Adult Arrests, 1994-2003

Year	Juvenile	Percent of Total	Adult	Percent of Total	Age Not Reported	Percent of Total	Total
1994	8,246	28.7%	20,227	70.4%	264	0.9%	28,737
1995	9,432	29.1	22,820	70.4	147	0.5	32,399
1996	9,938	29.6	23,409	69.6	267	0.8	33,614
1997	9,780	29.1	23,428	69.7	426	1.3	33,634
1998	9,175	27.3	24,188	72.1	185	0.6	33,548
1999	8,429	27.9	21,769	71.9	60	0.2	30,258
2000	8,435	28.9	20,612	70.6	154	0.5	29,201
2001	8,347	28.2	21,188	71.5	103	0.3	29,638
2002	7,742	26.6	21,279	73.0	124	0.4	29,145
2003	7,250	23.9	23,044	76.0	40	0.1	30,334

Juvenile and Adult Arrests, 1994-2003



Arrests by Age Group, 1994-2003

Age Group	1994	1995	1996	1997	1998	1999	2000	2001	2002	2003
Under 10	199	281	208	204	205	202	203	186	168	145
10-12	765	895	881	953	758	628	708	819	638	582
13-14	2137	2396	2433	2429	2165	1877	1809	1686	1736	1601
15	1609	1796	2077	1980	1775	1586	1698	1629	1459	1344
16	1646	2044	2138	2115	2034	1977	1898	1943	1810	1677
17	1890	2020	2201	2099	2238	2159	2119	2084	1931	1901
18	1828	2306	2238	2210	2610	2356	2377	2501	2248	2620
19	2143	2238	2279	2330	2611	2693	2572	2845	2528	2832
20	1774	1997	1991	2170	2366	2220	2198	2565	2224	2597
21	1200	1320	1304	1240	1385	1186	1112	1220	1323	1476
22	1057	1149	1163	1166	1063	1039	957	913	1010	1174
23	930	940	1026	922	1040	807	830	817	904	958
24	859	951	929	911	821	741	654	739	753	858
25-29	3002	3242	3506	3451	3390	2858	2598	2397	2562	2880
30-34	2542	2910	3023	2709	2642	2230	2018	1932	1990	2021
35-39	1854	2278	2264	2494	2497	2166	1931	1926	1931	1727
40-44	1244	1431	1633	1710	1689	1500	1475	1536	1711	1731
45-49	717	901	918	958	967	919	908	895	1034	1065
50-54	463	485	516	523	513	515	483	448	550	557
55-59	225	262	251	266	270	234	250	191	261	303
60-64	126	154	143	153	103	107	81	77	110	118
65 +	263	256	225	215	221	198	168	186	140	127
Age Not Reported	264	147	267	426	185	60	154	103	124	40
Arrest Total	28737	32399	33614	33634	33548	30258	29201	29638	29145	30334

Arrests by Offense, 1994-2003

Offense Classification	1994	1995	1996	1997	1998	1999	2000	2001	2002	2003
Murder/Non-Neg. Manslaughter	3	11	11	3	5	6	1	3	6	2
Negligent Manslaughter	2	1	1	1	2	4	4	1		5
Forcible Rape	43	54	51	35	44	24	39	32	42	40
Robbery	31	31	38	30	28	28	15	19	25	25
Aggravated Assault	127	176	193	180	168	108	144	161	127	136
Burglary	407	374	410	413	426	409	305	343	316	266
Larceny/Theft	3346	3742	3718	3093	2671	2327	2279	2238	2264	1924
Motor Vehicle Theft	336	358	334	307	286	289	247	238	261	227
Other Assaults	1337	1536	1671	1550	1567	1651	1704	1664	1798	1691
Arson	25	34	24	36	33	16	24	60	25	20
Forgery and Counterfeiting	286	261	223	189	191	160	137	186	192	202
Fraud	5661	5839	6006	5491	4291	3274	2532	1883	1777	1698
Embezzlement	5	5	14	5	6	6	1	6	4	8
Stolen Property Offenses	140	156	204	159	150	84	98	113	171	148
Vandalism	844	806	631	855	774	709	671	713	802	650
Weapons Offenses	157	139	121	119	102	107	120	138	140	136
Prostitution	1	4	2		7	3		4		5
Other Sex Offenses	72	89	103	99	82	76	87	87	83	92
Drug Abuse Violations	779	799	1106	1242	1517	1456	1501	1658	1752	2045
Gambling	3		3	1	6	5		4	4	
Off. Against Family & Children	229	344	283	327	401	200	250	245	228	205
Driving Under the Influence	4206	4439	4467	4777	5187	5179	4304	4301	4467	4854
Liquor Law Violations	4401	5109	5260	5521	6231	6377	6574	7415	6099	6969
Disorderly Conduct	1253	1579	1468	1487	1783	1568	1554	1636	1565	1691
Vagrancy	1	20		4	2	8	2	4	2	3
All Other Offenses	3509	4970	5602	6164	6392	4998	5285	5338	6069	6318
Suspicion				17		1				
Curfew and Loitering	495	414	561	486	347	382	345	325	270	339
Runaways	1038	1109	1109	1043	849	803	978	823	656	635
Arrest Total	28737	32399	33614	33634	33548	30258	29201	29638	29145	30334

Juvenile Arrests by Offense, 1994-2003

Offense Classification	1994	1995	1996	1997	1998	1999	2000	2001	2002	2003
Murder/Non-Neg. Manslaughter		9	1			1				
Negligent Manslaughter	1					1	1			1
Forcible Rape	13	16	12	6	13	6	12	9	18	11
Robbery	8	13	10	13	8	9		3	9	6
Aggravated Assault	37	68	45	35	47	25	15	28	19	14
Burglary	197	208	201	222	201	202	134	175	166	118
Larceny/Theft	1846	2066	2056	1771	1372	1212	1285	1134	1147	919
Motor Vehicle Theft	223	262	198	205	162	185	153	130	146	119
Other Assaults	379	467	517	424	420	401	448	439	485	420
Arson	19	24	20	25	23	10	17	52	15	16
Forgery and Counterfeiting	77	65	54	46	42	37	41	29	35	22
Fraud	19	16	28	20	28	17	16	32	18	23
Embezzlement		1								2
Stolen Property Offenses	86	83	138	105	81	49	51	54	90	92
Vandalism	609	569	420	654	532	420	423	503	538	410
Weapons Offenses	61	62	50	34	30	27	31	40	36	22
Prostitution			2							
Other Sex Offenses	25	31	30	32	32	18	32	26	32	31
Drug Offenses	84	136	205	229	269	284	292	311	289	249
Gambling								1		
Off. Against Family/Children	97	142	109	96	110	98	66	86	77	64
Driving Under the Influence	77	77	62	104	114	169	81	90	74	90
Liquor Law Violations	1426	1712	1900	1976	2169	2176	2039	1890	1645	1741
Disorderly Conduct	454	579	575	611	762	709	699	785	672	738
Vagrancy						1		3		
All Other Offenses	975	1303	1635	1643	1564	1187	1277	1379	1305	1168
Suspicion										
Curfew and Loitering	495	414	561	486	347	382	344	325	270	339
Runaways	1038	1109	1109	1043	849	803	978	823	656	635
Juvenile Arrest Total	8246	9432	9938	9780	9175	8429	8435	8347	7742	7250

Juvenile Arrests by Gender, 1994-2003

Year	Male	% of Total	Female	% of Total	Total
1994	5,726	69.4%	2,520	30.6%	8,246
1995	6,423	68.1	3,009	31.9	9,432
1996	6,512	65.5	3,426	34.5	9,938
1997	6,363	65.1	3,417	34.9	9,780
1998	6,129	66.8	3,046	33.2	9,175
1999	5,456	64.7	2,973	35.3	8,429
2000	5,387	63.9	3,048	36.1	8,435
2001	5,298	63.5	3,049	36.5	8,347
2002	5,043	65.1	2,699	34.9	7,742
2003	4,568	63.0	2,682	37.0	7,250

Adult Arrests by Offense, 1994-2003

Offense Classification	1994	1995	1996	1997	1998	1999	2000	2001	2002	2003
Murder/Non-Neg. Manslaughter	3	2	10	3	5	5	1	3	6	2
Negligent Manslaughter	1	1	1	1	2	3	3	1		4
Forcible Rape	29	36	39	29	31	18	27	23	24	29
Robbery	23	18	28	17	20	19	15	16	16	19
Aggravated Assault	89	108	147	144	121	82	128	133	108	122
Burglary	204	164	208	185	220	205	166	166	144	148
Larceny/Theft	1472	1662	1656	1306	1292	1110	987	1102	1114	1004
Motor Vehicle Theft	106	93	133	99	124	104	93	108	114	108
Other Assaults	946	1067	1151	1106	1136	1244	1249	1221	1311	1269
Arson	5	10	4	11	10	6	7	8	10	4
Forgery and Counterfeiting	207	195	169	140	148	123	96	157	155	180
Fraud	5542	5771	5874	5354	4173	3243	2482	1782	1701	1654
Embezzlement	5	4	13	5	6	6	1	6	4	6
Stolen Property Offenses	54	71	66	53	68	35	46	59	80	56
Vandalism	230	235	209	190	242	287	246	204	264	240
Weapons Offenses	96	77	69	83	72	80	87	98	103	114
Prostitution	1	4			7	3		4		5
Other Sex Offenses	46	58	73	66	49	58	53	61	51	61
Drug Offenses	684	660	894	998	1248	1169	1206	1344	1438	1795
Gambling	3		3	1	6	5		2	4	
Off. Against Family/Children	132	202	174	230	291	100	182	159	151	141
Driving Under the Influence	4102	4351	4364	4629	5051	5005	4214	4207	4390	4759
Liquor Law Violations	2942	3370	3323	3462	4033	4191	4493	5520	4449	5222
Disorderly Conduct	792	995	891	866	1017	856	854	851	892	952
Vagrancy	1	20		4	2	7	2	1	2	3
All Other Offenses	2512	3646	3910	4429	4814	3804	3974	3952	4748	5147
Suspicion				17		1				
Adult Arrest Total	20227	22820	23409	23428	24188	21769	20612	21188	21279	23044

Adult Arrests by Gender, 1994-2003

Year	Male	% of Total	Female	% of Total	Total
1994	15,004	74.2%	5,223	25.8%	20,227
1995	16,828	73.7	5,992	26.3	22,820
1996	17,283	73.8	6,126	26.2	23,409
1997	17,354	74.1	6,074	25.9	23,428
1998	18,280	75.6	5,908	24.4	24,188
1999	16,304	74.9	5,465	25.1	21,769
2000	15,361	74.5	5,251	25.5	20,612
2001	15,805	74.6	5,383	25.4	21,188
2002	15,859	74.5	5,420	25.5	21,279
2003	16,987	73.7	6,057	26.3	23,044

Drug Arrest Analysis

Drug offense arrests increased 16.7 percent from 1,752 in 2002 to 2,045 in 2003. The arrest totals shown should not be interpreted as the number of individuals arrested for drug offenses because it is possible that some individuals may have been arrested on more than one occasion for this offense.

Nearly 78 percent of drug arrests in 2003 were arrests of males.

Juveniles (persons under the age of 18) comprised 12.2 percent of the total in 2003.

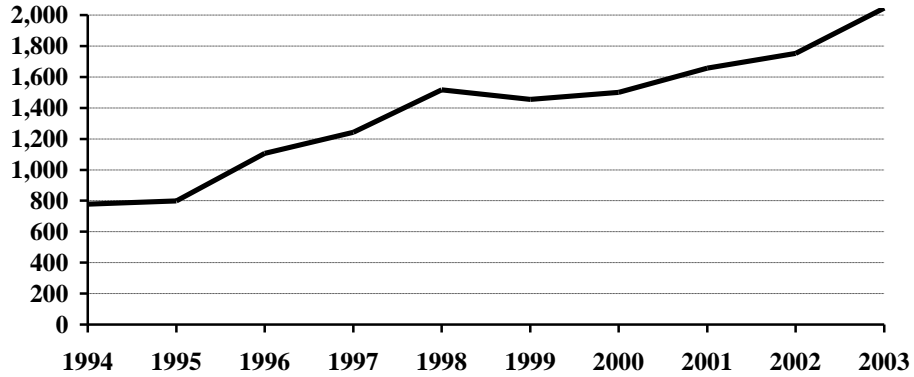
Approximately 88 percent of the drug arrests during the 10-year period were arrests for possession rather than sale or manufacture of drugs.

Seventy-seven percent of the arrests for drug offenses during the period 1994-2003 involved marijuana.

Arrests for Drug Offenses, 1994-2003

Year	Total	Percent Change from Previous Year
1994	779	21.2%
1995	799	2.6
1996	1,106	38.4
1997	1,242	12.3
1998	1,517	22.1
1999	1,456	-4.0
2000	1,501	3.1
2001	1,658	10.5
2002	1,752	5.7
2003	2,045	16.7

Arrests for Drug Offenses, 1994-2003



Drug Arrests by Gender, 1994-2003

Year	Male	% of Total	Female	% of Total	Total
1994	659	84.6%	120	15.4%	779
1995	646	80.9	153	19.1	799
1996	888	80.3	218	19.7	1,106
1997	1,035	83.3	207	16.7	1,242
1998	1,260	83.1	257	16.9	1,517
1999	1,161	79.7	295	20.3	1,456
2000	1,222	81.4	279	18.6	1,501
2001	1,298	78.3	360	21.7	1,658
2002	1,340	76.5	412	23.5	1,752
2003	1,593	77.9	452	22.1	2,045

Drug Arrests by Age Category, 1994-2003

Year	Juvenile	Percent of Total	Adult	Percent of Total	Age Not Reported	Percent of Total	Total
1994	84	10.8%	684	87.8%	11	1.4%	779
1995	136	17.0	660	82.6	3	0.4	799
1996	205	18.5	894	80.8	7	0.6	1,106
1997	229	18.4	998	80.4	15	1.2	1,242
1998	269	17.7	1,248	82.3			1,517
1999	284	19.5	1,169	80.3	3	0.2	1,456
2000	292	19.5	1,206	80.3	3	0.2	1,501
2001	311	18.7	1,344	81.1	3	0.2	1,658
2002	289	16.5	1,438	82.1	25	1.4	1,752
2003	249	12.2	1,795	87.8	1	*	2,045

*Less than 0.1 percent of total drug arrests.

Drug Arrests by Age Group, 1994-2003

Age Group	1994	1995	1996	1997	1998	1999	2000	2001	2002	2003
Under 10					1					
10-12	1	3	1	4	6	2	1	3	4	3
13-14	11	19	38	35	27	33	38	36	29	33
15	14	26	33	44	49	47	51	50	43	34
16	21	39	67	55	75	104	84	95	93	66
17	37	49	66	91	111	98	118	127	120	113
18	53	72	106	122	158	138	145	151	159	195
19	54	74	109	105	133	133	130	172	152	175
20	40	66	79	102	97	93	100	143	142	157
21	29	38	46	52	87	62	73	115	105	117
22	44	29	45	50	60	80	73	75	83	115
23	34	18	29	38	54	56	50	63	58	87
24	32	23	42	46	37	56	42	42	67	75
25-29	131	79	139	143	185	144	145	155	186	272
30-34	119	111	134	116	150	147	146	131	119	151
35-39	84	101	99	127	154	125	137	133	137	158
40-44	47	32	36	66	84	76	91	103	145	159
45-49	14	9	24	24	33	39	52	43	58	85
50-54	1	7	3	6	10	14	16	12	24	38
55-59	2		2	1	5	6	6	3	3	8
60-64		1	1		1			2		1
65 +								1		2
No Age Data	11	3	7	15		3	3	3	25	1
Total	779	799	1106	1242	1517	1456	1501	1658	1752	2045

Drug Arrests by Type of Offense, 1994-2003

Year	Sale or Manufacture	% of Total	Possession	% of Total	Total
1994	200	25.7%	579	74.3%	779
1995	92	11.5	707	88.5	799
1996	183	16.5	923	83.5	1,106
1997	109	8.8	1,133	91.2	1,242
1998	257	16.9	1,260	83.1	1,517
1999	159	10.9	1,297	89.1	1,456
2000	188	12.5	1,313	87.5	1,501
2001	118	7.1	1,540	92.9	1,658
2002	134	7.6	1,618	92.4	1,752
2003	143	7.0	1,902	93.0	2,045

Drug Arrests by Age Category and Type of Offense, 1994-2003

Year	Juvenile		Adult		Age Not Reported	
	Sale or Manufacture	Possession	Sale or Manufacture	Possession	Sale or Manufacture	Possession
1994	14	70	184	500	2	9
1995	14	122	78	582		3
1996	23	182	158	736	2	5
1997	24	205	82	916	3	12
1998	37	232	220	1,028		
1999	11	273	145	1,024	3	
2000	32	260	156	1,050		3
2001	7	304	111	1,233		3
2002	20	269	110	1,328	4	21
2003	20	229	123	1,672		1

Drug Arrests by Type of Drug, 1994-2003

Year	Opiates, Cocaine or Derivatives	Percent of Total	Marijuana	Percent of Total	Other Drugs or Narcotics	Percent of Total	Total
1994	37	4.7%	672	86.3%	70	9.0%	779
1995	21	2.6	687	86.0	91	11.4	799
1996	59	5.3	914	82.6	133	12.0	1,106
1997	39	3.1	1,050	84.5	153	12.3	1,242
1998	96	6.3	1,189	78.4	232	15.3	1,517
1999	53	3.6	1,173	80.6	230	15.8	1,456
2000	45	3.0	1,189	79.2	267	17.8	1,501
2001	33	2.0	1,221	73.6	404	24.4	1,658
2002	61	3.5	1,189	67.9	502	28.6	1,752
2003	62	3.0	1,428	69.9	555	27.1	2,045

Drug Arrests by Age Category and Type of Drug, 1994-2003

Year	Juvenile			Adult			Age Not Reported		
	Opiates, Cocaine or Deriv.	Marijuana	Other Drugs or Narcotics	Opiates, Cocaine or Deriv.	Marijuana	Other Drugs or Narcotics	Opiates, Cocaine or Deriv.	Marijuana	Other Drugs or Narcotics
1994	8	68	8	29	593	62		11	
1995		122	14	21	562	77		3	
1996	2	186	17	56	722	116	1	6	
1997	2	197	30	37	842	119		11	4
1998	5	227	37	91	962	195			
1999		260	24	52	911	206	1	2	
2000	4	263	25	41	925	240		1	2
2001		269	42	33	950	361		2	1
2002	4	251	34	55	923	460	2	15	8
2003	3	206	40	59	1,221	515		1	

DUI Arrest Analysis

Reported DUI arrests increased 8.7 percent from 4,467 in 2002 to 4,854 in 2003. The arrest totals should not be interpreted as the number of individuals arrested for DUI offenses because it is possible that some individuals may have been arrested on more than one occasion.

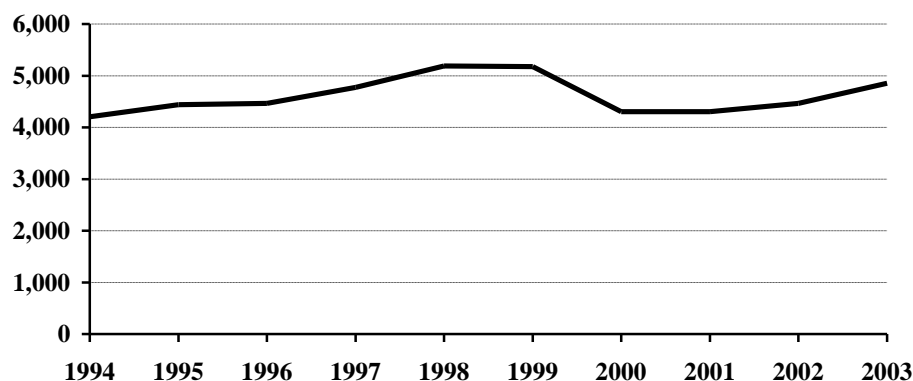
Approximately 77 percent of the DUI arrests in 2003 were arrests of males.

Juveniles, persons under the age of 18, made up 1.9 percent of the total in 2003.

DUI Arrests, 1994-2003

Year	DUI Arrests Reported	Percent Change from Previous Year
1994	4,206	-4.8%
1995	4,439	5.5
1996	4,467	0.6
1997	4,777	6.9
1998	5,187	8.6
1999	5,179	-0.2
2000	4,304	-16.9
2001	4,301	-0.1
2002	4,467	3.9
2003	4,854	8.7

DUI Arrests, 1994-2003



DUI Arrests by Gender, 1994-2003

Year	Male	% of Total	Female	% of Total	Total
1994	3,481	82.8%	725	17.2%	4,206
1995	3,672	82.7	767	17.3	4,439
1996	3,652	81.8	815	18.2	4,467
1997	3,917	82.0	860	18.0	4,777
1998	4,185	80.7	1,002	19.3	5,187
1999	4,149	80.1	1,030	19.9	5,179
2000	3,437	79.9	867	20.1	4,304
2001	3,450	80.2	851	19.8	4,301
2002	3,545	79.4	922	20.6	4,467
2003	3,763	77.5	1,091	22.5	4,854

DUI Arrests by Age Category, 1994-2003

Year	Juvenile	Percent of Total	Adult	Percent of Total	Age Not Reported	Percent of Total	Total
1994	77	1.8%	4,102	97.5%	27	0.6%	4,206
1995	77	1.7	4,351	98.0	11	0.2	4,439
1996	62	1.4	4,364	97.7	41	0.9	4,467
1997	104	2.2	4,629	96.9	44	0.9	4,777
1998	114	2.2	5,051	97.4	22	0.4	5,187
1999	169	3.3	5,005	96.6	5	0.1	5,179
2000	81	1.9	4,214	97.9	9	0.2	4,304
2001	90	2.1	4,207	97.8	4	0.1	4,301
2002	74	1.6	4,390	98.3	3	0.1	4,467
2003	90	1.9	4,759	98.0	5	0.1	4,854

DUI Arrests by Age Group, 1994-2003

Age Group	1994	1995	1996	1997	1998	1999	2000	2001	2002	2003
Under 10				1						
10-12		1				2				
13-14	1	2	2	3	2	4	1	1	3	2
15	9	9	10	8	10	14	3	6	6	10
16	12	16	13	40	42	32	30	35	17	25
17	55	49	37	52	60	117	47	48	48	53
18	100	94	107	103	158	141	125	112	114	161
19	123	121	112	143	174	228	146	135	155	195
20	139	143	144	180	181	228	155	145	182	219
21	222	205	214	234	272	274	251	269	276	354
22	195	203	212	225	203	269	240	232	260	300
23	175	163	195	156	234	220	205	197	238	267
24	143	189	185	162	194	203	170	209	188	260
25-29	670	690	702	755	777	770	640	641	660	775
30-34	751	756	713	711	713	641	520	526	507	526
35-39	565	617	624	717	752	754	529	519	511	436
40-44	383	435	475	506	566	493	473	499	520	480
45-49	262	313	295	293	396	351	349	337	339	354
50-54	162	173	159	191	188	207	185	187	232	214
55-59	86	111	88	110	107	101	116	78	97	120
60-64	52	59	56	69	58	50	42	43	51	46
65 +	74	79	83	74	78	75	68	78	60	52
No Age Data	27	11	41	44	22	5	9	4	3	5
Total	4206	4439	4467	4777	5187	5179	4304	4301	4467	4854

UCR OFFENSE DEFINITIONS

(This page intentionally left blank.)

UNIFORM CRIME REPORTING OFFENSE DEFINITIONS

Offenses in Uniform Crime Reporting are divided into two groups designated as Part I and Part II crimes. Information on the number of Part I offenses known to law enforcement, the number cleared by arrest or exceptional means, and the number of persons arrested is reported monthly. Arrest data are reported for Part I and Part II offenses. The Crime Index is composed of offenses 1-7 with the exception as noted in item 1 below.

NOTE: The classifications of these offenses for UCR reporting purposes are based on law enforcement investigation as opposed to determination by a court, medical examiner, jury, or other judicial hearing.

PART I OFFENSES:

1. CRIMINAL HOMICIDE

a. Murder and Non-Negligent Manslaughter

The willful (non-negligent) killing of one human being by another. Deaths caused by negligence, attempts to kill, assaults to kill, suicides, accidental deaths, and justifiable homicides are excluded. Justifiable homicides are limited to: (1) the killing of a felon by a law enforcement officer in the line of duty, and (2) the killing of a felon by a private citizen.

b. Manslaughter by Negligence

The killing of another person through gross negligence. Excludes traffic fatalities. While manslaughter by negligence is a Part I crime, it is not included in the Crime Index.

2. FORCIBLE RAPE

The carnal knowledge of a female forcibly and against her will. Included are rapes by force and attempts or assaults to rape. Statutory offenses (no force used -- victim under age of consent) are excluded.

3. ROBBERY

The taking or attempting to take anything of value from the care, custody, or control of a person or persons by force or threat of force or violence, or putting the victim in fear.

4. AGGRAVATED ASSAULT

An unlawful act by one person upon another for the purpose of inflicting severe or aggravated bodily injury. This type of assault usually is accompanied by the use of a weapon or by a means likely to produce death or great bodily harm. Simple assaults are excluded.

5. BURGLARY

Breaking or entering. The unlawful entry of a structure to commit a felony or theft. Attempted forcible entry is included.

6. LARCENY/THEFT

The unlawful taking, carrying, leading, or riding away of property from the possession or constructive possession of another. Examples are thefts of bicycles or automobile accessories, shoplifting, pocket-picking, or the stealing of any property or article that is not taken by force and violence or by fraud. Attempted larcenies are included. Embezzlement, "con" games, forgery, worthless checks, etc., are excluded.

7. MOTOR VEHICLE THEFT

The theft or attempted theft of a motor vehicle. A motor vehicle is self-propelled and runs on the surface and not on rails. Specifically excluded from this category are motorboats, construction equipment, airplanes, and farming equipment.

8. ARSON

Any willful or malicious burning or attempting to burn, with or without intent to defraud, a dwelling house, public building, motor vehicle, personal property of another, etc.

PART II OFFENSES:

9. OTHER ASSAULTS (SIMPLE)

Assaults or attempted assaults where no weapon was used or which did not result in serious or aggravated injury to the victim.

10. FORGERY AND COUNTERFEITING

Making, altering, uttering, or possessing, with the intent to defraud, anything false which is made to appear true. Attempts are included.

11. FRAUD

Fraudulent conversion and obtaining money or property by false pretenses. Included are larceny by bailee and bad checks except forgeries and counterfeiting. Attempts are included.

12. EMBEZZLEMENT

Misappropriation or misapplication of money or property entrusted to one's care, custody or control. Attempts are included.

13. STOLEN PROPERTY -- BUYING, RECEIVING, POSSESSING

Buying, receiving, or possessing stolen property, including attempts.

14. VANDALISM

Willful or malicious destruction, injury, disfigurement, or defacement of any public or private property, real or personal, without consent of the owner or person having custody or control. Attempts are included.

15. WEAPON OFFENSES -- CARRYING, POSSESSING, ETC.

All violations of regulations or statutes controlling the carrying, using, possessing, furnishing, and manufacturing of deadly weapons or silencers. Attempts are included.

16. PROSTITUTION AND COMMERCIALIZED VICE

Sex offenses of a commercialized nature, such as prostitution, keeping a bawdy house, procuring, or transporting women for immoral purposes. Attempts are included.

17. OTHER SEX OFFENSES (except forcible rape, prostitution and commercialized vice)

Statutory rape and offenses against chastity, common decency, morals and the like. Attempts are included.

18. DRUG ABUSE VIOLATIONS

State and local offenses relating to narcotic and non-narcotic drugs, such as unlawful possession, sale, use, growing and manufacturing of narcotic and non-narcotic drugs. Attempts are included.

19. GAMBLING

Promoting, permitting, or engaging in illegal gambling.

20. OFFENSES AGAINST FAMILY AND CHILDREN

Non-support, neglect, desertion, or abuse of family and children.

21. DRIVING UNDER THE INFLUENCE

Driving or operating any vehicle or common carrier while drunk or under the influence of liquor or drugs.

22. LIQUOR LAWS

State or local liquor law violations, except "drunkenness" (offense 23) and "driving under the influence" (offense 21).

23. DRUNKENNESS

Drunkenness or intoxication. Excluded is "driving under the influence" (offense 21). This is not a crime in North Dakota, but is included in the national program.

24. DISORDERLY CONDUCT

Breach of peace.

25. VAGRANCY

Vagabondage, begging, loitering, etc.

26. ALL OTHER OFFENSES

All violations of state or local laws, except offenses 1-25 and traffic offenses.

27. SUSPICION

No specific offense; suspect released without formal charges being placed.

28. CURFEW AND LOITERING

Offenses relating to violation of local curfew and loitering ordinances where such laws exist.

29. RUNAWAYS

Limited to juveniles taken into protective custody under provisions of local statutes.

**FULL-TIME LAW
ENFORCEMENT EMPLOYEES**

(This page intentionally left blank.)

**NUMBER OF FULL-TIME LAW ENFORCEMENT EMPLOYEES
REPORTED BY UCR AGENCIES
AS OF OCTOBER 31, 2003**

Agency	Law Enforcement Officers		Civilian Personnel		Total Full-Time			Population
	Male	Female	Male	Female	Male	Female	Total	
Adams SO	3				3		3	2,475
Barnes SO	5	1		1	5	2	7	4,717
Valley City PD	11	1	2	3	13	4	17	6,523
Benson SO	4				4		4	6,896
Billings SO	3			1	3	1	4	842
Bottineau SO	9		3	1	12	1	13	6,877
Bowman SO	2				2		2	1,579
Bowman PD	1	1			1	1	2	1,550
Burke SO	3	1			3	1	4	2,142
Burleigh SO	32	4	18	8	50	12	62	12,983
Bismarck PD	78	6	4	22	82	28	110	56,210
Lincoln PD	1	1			1	1	2	1,856
Cass SO	46	13	32	27	78	40	118	18,105
Fargo PD	94	17	3	36	97	53	150	81,328
West Fargo PD	23	2	2	9	25	11	36	15,794
NDSU PD	9	1		1	9	2	11	10,000
Cavalier SO	5		2	4	7	4	11	4,557
Dickey SO	4	1		1	4	2	6	3,630
Oakes PD	3			1	3	1	4	1,883
Divide SO	2				2		2	1,146
Crosby PD	2				2		2	1,036
Dunn SO	3			1	3	1	4	3,540
Eddy SO	4	1			4	1	5	2,628
Emmons SO	3				3		3	2,861
Linton PD	NR							1,242
Foster SO	2			1	2	1	3	1,435
Carrington PD	3				3		3	2,167
Golden Valley SO	4			1	4	1	5	1,833
Grand Forks SO	23			6	23	6	29	12,535
Grand Forks PD	71	6	5	11	76	17	93	38,525
Larimore PD	NR							1,397
Northwood PD	2				2		2	932
Emerado PD	NR							510
Thompson PD	1				1		1	993
UND PD	11		2	2	13	2	15	10,000
Grant SO	2				2		2	2,071
Elgin PD	1				1		1	623
Griggs SO	4				4		4	2,600
Hettinger SO	4				4		4	2,599
Kidder SO	1			1	1	1	2	1,858
Steele PD	1				1		1	720
LaMoure SO	4			1	4	1	5	4,509
Logan SO	2		1		3		3	1,459
Napoleon PD	2				2		2	806
McHenry SO	5			1	5	1	6	4,687
Velva PD	NR							1,005
McIntosh SO	3				3		3	2,087
Wishek PD	2				2		2	1,085
McKenzie SO	5		1	6	6	6	12	4,299
Watford City PD	4				4		4	1,407
McLean SO	19		1	3	20	3	23	9,003
Mercer SO	7		6	6	13	6	19	3,005
Beulah PD	6			1	6	1	7	3,113
Hazen PD	4				4		4	2,420
Morton SO	20		7	6	27	6	33	8,496
Mandan PD	27	1		8	27	9	36	16,762
Mountrail SO	NR							6,519

Agency	Law Enforcement Officers		Civilian Personnel		Total Full-Time			Population
	Male	Female	Male	Female	Male	Female	Total	
Nelson SO	4			1	4	1	5	3,398
Oliver SO	2			1	2	1	3	1,910
Pembina SO	8		2	4	10	4	14	6,777
Cavalier PD	4				4		4	1,489
Pierce SO	3			4	3	4	7	1,686
Rugby PD	4				4		4	2,843
Ramsey SO	6			1	6	1	7	4,710
Devils Lake PD	11	3		2	11	5	16	7,039
Ransom SO	4	1			4	1	5	3,530
Lisbon PD	2	1			2	1	3	2,262
Renville SO	3	1			3	1	4	2,545
Richland SO	13		5	4	18	4	22	9,125
Wahpeton PD	11	2		1	11	3	14	6,436
NDSCS PD	3			1	3	1	4	2,000
Rolette SO	9		2	1	11	1	12	13,796
Sargent SO	NR							4,248
Sheridan SO	NR							1,560
Sioux SO	NR							4,150
Slope SO	1				1		1	747
Stark SO	10			3	10	3	13	6,465
Dickinson PD	22	1	1	9	23	10	33	15,672
Steele SO	NR							2,092
Stutsman SO	8			2	8	2	10	6,132
Jamestown PD	27	2		4	27	6	33	15,108
Towner SO	2			1	2	1	3	1,463
Cando PD	3				3		3	1,264
Traill SO	4			3	4	3	7	3,577
Hillsboro PD	2				2		2	1,523
Mayville/Portland PD	3				3		3	2,468
Hatton PD								687
Walsh SO	12		4	2	16	2	18	7,593
Grafton PD	10			1	10	1	11	4,381
Ward SO	17	3	12	10	29	13	42	21,501
Minot PD	56	4	6	16	62	20	82	35,602
Wells SO	3			1	3	1	4	2,363
Harvey PD	3				3		3	1,875
Fessenden PD	1				1		1	586
Williams SO	19	3	5	2	24	5	29	7,166
Williston PD	21		1	7	22	7	29	12,371
Highway Patrol	121	5	45	16	166	21	187	
Total	1,022	83	172	267	1,194	350	1,544	634,000