

# **NORTH DAKOTA**

## **Office of Attorney General**

### **Bureau of Criminal Investigation**

---



## **Crime in North Dakota, 2005**

**Attorney General**  
**Wayne Stenehjem**

**Office of Attorney General**  
**Bureau of Criminal Investigation**

**Crime in North Dakota, 2005**

**A Summary of Uniform Crime Report Data**

**Wayne Stenehjem**  
**Attorney General**

**Prepared by**  
**Colleen Weltz**  
**UCR Program Manager**  
**Revised 2009**

## INTRODUCTION

The North Dakota Uniform Crime Reporting (UCR) program involves the collection, compilation, and analysis of crime and arrest statistics reported by the various local law enforcement agencies throughout the state. Forty-four sheriffs' departments and 32 police departments reported to the UCR program in 2005.

Law enforcement agencies may report UCR data in two ways:

**INCIDENT-BASED REPORTING:** Law enforcement agencies use a standard incident form to collect data on each incident reported to their respective agencies. This form collects much more detailed information than is collected using summary reporting. Data collected includes: type of incident, where and when the incident took place, victim characteristics, suspect/arrestee characteristics, property involved in the incident, etc. A total of 73 police departments and sheriffs' departments reported incident data for all or part of 2005.

In order to continue the statistical time-series begun with summary reporting, computer programs were written to extract summary data from the incident data reported. Crime in North Dakota, 2005 is a report on summary data.

**SUMMARY REPORTING:** Law enforcement agencies use a tally system to report the number of crime index offenses and arrests for each month. Three law enforcement agencies reported summary data in 2005.

The federal counterpart of the North Dakota UCR program is the National UCR program under the direction of the Federal Bureau of Investigation (FBI). The UCR program has been used nationally and in North Dakota for many years to measure the extent, distribution and fluctuation of crime through the crime index. The crime index is not an absolute measure, but rather an indication of the amount and type of crime occurring in any given jurisdiction. The index is composed of seven crimes that are sub-classified as follows:

**VIOLENT CRIME:** Murder/Non-Negligent Manslaughter  
Forcible Rape  
Robbery  
Aggravated Assault

**PROPERTY CRIME:** Burglary  
Larceny/Theft  
Motor Vehicle Theft

A Modified Crime Index is also calculated at the federal level. This includes arson as the fourth property crime and the eighth index offense. Data on arson is not included in this report.

Prior to an offense becoming recorded in the UCR program, it must be reported to the local law enforcement officials and reported by the local agency to the UCR program. Consequently, the UCR program only reflects reported crimes. Reporting of crimes depends on several factors,

including actual perception of an act as a crime, the probability of loss of status for reporting (as in cases of rape), and the perceived probability of action on the part of the law enforcement agency contacted.

Several types of data are gathered, including:

### **Offense data**

- Number of known crime index offenses
- Type and value of stolen property
- Additional information on homicides and arson
- Law enforcement officers killed or assaulted

### **Arrest and Clearance Data**

- Number and type of offenses cleared
- Number and type of index offenses involving juveniles cleared
- Number of persons arrested, by offense
- Characteristics of persons arrested (age, sex, race)

To allow for comparison among several geographic or jurisdictional areas with differing populations or to allow comparisons across time in an area undergoing population fluctuations, the UCR program provides for the calculation of crime rates to remove any potential biases created by population differences. Because a rate relates the incidence of activity to population, it is possible to measure annual fluctuations in criminal activity by comparing rates of crime reported in any given year with those reported in other years. National publications report crime rates calculated based on the number of reported offenses per 100,000 population. This publication provides crime rate information calculated in the same manner.

## TABLE OF CONTENTS

Introduction.....	3
Table of Contents.....	5
North Dakota Crime Summary, 2005.....	6
Crime Index Offense Analysis.....	7
Violent Crime.....	12
Murder/Non-Negligent Manslaughter.....	14
Forcible Rape.....	16
Robbery.....	18
Aggravated Assault.....	21
Property Crime.....	23
Burglary.....	25
Larceny/Theft.....	27
Motor Vehicle Theft.....	31
Crime Index Offenses by Reporting Jurisdiction.....	34
Arrest Analysis.....	38
Arrests in 2005.....	39
Arrest Analysis by Reporting Jurisdiction.....	45
Arrests 1996-2005.....	48
Drug Arrest Analysis.....	54
DUI Arrest Analysis.....	58
UCR Offense Definitions.....	61
Full-Time Law Enforcement Employees.....	66

## NORTH DAKOTA CRIME SUMMARY, 2005

In 2005, 12,979 crime index offenses were reported by local law enforcement agencies. This is an increase of 4.6 percent from the total of 12,413 reported in 2004.

Crime index offenses include: murder/non-negligent manslaughter, forcible rape, robbery, aggravated assault, burglary, larceny/theft, and motor vehicle theft.

The Census Bureau estimate of North Dakota's population for 2005 is 637,000. The index crime rate per 100,000 population for 2005 was 2037.5. The index crime rate for 2004 was 1956.3 per 100,000 population. This is a 4.2 percent increase in the crime rate.

The total number of reported violent index crimes (murder, rape, robbery, and aggravated assault) was 690. This represents an increase of 18.4 percent from the total of 583 reported in 2004. In 2003, 499 violent index crimes were reported.

Violent crime accounted for 5.3 percent of total index crimes reported in 2005.

Collectively, property crimes (burglary, larceny/theft and motor vehicle theft) increased by 3.9 percent from 11,830 reported in 2004 to 12,289 reported in 2005.

Property crime accounted for 94.7 percent of total crime index offenses reported in 2005.

The 9,293 larceny/theft offenses reported in 2005 accounted for 71.6 percent of total index crimes.

More than \$12.3 million worth of property was reported stolen in 2005, with 37.7 percent of that amount reported as recovered by law enforcement officials.

North Dakota law enforcement agencies reported 31,835 arrests in 2005. A total of 29,798 arrests was reported in 2004.

In 2005, juvenile arrests accounted for 21.1 percent of the total arrests. Juvenile arrests were 39.8 percent of the total arrests of crime index offenses.

The number of reported arrests in 2005 for DUI increased to 5,946 from 5,783 reported in 2004.

Arrests for drug offenses increased 12.8 percent from a 2004 total of 2,078 to 2,343 in 2005.

# **CRIME INDEX OFFENSE ANALYSIS**

---

---

# Crime Index Offenses

---

Crime index offenses include the violent crimes of murder/non-negligent manslaughter, forcible rape, robbery, and aggravated assault, and the property crimes of burglary, larceny/theft, and motor vehicle theft.

In 2005, 12,979 crime index offenses were reported by local law enforcement agencies. This is an increase of 4.6 percent from the total of 12,413 reported in 2004.

The Census Bureau estimate of North Dakota's population for 2005 is 637,000. Based on that total, the index crime rate per 100,000 population for 2005 was 2037.5, as compared to 1956.3 for 2004. See the crime index offense summary on page 5 for crime rate information for the period 1996-2005.

Approximately 20 percent of crime index offenses were reported as cleared by arrest or exceptional means. The UCR program defines an offense as "cleared" by law enforcement when at least one person is arrested, charged with the commission of the offense, and turned over to the court for prosecution. Several crimes may be cleared by the arrest of one person, while the arrests of many persons may clear only one offense. Law enforcement agencies may clear a crime by exceptional means when some element beyond law enforcement control precludes the placing of formal charges against the offender. Examples of circumstances that allow such clearances are the death of the offender (suicide, justifiably killed by police or private citizen, etc.); the victim's refusal to cooperate with prosecution after the offender has been identified; or the denial of extradition.

In 2005, 2,534 arrests were reported for crime index offenses. Of that total, 39.8 percent were arrests of juveniles.

More than \$12.3 million worth of property was reported stolen in 2005, with 37.7 percent of that amount reported as recovered by law enforcement officials.

---

## Crime Index Offenses Reported, 2005

<b>Crime Index Offense</b>	<b>Number Reported</b>	<b>Percent of Total Index Offenses</b>
Murder/Non-Negligent Manslaughter	14	0.1%
Forcible Rape	179	1.4
Robbery	53	0.4
Aggravated Assault	444	3.4
<b>Violent Crime Subtotal</b>	<b>690</b>	<b>5.3</b>
Burglary	1,966	15.2
Larceny/Theft	9,293	71.6
Motor Vehicle Theft	1,030	7.9
<b>Property Crime Subtotal</b>	<b>12,289</b>	<b>94.7</b>
<b>Crime Index Offense Total</b>	<b>12,979</b>	<b>100.0</b>



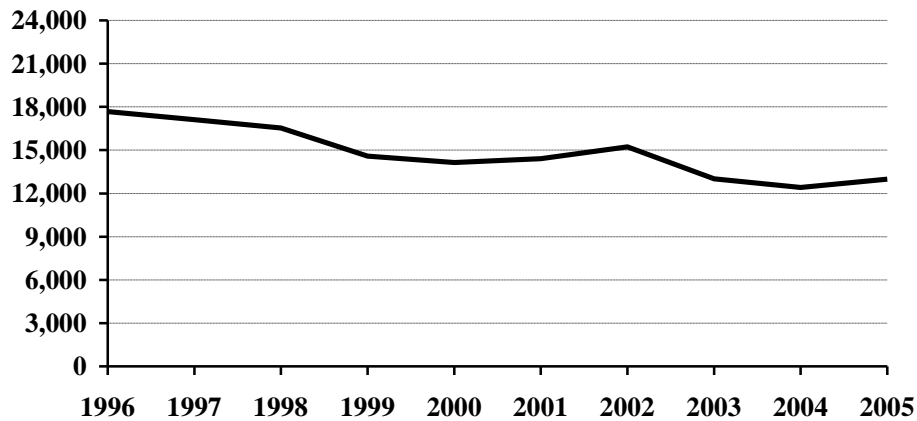
## Comparison of Crime Index Offenses Reported, 2004-2005

Crime Index Offense	2004	2005	Percent Change
<b>Murder/Non-Negligent Manslaughter</b>	<b>10</b>	<b>14</b>	<b>40.0%</b>
<b>Forcible Rape</b>	<b>181</b>	<b>179</b>	<b>-1.1</b>
Rape by Force	177	166	-6.2
Attempts to Rape	4	13	225.0
<b>Robbery</b>	<b>49</b>	<b>53</b>	<b>8.2</b>
Firearm	11	2	-81.8
Knife or Cutting Instrument	5	9	80.0
Other Dangerous Weapon	4	14	250.0
Strong Arm – No Weapon	29	28	-3.4
<b>Aggravated Assault</b>	<b>343</b>	<b>444</b>	<b>29.4</b>
Firearm	12	19	58.3
Knife or Cutting Instrument	53	71	34.0
Other Dangerous Weapon	80	128	60.0
Hands, Fists, Feet, Etc.	198	226	14.1
<b>Violent Crime Subtotal</b>	<b>583</b>	<b>690</b>	<b>18.4</b>
<b>Burglary</b>	<b>1,954</b>	<b>1,966</b>	<b>0.6</b>
Forcible Entry	896	924	3.1
Unlawful Entry – No Force	891	903	1.3
Attempted Forcible Entry	167	139	-16.8
<b>Larceny/Theft</b>	<b>8,984</b>	<b>9,293</b>	<b>3.4</b>
<b>Motor Vehicle Theft</b>	<b>892</b>	<b>1,030</b>	<b>15.5</b>
Autos	777	872	12.2
Trucks and Buses	48	57	18.8
Other Vehicles	67	101	50.7
<b>Property Crime Subtotal</b>	<b>11,830</b>	<b>12,289</b>	<b>3.9</b>
<b>Crime Index Offense Total</b>	<b>12,413</b>	<b>12,979</b>	<b>4.6</b>

## Crime Index Offenses, 1996-2005

Crime Index Offense	1996	1997	1998	1999	2000	2001	2002	2003	2004	2005
Murder/Non-Neg. Mansl.	12	10	7	13	8	9	6	12	10	14
Forcible Rape	175	150	169	147	173	159	167	143	181	179
Robbery	72	45	78	70	62	71	71	55	49	53
Aggravated Assault	335	344	312	217	319	275	309	289	343	444
Burglary	2008	2271	2194	2200	2004	2027	2250	1814	1954	1966
Larceny/Theft	13898	13163	12704	10956	10642	10870	11399	9700	8984	9293
Motor Vehicle Theft	1182	1139	1073	989	942	1000	1037	1002	892	1030
<b>Crime Index Offense Total</b>	<b>17682</b>	<b>17122</b>	<b>16537</b>	<b>14592</b>	<b>14150</b>	<b>14411</b>	<b>15239</b>	<b>13015</b>	<b>12413</b>	<b>12979</b>

### Crime Index Offense Totals, 1996-2005



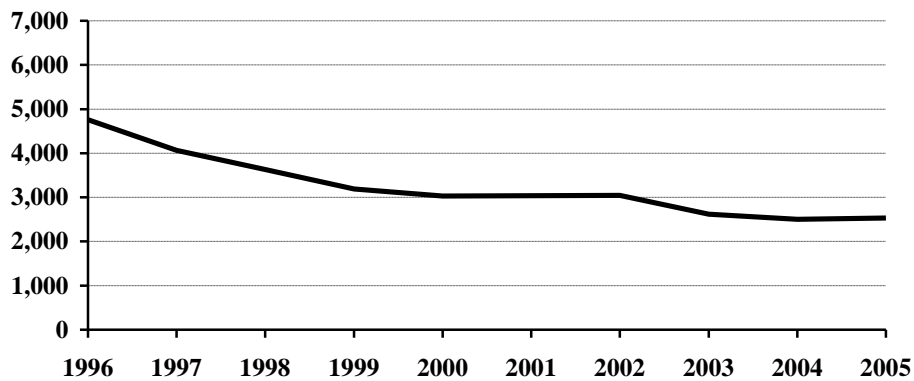
### Crime Index Offense Summary

Year	Population	Crime Index Offense Total	% Change in Number from Previous Year	Crime Rate per 100,000 Population	% Change in Rate from Previous Year	Percent Cleared
1996	644,000	17,682	-4.2%	2745.7	-4.6%	29.9%
1997	641,000	17,122	-3.2	2671.1	-2.7	29.0
1998	638,000	16,537	-3.4	2592.0	-3.0	26.5
1999	634,000	14,592	-11.8	2301.6	-11.2	27.2
2000	642,200	14,150	-3.0	2203.4	-4.3	22.9
2001	634,450	14,411	1.8	2271.4	3.1	21.6
2002	634,110	15,239	5.7	2403.2	5.8	21.1
2003	634,000	13,015	-14.6	2052.8	-14.6	20.8
2004	634,500	12,413	-4.6	1956.3	-4.7	20.7
2005	637,000	12,979	4.6	2037.5	4.2	20.2

### Arrests for Crime Index Offenses, 1996-2005

Year	Juvenile	Adult	Age Not Reported	Total
1996	2,523	2,221	11	4,755
1997	2,252	1,783	26	4,061
1998	1,803	1,813	12	3,628
1999	1,640	1,543	8	3,191
2000	1,599	1,417	14	3,030
2001	1,479	1,551	4	3,034
2002	1,505	1,526	10	3,041
2003	1,187	1,432	1	2,620
2004	1,009	1,491	5	2,505
2005	1,009	1,524	1	2,534

### Arrests for Crime Index Offenses, 1996-2005



### Property Loss Due to Crime Index Offenses, 1996-2005

Year	Population	Total Property Loss	% Change from Previous Year	Property Loss per Capita	Percent Recovered
1996	644,000	\$11,022,665	-0.4%	\$17.12	34.4%
1997	641,000	12,507,812	13.5	19.51	33.3
1998	638,000	11,429,270	-8.6	17.91	30.8
1999	634,000	11,201,544	-2.0	17.67	28.6
2000	642,200	10,308,899	-8.0	16.05	31.3
2001	634,450	11,420,051	10.8	18.00	33.2
2002	634,110	12,457,277	9.1	19.65	30.6
2003	634,000	11,457,228	-8.0	18.07	31.5
2004	634,500	11,397,856	-0.5	17.96	35.7
2005	637,000	12,390,920	8.7	19.45	37.7

# Violent Crime

---

Violent crime includes the offenses of murder/non-negligent manslaughter, forcible rape, robbery, and aggravated assault. (See the UCR offense definitions section beginning on page 57 of this publication for definitions of these and other offenses.)

In 2005, 690 violent crimes were reported in North Dakota. This is an 18.4 percent increase from the 2004 total of 583 violent offenses reported. In 2003, 499 violent crimes were reported.

Violent crime comprised 5.3 percent of reported crime index offenses in North Dakota in 2005.

The violent crime rate for 2005 is 108.3 per 100,000, as compared to 91.9 per 100,000 in 2004. This is a 17.8 percent increase in the violent crime rate. In 2003, the violent crime rate was 78.7 per 100,000 population.

More than 51 percent of violent crimes in 2005 were reported as cleared by arrest or exceptional means.

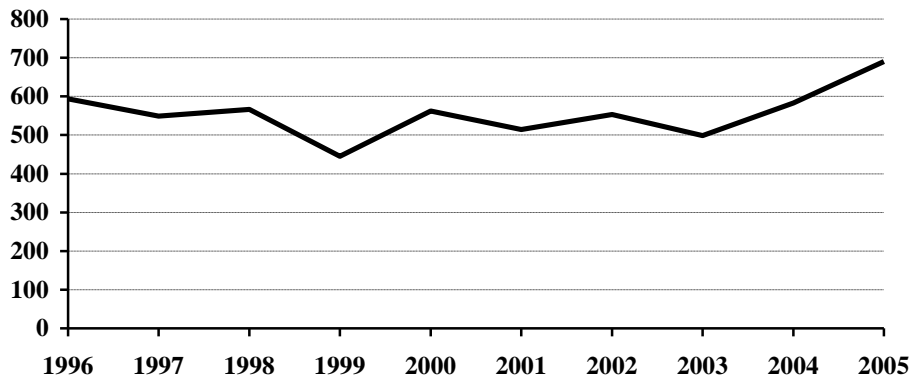
Of the 268 total arrests reported for violent crimes, 21.3 percent were arrests of juveniles.

---

## Violent Crime Summary

Year	Population	Violent Index Offenses	% Change in Number from Previous Year	Rate per 100,000 Population	% Change in Rate from Previous Year	Percent Cleared
1996	644,000	594	1.7%	92.2	1.2%	73.2%
1997	641,000	549	-7.6	85.6	-7.2	66.8
1998	638,000	566	3.1	88.7	3.6	61.8
1999	634,000	445	-21.4	70.2	-20.9	67.0
2000	642,200	562	26.3	87.5	24.6	51.2
2001	634,450	514	-8.5	81.0	-7.4	49.4
2002	634,110	553	7.6	87.2	7.7	50.5
2003	634,000	499	-9.8	78.7	-9.7	57.3
2004	634,500	583	16.8	91.9	16.8	52.1
2005	637,000	690	18.4	108.3	17.8	51.4

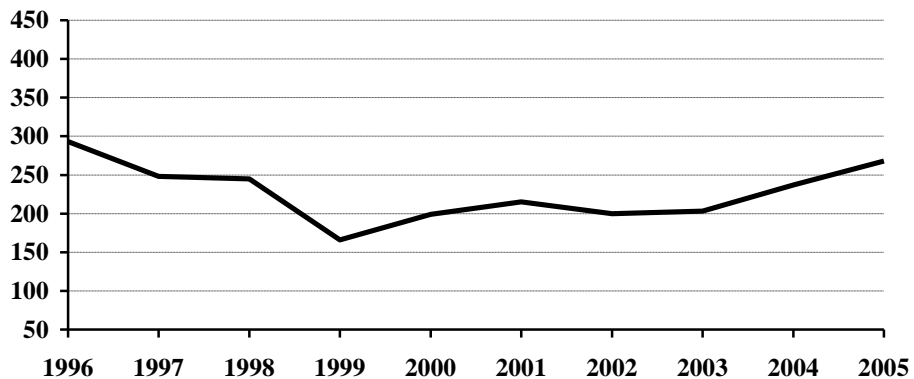
### Violent Crime Totals, 1996-2005



### Arrests for Violent Crimes, 1996-2005

Year	Juvenile	Adult	Age Not Reported	Total
1996	68	224	1	293
1997	54	193	1	248
1998	68	177		245
1999	41	124	1	166
2000	27	171	1	199
2001	40	175		215
2002	46	154		200
2003	31	172		203
2004	40	197		237
2005	57	211		268

### Arrests for Violent Crimes, 1996-2005



# Murder/Non-Negligent Manslaughter

The UCR program defines Murder/Non-Negligent Manslaughter as the “willful killing of one human being by another.” Not included in this category are attempts to murder, assaults to murder, suicides, accidental deaths, justifiable homicides, and deaths caused by gross negligence.

Fourteen murder/non-negligent manslaughter deaths were known to the North Dakota UCR program in 2005.

Twelve of the fourteen victims were adults. “Adult” is defined as a person aged 18 years or older.

Eight of the victims were male.

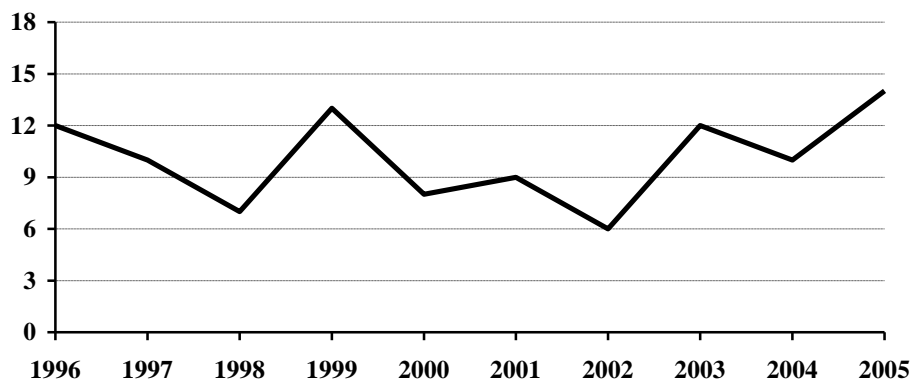
Three of the fourteen victims died as the result of gunshot wounds. (See the summary of homicide incidents and the weapons involved on page 10.)

The Office of Attorney General publishes a detailed report titled Homicide in North Dakota. The report provides an analysis of homicides for the period 1978-2005 and is available on our website at [www.ag.nd.gov](http://www.ag.nd.gov), under the Reports and Statistics link.

## Murder/Non-Negligent Manslaughter Summary

Year	Population	Offense Total	% Change in Number from Previous Year	Rate per 100,000 Population	% Change in Rate from Previous Year	Percent Cleared
1996	644,000	12	33.3%	1.9	35.7%	100.0%
1997	641,000	10	-16.7	1.6	-15.8	100.0
1998	638,000	7	-30.0	1.1	-31.3	100.0
1999	634,000	13	85.7	2.1	90.9	100.0
2000	642,200	8	-38.5	1.2	-42.9	87.5
2001	634,450	9	12.5	1.4	16.7	88.9
2002	634,110	6	-33.3	0.9	-35.7	83.3
2003	634,000	12	100.0	1.9	111.1	100.0
2004	634,500	10	-16.7	1.6	-15.8	100.0
2005	637,000	14	40.0	2.2	37.5	78.6

## Murder/Non-Negligent Manslaughter Totals, 1996-2005



## Summary of Murder/Non-Negligent Manslaughter Incidents, 2005

Date and Location of Incident	Victims		Assailants		Weapon Used	Relationship of Victim to Assailant	Circumstances
	Age	Sex	Age	Sex			
2/11/2005 Burlington, Ward County	1	F	23	F	Personal Weapon	Stepchild	Domestic Violence Victim was shaken to death
3/10/2005 Langdon, Cavalier County	40	F	35	M	Asphyxiation	Girlfriend	Domestic Violence
3/31/2005 Fairmount, Richland County	50	F	46	M	Firearm	Girlfriend	Domestic Violence Victim was shot Murder/Suicide
5/18/2005 Fargo	36	M	Unknown		Blunt Object		
5/29/2005 Bismarck	74	F	59	M	Fire	Stranger	Apartment building set on fire by assailant
6/10/2005 Fargo	52	M	49	M	Vehicle	Stranger	Hit-and-run death
6/20/2005 Hankinson, Richland County	43	F	19	M	Knife	Acquaintance	Circumstance unknown
6/26/2005 Rolette County	40	M	27	M	Personal Weapon	Uncle	Domestic Violence Victim found beaten in home
7/10/2005 New Rockford, Eddy County	83	M	57	M	Blunt Object	Acquaintance	Victim found dead in garage with head injury
10/2/2005 Kidder County	49	M	Unknown				
7/14/2005 Spirit Lake Reservation	29	M	43	M	Personal Weapon	Friend	Victim struck in head with offender's fist
10/8/2005 Grand Forks	BB	F	22	M	Asphyxiation	Daughter	Domestic Violence Victim found not breathing
10/17/2005 White Shield, Fort Berthold Reservation	27	M	30 28	M M	.22-caliber pistol	Brother-in-law Acquaintance	Domestic Violence Argument
11/8/2005 Minot	18	M	57	M	.44-caliber	Acquaintance	Argument

## Forcible Rape

---

The UCR program defines Forcible Rape as “the carnal knowledge of a female forcibly and against her will.” Assaults to rape, attempts to commit rape by force or threat of force are included. Carnal abuse, statutory offenses (no force -- victim under age of consent), and other sex offenses are not included.

In 2005, 179 forcible rapes were reported to local law enforcement in North Dakota. This is a decrease of 1.1 percent from the 2004 total of 181 offenses. A total of 143 forcible rapes were reported in 2003.

Because the UCR definition states that victims of rape must be female, the rate of occurrence for reported rapes is calculated based only on the female population. The Census Bureau estimate of North Dakota’s population for 2005 is 637,000. The number of females is approximately half of that figure. The resulting rate for 2005 is 56.2 reported rapes per 100,000 females, compared with 57.1 rapes per 100,000 females in 2004. In 2003, the forcible rape rate was 45.1 per 100,000 females.

In 2005, 35.8 percent of reported rapes were cleared by arrest or exceptional means.

Thirty-four arrests for forcible rape were reported in 2005. Approximately 82 percent of those arrested were adults. In 2004, 53 arrests for rape were reported.

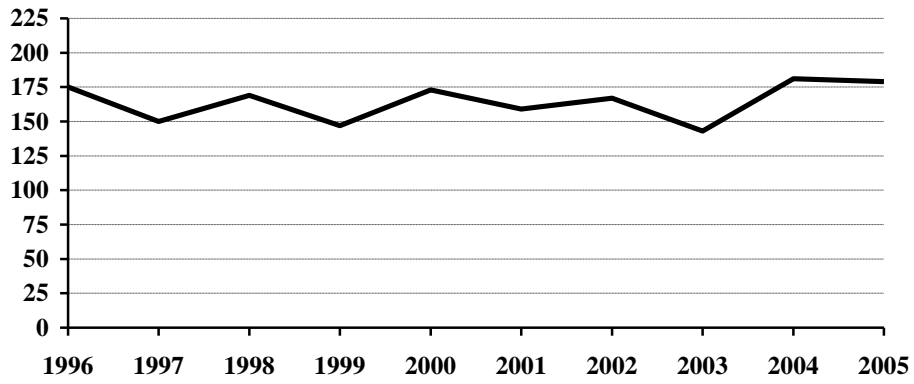
---

### Forcible Rape Summary

Year	Population	Offense Total	% Change in Number from Previous Year	Rate per 100,000 Females	% Change in Rate from Previous Year	Percent Cleared
1996	644,000	175	15.9%	54.3	15.3%	76.6%
1997	641,000	150	-14.3	46.8	-13.8	57.3
1998	638,000	169	12.7	53.0	13.2	51.5
1999	634,000	147	-13.0	46.4	-12.5	67.3
2000	642,200	173	17.7	53.9	16.2	30.1
2001	634,450	159	-8.1	50.1	-7.1	42.1
2002	634,110	167	5.0	52.7	5.2	37.7
2003	634,000	143	-14.4	45.1	-14.4	51.7
2004	634,500	181	26.6	57.1	26.6	40.3
2005	637,000	179	-1.1	56.2	-1.6	35.8



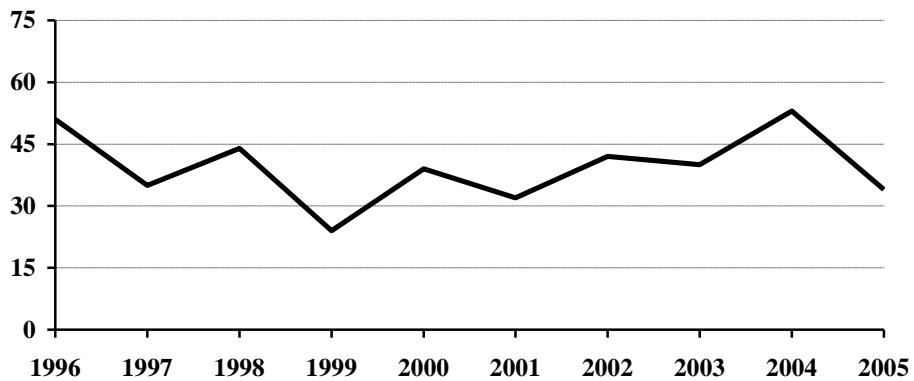
### Forcible Rape Totals, 1996-2005



### Arrests for Forcible Rape, 1996-2005

Year	Juvenile	Adult	Total
1996	12	39	51
1997	6	29	35
1998	13	31	44
1999	6	18	24
2000	12	27	39
2001	9	23	32
2002	18	24	42
2003	11	29	40
2004	10	43	53
2005	6	28	34

### Arrests for Forcible Rape, 1996-2005



## Robbery

---

Robbery is defined by the UCR program as “the taking or attempting to take anything of value from the care, custody, or control of a person or persons by force or threat of force or violence and/or by putting the victim in fear.”

Fifty-three robberies were reported in North Dakota in 2005, an increase of 8.2 percent from the total of 49 reported in 2004. A total of 55 robberies was reported in 2003.

The robbery rate for 2005 was 8.3 per 100,000 population, as compared with 7.7 per 100,000 population in 2004. This is a 7.8 percent increase in the robbery rate.

Thirty-four percent of reported robberies were cleared by arrest or exceptional means.

Twenty-two arrests for robbery were reported in 2005. Eighteen of those arrested were adults.

A firearm was used in two of the reported robberies in 2005.

Nearly 53 percent were strong-arm robberies where no weapon was used.

The value of property stolen in robbery incidents decreased from \$19,915 in 2004 to \$16,608 in 2005.

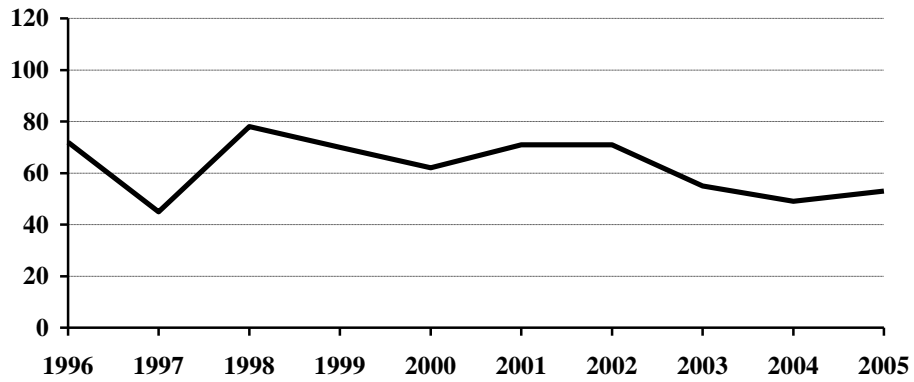
The average robbery in 2005 involved \$313 worth of property.

---

### Robbery Summary

Year	Population	Offense Total	% Change in Number from Previous Year	Rate per 100,000 Population	% Change in Rate from Previous Year	Percent Cleared
1996	644,000	72	12.5%	11.2	12.0%	48.6%
1997	641,000	45	-37.5	7.0	-37.5	64.4
1998	638,000	78	73.3	12.2	74.3	41.0
1999	634,000	70	-10.3	11.0	-9.8	48.6
2000	642,200	62	-11.4	9.7	-11.8	24.2
2001	634,450	71	14.5	11.2	15.5	23.9
2002	634,110	71	0.0	11.2	0.0	45.1
2003	634,000	55	-22.5	8.7	-22.3	43.6
2004	634,500	49	-10.9	7.7	-11.5	26.5
2005	637,000	53	8.2	8.3	7.8	34.0

### Robbery Totals, 1996-2005



### Robbery by Type of Weapon Involved, 2005

Type of Weapon	Number Reported	Percent of Total Offenses
Firearm	2	3.8%
Knife or Cutting Instrument	9	17.0
Other Dangerous Weapon	14	26.4
Hands, Fists, Feet, etc.	28	52.8
<b>Robbery Total</b>	<b>53</b>	<b>100.0</b>

### Robbery by Place of Occurrence and Value of Property, 2005

Place of Occurrence	Number Reported	Value of Property	Average Value per Robbery
Highway	18	\$1,851	\$102.83
Commercial House	9	3,253	361.44
Gas or Service Station	2	4,598	2,299.00
Convenience Store	3	700	233.33
Residence	11	629	57.18
Bank			
Other	10	5,577	557.70
<b>Robbery Total</b>	<b>53</b>	<b>16,608</b>	<b>313.36</b>

### Arrests for Robbery, 1996-2005

Year	Juvenile	Adult	Total
1996	10	28	38
1997	13	17	30
1998	8	20	28
1999	9	19	28
2000		15	15
2001	3	16	19
2002	9	16	25
2003	6	19	25
2004	8	7	15
2005	4	18	22

### Property Loss Due to Robbery, 1996-2005

Year	Offense Total	Property Loss	Average Loss per Robbery
1996	72	\$11,734	\$162.97
1997	45	7,029	156.20
1998	78	19,393	248.63
1999	70	23,808	340.11
2000	62	12,654	204.10
2001	71	45,051	634.52
2002	71	24,711	348.04
2003	55	50,180	912.36
2004	49	19,915	406.43
2005	53	16,608	313.36

## Aggravated Assault

---

The UCR program defines Aggravated Assault as “an unlawful attack by one person upon another for the purpose of inflicting severe or aggravated bodily injury. This type of assault is usually accompanied by the use of a weapon or by means likely to produce death or great bodily harm. Attempts are included because it is not necessary that an injury result when a gun, knife, or other weapon is used which could and probably would result in serious personal injury if the crime were successfully completed.”

In 2005, 444 aggravated assaults were reported in North Dakota, an increase of 29.4 percent from the 343 aggravated assaults reported in 2004. In 2003, 289 aggravated assaults were reported.

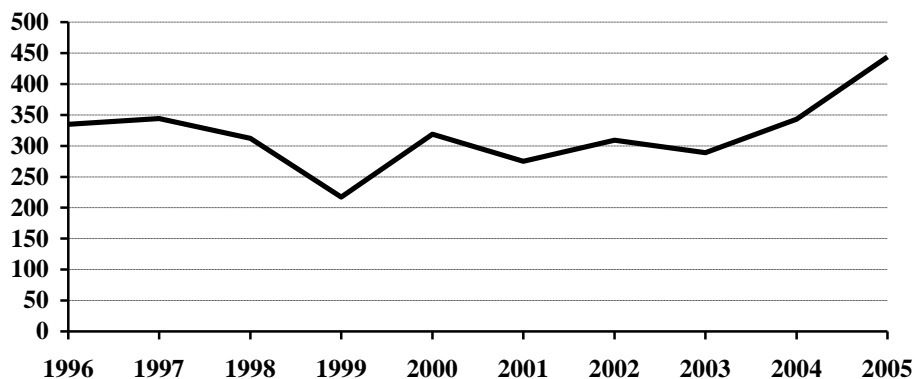
The aggravated assault rate for North Dakota increased 28.8 percent from 54.1 per 100,000 population in 2004 to 69.7 per 100,000 population in 2005.

---

### Aggravated Assault Summary

Year	Population	Offense Total	% Change in Number from Previous Year	Rate per 100,000 Population	% Change in Rate from Previous Year	Percent Cleared
1996	644,000	335	-6.9%	52.0	-7.5%	75.8%
1997	641,000	344	2.7	53.7	3.3	70.3
1998	638,000	312	-9.3	48.9	-8.9	71.8
1999	634,000	217	-30.4	34.2	-30.1	71.0
2000	642,200	319	47.0	49.7	45.3	67.1
2001	634,450	275	-13.8	43.3	-12.9	60.0
2002	634,110	309	12.4	48.7	12.5	57.9
2003	634,000	289	-6.5	45.6	-6.4	60.9
2004	634,500	343	18.7	54.1	18.6	60.6
2005	637,000	444	29.4	69.7	28.8	59.0

### Aggravated Assault Totals, 1996-2005



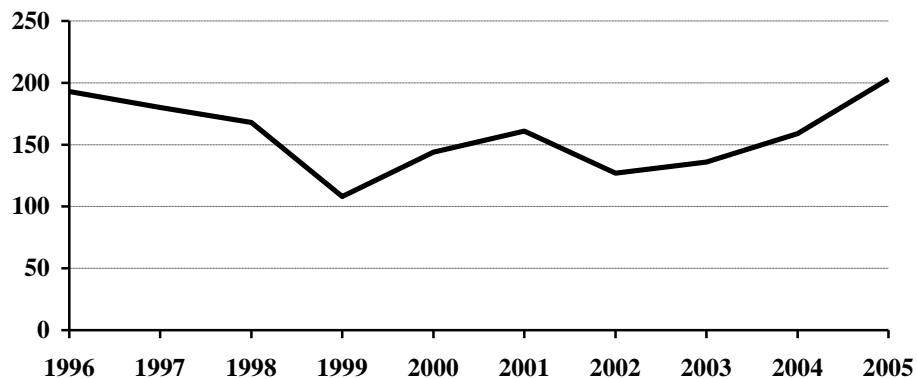
## Aggravated Assault by Type of Weapon Involved, 2005

Type of Weapon	Number Reported	Percent of Total Offenses
Firearm	19	4.3%
Knife or Cutting Instrument	71	16.0
Other Dangerous Weapon	128	28.8
Hands, Fists, Feet, etc.	226	50.9
<b>Aggravated Assault Total</b>	<b>444</b>	<b>100.0</b>

## Arrests for Aggravated Assault, 1996-2005

Year	Juvenile	Adult	Age Not Reported	Total
1996	45	147	1	193
1997	35	144	1	180
1998	47	121		168
1999	25	82	1	108
2000	15	128	1	144
2001	28	133		161
2002	19	108		127
2003	14	122		136
2004	22	137		159
2005	47	156		203

## Arrests for Aggravated Assault, 1996-2005



# Property Crime

Property crime includes the offenses of burglary, larceny/theft, and motor vehicle theft.

In 2005, the total number of property crimes reported was 12,289. This is an increase of 3.9 percent from the 2004 total of 11,830.

Property crime accounted for 94.7 percent of the index offenses reported in North Dakota.

The property crime rate increased 3.5 percent from 1864.5 per 100,000 population in 2004, to 1929.2 per 100,000 in 2005.

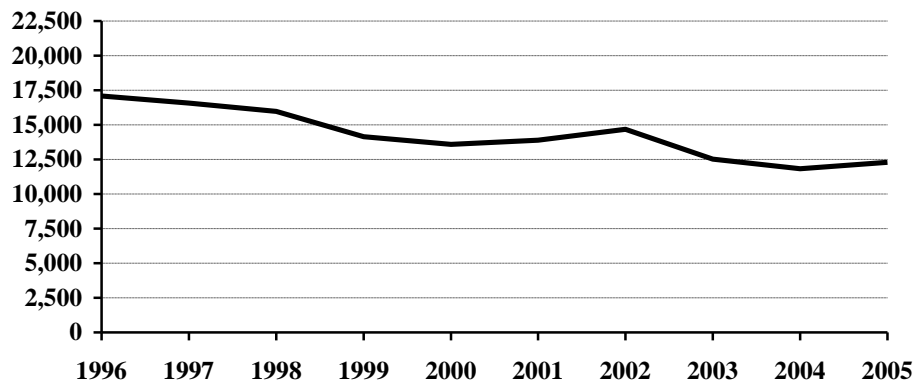
More than 18 percent of property crimes were cleared by arrest or exceptional means in 2005.

A total of 2,266 arrests were reported for property crimes. Of those, 42 percent were arrests of juveniles.

## Property Crime Summary

Year	Population	Property Index Offenses	% Change in Number from Previous Year	Rate per 100,000 Population	% Change in Rate from Previous Year	Percent Cleared
1996	644,000	17,088	-4.4%	2653.4	-4.8%	28.4%
1997	641,000	16,573	-3.0	2585.5	-2.6	27.7
1998	638,000	15,971	-3.6	2503.3	-3.2	25.2
1999	634,000	14,145	-11.4	2231.1	-10.9	25.9
2000	642,200	13,588	-3.9	2115.9	-5.2	21.8
2001	634,450	13,897	2.3	2190.4	3.5	20.6
2002	634,110	14,686	5.7	2316.0	5.7	20.0
2003	634,000	12,516	-14.8	1974.1	-14.8	19.4
2004	634,500	11,830	-5.5	1864.5	-5.6	19.1
2005	637,000	12,289	3.9	1929.2	3.5	18.5

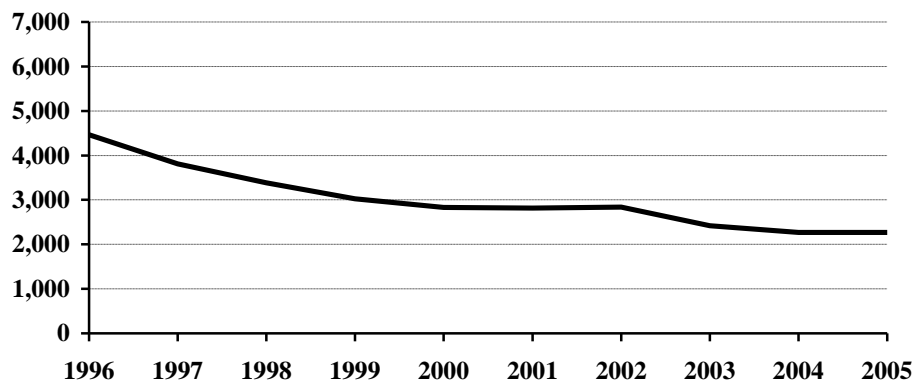
## Property Crime Totals, 1996-2005



## Arrests for Property Crimes, 1996-2005

Year	Juvenile	Adult	Age Not Reported	Total
1996	2,455	1,997	10	4,462
1997	2,198	1,590	25	3,813
1998	1,735	1,636	12	3,383
1999	1,599	1,419	7	3,025
2000	1,572	1,246	13	2,831
2001	1,439	1,376	4	2,819
2002	1,459	1,372	10	2,841
2003	1,156	1,260	1	2,417
2004	969	1,294	5	2,268
2005	952	1,313	1	2,266

## Arrests for Property Crimes, 1996-2005





# Burglary

---

The UCR program defines Burglary as the “unlawful entry of a structure to commit a felony or theft. The use of force to gain entry is not required to classify an offense as burglary.” Burglaries are classified into three categories: forcible entry, unlawful entry where no force is used, and attempted forcible entry.

In 2005, 1,966 burglaries were reported to the UCR program. This represents an increase of 0.6 percent from the total of 1,954 burglaries reported in 2004.

The rate of burglaries based on population was 308.6 per 100,000 inhabitants for 2005. This is a 0.2 percent increase from the rate of 308.0 per 100,000 population in 2004.

More than 11 percent of burglaries were cleared by arrest or exceptional means in 2005.

A total of 220 arrests for burglary was reported in 2005. Of these, 25 percent were juveniles.

The UCR program classifies burglaries by location of the incident. Nearly 49 percent were burglaries of residences.

Forty-seven percent of burglaries involved forcible entry.

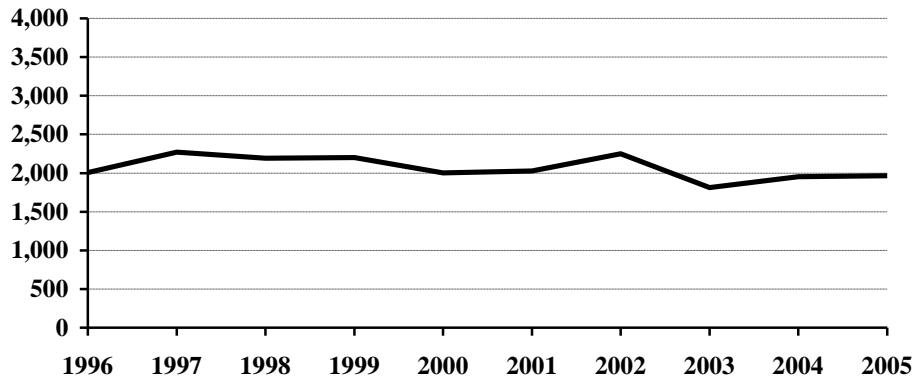
Property loss due to burglary is substantial. More than 2 million dollars worth of property was reported stolen in burglary incidents in 2005. The average burglary involved \$1,047 worth of property.

---

## Burglary Summary

Year	Population	Offense Total	% Change in Number from Previous Year	Rate per 100,000 Population	% Change in Rate from Previous Year	Percent Cleared
1996	644,000	2,008	-11.7%	311.8	-12.1%	20.7%
1997	641,000	2,271	13.1	354.3	13.6	19.8
1998	638,000	2,194	-3.4	343.9	-2.9	19.5
1999	634,000	2,200	0.3	347.0	0.9	20.8
2000	642,200	2,004	-8.9	312.1	-10.1	16.2
2001	634,450	2,027	1.1	319.5	2.4	15.1
2002	634,110	2,250	11.0	354.8	11.0	14.0
2003	634,000	1,814	-19.4	286.1	-19.4	13.8
2004	634,500	1,954	7.7	308.0	7.7	11.2
2005	637,000	1,966	0.6	308.6	0.2	11.6

### Burglary Totals, 1996-2005



### Burglary by Type of Entry, 2005

Type of Entry	Number Reported	Percent of Total Offenses
Forcible Entry	924	47.0%
Unlawful Entry - No Force	903	45.9
Attempted Forcible Entry	139	7.1
<b>Burglary Total</b>	<b>1,966</b>	<b>100.0</b>

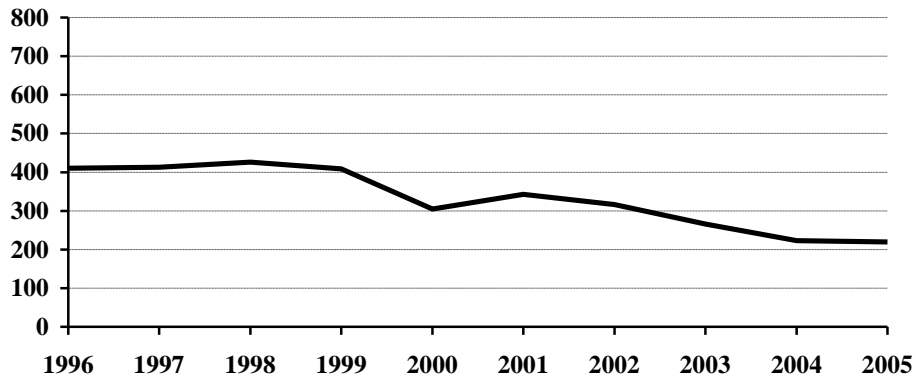
### Burglary by Location and Value of Property, 2005

Location	Number Reported	Value of Property	Average Value per Burglary
Residence	961	\$884,244	\$920.13
Non-Residence	1,005	1,173,691	1,167.85
<b>Burglary Total</b>	<b>1,966</b>	<b>2,057,935</b>	<b>1,046.76</b>

### Arrests for Burglary, 1996-2005

Year	Juvenile	Adult	Age Not Reported	Total
1996	201	208	1	410
1997	222	185	6	413
1998	201	220	5	426
1999	202	205	2	409
2000	134	166	5	305
2001	175	166	2	343
2002	166	144	6	316
2003	118	148		266
2004	99	119	5	223
2005	55	165		220

### Arrests for Burglary, 1996-2005



### Property Loss Due to Burglary, 1996-2005

Year	Offense Total	Property Loss	Average Loss per Burglary
1996	2,008	\$1,404,087	\$699.25
1997	2,271	2,114,489	931.08
1998	2,194	1,630,902	743.35
1999	2,200	1,853,763	842.62
2000	2,004	1,781,810	889.13
2001	2,027	1,572,709	775.88
2002	2,250	2,082,601	925.60
2003	1,814	1,562,749	861.49
2004	1,954	2,207,247	1,129.60
2005	1,966	2,057,935	1,046.76

# Larceny/Theft

---

The UCR program defines Larceny/Theft as the “unlawful taking, carrying, leading, or riding away of property from the possession or constructive possession of another. It includes crimes such as shoplifting, pocket-picking, purse-snatching, thefts from motor vehicles, thefts of motor vehicle parts and accessories, bicycle thefts, etc., in which no use of force, violence or fraud occurs. In the Uniform Crime Reporting program, this crime category does not include embezzlement, confidence games, forgery, and worthless checks. Motor vehicle theft is also excluded from this category inasmuch as it is a separate crime index offense.”

A total of 9,293 larceny/theft offenses was reported in North Dakota in 2005. This is a 3.4 percent increase from the 2004 total of 8,984.

The larceny/theft rate per 100,000 population was 1458.9 compared with 1415.9 in 2004, a 3 percent increase in the rate.

More than 19 percent of larceny/theft offenses were cleared by arrest or exceptional means in 2005.

The number of arrests for this offense decreased from 1,856 in 2004 to 1,830 in 2005. More than 43 percent of those arrested for larceny/theft in 2005 were juveniles.

More than 5.1 million dollars worth of property was reported stolen as the result of larceny/theft offenses in the state. The average dollar value per offense is \$559.

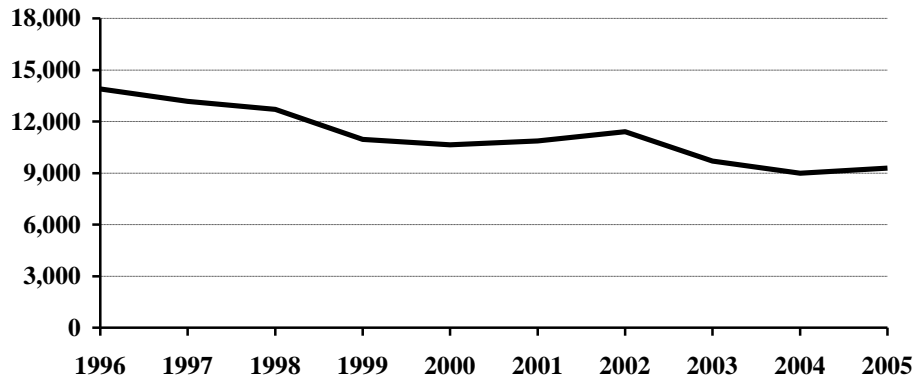
Larceny/theft accounted for 71.6 percent of the total index offenses reported and amounted to nearly 42 percent of the total value of stolen property.

---

## Larceny/Theft Summary

Year	Population	Offense Total	% Change in Number from Previous Year	Rate per 100,000 Population	% Change in Rate from Previous Year	Percent Cleared
1996	644,000	13,898	-3.7%	2158.1	-4.2%	28.6%
1997	641,000	13,163	-5.3	2053.5	-4.8	28.3
1998	638,000	12,704	-3.5	1991.2	-3.0	25.4
1999	634,000	10,956	-13.8	1728.1	-13.2	25.9
2000	642,200	10,642	-2.9	1657.1	-4.1	22.0
2001	634,450	10,870	2.1	1713.3	3.4	20.9
2002	634,110	11,399	4.9	1797.6	4.9	20.4
2003	634,000	9,700	-14.9	1530.0	-14.9	19.8
2004	634,500	8,984	-7.4	1415.9	-7.5	20.6
2005	637,000	9,293	3.4	1458.9	3.0	19.3

### Larceny/Theft Totals, 1996-2005



### Monetary Value of Larceny/Theft, 2005

Value of Larceny/Theft	Number Reported	Percent of Total Offenses
Under \$50	2,928	31.5%
\$50 to \$200	2,602	28.0
Over \$200	3,763	40.5
<b>Larceny/Theft Total</b>	<b>9,293</b>	<b>100.0</b>

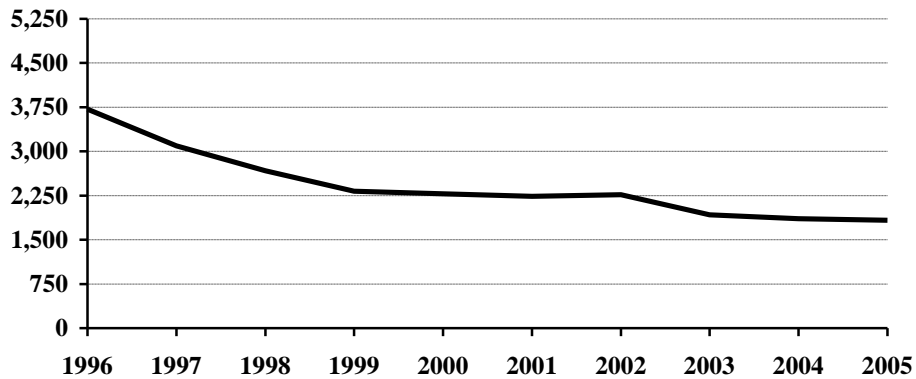
### Larceny/Theft by Type and Value, 2005

Type of Larceny/Theft	Number Reported	Value of Property	Average Value per Larceny/Theft
From Motor Vehicle	2,158	\$1,073,321	\$497.37
From Building	1,194	1,081,271	905.59
Shoplifting	1,092	123,143	112.77
Bicycles	810	150,759	186.12
Motor Vehicle Parts, Accessories	534	356,639	667.86
Pocket Picking	44	4,817	109.48
From Coin-Operated Machine	41	12,075	294.51
Purse Snatching	14	6,497	464.07
All Other	3,406	2,382,875	699.61
<b>Larceny/Theft Total</b>	<b>9,293</b>	<b>5,191,397</b>	<b>558.64</b>

### Arrests for Larceny/Theft, 1996-2005

Year	Juvenile	Adult	Age Not Reported	Total
1996	2,056	1,656	6	3,718
1997	1,771	1,306	16	3,093
1998	1,372	1,292	7	2,671
1999	1,212	1,110	5	2,327
2000	1,285	987	7	2,279
2001	1,134	1,102	2	2,238
2002	1,147	1,114	3	2,264
2003	919	1,004	1	1,924
2004	792	1,064		1,856
2005	794	1,035	1	1,830

### Arrests for Larceny/Theft, 1996-2005



### Property Loss Due to Larceny/Theft, 1996-2005

Year	Offense Total	Property Loss	Average Loss per Larceny/Theft
1996	13,898	\$5,118,818	\$368.31
1997	13,163	5,680,026	431.51
1998	12,704	5,858,913	461.19
1999	10,956	5,690,080	519.36
2000	10,642	4,627,836	434.87
2001	10,870	5,432,250	499.75
2002	11,399	5,701,494	500.17
2003	9,700	5,207,256	536.83
2004	8,984	4,931,853	548.96
2005	9,293	5,191,397	558.64

## Motor Vehicle Theft

---

Motor Vehicle Theft is defined by the UCR program as “the theft or attempted theft of a motor vehicle; the offense category includes the stealing of automobiles, trucks, buses, motorcycles, motor scooters, snowmobiles, etc. The definition excludes the taking of a motor vehicle for temporary use by those persons having lawful access.”

A total of 1,030 motor vehicle thefts was reported in 2005. This is an increase of 15.5 percent from the 2004 total of 892.

Based on a Census Bureau population estimate of 637,000 for North Dakota, the resulting motor vehicle theft rate is 161.7 per 100,000 population.

More than 23 percent of reported motor vehicle thefts were cleared by arrest or exceptional means in 2005.

The number of arrests for motor vehicle theft increased from 189 in 2004 to 216 in 2005.

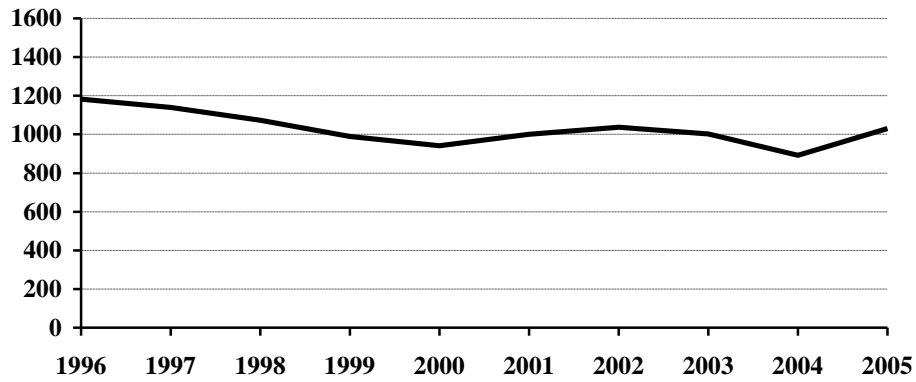
The average value per motor vehicle theft was approximately \$4,976.

---

### Motor Vehicle Theft Summary

Year	Population	Offense Total	% Change in Number from Previous Year	Rate per 100,000 Population	% Change in Rate from Previous Year	Percent Cleared
1996	644,000	1,182	1.5%	183.5	1.0%	40.1%
1997	641,000	1,139	-3.6	177.7	-3.2	37.1
1998	638,000	1,073	-5.8	168.2	-5.3	35.3
1999	634,000	989	-7.8	156.0	-7.3	37.0
2000	642,200	942	-4.8	146.7	-6.0	30.9
2001	634,450	1,000	6.2	157.6	7.4	27.8
2002	634,110	1,037	3.7	163.5	3.7	29.0
2003	634,000	1,002	-3.4	158.0	-3.4	25.2
2004	634,500	892	-11.0	140.6	-11.0	22.2
2005	637,000	1,030	15.5	161.7	15.0	23.5

### Motor Vehicle Theft Totals, 1996-2005



### Type of Vehicle Stolen, 2005

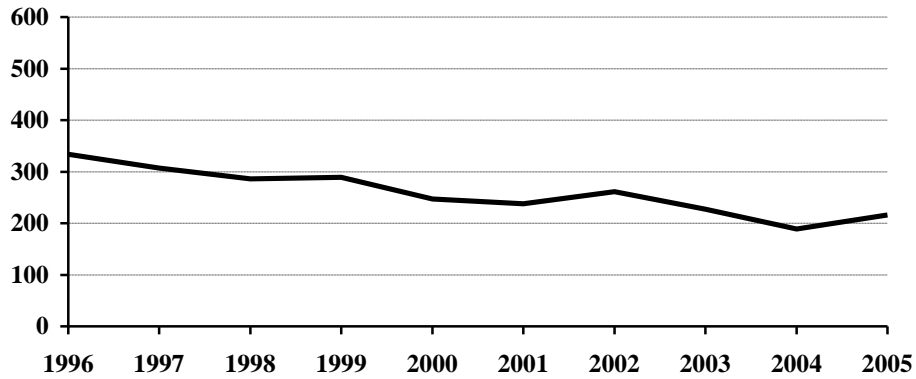
Type of Vehicle	Number Reported	Percent of Total Offenses
Automobiles	872	84.7%
Trucks and Buses	57	5.5
Other Vehicles	101	9.8
<b>Motor Vehicle Theft Total</b>	<b>1,030</b>	<b>100.0</b>

### Arrests for Motor Vehicle Theft, 1996-2005

Year	Juvenile	Adult	Age Not Reported	Total
1996	198	133	3	334
1997	205	99	3	307
1998	162	124		286
1999	185	104		289
2000	153	93	1	247
2001	130	108		238
2002	146	114	1	261
2003	119	108		227
2004	78	111		189
2005	103	113		216



### Arrests for Motor Vehicle Theft, 1996-2005



### Property Loss Due to Motor Vehicle Theft, 1996-2005

Year	Offense Total	Property Loss	Average Loss per Offense
1996	1,182	\$4,488,026	\$3,796.98
1997	1,139	4,706,068	4,131.75
1998	1,073	3,909,583	3,643.60
1999	989	3,633,353	3,673.76
2000	942	3,886,274	4,125.56
2001	1,000	4,414,621	4,414.62
2002	1,037	4,647,821	4,481.99
2003	1,002	4,637,043	4,627.79
2004	892	4,238,662	4,751.86
2005	1,030	5,124,789	4,975.52

# Crime Index Offenses by Reporting Jurisdiction

The rate per 100,000 population is shown immediately below the actual number of crime index offenses reported by each jurisdiction. A county total is also shown for each of those counties that have more than one reporting jurisdiction within its geographic boundaries. The rate is reported per 100,000 for easy comparison to national publications.

## Number and Rate of Index Offenses, 2005

County	Reporting Jurisdiction	Population	Murder/ Non-Negligent Manslaughter	Forcible Rape	Robbery	Aggravated Assault	Burglary	Larceny/ Theft	Motor Vehicle Theft	Total Index Offenses
Adams	County SO						5	12	1	18
		2,438					205.1	492.2	41.0	738.3
Barnes	County SO	4,705				5	11	23	4	43
	Valley City PD	6,469		1		106.3	233.8	488.8	85.0	913.9
	County Total	11,174		15.5		30.9	61.8	1035.7	123.7	1267.6
				8.9		62.6	134.2	805.4	107.4	1118.7
Benson	County SO	6,993	DID NOT REPORT IN 2005							
Billings	County SO	828	DID NOT REPORT IN 2005							
Bottineau	County SO	6,871					16	48	4	68
							232.9	698.6	58.2	989.7
Bowman	County SO	1,571						4		4
								254.6		254.6
	Bowman PD	1,541	DID NOT REPORT IN 2005							
Burke	County SO	2,082					8	18	1	27
							384.2	864.6	48.0	1296.8
Burleigh	County SO	13,869		4		13	37	102	23	179
				28.8		93.7	266.8	735.5	165.8	1290.6
	Bismarck PD	56,825	1	8	8	35	199	1171	128	1550
			1.8	14.1	14.1	61.6	350.2	2060.7	225.3	2727.7
	Lincoln PD	2,155					3	13		16
							139.2	603.2		742.5
	County Total	72,849	1	12	8	48	239	1286	151	1745
			1.4	16.5	11.0	65.9	328.1	1765.3	207.3	2395.4
Cass	County SO	20,059		2		8	46	148	27	231
				10.0		39.9	229.3	737.8	134.6	1151.6
	Fargo PD*	91,703	2	60	17	93	479	1891	218	2760
			2.2	65.4	18.5	101.4	522.3	2062.1	237.7	3009.7
	West Fargo PD	17,645		6	3	20	62	260	25	376
				34.0	17.0	113.3	351.4	1473.5	141.7	2130.9
	County Total	129,407	2	68	20	121	587	2299	270	3367
			1.5	52.5	15.5	93.5	453.6	1776.6	208.6	2601.9
Cavalier	County SO	4,392	1				2	8		11
			22.8				45.5	182.1		250.5
Dickey	County SO	3,621					3	40	2	45
							82.9	1104.7	55.2	1242.8
	Oakes PD	1,855	DID NOT REPORT IN 2005							
Divide	County SO	1,169	DID NOT REPORT IN 2005							
	Crosby PD	1,047	DID NOT REPORT IN 2005							
Dunn	County SO	3,450								0
										0.0
Eddy	County SO	2,610	1			2	3	13		19
			38.3			76.6	114.9	498.1		728.0

\* Includes 137 index offenses reported by the NDSU PD

County	Reporting Jurisdiction	Population	Murder/ Non-Negligent Manslaughter	Forcible Rape	Robbery	Aggravated Assault	Burglary	Larceny/ Theft	Motor Vehicle Theft	Total Index Offenses
Emmons	County SO	2,744					15 546.6	20 728.9	3 109.3	38 1384.8
	Linton PD	1,183	DID NOT REPORT IN 2005							
Foster	County SO	1,400					1 71.4	4 285.7		5 357.1
	Carrington PD	2,105					2 95.0	10 475.1		12 570.1
	County Total	3,505					3 85.6	14 399.4		17 485.0
Golden Valley	County SO	1,776	DID NOT REPORT IN 2005							
Grand Forks	County SO	12,247		3 24.5		10 81.7	32 261.3	91 743.0	15 122.5	151 1233.0
	Emerado PD	498				1 200.8	3 602.4	10 2008.0	3 602.4	17 3413.7
	Grand Forks PD*	49,162	1 2.0	10 20.3	6 12.2	54 109.8	298 606.2	1812 3685.8	182 370.2	2363 4806.6
	Larimore PD	1,362	DID NOT REPORT IN 2005							
	Northwood PD	907						4 441.0		4 441.0
	Thompson PD	984					2 203.3	4 406.5		6 609.8
	Reporting Agency Total	63,798	1 1.6	13 20.4	6 9.4	65 101.9	335 525.1	1921 3011.1	200 313.5	2541 3982.9
Grant	County SO	2,633						5 189.9		5 189.9
Griggs	County SO **	2,524					1 39.6	2 79.2		3 118.9
Hettinger	County SO	2,550						2 78.4		2 78.4
Kidder	County SO	1,855	1 53.9			1 53.9	5 269.5			7 377.4
	Steele PD	717						2 278.9	1 139.5	3 418.4
	County Total	2,572	1 38.9			1 38.9	5 194.4	2 77.8	1 38.9	10 388.8
LaMoure	County SO	4,520		1 22.1				6 132.7	1 22.1	8 177.0
Logan	County SO	1,338					1 74.7	3 224.2		4 299.0
	Napoleon PD	769	DID NOT REPORT IN 2005							
McHenry	County SO	5,651				5 88.5	19 336.2	23 407.0	5 88.5	52 920.2
McIntosh	County SO	2,098	DID NOT REPORT IN 2005							
	Wishek PD	1,042	DID NOT REPORT IN 2005							
McKenzie	County SO	4,174		1 24.0		2 47.9	13 311.5	27 646.9	3 71.9	46 1102.1
	Watford City PD	1,345				2 148.7	3 223.0	7 520.4		12 892.2
	County Total	5,519		1 18.1		4 72.5	16 289.9	34 616.1	3 54.4	58 1050.9
McLean	County SO	8,847		1 11.3		1 11.3	3 33.9	44 497.3	4 45.2	53 599.1
Mercer	County SO	3,004				2 66.6	7 233.0	14 466.0	1 33.3	24 798.9
	Beulah PD	3,071		1 32.6		3 97.7	7 227.9	25 814.1	4 130.3	40 1302.5
	Hazen PD	2,390	DID NOT REPORT IN 2005							
	Reporting Agency Total	6,075		1 16.5		5 82.3	14 230.5	39 642.0	5 82.3	64 1053.5

\* Includes 202 index offenses reported by UND PD.

\*\* Reported partial year

County	Reporting Jurisdiction	Population	Murder/ Non-Negligent Manslaughter	Forcible Rape	Robbery	Aggravated Assault	Burglary	Larceny/ Theft	Motor Vehicle Theft	Total Index Offenses
Morton	County SO	8,400		8 95.2		9 107.1	13 154.8	79 940.5	9 107.1	118 1404.8
	Mandan PD	17,031		3 17.6	3 17.6	25 146.8	26 152.7	343 2014.0	35 205.5	435 2554.2
	County Total	25,431		11 43.3	3 11.8	34 133.7	39 153.4	422 1659.4	44 173.0	553 2174.5
Mountrail	County SO	6,554				1 15.3	18 274.6	26 396.7	9 137.3	54 823.9
Nelson	County SO	3,458						4 115.7		4 115.7
Oliver	County SO	1,882						9 478.2	2 106.3	11 584.5
Pembina	County SO	6,742				1 14.8	5 74.2	30 445.0	12 178.0	48 712.0
	Cavalier PD	1,478						1 67.7		1 67.7
	County Total	8,220				1 12.2	5 60.8	31 377.1	12 146.0	49 596.1
Pierce	County SO	1,635					4 244.6	8 489.3		12 733.9
	Rugby PD	2,738		1 36.5		1 36.5	5 182.6	30 1095.7	3 109.6	40 1460.9
	County Total	4,373		1 22.9		1 22.9	9 205.8	38 869.0	3 68.6	52 1189.1
Ramsey	County SO	4,625				3 64.9	4 86.5	14 302.7	5 108.1	26 562.2
	Devils Lake PD	6,867			3 43.7	23 334.9	40 582.5	261 3800.8	18 262.1	345 5024.0
	County Total	11,492			3 26.1	26 226.2	44 382.9	275 2393.0	23 200.1	371 3228.3
Ransom	County SO	3,596					9 250.3	9 250.3	5 139.0	23 639.6
	Lisbon PD	2,253					1 44.4	2 88.8	2 88.8	5 221.9
	County Total	5,849					10 171.0	11 188.1	7 119.7	28 478.7
Renville	County SO	2,486		1 40.2			4 160.9	7 281.6	1 40.2	13 522.9
Richland	County SO	9,248	2 21.6			6 64.9	35 378.5	78 843.4	15 162.2	136 1470.6
	Wahpeton PD*	8,442		5 59.2		7 82.9	18 213.2	185 2191.4	14 165.8	229 2712.6
	County Total	17,690	2 11.3	5 28.3		13 73.5	53 299.6	263 1486.7	29 163.9	365 2063.3
Rolette	County SO	12,424	1 8.0	2 16.1	1 8.0	4 32.2	13 104.6	10 80.5	5 40.2	36 289.8
	Rolla PD	1,449				2 138.0	13 897.2	88 6073.2	8 552.1	111 7660.5
	County Total	13,873	1 7.2	2 14.4	1 7.2	6 43.2	26 187.4	98 706.4	13 93.7	147 1059.6
Sargent	County SO	4,125					5 121.2	23 557.6	3 72.7	31 751.5
Sheridan	County SO	1,481				1 67.5	1 67.5	12 810.3		14 945.3
Sioux	County SO	4,156	DID NOT REPORT IN 2005							
Slope	County SO**	745						1 134.2		1 134.2
Stark	County SO	6,454				3 46.5	4 62.0	47 728.2	5 77.5	59 914.2
	Dickinson PD	15,743		2 12.7	3 19.1	6 38.1	118 749.5	406 2578.9	21 133.4	556 3531.7
	County Total	22,197		2 9.0	3 13.5	9 40.5	122 549.6	453 2040.8	26 117.1	615 2770.6
Steele	County SO	2,070	DID NOT REPORT IN 2005							

\* Includes 35 index offenses reported by NDSCS PD.

\*\* Reported partial year

County	Reporting Jurisdiction	Population	Murder/ Non-Negligent Manslaughter	Forcible Rape	Robbery	Aggravated Assault	Burglary	Larceny/ Theft	Motor Vehicle Theft	Total Index Offenses
Stutsman	County SO	6,025		3 49.8	1 16.6	3 49.8	15 249.0	44 730.3	1 16.6	67 1112.0
	Jamestown PD	14,979		13 86.8	1 6.7	20 133.5	61 407.2	265 1769.1	12 80.1	372 2483.5
	County Total	21,004		16 76.2	2 9.5	23 109.5	76 361.8	309 1471.1	13 61.9	439 2090.1
Towner	County SO	2,584					2 77.4	14 541.8	5 193.5	21 812.7
Traill	County SO	4,324				2 46.3	4 92.5	17 393.2	6 138.8	29 670.7
	Mayville PD	1,936		4 206.6			3 155.0	6 309.9	2 103.3	15 774.8
	Portland PD	590								0 0.0
	Hillsboro PD	1,546					1 64.7	1 64.7		2 129.4
	Reporting Agency Total	6,850		4 58.4		2 29.2	8 116.8	24 350.4	8 116.8	46 671.5
Walsh	County SO	7,405		2 27.0		1 13.5	33 445.6	63 850.8	13 175.6	112 1512.5
	Grafton PD	4,283			1 23.3	2 46.7	15 350.2	116 2708.4	7 163.4	141 3292.1
	County Total	11,688		2 17.1	1 8.6	3 25.7	48 410.7	179 1531.5	20 171.1	253 2164.6
Ward	County SO	21,152	1 4.7		1 4.7	5 23.6	38 179.7	105 496.4	18 85.1	168 794.3
	Minot PD	35,277	1 2.8	30 85.0	4 11.3	48 136.1	108 306.1	860 2437.8	78 221.1	1129 3200.4
	County Total	56,429	2 3.5	30 53.2	5 8.9	53 93.9	146 258.7	965 1710.1	96 170.1	1297 2298.5
Wells	County SO	2,313					5 216.2	11 475.6	1 43.2	17 735.0
	Harvey PD	1,801		2 111.0		1 55.5	3 166.6	20 1110.5	2 111.0	28 1554.7
	Fessenden PD	561	DID NOT REPORT IN 2005							
	Reporting Agency Total	4,675		2 42.8		1 21.4	8 171.1	31 663.1	3 64.2	45 962.6
Williams	County SO	7,113		2 28.1			23 323.4	43 604.5	8 112.5	76 1068.5
	Williston PD	12,235		3 24.5	1 8.2	11 89.9	26 212.5	120 980.8	42 343.3	203 1659.2
	County Total	19,348		5 25.8	1 5.2	11 56.9	49 253.3	163 842.5	50 258.4	279 1442.0

# ARREST ANALYSIS

---

# Arrests in 2005

---

Although primarily an indication of law enforcement activity, the number of arrests reported does provide a limited profile of the perpetrators of crime, especially for those crimes that have high clearance rates. Differing arrest practices, policies, and enforcement emphases among agencies influence the volume of arrests for various offenses, particularly those against public order such as vagrancy, disorderly conduct, and related violations. However, arrests for serious crimes, e.g., robbery or burglary, are more likely to be uniform throughout all jurisdictions across the state.

The UCR program requires that an arrest be counted for each separate occasion an individual is taken into custody. Although several charges may be lodged against a person at the time of the arrest, only one arrest is counted for each time the person is taken into custody.

North Dakota law enforcement agencies reported 31,835 arrests in 2005. A total of 29,798 arrests was reported in 2004.

In 2005, more than 21 percent of total arrests were arrests of juveniles.

Nearly 72 percent of the total were arrests of males.

Arrests for the crime index offenses of murder/non-negligent manslaughter, forcible rape, robbery, aggravated assault, burglary, larceny/theft and motor vehicle theft comprised 8.0 percent of the total reported arrests. Of the 2,534 reported arrests for crime index offenses, 39.8 percent were arrests of juveniles.

The total of 11,886 reported arrests for DUI and liquor law violations represents 37.3 percent of the total arrests reported in the state of North Dakota in 2005. Arrests for DUI increased from 5,783 in 2004 to 5,946 in 2005. Liquor law violation arrests increased 3.2 percent from 5,758 in 2004 to 5,940 reported in 2005.

Approximately 81 percent of total arrests were white; 15 percent were Native American.

These statistics are provided by local law enforcement agencies that contribute to the North Dakota UCR program. No arrest figures for reservations in the state are included in these totals. Tribal law enforcement agencies do not participate in the state UCR program.

---

## Total Arrests Reported, 2005

Offense Classification	Number Reported	Percent of Total Arrests
Murder/Non-Negligent Manslaughter	9	*
Negligent Manslaughter	3	*
Forcible Rape	34	0.1%
Robbery	22	0.1
Aggravated Assault	203	0.6
Burglary	220	0.7
Larceny/Theft	1,830	5.7
Motor Vehicle Theft	216	0.7
Other Assaults	2,015	6.3
Arson	15	*
Forgery and Counterfeiting	161	0.5
Fraud	1,201	3.8
Embezzlement	15	*
Stolen Property Offenses	137	0.4
Vandalism	572	1.8
Weapons Offenses	271	0.9
Prostitution	1	*
Other Sex Offenses	82	0.3
Drug Abuse Violations	2,343	7.4
Gambling	4	*
Offenses Against Family and Children	243	0.8
Driving Under the Influence	5,946	18.7
Liquor Law Violations	5,940	18.7
Disorderly Conduct	1,657	5.2
Vagrancy		0.0
All Other Offenses	7,686	24.1
Suspicion		0.0
Curfew and Loitering	301	0.9
Runaways	708	2.2
<b>Arrest Total</b>	<b>31,835</b>	<b>100.0</b>

\* Less than 0.1 percent of total arrests.



## Comparison of Reported Arrests, 2004-2005

Offense Classification	2004	2005	Percent Change
Murder/Non-Negligent Manslaughter	10	9	-10.0%
Negligent Manslaughter	4	3	-25.0
Forcible Rape	53	34	-35.8
Robbery	15	22	46.7
Aggravated Assault	159	203	27.7
Burglary	223	220	-1.3
Larceny/Theft	1,856	1,830	-1.4
Motor Vehicle Theft	189	216	14.3
Other Assaults	1,656	2,015	21.7
Arson	24	15	-37.5
Forgery and Counterfeiting	170	161	-5.3
Fraud	1,557	1,201	-22.9
Embezzlement	4	15	275.0
Stolen Property Offenses	123	137	11.4
Vandalism	592	572	-3.4
Weapons Offenses	198	271	36.9
Prostitution	15	1	-93.3
Other Sex Offenses	94	82	-12.8
Drug Abuse Violations	2,078	2,343	12.8
Gambling	1	4	300.0
Offenses Against Family and Children	221	243	10.0
Driving Under the Influence	5,783	5,946	2.8
Liquor Law Violations	5,758	5,940	3.2
Disorderly Conduct	1,529	1,657	8.4
Vagrancy	0	0	---
All Other Offenses	6,556	7,686	17.2
Suspicion	0	0	---
Curfew and Loitering	264	301	14.0
Runaways	666	708	6.3
<b>Arrest Total</b>	<b>29,798</b>	<b>31,835</b>	<b>6.8</b>

## Juvenile and Adult Arrests, 2005

<b>Offense Classification</b>	<b>Juvenile</b>	<b>Adult</b>	<b>Age Not Reported</b>	<b>Total</b>
Murder/Non-Negligent Manslaughter		9		9
Negligent Manslaughter		3		3
Forcible Rape	6	28		34
Robbery	4	18		22
Aggravated Assault	47	156		203
Burglary	55	165		220
Larceny/Theft	794	1,035	1	1,830
Motor Vehicle Theft	103	113		216
Other Assaults	482	1,532	1	2,015
Arson	10	5		15
Forgery and Counterfeiting	15	145	1	161
Fraud	17	1,172	12	1,201
Embezzlement	4	11		15
Stolen Property Offenses	41	96		137
Vandalism	303	269		572
Weapons Offenses	41	230		271
Prostitution		1		1
Other Sex Offenses	20	62		82
Drug Abuse Violations	251	2,066	26	2,343
Gambling		4		4
Offenses Against Family and Children	86	157		243
Driving Under the Influence	92	5,847	7	5,946
Liquor Law Violations	1,255	4,674	11	5,940
Disorderly Conduct	687	969	1	1,657
Vagrancy				
All Other Offenses	1,399	6,271	16	7,686
Suspicion				
Curfew and Loitering	301			301
Runaways	708			708
<b>Arrest Total</b>	<b>6,721</b>	<b>25,038</b>	<b>76</b>	<b>31,835</b>

## Arrests by Gender, 2005

<b>Offense Classification</b>	<b>Male</b>	<b>Female</b>	<b>Total</b>
Murder/Non-Negligent Manslaughter	8	1	9
Negligent Manslaughter	2	1	3
Forcible Rape	34		34
Robbery	19	3	22
Aggravated Assault	169	34	203
Burglary	195	25	220
Larceny/Theft	1,106	724	1,830
Motor Vehicle Theft	154	62	216
Other Assaults	1,549	466	2,015
Arson	9	6	15
Forgery and Counterfeiting	82	79	161
Fraud	705	496	1,201
Embezzlement	7	8	15
Stolen Property Offenses	101	36	137
Vandalism	482	90	572
Weapons Offenses	252	19	271
Prostitution		1	1
Other Sex Offenses	79	3	82
Drug Abuse Violations	1,738	605	2,343
Gambling	4		4
Offenses Against Family and Children	171	72	243
Driving Under the Influence	4,640	1,306	5,946
Liquor Law Violations	3,984	1,956	5,940
Disorderly Conduct	1,260	397	1,657
Vagrancy			
All Other Offenses	5,677	2,009	7,686
Suspicion			
Curfew and Loitering	180	121	301
Runaways	284	424	708
<b>Arrest Total</b>	<b>22,891</b>	<b>8,944</b>	<b>31,835</b>

## Arrests by Race, 2005

<b>Offense Classification</b>	<b>White</b>	<b>Black</b>	<b>Native American</b>	<b>Asian</b>	<b>Total</b>
Murder/Non-Negligent Manslaughter	6		3		9
Negligent Manslaughter	2		1		3
Forcible Rape	26	5	3		34
Robbery	9	6	7		22
Aggravated Assault	121	15	67		203
Burglary	170	10	38	2	220
Larceny/Theft	1,342	75	403	10	1,830
Motor Vehicle Theft	147	7	60	2	216
Other Assaults	1,441	142	428	4	2,015
Arson	14		1		15
Forgery and Counterfeiting	137	6	18		161
Fraud	1,088	32	77	4	1,201
Embezzlement	12		3		15
Stolen Property Offenses	104	4	29		137
Vandalism	431	21	116	4	572
Weapons Offenses	230	12	29		271
Prostitution	1				1
Other Sex Offenses	66	6	10		82
Drug Abuse Violations	1,954	78	297	14	2,343
Gambling	3	1			4
Offenses Against Family and Children	195	17	31		243
Driving Under the Influence	5,205	100	631	10	5,946
Liquor Law Violations	5,078	90	756	16	5,940
Disorderly Conduct	1,240	74	339	4	1,657
Vagrancy					
All Other Offenses	6,059	391	1,218	18	7,686
Suspicion					
Curfew and Loitering	231	6	64		301
Runaways	535	26	144	3	708
<b>Arrest Total</b>	<b>25,847</b>	<b>1,124</b>	<b>4,773</b>	<b>91</b>	<b>31,835</b>

# Arrest Analysis by Reporting Jurisdiction

The table below contains arrest totals for each reporting agency in 2005. Juvenile and adult arrests as well as arrests reported without age information are included.

## Arrests by Reporting Jurisdiction, 2005

Agency	Murder/Non-Neg. Mansl.	Negligent Manslaughter	Forcible Rape	Robbery	Aggravated Assault	Burglary	Larceny/Theft	Motor Vehicle Theft	Other Assault	Arson	Forgery/Counterfeiting	Fraud	Embezzlement	Stolen Property Offenses	Vandalism	Weapons Offenses	Prostitution	Other Sex Offenses	Drug Abuse Violations	Gambling Violations	Off. Against Fam & Children	DUI	Liquor Law Violations	Disorderly Conduct	Vagrancy	All Other Offenses	Suspicion	Curfew/Loitering	Runaway	Total
Adams SO							2		4		1								6			6	12	1		3		2		37
Barnes SO						1	2	1	2						1	3			5			11	19			7				52
Valley City PD			1		1		9	2	11	1	1				3	6			22			75	70	8		28		3	2	243
Benson SO	Did not report in 2005																													
Billings SO	Did not report in 2005																													
Bottineau SO						1	4	1	3						1				18			8	52	1		10				100
Bowman SO																							2							2
Bowman PD	Did not report in 2005																													
Burke SO							2		1						2	1		1	20			4	3			20				54
Burleigh SO					4	6	2	3	33			104		1	5	10		1	94		10	180	122	7		62				644
Bismarck PD	1		3	4	26	24	368	23	282	2	12	28	11	31	110	39		20	246		5	485	644	314		548		107	86	3419
Lincoln PD																						2				2		2		6
Cass SO						1	8	4	20						6				25		29	92	88	6		31		2	2	314
Fargo PD	1	1	11	10	40	54	448	38	465	2	61	74		44	77	32	1	6	337	3	78	865	980	241		998		5	135	5007
West Fargo PD					11	10	34	4	109			5		1	12	9			106		3	187	138	22		122		41	34	848
NDSU PD									2										5			26	123	1		10				167
Cavalier SO	1								1						1				2			7	1	1		2				16
Dickey SO												37			1	1		1	1			11	20	1		2				75
Oakes PD	Did not report in 2005																													
Divide SO	Did not report in 2005																													
Crosby PD	Did not report in 2005																													
Dunn SO																						7								7
Eddy SO	1				1		2		2			8			3				1			11	20			6				55
Emmons SO							2		1			1			1	1		1	4			4	35	1		17				68
Linton PD	Did not report in 2005																													
Foster SO																						1								1
Carrington PD							5		5							1			2			10	5	2		7				37
Golden Valley SO	Did not report in 2005																													
Grand Forks SO					8	3	9	4	29		1	122		1	5	1		2	21		21	55	26	5		1461			17	1791
Emerado PD							3	1				1		1					1		7	17	2	3		6				42
Grand Forks PD	1				28	17	284	18	195	3	17	29		22	65	19		9	132		9	327	414	261		372		32	118	2372
Larimore PD	Did not report in 2005																													
Northwood PD																														0
Thompson PD																						2								2

Agency	Murder/Non-Neg. Mansl.	Negligent Manslaughter	Forcible Rape	Robbery	Aggravated Assault	Burglary	Larceny/Theft	Motor Vehicle Theft	Other Assault	Arson	Forgery/Counterfeiting	Fraud	Embezzlement	Stolen Property Offenses	Vandalism	Weapons Offenses	Prostitution	Other Sex Offenses	Drug Abuse Violations	Gambling Violations	Off. Against Fam & Children	DUI	Liquor Law Violations	Disorderly Conduct	Vagrancy	All Other Offenses	Suspicion	Curfew/Loitering	Runaway	Total	
UND PD					3	2	2		7										15		2	118	306	10		13				478	
Grant SO							2		2					2	1				1				2	1			1				12
Griggs SO*							1											1					2	9	2		3			1	19
Hettinger SO									3										1				1	1	1		3				10
Kidder SO					1	1			3				38										3				2				48
Steele PD									2														2	6			1				11
LaMoure SO							4	1																			1				6
Logan SO															2													2			9
Napoleon PD	Did not report in 2005																														
McHenry SO									7										1				8	13	1		7				37
McIntosh SO	Did not report in 2005																														
Wishek PD	Did not report in 2005																														
McKenzie SO					1	2			1			1							2				8	5							20
Watford City PD					1	1	1		4						4								3	9	3		6		2		37
McLean SO							1		1		1								7				18	20	2		5				55
Mercer SO					1				2							1						1	12	12			6				37
Beulah PD			1		1		10	2	6														31	24	9		24				112
Hazen PD	Did not report in 2005																														
Morton SO			2		5	1	10	1	21		1	2		2	3	6		1	11				75	73	6		40			3	263
Mandan PD					6	1	35	13	72					1	27	5		2	20				249	127	50		324		13	33	978
Mountrail SO					1	3			2						3				5				17	9	2		19				61
Nelson SO	Did not report in 2005																														
Oliver SO																							4				8				12
Pembina SO						2	4	1	21					2	2				61				58	99	5		36				291
Cavalier PD	Did not report in 2005																														
Pierce SO						2	2		3			2				1			5				14	11	1		17				58
Rugby PD						1			2			1				1			4				10	18	1		21				59
Ramsey SO			2		1	1		3						2				4	8		3	17	32	2		44		1	1	121	
Devils Lake PD			5	19	15	67	6	71		11	1		16	28	5		4	123		1	123	238	135		302		26	1	1197		
Ransom SO						1	2	6	2			18		7					2				15	19	7		12			1	92
Lisbon PD								2	1														4	13			1				21
Renville SO							1	1	2		1	14						1	6				5		1		54				86
Richland SO	1		1		1	3	16	7	23			147		1	6	2		1	10			37	48	68	5		183			5	565
Wahpeton PD					1		21	3	30		1	1			10			1	5				64	84	15		81		13	9	339
NDSCS PD							6		1						1				2				3	4	1		11				29
Rolette SO	1				3	4	1	1	1		1								10						7		1				30
Rolla PD						2	21	3	17		3	2			5	1		1	15				23	20	11		9			5	138
Sargent SO						2	3		2			13			2				7				20	18	4		28				99
Sheridan SO					1				1											1			2	2			1				8
Sioux SO	Did not report in 2005																														
Slope SO *																															0
Stark SO							1		4			438				1			4				35	30	2		287			1	803
Dickinson PD					3	11	54	7	70		11	50	3	2	20	8		8	38	1	28	147	218	118		144		7	67	1015	
Steele SO	Did not report in 2005																														

\* Reported partial year

Agency	Murder/Non-Neg. Mansl.	Negligent Manslaughter	Forcible Rape	Robbery	Aggravated Assault	Burglary	Larceny/Theft	Motor Vehicle Theft	Other Assault	Arson	Forgery/Counterfeiting	Fraud	Embezzlement	Stolen Property Offenses	Vandalism	Weapons Offenses	Prostitution	Other Sex Offenses	Drug Abuse Violations	Gambling Violations	Off. Against Fam & Children	DUI	Liquor Law Violations	Disorderly Conduct	Vagrancy	All Other Offenses	Suspicion	Curfew/Loitering	Runaway	Total
Stutsman SO			1		2	5	8	2	15	2	1				5				1			19	27	6		25			3	122
Jamestown PD			3	2	16	13	71	5	121	3	11			4	35	7		2	27			108	221	131		391		8	29	1208
Towner SO									3							1			2			7	2	1		1				17
Traill SO						2	3		2										3			16	13	2		5		1		47
Mayville PD						3	1		4							1			2			18	30	5		8				72
Hillsboro PD							1																							1
Portland PD																						3				1				4
Walsh SO			2		1	3	3	2	9		2	1			6	2			3			21	11	3		24				93
Grafton PD				1			6	2	5			1		1	4	3			18			53	25	4		28		5		156
Ward SO	1				2	2	10	5	60		2	1			8				11		1	61	133	25		28		45		395
Minot PD	1		5		10	14	241	20	165	2	19	8	1		62	32		6	61		2	318	313	177		1043		21	90	2611
Wells SO						2			1			47		1	5				2			1	1			44			5	109
Harvey PD						2			2			1			1	1						7	2			2		2	1	21
Fessenden PD	Did not report in 2005																													
Williams SO			2			1	1	2	25		1				7			2	7		1	24	24	2		17			4	120
Williston PD					3	1	14	10	41		1	3			20	1		2	2		3	51	144	15		105		9	9	434
Highway Patrol		2			1		22	12	13			1			1	70		3	314		2	1711	721	7		243				3123
Drug Task Forces											1	1		2		2			471				2	1		307				787
<b>Total</b>	<b>9</b>	<b>3</b>	<b>34</b>	<b>22</b>	<b>203</b>	<b>220</b>	<b>1830</b>	<b>216</b>	<b>2015</b>	<b>15</b>	<b>161</b>	<b>1201</b>	<b>15</b>	<b>137</b>	<b>572</b>	<b>271</b>	<b>1</b>	<b>82</b>	<b>2343</b>	<b>4</b>	<b>243</b>	<b>5946</b>	<b>5940</b>	<b>1657</b>	<b>7686</b>	<b>301</b>	<b>708</b>	<b>31835</b>		

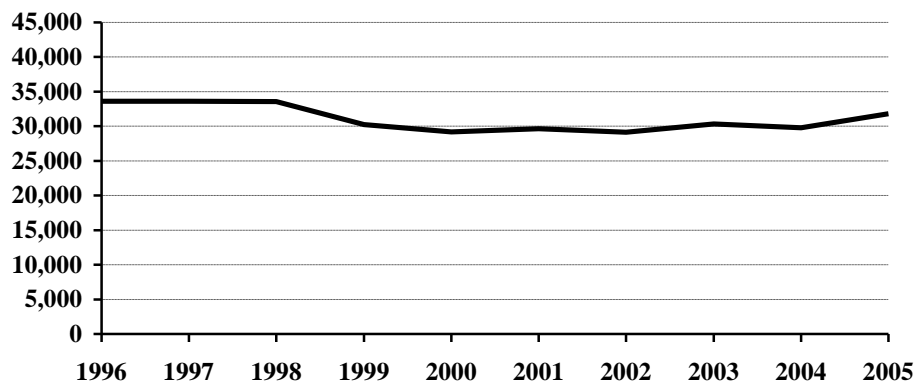
\* Reported partial year

# Arrests 1996-2005

## Arrest Summary

Year	Population	Arrest Total	% Change from Previous Year	Rate per 100,000 Pop.
1996	644,000	33,614	3.8%	5219.6
1997	641,000	33,634	0.1	5247.1
1998	638,000	33,548	-0.3	5258.3
1999	634,000	30,258	-9.8	4772.6
2000	642,200	29,201	-3.5	4547.0
2001	634,450	29,638	1.5	4671.4
2002	634,110	29,145	-1.7	4596.2
2003	634,000	30,334	4.1	4784.5
2004	634,500	29,798	-1.8	4696.3
2005	637,000	31,835	6.8	4997.6

## Arrest Totals, 1996-2005

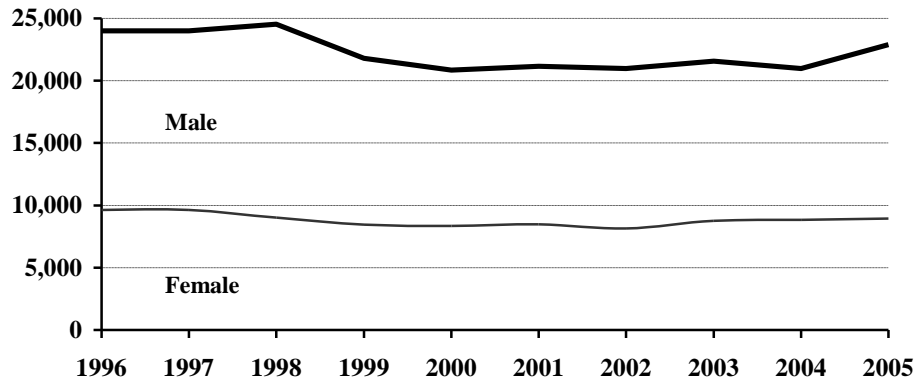


## Arrests by Gender, 1996-2005

Year	Male	% of Total	Female	% of Total	Total
1996	23,992	71.4%	9,622	28.6%	33,614
1997	24,011	71.4	9,623	28.6	33,634
1998	24,538	73.1	9,010	26.9	33,548
1999	21,801	72.1	8,457	27.9	30,258
2000	20,854	71.4	8,347	28.6	29,201
2001	21,170	71.4	8,468	28.6	29,638
2002	20,991	72.0	8,154	28.0	29,145
2003	21,580	71.1	8,754	28.9	30,334
2004	20,971	70.4	8,827	29.6	29,798
2005	22,891	71.9	8,944	28.1	31,835



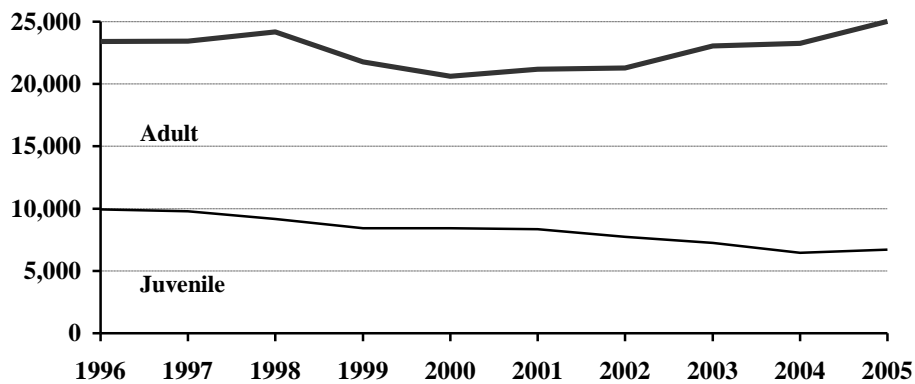
### Arrests by Gender, 1996-2005



### Juvenile and Adult Arrests, 1996-2005

Year	Juvenile	Percent of Total	Adult	Percent of Total	Age Not Reported	Percent of Total	Total
1996	9,938	29.6%	23,409	69.6%	267	0.8%	33,614
1997	9,780	29.1	23,428	69.7	426	1.3	33,634
1998	9,175	27.3	24,188	72.1	185	0.6	33,548
1999	8,429	27.9	21,769	71.9	60	0.2	30,258
2000	8,435	28.9	20,612	70.6	154	0.5	29,201
2001	8,347	28.2	21,188	71.5	103	0.3	29,638
2002	7,742	26.6	21,279	73.0	124	0.4	29,145
2003	7,250	23.9	23,044	76.0	40	0.1	30,334
2004	6,467	21.7	23,247	78.0	84	0.3	29,798
2005	6,721	21.1	25,038	78.6	76	0.2	31,835

### Juvenile and Adult Arrests, 1996-2005



## Arrests by Age Group, 1996-2005

Age Group	1996	1997	1998	1999	2000	2001	2002	2003	2004	2005
Under 10	208	204	205	202	203	186	168	145	108	73
10-12	881	953	758	628	708	819	638	582	580	500
13-14	2433	2429	2165	1877	1809	1686	1736	1601	1526	1411
15	2077	1980	1775	1586	1698	1629	1459	1344	1312	1394
16	2138	2115	2034	1977	1898	1943	1810	1677	1409	1630
17	2201	2099	2238	2159	2119	2084	1931	1901	1532	1713
18	2238	2210	2610	2356	2377	2501	2248	2620	2176	2300
19	2279	2330	2611	2693	2572	2845	2528	2832	2638	2647
20	1991	2170	2366	2220	2198	2565	2224	2597	2310	2602
21	1304	1240	1385	1186	1112	1220	1323	1476	1358	1405
22	1163	1166	1063	1039	957	913	1010	1174	1316	1259
23	1026	922	1040	807	830	817	904	958	1065	1173
24	929	911	821	741	654	739	753	858	909	1045
25-29	3506	3451	3390	2858	2598	2397	2562	2880	2952	3549
30-34	3023	2709	2642	2230	2018	1932	1990	2021	2140	2331
35-39	2264	2494	2497	2166	1931	1926	1931	1727	1888	2095
40-44	1633	1710	1689	1500	1475	1536	1711	1731	1846	1869
45-49	918	958	967	919	908	895	1034	1065	1275	1354
50-54	516	523	513	515	483	448	550	557	696	734
55-59	251	266	270	234	250	191	261	303	367	359
60-64	143	153	103	107	81	77	110	118	165	155
65 +	225	215	221	198	168	186	140	127	146	161
Age Not Reported	267	426	185	60	154	103	124	40	84	76
<b>Arrest Total</b>	<b>33614</b>	<b>33634</b>	<b>33548</b>	<b>30258</b>	<b>29201</b>	<b>29638</b>	<b>29145</b>	<b>30334</b>	<b>29798</b>	<b>31835</b>

## Arrests by Offense, 1996-2005

Offense Classification	1996	1997	1998	1999	2000	2001	2002	2003	2004	2005
Murder/Non-Neg. Manslaughter	11	3	5	6	1	3	6	2	10	9
Negligent Manslaughter	1	1	2	4	4	1		5	4	3
Forcible Rape	51	35	44	24	39	32	42	40	53	34
Robbery	38	30	28	28	15	19	25	25	15	22
Aggravated Assault	193	180	168	108	144	161	127	136	159	203
Burglary	410	413	426	409	305	343	316	266	223	220
Larceny/Theft	3718	3093	2671	2327	2279	2238	2264	1924	1856	1830
Motor Vehicle Theft	334	307	286	289	247	238	261	227	189	216
Other Assaults	1671	1550	1567	1651	1704	1664	1798	1691	1656	2015
Arson	24	36	33	16	24	60	25	20	24	15
Forgery and Counterfeiting	223	189	191	160	137	186	192	202	170	161
Fraud	6006	5491	4291	3274	2532	1883	1777	1698	1557	1201
Embezzlement	14	5	6	6	1	6	4	8	4	15
Stolen Property Offenses	204	159	150	84	98	113	171	148	123	137
Vandalism	631	855	774	709	671	713	802	650	592	572
Weapons Offenses	121	119	102	107	120	138	140	136	198	271
Prostitution	2		7	3		4		5	15	1
Other Sex Offenses	103	99	82	76	87	87	83	92	94	82
Drug Abuse Violations	1106	1242	1517	1456	1501	1658	1752	2045	2078	2343
Gambling	3	1	6	5		4	4		1	4
Off. Against Family & Children	283	327	401	200	250	245	228	205	221	243
Driving Under the Influence	4467	4777	5187	5179	4304	4301	4467	4854	5783	5946
Liquor Law Violations	5260	5521	6231	6377	6574	7415	6099	6969	5758	5940
Disorderly Conduct	1468	1487	1783	1568	1554	1636	1565	1691	1529	1657
Vagrancy		4	2	8	2	4	2	3		
All Other Offenses	5602	6164	6392	4998	5285	5338	6069	6318	6556	7686
Suspicion		17		1						
Curfew and Loitering	561	486	347	382	345	325	270	339	264	301
Runaways	1109	1043	849	803	978	823	656	635	666	708
<b>Arrest Total</b>	<b>33614</b>	<b>33634</b>	<b>33548</b>	<b>30258</b>	<b>29201</b>	<b>29638</b>	<b>29145</b>	<b>30334</b>	<b>29798</b>	<b>31835</b>

## Juvenile Arrests by Offense, 1996-2005

Offense Classification	1996	1997	1998	1999	2000	2001	2002	2003	2004	2005
Murder/Non-Neg. Manslaughter	1			1						
Negligent Manslaughter				1	1			1		
Forcible Rape	12	6	13	6	12	9	18	11	10	6
Robbery	10	13	8	9		3	9	6	8	4
Aggravated Assault	45	35	47	25	15	28	19	14	22	47
Burglary	201	222	201	202	134	175	166	118	99	55
Larceny/Theft	2056	1771	1372	1212	1285	1134	1147	919	792	794
Motor Vehicle Theft	198	205	162	185	153	130	146	119	78	103
Other Assaults	517	424	420	401	448	439	485	420	416	482
Arson	20	25	23	10	17	52	15	16	15	10
Forgery and Counterfeiting	54	46	42	37	41	29	35	22	17	15
Fraud	28	20	28	17	16	32	18	23	12	17
Embezzlement								2		4
Stolen Property Offenses	138	105	81	49	51	54	90	92	51	41
Vandalism	420	654	532	420	423	503	538	410	344	303
Weapons Offenses	50	34	30	27	31	40	36	22	40	41
Prostitution	2								10	
Other Sex Offenses	30	32	32	18	32	26	32	31	33	20
Drug Offenses	205	229	269	284	292	311	289	249	229	251
Gambling						1				
Off. Against Family/Children	109	96	110	98	66	86	77	64	84	86
Driving Under the Influence	62	104	114	169	81	90	74	90	92	92
Liquor Law Violations	1900	1976	2169	2176	2039	1890	1645	1741	1304	1255
Disorderly Conduct	575	611	762	709	699	785	672	738	652	687
Vagrancy				1		3				
All Other Offenses	1635	1643	1564	1187	1277	1379	1305	1168	1229	1399
Suspicion										
Curfew and Loitering	561	486	347	382	344	325	270	339	264	301
Runaways	1109	1043	849	803	978	823	656	635	666	708
<b>Juvenile Arrest Total</b>	<b>9938</b>	<b>9780</b>	<b>9175</b>	<b>8429</b>	<b>8435</b>	<b>8347</b>	<b>7742</b>	<b>7250</b>	<b>6467</b>	<b>6721</b>

## Juvenile Arrests by Gender, 1996-2005

Year	Male	% of Total	Female	% of Total	Total
1996	6,512	65.5%	3,426	34.5%	9,938
1997	6,363	65.1	3,417	34.9	9,780
1998	6,129	66.8	3,046	33.2	9,175
1999	5,456	64.7	2,973	35.3	8,429
2000	5,387	63.9	3,048	36.1	8,435
2001	5,298	63.5	3,049	36.5	8,347
2002	5,043	65.1	2,699	34.9	7,742
2003	4,568	63.0	2,682	37.0	7,250
2004	3,909	60.4	2,558	39.6	6,467
2005	4,092	60.9	2,629	39.1	6,721

## Adult Arrests by Offense, 1996-2005

Offense Classification	1996	1997	1998	1999	2000	2001	2002	2003	2004	2005
Murder/Non-Neg. Manslaughter	10	3	5	5	1	3	6	2	10	9
Negligent Manslaughter	1	1	2	3	3	1		4	4	3
Forcible Rape	39	29	31	18	27	23	24	29	43	28
Robbery	28	17	20	19	15	16	16	19	7	18
Aggravated Assault	147	144	121	82	128	133	108	122	137	156
Burglary	208	185	220	205	166	166	144	148	119	165
Larceny/Theft	1656	1306	1292	1110	987	1102	1114	1004	1064	1035
Motor Vehicle Theft	133	99	124	104	93	108	114	108	111	113
Other Assaults	1151	1106	1136	1244	1249	1221	1311	1269	1237	1532
Arson	4	11	10	6	7	8	10	4	9	5
Forgery and Counterfeiting	169	140	148	123	96	157	155	180	151	145
Fraud	5874	5354	4173	3243	2482	1782	1701	1654	1507	1172
Embezzlement	13	5	6	6	1	6	4	6	4	11
Stolen Property Offenses	66	53	68	35	46	59	80	56	72	96
Vandalism	209	190	242	287	246	204	264	240	246	269
Weapons Offenses	69	83	72	80	87	98	103	114	158	230
Prostitution			7	3		4		5	5	1
Other Sex Offenses	73	66	49	58	53	61	51	61	61	62
Drug Offenses	894	998	1248	1169	1206	1344	1438	1795	1846	2066
Gambling	3	1	6	5		2	4		1	4
Off. Against Family/Children	174	230	291	100	182	159	151	141	136	157
Driving Under the Influence	4364	4629	5051	5005	4214	4207	4390	4759	5685	5847
Liquor Law Violations	3323	3462	4033	4191	4493	5520	4449	5222	4449	4674
Disorderly Conduct	891	866	1017	856	854	851	892	952	876	969
Vagrancy		4	2	7	2	1	2	3		
All Other Offenses	3910	4429	4814	3804	3974	3952	4748	5147	5309	6271
Suspicion		17		1						
<b>Adult Arrest Total</b>	<b>23409</b>	<b>23428</b>	<b>24188</b>	<b>21769</b>	<b>20612</b>	<b>21188</b>	<b>21279</b>	<b>23044</b>	<b>23247</b>	<b>25038</b>

## Adult Arrests by Gender, 1996-2005

Year	Male	% of Total	Female	% of Total	Total
1996	17,283	73.8%	6,126	26.2%	23,409
1997	17,354	74.1	6,074	25.9	23,428
1998	18,280	75.6	5,908	24.4	24,188
1999	16,304	74.9	5,465	25.1	21,769
2000	15,361	74.5	5,251	25.5	20,612
2001	15,805	74.6	5,383	25.4	21,188
2002	15,859	74.5	5,420	25.5	21,279
2003	16,987	73.7	6,057	26.3	23,044
2004	17,004	73.1	6,243	26.9	23,247
2005	18,739	74.8	6,299	25.2	25,038

# Drug Arrest Analysis

---

Drug offense arrests increased 12.8 percent from 2,078 in 2004 to 2,343 in 2005. The arrest totals shown should not be interpreted as the number of individuals arrested for drug offenses because it is possible that some individuals may have been arrested on more than one occasion for this offense.

Approximately 74 percent of drug arrests in 2005 were arrests of males.

Juveniles (persons under the age of 18) comprised 10.7 percent of the total in 2005.

More than 88 percent of the drug arrests during the 10-year period were arrests for possession rather than sale or manufacture of drugs.

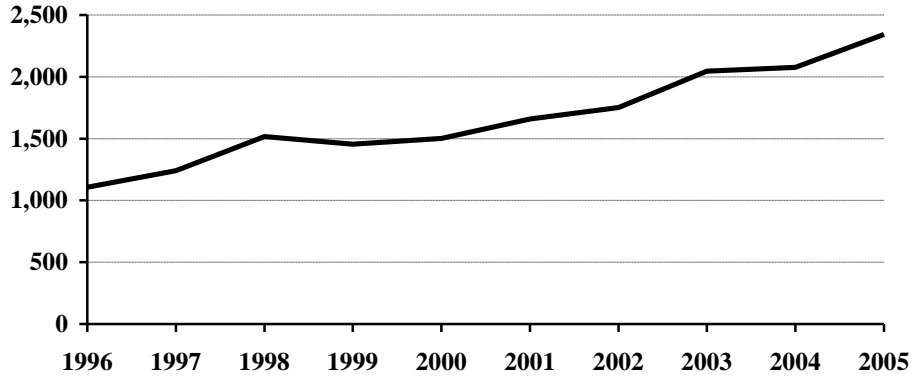
Approximately 73 percent of the arrests for drug offenses during the period 1996-2005 involved marijuana.

---

## Arrests for Drug Offenses, 1996-2005

Year	Total	Percent Change from Previous Year
1996	1,106	38.4%
1997	1,242	12.3
1998	1,517	22.1
1999	1,456	-4.0
2000	1,501	3.1
2001	1,658	10.5
2002	1,752	5.7
2003	2,045	16.7
2004	2,078	1.6
2005	2,343	12.8

## Arrests for Drug Offenses, 1996-2005



## Drug Arrests by Gender, 1996-2005

Year	Male	% of Total	Female	% of Total	Total
1996	888	80.3%	218	19.7%	1,106
1997	1,035	83.3	207	16.7	1,242
1998	1,260	83.1	257	16.9	1,517
1999	1,161	79.7	295	20.3	1,456
2000	1,222	81.4	279	18.6	1,501
2001	1,298	78.3	360	21.7	1,658
2002	1,340	76.5	412	23.5	1,752
2003	1,593	77.9	452	22.1	2,045
2004	1,595	76.8	483	23.2	2,078
2005	1,738	74.2	605	25.8	2,343

## Drug Arrests by Age Category, 1996-2005

Year	Juvenile	Percent of Total	Adult	Percent of Total	Age Not Reported	Percent of Total	Total
1996	205	18.5%	894	80.8%	7	0.6%	1,106
1997	229	18.4	998	80.4	15	1.2	1,242
1998	269	17.7	1,248	82.3			1,517
1999	284	19.5	1,169	80.3	3	0.2	1,456
2000	292	19.5	1,206	80.3	3	0.2	1,501
2001	311	18.7	1,344	81.1	3	0.2	1,658
2002	289	16.5	1,438	82.1	25	1.4	1,752
2003	249	12.2	1,795	87.8	1	*	2,045
2004	229	11.0	1,846	88.8	3	0.2	2,078
2005	251	10.7	2,066	88.2	26	1.1	2,343

\*Less than 0.1 percent of total drug arrests.

## Drug Arrests by Age Group, 1996-2005

Age Group	1996	1997	1998	1999	2000	2001	2002	2003	2004	2005
Under 10			1							
10-12	1	4	6	2	1	3	4	3	4	5
13-14	38	35	27	33	38	36	29	33	29	20
15	33	44	49	47	51	50	43	34	40	42
16	67	55	75	104	84	95	93	66	68	90
17	66	91	111	98	118	127	120	113	88	94
18	106	122	158	138	145	151	159	195	163	195
19	109	105	133	133	130	172	152	175	186	197
20	79	102	97	93	100	143	142	157	160	193
21	46	52	87	62	73	115	105	117	117	121
22	45	50	60	80	73	75	83	115	135	124
23	29	38	54	56	50	63	58	87	111	106
24	42	46	37	56	42	42	67	75	110	107
25-29	139	143	185	144	145	155	186	272	250	326
30-34	134	116	150	147	146	131	119	151	190	203
35-39	99	127	154	125	137	133	137	158	129	153
40-44	36	66	84	76	91	103	145	159	168	163
45-49	24	24	33	39	52	43	58	85	82	109
50-54	3	6	10	14	16	12	24	38	33	45
55-59	2	1	5	6	6	3	3	8	9	18
60-64	1		1			2		1	1	1
65 +						1		2	2	5
No Age Data	7	15		3	3	3	25	1	3	26
<b>Total</b>	<b>1106</b>	<b>1242</b>	<b>1517</b>	<b>1456</b>	<b>1501</b>	<b>1658</b>	<b>1752</b>	<b>2045</b>	<b>2078</b>	<b>2343</b>

## Drug Arrests by Type of Offense, 1996-2005

Year	Sale or Manufacture	% of Total	Possession	% of Total	Total
1996	183	16.5%	923	83.5%	1,106
1997	109	8.8	1,133	91.2	1,242
1998	257	16.9	1,260	83.1	1,517
1999	159	10.9	1,297	89.1	1,456
2000	188	12.5	1,313	87.5	1,501
2001	118	7.1	1,540	92.9	1,658
2002	134	7.6	1,618	92.4	1,752
2003	143	7.0	1,902	93.0	2,045
2004	318	15.3	1,760	84.7	2,078
2005	284	12.1	2,059	87.9	2,343



## Drug Arrests by Age Category and Type of Offense, 1996-2005

Year	Juvenile		Adult		Age Not Reported	
	Sale or Manufacture	Possession	Sale or Manufacture	Possession	Sale or Manufacture	Possession
1996	23	182	158	736	2	5
1997	24	205	82	916	3	12
1998	37	232	220	1,028		
1999	11	273	145	1,024	3	
2000	32	260	156	1,050		3
2001	7	304	111	1,233		3
2002	20	269	110	1,328	4	21
2003	20	229	123	1,672		1
2004	28	201	289	1,557	1	2
2005	17	234	259	1,807	8	18

## Drug Arrests by Type of Drug, 1996-2005

Year	Opiates, Cocaine or Derivatives	Percent of Total	Marijuana	Percent of Total	Other Drugs or Narcotics	Percent of Total	Total
1996	59	5.3%	914	82.6%	133	12.0%	1,106
1997	39	3.1	1,050	84.5	153	12.3	1,242
1998	96	6.3	1,189	78.4	232	15.3	1,517
1999	53	3.6	1,173	80.6	230	15.8	1,456
2000	45	3.0	1,189	79.2	267	17.8	1,501
2001	33	2.0	1,221	73.6	404	24.4	1,658
2002	61	3.5	1,189	67.9	502	28.6	1,752
2003	62	3.0	1,428	69.9	555	27.1	2,045
2004	38	1.8	1,333	64.2	707	34.0	2,078
2005	53	2.3	1,516	64.7	774	33.0	2,343

## Drug Arrests by Age Category and Type of Drug, 1996-2005

Year	Juvenile			Adult			Age Not Reported		
	Opiates, Cocaine or Deriv.	Marijuana	Other Drugs or Narcotics	Opiates, Cocaine or Deriv.	Marijuana	Other Drugs or Narcotics	Opiates, Cocaine or Deriv.	Marijuana	Other Drugs or Narcotics
1996	2	186	17	56	722	116	1	6	
1997	2	197	30	37	842	119		11	4
1998	5	227	37	91	962	195			
1999		260	24	52	911	206	1	2	
2000	4	263	25	41	925	240		1	2
2001		269	42	33	950	361		2	1
2002	4	251	34	55	923	460	2	15	8
2003	3	206	40	59	1,221	515		1	
2004	3	162	64	35	1,170	641		1	2
2005	2	220	29	51	1,288	727		8	18

# DUI Arrest Analysis

---

Reported DUI arrests increased 2.8 percent from 5,783 in 2004 to 5,946 in 2005. The arrest totals should not be interpreted as the number of individuals arrested for DUI offenses because it is possible that some individuals may have been arrested on more than one occasion.

Seventy-eight percent of the DUI arrests in 2005 were arrests of males.

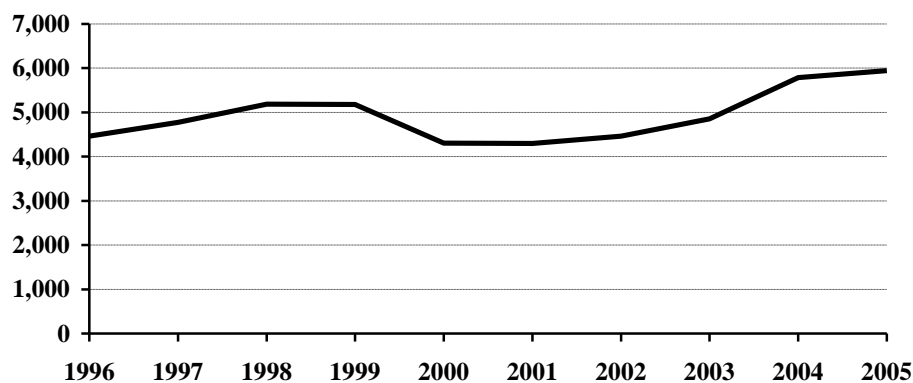
Juveniles, persons under the age of 18, made up 1.6 percent of the total in 2005.

---

## DUI Arrests, 1996-2005

Year	DUI Arrests Reported	Percent Change from Previous Year
1996	4,467	0.6%
1997	4,777	6.9
1998	5,187	8.6
1999	5,179	-0.2
2000	4,304	-16.9
2001	4,301	-0.1
2002	4,467	3.9
2003	4,854	8.7
2004	5,783	19.1
2005	5,946	2.8

## DUI Arrests, 1996-2005



### DUI Arrests by Gender, 1996-2005

Year	Male	% of Total	Female	% of Total	Total
1996	3,652	81.8%	815	18.2%	4,467
1997	3,917	82.0	860	18.0	4,777
1998	4,185	80.7	1,002	19.3	5,187
1999	4,149	80.1	1,030	19.9	5,179
2000	3,437	79.9	867	20.1	4,304
2001	3,450	80.2	851	19.8	4,301
2002	3,545	79.4	922	20.6	4,467
2003	3,763	77.5	1,091	22.5	4,854
2004	4,459	77.1	1,324	22.9	5,783
2005	4,640	78.0	1,306	22.0	5,946

### DUI Arrests by Age Category, 1996-2005

Year	Juvenile	Percent of Total	Adult	Percent of Total	Age Not Reported	Percent of Total	Total
1996	62	1.4%	4,364	97.7%	41	0.9%	4,467
1997	104	2.2	4,629	96.9	44	0.9	4,777
1998	114	2.2	5,051	97.4	22	0.4	5,187
1999	169	3.3	5,005	96.6	5	0.1	5,179
2000	81	1.9	4,214	97.9	9	0.2	4,304
2001	90	2.1	4,207	97.8	4	0.1	4,301
2002	74	1.6	4,390	98.3	3	0.1	4,467
2003	90	1.9	4,759	98.0	5	0.1	4,854
2004	92	1.6	5,685	98.3	6	0.1	5,783
2005	92	1.6	5,847	98.3	7	0.1	5,946

## DUI Arrests by Age Group, 1996-2005

Age Group	1996	1997	1998	1999	2000	2001	2002	2003	2004	2005
Under 10		1								
10-12				2						
13-14	2	3	2	4	1	1	3	2	3	1
15	10	8	10	14	3	6	6	10	8	5
16	13	40	42	32	30	35	17	25	33	31
17	37	52	60	117	47	48	48	53	48	55
18	107	103	158	141	125	112	114	161	142	121
19	112	143	174	228	146	135	155	195	212	206
20	144	180	181	228	155	145	182	219	205	219
21	214	234	272	274	251	269	276	354	362	344
22	212	225	203	269	240	232	260	300	417	372
23	195	156	234	220	205	197	238	267	305	345
24	185	162	194	203	170	209	188	260	293	278
25-29	702	755	777	770	640	641	660	775	867	1051
30-34	713	711	713	641	520	526	507	526	621	596
35-39	624	717	752	754	529	519	511	436	590	590
40-44	475	506	566	493	473	499	520	480	576	603
45-49	295	293	396	351	349	337	339	354	468	481
50-54	159	191	188	207	185	187	232	214	288	309
55-59	88	110	107	101	116	78	97	120	178	171
60-64	56	69	58	50	42	43	51	46	93	86
65 +	83	74	78	75	68	78	60	52	68	75
No Age Data	41	44	22	5	9	4	3	5	6	7
<b>Total</b>	<b>4467</b>	<b>4777</b>	<b>5187</b>	<b>5179</b>	<b>4304</b>	<b>4301</b>	<b>4467</b>	<b>4854</b>	<b>5783</b>	<b>5946</b>

# **UCR OFFENSE DEFINITIONS**

---

---

# UNIFORM CRIME REPORTING OFFENSE DEFINITIONS

Offenses in Uniform Crime Reporting are divided into two groups designated as Part I and Part II crimes. Information on the number of Part I offenses known to law enforcement, the number cleared by arrest or exceptional means, and the number of persons arrested is reported monthly. Arrest data are reported for Part I and Part II offenses. The Crime Index is composed of offenses 1-7 with the exception as noted in item 1 below.

NOTE: The classifications of these offenses for UCR reporting purposes are based on law enforcement investigation as opposed to determination by a court, medical examiner, jury, or other judicial hearing.

## **PART I OFFENSES:**

### **1. CRIMINAL HOMICIDE**

#### **a. Murder and Non-Negligent Manslaughter**

The willful (non-negligent) killing of one human being by another. Deaths caused by negligence, attempts to kill, assaults to kill, suicides, accidental deaths, and justifiable homicides are excluded. Justifiable homicides are limited to: (1) the killing of a felon by a law enforcement officer in the line of duty, and (2) the killing of a felon by a private citizen.

#### **b. Manslaughter by Negligence**

The killing of another person through gross negligence. Excludes traffic fatalities. While manslaughter by negligence is a Part I crime, it is not included in the Crime Index.

### **2. FORCIBLE RAPE**

The carnal knowledge of a female forcibly and against her will. Included are rapes by force and attempts or assaults to rape. Statutory offenses (no force used -- victim under age of consent) are excluded.

### **3. ROBBERY**

The taking or attempting to take anything of value from the care, custody, or control of a person or persons by force or threat of force or violence, or putting the victim in fear.

### **4. AGGRAVATED ASSAULT**

An unlawful act by one person upon another for the purpose of inflicting severe or aggravated bodily injury. This type of assault usually is accompanied by the use of a weapon or by a means likely to produce death or great bodily harm. Simple assaults are excluded.

### **5. BURGLARY**

Breaking or entering. The unlawful entry of a structure to commit a felony or theft. Attempted forcible entry is included.

**6. LARCENY/THEFT**

The unlawful taking, carrying, leading, or riding away of property from the possession or constructive possession of another. Examples are thefts of bicycles or automobile accessories, shoplifting, pocket-picking, or the stealing of any property or article that is not taken by force and violence or by fraud. Attempted larcenies are included. Embezzlement, "con" games, forgery, worthless checks, etc., are excluded.

**7. MOTOR VEHICLE THEFT**

The theft or attempted theft of a motor vehicle. A motor vehicle is self-propelled and runs on the surface and not on rails. Specifically excluded from this category are motorboats, construction equipment, airplanes, and farming equipment.

**8. ARSON**

Any willful or malicious burning or attempting to burn, with or without intent to defraud, a dwelling house, public building, motor vehicle, personal property of another, etc.

**PART II OFFENSES:**

**9. OTHER ASSAULTS (SIMPLE)**

Assaults or attempted assaults where no weapon was used or which did not result in serious or aggravated injury to the victim.

**10. FORGERY AND COUNTERFEITING**

Making, altering, uttering, or possessing, with the intent to defraud, anything false which is made to appear true. Attempts are included.

**11. FRAUD**

Fraudulent conversion and obtaining money or property by false pretenses. Included are larceny by bailee and bad checks except forgeries and counterfeiting. Attempts are included.

**12. EMBEZZLEMENT**

Misappropriation or misapplication of money or property entrusted to one's care, custody or control. Attempts are included.

**13. STOLEN PROPERTY -- BUYING, RECEIVING, POSSESSING**

Buying, receiving, or possessing stolen property, including attempts.

**14. VANDALISM**

Willful or malicious destruction, injury, disfigurement, or defacement of any public or private property, real or personal, without consent of the owner or person having custody or control. Attempts are included.

**15. WEAPON OFFENSES -- CARRYING, POSSESSING, ETC.**

All violations of regulations or statutes controlling the carrying, using, possessing, furnishing, and manufacturing of deadly weapons or silencers. Attempts are included.

**16. PROSTITUTION AND COMMERCIALIZED VICE**

Sex offenses of a commercialized nature, such as prostitution, keeping a bawdy house, procuring, or transporting women for immoral purposes. Attempts are included.

**17. OTHER SEX OFFENSES (except forcible rape, prostitution and commercialized vice)**

Statutory rape and offenses against chastity, common decency, morals and the like. Attempts are included.

**18. DRUG ABUSE VIOLATIONS**

State and local offenses relating to narcotic and non-narcotic drugs, such as unlawful possession, sale, use, growing and manufacturing of narcotic and non-narcotic drugs. Attempts are included.

**19. GAMBLING**

Promoting, permitting, or engaging in illegal gambling.

**20. OFFENSES AGAINST FAMILY AND CHILDREN**

Non-support, neglect, desertion, or abuse of family and children.

**21. DRIVING UNDER THE INFLUENCE**

Driving or operating any vehicle or common carrier while drunk or under the influence of liquor or drugs.

**22. LIQUOR LAWS**

State or local liquor law violations, except "drunkenness" (offense 23) and "driving under the influence" (offense 21).

**23. DRUNKENNESS**

Drunkenness or intoxication. Excluded is "driving under the influence" (offense 21). This is not a crime in North Dakota, but is included in the national program.

**24. DISORDERLY CONDUCT**

Breach of peace.

**25. VAGRANCY**

Vagabondage, begging, loitering, etc.

**26. ALL OTHER OFFENSES**

All violations of state or local laws, except offenses 1-25 and traffic offenses.



**27. SUSPICION**

No specific offense; suspect released without formal charges being placed.

**28. CURFEW AND LOITERING**

Offenses relating to violation of local curfew and loitering ordinances where such laws exist.

**29. RUNAWAYS**

Limited to juveniles taken into protective custody under provisions of local statutes.

**FULL-TIME LAW  
ENFORCEMENT EMPLOYEES**

---

---

**NUMBER OF FULL-TIME LAW ENFORCEMENT EMPLOYEES  
REPORTED BY UCR AGENCIES  
AS OF OCTOBER 31, 2005**

Agency	Law Enforcement Officers		Civilian Personnel		Total Full-Time			Population
	Male	Female	Male	Female	Male	Female	Total	
Adams SO	3	1			3	1	4	2,438
Barnes SO	5	1		1	5	2	7	4,705
Valley City PD	12	1		5	12	6	18	6,469
Benson SO	4				4		4	6,993
Billings SO	3			1	3	1	4	828
Bottineau SO	9		1	3	10	3	13	6,871
Bowman SO	2				2		2	1,571
Bowman PD	3			1	3	1	4	1,541
Burke SO	3			1	3	1	4	2,082
Burleigh SO	33	4	18	8	51	12	63	13,869
Bismarck PD	78	9	6	18	84	27	111	56,825
Lincoln PD	1	1			1	1	2	2,155
Cass SO	48	16	32	27	80	43	123	20,059
Fargo PD	109	19		18	109	37	146	81,703
West Fargo PD	26	2	2	10	28	12	40	17,645
NDSU PD	7	2	1	1	8	3	11	10,000
Cavalier SO	5		3	4	6	4	10	4,392
Dickey SO	4			1	4	1	5	3,621
Oakes PD	3				3		3	1,855
Divide SO	3				3		3	1,169
Crosby PD	2				2		2	1,047
Dunn SO	2			1	2	1	3	3,450
Eddy SO	5				5		5	2,610
Emmons SO	3			1	3	1	4	2,744
Linton PD	NR							1,183
Foster SO	2	1		1	2	2	4	1,400
Carrington PD	4				4		4	2,105
Golden Valley SO	4			1	4	1	5	1,776
Grand Forks SO	24			6	24	6	30	12,247
Grand Forks PD	71	7	4	11	75	18	93	39,162
Larimore PD	2				2		2	1,362
Northwood PD	2				2		2	907
Emerado PD	1			1	1	1	2	498
Thompson PD	1				1		1	984
UND PD	12		2	2	14	2	16	10,000
Grant SO	3				3		3	2,633
Griggs SO	4				4		4	2,524
Hettinger SO	4				4		4	2,550
Kidder SO	2			1	2	1	3	1,855
Steele PD	1				1		1	717
LaMoure SO	4			1	4	1	5	4,520
Logan SO	2				2		2	1,338
Napoleon PD	1				1		1	769
McHenry SO	7			1	7	1	8	5,651
McIntosh SO	1	1			1	1	2	2,098
Wishek PD	2				2		2	1,042
McKenzie SO	5			5	5	5	10	4,174
Watford City PD	4				4		4	1,345
McLean SO	20		1	5	21	5	26	8,847
Mercer SO	9		6	7	15	7	22	3,004
Beulah PD	5			1	5	1	6	3,071
Hazen PD	4				4		4	2,390
Morton SO	18	1	7	6	25	7	32	8,400
Mandan PD	26	2	1	8	27	10	37	17,031
Mountrail SO	4	1		5	4	6	10	6,554

Agency	Law Enforcement Officers		Civilian Personnel		Total Full-Time			Population
	Male	Female	Male	Female	Male	Female	Total	
Nelson SO	4			1	4	1	5	3,458
Oliver SO	2			1	2	1	3	1,882
Pembina SO	9		1	3	10	3	13	6,742
Cavalier PD	4				4		4	1,478
Pierce SO	3			4	3	4	7	1,635
Rugby PD	4				4		4	2,738
Ramsey SO	4			1	4	1	5	4,625
Devils Lake PD	14	2	1	1	15	3	18	6,867
Ransom SO	4			1	4	1	5	3,596
Lisbon PD	2	1			2	1	3	2,253
Renville SO	4	1			4	1	5	2,486
Richland SO	14	1	5	12	19	13	32	9,248
Wahpeton PD	12	2		2	12	2	16	6,442
NDSCS PD	3				3		3	2,000
Rolette SO	10		1	1	11	2	12	12,424
Rolla PD	2	1		1	2	2	4	1,449
Sargent SO	3			1	3	1	4	4,125
Sheridan SO	2	1			2	1	3	1,481
Sioux SO	1				1		1	4,156
Slope SO	1				1		1	745
Stark SO	9			3	9	3	12	6,454
Dickinson PD	23	1	1	11	24	12	36	15,743
Steele SO	3				3		3	2,070
Stutsman SO	7	1		2	7	3	10	6,025
Jamestown PD	28			4	28	4	32	14,979
Towner SO	2			1	2	1	3	2,584
Traill SO	5			5	5	5	10	4,324
Hillsboro PD	2				2		2	1,546
Mayville PD	3				3		3	1,936
Portland PD	NR							590
Walsh SO	11		3	3	14	3	17	7,405
Grafton PD	10			1	10	1	11	4,283
Ward SO	18	2	10	11	28	13	41	21,152
Minot PD	55	5	5	17	60	22	82	35,277
Wells SO	3				3		3	2,313
Harvey PD	3				3		3	1,801
Fessenden PD	1				1		1	561
Williams SO	17	2		1	17	3	20	7,113
Williston PD	21		2	6	23	6	29	12,235
Highway Patrol	131	5	19	29	150	34	184	
<b>Total</b>	<b>1076</b>	<b>94</b>	<b>132</b>	<b>286</b>	<b>1206</b>	<b>379</b>	<b>1586</b>	<b>637,000</b>