

Office of Attorney General
Bureau of Criminal Investigation

Crime in North Dakota, 2006

A Summary of Uniform Crime Report Data

Wayne Stenehjem
Attorney General

Prepared by
Colleen Weltz
UCR Program Manager
Revised 2009

INTRODUCTION

The North Dakota Uniform Crime Reporting (UCR) program involves the collection, compilation, and analysis of crime and arrest statistics reported by the various local law enforcement agencies throughout the state. Forty-five sheriffs' departments and 32 police departments reported to the UCR program in 2006.

Law enforcement agencies may report UCR data in two ways:

INCIDENT-BASED REPORTING: Law enforcement agencies use a standard incident form to collect data on each incident reported to their respective agencies. This form collects much more detailed information than is collected using summary reporting. Data collected includes: type of incident, where and when the incident took place, victim characteristics, suspect/arrestee characteristics, property involved in the incident, etc. A total of 74 police departments and sheriffs' departments reported incident data for all or part of 2006.

In order to continue the statistical time-series begun with summary reporting, computer programs were written to extract summary data from the incident data reported. Crime in North Dakota, 2006 is a report on summary data.

SUMMARY REPORTING: Law enforcement agencies use a tally system to report the number of crime index offenses and arrests for each month. Three law enforcement agencies reported summary data in 2006.

The federal counterpart of the North Dakota UCR program is the National UCR program under the direction of the Federal Bureau of Investigation (FBI). The UCR program has been used nationally and in North Dakota for many years to measure the extent, distribution and fluctuation of crime through the crime index. The crime index is not an absolute measure, but rather an indication of the amount and type of crime occurring in any given jurisdiction. The index is composed of seven crimes that are sub-classified as follows:

VIOLENT CRIME: Murder/Non-Negligent Manslaughter
Forcible Rape
Robbery
Aggravated Assault

PROPERTY CRIME: Burglary
Larceny/Theft
Motor Vehicle Theft

A Modified Crime Index is also calculated at the federal level. This includes arson as the fourth property crime and the eighth index offense. Data on arson is not included in this report.

Prior to an offense becoming recorded in the UCR program, it must be reported to the local law enforcement officials and reported by the local agency to the UCR program. Consequently, the UCR program only reflects reported crimes. Reporting of crimes depends on several factors,

including actual perception of an act as a crime, the probability of loss of status for reporting (as in cases of rape), and the perceived probability of action on the part of the law enforcement agency contacted.

Several types of data are gathered, including:

Offense data

- Number of known crime index offenses
- Type and value of stolen property
- Additional information on homicides and arson
- Law enforcement officers killed or assaulted

Arrest and Clearance Data

- Number and type of offenses cleared
- Number and type of index offenses involving juveniles cleared
- Number of persons arrested, by offense
- Characteristics of persons arrested (age, sex, race)

To allow for comparison among several geographic or jurisdictional areas with differing populations or to allow comparisons across time in an area undergoing population fluctuations, the UCR program provides for the calculation of crime rates to remove any potential biases created by population differences. Because a rate relates the incidence of activity to population, it is possible to measure annual fluctuations in criminal activity by comparing rates of crime reported in any given year with those reported in other years. National publications report crime rates calculated based on the number of reported offenses per 100,000 population. This publication provides crime rate information calculated in the same manner.

TABLE OF CONTENTS

Introduction.....	2
Table of Contents	4
North Dakota Crime Summary, 2006	5
Crime Index Offense Analysis.....	6
Violent Crime	11
Murder/Non-Negligent Manslaughter	13
Forcible Rape	15
Robbery.....	17
Aggravated Assault.....	20
Property Crime	22
Burglary	24
Larceny/Theft.....	27
Motor Vehicle Theft	30
Crime Index Offenses by Reporting Jurisdiction	33
Arrest Analysis.....	37
Arrests in 2006	38
Arrest Analysis by Reporting Jurisdiction	44
Arrests 1997-2006	47
Drug Arrest Analysis.....	53
DUI Arrest Analysis	57
UCR Offense Definitions.....	60
Full-Time Law Enforcement Employees.....	65

NORTH DAKOTA CRIME SUMMARY, 2006

In 2006, 13,099 crime index offenses were reported by local law enforcement agencies. This is an increase of 0.9 percent from the total of 12,979 reported in 2005.

Crime index offenses include: murder/non-negligent manslaughter, forcible rape, robbery, aggravated assault, burglary, larceny/theft, and motor vehicle theft.

The Census Bureau estimate of North Dakota's population for 2006 is 636,000. The index crime rate per 100,000 population for 2006 was 2059.6. The index crime rate for 2005 was 2037.5 per 100,000 population. This is a 1.1 percent increase in the crime rate.

The total number of reported violent index crimes (murder, rape, robbery, and aggravated assault) was 808. This represents an increase of 17.1 percent from the total of 690 reported in 2005. In 2004, 583 violent index crimes were reported.

Violent crime accounted for 6.2 percent of total index crimes reported in 2006.

Collectively, property crimes (burglary, larceny/theft and motor vehicle theft) increased by 2 offenses from 12,289 reported in 2005 to 12,291 reported in 2006.

Property crime accounted for 93.8 percent of total crime index offenses reported in 2006.

The 9,012 larceny/theft offenses reported in 2006 accounted for 68.8 percent of total index crimes.

More than \$12.4 million worth of property was reported stolen in 2006, with 30.6 percent of that amount reported as recovered by law enforcement officials.

North Dakota law enforcement agencies reported 32,343 arrests in 2006. A total of 31,835 arrests was reported in 2005.

In 2006, juvenile arrests accounted for 20.7 percent of the total arrests. Juvenile arrests were 37.7 percent of the total arrests for crime index offenses.

The number of reported arrests in 2006 for DUI increased to 6,488 from 5,946 reported in 2005.

Arrests for drug offenses decreased 3.7 percent from a 2005 total of 2,343 to 2,256 in 2006.

CRIME INDEX OFFENSE ANALYSIS

Crime Index Offenses

Crime index offenses include the violent crimes of murder/non-negligent manslaughter, forcible rape, robbery, and aggravated assault, and the property crimes of burglary, larceny/theft, and motor vehicle theft.

In 2006, 13,099 crime index offenses were reported by local law enforcement agencies. This is an increase of 0.9 percent from the total of 12,979 reported in 2005.

The Census Bureau estimate of North Dakota's population for 2006 is 636,000. Based on that total, the index crime rate per 100,000 population for 2006 was 2059.6, as compared to 2037.5 for 2005. See the crime index offense summary on page 5 for crime rate information for the period 1997-2006.

Twenty-one percent of crime index offenses were reported as cleared by arrest or exceptional means. The UCR program defines an offense as "cleared" by law enforcement when at least one person is arrested, charged with the commission of the offense, and turned over to the court for prosecution. Several crimes may be cleared by the arrest of one person, while the arrests of many persons may clear only one offense. Law enforcement agencies may clear a crime by exceptional means when some element beyond law enforcement control precludes the placing of formal charges against the offender. Examples of circumstances that allow such clearances are the death of the offender (suicide, justifiably killed by police or private citizen, etc.); the victim's refusal to cooperate with prosecution after the offender has been identified; or the denial of extradition.

In 2006, 2,550 arrests were reported for crime index offenses. Of that total, 37.7 percent were arrests of juveniles.

More than \$12.4 million worth of property was reported stolen in 2006, with 30.6 percent of that amount reported as recovered by law enforcement officials.

Crime Index Offenses Reported, 2006

Crime Index Offense	Number Reported	Percent of Total Index Offenses
Murder/Non-Negligent Manslaughter	8	0.1%
Forcible Rape	195	1.5
Robbery	72	0.5
Aggravated Assault	533	4.1
Violent Crime Subtotal	808	6.2
Burglary	2,302	17.6
Larceny/Theft	9,012	68.8
Motor Vehicle Theft	977	7.4
Property Crime Subtotal	12,291	93.8
Crime Index Offense Total	13,099	100.0

Comparison of Crime Index Offenses Reported, 2005-2006

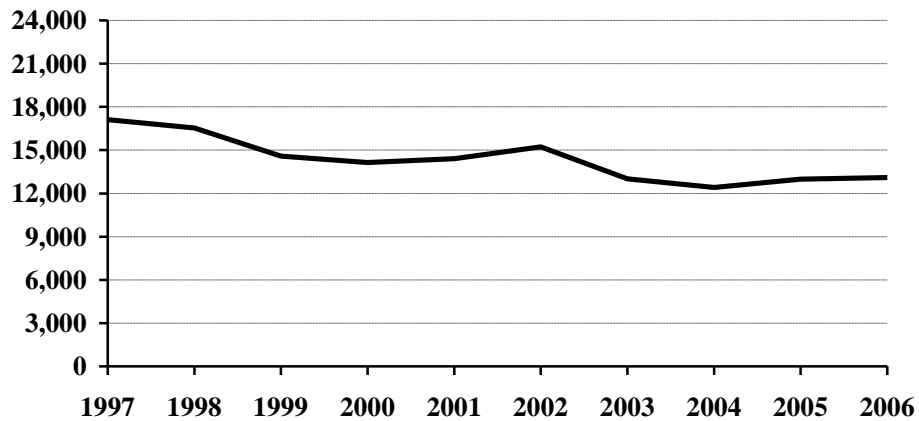
Crime Index Offense	2005	2006	Percent Change
Murder/Non-Negligent Manslaughter	14	8	-42.9%
Forcible Rape	179	195	8.9
Rape by Force	166	185	11.4
Attempts to Rape	13	10	-23.1
Robbery	53	72	35.8
Firearm	2	10	400.0
Knife or Cutting Instrument	9	10	11.1
Other Dangerous Weapon	14	17	21.4
Strong Arm – No Weapon	28	35	25.0
Aggravated Assault	444	533	20.0
Firearm	19	14	-26.3
Knife or Cutting Instrument	71	58	-18.3
Other Dangerous Weapon	128	132	3.1
Hands, Fists, Feet, Etc.	226	329	45.6
Violent Crime Subtotal	690	808	17.1
Burglary	1,966	2,302	17.1
Forcible Entry	924	1,046	13.2
Unlawful Entry – No Force	903	1,102	22.0
Attempted Forcible Entry	139	154	10.8
Larceny/Theft	9,293	9,012	-3.0
Motor Vehicle Theft	1,030	977	-5.1
Autos	872	776	-11.0
Trucks and Buses	57	87	52.6
Other Vehicles	101	114	12.9
Property Crime Subtotal	12,289	12,291	*
Crime Index Offense Total	12,979	13,099	0.9

* Less than 0.1 percent of total arrests.

Crime Index Offenses, 1997-2006

Crime Index Offense	1997	1998	1999	2000	2001	2002	2003	2004	2005	2006
Murder/Non-Neg. Mansl.	10	7	13	8	9	6	12	10	14	8
Forcible Rape	150	169	147	173	159	167	143	181	179	195
Robbery	45	78	70	62	71	71	55	49	53	72
Aggravated Assault	344	312	217	319	275	309	289	343	444	533
Burglary	2271	2194	2200	2004	2027	2250	1814	1954	1966	2302
Larceny/Theft	13163	12704	10956	10642	10870	11399	9700	8984	9293	9012
Motor Vehicle Theft	1139	1073	989	942	1000	1037	1002	892	1030	977
Crime Index Offense Total	17122	16537	14592	14150	14411	15239	13015	12413	12979	13099

Crime Index Offense Totals, 1997-2006



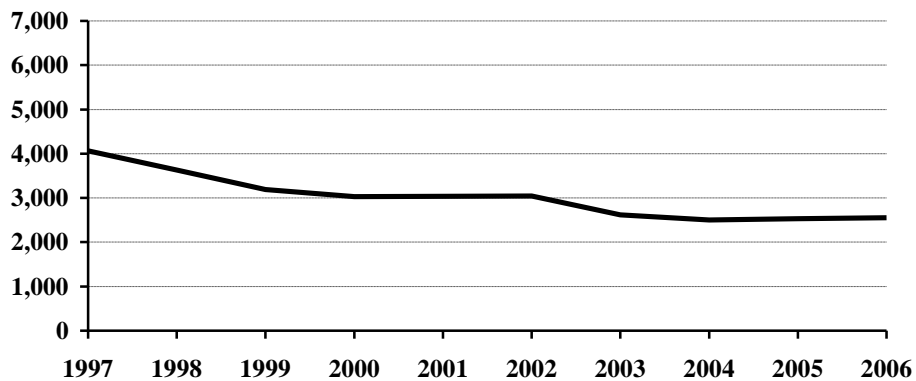
Crime Index Offense Summary

Year	Population	Crime Index Offense Total	% Change in Number from Previous Year	Crime Rate per 100,000 Population	% Change in Rate from Previous Year	Percent Cleared
1997	641,000	17,122	-3.2%	2671.1	-2.7%	29.0%
1998	638,000	16,537	-3.4	2592.0	-3.0	26.5
1999	634,000	14,592	-11.8	2301.6	-11.2	27.2
2000	642,200	14,150	-3.0	2203.4	-4.3	22.9
2001	634,450	14,411	1.8	2271.4	3.1	21.6
2002	634,110	15,239	5.7	2403.2	5.8	21.1
2003	634,000	13,015	-14.6	2052.8	-14.6	20.8
2004	634,500	12,413	-4.6	1956.3	-4.7	20.7
2005	637,000	12,979	4.6	2037.5	4.2	20.2
2006	636,000	13,099	0.9	2059.6	1.1	21.0

Arrests for Crime Index Offenses, 1997-2006

Year	Juvenile	Adult	Age Not Reported	Total
1997	2,252	1,783	26	4,061
1998	1,803	1,813	12	3,628
1999	1,640	1,543	8	3,191
2000	1,599	1,417	14	3,030
2001	1,479	1,551	4	3,034
2002	1,505	1,526	10	3,041
2003	1,187	1,432	1	2,620
2004	1,009	1,491	5	2,505
2005	1,009	1,524	1	2,534
2006	960	1,588	2	2,550

Arrests for Crime Index Offenses, 1997-2006



Property Loss Due to Crime Index Offenses, 1997-2006

Year	Population	Total Property Loss	% Change from Previous Year	Property Loss per Capita	Percent Recovered
1997	641,000	\$12,507,812	13.5%	\$19.51	33.3%
1998	638,000	11,429,270	-8.6	17.91	30.8
1999	634,000	11,201,544	-2.0	17.67	28.6
2000	642,200	10,308,899	-8.0	16.05	31.3
2001	634,450	11,420,051	10.8	18.00	33.2
2002	634,110	12,457,277	9.1	19.65	30.6
2003	634,000	11,457,228	-8.0	18.07	31.5
2004	634,500	11,397,856	-0.5	17.96	35.7
2005	637,000	12,390,920	8.7	19.45	37.7
2006	636,000	12,446,104	0.4	19.57	30.6

Violent Crime

Violent crime includes the offenses of murder/non-negligent manslaughter, forcible rape, robbery, and aggravated assault. (See the UCR offense definitions section beginning on page 57 of this publication for definitions of these and other offenses.)

In 2006, 808 violent crimes were reported in North Dakota. This is a 17.1 percent increase from the 2005 total of 690 violent offenses reported. In 2004, 583 violent crimes were reported.

Violent crime comprised 6.2 percent of reported crime index offenses in North Dakota in 2006.

The violent crime rate for 2006 is 127.0 per 100,000, as compared to 108.3 per 100,000 in 2005. This is a 17.3 percent increase in the violent crime rate. In 2004, the violent crime rate was 91.9 per 100,000 population.

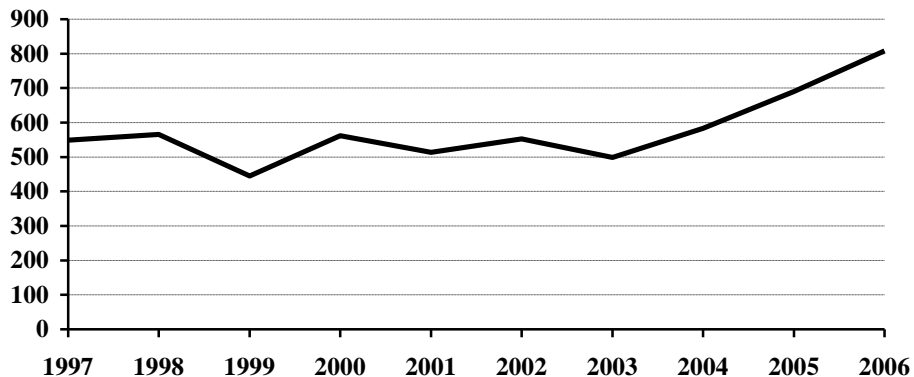
Nearly 48 percent of violent crimes in 2006 were reported as cleared by arrest or exceptional means.

Of the 290 total arrests reported for violent crimes, 14.1 percent were arrests of juveniles.

Violent Crime Summary

Year	Population	Violent Index Offenses	% Change in Number from Previous Year	Rate per 100,000 Population	% Change in Rate from Previous Year	Percent Cleared
1997	641,000	549	-7.6%	85.6	-7.2%	66.8%
1998	638,000	566	3.1	88.7	3.6	61.8
1999	634,000	445	-21.4	70.2	-20.9	67.0
2000	642,200	562	26.3	87.5	24.6	51.2
2001	634,450	514	-8.5	81.0	-7.4	49.4
2002	634,110	553	7.6	87.2	7.7	50.5
2003	634,000	499	-9.8	78.7	-9.7	57.3
2004	634,500	583	16.8	91.9	16.8	52.1
2005	637,000	690	18.4	108.3	17.8	51.4
2006	636,000	808	17.1	127.0	17.3	47.9

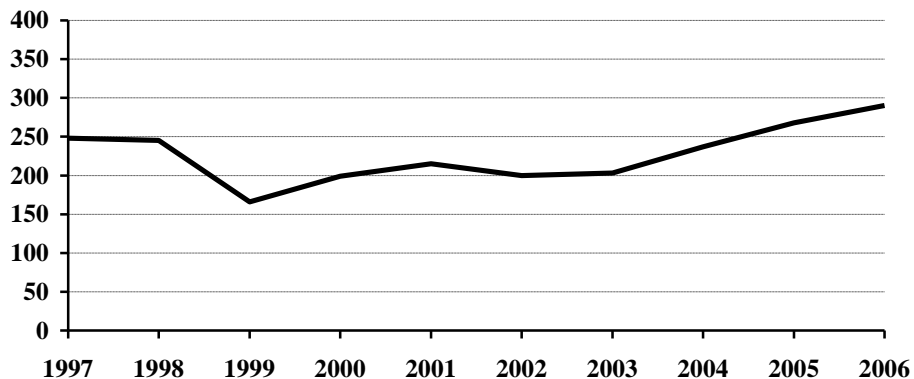
Violent Crime Totals, 1997-2006



Arrests for Violent Crimes, 1997-2006

Year	Juvenile	Adult	Age Not Reported	Total
1997	54	193	1	248
1998	68	177		245
1999	41	124	1	166
2000	27	171	1	199
2001	40	175		215
2002	46	154		200
2003	31	172		203
2004	40	197		237
2005	57	211		268
2006	41	249		290

Arrests for Violent Crimes, 1997-2006



Murder/Non-Negligent Manslaughter

The UCR program defines Murder/Non-Negligent Manslaughter as the “willful killing of one human being by another.” Not included in this category are attempts to murder, assaults to murder, suicides, accidental deaths, justifiable homicides, and deaths caused by gross negligence.

Eight murder/non-negligent manslaughter deaths were known to the North Dakota UCR program in 2006.

Six of the eight victims were adults. “Adult” is defined as a person aged 18 years or older.

Four of the victims were male.

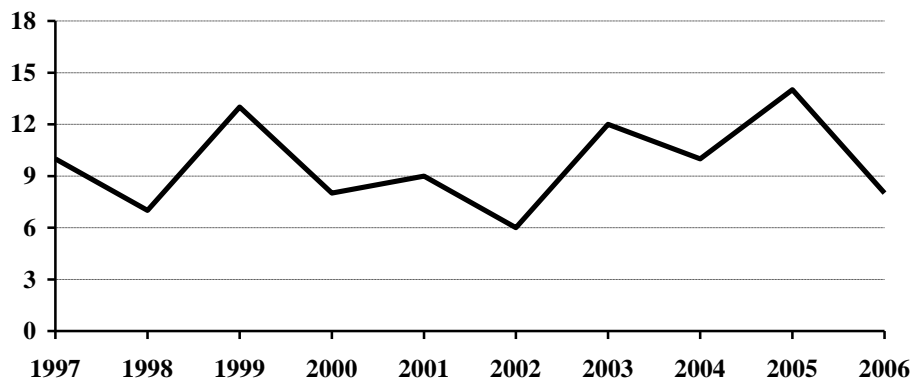
Four of the eight victims died as the result of knife wounds. (See the summary of homicide incidents and the weapons involved on page 10.)

The Office of Attorney General publishes a detailed report titled Homicide in North Dakota. The report provides an analysis of homicides for the period 1978-2006 and is available on our website at www.ag.nd.gov, under the Reports and Statistics link.

Murder/Non-Negligent Manslaughter Summary

Year	Population	Offense Total	% Change in Number from Previous Year	Rate per 100,000 Population	% Change in Rate from Previous Year	Percent Cleared
1997	641,000	10	-16.7%	1.6	-15.8%	100.0%
1998	638,000	7	-30.0	1.1	-31.3	100.0
1999	634,000	13	85.7	2.1	90.9	100.0
2000	642,200	8	-38.5	1.2	-42.9	87.5
2001	634,450	9	12.5	1.4	16.7	88.9
2002	634,110	6	-33.3	0.9	-35.7	83.3
2003	634,000	12	100.0	1.9	111.1	100.0
2004	634,500	10	-16.7	1.6	-15.8	100.0
2005	637,000	14	40.0	2.2	37.5	78.6
2006	636,000	8	-42.9	1.3	-40.9	87.5

Murder/Non-Negligent Manslaughter Totals, 1997-2006



Summary of Murder/Non-Negligent Manslaughter Incidents, 2006

Date and Location of Incident	Victims		Assailants		Weapon Used	Relationship of Victim to Assailant	Circumstances
	Age	Sex	Age	Sex			
1-21-2006 Standing Rock Reservation	57	M	34	M	Personal Weapon	Acquaintance	Victim suffered severe trauma to head and face.
2-16-2006 Mandan	NB	M	25	M	Personal Weapon	Child	Blunt force trauma to head. Domestic Violence
3-15-2006 Williams County	53	F	21	F	Knife	Mother	Argument Domestic Violence
6-3-2006 Bismarck	47	F	43	M	Knife	Wife	Domestic Violence
6-17-2006 Fargo	24	M	22	M	Handgun	Friend	Argument
9-12-2006 Valley City	22	F	34	M	Knife	Neighbor	Unknown
12-2-2006 Fargo	2	M	Unknown				Blunt Force
12-26-2006 Grand Forks	26	F	24	M	Knife	Girlfriend	Murder-Suicide Domestic Violence

Forcible Rape

The UCR program defines Forcible Rape as “the carnal knowledge of a female forcibly and against her will.” Assaults to rape, attempts to commit rape by force or threat of force are included. Carnal abuse, statutory offenses (no force -- victim under age of consent), and other sex offenses are not included.

In 2006, 195 forcible rapes were reported to local law enforcement in North Dakota. This is an increase of 8.9 percent from the 2005 total of 179 offenses. A total of 181 forcible rapes was reported in 2004.

Because the UCR definition states that victims of rape must be female, the rate of occurrence for reported rapes is calculated based only on the female population. The Census Bureau estimate of North Dakota’s population for 2006 is 636,000. The number of females is approximately half of that figure. The resulting rate for 2006 is 61.3 reported rapes per 100,000 females, compared with 56.2 rapes per 100,000 females in 2005. In 2004, the forcible rape rate was 57.1 per 100,000 females.

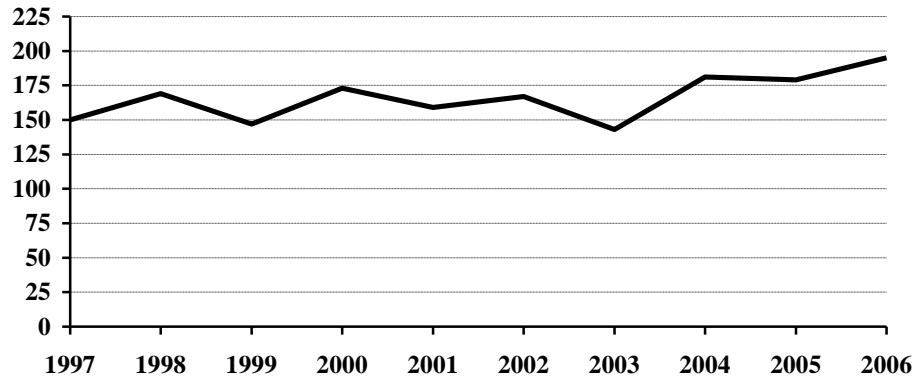
In 2006, 31.8 percent of reported rapes were cleared by arrest or exceptional means.

Forty-five arrests for forcible rape were reported in 2006. Approximately 91 percent of those arrested were adults. In 2005, 34 arrests for rape were reported.

Forcible Rape Summary

Year	Population	Offense Total	% Change in Number from Previous Year	Rate per 100,000 Females	% Change in Rate from Previous Year	Percent Cleared
1997	641,000	150	-14.3%	46.8	-13.8%	57.3%
1998	638,000	169	12.7	53.0	13.2	51.5
1999	634,000	147	-13.0	46.4	-12.5	67.3
2000	642,200	173	17.7	53.9	16.2	30.1
2001	634,450	159	-8.1	50.1	-7.1	42.1
2002	634,110	167	5.0	52.7	5.2	37.7
2003	634,000	143	-14.4	45.1	-14.4	51.7
2004	634,500	181	26.6	57.1	26.6	40.3
2005	637,000	179	-1.1	56.2	-1.6	35.8
2006	636,000	195	8.9	61.3	9.1	31.8

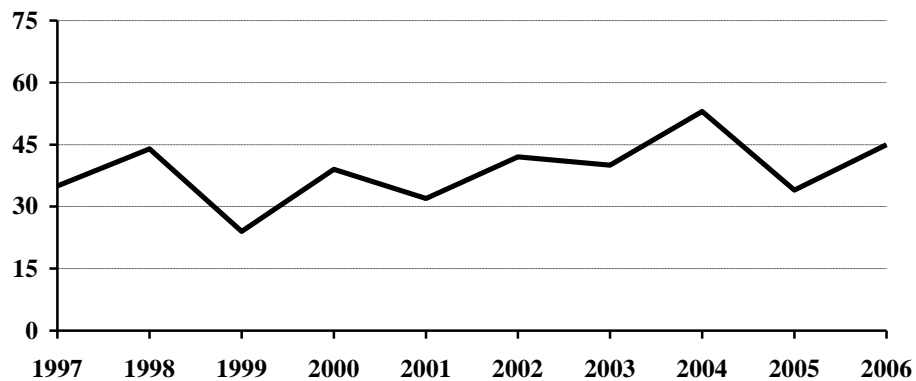
Forcible Rape Totals, 1997-2006



Arrests for Forcible Rape, 1997-2006

Year	Juvenile	Adult	Age Not Reported	Total
1997	6	29		35
1998	13	31		44
1999	6	18		24
2000	12	27		39
2001	9	23		32
2002	18	24		42
2003	11	29		40
2004	10	43		53
2005	6	28		34
2006	4	41		45

Arrests for Forcible Rape, 1997-2006



Robbery

Robbery is defined by the UCR program as “the taking or attempting to take anything of value from the care, custody, or control of a person or persons by force or threat of force or violence and/or by putting the victim in fear.”

Seventy-two robberies were reported in North Dakota in 2006, an increase of 35.8 percent from the total of 53 reported in 2005. A total of 49 robberies was reported in 2004.

The robbery rate for 2006 was 11.3 per 100,000 population, as compared with 8.3 per 100,000 population in 2005. This is a 36.1 percent increase in the robbery rate.

Approximately 36 percent of reported robberies were cleared by arrest or exceptional means.

Twenty-five arrests for robbery were reported in 2006. Eighteen of those arrested were adults.

Firearms were used in ten of the reported robberies in 2006.

More than 48 percent were strong-arm robberies where no weapon was used.

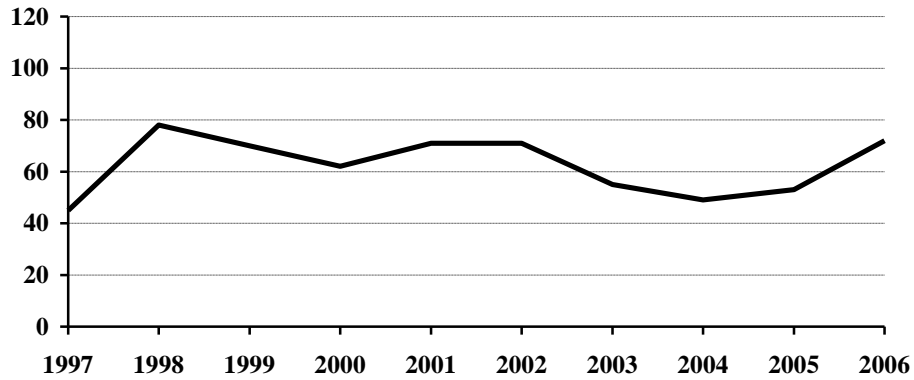
The value of property stolen in robbery incidents increased from \$16,608 in 2005 to \$62,319 in 2006.

The average robbery in 2006 involved \$866 worth of property.

Robbery Summary

Year	Population	Offense Total	% Change in Number from Previous Year	Rate per 100,000 Population	% Change in Rate from Previous Year	Percent Cleared
1997	641,000	45	-37.5%	7.0	-37.5%	64.4%
1998	638,000	78	73.3	12.2	74.3	41.0
1999	634,000	70	-10.3	11.0	-9.8	48.6
2000	642,200	62	-11.4	9.7	-11.8	24.2
2001	634,450	71	14.5	11.2	15.5	23.9
2002	634,110	71	0.0	11.2	0.0	45.1
2003	634,000	55	-22.5	8.7	-22.3	43.6
2004	634,500	49	-10.9	7.7	-11.5	26.5
2005	637,000	53	8.2	8.3	7.8	34.0
2006	636,000	72	35.8	11.3	36.1	36.1

Robbery Totals, 1997-2006



Robbery by Type of Weapon Involved, 2006

Type of Weapon	Number Reported	Percent of Total Offenses
Firearm	10	13.9%
Knife or Cutting Instrument	10	13.9
Other Dangerous Weapon	17	23.6
Hands, Fists, Feet, etc.	35	48.6
Robbery Total	72	100.0

Robbery by Place of Occurrence and Value of Property, 2006

Place of Occurrence	Number Reported	Value of Property	Average Value per Robbery
Highway	10	\$3,261	\$326.10
Commercial House	9	9,664	1,073.78
Gas or Service Station	6	2,067	344.50
Convenience Store	5	850	170.00
Residence	14	2,865	204.64
Bank	3	38,750	12,916.67
Other	25	4,862	194.48
Robbery Total	72	62,319	865.54

Arrests for Robbery, 1997-2006

Year	Juvenile	Adult	Total
1997	13	17	30
1998	8	20	28
1999	9	19	28
2000	0	15	15
2001	3	16	19
2002	9	16	25
2003	6	19	25
2004	8	7	15
2005	4	18	22
2006	7	18	25

Property Loss Due to Robbery, 1997-2006

Year	Offense Total	Property Loss	Average Loss per Robbery
1997	45	\$7,029	\$156.20
1998	78	19,393	248.63
1999	70	23,808	340.11
2000	62	12,654	204.10
2001	71	45,051	634.52
2002	71	24,711	348.04
2003	55	50,180	912.36
2004	49	19,915	406.43
2005	53	16,608	313.36
2006	72	62,319	865.54

Aggravated Assault

The UCR program defines Aggravated Assault as “an unlawful attack by one person upon another for the purpose of inflicting severe or aggravated bodily injury. This type of assault is usually accompanied by the use of a weapon or by means likely to produce death or great bodily harm. Attempts are included because it is not necessary that an injury result when a gun, knife, or other weapon is used which could and probably would result in serious personal injury if the crime were successfully completed.”

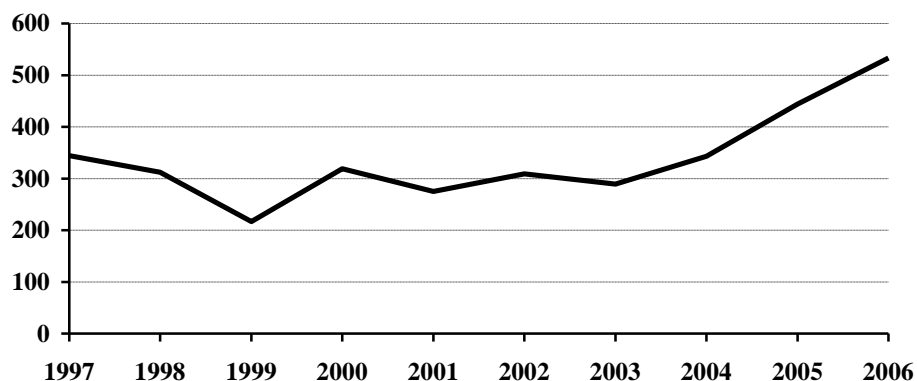
In 2006, 533 aggravated assaults were reported in North Dakota, an increase of 20 percent from the 444 aggravated assaults reported in 2005. In 2004, 343 aggravated assaults were reported.

The aggravated assault rate for North Dakota increased 20.2 percent from 69.7 per 100,000 population in 2005 to 83.8 per 100,000 population in 2006.

Aggravated Assault Summary

Year	Population	Offense Total	% Change in Number from Previous Year	Rate per 100,000 Population	% Change in Rate from Previous Year	Percent Cleared
1997	641,000	344	2.7%	53.7	3.3%	70.3%
1998	638,000	312	-9.3	48.9	-8.9	71.8
1999	634,000	217	-30.4	34.2	-30.1	71.0
2000	642,200	319	47.0	49.7	45.3	67.1
2001	634,450	275	-13.8	43.3	-12.9	60.0
2002	634,110	309	12.4	48.7	12.5	57.9
2003	634,000	289	-6.5	45.6	-6.4	60.9
2004	634,500	343	18.7	54.1	18.6	60.6
2005	637,000	444	29.4	69.7	28.8	59.0
2006	636,000	533	20.0	83.8	20.2	54.8

Aggravated Assault Totals, 1997-2006



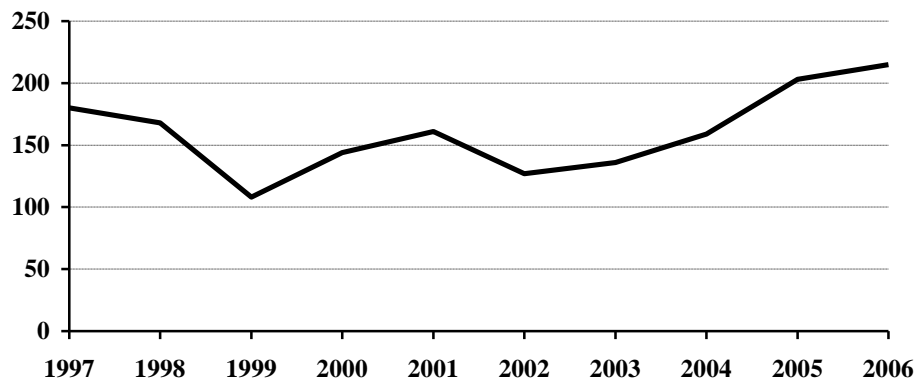
Aggravated Assault by Type of Weapon Involved, 2006

Type of Weapon	Number Reported	Percent of Total Offenses
Firearm	14	2.6%
Knife or Cutting Instrument	58	10.9
Other Dangerous Weapon	132	24.8
Hands, Fists, Feet, etc.	329	61.7
Aggravated Assault Total	533	100.0

Arrests for Aggravated Assault, 1997-2006

Year	Juvenile	Adult	Age Not Reported	Total
1997	35	144	1	180
1998	47	121		168
1999	25	82	1	108
2000	15	128	1	144
2001	28	133		161
2002	19	108		127
2003	14	122		136
2004	22	137		159
2005	47	156		203
2006	30	185		215

Arrests for Aggravated Assault, 1997-2006



Property Crime

Property crime includes the offenses of burglary, larceny/theft, and motor vehicle theft.

In 2006, the total number of property crimes reported was 12,291. This is an increase of 2 offenses from the 2005 total of 12,289.

Property crime accounted for 93.8 percent of the index offenses reported in North Dakota.

The property crime rate increased 0.2 percent from 1929.2 per 100,000 population in 2005, to 1932.5 per 100,000 in 2006.

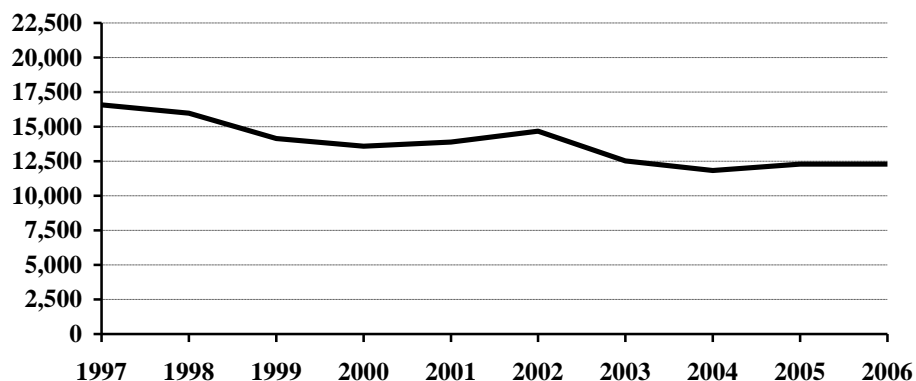
More than 19 percent of property crimes were cleared by arrest or exceptional means in 2006.

A total of 2,260 arrests were reported for property crimes. Of those, 40.7 percent were arrests of juveniles.

Property Crime Summary

Year	Population	Property Index Offenses	% Change in Number from Previous Year	Rate per 100,000 Population	% Change in Rate from Previous Year	Percent Cleared
1997	641,000	16,573	-3.0%	2585.5	-2.6%	27.7%
1998	638,000	15,971	-3.6	2503.3	-3.2	25.2
1999	634,000	14,145	-11.4	2231.1	-10.9	25.9
2000	642,200	13,588	-3.9	2115.9	-5.2	21.8
2001	634,450	13,897	2.3	2190.4	3.5	20.6
2002	634,110	14,686	5.7	2316.0	5.7	20.0
2003	634,000	12,516	-14.8	1974.1	-14.8	19.4
2004	634,500	11,830	-5.5	1864.5	-5.6	19.1
2005	637,000	12,289	3.9	1929.2	3.5	18.5
2006	636,000	12,291	0.0	1932.5	0.2	19.3

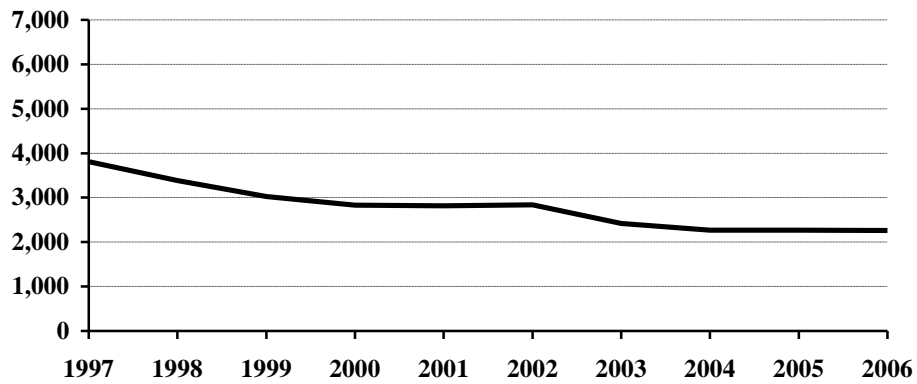
Property Crime Totals, 1997-2006



Arrests for Property Crimes, 1997-2006

Year	Juvenile	Adult	Age Not Reported	Total
1997	2,198	1,590	25	3,813
1998	1,735	1,636	12	3,383
1999	1,599	1,419	7	3,025
2000	1,572	1,246	13	2,831
2001	1,439	1,376	4	2,819
2002	1,459	1,372	10	2,841
2003	1,156	1,260	1	2,417
2004	969	1,294	5	2,268
2005	952	1,313	1	2,266
2006	919	1,339	2	2,260

Arrests for Property Crimes, 1997-2006



Burglary

The UCR program defines Burglary as the “unlawful entry of a structure to commit a felony or theft. The use of force to gain entry is not required to classify an offense as burglary.” Burglaries are classified into three categories: forcible entry, unlawful entry where no force is used, and attempted forcible entry.

In 2006, 2,302 burglaries were reported to the UCR program. This represents an increase of 17.1 percent from the total of 1,966 burglaries reported in 2005.

The rate of burglaries based on population was 361.9 per 100,000 inhabitants for 2006. This is a 17.3 percent increase from the rate of 308.6 per 100,000 population in 2005.

Approximately 15 percent of burglaries were cleared by arrest or exceptional means in 2006.

A total of 340 arrests for burglary was reported in 2006. Of these, 33.8 percent were juveniles.

The UCR program classifies burglaries by location of the incident. More than 50 percent were burglaries of residences.

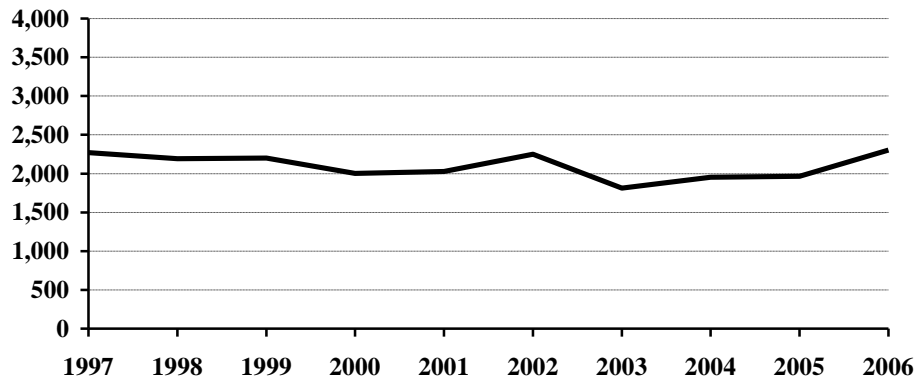
More than 45 percent of burglaries involved forcible entry.

Property loss due to burglary is substantial. More than \$2.4 million dollars worth of property was reported stolen in burglary incidents in 2006. The average burglary involved \$1,057 worth of property.

Burglary Summary

Year	Population	Offense Total	% Change in Number from Previous Year	Rate per 100,000 Population	% Change in Rate from Previous Year	Percent Cleared
1997	641,000	2,271	13.1%	354.3	13.6%	19.8%
1998	638,000	2,194	-3.4	343.9	-2.9	19.5
1999	634,000	2,200	0.3	347.0	0.9	20.8
2000	642,200	2,004	-8.9	312.1	-10.1	16.2
2001	634,450	2,027	1.1	319.5	2.4	15.1
2002	634,110	2,250	11.0	354.8	11.0	14.0
2003	634,000	1,814	-19.4	286.1	-19.4	13.8
2004	634,500	1,954	7.7	308.0	7.7	11.2
2005	637,000	1,966	0.6	308.6	0.2	11.6
2006	636,000	2,302	17.1	361.9	17.3	15.2

Burglary Totals, 1997-2006



Burglary by Type of Entry, 2006

Type of Entry	Number Reported	Percent of Total Offenses
Forcible Entry	1,046	45.4%
Unlawful Entry - No Force	1,102	47.9
Attempted Forcible Entry	154	6.7
Burglary Total	2,302	100.0

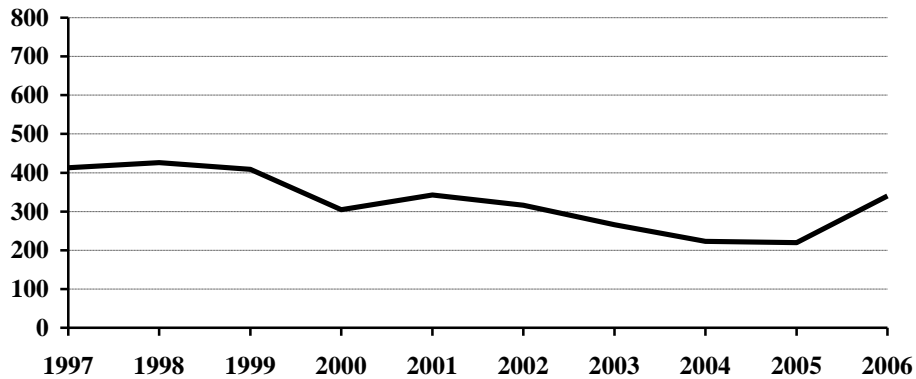
Burglary by Location and Value of Property, 2006

Location	Number Reported	Value of Property	Average Value per Burglary
Residence	1,163	\$1,039,460	\$893.77
Non-Residence	1,139	1,392,845	1,222.87
Burglary Total	2,302	2,432,305	1,056.61

Arrests for Burglary, 1997-2006

Year	Juvenile	Adult	Age Not Reported	Total
1997	222	185	6	413
1998	201	220	5	426
1999	202	205	2	409
2000	134	166	5	305
2001	175	166	2	343
2002	166	144	6	316
2003	118	148		266
2004	99	119	5	223
2005	55	165		220
2006	115	224	1	340

Arrests for Burglary, 1997-2006



Property Loss Due to Burglary, 1997-2006

Year	Offense Total	Property Loss	Average Loss per Burglary
1997	2,271	\$2,114,489	\$931.08
1998	2,194	1,630,902	743.35
1999	2,200	1,853,763	842.62
2000	2,004	1,781,810	889.13
2001	2,027	1,572,709	775.88
2002	2,250	2,082,601	925.60
2003	1,814	1,562,749	861.49
2004	1,954	2,207,247	1,129.60
2005	1,966	2,057,935	1,046.76
2006	2,302	2,432,305	1,056.61

Larceny/Theft

The UCR program defines Larceny/Theft as the “unlawful taking, carrying, leading, or riding away of property from the possession or constructive possession of another. It includes crimes such as shoplifting, pocket-picking, purse-snatching, thefts from motor vehicles, thefts of motor vehicle parts and accessories, bicycle thefts, etc., in which no use of force, violence or fraud occurs. In the Uniform Crime Reporting program, this crime category does not include embezzlement, confidence games, forgery, and worthless checks. Motor vehicle theft is also excluded from this category inasmuch as it is a separate crime index offense.”

A total of 9,012 larceny/theft offenses was reported in North Dakota in 2006. This is a 3 percent decrease from the 2005 total of 9,293.

The larceny/theft rate per 100,000 population was 1417.0 compared with 1458.9 in 2005, a 2.9 percent decrease in the rate.

Nearly 20 percent of larceny/theft offenses were cleared by arrest or exceptional means in 2006.

The number of arrests for this offense decreased from 1,830 in 2005 to 1,700 in 2006. Approximately 41 percent of those arrested for larceny/theft in 2006 were juveniles.

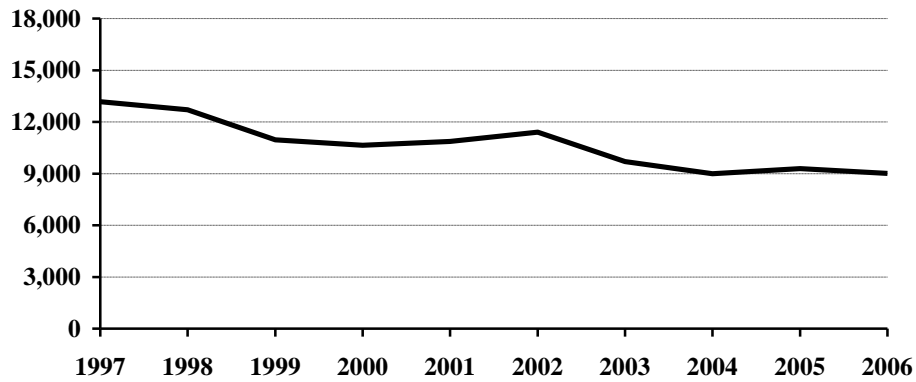
More than \$5.4 million dollars worth of property was reported stolen as the result of larceny/theft offenses in the state. The average dollar value per offense is \$602.

Larceny/theft accounted for 68.8 percent of the total index offenses reported and amounted to more than 43 percent of the total value of stolen property.

Larceny/Theft Summary

Year	Population	Offense Total	% Change in Number from Previous Year	Rate per 100,000 Population	% Change in Rate from Previous Year	Percent Cleared
1997	641,000	13,163	-5.3%	2053.5	-4.8%	28.3%
1998	638,000	12,704	-3.5	1991.2	-3.0	25.4
1999	634,000	10,956	-13.8	1728.1	-13.2	25.9
2000	642,200	10,642	-2.9	1657.1	-4.1	22.0
2001	634,450	10,870	2.1	1713.3	3.4	20.9
2002	634,110	11,399	4.9	1797.6	4.9	20.4
2003	634,000	9,700	-14.9	1530.0	-14.9	19.8
2004	634,500	8,984	-7.4	1415.9	-7.5	20.6
2005	637,000	9,293	3.4	1458.9	3.0	19.3
2006	636,000	9,012	-3.0	1417.0	-2.9	19.8

Larceny/Theft Totals, 1997-2006



Monetary Value of Larceny/Theft, 2006

Value of Larceny/Theft	Number Reported	Percent of Total Offenses
Under \$50	2,794	31.0%
\$50 to \$200	2,611	29.0
Over \$200	3,607	40.0
Larceny/Theft Total	9,012	100.0

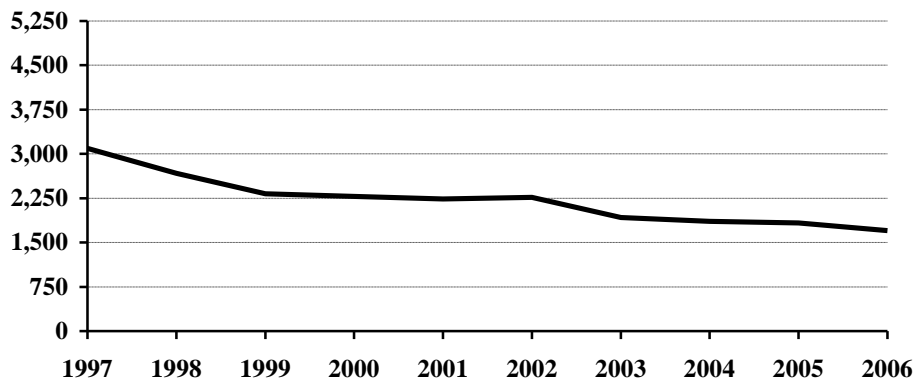
Larceny/Theft by Type and Value, 2006

Type of Larceny/Theft	Number Reported	Value of Property	Average Value per Larceny/Theft
From Motor Vehicle	2,090	\$961,608	\$460.10
From Building	1,107	689,465	622.82
Shoplifting	1,071	129,504	120.92
Bicycles	811	159,845	197.10
Motor Vehicle Parts, Accessories	486	212,886	438.04
From Coin-Operated Machine	45	15,571	346.02
Pocket Picking	29	4,308	148.55
Purse Snatching	13	2,391	183.92
All Other	3,360	3,249,842	967.21
Larceny/Theft Total	9,012	5,425,420	602.02

Arrests for Larceny/Theft, 1997-2006

Year	Juvenile	Adult	Age Not Reported	Total
1997	1,771	1,306	16	3,093
1998	1,372	1,292	7	2,671
1999	1,212	1,110	5	2,327
2000	1,285	987	7	2,279
2001	1,134	1,102	2	2,238
2002	1,147	1,114	3	2,264
2003	919	1,004	1	1,924
2004	792	1,064		1,856
2005	794	1,035	1	1,830
2006	699	1,000	1	1,700

Arrests for Larceny/Theft, 1997-2006



Property Loss Due to Larceny/Theft, 1997-2006

Year	Offense Total	Property Loss	Average Loss per Larceny/Theft
1997	13,163	\$5,680,026	\$431.51
1998	12,704	5,858,913	461.19
1999	10,956	5,690,080	519.36
2000	10,642	4,627,836	434.87
2001	10,870	5,432,250	499.75
2002	11,399	5,701,494	500.17
2003	9,700	5,207,256	536.83
2004	8,984	4,931,853	548.96
2005	9,293	5,191,397	558.64
2006	9,012	5,425,420	602.02

Motor Vehicle Theft

Motor Vehicle Theft is defined by the UCR program as “the theft or attempted theft of a motor vehicle; the offense category includes the stealing of automobiles, trucks, buses, motorcycles, motor scooters, snowmobiles, etc. The definition excludes the taking of a motor vehicle for temporary use by those persons having lawful access.”

A total of 977 motor vehicle thefts was reported in 2006. This is a decrease of 5.1 percent from the 2005 total of 1,030.

Based on a Census Bureau population estimate of 636,000 for North Dakota, the resulting motor vehicle theft rate is 153.6 per 100,000 population.

More than 23 percent of reported motor vehicle thefts were cleared by arrest or exceptional means in 2006.

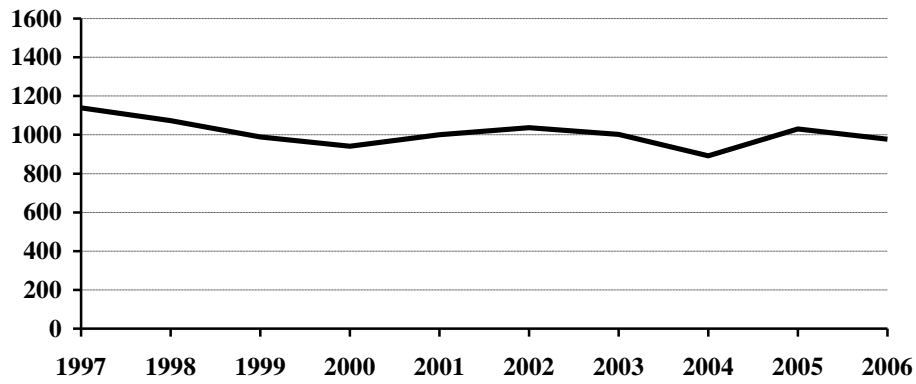
The number of arrests for motor vehicle theft increased from 216 in 2005 to 220 in 2006.

The average value per motor vehicle theft was approximately \$4,632.

Motor Vehicle Theft Summary

Year	Population	Offense Total	% Change in Number from Previous Year	Rate per 100,000 Population	% Change in Rate from Previous Year	Percent Cleared
1997	641,000	1,139	-3.6%	177.7	-3.2%	37.1%
1998	638,000	1,073	-5.8	168.2	-5.3	35.3
1999	634,000	989	-7.8	156.0	-7.3	37.0
2000	642,200	942	-4.8	146.7	-6.0	30.9
2001	634,450	1,000	6.2	157.6	7.4	27.8
2002	634,110	1,037	3.7	163.5	3.7	29.0
2003	634,000	1,002	-3.4	158.0	-3.4	25.2
2004	634,500	892	-11.0	140.6	-11.0	22.2
2005	637,000	1,030	15.5	161.7	15.0	23.5
2006	636,000	977	-5.1	153.6	-5.0	23.7

Motor Vehicle Theft Totals, 1997-2006



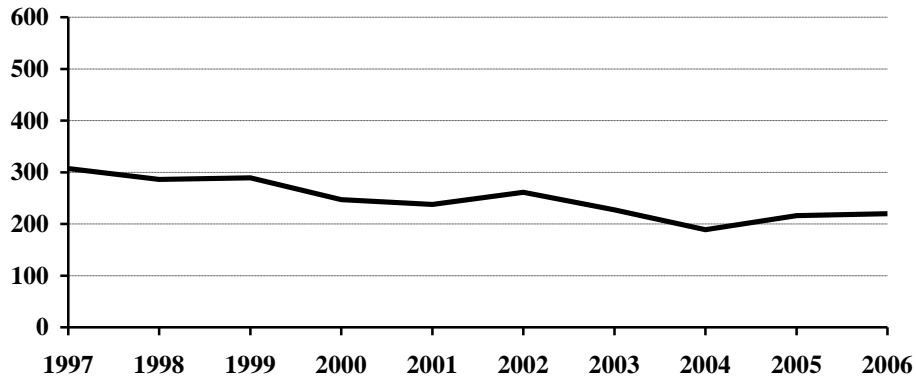
Type of Vehicle Stolen, 2006

Type of Vehicle	Number Reported	Percent of Total Offenses
Automobiles	776	79.4%
Trucks and Buses	87	8.9
Other Vehicles	114	11.7
Motor Vehicle Theft Total	977	100.0

Arrests for Motor Vehicle Theft, 1997-2006

Year	Juvenile	Adult	Age Not Reported	Total
1997	205	99	3	307
1998	162	124		286
1999	185	104		289
2000	153	93	1	247
2001	130	108		238
2002	146	114	1	261
2003	119	108		227
2004	78	111		189
2005	103	113		216
2006	105	115		220

Arrests for Motor Vehicle Theft, 1997-2006



Property Loss Due to Motor Vehicle Theft, 1997-2006

Year	Offense Total	Property Loss	Average Loss per Offense
1997	1,139	\$4,706,068	\$4,131.75
1998	1,073	3,909,583	3,643.60
1999	989	3,633,353	3,673.76
2000	942	3,886,274	4,125.56
2001	1,000	4,414,621	4,414.62
2002	1,037	4,647,821	4,481.99
2003	1,002	4,637,043	4,627.79
2004	892	4,238,662	4,751.86
2005	1,030	5,124,789	4,975.52
2006	977	4,525,628	4,632.17

Crime Index Offenses by Reporting Jurisdiction

The rate per 100,000 population is shown immediately below the actual number of crime index offenses reported by each jurisdiction. A county total is also shown for each of those counties that have more than one reporting jurisdiction within its geographic boundaries. The rate is reported per 100,000 for easy comparison to national publications.

Number and Rate of Index Offenses, 2006

County	Reporting Jurisdiction	Population	Murder/ Non-Negligent Manslaughter	Forcible Rape	Robbery	Aggravated Assault	Burglary	Larceny/ Theft	Motor Vehicle Theft	Total Index Offenses
Adams	County SO					2		10	1	13
		2,430				82.3		411.5	41.2	535.0
Barnes	County SO					2	11	15	2	30
		4,630				43.2	237.6	324.0	43.2	647.9
	Valley City PD		1		1	4	10	76	5	97
		6,431	15.5		15.5	62.2	155.5	1181.8	77.7	1508.3
	County Total		1		1	6	21	91	7	127
		11,061	9.0		9.0	54.2	189.9	822.7	63.3	1148.2
Benson	County SO	6,990	DID NOT REPORT IN 2006							
Billings	County SO	812	DID NOT REPORT IN 2006							
Bottineau	County SO			2			29	47	5	83
		6,732		29.7			430.8	698.2	74.3	1232.9
Bowman	County SO							1		1
		1,533						65.2		65.2
	Bowman PD	1,511	DID NOT REPORT IN 2006							
Burke	County SO						13	17	2	32
		2,029					640.7	837.9	98.6	1577.1
Burleigh	County SO			2		9	47	84	15	157
		14,126		14.2		63.7	332.7	594.6	106.2	1111.4
	Bismarck PD		1	16	10	112	259	1257	94	1749
		57,304	1.7	27.9	17.5	195.4	452.0	2193.6	164.0	3052.1
	Lincoln PD			1			2	9		12
	2,294		43.6			87.2	392.3		523.1	
	County Total		1	19	10	121	308	1350	109	1918
		73,724	1.4	25.8	13.6	164.1	417.8	1831.2	147.8	2601.6
Cass	County SO			8	2	14	44	111	24	203
		20,574		38.9	9.7	68.0	213.9	539.5	116.7	986.7
	Fargo PD*		2	73	19	141	545	2043	226	3049
		90,951	2.2	80.3	20.9	155.0	599.2	2246.3	248.5	3352.4
	West Fargo PD			3	1	12	74	275	27	392
	19,462		15.4	5.1	61.7	380.2	1413.0	138.7	2014.2	
	County Total		2	84	22	167	663	2429	277	3644
		130,987	1.5	64.1	16.8	127.5	506.2	1854.4	211.5	2782.0
Cavalier	County SO					4	4	37	5	50
		4,324				92.5	92.5	855.7	115.6	1156.3
Dickey	County SO						4	32		36
		3,634					110.1	880.6		990.6
	Oakes PD	1,846	DID NOT REPORT IN 2006							
Divide	County SO	1,130	DID NOT REPORT IN 2006							
	Crosby PD	1,016	DID NOT REPORT IN 2006							
Dunn	County SO									0
		3,438								0.0
Eddy	County SO			1	4		4	19	7	35
		2,623		38.1	152.5		152.5	724.4	266.9	1334.3

* Includes 118 index offenses reported by the NDSU PD

County	Reporting Jurisdiction	Population	Murder/ Non-Negligent Manslaughter	Forcible Rape	Robbery	Aggravated Assault	Burglary	Larceny/ Theft	Motor Vehicle Theft	Total Index Offenses
Emmons	County SO	2,683				1 37.3	12 447.3	22 820.0		35 1304.5
	Linton PD	1,157	DID NOT REPORT IN 2006							
Foster	County SO	1,430					1 69.9	1 69.9		2 139.9
	Carrington PD	2,145				1 46.6	1 46.6	6 279.7	2 93.2	10 466.2
	County Total	3,575				1 28.0	2 55.9	7 195.8	2 55.9	12 335.7
Golden Valley	County SO	1,737	DID NOT REPORT IN 2006							
Grand Forks	County SO	11,968		2 16.7		6 50.1	29 242.3	69 576.5	19 158.8	125 1044.5
	Emerado PD	482				4 829.9	7 1452.3	12 2489.6	2 414.9	25 5186.7
	Grand Forks PD*	50,239	1 2.0	20 39.8	15 29.9	60 119.4	303 603.1	1525 3035.5	153 304.5	2077 4134.2
	Larimore PD	1,323	DID NOT REPORT IN 2006							
	Northwood PD	883					2 226.5	10 1132.5	1 113.3	13 1472.3
	Thompson PD	961					2 208.1	1 104.1		3 312.2
	Reporting Agency Total	64,533	1 1.5	22 34.1	15 23.2	70 108.5	343 531.5	1617 2505.7	175 271.2	2243 3475.7
Grant	County SO	2,612						5 191.4		5 191.4
Griggs	County SO	2,494		1 40.1			1 40.1	2 80.2		4 160.4
Hettinger	County SO	2,483				1 40.3	2 80.5	4 161.1	2 80.5	9 362.5
Kidder	County SO	1,785		1 56.0			2 112.0	1 56.0	1 56.0	5 280.1
	Steele PD	693					3 432.9	9 1298.7		12 1731.6
	County Total	2,478		1 40.4			5 201.8	10 403.6	1 40.4	16 686.0
LaMoure	County SO	4,378					9 205.6	2 45.7		11 251.3
Logan	County SO	1,307						3 229.5	1 76.5	4 306.0
	Napoleon PD	749	DID NOT REPORT IN 2006							
McHenry	County SO	5,504				1 18.2	16 290.7	23 417.9	4 72.7	44 799.4
McIntosh	County SO	2,010	DID NOT REPORT IN 2006							
	Wishek PD	999	DID NOT REPORT IN 2006							
McKenzie	County SO	4,232				2 47.3	7 165.4	32 756.1	6 141.8	47 1110.6
	Watford City PD	1,355				1 73.8	1 73.8	5 369.0	3 221.4	10 738.0
	County Total	5,587				3 53.7	8 143.2	37 662.3	9 161.1	57 1020.2
McLean	County SO	8,593					13 151.3	58 675.0	9 104.7	80 931.0
Mercer	County SO	2,968		3 101.1			6 202.2	8 269.5	2 67.4	19 640.2
	Beulah PD	3,032		1 33.0		1 33.0	4 131.9	18 593.7	3 98.9	27 890.5
	Hazen PD	2,353	DID NOT REPORT IN 2006							
	Reporting Agency Total	6,000		4 66.7		1 16.7	10 166.7	26 433.3	5 83.3	46 766.7

* Includes 166 index offenses reported by UND PD.

County	Reporting Jurisdiction	Population	Murder/ Non-Negligent Manslaughter	Forcible Rape	Robbery	Aggravated Assault	Burglary	Larceny/ Theft	Motor Vehicle Theft	Total Index Offenses
Morton	County SO	8,293		3 36.2		4 48.2	17 205.0	45 542.6	7 84.4	76 916.4
	Mandan PD	17,203	1 5.8	8 46.5	1 5.8	24 139.5	90 523.2	309 1796.2	22 127.9	455 2644.9
	County Total	25,496	1 3.9	11 43.1	1 3.9	28 109.8	107 419.7	354 1388.5	29 113.7	531 2082.7
Mountrail	County SO	6,505					8 123.0	26 399.7	8 123.0	42 645.7
Nelson	County SO	3,420				1 29.2	12 350.9	26 760.2	4 117.0	43 1257.3
Oliver	County SO	1,811						3 165.7		3 165.7
Pembina	County SO	6,587				1 15.2	9 136.6	15 227.7		25 379.5
	Cavalier PD	1,441				1 69.4	4 277.6	15 1040.9		20 1387.9
	County Total	8,028				2 24.9	13 161.9	30 373.7		45 560.5
Pierce	County SO	1,601						6 374.8		6 374.8
	Rugby PD	2,685					3 111.7	27 1005.6	2 74.5	32 1191.8
	County Total	4,286					3 70.0	33 769.9	2 46.7	38 886.6
Ramsey	County SO	4,607				1 21.7	12 260.5	20 434.1	4 86.8	37 803.1
	Devils Lake PD	6,807		1 14.7	2 29.4	16 235.1	40 587.6	278 4084.0	17 249.7	354 5200.5
	County Total	11,414		1 8.8	2 17.5	17 148.9	52 455.6	298 2610.8	21 184.0	391 3425.6
Ransom	County SO	3,569				2 56.0	6 168.1	5 140.1	6 168.1	19 532.4
	Lisbon PD	2,234	DID NOT REPORT IN 2006							
Renville	County SO	2,419					1 41.3	11 454.7	1 41.3	13 537.4
Richland	County SO	9,108		1 11.0		2 22.0	39 428.2	62 680.7	8 87.8	112 1229.7
	Wahpeton PD*	8,210		1 12.2	1 12.2	11 134.0	22 268.0	175 2131.5	16 194.9	226 2752.7
	County Total	17,318		2 11.5	1 5.8	13 75.1	61 352.2	237 1368.5	24 138.6	338 1951.7
Rolette	County SO	12,406		1 8.1		4 32.2	15 120.9	10 80.6		30 241.8
	Rolla PD	1,440				1 69.4	11 763.9	92 6388.9	7 486.1	111 7708.3
	County Total	13,846		1 7.2		5 36.1	26 187.8	102 736.7	7 50.6	141 1018.3
Sargent	County SO	4,145		1 24.1			4 96.5	16 386.0	2 48.3	23 554.9
Sheridan	County SO	1,428				2 140.1	5 350.1	23 1610.6	1 64.9	31 2170.9
Sioux	County SO	4,177	DID NOT REPORT IN 2006							
Slope	County SO	708	DID NOT REPORT IN 2006							
Stark	County SO	6,399				2 31.3	3 46.9	32 500.1	5 78.1	42 656.4
	Dickinson PD	15,646		1 6.4	2 12.8	4 25.6	97 620.0	436 2786.7	38 242.9	578 3694.2
	County Total	22,045		1 4.5	2 9.1	6 27.2	100 453.6	468 2122.9	43 195.1	620 2812.4
Steele	County SO	2,004	DID NOT REPORT IN 2006							

* Includes 36 index offenses reported by NDSCS PD.

County	Reporting Jurisdiction	Population	Murder/ Non-Negligent Manslaughter	Forcible Rape	Robbery	Aggravated Assault	Burglary	Larceny/ Theft	Motor Vehicle Theft	Total Index Offenses
Stutsman	County SO	6,001		1 16.7		3 50.0	34 566.6	19 316.6	8 133.3	65 1083.2
	Jamestown PD	14,807		12 81.0	3 20.3	17 114.8	85 574.1	228 1539.8	12 81.0	357 2411.0
	County Total	20,808		13 62.5	3 14.4	20 96.1	119 571.9	247 1187.0	20 96.1	422 2028.1
Towner	County SO	2,541					8 314.8	10 393.5		18 708.4
Traill	County SO	4,277		2 46.8			10 233.8	10 233.8	6 140.3	28 654.7
	Mayville PD	1,929		1 51.8			4 207.4	18 933.1	1 51.8	24 1244.2
	Portland PD	577							1 173.3	1 173.3
	Hillsboro PD	1,527					9 589.4	19 1244.3	3 196.5	31 2030.1
	County Total	8,310		3 36.1			23 276.8	47 565.6	11 132.4	84 1010.8
Walsh	County SO	7,349		1 13.6		2 27.2	29 394.6	93 1265.5	25 340.2	150 2041.1
	Grafton PD	4,243		2 47.1		4 94.3	18 424.2	97 2286.1	8 188.5	129 3040.3
	County Total	11,592		3 25.9		6 51.8	47 405.5	190 1639.1	33 284.7	279 2406.8
Ward	County SO	20,757		2 9.6	1 4.8	10 48.2	49 236.1	106 510.7	13 62.6	181 872.0
	Minot PD	34,939		16 45.8	9 25.8	33 94.5	141 403.6	698 1997.8	87 249.0	984 2816.3
	County Total	55,696		18 32.3	10 18.0	43 77.2	190 341.1	804 1443.6	100 179.5	1165 2091.7
Wells	County SO	2,265					14 618.1	14 618.1	1 44.2	29 1280.4
	Harvey PD	1,757				1 56.9	5 284.6	26 1479.8		32 1821.3
	Fessenden PD	546					2 366.3	1 183.2		3 549.5
	County Total	4,568				1 21.9	21 459.7	41 897.5	1 21.9	64 1401.1
Williams	County SO	7,080	1 14.1	1 14.1		2 28.2	13 183.6	57 805.1	16 226.0	90 1271.2
	Williston PD	12,177		6 49.3	1 8.2	7 57.5	25 205.3	122 1001.9	25 205.3	186 1527.5
	County Total	19,257	1 5.2	7 36.4	1 5.2	9 46.7	38 197.3	179 929.5	41 212.9	276 1433.2

ARREST ANALYSIS

Arrests in 2006

Although primarily an indication of law enforcement activity, the number of arrests reported does provide a limited profile of the perpetrators of crime, especially for those crimes that have high clearance rates. Differing arrest practices, policies, and enforcement emphases among agencies influence the volume of arrests for various offenses, particularly those against public order such as vagrancy, disorderly conduct, and related violations. However, arrests for serious crimes, e.g., robbery or burglary, are more likely to be uniform throughout all jurisdictions across the state.

The UCR program requires that an arrest be counted for each separate occasion an individual is taken into custody. Although several charges may be lodged against a person at the time of the arrest, only one arrest is counted for each time the person is taken into custody.

North Dakota law enforcement agencies reported 32,343 arrests in 2006. A total of 31,835 arrests was reported in 2005.

In 2006, more than 20 percent of total arrests were arrests of juveniles.

Approximately 72 percent of the total were arrests of males.

Arrests for the crime index offenses of murder/non-negligent manslaughter, forcible rape, robbery, aggravated assault, burglary, larceny/theft and motor vehicle theft comprised 7.9 percent of the total reported arrests. Of the 2,550 reported arrests for crime index offenses, 37.7 percent were arrests of juveniles.

The total of 13,001 reported arrests for DUI and liquor law violations represents 40.2 percent of the total arrests reported in the state of North Dakota in 2006. Arrests for DUI increased from 5,946 in 2005 to 6,488 in 2006. Liquor law violation arrests increased 9.6 percent from 5,940 in 2005 to 6,513 reported in 2006.

Eighty percent of total arrests were white; nearly 16 percent were Native American.

These statistics are provided by local law enforcement agencies that contribute to the North Dakota UCR program. No arrest figures for reservations in the state are included in these totals. Tribal law enforcement agencies do not participate in the state UCR program.

Total Arrests Reported, 2006

Offense Classification	Number Reported	Percent of Total Arrests
Murder/Non-Negligent Manslaughter	5	*
Negligent Manslaughter	5	*
Forcible Rape	45	0.1%
Robbery	25	0.1
Aggravated Assault	215	0.7
Burglary	340	1.1
Larceny/Theft	1,700	5.3
Motor Vehicle Theft	220	0.7
Other Assaults	1,989	6.1
Arson	30	0.1
Forgery and Counterfeiting	159	0.5
Fraud	1,243	3.8
Embezzlement	24	0.1
Stolen Property Offenses	124	0.4
Vandalism	657	2.0
Weapons Offenses	215	0.7
Prostitution	2	*
Other Sex Offenses	82	0.3
Drug Abuse Violations	2,256	7.0
Gambling		
Offenses Against Family and Children	199	0.6
Driving Under the Influence	6,488	20.1
Liquor Law Violations	6,513	20.1
Disorderly Conduct	1,753	5.4
Vagrancy		
All Other Offenses	7,160	22.1
Suspicion		
Curfew and Loitering	224	0.7
Runaways	670	2.1
Arrest Total	32,343	100.0

* Less than 0.1 percent of total arrests.

Comparison of Reported Arrests, 2005-2006

Offense Classification	2005	2006	Percent Change
Murder/Non-Negligent Manslaughter	9	5	-44.4%
Negligent Manslaughter	3	5	66.7
Forcible Rape	34	45	32.4
Robbery	22	25	13.6
Aggravated Assault	203	215	5.9
Burglary	220	340	54.5
Larceny/Theft	1,830	1,700	-7.1
Motor Vehicle Theft	216	220	1.9
Other Assaults	2,015	1,989	-1.3
Arson	15	30	100.0
Forgery and Counterfeiting	161	159	-1.2
Fraud	1,201	1,243	3.5
Embezzlement	15	24	60.0
Stolen Property Offenses	137	124	-9.5
Vandalism	572	657	14.9
Weapons Offenses	271	215	-20.7
Prostitution	1	2	100.0
Other Sex Offenses	82	82	0.0
Drug Abuse Violations	2,343	2,256	-3.7
Gambling	4	0	-100.0
Offenses Against Family and Children	243	199	-18.1
Driving Under the Influence	5,946	6,488	9.1
Liquor Law Violations	5,940	6,513	9.6
Disorderly Conduct	1,657	1,753	5.8
Vagrancy	0	0	
All Other Offenses	7,686	7,160	-6.8
Suspicion	0	0	
Curfew and Loitering	301	224	-25.6
Runaways	708	670	-5.4
Arrest Total	31,835	32,343	1.6

Juvenile and Adult Arrests, 2006

Offense Classification	Juvenile	Adult	Age Not Reported	Total
Murder/Non-Negligent Manslaughter		5		5
Negligent Manslaughter	1	4		5
Forcible Rape	4	41		45
Robbery	7	18		25
Aggravated Assault	30	185		215
Burglary	115	224	1	340
Larceny/Theft	699	1,000	1	1,700
Motor Vehicle Theft	105	115		220
Other Assaults	474	1,513	2	1,989
Arson	15	15		30
Forgery and Counterfeiting	9	149	1	159
Fraud	29	1,211	3	1,243
Embezzlement	4	20		24
Stolen Property Offenses	46	78		124
Vandalism	362	293	2	657
Weapons Offenses	43	172		215
Prostitution		2		2
Other Sex Offenses	20	62		82
Drug Abuse Violations	264	1,983	9	2,256
Gambling				
Offenses Against Family and Children	107	91	1	199
Driving Under the Influence	100	6,384	4	6,488
Liquor Law Violations	1,469	5,038	6	6,513
Disorderly Conduct	714	1,035	4	1,753
Vagrancy				
All Other Offenses	1,192	5,963	5	7,160
Suspicion				
Curfew and Loitering	224			224
Runaways	670			670
Arrest Total	6,703	25,601	39	32,343

Arrests by Gender, 2006

Offense Classification	Male	Female	Total
Murder/Non-Negligent Manslaughter	4	1	5
Negligent Manslaughter	4	1	5
Forcible Rape	44	1	45
Robbery	23	2	25
Aggravated Assault	181	34	215
Burglary	301	39	340
Larceny/Theft	1,083	617	1,700
Motor Vehicle Theft	168	52	220
Other Assaults	1,445	544	1,989
Arson	24	6	30
Forgery and Counterfeiting	74	85	159
Fraud	731	512	1,243
Embezzlement	10	14	24
Stolen Property Offenses	94	30	124
Vandalism	579	78	657
Weapons Offenses	201	14	215
Prostitution		2	2
Other Sex Offenses	80	2	82
Drug Abuse Violations	1,762	494	2,256
Gambling			
Offenses Against Family and Children	116	83	199
Driving Under the Influence	4,956	1,532	6,488
Liquor Law Violations	4,267	2,246	6,513
Disorderly Conduct	1,358	395	1,753
Vagrancy			
All Other Offenses	5,266	1,894	7,160
Suspicion			
Curfew and Loitering	127	97	224
Runaways	283	387	670
Arrest Total	23,181	9,162	32,343

Arrests by Race, 2006

Offense Classification	White	Black	Native American	Asian	Total
Murder/Non-Negligent Manslaughter	3	2			5
Negligent Manslaughter	5				5
Forcible Rape	29	7	9		45
Robbery	16	4	5		25
Aggravated Assault	124	22	69		215
Burglary	240	24	73	3	340
Larceny/Theft	1,242	75	373	10	1,700
Motor Vehicle Theft	162	7	50	1	220
Other Assaults	1,416	161	412		1,989
Arson	22	1	2	5	30
Forgery and Counterfeiting	117	11	30	1	159
Fraud	1,107	54	80	2	1,243
Embezzlement	22	1	1		24
Stolen Property Offenses	86	11	27		124
Vandalism	537	23	95	2	657
Weapons Offenses	179	9	27		215
Prostitution	2				2
Other Sex Offenses	59	8	15		82
Drug Abuse Violations	1,785	105	351	15	2,256
Gambling					
Offenses Against Family and Children	165	14	19	1	199
Driving Under the Influence	5,649	114	713	12	6,488
Liquor Law Violations	5,545	115	835	18	6,513
Disorderly Conduct	1,275	83	393	2	1,753
Vagrancy					
All Other Offenses	5,406	352	1,384	18	7,160
Suspicion					
Curfew and Loitering	176	4	44		224
Runaways	500	25	136	9	670
Arrest Total	25,869	1,232	5,143	99	32,343

Arrest Analysis by Reporting Jurisdiction

The table below contains arrest totals for each reporting agency in 2006. Juvenile and adult arrests as well as arrests reported without age information are included.

Arrests by Reporting Jurisdiction, 2006

Agency	Murder/Non-Neg. Mansl.	Negligent Manslaughter	Forcible Rape	Robbery	Aggravated Assault	Burglary	Larceny/Theft	Motor Vehicle Theft	Other Assault	Arson	Forgery/Counterfeiting	Fraud	Embezzlement	Stolen Property Offenses	Vandalism	Weapons Offenses	Prostitution	Other Sex Offenses	Drug Abuse Violations	Gambling Violations	Off. Against Fam & Children	DUI	Liquor Law Violations	Disorderly Conduct	Vagrancy	All Other Offenses	Suspicion	Curfew/Loitering	Runaway	Total
Adams SO					2				6									2	1			8	6			1				26
Barnes SO						1	1		3						2				1			17	16	1		2				44
Valley City PD	1				2	1	20		15					3	7	1			20			74	98	9		22		1	2	276
Benson SO	DID NOT REPORT IN 2006																													
Billings SO	DID NOT REPORT IN 2006																													
Bottineau SO						7	1		2						1				12			36	70			15				144
Bowman SO																										1				1
Bowman PD	DID NOT REPORT IN 2006																													
Burke SO						1						1							18			1	1			10				32
Burleigh SO		1		7	3	16	5	30		3	181		1	15	7			1	76		2	164	176	18		116			9	831
Bismarck PD	1	6	5	35	35	349	26	365	8	39	53	19	33	164	28			17	271		5	543	661	391		622		66	128	3870
Lincoln PD		1							1												2	5		1		2				12
Cass SO		1		1	2	3	5	19					1	1					24		25	78	81	1		27			4	273
Fargo PD	1		12	6	55	70	405	34	424	2	40	116		38	78	17	2	8	350		73	1027	1067	275		831			162	5093
West Fargo PD			1		5	5	24	8	97	1	1	3		2	16	4		2	81		5	175	144	41		116		27	32	790
NDSU PD									1										4			39	145	5		8				202
Cavalier SO					3		11	3	1					1					2		1	2	8	1						33
Dickey SO							2		4			40				2		1	1		2	11	7							70
Oakes PD	DID NOT REPORT IN 2006																													
Divide SO	DID NOT REPORT IN 2006																													
Crosby PD	DID NOT REPORT IN 2006																													
Dunn SO																						19								19
Eddy SO							5	3														23	4	1		6				42
Emmons SO					1	16	7		1			6			1				2		1	4	32			16			1	88
Linton PD	DID NOT REPORT IN 2006																													
Foster SO						1	1																							2
Carrington PD					1		2		1						1							15	13	1		2				36
Golden Valley SO	DID NOT REPORT IN 2006																													
Grand Forks SO					3	2	12	1	18		1	83		1	6	1		2	15		7	73	46	2		1204			9	1486
Emerado PD					1	1	4		3					1					5			11	8	3		2		3	42	
Grand Forks PD			4	6	21	25	245	26	190	1	14	20		9	67	15		6	146		11	354	473	264		372		19	114	2402
Larimore PD	DID NOT REPORT IN 2006																													
Northwood PD						1			2																	1				4
Thompson PD						1																								1

Agency	Murder/Non-Neg. Mansl.	Negligent Manslaughter	Forcible Rape	Robbery	Aggravated Assault	Burglary	Larceny/Theft	Motor Vehicle Theft	Other Assault	Arson	Forgery/Counterfeiting	Fraud	Embezzlement	Stolen Property Offenses	Vandalism	Weapons Offenses	Prostitution	Other Sex Offenses	Drug Abuse Violations	Gambling Violations	Off. Against Fam & Children	DUI	Liquor Law Violations	Disorderly Conduct	Vagrancy	All Other Offenses	Suspicion	Curfew/Loitering	Runaway	Total	
UND PD				1				1	2					1	1	1			23			172	343	23		10				578	
Grant SO					1		1		1										1				3	1						8	
Griggs SO						2	1		5	1				1	1				1			2	4	4		1				23	
Hettinger SO					1				3					1					1			4	2			1			2	15	
Kidder SO									1										2			2	2	1		1				9	
Steele PD									3										2			2	5	1						13	
LaMoure SO									1						1	3			1			3				1				10	
Logan SO							2																			4				6	
Napoleon PD	DID NOT REPORT IN 2006																														
McHenry SO					1		1		4										2			13	2	2		6				31	
McIntosh SO	DID NOT REPORT IN 2006																														
Wishek PD	DID NOT REPORT IN 2006																														
McKenzie SO					1			1	3							1		1	4			17	7	1		1			1	38	
Watford City PD					1	1			5		1					2						12	9	3				1	1	36	
McLean SO							3	1	8				1		14	1			2			22	34	9		9			2	106	
Mercer SO								1	3	1						2			1		1	9	11	5		6				40	
Beulah PD					1	1	4	1	8													32	31	3		16				97	
Hazen PD	DID NOT REPORT IN 2006																														
Morton SO			2		2	5	5		11		1	1			8	5			9			77	69	8		40				243	
Mandan PD	1		3		9	8	22	4	72		3	1		3	44	5			4	13		4	224	138	63		324		10	11	966
Mountrail SO							1	2	2	1					1				6			18	19	3		22				75	
Nelson SO							3	1	6	1					1				3			5	10	5		5			2	42	
Oliver SO																										1				1	
Pembina SO					1	6			9						1	1		1	21			42	19	2		28			1	132	
Cavalier PD					1	1	2		7													11	37	2		5				66	
Pierce SO									1			2			1	1			4			17	42	2		10				80	
Rugby PD						2	2		2						3				17			17	27	7		17		2		96	
Ramsey SO			2	1		2	2	3	1		3	2		3	3	2		1	14		3	48	39	7		44		2		182	
Devils Lake PD					17	8	80	7	34	1	19	4		10	17	1		6	128		4	147	272	128		326		29		1238	
Ransom SO						6	3	6	6	2		1			2			2	1			11	10	10		4				64	
Lisbon PD	DID NOT REPORT IN 2006																														
Renville SO							1				1	8										5				6				21	
Richland SO					1		7	4	18			148			6				12		21	58	90	6		127		1		499	
Wahpeton PD				1	3	2	21	3	41					1	15	2			17			65	176	9		117		7	6	486	
NDSCS PD					2		3		5						1				6			6	20	2		10				55	
Rolette SO			1		1	12			13						3				11			13	13	8		6				81	
Rolla PD						2	30	1	8	1	2	2		1	4	1			5			13	14	7		4		1	1	97	
Sargent SO			1			1		1	7			20						1	4		2	9	18			16				80	
Sheridan SO						2			3										2			1	4	1		4				17	
Sioux SO	DID NOT REPORT IN 2006																														
Slope SO	DID NOT REPORT IN 2006																														
Stark SO					1		2		6		1	403							2			23	38			428			1	905	
Dickinson PD				1	2	14	62	6	59	1	8	51	3	2	22	7		2	33		14	178	227	101		102		3	34	932	
Steele SO	DID NOT REPORT IN 2006																														

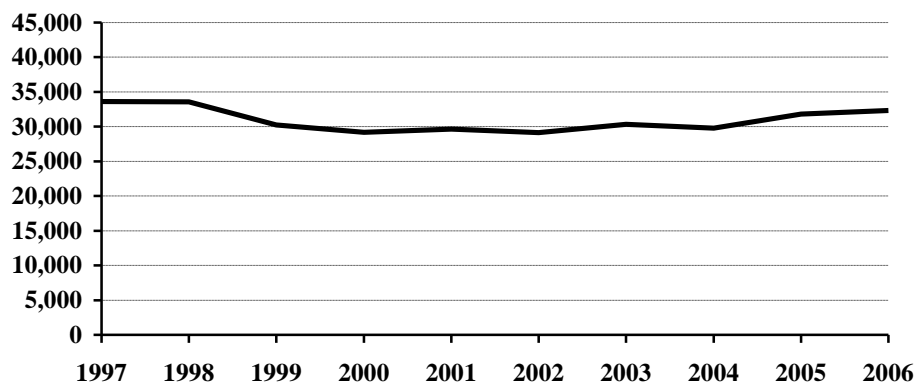
Agency	Murder/Non-Neg. Mansl.	Negligent Manslaughter	Forcible Rape	Robbery	Aggravated Assault	Burglary	Larceny/Theft	Motor Vehicle Theft	Other Assault	Arson	Forgery/Counterfeiting	Fraud	Embezzlement	Stolen Property Offenses	Vandalism	Weapons Offenses	Prostitution	Other Sex Offenses	Drug Abuse Violations	Gambling Violations	Off. Against Fam & Children	DUI	Liquor Law Violations	Disorderly Conduct	Vagrancy	All Other Offenses	Suspicion	Curfew/Loitering	Runaway	Total
Stutsman SO			1		1	1	8		9			1			3	1			1			17	30	9		10			8	100
Jamestown PD			1		11	13	60	2	113	2	3	3		1	31	9		3	23		5	103	255	104		392		17	10	1161
Towner SO									1													3	1			1				6
Traill SO			1				2	1	4										5			30	23	2		2				70
Mayville PD			1			2	3		4						1							12	2	1		5			1	32
Hillsboro PD							1		4						2	1			4		1	12		1		2				28
Portland PD															1							3	4							8
Walsh SO			1			3	10	7	10	2		1		2	4	1		1	1			26	26	1		25				121
Grafton PD							7		14		3			1	10	2		1	8		1	42	25	8		27			2	151
Ward SO			1		3	25	23	4	46			2			17	1		2	27		1	91	129	16		56		30	474	
Minot PD			2	4	10	33	174	20	147	2	12	22		5	47	12		13	42		4	313	296	146		974		20	68	2366
Wells SO						5	1		2	1		62				3		1	1		1	2	9	1		37		2	128	
Harvey PD							1		1										1			4	1	3		5				16
Fessenden PD																														0
Williams SO	1		1		1	5	6	4	15			1			5	1		3	4		1	18	24	1		13			6	110
Williston PD			1		6	6	30	12	52	2	4	3	1		20	4		1	3		2	67	117	9		86	15	20	461	
Highway Patrol			5				6	16	24			1			6	70			354			1788	777	12		259				3318
Drug Task Forces							2		2			1		2		2			405				3			189				606
Total	5	5	45	25	215	340	1700	220	1989	30	159	1243	24	124	657	215	2	82	2256		199	6488	6513	1753		7160	224	670	32343	

Arrests 1997-2006

Arrest Summary

Year	Population	Arrest Total	% Change from Previous Year	Rate per 100,000 Pop.
1997	641,000	33,634	0.1%	5247.1
1998	638,000	33,548	-0.3	5258.3
1999	634,000	30,258	-9.8	4772.6
2000	642,200	29,201	-3.5	4547.0
2001	634,450	29,638	1.5	4671.5
2002	634,110	29,145	-1.7	4596.2
2003	634,000	30,334	4.1	4784.5
2004	634,500	29,798	-1.8	4696.3
2005	637,000	31,835	6.8	4997.6
2006	636,000	32,343	1.6	5085.4

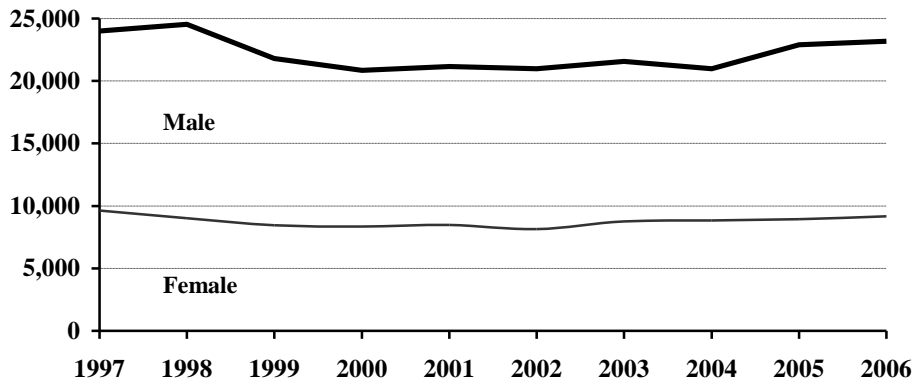
Arrest Totals, 1997-2006



Arrests by Gender, 1997-2006

Year	Male	% of Total	Female	% of Total	Total
1997	24,011	71.4%	9,623	28.6%	33,634
1998	24,538	73.1	9,010	26.9	33,548
1999	21,801	72.1	8,457	27.9	30,258
2000	20,854	71.4	8,347	28.6	29,201
2001	21,170	71.4	8,468	28.6	29,638
2002	20,991	72.0	8,154	28.0	29,145
2003	21,580	71.1	8,754	28.9	30,334
2004	20,971	70.4	8,827	29.6	29,798
2005	22,891	71.9	8,944	28.1	31,835
2006	23,181	71.7	9,162	28.3	32,343

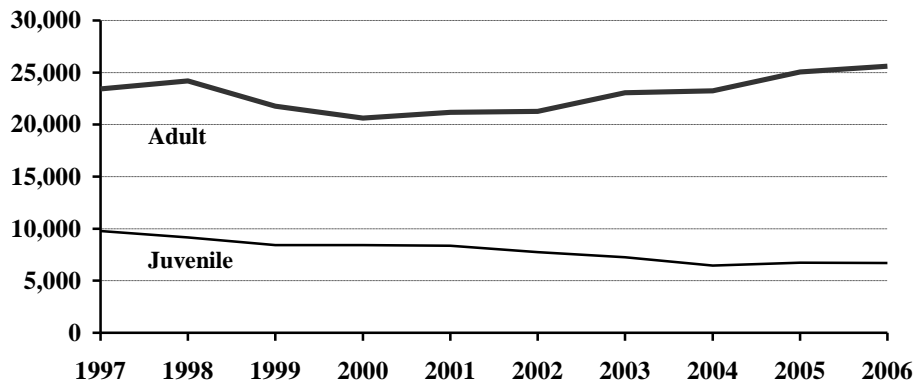
Arrests by Gender, 1997-2006



Juvenile and Adult Arrests, 1997-2006

Year	Juvenile	Percent of Total	Adult	Percent of Total	Age Not Reported	Percent of Total	Total
1997	9,780	29.1%	23,428	69.7%	426	1.3%	33,634
1998	9,175	27.3	24,188	72.1	185	0.6	33,548
1999	8,429	27.9	21,769	71.9	60	0.2	30,258
2000	8,435	28.9	20,612	70.6	154	0.5	29,201
2001	8,347	28.2	21,188	71.5	103	0.3	29,638
2002	7,742	26.6	21,279	73.0	124	0.4	29,145
2003	7,250	23.9	23,044	76.0	40	0.1	30,334
2004	6,467	21.7	23,247	78.0	84	0.3	29,798
2005	6,721	21.1	25,038	78.6	76	0.2	31,835
2006	6,703	20.7	25,601	79.2	39	0.1	32,343

Juvenile and Adult Arrests, 1997-2006



Arrests by Age Group, 1997-2006

Age Group	1997	1998	1999	2000	2001	2002	2003	2004	2005	2006
Under 10	204	205	202	203	186	168	145	108	73	120
10-12	953	758	628	708	819	638	582	580	500	579
13-14	2429	2165	1877	1809	1686	1736	1601	1526	1411	1548
15	1980	1775	1586	1698	1629	1459	1344	1312	1394	1268
16	2115	2034	1977	1898	1943	1810	1677	1409	1630	1460
17	2099	2238	2159	2119	2084	1931	1901	1532	1713	1728
18	2210	2610	2356	2377	2501	2248	2620	2176	2300	2456
19	2330	2611	2693	2572	2845	2528	2832	2638	2647	2654
20	2170	2366	2220	2198	2565	2224	2597	2310	2602	2599
21	1240	1385	1186	1112	1220	1323	1476	1358	1405	1605
22	1166	1063	1039	957	913	1010	1174	1316	1259	1274
23	922	1040	807	830	817	904	958	1065	1173	1102
24	911	821	741	654	739	753	858	909	1045	1042
25-29	3451	3390	2858	2598	2397	2562	2880	2952	3549	3629
30-34	2709	2642	2230	2018	1932	1990	2021	2140	2331	2371
35-39	2494	2497	2166	1931	1926	1931	1727	1888	2095	1989
40-44	1710	1689	1500	1475	1536	1711	1731	1846	1869	1886
45-49	958	967	919	908	895	1034	1065	1275	1354	1413
50-54	523	513	515	483	448	550	557	696	734	814
55-59	266	270	234	250	191	261	303	367	359	414
60-64	153	103	107	81	77	110	118	165	155	183
65 +	215	221	198	168	186	140	127	146	161	170
Age Not Reported	426	185	60	154	103	124	40	84	76	39
Arrest Total	33634	33548	30258	29201	29638	29145	30334	29798	31835	32343

Arrests by Offense, 1997-2006

Offense Classification	1997	1998	1999	2000	2001	2002	2003	2004	2005	2006
Murder/Non-Neg. Manslaughter	3	5	6	1	3	6	2	10	9	5
Negligent Manslaughter	1	2	4	4	1		5	4	3	5
Forcible Rape	35	44	24	39	32	42	40	53	34	45
Robbery	30	28	28	15	19	25	25	15	22	25
Aggravated Assault	180	168	108	144	161	127	136	159	203	215
Burglary	413	426	409	305	343	316	266	223	220	340
Larceny/Theft	3093	2671	2327	2279	2238	2264	1924	1856	1830	1700
Motor Vehicle Theft	307	286	289	247	238	261	227	189	216	220
Other Assaults	1550	1567	1651	1704	1664	1798	1691	1656	2015	1989
Arson	36	33	16	24	60	25	20	24	15	30
Forgery and Counterfeiting	189	191	160	137	186	192	202	170	161	159
Fraud	5491	4291	3274	2532	1883	1777	1698	1557	1201	1243
Embezzlement	5	6	6	1	6	4	8	4	15	24
Stolen Property Offenses	159	150	84	98	113	171	148	123	137	124
Vandalism	855	774	709	671	713	802	650	592	572	657
Weapons Offenses	119	102	107	120	138	140	136	198	271	215
Prostitution		7	3		4		5	15	1	2
Other Sex Offenses	99	82	76	87	87	83	92	94	82	82
Drug Abuse Violations	1242	1517	1456	1501	1658	1752	2045	2078	2343	2256
Gambling	1	6	5		4	4		1	4	
Off. Against Family & Children	327	401	200	250	245	228	205	221	243	199
Driving Under the Influence	4777	5187	5179	4304	4301	4467	4854	5783	5946	6488
Liquor Law Violations	5521	6231	6377	6574	7415	6099	6969	5758	5940	6513
Disorderly Conduct	1487	1783	1568	1554	1636	1565	1691	1529	1657	1753
Vagrancy	4	2	8	2	4	2	3			
All Other Offenses	6164	6392	4998	5285	5338	6069	6318	6556	7686	7160
Suspicion	17		1							
Curfew and Loitering	486	347	382	345	325	270	339	264	301	224
Runaways	1043	849	803	978	823	656	635	666	708	670
Arrest Total	33634	33548	30258	29201	29638	29145	30334	29798	31835	32343

Juvenile Arrests by Offense, 1997-2006

Offense Classification	1997	1998	1999	2000	2001	2002	2003	2004	2005	2006
Murder/Non-Neg. Manslaughter			1							
Negligent Manslaughter			1	1			1			1
Forcible Rape	6	13	6	12	9	18	11	10	6	4
Robbery	13	8	9		3	9	6	8	4	7
Aggravated Assault	35	47	25	15	28	19	14	22	47	30
Burglary	222	201	202	134	175	166	118	99	55	115
Larceny/Theft	1771	1372	1212	1285	1134	1147	919	792	794	699
Motor Vehicle Theft	205	162	185	153	130	146	119	78	103	105
Other Assaults	424	420	401	448	439	485	420	416	482	474
Arson	25	23	10	17	52	15	16	15	10	15
Forgery and Counterfeiting	46	42	37	41	29	35	22	17	15	9
Fraud	20	28	17	16	32	18	23	12	17	29
Embezzlement							2		4	4
Stolen Property Offenses	105	81	49	51	54	90	92	51	41	46
Vandalism	654	532	420	423	503	538	410	344	303	362
Weapons Offenses	34	30	27	31	40	36	22	40	41	43
Prostitution								10		
Other Sex Offenses	32	32	18	32	26	32	31	33	20	20
Drug Offenses	229	269	284	292	311	289	249	229	251	264
Gambling					1					
Off. Against Family/Children	96	110	98	66	86	77	64	84	86	107
Driving Under the Influence	104	114	169	81	90	74	90	92	92	100
Liquor Law Violations	1976	2169	2176	2039	1890	1645	1741	1304	1255	1469
Disorderly Conduct	611	762	709	699	785	672	738	652	687	714
Vagrancy			1		3					
All Other Offenses	1643	1564	1187	1277	1379	1305	1168	1229	1399	1192
Suspicion										
Curfew and Loitering	486	347	382	344	325	270	339	264	301	224
Runaways	1043	849	803	978	823	656	635	666	708	670
Juvenile Arrest Total	9780	9175	8429	8435	8347	7742	7250	6467	6721	6703

Juvenile Arrests by Gender, 1997-2006

Year	Male	% of Total	Female	% of Total	Total
1997	6,363	65.1%	3,417	34.9%	9,780
1998	6,129	66.8	3,046	33.2	9,175
1999	5,456	64.7	2,973	35.3	8,429
2000	5,387	63.9	3,048	36.1	8,435
2001	5,298	63.5	3,049	36.5	8,347
2002	5,043	65.1	2,699	34.9	7,742
2003	4,568	63.0	2,682	37.0	7,250
2004	3,909	60.4	2,558	39.6	6,467
2005	4,092	60.9	2,629	39.1	6,721
2006	4,240	63.3	2,463	36.7	6,703

Adult Arrests by Offense, 1997-2006

Offense Classification	1997	1998	1999	2000	2001	2002	2003	2004	2005	2006
Murder/Non-Neg. Manslaughter	3	5	5	1	3	6	2	10	9	5
Negligent Manslaughter	1	2	3	3	1		4	4	3	4
Forcible Rape	29	31	18	27	23	24	29	43	28	41
Robbery	17	20	19	15	16	16	19	7	18	18
Aggravated Assault	144	121	82	128	133	108	122	137	156	185
Burglary	185	220	205	166	166	144	148	119	165	224
Larceny/Theft	1306	1292	1110	987	1102	1114	1004	1064	1035	1000
Motor Vehicle Theft	99	124	104	93	108	114	108	111	113	115
Other Assaults	1106	1136	1244	1249	1221	1311	1269	1237	1532	1513
Arson	11	10	6	7	8	10	4	9	5	15
Forgery and Counterfeiting	140	148	123	96	157	155	180	151	145	149
Fraud	5354	4173	3243	2482	1782	1701	1654	1507	1172	1211
Embezzlement	5	6	6	1	6	4	6	4	11	20
Stolen Property Offenses	53	68	35	46	59	80	56	72	96	78
Vandalism	190	242	287	246	204	264	240	246	269	293
Weapons Offenses	83	72	80	87	98	103	114	158	230	172
Prostitution		7	3		4		5	5	1	2
Other Sex Offenses	66	49	58	53	61	51	61	61	62	62
Drug Offenses	998	1248	1169	1206	1344	1438	1795	1846	2066	1983
Gambling	1	6	5		2	4		1	4	
Off. Against Family/Children	230	291	100	182	159	151	141	136	157	91
Driving Under the Influence	4629	5051	5005	4214	4207	4390	4759	5685	5847	6384
Liquor Law Violations	3462	4033	4191	4493	5520	4449	5222	4449	4674	5038
Disorderly Conduct	866	1017	856	854	851	892	952	876	969	1035
Vagrancy	4	2	7	2	1	2	3			
All Other Offenses	4429	4814	3804	3974	3952	4748	5147	5309	6271	5963
Suspicion	17		1							
Adult Arrest Total	23428	24188	21769	20612	21188	21279	23044	23247	25038	25601

Adult Arrests by Gender, 1997-2006

Year	Male	% of Total	Female	% of Total	Total
1997	17,354	74.1%	6,074	25.9%	23,428
1998	18,280	75.6	5,908	24.4	24,188
1999	16,304	74.9	5,465	25.1	21,769
2000	15,361	74.5	5,251	25.5	20,612
2001	15,805	74.6	5,383	25.4	21,188
2002	15,859	74.5	5,420	25.5	21,279
2003	16,987	73.7	6,057	26.3	23,044
2004	17,004	73.1	6,243	26.9	23,247
2005	18,739	74.8	6,299	25.2	25,038
2006	18,912	73.9	6,689	26.1	25,601

Drug Arrest Analysis

Drug offense arrests decreased by 3.7 percent from a total of 2,343 in 2005 to 2,256 in 2006. The arrest totals shown should not be interpreted as the number of individuals arrested for drug offenses because it is possible that some individuals may have been arrested on more than one occasion for this offense.

Approximately 78 percent of drug arrests in 2006 were arrests of males.

Juveniles (persons under the age of 18) comprised 11.7 percent of the total in 2006.

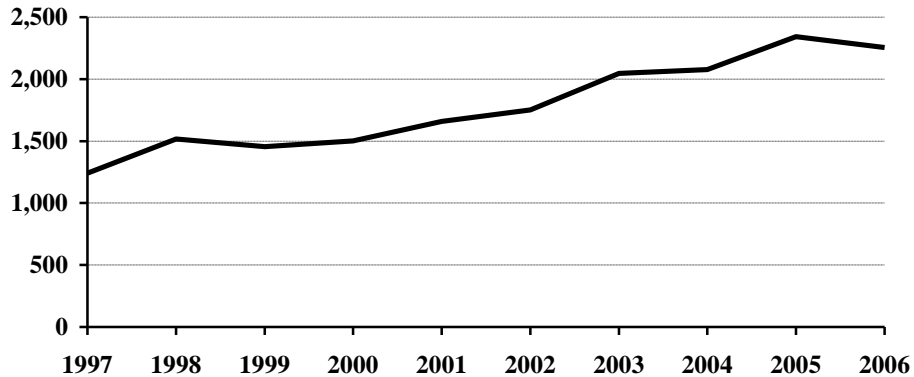
More than 88 percent of the drug arrests during the 10-year period were arrests for possession rather than sale or manufacture of drugs.

Approximately 72 percent of the arrests for drug offenses during the period 1997-2006 involved marijuana.

Arrests for Drug Offenses, 1997-2006

Year	Total	Percent Change from Previous Year
1997	1,242	12.3%
1998	1,517	22.1
1999	1,456	-4.0
2000	1,501	3.1
2001	1,658	10.5
2002	1,752	5.7
2003	2,045	16.7
2004	2,078	1.6
2005	2,343	12.8
2006	2,256	-3.7

Arrests for Drug Offenses, 1997-2006



Drug Arrests by Gender, 1997-2006

Year	Male	% of Total	Female	% of Total	Total
1997	1,035	83.3%	207	16.7%	1,242
1998	1,260	83.1	257	16.9	1,517
1999	1,161	79.7	295	20.3	1,456
2000	1,222	81.4	279	18.6	1,501
2001	1,298	78.3	360	21.7	1,658
2002	1,340	76.5	412	23.5	1,752
2003	1,593	77.9	452	22.1	2,045
2004	1,595	76.8	483	23.2	2,078
2005	1,738	74.2	605	25.8	2,343
2006	1,762	78.1	494	21.9	2,256

Drug Arrests by Age Category, 1997-2006

Year	Juvenile	Percent of Total	Adult	Percent of Total	Age Not Reported	Percent of Total	Total
1997	229	18.4%	998	80.4%	15	1.2%	1,242
1998	269	17.7	1,248	82.3			1,517
1999	284	19.5	1,169	80.3	3	0.2	1,456
2000	292	19.5	1,206	80.3	3	0.2	1,501
2001	311	18.7	1,344	81.1	3	0.2	1,658
2002	289	16.5	1,438	82.1	25	1.4	1,752
2003	249	12.2	1,795	87.8	1	*	2,045
2004	229	11.0	1,846	88.8	3	0.2	2,078
2005	251	10.7	2,066	88.2	26	1.1	2,343
2006	264	11.7	1,983	87.9	9	0.4	2,256

*Less than 0.1 percent of total drug arrests.

Drug Arrests by Age Group, 1997-2006

Age Group	1997	1998	1999	2000	2001	2002	2003	2004	2005	2006
Under 10		1								
10-12	4	6	2	1	3	4	3	4	5	4
13-14	35	27	33	38	36	29	33	29	20	34
15	44	49	47	51	50	43	34	40	42	38
16	55	75	104	84	95	93	66	68	90	79
17	91	111	98	118	127	120	113	88	94	109
18	122	158	138	145	151	159	195	163	195	187
19	105	133	133	130	172	152	175	186	197	169
20	102	97	93	100	143	142	157	160	193	180
21	52	87	62	73	115	105	117	117	121	132
22	50	60	80	73	75	83	115	135	124	119
23	38	54	56	50	63	58	87	111	106	98
24	46	37	56	42	42	67	75	110	107	97
25-29	143	185	144	145	155	186	272	250	326	319
30-34	116	150	147	146	131	119	151	190	203	217
35-39	127	154	125	137	133	137	158	129	153	156
40-44	66	84	76	91	103	145	159	168	163	145
45-49	24	33	39	52	43	58	85	82	109	91
50-54	6	10	14	16	12	24	38	33	45	52
55-59	1	5	6	6	3	3	8	9	18	16
60-64		1			2		1	1	1	4
65 +					1		2	2	5	1
No Age Data	15		3	3	3	25	1	3	26	9
Total	1242	1517	1456	1501	1658	1752	2045	2078	2343	2256

Drug Arrests by Type of Offense, 1997-2006

Year	Sale or Manufacture	% of Total	Possession	% of Total	Total
1997	109	8.8%	1,133	91.2%	1,242
1998	257	16.9	1,260	83.1	1,517
1999	159	10.9	1,297	89.1	1,456
2000	188	12.5	1,313	87.5	1,501
2001	118	7.1	1,540	92.9	1,658
2002	134	7.6	1,618	92.4	1,752
2003	143	7.0	1,902	93.0	2,045
2004	318	15.3	1,760	84.7	2,078
2005	284	12.1	2,059	87.9	2,343
2006	298	13.2	1,958	86.8	2,256

Drug Arrests by Age Category and Type of Offense, 1997-2006

Year	Juvenile		Adult		Age Not Reported	
	Sale or Manufacture	Possession	Sale or Manufacture	Possession	Sale or Manufacture	Possession
1997	24	205	82	916	3	12
1998	37	232	220	1,028		
1999	11	273	145	1,024	3	
2000	32	260	156	1,050		3
2001	7	304	111	1,233		3
2002	20	269	110	1,328	4	21
2003	20	229	123	1,672		1
2004	28	201	289	1,557	1	2
2005	17	234	259	1,807	8	18
2006	27	237	268	1,715	3	6

Drug Arrests by Type of Drug, 1997-2006

Year	Opiates, Cocaine or Derivatives	Percent of Total	Marijuana	Percent of Total	Other Drugs or Narcotics	Percent of Total	Total
1997	39	3.1%	1,050	84.5%	153	12.3%	1,242
1998	96	6.3	1,189	78.4	232	15.3	1,517
1999	53	3.6	1,173	80.6	230	15.8	1,456
2000	45	3.0	1,189	79.2	267	17.8	1,501
2001	33	2.0	1,221	73.6	404	24.4	1,658
2002	61	3.5	1,189	67.9	502	28.6	1,752
2003	62	3.0	1,428	69.9	555	27.1	2,045
2004	38	1.8	1,333	64.2	707	34.0	2,078
2005	53	2.3	1,516	64.7	774	33.0	2,343
2006	53	2.3	1,621	71.9	582	25.8	2,256

Drug Arrests by Age Category and Type of Drug, 1997-2006

Year	Juvenile			Adult			Age Not Reported		
	Opiates, Cocaine or Deriv.	Marijuana	Other Drugs or Narcotics	Opiates, Cocaine or Deriv.	Marijuana	Other Drugs or Narcotics	Opiates, Cocaine or Deriv.	Marijuana	Other Drugs or Narcotics
1997	2	197	30	37	842	119		11	4
1998	5	227	37	91	962	195			
1999		260	24	52	911	206	1	2	
2000	4	263	25	41	925	240		1	2
2001		269	42	33	950	361		2	1
2002	4	251	34	55	923	460	2	15	8
2003	3	206	40	59	1,221	515		1	
2004	3	162	64	35	1,170	641		1	2
2005	2	220	29	51	1,288	727		8	18
2006	1	229	34	52	1,389	542		3	6

DUI Arrest Analysis

Reported DUI arrests increased 9.1 percent from 5,946 in 2005 to 6,488 in 2006. The arrest totals should not be interpreted as the number of individuals arrested for DUI offenses because it is possible that some individuals may have been arrested on more than one occasion.

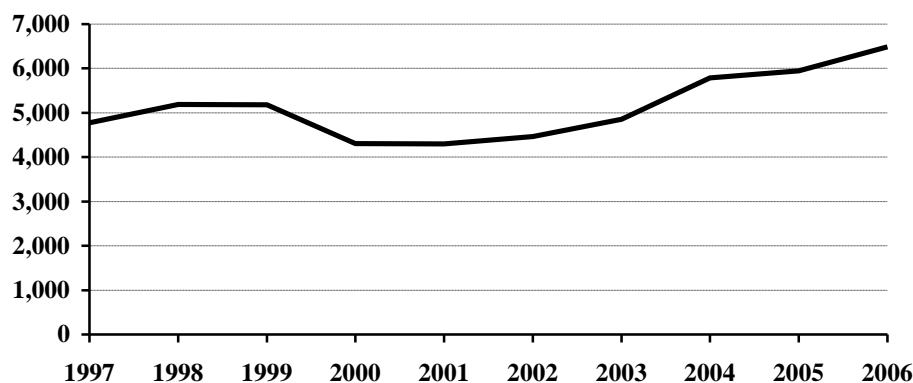
More than 76 percent of the DUI arrests in 2006 were arrests of males.

Juveniles, persons under the age of 18, made up 1.5 percent of the total in 2006.

DUI Arrests, 1997-2006

Year	DUI Arrests Reported	Percent Change from Previous Year
1997	4,777	6.9%
1998	5,187	8.6
1999	5,179	-0.2
2000	4,304	-16.9
2001	4,301	-0.1
2002	4,467	3.9
2003	4,854	8.7
2004	5,783	19.1
2005	5,946	2.8
2006	6,488	9.1

DUI Arrests, 1997-2006



DUI Arrests by Gender, 1997-2006

Year	Male	% of Total	Female	% of Total	Total
1997	3,917	82.0%	860	18.0%	4,777
1998	4,185	80.7	1,002	19.3	5,187
1999	4,149	80.1	1,030	19.9	5,179
2000	3,437	79.9	867	20.1	4,304
2001	3,450	80.2	851	19.8	4,301
2002	3,545	79.4	922	20.6	4,467
2003	3,763	77.5	1,091	22.5	4,854
2004	4,459	77.1	1,324	22.9	5,783
2005	4,640	78.0	1,306	22.0	5,946
2006	4,956	76.4	1,532	23.6	6,488

DUI Arrests by Age Category, 1997-2006

Year	Juvenile	Percent of Total	Adult	Percent of Total	Age Not Reported	Percent of Total	Total
1997	104	2.2%	4,629	96.9%	44	0.9%	4,777
1998	114	2.2	5,051	97.4	22	0.4	5,187
1999	169	3.3	5,005	96.6	5	0.1	5,179
2000	81	1.9	4,214	97.9	9	0.2	4,304
2001	90	2.1	4,207	97.8	4	0.1	4,301
2002	74	1.6	4,390	98.3	3	0.1	4,467
2003	90	1.9	4,759	98.0	5	0.1	4,854
2004	92	1.6	5,685	98.3	6	0.1	5,783
2005	92	1.6	5,847	98.3	7	0.1	5,946
2006	100	1.5	6,384	98.4	4	0.1	6,488

DUI Arrests by Age Group, 1997-2006

Age Group	1997	1998	1999	2000	2001	2002	2003	2004	2005	2006
Under 10	1									
10-12			2							
13-14	3	2	4	1	1	3	2	3	1	1
15	8	10	14	3	6	6	10	8	5	10
16	40	42	32	30	35	17	25	33	31	28
17	52	60	117	47	48	48	53	48	55	61
18	103	158	141	125	112	114	161	142	121	161
19	143	174	228	146	135	155	195	212	206	187
20	180	181	228	155	145	182	219	205	219	196
21	234	272	274	251	269	276	354	362	344	431
22	225	203	269	240	232	260	300	417	372	373
23	156	234	220	205	197	238	267	305	345	357
24	162	194	203	170	209	188	260	293	278	336
25-29	755	777	770	640	641	660	775	867	1051	1060
30-34	711	713	641	520	526	507	526	621	596	735
35-39	717	752	754	529	519	511	436	590	590	624
40-44	506	566	493	473	499	520	480	576	603	621
45-49	293	396	351	349	337	339	354	468	481	560
50-54	191	188	207	185	187	232	214	288	309	346
55-59	110	107	101	116	78	97	120	178	171	199
60-64	69	58	50	42	43	51	46	93	86	98
65 +	74	78	75	68	78	60	52	68	75	100
No Age Data	44	22	5	9	4	3	5	6	7	4
Total	4777	5187	5179	4304	4301	4467	4854	5783	5946	6488

UCR OFFENSE DEFINITIONS

UNIFORM CRIME REPORTING OFFENSE DEFINITIONS

Offenses in Uniform Crime Reporting are divided into two groups designated as Part I and Part II crimes. Information on the number of Part I offenses known to law enforcement, the number cleared by arrest or exceptional means, and the number of persons arrested is reported monthly. Arrest data are reported for Part I and Part II offenses. The Crime Index is composed of offenses 1-7 with the exception as noted in item 1 below.

NOTE: The classifications of these offenses for UCR reporting purposes are based on law enforcement investigation as opposed to determination by a court, medical examiner, jury, or other judicial hearing.

PART I OFFENSES:

1. CRIMINAL HOMICIDE

a. Murder and Non-Negligent Manslaughter

The willful (non-negligent) killing of one human being by another. Deaths caused by negligence, attempts to kill, assaults to kill, suicides, accidental deaths, and justifiable homicides are excluded. Justifiable homicides are limited to: (1) the killing of a felon by a law enforcement officer in the line of duty, and (2) the killing of a felon by a private citizen.

b. Manslaughter by Negligence

The killing of another person through gross negligence. Excludes traffic fatalities. While manslaughter by negligence is a Part I crime, it is not included in the Crime Index.

2. FORCIBLE RAPE

The carnal knowledge of a female forcibly and against her will. Included are rapes by force and attempts or assaults to rape. Statutory offenses (no force used -- victim under age of consent) are excluded.

3. ROBBERY

The taking or attempting to take anything of value from the care, custody, or control of a person or persons by force or threat of force or violence, or putting the victim in fear.

4. AGGRAVATED ASSAULT

An unlawful act by one person upon another for the purpose of inflicting severe or aggravated bodily injury. This type of assault usually is accompanied by the use of a weapon or by a means likely to produce death or great bodily harm. Simple assaults are excluded.

5. BURGLARY

Breaking or entering. The unlawful entry of a structure to commit a felony or theft. Attempted forcible entry is included.

6. LARCENY/THEFT

The unlawful taking, carrying, leading, or riding away of property from the possession or constructive possession of another. Examples are thefts of bicycles or automobile accessories, shoplifting, pocket-picking, or the stealing of any property or article that is not taken by force and violence or by fraud. Attempted larcenies are included. Embezzlement, "con" games, forgery, worthless checks, etc., are excluded.

7. MOTOR VEHICLE THEFT

The theft or attempted theft of a motor vehicle. A motor vehicle is self-propelled and runs on the surface and not on rails. Specifically excluded from this category are motorboats, construction equipment, airplanes, and farming equipment.

8. ARSON

Any willful or malicious burning or attempting to burn, with or without intent to defraud, a dwelling house, public building, motor vehicle, personal property of another, etc.

PART II OFFENSES:

9. OTHER ASSAULTS (SIMPLE)

Assaults or attempted assaults where no weapon was used or which did not result in serious or aggravated injury to the victim.

10. FORGERY AND COUNTERFEITING

Making, altering, uttering, or possessing, with the intent to defraud, anything false which is made to appear true. Attempts are included.

11. FRAUD

Fraudulent conversion and obtaining money or property by false pretenses. Included are larceny by bailee and bad checks except forgeries and counterfeiting. Attempts are included.

12. EMBEZZLEMENT

Misappropriation or misapplication of money or property entrusted to one's care, custody or control. Attempts are included.

13. STOLEN PROPERTY -- BUYING, RECEIVING, POSSESSING

Buying, receiving, or possessing stolen property, including attempts.

14. VANDALISM

Willful or malicious destruction, injury, disfigurement, or defacement of any public or private property, real or personal, without consent of the owner or person having custody or control. Attempts are included.

15. WEAPON OFFENSES -- CARRYING, POSSESSING, ETC.

All violations of regulations or statutes controlling the carrying, using, possessing, furnishing, and manufacturing of deadly weapons or silencers. Attempts are included.

16. PROSTITUTION AND COMMERCIALIZED VICE

Sex offenses of a commercialized nature, such as prostitution, keeping a bawdy house, procuring, or transporting women for immoral purposes. Attempts are included.

17. OTHER SEX OFFENSES (except forcible rape, prostitution and commercialized vice)

Statutory rape and offenses against chastity, common decency, morals and the like. Attempts are included.

18. DRUG ABUSE VIOLATIONS

State and local offenses relating to narcotic and non-narcotic drugs, such as unlawful possession, sale, use, growing and manufacturing of narcotic and non-narcotic drugs. Attempts are included.

19. GAMBLING

Promoting, permitting, or engaging in illegal gambling.

20. OFFENSES AGAINST FAMILY AND CHILDREN

Non-support, neglect, desertion, or abuse of family and children.

21. DRIVING UNDER THE INFLUENCE

Driving or operating any vehicle or common carrier while drunk or under the influence of liquor or drugs.

22. LIQUOR LAWS

State or local liquor law violations, except "drunkenness" (offense 23) and "driving under the influence" (offense 21).

23. DRUNKENNESS

Drunkenness or intoxication. Excluded is "driving under the influence" (offense 21). This is not a crime in North Dakota, but is included in the national program.

24. DISORDERLY CONDUCT

Breach of peace.

25. VAGRANCY

Vagabondage, begging, loitering, etc.

26. ALL OTHER OFFENSES

All violations of state or local laws, except offenses 1-25 and traffic offenses.

27. SUSPICION

No specific offense; suspect released without formal charges being placed.

28. CURFEW AND LOITERING

Offenses relating to violation of local curfew and loitering ordinances where such laws exist.

29. RUNAWAYS

Limited to juveniles taken into protective custody under provisions of local statutes.

**FULL-TIME LAW
ENFORCEMENT EMPLOYEES**

**NUMBER OF FULL-TIME LAW ENFORCEMENT EMPLOYEES
REPORTED BY UCR AGENCIES
AS OF OCTOBER 31, 2006**

Agency	Law Enforcement Officers		Civilian Personnel		Total Full-Time			Population
	Male	Female	Male	Female	Male	Female	Total	
Adams SO	3	1			3	1	4	2,430
Barnes SO	5	1		1	5	2	7	4,630
Valley City PD	12	1		6	12	7	19	6,431
Benson SO	4				4		4	6,990
Billings SO	4				4		4	812
Bottineau SO	8		1	3	9	3	12	6,732
Bowman SO	2	1			2	1	3	1,533
Bowman PD	3			1	3	1	4	1,511
Burke SO	4				4		4	2,029
Burleigh SO	35	4	17	15	52	19	71	14,126
Bismarck PD	80	8	6	20	86	28	114	57,304
Lincoln PD	1	1			1	1	2	2,294
Cass SO	50	17	32	26	82	43	125	20,574
Fargo PD	106	20		18	106	38	144	80,951
West Fargo PD	28	2	2	11	30	13	43	19,462
NDSU PD	7	2	2	3	9	5	14	10,000
Cavalier SO	5				5		5	4,324
Dickey SO	5			1	5	1	6	3,634
Oakes PD	2				2		2	1,846
Divide SO	3				3		3	1,130
Crosby PD	2				2		2	1,016
Dunn SO	3			1	3	1	4	3,438
Eddy SO	5				5		5	2,623
Emmons SO	3			1	3	1	4	2,683
Linton PD	1				1		1	1,157
Foster SO	2	1		1	2	2	4	1,430
Carrington PD	3	1			3	1	4	2,145
Golden Valley SO	4			1	4	1	5	1,737
Grand Forks SO	27			6	27	6	33	11,968
Grand Forks PD	73	6	5	10	78	16	94	40,239
Larimore PD	2				2		2	1,323
Northwood PD	2				2		2	883
Emerado PD	1				1		1	482
Thompson PD	1				1		1	961
UND PD	12		1	2	13	2	15	10,000
Grant SO	3				3		3	2,612
Griggs SO	4				4		4	2,494
Hettinger SO	3				3		3	2,483
Kidder SO	2			1	2	1	3	1,785
Steele PD	1				1		1	693
LaMoure SO	4			1	4	1	5	3,494
LaMoure PD	1	1			1	1	2	884
Logan SO	2		2		4		4	1,307
Napoleon PD	1				1		1	749
McHenry SO	7			1	7	1	8	5,504
McIntosh SO	2	1			2	1	3	2,010
Wishek PD	NR							999
McKenzie SO	5			5	5	5	10	4,232
Watford City PD	4				4		4	1,355
McLean SO	19		4	4	23	4	27	8,593
Mercer SO	13		6	7	19	7	26	2,968
Beulah PD	5			1	5	1	6	3,032
Hazen PD	4				4		4	2,353
Morton SO	20		7	6	27	6	33	8,293
Mandan PD	24	3	1	8	25	11	36	17,203
Mountrail SO	6	1		5	6	6	12	6,505

Agency	Law Enforcement Officers		Civilian Personnel		Total Full-Time			Population
	Male	Female	Male	Female	Male	Female	Total	
Nelson SO	4			1	4	1	5	3,420
Oliver SO	3			1	3	1	4	1,811
Pembina SO	8		1	5	9	5	14	6,587
Cavalier PD	4				4		4	1,441
Pierce SO	3		1	3	4	3	7	1,601
Rugby PD	4				4		4	2,685
Ramsey SO	6			1	6	1	7	4,607
Devils Lake PD	14	2	1	1	15	3	18	6,807
Ransom SO	4			1	4	1	5	3,569
Lisbon PD	2	1			2	1	3	2,234
Renville SO	4	1			4	1	5	2,419
Richland SO	15	1	4	5	19	6	25	9,108
Wahpeton PD	12	2		2	12	4	16	6,210
NDSCS PD	3				3		3	2,000
Rolette SO	9		6	3	15	3	18	12,406
Rolla PD	2	1			2	1	3	1,440
Sargent SO	3			1	3	1	4	4,145
Sheridan SO	2				2		2	1,428
Sioux SO	1				1		1	4,177
Slope SO	1				1		1	708
Stark SO	9	1		3	9	4	13	6,399
Dickinson PD	26	1	2	11	28	12	40	15,646
Steele SO	3			1	3	1	4	2,004
Stutsman SO	7	1		2	7	3	10	6,001
Jamestown PD	27	1		4	27	5	32	14,807
Towner SO	2		1		3		3	2,541
Traill SO	5			5	5	5	10	4,277
Hillsboro PD	2				2		2	1,527
Mayville PD	3				3		3	1,929
Portland PD	NR							577
Walsh SO	11		3	4	14	4	18	7,349
Grafton PD	9			1	9	1	10	4,243
Ward SO	20	1	10	12	30	13	43	20,757
Minot PD	55	5	5	16	60	21	81	34,939
Wells SO	3				3		3	2,265
Harvey PD	2	1			2	1	3	1,757
Fessenden PD	1				1		1	546
Williams SO	15	2	9	2	24	4	28	7,080
Williston PD	20	2	1	7	21	9	30	12,177
Highway Patrol	119	3	14	33	133	36	169	
Total	1081	98	144	291	1225	389	1614	636,000