

NORTH DAKOTA

Office of Attorney General

Bureau of Criminal Investigation



Crime in North Dakota, 2008

Attorney General
Wayne Stenehjem

Office of Attorney General
Bureau of Criminal Investigation

Crime in North Dakota, 2008

A Summary of Uniform Crime Report Data

Wayne Stenehjem
Attorney General

Prepared by
Colleen Weltz
UCR Program Manager
2009

INTRODUCTION

The North Dakota Uniform Crime Reporting (UCR) program involves the collection, compilation, and analysis of crime and arrest statistics reported by the various local law enforcement agencies throughout the state. Forty-six sheriffs' departments and 40 police departments reported to the UCR program in 2008.

Law enforcement agencies may report UCR data in two ways:

INCIDENT-BASED REPORTING: Law enforcement agencies use a standard incident form to collect data on each incident reported to their respective agencies. This form collects much more detailed information than is collected using summary reporting. Data collected includes: type of incident, where and when the incident took place, victim characteristics, suspect/arrestee characteristics, property involved in the incident, etc. A total of 84 police departments and sheriffs' departments reported incident data for all or part of 2008.

In order to continue the statistical time-series begun with summary reporting, computer programs were written to extract summary data from the incident data reported. Crime in North Dakota, 2008 is a report on summary data.

SUMMARY REPORTING: Law enforcement agencies use a tally system to report the number of crime index offenses and arrests for each month. Two law enforcement agencies reported summary data in 2008.

The federal counterpart of the North Dakota UCR program is the National UCR program under the direction of the Federal Bureau of Investigation (FBI). The UCR program has been used nationally and in North Dakota for many years to measure the extent, distribution and fluctuation of crime through the crime index. The crime index is not an absolute measure, but rather an indication of the amount and type of crime occurring in any given jurisdiction. The index is composed of seven crimes that are sub-classified as follows:

VIOLENT CRIME: Murder/Non-Negligent Manslaughter
Forcible Rape
Robbery
Aggravated Assault

PROPERTY CRIME: Burglary
Larceny/Theft
Motor Vehicle Theft

A Modified Crime Index is also calculated at the federal level. This includes arson as the fourth property crime and the eighth index offense. Data on arson is not included in this report.

Prior to an offense becoming recorded in the UCR program, it must be reported to the local law enforcement officials and reported by the local agency to the UCR program. Consequently, the UCR program only reflects reported crimes. Reporting of crimes depends on several factors,

including actual perception of an act as a crime, the probability of loss of status for reporting (as in cases of rape), and the perceived probability of action on the part of the law enforcement agency contacted.

Several types of data are gathered, including:

Offense data

- Number of known crime index offenses
- Type and value of stolen property
- Additional information on homicides and arson
- Law enforcement officers killed or assaulted

Arrest and Clearance Data

- Number and type of offenses cleared
- Number and type of index offenses involving juveniles cleared
- Number of persons arrested, by offense
- Characteristics of persons arrested (age, sex, race)

To allow for comparison among several geographic or jurisdictional areas with differing populations or to allow comparisons across time in an area undergoing population fluctuations, the UCR program provides for the calculation of crime rates to remove any potential biases created by population differences. Because a rate relates the incidence of activity to population, it is possible to measure annual fluctuations in criminal activity by comparing rates of crime reported in any given year with those reported in other years. National publications report crime rates calculated based on the number of reported offenses per 100,000 population. This publication provides crime rate information calculated in the same manner.

TABLE OF CONTENTS

Introduction.....	1
Table of Contents.....	3
North Dakota Crime Summary, 2008.....	4
Crime Index Offense Analysis.....	5
Violent Crime.....	10
Murder/Non-Negligent Manslaughter.....	12
Forcible Rape.....	14
Robbery.....	16
Aggravated Assault.....	19
Property Crime.....	21
Burglary.....	23
Larceny/Theft.....	26
Motor Vehicle Theft.....	29
Crime Index Offenses by Reporting Jurisdiction.....	32
Arrest Analysis.....	36
Arrests in 2008.....	37
Arrest Analysis by Reporting Jurisdiction.....	43
Arrests 1999-2008.....	46
Drug Arrest Analysis.....	52
DUI Arrest Analysis.....	56
UCR Offense Definitions.....	59
Full-Time Law Enforcement Employees.....	64

NORTH DAKOTA CRIME SUMMARY, 2008

In 2008, 12,850 crime index offenses were reported by local law enforcement agencies. This is an increase of 2.5 percent from the total of 12,532 reported in 2007.

Crime index offenses include: murder/non-negligent manslaughter, forcible rape, robbery, aggravated assault, burglary, larceny/theft, and motor vehicle theft.

The Census Bureau estimate of North Dakota's population for 2008 is 641,500. The index crime rate per 100,000 population for 2008 was 2003.1. The index crime rate for 2007 was 1958.1 per 100,000 population. This is a 2.3 percent increase in the crime rate.

The total number of reported violent index crimes (murder, rape, robbery, and aggravated assault) was 1,035. This represents an increase of 16.8 percent from the total of 886 reported in 2007. In 2006, 808 violent index crimes were reported.

Violent crime accounted for 8.1 percent of total index crimes reported in 2008.

Collectively, property crimes (burglary, larceny/theft and motor vehicle theft) increased by 1.5 percent from 11,646 reported in 2007 to 11,815 reported in 2008.

Property crime accounted for 91.9 percent of total crime index offenses reported in 2008.

The 8,926 larceny/theft offenses reported in 2008 accounted for 69.5 percent of total index crimes.

More than \$12.1 million worth of property was reported stolen in 2008, with 37.6 percent of that amount reported as recovered by law enforcement officials.

North Dakota law enforcement agencies reported 29,334 arrests in 2008. A total of 30,780 arrests was reported in 2007.

In 2008, juvenile arrests accounted for 22.5 percent of the total arrests. Juvenile arrests were 38.3 percent of the total arrests of crime index offenses.

The number of reported arrests in 2008 for DUI decreased to 5,815 from 6,085 reported in 2007.

Arrests for drug offenses decreased 7.1 percent from a 2007 total of 2,323 to 2,158 in 2008.

CRIME INDEX OFFENSE ANALYSIS

Crime Index Offenses

Crime index offenses include the violent crimes of murder/non-negligent manslaughter, forcible rape, robbery, and aggravated assault, and the property crimes of burglary, larceny/theft, and motor vehicle theft.

In 2008, 12,850 crime index offenses were reported by local law enforcement agencies. This is an increase of 2.5 percent from the total of 12,532 reported in 2007.

The Census Bureau estimate of North Dakota's population for 2008 is 641,500. Based on that total, the index crime rate per 100,000 population for 2008 was 2003.1, as compared to 1958.1 for 2007. See the crime index offense summary on page 5 for crime rate information for the period 1999-2008.

More than 26 percent of crime index offenses were reported as cleared by arrest or exceptional means. The UCR program defines an offense as "cleared" by law enforcement when at least one person is arrested, charged with the commission of the offense, and turned over to the court for prosecution. Several crimes may be cleared by the arrest of one person, while the arrests of many persons may clear only one offense. Law enforcement agencies may clear a crime by exceptional means when some element beyond law enforcement control precludes the placing of formal charges against the offender. Examples of circumstances that allow such clearances are the death of the offender (suicide, justifiably killed by police or private citizen, etc.); the victim's refusal to cooperate with prosecution after the offender has been identified; or the denial of extradition.

In 2008, 3,204 arrests were reported for crime index offenses. Of that total, 38.3 percent were arrests of juveniles.

More than \$12.1 million worth of property was reported stolen in 2008, with 37.6 percent of that amount reported as recovered by law enforcement officials.

Crime Index Offenses Reported, 2008

Crime Index Offense	Number Reported	Percent of Total Index Offenses
Murder/Non-Negligent Manslaughter	4	0.0%
Forcible Rape	222	1.7
Robbery	71	0.6
Aggravated Assault	738	5.7
Violent Crime Subtotal	1,035	8.1
Burglary	2,035	15.8
Larceny/Theft	8,926	69.5
Motor Vehicle Theft	854	6.7
Property Crime Subtotal	11,815	91.9
Crime Index Offense Total	12,850	100.0

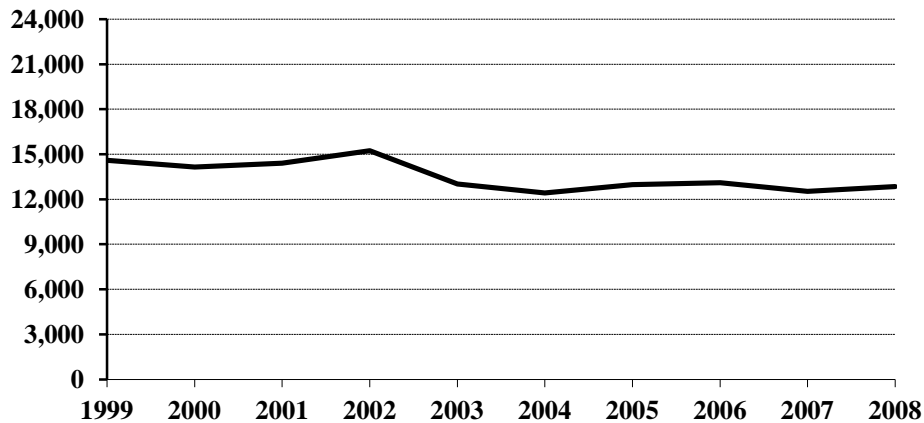
Comparison of Crime Index Offenses Reported, 2007-2008

Crime Index Offense	2007	2008	Percent Change
Murder/Non-Negligent Manslaughter	17	4	-76.5%
Forcible Rape	202	222	9.9
Rape by Force	193	214	10.9
Attempts to Rape	9	8	-11.1
Robbery	68	71	4.4
Firearm	21	9	-57.1
Knife or Cutting Instrument	4	10	150.0
Other Dangerous Weapon	14	17	21.4
Strong Arm – No Weapon	29	35	20.7
Aggravated Assault	599	738	23.2
Firearm	14	15	7.1
Knife or Cutting Instrument	86	91	5.8
Other Dangerous Weapon	156	154	-1.3
Hands, Fists, Feet, Etc.	343	478	39.4
Violent Crime Subtotal	886	1,035	16.8
Burglary	2,096	2,035	-2.9
Forcible Entry	939	966	2.9
Unlawful Entry – No Force	995	953	-4.2
Attempted Forcible Entry	162	116	-28.4
Larceny/Theft	8,672	8,926	2.9
Motor Vehicle Theft	878	854	-2.7
Autos	721	702	-2.6
Trucks and Buses	60	54	-10.0
Other Vehicles	97	98	1.0
Property Crime Subtotal	11,646	11,815	1.5
Crime Index Offense Total	12,532	12,850	2.5

Crime Index Offenses, 1999-2008

Crime Index Offense	1999	2000	2001	2002	2003	2004	2005	2006	2007	2008
Murder/Non-Neg. Mansl.	13	8	9	6	12	10	14	9	17	4
Forcible Rape	147	173	159	167	143	181	179	195	202	222
Robbery	70	62	71	71	55	49	53	72	68	71
Aggravated Assault	217	319	275	309	289	343	444	532	599	738
Burglary	2200	2004	2027	2250	1814	1953	1966	2302	2096	2035
Larceny/Theft	10956	10642	10870	11399	9700	8984	9293	9012	8672	8926
Motor Vehicle Theft	989	942	1000	1037	1002	892	1030	977	878	854
Crime Index Offense Total	14592	14150	14411	15239	13015	12412	12979	13099	12532	12850

Crime Index Offense Totals, 1999-2008



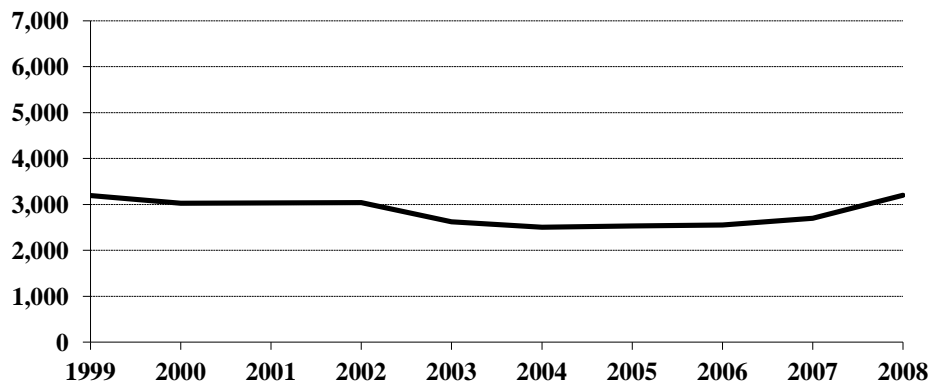
Crime Index Offense Summary

Year	Population	Crime Index Offense Total	% Change in Number from Previous Year	Crime Rate per 100,000 Population	% Change in Rate from Previous Year	Percent Cleared
1999	634,000	14,592	-11.8%	2301.6	-11.2%	27.2%
2000	642,200	14,150	-3.0	2203.4	-4.3	22.9
2001	634,450	14,411	1.8	2271.4	3.1	21.6
2002	634,110	15,239	5.7	2403.2	5.8	21.1
2003	634,000	13,015	-14.6	2052.8	-14.6	20.8
2004	634,500	12,412	-4.6	1956.2	-4.7	20.7
2005	637,000	12,979	4.6	2037.5	4.2	20.2
2006	636,000	13,099	0.9	2059.6	1.1	21.0
2007	640,000	12,532	-4.3	1958.1	-4.9	22.2
2008	641,500	12,850	2.5	2003.1	2.3	26.1

Arrests for Crime Index Offenses, 1999-2008

Year	Juvenile	Adult	Age Not Reported	Total
1999	1,640	1,543	8	3,191
2000	1,599	1,417	14	3,030
2001	1,479	1,551	4	3,034
2002	1,505	1,526	10	3,041
2003	1,187	1,432	1	2,620
2004	1,009	1,491	5	2,505
2005	1,009	1,524	1	2,534
2006	960	1,588	2	2,550
2007	1,090	1,610	0	2,700
2008	1,227	1,973	4	3,204

Arrests for Crime Index Offenses, 1999-2008



Property Loss Due to Crime Index Offenses, 1999-2008

Year	Population	Total Property Loss	% Change from Previous Year	Property Loss per Capita	Percent Recovered
1999	634,000	\$11,201,544	-2.0%	\$17.67	28.6%
2000	642,200	10,308,899	-8.0	16.05	31.3
2001	634,450	11,420,051	10.8	18.00	33.2
2002	634,110	12,457,277	9.1	19.65	30.6
2003	634,000	11,457,228	-8.0	18.07	31.5
2004	634,500	11,397,856	-0.5	17.96	35.7
2005	637,000	12,390,920	8.7	19.45	37.7
2006	636,000	12,446,104	0.4	19.57	30.6
2007	640,000	10,730,659	-13.8	16.77	36.9
2008	641,500	12,142,441	13.2	18.93	37.6

Violent Crime

Violent crime includes the offenses of murder/non-negligent manslaughter, forcible rape, robbery, and aggravated assault. (See the UCR offense definitions section beginning on page 57 of this publication for definitions of these and other offenses.)

In 2008, 1,035 violent crimes were reported in North Dakota. This is a 16.8 percent increase from the 2007 total of 886 violent offenses reported. In 2006, 808 violent crimes were reported.

Violent crime comprised 8.1 percent of reported crime index offenses in North Dakota in 2008.

The violent crime rate for 2008 is 161.3 per 100,000, as compared to 138.4 per 100,000 in 2007. This is a 16.5 percent increase in the violent crime rate. In 2006, the violent crime rate was 127.0 per 100,000 population.

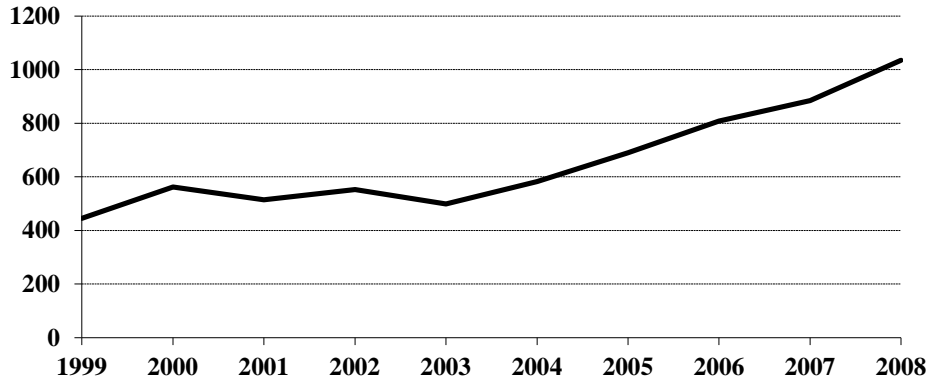
Nearly 53 percent of violent crimes in 2008 were reported as cleared by arrest or exceptional means.

Of the 392 total arrests reported for violent crimes, 17.6 percent were arrests of juveniles.

Violent Crime Summary

Year	Population	Violent Index Offenses	% Change in Number from Previous Year	Rate per 100,000 Population	% Change in Rate from Previous Year	Percent Cleared
1999	634,000	445	-21.4%	70.2	-20.9%	67.1%
2000	642,200	562	26.3	87.5	24.6	51.2
2001	634,450	514	-8.5	81.0	-7.4	49.4
2002	634,110	553	7.6	87.2	7.7	50.5
2003	634,000	499	-9.8	78.7	-9.7	57.3
2004	634,500	583	16.8	91.9	16.8	52.1
2005	637,000	690	18.4	108.3	17.8	51.4
2006	636,000	808	17.1	127.0	17.3	47.9
2007	640,000	886	9.7	138.4	9.0	44.6
2008	641,500	1,035	16.8	161.3	16.5	52.8

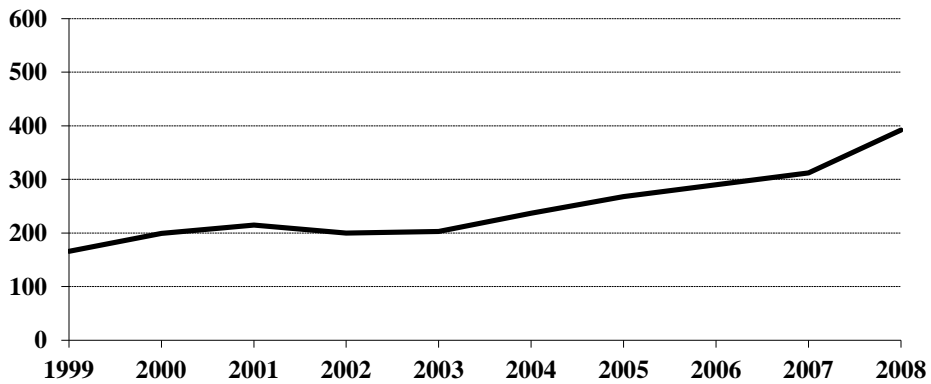
Violent Crime Totals, 1999-2008



Arrests for Violent Crimes, 1999-2008

Year	Juvenile	Adult	Age Not Reported	Total
1999	41	124	1	166
2000	27	171	1	199
2001	40	175		215
2002	46	154		200
2003	31	172		203
2004	40	197		237
2005	57	211		268
2006	41	249		290
2007	46	266		312
2008	69	320	3	392

Arrests for Violent Crimes, 1999-2008



Murder/Non-Negligent Manslaughter

The UCR program defines Murder/Non-Negligent Manslaughter as the “willful killing of one human being by another.” Not included in this category are attempts to murder, assaults to murder, suicides, accidental deaths, justifiable homicides, and deaths caused by gross negligence.

Four murder/non-negligent manslaughter deaths were known to the North Dakota UCR program in 2008.

Two of the four victims were adults. “Adult” is defined as a person aged 18 years or older.

Three of the victims were male.

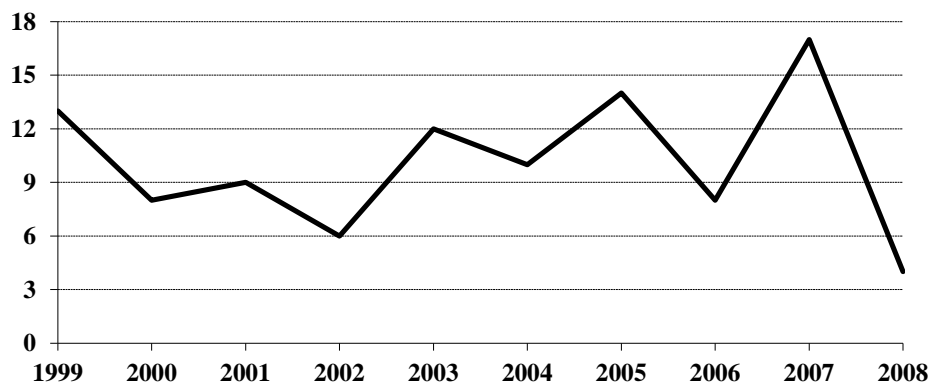
Knives were involved in the deaths of two homicide victims. In 2 homicides, the weapon involved was personal weapons. (See the summary of homicide incidents and the weapons involved on page 10.)

The Office of Attorney General publishes a detailed report titled Homicide in North Dakota. The report provides an analysis of homicides for the period 1989-2008 and is available on our website at www.ag.nd.gov, under the News and Publications link.

Murder/Non-Negligent Manslaughter Summary

Year	Population	Offense Total	% Change in Number from Previous Year	Rate per 100,000 Population	% Change in Rate from Previous Year	Percent Cleared
1999	634,000	13	85.7%	2.1	90.9%	100.0%
2000	642,200	8	-38.5	1.2	-42.9	87.5
2001	634,450	9	12.5	1.4	16.7	88.9
2002	634,110	6	-33.3	0.9	-35.7	83.3
2003	634,000	12	100.0	1.9	111.1	100.0
2004	634,500	10	-16.7	1.6	-15.8	100.0
2005	637,000	14	40.0	2.2	37.5	78.6
2006	636,000	8	-42.9	1.3	-40.9	88.9
2007	640,000	17	112.5	2.7	107.7	94.1
2008	641,500	4	-76.5	0.6	-77.8	100.0

Murder/Non-Negligent Manslaughter Totals, 1999-2008



Summary of Murder/Non-Negligent Manslaughter Incidents, 2008

Date & Location of Incident	Victim(s)		Assailant(s)		Weapons Used	Relationship of Victim to Assailant	Circumstances
	Age	Sex	Age	Sex			
3/1/2008 Devils Lake	43	F	26	M	Knife	Acquaintance	Offender found victim in home and proceeded to stab her.
4/14/2008 Bismarck	NB	M	30	F	Personal Weapon	Babysitree	Shaken Baby Syndrome
6/4/2008 Bismarck	30	M	21 22 19	M M M	Knife	Otherwise Known	Victim killed in the course of a robbery.
12/11/2008 Fort Berthold Reservation	16	M	21 20	M M	Personal Weapon	Acquaintance Friend	Argument between victim and assailants

Forcible Rape

The UCR program defines Forcible Rape as “the carnal knowledge of a female forcibly and against her will.” Assaults to rape, attempts to commit rape by force or threat of force are included. Carnal abuse, statutory offenses (no force -- victim under age of consent), and other sex offenses are not included.

In 2008, 222 forcible rapes were reported to local law enforcement in North Dakota. This is an increase of 9.9 percent from the 2007 total of 202 offenses. A total of 195 forcible rapes was reported in 2006.

Because the UCR definition states that victims of rape must be female, the rate of occurrence for reported rapes is calculated based only on the female population. The Census Bureau estimate of North Dakota’s population for 2008 is 641,500. The number of females is approximately half of that figure. The resulting rate for 2008 is 69.2 reported rapes per 100,000 females, compared with 63.1 rapes per 100,000 females in 2007. In 2006, the forcible rape rate was 61.3 per 100,000 females.

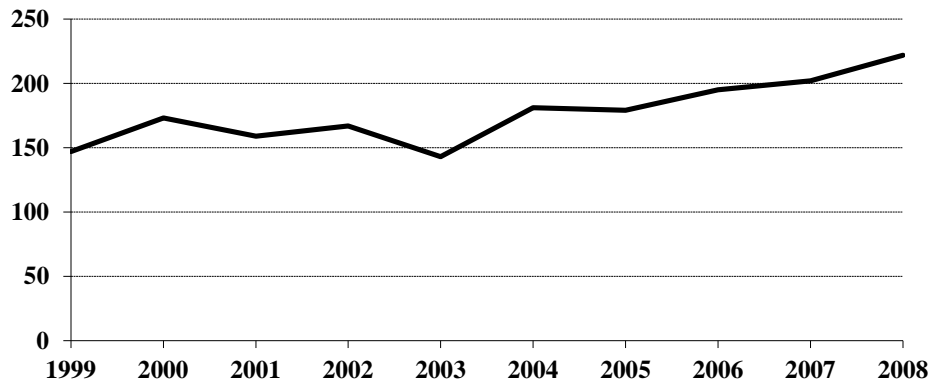
In 2008, 29.7 percent of reported rapes were cleared by arrest or exceptional means.

Forty-five arrests for forcible rape were reported in 2008. Sixty percent of those arrested were adults. In 2007, 37 arrests for rape were reported.

Forcible Rape Summary

Year	Population	Offense Total	% Change in Number from Previous Year	Rate per 100,000 Females	% Change in Rate from Previous Year	Percent Cleared
1999	634,000	147	-13.0%	46.4	-12.5%	67.3%
2000	642,200	173	17.7	53.9	16.2	30.1
2001	634,450	159	-8.1	50.1	-7.1	42.1
2002	634,110	167	5.0	52.7	5.2	37.7
2003	634,000	143	-14.4	45.1	-14.4	51.7
2004	634,500	181	26.6	57.1	26.6	40.3
2005	637,000	179	-1.1	56.2	-1.6	35.8
2006	636,000	195	8.9	61.3	9.1	31.8
2007	640,000	202	3.6	63.1	2.9	28.7
2008	641,500	222	9.9	69.2	9.7	29.7

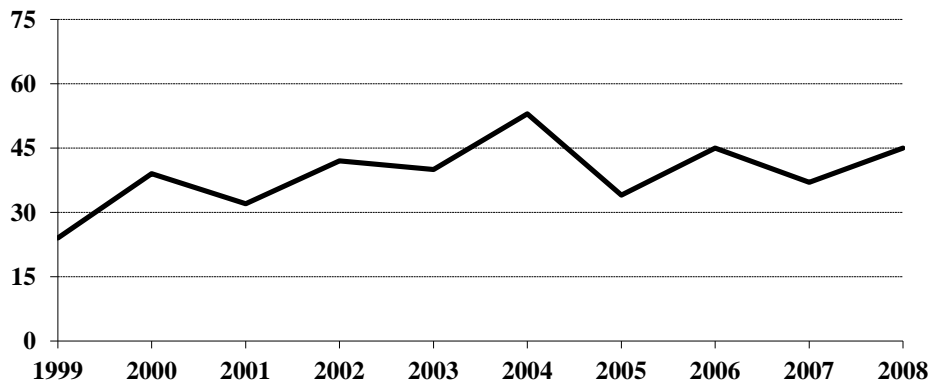
Forcible Rape Totals, 1999-2008



Arrests for Forcible Rape, 1999-2008

Year	Juvenile	Adult	Total
1999	6	18	24
2000	12	27	39
2001	9	23	32
2002	18	24	42
2003	11	29	40
2004	10	43	53
2005	6	28	34
2006	4	41	45
2007	8	29	37
2008	18	27	45

Arrests for Forcible Rape, 1999-2008



Robbery

Robbery is defined by the UCR program as “the taking or attempting to take anything of value from the care, custody, or control of a person or persons by force or threat of force or violence and/or by putting the victim in fear.”

Seventy-one robberies were reported in North Dakota in 2008, an increase of 4.4 percent from the total of 68 reported in 2007. A total of 72 robberies was reported in 2006.

The robbery rate for 2008 was 11.1 per 100,000 population, as compared with 10.6 per 100,000 population in 2007. This is a 4.7 percent increase in the robbery rate.

More than 28 percent of reported robberies were cleared by arrest or exceptional means.

Twenty-three arrests for robbery were reported in 2008. Nineteen of those arrested were adults.

Firearms were used in 9 of the reported robberies in 2008.

More than 49 percent were strong-arm robberies where no weapon was used.

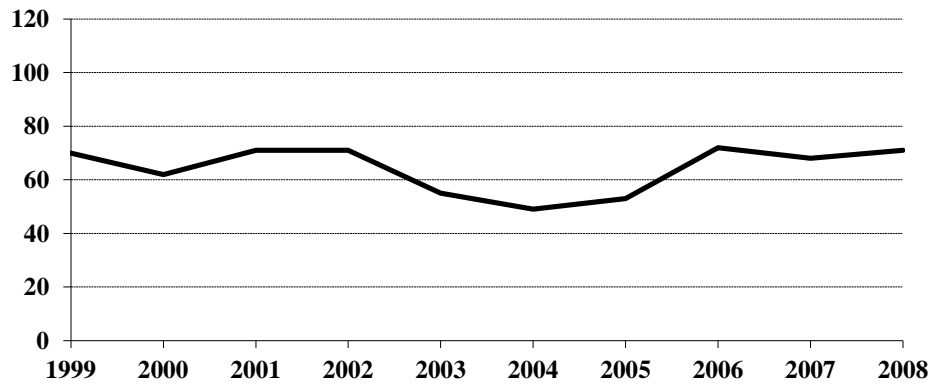
The value of property stolen in robbery incidents decreased from \$80,292 in 2007 to \$66,036 in 2008.

The average robbery in 2008 involved \$930 worth of property.

Robbery Summary

Year	Population	Offense Total	% Change in Number from Previous Year	Rate per 100,000 Population	% Change in Rate from Previous Year	Percent Cleared
1999	634,000	70	-10.3%	11.0	-9.8%	48.6%
2000	642,200	62	-11.4	9.7	-11.8	24.2
2001	634,450	71	14.5	11.2	15.5	23.9
2002	634,110	71	0.0	11.2	0.0	45.1
2003	634,000	55	-22.5	8.7	-22.3	43.6
2004	634,500	49	-10.9	7.7	-11.5	26.5
2005	637,000	53	8.2	8.3	7.8	34.0
2006	636,000	72	35.8	11.3	36.1	36.1
2007	640,000	68	-5.6	10.6	-6.2	30.9
2008	641,500	71	4.4	11.1	4.7	28.2

Robbery Totals, 1999-2008



Robbery by Type of Weapon Involved, 2008

Type of Weapon	Number Reported	Percent of Total Offenses
Firearm	9	12.7%
Knife or Cutting Instrument	10	14.1
Other Dangerous Weapon	17	23.9
Hands, Fists, Feet, etc.	35	49.3
Robbery Total	71	100.0

Robbery by Place of Occurrence and Value of Property, 2008

Place of Occurrence	Number Reported	Value of Property	Average Value per Robbery
Highway	22	\$3,279	\$149.05
Commercial House	11	4,328	393.45
Gas or Service Station	2	16,243	8,121.50
Convenience Store	5	392	78.40
Residence	13	3,346	257.38
Bank	5	27,295	5,459.00
Other	13	11,153	857.92
Robbery Total	71	66,036	930.08

Arrests for Robbery, 1999-2008

Year	Juvenile	Adult	Total
1999	9	19	28
2000	0	15	15
2001	3	16	19
2002	9	16	25
2003	6	19	25
2004	8	7	15
2005	4	18	22
2006	7	18	25
2007	5	24	29
2008	4	19	23

Property Loss Due to Robbery, 1999-2008

Year	Offense Total	Property Loss	Average Loss per Robbery
1999	70	\$23,808	\$340.11
2000	62	12,654	204.10
2001	71	45,051	634.52
2002	71	24,711	348.04
2003	55	50,180	912.36
2004	49	19,915	406.43
2005	53	16,608	313.36
2006	72	62,319	865.54
2007	68	80,292	1,180.76
2008	71	66,036	930.08

Aggravated Assault

The UCR program defines Aggravated Assault as “an unlawful attack by one person upon another for the purpose of inflicting severe or aggravated bodily injury. This type of assault is usually accompanied by the use of a weapon or by means likely to produce death or great bodily harm. Attempts are included because it is not necessary that an injury result when a gun, knife, or other weapon is used which could and probably would result in serious personal injury if the crime were successfully completed.”

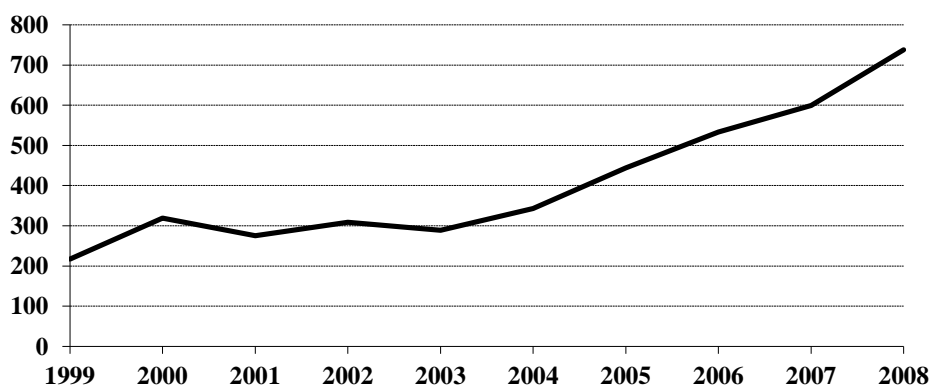
In 2008, 738 aggravated assaults were reported in North Dakota, an increase of 23.2 percent from the 599 aggravated assaults reported in 2007. In 2006, 533 aggravated assaults were reported.

The aggravated assault rate for North Dakota increased 22.9 percent from 93.6 per 100,000 population in 2007 to 115.0 per 100,000 population in 2008.

Aggravated Assault Summary

Year	Population	Offense Total	% Change in Number from Previous Year	Rate per 100,000 Population	% Change in Rate from Previous Year	Percent Cleared
1999	634,000	217	-30.4%	34.2	-30.1%	71.0%
2000	642,200	319	47.0	49.7	45.3	67.1
2001	634,450	275	-13.8	43.3	-12.9	60.0
2002	634,110	309	12.4	48.7	12.5	57.9
2003	634,000	289	-6.5	45.6	-6.4	60.9
2004	634,500	343	18.7	54.1	18.6	60.6
2005	637,000	444	29.4	69.7	28.8	59.0
2006	636,000	533	20.0	83.8	20.2	54.8
2007	640,000	599	12.4	93.6	11.7	50.3
2008	641,500	738	23.2	115.0	22.9	61.8

Aggravated Assault Totals, 1999-2008



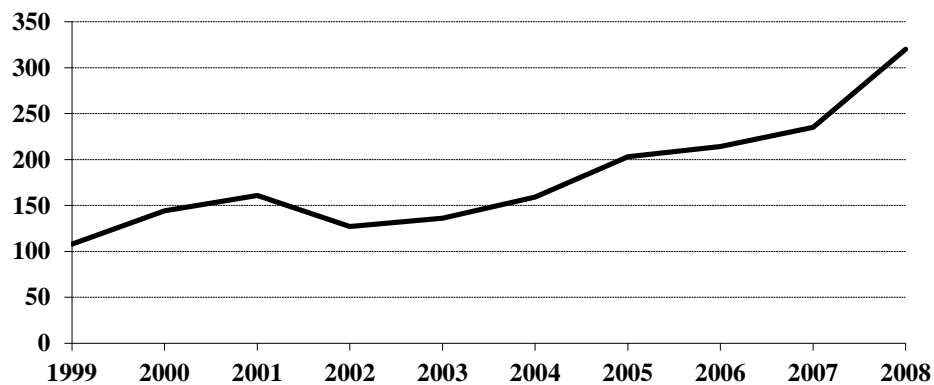
Aggravated Assault by Type of Weapon Involved, 2008

Type of Weapon	Number Reported	Percent of Total Offenses
Firearm	15	2.0%
Knife or Cutting Instrument	91	12.3
Other Dangerous Weapon	154	20.9
Hands, Fists, Feet, etc.	478	64.8
Aggravated Assault Total	738	100.0

Arrests for Aggravated Assault, 1999-2008

Year	Juvenile	Adult	Age Not Reported	Total
1999	25	82	1	108
2000	15	128	1	144
2001	28	133		161
2002	19	108		127
2003	14	122		136
2004	22	137		159
2005	47	156		203
2006	30	184		214
2007	31	204		235
2008	47	270	3	320

Arrests for Aggravated Assault, 1999-2008



Property Crime

Property crime includes the offenses of burglary, larceny/theft, and motor vehicle theft.

In 2008, the total number of property crimes reported was 11,815. This is an increase of 1.5 percent from the 2007 total of 11,646.

Property crime accounted for 91.9 percent of the index offenses reported in North Dakota.

The property crime rate increased 1.2 percent from 1819.7 per 100,000 population in 2007, to 1841.8 per 100,000 in 2008.

Nearly 24 percent of property crimes were cleared by arrest or exceptional means in 2008.

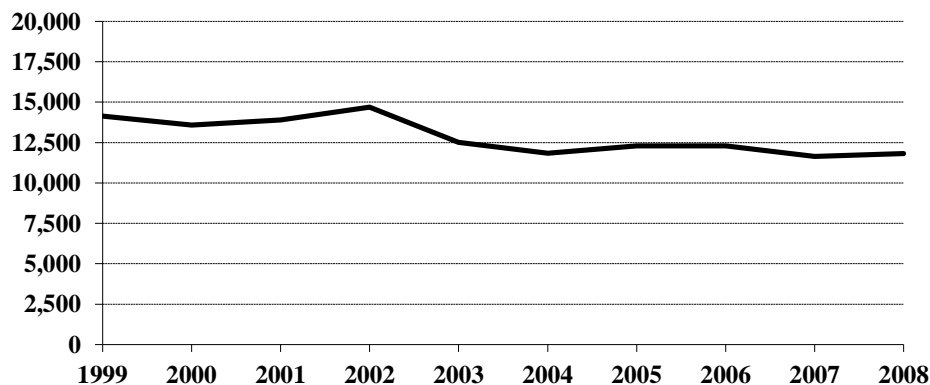
A total of 2,812 arrests were reported for property crimes. Of those, 41.2 percent were arrests of juveniles.

Property Crime Summary

Year	Population	Property Index Offenses	% Change in Number from Previous Year	Rate per 100,000 Population	% Change in Rate from Previous Year	Percent Cleared
1999	634,000	14,145	-11.4%	2231.1	-10.9%	25.9%
2000	642,200	13,588	-3.9	2115.9	-5.2	21.8
2001	634,450	13,897	2.3	2190.4	3.5	20.6
2002	634,110	14,686	5.7	2316.0	5.7	20.0
2003	634,000	12,516	-14.8	1974.1	-14.8	19.4
2004	634,500	11,830	-5.5	1864.3	-5.6	19.2
2005	637,000	12,289	3.9	1929.2	3.5	18.5
2006	636,000	12,291	*	1932.5	0.2	19.3
2007	640,000	11,646	-5.2	1819.7	-5.8	20.5
2008	641,500	11,815	1.5	1841.8	1.2	23.8

* Less than 0.1 percent.

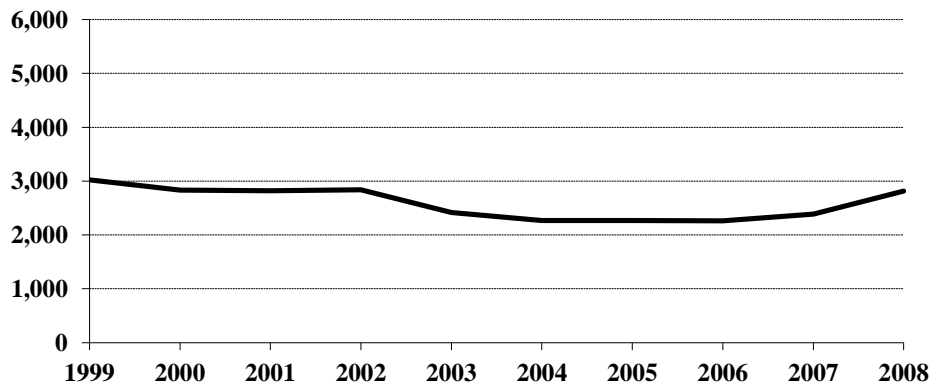
Property Crime Totals, 1999-2008



Arrests for Property Crimes, 1999-2008

Year	Juvenile	Adult	Age Not Reported	Total
1999	1,599	1,419	7	3,025
2000	1,572	1,246	13	2,831
2001	1,439	1,376	4	2,819
2002	1,459	1,372	10	2,841
2003	1,156	1,260	1	2,417
2004	969	1,294	5	2,268
2005	952	1,313	1	2,266
2006	919	1,339	2	2,260
2007	1,044	1,344		2,388
2008	1,158	1,653	1	2,812

Arrests for Property Crimes, 1999-2008



Burglary

The UCR program defines Burglary as the “unlawful entry of a structure to commit a felony or theft. The use of force to gain entry is not required to classify an offense as burglary.” Burglaries are classified into three categories: forcible entry, unlawful entry where no force is used, and attempted forcible entry.

In 2008, 2,035 burglaries were reported to the UCR program. This represents a decrease of 2.9 percent from the total of 2,096 burglaries reported in 2007.

The rate of burglaries based on population was 317.2 per 100,000 inhabitants for 2008. This is a 3.1 percent decrease from the rate of 327.5 per 100,000 population in 2007.

More than 16 percent of burglaries were cleared by arrest or exceptional means in 2008.

A total of 264 arrests for burglary was reported in 2008. Of these, 36.7 percent were juveniles.

The UCR program classifies burglaries by location of the incident. More than 53 percent were burglaries of residences.

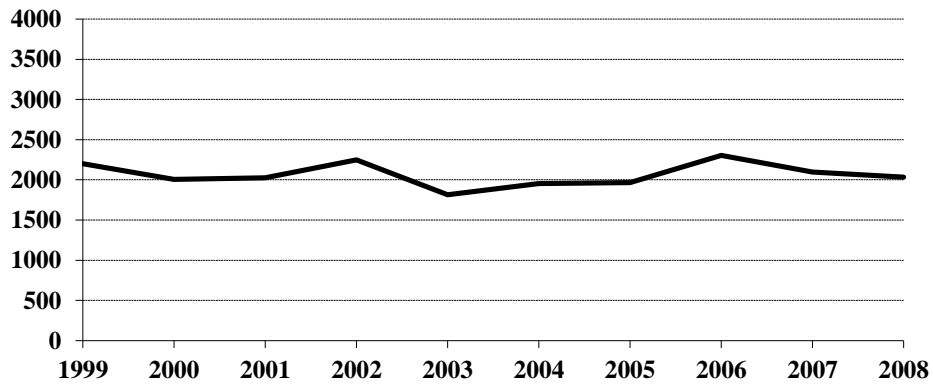
More than 47 percent of burglaries involved forcible entry.

Property loss due to burglary is substantial. More than \$3.4 million dollars worth of property was reported stolen in burglary incidents in 2008. The average burglary involved \$1,681 worth of property.

Burglary Summary

Year	Population	Offense Total	% Change in Number from Previous Year	Rate per 100,000 Population	% Change in Rate from Previous Year	Percent Cleared
1999	634,000	2,200	0.3%	347.0	0.9%	20.8%
2000	642,200	2,004	-8.9	312.1	-10.1	16.2
2001	634,450	2,027	1.1	319.5	2.4	15.1
2002	634,110	2,250	11.0	354.8	11.0	14.0
2003	634,000	1,814	-19.4	286.1	-19.4	13.8
2004	634,500	1,954	7.7	308.0	7.7	11.2
2005	637,000	1,966	0.6	308.6	0.2	11.6
2006	636,000	2,302	17.1	361.9	17.3	15.2
2007	640,000	2,096	-8.9	327.5	-9.5	12.3
2008	641,500	2,035	-2.9	317.2	-3.1	16.1

Burglary Totals, 1999-2008



Burglary by Type of Entry, 2008

Type of Entry	Number Reported	Percent of Total Offenses
Forcible Entry	966	47.5%
Unlawful Entry - No Force	953	46.8
Attempted Forcible Entry	116	5.7
Burglary Total	2,035	100.0

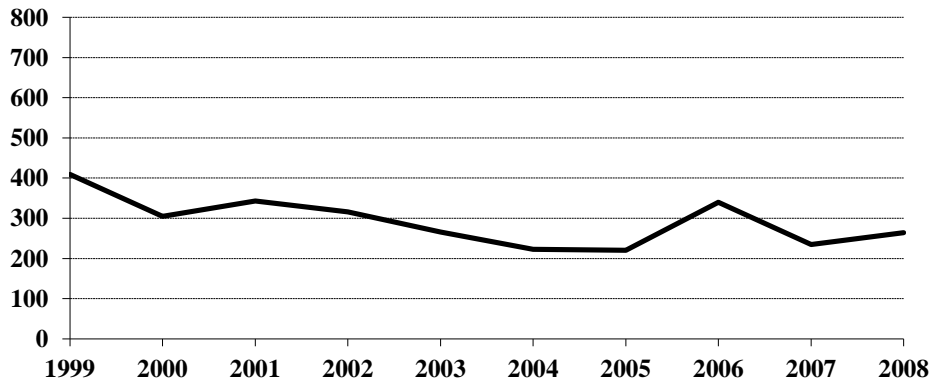
Burglary by Location and Value of Property, 2008

Location	Number Reported	Value of Property	Average Value per Burglary
Residence	1,081	\$1,877,375	\$1,736.70
Non-Residence	954	1,542,976	1,617.38
Burglary Total	2,035	3,420,351	1,680.76

Arrests for Burglary, 1999-2008

Year	Juvenile	Adult	Age Not Reported	Total
1999	202	205	2	409
2000	134	166	5	305
2001	175	166	2	343
2002	166	144	6	316
2003	118	148		266
2004	99	119	5	223
2005	55	165		220
2006	115	224	1	340
2007	94	141		235
2008	97	167		264

Arrests for Burglary, 1999-2008



Property Loss Due to Burglary, 1999-2008

Year	Offense Total	Property Loss	Average Loss per Burglary
1999	2,200	\$1,853,763	\$842.62
2000	2,004	1,781,810	889.13
2001	2,027	1,572,709	775.88
2002	2,250	2,082,601	925.60
2003	1,814	1,562,749	861.49
2004	1,954	2,207,247	1,129.60
2005	1,966	2,057,935	1,046.76
2006	2,302	2,432,305	1,056.61
2007	2,096	1,943,995	927.48
2008	2,035	3,420,351	1,680.76

Larceny/Theft

The UCR program defines Larceny/Theft as the “unlawful taking, carrying, leading, or riding away of property from the possession or constructive possession of another. It includes crimes such as shoplifting, pocket-picking, purse-snatching, thefts from motor vehicles, thefts of motor vehicle parts and accessories, bicycle thefts, etc., in which no use of force, violence or fraud occurs. In the Uniform Crime Reporting program, this crime category does not include embezzlement, confidence games, forgery, and worthless checks. Motor vehicle theft is also excluded from this category inasmuch as it is a separate crime index offense.”

A total of 8,926 larceny/theft offenses was reported in North Dakota in 2008. This is a 2.9 percent increase from the 2007 total of 8,672.

The larceny/theft rate per 100,000 population was 1391.4 compared with 1355.0 in 2007, a 2.7 percent increase in the rate.

More than 25 percent of larceny/theft offenses were cleared by arrest or exceptional means in 2008.

The number of arrests for this offense increased from 1,979 in 2007 to 2,366 in 2008. Approximately 41 percent of those arrested for larceny/theft in 2008 were juveniles.

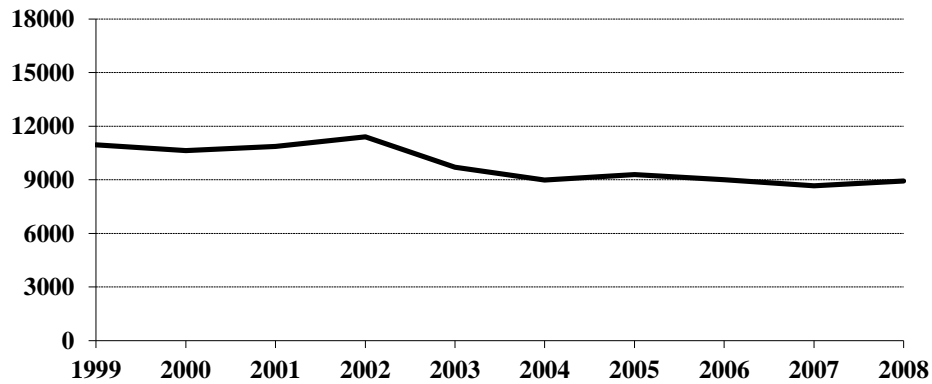
More than \$4.7 million dollars worth of property was reported stolen as the result of larceny/theft offenses in the state. The average dollar value per offense is \$533.

Larceny/theft accounted for 69.5 percent of the total index offenses reported and amounted to approximately 39 percent of the total value of stolen property.

Larceny/Theft Summary

Year	Population	Offense Total	% Change in Number from Previous Year	Rate per 100,000 Population	% Change in Rate from Previous Year	Percent Cleared
1999	634,000	10,956	-13.8%	1728.1	-13.2%	25.9%
2000	642,200	10,642	-2.9	1657.1	-4.1	22.0
2001	634,450	10,870	2.1	1713.3	3.4	20.9
2002	634,110	11,399	4.9	1797.6	4.9	20.4
2003	634,000	9,700	-14.9	1530.0	-14.9	19.8
2004	634,500	8,984	-7.4	1415.9	-7.5	20.6
2005	637,000	9,293	3.4	1458.9	3.0	19.3
2006	636,000	9,012	-3.0	1417.0	-2.9	19.8
2007	640,000	8,672	-3.8	1355.0	-4.4	22.1
2008	641,500	8,926	2.9	1391.4	2.7	25.5

Larceny/Theft Totals, 1999-2008



Monetary Value of Larceny/Theft, 2008

Value of Larceny/Theft	Number Reported	Percent of Total Offenses
Under \$50	2,926	32.8%
\$50 to \$200	2,568	28.8
Over \$200	3,432	38.4
Larceny/Theft Total	8,926	100.0

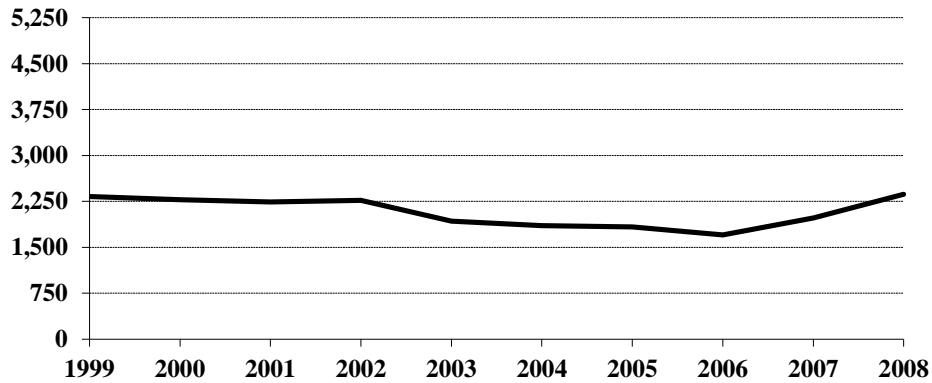
Larceny/Theft by Type and Value, 2008

Type of Larceny/Theft	Number Reported	Value of Property	Average Value per Larceny/Theft
From Motor Vehicle	1,846	\$963,901	\$522.16
Shoplifting	1,640	187,670	114.43
From Building	1,177	816,094	693.37
Bicycles	742	144,555	194.82
Motor Vehicle Parts, Accessories	421	180,308	428.29
Pocket Picking	25	2,263	90.52
From Coin-Operated Machine	14	1,755	125.36
Purse Snatching	7	2,474	353.43
All Other	3,054	2,458,968	805.16
Larceny/Theft Total	8,926	4,757,988	533.05

Arrests for Larceny/Theft, 1999-2008

Year	Juvenile	Adult	Age Not Reported	Total
1999	1,212	1,110	5	2,327
2000	1,285	987	7	2,279
2001	1,134	1,102	2	2,238
2002	1,147	1,114	3	2,264
2003	919	1,004	1	1,924
2004	792	1,064		1,856
2005	794	1,035	1	1,830
2006	699	1,000	1	1,700
2007	876	1,103		1,979
2008	977	1,388	1	2,366

Arrests for Larceny/Theft, 1999-2008



Property Loss Due to Larceny/Theft, 1999-2008

Year	Offense Total	Property Loss	Average Loss per Larceny/Theft
1999	10,956	\$5,690,080	\$519.36
2000	10,642	4,627,836	434.87
2001	10,870	5,432,250	499.75
2002	11,399	5,701,494	500.17
2003	9,700	5,207,256	536.83
2004	8,984	4,931,853	548.96
2005	9,293	5,191,397	558.64
2006	9,012	5,425,420	602.02
2007	8,672	4,343,221	500.83
2008	8,926	4,757,988	533.05

Motor Vehicle Theft

Motor Vehicle Theft is defined by the UCR program as “the theft or attempted theft of a motor vehicle; the offense category includes the stealing of automobiles, trucks, buses, motorcycles, motor scooters, snowmobiles, etc. The definition excludes the taking of a motor vehicle for temporary use by those persons having lawful access.”

A total of 854 motor vehicle thefts was reported in 2008. This is a decrease of 2.7 percent from the 2007 total of 878.

Based on a Census Bureau population estimate of 641,500 for North Dakota, the resulting motor vehicle theft rate is 133.1 per 100,000 population.

More than 24 percent of reported motor vehicle thefts were cleared by arrest or exceptional means in 2008.

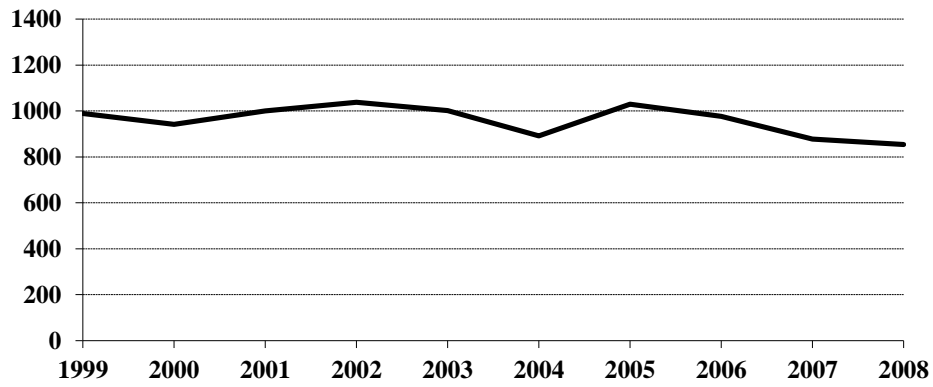
The number of arrests for motor vehicle theft increased from 174 in 2007 to 182 in 2008.

The average value per motor vehicle theft was approximately \$4,564.

Motor Vehicle Theft Summary

Year	Population	Offense Total	% Change in Number from Previous Year	Rate per 100,000 Population	% Change in Rate from Previous Year	Percent Cleared
1999	634,000	989	-7.8%	156.0	-7.3%	37.0%
2000	642,200	942	-4.8	146.7	-6.0	30.9
2001	634,450	1,000	6.2	157.6	7.4	27.8
2002	634,110	1,037	3.7	163.5	3.7	29.0
2003	634,000	1,002	-3.4	158.0	-3.4	25.2
2004	634,500	892	-11.0	140.6	-11.0	22.2
2005	637,000	1,030	15.5	161.7	15.0	23.5
2006	636,000	977	-5.1	153.6	-5.0	23.7
2007	640,000	878	-10.1	137.2	-10.7	24.4
2008	641,500	854	-2.7	133.1	-3.0	24.6

Motor Vehicle Theft Totals, 1999-2008



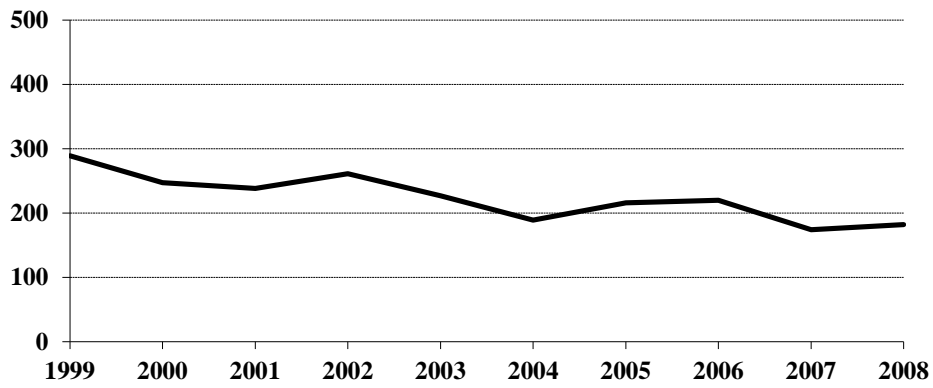
Type of Vehicle Stolen, 2008

Type of Vehicle	Number Reported	Percent of Total Offenses
Automobiles	702	82.2%
Trucks and Buses	54	6.3
Other Vehicles	98	11.5
Motor Vehicle Theft Total	854	100.0

Arrests for Motor Vehicle Theft, 1999-2008

Year	Juvenile	Adult	Age Not Reported	Total
1999	185	104		289
2000	153	93	1	247
2001	130	108		238
2002	146	114	1	261
2003	119	108		227
2004	78	111		189
2005	103	113		216
2006	105	115		220
2007	74	100		174
2008	84	98		182

Arrests for Motor Vehicle Theft, 1999-2008



Property Loss Due to Motor Vehicle Theft, 1999-2008

Year	Offense Total	Property Loss	Average Loss per Offense
1999	989	\$3,633,353	\$3,673.76
2000	942	3,886,274	4,125.56
2001	1,000	4,414,621	4,414.62
2002	1,037	4,647,821	4,481.99
2003	1,002	4,637,043	4,627.79
2004	892	4,238,662	4,751.86
2005	1,030	5,124,789	4,975.52
2006	977	4,525,628	4,632.17
2007	878	4,348,148	4,952.33
2008	854	3,897,971	4,564.37

Crime Index Offenses by Reporting Jurisdiction

The rate per 100,000 population is shown immediately below the actual number of crime index offenses reported by each jurisdiction. A county total is also shown for each of those counties that have more than one reporting jurisdiction within its geographic boundaries. The rate is reported per 100,000 for easy comparison to national publications.

Number and Rate of Index Offenses, 2008

County	Reporting Jurisdiction	Population	Murder/ Non-Negligent Manslaughter	Forcible Rape	Robbery	Aggravated Assault	Burglary	Larceny/ Theft	Motor Vehicle Theft	Total Index Offenses
Adams	County SO			2		2	4	5		13
		2,249		88.9		88.9	177.9	222.3		578.0
Barnes	County SO	4,457				1	8	17	3	29
						22.4	179.5	381.4	67.3	650.7
	Valley City PD	6,242		5	1	1	24	56	5	92
				80.1	16.0	16.0	384.5	897.1	80.1	1473.9
	County Total	10,699		5	1	2	32	73	8	121
				46.7	9.3	18.7	299.1	682.3	74.8	1130.9
Benson	County SO	6,990	DID NOT REPORT IN 2008							
Billings	County SO	791	DID NOT REPORT IN 2008							
Bottineau	County SO						9	11	1	21
		3,640					247.3	302.2	27.5	576.9
Bowman	County SO	1,467							1	1
									68.2	68.2
	Bowman PD	1,451	DID NOT REPORT IN 2008							
Burke	County SO	1,824					10	10	1	21
							548.2	548.2	54.8	1151.3
Burleigh	County SO	15,895		9		13	46	101	11	180
				56.6		81.8	289.4	635.4	69.2	1132.4
	Bismarck PD	59,988	2	16	10	127	211	1324	94	1784
			3.3	26.7	16.7	211.7	351.7	2207.1	156.7	2973.9
	Lincoln PD	2,660					5	16	2	23
						188.0	601.5	75.2	864.7	
	County Total	78,543	2	25	10	140	262	1441	107	1987
			2.5	31.8	12.7	178.2	333.6	1834.7	136.2	2529.8
Cass	County SO	22,644		1		3	57	113	16	190
				4.4		13.2	251.7	499.0	70.7	839.1
	Fargo PD *	92,902	51	27	192	457	2372	214	3313	
			54.9	29.1	206.7	491.9	2553.2	230.4	3566.1	
	West Fargo PD	24,266	10	3	26	125	375	47	586	
		41.2	12.4	107.1	515.1	1545.4	193.7	2414.9		
	County Total	139,812	62	30	221	639	2860	277	4089	
			44.3	21.5	158.1	457.0	2045.6	198.1	2924.6	
Cavalier	County SO	3,821				2	3	30	4	39
						52.3	78.5	785.1	104.7	1020.7
Dickey	County SO	2,058					2	13	2	17
							97.2	631.7	97.2	826.0
	Ellendale PD	1,778			1		2	5		8
					56.2		112.5	281.2		449.9
	Oakes PD	1,486						2		2
							134.6		134.6	
	County Total	5,322			1		4	20	2	27
					18.8		75.2	375.8	37.6	507.3
Divide	County SO	1,040	DID NOT REPORT IN 2008							
	Crosby PD	939	DID NOT REPORT IN 2008							

* Includes 136 index offenses reported by NDSU PD.

County	Reporting Jurisdiction	Population	Murder/ Non-Negligent Manslaughter	Forcible Rape	Robbery	Aggravated Assault	Burglary	Larceny/ Theft	Motor Vehicle Theft	Total Index Offenses
Dunn	County SO	3,282								0 0.0
Eddy	County SO	2,400				1 41.7	4 166.7	5 208.3		10 416.7
Emmons	County SO	2,371				1 42.2	15 632.6	14 590.5	1 42.2	31 1307.5
	Linton PD	1,015	DID NOT REPORT IN 2008							
Foster	County SO	1,389							2 144.0	2 144.0
	Carrington PD	2,080					7 336.5	3 144.2	1 48.1	11 528.8
	County Total	3,469					7 201.8	3 86.5	3 86.5	13 374.7
Golden Valley	County SO	1,646	DID NOT REPORT IN 2008							
Grand Forks	County SO	11,636				7 60.2	18 154.7	39 335.2	15 128.9	79 678.9
	Emerado PD	472		1 211.9			1 211.9	6 1271.2	1 211.9	9 1906.8
	Grand Forks PD *	52,064		25 48.0	14 26.9	104 199.8	278 534.0	1530 2938.7	107 205.5	2058 3952.8
	Larimore PD	1,289	DID NOT REPORT IN 2008							
	Northwood PD	871					2 229.6	1 114.8		3 344.4
	Thompson PD	949					3 316.1	6 632.2	1 105.4	10 1053.7
	Reporting Agency Total	67,281		26 38.6	14 20.8	111 165.0	302 448.9	1582 2351.3	124 184.3	2159 3208.9
Grant	County SO	1,885					1 53.1	2 106.1		3 159.2
	Elgin PD	546				1 183.2	1 183.2	1 183.2		3 549.5
	County Total	2,431				1 41.1	2 82.3	3 123.4		6 246.8
Griggs	County SO	2,364								0 0.0
Hettinger	County SO	2,402					1 41.6	6 249.8	2 83.3	9 374.7
Kidder	County SO	1,662					1 60.2	2 120.3		3 180.5
	Steele PD	649						3 462.2		3 462.2
	County Total	2,311					1 43.3	5 216.4		6 259.6
LaMoure	County SO	3,236				2 61.8	1 30.9	2 61.8	1 30.9	6 185.4
	Lamoure PD	819	DID NOT REPORT IN 2008							
Logan	County SO	698						4 573.1		4 573.1
	Napoleon PD	1,225	DID NOT REPORT IN 2008							
McHenry	County SO	5,153					5 97.0	16 310.5	3 58.2	24 465.7
McIntosh	County SO	1,794				1 55.7		5 278.7		6 334.4
	Wishek PD	896	DID NOT REPORT IN 2008							
McKenzie	County SO	4,253					4 94.1	24 564.3	3 70.5	31 728.9
	Watford City PD	2,701				1 37.0		5 185.1		6 222.1
	County Total	6,954				1 14.4	4 57.5	29 417.0	3 43.1	37 532.1

* Includes 143 index offenses reported by UND PD.

County	Reporting Jurisdiction	Population	Murder/ Non-Negligent Manslaughter	Forcible Rape	Robbery	Aggravated Assault	Burglary	Larceny/ Theft	Motor Vehicle Theft	Total Index Offenses
McLean	County SO	8,263		4 48.4		10 121.0	39 472.0	82 992.4	6 72.6	141 1706.4
Mercer	County SO	2,820				2 70.9	7 248.2	7 248.2	4 141.8	20 709.2
	Beulah PD	2,877		3 104.3		4 139.0	4 139.0	30 1042.8	3 104.3	44 1529.4
	Hazen PD	2,219	DID NOT REPORT IN 2008							
	Reporting Agency Total	7,916		3 37.9		6 75.8	11 139.0	37 467.4	7 88.4	64 808.5
Morton	County SO	8,208		6 73.1		5 60.9	14 170.6	59 718.8	5 60.9	89 1084.3
	Mandan PD	17,860		16 89.6	4 22.4	15 84.0	43 240.8	316 1769.3	29 162.4	423 2368.4
	County Total	26,068		22 84.4	4 15.3	20 76.7	57 218.7	375 1438.5	34 130.4	512 1964.1
Mountrail	County SO	5,267				3 57.0	10 189.9	41 778.4	5 94.9	59 1120.2
	Stanley PD	1,215						9 740.7		9 740.7
	County Total	6,482				3 46.3	10 154.3	50 771.4	5 77.1	68 1049.1
Nelson	County SO	3,170				2 63.1	4 126.2	10 315.5	7 220.8	23 725.6
Oliver	County SO	1,692						5 295.5		5 295.5
Pembina	County SO	6,098				3 49.2	6 98.4	15 246.0	6 98.4	30 492.0
	Cavalier PD	1,333		1 75.0			1 75.0	16 1200.3	2 150.0	20 1500.4
	County Total	7,431		1 13.5		3 40.4	7 94.2	31 417.2	8 107.7	50 672.9
Pierce	County SO	1,511					2 132.4			2 132.4
	Rugby PD	2,538					1 39.4	6 236.4		7 275.8
	County Total	4,049					3 74.1	6 148.2		9 222.3
Ramsey	County SO	4,506				1 22.2	5 111.0	20 443.9	7 155.3	33 732.4
	Devils Lake PD	6,610	1 15.1	1 15.1		10 151.3	31 469.0	234 3540.1	18 272.3	295 4462.9
	County Total	11,116	1 9.0	1 9.0		11 99.0	36 323.9	254 2285.0	25 224.9	328 2950.7
Ransom	County SO	3,489		1 28.7		1 28.7	1 28.7	3 86.0		6 172.0
	Lisbon PD	2,182			1 45.8	4 183.3	7 320.8	7 320.8	5 229.1	24 1099.9
	County Total	5,671		1 17.6	1 17.6	5 88.2	8 141.1	10 176.3	5 88.2	30 529.0
Renville	County SO	2,288					1 43.7	5 218.5		6 262.2
Richland	County SO	8,763		1 11.4	1 11.4	12 136.9	25 285.3	54 616.2	5 57.1	98 1118.3
	Wahpeton PD *	7,603		1 13.2	1 13.2	9 118.4	25 328.8	170 2236.0	4 52.6	210 2762.1
	County Total	16,366		2 12.2	2 12.2	21 128.3	50 305.5	224 1368.7	9 55.0	308 1882.0
Rolette	County SO	11,919				1 8.4	6 50.3	8 67.1	2 16.8	17 142.6
	Rolla PD	1,423				4 281.1	2 140.5	22 1546.0	3 210.8	31 2178.5
	St. John's PD	354					1 282.5	1 282.5		2 565.0
	County Total	13,696				5 36.5	9 65.7	31 226.3	5 36.5	50 365.1

* Includes 37 index offenses reported by NDSCS PD.

County	Reporting Jurisdiction	Population	Murder/ Non-Negligent Manslaughter	Forcible Rape	Robbery	Aggravated Assault	Burglary	Larceny/ Theft	Motor Vehicle Theft	Total Index Offenses
Sargent	County SO	4,061				1 24.4		25 611.1		26 635.5
Sheridan	County SO	1,282					3 234.0	6 468.0	1 64.9	10 780.0
Sioux	County SO	4,254	DID NOT REPORT IN 2008							
Slope	County SO	650	DID NOT REPORT IN 2008							
Stark	County SO	6,294		1 15.9		5 79.4	1 15.9	53 842.1	20 317.8	80 1271.1
	Dickinson PD	15,910			1 6.3	29 182.3	39 245.1	251 1577.6	31 194.8	351 2206.2
	South Heart PD	297	DID NOT REPORT IN 2008							
	County Total	22,501		1 4.4	1 4.4	34 151.1	40 177.8	304 1351.1	51 226.7	431 1915.5
Steele	County SO	1,800	DID NOT REPORT IN 2008							
Stutsman	County SO	5,787		3 51.8			12 207.4	35 604.8	4 69.1	54 933.1
	Jamestown PD	14,578		15 102.9	2 13.7	30 205.8	65 445.9	240 1646.3	17 116.6	369 2531.2
	County Total	20,365		18 88.4	2 9.8	30 147.3	77 378.1	275 1350.4	21 103.1	423 2077.1
	County Total	2,235					11 912.9	13 1078.8		24 1991.7
Traill	County SO	4,585					7 152.7	13 283.5	9 196.3	29 632.5
	Mayville PD	1,986		1 50.4			2 100.7	4 201.4	3 151.1	10 503.5
	Hillsboro PD	1,470						1 68.0		1 68.0
	County Total	8,041		1 12.4			9 111.9	18 223.9	12 149.2	40 497.5
Walsh	County SO	6,890		3 43.5		2 29.0	44 638.6	52 754.7	15 217.7	116 1683.6
	Grafton PD	3,991		1 25.1		5 125.3	46 1152.6	111 2781.3	8 200.5	171 4284.6
	County Total	10,881		4 36.8		7 64.3	90 827.1	163 1498.0	23 211.4	287 2637.6
	County Total	19,611		5 25.5		13 66.3	39 198.9	61 311.0	11 56.1	129 657.8
Ward	County SO	19,611		5 25.5		13 66.3	39 198.9	61 311.0	11 56.1	129 657.8
	Minot PD	35,124		20 56.9	3 8.5	53 150.9	128 364.4	557 1585.8	47 133.8	808 2300.4
	Burlington PD	993					3 302.1	1 100.7		4 402.8
	County Total	55,728		25 44.9	3 5.4	66 118.4	170 305.1	619 1110.8	58 104.1	941 1688.6
Wells	County SO	2,079					24 1154.4	13 625.3		37 1779.7
	Harvey PD	1,610		3 186.3		5 310.6	9 559.0	17 1055.9		34 2111.8
	Fessenden PD	499				1 200.4		3 601.2		4 801.6
	County Total	4,188		3 71.6		6 143.3	33 788.0	33 788.0		75 1790.8
Williams	County SO	7,188		2 27.8		10 139.1	41 570.4	52 723.4	12 166.9	117 1627.7
	Williston PD	12,387		14 113.0	2 16.1	13 104.9	17 137.2	157 1267.5	27 218.0	230 1856.8
	County Total	19,575		16 81.7	2 10.2	23 117.5	58 296.3	209 1067.7	39 199.2	347 1772.7

ARREST ANALYSIS

Arrests in 2008

Although primarily an indication of law enforcement activity, the number of arrests reported does provide a limited profile of the perpetrators of crime, especially for those crimes that have high clearance rates. Differing arrest practices, policies, and enforcement emphases among agencies influence the volume of arrests for various offenses, particularly those against public order such as vagrancy, disorderly conduct, and related violations. However, arrests for serious crimes, e.g., robbery or burglary, are more likely to be uniform throughout all jurisdictions across the state.

The UCR program requires that an arrest be counted for each separate occasion an individual is taken into custody. Although several charges may be lodged against a person at the time of the arrest, only one arrest is counted for each time the person is taken into custody.

North Dakota law enforcement agencies reported 29,334 arrests in 2008. A total of 30,780 arrests was reported in 2007.

In 2008, more than 22 percent of total arrests were arrests of juveniles.

Seventy-one percent of the total was arrests of males.

Arrests for the crime index offenses of murder/non-negligent manslaughter, forcible rape, robbery, aggravated assault, burglary, larceny/theft and motor vehicle theft comprised 10.9 percent of the total reported arrests. Of the 3,204 reported arrests for crime index offenses, 38.3 percent were arrests of juveniles.

The total of 11,407 reported arrests for DUI and liquor law violations represents 38.9 percent of the total arrests reported in the state of North Dakota in 2008. Arrests for DUI decreased from 6,085 in 2007 to 5,815 in 2008. Liquor law violation arrests decreased 8.6 percent from 6,118 in 2007 to 5,592 reported in 2008.

More than 79 percent of total arrests were white; over 16 percent were Native American.

These statistics are provided by local law enforcement agencies that contribute to the North Dakota UCR program. No arrest figures for reservations in the state are included in these totals. Tribal law enforcement agencies do not participate in the state UCR program.

Total Arrests Reported, 2008

Offense Classification	Number Reported	Percent of Total Arrests
Murder/Non-Negligent Manslaughter	4	*
Negligent Manslaughter	6	*
Forcible Rape	45	0.2%
Robbery	23	0.1
Aggravated Assault	320	1.1
Burglary	264	0.9
Larceny/Theft	2,366	8.1
Motor Vehicle Theft	182	0.6
Other Assaults	1,947	6.6
Arson	22	0.1
Forgery and Counterfeiting	71	0.2
Fraud	646	2.2
Embezzlement	30	0.1
Stolen Property Offenses	135	0.5
Vandalism	557	1.9
Weapons Offenses	223	0.8
Prostitution	3	*
Other Sex Offenses	82	0.3
Drug Abuse Violations	2,158	7.4
Gambling	1	*
Offenses Against Family and Children	163	0.6
Driving Under the Influence	5,815	19.8
Liquor Law Violations	5,592	19.1
Disorderly Conduct	1,835	6.3
Vagrancy		
All Other Offenses	5,986	20.4
Suspicion		
Curfew and Loitering	248	0.8
Runaways	610	2.1
Arrest Total	29,334	100.0

* Less than 0.1 percent of total arrests.

Comparison of Reported Arrests, 2007-2008

Offense Classification	2007	2008	Percent Change
Murder/Non-Negligent Manslaughter	11	4	-63.6%
Negligent Manslaughter	5	6	20.0
Forcible Rape	37	45	21.6
Robbery	29	23	-20.7
Aggravated Assault	235	320	36.2
Burglary	235	264	12.3
Larceny/Theft	1,979	2,366	19.6
Motor Vehicle Theft	174	182	4.6
Other Assaults	1,982	1,947	-1.8
Arson	24	22	-8.3
Forgery and Counterfeiting	111	71	-36.0
Fraud	913	646	-29.2
Embezzlement	28	30	7.1
Stolen Property Offenses	126	135	7.1
Vandalism	665	557	-16.2
Weapons Offenses	174	223	28.2
Prostitution	6	3	-50.0
Other Sex Offenses	62	82	32.3
Drug Abuse Violations	2,323	2,158	-7.1
Gambling	3	1	-66.7
Offenses Against Family and Children	177	163	-7.9
Driving Under the Influence	6,085	5,815	-4.4
Liquor Law Violations	6,118	5,592	-8.6
Disorderly Conduct	1,586	1,835	15.7
Vagrancy	0	0	
All Other Offenses	6,684	5,986	-10.4
Suspicion	0	0	
Curfew and Loitering	279	248	-11.1
Runaways	729	610	-16.3
Arrest Total	30,780	29,334	-4.7

Juvenile and Adult Arrests, 2008

Offense Classification	Juvenile	Adult	Age Not Reported	Total
Murder/Non-Negligent Manslaughter		4		4
Negligent Manslaughter	1	5		6
Forcible Rape	18	27		45
Robbery	4	19		23
Aggravated Assault	47	270	3	320
Burglary	97	167		264
Larceny/Theft	977	1,388	1	2,366
Motor Vehicle Theft	84	98		182
Other Assaults	465	1,480	2	1,947
Arson	7	15		22
Forgery and Counterfeiting	2	69		71
Fraud	16	620	10	646
Embezzlement	8	22		30
Stolen Property Offenses	39	96		135
Vandalism	298	258	1	557
Weapons Offenses	43	180		223
Prostitution		3		3
Other Sex Offenses	20	62		82
Drug Abuse Violations	291	1,857	10	2,158
Gambling		1		1
Offenses Against Family and Children	88	75		163
Driving Under the Influence	93	5,718	4	5,815
Liquor Law Violations	1,217	4,369	6	5,592
Disorderly Conduct	761	1,073	1	1,835
Vagrancy				
All Other Offenses	1,159	4,819	8	5,986
Suspicion				
Curfew and Loitering	248			248
Runaways	610			610
Arrest Total	6,593	22,695	46	29,334

Arrests by Gender, 2008

Offense Classification	Male	Female	Total
Murder/Non-Negligent Manslaughter	3	1	4
Negligent Manslaughter	3	3	6
Forcible Rape	44	1	45
Robbery	20	3	23
Aggravated Assault	273	47	320
Burglary	242	22	264
Larceny/Theft	1,253	1,113	2,366
Motor Vehicle Theft	130	52	182
Other Assaults	1,428	519	1,947
Arson	18	4	22
Forgery and Counterfeiting	35	36	71
Fraud	393	253	646
Embezzlement	17	13	30
Stolen Property Offenses	103	32	135
Vandalism	467	90	557
Weapons Offenses	206	17	223
Prostitution	1	2	3
Other Sex Offenses	80	2	82
Drug Abuse Violations	1,642	516	2,158
Gambling	1		1
Offenses Against Family and Children	90	73	163
Driving Under the Influence	4,449	1,366	5,815
Liquor Law Violations	3,688	1,904	5,592
Disorderly Conduct	1,420	415	1,835
Vagrancy			
All Other Offenses	4,392	1,594	5,986
Suspicion			
Curfew and Loitering	151	97	248
Runaways	279	331	610
Arrest Total	20,828	8,506	29,334

Arrests by Race, 2008

Offense Classification	White	Black	Native American	Asian	Total
Murder/Non-Negligent Manslaughter	1		3		4
Negligent Manslaughter	5		1		6
Forcible Rape	38	3	4		45
Robbery	13	5	5		23
Aggravated Assault	210	33	77		320
Burglary	206	14	44		264
Larceny/Theft	1,676	132	549	9	2,366
Motor Vehicle Theft	127	7	47	1	182
Other Assaults	1,406	172	360	9	1,947
Arson	18	2	2		22
Forgery and Counterfeiting	54	6	11		71
Fraud	568	25	52	1	646
Embezzlement	27	1	2		30
Stolen Property Offenses	88	10	37		135
Vandalism	439	29	88	1	557
Weapons Offenses	187	12	24		223
Prostitution	2		1		3
Other Sex Offenses	64	5	12	1	82
Drug Abuse Violations	1,723	108	317	10	2,158
Gambling		1			1
Offenses Against Family and Children	123	9	31		163
Driving Under the Influence	5,038	96	672	9	5,815
Liquor Law Violations	4,656	107	812	17	5,592
Disorderly Conduct	1,349	116	367	3	1,835
Vagrancy					
All Other Offenses	4,563	313	1,103	7	5,986
Suspicion					
Curfew and Loitering	204	6	38		248
Runaways	453	38	116	3	610
Arrest Total	23,238	1,250	4,775	71	29,334

Arrest Analysis by Reporting Jurisdiction

The table below contains arrest totals for each reporting agency in 2008. Juvenile and adult arrests as well as arrests reported without age information are included.

Arrests by Reporting Jurisdiction, 2008

Agency	Murder/Non-Neg. Mansl.	Negligent Manslaughter	Forcible Rape	Robbery	Aggravated Assault	Burglary	Larceny/Theft	Motor Vehicle Theft	Other Assault	Arson	Forgery/Counterfeiting	Fraud	Embezzlement	Stolen Property Offenses	Vandalism	Weapons Offenses	Prostitution	Other Sex Offenses	Drug Abuse Violations	Gambling Violations	Off. Against Fam & Children	DUI	Liquor Law Violations	Disorderly Conduct	Vagrancy	All Other Offenses	Suspicion	Curfew/Loitering	Runaway	Total
Adams SO			2		2		1											1	3			11	8			2	3		33	
Barnes SO						1			3										2			9	15			8			38	
Valley City PD			1			1	4	2	19					1	5	1		1	23			71	40	1		25	1	2	198	
Benson SO	DID NOT REPORT IN 2008																													
Billings SO	DID NOT REPORT IN 2008																													
Bottineau SO							1								1				3				101			2			108	
Bowman SO																						1	7						8	
Bowman PD	DID NOT REPORT IN 2008																													
Burke SO						2		1	2			1							9							20			36	
Burleigh SO					3	3	11	2	25			140		1	9	2		2	75			123	237	19		109		7	768	
Bismarck PD	3	2	4	56	19	519	21	301		9	56	21	35	70	11		20	245		18	411	579	319		631	60	103	3513		
Lincoln PD							2	2						1					1	2	3	12	1		2	1	1	28		
Cass SO							2	1	27	2				2	3	1			23		12	73	73	7		26		3	255	
Fargo PD			11	11	75	35	839	25	462	5	19	57		40	125	37	2	13	290	1	50	813	1188	329		786	1	91	5305	
West Fargo PD			2		14	16	43	8	147			4	1	9	17	7		4	80		5	165	134	31		85	7	28	807	
NDSU PD									1										6			29	129	7		14			186	
Cavalier SO					2		1	2	6						1	1			1			10	1	2		4			31	
Dickey SO							2				1	13						1			1	7	8			7			40	
Ellendale PD																						1							1	
Oakes PD																													0	
Divide SO	DID NOT REPORT IN 2008																													
Crosby PD	DID NOT REPORT IN 2008																													
Dunn SO																						17							17	
Eddy SO																						11	2			1			14	
Emmons SO					1	1	4	1		1	2								3			5	36	2		5			61	
Linton PD	DID NOT REPORT IN 2008																													
Foster SO							1																						1	
Carrington PD						2	2	2								1			1			10	11	1		3	5		38	
Golden Valley SO	DID NOT REPORT IN 2008																													
Grand Forks SO					5	3	1	4	16			25		1	7	3			13		3	72	22	9		831		6	1021	
Emerado PD							2	1	1						3			1	1		3	15	5	3		2			37	
Grand Forks PD			1	2	45	21	356	13	174	7	5	21	2	9	34	9		7	107		15	234	339	210		277	8	131	2027	
Larimore PD	DID NOT REPORT IN 2008																													
Northwood PD						2															2					1			5	
Thompson PD						1																							1	

Agency	Murder/Non-Neg. Mansl.	Negligent Manslaughter	Forcible Rape	Robbery	Aggravated Assault	Burglary	Larceny/Theft	Motor Vehicle Theft	Other Assault	Arson	Forgery/Counterfeiting	Fraud	Embezzlement	Stolen Property Offenses	Vandalism	Weapons Offenses	Prostitution	Other Sex Offenses	Drug Abuse Violations	Gambling Violations	Off. Against Fam & Children	DUI	Liquor Law Violations	Disorderly Conduct	Vagrancy	All Other Offenses	Suspicion	Curfew/Loitering	Runaway	Total
UND PD						1	1	1											6		1	32	143	9		14				208
Grant SO						2			2										4											8
Elgin PD					1				1															1						3
Griggs SO									2							1							4	5			1			13
Hettinger SO						1																								1
Kidder SO									1			29							1	1				5	12					49
Steele PD						1			5						2								2	2	3					15
LaMoure SO					1				1																					2
LaMoure PD	DID NOT REPORT IN 2008																													
Logan SO															2								5				1			8
Napoleon PD	DID NOT REPORT IN 2008																													
McHenry SO						1	1	2											6			11	26	2		2				51
McIntosh SO									1			5			2				3				7	4			2			24
Wishek PD	DID NOT REPORT IN 2008																													
McKenzie SO							1	3							1	1			2			7	9	2						26
Watford City PD					2	3										1			6				13	13	4					42
McLean SO			1		5	5	10	1	15		1			4	14	3		1	12				43	63	14		18		4	214
Mercer SO					2	3					2			1		1			42				16	8			20			95
Beulah PD					2			2	5														40	34	4		7	1		95
Hazen PD	DID NOT REPORT IN 2008																													
Morton SO			1		2	3	5		10					1	6	6		1	3			2	83	71	12		55		1	262
Mandan PD			1	2	4	14	23	11	101	1	3	4			31	7		6	14			5	244	144	70		344	39	15	1083
Mountrail SO					2		1	1	5						1	1			2				46	11	4		21			95
Stanley PD									4										3				13	9	1		3			33
Nelson SO					1			2	7						4	2							13	6	1		2			38
Oliver SO									5			1			1	1			1				8	1	3		3			24
Pembina SO					2		2	1	2					1	1	3		1	21				49	17	5		12			117
Cavalier PD									7						1	2			6				20	22	5		18			81
Pierce SO																			1				3	3	1		1			9
Rugby PD						1	1		1			1							1	2			1	3	1					12
Ramsey SO					2	7	4	10	1	1		1		3		2	1	1	12			4	38	14	7		32	5	2	147
Devils Lake PD	1		1		2	9	94	6	38	2	7	3		5	34	4		1	75			5	110	148	120		232	27		924
Ransom SO			1		1				1										1				5	2	1		1			13
Lisbon PD					2				4						1				2				19	4	2		5			39
Renville SO						1			3			18							2				2		1		10			37
Richland SO					4	1	2		8			68		3	4				4			16	32	41	7		102	1	2	295
Wahpeton PD					3	6	15	1	21	1	1			2	11	1		2	5				39	77	7		70	4		266
NDSCS PD						1	5								1				2				7	9			11			36
Rolette SO					1	6	2		9					1	4				2				10	10	9		3			57
Rolla PD					3	1	17	1	15									1					1	4	13		1			57
St. John's PD						1	2												1				2	2						8
Sargent SO					1		2		1			37			2				6				13	33	1		11			107
Sheridan SO						2	3		1														1		1		1			9
Sioux SO	DID NOT REPORT IN 2008																													
Slope SO	DID NOT REPORT IN 2008																													
Stark SO					1		2	1	5			73	1	1					2			6	36	68	11		332			539
Dickinson PD					9	10	22	4	65		2	21	1	4	28	7		1	43			2	173	219	163		173		3	950

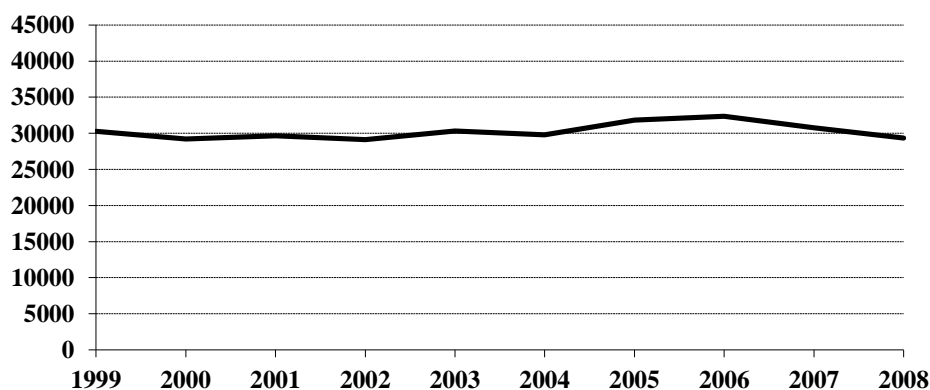
Agency	Murder/Non-Neg. Mansl.	Negligent Manslaughter	Forcible Rape	Robbery	Aggravated Assault	Burglary	Larceny/Theft	Motor Vehicle Theft	Other Assault	Arson	Forgery/Counterfeiting	Fraud	Embezzlement	Stolen Property Offenses	Vandalism	Weapons Offenses	Prostitution	Other Sex Offenses	Drug Abuse Violations	Gambling Violations	Off. Against Fam & Children	DUI	Liquor Law Violations	Disorderly Conduct	Vagrancy	All Other Offenses	Suspicion	Curfew/Loitering	Runaway	Total
South Heart PD	DID NOT REPORT IN 2008																													
Steele SO	DID NOT REPORT IN 2008																													
Stutsman SO			1			8	10	1	13						1	3		2	4			35	44	9		22			7	160
Jamestown PD			4	1	16	2	54	5	80	1	7	1	1	2	30	2		1	42			123	183	113		366		17	27	1078
Towner SO							2		1													1	11						1	16
Cando PD							4		2						1				1			4	6	3		9		8		38
Traill SO						3	1	3	4			1		1	4	1			6		1	22	22	1		4			1	75
Mayville PD						1			4											2		9	1	1		2				20
Hillsboro PD																						5								5
Walsh SO			2			10	5	2	10						3			1	2			34	20	3		5			1	98
Grafton PD					1	5	6	1	17		2					1				17		2	38	29	17		5		2	145
Ward SO			2		6	24	9	3	47	1	5	3		1	18	2		3	14		1	67	76	29		24			19	354
Minot PD			4	2	25	23	205	8	135		3	12	1	6	41	34		4	101		2	363	369	192		672		37	122	2361
Burlington PD									2													6	10			5				23
Wells SO									2			48										3	19			39				111
Harvey PD					1		1		1													2	10	8		3				26
Fessenden PD					1		1																			1				3
Williams SO			1		4		6	3	16					1	1	1		2	3		4	19	11	4		25			4	105
Williston PD			7	1	7	7	51	10	49	1	2		2		20			2			1	70	38	17		133		21	27	466
Highway Patrol		6			3		6	11	24			1			11	59			394			1770	554	12		186				3037
Drug Task Forces						4	1				1					3							5			136				544
Total	4	6	45	23	320	264	2366	182	1947	22	71	646	30	135	557	223	3	82	2158	1	163	5815	5592	1835	0	5986	0	248	610	29334

Arrests 1999-2008

Arrest Summary

Year	Population	Arrest Total	% Change from Previous Year	Rate per 100,000 Pop.
1999	634,000	30,258	-9.8%	4772.6
2000	642,200	29,201	-3.5	4547.0
2001	634,450	29,638	1.5	4671.4
2002	634,110	29,145	-1.7	4596.2
2003	634,000	30,334	4.1	4784.5
2004	634,500	29,798	-1.8	4696.3
2005	637,000	31,835	6.8	4997.6
2006	636,000	32,343	1.6	5085.4
2007	640,000	30,780	-4.8	4809.4
2008	641,500	29,334	-4.7	4572.7

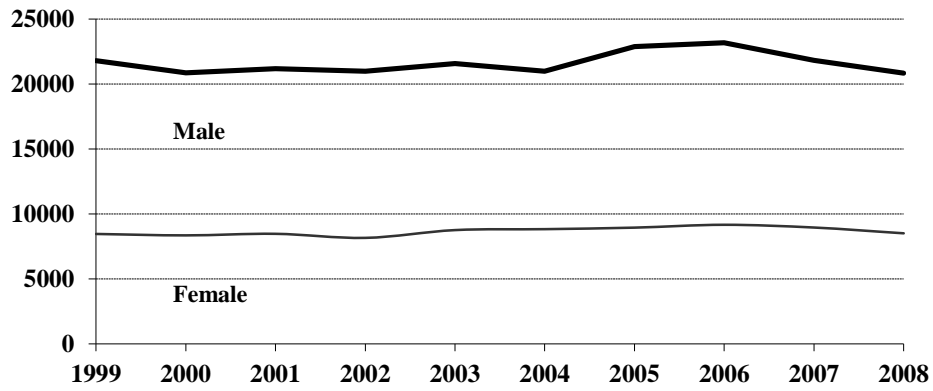
Arrest Totals, 1999-2008



Arrests by Gender, 1999-2008

Year	Male	% of Total	Female	% of Total	Total
1999	21,801	72.1%	8,457	27.9%	30,258
2000	20,854	71.4	8,347	28.6	29,201
2001	21,170	71.4	8,468	28.6	29,638
2002	20,991	72.0	8,154	28.0	29,145
2003	21,580	71.1	8,754	28.9	30,334
2004	20,971	70.4	8,827	29.6	29,798
2005	22,891	71.9	8,944	28.1	31,835
2006	23,181	71.7	9,162	28.3	32,343
2007	21,829	70.9	8,951	29.1	30,780
2008	20,828	71.0	8,506	29.0	29,334

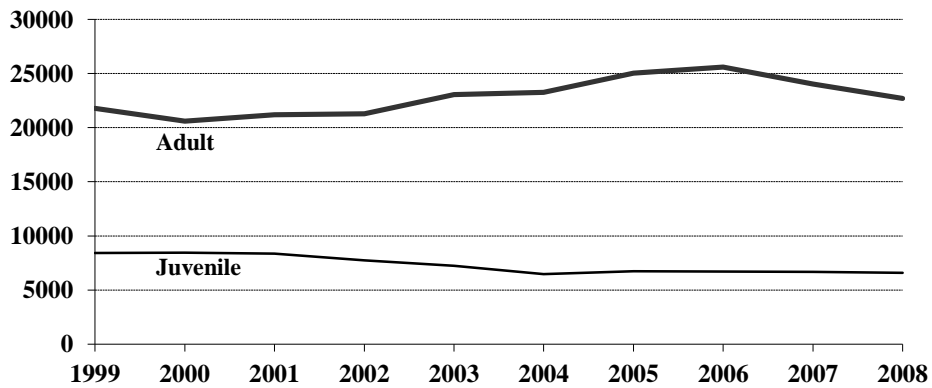
Arrests by Gender, 1999-2008



Juvenile and Adult Arrests, 1999-2008

Year	Juvenile	Percent of Total	Adult	Percent of Total	Age Not Reported	Percent of Total	Total
1999	8,429	27.9%	21,769	71.9%	60	0.2%	30,258
2000	8,435	28.9	20,612	70.6	154	0.5	29,201
2001	8,347	28.2	21,188	71.5	103	0.3	29,638
2002	7,742	26.6	21,279	73.0	124	0.4	29,145
2003	7,250	23.9	23,044	76.0	40	0.1	30,334
2004	6,467	21.7	23,247	78.0	84	0.3	29,798
2005	6,721	21.1	25,038	78.6	76	0.2	31,835
2006	6,703	20.7	25,601	79.2	39	0.1	32,343
2007	6,676	21.7	24,037	78.1	67	0.2	30,780
2008	6,593	22.5	22,695	77.4	46	0.1	29,334

Juvenile and Adult Arrests, 1999-2008



Arrests by Age Group, 1999-2008

Age Group	1999	2000	2001	2002	2003	2004	2005	2006	2007	2008
Under 10	202	203	186	168	145	108	73	120	108	106
10-12	628	708	819	638	582	580	500	579	461	465
13-14	1877	1809	1686	1736	1601	1526	1411	1548	1427	1396
15	1586	1698	1629	1459	1344	1312	1394	1268	1337	1327
16	1977	1898	1943	1810	1677	1409	1630	1460	1641	1606
17	2159	2119	2084	1931	1901	1532	1713	1728	1702	1693
18	2356	2377	2501	2248	2620	2176	2300	2456	2368	2159
19	2693	2572	2845	2528	2832	2638	2647	2654	2647	2369
20	2220	2198	2565	2224	2597	2310	2602	2599	2417	2224
21	1186	1112	1220	1323	1476	1358	1405	1605	1444	1289
22	1039	957	913	1010	1174	1316	1259	1274	1268	1192
23	807	830	817	904	958	1065	1173	1102	1018	1059
24	741	654	739	753	858	909	1045	1042	996	881
25-29	2858	2598	2397	2562	2880	2952	3549	3629	3567	3520
30-34	2230	2018	1932	1990	2021	2140	2331	2371	2100	1983
35-39	2166	1931	1926	1931	1727	1888	2095	1989	1758	1674
40-44	1500	1475	1536	1711	1731	1846	1869	1886	1612	1539
45-49	919	908	895	1034	1065	1275	1354	1413	1312	1308
50-54	515	483	448	550	557	696	734	814	780	769
55-59	234	250	191	261	303	367	359	414	425	365
60-64	107	81	77	110	118	165	155	183	171	199
65 +	198	168	186	140	127	146	161	170	154	165
Age Not Reported	60	154	103	124	40	84	76	39	67	46
Arrest Total	30258	29201	29638	29145	30334	29798	31835	32343	30780	29334

Arrests by Offense, 1999-2008

Offense Classification	1999	2000	2001	2002	2003	2004	2005	2006	2007	2008
Murder/Non-Neg. Manslaughter	6	1	3	6	2	10	9	6	11	4
Negligent Manslaughter	4	4	1		5	4	3	5	5	6
Forcible Rape	24	39	32	42	40	53	34	45	37	45
Robbery	28	15	19	25	25	15	22	25	29	23
Aggravated Assault	108	144	161	127	136	159	203	214	235	320
Burglary	409	305	343	316	266	223	220	340	235	264
Larceny/Theft	2327	2279	2238	2264	1924	1856	1830	1700	1979	2366
Motor Vehicle Theft	289	247	238	261	227	189	216	220	174	182
Other Assaults	1651	1704	1664	1798	1691	1656	2015	1989	1982	1947
Arson	16	24	60	25	20	24	15	30	24	22
Forgery and Counterfeiting	160	137	186	192	202	170	161	159	111	71
Fraud	3274	2532	1883	1777	1698	1557	1201	1243	913	646
Embezzlement	6	1	6	4	8	4	15	24	28	30
Stolen Property Offenses	84	98	113	171	148	123	137	124	126	135
Vandalism	709	671	713	802	650	592	572	657	665	557
Weapons Offenses	107	120	138	140	136	198	271	215	174	223
Prostitution	3		4		5	15	1	2	6	3
Other Sex Offenses	76	87	87	83	92	94	82	82	62	82
Drug Abuse Violations	1456	1501	1658	1752	2045	2078	2343	2256	2323	2158
Gambling	5		4	4		1	4		3	1
Off. Against Family & Children	200	250	245	228	205	221	243	199	177	163
Driving Under the Influence	5179	4304	4301	4467	4854	5783	5946	6488	6085	5815
Liquor Law Violations	6377	6574	7415	6099	6969	5758	5940	6513	6118	5592
Disorderly Conduct	1568	1554	1636	1565	1691	1529	1657	1753	1586	1835
Vagrancy	8	2	4	2	3					
All Other Offenses	4998	5285	5338	6069	6318	6556	7686	7160	6684	5986
Suspicion	1									
Curfew and Loitering	382	345	325	270	339	264	301	224	279	248
Runaways	803	978	823	656	635	666	708	670	729	610
Arrest Total	30258	29201	29638	29145	30334	29798	31835	32343	30780	29334

Juvenile Arrests by Offense, 1999-2008

Offense Classification	1999	2000	2001	2002	2003	2004	2005	2006	2007	2008
Murder/Non-Neg. Manslaughter	1								2	
Negligent Manslaughter	1	1			1			1		1
Forcible Rape	6	12	9	18	11	10	6	4	8	18
Robbery	9		3	9	6	8	4	7	5	4
Aggravated Assault	25	15	28	19	14	22	47	30	31	47
Burglary	202	134	175	166	118	99	55	115	94	97
Larceny/Theft	1212	1285	1134	1147	919	792	794	699	876	977
Motor Vehicle Theft	185	153	130	146	119	78	103	105	74	84
Other Assaults	401	448	439	485	420	416	482	474	442	465
Arson	10	17	52	15	16	15	10	15	14	7
Forgery and Counterfeiting	37	41	29	35	22	17	15	9	5	2
Fraud	17	16	32	18	23	12	17	29	34	16
Embezzlement					2		4	4	5	8
Stolen Property Offenses	49	51	54	90	92	51	41	46	43	39
Vandalism	420	423	503	538	410	344	303	362	378	298
Weapons Offenses	27	31	40	36	22	40	41	43	28	43
Prostitution						10				
Other Sex Offenses	18	32	26	32	31	33	20	20	16	20
Drug Offenses	284	292	311	289	249	229	251	264	278	291
Gambling			1							
Off. Against Family/Children	98	66	86	77	64	84	86	107	91	88
Driving Under the Influence	169	81	90	74	90	92	92	100	66	93
Liquor Law Violations	2176	2039	1890	1645	1741	1304	1255	1469	1341	1217
Disorderly Conduct	709	699	785	672	738	652	687	714	601	761
Vagrancy	1		3							
All Other Offenses	1187	1277	1379	1305	1168	1229	1399	1192	1236	1159
Suspicion										
Curfew and Loitering	382	344	325	270	339	264	301	224	279	248
Runaways	803	978	823	656	635	666	708	670	729	610
Juvenile Arrest Total	8429	8435	8347	7742	7250	6467	6721	6703	6676	6593

Juvenile Arrests by Gender, 1999-2008

Year	Male	% of Total	Female	% of Total	Total
1999	5,456	64.7%	2,973	35.3%	8,429
2000	5,387	63.9	3,048	36.1	8,435
2001	5,298	63.5	3,049	36.5	8,347
2002	5,043	65.1	2,699	34.9	7,742
2003	4,568	63.0	2,682	37.0	7,250
2004	3,909	60.4	2,558	39.6	6,467
2005	4,092	60.9	2,629	39.1	6,721
2006	4,240	63.3	2,463	36.7	6,703
2007	4,108	61.5	2,568	38.5	6,676
2008	4,061	61.6	2,532	38.4	6,593

Adult Arrests by Offense, 1999-2008

Offense Classification	1999	2000	2001	2002	2003	2004	2005	2006	2007	2008
Murder/Non-Neg. Manslaughter	5	1	3	6	2	10	9	6	9	4
Negligent Manslaughter	3	3	1		4	4	3	4	5	5
Forcible Rape	18	27	23	24	29	43	28	41	29	27
Robbery	19	15	16	16	19	7	18	18	24	19
Aggravated Assault	82	128	133	108	122	137	156	184	204	270
Burglary	205	166	166	144	148	119	165	224	141	167
Larceny/Theft	1110	987	1102	1114	1004	1064	1035	1000	1103	1388
Motor Vehicle Theft	104	93	108	114	108	111	113	115	100	98
Other Assaults	1244	1249	1221	1311	1269	1237	1532	1513	1540	1480
Arson	6	7	8	10	4	9	5	15	9	15
Forgery and Counterfeiting	123	96	157	155	180	151	145	149	106	69
Fraud	3243	2482	1782	1701	1654	1507	1172	1211	845	620
Embezzlement	6	1	6	4	6	4	11	20	23	22
Stolen Property Offenses	35	46	59	80	56	72	96	78	83	96
Vandalism	287	246	204	264	240	246	269	293	287	258
Weapons Offenses	80	87	98	103	114	158	230	172	146	180
Prostitution	3		4		5	5	1	2	6	3
Other Sex Offenses	58	53	61	51	61	61	62	62	46	62
Drug Offenses	1169	1206	1344	1438	1795	1846	2066	1983	2035	1857
Gambling	5		2	4		1	4		3	1
Off. Against Family/Children	100	182	159	151	141	136	157	91	86	75
Driving Under the Influence	5005	4214	4207	4390	4759	5685	5847	6384	6018	5718
Liquor Law Violations	4191	4493	5520	4449	5222	4449	4674	5038	4775	4369
Disorderly Conduct	856	854	851	892	952	876	969	1035	984	1073
Vagrancy	7	2	1	2	3					
All Other Offenses	3804	3974	3952	4748	5147	5309	6271	5963	5430	4819
Suspicion	1									
Adult Arrest Total	21769	20612	21188	21279	23044	23247	25038	25601	24037	22695

Adult Arrests by Gender, 1999-2008

Year	Male	% of Total	Female	% of Total	Total
1999	16,304	74.9%	5,465	25.1%	21,769
2000	15,361	74.5	5,251	25.5	20,612
2001	15,805	74.6	5,383	25.4	21,188
2002	15,859	74.5	5,420	25.5	21,279
2003	16,987	73.7	6,057	26.3	23,044
2004	17,004	73.1	6,243	26.9	23,247
2005	18,739	74.8	6,299	25.2	25,038
2006	18,912	73.9	6,689	26.1	25,601
2007	17,677	73.5	6,360	26.5	24,037
2008	16,735	73.7	5,960	26.3	22,695

Drug Arrest Analysis

Drug offense arrests decreased by 7.1 percent from a total of 2,323 in 2007 to 2,158 in 2008. The arrest totals shown should not be interpreted as the number of individuals arrested for drug offenses because it is possible that some individuals may have been arrested on more than one occasion for this offense.

Approximately 76 percent of drug arrests in 2008 were arrests of males.

Juveniles (persons under the age of 18) comprised 13.5 percent of the total in 2008.

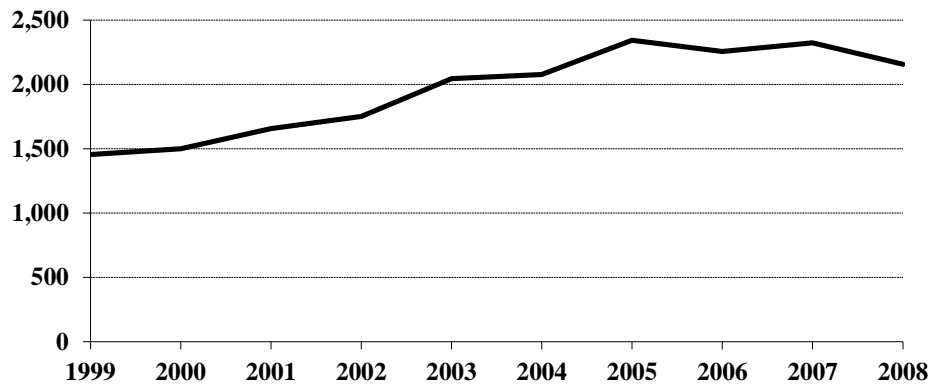
More than 89 percent of the drug arrests during the 10-year period were arrests for possession rather than sale or manufacture of drugs.

Approximately 72 percent of the arrests for drug offenses during the period 1999-2008 involved marijuana.

Arrests for Drug Offenses, 1999-2008

Year	Total	Percent Change from Previous Year
1999	1,456	-4.0%
2000	1,501	3.1
2001	1,658	10.5
2002	1,752	5.7
2003	2,045	16.7
2004	2,078	1.6
2005	2,343	12.8
2006	2,256	-3.7
2007	2,323	3.0
2008	2,158	-7.1

Arrests for Drug Offenses, 1999-2008



Drug Arrests by Gender, 1999-2008

Year	Male	% of Total	Female	% of Total	Total
1999	1,161	79.7%	295	20.3%	1,456
2000	1,222	81.4	279	18.6	1,501
2001	1,298	78.3	360	21.7	1,658
2002	1,340	76.5	412	23.5	1,752
2003	1,593	77.9	452	22.1	2,045
2004	1,595	76.8	483	23.2	2,078
2005	1,738	74.2	605	25.8	2,343
2006	1,762	78.1	494	21.9	2,256
2007	1,774	76.4	549	23.6	2,323
2008	1,642	76.1	516	23.9	2,158

Drug Arrests by Age Category, 1999-2008

Year	Juvenile	Percent of Total	Adult	Percent of Total	Age Not Reported	Percent of Total	Total
1999	284	19.5%	1,169	80.3%	3	0.2%	1,456
2000	292	19.5	1,206	80.3	3	0.2	1,501
2001	311	18.7	1,344	81.1	3	0.2	1,658
2002	289	16.5	1,438	82.1	25	1.4	1,752
2003	249	12.2	1,795	87.8	1	*	2,045
2004	229	11.0	1,846	88.8	3	0.1	2,078
2005	251	10.7	2,066	88.2	26	1.1	2,343
2006	264	11.7	1,983	87.9	9	0.4	2,256
2007	278	12.0	2,035	87.6	10	0.4	2,323
2008	291	13.5	1,857	86.0	10	0.5	2,158

*Less than 0.1 percent of total drug arrests.

Drug Arrests by Age Group, 1999-2008

Age Group	1999	2000	2001	2002	2003	2004	2005	2006	2007	2008
Under 10										
10-12	2	1	3	4	3	4	5	4	2	4
13-14	33	38	36	29	33	29	20	34	39	31
15	47	51	50	43	34	40	42	38	47	60
16	104	84	95	93	66	68	90	79	92	91
17	98	118	127	120	113	88	94	109	98	105
18	138	145	151	159	195	163	195	187	209	195
19	133	130	172	152	175	186	197	169	196	175
20	93	100	143	142	157	160	193	180	182	151
21	62	73	115	105	117	117	121	132	148	141
22	80	73	75	83	115	135	124	119	136	126
23	56	50	63	58	87	111	106	98	95	100
24	56	42	42	67	75	110	107	97	106	78
25-29	144	145	155	186	272	250	326	319	385	303
30-34	147	146	131	119	151	190	203	217	155	171
35-39	125	137	133	137	158	129	153	156	136	114
40-44	76	91	103	145	159	168	163	145	111	129
45-49	39	52	43	58	85	82	109	91	87	105
50-54	14	16	12	24	38	33	45	52	59	45
55-59	6	6	3	3	8	9	18	16	22	17
60-64			2		1	1	1	4	3	5
65 +			1		2	2	5	1	5	2
No Age Data	3	3	3	25	1	3	26	9	10	10
Total	1456	1501	1658	1752	2045	2078	2343	2256	2323	2158

Drug Arrests by Type of Offense, 1999-2008

Year	Sale or Manufacture	% of Total	Possession	% of Total	Total
1999	159	10.9%	1,297	89.1%	1,456
2000	188	12.5	1,313	87.5	1,501
2001	118	7.1	1,540	92.9	1,658
2002	134	7.6	1,618	92.4	1,752
2003	143	7.0	1,902	93.0	2,045
2004	318	15.3	1,760	84.7	2,078
2005	284	12.1	2,059	87.9	2,343
2006	298	13.2	1,958	86.8	2,256
2007	217	9.3	2,106	90.7	2,323
2008	250	11.6	1,908	88.4	2,158

Drug Arrests by Age Category and Type of Offense, 1999-2008

Year	Juvenile		Adult		Age Not Reported	
	Sale or Manufacture	Possession	Sale or Manufacture	Possession	Sale or Manufacture	Possession
1999	11	273	145	1,024	3	
2000	32	260	156	1,050		3
2001	7	304	111	1,233		3
2002	20	269	110	1,328	4	21
2003	20	229	123	1,672		1
2004	28	201	289	1,557	1	2
2005	17	234	259	1,807	8	18
2006	27	237	268	1,715	3	6
2007	19	259	196	1,839	2	8
2008	33	258	217	1,640		10

Drug Arrests by Type of Drug, 1999-2008

Year	Opiates, Cocaine or Derivatives	Percent of Total	Marijuana	Percent of Total	Other Drugs or Narcotics	Percent of Total	Total
1999	53	3.6%	1,173	80.6%	230	15.8%	1,456
2000	45	3.0	1,189	79.2	267	17.8	1,501
2001	33	2.0	1,221	73.6	404	24.4	1,658
2002	61	3.5	1,189	67.9	502	28.6	1,752
2003	62	3.0	1,428	69.9	555	27.1	2,045
2004	38	1.8	1,333	64.2	707	34.0	2,078
2005	53	2.3	1,516	64.7	774	33.0	2,343
2006	53	2.3	1,621	71.9	582	25.8	2,256
2007	50	2.2	1,783	76.7	490	21.1	2,323
2008	49	2.3	1,681	77.9	428	19.8	2,158

Drug Arrests by Age Category and Type of Drug, 1999-2008

Year	Juvenile			Adult			Age Not Reported		
	Opiates, Cocaine or Deriv.	Marijuana	Other Drugs or Narcotics	Opiates, Cocaine or Deriv.	Marijuana	Other Drugs or Narcotics	Opiates, Cocaine or Deriv.	Marijuana	Other Drugs or Narcotics
1999		260	24	52	911	206	1	2	
2000	4	263	25	41	925	240		1	2
2001		269	42	33	950	361		2	1
2002	4	251	34	55	923	460	2	15	8
2003	3	206	40	59	1,221	515		1	
2004	3	162	64	35	1,170	641		1	2
2005	2	220	29	51	1,288	727		8	18
2006	1	229	34	52	1,389	542		3	6
2007	1	244	33	49	1,532	454		7	3
2008	5	237	49	44	1,438	375		6	4

DUI Arrest Analysis

Reported DUI arrests decreased 4.4 percent from 6,085 in 2007 to 5,815 in 2008. The arrest totals should not be interpreted as the number of individuals arrested for DUI offenses because it is possible that some individuals may have been arrested on more than one occasion.

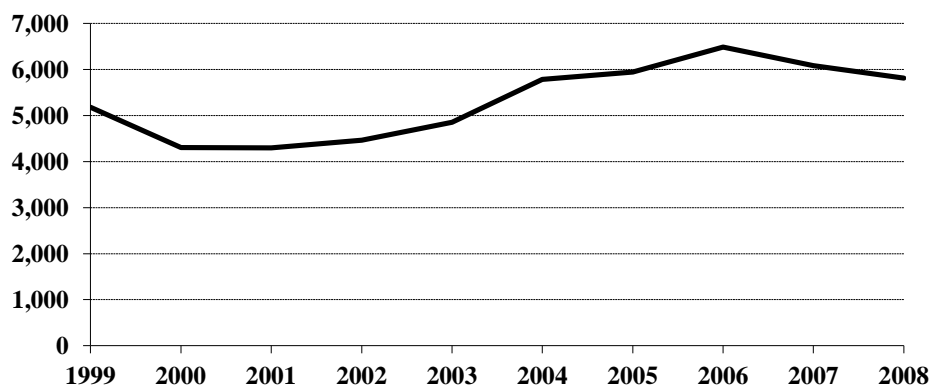
More than 76 percent of the DUI arrests in 2008 were arrests of males.

Juveniles, persons under the age of 18, made up 1.6 percent of the total in 2008.

DUI Arrests, 1999-2008

Year	DUI Arrests Reported	Percent Change from Previous Year
1999	5,179	-0.2%
2000	4,304	-16.9
2001	4,301	-0.1
2002	4,467	3.9
2003	4,854	8.7
2004	5,783	19.1
2005	5,946	2.8
2006	6,488	9.1
2007	6,085	-6.2
2008	5,815	-4.4

DUI Arrests, 1999-2008



DUI Arrests by Gender, 1999-2008

Year	Male	% of Total	Female	% of Total	Total
1999	4,149	80.1%	1,030	19.9%	5,179
2000	3,437	79.9	867	20.1	4,304
2001	3,450	80.2	851	19.8	4,301
2002	3,545	79.4	922	20.6	4,467
2003	3,763	77.5	1,091	22.5	4,854
2004	4,459	77.1	1,324	22.9	5,783
2005	4,640	78.0	1,306	22.0	5,946
2006	4,956	76.4	1,532	23.6	6,488
2007	4,620	75.9	1,465	24.1	6,085
2008	4,449	76.5	1,366	23.5	5,815

DUI Arrests by Age Category, 1999-2008

Year	Juvenile	Percent of Total	Adult	Percent of Total	Age Not Reported	Percent of Total	Total
1999	169	3.3%	5,005	96.6%	5	0.1%	5,179
2000	81	1.9	4,214	97.9	9	0.2	4,304
2001	90	2.1	4,207	97.8	4	0.1	4,301
2002	74	1.6	4,390	98.3	3	0.1	4,467
2003	90	1.9	4,759	98.0	5	0.1	4,854
2004	92	1.6	5,685	98.3	6	0.1	5,783
2005	92	1.6	5,847	98.3	7	0.1	5,946
2006	100	1.5	6,384	98.4	4	0.1	6,488
2007	66	1.1	6,018	98.9	1	*	6,085
2008	93	1.6	5,718	98.3	4	0.1	5,815

*Less than 0.1 percent of total drug arrests.

DUI Arrests by Age Group, 1999-2008

Age Group	1999	2000	2001	2002	2003	2004	2005	2006	2007	2008
Under 10										
10-12	2									
13-14	4	1	1	3	2	3	1	1	1	2
15	14	3	6	6	10	8	5	10	2	8
16	32	30	35	17	25	33	31	28	17	25
17	117	47	48	48	53	48	55	61	46	58
18	141	125	112	114	161	142	121	161	127	121
19	228	146	135	155	195	212	206	187	166	158
20	228	155	145	182	219	205	219	196	166	173
21	274	251	269	276	354	362	344	431	381	340
22	269	240	232	260	300	417	372	373	381	338
23	220	205	197	238	267	305	345	357	339	314
24	203	170	209	188	260	293	278	336	336	304
25-29	770	640	641	660	775	867	1051	1060	1117	1083
30-34	641	520	526	507	526	621	596	735	719	641
35-39	754	529	519	511	436	590	590	624	570	581
40-44	493	473	499	520	480	576	603	621	527	512
45-49	351	349	337	339	354	468	481	560	517	507
50-54	207	185	187	232	214	288	309	346	301	309
55-59	101	116	78	97	120	178	171	199	198	168
60-64	50	42	43	51	46	93	86	98	91	94
65 +	75	68	78	60	52	68	75	100	82	75
No Age Data	5	9	4	3	5	6	7	4	1	4
Total	5179	4304	4301	4467	4854	5783	5946	6488	6085	5815

UCR OFFENSE DEFINITIONS

UNIFORM CRIME REPORTING OFFENSE DEFINITIONS

Offenses in Uniform Crime Reporting are divided into two groups designated as Part I and Part II crimes. Information on the number of Part I offenses known to law enforcement, the number cleared by arrest or exceptional means, and the number of persons arrested is reported monthly. Arrest data are reported for Part I and Part II offenses. The Crime Index is composed of offenses 1-7 with the exception as noted in item 1 below.

NOTE: The classifications of these offenses for UCR reporting purposes are based on law enforcement investigation as opposed to determination by a court, medical examiner, jury, or other judicial hearing.

PART I OFFENSES:

1. CRIMINAL HOMICIDE

a. Murder and Non-Negligent Manslaughter

The willful (non-negligent) killing of one human being by another. Deaths caused by negligence, attempts to kill, assaults to kill, suicides, accidental deaths, and justifiable homicides are excluded. Justifiable homicides are limited to: (1) the killing of a felon by a law enforcement officer in the line of duty, and (2) the killing of a felon by a private citizen.

b. Manslaughter by Negligence

The killing of another person through gross negligence. Excludes traffic fatalities. While manslaughter by negligence is a Part I crime, it is not included in the Crime Index.

2. FORCIBLE RAPE

The carnal knowledge of a female forcibly and against her will. Included are rapes by force and attempts or assaults to rape. Statutory offenses (no force used -- victim under age of consent) are excluded.

3. ROBBERY

The taking or attempting to take anything of value from the care, custody, or control of a person or persons by force or threat of force or violence, or putting the victim in fear.

4. AGGRAVATED ASSAULT

An unlawful act by one person upon another for the purpose of inflicting severe or aggravated bodily injury. This type of assault usually is accompanied by the use of a weapon or by a means likely to produce death or great bodily harm. Simple assaults are excluded.

5. BURGLARY

Breaking or entering. The unlawful entry of a structure to commit a felony or theft. Attempted forcible entry is included.

6. LARCENY/THEFT

The unlawful taking, carrying, leading, or riding away of property from the possession or constructive possession of another. Examples are thefts of bicycles or automobile accessories, shoplifting, pocket-picking, or the stealing of any property or article that is not taken by force and violence or by fraud. Attempted larcenies are included. Embezzlement, "con" games, forgery, worthless checks, etc., are excluded.

7. MOTOR VEHICLE THEFT

The theft or attempted theft of a motor vehicle. A motor vehicle is self-propelled and runs on the surface and not on rails. Specifically excluded from this category are motorboats, construction equipment, airplanes, and farming equipment.

8. ARSON

Any willful or malicious burning or attempting to burn, with or without intent to defraud, a dwelling house, public building, motor vehicle, personal property of another, etc.

PART II OFFENSES:

9. OTHER ASSAULTS (SIMPLE)

Assaults or attempted assaults where no weapon was used or which did not result in serious or aggravated injury to the victim.

10. FORGERY AND COUNTERFEITING

Making, altering, uttering, or possessing, with the intent to defraud, anything false which is made to appear true. Attempts are included.

11. FRAUD

Fraudulent conversion and obtaining money or property by false pretenses. Included are larceny by bailee and bad checks except forgeries and counterfeiting. Attempts are included.

12. EMBEZZLEMENT

Misappropriation or misapplication of money or property entrusted to one's care, custody or control. Attempts are included.

13. STOLEN PROPERTY -- BUYING, RECEIVING, POSSESSING

Buying, receiving, or possessing stolen property, including attempts.

14. VANDALISM

Willful or malicious destruction, injury, disfigurement, or defacement of any public or private property, real or personal, without consent of the owner or person having custody or control. Attempts are included.

15. WEAPON OFFENSES -- CARRYING, POSSESSING, ETC.

All violations of regulations or statutes controlling the carrying, using, possessing, furnishing, and manufacturing of deadly weapons or silencers. Attempts are included.

16. PROSTITUTION AND COMMERCIALIZED VICE

Sex offenses of a commercialized nature, such as prostitution, keeping a bawdy house, procuring, or transporting women for immoral purposes. Attempts are included.

17. OTHER SEX OFFENSES (except forcible rape, prostitution and commercialized vice)

Statutory rape and offenses against chastity, common decency, morals and the like. Attempts are included.

18. DRUG ABUSE VIOLATIONS

State and local offenses relating to narcotic and non-narcotic drugs, such as unlawful possession, sale, use, growing and manufacturing of narcotic and non-narcotic drugs. Attempts are included.

19. GAMBLING

Promoting, permitting, or engaging in illegal gambling.

20. OFFENSES AGAINST FAMILY AND CHILDREN

Non-support, neglect, desertion, or abuse of family and children.

21. DRIVING UNDER THE INFLUENCE

Driving or operating any vehicle or common carrier while drunk or under the influence of liquor or drugs.

22. LIQUOR LAWS

State or local liquor law violations, except "drunkenness" (offense 23) and "driving under the influence" (offense 21).

23. DRUNKENNESS

Drunkenness or intoxication. Excluded is "driving under the influence" (offense 21). This is not a crime in North Dakota, but is included in the national program.

24. DISORDERLY CONDUCT

Breach of peace.

25. VAGRANCY

Vagabondage, begging, loitering, etc.

26. ALL OTHER OFFENSES

All violations of state or local laws, except offenses 1-25 and traffic offenses.

27. SUSPICION

No specific offense; suspect released without formal charges being placed.

28. CURFEW AND LOITERING

Offenses relating to violation of local curfew and loitering ordinances where such laws exist.

29. RUNAWAYS

Limited to juveniles taken into protective custody under provisions of local statutes.

**FULL-TIME LAW
ENFORCEMENT EMPLOYEES**

**NUMBER OF FULL-TIME LAW ENFORCEMENT EMPLOYEES
REPORTED BY UCR AGENCIES
AS OF OCTOBER 31, 2008**

Agency	Law Enforcement Officers		Civilian Personnel		Total Full-Time			Population
	Male	Female	Male	Female	Male	Female	Total	
Adams SO	4				4		4	2,249
Barnes SO	5	1	5	5	10	6	16	4,457
Valley City PD	12	1		5	12	6	18	6,242
Benson SO	4				4		4	6,990
Billings SO	4				4		4	791
Medora PD	2				2		2	NR
Bottineau SO	10		4		14		14	6,340
Bowman SO	2	1			2	1	3	1,467
Bowman PD	3				3		3	1,451
Scranton PD	1				1		1	NR
Burke SO	4			1	4	1	5	1,824
Powers Lake PD	1				1		1	NR
Burleigh SO	42	5	18	15	60	20	80	15,895
Bismarck PD	76	9	7	21	83	30	113	59,988
Lincoln PD	1	1			1	1	2	2,660
Cass SO	55	14	36	28	91	42	133	22,644
Fargo PD	108	23		18	108	41	149	92,902
West Fargo PD	30	2	9	1	39	3	42	24,266
NDSU PD	11	1		3	11	4	15	
Cavalier SO	5		2	4	7	4	11	3,821
Dickey SO	4			1	4	1	5	2,058
Ellendale PD	1				1		1	1,486
Oakes PD	3		1		4		4	1,778
Divide SO	3				3		3	1,040
Crosby PD	2				2		2	939
Dunn SO	4			1	4	1	5	3,282
Killdeer PD	2				2		2	NR
Eddy SO	4				4		4	2,400
Emmons SO	3		1		4		4	2,371
Linton PD	1				1		1	1,015
Foster SO	2	1		1	2	2	4	1,389
Carrington PD	3	1			3	1	4	2,080
Golden Valley SO	4			1	4	1	5	1,646
Grand Forks SO	27			6	27	6	33	11,636
Grand Forks PD	69	9	6	10	75	19	94	52,064
Larimore PD	2				2		2	1,289
Northwood PD	2				2		2	871
Emerado PD	2				2		2	472
Thompson PD	1				1		1	949
UND PD	11	1		2	11	3	14	
Grant SO	3				3		3	1,885
Elgin PD	1				1		1	546
Griggs SO	3				3		3	2,364
Hettinger SO	3	1			3	1	4	2,402
Kidder SO	2		1		3		3	1,662
Steele PD	1				1		1	649
LaMoure SO	4			1	4	1	5	3,236
Kulm PD	1				1		1	NR
LaMoure PD		1				1	1	819
Logan SO	2		2		4		4	698
Napoleon PD	1				1		1	1,225
McHenry SO	6	1			6	1	7	5,153
McIntosh SO	2	1			2	1	3	1,794
Wishek PD	2				2		2	896
McKenzie SO	6			7	6	7	13	4,253
Watford City PD	5				5		5	1,367
McLean SO	19	1	1	7	20	8	28	8,263
Mercer SO	13		10		23		23	2,820
Beulah PD	5		1		6		6	2,877
Hazen PD	4				4		4	2,219
Morton SO	20		6	6	26	6	32	8,208
Mandan PD	26	3	3	8	29	11	40	17,860

Agency	Law Enforcement Officers		Civilian Personnel		Total Full-Time			Population
	Male	Female	Male	Female	Male	Female	Total	
Mountrail SO	9		5		14		14	5,267
Stanley PD	2				2		2	1,215
Nelson SO	4			1	4	1	5	3,170
Oliver SO	4		1		5		5	1,692
Center PD	1				1		1	NR
Pembina SO	8		1	3	9	3	12	6,098
Cavalier PD	4				4		4	1,333
Pierce SO	3	1		4	3	5	8	1,511
Rugby PD	4				4		4	2,538
Ramsey SO	6			1	6	1	7	4,506
Devils Lake PD	14	2	1	1	15	3	18	6,610
Ransom SO	3	1		1	3	2	5	3,489
Lisbon PD	2	1			2	1	3	2,182
Renville SO	4	1			4	1	5	2,288
Mohall PD	1				1		1	NR
Sherwood PD	1				1		1	NR
Richland SO	12	1		2	12	3	15	8,763
Wahpeton PD	12	2		2	12	4	16	7,603
NDSCS PD	3				3		3	
Rolette SO	5		5	4	10	4	14	11,919
Rolla PD	3				3		3	1,423
St. John's							0	354
Sargent SO	4			1	4	1	5	4,091
Sheridan SO	2				2		2	1,282
Sioux SO	1				1		1	4,254
Slope SO	1				1		1	650
Stark SO	11	1		3	11	4	15	6,294
Dickinson PD	27	2	2	12	29	14	43	15,910
Belfield PD	1				1		1	NR
South Heart PD							0	297
Steele SO	3				3		3	1,800
Stutsman SO	8	1		2	8	3	11	5,787
Jamestown PD	25	3		4	25	7	32	14,578
Towner SO	2		1		3		3	1,205
Cando PD	2				2		2	1,030
Traill SO	5			4	5	4	9	4,585
Hillsboro PD	1	1			1	1	2	1,470
Mayville PD	1				1		1	1,986
Walsh SO	10		4	3	14	3	17	6,890
Grafton PD	9			1	9	1	10	3,991
Ward SO	17	1	11	13	28	14	42	19,611
Kenmare PD	3				3		3	NR
Minot PD	53	7	5	17	58	24	82	35,124
Burlington PD	2				2		2	993
Surrey PD	1				1		1	NR
Wells SO	3				3		3	2,079
Harvey PD	2	1			2	1	3	1,610
Fessenden PD	1				1		1	499
Williams SO	13	3	9	3	22	6	28	7,188
Tioga PD	2				2		2	NR
Williston PD	22	1	2	6	24	7	31	12,387
Highway Patrol	132	6	19	30	151	36	187	
Total	1,128	114	179	270	1,307	384	1,691	641,500