

Office of Attorney General
Bureau of Criminal Investigation

Crime in North Dakota, 2009

A Summary of Uniform Crime Report Data

Wayne Stenehjem
Attorney General

Prepared by
Colleen Weltz
UCR Program Manager
2010

INTRODUCTION

The North Dakota Uniform Crime Reporting (UCR) program involves the collection, compilation, and analysis of crime and arrest statistics reported by the various local law enforcement agencies throughout the state. Forty-seven sheriffs' departments and 42 police departments reported to the UCR program in 2009.

Law enforcement agencies may report UCR data in two ways:

INCIDENT-BASED REPORTING: Law enforcement agencies use a standard incident form to collect data on each incident reported to their respective agencies. This form collects much more detailed information than is collected using summary reporting. Data collected includes: type of incident, where and when the incident took place, victim characteristics, suspect/arrestee characteristics, property involved in the incident, etc. A total of 89 police departments and sheriffs' departments reported incident data for all or part of 2009.

In order to continue the statistical time-series begun with summary reporting, computer programs were written to extract summary data from the incident data reported. Crime in North Dakota, 2009 is a report on summary data.

SUMMARY REPORTING: Law enforcement agencies use a tally system to report the number of crime index offenses and arrests for each month. Two law enforcement agencies reported summary data in 2009.

The federal counterpart of the North Dakota UCR program is the National UCR program under the direction of the Federal Bureau of Investigation (FBI). The UCR program has been used nationally and in North Dakota for many years to measure the extent, distribution and fluctuation of crime through the crime index. The crime index is not an absolute measure, but rather an indication of the amount and type of crime occurring in any given jurisdiction. The index is composed of seven crimes that are sub-classified as follows:

VIOLENT CRIME: Murder/Non-Negligent Manslaughter
Forcible Rape
Robbery
Aggravated Assault

PROPERTY CRIME: Burglary
Larceny/Theft
Motor Vehicle Theft

A Modified Crime Index is also calculated at the federal level. This includes arson as the fourth property crime and the eighth index offense. Data on arson is not included in this report.

Prior to an offense becoming recorded in the UCR program, it must be reported to the local law enforcement officials and reported by the local agency to the UCR program. Consequently, the UCR program only reflects reported crimes. Reporting of crimes depends on several factors,

including actual perception of an act as a crime, the probability of loss of status for reporting (as in cases of rape), and the perceived probability of action on the part of the law enforcement agency contacted.

Several types of data are gathered, including:

Offense data

- Number of known crime index offenses
- Type and value of stolen property
- Additional information on homicides and arson
- Law enforcement officers killed or assaulted

Arrest and Clearance Data

- Number and type of offenses cleared
- Number and type of index offenses involving juveniles cleared
- Number of persons arrested, by offense
- Characteristics of persons arrested (age, sex, race)

To allow for comparison among several geographic or jurisdictional areas with differing populations or to allow comparisons across time in an area undergoing population fluctuations, the UCR program provides for the calculation of crime rates to remove any potential biases created by population differences. Because a rate relates the incidence of activity to population, it is possible to measure annual fluctuations in criminal activity by comparing rates of crime reported in any given year with those reported in other years. National publications report crime rates calculated based on the number of reported offenses per 100,000 population. This publication provides crime rate information calculated in the same manner.

TABLE OF CONTENTS

Introduction.....	i
Table of Contents.....	iii
North Dakota Crime Summary, 2009.....	iv
Crime Index Offense Analysis.....	1
Violent Crime.....	6
Murder/Non-Negligent Manslaughter.....	8
Forcible Rape.....	10
Robbery.....	12
Aggravated Assault.....	15
Property Crime.....	17
Burglary.....	19
Larceny/Theft.....	22
Motor Vehicle Theft.....	25
Crime Index Offenses by Reporting Jurisdiction.....	28
Arrest Analysis.....	32
Arrests in 2009.....	33
Arrest Analysis by Reporting Jurisdiction.....	39
Arrests 2000-2009.....	42
Drug Arrest Analysis.....	48
DUI Arrest Analysis.....	52
UCR Offense Definitions.....	55
Full-Time Law Enforcement Employees.....	60

NORTH DAKOTA CRIME SUMMARY, 2009

In 2009, 12,822 crime index offenses were reported by local law enforcement agencies. This is a decrease of 0.2 percent from the total of 12,850 reported in 2008.

Crime index offenses include: murder/non-negligent manslaughter, forcible rape, robbery, aggravated assault, burglary, larceny/theft, and motor vehicle theft.

The Census Bureau estimate of North Dakota's population for 2009 is 647,000. The index crime rate per 100,000 population for 2009 was 1981.8. The index crime rate for 2008 was 2003.1 per 100,000 population. This is a 1.1 percent decrease in the crime rate.

The total number of reported violent index crimes (murder, rape, robbery, and aggravated assault) was 1,118. This represents an increase of 8.0 percent from the total of 1,035 reported in 2008. In 2007, 886 violent index crimes were reported.

Violent crime accounted for 8.7 percent of total index crimes reported in 2009.

Collectively, property crimes (burglary, larceny/theft and motor vehicle theft) decreased by 0.9 percent from 11,815 reported in 2008 to 11,704 reported in 2009.

Property crime accounted for 91.3 percent of total crime index offenses reported in 2009.

The 8,699 larceny/theft offenses reported in 2009 accounted for 67.9 percent of total index crimes.

More than \$11.7 million worth of property was reported stolen in 2009, with 30.9 percent of that amount reported as recovered by law enforcement officials.

North Dakota law enforcement agencies reported 28,925 arrests in 2009. A total of 29,334 arrests was reported in 2008.

In 2009, juvenile arrests accounted for 21.2 percent of the total arrests. Juvenile arrests were 35.9 percent of the total arrests of crime index offenses.

The number of reported arrests in 2009 for DUI increased to 5,819 from 5,815 reported in 2008.

Arrests for drug offenses decreased 4.4 percent from a 2008 total of 2,158 to 2,063 in 2009.

CRIME INDEX OFFENSE ANALYSIS

Crime Index Offenses

Crime index offenses include the violent crimes of murder/non-negligent manslaughter, forcible rape, robbery, and aggravated assault, and the property crimes of burglary, larceny/theft, and motor vehicle theft.

In 2009, 12,822 crime index offenses were reported by local law enforcement agencies. This is a decrease of 0.2 percent from the total of 12,850 reported in 2008.

The Census Bureau estimate of North Dakota's population for 2009 is 647,000. Based on that total, the index crime rate per 100,000 population for 2009 was 1981.8, as compared to 2003.1 for 2008. See the crime index offense summary on page 5 for crime rate information for the period 2000-2009.

More than 27 percent of crime index offenses were reported as cleared by arrest or exceptional means. The UCR program defines an offense as "cleared" by law enforcement when at least one person is arrested, charged with the commission of the offense, and turned over to the court for prosecution. Several crimes may be cleared by the arrest of one person, while the arrests of many persons may clear only one offense. Law enforcement agencies may clear a crime by exceptional means when some element beyond law enforcement control precludes the placing of formal charges against the offender. Examples of circumstances that allow such clearances are the death of the offender (suicide, justifiably killed by police or private citizen, etc.); the victim's refusal to cooperate with prosecution after the offender has been identified; or the denial of extradition.

In 2009, 3,400 arrests were reported for crime index offenses. Of that total, 35.9 percent were arrests of juveniles.

More than \$11.7 million worth of property was reported stolen in 2009, with 30.9 percent of that amount reported as recovered by law enforcement officials.

Crime Index Offenses Reported, 2009

Crime Index Offense	Number Reported	Percent of Total Index Offenses
Murder/Non-Negligent Manslaughter	15	0.1%
Forcible Rape	206	1.6
Robbery	102	0.8
Aggravated Assault	795	6.2
Violent Crime Subtotal	1,118	8.7
Burglary	2,180	17.0
Larceny/Theft	8,699	67.9
Motor Vehicle Theft	825	6.4
Property Crime Subtotal	11,704	91.3
Crime Index Offense Total	12,822	100.0

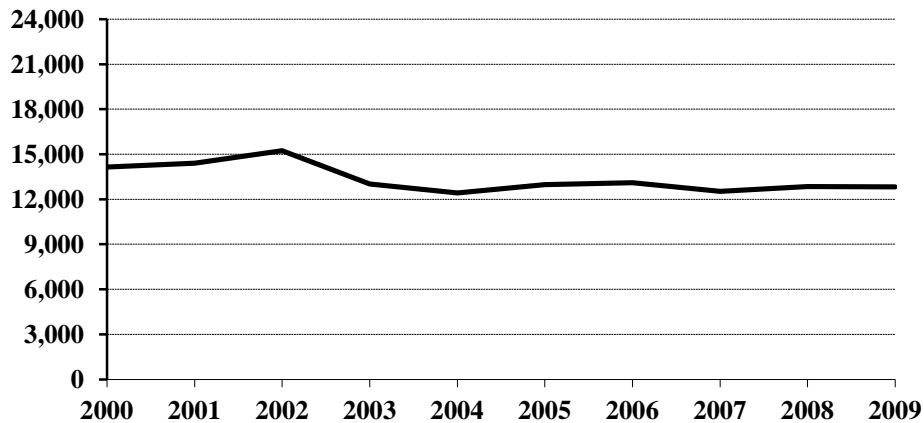
Comparison of Crime Index Offenses Reported, 2008-2009

Crime Index Offense	2008	2009	Percent Change
Murder/Non-Negligent Manslaughter	4	15	275.0 %
Forcible Rape	222	206	-7.2
Rape by Force	214	197	-7.9
Attempts to Rape	8	9	12.5
Robbery	71	102	43.7
Firearm	9	21	133.3
Knife or Cutting Instrument	10	17	70.0
Other Dangerous Weapon	17	26	52.9
Strong Arm – No Weapon	35	38	8.6
Aggravated Assault	738	795	7.7
Firearm	15	10	-33.3
Knife or Cutting Instrument	91	78	-14.3
Other Dangerous Weapon	154	165	7.1
Hands, Fists, Feet, Etc.	478	542	13.4
Violent Crime Subtotal	1,035	1,118	8.0
Burglary	2,035	2,180	7.1
Forcible Entry	966	1,041	7.8
Unlawful Entry – No Force	953	963	1.1
Attempted Forcible Entry	116	176	51.7
Larceny/Theft	8,926	8,699	-2.5
Motor Vehicle Theft	854	825	-3.4
Autos	702	668	-4.8
Trucks and Buses	54	55	1.9
Other Vehicles	98	102	4.1
Property Crime Subtotal	11,815	11,704	-0.9
Crime Index Offense Total	12,850	12,822	-0.2

Crime Index Offenses, 2000-2009

Crime Index Offense	2000	2001	2002	2003	2004	2005	2006	2007	2008	2009
Murder/Non-Neg. Mansl.	8	9	6	12	10	14	9	17	4	15
Forcible Rape	173	159	167	143	181	179	195	202	222	206
Robbery	62	71	71	55	49	53	72	68	71	102
Aggravated Assault	319	275	309	289	343	444	532	599	738	795
Burglary	2004	2027	2250	1814	1953	1966	2302	2096	2035	2180
Larceny/Theft	10642	10870	11399	9700	8984	9293	9012	8672	8926	8699
Motor Vehicle Theft	942	1000	1037	1002	892	1030	977	878	854	825
Crime Index Offense Total	14150	14411	15239	13015	12412	12979	13099	12532	12850	12822

Crime Index Offense Totals, 2000-2009



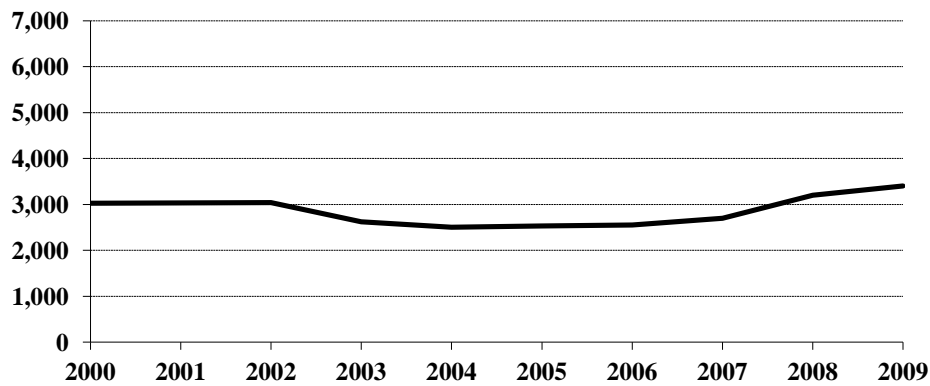
Crime Index Offense Summary

Year	Population	Crime Index Offense Total	% Change in Number from Previous Year	Crime Rate per 100,000 Population	% Change in Rate from Previous Year	Percent Cleared
2000	642,200	14,150	-3.0 %	2203.4	-4.3 %	22.9 %
2001	634,450	14,411	1.8	2271.4	3.1	21.6
2002	634,110	15,239	5.7	2403.2	5.8	21.1
2003	634,000	13,015	-14.6	2052.8	-14.6	20.8
2004	634,500	12,412	-4.6	1956.2	-4.7	20.7
2005	637,000	12,979	4.6	2037.5	4.2	20.2
2006	636,000	13,099	0.9	2059.6	1.1	21.0
2007	640,000	12,532	-4.3	1958.1	-4.9	22.2
2008	641,500	12,850	2.5	2003.1	2.3	26.1
2009	647,000	12,822	-0.2	1981.8	-1.1	27.5

Arrests for Crime Index Offenses, 2000-2009

Year	Juvenile	Adult	Age Not Reported	Total
2000	1,599	1,417	14	3,030
2001	1,479	1,551	4	3,034
2002	1,505	1,526	10	3,041
2003	1,187	1,432	1	2,620
2004	1,009	1,491	5	2,505
2005	1,009	1,524	1	2,534
2006	960	1,588	2	2,550
2007	1,090	1,610	0	2,700
2008	1,227	1,973	4	3,204
2009	1,219	2,178	3	3,400

Arrests for Crime Index Offenses, 2000-2009



Property Loss Due to Crime Index Offenses, 2000-2009

Year	Population	Total Property Loss	% Change from Previous Year	Property Loss per Capita	Percent Recovered
2000	642,200	10,308,899	-8.0 %	\$16.05	31.3 %
2001	634,450	11,420,051	10.8	18.00	33.2
2002	634,110	12,457,277	9.1	19.65	30.6
2003	634,000	11,457,228	-8.0	18.07	31.5
2004	634,500	11,397,856	-0.5	17.96	35.7
2005	637,000	12,390,920	8.7	19.45	37.7
2006	636,000	12,446,104	0.4	19.57	30.6
2007	640,000	10,730,659	-13.8	16.77	36.9
2008	641,500	12,142,441	13.2	18.93	37.6
2009	647,000	11,700,881	-3.6	18.08	30.9

Violent Crime

Violent crime includes the offenses of murder/non-negligent manslaughter, forcible rape, robbery, and aggravated assault. (See the UCR offense definitions section beginning on page 57 of this publication for definitions of these and other offenses.)

In 2009, 1,118 violent crimes were reported in North Dakota. This is an 8.0 percent increase from the 2008 total of 1,035 violent offenses reported. In 2007, 886 violent crimes were reported.

Violent crime comprised 8.7 percent of reported crime index offenses in North Dakota in 2009.

The violent crime rate for 2009 is 172.8 per 100,000, as compared to 161.3 per 100,000 in 2008. This is a 7.1 percent increase in the violent crime rate. In 2007, the violent crime rate was 138.4 per 100,000 population.

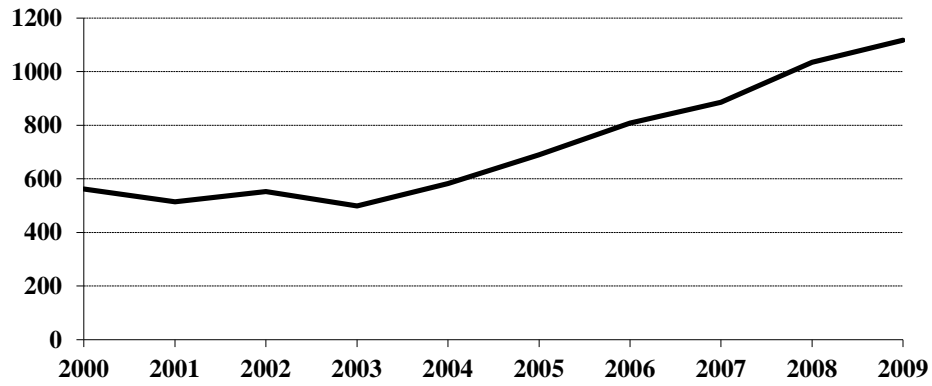
More than 52 percent of violent crimes in 2009 were reported as cleared by arrest or exceptional means.

Of the 430 total arrests reported for violent crimes, 10.5 percent were arrests of juveniles.

Violent Crime Summary

Year	Population	Violent Index Offenses	% Change in Number from Previous Year	Rate per 100,000 Population	% Change in Rate from Previous Year	Percent Cleared
2000	642,200	562	26.3 %	87.5	24.6 %	51.2 %
2001	634,450	514	-8.5	81.0	-7.4	49.4
2002	634,110	553	7.6	87.2	7.7	50.5
2003	634,000	499	-9.8	78.7	-9.7	57.3
2004	634,500	583	16.8	91.9	16.8	52.1
2005	637,000	690	18.4	108.3	17.8	51.4
2006	636,000	808	17.1	127.0	17.3	47.9
2007	640,000	886	9.7	138.4	9.0	44.6
2008	641,500	1,035	16.8	161.3	16.5	52.8
2009	647,000	1,118	8.0	172.8	7.1	52.4

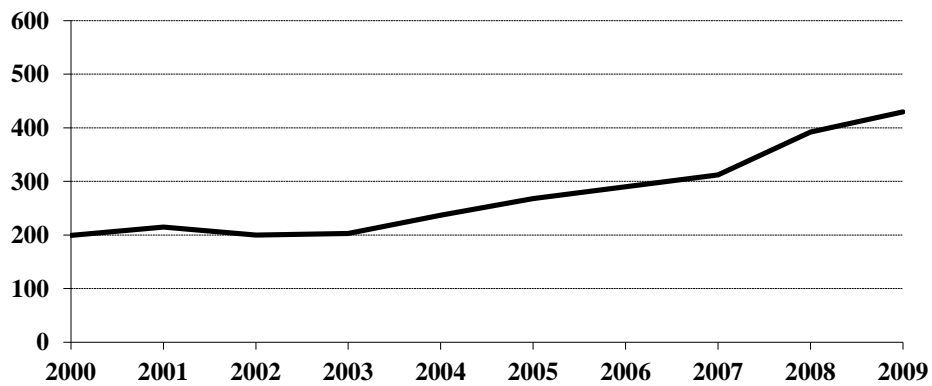
Violent Crime Totals, 2000-2009



Arrests for Violent Crimes, 2000-2009

Year	Juvenile	Adult	Age Not Reported	Total
2000	27	171	1	199
2001	40	175		215
2002	46	154		200
2003	31	172		203
2004	40	197		237
2005	57	211		268
2006	41	249		290
2007	46	266		312
2008	69	320	3	392
2009	45	385		430

Arrests for Violent Crimes, 2000-2009



Murder/Non-Negligent Manslaughter

The UCR program defines Murder/Non-Negligent Manslaughter as the “willful killing of one human being by another.” Not included in this category are attempts to murder, assaults to murder, suicides, accidental deaths, justifiable homicides, and deaths caused by gross negligence.

Fifteen murder/non-negligent manslaughter deaths were known to the North Dakota UCR program in 2009.

Eleven of the fifteen victims were adults. “Adult” is defined as a person aged 18 years or older.

Seven of the victims were male.

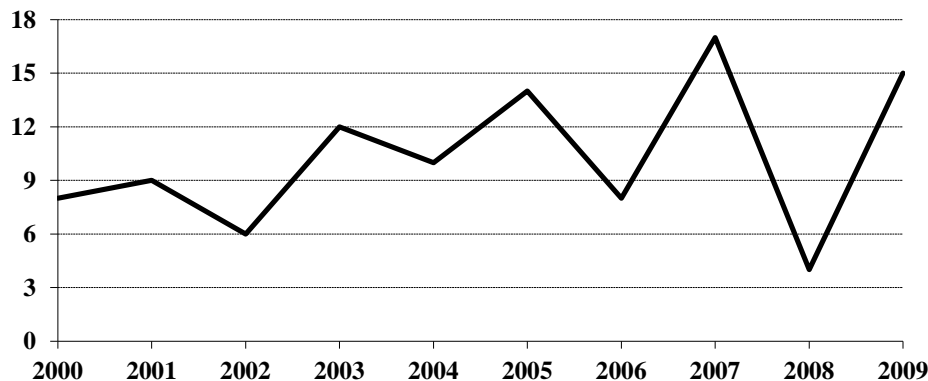
Firearms were involved in the deaths of five homicide victims. In 3 homicides, the weapon involved was personal weapons. (See the summary of homicide incidents and the weapons involved on page 10.)

The Office of Attorney General publishes a detailed report titled Homicide in North Dakota. The report provides an analysis of homicides for the period 1990-2009 and is available on our website at www.ag.nd.gov, under the News and Publications link.

Murder/Non-Negligent Manslaughter Summary

Year	Population	Offense Total	% Change in Number from Previous Year	Rate per 100,000 Population	% Change in Rate from Previous Year	Percent Cleared
2000	642,200	8	-38.5 %	1.2	-42.9 %	87.5 %
2001	634,450	9	12.5	1.4	16.7	88.9
2002	634,110	6	-33.3	0.9	-35.7	83.3
2003	634,000	12	100.0	1.9	111.1	100.0
2004	634,500	10	-16.7	1.6	-15.8	100.0
2005	637,000	14	40.0	2.2	37.5	78.6
2006	636,000	8	-42.9	1.3	-40.9	88.9
2007	640,000	17	112.5	2.7	107.7	94.1
2008	641,500	4	-76.5	0.6	-77.8	100.0
2009	647,000	15	275.0	2.3	283.3	93.3

Murder/Non-Negligent Manslaughter Totals, 2000-2009



Summary of Murder/Non-Negligent Manslaughter Incidents, 2009

Date & Location of Incident	Victim(s)		Assailant(s)		Weapons Used	Relationship of Victim to Assailant	Circumstances
	Age	Sex	Age	Sex			
1/27/2009 Spirit Lake Reservation	36	M	49	F	Knife	Boyfriend	Lover's Quarrel Domestic Violence
2/2/2009 Burleigh	NB	F	18	F	Starvation	Daughter	Baby died of malnutrition Domestic Violence
3/19/2009 Turtle Mountain Reservation	3 M	F	24	M	Personal Weapon	Daughter	Domestic Violence
3/6/2009 McHenry County	38	F	38	M	Shotgun	Girlfriend	Murder/Suicide Domestic Violence
3/26/2009 Dunn County	49	M	39 23	M M	Firearm	Acquaintance Acquaintance	Alleged Child Abuse
5/5/2009 Bismarck	74	F	78	M	Blunt Object	Wife	Unknown Domestic Violence
07/25/2009 Dickinson	19	M	20	M	Firearm	Acquaintance	Argument
07/26/2009 Fargo	47	M	20	M	Personal Weapon	Stranger	Unknown
8/16/2009 Dickinson	43	F	41	M	Blunt Object/ Firearm	Wife	Lover's Quarrel Murder/Suicide Domestic Violence
9/8/2009 Grand Forks	47	F	50	M	Handgun	Wife	Domestic Violence Murder/Suicide
10/06/2009 Bismarck	3 M	M	20	M	Personal Weapon	Son	Shaken Baby Syndrome Domestic Violence
10/16/2009 Fort Berthold Reservation	18	M	18	M	Knife	Cousins	Victim found with stab wounds Domestic Violence
10/26/2009 Fargo	49	M	41	M	Blunt Object	Acquaintance	Murder for hire
10/31/2009 Fargo	2 M	F	46	M	Asphyxiation	Babysitree	Fell asleep on top of victim.
11/26/2009 Pembina County	41	F	52	M	Handgun	Wife	Domestic Violence Murder/Suicide

Forcible Rape

The UCR program defines Forcible Rape as “the carnal knowledge of a female forcibly and against her will.” Assaults to rape, attempts to commit rape by force or threat of force are included. Carnal abuse, statutory offenses (no force -- victim under age of consent), and other sex offenses are not included.

In 2009, 206 forcible rapes were reported to local law enforcement in North Dakota. This is a decrease of 7.2 percent from the 2008 total of 222 offenses. A total of 202 forcible rapes was reported in 2007.

Because the UCR definition states that victims of rape must be female, the rate of occurrence for reported rapes is calculated based only on the female population. The Census Bureau estimate of North Dakota’s population for 2009 is 647,000. The number of females is approximately half of that figure. The resulting rate for 2009 is 63.7 reported rapes per 100,000 females, compared with 69.2 rapes per 100,000 females in 2008. In 2007, the forcible rape rate was 63.1 per 100,000 females.

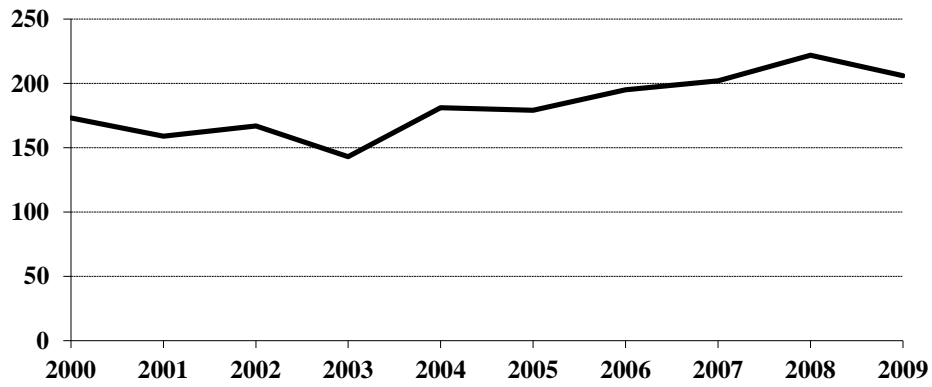
In 2009, 29.1 percent of reported rapes were cleared by arrest or exceptional means.

Twenty-six arrests for forcible rape were reported in 2009. More than 69 percent of those arrested were adults. In 2008, 45 arrests for rape were reported.

Forcible Rape Summary

Year	Population	Offense Total	% Change in Number from Previous Year	Rate per 100,000 Females	% Change in Rate from Previous Year	Percent Cleared
2000	642,200	173	17.7 %	53.9	16.2 %	30.1 %
2001	634,450	159	-8.1	50.1	-7.1	42.1
2002	634,110	167	5.0	52.7	5.2	37.7
2003	634,000	143	-14.4	45.1	-14.4	51.7
2004	634,500	181	26.6	57.1	26.6	40.3
2005	637,000	179	-1.1	56.2	-1.6	35.8
2006	636,000	195	8.9	61.3	9.1	31.8
2007	640,000	202	3.6	63.1	2.9	28.7
2008	641,500	222	9.9	69.2	9.7	29.7
2009	647,000	206	-7.2	63.7	-7.9	29.1

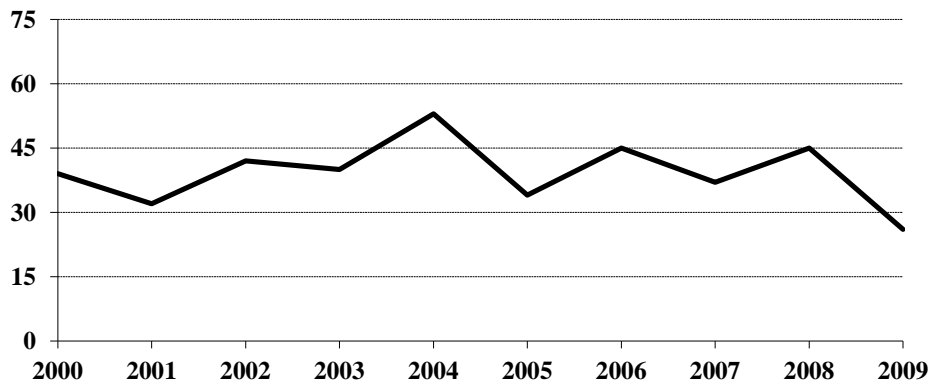
Forcible Rape Totals, 2000-2009



Arrests for Forcible Rape, 2000-2009

Year	Juvenile	Adult	Total
2000	12	27	39
2001	9	23	32
2002	18	24	42
2003	11	29	40
2004	10	43	53
2005	6	28	34
2006	4	41	45
2007	8	29	37
2008	18	27	45
2009	8	18	26

Arrests for Forcible Rape, 2000-2009



Robbery

Robbery is defined by the UCR program as “the taking or attempting to take anything of value from the care, custody, or control of a person or persons by force or threat of force or violence and/or by putting the victim in fear.”

In 2009, there were 102 robberies reported in North Dakota. This is an increase of 43.7 percent from the total of 71 reported in 2008. A total of 68 robberies was reported in 2007.

The robbery rate for 2009 was 15.8 per 100,000 population, as compared with 11.1 per 100,000 population in 2008. This is a 42.3 percent increase in the robbery rate.

More than 36 percent of reported robberies were cleared by arrest or exceptional means.

Thirty-seven arrests for robbery were reported in 2009. Thirty-four of those arrested were adults.

Firearms were used in 21 of the reported robberies in 2009.

More than 37 percent were strong-arm robberies where no weapon was used.

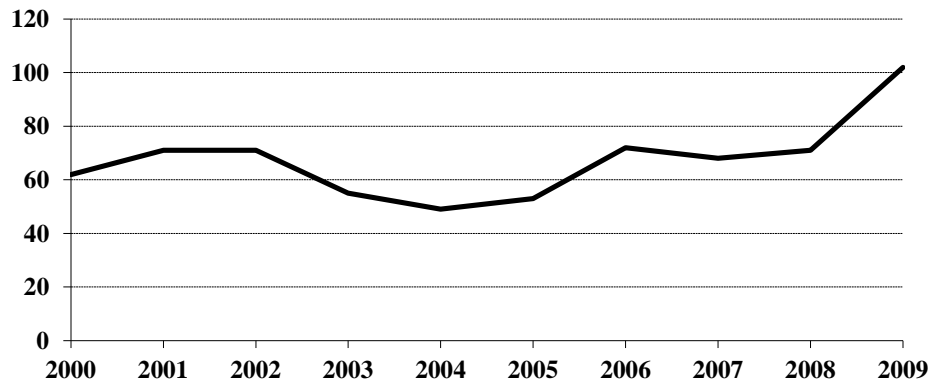
The value of property stolen in robbery incidents increased from \$66,036 in 2008 to \$141,456 in 2009.

The average robbery in 2009 involved \$1387 worth of property.

Robbery Summary

Year	Population	Offense Total	% Change in Number from Previous Year	Rate per 100,000 Population	% Change in Rate from Previous Year	Percent Cleared
2000	642,200	62	-11.4 %	9.7	-11.8 %	24.2 %
2001	634,450	71	14.5	11.2	15.5	23.9
2002	634,110	71	0.0	11.2	0.0	45.1
2003	634,000	55	-22.5	8.7	-22.3	43.6
2004	634,500	49	-10.9	7.7	-11.5	26.5
2005	637,000	53	8.2	8.3	7.8	34.0
2006	636,000	72	35.8	11.3	36.1	36.1
2007	640,000	68	-5.6	10.6	-6.2	30.9
2008	641,500	71	4.4	11.1	4.7	28.2
2009	647,000	102	43.7	15.8	42.3	36.3

Robbery Totals, 2000-2009



Robbery by Type of Weapon Involved, 2009

Type of Weapon	Number Reported	Percent of Total Offenses
Firearm	21	20.6 %
Knife or Cutting Instrument	17	16.7
Other Dangerous Weapon	26	25.5
Hands, Fists, Feet, etc.	38	37.2
Robbery Total	102	100.0

Robbery by Place of Occurrence and Value of Property, 2009

Place of Occurrence	Number Reported	Value of Property	Average Value per Robbery
Highway	21	\$2,451	\$116.71
Commercial House	22	9,893	449.68
Gas or Service Station	2	2,170	1,085.00
Convenience Store	9	10,418	1,157.56
Residence	21	12,453	593.00
Bank	4	88,423	22,105.75
Other	23	15,648	680.35
Robbery Total	102	141,456	1,386.82

Arrests for Robbery, 2000-2009

Year	Juvenile	Adult	Total
2000	0	15	15
2001	3	16	19
2002	9	16	25
2003	6	19	25
2004	8	7	15
2005	4	18	22
2006	7	18	25
2007	5	24	29
2008	4	19	23
2009	3	34	37

Property Loss Due to Robbery, 2000-2009

Year	Offense Total	Property Loss	Average Loss per Robbery
2000	62	\$12,654	\$204.10
2001	71	45,051	634.52
2002	71	24,711	348.04
2003	55	50,180	912.36
2004	49	19,915	406.43
2005	53	16,608	313.36
2006	72	62,319	865.54
2007	68	80,292	1,180.76
2008	71	66,036	930.08
2009	102	141,456	1,386.82

Aggravated Assault

The UCR program defines Aggravated Assault as “an unlawful attack by one person upon another for the purpose of inflicting severe or aggravated bodily injury. This type of assault is usually accompanied by the use of a weapon or by means likely to produce death or great bodily harm. Attempts are included because it is not necessary that an injury result when a gun, knife, or other weapon is used which could and probably would result in serious personal injury if the crime were successfully completed.”

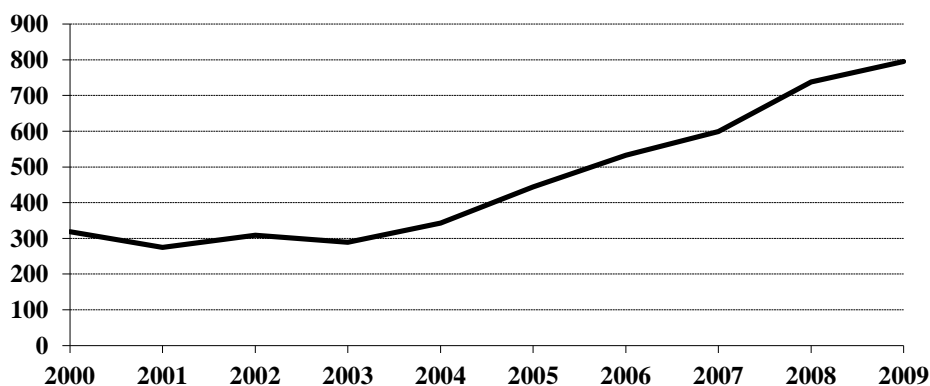
In 2009, 795 aggravated assaults were reported in North Dakota, an increase of 7.7 percent from the 738 aggravated assaults reported in 2008. In 2007, 599 aggravated assaults were reported.

The aggravated assault rate for North Dakota increased 6.9 percent from 115.0 per 100,000 population in 2008 to 122.9 per 100,000 population in 2009.

Aggravated Assault Summary

Year	Population	Offense Total	% Change in Number from Previous Year	Rate per 100,000 Population	% Change in Rate from Previous Year	Percent Cleared
2000	642,200	319	47.0 %	49.7	45.3 %	67.1 %
2001	634,450	275	-13.8	43.3	-12.9	60.0
2002	634,110	309	12.4	48.7	12.5	57.9
2003	634,000	289	-6.5	45.6	-6.4	60.9
2004	634,500	343	18.7	54.1	18.6	60.6
2005	637,000	444	29.4	69.7	28.8	59.0
2006	636,000	533	20.0	83.8	20.2	54.8
2007	640,000	599	12.4	93.6	11.7	50.3
2008	641,500	738	23.2	115.0	22.9	61.8
2009	647,000	795	7.7	122.9	6.9	59.7

Aggravated Assault Totals, 2000-2009



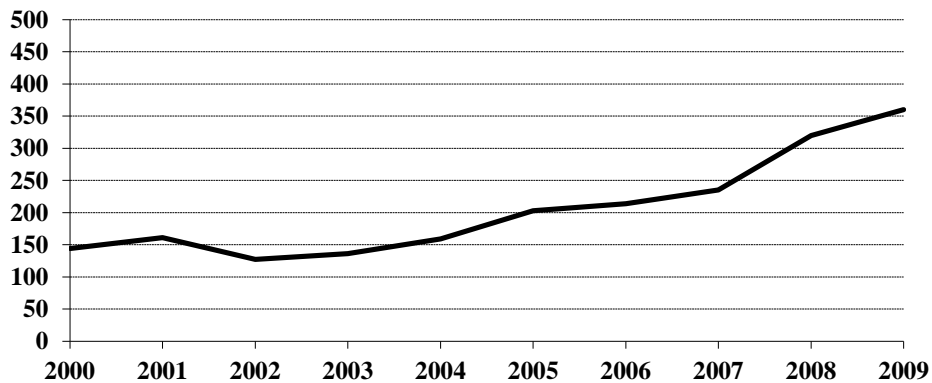
Aggravated Assault by Type of Weapon Involved, 2009

Type of Weapon	Number Reported	Percent of Total Offenses
Firearm	10	1.3 %
Knife or Cutting Instrument	78	9.8
Other Dangerous Weapon	165	20.7
Hands, Fists, Feet, etc.	542	68.2
Aggravated Assault Total	795	100.0

Arrests for Aggravated Assault, 2000-2009

Year	Juvenile	Adult	Age Not Reported	Total
2000	15	128	1	144
2001	28	133		161
2002	19	108		127
2003	14	122		136
2004	22	137		159
2005	47	156		203
2006	30	184		214
2007	31	204		235
2008	47	270	3	320
2009	34	326		360

Arrests for Aggravated Assault, 2000-2009



Property Crime

Property crime includes the offenses of burglary, larceny/theft, and motor vehicle theft.

In 2009, the total number of property crimes reported was 11,704. This is a decrease of 0.9 percent from the 2008 total of 11,815.

Property crime accounted for 91.3 percent of the index offenses reported in North Dakota.

The property crime rate decreased 1.8 percent from 1841.8 per 100,000 population in 2008, to 1809.0 per 100,000 in 2009.

More than 25 percent of property crimes were cleared by arrest or exceptional means in 2009.

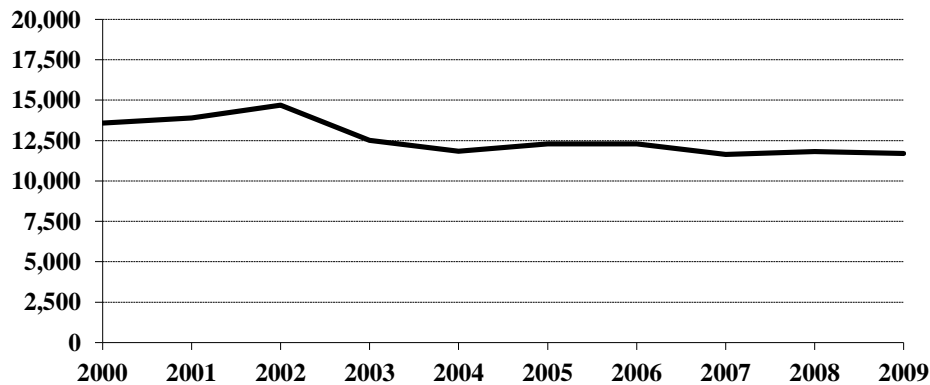
A total of 2,970 arrests were reported for property crimes. Of those, 39.5 percent were arrests of juveniles.

Property Crime Summary

Year	Population	Property Index Offenses	% Change in Number from Previous Year	Rate per 100,000 Population	% Change in Rate from Previous Year	Percent Cleared
2000	642,200	13,588	-3.9 %	2115.9	-5.2 %	21.8 %
2001	634,450	13,897	2.3	2190.4	3.5	20.6
2002	634,110	14,686	5.7	2316.0	5.7	20.0
2003	634,000	12,516	-14.8	1974.1	-14.8	19.4
2004	634,500	11,830	-5.5	1864.5	-5.6	19.2
2005	637,000	12,289	3.9	1929.2	3.5	18.5
2006	636,000	12,291	*	1932.5	0.2	19.3
2007	640,000	11,646	-5.2	1819.7	-5.8	20.5
2008	641,500	11,815	1.5	1841.8	1.2	23.8
2009	647,000	11,704	-0.9	1809.0	-1.8	25.1

* Less than 0.1 percent.

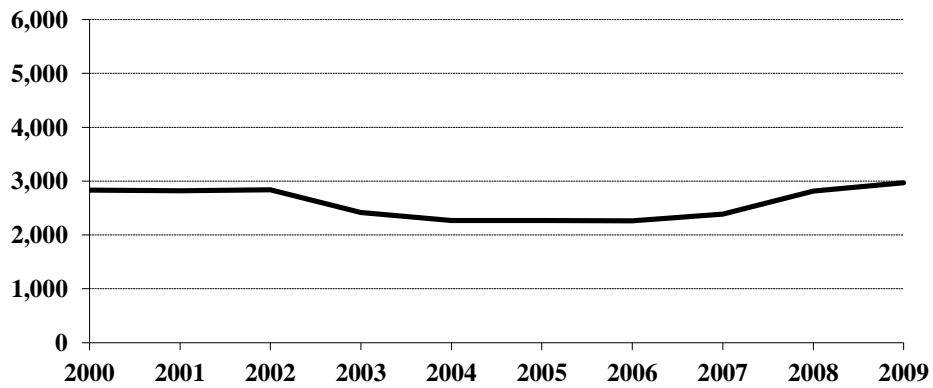
Property Crime Totals, 2000-2009



Arrests for Property Crimes, 2000-2009

Year	Juvenile	Adult	Age Not Reported	Total
2000	1,572	1,246	13	2,831
2001	1,439	1,376	4	2,819
2002	1,459	1,372	10	2,841
2003	1,156	1,260	1	2,417
2004	969	1,294	5	2,268
2005	952	1,313	1	2,266
2006	919	1,339	2	2,260
2007	1,044	1,344		2,388
2008	1,158	1,653	1	2,812
2009	1,174	1,793	3	2,970

Arrests for Property Crimes, 2000-2009



Burglary

The UCR program defines Burglary as the “unlawful entry of a structure to commit a felony or theft. The use of force to gain entry is not required to classify an offense as burglary.” Burglaries are classified into three categories: forcible entry, unlawful entry where no force is used, and attempted forcible entry.

In 2009, 2,180 burglaries were reported to the UCR program. This represents an increase of 7.1 percent from the total of 2,035 burglaries reported in 2008.

The rate of burglaries based on population was 336.9 per 100,000 inhabitants for 2009. This is a 6.2 percent increase from the rate of 317.2 per 100,000 population in 2008.

More than 15 percent of burglaries were cleared by arrest or exceptional means in 2009.

A total of 306 arrests for burglary was reported in 2009. Of these, 30.7 percent were juveniles.

The UCR program classifies burglaries by location of the incident. Nearly 53 percent were burglaries of residences.

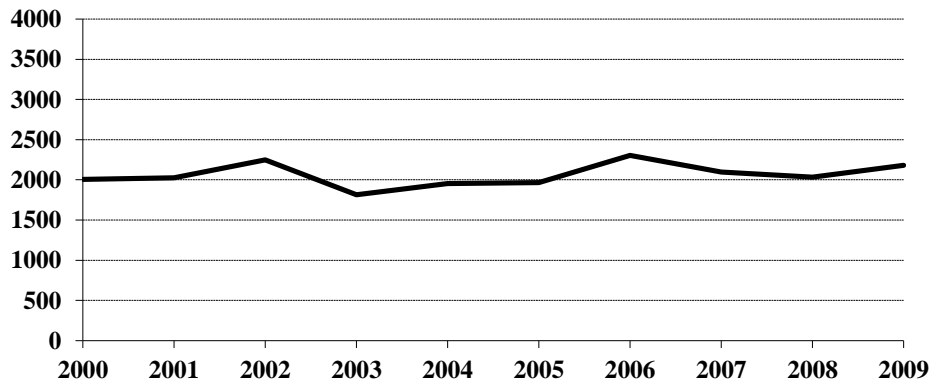
More than 47 percent of burglaries involved forcible entry.

Property loss due to burglary is substantial. More than \$2.5 million dollars worth of property was reported stolen in burglary incidents in 2009. The average burglary involved \$1,151 worth of property.

Burglary Summary

Year	Population	Offense Total	% Change in Number from Previous Year	Rate per 100,000 Population	% Change in Rate from Previous Year	Percent Cleared
2000	642,200	2,004	-8.9 %	312.1	-10.1 %	16.2 %
2001	634,450	2,027	1.1	319.5	2.4	15.1
2002	634,110	2,250	11.0	354.8	11.0	14.0
2003	634,000	1,814	-19.4	286.1	-19.4	13.8
2004	634,500	1,954	7.7	308.0	7.7	11.2
2005	637,000	1,966	0.6	308.6	0.2	11.6
2006	636,000	2,302	17.1	361.9	17.3	15.2
2007	640,000	2,096	-8.9	327.5	-9.5	12.3
2008	641,500	2,035	-2.9	317.2	-3.1	16.1
2009	647,000	2,180	7.1	336.9	6.2	15.2

Burglary Totals, 2000-2009



Burglary by Type of Entry, 2009

Type of Entry	Number Reported	Percent of Total Offenses
Forcible Entry	1,041	47.7 %
Unlawful Entry - No Force	963	44.2
Attempted Forcible Entry	176	8.1
Burglary Total	2,180	100.0

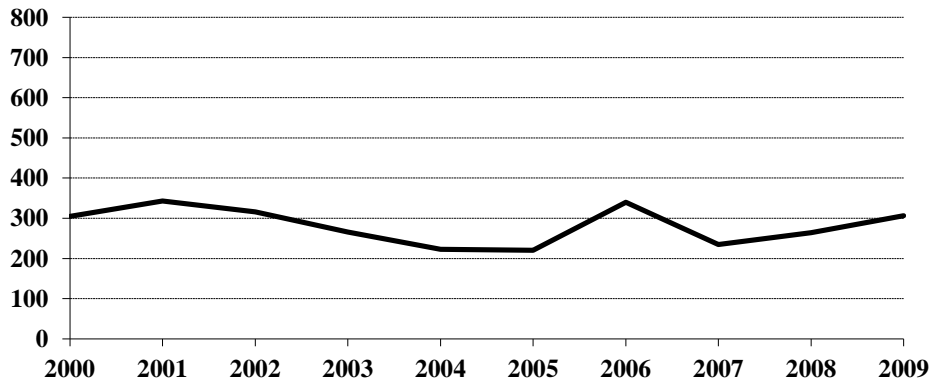
Burglary by Location and Value of Property, 2009

Location	Number Reported	Value of Property	Average Value per Burglary
Residence	1,149	\$1,201,159	\$1,045.40
Non-Residence	1,031	1,308,348	1,269.01
Burglary Total	2,180	2,509,507	1,151.15

Arrests for Burglary, 2000-2009

Year	Juvenile	Adult	Age Not Reported	Total
2000	134	166	5	305
2001	175	166	2	343
2002	166	144	6	316
2003	118	148		266
2004	99	119	5	223
2005	55	165		220
2006	115	224	1	340
2007	94	141		235
2008	97	167		264
2009	94	211	1	306

Arrests for Burglary, 2000-2009



Property Loss Due to Burglary, 2000-2009

Year	Offense Total	Property Loss	Average Loss per Burglary
2000	2,004	\$1,781,810	\$889.13
2001	2,027	1,572,709	775.88
2002	2,250	2,082,601	925.60
2003	1,814	1,562,749	861.49
2004	1,954	2,207,247	1,129.60
2005	1,966	2,057,935	1,046.76
2006	2,302	2,432,305	1,056.61
2007	2,096	1,943,995	927.48
2008	2,035	3,420,351	1,680.76
2009	2,180	2,509,507	1,151.15

Larceny/Theft

The UCR program defines Larceny/Theft as the “unlawful taking, carrying, leading, or riding away of property from the possession or constructive possession of another. It includes crimes such as shoplifting, pocket-picking, purse-snatching, thefts from motor vehicles, thefts of motor vehicle parts and accessories, bicycle thefts, etc., in which no use of force, violence or fraud occurs. In the Uniform Crime Reporting program, this crime category does not include embezzlement, confidence games, forgery, and worthless checks. Motor vehicle theft is also excluded from this category inasmuch as it is a separate crime index offense.”

A total of 8,699 larceny/theft offenses was reported in North Dakota in 2009. This is a 2.5 percent decrease from the 2008 total of 8,926.

The larceny/theft rate per 100,000 population was 1344.5 compared with 1391.4 in 2008, a 3.4 percent decrease in the rate.

More than 27 percent of larceny/theft offenses were cleared by arrest or exceptional means in 2009.

The number of arrests for this offense increased from 2,366 in 2008 to 2,485 in 2009. Nearly 40 percent of those arrested for larceny/theft in 2009 were juveniles.

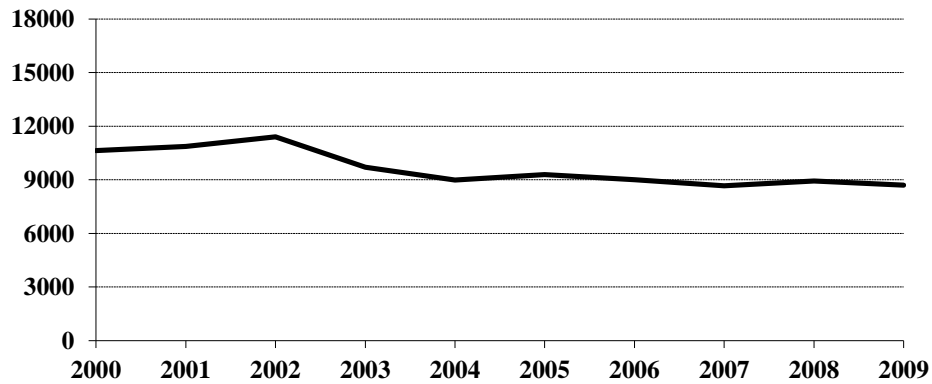
More than \$5.3 million dollars worth of property was reported stolen as the result of larceny/theft offenses in the state. The average dollar value per offense is \$618.

Larceny/theft accounted for 67.9 percent of the total index offenses reported and amounted to approximately 46 percent of the total value of stolen property.

Larceny/Theft Summary

Year	Population	Offense Total	% Change in Number from Previous Year	Rate per 100,000 Population	% Change in Rate from Previous Year	Percent Cleared
2000	642,200	10,642	-2.9 %	1657.1	-4.1 %	22.0 %
2001	634,450	10,870	2.1	1713.3	3.4	20.9
2002	634,110	11,399	4.9	1797.6	4.9	20.4
2003	634,000	9,700	-14.9	1530.0	-14.9	19.8
2004	634,500	8,984	-7.4	1415.9	-7.5	20.6
2005	637,000	9,293	3.4	1458.9	3.0	19.3
2006	636,000	9,012	-3.0	1417.0	-2.9	19.8
2007	640,000	8,672	-3.8	1355.0	-4.4	22.1
2008	641,500	8,926	2.9	1391.4	2.7	25.5
2009	647,000	8,699	-2.5	1344.5	-3.4	27.4

Larceny/Theft Totals, 2000-2009



Monetary Value of Larceny/Theft, 2009

Value of Larceny/Theft	Number Reported	Percent of Total Offenses
Under \$50	2,941	33.8 %
\$50 to \$200	2,385	27.4
Over \$200	3,373	38.8
Larceny/Theft Total	8,699	100.0

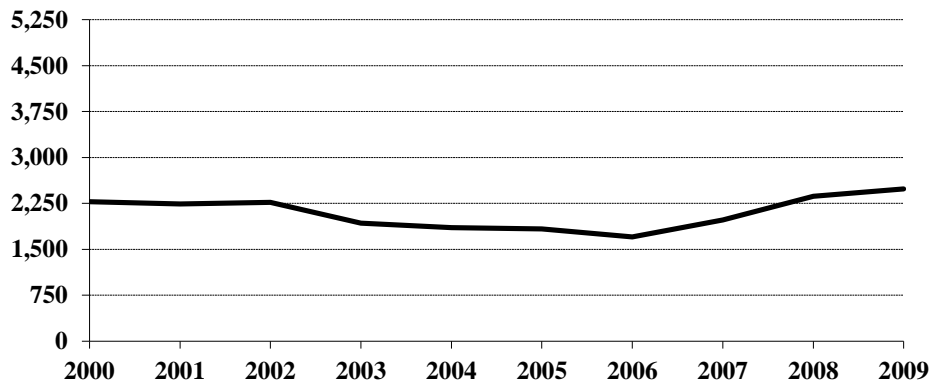
Larceny/Theft by Type and Value, 2009

Type of Larceny/Theft	Number Reported	Value of Property	Average Value per Larceny/Theft
From Motor Vehicle	1,886	\$858,549	\$455.22
Shoplifting	1,864	236,892	127.09
From Building	957	667,568	697.56
Bicycles	668	142,808	213.78
Motor Vehicle Parts, Accessories	344	216,340	628.90
From Coin-Operated Machine	16	5,587	349.19
Pocket Picking	13	1,459	112.23
Purse Snatching	13	2,818	216.77
All Other	2,938	3,242,241	1,103.55
Larceny/Theft Total	8,699	5,374,262	617.80

Arrests for Larceny/Theft, 2000-2009

Year	Juvenile	Adult	Age Not Reported	Total
2000	1,285	987	7	2,279
2001	1,134	1,102	2	2,238
2002	1,147	1,114	3	2,264
2003	919	1,004	1	1,924
2004	792	1,064		1,856
2005	794	1,035	1	1,830
2006	699	1,000	1	1,700
2007	876	1,103		1,979
2008	977	1,388	1	2,366
2009	992	1,491	2	2,485

Arrests for Larceny/Theft, 2000-2009



Property Loss Due to Larceny/Theft, 2000-2009

Year	Offense Total	Property Loss	Average Loss per Larceny/Theft
2000	10,642	\$4,627,836	\$434.87
2001	10,870	5,432,250	499.75
2002	11,399	5,701,494	500.17
2003	9,700	5,207,256	536.83
2004	8,984	4,931,853	548.96
2005	9,293	5,191,397	558.64
2006	9,012	5,425,420	602.02
2007	8,672	4,343,221	500.83
2008	8,926	4,757,988	533.05
2009	8,699	5,374,262	617.80

Motor Vehicle Theft

Motor Vehicle Theft is defined by the UCR program as “the theft or attempted theft of a motor vehicle; the offense category includes the stealing of automobiles, trucks, buses, motorcycles, motor scooters, snowmobiles, etc. The definition excludes the taking of a motor vehicle for temporary use by those persons having lawful access.”

A total of 825 motor vehicle thefts was reported in 2009. This is a decrease of 3.4 percent from the 2008 total of 854.

Based on a Census Bureau population estimate of 647,000 for North Dakota, the resulting motor vehicle theft rate is 127.5 per 100,000 population.

More than 27 percent of reported motor vehicle thefts were cleared by arrest or exceptional means in 2009.

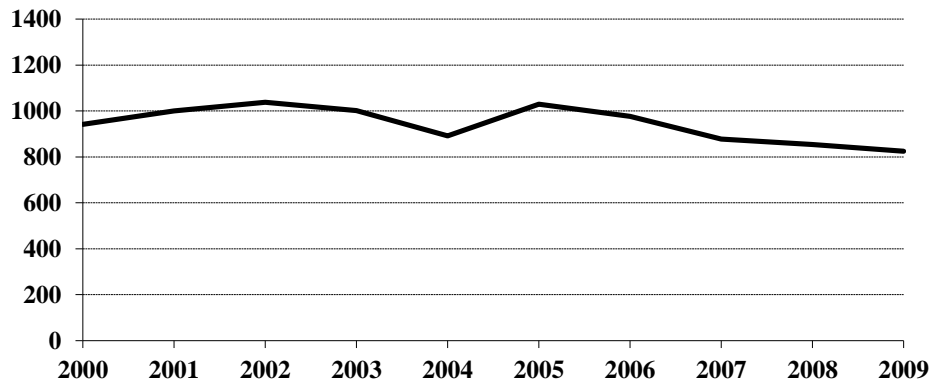
The number of arrests for motor vehicle theft decreased from 182 in 2008 to 179 in 2009.

The average value per motor vehicle theft was approximately \$4,454.

Motor Vehicle Theft Summary

Year	Population	Offense Total	% Change in Number from Previous Year	Rate per 100,000 Population	% Change in Rate from Previous Year	Percent Cleared
2000	642,200	942	-4.8 %	146.7	-6.0 %	30.9 %
2001	634,450	1,000	6.2	157.6	7.4	27.8
2002	634,110	1,037	3.7	163.5	3.7	29.0
2003	634,000	1,002	-3.4	158.0	-3.4	25.2
2004	634,500	892	-11.0	140.6	-11.0	22.2
2005	637,000	1,030	15.5	161.7	15.0	23.5
2006	636,000	977	-5.1	153.6	-5.0	23.7
2007	640,000	878	-10.1	137.2	-10.7	24.4
2008	641,500	854	-2.7	133.1	-3.0	24.6
2009	647,000	825	-3.4	127.5	-4.2	27.4

Motor Vehicle Theft Totals, 2000-2009



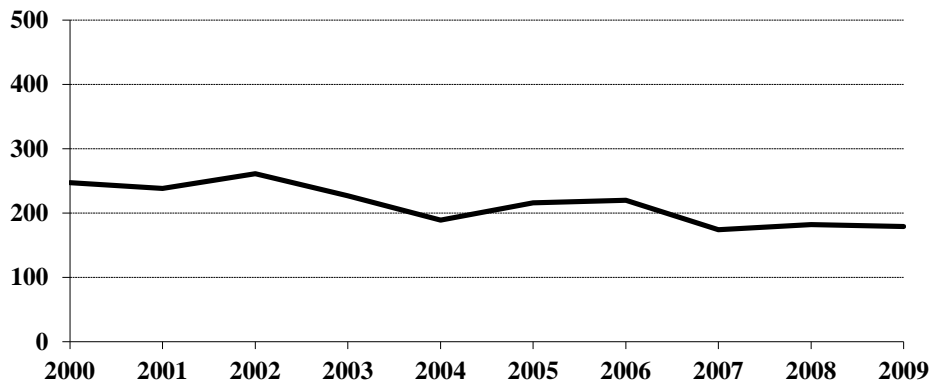
Type of Vehicle Stolen, 2009

Type of Vehicle	Number Reported	Percent of Total Offenses
Automobiles	668	81.0 %
Trucks and Buses	55	6.7
Other Vehicles	102	12.3
Motor Vehicle Theft Total	825	100.0

Arrests for Motor Vehicle Theft, 2000-2009

Year	Juvenile	Adult	Age Not Reported	Total
2000	153	93	1	247
2001	130	108		238
2002	146	114	1	261
2003	119	108		227
2004	78	111		189
2005	103	113		216
2006	105	115		220
2007	74	100		174
2008	84	98		182
2009	88	91		179

Arrests for Motor Vehicle Theft, 2000-2009



Property Loss Due to Motor Vehicle Theft, 2000-2009

Year	Offense Total	Property Loss	Average Loss per Offense
2000	942	\$3,886,274	\$4,125.56
2001	1,000	4,414,621	4,414.62
2002	1,037	4,647,821	4,481.99
2003	1,002	4,637,043	4,627.79
2004	892	4,238,662	4,751.86
2005	1,030	5,124,789	4,975.52
2006	977	4,525,628	4,632.17
2007	878	4,348,148	4,952.33
2008	854	3,897,971	4,564.37
2009	825	3,674,803	4,454.31

Crime Index Offenses by Reporting Jurisdiction

The rate per 100,000 population is shown immediately below the actual number of crime index offenses reported by each jurisdiction. A county total is also shown for each of those counties that have more than one reporting jurisdiction within its geographic boundaries. The rate is reported per 100,000 for easy comparison to national publications.

Number and Rate of Index Offenses, 2009

County	Reporting Jurisdiction	Population	Murder/ Non-Negligent Manslaughter	Forcible Rape	Robbery	Aggravated Assault	Burglary	Larceny/ Theft	Motor Vehicle Theft	Total Index Offenses
Adams	County SO	2,227				2 89.8	5 224.5	2 89.8	1 44.9	10 449.0
Barnes	County SO	4,483				2 44.6	3 66.9	8 178.5	2 44.6	15 334.6
	Valley City PD	6,172		1 16.2		3 48.6	14 226.8	38 615.7	4 64.8	60 972.1
	County Total	10,655		1 9.4		5 46.9	17 159.5	46 431.7	6 56.3	75 703.9
Benson	County SO	7,006				1 14.3		1 14.3		2 28.5
Billings	County SO	810						1 123.5		1 123.5
Bottineau	County SO	6,305					11 174.5	35 555.1	4 63.4	50 793.0
Bowman	County SO	1,529						1 65.4	1 65.4	2 130.8
	Bowman PD	1,491	DID NOT REPORT IN 2009							
Burke	County SO	1,555					4 257.2	16 1028.9	1 64.3	21 1350.5
	Powers Lake PD	238	DID NOT REPORT IN 2009							
Burleigh	County SO	16,590	1 6.0	2 12.1		8 48.2	41 247.1	134 807.7	15 90.4	201 1211.6
	Bismarck PD	60,923	2 3.3	17 27.9	12 19.7	127 208.5	204 334.8	1277 2096.1	102 167.4	1741 2857.7
	Lincoln PD	2,875				2 69.6	7 243.5	11 382.6	4 139.1	24 834.8
	County Total	80,388	3 3.7	19 23.6	12 14.9	137 170.4	252 313.5	1422 1768.9	121 150.5	1966 2445.6
Cass	County SO	24,258		2 8.2		3 12.4	47 193.8	120 494.7	17 70.1	189 779.1
	Fargo PD *	93,986	3 3.2	54 57.5	34 36.2	213 226.6	649 690.5	2411 2565.3	250 266.0	3614 3845.3
	West Fargo PD	24,862		12 28.3	5 20.1	46 185.0	180 724.0	339 1363.5	29 116.6	611 2457.6
	County Total	143,106	3 2.1	68 47.5	39 27.3	262 183.1	876 612.1	2870 2005.5	296 206.8	4414 3084.4
Cavalier	County SO	3,776				3 79.4	7 185.4	33 873.9	2 53.0	45 1191.7
Dickey	County SO	2,036					1 49.1	3 147.3	1 49.1	5 245.6
	Ellendale PD	1,446				1 69.2	11 760.7	4 276.6		16 1106.5
	Oakes PD	1,740				1 57.5		3 172.4	1 57.5	5 287.4
	County Total	5,222				2 38.3	12 229.8	10 191.5	2 38.3	26 497.9
Divide	County SO	1,034	DID NOT REPORT IN 2009							
	Crosby PD	939	DID NOT REPORT IN 2009							

* Includes 122 index offenses reported by NDSU PD

County	Reporting Jurisdiction	Population	Murder/ Non-Negligent Manslaughter	Forcible Rape	Robbery	Aggravated Assault	Burglary	Larceny/ Theft	Motor Vehicle Theft	Total Index Offenses
Dunn	County SO	3,314	DID NOT REPORT IN 2009							
Eddy	County SO	2,370				3 126.6	1 42.2	4 168.8		8 337.6
Emmons	County SO	2,326					10 429.9	9 386.9	2 86.0	21 902.8
	Linton PD	987	DID NOT REPORT IN 2009							
Foster	County SO	1,391	DID NOT REPORT IN 2009							
	Carrington PD	2,052						3 146.2	1 48.7	4 194.9
Golden Valley	County SO	1,624	DID NOT REPORT IN 2009							
Grand Forks	County SO	11,965		1 8.4	1 8.4	10 83.6	39 326.0	61 509.8	16 133.7	128 1069.8
	Emerado PD	473				2 422.8	1 211.4	3 634.2		6 1268.5
	Grand Forks PD *	51,553	1 1.9	30 58.2	28 54.3	88 170.7	278 539.3	1312 2545.0	70 135.8	1807 3505.1
	Larimore PD	1,300				3 230.8	7 538.5	13 1000.0		23 1769.2
	Northwood PD	924					4 432.9	9 974.0	1 108.2	14 1515.2
	Thompson PD	954					2 209.6	2 209.6		4 419.3
	County Total	67,169	1 1.5	31 46.2	29 43.2	103 153.3	331 492.8	1400 2084.3	87 129.5	1982 2950.8
Grant	County SO	1,859					1 53.8	4 215.2	2 107.6	7 376.5
	Elgin PD	532						2 375.9	1 188.0	3 563.9
	County Total	2,391					1 41.8	6 250.9	3 125.5	10 418.2
Griggs	County SO	2,339								0 0.0
Hettinger	County SO	2,364						4 169.2	1 42.3	5 211.5
Kidder	County SO	1,626					1 61.5	1 61.5		2 123.0
	Steele PD	639		1 156.5		1 156.5	1 156.5	3 469.5	1 156.5	7 1095.5
	County Total	2,265		1 44.2		1 44.2	2 88.3	4 176.6	1 44.2	9 397.4
LaMoure	County SO	3,158				1 31.7			2 63.3	3 95.0
	LaMoure PD	788	DID NOT REPORT IN 2009							
Logan	County SO	1,217					1 82.2	2 164.3		3 246.5
	Napoleon PD	705						1 141.8		1 141.8
	County Total	1,922					1 52.0	3 156.1		4 208.1
McHenry	County SO	5,127	1 19.5	1 19.5			3 58.5	10 195.0	1 19.5	16 312.1
McIntosh	County SO	1,735				1 57.6	2 115.3	2 115.3	1 57.6	6 345.8
	Wishek PD	853	DID NOT REPORT IN 2009							
McKenzie	County SO	4,331					3 69.3	25 577.2	2 46.2	30 692.7
	Watford City PD	1,382					1 72.4	1 72.4		2 144.7
	County Total	5,713					4 70.0	26 455.1	2 35.0	32 560.1

* Includes 149 index offenses reported by UND PD.

County	Reporting Jurisdiction	Population	Murder/ Non-Negligent Manslaughter	Forcible Rape	Robbery	Aggravated Assault	Burglary	Larceny/ Theft	Motor Vehicle Theft	Total Index Offenses
McLean	County SO	8,305		3 36.1		3 36.1	21 252.9	53 638.2	11 132.5	91 1095.7
Mercer	County SO	2,820					8 283.7	30 1063.8	2 70.9	40 1418.4
	Beulah PD	2,834		4 141.1		2 70.6	6 211.7	37 1305.6	1 35.3	50 1764.3
	Hazen PD	2,181	DID NOT REPORT IN 2009							
	Reporting Agency Total	7,835		4 51.1		2 25.5	14 178.7	67 855.1	3 38.3	90 1148.7
Morton	County SO	8,320		1 12.0		5 60.1	9 108.2	59 709.1	6 72.1	80 961.5
	Mandan PD	18,244		16 87.7	1 5.5	28 153.5	47 257.6	288 1578.6	33 180.9	413 2263.8
	County Total	26,564		17 64.0	1 3.8	33 124.2	56 210.8	347 1306.3	39 146.8	493 1855.9
Mountrail	County SO	5,339				3 56.2	18 337.1	36 674.3	8 149.8	65 1217.5
	Stanley PD	1,212							1 82.5	1 82.5
	County Total	6,551				3 45.8	18 274.8	36 549.5	9 137.4	66 1007.5
Nelson	County SO	3,136			1 31.9	3 95.7	4 127.6	13 414.5	4 127.6	25 797.2
Oliver	County SO	1,672					1 59.8	6 358.9		7 418.7
Pembina	County SO	6,058	1 16.5	1 16.5		4 66.0	5 82.5	9 148.6	1 16.5	21 346.6
	Cavalier PD	1,301					10 768.6	17 1306.7	3 230.6	30 2305.9
	County Total	7,359	1 13.6	1 13.6		4 54.4	15 203.8	26 353.3	4 54.4	51 693.0
Pierce	County SO	1,526			1 65.5	1 65.5	4 262.1	8 524.2		14 917.4
	Rugby PD	2,538		2 78.8	1 39.4	2 78.8	8 315.2	31 1221.4	3 118.2	47 1851.9
	County Total	4,064		2 49.4	2 49.4	3 73.8	12 295.3	39 959.6	3 73.8	61 1501.0
Ramsey	County SO	4,581				3 65.5	5 109.1	11 240.1	4 87.3	23 502.1
	Devils Lake PD	6,654		1 15.0		28 420.8	39 586.1	243 3651.9	14 210.4	325 4884.3
	County Total	11,235		1 8.9		31 275.9	44 394.6	254 2260.8	18 160.2	348 3097.5
Ransom	County SO	3,473		2 57.6			13 374.3	11 316.7	3 86.4	29 835.0
	Lisbon PD	2,170			1 46.1	1 46.1	20 921.7	12 553.0	2 92.2	36 1659.0
	County Total	5,643		2 35.4	1 17.7	1 17.7	33 584.8	23 407.6	5 88.6	65 1151.9
Renville	County SO	2,227			1 44.9		1 44.9	12 538.8		14 628.6
Richland	County SO	6,804		2 29.4		3 44.1	34 499.7	52 764.3	3 44.1	94 1381.5
	Wahpeton PD *	9,484		2 21.1		10 105.4	22 232.0	160 1687.1	7 73.8	201 2119.4
	County Total	16,288		4 24.6		13 79.8	56 343.8	212 1301.6	10 61.4	295 1811.1
Rolette	County SO	11,985				3 25.0	7 58.4	1 8.3		11 91.8
	Rolla PD	1,420					8 563.4	28 1971.8		36 2535.2
	St. John PD	354					1 282.5	1 282.5		2 565.0
	County Total	13,759				3 21.8	16 116.3	30 218.0		49 356.1

* Includes 27 index offenses reported by NDSCS PD.

County	Reporting Jurisdiction	Population	Murder/ Non-Negligent Manslaughter	Forcible Rape	Robbery	Aggravated Assault	Burglary	Larceny/ Theft	Motor Vehicle Theft	Total Index Offenses
Sargent	County SO	4,047				3 74.1	2 49.4	19 469.5	3 74.1	27 667.2
Sheridan	County SO	1,235				1 81.0	5 404.9	11 890.7		17 1376.5
Sioux	County SO	4,284	DID NOT REPORT IN 2009							
Slope	County SO	671						4 596.1		4 596.1
Stark	County SO	6,410				1 15.6	3 46.8	34 530.4	3 46.8	41 639.6
	Dickinson PD	16,043	2 12.5		2 12.5	28 174.5	34 211.9	252 1570.8	15 93.5	333 2075.7
	Belfield PD									0 0.0
	South Heart PD	297	DID NOT REPORT IN 2009							
	Reporting Agency Total	22,750	2 8.8		2 8.8	29 127.5	37 162.6	286 1257.1	18 79.1	374 1644.0
Steele	County SO	1,765	DID NOT REPORT IN 2009							
Stutsman	County SO	5,858		4 68.3		2 34.1	8 136.6	28 478.0	3 51.2	45 768.2
	Jamestown PD	14,535		7 48.2	1 6.9	11 75.7	53 364.6	226 1554.9	24 165.1	322 2215.3
	County Total	20,393		11 53.9	1 4.9	13 63.7	61 299.1	254 1245.5	27 132.4	367 1799.6
Towner	County SO	1,166					2 171.5	3 257.3	1 85.8	6 514.6
	Cando PD	989					1 101.1	9 910.0		10 1011.1
	County Total	2,155					3 139.2	12 556.8	1 46.4	16 742.5
Traill	County SO	4,601			1 21.7		5 108.7	20 434.7	3 65.2	29 630.3
	Mayville PD	1,751					3 171.3	3 171.3	2 114.2	8 456.9
	Hillsboro PD	1,459					1 68.5	3 205.6	1 68.5	5 342.7
	County Total	7,811			1 12.4		9 115.2	26 332.9	6 76.8	42 537.7
Walsh	County SO	6,886		1 14.5		1 14.5	17 246.9	52 755.2	12 174.3	83 1205.3
	Grafton PD	3,924		2 51.0	1 25.5	1 25.5	24 611.6	82 2089.7	8 203.9	118 3007.1
	County Total	10,810		3 27.8	1 9.3	2 18.5	41 379.3	134 1239.6	20 185.0	201 1859.4
Ward	County SO	19,836		6 30.2	2 10.1	10 50.4	28 141.2	100 504.1	20 100.8	166 836.9
	Minot PD	35,293		12 34.0	5 14.2	90 255.0	102 289.0	489 1385.5	52 147.3	750 2125.1
	Burlington PD	990						1 101.0		1 101.0
	County Total	56,119		18 32.1	7 12.5	100 178.2	130 231.7	590 1051.3	72 128.3	917 1634.0
Wells	County SO	2,063					2 96.9	5 242.4		7 339.3
	Harvey PD	1,583		2 126.3		2 126.3	4 252.7	29 1832.0	1 63.2	38 2400.5
	Fessenden PD	488								0 0.0
	County Total	4,134		2 48.4		2 48.4	6 145.1	34 822.4	1 24.2	45 1088.5
Williams	County SO	7,357		2 27.2		8 108.7	19 258.3	30 407.8	10 135.9	69 937.9
	Williston PD	12,662		15 118.5	4 31.6	17 134.3	37 292.2	268 2116.6	26 205.3	367 2898.4
	County Total	20,019		17 84.9	4 20.0	25 124.9	56 279.7	298 1488.6	36 179.8	436 2177.9

ARREST ANALYSIS

Arrests in 2009

Although primarily an indication of law enforcement activity, the number of arrests reported does provide a limited profile of the perpetrators of crime, especially for those crimes that have high clearance rates. Differing arrest practices, policies, and enforcement emphases among agencies influence the volume of arrests for various offenses, particularly those against public order such as vagrancy, disorderly conduct, and related violations. However, arrests for serious crimes, e.g., robbery or burglary, are more likely to be uniform throughout all jurisdictions across the state.

The UCR program requires that an arrest be counted for each separate occasion an individual is taken into custody. Although several charges may be lodged against a person at the time of the arrest, only one arrest is counted for each time the person is taken into custody.

North Dakota law enforcement agencies reported 28,925 arrests in 2009. A total of 29,334 arrests was reported in 2008.

In 2009, more than 21 percent of total arrests were arrests of juveniles.

More than 70 percent of the total was arrests of males.

Arrests for the crime index offenses of murder/non-negligent manslaughter, forcible rape, robbery, aggravated assault, burglary, larceny/theft and motor vehicle theft comprised 11.8 percent of the total reported arrests. Of the 3,400 reported arrests for crime index offenses, 35.9 percent were arrests of juveniles.

The total of 11,268 reported arrests for DUI and liquor law violations represents 39 percent of the total arrests reported in the state of North Dakota in 2009. Arrests for DUI increased from 5,815 in 2008 to 5,819 in 2009. Liquor law violation arrests decreased 2.6 percent from 5,592 in 2008 to 5,449 reported in 2009.

More than 79 percent of total arrests were white; over 16 percent were Native American.

These statistics are provided by local law enforcement agencies that contribute to the North Dakota UCR program. No arrest figures for reservations in the state are included in these totals. Tribal law enforcement agencies do not participate in the state UCR program.

Total Arrests Reported, 2009

Offense Classification	Number Reported	Percent of Total Arrests
Murder/Non-Negligent Manslaughter	7	*
Negligent Manslaughter	7	*
Forcible Rape	26	0.1 %
Robbery	37	0.1
Aggravated Assault	360	1.2
Burglary	306	1.1
Larceny/Theft	2,485	8.6
Motor Vehicle Theft	179	0.6
Other Assaults	2,047	7.1
Arson	14	0.1
Forgery and Counterfeiting	90	0.3
Fraud	709	2.5
Embezzlement	31	0.1
Stolen Property Offenses	126	0.4
Vandalism	518	1.8
Weapons Offenses	168	0.6
Prostitution	4	*
Other Sex Offenses	89	0.3
Drug Abuse Violations	2,063	7.1
Gambling	1	*
Offenses Against Family and Children	185	0.6
Driving Under the Influence	5,819	20.1
Liquor Law Violations	5,449	18.8
Disorderly Conduct	1,843	6.4
Vagrancy		
All Other Offenses	5,542	19.2
Suspicion		
Curfew and Loitering	296	1.0
Runaways	524	1.8
Arrest Total	28,925	100.0

* Less than 0.1 percent of total arrests.

Comparison of Reported Arrests, 2008-2009

Offense Classification	2008	2009	Percent Change
Murder/Non-Negligent Manslaughter	4	7	75.0
Negligent Manslaughter	6	7	16.7
Forcible Rape	45	26	-42.2
Robbery	23	37	60.9
Aggravated Assault	320	360	12.5
Burglary	264	306	15.9
Larceny/Theft	2,366	2,485	5.0
Motor Vehicle Theft	182	179	-1.6
Other Assaults	1,947	2,047	5.1
Arson	22	14	-36.4
Forgery and Counterfeiting	71	90	26.8
Fraud	646	709	9.8
Embezzlement	30	31	3.3
Stolen Property Offenses	135	126	-6.7
Vandalism	557	518	-7.0
Weapons Offenses	223	168	-24.7
Prostitution	3	4	33.3
Other Sex Offenses	82	89	8.5
Drug Abuse Violations	2,158	2,063	-4.4
Gambling	1	1	0.0
Offenses Against Family and Children	163	185	13.5
Driving Under the Influence	5,815	5,819	0.1
Liquor Law Violations	5,592	5,449	-2.6
Disorderly Conduct	1,835	1,843	0.4
Vagrancy	0	0	
All Other Offenses	5,986	5,542	-7.4
Suspicion	0	0	
Curfew and Loitering	248	296	19.4
Runaways	610	524	-14.1
Arrest Total	29,334	28,925	-1.4

Juvenile and Adult Arrests, 2009

Offense Classification	Juvenile	Adult	Age Not Reported	Total
Murder/Non-Negligent Manslaughter		7		7
Negligent Manslaughter		7		7
Forcible Rape	8	18		26
Robbery	3	34		37
Aggravated Assault	34	326		360
Burglary	94	211	1	306
Larceny/Theft	992	1,491	2	2,485
Motor Vehicle Theft	88	91		179
Other Assaults	427	1,619	1	2,047
Arson	5	9		14
Forgery and Counterfeiting	9	81		90
Fraud	11	693	5	709
Embezzlement	3	28		31
Stolen Property Offenses	51	75		126
Vandalism	254	264		518
Weapons Offenses	26	142		168
Prostitution		4		4
Other Sex Offenses	24	65		89
Drug Abuse Violations	293	1,762	8	2,063
Gambling		1		1
Offenses Against Family and Children	88	96	1	185
Driving Under the Influence	79	5,735	5	5,819
Liquor Law Violations	1,029	4,418	2	5,449
Disorderly Conduct	729	1,112	2	1,843
Vagrancy				
All Other Offenses	1,053	4,483	6	5,542
Suspicion				
Curfew and Loitering	296			296
Runaways	524			524
Arrest Total	6,120	22,772	33	28,925

Arrests by Gender, 2009

Offense Classification	Male	Female	Total
Murder/Non-Negligent Manslaughter	6	1	7
Negligent Manslaughter	4	3	7
Forcible Rape	26		26
Robbery	34	3	37
Aggravated Assault	310	50	360
Burglary	274	32	306
Larceny/Theft	1,341	1,144	2,485
Motor Vehicle Theft	138	41	179
Other Assaults	1,476	571	2,047
Arson	11	3	14
Forgery and Counterfeiting	39	51	90
Fraud	440	269	709
Embezzlement	14	17	31
Stolen Property Offenses	95	31	126
Vandalism	439	79	518
Weapons Offenses	163	5	168
Prostitution		4	4
Other Sex Offenses	85	4	89
Drug Abuse Violations	1,631	432	2,063
Gambling	1		1
Offenses Against Family and Children	109	76	185
Driving Under the Influence	4,391	1,428	5,819
Liquor Law Violations	3,561	1,888	5,449
Disorderly Conduct	1,394	449	1,843
Vagrancy			
All Other Offenses	4,017	1,525	5,542
Suspicion			
Curfew and Loitering	168	128	296
Runaways	226	298	524
Arrest Total	20,393	8,532	28,925

Arrests by Race, 2009

Offense Classification	White	Black	Native American	Asian	Total
Murder/Non-Negligent Manslaughter	7				7
Negligent Manslaughter	5		2		7
Forcible Rape	18	4	4		26
Robbery	26	3	8		37
Aggravated Assault	240	30	89	1	360
Burglary	234	16	54	2	306
Larceny/Theft	1,772	140	563	10	2,485
Motor Vehicle Theft	120	5	54		179
Other Assaults	1,461	157	419	10	2,047
Arson	9		5		14
Forgery and Counterfeiting	71	8	10	1	90
Fraud	629	15	63	2	709
Embezzlement	27	1	2	1	31
Stolen Property Offenses	83	12	31		126
Vandalism	384	23	106	5	518
Weapons Offenses	152	9	5	2	168
Prostitution	4				4
Other Sex Offenses	72	3	13	1	89
Drug Abuse Violations	1,718	100	238	7	2,063
Gambling	1				1
Offenses Against Family and Children	131	21	32	1	185
Driving Under the Influence	5,086	120	601	12	5,819
Liquor Law Violations	4,490	108	835	16	5,449
Disorderly Conduct	1,382	119	340	2	1,843
Vagrancy					
All Other Offenses	4,202	276	1,044	20	5,542
Suspicion					
Curfew and Loitering	240	8	47	1	296
Runaways	389	23	111	1	524
Arrest Total	22,955	1,201	4,674	95	28,925

Arrest Analysis by Reporting Jurisdiction

The table below contains arrest totals for each reporting agency in 2009. Juvenile and adult arrests as well as arrests reported without age information are included.

Arrests by Reporting Jurisdiction, 2009

Agency	Murder/Non-Neg. Mansl.	Negligent Manslaughter	Forcible Rape	Robbery	Aggravated Assault	Burglary	Larceny/Theft	Motor Vehicle Theft	Other Assault	Arson	Forgery/Counterfeiting	Fraud	Embezzlement	Stolen Property Offenses	Vandalism	Weapons Offenses	Prostitution	Other Sex Offenses	Drug Abuse Violations	Gambling Violations	Off. Against Fam & Children	DUI	Liquor Law Violations	Disorderly Conduct	Vagrancy	All Other Offenses	Suspicion	Curfew/Loitering	Runaway	Total
Adams SO					1	1	1		1		1								2			6	2			1				16
Barnes SO					1	1								1					1			10	7							21
Valley City PD					2	5	4		17										17			70	30	7		9				161
Benson SO					1																									1
Billings SO																						1								1
Bottineau SO						3	8	3		1				1	1			1	3				99			3				123
Bowman SO																						1	7							8
Bowman PD	DID NOT REPORT IN 2009																													
Burke SO									2										4			4	1	2		2				15
Powers Lake PD	DID NOT REPORT IN 2009																													
Burleigh SO		1			5	4	24	6	49		149			12	4		6	34		4	96	177	7		142			20	740	
Bismarck PD	2	1	2	60	20	506	16	288	2	11	43	11	24	83	18		11	194		15	473	543	319		549	94	109	3394		
Lincoln PD					2	3	1	5	7					2			1				6	12	5		5	1	11	61		
Cass SO					2	2		3	16			1		1					22		6	84	105	8		30	1	2	283	
Fargo PD	2	1	7	12	87	69	820	38	424	1	19	27		34	75	23	3	7	306		57	757	1055	389		846	44	80	5183	
West Fargo PD			1	1	21	17	38	6	157	3		7	1	9	19	6		1	99		2	147	125	34		111	22	27	854	
NDSU PD						6			1			1				1			17			37	135	6		15			219	
Cavalier SO					2	2	2		3			1			5				1			6	2	3		2			29	
Dickey SO											35			2	1		2				1	6	4			1			52	
Ellendale PD					1	2	2							1					1			4				2			13	
Oakes PD									1									1				1	1	1		4			9	
Divide SO	DID NOT REPORT IN 2009																													
Crosby PD	DID NOT REPORT IN 2009																													
Dunn SO	DID NOT REPORT IN 2009																													
Eddy SO																						12	1	2		1			16	
Emmons SO								1	2			2		2					1			4	23	3		4			42	
Linton PD	DID NOT REPORT IN 2009																													
Foster SO	DID NOT REPORT IN 2009																													
Carrington PD						2	1	1														7	5	1		1			18	
Golden Valley SO	DID NOT REPORT IN 2009																													
Grand Forks SO					5	6	5	4	25		43			2	1	1		1	15		3	98	72	6		925		7	1219	
Emerado PD						1		4						5							2	10		2		5			29	
Grand Forks PD			4	9	38	45	359	11	207	1	15	28	12	15	43	10		3	84		23	239	396	264		250	13	72	2141	
Larimore PD									10													3		3		1			17	
Northwood PD						2																				2			4	

Agency	Murder/Non-Neg. Mansl.	Negligent Manslaughter	Forcible Rape	Robbery	Aggravated Assault	Burglary	Larceny/Theft	Motor Vehicle Theft	Other Assault	Arson	Forgery/Counterfeiting	Fraud	Embezzlement	Stolen Property Offenses	Vandalism	Weapons Offenses	Prostitution	Other Sex Offenses	Drug Abuse Violations	Gambling Violations	Off. Against Fam & Children	DUI	Liquor Law Violations	Disorderly Conduct	Vagrancy	All Other Offenses	Suspicion	Curfew/Loitering	Runaway	Total
Thompson PD									1					1																2
UND PD					2				7						3				14			87	262	12		19			1	407
Grant SO									3		1								9			1	3	3		2				22
Elgin PD							2		1						1				2											6
Griggs SO									2						1							5	1	2		1				12
Hettinger SO									1										2											3
Kidder SO						1	2		3			7							1			5	5	1						25
Steele PD					1		1		2													3		1		3				11
LaMoure SO					1														2											3
LaMoure PD	DID NOT REPORT IN 2009																													
Logan SO						2	1		1														4		1		7			16
Napoleon PD																							1							1
McHenry SO	1					1	2		2										1			4	3	3		1				18
McIntosh SO						3	1	1	2			7				1		1	1				9	16	2		1		1	46
Wishek PD	DID NOT REPORT IN 2009																													
McKenzie SO							1		3														12	9	4		1			30
Watford City PD						1	2		1						1				2				18	4	3				3	35
McLean SO					1	10	9	2	18	1					10	3			31				41	59	21		28		1	235
Mercer SO						4	4	2	1									1	46				19	5	3		26		1	112
Beulah PD			1			2	2		11			1										25	18	14		7		4	1	86
Hazen PD	DID NOT REPORT IN 2009																													
Morton SO					3	1	7	1	10		1				4				9				69	38	2		44		1	190
Mandan PD			3		9	15	27	11	105	1	2			6	35	8		5	17			11	197	126	41		396	29	18	1062
Mountrail SO					2	1	2	1	7						2	2							58	6	8		20			109
Stanley PD									1	1													4							6
Nelson SO					1	3	3	3	10						3	4							12	9	4		6			58
Oliver SO							1		2			1											1		3		1			9
Pembina SO					1			1	4							3			22				30	15	2		14			92
Cavalier PD						1			7							1			3				16	16	1		7			52
Pierce SO				1	1															1				7			1			11
Rugby PD					2		2		5			2			2				1	1			5	2	2		4			28
Ramsey SO		1		2	3	2	2	1	1	1	2	4		2	1		1	3	22			4	45	33	1		66		1	198
Devils Lake PD					9	6	83	6	39	1	9	1		12	27	2			7	94		6	126	202	113		233	17		993
Ransom SO						2	1		5		1	1				1			1			1	3	5	5		3			29
Lisbon PD					1	1	2		1											1			10	5						21
Renville SO									1			9			1								12	12	1		2			38
Richland SO					2	7	4		17		1	92			11	1		2	5			17	33	52	5		87		3	339
Wahpeton PD					3	4	23	1	47		1		1	4	17	3		3	9			2	49	153	21		77	8	1	427
NDSOS PD					1	2	1		2						1								3	7	4		2			23
Rolette SO															1					2			11	3	5		4			26
Rolla PD						2	24		19						7	1			1				9	25	20		2		1	111
St. John PD									3														1	4	4					12
Sargent SO					3	1	3		7		1	11				3			2	7			6	28	4		9			85
Sheridan SO					1				2										1				2	8	1		1			16
Sioux SO	DID NOT REPORT IN 2009																													
Slope SO																														0
Stark SO												134				1			6			10	56	36	18		128			389

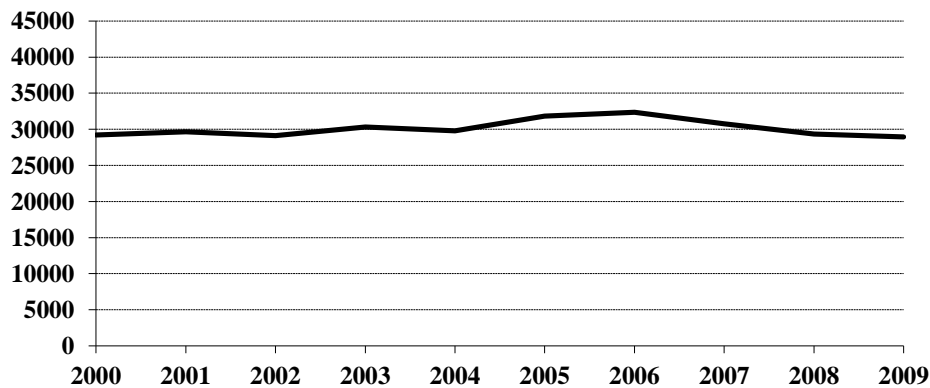
Agency	Murder/Non-Neg. Mansl.	Negligent Manslaughter	Forcible Rape	Robbery	Aggravated Assault	Burglary	Larceny/Theft	Motor Vehicle Theft	Other Assault	Arson	Forgery/Counterfeiting	Fraud	Embezzlement	Stolen Property Offenses	Vandalism	Weapons Offenses	Prostitution	Other Sex Offenses	Drug Abuse Violations	Gambling Violations	Off. Against Fam & Children	DUI	Liquor Law Violations	Disorderly Conduct	Vagrancy	All Other Offenses	Suspicion	Curfew/Loitering	Runaway	Total
Dickinson PD	2			4	18	6	35	5	56		7	25	4	2	17	3		6	48			89	144	120		165			5	761
Belfield PD									2																					2
South Heart PD	DID NOT REPORT IN 2009																													
Steele SO	DID NOT REPORT IN 2009																													
Stutsman SO					2	4	4		4		1	1		1				1				17	25	4		14			3	81
Jamestown PD			1		3	7	75	7	96	1	5	1	1		18	6		4	36		1	98	123	129		368		20	12	1012
Towner SO							2								1							1		1		6				11
Cando PD							1		5						1			1				6	10	2		11		1		38
Traill SO							5	2	3					1	2					2		19	14			3		1		52
Mayville PD						2			2											4		7	5	1		1				22
Hillsboro PD							1															2	1							5
Walsh SO						5	8	5	17		1			1	7			1	2			32	6	6		9				100
Grafton PD				3		2	10		18			1			9			1	19		1	50	40	18		8			2	182
Ward SO			1	1	2	3	17	5	45		1	7			21	3		4	10			50	55	22		50			26	323
Minot PD					39	8	189	11	129	1	4	16		6	24	16		3	158		2	338	325	102		247		1	97	1716
Burlington PD																						7				1				8
Wells SO								7				48				1			15		1	8	12			71				163
Harvey PD						1	6		4						4							8	30	3		3		2		65
Fessenden PD																							5			1				6
Williams SO					5	1	5	1	12										7		1	21	18	2		11			1	86
Williston PD			7	2	13	12	124	10	66		2	2	1		26	1		6	3	1	14	93	58	29		94		35	20	619
Highway Patrol		4			3	1	10	8	12		1	1			8	41						1900	596	7		275				3198
Drug Task Forces							2				3					2					1		2			90				412
Total	7	7	26	37	360	306	2485	179	2047	14	90	709	31	126	518	168	4	89	2063	1	185	5819	5449	1843		5542		296	524	28925

Arrests 2000-2009

Arrest Summary

Year	Population	Arrest Total	% Change from Previous Year	Rate per 100,000 Pop.
2000	642,200	29,201	-3.5 %	4547.0
2001	634,450	29,638	1.5	4671.4
2002	634,110	29,145	-1.7	4596.2
2003	634,000	30,334	4.1	4784.5
2004	634,500	29,798	-1.8	4696.3
2005	637,000	31,835	6.8	4997.6
2006	636,000	32,343	1.6	5085.4
2007	640,000	30,780	-4.8	4809.4
2008	641,500	29,334	-4.7	4572.7
2009	647,000	28,925	-1.4	4470.6

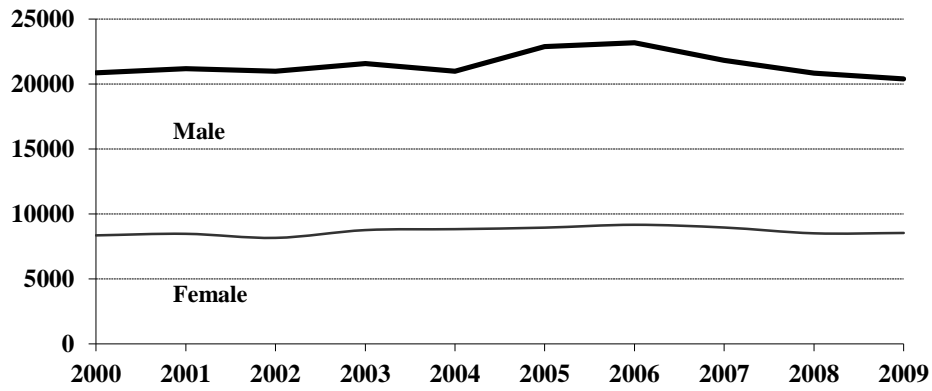
Arrest Totals, 2000-2009



Arrests by Gender, 2000-2009

Year	Male	% of Total	Female	% of Total	Total
2000	20,854	71.4 %	8,347	28.6 %	29,201
2001	21,170	71.4	8,468	28.6	29,638
2002	20,991	72.0	8,154	28.0	29,145
2003	21,580	71.1	8,754	28.9	30,334
2004	20,971	70.4	8,827	29.6	29,798
2005	22,891	71.9	8,944	28.1	31,835
2006	23,181	71.7	9,162	28.3	32,343
2007	21,829	70.9	8,951	29.1	30,780
2008	20,828	71.0	8,506	29.0	29,334
2009	20,393	70.5	8,532	29.5	28,925

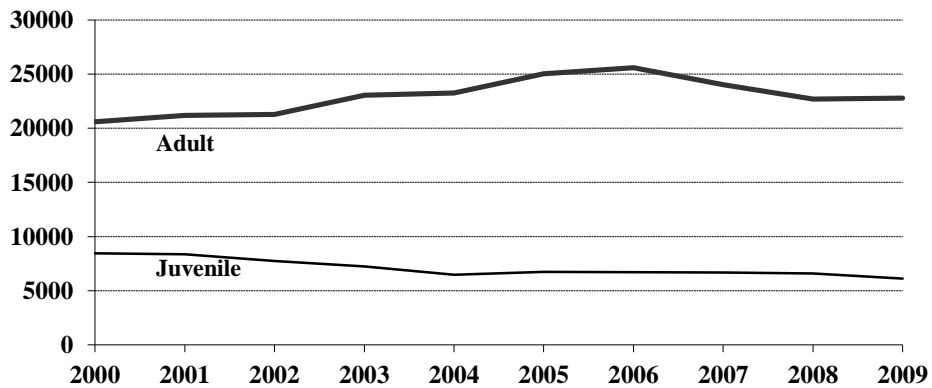
Arrests by Gender, 2000-2009



Juvenile and Adult Arrests, 2000-2009

Year	Juvenile	Percent of Total	Adult	Percent of Total	Age Not Reported	Percent of Total	Total
2000	8,435	28.9 %	20,612	70.6 %	154	0.5 %	29,201
2001	8,347	28.2	21,188	71.5	103	0.3	29,638
2002	7,742	26.6	21,279	73.0	124	0.4	29,145
2003	7,250	23.9	23,044	76.0	40	0.1	30,334
2004	6,467	21.7	23,247	78.0	84	0.3	29,798
2005	6,721	21.1	25,038	78.6	76	0.2	31,835
2006	6,703	20.7	25,601	79.2	39	0.1	32,343
2007	6,676	21.7	24,037	78.1	67	0.2	30,780
2008	6,593	22.5	22,695	77.4	46	0.1	29,334
2009	6,120	21.2	22,772	78.7	33	0.1	28,925

Juvenile and Adult Arrests, 2000-2009



Arrests by Age Group, 2000-2009

Age Group	2000	2001	2002	2003	2004	2005	2006	2007	2008	2009
Under 10	203	186	168	145	108	73	120	108	106	99
10-12	708	819	638	582	580	500	579	461	465	510
13-14	1809	1686	1736	1601	1526	1411	1548	1427	1396	1185
15	1698	1629	1459	1344	1312	1394	1268	1337	1327	1243
16	1898	1943	1810	1677	1409	1630	1460	1641	1606	1585
17	2119	2084	1931	1901	1532	1713	1728	1702	1693	1498
18	2377	2501	2248	2620	2176	2300	2456	2368	2159	2059
19	2572	2845	2528	2832	2638	2647	2654	2647	2369	2371
20	2198	2565	2224	2597	2310	2602	2599	2417	2224	2268
21	1112	1220	1323	1476	1358	1405	1605	1444	1289	1236
22	957	913	1010	1174	1316	1259	1274	1268	1192	1087
23	830	817	904	958	1065	1173	1102	1018	1059	959
24	654	739	753	858	909	1045	1042	996	881	1005
25-29	2598	2397	2562	2880	2952	3549	3629	3567	3520	3441
30-34	2018	1932	1990	2021	2140	2331	2371	2100	1983	2108
35-39	1931	1926	1931	1727	1888	2095	1989	1758	1674	1719
40-44	1475	1536	1711	1731	1846	1869	1886	1612	1539	1495
45-49	908	895	1034	1065	1275	1354	1413	1312	1308	1289
50-54	483	448	550	557	696	734	814	780	769	934
55-59	250	191	261	303	367	359	414	425	365	449
60-64	81	77	110	118	165	155	183	171	199	187
65 +	168	186	140	127	146	161	170	154	165	165
Age Not Reported	154	103	124	40	84	76	39	67	46	33
Arrest Total	29201	29638	29145	30334	29798	31835	32343	30780	29334	28925

Arrests by Offense, 2000-2009

Offense Classification	2000	2001	2002	2003	2004	2005	2006	2007	2008	2009
Murder/Non-Neg. Manslaughter	1	3	6	2	10	9	6	11	4	7
Negligent Manslaughter	4	1		5	4	3	5	5	6	7
Forcible Rape	39	32	42	40	53	34	45	37	45	26
Robbery	15	19	25	25	15	22	25	29	23	37
Aggravated Assault	144	161	127	136	159	203	214	235	320	360
Burglary	305	343	316	266	223	220	340	235	264	306
Larceny/Theft	2279	2238	2264	1924	1856	1830	1700	1979	2366	2485
Motor Vehicle Theft	247	238	261	227	189	216	220	174	182	179
Other Assaults	1704	1664	1798	1691	1656	2015	1989	1982	1947	2047
Arson	24	60	25	20	24	15	30	24	22	14
Forgery and Counterfeiting	137	186	192	202	170	161	159	111	71	90
Fraud	2532	1883	1777	1698	1557	1201	1243	913	646	709
Embezzlement	1	6	4	8	4	15	24	28	30	31
Stolen Property Offenses	98	113	171	148	123	137	124	126	135	126
Vandalism	671	713	802	650	592	572	657	665	557	518
Weapons Offenses	120	138	140	136	198	271	215	174	223	168
Prostitution		4		5	15	1	2	6	3	4
Other Sex Offenses	87	87	83	92	94	82	82	62	82	89
Drug Abuse Violations	1501	1658	1752	2045	2078	2343	2256	2323	2158	2063
Gambling		4	4		1	4		3	1	1
Off. Against Family & Children	250	245	228	205	221	243	199	177	163	185
Driving Under the Influence	4304	4301	4467	4854	5783	5946	6488	6085	5815	5819
Liquor Law Violations	6574	7415	6099	6969	5758	5940	6513	6118	5592	5449
Disorderly Conduct	1554	1636	1565	1691	1529	1657	1753	1586	1835	1843
Vagrancy	2	4	2	3						
All Other Offenses	5285	5338	6069	6318	6556	7686	7160	6684	5986	5542
Suspicion										
Curfew and Loitering	345	325	270	339	264	301	224	279	248	296
Runaways	978	823	656	635	666	708	670	729	610	524
Arrest Total	29201	29638	29145	30334	29798	31835	32343	30780	29334	28925

Juvenile Arrests by Offense, 2000-2009

Offense Classification	2000	2001	2002	2003	2004	2005	2006	2007	2008	2009
Murder/Non-Neg. Manslaughter								2		
Negligent Manslaughter	1			1			1		1	
Forcible Rape	12	9	18	11	10	6	4	8	18	8
Robbery		3	9	6	8	4	7	5	4	3
Aggravated Assault	15	28	19	14	22	47	30	31	47	34
Burglary	134	175	166	118	99	55	115	94	97	94
Larceny/Theft	1285	1134	1147	919	792	794	699	876	977	992
Motor Vehicle Theft	153	130	146	119	78	103	105	74	84	88
Other Assaults	448	439	485	420	416	482	474	442	465	427
Arson	17	52	15	16	15	10	15	14	7	5
Forgery and Counterfeiting	41	29	35	22	17	15	9	5	2	9
Fraud	16	32	18	23	12	17	29	34	16	11
Embezzlement				2		4	4	5	8	3
Stolen Property Offenses	51	54	90	92	51	41	46	43	39	51
Vandalism	423	503	538	410	344	303	362	378	298	254
Weapons Offenses	31	40	36	22	40	41	43	28	43	26
Prostitution					10					
Other Sex Offenses	32	26	32	31	33	20	20	16	20	24
Drug Offenses	292	311	289	249	229	251	264	278	291	293
Gambling		1								
Off. Against Family/Children	66	86	77	64	84	86	107	91	88	88
Driving Under the Influence	81	90	74	90	92	92	100	66	93	79
Liquor Law Violations	2039	1890	1645	1741	1304	1255	1469	1341	1217	1029
Disorderly Conduct	699	785	672	738	652	687	714	601	761	729
Vagrancy		3								
All Other Offenses	1277	1379	1305	1168	1229	1399	1192	1236	1159	1053
Suspicion										
Curfew and Loitering	344	325	270	339	264	301	224	279	248	296
Runaways	978	823	656	635	666	708	670	729	610	524
Juvenile Arrest Total	8435	8347	7742	7250	6467	6721	6703	6676	6593	6120

Juvenile Arrests by Gender, 2000-2009

Year	Male	% of Total	Female	% of Total	Total
2000	5,387	63.9 %	3,048	36.1 %	8,435
2001	5,298	63.5	3,049	36.5	8,347
2002	5,043	65.1	2,699	34.9	7,742
2003	4,568	63.0	2,682	37.0	7,250
2004	3,909	60.4	2,558	39.6	6,467
2005	4,092	60.9	2,629	39.1	6,721
2006	4,240	63.3	2,463	36.7	6,703
2007	4,108	61.5	2,568	38.5	6,676
2008	4,061	61.6	2,532	38.4	6,593
2009	3,759	61.4	2,361	38.6	6,120

Adult Arrests by Offense, 2000-2009

Offense Classification	2000	2001	2002	2003	2004	2005	2006	2007	2008	2009
Murder/Non-Neg. Manslaughter	1	3	6	2	10	9	6	9	4	7
Negligent Manslaughter	3	1		4	4	3	4	5	5	7
Forcible Rape	27	23	24	29	43	28	41	29	27	18
Robbery	15	16	16	19	7	18	18	24	19	34
Aggravated Assault	128	133	108	122	137	156	184	204	270	326
Burglary	166	166	144	148	119	165	224	141	167	211
Larceny/Theft	987	1102	1114	1004	1064	1035	1000	1103	1388	1491
Motor Vehicle Theft	93	108	114	108	111	113	115	100	98	91
Other Assaults	1249	1221	1311	1269	1237	1532	1513	1540	1480	1619
Arson	7	8	10	4	9	5	15	9	15	9
Forgery and Counterfeiting	96	157	155	180	151	145	149	106	69	81
Fraud	2482	1782	1701	1654	1507	1172	1211	845	620	693
Embezzlement	1	6	4	6	4	11	20	23	22	28
Stolen Property Offenses	46	59	80	56	72	96	78	83	96	75
Vandalism	246	204	264	240	246	269	293	287	258	264
Weapons Offenses	87	98	103	114	158	230	172	146	180	142
Prostitution		4		5	5	1	2	6	3	4
Other Sex Offenses	53	61	51	61	61	62	62	46	62	65
Drug Offenses	1206	1344	1438	1795	1846	2066	1983	2035	1857	1762
Gambling		2	4		1	4		3	1	1
Off. Against Family/Children	182	159	151	141	136	157	91	86	75	96
Driving Under the Influence	4214	4207	4390	4759	5685	5847	6384	6018	5718	5735
Liquor Law Violations	4493	5520	4449	5222	4449	4674	5038	4775	4369	4418
Disorderly Conduct	854	851	892	952	876	969	1035	984	1073	1112
Vagrancy	2	1	2	3						
All Other Offenses	3974	3952	4748	5147	5309	6271	5963	5430	4819	4483
Suspicion										
Adult Arrest Total	20612	21188	21279	23044	23247	25038	25601	24037	22695	22772

Adult Arrests by Gender, 2000-2009

Year	Male	% of Total	Female	% of Total	Total
2000	15,361	74.5 %	5,251	25.5 %	20,612
2001	15,805	74.6	5,383	25.4	21,188
2002	15,859	74.5	5,420	25.5	21,279
2003	16,987	73.7	6,057	26.3	23,044
2004	17,004	73.1	6,243	26.9	23,247
2005	18,739	74.8	6,299	25.2	25,038
2006	18,912	73.9	6,689	26.1	25,601
2007	17,677	73.5	6,360	26.5	24,037
2008	16,735	73.7	5,960	26.3	22,695
2009	16,610	72.9	6,162	27.1	22,772

Drug Arrest Analysis

Drug offense arrests decreased by 4.4 percent from a total of 2,158 in 2008 to 2,063 in 2009. The arrest totals shown should not be interpreted as the number of individuals arrested for drug offenses because it is possible that some individuals may have been arrested on more than one occasion for this offense.

Approximately 79 percent of drug arrests in 2009 were arrests of males.

Juveniles (persons under the age of 18) comprised 14.2 percent of the total in 2009.

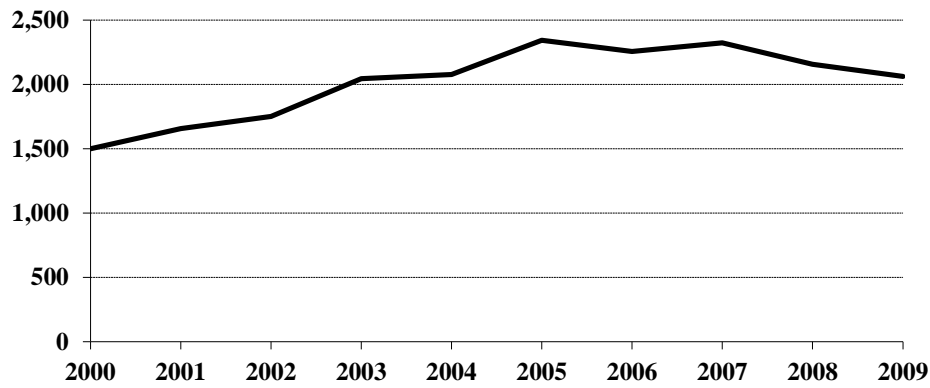
More than 89 percent of the drug arrests during the 10-year period were arrests for possession rather than sale or manufacture of drugs.

Nearly 72 percent of the arrests for drug offenses during the period 2000-2009 involved marijuana.

Arrests for Drug Offenses, 2000-2009

Year	Total	Percent Change from Previous Year
2000	1,501	3.1 %
2001	1,658	10.5
2002	1,752	5.7
2003	2,045	16.7
2004	2,078	1.6
2005	2,343	12.8
2006	2,256	-3.7
2007	2,323	3.0
2008	2,158	-7.1
2009	2,063	-4.4

Arrests for Drug Offenses, 2000-2009



Drug Arrests by Gender, 2000-2009

Year	Male	% of Total	Female	% of Total	Total
2000	1,222	81.4 %	279	18.6 %	1,501
2001	1,298	78.3	360	21.7	1,658
2002	1,340	76.5	412	23.5	1,752
2003	1,593	77.9	452	22.1	2,045
2004	1,595	76.8	483	23.2	2,078
2005	1,738	74.2	605	25.8	2,343
2006	1,762	78.1	494	21.9	2,256
2007	1,774	76.4	549	23.6	2,323
2008	1,642	76.1	516	23.9	2,158
2009	1,631	79.1	432	20.9	2,063

Drug Arrests by Age Category, 2000-2009

Year	Juvenile	Percent of Total	Adult	Percent of Total	Age Not Reported	Percent of Total	Total
2000	292	19.5 %	1,206	80.3 %	3	0.2 %	1,501
2001	311	18.7	1,344	81.1	3	0.2	1,658
2002	289	16.5	1,438	82.1	25	1.4	1,752
2003	249	12.2	1,795	87.8	1	*	2,045
2004	229	11.0	1,846	88.8	3	0.1	2,078
2005	251	10.7	2,066	88.2	26	1.1	2,343
2006	264	11.7	1,983	87.9	9	0.4	2,256
2007	278	12.0	2,035	87.6	10	0.4	2,323
2008	291	13.5	1,857	86.0	10	0.5	2,158
2009	293	14.2	1,762	85.4	8	0.4	2,063

*Less than 0.1 percent of total drug arrests.

Drug Arrests by Age Group, 2000-2009

Age Group	2000	2001	2002	2003	2004	2005	2006	2007	2008	2009
Under 10										
10-12	1	3	4	3	4	5	4	2	4	3
13-14	38	36	29	33	29	20	34	39	31	31
15	51	50	43	34	40	42	38	47	60	40
16	84	95	93	66	68	90	79	92	91	97
17	118	127	120	113	88	94	109	98	105	122
18	145	151	159	195	163	195	187	209	195	170
19	130	172	152	175	186	197	169	196	175	179
20	100	143	142	157	160	193	180	182	151	161
21	73	115	105	117	117	121	132	148	141	134
22	73	75	83	115	135	124	119	136	126	107
23	50	63	58	87	111	106	98	95	100	99
24	42	42	67	75	110	107	97	106	78	113
25-29	145	155	186	272	250	326	319	385	303	258
30-34	146	131	119	151	190	203	217	155	171	164
35-39	137	133	137	158	129	153	156	136	114	113
40-44	91	103	145	159	168	163	145	111	129	84
45-49	52	43	58	85	82	109	91	87	105	89
50-54	16	12	24	38	33	45	52	59	45	55
55-59	6	3	3	8	9	18	16	22	17	26
60-64		2		1	1	1	4	3	5	7
65 +		1		2	2	5	1	5	2	3
No Age Data	3	3	25	1	3	26	9	10	10	8
Total	1501	1658	1752	2045	2078	2343	2256	2323	2158	2063

Drug Arrests by Type of Offense, 2000-2009

Year	Sale or Manufacture	% of Total	Possession	% of Total	Total
2000	188	12.5 %	1,313	87.5 %	1,501
2001	118	7.1	1,540	92.9	1,658
2002	134	7.6	1,618	92.4	1,752
2003	143	7.0	1,902	93.0	2,045
2004	318	15.3	1,760	84.7	2,078
2005	284	12.1	2,059	87.9	2,343
2006	298	13.2	1,958	86.8	2,256
2007	217	9.3	2,106	90.7	2,323
2008	250	11.6	1,908	88.4	2,158
2009	257	12.5	1,806	87.5	2,063

Drug Arrests by Age Category and Type of Offense, 2000-2009

Year	Juvenile		Adult		Age Not Reported	
	Sale or Manufacture	Possession	Sale or Manufacture	Possession	Sale or Manufacture	Possession
2000	32	260	156	1,050		3
2001	7	304	111	1,233		3
2002	20	269	110	1,328	4	21
2003	20	229	123	1,672		1
2004	28	201	289	1,557	1	2
2005	17	234	259	1,807	8	18
2006	27	237	268	1,715	3	6
2007	19	259	196	1,839	2	8
2008	33	258	217	1,640		10
2009	17	276	240	1,522		8

Drug Arrests by Type of Drug, 2000-2009

Year	Opiates, Cocaine or Derivatives	Percent of Total	Marijuana	Percent of Total	Other Drugs or Narcotics	Percent of Total	Total
2000	45	3.0 %	1,189	79.2 %	267	17.8 %	1,501
2001	33	2.0	1,221	73.6	404	24.4	1,658
2002	61	3.5	1,189	67.9	502	28.6	1,752
2003	62	3.0	1,428	69.9	555	27.1	2,045
2004	38	1.8	1,333	64.2	707	34.0	2,078
2005	53	2.3	1,516	64.7	774	33.0	2,343
2006	53	2.3	1,621	71.9	582	25.8	2,256
2007	50	2.2	1,783	76.7	490	21.1	2,323
2008	49	2.3	1,681	77.9	428	19.8	2,158
2009	44	2.1	1,533	74.3	486	23.6	2,063

Drug Arrests by Age Category and Type of Drug, 2000-2009

Year	Juvenile			Adult			Age Not Reported		
	Opiates, Cocaine or Deriv.	Marijuana	Other Drugs or Narcotics	Opiates, Cocaine or Deriv.	Marijuana	Other Drugs or Narcotics	Opiates, Cocaine or Deriv.	Marijuana	Other Drugs or Narcotics
2000	4	263	25	41	925	240		1	2
2001		269	42	33	950	361		2	1
2002	4	251	34	55	923	460	2	15	8
2003	3	206	40	59	1,221	515		1	
2004	3	162	64	35	1,170	641		1	2
2005	2	220	29	51	1,288	727		8	18
2006	1	229	34	52	1,389	542		3	6
2007	1	244	33	49	1,532	454		7	3
2008	5	237	49	44	1,438	375		6	4
2009	2	237	54	42	1,292	428		4	4

DUI Arrest Analysis

Reported DUI arrests increased 0.1 percent from 5,815 in 2008 to 5,819 in 2009. The arrest totals should not be interpreted as the number of individuals arrested for DUI offenses because it is possible that some individuals may have been arrested on more than one occasion.

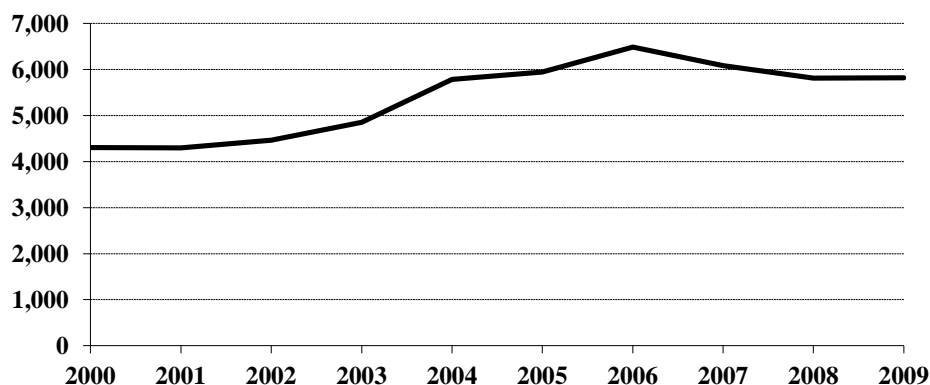
More than 75 percent of the DUI arrests in 2009 were arrests of males.

Juveniles, persons under the age of 18, made up 1.4 percent of the total in 2009.

DUI Arrests, 2000-2009

Year	DUI Arrests Reported	Percent Change from Previous Year
2000	4,304	-16.9 %
2001	4,301	-0.1
2002	4,467	3.9
2003	4,854	8.7
2004	5,783	19.1
2005	5,946	2.8
2006	6,488	9.1
2007	6,085	-6.2
2008	5,815	-4.4
2009	5,819	0.1

DUI Arrests, 2000-2009



DUI Arrests by Gender, 2000-2009

Year	Male	% of Total	Female	% of Total	Total
2000	3,437	79.9 %	867	20.1 %	4,304
2001	3,450	80.2	851	19.8	4,301
2002	3,545	79.4	922	20.6	4,467
2003	3,763	77.5	1,091	22.5	4,854
2004	4,459	77.1	1,324	22.9	5,783
2005	4,640	78.0	1,306	22.0	5,946
2006	4,956	76.4	1,532	23.6	6,488
2007	4,620	75.9	1,465	24.1	6,085
2008	4,449	76.5	1,366	23.5	5,815
2009	4,391	75.5	1,428	24.5	5,819

DUI Arrests by Age Category, 2000-2009

Year	Juvenile	Percent of Total	Adult	Percent of Total	Age Not Reported	Percent of Total	Total
2000	81	1.9 %	4,214	97.9 %	9	0.2 %	4,304
2001	90	2.1	4,207	97.8	4	0.1	4,301
2002	74	1.6	4,390	98.3	3	0.1	4,467
2003	90	1.9	4,759	98.0	5	0.1	4,854
2004	92	1.6	5,685	98.3	6	0.1	5,783
2005	92	1.6	5,847	98.3	7	0.1	5,946
2006	100	1.5	6,384	98.4	4	0.1	6,488
2007	66	1.1	6,018	98.9	1	*	6,085
2008	93	1.6	5,718	98.3	4	0.1	5,815
2009	79	1.4	5,735	98.5	5	0.1	5,819

*Less than 0.1 percent of total drug arrests.

DUI Arrests by Age Group, 2000-2009

Age Group	2000	2001	2002	2003	2004	2005	2006	2007	2008	2009
Under 10										
10-12										
13-14	1	1	3	2	3	1	1	1	2	
15	3	6	6	10	8	5	10	2	8	7
16	30	35	17	25	33	31	28	17	25	27
17	47	48	48	53	48	55	61	46	58	45
18	125	112	114	161	142	121	161	127	121	110
19	146	135	155	195	212	206	187	166	158	138
20	155	145	182	219	205	219	196	166	173	169
21	251	269	276	354	362	344	431	381	340	359
22	240	232	260	300	417	372	373	381	338	300
23	205	197	238	267	305	345	357	339	314	316
24	170	209	188	260	293	278	336	336	304	292
25-29	640	641	660	775	867	1051	1060	1117	1083	1082
30-34	520	526	507	526	621	596	735	719	641	654
35-39	529	519	511	436	590	590	624	570	581	554
40-44	473	499	520	480	576	603	621	527	512	514
45-49	349	337	339	354	468	481	560	517	507	501
50-54	185	187	232	214	288	309	346	301	309	377
55-59	116	78	97	120	178	171	199	198	168	205
60-64	42	43	51	46	93	86	98	91	94	90
65 +	68	78	60	52	68	75	100	82	75	74
No Age Data	9	4	3	5	6	7	4	1	4	5
Total	4304	4301	4467	4854	5783	5946	6488	6085	5815	5819

UCR OFFENSE DEFINITIONS

UNIFORM CRIME REPORTING OFFENSE DEFINITIONS

Offenses in Uniform Crime Reporting are divided into two groups designated as Part I and Part II crimes. Information on the number of Part I offenses known to law enforcement, the number cleared by arrest or exceptional means, and the number of persons arrested is reported monthly. Arrest data are reported for Part I and Part II offenses. The Crime Index is composed of offenses 1-7 with the exception as noted in item 1 below.

NOTE: The classifications of these offenses for UCR reporting purposes are based on law enforcement investigation as opposed to determination by a court, medical examiner, jury, or other judicial hearing.

PART I OFFENSES:

1. CRIMINAL HOMICIDE

a. Murder and Non-Negligent Manslaughter

The willful (non-negligent) killing of one human being by another. Deaths caused by negligence, attempts to kill, assaults to kill, suicides, accidental deaths, and justifiable homicides are excluded. Justifiable homicides are limited to: (1) the killing of a felon by a law enforcement officer in the line of duty, and (2) the killing of a felon by a private citizen.

b. Manslaughter by Negligence

The killing of another person through gross negligence. Excludes traffic fatalities. While manslaughter by negligence is a Part I crime, it is not included in the Crime Index.

2. FORCIBLE RAPE

The carnal knowledge of a female forcibly and against her will. Included are rapes by force and attempts or assaults to rape. Statutory offenses (no force used -- victim under age of consent) are excluded.

3. ROBBERY

The taking or attempting to take anything of value from the care, custody, or control of a person or persons by force or threat of force or violence, or putting the victim in fear.

4. AGGRAVATED ASSAULT

An unlawful act by one person upon another for the purpose of inflicting severe or aggravated bodily injury. This type of assault usually is accompanied by the use of a weapon or by a means likely to produce death or great bodily harm. Simple assaults are excluded.

5. BURGLARY

Breaking or entering. The unlawful entry of a structure to commit a felony or theft. Attempted forcible entry is included.

6. LARCENY/THEFT

The unlawful taking, carrying, leading, or riding away of property from the possession or constructive possession of another. Examples are thefts of bicycles or automobile accessories, shoplifting, pocket-picking, or the stealing of any property or article that is not taken by force and violence or by fraud. Attempted larcenies are included. Embezzlement, "con" games, forgery, worthless checks, etc., are excluded.

7. MOTOR VEHICLE THEFT

The theft or attempted theft of a motor vehicle. A motor vehicle is self-propelled and runs on the surface and not on rails. Specifically excluded from this category are motorboats, construction equipment, airplanes, and farming equipment.

8. ARSON

Any willful or malicious burning or attempting to burn, with or without intent to defraud, a dwelling house, public building, motor vehicle, personal property of another, etc.

PART II OFFENSES:

9. OTHER ASSAULTS (SIMPLE)

Assaults or attempted assaults where no weapon was used or which did not result in serious or aggravated injury to the victim.

10. FORGERY AND COUNTERFEITING

Making, altering, uttering, or possessing, with the intent to defraud, anything false which is made to appear true. Attempts are included.

11. FRAUD

Fraudulent conversion and obtaining money or property by false pretenses. Included are larceny by bailee and bad checks except forgeries and counterfeiting. Attempts are included.

12. EMBEZZLEMENT

Misappropriation or misapplication of money or property entrusted to one's care, custody or control. Attempts are included.

13. STOLEN PROPERTY -- BUYING, RECEIVING, POSSESSING

Buying, receiving, or possessing stolen property, including attempts.

14. VANDALISM

Willful or malicious destruction, injury, disfigurement, or defacement of any public or private property, real or personal, without consent of the owner or person having custody or control. Attempts are included.

15. WEAPON OFFENSES -- CARRYING, POSSESSING, ETC.

All violations of regulations or statutes controlling the carrying, using, possessing, furnishing, and manufacturing of deadly weapons or silencers. Attempts are included.

16. PROSTITUTION AND COMMERCIALIZED VICE

Sex offenses of a commercialized nature, such as prostitution, keeping a bawdy house, procuring, or transporting women for immoral purposes. Attempts are included.

17. OTHER SEX OFFENSES (except forcible rape, prostitution and commercialized vice)

Statutory rape and offenses against chastity, common decency, morals and the like. Attempts are included.

18. DRUG ABUSE VIOLATIONS

State and local offenses relating to narcotic and non-narcotic drugs, such as unlawful possession, sale, use, growing and manufacturing of narcotic and non-narcotic drugs. Attempts are included.

19. GAMBLING

Promoting, permitting, or engaging in illegal gambling.

20. OFFENSES AGAINST FAMILY AND CHILDREN

Non-support, neglect, desertion, or abuse of family and children.

21. DRIVING UNDER THE INFLUENCE

Driving or operating any vehicle or common carrier while drunk or under the influence of liquor or drugs.

22. LIQUOR LAWS

State or local liquor law violations, except "drunkenness" (offense 23) and "driving under the influence" (offense 21).

23. DRUNKENNESS

Drunkenness or intoxication. Excluded is "driving under the influence" (offense 21). This is not a crime in North Dakota, but is included in the national program.

24. DISORDERLY CONDUCT

Breach of peace.

25. VAGRANCY

Vagabondage, begging, loitering, etc.

26. ALL OTHER OFFENSES

All violations of state or local laws, except offenses 1-25 and traffic offenses.

27. SUSPICION

No specific offense; suspect released without formal charges being placed.

28. CURFEW AND LOITERING

Offenses relating to violation of local curfew and loitering ordinances where such laws exist.

29. RUNAWAYS

Limited to juveniles taken into protective custody under provisions of local statutes.

**FULL-TIME LAW
ENFORCEMENT EMPLOYEES**

**NUMBER OF FULL-TIME LAW ENFORCEMENT EMPLOYEES
REPORTED BY UCR AGENCIES
AS OF OCTOBER 31, 2009**

Agency	Law Enforcement Officers		Civilian Personnel		Total Full-Time			Population
	Male	Female	Male	Female	Male	Female	Total	
Adams SO	3				3		3	2,227
Barnes SO	5	1	4	7	9	8	17	4,483
Valley City PD	12	1		6	12	7	19	6,172
Benson SO	4				4		4	7,006
Billings SO	4				4		4	810
Medora PD	2				2		2	
Bottineau SO	10		2	2	12	2	14	6,305
Bowman SO	2	1			2	1	3	1,529
Bowman PD	3				3		3	1,491
Scranton PD	1				1		1	
Burke SO	4				4		4	1,555
Powers Lake PD	1				1		1	238
Burleigh SO	40	4	20	17	60	21	81	16,590
Bismarck PD	83	11	7	21	90	32	122	60,923
Lincoln PD	2	1			2	1	3	2,875
Cass SO	56	14	35	31	91	45	136	24,258
Fargo PD	112	21		18	112	39	151	83,986
West Fargo PD	31	2		10	31	12	43	24,862
NDSU PD	11	3	2	6	13	9	22	10,000
Cavalier SO	5		2	4	7	4	11	3,776
Dickey SO	4			1	4	1	5	2,036
Ellendale PD	2				2		2	1,446
Oakes PD	3	1			3	1	4	1,740
Divide SO	4				4		4	1,034
Crosby PD	2				2		2	939
Dunn SO	4			1	4	1	5	3,314
Killdeer PD	2				2		2	
Eddy SO	4			1	4	1	5	2,370
Emmons SO	3		1		4		4	2,326
Linton PD	2				2		2	987
Foster SO	2	1		1	2	2	4	1,391
Carrington PD	3	1			3	1	4	2,052
Golden Valley SO	4			1	4	1	5	1,624
Grand Forks SO	27			7	27	7	34	11,965
Grand Forks PD	70	12	6	10	76	22	98	41,553
Larimore PD	2				2		2	1,300
Northwood PD	2				2		2	924
Emerado PD	1				1		1	473
Thompson PD	1				1		1	954
UND PD	11	1		2	11	3	14	10,000
Grant SO	2	1			2	1	3	1,859
Elgin PD	1				1		1	532
Griggs SO	2			1	2	1	3	2,339
Hettinger SO	2	1			2	1	3	2,364
Kidder SO	3			1	3	1	4	1,626
Steele PD	1				1		1	639
LaMoure SO	4			1	4	1	5	3,158
Kulm PD	1				1		1	
LaMoure PD	1				1		1	788
Logan SO	2				2		2	1,217
Napoleon PD	1				1		1	705
McHenry SO	6	1			6	1	7	5,127
McIntosh SO	2	1			2	1	3	1,735
Wishek PD	2				2		2	853
McKenzie SO	6	9			6	9	15	4,331
Watford City PD	5				5		5	1,382
McLean SO	19	1	4	8	23	9	32	8,305
Mercer SO	14		8		22		22	2,820
Beulah PD	5			1	5	1	6	2,834
Hazen PD	4				4		4	2,181
Morton SO	20	1	6	8	26	9	35	8,320
Mandan PD	23	4	2	7	25	11	36	1,759

Agency	Law Enforcement Officers		Civilian Personnel		Total Full-Time			Population
	Male	Female	Male	Female	Male	Female	Total	
Mountrail SO	6	1		5	6	6	12	5,339
Stanley PD	3				3		3	1,212
Nelson SO	3			1	3	1	4	3,136
Oliver SO	3			1	3	1	4	1,672
Center PD	1				1		1	
Pembina SO	7		2	4	9	4	13	6,058
Cavalier PD	4				4		4	1,301
Pierce SO	3			4	3	4	7	1,526
Rugby PD	4				4		4	2,538
Ramsey SO	5	1		1	5	2	7	4,581
Devils Lake PD	15	1	1	1	16	2	18	6,654
Ransom SO	3	1	1	1	4	2	6	3,473
Lisbon PD	2	1			2	1	3	2,170
Renville SO	4	1			4	1	5	2,227
Mohall PD	1				1		1	
Sherwood PD	1				1		1	
Richland SO	12	1	7	5	19	6	25	6,804
Wahpeton PD	12	2	2		14	2	16	7,484
NDSCS PD	3				3		3	2,000
Rolette SO	7		4	4	11	4	15	11,985
Rolla PD	4				4		4	1,420
St. John PD	1				1		1	354
Sargent SO	4			1	4	1	5	4,047
Sheridan SO	3				3		3	1,235
Sioux SO	1				1		1	4,284
Slope SO	1				1		1	671
Stark SO	12		3		15		15	6,410
Dickinson PD	29	2	3	12	32	14	46	16,043
Belfield PD	1				1		1	5,917
South Heart PD		1				1	1	6,039
Steele SO	3				3		3	6,161
Stutsman SO	7	1		2	7	3	10	6,283
Jamestown PD	26	3		4	26	7	33	6,405
Towner SO	2			1	2	1	3	6,526
Cando PD	2				2		2	6,648
Traill SO	6			5	6	5	11	6,770
Hillsboro PD	1	1			1	1	2	6,892
Mayville PD	3				3		3	7,014
Walsh SO	10		4	3	14	3	17	6,886
Grafton PD	10			1	10	1	11	3,924
Ward SO	18	3	12	13	30	16	46	19,836
Kenmare PD	3				3		3	
Minot PD	53	7	6	18	59	25	84	35,293
Burlington PD	2				2		2	990
Surrey PD	1				1		1	
Wells SO	3				3		3	2,063
Harvey PD	3	1			3	1	4	1,583
Fessenden PD	1				1		1	488
Williams SO	15	3	10	2	25	5	30	7,357
Tioga PD	2				2		2	
Williston PD	22	1	2	6	24	7	31	12,662
Highway Patrol	126	6	20	31	146	37	183	
Total	1144	132	176	299	1320	431	1751	647,000