

**Office of Attorney General**  
**Bureau of Criminal Investigation**

**Crime in North Dakota, 2011**

**A Summary of Uniform Crime Report Data**

**Wayne Stenehjem**  
**Attorney General**

**Prepared by**  
**Colleen Weltz**  
**UCR Program Manager**  
**2012**



## INTRODUCTION

The North Dakota Uniform Crime Reporting (UCR) program involves the collection, compilation, and analysis of crime and arrest statistics reported by the various local law enforcement agencies throughout the state. Fifty sheriffs' departments and 47 police departments reported to the UCR program in 2011.

**INCIDENT-BASED REPORTING:** North Dakota law enforcement agencies use a standard incident form to collect data on each incident reported to their respective agencies. This form collects much more detailed information than is collected using summary reporting. Data collected includes: type of incident, where and when the incident took place, victim characteristics, suspect/arrestee characteristics, property involved in the incident, etc. A total of 97 police departments and sheriffs' departments reported incident data for all or part of 2011.

In order to continue the statistical time-series begun with summary reporting, computer programs were written to extract summary data from the incident data reported. Crime in North Dakota, 2011 is a report on summary data.

**SUMMARY REPORTING:** Law enforcement agencies use a tally system to report the number of crime index offenses and arrests for each month. North Dakota no longer has any agencies reporting summary data.

The federal counterpart of the North Dakota UCR program is the National UCR program under the direction of the Federal Bureau of Investigation (FBI). The UCR program has been used nationally and in North Dakota for many years to measure the extent, distribution and fluctuation of crime through the crime index. The crime index is not an absolute measure, but rather an indication of the amount and type of crime occurring in any given jurisdiction. The index is composed of seven crimes that are sub-classified as follows:

**VIOLENT CRIME:** Murder/Non-Negligent Manslaughter  
Forcible Rape  
Robbery  
Aggravated Assault

**PROPERTY CRIME:** Burglary  
Larceny/Theft  
Motor Vehicle Theft

A Modified Crime Index is also calculated at the federal level. This includes arson as the fourth property crime and the eighth index offense. Data on arson is not included in this report.

Prior to an offense becoming recorded in the UCR program, it must be reported to the local law enforcement officials and reported by the local agency to the UCR program. Consequently, the UCR program only reflects reported crimes. Reporting of crimes depends on several factors,

including actual perception of an act as a crime, the probability of loss of status for reporting (as in cases of rape), and the perceived probability of action on the part of the law enforcement agency contacted.

Several types of data are gathered, including:

**Offense data**

- Number of known crime index offenses
- Type and value of stolen property
- Additional information on homicides and arson
- Law enforcement officers killed or assaulted

**Arrest and Clearance Data**

- Number and type of offenses cleared
- Number and type of index offenses involving juveniles cleared
- Number of persons arrested, by offense
- Characteristics of persons arrested (age, sex, race)

To allow for comparison among several geographic or jurisdictional areas with differing populations or to allow comparisons across time in an area undergoing population fluctuations, the UCR program provides for the calculation of crime rates to remove any potential biases created by population differences. Because a rate relates the incidence of activity to population, it is possible to measure annual fluctuations in criminal activity by comparing rates of crime reported in any given year with those reported in other years. National publications report crime rates calculated based on the number of reported offenses per 100,000 population. This publication provides crime rate information calculated in the same manner.

# TABLE OF CONTENTS

Introduction.....	i
Table of Contents.....	iii
North Dakota Crime Summary, 2011 .....	v
Crime Index Offense Analysis.....	1
Violent Crime .....	7
Murder/Non-Negligent Manslaughter .....	9
Forcible Rape .....	11
Robbery.....	13
Aggravated Assault.....	16
Property Crime .....	18
Burglary .....	20
Larceny/Theft.....	23
Motor Vehicle Theft .....	26
Crime Index Offenses by Reporting Jurisdiction .....	29
Arrest Analysis.....	34
Arrests in 2011 .....	36
Arrest Analysis by Reporting Jurisdiction .....	42
Arrests 2002-2011 .....	45
Drug Arrest Analysis.....	51
DUI Arrest Analysis .....	55
UCR Offense Definitions.....	58
Full-Time Law Enforcement Employees.....	64

(This page intentionally left blank.)

## **NORTH DAKOTA CRIME SUMMARY, 2011**

In 2011, 13,778 crime index offenses were reported by local law enforcement agencies. This is an increase of 10.9 percent from the total of 12,427 reported in 2010.

Crime index offenses include: murder/non-negligent manslaughter, forcible rape, robbery, aggravated assault, burglary, larceny/theft, and motor vehicle theft.

The Census Bureau estimate of North Dakota's population for 2011 is 683,932. The index crime rate per 100,000 population for 2011 was 2014.5. The index crime rate for 2010 was 1847.6 per 100,000 population. This is a 9.0 percent increase in the crime rate.

The total number of reported violent index crimes (murder, rape, robbery, and aggravated assault) was 1,353. This represents an increase of 16.1 percent from the total of 1,165 reported in 2010. In 2009, 1,118 violent index crimes were reported.

Violent crime accounted for 9.8 percent of total index crimes reported in 2011.

Collectively, property crimes (burglary, larceny/theft and motor vehicle theft) increased by 10.3 percent from 11,262 reported in 2010 to 12,425 reported in 2011.

Property crime accounted for 90.2 percent of total crime index offenses reported in 2011.

The 9,344 larceny/theft offenses reported in 2011 accounted for 67.8 percent of total index crimes.

More than \$16.2 million worth of property was reported stolen in 2011, with over 31 percent of that amount reported as recovered by law enforcement officials.

North Dakota law enforcement agencies reported 29,260 arrests in 2011. A total of 29,404 arrests was reported in 2010.

In 2011, juvenile arrests accounted for 18.5 percent of the total arrests. Juvenile arrests were 29.4 percent of the total arrests of crime index offenses.

The number of reported arrests in 2011 for DUI increased to 6,600 from 6,050 reported in 2010.

Arrests for drug offenses increased 13.8 percent from a 2010 total of 2,339 to 2,662 in 2011.

(This page intentionally left blank.)



# **CRIME INDEX OFFENSE ANALYSIS**

---

---

(This page intentionally left blank.)

# Crime Index Offenses

---

Crime index offenses include the violent crimes of murder/non-negligent manslaughter, forcible rape, robbery, and aggravated assault, and the property crimes of burglary, larceny/theft, and motor vehicle theft.

In 2011, 13,778 crime index offenses were reported by local law enforcement agencies. This is an increase of 10.9 percent from the total of 12,427 reported in 2010.

The Census Bureau estimate of North Dakota's population for 2011 is 683,932. Based on that total, the index crime rate per 100,000 population for 2011 was 2014.5, as compared to 1847.6 for 2010. See the crime index offense summary on page 5 for crime rate information for the period 2002-2011.

More than 27 percent of crime index offenses were reported as cleared by arrest or exceptional means. The UCR program defines an offense as "cleared" by law enforcement when at least one person is arrested, charged with the commission of the offense, and turned over to the court for prosecution. Several crimes may be cleared by the arrest of one person, while the arrests of many persons may clear only one offense. Law enforcement agencies may clear a crime by exceptional means when some element beyond law enforcement control precludes the placing of formal charges against the offender. Examples of circumstances that allow such clearances are the death of the offender (suicide, justifiably killed by police or private citizen, etc.); the victim's refusal to cooperate with prosecution after the offender has been identified; or the denial of extradition.

In 2011, 3,436 arrests were reported for crime index offenses. Of that total, 29.4 percent were arrests of juveniles.

More than \$16.2 million worth of property was reported stolen in 2011, with 31.3 percent of that amount reported as recovered by law enforcement officials.

---

## Crime Index Offenses Reported, 2011

Crime Index Offense	Number Reported	Percent of Total Index Offenses
Murder/Non-Negligent Manslaughter	15	0.1%
Forcible Rape	207	1.5
Robbery	91	0.7
Aggravated Assault	1,040	7.5
<b>Violent Crime Subtotal</b>	<b>1,353</b>	<b>9.8</b>
Burglary	2,227	16.2
Larceny/Theft	9,344	67.8
Motor Vehicle Theft	854	6.2
<b>Property Crime Subtotal</b>	<b>12,425</b>	<b>90.2</b>
<b>Crime Index Offense Total</b>	<b>13,778</b>	<b>100.0</b>

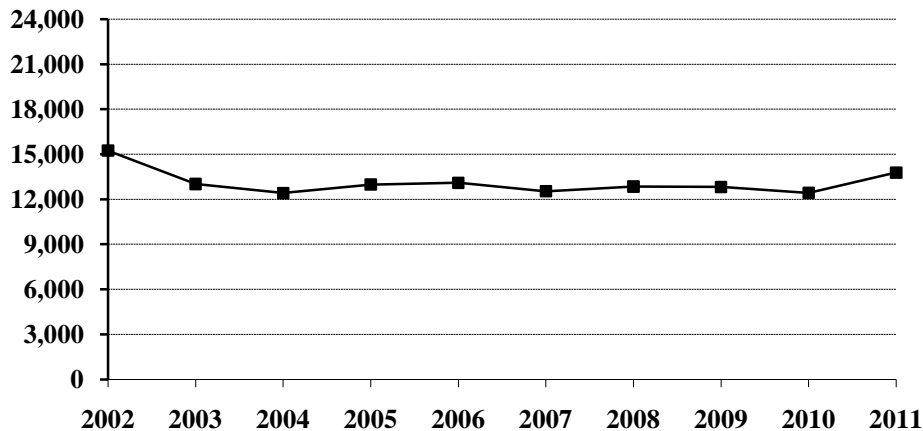
## Comparison of Crime Index Offenses Reported, 2010-2011

<b>Crime Index Offense</b>	<b>2010</b>	<b>2011</b>	<b>Percent Change</b>
<b>Murder/Non-Negligent Manslaughter</b>	<b>11</b>	<b>15</b>	<b>36.4%</b>
<b>Forcible Rape</b>	<b>222</b>	<b>207</b>	<b>-6.8</b>
Rape by Force	217	203	-6.5
Attempts to Rape	5	4	-20.0
<b>Robbery</b>	<b>85</b>	<b>91</b>	<b>7.1</b>
Firearm	12	27	125.0
Knife or Cutting Instrument	5	13	160.0
Other Dangerous Weapon	23	21	-8.7
Strong Arm – No Weapon	45	30	-33.3
<b>Aggravated Assault</b>	<b>847</b>	<b>1,040</b>	<b>22.8</b>
Firearm	19	22	15.8
Knife or Cutting Instrument	88	117	33.0
Other Dangerous Weapon	205	263	28.3
Hands, Fists, Feet, Etc.	535	638	19.3
<b>Violent Crime Subtotal</b>	<b>1,165</b>	<b>1,353</b>	<b>16.1</b>
<b>Burglary</b>	<b>1,826</b>	<b>2,227</b>	<b>22.0</b>
Forcible Entry	875	1,006	15.0
Unlawful Entry – No Force	832	1,088	30.8
Attempted Forcible Entry	119	133	11.8
<b>Larceny/Theft</b>	<b>8,673</b>	<b>9,344</b>	<b>7.7</b>
<b>Motor Vehicle Theft</b>	<b>763</b>	<b>854</b>	<b>11.9</b>
Autos	590	716	21.4
Trucks and Buses	46	48	4.3
Other Vehicles	127	90	-29.1
<b>Property Crime Subtotal</b>	<b>11,262</b>	<b>12,425</b>	<b>10.3</b>
<b>Crime Index Offense Total</b>	<b>12,427</b>	<b>13,778</b>	<b>10.9</b>

## Crime Index Offenses, 2002-2011

Crime Index Offense	2002	2003	2004	2005	2006	2007	2008	2009	2010	2011
Murder/Non-Neg. Mansl.	6	12	10	14	9	17	4	15	11	15
Forcible Rape	167	143	181	179	195	202	222	206	222	207
Robbery	71	55	49	53	72	68	71	102	85	91
Aggravated Assault	309	289	343	444	532	599	738	795	847	1040
Burglary	2250	1814	1953	1966	2302	2096	2035	2180	1826	2227
Larceny/Theft	11399	9700	8984	9293	9012	8672	8926	8699	8673	9344
Motor Vehicle Theft	1037	1002	892	1030	977	878	854	825	763	854
<b>Crime Index Offense Total</b>	<b>15239</b>	<b>13015</b>	<b>12412</b>	<b>12979</b>	<b>13099</b>	<b>12532</b>	<b>12850</b>	<b>12822</b>	<b>12427</b>	<b>13778</b>

### Crime Index Offense Totals, 2002-2011



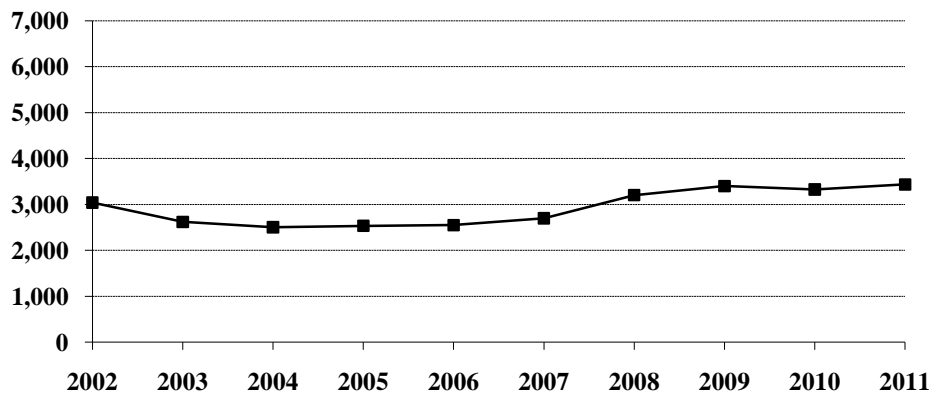
### Crime Index Offense Summary

Year	Population	Crime Index Offense Total	% Change in Number from Previous Year	Crime Rate per 100,000 Population	% Change in Rate from Previous Year	Percent Cleared
2002	634,110	15,239	5.7%	2403.2	5.8%	21.1%
2003	634,000	13,015	-14.6	2052.8	-14.6	20.8
2004	634,500	12,412	-4.6	1956.2	-4.7	20.7
2005	637,000	12,979	4.6	2037.5	4.2	20.2
2006	636,000	13,099	0.9	2059.6	1.1	21.0
2007	640,000	12,532	-4.3	1958.1	-4.9	22.2
2008	641,500	12,850	2.5	2003.1	2.3	26.1
2009	647,000	12,822	-0.2	1981.8	-1.1	27.5
2010	672,591	12,427	-3.1	1847.6	-6.8	28.9
2011	683,932	13,778	10.9	2014.5	9.0	27.3

## Arrests for Crime Index Offenses, 2002-2011

Year	Juvenile	Adult	Age Not Reported	Total
2002	1,505	1,526	10	3,041
2003	1,187	1,432	1	2,620
2004	1,009	1,491	5	2,505
2005	1,009	1,524	1	2,534
2006	960	1,588	2	2,550
2007	1,090	1,610		2,700
2008	1,227	1,973	4	3,204
2009	1,219	2,178	3	3,400
2010	1,084	2,242		3,326
2011	1,010	2,426		3,436

## Arrests for Crime Index Offenses, 2002-2011



## Property Loss Due to Crime Index Offenses, 2002-2011

Year	Population	Total Property Loss	% Change from Previous Year	Property Loss per Capita	Percent Recovered
2002	634,110	\$12,457,277	9.1%	\$19.65	30.6%
2003	634,000	11,457,228	-8.0	18.07	31.5
2004	634,500	11,397,856	-0.5	17.96	35.7
2005	637,000	12,390,920	8.7	19.45	37.7
2006	636,000	12,446,104	0.4	19.57	30.6
2007	640,000	10,730,659	-13.8	16.77	36.9
2008	641,500	12,142,441	13.2	18.93	37.6
2009	647,000	11,700,881	-3.6	18.08	30.9
2010	672,591	11,968,019	2.3	17.79	28.2
2011	683,932	16,200,979	35.4	23.69	31.3

# Violent Crime

---

Violent crime includes the offenses of murder/non-negligent manslaughter, forcible rape, robbery, and aggravated assault. (See the UCR offense definitions section beginning on page 58 of this publication for definitions of these and other offenses.)

In 2011, 1,353 violent crimes were reported in North Dakota. This is a 16.1 percent increase from the 2010 total of 1,165 violent offenses reported. In 2009, 1,118 violent crimes were reported.

Violent crime comprised 9.8 percent of reported crime index offenses in North Dakota in 2011.

The violent crime rate for 2011 is 197.8 per 100,000, as compared to 173.2 per 100,000 in 2010. This is 14.2 percent increase in the violent crime rate. In 2009, the violent crime rate was 172.8 per 100,000 population.

More than 54 percent of violent crimes in 2011 were reported as cleared by arrest or exceptional means.

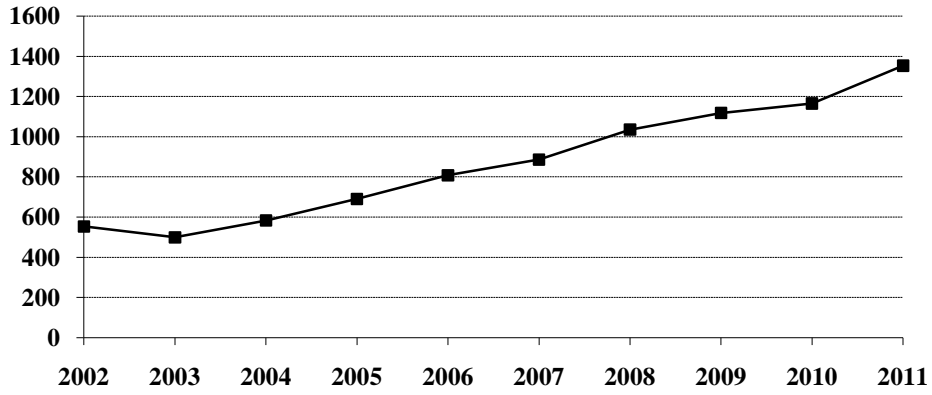
Of the 490 total arrests reported for violent crimes, 9.2 percent were arrests of juveniles.

---

## Violent Crime Summary

Year	Population	Violent Index Offenses	% Change in Number from Previous Year	Rate per 100,000 Population	% Change in Rate from Previous Year	Percent Cleared
2002	634,110	553	7.6%	87.2	7.7%	50.5%
2003	634,000	499	-9.8	78.7	-9.7	57.3
2004	634,500	583	16.8	91.9	16.8	52.1
2005	637,000	690	18.4	108.3	17.8	51.4
2006	636,000	808	17.1	127.0	17.3	47.9
2007	640,000	886	9.7	138.4	9.0	44.6
2008	641,500	1,035	16.8	161.3	16.5	52.8
2009	647,000	1,118	8.0	172.8	7.1	52.4
2010	672,591	1,165	4.2	173.2	0.2	54.8
2011	683,932	1,353	16.1	197.8	14.2	54.4

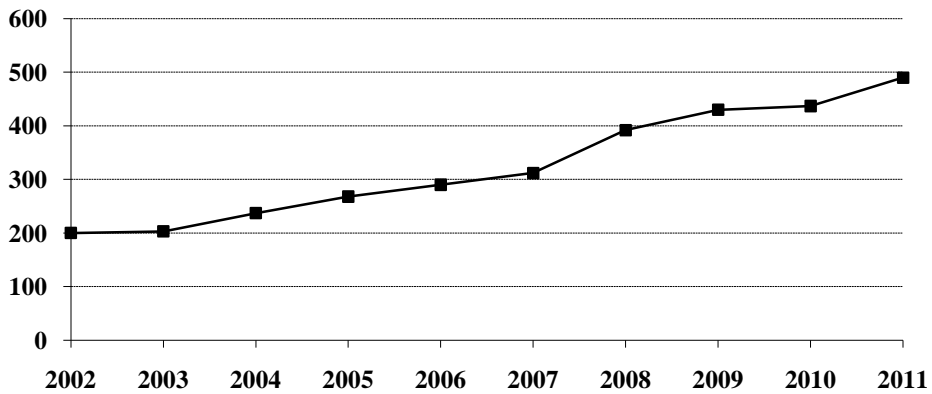
### Violent Crime Totals, 2002-2011



### Arrests for Violent Crimes, 2002-2011

Year	Juvenile	Adult	Age Not Reported	Total
2002	46	154		200
2003	31	172		203
2004	40	197		237
2005	57	211		268
2006	41	249		290
2007	46	266		312
2008	69	320	3	392
2009	45	385		430
2010	61	376		437
2011	45	445		490

### Arrests for Violent Crimes, 2002-2011





# Murder/Non-Negligent Manslaughter

The UCR program defines Murder/Non-Negligent Manslaughter as the “willful killing of one human being by another.” Not included in this category are attempts to murder, assaults to murder, suicides, accidental deaths, justifiable homicides, and deaths caused by gross negligence.

Fifteen murder/non-negligent manslaughter deaths were known to the North Dakota UCR program in 2011.

Eleven of the fifteen victims were adults. “Adult” is defined as a person aged 18 years or older.

Ten of the victims were male.

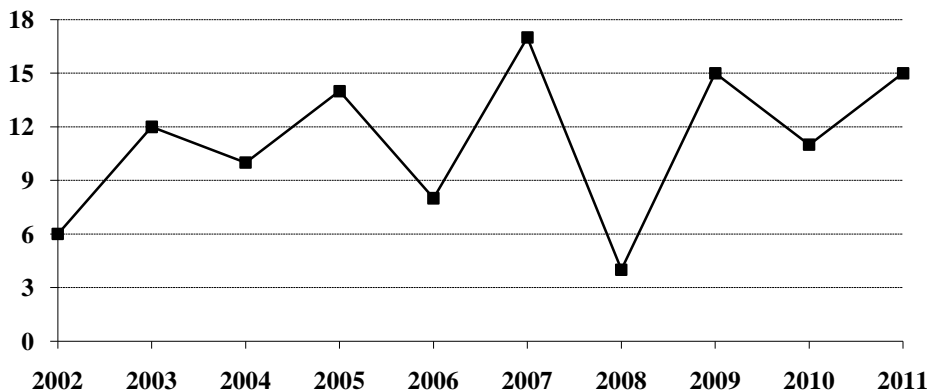
Firearms were involved in the deaths of six homicide victims. In 6 homicides, the weapon involved was a cutting instrument. (See the summary of homicide incidents and the weapons involved on page 10.)

The Office of Attorney General publishes a detailed report titled Homicide in North Dakota. The report provides an analysis of homicides for the period 1992-2011 and is available on our website at [www.ag.nd.gov](http://www.ag.nd.gov), under the News and Publications link.

## Murder/Non-Negligent Manslaughter Summary

Year	Population	Offense Total	% Change in Number from Previous Year	Rate per 100,000 Population	% Change in Rate from Previous Year	Percent Cleared
2002	634,110	6	-33.3%	0.9	-35.7%	83.3%
2003	634,000	12	100.0	1.9	111.1	100.0
2004	634,500	10	-16.7	1.6	-15.8	100.0
2005	637,000	14	40.0	2.2	37.5	78.6
2006	636,000	8	-42.9	1.3	-40.9	88.9
2007	640,000	17	112.5	2.7	107.7	94.1
2008	641,500	4	-76.5	0.6	-77.8	100.0
2009	647,000	15	275.0	2.3	283.3	93.3
2010	672,591	11	-26.7	1.6	-30.4	100.0
2011	683,932	15	36.4	2.2	37.5	93.3

## Murder/Non-Negligent Manslaughter Totals, 2002-2011



## Summary of Murder/Non-Negligent Manslaughter Incidents, 2011

Date & Location of Incident	Victim(s)		Assailant(s)		Weapons Used	Relationship of Victim to Assailant	Circumstances
	Age	Sex	Age	Sex			
1/28/2011 Minot **	19	F	26	M	Handgun	Girlfriend	Domestic Violence
1/28/2011 Minot **	38 22 13	F M M	26	M	Firearm	Acquaintance Acquaintance Acquaintance	Other Circumstances
2/12/2011 Minot	1	M	32 20	M F	Personal Weapon	Child of Girlfriend Child	Domestic Violence
3/12/2011 Minot	48	M	32	M	Knife	Acquaintance	Argument
3/29/2011 Bismarck	75	M	47	M	Blunt Object & Cutting Instrument	Parent	Domestic Violence
4/16/2011 Lincoln	23	M	27	M	Knife	Friends	Argument
4/30/2011 Stutsman County	18	M	22 33	F M	Knife	Relationship Unknown Relationship Unknown	Unknown
5/21/2011 Fort Totten	6 9	M F	41	M	Knife	Child Child	Unknown Circumstances/ Domestic Violence
7/8/2011 Bismarck	56	M	52	M	Firearm	Police Officer	Killed in the Line of Duty
7/24/2011 Morton County	57	F	56	M	Firearm	Wife	Murder/Suicide Domestic Violence
8/30/2011 Belfield	39	F	41	M	Asphyxiation	Former Girlfriend	Argument/ Domestic Violence
9/11/2011 Fargo	28	M			Knife	Unknown	Argument

\*\* Both cases involve the same assailant

## Forcible Rape

---

The UCR program defines Forcible Rape as “the carnal knowledge of a female forcibly and against her will.” Assaults to rape, attempts to commit rape by force or threat of force are included. Carnal abuse, statutory offenses (no force -- victim under age of consent), and other sex offenses are not included.

In 2011, 207 forcible rapes were reported to local law enforcement in North Dakota. This is a decrease of 6.8 percent from the 2010 total of 222 offenses. A total of 206 forcible rapes was also reported in 2009.

Because the UCR definition states that victims of rape must be female, the rate of occurrence for reported rapes is calculated based only on the female population. The Census Bureau estimate of North Dakota’s population for 2011 is 683,932. The number of females is approximately half of that figure. The resulting rate for 2011 is 60.5 reported rapes per 100,000 females, compared with 66.0 rapes per 100,000 females in 2010. In 2009, the forcible rape rate was 63.7 per 100,000 females.

In 2011, 33.3 percent of reported rapes were cleared by arrest or exceptional means.

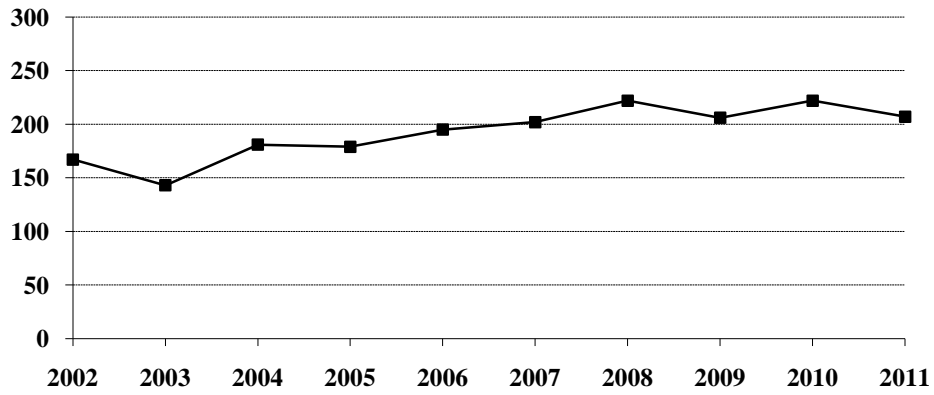
Thirty-one arrests for forcible rape were reported in 2011. More than 80 percent of those arrested were adults. In 2010, 43 arrests for rape were reported.

---

### Forcible Rape Summary

Year	Population	Offense Total	% Change in Number from Previous Year	Rate per 100,000 Females	% Change in Rate from Previous Year	Percent Cleared
2002	634,110	167	5.0%	52.7	5.2%	37.7%
2003	634,000	143	-14.4	45.1	-14.4	51.7
2004	634,500	181	26.6	57.1	26.6	40.3
2005	637,000	179	-1.1	56.2	-1.6	35.8
2006	636,000	195	8.9	61.3	9.1	31.8
2007	640,000	202	3.6	63.1	2.9	28.7
2008	641,500	222	9.9	69.2	9.7	29.7
2009	647,000	206	-7.2	63.7	-7.9	29.1
2010	672,591	222	7.8	66.0	3.6	34.2
2011	683,932	207	-6.8	60.5	-8.3	33.3

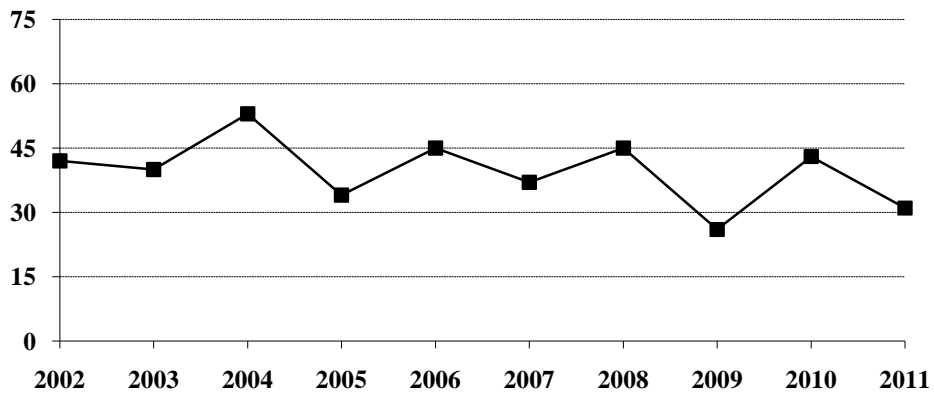
### Forcible Rape Totals, 2002-2011



### Arrests for Forcible Rape, 2002-2011

Year	Juvenile	Adult	Total
2002	18	24	42
2003	11	29	40
2004	10	43	53
2005	6	28	34
2006	4	41	45
2007	8	29	37
2008	18	27	45
2009	8	18	26
2010	17	26	43
2011	6	25	31

### Arrests for Forcible Rape, 2002-2011



## Robbery

---

Robbery is defined by the UCR program as “the taking or attempting to take anything of value from the care, custody, or control of a person or persons by force or threat of force or violence and/or by putting the victim in fear.”

In 2011, there were 91 robberies reported in North Dakota. This is an increase of 7.1 percent from the total of 85 reported in 2010. A total of 102 robberies was reported in 2009.

The robbery rate for 2011 was 13.3 per 100,000 population, as compared with 12.6 per 100,000 population in 2010. This is a 5.6 percent increase in the robbery rate.

Nearly 32 percent of reported robberies were cleared by arrest or exceptional means.

Twenty-two arrests for robbery were reported in 2011. Eighteen of those arrested were adults.

Firearms were used in 27 of the reported robberies in 2011.

Nearly 33 percent were strong-arm robberies where no weapon was used.

The value of property stolen in robbery incidents increased from \$27,073 in 2010 to \$60,393 in 2011.

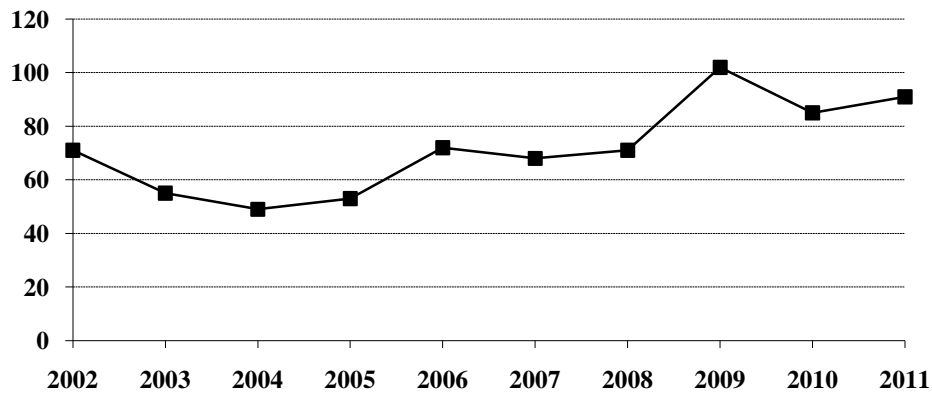
The average robbery in 2011 involved \$664 worth of property.

---

### Robbery Summary

Year	Population	Offense Total	% Change in Number from Previous Year	Rate per 100,000 Population	% Change in Rate from Previous Year	Percent Cleared
2002	634,110	71	0.0%	11.2	0.0%	45.1%
2003	634,000	55	-22.5	8.7	-22.3	43.6
2004	634,500	49	-10.9	7.7	-11.5	26.5
2005	637,000	53	8.2	8.3	7.8	34.0
2006	636,000	72	35.8	11.3	36.1	36.1
2007	640,000	68	-5.6	10.6	-6.2	30.9
2008	641,500	71	4.4	11.1	4.7	28.2
2009	647,000	102	43.7	15.8	42.3	36.3
2010	672,591	85	-16.7	12.6	-20.3	35.3
2011	683,932	91	7.1	13.3	5.6	31.9

### Robbery Totals, 2002-2011



### Robbery by Type of Weapon Involved, 2011

Type of Weapon	Number Reported	Percent of Total Offenses
Firearm	27	29.7%
Knife or Cutting Instrument	13	14.3
Other Dangerous Weapon	21	23.1
Hands, Fists, Feet, etc.	30	32.9
<b>Robbery Total</b>	<b>91</b>	<b>100.0</b>

### Robbery by Place of Occurrence and Value of Property, 2011

Place of Occurrence	Number Reported	Value of Property	Average Value per Robbery
Highway	20	\$17,087	\$854.35
Commercial House	16	6,931	433.19
Gas or Service Station	3	1,511	503.67
Convenience Store	6	2,556	426.00
Residence	18	8,410	467.22
Bank	5	13,273	2,654.60
Other	23	10,625	461.96
<b>Robbery Total</b>	<b>91</b>	<b>60,393</b>	<b>663.66</b>

### Arrests for Robbery, 2002-2011

Year	Juvenile	Adult	Total
2002	9	16	25
2003	6	19	25
2004	8	7	15
2005	4	18	22
2006	7	18	25
2007	5	24	29
2008	4	19	23
2009	3	34	37
2010	5	27	32
2011	4	18	22

### Property Loss Due to Robbery, 2002-2011

Year	Offense Total	Property Loss	Average Loss per Robbery
2002	71	\$24,711	\$348.04
2003	55	50,180	912.36
2004	49	19,915	406.43
2005	53	16,608	313.36
2006	72	62,319	865.54
2007	68	80,292	1,180.76
2008	71	66,036	930.08
2009	102	141,456	1,386.82
2010	85	27,073	318.51
2011	91	60,393	663.66

# Aggravated Assault

The UCR program defines Aggravated Assault as “an unlawful attack by one person upon another for the purpose of inflicting severe or aggravated bodily injury. This type of assault is usually accompanied by the use of a weapon or by means likely to produce death or great bodily harm. Attempts are included because it is not necessary that an injury result when a gun, knife, or other weapon is used which could and probably would result in serious personal injury if the crime were successfully completed.”

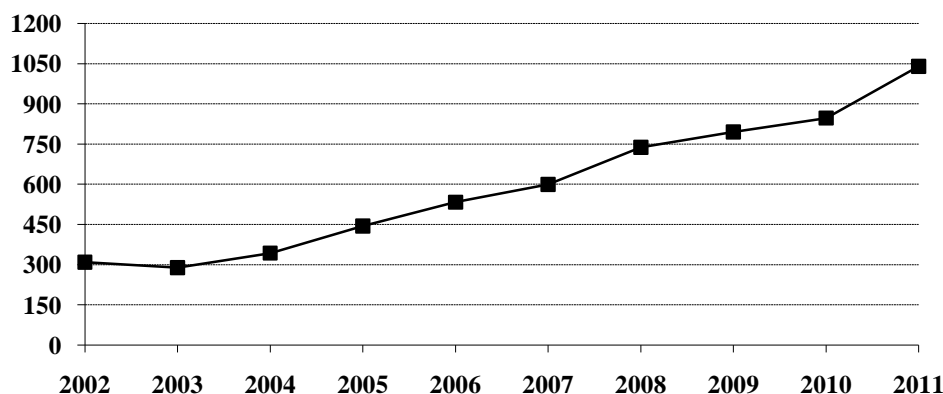
In 2011, 1,040 aggravated assaults were reported in North Dakota, an increase of 22.8 percent from the 847 aggravated assaults reported in 2010. In 2009, 795 aggravated assaults were reported.

The aggravated assault rate for North Dakota increased 20.8 percent from 125.9 per 100,000 population in 2010 to 152.1 per 100,000 population in 2011.

## Aggravated Assault Summary

Year	Population	Offense Total	% Change in Number from Previous Year	Rate per 100,000 Population	% Change in Rate from Previous Year	Percent Cleared
2002	634,110	309	12.4%	48.7	12.5%	57.9%
2003	634,000	289	-6.5	45.6	-6.4	60.9
2004	634,500	343	18.7	54.1	18.6	60.6
2005	637,000	444	29.4	69.7	28.8	59.0
2006	636,000	533	20.0	83.8	20.2	54.8
2007	640,000	599	12.4	93.6	11.7	50.3
2008	641,500	738	23.2	115.0	22.9	61.8
2009	647,000	795	7.7	122.9	6.9	59.7
2010	672,591	847	6.5	125.9	2.4	61.5
2011	683,932	1,040	22.8	152.1	20.8	60.0

## Aggravated Assault Totals, 2002-2011





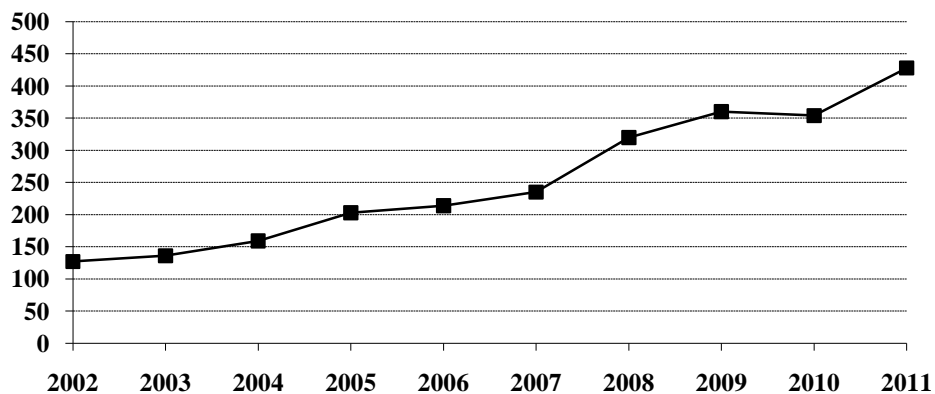
## Aggravated Assault by Type of Weapon Involved, 2011

Type of Weapon	Number Reported	Percent of Total Offenses
Firearm	22	2.1%
Knife or Cutting Instrument	117	11.3
Other Dangerous Weapon	263	25.3
Hands, Fists, Feet, etc.	638	61.3
<b>Aggravated Assault Total</b>	<b>1,040</b>	<b>100.0</b>

## Arrests for Aggravated Assault, 2002-2011

Year	Juvenile	Adult	Age Not Reported	Total
2002	19	108		127
2003	14	122		136
2004	22	137		159
2005	47	156		203
2006	30	184		214
2007	31	204		235
2008	47	270	3	320
2009	34	326		360
2010	39	315		354
2011	35	393		428

## Arrests for Aggravated Assault, 2002-2011



# Property Crime

Property crime includes the offenses of burglary, larceny/theft, and motor vehicle theft.

In 2011, the total number of property crimes reported was 12,425. This is an increase of 10.3 percent from the 2010 total of 11,262.

Property crime accounted for 90.2 percent of the index offenses reported in North Dakota.

The property crime rate increased 8.5 percent from 1674.4 per 100,000 population in 2010, to 1816.7 per 100,000 in 2011.

More than 24 percent of property crimes were cleared by arrest or exceptional means in 2011.

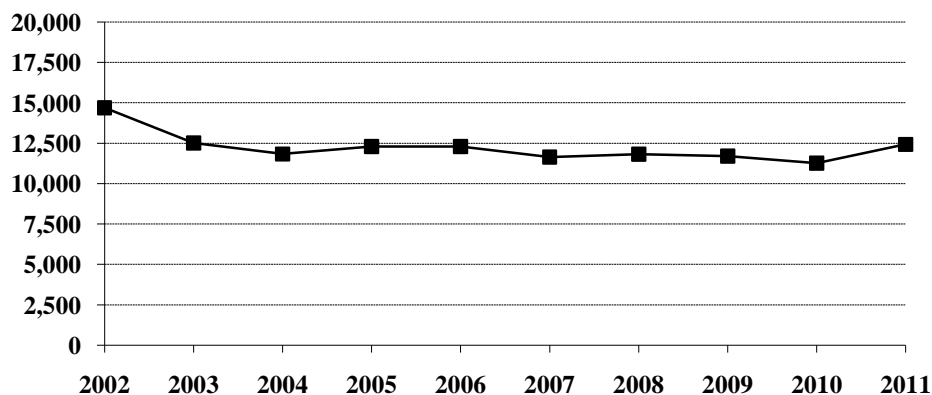
A total of 2,946 arrests was reported for property crimes. Of those, 32.8 percent were arrests of juveniles.

## Property Crime Summary

Year	Population	Property Index Offenses	% Change in Number from Previous Year	Rate per 100,000 Population	% Change in Rate from Previous Year	Percent Cleared
2002	634,110	14,686	5.7%	2316.0	5.7%	20.0%
2003	634,000	12,516	-14.8	1974.1	-14.8	19.4
2004	634,500	11,830	-5.5	1864.5	-5.6	19.2
2005	637,000	12,289	3.9	1929.2	3.5	18.5
2006	636,000	12,291	*	1932.5	0.2	19.3
2007	640,000	11,646	-5.2	1819.7	-5.8	20.5
2008	641,500	11,815	1.5	1841.8	1.2	23.8
2009	647,000	11,704	-0.9	1809.0	-1.8	25.1
2010	672,591	11,262	-3.8	1674.4	-7.4	26.2
2011	683,932	12,425	10.3	1816.7	8.5	24.4

\* Less than 0.1 percent.

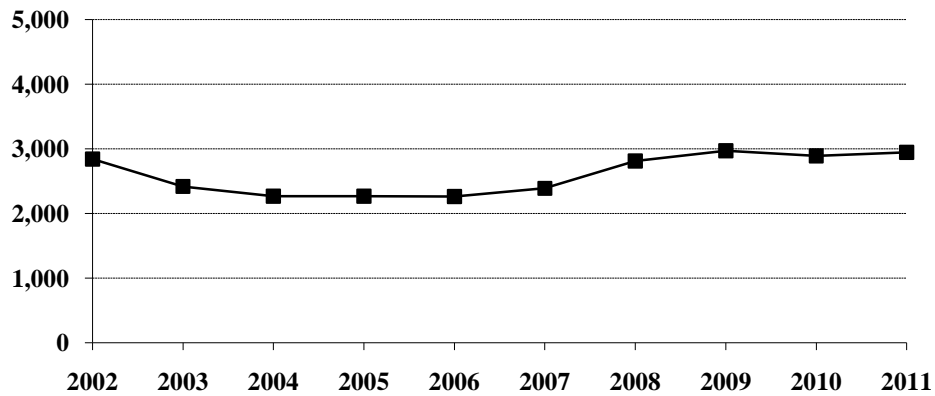
## Property Crime Totals, 2002-2011



## Arrests for Property Crimes, 2002-2011

Year	Juvenile	Adult	Age Not Reported	Total
2002	1,459	1,372	10	2,841
2003	1,156	1,260	1	2,417
2004	969	1,294	5	2,268
2005	952	1,313	1	2,266
2006	919	1,339	2	2,260
2007	1,044	1,344		2,388
2008	1,158	1,653	1	2,812
2009	1,174	1,793	3	2,970
2010	1,023	1,866		2,889
2011	965	1,981		2,946

## Arrests for Property Crimes, 2002-2011



# Burglary

---

The UCR program defines Burglary as the “unlawful entry of a structure to commit a felony or theft. The use of force to gain entry is not required to classify an offense as burglary.” Burglaries are classified into three categories: forcible entry, unlawful entry where no force is used, and attempted forcible entry.

In 2011, 2,227 burglaries were reported to the UCR program. This represents an increase of 22 percent from the total of 1,826 burglaries reported in 2010.

The rate of burglaries based on population was 325.6 per 100,000 inhabitants for 2011. This is a 19.9 percent increase from the rate of 271.5 per 100,000 population in 2010.

Thirteen percent of burglaries were cleared by arrest or exceptional means in 2011.

A total of 215 arrests for burglary was reported in 2011. Of these, 32.1 percent were juveniles.

The UCR program classifies burglaries by location of the incident. Nearly 55 percent were burglaries of residences.

More than 45 percent of burglaries involved forcible entry.

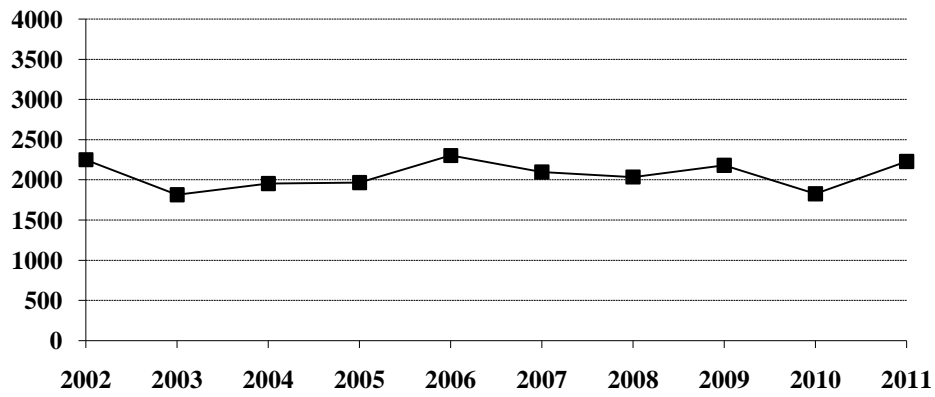
Property loss due to burglary is substantial. More than \$2.7 million dollars worth of property was reported stolen in burglary incidents in 2011. The average burglary involved \$1,254 worth of property.

---

## Burglary Summary

Year	Population	Offense Total	% Change in Number from Previous Year	Rate per 100,000 Population	% Change in Rate from Previous Year	Percent Cleared
2002	634,110	2,250	11.0%	354.8	11.0%	14.0%
2003	634,000	1,814	-19.4	286.1	-19.4	13.8
2004	634,500	1,954	7.7	308.0	7.7	11.2
2005	637,000	1,966	0.6	308.6	0.2	11.6
2006	636,000	2,302	17.1	361.9	17.3	15.2
2007	640,000	2,096	-8.9	327.5	-9.5	12.3
2008	641,500	2,035	-2.9	317.2	-3.1	16.1
2009	647,000	2,180	7.1	336.9	6.2	15.2
2010	672,591	1,826	-16.2	271.5	-19.4	14.6
2011	683,932	2,227	22.0	325.6	19.9	13.0

## Burglary Totals, 2002-2011



## Burglary by Type of Entry, 2011

Type of Entry	Number Reported	Percent of Total Offenses
Forcible Entry	1,006	45.1%
Unlawful Entry - No Force	1,088	48.9
Attempted Forcible Entry	133	6.0
<b>Burglary Total</b>	<b>2,227</b>	<b>100.0</b>

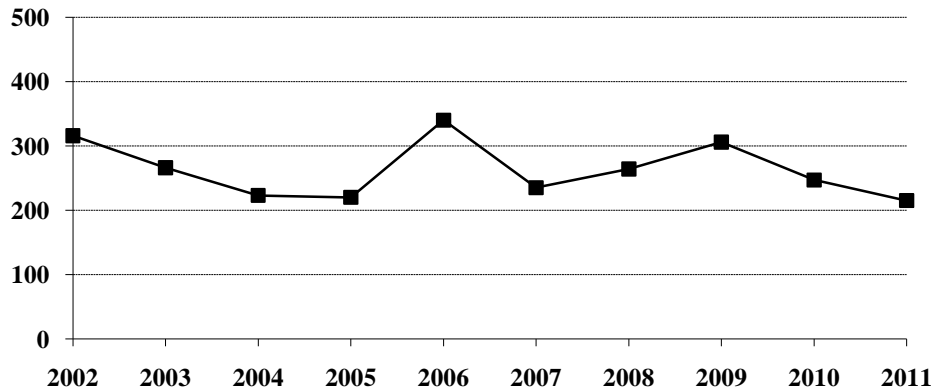
## Burglary by Location and Value of Property, 2011

Location	Number Reported	Value of Property	Average Value per Burglary
Residence	1,224	\$1,535,762	\$1,254.71
Non-Residence	1,003	1,256,185	1,252.43
<b>Burglary Total</b>	<b>2,227</b>	<b>2,791,947</b>	<b>1,253.68</b>

## Arrests for Burglary, 2002-2011

Year	Juvenile	Adult	Age Not Reported	Total
2002	166	144	6	316
2003	118	148		266
2004	99	119	5	223
2005	55	165		220
2006	115	224	1	340
2007	94	141		235
2008	97	167		264
2009	94	211	1	306
2010	71	176		247
2011	69	146		215

## Arrests for Burglary, 2002-2011



## Property Loss Due to Burglary, 2002-2011

Year	Offense Total	Property Loss	Average Loss per Burglary
2002	2,250	\$2,082,601	\$925.60
2003	1,814	1,562,749	861.49
2004	1,954	2,207,247	1,129.60
2005	1,966	2,057,935	1,046.76
2006	2,302	2,432,305	1,056.61
2007	2,096	1,943,995	927.48
2008	2,035	3,420,351	1,680.76
2009	2,180	2,509,507	1,151.15
2010	1,826	2,141,820	1,172.96
2011	2,227	2,791,947	1,253.68

## Larceny/Theft

---

The UCR program defines Larceny/Theft as the “unlawful taking, carrying, leading, or riding away of property from the possession or constructive possession of another. It includes crimes such as shoplifting, pocket-picking, purse-snatching, thefts from motor vehicles, thefts of motor vehicle parts and accessories, bicycle thefts, etc., in which no use of force, violence or fraud occurs. In the Uniform Crime Reporting program, this crime category does not include embezzlement, confidence games, forgery, and worthless checks. Motor vehicle theft is also excluded from this category inasmuch as it is a separate crime index offense.”

A total of 9,344 larceny/theft offenses was reported in North Dakota in 2011. This is a 7.7 percent increase from the 2010 total of 8,673.

The larceny/theft rate per 100,000 population was 1366.2 compared with 1289.5 in 2010, a 5.9 percent increase in the rate.

More than 27 percent of larceny/theft offenses were cleared by arrest or exceptional means in 2011.

The number of arrests for this offense increased from 2,487 in 2010 to 2,610 in 2011. More than 33 percent of those arrested for larceny/theft in 2011 were juveniles.

More than \$7.0 million dollars worth of property was reported stolen as the result of larceny/theft offenses in the state. The average dollar value per offense is \$753.

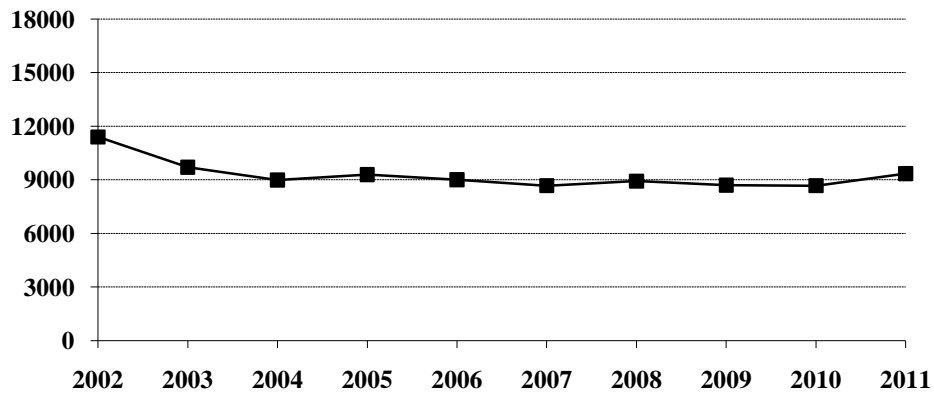
Larceny/theft accounted for 67.8 percent of the total index offenses reported and amounted to 43.4 percent of the total value of stolen property.

---

### Larceny/Theft Summary

Year	Population	Offense Total	% Change in Number from Previous Year	Rate per 100,000 Population	% Change in Rate from Previous Year	Percent Cleared
2002	634,110	11,399	4.9%	1797.6	4.9%	20.4%
2003	634,000	9,700	-14.9	1530.0	-14.9	19.8
2004	634,500	8,984	-7.4	1415.9	-7.5	20.6
2005	637,000	9,293	3.4	1458.9	3.0	19.3
2006	636,000	9,012	-3.0	1417.0	-2.9	19.8
2007	640,000	8,672	-3.8	1355.0	-4.4	22.1
2008	641,500	8,926	2.9	1391.4	2.7	25.5
2009	647,000	8,699	-2.5	1344.5	-3.4	27.4
2010	672,591	8,673	-0.3	1289.5	-4.1	28.6
2011	683,932	9,344	7.7	1366.2	5.9	27.1

### Larceny/Theft Totals, 2002-2011



### Monetary Value of Larceny/Theft, 2011

Value of Larceny/Theft	Number Reported	Percent of Total Offenses
Under \$50	2,762	29.6%
\$50 to \$200	2,624	28.0
Over \$200	3,958	42.4
<b>Larceny/Theft Total</b>	<b>9,344</b>	<b>100.0</b>

### Larceny/Theft by Type and Value, 2011

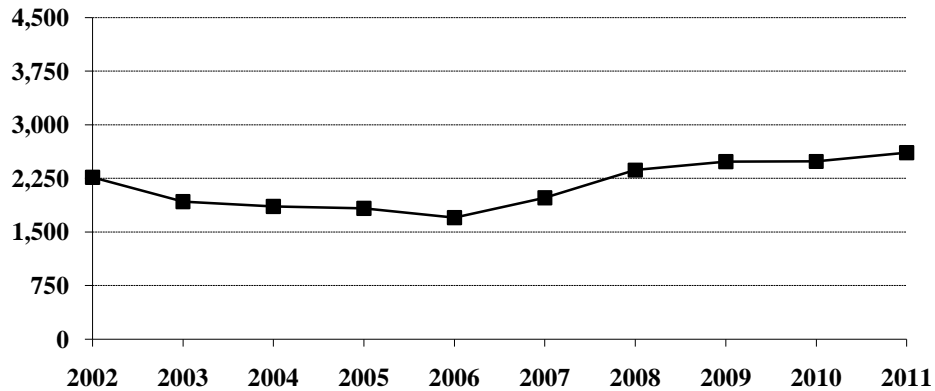
Type of Larceny/Theft	Number Reported	Value of Property	Average Value per Larceny/Theft
From Motor Vehicle	2,015	\$878,798	\$436.13
Shoplifting	1,927	216,786	112.50
From Building	1,122	1,140,302	1,016.31
Bicycles	510	131,243	257.34
Motor Vehicle Parts, Accessories	400	423,466	1,058.67
From Coin-Operated Machine	38	5,087	133.87
Purse Snatching	20	10,274	513.70
Pocket Picking	10	990	99.00
All Other	3,302	4,226,164	1,279.88
<b>Larceny/Theft Total</b>	<b>9,344</b>	<b>7,033,110</b>	<b>752.69</b>



### Arrests for Larceny/Theft, 2002-2011

Year	Juvenile	Adult	Age Not Reported	Total
2002	1,147	1,114	3	2,264
2003	919	1,004	1	1,924
2004	792	1,064		1,856
2005	794	1,035	1	1,830
2006	699	1,000	1	1,700
2007	876	1,103		1,979
2008	977	1,388	1	2,366
2009	992	1,491	2	2,485
2010	895	1,592		2,487
2011	866	1,744		2,610

### Arrests for Larceny/Theft, 2002-2011



### Property Loss Due to Larceny/Theft, 2002-2011

Year	Offense Total	Property Loss	Average Loss per Larceny/Theft
2002	11,399	\$5,701,494	\$500.17
2003	9,700	5,207,256	536.83
2004	8,984	4,931,853	548.96
2005	9,293	5,191,397	558.64
2006	9,012	5,425,420	602.02
2007	8,672	4,343,221	500.83
2008	8,926	4,757,988	533.05
2009	8,699	5,374,262	617.80
2010	8,673	5,809,941	669.89
2011	9,344	7,033,110	752.69

# Motor Vehicle Theft

---

Motor Vehicle Theft is defined by the UCR program as “the theft or attempted theft of a motor vehicle; the offense category includes the stealing of automobiles, trucks, buses, motorcycles, motor scooters, snowmobiles, etc. The definition excludes the taking of a motor vehicle for temporary use by those persons having lawful access.”

A total of 854 motor vehicle thefts was reported in 2011. This is an increase of 11.9 percent from the 2010 total of 763.

Based on a Census Bureau population estimate of 683,932 for North Dakota, the resulting motor vehicle theft rate is 124.9 per 100,000 population.

More than 24 percent of reported motor vehicle thefts were cleared by arrest or exceptional means in 2011.

The number of arrests for motor vehicle theft decreased from 155 in 2010 to 121 in 2011.

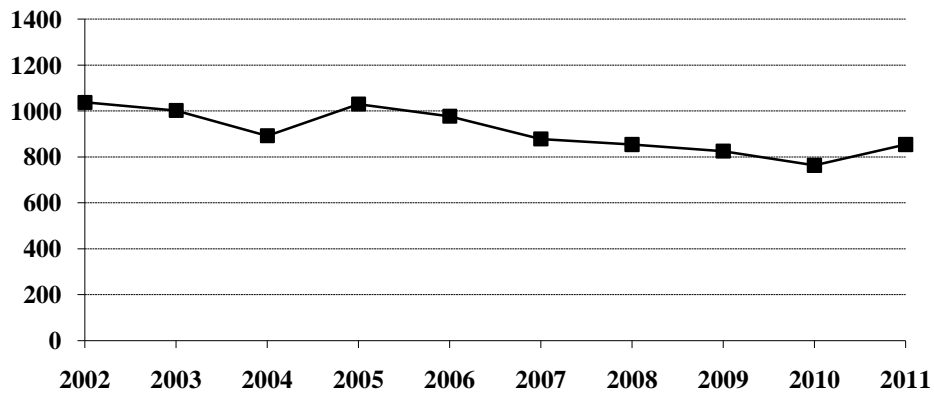
The average value per motor vehicle theft was approximately \$8,114.

---

## Motor Vehicle Theft Summary

Year	Population	Offense Total	% Change in Number from Previous Year	Rate per 100,000 Population	% Change in Rate from Previous Year	Percent Cleared
2002	634,110	1,037	3.7%	163.5	3.7%	29.0%
2003	634,000	1,002	-3.4	158.0	-3.4	25.2
2004	634,500	892	-11.0	140.6	-11.0	22.2
2005	637,000	1,030	15.5	161.7	15.0	23.5
2006	636,000	977	-5.1	153.6	-5.0	23.7
2007	640,000	878	-10.1	137.2	-10.7	24.4
2008	641,500	854	-2.7	133.1	-3.0	24.6
2009	647,000	825	-3.4	127.5	-4.2	27.4
2010	672,591	763	-7.5	113.4	-11.1	26.7
2011	683,932	854	11.9	124.9	10.1	24.1

### Motor Vehicle Theft Totals, 2002-2011



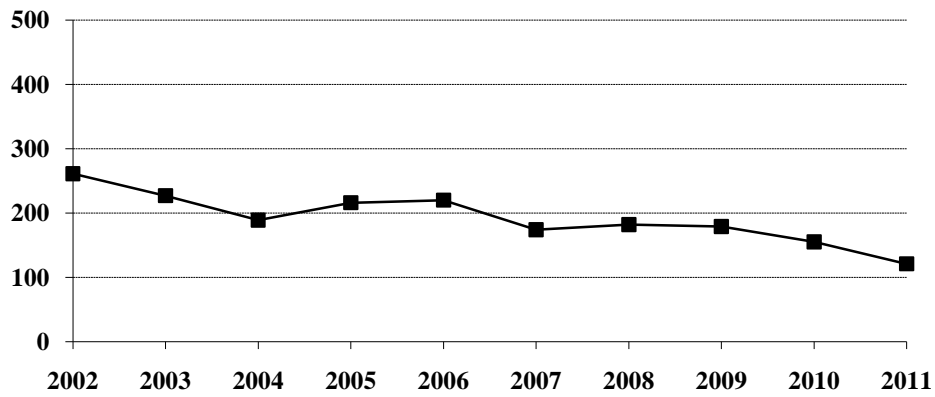
### Type of Vehicle Stolen, 2011

Type of Vehicle	Number Reported	Percent of Total Offenses
Automobiles	716	83.9%
Trucks and Buses	48	5.6
Other Vehicles	90	10.5
<b>Motor Vehicle Theft Total</b>	<b>854</b>	<b>100.0</b>

### Arrests for Motor Vehicle Theft, 2002-2011

Year	Juvenile	Adult	Age Not Reported	Total
2002	146	114	1	261
2003	119	108		227
2004	78	111		189
2005	103	113		216
2006	105	115		220
2007	74	100		174
2008	84	98		182
2009	88	91		179
2010	57	98		155
2011	30	91		121

## Arrests for Motor Vehicle Theft, 2002-2011



## Property Loss Due to Motor Vehicle Theft, 2002-2011

Year	Offense Total	Property Loss	Average Loss per Offense
2002	1,037	\$4,647,821	\$4,481.99
2003	1,002	4,637,043	4,627.79
2004	892	4,238,662	4,751.86
2005	1,030	5,124,789	4,975.52
2006	977	4,525,628	4,632.17
2007	878	4,348,148	4,952.33
2008	854	3,897,971	4,564.37
2009	825	3,674,803	4,454.31
2010	763	3,987,385	5,225.93
2011	854	6,929,776	8,114.49

# Crime Index Offenses by Reporting Jurisdiction

The rate per 100,000 population is shown immediately below the actual number of crime index offenses reported by each jurisdiction. A county total is also shown for each of those counties that have more than one reporting jurisdiction within its geographic boundaries. The rate is reported per 100,000 for easy comparison to national publications. Population estimates were provided by the FBI Criminal Justice Information Services (CJIS) Division.

## Number and Rate of Index Offenses, 2011

County	Reporting Jurisdiction	Population	Murder/ Non-Negligent Manslaughter	Forcible Rape	Robbery	Aggravated Assault	Burglary	Larceny/ Theft	Motor Vehicle Theft	Total Index Offenses
Adams	County SO	2,383			1 42.0		11 461.6	7 293.7	1 42.0	20 839.3
Barnes	County SO	4,557				1 21.9	10 219.4	30 658.3	5 109.7	46 1009.4
	Valley City PD	6,696		2 29.9			14 209.1	45 672.0	5 74.7	66 985.7
	County Total	11,253		2 17.8		1 8.9	24 213.3	75 666.5	10 88.9	112 995.3
Benson	County SO	6,772					8 118.1	5 73.8	3 44.3	16 236.3
Billings	County SO	682					2 293.3	2 293.3		4 586.5
	Medora PD	114				2 1754.4				2 1754.4
	County Total	796				2 251.3	2 251.3	2 251.3		6 753.8
Botineau	County SO	6,537					6 91.8	16 244.8	1 15.3	23 351.8
Bowman	County SO	1,526	DID NOT REPORT IN 2011							
	Bowman PD	1,678	DID NOT REPORT IN 2011							
	Scranton PD									0 0.0
Burke	County SO	2,001				3 149.9	3 149.9	13 649.7	1 50.0	20 999.5
Burleigh	County SO	17,927		5 27.9		9 50.2	61 340.3	127 708.4	10 55.8	212 1182.6
	Bismarck PD	62,305	2 3.2	28 44.9	15 24.1	130 208.7	260 417.3	1511 2425.2	113 181.4	2059 3304.7
	Lincoln PD	2,447	1 40.9			6 245.2	1 40.9	19 776.5	4 163.5	31 1266.9
	County Total	82,679	3 3.6	33 39.9	15 18.1	145 175.4	322 389.5	1657 2004.1	127 153.6	2302 2784.3
Cass	County SO	18,711		5 26.7		12 64.1	62 331.4	95 507.7	10 53.4	184 983.4
	Fargo PD *	107,329	1 0.9	46 42.9	48 44.7	303 282.3	443 412.7	2273 2117.8	133 123.9	3247 3025.3
	West Fargo PD	26,266		4 15.2	4 15.2	44 167.5	80 304.6	330 1256.4	21 80.0	483 1838.9
	County Total	152,306	1 0.7	55 36.1	52 34.1	359 235.7	585 384.1	2698 1771.4	164 107.7	3914 2569.8
Cavalier	County SO	4,060				2 49.3	11 270.9	41 1009.9	6 147.8	60 1477.8

\* Includes 107 index offenses reported by NDSU PD

County	Reporting Jurisdiction	Population	Murder/ Non-Negligent Manslaughter	Forcible Rape	Robbery	Aggravated Assault	Burglary	Larceny/ Theft	Motor Vehicle Theft	Total Index Offenses
Dickey	County SO	2,073					1 48.2	6 289.4	1 48.2	8 385.9
	Oakes PD	1,887								0 0.0
	Ellendale PD	1,418		1 70.5			1 70.5	20 1410.4		22 1551.5
	County Total	5,378		1 18.6			2 37.2	26 483.5	1 18.6	30 557.8
Divide	County SO	1,018	DID NOT REPORT IN 2011							
Dunn	County SO	2,832	DID NOT REPORT IN 2011							
	Killdeer PD	764	DID NOT REPORT IN 2011							
Eddy	County SO	2,425				3 123.7	10 412.4	5 206.2	1 41.2	19 783.5
Emmons	County SO	2,495					14 561.1	7 280.6	1 40.1	22 881.8
	Linton PD	1,115			1 89.7	1 89.7	1 89.7			3 269.1
	County Total	3,610			1 27.7	1 27.7	15 415.5	7 193.9	1 27.7	25 692.5
Foster	County SO	1,299								0 0.0
	Carrington PD	2,100			1 47.6		6 285.7	3 142.9	1 47.6	11 523.8
	County Total	3,399			1 29.4		6 176.5	3 88.3	1 29.4	11 323.6
Golden Valley	County SO	1,708				4 234.2	1 58.5	6 351.3	1 58.5	12 702.6
Grand Forks	County SO	11,874				11 92.6	24 202.1	55 463.2	7 59.0	97 816.9
	Emerado PD **	421								0 0.0
	Grand Forks PD *	53,729		34 63.3	8 14.9	93 173.1	311 578.8	1279 2380.5	107 199.1	1832 3409.7
	Northwood PD	961					4 416.2	5 520.3		9 936.5
	Thompson PD	1,003					2 199.4	3 299.1	1 99.7	6 598.2
	County Total	67,988		34 50.0	8 11.8	104 153.0	341 501.6	1342 1973.9	115 169.1	1944 2859.3
Grant	County SO	2,434					3 123.3	2 82.2	1 41.1	6 246.5
Griggs	County SO	2,461	1 40.6				4 162.5	1 40.6	2 81.3	8 325.1
Hettinger	County SO	2,519				2 79.4	6 238.2	5 198.5	1 39.7	14 555.8
Kidder	County SO	1,749		1 57.2				3 171.5	1 57.2	5 285.9
	Steele PD	727		1 137.6			1 137.6	3 412.7		5 687.8
	County Total	2,476		2 80.8			1 40.4	6 242.3	1 40.4	10 403.9
LaMoure	County SO	3,305						2 60.5	1 30.3	3 90.8
	LaMoure PD	904								0 0.0
	Kulm PD		DID NOT REPORT IN 2011							
	Reporting Agency Total	4,209						2 47.5	1 23.8	3 71.3

\* Includes 160 index offenses reported by UND PD.

\*\* Reported Partial Year

County	Reporting Jurisdiction	Population	Murder/ Non-Negligent Manslaughter	Forcible Rape	Robbery	Aggravated Assault	Burglary	Larceny/ Theft	Motor Vehicle Theft	Total Index Offenses
Logan	County SO	1,219						1 82.0	1 82.0	2 164.1
	Napoleon PD	805						12 1490.7		12 1490.7
	County Total	2,024						13 642.3	1 49.4	14 691.7
McHenry	County SO	5,486				5 91.1	8 145.8	21 382.8	5 91.1	39 710.9
McIntosh	County SO	1,837			1 54.4	2 108.9	1 54.4	3 163.3		7 381.1
	Wishek PD	1,019				1 98.1				1 98.1
	County Total	2,856			1 35.0	3 105.0	1 35.0	3 105.0		8 280.1
McKenzie	County SO	4,694		2 42.6		6 127.8	1 21.3	55 1171.7	11 234.3	75 1597.8
	Watford City PD	1,773		1 56.4		6 338.4	7 394.8	43 2425.3	6 338.4	63 3553.3
	County Total	6,467		3 46.4		12 185.6	8 123.7	98 1515.4	17 262.9	138 2133.9
McLean	County SO	9,113				4 43.9	21 230.4	55 603.5	6 65.8	86 943.7
Mercer	County SO	2,940				5 170.1	11 374.1	6 204.1	4 136.1	26 884.4
	Beulah PD	3,174		1 31.5		1 31.5	14 441.1	51 1606.8	1 31.5	68 2142.4
	Hazen PD	2,452	DID NOT REPORT IN 2011							
	Reporting Agency Total	6,114		1 16.4		6 98.1	25 408.9	57 932.3	5 81.8	94 1537.5
Morton	County SO	9,294	1 10.8	4 43.0	1 10.8	8 86.1	50 538.0	67 720.9	5 53.8	136 1463.3
	Mandan PD	18,640		6 32.2		38 203.9	66 354.1	394 2113.7	34 182.4	538 2886.3
	County Total	27,934	1 3.6	10 35.8	1 3.6	46 164.7	116 415.3	461 1650.3	39 139.6	674 2412.8
Mountrail	County SO	6,319				6 95.0	28 443.1	57 902.0	20 316.5	111 1756.6
	Stanley PD	1,483	DID NOT REPORT IN 2011							
Nelson	County SO	3,179		1 31.5		1 31.5	11 346.0	11 346.0	1 31.5	25 786.4
Oliver	County SO	1,877					1 53.3	2 106.6		3 159.8
	Center PD		DID NOT REPORT IN 2011							
Pembina	County SO	6,214				2 32.2	17 273.6	20 321.9	9 144.8	48 772.4
	Cavalier PD	1,324					5 377.6	16 1208.5	1 75.5	22 1661.6
	County Total	7,538				2 26.5	22 291.9	36 477.6	10 132.7	70 928.6
Pierce	County SO	1,506						2 132.8		2 132.8
	Rugby PD	2,924					15 513.0	42 1436.4	2 68.4	59 2017.8
	County Total	4,430					15 338.6	44 993.2	2 45.1	61 1377.0
Ramsey	County SO	4,383			1 22.8		1 22.8	13 296.6	2 45.6	17 387.9
	Devils Lake PD	7,261		8 110.2	2 27.5	23 316.8	71 977.8	266 3663.4	21 289.2	391 5384.9
	County Total	11,644		8 68.7	3 25.8	23 197.5	72 618.3	279 2396.1	23 197.5	408 3504.0

County	Reporting Jurisdiction	Population	Murder/ Non-Negligent Manslaughter	Forcible Rape	Robbery	Aggravated Assault	Burglary	Larceny/ Theft	Motor Vehicle Theft	Total Index Offenses
Ransom	County SO	3,359		1 29.8		1 29.8	5 148.9	1 29.8		8 238.2
	Lisbon PD	2,190				1 45.7	19 867.6	21 958.9	2 91.3	43 1963.5
	County Total	5,549		1 18.0		2 36.0	24 432.5	22 396.5	2 36.0	51 919.1
Renville	County SO	2,266					9 397.2	16 706.1		25 1103.3
	Mohall PD**									0 0.0
	Sherwood PD	246					3 1219.5			3 1219.5
	County Total	2,512					12 477.7	16 636.9		28 1114.6
Richland	County SO	8,699		4 46.0		7 80.5	38 436.8	45 517.3	9 103.5	103 1184.0
	Wahpeton PD *	7,897		3 38.0		6 76.0	21 265.9	168 2127.4	4 50.7	202 2557.9
	County Total	16,596		7 42.2		13 78.3	59 355.5	213 1283.4	13 78.3	305 1837.8
Rolette	County SO	12,870				4 31.1	13 101.0	12 93.2	3 23.3	32 248.6
	Rolla PD	1,302					10 768.0	14 1075.3	2 153.6	26 1996.9
	County Total	14,172				4 28.2	23 162.3	26 183.5	5 35.3	58 409.3
Sargent	County SO	3,894				3 77.0	5 128.4	18 462.2	1 25.7	27 693.4
Sheridan	County SO	1,343				1 74.5	4 297.8	12 893.5		17 1265.8
Sioux	County SO	4,223								0 0.0
Slope	County SO	739						2 270.6		2 270.6
Stark	County SO	5,401				4 74.1	5 92.6	28 518.4	2 37.0	39 722.1
	Dickinson PD	18,087			1 5.5	50 276.4	53 293.0	364 2012.5	25 138.2	493 2725.7
	Belfield PD	813	1 123.0				3 369.0	17 2091.0	2 246.0	23 2829.0
	South Heart PD	306					1 326.8			1 326.8
	County Total	24,607	1 4.1		1 4.1	54 219.4	62 252.0	409 1662.1	29 117.9	556 2259.5
Steele	County SO	2,008					3 149.4	2 99.6	1 49.8	6 298.8
Stutsman	County SO	5,769	1 17.3	5 86.7		3 52.0	9 156.0	16 277.3	3 52.0	37 641.4
	Jamestown PD	15,687		11 70.1		19 121.1	43 274.1	248 1580.9	17 108.4	338 2154.7
	County Total	21,456	1 4.7	16 74.6		22 102.5	52 242.4	264 1230.4	20 93.2	375 1747.8
Towner	County SO	1,150					3 260.9	7 608.7		10 869.6
	Cando PD	1,134				1 88.2		1 88.2		2 176.4
	County Total	2,284				1 43.8	3 131.3	8 350.3		12 525.4
Traill	County SO	6,628		1 15.1		1 15.1	8 120.7	34 513.0	2 30.2	46 694.0
	Hillsboro PD	1,630				1 61.3		2 122.7		3 184.0
	County Total	8,258		1 12.1		2 24.2	8 96.9	36 435.9	2 24.2	49 593.4

\* Includes 35 index offenses reported by NDSCS PD.

\*\* Reported Partial Year



County	Reporting Jurisdiction	Population	Murder/ Non-Negligent Manslaughter	Forcible Rape	Robbery	Aggravated Assault	Burglary	Larceny/ Theft	Motor Vehicle Theft	Total Index Offenses
Walsh	County SO	6,950		1 14.4		4 57.6	27 388.5	41 589.9	6 86.3	79 1136.7
	Grafton PD	4,356		2 45.9		10 229.6	16 367.3	76 1744.7	7 160.7	111 2548.2
	County Total	11,306		3 26.5		14 123.8	43 380.3	117 1034.8	13 115.0	190 1680.5
Ward	County SO	17,996		5 27.8		27 150.0	49 272.3	104 577.9	16 88.9	201 1116.9
	Kenmare PD	1,114								0
	Minot PD	41,577	6 14.4	7 16.8	5 12.0	103 247.7	118 283.8	601 1445.5	67 161.1	907 2181.5
	Burlington PD	1,078					1 92.8	1 92.8	1 92.8	3 278.3
	Surrey PD	950				1 105.3	5 526.3	5 526.3	1 105.3	12 1263.2
	County Total	62,715	6 9.6	12 19.1	5 8.0	131 208.9	173 275.9	711 1133.7	85 135.5	1123 1790.6
Wells	County SO	1,978					8 404.4	10 505.6	1 50.6	19 960.6
	Harvey PD	1,813				2 110.3	7 386.1	15 827.4	2 110.3	26 1434.1
	Fessenden PD	487					8 1642.7			8 1642.7
	County Total	4,278				2 46.8	23 537.6	25 584.4	3 70.1	53 1238.9
Williams	County SO	7,812		1 12.8		18 230.4	15 192.0	111 1420.9	27 345.6	172 2201.7
	Tioga PD		DID NOT REPORT IN 2011							
	Williston PD	14,964		16 106.9	2 13.4	39 260.6	28 187.1	292 1951.3	75 501.2	452 3020.6
	Reporting Agency Total	22,776		17 74.6	2 8.8	57 250.3	43 188.8	403 1769.4	102 447.8	624 2739.7

(This page intentionally left blank.)

# ARREST ANALYSIS

---

---

# Arrests in 2011

---

Although primarily an indication of law enforcement activity, the number of arrests reported does provide a limited profile of the perpetrators of crime, especially for those crimes that have high clearance rates. Differing arrest practices, policies, and enforcement emphases among agencies influence the volume of arrests for various offenses, particularly those against public order such as vagrancy, disorderly conduct, and related violations. However, arrests for serious crimes, e.g., robbery or burglary, are more likely to be uniform throughout all jurisdictions across the state.

The UCR program requires that an arrest be counted for each separate occasion an individual is taken into custody. Although several charges may be lodged against a person at the time of the arrest, only one arrest is counted for each time the person is taken into custody.

North Dakota law enforcement agencies reported 29,260 arrests in 2011. A total of 29,404 arrests was reported in 2010.

In 2011, more than 18 percent of total arrests were arrests of juveniles.

More than 71 percent of the total was arrests of males.

Arrests for the crime index offenses of murder/non-negligent manslaughter, forcible rape, robbery, aggravated assault, burglary, larceny/theft and motor vehicle theft comprised 11.7 percent of the total reported arrests. Of the 3,436 reported arrests for crime index offenses, 29.4 percent were arrests of juveniles.

The total of 11,295 reported arrests for DUI and liquor law violations represents 38.6 percent of the total arrests reported in the state of North Dakota in 2011. Arrests for DUI increased from 6,050 in 2010 to 6,600 in 2011. Liquor law violation arrests decreased 18.3 percent from 5,750 in 2010 to 4,695 reported in 2011.

More than 80 percent of total arrests were white; over 14 percent were Native American.

These statistics are provided by local law enforcement agencies that contribute to the North Dakota UCR program. No arrest figures for reservations in the state are included in these totals. Tribal law enforcement agencies do not participate in the state UCR program.

---

## Total Arrests Reported, 2011

Offense Classification	Number Reported	Percent of Total Arrests
Murder/Non-Negligent Manslaughter	9	*
Negligent Manslaughter		
Forcible Rape	31	0.1%
Robbery	22	0.1
Aggravated Assault	428	1.5
Burglary	215	0.7
Larceny/Theft	2,610	8.9
Motor Vehicle Theft	121	0.4
Other Assaults	2,013	6.9
Arson	12	*
Forgery and Counterfeiting	66	0.2
Fraud	421	1.4
Embezzlement	41	0.1
Stolen Property Offenses	143	0.5
Vandalism	469	1.6
Weapons Offenses	194	0.7
Prostitution	16	0.1
Other Sex Offenses	65	0.2
Drug Abuse Violations	2,662	9.1
Gambling		
Offenses Against Family and Children	122	0.4
Driving Under the Influence	6,600	22.6
Liquor Law Violations	4,695	16.0
Disorderly Conduct	1,711	5.8
Vagrancy		
All Other Offenses	5,899	20.2
Suspicion		
Curfew and Loitering	206	0.7
Runaways	489	1.7
<b>Arrest Total</b>	<b>29,260</b>	<b>100.0</b>

\* Less than 0.1 percent of total arrests.

## Comparison of Reported Arrests, 2010-2011

Offense Classification	2010	2011	Percent Change
Murder/Non-Negligent Manslaughter	8	9	12.5%
Negligent Manslaughter	1	0	-100.0
Forcible Rape	43	31	-27.9
Robbery	32	22	-31.3
Aggravated Assault	354	428	20.9
Burglary	247	215	-13.0
Larceny/Theft	2,487	2,610	4.9
Motor Vehicle Theft	155	121	-21.9
Other Assaults	1,977	2,013	1.8
Arson	10	12	20.0
Forgery and Counterfeiting	80	66	-17.5
Fraud	627	421	-32.9
Embezzlement	36	41	13.9
Stolen Property Offenses	157	143	-8.9
Vandalism	505	469	-7.1
Weapons Offenses	165	194	17.6
Prostitution	5	16	220.0
Other Sex Offenses	90	65	-27.8
Drug Abuse Violations	2,339	2,662	13.8
Gambling	0	0	0.0
Offenses Against Family and Children	132	122	-7.6
Driving Under the Influence	6,050	6,600	9.1
Liquor Law Violations	5,750	4,695	-18.3
Disorderly Conduct	2,252	1,711	-24.0
Vagrancy	0	0	0.0
All Other Offenses	5,028	5,899	17.3
Suspicion	0	0	0.0
Curfew and Loitering	268	206	-23.1
Runaways	606	489	-19.3
<b>Arrest Total</b>	<b>29,404</b>	<b>29,260</b>	<b>-0.5</b>

## Juvenile and Adult Arrests, 2011

<b>Offense Classification</b>	<b>Juvenile</b>	<b>Adult</b>	<b>Total</b>
Murder/Non-Negligent Manslaughter		9	9
Negligent Manslaughter			
Forcible Rape	6	25	31
Robbery	4	18	22
Aggravated Assault	35	393	428
Burglary	69	146	215
Larceny/Theft	866	1,744	2,610
Motor Vehicle Theft	30	91	121
Other Assaults	371	1,642	2,013
Arson	6	6	12
Forgery and Counterfeiting	6	60	66
Fraud	9	412	421
Embezzlement	5	36	41
Stolen Property Offenses	33	110	143
Vandalism	214	255	469
Weapons Offenses	21	173	194
Prostitution		16	16
Other Sex Offenses	11	54	65
Drug Abuse Violations	366	2,296	2,662
Gambling			
Offenses Against Family and Children	57	65	122
Driving Under the Influence	35	6,565	6,600
Liquor Law Violations	888	3,807	4,695
Disorderly Conduct	762	949	1,711
Vagrancy			
All Other Offenses	934	4,965	5,899
Suspicion			
Curfew and Loitering	206		206
Runaways	489		489
<b>Arrest Total</b>	<b>5,423</b>	<b>23,837</b>	<b>29,260</b>

## Arrests by Gender, 2011

<b>Offense Classification</b>	<b>Male</b>	<b>Female</b>	<b>Total</b>
Murder/Non-Negligent Manslaughter	7	2	9
Negligent Manslaughter			
Forcible Rape	31		31
Robbery	22		22
Aggravated Assault	376	52	428
Burglary	199	16	215
Larceny/Theft	1,391	1,219	2,610
Motor Vehicle Theft	97	24	121
Other Assaults	1,446	567	2,013
Arson	11	1	12
Forgery and Counterfeiting	40	26	66
Fraud	263	158	421
Embezzlement	24	17	41
Stolen Property Offenses	121	22	143
Vandalism	386	83	469
Weapons Offenses	184	10	194
Prostitution	4	12	16
Other Sex Offenses	62	3	65
Drug Abuse Violations	2,056	606	2,662
Gambling			
Offenses Against Family and Children	61	61	122
Driving Under the Influence	5,109	1,491	6,600
Liquor Law Violations	3,073	1,622	4,695
Disorderly Conduct	1,274	437	1,711
Vagrancy			
All Other Offenses	4,455	1,444	5,899
Suspicion			
Curfew and Loitering	100	106	206
Runaways	200	289	489
<b>Arrest Total</b>	<b>20,992</b>	<b>8,268</b>	<b>29,260</b>



## Arrests by Race, 2011

<b>Offense Classification</b>	<b>White</b>	<b>Black</b>	<b>Native American</b>	<b>Asian</b>	<b>Total</b>
Murder/Non-Negligent Manslaughter	6	3			9
Negligent Manslaughter					
Forcible Rape	26	4	1		31
Robbery	8	11	3		22
Aggravated Assault	294	51	81	2	428
Burglary	162	17	36		215
Larceny/Theft	1,848	181	575	6	2,610
Motor Vehicle Theft	94	4	23		121
Other Assaults	1,451	167	384	11	2,013
Arson	11		1		12
Forgery and Counterfeiting	50	10	6		66
Fraud	371	20	30		421
Embezzlement	34	5	2		41
Stolen Property Offenses	107	11	25		143
Vandalism	378	28	62	1	469
Weapons Offenses	171	12	11		194
Prostitution	10	5	1		16
Other Sex Offenses	56	5	4		65
Drug Abuse Violations	2,221	157	269	15	2,662
Gambling					
Offenses Against Family and Children	86	5	28	3	122
Driving Under the Influence	5,810	182	588	20	6,600
Liquor Law Violations	3,928	97	657	13	4,695
Disorderly Conduct	1,291	112	308		1,711
Vagrancy					
All Other Offenses	4,619	339	928	13	5,899
Suspicion					
Curfew and Loitering	149	13	44		206
Runaways	313	50	122	4	489
<b>Arrest Total</b>	<b>23,494</b>	<b>1,489</b>	<b>4,189</b>	<b>88</b>	<b>29,260</b>

# Arrest Analysis by Reporting Jurisdiction

The table below contains arrest totals for each reporting agency in 2011. Juvenile and adult arrests are included.

## Arrests by Reporting Jurisdiction, 2011

Agency	Murder/Non-Neg. Mansl.	Negligent Manslaughter	Forcible Rape	Robbery	Aggravated Assault	Burglary	Larceny/Theft	Motor Vehicle Theft	Other Assault	Arson	Forgery/Counterfeiting	Fraud	Embezzlement	Stolen Property Offenses	Vandalism	Weapons Offenses	Prostitution	Other Sex Offenses	Drug Abuse Violations	Gambling Violations	Off. Against Fam & Children	DUI	Liquor Law Violations	Disorderly Conduct	Vagrancy	All Other Offenses	Suspicion	Curfew/Loitering	Runaway	Total
Adams SO								1	8									1	5			22	5			2				44
Barnes SO							2		2													3	8	2		4				21
Valley City PD						2	8		19						7					12		41	32	8		6			2	137
Benson SO						10	1	2	11									1	3			4	11							43
Billings SO									1						1							3								5
Medora PD					1														3			7		2		1				14
Bottineau SO						4	1																99			1				108
Bowman SO	DID NOT REPORT IN 2011																													
Bowman PD	DID NOT REPORT IN 2011																													
Scranton PD																														0
Burke SO									1			1			1	1						18	9	3		15				53
Burleigh SO			1		5	2	3	2	40		1	42		3	5			2	69		1	206	284	11		142			8	827
Bismarck PD	1	5	3	60	18	602	19	242		10	60	14	20	52	17			13	380		15	539	368	361		629	98	144	3670	
Lincoln PD	1			4		3		6						2	1						15	1	4		1			5	44	
Cass SO									24					2	3							72	96	4		28				252
Fargo PD			9	13	95	39	803	9	407	4	22	32	2	37	54	20	6	8	342		6	969	434	99		793	15	95	4313	
West Fargo PD			1		15	5	36	4	96			1		4	17	4				88		5	62	79	29	123	13	14	596	
NDSU PD						4		1				5		2						16		24	167	1		23			243	
Cavalier SO					2		4	1	1						7				1	2		6	3	5		9			41	
Dickey SO						1			1			9									2	5	3	2		69			92	
Ellendale PD			1			1	1															3				2			12	
Oakes PD									1													2				3			6	
Divide SO	DID NOT REPORT IN 2011																													
Dunn SO	DID NOT REPORT IN 2011																													
Killdeer PD	DID NOT REPORT IN 2011																													
Eddy SO					2			1						1								14	3	5		2			32	
Emmons SO						6			5			2			1					2		11	17			12		2	58	
Linton PD					1																								1	
Foster SO																													0	
Carrington PD				1			1								1							4	3			1			11	
Golden Valley SO					3		2		1													8	1			8			26	
Grand Forks SO					9		11	2	28		1	34			6	2			1	32		3	81	60	6		781		6	1063

Agency	Murder/Non-Neg. Mansl.	Negligent Manslaughter	Forcible Rape	Robbery	Aggravated Assault	Burglary	Larceny/Theft	Motor Vehicle Theft	Other Assault	Arson	Forgery/Counterfeiting	Fraud	Embezzlement	Stolen Property Offenses	Vandalism	Weapons Offenses	Prostitution	Other Sex Offenses	Drug Abuse Violations	Gambling Violations	Off. Against Fam & Children	DUI	Liquor Law Violations	Disorderly Conduct	Vagrancy	All Other Offenses	Suspicion	Curfew/Loitering	Runaway	Total	
Emerado PD**																															0
Grand Forks PD			1	2	52	22	244	14	197	1	6	20	15	13	48	2		5	97		29	252	397	207		269			73	1966	
Northwood PD									2													1	3							6	
Thompson PD															1								1						1	3	
UND PD					1		3	1	5						3				34			49	344	14		53				507	
Grant SO							1												3			1	4	1						10	
Griggs SO	1					1			2										2			9	10	3		1				29	
Hettinger SO					2				2	1								1				1	1			1				9	
Kidder SO									5										2			15	4	1		1				28	
Steele PD							1		2														4							7	
LaMoure SO																			2											26	
Kulm PD	DID NOT REPORT IN 2011																														
LaMoure PD**																														1	1
Logan SO								1							1							4	3	1		7				17	
Napoleon PD							3												1			5	7	2		48				66	
McHenry SO					2	3	7		5						6			1	3			16	23	9		10				85	
McIntosh SO				1	2	1	2		2			11			3				1			6	10	1		5				45	
Wishek PD					1				3													1								5	
McKenzie SO			1		4		1	1	6			1							6			42	18	4		4				88	
Watford City PD			1		2		7	1	21		3	1			1	3	4	2	21		1	109	32	22		14			1	246	
McLean SO					4	5	8	2	19		1			2	9	3			24			69	48	7		23		2		226	
Mercer SO					2	1			2						2			1	39			23	7	9		13		1		100	
Beulah PD					1				4						1							29		15		5		1		56	
Hazen PD	DID NOT REPORT IN 2011																														
Morton SO					3	3	2		12					1	7	2			10		1	99	85	14		118			1	358	
Mandan PD			2		13	5	48	2	121			1		1	7	1		3	28		3	176	156	99		346		32	4	1048	
Mountrail SO					3	2	3	2	8			3			5	11			8			93	18	9		56			1	222	
Stanley PD	DID NOT REPORT IN 2011																														
Nelson SO						1			12		1	1			3			1	1			8	4	2		2				36	
Oliver SO									1													3	1	1		1				7	
Center PD	DID NOT REPORT IN 2011																														
Pembina SO					1	4		4	8		1			1	1				21			27	48	2		13		2		133	
Cavalier PD									2										3			10	15			2				32	
Pierce SO																						4	2							6	
Rugby PD						11	5	1	8					1	2	1			5			14	9	8		11				76	
Ramsey SO							1	1											1			14	3	1		6				27	
Devils Lake PD			1		14	5	86	1	61		2	1	6	9	17	5		1	98		25	198	226	114		166		14	4	1054	
Ransom SO					1	1			3						1			1	1			12	2	3		2		1		28	
Lisbon PD					1	1								1		1			2			18				5				29	
Renville SO									3			5				2						5	12	2		2			2	33	
Mohall PD **																														0	
Sherwood PD																		1												1	
Richland SO					3	1	20	2	13			48		2	2			2	5			17	29	79	9	83			5	320	
Wahpeton PD					4	7	51		25		1			1	20				8			3	32	62	11	77		3	2	307	

\*\* Reported Partial Year

Agency	Murder/Non-Neg. Mansl.	Negligent Manslaughter	Forcible Rape	Robbery	Aggravated Assault	Burglary	Larceny/Theft	Motor Vehicle Theft	Other Assault	Arson	Forgery/Counterfeiting	Fraud	Embezzlement	Stolen Property Offenses	Vandalism	Weapons Offenses	Prostitution	Other Sex Offenses	Drug Abuse Violations	Gambling Violations	Off. Against Fam & Children	DUI	Liquor Law Violations	Disorderly Conduct	Vagrancy	All Other Offenses	Suspicion	Curfew/Loitering	Runaway	Total	
NDSCS PD						1	8		3					1					7			1	13	2		11				47	
Rolette SO					2	1		1	11					5	2				9				39	2	33		9			114	
Rolla PD						1	6	2	8						4								5	16	22		5	2		71	
Sargent SO					1		5		1			30				1			11		1		14	20	6		10			100	
Sheridan SO					1		2		3														8	4			2			20	
Sioux SO																							3		2					5	
Slope SO																														0	
Stark SO					1				6		1	3			1	2			12				69	28	2		352			477	
Dickinson PD					16	7	83	4	69		3	35	4	17	26	7		3	82				191	117	159		234		5	1062	
Belfield PD							1		1														5	3	1		2			13	
South Heart PD**																									1					1	
Steele SO							1		2							1			1				21	12			1			39	
Stutsman SO	2		2		1	4	10	1	11						8			1	2				18	28	2		16			106	
Jamestown PD			2		11	5	103	3	105		1	2		3	23	9		2	32				119	235	102		311	15	13	1096	
Towner SO																			1						1					2	
Cando PD					1				1														2				5			9	
Trails SO						1	12	1	1		2				5				7				27	37	4		3			100	
Hillsboro PD					1				1														4							6	
Walsh SO			1		2	4	2	1	17			1			6	1		1	4				41	16	8		4			109	
Grafton PD					2	2	13		28		2	1			6	1		2	10		2		59	23	17		19		3	190	
Ward SO			1		9	5	14	3	48		1	1		2	9	1		2	17				76	39	21		28		16	293	
Kenmare PD																							1							1	
Minot PD	4			2	44	13	274	12	126	4	2	11		14	56	16		4	254		3		372	226	145		375		72	2029	
Burlington PD									1														6							7	
Surrey PD					1	2	1	1	2			1			1	1			1				25				1			37	
Wells SO						1			3			53							5				4	18			35			119	
Harvey PD					2		3		6		1				1	1							11	15	5		8	1	1	55	
Fessenden PD									1															1						2	
Williams SO					8	2	5	2	23	2					7	5		1	22		5		159	83	11		36		5	376	
Tioga PD	DID NOT REPORT IN 2011																														
Williston PD			2		13	4	90	5	72		2	1		1	19	1		3	3		2		113	47	50		51		3	6	488
Highway Patrol							1	11	14		1	4		3	2	59			345				1691	388	3		194			1	2717
Drug Task Forces											1				1	3	6		413					3			187				614

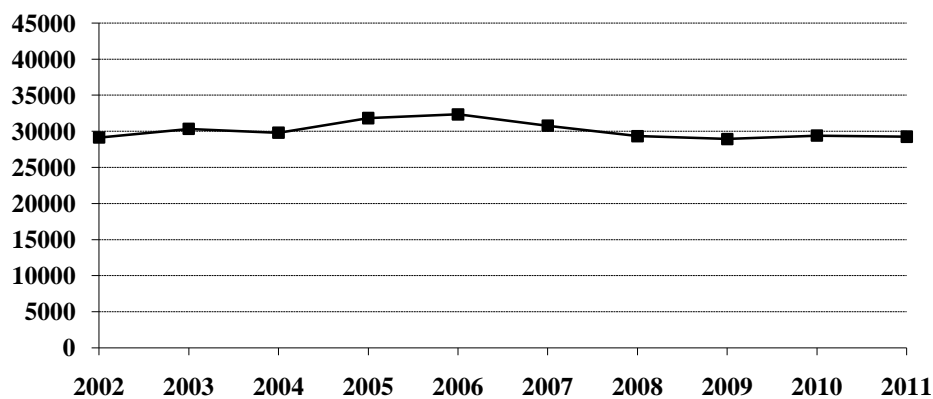
\*\* Reported Partial Year

# Arrests 2002-2011

## Arrest Summary

Year	Population	Arrest Total	% Change from Previous Year	Rate per 100,000 Pop.
2002	634,110	29,145	-1.7%	4596.2
2003	634,000	30,334	4.1	4784.5
2004	634,500	29,798	-1.8	4696.3
2005	637,000	31,835	6.8	4997.6
2006	636,000	32,343	1.6	5085.4
2007	640,000	30,780	-4.8	4809.4
2008	641,500	29,334	-4.7	4572.7
2009	647,000	28,925	-1.4	4470.6
2010	672,591	29,404	1.7	4371.8
2011	683,932	29,260	-0.5	4278.2

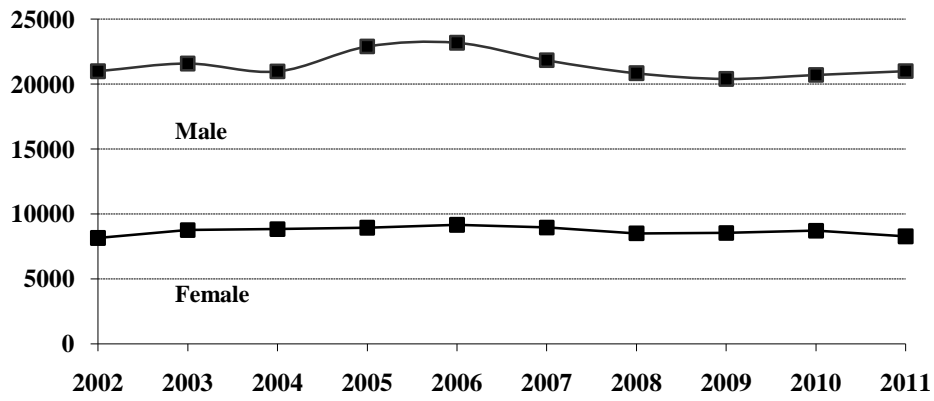
## Arrest Totals, 2002-2011



## Arrests by Gender, 2002-2011

Year	Male	% of Total	Female	% of Total	Total
2002	20,991	72.0%	8,154	28.0%	29,145
2003	21,580	71.1	8,754	28.9	30,334
2004	20,971	70.4	8,827	29.6	29,798
2005	22,891	71.9	8,944	28.1	31,835
2006	23,181	71.7	9,162	28.3	32,343
2007	21,829	70.9	8,951	29.1	30,780
2008	20,828	71.0	8,506	29.0	29,334
2009	20,393	70.5	8,532	29.5	28,925
2010	20,699	70.4	8,705	29.6	29,404
2011	20,992	71.7	8,268	28.3	29,260

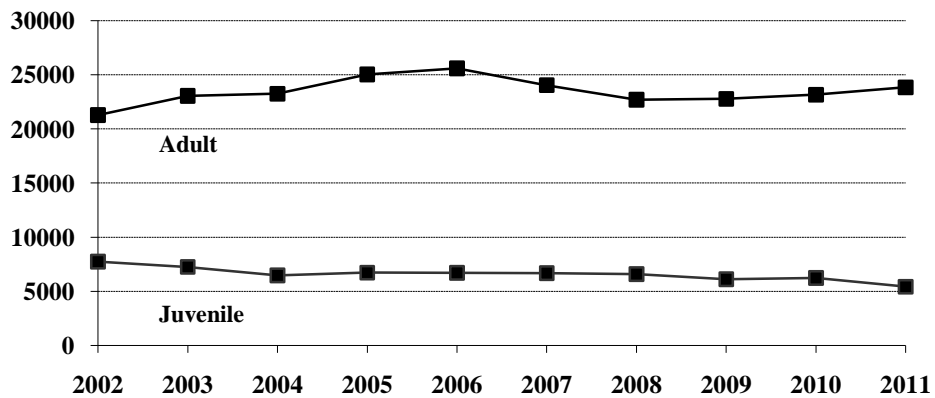
### Arrests by Gender, 2002-2011



### Juvenile and Adult Arrests, 2002-2011

Year	Juvenile	Percent of Total	Adult	Percent of Total	Age Not Reported	Percent of Total	Total
2002	7,742	26.6%	21,279	73.0%	124	0.4%	29,145
2003	7,250	23.9	23,044	76.0	40	0.1	30,334
2004	6,467	21.7	23,247	78.0	84	0.3	29,798
2005	6,721	21.1	25,038	78.6	76	0.2	31,835
2006	6,703	20.7	25,601	79.2	39	0.1	32,343
2007	6,676	21.7	24,037	78.1	67	0.2	30,780
2008	6,593	22.5	22,695	77.4	46	0.1	29,334
2009	6,120	21.2	22,772	78.7	33	0.1	28,925
2010	6,227	21.2	23,157	78.8	20	0.1	29,404
2011	5,423	18.5	23,837	81.5			29,260

### Juvenile and Adult Arrests, 2002-2011



## Arrests by Age Group, 2002-2011

Age Group	2002	2003	2004	2005	2006	2007	2008	2009	2010	2011
Under 10	168	145	108	73	120	108	106	99	85	91
10-12	638	582	580	500	579	461	465	510	499	405
13-14	1736	1601	1526	1411	1548	1427	1396	1185	1370	1189
15	1459	1344	1312	1394	1268	1337	1327	1243	1203	1127
16	1810	1677	1409	1630	1460	1641	1606	1585	1485	1266
17	1931	1901	1532	1713	1728	1702	1693	1498	1585	1345
18	2248	2620	2176	2300	2456	2368	2159	2059	1968	1927
19	2528	2832	2638	2647	2654	2647	2369	2371	2337	2130
20	2224	2597	2310	2602	2599	2417	2224	2268	2143	2001
21	1323	1476	1358	1405	1605	1444	1289	1236	1366	1332
22	1010	1174	1316	1259	1274	1268	1192	1087	1216	1178
23	904	958	1065	1173	1102	1018	1059	959	1040	1075
24	753	858	909	1045	1042	996	881	1005	952	963
25-29	2562	2880	2952	3549	3629	3567	3520	3441	3613	3841
30-34	1990	2021	2140	2331	2371	2100	1983	2108	2209	2638
35-39	1931	1727	1888	2095	1989	1758	1674	1719	1709	1834
40-44	1711	1731	1846	1869	1886	1612	1539	1495	1422	1531
45-49	1034	1065	1275	1354	1413	1312	1308	1289	1324	1306
50-54	550	557	696	734	814	780	769	934	970	1067
55-59	261	303	367	359	414	425	365	449	490	598
60-64	110	118	165	155	183	171	199	187	222	249
65 +	140	127	146	161	170	154	165	165	176	167
Age Not Reported	124	40	84	76	39	67	46	33	20	
<b>Arrest Total</b>	<b>29145</b>	<b>30334</b>	<b>29798</b>	<b>31835</b>	<b>32343</b>	<b>30780</b>	<b>29334</b>	<b>28925</b>	<b>29404</b>	<b>29260</b>

## Arrests by Offense, 2002-2011

Offense Classification	2002	2003	2004	2005	2006	2007	2008	2009	2010	2011
Murder/Non-Neg. Manslaughter	6	2	10	9	6	11	4	7	8	9
Negligent Manslaughter		5	4	3	5	5	6	7	1	
Forcible Rape	42	40	53	34	45	37	45	26	43	31
Robbery	25	25	15	22	25	29	23	37	32	22
Aggravated Assault	127	136	159	203	214	235	320	360	354	428
Burglary	316	266	223	220	340	235	264	306	247	215
Larceny/Theft	2264	1924	1856	1830	1700	1979	2366	2485	2487	2610
Motor Vehicle Theft	261	227	189	216	220	174	182	179	155	121
Other Assaults	1798	1691	1656	2015	1989	1982	1947	2047	1977	2013
Arson	25	20	24	15	30	24	22	14	10	12
Forgery and Counterfeiting	192	202	170	161	159	111	71	90	80	66
Fraud	1777	1698	1557	1201	1243	913	646	709	627	421
Embezzlement	4	8	4	15	24	28	30	31	36	41
Stolen Property Offenses	171	148	123	137	124	126	135	126	157	143
Vandalism	802	650	592	572	657	665	557	518	505	469
Weapons Offenses	140	136	198	271	215	174	223	168	165	194
Prostitution		5	15	1	2	6	3	4	5	16
Other Sex Offenses	83	92	94	82	82	62	82	89	90	65
Drug Abuse Violations	1752	2045	2078	2343	2256	2323	2158	2063	2339	2662
Gambling	4		1	4		3	1	1		
Off. Against Family & Children	228	205	221	243	199	177	163	185	132	122
Driving Under the Influence	4467	4854	5783	5946	6488	6085	5815	5819	6050	6600
Liquor Law Violations	6099	6969	5758	5940	6513	6118	5592	5449	5750	4695
Disorderly Conduct	1565	1691	1529	1657	1753	1586	1835	1843	2252	1711
Vagrancy	2	3								
All Other Offenses	6069	6318	6556	7686	7160	6684	5986	5542	5028	5899
Suspicion										
Curfew and Loitering	270	339	264	301	224	279	248	296	268	206
Runaways	656	635	666	708	670	729	610	524	606	489
<b>Arrest Total</b>	<b>29145</b>	<b>30334</b>	<b>29798</b>	<b>31835</b>	<b>32343</b>	<b>30780</b>	<b>29334</b>	<b>28925</b>	<b>29404</b>	<b>29260</b>



## Juvenile Arrests by Offense, 2002-2011

Offense Classification	2002	2003	2004	2005	2006	2007	2008	2009	2010	2011
Murder/Non-Neg. Manslaughter						2				
Negligent Manslaughter		1			1		1			
Forcible Rape	18	11	10	6	4	8	18	8	17	6
Robbery	9	6	8	4	7	5	4	3	5	4
Aggravated Assault	19	14	22	47	30	31	47	34	39	35
Burglary	166	118	99	55	115	94	97	94	71	69
Larceny/Theft	1147	919	792	794	699	876	977	992	895	866
Motor Vehicle Theft	146	119	78	103	105	74	84	88	57	30
Other Assaults	485	420	416	482	474	442	465	427	397	371
Arson	15	16	15	10	15	14	7	5	4	6
Forgery and Counterfeiting	35	22	17	15	9	5	2	9	5	6
Fraud	18	23	12	17	29	34	16	11	14	9
Embezzlement		2		4	4	5	8	3	2	5
Stolen Property Offenses	90	92	51	41	46	43	39	51	63	33
Vandalism	538	410	344	303	362	378	298	254	234	214
Weapons Offenses	36	22	40	41	43	28	43	26	16	21
Prostitution			10							
Other Sex Offenses	32	31	33	20	20	16	20	24	33	11
Drug Offenses	289	249	229	251	264	278	291	293	380	366
Gambling										
Off. Against Family/Children	77	64	84	86	107	91	88	88	50	57
Driving Under the Influence	74	90	92	92	100	66	93	79	52	35
Liquor Law Violations	1645	1741	1304	1255	1469	1341	1217	1029	972	888
Disorderly Conduct	672	738	652	687	714	601	761	729	902	762
Vagrancy										
All Other Offenses	1305	1168	1229	1399	1192	1236	1159	1053	1145	934
Suspicion										
Curfew and Loitering	270	339	264	301	224	279	248	296	268	206
Runaways	656	635	666	708	670	729	610	524	606	489
<b>Juvenile Arrest Total</b>	<b>7742</b>	<b>7250</b>	<b>6467</b>	<b>6721</b>	<b>6703</b>	<b>6676</b>	<b>6593</b>	<b>6120</b>	<b>6227</b>	<b>5423</b>

## Juvenile Arrests by Gender, 2002-2011

Year	Male	% of Total	Female	% of Total	Total
2002	5,043	65.1%	2,699	34.9%	7,742
2003	4,568	63.0	2,682	37.0	7,250
2004	3,909	60.4	2,558	39.6	6,467
2005	4,092	60.9	2,629	39.1	6,721
2006	4,240	63.3	2,463	36.7	6,703
2007	4,108	61.5	2,568	38.5	6,676
2008	4,061	61.6	2,532	38.4	6,593
2009	3,759	61.4	2,361	38.6	6,120
2010	3,784	60.8	2,443	39.2	6,227
2011	3,189	58.8	2,234	41.2	5,423

## Adult Arrests by Offense, 2002-2011

Offense Classification	2002	2003	2004	2005	2006	2007	2008	2009	2010	2011
Murder/Non-Neg. Manslaughter	6	2	10	9	6	9	4	7	8	9
Negligent Manslaughter		4	4	3	4	5	5	7	1	
Forcible Rape	24	29	43	28	41	29	27	18	26	25
Robbery	16	19	7	18	18	24	19	34	27	18
Aggravated Assault	108	122	137	156	184	204	270	326	315	393
Burglary	144	148	119	165	224	141	167	211	176	146
Larceny/Theft	1114	1004	1064	1035	1000	1103	1388	1491	1592	1744
Motor Vehicle Theft	114	108	111	113	115	100	98	91	98	91
Other Assaults	1311	1269	1237	1532	1513	1540	1480	1619	1580	1642
Arson	10	4	9	5	15	9	15	9	6	6
Forgery and Counterfeiting	155	180	151	145	149	106	69	81	75	60
Fraud	1701	1654	1507	1172	1211	845	620	693	611	412
Embezzlement	4	6	4	11	20	23	22	28	34	36
Stolen Property Offenses	80	56	72	96	78	83	96	75	94	110
Vandalism	264	240	246	269	293	287	258	264	270	255
Weapons Offenses	103	114	158	230	172	146	180	142	149	173
Prostitution		5	5	1	2	6	3	4	5	16
Other Sex Offenses	51	61	61	62	62	46	62	65	57	54
Drug Offenses	1438	1795	1846	2066	1983	2035	1857	1762	1957	2296
Gambling	4		1	4		3	1	1		
Off. Against Family/Children	151	141	136	157	91	86	75	96	81	65
Driving Under the Influence	4390	4759	5685	5847	6384	6018	5718	5735	5994	6565
Liquor Law Violations	4449	5222	4449	4674	5038	4775	4369	4418	4774	3807
Disorderly Conduct	892	952	876	969	1035	984	1073	1112	1348	949
Vagrancy	2	3								
All Other Offenses	4748	5147	5309	6271	5963	5430	4819	4483	3879	4965
Suspicion										
<b>Adult Arrest Total</b>	<b>21279</b>	<b>23044</b>	<b>23247</b>	<b>25038</b>	<b>25601</b>	<b>24037</b>	<b>22695</b>	<b>22772</b>	<b>23157</b>	<b>23837</b>

## Adult Arrests by Gender, 2002-2011

Year	Male	% of Total	Female	% of Total	Total
2002	15,859	74.5%	5,420	25.5%	21,279
2003	16,987	73.7	6,057	26.3	23,044
2004	17,004	73.1	6,243	26.9	23,247
2005	18,739	74.8	6,299	25.2	25,038
2006	18,912	73.9	6,689	26.1	25,601
2007	17,677	73.5	6,360	26.5	24,037
2008	16,735	73.7	5,960	26.3	22,695
2009	16,610	72.9	6,162	27.1	22,772
2010	16,901	73.0	6,256	27.0	23,157
2011	17,803	74.7	6,034	25.3	23,837

# Drug Arrest Analysis

---

Drug offense arrests increased by 13.8 percent from a total of 2,339 in 2010 to 2,662 in 2011. The arrest totals shown should not be interpreted as the number of individuals arrested for drug offenses because it is possible that some individuals may have been arrested on more than one occasion for this offense.

More than 77 percent of drug arrests in 2011 were arrests of males.

Juveniles (persons under the age of 18) comprised 13.7 percent of the total in 2011.

More than 88 percent of the drug arrests during the 10-year period were arrests for possession rather than sale or manufacture of drugs.

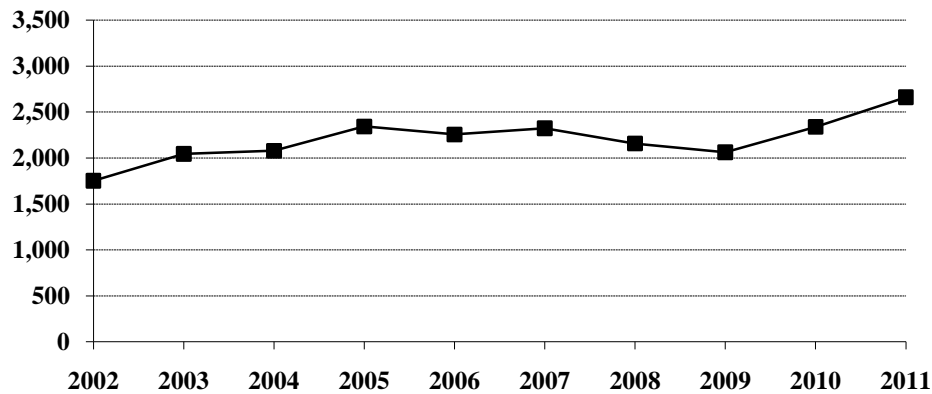
Seventy-one percent of the arrests for drug offenses during the period 2002-2011 involved marijuana.

---

## Arrests for Drug Offenses, 2002-2011

Year	Total	Percent Change from Previous Year
2002	1,752	5.7%
2003	2,045	16.7
2004	2,078	1.6
2005	2,343	12.8
2006	2,256	-3.7
2007	2,323	3.0
2008	2,158	-7.1
2009	2,063	-4.4
2010	2,339	13.4
2011	2,662	13.8

## Arrests for Drug Offenses, 2002-2011



## Drug Arrests by Gender, 2002-2011

Year	Male	% of Total	Female	% of Total	Total
2002	1,340	76.5%	412	23.5%	1,752
2003	1,593	77.9	452	22.1	2,045
2004	1,595	76.8	483	23.2	2,078
2005	1,738	74.2	605	25.8	2,343
2006	1,762	78.1	494	21.9	2,256
2007	1,774	76.4	549	23.6	2,323
2008	1,642	76.1	516	23.9	2,158
2009	1,631	79.1	432	20.9	2,063
2010	1,792	76.6	547	23.4	2,339
2011	2,056	77.2	606	22.8	2,662

## Drug Arrests by Age Category, 2002-2011

Year	Juvenile	Percent of Total	Adult	Percent of Total	Age Not Reported	Percent of Total	Total
2002	289	16.5%	1,438	82.1%	25	1.4%	1,752
2003	249	12.2	1,795	87.8	1	*	2,045
2004	229	11.0	1,846	88.8	3	0.1	2,078
2005	251	10.7	2,066	88.2	26	1.1	2,343
2006	264	11.7	1,983	87.9	9	0.4	2,256
2007	278	12.0	2,035	87.6	10	0.4	2,323
2008	291	13.5	1,857	86.0	10	0.5	2,158
2009	293	14.2	1,762	85.4	8	0.4	2,063
2010	380	16.2	1,957	83.7	2	0.1	2,339
2011	366	13.7	2,296	86.3			2,662

\*Less than 0.1 percent of total drug arrests.

## Drug Arrests by Age Group, 2002-2011

Age Group	2002	2003	2004	2005	2006	2007	2008	2009	2010	2011
Under 10										
10-12	4	3	4	5	4	2	4	3	6	4
13-14	29	33	29	20	34	39	31	31	43	38
15	43	34	40	42	38	47	60	40	81	69
16	93	66	68	90	79	92	91	97	116	111
17	120	113	88	94	109	98	105	122	134	144
18	159	195	163	195	187	209	195	170	182	227
19	152	175	186	197	169	196	175	179	174	260
20	142	157	160	193	180	182	151	161	184	216
21	105	117	117	121	132	148	141	134	147	155
22	83	115	135	124	119	136	126	107	154	144
23	58	87	111	106	98	95	100	99	97	150
24	67	75	110	107	97	106	78	113	108	97
25-29	186	272	250	326	319	385	303	258	303	357
30-34	119	151	190	203	217	155	171	164	201	220
35-39	137	158	129	153	156	136	114	113	111	128
40-44	145	159	168	163	145	111	129	84	97	113
45-49	58	85	82	109	91	87	105	89	80	94
50-54	24	38	33	45	52	59	45	55	64	90
55-59	3	8	9	18	16	22	17	26	40	32
60-64		1	1	1	4	3	5	7	13	11
65 +		2	2	5	1	5	2	3	2	2
No Age Data	25	1	3	26	9	10	10	8	2	
<b>Total</b>	<b>1752</b>	<b>2045</b>	<b>2078</b>	<b>2343</b>	<b>2256</b>	<b>2323</b>	<b>2158</b>	<b>2063</b>	<b>2339</b>	<b>2662</b>

## Drug Arrests by Type of Offense, 2002-2011

Year	Sale or Manufacture	% of Total	Possession	% of Total	Total
2002	134	7.6%	1,618	92.4%	1,752
2003	143	7.0	1,902	93.0	2,045
2004	318	15.3	1,760	84.7	2,078
2005	284	12.1	2,059	87.9	2,343
2006	298	13.2	1,958	86.8	2,256
2007	217	9.3	2,106	90.7	2,323
2008	250	11.6	1,908	88.4	2,158
2009	257	12.5	1,806	87.5	2,063
2010	338	14.5	2,001	85.5	2,339
2011	346	13.0	2,316	87.0	2,662

## Drug Arrests by Age Category and Type of Offense, 2002-2011

Year	Juvenile		Adult		Age Not Reported	
	Sale or Manufacture	Possession	Sale or Manufacture	Possession	Sale or Manufacture	Possession
2002	20	269	110	1,328	4	21
2003	20	229	123	1,672		1
2004	28	201	289	1,557	1	2
2005	17	234	259	1,807	8	18
2006	27	237	268	1,715	3	6
2007	19	259	196	1,839	2	8
2008	33	258	217	1,640		10
2009	17	276	240	1,522		8
2010	20	360	318	1,639		2
2011	32	334	314	1,982		

## Drug Arrests by Type of Drug, 2002-2011

Year	Opiates, Cocaine or Derivatives	Percent of Total	Marijuana	Percent of Total	Other Drugs or Narcotics	Percent of Total	Total
2002	61	3.5%	1,189	67.9%	502	28.6%	1,752
2003	62	3.0	1,428	69.9	555	27.1	2,045
2004	38	1.8	1,333	64.2	707	34.0	2,078
2005	53	2.3	1,516	64.7	774	33.0	2,343
2006	53	2.3	1,621	71.9	582	25.8	2,256
2007	50	2.2	1,783	76.7	490	21.1	2,323
2008	49	2.3	1,681	77.9	428	19.8	2,158
2009	44	2.1	1,533	74.3	486	23.6	2,063
2010	29	1.3	1,722	73.6	588	25.1	2,339
2011	37	1.4	1,837	69.0	788	29.6	2,662

## Drug Arrests by Age Category and Type of Drug, 2002-2011

Year	Juvenile			Adult			Age Not Reported		
	Opiates, Cocaine or Deriv.	Marijuana	Other Drugs or Narcotics	Opiates, Cocaine or Deriv.	Marijuana	Other Drugs or Narcotics	Opiates, Cocaine or Deriv.	Marijuana	Other Drugs or Narcotics
2002	4	251	34	55	923	460	2	15	8
2003	3	206	40	59	1,221	515		1	
2004	3	162	64	35	1,170	641		1	2
2005	2	220	29	51	1,288	727		8	18
2006	1	229	34	52	1,389	542		3	6
2007	1	244	33	49	1,532	454		7	3
2008	5	237	49	44	1,438	375		6	4
2009	2	237	54	42	1,292	428		4	4
2010	1	297	82	28	1,423	506		2	
2011	2	285	79	35	1,552	709			

# DUI Arrest Analysis

---

Reported DUI arrests increased 9.1 percent from 6,050 in 2010 to 6,600 in 2011. The arrest totals should not be interpreted as the number of individuals arrested for DUI offenses because it is possible that some individuals may have been arrested on more than one occasion.

More than 77 percent of the DUI arrests in 2011 were arrests of males.

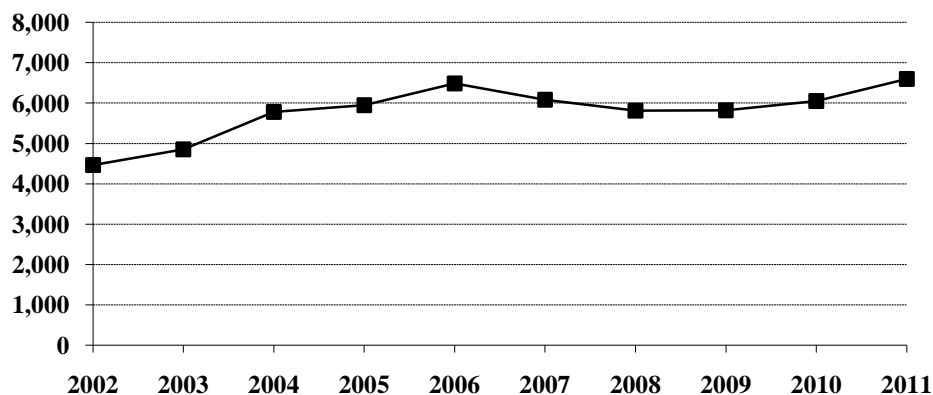
Juveniles, persons under the age of 18, made up 0.5 percent of the total in 2011.

---

## DUI Arrests, 2002-2011

Year	DUI Arrests Reported	Percent Change from Previous Year
2002	4,467	3.9%
2003	4,854	8.7
2004	5,783	19.1
2005	5,946	2.8
2006	6,488	9.1
2007	6,085	-6.2
2008	5,815	-4.4
2009	5,819	0.1
2010	6,050	4.0
2011	6,600	9.1

## DUI Arrests, 2002-2011



### DUI Arrests by Gender, 2002-2011

Year	Male	% of Total	Female	% of Total	Total
2002	3,545	79.4%	922	20.6%	4,467
2003	3,763	77.5	1,091	22.5	4,854
2004	4,459	77.1	1,324	22.9	5,783
2005	4,640	78.0	1,306	22.0	5,946
2006	4,956	76.4	1,532	23.6	6,488
2007	4,620	75.9	1,465	24.1	6,085
2008	4,449	76.5	1,366	23.5	5,815
2009	4,391	75.5	1,428	24.5	5,819
2010	4,639	76.7	1,411	23.3	6,050
2011	5,109	77.4	1,491	22.6	6,600

### DUI Arrests by Age Category, 2002-2011

Year	Juvenile	Percent of Total	Adult	Percent of Total	Age Not Reported	Percent of Total	Total
2002	74	1.6%	4,390	98.3%	3	0.1%	4,467
2003	90	1.9	4,759	98.0	5	0.1	4,854
2004	92	1.6	5,685	98.3	6	0.1	5,783
2005	92	1.6	5,847	98.3	7	0.1	5,946
2006	100	1.5	6,384	98.4	4	0.1	6,488
2007	66	1.1	6,018	98.9	1	*	6,085
2008	93	1.6	5,718	98.3	4	0.1	5,815
2009	79	1.4	5,735	98.5	5	0.1	5,819
2010	52	0.9	5,994	99.0	4	0.1	6,050
2011	35	0.5	6,565	99.5			6,600

\*Less than 0.1 percent of total DUI arrests.



## DUI Arrests by Age Group, 2002-2011

Age Group	2002	2003	2004	2005	2006	2007	2008	2009	2010	2011
Under 10										
10-12										
13-14	3	2	3	1	1	1	2			1
15	6	10	8	5	10	2	8	7	2	3
16	17	25	33	31	28	17	25	27	12	9
17	48	53	48	55	61	46	58	45	38	22
18	114	161	142	121	161	127	121	110	81	94
19	155	195	212	206	187	166	158	138	128	116
20	182	219	205	219	196	166	173	169	135	141
21	276	354	362	344	431	381	340	359	350	366
22	260	300	417	372	373	381	338	300	356	368
23	238	267	305	345	357	339	314	316	307	334
24	188	260	293	278	336	336	304	292	293	303
25-29	660	775	867	1051	1060	1117	1083	1082	1204	1262
30-34	507	526	621	596	735	719	641	654	711	920
35-39	511	436	590	590	624	570	581	554	644	685
40-44	520	480	576	603	621	527	512	514	512	569
45-49	339	354	468	481	560	517	507	501	545	507
50-54	232	214	288	309	346	301	309	377	335	413
55-59	97	120	178	171	199	198	168	205	206	291
60-64	51	46	93	86	98	91	94	90	110	121
65 +	60	52	68	75	100	82	75	74	77	75
No Age Data	3	5	6	7	4	1	4	5	4	
<b>Total</b>	<b>4467</b>	<b>4854</b>	<b>5783</b>	<b>5946</b>	<b>6488</b>	<b>6085</b>	<b>5815</b>	<b>5819</b>	<b>6050</b>	<b>6600</b>

(This page intentionally left blank.)

# **UCR OFFENSE DEFINITIONS**

---

---

# UNIFORM CRIME REPORTING OFFENSE DEFINITIONS

Offenses in Uniform Crime Reporting are divided into two groups designated as Part I and Part II crimes. Information on the number of Part I offenses known to law enforcement, the number cleared by arrest or exceptional means, and the number of persons arrested is reported monthly. Arrest data are reported for Part I and Part II offenses. The Crime Index is composed of offenses 1-7 with the exception as noted in item 1 below.

NOTE: The classifications of these offenses for UCR reporting purposes are based on law enforcement investigation as opposed to determination by a court, medical examiner, jury, or other judicial hearing.

## **PART I OFFENSES:**

### **1. CRIMINAL HOMICIDE**

#### **a. Murder and Non-Negligent Manslaughter**

The willful (non-negligent) killing of one human being by another. Deaths caused by negligence, attempts to kill, assaults to kill, suicides, accidental deaths, and justifiable homicides are excluded. Justifiable homicides are limited to: (1) the killing of a felon by a law enforcement officer in the line of duty, and (2) the killing of a felon by a private citizen.

#### **b. Manslaughter by Negligence**

The killing of another person through gross negligence. Excludes traffic fatalities. While manslaughter by negligence is a Part I crime, it is not included in the Crime Index.

### **2. FORCIBLE RAPE**

The carnal knowledge of a female forcibly and against her will. Included are rapes by force and attempts or assaults to rape. Statutory offenses (no force used -- victim under age of consent) are excluded.

### **3. ROBBERY**

The taking or attempting to take anything of value from the care, custody, or control of a person or persons by force or threat of force or violence, or putting the victim in fear.

### **4. AGGRAVATED ASSAULT**

An unlawful act by one person upon another for the purpose of inflicting severe or aggravated bodily injury. This type of assault usually is accompanied by the use of a weapon or by a means likely to produce death or great bodily harm. Simple assaults are excluded.

### **5. BURGLARY**

Breaking or entering. The unlawful entry of a structure to commit a felony or theft. Attempted forcible entry is included.

**6. LARCENY/THEFT**

The unlawful taking, carrying, leading, or riding away of property from the possession or constructive possession of another. Examples are thefts of bicycles or automobile accessories, shoplifting, pocket-picking, or the stealing of any property or article that is not taken by force and violence or by fraud. Attempted larcenies are included. Embezzlement, “con” games, forgery, worthless checks, etc., are excluded.

**7. MOTOR VEHICLE THEFT**

The theft or attempted theft of a motor vehicle. A motor vehicle is self-propelled and runs on the surface and not on rails. Specifically excluded from this category are motorboats, construction equipment, airplanes, and farming equipment.

**8. ARSON**

Any willful or malicious burning or attempting to burn, with or without intent to defraud, a dwelling house, public building, motor vehicle, personal property of another, etc.

**PART II OFFENSES:**

**9. OTHER ASSAULTS (SIMPLE)**

Assaults or attempted assaults where no weapon was used or which did not result in serious or aggravated injury to the victim.

**10. FORGERY AND COUNTERFEITING**

Making, altering, uttering, or possessing, with the intent to defraud, anything false which is made to appear true. Attempts are included.

**11. FRAUD**

Fraudulent conversion and obtaining money or property by false pretenses. Included are larceny by bailee and bad checks except forgeries and counterfeiting. Attempts are included.

**12. EMBEZZLEMENT**

Misappropriation or misapplication of money or property entrusted to one’s care, custody or control. Attempts are included.

**13. STOLEN PROPERTY -- BUYING, RECEIVING, POSSESSING**

Buying, receiving, or possessing stolen property, including attempts.

**14. VANDALISM**

Willful or malicious destruction, injury, disfigurement, or defacement of any public or private property, real or personal, without consent of the owner or person having custody or control. Attempts are included.

**15. WEAPON OFFENSES -- CARRYING, POSSESSING, ETC.**

All violations of regulations or statutes controlling the carrying, using, possessing, furnishing, and manufacturing of deadly weapons or silencers. Attempts are included.

**16. PROSTITUTION AND COMMERCIALIZED VICE**

Sex offenses of a commercialized nature, such as prostitution, keeping a bawdy house, procuring, or transporting women for immoral purposes. Attempts are included.

**17. OTHER SEX OFFENSES (except forcible rape, prostitution and commercialized vice)**

Statutory rape and offenses against chastity, common decency, morals and the like. Attempts are included.

**18. DRUG ABUSE VIOLATIONS**

State and local offenses relating to narcotic and non-narcotic drugs, such as unlawful possession, sale, use, growing and manufacturing of narcotic and non-narcotic drugs. Attempts are included.

**19. GAMBLING**

Promoting, permitting, or engaging in illegal gambling.

**20. OFFENSES AGAINST FAMILY AND CHILDREN**

Non-support, neglect, desertion, or abuse of family and children.

**21. DRIVING UNDER THE INFLUENCE**

Driving or operating any vehicle or common carrier while drunk or under the influence of liquor or drugs.

**22. LIQUOR LAWS**

State or local liquor law violations, except "drunkenness" (offense 23) and "driving under the influence" (offense 21).

**23. DRUNKENNESS**

Drunkenness or intoxication. Excluded is "driving under the influence" (offense 21). This is not a crime in North Dakota, but is included in the national program.

**24. DISORDERLY CONDUCT**

Breach of peace.

**25. VAGRANCY**

Vagabondage, begging, loitering, etc.

**26. ALL OTHER OFFENSES**

All violations of state or local laws, except offenses 1-25 and traffic offenses.

**27. SUSPICION**

No specific offense; suspect released without formal charges being placed.

**28. CURFEW AND LOITERING**

Offenses relating to violation of local curfew and loitering ordinances where such laws exist.

**29. RUNAWAYS**

Limited to juveniles taken into protective custody under provisions of local statutes.

(This page intentionally left blank.)



**FULL-TIME LAW  
ENFORCEMENT EMPLOYEES**

---

---

**NUMBER OF FULL-TIME LAW ENFORCEMENT EMPLOYEES  
REPORTED BY UCR AGENCIES  
AS OF OCTOBER 31, 2011**

Agency	Law Enforcement Officers		Civilian Personnel		Total Full-Time			Population
	Male	Female	Male	Female	Male	Female	Total	
Adams SO	2				2		2	2,383
Barnes SO	5	1		1	5	2	7	4,557
Valley City PD	11	1		6	11	7	18	6,696
Benson SO	4				4		4	6,772
Billings SO	4				4		4	682
Medora PD	2				2		2	114
Bottineau SO	8		2	2	10	2	12	6,537
Bowman SO	3				3		3	1,526
Bowman PD	3				3		3	1,678
Scranton PD	1				1		1	NR
Burke SO	5			1	5	1	6	1,716
Powers Lake PD								285
Burleigh SO	36	5	1	8	37	13	50	17,927
Bismarck PD	86	10	7	21	93	31	124	62,305
Lincoln PD	1				1		1	2,447
Cass SO	58	15	35	31	93	46	139	18,711
Fargo PD	118	26	1	17	119	43	162	97,329
West Fargo PD	34	2		10	34	12	46	26,266
NDSU PD	10	5	3	6	13	11	24	10,000
Cavalier SO	5		2	4	7	4	11	4,060
Dickey SO	4			1	4	1	5	2,073
Ellendale PD	2				2		2	1,418
Oakes PD	3				3		3	1,887
Divide SO	6				6		6	1,018
Crosby PD								1,088
Dunn SO	8			1	8	1	9	2,832
Killdeer PD	3				3		3	764
Eddy SO	3	1		1	3	2	5	2,425
Emmons SO	3			1	3	1	4	2,495
Linton PD	1				1		1	1,115
Foster SO	2	1			2	1	3	1,299
Carrington PD	3	1			3	1	4	2,100
Golden Valley SO	4			1	4	1	5	1,708
Grand Forks SO	31	2		7	31	9	40	10,505
Grand Forks PD	71	11	5	10	76	21	97	43,729
Larimore PD								1,369
Northwood PD	2				2		2	961
Emerado PD								421
Thompson PD	1				1		1	1,003
UND PD	11	1		2	11	3	14	10,000
Grant SO	3	1			3	1	4	2,434
Griggs SO	4			1	4	1	5	2,461
Hettinger SO	3	1			3	1	4	2,519
Kidder SO	3			1	3	1	4	1,749
Steele PD	1				1		1	727
LaMoure SO	4			1	4	1	5	3,305
Kulm PD	1				1		1	NR
LaMoure PD	1				1		1	904
Logan SO	2		2		4		4	1,219
Napoleon PD	1				1		1	805
McHenry SO	6	1			6	1	7	5,486
McIntosh SO	2	1			2	1	3	1,837
Wishek PD	2				2		2	1,019
McKenzie SO	9	7			9	7	16	4,694
Watford City PD	6	1			6	1	7	1,773
McLean SO	17		5	8	22	9	31	9,113
Mercer SO	14		2	6	16	6	22	2,940
Beulah PD	5			1	5	1	6	3,174
Hazen PD	4				4		4	2,452
Morton SO	18	2	9	8	27	10	37	9,294
Mandan PD	24	3	2	6	26	9	35	18,640

Agency	Law Enforcement Officers		Civilian Personnel		Total Full-Time			Population
	Male	Female	Male	Female	Male	Female	Total	
Mountrail SO	10		1	8	11	8	19	6,319
Stanley PD	3				3		3	1,483
Nelson SO	4			1	4	1	5	3,179
Oliver SO	2			1	2	1	3	1,877
Center PD	1				1		1	NR
Pembina SO	7		2	3	9	3	12	6,214
Cavalier PD	4				4		4	1,324
Pierce SO	3		1	4	4	4	8	1,506
Rugby PD	4				4		4	2,924
Ramsey SO	6			1	6	1	7	4,383
Devils Lake PD	15	1	1	1	16	2	18	7,261
Ransom SO	3	1		1	3	2	5	3,359
Lisbon PD	2	1			2	1	3	2,190
Renville SO	1	3			1	3	4	2,266
Mohall PD								NR
Sherwood PD	1				1		1	246
Richland SO	14	1	10	10	24	11	35	8,699
Wahpeton PD	11	3		2	11	5	16	5,897
NDSCS PD	4				4		4	2,000
Rolette SO	9		4	5	13	5	18	12,523
Rolla PD	4				4		4	1,302
St. John PD								347
Sargent SO	4			1	4	1	5	3,894
Sheridan SO	3				3		3	1,343
Sioux SO	1				1		1	4,223
Slope SO	1				1		1	739
Stark SO	15			3	15	3	18	5,401
Dickinson PD	30	1	4	12	34	13	47	18,087
Belfield PD	2				2		2	813
South Heart PD								306
Steele SO	3				3		3	2,008
Stutsman SO	8	1		2	8	3	11	5,769
Jamestown PD	27	2		4	27	6	33	15,687
Towner SO	2			1	2	1	3	1,150
Cando PD	2				2		2	1,134
Traill SO	7	1		5	7	6	13	6,628
Hillsboro PD	1	1			1	1	2	1,630
Walsh SO	10		2	4	12	4	16	6,950
Grafton PD	10			1	10	1	11	4,356
Ward SO	18	4	14	11	32	15	47	17,996
Kenmare PD	2				2		2	1,114
Minot PD	52	9	5	18	57	27	84	41,577
Burlington PD	2				2		2	1,078
Surrey PD	1				1		1	950
Wells SO	3				3		3	1,978
Harvey PD	2	1			2	1	3	1,813
Fessenden PD	1				1		1	487
Williams SO	23	4	10	6	33	10	43	7,812
Tioga PD	3				3		3	NR
Williston PD	24	2	2	7	26	9	35	14,964
Highway Patrol	136	5	18	30	154	35	189	
<b>Total</b>	<b>1,185</b>	<b>141</b>	<b>150</b>	<b>305</b>	<b>1,335</b>	<b>446</b>	<b>1,781</b>	<b>683,932</b>

NR = Not Reporting