

Office of Attorney General
Bureau of Criminal Investigation

Crime in North Dakota, 2012

A Summary of Uniform Crime Report Data

Wayne Stenehjem
Attorney General

Prepared by
Colleen Weltz
UCR Program Manager
2013

INTRODUCTION

The North Dakota Uniform Crime Reporting (UCR) program involves the collection, compilation, and analysis of crime and arrest statistics reported by the various local law enforcement agencies throughout the state. Fifty-two sheriffs' departments and 43 police departments reported to the UCR program in 2012.

INCIDENT-BASED REPORTING: North Dakota law enforcement agencies use a standard incident form to collect data on each incident reported to their respective agencies. This form collects much more detailed information than is collected using summary reporting. Data collected includes: type of incident, where and when the incident took place, victim characteristics, suspect/arrestee characteristics, property involved in the incident, etc. A total of 95 police departments and sheriffs' departments reported incident data for all or part of 2012.

In order to continue the statistical time-series begun with summary reporting, computer programs were written to extract summary data from the incident data reported. Crime in North Dakota, 2012 is a report on summary data.

SUMMARY REPORTING: Law enforcement agencies use a tally system to report the number of crime index offenses and arrests for each month. North Dakota no longer has any agencies reporting summary data.

The federal counterpart of the North Dakota UCR program is the National UCR program under the direction of the Federal Bureau of Investigation (FBI). The UCR program has been used nationally and in North Dakota for many years to measure the extent, distribution and fluctuation of crime through the crime index. The crime index is not an absolute measure, but rather an indication of the amount and type of crime occurring in any given jurisdiction. The index is composed of seven crimes that are sub-classified as follows:

VIOLENT CRIME: Murder/Non-Negligent Manslaughter
Forcible Rape
Robbery
Aggravated Assault

PROPERTY CRIME: Burglary
Larceny/Theft
Motor Vehicle Theft

A Modified Crime Index is also calculated at the federal level. This includes arson as the fourth property crime and the eighth index offense. Data on arson is not included in this report.

Prior to an offense becoming recorded in the UCR program, it must be reported to the local law enforcement officials and reported by the local agency to the UCR program. Consequently, the UCR program only reflects reported crimes. Reporting of crimes depends on several factors, including actual perception of an act as a crime, the probability of loss of status for reporting (as in cases of rape), and the perceived probability of action on the part of the law enforcement agency contacted.

Several types of data are gathered, including:

Offense data

- Number of known crime index offenses
- Type and value of stolen property
- Additional information on homicides and arson
- Law enforcement officers killed or assaulted

Arrest and Clearance Data

- Number and type of offenses cleared
- Number and type of index offenses involving juveniles cleared
- Number of persons arrested, by offense
- Characteristics of persons arrested (age, sex, race)

To allow for comparison among several geographic or jurisdictional areas with differing populations or to allow comparisons across time in an area undergoing population fluctuations, the UCR program provides for the calculation of crime rates to remove any potential biases created by population differences. Because a rate relates the incidence of activity to population, it is possible to measure annual fluctuations in criminal activity by comparing rates of crime reported in any given year with those reported in other years. National publications report crime rates calculated based on the number of reported offenses per 100,000 population. This publication provides crime rate information calculated in the same manner.

TABLE OF CONTENTS

Introduction.....	i
Table of Contents.....	iii
North Dakota Crime Summary, 2012.....	v
Crime Index Offense Analysis.....	1
Violent Crime.....	7
Murder/Non-Negligent Manslaughter.....	9
Forcible Rape.....	11
Robbery.....	13
Aggravated Assault.....	16
Property Crime.....	18
Burglary.....	20
Larceny/Theft.....	23
Motor Vehicle Theft.....	26
Crime Index Offenses by Reporting Jurisdiction.....	29
Arrest Analysis.....	35
Arrests in 2012.....	36
Arrest Analysis by Reporting Jurisdiction.....	42
Arrests 2003-2012.....	45
Drug Arrest Analysis.....	51
DUI Arrest Analysis.....	55
UCR Offense Definitions.....	59
Full-Time Law Enforcement Employees.....	65

(This page intentionally left blank.)

NORTH DAKOTA CRIME SUMMARY, 2012

In 2012, 14,866 crime index offenses were reported by local law enforcement agencies. This is an increase of 7.9 percent from the total of 13,778 reported in 2011.

Crime index offenses include: murder/non-negligent manslaughter, forcible rape, robbery, aggravated assault, burglary, larceny/theft, and motor vehicle theft.

The Census Bureau estimate of North Dakota's population for 2012 is 699,628. The index crime rate per 100,000 population for 2012 was 2124.8. The index crime rate for 2011 was 2014.5 per 100,000 population. This is a 5.5 percent increase in the crime rate.

The total number of reported violent index crimes (murder, rape, robbery, and aggravated assault) was 1,451. This represents an increase of 7.2 percent from the total of 1,353 reported in 2011. In 2010, 1,165 violent index crimes were reported.

Violent crime accounted for 9.8 percent of total index crimes reported in 2012.

Collectively, property crimes (burglary, larceny/theft and motor vehicle theft) increased by 8.0 percent from 12,425 reported in 2011 to 13,415 reported in 2012.

Property crime accounted for 90.2 percent of total crime index offenses reported in 2012.

The 10,184 larceny/theft offenses reported in 2012 accounted for 68.5 percent of total index crimes.

More than \$22.2 million worth of property was reported stolen in 2012, with over 26 percent of that amount reported as recovered by law enforcement officials.

North Dakota law enforcement agencies reported 32,380 arrests in 2012. A total of 29,260 arrests was reported in 2011.

In 2012, juvenile arrests accounted for 16.9 percent of the total arrests. Juvenile arrests were 24.8 percent of the total arrests of crime index offenses.

The number of reported arrests in 2012 for DUI increased to 7,322 from 6,600 reported in 2011.

Arrests for drug offenses increased 7.9 percent from a 2011 total of 2,662 to 2,872 in 2012.

(This page intentionally left blank.)

CRIME INDEX OFFENSE ANALYSIS

(This page intentionally left blank.)

Crime Index Offenses

Crime index offenses include the violent crimes of murder/non-negligent manslaughter, forcible rape, robbery, and aggravated assault, and the property crimes of burglary, larceny/theft, and motor vehicle theft.

In 2012, 14,866 crime index offenses were reported by local law enforcement agencies. This is an increase of 7.9 percent from the total of 13,788 reported in 2011.

The Census Bureau estimate of North Dakota's population for 2012 is 699,628. Based on that total, the index crime rate per 100,000 population for 2012 was 2124.8, as compared to 2014.5 for 2011. See the crime index offense summary on page 5 for crime rate information for the period 2003-2012.

More than 25 percent of crime index offenses were reported as cleared by arrest or exceptional means. The UCR program defines an offense as "cleared" by law enforcement when at least one person is arrested, charged with the commission of the offense, and turned over to the court for prosecution. Several crimes may be cleared by the arrest of one person, while the arrests of many persons may clear only one offense. Law enforcement agencies may clear a crime by exceptional means when some element beyond law enforcement control precludes the placing of formal charges against the offender. Examples of circumstances that allow such clearances are the death of the offender (suicide, justifiably killed by police or private citizen, etc.); the victim's refusal to cooperate with prosecution after the offender has been identified; or the denial of extradition.

In 2012, 3,765 arrests were reported for crime index offenses. Of that total, 24.8 percent were arrests of juveniles.

More than \$22.2 million worth of property was reported stolen in 2012, with 26.3 percent of that amount reported as recovered by law enforcement officials.

Crime Index Offenses Reported, 2012

Crime Index Offense	Number Reported	Percent of Total Index Offenses
Murder/Non-Negligent Manslaughter	20	0.1%
Forcible Rape	243	1.6
Robbery	117	0.8
Aggravated Assault	1,071	7.2
Violent Crime Subtotal	1,451	9.8
Burglary	2,200	14.8
Larceny/Theft	10,184	68.5
Motor Vehicle Theft	1,031	7.0
Property Crime Subtotal	13,415	90.2
Crime Index Offense Total	14,866	100.0

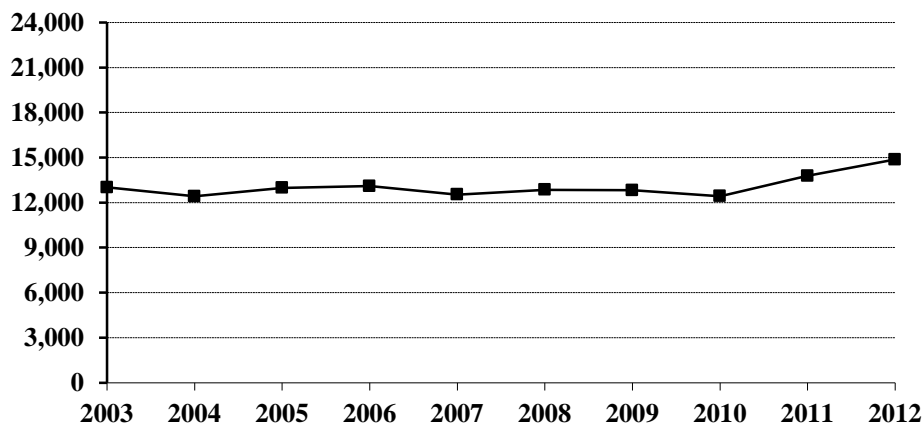
Comparison of Crime Index Offenses Reported, 2011-2012

Crime Index Offense	2011	2012	Percent Change
Murder/Non-Negligent Manslaughter	15	20	33.3%
Forcible Rape	207	243	17.4
Rape by Force	203	232	14.3
Attempts to Rape	4	11	175.0
Robbery	91	117	28.6
Firearm	27	25	-7.4
Knife or Cutting Instrument	13	16	23.1
Other Dangerous Weapon	21	24	14.3
Strong Arm – No Weapon	30	52	73.3
Aggravated Assault	1,040	1,071	3.0
Firearm	22	17	-22.7
Knife or Cutting Instrument	117	115	-1.7
Other Dangerous Weapon	263	303	15.2
Hands, Fists, Feet, Etc.	638	636	-0.3
Violent Crime Subtotal	1,353	1,451	7.2
Burglary	2,227	2,200	-1.2
Forcible Entry	1,006	1,041	3.5
Unlawful Entry – No Force	1,088	1,042	-4.2
Attempted Forcible Entry	133	117	-12.0
Larceny/Theft	9,344	10,184	9.0
Motor Vehicle Theft	854	1,031	20.7
Autos	716	824	15.1
Trucks and Buses	48	75	56.3
Other Vehicles	90	132	46.7
Property Crime Subtotal	12,425	13,415	8.0
Crime Index Offense Total	13,778	14,866	7.9

Crime Index Offenses, 2003-2012

Crime Index Offense	2003	2004	2005	2006	2007	2008	2009	2010	2011	2012
Murder/Non-Neg. Mansl.	12	10	14	9	17	4	15	11	15	20
Forcible Rape	143	181	179	195	202	222	206	222	207	243
Robbery	55	49	53	72	68	71	102	85	91	117
Aggravated Assault	289	343	444	532	599	738	795	847	1040	1071
Burglary	1814	1953	1966	2302	2096	2035	2180	1826	2227	2200
Larceny/Theft	9700	8984	9293	9012	8672	8926	8699	8673	9344	10184
Motor Vehicle Theft	1002	892	1030	977	878	854	825	763	854	1031
Crime Index Offense Total	13015	12412	12979	13099	12532	12850	12822	12427	13778	14866

Crime Index Offense Totals, 2003-2012



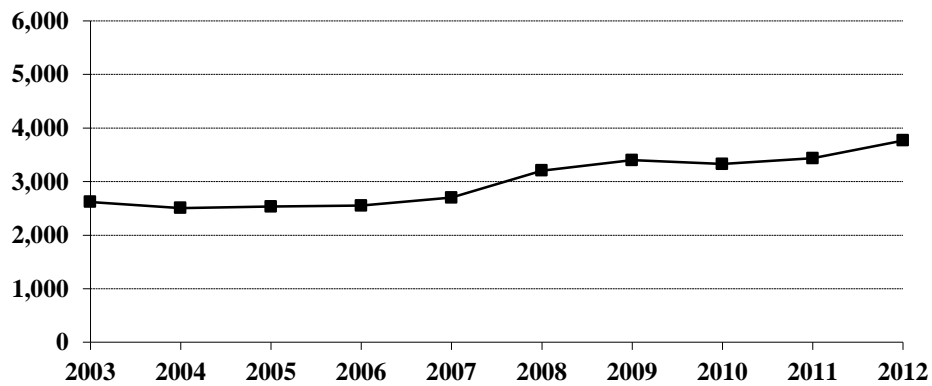
Crime Index Offense Summary

Year	Population	Crime Index Offense Total	% Change in Number from Previous Year	Crime Rate per 100,000 Population	% Change in Rate from Previous Year	Percent Cleared
2003	634,000	13,015	-14.6%	2052.8	-14.6%	20.8%
2004	634,500	12,412	-4.6	1956.2	-4.7	20.7
2005	637,000	12,979	4.6	2037.5	4.2	20.2
2006	636,000	13,099	0.9	2059.6	1.1	21.0
2007	640,000	12,532	-4.3	1958.1	-4.9	22.2
2008	641,500	12,850	2.5	2003.1	2.3	26.1
2009	647,000	12,822	-0.2	1981.8	-1.1	27.5
2010	672,591	12,427	-3.1	1847.6	-6.8	28.9
2011	683,932	13,778	10.9	2014.5	9.0	27.3
2012	699,628	14,866	7.9	2124.8	5.5	25.6

Arrests for Crime Index Offenses, 2003-2012

Year	Juvenile	Adult	Age Not Reported	Total
2003	1,187	1,432	1	2,620
2004	1,009	1,491	5	2,505
2005	1,009	1,524	1	2,534
2006	960	1,588	2	2,550
2007	1,090	1,610		2,700
2008	1,227	1,973	4	3,204
2009	1,219	2,178	3	3,400
2010	1,084	2,242		3,326
2011	1,010	2,426		3,436
2012	934	2,831		3,765

Arrests for Crime Index Offenses, 2003-2012



Property Loss Due to Crime Index Offenses, 2003-2012

Year	Population	Total Property Loss	% Change from Previous Year	Property Loss per Capita	Percent Recovered
2003	634,000	\$11,457,228	-8.0%	\$18.07	31.5%
2004	634,500	11,397,856	-0.5	17.96	35.7
2005	637,000	12,390,920	8.7	19.45	37.7
2006	636,000	12,446,104	0.4	19.57	30.6
2007	640,000	10,730,659	-13.8	16.77	36.9
2008	641,500	12,142,441	13.2	18.93	37.6
2009	647,000	11,700,881	-3.6	18.08	30.9
2010	672,591	11,968,019	2.3	17.79	28.2
2011	683,932	16,200,979	35.4	23.69	31.3
2012	699,628	22,227,490	37.2	31.77	26.3

Violent Crime

Violent crime includes the offenses of murder/non-negligent manslaughter, forcible rape, robbery, and aggravated assault. (See the UCR offense definitions section beginning on page 58 of this publication for definitions of these and other offenses.)

In 2012, 1,451 violent crimes were reported in North Dakota. This is a 7.2 percent increase from the 2011 total of 1,353 violent offenses reported. In 2010, 1,165 violent crimes were reported.

Violent crime comprised 9.8 percent of reported crime index offenses in North Dakota in 2012.

The violent crime rate for 2012 is 207.4 per 100,000, as compared to 197.8 per 100,000 in 2011. This is 4.9 percent increase in the violent crime rate. In 2010, the violent crime rate was 173.2 per 100,000 population.

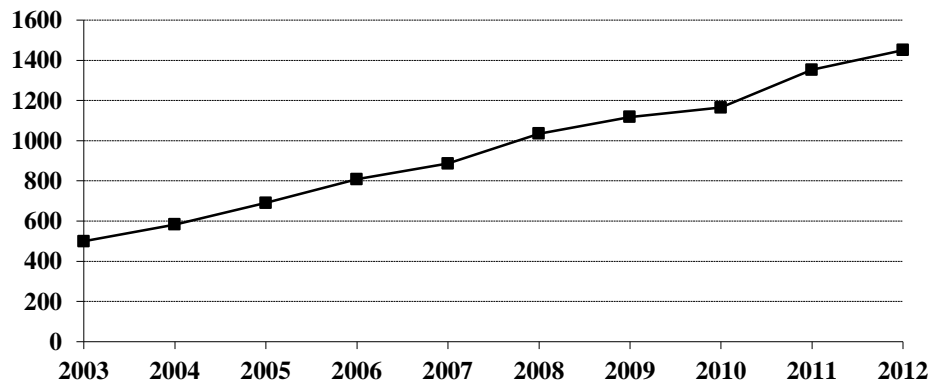
More than 50 percent of violent crimes in 2012 were reported as cleared by arrest or exceptional means.

Of the 544 total arrests reported for violent crimes, 10.8 percent were arrests of juveniles.

Violent Crime Summary

Year	Population	Violent Index Offenses	% Change in Number from Previous Year	Rate per 100,000 Population	% Change in Rate from Previous Year	Percent Cleared
2003	634,000	499	-9.8%	78.7	-9.7%	57.3%
2004	634,500	583	16.8	91.9	16.8	52.1
2005	637,000	690	18.4	108.3	17.8	51.4
2006	636,000	808	17.1	127.0	17.3	47.9
2007	640,000	886	9.7	138.4	9.0	44.6
2008	641,500	1,035	16.8	161.3	16.5	52.8
2009	647,000	1,118	8.0	172.8	7.1	52.4
2010	672,591	1,165	4.2	173.2	0.2	54.8
2011	683,932	1,353	16.1	197.8	14.2	54.4
2012	699,628	1,451	7.2	207.4	4.9	50.5

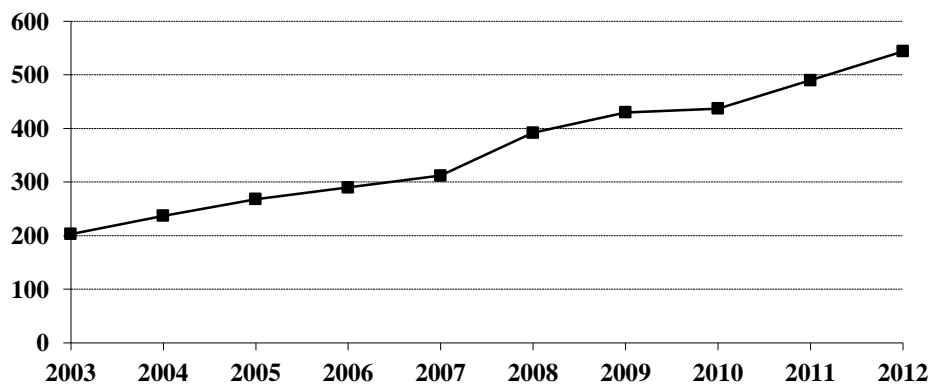
Violent Crime Totals, 2003-2012



Arrests for Violent Crimes, 2003-2012

Year	Juvenile	Adult	Age Not Reported	Total
2003	31	172		203
2004	40	197		237
2005	57	211		268
2006	41	249		290
2007	46	266		312
2008	69	320	3	392
2009	45	385		430
2010	61	376		437
2011	45	445		490
2012	59	485		544

Arrests for Violent Crimes, 2003-2012



Murder/Non-Negligent Manslaughter

The UCR program defines Murder/Non-Negligent Manslaughter as the “willful killing of one human being by another.” Not included in this category are attempts to murder, assaults to murder, suicides, accidental deaths, justifiable homicides, and deaths caused by gross negligence.

Twenty murder/non-negligent manslaughter deaths were known to the North Dakota UCR program in 2012.

Fourteen of the twenty victims were adults. “Adult” is defined as a person aged 18 years or older. Fourteen of the victims were male.

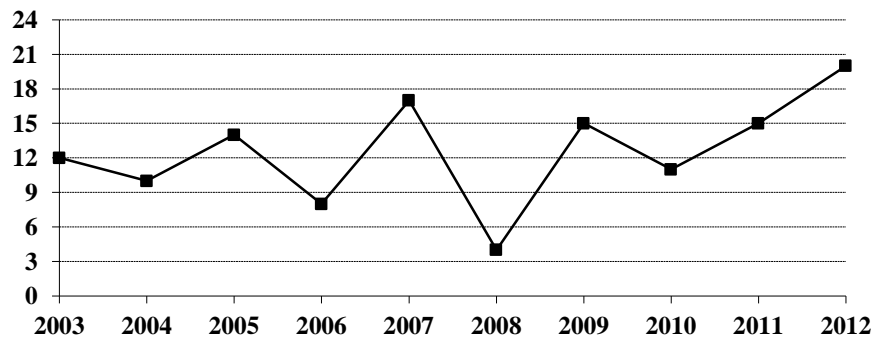
Firearms were involved in the deaths of seven homicide victims. In 6 homicides, the weapon involved was a cutting instrument. (See the summary of homicide incidents and the weapons involved on page 10.)

The Office of Attorney General publishes a detailed report titled Homicide in North Dakota. The report provides an analysis of homicides for the period 1993-2012 and is available on our website at www.ag.nd.gov, under the Crime Reports link.

Murder/Non-Negligent Manslaughter Summary

Year	Population	Offense Total	% Change in Number from Previous Year	Rate per 100,000 Population	% Change in Rate from Previous Year	Percent Cleared
2003	634,000	12	100.0%	1.9	111.1%	100.0%
2004	634,500	10	-16.7	1.6	-15.8	100.0
2005	637,000	14	40.0	2.2	37.5	78.6
2006	636,000	8	-42.9	1.3	-40.9	88.9
2007	640,000	17	112.5	2.7	107.7	94.1
2008	641,500	4	-76.5	0.6	-77.8	100.0
2009	647,000	15	275.0	2.3	283.3	93.3
2010	672,591	11	-26.7	1.6	-30.4	100.0
2011	683,932	15	36.4	2.2	37.5	93.3
2012	699,628	20	33.3	2.9	31.8	95.0

Murder/Non-Negligent Manslaughter Totals, 2003-2012



Summary of Murder/Non-Negligent Manslaughter Incidents, 2012

Date & Location of Incident	Victim(s)		Assailant(s)		Weapons Used	Relationship of Victim to Assailant	Circumstances
	Age	Sex	Age	Sex			
1/31/2012 Beulah	22	M	29 24	M M	Firearm	Friend Friend	Drug Related
2/28/2012 Fargo	52	F	49	M	Knife/Cutting Instrument	Spouse	Domestic Violence
03/26/2012 Bismarck	83	F	47	M	Blunt Object	Parent	Domestic Violence
4/19/2012 Mandan	60	F	65	M	Knife/Cutting Instrument	Girlfriend	Domestic Violence
6/3/2012 Fort Berthold Res.	27	M			Unknown	Unknown	Unknown Circumstance
7/6/2012 Bismarck	40	M	42	M	Knife/Cutting Instrument	Acquaintance	Unknown Circumstance
7/8/2012 Fargo	51	F	54	M	Firearm	Spouse	Murder/Suicide Domestic Violence
7/8/2012 Bottineau	9 5	M M	30	M	Motor Vehicle	Otherwise Known Otherwise Known	Other Circumstance
7/20/2012 Fort Berthold Res.	30	M	20	M	Knife/Cutting Instrument	Otherwise Known	Other Circumstance
8/4/2012 Williams County	57	M	24	M	Handgun	Otherwise Known	Argument
8/14/2012 Watford City	26	M	22	M	Motor Vehicle	Acquaintance	Argument
9/19/2012 Ransom County	1	M	28	F	Personal Weapon	Child	Child Abuse Domestic Violence
10/29/2012 Mandan	30	M	23	M	Personal Weapon	Acquaintance	Argument
11/10/2012 Standing Rock Res.	20	M	22	F	Knife/Cutting Instrument	Boyfriend	Argument Domestic Violence
11/18/2012 Mountrail County	64 13 10 6	F M F M	23	M	Rifle	Stranger	Murder/Suicide
12/2/2012 Turtle Mountain Res.	21	M	21 16	M M	Knife/Cutting Instrument	Acquaintance Acquaintance	Argument

Forcible Rape

The UCR program defines Forcible Rape as “the carnal knowledge of a female forcibly and against her will.” Assaults to rape, attempts to commit rape by force or threat of force are included. Carnal abuse, statutory offenses (no force -- victim under age of consent), and other sex offenses are not included.

In 2012, 243 forcible rapes were reported to local law enforcement in North Dakota. This is an increase of 17.4 percent from the 2011 total of 207 offenses. A total of 222 forcible rapes was also reported in 2010.

Because the UCR definition states that victims of rape must be female, the rate of occurrence for reported rapes is calculated based only on the female population. The Census Bureau estimate of North Dakota’s population for 2012 is 699,628. The number of females is approximately half of that figure. The resulting rate for 2012 is 69.5 reported rapes per 100,000 females, compared with 60.5 rapes per 100,000 females in 2011. In 2010, the forcible rape rate was 66.0 per 100,000 females.

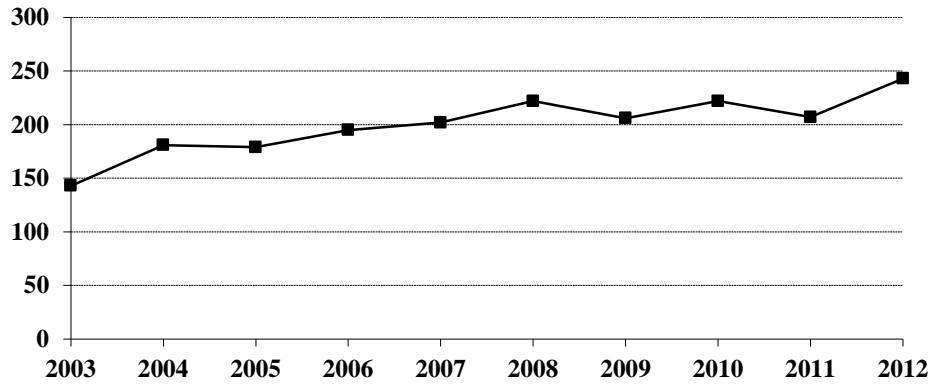
In 2012, 33.7 percent of reported rapes were cleared by arrest or exceptional means.

Forty-five arrests for forcible rape were reported in 2012. More than 62 percent of those arrested were adults. In 2011, 31 arrests for rape were reported.

Forcible Rape Summary

Year	Population	Offense Total	% Change in Number from Previous Year	Rate per 100,000 Females	% Change in Rate from Previous Year	Percent Cleared
2003	634,000	143	-14.4%	45.1	-14.4%	51.7%
2004	634,500	181	26.6	57.1	26.6	40.3
2005	637,000	179	-1.1	56.2	-1.6	35.8
2006	636,000	195	8.9	61.3	9.1	31.8
2007	640,000	202	3.6	63.1	2.9	28.7
2008	641,500	222	9.9	69.2	9.7	29.7
2009	647,000	206	-7.2	63.7	-7.9	29.1
2010	672,591	222	7.8	66.0	3.6	34.2
2011	683,932	207	-6.8	60.5	-8.3	33.3
2012	699,628	243	17.4	69.5	14.9	33.7

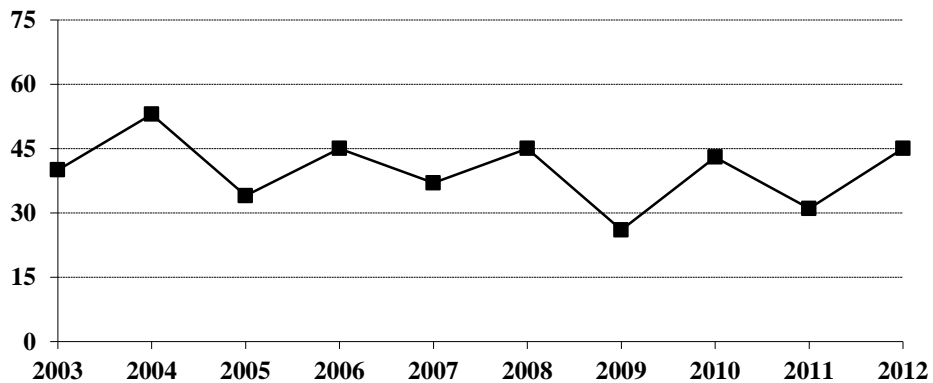
Forcible Rape Totals, 2003-2012



Arrests for Forcible Rape, 2003-2012

Year	Juvenile	Adult	Total
2003	11	29	40
2004	10	43	53
2005	6	28	34
2006	4	41	45
2007	8	29	37
2008	18	27	45
2009	8	18	26
2010	17	26	43
2011	6	25	31
2012	17	28	45

Arrests for Forcible Rape, 2003-2012



Robbery

Robbery is defined by the UCR program as “the taking or attempting to take anything of value from the care, custody, or control of a person or persons by force or threat of force or violence and/or by putting the victim in fear.”

In 2012, there were 117 robberies reported in North Dakota. This is an increase of 28.6 percent from the total of 91 reported in 2011. A total of 85 robberies was reported in 2010.

The robbery rate for 2012 was 16.7 per 100,000 population, as compared with 13.3 per 100,000 population in 2011. This is a 25.6 percent increase in the robbery rate.

More than 32 percent of reported robberies were cleared by arrest or exceptional means.

Forty-eight arrests for robbery were reported in 2012. Thirty-five of those arrested were adults.

Firearms were used in 25 of the reported robberies in 2012.

More than 44 percent were strong-arm robberies where no weapon was used.

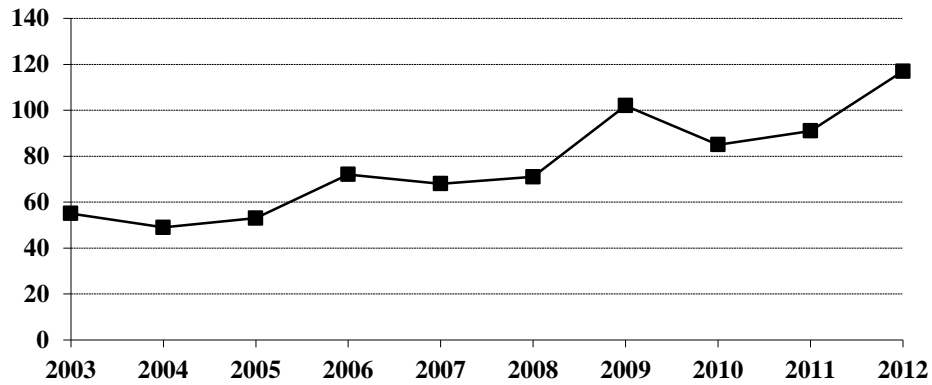
The value of property stolen in robbery incidents increased from \$60,393 in 2011 to \$96,584 in 2012.

The average robbery in 2012 involved \$826 worth of property.

Robbery Summary

Year	Population	Offense Total	% Change in Number from Previous Year	Rate per 100,000 Population	% Change in Rate from Previous Year	Percent Cleared
2003	634,000	55	-22.5%	8.7	-22.3%	43.6%
2004	634,500	49	-10.9	7.7	-11.5	26.5
2005	637,000	53	8.2	8.3	7.8	34.0
2006	636,000	72	35.8	11.3	36.1	36.1
2007	640,000	68	-5.6	10.6	-6.2	30.9
2008	641,500	71	4.4	11.1	4.7	28.2
2009	647,000	102	43.7	15.8	42.3	36.3
2010	672,591	85	-16.7	12.6	-20.3	35.3
2011	683,932	91	7.1	13.3	5.6	31.9
2012	699,628	117	28.6	16.7	25.6	32.5

Robbery Totals, 2003-2012



Robbery by Type of Weapon Involved, 2012

Type of Weapon	Number Reported	Percent of Total Offenses
Firearm	25	21.4%
Knife or Cutting Instrument	16	13.7
Other Dangerous Weapon	24	20.5
Hands, Fists, Feet, etc.	52	44.4
Robbery Total	117	100.0

Robbery by Place of Occurrence and Value of Property, 2012

Place of Occurrence	Number Reported	Value of Property	Average Value per Robbery
Highway	30	\$30,390	\$1,013.00
Commercial House	23	22,199	965.17
Gas or Service Station	3	863	287.67
Convenience Store	2	1,126	563.00
Residence	28	12,718	454.21
Bank	4	20,816	5,204.00
Other	27	8,472	313.78
Robbery Total	117	96,584	825.50

Arrests for Robbery, 2003-2012

Year	Juvenile	Adult	Total
2003	6	19	25
2004	8	7	15
2005	4	18	22
2006	7	18	25
2007	5	24	29
2008	4	19	23
2009	3	34	37
2010	5	27	32
2011	4	18	22
2012	13	35	48

Property Loss Due to Robbery, 2003-2012

Year	Offense Total	Property Loss	Average Loss per Robbery
2003	55	\$50,180	\$912.36
2004	49	19,915	406.43
2005	53	16,608	313.36
2006	72	62,319	865.54
2007	68	80,292	1,180.76
2008	71	66,036	930.08
2009	102	141,456	1,386.82
2010	85	27,073	318.51
2011	91	60,393	663.66
2012	117	96,584	825.50

Aggravated Assault

The UCR program defines Aggravated Assault as “an unlawful attack by one person upon another for the purpose of inflicting severe or aggravated bodily injury. This type of assault is usually accompanied by the use of a weapon or by means likely to produce death or great bodily harm. Attempts are included because it is not necessary that an injury result when a gun, knife, or other weapon is used which could and probably would result in serious personal injury if the crime were successfully completed.”

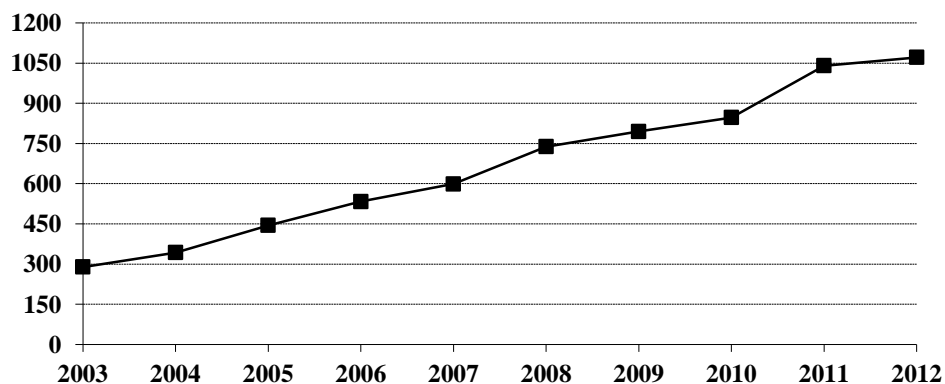
In 2012, 1,071 aggravated assaults were reported in North Dakota, an increase of 3.0 percent from the 1,040 aggravated assaults reported in 2011. In 2010, 847 aggravated assaults were reported.

The aggravated assault rate for North Dakota increased 0.7 percent from 152.1 per 100,000 population in 2011 to 153.1 per 100,000 population in 2012.

Aggravated Assault Summary

Year	Population	Offense Total	% Change in Number from Previous Year	Rate per 100,000 Population	% Change in Rate from Previous Year	Percent Cleared
2003	634,000	289	-6.5%	45.6	-6.4%	60.9%
2004	634,500	343	18.7	54.1	18.6	60.6
2005	637,000	444	29.4	69.7	28.8	59.0
2006	636,000	533	20.0	83.8	20.2	54.8
2007	640,000	599	12.4	93.6	11.7	50.3
2008	641,500	738	23.2	115.0	22.9	61.8
2009	647,000	795	7.7	122.9	6.9	59.7
2010	672,591	847	6.5	125.9	2.4	61.5
2011	683,932	1,040	22.8	152.1	20.8	60.0
2012	699,628	1,071	3.0	153.1	0.7	55.5

Aggravated Assault Totals, 2003-2012



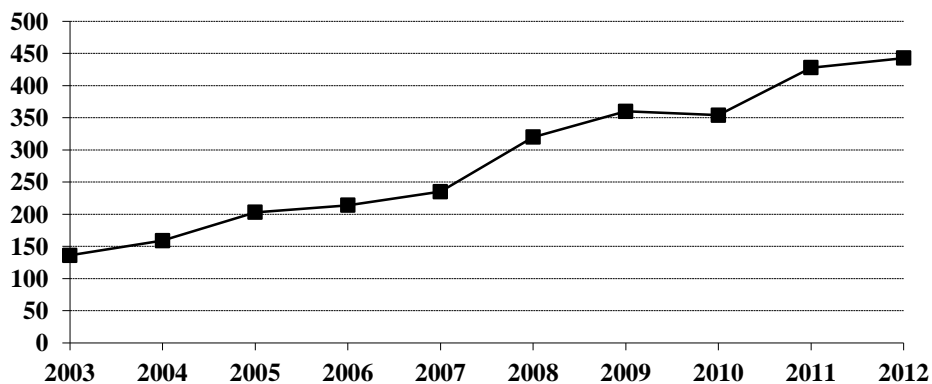
Aggravated Assault by Type of Weapon Involved, 2012

Type of Weapon	Number Reported	Percent of Total Offenses
Firearm	17	1.6%
Knife or Cutting Instrument	115	10.7
Other Dangerous Weapon	303	28.3
Hands, Fists, Feet, etc.	636	59.4
Aggravated Assault Total	1,071	100.0

Arrests for Aggravated Assault, 2003-2012

Year	Juvenile	Adult	Age Not Reported	Total
2003	14	122		136
2004	22	137		159
2005	47	156		203
2006	30	184		214
2007	31	204		235
2008	47	270	3	320
2009	34	326		360
2010	39	315		354
2011	35	393		428
2012	29	414		443

Arrests for Aggravated Assault, 2003-2012



Property Crime

Property crime includes the offenses of burglary, larceny/theft, and motor vehicle theft.

In 2012, the total number of property crimes reported was 13,415. This is an increase of 8.0 percent from the 2011 total of 12,425.

Property crime accounted for 90.2 percent of the index offenses reported in North Dakota.

The property crime rate increased 5.5 percent from 1816.7 per 100,000 population in 2011, to 1917.4 per 100,000 in 2012.

Twenty-three percent of property crimes were cleared by arrest or exceptional means in 2012.

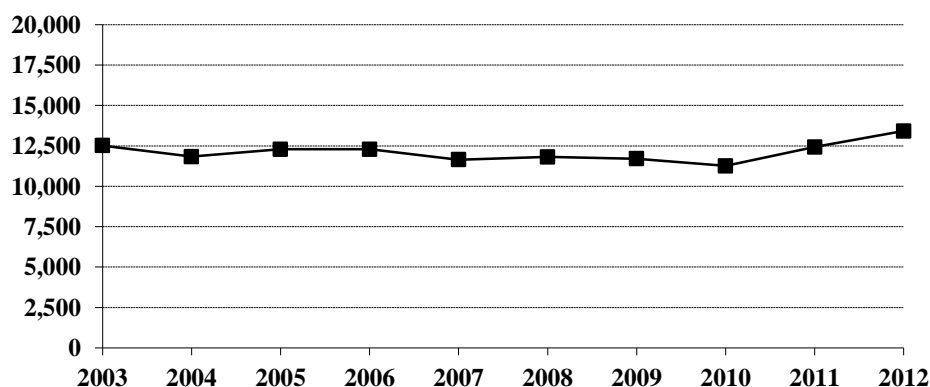
A total of 3,221 arrests was reported for property crimes. Of those, 27.2 percent were arrests of juveniles.

Property Crime Summary

Year	Population	Property Index Offenses	% Change in Number from Previous Year	Rate per 100,000 Population	% Change in Rate from Previous Year	Percent Cleared
2003	634,000	12,516	-14.8%	1974.1	-14.8%	19.4%
2004	634,500	11,830	-5.5	1864.5	-5.6	19.2
2005	637,000	12,289	3.9	1929.2	3.5	18.5
2006	636,000	12,291	*	1932.5	0.2	19.3
2007	640,000	11,646	-5.2	1819.7	-5.8	20.5
2008	641,500	11,815	1.5	1841.8	1.2	23.8
2009	647,000	11,704	-0.9	1809.0	-1.8	25.1
2010	672,591	11,262	-3.8	1674.4	-7.4	26.2
2011	683,932	12,425	10.3	1816.7	8.5	24.4
2012	699,628	13,415	8.0	1917.4	5.5	23.0

* Less than 0.1 percent.

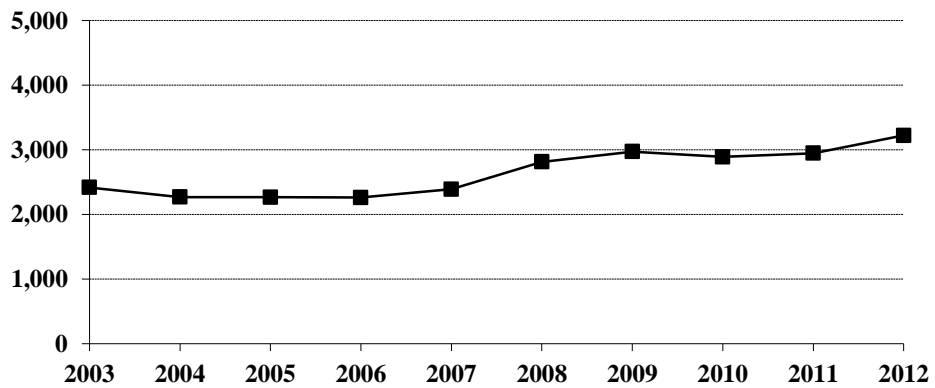
Property Crime Totals, 2003-2012



Arrests for Property Crimes, 2003-2012

Year	Juvenile	Adult	Age Not Reported	Total
2003	1,156	1,260	1	2,417
2004	969	1,294	5	2,268
2005	952	1,313	1	2,266
2006	919	1,339	2	2,260
2007	1,044	1,344		2,388
2008	1,158	1,653	1	2,812
2009	1,174	1,793	3	2,970
2010	1,023	1,866		2,889
2011	965	1,981		2,946
2012	875	2,346		3,221

Arrests for Property Crimes, 2003-2012



Burglary

The UCR program defines Burglary as the “unlawful entry of a structure to commit a felony or theft. The use of force to gain entry is not required to classify an offense as burglary.” Burglaries are classified into three categories: forcible entry, unlawful entry where no force is used, and attempted forcible entry.

In 2012, 2,200 burglaries were reported to the UCR program. This represents a decrease of 1.2 percent from the total of 2,227 burglaries reported in 2011.

The rate of burglaries based on population was 314.5 per 100,000 inhabitants for 2012. This is a 3.4 percent decrease from the rate of 325.6 per 100,000 population in 2011.

Nearly 13 percent of burglaries were cleared by arrest or exceptional means in 2012.

A total of 257 arrests for burglary was reported in 2012. Of these, 21.8 percent were juveniles.

The UCR program classifies burglaries by location of the incident. Fifty-nine percent were burglaries of residences.

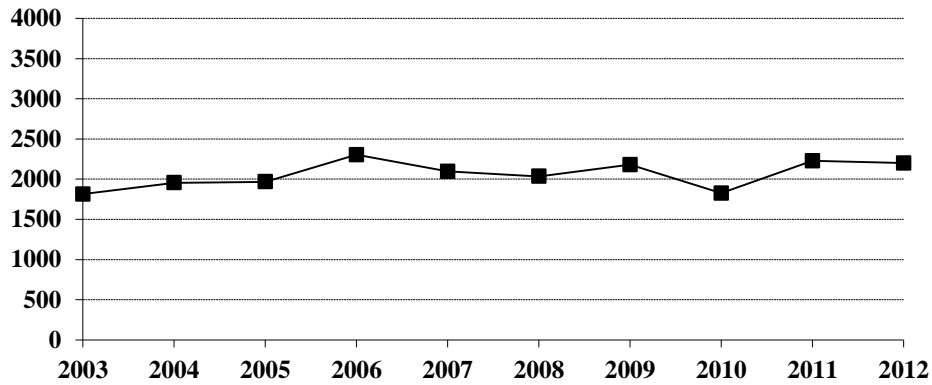
More than 47 percent of burglaries involved forcible entry.

Property loss due to burglary is substantial. More than \$3.4 million dollars worth of property was reported stolen in burglary incidents in 2012. The average burglary involved \$1,550 worth of property.

Burglary Summary

Year	Population	Offense Total	% Change in Number from Previous Year	Rate per 100,000 Population	% Change in Rate from Previous Year	Percent Cleared
2003	634,000	1,814	-19.4%	286.1	-19.4%	13.8%
2004	634,500	1,954	7.7	308.0	7.7	11.2
2005	637,000	1,966	0.6	308.6	0.2	11.6
2006	636,000	2,302	17.1	361.9	17.3	15.2
2007	640,000	2,096	-8.9	327.5	-9.5	12.3
2008	641,500	2,035	-2.9	317.2	-3.1	16.1
2009	647,000	2,180	7.1	336.9	6.2	15.2
2010	672,591	1,826	-16.2	271.5	-19.4	14.6
2011	683,932	2,227	22.0	325.6	19.9	13.0
2012	699,628	2,200	-1.2	314.5	-3.4	12.8

Burglary Totals, 2003-2012



Burglary by Type of Entry, 2012

Type of Entry	Number Reported	Percent of Total Offenses
Forcible Entry	1,041	47.3%
Unlawful Entry - No Force	1,042	47.4
Attempted Forcible Entry	117	5.3
Burglary Total	2,200	100.0

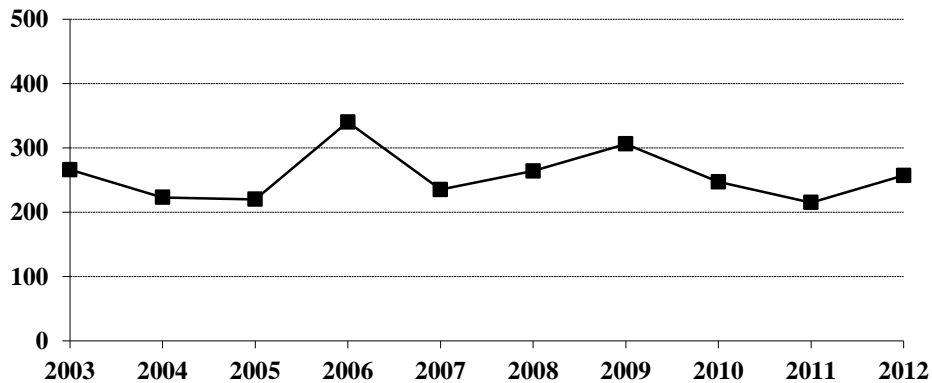
Burglary by Location and Value of Property, 2012

Location	Number Reported	Value of Property	Average Value per Burglary
Residence	1,297	\$1,700,679	\$1,311.24
Non-Residence	903	1,710,196	1,893.90
Burglary Total	2,200	3,410,875	1,550.40

Arrests for Burglary, 2003-2012

Year	Juvenile	Adult	Age Not Reported	Total
2003	118	148		266
2004	99	119	5	223
2005	55	165		220
2006	115	224	1	340
2007	94	141		235
2008	97	167		264
2009	94	211	1	306
2010	71	176		247
2011	69	146		215
2012	56	201		257

Arrests for Burglary, 2003-2012



Property Loss Due to Burglary, 2003-2012

Year	Offense Total	Property Loss	Average Loss per Burglary
2003	1,814	\$1,562,749	\$861.49
2004	1,954	2,207,247	1,129.60
2005	1,966	2,057,935	1,046.76
2006	2,302	2,432,305	1,056.61
2007	2,096	1,943,995	927.48
2008	2,035	3,420,351	1,680.76
2009	2,180	2,509,507	1,151.15
2010	1,826	2,141,820	1,172.96
2011	2,227	2,791,947	1,253.68
2012	2,200	3,410,875	1,550.40

Larceny/Theft

The UCR program defines Larceny/Theft as the “unlawful taking, carrying, leading, or riding away of property from the possession or constructive possession of another. It includes crimes such as shoplifting, pocket-picking, purse-snatching, thefts from motor vehicles, thefts of motor vehicle parts and accessories, bicycle thefts, etc., in which no use of force, violence or fraud occurs. In the Uniform Crime Reporting program, this crime category does not include embezzlement, confidence games, forgery, and worthless checks. Motor vehicle theft is also excluded from this category inasmuch as it is a separate crime index offense.”

A total of 10,184 larceny/theft offenses was reported in North Dakota in 2012. This is a 9.0 percent increase from the 2011 total of 9,344.

The larceny/theft rate per 100,000 population was 1455.6 compared with 1366.2 in 2011, a 6.5 percent increase in the rate.

More than 25 percent of larceny/theft offenses were cleared by arrest or exceptional means in 2012.

The number of arrests for this offense increased from 2,610 in 2011 to 2,804 in 2012. More than 27 percent of those arrested for larceny/theft in 2012 were juveniles.

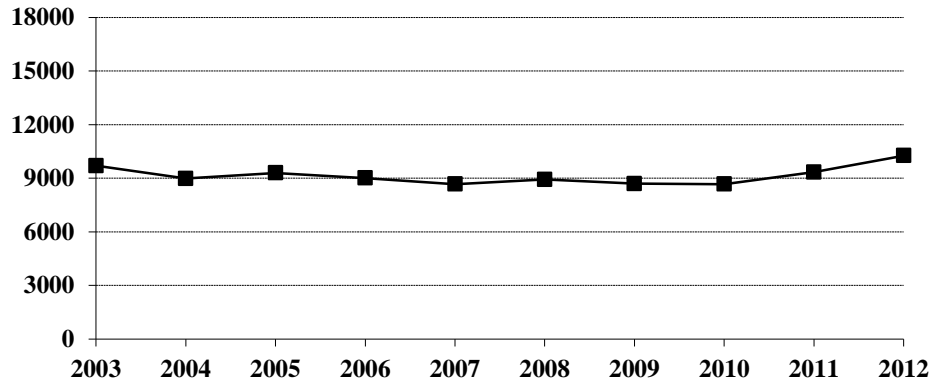
More than \$10 million dollars worth of property was reported stolen as the result of larceny/theft offenses in the state. The average dollar value per offense is \$986.

Larceny/theft accounted for 68.5 percent of the total index offenses reported and amounted to 45.2 percent of the total value of stolen property.

Larceny/Theft Summary

Year	Population	Offense Total	% Change in Number from Previous Year	Rate per 100,000 Population	% Change in Rate from Previous Year	Percent Cleared
2003	634,000	9,700	-14.9%	1530.0	-14.9%	19.8%
2004	634,500	8,984	-7.4	1415.9	-7.5	20.6
2005	637,000	9,293	3.4	1458.9	3.0	19.3
2006	636,000	9,012	-3.0	1417.0	-2.9	19.8
2007	640,000	8,672	-3.8	1355.0	-4.4	22.1
2008	641,500	8,926	2.9	1391.4	2.7	25.5
2009	647,000	8,699	-2.5	1344.5	-3.4	27.4
2010	672,591	8,673	-0.3	1289.5	-4.1	28.6
2011	683,932	9,344	7.7	1366.2	5.9	27.1
2012	699,628	10,184	9.0	1455.6	6.5	25.6

Larceny/Theft Totals, 2003-2012



Property Loss Due to Larceny/Theft, 2003-2012

Year	Offense Total	Property Loss	Average Loss per Larceny/Theft
2003	9,700	\$5,207,256	\$536.83
2004	8,984	4,931,853	548.96
2005	9,293	5,191,397	558.64
2006	9,012	5,425,420	602.02
2007	8,672	4,343,221	500.83
2008	8,926	4,757,988	533.05
2009	8,699	5,374,262	617.80
2010	8,673	5,809,941	669.89
2011	9,344	7,033,110	752.69
2012	10,184	10,043,000	986.15

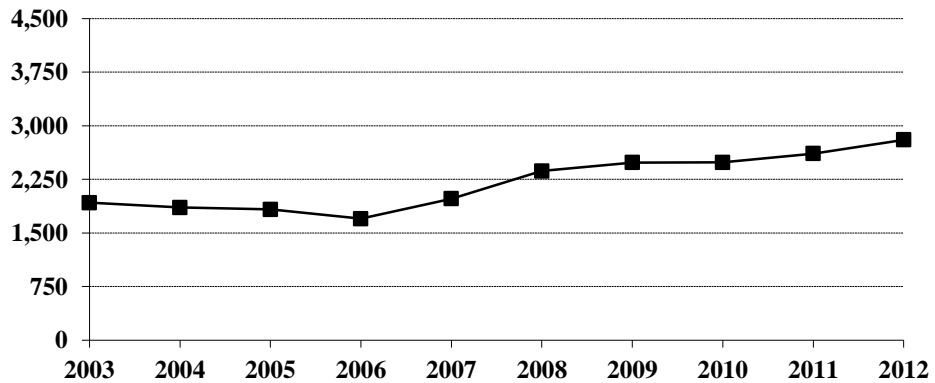
Larceny/Theft by Type and Value, 2012

Type of Larceny/Theft	Number Reported	Value of Property	Average Value per Larceny/Theft
Shoplifting	2,116	\$241,648	\$114.20
From Motor Vehicle	1,907	1,141,307	598.48
From Building	1,408	1,690,410	1,200.58
Bicycles	550	150,394	273.44
Motor Vehicle Parts, Accessories	362	495,714	1,369.38
Purse Snatching	16	15,001	937.56
Pocket Picking	12	3,008	250.67
From Coin-Operated Machine	9	684	76.00
All Other	3,804	6,304,834	1,657.42
Larceny/Theft Total	10,184	10,043,000	986.15

Arrests for Larceny/Theft, 2003-2012

Year	Juvenile	Adult	Age Not Reported	Total
2003	919	1,004	1	1,924
2004	792	1,064		1,856
2005	794	1,035	1	1,830
2006	699	1,000	1	1,700
2007	876	1,103		1,979
2008	977	1,388	1	2,366
2009	992	1,491	2	2,485
2010	895	1,592		2,487
2011	866	1,744		2,610
2012	763	2,041		2,804

Arrests for Larceny/Theft, 2003-2012



Motor Vehicle Theft

Motor Vehicle Theft is defined by the UCR program as “the theft or attempted theft of a motor vehicle; the offense category includes the stealing of automobiles, trucks, buses, motorcycles, motor scooters, snowmobiles, etc. The definition excludes the taking of a motor vehicle for temporary use by those persons having lawful access.”

A total of 1,031 motor vehicle thefts was reported in 2012. This is an increase of 20.7 percent from the 2011 total of 854.

Based on a Census Bureau population estimate of 699,628 for North Dakota, the resulting motor vehicle theft rate is 147.4 per 100,000 population.

More than 18 percent of reported motor vehicle thefts were cleared by arrest or exceptional means in 2012.

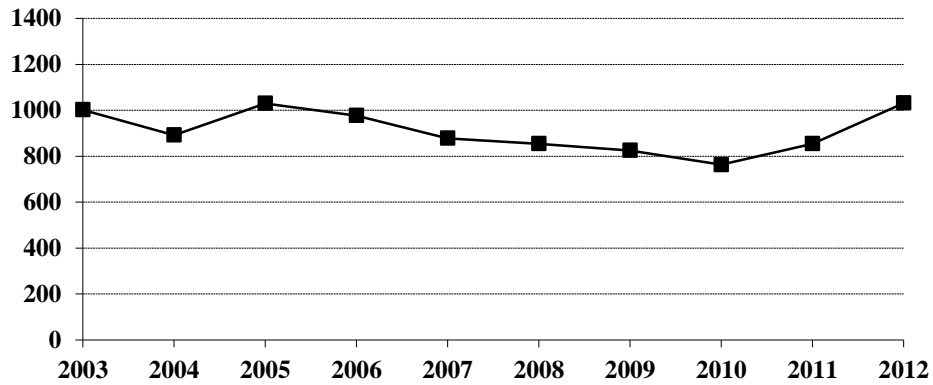
The number of arrests for motor vehicle theft increased from 121 in 2011 to 160 in 2012.

The average value per motor vehicle theft was approximately \$8,382.

Motor Vehicle Theft Summary

Year	Population	Offense Total	% Change in Number from Previous Year	Rate per 100,000 Population	% Change in Rate from Previous Year	Percent Cleared
2003	634,000	1,002	-3.4%	158.0	-3.4%	25.2%
2004	634,500	892	-11.0	140.6	-11.0	22.2
2005	637,000	1,030	15.5	161.7	15.0	23.5
2006	636,000	977	-5.1	153.6	-5.0	23.7
2007	640,000	878	-10.1	137.2	-10.7	24.4
2008	641,500	854	-2.7	133.1	-3.0	24.6
2009	647,000	825	-3.4	127.5	-4.2	27.4
2010	672,591	763	-7.5	113.4	-11.1	26.7
2011	683,932	854	11.9	124.9	10.1	24.1
2012	699,628	1,031	20.7	147.4	18.0	18.2

Motor Vehicle Theft Totals, 2003-2012



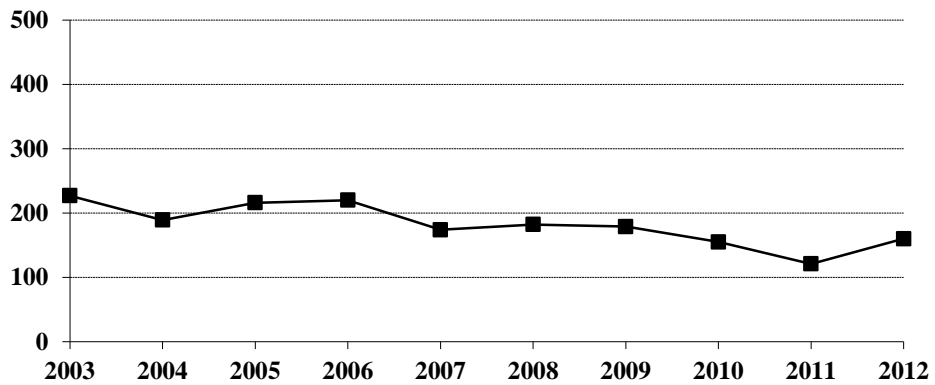
Type of Vehicle Stolen, 2012

Type of Vehicle	Number Reported	Percent of Total Offenses
Automobiles	824	79.9%
Trucks and Buses	75	7.3
Other Vehicles	132	12.8
Motor Vehicle Theft Total	1,031	100.0

Arrests for Motor Vehicle Theft, 2003-2012

Year	Juvenile	Adult	Total
2003	119	108	227
2004	78	111	189
2005	103	113	216
2006	105	115	220
2007	74	100	174
2008	84	98	182
2009	88	91	179
2010	57	98	155
2011	30	91	121
2012	56	104	160

Arrests for Motor Vehicle Theft, 2003-2012



Property Loss Due to Motor Vehicle Theft, 2003-2012

Year	Offense Total	Property Loss	Average Loss per Offense
2003	1,002	\$4,637,043	\$4,627.79
2004	892	4,238,662	4,751.86
2005	1,030	5,124,789	4,975.52
2006	977	4,525,628	4,632.17
2007	878	4,348,148	4,952.33
2008	854	3,897,971	4,564.37
2009	825	3,674,803	4,454.31
2010	763	3,987,385	5,225.93
2011	854	6,929,776	8,114.49
2012	1,031	8,641,569	8,381.74

Crime Index Offenses by Reporting Jurisdiction

The rate per 100,000 population is shown immediately below the actual number of crime index offenses reported by each jurisdiction. A county total is also shown for each of those counties that have more than one reporting jurisdiction within its geographic boundaries. The rate is reported per 100,000 for easy comparison to national publications. Population estimates were provided by the FBI Criminal Justice Information Services (CJIS) Division.

Number and Rate of Index Offenses, 2012

County	Reporting Jurisdiction	Population	Murder/ Non-Negligent Manslaughter	Forcible Rape	Robbery	Aggravated Assault	Burglary	Larceny/ Theft	Motor Vehicle Theft	Total Index Offenses
Adams	County SO	2,360					6 254.2	3 127.1		9 381.4
	County SO	4,580		2 43.7			11 240.2	25 545.9	2 43.7	40 873.4
Barnes	Valley City PD	6,730		1 14.9		9 133.7	26 386.3	100 1485.9	3 44.6	139 2065.4
	County Total	11,310		3 26.5		9 79.6	37 327.1	125 1105.2	5 44.2	179 1582.7
	County SO	6,877		3 43.6			5 72.7	12 174.5	5 72.7	25 363.5
Billings	County SO	716					5 698.3	10 1396.6	1 139.7	16 2234.6
	Medora PD	119					1 840.3	1 840.3		2 1680.7
	County Total	835					6 718.6	11 1317.4	1 119.8	18 2155.7
Bottineau	County SO	6,591	2 30.3			3 45.5	16 242.8	41 622.1	4 60.7	66 1001.4
Bowman	County SO	1,240	DID NOT REPORT IN 2012							
	Bowman PD	1,679	DID NOT REPORT IN 2012							
	Scranton PD	287	DID NOT REPORT IN 2012							
Burke	County SO	2,080				1 48.1	6 288.5	14 673.1	5 240.4	26 1250.0
Burleigh	County SO	18,431		4 21.7	1 5.4	15 81.4	64 347.2	111 602.2	13 70.5	208 1128.5
	Bismarck PD	64,103	1 1.6	33 51.5	16 25.0	171 266.8	307 478.9	1526 2380.5	104 162.2	2158 3366.5
	Lincoln PD	2,519				2 79.4	1 39.7	8 317.6	2 79.4	13 516.1
	County Total	85,053	1 1.2	37 43.5	17 20.0	188 221.0	372 437.4	1645 1934.1	119 139.9	2379 2797.1
Cass	County SO	19,161		6 31.3	2 10.4	14 73.1	74 386.2	108 563.6	7 36.5	211 1101.2
	Fargo PD *	109,813	2 1.8	71 64.7	47 42.8	276 251.3	464 422.5	2316 2109.0	156 142.1	3332 3034.2
	West Fargo PD	26,894		2 7.4	5 18.6	55 204.5	79 293.7	375 1394.4	35 130.1	551 2048.8
	County Total	155,868	2 1.3	79 50.7	54 34.6	345 221.3	617 395.8	2799 1795.8	198 127.0	4094 2626.6
Cavalier	County SO	4,029					7 173.7	18 446.8	1 24.8	26 645.3

* Includes 85 index offenses reported by NDSU PD

County	Reporting Jurisdiction	Population	Murder/ Non-Negligent Manslaughter	Forcible Rape	Robbery	Aggravated Assault	Burglary	Larceny/ Theft	Motor Vehicle Theft	Total Index Offenses
Dickey	County SO	2,099				1 47.6		9 428.8		10 476.4
	Ellendale PD	1,432					4 279.3	7 488.8		11 768.2
	Oakes PD	1,908	DID NOT REPORT IN 2012							
	Reporting Agency Total	3,531				1 28.3	4 113.3	16 453.1		21 594.7
Divide	County SO	2,174					5 230.0	9 414.0	3 138.0	17 782.0
Dunn	County SO	2,999				7 233.4	8 266.8	18 600.2	3 100.0	36 1200.4
	Killdeer PD	806		2 248.1			2 248.1	11 1364.8	3 372.2	18 2233.3
	County Total	3,805		2 52.6		7 184.0	10 262.8	29 762.2	6 157.7	54 1419.2
Eddy	County SO	2,435				1 41.1	3 123.2	15 616.0		19 780.3
Emmons	County SO	2,506					7 279.3	15 598.6	5 199.5	27 1077.4
	Linton PD	1,121					1 89.2	2 178.4		3 267.6
	County Total	3,627					8 220.6	17 468.7	5 137.9	30 827.1
Foster	County SO	1,307								0 0.0
	Carrington PD	2,111						4 189.5	2 94.7	6 284.2
	County Total	3,418						4 117.0	2 58.5	6 175.5
Golden Valley	County SO	1,792					3 167.4	5 279.0		8 446.4
Grand Forks	County SO	12,318				6 48.7	24 194.8	36 292.3	7 56.8	73 592.6
	Grand Forks PD *	53,839		25 46.4	21 39.0	102 189.5	243 451.3	1253 2327.3	91 169.0	1735 3222.6
	Northwood PD	963				1 103.8	2 207.7	6 623.1		9 934.6
	Thompson PD	1,006						1 99.4		1 99.4
	County Total	68,126		25 36.7	21 30.8	109 160.0	269 394.9	1296 1902.4	98 143.9	1818 2668.6
Grant	County SO	2,391		1 41.8	1 41.8	3 125.5	11 460.1	8 334.6	3 125.5	27 1129.2
Griggs	County SO	2,426				3 123.7	2 82.4	3 123.7		8 329.8
Hettinger	County SO	2,573			1 38.9	4 155.5	3 116.6	7 272.1	4 155.5	19 738.4
Kidder	County SO	1,744					3 172.0	4 229.4	1 57.3	8 458.7
	Steele PD	725					4 551.7	10 1379.3	1 137.9	15 2069.0
	County Total	2,469					7 283.5	14 567.0	2 81.0	23 931.6
LaMoure	County SO	3,298			1 30.3			1 30.3	1 30.3	3 91.0
	Kulm PD		DID NOT REPORT IN 2012							
	LaMoure PD	901				1 111.0	2 222.0	4 444.0	2 222.0	9 998.9
	Reporting Agency Total	4,199			1 23.8	1 23.8	1 23.8	2 47.6	5 119.1	3 71.4

* Includes 167 index offenses reported by UND PD.

County	Reporting Jurisdiction	Population	Murder/ Non-Negligent Manslaughter	Forcible Rape	Robbery	Aggravated Assault	Burglary	Larceny/ Theft	Motor Vehicle Theft	Total Index Offenses
Logan	County SO	1,223					1 81.8	12 981.2	1 81.8	14 1144.7
	Napoleon PD	808					1 123.8	7 866.3		8 990.1
	County Total	2,031					2 98.5	19 935.5	1 49.2	22 1083.2
McHenry	County SO	5,631				2 35.5	11 195.3	27 479.5	6 106.6	46 816.9
McIntosh	County SO	1,812					3 164.7	3 164.7		6 329.5
	Wishek PD **	1,012					1 98.8			1 98.8
	County Total	2,833					4 141.2	3 105.9		7 247.1
McKenzie	County SO	5,213			1 19.2	7 134.3	7 134.3	74 1419.5	5 95.9	94 1803.2
	Watford City PD	1,967	1 50.8	1 50.8		13 660.9	5 254.2	52 2643.6	8 406.7	80 4067.1
	County Total	7,180	1 13.9	1 13.9	1 13.9	20 278.6	12 167.1	126 1754.9	13 181.1	174 2423.4
McLean	County SO	9,276		1 10.8	1 10.8	6 64.7	37 398.9	79 851.7	13 140.1	137 1476.9
Mercer	County SO	2,969				1 33.7	7 235.8	17 572.6	3 101.0	28 943.1
	Beulah PD	3,202	1 31.2	2 62.5		5 156.2	19 593.4	48 1499.1	6 187.4	81 2529.7
	Hazen PD	2,472	DID NOT REPORT IN 2012							
	Reporting Agency Total	6,171	1 16.2	2 32.4		6 97.2	26 421.3	65 1053.3	9 145.8	109 1766.3
Morton	County SO	9,438		4 42.4		6 63.6	15 158.9	68 720.5	6 63.6	99 1049.0
	Mandan PD	18,932	2 10.6	9 47.5	5 26.4	34 179.6	51 269.4	421 2223.7	44 232.4	566 2989.6
	County Total	28,370	2 7.0	13 45.8	5 17.6	40 141.0	66 232.6	489 1723.7	50 176.2	665 2344.0
Mountrail	County SO	6,708	4 59.6			10 149.1	18 268.3	72 1073.3	25 372.7	129 1923.1
	Stanley PD **	1,575				3 190.5		5 317.5	2 127.0	10 634.9
	County Total	8,283	4 48.3			13 156.9	18 217.3	77 929.6	27 326.0	139 1678.1
Nelson	County SO	3,127				4 127.9	11 351.8	11 351.8	8 255.8	34 1087.3
Oliver	County SO	1,872				1 53.4		1 53.4	1 53.4	3 160.3
Pembina	County SO	6,191				5 80.8	11 177.7	21 339.2	3 48.5	40 646.1
	Cavalier PD	1,319		1 75.8		1 75.8	3 227.4	13 958.6		18 1364.7
	County Total	7,510		1 13.3		6 79.9	14 186.4	34 452.7	3 39.3	58 772.3
Pierce	County SO	1,523					5 328.3	7 459.6		12 787.9
	Rugby PD	2,952				1 33.9	10 338.8	48 1626.0	4 135.5	63 2134.1
	County Total	4,475				1 22.3	15 335.2	55 1229.1	4 89.4	75 1676.0
Ramsey	County SO	4,410						10 226.8	1 22.7	11 249.4
	Devils Lake PD	7,305		5 68.4	2 27.4	8 109.5	65 889.8	256 3504.4	14 191.6	350 4791.2
	County Total	11,715		5 42.7	2 17.1	8 68.3	65 554.8	266 2270.6	15 128.0	361 3081.5

** Reported partial year.

County	Reporting Jurisdiction	Population	Murder/ Non-Negligent Manslaughter	Forcible Rape	Robbery	Aggravated Assault	Burglary	Larceny/ Theft	Motor Vehicle Theft	Total Index Offenses
Ransom	County SO	3,345	1 29.9			1 29.9	8 239.2	7 209.3	1 29.9	18 538.1
	Lisbon PD	2,182				1 45.8	12 550.0	27 1237.4	5 229.1	45 2062.3
	County Total	5,527	1 18.1			2 36.2	20 361.9	34 615.2	6 108.6	63 1139.9
Renville	County SO	2,298				1 43.5	2 87.0	17 739.8		20 870.3
	Sherwood PD	249						1 401.6		1 401.6
	County Total	2,547				1 39.3	2 78.5	18 706.7		21 824.5
Richland	County SO	8,710		1 11.5		4 45.9	23 264.1	69 792.2	11 126.3	108 1240.0
	Wahpeton PD *	7,908		3 37.9	1 12.6	5 63.2	31 392.0	139 1757.7	11 139.1	190 2402.6
	County Total	16,618		4 24.1	1 6.0	9 54.2	54 324.9	208 1251.7	22 132.4	298 1793.2
Rolette	County SO	13,197				1 7.6	8 60.6	4 30.3	4 30.3	17 128.8
	Rolla PD	1,335				1 74.9	6 449.4	13 973.8	4 299.6	24 1797.8
	County Total	14,532				2 13.8	14 96.3	17 117.0	8 55.1	41 282.1
Sargent	County SO	3,885					8 205.9	13 334.6		21 540.5
Sheridan	County SO	1,339					6 448.1	24 1792.4	3 194.7	33 2464.5
Sioux	County SO	4,378								0 0.0
Slope	County SO	734					1 136.2	1 136.2		2 272.5
Stark	County SO	6,831				4 66.9	2 33.5	75 1254.6	8 133.8	89 1488.8
	Dickinson PD	18,924			3 15.9	42 221.9	27 142.7	341 1801.9	23 121.5	436 2304.0
	Belfield PD **	853								0 0.0
	County Total	25,755			3 11.6	46 178.6	29 112.6	416 1615.2	31 120.4	525 2038.4
Steele	County SO	1,995		1 50.1			5 250.6	1 50.1	1 50.1	8 401.0
Stutsman	County SO	5,792		3 51.8		1 17.3	13 224.4	29 500.7	10 172.7	56 966.9
	Jamestown PD	15,753		12 76.2		20 127.0	78 495.1	320 2031.4	23 146.0	453 2875.6
	County Total	21,545		15 69.6		21 97.5	91 422.4	349 1619.9	33 153.2	509 2362.5
Towner	County SO	1,166					4 343.1	2 171.5		6 514.6
	Cando PD	1,150								0 0.0
	Reporting Agency Total	2,316					4 172.7	2 86.4		6 259.1
Traill	County SO	6,687				1 15.0	14 209.4	32 478.5	2 29.9	49 732.8
	Hillsboro PD	1,647				1 60.7	2 121.4	10 607.2	1 60.7	14 850.0
	County Total	8,334				2 24.0	16 192.0	42 504.0	3 36.0	63 755.9

* Includes 30 index offenses reported by NDSCS PD.

** Reported partial year

County	Reporting Jurisdiction	Population	Murder/ Non-Negligent Manslaughter	Forcible Rape	Robbery	Aggravated Assault	Burglary	Larceny/ Theft	Motor Vehicle Theft	Total Index Offenses
Walsh	County SO	6,936				1 14.4	22 317.2	56 807.4	7 100.9	86 1239.9
	Grafton PD	4,349		5 115.0		16 367.9	8 184.0	114 2621.3	9 206.9	152 3495.1
	County Total	11,285		5 44.3		17 150.6	30 265.8	170 1506.4	16 141.8	238 2109.0
Ward	County SO	18,796		5 26.6		16 85.1	46 244.7	108 574.6	30 159.6	205 1090.7
	Kenmare PD	1,165					1 85.8	1 85.8	1 85.8	3 257.5
	Minot PD	43,460		20 46.0	6 13.8	76 174.9	78 179.5	604 1389.8	81 186.4	865 1990.3
	Burlington PD	1,127				1 88.7	1 88.7	4 354.9	4 354.9	10 887.3
	Surrey PD	994				1 100.6	1 100.6			2 201.2
	County Total	65,542		25 38.1	6 9.2	94 143.4	127 193.8	717 1094.0	116 177.0	1085 1655.4
Wells	County SO	2,005		1 49.9		3 149.6	10 498.8	6 299.3	1 49.9	21 1047.4
	Harvey PD	1,836		2 108.9	1 54.5	2 108.9	10 544.7	33 1797.4		48 2614.4
	Fessenden PD	493					1 202.8	1 202.8		2 405.7
	County Total	4,334		3 69.2	1 23.1	5 115.4	21 484.5	40 922.9	1 23.1	71 1638.2
Williams	County SO	8,560	1 11.7	5 58.4		40 467.3	48 560.7	176 2056.1	52 607.5	322 3761.7
	Tioga PD		DID NOT REPORT IN 2012							
	Williston PD	16,373		12 73.3	2 12.2	49 299.3	44 268.7	604 3689.0	116 708.5	827 5051.0
	Reporting Agency Total	24,933	1 4.0	17 68.2	2 8.0	89 357.0	92 369.0	780 3128.4	168 673.8	1149 4608.4

(This page intentionally left blank.)

ARREST ANALYSIS

Arrests in 2012

Although primarily an indication of law enforcement activity, the number of arrests reported does provide a limited profile of the perpetrators of crime, especially for those crimes that have high clearance rates. Differing arrest practices, policies, and enforcement emphases among agencies influence the volume of arrests for various offenses, particularly those against public order such as vagrancy, disorderly conduct, and related violations. However, arrests for serious crimes, e.g., robbery or burglary, are more likely to be uniform throughout all jurisdictions across the state.

The UCR program requires that an arrest be counted for each separate occasion an individual is taken into custody. Although several charges may be lodged against a person at the time of the arrest, only one arrest is counted for each time the person is taken into custody.

North Dakota law enforcement agencies reported 32,380 arrests in 2012. A total of 29,260 arrests was reported in 2011.

In 2012, nearly 17 percent of total arrests were arrests of juveniles.

More than 73 percent of the total was arrests of males.

Arrests for the crime index offenses of murder/non-negligent manslaughter, forcible rape, robbery, aggravated assault, burglary, larceny/theft and motor vehicle theft comprised 11.6 percent of the total reported arrests. Of the 3,765 reported arrests for crime index offenses, 24.8 percent were arrests of juveniles.

The total of 11,877 reported arrests for DUI and liquor law violations represents 36.7 percent of the total arrests reported in the state of North Dakota in 2012. Arrests for DUI increased from 6,600 in 2011 to 7,322 in 2012. Liquor law violation arrests decreased 3 percent from 4,695 in 2011 to 4,555 reported in 2012.

More than 80 percent of total arrests were white; over 13 percent were Native American.

These statistics are provided by local law enforcement agencies that contribute to the North Dakota UCR program. No arrest figures for reservations in the state are included in these totals. Tribal law enforcement agencies do not participate in the state UCR program.

Total Arrests Reported, 2012

Offense Classification	Number Reported	Percent of Total Arrests
Murder/Non-Negligent Manslaughter	8	*
Negligent Manslaughter	5	*
Forcible Rape	45	0.1%
Robbery	48	0.2
Aggravated Assault	443	1.4
Burglary	257	0.8
Larceny/Theft	2,804	8.7
Motor Vehicle Theft	160	0.5
Other Assaults	2,329	7.2
Arson	19	0.1
Forgery and Counterfeiting	84	0.3
Fraud	454	1.4
Embezzlement	48	0.2
Stolen Property Offenses	146	0.5
Vandalism	539	1.7
Weapons Offenses	305	0.9
Prostitution	35	0.1
Other Sex Offenses	86	0.3
Drug Abuse Violations	2,872	8.9
Gambling		0.0
Offenses Against Family and Children	132	0.4
Driving Under the Influence	7,322	22.6
Liquor Law Violations	4,555	14.1
Disorderly Conduct	2,011	6.2
Vagrancy		0.0
All Other Offenses	6,993	21.6
Suspicion		0.0
Curfew and Loitering	146	0.4
Runaways	534	1.7
Arrest Total	32,380	100.0

* Less than 0.1 percent of total arrests.

Comparison of Reported Arrests, 2011-2012

Offense Classification	2011	2012	Percent Change
Murder/Non-Negligent Manslaughter	9	8	-11.1%
Negligent Manslaughter		5	---
Forcible Rape	31	45	45.2
Robbery	22	48	118.2
Aggravated Assault	428	443	3.5
Burglary	215	257	19.5
Larceny/Theft	2,610	2,804	7.4
Motor Vehicle Theft	121	160	32.2
Other Assaults	2,013	2,329	15.7
Arson	12	19	58.3
Forgery and Counterfeiting	66	84	27.3
Fraud	421	454	7.8
Embezzlement	41	48	17.1
Stolen Property Offenses	143	146	2.1
Vandalism	469	539	14.9
Weapons Offenses	194	305	57.2
Prostitution	16	35	118.8
Other Sex Offenses	65	86	32.3
Drug Abuse Violations	2,662	2,872	7.9
Gambling			
Offenses Against Family and Children	122	132	8.2
Driving Under the Influence	6,600	7,322	10.9
Liquor Law Violations	4,695	4,555	-3.0
Disorderly Conduct	1,711	2,011	17.5
Vagrancy			
All Other Offenses	5,899	6,993	18.5
Suspicion			
Curfew and Loitering	206	146	-29.1
Runaways	489	534	9.2
Arrest Total	29,260	32,380	10.7

Juvenile and Adult Arrests, 2012

Offense Classification	Juvenile	Adult	No Age	Total
Murder/Non-Negligent Manslaughter		8		8
Negligent Manslaughter		5		5
Forcible Rape	17	28		45
Robbery	13	35		48
Aggravated Assault	29	414		443
Burglary	56	201		257
Larceny/Theft	763	2,041		2,804
Motor Vehicle Theft	56	104		160
Other Assaults	436	1,893		2,329
Arson	9	10		19
Forgery and Counterfeiting	4	80		84
Fraud	15	438	1	454
Embezzlement	8	40		48
Stolen Property Offenses	40	106		146
Vandalism	225	314		539
Weapons Offenses	26	279		305
Prostitution	1	34		35
Other Sex Offenses	26	60		86
Drug Abuse Violations	351	2,521		2,872
Gambling				
Offenses Against Family and Children	63	69		132
Driving Under the Influence	47	7,275		7,322
Liquor Law Violations	880	3,675		4,555
Disorderly Conduct	759	1,252		2,011
Vagrancy				
All Other Offenses	966	6,027		6,993
Suspicion				
Curfew and Loitering	146			146
Runaways	534			534
Arrest Total	5,470	26,909	1	32,380

Arrests by Gender, 2012

Offense Classification	Male	Female	Total
Murder/Non-Negligent Manslaughter	7	1	8
Negligent Manslaughter	5		5
Forcible Rape	45		45
Robbery	45	3	48
Aggravated Assault	393	50	443
Burglary	231	26	257
Larceny/Theft	1,522	1,282	2,804
Motor Vehicle Theft	130	30	160
Other Assaults	1,682	647	2,329
Arson	14	5	19
Forgery and Counterfeiting	56	28	84
Fraud	275	179	454
Embezzlement	17	31	48
Stolen Property Offenses	113	33	146
Vandalism	451	88	539
Weapons Offenses	282	23	305
Prostitution	12	23	35
Other Sex Offenses	80	6	86
Drug Abuse Violations	2,190	682	2,872
Gambling			
Offenses Against Family and Children	62	70	132
Driving Under the Influence	5,843	1,479	7,322
Liquor Law Violations	3,029	1,526	4,555
Disorderly Conduct	1,526	485	2,011
Vagrancy			
All Other Offenses	5,330	1,663	6,993
Suspicion			
Curfew and Loitering	79	67	146
Runaways	228	306	534
Arrest Total	23,647	8,733	32,380

Arrests by Race, 2012

Offense Classification	White	Black	Native American	Asian	Total
Murder/Non-Negligent Manslaughter	7	1			8
Negligent Manslaughter	5				5
Forcible Rape	35	6	4		45
Robbery	28	9	11		48
Aggravated Assault	327	48	67	1	443
Burglary	209	14	34		257
Larceny/Theft	1,969	232	575	28	2,804
Motor Vehicle Theft	116	15	29		160
Other Assaults	1,727	209	374	19	2,329
Arson	14	2	3		19
Forgery and Counterfeiting	68	9	7		84
Fraud	394	24	34	2	454
Embezzlement	40	4	4		48
Stolen Property Offenses	101	24	20	1	146
Vandalism	441	21	75	2	539
Weapons Offenses	265	21	18	1	305
Prostitution	25	7	2	1	35
Other Sex Offenses	72	5	8	1	86
Drug Abuse Violations	2,375	189	291	17	2,872
Gambling					
Offenses Against Family and Children	85	9	37	1	132
Driving Under the Influence	6,349	274	679	20	7,322
Liquor Law Violations	3,893	107	537	18	4,555
Disorderly Conduct	1,563	129	310	9	2,011
Vagrancy					
All Other Offenses	5,355	470	1,137	31	6,993
Suspicion					
Curfew and Loitering	121	3	22		146
Runaways	358	57	114	5	534
Arrest Total	25,942	1,889	4,392	157	32,380

Arrest Analysis by Reporting Jurisdiction

The table below contains arrest totals for each reporting agency in 2012. Juvenile and adult arrests are included.

Arrests by Reporting Jurisdiction, 2012

Agency	Murder/Non-Neg. Mansl.	Negligent Manslaughter	Forcible Rape	Robbery	Aggravated Assault	Burglary	Larceny/Theft	Motor Vehicle Theft	Other Assault	Arson	Forgery/Counterfeiting	Fraud	Embezzlement	Stolen Property Offenses	Vandalism	Weapons Offenses	Prostitution	Other Sex Offenses	Drug Abuse Violations	Gambling Violations	Off. Against Fam & Children	DUI	Liquor Law Violations	Disorderly Conduct	Vagrancy	All Other Offenses	Suspicion	Curfew/Loitering	Runaway	Total	
Adams SO						2			7										6			23	8	1		7				54	
Barnes SO						2																	3	3			1				9
Valley City PD					3	5	18		28		2			3	5			2	36			50	74	22		31	7	2	288		
Benson SO							1	1	6									1	3			7	8	3						30	
Billings SO																			1				8		1						10
Medora PD						1	1		3														2								7
Bottineau SO	1				2	3	10	1	1		1					1			1		2	32	37	1		5				98	
Bowman SO	DID NOT REPORT IN 2012																														
Bowman PD	DID NOT REPORT IN 2012																														
Scranton PD	DID NOT REPORT IN 2012																														
Burke SO					1		2		4				1			1							40	10	8		10				77
Burleigh SO					8		16	6	40			76		1	5	3		4	96		1	281	446	16		105			7	1111	
Bismarck PD	1		4	7	73	15	567	16	342	4	7	45	18	27	111	20		17	487		22	606	324	342		861	43	158	4117		
Lincoln PD						1			3						1				4				20		2	17		1			49
Cass SO				4	7	5	4		20					2	3	1			27			73	234	8		43			1	432	
Fargo PD			12	22	94	77	837	22	416	4	25	39	3	47	54	21	10	21	286		5	877	171	214		814	6	95	4172		
West Fargo PD					24	13	58	5	123	1	2	14		2	17	4		1	88		3	46	89	36		183	9	28	746		
NDSU PD							5		4			1		2	1				16			55	127	1		49				261	
Cavalier SO						2	4		1	1					1				2			11	6	1		1				30	
Dickey SO							2					22										5	7			45			1	82	
Ellendale PD						7	2		1			1			1	1						4				1				18	
Oakes PD	DID NOT REPORT IN 2012																														
Divide SO									10	1		4				2		2	9		1	36	13	17		10			1	106	
Dunn SO					2	1			6							5			6			64	5	4		14				107	
Killdeer PD									3										1			14	2	4		1				25	
Eddy SO									4		1								1			17	1	2		3				29	
Emmons SO						1	6	2	4			2							6			13	10	2		9				55	
Linton PD **																						1									1
Foster SO																															0
Carrington PD												1										4	1	2		4				12	
Golden Valley SO						4	1		4										1				1	3			1				15
Grand Forks SO					4	5	5	1	28			32		2	6	1		1	55		9	103	106	3		1008		6	1375		

** Reported partial year

Agency	Murder/Non-Neg. Mansl.	Negligent Manslaughter	Forcible Rape	Robbery	Aggravated Assault	Burglary	Larceny/Theft	Motor Vehicle Theft	Other Assault	Arson	Forgery/Counterfeiting	Fraud	Embezzlement	Stolen Property Offenses	Vandalism	Weapons Offenses	Prostitution	Other Sex Offenses	Drug Abuse Violations	Gambling Violations	Off. Against Fam & Children	DUI	Liquor Law Violations	Disorderly Conduct	Vagrancy	All Other Offenses	Suspicion	Curfew/Lottering	Runaway	Total
Grand Forks PD			8	8	46	9	312	10	189		6	21	11	11	39	11	1	2	118		30	298	377	231		330	14	115	2197	
Northwood PD						2			3										1				3							9
Thompson PD									1																					1
UND PD				1			2		19	1					1	3		1	55			174	484	13		125	1		880	
Grant SO			1		2	2			2						1				2				4	1				2	17	
Griggs SO						2						1			6	1			1			7	22	1					41	
Hettinger SO					3				11		1				2							6		6		1		1	31	
Kidder SO								2											1			14	1			2			20	
Steele PD						1			2	1					3						1	1	2	2					13	
LaMoure SO				2	1			1	1		1								1			15				1			23	
Kulm PD	DID NOT REPORT IN 2012																													
LaMoure PD					1		3		1										2			5	2	1		1	1		17	
Logan SO						1	1															6	4	2		2			16	
Napoleon PD									2		1							1	2			1	4			20			31	
McHenry SO					1	1	5		7		1			1					3			22	12	6		17			76	
McIntosh SO							2	1	2			5						2	6			5	2	1		4			30	
Wishek PD **						1																2							3	
McKenzie SO					5		3	1	9						5	4			13			73	4	8		12			137	
Watford City PD	1				7	2	4	1	17		21	2			6	18	13	2	53			253	38	74		32			544	
McLean SO			1		4	3	6	2	22			4		6	10	5		1	25			100	67	18		47	1	2	324	
Mercer SO					1		2		3										10			17	4	2		8		1	48	
Beulah PD	2				4	6	2	2	11	1		2				3			9			39	5	14		17	3	1	121	
Hazen PD	DID NOT REPORT IN 2012																													
Morton SO			2		2		5	2	17			1			8	10	1		4			95	67	10		145		7	376	
Mandan PD			1	1	13	6	42	7	103						8	1		2	32		1	173	117	91		356	24		978	
Mountrail SO					4		3	1	23			1		1	5	16		1	15		1	77	12	10		31			201	
Stanley PD **					3		1	1	6						4	5			5			57	8	23		5			118	
Nelson SO					2			1	17					1	7				3			10	27	2		9			79	
Oliver SO									3							1			2		1	5	2	1		10			25	
Pembina SO					2				13						1	1			25			28	42	6		13			131	
Cavalier PD			1						1										1			9	16						29	
Pierce SO						2			1						1							3	1						8	
Rugby PD					1	4	16	3	11						2				7			22	3	9		11		1	90	
Ramsey SO							1		1							2			1			9	5			6			25	
Devils Lake PD			2	1	4	3	77	2	57		2	2	6	1	14	1			85		19	129	137	79		233	6	1	861	
Ransom SO	1				1	2	1	1				1						1	4			2	5	2		5			26	
Lisbon PD					2			1	2							2			3			9	7	1		3			30	
Renville SO							1		2			3	1		3	2		1	6		2	17	24	4		9	1		76	
Sherwood PD																													0	
Richland SO			2		2	2	9	2	16		1	35			1	1			4		17	17	17	4		81		3	214	
Wahpeton PD				1	2	1	35	1	30			1		1	7			1	7		2	29	24	41		76	3	1	263	

** Reported partial year

Agency	Murder/Non-Neg. Mansl.	Negligent Manslaughter	Forcible Rape	Robbery	Aggravated Assault	Burglary	Larceny/Theft	Motor Vehicle Theft	Other Assault	Arson	Forgery/Counterfeiting	Fraud	Embezzlement	Stolen Property Offenses	Vandalism	Weapons Offenses	Prostitution	Other Sex Offenses	Drug Abuse Violations	Gambling Violations	Off. Against Fam & Children	DUI	Liquor Law Violations	Disorderly Conduct	Vagrancy	All Other Offenses	Suspicion	Curfew/Loitering	Runaway	Total	
NDSCS PD									1										1			1	9	4		10				26	
Rolette SO					1	1	1	1	6						1		1		4			33	19	16		5				89	
Rolla PD						2	8	1	12					1	1				3			14	3	5					2	52	
Sargent SO						3	2		4			21				1			8			6	16	7		10				78	
Sheridan SO						2			1						1				1			11	1			3				20	
Sioux SO																						5		1						6	
Slope SO						1			1																					2	
Stark SO					1			1	20			2			1	3		1	26			110	15	3		442				625	
Dickinson PD		1		1	18	5	53	5	97		2	40	6	4	34	10	5	6	84			216	146	211		294			2	1240	
Belfield PD **									1																					1	
Steele SO						1		1	5							1			4			12	33	3		6				66	
Stutsman SO			2		1	3	6	1	15					1	7	1			3		1	21	12	4		15		1	94		
Jamestown PD			2		7	2	91	3	112	4	1	1	1	3	47	12		4	41		2	152	267	96		407	14	10	1279		
Towner SO							1		2																					3	
Cando PD **									1																					1	
Trail SO					1	4	5		1										1			26	24	5		10			1	78	
Hillsboro PD									1						1							1				2		3		8	
Walsh SO						8	5		16		2				3	1			10			29	20	16		18		5		133	
Grafton PD					5	3	4		19			2	1		10	3		1	16			69	38	30		18		2		221	
Ward SO			1		2	3	6	6	57			1		3	13	4		3	22		1	166	55	19		55		16		433	
Kenmare PD							1												1			1		2		1				6	
Minot PD	1		2		37	9	325	18	126		5	23		17	36	17		5	245		4	456	265	135		347		59	2132		
Burlington PD					1	1	1	2	8	1									1			15	1	5		4		1		41	
Surrey PD					1	1												2		2		29	2			2				39	
Wells SO			1		2		1		4			36			1	1		1	6		1	9	18	3		46				130	
Harvey PD					3	2	1		4					1	1							10	17	8		1				48	
Fessenden PD																								1							1
Williams SO	1		2		15	9	5	8	47						12	9			43		4	174	64	20		52			4	469	
Tioga PD	DID NOT REPORT IN 2012																														
Williston PD			1		16	2	215	5	75		1	4		1	24	3	2	1	9		2	106	23	57		72		1	4	624	
Highway Patrol		4			1	1		12	30		1	8		4	7	86			304			1525	272	7		199				2461	
Drug Task Forces							1							3		6			399				1			139				549	

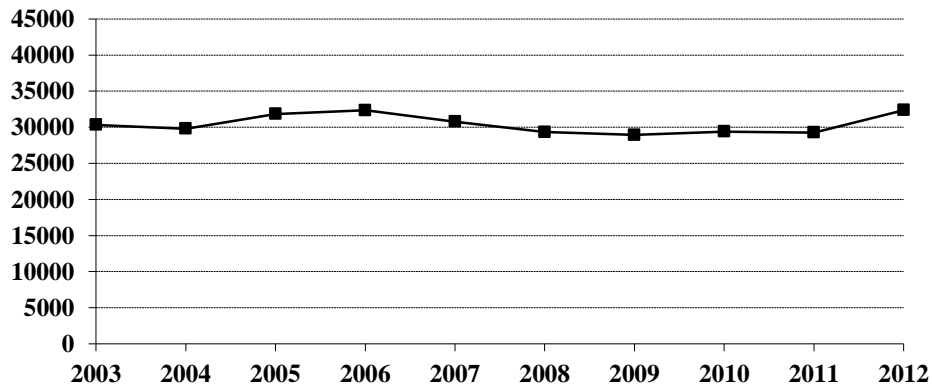
** Reported partial year

Arrests 2003-2012

Arrest Summary

Year	Population	Arrest Total	% Change from Previous Year	Rate per 100,000 Pop.
2003	634,000	30,334	4.1%	4784.5
2004	634,500	29,798	-1.8	4696.3
2005	637,000	31,835	6.8	4997.6
2006	636,000	32,343	1.6	5085.4
2007	640,000	30,780	-4.8	4809.4
2008	641,500	29,334	-4.7	4572.7
2009	647,000	28,925	-1.4	4470.6
2010	672,591	29,404	1.7	4371.8
2011	683,932	29,260	-0.5	4278.2
2012	699,628	32,380	10.7	4628.2

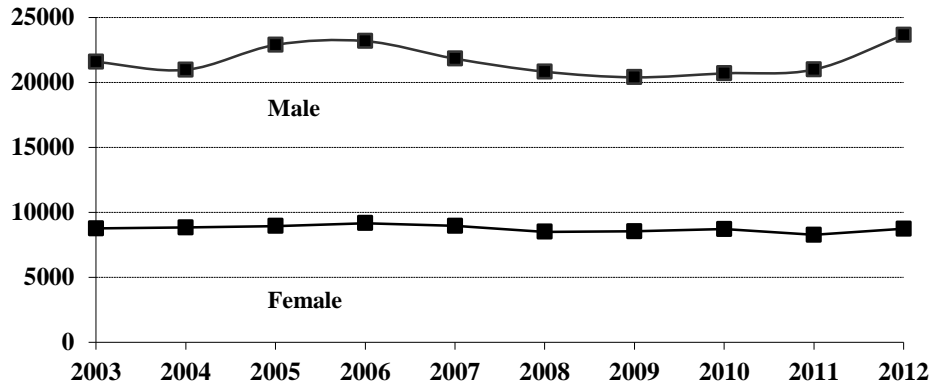
Arrest Totals, 2003-2012



Arrests by Gender, 2003-2012

Year	Male	% of Total	Female	% of Total	Total
2003	21,580	71.1%	8,754	28.9%	30,334
2004	20,971	70.4	8,827	29.6	29,798
2005	22,891	71.9	8,944	28.1	31,835
2006	23,181	71.7	9,162	28.3	32,343
2007	21,829	70.9	8,951	29.1	30,780
2008	20,828	71.0	8,506	29.0	29,334
2009	20,393	70.5	8,532	29.5	28,925
2010	20,699	70.4	8,705	29.6	29,404
2011	20,992	71.7	8,268	28.3	29,260
2012	23,647	73.0	8,733	27.0	32,380

Arrests by Gender, 2003-2012

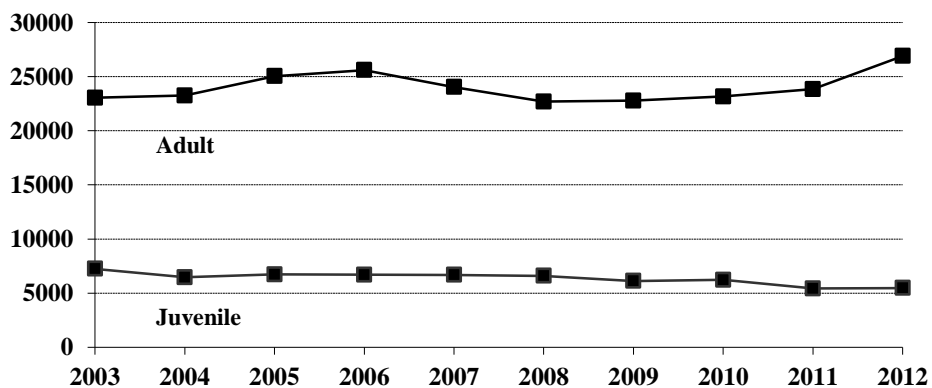


Juvenile and Adult Arrests, 2003-2012

Year	Juvenile	Percent of Total	Adult	Percent of Total	Age Not Reported	Percent of Total	Total
2003	7,250	23.9%	23,044	76.0%	40	0.1%	30,334
2004	6,467	21.7	23,247	78.0	84	0.3	29,798
2005	6,721	21.1	25,038	78.6	76	0.2	31,835
2006	6,703	20.7	25,601	79.2	39	0.1	32,343
2007	6,676	21.7	24,037	78.1	67	0.2	30,780
2008	6,593	22.5	22,695	77.4	46	0.1	29,334
2009	6,120	21.2	22,772	78.7	33	0.1	28,925
2010	6,227	21.2	23,157	78.8	20	0.1	29,404
2011	5,423	18.5	23,837	81.5			29,260
2012	5,470	16.9	26,909	83.1	1	*	32,380

* Less than 0.1 percent of total arrests.

Juvenile and Adult Arrests, 2003-2012



Arrests by Age Group, 2003-2012

Age Group	2003	2004	2005	2006	2007	2008	2009	2010	2011	2012
Under 10	145	108	73	120	108	106	99	85	91	100
10-12	582	580	500	579	461	465	510	499	405	488
13-14	1601	1526	1411	1548	1427	1396	1185	1370	1189	1145
15	1344	1312	1394	1268	1337	1327	1243	1203	1127	1108
16	1677	1409	1630	1460	1641	1606	1585	1485	1266	1259
17	1901	1532	1713	1728	1702	1693	1498	1585	1345	1370
18	2620	2176	2300	2456	2368	2159	2059	1968	1927	1765
19	2832	2638	2647	2654	2647	2369	2371	2337	2130	2217
20	2597	2310	2602	2599	2417	2224	2268	2143	2001	2103
21	1476	1358	1405	1605	1444	1289	1236	1366	1332	1449
22	1174	1316	1259	1274	1268	1192	1087	1216	1178	1268
23	958	1065	1173	1102	1018	1059	959	1040	1075	1235
24	858	909	1045	1042	996	881	1005	952	963	1103
25-29	2880	2952	3549	3629	3567	3520	3441	3613	3841	4470
30-34	2021	2140	2331	2371	2100	1983	2108	2209	2638	3325
35-39	1727	1888	2095	1989	1758	1674	1719	1709	1834	2194
40-44	1731	1846	1869	1886	1612	1539	1495	1422	1531	1893
45-49	1065	1275	1354	1413	1312	1308	1289	1324	1306	1560
50-54	557	696	734	814	780	769	934	970	1067	1262
55-59	303	367	359	414	425	365	449	490	598	613
60-64	118	165	155	183	171	199	187	222	249	255
65 +	127	146	161	170	154	165	165	176	167	197
Age Not Reported	40	84	76	39	67	46	33	20		1
Arrest Total	30334	29798	31835	32343	30780	29334	28925	29404	29260	32380

Arrests by Offense, 2003-2012

Offense Classification	2003	2004	2005	2006	2007	2008	2009	2010	2011	2012
Murder/Non-Neg. Manslaughter	2	10	9	6	11	4	7	8	9	8
Negligent Manslaughter	5	4	3	5	5	6	7	1		5
Forcible Rape	40	53	34	45	37	45	26	43	31	45
Robbery	25	15	22	25	29	23	37	32	22	48
Aggravated Assault	136	159	203	214	235	320	360	354	428	443
Burglary	266	223	220	340	235	264	306	247	215	257
Larceny/Theft	1924	1856	1830	1700	1979	2366	2485	2487	2610	2804
Motor Vehicle Theft	227	189	216	220	174	182	179	155	121	160
Other Assaults	1691	1656	2015	1989	1982	1947	2047	1977	2013	2329
Arson	20	24	15	30	24	22	14	10	12	19
Forgery and Counterfeiting	202	170	161	159	111	71	90	80	66	84
Fraud	1698	1557	1201	1243	913	646	709	627	421	454
Embezzlement	8	4	15	24	28	30	31	36	41	48
Stolen Property Offenses	148	123	137	124	126	135	126	157	143	146
Vandalism	650	592	572	657	665	557	518	505	469	539
Weapons Offenses	136	198	271	215	174	223	168	165	194	305
Prostitution	5	15	1	2	6	3	4	5	16	35
Other Sex Offenses	92	94	82	82	62	82	89	90	65	86
Drug Abuse Violations	2045	2078	2343	2256	2323	2158	2063	2339	2662	2872
Gambling		1	4		3	1	1			
Off. Against Family & Children	205	221	243	199	177	163	185	132	122	132
Driving Under the Influence	4854	5783	5946	6488	6085	5815	5819	6050	6600	7322
Liquor Law Violations	6969	5758	5940	6513	6118	5592	5449	5750	4695	4555
Disorderly Conduct	1691	1529	1657	1753	1586	1835	1843	2252	1711	2011
Vagrancy	3									
All Other Offenses	6318	6556	7686	7160	6684	5986	5542	5028	5899	6993
Suspicion										
Curfew and Loitering	339	264	301	224	279	248	296	268	206	146
Runaways	635	666	708	670	729	610	524	606	489	534
Arrest Total	30334	29798	31835	32343	30780	29334	28925	29404	29260	32380

Juvenile Arrests by Offense, 2003-2012

Offense Classification	2003	2004	2005	2006	2007	2008	2009	2010	2011	2012
Murder/Non-Neg. Manslaughter					2					
Negligent Manslaughter	1			1		1				
Forcible Rape	11	10	6	4	8	18	8	17	6	17
Robbery	6	8	4	7	5	4	3	5	4	13
Aggravated Assault	14	22	47	30	31	47	34	39	35	29
Burglary	118	99	55	115	94	97	94	71	69	56
Larceny/Theft	919	792	794	699	876	977	992	895	866	763
Motor Vehicle Theft	119	78	103	105	74	84	88	57	30	56
Other Assaults	420	416	482	474	442	465	427	397	371	436
Arson	16	15	10	15	14	7	5	4	6	9
Forgery and Counterfeiting	22	17	15	9	5	2	9	5	6	4
Fraud	23	12	17	29	34	16	11	14	9	15
Embezzlement	2		4	4	5	8	3	2	5	8
Stolen Property Offenses	92	51	41	46	43	39	51	63	33	40
Vandalism	410	344	303	362	378	298	254	234	214	225
Weapons Offenses	22	40	41	43	28	43	26	16	21	26
Prostitution		10								1
Other Sex Offenses	31	33	20	20	16	20	24	33	11	26
Drug Offenses	249	229	251	264	278	291	293	380	366	351
Gambling										
Off. Against Family/Children	64	84	86	107	91	88	88	50	57	63
Driving Under the Influence	90	92	92	100	66	93	79	52	35	47
Liquor Law Violations	1741	1304	1255	1469	1341	1217	1029	972	888	880
Disorderly Conduct	738	652	687	714	601	761	729	902	762	759
Vagrancy										
All Other Offenses	1168	1229	1399	1192	1236	1159	1053	1145	934	966
Suspicion										
Curfew and Loitering	339	264	301	224	279	248	296	268	206	146
Runaways	635	666	708	670	729	610	524	606	489	534
Juvenile Arrest Total	7250	6467	6721	6703	6676	6593	6120	6227	5423	5470

Juvenile Arrests by Gender, 2003-2012

Year	Male	% of Total	Female	% of Total	Total
2003	4,568	63.0%	2,682	37.0%	7,250
2004	3,909	60.4	2,558	39.6	6,467
2005	4,092	60.9	2,629	39.1	6,721
2006	4,240	63.3	2,463	36.7	6,703
2007	4,108	61.5	2,568	38.5	6,676
2008	4,061	61.6	2,532	38.4	6,593
2009	3,759	61.4	2,361	38.6	6,120
2010	3,784	60.8	2,443	39.2	6,227
2011	3,189	58.8	2,234	41.2	5,423
2012	3,283	60.0	2,187	40.0	5,470

Adult Arrests by Offense, 2003-2012

Offense Classification	2003	2004	2005	2006	2007	2008	2009	2010	2011	2012
Murder/Non-Neg. Manslaughter	2	10	9	6	9	4	7	8	9	8
Negligent Manslaughter	4	4	3	4	5	5	7	1		5
Forcible Rape	29	43	28	41	29	27	18	26	25	28
Robbery	19	7	18	18	24	19	34	27	18	35
Aggravated Assault	122	137	156	184	204	270	326	315	393	414
Burglary	148	119	165	224	141	167	211	176	146	201
Larceny/Theft	1004	1064	1035	1000	1103	1388	1491	1592	1744	2041
Motor Vehicle Theft	108	111	113	115	100	98	91	98	91	104
Other Assaults	1269	1237	1532	1513	1540	1480	1619	1580	1642	1893
Arson	4	9	5	15	9	15	9	6	6	10
Forgery and Counterfeiting	180	151	145	149	106	69	81	75	60	80
Fraud	1654	1507	1172	1211	845	620	693	611	412	438
Embezzlement	6	4	11	20	23	22	28	34	36	40
Stolen Property Offenses	56	72	96	78	83	96	75	94	110	106
Vandalism	240	246	269	293	287	258	264	270	255	314
Weapons Offenses	114	158	230	172	146	180	142	149	173	279
Prostitution	5	5	1	2	6	3	4	5	16	34
Other Sex Offenses	61	61	62	62	46	62	65	57	54	60
Drug Offenses	1795	1846	2066	1983	2035	1857	1762	1957	2296	2521
Gambling		1	4		3	1	1			
Off. Against Family/Children	141	136	157	91	86	75	96	81	65	69
Driving Under the Influence	4759	5685	5847	6384	6018	5718	5735	5994	6565	7275
Liquor Law Violations	5222	4449	4674	5038	4775	4369	4418	4774	3807	3675
Disorderly Conduct	952	876	969	1035	984	1073	1112	1348	949	1252
Vagrancy	3									
All Other Offenses	5147	5309	6271	5963	5430	4819	4483	3879	4965	6027
Suspicion										
Adult Arrest Total	23044	23247	25038	25601	24037	22695	22772	23157	23837	26909

Adult Arrests by Gender, 2003-2012

Year	Male	% of Total	Female	% of Total	Total
2003	16,987	73.7%	6,057	26.3%	23,044
2004	17,004	73.1	6,243	26.9	23,247
2005	18,739	74.8	6,299	25.2	25,038
2006	18,912	73.9	6,689	26.1	25,601
2007	17,677	73.5	6,360	26.5	24,037
2008	16,735	73.7	5,960	26.3	22,695
2009	16,610	72.9	6,162	27.1	22,772
2010	16,901	73.0	6,256	27.0	23,157
2011	17,803	74.7	6,034	25.3	23,837
2012	20,364	75.7	6,545	24.3	26,909

Drug Arrest Analysis

Drug offense arrests increased by 7.9 percent from a total of 2,662 in 2011 to 2,872 in 2012. The arrest totals shown should not be interpreted as the number of individuals arrested for drug offenses because it is possible that some individuals may have been arrested on more than one occasion for this offense.

More than 76 percent of drug arrests in 2012 were arrests of males.

Juveniles (persons under the age of 18) comprised 12.2 percent of the total in 2012.

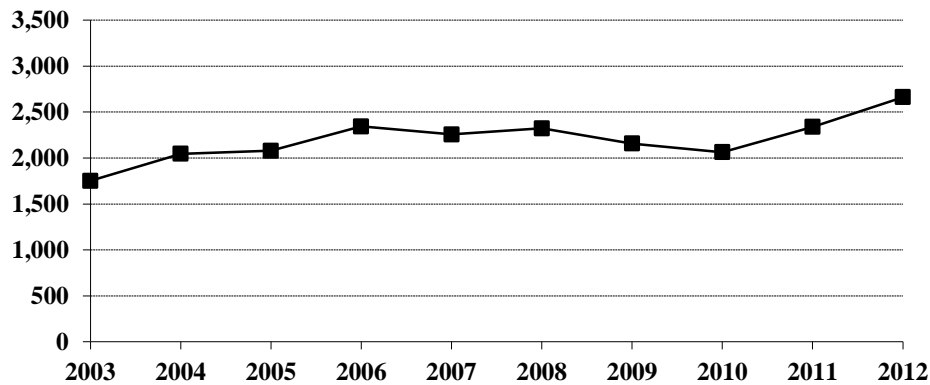
More than 88 percent of the drug arrests during the 10-year period were arrests for possession rather than sale or manufacture of drugs.

Nearly seventy-one percent of the arrests for drug offenses during the period 2003-2012 involved marijuana.

Arrests for Drug Offenses, 2003-2012

Year	Total	Percent Change from Previous Year
2003	2,045	16.7%
2004	2,078	1.6
2005	2,343	12.8
2006	2,256	-3.7
2007	2,323	3.0
2008	2,158	-7.1
2009	2,063	-4.4
2010	2,339	13.4
2011	2,662	13.8
2012	2,872	7.9

Arrests for Drug Offenses, 2003-2012



Drug Arrests by Gender, 2003-2012

Year	Male	% of Total	Female	% of Total	Total
2003	1,593	77.9%	452	22.1%	2,045
2004	1,595	76.8	483	23.2	2,078
2005	1,738	74.2	605	25.8	2,343
2006	1,762	78.1	494	21.9	2,256
2007	1,774	76.4	549	23.6	2,323
2008	1,642	76.1	516	23.9	2,158
2009	1,631	79.1	432	20.9	2,063
2010	1,792	76.6	547	23.4	2,339
2011	2,056	77.2	606	22.8	2,662
2012	2,190	76.3	682	23.7	2,872

Drug Arrests by Age Category, 2003-2012

Year	Juvenile	Percent of Total	Adult	Percent of Total	Age Not Reported	Percent of Total	Total
2003	249	12.2%	1,795	87.8%	1	*	2,045
2004	229	11.0	1,846	88.8	3	0.1%	2,078
2005	251	10.7	2,066	88.2	26	1.1	2,343
2006	264	11.7	1,983	87.9	9	0.4	2,256
2007	278	12.0	2,035	87.6	10	0.4	2,323
2008	291	13.5	1,857	86.0	10	0.5	2,158
2009	293	14.2	1,762	85.4	8	0.4	2,063
2010	380	16.2	1,957	83.7	2	0.1	2,339
2011	366	13.7	2,296	86.3			2,662
2012	351	12.2	2,521	87.8			2,872

*Less than 0.1 percent of total drug arrests.

Drug Arrests by Age Group, 2003-2012

Age Group	2003	2004	2005	2006	2007	2008	2009	2010	2011	2012
Under 10										
10-12	3	4	5	4	2	4	3	6	4	3
13-14	33	29	20	34	39	31	31	43	38	51
15	34	40	42	38	47	60	40	81	69	60
16	66	68	90	79	92	91	97	116	111	78
17	113	88	94	109	98	105	122	134	144	159
18	195	163	195	187	209	195	170	182	227	180
19	175	186	197	169	196	175	179	174	260	244
20	157	160	193	180	182	151	161	184	216	189
21	117	117	121	132	148	141	134	147	155	212
22	115	135	124	119	136	126	107	154	144	142
23	87	111	106	98	95	100	99	97	150	133
24	75	110	107	97	106	78	113	108	97	112
25-29	272	250	326	319	385	303	258	303	357	442
30-34	151	190	203	217	155	171	164	201	220	296
35-39	158	129	153	156	136	114	113	111	128	187
40-44	159	168	163	145	111	129	84	97	113	126
45-49	85	82	109	91	87	105	89	80	94	105
50-54	38	33	45	52	59	45	55	64	90	94
55-59	8	9	18	16	22	17	26	40	32	41
60-64	1	1	1	4	3	5	7	13	11	13
65 +	2	2	5	1	5	2	3	2	2	5
No Age Data	1	3	26	9	10	10	8	2		
Total	2045	2078	2343	2256	2323	2158	2063	2339	2662	2872

Drug Arrests by Type of Offense, 2003-2012

Year	Sale or Manufacture	% of Total	Possession	% of Total	Total
2003	143	7.0%	1,902	93.0%	2,045
2004	318	15.3	1,760	84.7	2,078
2005	284	12.1	2,059	87.9	2,343
2006	298	13.2	1,958	86.8	2,256
2007	217	9.3	2,106	90.7	2,323
2008	250	11.6	1,908	88.4	2,158
2009	257	12.5	1,806	87.5	2,063
2010	338	14.5	2,001	85.5	2,339
2011	346	13.0	2,316	87.0	2,662
2012	269	9.4	2,603	90.6	2,872

Drug Arrests by Age Category and Type of Offense, 2003-2012

Year	Juvenile		Adult		Age Not Reported	
	Sale or Manufacture	Possession	Sale or Manufacture	Possession	Sale or Manufacture	Possession
2003	20	229	123	1,672		1
2004	28	201	289	1,557	1	2
2005	17	234	259	1,807	8	18
2006	27	237	268	1,715	3	6
2007	19	259	196	1,839	2	8
2008	33	258	217	1,640		10
2009	17	276	240	1,522		8
2010	20	360	318	1,639		2
2011	32	334	314	1,982		
2012	28	323	241	2,280		

Drug Arrests by Type of Drug, 2003-2012

Year	Opiates, Cocaine or Derivatives	Percent of Total	Marijuana	Percent of Total	Other Drugs or Narcotics	Percent of Total	Total
2003	62	3.0%	1,428	69.9%	555	27.1%	2,045
2004	38	1.8	1,333	64.2	707	34.0	2,078
2005	53	2.3	1,516	64.7	774	33.0	2,343
2006	53	2.3	1,621	71.9	582	25.8	2,256
2007	50	2.2	1,783	76.7	490	21.1	2,323
2008	49	2.3	1,681	77.9	428	19.8	2,158
2009	44	2.1	1,533	74.3	486	23.6	2,063
2010	29	1.3	1,722	73.6	588	25.1	2,339
2011	37	1.4	1,837	69.0	788	29.6	2,662
2012	64	2.2	1,934	67.4	874	30.4	2,872

Drug Arrests by Age Category and Type of Drug, 2003-2012

Year	Juvenile			Adult			Age Not Reported		
	Opiates, Cocaine or Deriv.	Marijuana	Other Drugs or Narcotics	Opiates, Cocaine or Deriv.	Marijuana	Other Drugs or Narcotics	Opiates, Cocaine or Deriv.	Marijuana	Other Drugs or Narcotics
2003	3	206	40	59	1,221	515		1	
2004	3	162	64	35	1,170	641		1	2
2005	2	220	29	51	1,288	727		8	18
2006	1	229	34	52	1,389	542		3	6
2007	1	244	33	49	1,532	454		7	3
2008	5	237	49	44	1,438	375		6	4
2009	2	237	54	42	1,292	428		4	4
2010	1	297	82	28	1,423	506		2	
2011	2	285	79	35	1,552	709			
2012	3	280	68	61	1,654	806			

DUI Arrest Analysis

Reported DUI arrests increased 10.9 percent from 6,600 in 2011 to 7,322 in 2012. The arrest totals should not be interpreted as the number of individuals arrested for DUI offenses because it is possible that some individuals may have been arrested on more than one occasion.

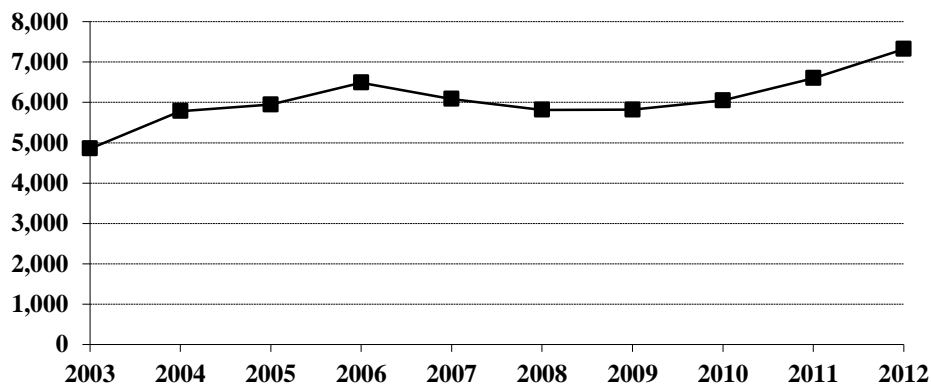
Nearly 80 percent of the DUI arrests in 2012 were arrests of males.

Juveniles, persons under the age of 18, made up 0.6 percent of the total in 2012.

DUI Arrests, 2003-2012

Year	DUI Arrests Reported	Percent Change from Previous Year
2003	4,854	8.7%
2004	5,783	19.1
2005	5,946	2.8
2006	6,488	9.1
2007	6,085	-6.2
2008	5,815	-4.4
2009	5,819	0.1
2010	6,050	4.0
2011	6,600	9.1
2012	7,322	10.9

DUI Arrests, 2003-2012



DUI Arrests by Gender, 2003-2012

Year	Male	% of Total	Female	% of Total	Total
2003	3,763	77.5%	1,091	22.5%	4,854
2004	4,459	77.1	1,324	22.9	5,783
2005	4,640	78.0	1,306	22.0	5,946
2006	4,956	76.4	1,532	23.6	6,488
2007	4,620	75.9	1,465	24.1	6,085
2008	4,449	76.5	1,366	23.5	5,815
2009	4,391	75.5	1,428	24.5	5,819
2010	4,639	76.7	1,411	23.3	6,050
2011	5,109	77.4	1,491	22.6	6,600
2012	5,843	79.8	1,479	20.2	7,322

DUI Arrests by Age Category, 2003-2012

Year	Juvenile	Percent of Total	Adult	Percent of Total	Age Not Reported	Percent of Total	Total
2003	90	1.9%	4,759	98.0%	5	0.1%	4,854
2004	92	1.6	5,685	98.3	6	0.1	5,783
2005	92	1.6	5,847	98.3	7	0.1	5,946
2006	100	1.5	6,384	98.4	4	0.1	6,488
2007	66	1.1	6,018	98.9	1	*	6,085
2008	93	1.6	5,718	98.3	4	0.1	5,815
2009	79	1.4	5,735	98.5	5	0.1	5,819
2010	52	0.9	5,994	99.0	4	0.1	6,050
2011	35	0.5	6,565	99.5			6,600
2012	47	0.6	7,275	99.4			7,322

*Less than 0.1 percent of total DUI arrests.

DUI Arrests by Age Group, 2003-2012

Age Group	2003	2004	2005	2006	2007	2008	2009	2010	2011	2012
Under 10										
10-12										
13-14	2	3	1	1	1	2			1	1
15	10	8	5	10	2	8	7	2	3	4
16	25	33	31	28	17	25	27	12	9	9
17	53	48	55	61	46	58	45	38	22	33
18	161	142	121	161	127	121	110	81	94	100
19	195	212	206	187	166	158	138	128	116	139
20	219	205	219	196	166	173	169	135	141	164
21	354	362	344	431	381	340	359	350	366	394
22	300	417	372	373	381	338	300	356	368	363
23	267	305	345	357	339	314	316	307	334	365
24	260	293	278	336	336	304	292	293	303	367
25-29	775	867	1051	1060	1117	1083	1082	1204	1262	1356
30-34	526	621	596	735	719	641	654	711	920	1022
35-39	436	590	590	624	570	581	554	644	685	776
40-44	480	576	603	621	527	512	514	512	569	642
45-49	354	468	481	560	517	507	501	545	507	583
50-54	214	288	309	346	301	309	377	335	413	519
55-59	120	178	171	199	198	168	205	206	291	281
60-64	46	93	86	98	91	94	90	110	121	117
65 +	52	68	75	100	82	75	74	77	75	87
No Age Data	5	6	7	4	1	4	5	4		
Total	4854	5783	5946	6488	6085	5815	5819	6050	6600	7322

(This page intentionally left blank.)

UCR OFFENSE DEFINITIONS

UNIFORM CRIME REPORTING OFFENSE DEFINITIONS

Offenses in Uniform Crime Reporting are divided into two groups designated as Part I and Part II crimes. Information on the number of Part I offenses known to law enforcement, the number cleared by arrest or exceptional means, and the number of persons arrested is reported monthly. Arrest data are reported for Part I and Part II offenses. The Crime Index is composed of offenses 1-7 with the exception as noted in item 1 below.

NOTE: The classifications of these offenses for UCR reporting purposes are based on law enforcement investigation as opposed to determination by a court, medical examiner, jury, or other judicial hearing.

PART I OFFENSES:

1. CRIMINAL HOMICIDE

a. Murder and Non-Negligent Manslaughter

The willful (non-negligent) killing of one human being by another. Deaths caused by negligence, attempts to kill, assaults to kill, suicides, accidental deaths, and justifiable homicides are excluded. Justifiable homicides are limited to: (1) the killing of a felon by a law enforcement officer in the line of duty, and (2) the killing of a felon by a private citizen.

b. Manslaughter by Negligence

The killing of another person through gross negligence. Excludes traffic fatalities. While manslaughter by negligence is a Part I crime, it is not included in the Crime Index.

2. FORCIBLE RAPE

The carnal knowledge of a female forcibly and against her will. Included are rapes by force and attempts or assaults to rape. Statutory offenses (no force used -- victim under age of consent) are excluded.

3. ROBBERY

The taking or attempting to take anything of value from the care, custody, or control of a person or persons by force or threat of force or violence, or putting the victim in fear.

4. AGGRAVATED ASSAULT

An unlawful act by one person upon another for the purpose of inflicting severe or aggravated bodily injury. This type of assault usually is accompanied by the use of a weapon or by a means likely to produce death or great bodily harm. Simple assaults are excluded.

5. BURGLARY

Breaking or entering. The unlawful entry of a structure to commit a felony or theft. Attempted forcible entry is included.

6. LARCENY/THEFT

The unlawful taking, carrying, leading, or riding away of property from the possession or constructive possession of another. Examples are thefts of bicycles or automobile accessories, shoplifting, pocket-picking, or the stealing of any property or article that is not taken by force and violence or by fraud. Attempted larcenies are included. Embezzlement, “con” games, forgery, worthless checks, etc., are excluded.

7. MOTOR VEHICLE THEFT

The theft or attempted theft of a motor vehicle. A motor vehicle is self-propelled and runs on the surface and not on rails. Specifically excluded from this category are motorboats, construction equipment, airplanes, and farming equipment.

8. ARSON

Any willful or malicious burning or attempting to burn, with or without intent to defraud, a dwelling house, public building, motor vehicle, personal property of another, etc.

PART II OFFENSES:

9. OTHER ASSAULTS (SIMPLE)

Assaults or attempted assaults where no weapon was used or which did not result in serious or aggravated injury to the victim.

10. FORGERY AND COUNTERFEITING

Making, altering, uttering, or possessing, with the intent to defraud, anything false which is made to appear true. Attempts are included.

11. FRAUD

Fraudulent conversion and obtaining money or property by false pretenses. Included are larceny by bailee and bad checks except forgeries and counterfeiting. Attempts are included.

12. EMBEZZLEMENT

Misappropriation or misapplication of money or property entrusted to one’s care, custody or control. Attempts are included.

13. STOLEN PROPERTY -- BUYING, RECEIVING, POSSESSING

Buying, receiving, or possessing stolen property, including attempts.

14. VANDALISM

Willful or malicious destruction, injury, disfigurement, or defacement of any public or private property, real or personal, without consent of the owner or person having custody or control. Attempts are included.

15. WEAPON OFFENSES -- CARRYING, POSSESSING, ETC.

All violations of regulations or statutes controlling the carrying, using, possessing, furnishing, and manufacturing of deadly weapons or silencers. Attempts are included.

16. PROSTITUTION AND COMMERCIALIZED VICE

Sex offenses of a commercialized nature, such as prostitution, keeping a bawdy house, procuring, or transporting women for immoral purposes. Attempts are included.

17. OTHER SEX OFFENSES (except forcible rape, prostitution and commercialized vice)

Statutory rape and offenses against chastity, common decency, morals and the like. Attempts are included.

18. DRUG ABUSE VIOLATIONS

State and local offenses relating to narcotic and non-narcotic drugs, such as unlawful possession, sale, use, growing and manufacturing of narcotic and non-narcotic drugs. Attempts are included.

19. GAMBLING

Promoting, permitting, or engaging in illegal gambling.

20. OFFENSES AGAINST FAMILY AND CHILDREN

Non-support, neglect, desertion, or abuse of family and children.

21. DRIVING UNDER THE INFLUENCE

Driving or operating any vehicle or common carrier while drunk or under the influence of liquor or drugs.

22. LIQUOR LAWS

State or local liquor law violations, except "drunkenness" (offense 23) and "driving under the influence" (offense 21).

23. DRUNKENNESS

Drunkenness or intoxication. Excluded is "driving under the influence" (offense 21). This is not a crime in North Dakota, but is included in the national program.

24. DISORDERLY CONDUCT

Breach of peace.

25. VAGRANCY

Vagabondage, begging, loitering, etc.

26. ALL OTHER OFFENSES

All violations of state or local laws, except offenses 1-25 and traffic offenses.

27. SUSPICION

No specific offense; suspect released without formal charges being placed.

28. CURFEW AND LOITERING

Offenses relating to violation of local curfew and loitering ordinances where such laws exist.

29. RUNAWAYS

Limited to juveniles taken into protective custody under provisions of local statutes.

(This page intentionally left blank.)

**FULL-TIME LAW
ENFORCEMENT EMPLOYEES**

**NUMBER OF FULL-TIME LAW ENFORCEMENT EMPLOYEES
REPORTED BY UCR AGENCIES
AS OF OCTOBER 31, 2012**

Agency	Law Enforcement Officers		Civilian Personnel		Total Full-Time			Population
	Male	Female	Male	Female	Male	Female	Total	
Adams SO	4				4		4	2,360
Barnes SO	6			1	6	1	7	4,580
Valley City PD	11	1		5	11	6	17	6,730
Benson SO	4				4		4	6,877
Billings SO	5				5		5	716
Medora PD	3				3		3	119
Bottineau SO	10		5		15		15	6,591
Bowman SO	3				3		3	1,240
Bowman PD	3				3		3	1,679
Scranton PD	1				1		1	287
Burke SO	6			1	6	1	7	2,080
Burleigh SO	41	6	25	21	66	27	93	18,431
Bismarck PD	91	12	8	20	99	32	131	64,103
Lincoln PD	3				3		3	2,519
Cass SO	58	20	33	28	91	48	139	19,161
Fargo PD	120	21		19	120	40	160	99,813
West Fargo PD	37	2	1	9	38	11	49	26,894
NDSU PD	12	5	2	6	14	11	25	10,000
Cavalier SO	5		5		10		10	4,029
Dickey SO	4			1	4	1	5	2,099
Ellendale PD	2				2		2	1,908
Oakes PD	3				3		3	1,432
Divide SO	7				7		7	2,174
Dunn SO	10	1		1	10	2	12	2,999
Killdeer PD	3				3		3	806
Eddy SO	3	1		1	3	2	5	2,435
Emmons SO	3			1	3	1	4	2,506
Linton PD								1,121
Foster SO	2	1			2	1	3	1,307
Carrington PD	3	1			3	1	4	2,111
Golden Valley SO	3	1		1	3	2	5	1,792
Grand Forks SO	30	2	6	1	36	3	39	12,318
Grand Forks PD	70	12	5	10	75	22	97	43,839
Northwood PD	2				2		2	963
Thompson PD	1				1		1	1,006
UND PD	14	1		2	14	3	17	10,000
Grant SO	3	1			3	1	4	2,391
Griggs SO	4			1	4	1	5	2,426
Hettinger SO	4	1			4	1	5	2,573
Kidder SO	3			1	3	1	4	1,744
Steele PD	1				1		1	725
LaMoure SO	4			1	4	1	5	3,298
Kulm PD	1				1		1	NA
LaMoure PD	1				1		1	901
Logan SO	2				2		2	1,223
Napoleon PD	1				1		1	808
McHenry SO	6	1			6	1	7	5,631
McIntosh SO	2	1			2	1	3	1,821
Wishek PD	2				2		2	1,012
McKenzie SO	13			11	13	11	24	5,213
Watford City PD	9	1		1	9	2	11	1,967
McLean SO	18	1	7	9	25	10	35	9,276
Mercer SO	14		3	6	17	6	23	2,969
Beulah PD	4			1	4	1	5	3,202
Hazen PD	4				4		4	2,472
Morton SO	19	2	8	9	27	11	38	9,438
Mandan PD	24	4	1	4	25	8	33	18,932

Agency	Law Enforcement Officers		Civilian Personnel		Total Full-Time			Population
	Male	Female	Male	Female	Male	Female	Total	
Mountrail SO	11	1		10	11	11	22	6,708
Stanley PD	3	1			3	1	4	1,575
Nelson SO	5				5		5	3,127
Oliver SO	4			1	4	1	5	1,872
Pembina SO	7		6		13		13	6,191
Cavalier PD	4				4		4	1,319
Pierce SO	3			4	3	4	7	1,523
Rugby PD	4				4		4	2,952
Ramsey SO	6			1	6	1	7	4,410
Devils Lake PD	15	1	1	1	16	2	18	7,305
Ransom SO	3	1		1	3	2	5	3,345
Lisbon PD	2	1			2	1	3	2,182
Renville SO	1	4			1	4	5	2,298
Sherwood PD	1				1		1	249
Richland SO	12	1	4	7	16	8	24	8,710
Wahpeton PD	11	3		2	11	5	16	5,908
NDSCS PD	2	1		1	2	2	4	2,000
Rolette SO	8	1	4	5	12	6	18	13,197
Rolla PD	4				4		4	1,335
Sargent SO	4			1	4	1	5	3,885
Sheridan SO	3				3		3	1,339
Sioux SO	1				1		1	4,378
Slope SO	1				1		1	734
Stark SO	17			3	17	3	20	5,978
Dickinson PD	35	1	2	13	37	14	51	18,924
Belfield PD	2				2		2	853
Steele SO	3				3		3	1,995
Stutsman SO	7	1		2	7	3	10	5,792
Jamestown PD	26	2		4	26	6	32	15,753
Towner SO	3				3		3	1,166
Cando PD	2				2		2	1,150
Traill SO	7	1		5	7	6	13	6,687
Hillsboro PD	1	1			1	1	2	1,647
Walsh SO	9	1	2	3	11	4	15	6,936
Grafton PD	10			1	10	1	11	4,349
Ward SO	23	2	18	16	41	18	59	18,796
Kenmare PD	3				3		3	1,165
Minot PD	54	11	17	6	71	17	88	43,460
Burlington PD	2				2		2	1,127
Surrey PD	2				2		2	994
Wells SO	3				3		3	2,005
Harvey PD	4				4		4	1,836
Fessenden PD	1				1		1	493
Williams SO	28	3	12	8	40	11	51	8,560
Tioga PD	5				5		5	NA
Williston PD	29	3	2	10	31	13	44	16,373
Highway Patrol	137	6	16	31	153	37	190	
Total	1,250	146	193	308	1,443	454	1,897	699,628

NA = Not Available