

# **Office of Attorney General**

## **Bureau of Criminal Investigation**

### **Crime in North Dakota, 2013**

#### **A Summary of Uniform Crime Report Data**

**Wayne Stenehjem  
Attorney General**

**Prepared by  
Colleen Weltz  
UCR Program Manager  
2014**



# INTRODUCTION

The North Dakota Uniform Crime Reporting (UCR) program involves the collection, compilation, and analysis of crime and arrest statistics reported by the various local law enforcement agencies throughout the state. Fifty-two sheriffs' departments, 53 police departments and the ND Highway Patrol reported to the UCR program in 2013.

**INCIDENT-BASED REPORTING:** North Dakota law enforcement agencies use a standard incident form to collect data on each incident reported to their respective agencies. This form collects much more detailed information than is collected using summary reporting. Data collected includes: type of incident, where and when the incident took place, victim characteristics, suspect/arrestee characteristics, property involved in the incident, etc. A total of 105 police departments and sheriffs' departments along with the ND Highway Patrol reported incident data for all or part of 2013.

In order to continue the statistical time-series begun with summary reporting, computer programs were written to extract summary data from the incident data reported. Crime in North Dakota, 2013 is a report on summary data.

**SUMMARY REPORTING:** Law enforcement agencies use a tally system to report the number of crime index offenses and arrests for each month. North Dakota no longer has any agencies reporting summary data.

The federal counterpart of the North Dakota UCR program is the National UCR program under the direction of the Federal Bureau of Investigation (FBI). The UCR program has been used nationally and in North Dakota for many years to measure the extent, distribution and fluctuation of crime through the crime index. The crime index is not an absolute measure, but rather an indication of the amount and type of crime occurring in any given jurisdiction. The index is composed of seven crimes that are sub-classified as follows:

**VIOLENT CRIME:** Murder/Non-Negligent Manslaughter  
Forcible Rape  
Robbery  
Aggravated Assault

**PROPERTY CRIME:** Burglary  
Larceny/Theft  
Motor Vehicle Theft

A Modified Crime Index is also calculated at the federal level. This includes arson as the fourth property crime and the eighth index offense. Data on arson is not included in this report.

Prior to an offense becoming recorded in the UCR program, it must be reported to the local law enforcement officials and reported by the local agency to the UCR program. Consequently, the UCR program only reflects reported crimes. Reporting of crimes depends on several factors, including actual perception of an act as a crime, the probability of loss of status for reporting (as in cases of rape), and the perceived probability of action on the part of the law enforcement agency contacted.

Several types of data are gathered, including:

**Offense data**

- Number of known crime index offenses
- Type and value of stolen property
- Additional information on homicides and arson
- Law enforcement officers killed or assaulted

**Arrest and Clearance Data**

- Number and type of offenses cleared
- Number and type of index offenses involving juveniles cleared
- Number of persons arrested, by offense
- Characteristics of persons arrested (age, sex, race)

To allow for comparison among several geographic or jurisdictional areas with differing populations or to allow comparisons across time in an area undergoing population fluctuations, the UCR program provides for the calculation of crime rates to remove any potential biases created by population differences. Because a rate relates the incidence of activity to population, it is possible to measure annual fluctuations in criminal activity by comparing rates of crime reported in any given year with those reported in other years. National publications report crime rates calculated based on the number of reported offenses per 100,000 population. This publication provides crime rate information calculated in the same manner.

# TABLE OF CONTENTS

Introduction.....	i
Table of Contents.....	iii
North Dakota Crime Summary, 2013.....	v
Crime Index Offense Analysis.....	1
Violent Crime.....	7
Murder/Non-Negligent Manslaughter.....	9
Forcible Rape.....	11
Robbery.....	13
Aggravated Assault.....	16
Property Crime.....	18
Burglary.....	20
Larceny/Theft.....	23
Motor Vehicle Theft.....	26
Crime Index Offenses by Reporting Jurisdiction.....	29
Arrest Analysis.....	35
Arrests in 2013.....	36
Arrest Analysis by Reporting Jurisdiction.....	42
Arrests 2004-2013.....	45
Drug Arrest Analysis.....	51
DUI Arrest Analysis.....	55
UCR Offense Definitions.....	59
Full-Time Law Enforcement Employees.....	65

(This page intentionally left blank.)

## **NORTH DAKOTA CRIME SUMMARY, 2013**

In 2013, 15,685 crime index offenses were reported by local law enforcement agencies. This is an increase of 5.5 percent from the total of 14,866 reported in 2012.

Crime index offenses include: murder/non-negligent manslaughter, forcible rape, robbery, aggravated assault, burglary, larceny/theft, and motor vehicle theft.

The Census Bureau estimate of North Dakota's population for 2013 is 723,393. The index crime rate per 100,000 population for 2013 is 2168.3. The index crime rate for 2012 was 2124.8 per 100,000 population. This is a 2 percent increase in the crime rate.

The total number of reported violent index crimes (murder, rape, robbery, and aggravated assault) was 1,558. This represents an increase of 7.4 percent from the total of 1,451 reported in 2012. In 2011, 1,353 violent index crimes were reported.

Violent crime accounted for 9.9 percent of total index crimes reported in 2013.

Collectively, property crimes (burglary, larceny/theft and motor vehicle theft) increased by 5.3 percent from 13,415 reported in 2012 to 14,127 reported in 2013.

Property crime accounted for 90.1 percent of total crime index offenses reported in 2013.

The 10,243 larceny/theft offenses reported in 2013 accounted for 65.3 percent of total index crimes.

More than \$33.3 million worth of property was reported stolen in 2013, with over 25 percent of that amount reported as recovered by law enforcement officials.

North Dakota law enforcement agencies reported 31,166 arrests in 2013. A total of 32,380 arrests was reported in 2012.

In 2013, juvenile arrests accounted for 14.6 percent of the total arrests. Juvenile arrests were 20 percent of the total arrests of crime index offenses.

The number of reported arrests in 2013 for DUI decreased to 7,086 from 7,322 reported in 2012.

Arrests for drug offenses increased 19.5 percent from a 2012 total of 2,872 to 3,431 in 2013.

(This page intentionally left blank.)



# **CRIME INDEX OFFENSE ANALYSIS**

---

---

(This page intentionally left blank.)

# Crime Index Offenses

---

Crime index offenses include the violent crimes of murder/non-negligent manslaughter, forcible rape, robbery, and aggravated assault, and the property crimes of burglary, larceny/theft, and motor vehicle theft.

In 2013, 15,685 crime index offenses were reported by local law enforcement agencies. This is an increase of 5.5 percent from the total of 14,866 reported in 2012.

The Census Bureau estimate of North Dakota's population for 2013 is 723,393. Based on that total, the index crime rate per 100,000 population for 2013 was 2168.3, as compared to 2124.8 for 2012. See the crime index offense summary on page 5 for crime rate information for the period 2004-2013.

More than 24 percent of crime index offenses were reported as cleared by arrest or exceptional means. The UCR program defines an offense as "cleared" by law enforcement when at least one person is arrested, charged with the commission of the offense, and turned over to the court for prosecution. Several crimes may be cleared by the arrest of one person, while the arrests of many persons may clear only one offense. Law enforcement agencies may clear a crime by exceptional means when some element beyond law enforcement control precludes the placing of formal charges against the offender. Examples of circumstances that allow such clearances are the death of the offender (suicide, justifiably killed by police or private citizen, etc.); the victim's refusal to cooperate with prosecution after the offender has been identified; or the denial of extradition.

In 2013, 3,622 arrests were reported for crime index offenses. Of that total, 20 percent were arrests of juveniles.

More than \$33.3 million worth of property was reported stolen in 2013, with 25.3 percent of that amount reported as recovered by law enforcement officials.

---

## Crime Index Offenses Reported, 2013

Crime Index Offense	Number Reported	Percent of Total Index Offenses
Murder/Non-Negligent Manslaughter	14	0.1%
Forcible Rape	237	1.5
Robbery	151	1.0
Aggravated Assault	1,156	7.4
<b>Violent Crime Subtotal</b>	<b>1,558</b>	<b>9.9</b>
Burglary	2,656	16.9
Larceny/Theft	10,243	65.3
Motor Vehicle Theft	1,228	7.8
<b>Property Crime Subtotal</b>	<b>14,127</b>	<b>90.1</b>
<b>Crime Index Offense Total</b>	<b>15,685</b>	<b>100.0</b>

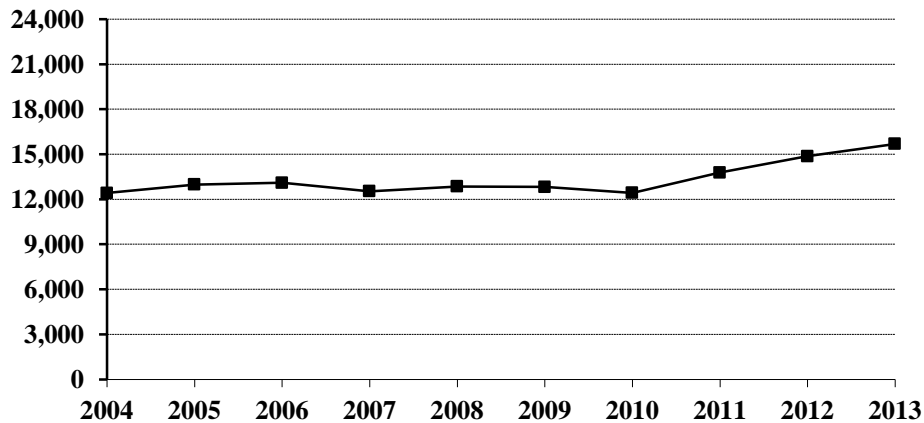
## Comparison of Crime Index Offenses Reported, 2012-2013

<b>Crime Index Offense</b>	<b>2012</b>	<b>2013</b>	<b>Percent Change</b>
<b>Murder/Non-Negligent Manslaughter</b>	<b>20</b>	<b>14</b>	<b>-30.0%</b>
<b>Forcible Rape</b>	<b>243</b>	<b>237</b>	<b>-2.5</b>
Rape by Force	232	229	-1.3
Attempts to Rape	11	8	-27.3
<b>Robbery</b>	<b>117</b>	<b>151</b>	<b>29.1</b>
Firearm	25	40	60.0
Knife or Cutting Instrument	16	29	81.3
Other Dangerous Weapon	24	31	29.2
Strong Arm – No Weapon	52	51	-1.9
<b>Aggravated Assault</b>	<b>1,071</b>	<b>1,156</b>	<b>7.9</b>
Firearm	17	22	29.4
Knife or Cutting Instrument	115	138	20.0
Other Dangerous Weapon	303	291	-4.0
Hands, Fists, Feet, Etc.	636	705	10.8
<b>Violent Crime Subtotal</b>	<b>1,451</b>	<b>1,558</b>	<b>7.4</b>
<b>Burglary</b>	<b>2,200</b>	<b>2,656</b>	<b>20.7</b>
Forcible Entry	1,041	1,287	23.6
Unlawful Entry – No Force	1,042	1,238	18.8
Attempted Forcible Entry	117	131	12.0
<b>Larceny/Theft</b>	<b>10,184</b>	<b>10,243</b>	<b>0.6</b>
<b>Motor Vehicle Theft</b>	<b>1,031</b>	<b>1,228</b>	<b>19.1</b>
Autos	824	994	20.6
Trucks and Buses	75	78	4.0
Other Vehicles	132	156	18.2
<b>Property Crime Subtotal</b>	<b>13,415</b>	<b>14,127</b>	<b>5.3</b>
<b>Crime Index Offense Total</b>	<b>14,866</b>	<b>15,685</b>	<b>5.5</b>

## Crime Index Offenses, 2004-2013

Crime Index Offense	2004	2005	2006	2007	2008	2009	2010	2011	2012	2013
Murder/Non-Neg. Mansl.	10	14	9	17	4	15	11	15	20	14
Forcible Rape	181	179	195	202	222	206	222	207	243	237
Robbery	49	53	72	68	71	102	85	91	117	151
Aggravated Assault	343	444	532	599	738	795	847	1040	1071	1156
Burglary	1953	1966	2302	2096	2035	2180	1826	2227	2200	2656
Larceny/Theft	8984	9293	9012	8672	8926	8699	8673	9344	10184	10243
Motor Vehicle Theft	892	1030	977	878	854	825	763	854	1031	1228
<b>Crime Index Offense Total</b>	<b>12412</b>	<b>12979</b>	<b>13099</b>	<b>12532</b>	<b>12850</b>	<b>12822</b>	<b>12427</b>	<b>13778</b>	<b>14866</b>	<b>15685</b>

### Crime Index Offense Totals, 2004-2013



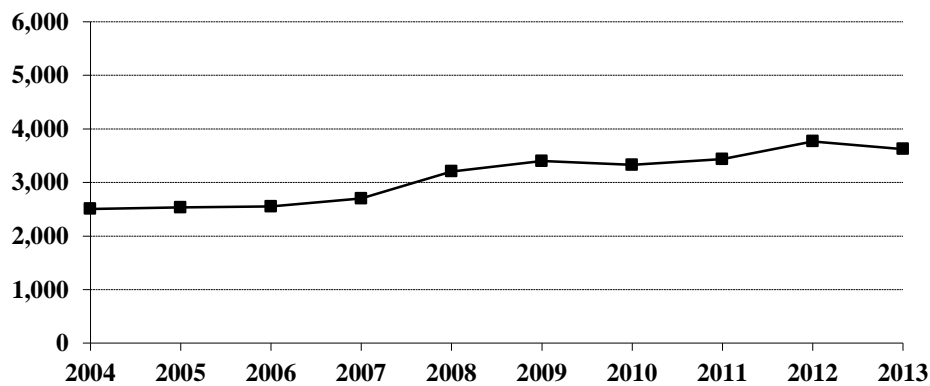
### Crime Index Offense Summary

Year	Population	Crime Index Offense Total	% Change in Number from Previous Year	Crime Rate per 100,000 Population	% Change in Rate from Previous Year	Percent Cleared
2004	634,500	12,412	-4.6%	1956.2	-4.7%	20.7%
2005	637,000	12,979	4.6	2037.5	4.2	20.2
2006	636,000	13,099	0.9	2059.6	1.1	21.0
2007	640,000	12,532	-4.3	1958.1	-4.9	22.2
2008	641,500	12,850	2.5	2003.1	2.3	26.1
2009	647,000	12,822	-0.2	1981.8	-1.1	27.5
2010	672,591	12,427	-3.1	1847.6	-6.8	28.9
2011	683,932	13,778	10.9	2014.5	9.0	27.3
2012	699,628	14,866	7.9	2124.8	5.5	25.6
2013	723,393	15,685	5.5	2168.3	2.0	24.5

### Arrests for Crime Index Offenses, 2004-2013

Year	Juvenile	Adult	Age Not Reported	Total
2004	1,009	1,491	5	2,505
2005	1,009	1,524	1	2,534
2006	960	1,588	2	2,550
2007	1,090	1,610		2,700
2008	1,227	1,973	4	3,204
2009	1,219	2,178	3	3,400
2010	1,084	2,242		3,326
2011	1,010	2,426		3,436
2012	934	2,831		3,765
2013	723	2,899		3,622

### Arrests for Crime Index Offenses, 2004-2013



### Property Loss Due to Crime Index Offenses, 2004-2013

Year	Population	Total Property Loss	% Change from Previous Year	Property Loss per Capita	Percent Recovered
2004	634,500	\$11,397,856	-0.5%	\$17.96	35.7%
2005	637,000	12,390,920	8.7	19.45	37.7
2006	636,000	12,446,104	0.4	19.57	30.6
2007	640,000	10,730,659	-13.8	16.77	36.9
2008	641,500	12,142,441	13.2	18.93	37.6
2009	647,000	11,700,881	-3.6	18.08	30.9
2010	672,591	11,968,019	2.3	17.79	28.2
2011	683,932	16,200,979	35.4	23.69	31.3
2012	699,628	22,227,490	37.2	31.77	26.3
2013	723,393	33,346,595	50.0	46.10	25.3

# Violent Crime

---

Violent crime includes the offenses of murder/non-negligent manslaughter, forcible rape, robbery, and aggravated assault. (See the UCR offense definitions section beginning on page 59 of this publication for definitions of these and other offenses.)

In 2013, 1,558 violent crimes were reported in North Dakota. This is a 7.4 percent increase from the 2012 total of 1,451 violent crimes reported. In 2011, 1,353 violent crimes were reported.

Violent crime comprised 9.9 percent of reported crime index offenses in North Dakota in 2013.

The violent crime rate for 2013 is 215.4 per 100,000, as compared to 207.4 per 100,000 in 2012. This is 3.9 percent increase in the violent crime rate. In 2011, the violent crime rate was 197.8 per 100,000 population.

Nearly 50 percent of violent crimes in 2013 were reported as cleared by arrest or exceptional means.

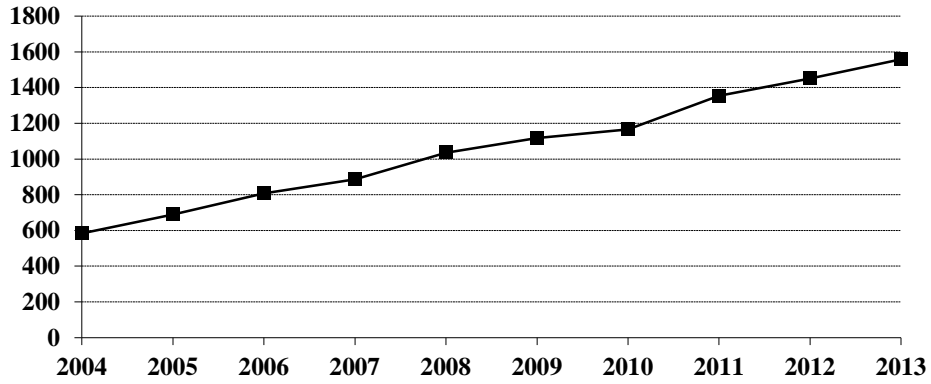
Of the 585 total arrests reported for violent crimes, 6.5 percent were arrests of juveniles.

---

## Violent Crime Summary

Year	Population	Violent Index Offenses	% Change in Number from Previous Year	Rate per 100,000 Population	% Change in Rate from Previous Year	Percent Cleared
2004	634,500	583	16.8%	91.9	16.8%	52.1%
2005	637,000	690	18.4	108.3	17.8	51.4
2006	636,000	808	17.1	127.0	17.3	47.9
2007	640,000	886	9.7	138.4	9.0	44.6
2008	641,500	1,035	16.8	161.3	16.5	52.8
2009	647,000	1,118	8.0	172.8	7.1	52.4
2010	672,591	1,165	4.2	173.2	0.2	54.8
2011	683,932	1,353	16.1	197.8	14.2	54.4
2012	699,628	1,451	7.2	207.4	4.9	50.5
2013	723,393	1,558	7.4	215.4	3.9	48.9

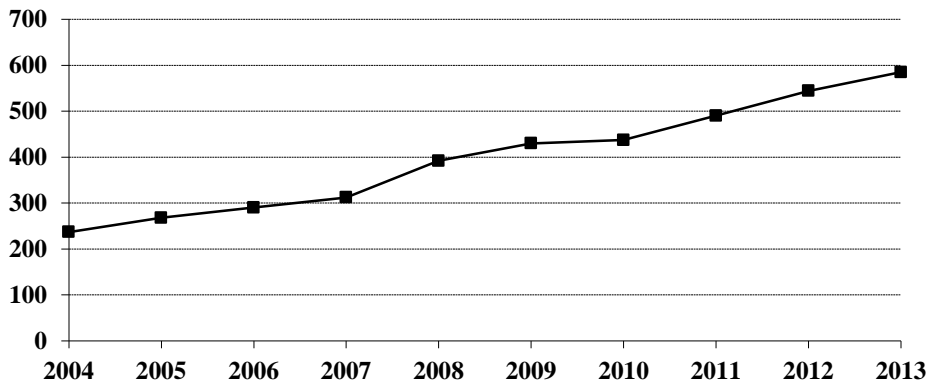
### Violent Crime Totals, 2004-2013



### Arrests for Violent Crimes, 2004-2013

Year	Juvenile	Adult	Age Not Reported	Total
2004	40	197		237
2005	57	211		268
2006	41	249		290
2007	46	266		312
2008	69	320	3	392
2009	45	385		430
2010	61	376		437
2011	45	445		490
2012	59	485		544
2013	38	547		585

### Arrests for Violent Crimes, 2004-2013





# Murder/Non-Negligent Manslaughter

The UCR program defines Murder/Non-Negligent Manslaughter as the “willful killing of one human being by another.” Not included in this category are attempts to murder, assaults to murder, suicides, accidental deaths, justifiable homicides, and deaths caused by gross negligence.

Fourteen murder/non-negligent manslaughter deaths were known to the North Dakota UCR program in 2013.

Twelve of the fourteen victims were adults. “Adult” is defined as a person aged 18 years or older. Fourteen of the victims were male.

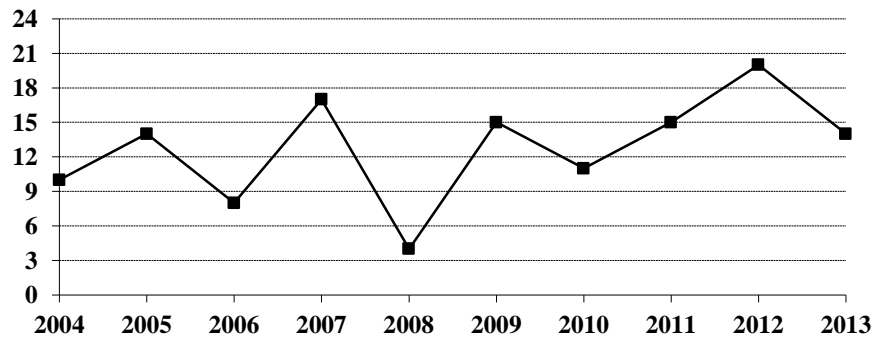
Firearms were involved in the deaths of four homicide victims. In 5 homicides, the weapon involved was a cutting instrument. (See the summary of homicide incidents and the weapons involved on page 10.)

The Office of Attorney General publishes a detailed report titled Homicide in North Dakota. The report provides an analysis of homicides for the period 1994-2013 and is available on our website at [www.ag.nd.gov](http://www.ag.nd.gov), under the Crime Reports link.

## Murder/Non-Negligent Manslaughter Summary

Year	Population	Offense Total	% Change in Number from Previous Year	Rate per 100,000 Population	% Change in Rate from Previous Year	Percent Cleared
2004	634,500	10	-16.7%	1.6	-15.8%	100.0%
2005	637,000	14	40.0	2.2	37.5	78.6
2006	636,000	8	-42.9	1.3	-40.9	88.9
2007	640,000	17	112.5	2.7	107.7	94.1
2008	641,500	4	-76.5	0.6	-77.8	100.0
2009	647,000	15	275.0	2.3	283.3	93.3
2010	672,591	11	-26.7	1.6	-30.4	100.0
2011	683,932	15	36.4	2.2	37.5	93.3
2012	699,628	20	33.3	2.9	31.8	95.0
2013	723,393	14	-30.0	1.9	-34.5	100.0

## Murder/Non-Negligent Manslaughter Totals, 2004-2013



## Summary of Murder/Non-Negligent Manslaughter Incidents, 2013

Date & Location of Incident	Victim(s)		Assailant(s)		Weapons Used	Relationship of Victim to Assailant	Circumstances
	Age	Sex	Age	Sex			
2/5/2013 Bottineau County	40	M	48	M	Rifle	Friend	Other Circumstance
2/19/2013 Fargo	40	F	46	M	Firearm	Spouse	Argument Domestic Violence
2/25/2013 Spirit Lake Res.	27	M	26	M	Knife/Cutting Instrument	Brother	Domestic Violence
3/2/2013 Standing Rock Res.	24	M	30	F	Knife/Cutting Instrument	Acquaintance	Argument
3/16/2013 Williston	28	M	47	M	Firearm	Unknown	Argument
3/17/2013 Williams	32	M	31	M	Knife/Cutting Instrument	Friend	Other Circumstance
4/24/2013 Williams	58	M	34	M	Rifle	Relationship Unknown	Unknown Circumstances
5/9/2013 Bismarck	18	M	25 20	M M	Blunt Object	Otherwise Known Otherwise Known	Other Circumstance
5/30/2013 Burleigh County	62	F	36	M	Blunt Object	Parent	Argument Domestic Violence
6/12/2013 Spirit Lake Res.	2	F	31	F	Personal Weapon	Other Family Member	Domestic Violence
7/23/2013 Bowman	NN	F	42	F	Asphyxiation	Child	Domestic Violence
11/17/2013 Grand Forks County	33	M	21 24 23 23	M M M F	Knife/Cutting Instrument	Otherwise Known Otherwise Known Otherwise Known Otherwise Known	Burglary
11/23/2013 Fargo	30 23	M F	35	M	Knife/Cutting Instrument	Relationship Unknown Ex-Girlfriend	Unknown Circumstances Domestic Violence

# Forcible Rape

---

The UCR program defines Forcible Rape as “the carnal knowledge of a female forcibly and against her will.” Assaults to rape, attempts to commit rape by force or threat of force are included. Carnal abuse, statutory offenses (no force -- victim under age of consent), and other sex offenses are not included.

In 2013, 237 forcible rapes were reported to local law enforcement in North Dakota. This is a decrease of 2.5 percent from the 2012 total of 243 offenses. A total of 207 forcible rapes was also reported in 2011.

Because the UCR definition states that victims of rape must be female, the rate of occurrence for reported rapes is calculated based only on the female population. The Census Bureau estimate of North Dakota’s population for 2013 is 723,393. The number of females is approximately half of that figure. The resulting rate for 2013 is 65.5 reported rapes per 100,000 females, compared with 69.5 rapes per 100,000 females in 2012. In 2011, the forcible rape rate was 60.5 per 100,000 females.

In 2013, 22.8 percent of reported rapes were cleared by arrest or exceptional means.

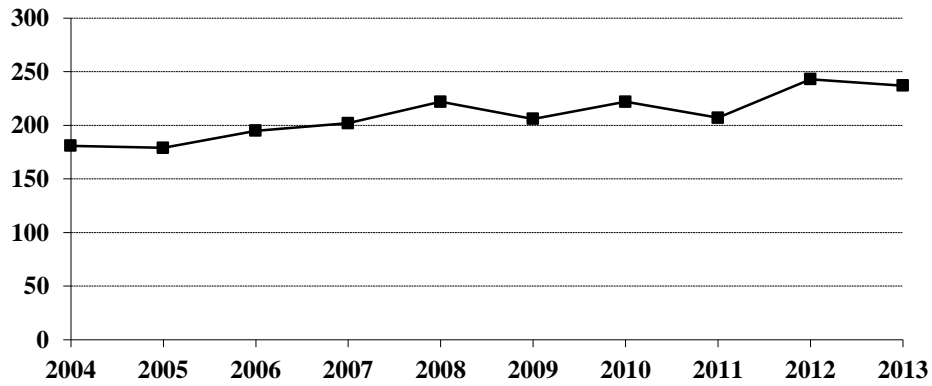
Thirty-two arrests for forcible rape were reported in 2013. More than 78 percent of those arrested were adults. In 2012, 45 arrests for rape were reported.

---

## Forcible Rape Summary

Year	Population	Offense Total	% Change in Number from Previous Year	Rate per 100,000 Females	% Change in Rate from Previous Year	Percent Cleared
2004	634,500	181	26.6%	57.1	26.6%	40.3%
2005	637,000	179	-1.1	56.2	-1.6	35.8
2006	636,000	195	8.9	61.3	9.1	31.8
2007	640,000	202	3.6	63.1	2.9	28.7
2008	641,500	222	9.9	69.2	9.7	29.7
2009	647,000	206	-7.2	63.7	-7.9	29.1
2010	672,591	222	7.8	66.0	3.6	34.2
2011	683,932	207	-6.8	60.5	-8.3	33.3
2012	699,628	243	17.4	69.5	14.9	33.7
2013	723,393	237	-2.5	65.5	-5.8	22.8

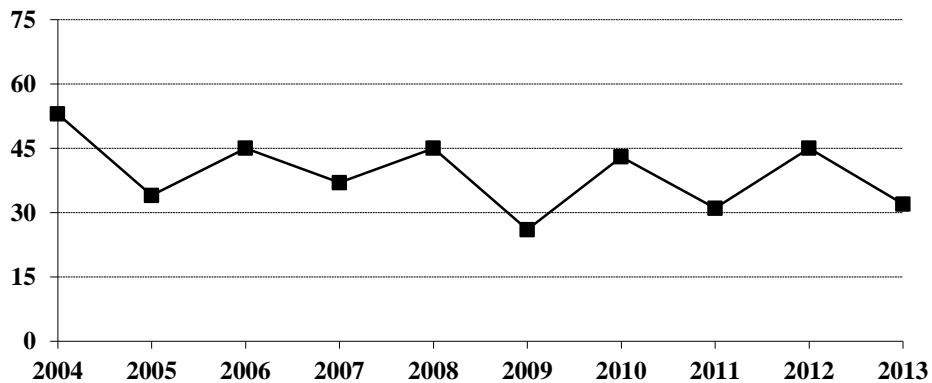
### Forcible Rape Totals, 2004-2013



### Arrests for Forcible Rape, 2004-2013

Year	Juvenile	Adult	Total
2004	10	43	53
2005	6	28	34
2006	4	41	45
2007	8	29	37
2008	18	27	45
2009	8	18	26
2010	17	26	43
2011	6	25	31
2012	17	28	45
2013	7	25	32

### Arrests for Forcible Rape, 2004-2013



# Robbery

---

Robbery is defined by the UCR program as “the taking or attempting to take anything of value from the care, custody, or control of a person or persons by force or threat of force or violence and/or by putting the victim in fear.”

In 2013, there were 151 robberies reported in North Dakota. This is an increase of 29.1 percent from the total of 117 reported in 2012. A total of 91 robberies was reported in 2011.

The robbery rate for 2013 was 20.9 per 100,000 population, as compared with 16.7 per 100,000 population in 2012. This is a 25.1 percent increase in the robbery rate.

More than 25 percent of reported robberies were cleared by arrest or exceptional means.

Forty-four arrests for robbery were reported in 2013. Forty-two of those arrested were adults.

Firearms were used in 40 of the reported robberies in 2013.

More than 33 percent were strong-arm robberies where no weapon was used.

The value of property stolen in robbery incidents increased from \$96,584 in 2012 to \$108,267 in 2013.

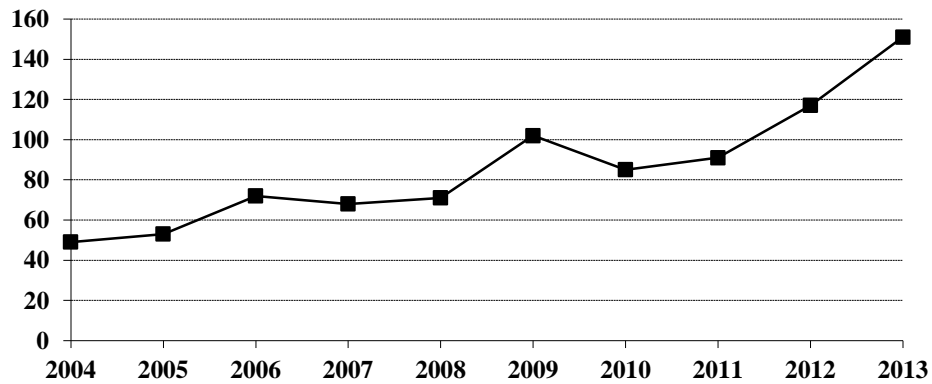
The average robbery in 2013 involved \$717 worth of property.

---

## Robbery Summary

Year	Population	Offense Total	% Change in Number from Previous Year	Rate per 100,000 Population	% Change in Rate from Previous Year	Percent Cleared
2004	634,500	49	-10.9%	7.7	-11.5%	26.5%
2005	637,000	53	8.2	8.3	7.8	34.0
2006	636,000	72	35.8	11.3	36.1	36.1
2007	640,000	68	-5.6	10.6	-6.2	30.9
2008	641,500	71	4.4	11.1	4.7	28.2
2009	647,000	102	43.7	15.8	42.3	36.3
2010	672,591	85	-16.7	12.6	-20.3	35.3
2011	683,932	91	7.1	13.3	5.6	31.9
2012	699,628	117	28.6	16.7	25.6	32.5
2013	723,393	151	29.1	20.9	25.1	25.8

### Robbery Totals, 2004-2013



### Robbery by Type of Weapon Involved, 2013

Type of Weapon	Number Reported	Percent of Total Offenses
Firearm	40	26.5%
Knife or Cutting Instrument	29	19.2
Other Dangerous Weapon	31	20.5
Hands, Fists, Feet, etc.	51	33.8
<b>Robbery Total</b>	<b>151</b>	<b>100.0</b>

### Robbery by Place of Occurrence and Value of Property, 2013

Place of Occurrence	Number Reported	Value of Property	Average Value per Robbery
Highway	41	\$12,417	\$302.85
Commercial House	30	14,149	471.63
Gas or Service Station	7	6,520	931.43
Convenience Store	11	2,736	248.73
Residence	21	9,202	438.19
Bank	4	20,620	5,155.00
Other	37	42,623	1,151.97
<b>Robbery Total</b>	<b>151</b>	<b>108,267</b>	<b>717.00</b>

### Arrests for Robbery, 2004-2013

Year	Juvenile	Adult	Total
2004	8	7	15
2005	4	18	22
2006	7	18	25
2007	5	24	29
2008	4	19	23
2009	3	34	37
2010	5	27	32
2011	4	18	22
2012	13	35	48
2013	2	42	44

### Property Loss Due to Robbery, 2004-2013

Year	Offense Total	Property Loss	Average Loss per Robbery
2004	49	\$19,915	\$406.43
2005	53	16,608	313.36
2006	72	62,319	865.54
2007	68	80,292	1,180.76
2008	71	66,036	930.08
2009	102	141,456	1,386.82
2010	85	27,073	318.51
2011	91	60,393	663.66
2012	117	96,584	825.50
2013	151	108,267	717.00

## Aggravated Assault

The UCR program defines Aggravated Assault as “an unlawful attack by one person upon another for the purpose of inflicting severe or aggravated bodily injury. This type of assault is usually accompanied by the use of a weapon or by means likely to produce death or great bodily harm. Attempts are included because it is not necessary that an injury result when a gun, knife, or other weapon is used which could and probably would result in serious personal injury if the crime were successfully completed.”

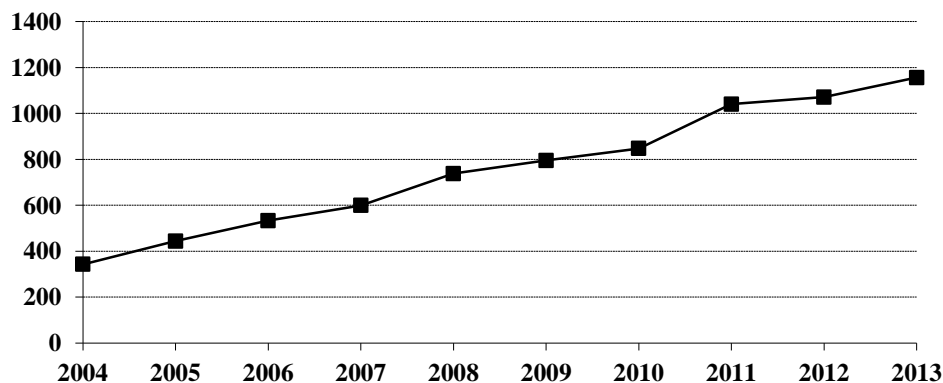
In 2013, 1,156 aggravated assaults were reported in North Dakota, an increase of 7.9 percent from the 1,071 aggravated assaults reported in 2012. In 2011, 1,040 aggravated assaults were reported.

The aggravated assault rate for North Dakota increased 4.4 percent from 153.1 per 100,000 population in 2012 to 159.8 per 100,000 population in 2013.

### Aggravated Assault Summary

Year	Population	Offense Total	% Change in Number from Previous Year	Rate per 100,000 Population	% Change in Rate from Previous Year	Percent Cleared
2004	634,500	343	18.7%	54.1	18.6%	60.6%
2005	637,000	444	29.4	69.7	28.8	59.0
2006	636,000	533	20.0	83.8	20.2	54.8
2007	640,000	599	12.4	93.6	11.7	50.3
2008	641,500	738	23.2	115.0	22.9	61.8
2009	647,000	795	7.7	122.9	6.9	59.7
2010	672,591	847	6.5	125.9	2.4	61.5
2011	683,932	1,040	22.8	152.1	20.8	60.0
2012	699,628	1,071	3.0	153.1	0.7	55.5
2013	723,393	1,156	7.9	159.8	4.4	56.7

### Aggravated Assault Totals, 2004-2013





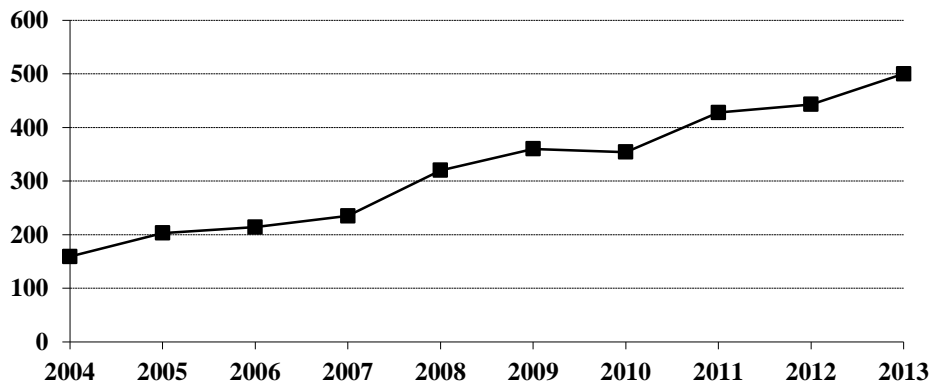
## Aggravated Assault by Type of Weapon Involved, 2013

Type of Weapon	Number Reported	Percent of Total Offenses
Firearm	22	1.9%
Knife or Cutting Instrument	138	11.9
Other Dangerous Weapon	291	25.2
Hands, Fists, Feet, etc.	705	61.0
<b>Aggravated Assault Total</b>	<b>1,156</b>	<b>100.0</b>

## Arrests for Aggravated Assault, 2004-2013

Year	Juvenile	Adult	Age Not Reported	Total
2004	22	137		159
2005	47	156		203
2006	30	184		214
2007	31	204		235
2008	47	270	3	320
2009	34	326		360
2010	39	315		354
2011	35	393		428
2012	29	414		443
2013	29	471		500

## Arrests for Aggravated Assault, 2004-2013



# Property Crime

Property crime includes the offenses of burglary, larceny/theft, and motor vehicle theft.

In 2013, the total number of property crimes reported was 14,127. This is an increase of 5.3 percent from the 2012 total of 13,415.

Property crime accounted for 90.1 percent of the index offenses reported in North Dakota.

The property crime rate increased 1.9 percent from 1917.4 per 100,000 population in 2012, to 1952.9 per 100,000 in 2013.

More than 21 percent of property crimes were cleared by arrest or exceptional means in 2013.

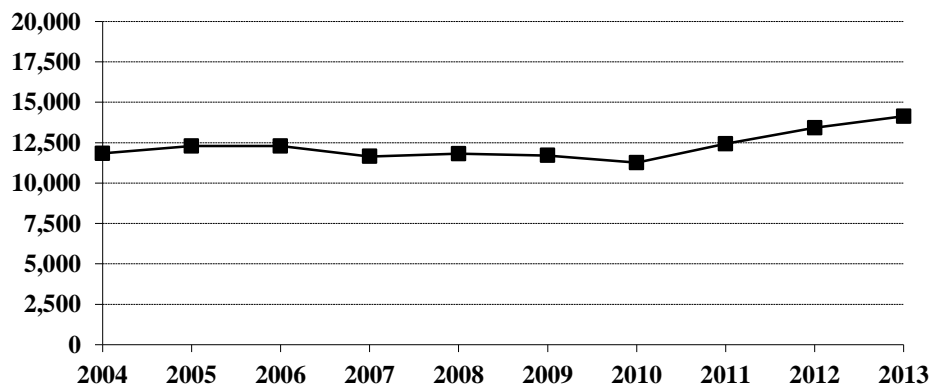
A total of 3,037 arrests was reported for property crimes. Of those, 22.6 percent were arrests of juveniles.

## Property Crime Summary

Year	Population	Property Index Offenses	% Change in Number from Previous Year	Rate per 100,000 Population	% Change in Rate from Previous Year	Percent Cleared
2004	634,500	11,830	-5.5%	1864.5	-5.6%	19.2%
2005	637,000	12,289	3.9	1929.2	3.5	18.5
2006	636,000	12,291	*	1932.5	0.2	19.3
2007	640,000	11,646	-5.2	1819.7	-5.8	20.5
2008	641,500	11,815	1.5	1841.8	1.2	23.8
2009	647,000	11,704	-0.9	1809.0	-1.8	25.1
2010	672,591	11,262	-3.8	1674.4	-7.4	26.2
2011	683,932	12,425	10.3	1816.7	8.5	24.4
2012	699,628	13,415	8.0	1917.4	5.5	23.0
2013	723,393	14,127	5.3	1952.9	1.9	21.8

\* Less than 0.1 percent.

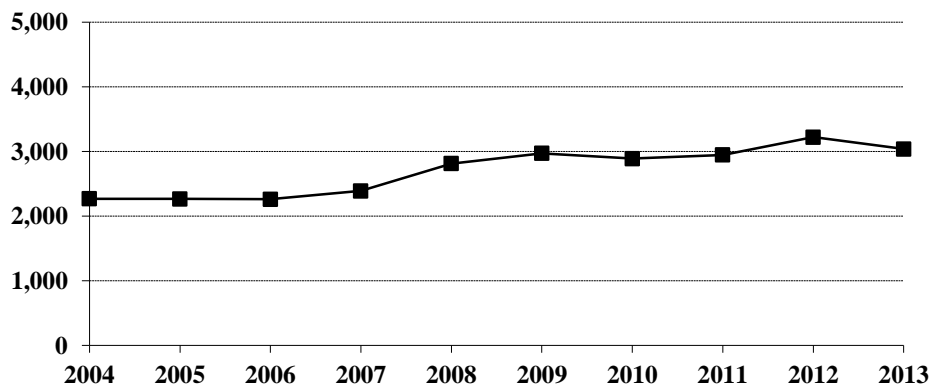
## Property Crime Totals, 2004-2013



## Arrests for Property Crimes, 2004-2013

Year	Juvenile	Adult	Age Not Reported	Total
2004	969	1,294	5	2,268
2005	952	1,313	1	2,266
2006	919	1,339	2	2,260
2007	1,044	1,344		2,388
2008	1,158	1,653	1	2,812
2009	1,174	1,793	3	2,970
2010	1,023	1,866		2,889
2011	965	1,981		2,946
2012	875	2,346		3,221
2013	685	2,352		3,037

## Arrests for Property Crimes, 2004-2013



# Burglary

---

The UCR program defines Burglary as the “unlawful entry of a structure to commit a felony or theft. The use of force to gain entry is not required to classify an offense as burglary.” Burglaries are classified into three categories: forcible entry, unlawful entry where no force is used, and attempted forcible entry.

In 2013, 2,656 burglaries were reported to the UCR program. This represents an increase of 20.7 percent from the total of 2,200 burglaries reported in 2012.

The rate of burglaries based on population was 367.2 per 100,000 inhabitants for 2013. This is a 16.8 percent increase from the rate of 314.5 per 100,000 population in 2012.

More than 10 percent of burglaries were cleared by arrest or exceptional means in 2013.

A total of 246 arrests for burglary was reported in 2013. Of these, 22.8 percent were juveniles.

The UCR program classifies burglaries by location of the incident. More than 51 percent were burglaries of residences.

More than 48 percent of burglaries involved forcible entry.

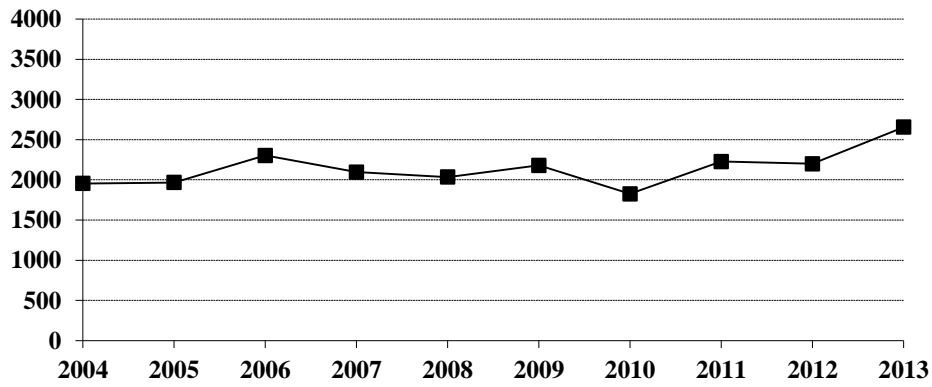
Property loss due to burglary is substantial. More than \$4.8 million worth of property was reported stolen in burglary incidents in 2013. The average burglary involved \$1,833 worth of property.

---

## Burglary Summary

Year	Population	Offense Total	% Change in Number from Previous Year	Rate per 100,000 Population	% Change in Rate from Previous Year	Percent Cleared
2004	634,500	1,954	7.7%	308.0	7.7%	11.2%
2005	637,000	1,966	0.6	308.6	0.2	11.6
2006	636,000	2,302	17.1	361.9	17.3	15.2
2007	640,000	2,096	-8.9	327.5	-9.5	12.3
2008	641,500	2,035	-2.9	317.2	-3.1	16.1
2009	647,000	2,180	7.1	336.9	6.2	15.2
2010	672,591	1,826	-16.2	271.5	-19.4	14.6
2011	683,932	2,227	22.0	325.6	19.9	13.0
2012	699,628	2,200	-1.2	314.5	-3.4	12.8
2013	723,393	2,656	20.7	367.2	16.8	10.4

### Burglary Totals, 2004-2013



### Burglary by Type of Entry, 2013

Type of Entry	Number Reported	Percent of Total Offenses
Forcible Entry	1,287	48.5%
Unlawful Entry - No Force	1,238	46.6
Attempted Forcible Entry	131	4.9
<b>Burglary Total</b>	<b>2,656</b>	<b>100.0</b>

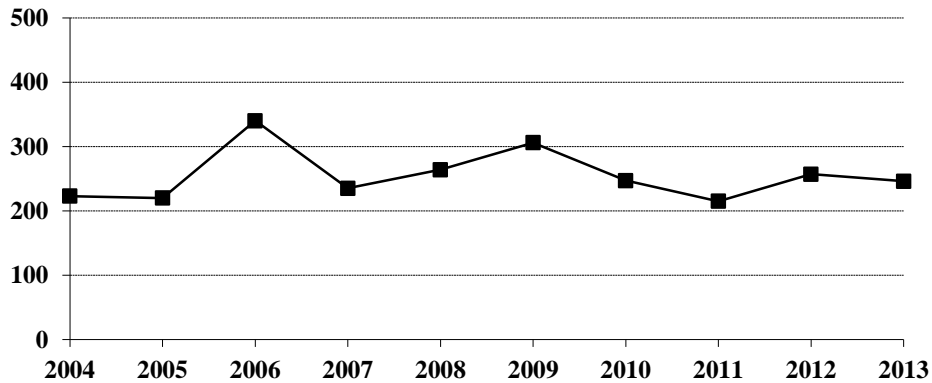
### Burglary by Location and Value of Property, 2013

Location	Number Reported	Value of Property	Average Value per Burglary
Residence	1,369	\$2,319,158	\$1,694.05
Non-Residence	1,287	2,549,116	1,980.67
<b>Burglary Total</b>	<b>2,656</b>	<b>4,868,274</b>	<b>1,832.93</b>

### Arrests for Burglary, 2004-2013

Year	Juvenile	Adult	Age Not Reported	Total
2004	99	119	5	223
2005	55	165		220
2006	115	224	1	340
2007	94	141		235
2008	97	167		264
2009	94	211	1	306
2010	71	176		247
2011	69	146		215
2012	56	201		257
2013	56	190		246

### Arrests for Burglary, 2004-2013



### Property Loss Due to Burglary, 2004-2013

Year	Offense Total	Property Loss	Average Loss per Burglary
2004	1,954	\$2,207,247	\$1,129.60
2005	1,966	2,057,935	1,046.76
2006	2,302	2,432,305	1,056.61
2007	2,096	1,943,995	927.48
2008	2,035	3,420,351	1,680.76
2009	2,180	2,509,507	1,151.15
2010	1,826	2,141,820	1,172.96
2011	2,227	2,791,947	1,253.68
2012	2,200	3,410,875	1,550.40
2013	2,656	4,868,274	1,832.93

# Larceny/Theft

---

The UCR program defines Larceny/Theft as the “unlawful taking, carrying, leading, or riding away of property from the possession or constructive possession of another. It includes crimes such as shoplifting, pocket-picking, purse-snatching, thefts from motor vehicles, thefts of motor vehicle parts and accessories, bicycle thefts, etc., in which no use of force, violence or fraud occurs. In the Uniform Crime Reporting program, this crime category does not include embezzlement, confidence games, forgery, and worthless checks. Motor vehicle theft is also excluded from this category inasmuch as it is a separate crime index offense.”

A total of 10,243 larceny/theft offenses was reported in North Dakota in 2013. This is a 0.6 percent increase from the 2012 total of 10,184.

The larceny/theft rate per 100,000 population was 1416.0 compared with 1455.6 in 2012, a 2.7 percent decrease in the rate.

More than 25 percent of larceny/theft offenses were cleared by arrest or exceptional means in 2013.

The number of arrests for this offense decreased from 2,804 in 2012 to 2,613 in 2013. More than 22 percent of those arrested for larceny/theft in 2013 were juveniles.

More than \$15 million worth of property was reported stolen as the result of larceny/theft offenses in the state. The average dollar value per offense is \$1,556.

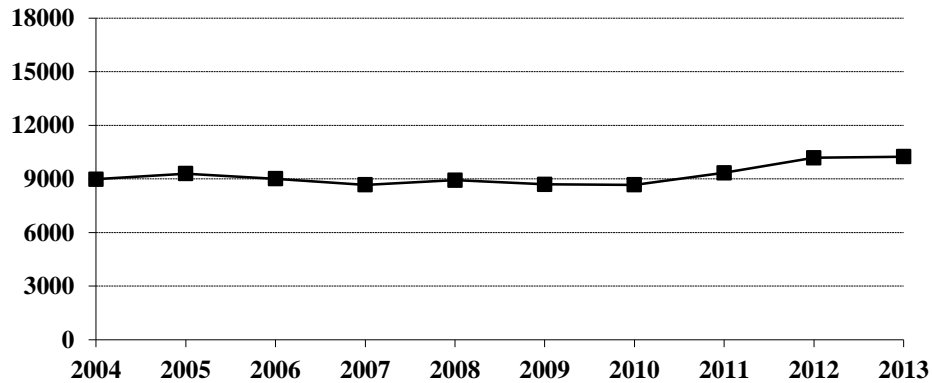
Larceny/theft accounted for 65.3 percent of the total index offenses reported and amounted to 47.8 percent of the total value of stolen property.

---

## Larceny/Theft Summary

Year	Population	Offense Total	% Change in Number from Previous Year	Rate per 100,000 Population	% Change in Rate from Previous Year	Percent Cleared
2004	634,500	8,984	-7.4%	1415.9	-7.5%	20.6%
2005	637,000	9,293	3.4	1458.9	3.0	19.3
2006	636,000	9,012	-3.0	1417.0	-2.9	19.8
2007	640,000	8,672	-3.8	1355.0	-4.4	22.1
2008	641,500	8,926	2.9	1391.4	2.7	25.5
2009	647,000	8,699	-2.5	1344.5	-3.4	27.4
2010	672,591	8,673	-0.3	1289.5	-4.1	28.6
2011	683,932	9,344	7.7	1366.2	5.9	27.1
2012	699,628	10,184	9.0	1455.6	6.5	25.6
2013	723,393	10,243	0.6	1416.0	-2.7	25.2

## Larceny/Theft Totals, 2004-2013



## Property Loss Due to Larceny/Theft, 2004-2013

Year	Offense Total	Property Loss	Average Loss per Larceny/Theft
2004	8,984	\$4,931,853	\$548.96
2005	9,293	5,191,397	558.64
2006	9,012	5,425,420	602.02
2007	8,672	4,343,221	500.83
2008	8,926	4,757,988	533.05
2009	8,699	5,374,262	617.80
2010	8,673	5,809,941	669.89
2011	9,344	7,033,110	752.69
2012	10,184	10,043,000	986.15
2013	10,243	15,940,098	1,556.19

## Larceny/Theft by Type and Value, 2013

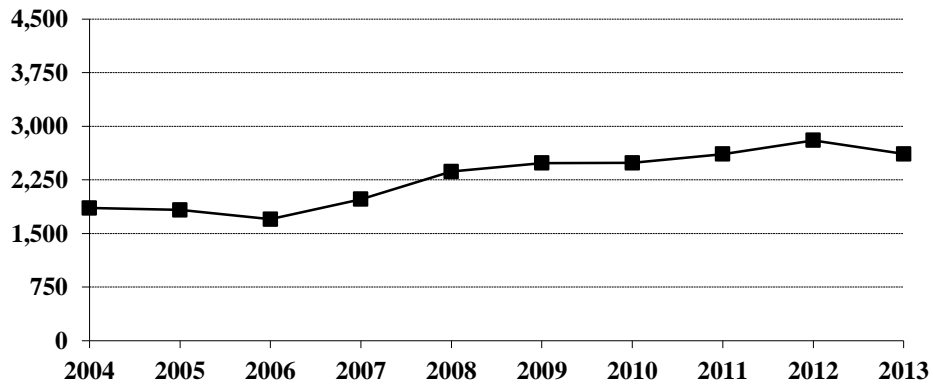
Type of Larceny/Theft	Number Reported	Value of Property	Average Value per Larceny/Theft
Shoplifting	2,130	\$362,389	\$170.14
From Motor Vehicle	1,710	1,319,424	771.59
From Building	1,386	2,884,357	2,081.07
Motor Vehicle Parts, Accessories	563	444,587	789.67
Bicycles	528	180,997	342.80
Purse Snatching	21	8,362	398.19
From Coin-Operated Machine	19	6,097	320.89
Pocket Picking	11	4,471	406.45
All Other	3,875	10,729,414	2,768.88
<b>Larceny/Theft Total</b>	<b>10,243</b>	<b>15,940,098</b>	<b>1,556.19</b>



### Arrests for Larceny/Theft, 2004-2013

Year	Juvenile	Adult	Age Not Reported	Total
2004	792	1,064		1,856
2005	794	1,035	1	1,830
2006	699	1,000	1	1,700
2007	876	1,103		1,979
2008	977	1,388	1	2,366
2009	992	1,491	2	2,485
2010	895	1,592		2,487
2011	866	1,744		2,610
2012	763	2,041		2,804
2013	581	2,032		2,613

### Arrests for Larceny/Theft, 2004-2013



# Motor Vehicle Theft

---

Motor Vehicle Theft is defined by the UCR program as “the theft or attempted theft of a motor vehicle; the offense category includes the stealing of automobiles, trucks, buses, motorcycles, motor scooters, snowmobiles, etc. The definition excludes the taking of a motor vehicle for temporary use by those persons having lawful access.”

A total of 1,228 motor vehicle thefts was reported in 2013. This is an increase of 19.1 percent from the 2012 total of 1,031.

Based on a Census Bureau population estimate of 723,393 for North Dakota, the resulting motor vehicle theft rate is 169.8 per 100,000 population.

More than 17 percent of reported motor vehicle thefts were cleared by arrest or exceptional means in 2013.

The number of arrests for motor vehicle theft increased from 160 in 2012 to 178 in 2013.

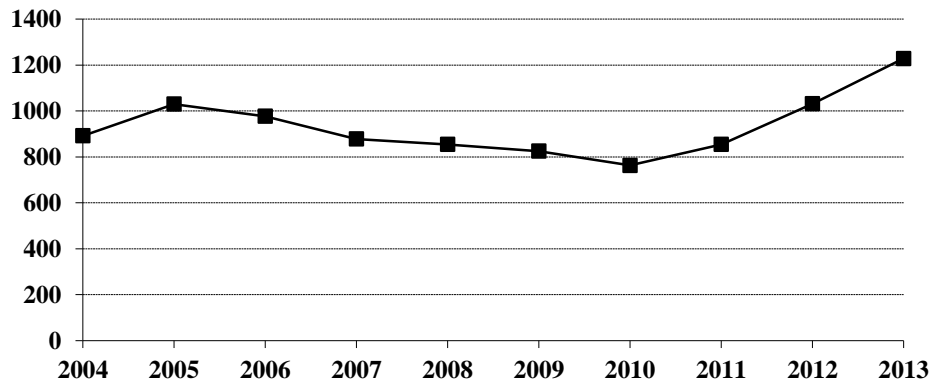
The average value per motor vehicle theft was approximately \$10,121.

---

## Motor Vehicle Theft Summary

Year	Population	Offense Total	% Change in Number from Previous Year	Rate per 100,000 Population	% Change in Rate from Previous Year	Percent Cleared
2004	634,500	892	-11.0%	140.6	-11.0%	22.2%
2005	637,000	1,030	15.5	161.7	15.0	23.5
2006	636,000	977	-5.1	153.6	-5.0	23.7
2007	640,000	878	-10.1	137.2	-10.7	24.4
2008	641,500	854	-2.7	133.1	-3.0	24.6
2009	647,000	825	-3.4	127.5	-4.2	27.4
2010	672,591	763	-7.5	113.4	-11.1	26.7
2011	683,932	854	11.9	124.9	10.1	24.1
2012	699,628	1,031	20.7	147.4	18.0	18.2
2013	723,393	1,228	19.1	169.8	15.2	17.8

### Motor Vehicle Theft Totals, 2004-2013



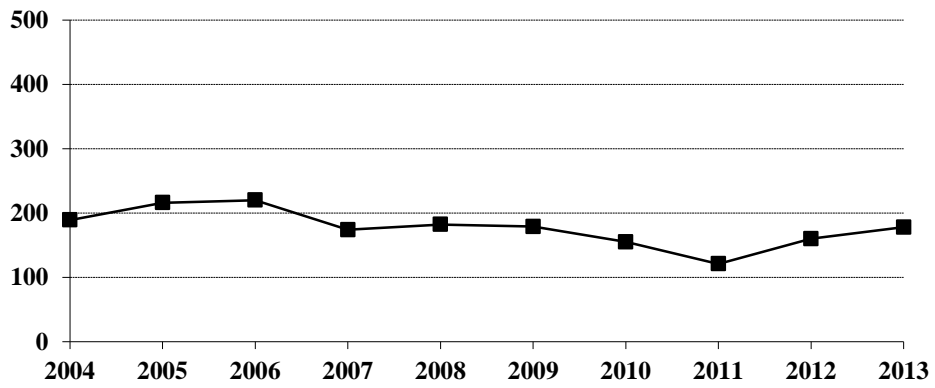
### Type of Vehicle Stolen, 2013

Type of Vehicle	Number Reported	Percent of Total Offenses
Automobiles	994	80.9%
Trucks and Buses	78	6.4
Other Vehicles	156	12.7
<b>Motor Vehicle Theft Total</b>	<b>1,228</b>	<b>100.0</b>

### Arrests for Motor Vehicle Theft, 2004-2013

Year	Juvenile	Adult	Total
2004	78	111	189
2005	103	113	216
2006	105	115	220
2007	74	100	174
2008	84	98	182
2009	88	91	179
2010	57	98	155
2011	30	91	121
2012	56	104	160
2013	48	130	178

### Arrests for Motor Vehicle Theft, 2004-2013



### Property Loss Due to Motor Vehicle Theft, 2004-2013

Year	Offense Total	Property Loss	Average Loss per Offense
2004	892	\$4,238,662	\$4,751.86
2005	1,030	5,124,789	4,975.52
2006	977	4,525,628	4,632.17
2007	878	4,348,148	4,952.33
2008	854	3,897,971	4,564.37
2009	825	3,674,803	4,454.31
2010	763	3,987,385	5,225.93
2011	854	6,929,776	8,114.49
2012	1,031	8,641,569	8,381.74
2013	1,228	12,428,033	10,120.55

# Crime Index Offenses by Reporting Jurisdiction

The rate per 100,000 population is shown immediately below the actual number of crime index offenses reported by each jurisdiction. A county total is also shown for each of those counties that have more than one reporting jurisdiction within its geographic boundaries. The rate is reported per 100,000 for easy comparison to national publications. Population estimates were provided by the FBI Criminal Justice Information Services (CJIS) Division.

## Number and Rate of Index Offenses, 2013

County	Reporting Jurisdiction	Population	Murder/ Non-Negligent Manslaughter	Forcible Rape	Robbery	Aggravated Assault	Burglary	Larceny/ Theft	Motor Vehicle Theft	Total Index Offenses
Adams	County SO	2,348				1 42.6	2 85.2	7 298.1		10 425.9
Barnes	County SO	4,647				1 21.5	9 193.7	17 365.8	3 64.6	30 645.6
	Valley City PD	6,580		1 15.2	1 15.2	12 182.4	42 638.3	113 1717.3	9 136.8	178 2705.2
	County Total	11,227		1 8.9	1 8.9	13 115.8	51 454.3	130 1157.9	12 106.9	208 1852.7
Benson	County SO	6,929					4 57.7	6 86.6	4 57.7	14 202.0
Billings	County SO	837				1 119.5	3 358.4	13 1553.2		17 2031.1
	Medora PD	139								0 0.0
	County Total	976				1 102.5	3 307.4	13 1332.0		17 1741.8
Bottineau	County SO	6,771	1 14.8			4 59.1	23 339.7	59 871.4	6 88.6	93 1373.5
Bowman	County SO	1,318				1 75.9	3 227.6		2 151.7	6 455.2
	Bowman PD	1,687	1 59.3				2 118.6	18 1067.0	2 118.6	23 1363.4
	Scranton PD	285					1 350.9			1 350.9
	County Total	3,290	1 30.4			1 30.4	6 182.4	18 547.1	4 121.6	30 911.9
Burke	County SO	2,294		1 43.6			5 218.0	10 435.9	9 392.3	25 1089.8
	Powers Lake PD	314					1 318.5	8 2547.8	1 318.5	10 3184.7
	County Total	2,608		1 38.3			6 230.1	18 690.2	10 383.4	35 1342.0
Burleigh	County SO	20,244	1 4.9	6 29.6		27 133.4	57 281.6	106 523.6	14 69.2	211 1042.3
	Bismarck PD	65,850	1 1.5	24 36.4	15 22.8	152 230.8	334 507.2	1289 1957.5	107 162.5	1922 2918.8
	Lincoln PD	2,898				2 69.0	1 34.5	18 621.1	1 34.5	22 759.1
	County Total	88,992	2 2.2	30 33.7	15 16.9	181 203.4	392 440.5	1413 1587.8	122 137.1	2155 2421.6
Cass	County SO	22,354		4 17.9	2 8.9	19 85.0	47 210.3	80 357.9	8 35.8	160 715.8
	Fargo PD *	111,101	3 2.7	61 54.9	58 52.2	315 283.5	710 639.1	2415 2173.7	169 152.1	3731 3358.2
	West Fargo PD	28,018		9 32.1	3 10.7	31 110.6	147 524.7	336 1199.2	47 167.7	573 2045.1
	County Total	161,473	3 1.9	74 45.8	63 39.0	365 226.0	904 559.8	2831 1753.2	224 138.7	4464 2764.5
Cavalier	County SO	4,018					1 24.9	24 597.3	3 74.7	28 696.9

\* Includes 85 index offenses reported by NDSU PD

County	Reporting Jurisdiction	Population	Murder/ Non-Negligent Manslaughter	Forcible Rape	Robbery	Aggravated Assault	Burglary	Larceny/ Theft	Motor Vehicle Theft	Total Index Offenses
Dickey	County SO	2,144					1 46.6	8 373.1	1 46.6	10 466.4
	Ellendale PD	1,840				1 72.0	4 288.2	7 504.3		12 864.6
	Oakes PD	1,388		1 54.3		1 54.3		2 108.7		4 217.4
	County Total	5,372		1 18.6		2 37.2	5 93.1	17 316.5	1 18.6	26 484.0
Divide	County SO	2,330				1 42.9	2 85.8	5 214.6		8 343.3
Dunn	County SO	3,366				3 89.1	9 267.4	17 505.1	2 59.4	31 921.0
	Killdeer PD	841						4 475.6	1 118.9	5 594.5
	County Total	4,207				3 71.3	9 213.9	21 499.2	3 71.3	36 855.7
Eddy	County SO	2,412				2 82.9	1 41.5	9 373.1	1 41.5	13 539.0
Emmons	County SO	3,546					15 423.0	21 592.2	2 56.4	38 1071.6
Foster	County SO	1,372	DID NOT REPORT IN 2013							
	Carrington PD	2,108			1 47.4		2 94.9	5 237.2	1 47.4	9 426.9
Golden Valley	County SO	1,886				2 106.0	6 318.1	2 106.0		10 530.2
Grand Forks	County SO	13,502	1 7.4	5 37.0		9 66.7	33 244.4	56 414.8	7 51.8	111 822.1
	Grand Forks PD *	53,625		34 63.4	25 46.6	92 171.6	200 373.0	1205 2247.1	69 128.7	1625 3030.3
	Northwood PD	918					2 217.9	4 435.7	1 108.9	7 762.5
	Thompson PD	1,002						4 399.2		4 399.2
	County Total	69,047	1 1.4	39 56.5	25 36.2	101 146.3	235 340.3	1269 1837.9	77 111.5	1747 2530.2
Grant	County SO	2,364						4 169.2		4 169.2
Griggs	County SO	2,396				2 83.5		1 41.7		3 125.2
Hettinger	County SO	2,634				1 38.0	8 303.7	13 493.5	4 151.9	26 987.1
Kidder	County SO	1,761				2 113.6	4 227.1	2 113.6	2 113.6	10 567.9
	Steele PD	708					4 565.0	2 282.5		6 847.5
	County Total	2,469				2 81.0	8 324.0	4 162.0	2 81.0	16 648.0
LaMoure	County SO	3,301		1 30.3		1 30.3	2 60.6	1 30.3		5 151.5
	Kulm PD									0 0.0
	LaMoure PD	895				1 111.7	1 111.7	6 670.4		8 893.9
	County Total	4,196		1 23.8		2 47.7	3 71.5	7 166.8		13 309.8

\* Includes 138 index offenses reported by UND PD.

County	Reporting Jurisdiction	Population	Murder/ Non-Negligent Manslaughter	Forcible Rape	Robbery	Aggravated Assault	Burglary	Larceny/ Theft	Motor Vehicle Theft	Total Index Offenses
Logan	County SO	1,183					1 84.5	4 338.1	1 84.5	6 507.2
	Napoleon PD	757					5 660.5	6 792.6		11 1453.1
	County Total	1,940					6 309.3	10 515.5	1 51.5	17 876.3
McHenry	County SO	6,054					14 231.3	24 396.4	5 82.6	43 710.3
McIntosh	County SO	1,819					1 55.0			1 55.0
	Wishek PD	974					1 102.7			1 102.7
	County Total	2,793					2 71.6			2 71.6
McKenzie	County SO	6,002		2 33.3		18 299.9	16 266.6	59 983.0	17 283.2	112 1866.0
	Watford City PD	2,793		3 107.4	1 35.8	8 286.4	16 572.9	66 2363.1	20 716.1	114 4081.6
	County Total	8,795		5 56.9	1 11.4	26 295.6	32 363.8	125 1421.3	37 420.7	226 2569.6
McLean	County SO	9,617		2 20.8		9 93.6	11 114.4	69 717.5	7 72.8	98 1019.0
Mercer	County SO	3,114			2 64.2	2 64.2	13 417.5	28 899.2	3 96.3	48 1541.4
	Beulah PD	3,149				4 127.0	5 158.8	20 635.1	3 95.3	32 1016.2
	Hazen PD **	2,423								0 0.0
	County Total	8,686			2 23.0	6 69.1	18 207.2	48 552.6	6 69.1	80 921.0
Morton	County SO	9,695		3 30.9		7 72.2	7 72.2	64 660.1	9 92.8	90 928.3
	Mandan PD	19,168		11 57.4	5 26.1	35 182.6	72 375.6	501 2613.7	47 245.2	671 3500.6
	County Total	28,863		14 48.5	5 17.3	42 145.5	79 273.7	565 1957.5	56 194.0	761 2636.6
Mountrail	County SO	4,983		1 20.1		13 260.9	23 461.6	75 1505.1	37 742.5	149 2990.2
	Stanley PD **	1,949				1 51.3	1 51.3	3 153.9	7 359.2	12 615.7
	New Town PD	2,362		1 42.3	1 42.3	5 211.7	5 211.7	11 465.7	3 127.0	26 1100.8
	County Total	9,294		2 21.5	1 10.8	19 204.4	29 312.0	89 957.6	47 505.7	187 2012.1
Nelson	County SO	3,131				2 63.9	12 383.3	11 351.3	2 63.9	27 862.3
Oliver	County SO	1,876				3 159.9	1 53.3	5 266.5	1 53.3	10 533.0
Pembina	County SO	6,113		2 32.7			13 212.7	8 130.9	1 16.4	24 392.6
	Cavalier PD	1,268		1 78.9			5 394.3	16 1261.8	1 78.9	23 1813.9
	County Total	7,381		3 40.6			18 243.9	24 325.2	2 27.1	47 636.8
Pierce	County SO	1,616					11 680.7	8 495.0		19 1175.7
	Rugby PD	2,972		2 67.3		4 134.6	13 437.4	27 908.5		46 1547.8
	County Total	4,588		2 43.6		4 87.2	24 523.1	35 762.9		65 1416.7
Ramsey	County SO	4,544				1 22.0	3 66.0	17 374.1	6 132.0	27 594.2
	Devils Lake PD	7,260		4 55.1	3 41.3	14 192.8	48 661.2	263 3622.6	16 220.4	348 4793.4
	County Total	11,804		4 33.9	3 25.4	15 127.1	51 432.1	280 2372.1	22 186.4	375 3176.9

\*\* Reported partial year.

County	Reporting Jurisdiction	Population	Murder/ Non-Negligent Manslaughter	Forcible Rape	Robbery	Aggravated Assault	Burglary	Larceny/ Theft	Motor Vehicle Theft	Total Index Offenses
Ransom	County SO	3,415				2 58.6	3 87.8	6 175.7	2 58.6	13 380.7
	Lisbon PD	2,149				2 93.1	4 186.1	18 837.6		24 1116.8
	County Total	5,564				4 71.9	7 125.8	24 431.3	2 35.9	37 665.0
Renville	County SO	2,389					1 41.9	17 711.6	5 209.3	23 962.7
	Sherwood PD	254								0
	County Total	2,643					1 37.8	17 643.2	5 189.2	23 870.2
Richland	County SO	7,812				4 51.2	21 268.8	42 537.6	3 38.4	70 896.1
	Wahpeton PD *	8,705		1 11.5	2 23.0	4 46.0	21 241.2	160 1838.0	9 103.4	197 2263.1
	County Total	16,517		1 6.1	2 12.1	8 48.4	42 254.3	202 1223.0	12 72.7	267 1616.5
Rolette	County SO	13,483		1 7.4	2 14.8		2 14.8	5 37.1	2 14.8	12 89.0
	Rolla PD	1,333				2 150.0	4 300.1	11 825.2	3 225.1	20 1500.4
	County Total	14,816		1 6.7	2 13.5	2 13.5	6 40.5	16 108.0	5 33.7	32 216.0
Sargent	County SO	4,010					4 99.8	11 274.3	1 24.9	16 399.0
Sheridan	County SO	1,277					2 156.6	13 1018.0	1 64.9	16 1252.9
Sioux	County SO	4,507								0 0.0
Slope	County SO	785						1 127.4	1 127.4	2 254.8
Stark	County SO	6,665				3 45.0	1 15.0	45 675.2	8 120.0	57 855.2
	Dickinson PD	20,347			2 9.8	71 348.9	56 275.2	468 2300.1	47 231.0	644 3165.1
	Belfield PD	856					3 350.5	14 1635.5	1 116.8	18 2102.8
	South Heart PD	354					2 565.0	1 282.5		3 847.5
	County Total	28,222			2 7.1	74 262.2	62 219.7	528 1870.9	56 198.4	722 2558.3
Steele	County SO	2,037				2 98.2	1 49.1	1 49.1	1 49.1	5 245.5
Stutsman	County SO	6,026		3 49.8	1 16.6	3 49.8	35 580.8	27 448.1	1 16.6	70 1161.6
	Jamestown PD	15,286		20 130.8	1 6.5	19 124.3	73 477.6	269 1759.8	20 130.8	402 2629.9
	County Total	21,312		23 107.9	2 9.4	22 103.2	108 506.8	296 1388.9	21 98.5	472 2214.7
Towner	County SO	1,233				1 81.1	2 162.2	4 324.4		7 567.7
	Cando PD **	1,164						1 85.9	1 85.9	2 171.8
	County Total	2,397				1 41.7	2 83.4	5 208.6	1 41.7	9 375.5
Traill	County SO	6,624		1 15.1		2 30.2	6 90.6	22 332.1	8 120.8	39 588.8
	Hillsboro PD **	1,602					5 312.1	4 249.7	1 62.4	10 624.2
	County Total	8,226		1 12.2		2 24.3	11 133.7	26 316.1	9 109.4	49 595.7

\* Includes 32 index offenses reported by NDSCS PD.

\*\* Reported partial year



County	Reporting Jurisdiction	Population	Murder/ Non-Negligent Manslaughter	Forcible Rape	Robbery	Aggravated Assault	Burglary	Larceny/ Theft	Motor Vehicle Theft	Total Index Offenses
Walsh	County SO	6,936				8 115.3	17 245.1	61 879.5	7 100.9	93 1340.8
	Grafton PD	4,326		2 46.2		15 346.7	7 161.8	86 1988.0	4 92.5	114 2635.2
	County Total	11,262		2 17.8		23 204.2	24 213.1	147 1305.3	11 97.7	207 1838.0
Ward	County SO	18,846		1 5.3		20 106.1	55 291.8	97 514.7	24 127.3	197 1045.3
	Kenmare PD	1,050				1 95.2			1 95.2	2 190.5
	Minot PD	44,635		12 26.9	18 40.3	90 201.6	180 403.3	708 1586.2	108 242.0	1116 2500.3
	Burlington PD	1,054				1 94.9		5 474.4	1 94.9	7 664.1
	Berthold PD	484					3 619.8	2 413.2		5 1033.1
	Surrey PD	1,042				1 96.0	1 96.0	3 287.9		5 479.8
	County Total	67,111		13 19.4	18 26.8	113 168.4	239 356.1	815 1214.4	137 199.7	1332 1984.8
Wells	County SO	2,072				1 48.3	8 386.1	6 289.6	1 48.3	16 772.2
	Harvey PD	1,827					2 109.5	13 711.5	5 273.7	20 1094.7
	Fessenden PD	486								0 0.0
	County Total	4,385				1 22.8	10 228.1	19 433.3	6 136.8	36 821.0
Williams	County SO	7,647	2 26.2	3 39.2		30 392.3	71 928.5	237 3099.3	87 1137.7	430 5623.1
	Tioga PD	1,247		1 80.2		5 401.0	2 160.4	14 1122.7	6 481.2	28 2245.4
	Williston PD	19,949	1 5.0	13 65.2	8 40.1	57 285.7	80 401.0	685 3433.8	206 1032.6	1050 5263.4
	County Total	28,843	3 10.4	17 58.9	8 27.7	92 319.0	153 530.5	936 3245.2	299 1036.6	1508 5228.3

(This page intentionally left blank.)

# ARREST ANALYSIS

---

---

# Arrests in 2013

---

Although primarily an indication of law enforcement activity, the number of arrests reported does provide a limited profile of the perpetrators of crime, especially for those crimes that have high clearance rates. Differing arrest practices, policies, and enforcement emphases among agencies influence the volume of arrests for various offenses, particularly those against public order such as vagrancy, disorderly conduct, and related violations. However, arrests for serious crimes, e.g., robbery or burglary, are more likely to be uniform throughout all jurisdictions across the state.

The UCR program requires that an arrest be counted for each separate occasion an individual is taken into custody. Although several charges may be lodged against a person at the time of the arrest, only one arrest is counted for each time the person is taken into custody.

North Dakota law enforcement agencies reported 31,166 arrests in 2013. A total of 32,380 arrests was reported in 2012.

In 2013, more than 14 percent of total arrests were arrests of juveniles.

More than 73 percent of the total was arrests of males.

Arrests for the crime index offenses of murder/non-negligent manslaughter, forcible rape, robbery, aggravated assault, burglary, larceny/theft and motor vehicle theft comprised 11.6 percent of the total reported arrests. Of the 3,622 reported arrests for crime index offenses, 20 percent were arrests of juveniles.

The total of 11,073 reported arrests for DUI and liquor law violations represents 35.5 percent of the total arrests reported in the state of North Dakota in 2013. Arrests for DUI decreased from 7,322 in 2012 to 7,086 in 2013. Liquor law violation arrests decreased 12.5 percent from 4,555 in 2012 to 3,987 reported in 2013.

More than 79 percent of total arrests were white; over 13 percent were Native American.

These statistics are provided by local law enforcement agencies that contribute to the North Dakota UCR program. No arrest figures for reservations in the state are included in these totals. Tribal law enforcement agencies do not participate in the state UCR program.

---

## Total Arrests Reported, 2013

Offense Classification	Number Reported	Percent of Total Arrests
Murder/Non-Negligent Manslaughter	10	*
Negligent Manslaughter	1	*
Forcible Rape	32	0.1%
Robbery	44	0.1
Aggravated Assault	500	1.6
Burglary	246	0.8
Larceny/Theft	2,613	8.4
Motor Vehicle Theft	178	0.6
Other Assaults	2,423	7.8
Arson	16	0.1
Forgery and Counterfeiting	81	0.3
Fraud	384	1.2
Embezzlement	37	0.1
Stolen Property Offenses	155	0.5
Vandalism	559	1.8
Weapons Offenses	338	1.1
Prostitution	43	0.1
Other Sex Offenses	79	0.3
Drug Abuse Violations	3,431	11.0
Gambling	2	*
Offenses Against Family and Children	133	0.4
Driving Under the Influence	7,086	22.7
Liquor Law Violations	3,987	12.8
Disorderly Conduct	1,854	5.9
Vagrancy		
All Other Offenses	6,427	20.6
Suspicion		
Curfew and Loitering	88	0.3
Runaways	419	1.3
<b>Arrest Total</b>	<b>31,166</b>	<b>100.0</b>

\* Less than 0.1 percent of total arrests.

## Comparison of Reported Arrests, 2012-2013

Offense Classification	2012	2013	Percent Change
Murder/Non-Negligent Manslaughter	8	10	25.0%
Negligent Manslaughter	5	1	-80.0
Forcible Rape	45	32	-28.9
Robbery	48	44	-8.3
Aggravated Assault	443	500	12.9
Burglary	257	246	-4.3
Larceny/Theft	2,804	2,613	-6.8
Motor Vehicle Theft	160	178	11.3
Other Assaults	2,329	2,423	4.0
Arson	19	16	-15.8
Forgery and Counterfeiting	84	81	-3.6
Fraud	454	384	-15.4
Embezzlement	48	37	-22.9
Stolen Property Offenses	146	155	6.2
Vandalism	539	559	3.7
Weapons Offenses	305	338	10.8
Prostitution	35	43	22.9
Other Sex Offenses	86	79	-8.1
Drug Abuse Violations	2,872	3,431	19.5
Gambling		2	
Offenses Against Family and Children	132	133	0.8
Driving Under the Influence	7,322	7,086	-3.2
Liquor Law Violations	4,555	3,987	-12.5
Disorderly Conduct	2,011	1,854	-7.8
Vagrancy			
All Other Offenses	6,993	6,427	-8.1
Suspicion			
Curfew and Loitering	146	88	-39.7
Runaways	534	419	-21.5
<b>Arrest Total</b>	<b>32,380</b>	<b>31,166</b>	<b>-3.7</b>

## Juvenile and Adult Arrests, 2013

<b>Offense Classification</b>	<b>Juvenile</b>	<b>Adult</b>	<b>Total</b>
Murder/Non-Negligent Manslaughter		10	10
Negligent Manslaughter		1	1
Forcible Rape	7	25	32
Robbery	2	42	44
Aggravated Assault	29	471	500
Burglary	56	190	246
Larceny/Theft	581	2,032	2,613
Motor Vehicle Theft	48	130	178
Other Assaults	391	2,032	2,423
Arson	9	7	16
Forgery and Counterfeiting	1	80	81
Fraud	11	373	384
Embezzlement	7	30	37
Stolen Property Offenses	33	122	155
Vandalism	233	326	559
Weapons Offenses	17	321	338
Prostitution		43	43
Other Sex Offenses	27	52	79
Drug Abuse Violations	352	3,079	3,431
Gambling		2	2
Offenses Against Family and Children	53	80	133
Driving Under the Influence	38	7,048	7,086
Liquor Law Violations	661	3,326	3,987
Disorderly Conduct	657	1,197	1,854
Vagrancy			
All Other Offenses	817	5,610	6,427
Suspicion			
Curfew and Loitering	88		88
Runaways	419		419
<b>Arrest Total</b>	<b>4,537</b>	<b>26,629</b>	<b>31,166</b>

## Arrests by Gender, 2013

<b>Offense Classification</b>	<b>Male</b>	<b>Female</b>	<b>Total</b>
Murder/Non-Negligent Manslaughter	9	1	10
Negligent Manslaughter	1		1
Forcible Rape	31	1	32
Robbery	42	2	44
Aggravated Assault	441	59	500
Burglary	208	38	246
Larceny/Theft	1,444	1,169	2,613
Motor Vehicle Theft	137	41	178
Other Assaults	1,744	679	2,423
Arson	14	2	16
Forgery and Counterfeiting	54	27	81
Fraud	245	139	384
Embezzlement	21	16	37
Stolen Property Offenses	125	30	155
Vandalism	495	64	559
Weapons Offenses	317	21	338
Prostitution	29	14	43
Other Sex Offenses	73	6	79
Drug Abuse Violations	2,553	878	3,431
Gambling	2		2
Offenses Against Family and Children	49	84	133
Driving Under the Influence	5,630	1,456	7,086
Liquor Law Violations	2,620	1,367	3,987
Disorderly Conduct	1,449	405	1,854
Vagrancy			
All Other Offenses	4,856	1,571	6,427
Suspicion			
Curfew and Loitering	47	41	88
Runaways	156	263	419
<b>Arrest Total</b>	<b>22,792</b>	<b>8,374</b>	<b>31,166</b>



## Arrests by Race, 2013

<b>Offense Classification</b>	<b>White</b>	<b>Black</b>	<b>Native American</b>	<b>Asian</b>	<b>Total</b>
Murder/Non-Negligent Manslaughter	9		1		10
Negligent Manslaughter	1				1
Forcible Rape	23	4	5		32
Robbery	22	9	13		44
Aggravated Assault	347	58	89	6	500
Burglary	201	19	26		246
Larceny/Theft	1,795	284	519	15	2,613
Motor Vehicle Theft	133	11	33	1	178
Other Assaults	1,780	255	375	13	2,423
Arson	16				16
Forgery and Counterfeiting	58	12	11		81
Fraud	332	22	30		384
Embezzlement	30	6	1		37
Stolen Property Offenses	116	15	23	1	155
Vandalism	445	40	71	3	559
Weapons Offenses	300	15	23		338
Prostitution	34	8	1		43
Other Sex Offenses	66	6	7		79
Drug Abuse Violations	2,820	212	389	10	3,431
Gambling	2				2
Offenses Against Family and Children	81	8	44		133
Driving Under the Influence	6,153	278	624	31	7,086
Liquor Law Violations	3,420	111	440	16	3,987
Disorderly Conduct	1,396	150	301	7	1,854
Vagrancy					
All Other Offenses	4,867	463	1,079	18	6,427
Suspicion					
Curfew and Loitering	62	6	19	1	88
Runaways	244	61	107	7	419
<b>Arrest Total</b>	<b>24,753</b>	<b>2,053</b>	<b>4,231</b>	<b>129</b>	<b>31,166</b>

# Arrest Analysis by Reporting Jurisdiction

The table below contains arrest totals for each reporting agency in 2013. Juvenile and adult arrests are included.

## Arrests by Reporting Jurisdiction, 2013

Agency	Murder/Non-Neg. Mansl.	Negligent Manslaughter	Forcible Rape	Robbery	Aggravated Assault	Burglary	Larceny/Theft	Motor Vehicle Theft	Other Assault	Arson	Forgery/Counterfeiting	Fraud	Embezzlement	Stolen Property Offenses	Vandalism	Weapons Offenses	Prostitution	Other Sex Offenses	Drug Abuse Violations	Gambling Violations	Off. Against Fam & Children	DUI	Liquor Law Violations	Disorderly Conduct	Vagrancy	All Other Offenses	Suspicion	Curfew/Loitering	Runaway	Total	
Adams SO					1	1	1		2					1				1	5			21		2		3				38	
Barnes SO						1	1		3										1				5	3	1		3				18
Valley City PD			1		4	10	7	2	33						3			2	38				49	51	29		35	1	2	267	
Benson SO							1		4					1					3		1		8	28	1		1			48	
Billings SO					1		1		2						1								7				1			13	
Medora PD							1		1								5		1				7		1					16	
Bottineau SO	1				1	14	22		8						1				24				25	18	3		11			128	
Bowman SO					1			1	1						1	2			1				6	4	2		11			30	
Bowman PD	1						6		1						1										2					11	
Scranton PD																														0	
Burke SO			1			1	2		6			1			1	4			3		1		37	8	1		9			75	
Powers Lake PD																														0	
Burleigh SO					18	7	6	2	53			76		2	15	8		2	140		3	218	436	6		79		6	1077		
Bismarck PD	1	4	7		82	30	506	18	342	1	16	54	9	22	72	38	2	10	572	2	23	610	304	407		930	22	113	4197		
Lincoln PD					2				6									1	2				22	1			3		2	39	
Cass SO				1	6			1	23					2		4			39				122	178	5		44		4	429	
Fargo PD	2	2	15		108	45	821	13	434	1	28	39	5	24	62	21	4	12	311		5	724	144	177		881	15	91	3984		
West Fargo PD			1		18	10	38	7	118	1	8	8	2	4	11	11		6	99		7	85	54	25		140	15	32	700		
NDSU PD							2	1	2			6		2	5	1			25				68	89	3		44			248	
Cavalier SO						1	1	2	1	1													12				1			19	
Dickey SO							4	1				15			1	1					1		4	2			39			68	
Ellendale PD										2													5				1			8	
Oakes PD					1		4			2					1								3	1	4					16	
Divide SO						1	2		16							1			5				46	8	11		7			97	
Dunn SO					1	3		1	11							5			6				43	6	10		9			95	
Killdeer PD							2		1						1				3				10	6	2		2			27	
Eddy SO					1			1	5										3				12	1	3		3			29	
Emmons SO						2	6	1	7						26	1		1	2				7	19	1		15			88	
Foster SO	DID NOT REPORT IN 2013																														
Carrington PD						1	1		1										2				3	3	1					12	
Golden Valley SO					1				9	1																				11	
Grand Forks SO	1	1			4	7	6	3	26			2		1	3	1		1	29		7	63	27	11		306		3	502		

Agency	Murder/Non-Neg. Mansl.	Negligent Manslaughter	Forcible Rape	Robbery	Aggravated Assault	Burglary	Larceny/Theft	Motor Vehicle Theft	Other Assault	Arson	Forgery/Counterfeiting	Fraud	Embezzlement	Stolen Property Offenses	Vandalism	Weapons Offenses	Prostitution	Other Sex Offenses	Drug Abuse Violations	Gambling Violations	Off. Against Fam & Children	DUI	Liquor Law Violations	Disorderly Conduct	Vagrancy	All Other Offenses	Suspicion	Curfew/Loitering	Runaway	Total
Grand Forks PD			3	6	30	10	206	11	138	1	3	21	10	17	32	5	1	1	102		28	235	432	233		257		9	69	1860
Northwood PD									1													2								3
Thompson PD																														0
UND PD			1			1	2	1	4			1		1	1	1			34			56	412	8		72				595
Grant SO							1		5									1						1		1			3	12
Griggs SO						1			4							1							9	8			1			24
Hettinger SO					1		2		10									1	1				27	1	5		1			49
Kidder SO					1		1	1	1										1				5							10
Steele PD						2			6																2		2			12
LaMoure SO						1	1		3														6	16			3			30
Kulm PD																			1				1							2
LaMoure PD						2	1								3			1	1				2	7			2	2		21
Logan SO							1	1	3			1											2		2		5			15
Napoleon PD							2													1			2		2		12			19
McHenry SO							1		10						1			1	4				23	10	9		4			63
McIntosh SO									2														2				3			7
Wishek PD						1																	1							2
McKenzie SO			1		8	1	7	5	28	1				2	6	5		1	28				106	15	18		22			254
Watford City PD					5	1	7		26			1		3	8	22	1		38				254	21	43		41			471
McLean SO					4		9	2	23						11	3			91				92	56	12		69			372
Mercer SO				1	1	2	1		2		2					1		1	18				15	5	1		14			64
Beulah PD					2		3		16			1			2	1			25				20	12	7		26		2	117
Hazen PD**									1																					1
Morton SO					4		5	1	20			1			3	8			14				103	82	6		177		2	426
Mandan PD	1		1	2	15	6	45	5	112	1	1				10	4		8	28		3	160	101	42		378	10		933	
Mountrail SO					6	2	2	13	19			4		3	1	9			18				53	9	5		38			182
New Town PD			1		4				7					2		3			13				72	9	17		12		1	141
Stanley PD **								2	4							1							19	7	23		9			65
Nelson SO					2		2		7					2	5			1	3				6	25	3		7			63
Oliver SO					3			1	3						1				1				3	2	1		6			21
Pembina SO									11										16				33	12	6		10			88
Cavalier PD			1			3	3		8							1			2				9	1			2			30
Pierce SO									2														9	1			1			13
Rugby PD					4	2	4		8						3				16				16	7	7		15			82
Ramsey SO							3	1	2														12	3	1		4			26
Devils Lake PD			1	3	4	4	58	11	57		5	6	2	3	18	1		1	80		20	120	123	81		240		6	13	857
Ransom SO						1			8			2		3					6		1		3	6	1		4		1	36
Lisbon PD					2																		8	1						11
Renville SO					2		1	1	9			7							3				5	3	1		4			36
Sherwood PD																														0
Richland SO					4	6	8		15		1	27		1	7	2		2	6		17	30	16	9		89		4	244	
Wahpeton PD				3	3	4	45	1	26	3					33	1		2	10		5	29	33	12		69			279	

\*\* Reported partial year

Agency	Murder/Non-Neg. Mansl.	Negligent Manslaughter	Forcible Rape	Robbery	Aggravated Assault	Burglary	Larceny/Theft	Motor Vehicle Theft	Other Assault	Arson	Forgery/Counterfeiting	Fraud	Embezzlement	Stolen Property Offenses	Vandalism	Weapons Offenses	Prostitution	Other Sex Offenses	Drug Abuse Violations	Gambling Violations	Off. Against Fam & Children	DUI	Liquor Law Violations	Disorderly Conduct	Vagrancy	All Other Offenses	Suspicion	Curfew/Lotering	Runaway	Total
NDSCS PD									4										1				4			5				14
Rolette SO			1				2		8						2	1			2				30	9	19		5			79
Rolla PD					1		12	1	1					2	2				2				17	5	7		2			52
Sargent SO									3			26				1			11				19	6	6		5			77
Sheridan SO						3	2		4						1				8				11	2			1		1	33
Sioux SO																							9		1					10
Slope SO																							1							1
Stark SO					2		2	1	8							4			25				138	44	8		381			613
Dickinson PD				1	30	8	115	6	118	2	4	22	9	4	34	15	9	7	85				182	127	172		411		1	1362
Belfield PD						2	4	1	9										18				28	12	7		8			89
South Heart PD																			1				1							2
Steele SO					1	1			2										6				14	30			5			59
Stutsman SO				2	1	10	3		11		1					1			5				18	26	6		18			102
Jamestown PD			10		10	3	51	7	97	3	1			1	24	9		5	54			1	121	249	93		343	7	14	1103
Towner SO					1																									1
Cando PD **									2														1				1			4
Trail SO							2		4						1				10				26	2	4		1		1	51
Hillsboro PD **									1														3							4
Walsh SO							16	1	12						23			2	8				37	20	16		19	1	1	156
Grafton PD					5		15	2	29					1	27	2		1	23			2	44	7	38		18			214
Ward SO					7	1	3	5	41			5		4	12	6	1	1	44				173	76	8		55		5	447
Kenmare PD					1				1														5							7
Minot PD				1	46	12	364	6	149	1	4	19		21	50	25	20	3	270			1	378	164	122		358		38	2052
Burlington PD					1		1	1	3							2			13				16	9			3			49
Surrey PD					1														4				10	3			10			28
Berthold PD							1		4					1	2	1			4				1		1		7		1	23
Wells SO					1	1	1		3			33							7			1	6	8		69			130	
Harvey PD						1	3	7											1				5	6	2		4			29
Fessenden PD																														0
Williams SO	2		2		13	16	11	12	44					3	10	11		2	66			4	175	11	24		85		2	493
Tioga PD					3		3	2	13					7	2	7			9				61	3	17		11			138
Williston PD	1			2	18	4	139	11	78		2	3		2	13	3		1	25			2	35	14	30		46		7	436
Highway Patrol		1			3		2	8	50			3		13	6	69			413				1749	322	7		241			2887
Drug Task Forces						1	1									14			441								137			595

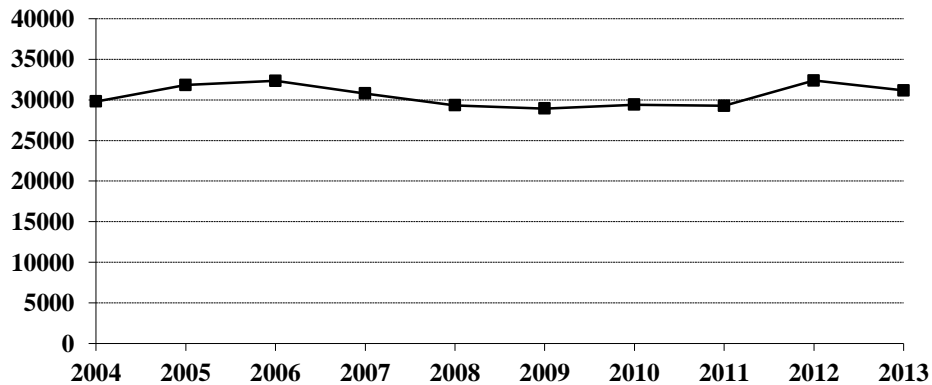
\*\* Reported partial year

# Arrests 2004-2013

## Arrest Summary

Year	Population	Arrest Total	% Change from Previous Year	Rate per 100,000 Pop.
2004	634,500	29,798	-1.8%	4696.3
2005	637,000	31,835	6.8	4997.6
2006	636,000	32,343	1.6	5085.4
2007	640,000	30,780	-4.8	4809.4
2008	641,500	29,334	-4.7	4572.7
2009	647,000	28,925	-1.4	4470.6
2010	672,591	29,404	1.7	4371.8
2011	683,932	29,260	-0.5	4278.2
2012	699,628	32,380	10.7	4628.2
2013	723,393	31,166	-3.7	4308.3

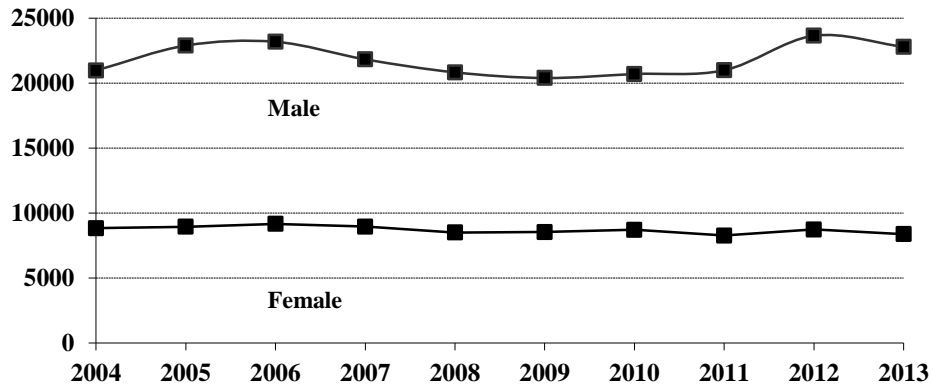
## Arrest Totals, 2004-2013



## Arrests by Gender, 2004-2013

Year	Male	% of Total	Female	% of Total	Total
2004	20,971	70.4%	8,827	29.6%	29,798
2005	22,891	71.9	8,944	28.1	31,835
2006	23,181	71.7	9,162	28.3	32,343
2007	21,829	70.9	8,951	29.1	30,780
2008	20,828	71.0	8,506	29.0	29,334
2009	20,393	70.5	8,532	29.5	28,925
2010	20,699	70.4	8,705	29.6	29,404
2011	20,992	71.7	8,268	28.3	29,260
2012	23,647	73.0	8,733	27.0	32,380
2013	22,792	73.1	8,374	26.9	31,166

### Arrests by Gender, 2004-2013

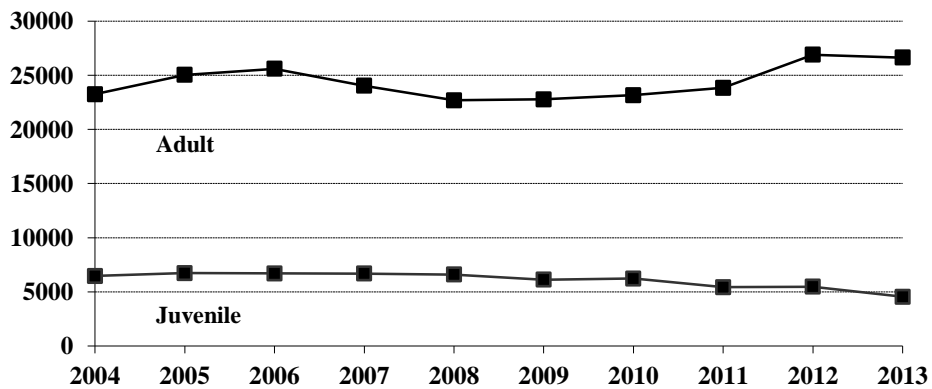


### Juvenile and Adult Arrests, 2004-2013

Year	Juvenile	Percent of Total	Adult	Percent of Total	Age Not Reported	Percent of Total	Total
2004	6,467	21.7%	23,247	78.0%	84	0.3%	29,798
2005	6,721	21.1	25,038	78.6	76	0.2	31,835
2006	6,703	20.7	25,601	79.2	39	0.1	32,343
2007	6,676	21.7	24,037	78.1	67	0.2	30,780
2008	6,593	22.5	22,695	77.4	46	0.1	29,334
2009	6,120	21.2	22,772	78.7	33	0.1	28,925
2010	6,227	21.2	23,157	78.8	20	0.1	29,404
2011	5,423	18.5	23,837	81.5			29,260
2012	5,470	16.9	26,909	83.1	1	*	32,380
2013	4,537	14.6	26,629	85.4			31,166

\* Less than 0.1 percent of total arrests.

### Juvenile and Adult Arrests, 2004-2013



## Arrests by Age Group, 2004-2013

Age Group	2004	2005	2006	2007	2008	2009	2010	2011	2012	2013
Under 10	108	73	120	108	106	99	85	91	100	82
10-12	580	500	579	461	465	510	499	405	488	379
13-14	1526	1411	1548	1427	1396	1185	1370	1189	1145	1001
15	1312	1394	1268	1337	1327	1243	1203	1127	1108	949
16	1409	1630	1460	1641	1606	1585	1485	1266	1259	1010
17	1532	1713	1728	1702	1693	1498	1585	1345	1370	1116
18	2176	2300	2456	2368	2159	2059	1968	1927	1765	1562
19	2638	2647	2654	2647	2369	2371	2337	2130	2217	1974
20	2310	2602	2599	2417	2224	2268	2143	2001	2103	1866
21	1358	1405	1605	1444	1289	1236	1366	1332	1449	1380
22	1316	1259	1274	1268	1192	1087	1216	1178	1268	1277
23	1065	1173	1102	1018	1059	959	1040	1075	1235	1217
24	909	1045	1042	996	881	1005	952	963	1103	1096
25-29	2952	3549	3629	3567	3520	3441	3613	3841	4470	4585
30-34	2140	2331	2371	2100	1983	2108	2209	2638	3325	3487
35-39	1888	2095	1989	1758	1674	1719	1709	1834	2194	2334
40-44	1846	1869	1886	1612	1539	1495	1422	1531	1893	1925
45-49	1275	1354	1413	1312	1308	1289	1324	1306	1560	1536
50-54	696	734	814	780	769	934	970	1067	1262	1285
55-59	367	359	414	425	365	449	490	598	613	635
60-64	165	155	183	171	199	187	222	249	255	295
65 +	146	161	170	154	165	165	176	167	197	175
Age Not Reported	84	76	39	67	46	33	20		1	
<b>Arrest Total</b>	<b>29798</b>	<b>31835</b>	<b>32343</b>	<b>30780</b>	<b>29334</b>	<b>28925</b>	<b>29404</b>	<b>29260</b>	<b>32380</b>	<b>31166</b>

## Arrests by Offense, 2004-2013

Offense Classification	2004	2005	2006	2007	2008	2009	2010	2011	2012	2013
Murder/Non-Neg. Manslaughter	10	9	6	11	4	7	8	9	8	10
Negligent Manslaughter	4	3	5	5	6	7	1		5	1
Forcible Rape	53	34	45	37	45	26	43	31	45	32
Robbery	15	22	25	29	23	37	32	22	48	44
Aggravated Assault	159	203	214	235	320	360	354	428	443	500
Burglary	223	220	340	235	264	306	247	215	257	246
Larceny/Theft	1856	1830	1700	1979	2366	2485	2487	2610	2804	2613
Motor Vehicle Theft	189	216	220	174	182	179	155	121	160	178
Other Assaults	1656	2015	1989	1982	1947	2047	1977	2013	2329	2423
Arson	24	15	30	24	22	14	10	12	19	16
Forgery and Counterfeiting	170	161	159	111	71	90	80	66	84	81
Fraud	1557	1201	1243	913	646	709	627	421	454	384
Embezzlement	4	15	24	28	30	31	36	41	48	37
Stolen Property Offenses	123	137	124	126	135	126	157	143	146	155
Vandalism	592	572	657	665	557	518	505	469	539	559
Weapons Offenses	198	271	215	174	223	168	165	194	305	338
Prostitution	15	1	2	6	3	4	5	16	35	43
Other Sex Offenses	94	82	82	62	82	89	90	65	86	79
Drug Abuse Violations	2078	2343	2256	2323	2158	2063	2339	2662	2872	3431
Gambling	1	4		3	1	1				2
Off. Against Family & Children	221	243	199	177	163	185	132	122	132	133
Driving Under the Influence	5783	5946	6488	6085	5815	5819	6050	6600	7322	7086
Liquor Law Violations	5758	5940	6513	6118	5592	5449	5750	4695	4555	3987
Disorderly Conduct	1529	1657	1753	1586	1835	1843	2252	1711	2011	1854
Vagrancy										
All Other Offenses	6556	7686	7160	6684	5986	5542	5028	5899	6993	6427
Suspicion										
Curfew and Loitering	264	301	224	279	248	296	268	206	146	88
Runaways	666	708	670	729	610	524	606	489	534	419
<b>Arrest Total</b>	<b>29798</b>	<b>31835</b>	<b>32343</b>	<b>30780</b>	<b>29334</b>	<b>28925</b>	<b>29404</b>	<b>29260</b>	<b>32380</b>	<b>31166</b>



## Juvenile Arrests by Offense, 2004-2013

Offense Classification	2004	2005	2006	2007	2008	2009	2010	2011	2012	2013
Murder/Non-Neg. Manslaughter				2						
Negligent Manslaughter			1		1					
Forcible Rape	10	6	4	8	18	8	17	6	17	7
Robbery	8	4	7	5	4	3	5	4	13	2
Aggravated Assault	22	47	30	31	47	34	39	35	29	29
Burglary	99	55	115	94	97	94	71	69	56	56
Larceny/Theft	792	794	699	876	977	992	895	866	763	581
Motor Vehicle Theft	78	103	105	74	84	88	57	30	56	48
Other Assaults	416	482	474	442	465	427	397	371	436	391
Arson	15	10	15	14	7	5	4	6	9	9
Forgery and Counterfeiting	17	15	9	5	2	9	5	6	4	1
Fraud	12	17	29	34	16	11	14	9	15	11
Embezzlement		4	4	5	8	3	2	5	8	7
Stolen Property Offenses	51	41	46	43	39	51	63	33	40	33
Vandalism	344	303	362	378	298	254	234	214	225	233
Weapons Offenses	40	41	43	28	43	26	16	21	26	17
Prostitution	10								1	
Other Sex Offenses	33	20	20	16	20	24	33	11	26	27
Drug Offenses	229	251	264	278	291	293	380	366	351	352
Gambling										
Off. Against Family/Children	84	86	107	91	88	88	50	57	63	53
Driving Under the Influence	92	92	100	66	93	79	52	35	47	38
Liquor Law Violations	1304	1255	1469	1341	1217	1029	972	888	880	661
Disorderly Conduct	652	687	714	601	761	729	902	762	759	657
Vagrancy										
All Other Offenses	1229	1399	1192	1236	1159	1053	1145	934	966	817
Suspicion										
Curfew and Loitering	264	301	224	279	248	296	268	206	146	88
Runaways	666	708	670	729	610	524	606	489	534	419
<b>Juvenile Arrest Total</b>	<b>6467</b>	<b>6721</b>	<b>6703</b>	<b>6676</b>	<b>6593</b>	<b>6120</b>	<b>6227</b>	<b>5423</b>	<b>5470</b>	<b>4537</b>

## Juvenile Arrests by Gender, 2004-2013

Year	Male	% of Total	Female	% of Total	Total
2004	3,909	60.4%	2,558	39.6%	6,467
2005	4,092	60.9	2,629	39.1	6,721
2006	4,240	63.3	2,463	36.7	6,703
2007	4,108	61.5	2,568	38.5	6,676
2008	4,061	61.6	2,532	38.4	6,593
2009	3,759	61.4	2,361	38.6	6,120
2010	3,784	60.8	2,443	39.2	6,227
2011	3,189	58.8	2,234	41.2	5,423
2012	3,283	60.0	2,187	40.0	5,470
2013	2,812	62.0	1,725	38.0	4,537

## Adult Arrests by Offense, 2004-2013

Offense Classification	2004	2005	2006	2007	2008	2009	2010	2011	2012	2013
Murder/Non-Neg. Manslaughter	10	9	6	9	4	7	8	9	8	10
Negligent Manslaughter	4	3	4	5	5	7	1		5	1
Forcible Rape	43	28	41	29	27	18	26	25	28	25
Robbery	7	18	18	24	19	34	27	18	35	42
Aggravated Assault	137	156	184	204	270	326	315	393	414	471
Burglary	119	165	224	141	167	211	176	146	201	190
Larceny/Theft	1064	1035	1000	1103	1388	1491	1592	1744	2041	2032
Motor Vehicle Theft	111	113	115	100	98	91	98	91	104	130
Other Assaults	1237	1532	1513	1540	1480	1619	1580	1642	1893	2032
Arson	9	5	15	9	15	9	6	6	10	7
Forgery and Counterfeiting	151	145	149	106	69	81	75	60	80	80
Fraud	1507	1172	1211	845	620	693	611	412	438	373
Embezzlement	4	11	20	23	22	28	34	36	40	30
Stolen Property Offenses	72	96	78	83	96	75	94	110	106	122
Vandalism	246	269	293	287	258	264	270	255	314	326
Weapons Offenses	158	230	172	146	180	142	149	173	279	321
Prostitution	5	1	2	6	3	4	5	16	34	43
Other Sex Offenses	61	62	62	46	62	65	57	54	60	52
Drug Offenses	1846	2066	1983	2035	1857	1762	1957	2296	2521	3079
Gambling	1	4		3	1	1				2
Off. Against Family/Children	136	157	91	86	75	96	81	65	69	80
Driving Under the Influence	5685	5847	6384	6018	5718	5735	5994	6565	7275	7048
Liquor Law Violations	4449	4674	5038	4775	4369	4418	4774	3807	3675	3326
Disorderly Conduct	876	969	1035	984	1073	1112	1348	949	1252	1197
Vagrancy										
All Other Offenses	5309	6271	5963	5430	4819	4483	3879	4965	6027	5610
Suspicion										
<b>Adult Arrest Total</b>	<b>23247</b>	<b>25038</b>	<b>25601</b>	<b>24037</b>	<b>22695</b>	<b>22772</b>	<b>23157</b>	<b>23837</b>	<b>26909</b>	<b>26629</b>

## Adult Arrests by Gender, 2004-2013

Year	Male	% of Total	Female	% of Total	Total
2004	17,004	73.1%	6,243	26.9%	23,247
2005	18,739	74.8	6,299	25.2	25,038
2006	18,912	73.9	6,689	26.1	25,601
2007	17,677	73.5	6,360	26.5	24,037
2008	16,735	73.7	5,960	26.3	22,695
2009	16,610	72.9	6,162	27.1	22,772
2010	16,901	73.0	6,256	27.0	23,157
2011	17,803	74.7	6,034	25.3	23,837
2012	20,364	75.7	6,545	24.3	26,909
2013	19,980	75.0	6,649	25.0	26,629

# Drug Arrest Analysis

---

Drug offense arrests increased by 19.5 percent from a total of 2,872 in 2012 to 3,431 in 2013. The arrest totals shown should not be interpreted as the number of individuals arrested for drug offenses because it is possible that some individuals may have been arrested on more than one occasion for this offense.

More than 74 percent of drug arrests in 2013 were arrests of males.

Juveniles (persons under the age of 18) comprised 10.3 percent of the total in 2013.

More than 88 percent of the drug arrests during the 10-year period were arrests for possession rather than sale or manufacture of drugs.

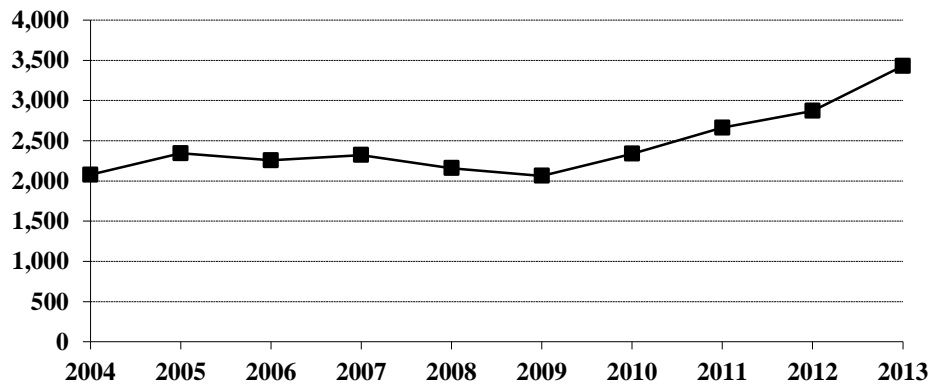
Nearly seventy percent of the arrests for drug offenses during the period 2004-2013 involved marijuana.

---

## Arrests for Drug Offenses, 2004-2013

Year	Total	Percent Change from Previous Year
2004	2,078	1.6%
2005	2,343	12.8
2006	2,256	-3.7
2007	2,323	3.0
2008	2,158	-7.1
2009	2,063	-4.4
2010	2,339	13.4
2011	2,662	13.8
2012	2,872	7.9
2013	3,431	19.5

## Arrests for Drug Offenses, 2004-2013



## Drug Arrests by Gender, 2004-2013

Year	Male	% of Total	Female	% of Total	Total
2004	1,595	76.8%	483	23.2%	2,078
2005	1,738	74.2	605	25.8	2,343
2006	1,762	78.1	494	21.9	2,256
2007	1,774	76.4	549	23.6	2,323
2008	1,642	76.1	516	23.9	2,158
2009	1,631	79.1	432	20.9	2,063
2010	1,792	76.6	547	23.4	2,339
2011	2,056	77.2	606	22.8	2,662
2012	2,190	76.3	682	23.7	2,872
2013	2,553	74.4	878	25.6	3,431

## Drug Arrests by Age Category, 2004-2013

Year	Juvenile	Percent of Total	Adult	Percent of Total	Age Not Reported	Percent of Total	Total
2004	229	11.0%	1,846	88.8%	3	0.1%	2,078
2005	251	10.7	2,066	88.2	26	1.1	2,343
2006	264	11.7	1,983	87.9	9	0.4	2,256
2007	278	12.0	2,035	87.6	10	0.4	2,323
2008	291	13.5	1,857	86.0	10	0.5	2,158
2009	293	14.2	1,762	85.4	8	0.4	2,063
2010	380	16.2	1,957	83.7	2	0.1	2,339
2011	366	13.7	2,296	86.3			2,662
2012	351	12.2	2,521	87.8			2,872
2013	352	10.3	3,079	89.7			3,431

## Drug Arrests by Age Group, 2004-2013

Age Group	2004	2005	2006	2007	2008	2009	2010	2011	2012	2013
Under 10										
10-12	4	5	4	2	4	3	6	4	3	2
13-14	29	20	34	39	31	31	43	38	51	47
15	40	42	38	47	60	40	81	69	60	64
16	68	90	79	92	91	97	116	111	78	121
17	88	94	109	98	105	122	134	144	159	118
18	163	195	187	209	195	170	182	227	180	240
19	186	197	169	196	175	179	174	260	244	217
20	160	193	180	182	151	161	184	216	189	201
21	117	121	132	148	141	134	147	155	212	212
22	135	124	119	136	126	107	154	144	142	211
23	111	106	98	95	100	99	97	150	133	160
24	110	107	97	106	78	113	108	97	112	112
25-29	250	326	319	385	303	258	303	357	442	575
30-34	190	203	217	155	171	164	201	220	296	397
35-39	129	153	156	136	114	113	111	128	187	234
40-44	168	163	145	111	129	84	97	113	126	168
45-49	82	109	91	87	105	89	80	94	105	138
50-54	33	45	52	59	45	55	64	90	94	137
55-59	9	18	16	22	17	26	40	32	41	55
60-64	1	1	4	3	5	7	13	11	13	20
65 +	2	5	1	5	2	3	2	2	5	2
No Age Data	3	26	9	10	10	8	2			
<b>Total</b>	<b>2078</b>	<b>2343</b>	<b>2256</b>	<b>2323</b>	<b>2158</b>	<b>2063</b>	<b>2339</b>	<b>2662</b>	<b>2872</b>	<b>3431</b>

## Drug Arrests by Type of Offense, 2004-2013

Year	Sale or Manufacture	% of Total	Possession	% of Total	Total
2004	318	15.3%	1,760	84.7%	2,078
2005	284	12.1	2,059	87.9	2,343
2006	298	13.2	1,958	86.8	2,256
2007	217	9.3	2,106	90.7	2,323
2008	250	11.6	1,908	88.4	2,158
2009	257	12.5	1,806	87.5	2,063
2010	338	14.5	2,001	85.5	2,339
2011	346	13.0	2,316	87.0	2,662
2012	269	9.4	2,603	90.6	2,872
2013	325	9.5	3,106	90.5	3,431

## Drug Arrests by Age Category and Type of Offense, 2004-2013

Year	Juvenile		Adult		Age Not Reported	
	Sale or Manufacture	Possession	Sale or Manufacture	Possession	Sale or Manufacture	Possession
2004	28	201	289	1,557	1	2
2005	17	234	259	1,807	8	18
2006	27	237	268	1,715	3	6
2007	19	259	196	1,839	2	8
2008	33	258	217	1,640		10
2009	17	276	240	1,522		8
2010	20	360	318	1,639		2
2011	32	334	314	1,982		
2012	28	323	241	2,280		
2013	13	339	312	2,767		

## Drug Arrests by Type of Drug, 2004-2013

Year	Opiates, Cocaine or Derivatives	Percent of Total	Marijuana	Percent of Total	Other Drugs or Narcotics	Percent of Total	Total
2004	38	1.8%	1,333	64.2%	707	34.0%	2,078
2005	53	2.3	1,516	64.7	774	33.0	2,343
2006	53	2.3	1,621	71.9	582	25.8	2,256
2007	50	2.2	1,783	76.7	490	21.1	2,323
2008	49	2.3	1,681	77.9	428	19.8	2,158
2009	44	2.1	1,533	74.3	486	23.6	2,063
2010	29	1.3	1,722	73.6	588	25.1	2,339
2011	37	1.4	1,837	69.0	788	29.6	2,662
2012	64	2.2	1,934	67.4	874	30.4	2,872
2013	57	1.7	2,158	62.9	1,216	35.4	3,431

## Drug Arrests by Age Category and Type of Drug, 2004-2013

Year	Juvenile			Adult			Age Not Reported		
	Opiates, Cocaine or Deriv.	Marijuana	Other Drugs or Narcotics	Opiates, Cocaine or Deriv.	Marijuana	Other Drugs or Narcotics	Opiates, Cocaine or Deriv.	Marijuana	Other Drugs or Narcotics
2004	3	162	64	35	1,170	641		1	2
2005	2	220	29	51	1,288	727		8	18
2006	1	229	34	52	1,389	542		3	6
2007	1	244	33	49	1,532	454		7	3
2008	5	237	49	44	1,438	375		6	4
2009	2	237	54	42	1,292	428		4	4
2010	1	297	82	28	1,423	506		2	
2011	2	285	79	35	1,552	709			
2012	3	280	68	61	1,654	806			
2013		312	40	57	1,846	1,176			

# DUI Arrest Analysis

---

Reported DUI arrests decreased 3.2 percent from 7,322 in 2012 to 7,086 in 2013. The arrest totals should not be interpreted as the number of individuals arrested for DUI offenses because it is possible that some individuals may have been arrested on more than one occasion.

More than 79 percent of the DUI arrests in 2013 were arrests of males.

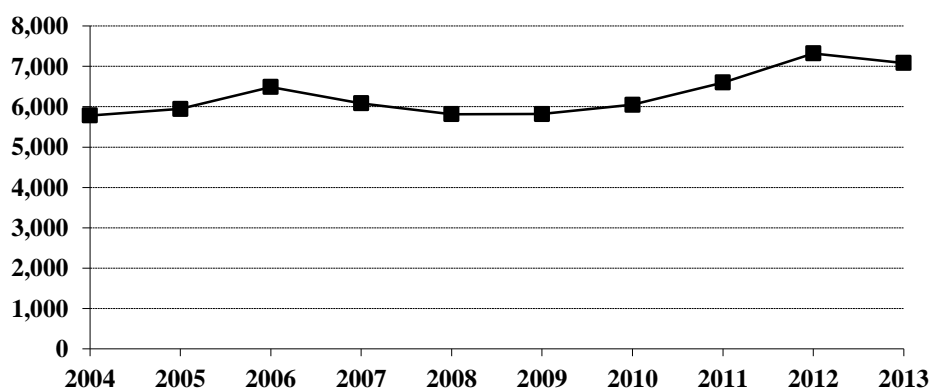
Juveniles, persons under the age of 18, made up 0.5 percent of the total in 2013.

---

## DUI Arrests, 2004-2013

Year	DUI Arrests Reported	Percent Change from Previous Year
2004	5,783	19.1%
2005	5,946	2.8
2006	6,488	9.1
2007	6,085	-6.2
2008	5,815	-4.4
2009	5,819	0.1
2010	6,050	4.0
2011	6,600	9.1
2012	7,322	10.9
2013	7,086	-3.2

## DUI Arrests, 2004-2013



### DUI Arrests by Gender, 2004-2013

Year	Male	% of Total	Female	% of Total	Total
2004	4,459	77.1%	1,324	22.9%	5,783
2005	4,640	78.0	1,306	22.0	5,946
2006	4,956	76.4	1,532	23.6	6,488
2007	4,620	75.9	1,465	24.1	6,085
2008	4,449	76.5	1,366	23.5	5,815
2009	4,391	75.5	1,428	24.5	5,819
2010	4,639	76.7	1,411	23.3	6,050
2011	5,109	77.4	1,491	22.6	6,600
2012	5,843	79.8	1,479	20.2	7,322
2013	5,630	79.5	1,456	20.5	7,086

### DUI Arrests by Age Category, 2004-2013

Year	Juvenile	Percent of Total	Adult	Percent of Total	Age Not Reported	Percent of Total	Total
2004	92	1.6%	5,685	98.3%	6	0.1%	5,783
2005	92	1.6	5,847	98.3	7	0.1	5,946
2006	100	1.5	6,384	98.4	4	0.1	6,488
2007	66	1.1	6,018	98.9	1	*	6,085
2008	93	1.6	5,718	98.3	4	0.1	5,815
2009	79	1.4	5,735	98.5	5	0.1	5,819
2010	52	0.9	5,994	99.0	4	0.1	6,050
2011	35	0.5	6,565	99.5			6,600
2012	47	0.6	7,275	99.4			7,322
2013	38	0.5	7,048	99.5			7,086

\*Less than 0.1 percent of total DUI arrests.



## DUI Arrests by Age Group, 2004-2013

Age Group	2004	2005	2006	2007	2008	2009	2010	2011	2012	2013
Under 10										
10-12										
13-14	3	1	1	1	2			1	1	
15	8	5	10	2	8	7	2	3	4	1
16	33	31	28	17	25	27	12	9	9	13
17	48	55	61	46	58	45	38	22	33	24
18	142	121	161	127	121	110	81	94	100	61
19	212	206	187	166	158	138	128	116	139	115
20	205	219	196	166	173	169	135	141	164	144
21	362	344	431	381	340	359	350	366	394	344
22	417	372	373	381	338	300	356	368	363	346
23	305	345	357	339	314	316	307	334	365	356
24	293	278	336	336	304	292	293	303	367	342
25-29	867	1051	1060	1117	1083	1082	1204	1262	1356	1320
30-34	621	596	735	719	641	654	711	920	1022	969
35-39	590	590	624	570	581	554	644	685	776	758
40-44	576	603	621	527	512	514	512	569	642	694
45-49	468	481	560	517	507	501	545	507	583	599
50-54	288	309	346	301	309	377	335	413	519	508
55-59	178	171	199	198	168	205	206	291	281	280
60-64	93	86	98	91	94	90	110	121	117	128
65 +	68	75	100	82	75	74	77	75	87	84
No Age Data	6	7	4	1	4	5	4			
<b>Total</b>	<b>5783</b>	<b>5946</b>	<b>6488</b>	<b>6085</b>	<b>5815</b>	<b>5819</b>	<b>6050</b>	<b>6600</b>	<b>7322</b>	<b>7086</b>

(This page intentionally left blank.)

# **UCR OFFENSE DEFINITIONS**

---

---

# UNIFORM CRIME REPORTING OFFENSE DEFINITIONS

Offenses in Uniform Crime Reporting are divided into two groups designated as Part I and Part II crimes. Information on the number of Part I offenses known to law enforcement, the number cleared by arrest or exceptional means, and the number of persons arrested is reported monthly. Arrest data are reported for Part I and Part II offenses. The Crime Index is composed of offenses 1-7 with the exception as noted in item 1 below.

NOTE: The classifications of these offenses for UCR reporting purposes are based on law enforcement investigation as opposed to determination by a court, medical examiner, jury, or other judicial hearing.

## **PART I OFFENSES:**

### **1. CRIMINAL HOMICIDE**

#### **a. Murder and Non-Negligent Manslaughter**

The willful (non-negligent) killing of one human being by another. Deaths caused by negligence, attempts to kill, assaults to kill, suicides, accidental deaths, and justifiable homicides are excluded. Justifiable homicides are limited to: (1) the killing of a felon by a law enforcement officer in the line of duty, and (2) the killing of a felon by a private citizen.

#### **b. Manslaughter by Negligence**

The killing of another person through gross negligence. Excludes traffic fatalities. While manslaughter by negligence is a Part I crime, it is not included in the Crime Index.

### **2. FORCIBLE RAPE**

The carnal knowledge of a female forcibly and against her will. Included are rapes by force and attempts or assaults to rape. Statutory offenses (no force used -- victim under age of consent) are excluded.

### **3. ROBBERY**

The taking or attempting to take anything of value from the care, custody, or control of a person or persons by force or threat of force or violence, or putting the victim in fear.

### **4. AGGRAVATED ASSAULT**

An unlawful act by one person upon another for the purpose of inflicting severe or aggravated bodily injury. This type of assault usually is accompanied by the use of a weapon or by a means likely to produce death or great bodily harm. Simple assaults are excluded.

### **5. BURGLARY**

Breaking or entering. The unlawful entry of a structure to commit a felony or theft. Attempted forcible entry is included.

**6. LARCENY/THEFT**

The unlawful taking, carrying, leading, or riding away of property from the possession or constructive possession of another. Examples are thefts of bicycles or automobile accessories, shoplifting, pocket-picking, or the stealing of any property or article that is not taken by force and violence or by fraud. Attempted larcenies are included. Embezzlement, “con” games, forgery, worthless checks, etc., are excluded.

**7. MOTOR VEHICLE THEFT**

The theft or attempted theft of a motor vehicle. A motor vehicle is self-propelled and runs on the surface and not on rails. Specifically excluded from this category are motorboats, construction equipment, airplanes, and farming equipment.

**8. ARSON**

Any willful or malicious burning or attempting to burn, with or without intent to defraud, a dwelling house, public building, motor vehicle, personal property of another, etc.

**PART II OFFENSES:**

**9. OTHER ASSAULTS (SIMPLE)**

Assaults or attempted assaults where no weapon was used or which did not result in serious or aggravated injury to the victim.

**10. FORGERY AND COUNTERFEITING**

Making, altering, uttering, or possessing, with the intent to defraud, anything false which is made to appear true. Attempts are included.

**11. FRAUD**

Fraudulent conversion and obtaining money or property by false pretenses. Included are larceny by bailee and bad checks except forgeries and counterfeiting. Attempts are included.

**12. EMBEZZLEMENT**

Misappropriation or misapplication of money or property entrusted to one’s care, custody or control. Attempts are included.

**13. STOLEN PROPERTY -- BUYING, RECEIVING, POSSESSING**

Buying, receiving, or possessing stolen property, including attempts.

**14. VANDALISM**

Willful or malicious destruction, injury, disfigurement, or defacement of any public or private property, real or personal, without consent of the owner or person having custody or control. Attempts are included.

**15. WEAPON OFFENSES -- CARRYING, POSSESSING, ETC.**

All violations of regulations or statutes controlling the carrying, using, possessing, furnishing, and manufacturing of deadly weapons or silencers. Attempts are included.

**16. PROSTITUTION AND COMMERCIALIZED VICE**

Sex offenses of a commercialized nature, such as prostitution, keeping a bawdy house, procuring, or transporting women for immoral purposes. Attempts are included.

**17. OTHER SEX OFFENSES (except forcible rape, prostitution and commercialized vice)**

Statutory rape and offenses against chastity, common decency, morals and the like. Attempts are included.

**18. DRUG ABUSE VIOLATIONS**

State and local offenses relating to narcotic and non-narcotic drugs, such as unlawful possession, sale, use, growing and manufacturing of narcotic and non-narcotic drugs. Attempts are included.

**19. GAMBLING**

Promoting, permitting, or engaging in illegal gambling.

**20. OFFENSES AGAINST FAMILY AND CHILDREN**

Non-support, neglect, desertion, or abuse of family and children.

**21. DRIVING UNDER THE INFLUENCE**

Driving or operating any vehicle or common carrier while drunk or under the influence of liquor or drugs.

**22. LIQUOR LAWS**

State or local liquor law violations, except "drunkenness" (offense 23) and "driving under the influence" (offense 21).

**23. DRUNKENNESS**

Drunkenness or intoxication. Excluded is "driving under the influence" (offense 21). This is not a crime in North Dakota, but is included in the national program.

**24. DISORDERLY CONDUCT**

Breach of peace.

**25. VAGRANCY**

Vagabondage, begging, loitering, etc.

**26. ALL OTHER OFFENSES**

All violations of state or local laws, except offenses 1-25 and traffic offenses.

**27. SUSPICION**

No specific offense; suspect released without formal charges being placed.

**28. CURFEW AND LOITERING**

Offenses relating to violation of local curfew and loitering ordinances where such laws exist.

**29. RUNAWAYS**

Limited to juveniles taken into protective custody under provisions of local statutes.

(This page intentionally left blank.)



**FULL-TIME LAW  
ENFORCEMENT EMPLOYEES**

---

---

**NUMBER OF FULL-TIME LAW ENFORCEMENT EMPLOYEES  
REPORTED BY UCR AGENCIES  
AS OF OCTOBER 31, 2013**

Agency	Law Enforcement Officers		Civilian Personnel		Total Full-Time			Population
	Male	Female	Male	Female	Male	Female	Total	
Adams SO	4		1		5		5	2,348
Barnes SO	6	1		1	6	2	8	4,647
Valley City PD	12	1		1	12	2	14	6,580
Benson SO	4				4		4	6,929
Billings SO	5				5		5	837
Medora PD	2				2		2	139
Bottineau SO	10		1	3	11	3	14	6,771
Bowman SO	4			1	4	1	5	1,318
Bowman PD	3				3		3	1,687
Scranton PD	1				1		1	285
Burke SO	7			1	7	1	8	1,980
Powers Lake PD	1				1		1	314
Burleigh SO	43	6	22	24	65	30	95	20,244
Bismarck PD	87	12	9	18	96	30	126	65,850
Lincoln PD	2				2		2	2,898
Cass SO	73	25	23	30	96	55	151	22,354
Fargo PD	120	23	1	18	121	41	162	111,101
West Fargo PD	37	2		10	37	12	49	28,018
NDSU PD *	10	5	3	6	13	11	24	
Cavalier SO	5		3	3	8	3	11	4,018
Dickey SO	4			1	4	1	5	2,144
Ellendale PD	2				2		2	1,388
Oakes PD	3				3		3	1,840
Divide SO	8				8		8	2,330
Dunn SO	12	1		1	12	2	14	3,366
Killdeer PD	3				3		3	841
Eddy SO	4	2			4	2	6	2,412
Emmons SO	5			1	5	1	6	3,546
Foster SO	2	1			2	1	3	1,372
Carrington PD	4	1	4	1	8	2	10	2,108
Golden Valley SO	4	1		1	4	2	6	1,886
Grand Forks SO	29	2		7	29	9	38	13,502
Grand Forks PD	73	9	4	11	77	20	97	53,625
Northwood PD	2				2		2	918
Thompson PD	1				1		1	1,002
UND PD *	14	2		3	14	5	19	
Grant SO	4				4		4	2,364
Griggs SO	4			1	4	1	5	2,396
Hettinger SO	3	1			3	1	4	2,634
Kidder SO	3			1	3	1	4	1,761
Steele PD	1				1		1	708
LaMoure SO	4			1	4	1	5	3,301
Kulm PD	1				1		1	NA
LaMoure PD	1				1		1	895
Logan SO	2				2		2	1,183
Napoleon PD	1				1		1	757
McHenry SO	6	1			6	1	7	6,054
McIntosh SO	2	1			2	1	3	1,819
Wishek PD	2				2		2	974
McKenzie SO	14		1	11	15	11	26	6,002
Watford City PD	9	1		1	9	2	11	2,793
McLean SO	18	2	5	11	23	13	36	9,617
Mercer SO	14	1	6	6	20	7	27	3,114
Beulah PD	5		1		6		6	3,149
Hazen PD	4				4		4	2,423
Morton SO	22	2	8	9	30	11	41	9,695
Mandan PD	27	3	2	4	29	7	36	19,168

Agency	Law Enforcement Officers		Civilian Personnel		Total Full-Time			Population
	Male	Female	Male	Female	Male	Female	Total	
Mountrail SO	10	1		11	10	12	22	4,983
New Town PD	2	1		1	2	2	4	2,362
Stanley PD	4	1			4	1	5	1,949
Nelson SO	5			1	5	1	6	3,131
Oliver SO	4		1		5		5	1,876
Pembina SO	7		2	3	9	3	12	6,113
Cavalier PD	4				4		4	1,268
Pierce SO	3			4	3	4	7	1,616
Rugby PD	5				5		5	2,972
Ramsey SO	5	1		1	5	2	7	4,544
Devils Lake PD	14	2	1	1	15	3	18	7,260
Ransom SO	4			1	4	1	5	3,415
Lisbon PD	2	1			2	1	3	2,149
Renville SO	4	2			4	2	6	2,389
Sherwood PD	1				1		1	254
Richland SO	12	1	6	6	18	7	25	8,705
Wahpeton PD	11	3		2	11	5	16	7,812
NDSCS PD *	2	1		1	2	2	4	
Rolette SO	8	1	5	4	13	5	18	13,483
Rolla PD	4				4		4	1,333
Sargent SO	4			1	4	1	5	4,010
Sheridan SO	2				2		2	1,277
Sioux SO	1				1		1	4,507
Slope SO	1				1		1	785
Stark SO	20	1		4	20	5	25	6,665
Dickinson PD	37	1	2	17	39	18	57	20,347
Belfield PD	3			1	3	1	4	856
South Heart PD							0	354
Steele SO	3			1	3	1	4	2,037
Stutsman SO	8	1		2	8	3	11	6,026
Jamestown PD	28	1		4	28	5	33	15,286
Towner SO	3				3		3	1,233
Cando PD	3				3		3	1,164
Trails SO	6	2		5	6	7	13	6,624
Hillsboro PD	1	1			1	1	2	1,602
Walsh SO	8	2	3	3	11	5	16	6,936
Grafton PD	10			1	10	1	11	4,326
Ward SO	24	3	20	13	44	16	60	18,846
Kenmare PD	3				3		3	1,050
Minot PD	61	11	5	20	66	31	97	44,635
Burlington PD	3				3		3	1,054
Surrey PD	2				2		2	1,042
Berthold PD							0	484
Wells SO	3				3		3	2,072
Harvey PD	1	2		1	1	3	4	1,827
Fessenden PD	1				1		1	486
Williams SO	30	3	16	10	46	13	59	7,647
Tioga PD	6			1	6	1	7	1,247
Williston PD	35	3	1	13	36	16	52	19,949
Highway Patrol	140	9	13	32	153	41	194	
<b>Total</b>	<b>1,311</b>	<b>161</b>	<b>169</b>	<b>352</b>	<b>1,480</b>	<b>513</b>	<b>1,993</b>	<b>723,393</b>

NA = Not Available

\* = Included in City's Population