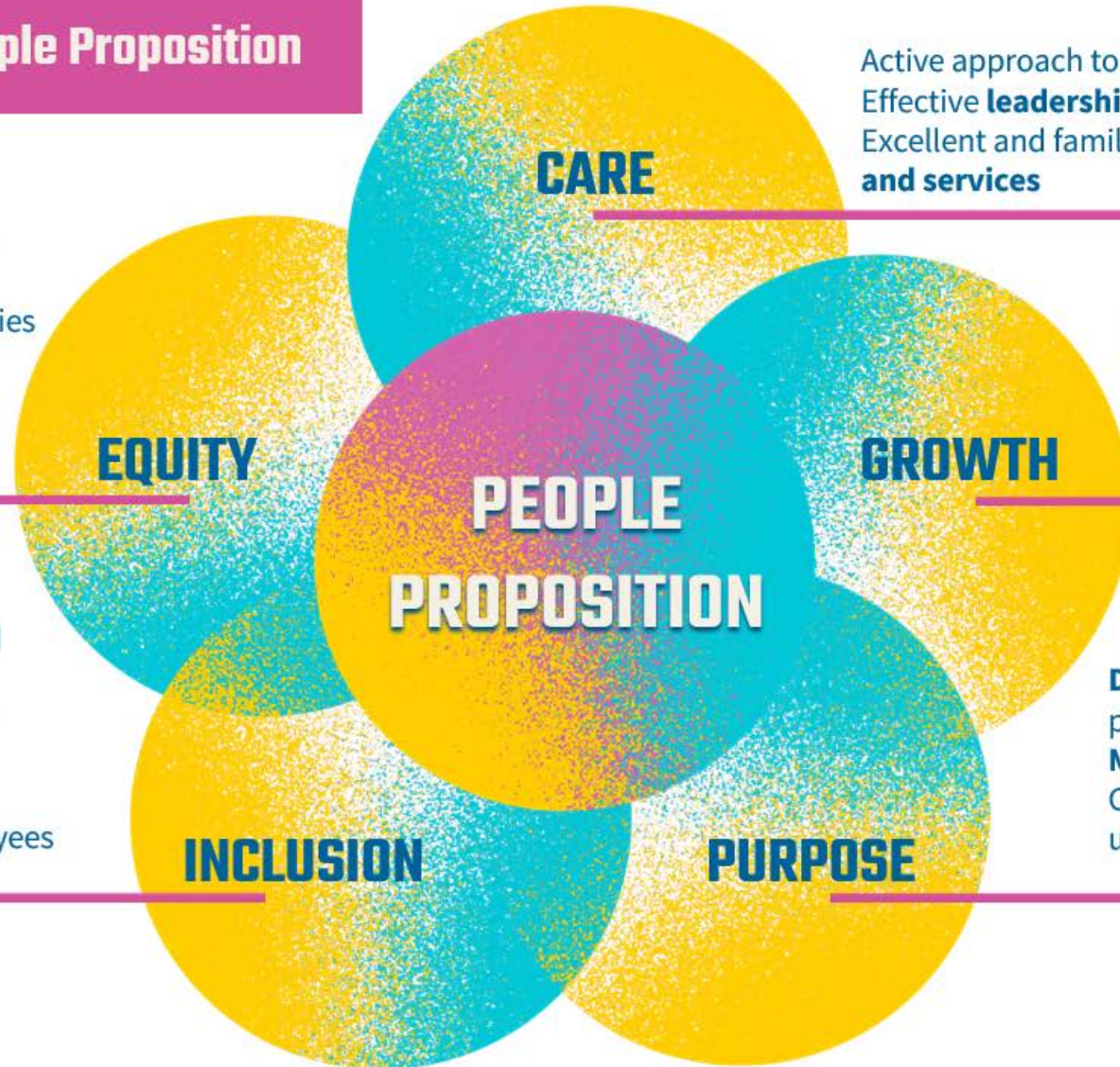


UC San Diego People Proposition



CARE

Active approach to **mental health**
Effective **leadership and management** practices
Excellent and family friendly employee **support and services**

EQUITY

Respect, recognition, and a sense of value
Fairness and agility in policies and processes, including compensation
Employee **agency**

GROWTH

Opportunities for **learning**, development, and progression
Workplace **flexibility**
Institutional **innovation**

PEOPLE PROPOSITION

INCLUSION

Community, belonging, and connections
Authentic **engagement** and communication
Transparency in decisions and actions affecting employees

PURPOSE

Diversity in people, perspective, and experience
Meaningful work
Clear campus and university **direction**