

WELCOME!

- We'll get started momentarily.
- Your microphone, video, and chat features are not needed and will remain deactivated.
- To view closed captioning, select the *Closed Captioning* icon at the bottom of the screen or the three-dots icon then *View Sub-titles*.
- Please submit questions at any time in the Q&A feature.
- If you still have questions at the end of this session, please contact Health Center Program Support.





Today with Macrae: Health Center Program Updates

Thursday, March 28, 2024

Jim Macrae

Associate Administrator

Health Resources and Services Administration (HRSA), Bureau of Primary Health Care (BPHC)

Vision: Healthy Communities, Healthy People



Today with Macrae

AGENDA

- April Observances
- Techquity
- On My Mind
- Funding and Program Updates
- Mark Your Calendar
- Q&A



Colorectal Cancer Awareness Month



Family Health Services Corporation

(South Central, Idaho)

80% in Every Community

National Achievement Award honoree

American Cancer Society National Colorectal
Cancer Roundtable

Check out these resources

- [Increasing Colorectal Cancer Screening in Health Centers webinar](#)
- CDC's [What Should I Know About Screening?](#)
- American Cancer Society's [Cancer Facts & Figures 2024 \(PDF\)](#)



April 15: Tax Day

- Eligible individual taxpayers can file federal taxes for free with Direct File
- Can use in English or Spanish
- Includes live online support from IRS staff
- Available in 12 states: Arizona, California, Florida, Massachusetts, Nevada, New Hampshire, New York, South Dakota, Tennessee, Texas, Washington and Wyoming
- Encourage patients to visit directfile.irs.gov to see if they're eligible

Simple, secure, and always free.



For more information and to see if you're eligible, visit: directfile.irs.gov



Black Maternal Health Week 2024



April 11 – 17

#BMHW24 | #HRSAhelpsMoms

Join us to raise awareness
and promote action.

Elevate YOUR work and achievements in
improving Black maternal health!

Greater Portland Health Prenatal Program

[Ariel Zodhiates, M.D.](#)

Clinical Program Coordinator Prenatal/OB Care

Greater Portland Health



About Greater Portland Health



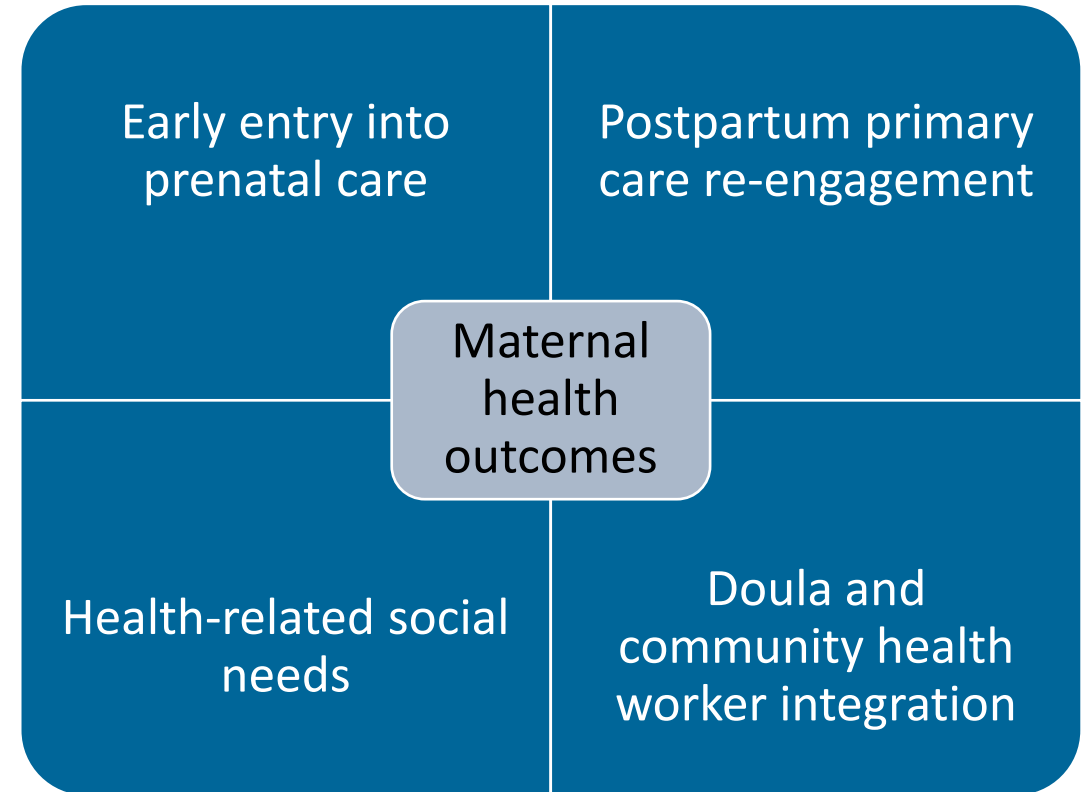
Portland Community Health Center dba Greater Portland Health

- 501(c)(3) federally qualified health center established in 2009
- 16 locations in Portland, South Portland, and Westbrook, Maine
 - ✓ Community health centers (3)
 - ✓ Healthcare for the homeless (3)
 - ✓ School-based (7)
 - ✓ Public housing (3)

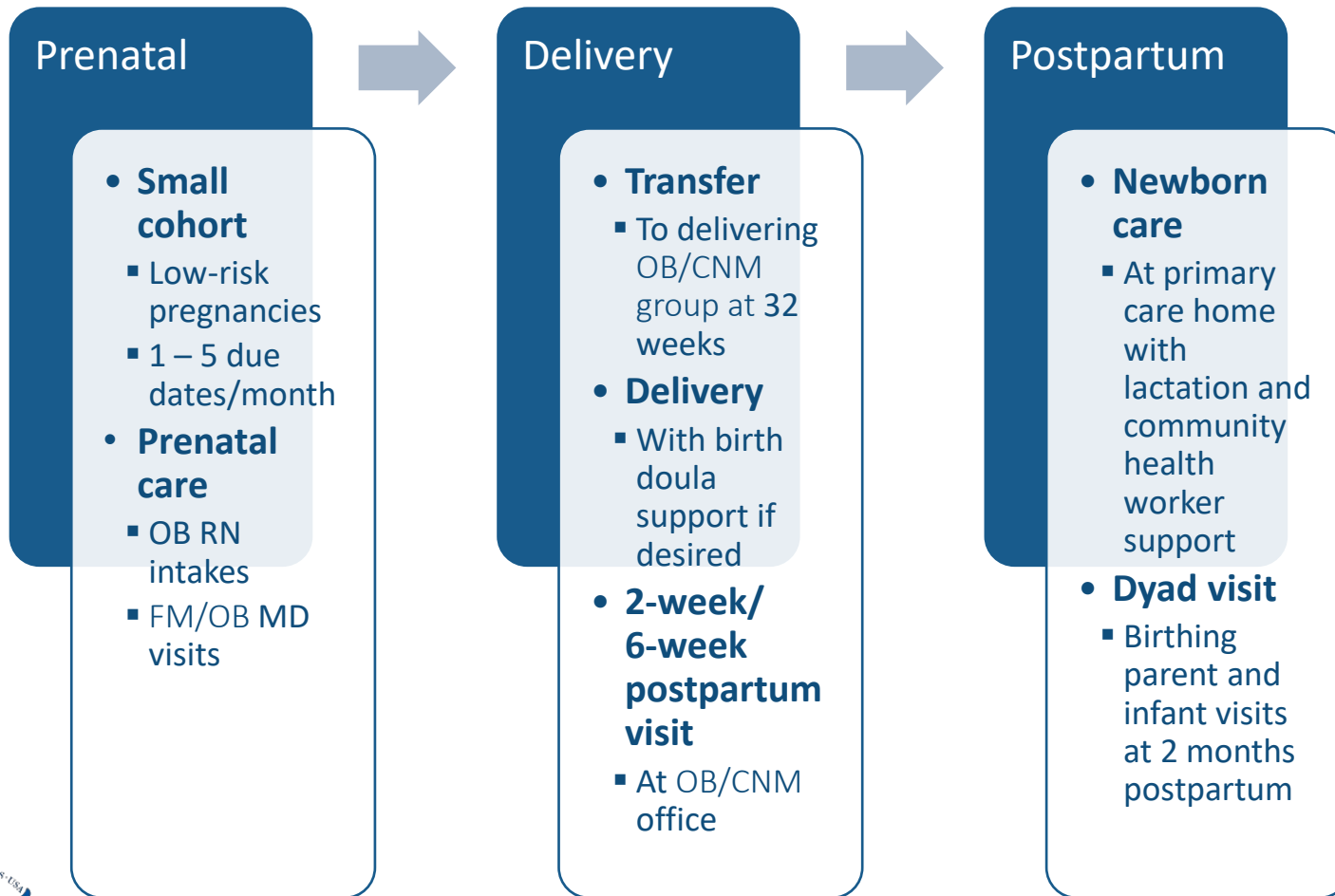
Our Pregnant Patients in 2023

222 pregnant patients

- Countries of origin
Angola, Democratic Republic of the Congo, United States
- Languages spoken
English, Portuguese, Lingala, French, Spanish
- Race
Black or African American, Asian, Declined to Specify, Hispanic or Latino, Multiracial, or White



Our Prenatal Program



27 Patients

- **Countries of origin**
 - Angola, United States, Democratic Republic of the Congo, Ecuador, Togo, Guatemala, Nicaragua, Rwanda
- **Languages spoken**
 - Lingala, French, English, Portuguese, Spanish, Kinyarwanda
- **Race**
 - Black or African American, Native Hawaiian or Other Pacific Islander, Multiracial, or White



Community Partnerships

Local

HRSN

- Housing
- Furniture
- Clothing
- Transportation
- Insurance
- Food

Health care

- Behavioral health
- Dental
- Public health nursing
- Doulas

Pediatric

- Health care
- Diapers
- Child care resources
- Home visitors

State

- Perinatal Quality Collaborative for Maine
- Northern New England Perinatal Quality Improvement Network
- Perinatal System of Care
- Maternal Health Task Force
- New Mainers Public Health Initiative
- MaineCare



Techquity in Action

[Chrissy Kuahine](#)

Call Chrissy at 808-590-1244

Director of Clinical and Patient Informatics

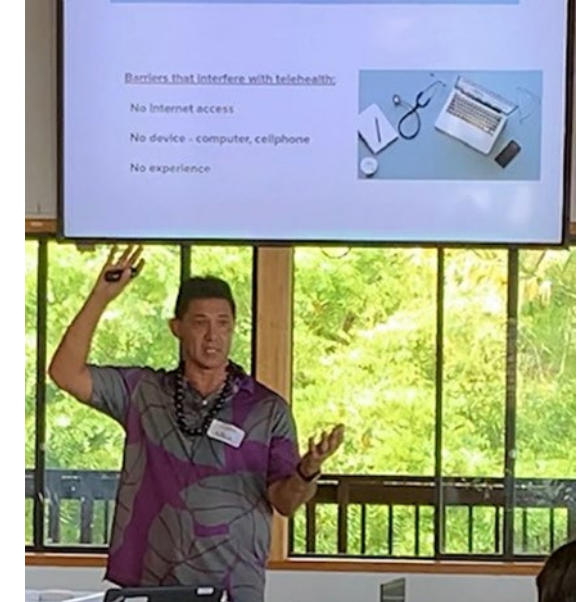
Waianae Coast Comprehensive Health Center



Community Wi-Fi Connection



Kupuna Computer Training and Partnerships



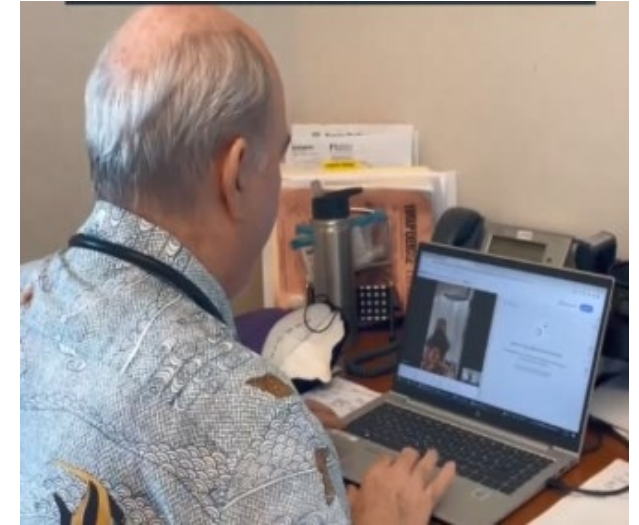
Imua!



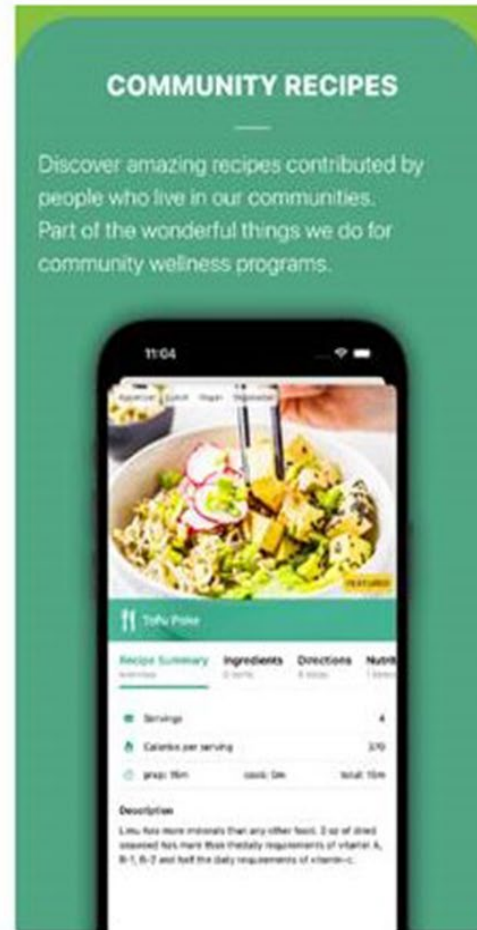
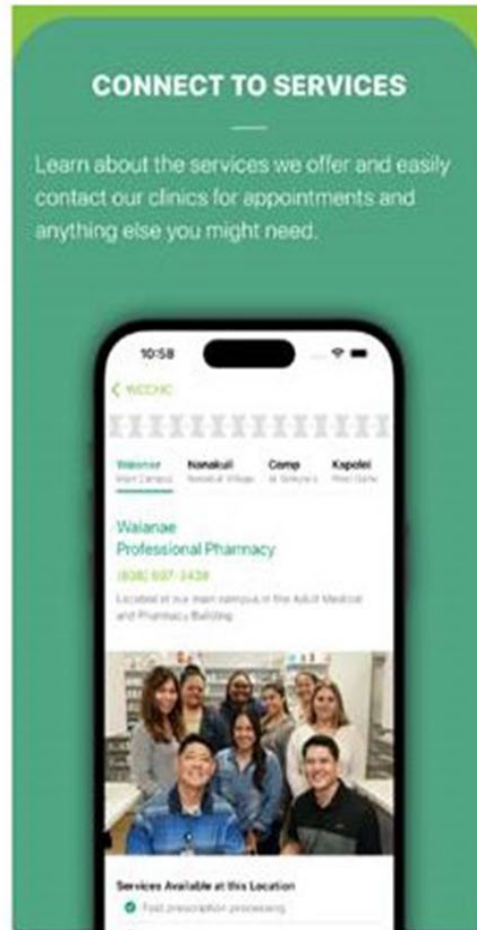
Connecting Households to the Internet



Establish Telehealth and Social Services



My Comp Health (CHC) Mobile App



Look for it in your favorite app store!



On My Mind



FY 2024 Funding Outlook

FY 2024/25 Mandatory Funding

- Approximately \$5.345 billion for 15 months (10/1/2023 to 12/31/2024)
- Awaiting final decisions on award actions and timing

FY 2024 Discretionary Funding

- No increase – approximately \$1.8 billion
- Maintains FY 2023 targeted investments for
 - ✓ *Primary Care HIV Prevention*,
 - ✓ *Early Childhood Development*
 - ✓ *School-Based Service Expansion*
- New investment for Cancer Screening



FY 2025 President's Budget: Primary Care

The FY 2025 Budget includes **\$8.2 billion** for health centers, an increase of **\$2.4 billion**.

Extends and increases mandatory funding, serving 37.4 million patients, with increased investments for FY 2025:

- **\$700 million** to expand access to comprehensive services in all health centers, expanding access to medical care, behavioral health, and oral health care
- **\$200 million** to provide patient support and enabling services
- **\$100 million** to recruit, retain, and grow the health center workforce
- **\$50 million** for high quality, patient-centered maternal health services, including behavioral health services
- **\$50 million** to expand access to street medicine services, increasing street outreach and patient support services for homeless populations



Supplemental Award Reporting Reminders

- **FY23 ECV Final Report**
Submission deadline is **March 30**
- **FY21 ARP/FY21 ARP-LAL Progress Reports**
Reporting cycle opens on **April 1**
Submission deadline is **April 15**
- **FY24 Non-Competing Continuation (NCC) Progress Report**
Submission deadline is **April 12**
 - ✓ FY23 & FY22 Ending the HIV Epidemic - Primary Care HIV Prevention (PCHP) Award
 - ✓ FY23 School-Based Service Expansion (SBSE) Award
 - ✓ FY23 Early Childhood Development (ECD) Award



PMS Login Enhancement

To ensure continuous ability to draw down funds:

1. Check your [SAM.gov](https://sam.gov) record to ensure the account is active and current - PMS uses SAM.gov to verify bank routing
 - ✓ Make sure that organization contacts in EHBs, SAM.gov and PMS are all up to date and aligned, as this is what the system checks to grant access.
 - ✓ Recommend checking SAM.gov at least once per year.
2. Go to [PMS](#)
3. Select ***Sign in with ID.me*** to log into PMS -- All recipients **MUST** register with ID.me to access their PMS account.
 - ✓ Existing ID.me members **do not** need to create another account
 - ✓ To link the email address on an existing ID.me with an existing PMS username, add your PMS email and **set as primary email** on your ID.me account.
 - ✓ ID.me accounts may include both personal and business information.



Resources and TA

PMS technical support

- Email: PMSSupport@psc.hhs.gov or submit a help request to XMSHelp@hhs.gov
- Phone: 1-877-614-5533

ID.me technical support

- Email: help@id.me
- ID.me Virtual Assistant “Roy”: Chatbot can be found in the bottom right-hand corner of the ID.me screen

Keeping your PMS account safe and secure

- [Defense and Mitigation from Email Bombing \(PDF\)](#)
- [Social Engineering Attacks Targeting IT Help Desks in the Health Sector \(PDF\)](#)



Health Center Program GeoCare Navigator

The *Health Center Program GeoCare Navigator* is live!

The tool can be used for:

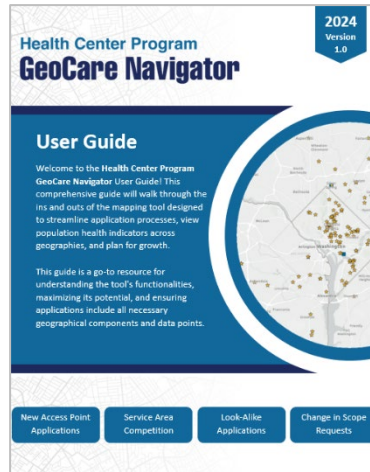
- New Access Points application
- Service Area Competition application
- Look-Alike application
- Change in Scope request

The screenshot displays the 'Health Center Program GeoCare Navigator' web application. At the top, it features the HRSA logo and the text 'An official website of the United States government'. Below the logo, the title 'Health Center Program GeoCare Navigator' is prominently displayed. The main interface is divided into two sections. On the left, a panel titled 'Select the type of application' contains four radio button options: 'New Access Point Application', 'Service Area Competition Application', 'Look-Alike Application', and 'Change in Scope Request'. Below these options are 'Back' and 'Continue' buttons. On the right, a map of the Washington, D.C. area is shown, with various zip codes and service areas highlighted in different colors (red, orange, yellow). The map includes a search bar, a scale bar (5 km / 2 mi), and a footer with navigation links: 'Ask Questions', 'Viewers & Players', 'Privacy Policy', 'Disclaimers', 'Vulnerability Disclosure Policy', 'Accessibility', 'FOIA', 'HHS.gov', and 'HRSA.gov'.

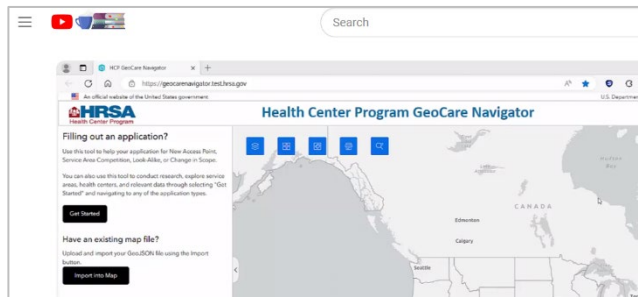
Resources and Next Steps

Currently Available Resources

User Guide



Introductory Video



Next Steps

- **Additional Documentation**
 - Data update schedule
 - Data estimation methodologies
- **Live Trainings**
 - Internal/external sessions
 - Will be recorded and available to all users
- **Updates and Enhancements**
 - Planning for continuous updates
 - Receiving user feedback

Contact Us

*Use the
[BPHC Contact Form!](#)*

Health Center Data and Research

- Health Center Program Research
- Health Center Patient Survey
- Health Center GeoCare Navigator (Formerly UDS Mapper)

Mark Your Calendar

Today with Macrae: Health Center Program Updates

- [Thursday, April 25, 2 – 3 p.m. ET](#)

Join Us!



Questions?



Thank You!

Bureau of Primary Health Care (BPHC)

Health Resources and Services Administration (HRSA)



[Health Center Program Support](#)



877-464-4772, 8 a.m. – 8 p.m. ET, Monday – Friday (except federal holidays)

bphc.hrsa.gov



[Sign up for the *Primary Health Care Digest*](#)



Connect with HRSA

Learn more about our agency at:

www.HRSA.gov



[Sign up for the HRSA eNews](#)

FOLLOW US:

