



Connecticut Avenue Securities, Series 2019-R02
CONFIDENTIAL PRELIMINARY TERM SHEET



CONNECTICUT AVENUE SECURITIES TRUST 2019-R02
Issuer

Fannie Mae
Trustor, Administrator and Master Servicer

CONNECTICUT AVENUE SECURITIES, SERIES 2019-R02

\$1,002,431,000
(Approximate)
Confidential Term Sheet

February 27, 2019

Wells Fargo Bank, N.A.
Indenture Trustee, Exchange Administrator and Custodian

U.S. Bank Trust National Association
Delaware Trustee

NOMURA



Structuring Lead and Joint Bookrunner

Co-Lead Manager and Joint Bookrunner



THE SECURITIES ARE BEING ISSUED BY CONNECTICUT AVENUE SECURITIES TRUST 2019-R02 (THE "ISSUER") AND ARE OBLIGATIONS OF THE ISSUER. THE SECURITIES ARE NOT GUARANTEED BY, AND ARE NOT DEBTS OR OBLIGATIONS OF, FANNIE MAE, THE UNITED STATES OR ANY AGENCY OR INSTRUMENTALITY OF THE UNITED STATES. THE SECURITIES HAVE NOT BEEN AND WILL NOT BE REGISTERED UNDER THE SECURITIES ACT OF 1933, AS AMENDED (THE "SECURITIES ACT"), OR THE LAWS OF ANY OTHER STATE OR JURISDICTION. This document has been prepared by Nomura Securities International, Inc. ("Nomura") for information purposes only. This document is an indicative summary of the terms and conditions of the securities described herein and may be amended, superseded or replaced by subsequent summaries, and will be superseded by the applicable offering document(s), which will set out the final terms and conditions of the securities.

This document will not constitute an underwriting commitment, an offer of financing, an offer to sell or the solicitation of an offer to buy any securities described herein, which will be subject to the internal approvals of Nomura, Wells Fargo Securities, LLC ("Wells Fargo Securities"), Merrill Lynch, Pierce, Fenner & Smith Incorporated ("BofA Merrill"), BNP Paribas Securities Corp. ("BNP"), Citigroup Global Markets Inc. ("Citigroup"), and Morgan Stanley & Co. LLC ("Morgan Stanley" and, together with Nomura, Wells Fargo Securities, BofA Merrill, BNP and Citigroup, the "Initial Purchasers"). No transaction or services related thereto is contemplated without the Initial Purchasers' subsequent formal agreement. The Initial Purchasers are not acting as fiduciaries, advisors or agents. Prior to entering into any transaction, you should determine, without reliance upon the Initial Purchasers or their affiliates, the economic risks and merits, as well as the legal, tax and accounting characterizations and consequences of the transaction, and independently determine that you are able to assume these risks. The Initial Purchasers accept no liability whatsoever for any consequential losses arising from the use of this document or reliance on the information contained herein.

None of the Initial Purchasers, Fannie Mae or the Issuer guarantees the accuracy or completeness of information which is contained in this document and which is stated to have been obtained from or is based upon trade and statistical services or other third party sources. Any data on past performance, modeling or back-testing contained herein is no indication of future performance. No representation is made as to the reasonableness of the assumptions made within or the accuracy or completeness of any modeling or back-testing or any other information contained herein. All opinions and estimates are given as of the date hereof and are subject to change and none of the Initial Purchasers, Fannie Mae or the Issuer assumes any obligation to update this document to reflect any such changes. The value of any investment may fluctuate as a result of market changes. The information herein is not intended to predict actual results and no assurances are given with respect thereto. Nothing herein will be deemed to constitute investment, legal, tax, financial, accounting or other advice.

The Initial Purchasers, their affiliates and the individuals associated therewith may (in various capacities) have positions or deal in transactions or securities (or related derivatives) identical or similar to those described herein.

Notwithstanding anything herein to the contrary, each recipient hereof (and their employees, representatives, and other agents) may disclose to any and all persons, without limitation of any *This is a Confidential Preliminary Term Sheet. All terms and statements are subject to change.*



kind from the commencement of discussions, the U.S. federal and state income tax treatment and tax structure of the proposed transaction described herein and all materials of any kind (including opinions or other tax analyses) that are provided relating to such tax treatment and tax structure. For this purpose, "tax structure" is limited to facts relevant to the U.S. federal and state income tax treatment of the proposed transaction described herein and does not include information relating to the identity of the parties, their affiliates, agents or advisors.

THIS DOCUMENT DOES NOT DISCLOSE ALL THE RISKS AND OTHER SIGNIFICANT ISSUES RELATED TO AN INVESTMENT IN THE SECURITIES. PRIOR TO INVESTING IN THE SECURITIES, POTENTIAL INVESTORS SHOULD READ THE FINAL OFFERING MEMORANDUM RELATING TO THE SECURITIES AND ENSURE THAT THEY FULLY UNDERSTAND THE TERMS OF THE SECURITIES AND ANY APPLICABLE RISKS.

This document is confidential, and no part of it may be reproduced, distributed or transmitted without the prior written permission of the Initial Purchasers.



Connecticut Avenue Securities, Series 2019-R02
CONFIDENTIAL PRELIMINARY TERM SHEET

CLASS 1M-1, CLASS 1M-2 and CLASS 1B-1 NOTES*
\$1,002,431,000 (Approximate)**

Class or Interest	Approximate Initial Class Principal Balance or Class Notional Amount (\$) ⁽¹⁾		Expected Approximate Initial Credit Support (%)	Interest Rate ⁽²⁾	Expected Ratings (S&P/Morningstar)	Expected WAL (yrs) ⁽¹⁾	Principal Payment Window (mos) ⁽¹⁾	Interest Accrual Basis	Maturity Date ⁽³⁾	Class or Interest Type
	Amount Issued	Reference Tranches								
1A-H ⁽⁴⁾⁽⁵⁾	Reference Tranche Only	\$25,192,767,584	4.50% ⁽⁵⁾							Senior
1M-1 ⁽⁶⁾	\$200,486,000		3.70%	1mL + %	BBB+ (sf) / A	1.47	1 – 28	Actual/360	August 2031	Mezzanine
1M-1H ⁽⁴⁾	Reference Tranche Only	\$10,552,891	3.70%							Mezzanine
1M-2A ⁽⁶⁾⁽⁷⁾	\$204,663,000		2.88%	1mL + %	BBB (sf) / A	3.29	28 – 53	Actual/360	August 2031	Mezzanine
1M-AH ⁽⁴⁾	Reference Tranche Only	\$10,772,534	2.88%							Mezzanine
1M-2B ⁽⁶⁾⁽⁷⁾	\$204,663,000		2.07%	1mL + %	BB+ (sf) / BBB+	5.57	53 – 84	Actual/360	August 2031	Mezzanine
1M-BH ⁽⁴⁾	Reference Tranche Only	\$10,772,534	2.07%							Mezzanine
1M-2C ⁽⁶⁾⁽⁷⁾	\$204,663,000		1.25%	1mL + %	B+ (sf) / BBB-	8.63	84 – 120	Actual/360	August 2031	Mezzanine
1M-CH ⁽⁴⁾	Reference Tranche Only	\$10,772,534	1.25%							Mezzanine
1M-2 ⁽⁷⁾	\$613,989,000		1.25%	1mL + %	B+ (sf) / BBB-	5.83	28 – 120	Actual/360	August 2031	RCR/Mezzanine
1B-1 ⁽⁶⁾⁽⁷⁾	\$187,956,000		0.50%	1mL + %	NR / NR	9.95	120 – 120	Actual/360	August 2031	Subordinate
1B-1H ⁽⁴⁾	Reference Tranche Only	\$9,892,960	0.50%							Subordinate
1B-2H ⁽⁴⁾	Reference Tranche Only	\$131,899,308	0.00%	1mL + 12.50% ⁽⁸⁾						Subordinate
X-IO ⁽⁹⁾	(⁹)									Excess IO
R ⁽¹⁰⁾	\$0									No Payment Residual
RL ⁽¹⁰⁾	\$0									No Payment Residual
Total:	\$1,002,431,000**	\$25,377,430,345								

* Offered on the Closing Date (the "Offered Notes").

** Including only Offered Notes.

Holders of certain Classes may exchange them for Classes of the corresponding Classes of Related Combinable and Recombinable Notes (the "RCR Notes") to be delivered at the time of exchange. The Classes of RCR Notes are the Class 1M-2, Class 1A-I1, Class 1A-I2, Class 1A-I3, Class 1A-I4, Class 1E-A1, Class 1E-A2, Class 1E-A3, Class 1E-A4, Class 1B-I1, Class 1B-I2, Class 1B-I3, Class 1B-I4, Class 1E-B1, Class 1E-B2, Class 1E-B3, Class 1E-B4, Class 1C-I1, Class 1C-I2, Class 1C-I3, Class 1C-I4, Class 1E-C1, Class 1E-C2, Class 1E-C3, Class 1E-C4, Class 1E-D1, Class 1E-D2, Class 1E-D3, Class 1E-D4, Class 1E-D5, Class 1E-F1, Class 1E-F2, Class 1E-F3, Class 1E-F4, Class 1E-F5, Class 1-J1, Class 1-J2, Class 1-J3, Class 1-J4, Class 1-K1, Class 1-K2, Class 1-K3, Class 1-K4, Class 1-X1, Class 1-X2, Class 1-X3, Class 1-X4, Class 1-Y1, Class 1-Y2, Class 1-Y3, Class 1-Y4, Class 1M-2Y, Class 1M-2X, Class 1B-1Y and Class 1B-1X Notes. For a more detailed description of the RCR Notes, see Schedule I hereto.

This is a Confidential Preliminary Term Sheet. All terms and statements are subject to change.



Connecticut Avenue Securities, Series 2019-R02
CONFIDENTIAL PRELIMINARY TERM SHEET

Information is preliminary and subject to final collateral and legal review. The analyses, calculations and valuations herein are based on certain assumptions and data provided by third parties that may vary from the actual characteristics of the final collateral. Investors should rely on the information contained in the final offering memorandum.

- (1) The principal amounts and notional amounts presented in this term sheet are approximate and subject to a +/- 5% variance. Weighted average lives and principal payment windows (if applicable) with respect to the Class 1M-1 Notes, Class 1M-2A Notes, Class 1M-2B Notes, Class 1M-2C Notes, Class 1M-2 Notes and Class 1B-1 Notes (together with the additional Classes of RCR Notes set forth on Schedule I hereto, the "Notes") assume that no Credit Events or Modification Events occur, prepayments occur at the pricing speed of 10% CPR (calculated from the Closing Date), the Notes pay on the 25th day of each month beginning in March 2019 and the Early Redemption Option is exercised on the Payment Date in February 2029.
- (2) Each Class of Offered Notes will be sold at a price of par.
- (3) The Class Principal Balance of any outstanding Notes will be paid in full on the earlier to occur of the Early Redemption Date, if any, and the Maturity Date.
- (4) The Class 1A-H Reference Tranche, Class 1M-1H Reference Tranche, Class 1M-AH Reference Tranche, Class 1M-BH Reference Tranche, Class 1M-CH Reference Tranche, Class 1B-1H Reference Tranche and Class 1B-2H Reference Tranche will not have corresponding Notes and will be referenced only in connection with making calculations of payments required to be made by the Issuer and reductions and increases in the principal amounts of the Notes.
- (5) The Class 1A-H Reference Tranche will have an approximate initial subordination percentage of 4.50%, with a required subordination percentage of 4.90%.
- (6) The Class 1M-1 Notes, Class 1M-2A Notes, Class 1M-2B Notes, Class 1M-2C Notes and Class 1B-1 Notes will have corresponding Reference Tranches for the purpose of making calculations of principal payments required to be made by the Issuer and reductions and increases in the principal amounts of the Notes.
- (7) The Class 1M-2A, Class 1M-2B, Class 1M-2C and Class 1B-1 Notes are collectively referred to as the "Exchangeable Notes." The Holders of the Class 1M-2 Notes may exchange all or part of that Class for proportionate interests in the Class 1M-2A, Class 1M-2B and Class 1M-2C Notes, and vice versa. Additionally, the Holders of the Class 1M-2A, Class 1M-2B, Class 1M-2C and Class 1B-1 Notes may exchange all or part of those Classes for proportionate interests in the Classes of Related Combinable and Recombinable Notes (the "RCR Notes") in the applicable combinations set forth on Schedule I hereto, and vice versa. Holders of certain Classes of RCR Notes may further exchange all or part of those Classes for proportionate interests in other RCR Notes in the applicable combinations set forth on Schedule I hereto, and vice versa. Of the Exchangeable Notes and the RCR Notes, only the Class 1M-2 and Class 1B-1 Notes are Offered Notes.

This is a Confidential Preliminary Term Sheet. All terms and statements are subject to change.



Connecticut Avenue Securities, Series 2019-R02
CONFIDENTIAL PRELIMINARY TERM SHEET

- (8) The Class 1B-2H Reference Tranche is assigned a class coupon solely for purposes of calculations in connection with the allocation of Modification Loss Amounts to the Subordinate Reference Tranches.
- (9) The X-IO Interest will be an uncertificated interest issued by the Issuer and held by Fannie Mae. The X-IO Interest will have no principal balance and will represent the entitlement on any Payment Date to the excess, if any, of (i) the amount payable in respect of the IO Q-REMIC Interest for such Payment Date over (ii) the Transfer Amount for the related Remittance Date. The X-IO Interest will not be offered.
- (10) The Class R and Class RL Certificates, which will be issued by the Issuer and retained by Fannie Mae, will constitute residual interests under U.S. Treasury regulations. The Class R and Class RL Certificates will not be offered.

This is a Confidential Preliminary Term Sheet. All terms and statements are subject to change.



Transaction Overview

On the Closing Date, the Issuer will issue the Notes. The Initial Purchasers will sell the Notes and the Issuer will deliver the gross proceeds of the sale of the Notes to the Custodian for deposit in a securities account (the "Cash Collateral Account"). The Notes will be subject to the credit and principal payment risk of the related portion of a certain pool (the "Reference Pool") of residential mortgage loans (the "Reference Obligations") held in various Fannie Mae-guaranteed MBS. Except as described below, the actual cash flows from the Reference Obligations will never be paid to the holders of the Notes (the "Noteholders" or "Holders," and each, a "Noteholder" or a "Holder"). The Issuer will make monthly payments of accrued interest and periodic payments of principal to the Noteholders. The Notes will be issued at par and, except for the Interest Only RCR Notes (as defined herein) and certain other RCR Notes, will be 12.5-year, uncapped LIBOR-based floaters.

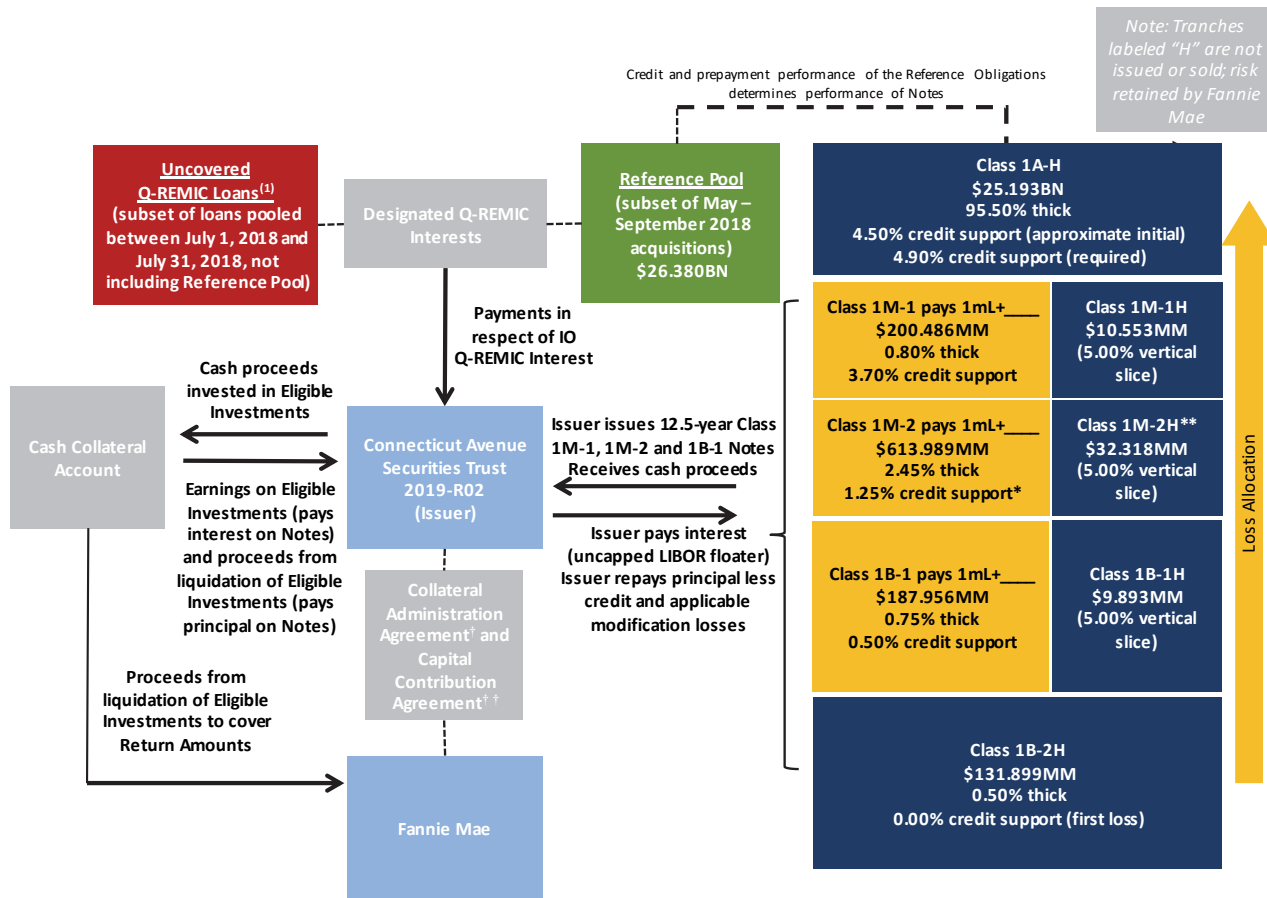
On the Termination Date, the Class Principal Balances of all outstanding Notes will be paid in full. If there are unrecovered losses on any Notes as of the Termination Date, holders of those Notes will be entitled to certain projected recovery payments on that date.

The "Offered Notes" consist of the Class 1M-1, Class 1M-2 and Class 1B-1 Notes. The transaction is structured to afford investors pass-through economic exposure to the Reference Obligations and provide Fannie Mae reimbursement for specified losses it incurs with respect to Reference Obligations that experience losses relating to Credit Events and Modification Events. Reimbursement of Fannie Mae for such specified losses is achieved in part by allowing the Issuer to reduce the outstanding Class Principal Balances of the Notes related to the designated Credit Events and Modification Events on the Reference Obligations. The occurrence of certain Credit Events or Modification Events on the Reference Obligations could result in write-downs of the Class Principal Balances of the Notes to the extent losses are realized on such Reference Obligations as a result of these events. In addition, the interest entitlement of the Notes may be subject to reduction based on the occurrence of Modification Events on these Reference Obligations to the extent losses are realized with respect thereto.

The sources of payments on the Notes consist of investment earnings and liquidation proceeds of short-term, liquid investments held in the Cash Collateral Account, amounts received by the Issuer under the Collateral Administration Agreement and Capital Contribution Agreement, and certain amounts received in respect of REMIC interests issued by separate REMIC trusts previously established by Fannie Mae and assigned by Fannie Mae to the Issuer, each as further described in this term sheet. The transaction has been structured so that the capital structure and cash flow allocations relative to principal payments of the Notes are reflective of private label senior/subordinate residential mortgage backed securities. Accordingly, the Notes may not receive allocations in respect of unscheduled principal unless target credit enhancement and delinquency percentages have been maintained. However, unlike securities in some senior/subordinate private label residential mortgage-backed securitizations, the principal payments required to be paid by the Issuer on the Notes will be based in part on the principal that is actually collected on the Reference Obligations, rather than on the entire amount of scheduled payments due on those Reference Obligations as further described herein.

Capitalized terms used in this term sheet are defined when first used or in the "*GLOSSARY OF CERTAIN DEFINED TERMS*."

This is a Confidential Preliminary Term Sheet. All terms and statements are subject to change.



(1) "Uncovered Q-REMIC Loans" represents a portion of the loans that were pooled in various Fannie Mae MBS trusts established between July 1, 2018 and July 31, 2018 that made REMIC elections. Such loans either (x) did not meet the Eligibility Criteria at time of acquisition and/or the Cut-Off Date or (y) would meet the Eligibility Criteria but were included in a previous Fannie Mae risk sharing transaction or are expected to be included in an alternative Fannie Mae risk sharing transaction. In no event will an Uncovered Q-REMIC Loan be a Reference Obligation or an uncovered Q-REMIC loan in any other Fannie Mae REMIC risk sharing transaction.

† Provides for (i) payment by Fannie Mae of Transfer Amounts (to the extent not otherwise paid from the IO Q-REMIC Interest) and any Return Reimbursement Amounts to the Issuer and (ii) payment by Issuer of Return Amounts to Fannie Mae.
†† Provides for payment by Fannie Mae of Capital Contribution Amounts to the Issuer.

Transfer Amounts are paid through to Holders in respect of interest on the Notes; Return Reimbursement Amounts are paid through to Holders in respect of principal of the Notes; portions of Capital Contributions Amounts are paid through to Holders in respect of interest on the Notes and portions are paid through to Holders in respect of principal on the Notes.

* Approximate initial credit support will be 2.88% for the Class 1M-2A Notes, 2.07% for the Class 1M-2B Notes and 1.25% for the Class 1M-2C Notes.
** Shown for illustrative purposes only. Represents the sum of the Class 1M-CH, Class 1M-BH and Class 1M-AH Reference Tranches. Losses are allocated to such Reference Tranches in that order.

This is a Confidential Preliminary Term Sheet. All terms and statements are subject to change.



GENERAL INFORMATION

Issuer	Connecticut Avenue Securities Trust 2019-R02, a Delaware statutory trust
Trustor, Administrator and Master Servicer	Fannie Mae
Title of Series	Connecticut Avenue Securities, Series 2019-R02
Offered Notes	Class 1M-1, Class 1M-2 and Class 1B-1 Notes
Delaware Trustee	U.S. Bank Trust National Association. Fees, expenses and indemnities of the Delaware Trustee will be paid by the Administrator.
Indenture Trustee	Wells Fargo Bank, N.A. Fees, expenses and indemnities of the Indenture Trustee will be paid by the Administrator.
Exchange Administrator	Wells Fargo Bank, N.A. The Exchange Administrator for the RCR Notes and the Exchangeable Notes will, among other duties, administer all exchanges of RCR Notes for Exchangeable Notes and vice versa, which will include receiving notices of requests for such exchanges from Noteholders, accepting the Notes to be exchanged, and giving notice to the Indenture Trustee of all such exchanges.
Custodian	Wells Fargo Bank, N.A. Pursuant to a securities account control agreement among the Issuer, the Indenture Trustee and the Custodian (the "Securities Account Control Agreement"), the Custodian will hold all Eligible Investments in the Cash Collateral Account and will serve as securities intermediary, including with respect to the Designated Q-REMIC Interests. Fees, expenses and indemnities of the Custodian will be paid by the Administrator.
Investment Agent	Wells Fargo Bank, N.A. or an affiliate thereof. Pursuant to an investment agency agreement among the Investment Agent, the Administrator and the Issuer (the "Investment Agency Agreement"), the Investment Agent will invest the funds in the Cash Collateral Account in Eligible Investments. The Investment Agency Agreement will set forth investment guidelines and will specify the Eligible Investments. Fees and expenses of the Investment Agent will be paid by the Administrator.

This is a Confidential Preliminary Term Sheet. All terms and statements are subject to change.



Lead Managers and Joint Bookrunners	Nomura (Structuring Lead) and Wells Fargo Securities (Co-Lead Manager)
Co-Managers	BofA Merrill, BNP, Citigroup and Morgan Stanley
Selling Group Members	Drexel Hamilton, LLC and Siebert Cisneros Shank & Co., L.L.C.
Payment Date	The 25th day of each calendar month (or, if not a business day, the following business day), commencing in March 2019. The "Remittance Date" is the business day immediately preceding each Payment Date.
Assets of the Issuer	The Cash Collateral Account (including the investments held therein), the Designated Q-REMIC Interests, the Note Distribution Account, and the rights of the Issuer under the Collateral Administration Agreement, the Capital Contribution Agreement, the Securities Account Control Agreement and the Investment Agency Agreement, all of which will be pledged to the Indenture Trustee for the benefit of Fannie Mae, as protected party under the Collateral Administration Agreement, and the Holders.
Designated Q-REMIC Interests	<p>REMIC regular interests issued by a Fannie Mae trust pursuant to a master trust agreement dated as of May 1, 2018.</p> <p>The Designated Q-REMIC Interests consist of (i) one or more interest-only REMIC regular interests related to certain interest cash flows from the Reference Obligations and certain of the Uncovered Q-REMIC Loans (the "IO Q-REMIC Interest") and (ii) one or more subordinate REMIC regular interests related to the Reference Obligations (the "Subordinate Q-REMIC Interest").</p> <p>On the Closing Date, Fannie Mae will contribute the Designated Q-REMIC Interests to the Issuer and the Issuer will pledge the Designated Q-REMIC Interests under the Indenture to the Indenture Trustee.</p> <p>See "<i>INVESTMENT CONSIDERATIONS — United States Federal Tax Consequences</i>" below for a description of the related features.</p>
Cash Collateral Account	An account to be established on the Closing Date in the name of the Issuer. The Custodian will invest (at the direction of the Investment Agent) amounts held in the Cash Collateral Account in Eligible Investments pursuant to the Investment Agency Agreement. The Investment Agent will liquidate Eligible

This is a Confidential Preliminary Term Sheet. All terms and statements are subject to change.



Investments held in the Cash Collateral Account to pay any Return Amounts due to Fannie Mae on any Remittance Date and, to the extent available after payment of such Return Amounts, deposit the proceeds in the Note Distribution Account for payment to Noteholders in respect of principal due on the Notes on the related Payment Date. Investment earnings on Eligible Investments held in the Cash Collateral Account during the related Investment Accrual Period will be deposited in the Note Distribution Account for payment to Noteholders in respect of interest; *provided*, that any investment earnings in excess of the LIBOR Interest Component for such Payment Date will be retained in the Cash Collateral Account until the Termination Date and will at no time be available for payment to Noteholders.

The rights of the Noteholders in the Cash Collateral Account will be subordinate to Fannie Mae's right to receive Return Amounts for so long as the Notes remain outstanding.

Eligible Investments

Each of the following investments, provided such investment is scheduled to mature before the immediately following Remittance Date, and all cash proceeds thereof: (a) obligations issued or fully guaranteed by the U.S. government or a U.S. government agency or instrumentality; (b) repurchase obligations involving any security described in (a) above and entered into with a depository institution or trust company (as principal) subject to supervision by federal or state banking authorities; or (c) U.S. government money market funds; provided, however, that in the event an investment fails to qualify under (a), (b) or (c) above, the proceeds of the sale of such investment will be deemed to be liquidation proceeds of an Eligible Investment for all purposes herein provided such liquidation proceeds are promptly reinvested in Eligible Investments. With respect to money market funds, the maturity date will be determined under Rule 2a-7 under the Investment Company Act.

The offering memorandum will set out any additional requirements relating to Eligible Investments.

Securities Account Control Agreement

The Issuer, the Indenture Trustee and the Custodian will enter into a Securities Account Control Agreement under which the Custodian will hold all Eligible Investments in the Cash Collateral Account and will serve as securities intermediary, including with respect to the Designated Q-REMIC Interests.

This is a Confidential Preliminary Term Sheet. All terms and statements are subject to change.

**Note Distribution Account**

An account to be established on the Closing Date in the name of the Indenture Trustee for the benefit of the Noteholders. The Note Distribution Account will include deposits from time to time of (a) investment income earned on Eligible Investments held in the Cash Collateral Account (up to the amount of the LIBOR Interest Component for a Payment Date), (b) proceeds from the liquidation of those Eligible Investments, (c) due and payable Transfer Amounts, Capital Contribution Amounts and Return Reimbursement Amounts and (d) without duplication of the amounts set forth in clauses (a) through (c) above, other amounts payable to the Issuer in respect of the Designated Q-REMIC Interests; *provided*, that amounts payable in respect of the X-IO Interest will not be deposited in the Note Distribution Account and instead will be paid to the holder thereof.

Collateral Administration Agreement

Simultaneously with the issuance of the Notes, Fannie Mae, the Issuer and the Indenture Trustee will enter into a Collateral Administration Agreement.

The Collateral Administration Agreement will provide that, on each Remittance Date:

- Fannie Mae will pay to the Issuer, by deposit into the Note Distribution Account or otherwise, (a) the Transfer Amount for such Remittance Date, it being understood that the Trust Estate Yield for the related Payment Date will be deemed to satisfy, up to the amount thereof, the foregoing payment obligation of Fannie Mae and (b) the Return Reimbursement Amount, if any, for such Remittance Date; and
- the Issuer will pay to Fannie Mae the Return Amount, if any, for such Remittance Date.

The Collateral Administration Agreement is subject to early termination following the occurrence of certain events described below. The "CAA Early Termination Date" is a Payment Date that is designated as an early termination date following the occurrence of such an event or following any termination of the Capital Contribution Agreement. The occurrence of a CAA Early Termination Date will constitute an Early Redemption Date for the Notes.

The CAA Early Termination Date will be the Payment Date following the occurrence of either of the following events (each, a "CAA Early Termination Event"):

This is a Confidential Preliminary Term Sheet. All terms and statements are subject to change.



- a final SEC determination that the Issuer must register as an investment company under the Investment Company Act;
- an acceleration of the maturity of the Notes under the Indenture; or
- failure of Fannie Mae to make a required payment under the Collateral Administration Agreement, which failure continues unremedied for 30 days following receipt of written notice of such failure.

Additionally, Fannie Mae may in its sole discretion designate as the CAA Early Termination Date the Payment Date following the occurrence of any of the following events (each, a "CAA Trigger Event"):

- accounting, insurance or regulatory changes after the Closing Date that, in Fannie Mae's reasonable determination, have a material adverse effect on Fannie Mae;
- legal, regulatory or accounting requirements or guidelines that, in Fannie Mae's reasonable determination, materially affect the financial position, accounting treatment or intended benefit of or to Fannie Mae;
- a requirement, in Fannie Mae's reasonable determination after consultation with external counsel (which will be a nationally recognized and reputable law firm), that Fannie Mae or any other transaction party must register as a "commodity pool operator" under the Commodity Exchange Act;
- material impairment of the Fannie Mae's rights under the Collateral Administration Agreement due to the amendment or modification of any transaction document; or
- failure of the Issuer to make a required payment under the Collateral Administration Agreement, which failure continues unremedied for 30 days following receipt of written notice of such failure.

Transfer Amount

For a Remittance Date, the excess of (a) the aggregate Interest Payment Amount for the related Payment Date over (b) the LIBOR Interest Component for such Payment Date.

This is a Confidential Preliminary Term Sheet. All terms and statements are subject to change.



The "LIBOR Interest Component" for a Payment Date is an amount equal to the product of (i) One-Month LIBOR for such Payment Date, (ii) the aggregate Class Principal Balance of the Notes immediately preceding such Payment Date and (iii) a fraction, the numerator of which is the actual number of days in the related Notes Accrual Period and the denominator of which is 360.

Trust Estate Yield

For any Payment Date, the cash flow yield on the assets contributed by Fannie Mae and constituting part of the trust estate of the Issuer (including the IO Q-REMIC Interest, but excluding the Subordinate Q-REMIC Interest and Eligible Investments held in the Cash Collateral Account) in respect of such Payment Date.

Return Amount

For any Remittance Date, the aggregate Tranche Write-down Amounts, if any, allocated to reduce the Class Principal Balance of each applicable outstanding Class of Notes on the related Payment Date (without regard to any exchanges of Exchangeable Notes for any RCR Notes).

Return Reimbursement Amount

For any Remittance Date, an amount equal to the aggregate Tranche Write-up Amounts, if any, allocated to increase the Class Principal Balance of each applicable outstanding Class of Notes on the related Payment Date (without regard to any exchanges of Exchangeable Notes for any RCR Notes).

Capital Contribution Agreement

Simultaneously with the issuance of the Notes, Fannie Mae, the Issuer and the Indenture Trustee will enter into a Capital Contribution Agreement under which Fannie Mae will pay any Capital Contribution Amounts to the Issuer by deposit into the Note Distribution Account on each Remittance Date.

The Capital Contribution Agreement is subject to termination upon the occurrence of a CAA Early Termination Date under the Collateral Administration Agreement.

Capital Contribution Amount

For a Remittance Date, the sum of

- an amount equal to the excess, if any, of (a) the LIBOR Interest Component for the related Payment Date, over (b) investment earnings on Eligible Investments in the Cash Collateral Account during related Investment Accrual Period (such amount, the "LIBOR Interest Component Contribution"); plus
- an amount equal to the excess, if any, of (a) the principal

This is a Confidential Preliminary Term Sheet. All terms and statements are subject to change.



amount (book value) of Eligible Investments liquidated in respect of such Remittance Date over (b) the liquidation proceeds of such Eligible Investments (such amount, the "Investment Liquidation Contribution").

Cut-off Date	For this term sheet and for the offering memorandum, December 31, 2018
Closing Date	On or about March 13, 2019
Notes Accrual Period	With respect to each Payment Date, the period beginning on and including the prior Payment Date (or, in the case of the first Payment Date, the Closing Date) and ending on and including the day preceding such Payment Date. Interest will be calculated based on the actual number of days in a Notes Accrual Period and a 360-day year.
Investment Accrual Period	With respect to a Payment Date, the calendar month immediately preceding the month of such Payment Date.
Note Rate	The Note Rate on each Class of Notes for any Notes Accrual Period will be equal to the floating or fixed per annum rate (or, in the case of certain RCR Notes, the interest entitlement described in Schedule I hereto) specified for such class as set forth in the final offering memorandum.
Legal Status	The Notes will be secured obligations of the Issuer. The RCR Notes represent interests in the Class 1M-2A Notes, Class 1M-2B Notes, Class 1M-2C Notes and/or Class 1B-1 Notes. The United States does not guarantee the Notes or any interest or return of discount on the Notes. The Notes are not debts or obligations of Fannie Mae, the United States or any agency or instrumentality of the United States.
Notes	<p>The Class 1M-1 Notes, Class 1M-2 Notes (together with the Class 1M-2A Notes, Class 1M-2B Notes, Class 1M-2C Notes and the additional RCR Notes set forth on Schedule I hereto) and Class 1B-1 Notes.</p> <p>The Class 1M-2A, Class 1M-2B, Class 1M-2C and Class 1B-1 Notes are the "Exchangeable Notes." The Notes will receive principal payments, if entitled to receive principal, and will be allocated reductions and increases in Class Principal Balance or Class Notional Amount, as applicable, in accordance with such allocations to the related Reference Tranches.</p>
RCR Notes	The Related Combinable and Recombinable Notes, or "RCR Notes" are set forth on Schedule I hereto. Holders of (x) Class

This is a Confidential Preliminary Term Sheet. All terms and statements are subject to change.



1M-2 Notes may exchange all or part of those Notes for proportionate interests in the related Exchangeable Notes, and vice versa, and (y) Holders of Class 1B-1 Notes may exchange all or part of those Notes for proportionate interests in the related RCR Notes, and vice versa, at any time on or after the earlier of (i) the tenth business day following the Closing Date or (ii) the first business day following the first Payment Date; *provided*, that no such exchange will occur on any Payment Date or Record Date. Additionally, Holders of Class 1M-2A, Class 1M-2B and Class 1M-2C Notes may further exchange all or part of those Exchangeable Notes for proportionate interests in the related RCR Notes, and vice versa. Certain Classes of related RCR Notes may further be exchanged for other Classes of RCR Notes as set forth on Schedule I hereto, and vice versa. Exchanges may occur repeatedly. Schedule I attached hereto sets forth the available combinations (the "Combinations") and characteristics of the RCR Notes. For the avoidance of doubt, an investor that would otherwise become a Holder of Class 1M-2 or Class 1B-1 Notes on the Closing Date may specify, no later than 2:00 P.M. (New York City time) on the third business day prior to the Closing Date, any permissible combination of proportionate interests in related RCR Notes or Exchangeable Notes for receipt by such investor on the Closing Date, in which case any exchange procedures and fees otherwise applicable will be waived. RCR Notes that are held by Holders will receive interest payments that are allocable to the related Exchangeable Notes, calculated at the applicable class coupon rate, and all principal amounts that are payable by the Issuer on the related Exchangeable Notes will be allocated to and payable to the related RCR Notes entitled to principal. In addition, Tranche Write-down Amounts that are allocable to Exchangeable Notes will be allocated to reduce the Class Principal Balance or Class Notional Amount, as applicable, of the related RCR Notes (to the extent such RCR Notes have a Class Principal Balance or Class Notional Amount, as applicable, greater than zero). Further, Tranche Write-up Amounts that are allocable to Exchangeable Notes will be allocated to increase the Class Principal Balance or Class Notional Amount, as applicable, of the related RCR Notes.

Certain of the RCR Notes set forth on Schedule I hereto are interest only RCR Notes (the "Interest Only RCR Notes"). The Interest Only RCR Notes are not entitled to receive payments of principal. Each Class of Interest Only RCR Notes has a "Class Notional Amount" as of any Payment Date equal to a specified percentage of the outstanding Class Principal Balance of the related Class of Exchangeable Notes or RCR Notes, as the case

This is a Confidential Preliminary Term Sheet. All terms and statements are subject to change.



may be.

Reference Tranches

The "References Tranches" are:

- Class 1A-H Reference Tranche;
- Class 1M-1 Reference Tranche;
- Class 1M-1H Reference Tranche;
- Class 1M-2A Reference Tranche;
- Class 1M-AH Reference Tranche;
- Class 1M-2B Reference Tranche;
- Class 1M-BH Reference Tranche;
- Class 1M-2C Reference Tranche;
- Class 1M-CH Reference Tranche;
- Class 1B-1 Reference Tranche;
- Class 1B-1H Reference Tranche; and
- Class 1B-2H Reference Tranche.

The Reference Tranches are described solely for the purpose of calculating principal payments required to be made on the Notes by the Issuer, any reductions or increases of principal on the Notes as a result of Credit Events on the Reference Obligations and any reductions in the interest or principal entitlements of the Notes as a result of Modification Events on the Reference Obligations. Only the Class 1M-1 Reference Tranche, Class 1M-2A Reference Tranche, Class 1M-2B Reference Tranche, Class 1M-2C Reference Tranche and Class 1B-1 Reference Tranche will have corresponding Classes of Notes on the Closing Date.

Senior Reference Tranche

The Class 1A-H Reference Tranche (the "Senior Reference Tranche").

Mezzanine Reference Tranches

The "Mezzanine References Tranches" are:

- Class 1M-1 Reference Tranche;
- Class 1M-1H Reference Tranche;
- Class 1M-2A Reference Tranche;
- Class 1M-AH Reference Tranche;
- Class 1M-2B Reference Tranche;
- Class 1M-BH Reference Tranche;
- Class 1M-2C Reference Tranche; and
- Class 1M-CH Reference Tranche.

This is a Confidential Preliminary Term Sheet. All terms and statements are subject to change.



Subordinate Reference Tranches

The Mezzanine Reference Tranches, the Class 1B-1 Reference Tranche, Class 1B-1H Reference Tranche and the Class 1B-2H Reference Tranche (collectively, the "Subordinate Reference Tranches").

Class Notional Amount of Reference Tranches

As of any Payment Date and with respect to each Reference Tranche, a notional amount equal to the initial Class Notional Amount of such Reference Tranche,

- minus the aggregate amount of Senior Reduction Amounts, Subordinate Reduction Amounts and Supplemental Subordinate Reduction Amounts allocated to such Reference Tranche on such Payment Date and all prior Payment Dates,
- minus the aggregate amount of Tranche Write-down Amounts allocated to reduce the Class Notional Amount of such Reference Tranche on such Payment Date and on all prior Payment Dates,
- plus the aggregate amount of Tranche Write-up Amounts allocated to increase the Class Notional Amount of such Reference Tranche on such Payment Date and on all prior Payment Dates and
- plus, in the case of the Class 1-AH Reference Tranche, the aggregate amount of Supplemental Senior Increase Amounts allocated to increase the Class Notional Amount thereof on such Payment Date and on all prior Payment Dates.

For the avoidance of doubt, no Tranche Write-up Amount or Tranche Write-down Amount will be applied twice on the same Payment Date.

Settlement

The Notes will settle with no accrued interest.

Form of Offering

Exempt from registration with the SEC under the Securities Act. The Notes are being offered only to "Qualified Institutional Buyers" (as defined in Rule 144A under the Securities Act) or to non-U.S. persons outside the United States pursuant to Regulation S under the Securities Act.

Ratings/Rating Agencies

The Issuer has engaged Standard & Poor's Ratings Services, a Standard & Poor's Financial Services LLC Business ("S&P") and Morningstar Credit Ratings, LLC ("Morningstar") to rate the Class 1M-1 Notes, Class 1M-2A Notes, Class 1M-2B Notes,

This is a Confidential Preliminary Term Sheet. All terms and statements are subject to change.



Class 1M-2C Notes, Class 1M-2 Notes and certain additional Classes of RCR Notes set forth on Schedule I hereto on the Closing Date. No rating agency has been engaged to rate the Class 1B-1 Notes on the Closing Date.

Reporting Period

The second calendar month preceding the month of each Payment Date. The delinquency status of each Reference Obligation will be determined as of the close of business on the last day of the related Reporting Period.

Maturity Date

On the Payment Date in August 2031, the Issuer will be obligated to retire the Notes by paying an amount equal to their full remaining Class Principal Balances, plus accrued and unpaid interest. However, the Notes may be paid in full prior to the Maturity Date on (a) the Early Redemption Date or (b) the Payment Date on which the aggregate Class Principal Balance of all outstanding Notes is otherwise reduced to zero. If on the Maturity Date a Class of RCR Notes is outstanding, all amounts payable on the Exchangeable Notes that were exchanged for such RCR Notes will be allocated to and payable on the applicable RCR Notes entitled to receive those amounts.

Early Redemption Option

Fannie Mae, as holder of the certificate evidencing beneficial ownership of the Issuer, may direct the Issuer to redeem the Notes on any Payment Date on or after the earlier to occur of (i) the Payment Date on which the aggregate unpaid principal balance of the Reference Obligations is less than or equal to 10% of the Cut-off Date Balance and (ii) the Payment Date occurring in February 2029, by paying an amount equal to the outstanding Class Principal Balance of the Notes, plus accrued and unpaid interest and related unpaid fees, expenses and indemnities of the Indenture Trustee, Exchange Administrator, Custodian, Investment Agent and Delaware Trustee. If on the Early Redemption Date a Class of RCR Notes is outstanding, all principal amounts that are payable by the Issuer on the Exchangeable Notes that were exchanged for such RCR Notes will be allocated to and payable on the applicable RCR Notes entitled to receive principal.

Early Redemption Date

The earlier to occur of (i) the Payment Date, if any, on which the Notes are redeemed by the Issuer pursuant to the Early Redemption Option and (ii) the CAA Early Termination Date (if such date is a result of the occurrence of a CAA Trigger Event).

Termination Date

The Notes will no longer be outstanding upon the date which is

This is a Confidential Preliminary Term Sheet. All terms and statements are subject to change.



the earliest of:

- (1) the Maturity Date;
- (2) the Early Redemption Date; and
- (3) the Payment Date on which the aggregate initial Class Principal Balance (without giving effect to any allocations of Tranche Write-down Amounts or Tranche Write-up Amounts related to the Notes on such Payment Date and all prior Payment Dates) and accrued and unpaid interest due on the Notes plus related unpaid fees, expenses and indemnities of the Indenture Trustee, Exchange Administrator, Custodian, Investment Agent and Delaware Trustee have otherwise been paid in full.

Expected Credit Enhancement

Notes/Tranches	Tranche Size	Approximate Initial Credit Support
Class 1A-H	95.50%	4.50% ⁽¹⁾
Class 1M-1 and Class 1M-1H	0.80%	3.70%
Class 1M-2 ⁽²⁾ and Class 1M-2H ⁽³⁾	2.45%	1.25%
Class 1B-1 and Class 1B-1H	0.75%	0.50%
Class 1B-2H	0.50%	0.00%

- (1) Required credit support for the Class 1A-H Reference Tranche will be 4.90%.
- (2) Approximate initial credit support will be 2.88% for the Class 1M-2A Notes, 2.07% for the Class 1M-2B Notes and 1.25% for the Class 1M-2C Notes.
- (3) Shown for illustrative purposes only. Represents the sum of the Class 1M-AH, Class 1M-BH and Class 1M-CH Reference Tranches.

The Subordinate Reference Tranches are subordinate to, and provide credit enhancement for, the Senior Reference Tranche and for each Class of more senior Subordinate Reference Tranches.

Fannie Mae Retention of Minimum 5% of Underlying Credit Risk

Fannie Mae will retain at least 5% of the underlying credit risk corresponding to a vertical slice of each of the Reference Tranches. Moreover, Fannie Mae will retain 100% of the underlying credit

This is a Confidential Preliminary Term Sheet. All terms and statements are subject to change.



risk corresponding to the Class 1B-2H Reference Tranche.

**Notes Acquired by
Fannie Mae**

Fannie Mae may from time to time acquire any of the Notes at any price in the open market or otherwise.

***STRUCTURAL
FEATURES***

Scheduled Principal

With respect to each Payment Date, the sum of all monthly scheduled payments of principal on the Reference Obligations that were collected by the related servicer during the related Reporting Period as reported to Fannie Mae as Master Servicer. Once a Reference Obligation is removed from the related MBS, all subsequent principal collections will be treated as Unscheduled Principal.

Unscheduled Principal

With respect to each Payment Date:

- (a) all partial principal prepayments on the Reference Obligations collected during the related Reporting Period, *plus*
- (b) the aggregate unpaid principal balance of all Reference Obligations that became subject to Reference Pool Removals during the related Reporting Period (excluding (i) Credit Event Reference Obligations and (ii) the portions of any prepayments in full that consist of scheduled principal collections), *plus*
- (c) decreases in the unpaid principal balance of all Reference Obligations as the result of loan modification or data corrections, *plus*
- (d) all scheduled principal collections, if any, for any Reference Obligations that have been removed from the related MBS, *plus*
- (e) the excess, if any, of the aggregate unpaid principal balance of the Reference Obligations refinanced under the High LTV Refinance Option and removed from the Reference Pool during the related Reporting Period, over the aggregate original unpaid principal balance of the resulting High LTV Refinance Reference Obligations, *minus*
- (f) increases in the unpaid principal balances of all Reference Obligations as the result of loan modifications, reinstatements due to error, or data corrections.

In the event that (f) above exceeds the sum of (a) through (e), the Unscheduled Principal for such Payment Date will be zero, and the Class 1A-H Notional Amount will be increased by the amount of

This is a Confidential Preliminary Term Sheet. All terms and statements are subject to change.



such excess. In April 2016, at the direction of its regulator and conservator FHFA, Fannie Mae announced a program that permits principal forgiveness as a loss mitigation alternative for a limited number of loans that were 90 days or more delinquent and had an unpaid principal balance in excess of the value of the related mortgaged property as of March 2016. No Reference Obligations are eligible for inclusion in this program. While there is no indication that this program will be extended or replicated, if any similar program of principal reduction were to be employed in the future that affected the Reference Obligations, any principal that was forgiven with respect to a Reference Obligation would decrease the unpaid principal balance of such Reference Obligation pursuant to clause (c) above.

Recovery Principal

With respect to each Payment Date, the sum of:

- (a) the excess, if any of the related Credit Event Amount for such Payment Date over the related Tranche Write-down Amount for such Payment Date; *plus*
- (b) the related Tranche Write-up Amount for such Payment Date.

Senior Reduction Amount

With respect to each Payment Date, if either of the Minimum Credit Enhancement Test or the Delinquency Test is not satisfied, the sum of:

- (a) the Senior Percentage of the Scheduled Principal for such Payment Date;
- (b) 100% of the Unscheduled Principal for such Payment Date; and
- (c) 100% of the Recovery Principal for such Payment Date.

With respect to each Payment Date, if the Minimum Credit Enhancement Test and the Delinquency Test are satisfied, the sum of:

- (a) the Senior Percentage of the Scheduled Principal for such Payment Date;
- (b) the Senior Percentage of the Unscheduled Principal for such Payment Date; and
- (c) 100% of the Recovery Principal for such Payment Date.

The "Senior Percentage" for a Payment Date is the percentage equivalent to a fraction, the numerator of which is the Class Notional Amount of the Senior Reference Tranche immediately prior to such Payment Date and the denominator of which is the

This is a Confidential Preliminary Term Sheet. All terms and statements are subject to change.



aggregate unpaid principal balance of the Reference Obligations at the end of the previous Reporting Period.

As noted above, the Minimum Credit Enhancement Test will not be satisfied at issuance and may not be satisfied for an indefinite period thereafter.

Subordinate Reduction Amount

With respect to each Payment Date, the sum of the Scheduled Principal, Unscheduled Principal and Recovery Principal for such Payment Date, less the Senior Reduction Amount.

Allocation of Senior Reduction Amount

On each Payment Date prior to the Termination Date, the Senior Reduction Amount will be allocated to the Senior Reference Tranche until its Class Notional Amount is reduced to zero, and then to the Subordinate Reference Tranches, in order of seniority, per "*Allocation of Subordinate Reduction Amount*."

Because the Class 1M-1, Class 1M-2A, Class 1M-2B, Class 1M-2C and Class 1B-1 Notes correspond to the Class 1M-1, Class 1M-2A, Class 1M-2B, Class 1M-2C and Class 1B-1 Reference Tranches, respectively, any portion of the Senior Reduction Amount that is allocated to the Class 1M-1, Class 1M-2A, Class 1M-2B, Class 1M-2C or Class 1B-1 Reference Tranche will result in a corresponding reduction in the Class Principal Balance of the Class 1M-1, Class 1M-2A, Class 1M-2B, Class 1M-2C or Class 1B-1 Notes, as applicable. Such reductions in the Class Principal Balance of the Class 1M-2A, Class 1M-2B, Class 1M-2C or Class 1B-1 Notes will result in a corresponding reduction in the Class Principal Balance or Class Notional Amount, as applicable, of the related RCR Notes (to the extent such RCR Notes have a Class Principal Balance or Class Notional Amount, as applicable, greater than zero).

Allocation of Subordinate Reduction Amount

On each Payment Date prior to the Termination Date, the Subordinate Reduction Amount will be allocated to the Subordinate Reference Tranches:

- (i) *first*, concurrently, on a pro rata basis based on their Class Notional Amounts, to the Class 1M-1 and Class 1M-1H Reference Tranches until their Class Notional Amounts have been reduced to zero;
- (ii) *second*, concurrently, on a pro rata basis based on their Class Notional Amounts, to the Class 1M-2A and Class 1M-AH Reference Tranches until their Class Notional Amounts have been reduced to zero;
- (iii) *third*, concurrently, on a pro rata basis based on their Class Notional Amounts, to the Class 1M-2B and Class 1M-BH

This is a Confidential Preliminary Term Sheet. All terms and statements are subject to change.



- Reference Tranches until their Class Notional Amounts have been reduced to zero;
- (iv) *fourth*, concurrently, on a pro rata basis based on their Class Notional Amounts, to the Class 1M-2C and Class 1M-CH Reference Tranches until their Class Notional Amounts have been reduced to zero;
 - (v) *fifth*, concurrently, on a pro rata basis based on their Class Notional Amounts, to the Class 1B-1 and Class 1B-1H Reference Tranches until their Class Notional Amounts have been reduced to zero; and
 - (vi) *sixth*, to the Class 1B-2H Reference Tranche until its Class Notional Amount has been reduced to zero.

Any Subordinate Reduction Amount remaining after the allocation in the immediately preceding sentence will be allocated to reduce the Class Notional Amount of the Class 1A-H Reference Tranche.

Because the Class 1M-1, Class 1M-2A, Class 1M-2B, Class 1M-2C and Class 1B-1 Notes correspond to the Class 1M-1, Class 1M-2A, Class 1M-2B, Class 1M-2C and Class 1B-1 Reference Tranches, respectively, any portion of the Subordinate Reduction Amount that is allocated to the Class 1M-1, Class 1M-2A, Class 1M-2B, Class 1M-2C or Class 1B-1 Reference Tranche will result in a corresponding reduction in the Class Principal Balance of the Class 1M-1, Class 1M-2A, Class 1M-2B, Class 1M-2C or Class 1B-1 Notes, as applicable. The Class 1B-2H Reference Tranche will not have corresponding Notes.

If any RCR Notes are held by Holders, any Subordinate Reduction Amount that is allocable in the *second*, *third*, *fourth* or *fifth* priority above on any Payment Date to the related Exchangeable Notes will be allocated to reduce the Class Principal Balance or Class Notional Amount, as applicable, of the related RCR Notes (to the extent such RCR Notes have a Class Principal Balance or Class Notional Amount, as applicable, greater than zero).

Loss Allocation Framework

General

Upon the occurrence of Modification Events affecting the Reference Obligations and to the extent that losses are realized with respect thereto, the interest entitlements of the Notes will be subject to reduction and the Class Principal Balances thereof will be subject to write-downs as further described under "*Allocation of Modification Loss Amounts*" below. Any such reductions or write-downs will be applied first to the most subordinate Class of Notes with an outstanding Class Principal Balance (once the Class Notional Amount of the Class 1B-2H Reference Tranche

This is a Confidential Preliminary Term Sheet. All terms and statements are subject to change.



has been reduced to zero).

Upon the occurrence of Credit Events affecting the Reference Obligations and to the extent that losses are realized with respect thereto, the Class Principal Balances of the Notes will be subject to write-downs as further described under "*Allocation of Tranche Write-down Amounts*" below. Any such reductions or write-downs will be allocated first to the most subordinate Class of Notes with an outstanding Class Principal Balance (once the Class Notional Amount of the Class 1B-2H Reference Tranche has been reduced to zero).

Modifications

Reference Obligations that undergo a temporary or permanent modification will not be removed from the Reference Pool unless they otherwise meet the criteria for Reference Pool Removal.

In the event that a program of principal forgiveness were implemented that impacted the Reference Obligations, any reduction in the principal balance of a Reference Obligation as the result of principal forgiveness would be treated as Unscheduled Principal. However, if the Reference Obligation subsequently became a Credit Event Reference Obligation, the related negative adjustment would be included in the Credit Event Net Loss for the Reference Obligation.

Modification Event

With respect to any Reference Obligation, a forbearance or certain mortgage rate modifications relating to such Reference Obligation. It is noted that in the absence of a forbearance or certain mortgage rate modifications, a term extension on a Reference Obligation will not constitute a Modification Event. For the avoidance of doubt, a refinancing of a Reference Obligation under the High LTV Refinance Option and replacement thereof with the resulting refinance mortgage loan (a "High LTV Refinance Reference Obligation") will not constitute a "Modification Event."

Modification Loss Amount

With respect to each Payment Date and any Reference Obligation that has experienced a Modification Event, the *excess*, if any, of:

- (i) one-twelfth of the Original Accrual Rate *multiplied* by the unpaid principal balance of such Reference Obligation, *over*
- (ii) one-twelfth of the Current Accrual Rate *multiplied* by the interest bearing unpaid principal balance of such Reference Obligation.

This is a Confidential Preliminary Term Sheet. All terms and statements are subject to change.



**Allocation of
Modification Loss
Amounts**

On each Payment Date on or prior to the Termination Date, the Preliminary Principal Loss Amount, Preliminary Tranche Write-down Amount, Preliminary Tranche Write-up Amount and Preliminary Class Notional Amount will be computed prior to the Allocation of the Modification Loss Amount.

On each Payment Date on or prior to the Termination Date, the Modification Loss Amount, if any, for such Payment Date will be allocated in the following order of priority:

first, to the Class 1B-2H Reference Tranche, until the amount allocated to the Class 1B-2H Reference Tranche is equal to the Class 1B-2H Reference Tranche Interest Accrual Amount;

second, to the Class 1B-2H Reference Tranche, until the aggregate amount allocated to the Class 1B-2H Reference Tranche is equal to the aggregate of the Preliminary Class Notional Amount of the Class 1B-2H Reference Tranche for such Payment Date;

third, to the Class 1B-1 and Class 1B-1H Reference Tranches, pro rata, based on their Class Notional Amounts immediately prior to such Payment Date, until the amount allocated to the Class 1B-1 Reference Tranche is equal to the Class 1B-1 Notes Interest Accrual Amount;

fourth, to the Class 1B-1 and Class 1B-1H Reference Tranches, pro rata, based on their Preliminary Class Notional Amounts for such Payment Date, until the aggregate amount allocated to the Class 1B-1 and Class 1B-1H Reference Tranches is equal to the aggregate of the Preliminary Class Notional Amounts of the Class 1B-1 and Class 1B-1H Reference Tranches for such Payment Date;

fifth, to the Class 1M-2C and Class 1M-CH Reference Tranches, pro rata, based on their Class Notional Amounts immediately prior to such Payment Date, until the amount allocated to the Class 1M-2C Reference Tranche is equal to the Class 1M-2C Notes Interest Accrual Amount;

sixth, to the Class 1M-2B and Class 1M-BH Reference Tranches, pro rata, based on their Class Notional Amounts immediately prior to such Payment Date, until the amount allocated to the Class 1M-2B Reference Tranche is equal to the Class 1M-2B Notes Interest Accrual Amount;

seventh, to the Class 1M-2A and Class 1M-AH Reference Tranches, pro rata, based on their Class Notional Amounts

This is a Confidential Preliminary Term Sheet. All terms and statements are subject to change.



immediately prior to such Payment Date, until the amount allocated to the Class 1M-2A Reference Tranche is equal to the Class 1M-2A Notes Interest Accrual Amount;

eighth, to the Class 1M-2C and Class 1M-CH Reference Tranches, pro rata, based on their Preliminary Class Notional Amounts for such Payment Date, until the aggregate amount allocated to the Class 1M-2C and Class 1M-CH Reference Tranches is equal to the aggregate of the Preliminary Class Notional Amounts of the Class 1M-2C and Class 1M-CH Reference Tranches for such Payment Date;

ninth, to the Class 1M-2B and Class 1M-BH Reference Tranches, pro rata, based on their Preliminary Class Notional Amounts for such Payment Date, until the aggregate amount allocated to the Class 1M-2B and Class 1M-BH Reference Tranches is equal to the aggregate of the Preliminary Class Notional Amounts of the Class 1M-2B and Class 1M-BH Reference Tranches for such Payment Date;

tenth, to the Class 1M-2A and Class 1M-AH Reference Tranches, pro rata, based on their Preliminary Class Notional Amounts for such Payment Date, until the aggregate amount allocated to the Class 1M-2A and Class 1M-AH Reference Tranches is equal to the aggregate of the Preliminary Class Notional Amounts of the Class 1M-2A and Class 1M-AH Reference Tranches for such Payment Date;

eleventh, to the Class 1M-1 and Class 1M-1H Reference Tranches, pro rata, based on their Class Notional Amounts immediately prior to such Payment Date, until the amount allocated to the Class 1M-1 Reference Tranche is equal to the Class 1M-1 Notes Interest Accrual Amount; and

twelfth, to the Class 1M-1 and Class 1M-1H Reference Tranches, pro rata, based on their Preliminary Class Notional Amounts for such Payment Date, until the aggregate amount allocated to the Class 1M-1 and Class 1M-1H Reference Tranches is equal to the aggregate of the Preliminary Class Notional Amounts of the Class 1M-1 and Class 1M-1H Reference Tranches for such Payment Date.

Any amounts allocated to the Class 1B-1, Class 1M-2C, Class 1M-2B, Class 1M-2A or Class 1M-1 Reference Tranches in the *third*, *fifth*, *sixth*, *seventh* or *eleventh* priority above will result in a corresponding reduction of the Interest Payment Amount of the Class 1B-1, Class 1M-2C, Class 1M-2B, Class 1M-2A or Class

This is a Confidential Preliminary Term Sheet. All terms and statements are subject to change.



1M-1 Notes, as applicable (without regard to any exchanges of Exchangeable Notes for RCR Notes for such Payment Date). The Class 1B-2H Reference Tranche is assigned a class coupon solely for purposes of calculations in connection with the allocation of Modification Loss Amounts to the Subordinate Reference Tranches, and any amounts allocated to the Class 1B-2H Reference Tranche in the *first* priority above will not result in a corresponding reduction of the Interest Payment Amount of any Class of Notes.

Any amounts allocated to the Class 1B-2H, Class 1B-1, Class 1M-2C, Class 1M-2B, Class 1M-2A or Class 1M-1 Reference Tranches in the *second, fourth, eighth, ninth, tenth* or *twelfth* priority above will be included in the calculation of the Principal Loss Amount.

If any RCR Notes are held by Holders, any Modification Loss Amount that is allocable in the *third, fifth, sixth* or *seventh* priority above on any Payment Date to the related Exchangeable Notes will be allocated to reduce the Interest Payment Amount of the applicable RCR Notes in accordance with the exchange proportions applicable to the related Combination.

Principal Loss Amount

With respect to any Payment Date, the sum of:

(a) the aggregate amount of Credit Event Net Losses for all Credit Event Reference Obligations for the related Reporting Period;

(b) the aggregate amount of court-approved principal reductions ("cramdowns") on the Reference Obligations in the related Reporting Period;

(c) subsequent losses on any Reference Obligation that became a Credit Event Reference Obligation on a prior Payment Date and with respect to which Net Liquidation Proceeds have already been determined; and

(d) amounts included in the *second, fourth, eighth, ninth, tenth* and *twelfth* priorities under "*Allocation of Modification Loss Amount*" above.

Principal Recovery Amount

With respect to any Payment Date, the sum of:

(a) the aggregate amount of Credit Event Net Losses for all Reversed Credit Event Reference Obligations for the related Reporting Period;

This is a Confidential Preliminary Term Sheet. All terms and statements are subject to change.



(b) subsequent recoveries on any Reference Obligation that became a Credit Event Reference Obligation on a prior Payment Date and with respect to which Net Liquidation Proceeds have already been determined;

(c) the aggregate amount of the Credit Event Net Gains of all Credit Event Reference Obligations for the related Reporting Period;

(d) the Rep and Warranty Settlement Amount; and

(e) the Projected Recovery Amount on the Termination Date.

Credit Event

With respect to any Payment Date on or before the Termination Date and any Reference Obligation, the first to occur of any of the following events during the related Reporting Period, as reported by the servicer to Fannie Mae, if applicable: (i) a short sale is settled, (ii) the related mortgaged property is sold to a third party during the foreclosure process, (iii) an REO disposition occurs, (iv) a mortgage note sale is executed on a loan that is 12 or more months delinquent when offered for sale or (v) the related mortgage note is charged off. With respect to any Credit Event Reference Obligation, there can only be one occurrence of a Credit Event; *provided*, that one additional separate Credit Event can occur with respect to each instance of such Credit Event Reference Obligation becoming a Reversed Credit Event Reference Obligation. For the avoidance of doubt, a refinancing of a Reference Obligation under the High LTV Refinance Option and replacement thereof with the resulting High LTV Refinance Reference Obligation will not constitute a "Credit Event."

Credit Event Reference Obligation

With respect to each Payment Date, any Reference Obligation in the Reference Pool for which a Credit Event has occurred and is reported during the related Reporting Period.

Tranche Write-down Amount

With respect to each Payment Date, the excess, if any, of the Principal Loss Amount for such Payment Date over the Principal Recovery Amount for such Payment Date.

With respect to each Payment Date, the Class Notional Amount of the Senior Reference Tranche will be increased by the excess, if any, of the Tranche Write-down Amount for such Payment Date over the Credit Event Amount for such Payment Date.

Tranche Write-up Amount

With respect to each Payment Date, the excess, if any, of the Principal Recovery Amount for such Payment Date over the

This is a Confidential Preliminary Term Sheet. All terms and statements are subject to change.



Principal Loss Amount for such Payment Date.

**Allocation of Tranche
Write-down Amounts**

On each Payment Date on or prior to the Termination Date, after allocation of the Senior Reduction Amount and Subordinate Reduction Amount, the Tranche Write-down Amount, if any, for such Payment Date will be allocated, *first*, to reduce any Overcollateralization Amount for such Payment Date, until such Overcollateralization Amount is reduced to zero and, *second*, to reduce the Class Notional Amount of each Reference Tranche in the following order of priority, in each case until its Class Notional Amount is reduced to zero:

- (i) *first*, to the Class 1B-2H Reference Tranche,
- (ii) *second*, to the Class 1B-1 and Class 1B-1H Reference Tranches, pro rata, based on their Class Notional Amounts,
- (iii) *third*, to the Class 1M-2C and Class 1M-CH Reference Tranches, pro rata, based on their Class Notional Amounts,
- (iv) *fourth*, to the Class 1M-2B and Class 1M-BH Reference Tranches, pro rata, based on their Class Notional Amounts,
- (v) *fifth*, to the Class 1M-2A and Class 1M-AH Reference Tranches, pro rata, based on their Class Notional Amounts,
- (vi) *sixth*, to the Class 1M-1 and Class 1M-1H Reference Tranches, pro rata, based on their Class Notional Amounts, and
- (vii) *seventh*, to the Class 1A-H Reference Tranche.

Because the Class 1M-1, Class 1M-2A, Class 1M-2B, Class 1M-2C and Class 1B-1 Notes correspond to the Class 1M-1, Class 1M-2A, Class 1M-2B, Class 1M-2C and Class 1B-1 Reference Tranches, respectively, any Tranche Write-down Amounts allocated to the Class 1M-1, Class 1M-2A, Class 1M-2B, Class 1M-2C or Class 1B-1 Reference Tranche will result in a corresponding reduction in the Class Principal Balance of the Class 1M-1, Class 1M-2A, Class 1M-2B, Class 1M-2C or Class 1B-1 Notes, as applicable (without regard to any exchanges of Exchangeable Notes for RCR Notes for such Payment Date). If any RCR Notes are held by Holders, any Tranche Write-down Amount that is allocable to the related Exchangeable Notes will be allocated to reduce the Class Principal Balance or Class Notional Amount, as applicable, of the related RCR Notes (to the extent such RCR Notes have a Class Principal Balance or Class Notional Amount, as applicable, greater than zero). The Class 1B-2H

This is a Confidential Preliminary Term Sheet. All terms and statements are subject to change.



Reference Tranche will not have corresponding Notes.

Allocation of Tranche Write-up Amounts

On each Payment Date on or prior to the Termination Date, after allocation of the Senior Reduction Amount and Subordinate Reduction Amount and Tranche Write-down Amounts, the Tranche Write-up Amount, if any, for such Payment Date will be allocated to increase the Class Notional Amount of each Reference Tranche in the following order of priority until the cumulative Tranche Write-up Amount so allocated is equal to the cumulative Tranche Write-down Amount previously allocated to such Reference Tranche on or prior to such Payment Date:

- (i) *first*, to the Class 1A-H Reference Tranche,
- (ii) *second*, to the Class 1M-1 and Class 1M-1H Reference Tranches, pro rata, based on their Class Notional Amounts,
- (iii) *third*, to the Class 1M-2A and Class 1M-AH Reference Tranches, pro rata, based on their Class Notional Amounts,
- (iv) *fourth*, to the Class 1M-2B and Class 1M-BH Reference Tranches, pro rata, based on their Class Notional Amounts,
- (v) *fifth*, to the Class 1M-2C and Class 1M-CH Reference Tranches, pro rata, based on their Class Notional Amounts,
- (vi) *sixth*, to the Class 1B-1 and Class 1B-1H Reference Tranches, pro rata, based on their Class Notional Amounts, and
- (vii) *seventh*, to the Class 1B-2H Reference Tranche.

Because the Class 1M-1, Class 1M-2A, Class 1M-2B, Class 1M-2C and Class 1B-1 Notes correspond to the Class 1M-1, Class 1M-2A, Class 1M-2B, Class 1M-2C and Class 1B-1 Reference Tranches, respectively, any Tranche Write-up Amounts allocated to the Class 1M-1, Class 1M-2A, Class 1M-2B, Class 1M-2C or Class 1B-1 Reference Tranche will result in a corresponding increase in the Class Principal Balance of the Class 1M-1, Class 1M-2A, Class 1M-2B, Class 1M-2C or Class 1B-1 Notes, as applicable (without regard to any exchanges of Exchangeable Notes for RCR Notes for such Payment Date). If any RCR Notes are held by Holders, any Tranche Write-up Amount that is allocable to the related Exchangeable Notes will be allocated to increase the Class Principal Balance or Class Notional Amount, as applicable, of the related RCR Notes. The Class 1B-2H Reference Tranche will not have corresponding Notes.

This is a Confidential Preliminary Term Sheet. All terms and statements are subject to change.



To the extent that the Tranche Write-up Amount on any Payment Date exceeds the Tranche Write-up Amount allocated on such Payment Date, the excess (the "Write-up Excess") will be available as overcollateralization to offset any Tranche Write-down Amounts on future Payment Dates prior to the allocation of such Tranche Write-down Amounts to reduce the Class Notional Amounts of the related Reference Tranches. On each Payment Date, the "Overcollateralization Amount" equals (a) the aggregate amount of Write-up Excesses for such Payment Date and all prior Payment Dates, minus (b) the aggregate amount of Overcollateralization Amounts used to offset Tranche Write-down Amounts on all prior Payment Dates.

**Supplemental
Subordinate Reduction
Amount**

For each Payment Date, the unpaid principal balance of the Reference Obligations at the end of the related Reporting Period multiplied by the excess, if any, of (i) the Offered Reference Tranche Percentage for such Payment Date over (ii) 5.25%.

The Supplemental Subordinate Reduction Amount, if any, will be applied on each Payment Date to reduce the Class Notional Amounts of the Reference Tranches as specified under "*Allocation of Supplemental Subordinate Reduction Amount and Supplemental Senior Increase Amount.*" In addition, an amount, referred to as the "Supplemental Senior Increase Amount" and which is equal to the Supplemental Subordinate Reduction Amount for any Payment Date, will be allocated to increase the Class Notional Amount of the Class 1A-H Reference Tranche as described under "*Allocation of Supplemental Subordinate Reduction Amount and Supplemental Senior Increase Amount.*"

The "Offered Reference Tranche Percentage" for each Payment Date is a fraction, expressed as a percentage, equal to the aggregate Class Notional Amount of the Class 1M-1, Class 1M-1H, Class 1M-2A, Class 1M-AH, Class 1M-2B, Class 1M-BH, Class 1M-2C, Class 1M-CH, Class 1B-1 and Class 1B-1H Reference Tranches (after allocation of the Senior Reduction Amount, the Subordinate Reduction Amount and any Tranche Write-down Amounts and Tranche Write-up Amounts for such Payment Date) divided by the unpaid principal balance of the Reference Obligations at the end of the related Reporting Period.

**Allocation of
Supplemental
Subordinate Reduction
Amount and
Supplemental Senior**

On each Payment Date on or prior to the Termination Date, after allocation of the Senior Reduction Amount, the Subordinate Reduction Amount and any Tranche Write-down Amounts and Tranche Write-up Amounts, the Supplemental Subordinate Reduction Amount, if any, for such Payment Date will be allocated to reduce the Class Notional Amount of each of the following

This is a Confidential Preliminary Term Sheet. All terms and statements are subject to change.



Increase Amount

Reference Tranches in the following order of priority, in each case until its Class Notional Amount is reduced to zero:

- (i) *first*, to the Class 1M-1 and Class 1M-1H Reference Tranches, pro rata, based on their Class Notional Amounts,
- (ii) *second*, to the Class 1M-2A and Class 1M-AH Reference Tranches, pro rata, based on their Class Notional Amounts,
- (iii) *third*, to the Class 1M-2B and Class 1M-BH Reference Tranches, pro rata, based on their Class Notional Amounts,
- (iv) *fourth*, to the Class 1M-2C and Class 1M-CH Reference Tranches, pro rata, based on their Class Notional Amounts, and
- (v) *fifth*, to the Class 1B-1 and Class 1B-1H Reference Tranches, pro rata, based on their Class Notional Amounts.

Because the Class 1M-1, Class 1M-2A, Class 1M-2B, Class 1M-2C and Class 1B-1 Notes correspond to the Class 1M-1, Class 1M-2A, Class 1M-2B, Class 1M-2C and Class 1B-1 Reference Tranches, respectively, any portion of the Supplemental Subordinate Reduction Amount that is allocated to the Class 1M-1, Class 1M-2A, Class 1M-2B, Class 1M-2C or Class 1B-1 Reference Tranche will result in a corresponding reduction in the Class Principal Balance of the Class 1M-1, Class 1M-2A, Class 1M-2B, Class 1M-2C or Class 1B-1 Notes, as applicable.

If any RCR Notes are held by Holders, any Supplemental Subordinate Reduction Amount that is allocable on any Payment Date to any Class of Exchangeable Notes will be allocated to reduce the Class Principal Balance or Class Notional Amount, as applicable, of the related Class or Classes of RCR Notes (to the extent such RCR Notes have a Class Principal Balance or Class Notional Amount, as applicable, greater than zero).

Simultaneously, on each Payment Date on or prior to the Termination Date, after allocation of the Senior Reduction Amount, the Subordinate Reduction Amount and any Tranche Write-down Amounts and Tranche Write-up Amounts, the Supplemental Senior Increase Amount, if any, for such Payment Date will be allocated to increase the Class Notional Amount of the Class 1A-H Reference Tranche.

Credit Event Reversals and Reference Pool Removals

Reversed Credit

With respect to any Payment Date, a Reference Obligation that

This is a Confidential Preliminary Term Sheet. All terms and statements are subject to change.



**Event Reference
Obligation**

was formerly in the Reference Pool and that became a Credit Event Reference Obligation in a prior Reporting Period and (i) that is repurchased by the lender or with respect to which the lender enters into a full indemnification of Fannie Mae or pays a fee in lieu of repurchase for any identified Eligibility Defect, (ii) with respect to which the party responsible for the representations and warranties and/or servicing obligations or liabilities with respect to the Reference Obligation (A) has declared bankruptcy or has been put into receivership or (B) has otherwise been relieved of such obligations or liabilities by operation of law or by agreement, and an Eligibility Defect is identified that could otherwise have resulted in a repurchase or (iii) with respect to which a violation of certain specified Eligibility Criteria is discovered as a result of a data correction.

**Reference Pool
Removals**

A Reference Obligation will be removed (a "Reference Pool Removal") from the Reference Pool upon the occurrence of any of the following:

- (1) the Reference Obligation becomes a Credit Event Reference Obligation;
- (2) the Reference Obligation is paid in full (except as provided below with regard to a refinancing under the High LTV Refinance Option);
- (3) the Reference Obligation is seized pursuant to an eminent domain proceeding with respect to the underlying mortgage loan;
- (4) the lender repurchases the Reference Obligation, enters into a full indemnification agreement or pays a fee in lieu of repurchase for the Reference Obligation;
- (5) Fannie Mae elects to sell (a) a delinquent Reference Obligation that is less than 12 months delinquent at the time it is offered for sale or (b) a Reference Obligation that previously had been seriously delinquent and is current at the time it is offered for sale;
- (6) the discovery of any of certain specified violations of the Eligibility Criteria for such Reference Obligation as a result of data correction;
- (7) the party responsible for the representations and warranties with respect to the Reference Obligation was granted relief by Fannie Mae from liability for potential breaches of specified Eligibility Defects at the time Fannie Mae acquired the Reference Obligation and an Eligibility Defect is identified that could otherwise have resulted in a repurchase but for the aforementioned relief, provided that the Eligibility Defect is identified on or before the 36th month following the date of Fannie Mae's acquisition of

This is a Confidential Preliminary Term Sheet. All terms and statements are subject to change.



- (8) the Reference Obligation; or
the party responsible for the representations and warranties and/or servicing obligations or liabilities with respect to the Reference Obligation (A) has declared bankruptcy or has been put into receivership or (B) has otherwise been relieved of such obligations or liabilities by operation of law or by agreement, and an Eligibility Defect is identified that could otherwise have resulted in a repurchase.

A Reference Obligation will be removed from the Reference Pool or will become a Reversed Credit Event Reference Obligation if a loan data change occurs that causes the Reference Obligation to no longer meet one or more of the criteria set forth in clauses (a), (f), (g), (j) and (k) of the definition of Eligibility Criteria.

A Reference Obligation that becomes subject to an Origination Rep and Warranty Settlement subsequent to the Cut-off Date may be removed, at its respective unpaid principal balance as of such date, from the Reference Pool by Fannie Mae at any time in its sole discretion, provided that the aggregate unpaid principal balance of the Reference Obligations so removed during any Reporting Period does not result in a reduction of the Class Notional Amount of any Reference Tranche in excess of 1.00% of the Class Notional Amount thereof immediately prior to such reduction. The removal of any Reference Obligation from the Reference Pool as described above will be treated as a "Reference Pool Removal"; *provided, however*, that the removal of a Reference Obligation from the Reference Pool as a result of a refinancing under our High LTV Refinance Option will not constitute a "Reference Pool Removal."

If a Reference Obligation meeting the High LTV Refinance Hold Criteria (defined below) is paid in full, the Reference Obligation will not be removed from the Reference Pool until the earlier of (i) the date Fannie Mae is able to confirm whether such payment in full was made in connection with the High LTV Refinance Option and (ii) the date that is 180 days following such payment in full (the earlier of (i) and (ii), the "Release Date").

On the Release Date, the following will apply:

- if Fannie Mae confirms that the payment in full was made in connection with the High LTV Refinance Option, the original Reference Obligation will be removed from the Reference Pool and the resulting High LTV Refinance Reference Obligation will be included in the Reference Pool as a replacement of the original Reference Obligation

This is a Confidential Preliminary Term Sheet. All terms and statements are subject to change.



(which removal and replacement will not constitute a Reference Pool Removal);

- if Fannie Mae confirms that the payment in full was not made in connection with the High LTV Refinance Option, the related Reference Obligation will be removed from the Reference Pool (which removal will constitute a Reference Pool Removal); and
- if neither such confirmation can be made, the related Reference Obligation will be removed from the Reference Pool (which removal will constitute a Reference Pool Removal).

A Reference Obligation meets the "High LTV Refinance Hold Criteria" if it (i) was originated on or after October 1, 2017, (ii) was originated at least 15 months prior to the date it was paid in full, (iii) had no 30-day delinquency in the six-month period immediately preceding the date it was paid in full, and no more than one 30-day delinquency in the 12-month period immediately preceding the date it was paid in full and (iv) is secured by a mortgaged property with a current estimated property value that is reasonably believed by Fannie Mae to result in eligibility under the High LTV Refinance Option.

Rep and Warrant Settlement Allocation

Origination Rep and Warranty Settlement

A settlement relating to claims arising from breaches of loan representations and warranties that Fannie Mae enters into with a seller or servicer in lieu of requiring such seller or servicer to repurchase a specified pool of Mortgage Loans that includes one or more Reference Obligations, whereby Fannie Mae has received the agreed-upon settlement proceeds from such seller or servicer.



**Rep and Warranty
Settlement Amount**

For each Reference Obligation that is part of an Origination Rep and Warranty Settlement (including any Reference Obligation that may previously have been removed from the Reference Pool due to a Credit Event), the portion of the settlement amount determined to be attributable to such Reference Obligation. The determination will be made by Fannie Mae at or about the time of the settlement and will be verified by an independent third party as described below.

After completion of an Origination Rep and Warranty Settlement that includes any Reference Obligations, Fannie Mae will engage an independent third party to conduct an annual review to validate that the Rep and Warranty Settlement Amount corresponding to each Reference Obligation matches Fannie Mae's records for such settlement.

MORTGAGE LOANS IN REFERENCE POOL

**Reference
Obligations**

The Reference Pool consists of mortgage loans acquired by Fannie Mae between May 1, 2018 and September 30, 2018 and held in various Fannie Mae MBS trusts established between July 1, 2018 and September 30, 2018 that meet the Eligibility Criteria, as defined below. The Reference Pool summary attached to this term sheet provides additional details about the Reference Obligations in the Reference Pool.

**Reference Pool
Eligibility Criteria**

Each mortgage loan in the Reference Pool must satisfy the following criteria (the "Eligibility Criteria"):

- (a) is a fully amortizing, fixed rate, first lien Mortgage Loan secured by a one- to four-unit property, town house, individual condominium unit, individual unit in a planned unit development, individual cooperative unit or manufactured home, with an original term of 241 to 360 months;
- (b) was acquired by Fannie Mae between May 1, 2018 and September 30, 2018 and held in various Fannie Mae MBS trusts established between July 1, 2018 and September 30, 2018;
- (c) is held in Fannie Mae MBS trusts with respect to which a REMIC election has been made;
- (d) has not been 30 or more days delinquent from the date of acquisition to the Cut-off Date;
- (e) was not originated under Fannie Mae's Refi Plus program (Fannie Mae's Refi Plus program includes but is not limited to the Home Affordable Refinance Program);
- (f) has an original combined loan-to-value ratio less than or

This is a Confidential Preliminary Term Sheet. All terms and statements are subject to change.



- equal to 97%;
- (g) is not subject to any form of risk sharing with the loan seller or servicer (other than limited seller or servicer indemnification or limited future loss protection settlements in certain cases);
- (h) was not originated under certain non-standard programs;
- (i) is a conventional loan (i.e. is not guaranteed by the Federal Housing Administration or the U.S. Department of Veterans Affairs);
- (j) has an original loan-to-value ratio that is (i) greater than 60% and (ii) less than or equal to 80%; and
- (k) is not covered by mortgage or pool insurance.

provided, however, that upon the refinancing of a Reference Obligation under the High LTV Refinance Option, the resulting High LTV Refinance Reference Obligation will constitute a Reference Obligation and will be included in the Reference Pool in replacement of the original Reference Obligation.

**Reference Pool
Selection Process**

Fannie Mae determined the composition of the Reference Pool utilizing the process described below.

All mortgage loans that Fannie Mae acquired between May 1, 2018 and September 30, 2018 and held in various Fannie Mae MBS trusts established between July 1, 2018 and September 30, 2018 (other than mortgage loans that were, or are anticipated to be included as reference obligations in an alternative Fannie Mae risk sharing transaction) were made available for potential selection for the Reference Pool. From this group of loans, Fannie Mae identified those loans that met the Eligibility Criteria (such loans, the "Available Loans").

The "Initial Cohort Pool" represents all of the Available Loans that met the Eligibility Criteria at the time of their acquisition by Fannie Mae (other than those Eligibility Criteria that are determined as of the Cut-off Date). The table below summarizes the loan count, original unpaid principal balance and key attributes of the mortgage loans included in the Initial Cohort Pool.



<u>Category</u>	<u>Loan Count</u>	<u>Aggregate Original Loan Balance</u>
Initial Cohort Pool	112,046	\$27,998,962,000
less loans that did not satisfy the delinquency criteria set forth in clause (d) of the Eligibility Criteria, less loans that paid in full, less quality control removals	<u>4,937</u>	<u>\$1,261,672,000</u>
Reference Pool	107,109	\$26,737,290,000

The table below summarizes the loans in the Initial Cohort Pool which were excluded from the Reference Pool due to failure to satisfy the delinquency-related Eligibility Criteria, payoffs and quality control removals.

Worst DQ Status Since Acquisition	Current Status ⁽¹⁾											Total
	Current	30	60	90	120	150	180	>180	Paid in Full	QC Removal	Repurchase	
Current	15 ⁽²⁾	0	0	0	0	0	0	0	2,185	8	0	2,208
30	1,941	514	0	0	0	0	0	0	46	2	0	2,503
60	74	16	77	0	0	0	0	0	1	0	0	168
90	10	2	4	26	0	0	0	0	1	0	0	43
120	0	0	0	0	15	0	0	0	0	0	0	15
150	0	0	0	0	0	0	0	0	0	0	0	0
180	0	0	0	0	0	0	0	0	0	0	0	0
>180	0	0	0	0	0	0	0	0	0	0	0	0
Total	2,040	532	81	26	15	0	0	0	2,233	10	0	4,937

(1) The above table takes into account acquisition eligibility criteria prior to the consideration of delinquency and other Cut-off Date eligibility requirements, which could understate such Cut-off Date eligibility exclusions.

(2) Defects identified, but the loans remain subject to the rebuttal process as of January 30, 2019 and therefore are excluded from eligibility.

This is a Confidential Preliminary Term Sheet. All terms and statements are subject to change.

**Loan Acquisition Practices**

All of the Reference Obligations were acquired from and serviced by loan sellers and servicers who are approved by Fannie Mae to conduct business with Fannie Mae. Fannie Mae relies on loan sellers to comply with Fannie Mae's standards and make underwriting decisions that result in investment quality loans. To protect Fannie Mae from acquiring loans that do not meet Fannie Mae's prescribed underwriting standards, loan sellers are required to make representations and warranties as to certain facts and circumstances concerning the loan sellers themselves and the mortgage loans they are selling. Representations and warranties required by Fannie Mae are described in the Mortgage Selling and Servicing Contract, the Fannie Mae Single-Family Selling Guide (the "Selling Guide"), the Fannie Mae Single-Family Servicing Guide (the "Servicing Guide") and other lender contracts (collectively, the "Lender Contract"). Subject to representation and warranty relief and sunset policies described in the offering memorandum, violation of any representation and warranty is a breach of the Lender Contract, entitling Fannie Mae to pursue certain remedies, including a loan repurchase request.

Underwriting Standards

Fannie Mae's Selling Guide establishes the baseline credit standards for mortgage loans that Fannie Mae acquires from Fannie Mae's approved loan sellers. In evaluating a borrower's willingness and ability to repay the mortgage loan, the loan seller must include documentation in the loan file that confirms that information provided by the borrower as part of the loan application is accurate and documents the loan seller's assessment of the borrower's credit history, employment, income, assets and other financial information. In addition, the loan seller must conduct a comprehensive risk assessment of each mortgage loan application prior to approving it. The loan seller is also responsible for the accuracy and completeness of the appraisal and its assessment of the marketability of the property as well as underwriting the appraisal report to determine whether the property presents adequate collateral for the mortgage loan.

Desktop Underwriter

Approximately 93.06% of the Reference Obligations, by unpaid principal balance, were underwritten through Fannie Mae's Desktop Underwriter® ("DU") system. DU is a proprietary automated underwriting system that evaluates mortgage delinquency risk and arrives at an underwriting recommendation by conducting a comprehensive examination of the primary and contributory risk factors in a mortgage application. DU analyzes the information in the

This is a Confidential Preliminary Term Sheet. All terms and statements are subject to change.



loan case file to reach an overall credit risk assessment to determine eligibility for delivery to Fannie Mae. In addition, DU outlines certain steps necessary for the loan seller to complete the processing of the loan file, including the required documentation necessary to verify borrower income, assets, and property value. All loans delivered to Fannie Mae must meet the documentation requirements stated in the Selling Guide or as required by DU as of the date of origination.

Servicing Practices

The servicing of the mortgage loans that are held in Fannie Mae's mortgage portfolio or that back Fannie Mae's MBS is performed by servicers on Fannie Mae's behalf, with Fannie Mae retaining servicing control. Each servicer is required to service the applicable Reference Obligations in accordance with Fannie Mae's servicing guidelines as stated in Fannie Mae's Servicing Guide and related announcements, including applicable contract variances. Fannie Mae's servicing guidelines may be revised from time to time at Fannie Mae's sole discretion.

Fannie Mae's QC Process

General

Fannie Mae conducts several different types of QC reviews on a sample basis with respect to mortgage loans, including post-purchase reviews, early payment default reviews, servicing reviews and post-foreclosure reviews. Fannie Mae reviews a statistically valid random sample of newly acquired performing mortgage loans, and augments this random sample with targeted, discretionary sampling employing a number of technology tools and internal models to more accurately identify loans with characteristics that merit further scrutiny in discretionary reviews.

During the course of its post-purchase QC reviews, Fannie Mae may identify the following:

- significant eligibility violations;
- breaches of selling representations or warranties, including instances of fraud or misrepresentation or that a selling warranty the lender made is untrue;
- breaches of the terms of applicable contract provisions; or
- servicing deficiencies that have had a materially adverse effect on the value of the mortgage loan or the acquired property.

This is a Confidential Preliminary Term Sheet. All terms and statements are subject to change.



If Fannie Mae identifies any of the foregoing, Fannie Mae may require the immediate repurchase of a mortgage loan. Fannie Mae refers to defects that ultimately give rise to a repurchase obligation as "Eligibility Defects." In certain circumstances, Fannie Mae may provide the loan seller with an alternative to the immediate repurchase of a mortgage loan that does not meet Fannie Mae's requirements.

Under Fannie Mae's lender selling representations and warranties framework, lenders are relieved of certain selling representations and warranties that relate to the underwriting of loans delivered to Fannie Mae, provided that those loans have achieved an acceptable payment history or a successful full-file quality control review by Fannie Mae. Nonetheless, lenders will not be relieved from Fannie Mae's enforcement with respect to certain "life of loan representations and warranties," including, but not limited to, fraud and misrepresentation, validity of title and Fannie Mae Charter violations.

Any limitations on Fannie Mae's ability to require the repurchase of a mortgage loan is likely to reduce the rate of lender repurchases following certain breaches and thus may increase the exposure of investors to credit losses.

Delinquent Mortgage Loans

Fannie Mae's current quality control process requires completion of an automated analysis of all defaulted loans that remain subject to loan seller repurchase obligations at the time of default. The objective is to determine the likelihood that a defect exists that will result in a repurchase by the loan seller. This automated analysis triggers referral to a specialist for a detailed review. The analysis takes into account the nature and circumstances of the borrower default, the timing and prior payment history of the borrower, the current status of the loan and/or property and other data elements that, based on Fannie Mae's experience, indicate that the default is correlated with a potential loan seller breach requiring a repurchase.

Fannie Mae's QC policies and procedures are generally subject to revision over time as a result of changes in the economic environment as well as changes in regulatory policies and requirements, including implementation of the "Single Security Initiative", among other factors. Further,

This is a Confidential Preliminary Term Sheet. All terms and statements are subject to change.



Fannie Mae may at any time modify our servicing requirements and other procedures in light of our evolving business needs and to minimize losses to taxpayers and our shareholders, among other purposes. These changes may be adopted without regard to investors and in some cases may have a negative impact on Noteholders.

Fannie Mae QC Results

Fannie Mae's post-purchase QC process is designed to evaluate the eligibility of the loans Fannie Mae acquires. In connection with Fannie Mae's post-purchase QC reviews for mortgage loans with LTV ratios greater than 60% and less than or equal to 80% that Fannie Mae acquired during the period from May 1, 2018 through September 30, 2018, Fannie Mae reviewed 2,940 mortgage loans out of the eligible production for the period May 1, 2018 through September 30, 2018, an approximate 2.41% sample, of which 2,501 are in the Reference Pool. Of the 2,940 mortgage loans, approximately 32.04% (or 942 mortgage loans) remain subject to Fannie Mae's post-purchase QC process as of January 30, 2019.

The following summary is preliminary based on the most current information available as of January 30, 2019. The offering memorandum will contain additional information about the results of Fannie Mae's post purchase QC reviews.

Type of Sample	Number of Loans Reviewed*	Loans With Eligibility Defects	Share of Sample with Eligibility Defects
Randomly Selected	1,739	15	0.86%
Discretionary Selections	<u>1,201</u>	<u>19</u>	<u>1.58%</u>
Total	2,940	34	1.16%

*942 loans remain subject to the random or discretionary post-purchase review process as of January 30, 2019, some of which may be determined to have eligibility defects.

None of the loans determined by Fannie Mae to have Eligibility Defects as of January 30, 2019 were included in the Reference Pool.

This is a Confidential Preliminary Term Sheet. All terms and statements are subject to change.



Due Diligence Review In connection with the issuance from time to time of Connecticut Avenue Securities, Fannie Mae engages third-party diligence providers (each, a "Diligence Provider") to conduct limited reviews of mortgage loans that Fannie Mae acquires in a specified calendar quarter and/or calendar month and includes in fully-guaranteed MBS. Each Diligence Provider selects for review a statistically valid, random sample of mortgage loan files (each, a "Diligence Sample") from a broader population of loans that were acquired in the applicable calendar quarter or calendar month and that received full credit and appraisal reviews (and a portion of which received compliance reviews) as part of Fannie Mae's random QC Process.

In its review of second quarter 2018 acquisitions, the relevant Diligence Provider selected a Diligence Sample of 999 mortgage loan files from a broader population of 5,102 loans (all of which met the Preliminary Eligibility Criteria). The related Diligence Sample included 4 Reference Obligations that were included in the final selection of the Reference Pool. The results of the second quarter 2018 review are described more fully in the related sections set forth under "The Reference Obligations" in the offering memorandum.

In its review of third quarter 2018 acquisitions, the relevant Diligence Provider selected a Diligence Sample of 999 mortgage loan files from a broader population of 5,088 loans (all of which met the Preliminary Eligibility Criteria). The related Diligence Sample included 294 Reference Obligations that were included in the final selection of the Reference Pool. The results of the third quarter 2018 review are described more fully in the related sections set forth under "The Reference Obligations" in the offering memorandum.

The "Preliminary Eligibility Criteria" are the Eligibility Criteria other than the criteria specified in clauses (b), (d) and (g) of the definition thereof, and provided that for this purpose clause (j) of the definition thereof is deemed to read as follows: "has an original loan-to-value ratio that is (i) greater than 60% and (ii) less than or equal to 97%."

THE NOTES

Indenture

The Notes will be issued pursuant to an Indenture. The permissible Combinations of RCR Notes that may be issued in exchange for Exchangeable Notes are set forth on Schedule I hereto.

Class Principal Balance

As of any Payment Date and for the Notes (in each case without regard to any exchange of Exchangeable Notes for RCR Notes):

- (a) the maximum dollar amount of principal to which the Holders of each related Class of Notes are then entitled, with such

This is a Confidential Preliminary Term Sheet. All terms and statements are subject to change.



- amount being equal to the initial Class Principal Balance of such Class of Notes, *minus*
- (b) the aggregate amount of principal paid by the Issuer on such Class of Notes on such Payment Date and all prior Payment Dates, *minus*
 - (c) the aggregate amount of Tranche Write-down Amounts allocated to reduce the Class Principal Balance of such Class of Notes on such Payment Date and on all prior Payment Dates, and *plus*
 - (d) the aggregate amount of Tranche Write-up Amounts allocated to increase the Class Principal Balance of such Class of Notes on such Payment Date and on all prior Payment Dates.

The Class Principal Balance of each Class of Notes (other than RCR Notes) will at all times equal the Class Notional Amount of the Reference Tranche that corresponds to such Class of Notes. For the avoidance of doubt, no Tranche Write-up Amount or Tranche Write-down Amount will be applied twice on the same Payment Date. The Class Principal Balance of each outstanding Class of RCR Notes entitled to principal will be equal to the outstanding Class Principal Balance of the Exchangeable Notes that were exchanged for such RCR Notes.

Interest Accrual Amount

With respect to each outstanding Class of Notes (and, solely for purposes of calculating allocations of any Modification Loss Amounts, the Class 1B-2H Reference Tranche) and any Payment Date, an amount equal to the accrued interest at the class coupon on the Class Principal Balance or Class Notional Amount, as applicable, of each Class of Notes immediately prior to such Payment Date (or, in the case of certain RCR Notes, the interest entitlement described in Schedule I hereto).

Interest Payment Amount

With respect to each outstanding Class of Notes and any Payment Date, an amount equal to the Interest Accrual Amount for such Class of Notes, less any Modification Loss Amount for such Payment Date allocated to reduce such amount for such Class of Notes. In each case, interest amounts that are payable by the Issuer on the related Exchangeable Notes will be allocated to and payable on any outstanding RCR Notes.



Payments of Principal

On each Remittance Date, the Investment Agent will liquidate Eligible Investments in the Cash Collateral Account and deposit in the Note Distribution Account an amount necessary to pay principal on the Notes as required under the Indenture. Additionally, on each Remittance Date, Fannie Mae will deposit in the Note Distribution Account any Investment Liquidation Contribution included in the Capital Contribution Amount under the Capital Contribution Agreement for payment of principal on the Notes.

Except as described below, on each Payment Date, the Indenture Trustee will pay, from amounts in the Note Distribution Account, principal to Holders of each outstanding Class of Notes (without regard to any exchanges of Exchangeable Notes for RCR Notes) in an amount equal to the portion of the Subordinate Reduction Amount and the Supplemental Subordinate Reduction Amount allocated, if any, to the corresponding Reference Tranche on such Payment Date. No payments of principal will be made to the Reference Tranches.

On the earlier to occur of (x) the Early Redemption Date, if any, and (y) the Maturity Date, the Issuer will pay 100% of the outstanding Class Principal Balance to Holders of each Class of Notes, after allocations of the Tranche Write-down Amount and the Tranche Write-up Amount for such Payment Date (without regard to any exchanges of Exchangeable Notes for RCR Notes).

In each case, principal amounts that are payable by the Issuer on the related Exchangeable Notes will be allocated to and payable on any outstanding RCR Notes that are entitled to principal.

In addition, on the Termination Date, the Projected Recovery Amount will be included in the calculation of the Principal Recovery Amount.

Event of Default

An "Event of Default" for the Notes under the Indenture will consist of:

- (a) any failure by the Issuer to pay principal or interest on a Note that continues unremedied for 30 days;
- (b) any failure by the Issuer to pay the then-outstanding Class Principal Balance of any Note on its Maturity Date, to the extent payable under the Indenture;
- (c) any failure by the Issuer to perform in any material respect any other obligation under the Indenture if the failure continues unremedied for 60 days after the Indenture Trustee receives notification by the Holders of at least 25% of the outstanding Class Principal Balance of the Notes (with the

This is a Confidential Preliminary Term Sheet. All terms and statements are subject to change.



outstanding Class Principal Balances of the Exchangeable Notes to be determined without regard to any exchanges for RCR Notes);

- (d) specified events of bankruptcy, insolvency or similar proceedings involving the Issuer;
- (e) the Indenture Trustee ceases to have a valid and enforceable first priority security interest on the assets of the Issuer that are subject to the lien of the Indenture, or such security interest proves not to have been valid or enforceable when granted or purported to have been granted;
- (f) it becomes unlawful for the Issuer to perform or comply with any of its obligations under the Notes, the Indenture or any related document to which it is a party;
- (g) the occurrence of the CAA Early Termination Date as a result of the occurrence of a CAA Early Termination Event; or
- (h) Fannie Mae (or its assignee, if any) fails to make payment of the amount, if any, required to be paid in respect of the Capital Contribution Amount for a Remittance Date pursuant to the Capital Contribution Agreement, which failure continues unremedied for 30 days following receipt of written notice of such failure.

Holders of RCR Notes will be entitled to exercise all the voting or direction rights that are otherwise allocated to the related Exchangeable Notes; provided, however, that Holders of any outstanding RCR Notes (other than the Interest Only RCR Notes) will be entitled to exercise their pro rata shares of 99% of the voting or direction rights that are otherwise allocated to the related Exchangeable Notes, and Holders of any outstanding Interest Only RCR Notes will be entitled to exercise 1% of the voting or direction rights that are otherwise allocated to the related Exchangeable Notes.

The appointment of a conservator (or other similar official) by a regulator having jurisdiction over Fannie Mae, whether or not Fannie Mae consents to such appointment, will not constitute an Event of Default.

Rights Upon Event of Default

If an "Event of Default" set forth in clauses (a) through (c) of the definition thereof will have occurred and be continuing, and the Indenture Trustee (at the direction of the Majority Noteholders) or the Majority Noteholders have declared the Notes due and payable and such declaration and the consequences of such "Event of Default" and

This is a Confidential Preliminary Term Sheet. All terms and statements are subject to change.



acceleration have not been rescinded and annulled, or if an Event of Default set forth in clauses (d) through (h) of the definition thereof will have occurred, the Issuer agrees that the Indenture Trustee will, upon direction of the Majority Noteholders, to the extent permitted by applicable law, exercise one or more of the following rights, privileges and remedies:

- (i) institute proceedings for the collection of all amounts then payable on the Notes or otherwise payable under the Indenture, whether by declaration or otherwise, enforce any judgment obtained, and collect from the assets of the Issuer any monies adjudged due;
- (ii) exercise any remedies of a secured party under the New York Uniform Commercial Code, as amended, and take any other appropriate action to protect and enforce the rights and remedies of the Noteholders under the Indenture; and
- (iii) exercise any other rights and remedies that may be available at law or in equity.

If an Event of Default occurs and is continuing, and the Notes have been declared due and payable and such declaration and the consequences of such Event of Default and acceleration have not been rescinded and annulled, the Majority Noteholders may direct the Indenture Trustee to (i) liquidate all assets (other than assets which are held in the form of cash) held in the Cash Collateral Account into cash, (ii) if entitled to do so under the Collateral Administration Agreement, give notice of a CAA Early Termination Event under the Collateral Administration Agreement to Fannie Mae (if the Collateral Administration Agreement has not yet terminated), (iii) demand payment from Fannie Mae of any amounts due under the Collateral Administration Agreement, (iv) demand payment from Fannie Mae (or any assignee thereof, if any) of any amounts due under the Capital Contribution Agreement and (v) distribute from the Note Distribution Account funds in the amounts and priorities as described in the Indenture.

"Majority Noteholders" means the Holders of at least a majority of the aggregate Class Principal Balance of the outstanding Classes of Notes (without giving effect to exchanges of Exchangeable Notes for RCR Notes); provided, however, that any Notes held by Fannie Mae will be disregarded for such purposes (unless at such time all outstanding Classes of Notes are held by Fannie Mae).

No Noteholder has any right under the Indenture to institute any action or proceeding at law or in equity or in bankruptcy or otherwise, or for the appointment of a receiver or trustee, or for any other

This is a Confidential Preliminary Term Sheet. All terms and statements are subject to change.



remedy, unless:

- (a) the Noteholder has previously given the Indenture Trustee written notice of an Event of Default and of the continuance thereof;
- (b) except as otherwise provided in the Indenture, the Majority Noteholders will have made written request of the Indenture Trustee to institute proceedings in respect of such Event of Default in its own name as Indenture Trustee hereunder and such Holders have offered to the Indenture Trustee indemnity satisfactory to it against the costs, expenses and liabilities to be incurred in compliance with such request; and
- (c) the Indenture Trustee for 30 days after its receipt of such notice, request and offer of indemnity set forth in clause (b) above has failed to institute any such proceeding; and
- (d) no direction inconsistent with such written request has been given to the Indenture Trustee during such 30-day period by the Majority Noteholders.

The Majority Noteholders may waive, rescind or annul such declaration of acceleration of the maturity of the Notes as further described in the Indenture.

Holder of such RCR Notes will be entitled to exercise all the voting or direction rights otherwise allocable to the related Exchangeable Notes as further described in the offering memorandum.

**Exchange
Administration**

Under the Indenture, the Exchange Administrator will be engaged by Fannie Mae to perform certain administrative functions with respect to exchanging Exchangeable Notes for RCR Notes and vice versa. The Exchange Administrator will, among other duties set forth in the Indenture, administer all exchanges of Exchangeable Notes for RCR Notes and vice versa, which will include receiving notices of requests for such exchanges from Noteholders, accepting the Notes to be exchanged, and giving notice to the Indenture Trustee of all such exchanges. The Exchange Administrator will notify the Indenture Trustee with respect to any exchanges of Exchangeable Notes for RCR Notes (and vice versa) at the time of such exchange, and the Indenture Trustee will make all subsequent payments in accordance with such notice, unless notified of a subsequent exchange by the Exchange Administrator.

INVESTMENT CONSIDERATIONS

United States Federal For U.S. federal income tax purposes, the sources of payments on the

This is a Confidential Preliminary Term Sheet. All terms and statements are subject to change.



Tax Consequences

Notes (as further described in this term sheet) will be structured as regular interests in one or more real estate mortgage investment conduits (each, a "REMIC"). Accordingly, the Issuer will be treated as holding assets in the form of one or more REMIC regular interests for U.S. federal income tax purposes.

The Issuer will make one or more proper and timely elections to treat certain segregated portions of its assets (exclusive of any assets, rights, obligations and arrangements excluded under the Indenture) as one or more REMICs for U.S. federal income tax purposes.

For U.S. federal income tax purposes, each of the Offered Notes will represent direct or indirect beneficial ownership of one or more regular interests in a REMIC coupled with rights under a notional principal contract.

The arrangement under which the RCR Notes are created will be classified as a grantor trust for U.S. federal income tax purposes. The RCR Notes represent beneficial ownership interests in the applicable Exchangeable Notes for U.S. federal income tax purposes.

Investment Company Act Considerations

The Issuer has not registered and will not register with the SEC as an investment company under the Investment Company Act of 1940 in reliance on Section 2(b) of the Investment Company Act of 1940.

Volcker Rule Considerations

The Issuer has been structured with the intent that it will not constitute a "covered fund" for purposes of the regulations adopted to implement Section 619 of the Dodd-Frank Wall Street Reform and Consumer Protection Act, commonly known as the Volcker Rule.

ERISA Considerations

Subject to the terms and considerations in the offering memorandum, the Notes (other than the Class 1B-1 Notes) are eligible to be purchased by employee benefit plans and entities holding the assets of any such plan.

Legal Investment

The Notes will not be "mortgage related securities" for purposes of the Secondary Mortgage Market Enhancement Act of 1984, as amended ("SMMEA"). No representation is or will be made as to the proper characterization of the Notes for legal investment or other purposes, the ability of particular investors to purchase Notes for legal investment or other purposes or the ability of particular investors to purchase the Notes under applicable legal investment or other restrictions.

Commodity Pool

The Issuer is not expected to be considered a "commodity pool" and, therefore, it is expected that there will be no need for a "commodity pool operator" to be registered pursuant to the Commodity Exchange

This is a Confidential Preliminary Term Sheet. All terms and statements are subject to change.



Act. In the event the Issuer is determined to be a "commodity pool" and Fannie Mae does not elect to designate a CAA Early Termination Event in respect of any resulting CAA Trigger Event, the Indenture Trustee will be directed under the Indenture to take reasonable steps to assist Fannie Mae in satisfying any requirements that arise from such a determination and to notify the Noteholders of such steps.

**Notes are not
Asset-Backed
Securities**

The Notes are not expected to be "asset-backed securities" as defined under Section 3(a)(79) of the Securities Exchange Act of 1934, as amended.

EU Risk Retention

In connection with Article 5(1) of EU Regulation 2017/2402 (the "Securitization Regulation"), Fannie Mae will retain a material net economic interest in the exposure related to the Notes issuance transaction of not less than 5%.

Each EU-regulated investor should consult with its own legal, accounting, regulatory and other advisors and/or its national regulator to determine whether, and to what extent, the information set forth herein and in the offering memorandum generally is sufficient for such EU-regulated investor to satisfy any due diligence requirements under the Securitization Regulation applicable to it, including, without limitation, whether the commitment of Fannie Mae to retain a material net economic interest in the exposure related to the Notes issuance transaction is sufficient to satisfy the retention requirements under the Securitization Regulation. Any such EU-regulated investor is required to independently assess and determine the sufficiency of the information described in the offering memorandum for the purposes of complying with any due diligence requirements under the Securitization Regulation applicable to it.

Notes Not Listed

At the time of issuance, the Notes are not expected to be listed on any national securities exchange or traded on any automated quotation systems of any registered securities association.

**Registration and
Denomination**

The Notes will be issuable in book-entry form through DTC, Euroclear and Clearstream in minimum denominations of \$10,000 with integral multiples of \$1 in excess thereof. The Notes are being offered only to "Qualified Institutional Buyers" (as defined in Rule 144A under the Securities Act) and in offshore transactions to persons who are not "U.S. persons" in reliance on Regulation S under the Securities Act.

Record Date

The business day preceding a Payment Date, with respect to beneficial interests in book-entry Notes and the last business day of the

This is a Confidential Preliminary Term Sheet. All terms and statements are subject to change.



Fannie Mae™

Connecticut Avenue Securities, Series 2019-R02
CONFIDENTIAL PRELIMINARY TERM SHEET

preceding month of a Payment Date, with respect to definitive Notes.

This is a Confidential Preliminary Term Sheet. All terms and statements are subject to change.



EXAMPLE OF PAYMENTS

The following sets forth an example of reporting of principal payments from borrowers on the Reference Obligations and payments on the Notes for the Payment Date in March 2019:

January 1 through January 31	Reporting Period	The Master Servicer will report principal payments on the Reference Obligations received during the related Reporting Period (January 1 through January 31) from borrowers including scheduled principal and full and partial principal prepayments.
January 31	Delinquency Determination Date	The Master Servicer will report the MBA delinquency status on the Reference Obligations determined as of the Delinquency Determination Date (January 31).
March 12	Master Servicer Remittance Date	Master Servicer will provide remittance file in respect of the Reference Obligations to the Indenture Trustee on or prior to the 8th business day of each month.
March 22	Record Date	Distributions on each Payment Date will be made to Holders of record for all classes of Notes as of the business day immediately preceding such Payment Date.
March 22	Remittance Date	One business day prior to the Payment Date, the Indenture Trustee withdraws from the Cash Collateral Account (i) amounts payable to Fannie Mae under the Collateral Administration Agreement and (ii) amounts for deposit to the Note Distribution Account. In addition, Fannie Mae deposits to the Note Distribution Account amounts required under the Collateral Administration Agreement and the Capital Contribution Agreement. Amounts in the Note Distribution Account are payable to Noteholders on the Payment Date.
March 25	Payment Date	On the 25th day of each month (or if the 25th day is not a business day, the next business day), the Issuer will make payments to Noteholders.

Succeeding months will follow the same pattern.

This is a Confidential Preliminary Term Sheet. All terms and statements are subject to change.



SCHEDULE I

**CONNECTICUT AVENUE SECURITIES, SERIES 2019-R02
RCR NOTES
AVAILABLE COMBINATIONS AND RECOMBINATIONS**

Combination	Class of Exchangeable or RCR Note	Maximum Original Balance / Notional Amount (\$)	Exchange Proportions (%) ⁽¹⁾	Class of RCR Note	Maximum Original Balance / Notional Amount (\$)	Exchange Proportions (%) ⁽¹⁾	Class Coupon (%)	Expected Ratings (S&P/Morningstar)
1	1M-2A	\$204,663,000	33.3333333333%	1M-2	\$613,989,000	100.0000000000%	1mL + ___%	B+ (sf) / BBB-
	1M-2B	\$204,663,000	33.3333333333%					
	1M-2C	\$204,663,000	33.3333333333%					
2	1M-2A	\$204,663,000	100.0000000000%	1E-A1	\$204,663,000	100.0000000000%	1mL + ___%	BBB (sf) / A
				1A-I1	\$204,663,000 ⁽²⁾	100.0000000000%	% ⁽³⁾	BBB (sf) / A
3	1M-2A	\$204,663,000	100.0000000000%	1E-A2	\$204,663,000	100.0000000000%	1mL + ___%	BBB (sf) / A
				1A-I2	\$204,663,000 ⁽²⁾	100.0000000000%	% ⁽³⁾	BBB (sf) / A
4	1M-2A	\$204,663,000	100.0000000000%	1E-A3	\$204,663,000	100.0000000000%	1mL + ___%	BBB (sf) / A
				1A-I3	\$204,663,000 ⁽²⁾	100.0000000000%	% ⁽³⁾	BBB (sf) / A
5	1M-2A	\$204,663,000	100.0000000000%	1E-A4	\$204,663,000	100.0000000000%	1mL + ___%	BBB (sf) / A
				1A-I4	\$204,663,000 ⁽²⁾	100.0000000000%	% ⁽³⁾	BBB (sf) / A
6	1M-2B	\$204,663,000	100.0000000000%	1E-B1	\$204,663,000	100.0000000000%	1mL + ___%	BB+ (sf) / BBB+
				1B-I1	\$204,663,000 ⁽²⁾	100.0000000000%	% ⁽³⁾	BB+ (sf) / BBB+
7	1M-2B	\$204,663,000	100.0000000000%	1E-B2	\$204,663,000	100.0000000000%	1mL + ___%	BB+ (sf) / BBB+
				1B-I2	\$204,663,000 ⁽²⁾	100.0000000000%	% ⁽³⁾	BB+ (sf) / BBB+
8	1M-2B	\$204,663,000	100.0000000000%	1E-B3	\$204,663,000	100.0000000000%	1mL + ___%	BB+ (sf) / BBB+
				1B-I3	\$204,663,000 ⁽²⁾	100.0000000000%	% ⁽³⁾	BB+ (sf) / BBB+
9	1M-2B	\$204,663,000	100.0000000000%	1E-B4	\$204,663,000	100.0000000000%	1mL + ___%	BB+ (sf) / BBB+
				1B-I4	\$204,663,000 ⁽²⁾	100.0000000000%	% ⁽³⁾	BB+ (sf) / BBB+
10	1M-2C	\$204,663,000	100.0000000000%	1E-C1	\$204,663,000	100.0000000000%	1mL + ___%	B+ (sf) / BBB-
				1C-I1	\$204,663,000 ⁽²⁾	100.0000000000%	% ⁽³⁾	B+ (sf) / BBB-
11	1M-2C	\$204,663,000	100.0000000000%	1E-C2	\$204,663,000	100.0000000000%	1mL + ___%	B+ (sf) / BBB-
				1C-I2	\$204,663,000 ⁽²⁾	100.0000000000%	% ⁽³⁾	B+ (sf) / BBB-
12	1M-2C	\$204,663,000	100.0000000000%	1E-C3	\$204,663,000	100.0000000000%	1mL + ___%	B+ (sf) / BBB-
				1C-I3	\$204,663,000 ⁽²⁾	100.0000000000%	% ⁽³⁾	B+ (sf) / BBB-
13	1M-2C	\$204,663,000	100.0000000000%	1E-C4	\$204,663,000	100.0000000000%	1mL + ___%	B+ (sf) / BBB-
				1C-I4	\$204,663,000 ⁽²⁾	100.0000000000%	% ⁽³⁾	B+ (sf) / BBB-
14	1E-A1	\$204,663,000	50.0000000000%	1E-D1	\$409,326,000	100.0000000000%	1mL + ___%	BB+ (sf) / BBB+
	1E-B1	\$204,663,000	50.0000000000%					
15	1E-A2	\$204,663,000	50.0000000000%	1E-D2	\$409,326,000	100.0000000000%	1mL + ___%	BB+ (sf) / BBB+
	1E-B2	\$204,663,000	50.0000000000%					
16	1E-A3	\$204,663,000	50.0000000000%	1E-D3	\$409,326,000	100.0000000000%	1mL + ___%	BB+ (sf) / BBB+
	1E-B3	\$204,663,000	50.0000000000%					
17	1E-A4	\$204,663,000	50.0000000000%	1E-D4	\$409,326,000	100.0000000000%	1mL + ___%	BB+ (sf) / BBB+
	1E-B4	\$204,663,000	50.0000000000%					
18	1M-2A	\$204,663,000	50.0000000000%	1E-D5	\$409,326,000	100.0000000000%	1mL + ___%	BB+ (sf) / BBB+
	1M-2B	\$204,663,000	50.0000000000%					
19	1E-B1	\$204,663,000	50.0000000000%	1E-F1	\$409,326,000	100.0000000000%	1mL + ___%	B+ (sf) / BBB-
	1E-C1	\$204,663,000	50.0000000000%					
20	1E-B2	\$204,663,000	50.0000000000%	1E-F2	\$409,326,000	100.0000000000%	1mL + ___%	B+ (sf) / BBB-
	1E-C2	\$204,663,000	50.0000000000%					

This is a Confidential Preliminary Term Sheet. All terms and statements are subject to change.



Combination	Class of Exchangeable or RCR Note	Maximum Original Balance / Notional Amount (\$)	Exchange Proportions (%) ⁽¹⁾	Class of RCR Note	Maximum Original Balance / Notional Amount (\$)	Exchange Proportions (%) ⁽¹⁾	Class Coupon (%)	Expected Ratings (S&P/Morningstar)
21	1E-B3	\$204,663,000	50.0000000000%	1E-F3	\$409,326,000	100.0000000000%	1mL + ___%	B+ (sf) / BBB-
	1E-C3	\$204,663,000	50.0000000000%					
22	1E-B4	\$204,663,000	50.0000000000%	1E-F4	\$409,326,000	100.0000000000%	1mL + ___%	B+ (sf) / BBB-
	1E-C4	\$204,663,000	50.0000000000%					
23	1M-2B	\$204,663,000	50.0000000000%	1E-F5	\$409,326,000	100.0000000000%	1mL + ___%	B+ (sf) / BBB-
	1M-2C	\$204,663,000	50.0000000000%					
24	1A-I1	\$204,663,000 ⁽²⁾	50.0000000000%	1-X1	\$409,326,000 ⁽²⁾	100.0000000000%	___% ⁽⁴⁾	BB+ (sf) / BBB+
	1B-I1	\$204,663,000 ⁽²⁾	50.0000000000%					
25	1A-I2	\$204,663,000 ⁽²⁾	50.0000000000%	1-X2	\$409,326,000 ⁽²⁾	100.0000000000%	___% ⁽⁴⁾	BB+ (sf) / BBB+
	1B-I2	\$204,663,000 ⁽²⁾	50.0000000000%					
26	1A-I3	\$204,663,000 ⁽²⁾	50.0000000000%	1-X3	\$409,326,000 ⁽²⁾	100.0000000000%	___% ⁽⁴⁾	BB+ (sf) / BBB+
	1B-I3	\$204,663,000 ⁽²⁾	50.0000000000%					
27	1A-I4	\$204,663,000 ⁽²⁾	50.0000000000%	1-X4	\$409,326,000 ⁽²⁾	100.0000000000%	___% ⁽⁴⁾	BB+ (sf) / BBB+
	1B-I4	\$204,663,000 ⁽²⁾	50.0000000000%					
28	1B-I1	\$204,663,000 ⁽²⁾	50.0000000000%	1-Y1	\$409,326,000 ⁽²⁾	100.0000000000%	___% ⁽⁴⁾	B+ (sf) / BBB-
	1C-I1	\$204,663,000 ⁽²⁾	50.0000000000%					
29	1B-I2	\$204,663,000 ⁽²⁾	50.0000000000%	1-Y2	\$409,326,000 ⁽²⁾	100.0000000000%	___% ⁽⁴⁾	B+ (sf) / BBB-
	1C-I2	\$204,663,000 ⁽²⁾	50.0000000000%					
30	1B-I3	\$204,663,000 ⁽²⁾	50.0000000000%	1-Y3	\$409,326,000 ⁽²⁾	100.0000000000%	___% ⁽⁴⁾	B+ (sf) / BBB-
	1C-I3	\$204,663,000 ⁽²⁾	50.0000000000%					
31	1B-I4	\$204,663,000 ⁽²⁾	50.0000000000%	1-Y4	\$409,326,000 ⁽²⁾	100.0000000000%	___% ⁽⁴⁾	B+ (sf) / BBB-
	1C-I4	\$204,663,000 ⁽²⁾	50.0000000000%					
32	1M-2C	\$204,663,000	100.0000000000%	1-J1	\$204,663,000 ⁽⁵⁾	100.0000000000%	⁽⁶⁾	B+ (sf) / BBB-
	1-X1	\$409,326,000 ⁽²⁾	200.0000000000%					
33	1M-2C	\$204,663,000	100.0000000000%	1-J2	\$204,663,000 ⁽⁵⁾	100.0000000000%	⁽⁶⁾	B+ (sf) / BBB-
	1-X2	\$409,326,000 ⁽²⁾	200.0000000000%					
34	1M-2C	\$204,663,000	100.0000000000%	1-J3	\$204,663,000 ⁽⁵⁾	100.0000000000%	⁽⁶⁾	B+ (sf) / BBB-
	1-X3	\$409,326,000 ⁽²⁾	200.0000000000%					
35	1M-2C	\$204,663,000	100.0000000000%	1-J4	\$204,663,000 ⁽⁵⁾	100.0000000000%	⁽⁶⁾	B+ (sf) / BBB-
	1-X4	\$409,326,000 ⁽²⁾	200.0000000000%					
36	1E-F5	\$409,326,000	100.0000000000%	1-K1	\$409,326,000 ⁽⁵⁾	100.0000000000%	⁽⁶⁾	B+ (sf) / BBB-
	1A-I1	\$204,663,000 ⁽²⁾	50.0000000000%					
37	1E-F5	\$409,326,000	100.0000000000%	1-K2	\$409,326,000 ⁽⁵⁾	100.0000000000%	⁽⁶⁾	B+ (sf) / BBB-
	1A-I2	\$204,663,000 ⁽²⁾	50.0000000000%					
38	1E-F5	\$409,326,000	100.0000000000%	1-K3	\$409,326,000 ⁽⁵⁾	100.0000000000%	⁽⁶⁾	B+ (sf) / BBB-
	1A-I3	\$204,663,000 ⁽²⁾	50.0000000000%					
39	1E-F5	\$409,326,000	100.0000000000%	1-K4	\$409,326,000 ⁽⁵⁾	100.0000000000%	⁽⁶⁾	B+ (sf) / BBB-
	1A-I4	\$204,663,000 ⁽²⁾	50.0000000000%					
40	1M-2	\$613,989,000	100.0000000000%	1M-2Y	\$613,989,000 ⁽⁷⁾	100.0000000000%	⁽⁸⁾	B+ (sf) / BBB-
				1M-2X	\$613,989,000 ⁽²⁾	100.0000000000%	⁽⁹⁾	B+ (sf) / BBB-
41	1B-1	\$187,956,000	100.0000000000%	1B-1Y	\$187,956,000 ⁽⁷⁾	100.0000000000%	⁽⁸⁾	NR / NR
				1B-1X	\$187,956,000 ⁽²⁾	100.0000000000%	⁽⁹⁾	NR / NR

⁽¹⁾ Exchange proportions are constant proportions of the original Class Principal Balances or Class Notional Amounts, as applicable, of the Class or Classes of Exchangeable or RCR Notes being exchanged. For any combinations that include both a Class of Notes with a Class Notional Amount and a Class of Notes with a Class Principal Balance, the exchange proportion relates to the aggregate original Class Principal Balance of the Class or Classes of Exchangeable or RCR Notes being received in such exchange. In accordance with the exchange proportions, Holders of Exchangeable Notes may exchange those Notes for RCR Notes, and vice versa. In addition, Holders of certain Classes of RCR Notes may exchange those Notes for other Classes of RCR Notes, and vice versa.

⁽²⁾ This Class is an interest only class with a Class Notional Amount as of any Payment Date equal to a specified percentage of the outstanding Class Principal Balance of the related Class of Exchangeable or RCR Note or Notes.

This is a Confidential Preliminary Term Sheet. All terms and statements are subject to change.



- (3) The interest payment on each of these Classes of Interest Only RCR Notes for a Payment Date represents a portion of the interest payment on the Class of Exchangeable Notes included in the related Combination for that Payment Date. For any Payment Date for which One-Month LIBOR is less than the applicable value set forth below (the "Negative LIBOR Trigger"), the interest payment on the specified Class of Interest Only RCR Notes will be calculated as the lesser of (x) the amount calculated based on the Class Coupon set forth above for that Class and (y) the excess of (i) the interest amount payable on the related Class of Exchangeable Notes for that Payment Date over (ii) the interest amount payable on the Class of floating rate RCR Notes included in the same Combination for that Payment Date.

<u>Class of Interest Only RCR Notes</u>	<u>Negative LIBOR Trigger</u>
Class 1A-I1 Notes.....	- %
Class 1A-I2 Notes.....	- %
Class 1A-I3 Notes.....	- %
Class 1A-I4 Notes.....	- %
Class 1B-I1 Notes.....	- %
Class 1B-I2 Notes.....	- %
Class 1B-I3 Notes.....	- %
Class 1B-I4 Notes.....	- %
Class 1C-I1 Notes.....	- %
Class 1C-I2 Notes.....	- %
Class 1C-I3 Notes.....	- %
Class 1C-I4 Notes.....	- %

- (4) The interest payment on each of these Classes of Interest Only RCR Notes for a Payment Date represents a portion of the interest payments on the Classes of RCR Notes included in the related Combination for that Payment Date. For any Payment Date for which One-Month LIBOR is less than the applicable Negative LIBOR Trigger set forth below, the interest payment on the specified Class of Interest Only RCR Notes will be calculated as the lesser of (x) the amount calculated based on the Class Coupon set forth above for that Class and (y) the aggregate of the interest amounts payable on the Classes of RCR Notes included in the same Combination that were exchanged for the specified Class of Interest Only RCR Notes for that Payment Date.

<u>Class of Interest Only RCR Notes</u>	<u>Negative LIBOR Trigger</u>
Class 1-X1 Notes.....	- %
Class 1-X2 Notes.....	- %
Class 1-X3 Notes.....	- %
Class 1-X4 Notes.....	- %
Class 1-Y1 Notes.....	- %
Class 1-Y2 Notes.....	- %
Class 1-Y3 Notes.....	- %
Class 1-Y4 Notes.....	- %

- (5) This Class has a Class Principal Balance as of any Payment Date equal to a specified percentage of the outstanding Class Principal Balance of the related Class of Exchangeable or RCR Notes that has a Class Principal Balance; provided, however that if the Class Principal Balance of the related Class of Exchangeable or RCR Notes that has a Class Principal Balance has been reduced to zero and the Class Notional Amount of the related Class of Exchangeable or RCR Notes with a Class Notional Amount is greater than zero, then this Class will no longer have a Class Principal Balance.
- (6) The interest payment on each of these Classes of RCR Notes for a Payment Date represents the sum of the interest payments on the Classes of Exchangeable and RCR Notes included in the related Combination for that Payment Date. The Class Coupon for each of these Classes of RCR Notes with respect to any Payment Date will be a fraction, expressed as a per annum rate, equal to (i) the aggregate interest amount payable on such Payment Date in respect of the Classes of Notes included in the applicable Combination and exchanged for such Class of RCR Notes, divided by (ii) the Class Principal Balance of such Class of RCR Notes immediately prior to such Payment Date, multiplied by (iii) a fraction, the numerator of which is 360 and the denominator of which is the actual number of days in the related Notes Accrual Period; provided, that on any Payment Date following the reduction of the Class Principal Balance of such Class of RCR Notes to zero, the interest entitlement of such Class of RCR Notes will be equal to the interest accrued on the remaining Class of Interest Only RCR Notes included in the applicable Combination that was exchanged for such Class of RCR Notes.
- (7) This Class has an outstanding Class Principal Amount as of any Payment Date equal to the outstanding Class Principal Balance of the related Class of Exchangeable Notes or RCR Notes.
- (8) The interest payment on this Class of RCR Notes for a Payment Date represents the portion of such interest that is received in respect of the REMIC regular interest component of the related Class of Exchangeable Notes or RCR Notes.
- (9) The interest payment on this Class of Interest Only RCR Notes for a Payment Date represents the portion of such interest attributable to a notional principal contract and does not constitute interest in respect of the REMIC regular interest component of the related Class of Exchangeable Notes or RCR Notes.

This is a Confidential Preliminary Term Sheet. All terms and statements are subject to change.



GLOSSARY OF CERTAIN DEFINED TERMS

"Credit Event Amount" means, with respect to each Payment Date, the aggregate amount of the Credit Event UPB of all Credit Event Reference Obligations for the related Reporting Period.

"Credit Event Net Gain" means, with respect to any Credit Event Reference Obligation, an amount equal to the *excess*, if any, of:

- (a) the related Net Liquidation Proceeds, over
- (b) the *sum* of:
 - (i) the related Credit Event UPB;
 - (ii) the total amount of prior principal forgiveness modifications (excluding any reduction in principal balance that resulted from the origination of a High LTV Refinance Reference Obligation), if any, on the related Credit Event Reference Obligation; and
 - (iii) delinquent accrued interest thereon, calculated at the applicable Current Accrual Rate from the related last-paid interest date through the date such Reference Obligation has been reported as a Credit Event Reference Obligation.

"Credit Event Net Loss" means, with respect to any Credit Event Reference Obligation, an amount equal to the *excess*, if any, of:

- (a) the sum of:
 - (i) the related Credit Event UPB;
 - (ii) the total amount of prior principal forgiveness modifications (excluding any reduction in principal balance that resulted from the origination of a High LTV Refinance Reference Obligation), if any, on the related Credit Event Reference Obligation; and
 - (iii) delinquent accrued interest thereon, calculated at the related Current Accrual Rate from the related last paid interest date through the date such Reference Obligation has been reported as a Credit Event Reference Obligation, *over*
- (b) the related Net Liquidation Proceeds.

As indicated below, the Net Liquidation Proceeds for any Credit Event Reference Obligation will be determined based on the proceeds received (net of related expenses and credits) during the period including the month in which such Reference Obligation became a Credit Event Reference Obligation together with the immediately following three-month period. Any proceeds or expenses received or incurred thereafter with respect to such Credit Event Reference

This is a Confidential Preliminary Term Sheet. All terms and statements are subject to change.



Obligation will be determined on a monthly basis for inclusion in the calculation of the Principal Recovery Amount or Principal Loss Amount, as applicable.

"Credit Event Reference Obligation" means, with respect to any Payment Date, any Reference Obligation with respect to which a Credit Event has occurred.

"Credit Event UPB" means, with respect to each Credit Event Reference Obligation, the unpaid principal balance of such Reference Obligation as of the end of the Reporting Period related to the Payment Date that it became a Credit Event Reference Obligation.

"Current Accrual Rate" means, with respect to each Payment Date and any Reference Obligation, the current mortgage rate, less the greater of (i) the related servicing fee rate and (ii) 35 basis points.

"Delinquency Test" means, for any Payment Date, a test that will be satisfied if:

(a) the sum of the Distressed Principal Balance for the current Payment Date and each of the preceding five Payment Dates, divided by six, is less than

(b) 40% of the excess of (i) the product of (x) the Subordinate Percentage and (y) the aggregate unpaid principal balance of the Reference Obligations as of the preceding Payment Date over (ii) the Principal Loss Amount for the current Payment Date.

"Distressed Principal Balance" means, for any Payment Date, the aggregate unpaid principal balance of the Reference Obligations that are 90 days or more delinquent or are otherwise in foreclosure, bankruptcy or REO status.

"High LTV Refinance Option" means Fannie Mae's high loan-to-value refinance program, effective October 1, 2017, designed to provide refinance opportunities to borrowers with existing Fannie Mae mortgages who are current in their mortgage payments but whose loan-to-value ratios exceed the maximum permitted for standard refinance products under the Selling Guide.

"Minimum Credit Enhancement Test" means, with respect to any Payment Date, a test that will be satisfied if the Subordinate Percentage (solely for purposes of such test, rounded to the sixth decimal place) is greater than or equal to 4.900000%.

"Net Liquidation Proceeds" means, with respect to any Credit Event Reference Obligation, the sum of the related liquidation proceeds and any proceeds received from the related servicer in connection with such Credit Event Reference Obligation, less related expenses and credits, including but not limited to taxes and insurance, legal costs, maintenance and preservation costs, in each case during the period including the month in which such Reference Obligation became a Credit Event Reference Obligation together with the immediately following three-month period.

"Original Accrual Rate" means, with respect to any Reference Obligation, the mortgage rate as of the Cut-off Date, less the greater of (i) the related servicing fee and (ii) 35 basis points.

This is a Confidential Preliminary Term Sheet. All terms and statements are subject to change.



"Preliminary Class Notional Amount" means, for a Payment Date and Reference Tranche, an amount equal to the Class Notional Amount of a Reference Tranche immediately prior to such Payment Date after the application of the Preliminary Tranche Write-down Amount in accordance with the priorities set forth in the Allocation of Tranche Write-down Amount for the related Notes and after the application of the Preliminary Tranche Write-up Amount in accordance with the priorities set forth in the Allocation of Tranche Write-up Amount.

"Preliminary Principal Loss Amount" means, for a Payment Date, an amount equal to the Principal Loss Amount computed without giving effect to clause (d) of the definition of Principal Loss Amount.

"Preliminary Tranche Write-down Amount" means, for a Payment Date, and amount equal to the Tranche Write-down Amount computed using the Preliminary Principal Loss Amount instead of the Principal Loss Amount.

"Preliminary Tranche Write-up Amount" means, for a Payment Date, an amount equal to the Tranche Write-up Amount computed using the Preliminary Principal Loss Amount instead of the Principal Loss Amount.

"Projected Recovery Amount" means, as of the Termination Date, the aggregate amount of subsequent recoveries, net of expenses and credits, projected to be received on the Reference Pool, calculated based on a formula to be derived by Fannie Mae from the actual net recovery experience for the Reference Pool during the 30-month period immediately preceding the Termination Date, plus any additional amount determined by Fannie Mae in its sole discretion to be appropriate for purposes of the foregoing projection in light of then-current market conditions. Information regarding the formula and results of the related calculations will be provided to Holders through Payment Date statements in advance of the Termination Date. In the absence of manifest error, Fannie Mae's determination of the Projected Recovery Amount will be final.

"Senior Percentage" means, with respect to each Payment Date, the percentage equivalent of a fraction, the numerator of which is the Class Notional Amount of the Senior Reference Tranche immediately prior to such Payment Date and the denominator of which is the aggregate unpaid principal balance of the Reference Obligations at the end of the previous Reporting Period.

"Subordinate Percentage" means, with respect to each Payment Date and the Notes, 100% minus the Senior Percentage for such Payment Date.



Weighted Average Life and Modeling Assumptions

Weighted average life of a Class of Notes refers to the average amount of time that will elapse from the date of issuance of such Class of Notes until each dollar is distributed and any Tranche Write-down Amount is allocated in reduction of its principal balance. The weighted average lives of the Notes will be influenced by, among other things, the rate at which principal of the mortgage loans that are Reference Obligations is paid, which may be in the form of scheduled amortization, prepayments or liquidations and the timing and rate of allocation of Tranche Write-down Amounts and Tranche Write-up Amounts.

Prepayments on mortgage loans are commonly measured relative to a constant prepayment standard or model. The model used in this term sheet for the Reference Obligations is a Constant Prepayment Rate (or "CPR"). CPR assumes that the outstanding principal balance of a pool of mortgage loans prepays at a specified constant annual rate. In projecting monthly cashflows, this rate is converted to an equivalent monthly rate. CPR does not purport to be either a historical description of the prepayment experience of mortgage loans or a prediction of the anticipated rate of prepayment of any mortgage loans, including the Reference Obligations. The percentages of CPR in the tables below do not purport to be historical description of relative prepayment experience of the Reference Obligations or predictions of the anticipated relative rate of prepayment of the Reference Obligations. Variations in the prepayment experience and the principal balance of the Reference Obligations that prepay may increase or decrease the percentages of initial Class Principal Balance (and weighted average lives) shown in the following tables. Such variations may occur even if the average prepayment experience of all such Reference Obligations equals any of the specified percentages of CPR.

The Weighted Average Life Tables, Declining Balances Tables, Credit Event Sensitivity Tables, Cumulative Note Write-down Amount Tables and Yield Tables below were prepared based on the following assumptions (collectively, the "Modeling Assumptions"):

- (1) the initial Class Principal Balances or Class Notional Amounts are as set forth in the table on page 4;
- (2) the scheduled monthly payment for each Reference Obligation is based on its outstanding principal balance, current mortgage rate and remaining amortization term to maturity so that it will fully amortize in amounts sufficient for the repayment thereof over its remaining amortization term to maturity;
- (3) each monthly payment of scheduled principal and interest on the Reference Obligations is timely received on the first day of each month commencing in February 2019;
- (4) other than with respect to the Declining Balances Tables, the Reference Obligations experience Credit Events at the indicated CDR percentages and there is no lag between the related Credit Event Amounts and the application of any related Recovery Principal; the Principal Loss Amount is equal to 25% of the Credit Event Amount; in the case of the Declining Balances Tables, it is assumed that no Credit Events occur;
- (5) the Delinquency Test is satisfied for each Payment Date;

This is a Confidential Preliminary Term Sheet. All terms and statements are subject to change.



- (6) principal prepayments in full on the Reference Obligations are received on the last day of each month beginning in the calendar month prior to the month in which the first Payment Date occurs;
- (7) there are no partial principal prepayments on the Reference Obligations;
- (8) the Reference Obligations prepay at the indicated CPR percentages;
- (9) except as specified in the tables, there are no defaults or delinquencies on the Reference Obligations;
- (10) Payment Dates occur on the 25th day of each month commencing in March 2019;
- (11) Remittance Dates occur on the 24th day of each month commencing in March 2019;
- (12) there are no purchases, removals, reinstatements, or substitutions of Reference Obligations;
- (13) there are no Modification Events or data corrections in connection with the Reference Obligations;
- (14) the Maturity Date is the Payment Date in August 2031;
- (15) there is no Early Redemption Option exercised (except in the case of Weighted Average Life (years) to Early Redemption Date);
- (16) the Closing Date is March 13, 2019;
- (17) one-month LIBOR stays constant at 2.48988%;
- (18) the Reference Obligations are aggregated into the assumed mortgage loans having the characteristics as described in "Assumed Characteristics of the Reference Obligations as of the Cut-off Date";
- (19) there are no Reversed Credit Event Reference Obligations;
- (20) the Projected Recovery Amount is zero;
- (21) there are no Originator Rep and Warranty Settlements;
- (22) the Collateral Administration Agreement does not terminate prior to the Payment Date in August 2031 (except in the case of Weighted Average Life (years) to Early Redemption Date);
- (23) there is no Event of Default under the Indenture;
- (24) there are no losses or delays in the liquidation of Eligible Investments in the Cash Collateral Account; and
- (25) the Class 1M-1 margin is equal to 0.90%, the Class 1M-2 margin is equal to 2.35% and the Class 1B-1 margin is equal to 4.25%.

The following default sensitivity tables assume a constant rate of Reference Obligations becoming Credit Event Reference Obligations each month relative to the then outstanding aggregate principal balance of Reference Obligations. This credit event rate (or "CDR") does not purport to be either an historical description of the default experience of the Reference Obligations or a prediction of the anticipated rate of defaults on the Reference Obligations. The rate and extent of actual defaults experienced on the Reference Obligations are likely to differ from those assumed and may differ significantly. A rate of 1.0% CDR assumes Reference Obligations become Credit Event Reference Obligations at an annual rate of 1.0% which remains in effect through the remaining lives of such Reference Obligations. Further, it is unlikely the Reference Obligations will become Credit Event Reference Obligations at any specified percentage of CDR.

This is a Confidential Preliminary Term Sheet. All terms and statements are subject to change.



Assumed Characteristics of the Reference Obligations as of the Cut-off Date

Assumed Reference Obligation Group Number	Outstanding Principal Balance (\$)	Remaining Term to Maturity (months)	Original Term to Maturity (months)	Current Mortgage Rate (%)
1	538,054.36	347	360	3.250
2	750,049.48	354	360	3.375
3	402,155.58	353	360	3.500
4	1,808,493.26	354	360	3.625
5	9,756,925.27	353	360	3.750
6	33,568,699.10	353	359	3.875
7	73,104,151.99	354	360	3.999
8	156,292,555.39	354	360	4.125
9	584,897,591.22	354	360	4.249
10	1,094,243,727.85	355	360	4.375
11	2,142,414,307.92	355	360	4.499
12	4,149,242,233.88	355	360	4.622
13	4,830,263,412.47	355	360	4.749
14	3,784,672,039.58	355	360	4.874
15	2,267,690,237.59	355	360	4.995
16	1,549,902,982.24	355	359	5.125
17	1,734,781,986.86	355	360	5.249
18	1,141,320,636.08	355	360	5.374
19	1,038,882,078.93	355	359	5.499
20	575,522,180.72	355	360	5.624
21	665,781,738.58	355	359	5.750
22	370,309,353.89	355	359	5.874
23	82,265,542.94	355	359	5.993
24	31,822,800.10	356	360	6.125
25	27,710,272.57	355	360	6.250
26	10,535,834.22	353	357	6.375
27	10,736,557.79	355	360	6.500
28	10,341,110.94	355	360	6.625
29	303,634.57	356	360	6.750

This is a Confidential Preliminary Term Sheet. All terms and statements are subject to change.

Declining Balances Tables
Percentages of Original Class Principal Balances Outstanding and Weighted Average Lives

Date	Class 1M-1							
	CPR Prepayment Assumption							
	<u>0%</u>	<u>5%</u>	<u>10%</u>	<u>15%</u>	<u>20%</u>	<u>25%</u>	<u>30%</u>	<u>35%</u>
Closing Date	100	100	100	100	100	100	100	100
February 25, 2020	91	91	82	55	24	0	0	0
February 25, 2021	82	73	19	0	0	0	0	0
February 25, 2022	73	37	0	0	0	0	0	0
February 25, 2023	63	3	0	0	0	0	0	0
February 25, 2024	52	0	0	0	0	0	0	0
February 25, 2025	41	0	0	0	0	0	0	0
February 25, 2026	29	0	0	0	0	0	0	0
February 25, 2027	17	0	0	0	0	0	0	0
February 25, 2028	4	0	0	0	0	0	0	0
February 25, 2029	0	0	0	0	0	0	0	0
February 25, 2030	0	0	0	0	0	0	0	0
February 25, 2031	0	0	0	0	0	0	0	0
February 25, 2032	0	0	0	0	0	0	0	0
Weighted Average Life (years) to Maturity	5.00	2.55	1.47	1.04	0.77	0.62	0.48	0.44
Weighted Average Life (years) to Early Redemption Date*	5.00	2.55	1.47	1.04	0.77	0.62	0.48	0.44

* The Early Redemption Date occurs on the first eligible Payment Date.

This is a Confidential Preliminary Term Sheet. All terms and statements are subject to change.



Class 1M-2
CPR Prepayment Assumption

Date	0%	5%	10%	15%	20%	25%	30%	35%
Closing Date	100	100	100	100	100	100	100	100
February 25, 2020	100	100	100	100	100	98	87	80
February 25, 2021	100	100	100	90	74	59	44	33
February 25, 2022	100	100	88	67	47	30	14	2
February 25, 2023	100	100	72	47	26	9	0	0
February 25, 2024	100	91	57	31	9	0	0	0
February 25, 2025	100	81	44	17	0	0	0	0
February 25, 2026	100	71	33	6	0	0	0	0
February 25, 2027	100	62	23	0	0	0	0	0
February 25, 2028	100	54	13	0	0	0	0	0
February 25, 2029	97	45	5	0	0	0	0	0
February 25, 2030	92	38	0	0	0	0	0	0
February 25, 2031	87	30	0	0	0	0	0	0
February 25, 2032	0	0	0	0	0	0	0	0
Weighted Average Life (years) to Maturity	12.22	9.19	5.85	4.08	3.05	2.42	1.95	1.67
Weighted Average Life (years) to Early Redemption Date*	9.94	8.28	5.83	4.08	3.05	2.42	1.95	1.67

* The Early Redemption Date occurs on the first eligible Payment Date.

This is a Confidential Preliminary Term Sheet. All terms and statements are subject to change.



Class 1B-1

CPR Prepayment Assumption

Date	0%	5%	10%	15%	20%	25%	30%	35%
Closing Date	100	100	100	100	100	100	100	100
February 25, 2020	100	100	100	100	100	100	100	100
February 25, 2021	100	100	100	100	100	100	100	100
February 25, 2022	100	100	100	100	100	100	100	100
February 25, 2023	100	100	100	100	100	100	80	45
February 25, 2024	100	100	100	100	100	77	34	4
February 25, 2025	100	100	100	100	88	39	2	0
February 25, 2026	100	100	100	100	54	10	0	0
February 25, 2027	100	100	100	87	27	0	0	0
February 25, 2028	100	100	100	60	7	0	0	0
February 25, 2029	100	100	100	38	0	0	0	0
February 25, 2030	100	100	94	19	0	0	0	0
February 25, 2031	100	100	73	4	0	0	0	0
February 25, 2032	0	0	0	0	0	0	0	0
Weighted Average Life (years) to Maturity	12.45	12.45	12.13	9.58	7.26	5.76	4.69	3.96
Weighted Average Life (years) to Early Redemption Date*	9.95	9.95	9.95	9.16	7.26	5.76	4.69	3.96

* The Early Redemption Date occurs on the first eligible Payment Date.

Credit Event Sensitivity Table

Cumulative Credit Events (as % of the Cut-off Date Balance)

CDR	0% CPR	5% CPR	10% CPR	15% CPR	20% CPR	25% CPR	30% CPR	35% CPR
0.00%	0.00%	0.00%	0.00%	0.00%	0.00%	0.00%	0.00%	0.00%
0.25%	2.73%	2.05%	1.57%	1.23%	0.99%	0.80%	0.67%	0.56%
0.50%	5.38%	4.05%	3.11%	2.44%	1.96%	1.60%	1.33%	1.12%
0.75%	7.96%	6.01%	4.62%	3.63%	2.91%	2.38%	1.98%	1.68%
1.00%	10.47%	7.91%	6.10%	4.80%	3.86%	3.16%	2.63%	2.23%
1.50%	15.29%	11.59%	8.96%	7.08%	5.70%	4.68%	3.91%	3.31%
2.00%	19.85%	15.10%	11.71%	9.27%	7.49%	6.16%	5.15%	4.38%
3.00%	28.25%	21.63%	16.88%	13.44%	10.91%	9.02%	7.58%	6.45%

This is a Confidential Preliminary Term Sheet. All terms and statements are subject to change.



Cumulative Note Write-down Amount Tables

Class 1M-1 Cumulative Write-down Amount (as % of Class 1M-1 Original Class Principal Balance)

CDR	<u>0% CPR</u>	<u>5% CPR</u>	<u>10% CPR</u>	<u>15% CPR</u>	<u>20% CPR</u>	<u>25% CPR</u>	<u>30% CPR</u>	<u>35% CPR</u>
0.00%	0.00%	0.00%	0.00%	0.00%	0.00%	0.00%	0.00%	0.00%
0.25%	0.00%	0.00%	0.00%	0.00%	0.00%	0.00%	0.00%	0.00%
0.50%	0.00%	0.00%	0.00%	0.00%	0.00%	0.00%	0.00%	0.00%
0.75%	0.00%	0.00%	0.00%	0.00%	0.00%	0.00%	0.00%	0.00%
1.00%	0.00%	0.00%	0.00%	0.00%	0.00%	0.00%	0.00%	0.00%
1.50%	15.28%	0.00%	0.00%	0.00%	0.00%	0.00%	0.00%	0.00%
2.00%	52.24%	9.36%	0.00%	0.00%	0.00%	0.00%	0.00%	0.00%
3.00%	69.95%	65.13%	55.42%	0.00%	0.00%	0.00%	0.00%	0.00%

Class 1M-2 Cumulative Write-down Amount (as % of Class 1M-2 Original Class Principal Balance)

CDR	<u>0% CPR</u>	<u>5% CPR</u>	<u>10% CPR</u>	<u>15% CPR</u>	<u>20% CPR</u>	<u>25% CPR</u>	<u>30% CPR</u>	<u>35% CPR</u>
0.00%	0.00%	0.00%	0.00%	0.00%	0.00%	0.00%	0.00%	0.00%
0.25%	0.00%	0.00%	0.00%	0.00%	0.00%	0.00%	0.00%	0.00%
0.50%	3.85%	0.00%	0.00%	0.00%	0.00%	0.00%	0.00%	0.00%
0.75%	30.19%	10.27%	0.00%	0.00%	0.00%	0.00%	0.00%	0.00%
1.00%	55.81%	29.73%	11.23%	0.00%	0.00%	0.00%	0.00%	0.00%
1.50%	100.00%	67.28%	40.45%	21.18%	7.13%	0.00%	0.00%	0.00%
2.00%	100.00%	100.00%	68.49%	43.58%	25.38%	11.84%	1.58%	0.00%
3.00%	100.00%	100.00%	100.00%	86.11%	60.31%	41.01%	26.29%	14.83%

Class 1B-1 Cumulative Write-down Amount (as % of Class 1B-1 Original Class Principal Balance)

CDR	<u>0% CPR</u>	<u>5% CPR</u>	<u>10% CPR</u>	<u>15% CPR</u>	<u>20% CPR</u>	<u>25% CPR</u>	<u>30% CPR</u>	<u>35% CPR</u>
0.00%	0.00%	0.00%	0.00%	0.00%	0.00%	0.00%	0.00%	0.00%
0.25%	24.18%	1.68%	0.00%	0.00%	0.00%	0.00%	0.00%	0.00%
0.50%	100.00%	68.40%	37.13%	14.77%	0.00%	0.00%	0.00%	0.00%
0.75%	100.00%	100.00%	87.42%	54.41%	30.45%	12.76%	0.00%	0.00%
1.00%	100.00%	100.00%	100.00%	93.34%	61.86%	38.58%	21.03%	7.51%
1.50%	100.00%	100.00%	100.00%	100.00%	100.00%	89.26%	63.53%	43.65%
2.00%	100.00%	100.00%	100.00%	100.00%	100.00%	100.00%	100.00%	79.17%
3.00%	100.00%	100.00%	100.00%	100.00%	100.00%	100.00%	100.00%	100.00%

This is a Confidential Preliminary Term Sheet. All terms and statements are subject to change.



Classes Yield Tables

Class 1M-1 Pre-Tax Yield to Maturity (Price = 100.00000%)

CDR	<u>0% CPR</u>	<u>5% CPR</u>	<u>10% CPR</u>	<u>15% CPR</u>	<u>20% CPR</u>	<u>25% CPR</u>	<u>30% CPR</u>	<u>35% CPR</u>
0.00%	3.41%	3.41%	3.41%	3.41%	3.41%	3.41%	3.41%	3.41%
0.25%	3.41%	3.41%	3.41%	3.41%	3.41%	3.41%	3.41%	3.41%
0.50%	3.41%	3.41%	3.41%	3.41%	3.41%	3.41%	3.41%	3.41%
0.75%	3.41%	3.41%	3.41%	3.41%	3.41%	3.41%	3.41%	3.41%
1.00%	3.41%	3.41%	3.41%	3.41%	3.41%	3.41%	3.41%	3.41%
1.50%	1.54%	3.41%	3.41%	3.41%	3.41%	3.41%	3.41%	3.41%
2.00%	(8.65)%	2.39%	3.41%	3.41%	3.41%	3.41%	3.41%	3.41%
3.00%	(24.55)%	(17.08)%	(7.90)%	3.41%	3.41%	3.41%	3.41%	3.41%

Class 1M-2 Pre-Tax Yield to Maturity (Price = 100.00000%)

CDR	<u>0% CPR</u>	<u>5% CPR</u>	<u>10% CPR</u>	<u>15% CPR</u>	<u>20% CPR</u>	<u>25% CPR</u>	<u>30% CPR</u>	<u>35% CPR</u>
0.00%	4.89%	4.89%	4.89%	4.89%	4.89%	4.89%	4.89%	4.89%
0.25%	4.89%	4.89%	4.89%	4.89%	4.89%	4.89%	4.89%	4.89%
0.50%	4.65%	4.89%	4.89%	4.89%	4.89%	4.89%	4.89%	4.89%
0.75%	2.54%	4.19%	4.89%	4.89%	4.89%	4.89%	4.89%	4.89%
1.00%	(0.55)%	2.50%	3.91%	4.89%	4.89%	4.89%	4.89%	4.89%
1.50%	(18.81)%	(2.89)%	0.72%	2.31%	3.89%	4.89%	4.89%	4.89%
2.00%	(31.49)%	(21.42)%	(3.56)%	(0.96)%	0.81%	2.66%	4.58%	4.89%
3.00%	(56.71)%	(47.46)%	(35.49)%	(9.80)%	(6.02)%	(3.93)%	(1.77)%	0.55%

Class 1B-1 Pre-Tax Yield to Maturity (Price = 100.00000%)

CDR	<u>0% CPR</u>	<u>5% CPR</u>	<u>10% CPR</u>	<u>15% CPR</u>	<u>20% CPR</u>	<u>25% CPR</u>	<u>30% CPR</u>	<u>35% CPR</u>
0.00%	6.83%	6.83%	6.83%	6.83%	6.83%	6.84%	6.84%	6.84%
0.25%	5.25%	6.75%	6.83%	6.83%	6.83%	6.83%	6.84%	6.84%
0.50%	(13.19)%	(0.43)%	3.78%	5.81%	6.83%	6.83%	6.84%	6.84%
0.75%	(30.73)%	(22.35)%	(6.43)%	1.14%	3.94%	5.60%	6.83%	6.84%
1.00%	(48.52)%	(40.38)%	(30.38)%	(10.95)%	(0.74)%	2.19%	4.14%	5.84%
1.50%	(81.65)%	(74.62)%	(66.31)%	(56.03)%	(42.12)%	(10.50)%	(3.72)%	(0.82)%
2.00%	*	*	(97.23)%	(89.29)%	(79.36)%	(66.14)%	(43.99)%	(10.24)%
3.00%	*	*	*	*	*	*	*	*

*Indicates a yield less than (99.99)%.

This is a Confidential Preliminary Term Sheet. All terms and statements are subject to change.



Weighted Average Life Tables

Class 1M-1 Weighted Average Life to Maturity (in Years)

CDR	<u>0% CPR</u>	<u>5% CPR</u>	<u>10% CPR</u>	<u>15% CPR</u>	<u>20% CPR</u>	<u>25% CPR</u>	<u>30% CPR</u>	<u>35% CPR</u>
0.00%	5.00	2.55	1.47	1.04	0.77	0.62	0.48	0.44
0.25%	5.21	3.05	1.63	1.10	0.82	0.62	0.54	0.45
0.50%	5.48	3.73	1.81	1.17	0.85	0.68	0.57	0.45
0.75%	5.83	4.76	2.04	1.26	0.90	0.70	0.57	0.45
1.00%	6.31	6.02	2.34	1.36	0.95	0.73	0.57	0.47
1.50%	7.24	6.85	3.35	1.65	1.08	0.79	0.61	0.50
2.00%	6.46	7.64	5.94	2.10	1.24	0.87	0.67	0.52
3.00%	4.87	5.69	7.31	5.10	1.83	1.11	0.79	0.61

Class 1M-2 Weighted Average Life to Maturity (in Years)

CDR	<u>0% CPR</u>	<u>5% CPR</u>	<u>10% CPR</u>	<u>15% CPR</u>	<u>20% CPR</u>	<u>25% CPR</u>	<u>30% CPR</u>	<u>35% CPR</u>
0.00%	12.22	9.19	5.85	4.08	3.05	2.42	1.95	1.67
0.25%	12.32	10.29	6.81	4.51	3.30	2.58	2.09	1.72
0.50%	12.38	11.27	7.83	5.10	3.61	2.75	2.19	1.80
0.75%	11.64	11.88	8.81	5.92	3.99	2.96	2.32	1.89
1.00%	10.38	11.45	9.49	6.81	4.51	3.22	2.48	1.99
1.50%	7.48	9.18	9.50	7.57	5.79	4.07	2.89	2.23
2.00%	5.46	6.72	8.49	7.55	6.06	4.79	3.68	2.59
3.00%	3.54	3.99	4.74	6.37	5.90	4.91	4.07	3.35

Class 1B-1 Weighted Average Life to Maturity (in Years)

CDR	<u>0% CPR</u>	<u>5% CPR</u>	<u>10% CPR</u>	<u>15% CPR</u>	<u>20% CPR</u>	<u>25% CPR</u>	<u>30% CPR</u>	<u>35% CPR</u>
0.00%	12.45	12.45	12.13	9.58	7.26	5.76	4.69	3.96
0.25%	12.00	12.45	12.45	11.14	8.51	6.51	5.21	4.28
0.50%	7.66	9.52	10.97	11.74	10.14	7.71	5.89	4.72
0.75%	4.95	5.84	7.59	9.39	9.84	8.71	7.11	5.36
1.00%	3.66	4.10	4.80	6.36	8.19	8.13	7.25	6.22
1.50%	2.40	2.57	2.81	3.14	3.71	5.28	6.02	5.72
2.00%	1.78	1.88	1.99	2.14	2.34	2.65	3.28	4.50
3.00%	1.17	1.21	1.26	1.31	1.37	1.45	1.56	1.71

This is a Confidential Preliminary Term Sheet. All terms and statements are subject to change.



Reference Pool Summary

Statistics for the Reference Obligations listed below are based on statistical Cut-off Date information as of December 31, 2018.

Reference Pool Summary				
	<u>Aggregate</u>	<u>Weighted Average</u>	<u>Minimum</u>	<u>Maximum</u>
Number of Reference Obligations	107,109	-	-	-
Aggregate Original Principal Balance	\$26,737,290,000	\$249,627 ⁽¹⁾	\$14,000	\$1,307,000
Aggregate Unpaid Principal Balance	\$26,379,861,345	\$246,290 ⁽¹⁾	\$5,196	\$1,300,707
Gross Mortgage Rate	-	4.895%	3.250%	6.750%
Remaining Term to Stated Maturity	-	355 Months	237 Months	358 Months
Original Term	-	360 Months	241 Months	360 Months
Loan Age	-	4 Months	2 Months	21 Months
Original Loan-to-Value Ratio	-	75.83%	61.00%	80.00%
Original Combined Loan-to-Value Ratio	-	76.36%	61.00%	97.00%
Debt-to-Income Ratio	-	37%	0%	50%
Credit Score	-	745	620	834
% Refinance	33.86%			
% Owner Occupied	85.35%			
% SFR/PUD	89.92%			
Top Five Geographic Concentration of Mortgage Loans (States)				
CA	17.64%			
TX	8.02%			
FL	6.70%			
WA	4.68%			
CO	4.61%			

(1) Average

This is a Confidential Preliminary Term Sheet. All terms and statements are subject to change.



<i>Product Type of the Mortgage Loans</i>							
Product Type	Number of Mortgage Loans	Unpaid Principal Balance (\$)⁽¹⁾	Unpaid Principal Balance (%)⁽¹⁾	W.A. Mortgage Rate (%)	W.A. Original Credit Score	W.A. Original LTV Ratio (%)	W.A. Original CLTV Ratio (%)
Fixed Rate	107,109	26,379,861,345	100.00	4.895	745	75.83	76.36
Total:	107,109	26,379,861,345	100.00	4.895	745	75.83	76.36

<i>Unpaid Principal Balances as of the Origination Date</i>							
Range of Unpaid Principal Balance (\$)	Number of Mortgage Loans	Unpaid Principal Balance (\$)⁽¹⁾	Unpaid Principal Balance (%)⁽¹⁾	W.A. Mortgage Rate (%)	W.A. Original Credit Score	W.A. Original LTV Ratio (%)	W.A. Original CLTV Ratio (%)
0.01 - 25,000.00	27	571,450	*	5.588	725	76.21	76.21
25,000.01 - 50,000.00	905	37,925,960	0.14	5.373	737	75.95	76.28
50,000.01 - 75,000.00	2,941	188,127,502	0.71	5.269	736	75.64	75.88
75,000.01 - 100,000.00	5,675	504,229,356	1.91	5.141	739	75.01	75.19
100,000.01 - 125,000.00	7,672	861,220,058	3.26	5.080	739	75.35	75.55
125,000.01 - 150,000.00	8,770	1,200,203,248	4.55	5.036	739	75.50	75.69
150,000.01 - 200,000.00	18,800	3,294,889,448	12.49	4.987	739	75.63	75.79
200,000.01 - 250,000.00	16,014	3,568,483,053	13.53	4.896	744	75.97	76.12
250,000.01 - 300,000.00	13,855	3,760,898,484	14.26	4.859	746	76.32	76.47
300,000.01 - 350,000.00	10,243	3,281,277,874	12.44	4.828	747	76.29	76.49
350,000.01 - 400,000.00	8,140	3,018,310,100	11.44	4.810	748	76.38	76.68
400,000.01 - 450,000.00	6,620	2,786,544,249	10.56	4.811	748	76.34	77.27
450,000.01 - 500,000.00	3,738	1,700,384,142	6.45	4.857	745	73.81	76.77
500,000.01 - 550,000.00	1,262	653,092,456	2.48	4.906	746	75.50	76.42
550,000.01 - 600,000.00	975	556,142,732	2.11	4.909	747	75.61	75.97
600,000.01 - 650,000.00	693	429,024,156	1.63	4.900	744	75.43	76.84
650,000.01 - 700,000.00	655	433,657,456	1.64	4.926	742	74.18	76.55
700,000.01 - 750,000.00	36	25,903,323	0.10	5.028	749	73.77	75.92
750,000.01 - 800,000.00	22	16,948,748	0.06	5.029	758	74.42	74.42
800,000.01 - 850,000.00	15	12,218,508	0.05	5.115	752	71.81	72.61
850,000.01 - 900,000.00	23	19,879,753	0.08	5.354	763	71.36	71.97
900,000.01 or greater	28	29,929,290	0.11	5.203	757	71.69	71.69
Total:	107,109	26,379,861,345	100.00	4.895	745	75.83	76.36
Average (\$)	249,626.92						

*Indicates a number that is greater than 0.000% but less than 0.005%.

⁽¹⁾ Amounts may not add up to the totals shown due to rounding.

This is a Confidential Preliminary Term Sheet. All terms and statements are subject to change.

*Unpaid Principal Balances as of the Cut-off Date*

Range of Unpaid Principal Balance (\$)	Number of Mortgage Loans	Unpaid Principal Balance (\$) ⁽¹⁾	Unpaid Principal Balance (%) ⁽¹⁾	W.A. Mortgage Rate (%)	W.A. Original Credit Score	W.A. Original LTV Ratio (%)	W.A. Original CLTV Ratio (%)
0.01 - 25,000.00	66	1,160,752	*	5.225	752	77.51	77.51
25,000.01 - 50,000.00	997	41,237,577	0.16	5.320	742	75.89	76.21
50,000.01 - 75,000.00	3,109	199,119,400	0.75	5.250	737	75.72	75.95
75,000.01 - 100,000.00	5,844	521,395,319	1.98	5.131	740	75.04	75.21
100,000.01 - 125,000.00	7,801	880,448,781	3.34	5.074	739	75.36	75.56
125,000.01 - 150,000.00	8,845	1,218,680,802	4.62	5.033	740	75.49	75.69
150,000.01 - 200,000.00	18,845	3,324,061,821	12.60	4.984	739	75.65	75.80
200,000.01 - 250,000.00	16,134	3,628,347,927	13.75	4.894	744	75.97	76.12
250,000.01 - 300,000.00	13,659	3,746,775,357	14.20	4.858	746	76.30	76.45
300,000.01 - 350,000.00	10,247	3,321,070,524	12.59	4.827	747	76.36	76.56
350,000.01 - 400,000.00	7,933	2,977,164,867	11.29	4.813	748	76.30	76.62
400,000.01 - 450,000.00	7,285	3,118,523,325	11.82	4.804	748	75.96	77.27
450,000.01 - 500,000.00	2,737	1,266,763,497	4.80	4.896	742	73.92	76.66
500,000.01 - 550,000.00	1,248	652,879,764	2.47	4.907	745	75.55	76.44
550,000.01 - 600,000.00	951	547,373,418	2.07	4.911	747	75.52	75.88
600,000.01 - 650,000.00	681	426,639,298	1.62	4.896	744	75.52	76.99
650,000.01 - 700,000.00	607	406,130,393	1.54	4.938	741	74.00	76.45
700,000.01 - 750,000.00	36	26,098,206	0.10	5.012	751	74.04	75.96
750,000.01 - 800,000.00	23	17,927,230	0.07	5.022	760	73.56	73.56
800,000.01 - 850,000.00	13	10,726,587	0.04	5.199	754	72.29	73.21
850,000.01 - 900,000.00	20	17,407,212	0.07	5.368	763	71.36	72.06
900,000.01 or greater	28	29,929,290	0.11	5.203	757	71.69	71.69
Total:	107,109	26,379,861,345	100.00	4.895	745	75.83	76.36
Average (\$)	246,289.87						

*Indicates a number that is greater than 0.000% but less than 0.005%.

⁽¹⁾ Amounts may not add up to the totals shown due to rounding.

This is a Confidential Preliminary Term Sheet. All terms and statements are subject to change.



<i>Gross Mortgage Rates of the Mortgage Loans as of the Cut-off Date</i>							
Range of Gross Mortgage Rates (%)	Number of Mortgage Loans	Unpaid Principal Balance (\$)⁽¹⁾	Unpaid Principal Balance (%)⁽¹⁾	W.A. Mortgage Rate (%)	W.A. Original Credit Score	W.A. Original LTV Ratio (%)	W.A. Original CLTV Ratio (%)
3.001 - 3.250	1	538,054	*	3.250	800	74.00	74.00
3.251 - 3.500	4	1,152,205	*	3.419	778	77.26	77.26
3.501 - 3.750	45	11,565,419	0.04	3.730	774	76.89	77.03
3.751 - 4.000	363	106,672,851	0.40	3.960	765	75.38	75.59
4.001 - 4.250	2,484	741,190,147	2.81	4.223	771	75.34	75.46
4.251 - 4.500	11,705	3,236,658,036	12.27	4.457	769	75.65	75.84
4.501 - 4.750	33,792	8,979,505,646	34.04	4.690	762	76.01	76.42
4.751 - 5.000	24,333	6,052,362,277	22.94	4.920	742	75.79	76.58
5.001 - 5.250	14,643	3,284,684,969	12.45	5.191	721	75.73	76.50
5.251 - 5.500	10,114	2,180,202,715	8.26	5.434	709	75.59	76.24
5.501 - 5.750	6,564	1,241,303,919	4.71	5.692	699	75.90	76.30
5.751 - 6.000	2,509	452,574,897	1.72	5.896	692	76.39	76.70
6.001 - 6.250	355	59,533,073	0.23	6.183	677	77.26	77.32
6.251 - 6.500	129	21,272,392	0.08	6.438	665	77.85	77.85
6.501 - 6.750	68	10,644,746	0.04	6.629	665	78.40	78.78
Total:	107,109	26,379,861,345	100.00	4.895	745	75.83	76.36
Weighted Average (%)	4.895						

*Indicates a number that is greater than 0.000% but less than 0.005%.

⁽¹⁾ Amounts may not add up to the totals shown due to rounding.

This is a Confidential Preliminary Term Sheet. All terms and statements are subject to change.



<i>Seasoning of the Mortgage Loans as of the Cut-off Date</i>							
Seasoning (months)	Number of Mortgage Loans	Unpaid Principal Balance (\$)⁽¹⁾	Unpaid Principal Balance (%)⁽¹⁾	W.A. Mortgage Rate (%)	W.A. Original Credit Score	W.A. Original LTV Ratio (%)	W.A. Original CLTV Ratio (%)
2	1,160	209,500,693	0.79	4.983	742	75.15	75.41
3	19,386	4,610,490,362	17.48	4.924	743	75.72	76.20
4	35,230	8,555,343,659	32.43	4.921	744	75.77	76.27
5	35,944	9,098,613,887	34.49	4.892	746	75.93	76.49
6	12,751	3,249,330,730	12.32	4.829	746	76.00	76.58
7	1,856	463,194,755	1.76	4.756	744	75.73	76.16
8	632	157,515,458	0.60	4.577	750	74.91	75.50
9	62	14,027,353	0.05	4.487	751	74.94	75.35
10	27	6,983,789	0.03	4.311	734	74.70	74.70
11	21	4,695,660	0.02	4.272	730	74.81	74.81
12	6	1,348,023	0.01	4.405	765	76.19	76.19
13	4	1,230,780	*	3.670	775	74.92	74.92
14	7	2,067,264	0.01	4.177	743	74.60	74.60
15	13	2,636,000	0.01	4.246	750	74.86	75.80
16	5	1,539,279	0.01	4.123	751	73.60	73.60
18	1	332,196	*	4.875	647	80.00	80.00
19	1	192,872	*	4.375	721	71.00	71.00
20	2	566,391	*	4.425	749	78.00	78.00
21	1	252,197	*	4.375	705	78.00	78.00
Total:	107,109	26,379,861,345	100.00	4.895	745	75.83	76.36
Weighted Average (months)	4.49						

*Indicates a number that is greater than 0.000% but less than 0.005%.

⁽¹⁾ Amounts may not add up to the totals shown due to rounding.

This is a Confidential Preliminary Term Sheet. All terms and statements are subject to change.



<i>Original Loan-to-Value Ratio of the Mortgage Loans at Origination</i>							
Range of Original LTV (%)	Number of Mortgage Loans	Unpaid Principal Balance (\$)⁽¹⁾	Unpaid Principal Balance (%)⁽¹⁾	W.A. Mortgage Rate (%)	W.A. Original Credit Score	W.A. Original LTV Ratio (%)	W.A. Original CLTV Ratio (%)
60.01 - 65.00	7,710	1,852,636,044	7.02	4.836	741	63.40	64.69
65.01 - 70.00	14,550	3,625,940,920	13.75	4.896	734	68.63	69.50
70.01 - 75.00	23,514	5,659,660,314	21.45	4.959	746	74.09	74.79
75.01 - 80.00	61,335	15,241,624,067	57.78	4.878	747	79.70	79.98
Total:	107,109	26,379,861,345	100.00	4.895	745	75.83	76.36
Weighted Average (%)	75.83						

<i>Combined Loan-to-Value Ratio of the Mortgage Loans at Origination</i>							
Range of Combined LTV (%)	Number of Mortgage Loans	Unpaid Principal Balance (\$)⁽¹⁾	Unpaid Principal Balance (%)⁽¹⁾	W.A. Mortgage Rate (%)	W.A. Original Credit Score	W.A. Original LTV Ratio (%)	W.A. Original CLTV Ratio (%)
60.01 - 65.00	7,390	1,732,811,464	6.57	4.832	741	63.40	63.41
65.01 - 70.00	14,088	3,449,006,548	13.07	4.893	734	68.62	68.64
70.01 - 75.00	22,841	5,410,983,155	20.51	4.958	746	74.06	74.10
75.01 - 80.00	60,462	14,978,449,542	56.78	4.874	747	79.61	79.70
80.01 - 85.00	332	105,172,342	0.40	4.979	737	73.57	83.97
85.01 - 90.00	1,355	497,797,821	1.89	4.985	743	74.87	89.61
90.01 - 95.00	600	197,715,416	0.75	5.041	740	76.38	94.63
95.01 - 97.00	41	7,925,056	0.03	5.011	719	78.31	96.82
Total:	107,109	26,379,861,345	100.00	4.895	745	75.83	76.36
Weighted Average (%)	76.36						

⁽¹⁾ Amounts may not add up to the totals shown due to rounding.*This is a Confidential Preliminary Term Sheet. All terms and statements are subject to change.*



<i>Credit Scores of the Mortgage Loans at Origination</i>							
Credit Scores at Origination	Number of Mortgage Loans	Unpaid Principal Balance (\$)⁽¹⁾	Unpaid Principal Balance (%)⁽¹⁾	W.A. Mortgage Rate (%)	W.A. Original Credit Score	W.A. Original LTV Ratio (%)	W.A. Original CLTV Ratio (%)
620	127	26,470,226	0.10	5.417	620	74.35	74.61
621 - 640	2,901	620,260,611	2.35	5.414	631	74.54	74.86
641 - 660	4,475	992,678,475	3.76	5.355	651	74.76	75.06
661 - 680	6,207	1,409,577,577	5.34	5.282	671	74.99	75.38
681 - 700	9,004	2,165,461,627	8.21	5.103	691	75.28	75.86
701 - 720	11,333	2,807,917,484	10.64	4.990	710	75.83	76.60
721 - 740	12,041	3,011,593,200	11.42	4.878	730	75.90	76.66
741 - 760	14,052	3,547,824,494	13.45	4.797	751	76.14	76.79
761 - 780	16,677	4,276,611,151	16.21	4.772	771	76.13	76.61
781 - 800	19,332	4,945,792,939	18.75	4.746	791	76.10	76.51
801 - 820	10,791	2,540,532,404	9.63	4.742	807	75.98	76.24
821 - 840	169	35,141,159	0.13	4.742	824	74.81	75.02
Total:	107,109	26,379,861,345	100.00	4.895	745	75.83	76.36
Weighted Average	745						

<i>Debt-to-Income Ratio of the Mortgage Loans at Origination*</i>							
Range of Debt-to-Income Ratios (%)	Number of Mortgage Loans	Unpaid Principal Balance (\$)⁽¹⁾	Unpaid Principal Balance (%)⁽¹⁾	W.A. Mortgage Rate (%)	W.A. Original Credit Score	W.A. Original LTV Ratio (%)	W.A. Original CLTV Ratio (%)
0 - 20	6,832	1,500,269,797	5.69	4.793	765	75.88	76.03
21 - 25	8,818	2,025,746,540	7.68	4.796	760	76.08	76.36
26 - 30	12,510	2,976,075,988	11.28	4.825	755	76.17	76.61
31 - 35	15,338	3,717,353,048	14.09	4.871	749	76.12	76.76
36 - 40	17,905	4,412,980,471	16.73	4.908	744	75.99	76.67
41 - 45	21,181	5,325,480,982	20.19	4.941	738	75.76	76.51
46 - 50	24,525	6,421,954,520	24.34	4.949	733	75.36	75.73
Total:	107,109	26,379,861,345	100.00	4.895	745	75.83	76.36
Weighted Average (%)	37						

* Debt-to-Income Ratios are shown rounded to the nearest integer.

⁽¹⁾ Amounts may not add up to the totals shown due to rounding.

This is a Confidential Preliminary Term Sheet. All terms and statements are subject to change.



<i>Occupancy Status of the Mortgage Loans as of the Cut-off Date</i>							
Occupancy Status	Number of Mortgage Loans	Unpaid Principal Balance (\$)⁽¹⁾	Unpaid Principal Balance (%)⁽¹⁾	W.A. Mortgage Rate (%)	W.A. Original Credit Score	W.A. Original LTV Ratio (%)	W.A. Original CLTV Ratio (%)
Owner-Occupied	88,113	22,516,201,199	85.35	4.849	742	75.96	76.56
Investment Property	12,929	2,463,811,046	9.34	5.374	755	74.18	74.19
Second Home	6,067	1,399,849,101	5.31	4.783	763	76.69	76.90
Total:	107,109	26,379,861,345	100.00	4.895	745	75.83	76.36

<i>Loan Purpose of the Mortgage Loans</i>							
Loan Purpose	Number of Mortgage Loans	Unpaid Principal Balance (\$)⁽¹⁾	Unpaid Principal Balance (%)⁽¹⁾	W.A. Mortgage Rate (%)	W.A. Original Credit Score	W.A. Original LTV Ratio (%)	W.A. Original CLTV Ratio (%)
Purchase	69,472	17,446,758,330	66.14	4.809	755	76.94	77.55
Cash-Out Refinance	29,040	6,752,152,166	25.60	5.136	721	73.77	73.81
No Cash-Out Refinance	8,597	2,180,950,850	8.27	4.838	733	73.30	74.72
Total:	107,109	26,379,861,345	100.00	4.895	745	75.83	76.36

<i>Property Type of the Mortgage Loans as of the Cut-off Date</i>							
Property Type	Number of Mortgage Loans	Unpaid Principal Balance (\$)⁽¹⁾	Unpaid Principal Balance (%)⁽¹⁾	W.A. Mortgage Rate (%)	W.A. Original Credit Score	W.A. Original LTV Ratio (%)	W.A. Original CLTV Ratio (%)
1-4 Family Dwelling Unit	63,869	15,403,279,335	58.39	4.919	741	75.63	76.07
PUD	30,948	8,318,363,372	31.53	4.848	748	76.27	77.00
Condo	10,911	2,417,865,200	9.17	4.900	753	75.53	75.90
Manufactured Housing	857	125,779,739	0.48	5.133	739	76.94	77.04
Co-op	524	114,573,699	0.43	4.643	758	76.35	76.41
Total:	107,109	26,379,861,345	100.00	4.895	745	75.83	76.36

⁽¹⁾ Amounts may not add up to the totals shown due to rounding.

This is a Confidential Preliminary Term Sheet. All terms and statements are subject to change.



<i>Geographic Concentration of the Mortgage Loans</i>							
State or Territory	Number of Mortgage Loans	Unpaid Principal Balance (\$)⁽¹⁾	Unpaid Principal Balance (%)⁽¹⁾	W.A. Mortgage Rate (%)	W.A. Original Credit Score	W.A. Original LTV Ratio (%)	W.A. Original CLTV Ratio (%)
California	12,759	4,653,573,463	17.64	4.943	738	74.51	75.14
Texas	9,345	2,116,711,384	8.02	4.946	740	76.32	77.11
Florida	8,235	1,766,328,711	6.70	4.958	742	76.07	76.65
Washington	3,977	1,234,059,773	4.68	4.938	743	75.41	75.73
Colorado	4,059	1,216,573,810	4.61	4.896	746	75.00	75.64
New York	3,492	1,040,059,168	3.94	4.840	744	75.42	75.60
Arizona	3,779	845,904,535	3.21	4.987	745	76.21	76.74
Illinois	3,802	804,716,435	3.05	4.821	752	76.69	77.04
Georgia	3,549	785,869,343	2.98	4.857	744	76.30	77.04
North Carolina	3,552	777,108,456	2.95	4.835	752	76.49	76.96
Pennsylvania	3,263	692,746,672	2.63	4.787	751	76.75	77.32
New Jersey	2,301	646,837,752	2.45	4.861	746	76.20	76.47
Virginia	2,378	646,250,147	2.45	4.820	750	76.39	77.03
Oregon	2,199	615,251,245	2.33	4.947	747	75.63	76.16
Massachusetts	1,990	610,809,751	2.32	4.877	742	75.11	75.44
Michigan	3,413	606,860,926	2.30	4.904	744	76.46	76.64
Minnesota	2,664	597,499,684	2.26	4.789	754	76.91	77.53
Utah	1,966	521,293,595	1.98	4.896	745	75.89	76.12
Ohio	2,958	482,278,429	1.83	4.831	749	76.82	77.12
Nevada	1,885	462,768,009	1.75	5.039	734	75.44	75.84
Tennessee	2,142	448,528,876	1.70	4.903	746	76.15	76.62
Wisconsin	2,237	428,910,928	1.63	4.776	756	76.61	77.00
Missouri	2,271	404,685,243	1.53	4.873	751	76.59	77.18
Maryland	1,396	382,019,113	1.45	4.867	747	75.80	77.11
South Carolina	1,847	379,948,180	1.44	4.863	749	76.34	76.83
Indiana	1,745	299,070,218	1.13	4.885	748	76.94	77.31
Idaho	1,133	254,849,705	0.97	4.900	746	76.08	76.33
Connecticut	918	219,080,165	0.83	4.774	750	76.43	76.70
Alabama	1,133	214,564,381	0.81	4.823	750	76.32	76.61
Louisiana	1,001	208,149,247	0.79	4.888	744	76.09	76.45
Kentucky	994	178,646,264	0.68	4.879	746	76.78	77.40
Iowa	896	158,049,851	0.60	4.727	749	76.77	77.75
Oklahoma	870	154,424,041	0.59	4.891	748	76.74	77.29
Hawaii	347	147,111,737	0.56	4.817	744	74.92	76.16
Nebraska	783	145,724,975	0.55	4.775	756	76.91	77.13
New Hampshire	529	130,595,645	0.50	4.865	742	76.54	76.96
Montana	534	129,601,561	0.49	4.801	750	76.12	76.32
Kansas	678	129,508,637	0.49	4.836	750	76.57	77.00
Arkansas	627	113,761,568	0.43	4.791	753	77.04	77.25
New Mexico	503	96,257,542	0.36	4.978	751	75.96	76.43
Mississippi	499	90,248,929	0.34	4.845	746	76.54	76.80
Delaware	345	81,327,397	0.31	4.850	755	76.47	76.83
Rhode Island	278	64,476,286	0.24	4.971	740	75.42	75.86
Maine	284	60,991,941	0.23	4.921	743	76.26	76.31
District of Columbia	160	60,761,586	0.23	4.869	745	74.81	76.21
Wyoming	242	52,549,736	0.20	4.792	752	76.83	77.28
South Dakota	265	52,290,211	0.20	4.751	754	76.11	77.16
North Dakota	197	41,066,568	0.16	4.760	754	76.65	77.35
West Virginia	225	35,994,838	0.14	4.868	744	76.05	76.10
Alaska	144	35,855,670	0.14	4.923	753	75.88	75.88
Vermont	171	34,274,812	0.13	4.774	750	76.53	76.84
Puerto Rico	135	17,850,394	0.07	4.778	749	76.72	76.72
Virgin Islands	13	4,667,601	0.02	5.184	740	75.72	75.72
Guam	1	516,212	*	5.000	816	80.00	80.00
Total:	107,109	26,379,861,345	100.00	4.895	745	75.83	76.36

*Indicates a number that is greater than 0.000% but less than 0.005%.

⁽¹⁾ Amounts may not add up to the totals shown due to rounding.

This is a Confidential Preliminary Term Sheet. All terms and statements are subject to change.



<i>Geographic Concentration of the Mortgage Loans (Top 10 Metropolitan Statistical Areas ("MSA"))*</i>							
Top 10 MSAs	Number of Mortgage Loans	Unpaid Principal Balance (\$)⁽¹⁾	Unpaid Principal Balance (%)⁽¹⁾	W.A. Mortgage Rate (%)	W.A. Original Credit Score	W.A. Original LTV Ratio (%)	W.A. Original CLTV Ratio (%)
Non-Metro	9,558	1,796,816,680	6.81	4.891	747	76.16	76.46
Los Angeles-Long Beach-Anaheim, CA	3,515	1,497,070,335	5.68	4.939	737	74.24	74.77
New York-Newark-Jersey City, NY-NJ-PA	4,197	1,390,425,658	5.27	4.848	743	75.55	75.72
Dallas-Fort Worth-Arlington, TX	3,563	850,821,854	3.23	4.958	737	76.26	77.03
Seattle-Tacoma-Bellevue, WA	2,133	773,777,274	2.93	4.931	742	75.32	75.63
Denver-Aurora-Lakewood, CO	2,305	730,967,587	2.77	4.896	745	74.72	75.31
Chicago-Naperville-Elgin, IL-IN-WI	3,104	720,103,461	2.73	4.822	753	76.58	76.91
Phoenix-Mesa-Chandler, AZ	2,808	656,957,281	2.49	4.991	743	76.31	76.90
Riverside-San Bernardino-Ontario, CA	2,096	617,643,251	2.34	4.955	731	74.80	75.57
Atlanta-Sandy Springs-Alpharetta, GA	2,620	614,002,716	2.33	4.858	744	76.32	77.16
Other	71,210	16,731,275,248	63.42	4.889	746	75.98	76.54
Total:	107,109	26,379,861,345	100.00	4.895	745	75.83	76.36

*Definitions of Metropolitan Statistical Areas (MSA) are updated periodically by the United States Office of Management and Budget. Fannie Mae seeks to update its loan level disclosure from time to time to reflect corresponding changes.

<i>Geographic Concentration of the Mortgage Loans (Top 10 Zip Codes)</i>							
Top 10 Zip Codes	Number of Mortgage Loans	Unpaid Principal Balance (\$)⁽¹⁾	Unpaid Principal Balance (%)⁽¹⁾	W.A. Mortgage Rate (%)	W.A. Original Credit Score	W.A. Original LTV Ratio (%)	W.A. Original CLTV Ratio (%)
95747	93	33,848,848	0.13	4.889	745	75.34	75.82
80134	84	30,172,811	0.11	4.857	751	75.75	76.95
85383	93	29,021,583	0.11	4.973	745	76.56	77.26
80016	74	27,648,144	0.10	4.864	741	75.85	76.94
80602	71	26,882,400	0.10	4.810	741	75.70	76.23
92336	71	24,432,306	0.09	4.972	731	74.69	75.24
75035	74	24,364,777	0.09	4.829	751	75.99	77.98
75070	89	23,816,871	0.09	4.885	745	76.11	76.56
94513	52	23,778,515	0.09	4.882	735	75.00	75.86
30040	81	23,196,424	0.09	4.814	746	76.69	77.81
Other	106,327	26,112,698,667	98.99	4.895	745	75.83	76.35
Total:	107,109	26,379,861,345	100.00	4.895	745	75.83	76.36

⁽¹⁾ Amounts may not add up to the totals shown due to rounding.

This is a Confidential Preliminary Term Sheet. All terms and statements are subject to change.



<i>Original Term to Maturity of the Mortgage Loans</i>							
Original Term to Maturity (months)	Number of Mortgage Loans	Unpaid Principal Balance (\$)⁽¹⁾	Unpaid Principal Balance (%)⁽¹⁾	W.A. Mortgage Rate (%)	W.A. Original Credit Score	W.A. Original LTV Ratio (%)	W.A. Original CLTV Ratio (%)
241 - 259	6	688,536	*	5.024	726	71.54	71.54
260 - 279	44	7,595,193	0.03	5.113	714	73.09	73.40
280 - 299	14	3,039,800	0.01	4.967	732	71.56	71.56
300 - 319	662	133,741,084	0.51	4.974	727	73.58	73.89
320 - 339	66	15,799,897	0.06	4.840	735	73.41	73.41
340 - 359	58	13,663,283	0.05	4.942	740	74.73	74.73
360	106,259	26,205,333,552	99.34	4.894	745	75.84	76.37
Total:	107,109	26,379,861,345	100.00	4.895	745	75.83	76.36
Weighted Average (months)	360						

*Indicates a number that is greater than 0.000% but less than 0.005%.

<i>Remaining Term to Maturity of the Mortgage Loans as of the Cut-off Date</i>							
Remaining Term to Maturity (months)	Number of Mortgage Loans	Unpaid Principal Balance (\$)⁽¹⁾	Unpaid Principal Balance (%)⁽¹⁾	W.A. Mortgage Rate (%)	W.A. Original Credit Score	W.A. Original LTV Ratio (%)	W.A. Original CLTV Ratio (%)
240 or less	1	108,762	*	5.500	651	80.00	80.00
241 - 250	4	457,006	*	5.051	749	69.95	69.95
251 - 260	10	2,130,092	0.01	4.956	727	73.08	73.08
261 - 270	9	1,775,871	0.01	4.798	692	70.20	71.53
271 - 280	27	3,934,018	0.01	5.302	716	74.21	74.21
281 - 290	13	2,917,781	0.01	4.986	733	71.62	71.62
291 - 300	632	126,778,825	0.48	4.975	726	73.62	73.95
301 - 357	105,265	26,034,180,795	98.69	4.894	745	75.85	76.38
358 or greater	1,148	207,578,197	0.79	4.984	742	75.18	75.45
Total:	107,109	26,379,861,345	100.00	4.895	745	75.83	76.36
Weighted Average (months)	355						

*Indicates a number that is greater than 0.000% but less than 0.005%.

⁽¹⁾ Amounts may not add up to the totals shown due to rounding.

This is a Confidential Preliminary Term Sheet. All terms and statements are subject to change.



<i>Seller of the Mortgage Loans</i>							
Seller	Number of Mortgage Loans	Unpaid Principal Balance (\$)⁽¹⁾	Unpaid Principal Balance (%)⁽¹⁾	W.A. Mortgage Rate (%)	W.A. Original Credit Score	W.A. Original LTV Ratio (%)	W.A. Original CLTV Ratio (%)
Wells Fargo Bank, N.A.	24,952	6,509,952,790	24.68	4.859	746	76.27	76.81
Quicken Loans Inc.	11,239	2,674,491,751	10.14	4.990	728	74.44	74.66
United Shore Financial Services LLC	4,367	1,209,346,270	4.58	4.854	753	75.96	76.27
JPMorgan Chase Bank, NA	4,397	1,204,268,631	4.57	4.623	758	75.52	75.73
Freedom Mortgage Corp.	3,057	946,743,800	3.59	4.890	743	75.96	76.90
SunTrust Mortgage Inc.	2,228	574,509,476	2.18	4.958	743	76.34	77.19
Flagstar Bank, FSB	1,919	530,317,789	2.01	4.947	741	75.50	75.99
NationStar Mortgage, LLC	2,092	517,180,279	1.96	5.119	724	75.00	75.31
Fairway Independent Mortgage Corporation	1,788	444,585,731	1.69	5.001	746	76.17	77.03
U.S. Bank N.A.	2,018	438,368,656	1.66	4.741	754	76.57	77.20
Other	49,052	11,330,096,172	42.95	4.913	746	75.90	76.49
Total:	107,109	26,379,861,345	100.00	4.895	745	75.83	76.36

<i>Servicers of the Mortgage Loans as of the Cut-off Date</i>							
Servicer	Number of Mortgage Loans	Unpaid Principal Balance (\$)⁽¹⁾	Unpaid Principal Balance (%)⁽¹⁾	W.A. Mortgage Rate (%)	W.A. Original Credit Score	W.A. Original LTV Ratio (%)	W.A. Original CLTV Ratio (%)
Wells Fargo Bank, N.A.	24,952	6,509,952,790	24.68	4.859	746	76.27	76.81
Quicken Loans Inc.	11,239	2,674,491,751	10.14	4.990	728	74.44	74.66
Matrix Financial Services Corporation	5,442	1,400,951,265	5.31	4.989	743	75.89	76.59
Freedom Mortgage Corp.	4,149	1,247,517,896	4.73	4.894	746	76.02	76.93
United Shore Financial Services LLC	4,367	1,209,346,270	4.58	4.854	753	75.96	76.27
JPMorgan Chase Bank, NA	4,397	1,204,268,631	4.57	4.623	758	75.52	75.73
SunTrust Mortgage Inc.	2,228	574,509,476	2.18	4.958	743	76.34	77.19
NationStar Mortgage, LLC	2,159	572,236,705	2.17	5.049	732	75.44	75.94
U.S. Bank N.A.	2,018	438,368,656	1.66	4.741	754	76.57	77.20
AmeriHome Mortgage Company, LLC	1,824	412,390,903	1.56	4.879	756	75.81	76.48
Other	44,334	10,135,827,002	38.42	4.912	745	75.87	76.43
Total:	107,109	26,379,861,345	100.00	4.895	745	75.83	76.36

⁽¹⁾ Amounts may not add up to the totals shown due to rounding.

This is a Confidential Preliminary Term Sheet. All terms and statements are subject to change.



<i>Origination Channel of the Mortgage Loans</i>							
Origination Channel	Number of Mortgage Loans	Unpaid Principal Balance (\$)⁽¹⁾	Unpaid Principal Balance (%)⁽¹⁾	W.A. Mortgage Rate (%)	W.A. Original Credit Score	W.A. Original LTV Ratio (%)	W.A. Original CLTV Ratio (%)
Retail	61,826	14,287,108,874	54.16	4.913	743	75.65	76.02
Correspondent	36,196	9,457,591,775	35.85	4.870	746	76.20	76.95
Broker	9,087	2,635,160,697	9.99	4.886	747	75.47	76.03
Total:	107,109	26,379,861,345	100.00	4.895	745	75.83	76.36

<i>Mortgage Loans with Subordinate Financing at Origination</i>							
Mortgage Loans with Subordinate Financing at Origination	Number of Mortgage Loans	Unpaid Principal Balance (\$)⁽¹⁾	Unpaid Principal Balance (%)⁽¹⁾	W.A. Mortgage Rate (%)	W.A. Original Credit Score	W.A. Original LTV Ratio (%)	W.A. Original CLTV Ratio (%)
No	104,287	25,389,920,357	96.25	4.892	745	75.91	75.91
Yes	2,822	989,940,988	3.75	4.967	740	73.84	87.83
Total:	107,109	26,379,861,345	100.00	4.895	745	75.83	76.36

⁽¹⁾ Amounts may not add up to the totals shown due to rounding.

This is a Confidential Preliminary Term Sheet. All terms and statements are subject to change.



<i>First Payment Date of the Mortgage Loans</i>							
First Payment Date	Number of Mortgage Loans	Unpaid Principal Balance (\$)⁽¹⁾	Unpaid Principal Balance (%)⁽¹⁾	W.A. Mortgage Rate (%)	W.A. Original Credit Score	W.A. Original LTV Ratio (%)	W.A. Original CLTV Ratio (%)
April 2017	1	252,197	*	4.375	705	78.00	78.00
May 2017	2	566,391	*	4.425	749	78.00	78.00
June 2017	1	192,872	*	4.375	721	71.00	71.00
July 2017	1	332,196	*	4.875	647	80.00	80.00
September 2017	5	1,539,279	0.01	4.123	751	73.60	73.60
October 2017	13	2,636,000	0.01	4.246	750	74.86	75.80
November 2017	7	2,067,264	0.01	4.177	743	74.60	74.60
December 2017	4	1,230,780	*	3.670	775	74.92	74.92
January 2018	6	1,348,023	0.01	4.405	765	76.19	76.19
February 2018	21	4,695,660	0.02	4.272	730	74.81	74.81
March 2018	27	6,983,789	0.03	4.311	734	74.70	74.70
April 2018	62	14,027,353	0.05	4.487	751	74.94	75.35
May 2018	632	157,515,458	0.60	4.577	750	74.91	75.50
June 2018	1,856	463,194,755	1.76	4.756	744	75.73	76.16
July 2018	12,751	3,249,330,730	12.32	4.829	746	76.00	76.58
August 2018	35,944	9,098,613,887	34.49	4.892	746	75.93	76.49
September 2018	35,230	8,555,343,659	32.43	4.921	744	75.77	76.27
October 2018	19,386	4,610,490,362	17.48	4.924	743	75.72	76.20
November 2018	1,160	209,500,693	0.79	4.983	742	75.15	75.41
Total:	107,109	26,379,861,345	100.00	4.895	745	75.83	76.36

*Indicates a number that is greater than 0.000% but less than 0.005%.

⁽¹⁾ Amounts may not add up to the totals shown due to rounding.

This is a Confidential Preliminary Term Sheet. All terms and statements are subject to change.



<i>Maturity Date of the Mortgage Loans</i>							
Maturity Date (year)	Number of Mortgage Loans	Unpaid Principal Balance (\$)⁽¹⁾	Unpaid Principal Balance (%)⁽¹⁾	W.A. Mortgage Rate (%)	W.A. Original Credit Score	W.A. Original LTV Ratio (%)	W.A. Original CLTV Ratio (%)
2038	1	108,762	*	5.500	651	80.00	80.00
2039	4	457,006	*	5.051	749	69.95	69.95
2040	14	3,029,348	0.01	4.853	710	71.28	71.28
2041	31	4,688,613	0.02	5.265	716	74.19	74.69
2042	14	3,039,800	0.01	4.967	732	71.56	71.56
2043	632	126,778,825	0.48	4.975	726	73.62	73.95
2044	28	6,694,344	0.03	4.960	729	72.71	72.71
2045	38	8,659,515	0.03	4.865	737	74.90	74.90
2046	30	7,408,297	0.03	4.815	733	71.73	71.73
2047	96	23,235,961	0.09	4.633	743	75.19	75.29
2048	106,221	26,195,760,874	99.30	4.895	745	75.84	76.37
Total:	107,109	26,379,861,345	100.00	4.895	745	75.83	76.36

*Indicates a number that is greater than 0.000% but less than 0.005%.

⁽¹⁾ Amounts may not add up to the totals shown due to rounding.

This is a Confidential Preliminary Term Sheet. All terms and statements are subject to change.

**First Time Homebuyer**

	Number of Mortgage Loans	Unpaid Principal Balance (\$) ⁽¹⁾	Unpaid Principal Balance (%) ⁽¹⁾	W.A. Mortgage Rate (%)	W.A. Original Credit Score	W.A. Original LTV Ratio (%)	W.A. Original CLTV Ratio (%)
First Time Homebuyer							
No	86,466	21,249,224,539	80.55	4.926	744	75.41	75.90
Yes	20,643	5,130,636,806	19.45	4.765	747	77.56	78.26
Total:	107,109	26,379,861,345	100.00	4.895	745	75.83	76.36

Number of Borrowers

	Number of Mortgage Loans	Unpaid Principal Balance (\$) ⁽¹⁾	Unpaid Principal Balance (%) ⁽¹⁾	W.A. Mortgage Rate (%)	W.A. Original Credit Score	W.A. Original LTV Ratio (%)	W.A. Original CLTV Ratio (%)
Number of Borrowers							
1	56,772	12,900,408,005	48.90	4.910	745	75.75	76.21
2 or More	50,337	13,479,453,340	51.10	4.880	744	75.91	76.50
Total:	107,109	26,379,861,345	100.00	4.895	745	75.83	76.36

Number of Units

	Number of Mortgage Loans	Unpaid Principal Balance (\$) ⁽¹⁾	Unpaid Principal Balance (%) ⁽¹⁾	W.A. Mortgage Rate (%)	W.A. Original Credit Score	W.A. Original LTV Ratio (%)	W.A. Original CLTV Ratio (%)
Number of Units							
1	104,108	25,557,089,707	96.88	4.883	744	75.92	76.46
2	2,039	516,720,945	1.96	5.220	748	73.52	73.60
3	459	141,874,873	0.54	5.319	747	72.60	72.71
4	503	164,175,821	0.62	5.316	755	72.52	72.53
Total:	107,109	26,379,861,345	100.00	4.895	745	75.83	76.36

⁽¹⁾ Amounts may not add up to the totals shown due to rounding.*This is a Confidential Preliminary Term Sheet. All terms and statements are subject to change.*



<i>Mortgage Insurance Coverage</i>							
Mortgage Insurance Coverage	Number of Mortgage Loans	Unpaid Principal Balance (\$)⁽¹⁾	Unpaid Principal Balance (%)⁽¹⁾	W.A. Mortgage Rate (%)	W.A. Original Credit Score	W.A. Original LTV Ratio (%)	W.A. Original CLTV Ratio (%)
None	107,109	26,379,861,345	100.00	4.895	745	75.83	76.36
Total:	107,109	26,379,861,345	100.00	4.895	745	75.83	76.36

<i>Delinquency Status of the Mortgage Loans as of the Cut-off Date</i>							
Delinquency Status	Number of Mortgage Loans	Unpaid Principal Balance (\$)⁽¹⁾	Unpaid Principal Balance (%)⁽¹⁾	W.A. Mortgage Rate (%)	W.A. Original Credit Score	W.A. Original LTV Ratio (%)	W.A. Original CLTV Ratio (%)
Current	107,109	26,379,861,345	100.00	4.895	745	75.83	76.36
Total:	107,109	26,379,861,345	100.00	4.895	745	75.83	76.36

<i>Historical Delinquency of the Mortgage Loans Since Acquisition as of the Cut-off Date</i>							
Delinquency Status Since Acquisition	Number of Mortgage Loans	Unpaid Principal Balance (\$)⁽¹⁾	Unpaid Principal Balance (%)⁽¹⁾	W.A. Mortgage Rate (%)	W.A. Original Credit Score	W.A. Original LTV Ratio (%)	W.A. Original CLTV Ratio (%)
Never Delinquent	107,109	26,379,861,345	100.00	4.895	745	75.83	76.36
Total:	107,109	26,379,861,345	100.00	4.895	745	75.83	76.36

<i>HomeReady Indicator</i>							
HomeReady Indicator	Number of Mortgage Loans	Unpaid Principal Balance (\$)⁽¹⁾	Unpaid Principal Balance (%)⁽¹⁾	W.A. Mortgage Rate (%)	W.A. Original Credit Score	W.A. Original LTV Ratio (%)	W.A. Original CLTV Ratio (%)
No	103,585	25,708,416,905	97.45	4.898	745	75.79	76.32
Yes	3,524	671,444,441	2.55	4.765	728	77.34	77.74
Total:	107,109	26,379,861,345	100.00	4.895	745	75.83	76.36

<i>Property Inspection Waiver</i>							
Property Inspection Waiver	Number of Mortgage Loans	Unpaid Principal Balance (\$)⁽¹⁾	Unpaid Principal Balance (%)⁽¹⁾	W.A. Mortgage Rate (%)	W.A. Original Credit Score	W.A. Original LTV Ratio (%)	W.A. Original CLTV Ratio (%)
No	99,825	24,246,453,209	91.91	4.907	744	75.97	76.53
Yes	7,284	2,133,408,136	8.09	4.761	747	74.26	74.34
Total:	107,109	26,379,861,345	100.00	4.895	745	75.83	76.36

⁽¹⁾ Amounts may not add up to the totals shown due to rounding.

This is a Confidential Preliminary Term Sheet. All terms and statements are subject to change.



Contact Information

Nomura Securities International, Inc.

ASSET FINANCE

Jack Kattan	(212) 667-9092	jack.kattan@nomura.com
Philip Theodoropoulos	(212) 667-1485	philip.theodoropoulos@nomura.com
Vishal Elijah	(212) 436-8234	vishal.elijah@nomura.com
Paul Gentile	(212) 436-8443	paul.gentile@nomura.com

STRUCTURING AND MODELING

David Ritchie	(212) 298-4302	david.ritchie@nomura.com
Michael Bianchini	(212) 667-9443	michael.bianchini@nomura.com
Danny Byun	(212) 667-8973	danny.byun@nomura.com

SYNDICATE

Patrick Quinn	(212) 667-9394	patrick.quinn@nomura.com
Brian Logan	(212) 667-2328	brian.logan1@nomura.com

TRADING

Brian Hargrave	(212) 667-9689	brian.hargrave@nomura.com
Brian Sullivan	(212) 667-2150	brian.sullivan2@nomura.com
Jonathan Ballard	(212) 667-2408	jonathan.ballard@nomura.com



Contact Information

Wells Fargo Securities, LLC

BANKING

Evan Siegert	(212) 214-5603	evan.siegert@wellsfargo.com
Bogdan Kulik	(212) 214-8704	bogdan.kulik@wellsfargo.com
Phil Pettinella	(704) 410-2307	philip.pettinella@wellsfargo.com
Matt Sweeney	(704) 410-2370	matt.b.sweeney@wellsfargo.com

TRADING

Max Jaeger	(704) 410-3303	max.jaeger@wellsfargo.com
Casey Neilson	(704) 410-3303	casey.neilson@wellsfargo.com

SYNDICATE

Bill Orr	(704) 410-3008	bill.orr@wellsfargo.com
Christie Tintle	(704) 410-3008	christie.tintle@wellsfargo.com
Daniel Boxer	(704) 410-3008	daniel.c.boxer@wellsfargo.com
Summers Binnicker	(704) 410-3008	summers.binnicker@wellsfargo.com