

Andrea Horvat-Kramaric

Head of Communication and Spokesperson, ECDC

EuroPCom 2020

29 June, 2020

It is New Year's eve 2019.



 **Departures**

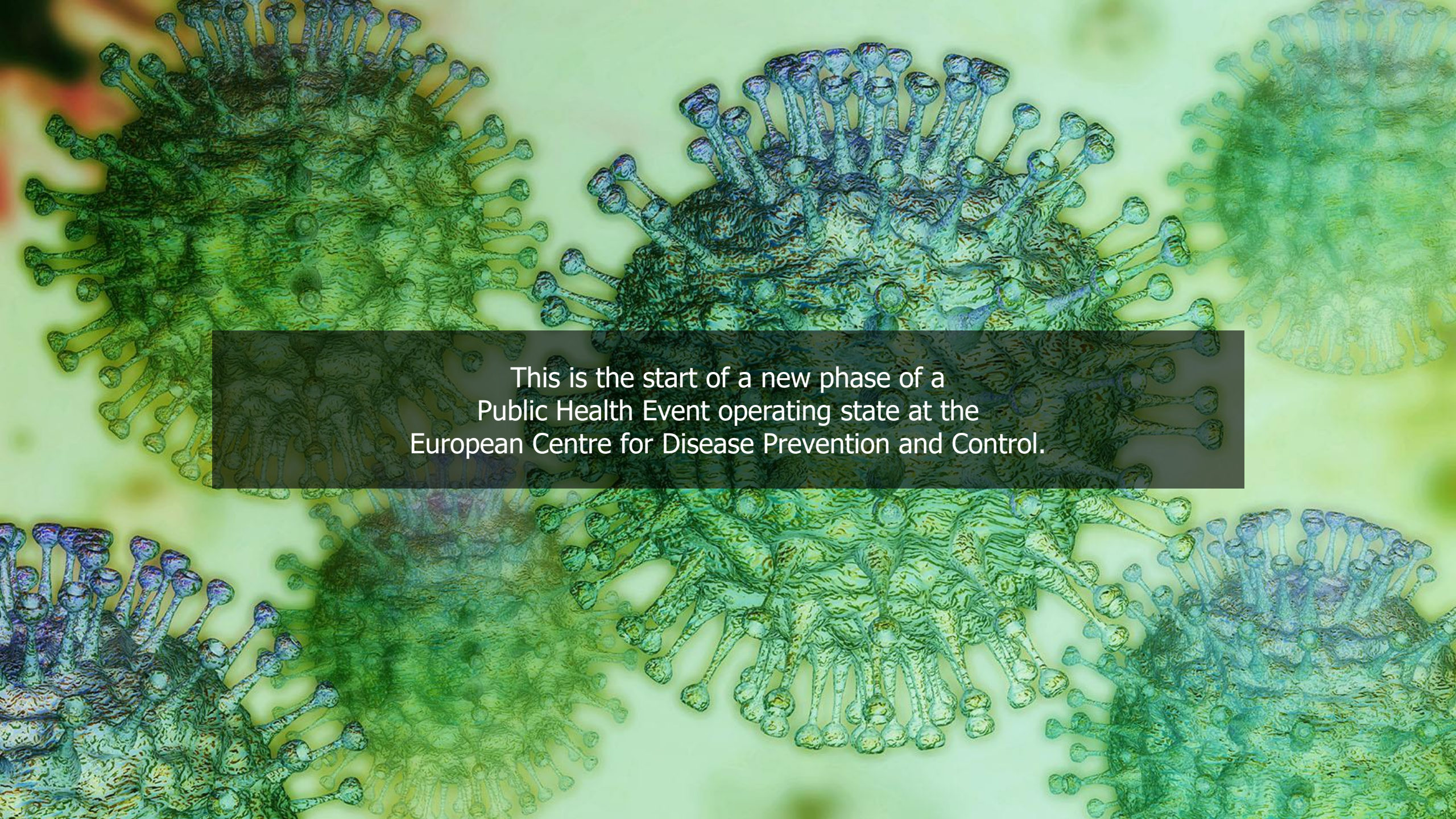
YEAR
2020

STATUS
HAPPY
NEW YEAR




On the brink of a new decade, a late night worker at ECDC notices incoming news of an emerging cluster of pneumonia cases in Wuhan City, China





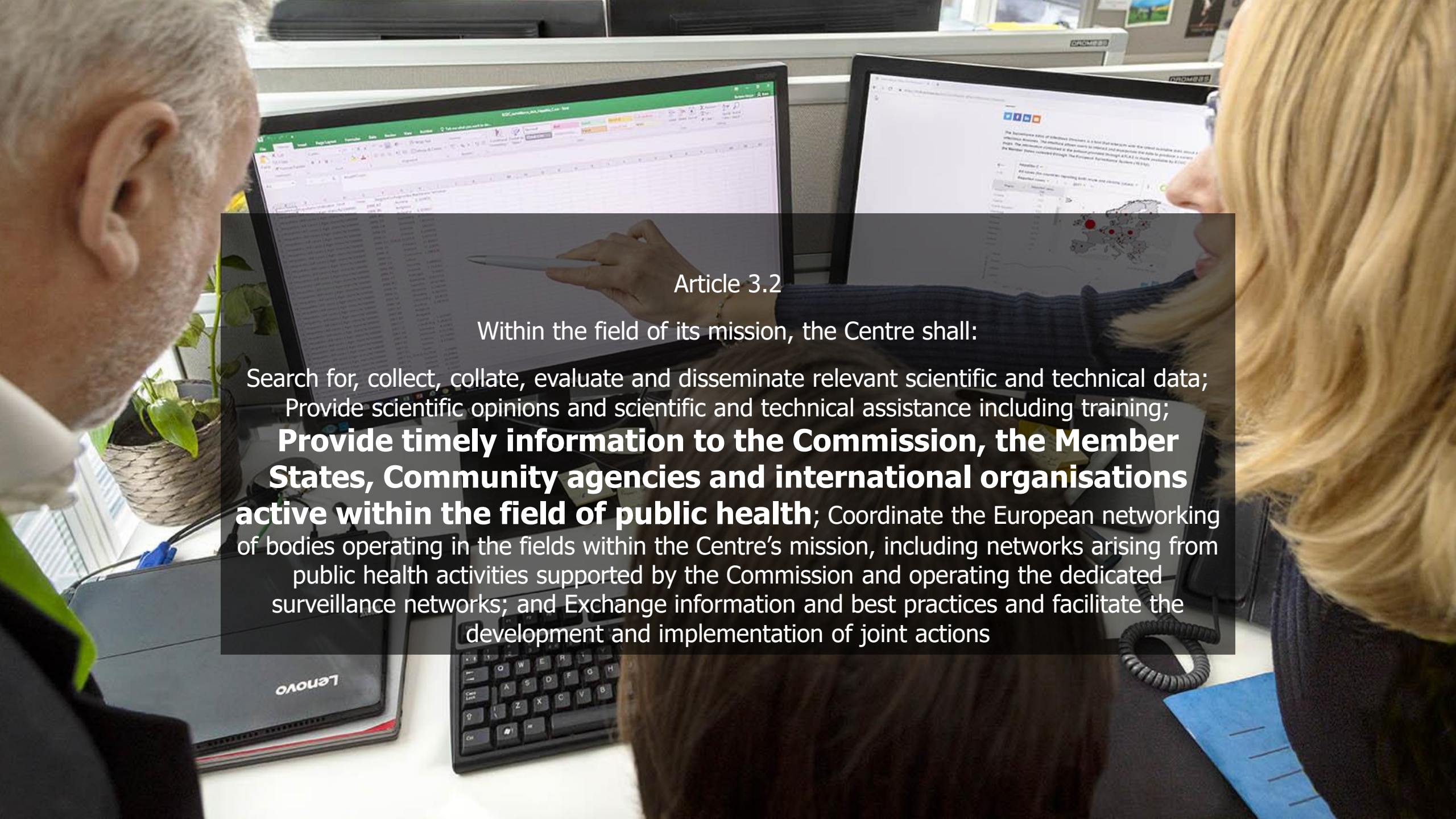
This is the start of a new phase of a
Public Health Event operating state at the
European Centre for Disease Prevention and Control.



Remember 2002-2003?







Article 3.2

Within the field of its mission, the Centre shall:

Search for, collect, collate, evaluate and disseminate relevant scientific and technical data;
Provide scientific opinions and scientific and technical assistance including training;
Provide timely information to the Commission, the Member States, Community agencies and international organisations active within the field of public health; Coordinate the European networking of bodies operating in the fields within the Centre's mission, including networks arising from public health activities supported by the Commission and operating the dedicated surveillance networks; and Exchange information and best practices and facilitate the development and implementation of joint actions

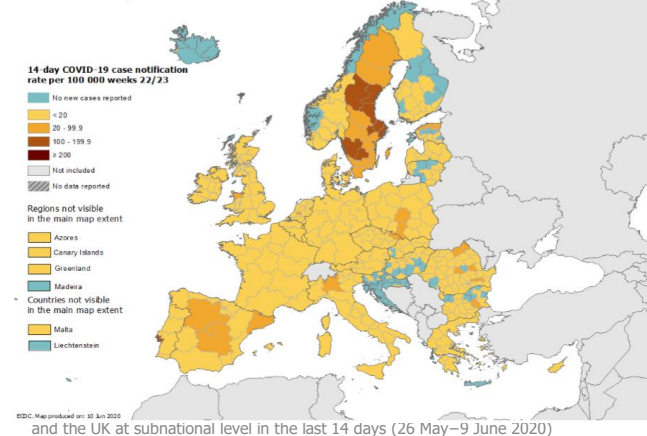
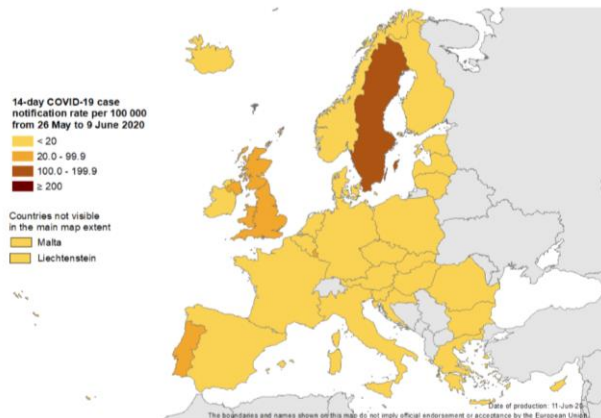
Rapid risk assessment



RAPID RISK ASSESSMENT

Coronavirus disease 2019 (COVID-19) in the EU/EEA and the UK – tenth update

11 June 2020



This assessment is based on information available to ECDC at the time of publication and unless otherwise stated, the assessment of risk refers to the risk that existed at the time of writing. It follows the ECDC rapid risk assessment methodology, with relevant adaptations. The overall risk is determined by a combination of risk of the probability of an event occurring and of its consequences (impact) to individuals or the population.

Risk assessment questions

- What is the risk of COVID-19 to the general population as of 10 June 2020 in the EU/EEA and the UK?
- What is the risk of COVID-19 to the population with defined factors associated with severe disease outcome as of 10 June 2020 in the EU/EEA and the UK?
- What is the risk of COVID-19 incidence rising to levels that require stricter response measures, as a consequence of lifting/adjusting community level physical distancing measures?

What is the risk of COVID-19 to the general population as of 10 June 2020 in the EU/EEA and UK?

The risk of COVID 19 in the general population of the EU/EEA and the UK is currently assessed as:

Low in areas where community transmission has been reduced and/or maintained at low levels and where there is extensive testing showing very low detection rates.

Moderate in areas where there is substantial ongoing community transmission and where appropriate physical distancing measures are not in place.

What is the risk of COVID-19 to the population with defined factors associated with severe disease outcome as of 10 June 2020 in the EU/EEA and UK?

The risk of COVID 19 to the population with defined factors associated with severe disease outcome is currently assessed as:

Moderate in areas where community transmission has been reduced and/or maintained at low levels and where there is extensive testing showing very low detection rates.

Very high in areas where there is substantial ongoing community transmission and where appropriate physical distancing measures are not in place.

What is the risk of COVID-19 incidence rising to levels that require stricter response measures, as a consequence of lifting/adjusting community level physical distancing measures?

The risk of COVID-19 incidence rising to a level that may require the re-introduction of stricter control measures is currently assessed as:

Moderate if measures are phased out gradually, when only sporadic or cluster transmission is reported, and when appropriate monitoring systems and capacities for extensive testing and contact tracing are in place.

High if measures are phased out when there is still ongoing community transmission, and no appropriate monitoring systems and capacities for extensive testing and contact tracing are in place.

COVID-19 publications (as of 1 June 2020)

Top 5 Publications	Page views	Downloads
1. Considerations relating to social distancing measures in response to COVID-19 (including updates)	33,980	11,069
2. Using face masks in the community - Reducing COVID-19 transmission from potentially asymptomatic or pre-symptomatic people through the use of face masks, 8 April 2020	24,442	6,441
3. Contact tracing: Public health management of persons, including healthcare workers, having had contact with COVID-19 cases in the European Union (including updates)	20,854	4,999
4. Guidance for wearing and removing personal protective equipment in healthcare settings for the care of patients with suspected or confirmed COVID-19, 28 Feb 2020	17,167	9,372
5. Guidelines for the use of non-pharmaceutical measures to delay and mitigate the impact of 2019-nCoV, 10 Feb 2020	13,631	8,257

As of 1 June 2020, ECDC has published **10 Risk Assessments** on COVID-19. In total, these have received **206,188 page views** and **54,589 downloads** so far.

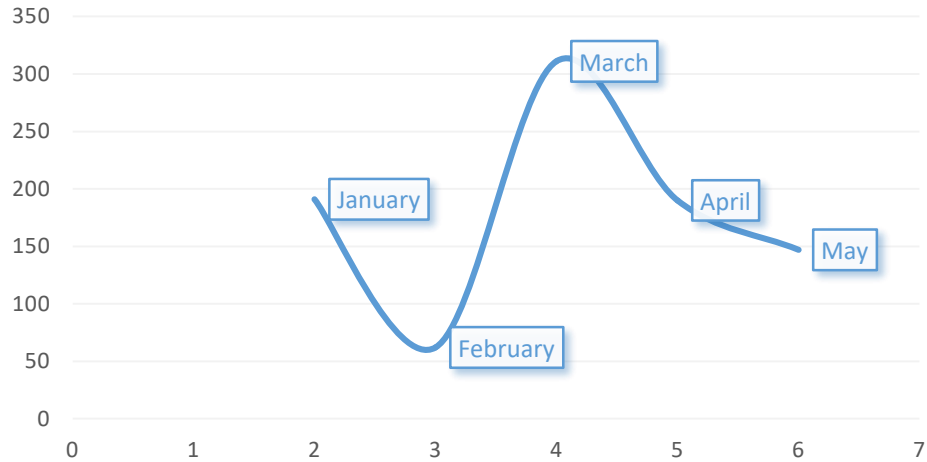
RRA 7, published on 12 March 2020, has received **59,725 page views** - the most views of all COVID-19 risk assessments and more views than any other ECDC risk assessment ever published.

Media Request Statistics

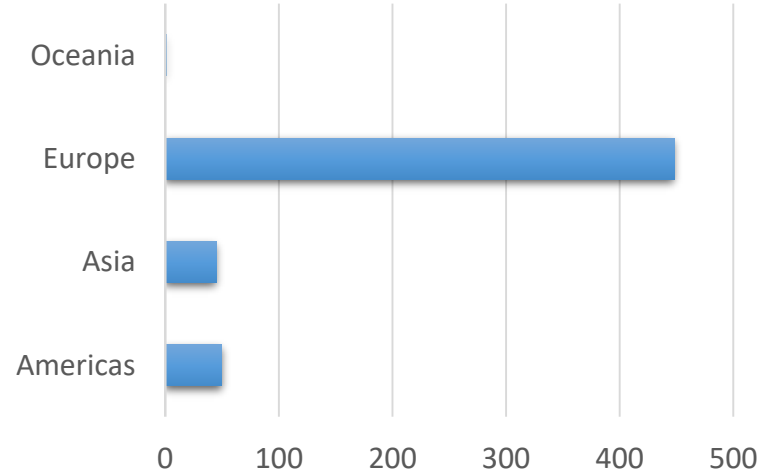
 **902**
Total number of requests

PHE Event - COVID-19
22 Jan - 23 May

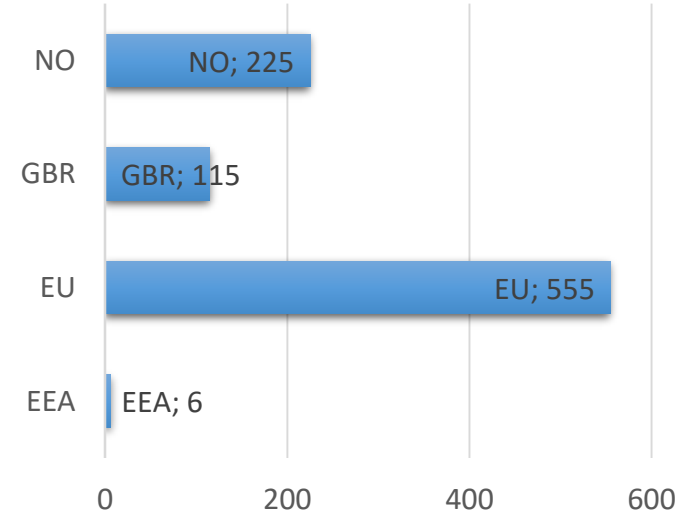
TOTAL REQUESTS BY MONTH

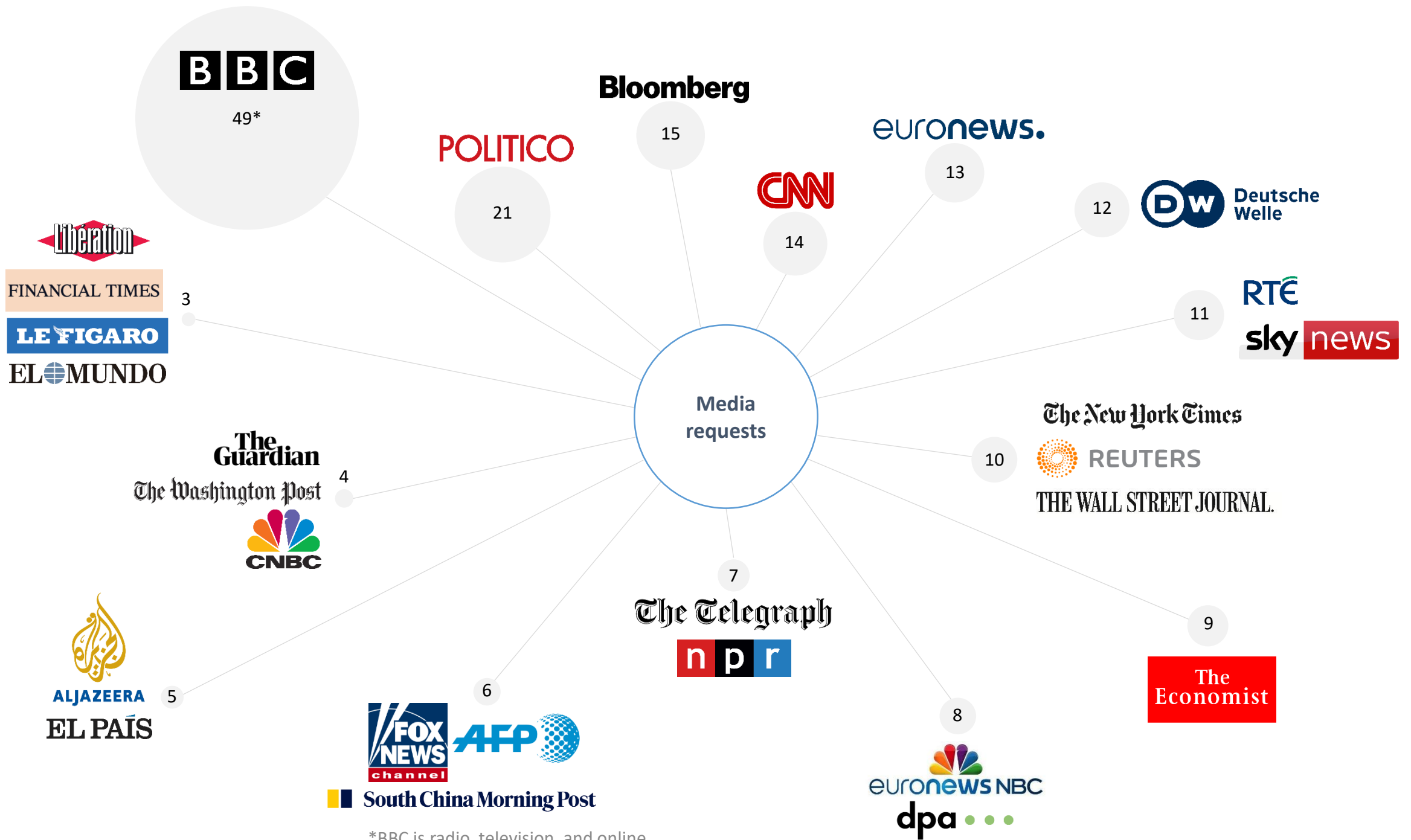


COUNT BY REGION



COUNT BY EU/EEA STATUS

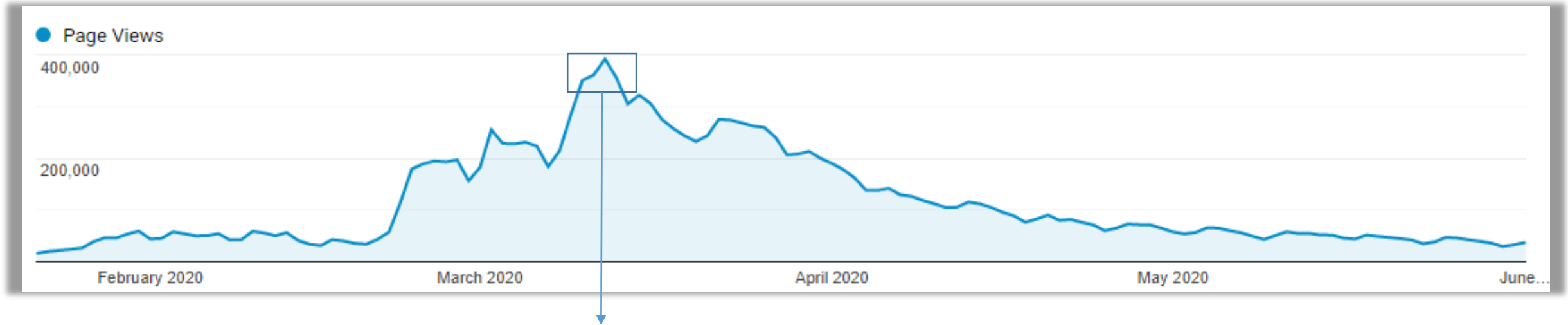




*BBC is radio, television, and online

Website overview

Since the start of the PHE in January 2020, and as of 1 June 2020, there has been **15,629,584 page views** (including 12,718,303 unique) on the ECDC website. This is **66% more** than the total number of page views recorded on the ECDC website since monitoring began in June 2011 - 1 January 2020 (9,376,669).



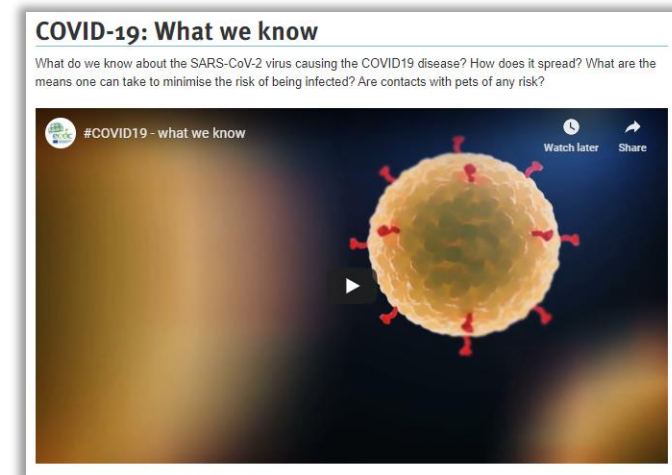
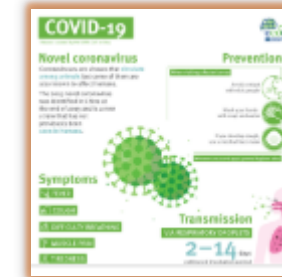
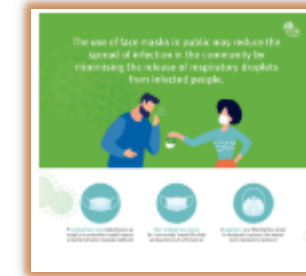
The number of page views in one day peaked at **391,983** on **Thursday 12 March**. That's more than double the average number of page views the ECDC website received per month in 2019. This peak corresponds with the publication of ECDC's 6th Risk Assessment on COVID-19 as well as the rapidly increasing number of COVID-19 cases across Europe.

Other content

ECDC has so far published 6 **infographics and posters** on COVID-19, covering issues such as hand washing, the use of face masks, contact tracing and COVID-19 in long-term care facilities.

As of 1 June 2020, these infographics have received **73,628 page views** and **4,858 (PDF) downloads** altogether.

ECDC has also produced 6 **videos on COVID-19** as of 1 June 2020. Since 18 March, the COVID-19 videos page has received **8,813 page views**, including more than 5,700 from users across Europe.



Where ECDC Facebook page fans come from



Overview of Social media accounts

Channel	Accounts	April Followers (mtm change)	May Followers (mtm change)
Twitter (followers)	ECDC_EU	57 038	59 044 (+2 006)
	ECDC_TB	3 110 (+13)	3 151 (+41)
	ECDC_Flu	6 382 (+341)	6 441 (+59)
	ECDC_VPD	5 294 (+99)	5 437 (+143)
	ECDC_HIV/AIDS	2 693 (+77)	2 749 (+56)
	ECDC_Outbreaks	17 483 (+3 308)	18 028 (+545)
	EAAD_EU	3 874 (+33)	3 909 (+35)
	ESCAIDE	1 746 (+64)	1 766 (+20)
	ECDCPHT	2 198 (+119)	2 233 (+35)
	Facebook (likes)	ECDC	29 044 (+3 891)
ESCAIDE		1 124 (+5)	1 139 (+15)
EAAD		13 851 (-4)	13 854 (+3)
LinkedIn (followers)	ECDC	25 646 (+1 799)	26 441 (+795)

Twitter account	Monthly impressions
ECDC_EU	685K
ECDC_TB	4.2K (-3.2K)
ECDC_FLU	54K (-14.3K)
EAAD_EU	3.2K (-5K)
ECDC_Outbreaks	414K (- 1.2 M)
ECDC_VPD	47.5K (+43.3K)
ECDCPHT	24.8K (+62.6K)
ESCAIDE	22.5K (+11.2K)

	Account	January Followers	June Followers (current)
Twitter (followers)	ECDC_EU	29 745	60 085 (+30 340)
	ECDC_Outbreaks	6 975	18 114 (+11 139)
Facebook (likes)	ECDC	14 146	35 372 (+21 226)
LinkedIn (followers)	ECDC	15 504	27 148 (+11 644)

Shared goal – to inform!

 **Siemens Healthineers** ✓
@SiemensHealth

Use trustworthy sources when keeping yourself informed about **#COVID19**. Organizations like **@WHO** **@CDCgov** **@ECDC_EU** have your back.

 **ECDC** ✓ @ECDC_EU · Mar 24
Always look for verified sources of information on **#COVID19**. Don't give in to **#FakeNews** flooding the media space.

Follow your national healthcare authorities expertise, read the **#ECDC** & EU institutions' materials. Stay informed, not disinformed.

Go to: ecdc.europa.eu





ecdc.europa.eu
#COVID19

GIF

 **Huawei EU** ✓ @HuaweiEU · 4m

There is a lot of misinformation on **#COVID19** circulating online these days. **@ECDC_EU** reminds us to verify our sources 📱 to avoid **#FakeNews**.

 **ECDC** ✓ @ECDC_EU · Mar 24
Always look for verified sources of information on **#COVID19**. Don't give in to **#FakeNews** flooding the media space.

Follow your national healthcare authorities expertise, read the **#ECDC** & EU institutions' materials. Stay informed, not disinformed.

Go to: ecdc.europa.eu





ecdc.europa.eu
#COVID19

GIF

Shared goal – to inform!

Mercedes-AMG Petronas Formula One Team
@MercedesAMGF1

Home
Posts
Videos
Photos
Community
Groups
About
Create a Page

Liked Following Share ...

Shop Now

Mercedes-AMG Petronas Formula One Team
26 March · 🌐

How to minimize the spread of #COVID19?
Check out the infographic from the European Centre for Disease Prevention and Control (ECDC).

COVID-19

ecdc

How to minimise the spread of COVID-19?

Based on the current knowledge of COVID-19 and evidence available on other viral respiratory pathogens, simple measures can reduce the spread of the virus.

- PERSONAL PROTECTIVE MEASURES**
 - Practice proper hand hygiene
 - Cough and sneeze into your elbow or a tissue. Throw it into a bin and wash your hands
 - Healthy people **do not** need to wear masks

Masks should be reserved for healthcare workers and those who care for ill persons at home.
- ENVIRONMENTAL MEASURES**
 - Frequently clean used surfaces, clothes and objects
 - Minimise sharing objects
 - Ensure appropriate ventilation
- SOCIAL DISTANCING MEASURES**
 - Standing 1 metre away from a visibly symptomatic person
 - Self-isolation of individuals with symptoms of a respiratory infection is one of the most important measures for reducing disease transmission and limiting the spread of the virus in the community during an epidemic.
 - For travel advice or travel recommendations refer

ABOUT MERCEDES-AMG PETRONAS FORMULA ONE TEAM

Who We Are
We are Mercedes-AMG Petronas Formula One Team; a 1,500-strong team of designers, engineers, mechanic...
See more

Community [See all](#)

Invite your friends to like this Page

11,348,236 people like this

11,250,054 people follow this

Tomasz Izdebski likes this

About [See all](#)

MercedesAMGF1.com

Sport team

What do people say about ECDC?



During #COVID19 pandemic, @ECDC_EU is on frontline monitoring outbreak, providing risk assessments, public health guidance and advice on response to EU countries and @EU_Commission.

🙏 Thanks to colleagues working tirelessly in this difficult period.

 ecdc.europa.eu

“Thanks to colleagues working tirelessly in this difficult period.”

The **European Centre for Disease Prevention and Control** is on the frontline in monitoring the outbreak, providing risk assessments, public health guidance and advice on response activities to EU countries and the European Commission.



EU response to
COVID-19



Thank you!

andrea.horvat-kramaric@ecdc.europa.eu