

# DEPARTMENT OF TRANSPORTATION AND INFRASTRUCTURE CORE TEAM ORGANIZATIONAL CHART

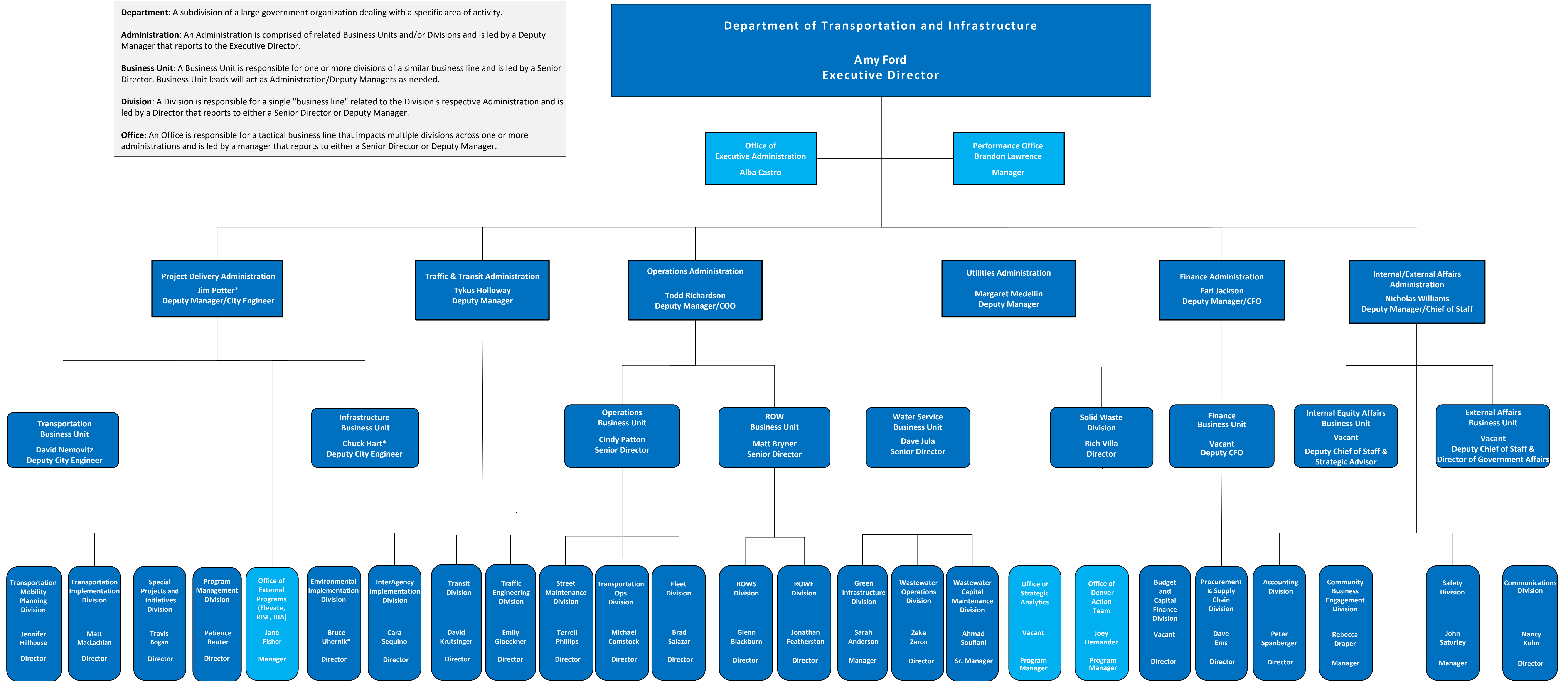
**Department:** A subdivision of a large government organization dealing with a specific area of activity.

**Administration:** An Administration is comprised of related Business Units and/or Divisions and is led by a Deputy Manager that reports to the Executive Director.

**Business Unit:** A Business Unit is responsible for one or more divisions of a similar business line and is led by a Senior Director. Business Unit leads will act as Administration/Deputy Managers as needed.

**Division:** A Division is responsible for a single "business line" related to the Division's respective Administration and is led by a Director that reports to either a Senior Director or Deputy Manager.

**Office:** An Office is responsible for a tactical business line that impacts multiple divisions across one or more administrations and is led by a manager that reports to either a Senior Director or Deputy Manager.



\*Interim