

# Bird Valley Trail System

in Chugach State Park

## Trail Descriptions

### **Bird Creek Trails:**

**Access:** Bird Valley Trailhead

**Allowable Uses:** Hike, Bike, Ski, Horseback, ATV, Snowmobile (down stream of Quartz Creek Ford, when conditions allow). ATV's allowed April 1st through November 30th.

**Length:** 13.2 miles total in lower valley; ATV & bike access ends 4 miles up the valley.

**Difficulty:** Easy

**Elevation Gain:** 400 feet

**Description:** Numerous trails located around Bird and Penguin Creeks offering exploration of lower valley. Bird Creek Falls are located on west end of trail system.

### **Bird Creek Valley to Bird Pass Trail:**

**Access:** Bird Valley Trailhead

**Allowable Uses:** Hiking

**Length:** 10 miles from trailhead to Bird Creek Pass

**Difficulty:** Moderate to Difficult

**Elevation Gain:** 1900 feet to Bird Creek Pass

**Description:** Wide trail continues from mile 4 up valley to the Bird Creek crossing. Less developed trail continues for 2 miles, then quickly gains elevation to the pass. Travel to the east from Bird Creek Pass will lead to Grizzly Bear Lake & Moraine Pass.

### **Penguin Peak Trail:**

**Access:** 0.5 mile from Bird Valley Trailhead

**Allowable Uses:** Hiking

**Length:** 2 miles

**Difficulty:** Difficult

**Elevation Gain:** 3200 feet

**Description:** Short but steep. This less developed trail quickly gains elevation through alder thickets then emerges into the alpine which offers spectacular views of Turnagain Arm and the lower valleys.



## Safety and Considerations:

Be prepared for an emergency, carry a satellite phone, file a trip plan with a friend. Bring drinking water or purify in the field. Salmon spawning area, bears are abundant. Be cautious when crossing Bird Creek. The water can be very cold and swift. Use water purification techniques for drinking water to avoid contracting Giardiasis (beaver fever). Area is subject to trapping.

## Special Features:

The maze of trails in the lower valley is a popular destination for ATV's in summer, and backcountry skiers in winter. Offers access to Penguin Ridge, and into the upper valley of North Fork Ship Creek (one of the most remote and scenic areas in the park).

## Park Rules:

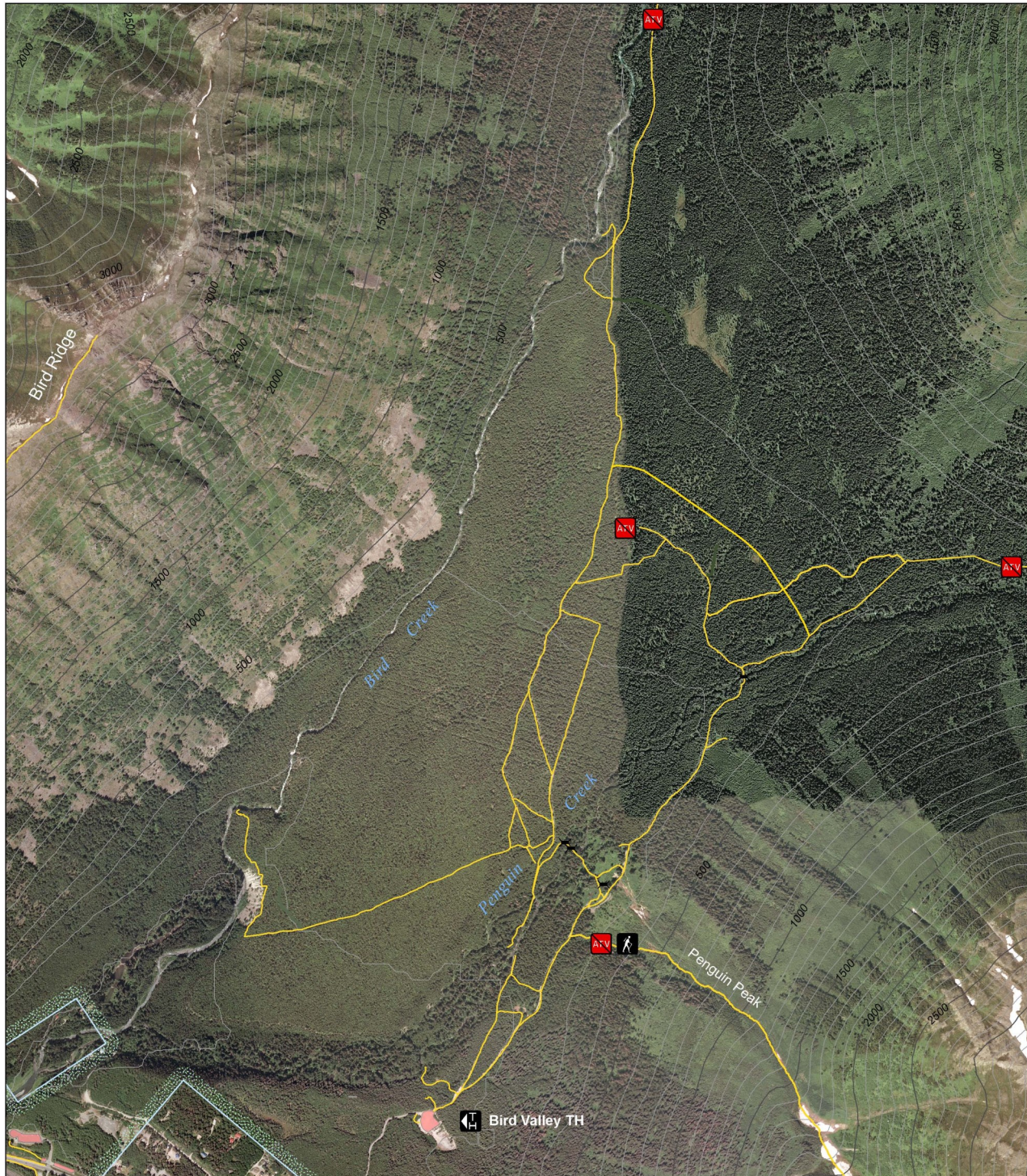
Dirt bikes are prohibited. Pets must be on a leash while in developed areas, and under control on trails and in the backcountry. Clean up after your pet. Camping is allowed as long as you are over ½ mile from the trailhead or developed road. Camping in an undeveloped area of a state park is limited to 10 consecutive days. Fires are allowed on gravel bars only. Visit <http://dnr.alaska.gov/parks/units/chugach> for a complete set of park rules.





# Chugach State Park

## Bird Valley Trails



Produced by: Alaska Department of Natural Resources, Division of Support Services, Land Records Information Section. Date Printed: September 24, 2008. Cartographers: Martin Stahl, Mike Ruicinski.

This map represents differential GPS data collected during the Chugach State Park Trail Inventory Project that was conducted in conjunction with National Park Service (NPS) Rivers and Trails Conservation Assistance (RTCA) program, Alaska Department of Natural Resources (ADNR) Land Record Information Service (LRIS), Department of Parks and Outdoor Recreation (DPOR), and Chugach State Park.

Chugach State Park: (907) 345-5014. Email: [esp@alaska.gov](mailto:esp@alaska.gov). Alaska State Parks: [www.dnr.state.ak.us/parks](http://www.dnr.state.ak.us/parks). Emergency: 911.

The State of Alaska makes no expressed or implied warranties (including warranties of merchantability and fitness) with respect to the character, function, or capabilities of this product or its appropriateness for any user's purposes. In no event will the State of Alaska be liable for any incidental, indirect, special, consequential or other damages suffered by the user or any other person or entity whether from use of the product, any failure thereof or otherwise, and in no event will the State of Alaska's liability to you or anyone else exceed the fee paid for the product.

### Legend

- Trailhead
- Hiking
- No ATV Use
- Bridge
- Trailway
- Parking Areas
- Chugach State Park



Projected Coordinate System:  
NAD 83, State Plane Alaska, Zone 4

Contour Interval: 100 feet

1:15,000

