

Guide to



Eklutna Lake Trail System

in Chugach State Park

Trail Descriptions:

Twin Peaks Trail:

Access: Eklutna Lake Trailhead

Allowable Uses: Hiking

Length: 2.6 miles

Difficulty: Moderate to Difficult

Elevation Gain: 1800 ft

Description: Trail quickly gains elevation on its way to an alpine meadow framed by the dramatic Twin Peaks and Goat Rock. Dall Sheep are often spotted above timberline.

Eklutna Lakeside Trail:

Access: Eklutna Lake Trailhead

Allowable Uses: Hike, Bike, Ski, Snowmobile, ATV

Length: 12.9 miles one way

Difficulty: Easy

Elevation Gain: 300 ft

Description: An old road bed that follows the shore of Eklutna Lake, then continues along the river to moraines of Eklutna Glacier.

Bold Ridge Trail:

Access: Mile 5 of Eklutna Lakeside Trail

Allowable Uses: Hiking

Length: 4.2 miles

Difficulty: Moderate to Difficult

Elevation Gain: 3600 ft

Description: Moderate climb on well used trail for the first 3.5 miles. Remaining trail is steep and less developed. Views of Bold Peak, Eklutna Lake and Glacier along ridgeline are well worth the hike.



Safety and Considerations:

Be prepared for an emergency and file a trip plan with a friend. Be aware of other users on multi-use trail such as the Eklutna Lakeside Trail.

Special Features:

Eklutna Lakeside trail features two public use cabins that are available year-round, along with three backcountry camping areas. Visit <https://dnr.alaska.gov/parks/aspcabins/index.htm> for cabin rental information. Berry picking on Bold Ridge and Twin Peaks trails in late summer. Popular area to view fall colors. Backcountry skiing in winter. Bike and kayak rentals available at Eklutna Lake trailhead through Lifetime Adventures <http://www.lifetimeadventures.net/>.

Park Rules:

ATVs are allowed from Sunday through Wednesday between April 1 and November 30 only. Snowmobiles allowed when snow cover is sufficient. Dirt Bikes are prohibited. Open fires are prohibited except in designated fire rings. Portable camp stoves are permitted. Camping is only allowed in designated areas. Pets must be on a leash while in the trailhead parking lot or campground, and under control on trails or while in the backcountry. Please clean up after your pet. Visit <http://dnr.alaska.gov/parks/aspunits/chugach/chugachindex.htm> for a complete set of park rules

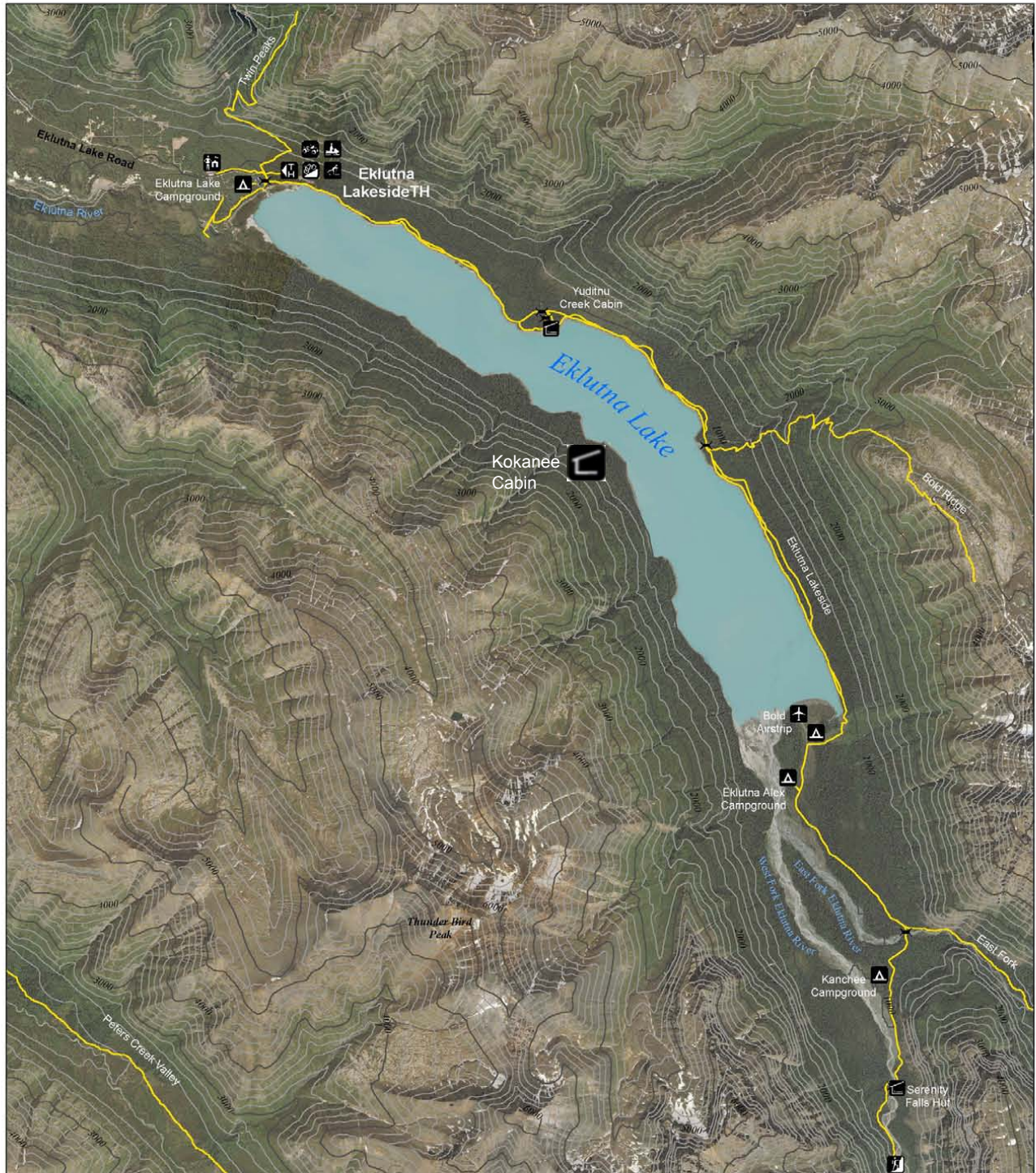
Chugach State Park Headquarters
Mile 115, Seward Highway
(907) 345 - 5014
csp@alaska.gov





Chugach State Park

Eklutna Lakeside Trail



Produced by: Alaska Department of Natural Resources, Division of Support Services, Land Records Information Section. Date Printed: January 23, 2009. Cartographers: Martin Stull, Mark Turner.

This map represents differential GPS data collected during the Chugach State Park Trail Inventory Pilot Project that was conducted in conjunction with National Park Service (NPS) Rivers and Trails Conservation Assistance (RTCA) program, Alaska Department of Natural Resources (ADNR) Land Record Information Service (LRIS), Department of Parks and Outdoor Recreation (DPOR), and Chugach State Park.

Chugach State Park: (907) 343-5014. Email: esp@alaska.gov. Alaska State Parks: www.dnr.state.ak.us/parks. Emergency: 911.

The State of Alaska makes no expressed or implied warranties (including warranties of merchantability and fitness) with respect to the character, function, or capabilities of this product or its appropriateness for any user's purposes. In no event will the State of Alaska be liable for any incidental, indirect, special, consequential or other damages suffered by the user or any other person or entity whether from use of the product, any failure thereof or otherwise, and in no event will the State of Alaska's liability to you or anyone else exceed the fee paid for the product.

Legend

- | | | | |
|--|-----------|--|------------|
| | Camping | | Snowmobile |
| | Trailhead | | ATV |
| | Cabin/Hut | | Ranger |
| | Skiing | | Airstrip |
| | Route | | Bridge |
| | Trailway | | Parking |



Technical assistance provided by the National Park Service - Rivers, Trails and Conservation Assistance Program.



Projected Coordinate System:
NAD 83, State Plane Alaska, Zone 4
Contour Interval: 200 feet

