

# Guide to



# Peters Creek Valley

**in Chugach State Park**

**Access:** Peters Creek Trailhead

**Allowable Uses:** Hiking, Biking (first 5 miles), Skiing, Snowmobiling

**Distance:** 5 miles one way (to end of old road bed); 14 miles one way (to trail end)

**Elevation Gain:** 500 feet (to mile 5); 1100 feet (to trail end at mile 14)

**Difficulty:** Moderate



Peters Creek Valley Trail Profile



## Trail Description:

Trailhead provides access to Bear Mountain and Mt. Eklutna. Bear Mountain trail branches off from the main valley trail after ¼ mile. Old roadbed ends at mile 5; trail continues 9 more miles into upper Peters Creek Valley.

## Park Rules:

Camping is only allowed over ½ mile from the trailhead. Camping in an undeveloped area of a state park is limited to 10 consecutive days. Fires are allowed on gravel bars below timberline in the Peters Creek drainage.

Visit <http://dnr.alaska.gov/parks/units/chugach> for a complete set of park rules.

## Safety and Considerations:

Old roadbed has steep muddy sections and stream crossings without bridges. Unmarked trail beyond mile 5 can be easily lost. Limited trailhead parking. Private property along first ¼ mile of trail. Be respectful of local landowners. Area subject to trapping during winter months.

## Special Features:

Quiet wooded valley for the first 5 miles. Skiing is excellent. Much of the valley is open to snowmobiles when snow conditions are adequate to protect underlying vegetation.

## Contact::

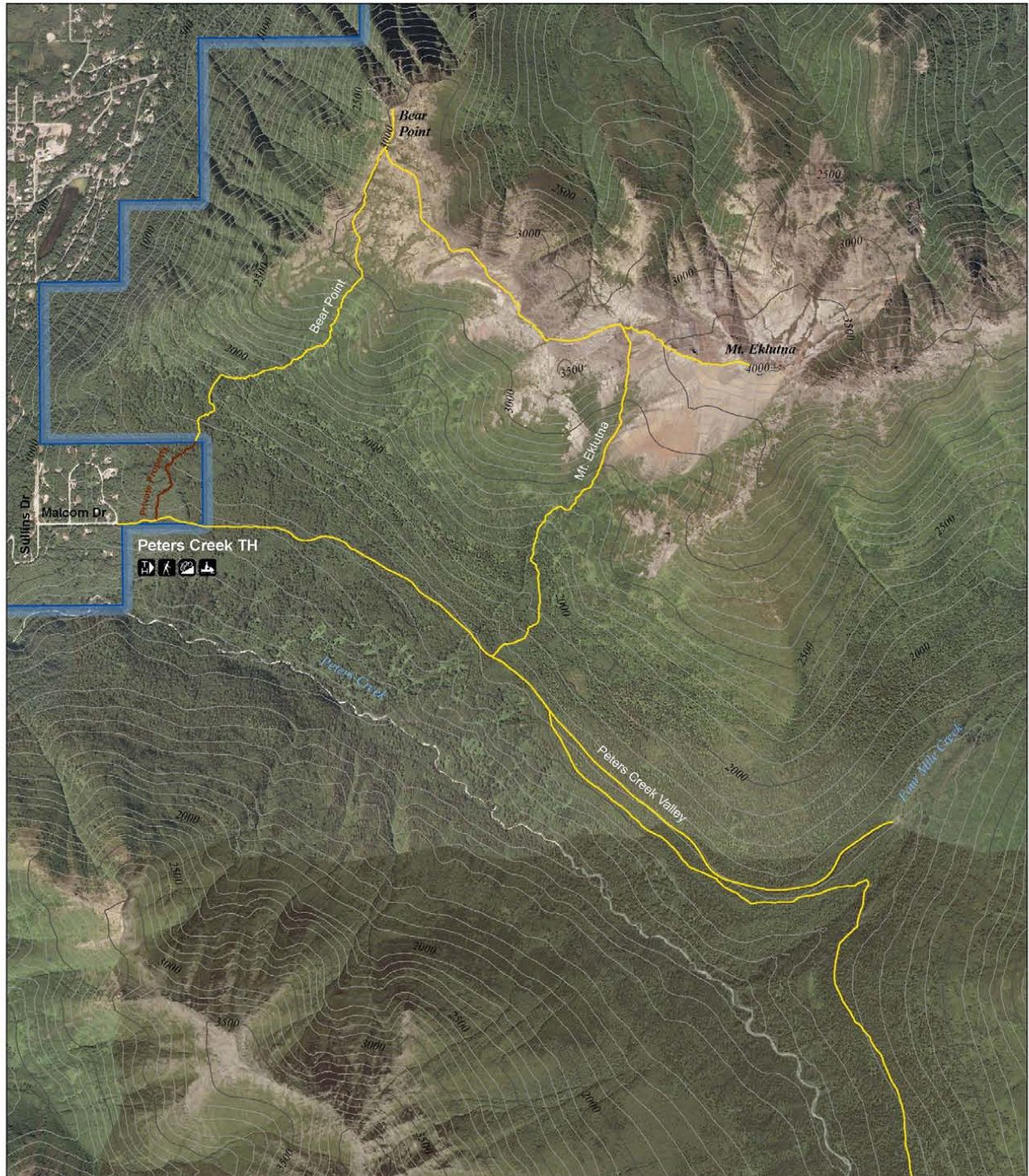
Chugach State Park Headquarters - Potter Section House  
Mile 115, Seward Highway (907) 345-5014  
[csp@alaska.gov](mailto:csp@alaska.gov)





# Chugach State Park

## Peters Creek Valley



Produced by: Alaska Department of Natural Resources, Division of Support Services, Land Records Information Section. Date Printed: May 9, 2009. Cartographer: Martin Stahl.

This map represents differential GPS data collected during the Chugach State Park Trail Inventory Pilot Project that was conducted in conjunction with National Park Service (NPS) Rivers and Trails Conservation Assistance (RTCA) program, Alaska Department of Natural Resources (ADNR) Land Record Information Service (LRIS), Department of Parks and Outdoor Recreation (DPOR), and Chugach State Park.

Chugach State Park: (907) 345-5014. Email: [esp@alaska.gov](mailto:esp@alaska.gov). Alaska State Parks: [www.dnr.state.ak.us/parks](http://www.dnr.state.ak.us/parks). Emergency: 911.

The State of Alaska makes no expressed or implied warranties (including warranties of merchantability and fitness) with respect to the character, function, or capabilities of this product or its appropriateness for any user's purposes. In no event will the State of Alaska be liable for any incidental, indirect, special, consequential or other damages suffered by the user or any other person or entity whether from use of the product, any failure thereof or otherwise, and in no event will the State of Alaska's liability to you or anyone else exceed the fee paid for the product.

### Legend

- Trailhead
- Hiking
- Biking
- Snowmobile
- Trailway
- Private Property
- Chugach State Park



Projected Coordinate System:  
NAD 83, State Plane Alaska, Zone 4

Contour Interval: 100 feet

1:20,000

