



# Virtual Desktops

## NetApp Solutions

NetApp  
July 31, 2024

# Table of Contents

- Virtual Desktops ..... 1
  - Virtual Desktop Services (VDS) ..... 1
  - VMware Horizon ..... 39
  - FlexPod desktop virtualization solutions ..... 40

# Virtual Desktops

## Virtual Desktop Services (VDS)

### TR-4861: Hybrid Cloud VDI with Virtual Desktop Service

Suresh Thoppay, NetApp

The NetApp Virtual Desktop Service (VDS) orchestrates Remote Desktop Services (RDS) in major public clouds as well as on private clouds. VDS supports Windows Virtual Desktop (WVD) on Microsoft Azure. VDS automates many tasks that must be performed after deployment of WVD or RDS, including setting up SMB file shares (for user profiles, shared data, and the user home drive), enabling Windows features, application and agent installation, firewall, and policies, and so on.

Users consume VDS for dedicated desktops, shared desktops, and remote applications. VDS provides scripted events for automating application management for desktops and reduces the number of images to manage.

VDS provides a single management portal for handling deployments across public and private cloud environments.

#### Customer Value

The remote workforce explosion of 2020 has changed requirements for business continuity. IT departments are faced with new challenges to rapidly provision virtual desktops and thus require provisioning agility, remote management, and the TCO advantages of a hybrid cloud that makes it easy to provision on-premises and cloud resources. They need a hybrid-cloud solution that:

- Addresses the post-COVID workspace reality to enable flexible work models with global dynamics
- Enables shift work by simplifying and accelerating the deployment of work environments for all employees, from task workers to power users
- Mobilizes your workforce by providing rich, secure VDI resources regardless of the physical location
- Simplifies hybrid-cloud deployment
- Automates and simplifies risk reduction management

#### Use Cases

Hybrid VDI with NetApp VDS allows service providers and enterprise virtual desktop administrators to easily expand resources to other cloud environment without affecting their users. Having on-premises resources provides better control of resources and offers wide selection of choices (compute, GPU, storage, and network) to meet demand.

This solution applies to the following use cases:

- Bursting into the cloud for surges in demand for remote desktops and applications
- Reducing TCO for long running remote desktops and applications by hosting them on-premises with flash storage and GPU resources

- Ease of management of remote desktops and applications across cloud environments
- Experience remote desktops and applications by using a software-as-a- service model with on-premises resources

### **Target Audience**

The target audience for the solution includes the following groups:

- EUC/VDI architects who wants to understand the requirements for a hybrid VDS
- NetApp partners who would like to assist customers with their remote desktop and application needs
- Existing NetApp HCI customers who want to address remote desktop and application demands

### **NetApp Virtual Desktop Service Overview**

NetApp offers many cloud services, including the rapid provisioning of virtual desktop with WVD or remote applications and rapid integration with Azure NetApp Files.

Traditionally, it takes weeks to provision and deliver remote desktop services to customers. Apart from provisioning, it can be difficult to manage applications, user profiles, shared data, and group policy objects to enforce policies. Firewall rules can increase complexity and require a separate skillset and tools.

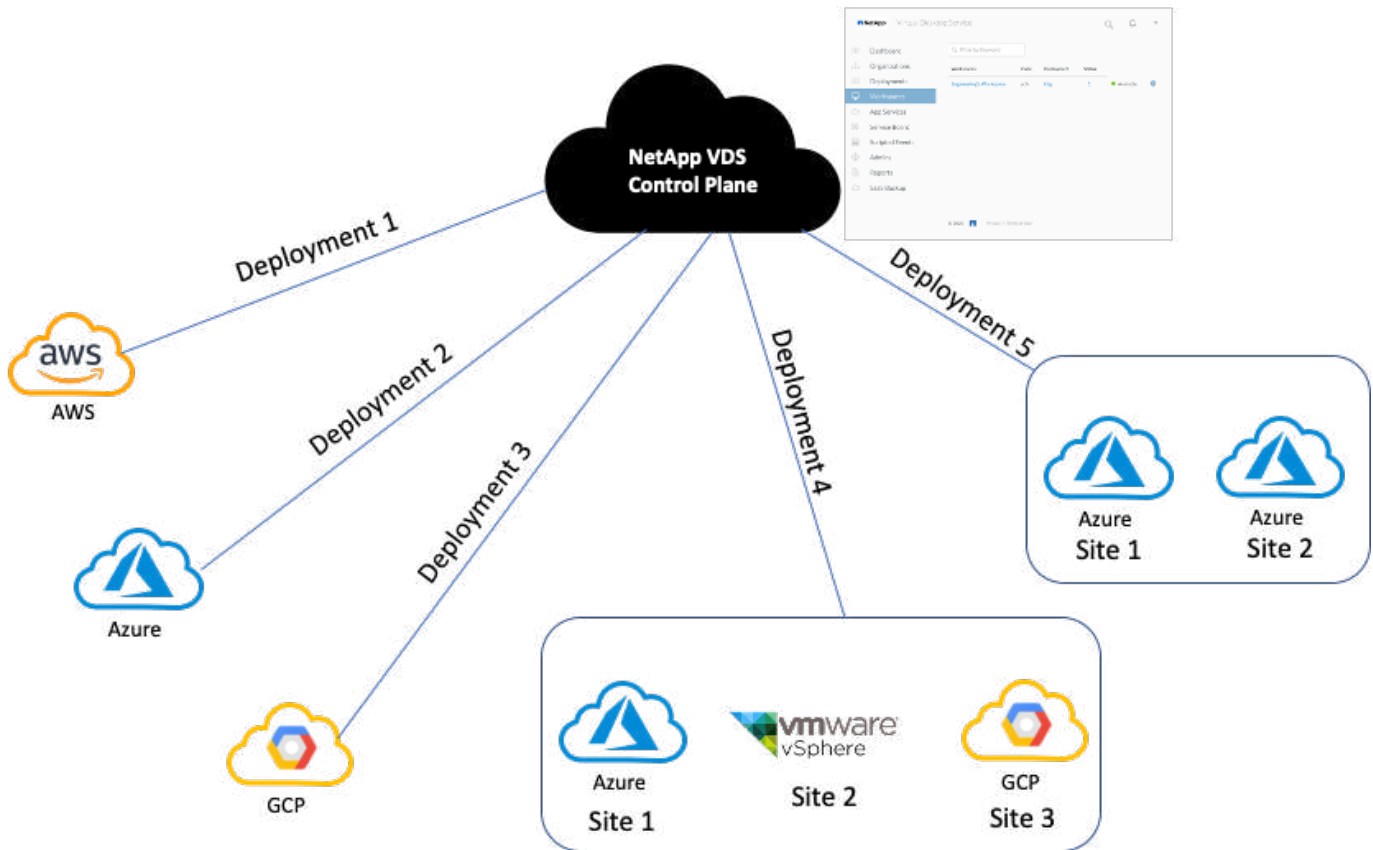
With Microsoft Azure Windows Virtual Desktop service, Microsoft takes care of maintenance for Remote Desktop Services components, allowing customers to focus on provisioning workspaces in the cloud. Customers must provision and manage the complete stack which requires special skills to manage VDI environments.

With NetApp VDS, customers can rapidly deploy virtual desktops without worrying about where to install the architecture components like brokers, gateways, agents, and so on. Customers who require complete control of their environment can work with a professional services team to achieve their goals. Customers consume VDS as a service and thus can focus on their key business challenges.

NetApp VDS is a software-as-a-service offering for centrally managing multiple deployments across AWS, Azure, GCP, or private cloud environments. Microsoft Windows Virtual Desktop is available only on Microsoft Azure. NetApp VDS orchestrates Microsoft Remote Desktop Services in other environments.

Microsoft offers multisession on Windows 10 exclusively for Windows Virtual Desktop environments on Azure. Authentication and identity are handled by the virtual desktop technology; WVD requires Azure Active Directory synced (with AD Connect) to Active Directory and session VMs joined to Active Directory. RDS requires Active Directory for user identity and authentication and VM domain join and management.

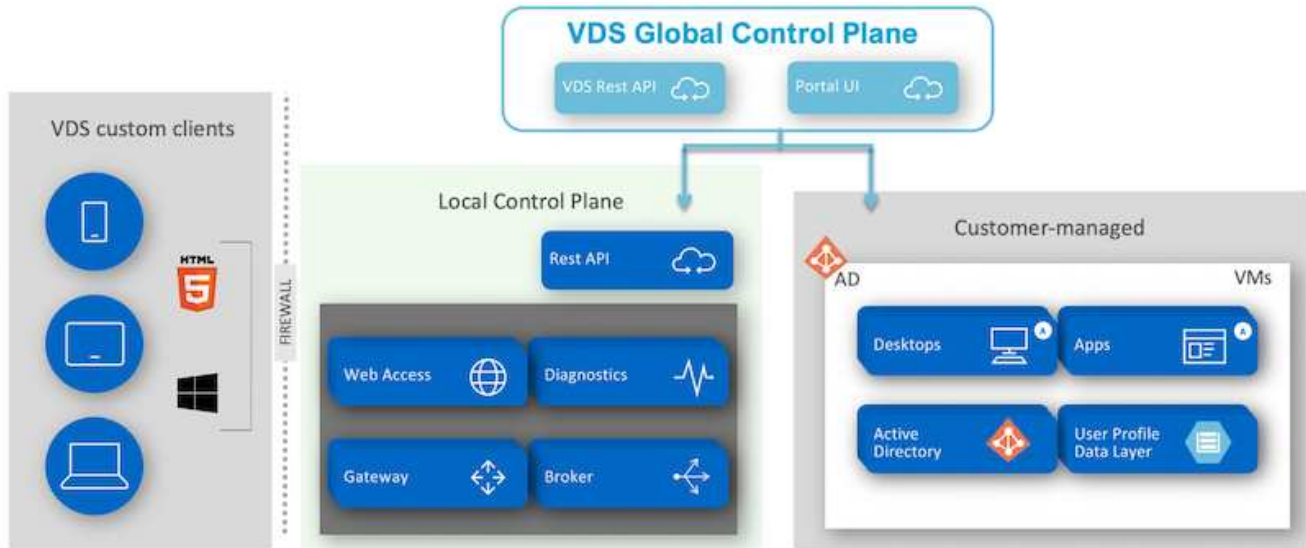
A sample deployment topology is shown in the following figure.



Each deployment is associated with an active directory domain and provides clients with an access entry point for workspaces and applications. A service provider or enterprise that has multiple active directory domains typically has more deployments. A single Active Directory domain that spans multiple regions typically has a single deployment with multiple sites.

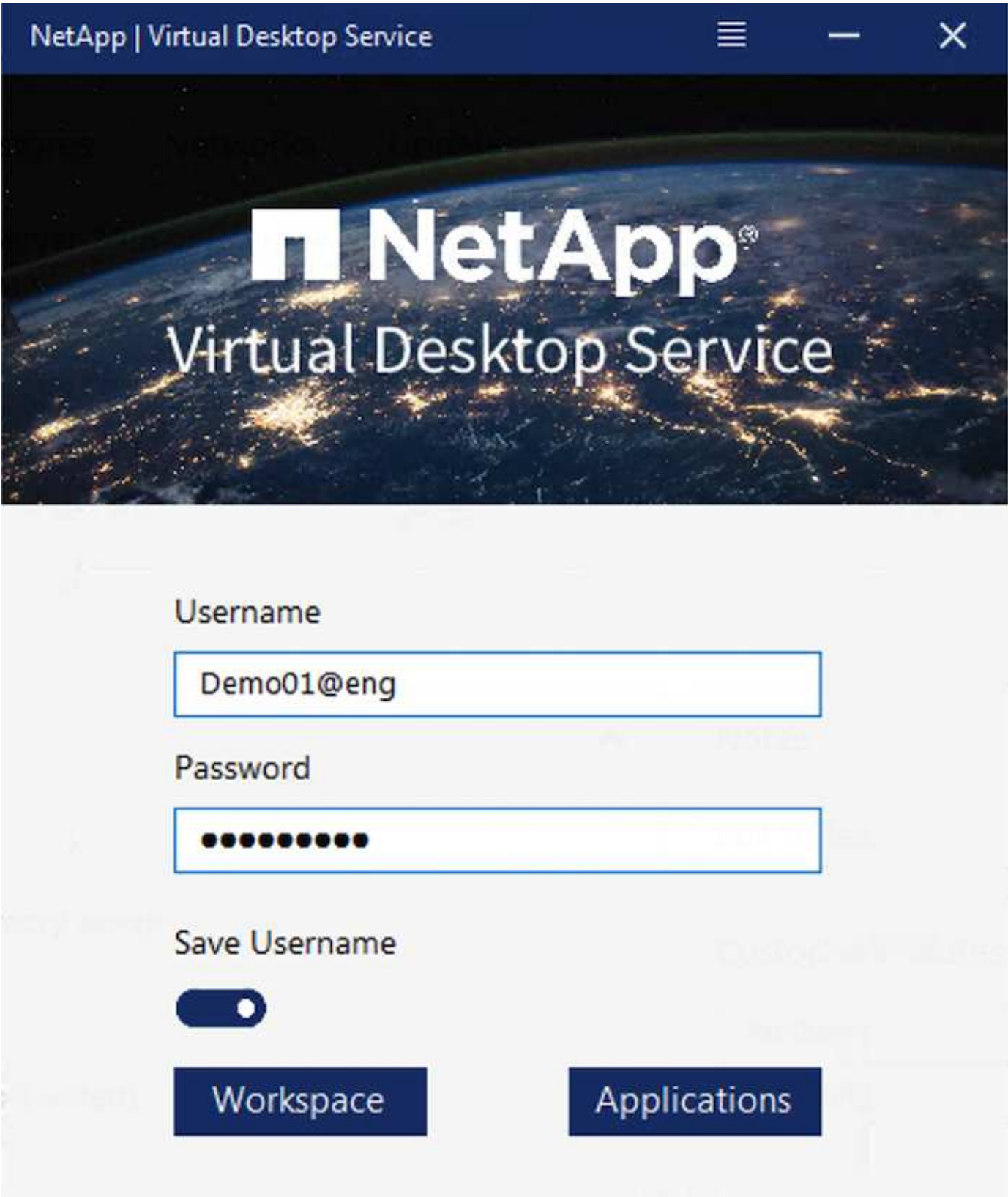
For WVD in Azure, Microsoft provides a platform-as-a-service that is consumed by NetApp VDS. For other environments, NetApp VDS orchestrates the deployment and configuration of Microsoft Remote Desktop Services. NetApp VDS supports both WVD Classic and WVD ARM and can also be used to upgrade existing versions.

Each deployment has its own platform services, which consists of Cloud Workspace Manager (REST API endpoint), an HTML 5 Gateway (connect to VMs from a VDS management portal), RDS Gateways (Access point for clients), and a Domain Controller. The following figure depicts the VDS Control Plane architecture for RDS implementation.



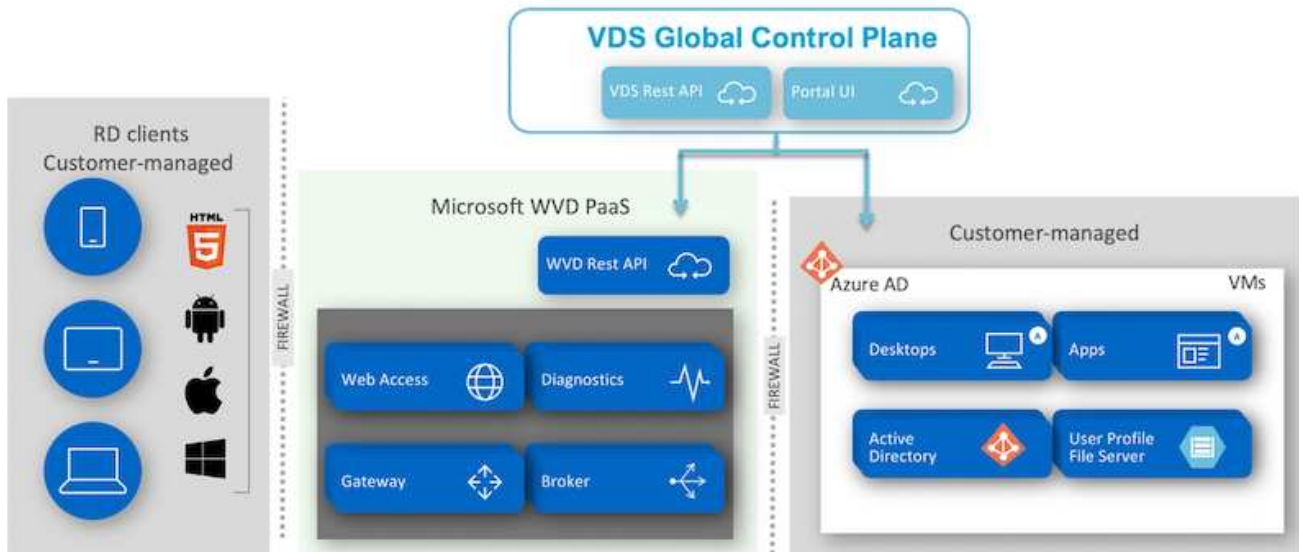
For RDS implementations, NetApp VDS can be readily accessed from Windows and browsers using client software that can be customized to include customer logo and images. Based on user credentials, it provides user access to approved workspaces and applications. There is no need to configure the gateway details.

The following figure shows the NetApp VDS client.



In the Azure WVD implementation, Microsoft handles the access entry point for the clients and can be consumed by a Microsoft WVD client available natively for various OSs. It can also be accessed from a web-based portal. The configuration of client software must be handled by the Group Policy Object (GPO) or in other ways preferred by customers.

The following figure depicts the VDS Control Plane architecture for Azure WVD implementations.



In addition to the deployment and configuration of required components, NetApp VDS also handles user management, application management, resource scaling, and optimization.

NetApp VDS can create users or grant existing user accounts access to cloud workspace or application services. The portal can also be used for password resets and the delegation of administering a subset of components. Helpdesk administrators or Level-3 technicians can shadow user sessions for troubleshooting or connect to servers from within the portal.

NetApp VDS can use image templates that you create, or it can use existing ones from the marketplace for cloud-based provisioning. To reduce the number of images to manage, you can use a base image, and any additional applications that you require can be provisioned using the provided framework to include any command-line tools like Chocolatey, MSIX app attach, PowerShell, and so on. Even custom scripts can be used as part of machine lifecycle events.

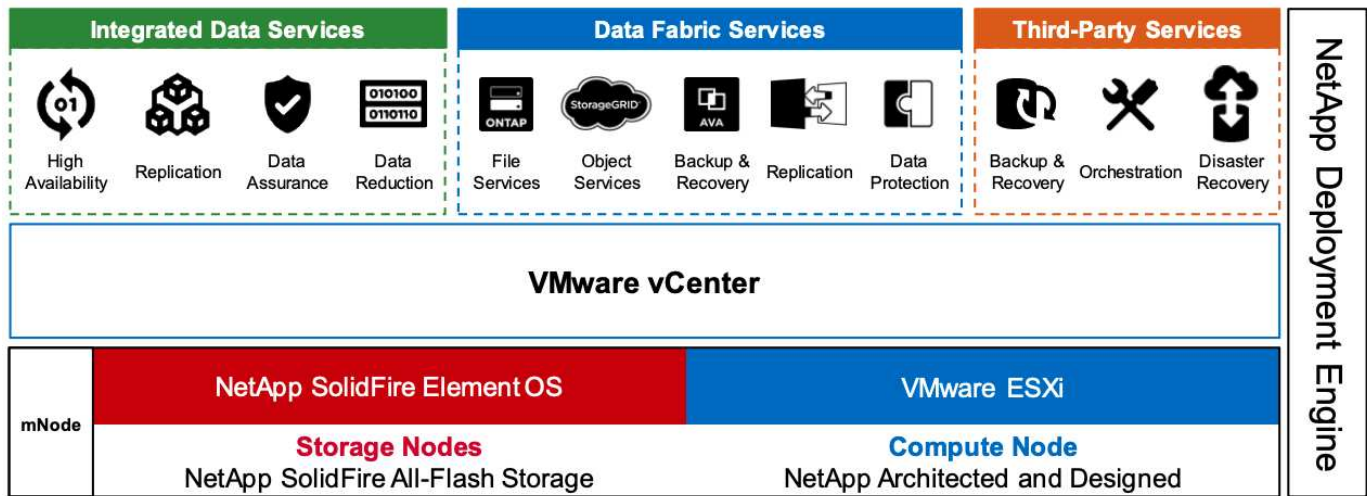
## NetApp HCI Overview

NetApp HCI is a hybrid cloud infrastructure that consists of a mix of storage nodes and compute nodes. It is available as either a two-rack unit or single-rack unit, depending on the model. The installation and configuration required to deploy VMs are automated with the NetApp Deployment Engine (NDE). Compute clusters are managed with VMware vCenter, and storage clusters are managed with the vCenter Plug-in deployed with NDE. A management VM called the mNode is deployed as part of the NDE.

NetApp HCI handles the following functions:

- Version upgrades
- Pushing events to vCenter
- vCenter Plug-In management
- A VPN tunnel for support
- The NetApp Active IQ Digital Advisor (also known as Digital Advisor) collector
- The extension of NetApp Cloud Services to on the premises, enabling a hybrid cloud infrastructure. The following figure depicts HCI components.





### Storage Nodes

Storage nodes are available as either a half-width or full-width rack unit. A minimum of four storage nodes is required at first, and a cluster can expand to up to 40 nodes. A storage cluster can be shared across multiple compute clusters. All the storage nodes contain a cache controller to improve write performance. A single node provides either 50K or 100K IOPS at a 4K block size.

NetApp HCI storage nodes run NetApp Element software, which provides minimum, maximum, and burst QoS limits. The storage cluster supports a mix of storage nodes, although one storage node cannot exceed one-third of total capacity.

### Compute Nodes



NetApp supports its storage connected to any compute servers listed in the [VMware Compatibility Guide](#).

Compute nodes are available in half-width, full-width, and two rack-unit sizes. The NetApp HCI H410C and H610C are based on scalable Intel Skylake processors. The H615C is based on second-generation scalable Intel Cascade Lake processors. There are two compute models that contain GPUs: the H610C contains two NVIDIA M10 cards and the H615C contains three NVIDIA T4 cards.



The NVIDIA T4 has 40 RT cores that provide the computation power needed to deliver real-time ray tracing. The same server model used by designers and engineers can now also be used by artists to create photorealistic imagery that features light bouncing off surfaces just as it would in real life. This RTX-capable GPU produces real-time ray tracing performance of up to five Giga Rays per second. The NVIDIA T4, when combined with Quadro Virtual Data Center Workstation (Quadro vDWS) software, enables artists to create photorealistic designs with accurate shadows, reflections, and refractions on any device from any location.

Tensor cores enable you to run deep learning inferencing workloads. When running these workloads, an NVIDIA T4 powered with Quadro vDWS can perform up to 25 times faster than a VM driven by a CPU-only server. A NetApp H615C with three NVIDIA T4 cards in one rack unit is an ideal solution for graphics and compute-intensive workloads.

The following figure lists NVIDIA GPU cards and compares their features.

## NVIDIA GPUs Recommended for Virtualization

	V100S	RTX 8000	RTX 6000	T4	M10	P6
GPU	1 NVIDIA Volta	1 NVIDIA Turing	1 NVIDIA Turing	1 NVIDIA Turing	4 NVIDIA Maxwell	1 NVIDIA Pascal
CUDA Cores	5,120	4,608	4,608	2,560	2,560 (640 per GPU)	2,048
Tensor Cores	640	576	576	320	—	—
RT Cores	—	72	72	40	—	—
Guaranteed QoS [GPU Scheduler]	✓	✓	✓	✓	—	✓
Live Migration	✓	✓	✓	✓	✓	✓
Multi-vGPU	✓	✓	✓	✓	✓	✓
Memory Size	32/16 GB HBM2	48 GB GDDR6	24 GB GDDR6	16 GB GDDR6	32 GB GDDR5 (8 GB per GPU)	16 GB GDDR5
vGPU Profiles	1 GB, 2 GB, 4 GB, 8 GB, 16 GB, 32 GB	1 GB, 2 GB, 3 GB, 4 GB, 6 GB, 8 GB, 12 GB, 16 GB, 24 GB, 48 GB	1 GB, 2 GB, 3 GB, 4 GB, 6 GB, 8 GB, 12 GB, 24 GB	1 GB, 2 GB, 4 GB, 8 GB, 16 GB	0.5 GB, 1 GB, 2 GB, 4 GB, 8 GB	1 GB, 2 GB, 4 GB, 8 GB, 16 GB
Form Factor	PCIe 3.0 dual slot and SXM2	PCIe 3.0 dual slot	PCIe 3.0 dual slot	PCIe 3.0 single slot	PCIe 3.0 dual slot	MXM [blade servers]
Power	250 W /300 W (SXM2)	250 W	250 W	70 W	225 W	90 W
Thermal	passive	passive	passive	passive	passive	bare board
vGPU Software Support	Quadro vDWS, GRID vPC, GRID vApps, vComputeServer	Quadro vDWS, GRID vPC, GRID vApps, vComputeServer	Quadro vDWS, GRID vPC, GRID vApps, vComputeServer	Quadro vDWS, GRID vPC, GRID vApps, vComputeServer	Quadro vDWS, GRID vPC, GRID vApps	Quadro vDWS, GRID vPC, GRID vApps, vComputeServer
Use Case	Ultra-high-end rendering, simulation, 3D design with Quadro vDWS; ideal upgrade path for V100	High-end rendering, 3D design and creative workflows with Quadro vDWS	Mid-range to high-end rendering, 3D design and creative workflows with Quadro vDWS	Entry-level to highend 3D design and engineering workflows with Quadro vDWS. High-density, low power GPU acceleration for knowledge workers with NVIDIA GRID software.	Knowledge workers using modern productivity apps and Windows 10 requiring best density and total cost of ownership [TCO], multimonitor support with NVIDIA GRID vPC/vApps	For customers requiring GPUs in a blade server form factor; ideal upgrade path for M6

The M10 GPU remains the best TCO solution for knowledge-worker use cases. However, the T4 makes a great alternative when IT wants to standardize on a GPU that can be used across multiple use cases, such as virtual workstations, graphics performance, real-time interactive rendering, and inferencing. With the T4, IT can take advantage of the same GPU resources to run mixed workloads—for example, running VDI during the day and repurposing the resources to run compute workloads at night.

The H610C compute node is two rack units in size; the H615C is one rack unit in size and consumes less power. The H615C supports H.264 and H.265 (High Efficiency Video Coding [HEVC]) 4:4:4 encoding and decoding. It also supports the increasingly mainstream VP9 decoder; even the WebM container package served by YouTube uses the VP9 codec for video.

The number of nodes in a compute cluster is dictated by VMware; currently, it is 96 with VMware vSphere 7.0 Update 1. Mixing different models of compute nodes in a cluster is supported when Enhanced vMotion Compatibility (EVC) is enabled.

## NVIDIA Licensing

When using an H610C or H615C, the license for the GPU must be procured from NVIDIA partners that are authorized to resell the licenses. You can find NVIDIA partners with the [partner locator](#). Search for competencies such as virtual GPU (vGPU) or Tesla.

NVIDIA vGPU software is available in four editions:

- NVIDIA GRID Virtual PC (GRID vPC)
- NVIDIA GRID Virtual Applications (GRID vApps)
- NVIDIA Quadro Virtual Data Center Workstation (Quadro vDWS)
- NVIDIA Virtual ComputeServer (vComputeServer)

## GRID Virtual PC

This product is ideal for users who want a virtual desktop that provides a great user experience for Microsoft Windows applications, browsers, high-definition video, and multi-monitor support. The NVIDIA GRID Virtual PC delivers a native experience in a virtual environment, allowing you to run all your PC applications at full performance.

## GRID Virtual Applications

GRID vApps are for organizations deploying a Remote Desktop Session Host (RDSH) or other app-streaming or session-based solutions. Designed to deliver Microsoft Windows applications at full performance, Windows Server-hosted RDSH desktops are also supported by GRID vApps.

## Quadro Virtual Data Center Workstation

This edition is ideal for mainstream and high-end designers who use powerful 3D content creation applications like Dassault CATIA, SOLIDWORKS, 3Dexcite, Siemens NX, PTC Creo, Schlumberger Petrel, or Autodesk Maya. NVIDIA Quadro vDWS allows users to access their professional graphics applications with full features and performance anywhere on any device.

## NVIDIA Virtual ComputeServer

Many organizations run compute-intensive server workloads such as artificial intelligence (AI), deep learning (DL), and data science. For these use cases, NVIDIA vComputeServer software virtualizes the NVIDIA GPU, which accelerates compute-intensive server workloads with features such as error correction code, page retirement, peer-to-peer over NVLink, and multi-vGPU.



A Quadro vDWS license enables you to use GRID vPC and NVIDIA vComputeServer.

## Deployment

NetApp VDS can be deployed to Microsoft Azure using a setup app available based on the required codebase. The current release is available [here](#) and the preview release of the upcoming product is available [here](#).

See [this video](#) for deployment instructions.



# NetApp Virtual Desktop Service

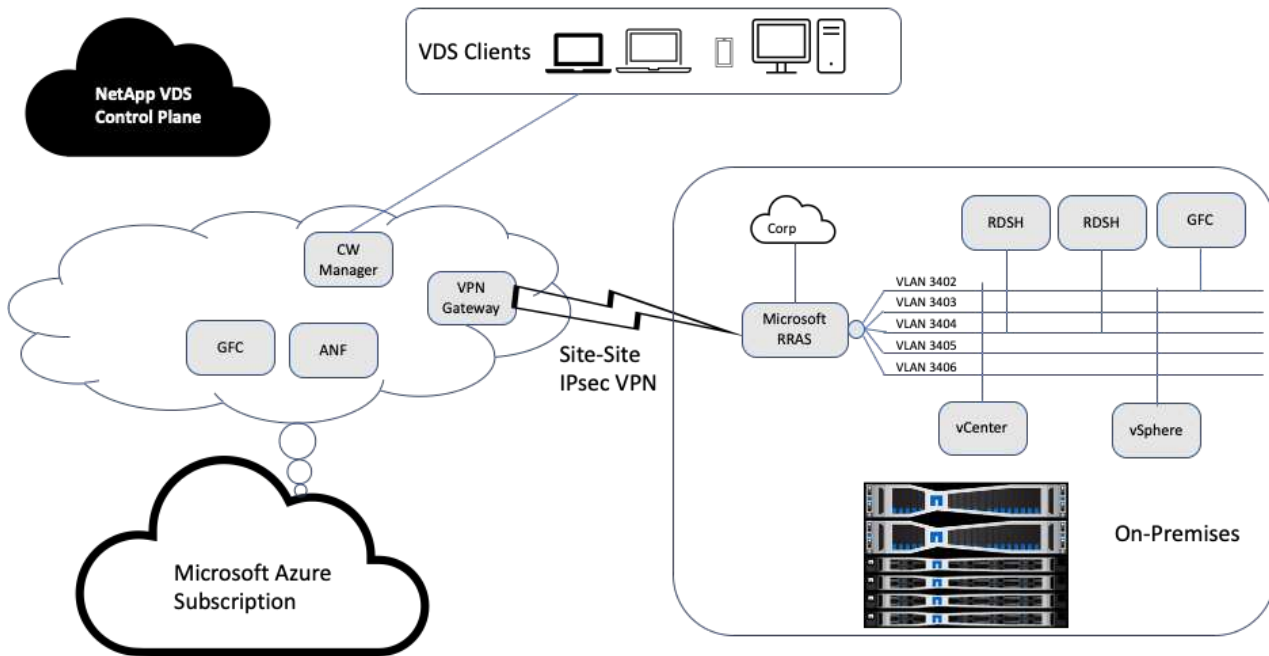
## Deployment & AD Connect

Toby vanRoojen  
Product Marketing Manager  
June, 2020

### Hybrid Cloud Environment

NetApp Virtual Desktop Service can be extended to on-premises when connectivity exists between on-premises resources and cloud resources. Enterprises can establish the link to Microsoft Azure using Express Route or a site-to-site IPsec VPN connection. You can also create links to other clouds in a similar way either using a dedicated link or with an IPsec VPN tunnel.

For the solution validation, we used the environment depicted in the following figure.



On-premises, we had multiple VLANs for management, remote-desktop-session hosts, and so on. They were on the 172.21.146-150.0/24 subnet and routed to the corporate network using the Microsoft Remote Routing Access Service. We also performed the following tasks:

1. We noted the public IP of the Microsoft Routing and Remote Access Server (RRAS; identified with IPchicken.com).
2. We created a Virtual Network Gateway resource (route-based VPN) on Azure Subscription.
3. We created the connection providing the local network gateway address for the public IP of the Microsoft RRAS server.
4. We completed VPN configuration on RRAS to create a virtual interface using pre-shared authentication that was provided while creating the VPN gateway. If configured correctly, the VPN should be in the connected state. Instead of Microsoft RRAS, you can also use pfSense or other relevant tools to create the site-to-site IPsec VPN tunnel. Since it is route-based, the tunnel redirects traffic based on the specific subnets configured.

Microsoft Azure Active Directory provides identity authentication based on oAuth. Enterprise client authentications typically require NTLM or Kerberos-based authentication. Microsoft Azure Active Directory Domain Services perform password hash sync between Azure Active Directory and on-prem domain controllers using ADConnect.

For this Hybrid VDS solution validation, we initially deployed to Microsoft Azure and added an additional site with vSphere. The advantage with this approach is that platform services were deployed to Microsoft Azure and were then readily backed up using the portal. Services can then be easily accessed from anywhere, even if the site-site VPN link is down.

To add another site, we used a tool called DCConfig. The shortcut to that application is available on the desktop of the cloud workspace manager (CWMgr) VM. After this application is launched, navigate to the DataCenter Sites tab, add the new datacenter site, and fill in the required info as shown below. The URL points to the vCenter IP. Make sure that the CWMgr VM can communicate with vCenter before adding the

configuration.



Make sure that vSphere PowerCLI 5.1 on CloudWorkspace manager is installed to enable communication with VMware vSphere environment.

The following figure depicts on- premises datacenter site configuration.

The screenshot shows the Configuration window with the following sections:

- DataCenter Sites:** A table with columns: DataCenter Site, Type, Is Primary, DataCenter Site Detail, and Edit. It lists Site 1 (AzureRM, Is Primary checked) and Site 2 (vSphere, Is Primary unchecked).
- General Settings:** Includes Local VM Account (Username: Administrator, Password: \*\*\*\*\*), Hypervisor Account (Username: Administrator@vsphere, Password: \*\*\*\*\*), URL (https://172.21.146.150/sdk/), Vm Name Prefix, Max Concurrent (20), Create Server, Subnet Mask (255.255.255.0), Default Gateway (172.21.148.250), and Is Primary Hypervisor? (No selected).
- DNS:** Primary DNS (10.67.78.11), Secondary DNS, and Set DNS Address (No selected).
- VSphere:** Data Center (NetApp-HCI-Datacenter), Cluster, Resource Pool, Host Name, VM Folder (VDS), Max VMs In Datastore (-1), Min HD Free Space In Datastore GB (-1), and Min Ram Free GB (-1).

At the bottom, there are checkboxes for "Exclude VSphere DataStore" and "Exclude VSphere ResourcePools".

Note that there are filtering options available for compute resource based on the specific cluster, host name, or free RAM space. Filtering options for storage resource includes the minimum free space on datastores or the maximum VMs per datastore. Datastores can be excluded using regular expressions. Click Save button to save the configuration.

To validate the configuration, click the Test button or click Load Hypervisor and check any dropdown under the vSphere section. It should be populated with appropriate values. It is a best practice to keep the primary hypervisor set to yes for the default provisioning site.

The VM templates created on VMware vSphere are consumed as provisioning collections on VDS. Provisioning collections come in two forms: shared and VDI. The shared provisioning collection type is used for remote desktop services for which a single resource policy is applied to all servers. The VDI type is used for WVD instances for which the resource policy is individually assigned. The servers in a provisioning collection can be assigned one of the following three roles:

- **TSDATA.** Combination of Terminal Services and Data server role.
- **TS.** Terminal Services (Session Host).
- **DATA.** File Server or Database Server. When you define the server role, you must pick the VM template and storage (datastore). The datastore chosen can be restricted to a specific datastore or you can use the least-used option in which the datastore is chosen based on data usage.

Each deployment has VM resource defaults for the cloud resource allocation based on Active Users, Fixed, Server Load, or User Count.

### Single server load test with Login VSI

The NetApp Virtual Desktop Service uses the Microsoft Remote Desktop Protocol to access virtual desktop sessions and applications, and the Login VSI tool determines the maximum number of users that can be hosted on a specific server model. Login VSI simulates user login at specific intervals and performs user operations like opening documents, reading and composing mails, working with Excel and PowerPoint, printing documents, compressing files, and taking random breaks. It then measures response times. User response time is low when server utilization is low and increases when more user sessions are added. Login VSI determines the baseline based on initial user login sessions and it reports the maximum user session when the user response exceeds 2 seconds from the baseline.

NetApp Virtual Desktop Service utilizes Microsoft Remote Desktop Protocol to access the Virtual Desktop session and Applications. To determine the maximum number of users that can be hosted on a specific server model, we used the Login VSI tool. Login VSI simulates user login at specific intervals and performs user operations like opening documents, reading and composing mails, working with Excel and PowerPoint, printing documents, compressing files, taking random breaks, and so on. It also measures response times. User response time is low when server utilization is low and increases when more user sessions are added. Login VSI determines the baseline based on the initial user login sessions and it reports maximum user sessions when the user response exceeds 2sec from the baseline.

The following table contains the hardware used for this validation.

Model	Count	Description
NetApp HCI H610C	4	Three in a cluster for launchers, AD, DHCP, and so on. One server for load testing.
NetApp HCI H615C	1	2x24C Intel Xeon Gold 6282 @2.1GHz. 1.5TB RAM.

The following table contains the software used for this validation.

Product	Description
NetApp VDS 5.4	Orchestration
VM Template Windows 2019 1809	Server OS for RDSH
Login VSI	4.1.32.1
VMware vSphere 6.7 Update 3	Hypervisor

Product	Description
---------	-------------

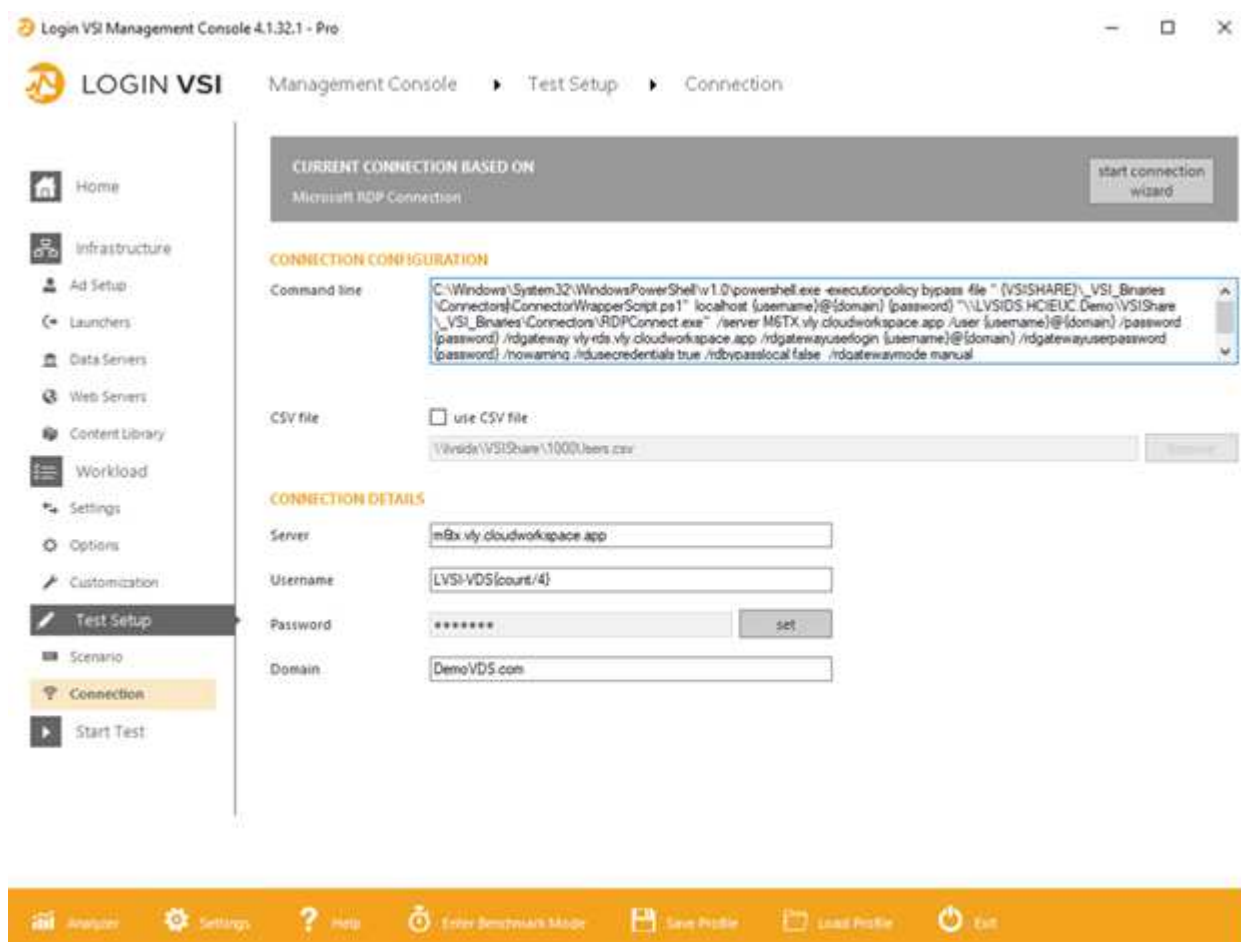
VMware vCenter 6.7 Update 3f	VMware management tool
------------------------------	------------------------

The Login VSI test results are as follows:

Model	VM configuration	Login VSI baseline	Login VSI Max
H610C	8 vCPU, 48GB RAM, 75GB disk, 8Q vGPU profile	799	178
H615C	12 vCPU, 128GB RAM, 75GB disk	763	272

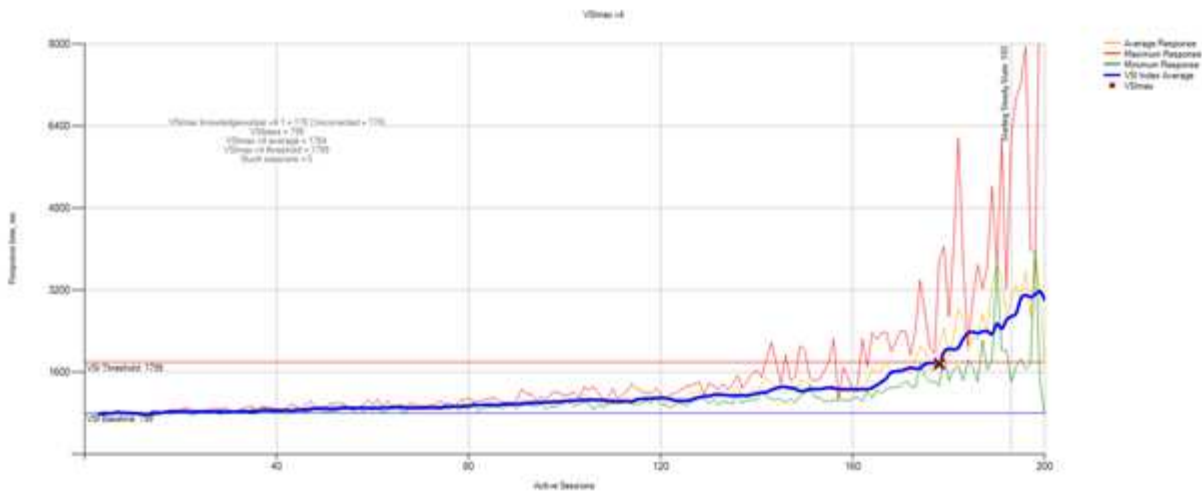
Considering sub-NUMA boundaries and hyperthreading, the eight VMs chosen for VM testing and configuration depended on the cores available on the host.

We used 10 launcher VMs on the H610C, which used the RDP protocol to connect to the user session. The following figure depicts the Login VSI connection information.

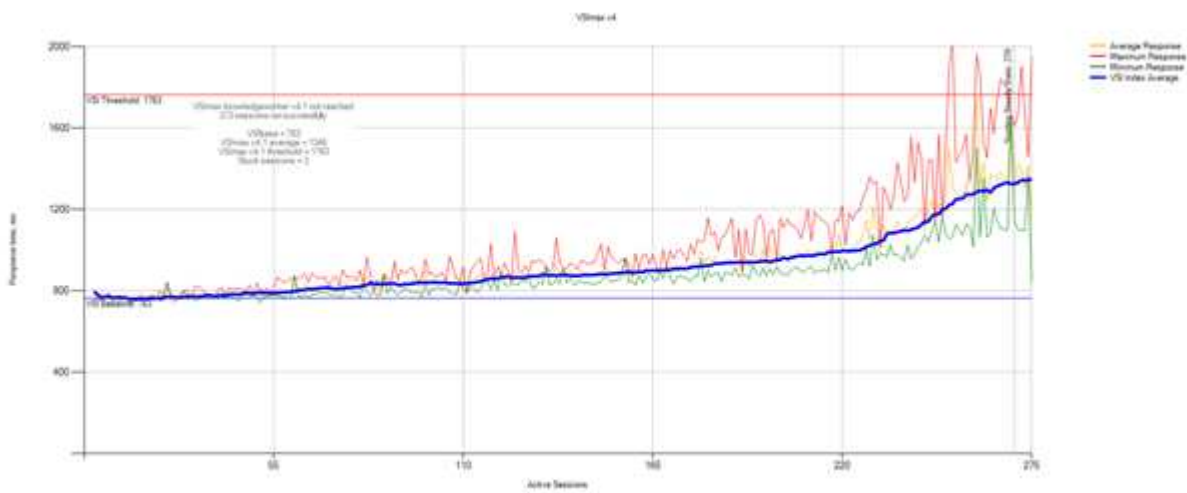


The following figure displays the Login VSI response time versus the active sessions for the H610C.





The following figure displays the Login VSI response time versus active sessions for the H615C.



The performance metrics from Cloud Insights during H615C Login VSI testing for the vSphere host and VMs are shown in the following figure.



### Management Portal

NetApp VDS Cloud Workspace Management Suite portal is available [here](#) and the upcoming version is available [here](#).

The portal allows centralized management for various VDS deployments including one that has sites defined for on-premises, administrative users, the application catalog, and scripted events. The portal is also used by administrative users for the manual provisioning of applications if required and to connect to any machines for troubleshooting.

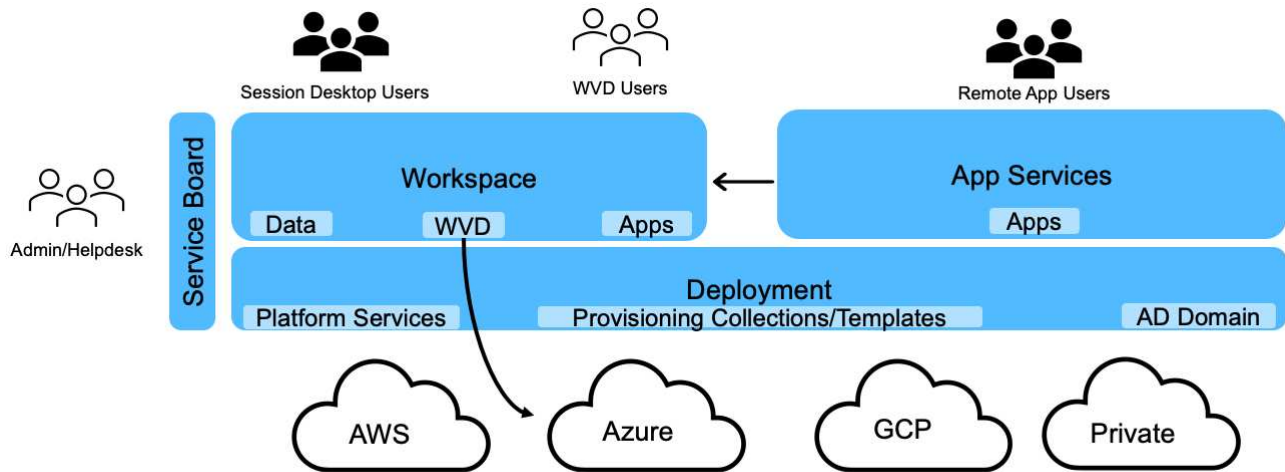
Service providers can use this portal to add their own channel partners and allow them to manage their own clients.

### User Management

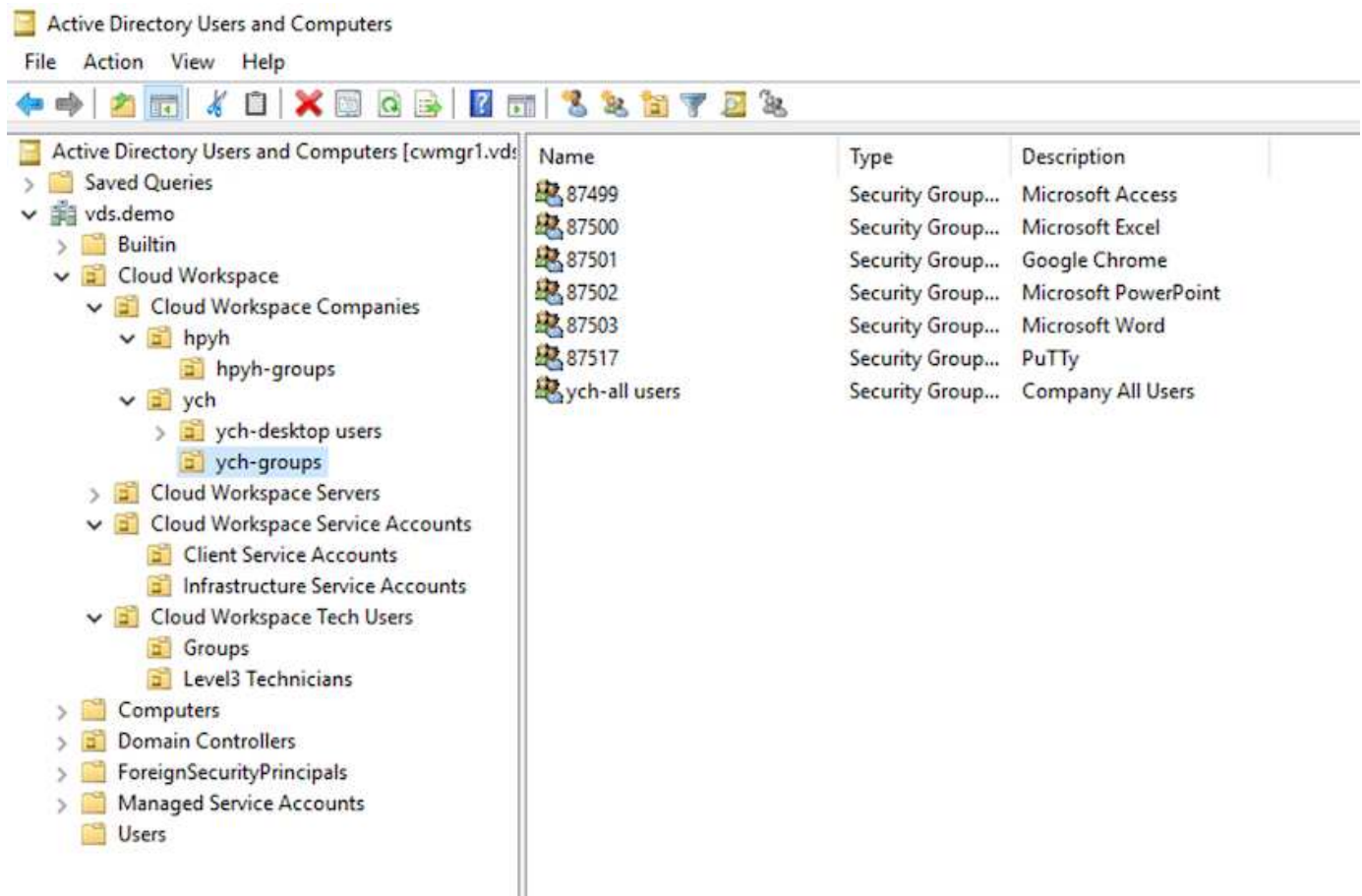
NetApp VDS uses Azure Active Directory for identity authentication and Azure Active Directory Domain Services for NTLM/Kerberos authentication. The ADConnect tool can be used to sync an on-prem Active Directory domain with Azure Active Directory.

New users can be added from the portal, or you can enable cloud workspace for existing users. Permissions for workspaces and application services can be controlled by individual users or by groups. From the management portal, administrative users can be defined to control permissions for the portal, workspaces, and so on.

The following figure depicts user management in NetApp VDS.



Each workspace resides in its own Active Directory organization unit (OU) under the Cloud Workspace OU as shown in the following figure.

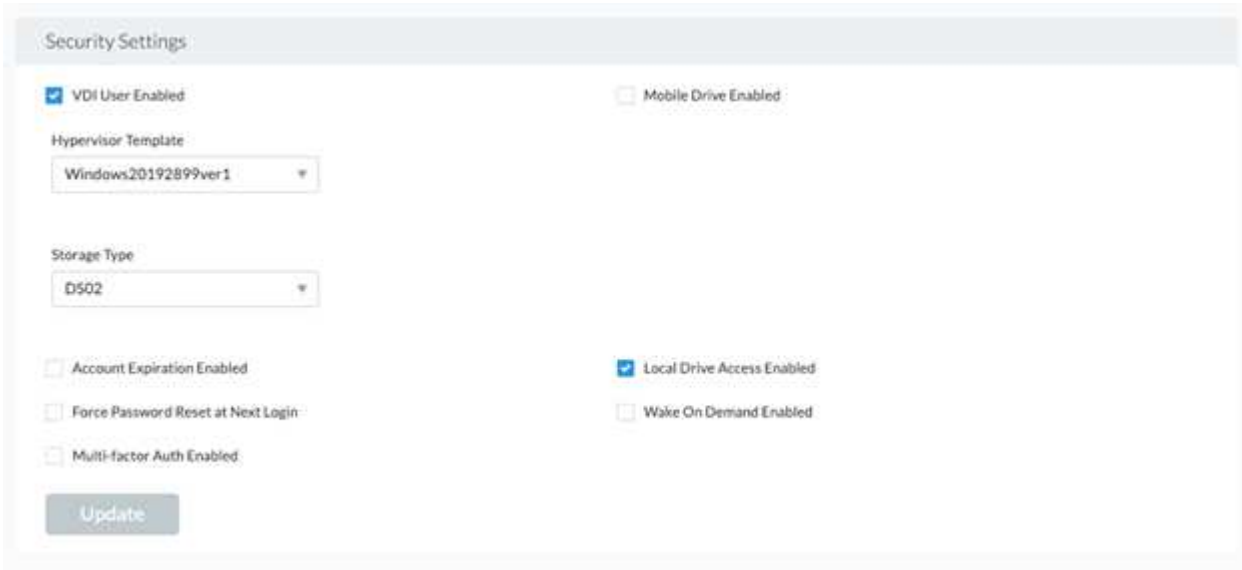


For more info, see [this video](#) on user permissions and user management in NetApp VDS.

When an Active Directory group is defined as a CRAUserGroup using an API call for the datacenter, all the users in that group are imported into the CloudWorkspace for management using the UI. As the cloud workspace is enabled for the user, VDS creates user home folders, settings permissions, user properties updates, and so on.

If VDI User Enabled is checked, VDS creates a single-session RDS machine dedicated to that user. It prompts

for the template and the datastore to provision.



The screenshot shows a 'Security Settings' window with the following options:

- VDI User Enabled
- Mobile Drive Enabled
- Hypervisor Template: Windows20192899ver1
- Storage Type: DS02
- Account Expiration Enabled
- Local Drive Access Enabled
- Force Password Reset at Next Login
- Wake On Demand Enabled
- Multi-factor Auth Enabled

An 'Update' button is located at the bottom left of the settings panel.

## Workspace Management

A workspace consists of a desktop environment; this can be shared remote desktop sessions hosted on-premises or on any supported cloud environment. With Microsoft Azure, the desktop environment can be persistent with Windows Virtual Desktops. Each workspace is associated with a specific organization or client. Options available when creating a new workspace can be seen in the following figure.

## New Workspace

Client & Settings
Choose Applications
Add Users
Review & Provision

Select a Client [Add](#)

No Clients Added.

**Workspace Settings**

Company Name

Primary Notification Email

**Application Settings**

Enable Remote App

Enable App Locker

Enable Application Usage Tracking

**Device Settings**

Disable Printing Access

Enable Workspace User Data Storage

**Security Settings**

Require Complex User Password

Enable MFA for All Users

Permit Access To Task Manager

Cancel
Continue



Each workspace is associated with specific deployment.

Workspaces contain associated apps and app services, shared data folders, servers, and a WVD instance. Each workspace can control security options like enforcing password complexity, multifactor authentication, file audits, and so on.

Workspaces can control the workload schedule to power on extra servers, limit the number of users per server, or set the schedule for the resources available for given period (always on/off). Resources can also be configured to wake up on demand.

The workspace can override the deployment VM resource defaults if required. For WVD, WVD host pools (which contains session hosts and app groups) and WVD workspaces can also be managed from the cloud workspace management suite portal. For more info on the WVD host pool, see this [video](#).

### Application Management

Task workers can quickly launch an application from the list of applications made available to them. App services publish applications from the Remote Desktop Services session hosts. With WVD, App Groups provide similar functionality from multi-session Windows 10 host pools.

For office workers to power users, the applications that they require can be provisioned manually using a service board, or they can be auto-provisioned using the scripted events feature in NetApp VDS.

For more information, see the [NetApp Application Entitlement page](#).

## ONTAP features for Virtual Desktop Service

The following ONTAP features make it attractive choice for use with a virtual desktop service.

- **Scale-out filesystem.** ONTAP FlexGroup volumes can grow to more than 20PB in size and can contain more than 400 billion files within a single namespace. The cluster can contain up to 24 storage nodes, each with a flexible the number of network interface cards depending on the model used.

User's virtual desktops, home folders, user profile containers, shared data, and so on can grow based on demand with no concern for filesystem limitations.

- **File system analytics.** You can use the XCP tool to gain insights into shared data. With ONTAP 9.8+ and ActiveIQ Unified Manager, you can easily query and retrieve file metadata information and identify cold data.
- **Cloud tiering.** You can migrate cold data to an object store in the cloud or to any S3-compatible storage in your datacenter.
- **File versions.** Users can recover files protected by NetApp ONTAP Snapshot copies. ONTAP Snapshot copies are very space efficient because they only record changed blocks.
- **Global namespace.** ONTAP FlexCache technology allows remote caching of file storage making it easier to manage shared data across locations containing ONTAP storage systems.
- **Secure multi-tenancy support.** A single physical storage cluster can be presented as multiple virtual storage arrays each with its own volumes, storage protocols, logical network interfaces, identity and authentication domain, management users, and so on. Therefore, you can share the storage array across multiple business units or environments, such as test, development, and production.

To guarantee performance, you can use adaptive QoS to set performance levels based on used or allocated space, and you can control storage capacity by using quotas.

- **VMware integration.** ONTAP tools for VMware vSphere provides a vCenter plug-in to provision datastores, implement vSphere host best practices, and monitor ONTAP resources.

ONTAP supports vStorage APIs for Array Integration (VAAI) for offloading SCSI/file operations to the storage array. ONTAP also supports vStorage APIs for Storage Awareness (VASA) and Virtual Volumes support for both block and file protocols.

The Snapcenter Plug-in for VMware vSphere provides an easy way to back up and restore virtual machines using the Snapshot feature on a storage array.

ActiveIQ Unified Manager provides end-to-end storage network visibility in a vSphere environment. Administrators can easily identify any latency issues that might occur on virtual desktop environments hosted on ONTAP.

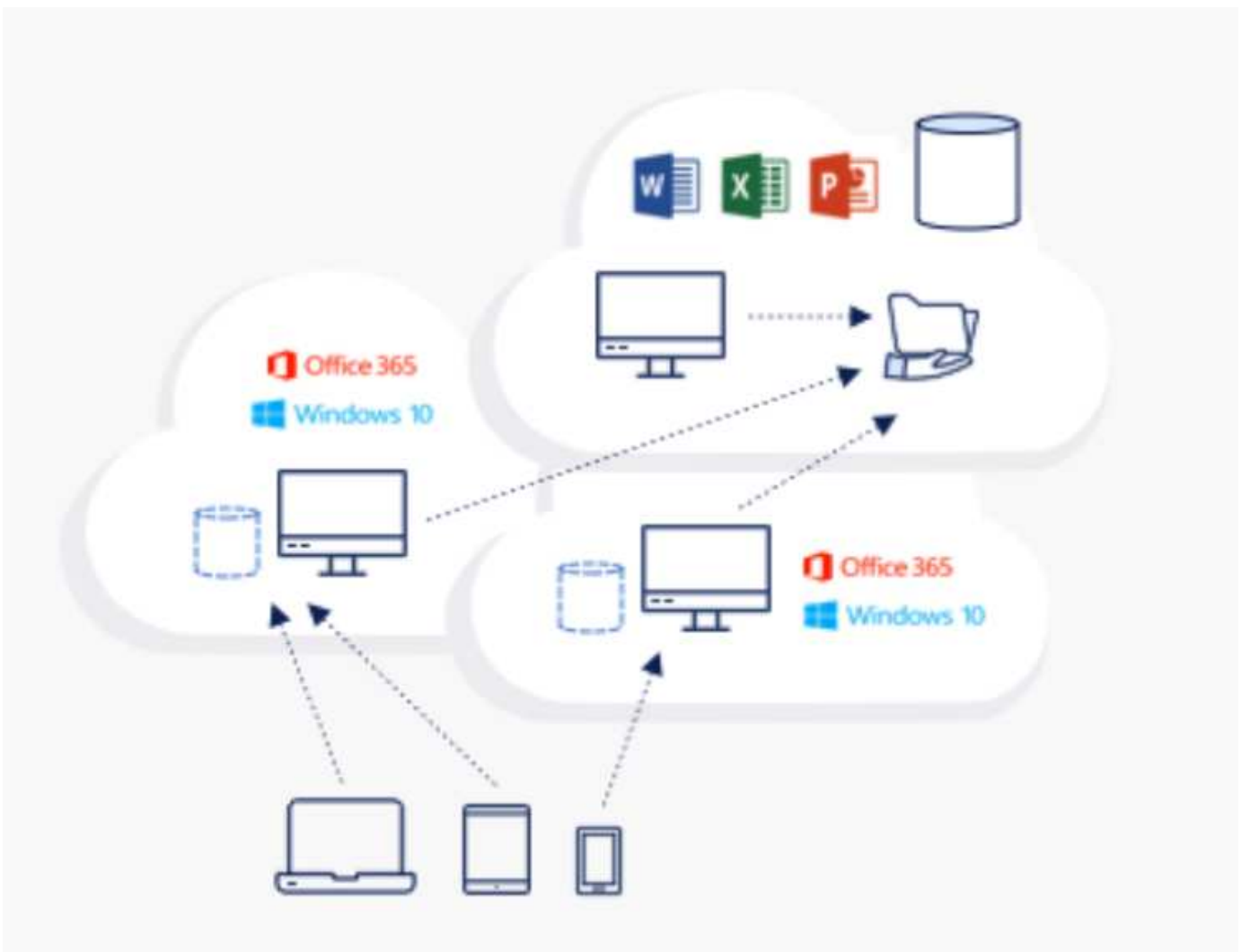
- **Security compliance.** With ActiveIQ Unified Manager, you can monitor multiple ONTAP systems with alerts for any policy violations.
- **Multi-protocol support.** ONTAP supports block (iSCSI, FC, FCoE, and NVMe/FC), file (NFSv3, NFSv4.1, SMB2.x, and SMB3.x), and object (S3) storage protocols.
- **Automation support.** ONTAP provides REST API, Ansible, and PowerShell modules to automate tasks with the VDS Management Portal.

## Data Management

As a part of deployment, you can choose the file-services method to host the user profile, shared data, and the home drive folder. The available options are File Server, Azure Files, or Azure NetApp Files. However, after deployment, you can modify this choice with the Command Center tool to point to any SMB share. [There are various advantages to hosting with NetApp ONTAP](#). To learn how to change the SMB share, see [Change Data Layer](#).

## Global File Cache

When users are spread across multiple sites within a global namespace, Global File Cache can help reduce latency for frequently accessed data. Global File Cache deployment can be automated using a provisioning collection and scripted events. Global File Cache handles the read and write caches locally and maintains file locks across locations. Global File Cache can work with any SMB file servers, including Azure NetApp Files.



Global File Cache requires the following:

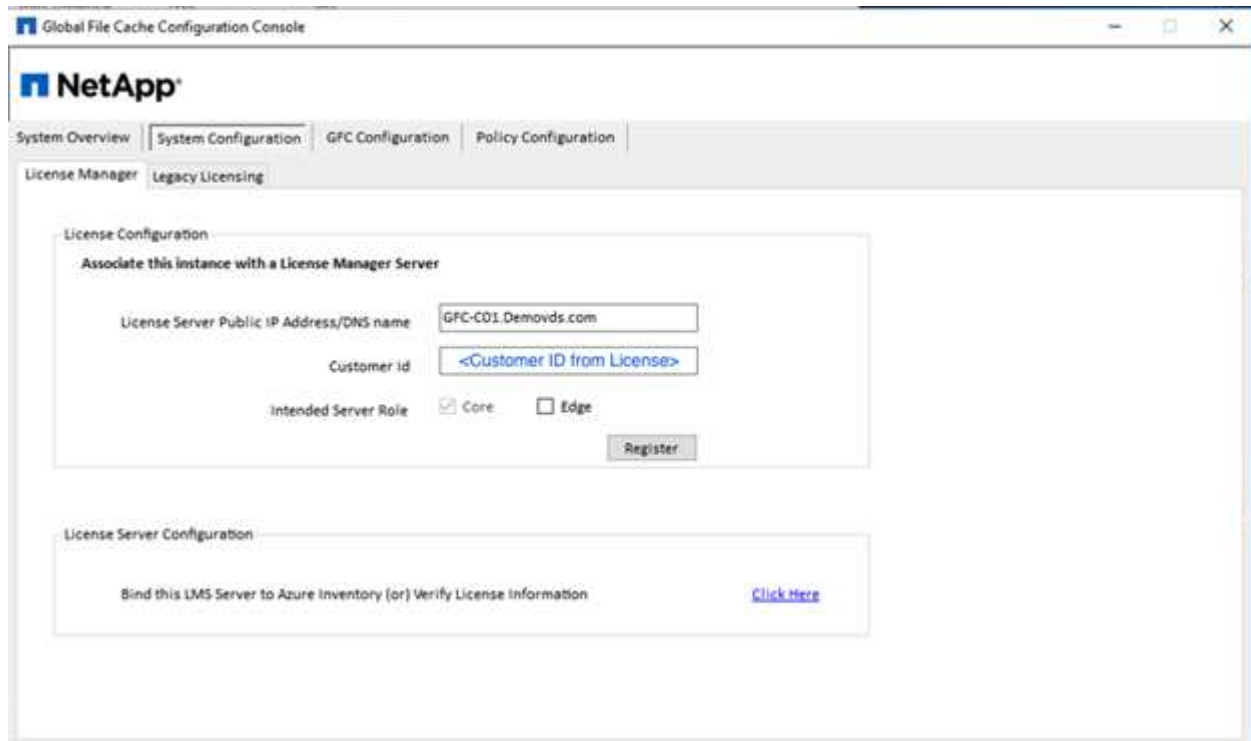
- Management server (License Management Server)
- Core

- Edge with enough disk capacity to cache the data

To download the software and to calculate the disk cache capacity for Edge, see the [GFC documentation](#).

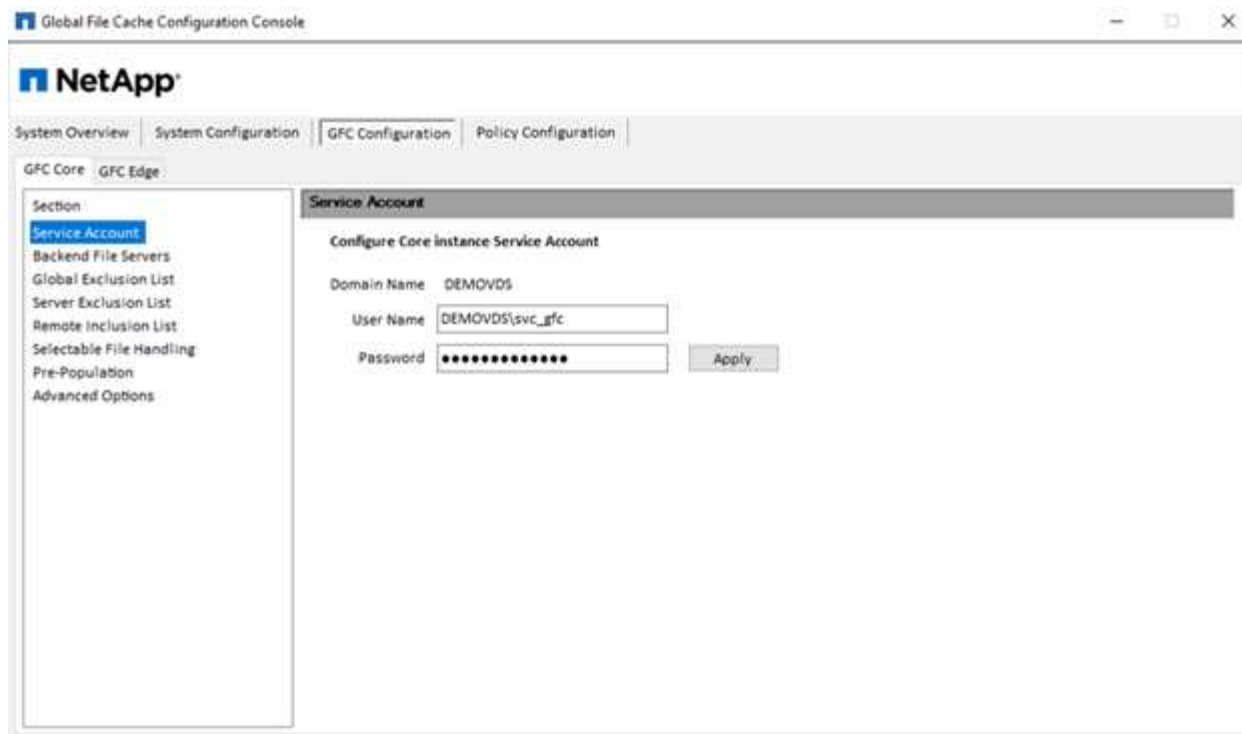
For our validation, we deployed the core and management resources on the same VM at Azure and edge resources on NetApp HCI. Please note that the core is where high-volume data access is required and the edge is a subset of the core. After the software is installed, you must activate the license activated before use. To do so, complete the following steps:

1. Under the License Configuration section, use the link Click Here to complete the license activation. Then register the core.

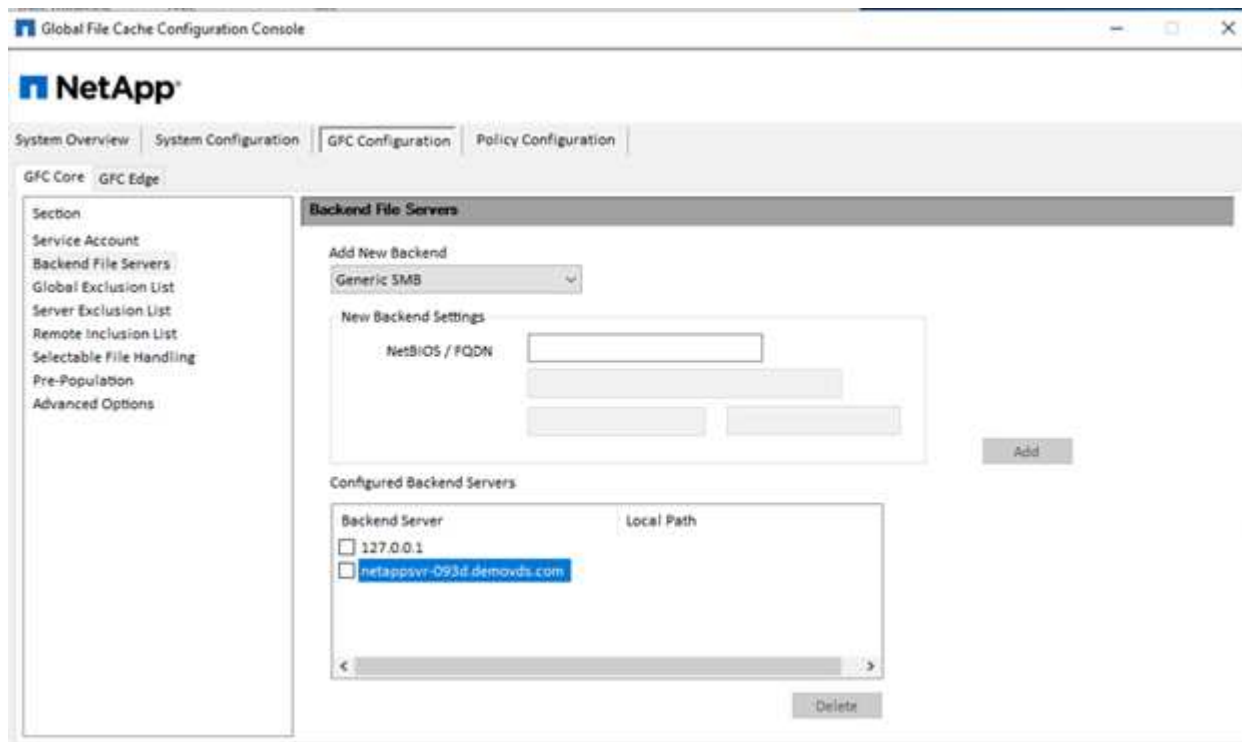


2. Provide the service account to be used for the Global File Cache. For the required permissions for this account, see the [GFC documentation](#).

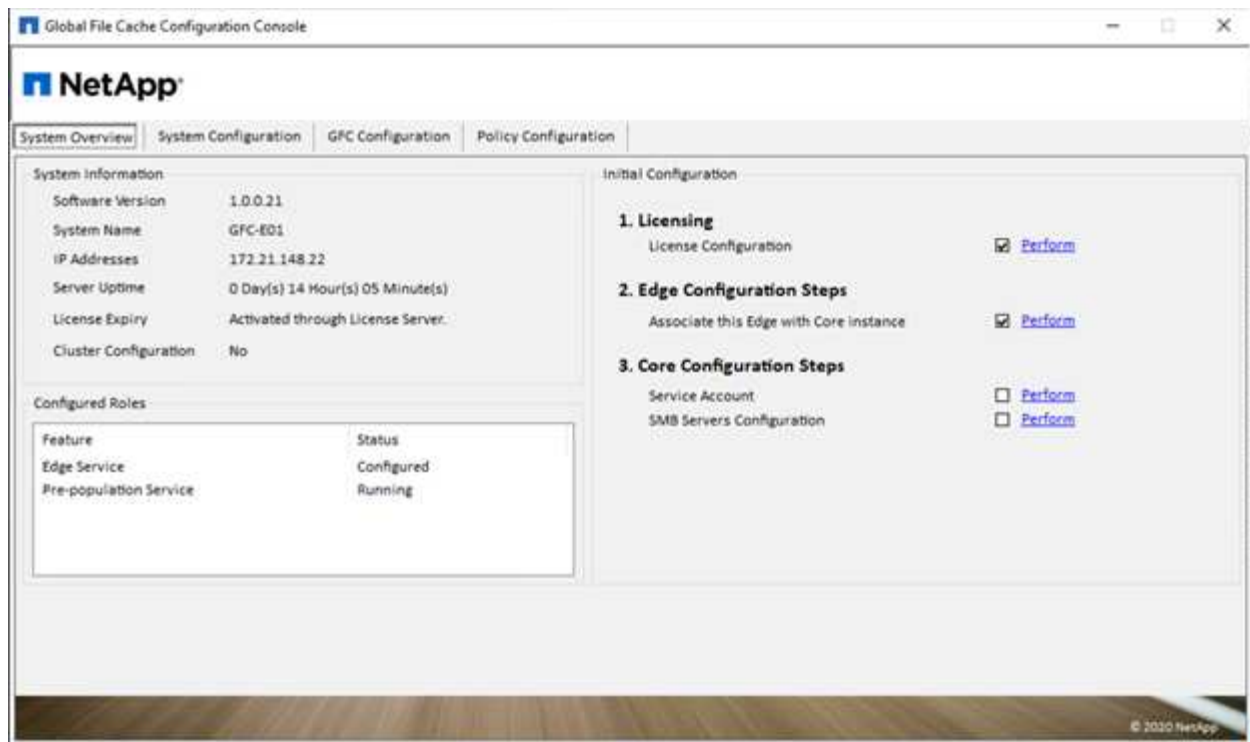




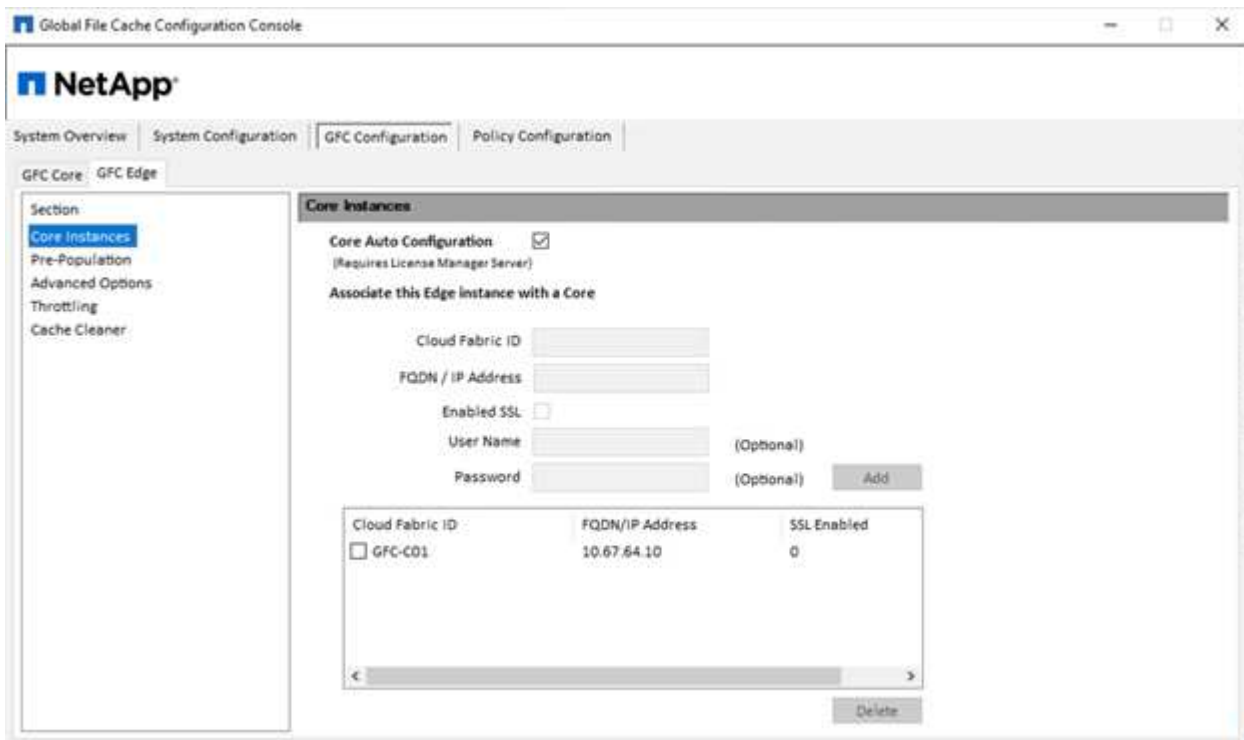
3. Add a new backend file server and provide the file server name or IP.



4. On the edge, the cache drive must have the drive letter D. If it does not, use diskpart.exe to select the volume and change drive letter. Register with the license server as edge.



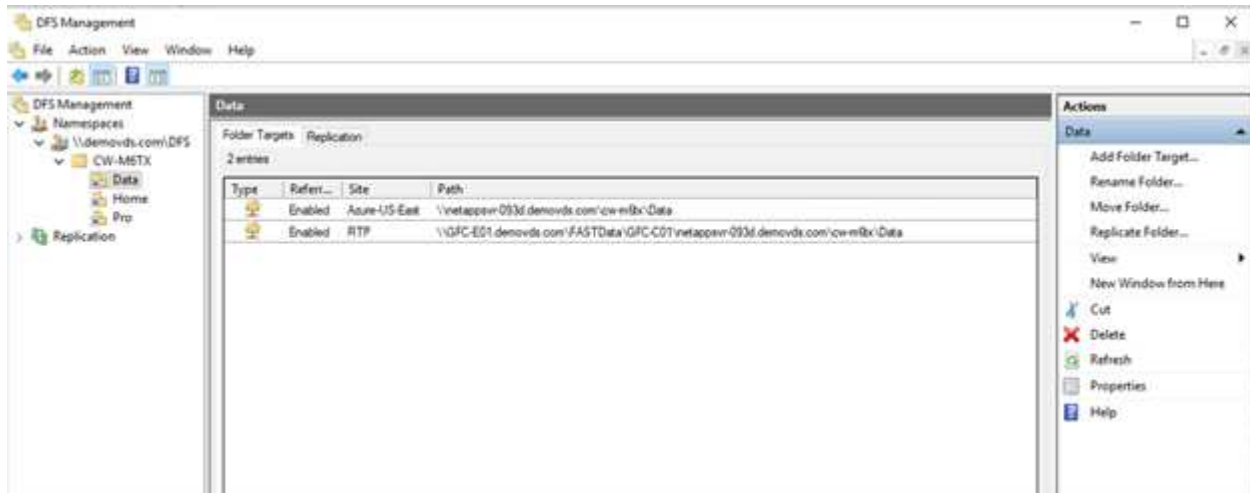
If core auto-configuration is enabled, core information is retrieved from the license management server automatically.



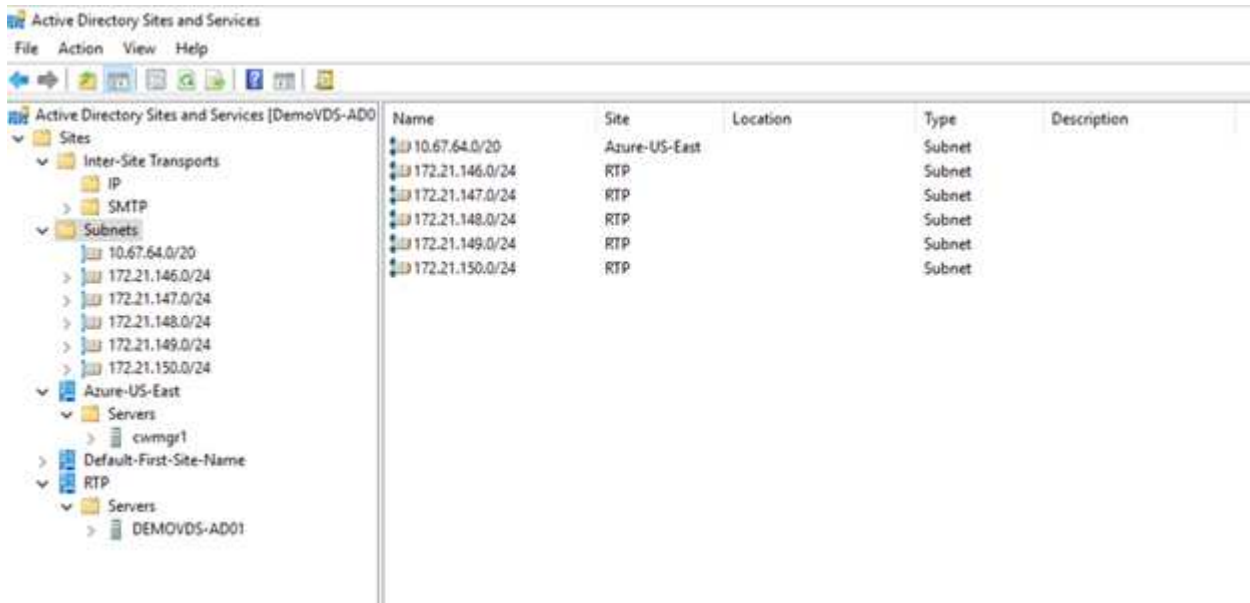
From any client machine, the administrators that used to access the share on the file server can access it with GFC edge using UNC Path \\<edge server name>\FASTDATA\<core server name>\<backend file server name>\<share name>. Administrators can include this path in user logonscript or GPO for users drive mapping at the edge location.

To provide transparent access for users across the globe, an administrator can setup the Microsoft Distributed

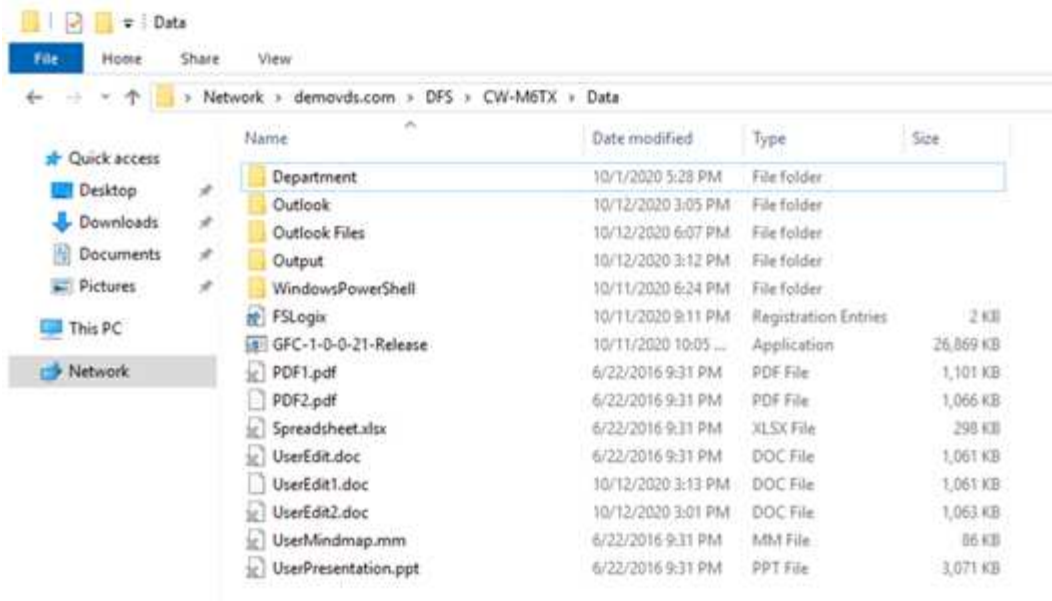
Filesystem (DFS) with links pointing to file server shares and to edge locations.



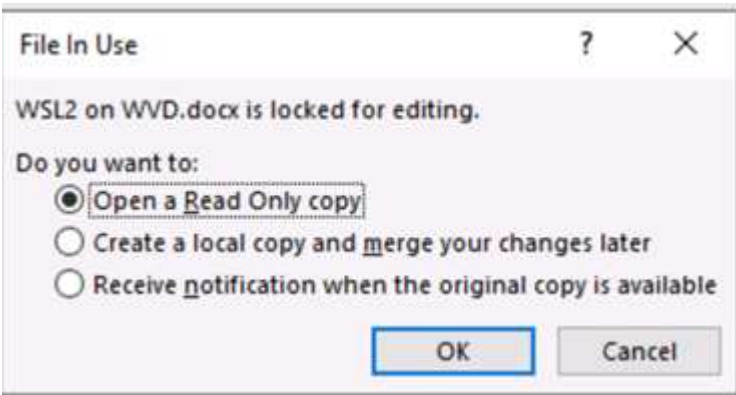
When users log in with Active Directory credentials based on the subnets associated with the site, the appropriate link is utilized by the DFS client to access the data.



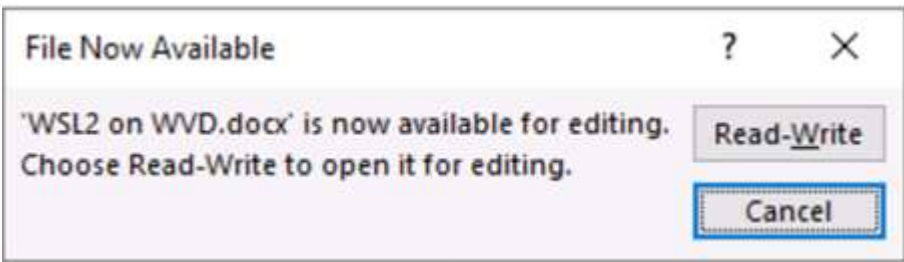
File icons change depending on whether a file is cached; files that are not cached have a grey X on the lower left corner of the icon. After a user in an edge location accesses a file, that file is cached, and the icon changes.



When a file is open and another user is trying to open the same file from an edge location, the user is prompted with the following selection:



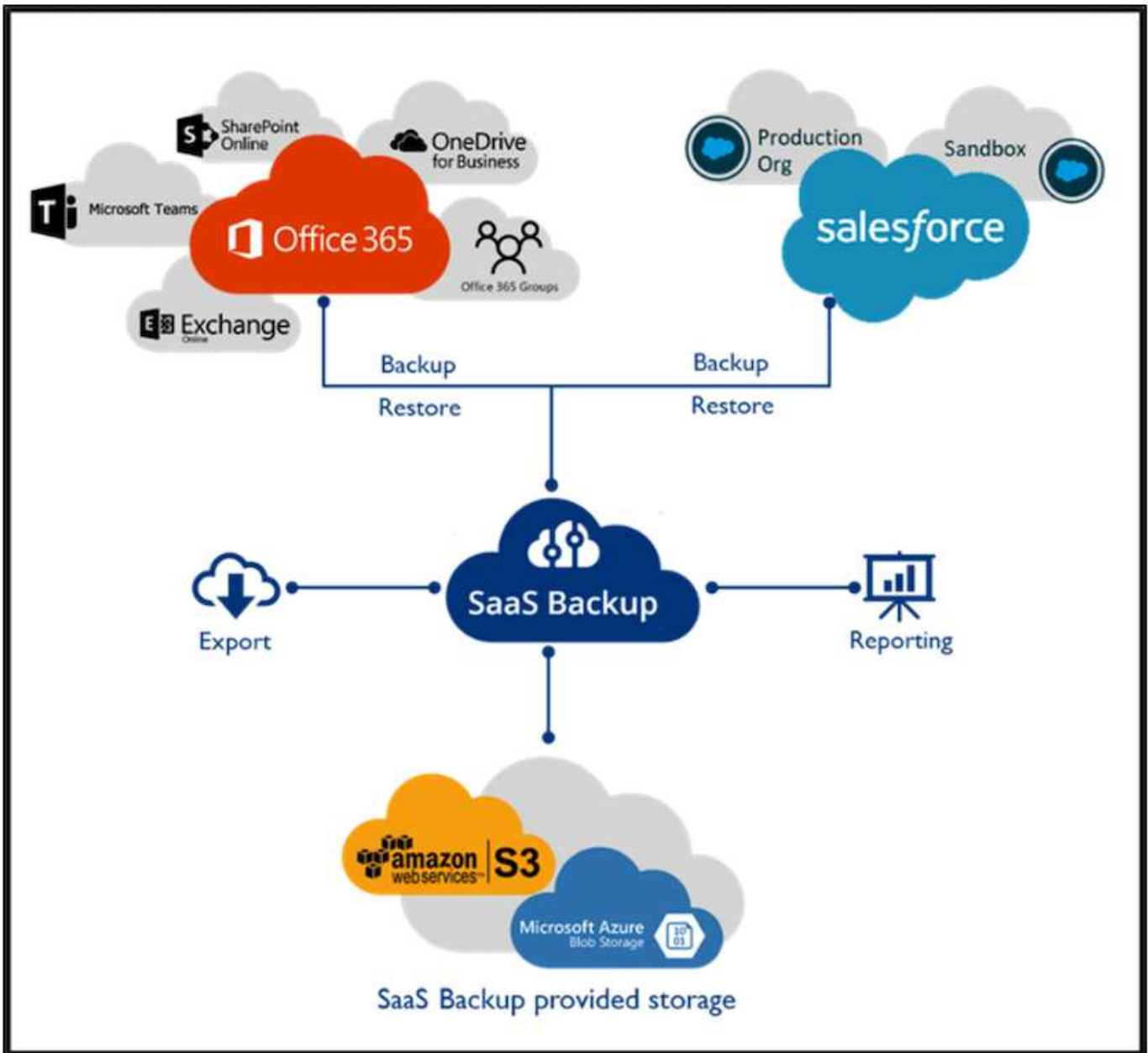
If the user selects the option to receive a notification when the original copy is available, the user is notified as follows:



For more information, see this [video on Talon and Azure NetApp Files Deployment](#).

**SaaS Backup**

NetApp VDS provides data protection for Salesforce and Microsoft Office 365, including Exchange, SharePoint, and Microsoft OneDrive. The following figure shows how NetApp VDS provides SaaS Backup for these data services.



For a demonstration of Microsoft Office 365 data protection, see [this video](#).

For a demonstration of Salesforce data protection, see [this video](#).

### Operation management

With NetApp VDS, administrators can delegate tasks to others. They can connect to deployed servers to troubleshoot, view logs, and run audit reports. While assisting customers, helpdesk or level-3 technicians can shadow user sessions, view process lists, and kill processes if required.

For information on VDS logfiles, see the [Troubleshooting Failed VDA Actions](#) page.

For more information on the required minimum permissions, see the [VDA Components and Permissions](#) page.

If you would like to manually clone a server, see the [Cloning Virtual Machines](#) page.

To automatically increase the VM disk size, see the [Auto-Increase Disk Space Feature page](#).

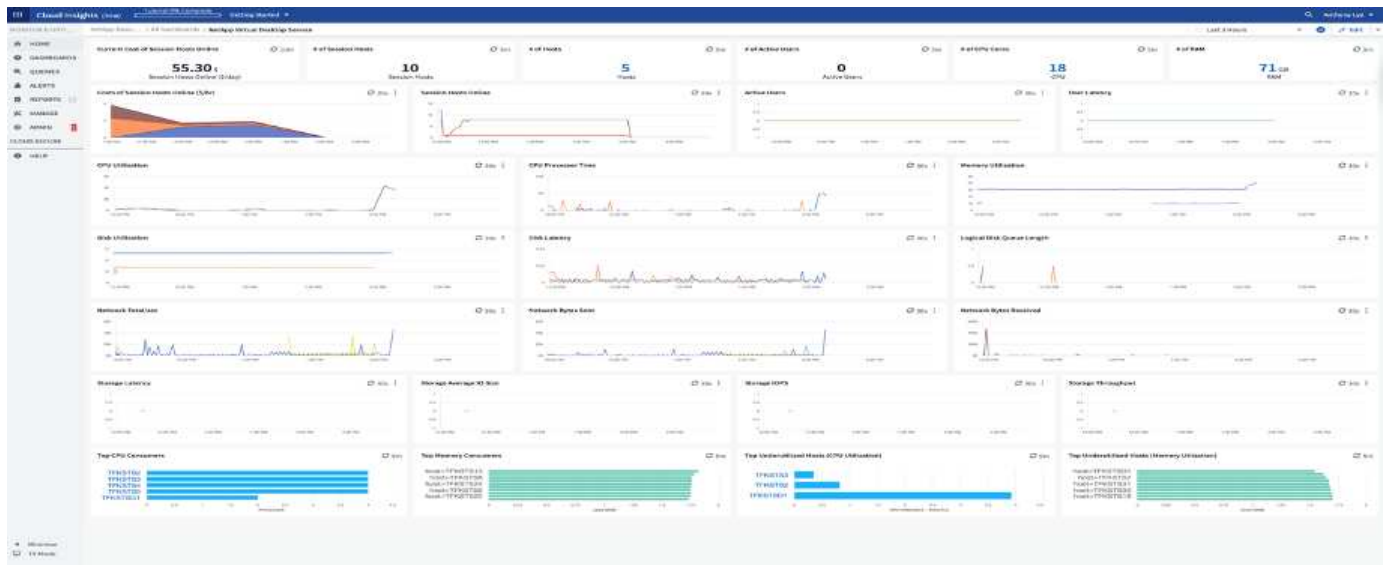
To identify the gateway address to manually configure the client, see the [End User Requirements page](#).

## Cloud Insights

NetApp Cloud Insights is a web-based monitoring tool that gives you complete visibility into infrastructure and applications running on NetApp and other third-party infrastructure components. Cloud Insights supports both private cloud and public clouds for monitoring, troubleshooting, and optimizing resources.

Only the acquisition unit VM (can be Windows or Linux) must be installed on a private cloud to collect metrics from data collectors without the need for agents. Agent-based data collectors allow you to pull custom metrics from Windows Performance Monitor or any input agents that Telegraf supports.

The following figure depicts the Cloud Insights VDS dashboard.



For more info on NetApp Cloud Insights, see [this video](#).

## Tools and Logs

This page discusses the DCCconfig Tool, TestVdc Tools, and log files.

### DCCconfig Tool

The DCCconfig tool supports the following hypervisor options for adding a site:

DataCenter Site

DataCenter Site

Hypervisor

Cancel New Save

Load Hypervisor Test

Select Hypervisor

- Aws
- AzureClassic
- AzureRM
- ComputeEngine
- HyperV
- ProfitBricks
- vCloud
- vCloudRest
- vSphere
- XenServer

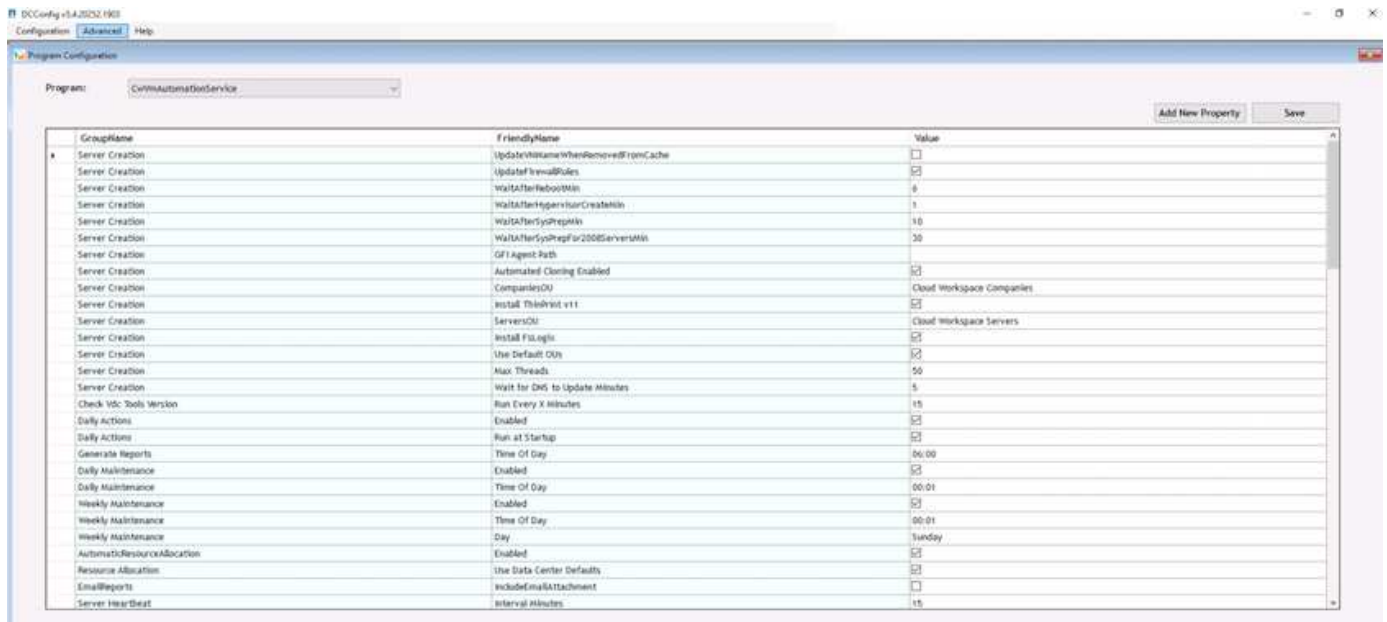
Configuration

DataCenter Accounts Email DatabaseConnection Exclude DataCenter Sites Product Keys Static IpAddress Drive Mapping

Save

	Description	DriveLetter
	Shared Data	P
	FTP	F
▶	User Home	H

Workspace-specific drive-letter mapping for shared data can be handled using GPO. Professional Services or the support team can use the advanced tab to customize settings like Active Directory OU names, the option to enable or disable deployment of FSLogix, various timeout values, and so on.



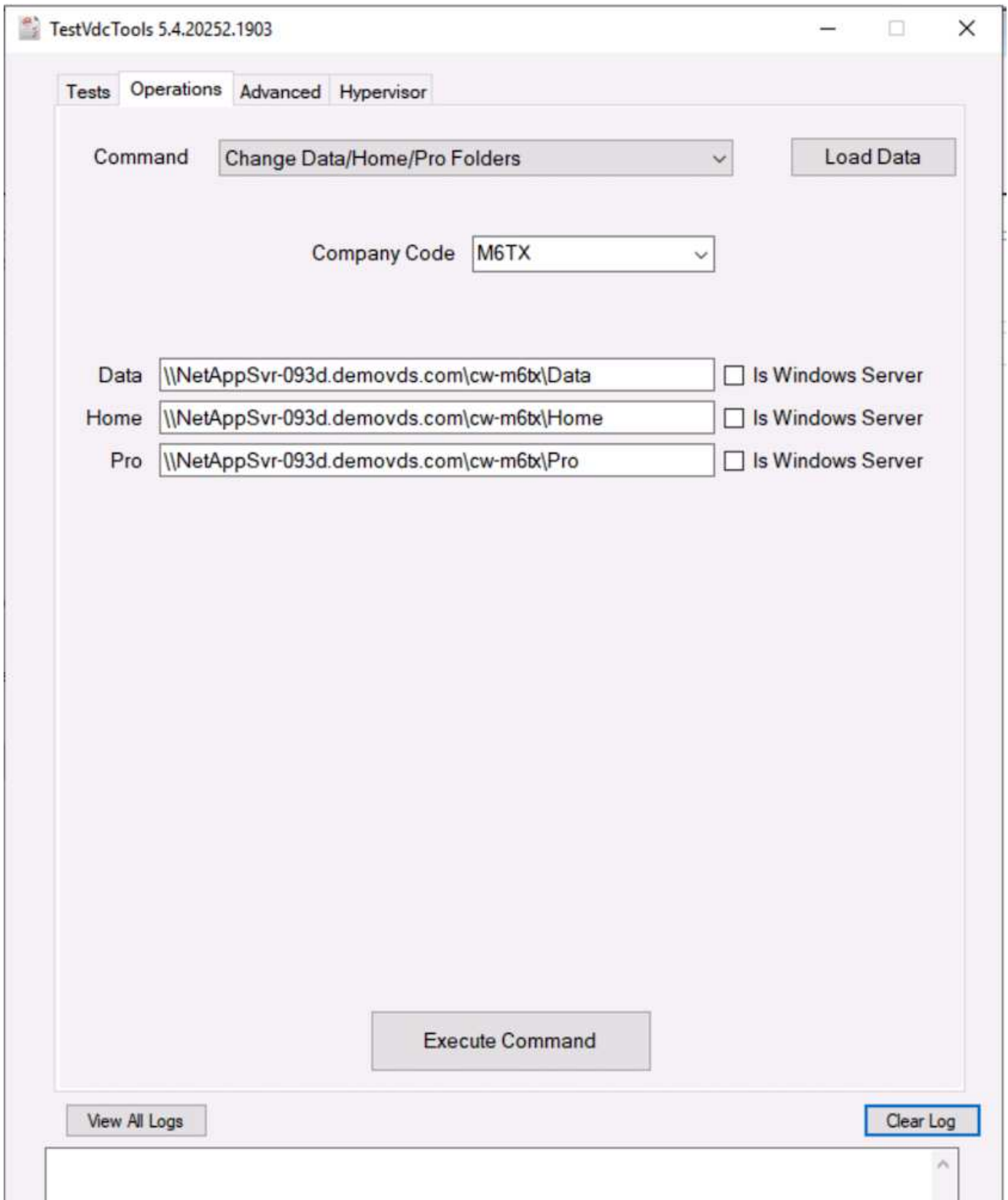
### Command Center (Previously known as TestVdc Tools)

To launch Command Center and the required role, see the [Command Center Overview](#).

You can perform the following operations:

- Change the SMB Path for a workspace.





- Change the site for provisioning collection.

Tests Operations **Advanced** Hypervisor

Command Edit Provisioning Collection ▾

Load Data

Provisioning Collection Windows2019 ▾

Description On vSphere Site 2

Share Drive P ▾

Minimum Cache Level 1 ▾

Operating System Windows Server 2019 ▾

Collection Type Shared ▾







	Data Center Site	Role	Template	Storage
▶	Site 2 ▾	TSDData ▾	Windows2019 ▾	DS01
*	▾	▾	▾	▾

Execute Command

View All Logs

Clear Log

Log Files

Name	Date modified	Type	Size
 CwAgent	9/19/2020 12:35 PM	File folder	
 CWAutomationService	9/19/2020 12:34 PM	File folder	
 CWManagerX	9/19/2020 12:53 PM	File folder	
 CwVmAutomationService	9/19/2020 12:34 PM	File folder	
 TestVdcTools	9/22/2020 8:20 PM	File folder	
 report	9/19/2020 12:18 PM	Executable Jar File	705 KB

Check [automation logs](#) for more info.

### GPU considerations

GPUs are typically used for graphic visualization (rendering) by performing repetitive arithmetic calculations. This repetitive compute capability is often used for AI and deep learning use cases.

For graphic intensive applications, Microsoft Azure offers the NV series based on the NVIDIA Tesla M60 card with one to four GPUs per VM. Each NVIDIA Tesla M60 card includes two Maxwell-based GPUs, each with 8GB of GDDR5 memory for a total of 16GB.



An NVIDIA license is included with the NV series.

TechPowerUp GPU-Z 2.36.0

Graphics Card | Sensors | Advanced | Validation

Name: NVIDIA Tesla M60 [Lookup](#)

GPU: GM204 | Revision: FF

Technology: 28 nm | Die Size: 398 mm<sup>2</sup>

Release Date: Aug 30, 2015 | Transistors: 5200M

BIOS Version: 84.04.85.00.03 [Share](#)  UEFI

Subvendor: NVIDIA | Device ID: 10DE 13F2 - 10DE 115E

ROPs/TMUs: 64 / 128 | Bus Interface: PCI [?](#)

Shaders: 2048 Unified | DirectX Support: 12 (12\_1)

Pixel Fillrate: 75.4 GPixel/s | Texture Fillrate: 150.8 GTexel/s

Memory Type: GDDR5 (Hynix) | Bus Width: 256 bit

Memory Size: 8192 MB | Bandwidth: 160.4 GB/s

Driver Version: 27.21.14.5257 (NVIDIA 452.57) / 2016

Driver Date: Oct 22, 2020 | Digital Signature: WHQL

GPU Clock: 557 MHz | Memory: 1253 MHz | Boost: 1178 MHz

Default Clock: 557 MHz | Memory: 1253 MHz | Boost: 1178 MHz






NVIDIA SLI: Disabled

Computing:  OpenCL  CUDA  DirectCompute  DirectML

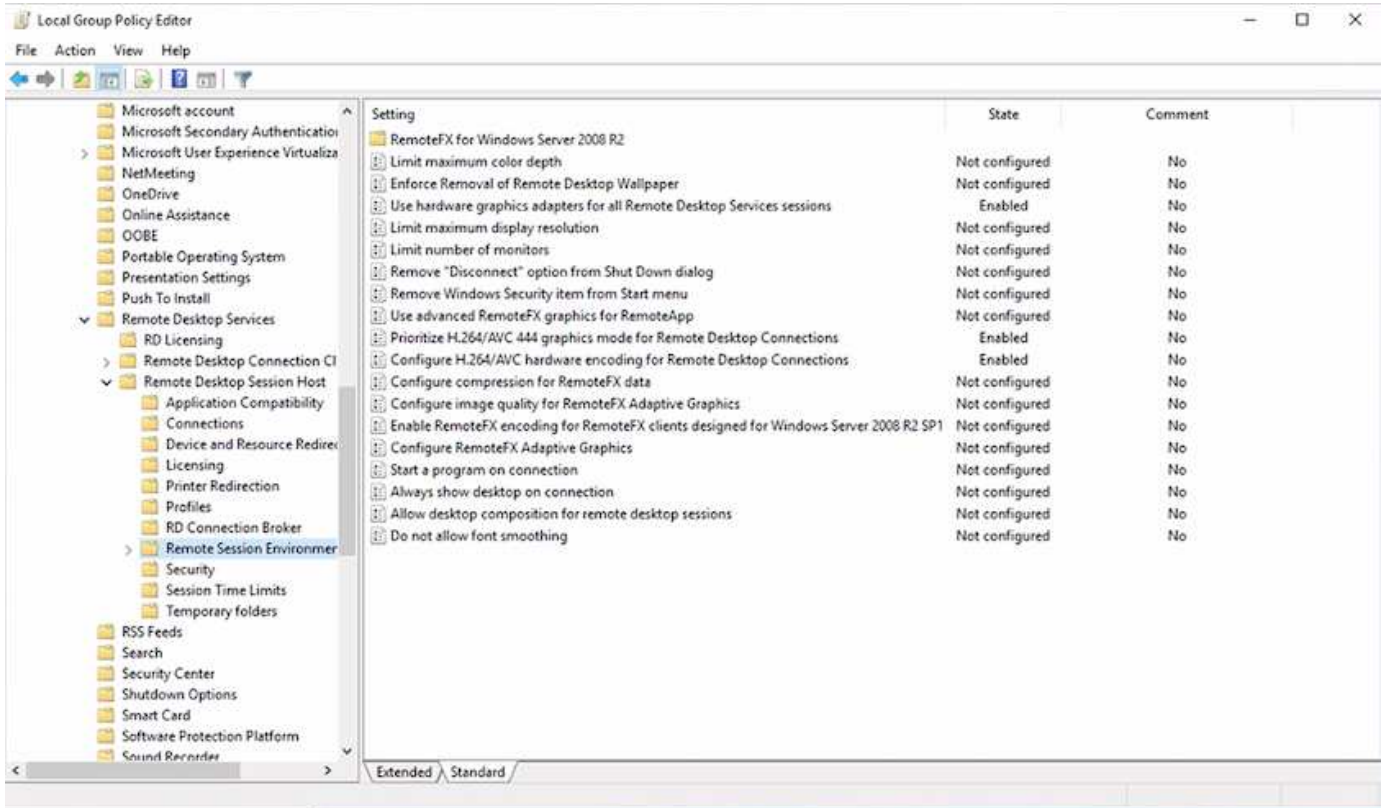
Technologies:  Vulkan  Ray Tracing  PhysX  OpenGL 4.6

NVIDIA Tesla M60 [Close](#)

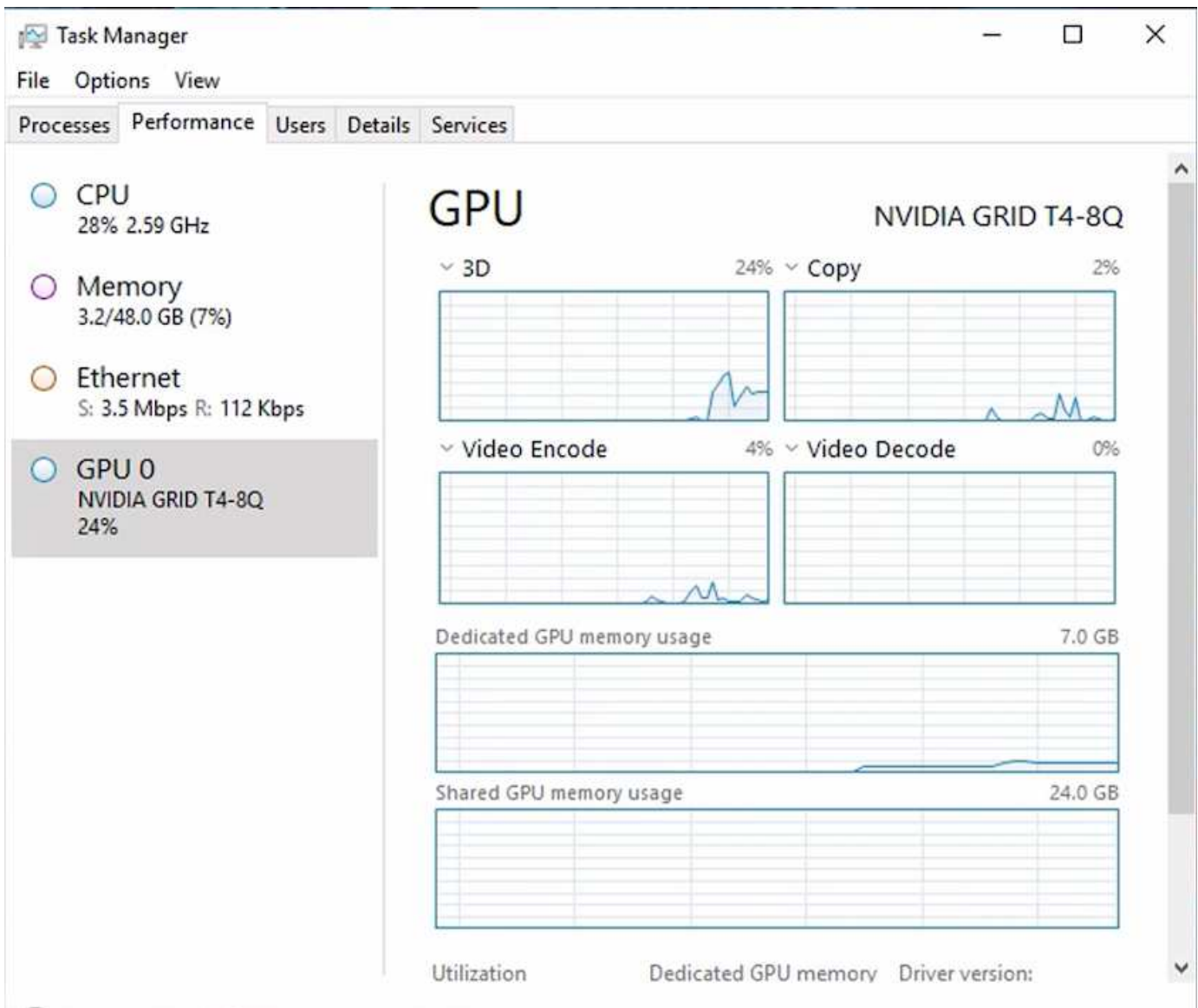
With NetApp HCI, the H615C GPU contains three NVIDIA Tesla T4 cards. Each NVIDIA Tesla T4 card has a Turing-based GPU with 16GB of GDDR6 memory. When used in a VMware vSphere environment, virtual machines are able to share the GPU, with each VM having dedicated frame buffer memory. Ray tracing is available with the GPUs on the NetApp HCI H615C to produce realistic images including light reflections. Please note that you need to have an NVIDIA license server with a license for GPU features.

Graphics Card		Sensors	Advanced	Validation	  	
Name	NVIDIA GRID T4-8Q			<input type="button" value="Lookup"/>		
GPU	TU104	Revision	A1		 <b>NVIDIA</b>	
Technology	12 nm	Die Size	545 mm <sup>2</sup>			
Release Date	Sep 13, 2018	Transistors	13600M			
BIOS Version	0.00.00.00.00			 <input type="checkbox"/> UEFI		
Subvendor	NVIDIA	Device ID	10DE 1EB8 - 10DE 130F			
ROPs/TMUs	8 / 160	Bus Interface	PCI			?
Shaders	2560 Unified		DirectX Support	12 (12_2)		
Pixel Fillrate	4.7 GPixel/s		Texture Fillrate	93.6 GTexel/s		
Memory Type	GDDR6		Bus Width	256 bit		
Memory Size	8192 MB		Bandwidth	Unknown		
Driver Version	27.21.14.5257 (NVIDIA 452.57) / 2016					
Driver Date	Oct 22, 2020		Digital Signature	WHQL		
GPU Clock	585 MHz	Memory	0 MHz	Shader	N/A	
Default Clock	585 MHz	Memory	0 MHz	Shader	N/A	
NVIDIA SLI	Disabled					
Computing	<input checked="" type="checkbox"/> OpenCL	<input checked="" type="checkbox"/> CUDA	<input checked="" type="checkbox"/> DirectCompute	<input type="checkbox"/> DirectML		
Technologies	<input checked="" type="checkbox"/> Vulkan	<input checked="" type="checkbox"/> Ray Tracing	<input type="checkbox"/> PhysX	<input checked="" type="checkbox"/> OpenGL 4.6		
NVIDIA GRID T4-8Q					<input type="button" value="Close"/>	

To use the GPU, you must install the appropriate driver, which can be downloaded from the NVIDIA license portal. In an Azure environment, the NVIDIA driver is available as GPU driver extension. Next, the group policies in the following screenshot must be updated to use GPU hardware for remote desktop service sessions. You should prioritize H.264 graphics mode and enable encoder functionality.



Validate GPU performance monitoring with Task Manager or by using the nvidia-smi CLI when running WebGL samples. Make sure that GPU, memory, and encoder resources are being consumed.



To make sure that the virtual machine is deployed to the NetApp HCI H615C with Virtual Desktop Service, define a site with the vCenter cluster resource that has H615C hosts. The VM template must have the required vGPU profile attached.

For shared multi-session environments, consider allocating multiple homogenous vGPU profiles. However, for high end professional graphics application, it is better to have each VM dedicated to a user to keep VMs isolated.

The GPU processor can be controlled by a QoS policy, and each vGPU profile can have dedicated frame buffers. However, the encoder and decoder are shared for each card. The placement of a vGPU profile on a GPU card is controlled by the vSphere host GPU assignment policy, which can emphasize performance (spread VMs) or consolidation (group VMs).

### Solutions for Industry

Graphics workstations are typically used in industries such as manufacturing, healthcare, energy, media and entertainment, education, architecture, and so on. Mobility is often limited for graphics-intensive applications.

To address the issue of mobility, Virtual Desktop Services provide a desktop environment for all types of workers, from task workers to expert users, using hardware resources in the cloud or with NetApp HCI, including options for flexible GPU configurations. VDS enables users to access their work environment from anywhere with laptops, tablets, and other mobile devices.

To run manufacturing workloads with software like ANSYS Fluent, ANSYS Mechanical, Autodesk AutoCAD, Autodesk Inventor, Autodesk 3ds Max, Dassault Systèmes SOLIDWORKS, Dassault Systèmes CATIA, PTC Creo, Siemens PLM NX, and so on, the GPUs available on various clouds (as of Jan 2021) are listed in the following table.

<b>GPU Model</b>	<b>Microsoft Azure</b>	<b>Google Compute (GCP)</b>	<b>Amazon Web Services (AWS)</b>	<b>On-Premises (NetApp HCI)</b>
NVIDIA M60	Yes	Yes	Yes	No
NVIDIA T4	No	Yes	Yes	Yes
NVIDIA P100	No	Yes	No	No
NVIDIA P4	No	Yes	No	No

Shared desktop sessions with other users and dedicated personal desktops are also available. Virtual desktops can have one to four GPUs or can utilize partial GPUs with NetApp HCI. The NVIDIA T4 is a versatile GPU card that can address the demands of a wide spectrum of user workloads.

Each GPU card on NetApp HCI H615C has 16GB of frame buffer memory and three cards per server. The number of users that can be hosted on single H615C server depends on the user workload.

<b>Users/Server</b>	<b>Light (4GB)</b>	<b>Medium (8GB)</b>	<b>Heavy (16GB)</b>
H615C	12	6	3

To determine the user type, run the GPU profiler tool while users are working with applications performing typical tasks. The GPU profiler captures memory demands, the number of displays, and the resolution that users require. You can then pick the vGPU profile that satisfies your requirements.

Virtual desktops with GPUs can support a display resolution of up to 8K, and the utility nView can split a single monitor into regions to work with different datasets.

With ONTAP file storage, you can realize the following benefits:

- A single namespace that can grow up to 20PB of storage with 400 billion of files, without much administrative input
- A namespace that can span the globe with a Global File Cache
- Secure multitenancy with managed NetApp storage
- The migration of cold data to object stores using NetApp FabricPool
- Quick file statistics with file system analytics
- Scaling a storage cluster up to 24 nodes increasing capacity and performance
- The ability to control storage space using quotas and guaranteed performance with QoS limits
- Securing data with encryption
- Meeting broad requirements for data protection and compliance
- Delivering flexible business continuity options



## Conclusion

The NetApp Virtual Desktop Service provides an easy-to-consume virtual desktop and application environment with a sharp focus on business challenges. By extending VDS with the on-premises ONTAP environment, you can use powerful NetApp features in a VDS environment, including rapid clone, in-line deduplication, compaction, thin provisioning, and compression. These features save storage costs and improve performance with all-flash storage. With VMware vSphere hypervisor, which minimizes server-provisioning time by using Virtual Volumes and vSphere API for Array integration. Using the hybrid cloud, customers can pick the right environment for their demanding workloads and save money. The desktop session running on-premises can access cloud resources based on policy.

## Where to Find Additional Information

To learn more about the information that is described in this document, review the following documents and/or websites:

- [NetApp Cloud](#)
- [NetApp VDS Product Documentation](#)
- [Connect your on-premises network to Azure with VPN Gateway](#)
- [Azure Portal](#)
- [Microsoft Windows Virtual Desktop](#)
- [Azure NetApp Files Registration](#)

## VMware Horizon

### **NVA-1132-DESIGN: VMware end-user computing with NetApp HCI**

Suresh Thoppay, NetApp

VMware end-user computing with NetApp HCI is a prevalidated, best-practice data center architecture for deploying virtual desktop workloads at an enterprise scale. This document describes the architectural design and best practices for deploying the solution at production scale in a reliable and risk-free manner.

[NVA-1132-DESIGN: VMware end-user computing with NetApp HCI](#)

### **NVA-1129-DESIGN: VMware end-user computing with NetApp HCI and NVIDIA GPUs**

Suresh Thoppay, NetApp

VMware end-user computing with NetApp HCI is a prevalidated, best-practice data center architecture for deploying virtual desktop workloads at an enterprise scale. This document describes the architectural design and best practices for deploying the solution at production scale in a reliable and risk-free manner.

[NVA-1129-DESIGN: VMware end-user computing with NetApp HCI and NVIDIA GPUs](#)

## **NVA-1129-DEPLOY: VMware end-user Computing with NetApp HCI and NVIDIA GPUs**

Suresh Thoppay, NetApp

VMware end-user Computing with NetApp HCI is a prevalidated, best-practice, data center architecture for deploying virtual desktop workloads at an enterprise scale. This document describes how to deploy the solution at production scale in a reliable and risk-free manner

[NVA-1129-DEPLOY: VMware end-user Computing with NetApp HCI and NVIDIA GPUs](#)

## **NetApp HCI for virtual desktop infrastructure with VMware Horizon 7 - Empower your power users with 3D Graphics**

Suresh Thoppay, NetApp

TR-4792 provides guidance on using the NetApp H615C compute node for 3D graphics workloads in a VMware Horizon environment powered by NVIDIA graphics processing units (GPUs) and virtualization software. It also provides the results from the preliminary testing of SPECviewperf 13 for the H615C.

[NetApp HCI for virtual desktop infrastructure with VMware Horizon 7 - Empower your power users with 3D Graphics](#)

## **FlexPod desktop virtualization solutions**

Learn more about FlexPod virtualization solutions by reviewing the [FlexPod design guides](#)

## Copyright information

Copyright © 2024 NetApp, Inc. All Rights Reserved. Printed in the U.S. No part of this document covered by copyright may be reproduced in any form or by any means—graphic, electronic, or mechanical, including photocopying, recording, taping, or storage in an electronic retrieval system—without prior written permission of the copyright owner.

Software derived from copyrighted NetApp material is subject to the following license and disclaimer:

THIS SOFTWARE IS PROVIDED BY NETAPP “AS IS” AND WITHOUT ANY EXPRESS OR IMPLIED WARRANTIES, INCLUDING, BUT NOT LIMITED TO, THE IMPLIED WARRANTIES OF MERCHANTABILITY AND FITNESS FOR A PARTICULAR PURPOSE, WHICH ARE HEREBY DISCLAIMED. IN NO EVENT SHALL NETAPP BE LIABLE FOR ANY DIRECT, INDIRECT, INCIDENTAL, SPECIAL, EXEMPLARY, OR CONSEQUENTIAL DAMAGES (INCLUDING, BUT NOT LIMITED TO, PROCUREMENT OF SUBSTITUTE GOODS OR SERVICES; LOSS OF USE, DATA, OR PROFITS; OR BUSINESS INTERRUPTION) HOWEVER CAUSED AND ON ANY THEORY OF LIABILITY, WHETHER IN CONTRACT, STRICT LIABILITY, OR TORT (INCLUDING NEGLIGENCE OR OTHERWISE) ARISING IN ANY WAY OUT OF THE USE OF THIS SOFTWARE, EVEN IF ADVISED OF THE POSSIBILITY OF SUCH DAMAGE.

NetApp reserves the right to change any products described herein at any time, and without notice. NetApp assumes no responsibility or liability arising from the use of products described herein, except as expressly agreed to in writing by NetApp. The use or purchase of this product does not convey a license under any patent rights, trademark rights, or any other intellectual property rights of NetApp.

The product described in this manual may be protected by one or more U.S. patents, foreign patents, or pending applications.

LIMITED RIGHTS LEGEND: Use, duplication, or disclosure by the government is subject to restrictions as set forth in subparagraph (b)(3) of the Rights in Technical Data -Noncommercial Items at DFARS 252.227-7013 (FEB 2014) and FAR 52.227-19 (DEC 2007).

Data contained herein pertains to a commercial product and/or commercial service (as defined in FAR 2.101) and is proprietary to NetApp, Inc. All NetApp technical data and computer software provided under this Agreement is commercial in nature and developed solely at private expense. The U.S. Government has a non-exclusive, non-transferrable, nonsublicensable, worldwide, limited irrevocable license to use the Data only in connection with and in support of the U.S. Government contract under which the Data was delivered. Except as provided herein, the Data may not be used, disclosed, reproduced, modified, performed, or displayed without the prior written approval of NetApp, Inc. United States Government license rights for the Department of Defense are limited to those rights identified in DFARS clause 252.227-7015(b) (FEB 2014).

## Trademark information

NETAPP, the NETAPP logo, and the marks listed at <http://www.netapp.com/TM> are trademarks of NetApp, Inc. Other company and product names may be trademarks of their respective owners.