

# Washington State Influenza Update

Week 32: August 4 – August 10, 2024

Quick facts are below. See full report on pages 1-9 for details.

Influenza-like illness activity in Washington is currently

**Minimal**

Number of reported lab-confirmed deaths

**130**  
2 children  
128 adults

Most common type this week

**A**

## Take Me to:

Strains and Trends  
Other Viruses  
Deaths

Page 1  
Page 7  
Page 9

## How do you stop the flu?

Get vaccinated! After getting vaccinated, also:



Wash your hands often



Cover your cough



Stay home when you're sick

## More Information:

Learn about flu and flu activity in Washington:

[www.FluFreeWA.org](http://www.FluFreeWA.org)

[National flu report](#) from the CDC

Washington [flu resources for providers](#)

Read detailed Washington weekly flu report following this page.

# Washington State Department of Health, Communicable Disease Epidemiology

Please note all data are preliminary and may change as data are updated. Due to the COVID-19 pandemic, data reported from the various influenza surveillance systems may not represent an accurate reflection of influenza activity. Results should be interpreted with caution, especially where comparisons are made to previous influenza seasons.

## State Summary

- Influenza-like illness activity was minimal during week 32.
- To date, 130 lab-confirmed influenza deaths have been reported for the 2023-2024 season.
- To date, 91 influenza-like illness outbreaks in long term care facilities have been reported for the 2023-2024 season.
- During week 32, 0.7 percent of visits among Influenza-like Illness Network (ILINet) participants were for influenza-like illness, which was below the baseline of 1.9 percent.
- During week 32, 1.5 percent of specimens tested by WHO (World Health Organization) and NREVSS (National Respiratory and Enteric Virus Surveillance System) collaborating laboratories in Washington were positive for influenza.
- Influenza A and Influenza B were reported to the ILINet surveillance system during week 32.

## Influenza Laboratory Surveillance Data

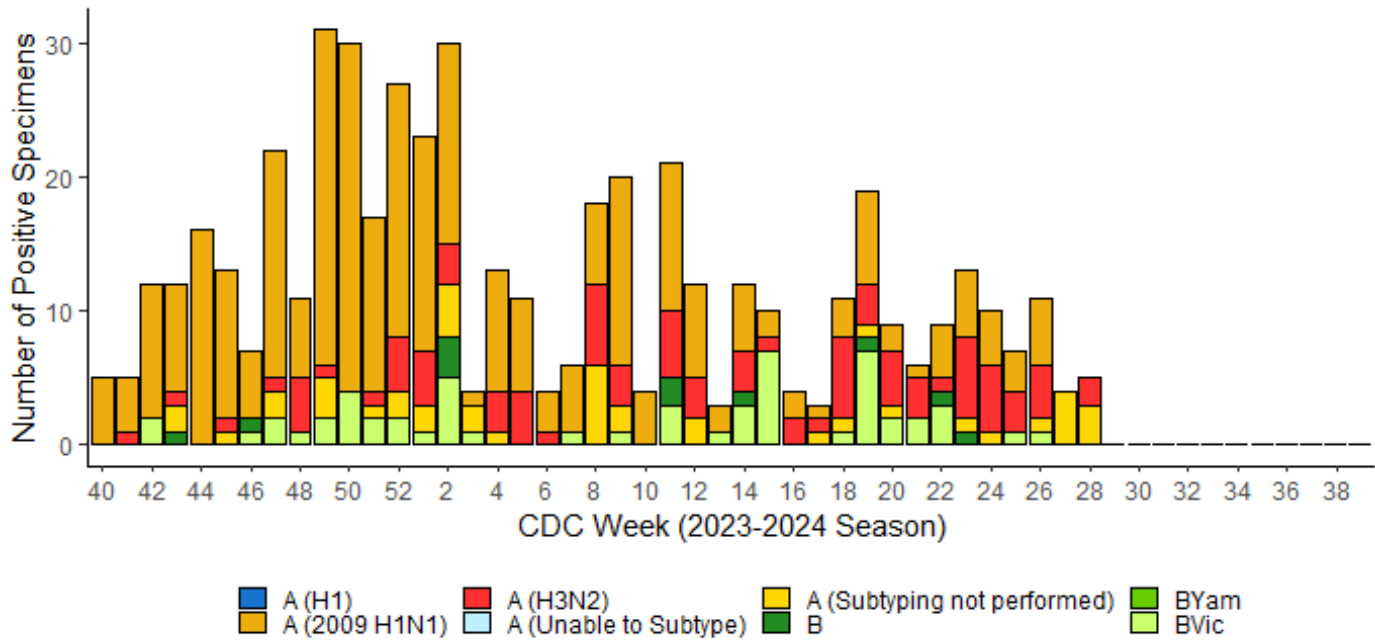
### Laboratory Data: World Health Organization (WHO) & National Respiratory and Enteric Virus Surveillance System (NREVSS) Data Reported to CDC

Influenza testing data is received through the WHO & NREVSS laboratory networks. Public health and commercial laboratories voluntarily report influenza testing data to the CDC. The figures below display data reported to the CDC by public health laboratories (Figure 1) and commercial laboratories (Figure 2). Table 1 combines the data from the public health and commercial laboratories.

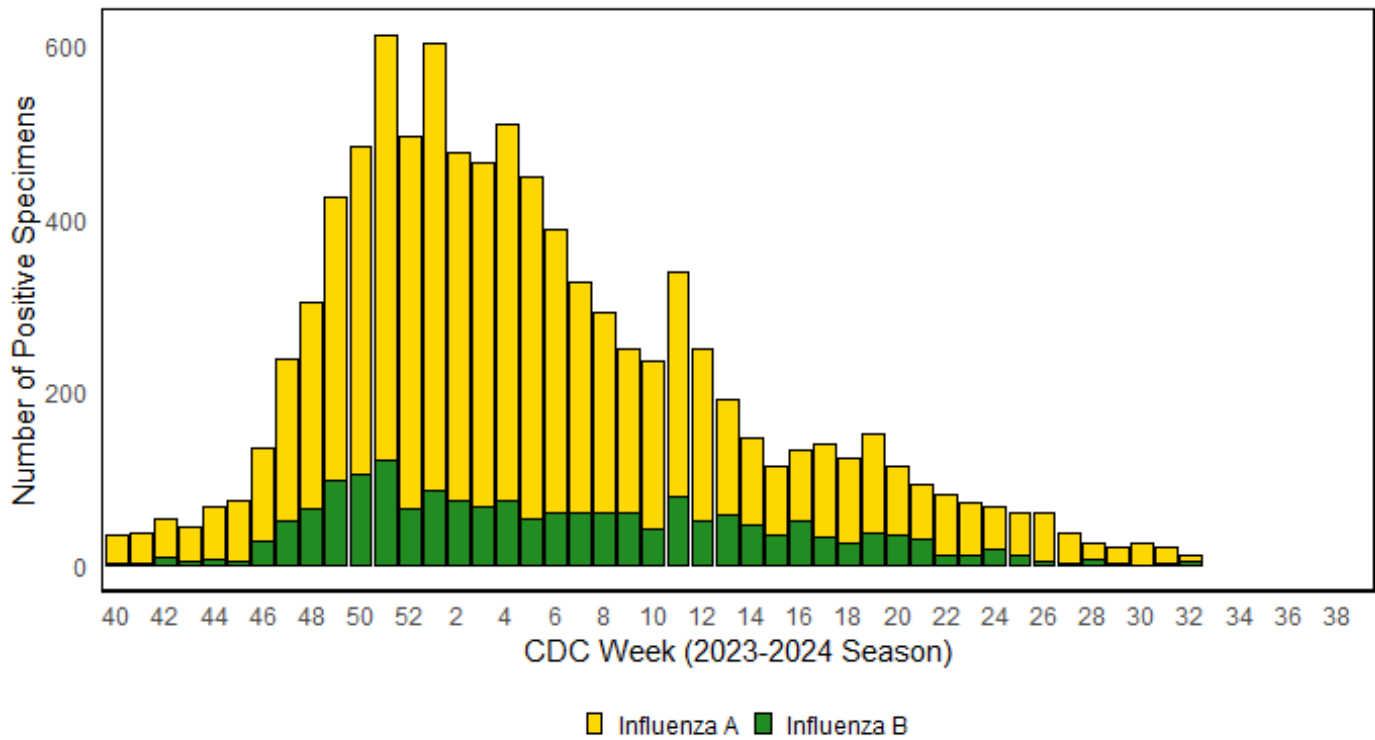
**Table 1: WA Influenza Specimens Reported to the CDC from Public Health Laboratories and Commercial Laboratories**

Week	A (H1)	A (2009 H1N1)	A (H3N2)	A (Unable to Subtype)	A (Subtyping not performed)	B	BYam	BVic	Total Tested	% Flu Positive
29	0	3	1	0	15	2	0	0	2,130	1.0
30	0	3	1	0	22	0	0	0	2,044	1.3
31	0	0	1	0	17	2	0	0	1,735	1.2
32	0	0	1	0	7	3	0	0	717	1.5

**Figure 1: Influenza Positive Tests Reported to the CDC from WA Public Health Laboratories**



**Figure 2: Influenza Positive Tests Reported to the CDC from WA Commercial Laboratories**



## Outpatient Influenza-like Illness Surveillance

### Outpatient Influenza-like Illness Surveillance Network (ILINet) Data

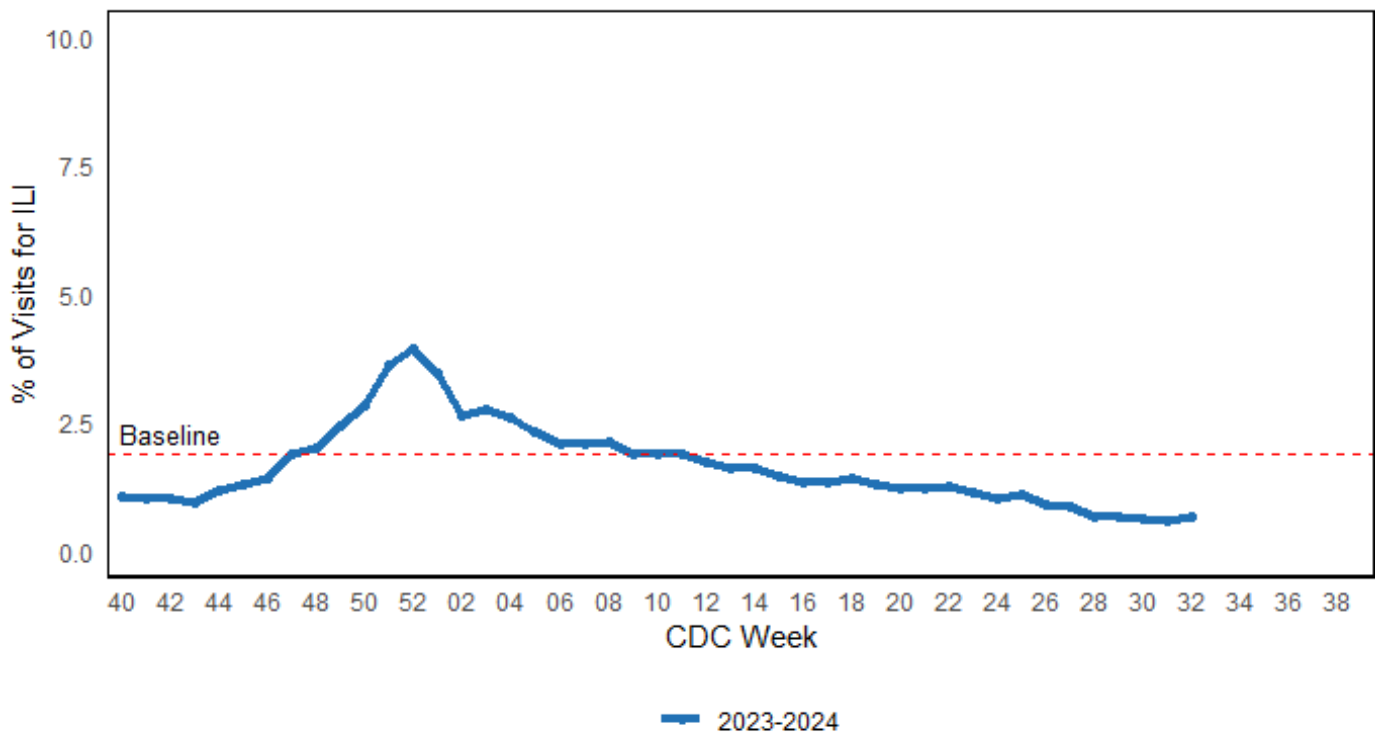
The U.S. Outpatient ILINet monitors outpatient visits for influenza-like illness (ILI), which includes symptoms of fever (temperature of 100°F/37.8°C or higher) accompanied by a cough and/or sore throat. During week 32, 108 sentinel providers in Washington reported data through ILINet. Of the 69060 visits reported, 449 (0.7 percent) were due to ILI, which was below the baseline of 1.9 percent.

ILINet monitors outpatient visits for influenza-like illness, not laboratory-confirmed influenza. Because of this, these figures capture respiratory illness visits due to infection with any pathogen that can present with similar symptoms, including influenza, SARS-CoV-2, and RSV. Due to the COVID-19 pandemic, health care-seeking behaviors have changed, and people may be accessing the health care system in alternative settings that are not captured by ILINet. Patients may also access the healthcare system at a different point in their illness than they did before the pandemic. As a result, it is important to evaluate data, including that from ILINet, in the context of other sources of surveillance data to obtain a complete and accurate picture of influenza, SARS-CoV-2, and other respiratory virus activity.

In Figure 3, the baseline is for Region 10 (Alaska, Idaho, Oregon, and Washington). For the 2023-2024 season, the baseline is calculated differently than in previous seasons.

<http://www.cdc.gov/flu/weekly/overview.htm>

**Figure 3: Percentage of ILI Visits Reported by Sentinel Providers, Washington, 2023-2024**



**Table 2: Number of ILI Visits Reported by Sentinel Providers by Age Group, Washington**

Week	Sentinel Providers	Age 0-4	Age 5-24	Age 25-49	Age 50-64	Over 64	Total ILI	Total Patients	Percent ILI
29	108	57	134	144	64	70	469	70,711	0.7
30	108	66	107	145	57	67	442	70,949	0.6
31	108	51	98	149	61	53	412	69,597	0.6
32	108	56	104	154	64	71	449	69,060	0.7

## Influenza-like Illness Syndromic Surveillance Data

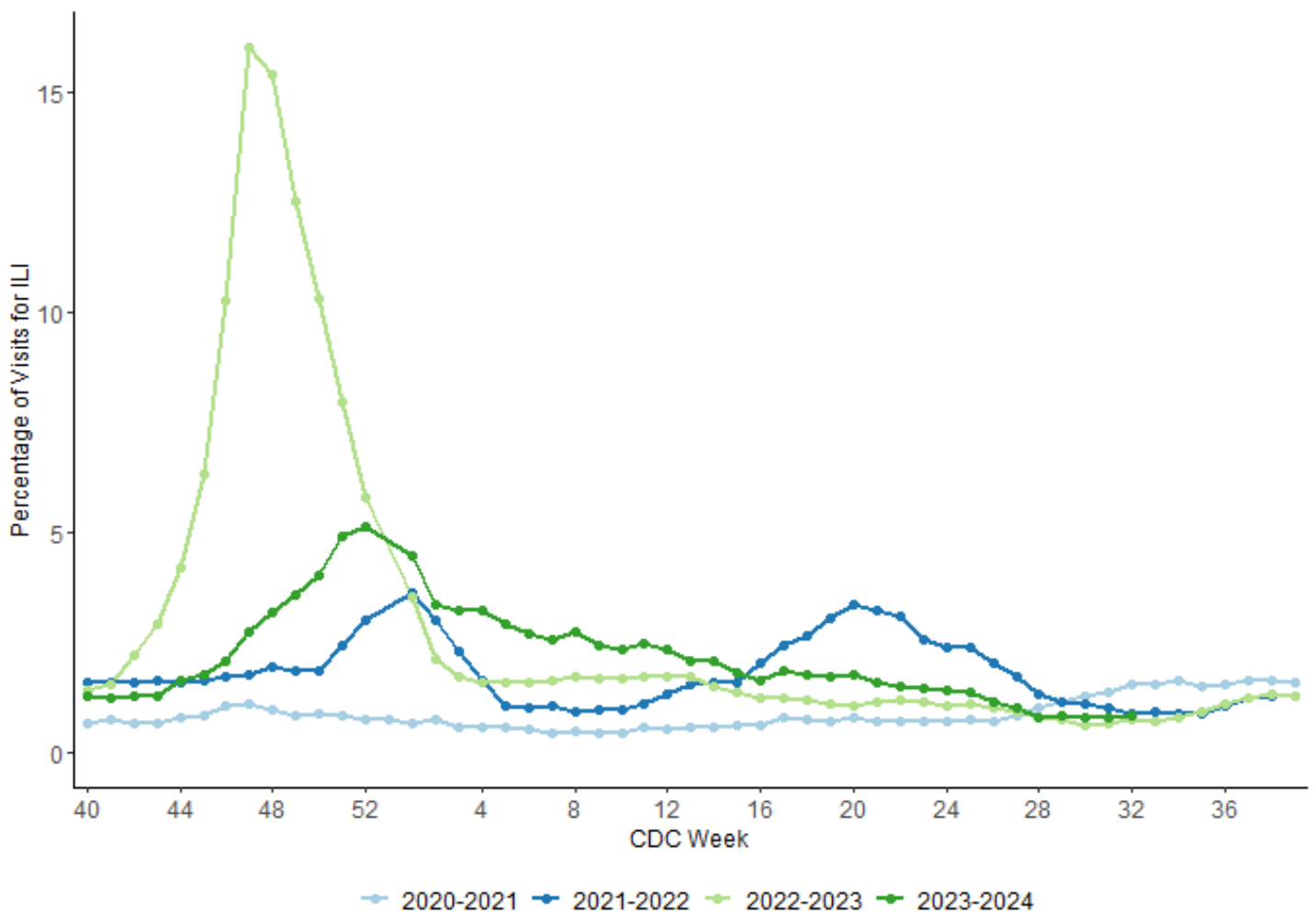
### ESSENCE Syndromic Surveillance Data

The figures below use data from a system called ESSENCE (Electronic Surveillance System from the Early Notification of Community-based Epidemics) that conducts syndromic surveillance for ILI. ILI is classified as a chief complaint of fever (greater than or equal to 100°F) with cough and/or sore throat as well as complaints of “influenza”. For more information about Syndromic Surveillance in Washington State, see:

<https://doh.wa.gov/public-health-healthcare-providers/healthcare-professions-and-facilities/data-exchange-0/syndromic-surveillance-rhino>

Figure 4 shows the proportion of visits at a subset of emergency departments across Washington where patients had a chief complaint of influenza-like illness, or were given a discharge diagnosis of influenza, by CDC week. For this purpose, ILI is defined as “influenza”, fever with cough, or fever with sore throat.

**Figure 4: Syndromic Surveillance, Percentage of Hospital Visits for a Chief Complaint of ILI, or Discharge Diagnosis of Influenza, by CDC Week, Washington, 2020-2024**



## Influenza-like Illness Surveillance by Region

Figure 5 shows the percent of emergency department visits for a chief complaint of ILI or a discharge diagnosis of influenza for each geographic region in Washington state.

Regions:

West-Northwest: Clallam, Grays Harbor, Jefferson, Kitsap, Lewis, Mason, Pacific, Thurston

Southwest: Clark, Cowlitz, Skamania, Wahkiakum

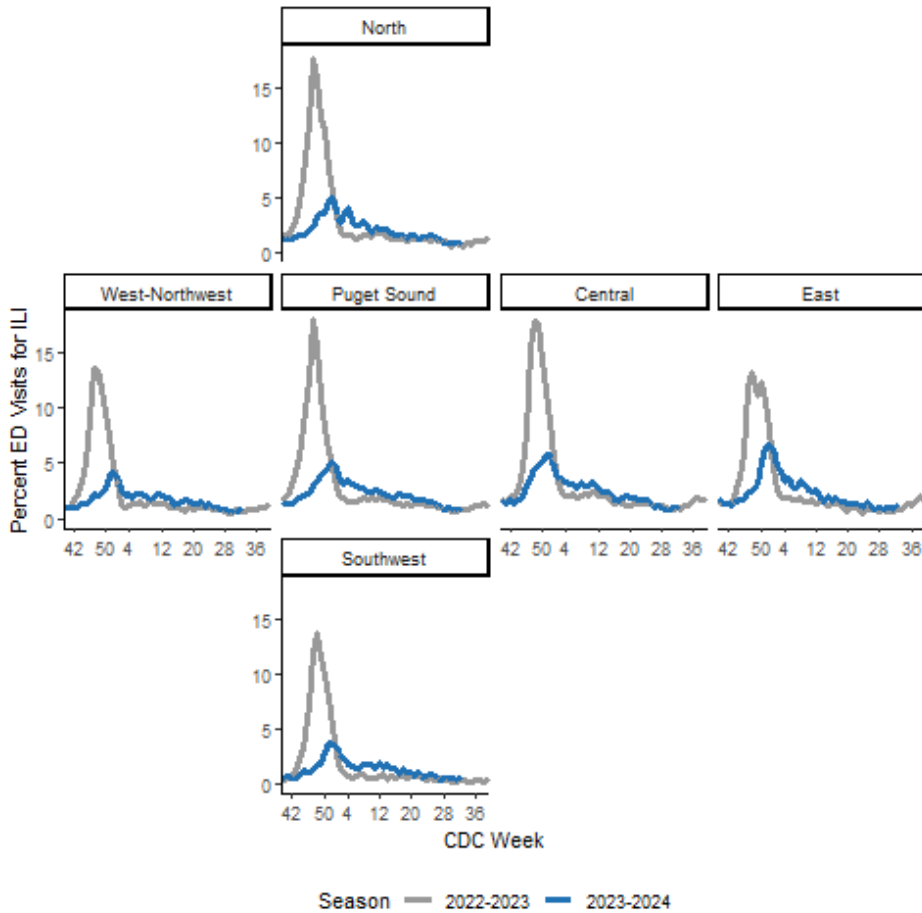
Puget Sound: King, Pierce

North: Island, San Juan, Skagit, Snohomish, Whatcom

Central: Benton, Chelan, Douglas, Franklin, Grant, Kittitas, Klickitat, Okanogan, Walla Walla, Yakima

East: Adams, Asotin, Columbia, Ferry, Garfield, Lincoln, Pend Oreille, Spokane, Stevens, Whitman

**Figure 5: Percent of Emergency Department Visits for ILI by Region, Washington**



## Influenza-like Illness Outbreaks in Long Term Care Facilities

Long term care facilities are required to report all suspected and confirmed outbreaks to their [local health jurisdiction](#) per Washington Administrative Code (WAC) [246-101-305](#). They are required to report the following:

- A sudden increase in acute febrile respiratory illness over the normal background rate (e.g., 2 or more cases of acute respiratory illness occurring within 72 hours of each other) OR
- Any resident who tests positive for influenza

Recommendations for prevention and control of influenza outbreaks in long-term care facilities are available at: <http://www.doh.wa.gov/Portals/1/Documents/5100/fluoutbrk-LTCF.pdf>

Local health jurisdictions in turn report long term care facility influenza-like illness outbreaks to the Washington State Department of Health.

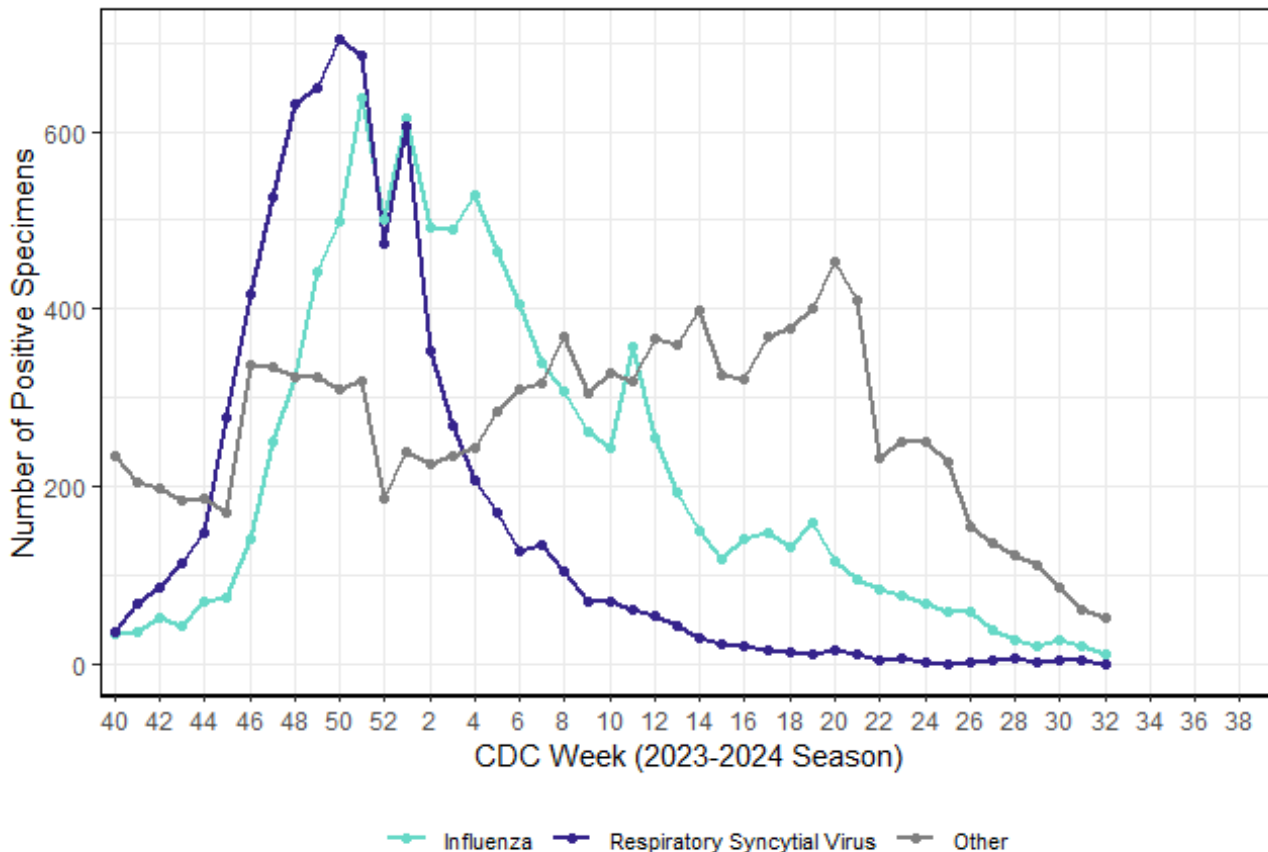
Since Week 40 of 2023, 91 influenza-like illness outbreaks in long term care facilities have been reported to the Washington State Department of Health.

## Other Causes of Respiratory Infections

The National Respiratory and Enteric Virus Surveillance System (NREVSS) is a laboratory-based system that monitors temporal and geographic circulation patterns (patterns occurring in time and place) of respiratory syncytial virus (RSV), human parainfluenza viruses (HPIV), human metapneumovirus (HMPV), respiratory adenoviruses, human coronavirus, rotavirus, and norovirus. In this surveillance system, participating U.S. laboratories voluntarily report the total number of weekly aggregate tests performed to detect these viruses and weekly aggregate positive tests. For more information about NREVSS, see <https://www.cdc.gov/surveillance/nrevss/index.html>.

Figure 6 shows more common respiratory viruses reported to NREVSS during the 2023-2024 season including Influenza, Respiratory Syncytial Virus, and Other Viruses. Figure 7 shows less common respiratory viruses reported to NREVSS during the 2023-2024 season including Adenovirus, Seasonal Coronavirus, Rotavirus, Enteric Adenovirus, Human Metapneumovirus, Rhinovirus/Enterovirus.

**Figure 6: More Common Respiratory and Enteric Viruses, Washington, 2023-2024 Season to Date**



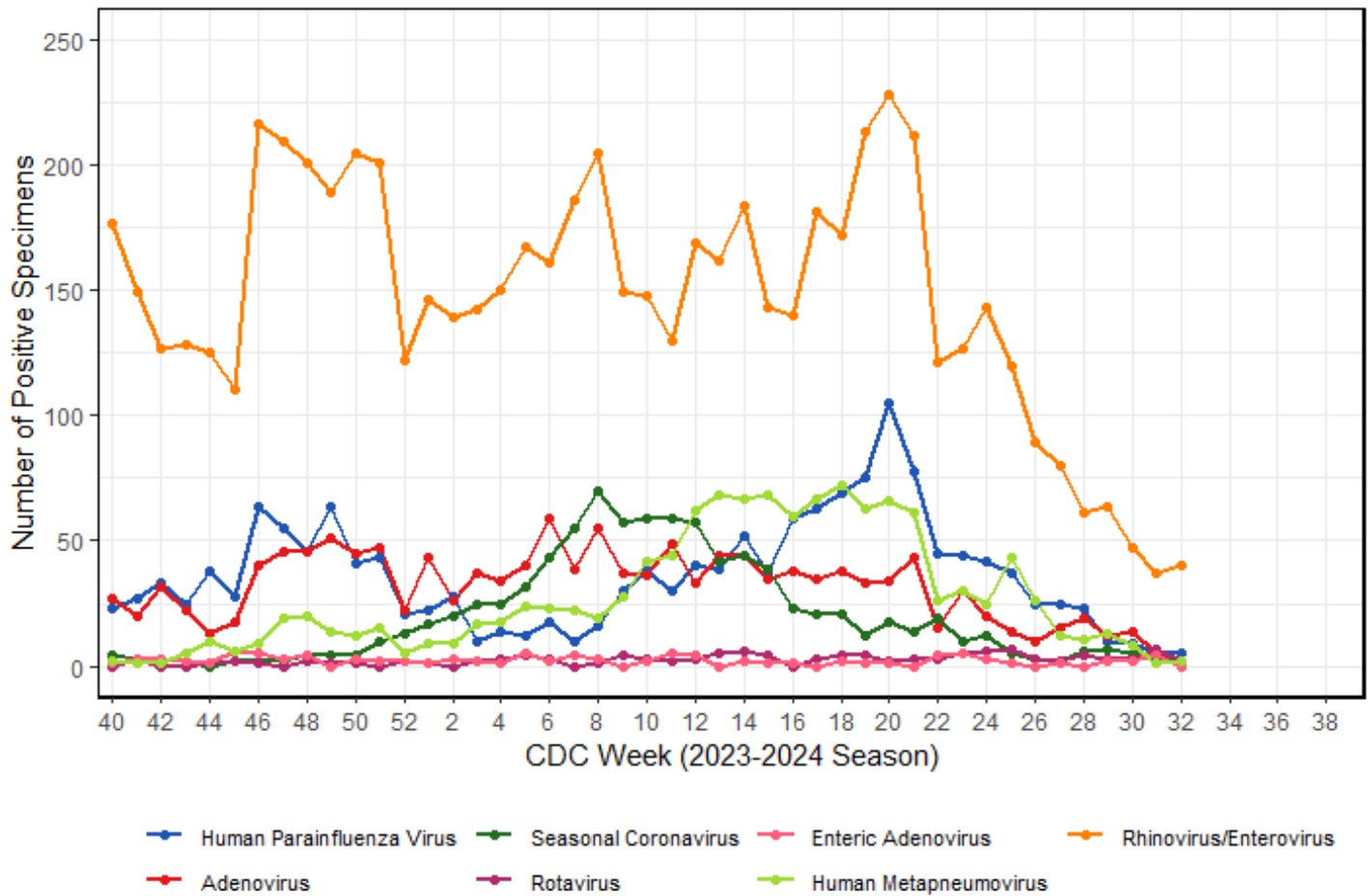
**Table 3: More Common Respiratory and Enteric Viruses, 2023-2024 Season to Date**

Week	Reporters	Influenza	Respiratory Syncytial Virus	Other
29	11	22	3	111
30	11	27	4	88
31	10	21	5	61
32	6	12	0	53

“Other” includes less common viruses including Adenovirus, Seasonal Coronavirus, Rotavirus, Enteric Adenovirus, Human Metapneumovirus, Rhinovirus/Enterovirus. In the figure below, coronavirus does not capture SARS-CoV-2 testing. For more information on COVID-19, see <https://www.doh.wa.gov/emergencies/covid-19>.



**Figure 7: Less Common Respiratory and Enteric Viruses, Washington, 2023-2024 Season to Date**



**Table 4: Less Common Respiratory and Enteric Viruses, 2023-2024 Season to Date**

Week	Reporters	Human Parainfluenza Virus	Adenovirus	Seasonal Coronavirus	Rotavirus	Enteric Adenovirus	Human Metapneumovirus	Rhinovirus/Enterovirus
29	11	10	12	7	3	2	13	64
30	11	9	14	5	3	2	8	47
31	10	5	5	2	7	4	1	37
32	6	5	2	2	2	0	2	40

## Laboratory Confirmed Influenza-Associated Deaths

### Reported Laboratory-Confirmed Influenza Associated Deaths

Since week 40 of 2023, 130 laboratory-confirmed influenza-associated deaths have been reported. This figure includes 121 influenza A, 8 influenza B, and 1 type unknown. Most of the deceased were elderly or had underlying health conditions. Two of the deceased were children.

**Table 5: Count of Reported Laboratory-Confirmed Influenza-Associated Deaths by Age Group, Washington, 2023-2024 season to date**

Age Group (in years)	Count of Deaths
0-4	1
5-17	1
18-29	1
30-49	13
50-64	29
65+	85
Total	130

*Note that these counts reflect only deaths officially reported to the Washington State Department of Health. Each influenza season is reported as week 40 through week 39 of the following year.*

### Reported Laboratory-Confirmed Influenza-Associated Deaths, Past Seasons

For reference, lab-confirmed influenza-associated death totals reported to the Department of Health for past seasons are presented below in Table 5. Note that for the purposes of Tables 5 and 6, each influenza season runs from week 40 of one year to week 39 of the next (roughly October to October).

Past season summaries are available:

<http://www.doh.wa.gov/DataandStatisticalReports/DiseasesandChronicConditions/CommunicableDiseaseSurveillanceData/InfluenzaSurveillanceData>

Note that influenza deaths are likely under-reported. The reasons for this under-reporting vary. Influenza may not be listed as a cause of death. Influenza testing may not have occurred in a timely fashion to identify the virus, or testing not have been performed at all. Lab-confirmed influenza-associated deaths may not have been appropriately reported to public health.

The CDC has published information about estimating seasonal influenza-associated deaths:

<https://www.cdc.gov/flu/about/burden/index.html>

**Table 6: Count of Reported Laboratory-Confirmed Influenza-Associated Deaths, Past Seasons to Week 32 and Total**

Season	Count of Deaths as of Current Week of Season	Count of Deaths Reported for the Entire Season (week 40 to week 39)
2023-2024, to date	130	130
2022-2023	267	272
2021-2022	21	26
2020-2021	0	0
2019-2020	114	114
2018-2019	241	241
2017-2018	294	296
2016-2017	276	276
2015-2016	66	67

## Additional Resources

International Influenza Data: <https://www.who.int/teams/global-influenza-programme/surveillance-and-monitoring/influenza-updates/current-influenza-update>

National Influenza Surveillance Report: <http://www.cdc.gov/flu/weekly/>

Washington DOH Influenza Information for Public Health and Healthcare Providers:

<http://www.doh.wa.gov/ForPublicHealthandHealthcareProviders/PublicHealthSystemResourcesandServices/Immunization/InfluenzaFluInformation>

Washington Joint Respiratory Disease Dashboard: <https://doh.wa.gov/data-and-statistical-reports/diseases-and-chronic-conditions/communicable-disease-surveillance-data/respiratory-illness-data-dashboard>

Washington Local Health Department Influenza Surveillance Reports:

King County: <https://kingcounty.gov/depts/health/communicable-diseases/disease-control/influenza.aspx>

Kitsap County: <https://kitsappublichealth.org/Respiratory.pdf>

Pierce County: <https://www.tpchd.org/healthy-people/provider-resources/disease-information-for-providers/influenza/influenza-reports>

Whatcom County: <https://www.whatcomcounty.us/4281/Respiratory-Virus-Data-Dashboards>

Yakima County: <http://www.yakimacounty.us/365/RSV-Flu-Stats>



**DOH 420-100 October 2023**

To request this document in another format, call 1-800-525-0127. Deaf or hard of hearing customers please call 711 (Washington Relay) or email [doh.information@doh.wa.gov](mailto:doh.information@doh.wa.gov).