

Distinct Designs Studio Collection

RUBBER FLOORING
SELECTION MADE SIMPLE.

FLEXCO[®]

AMERICAN-MADE FLOORING



Distinct Designs Studio Collection

A COORDINATED APPROACH TO RUBBER FLOORING.

As the basis for the Distinct Designs Studio Collection, rubber flooring is ideal for creating coordinated and functional commercial spaces. Constructed of durable, sustainable materials, this science-backed flooring offers comfort, long-lasting performance, easy installation and maintenance and a streamlined design process.

Select your profile

Choose from smooth or textured profiles that include a hammered look and low- and high-profile options featuring a variety of circular, weave and square patterns.

Select your color

The collection includes three palettes: FlexTones, which includes 68 solid colors; SpexTones, comprised of 28 speckled colors; and the Evolving Styles palette, which consists of two complementary groupings, Creative Elements with 22 marbled colors and Wood Elements with 11 wood-look designs.

Select your size

The Distinct Designs Studio Collection offers rubber sheet in four roll sizes plus four tile and three plank sizes to best suit your designs and the intended space.*

Complete your coordination

To achieve a unified appearance throughout any environment, select stair treads, wall base and accessories in coordinating palettes and profiles.

*Flooring size options vary by profile and color palette. Specific information is located on the "Distinct Designs Rubber Flooring Profiles" panels.



Distinct Designs Color Palettes

The collection includes three palettes, providing a wide range of solid and patterned colors.

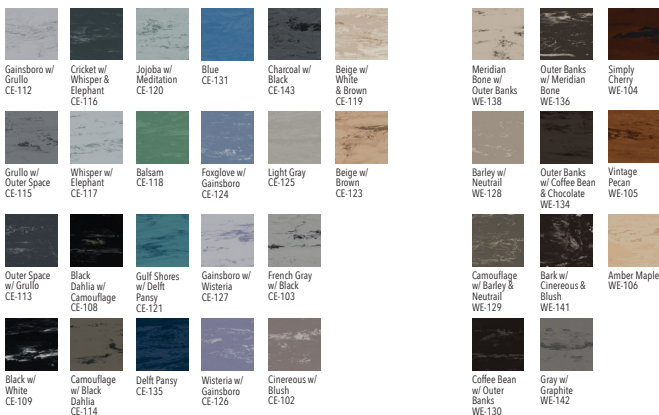
FlexTones® Color Palette

68 SOLID COLORS



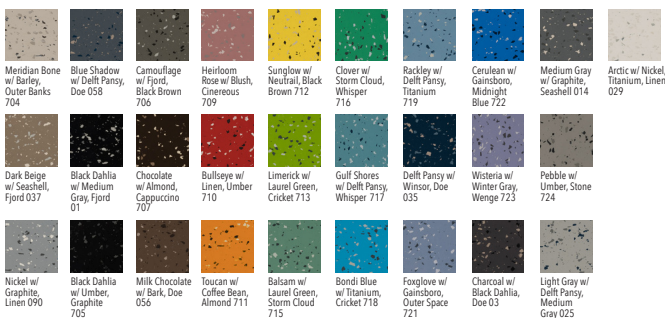
Evolving Styles® Color Palette

33 MARBLEIZED COLORS



SpexTones™ Color Palette

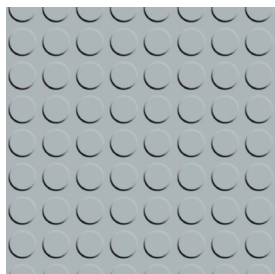
28 SPECKLED COLORS



Distinct Designs Rubber Flooring Profiles

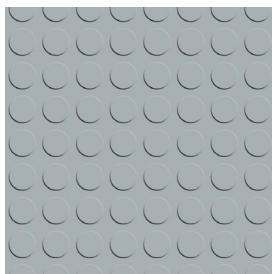
SMART, VERSATILE,
HIGH-PERFORMANCE FLOORING.

- ~ PVC-free, environmentally responsible construction
- ~ Exceeds ADA recommendations for slip resistance
- ~ Abrasion and chemical resistant for added safety
- ~ Excellent resistance to fungi in accordance with ASTM G21



Radial® High Profile (RBT)

Gauge	1/8"
Size	18" x 18"
Pieces/Ctn	20
Weight/Ctn	46 Lbs.
Sq. Ft./Ctn	45



Radial® Low Profile (RLT)

Gauge	1/8"
Size	18" x 18"
Pieces/Ctn	20
Weight/Ctn	46 Lbs.
Sq. Ft./Ctn	45



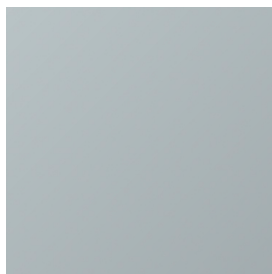
Hammered (SE)

Gauge	1/8"	1/8"
Size	12" x 12"	18" x 18"
Pieces/Ctn	45	20
Weight/Ctn	46 Lbs.	46 Lbs.
Sq. Ft./Ctn	45	45

Gauge	1/8"	1/8"
Size	24" x 24"	36" x 36"
Pieces/Ctn	14	6
Weight/Ctn	70 Lbs.	62 Lbs.
Sq. Ft./Ctn	56	54

Gauge	1/8"	1/8"
Size	6" x 36"	12" x 36"
Pieces/Ctn	18	10
Weight/Ctn	31.05 Lbs.	34.50 Lbs.
Sq. Ft./Ctn	27	30

Gauge	1/8"	.080"
Size	18" x 36"	24" x 24"
Pieces/Ctn	6	20
Weight/Ctn	31.05 Lbs.	60 Lbs.
Sq. Ft./Ctn	27	80



Smooth (SM)

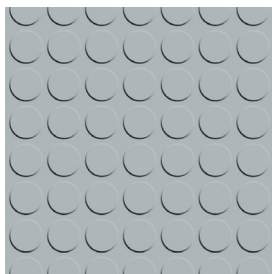
Gauge	1/8"	1/8"
Size	12" x 12"	18" x 18"
Pieces/Ctn	45	20
Weight/Ctn	52 Lbs.	52 Lbs.
Sq. Ft./Ctn	45	45

Gauge	1/8"	1/8"
Size	36" x 36"	6" x 36"
Pieces/Ctn	6	18
Weight/Ctn	62 Lbs.	31.05 Lbs.
Sq. Ft./Ctn	54	27

Gauge	1/8"	1/8"
Size	12" x 36"	18" x 36"
Pieces/Ctn	10	6
Weight/Ctn	34.50 Lbs.	31.05 Lbs.
Sq. Ft./Ctn	30	27

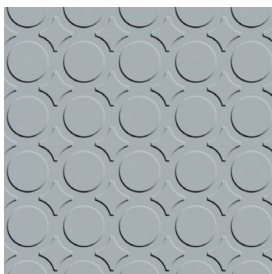
Smooth tile and plank available in Evolving Styles and SpexTones colors only.

Smooth rolls available in Evolving Styles colors only.



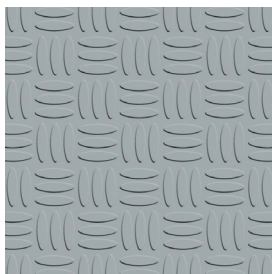
Radial® II (RGT)

Gauge	1/8"
Size	18" x 18"
Pieces/Ctn	20
Weight/Ctn	46 Lbs.
Sq. Ft./Ctn	45



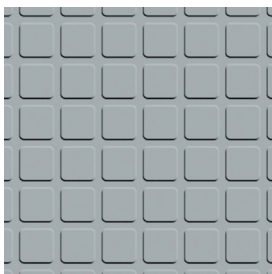
Radial® III (RCT)

Gauge	1/8"
Size	18" x 18"
Pieces/Ctn	20
Weight/Ctn	46 Lbs.
Sq. Ft./Ctn	45



Weave (WV)

Gauge	1/8"
Size	18" x 18"
Pieces/Ctn	20
Weight/Ctn	46 Lbs.
Sq. Ft./Ctn	45



Square² (SQ)

Gauge	1/8"
Size	18" x 18"
Pieces/Ctn	20
Weight/Ctn	46 Lbs.
Sq. Ft./Ctn	45

1/8" Smooth Rolls

36" x 20' (7 Sq. Yds./Roll; 10.8 Lbs./Sq. Yd.)
 36" x 40' (13 Sq. Yds./Roll; 10.8 Lbs./Sq. Yd.)
 48" x 20' (9 Sq. Yds./Roll; 10.8 Lbs./Sq. Yd.)
 48" x 40' (18 Sq. Yds./Roll; 10.8 Lbs./Sq. Yd.)

.100" Smooth Rolls

36" x 20' (7 Sq. Yds./Roll; 8.5 Lbs./Sq. Yd.)
 36" x 40' (13 Sq. Yds./Roll; 8.5 Lbs./Sq. Yd.)
 48" x 20' (9 Sq. Yds./Roll; 8.5 Lbs./Sq. Yd.)
 48" x 40' (18 Sq. Yds./Roll; 8.5 Lbs./Sq. Yd.)

Sheet rubber manufactured untrimmed must be double cut on the job site.

IMO and Repel formulation not available in sheet.

Add HW to color number for pre-grooved heat weld tiles available in 36" x 36" x 1/8" gauge.



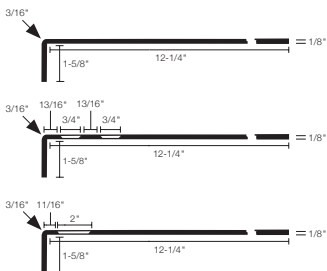
Distinct Designs Rubber Stair Treads

STYLE + SAFETY FROM DESIGN THROUGH INSTALLATION + BEYOND.

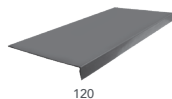
Our treads install easily—typically without the use of epoxy nose filler—and require no added coatings, sealers or finishes. Plus, they're available with smooth or ribbed inserts, grit strips and reinforced metal nose tread options.

HEAVY DUTY SMOOTH 120, 130 + 170

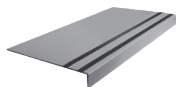
Gauge	3/16" at nose
Depth	12-1/4"
Lengths	36", 42", 48", 54", 60", 66", 72"
Nose	Square
Pieces/Ctn	10
Weight/Lin. Ft.	1.5 Lbs.
Matching Profile	Smooth Tile or Sheet and Diamond Landing



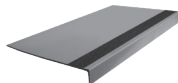
170 treads are not available with Glow-in-the-Dark grit strips or smooth and ribbed rubber inserts. 130 tread grit strips available in black only.



120



130 Safety Rib
two 3/4" strips



170 Visually Impaired
Contrast 2" strip

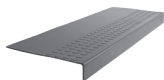
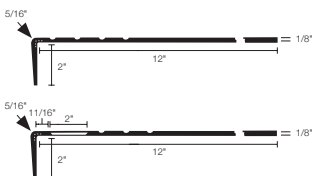


Smooth (SM)

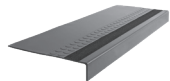
EXTRA HEAVY DUTY RADIAL 500 + 575

Gauge	5/16" at nose
Depth	12"
Lengths	36", 42", 48", 54", 60", 66", 72"
Nose	Square
Pieces/Ctn	6
Weight/Lin. Ft.	2.8 Lbs.
Matching Profile	Radial High Profile (RBT)

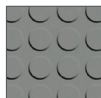
Exclusive metal-reinforced nose included.



500



575 Visually Impaired
Contrast 2" strip



Radial High
Profile (RBT)

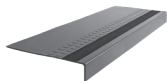


HEAVY DUTY RADIAL 550 + 585

Gauge	3/16" at nose
Depth	12"
Lengths	36", 42", 48", 54", 60", 66", 72", 78", 84", 90", 96", 102", 108"
Nose	Square, adjustable to 60°
Pieces/Ctn	6 (72" or less), 4 (78" and up)
Weight/Lin. Ft.	2.4 Lbs.
Matching Profile	Radial High Profile (RBT)



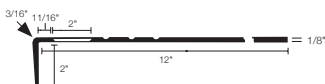
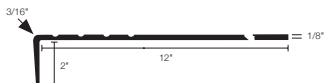
550



585 Visually Impaired Contrast 2" strip

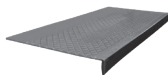


Radial High Profile (RBT)

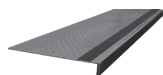


EXTRA HEAVY DUTY DIAMOND 600 + 675

Gauge	5/16" at nose
Depth	12"
Lengths	36", 42", 48", 54", 60", 66", 72"
Nose	Square
Pieces/Ctn	6
Weight/Lin. Ft.	2.8 Lbs. (600), 2.4 Lbs. (675)
Matching Profile	Smooth Tile or Sheet and Diamond Landing



600

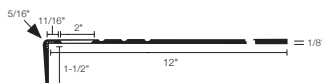
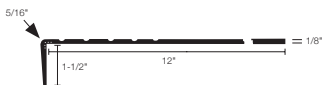


675 Textured/Visually Impaired Contrast 2" strip



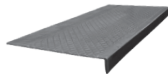
Diamond

Exclusive metal-reinforced nose included.

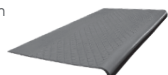


HEAVY DUTY DIAMOND 650 + 685

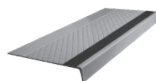
Gauge	Square 1/4" at nose Round 7/64" at nose
Depth	12"
Lengths	36", 42", 48", 54", 60", 66", 72", 78", 84", 90", 96", 102", 108"
Nose	Round nose only up to 72" in length
Pieces/Ctn	6 (72" or less), 4 (78" and up)
Weight/Lin. Ft.	2.25 Lbs.
Matching Profile	Smooth Tile or Sheet and Diamond Landing



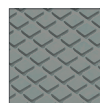
650 Square



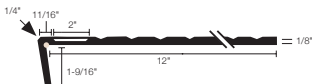
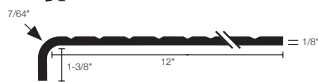
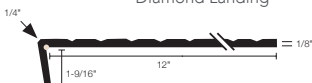
650 Round



685 Textured 2" strip

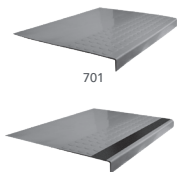


Diamond

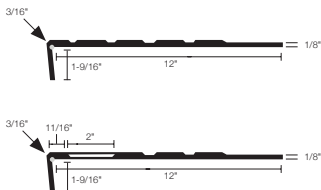


HEAVY DUTY RADIAL II 701 + 776

Gauge	3/16" at nose
Depth	12"
Lengths	36", 42", 48", 54", 60", 66", 72", 78", 84", 90", 96", 102", 108"
Nose	Square, adjustable to 60°
Pieces/Ctn	6 (72" or less), 4 (78" and up)
Weight/Lin. Ft.	2.0 Lbs.
Matching Profile	Radial II (RGT)



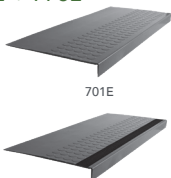
776 Visually Impaired Contrast 2" strip



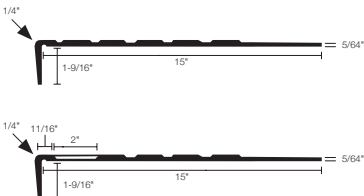
Radial II (RGT)

HEAVY DUTY EXTENDED RADIAL II 701E + 776E

Gauge	1/4" at nose
Depth	15"
Lengths	36", 42", 48", 54", 60", 66", 72"
Nose	Square, adjustable to 60°
Pieces/Ctn	6 (48" or less), 4 (54" and up)
Weight/Lin. Ft.	2.0 Lbs.
Matching Profile	Radial II (RGT)



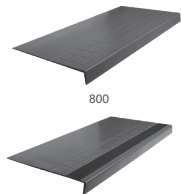
776E Visually Impaired Contrast



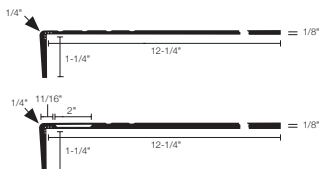
Radial II (RGT)

HEAVY DUTY SQUARE² 800 + 875

Gauge	1/4" at nose
Depth	12-1/4"
Lengths	36", 42", 48", 54", 60", 66", 72"
Nose	Square
Pieces/Ctn	6
Weight/Lin. Ft.	2.8 Lbs.
Matching Profile	Square ² (SQ)



875 Visually Impaired Contrast 2" strip



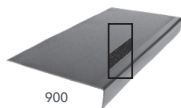
Square² (SQ)



Exclusive metal-reinforced nose included.

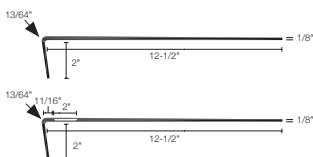
HEAVY DUTY HAMMERED TREAD WITH ADJUSTABLE SQUARE NOSE 900 + 975

Gauge	13/64" at nose
Depth	12-1/2"
Lengths	36", 42", 48", 54", 60", 66", 72", 78", 84", 90", 96", 102", 108"
Nose	Square, adjustable
Pieces/Ctn	6 (72" or less) 4 (78" and up)
Weight/Lin. Ft.	2.0 Lbs.
Matching Profile	Hammered (SE)



900

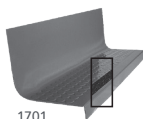
975 Visually Impaired Contrast 2" strip



Hammered (SE)

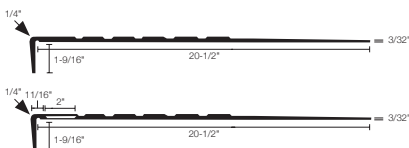
HEAVY DUTY RADIAL II ONE-PIECE TREAD WITH RISER 1701 + 1776

Gauge	1/4" at nose
Depth	20-1/2"
Lengths	36", 42", 48", 54", 60", 66", 72", 78", 84", 90", 96", 102", 108"
Nose	Square, adjustable to 60°
Pieces/Ctn	6 (48" or less) 4 (54" and up)
Weight/Lin. Ft.	2.5 Lbs.
Matching Profile	Radial II (RGT)



1701

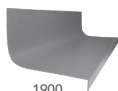
1776 Visually Impaired Contrast 2" strip



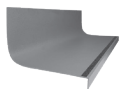
Radial II (RGT)

HEAVY DUTY HAMMERED ONE-PIECE TREAD WITH RISER 1900 + 1975

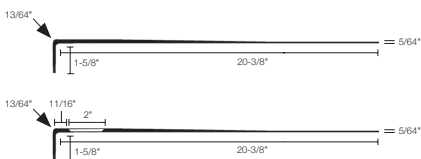
Gauge	13/64" at nose
Depth	20-3/8"
Lengths	36", 42", 48", 54", 60", 66", 72", 78", 84", 90", 96", 102", 108"
Nose	Square
Pieces/Ctn	6 (72" or less) 4 (78" and up)
Weight/Lin. Ft.	2.5 Lbs.
Matching Profile	Hammered (SE)



1900



1975 Visually Impaired Contrast 2" strip

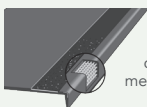


Hammered (SE)



Go filler-free.

Flexco Resilient Stair Treads no longer require epoxy nose filler for most installations.



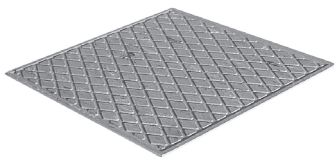
Magnified cutaway to show metal-reinforced nose.

DIAMOND LANDING TILE

Rubber, diamond-pattern landing tiles are available in all three Distinct Designs Studio Collection palettes to coordinate with our stair treads, ADWT, risers and stringers.

Order prefix: DSA

Gauge 3/16"
 Size 27" x 27"
 Pieces/Ctn 6
 Weight/Ctn 40.2 Lbs.
 Sq. Ft./Ctn 30.37



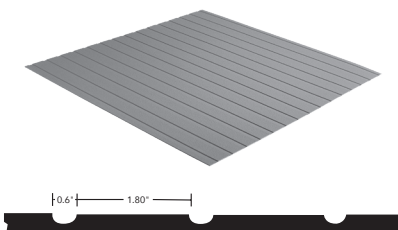
WARNING TILE (ADWT)

Assurance detectable warning tile (ADWT) features deeply set, pre-grooved strips that can be felt through a cane or walking device to alert the visually impaired of approaching interior stairways. Meets ANSI A117.1-2017 Section 705.4 for detectable warnings in interior locations.



Order prefix: ADWT

Gauge	1/8"	1/8"	1/8"
Size	12" x 12"	12" x 36"	36" x 36"
Pieces/Ctn	45	18	6
Weight/Ctn	50 Lbs.	60 Lbs.	60 Lbs.
Sq. Ft./Ctn	45	54	54



RUBBER STRINGERS + RISERS



Order prefix: STR
 Use prefix SSTR for
 SpexTones colors.

Stringer Material

Gauge 0.080"
 Size 10" x 72"
 Pieces/Ctn 10
 Weight/Lin. Ft. 0.65 Lbs.

Risers

Gauge 1/8"
 Height 7"
 Lengths 36", 42", 48", 54", 60",
 72", 84", 96", 108"
 Pieces/Ctn 20 (72" or less),
 10 (84" and up)
 Weight/Lin. Ft. 0.75 Lbs.



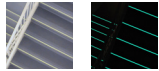
Order prefix: RSR
 Use prefix SRSR for
 SpexTones colors.

ABRASIVE GRIT STRIPS

Compliant with major safety requirements, 2" abrasive grit strips are available in six colors for rubber treads and five colors for vinyl treads.

Order prefix: GRIT

- ~ Available to meet ADA and IBC requirements for contrasting color
- ~ Yellow striping meets OSHA safety standards
- ~ Glow-in-the-Dark meets ASTM E2072 for abrasive glow strips
- ~ Meets California state standard code Title 24, Section 2-3306 (R)
- ~ 3/4" strips for 130 treads available in black only



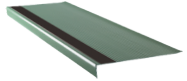
Glow-in-the-Dark strips available for rubber treads only. Color selections must be made from actual samples.

SMOOTH + RIBBED RUBBER INSERTS

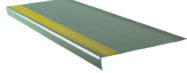
Durable, easy-to-clean inserts enhance safety, work with vinyl and rubber treads and coordinate across wall base, tiles, risers, stringers and accessories.

- ~ Available in all 68 FlexTones colors plus Canary
- ~ Available to meet ADA requirements for contrasting color
- ~ Canary smooth and ribbed inserts meet OSHA safety standards
- ~ 2" strips meet California Code of Regulations, Title 24

Smooth order prefix: SVI



Ribbed order prefix: RVI



Canary
075

CUSTOM CUTTING CAPABILITIES

Distinct Designs Studio Collection flooring can be cut to further customize any space. This system offers solid and patterned colors ideal for coordinated branding and wayfinding across any commercial environment.



FLASHCOVE™ PREFABRICATED WALL BASE SYSTEM

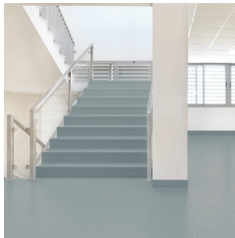
By minimizing gaps between walls and corners, our aluminum-reinforced, hygienic wall base system provides virtually seamless protection from germs, bacteria, maintenance machinery, chairs and equipment.

- ~ Optional stainless steel chiklet cove cap further blocks bacteria
- ~ Available in two sizes of 10' lengths plus special-order sizing

For technical details visit flexcofloors.com



Create a more hygienic, seamless flooring system by including FlashCove with rubber sheet.



RECOMMENDED ADHESIVES

See product technical data sheets on flexcofloors.com for a complete list of approved adhesives.



For more information, visit flexcofloors.com or contact your Flexco distributor. For samples, call 1-800-633-3151 or visit flexcofloors.com/samples.

GREENGUARD Gold certification is for rubber tile only.
100244-2 0424 ©2024 FLEXCO®