

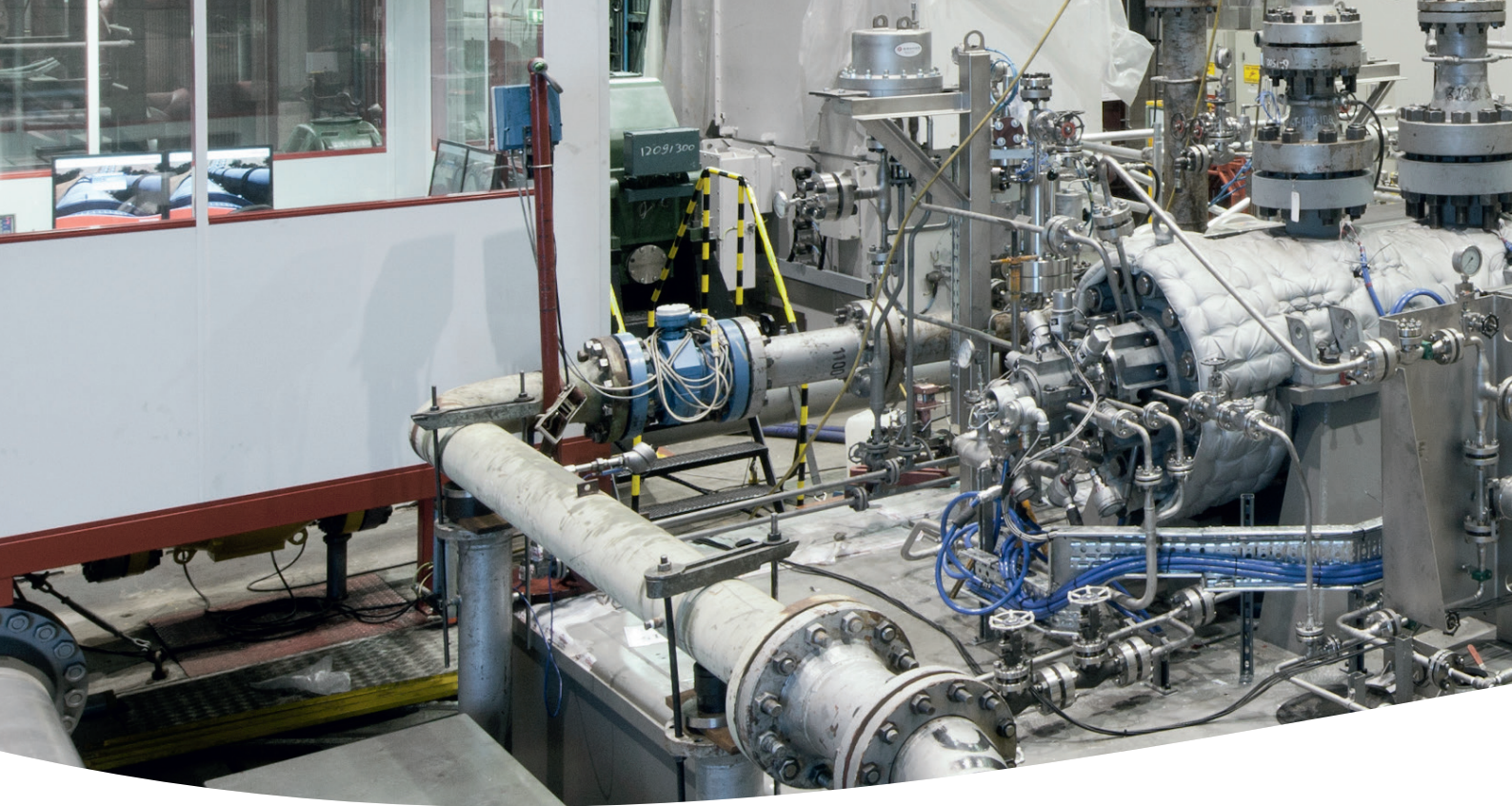


# Flowserve Etten-Leur Test Center

Advanced Testing and Engineering Expertise  
Serving Europe, Middle East and Africa



*Experience In Motion*



## Providing unparalleled testing capabilities to the EMA market

Highly engineered pumps and seals are designed to meet specific requirements, but over time, their performance can decline. And as equipment performance slips, it can negatively impact your operation, causing increased downtime, higher maintenance and energy costs, lost revenue and more risk.

The Flowserve Etten-Leur campus is a one-stop shop for all sorts of aftermarket services. Engineers at the facility can respond rapidly to identify and correct issues related to pump and seal performance and reliability, regardless of the OEM.

### Fully equipped with machinery and expertise

The Etten-Leur Test Center is part of the Etten-Leur campus. The campus is fully equipped, including high-end, five-axis CNC machines and a state-of-the-art warehousing system. It is staffed with about 100 engineers with CFD, FEA and CAD expertise to test, modify and repair pumps, seals and other equipment.

#### Some campus numbers

- 22,500 m<sup>2</sup> of floor area
- 100 dedicated engineers
- 450 operational employees
- 20 nationalities
- 35 high-end, five-axis CNC machines
- 20,000 different parts in stock

### Testing capabilities

The Etten-Leur facility is designed to quickly meet the needs of customers in Europe, Middle East and Africa. With access to advanced testing capabilities, engineers can evaluate the performance of pumps and seals under real-world conditions. In addition, other equipment can be tested, such as gearboxes, valves and electric motors.

#### Pump testing capabilities

- 11 different loops
- Capacities to 30,000 m<sup>3</sup>/h
- Pressures to 400 bar (5,802 psi)
- Speeds to 9,000 rpm (VFD)
- Horizontal, vertical and submersible pump hydraulic testing
- String testing, field test simulation
- Measurements according to API 610/ISO and Hydraulic Institute standards (head/pressure/flow rate, power and efficiency, NPSH, vibration, noise)





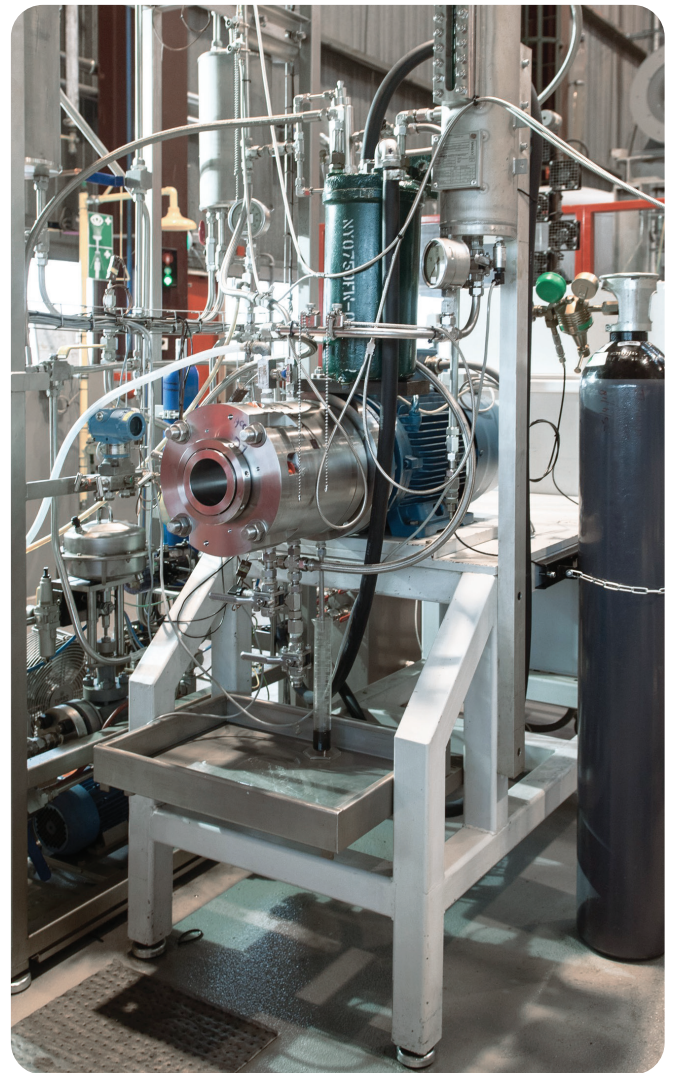
### Seal testing capabilities

- Four test units
- Speeds to 7,000 rpm
- Pressures to 200 bar (2,901 psi)
- Temperatures to 150°C (302°F)
- Water, oil and caustic fluid condition testing
- Clean-room facilities for seal inspections and maintenance
- Face profile measuring
- Microscope
- Measurements according to API 682 (leakage, temperatures, lifetime)

### High-energy testing

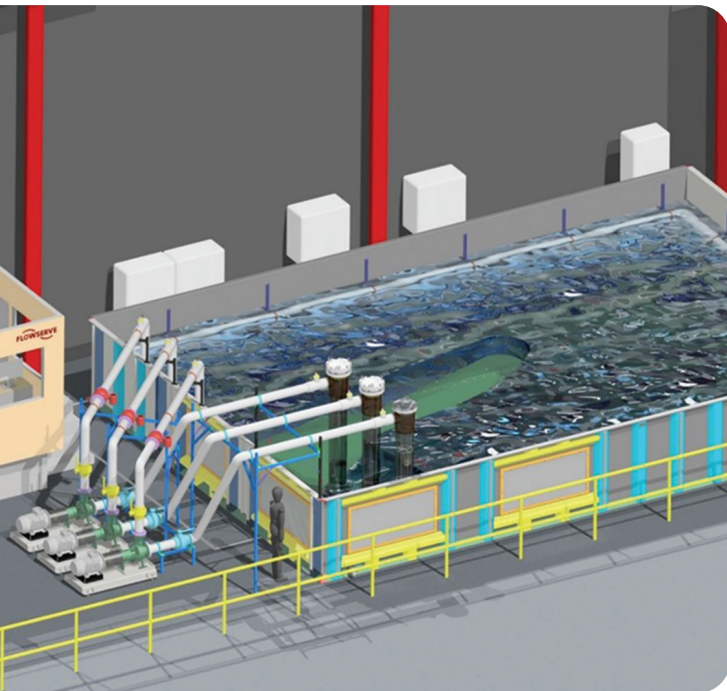
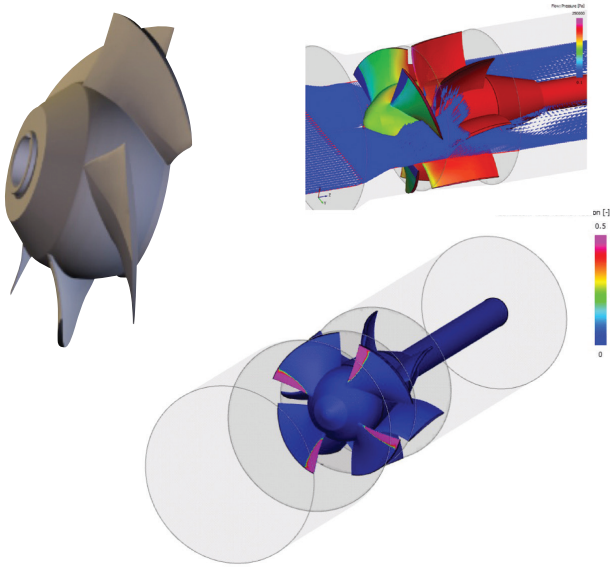
Testing highly engineered equipment under real-world conditions requires a huge amount of power as well as the ability to cool rapidly. To meet these needs, the Etten-Leur facility features the following:

- 28 MW (38,000 hp) of electrical power (largest electrical driver: 18 MW)
- 30 MW (42,000 hp) of cooling capacity
- Direct power supply of 150 kV; transformed to 3, 6, 6.6 or 10 kV
- 6 MW variable frequency drive electric motors to 13.8 kV
- Cutting-edge data collection
- Lifting capacity to 120 metric tons at 13 m (42.7 ft) height



## Scaled model testing

For large, high specific speed pumps and critical NPSH applications, the Etten-Leur facility provides cavitation visualization and scaled model testing. Scaled model testing includes a dedicated loop for product and experimental tests as well as fully stainless steel piping and a vacuum tank to ensure the highest cleanliness level and visibility.



## Pump intake testing

The facility provides Froude scaled pump intake testing for cooling water intake channels and sumps, surface water pumping stations and drainage stations. Free surface intakes are prone to issues related to submergence, air entrainment and vortex formation, directly impacting operational reliability.

Hydraulic engineers can improve performance and reliability by analyzing and addressing adverse approach flow conditions, free surface and submerged vortices, overall hydraulic conditions and local areas of high turbulence.

## Electric motor testing

Flowserve offers electric motor testing at its Etten-Leur Test Center in the Netherlands. This capability ensures that electric motors are performing as expected after service, a major component change or design modification.

Electric motor testing is essential to ensure a motor's in-service operating power is consistent with its rated power. It also helps Flowserve determine how a motor is operating in a loaded condition, with all associated risks, or if the motor is oversized for a particular application — which could uncover cost- and energy-saving opportunities.

Variable frequency drives (VFDs) or variable speed drives (VSDs) are tested in combination with a motor to guarantee operational functionality.

## Electric motor testing capabilities

The Flowserve Test Center's electric motor testing capabilities include:

- No-load testing, according to API 541 and IEC 60034 to 18 MW, on different kinds of voltages and frequencies
- Partial-load testing to 6 MW, according to API 541 and IEC 60043
- Full-load testing to 6 MW, according to API 541, through the back-to-back principle and — if required — mounted to a gearbox
- Problem diagnostics in vibration, temperature and sound
- Winding resistance measurement
- Winding insulation
- Polarization Index (PI) calculation
- Dielectric Absorption Ratio (DAR) measurements





### Facts and figures:

- 150 kV direct supply from the distribution grid
- 28 MW (38,000 hp) of electrical power
- 50 Hz test voltages at 0.4, 3, 6, 6.6 or 10 kV
- Reverse power at 0.4, 6, 6.6 or 10 kV
- 6 MW variable frequency drive up to 13.8 kV
- Measurement of motor efficiency, with a maximum deviation of 1%

- Lifting capacity to 120 metric tons at 13 m (42.7 ft) height
- Seven test areas, the largest of which has a size of 270 m<sup>2</sup> (886 ft<sup>2</sup>)

All our instruments are calibrated according to API and IEC. Customers are welcome to witness Type and Factory Acceptance Tests (FATs). These tests are carried out in the presence of the end user or the subcontracted approval authorities.

## Conveniently located

The Etten-Leur campus is easily accessible. It's centrally located near Europe's main seaports (Rotterdam, Antwerp and Hamburg) and airports (Amsterdam, Brussels, Paris, London and Frankfurt).





#### **Headquarters**

Flowserve Corporation  
5215 North O'Connor Blvd.  
Suite 2300  
Irving, Texas 75039-5421 USA  
Telephone: +1 937 890 5839

#### **Etten-Leur Test Center**

Vossendaal 29  
4877 AA Etten-Leur  
The Netherlands  
Telephone: +31 76 502 8200  
testcenter@flowserve.com

#### **Etten-Leur Campus**

Parallelweg 6  
4878 AH Etten-Leur  
The Netherlands  
Telephone: +31 76 502 8200

Flowserve Corporation has established industry leadership in the design and manufacture of its products. When properly selected, this Flowserve product is designed to perform its intended function safely during its useful life. However, the purchaser or user of Flowserve products should be aware that Flowserve products might be used in numerous applications under a wide variety of industrial service conditions. Although Flowserve can provide general guidelines, it cannot provide specific data and warnings for all possible applications. The purchaser/user must therefore assume the ultimate responsibility for the proper sizing and selection, installation, operation, and maintenance of Flowserve products. The purchaser/user should read and understand the Installation Instructions included with the product, and train its employees and contractors in the safe use of Flowserve products in connection with the specific application.

While the information and specifications contained in this literature are believed to be accurate, they are supplied for informative purposes only and should not be considered certified or as a guarantee of satisfactory results by reliance thereon. Nothing contained herein is to be construed as a warranty or guarantee, express or implied, regarding any matter with respect to this product. Because Flowserve is continually improving and upgrading its product design, the specifications, dimensions and information contained herein are subject to change without notice. Should any question arise concerning these provisions, the purchaser/user should contact Flowserve Corporation at any one of its worldwide operations or offices.

©2020 Flowserve Corporation. All rights reserved. This document contains registered and unregistered trademarks of Flowserve Corporation. Other company, product, or service names may be trademarks or service marks of their respective companies.

**SEBR000193 (EN/A4)** July 2020