

# UCSD WASTE SORTING GUIDE

A VISUAL GUIDE ON WHY, WHERE, AND HOW TO SORT YOUR WASTE AT UCSD

to read more, visit [UCSD's Zero Waste webpage](#)



**THIS IS A  
COLLABORATION  
BETWEEN:**



UC San Diego  
**STUDENT  
SUSTAINABILITY  
COLLECTIVE**

**UC San Diego**

HOUSING • DINING • HOSPITALITY  
Sustainability



# WHY SORT?

Correct waste sorting minimizes the amount waste that goes to the landfill.

## LANDFILLS

- excessive land use
- energy-intensive waste management
- pollution and methane



Chemicals from landfills pollute the soil and groundwater of their surroundings.



Food scraps break down in the landfill and emit this very potent greenhouse gas. Instead of throwing away extra food in the trash, we can compost it.

## LARGEST LANDFILLS IN THE WORLD



2

### BORDO PONIENTE LANDFILL



**SIZE: 927 acres**

**MEXICO CITY, MEXICO**

### 1 APEX REGIONAL LANDFILL

**SIZE: 2,200 acres**

**LAS VEGAS, NEVADA**

1 acre  $\approx$  1 football field

3

### LAOGANG LANDFILL



**SIZE: 830 acres**

**SHANGHAI, CHINA**

In 2021, UCSD diverted

**51%**

of its waste through proper recycling and composting

To help get UCSD to its goal of

**90%**

waste diversion, follow this guide and properly sort your waste!



# RECYCLING RULES

## Recyclable



Mixed Paper, Paper Cartons & Cardboard



Glass Bottles & Jars



Metal Cans & Aluminum Foil



Rigid Mixed Plastic

## Non-Recyclable



Mixed Material Trash

(Ex: paper cups with wax lining, plastic chip bag with aluminum lining)



Food Waste & Greasy Containers



Soft Plastic, & Utensils



E-Waste



Clothing & Textiles

## BEST PRACTICES

To ensure that your recyclables get recycled, follow these best practices.

### 1) Dry and Clean

Do not leave any leftover food or liquid in your recyclables to avoid contamination



### 2) Don't Use a Bag

Plastic bags are NOT recyclable, so keep your recyclables loose in a box or in a paper bag.

### 3) Flatten

This is more of a curtesy - flatten any boxes you have to save space in the bin!



## MORE ON PLASTICS...



There are 7 different types of plastic, which are classified by the different numbers within the recycling symbol.

Types 1, 2, & 5 are the easiest to be recycled, but...  
**UCSD accepts plastic types 1-7!!!**



# SPECIALTY RECYCLING RULES

Not everything can go into the blue bin. To minimize the amount we send to landfills, here are some resources about **specialty recycling**.

## E-WASTE

**SAD FACT:** In 2019, The US generated 6.92 million tons of e-waste. Only 15% of this was recycled.

examples of e-waste include



wires

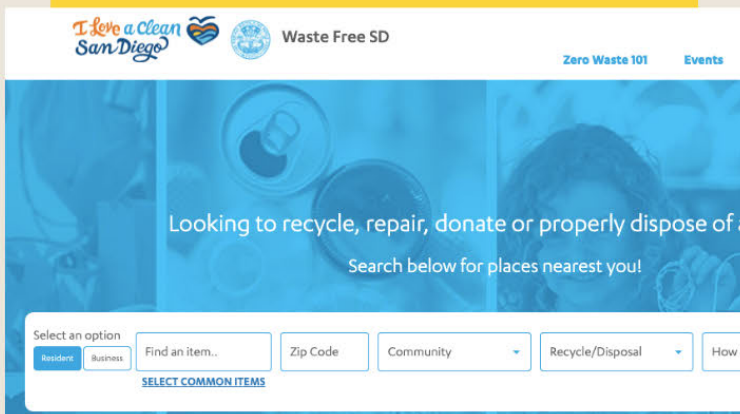


keyboards



phones and laptops

Visit [wastefreesd.org](http://wastefreesd.org) to find a location near you that takes your weird waste!



## FILM/SOFT PLASTICS

Plastic Packaging



Plastic grocery bags, produce/bread/Ziploc bags, etc.



### DON'T BE FOOLED

by the recycling logo! Plastic film can **ONLY** be recycled in a specialty drop-off station. These are often at grocery stores, such as Ralphs or Target. Visit [plasticfilmrecycling.org](http://plasticfilmrecycling.org) for more info.



## UCSD BOOKSTORE

Collects e-waste, **old pens** and hazardous waste such as **batteries**.

## Sustainability Resource Center

Batteries, food wrappers, packing peanuts, writing instruments, toner cartridges

## Environmental Health & Safety

Environmental Management Facility Building 9638 in the Campus Services Complex collects e-waste

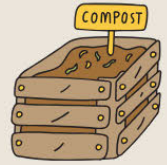


# COMPOST RULES

## COMPOST RULES ARE DIFFERENT WHEREVER YOU GO...

There are different guidelines for **GARDEN COMPOSTING** and **INDUSTRIAL COMPOSTING**. Find out where your waste goes, then refer to the rules.

## GARDEN COMPOSTING



### Accepted



Food Scraps



Plant Material



Plain Grains



Tape Removed!

Paper & Cardboard



Napkins, Paper Towels, and Parchment Paper



No Nylon!

Coffee Filters & Tea Bags



Animal Products & Greasy Food

**only at Rogers Garden**



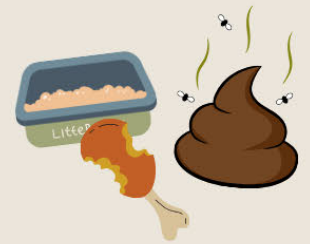
Wood, Bamboo & Corn Utensils

### Not Accepted



No Produce Stickers!

Mixed Materials



Animal Products, Waste or Litter

Exception: Roger's Gardens accepts meat



Any PLASTIC including PLA/Bioplastics

Exception: Roger's Gardens accepts corn plastic!

## GET INVOLVED

Student Gardens run on VOLUNTEER labor. Interested in helping out?

## UCSD Garden Discord

Find and contact a garden you want to get involved in.

<https://discord.gg/MTtxKJJfFP>

# COMPOST RULES

CONTINUED

## INDUSTRIAL COMPOSTING

UCSD's waste hauler, **EDCO**, picks up food waste from campus dining halls and residential communities, where it is industrially composted. **SB1383** now requires that UCSD composts organic waste.



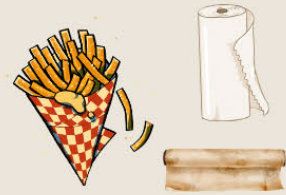
### Accepted



ALL FOOD



Plant Material



Food-Soiled Napkins, Paper Towels, and Parchment Paper



Non-Coated Paper Takeout Containers, Paper Dishware, and Paper Packaging

shiny/waxy = coated  
matte = non-coated



Coffee Filters & Tea Bags



Paper & Cardboard



Wood Utensils

No Bamboo

### Not Accepted



Animal Waste or Litter



**PLASTIC/BIOPLASTIC/COMPOSTABLE BAGS**

No Produce Stickers!



Mixed Materials (paper+plastic)



Plastic / Wax Coated Paper Materials



# COMPOSTING PROGRAMS

Want to make sure your organic waste stays out of the trash and turns into compost? There are programs on campus that help you with that!



## SSC Bucket Program



Email [ssc-food@ucsd.edu](mailto:ssc-food@ucsd.edu) to get a compost bucket to hold your food scraps. The SSC also takes volunteers.

## Buckets for Grad Students too!

If you are a graduate student and want a bucket, please email \_\_\_\_\_ to find out how you can get one.

## Bucket Care Guide



[bit.ly/how2bucket](https://bit.ly/how2bucket)



# THANK YOU FOR SORTING YOUR WASTE!