



Author: Drew Christopher

A. Purpose

To setup the IDOTCAD_ORD production environment on a Consultant PC.

B. Owner

Bureau of Design and Environment \ Surveys, Mapping and Modeling \ CADD Modeling & GIS Support

C. Audience

Consulting firms that work with the Illinois Department of Transportation

D. Required Items

- Current version of the IDOTCAD_ORD.zip file downloaded from <http://www.idot.illinois.gov/doing-business/procurements/engineering-architectural-professional-services/Consultants-Resources/index#CADD>

E. Specific Instructions/Requirements

1. Save the IDOTCAD_ORD.zip file to your desktop from the link above. Extract the IDOTCAD_ORD.exe file to you desktop. *Double-Click* the file to start the self-extractor. The self-extractor DOES NOT change anything on your PC.
2. In the dialog that appears (Figure F.1), pick “Extract” to extract the IDOTCAD_ORD folder to your desktop
3. Open OpenRoads, OpenBridge Modeler or MicroStation and click on “Manage Configuration” on the Left of the opening screen (Figure F.2).
4. In the *Manage Configurations* dialog box, click on “Add” in the upper left corner (Figure F.3).
5. In the *New Configuration* dialog box enter a **Configuration Name** and **Description** that you want. For the **Type** set it to Local if the IDOTCAD_ORD folder is on your local Hard Drive **OR** set it to Network/Shared Drive if the IDOTCAD_ORD folder is on a Server share. For the Configuration Folder select the “Browse” button and navigate to the Configuration folder located in the IDOTCAD_ORD folder and hit “Select Folder”. (Figure F.4).
6. Select “OK” in the Manage Configurations dialog box. Select the new configuration on the left side of the software opening screen to set it as active.
7. To change to the Illinois Tollway WorkSpace, select the “WorkSpace” pull down menu and select **ILTollway**.

F. Table of Figures

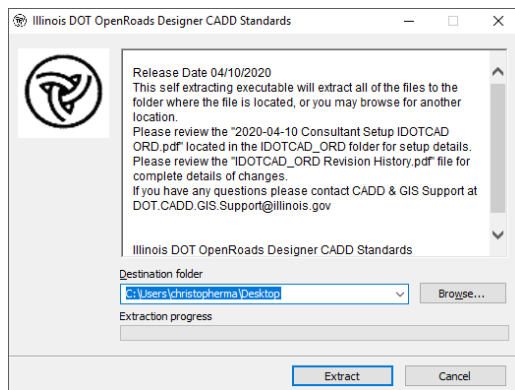


Figure F.1

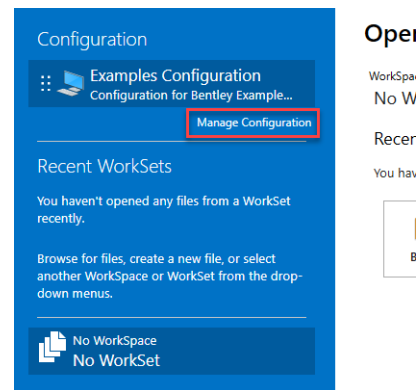


Figure F.2

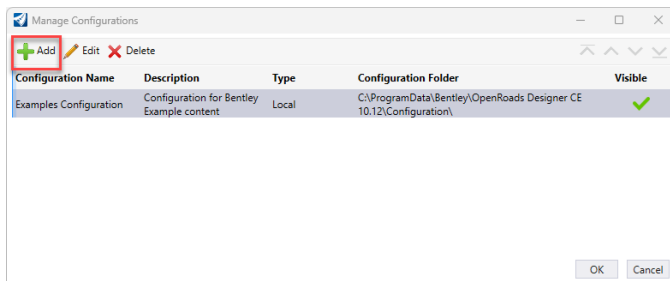


Figure F.3

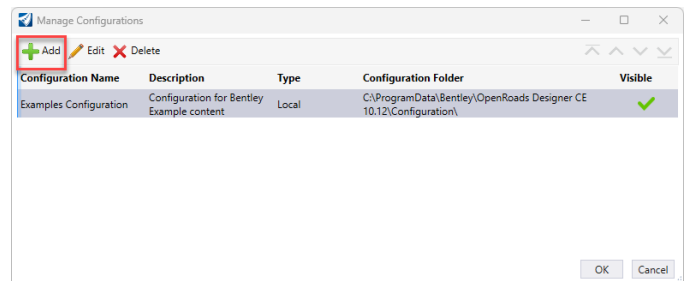


Figure F.4

If you have questions regarding installation, please contact IDOT CADD and GIS Support at DOT.CADD.GIS.Support@illinois.gov.