

Children Birth-21 who are Deaf, DeafBlind, and Hard of Hearing in Minnesota

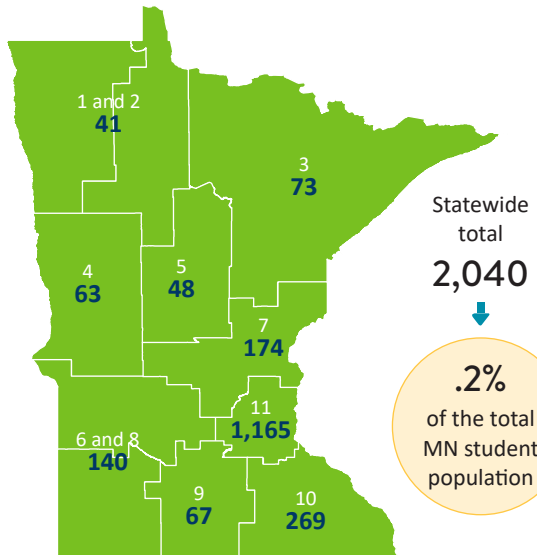


Characteristics of students in Minnesota who are D/HH, 2016-17

Source: Minnesota Department of Education Legislative report

GRADE K-12

Enrollment count by region for all students who are D/HH



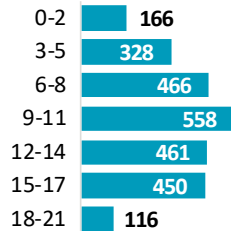
Statewide total special education and D/HH students K-12

119,045 → **1.7%**
special education students of which are D/HH



AGE 0-21

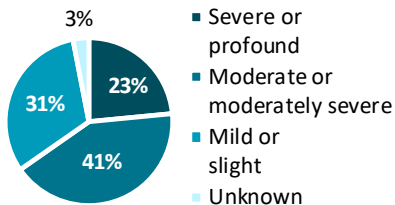
Age distribution of all D/HH students



Of the 242 cases of permanent hearing loss reported to MDH in 2015:

61% are bilateral
30% are unilateral
10% are unknown/closed cases

Of the 61% bilateral hearing loss cases



Minnesota has:
2,545 + **83**
total D/HH children age 0-21 deafblind children age 0-21

Outcomes by age group

BIRTH TO AGE 5

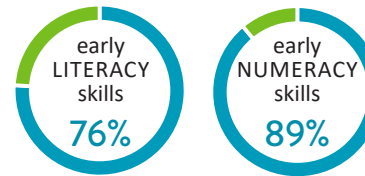
Newborns screened for hearing loss in 2015: **68,063**

Cases referred: **5%**
Cases identified: **242** permanent, **91** transient
Cases lost to follow-up: **216** (40%) newborns with REFER results had no audiology appointment after a failed newborn screening

Source: Early hearing detection and intervention (EHDI)

2017 Kindergarten readiness for D/HH students

Percentage of children who were D/HH with no cognitive delays/disabilities exiting Part B and transitioning to kindergarten that demonstrated:

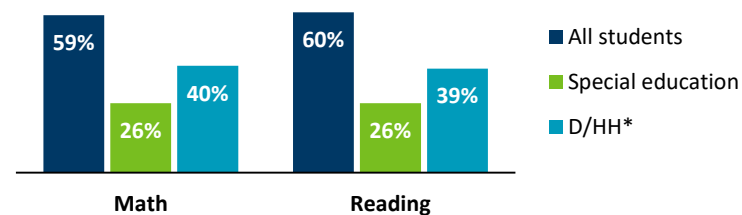


Source: Minnesota Department of Education

SCHOOL-AGE KIDS

Source: Minnesota Comprehensive Assessment (MCA) test scores

2016-17 Statewide proficiency by student category for the proportion of students who met or exceeded proficiency in math and reading

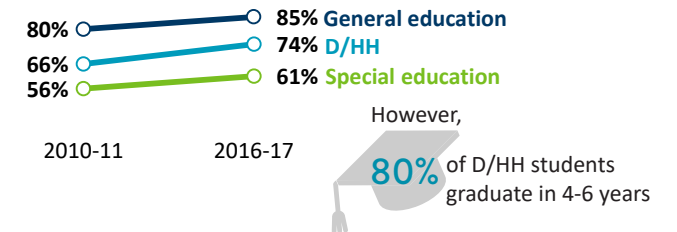


* D/HH students who are on an IEP and for whom hearing loss is listed as their primary disability

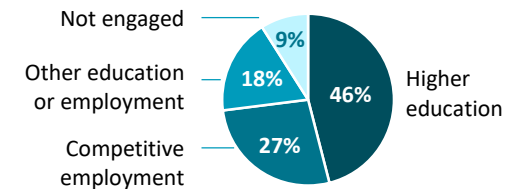
9TH GRADE TO TRANSITION (AGE 21)

Source: Minnesota Department of Education Legislative report

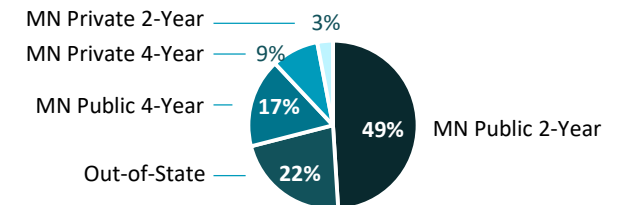
Graduation state trends



2015-2016 Post-school outcomes for D/HH students



Sector of college enrollment



mn MINNESOTA
COMMISSION OF THE DEAF, DEAFBLIND,
& HARD OF HEARING

For more information:

Contact Anna Paulson, MN Commission of the Deaf, DeafBlind, and Hard of Hearing at 651-431-5960 or email anna.paulson@state.mn.us

