

Advisory Committee Meeting #2

WESTON MERRICK, RESULTS FIRST COORDINATOR, MMB

Minnesota's Results First Initiative

- Reviewing the policy challenge
- Goal
 - Produce benefit-cost estimates that are understood, trusted, and used by policy-makers
- Areas of Focus
 - Corrections
 - Human Services
 - Beginning with Adult Mental Health

Program Inventory Partners

Adult Correction	Adult Mental Health
DOC- Prisons	DHS
DOC- Supervision	Hennepin County
Dakota County	Dakota County
Dodge, Fillmore, Olmsted (DFO)	Olmsted County
Stearns County	TBA

Status of the Benefit-Cost Analysis

- Adult Corrections updates
 - Data collection
 - Timeline
- Adult Mental Health
 - Kickoff
 - Timeline
- Website Launch:

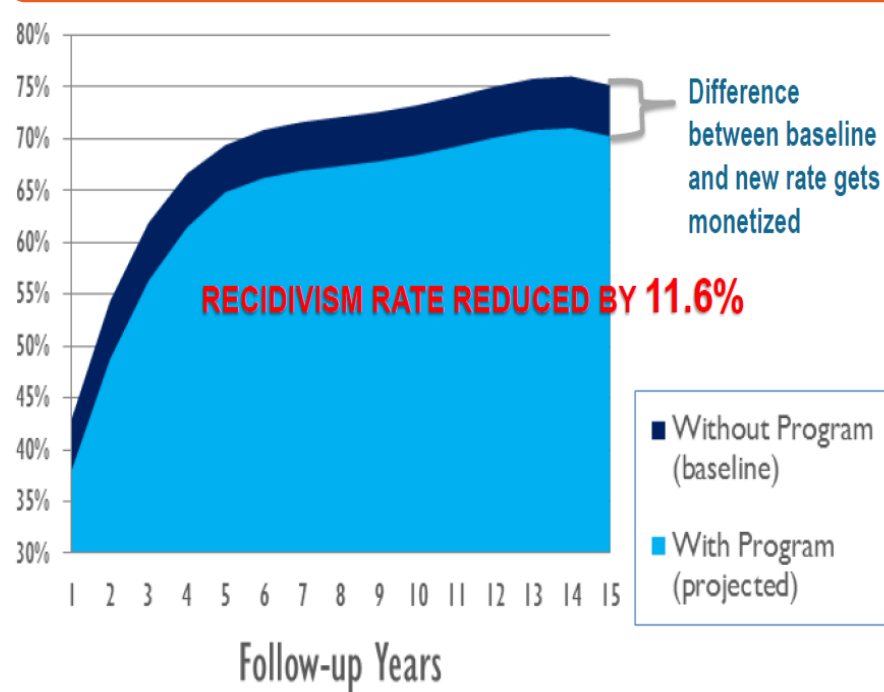
mn.gov/mmb/results-first/

PROGRAM INFORMATION				BUDGET		CAPACITY	EVIDENCE-BASED		
Program Name	Program Description	Frequency/ Intensity of Program	Service Provider(s)	Program Budget	How was budget calculated?	Participants Served	Clearinghouse	Rating from Clearinghouse	In RF Model (Y/N)
Adult/Intensive Supervised Release	Intensive supervision and case management, including GPS monitoring, frequent drug testing.	4 home visits		\$320,684	Budget line/ FTE analysis	130	Yes	Promising	Yes
Adult/Treatment - Sex Offender	Provide intensive treatment as part of case management to reduce risk to reoffend.	1x week	Project Pathfinder, Inc.	\$169,087	Budget line/ FTE analysis	442	Crime Solutions	Promising	Yes
Adult/Treatment - Domestic Violence	Provide intensive treatment as part of case management to reduce risk to reoffend.	1x week	La Oportunidad, Inc.; People Inc.	\$90,000	Budget line/ FTE analysis	680	Crime Solutions	Promising	Yes
Adult/Work Release (W/R)	Allow offenders out of jail daily for employment during incarceration.	daily		\$70,550	Budget line/ FTE analysis	162	W/R	Effective, promising, no	Yes
Adult/Electronic Home Monitoring (EHM)	Electronically monitors offender behavior; jail alternative program.	daily	Midwest Monitoring and Surveillance,	\$60,000	Budget line/ FTE analysis	565	Crime Solutions	Promising	Yes
Adult/Conditional Release	Electronically monitors offender behavior; jail alternative program.	UA track only			Part of EHM budget	63	Crime Solutions	Promising	Yes
Thinking for a change	CBT for those that score high on LSC/CMI.	2x week	Internal	\$16,000			Crime Solutions	Promising	Yes
Moving on	High risk female offenders	2x week	Internal	\$5,000			W/R	Promising	Yes
Driving with care	CBT for DWI cases (same budget as Safe Streets First)	1x week	Create, Inc						
Adult/Enhanced Caseload	Intensive supervision and case management, including GPS monitoring, frequent drug testing. Same as high risk general.	2-3x week				104	Crime Solutions	Effective	Compare w/ ISR
Adult/Jail Re-entry Program (RAP)	Offers assistance to jail inmates re-entering the community after extended periods of incarceration.	1x week	Attic Correctional Services	250000	Bush Foundation Grant	269		Promising	
Adult/One Day DWI Program	First time DWI offenders complete conditions by attending a one-day session with CD/Alcohol assessments, an education class, and victim impact panels.	once	CDC Centers, Inc.	75,000	Offender pays & PSC budget	522	Crime Solutions		

Kick-Off Feedback

What is a Benefit-Cost Ratio?

Results First Model



MN resource use + rigorous research



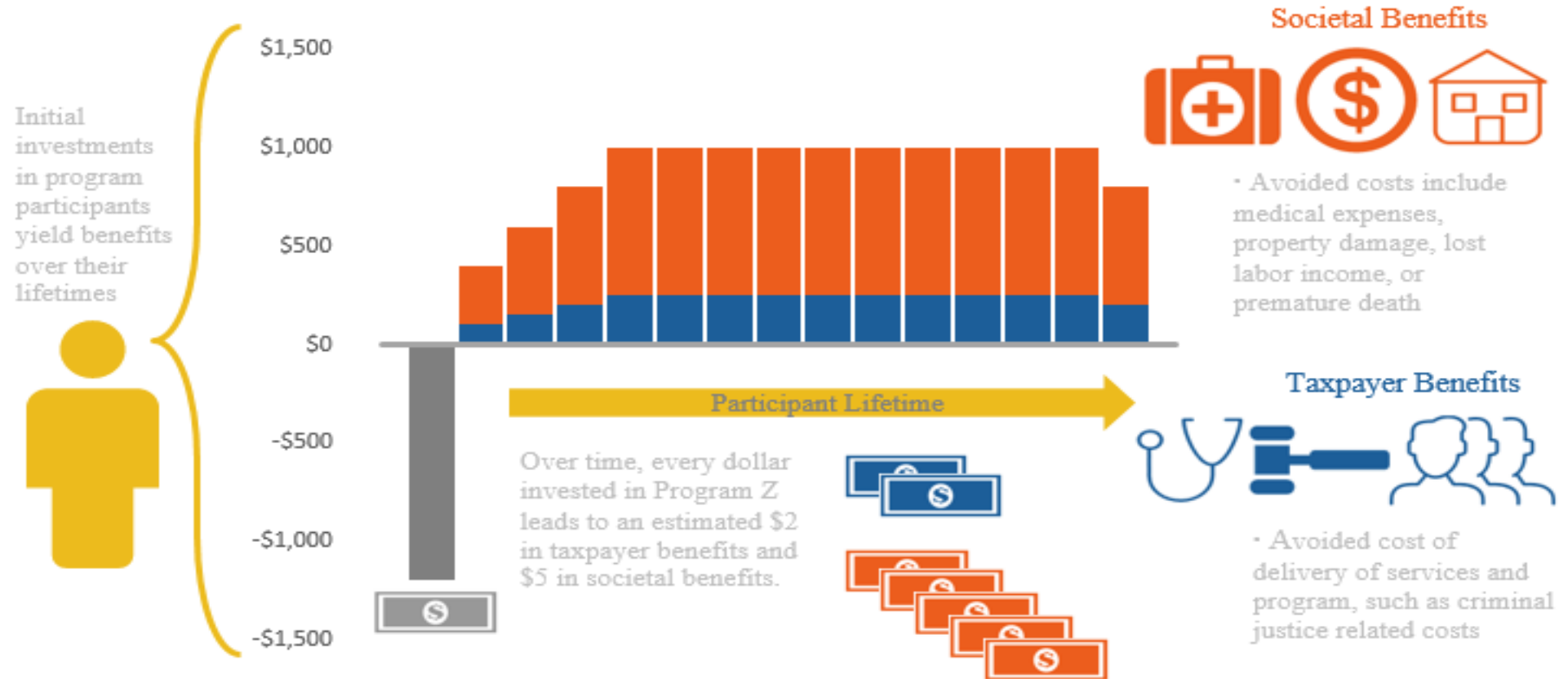
Benefits

MN Program Costs

Costs

What's Included in Benefits?

The benefit-cost ratio for C program reflects:



Sample Findings

Benefit-Cost Analysis Mock-Up

Table 1: Adult Mental Health Programs									
Program/Practice	Dakota County	Hennepin County	Olmstead County	TBD County	Cost per participant	Expansion Potential	Benefit-Cost Ratio	Benefit-Cost Ratio to Taxpayers (Blue) & Society (Orange)	
C Program	x		x		\$1,200	unknown	\$7.00	\$2.00	\$5.00
Up Practice	x				\$839	moderate	\$6.90	\$2.93	\$3.97
D Program		x		x	\$808	unknown	\$6.50	\$2.00	\$4.50
E Program	x	x			\$1,435	low	\$6.00	\$3.50	\$2.50
A Program	x	x	x		\$357	low	\$5.50	\$1.50	\$4.00
Down Practice	x	x	x		\$862	moderate	\$5.48	\$1.92	\$3.56
B Program		x		x	\$351	high	\$5.00	\$2.00	\$3.00
Right Program		x	x	x	\$793	high	\$2.89	\$1.67	\$1.22
Left Program		x			\$1,174	unknown	\$1.42	\$1.18	\$0.24
North Practice	x		x		\$3,458	moderate	\$0.20	\$-0.03	\$0.23
West Practice	x	x	x		\$3,447	low	-\$0.26	\$-0.43	\$0.16
East Practice		x		x	\$17,975	moderate	-\$0.44	\$-0.48	\$0.04
South Practice	x	x			\$270	low	-\$1.26	\$-1.07	\$-0.19

Source: Minnesota Management & Budget

Next Steps

- Next advisory committee meeting will be after session
- Stakeholder outreach
- Survey of legislature and staff

Weston Merrick, Results First Coordinator

Weston.Merrick@state.mn.us

Timeline

