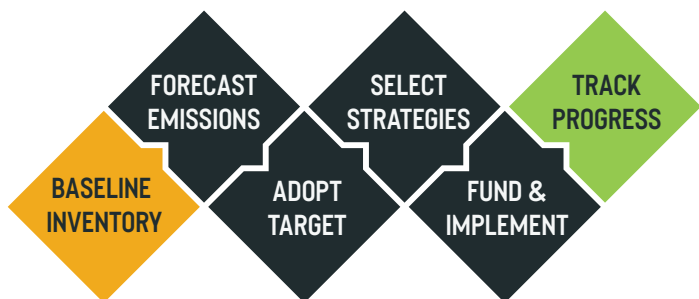


# CITY OF KENMORE, WASHINGTON GREENHOUSE GAS INVENTORY RESULTS

As part of the [King County-Cities Climate Collaboration \(K4C\)](#), the City of Kenmore has committed to reducing greenhouse gas (GHG) emissions within its community while building its resiliency to the impacts of climate change.

As an important first step in its climate action planning process, the City has completed a GHG inventory for 2019. This baseline will help the City set community-wide targets, measure progress over time, and inform which actions will have the greatest GHG emissions reduction benefits.

## WHERE WE ARE & WHERE WE'RE GOING



## INVENTORY QUICK FACTS

### 2 INVENTORIES

**Community-wide.** Emissions from community activities, like energy use, transportation, and waste disposal.

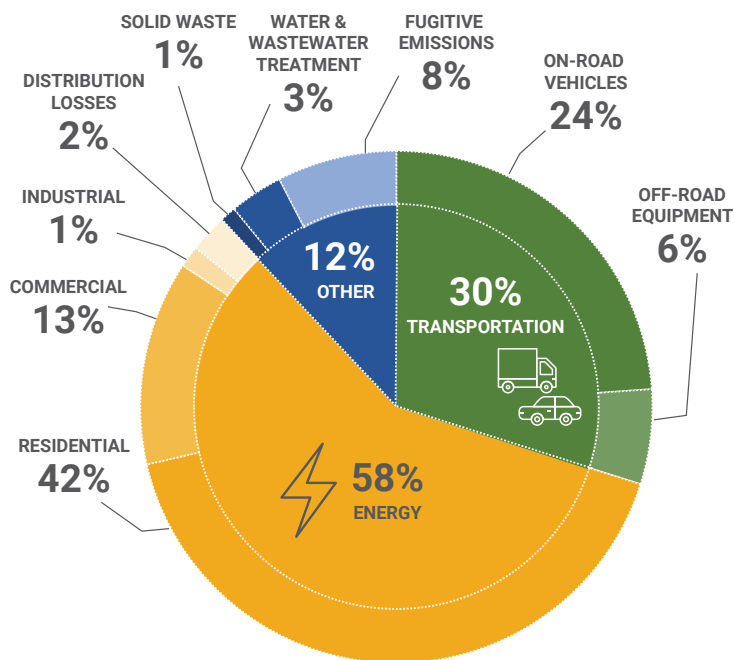
**Government operations.** Emissions from everyday government activities (see results on the back).

### 2 ACCEPTED PROTOCOLS

The inventories are in compliance with the **U.S. Community Protocol and Local Government Operations Protocol**, nationally accepted standards for GHG inventories.

## COMMUNITY EMISSIONS AT A GLANCE

178,009 Estimated Metric Tons of Carbon Dioxide Equivalent (MTCO<sub>2e</sub>)



## DID YOU KNOW?

The emissions created by the Kenmore community are equal to:

Driving **38,000 cars** for one year

Consuming **20 million gallons** of gasoline

Charging **22 billion** cell phones

Recapturing these emissions for one year would require us to grow **232,000 acres** of forestland



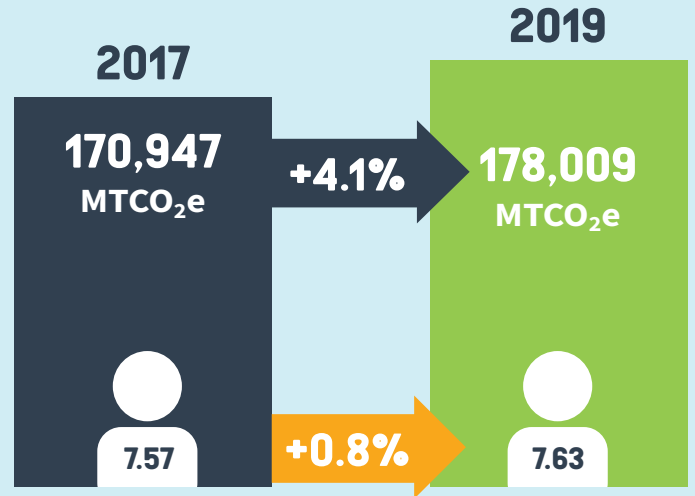


## COMMUNITY GHG EMISSIONS TREND

2017 to 2019

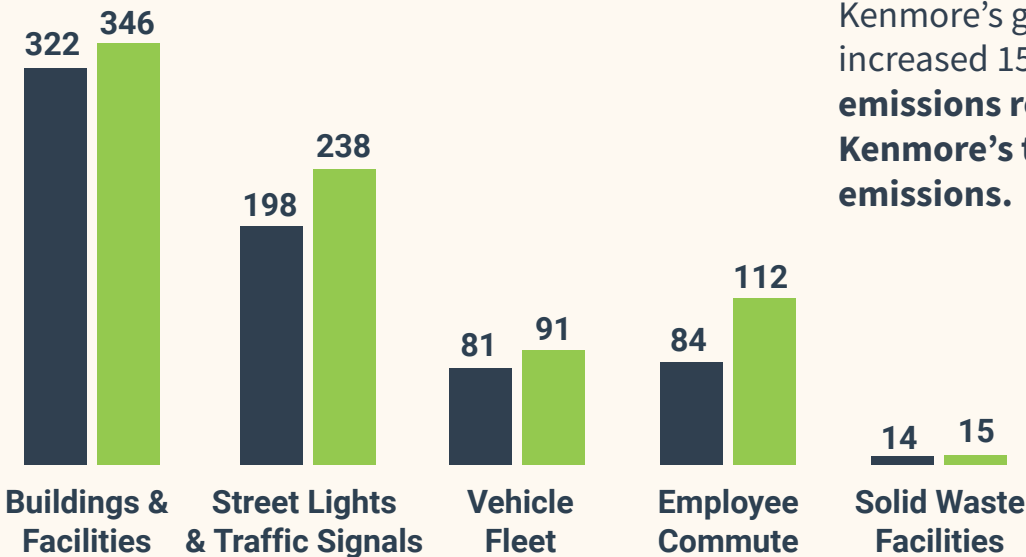
	2017 EMISSIONS (MTCO <sub>2</sub> e)	2019 EMISSIONS (MTCO <sub>2</sub> e)	% CHANGE
ENERGY	97,686	103,621	+6.1%
TRANSPORTATION	52,446	53,168	+1.4%
SOLID WASTE	1,957	1,785	-8.8%
WATER & WASTEWATER	6,686	5,997	-10.3%
PROCESS & FUGITIVE	12,172	13,438	+10.4%
<b>TOTAL</b>	<b>170,947</b>	<b>178,009</b>	<b>+4.1%</b>
PER-CAPITA	7.57	7.63	+0.8%

Emissions increased by 4% from 2017 to 2019. On a per-capita basis (controlling for population growth), emissions increased by less than 1%.



## EMISSIONS FROM CITY GOVERNMENT OPERATIONS— 2017 AND 2019, IN MTCO<sub>2</sub>E

2017 (Total Emissions = 699 MTCO<sub>2</sub>e)  
 2019 (Total Emissions = 802 MTCO<sub>2</sub>e)



Emissions produced by the City of Kenmore’s government operations increased 15% from 2017. **These emissions represent 0.5% of Kenmore’s total community emissions.**



Visit [www.kenmorewa.gov](http://www.kenmorewa.gov) for more information about the greenhouse gas inventory and climate action planning process. Follow us on social media to stay up to date on upcoming climate change workshops, giveaways, surveys, & more!