



SOUTH WHATCOM FIRE AUTHORITY

**REGIONAL FIRE PROTECTION
SERVICES AUTHORITY PLAN**

THE FEASIBILITY OF FIRE DEPARTMENT PARTNERSHIP

During the past three decades, fire protection in America has undergone a process of remarkable transformation. Change began in the early 1970s, roughly corresponding with the publication of *America Burning* by The National Commission on Fire Prevention and Control. Fire departments across the nation began to assume a greater role in the protection of citizens from many more hazards than in the past—quickly expanding from fire suppression to greater emphasis on fire prevention, emergency medical service, ambulance transport, hazardous materials, specialized operations, natural disasters, and (in the recent past) Homeland Security. *This was the dawning of the first responder doctrine in the Fire Service in America.*

The process of change continues today, although some fire agencies feel that the progress made is not in the spirit of 1973's *America Burning*. While many goals of *America Burning* (and of the *Fire Prevention and Control Act* of 1974 that followed) have not materialized, the responsibilities, scope of service, and emergency incidents of community fire departments continue to increase. Urban and suburban expansion have reached unprecedented levels across America, yet laws that limit the funding of public services increasingly restrict emergency services in those same communities. Nearly all such tax limit laws trace their roots to California's Proposition 13, passed by voters in that state in 1978.

Well before the date of *America Burning* and the California tax revolt, private sector businesses recognized the benefit of merger and collaboration as a means to increase efficiency. For years, critics have advised government to *reinvent itself* and to administer programs more like a business. An increasing number of executive fire officials and policymakers now recognize the moral imperative to maximize the efficiency and effectiveness of emergency service resources through a process of strategic cooperation.

Consequently, what was once relatively uncommon in the fire protection industry has become more widespread as fire department leaders react to internal forces promoting maximization of resources and the external drivers (i.e., expanding scope of service, increased populations, rapid community development, and limited capital).

More and more, local fire agencies partner with other jurisdictions to eliminate service duplication and to focus resources on providing essential services. Such strategic alliances between fire protection agencies began in areas experiencing rapid economic development, primarily surrounding burgeoning West Coast cities like Los Angeles, San Diego, Denver, Seattle, Salt Lake City, and Portland. Now, as the economic development that so characterized large metropolitan centers during the last two decades spreads and external forces act to limit the ability of the once isolated surrounding communities to unilaterally react to the change; the *strategic partnership* of emergency service organizations becomes an alternative more frequently considered by policymakers. Such is the case with the South Whatcom County fire agencies involved with this project that are located in the shadow of the Bellingham metropolitan area.

There are over 400 fire protection districts and 270 cities and towns in the State of Washington today. In the past ten years, the State of Washington has experienced:

- A remarkable increase in the number of cooperative efforts, consolidations, and fire protection district mergers.

- An increase in the number of cities and fire protection districts developing and improving cooperative services, consolidations and/or mergers and inter-local contractual agreements for emergency services. Examples are: City of Sumner and East Pierce Fire & Rescue; Cities of Auburn, Algona, and Pacific; Lewis County Fire District #12 and the City of Centralia.
- A constant pace of cities that have annexed into a fire protection district.
- The creation of a legislative vehicle to form Washington's first Regional Fire Protection Services Authority (RFPSA).

Many factors have led to the increase in these cooperative agreements, mergers, or annexations. These factors include:

- Recent committee studies and state legislation encouraging or providing incentives for cooperative services.
- State and federal grant criteria requires or allows for higher scoring for entities with cooperative or consolidated services.
- Tax limitation initiatives and referendums that have reduced the revenue available to many counties, cities, towns, and special purpose districts, thereby increasing the need to consolidate activities to achieve efficiencies and reduce operating costs.
- The Growth Management Act and its implementation in Washington counties that requires long-term planning of facilities and operations by counties, cities, towns, and special purpose tax districts.
- The cost of emergency operations; the cost of purchasing emergency apparatus and equipment; the cost of constructing fire station facilities; and the cost of fire suppression equipment, emergency medical and rescue equipment, and clothing have significantly increased.¹

It is in this climate of ongoing regional change that the South Whatcom Planning Committee was initiated to explore collaborative opportunities which can be identified and the economic feasibility of the opportunities be impartially judged.

¹ Clark and Brian Shure, *Mergers and Consolidations*.

RCW 52.26 REGIONAL FIRE PROTECTION SERVICE AUTHORITY

NEEDS STATEMENT:

(1) The ability to respond to emergency situations by fire protection/emergency medical services jurisdictions has not kept up with the community's needs and special service demands;

(2) Providing a fire protection and emergency medical service system requires a shared partnership and responsibility among the local and regional governments and the private sector;

(3) There are efficiencies to be gained by regional fire protection/emergency medical service delivery while retaining local control; and

(4) Timely development of significant projects can best be achieved through enhanced funding options for regional fire protection / emergency medical service agencies, using already existing taxing authority to address fire protection/emergency service needs and new authority to address critical fire protection projects and emergency services.

RCW 52.26 REGIONAL FIRE PROTECTION SERVICE AUTHORITY PLAN

DEFINITIONS:

The definitions in this section apply throughout this **SWFA Plan**, unless the context clearly requires otherwise.

(1) **%Board** means the governing body of the **SWFA**.

(2) **%Participating Jurisdictions** means the municipal jurisdictions (Whatcom County Fire Districts #2, #6, #9, and #10) joining the **SWFA** in accordance with RCW 52.26.020(5).

(3) **%South Whatcom Fire Authority** or **%SWFA** means the municipal corporation, an independent taxing authority within the meaning of Article VII, Section 1 of the state Constitution, and a taxing district within the meaning of Article VII, Section 2 of the state Constitution, whose boundaries are coextensive with the Participating Jurisdictions and that has been created by a vote of the people under RCW 52.26 to implement the **South Whatcom Fire Authority Plan**.

(4) **%South Whatcom Fire Authority Planning Committee** or **"SWFA Planning Committee"** means the advisory committee authorized under RCW 52.26.030 to create and propose to fire protection jurisdictions a **Regional Fire Protection Services Authority Plan (SWFA Plan)** to design, finance, and develop a regional fire protection and emergency service jurisdiction.

(5) **%Regional Fire Protection Services Authority Plan** or **%SWFA Plan** means the plan to develop and finance the **SWFA**, including, but not limited to, specific capital projects, fire operations and emergency service operations, pursuant to RCW 52.26.040(3)(b), and the preservation and maintenance of existing or future facilities and services.

(6) **%Super Majority** when used in reference to votes taken by the Board, means four (4) votes.

South Whatcom Fire Authority Plan

OBJECT I: SWFA - **FORMATION AUTHORITY**

Reference:

1. Authority to form a Regional Fire Protection Services Authority between the Participating Jurisdictions is authorized by RCW 52.26.
2. Authority to form the **South Whatcom Fire Authority Planning Committee (SWFA Planning Committee)** is authorized in RCW 52.26.020
3. Authority and empowerment of the **SWFA Planning Committee** is provided by RCW 52.26.030.
4. Appointment and participation on the **SWFA Planning Committee** shall be the *current sitting fire commissioners* of the Participating Jurisdictions in accordance with RCW 52.26.030.
5. The mission and goal of the **SWFA Planning Committee** is to develop and adopt the **South Whatcom Fire Authority Plan (SWFA Plan)** as defined in RCW 52.26.040
6. Upon successful development, approval, and adoption of the **SWFA Plan** by the **SWFA Planning Committee**, the governing bodies of the Participating Jurisdictions shall certify the **SWFA Plan** to the ballot, including identification of the revenue options or levy rate specified to fund the plan.
7. The Participating Jurisdictions shall draft a joint ballot title, give notice as required by law for ballot measures, and perform other duties as required to put the plan before the voters of the respective Participating Jurisdictions for their approval or rejection as a single ballot measure that both approves formation of the **SWFA** and approves the plan.

SWFA Activity/Operation:

1. No *current* activity or operation of the Participating Jurisdictions will change during the planning period of the **SWFA Plan**.
2. Should the **SWFA Plan** be ratified with a successful vote by the collective electorate of the Participating Jurisdictions, the **South Whatcom Regional Fire Protection Services Authority** shall be formed on January 1, 2009, in accordance with RCW 52.26.070.
3. On the date of formation, all assets, functions, programs, and services identified in the plan shall be transferred accordingly.
4. For the **exclusive purposes** of certifying/levying/collecting taxes and/or other fire district revenue that is transferred to **SWFA**, and to provide representation to the newly formed **SWFA** governance Board, Whatcom County Fire Districts #2, #6, #9, and #10 shall continue to exist as a Washington State municipal corporation/government entity until January 1, 2010.

5. It is the intent that each of the Participating Jurisdictions will completely cease operations effective January 1, 2010, whether by dissolution or other means. In the absence of legislation to the contrary, the **SWFA** shall have the authority to call and fund an election to dissolve the Participating Jurisdictions as of January 1, 2010 or later.

WCFD #2, #6, #9, and #10 Property/Assets/Documentation to be Transferred:

1. No transfer of current assets, equipment, documents, contracts, agreements, or records of the Participating Jurisdictions will occur during the planning period of the **SWFA**.

SWFA PLAN Revision Option:

1. The **FORMATION AUTHORITY** portion of the **SWFA Plan** is subject to alteration only by a revised **SWFA Plan** being re-submitted to the electorate for approval.

South Whatcom Fire Authority Plan

OBJECT II: SWFA - **JURISDICTIONAL BOUNDARIES**

Reference:

1. The authority to define the jurisdictional boundaries of the **South Whatcom Fire Authority (SWFA)** is provided by RCW 52.26.020(2).

SWFA Activity/Operation:

1. If the adopted **SWFA Plan** is approved by the voters at the November 4, 2008, Whatcom County General Election, the jurisdictional boundaries of the **SWFA** shall be the *current legal boundaries* of the Participating Jurisdictions, which boundaries are currently contiguous and are depicted on the map attached hereto and marked as Appendix %A+ of this plan.

WCFD #2, #6, #9, and #10 Property/Assets/Documentation to be Transferred:

1. Transfer of authority and jurisdiction to the **SWFA** from Whatcom County Fire Districts #2, #6, #9, and #10 shall occur on January 1, 2009 in accordance with the Objectives identified in this **SWFA Plan**.

SWFA PLAN Revision Option:

Unless otherwise allowed by statute, the **JURISDICTIONAL** portion of the **SWFA Plan** may be revised only by a revised **SWFA Plan** being re-submitted to the electorate for approval.

South Whatcom Fire Authority Plan

OBJECT III: SWFA - GOVERNANCE and REPRESENTATION

Reference:

1. The authority to provide **GOVERNANCE** for the **South Whatcom Fire Authority (SWFA)** is provided by RCW 52.26.080 and RCW 52.26.090.

SWFA Activity/Operation:

1. As provided by RCW 52.26.080, the **SWFA Governing Board** shall come into existence and authority on January 1, 2009.

2. The **SWFA** shall be divided into five Commissioner Districts for purposes of eligibility for service as a Commissioner on the **SWFA Governing Board**. Each of the five Commissioner Districts is legally described on the attached Appendix % and graphically displayed on Appendix %.

3. The initial **SWFA Governing Board** on January 1, 2009, shall consist of one (1) Commissioner appointed by Districts #6, #9, and #10 and two Commissioners appointed by District #2 (one from Sudden Valley and one from Geneva). The initial Commissioners shall serve until the following dates:

Commissioner District No. 1: January 1, 2011

Commissioner District No. 2: January 1, 2011

Commissioner District No. 3: January 1, 2013

Commissioner District No. 4: January 1, 2013

Commissioner District No. 5: January 1, 2015

3.1 At the conclusion of the initial terms above, each Commissioner shall serve for a term of six (6) years.

4. Commissioner Districts shall be used as follows: Only a registered voter who resides in a Commissioner District may be a candidate for, or hold office as, a Commissioner of the Commissioner District. Voters of the entire **SWFA** may vote at a primary and general election to elect a candidate for the Commissioner District.

4.1 A Commissioner position shall become vacant on the death, resignation, or recall of the Commissioner; absence from three (3) consecutive regular meetings of the Board without being excused by the Board; or for other causes provided by law.

4.2 Vacancies in office shall be filled at the next November general election, unless the vacancy occurs after the day for filing declarations of candidacy in which case, the vacancy shall be filled at the next succeeding November general election. The person elected shall take office upon certification of the results of the election and shall serve the unexpired term of the vacated office. Until a successor has been elected and certified, a majority of the Board shall fill the vacancy by appointment. When making an appointment, the Board shall make a good faith effort to appoint an individual who resides within the Commissioner District for which a vacancy exists.

5. The **SWFA Governing Board** shall adopt governance policies and rules for conducting business for the **SWFA** upon formation after January 1, 2009, in accordance with RCW 52.26.080.

6. The **SWFA Governing Board** shall adopt bylaws to govern the **SWFA** affairs and establish the **SWFA Governing Board** positions and term limits during 2009, to be placed in effect on January 1, 2010, in accordance with RCW 52.26.080.

7. The **SWFA Governing Board** shall have all the power and authority granted to governing boards under Washington State Law, and shall include the power and authority to make any decisions appropriate for the **SWFA** and for issues related to RCW 52.26.

8. Commissioners of the Governing Board may receive compensation in the same manner and under the same conditions as provided by law for Commissioners of a fire protection district organized under Chapter 52 RCW.

WCFD #2, #6, #9, and #10 Property/Assets/Documentation to be Transferred:

1. Unless otherwise noted in this plan, all *current* assets, equipment, documents, contracts, agreements, and records from Whatcom County Fire Districts #2, #6, #9, and #10 relating to the **GOVERNANCE** of the respective South Whatcom fire districts shall be transferred to the **SWFA**.

SWFA PLAN Revision Option:

The **GOVERNANCE** portion of the **SWFA Plan** may be revised by a **super majority** vote of the current sitting **SWFA Governing Board**.

South Whatcom Fire Authority Plan

OBJECT IV: SWFA - FUNDING

Reference:

1. The authority to provide funding and levy taxes for the **South Whatcom Fire Authority (SWFA)** is provided by RCW 52.26.050, RCW 52.26.140, RCW 52.26.150, RCW 52.26.160, RCW 52.26.170, and RCW 84.55.

SWFA Activity/Operation:

1. For fiscal year 2009 and thereafter, the Participating Jurisdictions shall transfer all 2009 revenue, taxes, and proceeds collected by their respective jurisdictions for fire and Emergency Medical Services (~~EMS~~) levies to **SWFA** for the inaugural year of operation.

2. Funding for the **SWFA** beginning in Fiscal Year 2010 and beyond shall be accomplished by an ad valorem fire tax not to exceed \$1.50 per \$1,000 of assessed value of all taxable property within the **SWFA** boundaries. Provided, however, that the initial ad valorem fire tax levied in 2009 for collection in 2010 shall be \$1.28 per \$1,000 of assessed value of all taxable property within the **SWFA** boundaries.

3. To the extent permitted by law, the **SWFA** shall contract with agencies and entities exempt from ad valorem taxes in accordance with RCW 52.30.020 and related statutes, provided that this shall not include contracts with, or the need to contract with or otherwise pursue funding from, the Participating Jurisdictions of the South Whatcom fire districts.

4. **SWFA** shall assume all outstanding bonded indebtedness of the Participating Jurisdictions and redeem all debt payments on their current schedule.

5. After 2009, any Participating Jurisdiction having an unexpired Emergency Medical Services (EMS) levy will not collect such taxes for the remaining term of the levy. If, after 2009, the Board determines that an EMS levy is advisable, the **South Whatcom Fire Authority** may seek voter approval to impose an EMS levy in an amount not to exceed \$0.50 per \$1,000 of assessed value of all taxable property located within the boundaries of the **South Whatcom Fire Authority**. The EMS levy will be imposed upon voter approval of same.

WCFD #2, #6, #9, and #10 Property/Assets/Documentation to be Transferred:

1. All financial assets of the Participating Jurisdictions shall be transferred to the **SWFA** on the date of formation unless otherwise specifically allowed by the **SWFA Plan**.

SWFA PLAN Revision Option:

The **FUNDING** portion of the **SWFA Plan** is subject to alteration only by a revised **SWFA Plan** being re-submitted to the electorate for approval.

South Whatcom Fire Authority Plan

OBJECT V: SWFA - ORGANIZATIONAL STRUCTURE

Reference:

1. The authority for the **South Whatcom Fire Authority (SWFA)** to establish an **ORGANIZATIONAL STRUCTURE** is provided in RCW 52.26.040.

SWFA Activity/Operation:

1. On the day of formation, the **SWFA** shall be organized and managed, with leadership provided, as shown in Appendix %B+attached hereto.
2. The Administrative/Operations/Prevention/Support Divisions of the **SWFA** shall be organized and a chain of command be established in accordance with the organizational structure provided in Appendix %B+attached hereto.
3. The current Fire Chief of Whatcom County Fire District #2 shall be appointed as the Fire Chief of the **SWFA**.

WCFD #2, #6, #9, and #10 Property/Assets/Documentation to be Transferred:

1. Unless otherwise noted in the **SWFA Plan**, all *current* assets, equipment, documents, contracts, agreements, and records from the respective participating fire departments relating to the **ORGANIZATIONAL STRUCTURE** of the Participating Jurisdictions shall be transferred to the **SWFA**.

SWFA PLAN Revision Option:

The **ORGANIZATIONAL STRUCTURE** portion of the **SWFA Plan** may be revised by a majority vote of the current sitting **SWFA Governing Board**.

South Whatcom Fire Authority Plan

**OBJECT VI: SWFA - ADMINISTRATIVE/MANAGEMENT/
PERSONNEL FUNCTIONS**

Reference:

1. The authority for the **South Whatcom Fire Authority (SWFA)** to establish and provide **ADMINISTRATIVE/MANAGEMENT/PERSONNEL** components is provided in RCW 52.26.040.

SWFA Activity/Operation:

1. The **SWFA** shall be organized as provided in Appendix ~~B~~+ of this **SWFA Plan**.
2. The current Fire Chief of Whatcom County Fire District #2 shall be appointed as the Fire Chief of the **SWFA**.
3. All current executive, command, and administrative staff of the Participating Jurisdictions shall be transferred over to the **SWFA** on the day of formation at their current rank, grade, and seniority to fulfill the duties of those positions outlined in the organizational structure in Appendix ~~B~~+ unless otherwise noted in this **SWFA Plan**.
4. All *current* employee/member agreements, personal service contracts, and/or other contracts or agreements pertaining to work, duties, services, or employment with the Participating Jurisdictions shall be transferred over with all personnel on the day of formation.
5. Currently appointed **FIRE DISTRICT SECRETARY** positions:
 - May be immediately transferred to the **SWFA** should their respective Board of Commissioners elect that option; or
 - May remain the *Fire District Secretary* of their respective Fire Districts until such Fire District officially dissolves or otherwise ceases to operate; or
 - Shall perform *Fire District Secretary* duties to the extent of certifying the 2009 Fire District budget and collecting/transferring funds to **SWFA** if they remain with their Fire District.
6. All current administrative and business functions, agreements, documents, operations, and policies and procedures from the Participating Jurisdictions shall transfer over to the **SWFA** unless otherwise noted in this **SWFA Plan**.
7. Unless otherwise noted in this **SWFA Plan**, the transfer of all *authority* and the *administrative/management/personnel functions* from the Participating Jurisdictions to **SWFA**

shall be seamless and shall initially model the current *administrative/management/personnel functions* of Whatcom County Fire District #2.

8. The **SWFA** shall complete a *Customer Centered Strategic/Business Plan* within one-hundred-eighty (180) days of formation. The **SWFA Strategic/Business Plan** shall:

- Establish and adopt **SWFA** mission/vision/and organizational core value statements;
- Identify all services that the **SWFA** will provide to its external and internal customers;
- Identify/adopt/establish measurable *Levels of Service Standards, Response Performance Objectives, and an Emergency Services Deployment Plan* for **SWFA** services;
- Identify and establish the **SWFA organizational model**;
- Identify and establish the **SWFA chain of command** and *chain of communications*;
- Identify and establish the **SWFA leadership model**;
- Identify and establish the *organizational divisions* of the **SWFA** and their mission/duties;
- Identify and prioritize the current and future *critical issues* and *challenges* of the **SWFA**;
- Research, develop, and adopt a ten-year **SWFA Financial Plan**;
- Inventory, evaluate, and adopt a **SWFA Apparatus/Equipment Replacement Program and Replacement Fund**; and,
- Establish **SWFA Strategic Initiatives** and *Goals/Objectives*, inclusive of all items above.

9. The **SWFA** shall obtain its own insurance services beginning 2009.

10. The current Participating Jurisdictions *Volunteer Firefighter Associations* have the option of maintaining their current identity/autonomy as it relates to their association functions identified in their respective bylaws.

WCFD #2, #6, #9, and #10 Property/Assets/Documentation to be Transferred:

1. Unless otherwise noted in this **SWFA Plan**, all *current* assets, equipment, documents, contracts, agreements, and records relating to the *administrative/management/personnel functions* of the Participating Jurisdictions shall be immediately transferred to the **SWFA**.

2. Transfer of assets from the Participating Jurisdictions to the **SWFA** shall occur on or before January 1, 2009, depending on the outcome of the November 4, 2008 election, in accordance with the Objectives identified in the **SWFA Plan**.

SWFA PLAN Revision Option:

The **ADMINISTRATIVE/MANAGEMENT/PERSONNEL** portion of the **SWFA Plan** may be revised by a majority vote of the current sitting **SWFA Governing Board**.

South Whatcom Fire Authority Plan

OBJECT VII: SWFA - OPERATIONS AND EXTERNAL DELIVERY SERVICES

Reference:

1. The authority for the **South Whatcom Fire Authority (SWFA)** to establish and provide **OPERATIONS and EXTERNAL DELIVERY SERVICES** components of the **SWFA Plan** is provided in RCW 52.26.040.

SWFA Activity/Operation:

1. All current aspects/provisions/levels of service of Participating Jurisdictions **OPERATIONS and EXTERNAL DELIVERY SERVICES** shall be transferred over to the **SWFA** on the day of formation.
2. All current automatic aid and mutual aid agreements, and any other contractual services agreements, documents, or memorandums currently in place with Whatcom County Fire Districts #2, #6, #9, and #10, shall be transferred over on January 1, 2009, to provide continuous, seamless readiness, and emergency services coverage.
3. As a part of the **SWFA Plan**, the **SWFA** shall adopt new **Standards of Coverage Response Objectives** and a **SWFA Emergency Services Deployment Plan** based upon the new jurisdictional boundaries as indicated in Appendix **A** of this plan. A copy of the **Draft Standards of Coverage** is attached hereto as Appendix **D**.

WCFD #2, #6, #9, and #10 Property/Assets/Documentation to be Transferred:

1. On January 1, 2009, all real property, buildings, facilities, appurtenances, and other property improvements currently owned and operated by Whatcom County Fire Districts #2, #6, #9, and #10, shall be transferred in their entirety to the new **SWFA**. See Appendix **C** for the details of each organization's assets.
2. Unless otherwise set forth in this plan, all non-real property assets, apparatus, tools, equipment, and/or property used in providing internal and/or external services to Participating Jurisdictions, shall be transferred to the new **SWFA** for fire/emergency medical services operations purposes.
3. On January 1, 2009, all reserve cash funds of Participating Jurisdictions established for *equipment/apparatus replacement* shall be transferred to the new **SWFA Apparatus/Equipment Replacement Fund**.

4. Unless otherwise noted in this **SWFA Plan**, all *current* documents, contracts, agreements, and records from Participating Jurisdictions relating to **OPERATIONS and EXTERNAL DELIVERY SERVICES** of said organizations shall be transferred to the **SWFA**.

SWFA PLAN Revision Option:

The **OPERATIONS and EXTERNAL DELIVERY SERVICES** portion of the **SWFA Plan** may be revised by a majority vote of the current sitting **SWFA Governing Board**.

South Whatcom Fire Authority Plan

OBJECT VIII: SWFA - INTERNAL SUPPORT SERVICES

Reference:

1. The authority for the **South Whatcom Fire Authority (SWFA)** to establish and provide **INTERNAL SUPPORT SERVICES** components of the **SWFA Plan** is provided in RCW 52.26.040.

SWFA Activity/Operation:

1. All current aspects/provisions/levels of service of Participating Jurisdictions **INTERNAL SUPPORT SERVICES** programs shall be transferred over to the **SWFA** on the day of formation.
2. As a part of the **SWFA Strategic/Business Plan** exercise required by this **Plan** in 2009, the **SWFA** shall develop and adopt a new **INTERNAL SUPPORT SERVICES Plan** to maintain a state of readiness and ensure a full scope of services and support to the responders, staff, and internal customers of **SWFA**.
3. At the time of formation, all current **INTERNAL SUPPORT SERVICES** currently in place with Whatcom County Fire District #2 shall be extended to Whatcom County Fire Districts # 6, #9, and #10 until such time as the **SWFA Strategic/Business Plan** is completed, adopted, and implemented by **SWFA**.

WCFD #2, #6, #9, and #10 Property/Assets/Documentation to be Transferred:

1. On January 1, 2009, all real property, buildings, facilities, appurtenances, and other property improvements currently owned and operated by Whatcom County Fire Districts #2, #6, #9, and #10, used in providing **INTERNAL SUPPORT SERVICES** shall be transferred in their entirety to the new SW-RFPSA. See Appendix C for the details of each organizations assets.
2. Unless otherwise set forth in this plan, all non-real property assets, apparatus, tools, equipment, and/or property used in providing **INTERNAL SUPPORT SERVICES** to Whatcom County Fire Districts #2, #6, #9, and #10, shall be transferred to the new **SWFA**.
3. Unless otherwise noted in this **SWFA Plan**, all *current* documents, contracts, agreements, and records from Participating Jurisdictions relating to **INTERNAL SUPPORT SERVICES** of said organizations shall be transferred to the **SWFA**.

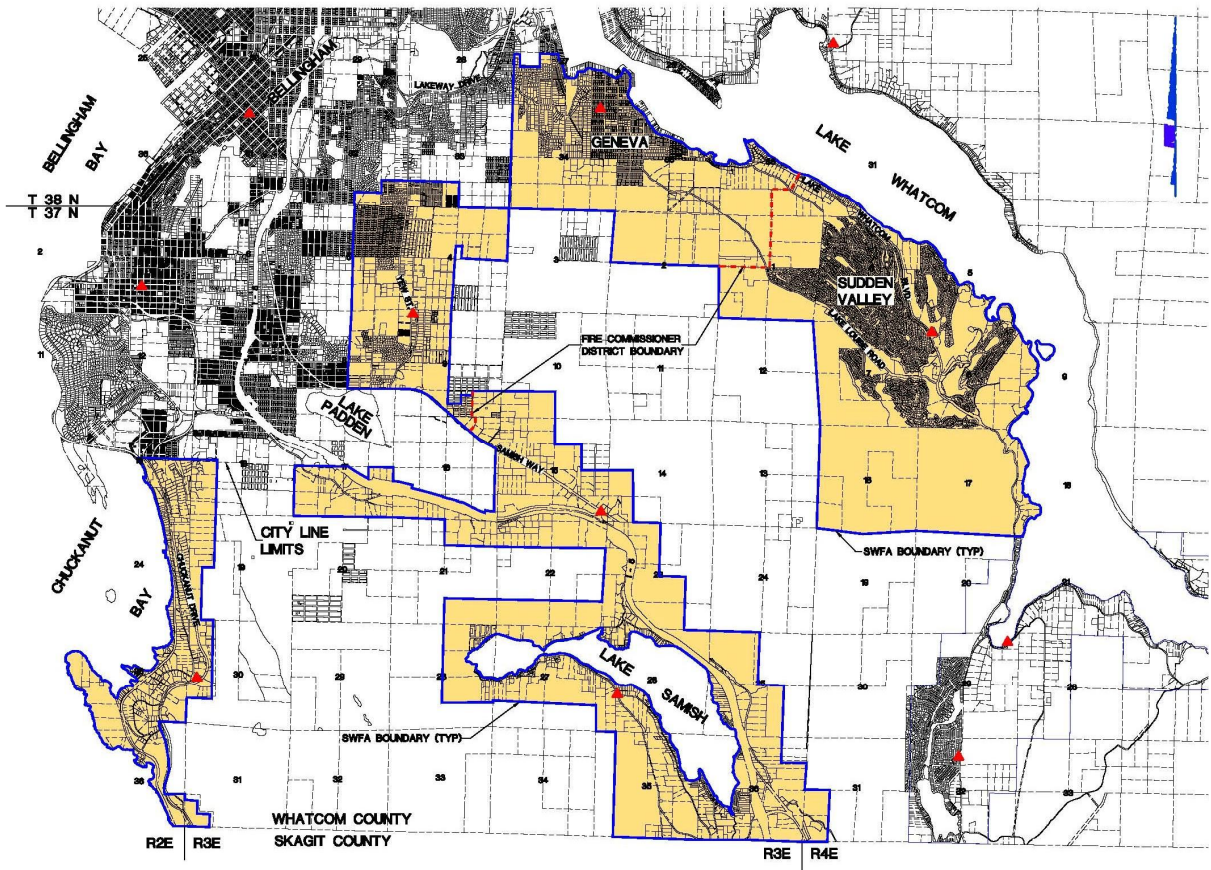
SWFA PLAN Revision Option:

The **SWFA INTERNAL SUPPORT SERVICES** portion of the **SWFA Plan** may be revised by a majority vote of the current sitting **SWFA Governing Board**.

South Whatcom Fire Authority

APPENDIX "A"

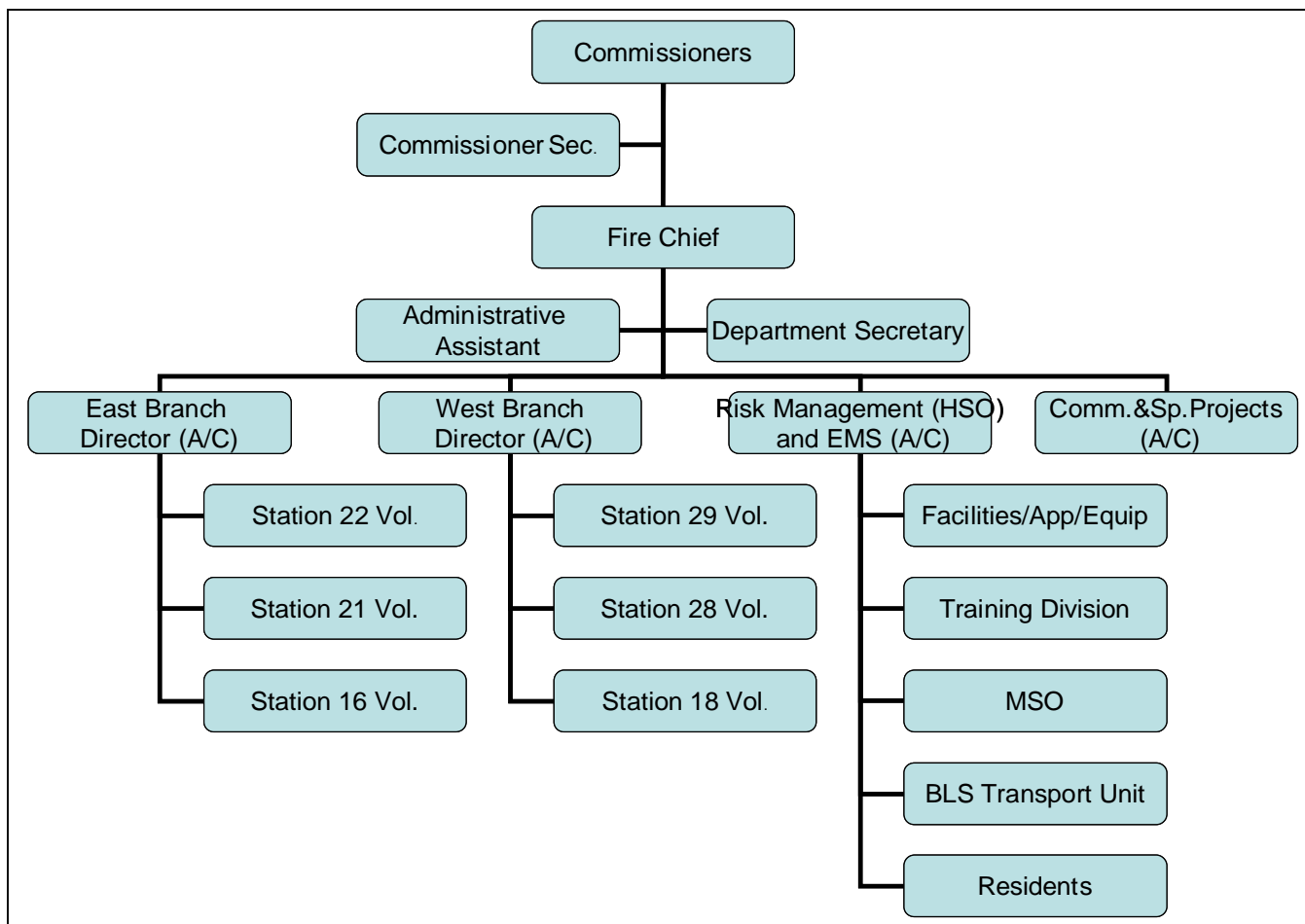
Jurisdictional Boundaries Map



South Whatcom Fire Authority

APPENDIX "B"

SWFA Organizational Chart



South Whatcom Fire Authority

APPENDIX "C"

Current SWFA Fire Station Locations

- Fire Station #18:** (*Chuckanut Drive*) located at 686 Chuckanut Drive, Bellingham, Washington
- Fire Station #16:** (*Yew Street*) located at 2095 Yew Street Road, Bellingham, Washington
- Fire Station #21:** (*Geneva*) located at 4518 Cable Street, Bellingham, Washington
- Fire Station #22:** (*Sudden Valley*) located at 2050 Lake Whatcom Boulevard, Bellingham, Washington
- Fire Station #28:** (*Lake Samish*) located at 5170 Samish Way, Bellingham, Washington
- Fire Station #29:** (*Lake Samish*) located at 705 West Lake Samish Drive, Bellingham, Washington

South Whatcom Fire Authority

APPENDIX "D"

SWFA DRAFT Standards of Coverage

South Whatcom Fire Authority hereby establishes the following response performance goals/standards, including specific response time objectives, as applicable:

A. Response Turnout Time:

- (1) **SWFA** has adopted a *response turnout time objective* of ninety (90) seconds 90% of the time for all Priority 1 emergency incidents.

B. Response Objectives for Priority 1 Fire Suppression Incidents:

B.1 **SWFA** has adopted a response time objective of:

- NA minutes 90% of the time for the arrival of the *first due fire engine company* when responding to a Priority 1 fire suppression incident in the *Zone I Maximum Risk (Urban) Response Zone*.
- 5 minutes 90% of the time for the arrival of the *first due fire engine company* when responding to a Priority 1 fire suppression incident in the *Zone II High Risk (Suburban) Response Zone*.
- 10 minutes 90% of the time for the arrival of the *first due fire engine company* when responding to a Priority 1 fire suppression incident in the *Zone III Moderate Risk (Rural) Response Zone*.
- NA minutes 90% of the time for the arrival of the *first due fire engine company* when responding to a Priority 1 fire suppression incident in the *Zone IV Low Risk (Wilderness) Response Zone*.

- a. **SWFA's** definition of a *first due fire engine company* includes **three (3)** suppression personnel arriving in **one (1)** or more apparatus.

B.2 **SWFA** uses a response/travel time objective/goal of **ten (10) minutes** for the arrival of the full first alarm assignment of response resources 80% of the time when responding to a Priority 1 fire suppression incident (where a full first alarm is required) in a Suburban Response Zone and a response/travel time objective/goal of **fourteen (14) minutes** of the arrival of the first alarm assignment of response resources 80% of the time when responding to a Priority 1 fire suppression incident (where a full first alarm is required) in a Rural Response Zone.

- a. **SWFA's** full first alarm assignment includes a minimum of **two (2)** suppression personnel and **one (1)** Incident Commander, for a total of **three (3)** personnel.

C. Response Objectives for Priority 1 Emergency Medical Services Incidents:

C.1 **SWFA** hereby establishes the following response performance goals/standards, including specific response time objectives, as applicable in (WAC 246-976):

- a. **SWFA** has adopted a response/travel time objective of **fifteen (15)** minutes 90% of the time for the arrival of Basic Life Support (BLS) or higher level capability for Priority 1 incidents.
- b. **SWFA** has adopted a response/travel time objective of **twenty (20)** minutes 90% of the time for the arrival of Advanced Life Support (ALS).

D. Response Objectives for Priority 1 Hazardous Materials Incidents:

D.1 The Washington State Patrol is responsible for hazardous materials incidents/incident command within the District. **SWFA** response personnel are trained to the **Operations** level and support the Washington State Patrol.

D.2 Hazards Materials **Technician** level response services are provided to **SWFA** by **Specialized Emergency Response Program (SERP)**.

D.3 The **SWFA** response time objective for an **“Operations”** level response to Priority 1 hazardous materials incidents is as follows:

- NA minutes 90% of the time for the arrival of the *first due fire engine company* when responding to a Priority 1 hazardous materials incident in the *Zone I Maximum Risk (Urban) Response Zone*.
- 5 minutes 90% of the time for the arrival of the *first due fire engine company* when responding to a Priority 1 hazardous materials incident in the *Zone II High Risk (Suburban) Response Zone*.
- 10 minutes 90% of the time for the arrival of the *first due fire engine company* when responding to a Priority 1 hazardous materials incident in the *Zone III Moderate Risk (Rural) Response Zone*.
- NA minutes 90% of the time for the arrival of the *first due fire engine company* when responding to a Priority 1 hazardous materials incident in the *Zone IV Low Risk (Wilderness) Response Zone*.
 - a. **SWFA’s** definition of a *first due fire engine company* includes **three (3)** suppression personnel arriving on **one (1)** or more apparatus.

E. Response Objectives for Priority 1 Technical Rescue Incidents:

E.1 **SWFA** response personnel are trained to the **“Awareness”** level for technical rescue operations with the exception of surface water rescue incidents.

E.2 Technical Rescue Technician-level response services are provided to **SWFA** by the **Bellingham Fire Department**.

E.3 **SWFA** response time objectives for an “**Awareness**” level response to Priority 1 technical rescue incidents is as follows:

- 5 minutes 90% of the time for the arrival of the *first due emergency resources*’ when responding to a Priority 1 *technical rescue incident* in the SUBURBAN (Moderate Risk) Response Zone.
- 10 minutes 80% of the time for the arrival of the *first due emergency resources*’ when responding to a Priority 1 *technical rescue incident* in the RURAL (Moderate Risk) Response Zone.

E.4 **SWFA** response time objectives for a “**Technician**” level response to Priority 1 Surface Water technical rescue incidents is as follows:

- 10 minutes 90% of the time for the arrival of the *first due emergency resources*’ when responding to a Priority 1 surface water *technical rescue incidents* in the SUBURBAN (Moderate Risk) Response Zone.
- 14 minutes 80% of the time for the arrival of the *first due emergency resources*’ when responding to a Priority 1 surface water *technical rescue incident* in the RURAL (Moderate Risk) Response Zone.

South Whatcom Fire Authority

APPENDIX "E"

Commissioner Districts Legal Descriptions

SOUTH WHATCOM FIRE AUTHORITY

CONSOLIDATED BOUNDARY LEGAL DESCRIPTION

AN AREA OF LAND ORIGINALLY DEFINING THE BOUNDARIES OF WHATCOM COUNTY FIRE PROTECTION DISTRICT NO. 2, BY RESOLUTION OF THE BOARD OF COUNTY COMMISSIONERS IN APRIL 1944, DESCRIBED AS FOLLOWS:

BEGINNING ON THE SECTION LINE BETWEEN SECTIONS 35 AND 36, TOWNSHIP 38 NORTH, RANGE 3 EAST, AT A POINT 150 FEET SOUTHERLY AND AT RIGHT ANGLES TO THE CENTER OF LAKE WHATCOM BOULEVARD PAVED ROAD; THENCE SOUTH ON SAID SECTION LINE TO THE SOUTH LINE OF BLOCK 20, AMENDED PLAT OF GENEVA; THENCE WESTERLY ALONG THE SOUTHERLY LINE OF BLOCK 20 AND BLOCK 19 OF SAID PLAT, TO CENTER LINE OF WELLINGTON AVENUE AS SHOWN ON SAID PLAT; THENCE NORTH ALONG CENTER LINE OF WELLINGTON AVENUE TO ITS JUNCTION WITH THE CENTER LINE OF COLUMBUS AVENUE; THENCE NORTHWESTERLY AND WEST ALONG CENTER LINE OF COLUMBUS AVENUE AS SHOWN ON AMENDED PLAT OF GENEVA AND ON PLAT SOUTH GENEVA TO THE WEST LINE OF SECTION 35, TOWNSHIP 38 NORTH, RANGE 3 EAST; THENCE CONTINUE ON WEST ALONG CENTER LINE OF SIXTH STREET AS SHOWN ON PLAT OF WEST GENEVA TO WEST LINE OF DEPOT STREET; THENCE CONTINUE WEST ON LINE BETWEEN LOTS 6 AND 7, AND 18 AND 19, CLARKE'S ACRE TRACTS TO CENTER LINE OF LAKEVIEW STREET AS SHOWN ON SAME PLAT; THENCE SOUTH ON CENTER LINE OF LAKEVIEW STREET TO SOUTH LINE OF LOT 34, SAID CLARKE'S ACRE TRACTS EXTENDED EAST; THENCE WEST ALONG SOUTH LINE OF LOTS 34, 35, 36, 37, 38, 39, 40 AND 41, SAID CLARKE'S ACRE TRACTS, TO THE NORTH AND SOUTH CENTER LINE OF SECTION 34, TOWNSHIP 38, RANGE 3 EAST; THENCE NORTH ALONG SAID SECTION CENTER LINE TO LAKE WHATCOM BOULEVARD; THENCE EASTERLY ALONG SAID BOULEVARD TO TERRACE AVENUE SOUTH AS SHOWN ON PLAT OF KERSHAW ACRE TRACTS; THENCE SOUTHEASTERLY ALONG TERRACE AVENUE SOUTH TO FOURTH STREET; THENCE EAST ON FOURTH STREET BETWEEN THE PLAT OF CLARKE'S ACRE TRACTS AND KERSHAW'S ACRE TRACTS TO DEPOT STREET; THENCE SOUTH ON DEPOT STREET ONE BLOCK TO FIFTH STREET; THENCE EAST ON FIFTH STREET TWO BLOCKS TO LAKE OR AUSTIN STREET; THENCE NORTH ON LAKE OR AUSTIN STREET ONE BLOCK TO FREMONT AVENUE; THENCE EAST ON FREMONT AVENUE TO ITS INTERSECTION WITH A LINE DRAWN 150 FEET SOUTHERLY AND AT RIGHT ANGLES TO THE CENTER OF LAKE WHATCOM BOULEVARD PAVED ROAD; THENCE EASTERLY ALONG A LINE 150 FEET DISTANT FROM AND PARALLEL TO CENTER LINE OF SAID LAKE WHATCOM BOULEVARD TO THE EAST LINE OF SECTION 35, TOWNSHIP 38 NORTH, RANGE 3 EAST, BEING THE POINT OF BEGINNING.

TOGETHER WITH AN AREA OF LAND DEFINING THE ADDITIONAL BOUNDARIES OF WHATCOM COUNTY FIRE PROTECTION DISTRICT NO. 2, DESCRIBED UNDER CANVASSING BOARD CERTIFICATE FILED IN APRIL 1944, DESCRIBED AS FOLLOWS:

BEGINNING AT THE POINT OF INTERSECTION ON THE NORTH AND SOUTH CENTER LINE OF SECTION 36, T 38 N, R 3 E, W.M., AND THE SOUTHERLY SHORE LINE OF LAKE WHATCOM, THENCE SOUTH ALONG SAID NORTH AND SOUTH CENTER LINE OF SECTION 36, TO A POINT 150 FEET SOUTH OF AND AT RIGHT ANGLES TO THE CENTER OF LAKE WHATCOM BOULEVARD PAVED ROAD; THENCE ALONG A LINE 150 FEET DISTANT FROM AND PARALLEL TO THE CENTER LINE OF SAID LAKE WHATCOM BOULEVARD TO AN INTERSECTION WITH FREMONT AVENUE IN AMENDED PLAT OF GENEVA; THENCE WEST ALONG SAID FREMONT AVENUE TO LAKE, OR AUSTIN STREET; THENCE SOUTH ON SAID LAKE, OR AUSTIN STREET ONE BLOCK; THENCE WEST ALONG FIFTH STREET, PLAT OF WEST GENEVA, TWO BLOCKS TO DEPOT STREET; THENCE NORTH ON DEPOT STREET ONE BLOCK TO FOURTH STREET; THENCE WEST ON SAID FOURTH STREET BETWEEN THE PLAT OF CLARKS ACRES TRACTS AND PLAT OF KERSHAW'S ACRE TRACTS TO TERRACE AVENUE SOUTH; THENCE ALONG SAID TERRACE AVENUE SOUTH TO AN INTERSECTION WITH THE LAKE WHATCOM BOULEVARD PAVEMENT; THENCE NORTHERLY AND WESTERLY ALONG SAID PAVEMENT AND THE SOUTH LINE OF SECTION 27, T 38 N, R 3 E, W.M. TO AN INTERSECTION WITH THE EAST BOUNDARY OF THE CITY OF BELLINGHAM SAID POINT BEING THE SW ¼ SECTION CORNER OF SECTION 27; THENCE NORTH ALONG THE EAST BOUNDARY OF THE CITY OF BELLINGHAM, BEING THE WEST LINE OF THE SW ¼ SAID SECTION 27 ONE HALF MILE TO THE WEST ONE QUARTER CORNER SAID SECTION 27; THENCE EAST ALONG THE SOUTH BOUNDARY OF THE CITY OF BELLINGHAM, SAID LINE BEING THE EAST AND WEST CENTER LINE OF SAID SECTION 27 TO AN INTERSECTION WITH THE WESTERLY SHORELINE OF LAKE WHATCOM; THENCE SOUTHERLY AND EASTERLY ALONG THE SOUTHERLY SHORELINE OF LAKE WHATCOM AND AROUND ECHO POINT TO THE PLACE OF BEGINNING.

TOGETHER WITH AN AREA OF LAND ANNEXED TO THE ORIGINAL BOUNDARIES OF WHATCOM COUNTY FIRE PROTECTION DISTRICT NO. 2, BY RESOLUTION OF THE BOARD OF COUNTY COMMISSIONERS IN OCTOBER 1965, DESCRIBED AS FOLLOWS:

BEGINNING AT THE POINT OF INTERSECTION OF THE NORTH AND SOUTH CENTER LINE OF SECTION 36, TOWNSHIP 38 NORTH, RANGE 3 EAST, W.M., AND THE SOUTHERLY SHORE LINE OF LAKE WHATCOM; THENCE SOUTH ALONG SAID NORTH AND SOUTH CENTER LINE OF SECTION 36, TO A POINT 150 FEET SOUTH OF AND AT RIGHT ANGLES TO THE CENTER OF LAKE WHATCOM BOULEVARD PAVED ROAD; THENCE ALONG A LINE 150 FEET DISTANCE FROM AND PARALLEL TO THE CENTER LINE OF SAID LAKE WHATCOM BOULEVARD TO THE SOUTH LINE OF BLOCK 20, AMENDED PLAT OF GENEVA; THENCE WESTERLY ALONG THE SOUTHERLY LINE OF BLOCK 20 AND BLOCK 19 OF SAID PLAT TO CENTER OF WELLINGTON AVENUE AS SHOWN ON SAID PLAT; THENCE NORTH ALONG CENTER LINE OF WELLINGTON AVENUE TO ITS JUNCTION WITH THE CENTER LINE OF COLUMBUS AVENUE AS SHOWN ON AMENDED PLAT OF GENEVA AND ON PLAT OF SOUTH GENEVA; THENCE WEST ALONG THE CENTER LINE OF COLUMBUS AVENUE TO THE WEST LINE OF SECTION 35, TOWNSHIP 38 NORTH, RANGE 3 EAST, W.M.; THENCE CONTINUE WEST ALONG CENTER LINE OF SIXTH STREET AS SHOWN ON PLAT OF WEST GENEVA TO WEST LINE OF DEPOT STREET; THENCE CONTINUE WEST ON LINE BETWEEN LOTS 6, 7, 18 AND 19 OF CLARKE'S ACRE TRACTS TO CENTER LINE OF LAKEVIEW STREET AS

SHOWN ON SAME PLAT; THENCE SOUTH ON CENTER LINE OF LAKEVIEW STREET TO SOUTH LINE OF LOT 34, SAID CLARKE 6 ACRE TRACTS, EXTENDED EAST; THENCE WEST LONG SOUTH LINE OF LOTS 34, 35, 36, 37, 38, 39, 40 AND 41, SAID CLARKE 6 ACRE TRACTS TO THE NORTH AND SOUTH CENTER LINE OF SECTION 34, TOWNSHIP 38 NORTH, RANGE 3 EAST; THENCE NORTH ALONG SAID SECTION CENTER LINE TO LAKE WHATCOM BOULEVARD PAVEMENT; THENCE NORTHERLY AND WESTERLY ALONG SAID PAVEMENT AND THE SOUTH SECTION LINE OF SECTION 27. TOWNSHIP 38 NORTH, RANGE 3 EAST, W.M., TO AN INTERSECTION WITH THE EAST BOUNDARY OF CITY OF BELLINGHAM, SAID POINT BEING THE SECTION CORNER COMMON TO SECTIONS 27, 28, 33 AND 34, TOWNSHIP 38 NORTH, RANGE 3 EAST; THENCE SOUTH ALONG NORTH AND SOUTH SECTION LINE BETWEEN SAID SECTIONS 33 AND 34, TO THE SECTION CORNER COMMON TO SECTIONS 33 AND 34, TOWNSHIP 38 NORTH, RANGE 3 EAST, AND SECTIONS 3 AND 4, TOWNSHIP 37 NORTH, RANGE 3 EAST; THENCE EASTERLY ON EAST AND WEST SECTION LINE BETWEEN SAID SECTIONS 34 AND 3 TO SECTION CORNER COMMON TO SECTIONS 34 AND 35, TOWNSHIP 38 NORTH, RANGE 3 EAST, AND SECTIONS 2 AND 3, TOWNSHIP 37 NORTH, RANGE 3 EAST; THENCE SOUTHERLY ON NORTH AND SOUTH SECTION LINE BETWEEN SAID SECTIONS 2 AND 3 TO THE QUARTER CORNER BETWEEN SECTIONS 2 AND 3, TOWNSHIP 37 NORTH, RANGE 3 EAST, W.M.; THENCE EASTERLY ON EAST AND WEST CENTER LINE OF SAID SECTION 2 TO THE QUARTER CORNER BETWEEN SECTIONS 1 AND 2 OF SAID TOWNSHIP AND RANGE; THENCE SOUTHERLY ON NORTH AND SOUTH SECTION LINE BETWEEN SAID SECTIONS 1 AND 2 TO SECTION CORNER COMMON TO SECTIONS 1, 2, 11 AND 12, TOWNSHIP 37 NORTH, RANGE 3 EAST; THENCE EASTERLY ON EAST AND WEST SECTION LINE BETWEEN SAID SECTIONS 1 AND 12 TO THE SECTION CORNER COMMON TO SECTIONS 1 AND 12, TOWNSHIP 37, NORTH RANGE 3 EAST, AND SECTIONS 6 AND 7, TOWNSHIP 37 NORTH, RANGE 4 EAST; THENCE SOUTHERLY ON NORTH AND SOUTH SECTION LINE BETWEEN SAID SECTIONS 12 AND 7 TO THE QUARTER CORNER BETWEEN SAID SECTIONS 7 AND 12; THENCE EASTERLY ON EAST AND WEST CENTER LINE OF SAID SECTIONS 7, 8, 9, TOWNSHIP 37 NORTH, RANGE 4 EAST, TO THE SHORE LINE OF LAKE WHATCOM; THENCE NORTHWESTERLY FOLLOWING SOUTH SHORE LINE OF LAKE WHATCOM TO POINT OF BEGINNING.

TOGETHER WITH AN AREA OF LAND ANNEXED TO THE ORIGINAL BOUNDARIES OF WHATCOM COUNTY FIRE PROTECTION DISTRICT NO. 2, BY RESOLUTION OF THE BOARD OF FIRE DISTRICT COMMISSIONERS IN FEBRUARY 1973, DESCRIBED AS FOLLOWS:

STARTING AT THE CENTER OF SECTION 7 ON THE SECTION LINE BETWEEN SECTION 7 AND 12. THENCE SOUTH ON THE SECTION LINE BETWEEN SECTION 13 AND 18 TO THE SOUTHWEST CORNER OF SECTION 18, THENCE EASTERLY ON THE SECTION LINE BETWEEN 18 AND 19 TO THE SHORES OF LAKE WHATCOM, THENCE NORTHWESTERLY FOLLOWING THE SHORES OF LAKE WHATCOM TO THE CENTER LINE OF SECTION 8, THENCE WESTERLY ACROSS SECTION 8 AND 7 TO THE POINT OF BEGINNING.

TOGETHER WITH AN AREA OF LAND ORIGINALLY DEFINING THE BOUNDARIES OF WHATCOM COUNTY FIRE PROTECTION DISTRICT NO. 6, BY RESOLUTION OF THE BOARD OF COUNTY COMMISSIONERS IN MARCH 1956, DESCRIBED AS FOLLOWS:

THAT PORTION OF TOWNSHIP 37 NORTH, RANGE 2 EAST, W.M., AND TOWNSHIP 37 NORTH, RANGE 3 EAST, W.M., WHATCOM COUNTY, WASHINGTON, THE BOUNDARIES OF WHICH ARE AS FOLLOWS:

BOUNDED ON THE NORTH BY THE SOUTH LINE OF THE CITY OF BELLINGHAM, WASHINGTON; BOUNDED ON THE SOUTH BY THE NORTH LINE OF SKAGIT COUNTY; BOUNDED ON THE WEST BY BELLINGHAM BAY AND OTHER WATERS; BOUNDED ON THE EAST BY THE NORTH AND SOUTH CENTER LINES OF THE WEST ($W\frac{1}{2}$) OF SECTIONS 18, 19, 30 AND 31, TOWNSHIP 37 NORTH, RANGE 3 EAST, W.M., EXCEPT THAT PORTION OF SAME THAT IS A PART OF LARRABEE STATE PARK.

TOGETHER WITH AN AREA OF LAND ORIGINALLY DEFINING THE BOUNDARIES OF WHATCOM COUNTY FIRE PROTECTION DISTRICT NO. 9, BY RESOLUTION OF THE BOARD OF COUNTY COMMISSIONERS IN NOVEMBER 1957, DESCRIBED AS FOLLOWS:

BEGINNING AT THE CENTER OF SECTION 17, GO WEST $\frac{1}{2}$ MILE TO THE WEST $\frac{1}{4}$ CORNER OF SECTION 17; THENCE SOUTH $\frac{1}{2}$ MILE TO THE SOUTHWEST CORNER OF SECTION 17; THENCE EAST $1\frac{1}{2}$ MILES TO THE NORTH $\frac{1}{4}$ CORNER OF SECTION 21; THENCE SOUTH $\frac{1}{4}$ MILE; THENCE EAST $1\frac{1}{2}$ MILES TO THE EAST SECTION LINE OF SECTION 22; THENCE SOUTH $\frac{1}{2}$ MILE ALONG SECTION LINE; THENCE WEST $1\frac{1}{2}$ MILES TO THE NORTH-SOUTH CENTER LINE OF SECTION 21; THENCE SOUTH 1 MILE; THENCE EAST $1\frac{1}{2}$ MILES TO THE EAST SECTION LINE OF SECTION 27; THENCE SOUTH $\frac{1}{4}$ MILE TO THE NORTHEAST CORNER OF SECTION 34; THENCE EAST $\frac{1}{4}$ MILE; THENCE SOUTH 1 MILE TO THE SOUTH SECTION LINE OF SECTION 35; THENCE EAST 2 MILES; THENCE NORTH $\frac{1}{2}$ MILE; THENCE WEST $\frac{1}{4}$ MILE TO THE WEST $\frac{1}{4}$ CORNER OF SECTION 31; THENCE NORTH $\frac{1}{4}$ MILE; THENCE WEST $\frac{1}{4}$ MILE; THENCE NORTH $\frac{3}{4}$ MILE TO THE EAST-WEST CENTER LINE OF SECTION 25; THENCE WEST $\frac{1}{4}$ MILE TO THE CENTER OF SECTION 25; THENCE NORTH $\frac{1}{2}$ MILE TO THE NORTH $\frac{1}{4}$ CORNER OF SECTION 25; THENCE WEST $\frac{3}{4}$ MILE; THENCE NORTH $\frac{1}{2}$ MILE; THENCE WEST $\frac{1}{4}$ MILE TO THE CENTER OF SECTION 23; THENCE NORTH $\frac{1}{2}$ MILE TO THE NORTH $\frac{1}{4}$ CORNER OF SECTION 23; THENCE WEST $\frac{1}{4}$ MILE; THENCE NORTH $\frac{1}{2}$ MILE TO THE EAST-WEST CENTER LINE OF SECTION 14; THENCE WEST $\frac{1}{2}$ MILE; THENCE NORTH $\frac{1}{4}$ MILE; THENCE WEST $\frac{1}{4}$ MILE TO THE NORTH-SOUTH CENTER LINE OF SECTION 15; THENCE NORTH $\frac{1}{2}$ MILE; THENCE WEST $\frac{3}{4}$ MILE (MORE OR LESS, TO THE CENTERLINE OF VACATED MYRTLE STREET, AS SHOWN ON THE PLAT OF WASHINGTON IMPROVEMENT COMPANY'S ADDITION TO SEHOME, AS RECORDED IN VOLUME 2 OF PLATS PAGE 58, IN THE AUDITORS OFFICE OF WHATCOM COUNTY WASHINGTON); THENCE SOUTH $\frac{3}{4}$ MILE (ALONG SAID CENTERLINE AND THE WEST LINE OF THE EAST HALF OF THE NORTHEAST QUARTER OF SECTION 16) TO THE EAST-WEST CENTER LINE OF SECTION 16; THENCE WEST $1\frac{1}{4}$ MILES TO THE POINT OF BEGINNING; THE POINT OF BEGINNING BEING IN TOWNSHIP 37 NORTH, RANGE 3 EAST.

TOGETHER WITH AN AREA OF LAND ORIGINALLY DEFINING THE BOUNDARIES OF WHATCOM COUNTY FIRE PROTECTION DISTRICT NO. 10, BY RESOLUTION OF THE BOARD OF COUNTY COMMISSIONERS IN NOVEMBER 1959, DESCRIBED AS FOLLOWS:

ALL OF THAT PART OF THE EAST HALF ($E\frac{1}{2}$) OF SECTION 32, TOWNSHIP 38 NORTH, RANGE 3 EAST, W.M., AND THE WEST HALF ($W\frac{1}{2}$) OF SECTION 33, TOWNSHIP 38, RANGE 3 EAST, W.M., LYING SOUTH OF THE CITY LIMITS OF BELLINGHAM, WASHINGTON,

THE WEST HALF (W½) OF SECTION 4, TOWNSHIP 37 NORTH, RANGE 3 EAST, W.M.,

THE EAST HALF (E½) OF SECTION 5, TOWNSHIP 37 NORTH, RANGE 3 EAST, W.M.,

ALL OF THAT PART OF EAST HALF (E½) OF SECTION 8, AND THE WEST HALF (W½) OF SECTION 9, TOWNSHIP 37 NORTH, RANGE 3 EAST, W.M., LYING NORTHERLY OF STATE ROAD #1, ALSO KNOWN AS PRIMARY STATE HIGHWAY 99.

TOGETHER WITH AN AREA OF LAND ANNEXED TO THE ORIGINAL BOUNDARIES OF WHATCOM COUNTY FIRE PROTECTION DISTRICT NO. 10, BY RESOLUTION OF THE BOARD OF COUNTY COMMISSIONERS (DATE UNKNOWN), DESCRIBED AS FOLLOWS:

TOGETHER WITH THE FOLLOWING DESCRIBED TRACTS IN SECTION 9, TOWNSHIP 37 NORTH, RANGE 3 EAST OF W.M.:

ALL THAT PORTION OF THE FOLLOWING DESCRIBED TRACT LYING NORTHEASTERLY OF SAMISH WAY: BLOCKS 1, 2, 3, 4, 15, 16, 17 AND 18 OF WASHINGTON IMPROVEMENT COMPANY'S ADDITION TO SEHOME, AS RECORDED IN VOLUME 2 OF PLATS PAGE 58, IN THE AUDITORS OFFICE OF WHATCOM COUNTY WASHINGTON, TOGETHER WITH ABUTTING VACATED STREETS AND ALLEYS.

AND ALL THAT PORTION OF BLOCKS 19, 20, 21, 22, 33, AND 34 OF GREAT NORTHERN TERMINAL ADDITION TO FAIRHAVEN AS RECORDED IN VOLUME 4 OF PLATS PAGE 4, IN THE AUDITORS OFFICE OF WHATCOM COUNTY, WASHINGTON, TOGETHER WITH ABUTTING VACATED STREETS AND ALLEYS;

ALSO TOGETHER WITH THAT PORTION OF THE NORTHWEST QUARTER OF THE NORTHEAST QUARTER OF SECTION 16, TOWNSHIP 37 NORTH, RANGE 3 EAST OF W.M. LYING NORTHEASTERLY OF SAMISH WAY NOT BEING A PORTION OF FIRE DISTRICT NUMBER 8.

TOGETHER WITH AN AREA OF LAND ANNEXED TO THE ORIGINAL BOUNDARIES OF WHATCOM COUNTY FIRE PROTECTION DISTRICT NO. 10, BY RESOLUTION OF THE BOARD OF COUNTY COMMISSIONERS IN JULY 1993, DESCRIBED AS FOLLOWS:

APPROXIMATELY ONE HUNDRED FIFTY-TWO ACRES, COUNTY ASSESSOR PARCEL NO. 370304468479, GOVERNMENT LOTS 1 AND 2 (N ½ NE ¼), LESS ROAD (77 AC); PARCEL NO. 370304478327, NE ¼, SW ¼, NE ¼; E ½, W ½, SW ¼, NE ¼; AND SE ¼, NE ¼ (60 AC); PARCEL NO. 370304292365, W ½, NW ¼, SW ¼, NE ¼, LESS ROAD (4.85 AC); PARCEL NO. 370304366293, SE ¼, SW ¼, NE ¼, LESS ROAD (9.70 AC).

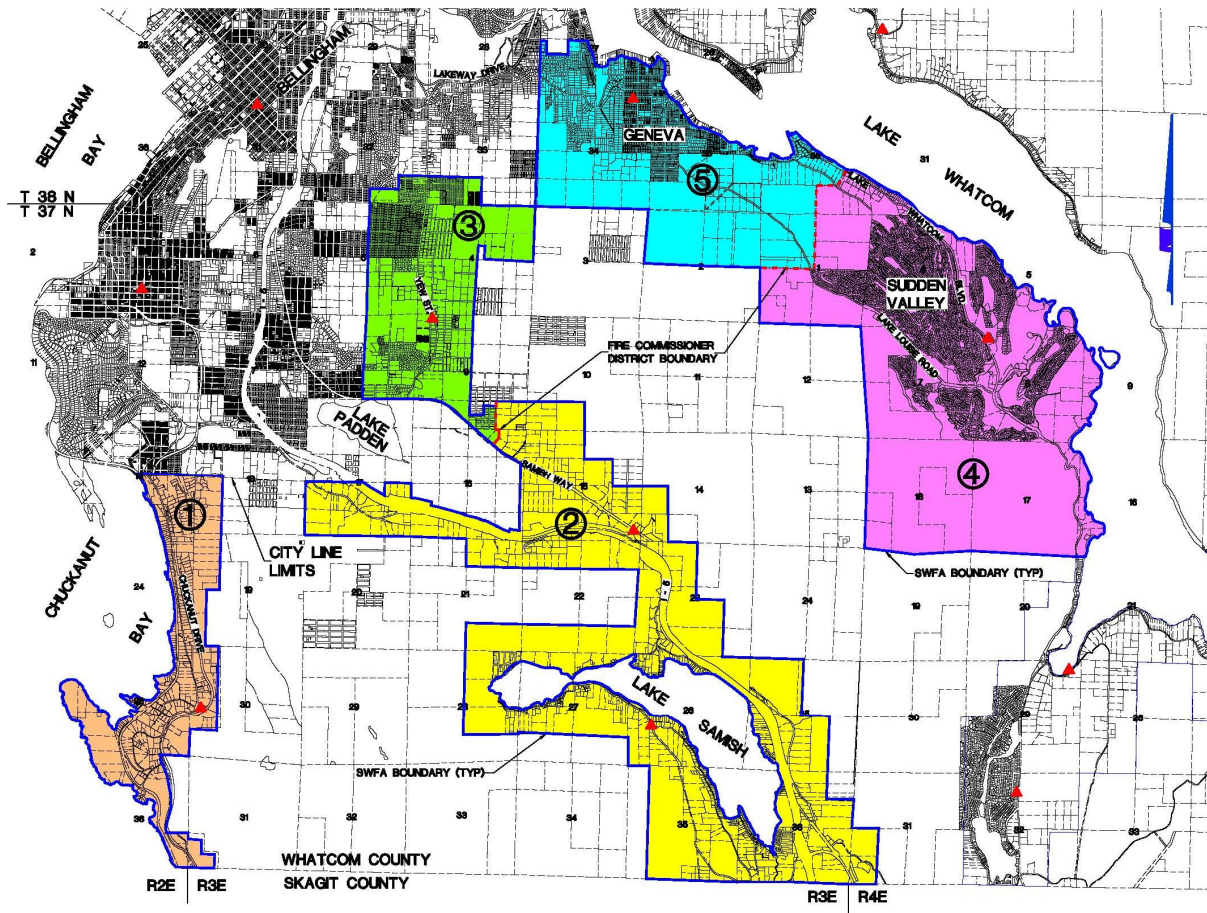
EXCEPTING FROM THE ABOVE DESCRIBED DISTRICT BOUNDARY AREAS ANY PORTION THEREOF LYING WITHIN THE LIMITS OF THE CITY OF BELLINGHAM OR LANDS REQUIRED BY LAW TO PAY FOREST FIRE PROTECTION ASSESSMENTS.

SITUATE IN WHATCOM COUNTY, WASHINGTON.

South Whatcom Fire Authority

APPENDIX "F"

Commissioner Districts Boundaries Map



WCFD#2/REGIONAL FIRE AUTHORITY/FINAL SWFA PLAN_06-17-08(RSV)