

OKLAHOMA COVID-19 WEEKLY REPORT

Weekly Epidemiology and Surveillance Report
August 21– August 27, 2020



PURPOSE To provide up-to-date weekly epidemiological data on COVID-19 in Oklahoma.

SNAPSHOT

	Aug 21– Aug 27	Change ¹	Total
Confirmed cases	4,881	6.9%	55,550
Recovered cases ²	4,491	11.2%	47,186
Deaths	69	-2.8%	778

1. Change from the week of Aug 14-20, 2020.

2. Currently not hospitalized or deceased and 14 days after onset/report.

Cases		Deaths	
Persons aged 50 and over	Females	Persons aged 50 and over	Males
32%	52%	96%	55%
of <u>cases</u>	of <u>cases</u>	of <u>deaths</u>	of <u>deaths</u>

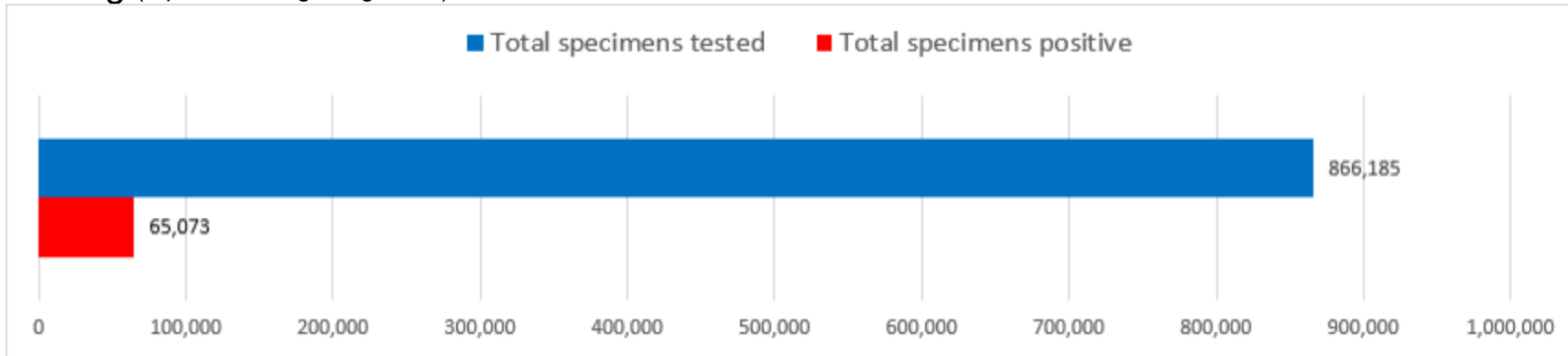
The average age of cases was **40** years.

The youngest case was **less than a year old** and the oldest case was **100+ years**.

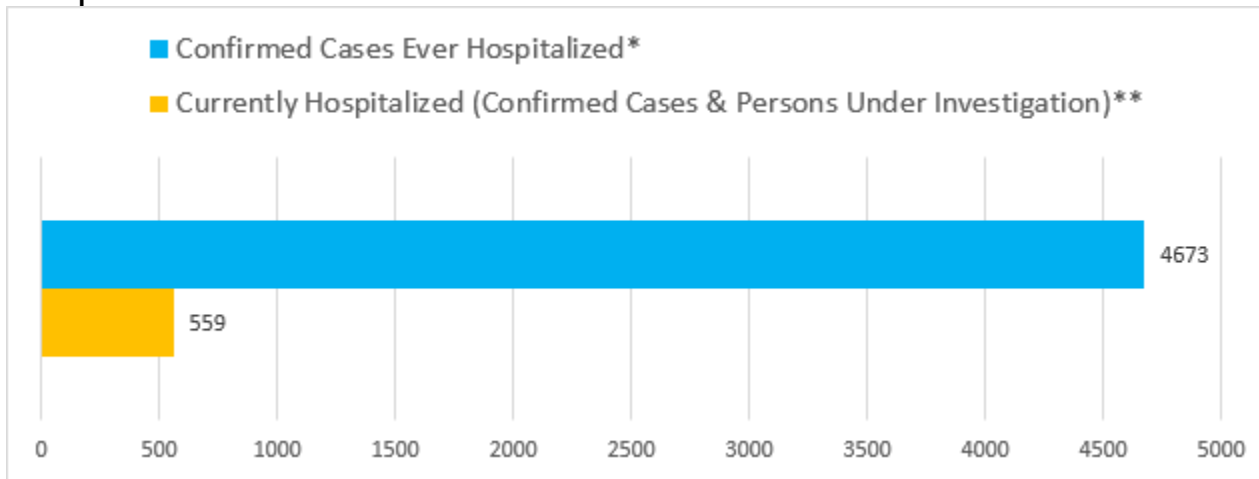
The average age of individuals who died was **75** years.

The youngest individual to die from COVID-19 was **less than 15 years** and the oldest was **100+ years**.

Testing (reported through August 27)



Hospitalizations



*Ever hospitalized includes discharged, deceased, currently hospitalized and recovered as of 8/27/2020.

**Source OSDH Beds Survey. Note, facility response rate of 94% on 8/27/2020.

KEY POINTS

- **4,881** confirmed cases were reported in the past week
6.9% increase from the week before (Aug 14-20).
 - **69** deaths were reported in the past week
2.8% decrease from the week before (Aug 14-20).
 - **4,673 (8.4%)** confirmed cases have been hospitalized
 - **405** confirmed cases were reported to OSDH as hospitalized in the past week 10.4% increase from the week before (Aug 14-20)
 - **866,185** specimens have been tested in total
 - **77** counties (out of 77) have had at least one confirmed case of COVID-19
-

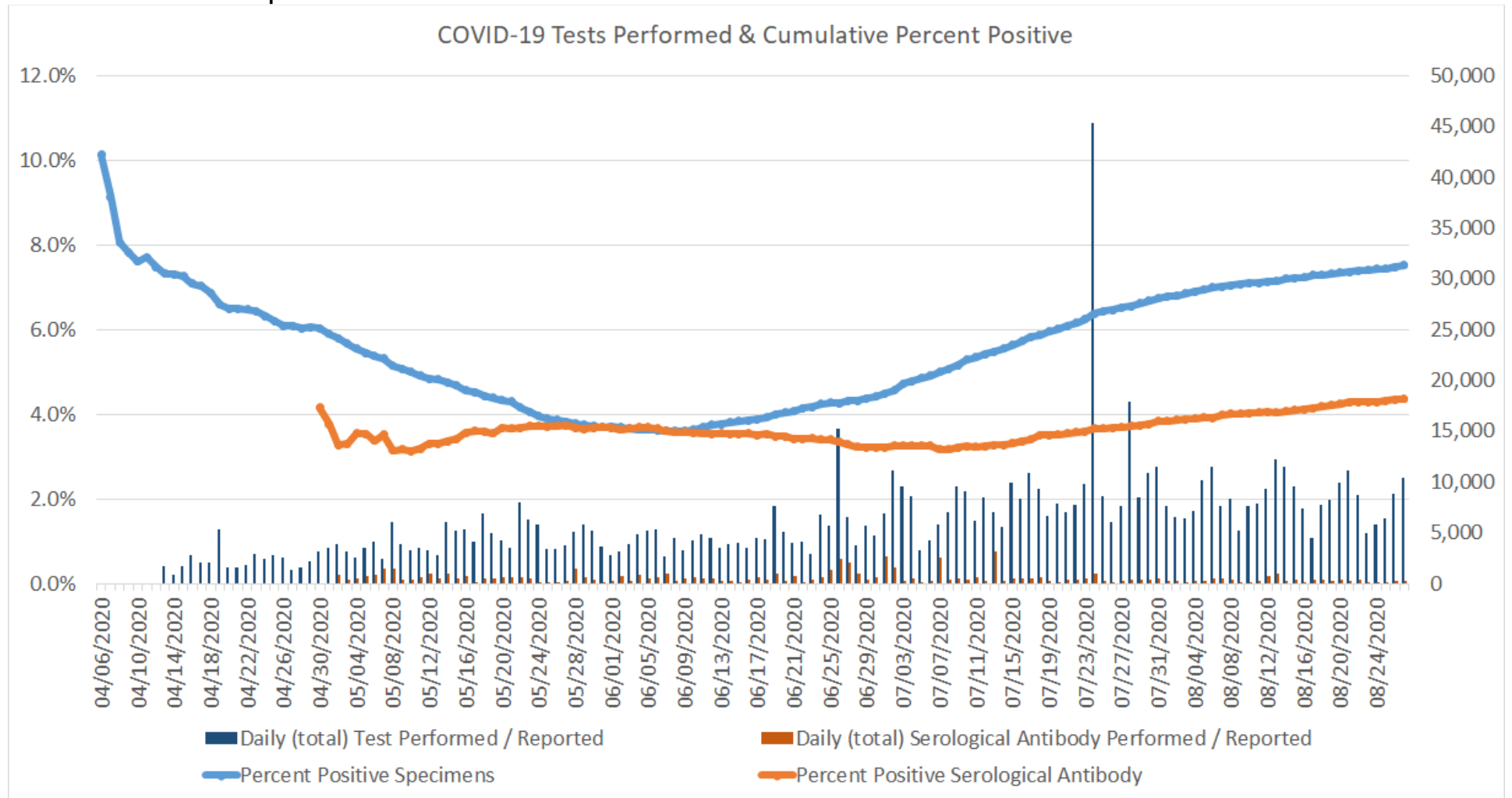
DISEASE TESTING

	Aug 21 – Aug 27	Total Number
Specimens tested ¹ , count	56,065	866,185
Specimens positive, count (%)	5,625 (10.0%)	65,073 (7.5%)
Antibody tested, count	1,642	68,964
Antibody positive, count (%)	150 (9.1%)	3,006 (4.4%)

1. Includes state and private laboratories.

Note: Specimen counts may not reflect unique individuals.

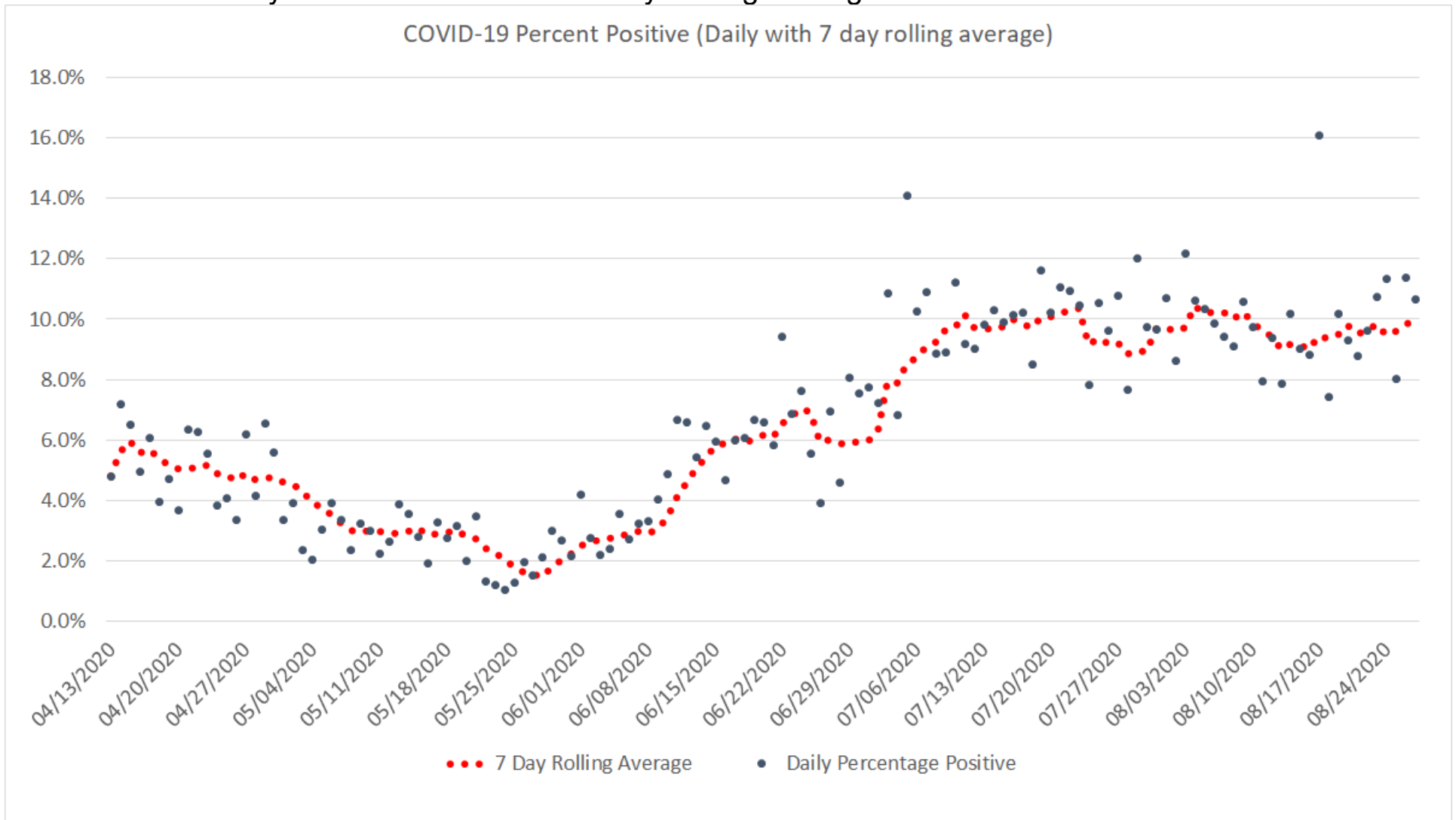
Positive tests as a percent of total tests



Oklahoma, August 27, 2020

Note: On July 24, 2020 fourteen labs began reporting to OSDH that had been testing since May 18, 2020.

Covid-19 Tests Daily Percent Positive with 7 Day Rolling Average



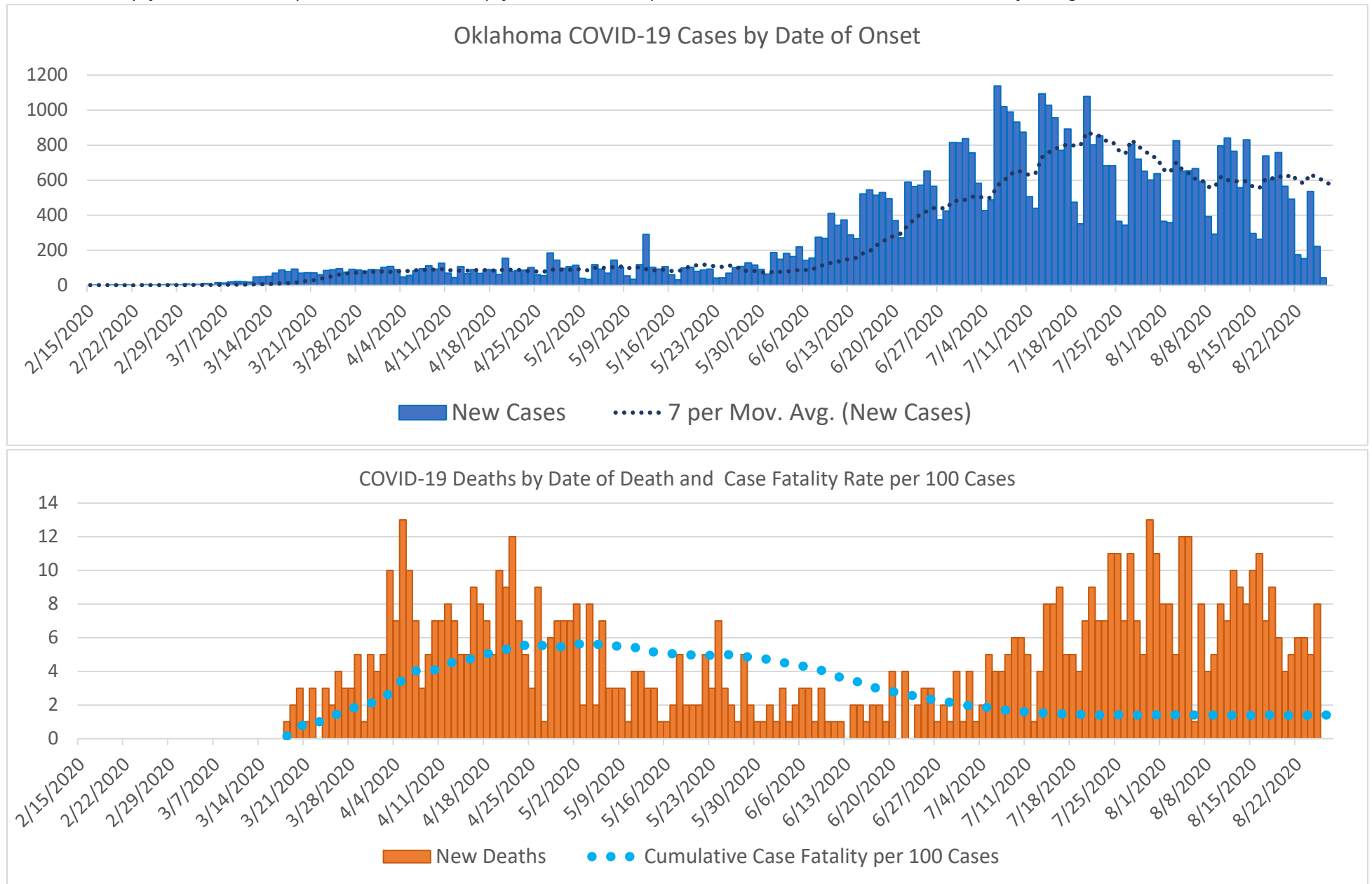
Oklahoma, August 27, 2020

EPIDEMIOLOGICAL ESTIMATES

	Estimate	Notes / Interpretation
Cases		
Cumulative incidence*	1,408.8 (per 100,000 persons)	From March 7 to August 27, there were about 1,408 per 100,000 new cases of COVID-19 in Oklahoma.
Absolute change in cumulative incidence from previous week	8.0 (per 100,000 persons)	Compared to August 14 – August 20 there were 8 (per 100,000) more cases of COVID-19 reported in Oklahoma during the past week (Aug 21 – Aug 27).
Disease Severity		
Case-fatality risk (crude)	1.4%	The estimate is not adjusted for the lag time from reporting to death (i.e., delay between the time someone dies and the time their death is reported). The fatality estimate could be lower due to cases that were undiagnosed or had milder symptoms.
Cumulative Hospitalization rate (overall)	118.5 (per 100,000 persons)	About 118 people per 100,000 have ever been hospitalized for COVID-19 during this outbreak.

CASES AND DEATHS

New cases (by date of onset) and new deaths (by date of death) of COVID-19 in Oklahoma, February–August 2020



Data as of August 27, 2020.

Please note the different axes for new cases (top—from 0 to 1,200 for new cases) and new deaths (bottom—from 0 to 14 for new deaths). Additionally, a 7 day lag has been applied to the trend line based on information collected to-date for 7/19 and 7/25 where within 7 days of onset date approximately 80% of the cases had been reported.

Oklahoma Excess Death Analysis

- + indicates observed count above threshold
- Predicted number of deaths from all causes
- threshold for excess deaths

Weekly number of deaths (from all causes)

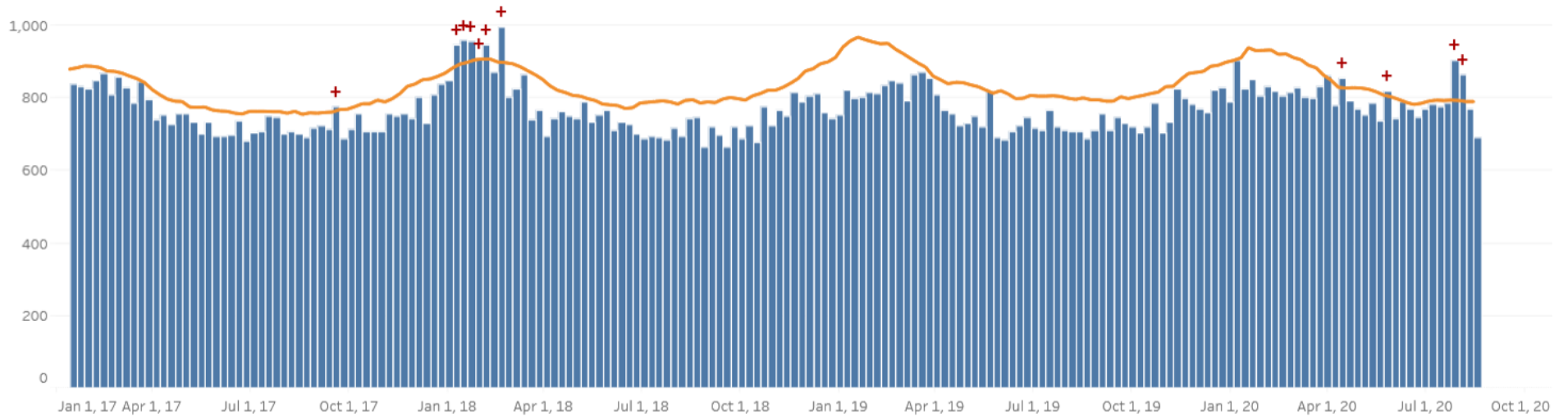
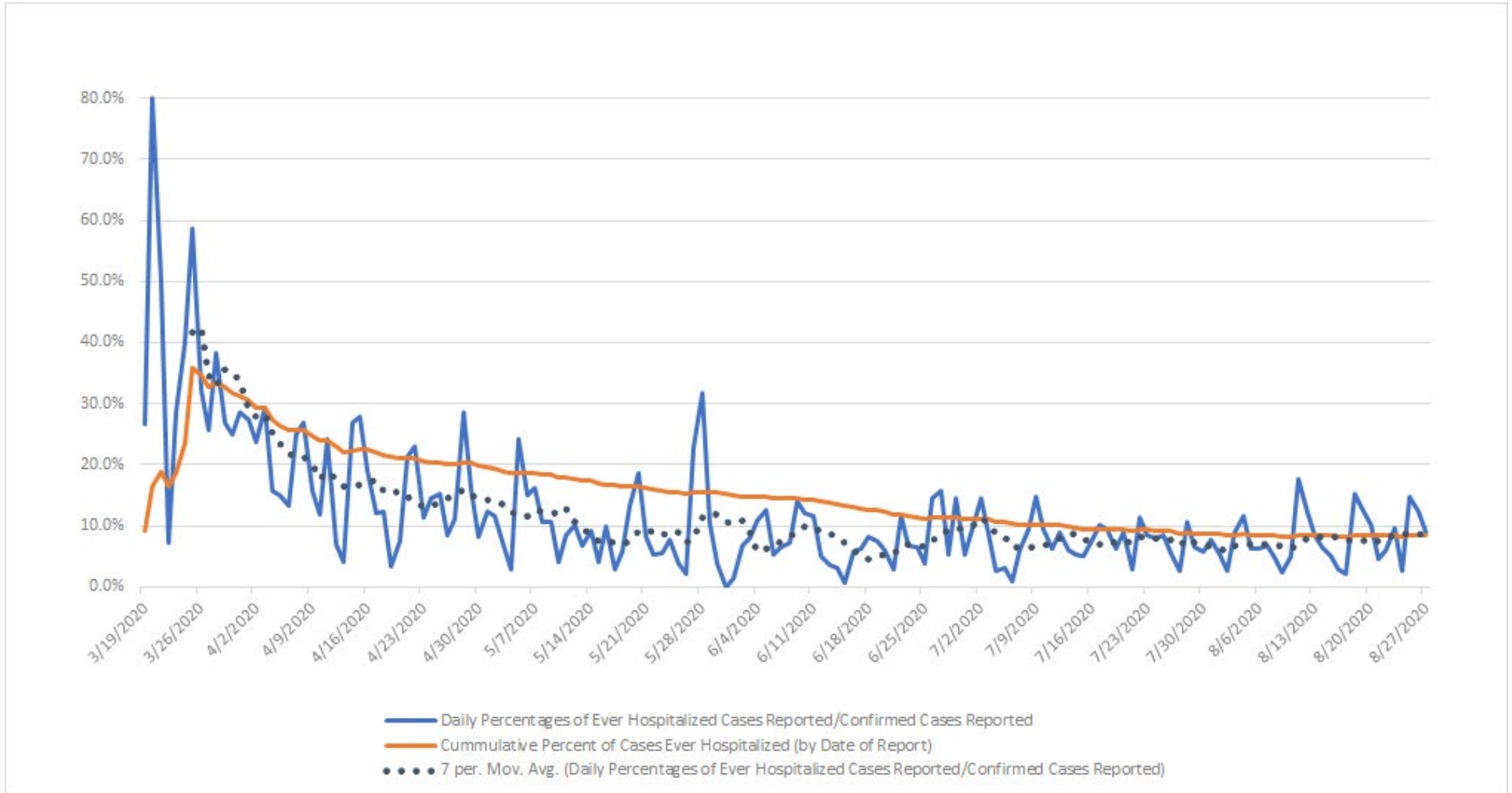


Figure notes: Contains data up to the week-ending date of August 15, 2020. Data in recent weeks are incomplete. Only 60% of the death records are submitted to NCHS within 1-days of the date of death, and completeness varies by jurisdiction.

Source: CDC, National Center for Health Statistics, https://www.cdc.gov/nchs/nvss/vsrr/covid19/excess_deaths.htm#dashboard, Aug 27, 2020 11pm

.....

PERCENT OF CASES EVER HOSPITALIZED (by date of report)



Source: OSDH Acute Disease Registry

.....

TIME TO EVENT*

	N	Median	10th to 90th Percentile
Time from Symptom Onset to Test (Specimen Collection) ^{1,2}	25,167	3 days	0-10 days
Time from Symptom Onset to Hospitalization ^{1,3}	2,836	6 days	0-14 days
Length of Hospitalization Discharged Alive ⁴	2,230	5 days	1-15 days
Length of Hospitalization Deceased ⁴	575	9 days	2-24 days
Time from Symptom Onset to Death ^{1,5}	476	14 days	5-33 days

*Data as of August 27, 2020.

1. Limited to cases with a known date of symptom onset.
 2. Limited to cases with a known date of a test (specimen collection) on or after the date of symptom onset.
 3. Limited to cases with a known hospital admission date on or after the date of symptom onset.
 4. Limited to cases with a known admission and discharge date from the hospital.
 5. Limited to cases who are deceased.
-

DEMOGRAPHIC INFORMATION as of August 20, 2020

		Cases count (%) ¹		Deaths count (%) ¹		Cumulative Incidence Rate ²	Cumulative Mortality Rate ²
Oklahoma		55,550		778		1,408.8	19.7
Gender							
	Male	26,422	(47.6)	430	(55.3)	1,352.9	22.0
	Female	29,128	(52.4)	348	(44.7)	1,463.7	17.5
Age group							
	Under 1- 4	1,236	(2.2)	0	(0.0)	474.6	0.0
	5-14	3,067	(5.5)	1	(0.1)	570.2	0.2
	15-24	10,393	(18.7)	1	(0.1)	1,932.4	0.2
	25-34	10,155	(18.3)	7	(0.9)	1,869.4	1.3
	35-44	8,945	(16.1)	11	(1.4)	1,824.1	2.2
	45-54	7,637	(13.7)	34	(4.4)	1,659.1	7.4
	55-64	6,359	(11.4)	107	(13.8)	1,288.7	21.7
	65-74	4,155	(7.5)	205	(26.3)	1,158.5	57.2
	75-84	2,339	(4.2)	214	(27.5)	1,246.1	114.0
	85+	1,263	(2.3)	198	(25.4)	1,725.5	270.5
	Unknown	1	(0.0)	0	(0.0)		
Race							
	American Indian or Alaska Native	5,222	(9.4)	69	(8.9)	1,700.0	22.5
	Asian or Pacific Islander	2,142	(3.9)	19	(2.4)	2,418.9	21.5
	Black or African American	3,949	(7.1)	47	(6.0)	1,372.7	16.3
	Multiracial/Other	2,209	(4.0)	27	(3.5)	533.9	6.5
	White	30,526	(55.0)	568	(73.0)	1,072.6	20.0
	Unknown	11,502	(20.7)	48	(6.2)		
Ethnicity							
	Hispanic or Latino	10,894	(19.6)	54	(6.9)	2,538.9	12.6
	Not Hispanic or Latino	32,169	(57.9)	635	(81.6)	915.5	18.1
	Unknown	12,487	(22.5)	89	(11.4)		

1. Percentages may not add up to 100 due to rounding.

2. Rate per 100,000 population

HEALTHCARE & NON-HEALTHCARE

Status ¹	Non-Healthcare Worker count (%)*	Healthcare Worker count (%)*
Active	7,334 (14.0)	252 (8.3)
Deceased	769 (1.5)	9 (0.3)
Recovered	44,416 (84.6)	2,770 (91.4)
Total	52,519	3,031

* Percentages may not add up to 100 due to rounding.

1. Data as of August 20, 2020

CASES & DEATHS BY LONG-TERM CARE AND CORRECTIONAL FACILITIES

	Cases	Deaths
LTCF^{1,2}		
Residents	2,035	330
Staff	1,152	3
Total	3,187	333
Correctional Facilities^{2,3}		
Inmates	935	6
Staff	237	1
Total	1,172	7

1. Long term care facility or nursing home

2. Data as of August 27, 2020.

3. Correctional facilities include prisons, jails, and juvenile detention centers.

AGE DISTRIBUTION OF NEW CASES/DEATHS CONFIRMED FROM AUGUST 21– AUGUST 27

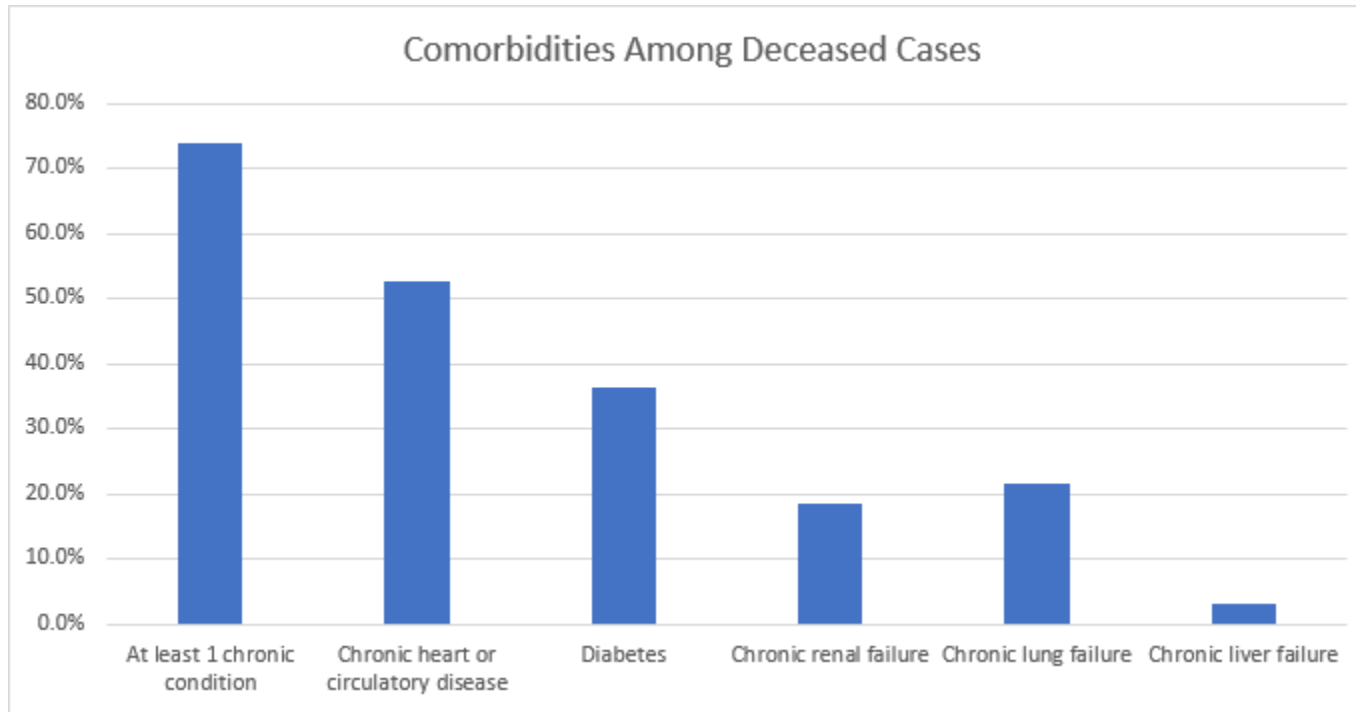
Age group	New Cases*	Percentage	New Deaths	Percentage
Under 1- 4	95	1.9%	0	0.0%
5-14	288	5.9%	0	0.0%
15-24	1128	23.1%	0	0.0%
25-34	825	16.9%	0	0.0%
35-44	692	14.2%	2	2.9%
45-54	596	12.2%	1	1.4%
55-64	557	11.4%	8	11.6%
65-74	375	7.7%	18	26.1%
75-84	210	4.3%	25	36.2%
85+	114	2.3%	15	21.7%

*One case this week has an unknown age.

COMORBIDITIES AMONG DECEASED CASES

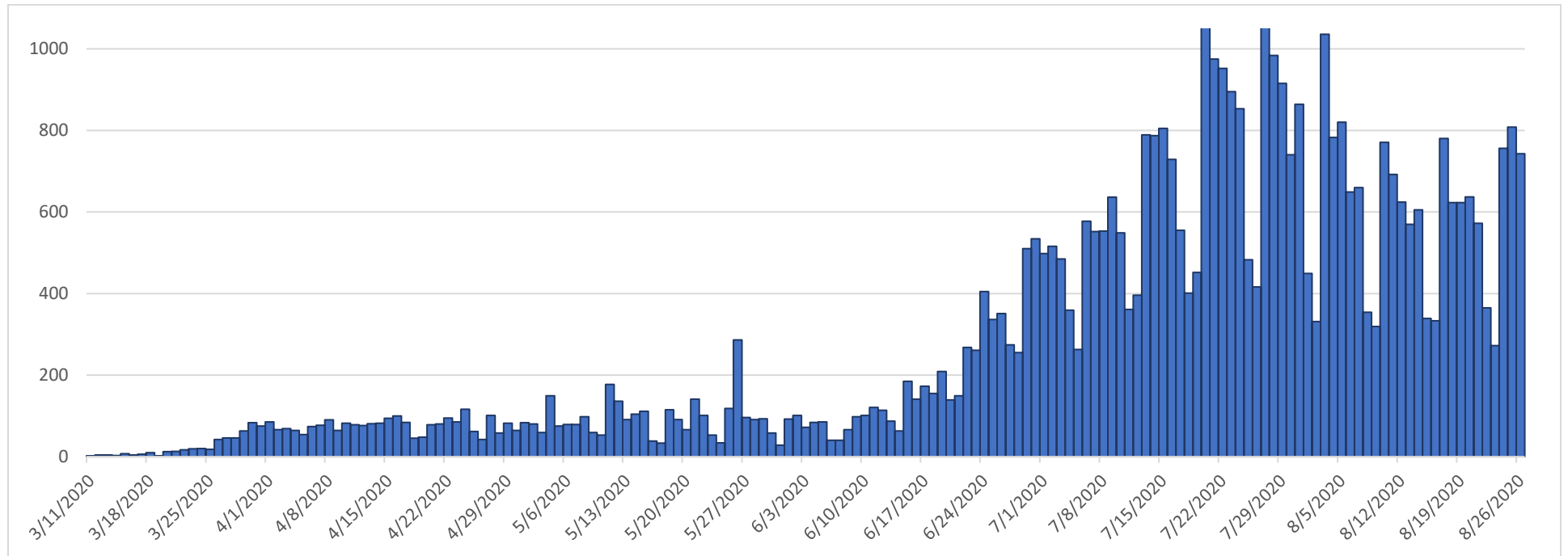
Comorbidities	Number (%)
At least 1 chronic condition*	576 (74.0)
Chronic heart or circulatory disease	411 (52.8)
Diabetes	283 (36.4)
Chronic renal failure	145 (18.6)
Chronic lung failure	169 (21.7)
Chronic liver failure	25 (3.2)

*Chronic conditions include; chronic heart or circulatory disease, diabetes, chronic lung failure, chronic liver failure and renal failure



RECOVERED CASES

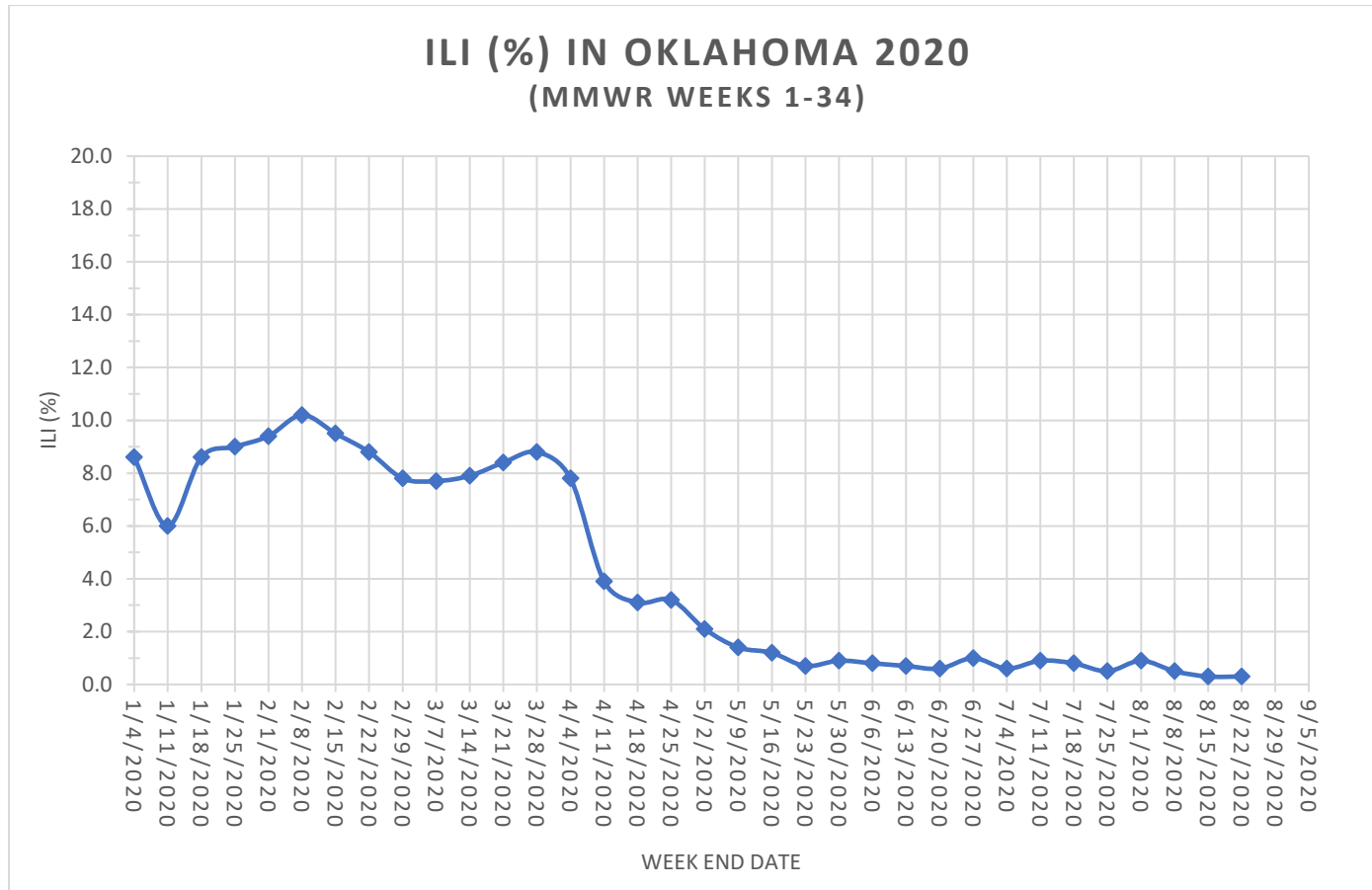
Distribution of **recovered cases of COVID-19**, March-August 2020, Oklahoma



Note: A recovered case is an individual currently not hospitalized or deceased AND 14 days after the onset of symptoms

Symptoms Criteria

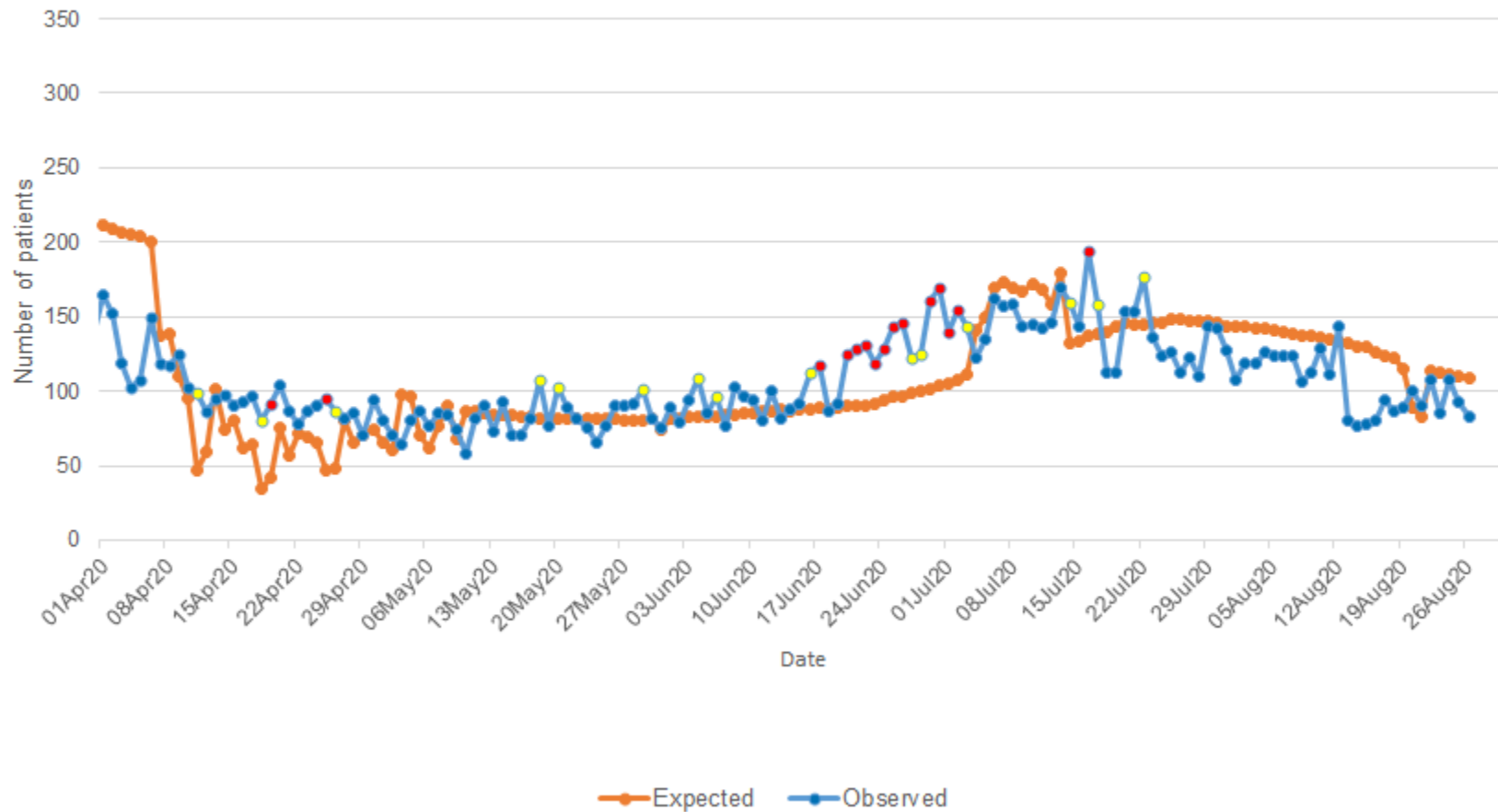
Weekly percentage of **Influenza-Like Illness (ILI)** (%), Morbidity and Mortality Weekly Report, Oklahoma, Jan–Aug 2020



Interpretation: Data on Influenza-Like Illness has remained relatively unchanged in the daily number and weekly percentage of influenza-like illness cases in the past week.

COVID-19 Related Emergency Department Visits

Oklahoma State Syndromic Surveillance of COVID-19 related ED Visits April 1-August 26, 2020

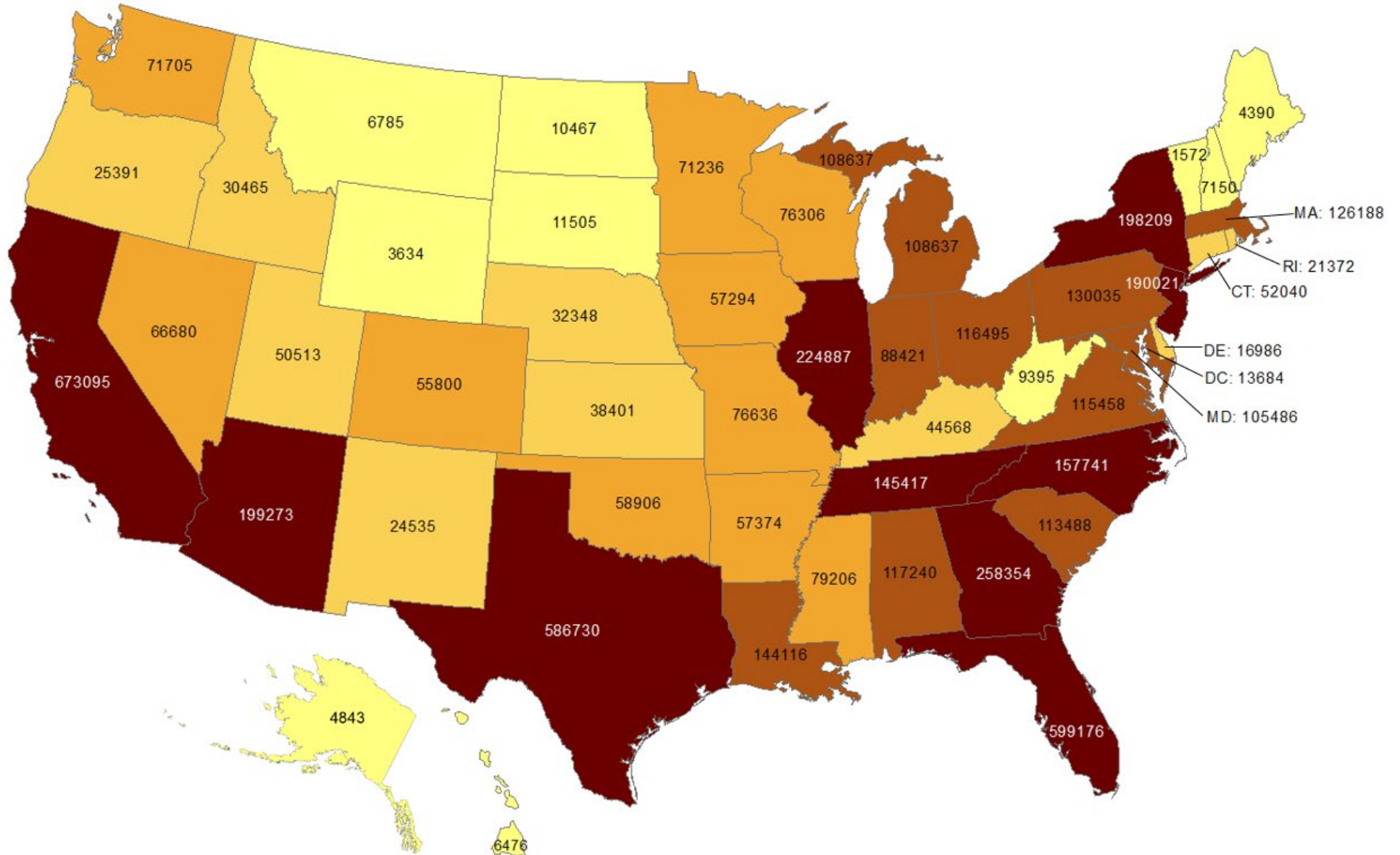


Interpretation: Data from syndromic surveillance shows that the number of COVID-19 related emergency department visits has been in the expected range for in the past 2 weeks as indicated by the blue dots on the observed line.

OKLAHOMA IN COMPARISON

Total number of reported COVID-19 cases

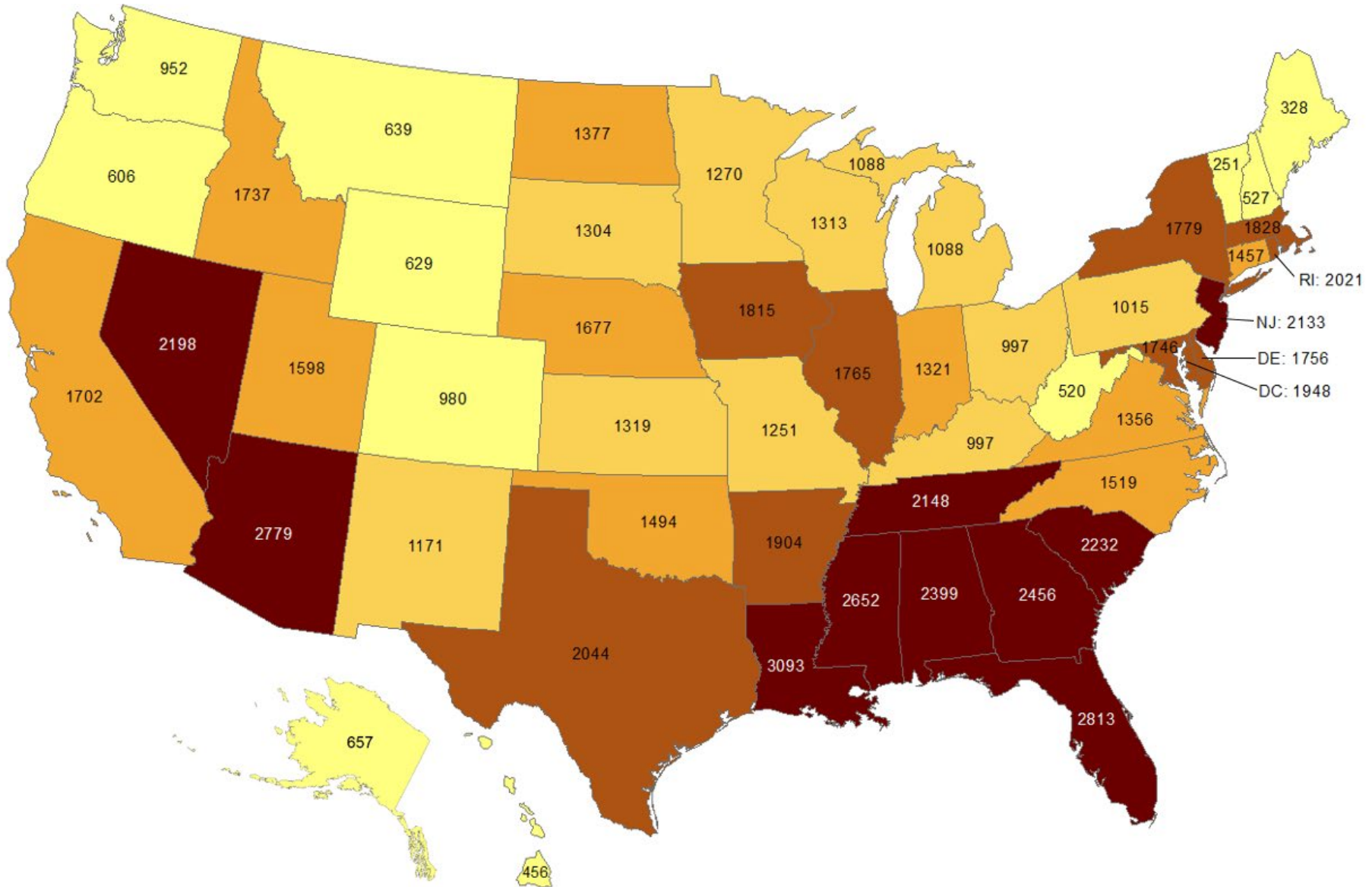
Oklahoma ranks **27** (out of all States and DC) in the total number of reported COVID-19 cases in the US.



Data from CDC. Available at <https://www.cdc.gov/covid-data-tracker/index.html>
Data as of August 26, 2020

Cumulative incidence of reported COVID-19 cases

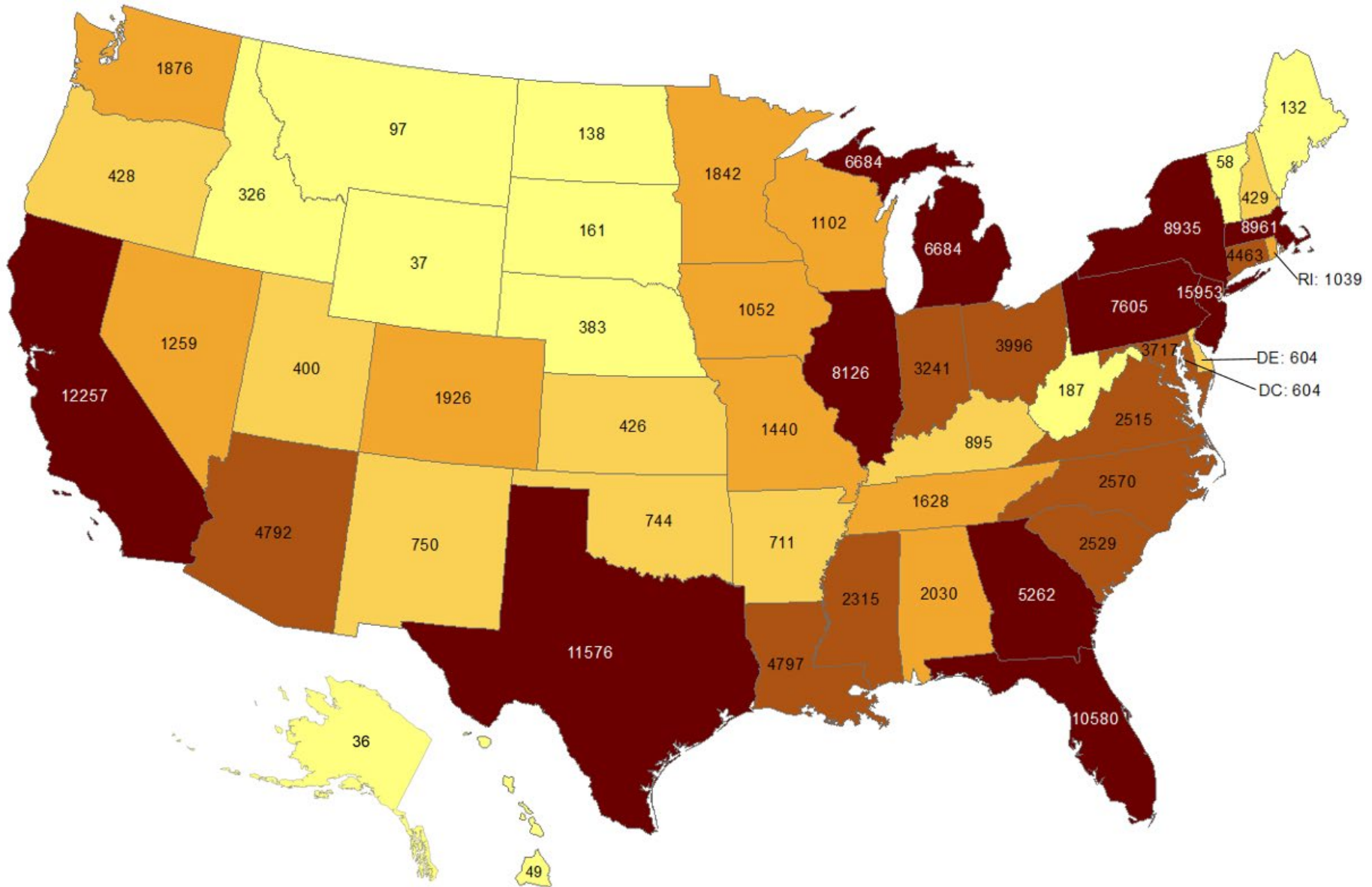
Oklahoma ranks **26** (out of all States and DC) in the cumulative incidence (per 100,000 persons) of reported COVID-19 cases in the US.



Data from CDC. Available at <https://www.cdc.gov/covid-data-tracker/index.html>
Data as of August 26, 2020

Total number of reported COVID-19 deaths

Oklahoma ranks **33** (out of all States and DC) in the total number of reported COVID-19 deaths in the US.



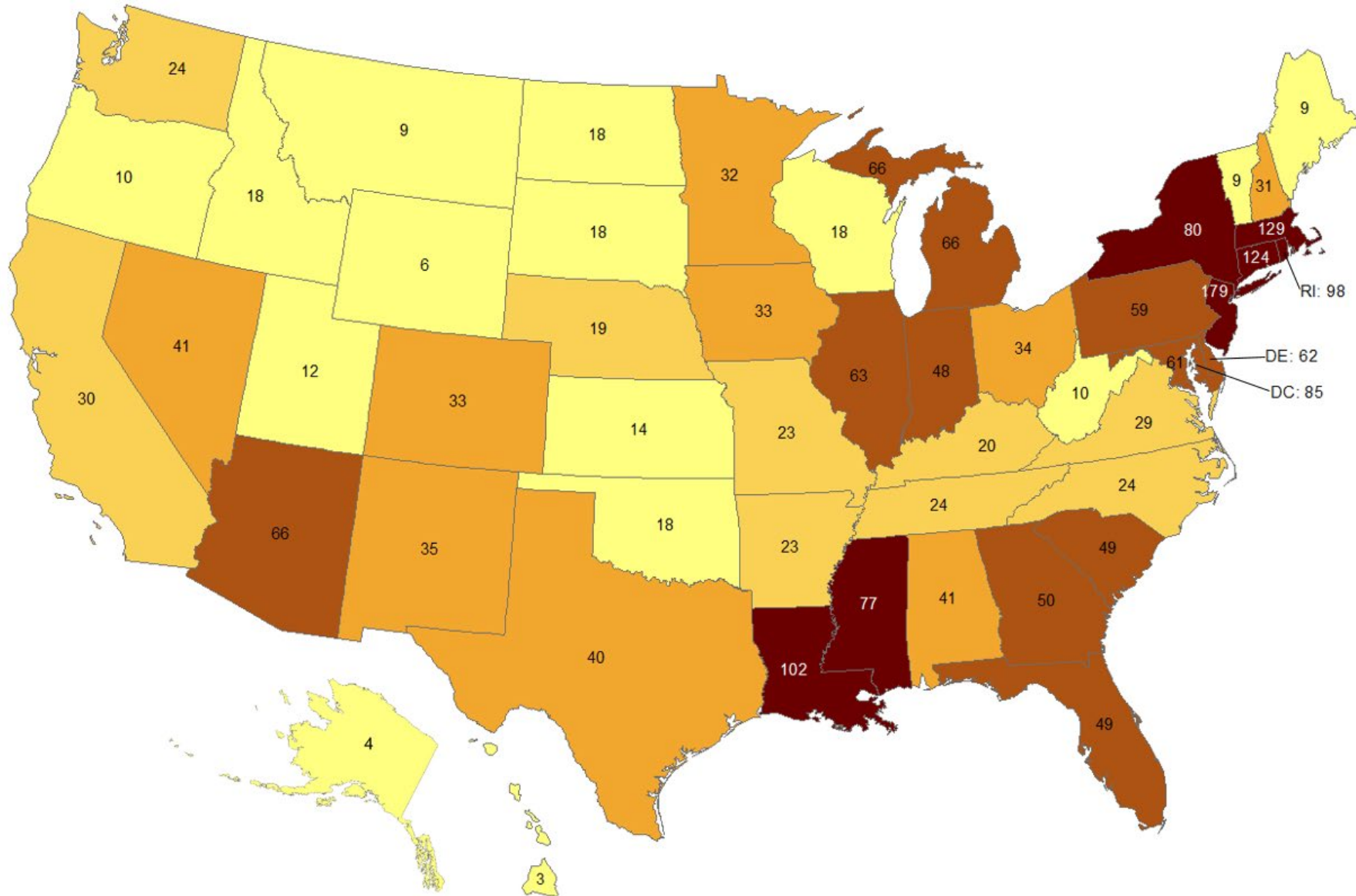
Data from CDC. Available at <https://www.cdc.gov/covid-data-tracker/index.html>

Data as of August 26, 2020

NOTE: CDC numbers include both Confirmed and Probable cases whereas the OSDH counts are limited to Confirmed cases.

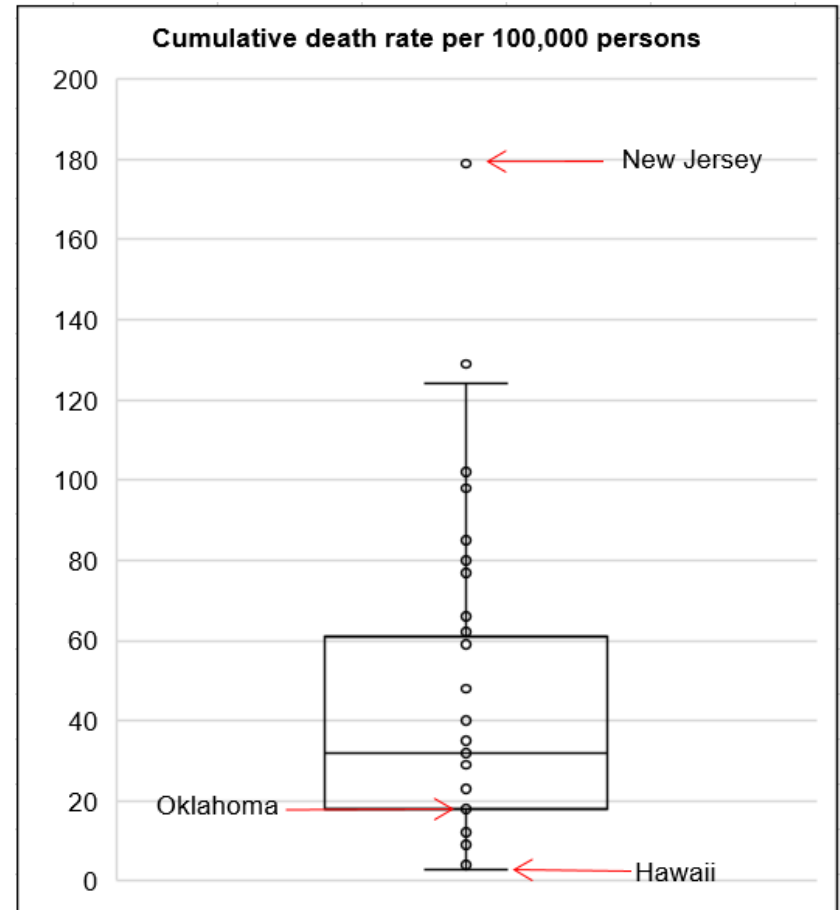
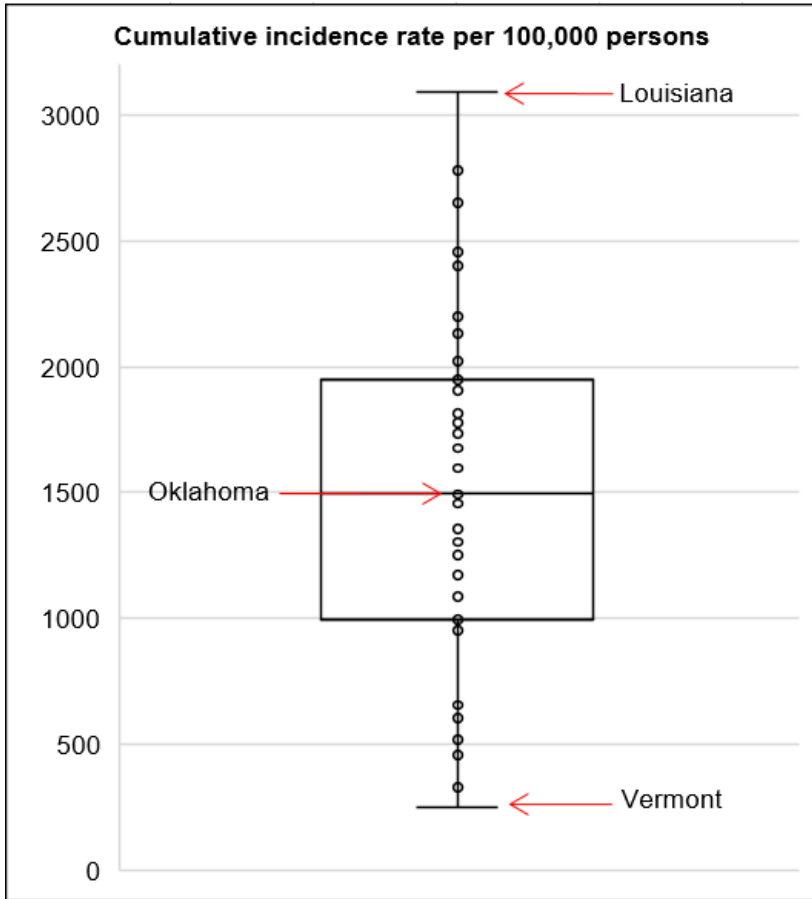
Cumulative death rate of reported COVID-19 cases

Oklahoma ranks **38** (out of all States and DC) in the cumulative death rate (per 100,000 persons) of reported COVID-19 cases in the US.



Data from CDC. Available at <https://www.cdc.gov/covid-data-tracker/index.html>
Data as of August 26, 2020

Cumulative incidence and cumulative death rate of reported COVID-19 cases



Interpretation: Oklahoma has cumulative incidence that equals the median of the US and cumulative death rate below the median of the US.

ACKNOWLEDGEMENT

The weekly report is made by possible through the efforts of county and city public health and healthcare professionals.

NOTES

Every effort is made to ensure accuracy and the data is up-to-date for the time period reported.
For daily updates on COVID-19, please visit <https://coronavirus.health.ok.gov/>

DISCLAIMER

The purpose of publishing aggregated statistical COVID-19 data through the OSDH Dashboard, the Executive Order Report, and the Weekly Epidemiology and Surveillance Report is to support the needs of the general public in receiving important and necessary information regarding the state of the health and safety of the citizens of Oklahoma. These resources may be used only for statistical purposes and may not be used in any way that would determine the identity of any reported cases.