

# OKLAHOMA COVID-19 WEEKLY REPORT

Weekly Epidemiology and Surveillance Report  
August 28– September 3, 2020



**PURPOSE** To provide up-to-date weekly epidemiological data on COVID-19 in Oklahoma.

## SNAPSHOT

	Aug 28–Sept 3	Change <sup>1</sup>	Total
Confirmed cases	5,477	12.2%	61,027
Recovered cases <sup>2</sup>	4,261	-5.1%	51,447
Deaths	57	-17.4%	835

1. Change from the week of Aug 21-27, 2020.

2. Currently not hospitalized or deceased and 14 days after onset/report.

Cases		Deaths	
Persons aged 50 and over	Females	Persons aged 50 and over	Males
<b>31%</b>	<b>53%</b>	<b>96%</b>	<b>55%</b>
of <u>cases</u>	of <u>cases</u>	of <u>deaths</u>	of <u>deaths</u>

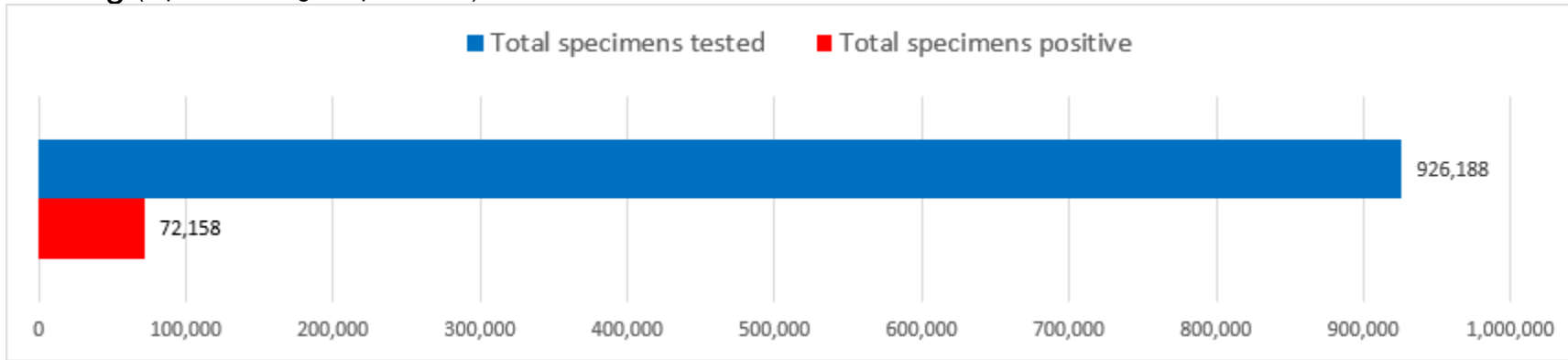
The average age of cases was **40** years.

The youngest case was **less than a year old** and the oldest case was **100+ years**.

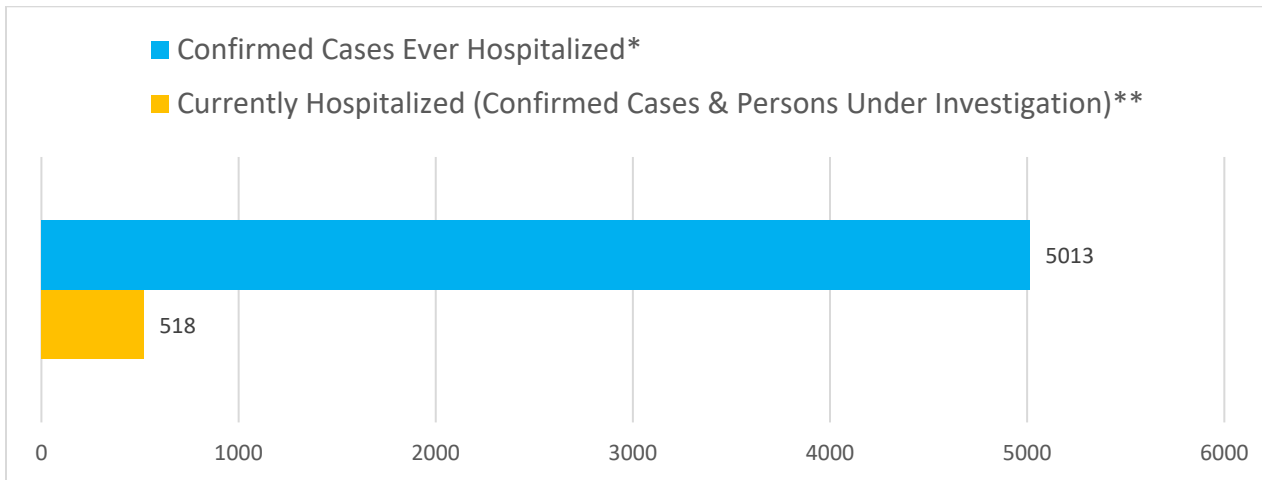
The average age of individuals who died was **75** years.

The youngest individual to die from COVID-19 was **less than 15 years** and the oldest was **100+ years**.

## Testing (reported through September 3)



## Hospitalizations



\*Ever hospitalized includes discharged, deceased, currently hospitalized and recovered as of 9/3/2020.

\*\*Source OSDH Beds Survey. Note, facility response rate of 93% on 9/3/2020.

---

## KEY POINTS

- **5,477** confirmed cases were reported in the past week  
12.2% increase from the week before (Aug 21-27).
  - **57** deaths were reported in the past week  
5.1% decrease from the week before (Aug 21-27).
  - **5,013 (8.2%)** confirmed cases have been hospitalized
  - **340** confirmed cases were reported to OSDH as hospitalized in the past week  
16.0% decrease from the week before (Aug 21-27)
  - **926,188** specimens have been tested in total
  - **77** counties (out of 77) have had at least one confirmed case of COVID-19
- 

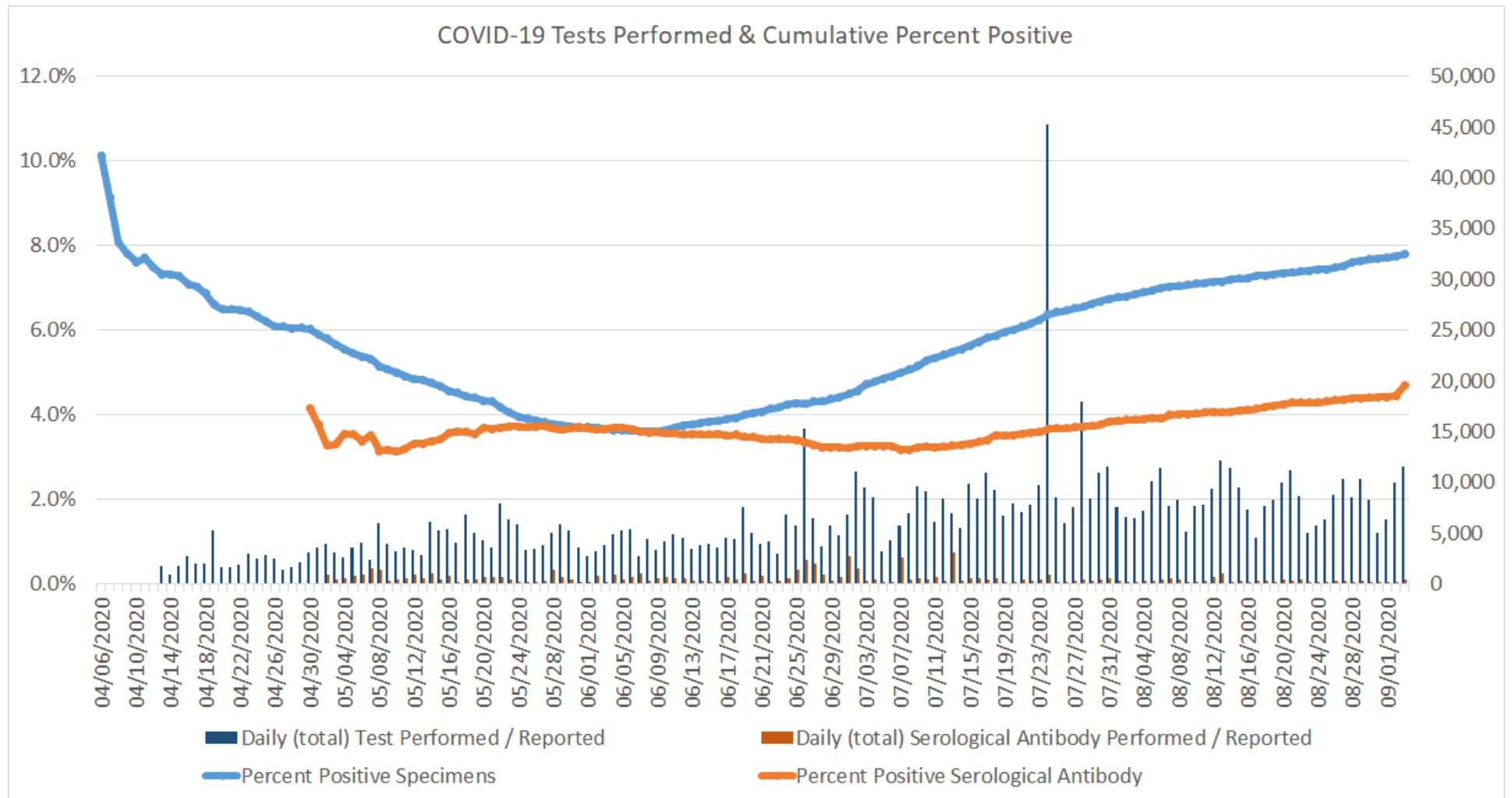
## DISEASE TESTING

	Aug 28 – Sept 3	Total Number
Specimens tested <sup>1</sup> , count	60,003	926,188
Specimens positive, count (%)	7,085 (11.8%)	72,158 (7.8%)
Antibody tested, count	4,209	73,173
Antibody positive, count (%)	447 (10.6%)	3,453 (4.7%)

1. Includes state and private laboratories.

Note: Specimen counts may not reflect unique individuals.

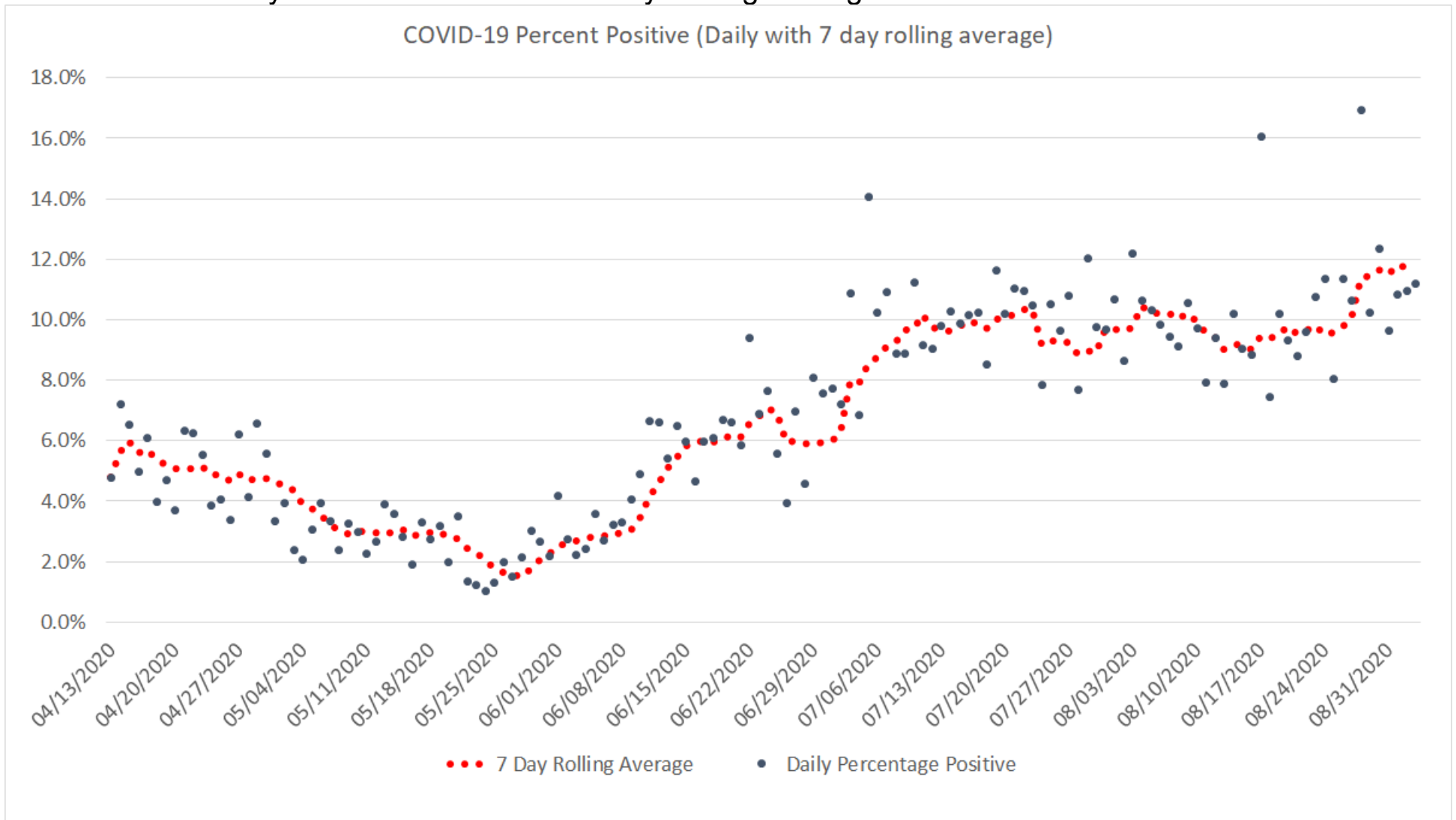
# Positive tests as a percent of total tests



Oklahoma, September 3, 2020

Note: On July 24, 2020 fourteen labs began reporting to OSDH that had been testing since May 18, 2020.

# Covid-19 Tests Daily Percent Positive with 7 Day Rolling Average



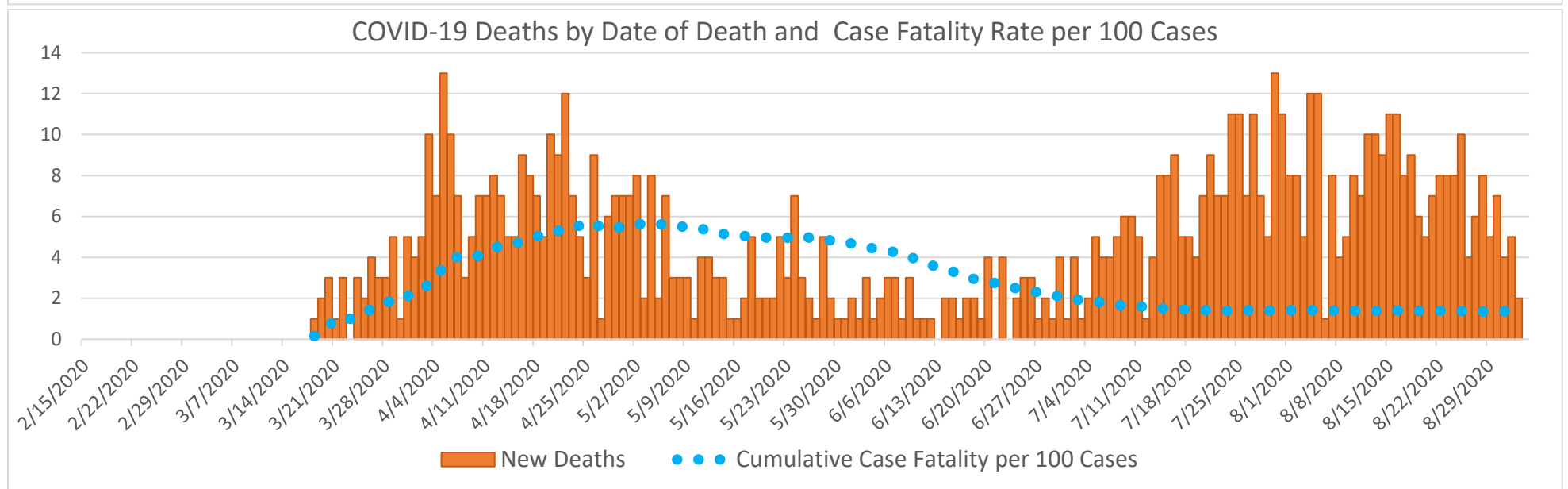
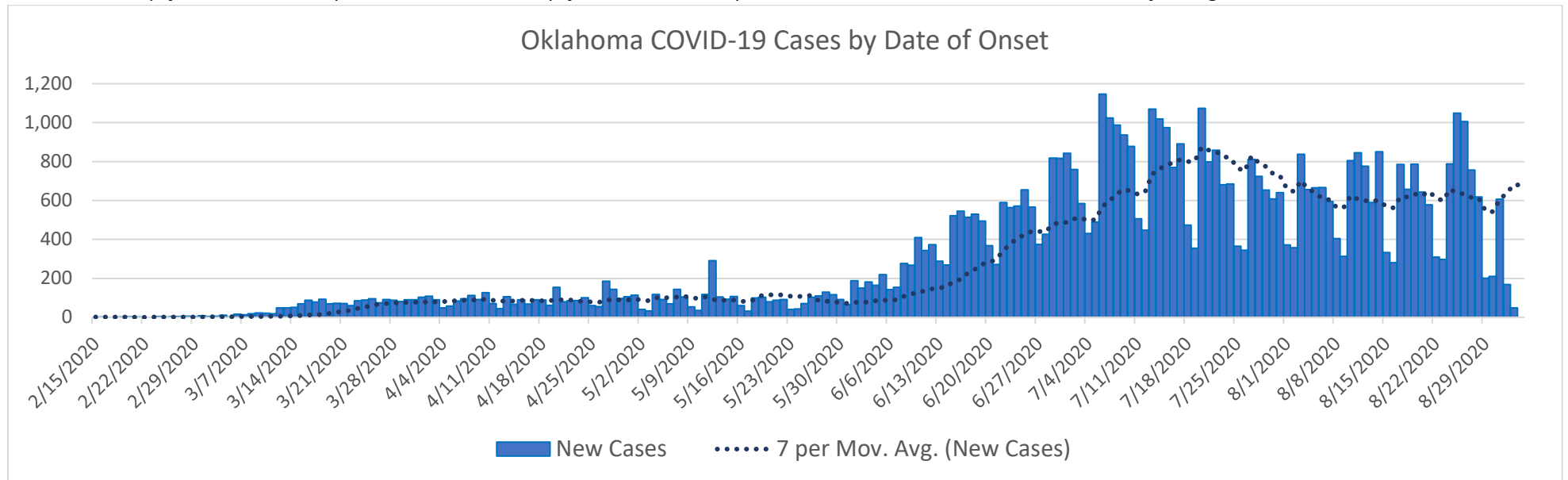
Oklahoma, September 3, 2020

## EPIDEMIOLOGICAL ESTIMATES

	Estimate	Notes / Interpretation
<b>Cases</b>		
Cumulative incidence*	1,547.7 (per 100,000 persons)	From March 7 to September 3, there were about 1,547 per 100,000) new cases of COVID-19 in Oklahoma.
Absolute change in cumulative incidence from previous week	15.1 (per 100,000 persons)	Compared to August 21 – August 27 there were 15 (per 100,000) more cases of COVID-19 reported in Oklahoma during the past week (Aug 28 – Sep 3).
<b>Disease Severity</b>		
Case-fatality risk (crude)	1.4%	The estimate is not adjusted for the lag time from reporting to death (i.e., delay between the time someone dies and the time their death is reported). The fatality estimate could be lower due to cases that were undiagnosed or had milder symptoms.
Cumulative Hospitalization rate (overall)	127.1 (per 100,000 persons)	About 127 people per 100,000 have ever been hospitalized for COVID-19 during this outbreak.

# CASES AND DEATHS

New cases (by date of onset) and new deaths (by date of death) of COVID-19 in Oklahoma, February–August 2020



Data as of September 3, 2020.

Please note the different axes for new cases (top—from 0 to 1,200 for new cases) and new deaths (bottom—from 0 to 14 for new deaths). Additionally, a 7 day lag has been applied to the trend line based on information collected to-date for 7/19 and 7/25 where within 7 days of onset date approximately 80% of the cases had been reported.

# Oklahoma Excess Death Analysis

- + indicates observed count above threshold
- Predicted number of deaths from all causes
- threshold for excess deaths

## Weekly number of deaths (from all causes)

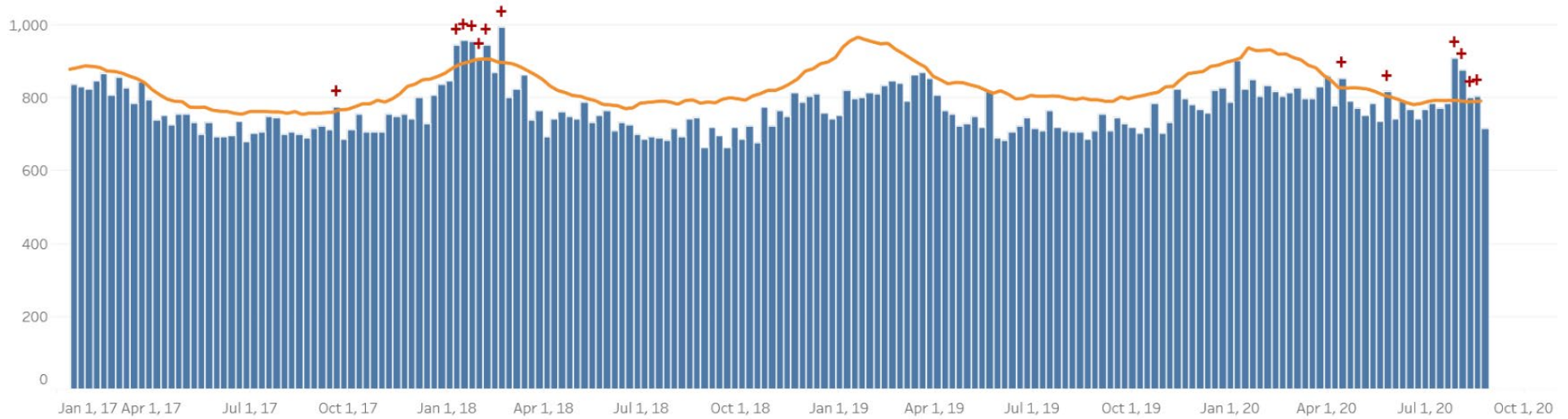
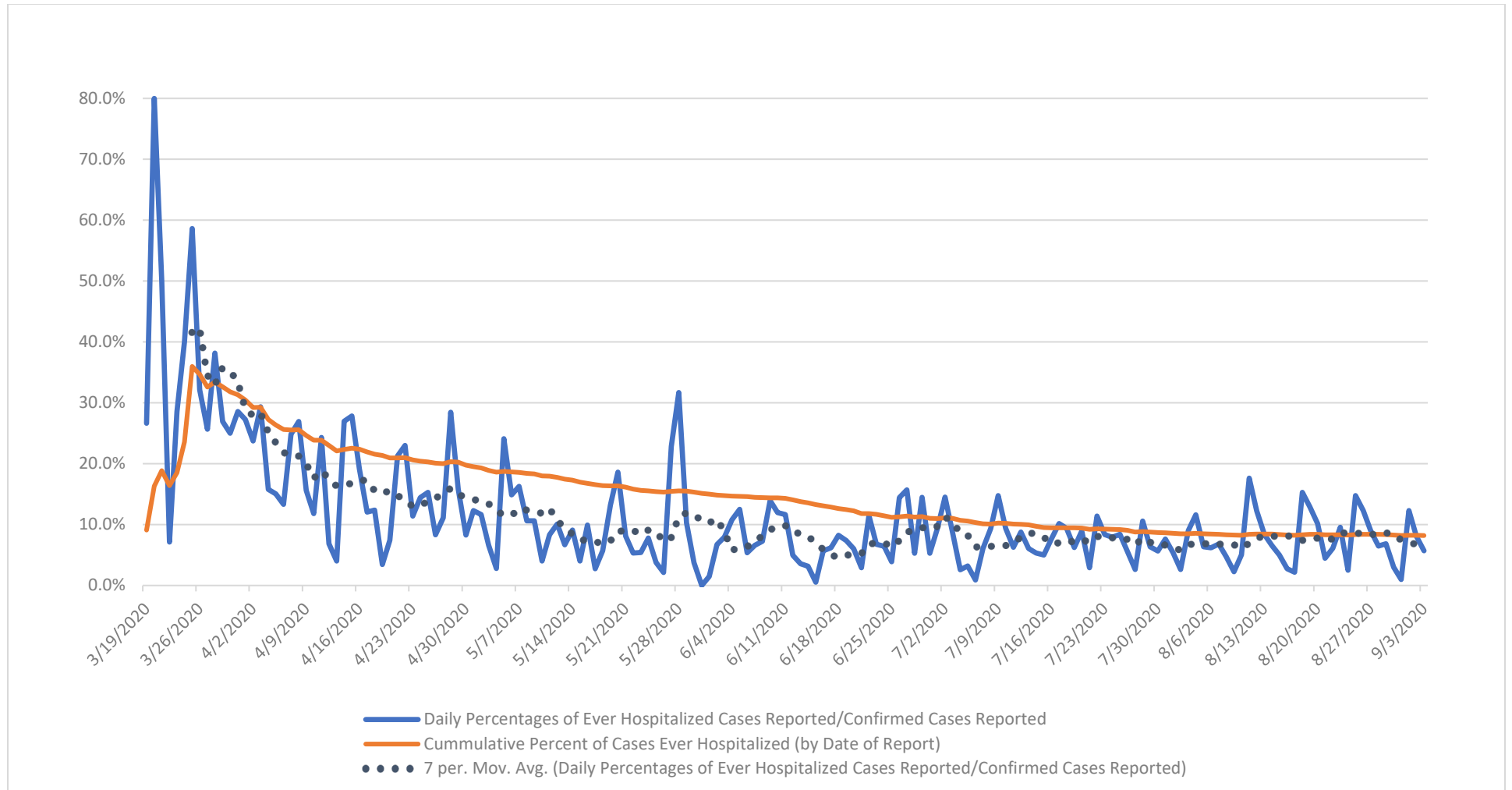


Figure notes: Contains data up to the week-ending date of August 22, 2020. Data in recent weeks are incomplete. Only 60% of the death records are submitted to NCHS within 1-days of the date of death, and completeness varies by jurisdiction.

Source: CDC, National Center for Health Statistics, [https://www.cdc.gov/nchs/nvss/vsrr/covid19/excess\\_deaths.htm#dashboard](https://www.cdc.gov/nchs/nvss/vsrr/covid19/excess_deaths.htm#dashboard), Sep 3, 2020 11pm



## PERCENT OF CASES EVER HOSPITALIZED (by date of report)



Source: OSDH Acute Disease Registry

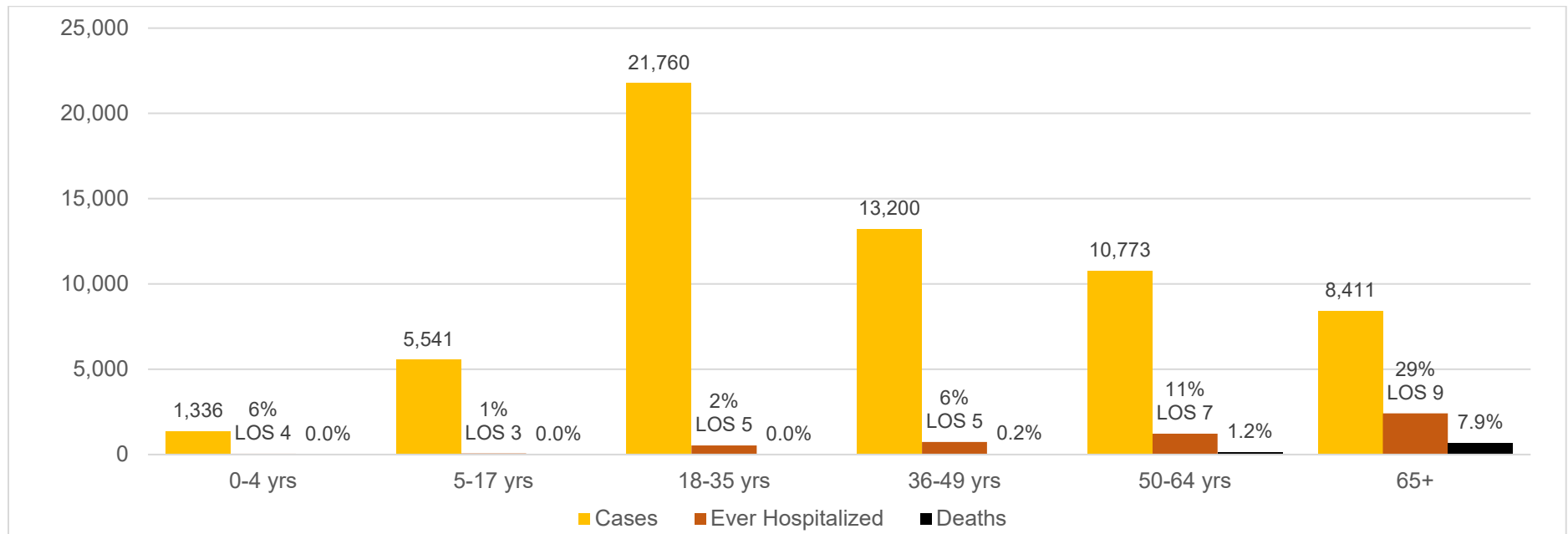
**TIME TO EVENT\***

	<b>N</b>	<b>Median</b>	<b>10<sup>th</sup> to 90<sup>th</sup> Percentile</b>
Time from Symptom Onset to Test (Specimen Collection) <sup>1,2</sup>	27,590	3 days	0-10 days
Time from Symptom Onset to Hospitalization <sup>1,3</sup>	3,052	6 days	0-14 days
Length of Hospitalization Discharged Alive <sup>4</sup>	2,400	5 days	1-15 days
Length of Hospitalization Deceased <sup>4</sup>	627	10 days	2-25 days
Time from Symptom Onset to Death <sup>1,5</sup>	521	15 days	5-34 days

\*Data as of September 3, 2020.

1. Limited to cases with a known date of symptom onset.
2. Limited to cases with a known date of a test (specimen collection) on or after the date of symptom onset.
3. Limited to cases with a known hospital admission date on or after the date of symptom onset.
4. Limited to cases with a known admission and discharge date from the hospital.
5. Limited to cases who are deceased.

**CUMULATIVE CASES, PERCENT HOSPITALIZED, AVERAGE LENGTH OF STAY (LOS) FOR JULY CASES AND DEATHS BY AGE GROUP**



## DEMOGRAPHIC INFORMATION as of September 3, 2020

		Cases count (%) <sup>1</sup>		Deaths count (%) <sup>1</sup>		Cumulative Incidence Rate <sup>2</sup>	Cumulative Mortality Rate <sup>2</sup>
<b>Oklahoma</b>		<b>61,027</b>		<b>835</b>		<b>1,547.7</b>	<b>21.2</b>
<b>Gender</b>							
	Male	<b>28,793</b>	<b>(47.2)</b>	<b>456</b>	<b>(54.6)</b>	<b>1,474.3</b>	<b>23.3</b>
	Female	<b>32,234</b>	<b>(52.8)</b>	<b>379</b>	<b>(45.4)</b>	<b>1,619.8</b>	<b>19.0</b>
<b>Age group</b>							
	Under 1- 4	<b>1,341</b>	<b>(2.2)</b>	<b>0</b>	<b>(0.0)</b>	<b>514.9</b>	<b>0.0</b>
	5-14	<b>3,388</b>	<b>(5.6)</b>	<b>1</b>	<b>(0.1)</b>	<b>629.8</b>	<b>0.2</b>
	15-24	<b>11,728</b>	<b>(19.2)</b>	<b>1</b>	<b>(0.1)</b>	<b>2,180.6</b>	<b>0.2</b>
	25-34	<b>11,144</b>	<b>(18.3)</b>	<b>7</b>	<b>(0.8)</b>	<b>2,051.5</b>	<b>1.3</b>
	35-44	<b>9,838</b>	<b>(16.1)</b>	<b>13</b>	<b>(1.6)</b>	<b>2,006.2</b>	<b>2.7</b>
	45-54	<b>8,287</b>	<b>(13.6)</b>	<b>36</b>	<b>(4.3)</b>	<b>1,800.3</b>	<b>7.8</b>
	55-64	<b>6,889</b>	<b>(11.3)</b>	<b>112</b>	<b>(13.4)</b>	<b>1,396.1</b>	<b>22.7</b>
	65-74	<b>4,508</b>	<b>(7.4)</b>	<b>224</b>	<b>(26.8)</b>	<b>1,256.9</b>	<b>62.5</b>
	75-84	<b>2,543</b>	<b>(4.2)</b>	<b>230</b>	<b>(27.5)</b>	<b>1,354.7</b>	<b>122.5</b>
	85+	<b>1,360</b>	<b>(2.2)</b>	<b>211</b>	<b>(25.3)</b>	<b>1,858.0</b>	<b>288.3</b>
	Unknown	<b>1</b>	<b>(0.0)</b>				
<b>Race</b>							
	American Indian or Alaska Native	<b>5,871</b>	<b>(9.6)</b>	<b>80</b>	<b>(9.6)</b>	<b>1,911.2</b>	<b>26.0</b>
	Asian or Pacific Islander	<b>2,265</b>	<b>(3.7)</b>	<b>20</b>	<b>(2.4)</b>	<b>2,557.8</b>	<b>22.6</b>
	Black or African American	<b>4,303</b>	<b>(7.1)</b>	<b>49</b>	<b>(5.9)</b>	<b>1,495.8</b>	<b>17.0</b>
	Multiracial/Other	<b>2,428</b>	<b>(4.0)</b>	<b>28</b>	<b>(3.4)</b>	<b>586.8</b>	<b>6.8</b>
	White	<b>33,830</b>	<b>(55.4)</b>	<b>607</b>	<b>(72.7)</b>	<b>1,188.7</b>	<b>21.3</b>
	Unknown	<b>12,330</b>	<b>(20.2)</b>	<b>51</b>	<b>(6.1)</b>		
<b>Ethnicity</b>							
	Hispanic or Latino	<b>11,620</b>	<b>(19.0)</b>	<b>59</b>	<b>(7.1)</b>	<b>2,708.1</b>	<b>13.8</b>
	Not Hispanic or Latino	<b>35,897</b>	<b>(58.8)</b>	<b>685</b>	<b>(82.0)</b>	<b>1,021.5</b>	<b>19.5</b>
	Unknown	<b>13,510</b>	<b>(22.1)</b>	<b>91</b>	<b>(10.9)</b>		

1. Percentages may not add up to 100 due to rounding.

2. Rate per 100,000 population

## HEALTHCARE & NON-HEALTHCARE

Status <sup>1</sup>	Non-Healthcare Worker count (%)*	Healthcare Worker count (%)*
Active	8,510 (14.7)	235 (7.2)
Deceased	825 (1.4)	10 (0.3)
Recovered	48,439 (83.8)	3,008 (92.5)
<b>Total</b>	<b>57,774</b>	<b>3,253</b>

\* Percentages may not add up to 100 due to rounding.

1. Data as of September 3, 2020

## CASES & DEATHS BY LONG-TERM CARE AND CORRECTIONAL FACILITIES

	Cases	Deaths
<b>LTCF<sup>1,2</sup></b>		
Residents	2,174	347
Staff	1,217	3
<b>Total</b>	<b>3,391</b>	<b>350</b>
<b>Correctional Facilities<sup>2,3</sup></b>		
Inmates	1,168	6
Staff	266	1
<b>Total</b>	<b>1,434</b>	<b>7</b>

1. Long term care facility or nursing home

2. Data as of September 3, 2020.

3. Correctional facilities include prisons, jails, and juvenile detention centers.

## AGE DISTRIBUTION OF NEW CASES/DEATHS CONFIRMED FROM AUGUST 28–September 3

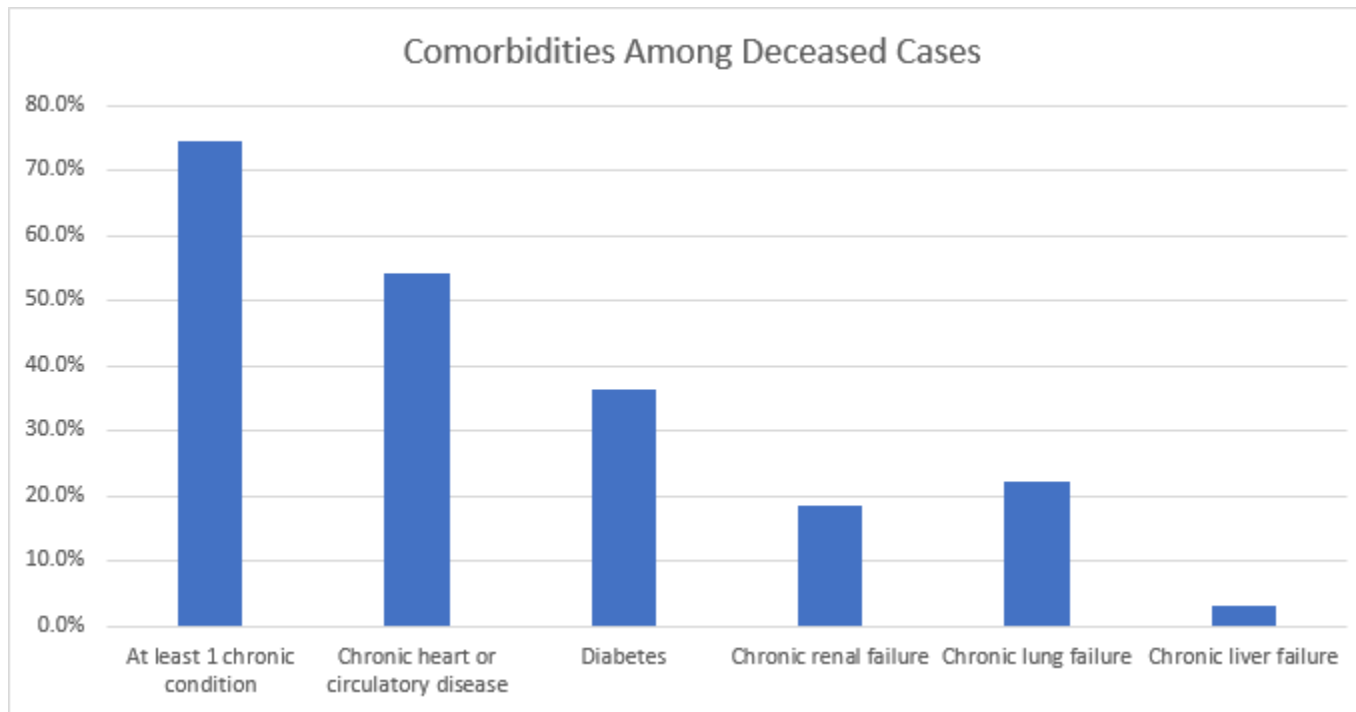
Age group	New Cases*	Percentage	New Deaths	Percentage
Under 1- 4	<b>105</b>	<b>1.9%</b>	<b>0</b>	<b>0.0%</b>
5-14	<b>321</b>	<b>5.9%</b>	<b>0</b>	<b>0.0%</b>
15-24	<b>1335</b>	<b>24.4%</b>	<b>0</b>	<b>0.0%</b>
25-34	<b>989</b>	<b>18.1%</b>	<b>0</b>	<b>0.0%</b>
35-44	<b>893</b>	<b>16.3%</b>	<b>2</b>	<b>3.5%</b>
45-54	<b>650</b>	<b>11.9%</b>	<b>2</b>	<b>3.5%</b>
55-64	<b>530</b>	<b>9.7%</b>	<b>5</b>	<b>8.8%</b>
65-74	<b>353</b>	<b>6.4%</b>	<b>19</b>	<b>33.3%</b>
75-84	<b>204</b>	<b>3.7%</b>	<b>16</b>	<b>28.1%</b>
85+	<b>97</b>	<b>1.8%</b>	<b>13</b>	<b>22.8%</b>

\*One case this week has an unknown age.

## COMORBIDITIES AMONG DECEASED CASES

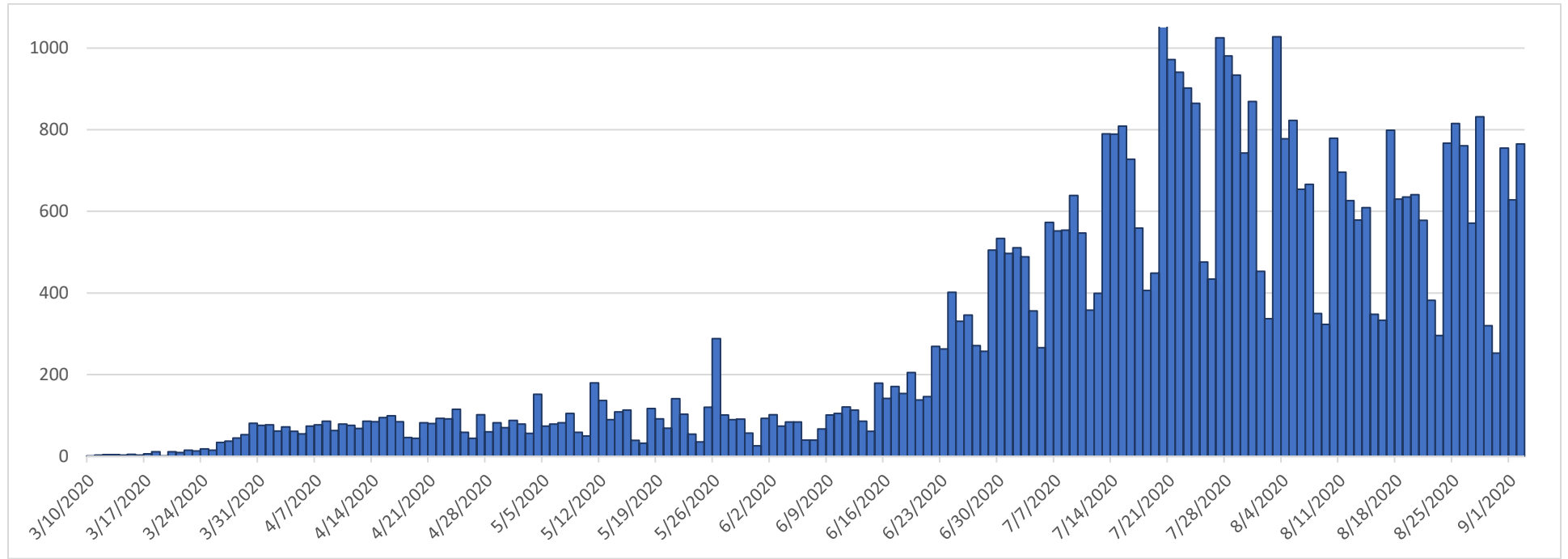
Comorbidities	Number (%)
At least 1 chronic condition*	622 (74.5)
Chronic heart or circulatory disease	453 (54.3)
Diabetes	304 (36.4)
Chronic renal failure	154 (18.4)
Chronic lung failure	186 (22.3)
Chronic liver failure	27 (3.2)

\*Chronic conditions include; chronic heart or circulatory disease, diabetes, chronic lung failure, chronic liver failure and renal failure



# RECOVERED CASES

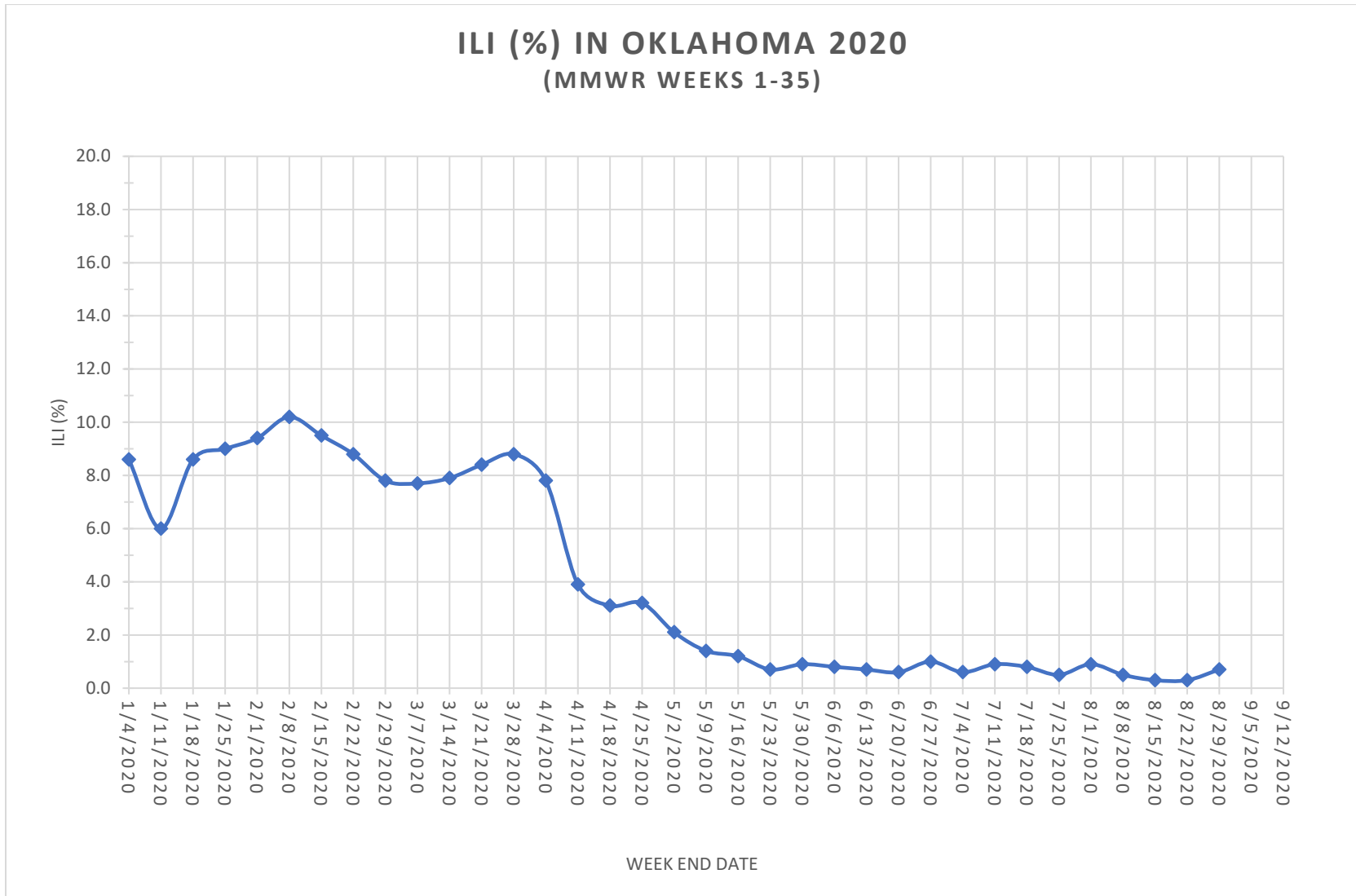
Distribution of recovered cases of COVID-19, March-September 2020, Oklahoma



Note: A recovered case is an individual currently not hospitalized or deceased AND 14 days after the onset of symptoms

# Symptoms Criteria

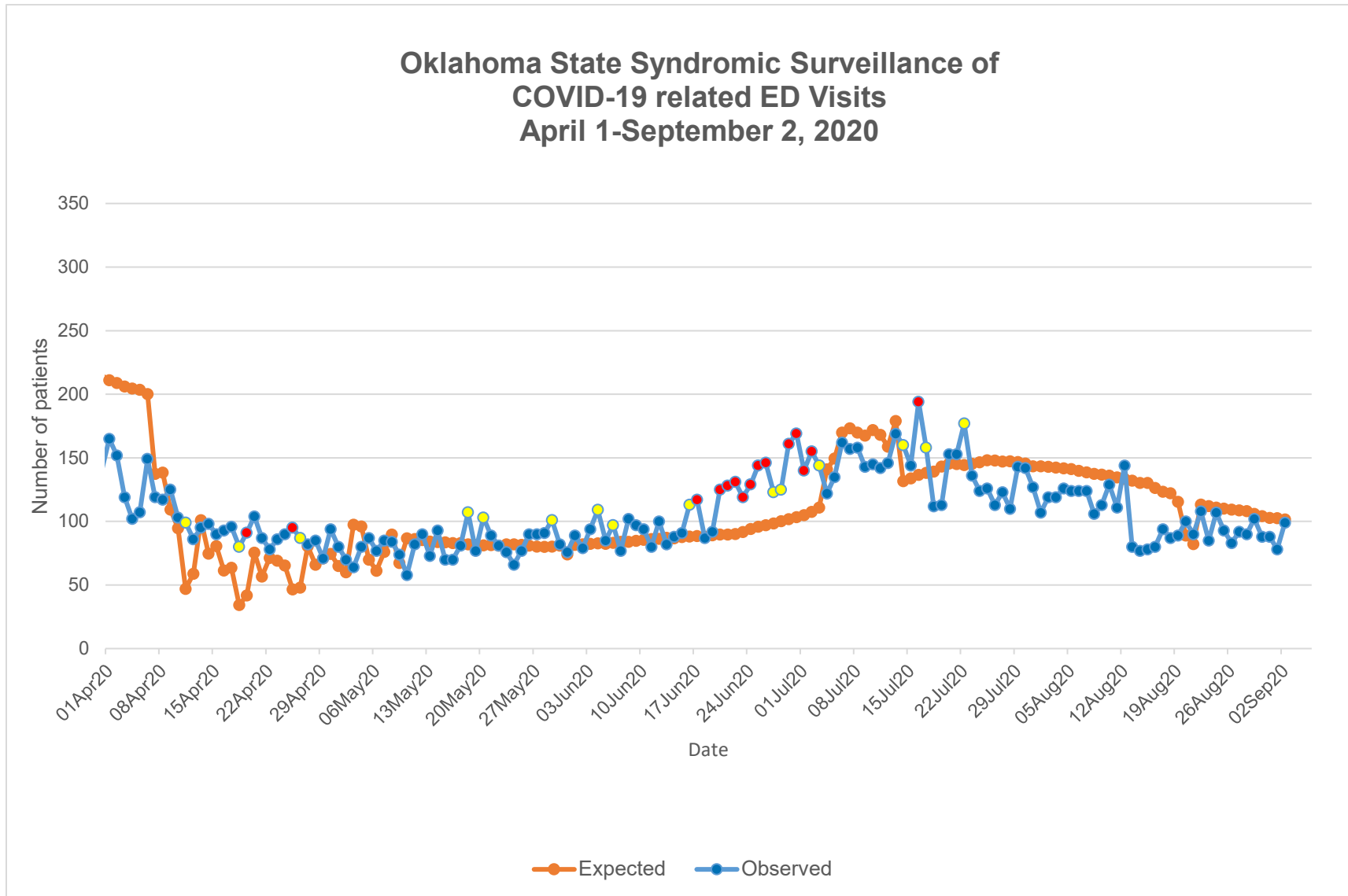
Weekly percentage of **Influenza-Like Illness (ILI)** (%), Morbidity and Mortality Weekly Report, Oklahoma, Jan–Aug 2020



**Interpretation:** Data on Influenza-Like Illness has increased slightly in the daily number and weekly percentage of influenza-like illness cases in the past week.

.....

## COVID-19 Related Emergency Department Visits



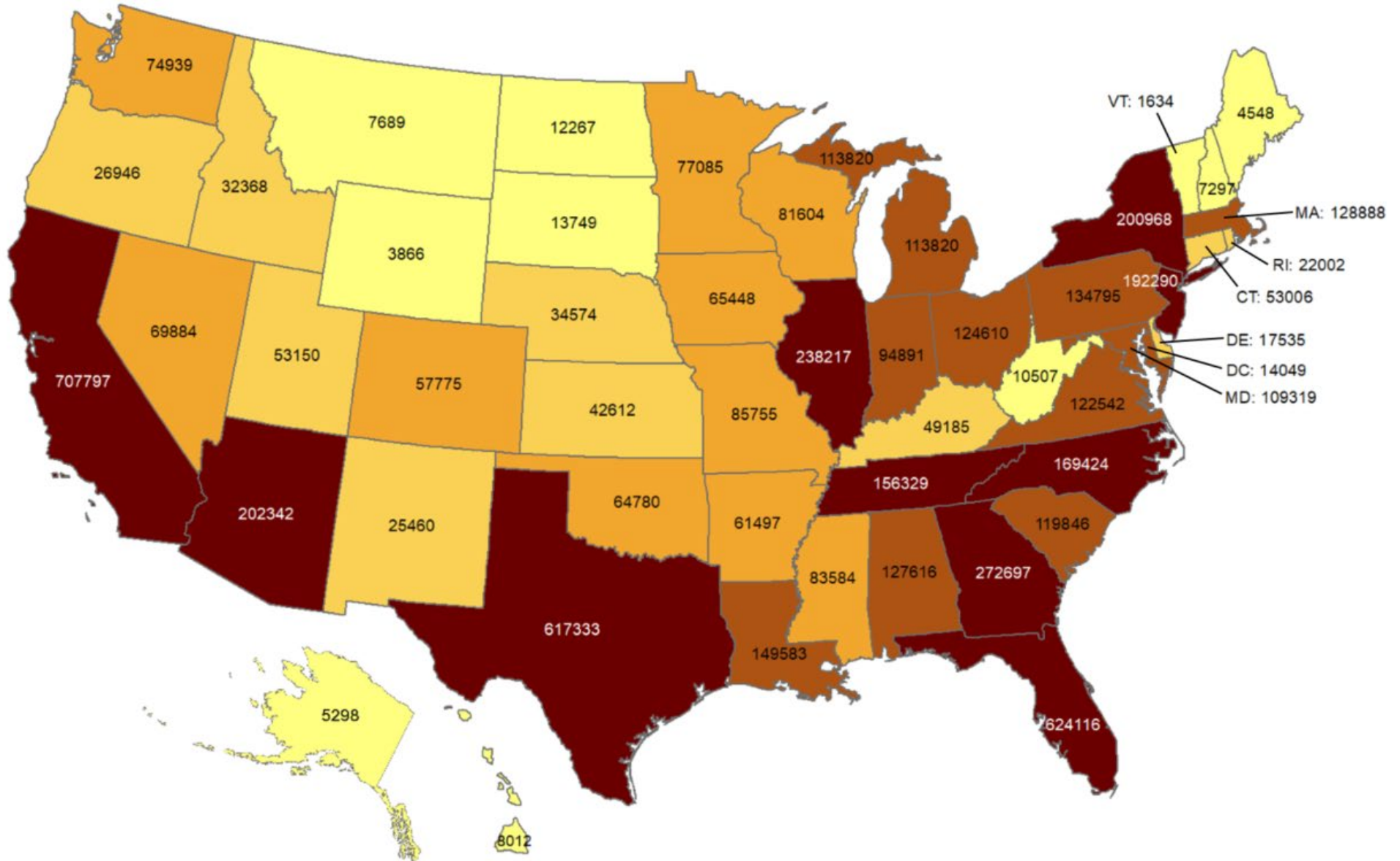
**Interpretation:** Data from syndromic surveillance shows that the number of COVID-19 related emergency department visits has been in the expected range for in the past 2 weeks as indicated by the blue dots on the observed line.



# OKLAHOMA IN COMPARISON

## Total number of reported COVID-19 cases

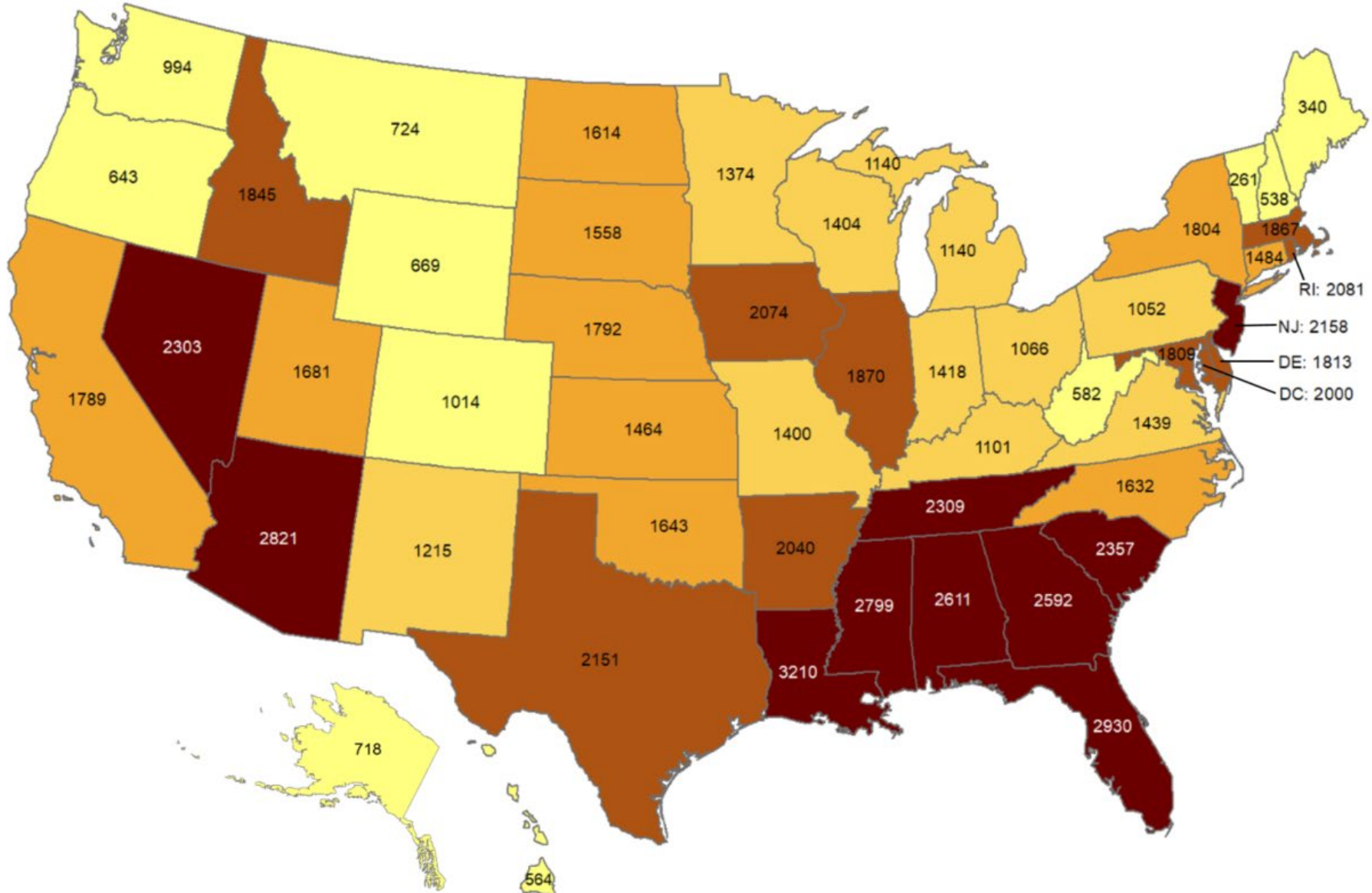
Oklahoma ranks **28** (out of all States and DC) in the total number of reported COVID-19 cases in the US.



Data from CDC. Available at <https://www.cdc.gov/covid-data-tracker/index.html>  
Data as of September 2, 2020

## Cumulative incidence of reported COVID-19 cases

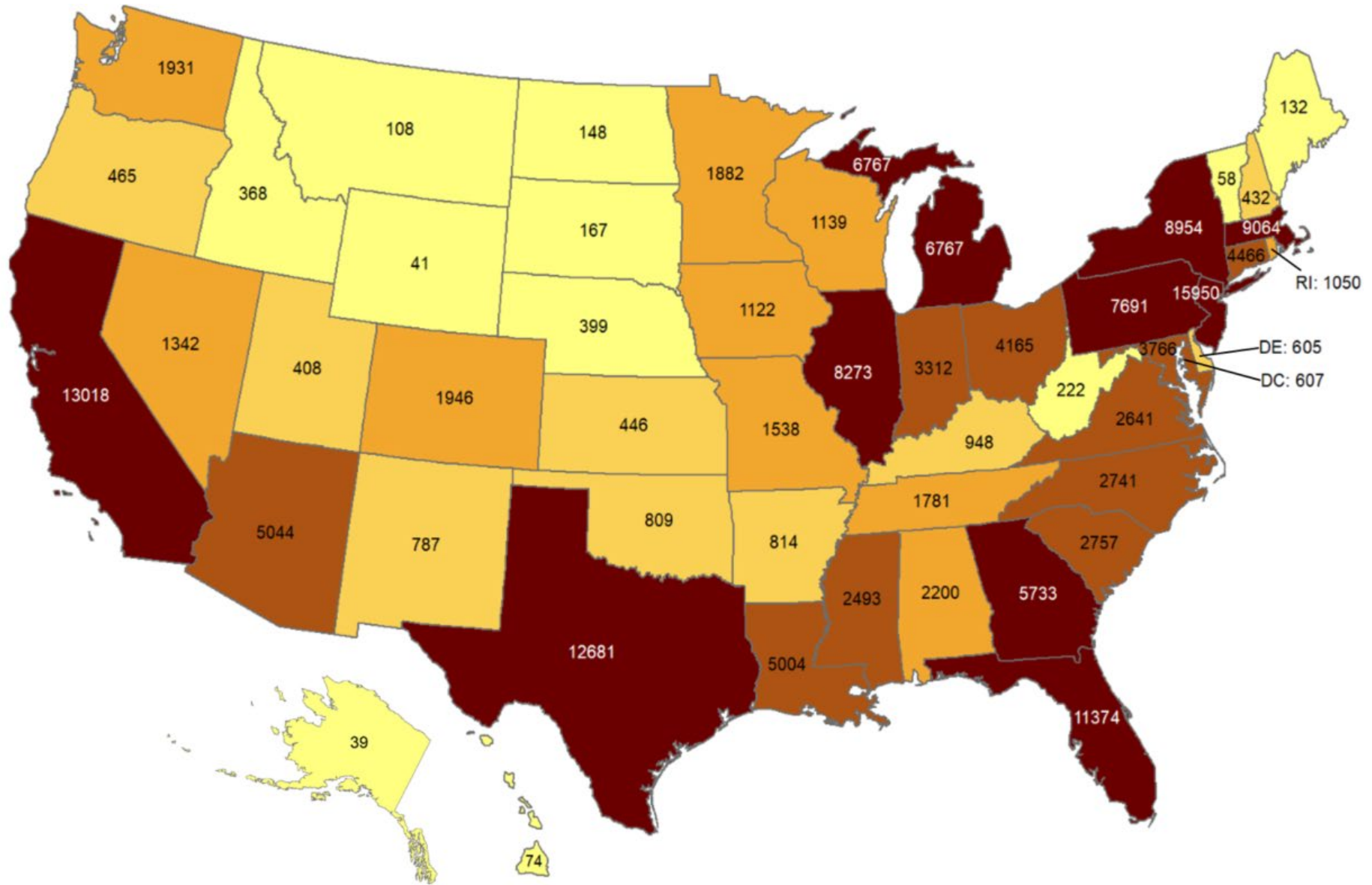
Oklahoma ranks **25** (out of all States and DC) in the cumulative incidence (per 100,000 persons) of reported COVID-19 cases in the US.



Data from CDC. Available at <https://www.cdc.gov/covid-data-tracker/index.html>  
Data as of September 2, 2020

## Total number of reported COVID-19 deaths

Oklahoma ranks **33** (out of all States and DC) in the total number of reported COVID-19 deaths in the US.

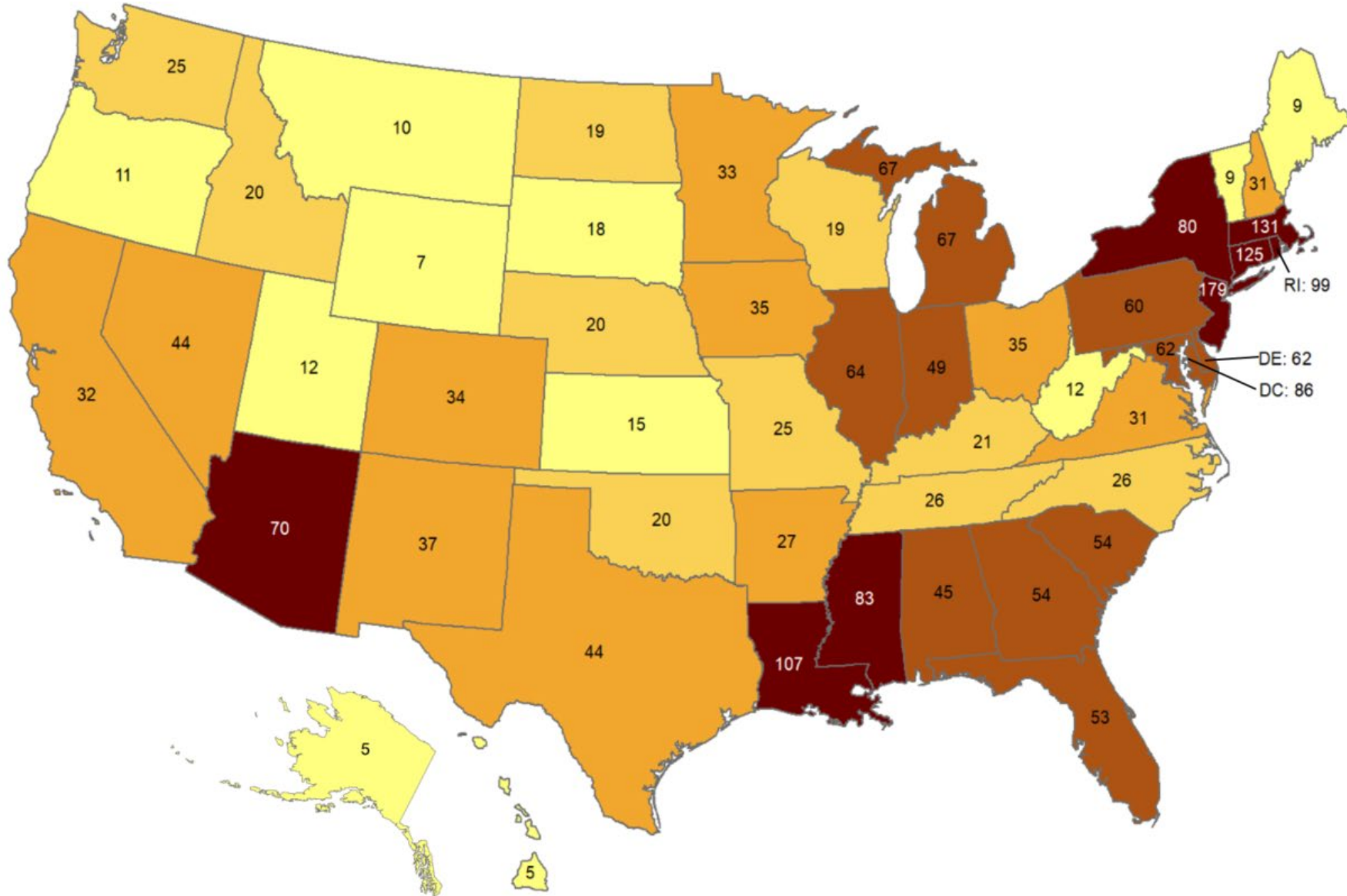


Data from CDC. Available at <https://www.cdc.gov/covid-data-tracker/index.html>  
Data as of September 2, 2020

NOTE: CDC numbers include both Confirmed and Probable cases whereas the OSDH counts are limited to Confirmed cases.

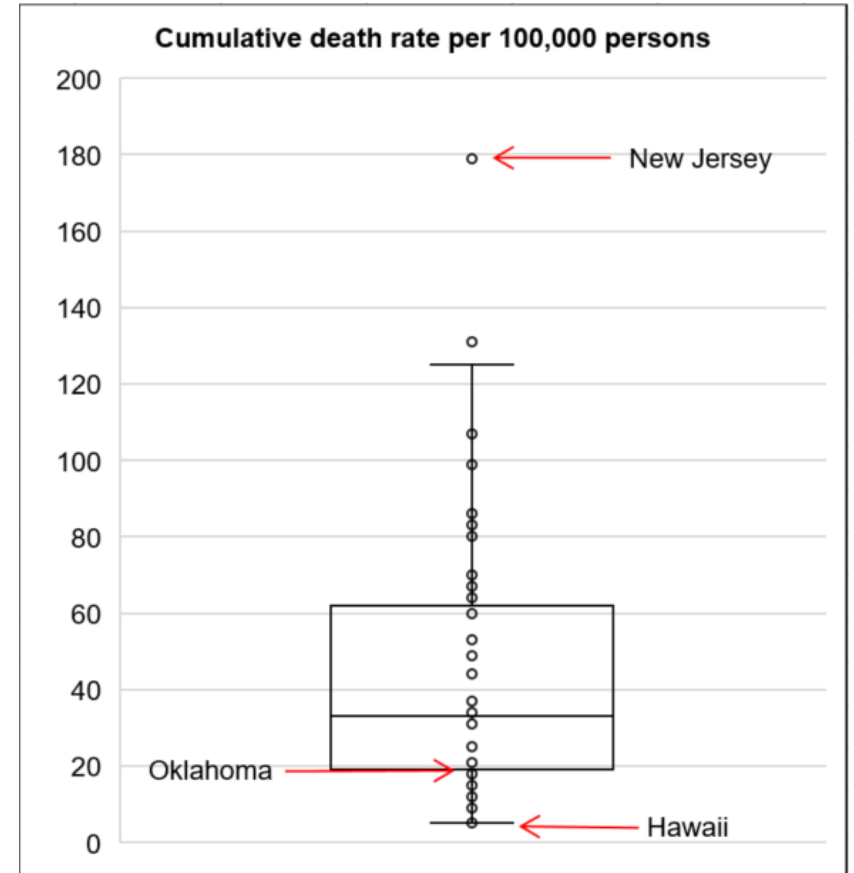
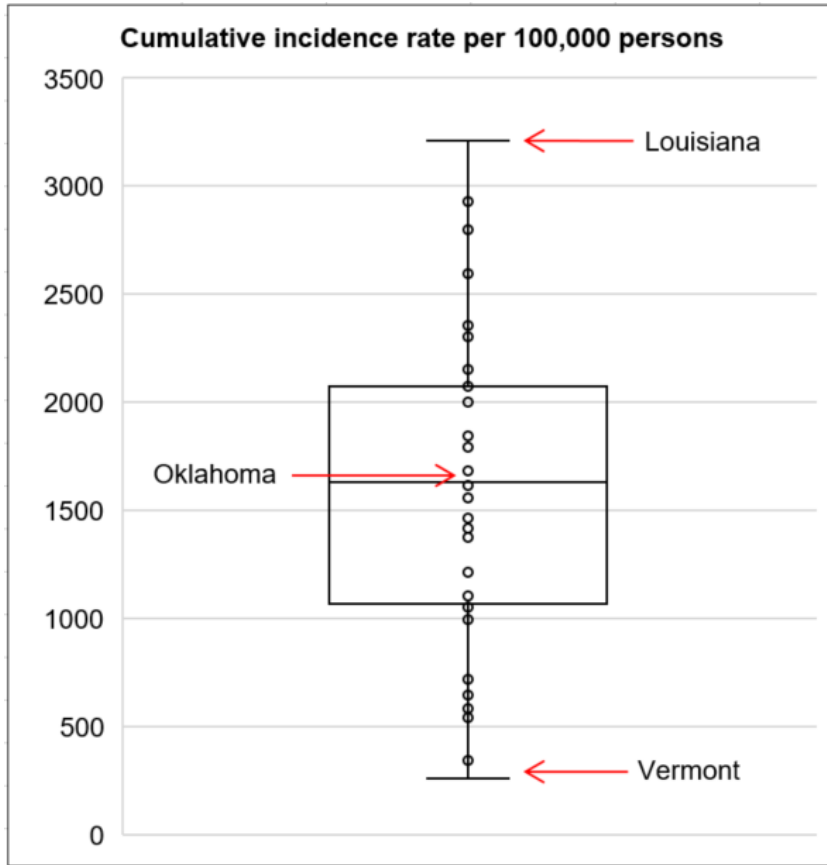
## Cumulative death rate of reported COVID-19 cases

Oklahoma ranks **36** (out of all States and DC) in the cumulative death rate (per 100,000 persons) of reported COVID-19 cases in the US.



Data from CDC. Available at <https://www.cdc.gov/covid-data-tracker/index.html>  
Data as of September 2, 2020

## Cumulative incidence and cumulative death rate of reported COVID-19 cases



**Interpretation:** Oklahoma has cumulative incidence that is **above the median** of the US and cumulative death rate **below the median** of the US.

---

---

## **ACKNOWLEDGEMENT**

The weekly report is made by possible through the efforts of county and city public health and healthcare professionals.

---

## **NOTES**

Every effort is made to ensure accuracy and the data is up-to-date for the time period reported.  
For daily updates on COVID-19, please visit <https://coronavirus.health.ok.gov/>

---

## **DISCLAIMER**

The purpose of publishing aggregated statistical COVID-19 data through the OSDH Dashboard, the Executive Order Report, and the Weekly Epidemiology and Surveillance Report is to support the needs of the general public in receiving important and necessary information regarding the state of the health and safety of the citizens of Oklahoma. These resources may be used only for statistical purposes and may not be used in any way that would determine the identity of any reported cases.