

# OKLAHOMA COVID-19 WEEKLY REPORT

Weekly Epidemiology and Surveillance Report  
November 6 - 12, 2020



**PURPOSE** To provide up-to-date weekly epidemiological data on COVID-19 in Oklahoma.

## SNAPSHOT\*

	Nov 5-Nov 12	Change <sup>1</sup>	Total
Cases	9,680	74.8%	144,691
Recovered cases <sup>2</sup>	10,126	30.2%	120,426
Deaths	89	-16.8%	1,481

\* Note due to a lag in the data related to new data collection system, the counts for Nov 5 are included in both the current week and the previous week's total in order to have 7 days-worth of data in both the current and the previous week.

1. Change from the week of Oct 30-Nov 5, 2020.

2. Currently not hospitalized or deceased and 14 days after onset/report.

## KEY POINTS

- **16,919** cases were reported in the past week  
74.8% increase from the week before (Oct 30- Nov 5).
- **89** deaths were reported in the past week  
16.8% decrease from the week before (Oct 30-Nov 5).
- **10,030 (6.9%)** cases have been hospitalized
- **1,803,710** specimens have been tested in total

CASES		DEATHS	
Persons aged 50 and over	Females	Persons aged 50 and over	Males
<b>33%</b>	<b>52%</b>	<b>96%</b>	<b>57%</b>
of <u>cases</u>	of <u>cases</u>	of <u>deaths</u>	of <u>deaths</u>

The average age of cases was **40** years.

The youngest case was **less than a year old** and the oldest case was **100+ years**.

The average age of individuals who died was **75** years.

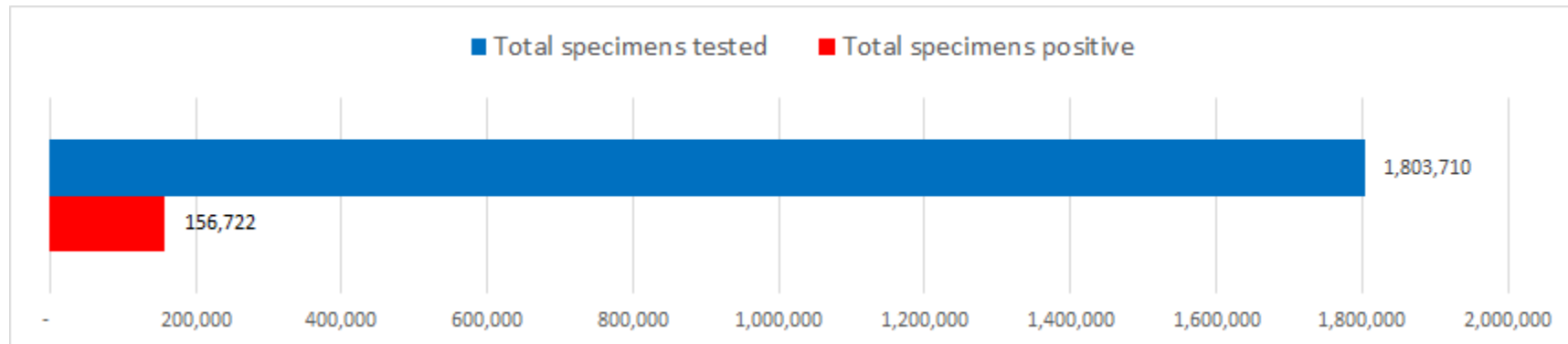
The youngest individual to die from COVID-19 was **less than 15 years** and the oldest was **100+ years**.

## DISEASE TESTING

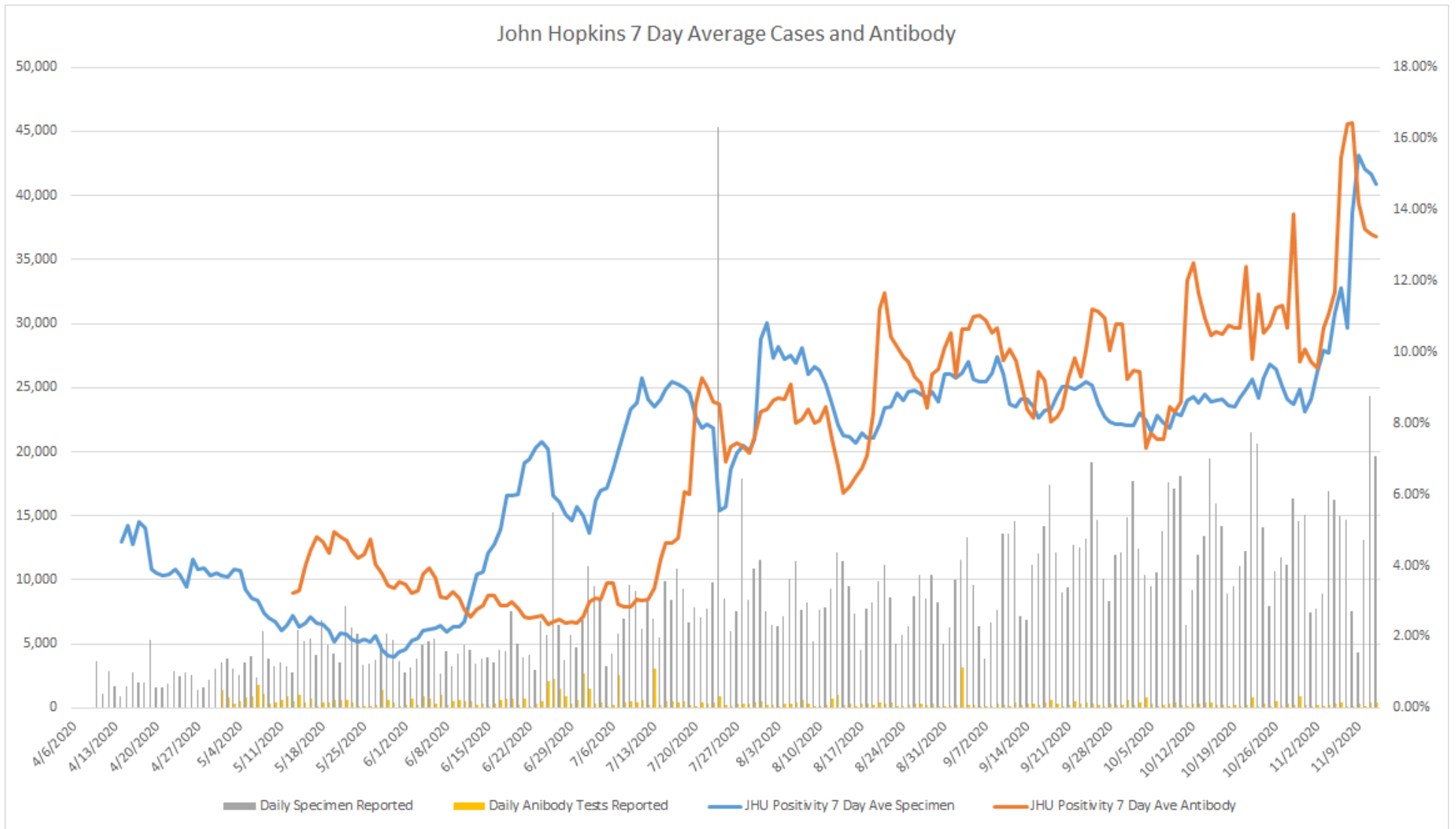
	Nov 6 – Nov 12	Total Number
Specimens tested <sup>1</sup> , count	98,643	1,803,710
Specimens positive, count	12,516	156,722
Percent positive	12.7%	8.7%
Johns Hopkins positivity %	14.7%	8.1%
Antibody tested, count	1,981	93,221
Antibody positive, count	260	5,545
Antibody percent positive	13.1%	5.9%

1. Includes state and private laboratories.

Note: Specimen counts may not reflect unique individuals.



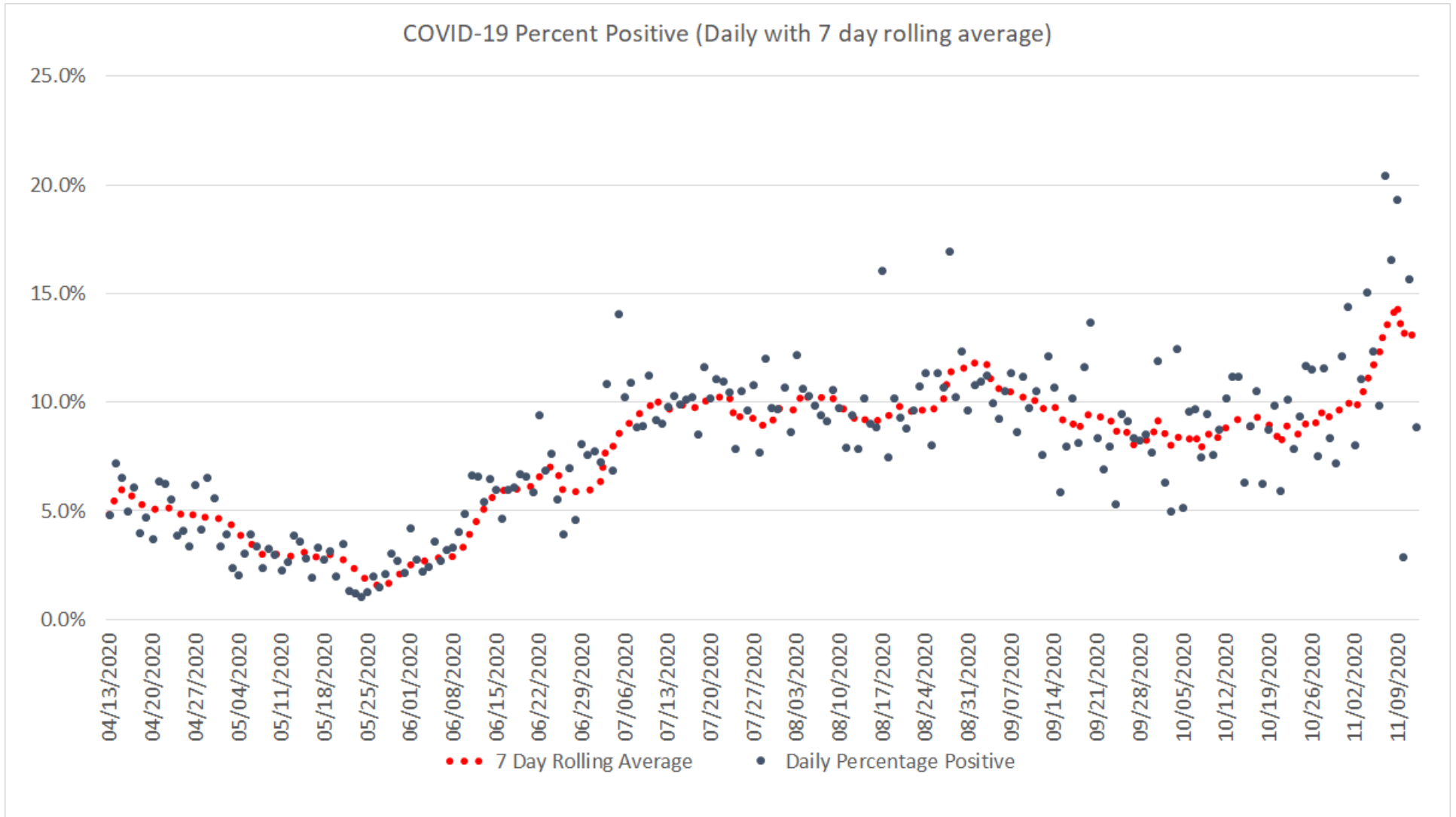
# JOHNS HOPKINS 7 DAY AVERAGE POSITIVITY RATE FOR SPECIMEN AND ANTIBODY CASES



Oklahoma, November 12, 2020

Note: On July 24, 2020 fourteen labs began reporting to OSDH that had been testing since May 18, 2020.

# COVID-19 TESTS DAILY PERCENT POSITIVE WITH 7 DAY ROLLING AVERAGE



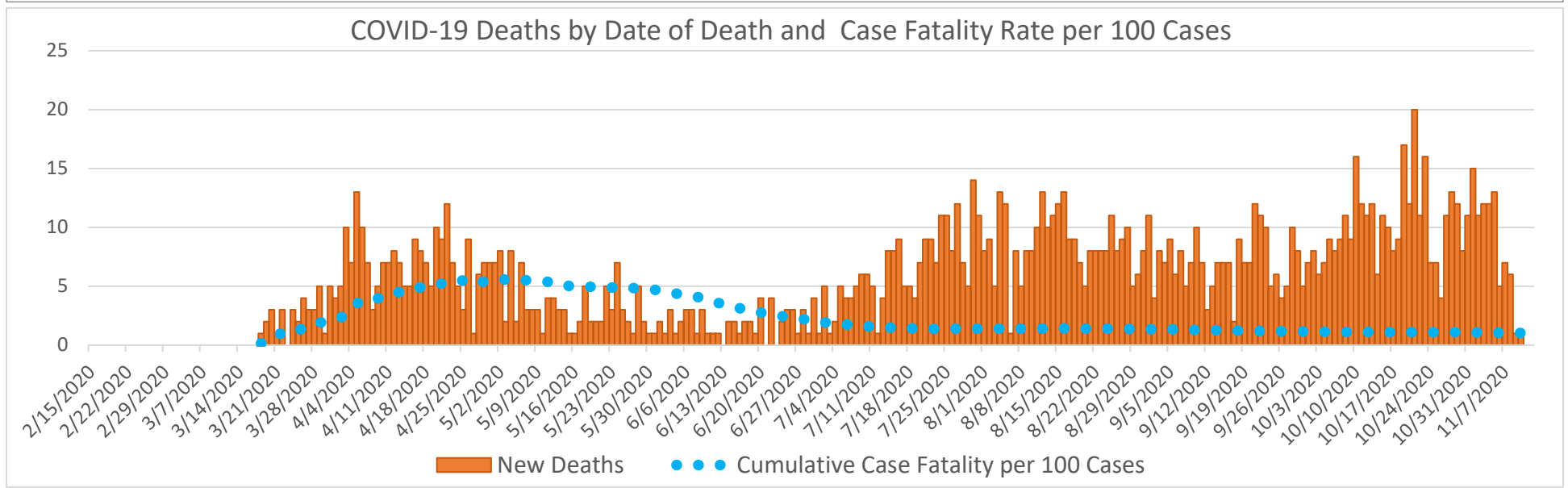
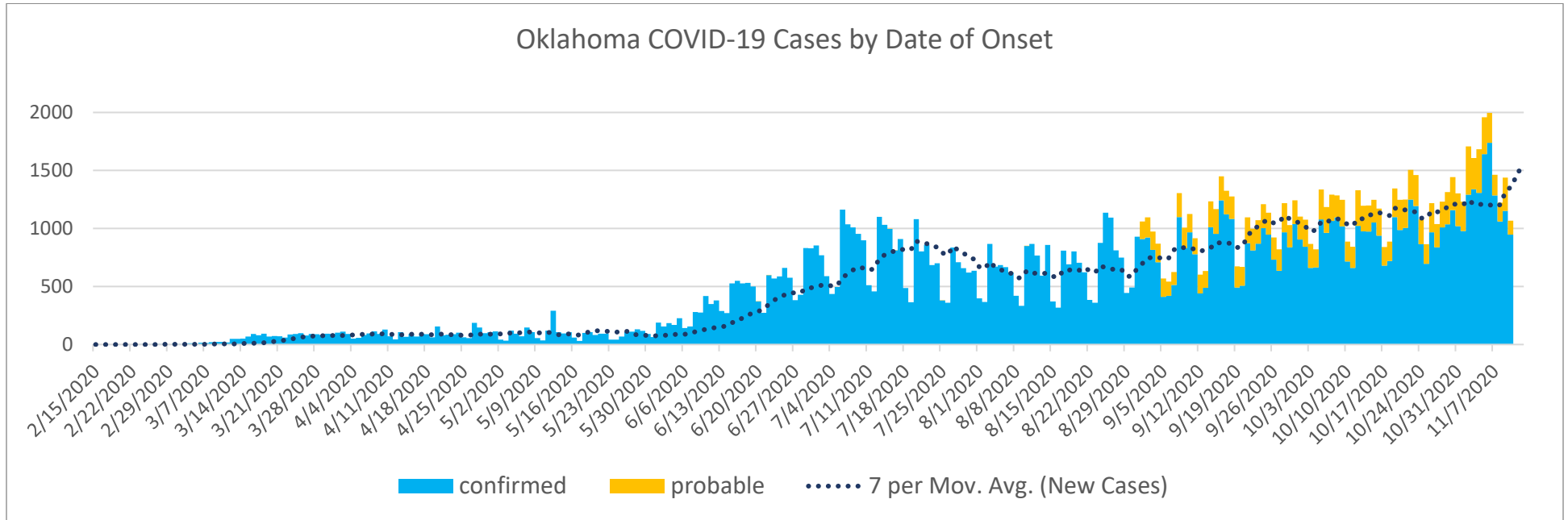
Oklahoma, November 12, 2020

## EPIDEMIOLOGICAL ESTIMATES

	Estimate	Notes / Interpretation
<b>Cases</b>		
Cumulative incidence*	3,669.5 (per 100,000 persons)	From March 7 to November 12, there were about 3,669 (per 100,000) new cases of COVID-19 in Oklahoma.
Absolute change in cumulative incidence from previous week	183.6 (per 100,000 persons)	Compared to October 30 – November 5 there were 183 (per 100,000) more cases of COVID-19 reported in Oklahoma during the past week (Nov 6– Nov 12).
<b>Disease Severity</b>		
Case-fatality risk (crude)	1.1%	The estimate is not adjusted for the lag time from reporting to death (i.e., delay between the time someone dies and the time their death is reported). The fatality estimate could be lower due to cases that were undiagnosed or had milder symptoms.
Cumulative Hospitalization rate (overall)	254.4 (per 100,000 persons)	About 254 people per 100,000 have ever been hospitalized for COVID-19 during this outbreak.

# CASES AND DEATHS

New cases (by date of onset) and new deaths (by date of death) of COVID-19 in Oklahoma, February–November 2020



Please note the different axes for new cases (top—from 0 to 2,000 for new cases) and new deaths (bottom—from 0 to 25 for new deaths). Additionally, a 7 day lag has been applied to the trend line based on information collected to-date for 7/19 and 7/25 where within 7 days of onset date approximately 80% of the cases had been reported.

## DEMOGRAPHIC INFORMATION AS OF NOVEMBER 12, 2020

		Cases count (%) <sup>1</sup>		Deaths count (%) <sup>1</sup>		Cumulative Incidence Rate <sup>2</sup>	Cumulative Mortality Rate <sup>2</sup>
<b>Oklahoma</b>		<b>144,691</b>		<b>1481</b>		<b>3,669.5</b>	<b>37.6</b>
<b>Gender</b>							
	Male	<b>68,930</b>	<b>(47.6)</b>	<b>844</b>	<b>(57.0)</b>	<b>3,529.4</b>	<b>43.2</b>
	Female	<b>75,761</b>	<b>(52.4)</b>	<b>637</b>	<b>(43.0)</b>	<b>3,807.0</b>	<b>32.0</b>
	Unknown	<b>0</b>	<b>(0.0)</b>	<b>0</b>	<b>(0.0)</b>		
<b>Age group</b>							
	Under 1- 4	<b>2,683</b>	<b>(1.9)</b>	<b>0</b>	<b>(0.0)</b>	<b>1,030.2</b>	<b>0.0</b>
	5-14	<b>8,585</b>	<b>(5.9)</b>	<b>1</b>	<b>(0.1)</b>	<b>1,596.0</b>	<b>0.2</b>
	15-24	<b>28,022</b>	<b>(19.4)</b>	<b>2</b>	<b>(0.1)</b>	<b>5,210.2</b>	<b>0.4</b>
	25-34	<b>24,550</b>	<b>(17.0)</b>	<b>12</b>	<b>(0.8)</b>	<b>4,519.4</b>	<b>2.2</b>
	35-44	<b>23,038</b>	<b>(15.9)</b>	<b>25</b>	<b>(1.7)</b>	<b>4,697.9</b>	<b>5.1</b>
	45-54	<b>20,142</b>	<b>(13.9)</b>	<b>59</b>	<b>(4.0)</b>	<b>4,375.7</b>	<b>12.8</b>
	55-64	<b>17,121</b>	<b>(11.8)</b>	<b>187</b>	<b>(12.6)</b>	<b>3,469.7</b>	<b>37.9</b>
	65-74	<b>11,343</b>	<b>(7.8)</b>	<b>390</b>	<b>(26.3)</b>	<b>3,162.7</b>	<b>108.7</b>
	75-84	<b>6,221</b>	<b>(4.3)</b>	<b>405</b>	<b>(27.3)</b>	<b>3,314.1</b>	<b>215.8</b>
	85+	<b>2,985</b>	<b>(2.1)</b>	<b>400</b>	<b>(27.0)</b>	<b>4,078.1</b>	<b>546.5</b>
	Unknown	<b>1</b>	<b>(0.0)</b>				
<b>Race</b>							
	American Indian or Alaska Native	<b>14,357</b>	<b>(9.9)</b>	<b>129</b>	<b>(8.7)</b>	<b>4,673.8</b>	<b>42.0</b>
	Asian or Pacific Islander	<b>3,601</b>	<b>(2.5)</b>	<b>26</b>	<b>(1.8)</b>	<b>4,066.5</b>	<b>29.4</b>
	Black or African American	<b>9,464</b>	<b>(6.5)</b>	<b>88</b>	<b>(5.9)</b>	<b>3,289.8</b>	<b>30.6</b>
	Multiracial/Other	<b>5,445</b>	<b>(3.8)</b>	<b>48</b>	<b>(3.2)</b>	<b>1,316.0</b>	<b>11.6</b>
	White	<b>83,627</b>	<b>(57.8)</b>	<b>1074</b>	<b>(72.5)</b>	<b>2,938.5</b>	<b>37.7</b>
	Unknown	<b>28,197</b>	<b>(19.5)</b>	<b>116</b>	<b>(7.8)</b>		
<b>Ethnicity</b>							
	Hispanic or Latino	<b>20,596</b>	<b>(14.2)</b>	<b>88</b>	<b>(5.9)</b>	<b>4,800.1</b>	<b>20.5</b>
	Not Hispanic or Latino	<b>90,998</b>	<b>(62.9)</b>	<b>1206</b>	<b>(81.4)</b>	<b>2,589.6</b>	<b>34.3</b>
	Unknown	<b>33,097</b>	<b>(22.9)</b>	<b>187</b>	<b>(12.6)</b>		

1. Percentages may not add up to 100 due to rounding.

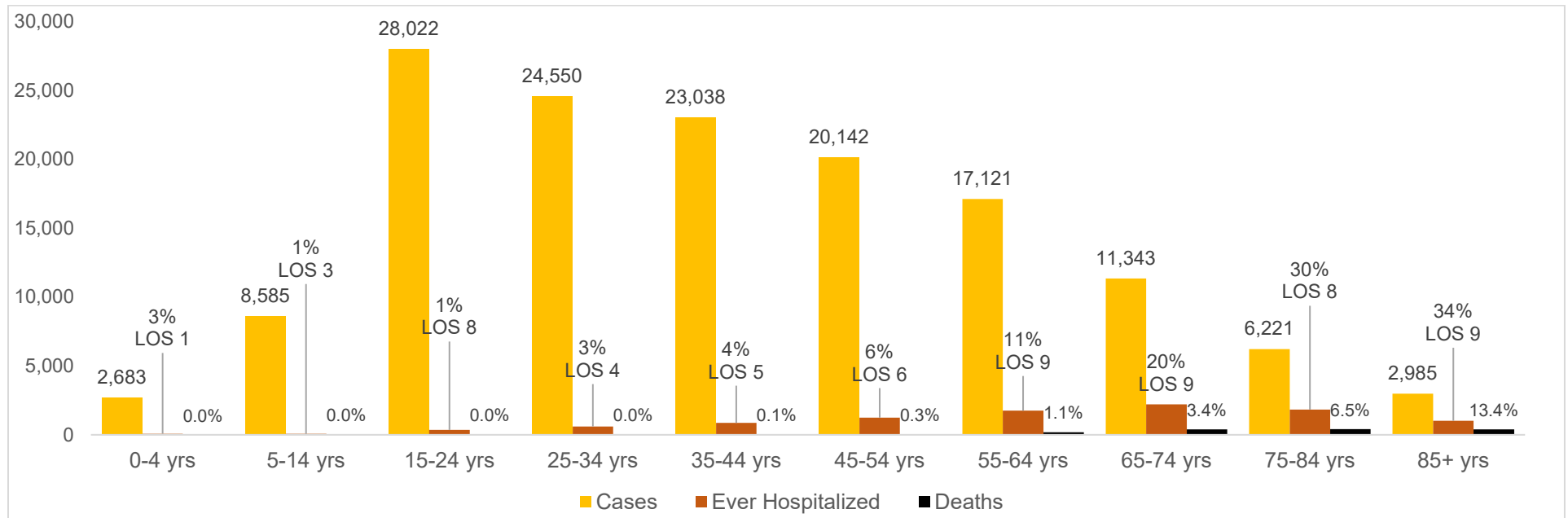
2. Rate per 100,000 population

## AGE DISTRIBUTION OF NEW CASES/DEATHS FROM NOVEMBER 6-12\*

Age group	New Cases	Percentage	New Deaths	Percentage
Under 1- 4	279	1.9%	0	0.0%
5-14	1125	7.6%	0	0.0%
15-24	2752	18.6%	0	0.0%
25-34	2367	16.0%	0	0.0%
35-44	2398	16.2%	1	1.5%
45-54	2081	14.0%	0	0.0%
55-64	1819	12.3%	12	17.6%
65-74	1144	7.7%	20	29.4%
75-84	595	4.0%	23	33.8%
85+	258	1.7%	12	17.6%

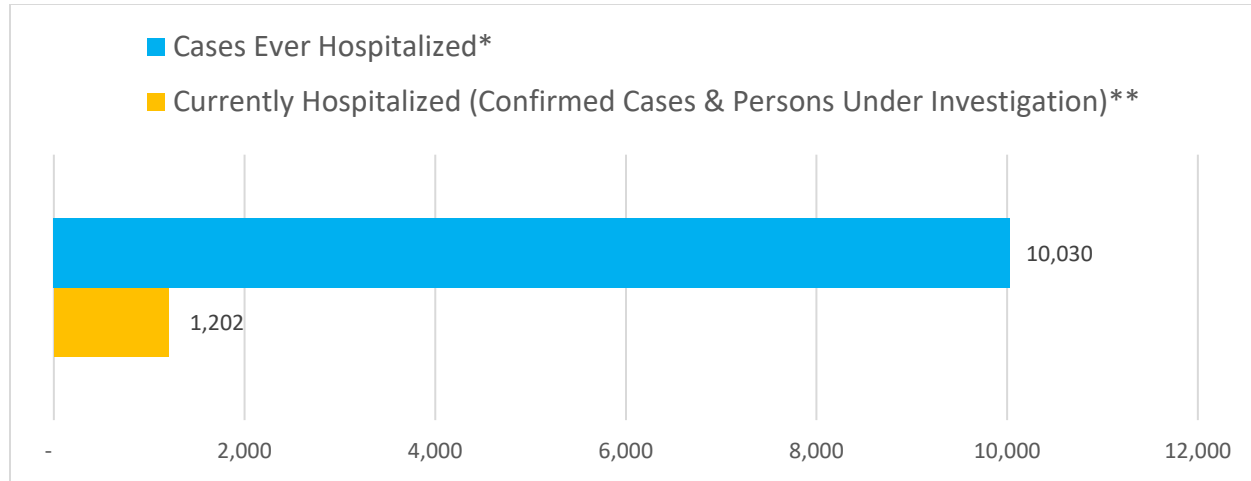
\*Data are preliminary and are subject to change as cases are processed. Please note the difference in reporting period for numbers in this table (Nov 6-12) relative to period used in the Snapshot table (Nov 5-12) which appears at the beginning of this report.

## CUMULATIVE CASES, PERCENT HOSPITALIZED, AVERAGE LENGTH OF STAY (AUGUST CASES) AND DEATHS BY AGE GROUP





# HOSPITALIZATIONS



**10,030 Ever Hospitalized Cases** (includes discharged, deceased, currently hospitalized and recovered).

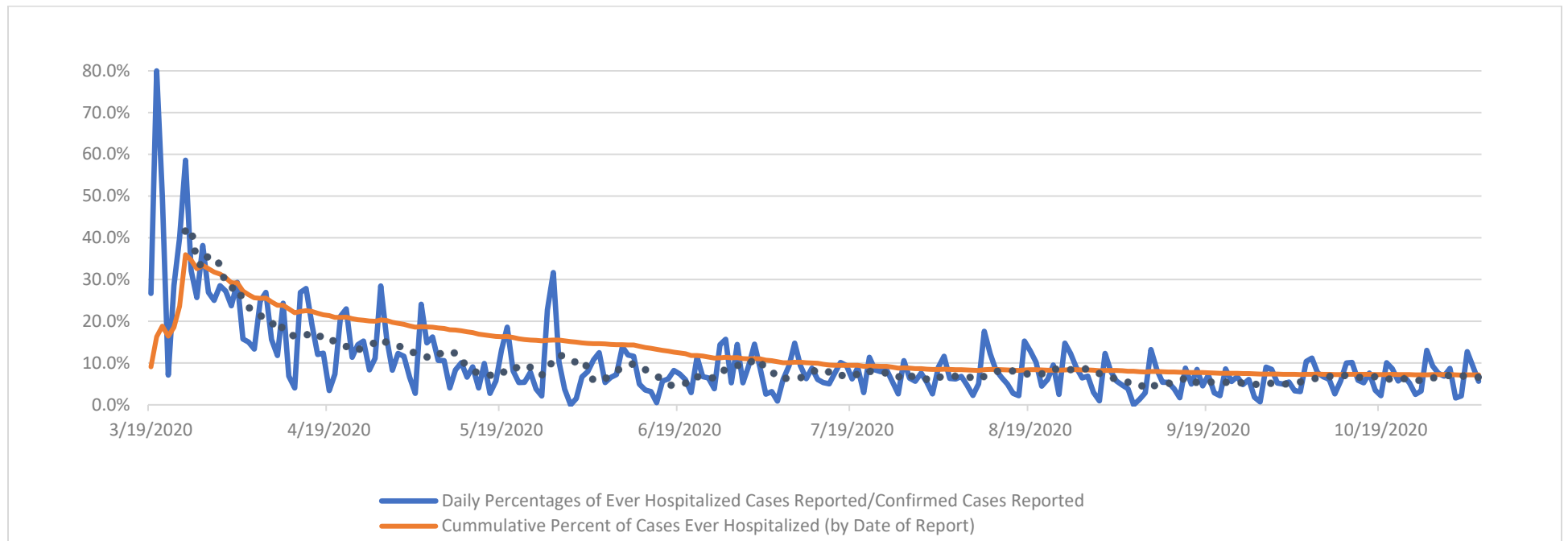
Average age of cases hospitalized: **61.5**

Average age of cases not hospitalized: **38.7**

\*Ever hospitalized includes discharged, deceased, currently hospitalized and recovered as of 11/12/2020.

\*\*Source OSDH Beds Survey. Note, facility response rate of 98% on 11/12/2020

## PERCENT OF CASES EVER HOSPITALIZED (by date of report)



## AT-RISK SETTINGS HEALTHCARE & NON-HEALTHCARE

Status	Non-Healthcare Worker count (%)*	Healthcare Worker count (%)*
Active	20,209 (16.1)	575 (8.1)
Deceased	1,466 (1.1)	15 (0.2)
Recovered	113,937 (82.8)	6,489 (91.7)
<b>Total</b>	<b>137,612</b>	<b>7,079</b>

## CORRECTIONAL FACILITIES<sup>1</sup>

	Cases (%)*	Deaths (%)*
Inmates	3,354 (81.9)	26 (92.9)
Staff	742 (18.1)	2 (7.1)
<b>Total</b>	<b>4,096</b>	<b>28</b>

<sup>1</sup>Correctional facilities include prisons, jails, and juvenile detention center

## LONG TERM CARE (LTC) FACILITIES<sup>2</sup>

	Cases (%)*	Deaths (%)*
Residents	3,942 (62.9)	535 (99.3)
Staff	2,326 (37.1)	4 (0.7)
<b>Total</b>	<b>6,268</b>	<b>539</b>

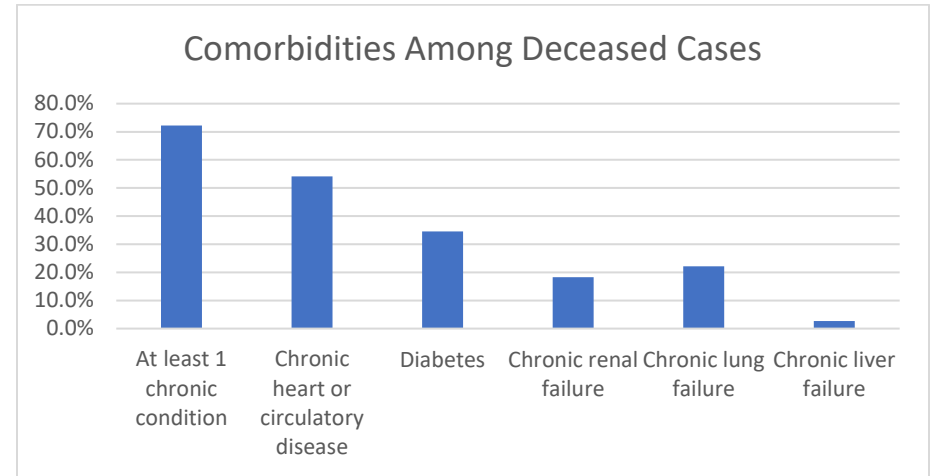
<sup>2</sup>Long term care facility or nursing home.

*Detailed counts of LTC Cases by County and Facility can be found at the end of this report.*

## COMORBIDITIES AMONG DECEASED CASES

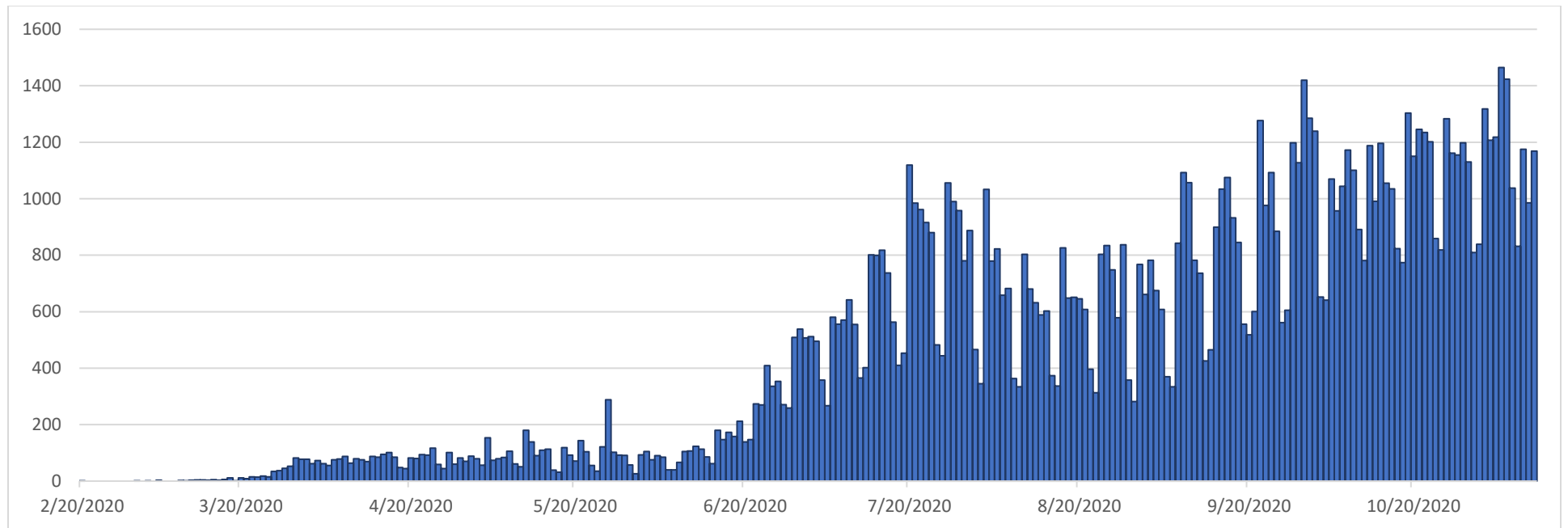
Comorbidities	Number (%)
At least 1 chronic condition <sup>3</sup>	1,070 (72.2)
Chronic heart or circulatory disease	802 (54.2)
Diabetes	511 (34.5)
Chronic renal failure	271 (18.3)
Chronic lung failure	328 (22.1)
Chronic liver failure	40 (2.7)

<sup>3</sup>Chronic conditions include; chronic heart or circulatory disease, diabetes, chronic lung failure, chronic liver failure and renal failure.



## RECOVERED CASES

Distribution of **recovered cases of COVID-19**, March - November 2020, Oklahoma

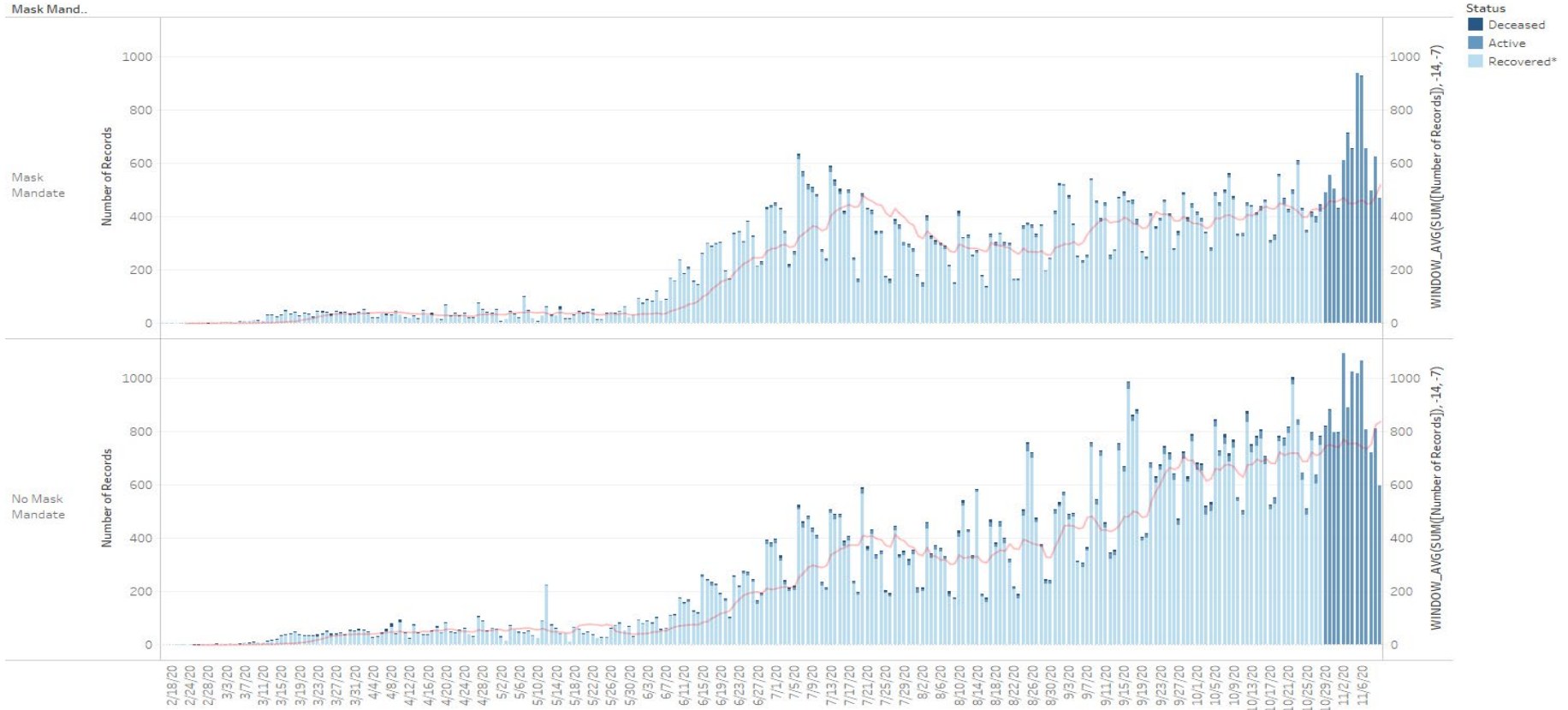


Note: A recovered case is an individual currently not hospitalized or deceased AND 14 days after the onset of symptoms

# IMPACT OF MASK MANDATES

	7 Day Average Number of Cases by date of Onset* with 7 day lag						Percent Change 8/1 to 11/10	Percent Change 9/1 to 11/10
	1-Aug	1-Sep	15-Sep	1-Oct	15-Oct	1-Nov		
Mask	328.8	58%	79%	431.8	461.5	520.1	34%	52%
per 100,000 Pop'l	20.4	18.0	23.3	26.8	28.6	32.3		
No Mask	341.3	146%	106%	688.5	743	839.1	109%	75%
per 100,000 Pop'l	14.6	17.3	28.3	29.4	31.7	35.8		
Mask vs No Mask Incidence difference	40%	4%	-17%	-9%	-10%	-10%		

Status by Date of Onset as of 11/12/2020



The trends of sum of Number of Records and WINDOW\_AVG(SUM([Number of Records]), -14, -7) for Event Dt Day broken down by Mask Mandate. For pane Sum of Number of Records: Color shows details about Status. The view is filtered on Status, which keeps Active, Deceased and Recovered\*.

# SYMPTOMS CRITERIA

## WEEKLY PERCENT OF INFLUENZA-LIKE ILLNESS BASED ON TOTAL PATIENT VISITS TO SENTINEL CLINICIANS, OKLAHOMA VIRAL RESPIRATORY ILLNESS SURVEILLANCE SYSTEM, 2018-2021

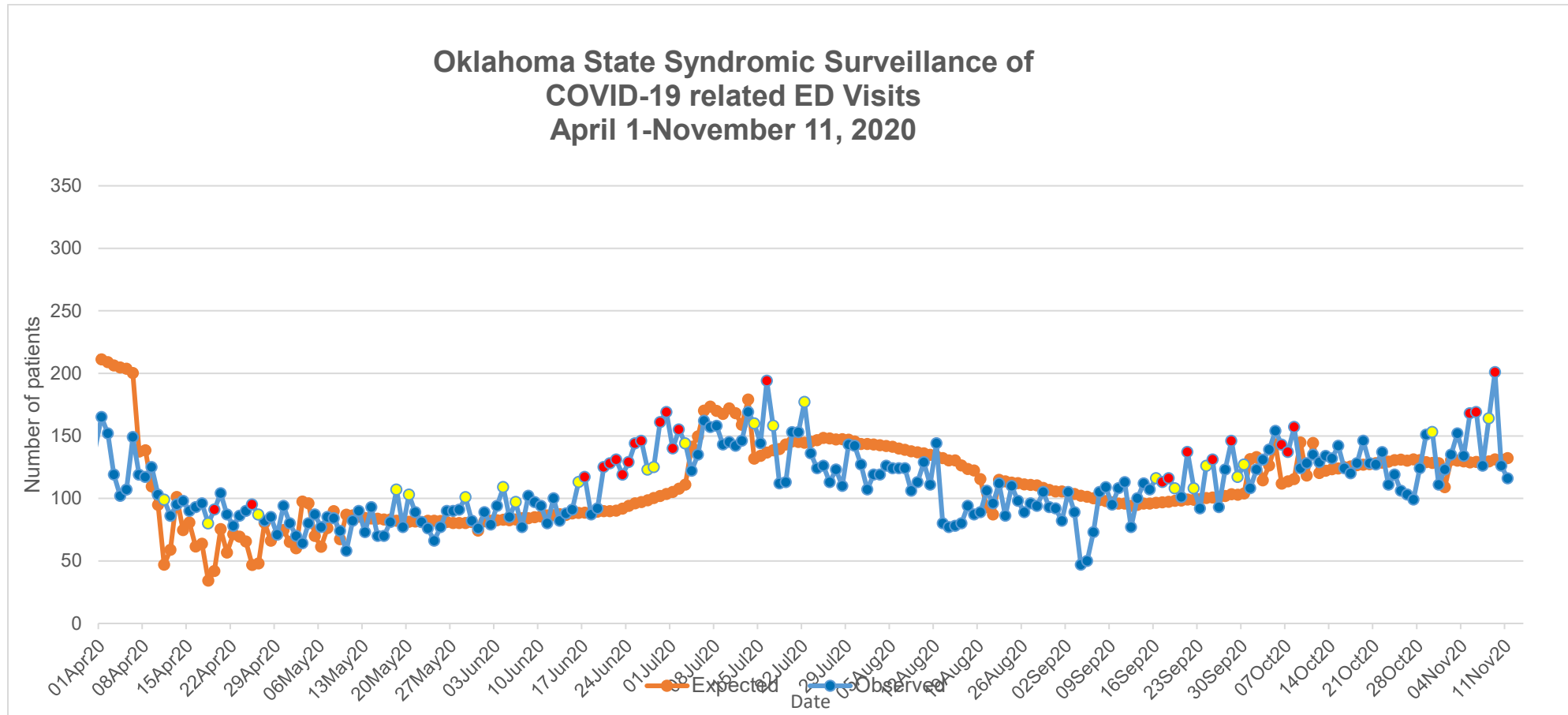


**Interpretation:** Data on Influenza-Like Illness (ILI) increased slightly to 2.8% of outpatient visits exhibiting fever with cough or sore throat. This week’s value of 2.8% is below Oklahoma’s baseline ILI of 3.9%.

**Note:** Data current up to week ending November 7, 2020 (Week 45).

**Source:** <https://oklahoma.gov/content/dam/ok/en/health/health2/aem-documents/prevention-and-preparedness/acute-disease-service/disease-information/flu-view>

# COVID-19 RELATED EMERGENCY DEPARTMENT VISITS



**Interpretation:** Data from syndromic surveillance shows that the number of COVID-19 related emergency department visits has been significantly higher than expected value on 3 days within the past 2 weeks as indicated by the red dots on the observed line.

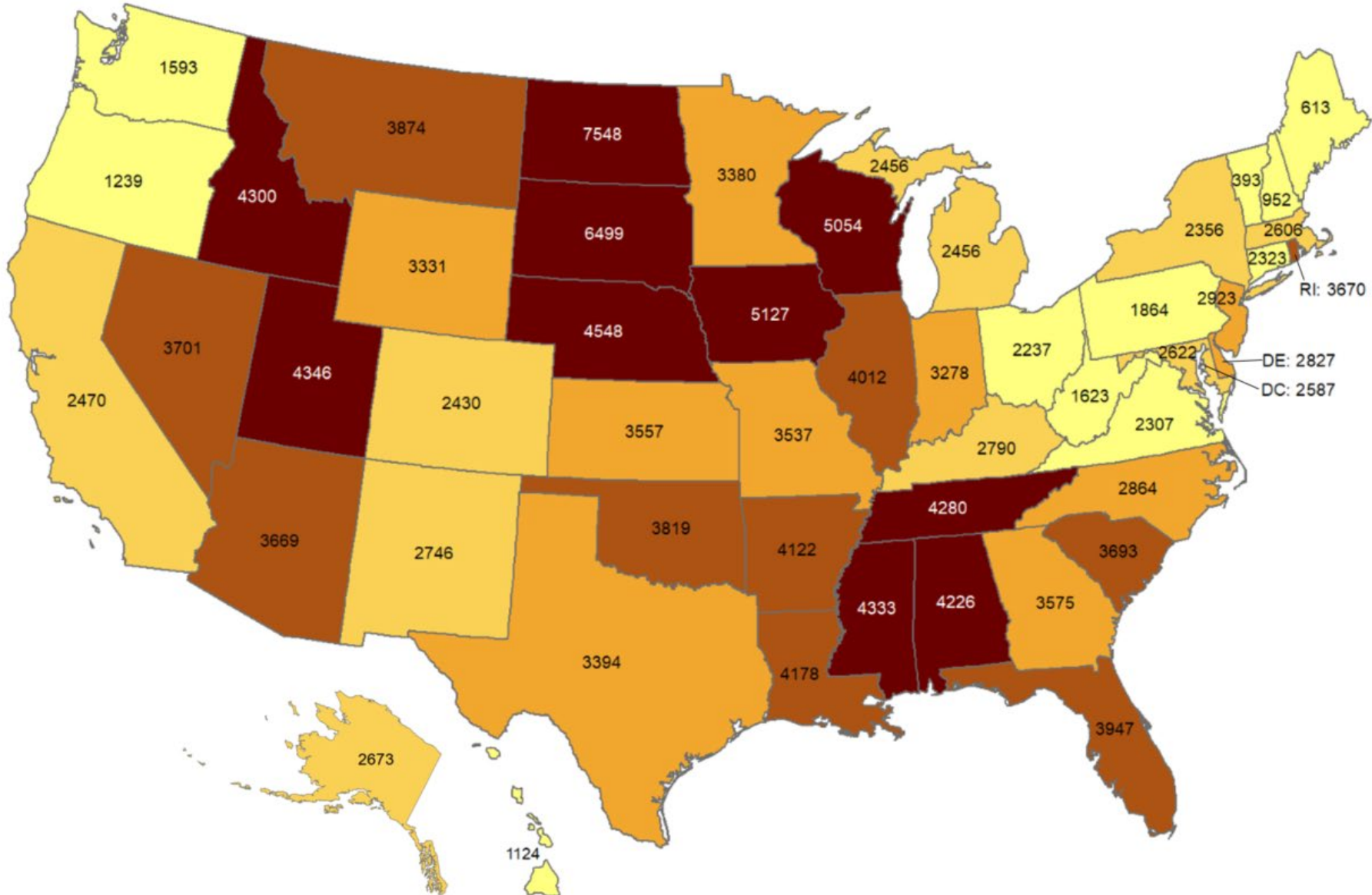
.....





## Cumulative incidence of reported COVID-19 cases

Oklahoma ranks **16** (out of all States and DC) in the cumulative incidence (per 100,000 persons) of reported COVID-19 cases in the US.

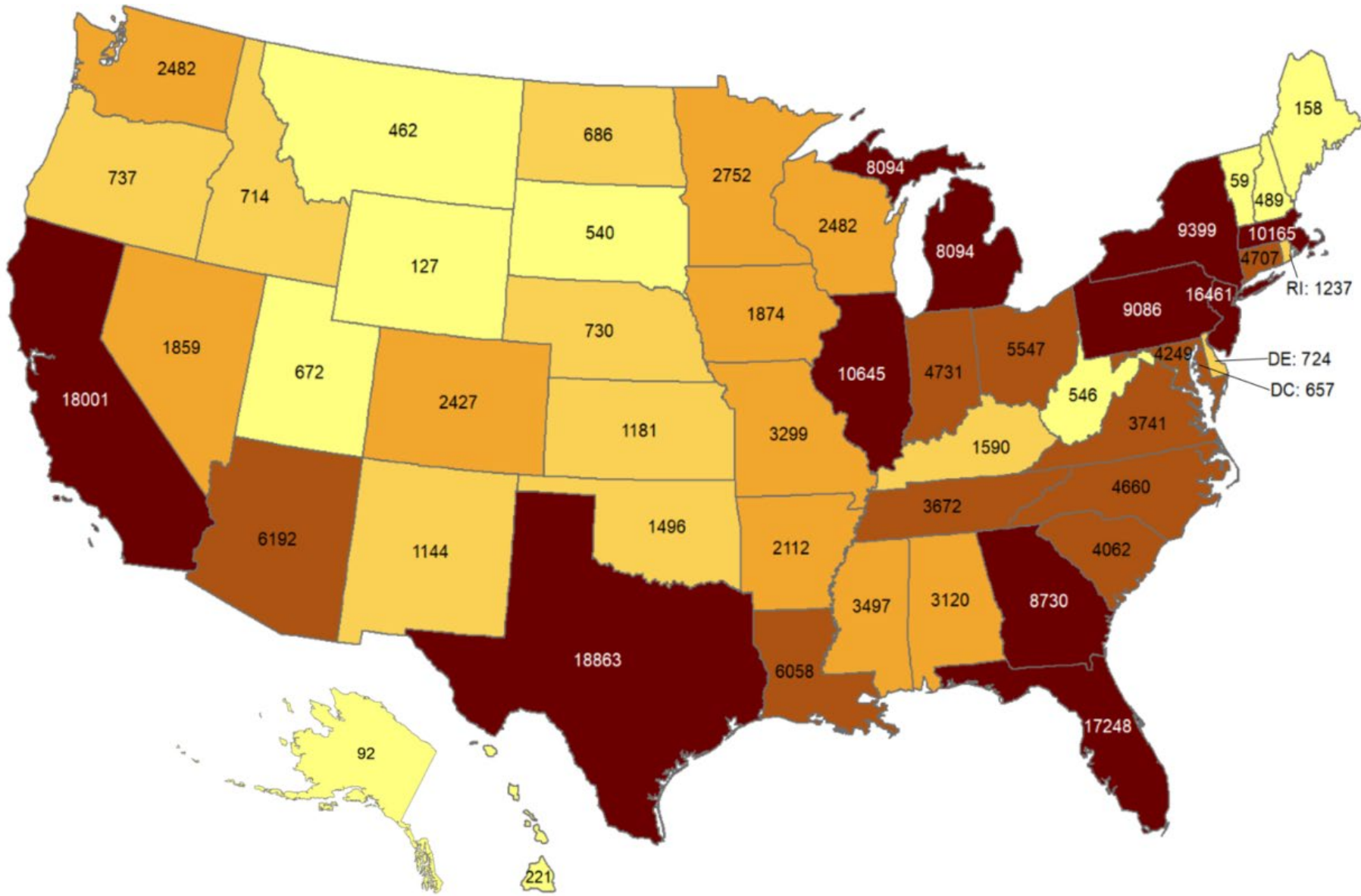


Data from CDC. Available at <https://www.cdc.gov/covid-data-tracker/index.html>  
Data as of November 11, 2020



## Total number of reported COVID-19 deaths

Oklahoma ranks **32** (out of all States and DC) in the total number of reported COVID-19 deaths in the US.



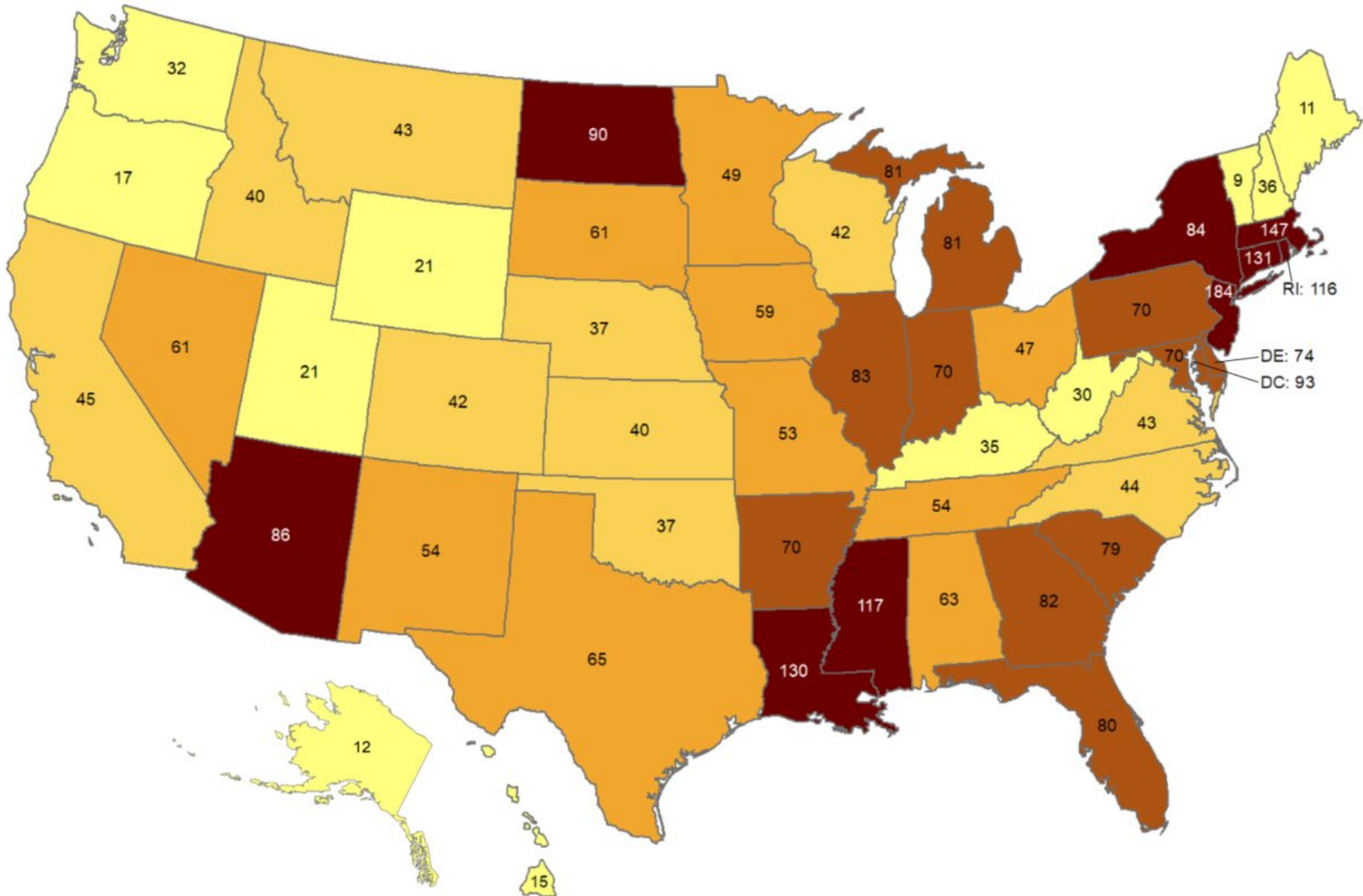
Data from CDC. Available at <https://www.cdc.gov/covid-data-tracker/index.html>

Data as of November 11, 2020

NOTE: CDC numbers include both Confirmed and Probable cases.

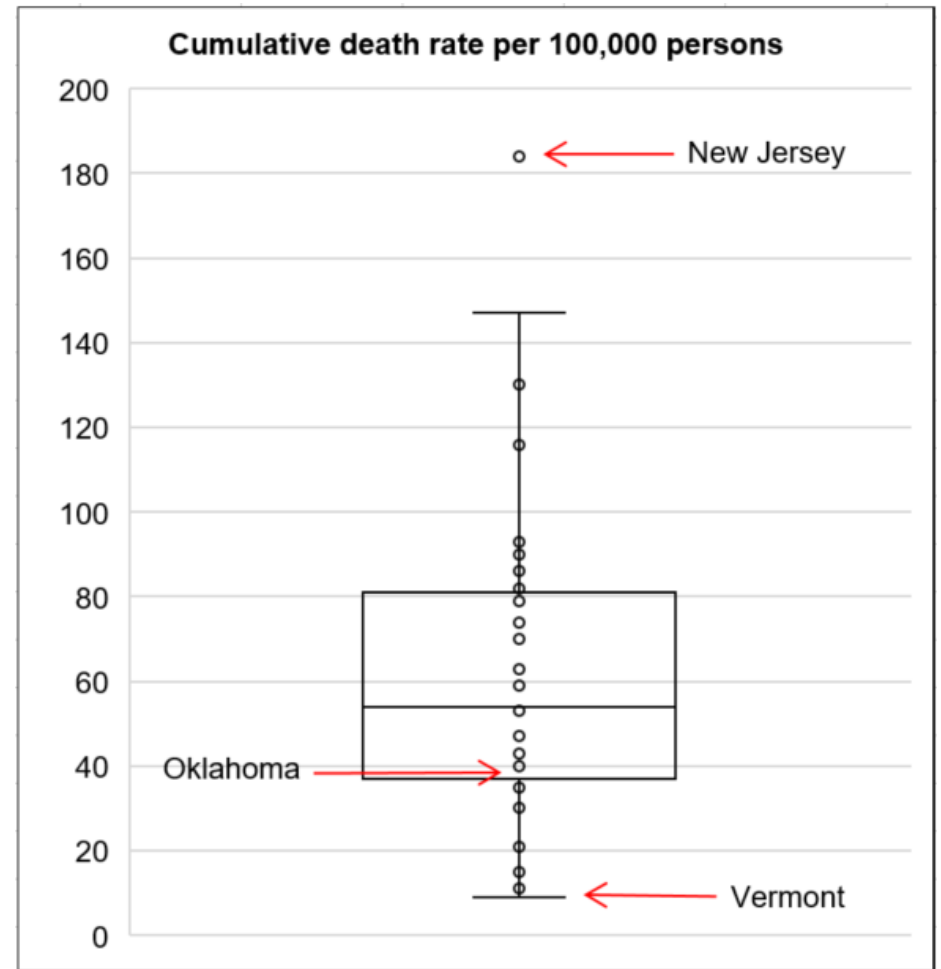
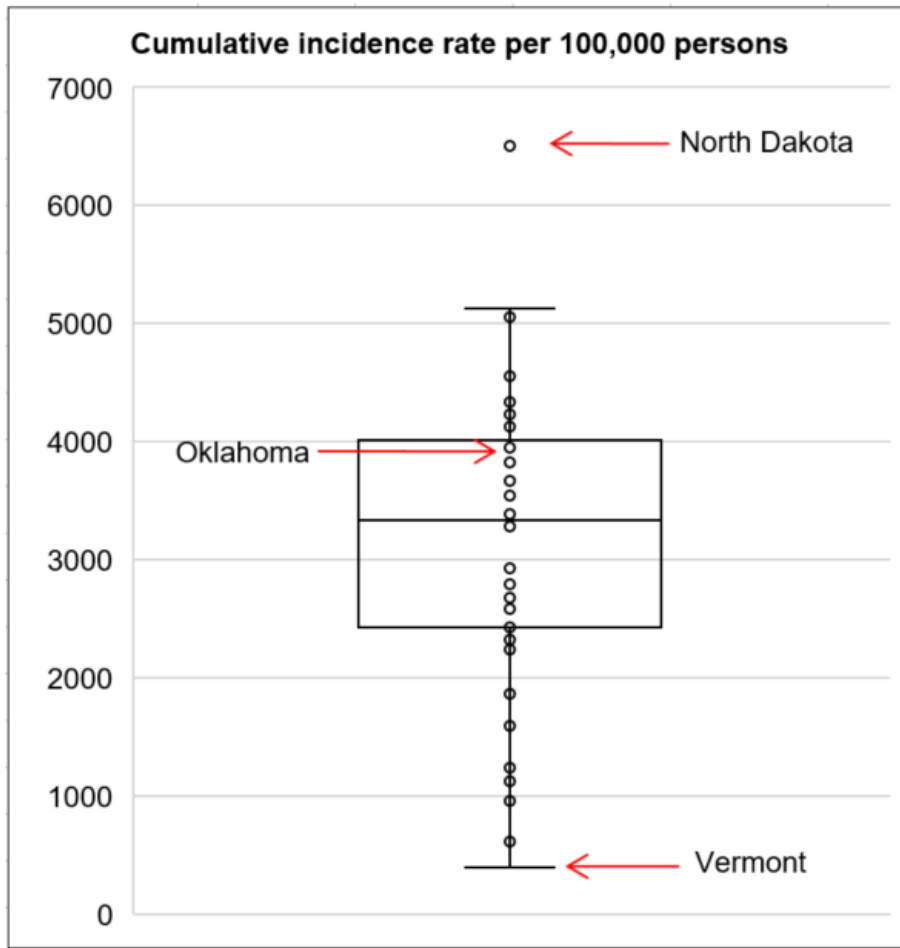
## Cumulative death rate of reported COVID-19 cases

Oklahoma ranks **39** (out of all States and DC) in the cumulative death rate (per 100,000 persons) of reported COVID-19 cases in the US.



Data from CDC. Available at <https://www.cdc.gov/covid-data-tracker/index.html>  
Data as of November 11, 2020

## Cumulative incidence and cumulative death rate of reported COVID-19 cases



**Interpretation:** Oklahoma has cumulative incidence that is **above the median** of the US and cumulative death rate **below the median** of the US.

# OKLAHOMA EXCESS DEATH ANALYSIS

Select a jurisdiction:

Oklahoma

- + indicates observed count above threshold
- ▒ Predicted number of deaths from all causes
- threshold for excess deaths

## Weekly number of deaths (from all causes)

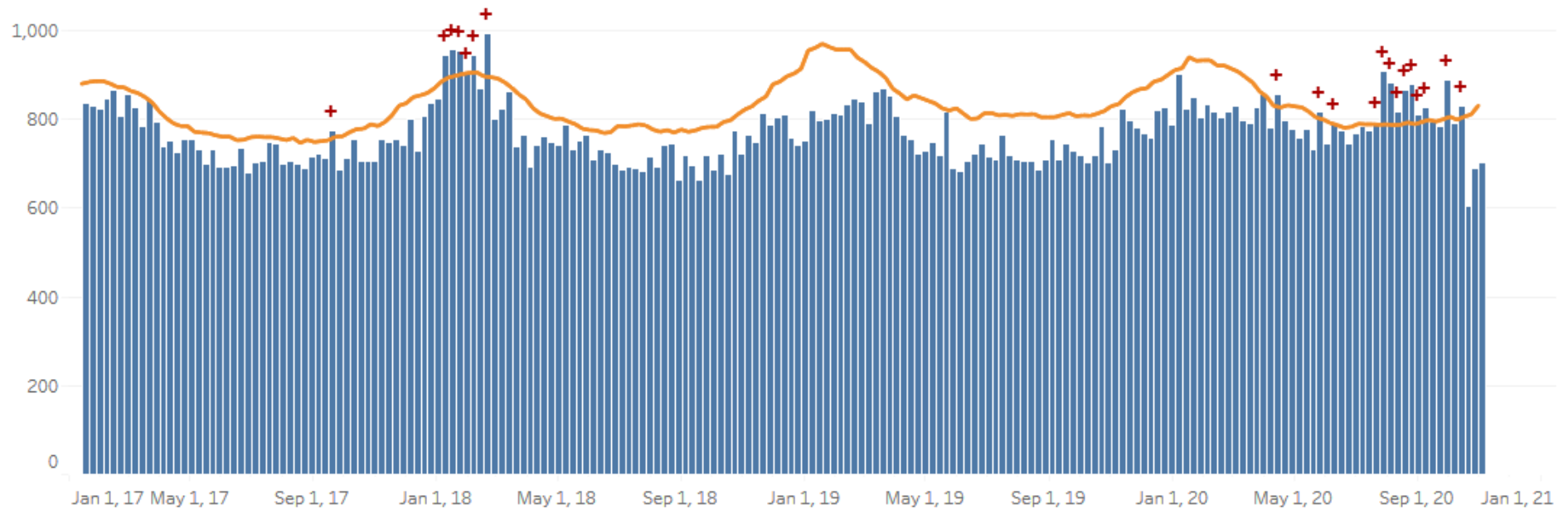


Figure notes: Contains data up to the week-ending date of October 31, 2020. Data in recent weeks are incomplete. Only 60% of the death records are submitted to NCHS within 1-days of the date of death, and completeness varies by jurisdiction.

Source: CDC, National Center for Health Statistics, [https://www.cdc.gov/nchs/nvss/vsrr/covid19/excess\\_deaths.htm#dashboard](https://www.cdc.gov/nchs/nvss/vsrr/covid19/excess_deaths.htm#dashboard), Nov 12, 2020 1:30pm

## COVID-19 LTC OR NURSING HOME ASSOCIATED CASES BY COUNTY

Status as of Midnight November 12, 2020

Data are preliminary and are subject to change as cases are processed.

County of Residence	Cases	Recovered**	Deaths
Adair	2	2	0
Alfalfa	1	1	0
Atoka	16	12	0
Beaver	9	2	0
Beckham	70	60	1
Blaine	18	16	0
Bryan	126	103	10
Caddo	96	79	12
Canadian	77	71	0
Carter	14	10	2
Cherokee	7	6	0
Choctaw	73	66	1
Cleveland	442	360	57
Coal	14	3	0
Comanche	51	34	5
Cotton	1	1	0
Craig	11	10	0
Creek	100	83	6
Custer	41	31	3
Delaware	108	77	16

County of Residence	Cases	Recovered**	Deaths
Dewey	3	2	1
Ellis	4	3	0
Garfield	126	110	8
Garvin	10	9	0
Grady	59	49	8
Grant	12	10	1
Greer	50	41	6
Harmon	11	11	0
Harper	2	2	0
Haskell	54	47	3
Hughes	9	9	0
Jackson	75	39	5
Jefferson	3	2	0
Johnston	3	2	0
Kay	52	45	1
Kingfisher	88	83	3
Kiowa	17	7	0
Latimer	15	12	1
Le Flore	181	167	12
Lincoln	100	78	20
Logan	16	16	0
Love	16	5	0
Major	7	5	1

<b>County of Residence</b>	<b>Cases</b>	<b>Recovered**</b>	<b>Deaths</b>
Marshall	3	3	0
Mayes	18	17	1
McClain	83	73	6
McCurtain	94	70	15
McIntosh	38	24	4
Murray	15	14	0
Muskogee	155	118	10
Noble	5	2	0
Nowata	44	44	0
Okfuskee	5	5	0
Oklahoma	1341	1136	114
Okmulgee	52	52	0
Osage	51	45	6
Ottawa	98	91	4
Pawnee	6	6	0
Payne	97	78	4
Pittsburg	143	126	15
Pontotoc	12	10	0
Pottawatomie	135	119	4
Pushmataha	39	35	4
Roger Mills	1	1	0
Rogers	288	202	39
Seminole	94	87	1

County of Residence	Cases	Recovered**	Deaths
Sequoyah	61	57	2
Stephens	53	41	0
Texas	28	25	2
Tillman	27	24	1
Tulsa	705	560	76
Wagoner	88	72	12
Washington	232	194	33
Washita	10	8	0
Woods	5	5	0
Woodward	52	47	3
	6268	5172	539

**\*\*Recovered:** *Currently not hospitalized or deceased and 14 days after onset/report.*



## COVID-19 LTC OR NURSING HOME ASSOCIATED CASES BY FACILITY

Status as of Midnight November 12, 2020

Data are preliminary and are subject to change as cases are processed.

Facility	Cases	Recovered**	Deaths
Aberdeen Heights Assisted Living Community	4	4	0
Accel at Crystal Park	15	9	6
Ada Care Center	3	2	0
Adams PARC Post Acute Recovery Center	93	79	12
Ambassador Manor Nursing Center	14	6	0
Anadarko Nursing & Rehab	30	25	1
Antlers Manor	1	1	0
Arbor House Assisted Living Center - Norman	4	3	1
Arbor House Assisted Living Center of Mustang	2	0	0
Arbor Village	6	3	0
Artesian Home	6	5	0
Ash Street Place	1	1	0
Ashbrook Village	4	4	0
Aspen Health and Rehab	5	5	0
Atoka Manor	10	8	0
Autumn Leaves of Edmond	34	30	1
Autumn Leaves of Southwest Oklahoma City	3	2	1
Autumn Leaves of Tulsa	1	1	0
Avondale Cottage of Pryor	1	1	0
Avonlea Cottage of Seminole	14	13	0

Facility	Cases	Recovered**	Deaths
Avonlea Cottage of Shawnee, LLC	9	8	0
Ayers Nursing Home	14	3	0
Baptist Village of Hugo	59	56	1
Baptist Village of Oklahoma City	31	25	3
Baptist Village of Owasso	10	10	0
Barnsdall Nursing Home	2	2	0
Bartlesville Assisted Living	15	13	0
Bartlesville Health and Rehabilitation Community	95	72	20
Beacon Ridge	4	4	0
Beadles Nursing Home	2	2	0
Beare Manor	1	1	0
Beaver County Nursing Home	9	2	0
Belfair of McAlester	4	4	0
Bell Avenue Nursing Center	18	13	1
Bellarose Senior Living	1	1	0
Bellevue Health and Rehabilitation	56	43	6
Betty Ann Nursing Center	1	0	0
Billings Fairchild Center, Inc	3	2	0
Binger Nursing and Rehabilitation	55	44	10
Blue Ridge Place	1	1	0
Boyce Manor Nursing Home	2	2	0
Bradford Village Healthcare Center: Nursing Home	13	8	1
Brentwood Extended Care & Rehab	4	3	0

Facility	Cases	Recovered**	Deaths
Broadway Manor Nursing Home	38	28	4
Broken Arrow Assisted Living	5	4	1
Broken Arrow Nursing Home, Inc.	15	12	0
Broken Bow Nursing Home	56	41	11
Brookdale Bartlesville North	18	15	3
Brookdale Bartlesville South	8	8	0
Brookdale Broken Arrow	10	8	2
Brookdale Cedar Ridge	4	4	0
Brookdale Chickasha	18	14	4
Brookdale Claremore	1	1	0
Brookdale Durant	26	21	1
Brookdale Edmond Santa Fe	1	1	0
Brookdale Muskogee	14	6	3
Brookdale Norman	1	1	0
Brookdale Stillwater	1	1	0
Brookdale Tulsa 71st and Sheridan	63	49	12
Brookdale Tulsa Midtown	4	1	0
Brookdale Tulsa South	4	0	0
Brookdale Village	2	2	0
Brookdale Weatherford	2	1	0
Brookridge Retirement Community	3	0	0
Brookside Nursing Center	1	0	0
Brookwood Skilled Nursing and Therapy	4	2	1

Facility	Cases	Recovered**	Deaths
Burford Manor	4	4	0
Capitol Hill Skilled Nursing and Therapy	46	39	7
Carnegie Nursing Home, Inc.	4	1	0
Cedar Creek Nursing Center	2	1	0
Cedar Crest Manor	2	2	0
Cedarcrest Care Center	46	37	6
Center of Family Love	5	5	0
Chandler Therapy & Living Center, LLC	53	43	9
Checotah Nursing Center	1	1	0
Cherokee County Nursing Center	3	3	0
Chickasha Nursing Center, Inc	3	3	0
Chisholm Trail Assisted Living	1	1	0
Choctaw Nation Nursing Home	36	32	4
Cimarron Nursing Center	13	11	1
Cimarron Pointe Care Center	5	1	0
Claremore Skilled Nursing and Therapy	5	5	0
Cleveland Manor Nursing & Rehab	2	2	0
Clinton Therapy & Living Center	1	1	0
Colonial Manor II	11	11	0
Colonial Manor Nursing Home	20	17	0
Colonial Park Manor, LLC	3	3	0
Colonial Terrace Care Center	2	1	0
Community Health Care of Gore	4	3	0

Facility	Cases	Recovered**	Deaths
Community Health Center	10	9	1
Copp's Residential Care, Inc	1	1	0
Cordell Christian	3	3	0
Corn Heritage Village and Rehab	8	8	0
Corn Heritage Village and Rehab of Weatherford	21	17	2
Cottonwood Creek Skilled Nursing & Therapy	1	1	0
Country Club Care	6	6	0
Country Club at Woodland Hills	7	6	0
Countryside Estates	2	2	0
Countrywood Assisted Living and Memory Care	4	3	0
Covenant Living at Inverness	7	6	1
Coweta Manor Nursing Home	63	52	11
Creekside Village	2	2	0
Cross Timbers Nursing and Rehabilitation	42	40	0
Crossroads Residential Care	7	3	1
Dr W F & Mada Dunaway Manor	11	11	0
Drumright Nursing Home	1	1	0
Eastgate Village Retirement Center	50	45	2
Eastwood Manor	2	2	0
Edith Kassanavoid Gordon Assisted Living Center	1	1	0
Edmond Healthcare Center	45	36	8
El Reno Post-Acute Rehabilitation Center	1	1	0
Elk City Nursing Center	4	3	0

Facility	Cases	Recovered**	Deaths
Elk Crossing	14	11	0
Elkwood Assisted Living and Memory Care	24	18	1
Elmbrook Home	1	1	0
Elmwood Manor Nursing Home	11	11	0
Emerald Care Center Claremore	88	75	6
Emerald Care Center Midwest	22	18	0
Emerald Care Center Southwest LLC	49	46	2
Emerald Care Center Tulsa	9	6	0
Emerald Square Assisted Living Community	3	3	0
English Village Manor	18	7	0
Enid Senior Care	3	2	0
Epworth Villa Health Services	17	16	1
Eufaula Manor Nursing and Rehabilitation Center	16	12	1
Fairfax Manor	2	2	0
Fairmont Skilled Nursing and Therapy	76	72	4
Fairview Fellowship Home for Senior Citizens, Inc	4	3	0
Family Care Center of Fairland	2	2	0
Family Care Center of Kingston	2	2	0
Featherstone Assisted Living Community of Moore	36	32	4
First Shamrock Care Center	3	3	0
Forest Hills Care and Rehabilitation Center	3	3	0
Forrest Manor Nursing Center	6	6	0
Fort Gibson Nursing Home	2	2	0

Facility	Cases	Recovered**	Deaths
Fountain View Manor, Inc	4	4	0
FountainBrook Assisted Living and Memory Support	5	5	0
Four Seasons Rehabilitation & Care	5	5	0
Franciscan Villa	96	70	11
Garland Road Nursing and Rehab Center	4	3	0
Gatesway Foundation, Inc	3	3	0
Glade Avenue Assisted Living	1	1	0
Glade Avenue South	6	2	2
Glenhaven Retirement Village	18	16	2
Glenwood Healthcare	10	8	2
Golden Oaks Village	27	21	5
Grace Living Center - Clinton	2	1	0
Grace Living Center - Jenks	13	8	3
Grace Living Center - Norman	86	73	12
Gracewood Health and Rehab	41	31	6
Grand Lake Villa	16	12	0
Grandwood Assisted Living, LC	9	2	0
Green Country Care Center	19	16	3
Green Country Village Assisted Living Center	2	2	0
Greenbrier Nursing Home	9	9	0
Greenbrier Village Residential Living, LLC	1	1	0
Gregston Nursing Home, Inc.	4	3	0
Grove Nursing Center	82	66	16

Facility	Cases	Recovered**	Deaths
Harrah Nursing Center	14	11	1
Haskell County Nursing Center, Inc	51	45	3
Hays House	31	31	0
Heartsworth Center for Nursing and Rehabilitation	8	8	0
Heartsworth House Assisted Living	1	1	0
Heatheridge Residential Care Center	1	1	0
Heavener Nursing & Rehab	51	42	7
Hennessey Nursing & Rehab	73	71	2
Henryetta Community Skilled Healthcare & Rehab	2	2	0
Hensley Nursing & Rehab	27	24	1
Heritage Assisted Living	3	3	0
Heritage Community	17	14	2
Heritage Hills Living & Rehabilitation Center	1	1	0
Heritage Manor	29	28	1
Heritage Park	1	0	0
Heritage Villa Nursing Center	10	10	0
Heritage Village Nursing Home	3	3	0
Heritage at Brandon Place Health and Rehabilitation	42	35	4
Highland Park Health Care	2	2	0
Hill Nursing Home, Inc	15	13	1
Hillcrest Manor Nursing Center	1	1	0
Hillcrest Nursing Center	19	18	1
Holiday Heights Nursing Home	1	1	0



Facility	Cases	Recovered**	Deaths
Homestead of Bethany, LLC	8	7	0
Homestead of Hugo	11	7	0
Homestead of Owasso	1	1	0
Ignite Medical Resort Norman, LLC	44	33	6
Ignite Medical Resort OKC	91	80	11
Iris Memory Care of Edmond	6	6	0
John H. Johnson Care Suites	3	3	0
Kenwood Manor	18	16	1
Lake Country Nursing Center	16	5	0
Lake Drive Care and Rehabilitation Center	39	39	0
Lakeland Manor, Inc	9	7	1
Lakeview Nursing & Rehab	17	12	2
Landmark of Midwest City Rehabilitation and Nursing	41	34	4
Legacy Village of Stillwater	8	1	0
Legend at 71st St	8	5	0
Legend at Council Road	2	2	0
Legend at Mingo Road	3	3	0
Legend at Rivendell	52	45	4
Leisure Village Health Care Center	9	9	0
Lexington Nursing Home	8	6	0
Lindsay Nursing & Rehab	2	2	0
Linwood Village Nursing & Retirement Apts	13	13	0
Lyndale at Edmond	1	1	0

Facility	Cases	Recovered**	Deaths
Magnolia Creek Skilled Nursing and Therapy	33	13	3
Mangum Skilled Nursing and Therapy	54	45	6
Maple Lawn Nursing and Rehabilitation	19	16	1
Maplewood Care Center	7	7	0
McAlester Nursing & Rehab	14	12	1
McCall's Chapel School, Inc #11	2	2	0
McCall's Chapel School, Inc #13	1	1	0
McCall's Chapel School, Inc #4	1	1	0
McCall's Chapel School, Inc #7	1	1	0
McCall's Chapel School, Inc #8	1	1	0
McCall's Chapel School, Inc #9	1	1	0
McMahon-Tomlinson Nursing Center	11	9	1
Meadow Brook Residential Care	26	25	0
Meadowbrook Nursing Center	1	1	0
Meadowlake Estates	76	72	3
Meadowlakes Retirement Village	1	1	0
Medical Park West Rehabilitation	6	1	2
Medicallodges Dewey	3	3	0
Meeker Nursing Center	34	23	10
Memorial Heights Nursing Center	24	17	3
Memorial Nursing Center	24	22	1
Memory Care Center at Emerald	4	3	0
Meridian Nursing Home	3	3	0

Facility	Cases	Recovered**	Deaths
Miami Nursing Center, LLC	71	66	2
Mid-Del Skilled Nursing and Therapy	17	10	0
Mitchell Manor	51	49	2
Monroe Manor	3	1	0
Montereau, Inc Assisted Living	3	3	0
Montereau, Inc LTC/SNF	3	3	0
Montevista Rehabilitation and Skilled Care	6	2	0
Mooreland Heritage Manor	20	19	0
Muskogee Nursing Center	12	5	0
New Hope Retirement & Care Center	1	1	0
Noble Health Care Center	8	8	0
North County Center for Nursing and Rehabilitation	1	1	0
North Winds Living Center	1	1	0
Northhaven Place	10	8	1
Northwest Nursing Center	1	1	0
Oak Hills Living Center	12	11	1
Oakridge Home	1	1	0
Oakridge Nursing Center	53	44	4
Okemah Care Center	1	1	0
Oklahoma Methodist Manor	17	14	2
Oklahoma Veterans Center, Claremore Division	192	120	35
Oklahoma Veterans Center, Clinton Division	7	5	0
Oklahoma Veterans Center, Lawton-Ft. Sill Division	9	7	0

Facility	Cases	Recovered**	Deaths
Oklahoma Veterans Center, Norman Division	73	48	18
Oklahoma Veterans Center, Sulfur Division	10	10	0
Oklahoma Veterans Center, Talihina Division	22	17	3
Osage Nursing Home, LLC	4	4	0
Oxford Glen at Owasso	3	3	0
Perry Green Valley Nursing Center, LLC	1	0	0
Pleasant Valley Health Care Center	5	5	0
Pocola Health & Rehab	56	53	3
Ponca City Nursing and Rehabilitation	14	12	0
Prairie House Assisted Living & Memory Care	3	3	0
Primrose Retirement Community of Shawnee	11	9	0
Primrose Retirement Community of Stillwater	2	2	0
Purcell Care Center, LLC	10	8	1
Quail Creek Senior Living	22	18	4
Quail Ridge Living Center, Inc (Colcord, OK)	6	5	0
Quail Ridge Senior Living	24	17	6
Quinton Manor Nursing Home	8	8	0
Rainbow Health Care Community: Nursing Home	64	56	4
Rambling Oaks (Norman)	22	17	2
Rambling Oaks Courtyard Assisted Living & Memory Care	1	1	0
Ranch Terrace Nursing Home	6	5	0
Ranchwood Nursing Center	28	27	0
Reliant Living Center	8	1	0

Facility	Cases	Recovered**	Deaths
Reliant Living Center of Del City	1	0	0
River Oaks Skilled Nursing	2	1	0
Riverside Health Services LLC	2	2	0
Robert M Greer Center	1	1	0
Rolling Hills Care Center	7	1	0
Ruth Wilson Hurley Manor	16	2	0
Saint Simeons Episcopal Home	17	17	0
Sand Springs Nursing and Rehabilitation	4	4	0
Seiling Nursing Center	3	2	1
Seminole Care and Rehabilitation Center	73	67	1
Seminole Pioneer Nursing Home	1	1	0
Senior Suites Healthcare	6	5	1
Senior Village	3	2	0
Sequoyah East Nursing Center, LLC	13	13	0
Sequoyah Manor	36	34	1
Sequoyah Pointe Living Center	3	3	0
Shady Rest Care Center	2	2	0
Shanoan Springs Nursing and Rehabilitation	2	1	0
Share Medical Center	2	2	0
Shattuck Nursing Center	4	3	0
Shawn Manor Nursing Home	1	1	0
Shawnee Colonial Estates Nursing Home	63	54	4
Sienna Extended Care & Rehab	34	33	1

<b>Facility</b>	<b>Cases</b>	<b>Recovered**</b>	<b>Deaths</b>
Skiatook Nursing Home	40	34	6
South Park East	44	39	1
South Pointe Rehabilitation and Care Center	170	148	13
Southbrook Healthcare, Inc.	3	2	1
Southern Hills Rehabilitation Center	67	56	10
Southern Oaks Care Center	1	1	0
Southern Plaza Assisted Living and Memory Care	25	24	0
Southern Pointe Living Center	40	31	5
Spanish Cove Housing Authority	6	6	0
Spiro Nursing Home, Inc.	34	34	0
St. Ann's Skilled Nursing and Therapy	73	60	12
St. Katharine Drexel Retirement Center	6	6	0
Storey Oaks	45	37	0
Stroud Health Care Center South	2	2	0
Summers Healthcare, LLC	4	4	0
Sunset Estates of Purcell	67	62	4
Tamarack Retirement Center	18	14	2
Teal Creek Assisted Living & Memory Care	3	3	0
Tealridge Assisted Living	6	6	0
Ten Oaks Place	1	1	0
The Arbors Assisted Living Center	7	6	0
The Chateau	3	3	0
The Commons	37	37	0

Facility	Cases	Recovered**	Deaths
The Commons - AL	1	1	0
The Cottage Extended Care	9	8	1
The Courtyards at Claremore Assisted Living	4	3	0
The Courtyards at Magnolia Creek	6	6	0
The Fountains at Canterbury Health Center	11	10	0
The Gardens	1	1	0
The Gardens at Rivermont	1	1	0
The Golden Rule Home	42	39	0
The Grand at Bethany Skilled Nursing and Therapy	1	1	0
The Health Center at Concordia	21	19	1
The Health Center at Concordia ALC	6	6	0
The Highlands at Owasso	14	11	1
The King's Daughters & Sons Nursing Home	10	10	0
The Lakes	3	3	0
The Linden at Stonehaven Square	8	4	4
The Living Center	27	20	3
The Mansion at Waterford	20	18	2
The Neighborhoods at Baptist Village of Elk City	6	6	0
The Oaks Healthcare Center	2	2	0
The Parke Assisted Living	3	3	0
The Regency Skilled Nursing and Therapy	2	2	0
The Renaissance of Stillwater - Assisted Living	2	1	0
The Springs Skilled Nursing and Therapy	26	18	1

Facility	Cases	Recovered**	Deaths
The Timbers Skilled Nursing and Therapy	30	27	3
The Veraden	1	1	0
The Villages at Southern Hills	67	55	10
The Wilshire Skilled Nursing and Therapy	3	3	0
The Wolfe Living Center at Summit Ridge	11	8	1
Touchmark at Coffee Creek	1	1	0
Town of Vici Nursing Home	2	2	0
Tulsa Assisted Living and Memory Care	2	2	0
Tulsa Nursing Center	29	25	1
Tuscany Village Nursing Center	19	17	1
Tuttle Care Center	22	20	2
University Park Skilled Nursing & Therapy	2	2	0
University Village	18	16	0
Via Christi Village Ponca City	6	5	0
Vian Nursing & Rehab, LLC	8	6	1
Victorian Estates	2	2	0
Village Health Care Center	11	11	0
Village Lodge of Ardmore Village	1	1	0
Village at Oakwood	4	3	1
Village on the Park	37	30	6
Wagoner Health & Rehab	6	6	0
Walnut Grove Living Center	65	52	12
Warr Acres Nursing Center	16	10	1



Facility	Cases	Recovered**	Deaths
Washita Valley Living Center	3	2	0
Weatherwood Assisted Living and Memory Care	2	1	0
Wellington Parke, LLC	1	1	0
West Wind Assisted Living	8	2	0
Westbrook Gardens	4	2	1
Westbrook Healthcare, Inc	2	1	0
Westhaven Nursing Home	74	64	2
Westview Cottages	4	4	0
Wildewood Skilled Nursing and Therapy	3	3	0
Wilkins Health and Rehabilitation Community	11	10	0
Willow Haven Nursing Home	26	22	1
Willow Park Health Care Center	15	8	4
Willowood at Mustang Assisted Living and Memory Care	1	1	0
Windridge Nursing and Rehabilitation Center	14	11	2
Windsor Hills Nursing Center	1	1	0
Woodland Park Home, Inc	5	4	0
Woodlands Skilled Nursing & Therapy	1	1	0
Woodward Skilled Nursing and Therapy	31	27	3
York Manor Nursing Home	2	2	0
Zarrow Pointe	6	6	0
<b>Total</b>	<b>6268</b>	<b>5172</b>	<b>539</b>

**\*\*Recovered:** Currently not hospitalized or deceased and 14 days after onset/report.

## **ACKNOWLEDGEMENT**

The weekly report is made by possible through the efforts of county and city public health and healthcare professionals.

---

## **NOTES**

Every effort is made to ensure accuracy and the data is up-to-date for the time period reported.

For daily updates on COVID-19, please visit <https://coronavirus.health.ok.gov/>

---

## **DISCLAIMER**

The purpose of publishing aggregated statistical COVID-19 data through the OSDH Dashboard, the Executive Order Report, and the Weekly Epidemiology and Surveillance Report is to support the needs of the general public in receiving important and necessary information regarding the state of the health and safety of the citizens of Oklahoma. These resources may be used only for statistical purposes and may not be used in any way that would determine the identity of any reported cases.