

OKLAHOMA COVID-19 WEEKLY REPORT

Weekly Epidemiology and Surveillance Report
November 27 – December 3, 2020



PURPOSE To provide up-to-date weekly epidemiological data on COVID-19 in Oklahoma.

SNAPSHOT

	Nov 27 – Dec 3	Change ¹	Total
Cases	16,481	-29.0%	204,048
Recovered cases ²	21,200	2.4%	174,169
Deaths	132	13.8%	1,836

1. Change from the week of Nov 20-Nov 26, 2020.
2. Currently not hospitalized or deceased and 14 days after onset/report.

KEY POINTS

- **16,481** cases were reported in the past week
29.0% decrease from the week before (Nov 20 - 26).
- **132** deaths were reported in the past week
13.8% increase from the week before (Nov 20 - 26).
- **12,773 (6.3%)** cases have been hospitalized
- **2,199,782** specimens have been tested in total

CASES		DEATHS	
Persons aged 50 and over	Females	Persons aged 50 and over	Males
33%	53%	96%	56%
of <u>cases</u>	of <u>cases</u>	of <u>deaths</u>	of <u>deaths</u>

The average age of cases was **41** years.

The youngest case was **less than a year old** and the oldest case was **100+ years**.

The average age of individuals who died was **75** years.

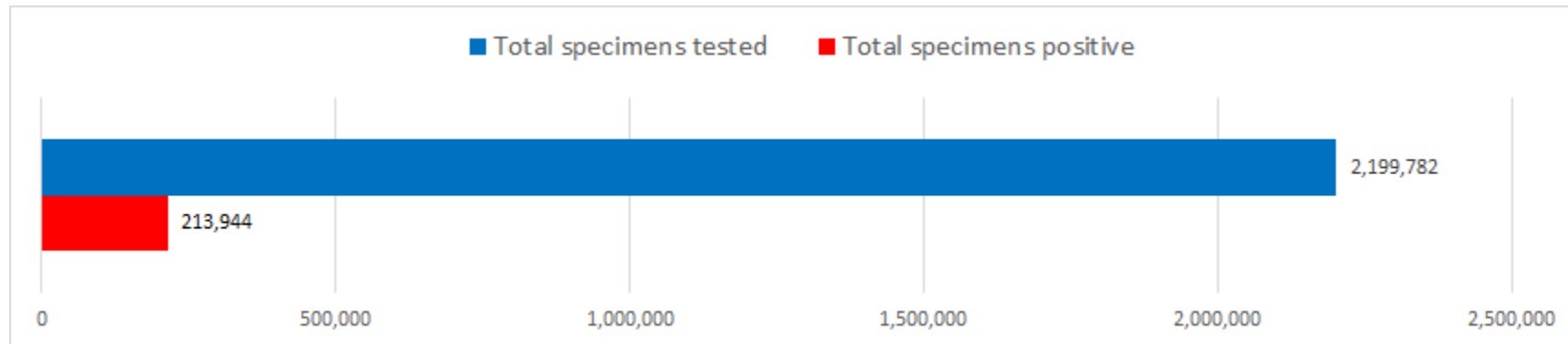
The youngest individual to die from COVID-19 was **less than 15 years** and the oldest was **100+ years**.

DISEASE TESTING

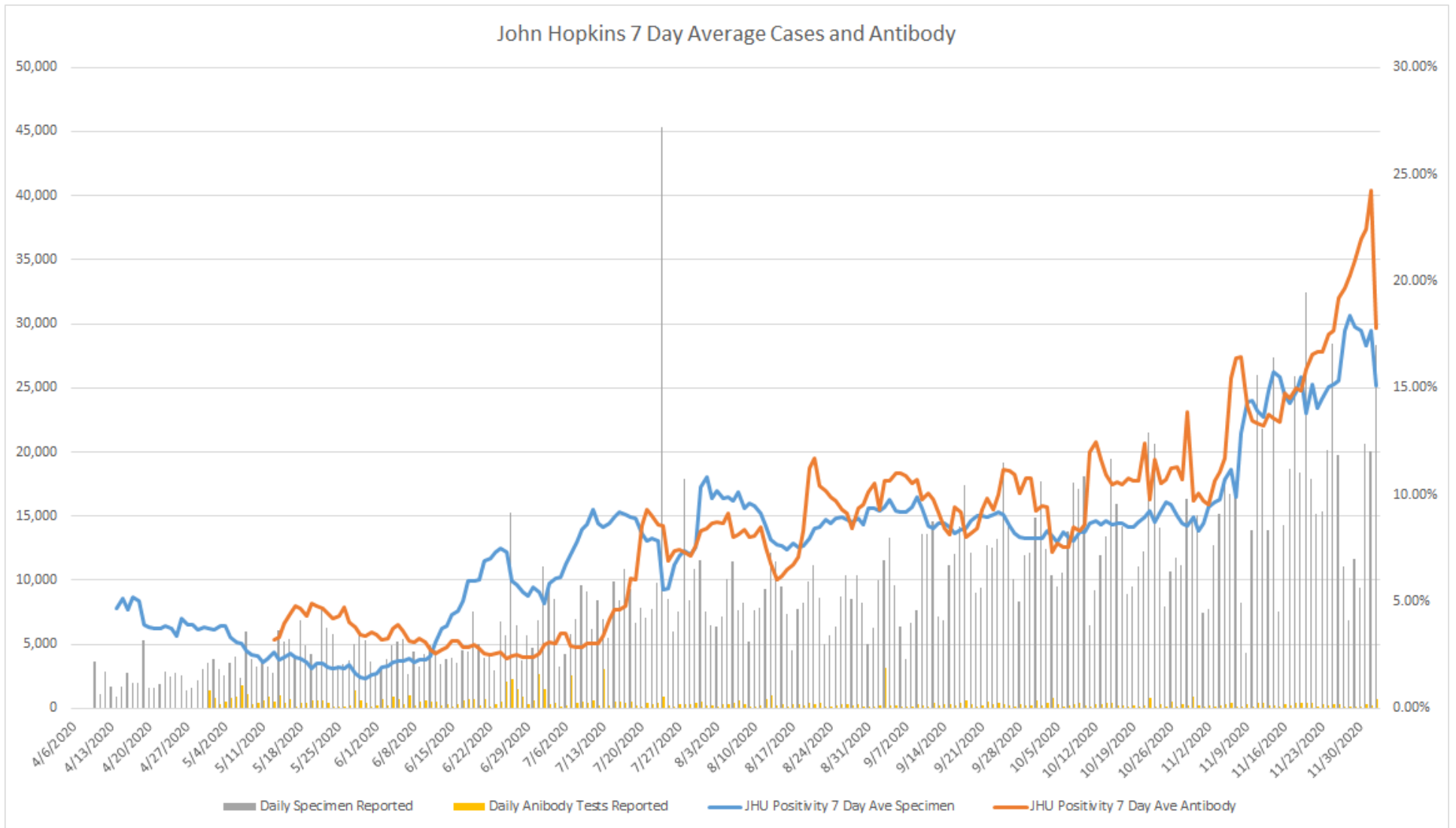
	Nov 27 – Dec 3	Total Number
Specimens tested, count	108,055	2,199,782
Specimens positive, count	16,032	213,944
Percent positive	14.8%	9.7%
Johns Hopkins positivity %	15.1%	9.3%
Antibody tested, count	1,634	98,949
Antibody positive, count	291	6,539
Antibody percent positive	17.8%	6.6%

Source: This data is obtained outside of individual case data reported to the OSDH Acute Disease Service and comes from a daily survey of state and private laboratories and facilities that are performing Covid-19 testing.

Note: Specimen counts may not reflect unique individuals.



JOHNS HOPKINS 7 DAY AVERAGE POSITIVITY RATE FOR SPECIMEN AND ANTIBODY CASES

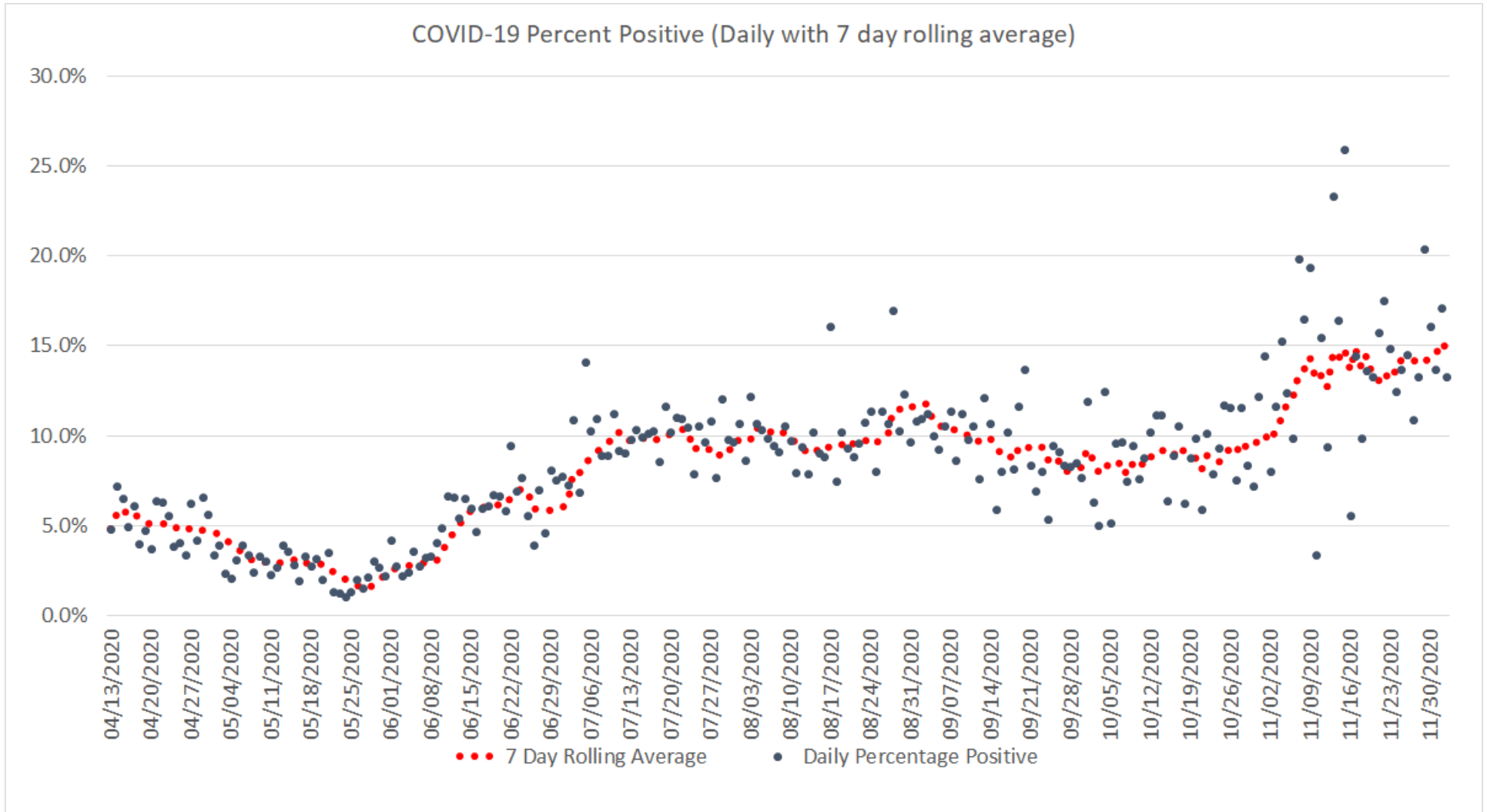


Oklahoma, December 3, 2020

Source: This data is obtained outside of individual case data reported to the OSDH Acute Disease Service and comes from a daily survey of state and private laboratories and facilities that are performing Covid-19 testing.

Note: On July 24, 2020 fourteen labs began reporting to OSDH that had been testing since May 18, 2020.

COVID-19 TESTS DAILY PERCENT POSITIVE WITH 7 DAY ROLLING AVERAGE



Oklahoma, December 03, 2020

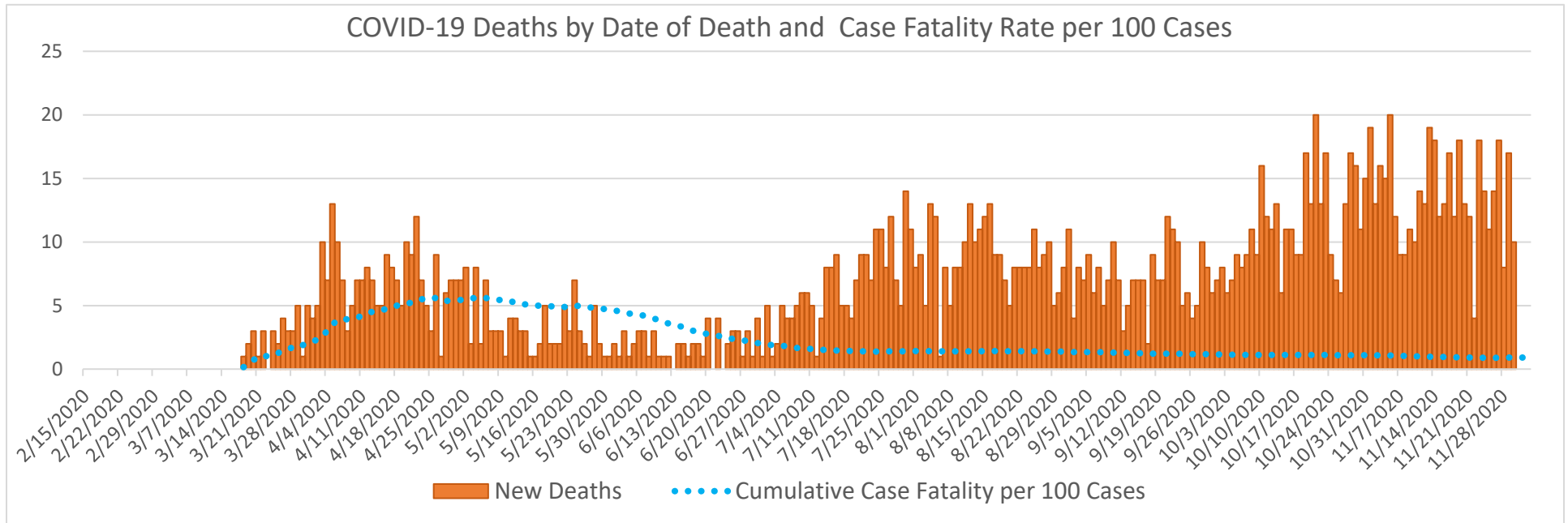
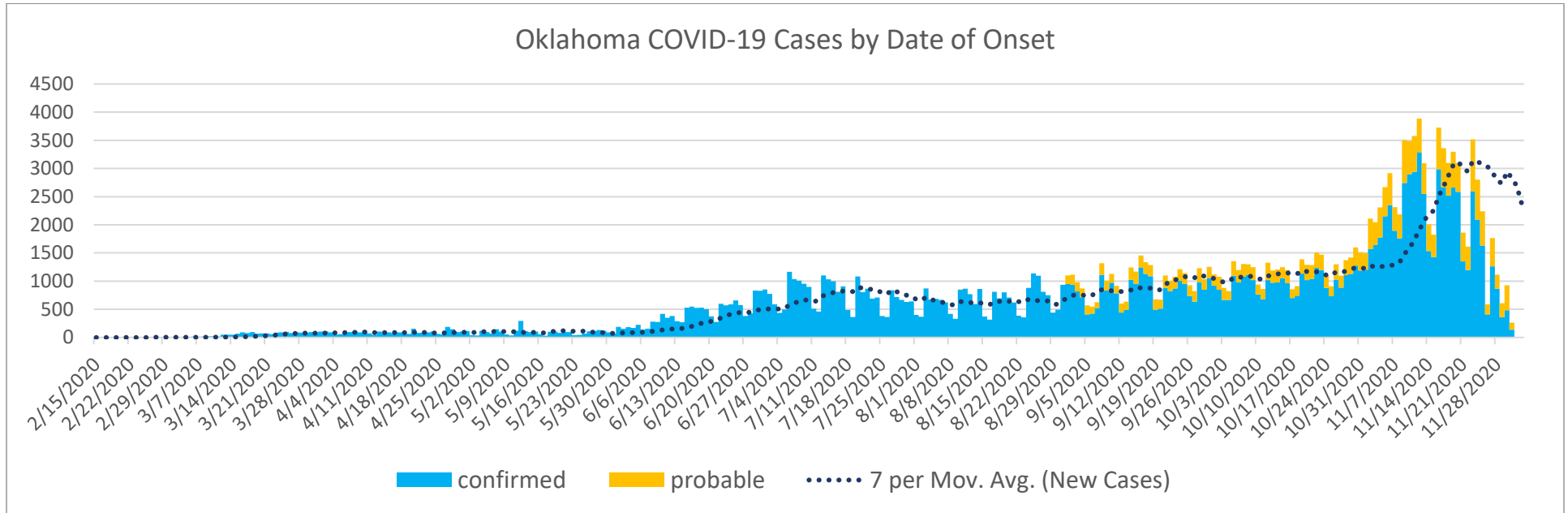
Source: This data is obtained outside of individual case data reported to the OSDH Acute Disease Service and comes from a daily survey of state and private laboratories and facilities that are performing Covid-19 testing.

EPIDEMIOLOGICAL ESTIMATES

	Estimate	Notes / Interpretation
Cases		
Cumulative incidence*	5,174.8 (per 100,000 persons)	From March 7 to December 3, there were about 5,174 (per 100,000) new cases of COVID-19 in Oklahoma.
Absolute change in cumulative incidence from previous week	-171.1 (per 100,000 persons)	Compared to November 20 – November 26 there were 171 (per 100,000) fewer cases of COVID-19 reported in Oklahoma during the past week (Nov 27– Dec 3).
Disease Severity		
Case-fatality risk (crude)	0.9%	The estimate is not adjusted for the lag time from reporting to death (i.e., delay between the time someone dies and the time their death is reported). The fatality estimate could be lower due to cases that were undiagnosed or had milder symptoms.
Cumulative Hospitalization rate (overall)	323.9 (per 100,000 persons)	About 323 people per 100,000 have ever been hospitalized for COVID-19 during this outbreak.

CASES AND DEATHS

New cases (by date of onset) and new deaths (by date of death) of COVID-19 in Oklahoma, February–December 2020



Please note the different axes for new cases (top—from 0 to 4,500 for new cases) and new deaths (bottom—from 0 to 25 for new deaths). Additionally, a 7 day lag has been applied to the trend line based on information collected to-date for 7/19 and 7/25 where within 7 days of onset date approximately 80% of the cases had been reported.

DEMOGRAPHIC INFORMATION AS OF DECEMBER 3, 2020

		Cases count (%) ¹		Deaths count (%) ¹		Cumulative Incidence Rate ²	Cumulative Mortality Rate ²
Oklahoma		204,048		1836		5,174.8	46.6
Gender							
	Male	96,805	(47.4)	800	(43.6)	4,956.6	41.0
	Female	107,243	(52.6)	1036	(56.4)	5,389.0	52.1
	Unknown	0	(0.0)	0	(0.0)		
Age group							
	Under 1- 4	3,701	(1.8)	0	(0.0)	1,421.1	0.0
	5-14	12,774	(6.3)	1	(0.1)	2,374.8	0.2
	15-24	37,875	(18.6)	3	(0.2)	7,042.2	0.6
	25-34	34,098	(16.7)	13	(0.7)	6,277.0	2.4
	35-44	32,781	(16.1)	27	(1.5)	6,684.7	5.5
	45-54	28,752	(14.1)	79	(4.3)	6,246.2	17.2
	55-64	24,754	(12.1)	229	(12.5)	5,016.6	46.4
	65-74	16,489	(8.1)	474	(25.8)	4,597.6	132.2
	75-84	8,746	(4.3)	516	(28.1)	4,659.3	274.9
	85+	4,077	(2.0)	494	(26.9)	5,570.0	674.9
	Unknown	1	(0.0)				
Race							
	American Indian or Alaska Native	19,327	(9.5)	158	(8.6)	6,291.7	51.4
	Asian or Pacific Islander	4,346	(2.1)	30	(1.6)	4,907.8	33.9
	Black or African American	12,365	(6.1)	111	(6.0)	4,298.2	38.6
	Multiracial/Other	7,238	(3.5)	59	(3.2)	1,749.3	14.3
	White	116,890	(57.3)	1322	(72.0)	4,107.3	46.5
	Unknown	43,882	(21.5)	156	(8.5)		
Ethnicity							
	Hispanic or Latino	25,674	(12.6)	105	(5.7)	5,983.5	24.5
	Not Hispanic or Latino	126,653	(62.1)	1497	(81.5)	3,604.2	42.6
	Unknown	51,721	(25.3)	234	(12.7)		

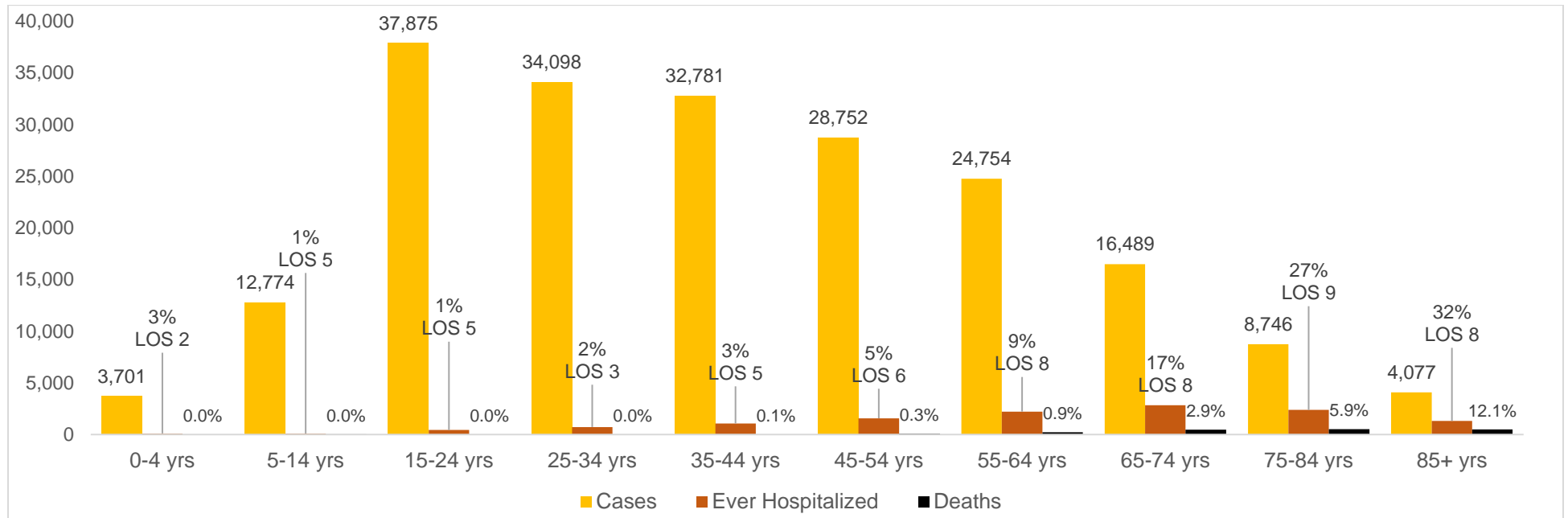
1. Percentages may not add up to 100 due to rounding.

2. Rate per 100,000 population

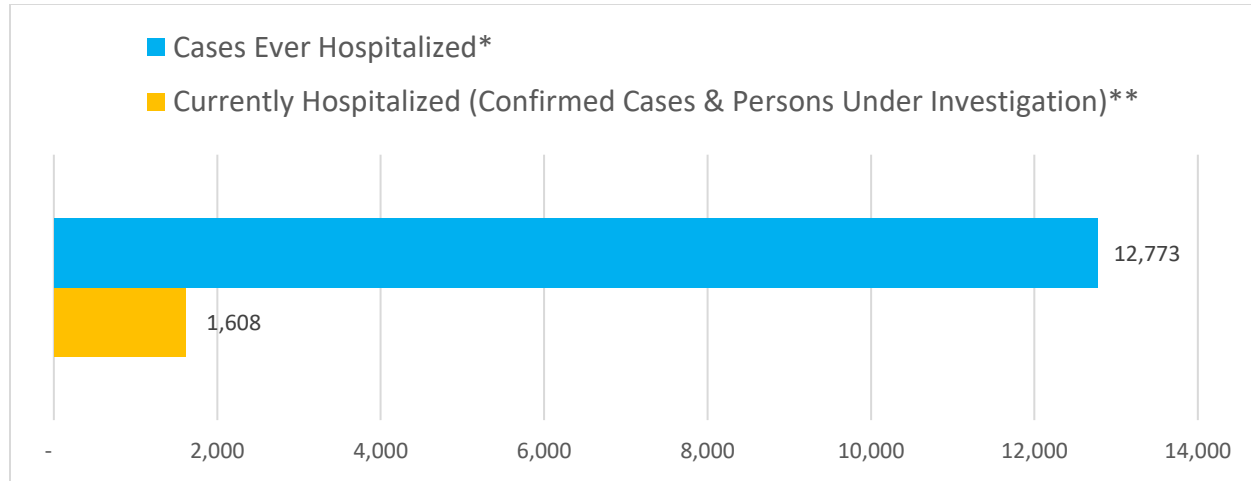
AGE DISTRIBUTION OF NEW CASES/DEATHS FROM NOVEMBER 27- DECEMBER 3

Age group	New Cases	Percentage	New Deaths	Percentage
Under 1- 4	312	1.9%	0	0.0%
5-14	1,066	6.5%	0	0.0%
15-24	2,570	15.6%	1	0.8%
25-34	2,696	16.4%	1	0.8%
35-44	2,689	16.3%	1	0.8%
45-54	2,373	14.4%	4	3.0%
55-64	2,167	13.1%	18	13.6%
65-74	1,537	9.3%	32	24.2%
75-84	721	4.4%	43	32.6%
85+	350	2.1%	32	24.2%

CUMULATIVE CASES, PERCENT HOSPITALIZED, AVERAGE LENGTH OF STAY (OCT CASES) AND DEATHS BY AGE GROUP



HOSPITALIZATIONS



12,773 Ever Hospitalized Cases (includes discharged, deceased, currently hospitalized and recovered).

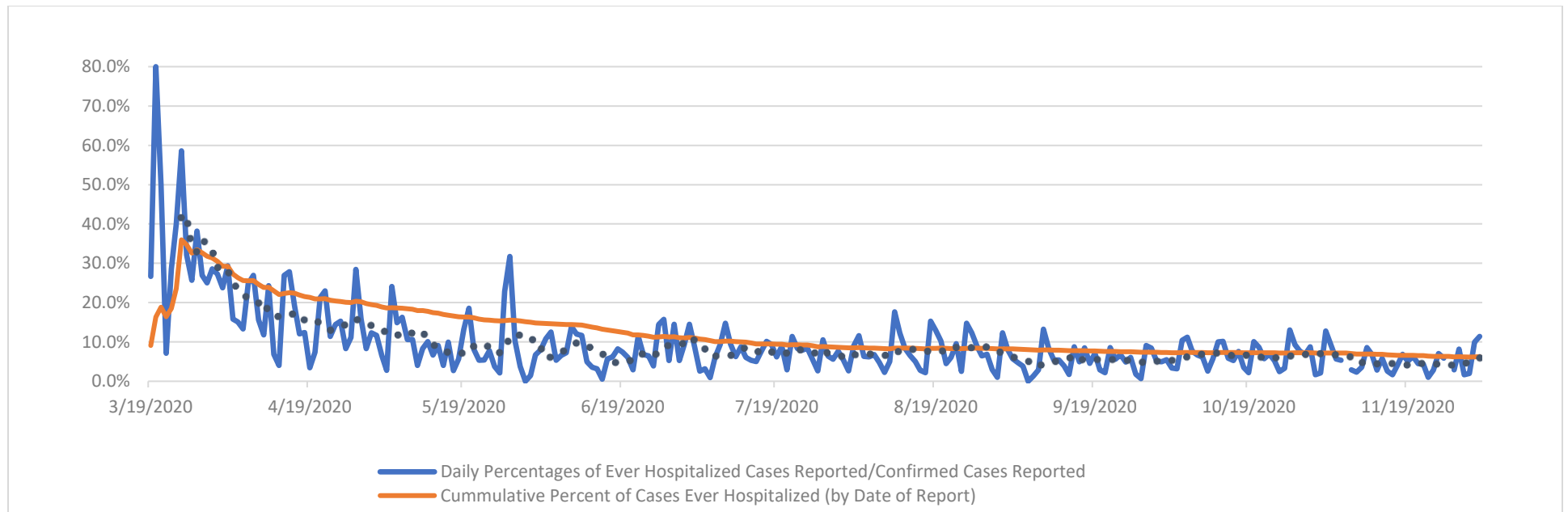
Average age of cases hospitalized: **61.8**

Average age of cases not hospitalized: **39.1**

*Ever hospitalized includes discharged, deceased, currently hospitalized and recovered as of 12/3/2020.

**Source OSDH Beds Survey. Note, facility response rate of 96% on 12/3/2020. This total reflects all cases and person's under investigation as reported by Acute, Focus, Rehabilitation and Tribal facilities that responded to the survey on this date.

PERCENT OF CASES EVER HOSPITALIZED (by date of report)



Source: OSDH Acute Disease Registry

.....

AT-RISK SETTINGS HEALTHCARE & NON-HEALTHCARE

Status	Non-Healthcare Worker count (%)*	Healthcare Worker count (%)*
Active	27,338 (14.0)	705 (7.7)
Deceased	1,818 (0.9)	18 (0.2)
Recovered	165,763 (85.0)	8,406 (92.1)
Total	194,919	9,129

CORRECTIONAL FACILITIES¹

	Cases (%)*	Deaths (%)*
Inmates	3,834 (80.1)	29 (93.5)
Staff	951 (19.9)	2 (6.5)
Total	4,785	31

¹Correctional facilities include prisons, jails, and juvenile detention center

LONG TERM CARE (LTC) FACILITIES²

	Cases (%)*	Deaths (%)*
Residents	4,869 (64.5)	629 (99.4)
Staff	2,679 (35.5)	4 (0.6)
Total	7,748	633

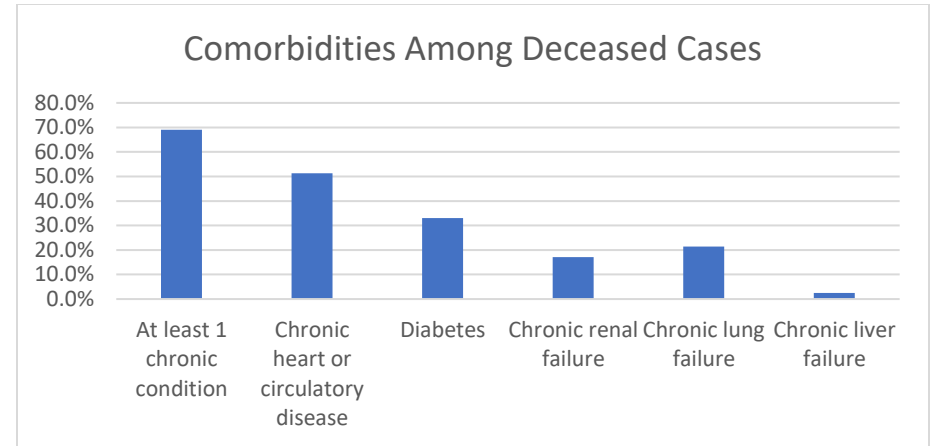
²Long term care facility or nursing home.

Detailed counts of LTC Cases by County and Facility can be found at the end of this report.

COMORBIDITIES AMONG DECEASED CASES

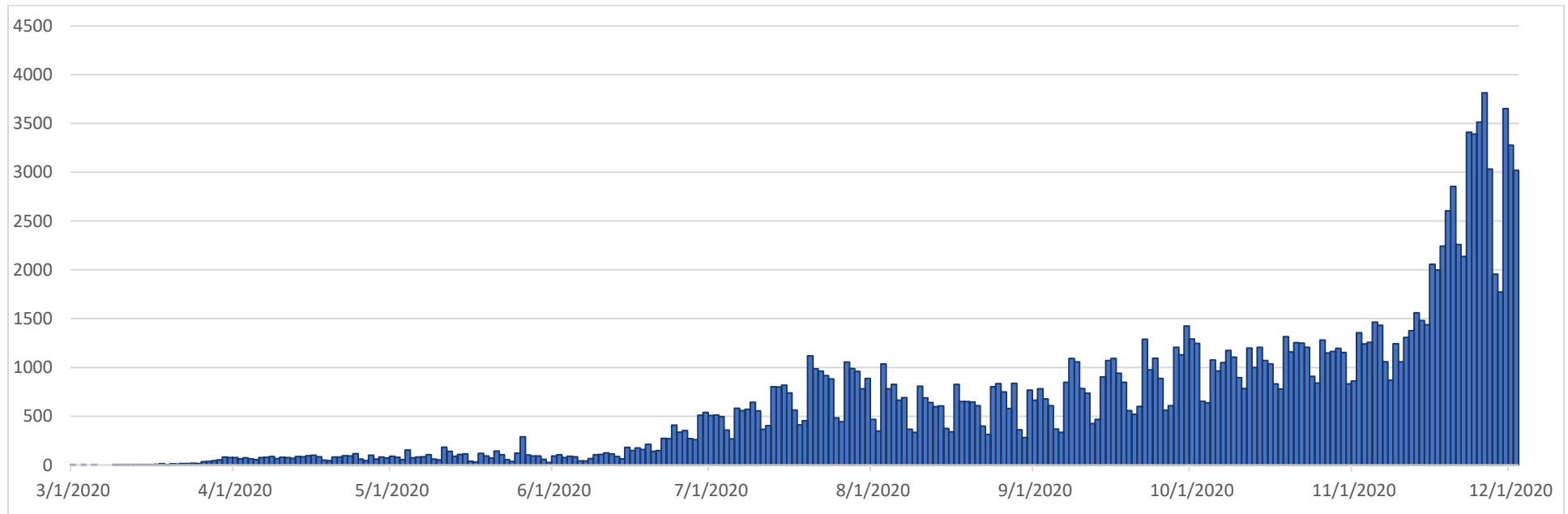
Comorbidities	Number (%)
At least 1 chronic condition ³	1,268 (69.1)
Chronic heart or circulatory disease	943 (51.4)
Diabetes	607 (33.1)
Chronic renal failure	315 (17.2)
Chronic lung failure	393 (21.4)
Chronic liver failure	46 (2.5)

³Chronic conditions include; chronic heart or circulatory disease, diabetes, chronic lung failure, chronic liver failure and renal failure.



RECOVERED CASES

Distribution of recovered cases of COVID-19, March – December 2020, Oklahoma



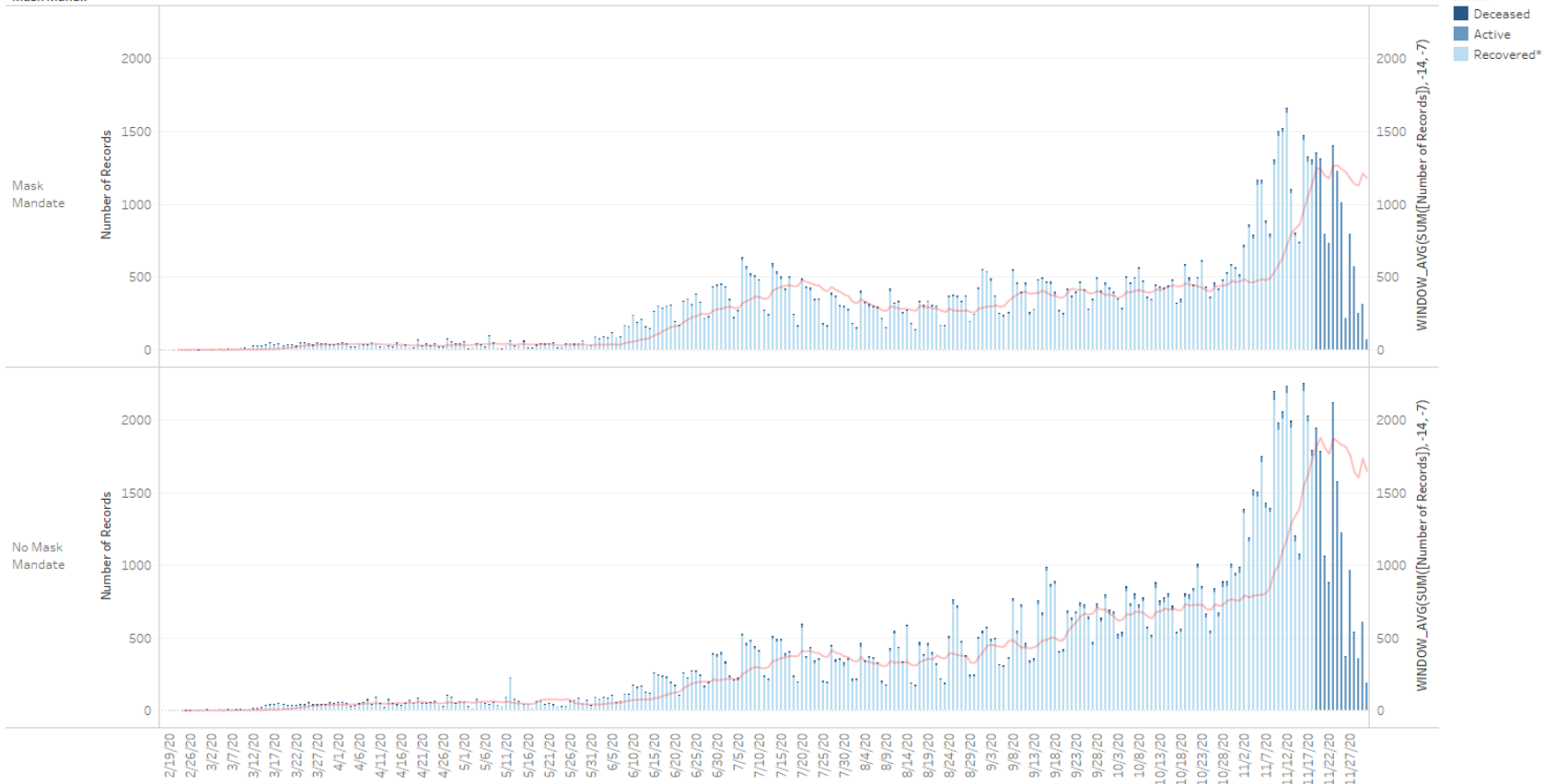
Note: A recovered case is an individual currently not hospitalized or deceased AND 14 days after the onset of symptoms

IMPACT OF MASK MANDATES

	7 Day Average Number of Cases by date of Onset* with 7 day lag						Percent Change 8/1 to 12/1	Percent Change 9/1 to 12/1
	1-Aug	1-Sep	1-Oct	1-Nov	15-Nov	1-Dec		
Mask	330	291	379	472	862	1,181	258%	306%
per 100,000 Pop'l	20.5	18.1	23.5	29.3	53.5	73.3		
No Mask	343	407	665	760	1,395	1,649	381%	305%
per 100,000 Pop'l	14.6	17.4	28.4	32.4	59.5	70.3		
Mask vs No Mask Incidence difference	40%	4%	-17%	-10%	-10%	4%		

Status by Date of Onset as of 12/3/2020

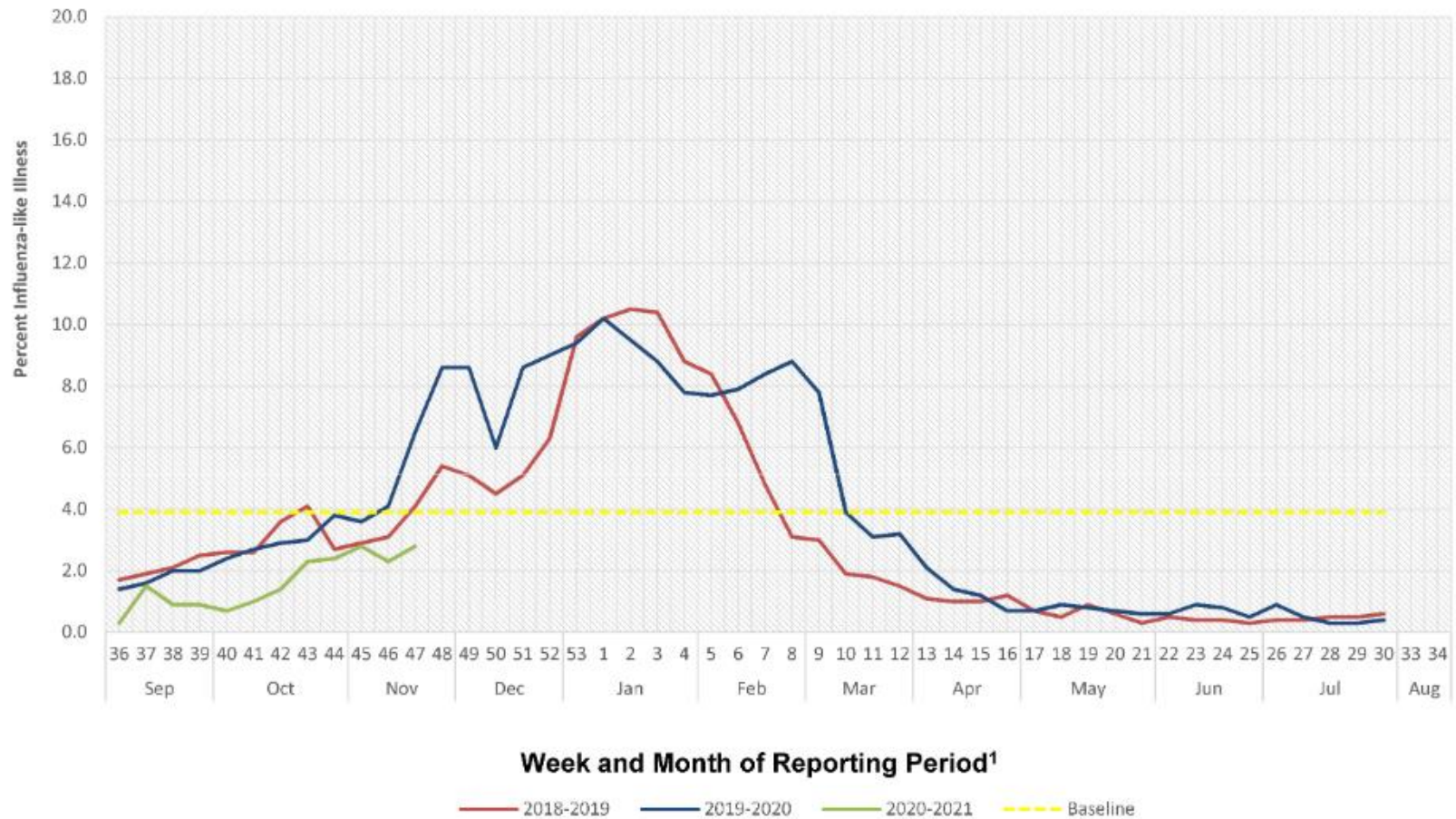
Mask Mand.



The trends of sum of Number of Records and WINDOW_AVG(SUM((Number of Records)), -14, -7) for Event Dt Day broken down by Mask Mandate. For pane Sum of Number of Records: Color shows details about Status. The view is filtered on Status, which keeps Active, Deceased and Recovered*.

SYMPTOMS CRITERIA

WEEKLY PERCENT OF INFLUENZA-LIKE ILLNESS BASED ON TOTAL PATIENT VISITS TO SENTINEL CLINICIANS, OKLAHOMA VIRAL RESPIRATORY ILLNESS SURVEILLANCE SYSTEM, 2018-2021



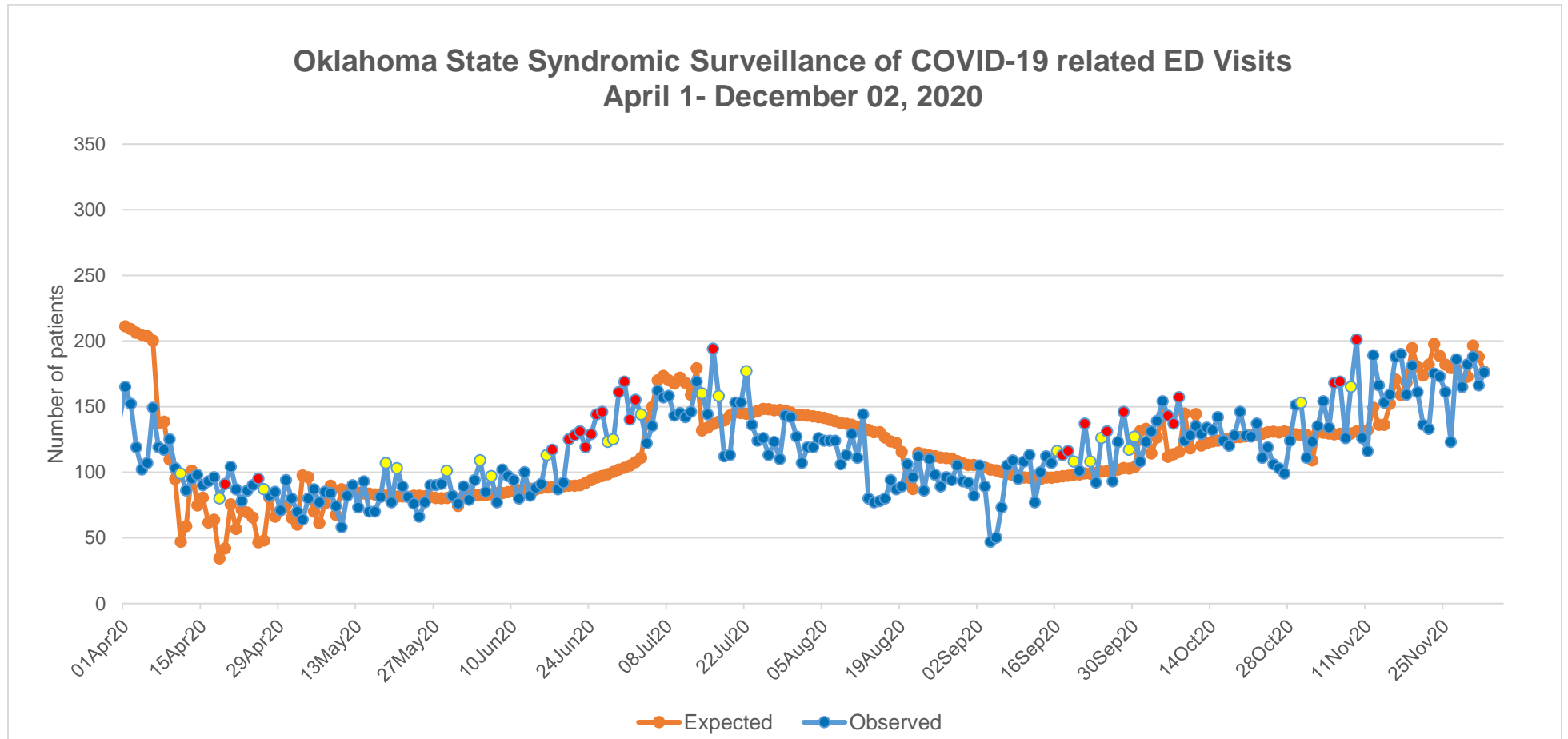
¹These units correspond to the number of weeks in a year and allow for a comparison between multiple seasons.

Interpretation: Data on Influenza-Like Illness (ILI) decreased to 2.2% of outpatient visits exhibiting fever with cough or sore throat. This week's value of 2.2% is below Oklahoma's baseline ILI of 3.9%.

Note: Data current up to week ending November 28, 2020 (Week 48).

Source: <https://oklahoma.gov/content/dam/ok/en/health/health2/aem-documents/prevention-and-preparedness/acute-disease-service/disease-information/flu-view>

COVID-19 RELATED EMERGENCY DEPARTMENT VISITS



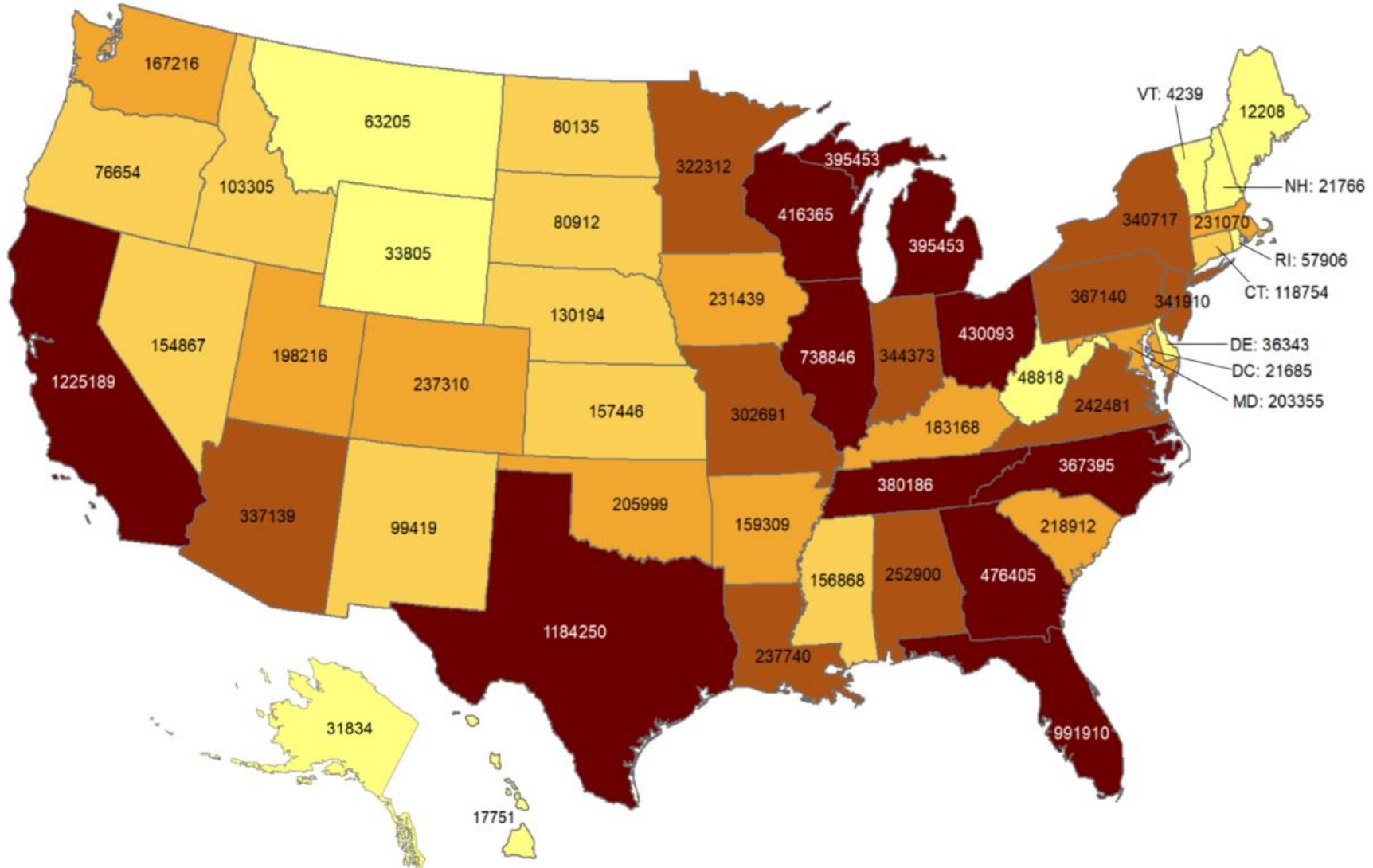
Interpretation: Data from syndromic surveillance shows that the number of COVID-19 related emergency department visits has been within the expected range for the past 2 weeks as indicated by the blue dots on the observed line.

.....

OKLAHOMA IN COMPARISON

Total number of reported COVID-19 cases

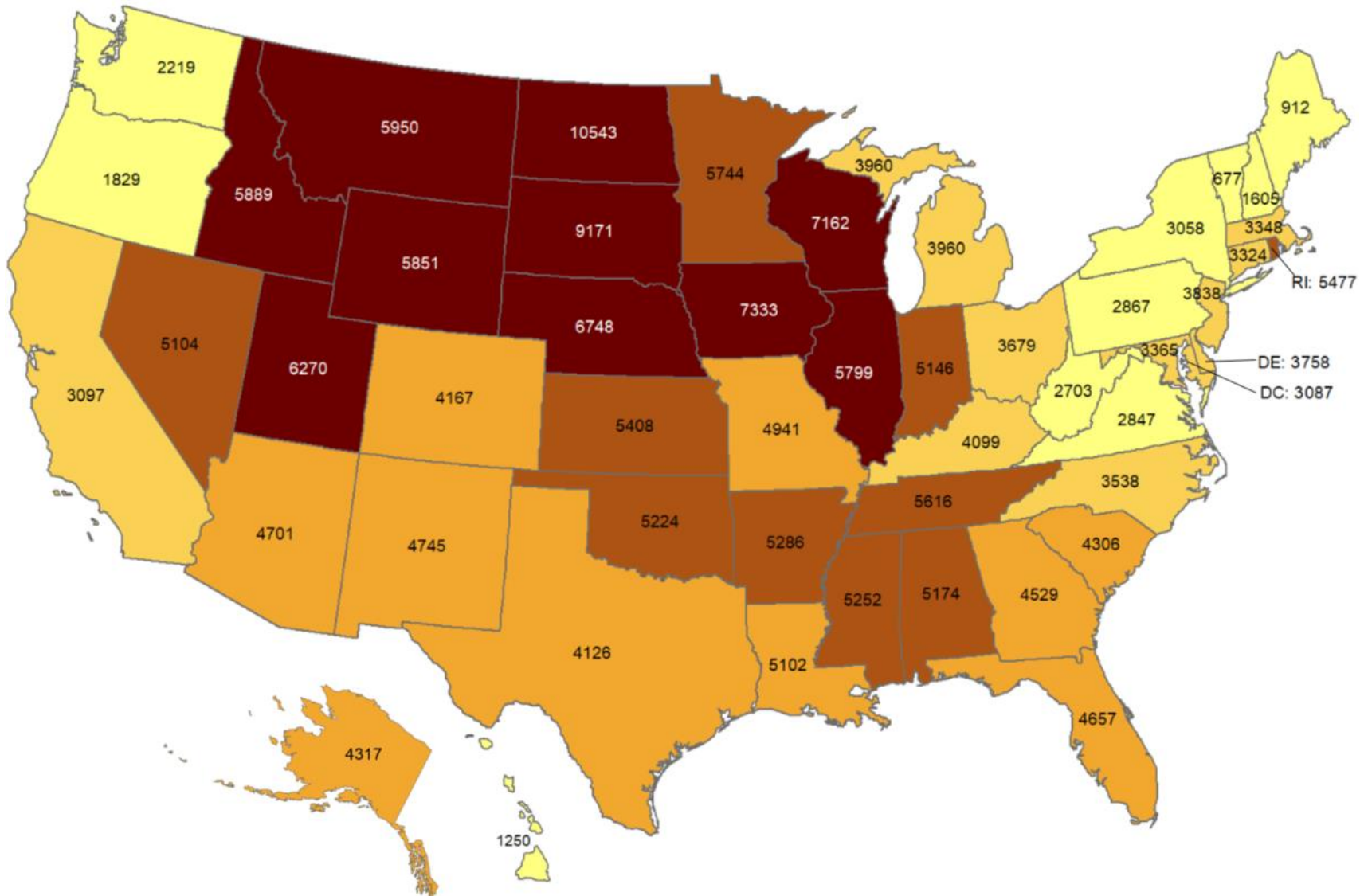
Oklahoma ranks **25** (out of all States and DC) in the total number of reported COVID-19 cases in the US.



Data from CDC. Available at <https://www.cdc.gov/covid-data-tracker/index.html>
Data as of December 2, 2020

Cumulative incidence of reported COVID-19 cases

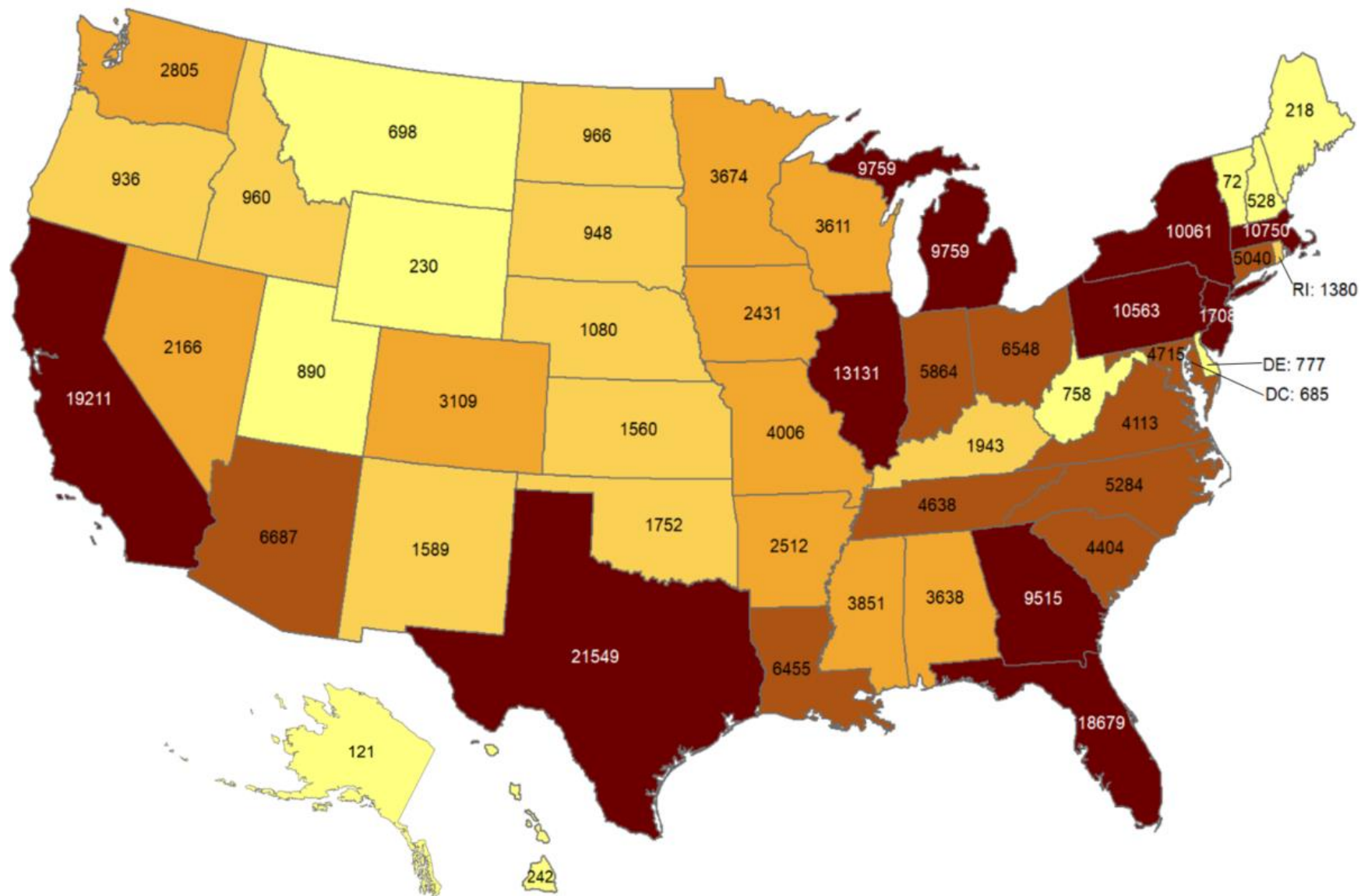
Oklahoma ranks **17** (out of all States and DC) in the cumulative incidence (per 100,000 persons) of reported COVID-19 cases in the US.



Data from CDC. Available at <https://www.cdc.gov/covid-data-tracker/index.html>
Data as of December 2, 2020

Total number of reported COVID-19 deaths

Oklahoma ranks **32** (out of all States and DC) in the total number of reported COVID-19 deaths in the US.



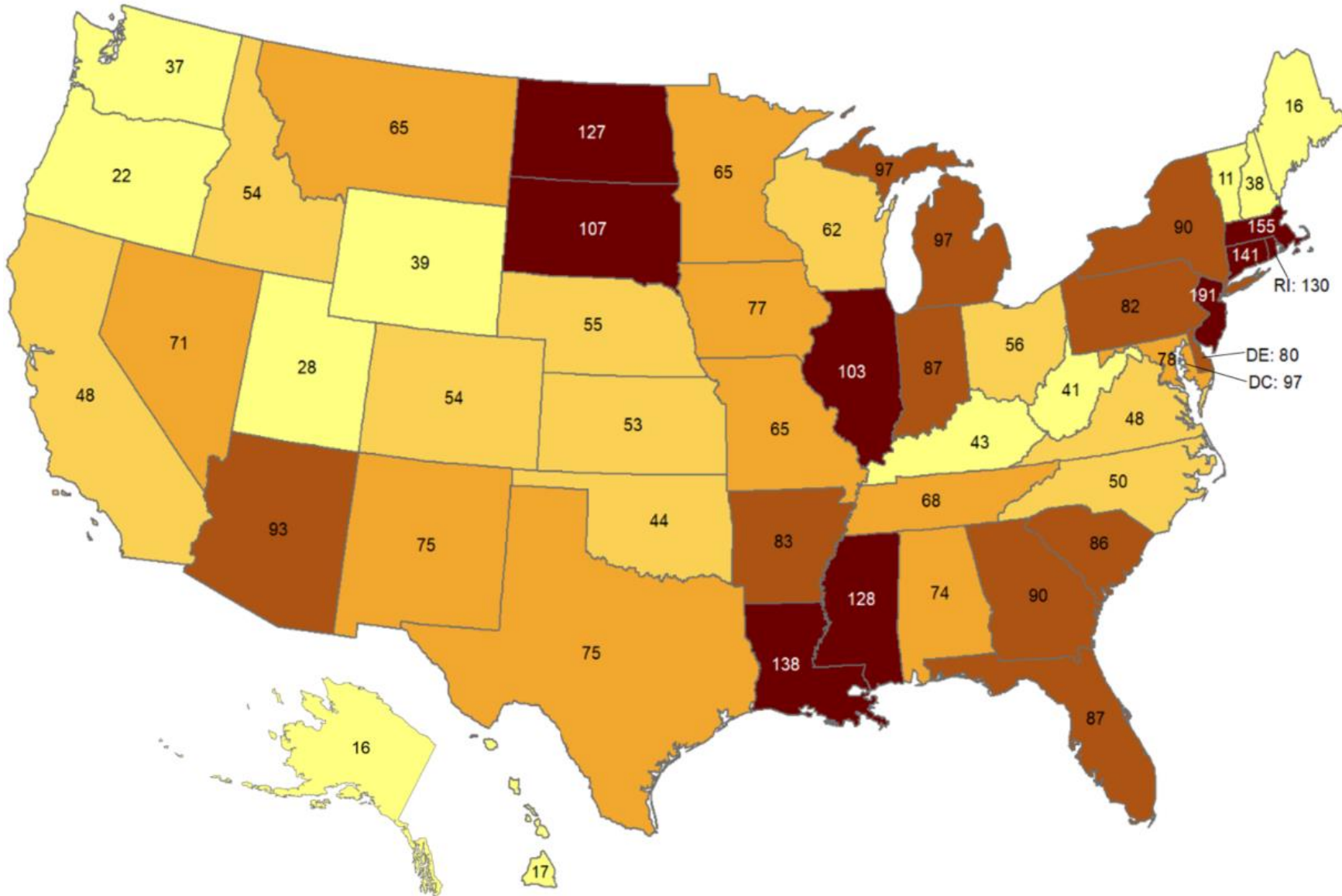
Data from CDC. Available at <https://www.cdc.gov/covid-data-tracker/index.html>

Data as of December 2, 2020

NOTE: CDC numbers include both Confirmed and Probable cases.

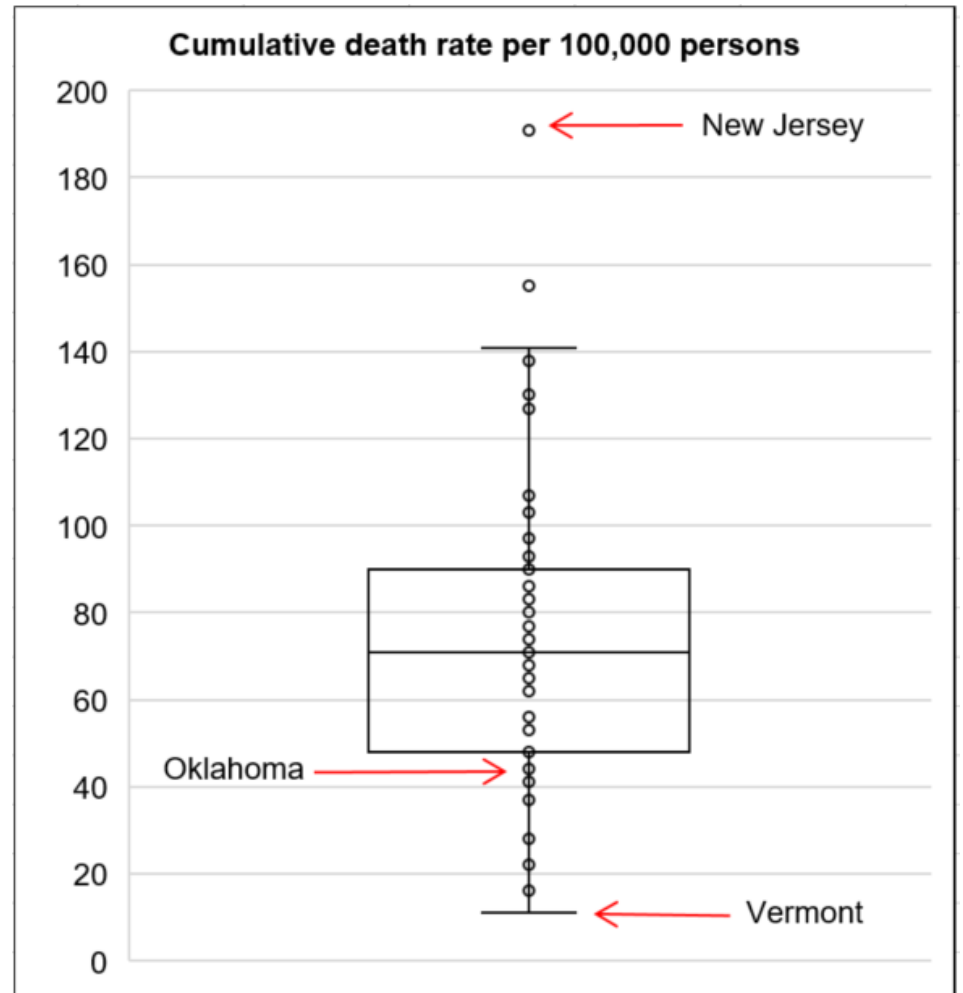
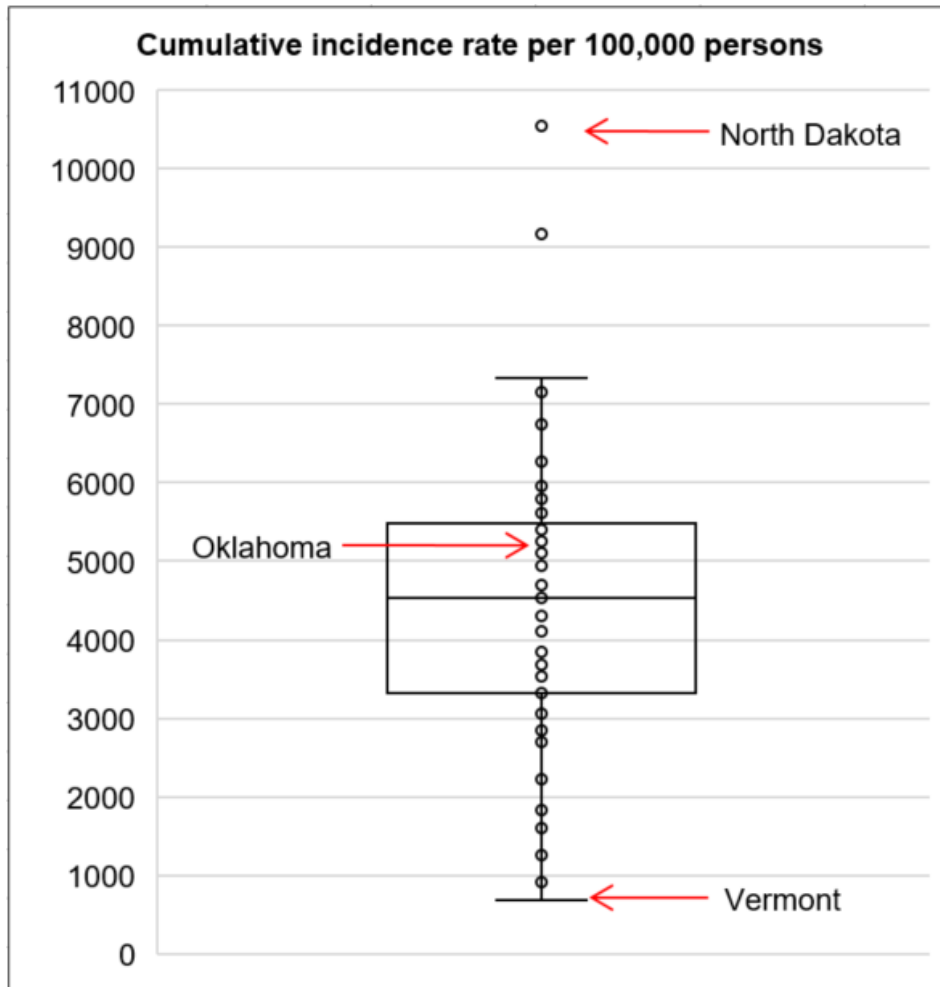
Cumulative death rate of reported COVID-19 cases

Oklahoma ranks **40** (out of all States and DC) in the cumulative death rate (per 100,000 persons) of reported COVID-19 cases in the US.



Data from CDC. Available at <https://www.cdc.gov/covid-data-tracker/index.html>
Data as of December 2, 2020

Cumulative incidence and cumulative death rate of reported COVID-19 cases



Interpretation: Oklahoma has cumulative incidence that is **above the median** of the US and cumulative death rate **below the median** of the US.

OKLAHOMA EXCESS DEATH ANALYSIS

- + indicates observed count above threshold
- Predicted number of deaths from all causes
- threshold for excess deaths

Weekly number of deaths (from all causes)

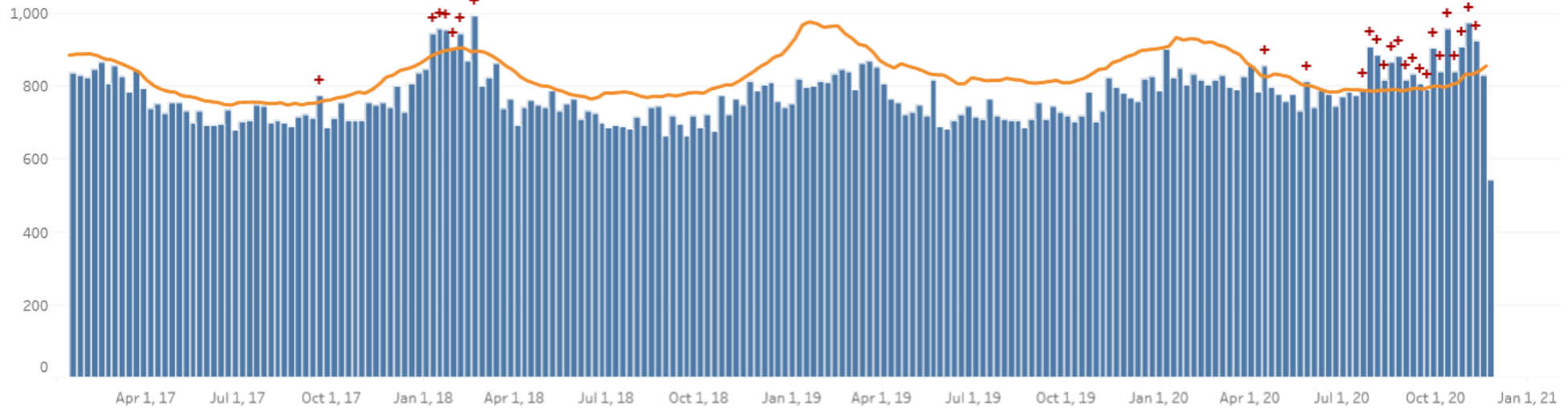


Figure notes: Contains data up to the week-ending date of November 21, 2020. Data in recent weeks are incomplete. Only 60% of the death records are submitted to NCHS within 1-days of the date of death, and completeness varies by jurisdiction.

Source: CDC, National Center for Health Statistics, https://www.cdc.gov/nchs/nvss/vsrr/covid19/excess_deaths.htm#dashboard, Dec 3, 2020 12PM

COVID-19 LTC OR NURSING HOME ASSOCIATED CASES BY COUNTY

Status as of Midnight December 2, 2020

Data are preliminary and are subject to change as cases are processed.

County of Residence	Cases	Recovered**	Deaths
Adair	2	2	0
Alfalfa	3	3	0
Atoka	35	20	0
Beaver	13	12	1
Beckham	76	70	2
Blaine	20	18	0
Bryan	128	103	10
Caddo	135	110	15
Canadian	144	119	2
Carter	19	16	2
Cherokee	16	9	1
Choctaw	79	72	1
Cleveland	504	380	61
Coal	63	54	2
Comanche	91	54	7
Cotton	27	4	1
Craig	17	11	0
Creek	136	105	8
Custer	90	58	11

County of Residence	Cases	Recovered**	Deaths
Delaware	147	105	24
Dewey	4	3	1
Ellis	5	5	0
Garfield	147	126	8
Garvin	16	14	0
Grady	93	59	8
Grant	12	11	1
Greer	50	41	6
Harmon	11	11	0
Harper	2	2	0
Haskell	56	50	3
Hughes	16	15	0
Jackson	96	71	14
Jefferson	8	5	0
Johnston	5	5	0
Kay	70	58	3
Kingfisher	93	86	3
Kiowa	35	15	2
Latimer	17	13	1
Le Flore	185	169	12
Lincoln	118	85	20
Logan	65	25	1
Love	24	24	0

County of Residence	Cases	Recovered**	Deaths
Major	47	25	3
Marshall	10	8	0
Mayes	29	24	2
McClain	98	83	6
McCurtain	95	70	15
McIntosh	42	28	4
Murray	25	20	0
Muskogee	167	126	10
Noble	126	92	0
Nowata	49	49	0
Okfuskee	10	8	0
Oklahoma	1539	1299	137
Okmulgee	63	57	0
Osage	55	48	6
Ottawa	133	104	5
Pawnee	9	8	0
Payne	122	107	4
Pittsburg	158	135	15
Pontotoc	38	28	0
Pottawatomie	141	130	6
Pushmataha	40	36	4
Roger Mills	1	1	0
Rogers	326	232	40

County of Residence	Cases	Recovered**	Deaths
Seminole	97	90	2
Sequoyah	63	60	2
Stephens	76	58	2
Texas	58	37	3
Tillman	28	25	2
Tulsa	797	650	86
Wagoner	90	76	12
Washington	254	212	33
Washita	17	13	0
Woods	19	13	0
Woodward	53	48	3
<i>Total</i>	<i>7748</i>	<i>6218</i>	<i>633</i>

****Recovered:** *Currently not hospitalized or deceased and 14 days after onset/report.*

COVID-19 LTC OR NURSING HOME ASSOCIATED CASES BY FACILITY

Status as of Midnight December 2, 2020

Data are preliminary and are subject to change as cases are processed.

Facility	Cases	Recovered**	Deaths
Aberdeen Heights Assisted Living Community	5	4	0
Aberdeen Memory Care of Tulsa	5	3	2
Accel at Crystal Park	22	10	6
Ada Care Center	3	2	0
Adams PARC Post Acute Recovery Center	97	83	12
Albert Hall	7	7	0
Ambassador Manor Nursing Center	17	11	1
Anadarko Nursing & Rehab	31	26	1
Antlers Manor	1	1	0
Arbor House Assisted Living Center - Norman	8	4	1
Arbor House Assisted Living Center of Mustang	20	17	0
Arbor House Reminisce	26	2	1
Arbor Village	7	7	0
Artesian Home	6	6	0
Ash Street Place	2	1	0
Ashbrook Village	4	4	0
Aspen Health and Rehab	6	6	0
Atoka Manor	26	11	0
Autumn Leaves of Edmond	34	30	4
Autumn Leaves of Southwest Oklahoma City	3	2	1

Facility	Cases	Recovered**	Deaths
Autumn Leaves of Tulsa	1	1	0
Avondale Cottage of Pryor	1	1	0
Avonlea Cottage of Seminole	15	14	0
Avonlea Cottage of Shawnee, LLC	9	8	0
Ayers Nursing Home	16	10	3
Ballard Nursing Center	24	15	0
Baptist Village of Hugo	59	56	1
Baptist Village of Oklahoma City	45	37	4
Baptist Village of Owasso	15	15	0
Barnsdall Nursing Home	2	2	0
Bartlesville Assisted Living	23	20	0
Bartlesville Health and Rehabilitation Community	101	76	20
Beacon Ridge	4	4	0
Beadles Nursing Home	16	10	0
Beare Manor	1	1	0
Beaver County Nursing Home	13	12	1
Belfair of McAlester	10	6	0
Bell Avenue Nursing Center	18	16	2
Bellarose Senior Living	1	1	0
Bellevue Health and Rehabilitation	84	68	10
Betty Ann Nursing Center	1	0	0
Billings Fairchild Center, Inc	128	88	0
Binger Nursing and Rehabilitation	55	45	10

Facility	Cases	Recovered**	Deaths
Blue Ridge Place	1	1	0
Blue River Healthcare, Inc	1	1	0
Boyce Manor Nursing Home	10	9	0
Bradford Village Healthcare Center: Nursing Home	14	8	1
Brentwood Extended Care & Rehab	4	4	0
Broadway Manor Nursing Home	39	28	4
Broken Arrow Assisted Living	6	5	1
Broken Arrow Nursing Home, Inc.	30	25	1
Broken Bow Nursing Home	56	41	11
Brookdale Bartlesville North	18	15	3
Brookdale Bartlesville South	9	9	0
Brookdale Broken Arrow	10	8	2
Brookdale Cedar Ridge	6	6	0
Brookdale Chickasha	18	15	3
Brookdale Claremore	3	2	0
Brookdale Durant	26	21	1
Brookdale Edmond Santa Fe	3	1	0
Brookdale Muskogee	18	7	4
Brookdale Norman	1	1	0
Brookdale Stillwater	1	1	0
Brookdale Tulsa 71st and Sheridan	65	51	12
Brookdale Tulsa Midtown	4	2	0
Brookdale Tulsa South	5	4	0

Facility	Cases	Recovered**	Deaths
Brookdale Village	3	3	0
Brookdale Weatherford	2	1	0
Brookridge Retirement Community	4	2	0
Brookside Nursing Center	5	5	0
Brookwood Skilled Nursing and Therapy	5	2	1
Burford Manor	11	11	0
Callaway Nursing Home	3	0	0
Capitol Hill Skilled Nursing and Therapy	46	39	7
Carnegie Nursing Home, Inc.	38	30	3
Cedar Creek Nursing Center	10	2	0
Cedar Crest Manor	5	2	0
Cedarcrest Care Center	46	38	6
Center of Family Love	6	6	0
Chandler Therapy & Living Center, LLC	53	43	9
Checotah Nursing Center	1	1	0
Cherokee County Nursing Center	5	3	0
Chickasha Nursing Center, Inc	4	3	0
Chisholm Trail Assisted Living	7	4	0
Choctaw Nation Nursing Home	36	32	4
Cimarron Nursing Center	14	11	1
Cimarron Pointe Care Center	18	10	0
Claremore Skilled Nursing and Therapy	8	6	0
Cleveland Manor Nursing & Rehab	2	2	0

Facility	Cases	Recovered**	Deaths
Clinton Therapy & Living Center	1	1	0
Colonial Manor II	11	11	0
Colonial Manor Nursing Home	23	19	1
Colonial Park Manor, LLC	4	3	0
Colonial Terrace Care Center	3	3	0
Community Health Care of Gore	5	4	0
Community Health Center	10	9	1
Copp's Residential Care, Inc	1	1	0
Cordell Christian	6	6	0
Corn Heritage Village and Rehab	11	11	0
Corn Heritage Village and Rehab of Weatherford	24	20	3
Cottonwood Creek Skilled Nursing & Therapy	2	2	0
Country Club Care	12	7	0
Country Club at Woodland Hills	7	6	0
Country Lane	2	1	0
Country Place	1	1	0
Countryside Estates	3	3	0
Countrywood Assisted Living and Memory Care	4	3	0
Covenant Living at Inverness	10	9	1
Coweta Manor Nursing Home	63	52	11
Creekside Village	2	2	0
Cross Timbers Nursing and Rehabilitation	46	42	2
Crossroads Residential Care	7	4	1

Facility	Cases	Recovered**	Deaths
Dr W F & Mada Dunaway Manor	33	17	1
Drumright Nursing Home	11	3	0
Eastgate Village Retirement Center	51	45	2
Eastwood Manor	24	2	0
Edith Kassanavoid Gordon Assisted Living Center	1	1	0
Edmond Healthcare Center	45	36	8
El Reno Post-Acute Rehabilitation Center	2	2	0
Elk City Nursing Center	5	5	0
Elk Crossing	16	13	1
Elkwood Assisted Living and Memory Care	25	22	1
Elmbrook Home	4	3	0
Elmwood Manor Nursing Home	11	11	0
Emerald Care Center Claremore	107	93	6
Emerald Care Center Midwest	25	21	2
Emerald Care Center Southwest LLC	51	48	2
Emerald Care Center Tulsa	10	9	0
Emerald Square Assisted Living Community	3	3	0
English Village Manor	32	22	5
Enid Senior Care	10	9	0
Epworth Villa Health Services	17	16	1
Eufaula Manor Nursing and Rehabilitation Center	20	14	1
Fairfax Manor	4	3	0
Fairmont Skilled Nursing and Therapy	76	72	4

Facility	Cases	Recovered**	Deaths
Fairview Fellowship Home for Senior Citizens, Inc	47	26	2
Family Care Center of Fairland	2	2	0
Family Care Center of Kingston	3	3	0
Featherstone Assisted Living Community of Moore	36	32	4
First Shamrock Care Center	3	3	0
Forest Hills Care and Rehabilitation Center	8	4	1
Forrest Manor Nursing Center	6	6	0
Fort Gibson Nursing Home	2	2	0
Fountain View Manor, Inc	6	6	0
FountainBrook Assisted Living and Memory Support	6	6	0
Four Seasons Rehabilitation & Care	6	5	0
Franciscan Villa	101	88	12
Garland Road Nursing and Rehab Center	6	6	0
Gatesway Foundation, Inc	3	3	0
Glade Avenue Assisted Living	2	1	0
Glade Avenue South	6	2	2
Glenhaven Retirement Village	21	18	2
Glenwood Healthcare	16	9	4
Go Ye Village Continuum of Care Retirement Community	4	2	0
Golden Age Nursing Home of Guthrie, LLC	48	9	1
Golden Oaks Village	28	22	5
Grace Living Center - Clinton	5	3	0
Grace Living Center - Jenks	18	12	4

Facility	Cases	Recovered**	Deaths
Grace Living Center - Norman	87	73	12
Grace Living Center - Stillwater	10	8	0
Grace Living Center - Tahlequah East Shawnee	1	1	0
Gracewood Health and Rehab	42	31	6
Gran Grans Place	1	1	0
Grand Lake Villa	31	19	6
Grandwood Assisted Living, LC	27	20	2
Green Country Care Center	19	16	3
Green Country Village Assisted Living Center	2	2	0
Green Tree at Sand Springs	1	1	0
Greenbrier Nursing Home	9	9	0
Greenbrier Village Residential Living, LLC	2	2	0
Gregston Nursing Home, Inc.	5	5	0
Grove Nursing Center	82	66	16
Harrah Nursing Center	44	39	3
Haskell County Nursing Center, Inc	52	46	3
Hays House	36	36	0
Heartsworth Center for Nursing and Rehabilitation	13	9	0
Heartsworth House Assisted Living	1	1	0
Heatheridge Residential Care Center	1	1	0
Heavener Nursing & Rehab	52	42	7
Hennessey Nursing & Rehab	75	72	2
Henryetta Community Skilled Healthcare & Rehab	3	3	0

Facility	Cases	Recovered**	Deaths
Hensley Nursing & Rehab	29	25	2
Heritage Assisted Living	3	3	0
Heritage Community	26	20	2
Heritage Hills Living & Rehabilitation Center	1	1	0
Heritage Manor	29	28	1
Heritage Park	5	5	0
Heritage Point of Tulsa	1	1	0
Heritage Villa Nursing Center	13	12	0
Heritage Village Nursing Home	3	3	0
Heritage at Brandon Place Health and Rehabilitation	47	38	4
Highland Park Health Care	5	2	0
Hill Nursing Home, Inc	15	13	1
Hillcrest Manor Nursing Center	1	1	0
Hillcrest Nursing Center	19	18	1
Hobart Nursing & Rehab	16	1	0
Holiday Heights Nursing Home	4	2	0
Homestead of Bethany, LLC	8	7	0
Homestead of Hugo	18	13	0
Homestead of Owasso	1	1	0
Ignite Medical Resort Norman, LLC	45	33	6
Ignite Medical Resort OKC	95	83	11
Iris Memory Care of Edmond	6	6	0
John H. Johnson Care Suites	3	3	0

Facility	Cases	Recovered**	Deaths
Kenwood Manor	19	17	1
Lake Country Nursing Center	26	26	0
Lake Drive Care and Rehabilitation Center	39	39	0
Lakeland Manor, Inc	9	7	1
Lakeview Nursing & Rehab	18	13	2
Landmark of Midwest City Rehabilitation and Nursing	41	34	4
Legacy Village of Stillwater	14	14	0
Legend at 71st St	8	6	1
Legend at Council Road	5	2	0
Legend at Mingo Road	3	3	0
Legend at Rivendell	56	47	5
Leisure Village Health Care Center	9	9	0
Lexington Nursing Home	10	9	0
Liberty Place	1	0	0
Lindsay Nursing & Rehab	4	2	0
Linwood Village Nursing & Retirement Apts	14	14	0
Lyndale at Edmond	2	2	0
Magnolia Creek Skilled Nursing and Therapy	37	26	7
Mangum Skilled Nursing and Therapy	54	45	6
Maple Lawn Nursing and Rehabilitation	19	16	1
Maplewood Care Center	9	9	0
Marlow Nursing & Rehab	1	1	0
McAlester Nursing & Rehab	18	17	1

Facility	Cases	Recovered**	Deaths
McCall's Chapel School, Inc #11	2	2	0
McCall's Chapel School, Inc #13	1	1	0
McCall's Chapel School, Inc #4	1	1	0
McCall's Chapel School, Inc #7	1	1	0
McCall's Chapel School, Inc #8	1	1	0
McCall's Chapel School, Inc #9	1	1	0
McLoud Nursing Center	1	1	0
McMahon-Tomlinson Nursing Center	14	10	2
Meadow Brook Residential Care	26	25	0
Meadowbrook Nursing Center	1	1	0
Meadowlake Estates	77	72	4
Meadowlakes Retirement Village	1	1	0
Medical Park West Rehabilitation	7	4	2
Medicallodges Dewey	4	4	0
Meeker Nursing Center	39	26	10
Memorial Heights Nursing Center	24	17	3
Memorial Nursing Center	25	23	1
Memory Care Center at Emerald	4	3	0
Meridian Nursing Home	4	3	0
Miami Nursing Center, LLC	79	74	3
Mid-Del Skilled Nursing and Therapy	25	20	0
Mitchell Manor	51	49	2
Monroe Manor	9	4	0

Facility	Cases	Recovered**	Deaths
Monterea, Inc Assisted Living	3	3	0
Monterea, Inc LTC/SNF	4	3	0
Montevista Rehabilitation and Skilled Care	8	3	0
Mooreland Heritage Manor	20	19	0
Muscogee (Creek) Nation Skilled Nursing Facility	1	0	0
Muskogee Nursing Center	13	6	0
New Hope Retirement & Care Center	1	1	0
Noble Health Care Center	12	10	0
North County Center for Nursing and Rehabilitation	2	1	0
North Winds Living Center	1	1	0
Northhaven Place	10	8	1
Northwest Nursing Center	1	1	0
Oak Hills Living Center	14	13	1
Oakridge Home	1	1	0
Oakridge Nursing Center	54	44	4
Okemah Care Center	1	1	0
Oklahoma Methodist Manor	17	14	2
Oklahoma Veterans Center, Ardmore Division	1	1	0
Oklahoma Veterans Center, Claremore Division	201	127	35
Oklahoma Veterans Center, Clinton Division	62	34	7
Oklahoma Veterans Center, Lawton-Ft. Sill Division	16	12	0
Oklahoma Veterans Center, Norman Division	74	49	21
Oklahoma Veterans Center, Sulfur Division	14	12	0

Facility	Cases	Recovered**	Deaths
Oklahoma Veterans Center, Talihina Division	24	19	3
Osage Nursing Home, LLC	4	4	0
Oxford Glen at Owasso	3	3	0
Perry Green Valley Nursing Center, LLC	4	4	0
Pleasant Valley Health Care Center	7	6	0
Pocola Health & Rehab	56	53	3
Ponca City Nursing and Rehabilitation	16	16	0
Prairie House Assisted Living & Memory Care	4	3	0
Prairie Pointe at Stroud	9	1	0
Primrose Retirement Community of Shawnee	11	10	0
Primrose Retirement Community of Stillwater	3	2	0
Providence Place	1	1	0
Purcell Care Center, LLC	10	8	1
Quail Creek Senior Living	23	18	4
Quail Ridge Living Center, Inc (Colcord, OK)	7	7	0
Quail Ridge Senior Living	24	17	6
Quinton Manor Nursing Home	9	9	0
RT 66 Residential Care Home, LLC	6	4	0
Rainbow Health Care Community: Nursing Home	64	56	4
Rambling Oaks (Norman)	23	18	2
Rambling Oaks Courtyard Assisted Living & Memory Care	2	2	0
Ranch Terrace Nursing Home	20	13	1
Ranchwood Nursing Center	30	29	1

Facility	Cases	Recovered**	Deaths
Reliant Living Center	9	7	0
Reliant Living Center of Del City	2	2	0
River Oaks Skilled Nursing	40	24	1
Riverside Health Services LLC	3	2	0
Robert M Greer Center	1	1	0
Rolling Hills Care Center	19	11	0
Ruth Wilson Hurley Manor	70	61	2
Saint Simeons Episcopal Home	17	17	0
Sand Plum Assisted Living Community	1	0	0
Sand Springs Nursing and Rehabilitation	5	5	0
Seiling Nursing Center	5	4	1
Seminole Care and Rehabilitation Center	74	68	2
Seminole Pioneer Nursing Home	1	1	0
Senior Star The Brook	3	3	0
Senior Suites Healthcare	7	6	1
Senior Village	8	3	0
Sequoyah East Nursing Center, LLC	13	13	0
Sequoyah Manor	37	35	1
Sequoyah Pointe Living Center	11	6	0
Shady Rest Care Center	4	4	0
Shanoan Springs Nursing and Rehabilitation	28	5	1
Share Medical Center	2	2	0
Shattuck Nursing Center	4	4	0

Facility	Cases	Recovered**	Deaths
Shawn Manor Nursing Home	1	1	0
Shawnee Care Center	1	0	0
Shawnee Colonial Estates Nursing Home	67	61	6
Sienna Extended Care & Rehab	36	34	1
Skiatook Nursing Home	40	34	6
Sommerset Neighborhood	1	1	0
South Park East	44	39	1
South Pointe Rehabilitation and Care Center	170	147	13
Southbrook Healthcare, Inc.	3	2	1
Southern Hills Rehabilitation Center	70	57	10
Southern Oaks Care Center	3	3	0
Southern Plaza Assisted Living and Memory Care	25	24	0
Southern Pointe Living Center	40	31	5
Spanish Cove Housing Authority	7	7	0
Spiro Nursing Home, Inc.	34	34	0
St. Ann's Skilled Nursing and Therapy	82	65	14
St. Katharine Drexel Retirement Center	6	6	0
Storey Oaks	48	46	0
Stroud Health Care Center South	6	4	0
Summers Healthcare, LLC	6	6	0
Sunset Estates of Purcell	67	63	4
Tamarack Retirement Center	18	14	2
Teal Creek Assisted Living & Memory Care	3	3	0

Facility	Cases	Recovered**	Deaths
Tealridge Assisted Living	7	6	0
Temple Manor Nursing Home	24	2	0
Ten Oaks Place	4	2	0
The Arbors Assisted Living Center	7	6	0
The Brentwood Senior Living	12	5	1
The Chateau	10	5	1
The Commons	40	37	0
The Commons - AL	1	1	0
The Cottage Extended Care	9	8	1
The Courtyards at Claremore Assisted Living	7	5	1
The Courtyards at Magnolia Creek	9	9	0
The Fountains at Canterbury Health Center	27	24	1
The Gardens	1	1	0
The Gardens at Rivermont	1	1	0
The Golden Rule Home	42	40	0
The Grand at Bethany Skilled Nursing and Therapy	3	2	0
The Health Center at Concordia	25	23	1
The Health Center at Concordia ALC	7	7	0
The Highlands at Owasso	14	12	1
The King's Daughters & Sons Nursing Home	10	10	0
The Lakes	7	4	1
The Linden at Stonehaven Square	9	4	4
The Living Center	29	23	3

Facility	Cases	Recovered**	Deaths
The Mansion at Waterford	20	18	2
The Neighborhoods at Baptist Village of Elk City	7	7	0
The Oaks Healthcare Center	2	2	0
The Parke Assisted Living	3	3	0
The Regency Skilled Nursing and Therapy	3	3	0
The Renaissance of Stillwater - Assisted Living	3	3	0
The Springs Skilled Nursing and Therapy	29	22	1
The Timbers Skilled Nursing and Therapy	57	38	4
The Veraden	1	1	0
The Villages at Southern Hills	72	59	11
The Wilshire Skilled Nursing and Therapy	3	3	0
The Wolfe Living Center at Summit Ridge	11	8	1
Timberwood Assisted Living & Memory Care	1	1	0
Touchmark at Coffee Creek	4	4	0
Town of Vici Nursing Home	2	2	0
Tulsa Assisted Living and Memory Care	2	2	0
Tulsa Nursing Center	29	26	1
Tuscany Village Nursing Center	22	18	1
Tuttle Care Center	22	20	2
University Park Skilled Nursing & Therapy	2	2	0
University Village	22	19	0
Via Christi Village Ponca City	12	8	0
Vian Nursing & Rehab, LLC	8	6	1

Facility	Cases	Recovered**	Deaths
Victorian Estates	2	2	0
Village Health Care Center	11	11	0
Village Lodge of Ardmore Village	2	1	0
Village at Oakwood	5	4	1
Village on the Park	38	30	6
Wagoner Health & Rehab	6	6	0
Walnut Grove Living Center	67	52	12
Warr Acres Nursing Center	18	16	1
Washita Valley Living Center	3	3	0
Weatherwood Assisted Living and Memory Care	4	4	0
Wellington Parke, LLC	1	1	0
West Wind Assisted Living	12	8	1
Westbrook Gardens	6	4	1
Westbrook Healthcare, Inc	6	4	0
Westhaven Nursing Home	76	69	2
Westview Cottages	4	4	0
Wewoka Healthcare Center	1	1	0
Wildewood Skilled Nursing and Therapy	5	4	1
Wilkins Health and Rehabilitation Community	13	12	0
Willow Haven Nursing Home	28	23	3
Willow Park Health Care Center	18	10	4
Willowood at Mustang Assisted Living and Memory Care	3	3	0
Windridge Nursing and Rehabilitation Center	14	11	2

Facility	Cases	Recovered**	Deaths
Windsor Hills Nursing Center	3	2	0
Woodland Park Home, Inc	5	4	0
Woodlands Skilled Nursing & Therapy	1	1	0
Woodward Skilled Nursing and Therapy	31	27	3
York Manor Nursing Home	4	2	0
Zarrow Pointe	7	6	0
<i>Total</i>	<i>7748</i>	<i>6218</i>	<i>633</i>

**Recovered: *Currently not hospitalized or deceased and 14 days after onset/report.*

ACKNOWLEDGEMENT

The weekly report is made by possible through the efforts of county and city public health and healthcare professionals.

NOTES

Every effort is made to ensure accuracy and the data is up-to-date for the time period reported.

For daily updates on COVID-19, please visit <https://coronavirus.health.ok.gov/>

DISCLAIMER

The purpose of publishing aggregated statistical COVID-19 data through the OSDH Dashboard, the Executive Order Report, and the Weekly Epidemiology and Surveillance Report is to support the needs of the general public in receiving important and necessary information regarding the state of the health and safety of the citizens of Oklahoma. These resources may be used only for statistical purposes and may not be used in any way that would determine the identity of any reported cases.