

OKLAHOMA COVID-19 WEEKLY REPORT

Weekly Epidemiology and Surveillance Report
December 25 - 31, 2020



PURPOSE To provide up-to-date weekly epidemiological data on COVID-19 in Oklahoma.

SNAPSHOT

	Dec 25 – Dec 31	Change ¹	Total
Cases	18,383	-24.5%	290,936
Recovered cases ²	20,876	1.0%	255,843
Deaths	161	-12.5%	2,489

1. Change from the week of Dec 18- Dec 24, 2020.
2. Currently not hospitalized or deceased and 14 days after onset/report.

KEY POINTS

- **18,383** cases were reported in the past week
24.5% decrease from the week before (Dec 18 – Dec 24)
- **161** deaths were reported in the past week
12.5% decrease from the week before (Dec 18 – Dec 24)
- **17,059 (6.0%)** cases have been hospitalized
- **2,691,172** specimens have been tested in total

CASES		DEATHS	
Persons aged 50 and over	Females	Persons aged 50 and over	Males
34%	53%	96%	56%
of <u>cases</u>	of <u>cases</u>	of <u>deaths</u>	of <u>deaths</u>

The average age of cases was **41** years.

The youngest case was **less than a year old** and the oldest case was **100+ years**.

The average age of individuals who died was **75** years.

The youngest individual to die from COVID-19 was **less than 15 years** and the oldest was **100+ years**.

COVID- 19 VACCINE DATA

	Dec 25 – Dec 31	Total Number
Doses Received	52,150	174,900
Doses Administered	20,605	50,330

Source: COVID-19 Vaccination Reporting Specification Dataset
Oklahoma State Immunization Information System (OSIIS)
Data reflect information entered as of 11:59PM 12/30/2020

COVID-19 VACCINE FRAMEWORK

PHASE 1:

- Long Term Care Residents and Staff
- Health Care Workers providing direct inpatient COVID care
- Public health staff conducting front line COVID-19 pandemic mitigation and control activities
- Oklahoma State Licensed Emergency Medical Technicians and Paramedics

PHASE 2:

- First Responders
- Health Care Workers providing direct COVID outpatient care and services
- Adults age 65 and older, and adults of any age with comorbidities
- Teachers and staff in Pre-K-12 schools and educational settings
- Staff and residents in congregate locations and worksites
- Public health staff supporting front line efforts

PHASE 3:

- Teachers, students, residents and administrative staff in educational settings (if the vaccine is approved for ages <18 years to receive the vaccine)
- Critical Infrastructure Personnel as specified in the 3rd Executive Order

PHASE 4:

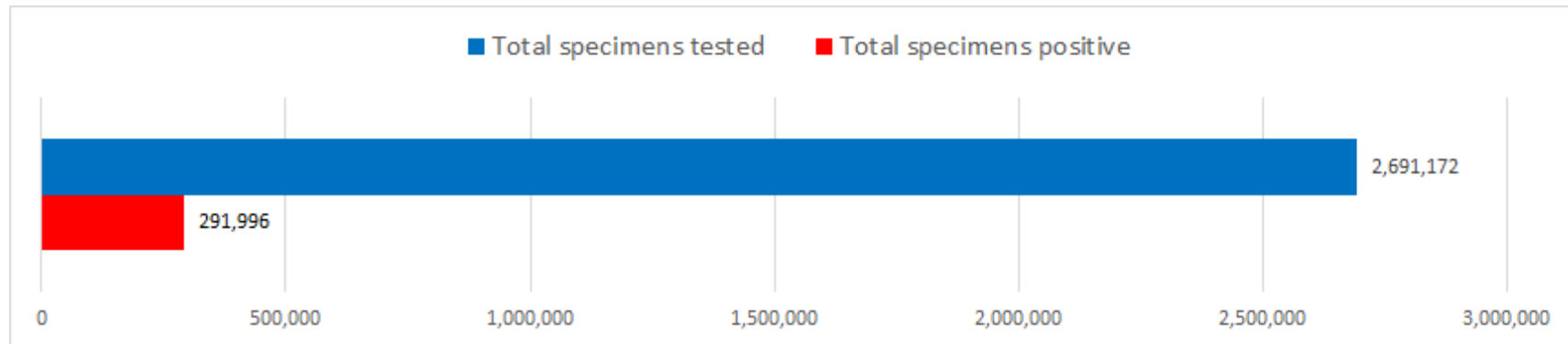
- Open to all Oklahoma residents

DISEASE TESTING

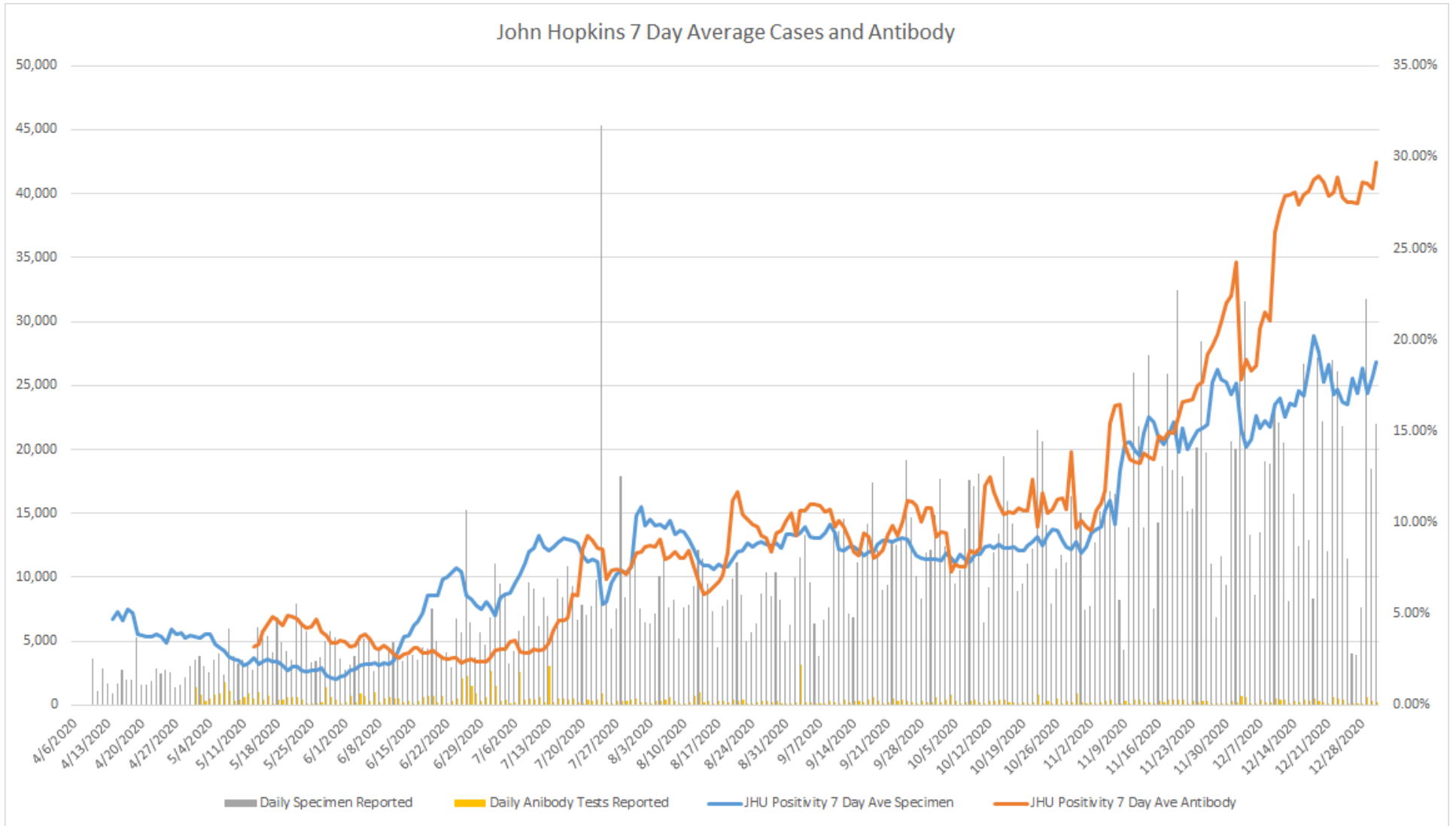
	Dec 25 – Dec 31	Total Number
Specimens tested, count	99,264	2,691,172
Specimens positive, count	19,447	291,996
Percent positive	19.6%	10.9%
Johns Hopkins positivity %	18.8%	10.8%
Antibody tested, count	1,475	107,663
Antibody positive, count	441	8,943
Antibody percent positive	29.9%	8.3%

Source: This data is obtained outside of individual case data reported to the OSDH Acute Disease Service and comes from a daily survey of state and private laboratories and facilities that are performing Covid-19 testing.

Note: Specimen counts may not reflect unique individuals.



JOHNS HOPKINS 7 DAY AVERAGE POSITIVITY RATE FOR SPECIMEN AND ANTIBODY CASES

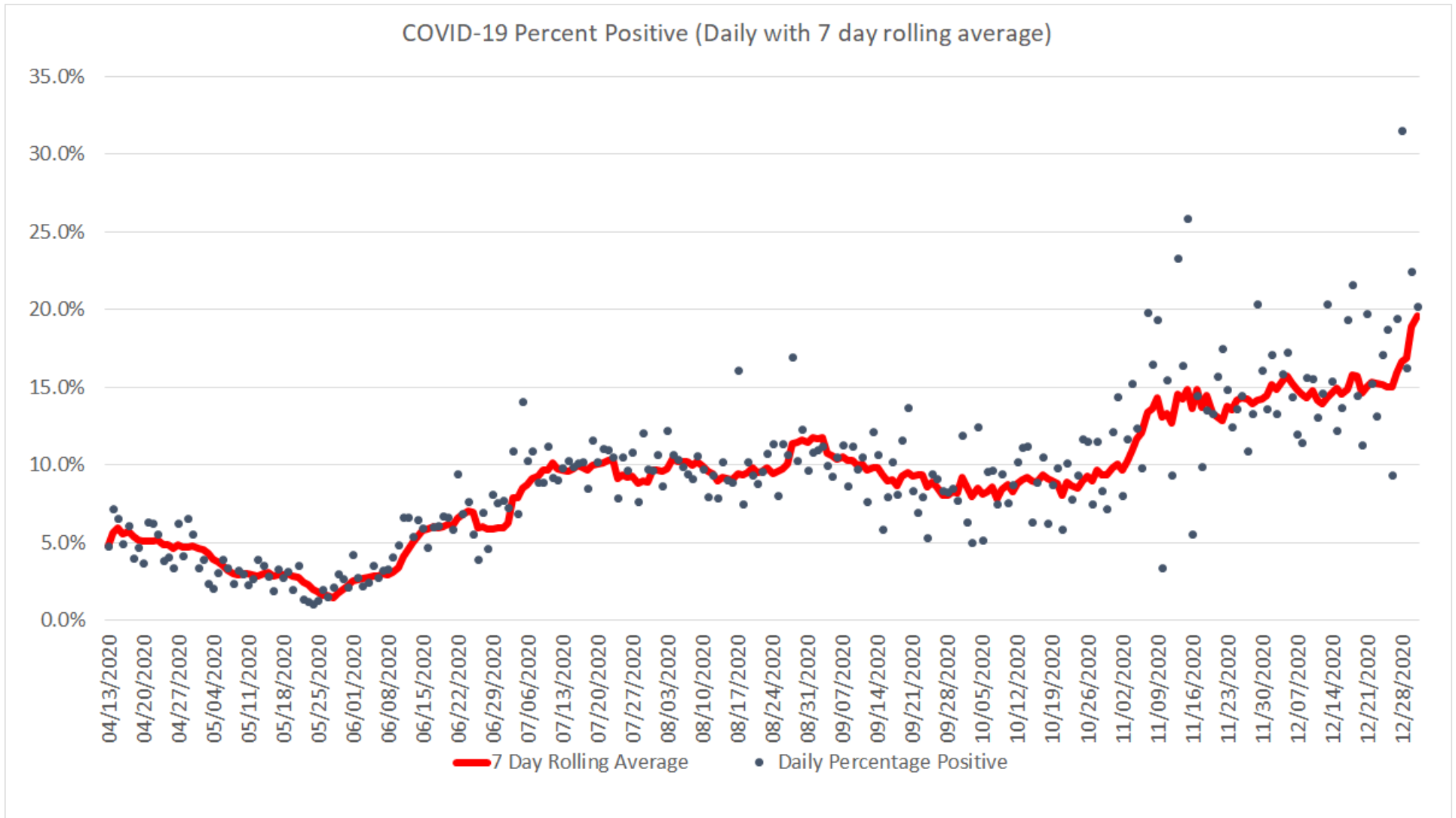


Oklahoma, December 31, 2020

Source: This data is obtained outside of individual case data reported to the OSDH Acute Disease Service and comes from a daily survey of state and private laboratories and facilities that are performing Covid-19 testing.

Note: On July 24, 2020 fourteen labs began reporting to OSDH that had been testing since May 18, 2020.

COVID-19 TESTS DAILY PERCENT POSITIVE WITH 7 DAY ROLLING AVERAGE



Oklahoma, December 31, 2020

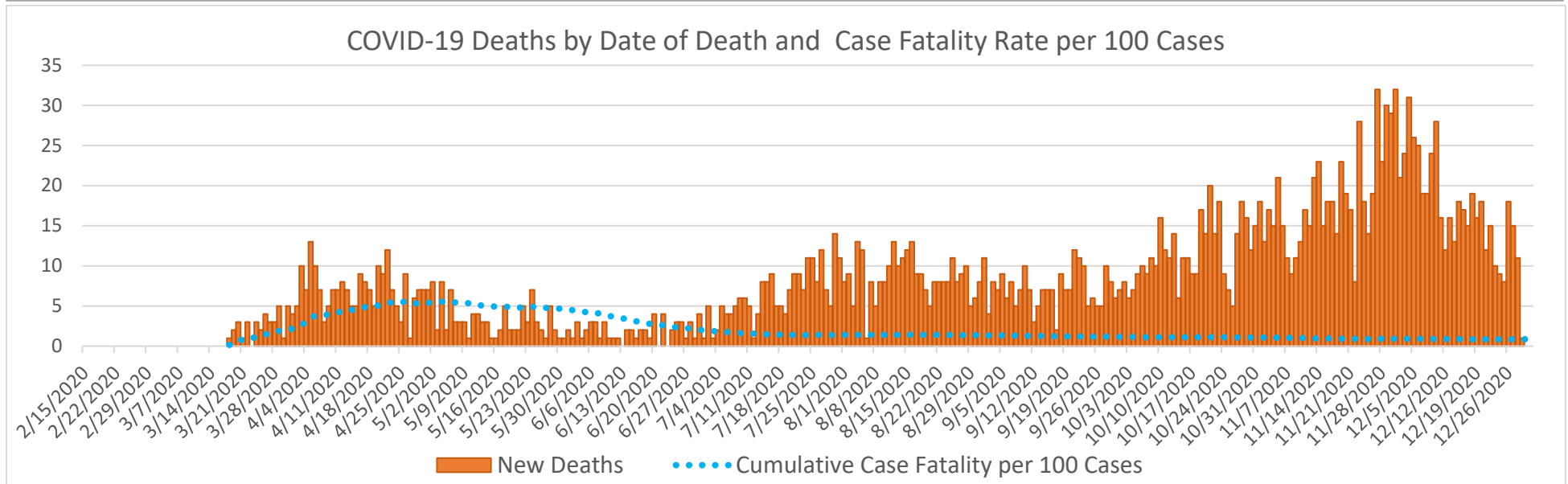
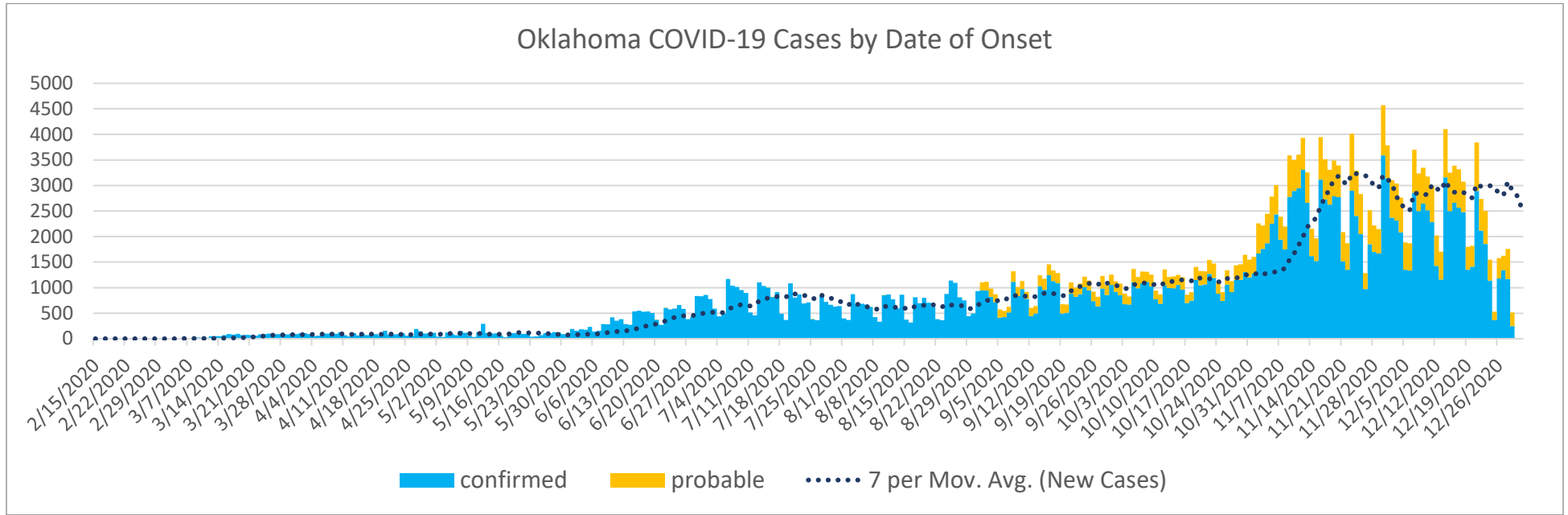
Source: This data is obtained outside of individual case data reported to the OSDH Acute Disease Service and comes from a daily survey of state and private laboratories and facilities that are performing Covid-19 testing.

EPIDEMIOLOGICAL ESTIMATES

	Estimate	Notes / Interpretation
Cases		
Cumulative incidence*	7,378.4 (per 100,000 persons)	From March 7 to December 31, there were about 7,378 (per 100,000) new cases of COVID-19 in Oklahoma.
Absolute change in cumulative incidence from previous week	-151.3 (per 100,000 persons)	Compared to December 18 – December 24 there were 151 (per 100,000) less cases of COVID-19 reported in Oklahoma during the past week (Dec 25– Dec 31).
Disease Severity		
Case-fatality risk (crude)	0.9%	The estimate is not adjusted for the lag time from reporting to death (i.e., delay between the time someone dies and the time their death is reported). The fatality estimate could be lower due to cases that were undiagnosed or had milder symptoms.
Cumulative Hospitalization rate (overall)	432.6 (per 100,000 persons)	About 432 people per 100,000 have ever been hospitalized for COVID-19 during this outbreak.

CASES AND DEATHS

New cases (by date of onset) and new deaths (by date of death) of COVID-19 in Oklahoma, February–December 2020



Please note the different axes for new cases (top—from 0 to 5,000 for new cases) and new deaths (bottom—from 0 to 35 for new deaths). Additionally, a 7-day lag has been applied to the trend line based on information collected to-date for 7/19 and 7/25 where within 7 days of onset date approximately 80% of the cases had been reported.

DEMOGRAPHIC INFORMATION AS OF DECEMBER 31, 2020

		Cases count (%) ¹		Deaths count (%) ^{1,3}		Cumulative Incidence Rate ²	Cumulative Mortality Rate ²
Oklahoma		290,936		2489		7,378.4	63.1
Gender							
	Male	137,288	(47.2)	1395	(56.0)	7,029.4	71.4
	Female	153,648	(52.8)	1094	(44.0)	7,720.9	55.0
	Unknown	0	(0.0)	0	(0.0)		
Age group							
	Under 1- 4	5,328	(1.8)	0	(0.0)	2,045.9	0.0
	5-14	18,933	(6.5)	1	(0.0)	3,519.8	0.2
	15-24	51,701	(17.8)	3	(0.1)	9,612.9	0.6
	25-34	48,230	(16.6)	17	(0.7)	8,878.6	3.1
	35-44	46,902	(16.1)	39	(1.6)	9,564.3	8.0
	45-54	41,359	(14.2)	119	(4.8)	8,985.0	25.9
	55-64	36,147	(12.4)	321	(12.9)	7,325.5	65.1
	65-74	24,034	(8.3)	647	(26.0)	6,701.3	180.4
	75-84	12,572	(4.3)	700	(28.1)	6,697.5	372.9
	85+	5,728	(2.0)	642	(25.8)	7,825.6	877.1
	Unknown	2	(0.0)				
Race							
	American Indian or Alaska Native	28,339	(9.7)	222	(8.9)	9,225.4	72.3
	Asian or Pacific Islander	5,586	(1.9)	37	(1.5)	6,308.1	41.8
	Black or African American	16,407	(5.6)	153	(6.1)	5,703.2	53.2
	Multiracial/Other	10,023	(3.4)	74	(3.0)	2,422.4	17.9
	White	165,800	(57.0)	1793	(72.0)	5,825.9	63.0
	Unknown	64,781	(22.3)	210	(8.4)		
Ethnicity							
	Hispanic or Latino	32,457	(11.2)	141	(5.7)	7,564.4	32.9
	Not Hispanic or Latino	180,744	(62.1)	2032	(81.6)	5,143.5	57.8
	Unknown/Other	77,735	(26.7)	316	(12.7)		

1. Percentages may not add up to 100 due to rounding.

2. Rate per 100,000 population

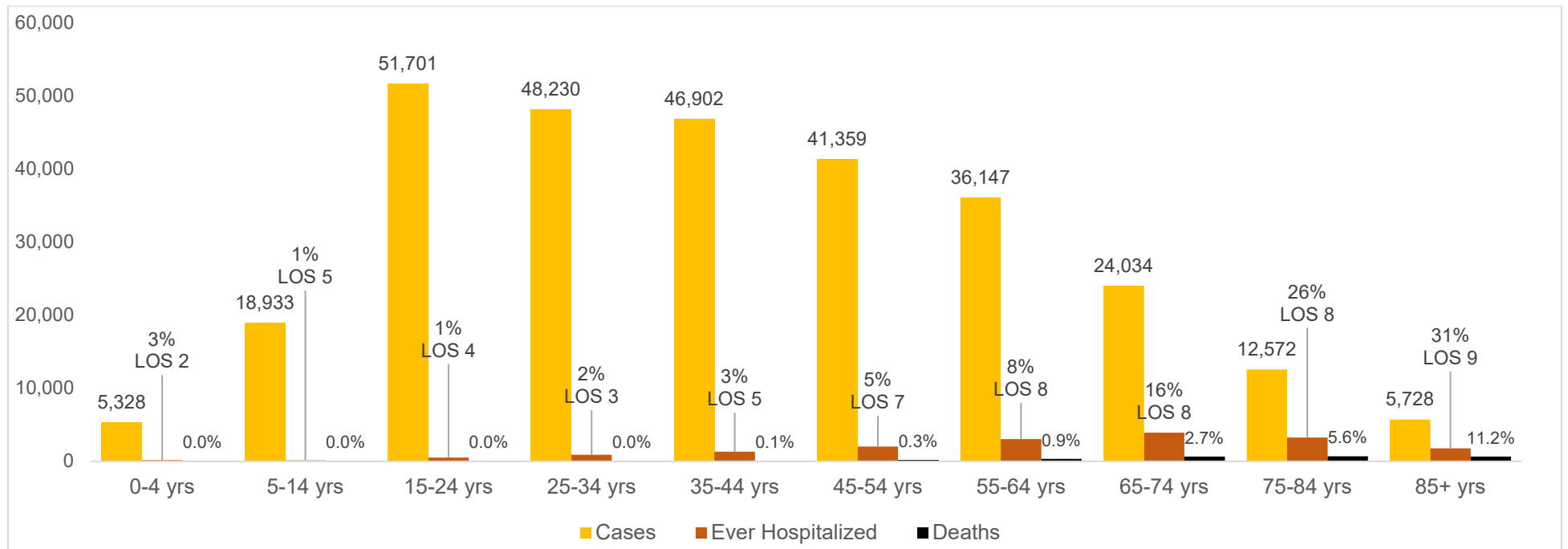
3. One death was previously misidentified as occurring in the under 1-4 age group within the December 24th Weekly Epi Report, this has been corrected in the above table.

AGE DISTRIBUTION OF NEW CASES/DEATHS FROM DECEMBER 25- DECEMBER 31

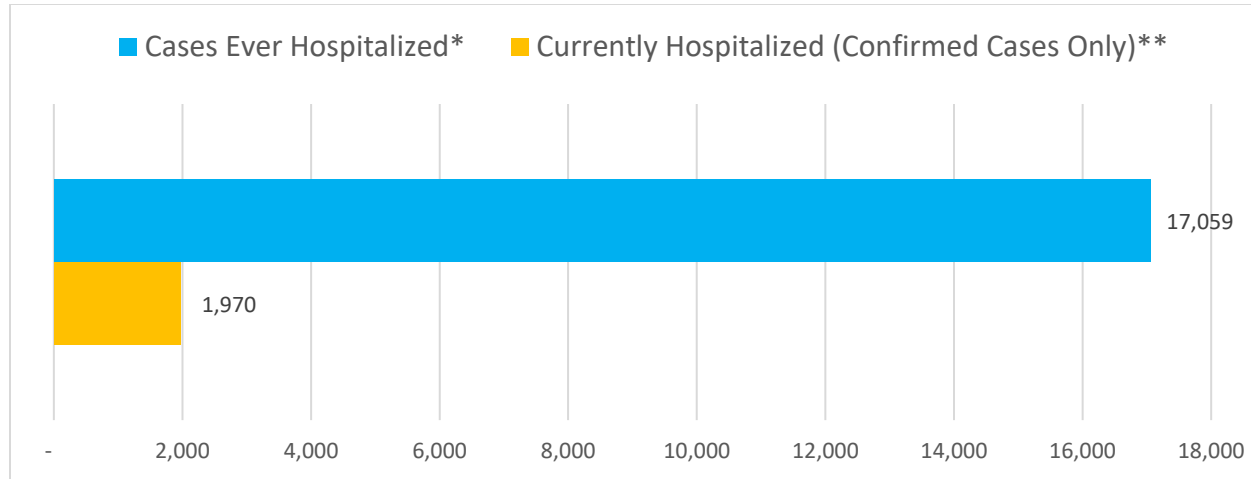
Age group	New Cases	Percentage	New Deaths ¹	Percentage
Under 1- 4	357	1.9%	0	0.0%
5-14	1,129	6.1%	0	0.0%
15-24	2,722	14.8%	0	0.0%
25-34	2,936	16.0%	1	0.6%
35-44	3,002	16.3%	4	2.5%
45-54	2,672	14.5%	13	8.0%
55-64	2,542	13.8%	18	11.1%
65-74	1,736	9.4%	36	22.2%
75-84	889	4.8%	48	29.6%
85+	400	2.2%	42	25.9%

1. Due to corrected case information, one death was previously misidentified as occurring in the under 1-4 age group within the December 24th Weekly Epi Report.

CUMULATIVE CASES, PERCENT HOSPITALIZED, AVERAGE LENGTH OF STAY (OCT CASES) AND DEATHS BY AGE GROUP



HOSPITALIZATIONS



17,059 Ever Hospitalized Cases (includes discharged, deceased, currently hospitalized and recovered).

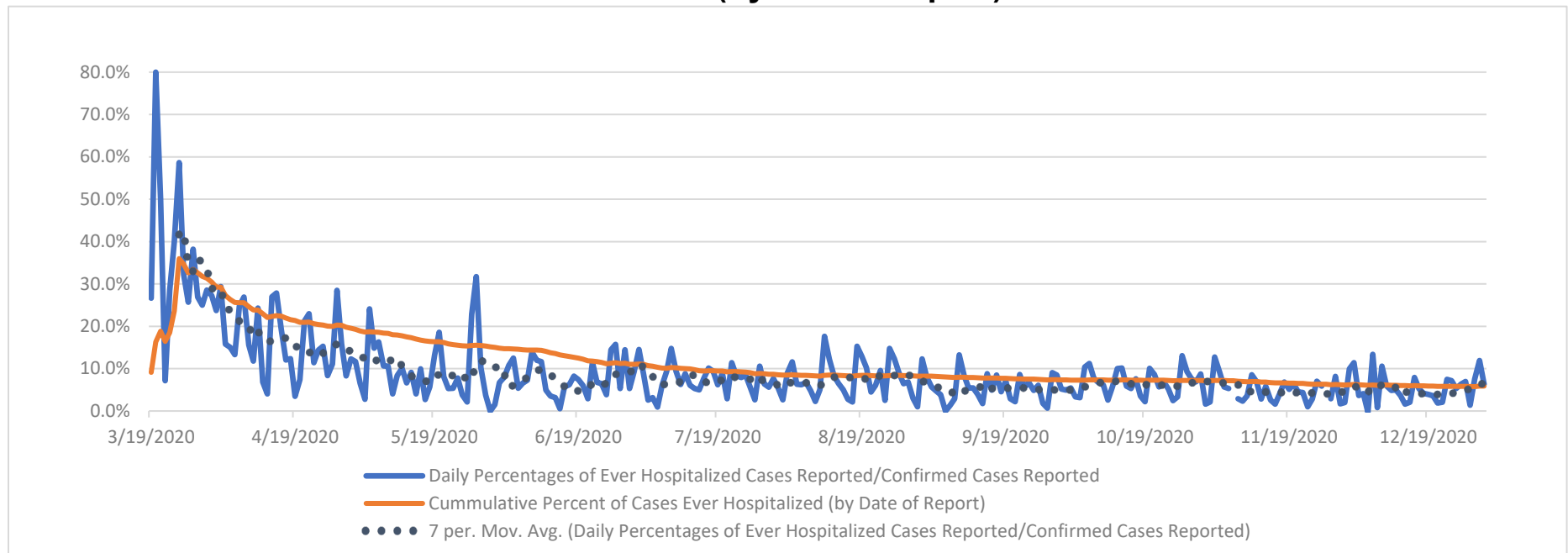
Average age of cases hospitalized: **62.4**

Average age of cases not hospitalized: **39.4**

*Ever hospitalized includes discharged, deceased, currently hospitalized and recovered as of 12/31/2020.

**Source OSDH Beds Survey. Note, facility response rate of 94% on 12/31/2020. This total reflects all cases as reported by Acute, Focus, Rehabilitation and Tribal facilities that responded to the survey on this date.

PERCENT OF CASES EVER HOSPITALIZED (by date of report)



Source: OSDH Acute Disease Registry

.....

AT-RISK SETTINGS HEALTHCARE & NON-HEALTHCARE

Status	Non-Healthcare Worker count (%)	Healthcare Worker count (%)
Active	31,782 (11.4)	822 (6.8)
Deceased	2,466 (0.9)	23 (0.2)
Recovered	244,590 (87.7)	11,253 (93.0)
Total	278,838	12,098

CORRECTIONAL FACILITIES¹

	Cases (%)	Deaths (%)
Inmates	4,037 (78.1)	32 (91.4)
Staff	1,135 (21.9)	3 (8.6)
Total	5,172	35

¹Correctional facilities include prisons, jails, and juvenile detention center

LONG TERM CARE (LTC) FACILITIES²

	Cases (%)	Deaths (%)
Residents	6,255 (63.3)	760 (99.3)
Staff	3,633 (36.7)	5 (0.7)
Total	9,888	765

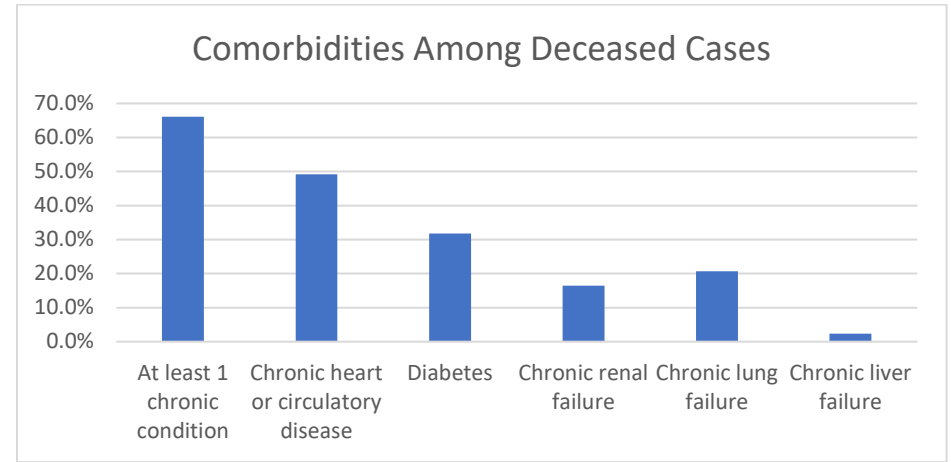
²Long term care facility or nursing home.

Detailed counts of LTC Cases by County and Facility can be found at the end of this report.

COMORBIDITIES AMONG DECEASED CASES

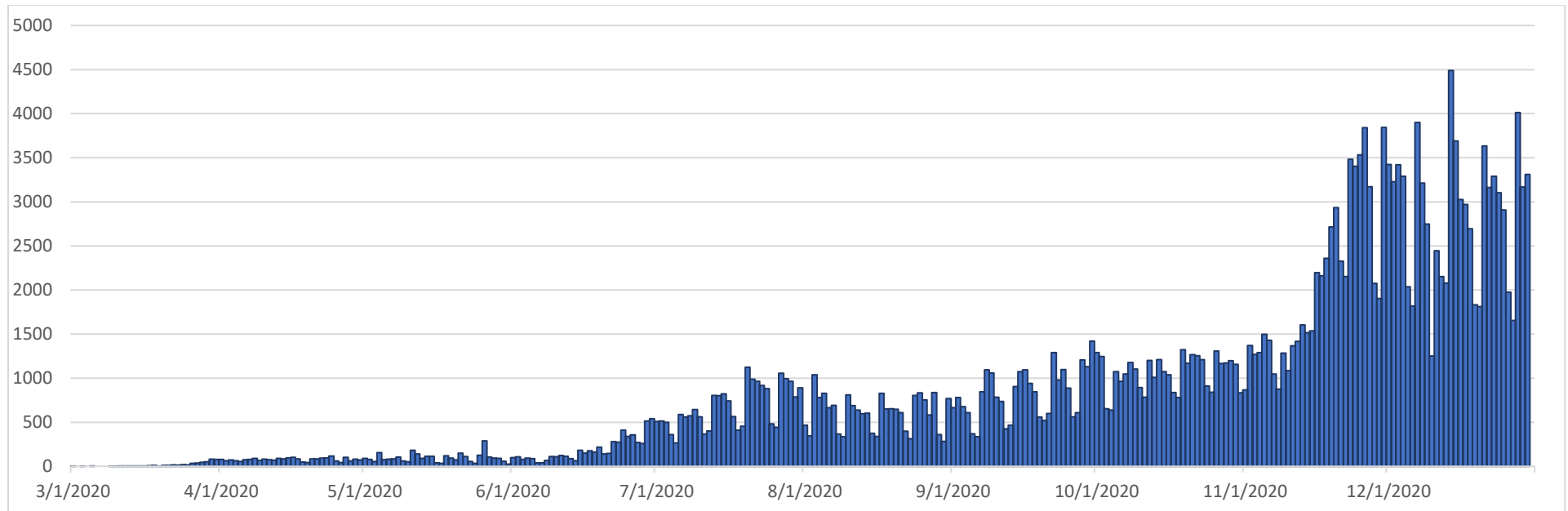
Comorbidities	Number (%)
At least 1 chronic condition ³	1,644 (66.1)
Chronic heart or circulatory disease	1,223 (49.1)
Diabetes	791 (31.8)
Chronic renal failure	409 (16.4)
Chronic lung failure	514 (20.7)
Chronic liver failure	58 (2.3)

³Chronic conditions include; chronic heart or circulatory disease, diabetes, chronic lung failure, chronic liver failure and renal failure.



RECOVERED CASES

Distribution of recovered cases of COVID-19, March – December 2020, Oklahoma



Note: A recovered case is an individual currently not hospitalized or deceased AND 14 days after the onset of symptoms

IMPACT OF MASK MANDATES

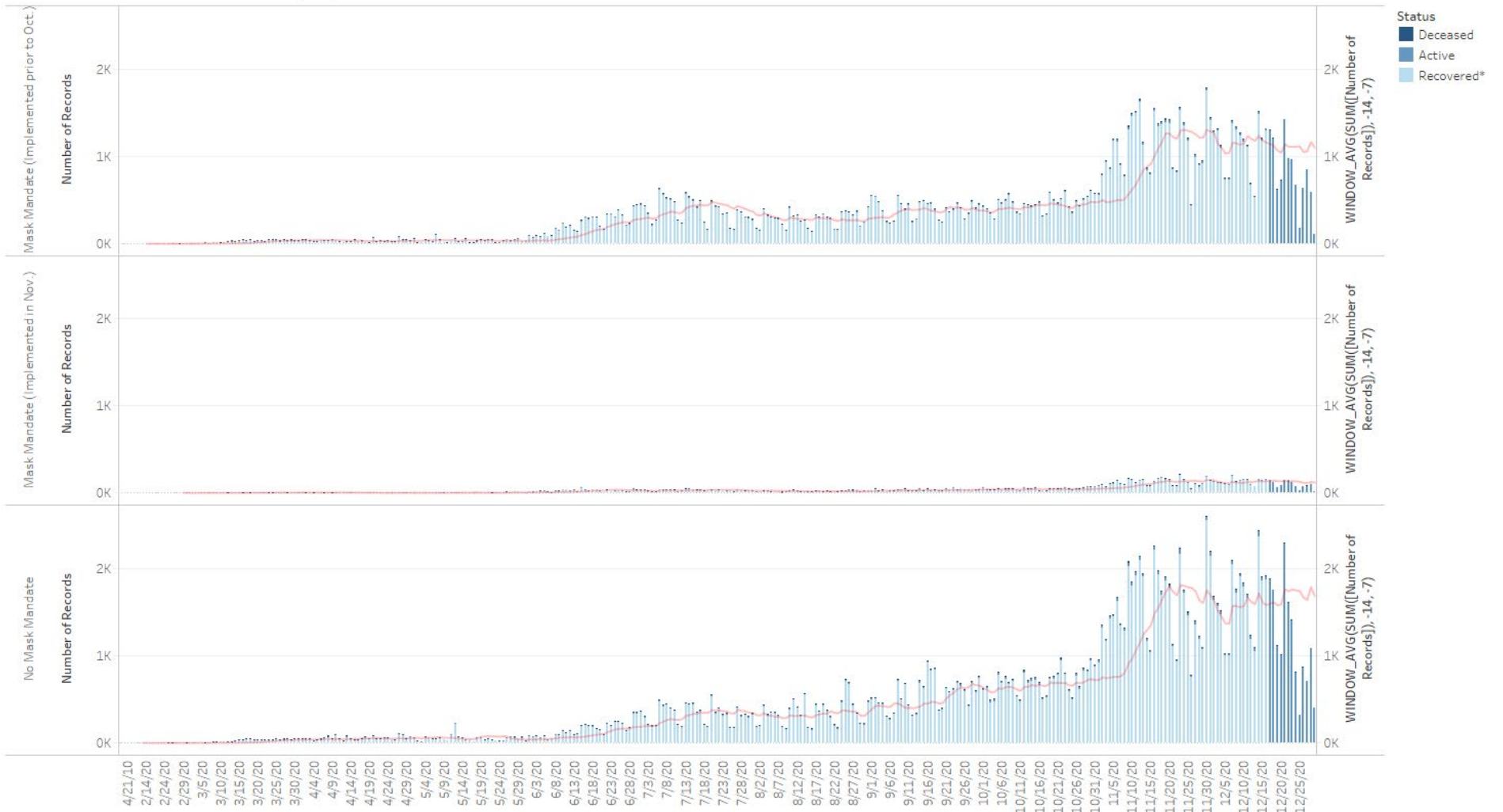
There are several important factors to consider in examining the data on case rates in mask mandate communities vs. those without:

1. As can be seen in this week's figure, there have been several municipalities adopt a mask mandate recently. Because mask usage prevents new infections but does not impact those currently in the incubation period, it is not appropriate to include these recent additions in the same group as communities that adopted mandates prior to October. Indeed, it is likely that increasing disease rates in these communities influenced the decision to adopt mandates.
2. The percentage change in case rates provided represent only a comparison from one single day to another. The full difference in rates can only be estimated by comparing data on all days within the period of interest. Such analysis is beyond the scope of this summary.
3. Mask mandates have been implemented primarily in densely populated metropolitan areas. Experience has shown that, in absence of mitigation efforts, such urban areas will have higher rates of disease transmission than in less populated areas. This can be observed in the graph above in the period before mid-July. The rate of increase was clearly higher in those communities that eventually adopted mask mandates. If urban populations have rates at or below those of less populated areas, it is likely that mitigation efforts are having a beneficial impact. Of course, mask mandates are not the only mitigation effort being employed, and it is not possible to determine what effect that alone has.

	7 Day Average Number of Cases by date of Onset* with 7 day lag						Percent Change 8/1 to 12/29	Percent Change 11/1 to 12/29
	1-Aug	1-Sep	1-Oct	1-Nov	1-Dec	29-Dec		
Mask Cities (Prior to Oct.)	331	291	379	480	1,284	1,099	232%	129%
per 100,000 Pop'l	20.5	18.1	23.5	29.8	79.7	68.2		
Mask Cities (Nov.)	25	21	37	48	150	122	388%	154%
per 100,000 Pop'l	17.7	14.9	26.2	34.0	106.1	86.3		
No Mask Areas	319	386	629	720	1,686	1,682	427%	134%
per 100,000 Pop'l	14.5	17.5	28.5	32.7	76.5	76.3		
Mask (Prior to Oct.) vs No Mask Incidence Difference	42%	3%	-18%	-9%	4%	-11%		

IMPACT OF MASK MANDATES (continued)

Status by Date of Onset as of 12/31/2020

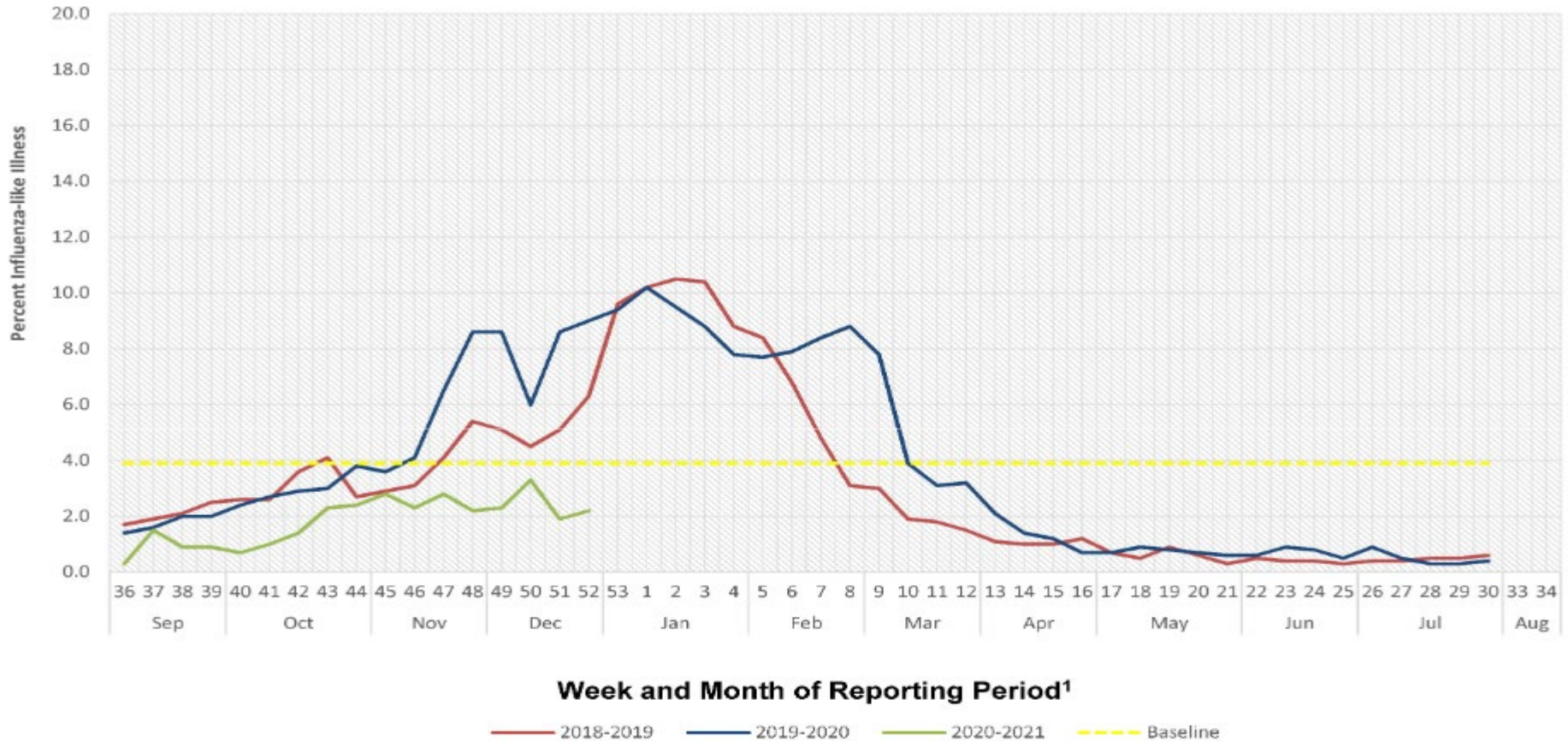


The trends of sum of Number of Records and WINDOW_AVG(SUM([Number of Records]), -14, -7) for Event Dt Day broken down by Mask Mandate. For pane Sum of Number of Records: Color shows details about Status. The view is filtered on Status, which keeps Active, Deceased and Recovered*.

SYMPTOMS CRITERIA

WEEKLY PERCENT OF INFLUENZA-LIKE ILLNESS BASED ON TOTAL PATIENT VISITS TO SENTINEL CLINICIANS, OKLAHOMA VIRAL RESPIRATORY ILLNESS SURVEILLANCE SYSTEM, 2018-2021

Week ending December 26, 2020 (Week 52)



¹These units correspond to the number of weeks in a year and allow for a comparison between multiple seasons.

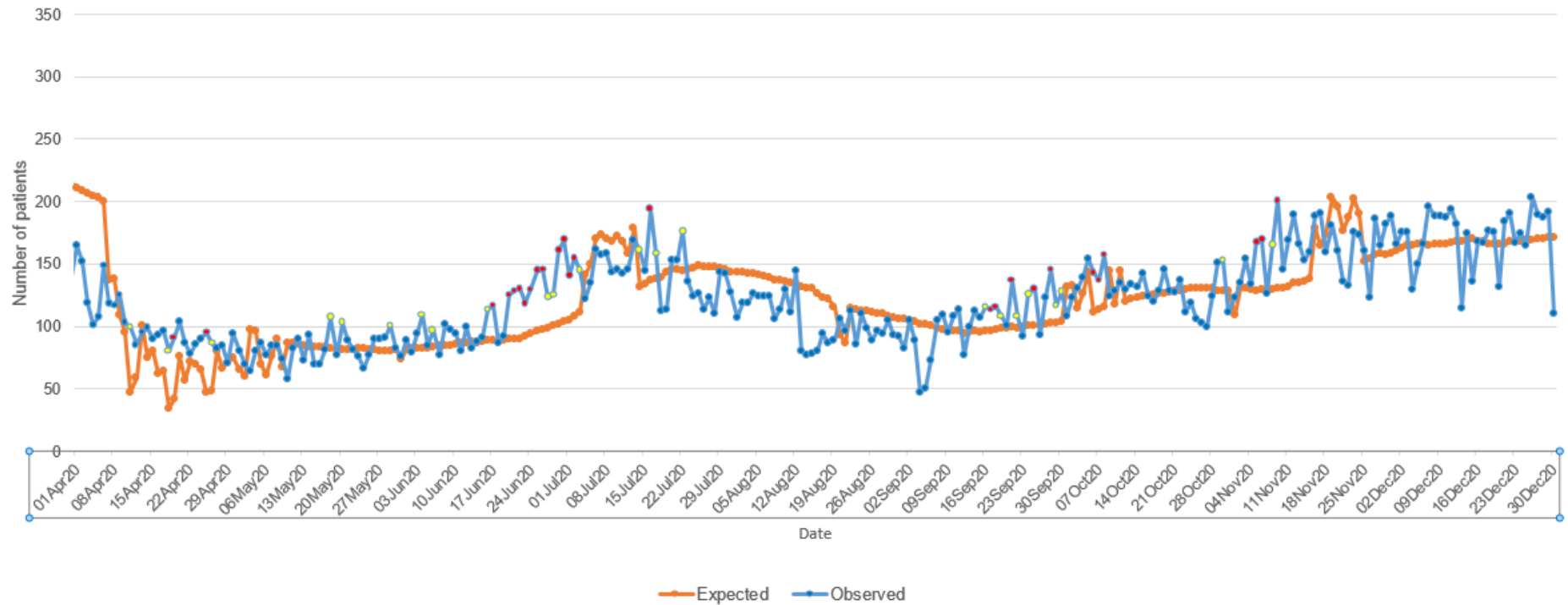
Interpretation: Data on Influenza-Like Illness (ILI) increased to 2.2% of outpatient visits exhibiting fever with cough or sore throat. This week's value of 3.3% is below Oklahoma's baseline ILI of 3.9%.

Note: Data current up to week ending December 26, 2020 (Week 52).

Source: <https://oklahoma.gov/content/dam/ok/en/health/health2/aem-documents/prevention-and-preparedness/acute-disease-service/disease-information/flu-view>

COVID-19 RELATED EMERGENCY DEPARTMENT VISITS

Oklahoma State Syndromic Surveillance of
COVID-19 related ED Visits
April 1- December 30, 2020

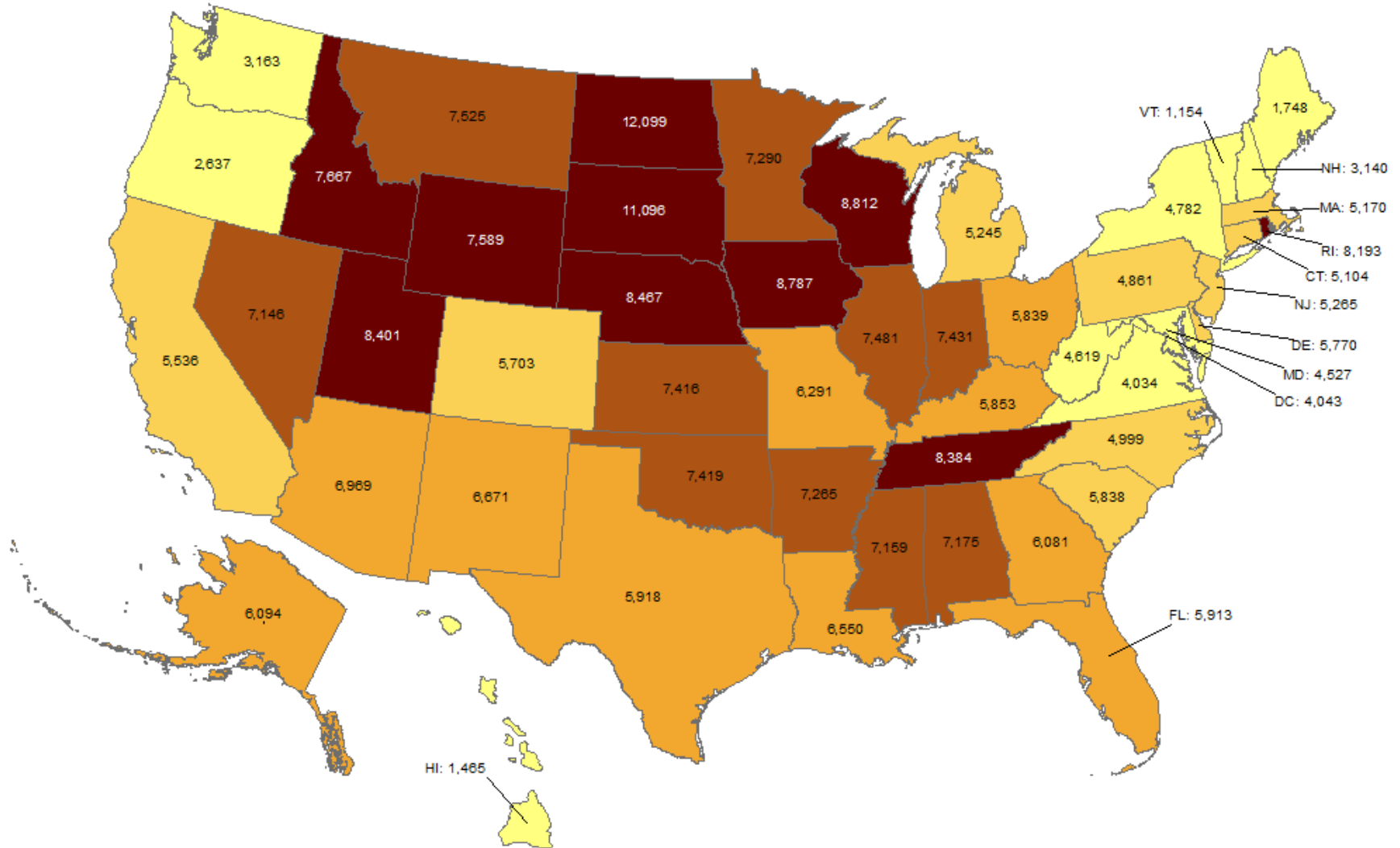


Interpretation: Data from syndromic surveillance shows that the number of COVID-19 related emergency department visits has been within the expected range for the past 2 weeks as indicated by the blue dots on the observed line.

.....

Cumulative incidence of reported COVID-19 cases

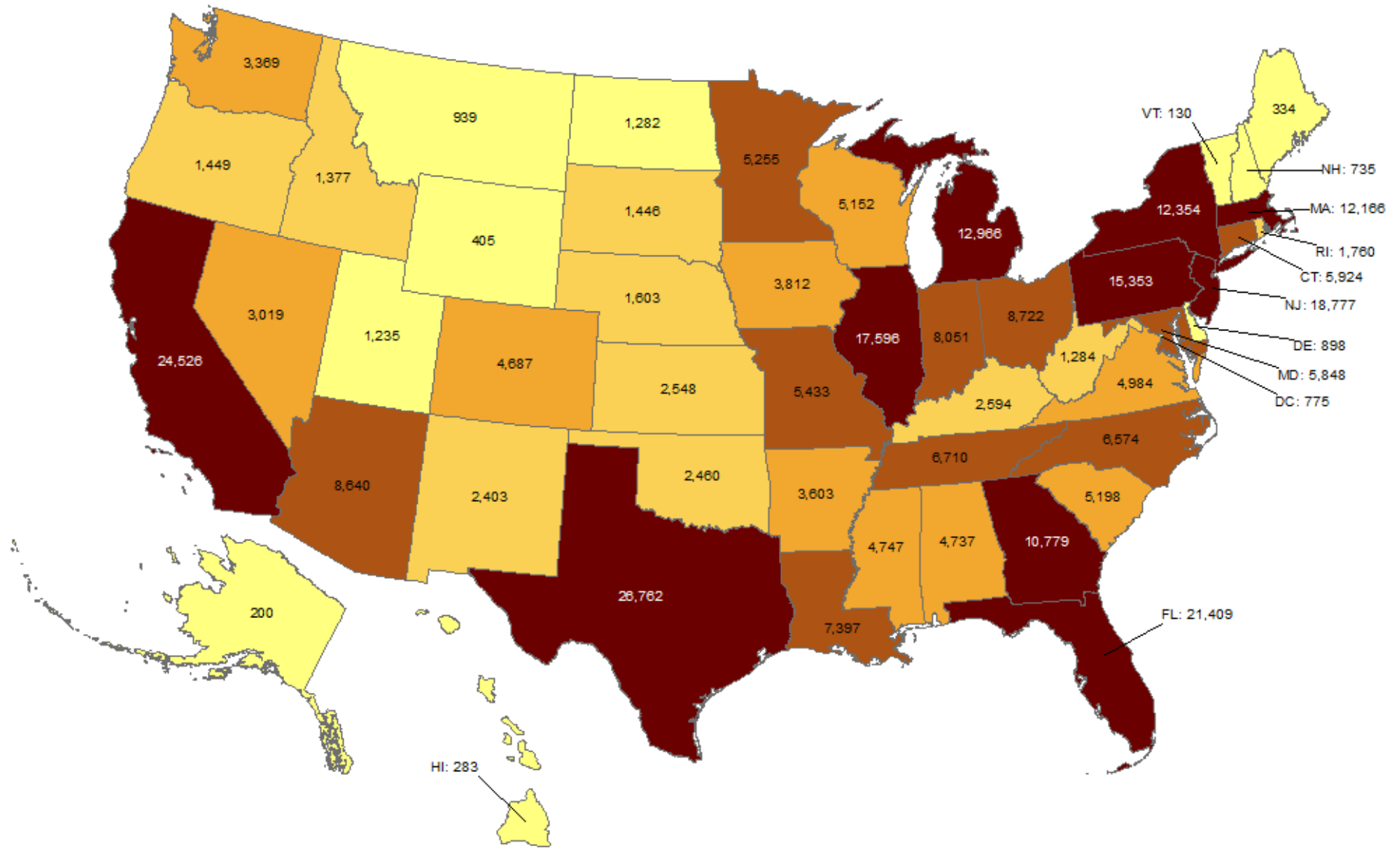
Oklahoma ranks **14** (out of all States and DC) in the cumulative incidence (per 100,000 persons) of reported COVID-19 cases in the US.



Data from CDC. Available at <https://www.cdc.gov/covid-data-tracker/index.html>
Data as of December 30, 2020

Total number of reported COVID-19 deaths

Oklahoma ranks **33** (out of all States and DC) in the total number of reported COVID-19 deaths in the US.



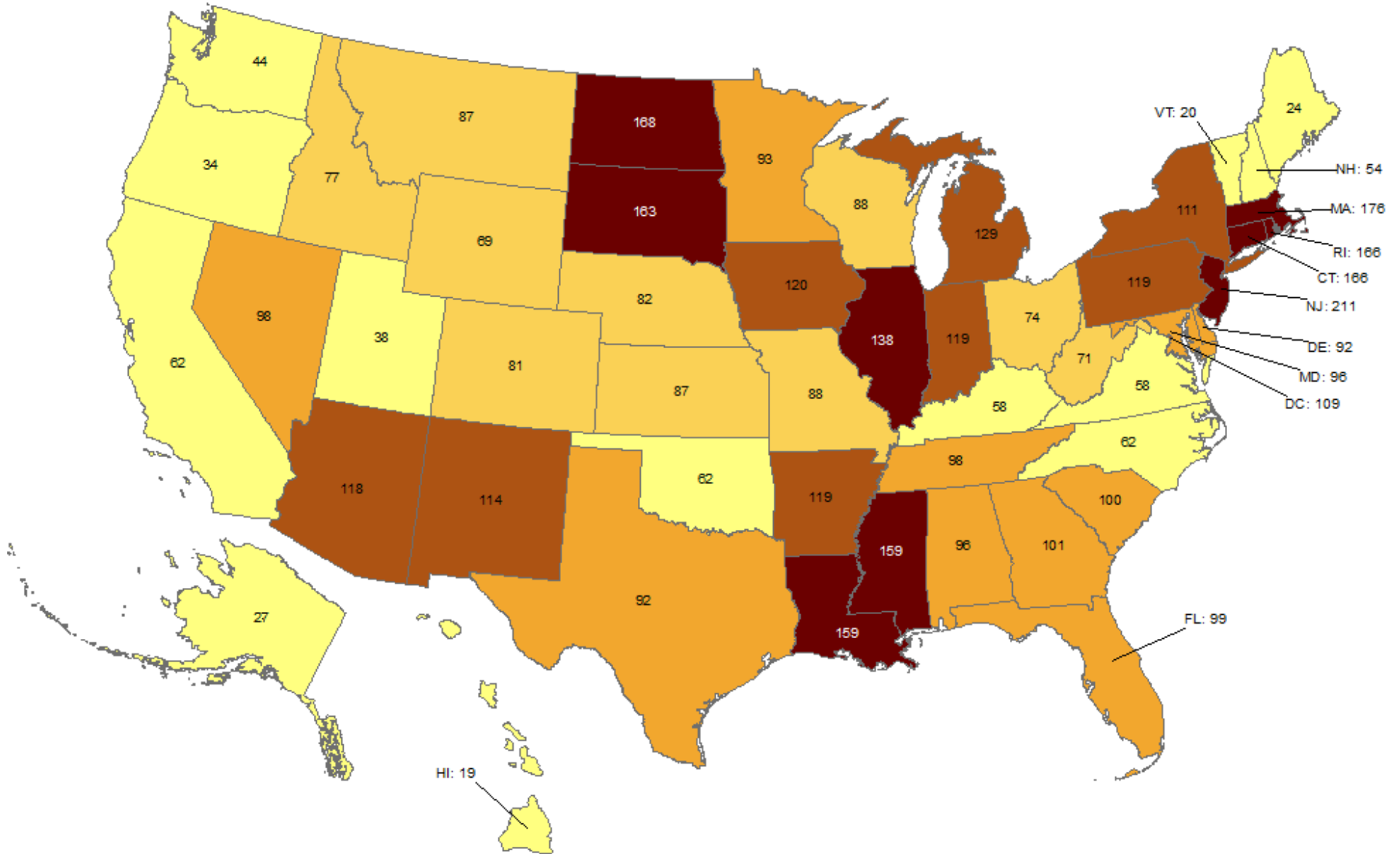
Data from CDC. Available at <https://www.cdc.gov/covid-data-tracker/index.html>

Data as of December 30, 2020

NOTE: CDC numbers include both Confirmed and Probable cases.

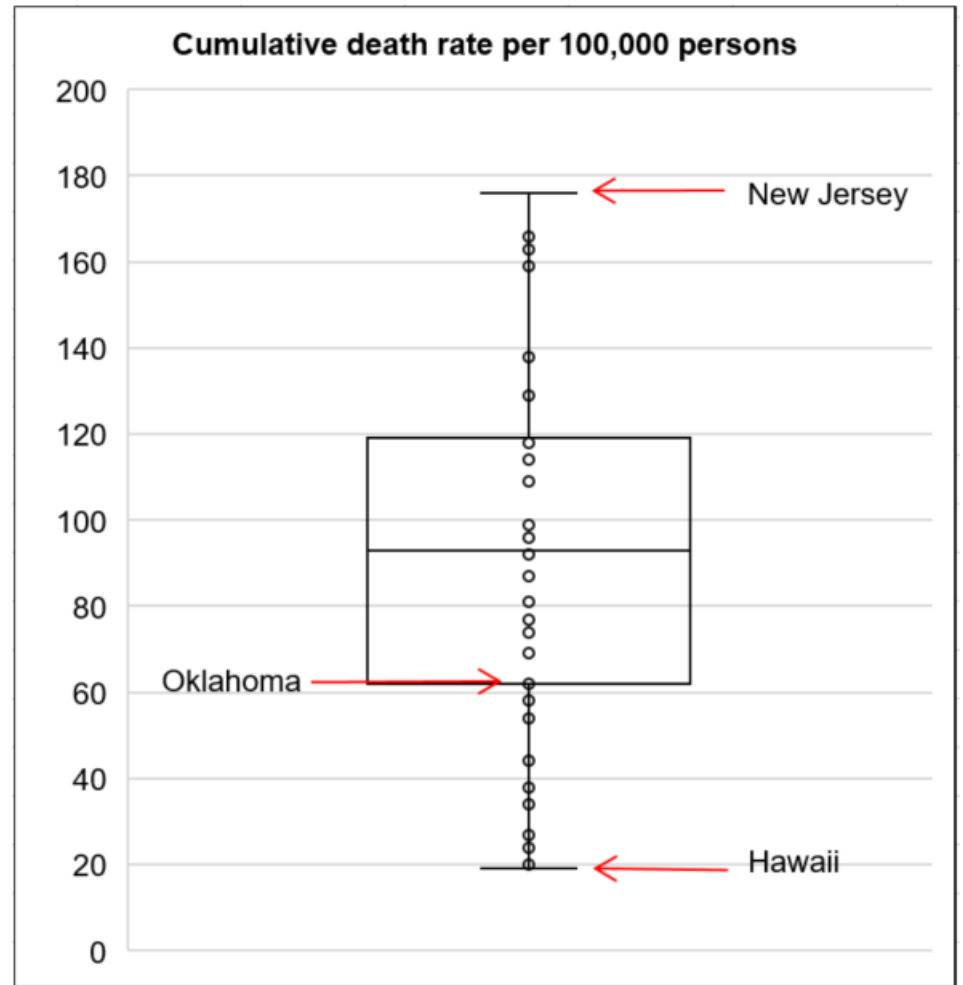
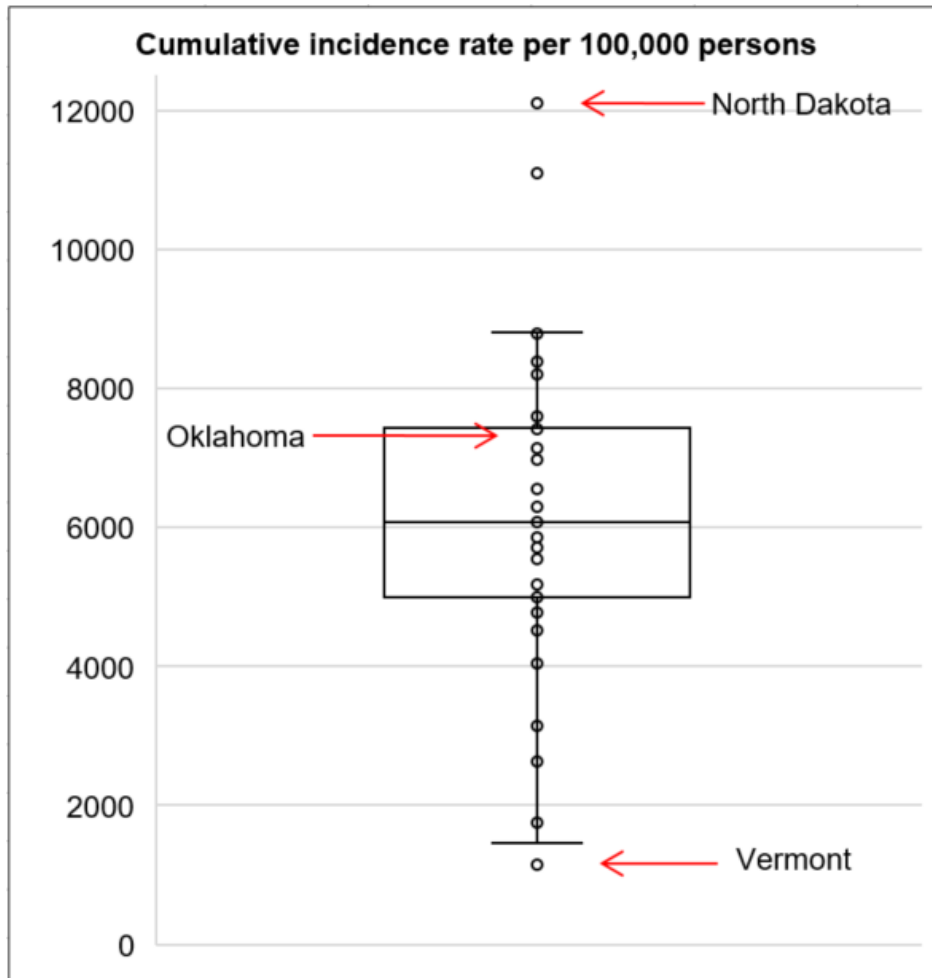
Cumulative death rate of reported COVID-19 cases

Oklahoma ranks **41** (out of all States and DC) in the cumulative death rate (per 100,000 persons) of reported COVID-19 cases in the US.



Data from CDC. Available at <https://www.cdc.gov/covid-data-tracker/index.html>
Data as of December 30, 2020

Cumulative incidence and cumulative death rate of reported COVID-19 cases



Interpretation: Oklahoma has cumulative incidence that is **above the median** of the US and cumulative death rate **below the median** of the US.

OKLAHOMA EXCESS DEATH ANALYSIS

- + indicates observed count above threshold
- Predicted number of deaths from all causes
- threshold for excess deaths

Weekly number of deaths (from all causes)

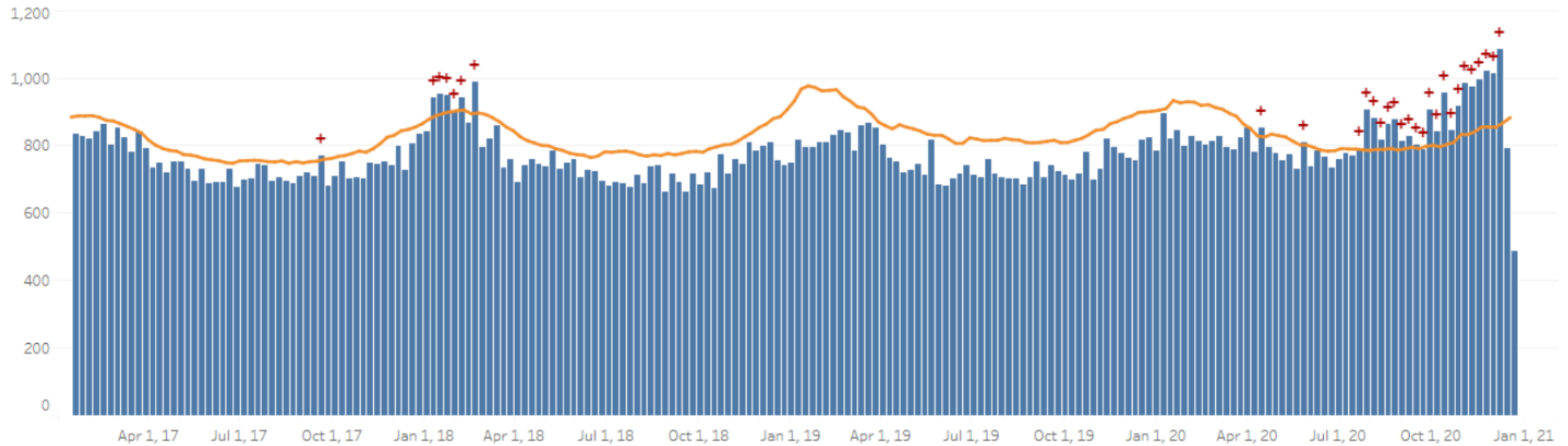


Figure notes: Contains data up to the week-ending date of December 19, 2020. Data in recent weeks are incomplete. Only 60% of the death records are submitted to NCHS within 1-days of the date of death, and completeness varies by jurisdiction.

Source: CDC, National Center for Health Statistics, https://www.cdc.gov/nchs/nvss/vsrr/covid19/excess_deaths.htm#dashboard, Jan 4, 2020 09:50AM

COVID-19 LTC OR NURSING HOME ASSOCIATED CASES BY COUNTY

Status as of Midnight December 30 2020

Data are preliminary and are subject to change as cases are processed.

County of Residence	Cases	Recovered**	Deaths
Adair	8	3	0
Alfalfa	4	4	0
Atoka	76	69	2
Beaver	17	14	1
Beckham	119	90	4
Blaine	29	23	0
Bryan	145	103	12
Caddo	146	119	17
Canadian	174	158	6
Carter	41	25	3
Cherokee	130	101	5
Choctaw	101	80	1
Cleveland	561	451	66
Coal	67	58	4
Comanche	164	95	10
Cotton	45	37	6
Craig	35	29	1
Creek	184	142	10
Custer	173	129	16

County of Residence	Cases	Recovered**	Deaths
Delaware	195	142	26
Dewey	9	8	1
Ellis	5	5	0
Garfield	158	141	9
Garvin	48	38	1
Grady	152	121	12
Grant	12	11	1
Greer	51	41	6
Harmon	14	13	0
Harper	2	2	0
Haskell	56	50	3
Hughes	23	20	0
Jackson	105	76	15
Jefferson	22	19	1
Johnston	12	6	0
Kay	160	122	7
Kingfisher	104	93	4
Kiowa	43	34	4
Latimer	31	24	2
Le Flore	189	173	12
Lincoln	128	105	21
Logan	97	85	2
Love	28	24	1

County of Residence	Cases	Recovered**	Deaths
Major	73	63	3
Marshall	23	16	0
Mayes	77	66	2
McClain	136	98	7
McCurtain	96	72	16
McIntosh	105	81	6
Murray	35	32	0
Muskogee	275	199	16
Noble	139	130	1
Nowata	51	49	0
Okfuskee	12	11	0
Oklahoma	1,631	1,379	146
Okmulgee	69	68	0
Osage	73	65	7
Ottawa	227	195	5
Pawnee	99	60	3
Payne	140	120	4
Pittsburg	212	173	15
Pontotoc	54	45	3
Pottawatomie	181	149	10
Pushmataha	41	37	4
Roger Mills	1	1	0
Rogers	381	282	42

County of Residence	Cases	Recovered**	Deaths
Seminole	105	93	3
Sequoyah	74	66	2
Stephens	148	111	3
Texas	67	60	5
Tillman	28	25	2
Tulsa	989	775	115
Wagoner	103	85	12
Washington	264	222	35
Washita	26	22	1
Woods	35	28	2
Woodward	55	50	3
<i>Total</i>	<i>9,888</i>	<i>8,011</i>	<i>765</i>

****Recovered:** *Currently not hospitalized or deceased and 14 days after onset/report.*

COVID-19 LTC OR NURSING HOME ASSOCIATED CASES BY FACILITY

Status as of Midnight December 30, 2020

Data are preliminary and are subject to change as cases are processed.

Facility	Cases	Recovered**	Deaths
Aberdeen Heights Assisted Living Community	10	9	0
Aberdeen Memory Care of Tulsa	6	3	2
Accel at Crystal Park	29	21	6
Ada Care Center	4	3	0
Adams PARC Post Acute Recovery Center	101	84	14
Albert Hall	7	7	0
Alcis Place	1	0	0
Ambassador Manor Nursing Center	21	13	4
Anadarko Nursing & Rehab	32	27	1
Antlers Manor	1	1	0
Arbor House Assisted Living Center - Norman	14	11	1
Arbor House Assisted Living Center of Mustang	33	26	4
Arbor House Reminisce	34	29	5
Arbor Village	8	8	0
Artesian Home	6	6	0
Ash Street Place	3	3	0
Ashbrook Village	5	5	0
Aspen Health and Rehab	9	9	0
Atoka Manor	70	65	2
Autumn Leaves of Edmond	34	30	4

Facility	Cases	Recovered**	Deaths
Autumn Leaves of Southwest Oklahoma City	3	2	1
Autumn Leaves of Tulsa	1	1	0
Avondale Cottage of Pryor	1	1	0
Avonlea Cottage of Seminole	19	18	0
Avonlea Cottage of Shawnee, LLC	10	9	0
Ayers Nursing Home	17	11	3
Ballard Nursing Center	24	20	3
Baptist Village of Hugo	60	56	1
Baptist Village of Oklahoma City	48	42	4
Baptist Village of Owasso	22	17	0
Barnsdall Nursing Home	2	2	0
Bartlesville Assisted Living	23	20	0
Bartlesville Health and Rehabilitation Community	104	81	20
Beacon Ridge	7	5	0
Beadles Nursing Home	29	24	2
Beare Manor	3	2	0
Beaver County Nursing Home	17	15	1
Belfair of McAlester	10	9	0
Belfair of Shawnee	1	1	0
Bell Avenue Nursing Center	19	16	2
Bellarose Senior Living	1	1	0
Bellevue Health and Rehabilitation	94	76	10
Betty Ann Nursing Center	7	2	0

Facility	Cases	Recovered**	Deaths
Beverly Place	1	1	0
Billings Fairchild Center, Inc	130	128	0
Binger Nursing and Rehabilitation	60	46	11
Blue Ridge Place	1	1	0
Blue River Healthcare, Inc	9	1	0
Boyce Manor Nursing Home	13	13	0
Bradford Village Healthcare Center: Nursing Home	14	8	2
Brentwood Extended Care & Rehab	17	15	0
Broadway Living Center	3	1	1
Broadway Manor Nursing Home	44	32	4
Broken Arrow Assisted Living	6	5	1
Broken Arrow Nursing Home, Inc.	33	28	4
Broken Bow Nursing Home	56	41	11
Brookdale Ada	2	2	0
Brookdale Bartlesville North	18	15	3
Brookdale Bartlesville South	9	9	0
Brookdale Broken Arrow	10	8	2
Brookdale Cedar Ridge	7	6	0
Brookdale Chickasha	19	16	3
Brookdale Claremore	5	2	1
Brookdale Durant	26	21	1
Brookdale Edmond Santa Fe	5	3	0
Brookdale Muskogee	22	10	6

Facility	Cases	Recovered**	Deaths
Brookdale Norman	1	1	0
Brookdale Owasso	1	0	0
Brookdale Shawnee	1	0	1
Brookdale Stillwater	4	2	0
Brookdale Tulsa 71st and Sheridan	65	51	12
Brookdale Tulsa Midtown	8	3	1
Brookdale Tulsa South	5	4	0
Brookdale Village	3	3	0
Brookdale Weatherford	11	6	1
Brookridge Retirement Community	5	3	0
Brookside Nursing Center	7	7	0
Brookwood Skilled Nursing and Therapy	6	3	1
Burford Manor	11	11	0
Callaway Nursing Home	12	12	0
Capitol Hill Skilled Nursing and Therapy	46	39	7
Carnegie Nursing Home, Inc.	39	31	4
Cedar Creek Nursing Center	23	8	0
Cedar Crest Manor	5	5	0
Cedarcrest Care Center	47	38	7
Center of Family Love	7	7	0
Chandler Therapy & Living Center, LLC	53	43	9
Checotah Nursing Center	5	2	0
Cherokee County Nursing Center	52	37	0

Facility	Cases	Recovered**	Deaths
Chickasha Nursing Center, Inc	12	10	1
Chisholm Trail Assisted Living	13	6	0
Choctaw Nation Nursing Home	36	32	4
Cimarron Nursing Center	14	11	1
Cimarron Pointe Care Center	27	23	1
Claremore Skilled Nursing and Therapy	12	11	0
Cleveland Manor Nursing & Rehab	56	38	0
Clinton Therapy & Living Center	2	1	0
Colonial Manor II	13	12	0
Colonial Manor Nursing Home	23	19	2
Colonial Park Manor, LLC	4	4	0
Colonial Terrace Care Center	3	3	0
Community Health Care of Gore	8	7	0
Community Health Center	10	9	1
Copp's Residential Care, Inc	1	1	0
Cordell Christian	6	6	0
Corn Heritage Village and Rehab	20	17	1
Corn Heritage Village and Rehab of Weatherford	39	34	4
Cottonwood Creek Skilled Nursing & Therapy	23	12	0
Country Club Care	30	19	0
Country Club at Woodland Hills	7	6	0
Country Lane	2	1	0
Country Place	1	1	0

Facility	Cases	Recovered**	Deaths
Countryside Estates	5	4	0
Countrywood Assisted Living and Memory Care	12	9	1
Covenant Living at Inverness	14	12	1
Covenant Living of Bixby	1	1	0
Coweta Manor Nursing Home	65	53	11
Creekside Village	2	2	0
Cross Timbers Nursing and Rehabilitation	46	41	3
Crossroads Residential Care	7	4	1
Dr W F & Mada Dunaway Manor	39	35	3
Drumright Nursing Home	36	17	0
Duncan Assisted Living	15	5	0
Eastgate Village Retirement Center	64	49	2
Eastwood Manor	90	87	0
Edith Kassanavoid Gordon Assisted Living Center	2	1	0
Edmond Healthcare Center	45	36	8
El Reno Post-Acute Rehabilitation Center	4	3	1
Elk City Nursing Center	41	19	2
Elk Crossing	24	20	2
Elkwood Assisted Living and Memory Care	25	22	1
Elmbrook Home	7	6	0
Elmwood Manor Nursing Home	11	11	0
Emerald Care Center Claremore	120	107	6
Emerald Care Center Midwest	25	21	2

Facility	Cases	Recovered**	Deaths
Emerald Care Center Southwest LLC	51	48	2
Emerald Care Center Tulsa	10	9	0
Emerald Square Assisted Living Community	3	3	0
English Village Manor	42	28	7
Enid Senior Care	12	11	1
Epworth Villa Health Services	21	19	1
Eufaula Manor Nursing and Rehabilitation Center	75	62	4
Fairfax Manor	11	11	0
Fairmont Skilled Nursing and Therapy	76	72	4
Fairview Fellowship Home for Senior Citizens, Inc	76	65	2
Family Care Center of Fairland	2	2	0
Family Care Center of Kingston	11	7	0
Featherstone Assisted Living Community of Ada	1	0	0
Featherstone Assisted Living Community of Moore	36	32	4
First Shamrock Care Center	3	3	0
Forest Hills Care and Rehabilitation Center	13	11	1
Forrest Manor Nursing Center	6	6	0
Fort Gibson Nursing Home	13	11	0
Fountain View Manor, Inc	6	6	0
FountainBrook Assisted Living and Memory Support	6	6	0
Four Seasons Rehabilitation & Care	25	6	1
Franciscan Villa	105	90	13
Garland Road Nursing and Rehab Center	8	8	0

Facility	Cases	Recovered**	Deaths
Gateway Foundation, Inc	3	3	0
Glade Avenue Assisted Living	2	2	0
Glade Avenue South	6	2	2
Glenhaven Retirement Village	23	20	2
Glenwood Healthcare	17	13	4
Go Ye Village Continuum of Care Retirement Community	5	3	2
Golden Age Nursing Home of Guthrie, LLC	74	64	2
Golden Oaks Village	28	22	5
Grace Living Center - Clinton	5	4	0
Grace Living Center - Jenks	22	15	5
Grace Living Center - Norman	88	74	12
Grace Living Center - Stillwater	12	12	0
Grace Living Center - Tahlequah East Shawnee	2	1	0
Gracewood Health and Rehab	42	32	6
Gran Grans Place	1	1	0
Grand Lake Villa	31	19	6
Grandwood Assisted Living, LC	38	34	3
Green Country Care Center	21	16	3
Green Country Village Assisted Living Center	4	4	0
Green Tree at Sand Springs	5	4	0
Greenbrier Nursing Home	10	10	0
Greenbrier Village Residential Living, LLC	2	2	0
Gregston Nursing Home, Inc.	8	8	0

Facility	Cases	Recovered**	Deaths
Grove Nursing Center	86	66	16
Harrah Nursing Center	44	39	3
Haskell County Nursing Center, Inc	52	46	3
Hays House	36	36	0
Heartsworth Center for Nursing and Rehabilitation	33	27	2
Heartsworth House Assisted Living	1	1	0
Heatheridge Residential Care Center	1	1	0
Heavener Nursing & Rehab	53	43	7
Hennessey Nursing & Rehab	75	73	2
Henryetta Community Skilled Healthcare & Rehab	3	3	0
Hensley Nursing & Rehab	30	27	2
Heritage Assisted Living	3	3	0
Heritage Community	29	26	2
Heritage Hills Living & Rehabilitation Center	23	2	0
Heritage Manor	30	28	1
Heritage Park	6	5	1
Heritage Point of Tulsa	1	1	0
Heritage Villa Nursing Center	13	12	0
Heritage Village Nursing Home	9	6	0
Heritage at Brandon Place Health and Rehabilitation	52	43	4
High Cedar Residential Care	1	1	0
Higher Call Nursing Center	32	12	0
Highland Park Health Care	6	6	0

Facility	Cases	Recovered**	Deaths
Hill Nursing Home, Inc	16	14	1
Hillcrest Manor Nursing Center	6	3	2
Hillcrest Nursing Center	20	19	0
Hobart Nursing & Rehab	21	19	1
Holiday Heights Nursing Home	11	8	1
Homestead Residential Care	1	1	0
Homestead of Bethany, LLC	8	7	0
Homestead of Hugo	38	21	0
Homestead of Owasso	1	1	0
Ignite Medical Resort Norman, LLC	45	33	7
Ignite Medical Resort OKC	96	85	11
Iris Memory Care of Edmond	6	6	0
Jacquelyn House	1	1	0
Jan Frances Care Center	9	8	0
John H. Johnson Care Suites	3	3	0
Kenwood Manor	19	17	1
Kingwood Skilled Nursing and Therapy	25	14	0
Lake Country Nursing Center	29	26	1
Lake Drive Care and Rehabilitation Center	39	39	0
Lakeland Manor, Inc	9	7	1
Lakeview Nursing & Rehab	18	13	2
Landmark of Midwest City Rehabilitation and Nursing	40	33	4
Lane Nursing & Ventilator Care	2	2	0

Facility	Cases	Recovered**	Deaths
Latimer Nursing Home	12	10	1
Legacy Village of Stillwater	16	15	0
Legend at 71st St	8	6	1
Legend at Council Road	5	5	0
Legend at Mingo Road	4	4	0
Legend at Rivendell	56	49	5
Leisure Village Health Care Center	46	33	4
Lexington Nursing Home	10	10	0
Liberty Place	1	1	0
Lindsay Nursing & Rehab	7	6	0
Linwood Village Nursing & Retirement Apts	14	14	0
Lyndale at Edmond	2	2	0
Magnolia Creek Skilled Nursing and Therapy	37	25	7
Mangum Skilled Nursing and Therapy	54	45	6
Maple Lawn Nursing and Rehabilitation	20	16	1
Maplewood Care Center	14	11	1
Marlow Nursing & Rehab	15	15	0
McAlester Nursing & Rehab	46	44	1
McCall's Chapel School, Inc #11	2	2	0
McCall's Chapel School, Inc #13	1	1	0
McCall's Chapel School, Inc #4	1	1	0
McCall's Chapel School, Inc #7	1	1	0
McCall's Chapel School, Inc #8	1	1	0

Facility	Cases	Recovered**	Deaths
McCall's Chapel School, Inc #9	1	1	0
McLoud Nursing Center	3	3	0
McMahon-Tomlinson Nursing Center	20	18	2
Meadow Brook Residential Care	26	25	0
Meadowbrook Nursing Center	25	16	0
Meadowlake Estates	78	73	4
Meadowlakes Retirement Village	1	1	0
Medical Park West Rehabilitation	7	4	2
Medicallodges Dewey	4	4	0
Meeker Nursing Center	45	33	11
Memorial Heights Nursing Center	24	17	4
Memorial Nursing Center	25	23	1
Memory Care Center at Emerald	4	3	0
Meridian Nursing Home	4	4	0
Miami Nursing Center, LLC	79	73	3
Mid-Del Skilled Nursing and Therapy	25	22	0
Mitchell Manor	51	49	2
Monroe Manor	11	9	0
Montereau, Inc Assisted Living	3	3	0
Montereau, Inc LTC/SNF	5	5	0
Montevista Rehabilitation and Skilled Care	12	4	2
Mooreland Heritage Manor	20	19	0
Muscogee (Creek) Nation Skilled Nursing Facility	1	1	0

Facility	Cases	Recovered**	Deaths
Muskogee Nursing Center	15	7	0
New Hope Retirement & Care Center	3	3	0
Noble Health Care Center	14	14	0
North County Assisted Living	6	3	0
North County Center for Nursing and Rehabilitation	26	10	1
North Winds Living Center	1	1	0
Northhaven Place	10	8	1
Northwest Nursing Center	2	2	0
Nowata Nursing Center	2	1	0
Oak Hills Living Center	15	14	1
Oakridge Home	4	1	0
Oakridge Nursing Center	54	43	5
Okemah Care Center	1	1	0
Oklahoma Methodist Manor	23	19	2
Oklahoma Veterans Center, Ardmore Division	6	4	0
Oklahoma Veterans Center, Claremore Division	223	145	35
Oklahoma Veterans Center, Clinton Division	128	93	10
Oklahoma Veterans Center, Lawton-Ft. Sill Division	22	16	0
Oklahoma Veterans Center, Norman Division	76	51	21
Oklahoma Veterans Center, Sulfur Division	17	15	0
Oklahoma Veterans Center, Talihina Division	24	19	3
Osage Nursing Home, LLC	4	4	0
Oxford Glen at Owasso	21	16	3

Facility	Cases	Recovered**	Deaths
Parkview Pointe Senior Living	1	0	0
Pauls Valley Care Center	1	0	0
Perry Green Valley Nursing Center, LLC	14	8	1
Pleasant Valley Health Care Center	21	9	0
Pocola Health & Rehab	56	53	3
Ponca City Nursing and Rehabilitation	53	36	0
Prairie House Assisted Living & Memory Care	7	4	0
Prairie Pointe at Stroud	10	10	0
Primrose Retirement Community of Shawnee	11	10	0
Primrose Retirement Community of Stillwater	3	3	0
Providence House	1	1	0
Providence Place	1	1	0
Purcell Care Center, LLC	35	13	1
Quail Creek Senior Living	23	18	4
Quail Ridge Living Center, Inc (Colcord, OK)	34	21	1
Quail Ridge Senior Living	24	17	6
Quinton Manor Nursing Home	10	10	0
RT 66 Residential Care Home, LLC	6	5	0
Rainbow Health Care Community: Nursing Home	66	58	4
Rambling Oaks (Norman)	24	19	2
Rambling Oaks Courtyard Assisted Living & Memory Care	4	4	0
Ranch Terrace Nursing Home	21	18	2
Ranchwood Nursing Center	30	29	1

Facility	Cases	Recovered**	Deaths
Reliant Living Center	11	9	0
Reliant Living Center of Del City	2	2	0
River Oaks Skilled Nursing	41	40	1
Riverside Health Services LLC	3	3	0
Robert M Greer Center	1	1	0
Rolling Hills Care Center	24	20	1
Ruth Wilson Hurley Manor	71	62	4
Saint Simeons Episcopal Home	17	17	0
Sand Plum Assisted Living Community	4	3	1
Sand Springs Nursing and Rehabilitation	5	5	0
Seiling Nursing Center	7	6	1
Seminole Care and Rehabilitation Center	75	67	3
Seminole Pioneer Nursing Home	1	1	0
Senior Star The Brook	3	3	0
Senior Suites Healthcare	10	8	1
Senior Village	9	6	1
Sequoyah East Nursing Center, LLC	13	13	0
Sequoyah Manor	49	41	2
Sequoyah Pointe Living Center	21	21	0
Shady Rest Care Center	26	26	0
Shanoan Springs Nursing and Rehabilitation	60	54	3
Share Medical Center	3	2	0
Shattuck Nursing Center	4	4	0

Facility	Cases	Recovered**	Deaths
Shawn Manor Nursing Home	2	1	0
Shawnee Care Center	31	8	3
Shawnee Colonial Estates Nursing Home	69	63	6
Sherwood Manor Nursing Home	10	6	1
Sienna Extended Care & Rehab	36	35	1
Skiatook Nursing Home	42	36	6
Sommerset Neighborhood	5	1	0
South Park East	44	39	1
South Pointe Rehabilitation and Care Center	170	147	13
Southbrook Healthcare, Inc.	12	3	1
Southern Hills Rehabilitation Center	75	63	10
Southern Oaks Care Center	52	24	3
Southern Plaza Assisted Living and Memory Care	28	27	0
Southern Pointe Living Center	40	31	5
Spanish Cove Housing Authority	10	9	0
Spiro Nursing Home, Inc.	35	34	0
St. Ann's Skilled Nursing and Therapy	83	67	15
St. Katharine Drexel Retirement Center	7	7	0
Stilwell Nursing Home, LLC	1	0	0
Stonecreek Assisted Living and Memory Care	3	0	0
Storey Oaks	48	46	0
Stroud Health Care Center South	7	7	0
Summers Healthcare, LLC	12	10	0

Facility	Cases	Recovered**	Deaths
Sunset Estates of Purcell	75	63	4
Tamarack Retirement Center	18	14	2
Teal Creek Assisted Living & Memory Care	4	4	0
Tealridge Assisted Living	9	9	0
Temple Manor Nursing Home	42	35	5
Ten Oaks Place	6	3	0
The Arbors Assisted Living Center	7	6	0
The Brentwood Senior Living	19	13	1
The Chateau	11	7	2
The Commons	43	42	0
The Commons - AL	1	1	0
The Cottage Extended Care	13	9	1
The Courtyards at Claremore Assisted Living	7	5	1
The Courtyards at Magnolia Creek	9	9	0
The Fountains at Canterbury Health Center	29	25	1
The Gardens	8	3	0
The Gardens at Rivermont	2	1	0
The Golden Rule Home	43	41	0
The Grand at Bethany Skilled Nursing and Therapy	4	4	0
The Health Center at Concordia	27	25	1
The Health Center at Concordia ALC	7	7	0
The Heaven House Elmwood	1	1	0
The Highlands at Owasso	22	14	3

Facility	Cases	Recovered**	Deaths
The King's Daughters & Sons Nursing Home	11	10	0
The Lakes	8	6	1
The Linden at Stonehaven Square	14	8	4
The Living Center	30	24	3
The Lodge at Brookline	12	0	0
The Mansion at Waterford	21	19	2
The Neighborhoods at Baptist Village of Ada	3	2	0
The Neighborhoods at Baptist Village of Elk City	8	7	0
The Oaks Healthcare Center	3	3	0
The Parke Assisted Living	3	3	0
The Regency Skilled Nursing and Therapy	4	4	0
The Renaissance of Stillwater - Assisted Living	3	3	0
The Springs Skilled Nursing and Therapy	36	25	2
The Timbers Skilled Nursing and Therapy	63	52	7
The Veraden	3	3	0
The Villages at Southern Hills	78	61	12
The Willows	1	1	0
The Wilshire Skilled Nursing and Therapy	3	3	0
The Wolfe Living Center at Summit Ridge	13	10	1
Tidwell Living Center	1	0	0
Timberwood Assisted Living & Memory Care	1	1	0
Touchmark at Coffee Creek	5	5	0
Town Village Assisted Living	1	1	0

Facility	Cases	Recovered**	Deaths
Town of Vici Nursing Home	7	7	0
Tulsa Assisted Living and Memory Care	3	3	0
Tulsa Nursing Center	29	26	1
Tuscany Village Nursing Center	22	19	1
Tuttle Care Center	24	20	2
University Park Skilled Nursing & Therapy	60	55	1
University Village	29	24	3
Via Christi Village Ponca City	62	49	2
Vian Nursing & Rehab, LLC	9	7	1
Victorian Estates	2	2	0
Village Health Care Center	11	11	0
Village Lodge of Ardmore Village	4	3	1
Village at Oakwood	5	4	1
Village on the Park	38	31	6
Villagio of Oklahoma City	1	1	0
Wagoner Health & Rehab	7	6	0
Walnut Grove Living Center	67	53	12
Warr Acres Nursing Center	18	16	1
Washita Valley Living Center	25	18	0
Weatherwood Assisted Living and Memory Care	5	5	0
Wellington Parke, LLC	3	3	0
West Wind Assisted Living	19	13	1
Westbrook Gardens	6	5	1

Facility	Cases	Recovered**	Deaths
Westbrook Healthcare, Inc	19	16	1
Westhaven Nursing Home	76	69	2
Westview Cottages	6	5	0
Wewoka Healthcare Center	3	2	0
Wildewood Skilled Nursing and Therapy	5	4	1
Wilkins Health and Rehabilitation Community	18	16	0
Willow Creek Health Care	1	1	0
Willow Haven Nursing Home	28	23	4
Willow Park Health Care Center	62	27	4
Willowood at Mustang Assisted Living and Memory Care	3	3	0
Wilson Nursing Center	3	0	0
Windridge Nursing and Rehabilitation Center	14	11	2
Windsor Hills Nursing Center	6	4	1
Woodland Park Home, Inc	5	4	0
Woodlands Skilled Nursing & Therapy	2	2	0
Woodward Skilled Nursing and Therapy	32	28	3
York Manor Nursing Home	42	39	2
Zarrow Pointe	11	7	1
<i>Total</i>	<i>9,888</i>	<i>8,011</i>	<i>765</i>

****Recovered:** Currently not hospitalized or deceased and 14 days after onset/report.

ACKNOWLEDGEMENT

The weekly report is made by possible through the efforts of county and city public health and healthcare professionals.

NOTES

Every effort is made to ensure accuracy and the data is up-to-date for the time period reported.

For daily updates on COVID-19, please visit <https://coronavirus.health.ok.gov/>

DISCLAIMER

The purpose of publishing aggregated statistical COVID-19 data through the OSDH Dashboard, the Executive Order Report, and the Weekly Epidemiology and Surveillance Report is to support the needs of the general public in receiving important and necessary information regarding the state of the health and safety of the citizens of Oklahoma. These resources may be used only for statistical purposes and may not be used in any way that would determine the identity of any reported cases.