

OKLAHOMA COVID-19 WEEKLY REPORT

Weekly Epidemiology and Surveillance Report
July 4 – July 10, 2021



PURPOSE To provide up-to-date weekly epidemiological data on COVID-19 in Oklahoma.

SNAPSHOT

	July 4 - 10	Change ¹	Total
Cases	2,688	56.7%	461,893
Recovered cases ²	1,543	18.1%	451,018
Deaths	11	n/a	7,417

1. Change from the week of June 27-July 3, 2021.

2. Not deceased and 14 days after symptom onset/specimen collection. Please note that the definition for recovered was changed starting May 4, 2021 due to incomplete data on hospitalization which may result in an inaccurate estimation of the active cases.

CASES		DEATHS	
Persons aged 50 and over	Females	Persons aged 50 and over	Males
33%	53%	95%	56%
of <u>cases</u>	of <u>cases</u>	of <u>deaths</u>	of <u>deaths</u>

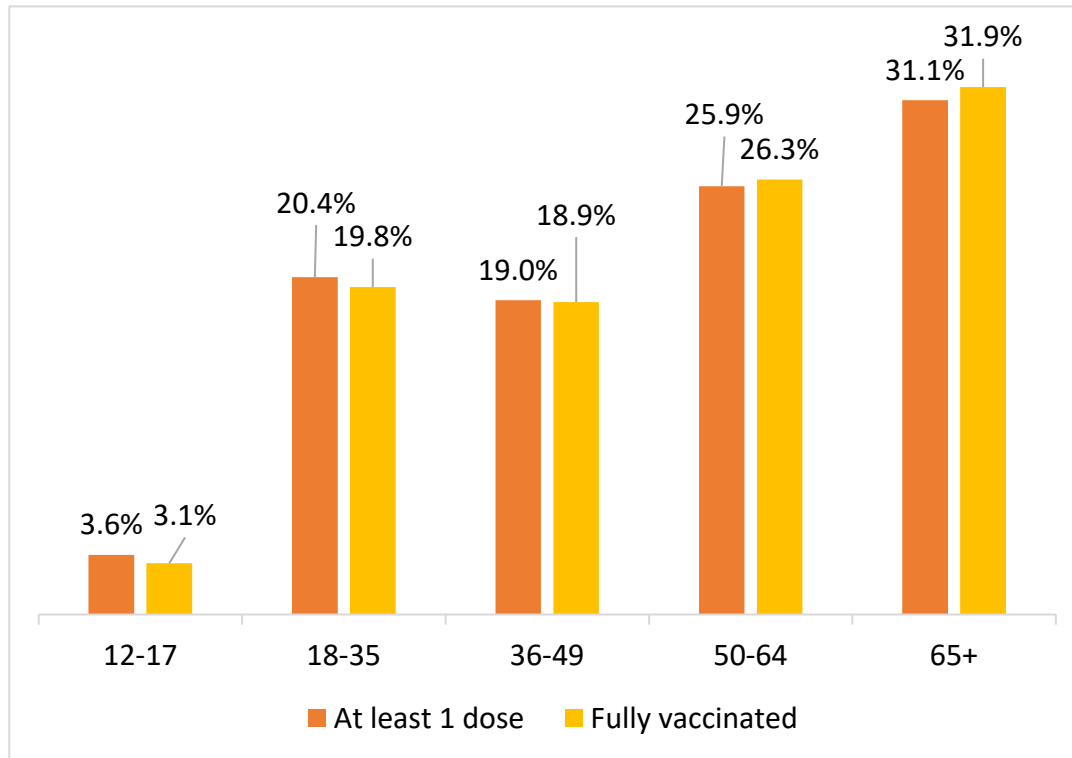
KEY POINTS

- **2,688** cases were reported in the past week
56.7% increase from the week before (June 27-July 3)
- **11** deaths were reported in the past week
- **27,275 (5.9%)** cases have been hospitalized
- **13,211** specimens have been tested over the last 7 days according to the CDC COVID data tracker
- **2,752,622** vaccine doses have been administered in total
- The average age of cases was **40** years and average age of individuals who died was **75** years
- The youngest case was **less than a year old** and the oldest case was **100+ years**
- The youngest individual to die from COVID-19 was **less than 15 years** and the oldest was **100+ years**

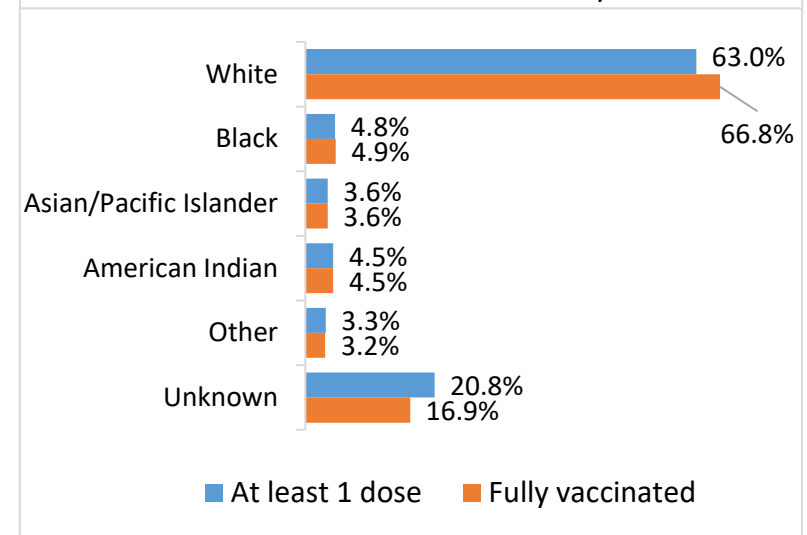
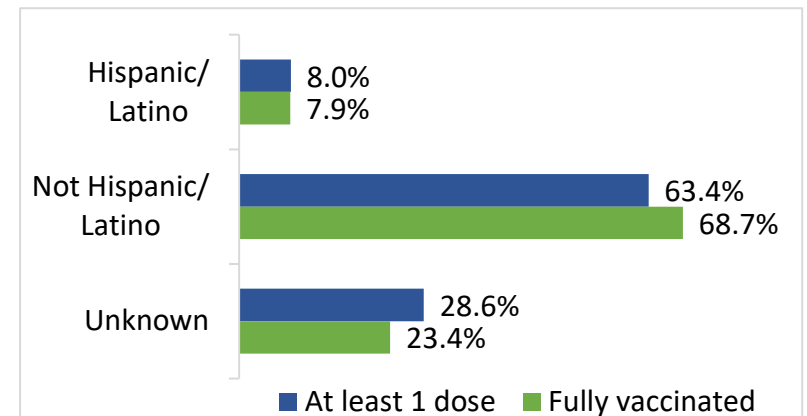
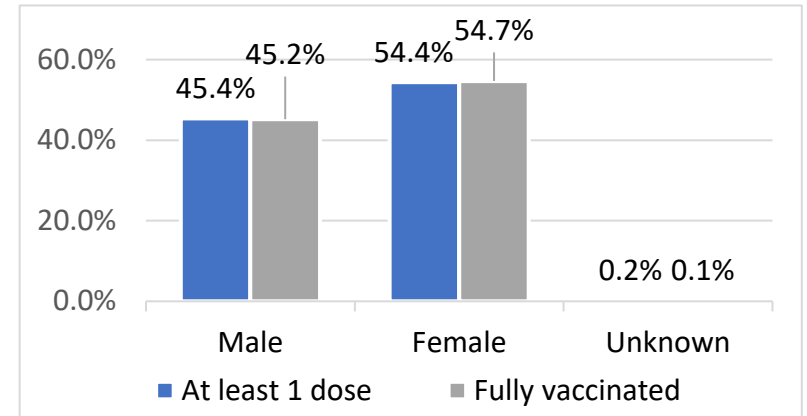
COVID-19 VACCINE DATA BY TOTAL AND KEY METRICS

	July 6 – July 12	Total Number
Doses Administered ¹	29,702	2,752,622
At least 1 dose ²	17,113	1,521,979
Fully vaccinated ³	14,151	1,320,463

1. Doses administered amount does not include doses administered by federal entities in Oklahoma.
2. At least one does refers to individuals receiving Pfizer and Moderna COVID-19 vaccines and/or receiving single shot of J&J/Janssen Vaccine
3. Fully vaccinated refers to individuals fully vaccinated after receiving either Pfizer and/or Moderna COVID-19 vaccines (both doses) and/or receiving single shot of J&J/Janssen Vaccine



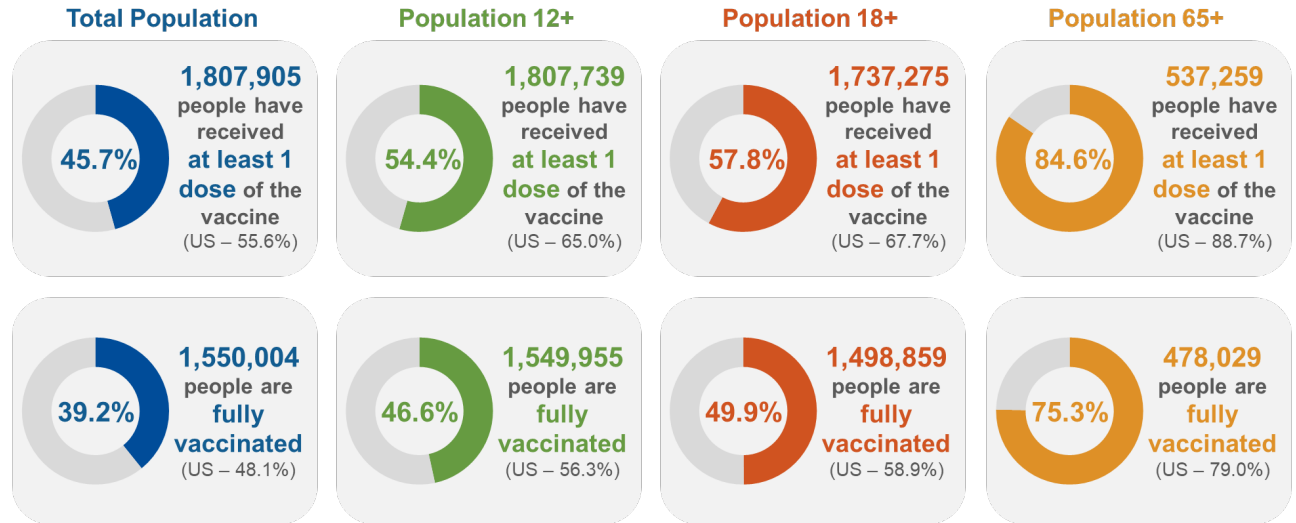
Source: COVID-19 Vaccination Reporting Specification Dataset Oklahoma State Immunization Information System (OSIIS). Data reflect information entered as of 11:59PM 7/12/2021



COVID-19 VACCINATIONS IN OKLAHOMA - FEDERAL AND STATE, AS OF JULY 12, 2021

	Count*	Adult Rate per 100K
Total Doses Administered	3,330,922	106,752

*Includes state and federal administered doses.



Percent of 12+ Population with At Least 1 Dose- Oklahoma Counties

County	Adults with At Least 1 Dose (%)	County	Adults with At Least 1 Dose (%)	County	Adults with At Least 1 Dose (%)	County	Adults with At Least 1 Dose (%)	County	Adults with At Least 1 Dose (%)
Adair	35.60%	Cotton	41.70%	Jackson	50.50%	McIntosh	51.80%	Roger Mills	33.90%
Alfalfa	44.60%	Craig	52.10%	Jefferson	41.20%	Murray	43.70%	Rogers	43.30%
Atoka	32.40%	Creek	40.30%	Johnston	40.80%	Muskogee	48.70%	Seminole	48.10%
Beaver	30.10%	Custer	47.60%	Kay	41.90%	Noble	58.40%	Sequoyah	35.40%
Beckham	40.80%	Delaware	37.40%	Kingfisher	45.60%	Nowata	40.20%	Stephens	46.90%
Blaine	44.60%	Dewey	26.40%	Kiowa	52.40%	Okfuskee	44.60%	Texas	43.00%
Bryan	36.10%	Ellis	35.30%	Latimer	30.50%	Oklahoma	63.30%	Tillman	45.40%
Caddo	60.90%	Garfield	46.40%	LeFlore	35.70%	Okmulgee	40.00%	Tulsa	58.90%
Canadian	55.80%	Garvin	46.70%	Lincoln	37.90%	Osage	30.20%	Wagoner	44.10%
Carter	44.50%	Grady	35.10%	Logan	32.10%	Ottawa	34.70%	Washington	43.10%
Cherokee	44.90%	Grant	42.70%	Love	42.40%	Pawnee	46.80%	Washita	39.60%
Choctaw	30.50%	Greer	35.90%	Major	47.40%	Payne	47.00%	Woods	39.60%
Cimarron	27.60%	Harmon	48.40%	Marshall	45.20%	Pittsburg	42.10%	Woodward	37.50%
Cleveland	50.70%	Harper	45.80%	Mayes	41.20%	Pontotoc	52.50%		
Coal	37.20%	Haskell	37.60%	McClain	48.20%	Pottawatomie	44.80%		
Comanche	52.90%	Hughes	41.00%	McCurtain	30.80%	Pushmataha	30.80%		

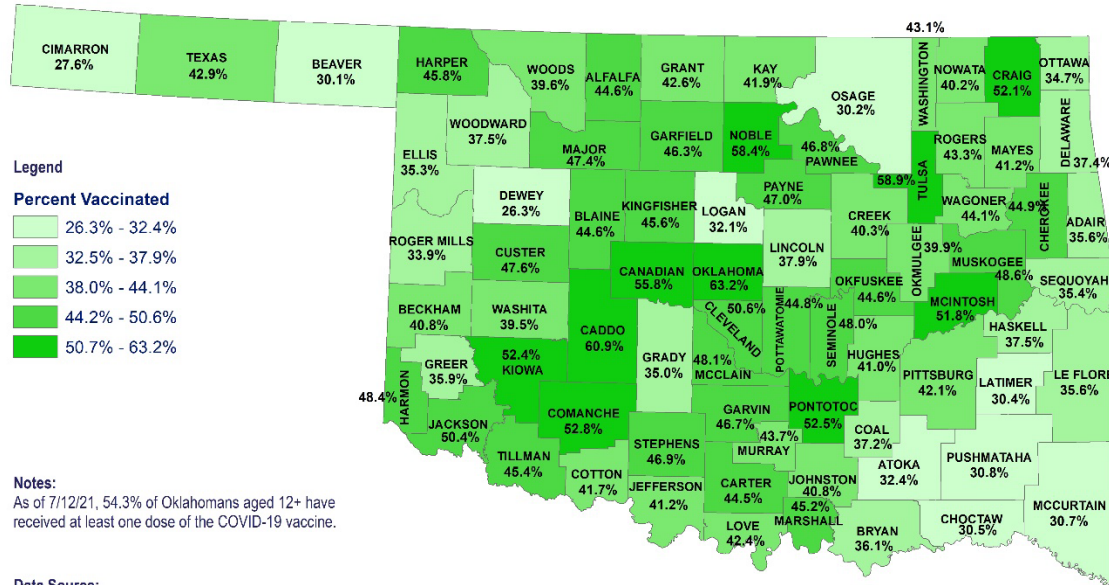
Source: CDC COVID Data Tracker – COVID-19 Vaccinations in the United States and COVID-19 Integrated County View. Posted: 7/13/21

COVID- 19 VACCINE DATA

Demographic Summary	Total Population ≥12 years of age	People who received at least 1 dose	People who are fully vaccinated
Oklahoma	3,325,223	1,521,979 (45.8%)	1,320,463 (39.7%)
Gender			
Male	1,637,286 (49.2%)	690,892 (42.2%)	597,000 (36.5%)
Female	1,687,937 (50.8%)	828,440 (49.1%)	721,721 (42.8%)
Unknown		2,647	1,742
Age Group			
12-17	320,490 (9.6%)	54,855 (17.1%)	40,614 (12.7%)
18-35	976,999 (29.4%)	311,109 (31.8%)	261,692 (26.8%)
36-49	675,766 (20.3%)	289,340 (42.8%)	249,692 (36.9%)
50-64	716,836 (21.6%)	394,186 (55.0%)	346,948 (48.4%)
65+	635,132 (19.1%)	472,415 (74.4%)	421,497 (66.4%)
Race			
White	2,610,851 (78.5%)	958,889 (36.7%)	882,560 (33.8%)
Black	282,592 (8.5%)	73,634 (26.1%)	64,841 (22.9%)
Asian/PI	94,874 (2.9%)	54,125 (57.0%)	47,703 (50.3%)
American Indian	336,906 (10.1%)	67,810 (20.1%)	59,372 (17.6%)
Other	-	50,221	42,800
Unknown	-	317,300	223,187
Ethnicity			
Hispanic	323,153 (9.7%)	121,532 (37.6%)	104,805 (32.4%)
Not Hispanic	3,002,070 (90.3%)	965,212 (32.2%)	907,057 (30.2%)
Unknown	-	435,235	308,601

Note: Fully vaccinated refers to individuals completing series after receiving either Pfizer and/or Moderna COVID-19 vaccines (both doses) and/or receiving single shot of J&J/Janssen Vaccine
 Data Source: 1. Single-race Population Estimates, United States, 2010-2019. July 1st resident population by state, age, sex, single-race, and Hispanic origin, on CDC WONDER Online Database. Vintage 2019 estimates released by U.S. Census Bureau on June 25, 2020 COVID-19. 2. Vaccination Reporting Specification (CVRS) Dataset - Oklahoma State Immunization Information System (OSIIS); Data reflect information entered as of 11:59PM 7/12/2021

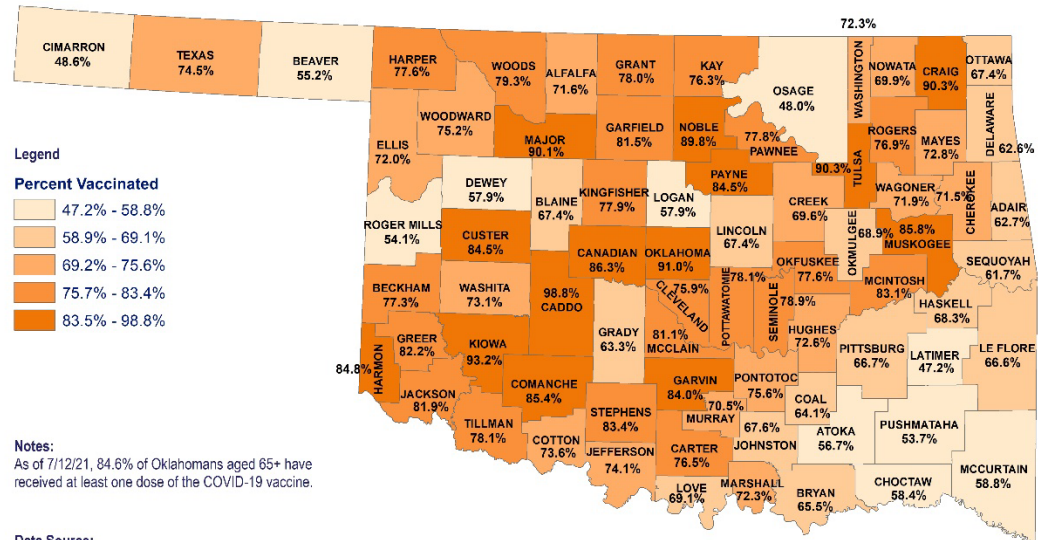
OKLAHOMA COVID-19 AT LEAST 1 DOSE COUNTY LEVEL VACCINE ADMINISTRATION FOR AGES 12+ AND 65+



Projection/Coordinate System: USGS Albers Equal Area Conic

Disclaimer: This map is a compilation of records, information and data from various city, county and state offices and other sources, affecting the area shown, and is the best representation of the data available at the time. The map and data are to be used for reference purposes only. The user acknowledges and accepts all inherent limitations of the map, including the fact that the data are dynamic and in a constant state of maintenance.

0 40 80 160 Miles



Projection/Coordinate System: USGS Albers Equal Area Conic

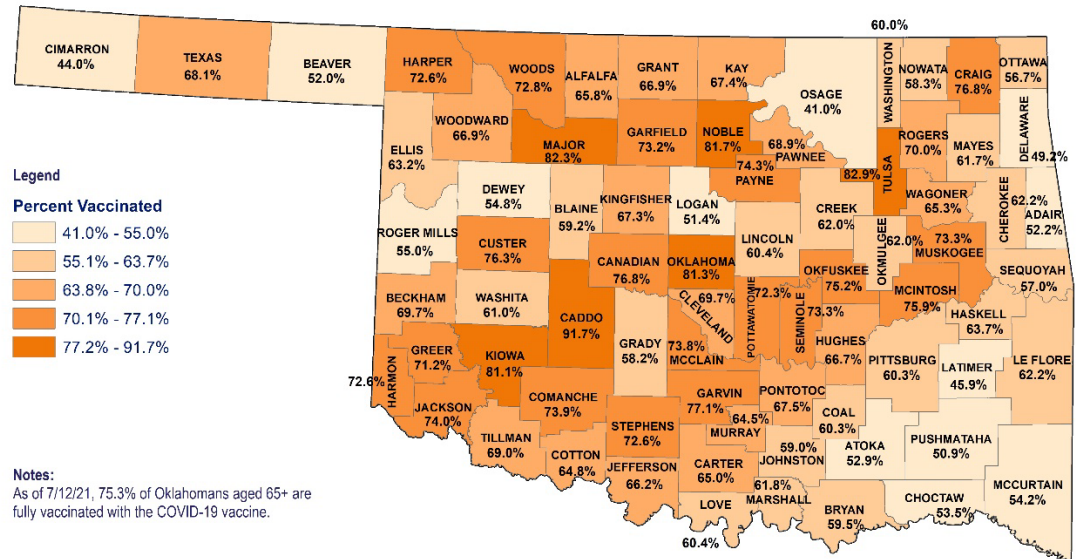
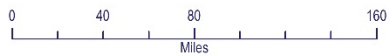
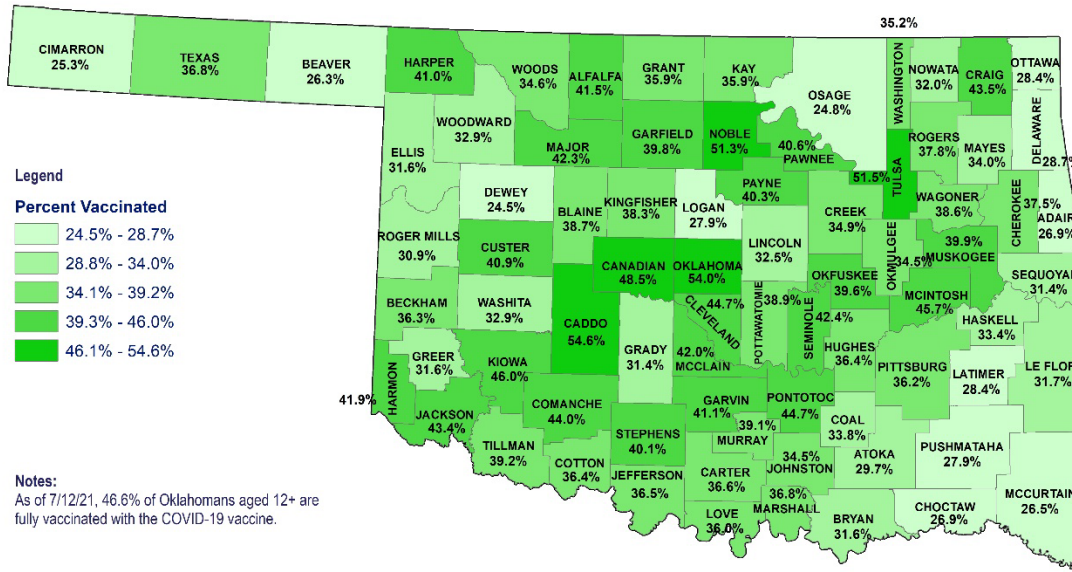
Disclaimer: This map is a compilation of records, information and data from various city, county and state offices and other sources, affecting the area shown, and is the best representation of the data available at the time. The map and data are to be used for reference purposes only. The user acknowledges and accepts all inherent limitations of the map, including the fact that the data are dynamic and in a constant state of maintenance.

0 40 80 160 Miles

Created: 07.13.2021



OKLAHOMA COVID-19 FULLY VACCINATED COUNTY LEVEL VACCINE ADMINISTRATION FOR AGES 12+ AND 65+

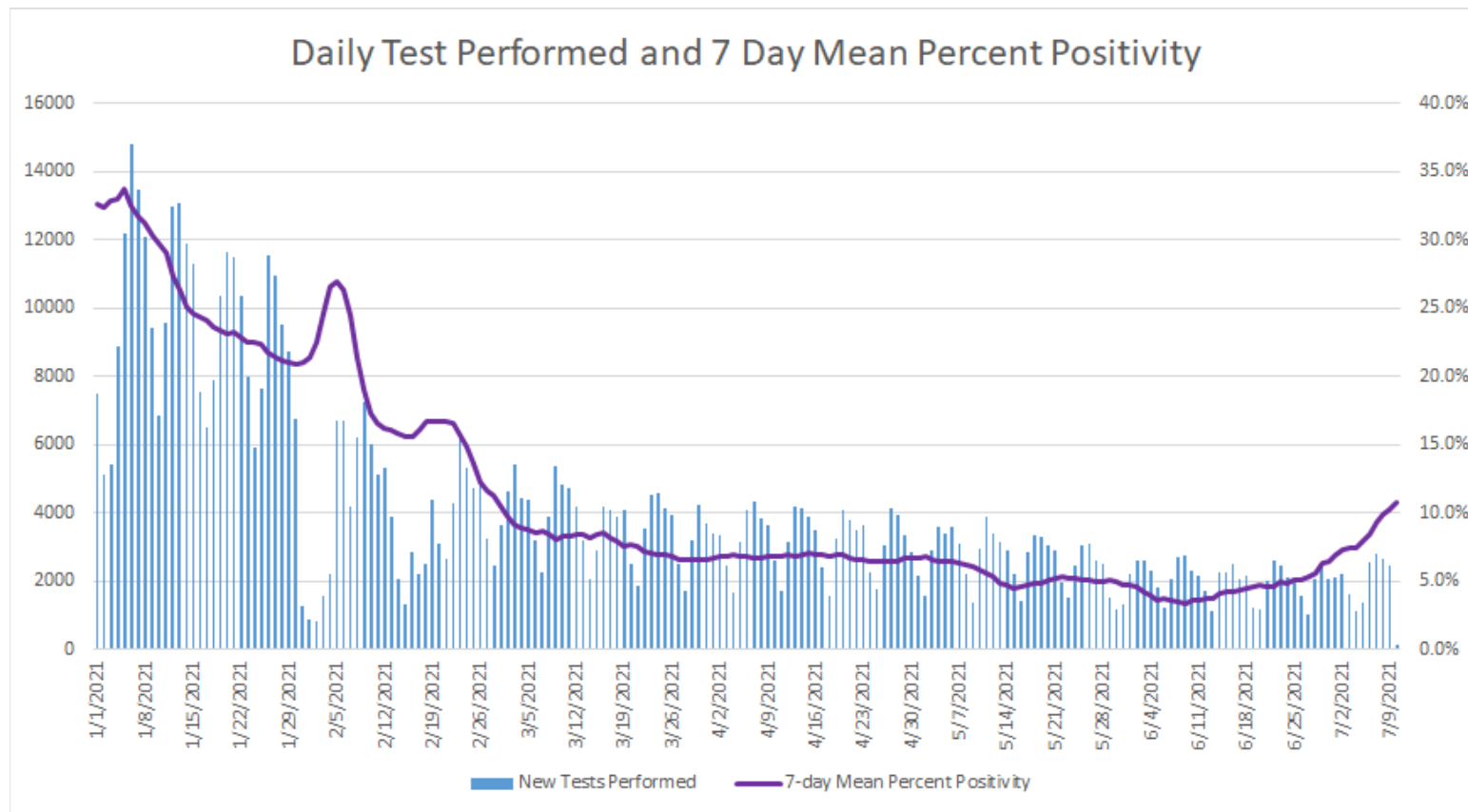


DISEASE TESTING

Jul 4 – Jul 10	
Specimens tested, count	13,211
Specimens positive, count	2,478
Percent positive	10.8%

Source: CDC COVID Data Tracker CDC | Data as of: Tuesday, July 13, 2021 12:47 PM ET. Posted: Tuesday, July 13, 2021 2:06 PM ET

COVID-19 DAILY TESTS PERFORMED AND 7 DAY MEAN PERCENT POSITIVITY



Oklahoma, July 13, 2021

Source: CDC COVID Data Tracker CDC | Data as of: Tuesday, July 13, 2021 12:47 PM ET. Posted: Tuesday, July 13, 2021 2:06 PM ET

COVID-19 VARIANT STRAINS

Genetic variants of SARS-CoV-2 have been emerging and circulating around the world throughout the COVID-19 pandemic.

- A variant has one or more mutations that differentiate it from other variants in circulation. As expected, multiple variants of SARS-CoV-2 have been documented in the United States and globally throughout this pandemic.

Three classes of variants:

- Variant of Interest
 - A variant with specific genetic markers that have been associated with changes to receptor binding, reduced neutralization by antibodies generated against previous infection or vaccination, reduced efficacy of treatments, potential diagnostic impact, or predicted increase in transmissibility or disease severity.
- Variant of Concern
 - A variant for which there is evidence of an increase in transmissibility, more severe disease (increased hospitalizations or deaths), significant reduction in neutralization by antibodies generated during previous infection or vaccination, reduced effectiveness of treatments or vaccines, or diagnostic detection failures.
- Variant of High Consequence
 - A variant of high consequence has clear evidence that prevention measures or medical countermeasures (MCMs) have significantly reduced effectiveness relative to previously circulating variants.

SARS-CoV-2 Sequencing Data, Oklahoma, January 1, 2021-July 13, 2021		
Variant Designation and Strain Name	SARS-CoV-2 Strain Count	SARS-CoV-2 Strain Percentage
No Concern	318	31.1%
Variant of Concern	688	67.3%
B.1.1.7 (Alpha)	410	59.6%
B.1.351 (Beta)	7	1.0%
B.1.617.2 (Delta)	231	33.6%
B.1.427/429 (Epsilon)	24	3.5%
P.1 (Gamma)	16	2.3%
Variant of Interest	17	1.7%
B.1.525 (Eta)	2	11.8%
B.1.526/526.1 (Iota)	14	82.4%
B.1.617.1 (Kappa)	1	5.9%
Grand Total	1,023	100.00%

Additional information on variant classifications and definitions can be found [here](#).

COVID-19 VACCINE BREAKTHROUGH INFECTIONS IN OKLAHOMA AS OF JULY 13, 2021

- Total Number Reported Vaccine Breakthrough Cases: 1,092

Vaccine Brand	Number of Fully Vaccinated OK Residents*	Number of Vaccine Breakthrough Cases**	Incidence of Vaccine Breakthrough Cases per 100,000 Fully Vaccinated OK Residents	Hospitalizations	Deaths
Johnson and Johnson	97,567	100	102.5	9	1
Moderna	662,685	376	56.7	40	9
Pfizer	788,633	616	78.1	58	4
Total	1,548,885	1092	70.5	107	14

*Vaccine Denominator: Represents the number of people who have received the second dose in a two-dose COVID-19 vaccine series or one dose of the single-shot Johnson and Johnson's Janssen COVID-19 vaccine.

**Vaccine breakthrough cases is defined as an individual with a COVID-19 positive laboratory results (PCR/Antigen) and documentation of COVID-19 vaccination that meets the definition of fully vaccinated. (Individuals are considered fully vaccinated ≥ 2 weeks after receiving the last dose in the COVID-19 vaccine series.)

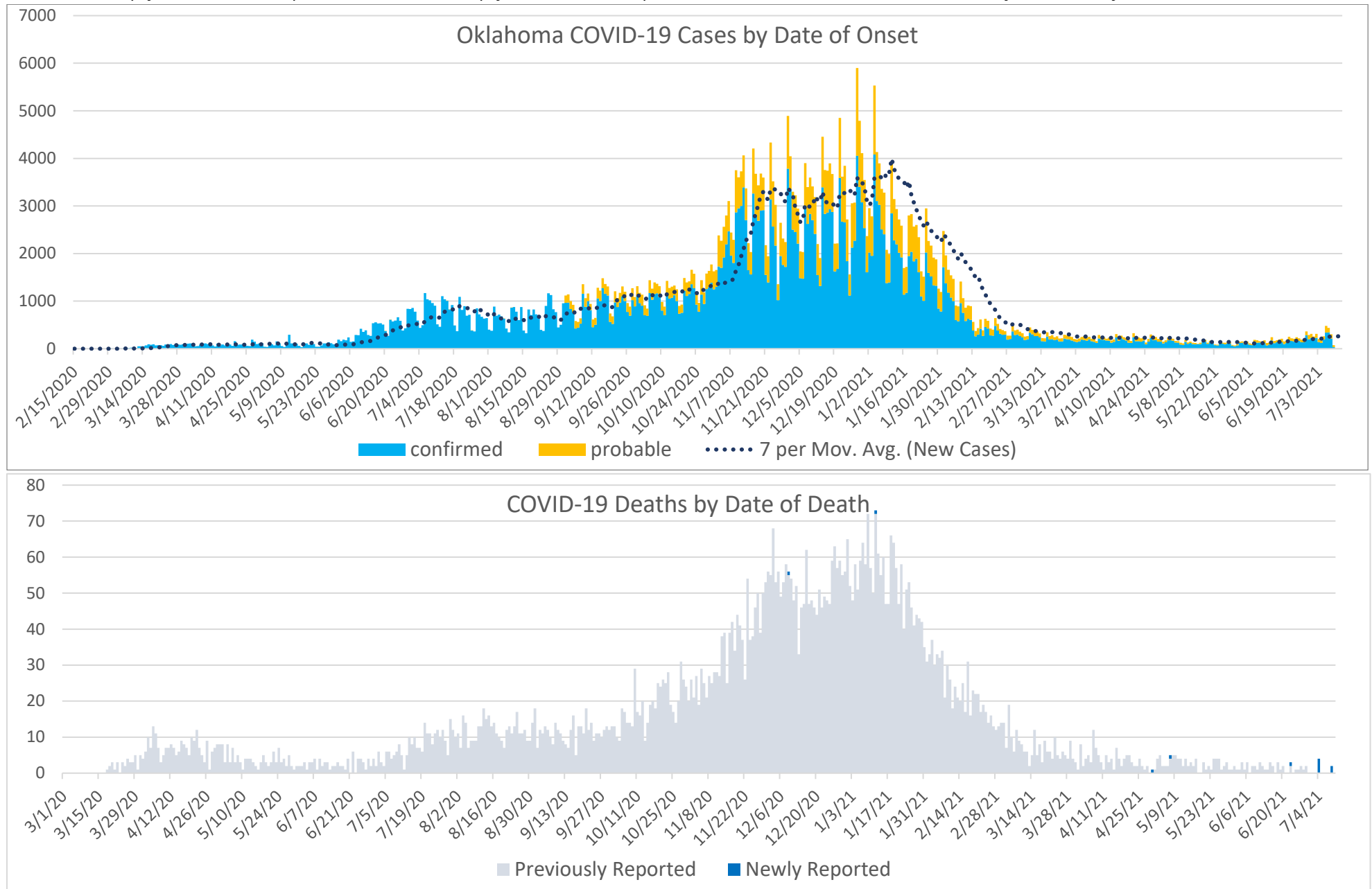
Source: CDC COVID Data Tracker—COVID-19 Vaccinations in the United States, Accessed July 13, 2021.

EPIDEMIOLOGICAL ESTIMATES

	Estimate	Notes / Interpretation
Cases		
Cumulative incidence	11,714.0 (per 100,000 persons)	From March 7, 2020 to July 10, 2021 there were about 11,714 (per 100,000) new cases of COVID-19 in Oklahoma.
Absolute change in cumulative incidence from previous week	24.7 (per 100,000 persons)	Compared to June 27 – July 3 there were 24.7 (per 100,000) more cases of COVID-19 reported in Oklahoma during the past week (July 3 – July 10).
Disease Severity		
Case-fatality risk (crude)	1.6%	The estimate is not adjusted for the lag time from reporting to death (i.e., delay between the time someone dies and the time their death is reported). The fatality estimate could be lower due to cases that were undiagnosed or had milder symptoms.
Cumulative Hospitalization rate (overall)	691.7 (per 100,000 persons)	About 691 people per 100,000 have ever been hospitalized for COVID-19 during this outbreak.

CASES AND DEATHS

New cases (by date of onset) and new deaths (by date of death) of COVID-19 in Oklahoma, February 2020–July 2021



Please note the different axes for new cases (top—from 0 to 7,000 for new cases) and new deaths (bottom—from 0 to 80 for new deaths). Additionally, a 7-day lag has been applied to the COVID-19 case trend line based on information.

DEMOGRAPHIC INFORMATION AS OF JULY 13, 2021

		Cases count (%) ¹		Deaths count (%) ¹		Cumulative Incidence Rate ²	Cumulative Mortality Rate ²
Oklahoma		461,893		7,417		11,714.0	188.1
Gender							
	Male	218,026	(47.2)	4,135	(55.8)	11,163.4	211.7
	Female	243,867	(52.8)	3,282	(44.2)	12,254.4	164.9
	Unknown	0	(0.0)	0	(0.0)		
Age group							
	Under 1- 4	9,165	(2.0)	0	(0.0)	3,519.2	0.0
	5-14	33,013	(7.1)	2	(0.0)	6,137.3	0.4
	15-24	81,617	(17.7)	10	(0.1)	15,175.2	1.9
	25-34	76,670	(16.6)	49	(0.7)	14,114.0	9.0
	35-44	73,526	(15.9)	127	(1.7)	14,993.4	25.9
	45-54	64,912	(14.1)	398	(5.4)	14,101.8	86.5
	55-64	57,857	(12.5)	1,006	(13.6)	11,725.1	203.9
	65-74	37,136	(8.0)	1,856	(25.0)	10,354.5	517.5
	75-84	19,370	(4.2)	2,058	(27.7)	10,319.1	1,096.4
	85+	8,619	(1.9)	1,911	(25.8)	11,775.2	2,610.8
	Unknown	8	(0.0)				
Race							
	American Indian or Alaska Native	44,785	(9.7)	647	(8.7)	14,579.3	210.6
	Asian or Pacific Islander	8,528	(1.8)	87	(1.2)	9,630.4	98.2
	Black or African American	25,956	(5.6)	486	(6.6)	9,022.5	168.9
	Multiracial/Other	15,936	(3.5)	207	(2.8)	3,851.5	50.0
	White	263,417	(57.0)	5,375	(72.5)	9,256.0	188.9
	Unknown	103,271	(22.4)	615	(8.3)		
Ethnicity							
	Hispanic or Latino	46,757	(10.1)	381	(5.1)	10,897.1	88.8
	Not Hispanic or Latino	292,356	(63.3)	6,128	(82.6)	8,319.7	174.4
	Unknown/Other	122,780	(26.6)	908	(12.2)		

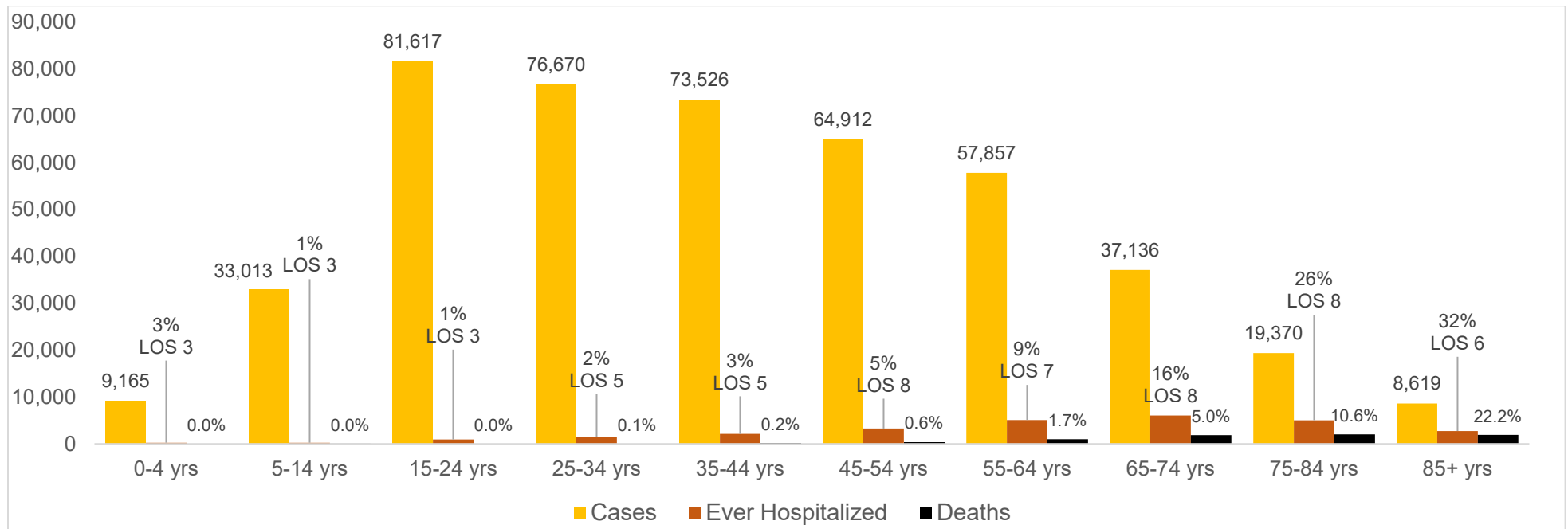
1. Percentages may not add up to 100 due to rounding.

2. Rate per 100,000 population

AGE DISTRIBUTION OF NEW CASES/DEATHS FROM JULY 4 - 10

Age group	New Cases	Percentage	New Deaths	Percentage
Under 1- 4	85	3.2%	0	0.0%
5-14	232	8.6%	0	0.0%
15-24	536	19.9%	0	0.0%
25-34	488	18.2%	1	9.1%
35-44	457	17.0%	1	9.1%
45-54	335	12.5%	1	9.1%
55-64	277	10.3%	2	18.2%
65-74	164	6.1%	1	9.1%
75-84	88	3.3%	3	27.3%
85+	24	0.9%	2	18.2%
Unknown	2	0.1%	0	0.0%

CUMULATIVE CASES, PERCENT HOSPITALIZED, AVERAGE LENGTH OF STAY (MAY 2021 CASES) AND DEATHS BY AGE GROUP



AT-RISK SETTINGS

HEALTHCARE & NON-HEALTHCARE

Status	Non-Healthcare Worker count (%)	Healthcare Worker count (%)
Active	3,378 (0.8)	80 (0.5)
Deceased	7,346 (1.7)	71 (0.4)
Recovered	434,892 (97.6)	16,126 (99.1)
Total	445,616	16,277

LONG TERM CARE (LTC) FACILITIES²

	Cases (%)	Deaths (%)
Residents	8,388 (62.5)	1,689 (98.8)
Staff	5,025 (37.5)	21 (1.2)
Total	13,413	1,710

²Long term care facility or nursing home.

CORRECTIONAL FACILITIES¹

	Cases (%)	Deaths (%)
Inmates	4,979 (76.8)	51 (91.1)
Staff	1,507 (23.2)	5 (8.9)
Total	6,486	56

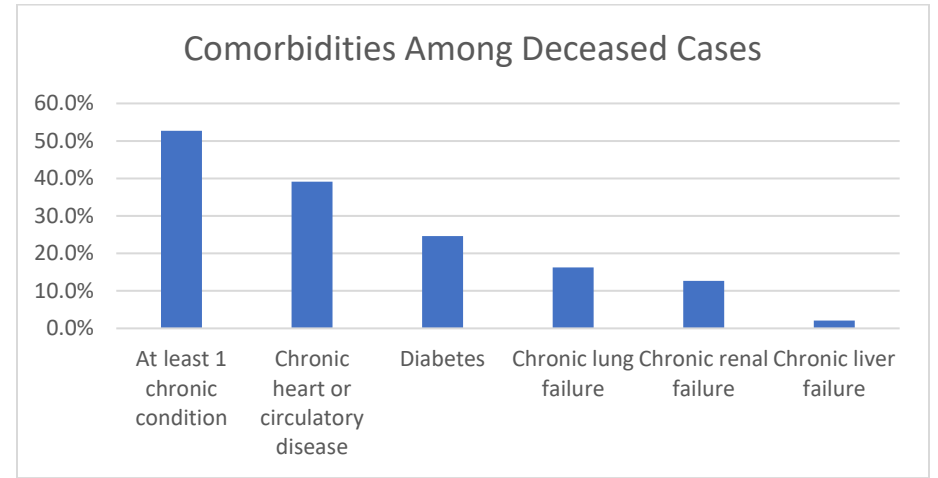
¹Correctional facilities include prisons, jails, and juvenile detention center

Detailed counts of LTC Cases by County and Facility can be found at the end of this report.

COMORBIDITIES AMONG DECEASED CASES

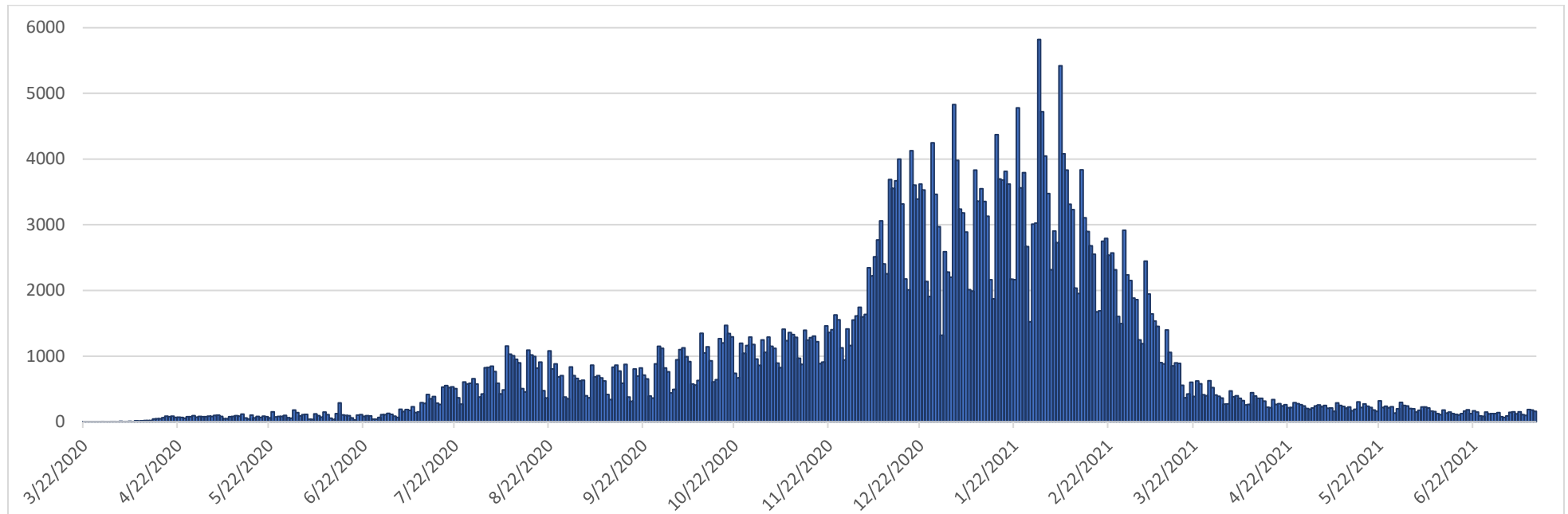
Comorbidities	Number (%)
At least 1 chronic condition ⁴	3,906 (52.7)
Chronic heart or circulatory disease	2,901 (39.1)
Diabetes	1,826 (24.6)
Chronic lung failure	1,208 (16.3)
Chronic renal failure	942 (12.7)
Chronic liver failure	152 (2.0)

⁴Chronic conditions include chronic heart or circulatory disease, diabetes, chronic lung failure, chronic liver failure and renal failure.



RECOVERED CASES

Distribution of recovered cases of COVID-19, March 2020 – July 2021, Oklahoma

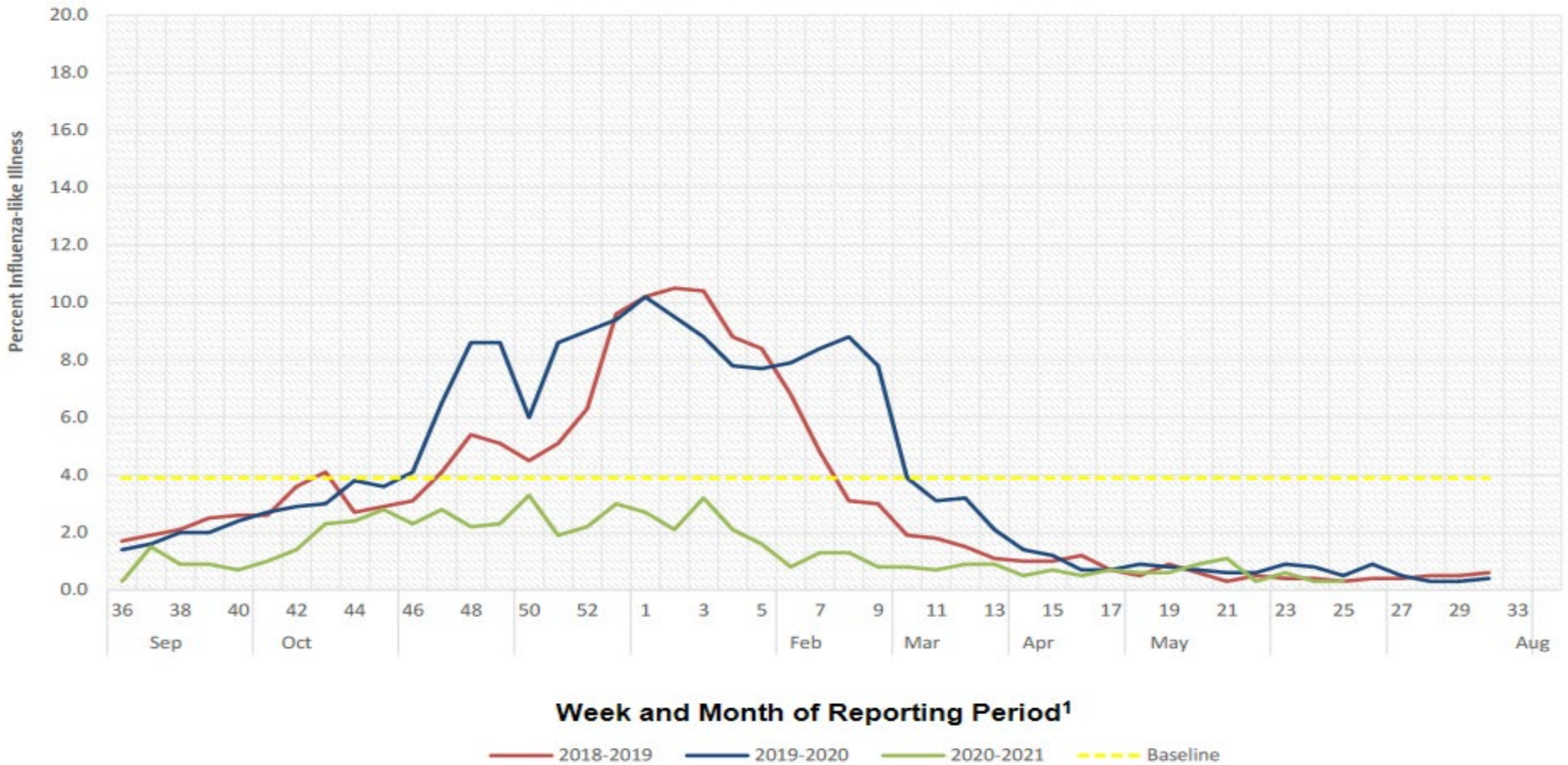


Recovered case: is not deceased and 14 days after symptom onset/specimen collection. Please note that the definition for recovered was changed starting May 4, 2021 due to incomplete data on hospitalizations which may result in an inaccurate estimation of the active cases.

SYMPTOMS CRITERIA

WEEKLY PERCENT OF INFLUENZA-LIKE ILLNESS BASED ON TOTAL PATIENT VISITS TO SENTINEL CLINICIANS, OKLAHOMA VIRAL RESPIRATORY ILLNESS SURVEILLANCE SYSTEM, 2018-2021

Week ending June 26, 2021 (Week 25)



¹These units correspond to the number of weeks in a year and allow for a comparison between multiple seasons.

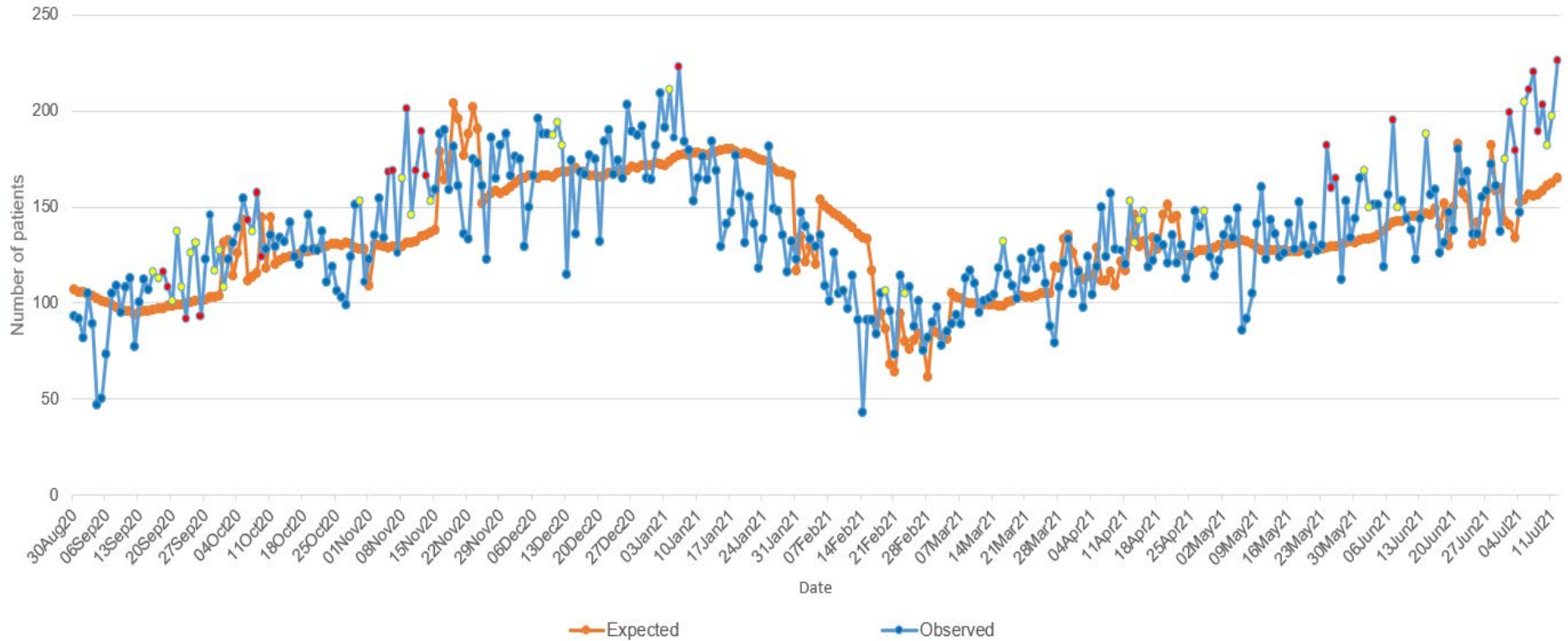
Interpretation: Data on Influenza-Like Illness (ILI) decreased to 0.5% of outpatient visits exhibiting fever with cough or sore throat. The most current week's value of 0.5% was below Oklahoma's baseline ILI of 3.9%.

Note: Data current up to week ending June 26, 2021 (Week 25). ILI graph will be updated monthly between Week 21 through Week 39

Source: <https://oklahoma.gov/content/dam/ok/en/health/health2/aem-documents/prevention-and-preparedness/acute-disease-service/disease-information/flu-view>

COVID-19 RELATED EMERGENCY DEPARTMENT VISITS

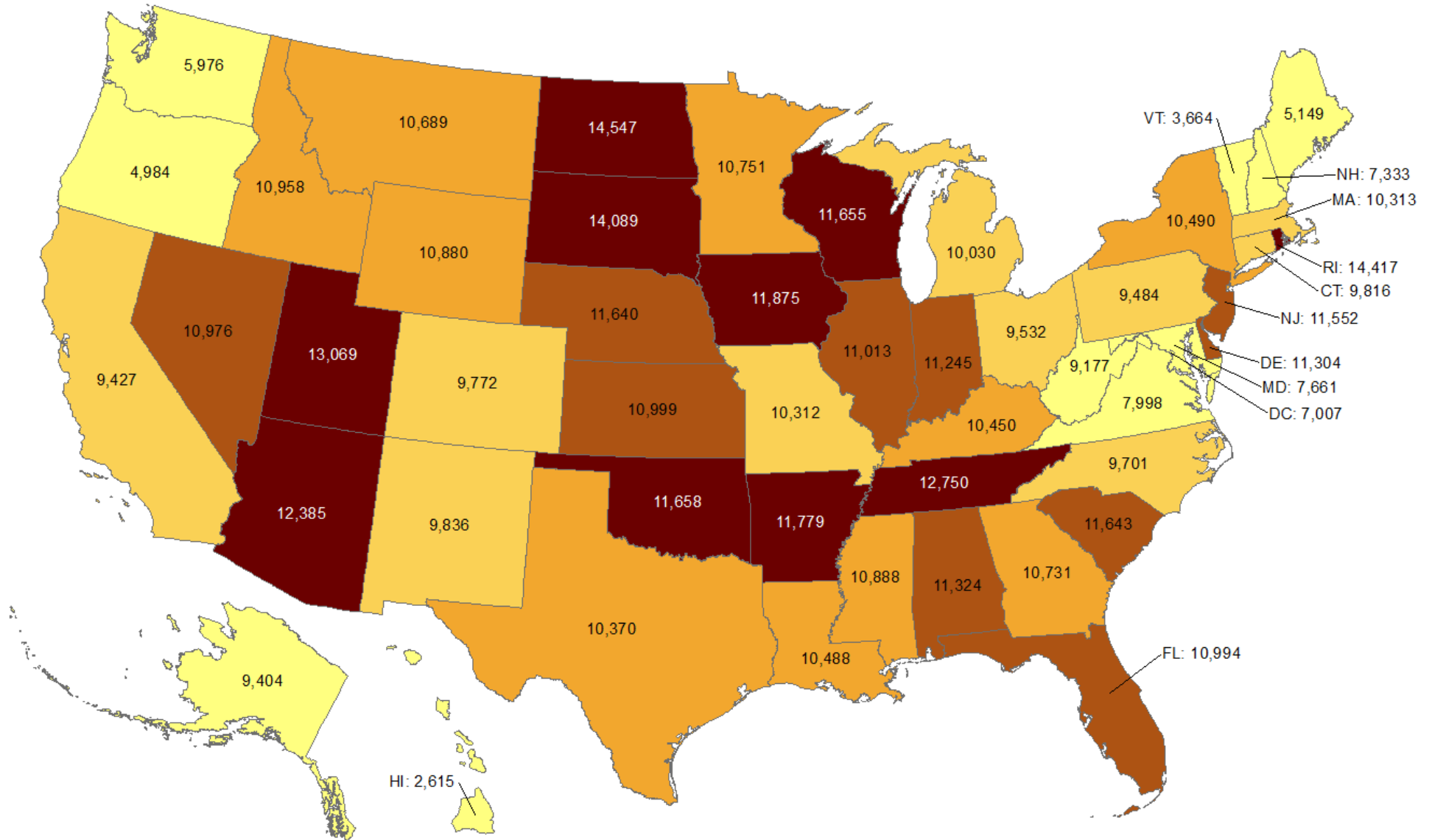
Oklahoma State Syndromic Surveillance of
COVID-19 related ED Visits
August 30, 2020 – July 12, 2021



Interpretation: Data from syndromic surveillance shows that the number of COVID-19 related emergency department visits were above the expected range for the past 2 weeks as indicated by multiple red dots on the observed line.

Cumulative incidence of reported COVID-19 cases

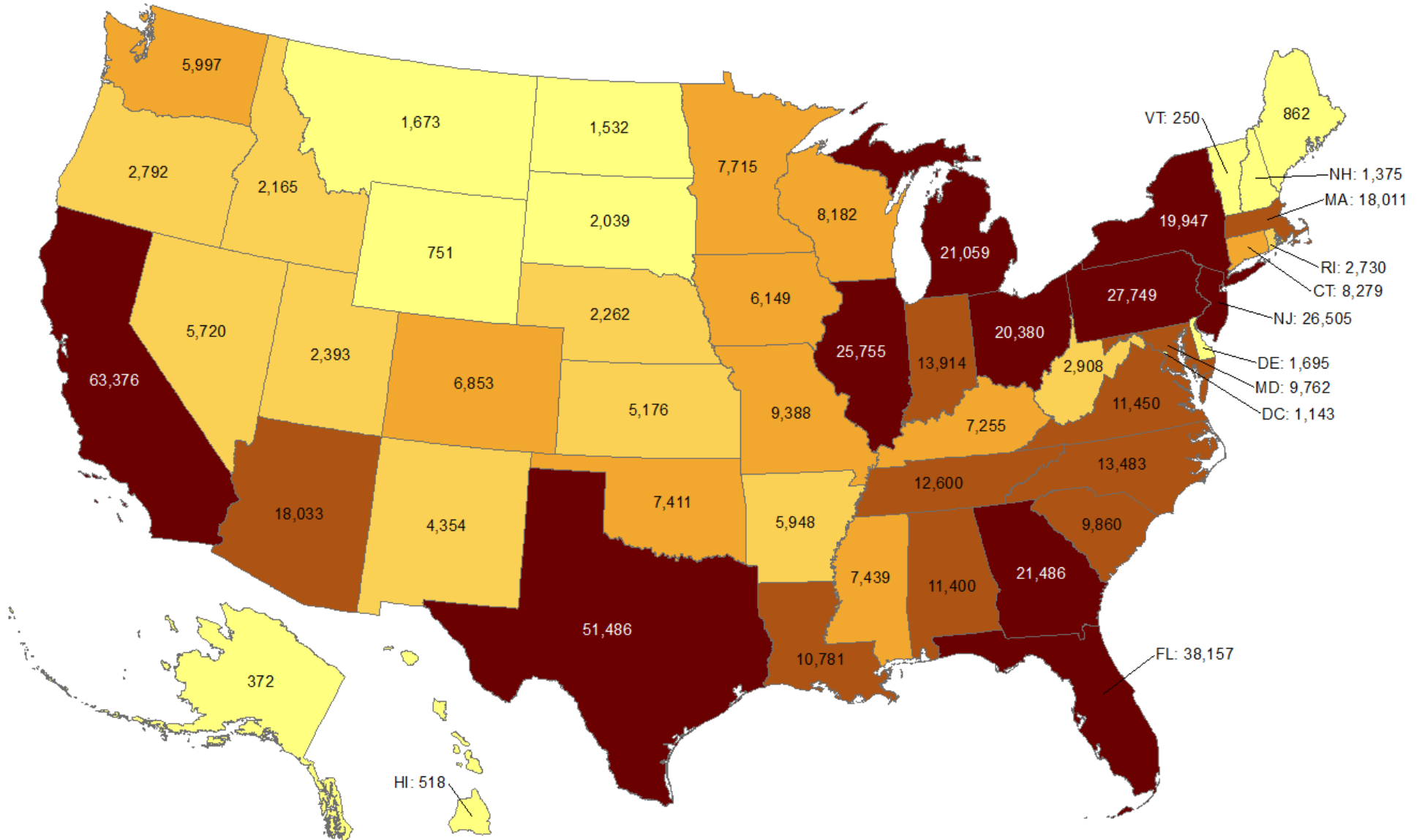
Oklahoma ranks **9** (out of all States and DC) in the cumulative incidence (per 100,000 persons) of reported COVID-19 cases in the US.



Data from CDC. Available at <https://www.cdc.gov/covid-data-tracker/index.html>
Data as of July 12, 2021

Total number of reported COVID-19 deaths

Oklahoma ranks **26** (out of all States and DC) in the total number of reported COVID-19 deaths in the US.

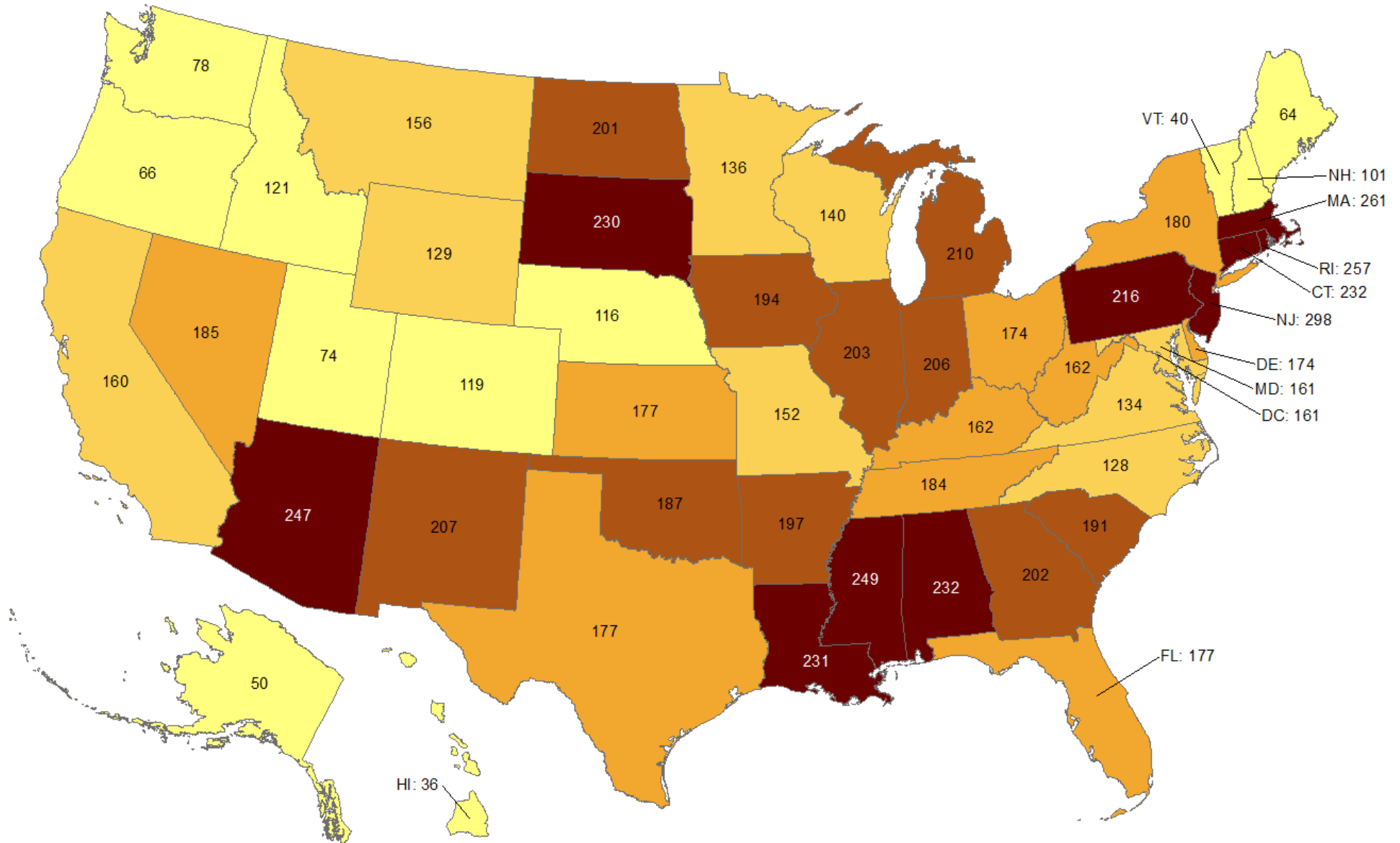


Data from CDC. Available at <https://www.cdc.gov/covid-data-tracker/index.html>
Data as of July 12, 2021

NOTE: CDC numbers include both Confirmed and Probable cases.

Cumulative death rate of reported COVID-19 cases

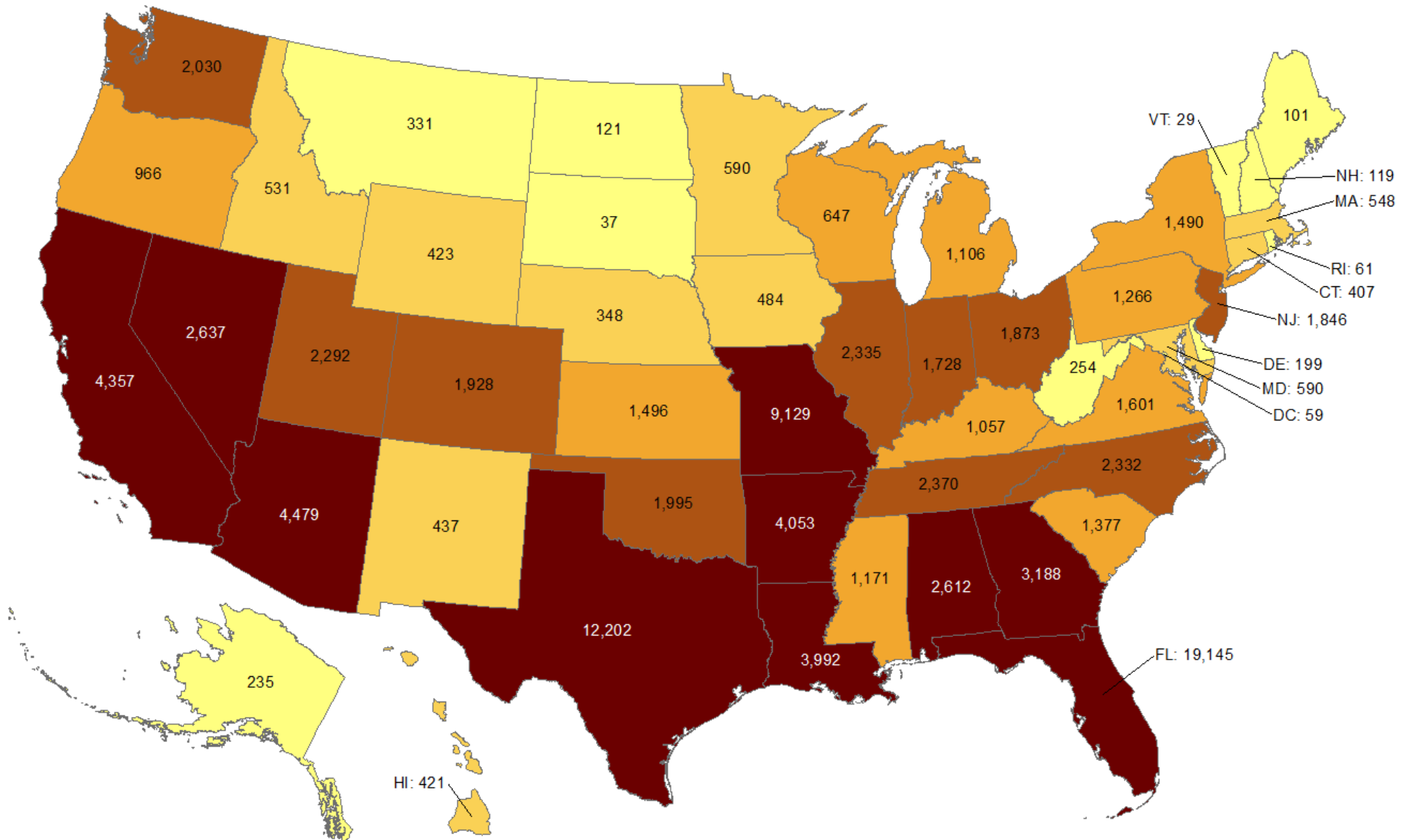
Oklahoma ranks **20** (out of all States and DC) in the cumulative death rate (per 100,000 persons) of reported COVID-19 cases in the US.



Data from CDC. Available at <https://www.cdc.gov/covid-data-tracker/index.html>
Data as of July 12, 2021

Total number of reported COVID-19 cases in last 7 days

Oklahoma ranks **16** (out of all States and DC) in the total number of reported COVID-19 cases in the last 7 days.



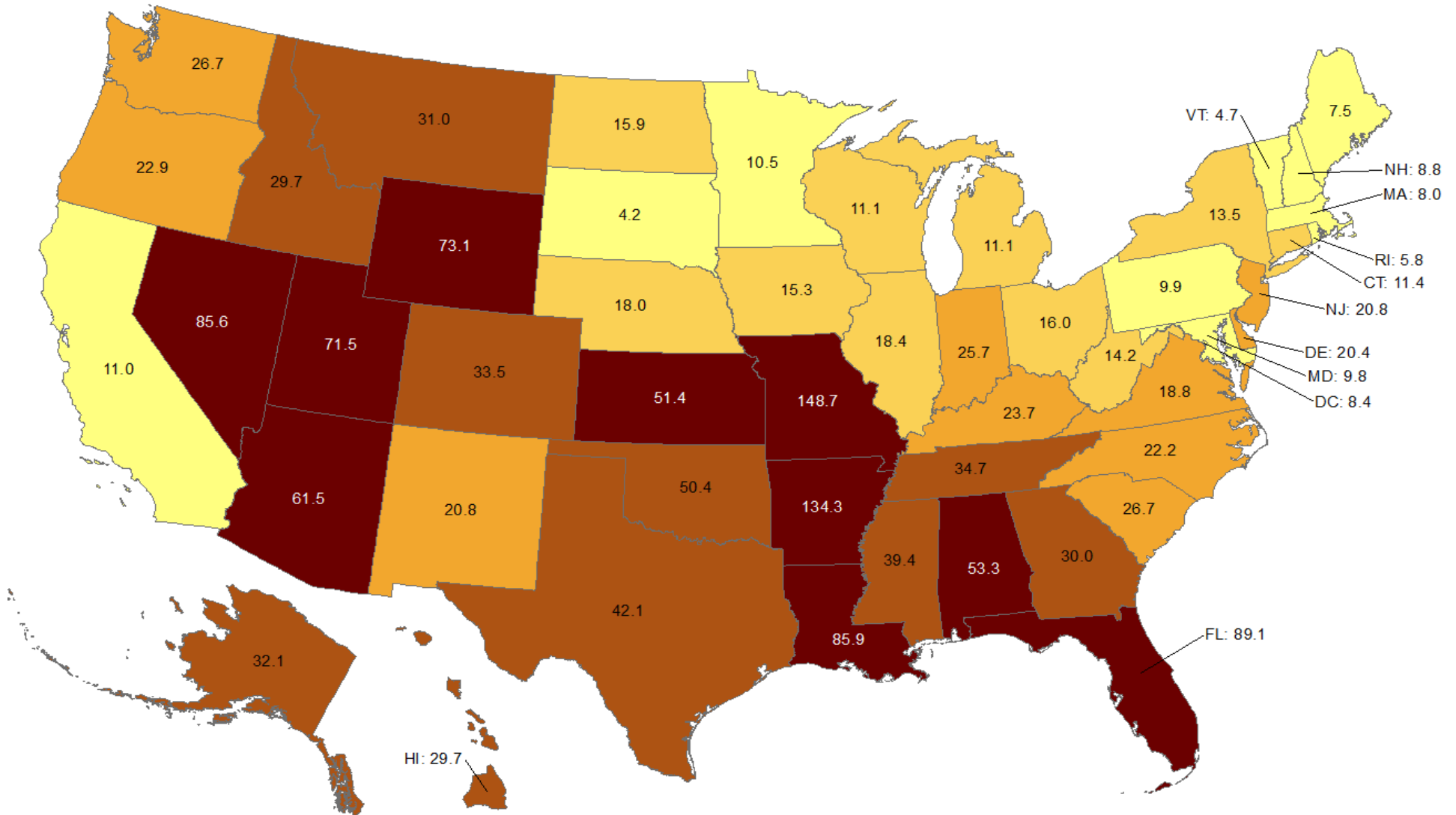
Data from CDC. Available at <https://www.cdc.gov/covid-data-tracker/index.html>

Data as of July 12, 2021

NOTE: CDC numbers include both Confirmed and Probable cases. Total new cases reported July 6, 2021 – July 12, 2021.

Cumulative incidence of reported COVID-19 cases in last 7 days

Oklahoma ranks **11** (out of all States and DC) in the cumulative incidence (per 100,000 persons) of reported COVID-19 cases in the last 7 days.



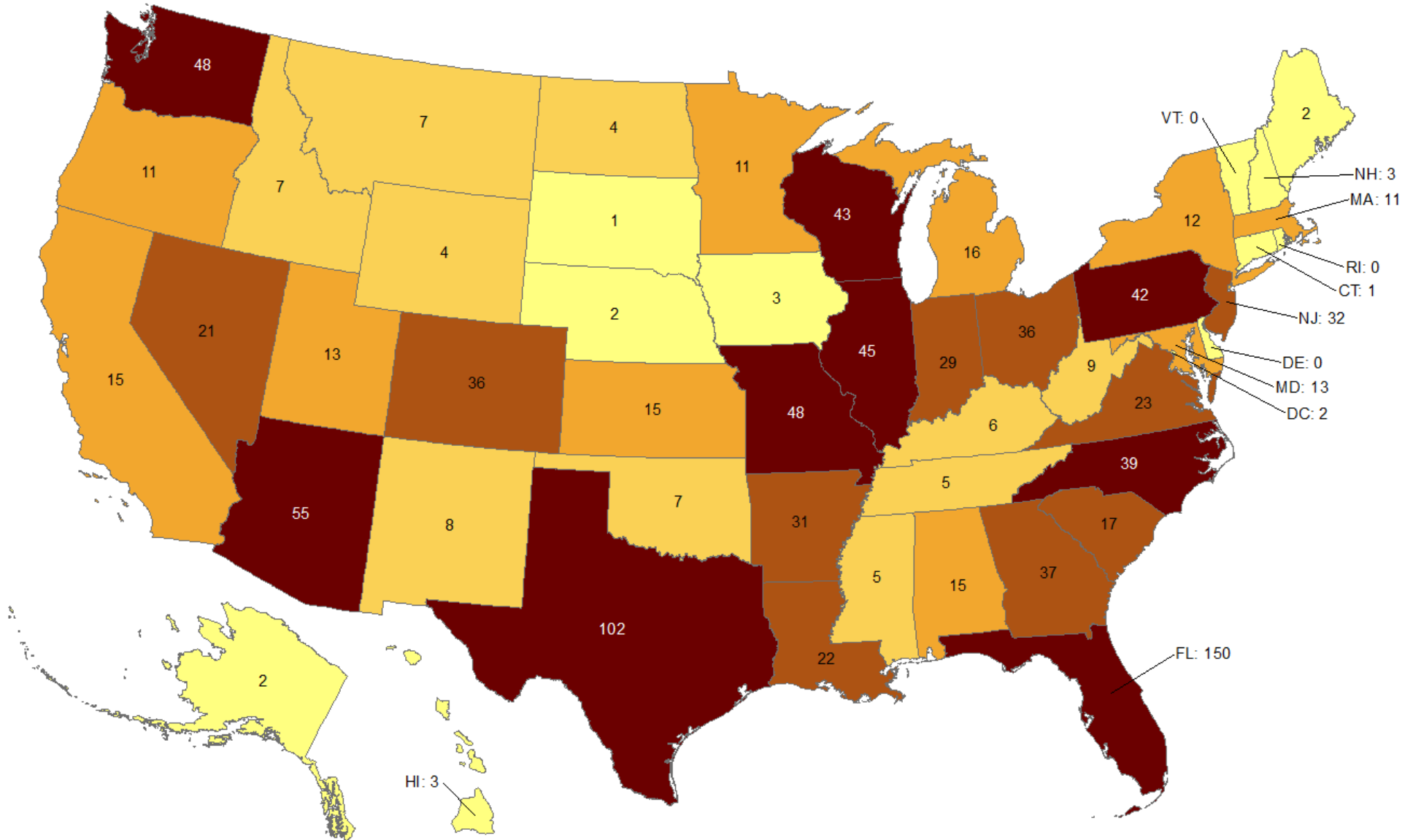
Data from CDC. Available at <https://www.cdc.gov/covid-data-tracker/index.html>

Data as of July 12, 2021

NOTE: Totals per 100,000 people in the last 7 days are calculated as the 7-day moving average of new cases or deaths (July 6 + 6 preceding days divided by 7) per 100,000 people using the U.S. Census Bureau, 2019.

Total number of reported COVID-19 deaths in last 7 days

Oklahoma ranks **32** (out of all States and DC) in the total number of reported COVID-19 deaths in the last 7 days.



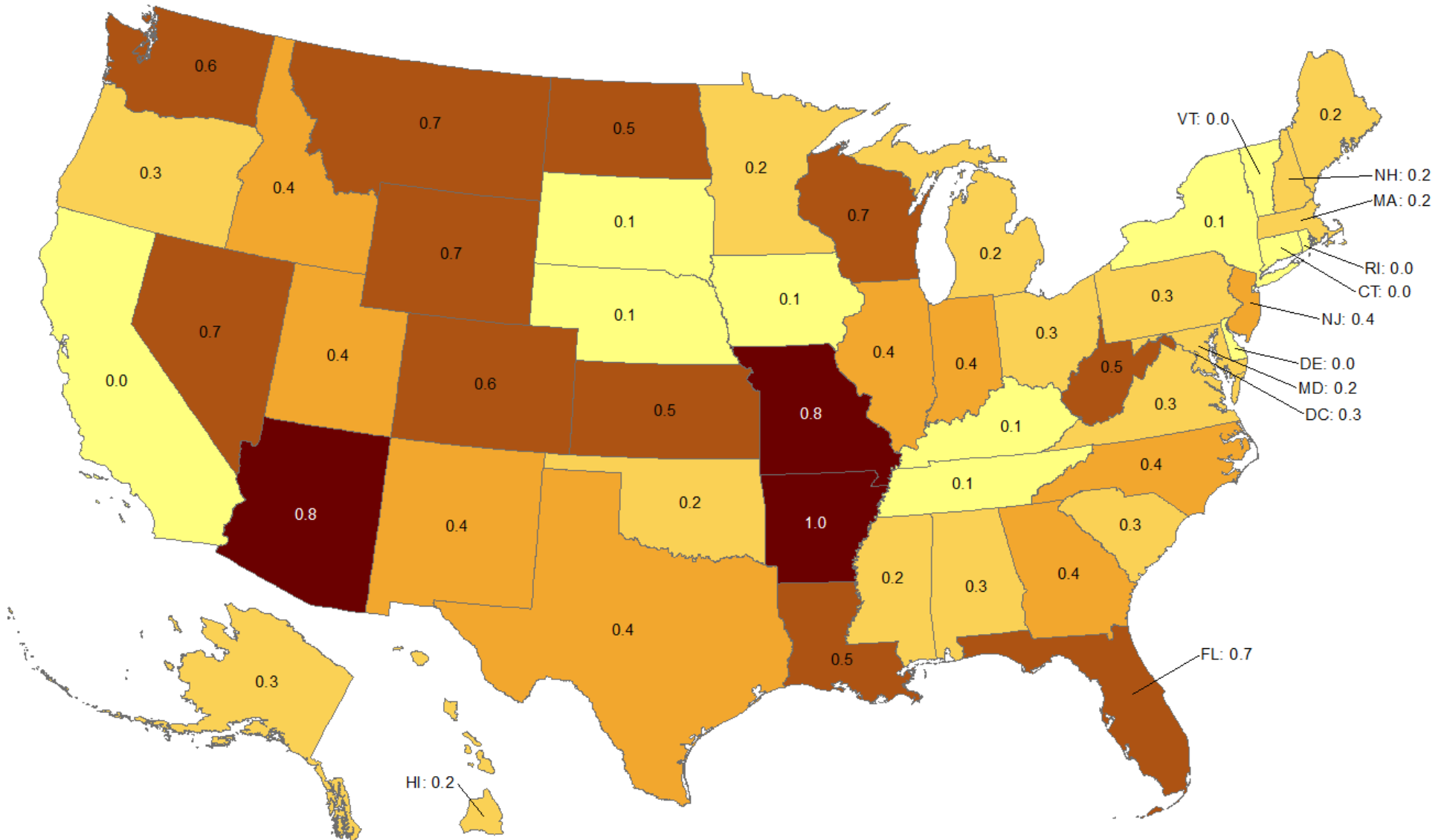
Data from CDC. Available at <https://www.cdc.gov/covid-data-tracker/index.html>

Data as of July 12, 2021

NOTE: CDC numbers include both Confirmed and Probable cases. Total new cases reported July 6, 2021 – July 12, 2021.

Cumulative death rate of reported COVID-19 cases in last 7 days

Oklahoma ranks **36** (out of all States and DC) in the cumulative death rate (per 100,000 persons) of reported COVID-19 cases in the last 7 days.

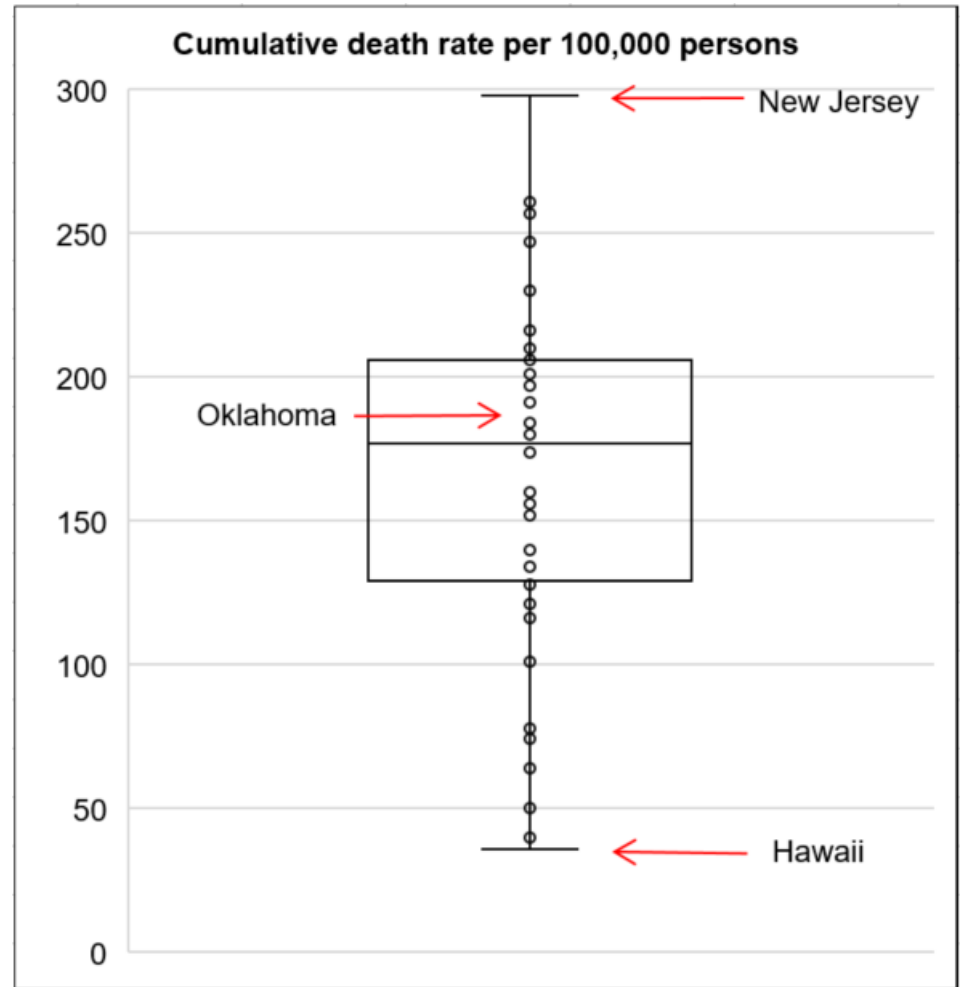
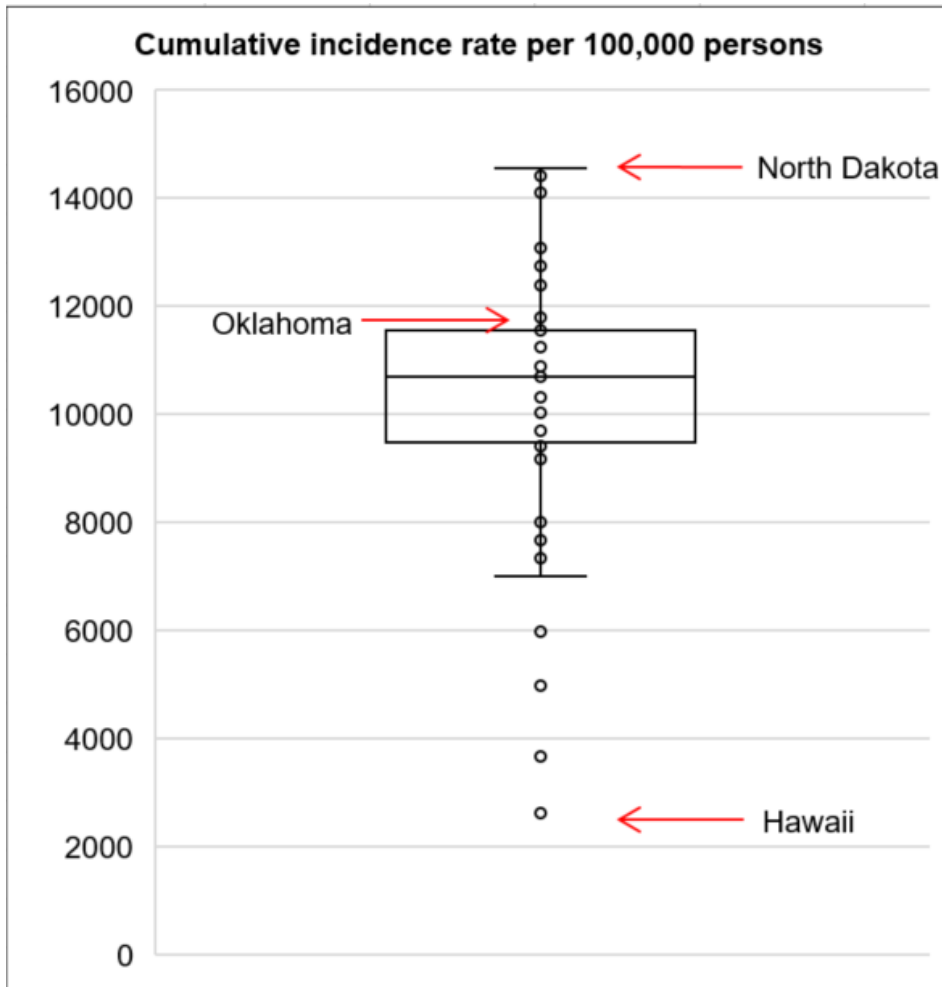


Data from CDC. Available at <https://www.cdc.gov/covid-data-tracker/index.html>

Data as of July 12, 2021

NOTE: Totals per 100,000 people in the last 7 days are calculated as the 7-day moving average of new cases or deaths (July 6, 2021 + 6 preceding days divided by 7) per 100,000 people using the U.S. Census Bureau, 2019.

Cumulative incidence and cumulative death rate of reported COVID-19 cases



Interpretation: Oklahoma has cumulative incidence rate that is **above the 75th percentile** of the US and cumulative death rate that is between 50th and 75th percentile of the US.

OKLAHOMA EXCESS DEATH ANALYSIS

- + indicates observed count above threshold
- Predicted number of deaths from all causes
- upper bound threshold for excess deaths

Weekly number of deaths (from all causes)

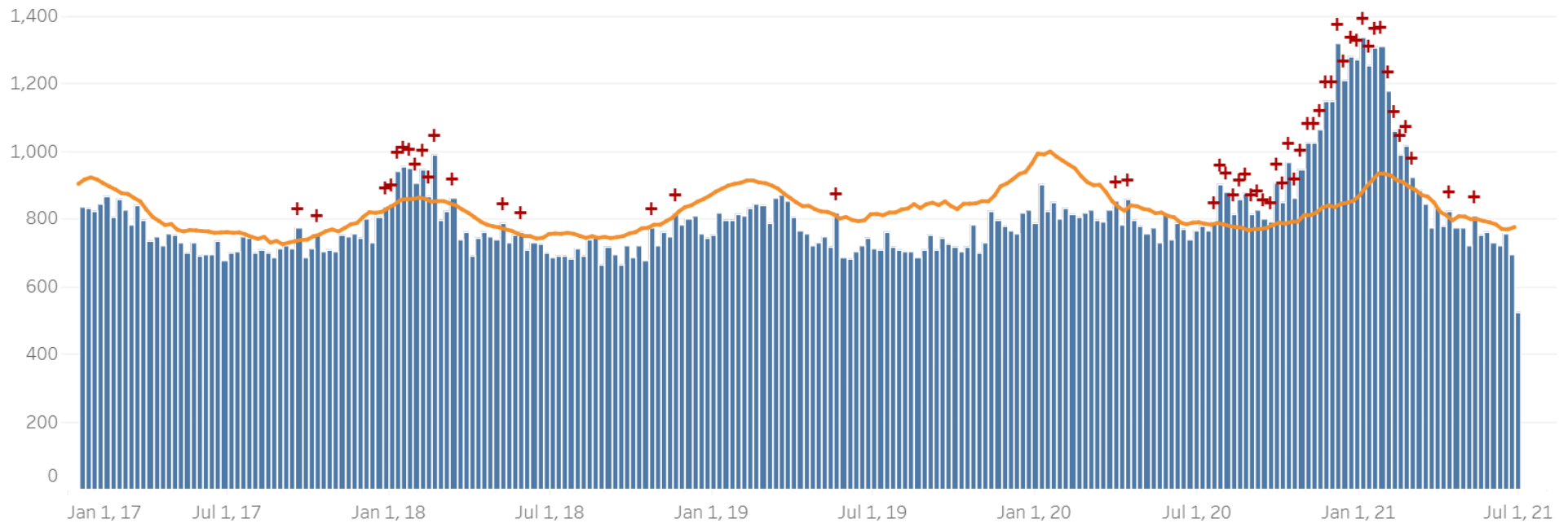


Figure notes: Contains data up to the week-ending date of June 26, 2021. Data in recent weeks are incomplete. Only 60% of the death records are submitted to NCHS within 10 days of the date of death, and completeness varies by jurisdiction.

Source: CDC, National Center for Health Statistics, https://www.cdc.gov/nchs/nvss/vsrr/covid19/excess_deaths.htm#dashboard, July 13, 2021 3PM

COVID-19 LTC OR NURSING HOME ASSOCIATED CASES BY COUNTY

Status as of 7:00 AM July 13, 2021

Data are preliminary and are subject to change as cases are processed.

County of Residence	Cases	Recovered**	Deaths
Adair	40	32	7
Alfalfa	11	11	0
Atoka	92	86	6
Beaver	21	18	3
Beckham	166	150	16
Blaine	53	50	3
Bryan	184	164	19
Caddo	173	151	22
Canadian	244	226	18
Carter	180	144	35
Cherokee	158	133	25
Choctaw	107	98	9
Cleveland	764	641	122
Coal	72	64	8
Comanche	250	220	30
Cotton	51	42	9
Craig	49	43	3
Creek	249	225	24
Custer	238	191	47

County of Residence	Cases	Recovered**	Deaths
Delaware	242	199	41
Dewey	18	17	1
Ellis	7	7	0
Garfield	288	255	32
Garvin	90	83	7
Grady	224	189	34
Grant	15	13	2
Greer	57	50	7
Harmon	56	55	1
Harper	3	2	1
Haskell	58	53	5
Hughes	37	35	1
Jackson	118	98	20
Jefferson	28	25	3
Johnston	35	28	6
Kay	210	182	26
Kingfisher	122	106	15
Kiowa	47	38	9
Latimer	45	39	6
Le Flore	262	245	17
Lincoln	143	118	24
Logan	157	137	20
Love	31	28	3

County of Residence	Cases	Recovered**	Deaths
Major	78	66	12
Marshall	33	32	1
Mayes	124	116	6
McClain	158	142	16
McCurtain	100	80	20
McIntosh	126	113	12
Murray	61	57	4
Muskogee	418	370	46
Noble	157	153	4
Nowata	80	79	1
Okfuskee	42	41	1
Oklahoma	1,955	1,687	268
Okmulgee	100	97	2
Osage	114	100	14
Ottawa	262	230	23
Pawnee	109	89	20
Payne	152	144	8
Pittsburg	328	292	36
Pontotoc	74	66	8
Pottawatomie	225	204	21
Pushmataha	47	38	5
Roger Mills	3	2	1
Rogers	456	379	76

County of Residence	Cases	Recovered**	Deaths
Seminole	163	154	9
Sequoyah	105	90	14
Stephens	255	237	18
Texas	70	60	10
Tillman	32	30	2
Tulsa	1,522	1,239	283
Wagoner	180	160	19
Washington	346	297	49
Washita	43	41	2
Woods	39	34	5
Woodward	61	54	7
<i>Total</i>	<i>13,413</i>	<i>11,664</i>	<i>1,710</i>

** Recovered case: is not deceased and 14 days after symptom onset/specimen collection. Please note that the definition for recovered was changed starting May 4, 2021 due to incomplete data on hospitalizations which may result in an inaccurate estimation of the active cases.

COVID-19 LTC OR NURSING HOME ASSOCIATED CASES BY FACILITY

Status as of 7:00 AM July 13, 2021

Data are preliminary and are subject to change as cases are processed.

Facility	Cases	Recovered**	Deaths
Aberdeen Heights Assisted Living Community	14	11	3
Aberdeen Memory Care of Tulsa	6	2	4
Accel at Crystal Park	51	41	10
Ada Care Center	7	7	0
Adams PARC Post Acute Recovery Center	106	87	19
Albert Hall	7	7	0
Alcis Place	1	1	0
Ambassador Manor Nursing Center	34	24	10
Anadarko Nursing & Rehab	43	41	2
Angelwood Assisted Living and Memory Care	1	1	0
Antlers Manor	5	1	0
Arbor House Assisted Living Center - Norman	22	14	8
Arbor House Assisted Living Center of Mustang	37	30	7
Arbor House Assisted Living of Midwest City	4	3	1
Arbor House Reminisce	36	28	8
Arbor Village	11	11	0
Artesian Home	15	13	2
Ash Street Place	5	5	0
Ashbrook Village	5	5	0
Aspen Health and Rehab	15	15	0

Facility	Cases	Recovered**	Deaths
Atoka Manor	81	75	6
Autumn Leaves of Edmond	34	30	4
Autumn Leaves of Southwest Oklahoma City	3	2	1
Autumn Leaves of Tulsa	6	5	1
Avondale Cottage of Pryor	1	1	0
Avonlea Cottage of Seminole	21	20	1
Avonlea Cottage of Shawnee, LLC	10	10	0
Ayers Nursing Home	19	12	7
Ballard Nursing Center	27	22	5
Baptist Village of Hugo	61	57	4
Baptist Village of Oklahoma City	64	59	5
Baptist Village of Owasso	57	46	11
Baptist Village of Owasso AL	26	25	1
Barnsdall Nursing Home	13	12	1
Bartlesville Assisted Living	23	23	0
Bartlesville Health and Rehabilitation Community	107	85	22
Beacon Ridge	13	13	0
Beadles Nursing Home	32	27	5
Beare Manor	31	22	9
Beaver County Nursing Home	21	18	3
Beehive Homes of Broken Arrow	1	1	0
Belfair of McAlester	10	8	2
Belfair of Shawnee	2	2	0

Facility	Cases	Recovered**	Deaths
Bell Avenue Nursing Center	44	40	4
Bellarose Senior Living	8	5	3
Bellevue Health and Rehabilitation	106	85	21
Betty Ann Nursing Center	25	23	1
Beverly Place	1	1	0
Billings Fairchild Center, Inc	132	130	2
Binger Nursing and Rehabilitation	63	51	12
Blue Ridge Place	1	1	0
Blue River Healthcare, Inc	26	21	5
Boyce Manor Nursing Home	13	12	1
Bradford Village Healthcare Center: Nursing Home	23	19	4
Brentwood Extended Care & Rehab	23	21	2
Broadway Living Center	5	4	1
Broadway Manor Nursing Home	46	38	8
Broken Arrow Assisted Living	7	5	2
Broken Arrow Nursing Home, Inc.	37	31	6
Broken Bow Nursing Home	56	44	12
Brookdale Ada	5	5	0
Brookdale Bartlesville North	23	19	4
Brookdale Bartlesville South	16	14	2
Brookdale Broken Arrow	12	10	2
Brookdale Cedar Ridge	11	9	2
Brookdale Chickasha	23	17	6

Facility	Cases	Recovered**	Deaths
Brookdale Claremore	6	5	1
Brookdale Durant	27	25	2
Brookdale Edmond Danforth	20	16	4
Brookdale Edmond Santa Fe	5	5	0
Brookdale Enid	4	4	0
Brookdale Muskogee	23	17	6
Brookdale Norman	1	1	0
Brookdale Owasso	2	2	0
Brookdale Shawnee	1	0	1
Brookdale Stillwater	5	4	1
Brookdale Tulsa 71st and Sheridan	67	53	14
Brookdale Tulsa Midtown	11	8	3
Brookdale Tulsa South	5	4	1
Brookdale Village	3	2	1
Brookdale Weatherford	14	12	2
Brookridge Retirement Community	8	8	0
Brookside Nursing Center	7	7	0
Brookwood Skilled Nursing and Therapy	10	7	3
Burford Manor	17	16	1
Calera Manor, LLC	2	2	0
Callaway Nursing Home	13	13	0
Canoe Brook Ardmore	2	1	0
Capitol Hill Skilled Nursing and Therapy	48	41	7

Facility	Cases	Recovered**	Deaths
Carnegie Nursing Home, Inc.	39	33	6
Cedar Creek Nursing Center	79	73	5
Cedar Crest Manor	27	27	0
Cedarcrest Care Center	53	44	9
Center of Family Love	15	15	0
Chandler Therapy & Living Center, LLC	59	50	9
Checotah Nursing Center	8	6	2
Cherokee County Nursing Center	65	56	9
Chickasha Nursing Center, Inc	13	9	4
Chisholm Trail Assisted Living	20	19	1
Choctaw Nation Nursing Home	37	32	5
Cimarron Nursing Center	21	17	4
Cimarron Pointe Care Center	26	23	3
Claremore Skilled Nursing and Therapy	15	12	3
Cleveland Manor Nursing & Rehab	62	52	10
Clinton Therapy & Living Center	5	5	0
Colonial Manor II	59	58	1
Colonial Manor Nursing Home	25	21	4
Colonial Park Manor, LLC	6	6	0
Colonial Terrace Care Center	28	27	0
Community Health Care of Gore	12	11	0
Community Health Center	11	9	2
Copp's Residential Care, Inc	3	3	0

Facility	Cases	Recovered**	Deaths
Cordell Christian	11	11	0
Corn Heritage Village and Rehab	27	26	1
Corn Heritage Village and Rehab of Weatherford	63	52	11
Cottonwood Creek Skilled Nursing & Therapy	34	27	6
Country Club Care	90	85	5
Country Club at Woodland Hills	8	8	0
Country Lane	3	3	0
Country Place	1	1	0
Countryside Estates	17	14	2
Countrywood Assisted Living and Memory Care	12	8	4
Covenant Living at Inverness	30	27	3
Covenant Living of Bixby	6	6	0
Coweta Manor Nursing Home	70	58	12
Creek Place	3	3	0
Creekside Village	14	13	1
Cross Place	1	1	0
Cross Timbers Nursing and Rehabilitation	59	56	3
Crossroads Residential Care	16	14	2
Crystal Place, LLC	1	1	0
Dogwood Creek Retirement Center	8	8	0
Dorset Place - Assisted Living	1	1	0
Dr W F & Mada Dunaway Manor	40	35	5
Drumright Nursing Home	46	45	1

Facility	Cases	Recovered**	Deaths
Duncan Assisted Living	19	18	1
Duncan Community Residence	1	1	0
Eastgate Village Retirement Center	103	94	8
Eastwood Manor	94	88	5
Eden Care - The Greens	1	1	0
Edith Kassanavoid Gordon Assisted Living Center	2	2	0
Edmond Healthcare Center	46	37	9
El Reno Post-Acute Rehabilitation Center	12	9	2
Elk City Nursing Center	59	51	8
Elk Crossing	37	30	7
Elkwood Assisted Living and Memory Care	25	22	3
Elmbrook Home	15	13	2
Elmwood Manor Nursing Home	14	14	0
Emerald Care Center Claremore	124	108	16
Emerald Care Center Midwest	72	66	6
Emerald Care Center Southwest LLC	58	56	2
Emerald Care Center Tulsa	39	32	7
Emerald Square Assisted Living Community	3	3	0
English Village Manor	49	38	11
Enid Senior Care	14	13	1
Epworth Villa Health Services	31	29	2
Eufaula Manor Nursing and Rehabilitation Center	78	71	7
Fairfax Manor	31	26	5

Facility	Cases	Recovered**	Deaths
Fairmont Skilled Nursing and Therapy	78	71	7
Fairview Fellowship Home for Senior Citizens, Inc	86	76	10
Family Care Center of Fairland	2	2	0
Family Care Center of Kingston	19	18	1
Faye's Place	7	7	0
Featherstone Assisted Living Community of Ada	4	4	0
Featherstone Assisted Living Community of Moore	37	32	5
First Shamrock Care Center	4	4	0
Forest Hills Care and Rehabilitation Center	31	25	6
Forrest Manor Nursing Center	52	48	4
Fort Gibson Nursing Home	21	17	4
Fountain View Manor, Inc	10	10	0
FountainBrook Assisted Living and Memory Support	10	10	0
Four Seasons Rehabilitation & Care	41	39	1
Franciscan Villa	124	104	20
Garland Road Nursing and Rehab Center	10	8	2
Gatesway Foundation, Inc	3	3	0
Glade Avenue Assisted Living	4	4	0
Glade Avenue South	6	3	3
Glenhaven Retirement Village	77	69	8
Glenwood Healthcare	22	14	8
Go Ye Village Continuum of Care Retirement Community	9	4	5
Golden Age Nursing Home of Guthrie, LLC	84	65	19

Facility	Cases	Recovered**	Deaths
Golden Oaks Village	37	27	10
Grace Living Center - Buffalo	1	0	1
Grace Living Center - Clinton	18	15	3
Grace Living Center - Jenks	41	32	9
Grace Living Center - Norman	88	71	17
Grace Living Center - Stillwater	15	14	1
Grace Living Center - Tahlequah East Shawnee	4	2	2
Gracewood Health and Rehab	44	36	8
Gran Grans Place	1	1	0
Grand Lake Villa	33	24	9
Grandwood Assisted Living, LC	41	35	6
Green Country Care Center	102	90	12
Green Country Village Assisted Living Center	4	4	0
Green Tree at Sand Springs	15	14	1
Greenbrier Nursing Home	48	45	3
Greenbrier Village Residential Living, LLC	13	13	0
Gregston Nursing Home, Inc.	13	12	1
Grove Nursing Center	95	76	19
Harborchase of Oklahoma City	1	1	0
Harrah Nursing Center	48	42	6
Haskell Care Center	8	8	0
Haskell County Nursing Center, Inc	55	50	5
Hays House	37	37	0

Facility	Cases	Recovered**	Deaths
Heartsworth Center for Nursing and Rehabilitation	43	35	3
Heartsworth House Assisted Living	1	1	0
Heatheridge Residential Care Center	22	16	6
Heavener Nursing & Rehab	55	47	8
Hennessey Nursing & Rehab	79	72	7
Henryetta Community Skilled Healthcare & Rehab	7	6	1
Hensley Nursing & Rehab	36	31	5
Heritage Assisted Living	6	6	0
Heritage Community	31	26	5
Heritage Hills Living & Rehabilitation Center	70	67	3
Heritage Manor	30	29	1
Heritage Park	7	4	3
Heritage Point of Oklahoma City	2	2	0
Heritage Point of Tulsa	6	6	0
Heritage Skilled Nursing & Therapy	6	6	0
Heritage Villa Nursing Center	21	17	4
Heritage Village Nursing Home	14	14	0
Heritage at Brandon Place Health and Rehabilitation	57	51	6
High Cedar Residential Care	1	1	0
Higher Call Nursing Center	37	30	7
Highland Park Health Care	10	9	1
Hill Nursing Home, Inc	16	15	1
Hillcrest Manor Nursing Center	7	2	5

Facility	Cases	Recovered**	Deaths
Hillcrest Nursing Center	21	20	1
Hobart Nursing & Rehab	23	20	3
Holiday Heights Nursing Home	12	10	2
Home of Hope Elmwood House	1	1	0
Home of Hope Scrapper House	1	1	0
Homestead Residential Care	2	2	0
Homestead of Bethany, LLC	9	8	1
Homestead of Hugo	43	38	5
Homestead of Owasso	14	14	0
Ignite Medical Resort Norman, LLC	46	37	9
Ignite Medical Resort OKC	109	95	14
Iris Memory Care of Edmond	10	7	3
Jacquelyn House	2	2	0
Jan Frances Care Center	14	12	2
John H. Johnson Care Suites	10	10	0
Kenwood Manor	23	22	1
Kingwood Skilled Nursing and Therapy	28	25	3
Lake Country Nursing Center	30	27	3
Lake Drive Care and Rehabilitation Center	41	41	0
Lakeland Manor, Inc	14	11	3
Lakeview Nursing & Rehab	21	18	2
Landmark of Midwest City Rehabilitation and Nursing	43	37	6
Lane Nursing & Ventilator Care	2	2	0

Facility	Cases	Recovered**	Deaths
Latimer Nursing Home	24	20	4
Legacy Village of Stillwater	16	16	0
Legend at 71st St	16	13	3
Legend at Council Road	7	7	0
Legend at Mingo Road	4	4	0
Legend at Rivendell	61	48	13
Leisure Village Health Care Center	50	38	12
Lexington Nursing Home	15	13	2
Liberty Place	2	2	0
Lindsay Nursing & Rehab	33	30	3
Linwood Village Nursing & Retirement Apts	14	14	0
Lyndale at Edmond	2	2	0
Magnolia Creek Skilled Nursing and Therapy	41	32	9
Mangum Skilled Nursing and Therapy	57	51	6
Maple Lawn Nursing and Rehabilitation	20	16	4
Maplewood Care Center	33	29	4
Marlow Nursing & Rehab	16	15	1
McAlester Nursing & Rehab	51	47	4
McCall's Chapel School, Inc #11	2	2	0
McCall's Chapel School, Inc #13	1	1	0
McCall's Chapel School, Inc #4	1	1	0
McCall's Chapel School, Inc #7	1	1	0
McCall's Chapel School, Inc #8	1	1	0

Facility	Cases	Recovered**	Deaths
McCall's Chapel School, Inc #9	1	1	0
McLoud Nursing Center	5	5	0
McMahon-Tomlinson Nursing Center	42	38	4
Meadow Brook Residential Care	29	29	0
Meadowbrook Nursing Center	34	31	3
Meadowlake Estates	84	67	17
Meadowlakes Retirement Village	1	1	0
Medical Park West Rehabilitation	9	7	2
Medicallodges Dewey	4	4	0
Meeker Nursing Center	51	36	15
Memorial Heights Nursing Center	27	20	7
Memorial Nursing Center	27	26	1
Memory Care Center at Emerald	13	12	1
Meridian Nursing Home	16	15	1
Miami Nursing Center, LLC	87	80	7
Mid-Del Skilled Nursing and Therapy	25	24	1
Miller's Residential Care, LLC	1	1	0
Mitchell Manor	84	79	5
Monroe Manor	11	9	2
Montereaue, Inc Assisted Living	9	6	3
Montereaue, Inc LTC/SNF	8	8	0
Montevista Rehabilitation and Skilled Care	21	18	3
Mooreland Heritage Manor	25	23	2

Facility	Cases	Recovered**	Deaths
Muscogee (Creek) Nation Skilled Nursing Facility	1	1	0
Muskogee Nursing Center	20	19	1
New Hope Retirement & Care Center	3	3	0
Noble Health Care Center	80	75	5
North County Assisted Living	6	5	1
North County Center for Nursing and Rehabilitation	34	30	4
North Winds Living Center	2	2	0
Northhaven Place	10	9	1
Northwest Nursing Center	3	3	0
Nowata Nursing Center	5	4	1
Oak Hills Living Center	20	19	1
Oakridge Home	11	9	2
Oakridge Nursing Center	59	52	7
Okemah Care Center	27	25	2
Oklahoma Methodist Manor AL	4	3	1
Oklahoma Methodist Manor NH	35	32	3
Oklahoma Veterans Center, Ardmore Division	31	18	13
Oklahoma Veterans Center, Claremore Division	258	216	42
Oklahoma Veterans Center, Clinton Division	151	118	33
Oklahoma Veterans Center, Lawton-Ft. Sill Division	42	35	7
Oklahoma Veterans Center, Norman Division	89	62	27
Oklahoma Veterans Center, Sulfur Division	42	40	1
Oklahoma Veterans Center, Talihina Division	32	28	4

Facility	Cases	Recovered**	Deaths
Okmulgee Terrace	2	1	0
Osage Nursing Home, LLC	30	29	1
Oxford Glen at Owasso	25	20	5
Parkhill North Nursing Home	21	19	2
Parkland Manor	1	1	0
Parkview Pointe Senior Living	1	1	0
Pauls Valley Care Center	1	1	0
Perry Green Valley Nursing Center, LLC	29	27	2
Pleasant Valley Health Care Center	77	73	4
Pocola Health & Rehab	60	56	4
Ponca City Nursing and Rehabilitation	67	59	8
Prairie House Assisted Living & Memory Care	8	5	3
Prairie Pointe at Stroud	11	10	0
Primrose Retirement Community of Shawnee	12	12	0
Primrose Retirement Community of Stillwater	3	3	0
Providence House	8	8	0
Providence Place	1	1	0
Purcell Care Center, LLC	41	35	6
Quail Creek Senior Living	23	19	4
Quail Ridge Living Center, Inc (Colcord, OK)	36	34	2
Quail Ridge Senior Living	27	21	6
Quinton Manor Nursing Home	10	10	0
RT 66 Residential Care Home, LLC	7	7	0

Facility	Cases	Recovered**	Deaths
Rainbow Health Care Community: Nursing Home	83	74	9
Rambling Oaks (Norman)	29	26	3
Rambling Oaks Courtyard Assisted Living & Memory Care	9	9	0
Ranch Terrace Nursing Home	22	19	3
Ranchwood Nursing Center	36	34	2
Reliant Living Center	19	18	1
Reliant Living Center of Del City	3	3	0
River Oaks Skilled Nursing	47	41	6
Riverside Health Services LLC	18	18	0
Robert M Greer Center	1	1	0
Rolling Hills Care Center	27	16	11
Ruth Wilson Hurley Manor	74	66	8
Saint Simeons Episcopal Home	29	26	3
Sand Plum Assisted Living Community	12	11	1
Sand Springs Nursing and Rehabilitation	8	7	0
Seiling Nursing Center	7	5	2
Seminole Care and Rehabilitation Center	89	83	6
Seminole Pioneer Nursing Home	21	20	0
Seminole Place	2	2	0
Senior Star The Brook	3	3	0
Senior Suites Healthcare	17	13	3
Senior Village	12	10	2
Sequoyah East Nursing Center, LLC	15	14	1

Facility	Cases	Recovered**	Deaths
Sequoyah Manor	55	44	11
Sequoyah Pointe Living Center	25	21	4
Shady Rest Care Center	27	27	0
Shanoan Springs Nursing and Rehabilitation	62	55	7
Share Medical Center	5	5	0
Shattuck Nursing Center	5	5	0
Shawn Manor Nursing Home	2	2	0
Shawnee Care Center	38	31	7
Shawnee Colonial Estates Nursing Home	73	63	10
Sherwood Manor Nursing Home	17	12	5
Shiloh Manor	14	14	0
Sienna Extended Care & Rehab	40	37	3
Skiatook Nursing Home	43	37	6
Skyview Nursing Center	7	6	1
Sommerset Neighborhood	23	22	1
South Park East	46	42	4
South Pointe Rehabilitation and Care Center	194	166	28
Southbrook Healthcare, Inc.	35	29	6
Southern Hills Rehabilitation Center	85	73	12
Southern Oaks Care Center	55	44	11
Southern Plaza Assisted Living and Memory Care	30	28	2
Southern Pointe Living Center	49	41	8
Southridge Place	1	1	0

Facility	Cases	Recovered**	Deaths
Spanish Cove Housing Authority	18	18	0
Spiro Nursing Home, Inc.	52	51	1
St. Ann's Skilled Nursing and Therapy	85	57	28
St. Katharine Drexel Retirement Center	10	10	0
Stilwell Nursing Home, LLC	33	26	7
Stonecreek Assisted Living and Memory Care	6	4	2
Storey Oaks	48	43	5
Stroud Health Care Center South	8	8	0
Summers Healthcare, LLC	30	29	1
Sunset Estates of Purcell	84	78	6
Tamarack Retirement Center	18	16	2
Teal Creek Assisted Living & Memory Care	6	6	0
Tealridge Assisted Living	12	12	0
Temple Manor Nursing Home	44	37	7
Ten Oaks Place	12	8	4
The Arbors Assisted Living Center	8	8	0
The Brentwood Senior Living	22	20	2
The Chateau	10	8	2
The Commons	104	95	9
The Commons - AL	2	2	0
The Cottage Extended Care	30	22	8
The Courtyards at Claremore Assisted Living	7	5	2
The Courtyards at Magnolia Creek	9	9	0

Facility	Cases	Recovered**	Deaths
The Fountains at Canterbury Health Center	37	31	6
The Gardens	18	14	4
The Gardens at Rivermont	3	3	0
The Golden Rule Home	56	53	3
The Grand at Bethany Skilled Nursing and Therapy	8	8	0
The Health Center at Concordia	31	28	3
The Health Center at Concordia ALC	8	8	0
The Heaven House Elmwood	1	1	0
The Highlands at Owasso	36	26	10
The King's Daughters & Sons Nursing Home	23	22	1
The Lakes	12	11	1
The Legend at Jefferson's Garden	1	1	0
The Linden at Stonehaven Square	17	9	8
The Living Centre	35	28	7
The Lodge at Brookline	15	13	2
The Mansion at Waterford	21	17	4
The Neighborhoods at Baptist Village of Ada	3	3	0
The Neighborhoods at Baptist Village of Elk City	9	9	0
The Neighborhoods at Baptist Village of Okmulgee	1	1	0
The Nova Center	1	1	0
The Oaks Healthcare Center	32	30	2
The Parke Assisted Living	17	15	2
The Regency Skilled Nursing and Therapy	16	15	1

Facility	Cases	Recovered**	Deaths
The Renaissance of Stillwater - Assisted Living	4	4	0
The Springs Skilled Nursing and Therapy	47	38	9
The Timbers Skilled Nursing and Therapy	67	56	11
The Veraden	9	9	0
The Villages at Southern Hills	86	66	20
The Willows	1	1	0
The Wilshire Skilled Nursing and Therapy	5	5	0
The Wolfe Living Center at Summit Ridge	17	16	1
Tidwell Living Center	1	1	0
Timberwood Assisted Living & Memory Care	1	1	0
Touchmark at Coffee Creek	26	25	1
Town Village Assisted Living	2	2	0
Town of Vici Nursing Home	18	17	1
Tulsa Assisted Living and Memory Care	3	3	0
Tulsa Nursing Center	32	29	3
Tuscany Village Nursing Center	25	23	2
Tuttle Care Center	27	25	2
University Park Skilled Nursing & Therapy	64	58	6
University Village	70	57	13
Van Buren House Assisted Living	2	2	0
Via Christi Village Ponca City	80	73	5
Vian Nursing & Rehab, LLC	22	20	2
Victorian Estates	8	7	1

Facility	Cases	Recovered**	Deaths
Village Health Care Center	13	12	1
Village Lodge of Ardmore Village	11	10	1
Village at Oakwood	8	7	1
Village on the Park	40	32	8
Villagio of Oklahoma City	1	0	1
Wagoner Health & Rehab	42	40	2
Wagoner Health & Rehab Res Care	8	8	0
Walnut Grove Living Center	70	57	13
Warr Acres Nursing Center	20	19	1
Washita Valley Living Center	35	32	3
Weatherwood Assisted Living and Memory Care	10	10	0
Wellington Parke, LLC	4	4	0
West Wind Assisted Living	21	20	1
Westbrook Gardens	6	5	1
Westbrook Healthcare, Inc	19	17	2
Westhaven Nursing Home	78	74	3
Westview Cottages	35	35	0
Wewoka Healthcare Center	13	13	0
Whispering Oaks	3	3	0
Wildewood Skilled Nursing and Therapy	6	5	1
Wildwood Care Center, Inc	37	34	3
Wilkins Health and Rehabilitation Community	21	21	0
Willow Creek Health Care	2	2	0

Facility	Cases	Recovered**	Deaths
Willow Haven Nursing Home	32	26	6
Willow Park Health Care Center	70	60	10
Willow Place	5	5	0
Willowood at Mustang Assisted Living and Memory Care	7	7	0
Wilson Nursing Center	47	39	8
Windridge Nursing and Rehabilitation Center	26	14	3
Windsor Hills Nursing Center	7	6	1
Woodland Park Home, Inc	6	5	1
Woodlands Skilled Nursing & Therapy	3	3	0
Woodview Home, Inc.	19	19	0
Woodward Skilled Nursing and Therapy	32	28	4
York Manor Nursing Home	43	41	2
Zarrow Pointe	18	15	3
<i>Total</i>	<i>13,413</i>	<i>11,664</i>	<i>1,710</i>

** Recovered case: is not deceased and 14 days after symptom onset/specimen collection. Please note that the definition for recovered was changed starting May 4, 2021 due to incomplete data on hospitalizations which may result in an inaccurate estimation of the active cases.

ACKNOWLEDGEMENT

The weekly report is made by possible through the efforts of county and city public health and healthcare professionals.

NOTES

Every effort is made to ensure accuracy and the data is up-to-date for the time period reported.

For daily updates on COVID-19, please visit <https://coronavirus.health.ok.gov/>

DISCLAIMER

The purpose of publishing aggregated statistical COVID-19 data through the OSDH Dashboard, the Executive Order Report, and the Weekly Epidemiology and Surveillance Report is to support the needs of the general public in receiving important and necessary information regarding the state of the health and safety of the citizens of Oklahoma. These resources may be used only for statistical purposes and may not be used in any way that would determine the identity of any reported cases.