

# OKLAHOMA COVID-19 WEEKLY REPORT

Weekly Epidemiology and Surveillance Report  
July 25 – July 31, 2021



**PURPOSE** To provide up-to-date weekly epidemiological data on COVID-19 in Oklahoma.

## SNAPSHOT

	July 25-31	Change <sup>1</sup>	Total
Cases	11,387	40.4%	486,232
Recovered cases <sup>2</sup>	5,687	35.8%	463,161
Deaths	46	n/a	7,531

1. Change from the week of July 18-24, 2021.

2. Not deceased and 14 days after symptom onset/specimen collection. Please note that the definition for recovered was changed starting May 4, 2021 due to incomplete data on hospitalization which may result in an inaccurate estimation of the active cases.

CASES		DEATHS	
Persons aged 50 and over	Females	Persons aged 50 and over	Males
<b>33%</b>	<b>53%</b>	<b>95%</b>	<b>56%</b>
of cases	of cases	of deaths	of deaths

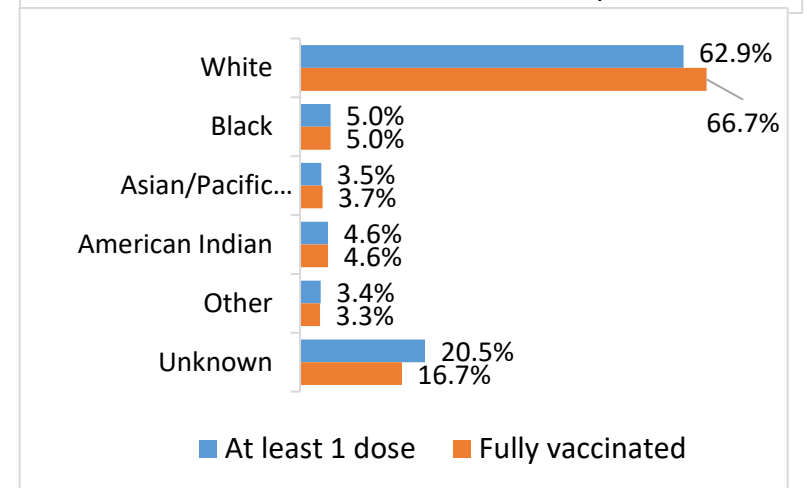
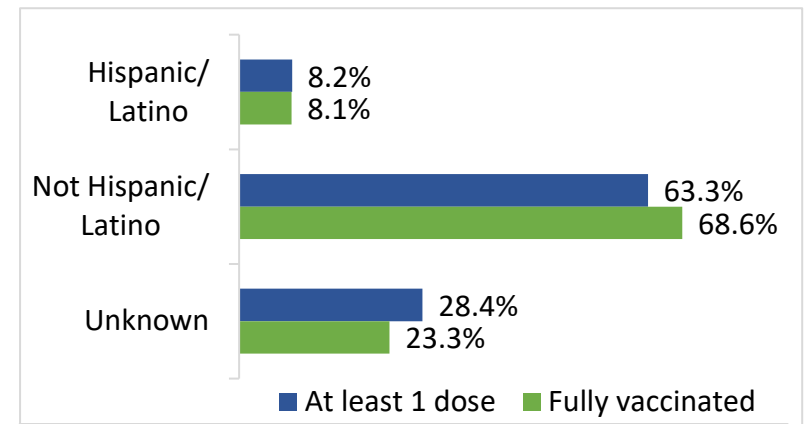
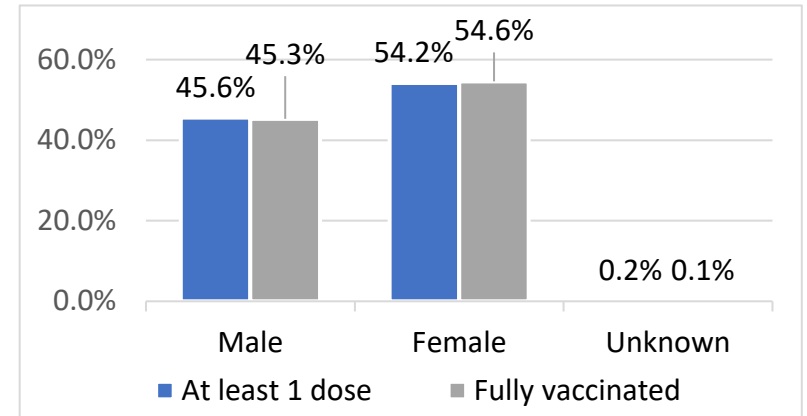
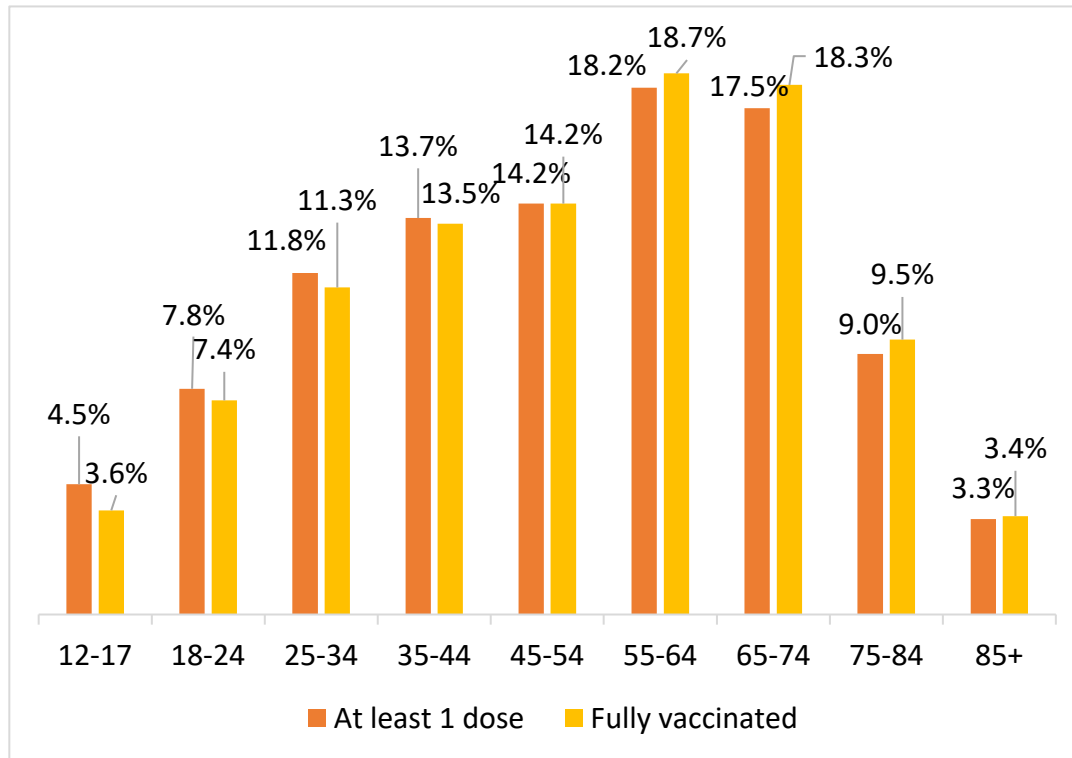
## KEY POINTS

- **11,387** cases were reported in the past week  
40.4% increase from the week before (July 18-24)
- **46** deaths were reported in the past week
- **28,516 (5.9%)** cases have been hospitalized
- **33,106** specimens have been tested over the last 7 days according to the CDC COVID data tracker
- **2,877,437** vaccine doses have been administered in total
- The average age of cases was **40** years and average age of individuals who died was **74** years
- The youngest case was **less than a year old** and the oldest case was **100+ years**
- The youngest individual to die from COVID-19 was **less than 15 years** and the oldest was **100+ years**

# COVID- 19 VACCINE DATA BY TOTAL AND KEY METRICS

	July 27 – Aug 2	Total Number
Doses Administered <sup>1</sup>	50,164	2,877,437
At least 1 dose <sup>2</sup>	37,358	1,611,130
Fully vaccinated <sup>3</sup>	14,803	1,361,162

1. Doses administered amount does not include doses administered by federal entities in Oklahoma.
2. At least one does refers to individuals receiving Pfizer and Moderna COVID-19 vaccines and/or receiving single shot of J&J/Janssen Vaccine
3. Fully vaccinated refers to individuals fully vaccinated after receiving either Pfizer and/or Moderna COVID-19 vaccines (both doses) and/or receiving single shot of J&J/Janssen Vaccine

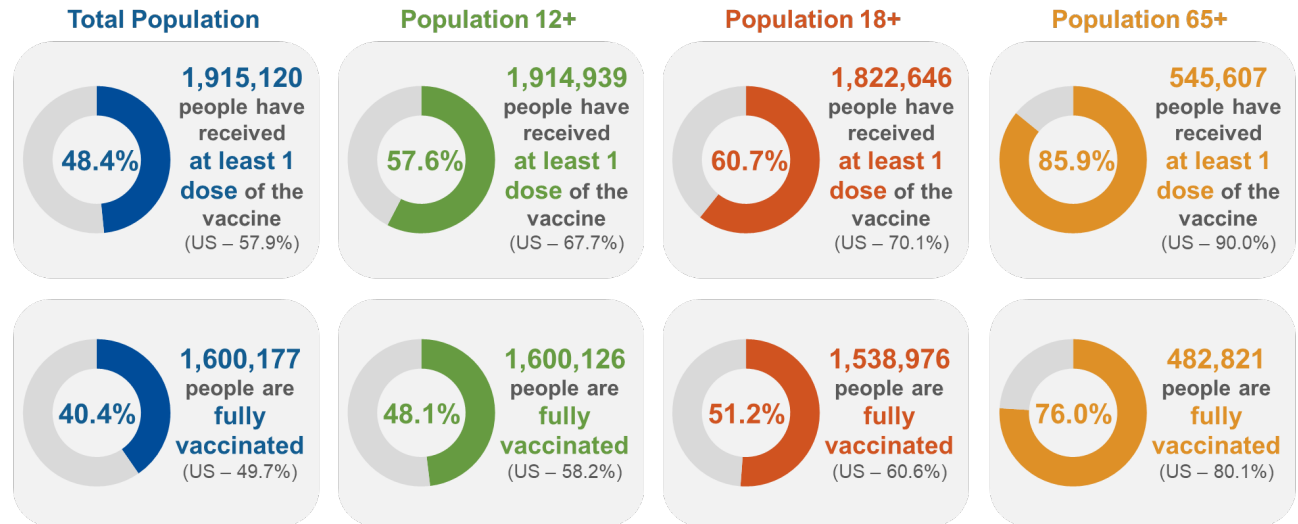


Source: COVID-19 Vaccination Reporting Specification Dataset Oklahoma State Immunization Information System (OSIIS). Data reflect information entered as of 11:59PM 8/2/2021. Data does not include doses administered by federal entities in Oklahoma

# COVID-19 VACCINATIONS IN OKLAHOMA - FEDERAL AND STATE, AS OF JULY 26, 2021

	Count*	Adult Rate per 100K
<b>Total Doses Administered</b>	<b>3,484,925</b>	<b>110,807</b>

\*Includes state and federal administered doses.



## Percent of 12+ Population with At Least 1 Dose- Oklahoma Counties

County	At Least 1 Dose (%)	County	At Least 1 Dose (%)	County	At Least 1 Dose (%)	County	At Least 1 Dose (%)	County	At Least 1 Dose (%)
Adair	38.5%	Cotton	43.9%	Jackson	53.3%	McIntosh	54.4%	Roger Mills	35.3%
Alfalfa	46.1%	Craig	55.6%	Jefferson	42.6%	Murray	45.6%	Rogers	46.4%
Atoka	34.4%	Creek	43.1%	Johnston	42.8%	Muskogee	52.2%	Seminole	50.9%
Beaver	31.5%	Custer	50.1%	Kay	43.9%	Noble	62.1%	Sequoyah	38.2%
Beckham	43.0%	Delaware	40.4%	Kingfisher	48.3%	Nowata	42.3%	Stephens	49.2%
Blaine	47.2%	Dewey	27.5%	Kiowa	54.5%	Okfuskee	47.2%	Texas	45.8%
Bryan	37.9%	Ellis	36.4%	Latimer	32.2%	Oklahoma	66.9%	Tillman	47.8%
Caddo	64.2%	Garfield	49.2%	LeFlore	38.6%	Okmulgee	42.4%	Tulsa	62.7%
Canadian	59.1%	Garvin	49.1%	Lincoln	40.5%	Osage	32.1%	Wagoner	47.1%
Carter	47.0%	Grady	37.5%	Logan	33.9%	Ottawa	37.9%	Washington	45.7%
Cherokee	47.5%	Grant	45.3%	Love	44.2%	Pawnee	50.0%	Washita	41.6%
Choctaw	32.1%	Greer	37.4%	Major	49.9%	Payne	49.3%	Woods	41.4%
Cimarron	28.8%	Harmon	51.3%	Marshall	47.3%	Pittsburg	44.6%	Woodward	39.5%
Cleveland	53.4%	Harper	47.6%	Mayes	44.3%	Pontotoc	54.8%		
Coal	39.2%	Haskell	40.0%	McClain	50.7%	Pottawatomie	47.6%		
Comanche	57.3%	Hughes	43.4%	McCurtain	32.6%	Pushmataha	32.5%		

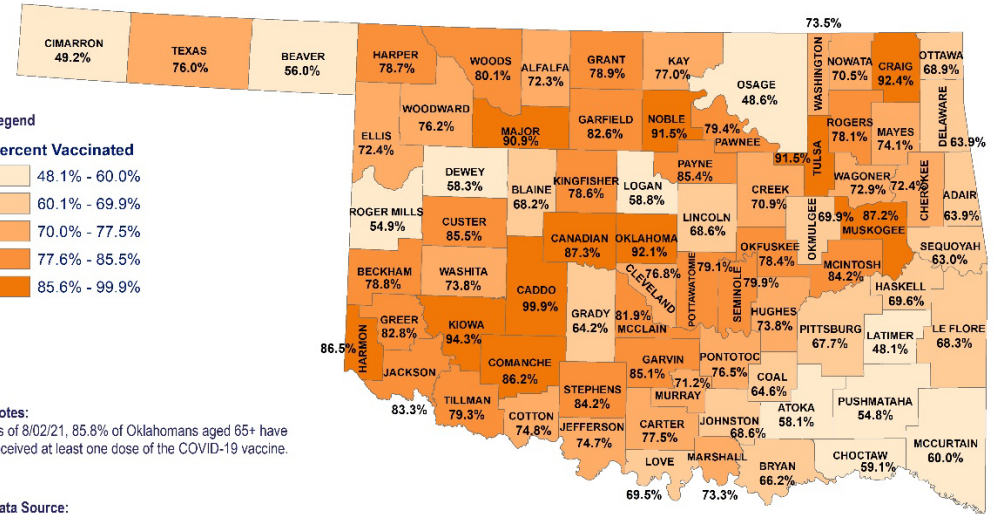
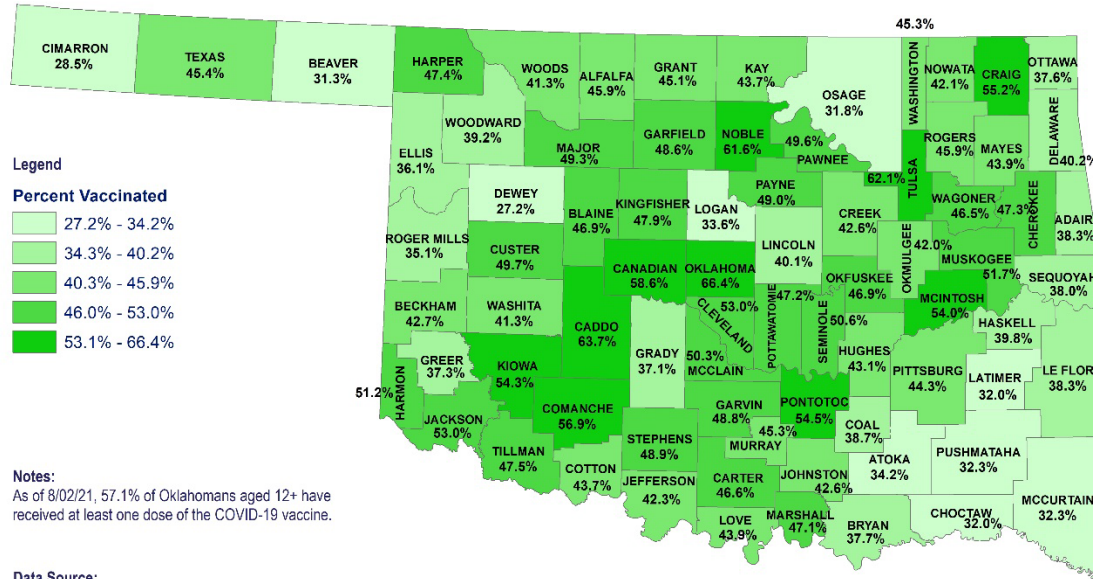
Source: CDC COVID Data Tracker – COVID-19 Vaccinations in the United States and COVID-19 Integrated County View. Posted: 8/3/21

## COVID- 19 VACCINE DATA

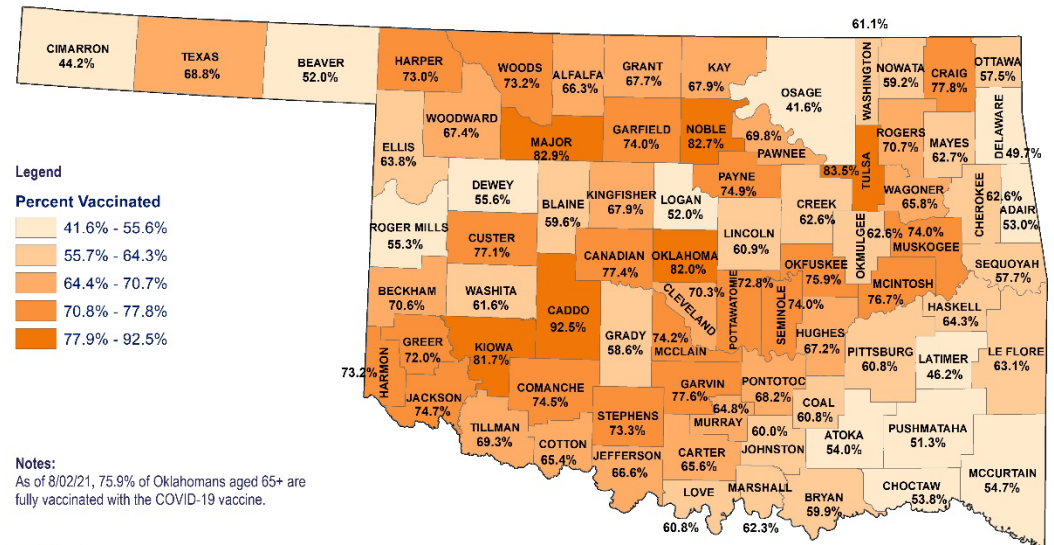
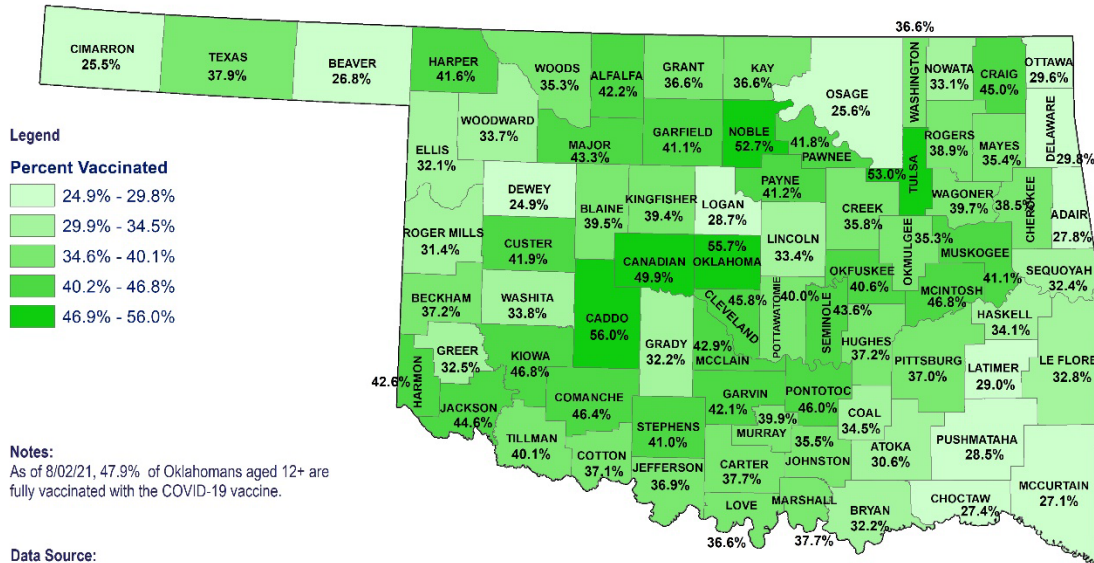
		Total Population >12 years of age	People who received at least 1 dose	People who are fully vaccinated
<b>Oklahoma</b>		3,325,223	1,611,130 (48.5%)	1,361,162 (40.9%)
<b>Gender</b>				
	Male	1,637,286 (49.2%)	734,930 (44.9%)	616,731 (37.7%)
	Female	1,687,937 (50.8%)	873,525 (51.8%)	742,676 (44.0%)
	Unknown		2,675	1,755
<b>Age group</b>				
	12-17	320,490 (9.6%)	72,390 (22.6%)	48,326 (15.1%)
	18-24	380,905 (11.5%)	126,086 (33.1%)	100,983 (26.5%)
	25-34	543,593 (16.3%)	189,451 (34.9%)	154,380 (28.4%)
	35-44	497,873 (15.0%)	220,215 (44.2%)	183,436 (36.8%)
	45-54	453,536 (13.6%)	229,049 (50.5%)	193,278 (42.6%)
	55-64	493,694 (14.8%)	294,008 (59.6%)	255,129 (51.7%)
	65-74	368,050 (11.1%)	281,432 (76.5%)	249,762 (67.9%)
	75-84	192,919 (5.8%)	145,759 (75.6%)	129,886 (67.3%)
	85+	74,163 (2.2%)	52,656 (71.0%)	45,961 (62.0%)
<b>Race</b>				
	White	2,610,851 (78.5%)	1,013,779 (38.8%)	907,635 (34.8%)
	Black	282,592 (8.5%)	81,165 (28.7%)	68,412 (24.2%)
	Asian/PI	94,874 (2.9%)	57,054 (60.1%)	49,805 (52.5%)
	American Indian	336,906 (10.1%)	73,948 (21.9%)	62,246 (18.5%)
	Other	-	55,499	45,302
	Unknown	-	329,685	227,762
<b>Ethnicity</b>				
	Hispanic or Latino	323,153 (9.7%)	132,682 (41.1%)	110,636 (34.2%)
	Not Hispanic or Latino	3,002,070 (90.3%)	1,020,120 (34.0%)	934,004 (31.1%)
	Unknown	-	458,328	316,522

Note: Fully vaccinated refers to individuals completing series after receiving either Pfizer and/or Moderna COVID-19 vaccines (both doses) and/or receiving single shot of J&J/Janssen Vaccine  
 Data Source: 1. Single-race Population Estimates, United States, 2010-2019. July 1st resident population by state, age, sex, single-race, and Hispanic origin, on CDC WONDER Online Database. Vintage 2019 estimates released by U.S. Census Bureau on June 25, 2020 COVID-19. 2. Vaccination Reporting Specification (CVRS) Dataset - Oklahoma State Immunization Information System (OSIIS); Data reflect information entered as of 11:59PM 8/2/2021. Data does not include doses administered by federal entities in Oklahoma

# OKLAHOMA COVID-19 AT LEAST 1 DOSE COUNTY LEVEL VACCINE ADMINISTRATION FOR AGES 12+ AND 65+



# OKLAHOMA COVID-19 FULLY VACCINATED COUNTY LEVEL VACCINE ADMINISTRATION FOR AGES 12+ AND 65+

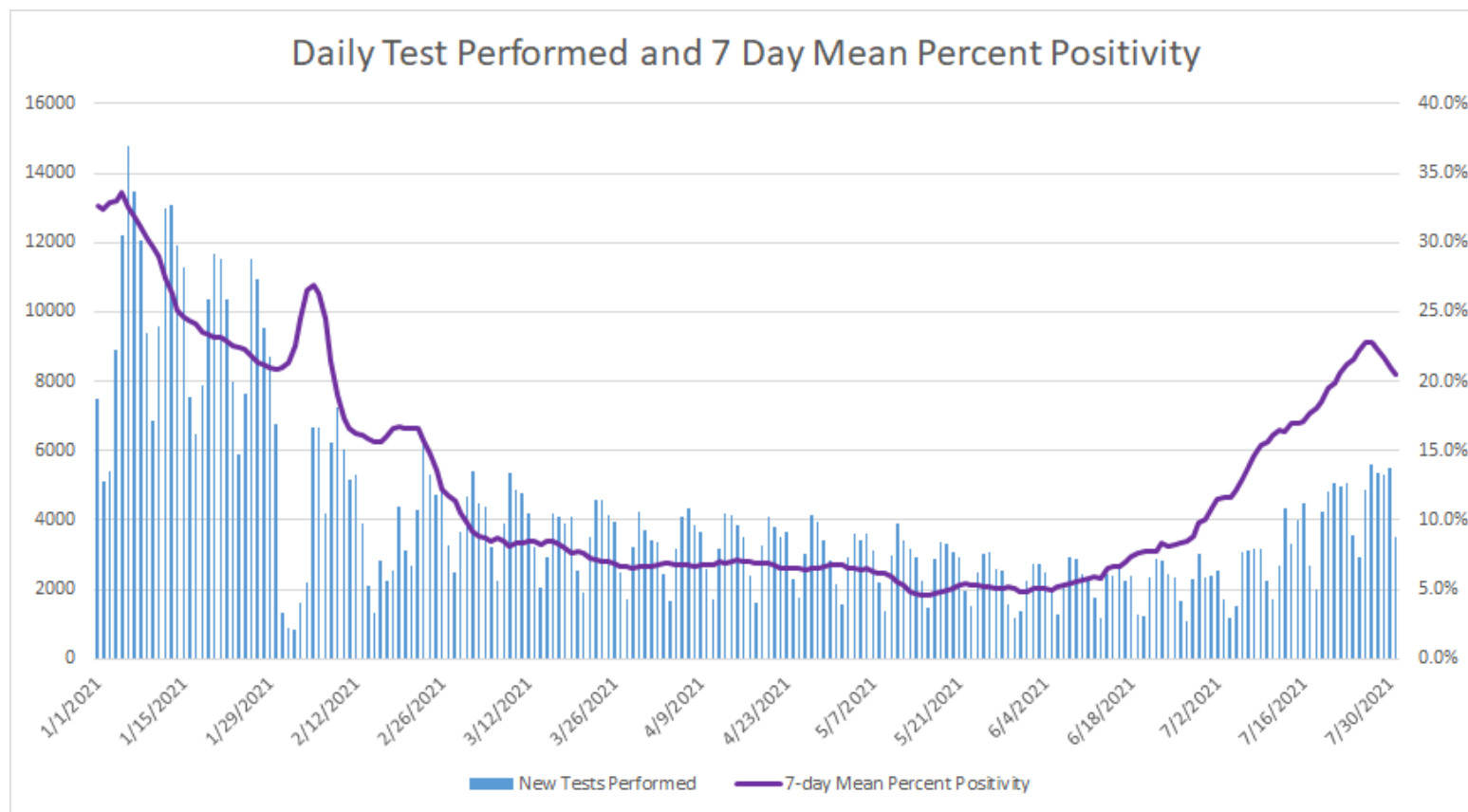


# DISEASE TESTING

July 25 – 31	
Specimens tested, count	33,106
Specimens positive, count	10,843
Percent positive	20.5%

Source: CDC COVID Data Tracker CDC | Data as of: Tuesday, August 3, 2021 1:19 PM ET. Posted: Tuesday, August 3, 2021 2:36 PM ET

## COVID-19 DAILY TESTS PERFORMED AND 7 DAY MEAN PERCENT POSITIVITY



Oklahoma, August 3, 2021

Source: CDC COVID Data Tracker CDC | Data as of: Tuesday, August 3, 2021 1:19 PM ET. Posted: Tuesday, August 3, 2021 2:36 PM ET

## COVID-19 VARIANT STRAINS

Genetic variants of SARS-CoV-2 have been emerging and circulating around the world throughout the COVID-19 pandemic.

- A variant has one or more mutations that differentiate it from other variants in circulation. As expected, multiple variants of SARS-CoV-2 have been documented in the United States and globally throughout this pandemic.

Three classes of variants:

- Variant of Interest
  - A variant with specific genetic markers that have been associated with changes to receptor binding, reduced neutralization by antibodies generated against previous infection or vaccination, reduced efficacy of treatments, potential diagnostic impact, or predicted increase in transmissibility or disease severity.
- Variant of Concern
  - A variant for which there is evidence of an increase in transmissibility, more severe disease (increased hospitalizations or deaths), significant reduction in neutralization by antibodies generated during previous infection or vaccination, reduced effectiveness of treatments or vaccines, or diagnostic detection failures.
- Variant of High Consequence
  - A variant of high consequence has clear evidence that prevention measures or medical countermeasures (MCMs) have significantly reduced effectiveness relative to previously circulating variants.

<b>SARS-CoV-2 Sequencing Data, Oklahoma, January 1, 2021-August 2, 2021</b>		
<b>Variant Designation and Strain Name</b>	<b>SARS-CoV-2 Strain Count</b>	<b>SARS-CoV-2 Strain Percentage</b>
No Concern	<b>334</b>	<b>16.7</b>
Variant of Concern	<b>1,598</b>	<b>79.9</b>
B.1.1.7 (Alpha)	444	27.8%
B.1.351 (Beta)	7	0.4%
B.1.617.2 (Delta)	1,127	70.5%
P.1 (Gamma)	20	1.3%
Variant of Interest	<b>42</b>	<b>2.1%</b>
B.1.427/429 (Epsilon)	24	57.1%
B.1.525 (Eta)	2	4.8%
B.1.526/526.1 (Iota)	15	35.7%
B.1.617.1 (Kappa)	1	2.4%
Variant to Watch	<b>26</b>	<b>1.3%</b>
C.37 (Lambda)	26	100.0%
<b>Grand Total</b>	<b>2,000</b>	<b>100.00%</b>

Additional information on variant classifications and definitions can be found [here](#).



## COVID-19 VACCINE BREAKTHROUGH INFECTIONS IN OKLAHOMA

- Total Number Reported Vaccine Breakthrough Cases: 2,514

### VACCINE BREAKTHROUGH CASES, HOSPITALIZATIONS AND DEATHS AS OF AUGUST 2, 2021

Vaccine Brand	Number of Fully Vaccinated OK Residents*	Number of Vaccine Breakthrough Cases**	Incidence of Vaccine Breakthrough Cases per 100,000 Fully Vaccinated OK Residents	Hospitalizations	Deaths
Johnson and Johnson	102,315	215	210.1	16	4
Moderna	674,080	831	123.3	77	12
Pfizer	817,860	1,468	179.5	104	9
<b>Total</b>	<b>1,594,255</b>	<b>2,514</b>	<b>157.7</b>	<b>197</b>	<b>25</b>

\*Vaccine Denominator: Represents the number of people who have received the second dose in a two-dose COVID-19 vaccine series or one dose of the single-shot Johnson and Johnson's Janssen COVID-19 vaccine.

\*\*Vaccine breakthrough cases is defined as an individual with a COVID-19 positive laboratory results (PCR/Antigen) and documentation of COVID-19 vaccination that meets the definition of fully vaccinated. (Individuals are considered fully vaccinated  $\geq 2$  weeks after receiving the last dose in the COVID-19 vaccine series.)

Source: CDC COVID Data Tracker—COVID-19 Vaccinations in the United States. Posted: 8/2/21

### PROPORTION OF BREAKTHROUGH CASES BY MONTH OF ONSET AS OF AUGUST 1, 2021

Month	Breakthrough Cases**	Non-Vaccinated Cases	Proportion of Vaccinated Cases
<i>Feb-21</i>	7	23,330	0.03%
<i>Mar-21</i>	41	9,123	0.45%
<i>Apr-21</i>	195	6,602	2.87%
<i>May-21</i>	260	4,153	5.89%
<i>Jun-21</i>	444	5,639	7.30%
<i>Jul-21*</i>	1,565	25,681	5.74%

\*July case investigations are still ongoing and data may be subject to change.

\*\*Vaccine breakthrough cases is defined as an individual with a COVID-19 positive laboratory results (PCR/Antigen) and documentation of COVID-19 vaccination that meets the definition of fully vaccinated. (Individuals are considered fully vaccinated  $\geq 2$  weeks after receiving the last dose in the COVID-19 vaccine series.)

## DISTRIBUTION OF RECENT COVID-19 HOSPITALIZATIONS BY VACCINATION STATUS AND AGE GROUP AS OF AUGUST 1, 2021

Vaccination Status	Age Group	Hospitalizations in the last 30 days	Percent
Non-Vaccinated	Under 1- 4	13	2.10%
	5-17	14	2.20%
	18-35	70	11.10%
	36-49	83	13.10%
	50-64	150	23.70%
	65+	149	23.60%
	Total	479	75.80%
Fully Vaccinated*	18-35	4	0.60%
	36-49	7	1.10%
	50-64	28	4.40%
	65+	114	18.00%
	Total	153	24.20%
Total		632	

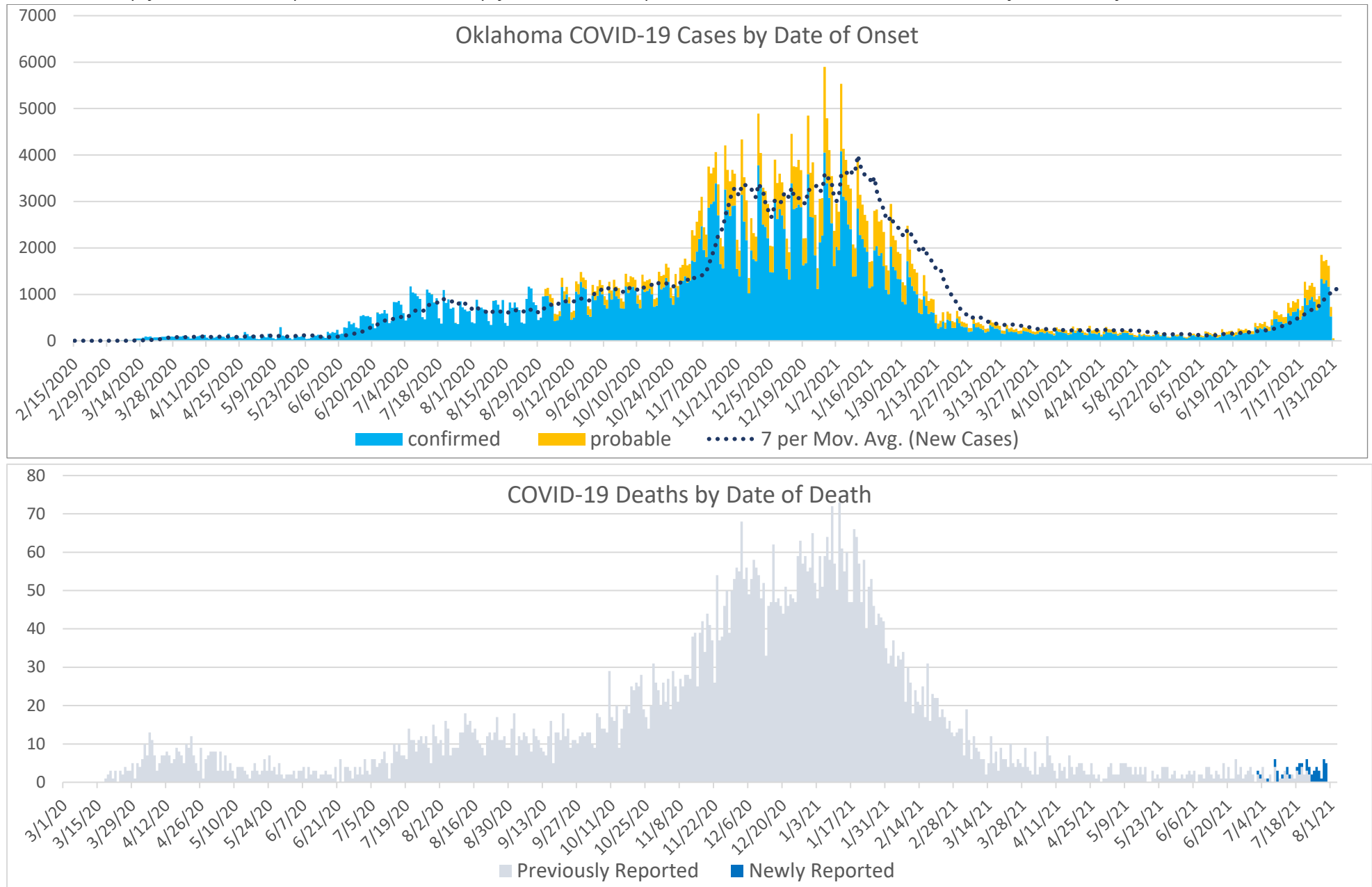
\*Vaccine breakthrough cases is defined as an individual with a COVID-19 positive laboratory results (PCR/Antigen) and documentation of COVID-19 vaccination that meets the definition of fully vaccinated. (Individuals are considered fully vaccinated  $\geq 2$  weeks after receiving the last dose in the COVID-19 vaccine series.)

## EPIDEMIOLOGICAL ESTIMATES

	Estimate	Notes / Interpretation
<b>Cases</b>		
Cumulative incidence	12,331.28 (per 100,000 persons)	From March 7, 2020 to July 31, 2021 there were about 12,331 (per 100,000) new cases of COVID-19 in Oklahoma.
Absolute change in cumulative incidence from previous week	83.1 (per 100,000 persons)	Compared to July 18 – July 24 there were 83.1 (per 100,000) more cases of COVID-19 reported in Oklahoma during the past week (July 25 – July 31).
<b>Disease Severity</b>		
Case-fatality risk (crude)	1.5%	The estimate is not adjusted for the lag time from reporting to death (i.e., delay between the time someone dies and the time their death is reported). The fatality estimate could be lower due to cases that were undiagnosed or had milder symptoms.
Cumulative Hospitalization rate (overall)	723.2 (per 100,000 persons)	About 723 people per 100,000 have ever been hospitalized for COVID-19 during this outbreak.

# CASES AND DEATHS

New cases (by date of onset) and new deaths (by date of death) of COVID-19 in Oklahoma, February 2020–July 2021



Please note the different axes for new cases (top—from 0 to 7,000 for new cases) and new deaths (bottom—from 0 to 80 for new deaths). Additionally, a 7-day lag has been applied to the COVID-19 case trend line based on information.

## DEMOGRAPHIC INFORMATION AS OF AUGUST 3, 2021

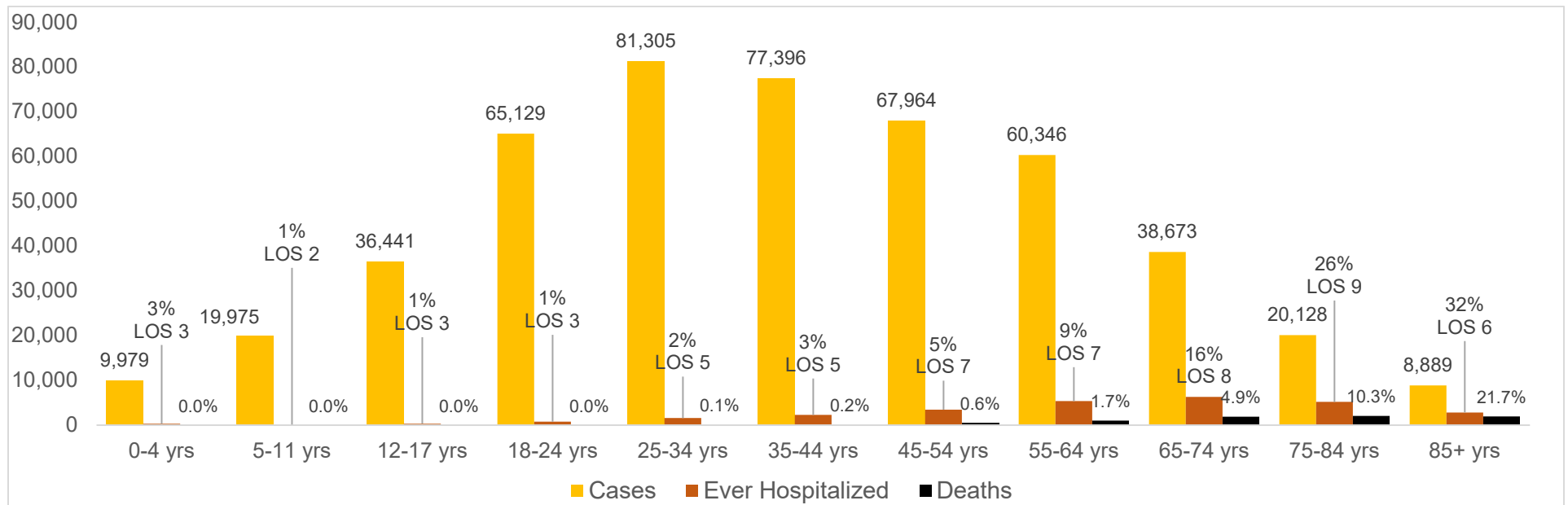
		Cases count (%) <sup>1</sup>		Deaths count (%) <sup>1</sup>		Cumulative Incidence Rate <sup>2</sup>	Cumulative Mortality Rate <sup>2</sup>
<b>Oklahoma</b>		<b>486,232</b>		<b>7,531</b>		<b>12,288.0</b>	<b>190.3</b>
<b>Gender</b>							
	Male	<b>229,524</b>	<b>(47.2)</b>	<b>4,206</b>	<b>(55.8)</b>	<b>11,752.1</b>	<b>215.4</b>
	Female	<b>256,708</b>	<b>(52.8)</b>	<b>3,325</b>	<b>(44.2)</b>	<b>12,899.7</b>	<b>167.1</b>
	Unknown	<b>0</b>	<b>(0.0)</b>	<b>0</b>	<b>(0.0)</b>		
<b>Age group</b>							
	Under 1- 4	<b>9,979</b>	<b>(2.1)</b>	<b>0</b>	<b>(0.0)</b>	<b>3,905.2</b>	<b>0.0</b>
	5-11	<b>19,975</b>	<b>(4.1)</b>	<b>0</b>	<b>(0.0)</b>	<b>5,309.5</b>	<b>0.0</b>
	12-17	<b>36,441</b>	<b>(7.5)</b>	<b>3</b>	<b>(0.0)</b>	<b>11,370.4</b>	<b>0.9</b>
	18-24	<b>65,129</b>	<b>(13.4)</b>	<b>9</b>	<b>(0.1)</b>	<b>17,098.5</b>	<b>2.4</b>
	25-34	<b>81,305</b>	<b>(16.7)</b>	<b>52</b>	<b>(0.7)</b>	<b>14,957.0</b>	<b>9.6</b>
	35-44	<b>77,396</b>	<b>(15.9)</b>	<b>137</b>	<b>(1.8)</b>	<b>15,545.3</b>	<b>27.5</b>
	45-54	<b>67,964</b>	<b>(14.0)</b>	<b>409</b>	<b>(5.4)</b>	<b>14,985.4</b>	<b>90.2</b>
	55-64	<b>60,346</b>	<b>(12.4)</b>	<b>1,029</b>	<b>(13.7)</b>	<b>12,223.4</b>	<b>208.4</b>
	65-74	<b>38,673</b>	<b>(8.0)</b>	<b>1,882</b>	<b>(25.0)</b>	<b>10,507.5</b>	<b>511.3</b>
	75-84	<b>20,128</b>	<b>(4.1)</b>	<b>2,081</b>	<b>(27.6)</b>	<b>10,433.4</b>	<b>1,078.7</b>
	85+	<b>8,889</b>	<b>(1.8)</b>	<b>1,929</b>	<b>(25.6)</b>	<b>11,985.8</b>	<b>2,601.0</b>
	Unknown	<b>7</b>	<b>(0.0)</b>				
<b>Race</b>							
	American Indian or Alaska Native	<b>47,587</b>	<b>(9.8)</b>	<b>654</b>	<b>(8.7)</b>	<b>15,491.4</b>	<b>212.9</b>
	Asian or Pacific Islander	<b>8,775</b>	<b>(1.8)</b>	<b>88</b>	<b>(1.2)</b>	<b>9,909.3</b>	<b>99.4</b>
	Black or African American	<b>27,365</b>	<b>(5.6)</b>	<b>492</b>	<b>(6.5)</b>	<b>9,512.3</b>	<b>171.0</b>
	Multiracial/Other	<b>16,825</b>	<b>(3.5)</b>	<b>210</b>	<b>(2.8)</b>	<b>4,066.4</b>	<b>50.8</b>
	White	<b>276,604</b>	<b>(56.9)</b>	<b>5,468</b>	<b>(72.6)</b>	<b>9,719.4</b>	<b>192.1</b>
	Unknown	<b>109,076</b>	<b>(22.4)</b>	<b>619</b>	<b>(8.2)</b>		
<b>Ethnicity</b>							
	Hispanic or Latino	<b>48,239</b>	<b>(9.9)</b>	<b>385</b>	<b>(5.1)</b>	<b>11,242.5</b>	<b>89.7</b>
	Not Hispanic or Latino	<b>307,762</b>	<b>(63.3)</b>	<b>6,231</b>	<b>(82.7)</b>	<b>8,758.2</b>	<b>177.3</b>
	Unknown/Other	<b>130,231</b>	<b>(26.8)</b>	<b>915</b>	<b>(12.1)</b>		

1. Percentages may not add up to 100 due to rounding. 2. Rate per 100,000 population based on 2019 Census Population data.

## NEW CASES, HOSPITALIZATIONS, AND DEATHS BY AGE GROUP FOR THE WEEK OF JULY 25 - 31

Age group	Percentage of Population Fully Vaccinated	New Cases (%)	New Hospitalizations (%)	New Deaths (%)
Under 1- 4	-	<b>397 (3.5%)</b>	<b>5 (0.9%)</b>	<b>0 (0.0%)</b>
5-11	-	<b>635 (5.6%)</b>	<b>1 (0.2%)</b>	<b>0 (0.0%)</b>
12-17	<b>15.1%</b>	<b>1098 (9.6%)</b>	<b>3 (0.5%)</b>	<b>0 (0.0%)</b>
18-24	<b>26.5%</b>	<b>1557 (13.7%)</b>	<b>18 (3.3%)</b>	<b>0 (0.0%)</b>
25-34	<b>28.4%</b>	<b>2104 (18.5%)</b>	<b>53 (9.7%)</b>	<b>2 (4.3%)</b>
35-44	<b>36.8%</b>	<b>1837 (16.1%)</b>	<b>61 (11.2%)</b>	<b>4 (8.7%)</b>
45-54	<b>42.6%</b>	<b>1432 (12.6%)</b>	<b>93 (17.0%)</b>	<b>6 (13.0%)</b>
55-64	<b>51.7%</b>	<b>1206 (10.6%)</b>	<b>119 (21.8%)</b>	<b>11 (23.9%)</b>
65-74	<b>67.9%</b>	<b>683 (6.0%)</b>	<b>99 (18.1%)</b>	<b>11 (23.9%)</b>
75-84	<b>67.3%</b>	<b>312 (2.7%)</b>	<b>66 (12.1%)</b>	<b>8 (17.4%)</b>
85+	<b>62.0%</b>	<b>125 (1.1%)</b>	<b>29 (5.3%)</b>	<b>4 (8.7%)</b>
Unknown	-	<b>1 (0.0%)</b>	<b>0 (0.0%)</b>	<b>0 (0.0%)</b>

## CUMULATIVE CASES, PERCENT HOSPITALIZED, AVERAGE LENGTH OF STAY (MAY 2021 CASES) AND DEATHS BY AGE GROUP



## AT-RISK SETTINGS

### HEALTHCARE & NON-HEALTHCARE

Status	Non-Healthcare Worker count (%)	Healthcare Worker count (%)
Active	15,398 (3.3)	142 (0.9)
Deceased	7,459 (1.6)	72 (0.4)
Recovered	446,666 (95.1)	16,495 (98.7)
<b>Total</b>	<b>469,523</b>	<b>16,709</b>

### CORRECTIONAL FACILITIES<sup>1</sup>

	Cases (%)	Deaths (%)
Inmates	5,002 (76.4%)	52 (91.2%)
Staff	1,544 (23.6%)	5 (8.8%)
<b>Total</b>	<b>6,546</b>	<b>57</b>

<sup>1</sup>Correctional facilities include prisons, jails, and juvenile detention center

### LONG TERM CARE (LTC) FACILITIES<sup>2</sup>

	Cases (%)	Deaths (%)
Residents	8,498 (62.5)	1,695 (98.7)
Staff	5,101 (37.5)	22 (1.3)
<b>Total</b>	<b>13,599</b>	<b>1,717</b>

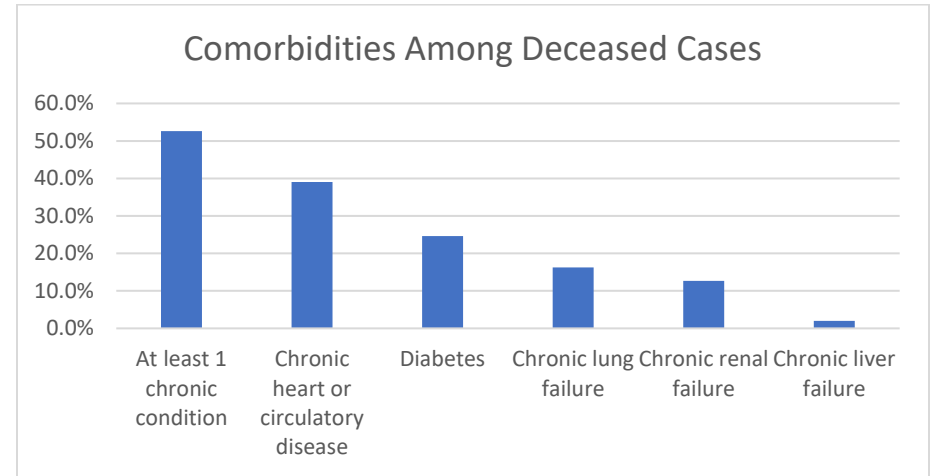
<sup>2</sup>Long term care facility or nursing home.

*Detailed counts of LTC Cases by County and Facility can be found at the end of this report.*

## COMORBIDITIES AMONG DECEASED CASES

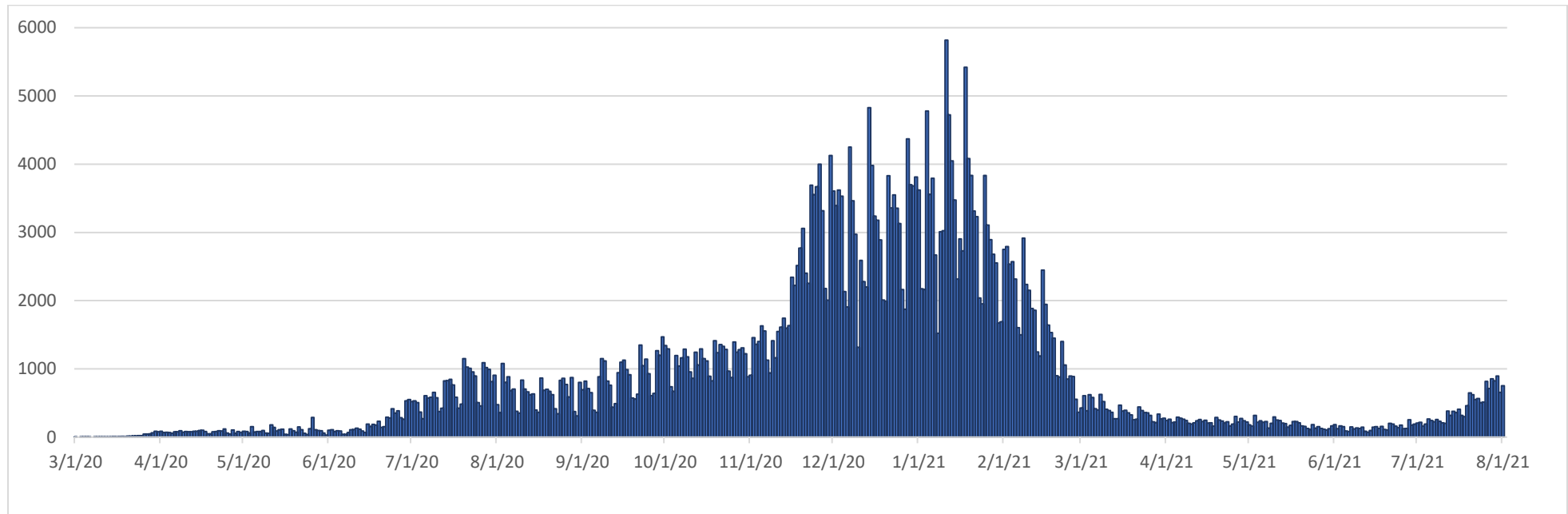
Comorbidities	Number (%)
At least 1 chronic condition <sup>4</sup>	3,965 (52.6%)
Chronic heart or circulatory disease	2,943 (39.1%)
Diabetes	1,853 (24.6%)
Chronic lung failure	1,221 (16.2%)
Chronic renal failure	953 (12.7%)
Chronic liver failure	152 (2.0%)

<sup>4</sup>Chronic conditions include chronic heart or circulatory disease, diabetes, chronic lung failure, chronic liver failure and renal failure.



## RECOVERED CASES

### Distribution of recovered cases of COVID-19, March 2020 – July 2021, Oklahoma



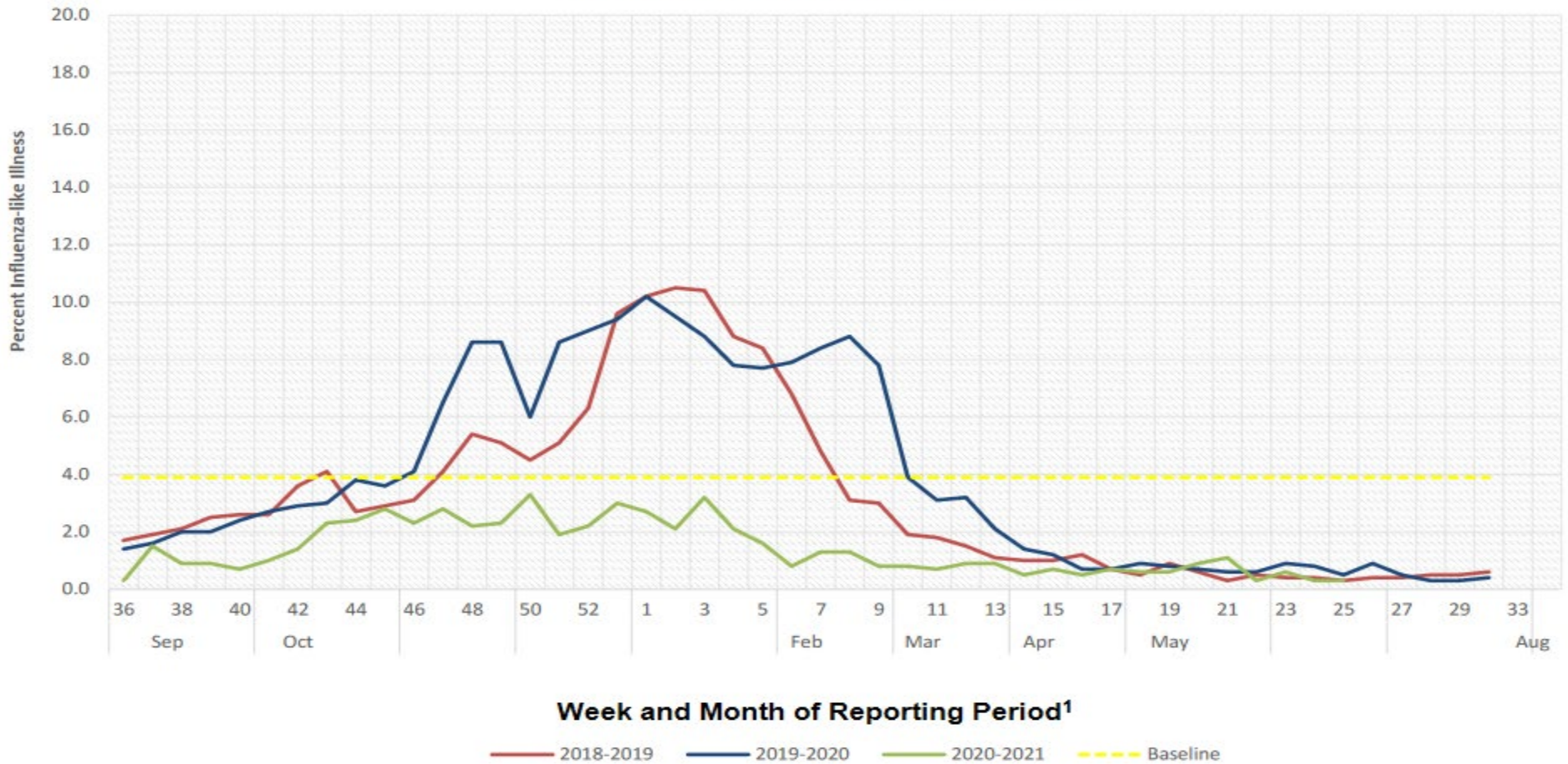
Recovered case: is not deceased and 14 days after symptom onset/specimen collection. Please note that the definition for recovered was changed starting May 4, 2021 due to incomplete data on hospitalizations which may result in an inaccurate estimation of the active cases.



# SYMPTOMS CRITERIA

## WEEKLY PERCENT OF INFLUENZA-LIKE ILLNESS BASED ON TOTAL PATIENT VISITS TO SENTINEL CLINICIANS, OKLAHOMA VIRAL RESPIRATORY ILLNESS SURVEILLANCE SYSTEM, 2018-2021

Week ending June 26, 2021 (Week 25)



<sup>1</sup>These units correspond to the number of weeks in a year and allow for a comparison between multiple seasons.

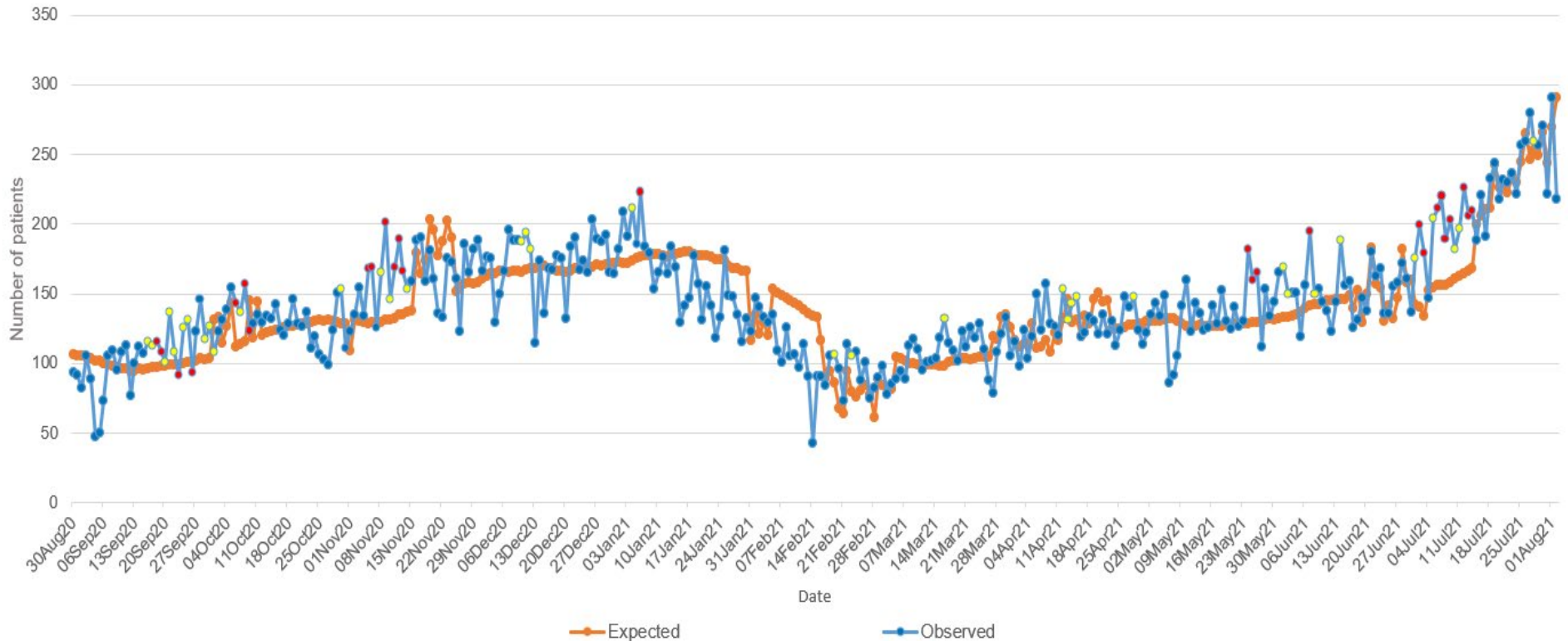
**Interpretation:** Data on Influenza-Like Illness (ILI) decreased to 0.5% of outpatient visits exhibiting fever with cough or sore throat. The most current week's value of 0.5% was below Oklahoma's baseline ILI of 3.9%.

**Note:** Data current up to week ending June 26, 2021 (Week 25). ILI graph will be updated monthly between Week 21 through Week 39

**Source:** <https://oklahoma.gov/content/dam/ok/en/health/health2/aem-documents/prevention-and-preparedness/acute-disease-service/disease-information/flu-view>

# COVID-19 RELATED EMERGENCY DEPARTMENT VISITS

Oklahoma State Syndromic Surveillance of  
COVID-19 related ED Visits  
August 30, 2020 – August 02, 2021



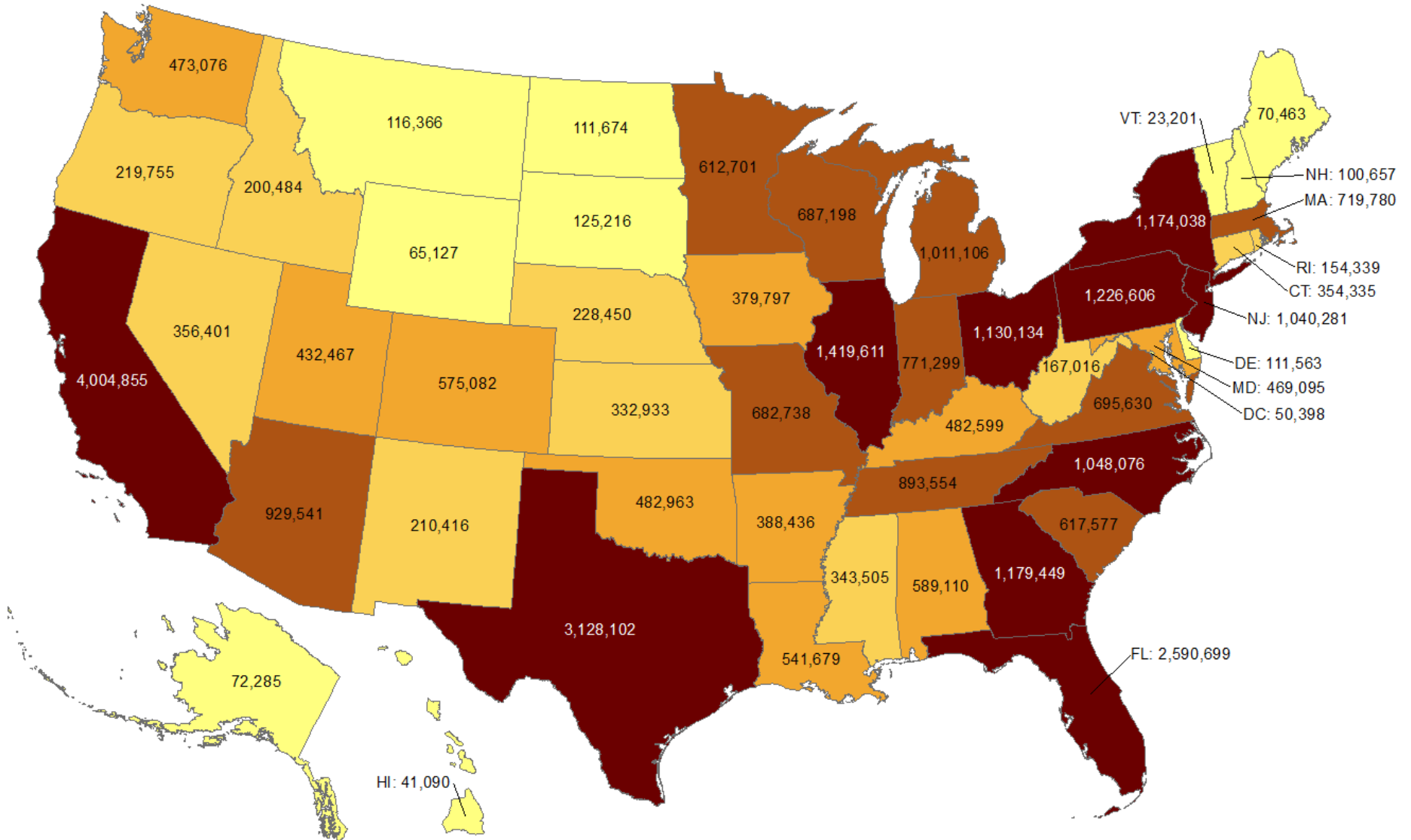
**Interpretation:** Data from syndromic surveillance shows that the number of COVID-19 related emergency department visits were within the expected range for the past 2 weeks as indicated by no red dots on the observed line.

.....

# OKLAHOMA IN COMPARISON

## Total number of reported COVID-19 cases

Oklahoma ranks **24** (out of all States and DC) in the total number of reported COVID-19 cases in the US.

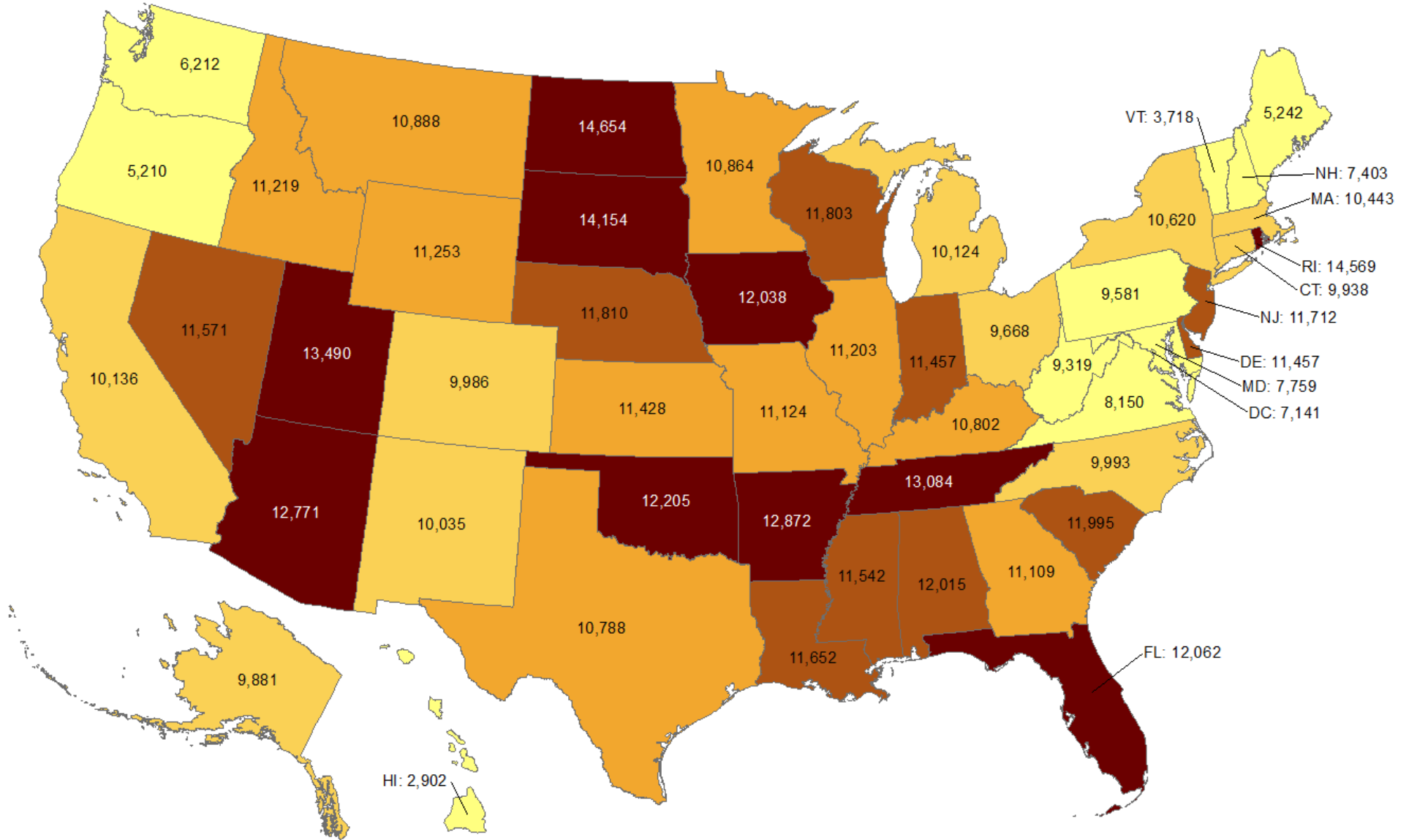


Data from CDC. Available at <https://www.cdc.gov/covid-data-tracker/index.html>  
Data as of August 2, 2021

NOTE: CDC numbers include both Confirmed and Probable cases.

## Cumulative incidence of reported COVID-19 cases

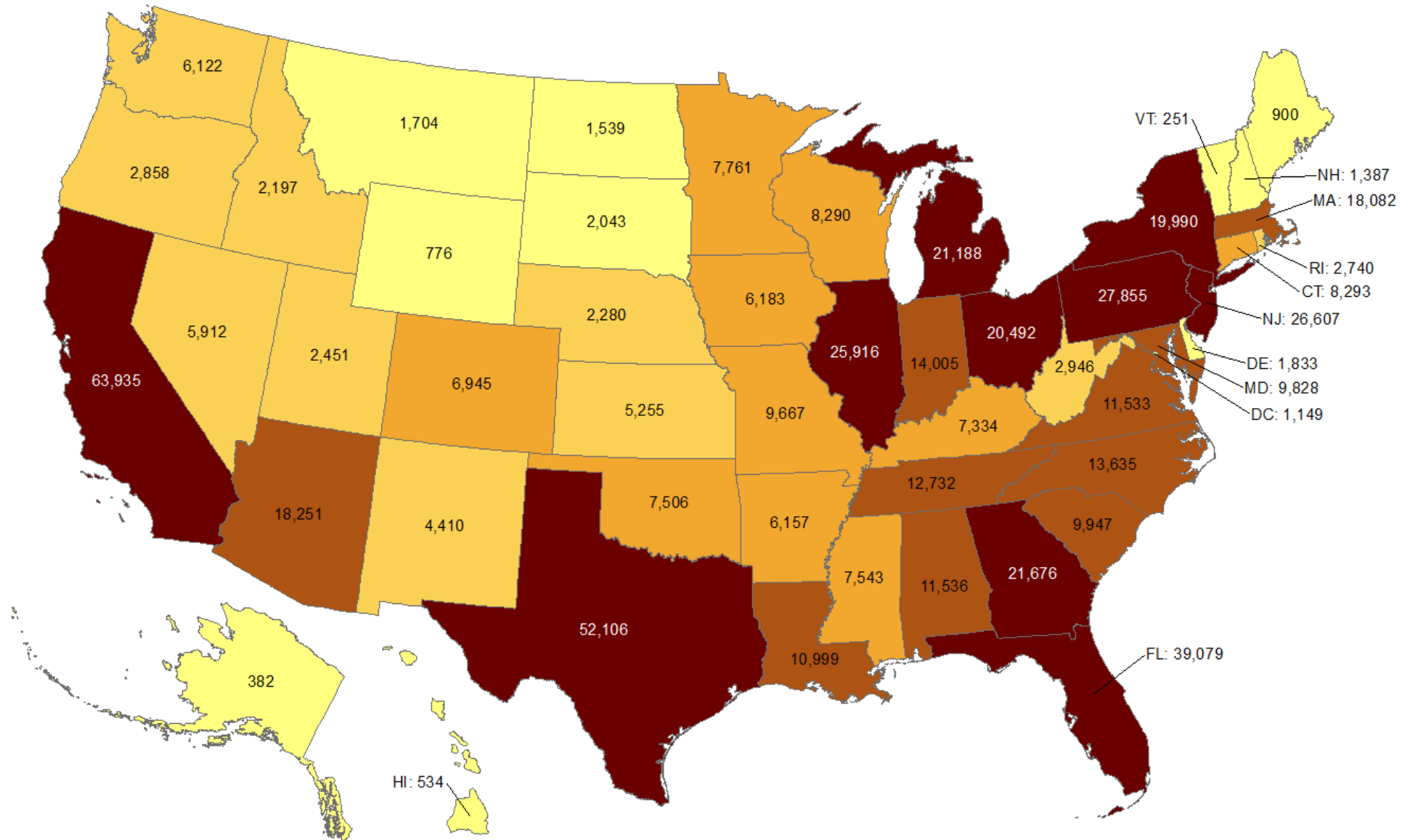
Oklahoma ranks **8** (out of all States and DC) in the cumulative incidence (per 100,000 persons) of reported COVID-19 cases in the US.



Data from CDC. Available at <https://www.cdc.gov/covid-data-tracker/index.html>  
Data as of August 2, 2021

# Total number of reported COVID-19 deaths

Oklahoma ranks **26** (out of all States and DC) in the total number of reported COVID-19 deaths in the US.



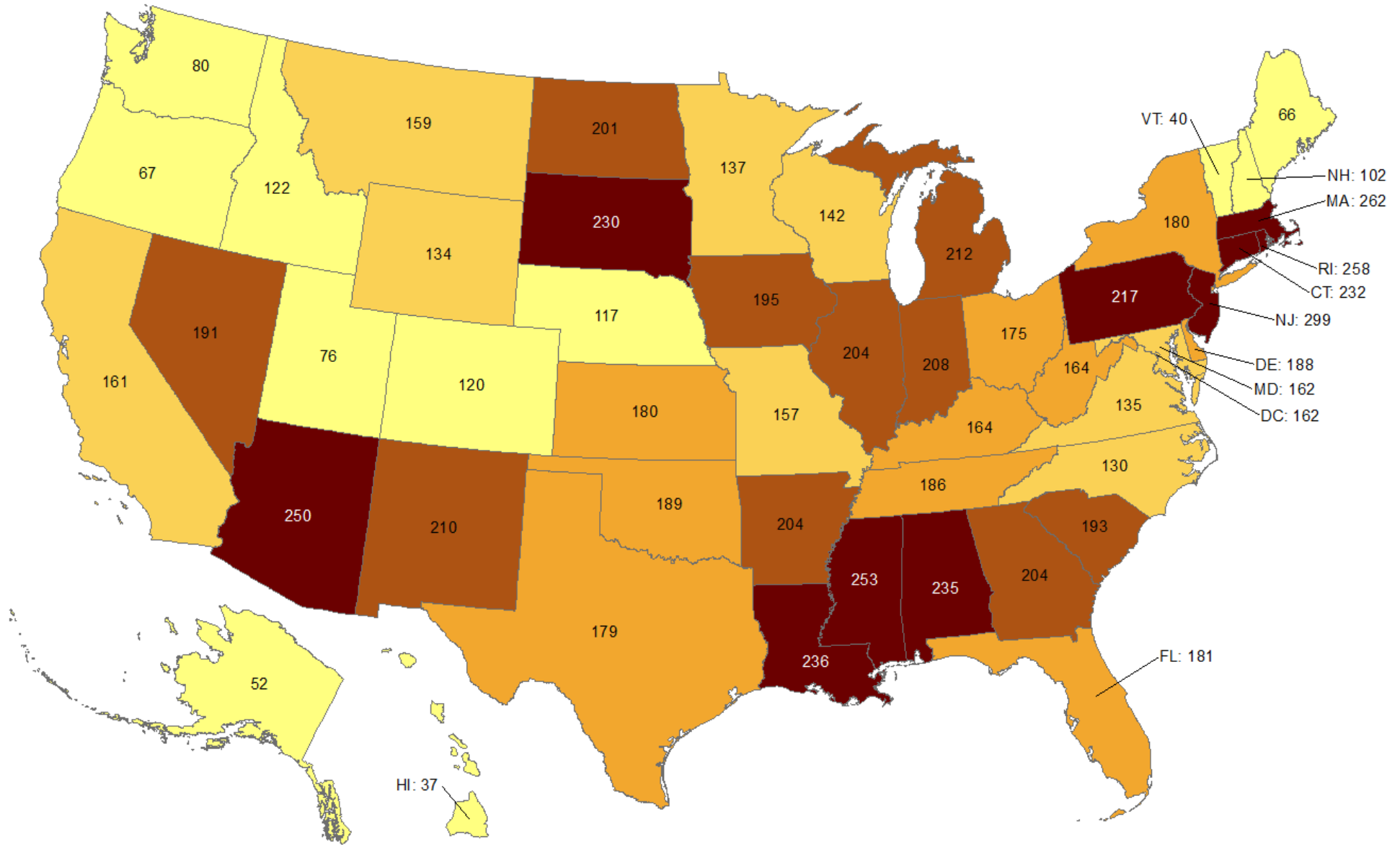
Data from CDC. Available at <https://www.cdc.gov/covid-data-tracker/index.html>

Data as of August 2, 2021

NOTE: CDC numbers include both Confirmed and Probable cases.

## Cumulative death rate of reported COVID-19 cases

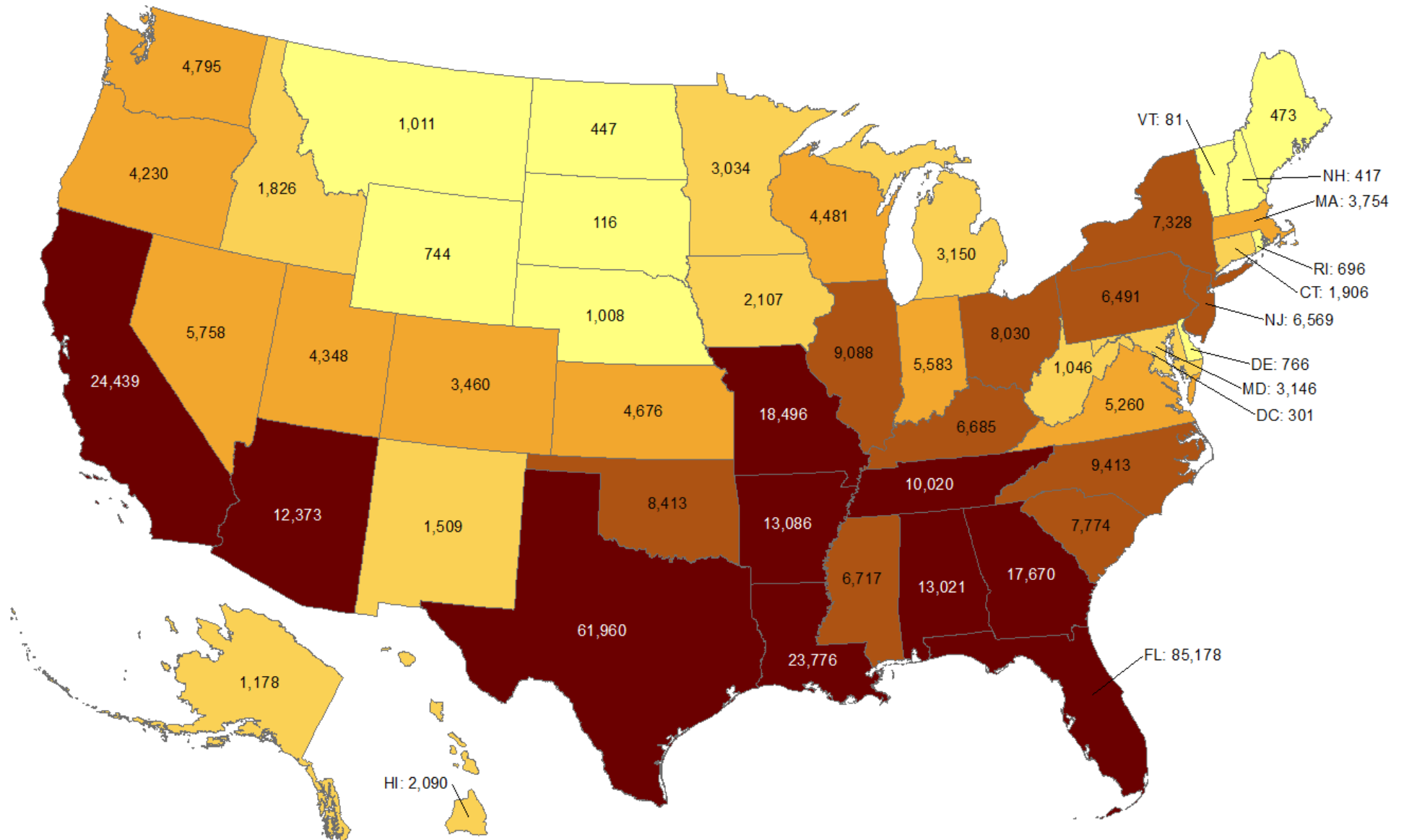
Oklahoma ranks **21** (out of all States and DC) in the cumulative death rate (per 100,000 persons) of reported COVID-19 cases in the US.



Data from CDC. Available at <https://www.cdc.gov/covid-data-tracker/index.html>  
Data as of August 2, 2021

## Total number of reported COVID-19 cases in last 7 days

Oklahoma ranks **13** (out of all States and DC) in the total number of reported COVID-19 cases in the last 7 days.



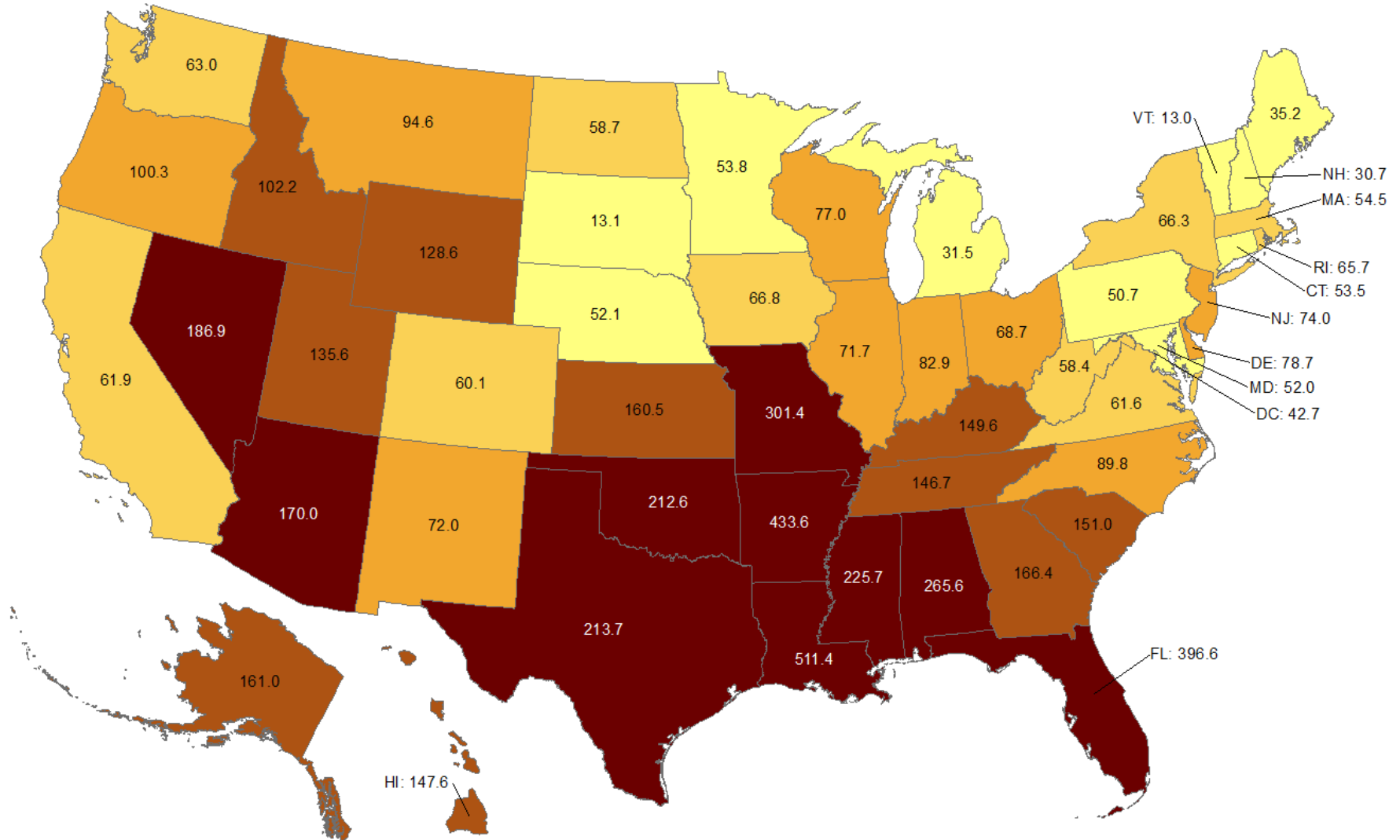
Data from CDC. Available at <https://www.cdc.gov/covid-data-tracker/index.html>  
Data as of August 2, 2021

NOTE: CDC numbers include both Confirmed and Probable cases. Total new cases reported July 27, 2021 – August 2, 2021.



## Cumulative incidence of reported COVID-19 cases in last 7 days

Oklahoma ranks **8** (out of all States and DC) in the cumulative incidence (per 100,000 persons) of reported COVID-19 cases in the last 7 days.



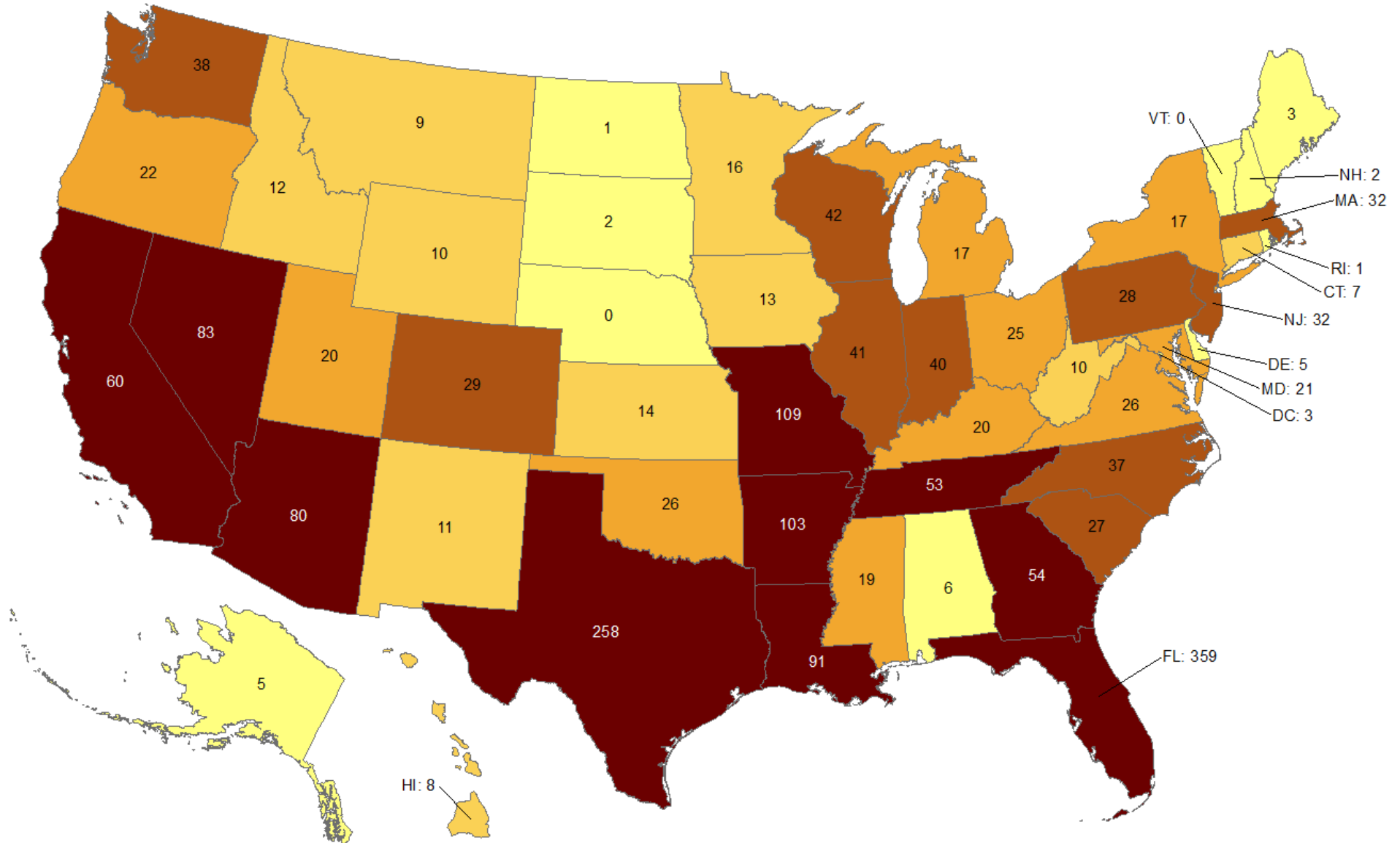
Data from CDC. Available at <https://www.cdc.gov/covid-data-tracker/index.html>

Data as of August 2, 2021

NOTE: Totals per 100,000 people in the last 7 days are calculated as the 7-day moving average of new cases or deaths (July 27 + 6 preceding days divided by 7) per 100,000 people using the U.S. Census Bureau, 2019.

## Total number of reported COVID-19 deaths in last 7 days

Oklahoma ranks **21** (out of all States and DC) in the total number of reported COVID-19 deaths in the last 7 days.



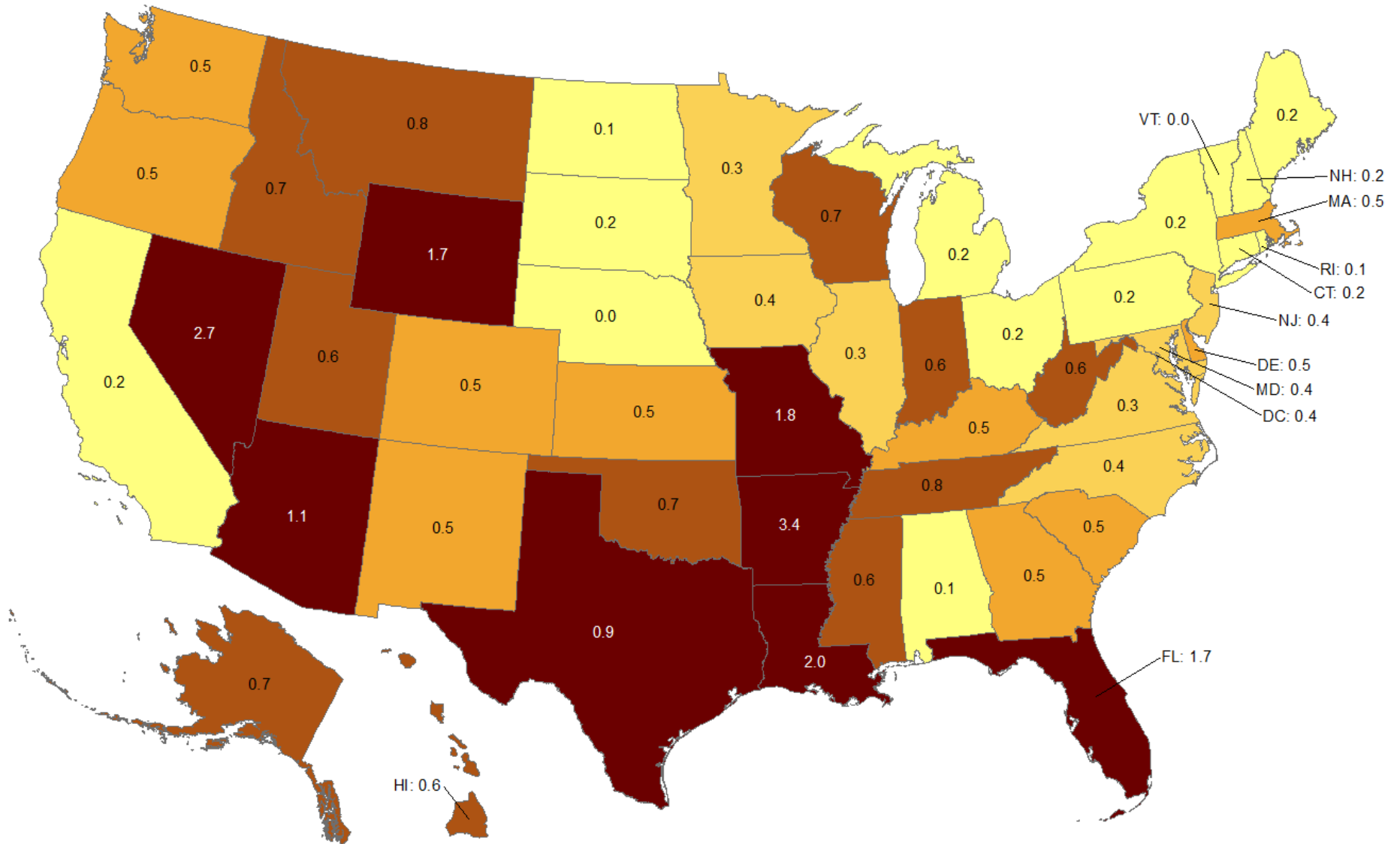
Data from CDC. Available at <https://www.cdc.gov/covid-data-tracker/index.html>

Data as of August 2, 2021

NOTE: CDC numbers include both Confirmed and Probable cases. Total new cases reported July 27, 2021 – August 2, 2021.

## Cumulative death rate of reported COVID-19 cases in last 7 days

Oklahoma ranks **12** (out of all States and DC) in the cumulative death rate (per 100,000 persons) of reported COVID-19 cases in the last 7 days.

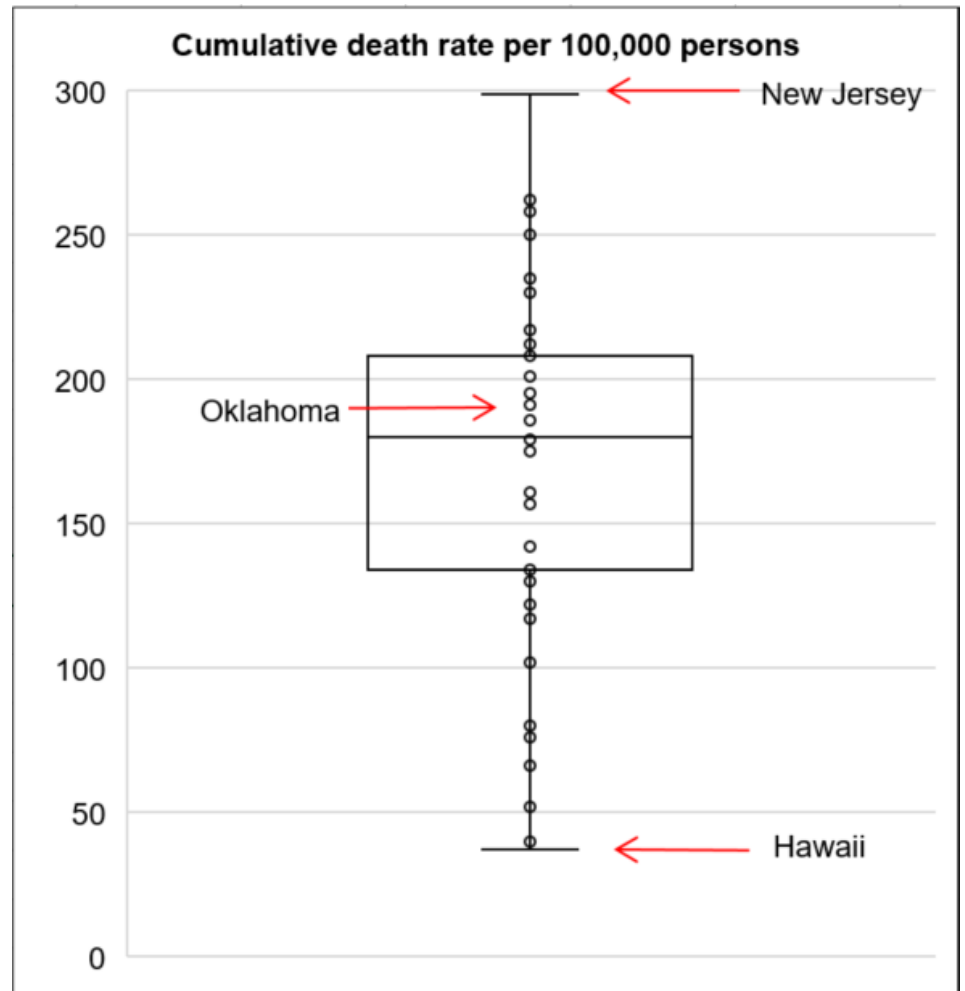
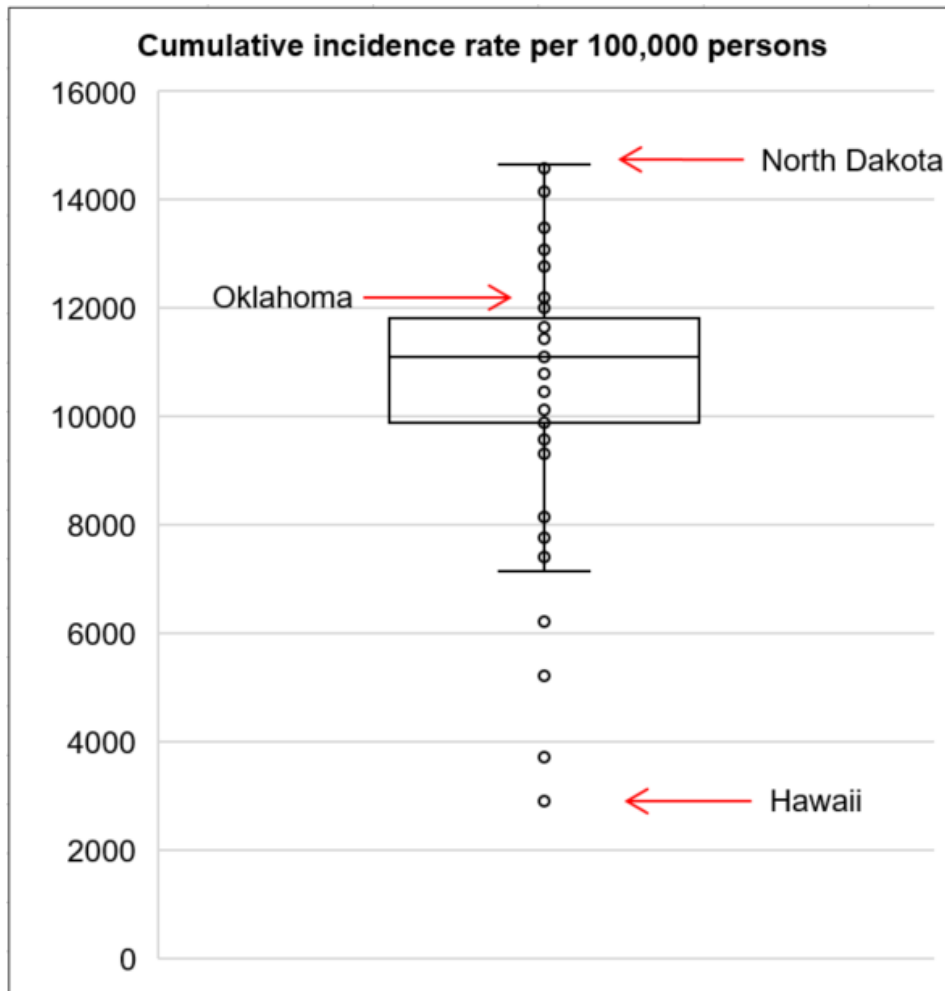


Data from CDC. Available at <https://www.cdc.gov/covid-data-tracker/index.html>

Data as of August 2, 2021

NOTE: Totals per 100,000 people in the last 7 days are calculated as the 7-day moving average of new cases or deaths (July 27, 2021 + 6 preceding days divided by 7) per 100,000 people using the U.S. Census Bureau, 2019.

## Cumulative incidence and cumulative death rate of reported COVID-19 cases



**Interpretation:** Oklahoma has cumulative incidence rate that is **above the 75<sup>th</sup> percentile** of the US and cumulative death rate that is between 50<sup>th</sup> and 75<sup>th</sup> percentile of the US.

# OKLAHOMA EXCESS DEATH ANALYSIS

- + indicates observed count above threshold
- Predicted number of deaths from all causes
- upper bound threshold for excess deaths

Weekly number of deaths (from all causes)

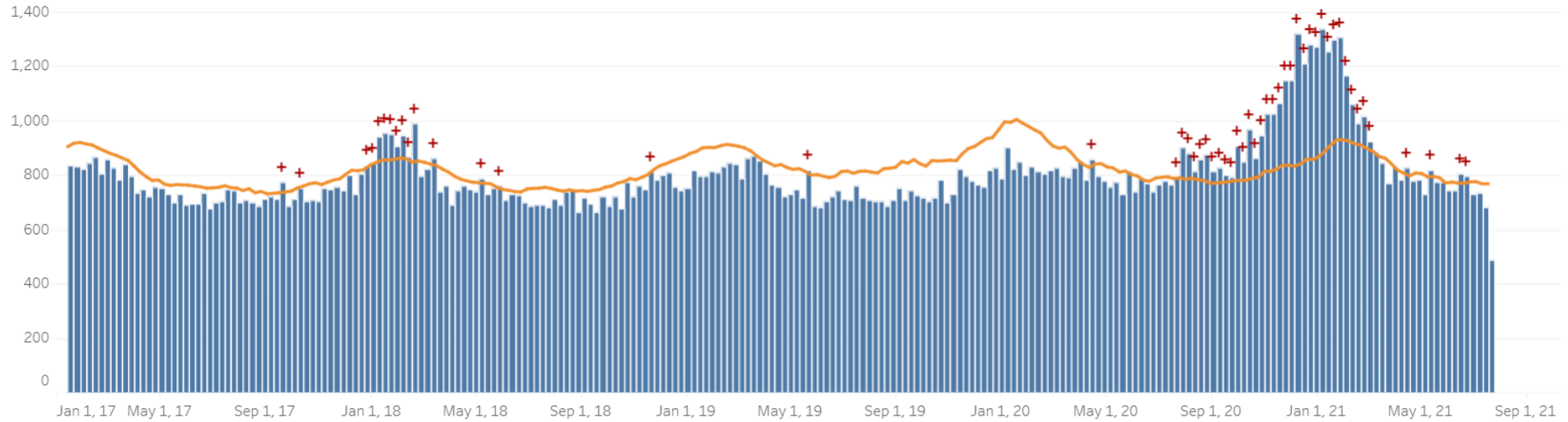


Figure notes: Contains data up to the week-ending date of July 17, 2021. Data in recent weeks are incomplete. Only 60% of the death records are submitted to NCHS within 10 days of the date of death, and completeness varies by jurisdiction.

Source: CDC, National Center for Health Statistics, [https://www.cdc.gov/nchs/nvss/vsrr/covid19/excess\\_deaths.htm#dashboard](https://www.cdc.gov/nchs/nvss/vsrr/covid19/excess_deaths.htm#dashboard), August 3, 2021 2PM

---

## COVID-19 LTC OR NURSING HOME ASSOCIATED CASES BY COUNTY

Status as of 7:00 AM August 3, 2021

Data are preliminary and are subject to change as cases are processed.

County of Residence	Cases	Recovered**	Deaths
Adair	40	33	7
Alfalfa	11	11	0
Atoka	93	86	6
Beaver	21	18	3
Beckham	167	151	16
Blaine	53	50	3
Bryan	186	167	19
Caddo	174	152	22
Canadian	244	226	18
Carter	188	152	35
Cherokee	159	133	25
Choctaw	107	98	9
Cleveland	767	644	122
Coal	72	64	8
Comanche	250	220	30
Cotton	51	42	9
Craig	54	50	3
Creek	252	227	25
Custer	238	191	47

<b>County of Residence</b>	<b>Cases</b>	<b>Recovered**</b>	<b>Deaths</b>
Delaware	246	203	41
Dewey	18	17	1
Ellis	7	7	0
Garfield	293	256	33
Garvin	90	83	7
Grady	225	191	34
Grant	15	13	2
Greer	57	50	7
Harmon	56	55	1
Harper	3	2	1
Haskell	67	53	5
Hughes	37	36	1
Jackson	120	98	20
Jefferson	28	25	3
Johnston	35	29	6
Kay	222	195	26
Kingfisher	121	106	15
Kiowa	47	38	9
Latimer	45	39	6
Le Flore	262	245	17
Lincoln	143	119	24
Logan	158	138	20
Love	31	28	3

County of Residence	Cases	Recovered**	Deaths
Major	78	66	12
Marshall	33	32	1
Mayes	137	122	8
McClain	161	144	16
McCurtain	101	80	20
McIntosh	127	115	12
Murray	65	58	4
Muskogee	421	374	46
Noble	157	153	4
Nowata	80	79	1
Okfuskee	42	41	1
Oklahoma	1,956	1,686	269
Okmulgee	100	97	3
Osage	115	101	14
Ottawa	266	242	23
Pawnee	110	90	20
Payne	155	144	8
Pittsburg	328	292	36
Pontotoc	74	66	8
Pottawatomie	232	211	21
Pushmataha	70	65	5
Roger Mills	3	2	1
Rogers	480	383	76



<b>County of Residence</b>	<b>Cases</b>	<b>Recovered**</b>	<b>Deaths</b>
Seminole	163	154	9
Sequoyah	106	92	14
Stephens	259	239	18
Texas	71	61	10
Tillman	32	30	2
Tulsa	1,551	1,256	284
Wagoner	180	161	19
Washington	348	298	49
Washita	43	41	2
Woods	41	36	5
Woodward	61	54	7
<i>Total</i>	<i>13,599</i>	<i>11,806</i>	<i>1,717</i>

\*\* Recovered case: is not deceased and 14 days after symptom onset/specimen collection. Please note that the definition for recovered was changed starting May 4, 2021 due to incomplete data on hospitalizations which may result in an inaccurate estimation of the active cases.

## COVID-19 LTC OR NURSING HOME ASSOCIATED CASES BY FACILITY

Status as of 7:00 AM August 3, 2021

Data are preliminary and are subject to change as cases are processed.

Facility	Cases	Recovered**	Deaths
Aberdeen Heights Assisted Living Community	14	11	3
Aberdeen Memory Care of Tulsa	6	2	4
Accel at Crystal Park	51	41	10
Ada Care Center	7	7	0
Adams PARC Post Acute Recovery Center	106	87	19
Albert Hall	7	7	0
Alcis Place	1	1	0
Ambassador Manor Nursing Center	35	24	10
Anadarko Nursing & Rehab	43	41	2
Angelwood Assisted Living and Memory Care	1	1	0
Antlers Manor	28	28	0
Arbor House Assisted Living Center - Norman	22	14	8
Arbor House Assisted Living Center of Mustang	37	30	7
Arbor House Assisted Living of Midwest City	4	3	1
Arbor House Reminisce	36	28	8
Arbor Village	11	11	0
Artesian Home	18	14	2
Ash Street Place	5	5	0
Ashbrook Village	5	5	0
Aspen Health and Rehab	15	15	0

Facility	Cases	Recovered**	Deaths
Atoka Manor	82	75	6
Autumn Leaves of Edmond	34	30	4
Autumn Leaves of Southwest Oklahoma City	3	2	1
Autumn Leaves of Tulsa	6	5	1
Avondale Cottage of Pryor	1	1	0
Avonlea Cottage of Seminole	21	20	1
Avonlea Cottage of Shawnee, LLC	10	10	0
Ayers Nursing Home	19	12	7
Ballard Nursing Center	27	22	5
Baptist Village of Hugo	61	57	4
Baptist Village of Oklahoma City	64	59	5
Baptist Village of Owasso	57	46	11
Baptist Village of Owasso AL	26	25	1
Barnsdall Nursing Home	13	12	1
Bartlesville Assisted Living	23	23	0
Bartlesville Health and Rehabilitation Community	107	85	22
Beacon Ridge	13	13	0
Beadles Nursing Home	34	29	5
Beare Manor	31	22	9
Beaver County Nursing Home	21	18	3
Beehive Homes of Broken Arrow	1	1	0
Beehive Homes of Glenpool	2	2	0
Belfair of McAlester	10	8	2

Facility	Cases	Recovered**	Deaths
Belfair of Shawnee	2	2	0
Bell Avenue Nursing Center	44	40	4
Bellarose Senior Living	8	5	3
Bellevue Health and Rehabilitation	106	85	21
Betty Ann Nursing Center	27	24	1
Beverly Place	1	1	0
Billings Fairchild Center, Inc	132	130	2
Binger Nursing and Rehabilitation	63	51	12
Blue Ridge Place	1	1	0
Blue River Healthcare, Inc	26	21	5
Boyce Manor Nursing Home	13	12	1
Bradford Village Healthcare Center: Nursing Home	23	19	4
Brentwood Extended Care & Rehab	24	21	2
Broadway Living Center	5	4	1
Broadway Manor Nursing Home	47	39	8
Broken Arrow Assisted Living	7	5	2
Broken Arrow Nursing Home, Inc.	37	31	6
Broken Bow Nursing Home	57	44	12
Brookdale Ada	5	5	0
Brookdale Bartlesville North	23	19	4
Brookdale Bartlesville South	16	14	2
Brookdale Broken Arrow	12	10	2
Brookdale Cedar Ridge	11	9	2

Facility	Cases	Recovered**	Deaths
Brookdale Chickasha	23	17	6
Brookdale Claremore	6	5	1
Brookdale Durant	27	25	2
Brookdale Edmond Danforth	20	16	4
Brookdale Edmond Santa Fe	5	5	0
Brookdale Enid	4	4	0
Brookdale Muskogee	23	17	6
Brookdale Norman	1	1	0
Brookdale Owasso	2	2	0
Brookdale Shawnee	1	0	1
Brookdale Stillwater	5	4	1
Brookdale Tulsa 71st and Sheridan	67	53	14
Brookdale Tulsa Midtown	11	8	3
Brookdale Tulsa South	5	4	1
Brookdale Village	3	2	1
Brookdale Weatherford	14	12	2
Brookridge Retirement Community	8	8	0
Brookside Nursing Center	7	7	0
Brookwood Skilled Nursing and Therapy	11	8	3
Burford Manor	17	16	1
Calera Manor, LLC	2	2	0
Callaway Nursing Home	13	13	0
Canoe Brook Ardmore	4	4	0

Facility	Cases	Recovered**	Deaths
Capitol Hill Skilled Nursing and Therapy	48	41	7
Carnegie Nursing Home, Inc.	39	33	6
Cedar Creek Nursing Center	79	74	5
Cedar Crest Manor	27	27	0
Cedarcrest Care Center	53	44	9
Center of Family Love	15	15	0
Chandler Therapy & Living Center, LLC	59	50	9
Checotah Nursing Center	8	6	2
Cherokee County Nursing Center	65	56	9
Chickasha Nursing Center, Inc	13	9	4
Chisholm Trail Assisted Living	20	19	1
Choctaw Nation Nursing Home	37	32	5
Cimarron Nursing Center	21	17	4
Cimarron Pointe Care Center	26	23	3
Claremore Skilled Nursing and Therapy	15	12	3
Cleveland Manor Nursing & Rehab	62	52	10
Clinton Therapy & Living Center	5	5	0
Colonial Manor II	59	58	1
Colonial Manor Nursing Home	25	21	4
Colonial Park Manor, LLC	6	6	0
Colonial Terrace Care Center	28	28	0
Community Health Care of Gore	12	12	0
Community Health Center	11	9	2

Facility	Cases	Recovered**	Deaths
Copp's Residential Care, Inc	3	3	0
Cordell Christian	11	11	0
Corn Heritage Village and Rehab	27	26	1
Corn Heritage Village and Rehab of Weatherford	63	52	11
Cottonwood Creek Skilled Nursing & Therapy	34	28	6
Country Club Care	91	85	5
Country Club at Woodland Hills	8	8	0
Country Lane	3	3	0
Country Place	1	1	0
Countryside Estates	17	15	2
Countrywood Assisted Living and Memory Care	12	8	4
Covenant Living at Inverness	30	27	3
Covenant Living of Bixby	6	6	0
Coweta Manor Nursing Home	70	58	12
Creek Place	3	3	0
Creekside Village	14	13	1
Cross Place	1	1	0
Cross Timbers Nursing and Rehabilitation	59	56	3
Crossroads Residential Care	16	14	2
Crystal Place, LLC	1	1	0
Dogwood Creek Retirement Center	8	8	0
Dorset Place - Assisted Living	1	1	0
Dr W F & Mada Dunaway Manor	41	36	5

Facility	Cases	Recovered**	Deaths
Drumright Nursing Home	46	44	2
Duncan Assisted Living	19	18	1
Duncan Community Residence	1	1	0
Eastgate Village Retirement Center	103	95	8
Eastwood Manor	94	89	5
Eden Care - The Greens	1	1	0
Edith Kassanavoid Gordon Assisted Living Center	2	2	0
Edmond Healthcare Center	46	37	9
El Reno Post-Acute Rehabilitation Center	12	10	2
Elk City Nursing Center	59	51	8
Elk Crossing	37	30	7
Elkwood Assisted Living and Memory Care	25	22	3
Elmbrook Home	16	14	2
Elmwood Manor Nursing Home	14	14	0
Emerald Care Center Claremore	124	108	16
Emerald Care Center Midwest	72	65	7
Emerald Care Center Southwest LLC	58	56	2
Emerald Care Center Tulsa	39	32	7
Emerald Square Assisted Living Community	3	3	0
English Village Manor	49	38	11
Enid Senior Care	14	13	1
Epworth Villa Health Services	31	29	2
Eufaula Manor Nursing and Rehabilitation Center	78	71	7



Facility	Cases	Recovered**	Deaths
Fairfax Manor	31	26	5
Fairmont Skilled Nursing and Therapy	78	71	7
Fairview Fellowship Home for Senior Citizens, Inc	86	76	10
Family Care Center of Fairland	2	2	0
Family Care Center of Kingston	19	18	1
Faye's Place	7	7	0
Featherstone Assisted Living Community of Ada	4	4	0
Featherstone Assisted Living Community of Moore	37	32	5
First Shamrock Care Center	4	4	0
Forest Hills Care and Rehabilitation Center	31	25	6
Forrest Manor Nursing Center	52	48	4
Fort Gibson Nursing Home	21	17	4
Fountain View Manor, Inc	10	9	1
FountainBrook Assisted Living and Memory Support	10	10	0
Four Seasons Rehabilitation & Care	42	41	1
Franciscan Villa	126	105	21
Garland Road Nursing and Rehab Center	10	8	2
Gatesway Foundation, Inc	3	3	0
Glade Avenue Assisted Living	4	4	0
Glade Avenue South	6	3	3
Glenhaven Retirement Village	77	69	8
Glenwood Healthcare	22	14	8
Go Ye Village Continuum of Care Retirement Community	9	4	5

Facility	Cases	Recovered**	Deaths
Golden Age Nursing Home of Guthrie, LLC	84	65	19
Golden Oaks Village	38	27	10
Grace Living Center - Buffalo	1	0	1
Grace Living Center - Clinton	18	15	3
Grace Living Center - Jenks	41	32	9
Grace Living Center - Norman	88	71	17
Grace Living Center - Stillwater	15	14	1
Grace Living Center - Tahlequah East Shawnee	4	2	2
Gracewood Health and Rehab	44	36	8
Gran Grans Place	1	1	0
Grand Lake Villa	33	24	9
Grandwood Assisted Living, LC	41	35	6
Green Country Care Center	102	90	12
Green Country Village Assisted Living Center	5	5	0
Green Tree at Sand Springs	28	27	1
Greenbrier Nursing Home	48	45	3
Greenbrier Village Residential Living, LLC	13	13	0
Gregston Nursing Home, Inc.	13	12	1
Grove Nursing Center	95	76	19
Harborchase of Oklahoma City	1	1	0
Harrah Nursing Center	48	42	6
Haskell Care Center	8	8	0
Haskell County Nursing Center, Inc	65	51	5

Facility	Cases	Recovered**	Deaths
Hays House	37	37	0
Heartsworth Center for Nursing and Rehabilitation	49	45	3
Heartsworth House Assisted Living	1	1	0
Heatheridge Residential Care Center	22	16	6
Heavener Nursing & Rehab	55	47	8
Hennessey Nursing & Rehab	79	72	7
Henryetta Community Skilled Healthcare & Rehab	7	6	1
Hensley Nursing & Rehab	36	31	5
Heritage Assisted Living	6	6	0
Heritage Community	31	26	5
Heritage Hills Living & Rehabilitation Center	70	67	3
Heritage Manor	30	29	1
Heritage Park	7	4	3
Heritage Point of Oklahoma City	2	2	0
Heritage Point of Tulsa	6	6	0
Heritage Skilled Nursing & Therapy	6	6	0
Heritage Villa Nursing Center	21	17	4
Heritage Village Nursing Home	14	14	0
Heritage at Brandon Place Health and Rehabilitation	57	51	6
High Cedar Residential Care	1	1	0
Higher Call Nursing Center	37	30	7
Highland Park Health Care	10	9	1
Hill Nursing Home, Inc	16	15	1

Facility	Cases	Recovered**	Deaths
Hillcrest Manor Nursing Center	7	2	5
Hillcrest Nursing Center	21	20	1
Hobart Nursing & Rehab	23	20	3
Holiday Heights Nursing Home	12	10	2
Home of Hope Elmwood House	1	1	0
Home of Hope Scrapper House	1	1	0
Homestead Residential Care	2	2	0
Homestead of Bethany, LLC	9	8	1
Homestead of Hugo	43	38	5
Homestead of Owasso	15	15	0
Ignite Medical Resort Norman, LLC	46	37	9
Ignite Medical Resort OKC	109	95	14
Iris Memory Care of Edmond	10	7	3
Jacquelyn House	2	2	0
Jan Frances Care Center	14	12	2
John H. Johnson Care Suites	10	10	0
Kenwood Manor	23	22	1
Kingwood Skilled Nursing and Therapy	28	25	3
Lake Country Nursing Center	30	27	3
Lake Drive Care and Rehabilitation Center	41	41	0
Lakeland Manor, Inc	14	11	3
Lakeview Nursing & Rehab	21	19	2
Landmark of Midwest City Rehabilitation and Nursing	43	37	6

Facility	Cases	Recovered**	Deaths
Lane Nursing & Ventilator Care	2	2	0
Latimer Nursing Home	24	20	4
Legacy Village of Stillwater	16	16	0
Legend at 71st St	16	13	3
Legend at Council Road	7	7	0
Legend at Mingo Road	4	4	0
Legend at Rivendell	61	48	13
Leisure Village Health Care Center	50	38	12
Lexington Nursing Home	15	13	2
Liberty Place	2	2	0
Lindsay Nursing & Rehab	33	30	3
Linwood Village Nursing & Retirement Apts	15	14	0
Lyndale at Edmond	2	2	0
Magnolia Creek Skilled Nursing and Therapy	42	32	9
Mangum Skilled Nursing and Therapy	58	51	6
Maple Lawn Nursing and Rehabilitation	20	16	4
Maplewood Care Center	35	30	4
Marlow Nursing & Rehab	16	15	1
McAlester Nursing & Rehab	51	47	4
McCall's Chapel School, Inc #11	2	2	0
McCall's Chapel School, Inc #13	1	1	0
McCall's Chapel School, Inc #4	1	1	0
McCall's Chapel School, Inc #7	1	1	0

Facility	Cases	Recovered**	Deaths
McCall's Chapel School, Inc #8	1	1	0
McCall's Chapel School, Inc #9	1	1	0
McLoud Nursing Center	5	5	0
McMahon-Tomlinson Nursing Center	42	38	4
Meadow Brook Residential Care	29	29	0
Meadowbrook Nursing Center	40	31	3
Meadowlake Estates	84	67	17
Meadowlakes Retirement Village	1	1	0
Medical Park West Rehabilitation	9	7	2
Medicallodges Dewey	5	4	0
Meeker Nursing Center	51	36	15
Memorial Heights Nursing Center	27	20	7
Memorial Nursing Center	27	26	1
Memory Care Center at Emerald	13	12	1
Meridian Nursing Home	16	15	1
Miami Nursing Center, LLC	87	80	7
Mid-Del Skilled Nursing and Therapy	25	24	1
Miller's Residential Care, LLC	2	2	0
Mitchell Manor	84	79	5
Monroe Manor	11	9	2
Montereau, Inc Assisted Living	15	6	3
Montereau, Inc LTC/SNF	8	8	0
Montevista Rehabilitation and Skilled Care	21	18	3

Facility	Cases	Recovered**	Deaths
Mooreland Heritage Manor	25	23	2
Muscogee (Creek) Nation Skilled Nursing Facility	1	1	0
Muskogee Nursing Center	20	19	1
New Hope Retirement & Care Center	3	3	0
Noble Health Care Center	80	75	5
North County Assisted Living	6	5	1
North County Center for Nursing and Rehabilitation	34	30	4
North Winds Living Center	2	2	0
Northhaven Place	10	9	1
Northwest Nursing Center	3	3	0
Nowata Nursing Center	5	4	1
Oak Hills Living Center	20	19	1
Oakridge Home	11	9	2
Oakridge Nursing Center	60	53	7
Okemah Care Center	27	25	2
Oklahoma Methodist Manor AL	4	3	1
Oklahoma Methodist Manor NH	35	32	3
Oklahoma Veterans Center, Ardmore Division	33	20	13
Oklahoma Veterans Center, Claremore Division	282	217	42
Oklahoma Veterans Center, Clinton Division	151	118	33
Oklahoma Veterans Center, Lawton-Ft. Sill Division	42	35	7
Oklahoma Veterans Center, Norman Division	90	62	27
Oklahoma Veterans Center, Sulfur Division	43	41	1

Facility	Cases	Recovered**	Deaths
Oklahoma Veterans Center, Talihina Division	32	28	4
Okmulgee Terrace	2	2	0
Osage Nursing Home, LLC	30	29	1
Oxford Glen at Owasso	25	20	5
Parkhill North Nursing Home	21	19	2
Parkland Manor	1	1	0
Parkview Pointe Senior Living	1	1	0
Pauls Valley Care Center	1	1	0
Perry Green Valley Nursing Center, LLC	29	27	2
Pleasant Valley Health Care Center	78	74	4
Pocola Health & Rehab	60	56	4
Ponca City Nursing and Rehabilitation	68	60	8
Prairie House Assisted Living & Memory Care	8	5	3
Prairie Pointe at Stroud	11	11	0
Primrose Retirement Community of Shawnee	12	12	0
Primrose Retirement Community of Stillwater	3	3	0
Providence House	8	8	0
Providence Place	1	1	0
Purcell Care Center, LLC	41	35	6
Quail Creek Senior Living	23	19	4
Quail Ridge Living Center, Inc (Colcord, OK)	37	35	2
Quail Ridge Senior Living	27	21	6
Quinton Manor Nursing Home	10	10	0



Facility	Cases	Recovered**	Deaths
RT 66 Residential Care Home, LLC	7	7	0
Rainbow Health Care Community: Nursing Home	84	75	9
Rambling Oaks (Norman)	29	26	3
Rambling Oaks Courtyard Assisted Living & Memory Care	9	9	0
Ranch Terrace Nursing Home	22	19	3
Ranchwood Nursing Center	36	34	2
Reliant Living Center	19	18	1
Reliant Living Center of Del City	3	3	0
River Oaks Skilled Nursing	47	41	6
Riverside Health Services LLC	18	18	0
Robert M Greer Center	1	1	0
Rolling Hills Care Center	27	16	11
Ruth Wilson Hurley Manor	74	66	8
Saint Simeons Episcopal Home	30	26	3
Sand Plum Assisted Living Community	12	11	1
Sand Springs Nursing and Rehabilitation	9	9	0
Seiling Nursing Center	7	5	2
Seminole Care and Rehabilitation Center	89	83	6
Seminole Pioneer Nursing Home	21	21	0
Seminole Place	2	2	0
Senior Star The Brook	3	3	0
Senior Suites Healthcare	17	14	3
Senior Village	12	10	2

Facility	Cases	Recovered**	Deaths
Sequoyah East Nursing Center, LLC	16	15	1
Sequoyah Manor	55	44	11
Sequoyah Pointe Living Center	25	21	4
Shady Rest Care Center	34	31	2
Shanoan Springs Nursing and Rehabilitation	62	55	7
Share Medical Center	5	5	0
Shattuck Nursing Center	5	5	0
Shawn Manor Nursing Home	2	2	0
Shawnee Care Center	38	31	7
Shawnee Colonial Estates Nursing Home	73	63	10
Sherwood Manor Nursing Home	17	12	5
Shiloh Manor	14	14	0
Sienna Extended Care & Rehab	40	37	3
Skiatook Nursing Home	43	37	6
Skyview Nursing Center	7	6	1
Sommerset Neighborhood	23	22	1
South Park East	46	42	4
South Pointe Rehabilitation and Care Center	194	166	28
Southbrook Healthcare, Inc.	36	29	6
Southern Hills Rehabilitation Center	86	74	12
Southern Oaks Care Center	55	44	11
Southern Plaza Assisted Living and Memory Care	30	28	2
Southern Pointe Living Center	49	41	8

Facility	Cases	Recovered**	Deaths
Southridge Place	1	1	0
Spanish Cove Housing Authority	18	18	0
Spiro Nursing Home, Inc.	52	51	1
St. Ann's Skilled Nursing and Therapy	85	57	28
St. Katharine Drexel Retirement Center	10	10	0
Stilwell Nursing Home, LLC	33	26	7
Stonecreek Assisted Living and Memory Care	6	4	2
Storey Oaks	48	43	5
Stroud Health Care Center South	8	8	0
Summers Healthcare, LLC	30	29	1
Sunset Estates of Purcell	85	79	6
Tamarack Retirement Center	18	16	2
Teal Creek Assisted Living & Memory Care	6	6	0
Tealridge Assisted Living	12	12	0
Temple Manor Nursing Home	44	37	7
Ten Oaks Place	12	8	4
The Arbors Assisted Living Center	8	8	0
The Brentwood Senior Living	22	20	2
The Chateau	10	8	2
The Commons	108	95	10
The Commons - AL	2	2	0
The Cottage Extended Care	30	22	8
The Courtyards at Claremore Assisted Living	7	5	2

Facility	Cases	Recovered**	Deaths
The Courtyards at Magnolia Creek	9	9	0
The Fountains at Canterbury Health Center	37	31	6
The Gardens	18	14	4
The Gardens at Rivermont	3	3	0
The Golden Rule Home	58	55	3
The Grand at Bethany Skilled Nursing and Therapy	8	8	0
The Health Center at Concordia	31	28	3
The Health Center at Concordia ALC	8	8	0
The Heaven House Elmwood	1	1	0
The Highlands at Owasso	36	26	10
The King's Daughters & Sons Nursing Home	23	22	1
The Lakes	12	11	1
The Legend at Jefferson's Garden	1	1	0
The Linden at Stonehaven Square	17	9	8
The Living Centre	35	28	7
The Lodge at Brookline	15	13	2
The Mansion at Waterford	21	17	4
The Neighborhoods at Baptist Village of Ada	3	3	0
The Neighborhoods at Baptist Village of Elk City	10	10	0
The Neighborhoods at Baptist Village of Okmulgee	1	1	0
The Nova Center	1	1	0
The Oaks Healthcare Center	32	30	2
The Parke Assisted Living	17	15	2

Facility	Cases	Recovered**	Deaths
The Regency Skilled Nursing and Therapy	23	22	1
The Renaissance of Stillwater - Assisted Living	4	4	0
The Springs Skilled Nursing and Therapy	47	38	9
The Timbers Skilled Nursing and Therapy	67	56	11
The Veraden	9	9	0
The Villages at Southern Hills	86	66	20
The Willows	1	1	0
The Wilshire Skilled Nursing and Therapy	5	5	0
The Wolfe Living Center at Summit Ridge	17	16	1
Tidwell Living Center	1	1	0
Timberwood Assisted Living & Memory Care	1	1	0
Touchmark at Coffee Creek	26	25	1
Town Village Assisted Living	2	2	0
Town of Vici Nursing Home	18	17	1
Tulsa Assisted Living and Memory Care	3	3	0
Tulsa Nursing Center	32	29	3
Tuscany Village Nursing Center	25	23	2
Tuttle Care Center	30	27	2
University Park Skilled Nursing & Therapy	65	58	6
University Village	72	58	13
Van Buren House Assisted Living	2	2	0
Via Christi Village Ponca City	91	85	5
Vian Nursing & Rehab, LLC	22	20	2

Facility	Cases	Recovered**	Deaths
Victorian Estates	8	7	1
Village Health Care Center	13	12	1
Village Lodge of Ardmore Village	11	10	1
Village at Oakwood	8	7	1
Village on the Park	40	32	8
Villagio of Oklahoma City	1	0	1
Wagoner Health & Rehab	42	40	2
Wagoner Health & Rehab Res Care	8	8	0
Walnut Grove Living Center	70	57	13
Warr Acres Nursing Center	20	19	1
Washita Valley Living Center	35	32	3
Weatherwood Assisted Living and Memory Care	10	10	0
Wellington Parke, LLC	4	4	0
West Wind Assisted Living	24	22	1
Westbrook Gardens	6	5	1
Westbrook Healthcare, Inc	19	17	2
Westhaven Nursing Home	81	75	3
Westview Cottages	35	35	0
Wewoka Healthcare Center	13	13	0
Whispering Oaks	3	3	0
Wildewood Skilled Nursing and Therapy	6	5	1
Wildwood Care Center, Inc	37	34	3
Wilkins Health and Rehabilitation Community	21	21	0

<b>Facility</b>	<b>Cases</b>	<b>Recovered**</b>	<b>Deaths</b>
Willow Creek Health Care	2	2	0
Willow Haven Nursing Home	32	26	6
Willow Park Health Care Center	70	60	10
Willow Place	5	5	0
Willowood at Mustang Assisted Living and Memory Care	7	7	0
Wilson Nursing Center	47	39	8
Windridge Nursing and Rehabilitation Center	29	26	3
Windsor Hills Nursing Center	7	6	1
Woodland Park Home, Inc	6	5	1
Woodlands Skilled Nursing & Therapy	3	3	0
Woodview Home, Inc.	21	21	0
Woodward Skilled Nursing and Therapy	32	28	4
York Manor Nursing Home	43	41	2
Zarrow Pointe	19	16	3
<i>Total</i>	<i>13,599</i>	<i>11,806</i>	<i>1,717</i>

\*\* Recovered case: is not deceased and 14 days after symptom onset/specimen collection. Please note that the definition for recovered was changed starting May 4, 2021 due to incomplete data on hospitalizations which may result in an inaccurate estimation of the active cases.

## **ACKNOWLEDGEMENT**

The weekly report is made by possible through the efforts of county and city public health and healthcare professionals.

---

## **NOTES**

Every effort is made to ensure accuracy and the data is up-to-date for the time period reported.

For daily updates on COVID-19, please visit <https://coronavirus.health.ok.gov/>

---

## **DISCLAIMER**

The purpose of publishing aggregated statistical COVID-19 data through the OSDH Dashboard, the Executive Order Report, and the Weekly Epidemiology and Surveillance Report is to support the needs of the general public in receiving important and necessary information regarding the state of the health and safety of the citizens of Oklahoma. These resources may be used only for statistical purposes and may not be used in any way that would determine the identity of any reported cases.