

# OKLAHOMA COVID-19 WEEKLY REPORT

Weekly Epidemiology and Surveillance Report  
October 17 - 23, 2021



**PURPOSE** To provide up-to-date weekly epidemiological data on COVID-19 in Oklahoma.

## SNAPSHOT

	Oct 17-23	Change <sup>1</sup>	Total
Cases	5,604	-27.7%	641,051
Recovered cases <sup>2</sup>	7,283	-17.2%	622,476
Deaths	170	n/a	10,710

1. Change from the week of October 10-16, 2021.

2. Not deceased and 14 days after symptom onset/specimen collection. Please note that the definition for recovered was changed starting May 4, 2021 due to incomplete data on hospitalization which may result in an inaccurate estimation of the active cases.

CASES		DEATHS	
Persons aged 50 and over	Females	Persons aged 50 and over	Males
<b>32%</b>	<b>53%</b>	<b>93%</b>	<b>56%</b>
of <u>cases</u>	of <u>cases</u>	of <u>deaths</u>	of <u>deaths</u>

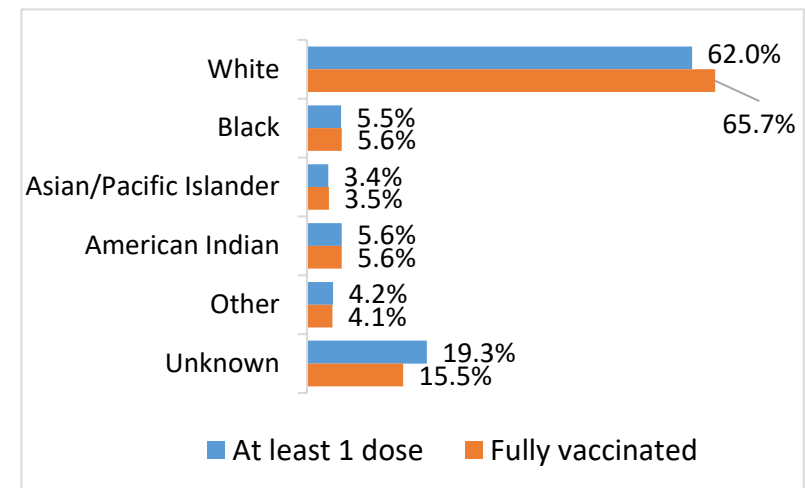
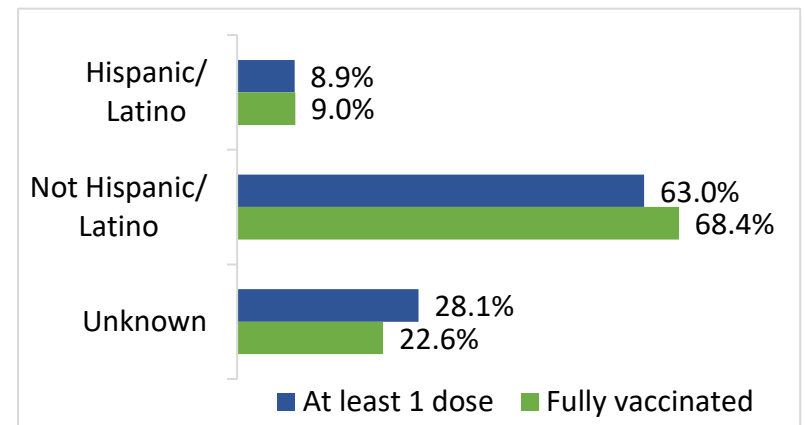
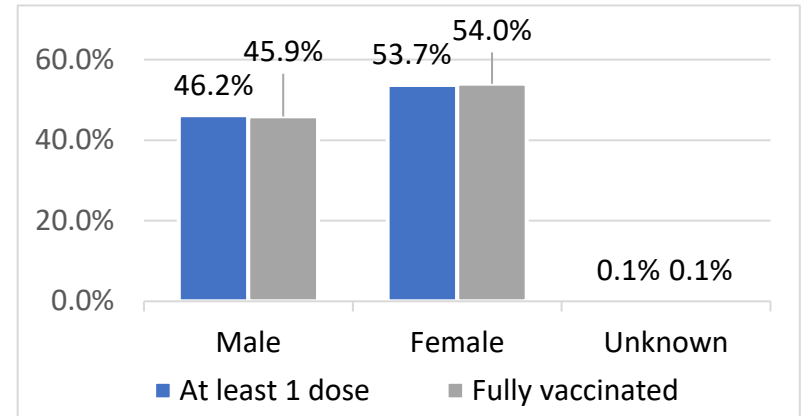
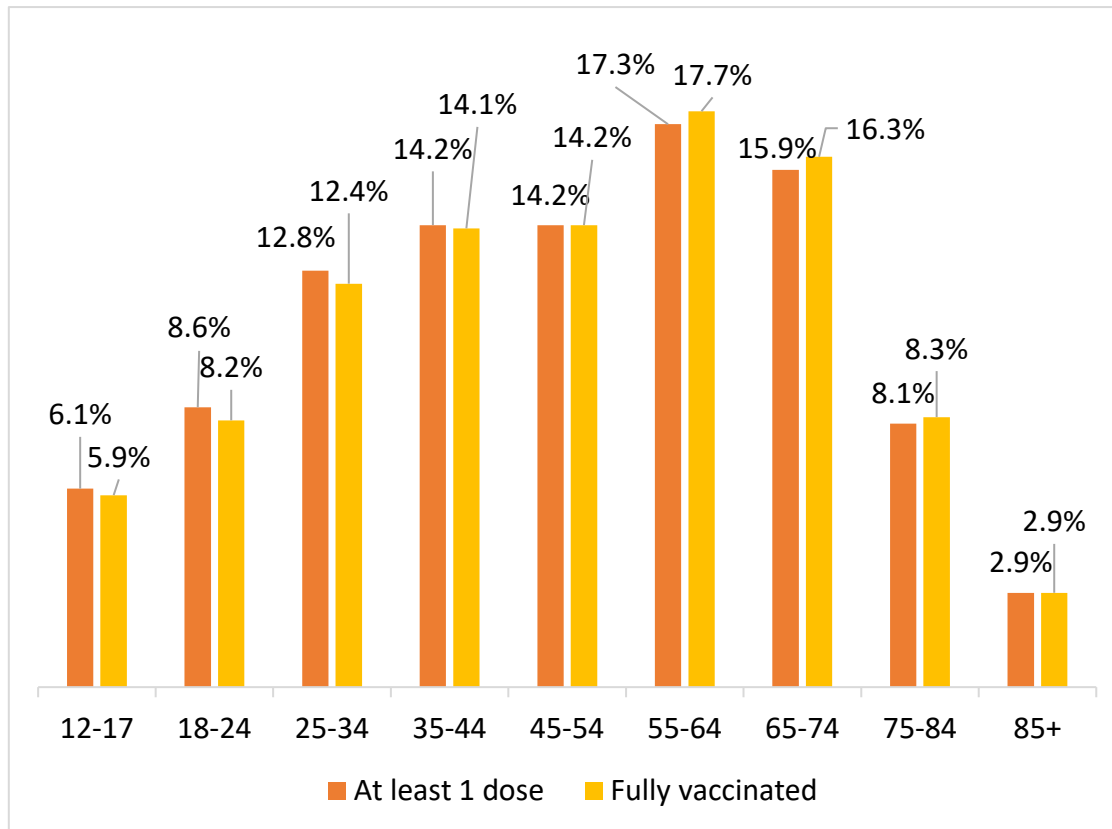
## KEY POINTS

- **5,604** cases were reported in the last week  
27.7% decrease from the week before (Oct 10-16)
- **170** deaths were reported in the past week.
- **36,422 (5.7%)** cases have been hospitalized
- **\*11,109** specimens have been tested over the last 7 days according to the CDC COVID data tracker. \*Recent testing data was not available within the most current CDC data.
- **3,622,145** vaccine doses have been administered in total
- The average age of cases was **39** years and average age of individuals who died was **73** years
- The youngest case was **less than a year old** and the oldest case was **100+ years**
- The youngest individual to die from COVID-19 was **less than 15 years** and the oldest was **100+ years**

# COVID-19 VACCINE DATA BY TOTAL AND KEY METRICS

	Oct 19 – Oct 25	Total Number
Doses Administered <sup>1</sup>	56,686	3,622,145
At least 1 dose <sup>2</sup>	13,386	1,918,952
Fully vaccinated <sup>3</sup>	12,554	1,655,891

1. Doses administered amount does not include doses administered by federal entities in Oklahoma.
2. At least one does refers to individuals receiving Pfizer and Moderna COVID-19 vaccines and/or receiving single shot of J&J/Janssen Vaccine.
3. Fully vaccinated refers to individuals fully vaccinated after receiving either Pfizer and/or Moderna COVID-19 vaccines (both doses) and/or receiving single shot of J&J/Janssen Vaccine.

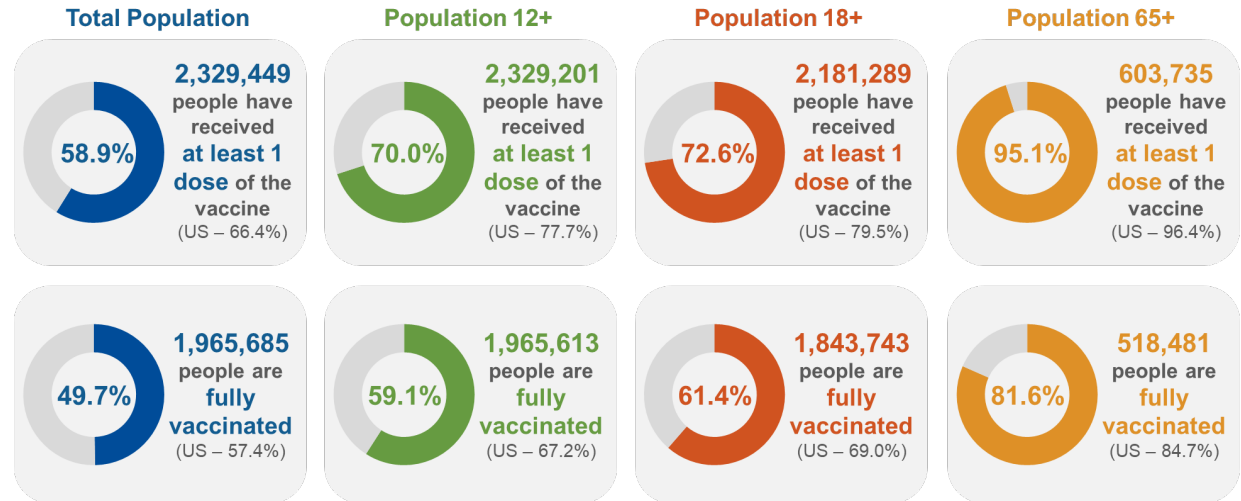


Source: COVID-19 Vaccination Reporting Specification Dataset Oklahoma State Immunization Information System (OSIIS). Data reflect information entered as of 11:59PM 10/25/2021. Data does not include doses administered by federal entities in Oklahoma

# COVID-19 VACCINATIONS IN OKLAHOMA - FEDERAL AND STATE, AS OF OCTOBER 25, 2021

	Count*	Adult Rate per 100K
<b>Total Doses Administered</b>	<b>4,405,452</b>	<b>137,570</b>
<b>Additional doses (booster/3rd) Administered</b>	<b>159,611</b>	<b>na</b>

\*Includes state and federal administered doses.



## Percent of 12+ Population with At Least 1 Dose- Oklahoma Counties

County	At Least 1 Dose (%)	County	At Least 1 Dose (%)	County	At Least 1 Dose (%)	County	At Least 1 Dose (%)	County	At Least 1 Dose (%)
Adair	49.8%	Cotton	60.9%	Jackson	66.5%	McIntosh	64.5%	Roger Mills	42.4%
Alfalfa	52.4%	Craig	65.7%	Jefferson	52.0%	Murray	53.9%	Rogers	55.6%
Atoka	41.8%	Creek	52.5%	Johnston	51.9%	Muskogee	66.2%	Seminole	64.6%
Beaver	38.5%	Custer	60.4%	Kay	52.5%	Noble	75.4%	Sequoyah	49.3%
Beckham	50.9%	Delaware	49.1%	Kingfisher	59.2%	Nowata	54.9%	Stephens	58.6%
Blaine	57.7%	Dewey	31.4%	Kiowa	64.1%	Okfuskee	55.4%	Texas	56.2%
Bryan	52.1%	Ellis	42.3%	Latimer	39.7%	Oklahoma	81.3%	Tillman	60.2%
Caddo	76.8%	Garfield	62.3%	LeFlore	46.8%	Okmulgee	51.8%	Tulsa	75.8%
Canadian	71.6%	Garvin	57.8%	Lincoln	48.9%	Osage	42.6%	Wagoner	57.3%
Carter	56.0%	Grady	45.7%	Logan	40.8%	Ottawa	48.4%	Washington	55.2%
Cherokee	59.8%	Grant	53.4%	Love	53.7%	Pawnee	60.2%	Washita	49.3%
Choctaw	43.6%	Greer	43.0%	Major	60.1%	Payne	57.7%	Woods	49.1%
Cimarron	38.9%	Harmon	60.1%	Marshall	57.2%	Pittsburg	55.1%	Woodward	46.6%
Cleveland	64.2%	Harper	53.6%	Mayes	54.8%	Pontotoc	64.7%		
Coal	47.3%	Haskell	49.3%	McClain	59.6%	Pottawatomie	59.0%		
Comanche	75.8%	Hughes	54.9%	McCurtain	45.5%	Pushmataha	41.8%		

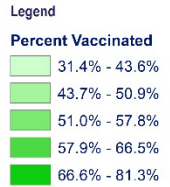
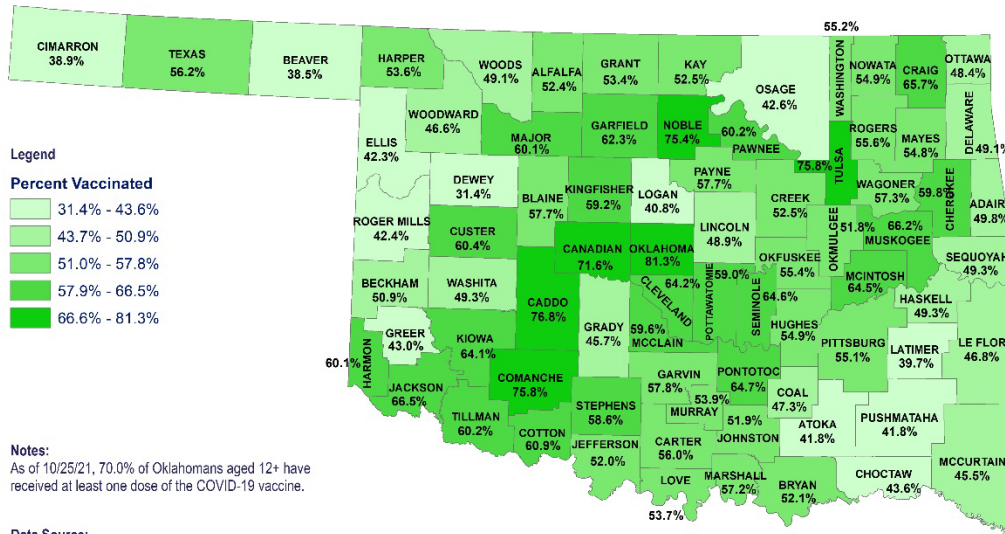
Source: CDC COVID Data Tracker – COVID-19 Vaccinations in the United States and COVID-19 Integrated County View. Posted: 10/25/2021

## COVID- 19 VACCINE DATA

		Total Population >12 years of age	People who received at least 1 dose	People who are fully vaccinated
<b>Oklahoma</b>		3,325,223	1,918,952 (57.7%)	1,655,891 (49.8%)
<b>Gender</b>				
	Male	1,637,286 (49.2%)	887,485 (54.2%)	760,197 (46.4%)
	Female	1,687,937 (50.8%)	1,028,639 (60.9%)	893,869 (53.0%)
	Unknown		2,828	1,825
<b>Age group</b>				
	12-17	320,490 (9.6%)	116,381 (36.3%)	97,566 (30.4%)
	18-24	380,905 (11.5%)	164,957 (43.3%)	135,770 (35.6%)
	25-34	543,593 (16.3%)	245,275 (45.1%)	204,663 (37.7%)
	35-44	497,873 (15.0%)	272,638 (54.8%)	233,482 (46.9%)
	45-54	453,536 (13.6%)	271,793 (59.9%)	235,742 (52.0%)
	55-64	493,694 (14.8%)	331,669 (67.2%)	292,581 (59.3%)
	65-74	368,050 (11.1%)	304,349 (82.7%)	269,436 (73.2%)
	75-84	192,919 (5.8%)	156,042 (80.9%)	138,066 (71.6%)
	85+	74,163 (2.2%)	55,735 (75.2%)	48,559 (65.5%)
<b>Race</b>				
	White	2,610,851 (78.5%)	1,189,831 (45.6%)	1,088,728 (41.7%)
	Black	282,592 (8.5%)	104,841 (37.1%)	92,281 (32.7%)
	Asian/PI	94,874 (2.9%)	64,819 (68.3%)	58,350 (61.5%)
	American Indian	336,906 (10.1%)	107,948 (32.0%)	92,018 (27.3%)
	Other	-	81,422	67,741
	Unknown	-	370,091	256,773
<b>Ethnicity</b>				
	Hispanic or Latino	323,153 (9.7%)	170,469 (52.8%)	149,464 (46.3%)
	Not Hispanic or Latino	3,002,070 (90.3%)	1,208,332 (40.2%)	1,132,479 (37.7%)
	Unknown	-	540,151	373,948

Note: Fully vaccinated refers to individuals completing series after receiving either Pfizer and/or Moderna COVID-19 vaccines (both doses) and/or receiving single shot of J&J/Janssen Vaccine  
 Data Source: 1. Single-race Population Estimates, United States, 2010-2019. July 1st resident population by state, age, sex, single-race, and Hispanic origin, on CDC WONDER Online Database. Vintage 2019 estimates released by U.S. Census Bureau on June 25, 2020 COVID-19. 2. Vaccination Reporting Specification (CVRS) Dataset - Oklahoma State Immunization Information System (OSIIS); Data reflect information entered as of 11:59PM 10/25/2021. Data does not include doses administered by federal entities in Oklahoma

# OKLAHOMA COVID-19 AT LEAST 1 DOSE COUNTY LEVEL VACCINE ADMINISTRATION FOR AGES 12+ AND 65+



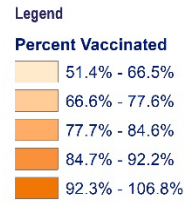
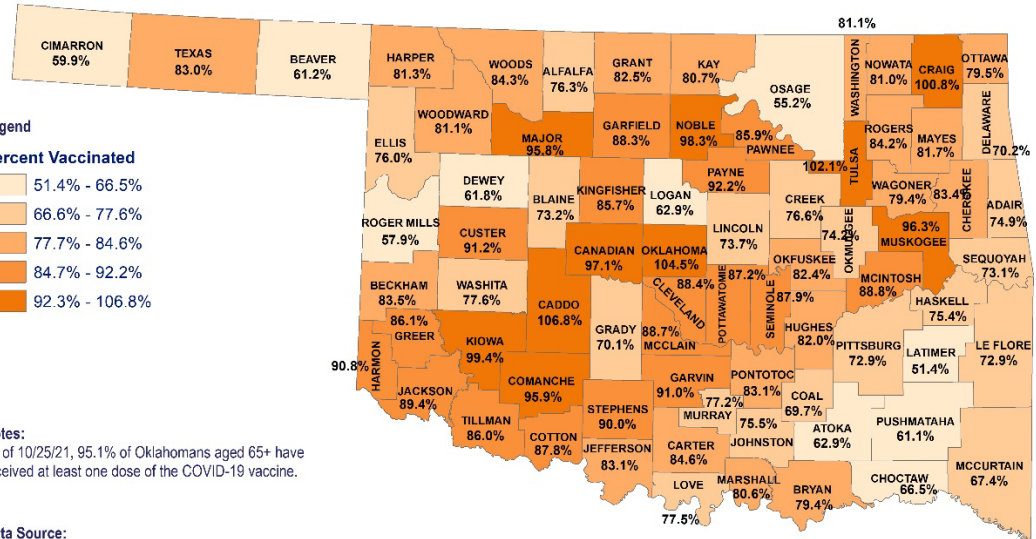
**Notes:**  
As of 10/25/21, 70.0% of Oklahomans aged 12+ have received at least one dose of the COVID-19 vaccine.

**Data Source:**  
CDC COVID Data Tracker, County Level Vaccination Data for Oklahoma. Posted 10/25/21.

Projection/Coordinate System: USGS Albers Equal Area Conic



**Disclaimer:** This map is a compilation of records, information and data from various city, county and state offices and other sources, affecting the area shown, and is the best representation of the data available at the time. The map and data are to be used for reference purposes only. The user acknowledges and accepts all inherent limitations of the map, including the fact that the data are dynamic and in a constant state of maintenance.



**Notes:**  
As of 10/25/21, 95.1% of Oklahomans aged 65+ have received at least one dose of the COVID-19 vaccine.

**Data Source:**  
CDC COVID Data Tracker, County Level Vaccination Data for Oklahoma. Posted 10/25/21.

Projection/Coordinate System: USGS Albers Equal Area Conic

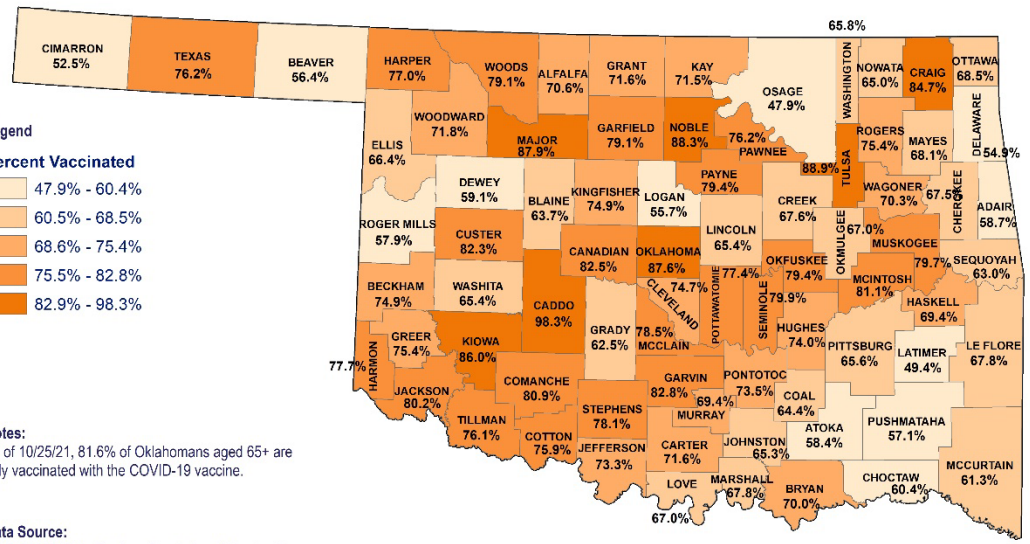
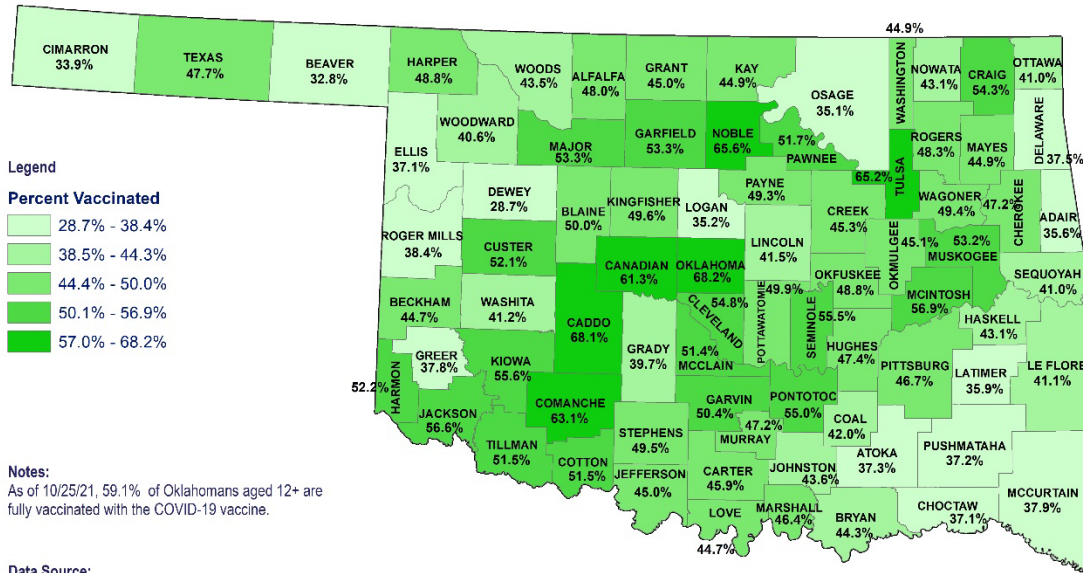
Created: 10.26.2021



**Disclaimer:** This map is a compilation of records, information and data from various city, county and state offices and other sources, affecting the area shown, and is the best representation of the data available at the time. The map and data are to be used for reference purposes only. The user acknowledges and accepts all inherent limitations of the map, including the fact that the data are dynamic and in a constant state of maintenance.



# OKLAHOMA COVID-19 FULLY VACCINATED COUNTY LEVEL VACCINE ADMINISTRATION FOR AGES 12+ AND 65+

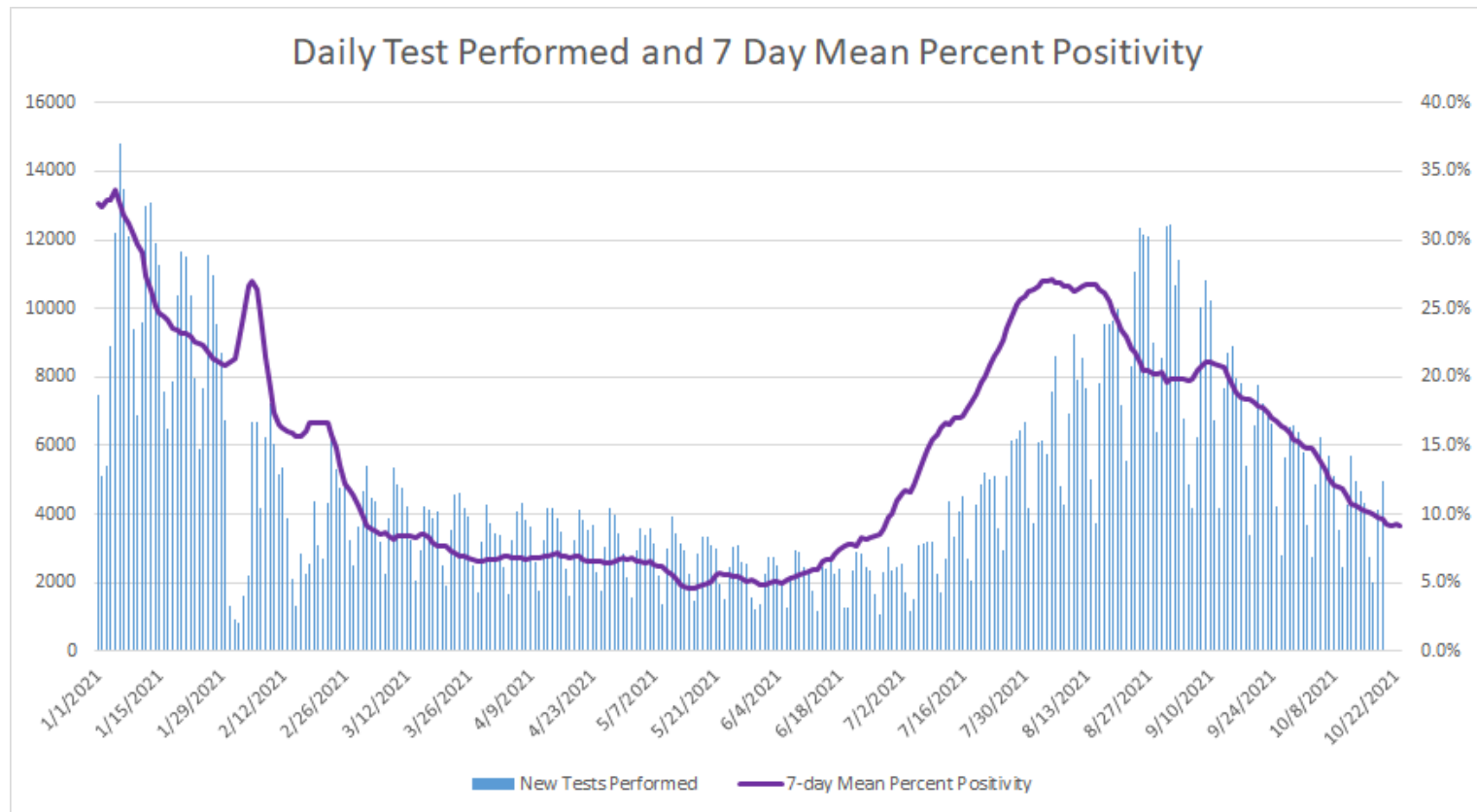


# DISEASE TESTING

Oct 17 – Oct 23	
Specimens tested, count	11,109*
Specimens positive, count	5,753
Percent positive	9.1%

Source: CDC COVID Data Tracker CDC | Data as of: Tuesday, October 26, 2021 2:24 PM ET. Posted: Tuesday, October 26, 2021 3:44 PM ET  
 \*(Recent testing data was not available within the most current CDC data.)

## COVID-19 DAILY TESTS PERFORMED AND 7 DAY MEAN PERCENT POSITIVITY



Oklahoma, October 26, 2021

Source: CDC COVID Data Tracker CDC | Data as of: Tuesday, October 26, 2021 2:24 PM ET. Posted: Tuesday, October 26, 2021 3:44 PM ET  
 (Recent testing data was not available within the most current CDC data.)

## COVID-19 VARIANT STRAINS

Genetic variants of SARS-CoV-2 have been emerging and circulating around the world throughout the COVID-19 pandemic.

- A variant has one or more mutations that differentiate it from other variants in circulation. As expected, multiple variants of SARS-CoV-2 have been documented in the [United States](#) and [globally](#) throughout this pandemic.

<b>SARS-CoV-2 Sequencing Data, Oklahoma, January 1, 2021-October 16, 2021</b>		
<b>Variant Designation and Strain Name</b>	<b>SARS-CoV-2 Strain Count</b>	<b>SARS-CoV-2 Strain Percentage</b>
No Concern	<b>380</b>	<b>5.5%</b>
Variants of Concern	<b>5,931</b>	<b>85.6%</b>
B.1.617.2 (Delta)	5,931	100.0%
Variants to Watch	<b>47</b>	<b>0.7%</b>
C.37 (Lambda)	47	100.0%
Variants Being Monitored	570	8.2%
B.1.1.7 (Alpha)	471	82.6%
B.1.351 (Beta)	7	1.2%
B.1.427/429 (Epsilon)	24	4.2%
B.1.525 (Eta)	2	0.4%
P.1 (Gamma)	35	6.1%
B.1.526/526.1 (Iota)	15	2.6%
B.1.617.1 (Kappa)	1	0.2%
B.1.621 (Mu)	15	2.6%
<b>Grand Total</b>	<b>6,928</b>	<b>100.0%</b>

Additional information on variant classifications and definitions can be found [here](#).

## COVID-19 VACCINE BREAKTHROUGH INFECTIONS AND REINFECTIONS DATA UPDATE

Each week, OSDH strives to provide high quality and accurate data to inform citizens of the current COVID-19 situation in Oklahoma. At this time, we are currently working on refining the process for identifying breakthrough infections and reinfections. Once we have finalized this process, we will resume providing tables on breakthrough infections and reinfections.



## DISTRIBUTION OF RECENT COVID-19 HOSPITAL ADMISSIONS BY VACCINATION STATUS AND AGE GROUP AS OF OCTOBER 16, 2021<sup>+</sup>

Vaccination Status	Age Group	Hospital Admissions in the last 30 days <sup>***</sup>	Percentage within Vaccination Status Category	Percentage of Total Hospitalizations
Non-Vaccinated	Under 1- 4	42	2.7%	2.2%
	5-17	42	2.7%	2.2%
	18-35	214	13.6%	11.1%
	36-49	299	19.0%	15.5%
	50-64	410	26.0%	21.2%
	65+	569	36.1%	29.4%
	Unknown	0	0.0%	0.0%
	Total	1,576	100.0%	81.5%
Fully Vaccinated*	5-17	2	0.7%	0.1%
	18-35	10	3.6%	0.5%
	36-49	18	6.5%	0.9%
	50-64	51	18.3%	2.6%
	65+	197	70.9%	10.2%
	Total	278	100.0%	14.4%
Partially Vaccinated**	5-17	1	1.3%	0.1%
	18-35	4	5.1%	0.2%
	36-49	4	5.1%	0.2%
	50-64	25	31.6%	1.3%
	65+	45	57.0%	2.3%
	Total	79	100.0%	4.1%
<b>Total Hospitalizations</b>	<b>1,933</b>			

<sup>+</sup> Data are preliminary and subject to change as more information is gathered, reviewed and quality assurance procedures are applied. Moving forward, the information presented in the table above (hospital admissions by vaccination status) will be limited to cases reported two (2) weeks prior allowing for additional review and quality assurance checks to be applied.

\*Fully Vaccinated Vaccine breakthrough cases are defined as an individual with a COVID-19 positive laboratory results (PCR/Antigen) and documentation of COVID-19 vaccination that meets the definition of fully vaccinated. (Individuals are considered fully vaccinated  $\geq 2$  weeks after receiving the last dose in the COVID-19 vaccine series.)

\*\*Partially Vaccinated Vaccine breakthrough cases is defined as an individual with a COVID-19 positive laboratory result (PCR/Antigen) and documentation of one COVID-19 vaccination. (Individuals are considered partially vaccinated  $\geq 2$  weeks after receiving the first dose in a 2-dose COVID-19 vaccine series.)

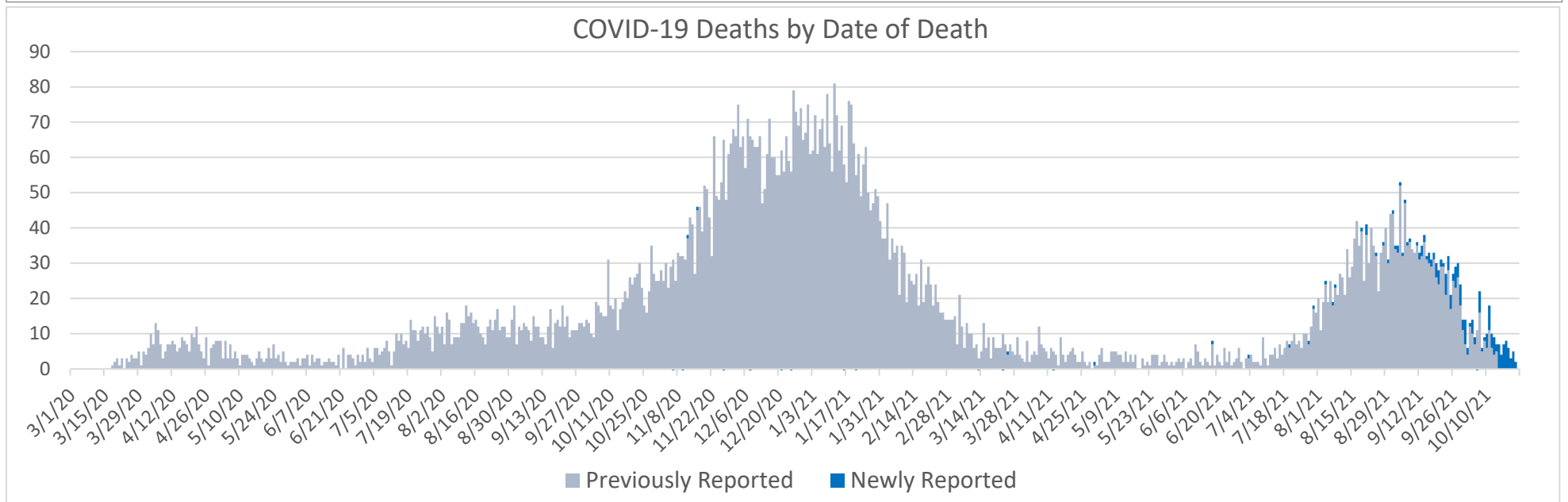
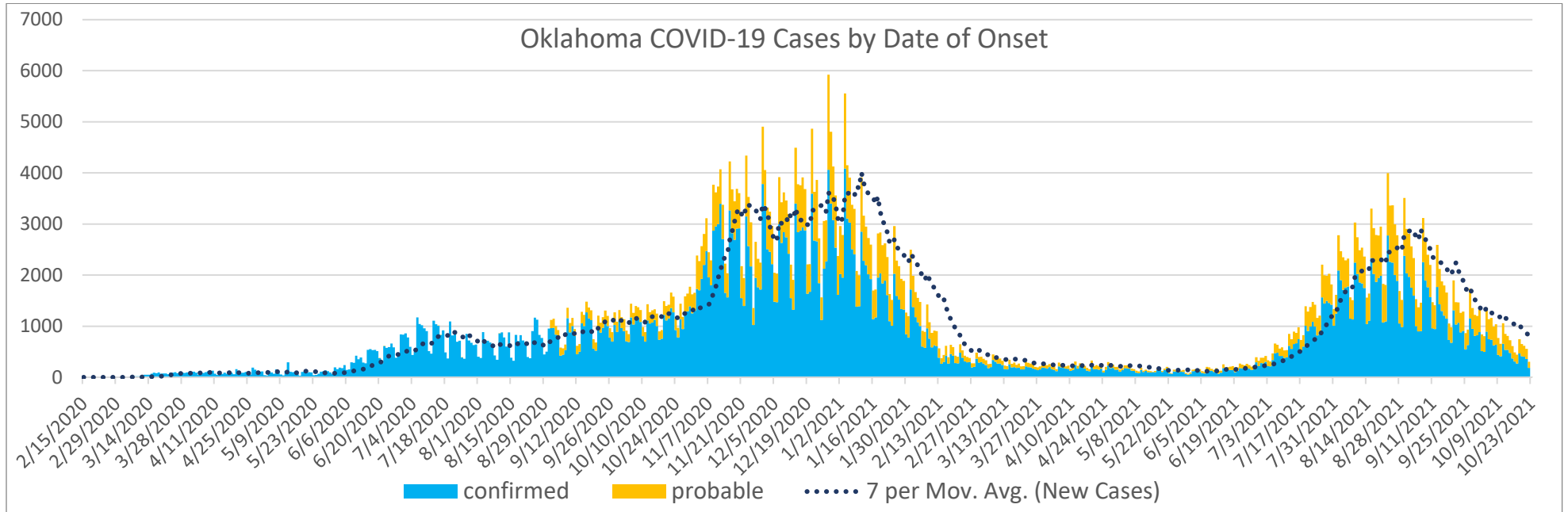
\*\*\*Numbers based on hospital admission date within the past 30 days.

## EPIDEMIOLOGICAL ESTIMATES

	Estimate	Notes / Interpretation
<b>Cases</b>		
Cumulative incidence	16,200.5 (per 100,000 persons)	From March 7, 2020 to October 23, 2021 there were about 16,200 (per 100,000) new cases of COVID-19 in Oklahoma.
Absolute change in cumulative incidence from previous week	-54.2 (per 100,000 persons)	Compared to October 10 - October 16 there were 54.2 (per 100,000) fewer cases of COVID-19 reported in Oklahoma during the past week (October 17 - 23).
<b>Disease Severity</b>		
Case-fatality risk (crude)	1.7%	The estimate is not adjusted for the lag time from reporting to death (i.e., delay between the time someone dies and the time their death is reported). The fatality estimate could be lower due to cases that were undiagnosed or had milder symptoms.
Cumulative Hospitalization rate (overall)	920.5 (per 100,000 persons)	About 920 people per 100,000 have ever been hospitalized for COVID-19 during this outbreak.

# CASES AND DEATHS

New cases (by date of onset) and new deaths (by date of death) of COVID-19 in Oklahoma, February 2020–October 2021



Please note the different axes for new cases (top—from 0 to 7,000 for new cases) and new deaths (bottom—from 0 to 90 for new deaths). Additionally, a 7-day lag has been applied to the COVID-19 case trend line based on information.

## DEMOGRAPHIC INFORMATION AS OF OCTOBER 26, 2021

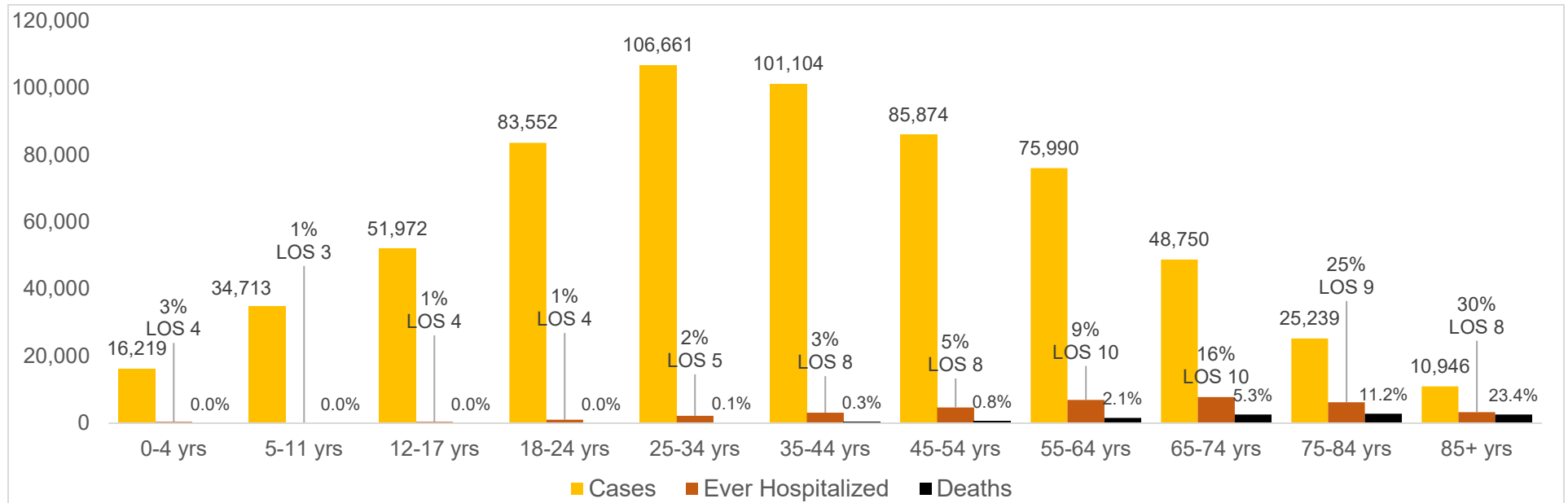
		Cases count (%) <sup>1</sup>		Deaths count (%) <sup>1</sup>		Cumulative Incidence Rate <sup>2</sup>	Cumulative Mortality Rate <sup>2</sup>
<b>Oklahoma</b>		<b>641,051</b>		<b>10,710</b>		<b>16,200.5</b>	<b>270.7</b>
<b>Gender</b>							
	Male	<b>301,646</b>	<b>(47.1)</b>	<b>4,781</b>	<b>(44.6)</b>	<b>15,444.9</b>	<b>244.8</b>
	Female	<b>339,405</b>	<b>(52.9)</b>	<b>5,929</b>	<b>(55.4)</b>	<b>17,055.2</b>	<b>297.9</b>
	Unknown	<b>0</b>	<b>(0.0)</b>	<b>0</b>	<b>(0.0)</b>		
<b>Age group</b>							
	Under 1- 4	<b>16,219</b>	<b>(2.5)</b>	<b>1</b>	<b>(0.0)</b>	<b>6,347.1</b>	<b>0.4</b>
	5-11	<b>34,713</b>	<b>(5.4)</b>	<b>0</b>	<b>(0.0)</b>	<b>9,226.9</b>	<b>0.0</b>
	12-17	<b>51,972</b>	<b>(8.1)</b>	<b>5</b>	<b>(0.0)</b>	<b>16,216.4</b>	<b>1.6</b>
	18-24	<b>83,552</b>	<b>(13.0)</b>	<b>20</b>	<b>(0.2)</b>	<b>21,935.1</b>	<b>5.3</b>
	25-34	<b>106,661</b>	<b>(16.6)</b>	<b>99</b>	<b>(0.9)</b>	<b>19,621.5</b>	<b>18.2</b>
	35-44	<b>101,104</b>	<b>(15.8)</b>	<b>284</b>	<b>(2.7)</b>	<b>20,307.2</b>	<b>57.0</b>
	45-54	<b>85,874</b>	<b>(13.4)</b>	<b>712</b>	<b>(6.6)</b>	<b>18,934.3</b>	<b>157.0</b>
	55-64	<b>75,990</b>	<b>(11.9)</b>	<b>1,605</b>	<b>(15.0)</b>	<b>15,392.1</b>	<b>325.1</b>
	65-74	<b>48,750</b>	<b>(7.6)</b>	<b>2,604</b>	<b>(24.3)</b>	<b>13,245.5</b>	<b>707.5</b>
	75-84	<b>25,239</b>	<b>(3.9)</b>	<b>2,816</b>	<b>(26.3)</b>	<b>13,082.7</b>	<b>1,459.7</b>
	85+	<b>10,946</b>	<b>(1.7)</b>	<b>2,564</b>	<b>(23.9)</b>	<b>14,759.4</b>	<b>3,457.2</b>
	Unknown	<b>31</b>	<b>(0.0)</b>				
<b>Race</b>							
	American Indian or Alaska Native	<b>65,052</b>	<b>(10.1)</b>	<b>916</b>	<b>(8.6)</b>	<b>21,177.0</b>	<b>298.2</b>
	Asian or Pacific Islander	<b>10,690</b>	<b>(1.7)</b>	<b>106</b>	<b>(1.0)</b>	<b>12,071.9</b>	<b>119.7</b>
	Black or African American	<b>37,841</b>	<b>(5.9)</b>	<b>687</b>	<b>(6.4)</b>	<b>13,153.9</b>	<b>238.8</b>
	Multiracial/Other	<b>22,491</b>	<b>(3.5)</b>	<b>274</b>	<b>(2.6)</b>	<b>5,435.8</b>	<b>66.2</b>
	White	<b>362,849</b>	<b>(56.6)</b>	<b>7,788</b>	<b>(72.7)</b>	<b>12,749.9</b>	<b>273.7</b>
	Unknown	<b>142,128</b>	<b>(22.2)</b>	<b>939</b>	<b>(8.8)</b>		
<b>Ethnicity</b>							
	Hispanic or Latino	<b>60,876</b>	<b>(9.5)</b>	<b>590</b>	<b>(5.5)</b>	<b>14,187.6</b>	<b>137.5</b>
	Not Hispanic or Latino	<b>408,938</b>	<b>(63.8)</b>	<b>9,010</b>	<b>(84.1)</b>	<b>11,637.4</b>	<b>256.4</b>
	Unknown/Other	<b>171,237</b>	<b>(26.7)</b>	<b>1,110</b>	<b>(10.4)</b>		

1. Percentages may not add up to 100 due to rounding. 2. Rate per 100,000 population based on 2019 Census Population data.

## NEW CASES, HOSPITALIZATIONS, AND DEATHS BY AGE GROUP FOR WEEK OF OCT 17-23

Age group	Percentage of Population Fully Vaccinated	New Cases (%)	New Hospitalizations (%)	New Deaths (%)
Under 1- 4	-	<b>256 (4.6%)</b>	<b>10 (3.1%)</b>	<b>0 (0.0%)</b>
5-11	-	<b>474 (8.5%)</b>	<b>5 (1.6%)</b>	<b>0 (0.0%)</b>
12-17	<b>30.4%</b>	<b>421 (7.5%)</b>	<b>4 (1.3%)</b>	<b>0 (0.0%)</b>
18-24	<b>35.6%</b>	<b>587 (10.5%)</b>	<b>8 (2.5%)</b>	<b>0 (0.0%)</b>
25-34	<b>37.7%</b>	<b>932 (16.6%)</b>	<b>20 (6.3%)</b>	<b>2 (1.2%)</b>
35-44	<b>46.9%</b>	<b>871 (15.5%)</b>	<b>32 (10.0%)</b>	<b>9 (5.3%)</b>
45-54	<b>52.0%</b>	<b>689 (12.3%)</b>	<b>43 (13.4%)</b>	<b>18 (10.6%)</b>
55-64	<b>59.3%</b>	<b>654 (11.7%)</b>	<b>68 (21.3%)</b>	<b>47 (27.6%)</b>
65-74	<b>73.2%</b>	<b>429 (7.7%)</b>	<b>61 (19.1%)</b>	<b>45 (26.5%)</b>
75-84	<b>71.6%</b>	<b>214 (3.8%)</b>	<b>48 (15.0%)</b>	<b>25 (14.7%)</b>
85+	<b>65.5%</b>	<b>77 (1.4%)</b>	<b>21 (6.6%)</b>	<b>24 (14.1%)</b>
Unknown	-	<b>0 (0.0%)</b>	<b>0 (0.0%)</b>	<b>0 (0.0%)</b>

## CUMULATIVE CASES, PERCENT HOSPITALIZED, AVERAGE LENGTH OF STAY (AUGUST 2021 CASES) AND DEATHS BY AGE GROUP



## AT-RISK SETTINGS

### HEALTHCARE & NON-HEALTHCARE

Status	Non-Healthcare Worker count (%)	Healthcare Worker count (%)
Active	7,699 (1.2)	166 (0.9)
Deceased	10,623 (1.7)	87 (0.5)
Recovered	603,244 (97.1)	19,232 (98.7)
<b>Total</b>	<b>621,566</b>	<b>19,485</b>

### LONG TERM CARE (LTC) FACILITIES<sup>2</sup>

	Cases (%)	Deaths (%)
Residents	9,173 (61.9)	1,777 (98.8)
Staff	5,658 (38.1)	22 (1.2)
<b>Total</b>	<b>14,831</b>	<b>1,799</b>

<sup>2</sup>Long term care facility or nursing home.

### CORRECTIONAL FACILITIES<sup>1</sup>

	Cases (%)	Deaths (%)
Inmates	5,414 (75.2%)	57 (91.9%)
Staff	1,788 (24.8%)	5 (8.1%)
<b>Total</b>	<b>7,202</b>	<b>62</b>

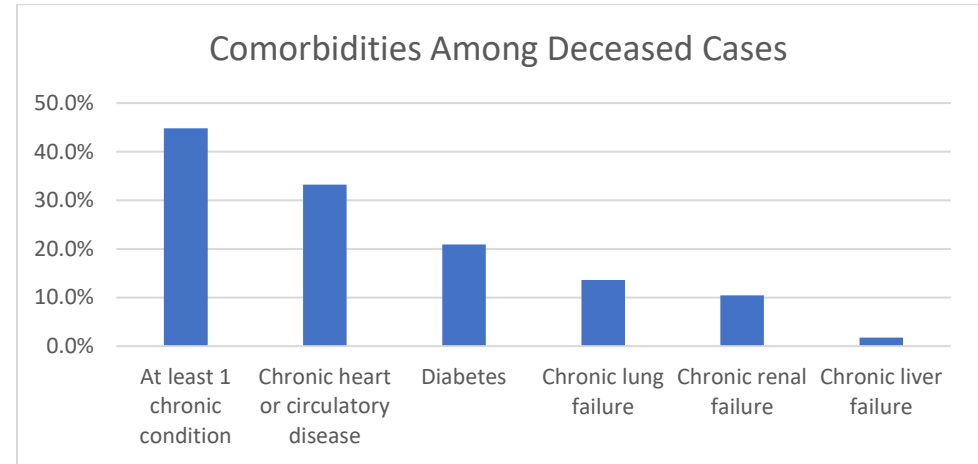
<sup>1</sup>Correctional facilities include prisons, jails, and juvenile detention center

*Detailed counts of LTC Cases by County and Facility can be found at the end of this report.*

## COMORBIDITIES AMONG DECEASED CASES

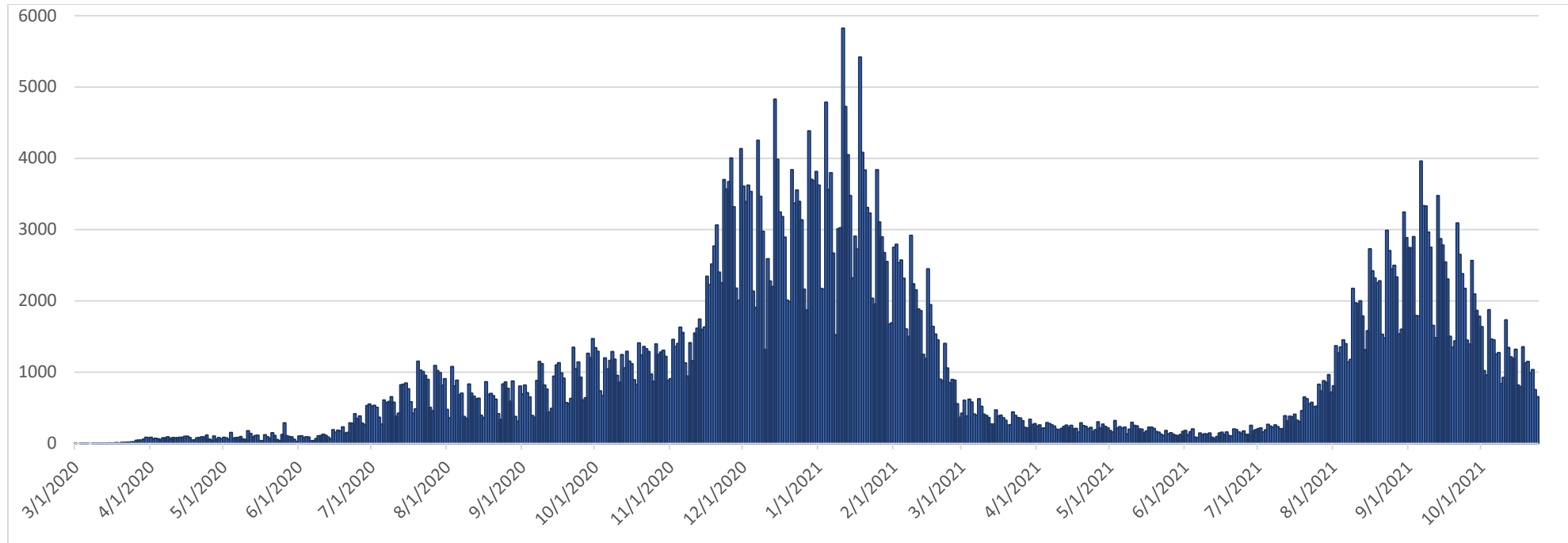
Comorbidities	Number (%)
At least 1 chronic condition <sup>4</sup>	4,801 (44.8%)
Chronic heart or circulatory disease	3,558 (33.2%)
Diabetes	2,241 (20.9%)
Chronic lung failure	1,458 (13.6%)
Chronic renal failure	1,122 (10.5%)
Chronic liver failure	187 (1.7%)

<sup>4</sup>Chronic conditions include chronic heart or circulatory disease, diabetes, chronic lung failure, chronic liver failure and renal failure.



## RECOVERED CASES

### Distribution of recovered cases of COVID-19, March 2020 – October 2021, Oklahoma

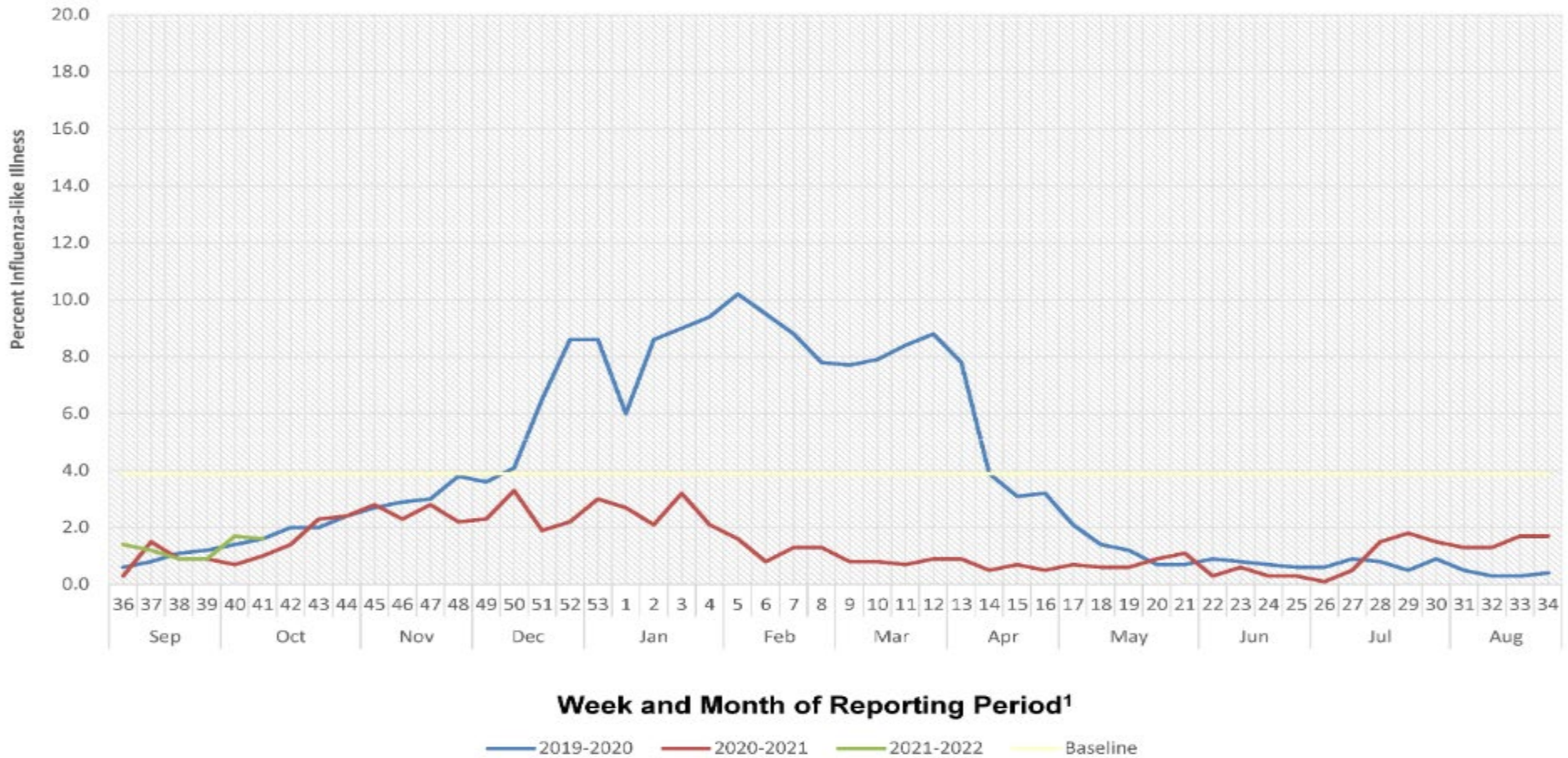


Recovered case: is not deceased and 14 days after symptom onset/specimen collection. Please note that the definition for recovered was changed starting May 4, 2021 due to incomplete data on hospitalizations which may result in an inaccurate estimation of the active cases.

# SYMPTOMS CRITERIA

## WEEKLY PERCENT OF INFLUENZA-LIKE ILLNESS BASED ON TOTAL PATIENT VISITS TO SENTINEL CLINICIANS, OKLAHOMA VIRAL RESPIRATORY ILLNESS SURVEILLANCE SYSTEM, 2019-2021

Week ending October 16, 2021 (Week 41)



<sup>1</sup>These units correspond to the number of weeks in a year and allow for a comparison between multiple seasons.

**Interpretation:** Data on Influenza-Like Illness (ILI) accounted for 1.6% of outpatient visits exhibiting fever with cough or sore throat. The most current week's value of 1.6% is below Oklahoma's baseline ILI of 3.9%.

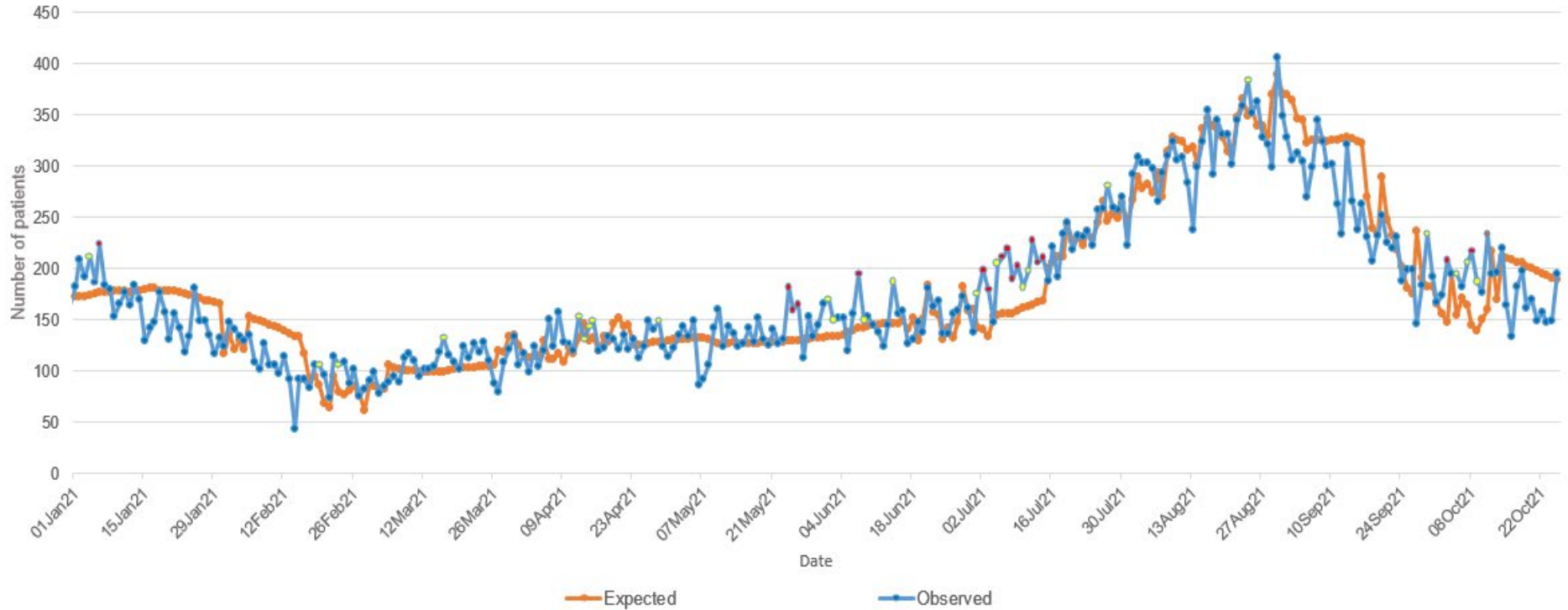
**Note:** Data current up to week ending October 16, 2021 (Week 41).

**Source:** <https://oklahoma.gov/content/dam/ok/en/health/health2/aem-documents/prevention-and-preparedness/acute-disease-service/disease-information/flu-view>



# COVID-19 RELATED EMERGENCY DEPARTMENT VISITS

Oklahoma State Syndromic Surveillance of  
COVID-19 related ED Visits  
January 01, 2021 – October 25, 2021



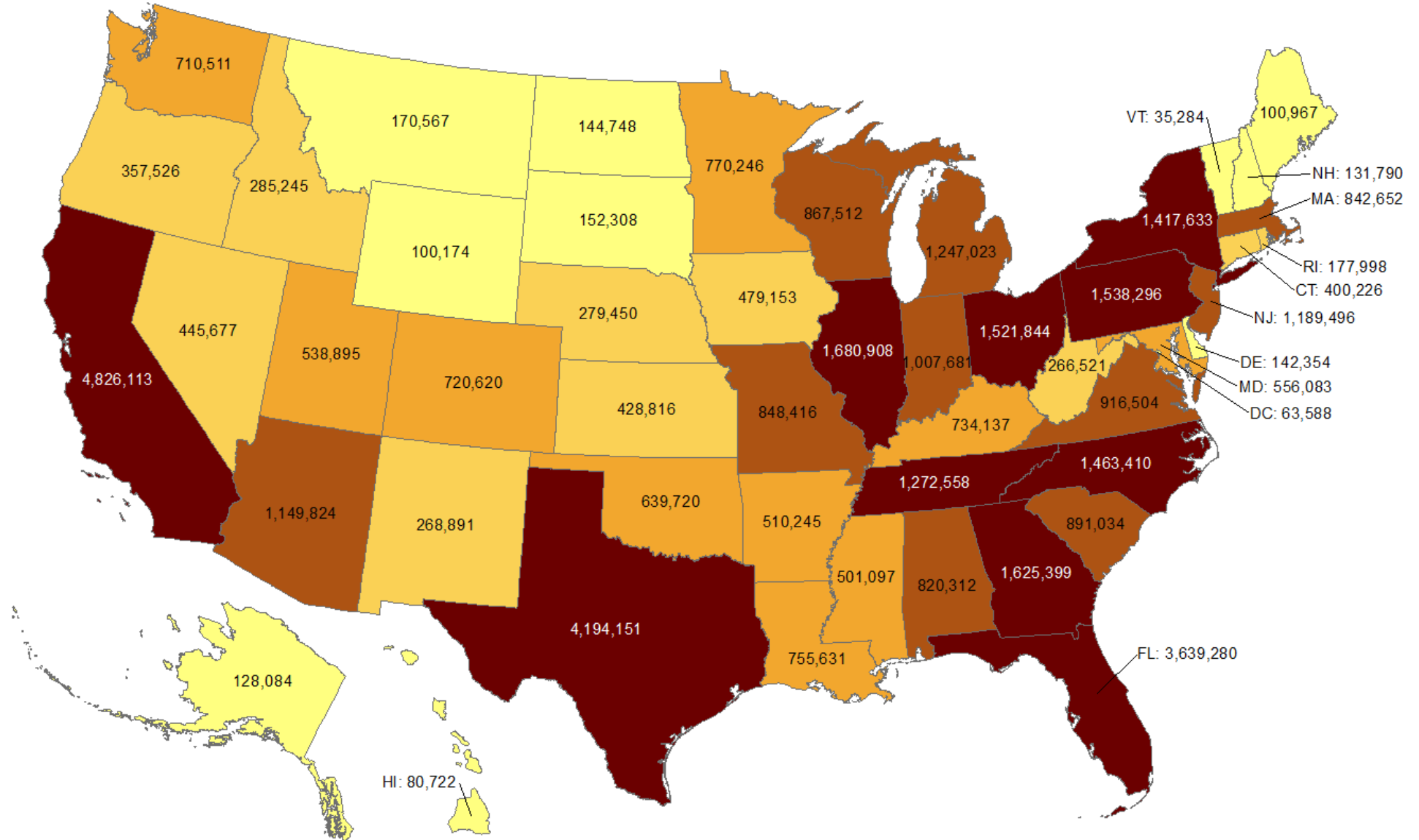
**Interpretation:** Data from syndromic surveillance shows that the number of COVID-19 related emergency department visits were within the expected range in the past 2 weeks as indicated by no red dots on the observed line.

.....

# OKLAHOMA IN COMPARISON

## Total number of reported COVID-19 cases

Oklahoma ranks **26** (out of all States and DC) in the total number of reported COVID-19 cases in the US.



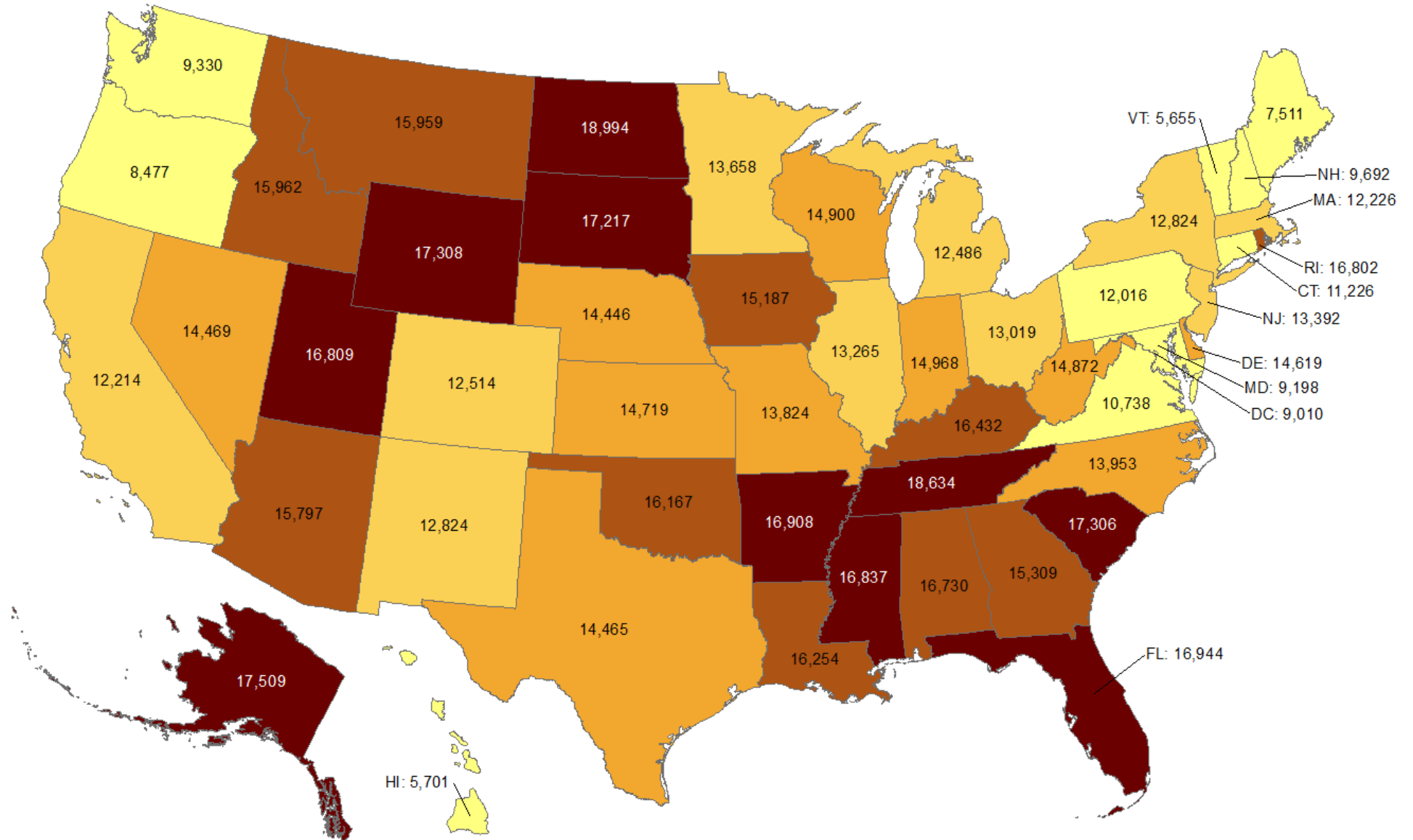
Data from CDC. Available at <https://www.cdc.gov/covid-data-tracker/index.html>

Data as of October 25, 2021

NOTE: CDC numbers include both Confirmed and Probable cases.

## Cumulative incidence of reported COVID-19 cases

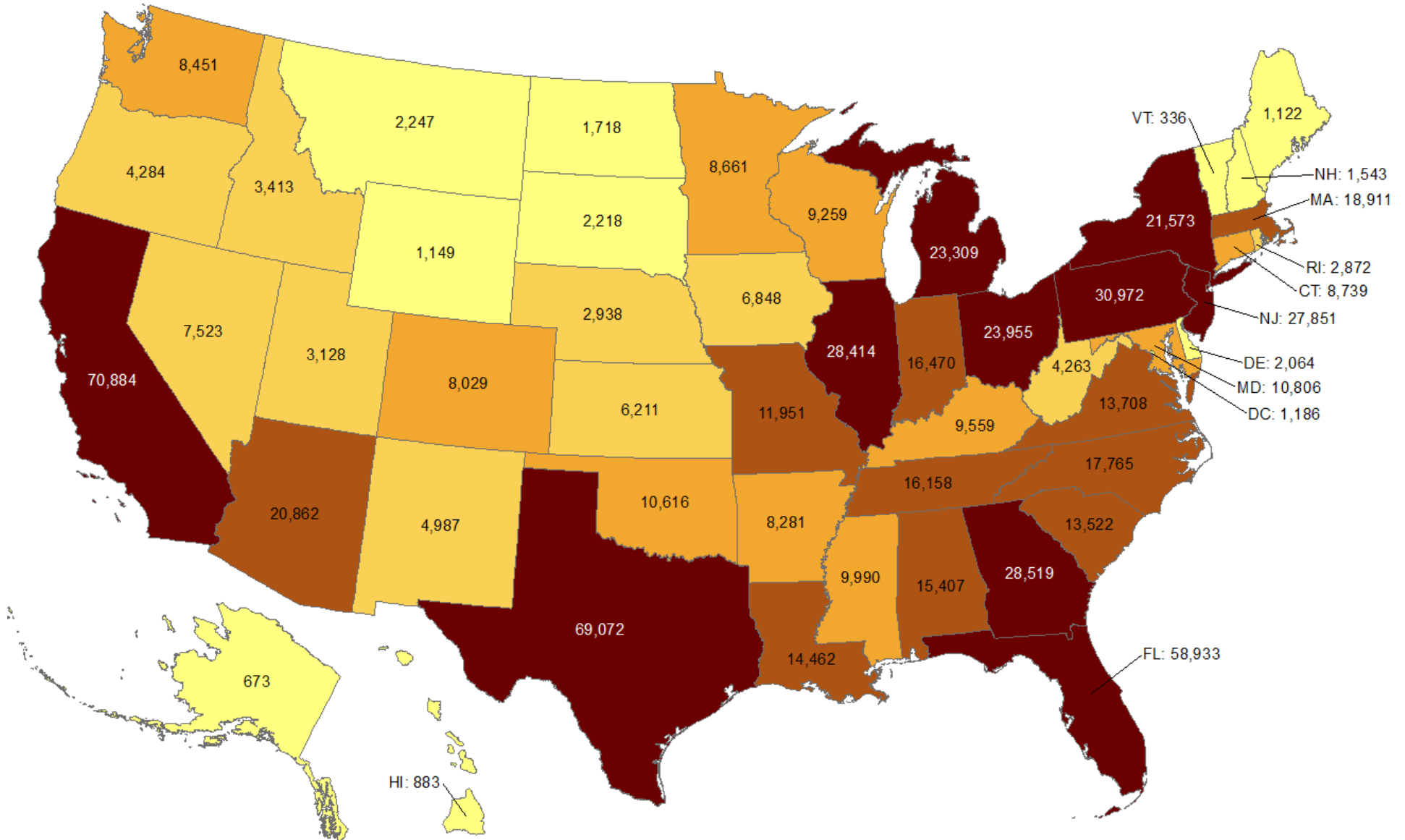
Oklahoma ranks **15** (out of all States and DC) in the cumulative incidence (per 100,000 persons) of reported COVID-19 cases in the US.



Data from CDC. Available at <https://www.cdc.gov/covid-data-tracker/index.html>  
Data as of October 25, 2021

## Total number of reported COVID-19 deaths

Oklahoma ranks **22** (out of all States and DC) in the total number of reported COVID-19 deaths in the US.



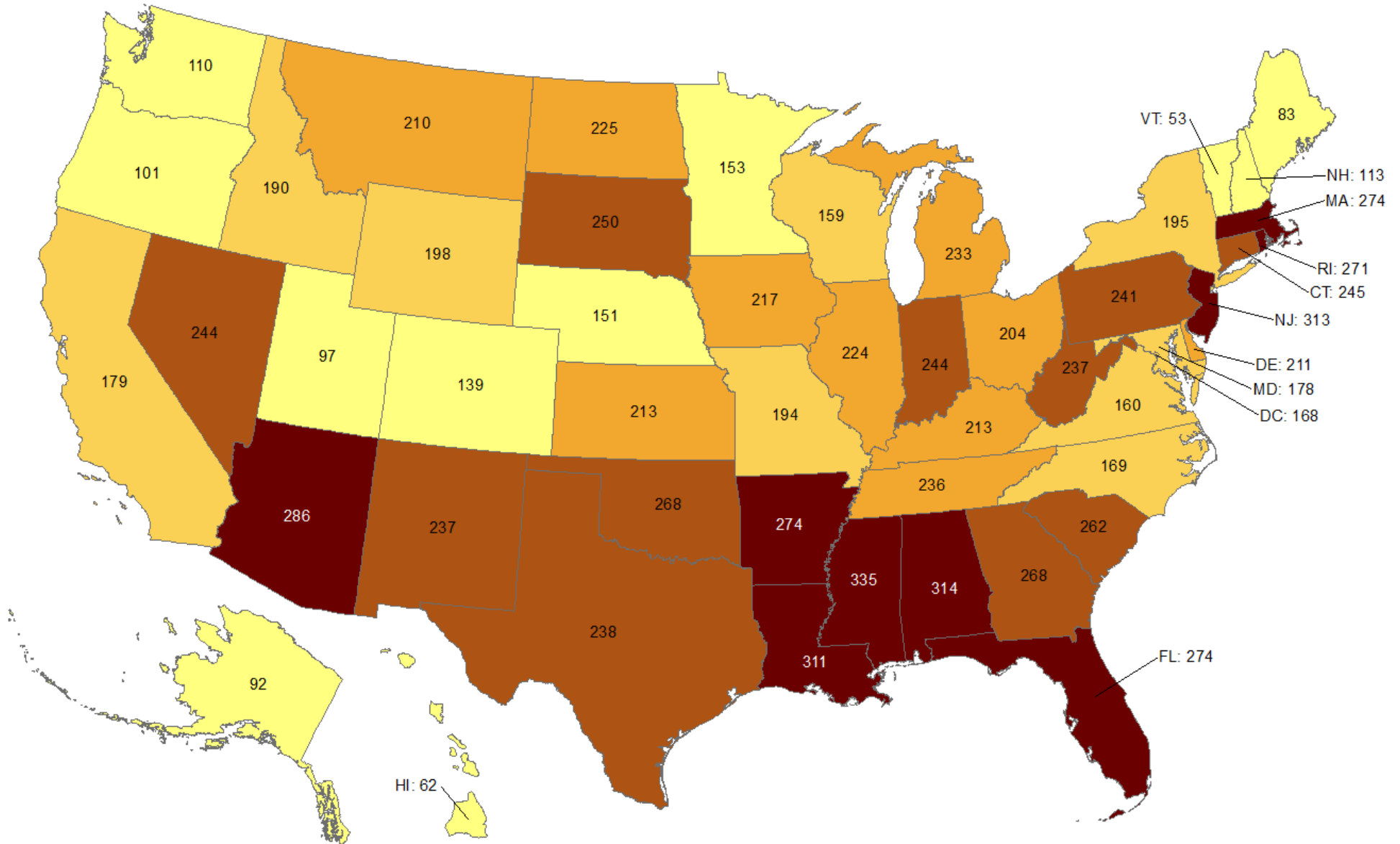
Data from CDC. Available at <https://www.cdc.gov/covid-data-tracker/index.html>

Data as of October 25, 2021

NOTE: CDC numbers include both Confirmed and Probable cases.

## Cumulative death rate of reported COVID-19 cases

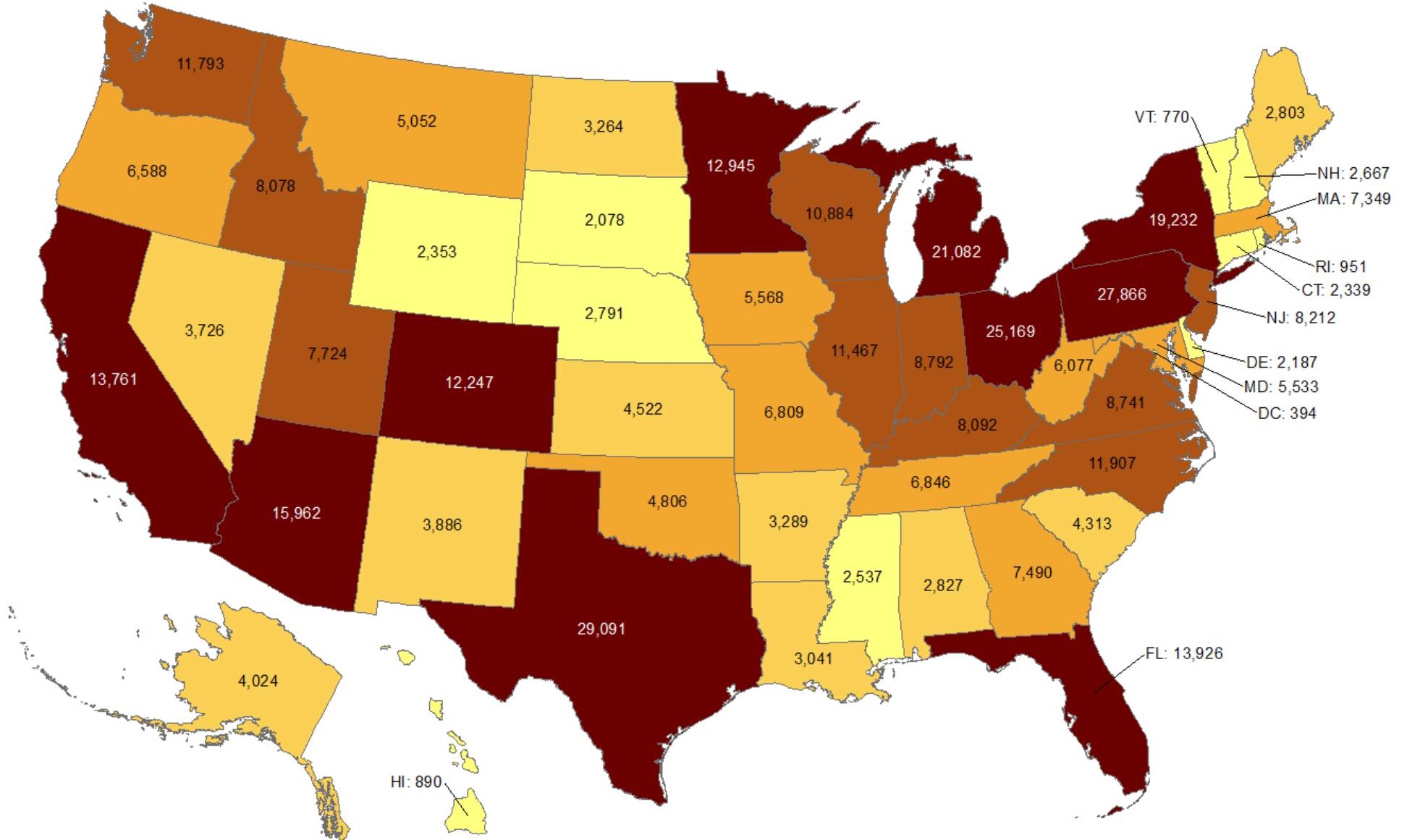
Oklahoma ranks **11** (out of all States and DC) in the cumulative death rate (per 100,000 persons) of reported COVID-19 cases in the US.



Data from CDC. Available at <https://www.cdc.gov/covid-data-tracker/index.html>  
Data as of October 25, 2021

## Total number of reported COVID-19 cases in last 7 days

Oklahoma ranks **30** (out of all States and DC) in the total number of reported COVID-19 cases in the last 7 days.



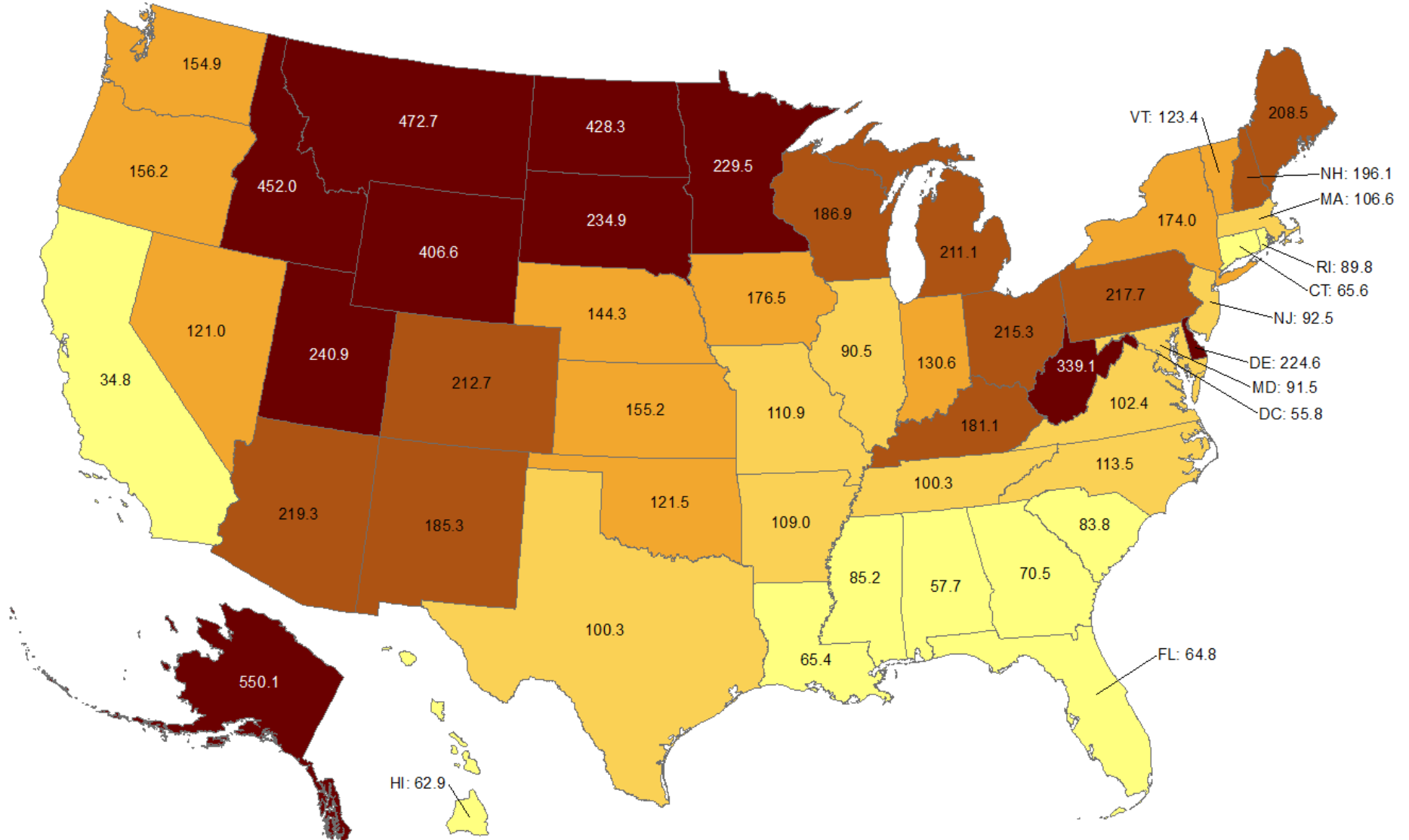
Data from CDC. Available at <https://www.cdc.gov/covid-data-tracker/index.html>

Data as of October 25, 2021

NOTE: CDC numbers include both Confirmed and Probable cases. Total new cases reported October 19, 2021 – October 25, 2021.

## Cumulative incidence of reported COVID-19 cases in last 7 days

Oklahoma ranks **29** (out of all States and DC) in the cumulative incidence (per 100,000 persons) of reported COVID-19 cases in the last 7 days.



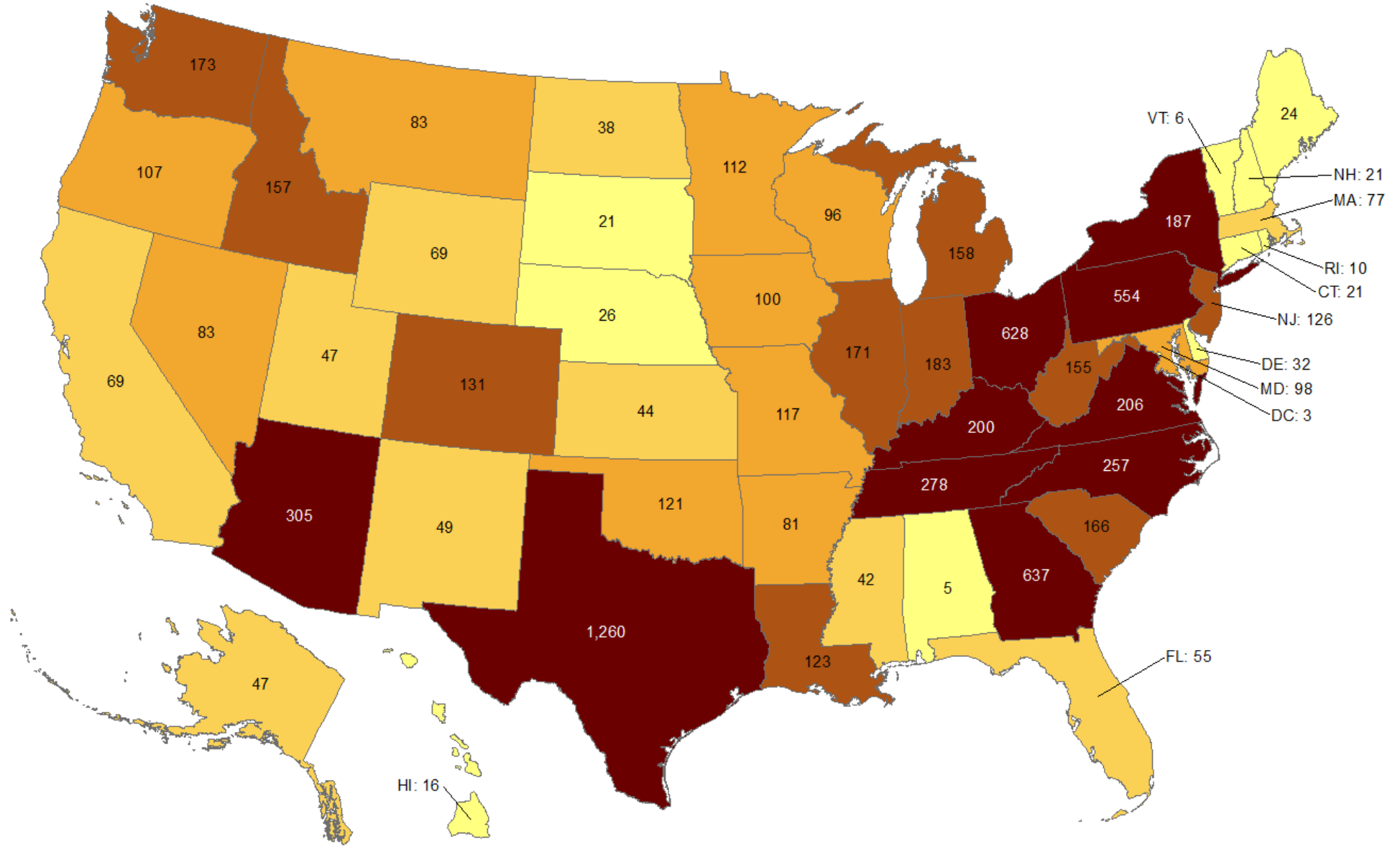
Data from CDC. Available at <https://www.cdc.gov/covid-data-tracker/index.html>

Data as of October 25, 2021

NOTE: Totals per 100,000 people in the last 7 days are calculated as the 7-day moving average of new cases or deaths (October 25, 2021 + 6 preceding days divided by 7) per 100,000 people using the U.S. Census Bureau, 2019.

## Total number of reported COVID-19 deaths in last 7 days

Oklahoma ranks **21** (out of all States and DC) in the total number of reported COVID-19 deaths in the last 7 days.



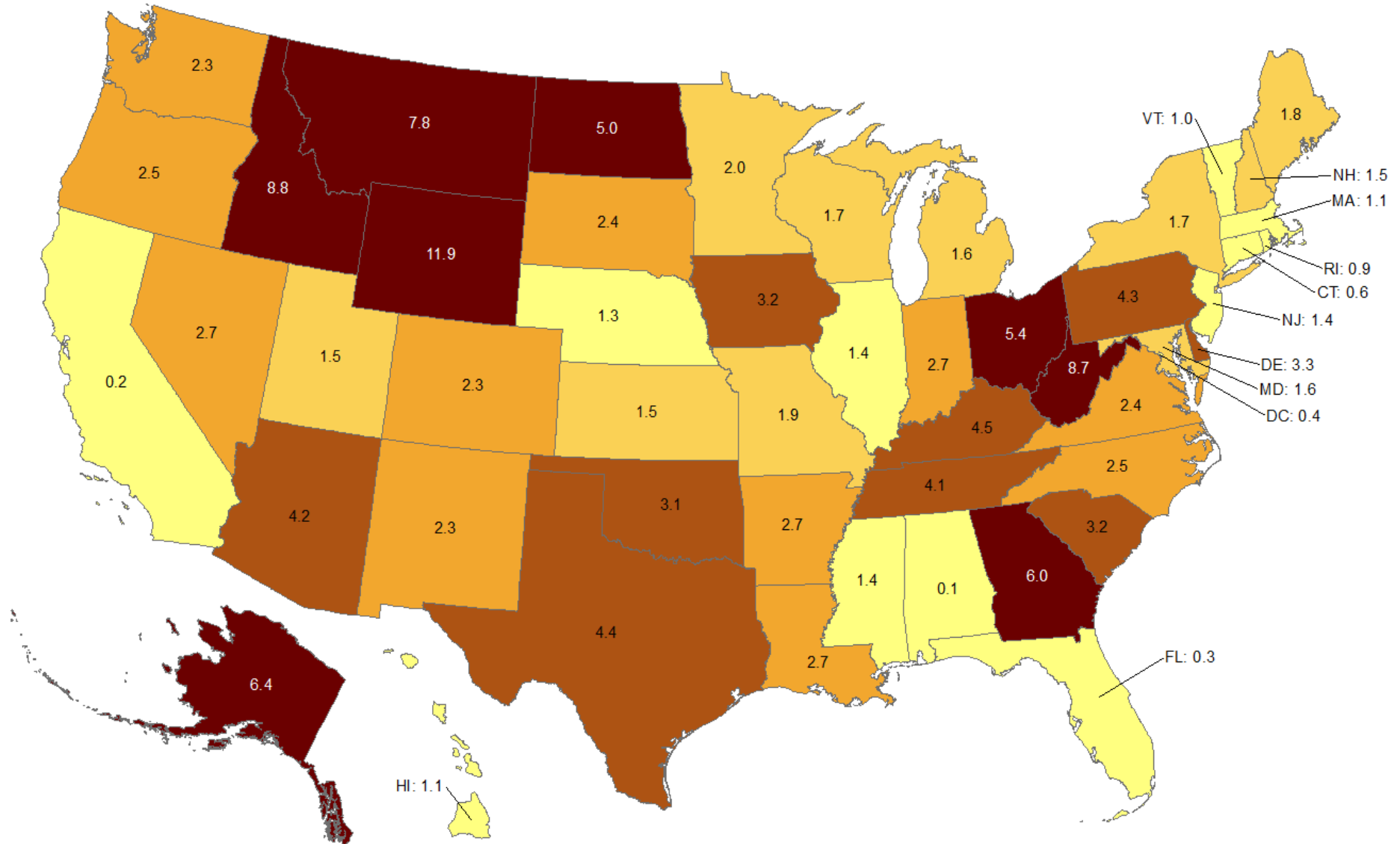
Data from CDC. Available at <https://www.cdc.gov/covid-data-tracker/index.html>  
Data as of October 25, 2021

NOTE: CDC numbers include both Confirmed and Probable cases. Total new cases reported October 19, 2021 – October 25, 2021.



## Cumulative death rate of reported COVID-19 cases in last 7 days

Oklahoma ranks **17** (out of all States and DC) in the cumulative death rate (per 100,000 persons) of reported COVID-19 cases in the last 7 days.

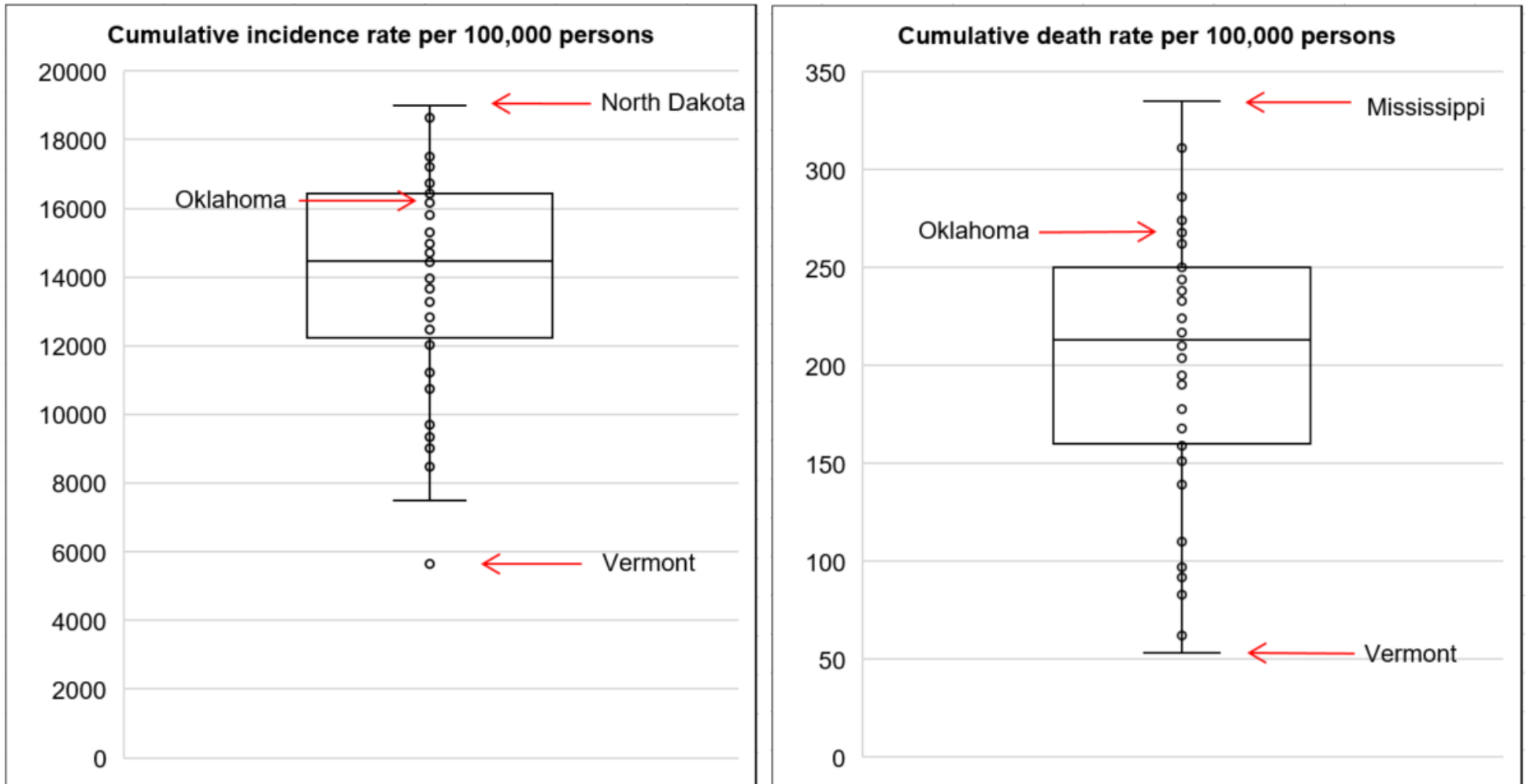


Data from CDC. Available at <https://www.cdc.gov/covid-data-tracker/index.html>

Data as of October 25, 2021

NOTE: Totals per 100,000 people in the last 7 days are calculated as the 7-day moving average of new cases or deaths (October 25, 2021 + 6 preceding days divided by 7) per 100,000 people using the U.S. Census Bureau, 2019.

## Cumulative incidence and cumulative death rate of reported COVID-19 cases



**Interpretation:** Oklahoma has cumulative incidence rate that is **below the 75<sup>th</sup> percentile** of the US and cumulative death rate that is **above the 75<sup>th</sup> percentile** of the US.

Data from CDC. Available at <https://www.cdc.gov/covid-data-tracker/index.html>  
Data as of October 25, 2021

# OKLAHOMA EXCESS DEATH ANALYSIS

- + indicates observed count above threshold
- Predicted number of deaths from all causes
- upper bound threshold for excess deaths

Weekly number of deaths (from all causes)

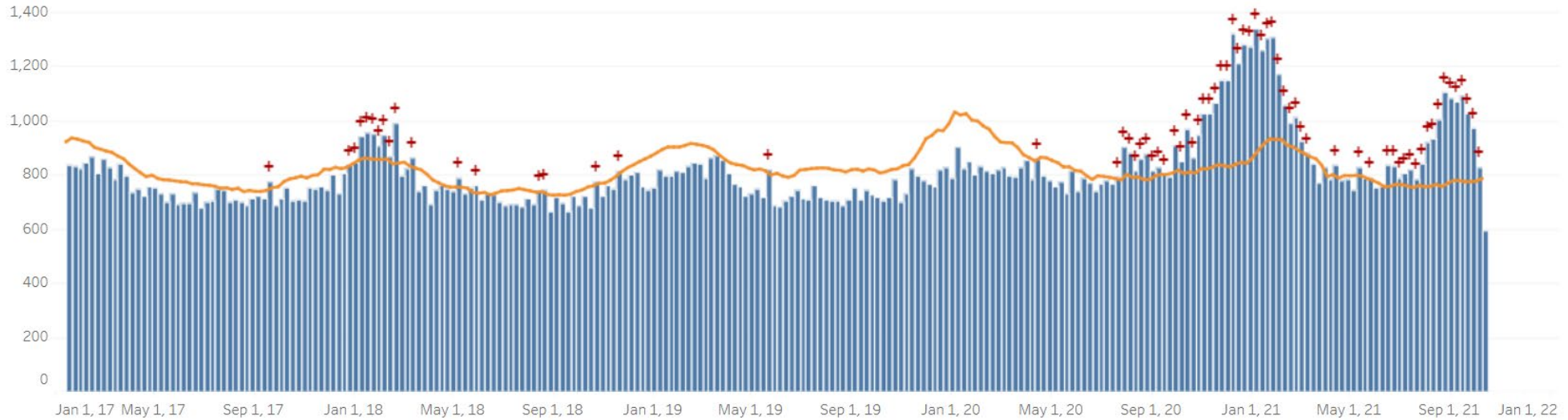


Figure notes: Contains data up to the week-ending date of October 9, 2021. Data in recent weeks are incomplete. Only 60% of the death records are submitted to NCHS within 10 days of the date of death, and completeness varies by jurisdiction.

Source: CDC, National Center for Health Statistics, [https://www.cdc.gov/nchs/nvss/vsrr/covid19/excess\\_deaths.htm#dashboard](https://www.cdc.gov/nchs/nvss/vsrr/covid19/excess_deaths.htm#dashboard), October 26, 2021 12:30PM

---

## COVID-19 LTC OR NURSING HOME ASSOCIATED CASES BY COUNTY

Status as of 7:00 AM October 26, 2021

Data are preliminary and are subject to change as cases are processed.

County of Residence	Cases	Recovered**	Deaths
Adair	43	34	8
Alfalfa	12	12	0
Atoka	104	98	6
Beaver	24	21	3
Beckham	177	160	17
Blaine	55	52	3
Bryan	287	257	27
Caddo	178	156	22
Canadian	286	261	21
Carter	204	168	35
Cherokee	165	139	26
Choctaw	122	111	10
Cleveland	808	681	124
Coal	73	65	8
Comanche	289	255	33
Cotton	55	46	9
Craig	60	55	3
Creek	264	233	26
Custer	249	201	47

<b>County of Residence</b>	<b>Cases</b>	<b>Recovered**</b>	<b>Deaths</b>
Delaware	267	221	45
Dewey	20	18	1
Ellis	8	8	0
Garfield	351	308	41
Garvin	95	88	7
Grady	234	196	34
Grant	15	13	2
Greer	68	57	7
Harmon	57	55	2
Harper	3	2	1
Haskell	71	66	5
Hughes	44	43	1
Jackson	129	108	20
Jefferson	28	25	3
Johnston	37	30	6
Kay	242	213	27
Kingfisher	126	111	15
Kiowa	52	43	9
Latimer	49	43	6
Le Flore	268	251	17
Lincoln	145	121	24
Logan	184	161	23
Love	31	28	3

<b>County of Residence</b>	<b>Cases</b>	<b>Recovered**</b>	<b>Deaths</b>
Major	90	76	12
Marshall	37	36	1
Mayes	147	138	9
McClain	172	154	16
McCurtain	105	85	20
McIntosh	140	126	12
Murray	84	78	6
Muskogee	458	391	49
Noble	158	153	4
Nowata	88	87	1
Okfuskee	44	43	1
Oklahoma	2,097	1,818	271
Okmulgee	120	116	3
Osage	125	110	14
Ottawa	278	251	24
Pawnee	118	98	20
Payne	165	152	8
Pittsburg	333	297	36
Pontotoc	81	72	8
Pottawatomie	253	226	24
Pushmataha	71	66	5
Roger Mills	3	2	1
Rogers	544	452	88

<b>County of Residence</b>	<b>Cases</b>	<b>Recovered**</b>	<b>Deaths</b>
Seminole	206	195	9
Sequoyah	109	95	14
Stephens	292	272	19
Texas	72	62	10
Tillman	34	32	2
Tulsa	1,699	1,380	303
Wagoner	197	176	19
Washington	370	321	49
Washita	48	46	2
Woods	49	41	5
Woodward	65	58	7
<i>Total</i>	<i>14,831</i>	<i>12,919</i>	<i>1,799</i>

\*\* Recovered case: is not deceased and 14 days after symptom onset/specimen collection. Please note that the definition for recovered was changed starting May 4, 2021 due to incomplete data on hospitalizations which may result in an inaccurate estimation of the active cases.

## COVID-19 LTC OR NURSING HOME ASSOCIATED CASES BY FACILITY

Status as of 7:00 AM October 26, 2021

Data are preliminary and are subject to change as cases are processed.

Facility	Cases	Recovered**	Deaths
Aberdeen Heights Assisted Living Community	16	13	3
Aberdeen Memory Care of Tulsa	7	3	4
Accel at Crystal Park	54	44	10
Ada Care Center	7	7	0
Adams PARC Post Acute Recovery Center	111	92	19
Albert Hall	7	7	0
Alcis Place	1	1	0
Ambassador Manor Nursing Center	39	27	11
Anadarko Nursing & Rehab	45	43	2
Angelwood Assisted Living and Memory Care	1	1	0
Antlers Manor	29	29	0
Arbor House Assisted Living Center - Norman	23	15	8
Arbor House Assisted Living Center of Mustang	37	30	7
Arbor House Assisted Living of Midwest City	4	3	1
Arbor House Reminisce	36	28	8
Arbor Village	12	11	1
Artesian Home	28	25	3
Ash Street Place	7	7	0
Ashbrook Village	6	6	0
Aspen Health and Rehab	15	15	0



Facility	Cases	Recovered**	Deaths
Atoka Manor	94	88	6
Autumn Leaves of Edmond	34	30	4
Autumn Leaves of Southwest Oklahoma City	3	2	1
Autumn Leaves of Tulsa	6	5	1
Avondale Cottage of Pryor	1	1	0
Avonlea Cottage of Seminole	27	26	1
Avonlea Cottage of Shawnee, LLC	10	10	0
Ayers Nursing Home	20	13	7
Ballard Nursing Center	27	22	5
Baptist Village of Hugo	74	68	5
Baptist Village of Oklahoma City	70	65	5
Baptist Village of Owasso	58	46	12
Baptist Village of Owasso AL	27	26	1
Barnsdall Nursing Home	14	13	1
Bartlesville Assisted Living	34	34	0
Bartlesville Health and Rehabilitation Community	110	88	22
Beacon Ridge	16	16	0
Beadles Nursing Home	34	29	5
Beare Manor	32	23	9
Beaver County Nursing Home	23	20	3
Beehive Homes of Broken Arrow	1	1	0
Beehive Homes of Glenpool	2	2	0
Belfair of McAlester	12	10	2

Facility	Cases	Recovered**	Deaths
Belfair of Shawnee	4	4	0
Bell Avenue Nursing Center	44	39	5
Bellarose Senior Living	8	5	3
Bellevue Health and Rehabilitation	109	88	21
Betty Ann Nursing Center	31	28	2
Beverly Place	1	1	0
Billings Fairchild Center, Inc	133	131	2
Binger Nursing and Rehabilitation	63	51	12
Blue Ridge Place	3	3	0
Blue River Healthcare, Inc	26	21	5
Boyce Manor Nursing Home	15	14	1
Bradford Village Healthcare Center: Nursing Home	24	20	4
Brentwood Extended Care & Rehab	24	22	2
Broadway Living Center	7	6	1
Broadway Manor Nursing Home	51	43	8
Broken Arrow Assisted Living	7	5	2
Broken Arrow Nursing Home, Inc.	38	32	6
Broken Bow Nursing Home	59	47	12
Brookdale Ada	5	5	0
Brookdale Bartlesville North	23	19	4
Brookdale Bartlesville South	16	14	2
Brookdale Broken Arrow	14	12	2
Brookdale Cedar Ridge	17	15	2

Facility	Cases	Recovered**	Deaths
Brookdale Chickasha	23	17	6
Brookdale Claremore	7	6	1
Brookdale Durant	27	25	2
Brookdale Edmond Danforth	20	16	4
Brookdale Edmond Santa Fe	6	6	0
Brookdale Enid	4	4	0
Brookdale Muskogee	23	17	6
Brookdale Norman	1	1	0
Brookdale Owasso	2	2	0
Brookdale Shawnee	2	1	1
Brookdale Stillwater	5	4	1
Brookdale Tulsa 71st and Sheridan	72	58	14
Brookdale Tulsa Midtown	11	8	3
Brookdale Tulsa South	8	7	1
Brookdale Village	3	2	1
Brookdale Weatherford	14	12	2
Brookridge Retirement Community	8	8	0
Brookside Nursing Center	8	8	0
Brookwood Skilled Nursing and Therapy	11	8	3
Burford Manor	17	16	1
Calera Manor, LLC	46	42	4
Callaway Nursing Home	14	14	0
Canoe Brook Ardmore	7	7	0

Facility	Cases	Recovered**	Deaths
Capitol Hill Skilled Nursing and Therapy	50	43	7
Carnegie Nursing Home, Inc.	40	34	6
Cearu Medical Resort	2	2	0
Cedar Creek Nursing Center	80	75	5
Cedar Crest Manor	29	29	0
Cedarcrest Care Center	53	44	9
Center of Family Love	18	18	0
Chandler Therapy & Living Center, LLC	60	51	9
Checotah Nursing Center	8	6	2
Cherokee County Nursing Center	66	57	9
Chickasha Nursing Center, Inc	13	9	4
Chisholm Trail Assisted Living	24	23	1
Choctaw Nation Nursing Home	37	32	5
Cimarron Nursing Center	23	19	4
Cimarron Pointe Care Center	28	25	3
Claremore Skilled Nursing and Therapy	36	31	5
Cleveland Manor Nursing & Rehab	69	59	10
Clinton Therapy & Living Center	7	7	0
Colonial Manor II	60	58	2
Colonial Manor Nursing Home	25	21	4
Colonial Park Manor, LLC	6	6	0
Colonial Terrace Care Center	28	28	0
Community Health Care of Gore	12	12	0

Facility	Cases	Recovered**	Deaths
Community Health Center	11	9	2
Copp's Residential Care, Inc	3	3	0
Cordell Christian	12	12	0
Corn Heritage Village and Rehab	27	26	1
Corn Heritage Village and Rehab of Weatherford	66	54	11
Cottonwood Creek Skilled Nursing & Therapy	36	29	6
Country Club Care	95	90	5
Country Club at Woodland Hills	10	10	0
Country Gardens Assisted Living Community	1	1	0
Country Lane	4	4	0
Country Place	1	1	0
Countryside Estates	19	17	2
Countrywood Assisted Living and Memory Care	12	8	4
Covenant Living at Inverness	30	27	3
Covenant Living of Bixby	6	6	0
Coweta Manor Nursing Home	76	64	12
Creek Place	3	3	0
Creekside Village	14	13	1
Cross Place	1	1	0
Cross Timbers Nursing and Rehabilitation	59	56	3
Crossroads Residential Care	16	14	2
Crystal Place, LLC	1	1	0
Dogwood Creek Retirement Center	8	8	0

Facility	Cases	Recovered**	Deaths
Dorset Place - Assisted Living	2	2	0
Dr W F & Mada Dunaway Manor	41	36	5
Drumright Nursing Home	58	46	2
Duncan Assisted Living	19	18	1
Duncan Community Residence	1	1	0
EastOK Cottage 1	3	3	0
Eastgate Village Retirement Center	105	96	9
Eastwood Manor	96	91	5
Eden Care - The Greens	1	1	0
Edith Kassanavoid Gordon Assisted Living Center	4	4	0
Edmond Healthcare Center	54	45	9
Edna Lee's Residential Care	4	4	0
El Reno Post-Acute Rehabilitation Center	13	10	2
Elk City Nursing Center	61	53	8
Elk Crossing	45	38	7
Elkwood Assisted Living and Memory Care	25	22	3
Elmbrook Home	21	19	2
Elmwood Manor Nursing Home	27	27	0
Emerald Care Center Claremore	125	109	16
Emerald Care Center Midwest	73	66	7
Emerald Care Center Southwest LLC	59	57	2
Emerald Care Center Tulsa	41	34	7
Emerald Square Assisted Living Community	3	3	0

Facility	Cases	Recovered**	Deaths
English Village Manor	54	42	11
Enid Senior Care	18	15	3
Epworth Villa Health Services	35	33	2
Eufaula Manor Nursing and Rehabilitation Center	85	76	7
Fairfax Manor	31	26	5
Fairmont Skilled Nursing and Therapy	79	72	7
Fairview Fellowship Home for Senior Citizens, Inc	100	89	10
Family Care Center of Fairland	2	2	0
Family Care Center of Kingston	20	19	1
Faye's Place	7	7	0
Featherstone Assisted Living Community of Ada	5	4	0
Featherstone Assisted Living Community of Durant	5	5	0
Featherstone Assisted Living Community of Moore	38	33	5
Featherstone of Miami	1	1	0
First Shamrock Care Center	5	5	0
Forest Hills Care and Rehabilitation Center	33	26	6
Forrest Manor Nursing Center	53	49	4
Fort Gibson Nursing Home	22	18	4
Fountain View Manor, Inc	11	10	1
FountainBrook Assisted Living and Memory Support	12	12	0
Four Seasons Rehabilitation & Care	44	43	1
Franciscan Villa	135	112	23
Garland Road Nursing and Rehab Center	13	11	2

Facility	Cases	Recovered**	Deaths
Gatesway Foundation, Inc	9	9	0
Glade Avenue Assisted Living	6	6	0
Glade Avenue South	6	3	3
Glenhaven Retirement Village	77	69	8
Glenwood Healthcare	27	18	9
Go Ye Village Continuum of Care Retirement Community	9	4	5
Golden Age Nursing Home of Guthrie, LLC	89	70	19
Golden Oaks Village	51	40	11
Grace Living Center - Buffalo	1	0	1
Grace Living Center - Clinton	19	16	3
Grace Living Center - Jenks	41	32	9
Grace Living Center - Norman	92	75	17
Grace Living Center - Stillwater	16	15	1
Grace Living Center - Tahlequah East Shawnee	6	4	2
Gracewood Health and Rehab	45	37	8
Gran Grans Place	2	2	0
Grand Lake Villa	38	29	9
Grandwood Assisted Living, LC	41	35	6
Green Country Care Center	103	91	12
Green Country Village Assisted Living Center	6	6	0
Green Tree at Sand Springs	29	23	6
Greenbrier Nursing Home	50	47	3
Greenbrier Village Residential Living, LLC	15	15	0



Facility	Cases	Recovered**	Deaths
Gregston Nursing Home, Inc.	13	12	1
Grove Nursing Center	98	79	19
Harborchase of Oklahoma City	1	1	0
Harrah Nursing Center	48	42	6
Haskell Care Center	28	10	0
Haskell County Nursing Center, Inc	67	62	5
Hays House	38	38	0
Heartsworth Center for Nursing and Rehabilitation	53	46	3
Heartsworth House Assisted Living	2	1	0
Heatheridge Residential Care Center	22	16	6
Heavener Nursing & Rehab	56	48	8
Hennessey Nursing & Rehab	81	74	7
Henryetta Community Skilled Healthcare & Rehab	10	9	1
Hensley Nursing & Rehab	40	35	5
Heritage Assisted Living	12	12	0
Heritage Community	32	27	5
Heritage Grove at Tahlequah	3	3	0
Heritage Hills Living & Rehabilitation Center	70	67	3
Heritage Manor	30	29	1
Heritage Park	7	4	3
Heritage Point of Oklahoma City	2	2	0
Heritage Point of Tulsa	7	7	0
Heritage Skilled Nursing & Therapy	10	9	1

Facility	Cases	Recovered**	Deaths
Heritage Villa Nursing Center	22	18	4
Heritage Village Nursing Home	15	15	0
Heritage at Brandon Place Health and Rehabilitation	57	51	6
High Cedar Residential Care	1	1	0
Higher Call Nursing Center	38	31	7
Highland Park Health Care	10	9	1
Hill Nursing Home, Inc	16	15	1
Hillcrest Manor Nursing Center	9	4	5
Hillcrest Nursing Center	22	20	1
Hobart Nursing & Rehab	26	23	3
Holiday Heights Nursing Home	13	11	2
Home of Hope Elmwood House	1	1	0
Home of Hope Scrapper House	1	1	0
Homestead Residential Care	2	2	0
Homestead of Bethany, LLC	9	8	1
Homestead of Hugo	45	40	5
Homestead of Owasso	16	16	0
Ignite Medical Resort Norman, LLC	53	42	9
Ignite Medical Resort OKC	125	111	14
Iris Memory Care of Edmond	10	7	3
Jacquelyn House	2	2	0
Jan Frances Care Center	14	12	2
John H. Johnson Care Suites	10	10	0

Facility	Cases	Recovered**	Deaths
Kenwood Manor	23	22	1
Kingwood Skilled Nursing and Therapy	29	26	3
Lake Country Nursing Center	30	27	3
Lake Drive Care and Rehabilitation Center	45	45	0
Lakeland Manor, Inc	14	11	3
Lakeview Nursing & Rehab	26	24	2
Landmark of Midwest City Rehabilitation and Nursing	44	38	6
Lane Nursing & Ventilator Care	3	3	0
Latimer Nursing Home	26	22	4
Legacy Village of Stillwater	18	17	0
Legend at 71st St	16	13	3
Legend at Council Road	7	7	0
Legend at Mingo Road	4	4	0
Legend at Rivendell	61	48	13
Leisure Village Health Care Center	51	39	12
Lexington Nursing Home	17	15	2
Lexington Place	1	1	0
Liberty Place	2	2	0
Lindsay Nursing & Rehab	34	31	3
Linwood Village Nursing & Retirement Apts	16	16	0
Lyndale at Edmond	2	2	0
Magnolia Creek Skilled Nursing and Therapy	44	35	9
Mangum Skilled Nursing and Therapy	70	60	6

Facility	Cases	Recovered**	Deaths
Maple Lawn Nursing and Rehabilitation	20	16	4
Maplewood Care Center	37	32	5
Marlow Nursing & Rehab	16	15	1
Mattox Hall	1	0	0
McAlester Nursing & Rehab	52	48	4
McCall's Chapel School, Inc #11	2	2	0
McCall's Chapel School, Inc #13	1	1	0
McCall's Chapel School, Inc #4	1	1	0
McCall's Chapel School, Inc #7	1	1	0
McCall's Chapel School, Inc #8	1	1	0
McCall's Chapel School, Inc #9	1	1	0
McLoud Nursing Center	8	8	0
McMahon-Tomlinson Nursing Center	47	43	4
Meadow Brook Residential Care	29	29	0
Meadowbrook Nursing Center	42	39	3
Meadowlake Estates	85	68	17
Meadowlakes Retirement Village	4	3	1
Medical Park West Rehabilitation	10	8	2
Medicallodges Dewey	6	6	0
Meeker Nursing Center	51	36	15
Memorial Heights Nursing Center	27	20	7
Memorial Nursing Center	28	27	1
Memory Care Center at Emerald	13	12	1

Facility	Cases	Recovered**	Deaths
Meridian Nursing Home	17	16	1
Miami Nursing Center, LLC	88	80	7
Mid-Del Skilled Nursing and Therapy	28	26	2
Miller's Residential Care, LLC	2	2	0
Mitchell Manor	86	81	5
Monroe Manor	17	12	5
Montereau, Inc Assisted Living	27	22	5
Montereau, Inc LTC/SNF	31	25	1
Montevista Rehabilitation and Skilled Care	23	19	4
Mooreland Heritage Manor	26	24	2
Muscogee (Creek) Nation Skilled Nursing Facility	1	1	0
Muskogee Nursing Center	20	19	1
New Hope Retirement & Care Center	4	4	0
Noble Health Care Center	81	76	5
North County Assisted Living	6	5	1
North County Center for Nursing and Rehabilitation	36	32	4
North Winds Living Center	2	2	0
Northhaven Place	10	9	1
Northwest Nursing Center	3	3	0
Nowata Nursing Center	7	6	1
Oak Hills Living Center	20	19	1
Oakridge Home	14	12	2
Oakridge Nursing Center	67	56	7

Facility	Cases	Recovered**	Deaths
Okemah Care Center	27	25	2
Oklahoma Methodist Manor AL	5	4	1
Oklahoma Methodist Manor NH	37	34	3
Oklahoma Veterans Center, Ardmore Division	36	23	13
Oklahoma Veterans Center, Claremore Division	322	266	53
Oklahoma Veterans Center, Clinton Division	160	127	33
Oklahoma Veterans Center, Lawton-Ft. Sill Division	69	59	9
Oklahoma Veterans Center, Norman Division	100	72	27
Oklahoma Veterans Center, Sulfur Division	55	53	2
Oklahoma Veterans Center, Talihina Division	34	30	4
Okmulgee Terrace	5	4	0
Osage Nursing Home, LLC	34	33	1
Oxford Glen at Owasso	25	20	5
Parkhill North Nursing Home	25	23	2
Parkland Manor	1	1	0
Parkview Pointe Senior Living	1	1	0
Pauls Valley Care Center	3	3	0
Perry Green Valley Nursing Center, LLC	30	27	2
Pleasant Valley Health Care Center	81	77	4
Pocola Health & Rehab	64	60	4
Ponca City Nursing and Rehabilitation	69	61	8
Prairie House Assisted Living & Memory Care	8	5	3
Prairie Pointe at Stroud	11	11	0

Facility	Cases	Recovered**	Deaths
Primrose Retirement Community of Shawnee	14	12	0
Primrose Retirement Community of Stillwater	3	3	0
Providence House	9	9	0
Providence Place	2	2	0
Purcell Care Center, LLC	43	36	7
Quail Creek Senior Living	23	19	4
Quail Ridge Living Center, Inc (Colcord, OK)	38	35	2
Quail Ridge Senior Living	27	21	6
Quinton Manor Nursing Home	10	10	0
RT 66 Residential Care Home, LLC	7	7	0
Rainbow Health Care Community: Nursing Home	84	75	9
Rainbow Terrace Care Center	1	1	0
Rambling Oaks (Norman)	29	26	3
Rambling Oaks Courtyard Assisted Living & Memory Care	9	9	0
Ranch Terrace Nursing Home	23	19	3
Ranchwood Nursing Center	49	44	4
Reliant Living Center	22	21	1
Reliant Living Center of Del City	3	3	0
River Oaks Skilled Nursing	52	43	8
Riverside Health Services LLC	18	18	0
Robert M Greer Center	1	1	0
Rolling Hills Care Center	30	19	11
Ruth Wilson Hurley Manor	75	67	8

Facility	Cases	Recovered**	Deaths
Saint Simeons Episcopal Home	42	33	3
Sand Plum Assisted Living Community	13	12	1
Sand Springs Nursing and Rehabilitation	20	17	0
Seiling Nursing Center	7	5	2
Seminole Care and Rehabilitation Center	113	105	6
Seminole Pioneer Nursing Home	22	22	0
Seminole Place	2	2	0
Senior Star The Brook	3	3	0
Senior Suites Healthcare	17	14	3
Senior Village	12	10	2
Sequoyah East Nursing Center, LLC	17	16	1
Sequoyah Manor	55	44	11
Sequoyah Pointe Living Center	27	23	4
Shady Rest Care Center	34	31	3
Shanoan Springs Nursing and Rehabilitation	62	55	7
Share Medical Center	13	10	0
Shattuck Nursing Center	7	7	0
Shawn Manor Nursing Home	3	2	0
Shawnee Care Center	39	32	7
Shawnee Colonial Estates Nursing Home	74	64	10
Sherwood Manor Nursing Home	19	14	5
Shiloh Manor	14	14	0
Sienna Extended Care & Rehab	40	37	3



Facility	Cases	Recovered**	Deaths
Skiatook Nursing Home	47	41	6
Skyview Nursing Center	9	8	1
Sommerset Neighborhood	23	22	1
South Park East	46	42	4
South Pointe Rehabilitation and Care Center	208	175	28
Southbrook Healthcare, Inc.	37	30	6
Southern Hills Rehabilitation Center	89	77	12
Southern Oaks Care Center	55	44	11
Southern Plaza Assisted Living and Memory Care	30	28	2
Southern Pointe Living Center	49	41	8
Southridge Place	1	1	0
Spanish Cove Housing Authority	28	27	0
Spiro Nursing Home, Inc.	56	55	1
St. Ann's Skilled Nursing and Therapy	95	64	28
St. Katharine Drexel Retirement Center	10	10	0
Stilwell Nursing Home, LLC	34	26	8
Stonecreek Assisted Living and Memory Care	6	4	2
Storey Oaks	48	43	5
Stroud Health Care Center South	8	8	0
Summers Healthcare, LLC	30	29	1
Sunset Estates of Purcell	87	81	6
Tamarack Retirement Center	18	16	2
Teal Creek Assisted Living & Memory Care	13	13	0

Facility	Cases	Recovered**	Deaths
Tealridge Assisted Living	14	14	0
Temple Manor Nursing Home	47	40	7
Ten Oaks Place	12	8	4
The Arbors Assisted Living Center	11	10	1
The Brentwood Senior Living	22	20	2
The Chateau	10	8	2
The Commons	133	119	14
The Commons - AL	3	3	0
The Cottage Extended Care	32	23	8
The Courtyards at Claremore Assisted Living	7	5	2
The Courtyards at Magnolia Creek	9	9	0
The Fountains at Canterbury Health Center	37	31	6
The Gardens	20	16	4
The Gardens at Rivermont	3	3	0
The Golden Rule Home	58	55	3
The Grand at Bethany Skilled Nursing and Therapy	24	24	0
The Health Center at Concordia	36	33	3
The Health Center at Concordia ALC	8	8	0
The Heaven House Elmwood	1	1	0
The Highlands at Owasso	39	29	10
The King's Daughters & Sons Nursing Home	69	64	5
The Lakes	12	11	1
The Legend at Jefferson's Garden	2	2	0

Facility	Cases	Recovered**	Deaths
The Linden at Stonehaven Square	29	20	9
The Living Centre	36	29	7
The Lodge at Brookline	16	14	2
The Mansion at Waterford	21	17	4
The Neighborhoods at Baptist Village of Ada	8	7	0
The Neighborhoods at Baptist Village of Elk City	15	14	0
The Neighborhoods at Baptist Village of Okmulgee	1	1	0
The Nova Center	1	1	0
The Oaks Healthcare Center	32	30	2
The Parke Assisted Living	17	15	2
The Regency Skilled Nursing and Therapy	29	26	3
The Renaissance of Stillwater - Assisted Living	5	5	0
The Springs Skilled Nursing and Therapy	51	42	9
The Timbers Skilled Nursing and Therapy	72	60	12
The Veraden	12	12	0
The Villages at Southern Hills	86	66	20
The Willows	1	1	0
The Wilshire Skilled Nursing and Therapy	5	5	0
The Wolfe Living Center at Summit Ridge	18	17	1
Tidwell Living Center	1	1	0
Timberwood Assisted Living & Memory Care	1	1	0
Touchmark at Coffee Creek	26	25	1
Town Village Assisted Living	2	2	0

Facility	Cases	Recovered**	Deaths
Town of Vici Nursing Home	19	18	1
Tulsa Assisted Living and Memory Care	4	3	1
Tulsa Nursing Center	38	35	3
Tuscany Village Nursing Center	26	24	2
Tuttle Care Center	37	31	2
University Park Skilled Nursing & Therapy	66	60	6
University Village	81	66	15
Van Buren House Assisted Living	2	2	0
Via Christi Village Ponca City	107	99	6
Vian Nursing & Rehab, LLC	22	20	2
Victorian Estates	8	7	1
Village Health Care Center	15	13	2
Village Lodge of Ardmore Village	11	10	1
Village at Oakwood	8	7	1
Village on the Park	47	39	8
Villagio of Oklahoma City	1	0	1
Wagoner Health & Rehab	44	41	3
Wagoner Health & Rehab Res Care	12	11	0
Walnut Grove Living Center	70	57	13
Warr Acres Nursing Center	22	21	1
Washita Valley Living Center	36	33	3
Weatherwood Assisted Living and Memory Care	10	10	0
Wellington Parke, LLC	5	5	0

Facility	Cases	Recovered**	Deaths
West Wind Assisted Living	26	24	2
Westbrook Gardens	6	5	1
Westbrook Healthcare, Inc	19	17	2
Westhaven Nursing Home	81	78	3
Westview Cottages	36	36	0
Wewoka Healthcare Center	13	13	0
Whispering Oaks	3	3	0
Wildewood Skilled Nursing and Therapy	26	25	1
Wildwood Care Center, Inc	37	34	3
Wilkins Health and Rehabilitation Community	35	34	0
Willow Creek Health Care	20	17	3
Willow Haven Nursing Home	33	27	6
Willow Park Health Care Center	73	63	10
Willow Place	5	5	0
Willowood at Mustang Assisted Living and Memory Care	7	7	0
Wilson Nursing Center	48	40	8
Windridge Nursing and Rehabilitation Center	32	28	4
Windsor Hills Nursing Center	8	7	1
Woodland Park Home, Inc	6	5	1
Woodlands Skilled Nursing & Therapy	3	3	0
Woodview Home, Inc.	21	21	0
Woodward Skilled Nursing and Therapy	33	29	4
York Manor Nursing Home	43	41	2

Facility	Cases	Recovered**	Deaths
Zarrow Pointe	20	17	3
<i>Total</i>	<i>14,831</i>	<i>12,919</i>	<i>1,799</i>

\*\* Recovered case: is not deceased and 14 days after symptom onset/specimen collection. Please note that the definition for recovered was changed starting May 4, 2021 due to incomplete data on hospitalizations which may result in an inaccurate estimation of the active cases.

## ACKNOWLEDGEMENT

The weekly report is made by possible through the efforts of county and city public health and healthcare professionals.

## NOTES

Every effort is made to ensure accuracy and the data is up-to-date for the time period reported.

## DISCLAIMER

The purpose of publishing aggregated statistical COVID-19 data through the OSDH Dashboard, the Executive Order Report, and the Weekly Epidemiology and Surveillance Report is to support the needs of the general public in receiving important and necessary information regarding the state of the health and safety of the citizens of Oklahoma. These resources may be used only for statistical purposes and may not be used in any way that would determine the identity of any reported cases.