

OKLAHOMA COVID-19 WEEKLY REPORT

Weekly Epidemiology and Surveillance Report
December 26, 2021 - January 1, 2022



PURPOSE To provide up-to-date weekly epidemiological data on COVID-19 in Oklahoma.

SNAPSHOT

| | Dec 26 – Jan 1 | Change ¹ | Total |
|------------------------------|----------------|---------------------|---------|
| Cases | 19,280 | 130.8% | 716,870 |
| Recovered cases ² | 8,531 | 17.2% | 681,503 |
| Deaths | 95 | n/a | 11,647 |

1. Change from the week of December 19-25, 2021.

2. Not deceased and 14 days after symptom onset/specimen collection. Please note that the definition for recovered was changed starting May 4, 2021 due to incomplete data on hospitalization which may result in an inaccurate estimation of the active cases.

What's New:

See Pages 2-6 for special reports on breakthrough and reinfection cases, and the risk for hospitalizations and fatality among vaccinated and non-vaccinated individuals.

This complex analysis is based on a lengthy data linkage process between the Oklahoma State Immunization Information System (OSIIS) and the Acute Disease Service case data.

KEY POINTS

- **19,280** cases were reported in the last week, 130.8% increase from the week before (Dec 19-25).
- **95** deaths were reported in the past week.
- The cumulative crude case-fatality risk is **1.6%**
- **38,453 (5.4%)** cases have been hospitalized. The cumulative hospitalization rate is **971.8 per 100,000 persons**.
- ***48,406** specimens have been reported over the last 7 days according to the CDC COVID data tracker. * Counts reflect the tests reported since Dec 29.
- **4,376,595** vaccine doses have been administered in total

SPECIAL REPORTS: ANALYSIS OF REINFECTIONS AND BREAKTHROUGH INFECTIONS ANALYSIS AND RISK FOR HOSPITALIZATIONS AND FATALITY AMONG VACCINATED AND NON-VACCINATED INDIVIDUALS

Two separate analyses were undertaken to examine effects of COVID-19 vaccination in Oklahoma. One analysis compared risk of being diagnosed with COVID-19 either following vaccination (breakthrough) or after having been previously infected (reinfection). No other outcomes (severe disease, hospitalization, or death) were considered in this analysis. Records were examined for the time period of January 1st 2021 through September 30th, 2021. This coincided with the earliest that the first vaccinated Oklahomans attained the status of “fully vaccinated” (14 days or more after completing the vaccine series) and ended prior to initiation of large-scale booster efforts. Therefore, results should not be taken to be indicative of protection levels following boosting.

To be “eligible” for breakthrough infection, a person must have been at least 14 days past having appropriately completed the vaccine series (received two doses of Pfizer or Moderna product, with a minimum interval between doses corresponding to label claims; or a single dose of the Janssen vaccine). Moreover, to be eligible for a breakthrough, the person must have not been previously diagnosed as infected with COVID-19. To be “eligible” for reinfection, a person must have been >90 days past initial diagnosis with COVID-19, and not vaccinated. Persons who had a documented infection and then were subsequently vaccinated were excluded from both breakthrough and reinfection classification (because any subsequent infection would be both a breakthrough and a reinfection). Because of this, as vaccine uptake increased the number of people eligible for reinfection decreased, as many people previously infected sought vaccination. The number of eligible person days for each month reflects the sum of the number of people eligible for an event on each day of the month.

The second analysis compared vaccinated (with no known history of infection) to non-vaccinated (with no known history of infection). Outcomes for this analysis included infection (breakthrough infection for vaccinated individuals; initial infection in non-vaccinated); hospitalization; and death. The included time period for this assessment was October 1st 2021 through November 30th, 2021. To be “eligible” for reinfection, a person must have been at least 14 days past having appropriately completed the vaccine series (received two doses of Pfizer or Moderna product, with a minimum interval between doses corresponding to label claims; or a single dose of the Janssen vaccine). No distinction was made between individuals who were fully vaccinated but not boosted versus those who had received an appropriate booster vaccination. Because of the documented differences in outcomes in different age groups, rates were stratified by age.

Results of the first analysis are presented below, stratified by month, and summarized for the entire period (Table 1). The rate of reinfection far outpaced breakthrough infections early in the examined period, although the rates converged toward the end of the examined period. For the entire examination period, vaccinated individuals were 20% less likely than previously infected to have a documented case of COVID-19 (alternatively, people who were previously infected were 1.3 times as likely to become infected as were

those who have been vaccinated). The relative equalizing of risk later in the period is consistent with guidance from the CDC and OSDH that booster vaccination may be necessary to achieve maximum protection from COVID-19.

Table 1. Breakthrough Infections and Reinfection Incidence Density by Month, January 2021—September 2021

| Month | Vaccination Breakthrough Cases | Eligible Person Days (sum of eligible vaccinated individuals for each day of the month) | Rate (per 100,000 person days) | Reinfection Cases | Eligible Person Days (sum of eligible previously infected individuals for each day of the month) | Rate (per 100,000 person days) |
|----------------|--------------------------------|---|--------------------------------|-------------------|--|--------------------------------|
| January 2021 | 7 | 354,373 | 2.0 | 148 | 2,029,623 | 7.3 |
| February 2021 | 55 | 4,101,524 | 1.3 | 167 | 4,707,291 | 3.5 |
| March 2021 | 178 | 14,406,929 | 1.2 | 239 | 7,573,634 | 3.2 |
| April 2021 | 217 | 26,072,035 | 0.8 | 210 | 9,393,304 | 2.2 |
| May 2021 | 268 | 40,342,326 | 0.7 | 182 | 10,130,239 | 1.8 |
| June 2021 | 487 | 44,269,166 | 1.1 | 129 | 9,693,683 | 1.3 |
| July 2021 | 3,959 | 48,948,496 | 8.1 | 671 | 9,939,564 | 6.8 |
| August 2021 | 10,188 | 51,362,268 | 19.8 | 1,755 | 9,891,066 | 17.7 |
| September 2021 | 7,746 | 53,867,395 | 14.4 | 1,213 | 9,284,981 | 13.1 |

Cumulative incidence: 23,105 vaccine breakthroughs divided by 1,872,601 vaccinated people: 1,233.8 cases per 100,000

Cumulative incidence: 4,714 reinfections among 305,002 people eligible for reinfection: 1,545.6 cases per 100,000.

Results of the second analysis (for hospitalizations and deaths) are presented below. In the 60 day period examined, individuals never having been vaccinated were:

- 2.9 times more likely than vaccinated (never previously infected) individuals to be diagnosed with COVID-19. This corresponds to vaccinated individuals being 65% less likely to be diagnosed with COVID-19. The Relative Risk (RR; non-vaccinated compared to vaccinated) ranged from 2.4 times more likely in the 85+ category, to 5.5 times more likely in the 5-17 age category.
- 3.1 times more likely than vaccinated (never previously infected) individuals to be hospitalized for COVID-19. This corresponds to vaccinated individuals being 68% less likely to require hospitalization. The RR (non-vaccinated compared to vaccinated) ranged from 3.6 times more likely for the 85+ category, to 10 times more likely in the 45 to 54 age category.
- 3.2 times more likely than vaccinated (never previously infected) individuals to die from COVID-19. This correlates to vaccinated individuals being 69% less likely to die. The RR (non-vaccinated compared to vaccinated) ranged from 3.8 in the 85+ category to 18 times more likely in the 55-64 age group.

While these summary results are indicative of meaningful protection afforded by vaccination, more dramatic evidence is seen in the age-stratified categories (see Tables 2-3). The vaccine reduces risk of hospitalization roughly 90% for all age groups less than 65 years, and 70% or more in individuals 65 or older. Risk of death is reduced more than 90% for those less than 65 years, and more than 70% in individuals 65 or older.

Table 2. Hospitalizations Rates by Vaccination Risk and Reduction in Risk and Relative Risk of Hospitalizations Compared to Vaccination Population and Age Group, October 2021—November 2021

| Age Group | Vaccinated Individuals | | Non-Vaccinated Individuals | |
|-----------|------------------------------------|--|------------------------------------|--|
| | Hospitalization Rate (per 100,000) | % Reduction in Risk (Compared to Non-Vaccinated) | Hospitalization Rate (per 100,000) | Relative Risk of Hospitalizations (Compared to Vaccinated) |
| <5 | N/A* | N/A* | 4.5 | N/A* |
| 5-17 | 0.0** | 100% | 3.2 | N/A** |
| 18-24 | 0.8 | 89% | 7.4 | 9.3 times higher risk of hospitalization |
| 25-34 | 2.1 | 88% | 18.1 | 8.7 times higher risk of hospitalization |
| 35-44 | 2.8 | 89% | 24.0 | 8.7 times higher risk of hospitalization |
| 45-54 | 5.5 | 90% | 54.7 | 10.0 times higher risk of hospitalization |
| 55-64 | 9.1 | 89% | 84.4 | 9.3 times higher risk of hospitalization |
| 65-84 | 35.5 | 87% | 273.1 | 7.7 times higher risk of hospitalization |
| 85+ | 55.3 | 72% | 196.9 | 3.6 times higher risk of hospitalization |

*Children under the age of 5 are not eligible for vaccination. Reduction in risk and Relative risk cannot be calculated. **No hospitalizations identified during this time period. Relative risk cannot be calculated.

Table 3. Fatality Rate by Vaccination Status and Reduction in Risk and Relative Risk of Death Compared to Vaccinated Population by Age Group, October 2021-November 2021

| Age Group | Vaccinated Individuals | | Non-Vaccinated Individuals | |
|-----------|-----------------------------|--|-----------------------------|---|
| | Fatality rate (per 100,000) | % Reduction in Risk (Compared to Non-Vaccinated) | Fatality Rate (per 100,000) | Relative Risk of Death (Compared to Vaccinated) |
| <5 | N/A* | N/A* | 0.0* | N/A* |
| 5-17 | 0.0** | N/A** | 0.0** | N/A** |
| 18-24 | 0.0** | 100% | 0.4 | N/A** |
| 25-34 | 0.0** | 100% | 1.5 | N/A** |
| 35-44 | 0.0** | 100% | 3.8 | N/A** |
| 45-54 | 0.9 | 94% | 14.8 | 16.3 times higher risk of death |
| 55-64 | 1.4 | 94% | 26.1 | 18.0 times higher risk of death |
| 65-84 | 7.9 | 89% | 71.8 | 9.1 times higher risk of death |
| 85+ | 29.8 | 74% | 112.5 | 3.8 times higher risk of death |

*Children under the age of 5 are not eligible for vaccination. Reduction in risk and relative risk cannot be calculated. **No deaths were identified during this period. Relative risk cannot be calculated.

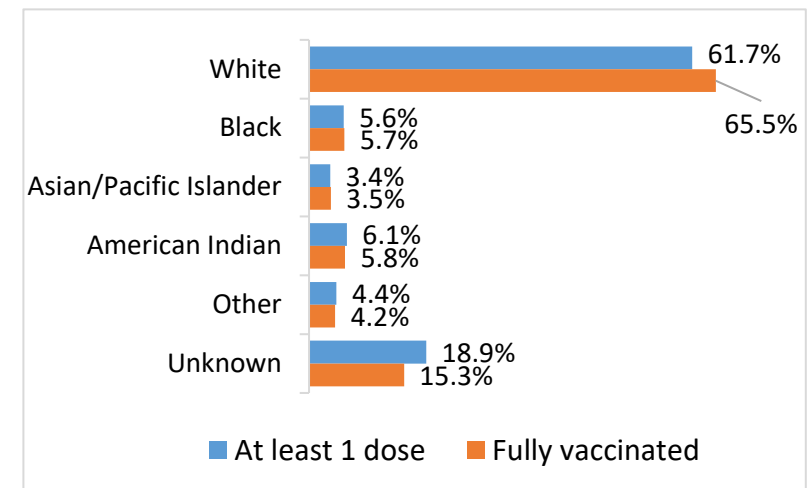
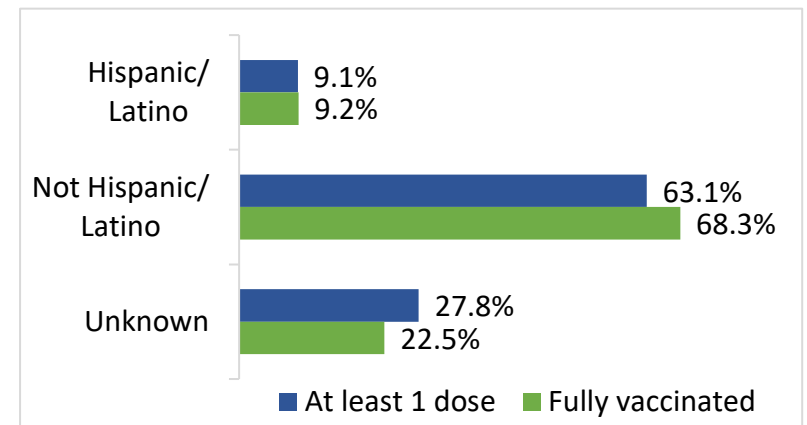
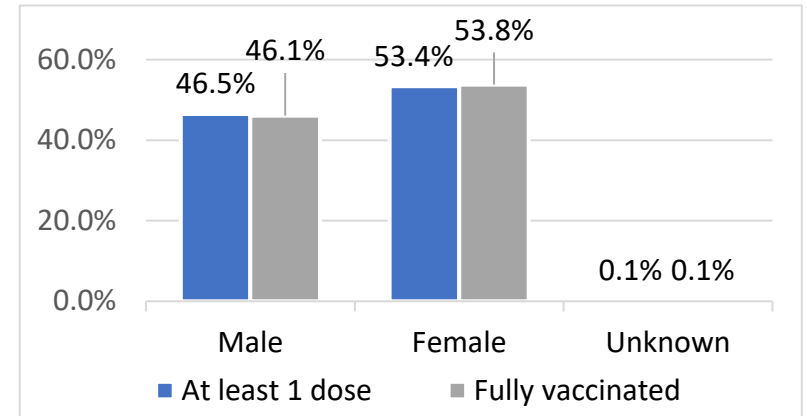
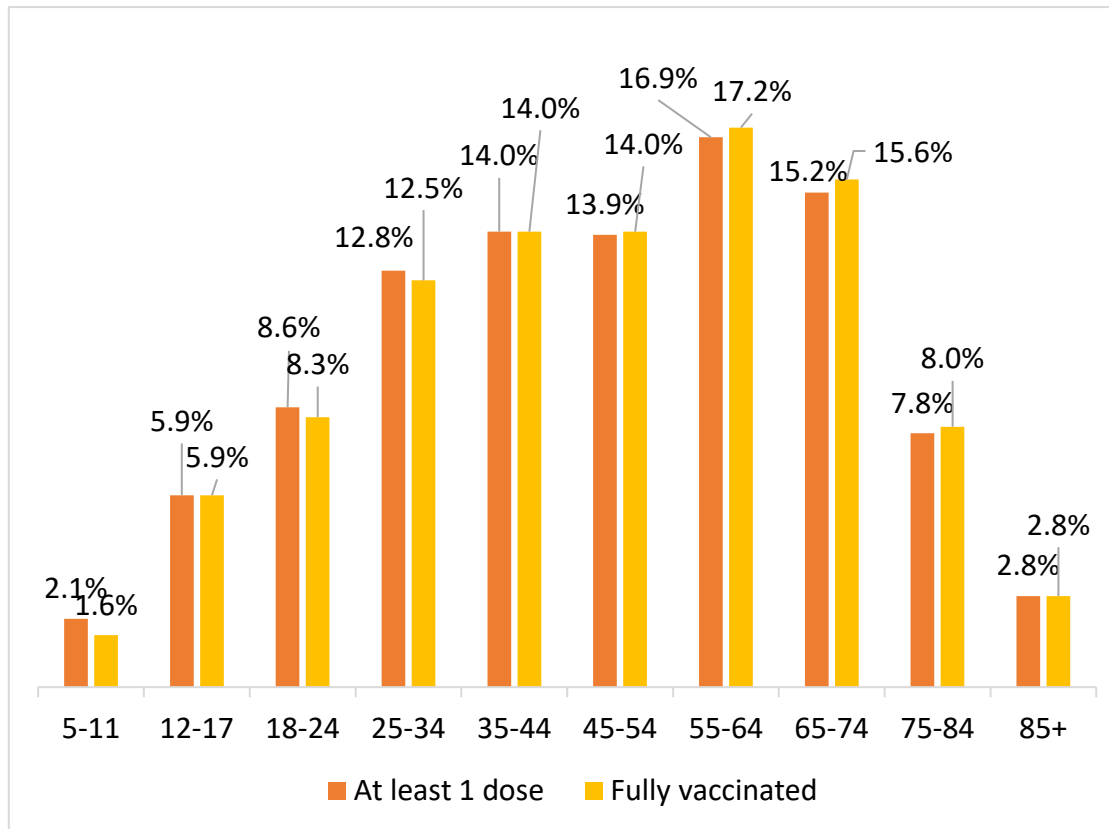
There are notable limitations to both of these analyses. Most significantly, both rely upon public health records for all measures of interest. It is well recognized that COVID-19 infections are under-identified and under-reported. It is unclear that this fact would bias results in any particular direction, although it is possible that those who are vaccinated are more likely to seek testing and diagnosis. Records on fatalities and hospitalizations are generally more accurate than case diagnoses, but there is often a time lag between the event and its reporting and recording in public health record systems. While any such lag could potentially result in increased rates of hospitalization and death for both groups, it is unclear that it presents any bias in the relative risks between vaccinated and non-vaccinated populations. Vaccination records are generally considered complete and accurate, but our examination relied primarily upon the Oklahoma State Immunization Information System (OSIIS) and did not search nationwide databases for vaccination records. For a small minority of individuals, vaccination status was informed based upon self-reporting. As such, there is a risk of mis-categorization in both directions (some individuals who self-reported being vaccinated may not have been; some individuals assumed to be unvaccinated may have been vaccinated outside the OSIIS system and not reported it to OSDH).

Despite these limitations, the findings reported here are consistent with those reported throughout the US and the world. Vaccination with FDA approved vaccines provide notable protection for Oklahomans from COVID-19. Vaccinated individuals are at far less risk than non-vaccinated people for infection and negative outcomes, including hospitalization and death. While there is much debate regarding protection provided via vaccination versus that afforded by previous infection, our results show that vaccination is at least equal to, and generally more protective, than previous infection. It is critical to note that vaccination also presents far less risk of negative outcomes than does natural infection. Given these findings, the OSDH continues to encourage all Oklahomans to seek COVID-19 vaccination and boosting, as advised by CDC guidance.

COVID- 19 VACCINE DATA BY TOTAL AND KEY METRICS

| | Dec 28 – Jan 3 | Total Number |
|---------------------------------|----------------|--------------|
| Doses Administered ¹ | 57,586 | 4,376,595 |
| At least 1 dose ² | 16,064 | 2,112,440 |
| Fully vaccinated ³ | 10,661 | 1,785,742 |

1. Doses administered amount does not include doses administered by federal entities in Oklahoma.
2. At least one does refers to individuals (ages 5 years+) receiving Pfizer and Moderna COVID-19 vaccines and/or receiving single shot of J&J/Janssen Vaccine.
3. Fully vaccinated refers to individuals (ages 5 years+) fully vaccinated after receiving either Pfizer and/or Moderna COVID-19 vaccines (both doses) and/or receiving single shot of J&J/Janssen Vaccine.

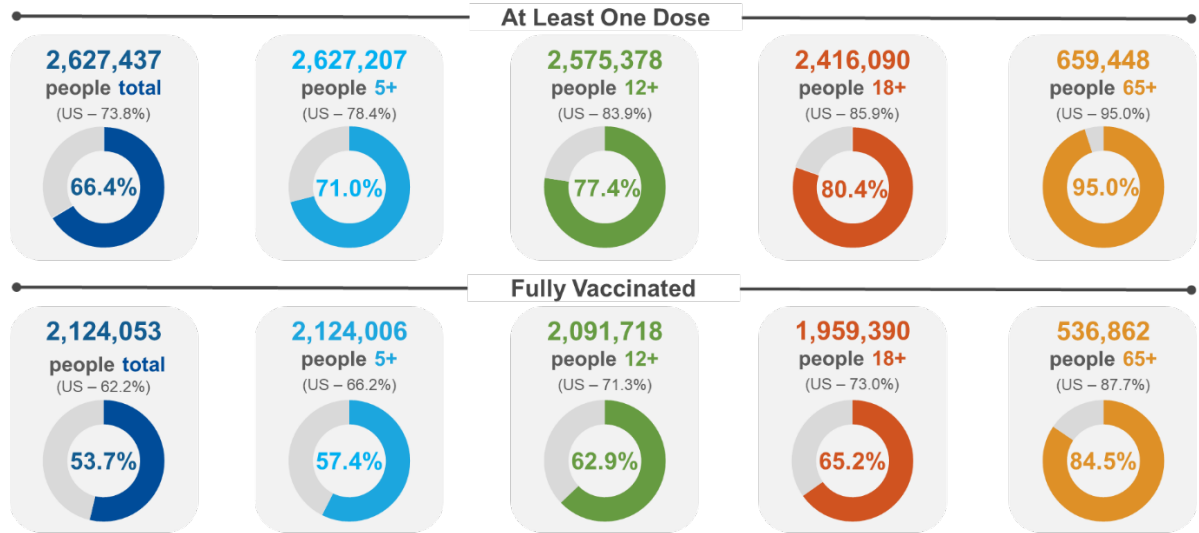


Source: COVID-19 Vaccination Reporting Specification Dataset Oklahoma State Immunization Information System (OSIIS). Data reflect information entered as of 11:59PM 1/3/2022. Data does not include doses administered by federal entities in Oklahoma

COVID-19 VACCINATIONS IN OKLAHOMA - FEDERAL AND STATE, AS OF JANUARY 4, 2022

| | Count* | Adult Rate per 100K |
|--|------------------|---------------------|
| Total Doses Administered | 5,352,649 | 165,426 |
| Additional doses (booster/3rd) Administered | 601,236 | na |

*Includes state and federal administered doses.



Percent of 5+ Population with At Least 1 Dose- Oklahoma Counties

| County | At Least 1 Dose (%) | County | At Least 1 Dose (%) | County | At Least 1 Dose (%) | County | At Least 1 Dose (%) | County | At Least 1 Dose (%) |
|-----------|---------------------|----------|---------------------|------------|---------------------|--------------|---------------------|-------------|---------------------|
| Adair | 52.7% | Cotton | 59.7% | Jackson | 65.6% | McIntosh | 63.3% | Roger Mills | 41.9% |
| Alfalfa | 51.2% | Craig | 67.2% | Jefferson | 50.1% | Murray | 53.0% | Rogers | 55.7% |
| Atoka | 41.2% | Creek | 51.7% | Johnston | 50.8% | Muskogee | 66.5% | Seminole | 62.9% |
| Beaver | 37.9% | Custer | 58.3% | Kay | 51.1% | Noble | 73.8% | Sequoyah | 52.6% |
| Beckham | 48.7% | Delaware | 51.9% | Kingfisher | 56.1% | Nowata | 58.2% | Stephens | 57.6% |
| Blaine | 55.3% | Dewey | 29.3% | Kiowa | 61.2% | Okfuskee | 53.6% | Texas | 55.3% |
| Bryan | 51.7% | Ellis | 41.1% | Latimer | 39.3% | Oklahoma | 83.5% | Tillman | 59.1% |
| Caddo | 74.0% | Garfield | 60.8% | LeFlore | 46.3% | Okmulgee | 50.2% | Tulsa | 77.5% |
| Canadian | 72.5% | Garvin | 55.7% | Lincoln | 48.1% | Osage | 42.6% | Wagoner | 57.4% |
| Carter | 55.1% | Grady | 46.3% | Logan | 40.8% | Ottawa | 48.3% | Washington | 57.1% |
| Cherokee | 65.0% | Grant | 50.6% | Love | 52.5% | Pawnee | 59.4% | Washita | 47.1% |
| Choctaw | 42.7% | Greer | 42.5% | Major | 57.2% | Payne | 59.8% | Woods | 49.0% |
| Cimarron | 39.2% | Harmon | 58.4% | Marshall | 56.4% | Pittsburg | 55.4% | Woodward | 44.8% |
| Cleveland | 68.2% | Harper | 51.2% | Mayes | 54.4% | Pontotoc | 63.0% | | |
| Coal | 46.9% | Haskell | 48.6% | McClain | 58.4% | Pottawatomie | 60.3% | | |
| Comanche | 76.4% | Hughes | 54.3% | McCurain | 43.8% | Pushmataha | 41.2% | | |

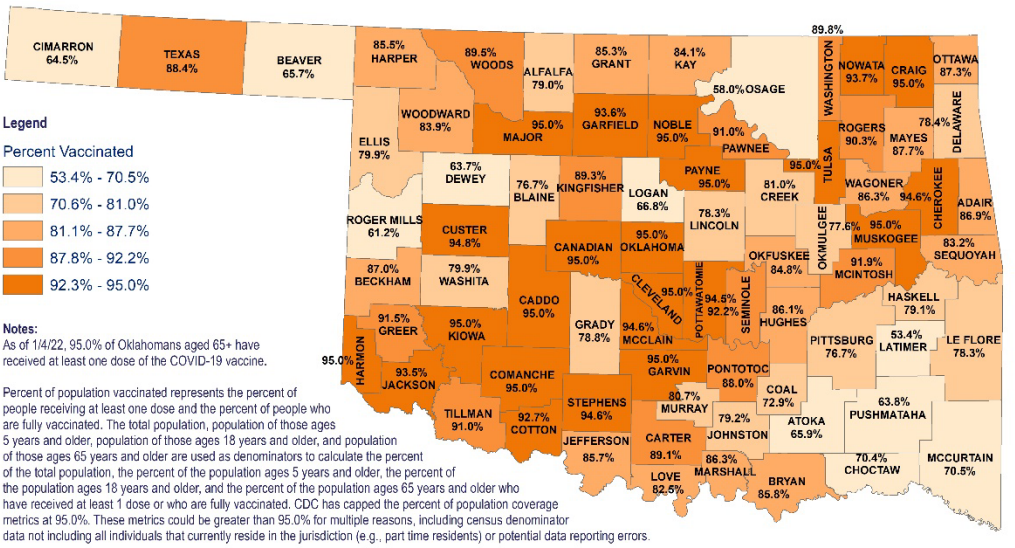
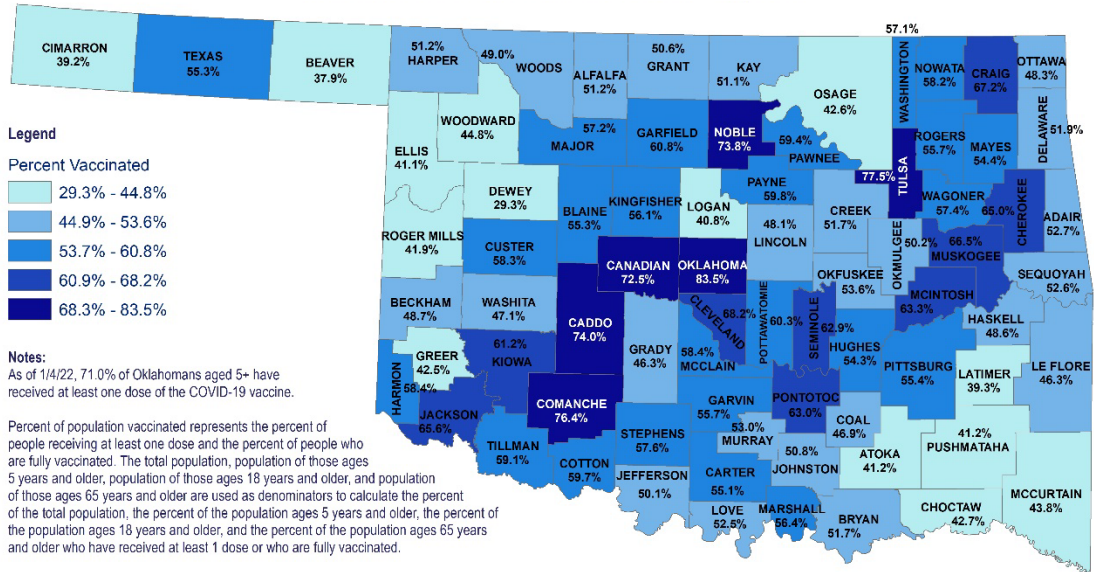
Source: CDC COVID Data Tracker – COVID-19 Vaccinations in the United States and COVID-19 Integrated County View. Posted: 1/4/2022

COVID- 19 VACCINE DATA

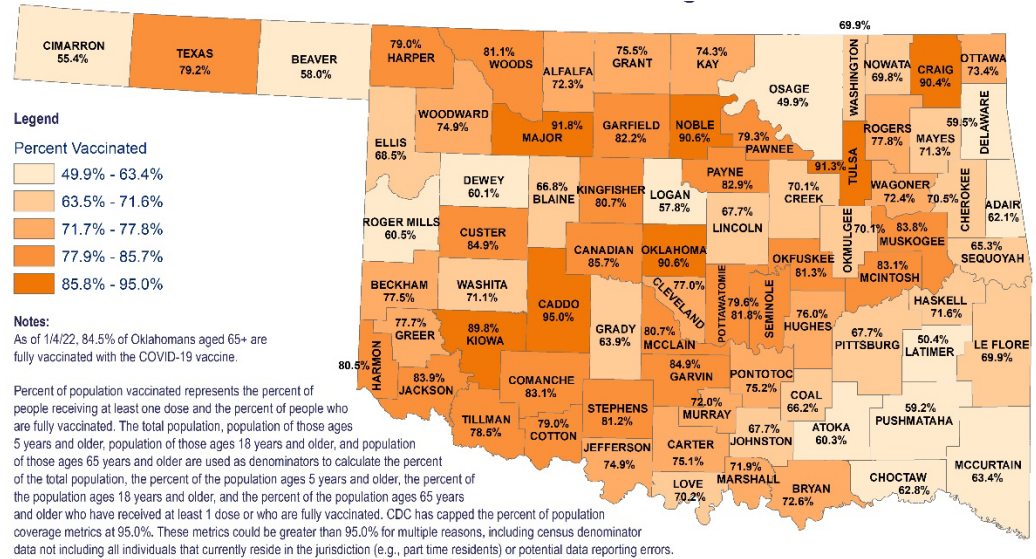
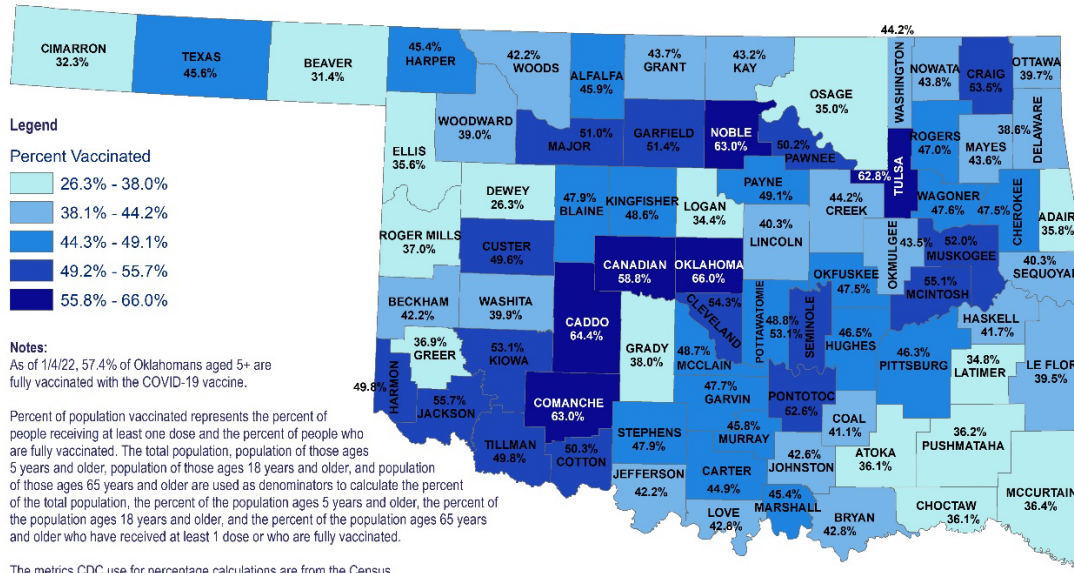
| | | Total Population >12 years of age | People who received at least 1 dose | People who are fully vaccinated |
|------------------|------------------------|--------------------------------------|--|------------------------------------|
| Oklahoma | | 3,325,223 | 2,112,440 (63.5%) | 1,785,742 (53.7%) |
| Gender | | | | |
| | Male | 1,637,286 (49.2%) | 982,359 (60.0%) | 823,314 (50.3%) |
| | Female | 1,687,937 (50.8%) | 1,127,093 (66.8%) | 960,537 (56.9%) |
| | Unknown | | 2,988 | 1,891 |
| Age group | | | | |
| | 5-11 | 376,215 (11.3%) | 44,703 (11.9%) | 28,147 (7.5%) |
| | 12-17 | 320,490 (9.6%) | 125,410 (39.1%) | 106,218 (33.1%) |
| | 18-24 | 380,905 (11.5%) | 181,988 (47.8%) | 148,626 (39.0%) |
| | 25-34 | 543,593 (16.3%) | 270,531 (49.8%) | 223,598 (41.1%) |
| | 35-44 | 497,873 (15.0%) | 296,011 (59.5%) | 250,366 (50.3%) |
| | 45-54 | 453,536 (13.6%) | 292,934 (64.6%) | 250,338 (55.2%) |
| | 55-64 | 493,694 (14.8%) | 356,290 (72.2%) | 306,536 (62.1%) |
| | 65-74 | 368,050 (11.1%) | 321,151 (87.3%) | 278,492 (75.7%) |
| | 75-84 | 192,919 (5.8%) | 164,244 (85.1%) | 142,703 (74.0%) |
| | 85+ | 74,163 (2.2%) | 59,036 (79.6%) | 50,699 (68.4%) |
| Race | | | | |
| | White | 2,610,851 (78.5%) | 1,303,268 (49.9%) | 1,169,542 (44.8%) |
| | Black | 282,592 (8.5%) | 118,113 (41.8%) | 102,159 (36.2%) |
| | Asian/PI | 94,874 (2.9%) | 71,925 (75.8%) | 62,771 (66.2%) |
| | American Indian | 336,906 (10.1%) | 128,036 (38.0%) | 103,080 (30.6%) |
| | Other | - | 92,626 | 74,928 |
| | Unknown | - | 398,472 | 273,262 |
| Ethnicity | | | | |
| | Hispanic or Latino | 323,153 (9.7%) | 193,333 (59.8%) | 165,279 (51.1%) |
| | Not Hispanic or Latino | 3,002,070 (90.3%) | 1,332,113 (44.4%) | 1,219,176 (40.6%) |
| | Unknown | - | 586,994 | 401,287 |

Note: Fully vaccinated refers to individuals (ages 5 years+) completing series after receiving either Pfizer and/or Moderna COVID-19 vaccines (both doses) and/or receiving single shot of J&J/Janssen Vaccine. Data Source: 1. Single-race Population Estimates, United States, 2010-2019. July 1st resident population by state, age, sex, single-race, and Hispanic origin, on CDC WONDER Online Database. Vintage 2019 estimates released by U.S. Census Bureau on June 25, 2020 COVID-19. 2. Vaccination Reporting Specification (CVRS) Dataset - Oklahoma State Immunization Information System (OSIIS); Data reflect information entered as of 11:59PM 1/3/2022. Data does not include doses administered by federal entities in Oklahoma

OKLAHOMA COVID-19 AT LEAST 1 DOSE COUNTY LEVEL VACCINE ADMINISTRATION FOR AGES 5+ AND 65+



OKLAHOMA COVID-19 FULLY VACCINATED COUNTY LEVEL VACCINE ADMINISTRATION FOR AGES 5+ AND 65+

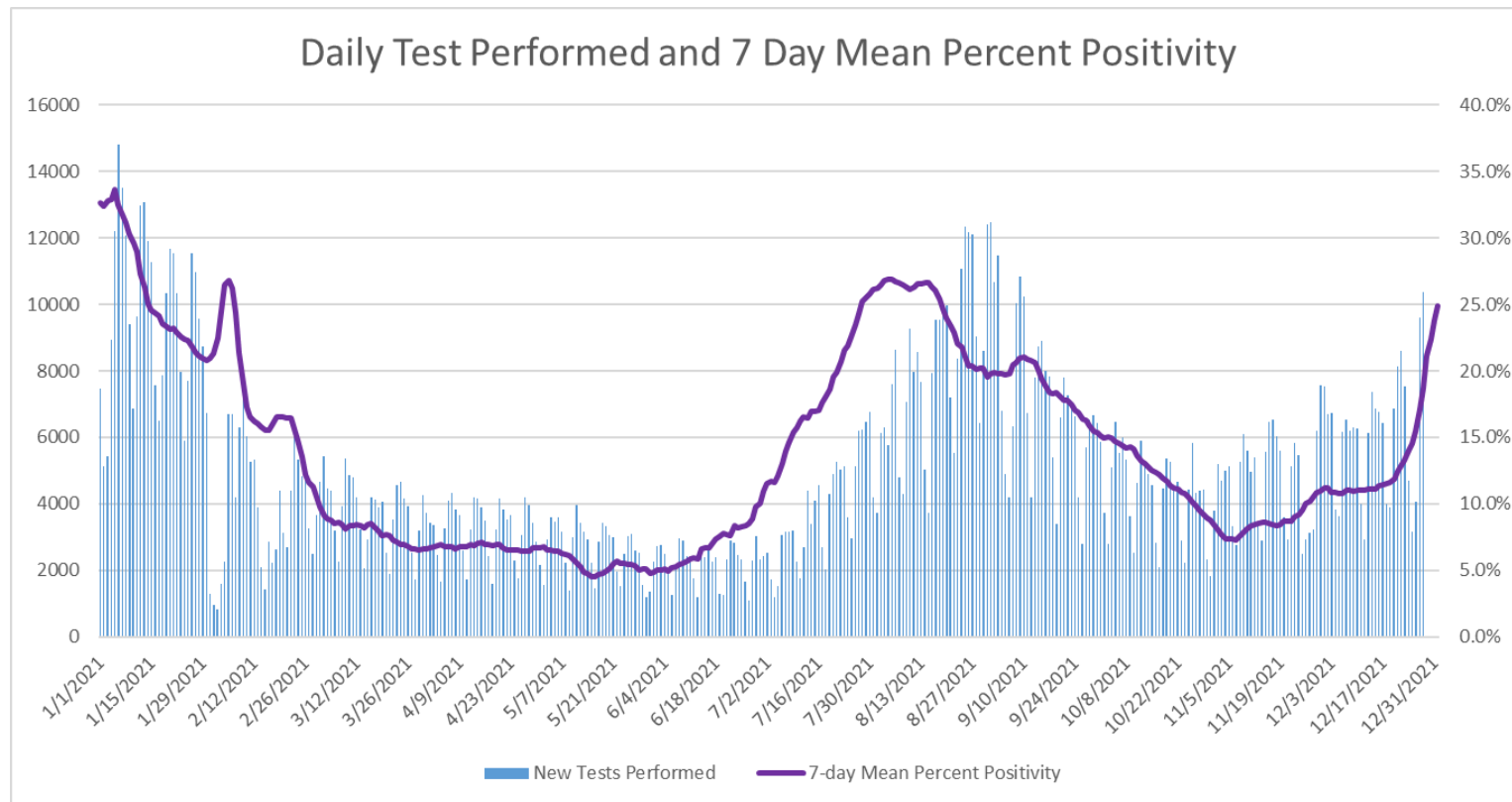


DISEASE TESTING

| Dec 26 – Jan 01 | |
|---------------------------|---------|
| Specimens tested, count | 48,406* |
| Specimens positive, count | 12,565 |
| Percent positive | 24.9% |

Source: CDC COVID Data Tracker CDC | Data as of: Tuesday, January 4, 2022 1:51 PM ET. Posted: Tuesday, January 4, 2022 3:19 PM ET
 *(Counts reflect the tests and specimens reported since Dec 22.)

COVID-19 DAILY TESTS PERFORMED AND 7 DAY MEAN PERCENT POSITIVITY



Oklahoma, January 4, 2022

Source: CDC COVID Data Tracker CDC | Data as of: Tuesday, January 4, 2022 1:51 PM ET. Posted: Tuesday, January 4, 2022 3:19 PM ET

COVID-19 VARIANT STRAINS

Genetic variants of SARS-CoV-2 have been emerging and circulating around the world throughout the COVID-19 pandemic.

- A variant has one or more mutations that differentiate it from other variants in circulation. As expected, multiple variants of SARS-CoV-2 have been documented in the United States and globally throughout this pandemic.

| SARS-CoV-2 Sequencing Data, Oklahoma, January 1, 2021-December 25, 2021 | | |
|--|--------------------------------|-------------------------------------|
| Variant Designation and Strain Name | SARS-CoV-2 Strain Count | SARS-CoV-2 Strain Percentage |
| No Concern | 415 | 3.3% |
| Variants of Concern | 11,465 | 91.7% |
| B.1.617.2 (Delta) | 11,459 | 99.9% |
| B.1.1.529 (Omicron) | 6 | 0.1% |
| Variants to Watch | 48 | 0.4% |
| C.37 (Lambda) | 48 | 100.0% |
| Variants Being Monitored | 573 | 4.6% |
| B.1.1.7 (Alpha) | 473 | 82.5% |
| B.1.351 (Beta) | 7 | 1.2% |
| B.1.427/429 (Epsilon) | 24 | 4.2% |
| B.1.525 (Eta) | 2 | 0.3% |
| P.1 (Gamma) | 36 | 6.3% |
| B.1.526/526.1 (Iota) | 15 | 2.6% |
| B.1.617.1 (Kappa) | 1 | 0.2% |
| B.1.621 (Mu) | 15 | 2.6% |
| Grand Total | 12,501 | 100.0% |

Additional information on variant classifications and definitions can be found [here](#).

DISTRIBUTION OF RECENT COVID-19 HOSPITAL ADMISSIONS BY VACCINATION STATUS AND AGE GROUP AS OF DECEMBER 25, 2021⁺

| Vaccination Status | Age Group | Hospital Admissions in the last 30 days ^{***} | Percentage within Vaccination Status Category | Percentage of Total Hospitalizations |
|------------------------|------------|--|---|--------------------------------------|
| Non-Vaccinated | Under 1- 4 | 17 | 1.6% | 1.5% |
| | 5-17 | 10 | 1.0% | 0.9% |
| | 18-35 | 96 | 9.3% | 8.6% |
| | 36-49 | 126 | 12.2% | 11.3% |
| | 50-64 | 296 | 28.6% | 26.6% |
| | 65+ | 411 | 39.7% | 36.9% |
| | Unknown | 78 | 7.5% | 7.0% |
| | Total | 1,034 | 100.0% | 92.8% |
| Fully Vaccinated* | 5-17 | 0 | 0.0% | 0.0% |
| | 18-35 | 0 | 0.0% | 0.0% |
| | 36-49 | 10 | 14.5% | 0.9% |
| | 50-64 | 13 | 18.8% | 1.2% |
| | 65+ | 46 | 66.7% | 4.1% |
| | Total | 69 | 100.0% | 6.2% |
| Partially Vaccinated** | 5-17 | 0 | 0.0% | 0.0% |
| | 18-35 | 0 | 0.0% | 0.0% |
| | 36-49 | 0 | 0.0% | 0.0% |
| | 50-64 | 5 | 45.5% | 0.4% |
| | 65+ | 6 | 54.5% | 0.5% |
| | Total | 11 | 100.0% | 1.0% |
| Total Hospitalizations | 1,114 | | | |

⁺ Data are preliminary and subject to change as more information is gathered, reviewed and quality assurance procedures are applied. The information presented in the table above (hospital admissions by vaccination status) will be limited to cases reported two (2) weeks prior allowing for additional review and quality assurance checks to be applied.

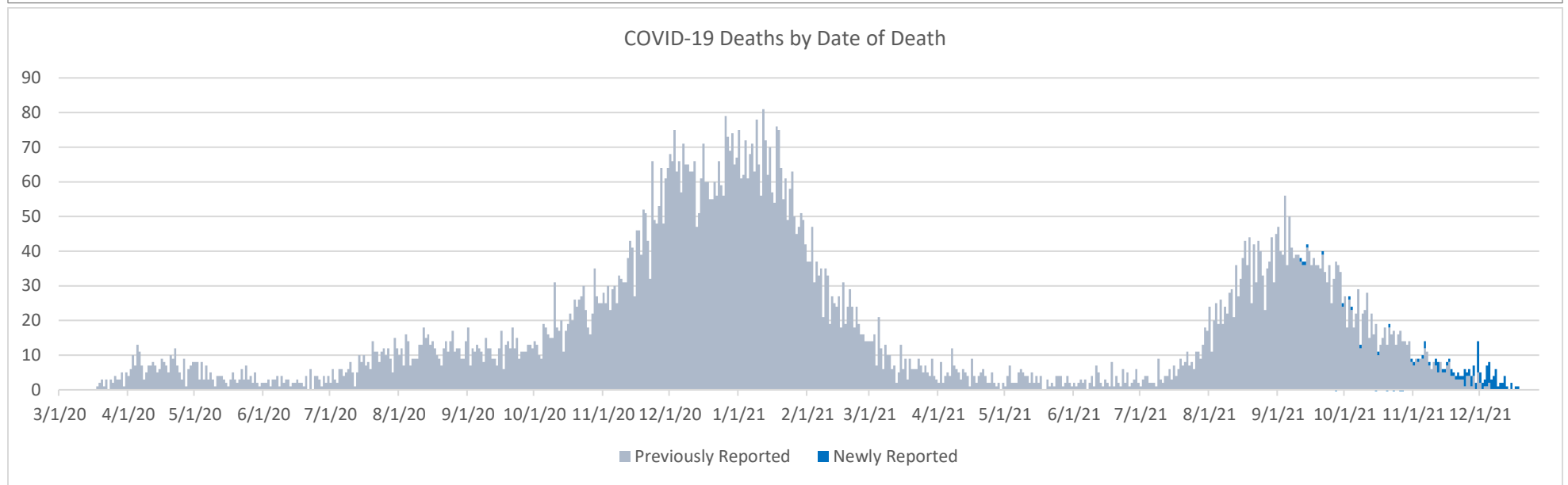
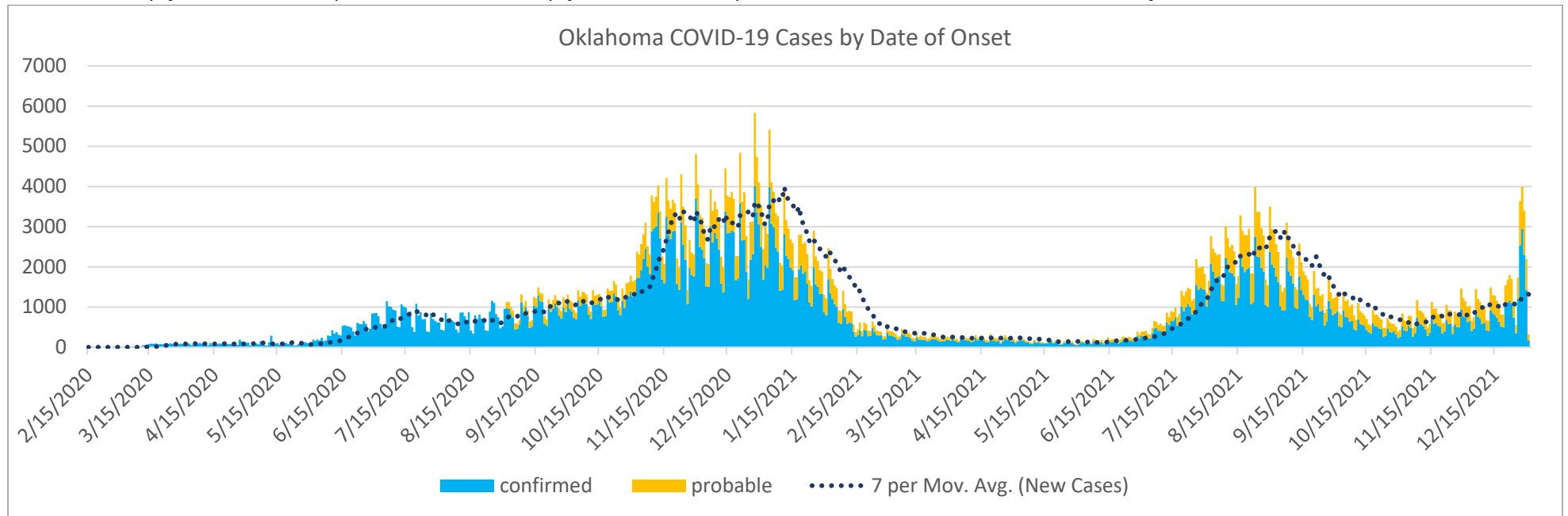
*Fully Vaccinated Vaccine breakthrough cases are defined as an individual with a COVID-19 positive laboratory results (PCR/Antigen) and documentation of COVID-19 vaccination that meets the definition of fully vaccinated. (Individuals are considered fully vaccinated ≥ 2 weeks after receiving the last dose in the COVID-19 vaccine series.)

**Partially Vaccinated Vaccine breakthrough cases is defined as an individual with a COVID-19 positive laboratory result (PCR/Antigen) and documentation of one COVID-19 vaccination. (Individuals are considered partially vaccinated ≥ 2 weeks after receiving the first dose in a 2-dose COVID-19 vaccine series.)

***Numbers based on hospital admission date within the past 30 days as reported in the OSDH PHIDDO system.

CASES AND DEATHS

New cases (by date of onset) and new deaths (by date of death) of COVID-19 in Oklahoma, February 2020–December 2021



Please note the different axes for new cases (top—from 0 to 7,000 for new cases) and new deaths (bottom—from 0 to 90 for new deaths). Additionally, a 7-day lag has been applied to the COVID-19 case trend line based on information.

*Due to changes in data reporting systems, not all newly reported deaths for this week are indicated in blue but are reflected in the cumulative total.

DEMOGRAPHIC INFORMATION AS OF JANUARY 4, 2021

| | | Cases count (%) ¹ | | Deaths count (%) ¹ | | Cumulative Incidence Rate ² | Cumulative Mortality Rate ² |
|------------------|----------------------------------|---------------------------------|---------------|----------------------------------|---------------|---|---|
| Oklahoma | | 716,870 | | 11,647 | | 18,116.6 | 294.3 |
| Gender | | | | | | | |
| | Male | 336,209 | (46.9) | 6,434 | (55.2) | 17,214.6 | 329.4 |
| | Female | 380,642 | (53.1) | 5,194 | (44.6) | 19,127.4 | 261.0 |
| | Unknown | 19 | (0.0) | 19 | (0.2) | | |
| Age group | | | | | | | |
| | Under 1- 4 | 16,460 | (2.3) | 3 | (0.0) | 6,441.4 | 1.2 |
| | 5-11 | 37,018 | (5.2) | 1 | (0.0) | 9,839.6 | 0.3 |
| | 12-17 | 52,205 | (7.3) | 7 | (0.1) | 16,289.1 | 2.2 |
| | 18-24 | 90,235 | (12.6) | 25 | (0.2) | 23,689.6 | 6.6 |
| | 25-34 | 118,404 | (16.5) | 101 | (0.9) | 21,781.7 | 18.6 |
| | 35-44 | 111,514 | (15.6) | 327 | (2.8) | 22,398.1 | 65.7 |
| | 45-54 | 94,124 | (13.1) | 783 | (6.7) | 20,753.4 | 172.6 |
| | 55-64 | 83,920 | (11.7) | 1,706 | (14.6) | 16,998.4 | 345.6 |
| | 65-74 | 55,087 | (7.7) | 2,710 | (23.3) | 14,967.3 | 736.3 |
| | 75-84 | 28,817 | (4.0) | 2,996 | (25.7) | 14,937.4 | 1,553.0 |
| | 85+ | 12,872 | (1.8) | 2,877 | (24.7) | 17,356.4 | 3,879.3 |
| | Unknown | 16,214 | (2.3) | 111 | (1.0) | | |
| Race | | | | | | | |
| | American Indian or Alaska Native | 89,402 | (12.5) | 1,211 | (10.4) | 29,103.8 | 394.2 |
| | Asian or Pacific Islander | 11,860 | (1.7) | 118 | (1.0) | 13,393.1 | 133.3 |
| | Black or African American | 41,895 | (5.8) | 750 | (6.4) | 14,563.1 | 260.7 |
| | Multiracial/Other | 5,887 | (0.8) | 75 | (0.6) | 1,422.8 | 18.1 |
| | White | 405,867 | (56.6) | 8,360 | (71.8) | 14,261.4 | 293.8 |
| | Unknown | 161,959 | (22.6) | 1,133 | (9.7) | | |
| Ethnicity | | | | | | | |
| | Hispanic or Latino | 58,735 | (8.2) | 601 | (5.2) | 13,688.7 | 140.1 |
| | Not Hispanic or Latino | 414,989 | (57.9) | 9,557 | (82.1) | 11,809.6 | 272.0 |
| | Unknown/Other | 243,146 | (33.9) | 1,489 | (12.8) | | |

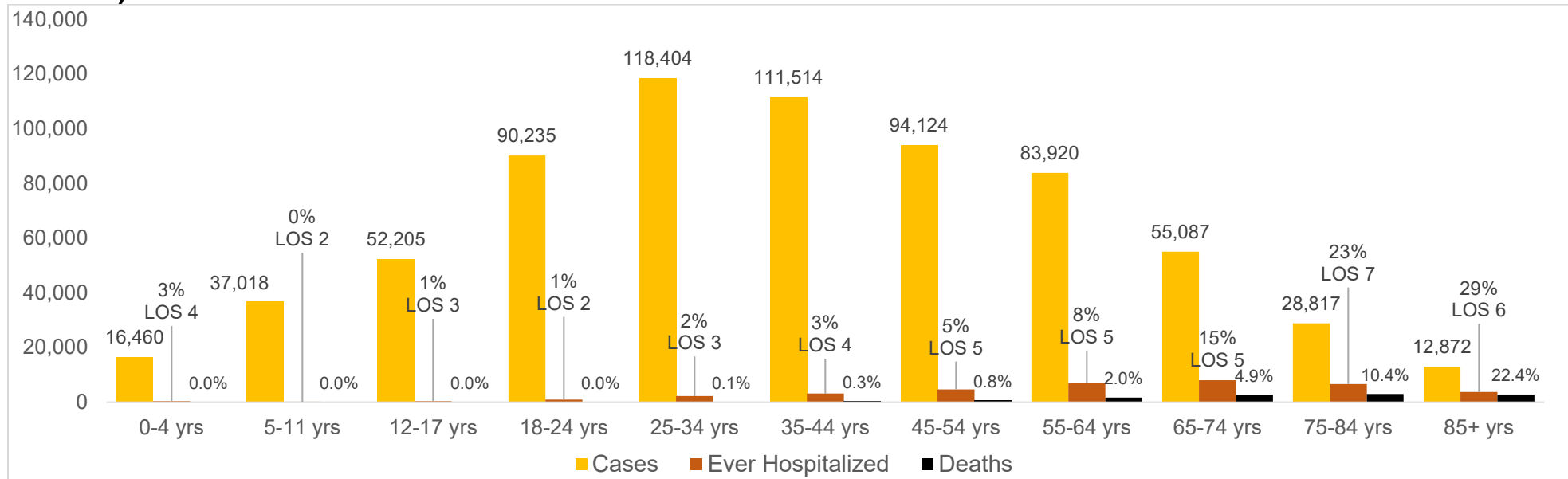
1. Percentages may not add up to 100 due to rounding. 2. Rate per 100,000 population based on 2019 Census Population data.

NEW CASES, HOSPITALIZATIONS, AND DEATHS BY AGE GROUP FOR WEEK OF DEC 26-JAN 1

| Age group | Percentage of Population Fully Vaccinated | New Cases (%) | New Hospitalizations (%) | New Deaths (%) |
|------------|---|---------------|--------------------------|----------------|
| Under 1- 4 | - | - | - | - |
| 5-11 | 7.5% | - | - | - |
| 12-17 | 33.1% | - | - | - |
| 18-24 | 39.0% | - | - | - |
| 25-34 | 41.1% | - | - | - |
| 35-44 | 50.3% | - | - | - |
| 45-54 | 55.2% | - | - | - |
| 55-64 | 62.1% | - | - | - |
| 65-74 | 75.7% | - | - | - |
| 75-84 | 74.0% | - | - | - |
| 85+ | 68.4% | - | - | - |
| Unknown | - | - | - | - |

Data migration and system issues have resulted in a large number of unknown ages in this week's report. We hope to have these issues addressed for future reports.

CUMULATIVE CASES, PERCENT HOSPITALIZED, AVERAGE LENGTH OF STAY (OCTOBER 2021 CASES) AND DEATHS BY AGE GROUP



AT-RISK SETTINGS

HEALTHCARE & NON-HEALTHCARE*

| Status | Non-Healthcare Worker count (%) | Healthcare Worker count (%) |
|--------------|---------------------------------|-----------------------------|
| Active | 7,959 (1.3) | 2 (0.0) |
| Deceased | 10,999 (1.7) | 88 (0.5) |
| Recovered | 616,932 (97.0) | 19,531 (99.5) |
| Total | 635,890 | 19,621 |

*data as of November 16, 2021

LONG TERM CARE (LTC) FACILITIES²

| | Cases (%) | Deaths (%) |
|--------------|---------------|--------------|
| Residents | 9,417 (61.5) | 1,809 (98.8) |
| Staff | 5,895 (38.5) | 22 (1.2) |
| Total | 15,312 | 1,831 |

²Long term care facility or nursing home.

CORRECTIONAL FACILITIES¹

| | Cases (%) | Deaths (%) |
|--------------|---------------|------------|
| Inmates | 5,463 (74.6%) | 58 (92.1%) |
| Staff | 1,859 (25.4%) | 5 (7.9%) |
| Total | 7,322 | 63 |

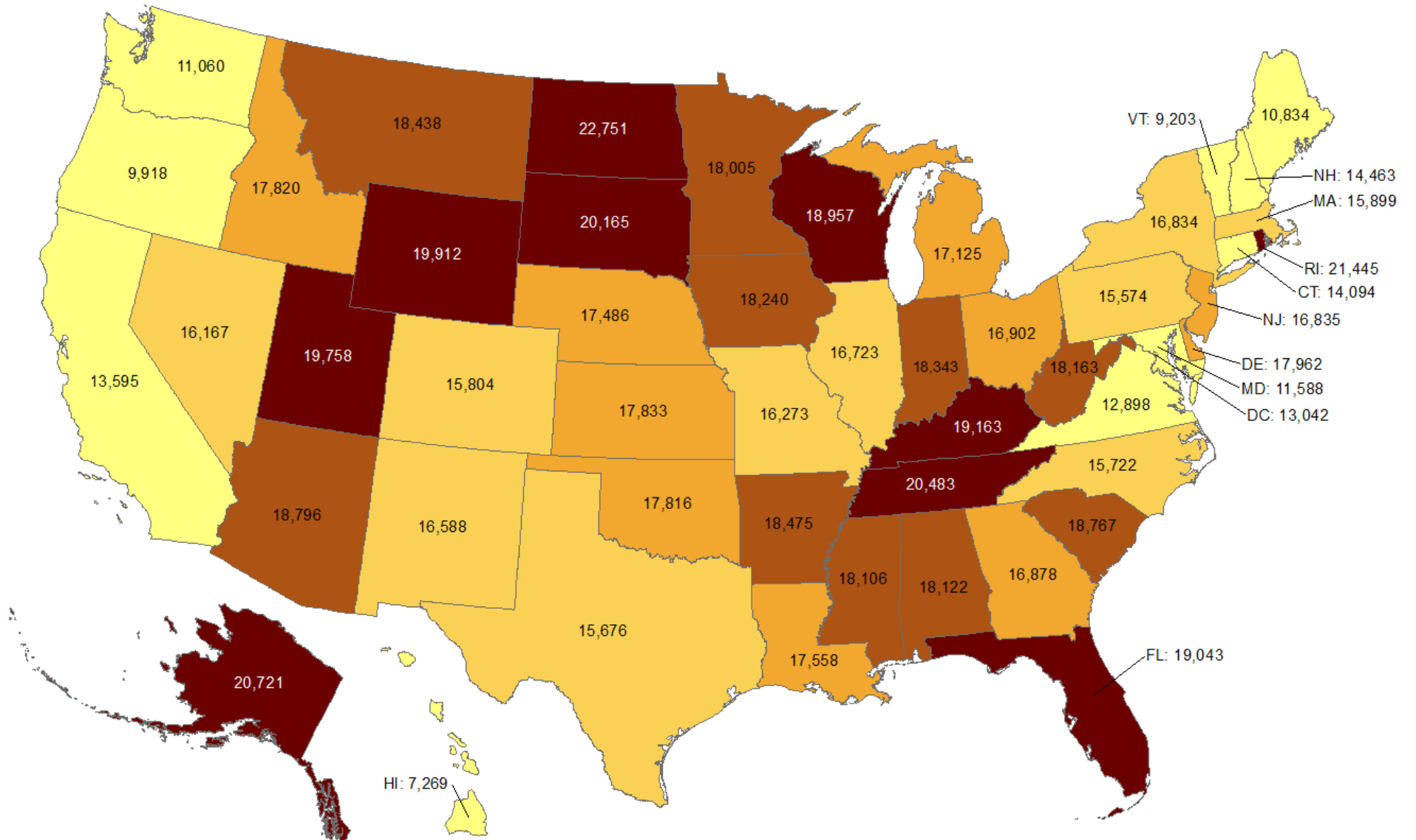
¹Correctional facilities include prisons, jails, and juvenile detention center

Detailed counts of LTC Cases by County and Facility can be found at the end of this report.

OKLAHOMA IN COMPARISON

Cumulative incidence of reported COVID-19 cases

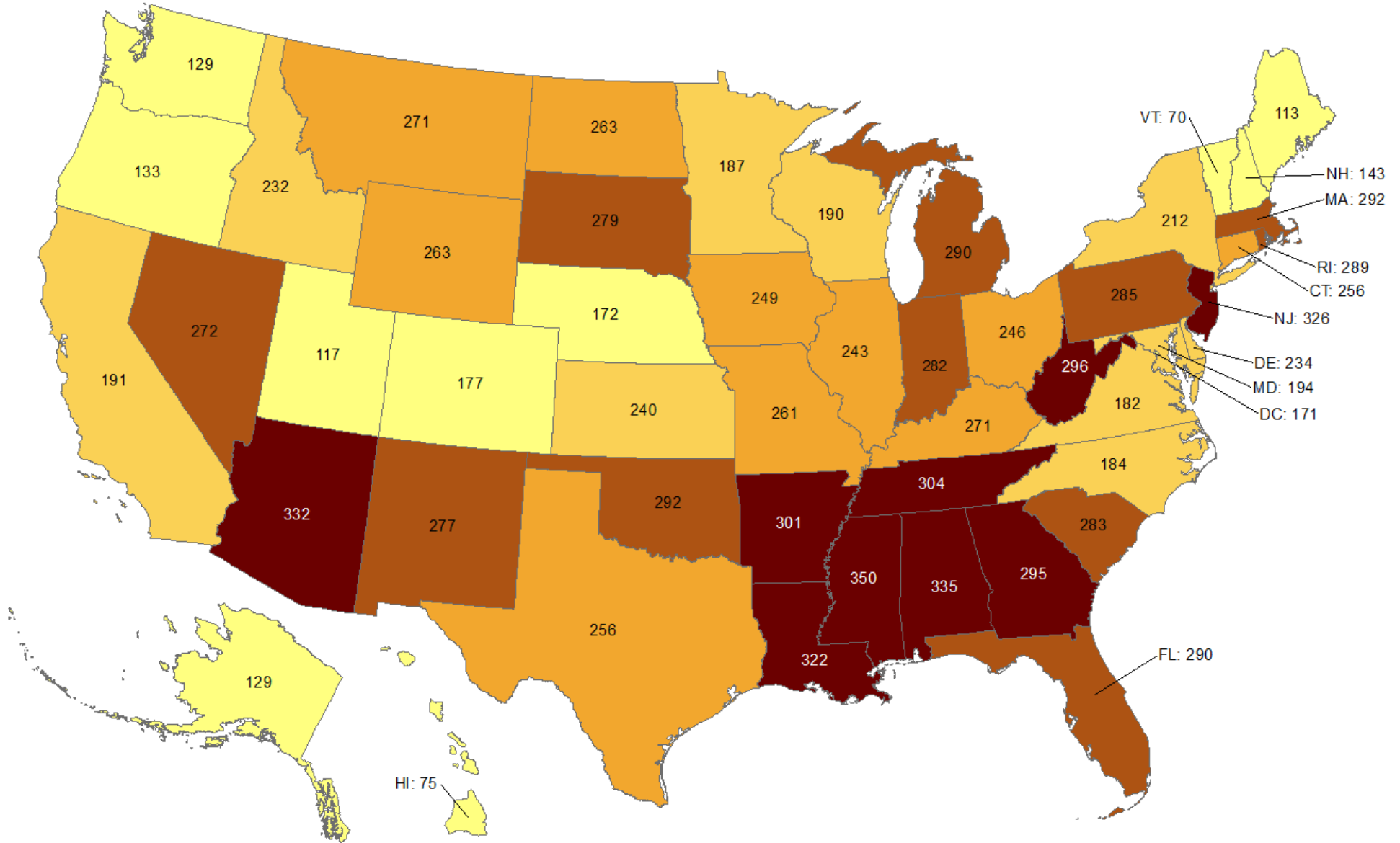
Oklahoma ranks **24** (out of all States and DC) in the cumulative incidence (per 100,000 persons) of reported COVID-19 cases in the US.



Data from CDC. Available at <https://www.cdc.gov/covid-data-tracker/index.html>
 Data as of December 30, 2021

Cumulative death rate of reported COVID-19 cases

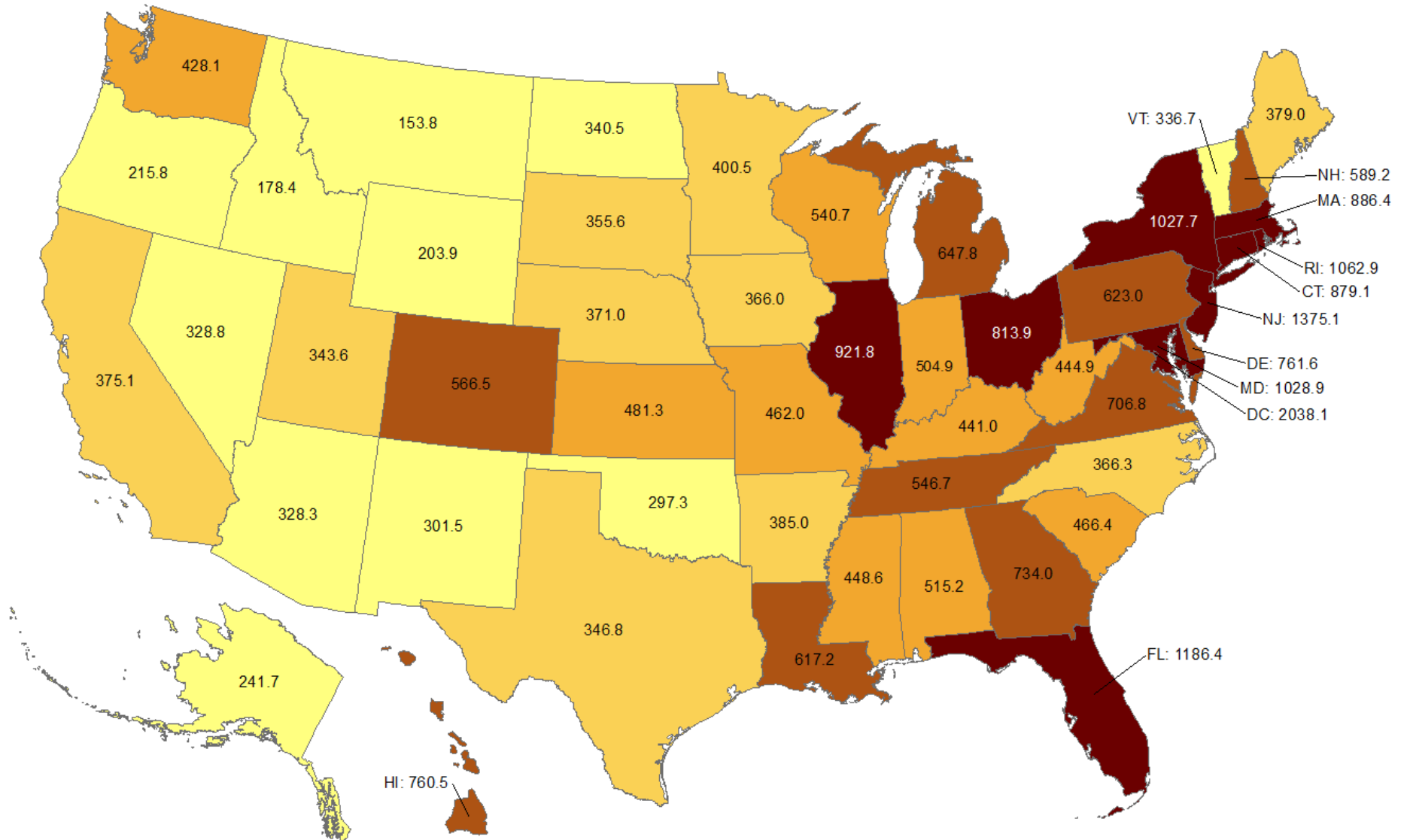
Oklahoma ranks **11** (out of all States and DC) in the cumulative death rate (per 100,000 persons) of reported COVID-19 cases in the US.



Data from CDC. Available at <https://www.cdc.gov/covid-data-tracker/index.html>
Data as of December 30, 2021

Cumulative incidence of reported COVID-19 cases in last 7 days

Oklahoma ranks **46** (out of all States and DC) in the cumulative incidence (per 100,000 persons) of reported COVID-19 cases in the last 7 days.



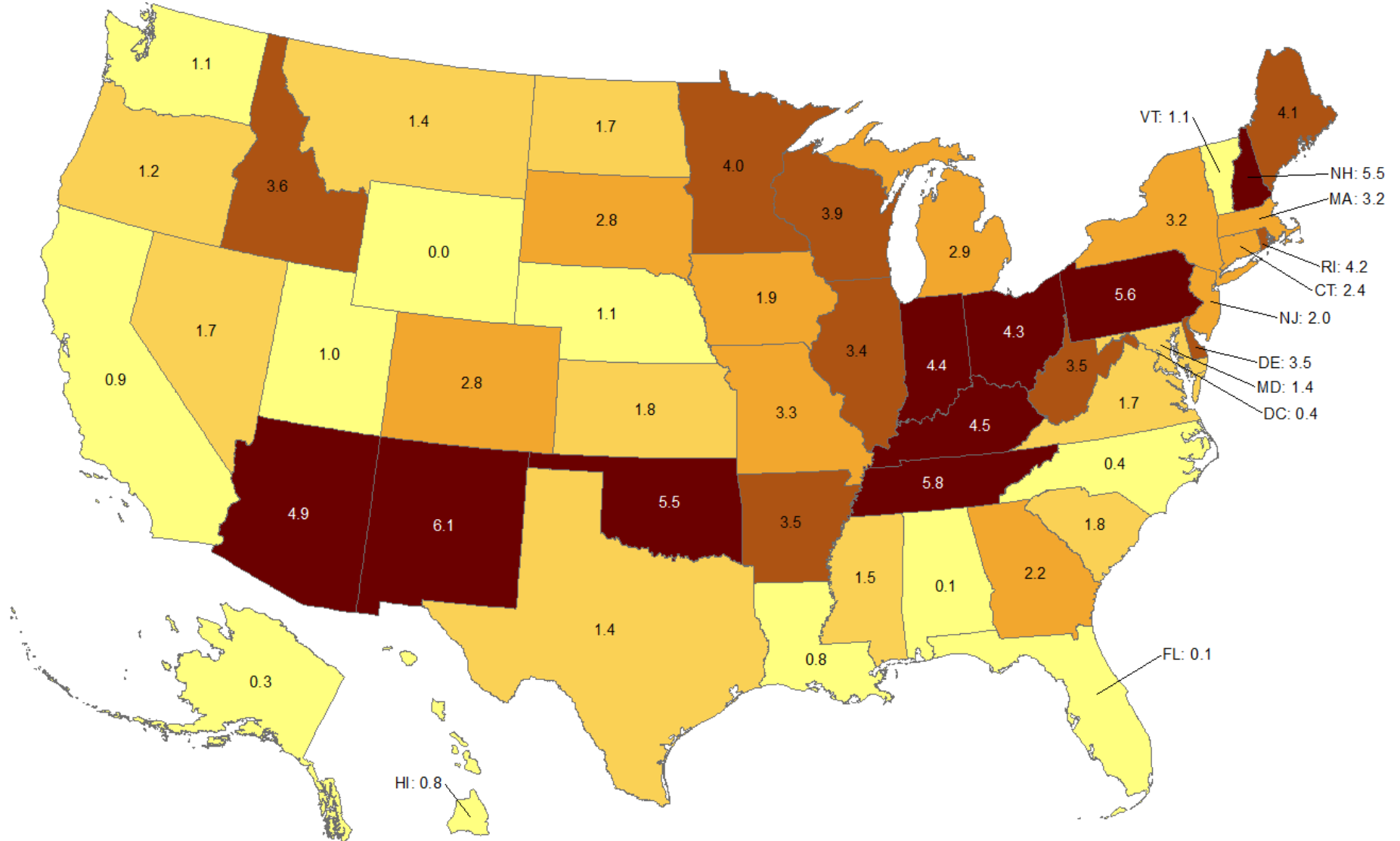
Data from CDC. Available at <https://www.cdc.gov/covid-data-tracker/index.html>

Data as of December 30, 2021

NOTE: Totals per 100,000 people in the last 7 days are calculated as the 7-day moving average of new cases or deaths (December 30, 2021 + 6 preceding days divided by 7) per 100,000 people using the U.S. Census Bureau, 2019.

Cumulative death rate of reported COVID-19 cases in last 7 days

Oklahoma ranks **5** (out of all States and DC) in the cumulative death rate (per 100,000 persons) of reported COVID-19 cases in the last 7 days.

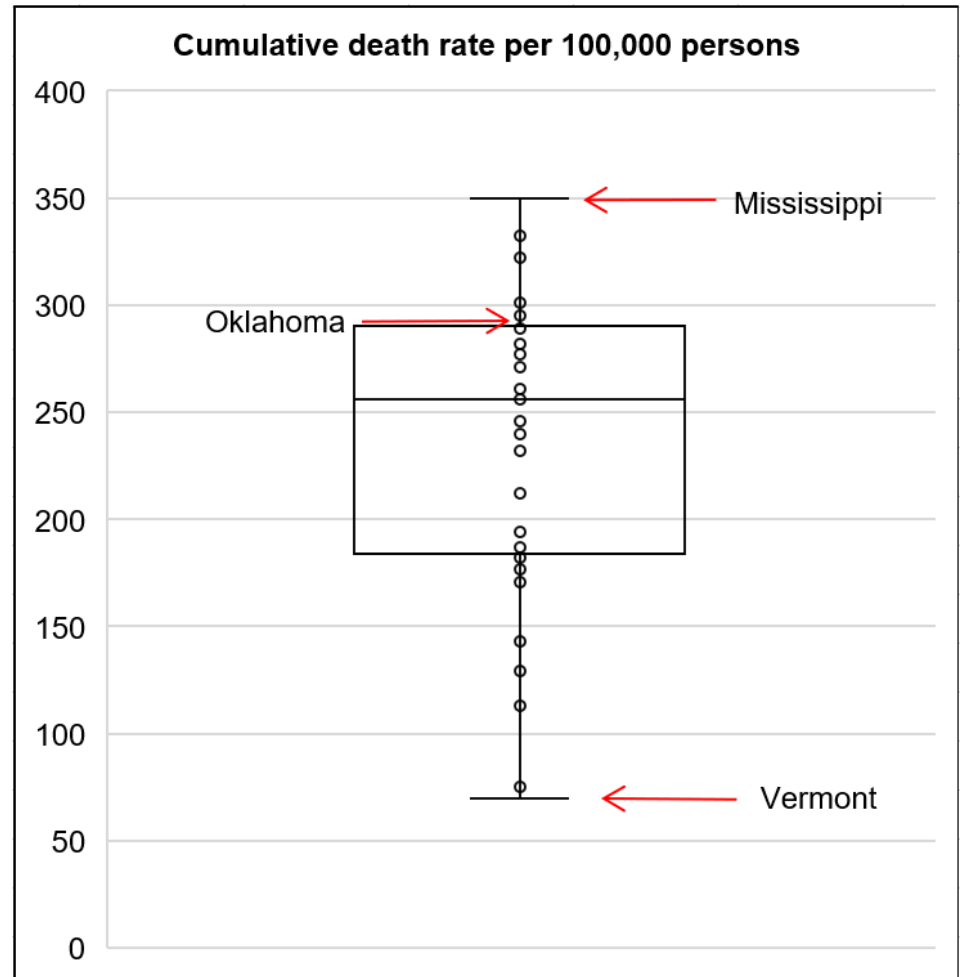
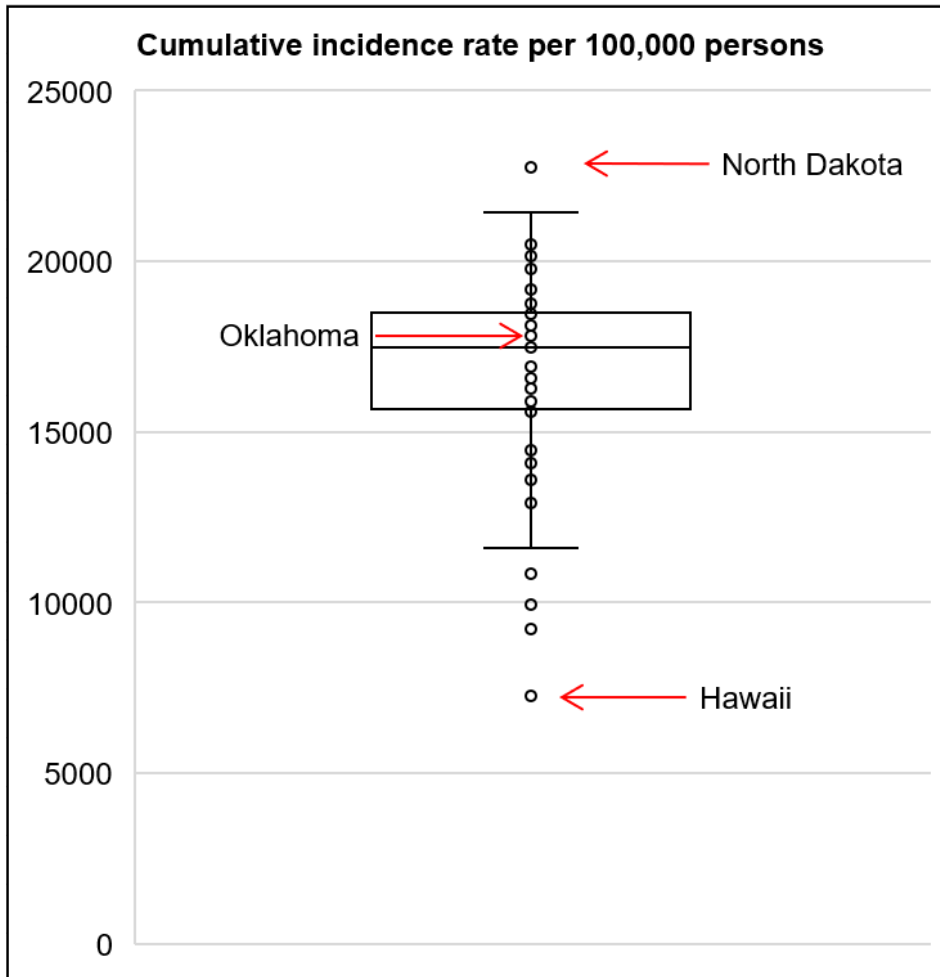


Data from CDC. Available at <https://www.cdc.gov/covid-data-tracker/index.html>

Data as of December 30, 2021

NOTE: Totals per 100,000 people in the last 7 days are calculated as the 7-day moving average of new cases or deaths (December 30, 2021 + 6 preceding days divided by 7) per 100,000 people using the U.S. Census Bureau, 2019.

Cumulative incidence and cumulative death rate of reported COVID-19 cases



Interpretation: Oklahoma has cumulative incidence rate that is **below the 75th percentile** of the US and cumulative death rate that is **above the 75th percentile** of the US.

Data from CDC. Available at <https://www.cdc.gov/covid-data-tracker/index.html>
Data as of December 30, 2021

OKLAHOMA EXCESS DEATH ANALYSIS

- + indicates observed count above threshold
- g Predicted number of deaths from all causes
- average expected number of deaths
- upper bound threshold for excess deaths

Weekly number of deaths (from all causes)

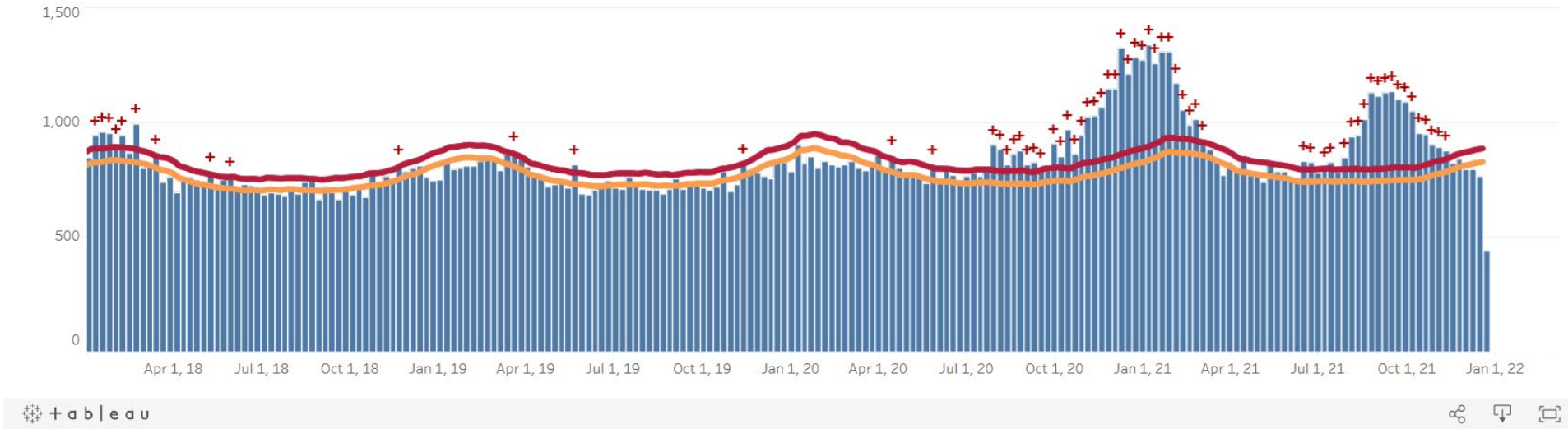


Figure notes: Contains data up to the week-ending date of December 18, 2021. Data in recent weeks are incomplete. Only 60% of the death records are submitted to NCHS within 10 days of the date of death, and completeness varies by jurisdiction.

Source: CDC, National Center for Health Statistics, https://www.cdc.gov/nchs/nvss/vsrr/covid19/excess_deaths.htm#dashboard, January 4, 2022 8:19 AM

COVID-19 LTC OR NURSING HOME ASSOCIATED CASES BY COUNTY

Status as of 7:00 AM January 4, 2022

Data are preliminary and are subject to change as cases are processed.

| County of Residence | Cases | Recovered** | Deaths |
|---------------------|-------|-------------|--------|
| Adair | 43 | 35 | 8 |
| Alfalfa | 11 | 11 | 0 |
| Atoka | 107 | 101 | 6 |
| Beaver | 26 | 23 | 3 |
| Beckham | 180 | 163 | 17 |
| Blaine | 51 | 48 | 3 |
| Bryan | 297 | 270 | 27 |
| Caddo | 179 | 158 | 21 |
| Canadian | 309 | 280 | 22 |
| Carter | 210 | 172 | 35 |
| Cherokee | 168 | 140 | 27 |
| Choctaw | 123 | 111 | 12 |
| Cleveland | 836 | 705 | 127 |
| Coal | 73 | 65 | 8 |
| Comanche | 303 | 261 | 36 |
| Cotton | 54 | 45 | 9 |
| Craig | 61 | 57 | 4 |
| Creek | 279 | 249 | 30 |
| Custer | 261 | 211 | 48 |

| County of Residence | Cases | Recovered** | Deaths |
|---------------------|-------|-------------|--------|
| Delaware | 268 | 219 | 47 |
| Dewey | 22 | 21 | 1 |
| Ellis | 12 | 11 | 0 |
| Frederick | 1 | 1 | 0 |
| Garfield | 363 | 320 | 41 |
| Garvin | 100 | 92 | 7 |
| Grady | 243 | 207 | 35 |
| Grant | 13 | 11 | 2 |
| Greer | 68 | 60 | 8 |
| Harmon | 57 | 55 | 2 |
| Harper | 3 | 2 | 1 |
| Haskell | 72 | 67 | 5 |
| Hillsdale | 1 | 1 | 0 |
| Hughes | 43 | 42 | 1 |
| Jackson | 131 | 111 | 20 |
| Jefferson | 28 | 25 | 3 |
| Johnston | 37 | 31 | 6 |
| Kay | 243 | 216 | 27 |
| Kingfisher | 131 | 114 | 15 |
| Kiowa | 54 | 45 | 9 |
| Latimer | 48 | 42 | 6 |
| Le Flore | 288 | 270 | 18 |
| Lincoln | 147 | 122 | 25 |

| County of Residence | Cases | Recovered** | Deaths |
|---------------------|-------|-------------|--------|
| Logan | 187 | 162 | 25 |
| Love | 30 | 27 | 3 |
| Major | 77 | 65 | 12 |
| Marshall | 39 | 38 | 1 |
| Mayes | 163 | 153 | 9 |
| McClain | 173 | 157 | 15 |
| McCurtain | 117 | 96 | 20 |
| McIntosh | 144 | 130 | 14 |
| Murray | 93 | 86 | 7 |
| Muskogee | 477 | 429 | 48 |
| Noble | 157 | 154 | 3 |
| Nowata | 89 | 87 | 1 |
| Okfuskee | 47 | 46 | 1 |
| Oklahoma | 2,181 | 1,881 | 274 |
| Okmulgee | 124 | 121 | 3 |
| Osage | 128 | 112 | 14 |
| Ottawa | 273 | 249 | 23 |
| Pawnee | 124 | 103 | 20 |
| Payne | 167 | 156 | 9 |
| Pittsburg | 358 | 320 | 36 |
| Pontotoc | 90 | 80 | 9 |
| Pottawatomie | 253 | 228 | 25 |
| Pushmataha | 72 | 67 | 5 |

| County of Residence | Cases | Recovered** | Deaths |
|---------------------|---------------|---------------|--------------|
| Roger Mills | 3 | 1 | 1 |
| Rogers | 586 | 494 | 88 |
| Seminole | 215 | 204 | 9 |
| Sequoyah | 115 | 101 | 14 |
| Stephens | 314 | 280 | 21 |
| Texas | 72 | 62 | 10 |
| Tillman | 33 | 31 | 2 |
| Tulsa | 1,715 | 1,412 | 302 |
| Wagoner | 203 | 182 | 20 |
| Washington | 374 | 322 | 50 |
| Washita | 52 | 50 | 2 |
| Woods | 50 | 44 | 6 |
| Woodward | 73 | 66 | 7 |
| <i>Total</i> | <i>15,312</i> | <i>13,386</i> | <i>1,831</i> |

** Recovered case: is not deceased and 14 days after symptom onset/specimen collection. Please note that the definition for recovered was changed starting May 4, 2021 due to incomplete data on hospitalizations which may result in an inaccurate estimation of the active cases.

COVID-19 LTC OR NURSING HOME ASSOCIATED CASES BY FACILITY

Status as of 7:00 AM January 4, 2022

Data are preliminary and are subject to change as cases are processed.

| Facility | Cases | Recovered** | Deaths |
|---|-------|-------------|--------|
| Aberdeen Heights Assisted Living Community | 16 | 13 | 3 |
| Aberdeen Memory Care of Tulsa | 7 | 3 | 4 |
| Accel at Crystal Park | 55 | 45 | 10 |
| Ada Care Center | 14 | 14 | 0 |
| Adams PARC Post Acute Recovery Center | 112 | 92 | 20 |
| Albert Hall | 7 | 7 | 0 |
| Alcis Place | 1 | 1 | 0 |
| Ambassador Manor Nursing Center | 40 | 29 | 11 |
| Anadarko Nursing & Rehab | 45 | 43 | 2 |
| Angelwood Assisted Living and Memory Care | 1 | 1 | 0 |
| Antlers Manor | 29 | 29 | 0 |
| Arbor House Assisted Living Center - Norman | 23 | 15 | 8 |
| Arbor House Assisted Living Center of Mustang | 37 | 30 | 7 |
| Arbor House Assisted Living of Midwest City | 4 | 3 | 1 |
| Arbor House Reminisce | 36 | 28 | 8 |
| Arbor Village | 20 | 18 | 2 |
| Artesian Home | 29 | 24 | 4 |
| Ash Street Place | 7 | 7 | 0 |
| Ashbrook Village | 6 | 6 | 0 |
| Aspen Health and Rehab | 15 | 15 | 0 |

| Facility | Cases | Recovered** | Deaths |
|--|-------|-------------|--------|
| Atoka Manor | 95 | 89 | 6 |
| Autumn Leaves of Edmond | 34 | 30 | 4 |
| Autumn Leaves of Southwest Oklahoma City | 3 | 2 | 1 |
| Autumn Leaves of Tulsa | 6 | 5 | 1 |
| Avondale Cottage of Pryor | 1 | 1 | 0 |
| Avonlea Cottage of Seminole | 27 | 25 | 2 |
| Avonlea Cottage of Shawnee, LLC | 10 | 10 | 0 |
| Ayers Nursing Home | 21 | 14 | 7 |
| Ballard Nursing Center | 27 | 22 | 5 |
| Baptist Village of Hugo | 74 | 68 | 6 |
| Baptist Village of Oklahoma City | 86 | 67 | 5 |
| Baptist Village of Owasso | 59 | 47 | 12 |
| Baptist Village of Owasso AL | 27 | 26 | 1 |
| Barnsdall Nursing Home | 15 | 13 | 1 |
| Bartlesville Assisted Living | 35 | 35 | 0 |
| Bartlesville Health and Rehabilitation Community | 112 | 89 | 22 |
| Beacon Ridge | 16 | 16 | 0 |
| Beadles Nursing Home | 35 | 30 | 5 |
| Beare Manor | 33 | 24 | 9 |
| Beaver County Nursing Home | 25 | 22 | 3 |
| Beehive Homes of Broken Arrow | 1 | 1 | 0 |
| Beehive Homes of Glenpool | 3 | 3 | 0 |
| Belfair of McAlester | 14 | 12 | 2 |

| Facility | Cases | Recovered** | Deaths |
|--|-------|-------------|--------|
| Belfair of Shawnee | 4 | 4 | 0 |
| Bell Avenue Nursing Center | 44 | 39 | 5 |
| Bellarose Senior Living | 8 | 5 | 3 |
| Bellevue Health and Rehabilitation | 110 | 88 | 21 |
| Betty Ann Nursing Center | 31 | 29 | 2 |
| Beverly Place | 1 | 1 | 0 |
| Billings Fairchild Center, Inc | 132 | 131 | 1 |
| Binger Nursing and Rehabilitation | 63 | 51 | 12 |
| Blue Ridge Place | 3 | 3 | 0 |
| Blue River Healthcare, Inc | 26 | 21 | 5 |
| Boyce Manor Nursing Home | 15 | 14 | 1 |
| Bradford Village Healthcare Center: Nursing Home | 24 | 20 | 4 |
| Brentwood Extended Care & Rehab | 33 | 31 | 2 |
| Broadway Living Center | 7 | 6 | 1 |
| Broadway Manor Nursing Home | 51 | 43 | 8 |
| Broken Arrow Assisted Living | 7 | 5 | 2 |
| Broken Arrow Nursing Home, Inc. | 38 | 32 | 6 |
| Broken Bow Nursing Home | 59 | 47 | 12 |
| Brookdale Ada | 5 | 5 | 0 |
| Brookdale Bartlesville North | 23 | 19 | 4 |
| Brookdale Bartlesville South | 16 | 14 | 2 |
| Brookdale Broken Arrow | 14 | 12 | 2 |
| Brookdale Cedar Ridge | 18 | 16 | 2 |

| Facility | Cases | Recovered** | Deaths |
|---------------------------------------|-------|-------------|--------|
| Brookdale Chickasha | 23 | 17 | 6 |
| Brookdale Claremore | 7 | 6 | 1 |
| Brookdale Durant | 27 | 25 | 2 |
| Brookdale Edmond Danforth | 20 | 16 | 4 |
| Brookdale Edmond Santa Fe | 6 | 6 | 0 |
| Brookdale Enid | 4 | 4 | 0 |
| Brookdale Muskogee | 23 | 17 | 6 |
| Brookdale Norman | 1 | 1 | 0 |
| Brookdale Owasso | 3 | 3 | 0 |
| Brookdale Shawnee | 2 | 1 | 1 |
| Brookdale Stillwater | 5 | 4 | 1 |
| Brookdale Tulsa 71st and Sheridan | 72 | 58 | 14 |
| Brookdale Tulsa Midtown | 11 | 8 | 3 |
| Brookdale Tulsa South | 8 | 7 | 1 |
| Brookdale Village | 3 | 2 | 1 |
| Brookdale Weatherford | 14 | 12 | 2 |
| Brookridge Retirement Community | 8 | 8 | 0 |
| Brookside Nursing Center | 9 | 9 | 0 |
| Brookwood Skilled Nursing and Therapy | 13 | 10 | 3 |
| Burford Manor | 24 | 23 | 1 |
| Calera Manor, LLC | 46 | 42 | 4 |
| Callaway Nursing Home | 14 | 14 | 0 |
| Canoe Brook Ardmore | 7 | 7 | 0 |

| Facility | Cases | Recovered** | Deaths |
|--|-------|-------------|--------|
| Capitol Hill Skilled Nursing and Therapy | 53 | 43 | 9 |
| Carnegie Nursing Home, Inc. | 41 | 35 | 6 |
| Cearu Medical Resort | 3 | 2 | 0 |
| Cedar Creek Nursing Center | 81 | 76 | 5 |
| Cedar Crest Manor | 35 | 31 | 0 |
| Cedarcrest Care Center | 53 | 44 | 9 |
| Center of Family Love | 18 | 18 | 0 |
| Chandler Therapy & Living Center, LLC | 60 | 51 | 9 |
| Checotah Nursing Center | 8 | 6 | 2 |
| Cherokee County Nursing Center | 67 | 57 | 10 |
| Chickasha Nursing Center, Inc | 13 | 9 | 4 |
| Chisholm Trail Assisted Living | 24 | 23 | 1 |
| Choctaw Nation Nursing Home | 37 | 32 | 5 |
| Cimarron Nursing Center | 27 | 21 | 4 |
| Cimarron Pointe Care Center | 28 | 25 | 3 |
| Claremore Skilled Nursing and Therapy | 37 | 32 | 5 |
| Cleveland Manor Nursing & Rehab | 71 | 61 | 10 |
| Clinton Therapy & Living Center | 11 | 11 | 0 |
| Colonial Manor II | 60 | 58 | 2 |
| Colonial Manor Nursing Home | 25 | 21 | 4 |
| Colonial Park Manor, LLC | 6 | 6 | 0 |
| Colonial Terrace Care Center | 29 | 29 | 0 |
| Community Health Care of Gore | 14 | 14 | 0 |

| Facility | Cases | Recovered** | Deaths |
|--|-------|-------------|--------|
| Community Health Center | 11 | 9 | 2 |
| Copp's Residential Care, Inc | 4 | 4 | 0 |
| Cordell Christian | 12 | 12 | 0 |
| Corn Heritage Village and Rehab | 29 | 27 | 1 |
| Corn Heritage Village and Rehab of Weatherford | 67 | 55 | 11 |
| Cottonwood Creek Skilled Nursing & Therapy | 37 | 31 | 6 |
| Country Club Care | 95 | 88 | 7 |
| Country Club at Woodland Hills | 10 | 10 | 0 |
| Country Gardens Assisted Living Community | 2 | 2 | 0 |
| Country Lane | 4 | 4 | 0 |
| Country Place | 1 | 1 | 0 |
| Countryside Estates | 19 | 17 | 2 |
| Countrywood Assisted Living and Memory Care | 12 | 8 | 4 |
| Covenant Living at Inverness | 32 | 29 | 3 |
| Covenant Living of Bixby | 6 | 6 | 0 |
| Coweta Manor Nursing Home | 76 | 64 | 12 |
| Creek Place | 3 | 3 | 0 |
| Creekside Village | 14 | 13 | 1 |
| Cross Place | 1 | 1 | 0 |
| Cross Timbers Nursing and Rehabilitation | 60 | 57 | 3 |
| Crossroads Residential Care | 16 | 14 | 2 |
| Crystal Place, LLC | 1 | 1 | 0 |
| Dogwood Creek Retirement Center | 11 | 11 | 0 |

| Facility | Cases | Recovered** | Deaths |
|---|-------|-------------|--------|
| Dorset Place - Assisted Living | 2 | 2 | 0 |
| Dr W F & Mada Dunaway Manor | 41 | 36 | 5 |
| Drumright Nursing Home | 60 | 58 | 2 |
| Duncan Assisted Living | 19 | 18 | 1 |
| Duncan Community Residence | 1 | 1 | 0 |
| EastOK Cottage 1 | 3 | 3 | 0 |
| Eastgate Village Retirement Center | 106 | 97 | 9 |
| Eastwood Manor | 97 | 92 | 5 |
| Eden Care - The Greens | 1 | 1 | 0 |
| Edith Kassanavoid Gordon Assisted Living Center | 5 | 5 | 0 |
| Edmond Healthcare Center | 54 | 43 | 11 |
| Edna Lee's Residential Care | 4 | 4 | 0 |
| El Reno Post-Acute Rehabilitation Center | 13 | 11 | 2 |
| Elk City Nursing Center | 63 | 55 | 8 |
| Elk Crossing | 47 | 39 | 7 |
| Elkwood Assisted Living and Memory Care | 25 | 22 | 3 |
| Elmbrook Home | 23 | 20 | 2 |
| Elmwood Manor Nursing Home | 27 | 27 | 0 |
| Emerald Care Center Claremore | 142 | 126 | 16 |
| Emerald Care Center Midwest | 73 | 66 | 7 |
| Emerald Care Center Southwest LLC | 61 | 59 | 2 |
| Emerald Care Center Tulsa | 42 | 35 | 7 |
| Emerald Square Assisted Living Community | 3 | 3 | 0 |

| Facility | Cases | Recovered** | Deaths |
|---|-------|-------------|--------|
| English Village Manor | 54 | 43 | 11 |
| Enid Senior Care | 18 | 15 | 3 |
| Epworth Villa Health Services | 40 | 35 | 2 |
| Eufaula Manor Nursing and Rehabilitation Center | 90 | 82 | 8 |
| Fairfax Manor | 34 | 26 | 5 |
| Fairmont Skilled Nursing and Therapy | 80 | 73 | 7 |
| Fairview Fellowship Home for Senior Citizens, Inc | 101 | 91 | 10 |
| Family Care Center of Fairland | 3 | 3 | 0 |
| Family Care Center of Kingston | 20 | 19 | 1 |
| Faye's Place | 7 | 7 | 0 |
| Featherstone Assisted Living Community of Ada | 5 | 5 | 0 |
| Featherstone Assisted Living Community of Durant | 6 | 6 | 0 |
| Featherstone Assisted Living Community of Moore | 38 | 33 | 5 |
| Featherstone of Miami | 11 | 11 | 0 |
| First Shamrock Care Center | 5 | 5 | 0 |
| Forest Hills Care and Rehabilitation Center | 35 | 29 | 6 |
| Forrest Manor Nursing Center | 53 | 49 | 4 |
| Fort Gibson Nursing Home | 22 | 18 | 4 |
| Fountain View Manor, Inc | 13 | 12 | 1 |
| FountainBrook Assisted Living and Memory Support | 12 | 12 | 0 |
| Four Seasons Rehabilitation & Care | 48 | 47 | 1 |
| Franciscan Villa | 136 | 113 | 23 |
| Garland Road Nursing and Rehab Center | 13 | 11 | 2 |

| Facility | Cases | Recovered** | Deaths |
|--|-------|-------------|--------|
| Gatesway Foundation, Inc | 9 | 9 | 0 |
| Glade Avenue Assisted Living | 7 | 7 | 0 |
| Glade Avenue South | 6 | 3 | 3 |
| Glenhaven Retirement Village | 78 | 69 | 8 |
| Glenwood Healthcare | 27 | 18 | 9 |
| Go Ye Village Continuum of Care Retirement Community | 10 | 4 | 5 |
| Golden Age Nursing Home of Guthrie, LLC | 89 | 70 | 19 |
| Golden Oaks Village | 54 | 42 | 11 |
| Grace Living Center - Buffalo | 1 | 0 | 1 |
| Grace Living Center - Clinton | 19 | 16 | 3 |
| Grace Living Center - Jenks | 41 | 32 | 9 |
| Grace Living Center - Norman | 93 | 76 | 17 |
| Grace Living Center - Stillwater | 16 | 15 | 1 |
| Grace Living Center - Tahlequah East Shawnee | 6 | 4 | 2 |
| Gracewood Health and Rehab | 45 | 37 | 8 |
| Gran Grans Place | 2 | 2 | 0 |
| Grand Lake Villa | 38 | 29 | 9 |
| Grandwood Assisted Living, LC | 48 | 42 | 6 |
| Green Country Care Center | 103 | 91 | 12 |
| Green Country Village Assisted Living Center | 6 | 6 | 0 |
| Green Tree at Sand Springs | 29 | 23 | 6 |
| Greenbrier Nursing Home | 53 | 49 | 3 |
| Greenbrier Village Residential Living, LLC | 15 | 15 | 0 |

| Facility | Cases | Recovered** | Deaths |
|---|-------|-------------|--------|
| Gregston Nursing Home, Inc. | 20 | 18 | 1 |
| Grove Nursing Center | 99 | 79 | 19 |
| Harborage of Oklahoma City | 1 | 1 | 0 |
| Harrah Nursing Center | 48 | 42 | 6 |
| Haskell Care Center | 31 | 31 | 0 |
| Haskell County Nursing Center, Inc | 67 | 62 | 5 |
| Hays House | 38 | 38 | 0 |
| Heartsworth Center for Nursing and Rehabilitation | 53 | 50 | 3 |
| Heartsworth House Assisted Living | 3 | 3 | 0 |
| Heatheridge Residential Care Center | 22 | 16 | 6 |
| Heavener Nursing & Rehab | 56 | 48 | 8 |
| Hennessey Nursing & Rehab | 81 | 74 | 7 |
| Henryetta Community Skilled Healthcare & Rehab | 10 | 9 | 1 |
| Hensley Nursing & Rehab | 40 | 35 | 5 |
| Heritage Assisted Living | 12 | 12 | 0 |
| Heritage Community | 32 | 27 | 5 |
| Heritage Grove at Tahlequah | 4 | 4 | 0 |
| Heritage Hills Living & Rehabilitation Center | 69 | 66 | 3 |
| Heritage Manor | 30 | 29 | 1 |
| Heritage Park | 7 | 4 | 3 |
| Heritage Point of Oklahoma City | 2 | 2 | 0 |
| Heritage Point of Tulsa | 15 | 15 | 0 |
| Heritage Skilled Nursing & Therapy | 10 | 9 | 1 |

| Facility | Cases | Recovered** | Deaths |
|---|-------|-------------|--------|
| Heritage Villa Nursing Center | 23 | 19 | 4 |
| Heritage Village Nursing Home | 15 | 15 | 0 |
| Heritage at Brandon Place Health and Rehabilitation | 65 | 59 | 6 |
| High Cedar Residential Care | 1 | 1 | 0 |
| Higher Call Nursing Center | 40 | 32 | 7 |
| Highland Park Health Care | 11 | 10 | 1 |
| Hill Nursing Home, Inc | 17 | 15 | 1 |
| Hillcrest Manor Nursing Center | 8 | 3 | 5 |
| Hillcrest Nursing Center | 30 | 28 | 2 |
| Hobart Nursing & Rehab | 26 | 23 | 3 |
| Holiday Heights Nursing Home | 16 | 11 | 2 |
| Home of Hope Elmwood House | 1 | 1 | 0 |
| Home of Hope Scrapper House | 1 | 1 | 0 |
| Homestead Residential Care | 2 | 2 | 0 |
| Homestead of Bethany, LLC | 9 | 8 | 1 |
| Homestead of Hugo | 45 | 39 | 6 |
| Homestead of Owasso | 16 | 16 | 0 |
| Ignite Medical Resort Norman, LLC | 53 | 44 | 9 |
| Ignite Medical Resort OKC | 128 | 113 | 15 |
| Iris Memory Care of Edmond | 10 | 7 | 3 |
| Jacquelyn House | 2 | 2 | 0 |
| Jan Frances Care Center | 14 | 12 | 2 |
| John H. Johnson Care Suites | 11 | 11 | 0 |

| Facility | Cases | Recovered** | Deaths |
|---|-------|-------------|--------|
| Kenwood Manor | 23 | 22 | 1 |
| Kingwood Skilled Nursing and Therapy | 32 | 29 | 3 |
| Lake Country Nursing Center | 30 | 27 | 3 |
| Lake Drive Care and Rehabilitation Center | 46 | 46 | 0 |
| Lakeland Manor, Inc | 15 | 11 | 3 |
| Lakeview Nursing & Rehab | 26 | 24 | 2 |
| Landmark of Midwest City Rehabilitation and Nursing | 44 | 38 | 6 |
| Lane Nursing & Ventilator Care | 5 | 5 | 0 |
| Latimer Nursing Home | 27 | 22 | 4 |
| Legacy Village of Stillwater | 18 | 18 | 0 |
| Legend at 71st St | 16 | 13 | 3 |
| Legend at Council Road | 7 | 7 | 0 |
| Legend at Mingo Road | 4 | 4 | 0 |
| Legend at Rivendell | 61 | 48 | 13 |
| Leisure Village Health Care Center | 52 | 40 | 12 |
| Lexington Nursing Home | 17 | 15 | 2 |
| Lexington Place | 1 | 1 | 0 |
| Liberty Place | 2 | 2 | 0 |
| Lindsay Nursing & Rehab | 36 | 32 | 3 |
| Linwood Village Nursing & Retirement Apts | 16 | 16 | 0 |
| Lyndale at Edmond | 2 | 2 | 0 |
| Magnolia Creek Skilled Nursing and Therapy | 45 | 36 | 9 |
| Mangum Skilled Nursing and Therapy | 70 | 63 | 7 |

| Facility | Cases | Recovered** | Deaths |
|---------------------------------------|-------|-------------|--------|
| Maple Lawn Nursing and Rehabilitation | 21 | 16 | 4 |
| Maplewood Care Center | 38 | 33 | 5 |
| Marlow Nursing & Rehab | 17 | 16 | 1 |
| Mattox Hall | 1 | 1 | 0 |
| McAlester Nursing & Rehab | 53 | 49 | 4 |
| McCall's Chapel School, Inc #11 | 2 | 2 | 0 |
| McCall's Chapel School, Inc #13 | 1 | 1 | 0 |
| McCall's Chapel School, Inc #4 | 1 | 1 | 0 |
| McCall's Chapel School, Inc #7 | 1 | 1 | 0 |
| McCall's Chapel School, Inc #8 | 1 | 1 | 0 |
| McCall's Chapel School, Inc #9 | 1 | 1 | 0 |
| McLoud Nursing Center | 8 | 8 | 0 |
| McMahon-Tomlinson Nursing Center | 48 | 44 | 4 |
| Meadow Brook Residential Care | 29 | 29 | 0 |
| Meadowbrook Nursing Center | 42 | 39 | 3 |
| Meadowlake Estates | 85 | 68 | 17 |
| Meadowlakes Retirement Village | 4 | 3 | 1 |
| Medical Park West Rehabilitation | 10 | 8 | 2 |
| Medicallodges Dewey | 6 | 6 | 0 |
| Meeker Nursing Center | 51 | 36 | 15 |
| Memorial Heights Nursing Center | 37 | 30 | 7 |
| Memorial Nursing Center | 28 | 27 | 1 |
| Memory Care Center at Emerald | 15 | 14 | 1 |

| Facility | Cases | Recovered** | Deaths |
|--|-------|-------------|--------|
| Meridian Nursing Home | 18 | 17 | 1 |
| Miami Nursing Center, LLC | 91 | 84 | 7 |
| Mid-Del Skilled Nursing and Therapy | 28 | 26 | 2 |
| Miller's Residential Care, LLC | 2 | 2 | 0 |
| Mitchell Manor | 86 | 81 | 5 |
| Monroe Manor | 17 | 11 | 6 |
| Montereau, Inc Assisted Living | 28 | 23 | 5 |
| Montereau, Inc LTC/SNF | 32 | 31 | 1 |
| Montevista Rehabilitation and Skilled Care | 23 | 19 | 4 |
| Mooreland Heritage Manor | 26 | 24 | 2 |
| Muscogee (Creek) Nation Skilled Nursing Facility | 1 | 1 | 0 |
| Muskogee Nursing Center | 21 | 20 | 1 |
| New Hope Retirement & Care Center | 16 | 15 | 0 |
| Noble Health Care Center | 81 | 76 | 5 |
| North County Assisted Living | 6 | 5 | 1 |
| North County Center for Nursing and Rehabilitation | 38 | 34 | 4 |
| North Winds Living Center | 3 | 2 | 0 |
| Northhaven Place | 10 | 9 | 1 |
| Northwest Nursing Center | 3 | 3 | 0 |
| Nowata Nursing Center | 8 | 6 | 1 |
| Oak Hills Living Center | 20 | 19 | 1 |
| Oakridge Home | 14 | 12 | 2 |
| Oakridge Nursing Center | 73 | 66 | 7 |

| Facility | Cases | Recovered** | Deaths |
|--|-------|-------------|--------|
| Okemah Care Center | 30 | 28 | 2 |
| Oklahoma Methodist Manor AL | 6 | 4 | 1 |
| Oklahoma Methodist Manor NH | 37 | 34 | 3 |
| Oklahoma Veterans Center, Ardmore Division | 36 | 23 | 13 |
| Oklahoma Veterans Center, Claremore Division | 330 | 272 | 53 |
| Oklahoma Veterans Center, Clinton Division | 167 | 134 | 33 |
| Oklahoma Veterans Center, Lawton-Ft. Sill Division | 72 | 61 | 10 |
| Oklahoma Veterans Center, Norman Division | 101 | 73 | 27 |
| Oklahoma Veterans Center, Sulfur Division | 57 | 54 | 2 |
| Oklahoma Veterans Center, Talihina Division | 36 | 32 | 4 |
| Okmulgee Terrace | 5 | 5 | 0 |
| Osage Nursing Home, LLC | 34 | 33 | 1 |
| Oxford Glen at Owasso | 25 | 20 | 5 |
| Parkhill North Nursing Home | 25 | 23 | 2 |
| Parkland Manor | 1 | 1 | 0 |
| Parkview Pointe Senior Living | 1 | 1 | 0 |
| Pauls Valley Care Center | 3 | 3 | 0 |
| Perry Green Valley Nursing Center, LLC | 30 | 28 | 2 |
| Pleasant Valley Health Care Center | 82 | 78 | 4 |
| Pocola Health & Rehab | 64 | 60 | 4 |
| Ponca City Nursing and Rehabilitation | 70 | 62 | 8 |
| Prairie House Assisted Living & Memory Care | 9 | 6 | 3 |
| Prairie Pointe at Stroud | 11 | 11 | 0 |

| Facility | Cases | Recovered** | Deaths |
|---|-------|-------------|--------|
| Primrose Retirement Community of Shawnee | 14 | 14 | 0 |
| Primrose Retirement Community of Stillwater | 3 | 3 | 0 |
| Providence House | 9 | 9 | 0 |
| Providence Place | 3 | 3 | 0 |
| Purcell Care Center, LLC | 43 | 36 | 7 |
| Quail Creek Senior Living | 23 | 19 | 4 |
| Quail Ridge Living Center, Inc (Colcord, OK) | 39 | 36 | 2 |
| Quail Ridge Senior Living | 27 | 21 | 6 |
| Quinton Manor Nursing Home | 19 | 19 | 0 |
| RT 66 Residential Care Home, LLC | 7 | 7 | 0 |
| Rainbow Health Care Community: Nursing Home | 84 | 75 | 9 |
| Rainbow Terrace Care Center | 1 | 1 | 0 |
| Rambling Oaks (Norman) | 29 | 26 | 3 |
| Rambling Oaks Courtyard Assisted Living & Memory Care | 10 | 10 | 0 |
| Ranch Terrace Nursing Home | 23 | 20 | 3 |
| Ranchwood Nursing Center | 59 | 48 | 4 |
| Reliant Living Center | 22 | 21 | 1 |
| Reliant Living Center of Del City | 3 | 3 | 0 |
| River Oaks Skilled Nursing | 53 | 45 | 8 |
| Riverside Health Services LLC | 18 | 18 | 0 |
| Robert M Greer Center | 1 | 1 | 0 |
| Rolling Hills Care Center | 34 | 23 | 11 |
| Ruth Wilson Hurley Manor | 75 | 67 | 8 |

| Facility | Cases | Recovered** | Deaths |
|--|-------|-------------|--------|
| Saint Simeons Episcopal Home | 42 | 39 | 3 |
| Sand Plum Assisted Living Community | 13 | 12 | 1 |
| Sand Springs Nursing and Rehabilitation | 20 | 18 | 2 |
| Seiling Nursing Center | 7 | 5 | 2 |
| Seminole Care and Rehabilitation Center | 117 | 111 | 6 |
| Seminole Pioneer Nursing Home | 23 | 23 | 0 |
| Seminole Place | 2 | 2 | 0 |
| Senior Star The Brook | 3 | 3 | 0 |
| Senior Suites Healthcare | 19 | 16 | 3 |
| Senior Village | 12 | 10 | 2 |
| Sequoyah East Nursing Center, LLC | 17 | 16 | 1 |
| Sequoyah Manor | 56 | 45 | 11 |
| Sequoyah Pointe Living Center | 27 | 23 | 4 |
| Shady Rest Care Center | 35 | 32 | 3 |
| Shanoan Springs Nursing and Rehabilitation | 63 | 56 | 7 |
| Share Medical Center | 13 | 12 | 1 |
| Shattuck Nursing Center | 11 | 10 | 0 |
| Shawn Manor Nursing Home | 6 | 6 | 0 |
| Shawnee Care Center | 39 | 31 | 8 |
| Shawnee Colonial Estates Nursing Home | 75 | 65 | 10 |
| Sherwood Manor Nursing Home | 20 | 15 | 5 |
| Shiloh Manor | 14 | 14 | 0 |
| Sienna Extended Care & Rehab | 40 | 37 | 3 |

| Facility | Cases | Recovered** | Deaths |
|--|-------|-------------|--------|
| Skiatook Nursing Home | 47 | 41 | 6 |
| Skyview Nursing Center | 9 | 8 | 1 |
| Sommerset Neighborhood | 23 | 22 | 1 |
| South Park East | 46 | 42 | 4 |
| South Pointe Rehabilitation and Care Center | 214 | 184 | 28 |
| Southbrook Healthcare, Inc. | 38 | 31 | 6 |
| Southern Hills Rehabilitation Center | 93 | 81 | 12 |
| Southern Oaks Care Center | 56 | 45 | 11 |
| Southern Plaza Assisted Living and Memory Care | 30 | 28 | 2 |
| Southern Pointe Living Center | 49 | 41 | 8 |
| Southridge Place | 1 | 1 | 0 |
| Spanish Cove Housing Authority | 31 | 30 | 0 |
| Spiro Nursing Home, Inc. | 58 | 57 | 1 |
| St. Ann's Skilled Nursing and Therapy | 97 | 69 | 28 |
| St. Katharine Drexel Retirement Center | 10 | 10 | 0 |
| Stilwell Nursing Home, LLC | 34 | 26 | 8 |
| Stonecreek Assisted Living and Memory Care | 6 | 4 | 2 |
| Storey Oaks | 48 | 43 | 5 |
| Stroud Health Care Center South | 8 | 8 | 0 |
| Summers Healthcare, LLC | 30 | 29 | 1 |
| Sunset Estates of Purcell | 93 | 86 | 6 |
| Talihina Manor | 20 | 19 | 1 |
| Tamarack Retirement Center | 19 | 17 | 2 |

| Facility | Cases | Recovered** | Deaths |
|--|-------|-------------|--------|
| Teal Creek Assisted Living & Memory Care | 13 | 13 | 0 |
| Tealridge Assisted Living | 14 | 13 | 1 |
| Temple Manor Nursing Home | 47 | 40 | 7 |
| Ten Oaks Place | 12 | 8 | 4 |
| The Arbors Assisted Living Center | 11 | 10 | 1 |
| The Brentwood Senior Living | 22 | 20 | 2 |
| The Chateau | 10 | 8 | 2 |
| The Commons | 135 | 121 | 14 |
| The Commons - AL | 4 | 4 | 0 |
| The Cottage Extended Care | 32 | 24 | 8 |
| The Courtyards at Claremore Assisted Living | 7 | 5 | 2 |
| The Courtyards at Magnolia Creek | 9 | 9 | 0 |
| The Fountains at Canterbury Health Center | 37 | 31 | 6 |
| The Gardens | 20 | 16 | 4 |
| The Gardens at Rivermont | 4 | 4 | 0 |
| The Golden Rule Home | 58 | 55 | 3 |
| The Grand at Bethany Skilled Nursing and Therapy | 25 | 24 | 1 |
| The Health Center at Concordia | 38 | 35 | 3 |
| The Health Center at Concordia ALC | 9 | 8 | 0 |
| The Heaven House Elmwood | 1 | 1 | 0 |
| The Highlands at Owasso | 39 | 29 | 10 |
| The King's Daughters & Sons Nursing Home | 69 | 64 | 5 |
| The Lakes | 12 | 11 | 1 |

| Facility | Cases | Recovered** | Deaths |
|--|-------|-------------|--------|
| The Legend at Jefferson's Garden | 2 | 2 | 0 |
| The Linden at Stonehaven Square | 29 | 20 | 9 |
| The Living Centre | 36 | 29 | 7 |
| The Lodge at Brookline | 16 | 14 | 2 |
| The Mansion at Waterford | 22 | 18 | 4 |
| The Neighborhoods at Baptist Village of Ada | 8 | 8 | 0 |
| The Neighborhoods at Baptist Village of Elk City | 15 | 15 | 0 |
| The Neighborhoods at Baptist Village of Okmulgee | 1 | 1 | 0 |
| The Nova Center | 1 | 1 | 0 |
| The Oaks Healthcare Center | 32 | 30 | 2 |
| The Parke Assisted Living | 17 | 15 | 2 |
| The Regency Skilled Nursing and Therapy | 28 | 25 | 3 |
| The Renaissance of Stillwater - Assisted Living | 5 | 5 | 0 |
| The Springs Skilled Nursing and Therapy | 52 | 43 | 9 |
| The Timbers Skilled Nursing and Therapy | 72 | 60 | 12 |
| The Veraden | 12 | 12 | 0 |
| The Villages at Southern Hills | 86 | 66 | 20 |
| The Willows | 1 | 1 | 0 |
| The Wilshire Skilled Nursing and Therapy | 6 | 6 | 0 |
| The Wolfe Living Center at Summit Ridge | 18 | 17 | 1 |
| Tidwell Living Center | 1 | 1 | 0 |
| Timberwood Assisted Living & Memory Care | 1 | 1 | 0 |
| Touchmark at Coffee Creek | 26 | 25 | 1 |

| Facility | Cases | Recovered** | Deaths |
|---|-------|-------------|--------|
| Town Village Assisted Living | 2 | 2 | 0 |
| Town of Vici Nursing Home | 21 | 20 | 1 |
| Tulsa Assisted Living and Memory Care | 5 | 4 | 1 |
| Tulsa Nursing Center | 38 | 34 | 4 |
| Tuscany Village Nursing Center | 26 | 24 | 2 |
| Tuttle Care Center | 38 | 35 | 3 |
| University Park Skilled Nursing & Therapy | 67 | 61 | 6 |
| University Village | 87 | 72 | 15 |
| Van Buren House Assisted Living | 4 | 4 | 0 |
| Via Christi Village Ponca City | 106 | 100 | 6 |
| Vian Nursing & Rehab, LLC | 23 | 21 | 2 |
| Victorian Estates | 8 | 7 | 1 |
| Village Health Care Center | 16 | 14 | 2 |
| Village Lodge of Ardmore Village | 11 | 10 | 1 |
| Village at Oakwood | 8 | 7 | 1 |
| Village on the Park | 48 | 39 | 8 |
| Villagio of Oklahoma City | 1 | 0 | 1 |
| Wagoner Health & Rehab | 46 | 42 | 4 |
| Wagoner Health & Rehab Res Care | 12 | 12 | 0 |
| Walnut Grove Living Center | 70 | 57 | 13 |
| Warr Acres Nursing Center | 23 | 21 | 1 |
| Washita Valley Living Center | 37 | 34 | 3 |
| Weatherwood Assisted Living and Memory Care | 11 | 11 | 0 |

| Facility | Cases | Recovered** | Deaths |
|--|-------|-------------|--------|
| Wellington Parke, LLC | 5 | 5 | 0 |
| West Wind Assisted Living | 26 | 24 | 2 |
| Westbrook Gardens | 6 | 5 | 1 |
| Westbrook Healthcare, Inc | 19 | 17 | 2 |
| Westhaven Nursing Home | 84 | 78 | 4 |
| Westview Cottages | 36 | 36 | 0 |
| Wewoka Healthcare Center | 18 | 16 | 0 |
| Whispering Oaks | 3 | 3 | 0 |
| Wildewood Skilled Nursing and Therapy | 26 | 25 | 1 |
| Wildwood Care Center, Inc | 37 | 34 | 3 |
| Wilkins Health and Rehabilitation Community | 48 | 37 | 0 |
| Willow Creek Health Care | 20 | 15 | 5 |
| Willow Haven Nursing Home | 34 | 28 | 6 |
| Willow Park Health Care Center | 73 | 62 | 11 |
| Willow Place | 5 | 5 | 0 |
| Willowood at Mustang Assisted Living and Memory Care | 7 | 7 | 0 |
| Wilson Nursing Center | 48 | 40 | 8 |
| Windridge Nursing and Rehabilitation Center | 32 | 28 | 4 |
| Windsor Hills Nursing Center | 8 | 7 | 1 |
| Woodland Park Home, Inc | 6 | 5 | 1 |
| Woodlands Skilled Nursing & Therapy | 3 | 3 | 0 |
| Woodview Home, Inc. | 22 | 22 | 0 |
| Woodward Skilled Nursing and Therapy | 39 | 35 | 4 |

| Facility | Cases | Recovered** | Deaths |
|-------------------------|---------------|---------------|--------------|
| York Manor Nursing Home | 44 | 42 | 2 |
| Zarrow Pointe | 21 | 18 | 3 |
| <i>Total</i> | <i>15,312</i> | <i>13,386</i> | <i>1,831</i> |

** Recovered case: is not deceased and 14 days after symptom onset/specimen collection. Please note that the definition for recovered was changed starting May 4, 2021 due to incomplete data on hospitalizations which may result in an inaccurate estimation of the active cases.

ACKNOWLEDGEMENT

The weekly report is made by possible through the efforts of county and city public health and healthcare professionals.

NOTES

Every effort is made to ensure accuracy and the data is up-to-date for the time period reported.

DISCLAIMER

The purpose of publishing aggregated statistical COVID-19 data through the OSDH Dashboard, the Executive Order Report, and the Weekly Epidemiology and Surveillance Report is to support the needs of the general public in receiving important and necessary information regarding the state of the health and safety of the citizens of Oklahoma. These resources may be used only for statistical purposes and may not be used in any way that would determine the identity of any reported cases.