



# Power Brake Sales

## Sacramento, California

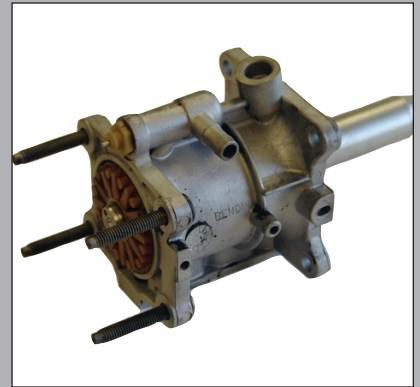
*Serving the automotive, hotrod, & trucking industry since 1948*



### products catalog

Toll Free:(800) 624-8185

[www.powerbrakes.com](http://www.powerbrakes.com)

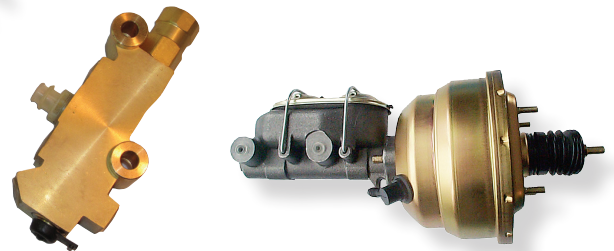
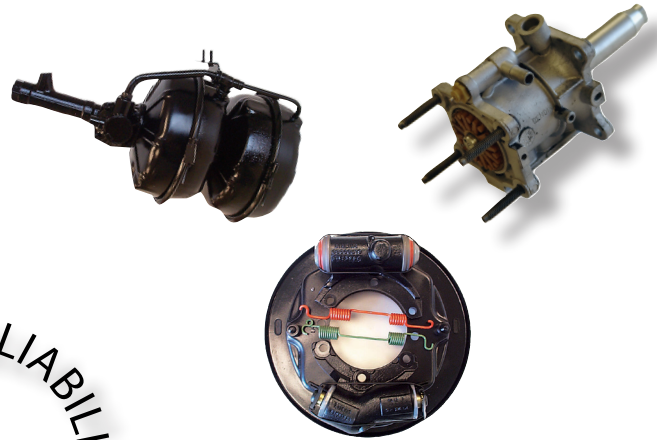


*Power Brake Sales is a family owned and operated business that was established in 1948 to fill a need for affordable alternatives to new parts. Air Brake Repair Service, Inc. dba Power Brake Sales has grown since then, we still provide high quality, affordable new and remanufactured units for vehicles both small and large but now we offer so much more. Whether it's a car, truck, bus, tractor or trailer, if you need part of the braking system, chances are we can provide it, or remanufacture it, for you. Both power and air brake systems and all the parts to make them work, are just one call away.*

## HEAVY DUTY TRUCK PARTS



## MEDIUM DUTY TRUCK PARTS



## LIGHT DUTY & PASSENGER CAR

## AFTERMARKET & HOT ROD PARTS

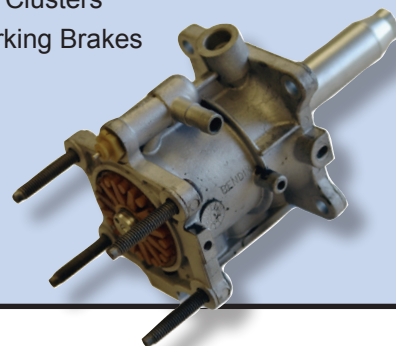
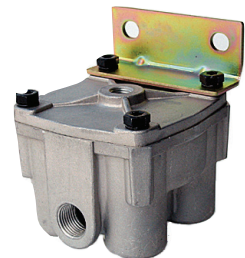
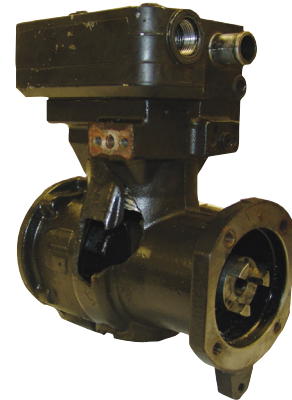


# Power Brake Sales

All mentioned of manufacturer's names, numbers, etc. are for reference purposes only. Referral to those items does in no way imply that the parts listed are the products of those manufacturer's.



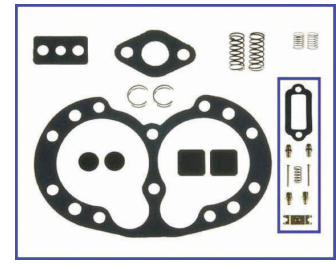
<b>Air</b>	<b>Power</b>
Air Compressors	Power Brake Units
Bendix	Bendix
Clayton	Delco
Cummins/Holset	Midland
Isuzu	Domestic Master Cylinders
Knorr	Slave Cylinders
Midland/Haldex	Treadlevacs
Volvo	Hydroboost
Wabco	Hydrovacs
Air Brake Valves	Bendix J Bolt
Bendix	Bendix Belly Band
Berg	Single & Tandem
Clayton	Midland Belly Band
Cummins	Delco Dual Power
Kysor	Delco Hy Power
Midland/Haldex	Bendix Hydro Max
Sealco	Bendix & Delco Motors
MGM	Mini Master Cylinders
Sprague	Lucas Components
Trico	Backing Plates
Wabco	Wheel Cylinders
Wagner	Brake Pump
Williams	Parking Cylinder
Air Dryers	Adjusting Cylinder
Fan Clutches	Hydraulic Relay
Spring Brakes	Dash Control
Anchorloc	Hydraulic Spring Brake
MGM	Heavy Duty Calipers & Pads
MaxiBrake	Power Clusters
Rockwell	ZF Parking Brakes
Roto Chambers	
Service Chambers	
DD3	
Bendix Convac Pumps	
Pressure Converters	
Wiper Motors	



# Compressors & Parts

Bendix Type

Series	Displacement	Head Kit	Unloader Valve
TF-300	4 cu. ft. per min. at 1250 R.P.M.	229415	279613
TF-400	7.25 cu. ft. per min. at 1250 R.P.M.	229416	279614
TF-500	12 cu. ft. per min. at 1250 R.P.M.	229417	279615
TF-501	12 cu. ft. per min. at 1250 R.P.M.	287043	279615
TF-600	14.5 cu. ft. per min. at 1250 R.P.M.	229417	279615
BX-2150	9.5 cu. ft. per min. at 1250 R.P.M.	108848	108847
TF-550	13.2 cu. ft. per min. at 1250 R.P.M.	107516	107515
TF-700	15.5 cu. ft. per min. at 1250 R.P.M.	289998	279615
TF-750	16.5 cu. ft. per min. at 1250 R.P.M.	107516	107515
TF-1000	24 cu. ft. per min. at 1250 R.P.M.	229417 (2)	279615 (2)
TF-1400	31 cu. ft. per min. at 1250 R.P.M.	104592	279615 (2)
BA-921	15.8 cu. ft. per min. at 1250 R.P.M.	61K13KA1	61K12KA5
BA-922	31.6 cu. ft. per min. at 1250 R.P.M.	61K14KA1	61K12KA5 (2)
DF-596	27 cu. ft. per min. at 1250 R.P.M.	61K08KA1	61K08KA5

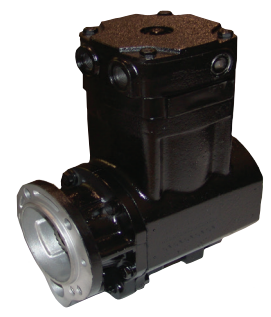


279615



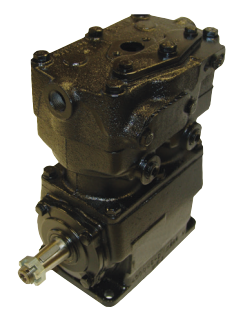
Cummins/Holset Type

Series	Displacement	Head Kit	Unloader Valve
SS191	8.5 cu. ft. per min. at 1250 R.P.M.	T26JAWEX	T26JB
SS296	13.2 cu. ft. per min. at 1250 R.P.M.	3559511	AR12719
SS338	15.0 cu. ft. per min. at 1250 R.P.M.	3559515	AR12719
QE296	13.2 cu. ft. per min. at 1250 R.P.M.	3559553	3559568
QE338	15.0 cu. ft. per min. at 1250 R.P.M.	3559549	3559568
ST676	30.0 cu. ft. per min. at 1250 R.P.M.	3559547	AR12719 (2)
ST773	34.0 cu. ft. per min. at 1250 R.P.M.	3559547	AR12719 (2)



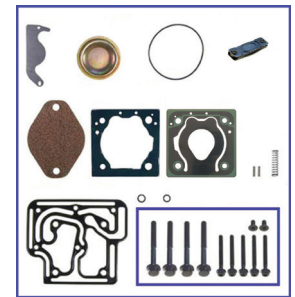
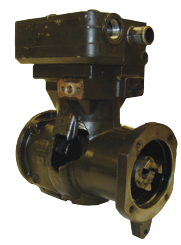
Haldex/Midland Type

Series	Displacement	Head Kit	Unloader Valve
EL-740	7.4 cu. ft. per min. at 1250 R.P.M.	3-740	3-33.
EL-850	8.5 cu. ft. per min. at 1250 R.P.M.	T26JAWEX	T26JB
EL-1200	12.0 cu. ft. per min. at 1250 R.P.M.	3-12	3-33.
EL-1300	12.9 cu. ft. per min. at 1250 R.P.M.	3-26EA	3-26GCEA
EL-1600	16.1 cu. ft. per min. at 1250 R.P.M.	3-26EA	3-26GCEA
EL-3200	32.2 cu. ft. per min. at 1250 R.P.M.	3-26EA (2)	3-26GC (2)



Wabco Type

Series	Displacement	Head Kit
75mm	15.2 cu. ft. per min. at 1250 R.P.M.	4089240
75mm Twin	30.4 cu. ft. per min. at 1250 R.P.M.	3559547
85mm	18.7 cu. ft. per min. at 1250 R.P.M.	4089238
85mm Twin	37.4 cu. ft. per min. at 1250 R.P.M.	4089239



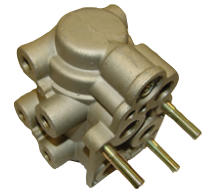
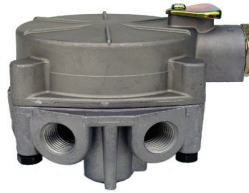
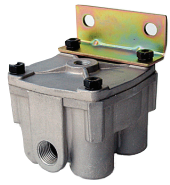
4089238

Core Charges May Apply



# AIR VALVES

## Bendix Type Replacement Valves



**Relay Valves**

Part #	Description
065104G	Vertical Delivery Ports, 3/8" Ports, (12)
065145G	Bob Tail Proportioning Relay Valve (4 psi C.P.) (R1)
065146G	Bob Tail Proportioning Relay Valve (5.5 psi C.P.) (R1)
065303G	2 Vert. 2 Horiz. Delivery Ports, 3/8" Ports (12), (4 psi C.P.)
102626G	Vertical Delivery Ports, 1/2" Ports (12)
103009G	Horizontal Delivery Ports, 1/2" Ports (12)
103010G	Horizontal Delivery Ports (14)
103028G	Vertical Delivery Ports (14)
103081G	Relay Spring Brake Valve (7)
279180G	Relay Valve, 2 Hole Mount (6)
279952G	Relay Valve, 2 Hole Mount (6)
281865G	Relay Emergency Valve (6)
286370G	Relay Valve (8)
287114G	Relay Valve (8P)
227355X	Relay Valve (1)
227361X	Relay Emergency Valve (1C)
229434X	Relay Emergency Valve, Old Style, Flange Mount (4)
229467X	Relay Valve (5)
277446X	Relay Emergency Valve, New Style, Tank Mount (4)

**Governor Valve**

Part #	Description
284358G	Governor

**Foot Valves**

Part #	Description
101100G	Foot Brake Valve (10)
277863G	Foot Brake Valve (3)
279950G	Foot Brake Valve (5)
284760G	Foot Brake Valve (7)
286171G	Foot Brake Valve (6)
288383G	Foot Brake Valve (7)
065313X	Foot Brake Valve (12)
065314X	Foot Brake Valve (14)
223192X	Foot Brake Valve (D1)
225804X	Foot Brake Valve (E)
228429X	Foot Brake Valve (1)
279750X	Foot Brake Valve (4)

**Quick Release Valves**

Part #	Description
229813G	Quick Release Valve (1/4" Supply Port) (1)
229859G	Quick Release Valve (3/8" Supply Port) (1)
229860G	Quick Release Valve (1/2" Supply Port) (1)
289714G	Quick Release Valve (1C)
229505G	Limiting Quick Release Valve 3/8" Del Port (2)
229509G	Limiting Quick Release Valve 1/4" Del Port (2)
289144G	Limiting Quick Release Valve (4)
800333G	In Line Quick Release Valve

Core Charges May Apply

# Air Valves Bendix Type Replacement Valves



## Pressure Protection Valves

Part #	Description
277147G	Nominal Closing Pressure 65 psi (2)
286500G	Nominal Closing Pressure 85 psi (4)

## Tractor Protection Valves

Part #	Description
279000G	Tractor Protection Valve (3)
288605G	Tractor Protection Valve (5)
227672X	Tractor Protection Valve (2)
288301X	Tractor Protection Valve (4)

## Control /Dash Valves

Part #	Description
228729G	Generic Cast Lever Flipper Valve
229635G	Flipper Valve (1)
276566G	Push/Pull Valve (20 psi Release, 1/8" Port) (1)
276567G	Push/Pull Valve (40 psi Release, 1/8" port) (1)
287600G	Push/Pull Valve (40 psi Release, 1/4" port) (1)
288239G	Push/Pull Valve (7)
288241G	Push Pull Valve (7)
287238G	Push/Pull Valve (1/8" Port) (8)
101437G	Dash Control Valve (2)
065157G	(800516) - Dash Control Valve (Mtg. Hole Dia. 0.27) (3)
275250X	Push Pull Valve (2)
281208X	Two Lever Position (2)

## Switch Valves

Part #	Description
228600G	Stop Light Switch (4)
228750G	Low Pressure Switch (3), Dual Terminal
279416G	Low Pressure Switch (3), Single Terminal
223220X	Stop Light Switch (2)
226262X	Stop Light Switch (3)
223578X	Low Pressure (2)
228477X	Trailer Emergency (1)
228520X	Stop Light, Double Check Valve (DS1)

## Spring Brake Valves

Part #	Description
286364G	Spring Brake Valve (1)
287376G	Spring Brake Valve (2)
103061G	Spring Brake Valve (1/2" Nut) (2)
101112G	Spring Brake Valve (4)
065437G	Spring Brake Valve, With Anti-compounding, 3/4" Nipple (5)
065439G	Spring Brake Valve, With Anti-compounding, 1/2" Nipple (5)

## Check Valves

Part #	Description
278598G	Double Check Valve
278614G	Double Check Valve (3/8" Ports)
278615G	Double Check Valve (1/4" Ports)
280809G	Double Check Valve

Core Charges May Apply



# Air Valves Haldex/Midland Type Replacement Valves



## Relay Valves

Part #	Description
12352G	Relay Valve
KN26000G	RT-4 Multi-Function Valve (55 psi closing)
KN26010G	RT-4 Multi-Function Valve (70 psi closing)
KN28060G	Relay Valve, Crack Pressure 4.6 psi
KN28071G	Relay Valve, Two Delivery Ports w/ Anti-Compounding
KN28080G	Relay Valve, Four Port, Single Control Line w/ Integral Bracket
KN28500G	RG-2 Relay Valve
KN28510G	RG-2 Relay Valve
KN28520G	RG-2 Relay Valve
KN28600G	FF-2 Full Function Valve, 3/8" Reservoir
KN28601G	FF-2 Full Function Valve, 1/2" Reservoir
KN30200G	Emergency Relay Valve, Crack Pressure 4.5 psi 3/8" Ports
KN30300G	Emergency Relay Valve, Crack Pressure 3 psi 1/4" Ports
KN30400G	Emergency Relay Valve, Crack Pressure 3 psi 3/8" Ports
11675X	Relay Emergency Valve
12350X	Relay Emergency Valve
12360X	Task Valve
KN28130X	Relay Valve, 3 Delivery Port
KN30010X	Relay Emergency Valve, Fruehauf Type

## Control Valves

Part #	Description
KN20606G	Manifold Dash Valve (Mtg. Hole Dia. 1/4-20 nuts on Cover)
KN20615G	Manifold Dash Valve (Mtg. Hole Dia. 1/4 Hole in Body)
KN20900	Red, Pin Style, Push Pull Knob
KN20901	Yellow, Pin Style, Push Pull Knob

## Check Valves

Part #	Description
KN23000G	1/2" Check Valve
KN23010G	3/8" Check Valve
KN23040G	3/4" Check Valve

## Misc. Valves

Part #	Description
KN27000G	Levelling Valve (Plastic) w/Linkage
KN68230G	12Volt Solenoid Valve
BE13240G	Circuit Light Switch, Actuation 55 psi
BE13241G	Low Air Switch, Actuation 66 psi
BE13250G	Stoplight Switch, Actuation Pressure 3 - 5 psi
BE13255G	Stoplight Switch, Actuation Pressure 55 psi
KN34000X	Tractor Protection, 3 line
KN34050X	Tractor Protection, 3 line, W/QR

## Drain Valves

Part #	Description
12105G	Drain Valve
281923G	Drain Valve

## Pressure Protection Valves

Part #	Description
KN31000G	Opening 65 psi, Closing 56 psi
A80150X	Distribution Valve

Core Charges May Apply

# Air Valves

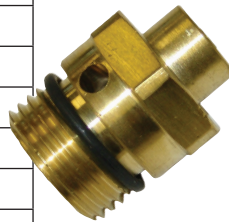
## Sealco Type Replacement Valves

Part #	Description
110139G	Service Relay Valve, 4 Delivery Ports, 4.5 psi
110170G	Spring Brake Control Valve, Protected Reservoir System
110197G	Relay Valve (Old Style), 2 Delivery Ports, 4.0 psi
110205G	Relay Emergency Valve, Charging, 4 Delivery Ports, 4.5 psi
110360G	Service Relay Valve, 2 Delivery Ports, 1.5 psi
110380G	Service Relay Valve, 4 Delivery Ports, 1.5 psi
110338G	Relay Emergency Valve, Non-Charging, 4 Delivery Ports, 4.5 psi
110410G	Service Relay Valve, 2 Delivery Port, 4.0 psi
110415G	Service Relay Valve, 4.0 psi
110500G	Spring Brake Control Valve
110570G	Control Line Valve
110700G	Spring Brake Control Valve
110800G	Spring Brake Control Valve
110580G	Control Line Valve, Trailer
17600G	Hand Control Valve, Manual, Two Hole Mounting
17600BG	Hand Control Valve, Manual, Two Hole Mounting
99600BG	Hand Control Valve, Automatic Shut-Off, Two Hole Mounting
780210G	Spring Brake Exhaust Valve



## New-Way Type Replacement Valves

Part #	Description
90054007G	Leveling Valve
90054074G	Solenoid Valve
90054075G	Solenoid Valve
90054079G	Pilot Valve
90054088G	Manual Dump Valve
90554241G	Leveling Valve (metal) No Linkage
90554271G	Leveling Valve



Safety Valves 250 PSI

Part #	Description
801116	ST-4 Style Safety Valve (7/8 - 14 UNF2A)
800154	ST-4 Style Safety Valve (1/2 - 14 NPT)
800534	ST-4 Style Safety Valve (M16x1.5 - 6H)
PRVSS250	ST-4 Style Safety Valve (1/2 - 14 NPT) Cummins SS

## Williams Control Valves





# Brake Shoes, Kits & Air Disc Calipers



## Linings

Part #	Description
BS-4228-KVT	Boxed Lining For 4 Shoes
BS-4398-KVT	Boxed Lining For 4 Shoes
BS-4505-HS	Boxed Lining For 4 Shoes
BS-4514-FLOE	Boxed Lining For 4 Shoes
BS-4515-MV23	Boxed Lining For 4 Shoes
BS-4515-TS	Boxed Lining For 4 Shoes
BS-4592-KVT	Boxed Lining For 4 Shoes
BS-4715A-KVT	Boxed Lining For 4 Shoes

## Brake Shoes

Part #	Description
BS-4504-HS	6 Inch Lucas Heat Star Shoe
BS-4505-HS	7 Inch Lucas Heat Star Shoe
BS-4515Q+-HS	4515Q+ Heat Star
BS-4515Q+-MV23	4515Q + Marathon Value 23,000
BS-4528-HS	5 Inch Lucas Heat Star Shoe
BS-4702Q+-HS	4702Q + Heat Star
BS-4702Q+-MV20	4702Q + Marathon Value 20,000
BS-4715Q+-KVT	4715Q+ KVT

## Boxed Bake Shoe Kit

Part #	Description
BS-4515Q+MV23-Kit	4515Q + Brake Shoe Kit
BS-4702Q+MV20-Kit	4702Q + Brake Shoe Kit
BS-4707Q+MV26-Kit	4707Q + Brake Shoe Kit
BS-4709ES1-MV23-Kit	4709 1st Generation Brake Shoe Kit
BS-4709ES2-MV23-Kit	4709 2nd Generation Brake Shoe Kit

## Air Disc Caliper Brake Pad


Part #	Description
BS-CBP-MTR225	MCI Pad
BS-CBP-OR6	Meritor D-Elisa Pad
BS-CBP-PRV01	Knorr Nova Prevos Pad
BS-CBP-RN01	Lucas Girling Pad

# Air Dryers, Kits & Accessories Common Parts


## Heater Kits

Part #	Description	2	4	9	IP	IS	SP	SS
102657G	12v Heater Kit	X	X					
109495G	12v 90 Watt				X	X	X	
109496G	24v 90 Watt				X	X	X	
109578G	12v 75 Watt, Color - White			X				
109579G	24v 75 Watt , Color - Gray			X				
5002595G (Transit Type)	24v 75 Watt , Color - Gray			X				
R950015G	12V Heater Kit							X
R950016G	24V Heater Kit							X

## Pressure Relief Valve

Part #	Description	2	4	9	IP	IS	SP	SS
205105G 	1/4" NPT Adjustable Pressure	X	X	X	X			
284142G	1/4" NPT Non Adjustable		X					
800350-150G	150 PSI	X	X	X	X	X		
800350-175G	175 PSI	X	X	X	X	X		


## Mounting Bracket

Part #	Description	2	4	9	IP	IS	SP	SS
107695G 	Includes: 5/16" Lock washer, 5/16" Hex Nut, Washer (4), 5/16" Hex Screw, Bracket, Locknut (4), 3/8" Cap Screw, Mount Strap & Lower Mounting Bracket.		X	X				
247954G	Includes: 5/16" Cap Screw (2) ,5/16" Lock Washer (2), 5/16" Hex Nut (2), Brackets (2).	X						


## Pig Tail

Part #	Description	2	4	9	IP	IS	SP	SS
109869G 	Replacement Wire Harness & Connector			X	X		X	X

## Purge Valve

Part #	Description	2	4	9	IP	IS	SP	SS
800404G 	Replacement Wire Harness & Connector				X			
800405G	12v 75 Watt Complete Purge Valve (also available in 24v 75 Watt & 24v 100 Watt)			X				
K022105G	Purge Valve Assembly (new style)			X	X	X		

## Check Valve

Part #	Description	2	4	9	IP	IS	SP	SS
107454G 		X						
107799G	3/4" NPT			X				
107800G	1/2" NPT			X				
5000457G	QE Check Valve Kit			X				



# Air Dryers, Kits & Accessories



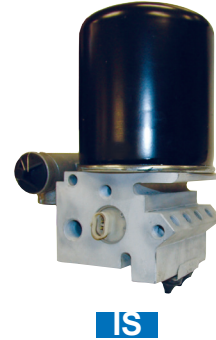
4



9



LP



IS



SP



2



SS

## Family of Dryers



Reman Dryer

Reman Part #	Port	Description
286934X	1/2" Port	12v D.C. - 60W
286936X	1/2" Port	24v D.C. - 60W

Maintenance Kits

Part #	Description
287053G	End Cover Maintenance Kit



287053G

Desiccant Cartridge

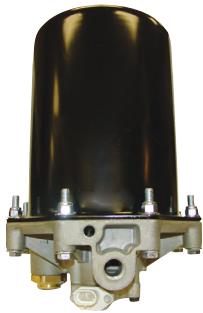


Reman Part #
101900X



# Air Dryers, Kits & Accessories

**New Replacement & Reman Dryer**



O.E.M Part #	Reman. Part. #	Purge Volume	Port Size	Heater
109685G (w/o bracket and plug)	109685X	Std.	1/2"	12v
065225G (w/bracket and plug)	N/A	Std.	1/2"	12v
065224G (w/o bracket and plug)	N/A	Std.	1/2"	24v
065225,065650,065243	065225X	Std.	1/2"	12v
065224,800686	065224X	Std.	1/2"	24v
065226,065228,065651	109687X	Std.	3/4"	12v

**Maintenance Kits**

Part #	Description
5004336G	Old Style Purge Valve Kit
5005037G	Hard seat (includes purge piston)
5005893G	Soft seat (includes purge piston)



5005037G

**Desiccant Cartridge**



Used on Model 9 & Extended Purge Valve Dryers

New Replacement #	Reman #
107794G	107794X



O.E.M Part#	Reman. Part. #	Heater
065612G 065693,800089	109477X	12v-90W
065613	109478X	24v-90W
800067	5000709X Bottom Port	12v-90W
800168	5000710X Side Port	12v-90W

**Maintenance Kits**

Part #	Description
109494G	Check Valve Maintenance Kit
5003547G	Purge Valve Maintenance Kit



109494G

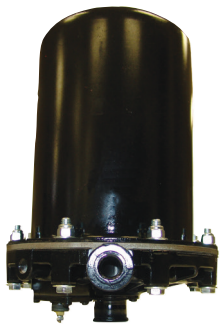
**Desiccant Cartridge**



New Replacement #	Reman #
N065624	109493X

Core Charges May Apply

# Air Dryers, Kits & Accessories



**Reman Dryer**

Reman Dryer		
Reman Part #	Port	Description
065040X	3/4" Port	24v D.C. - 120W
065041X	1/2" Port	12v D.C. - 60W

**End Cover Maintenance Kits**

Part #	Description
103818G	Purge Valve Kit
103879G	Seal Kit
103980G	End Cover Kit



103879G

**Desiccant Cartridge**



O.E.M. Part #	Reman Part #
104358G	104358X

Core Charges May Apply



**Reman Dryer**

Reman #	Description
109991X	12v D.C
109992X	24v D.C

**Maintenance Kits**

Part #	Description
109993G	Turbo Cut-Off Kit
5005624G	Delivery Check Valve Kit



109993G

**Desiccant Cartridge**



New Replacement #	Reman #
950011G	n/a
Note:109994G is the same as the 950011G	



# Air Dryers, Kits & Accessories



**New Replacement & Reman Dryer**



New Replacement #	Reman #	Description
R955205G	R955205X	12v D.C
R955206G	R955206X	24v D.C

**Maintenance Kits**

Part #	Description
R950013G	Turbo Cut-Off Assembly Kit
R950014G	Purge Valve Assembly Kit
R950017G	Outlet Check Valve Assembly Kit
R950045G	Diaphragm Kit



R950014G

**Desiccant Cartridge**

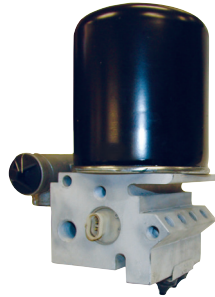


New Replacement #	Reman #
950011G	n/a
Note:109994G is the same as the 950011G	

Core Charges May Apply



**New Replacement & Reman Dryer**



O.E.M Part #	Reman. Part. #	Reference #
801147	5010133X (4 Line)	5010134 or 5010135
801266	5010696X (3 Line)	5010696

**Maintenance Kits**

Part #	Description
K022105G	Purge Valve Assembly
5003547G	Purge Valve Maintenance Kit



5003547G

**Desiccant Cartridge**



New Replacement #	Reman #
5008414G	N/A

# Fan Clutches & Repair Kits

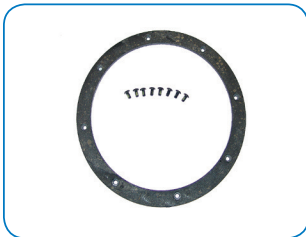
Horton Type

Series	Description
"S"	7.5" Air-Engaged Fan Drive
"HTS"	9.5" Air-Engaged Fan Drive
Drivemaster	Spring-Engaged Fan Drive
Two-Speed	Eddy Current/Spring-Engaged Fan Drive



Horton Type Repair Kits

Part #	Description	Cross #
294205	Minor Seal Kit, Fits "S" and "HTS" Series Clutches	OE# 994205, Kit Master # 4205
294212	7.5" Lining Kit, Fits "S" Series Clutches	OE# 994212, Kit Master # 7503
294246	9.5" Lining Kit, Fits "HTS" Series Clutches	OE# 994246, Kit Master # 9503
294314	Major Repair Kit, Fits "S" Series Clutches	OE# 994314, Kit Master # 7500H
294315	Major Repair Kit, Fits "HTS" Series Clutches	OE# 994315, Kit Master # 9500H
294305	Super Repair Kit, Fits "S" Series Clutches	OE# 994305, Kit Master # 9500HP
294307	Super Repair Kit, Fits "HTS" Series Clutches	OE# 994307, Kit Master # 7500HP

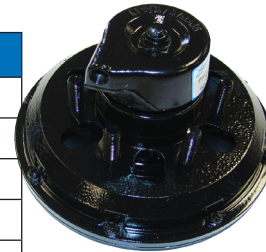


Core Charges May Apply

# Fan Clutches & Repair Kits

**Kysor Type Reman**

Part #	Description
1090-07050-01X	7" Fan Clutch (Reman), Front Air
1090-07050-03X	7" Mack/Volvo Fan Clutch (Reman), Front Air
1090-08000-01X	9" Fan Clutch (Reman), Front Air
1090-08000-03X	9" Mack/Volvo Fan Clutch (Reman), Front Air
1090-08000-04X	9" Fan Clutch (Reman), Front Air
1090-08500-01X	9" Fan Clutch (Reman, K-22), Rear Air
1090-08500-02X	9" Fan Clutch (Reman,K-22), Rear Air
1090-08500-03X	9" Mack/Volvo Fan Clutch (Reman,K-22), Rear Air
1090-08500-04X	9" Fan Clutch (Reman,K-22), Rear Air
1090-09500-01X	9" Fan Clutch (Reman,K-26), Rear Air
1090-09600-01X	9" Fan Clutch (Reman,K-30), Rear Air



FRONT AIR



REAR AIR



**Kysor Type New**

Part #	Description
9500-01	NEW 9" Fan Clutch (K-26), Rear Air

**Kysor Type Repair Kits**

Part #	Description	Cross #
38713-FA	Seal Kit, Fits "K-22" Series Clutches	OE # 38713, Kit Master # 8500SK
38714-RA	Seal Kit, Fits "K-26" Series Clutches	OE # 38714, Kit Master # 9 500SK



38714SK



38713SK

Core Charges May Apply



FD-3



FD-L

**Bendix Type**

Series	Description
FD-L	Pneumatically Operated, Thermostatically Controlled Clutch
FD-1	Pneumatically Operated, Thermostatically Controlled Clutch
FD-3	Pneumatically Operated, Thermostatically Controlled Clutch

Please Call Our Order Desk For Repair Kits and Piece Parts.



# Spring Brakes , Service Chambers & Diaphragms

## Spring Brakes

Series	Displacement
2424T	Standard 24/24 Spring Brake Complete
3030T	Standard 30/30 Spring Brake Complete (2.5" Stroke)
3036T	Standard 30/36 Spring Brake Complete



## Diaphragms

Series	Displacement
1809	9
1812	12
1816	16
1820	20
1820LS	20
1824	24
1824LS	24
1830	30
1830LS	30
1836	36
200001	Type 9" Bolt Diaphragm
200014	Type 6 3/4" Bolt Diaphragm
200630	Type 11" Bolt Diaphragm
200728	Type 6" Bolt Diaphragm
201271	Type 7 7/8" Bolt Diaphragm
210816	Type 9 7/8" Bolt Diaphragm



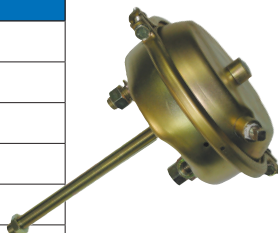
## Clevis Assembly & Pins

Series	Displacement
200054	1/2" Clevis Pin
239160	5/8" Clevis Pin
205948	1/2" X 1/2" Clevis Assembly
228790	1/2" X 5/8" Clevis Assembly
228798	5/8" X 5/8" Clevis Assembly



## Service Chambers

Part #	Displacement
T9SC	Type 9 Service Chamber
T12SC	Type 12 Service Chamber
T16SC	Type 16 Service Chamber
T20SC	Type 20 Service Chamber
T24SC	Type 24 Service Chamber
T30SC	Type 30 Service Chamber
T36SC	Type 36 Service Chamber



Core Charges May Apply

# Maxi Brake Chambers Power Clusters

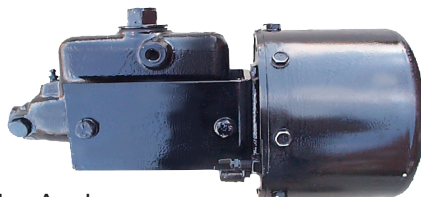
## Reman Maxi Brake Chambers

Part #	Description
2475DI	Inline 1/4 Ports
KSM2475DC	Offset 3/8 Ports
3075DI	Inline 1/4 Ports
KSM3075DC	Offset 3/8 Ports
3675DI	Inline 3/8 Ports
KSM3675DC	Offset 3/8 Ports
MAX15690	50 Series 1.75" Pushrod
MAX15691	50 Series 8.00" Pushrod
MAX15652	R0PT60 Maxibrake R Pull Type
MAX15656	R1PT60 Maxibrake R Pull Type
MAX15660	R2PT60 Maxibrake R Pull Type
MAX15664	R3PT60 Maxibrake R Pull Type
MAX15602	R0PH60 Maxibrake R Push Type
MAX15607	R1PH50 Maxibrake R Push Type
MAX15613	R2PH40 Maxibrake R Push Type
MAX15622	R3PH60 Maxibrake R Push Type



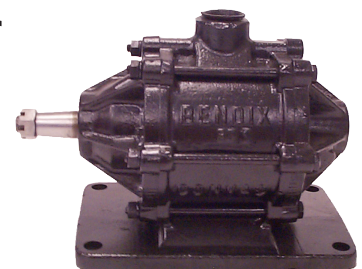
## Wagner Power Clusters

Part #	Air Chamber Dia.	Overall Length
A837X	5"	8"
A838X	6"	9"
A839X	7"	12"
A840X	7"	16"



Core Charges May Apply

## Bendix/ Bosch Convac Vacuum Pump



Aftermarket New and Remanufactured available.

# DD3 Actuators, Rotochamber & Parts

## New & Reman DD3 Brake Actuators\*

Part #	Description
284995	Left hand, Vertical, DD3 Actuator
287186	Right hand, Vertical, DD3 Actuator
287475	Right hand, Horizontal, DD3 Actuator
287479	Left hand, Horizontal, DD3 Actuator
287475LS	Right hand, Horizontal, Long Stud, DD3 Actuator
287479LS	Left hand, Horizontal, Long Stud, DD3 Actuator

Example \*284995X = Reman 284995G= New



## Rotochambers

Part #	Description
288022	Type 9 Rotochamber
288838	Type 12 Rotochamber
289816	Type 16 Rotochamber
288835	Type 20 Rotochamber
288836	Type 24 Rotochamber
288829	Type 30 Rotochamber
288827	Type 36 Rotochamber
288821	Type 50 Rotochamber
278907	Type 36 Roto Safety Actuator
281667	Type 50 Roto Safety Actuator



## Rotochamber Parts

Part #	Description
231406	Type 50 Rotochamber Dust Boot
231472	Type 9 Rotochamber Diaphragm
231491	Type 50 Rotochamber Diaphragm
231506	Type 12 Rotochamber Diaphragm
231516	Type 24 Rotochamber Diaphragm
231525	Type 16 Rotochamber Diaphragm
231534	Type 36 Rotochamber Diaphragm
231543	Type 30 Rotochamber Diaphragm

Part #	Description
231609	Type 9-24 Rotochamber Dust Boot
231928	Type 20 Rotochamber Diaphragm
236530	Type 36 Rotochamber (NEO) Diaphragm
236531	Type 50 Rotochamber (NEO) Diaphragm
242488	Type 50 Rotochamber LS (NEO) Diaphragm

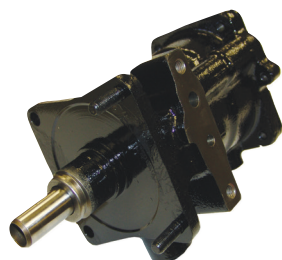
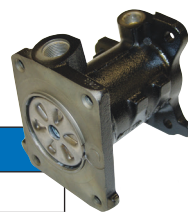
Core charges apply



# Delco & Bendix Hydraulic, Master Cylinders

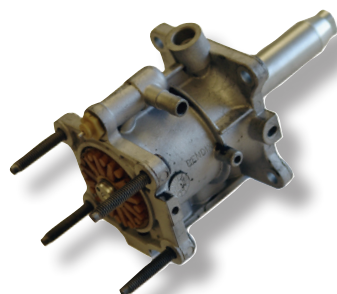
## Delco Dual Power

Part #	Application	Description
6700240H/B	GM & IHC	Hydraulic Cylinder
6700239P/H	GM	Vacuum Booster 7" Rod
6700234P/H	IHC	Vacuum Booster 5 1/2" Rod



## Delco Hy-pump, Pump and Motors

Part #	Application	Description
6700411L/M	GM & Oshkosh	7" Threaded Rod
6700413L/M	IHC	5 1/2" Threaded Rod
6700414L/M	Topkick, Oshkosh, Kodiak	9 1/4" to Center of Eyelet Rod
18006974X	GM, IHC	Lead Wire
18015776X	Topkick, Kodiak	Mounted Terminal



## Bendix Hydromax, Pump and Motors

Part #	Application	Description
2771558L/M	Ford	Pump and Motor are Center Mount
2770454L/M	IHC	Pump and Motor are Offset Mount
2772181L/M	GM,Ford,IHC,Freightliner	Pump and Motor are Offset Mount
2771320X	-	Stud - No Lead Wire
2771494X	-	Lead Wire
2771544X	-	Stud - No Lead Wire
2772729X	-	Lead Wire - Dual Terminal



## Mini Master Cylinders

Part #	Bore Dia.	Line Size	Reservoir	M/C Switch	Model
R11892	1.75/44.44	1/2 20 - 9/16 18	30 Alum	No	GM
R11909	1.75/44.44	11/16 18 - 3/4 18	Tall Plastic	No	
R11992	1.75/44.44	11/16 18 - 3/4 18	Sm Plastic	No	Ford Bosch AM
R11993	1.75/44.44	1/2 20 - 9/16 18	Tall Plastic	No	
R11994	2/50.0	1/2 20 - 9/16 18	Tall Plastic	No	GM IHC Bosch
R11998	1.75/44.44	1/2 20 - 9/16 18	Tall Plastic	No	Fiat Bosch AM
R11999	1.75/44.44	1/2 20 - 9/16 18	Tall Plastic	No	Ford Bosch AM
R12379	2/50.0	1/2 20 - 9/16 18	Tall Plastic	Yes	Ford Navistar
R12632	1.75/44.44	No Seats	Sm Plastic	No	Ford Bosch
R12671 Can use R11994	2/50.0	1/2 20 - 9/16 18	Tall Plastic	No	

# Medium Duty Hydrovacs, Master Cylinders

## Bendix Single Can Hydrovacs

Part #	Application
2504055	IHC
2508827	GM
2510065	Ford
2512061	IHC
2512139	Ford
2512140	Ford

## Hydrovac Check Valve Kit



Part #	Description
2511065	Hydrovac Vacuum Check Valve (1/2")

## Bendix Dual Can Hydrovacs

Part #	Application
2508065	IHC & Ford
2510401	GM



## Midland Frame Mounted Boosters

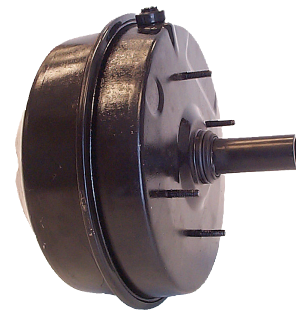
Part #	Description
C462	Single Diaphragm
C464	Single Diaphragm
C468	Single Diaphragm
C472	Single Diaphragm
C479	Single Diaphragm
C4036	Double Diaphragm
C4057	Double Diaphragm

## Midland Master Cylinders

Part #	Application	Cast #
C3472SD	Ford	300206G,300371
C3496SX	GM	300358 (same as C3492SX)
C3500SF	Ford-IHC	300459-A
C3502SB	Dodge	300407G
C3507SB	Ford	300455
C3510SA	IHC	300406-F

## Midland Firewall Mounted Boosters

Part #	Year	Size	Description
C4025L/M	1953-66	9 1/2"	Ford Truck Metal Hub
C4029L/M	1963-67	11 1/2"	Ford Truck Metal Hub
C4037L/M	1967-69	12"	Chevy Truck 2" Studs
C4063L/M	1967	12"	Ford Truck Plastic Hub
C4072L/M	1973-75	12"	IHC Plastic Hub
C4074L/M	1967-69	12"	Chevy truck 1 1/8" Studs
C4083L/M	1968-72	13"	Dodge Truck
C4085L/M	1968-84	13"	Ford Truck
C4089L/M	1969-75	13"	IHC Truck



## Delco Flow Switches

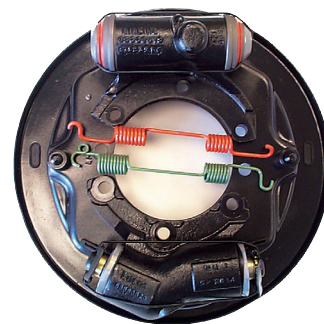
Part #	Application	Description
18005544	IHC	Flow Switch
18020593	GM	Flow Switch

Most Common Units Listed. Please Call For Our Complete Product Listing.

# Lucas Brake Systems

Backing Plate Assemblies

Part #	Bore Size	Position	Shoes	Shoe Size
203251	1.625"	Right	No	5"
203252	1.625"	Left	No	5"
203261	1.750"	Right	No	6/7"
203262	1.750"	Left	No	6/7"



Park Cylinders

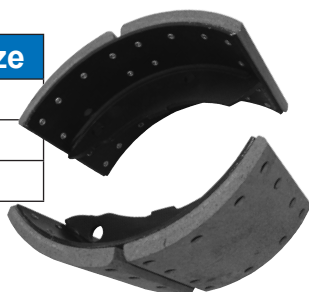
Part #	Bore Size	Position	Casting #
201179	1.750"	Left Hand	68660579
201180	1.750"	Right Hand	68660580

Adjusting Cylinders

Part #	Bore Size	Position	Casting #
201183	1.750"	Left Hand	68660520
201184	1.750"	Right Hand	68660521

Shoes

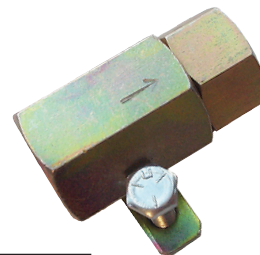
Part #	Size
BS-4528-HS	5"
BS-4504-HS	6"
BS-4505-HS	7"



Core Charges May Apply

Hydraulic Residual Check Valve

Part #	Description
RC-01	Residual Check Valve Kit



Maxi Parking Brake Chamber

Part #	Description
MAX15504	Air Released
MAX15502	?
MAX15500	Hydraulically Released



# Calipers & Parking Brakes

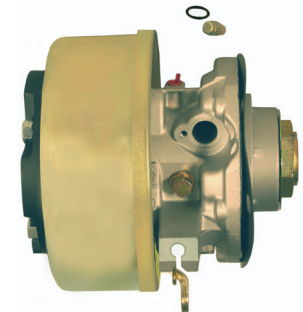
## Calipers & Pads

Part #	Description	Model
55250	Caliper	GMC, Chev, Navistar
55251	Caliper	Chev, Ford, GMC
55252	Caliper	Chev, Ford, GMC
55313	Caliper	Freightliner
55314	Caliper	Navistar
55604	Caliper	Ford
55605	Caliper	Ford
55849	Caliper	Navistar
55850	Caliper	Freightliner
D184	Brake Pads	Fits Caliper 55314
D224	Brake Pads	Fits Caliper 55251
D225	Brake Pads	Fits Caliper 55250
D236	Brake Pads	Fits Caliper 55252
D786 (80)	Brake Pads	Fits Caliper 55850/55849
D786A (1055)	Brake Pad s	Fits Caliper 55850/55849



## Ford ZF Parking Brake

Part #	Style	Type
6051-001-035	Electronic	Early
6051-001-036	Manual	Early
6051-001-041	Electronic	Late
6051-001-042	Manual	Late
6051-001-055	Electronic	Newer



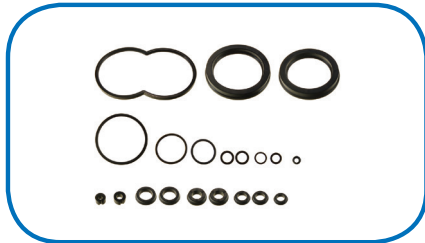
Core Charges May Apply

# Hydroboost

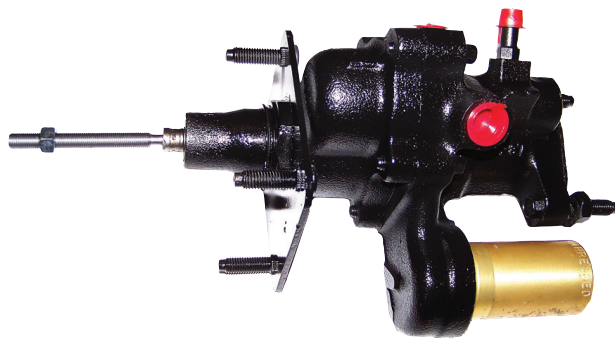
We remanufacture hydroboost for late model passenger cars and light duty trucks.

## How to Identify Your Hydroboost

**Accumulator Blue, Silver or Gold**



2771004 H/B Kit



**Threaded rod for aftermarket applications.**

Hydroboost can replace vacuum units that have power steering pumps for stop on a dime braking.



**H/B Installation Kit**

# Treadlevac

We remanufacture Bendix & Delco treadlevacs for 1953-1959 passenger cars. Core must be in rebuildable condition.



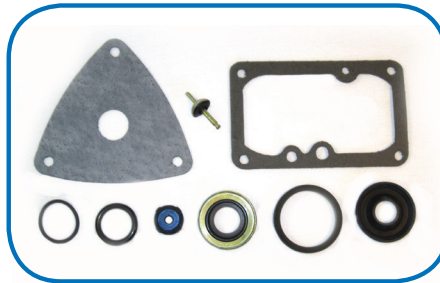
### How to Identify Your Treadlevac

Bendix - Has "Bendix" cast into the master cylinder.

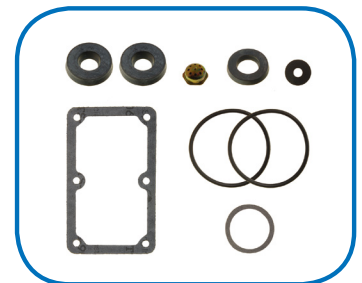
Delco - Has a 7 digit number starting with 54 or 55 cast into the master cylinder.

**Kits**

Part #	Description
TVAC-DEL	Delco Treadlevac Kit
TVAC-BEN	Bendix Treadlevac Kit



Bendix Kit



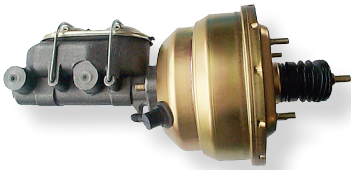
Delco Kit

**Parts**

Part #	Description
376091	Pushrod Boot
376004	5" Leather Piston Cup
376325	6" Leather Piston Cup



# Specialty Aftermarket Boosters



## Aftermarket Power Brake Boosters

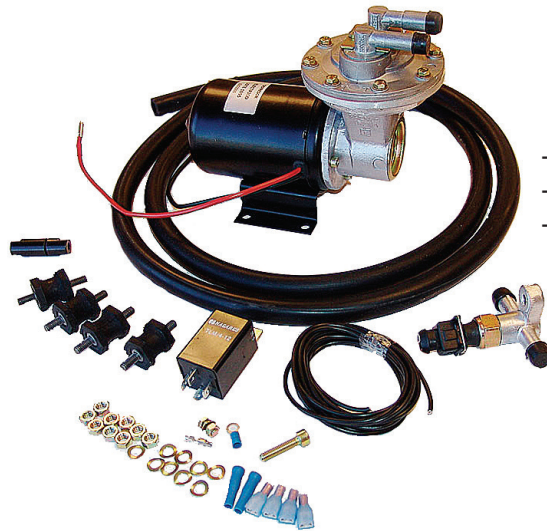
Part #	Description
PB7001	7" Single Diaphragm Booster
PB7014	7" Single Diaphragm Booster (64-66 Mustang)
PB7537	7" Double Diaphragm Booster
PB7537C	7" Double Diaphragm Booster Chrome Body
PB7537SS	7" Double Diaphragm Booster Stainless Steel Body
PB8531	8" Double Diaphragm Booster
PB8531C	8" Double Diaphragm Booster Chrome Body
PB8531SS	8" Double Diaphragm Booster Stainless Steel Body
PB9013	83-84 Corvette Unit
PB9018	65-67 Corvette Unit
PB9022	9" Single Diaphragm Booster (64-66 GM Style, fits big block)
PB9505	9" Double Diaphragm Booster
PB9507	9" Double Diaphragm Booster (82-83 Ford Passenger Car or Airport Tug)
PB11003	11" Single Diaphragm Booster (67-72 GM Style Unit)



## PB 900 Remote Mounted Booster

- comes with brackets & hose
- for older single system master cylinder vehicles or dual reservoir master cylinders that want power front axle braking.
- Fits almost anywhere

## EVP04 Electric Vacuum Pump & Vacuum Switch



- Easy installation
- Fits almost anywhere
- Unit only functions when it gets below 17 inches of vacuum.

## Master Cylinders

Part #	Description
MC1321H	1" Bore 9/16" And 1/2" Ports On Both Side
MC1921H	1" Bore 9/16" And 1/2" Ports On Engine Side
MC2912H	1 1/8" Bore 9/16" And 1/2" Ports On Engine Side
also available in aluminum or chrome	





# Aftermarket Booster Piece Parts

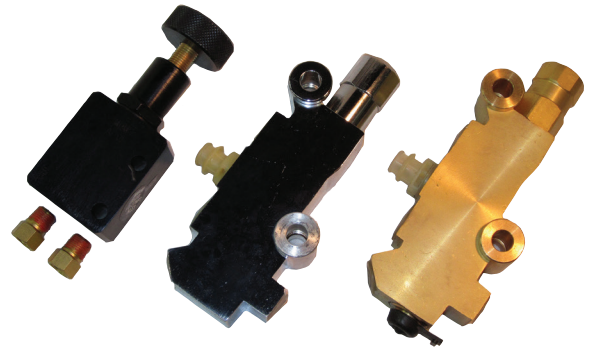
## Pedal Rods

Part #	Description
6772-18	Universal Clevis
P105	M/C Pin For Deep Hole M/C
PRE101	Pedal Rod Extension 2 1/2" Long, 3/8 Hole
PRE104	Pedal Rod Extension 1 1/2" Long, 3/8 Hole
PRE106	Female Pedal Rod Coupler.
PRE107	Pedal Rod Extension 4 1/8" Long, 5/8" Hole
PRE5564	Threaded Pedal Rod Extension, 4 3/4" Long Male And Female Ends
PRE9	Threaded Pedal Rod Extension, 9" Long Male And Female Ends



## Proportioning Valves

Part #	Description
PV2	Universal Disc/Drum
PV4	Universal Disc/ Disc
APV1	Universal Adjustable
PVP	Sensor Wire
also available in aluminum or chrome	



## Brackets

Part #	Description
PVB-B	Universal Bottom Mount Proportioning Valve Bracket
PVB-L	Universal Left Side Mount Proportioning Valve Bracket
PVB-R	Universal Right Side Mount Proportioning Valve Bracket
650	Fits Gm 1964-72 Brake Booster Slanted
651A	Fits Gm 1955-64 Brake Booster
PBB7004B	Fits Gm 1955-58 Brake Booster 2" Tall
CI5564BPR	1955-64 Chevy Impala Booster Bracket
PBRCT6772	1967-72 Chevy Truck Booster Bracket
FT5772PBR	1957-72 Ford Booster Bracket
J7486	1974-86 Jeep CJ Booster Bracket



Many more brackets available, call for details.

## Check Valves

Part #	Description
RCV2	2 lb Residual Inline M/C Check Valve
RCV10	10 lb Residual Inline M/C Check Valve
2509424	3/8 line w/ 1/2 grommet ID
2509425	3/8 & 1/8 line w/3/4 grommet ID
2513220	2-3/8 & 1/8 line w/ 3/4 grommet ID
C14285V	1/2 line w/3/4 grommet ID
2511065	2-1/2 lines & 1/8 line frame mounted
11D	3/8 X 3/8 lines inline check valve





## **Power Brake Sales**

1517 McCormack Street  
Sacramento, CA 95811

Toll Free:(800) 624-8185

Ph:(916) 446-7829

Fax:(916) 446-7569

e-mail: [pbs@powerbrakes.com](mailto:pbs@powerbrakes.com)

website:[www.powerbrakes.com](http://www.powerbrakes.com)

© copyright, 2012 Power Brake Sales  
No part of this catalog may be reproduced without  
written permission of Power Brake Sales Inc.