

MARICOPA COUNTY ADULT PROBATION

2009 Annual Report



*Offering **HOPE** to Neighborhoods, Victims
and Offenders*

MARICOPA COUNTY ADULT PROBATION



Dear Judge Mundell,

Another year of diminished government revenue meant that business changes were inevitable in fiscal year 2009. With tough decisions to be made, we set priorities at the outset, with public safety being foremost. Guided by evidence-based principles and a commitment to support the programs that work, we allocated our precious resources to the most effective strategies and services to reduce crime. Of particular significance, we are ensuring that field supervision is focused on the higher-risk probationers and that we are implementing evidence-based practices. In turbulent times, data-driven decision making helped center attention on the elements that are critical to our mission.

The department continues to build its capacity as an evidence-based organization. In this multi-year endeavor to successfully implement evidence-based practices, we are cultivating a cultural shift and developing new skill sets. There has been an ongoing flurry of productive activity and progress is being made in many areas, with training, new tools, quality assurance, and improved communication, to name a few. This is an organization of individuals dedicated to excellence, who inspire and motivate others. There is an undeniable momentum and the positive results of the Evidence-Based Practice Initiative will continue to unfold in the coming years.

In this annual report, I am proud to present favorable outcomes on our public safety performance measures. The results demonstrate Adult Probation's important contribution to the quality of community life. Adult Probation employees are to be commended, as they have pulled together to solve problems and have stepped up to meet the additional demands of providing vital public services in difficult times.

We are always optimistic as we go forward into another year. Budgets will improve, although perhaps not as quickly as we would like. Positive working relationships with community and criminal justice partners allow us to collaborate and leverage resources in support of community safety and offender change. Hope is our enduring vision, which we offer to neighborhoods, victims, and offenders.

Sincerely,

Barbara A. Broderick

Barbara A. Broderick
Chief Probation Officer

MARICOPA COUNTY ADULT PROBATION

Table of Contents

SECTION I	Page
Letter to Presiding Criminal Court Judge Barbara Rodriguez-Mundell	1
Vision, Values, and Mission Statements.....	3
Evidence-Based Practices.....	4
Managing For Results	5
85041 Legacy Project.....	6
Global Positioning Monitoring	6
General Information.....	7 & 8
SECTION II	
Pretrial Services.....	9
Presentence Investigation.....	10
Standard Probation.....	11
Sex Offender Division.....	12
Domestic Violence.....	13
Seriously Mentally Ill.....	14
Transferred Youth.....	15
Intensive Probation.....	16
Interstate Compact & Indirect Services.....	17
Fugitive Apprehension.....	18
Compliance Monitoring.....	19
Custody Management Unit & Work Furlough Program.....	20
Drug & DUI Courts	21
Education & Drug Treatment Education Fund.....	22
SECTION III	
Maricopa County Adult Probation Fiscal Year 2009 Awards.....	23
Maricopa County Adult Probation Executive Team.....	24



***VISION* Statement**

An agency of professionals committed to continuous improvement in the quality of community life by offering hope to neighborhoods, victims and offenders.

***VALUES* Statement**

We believe in:

- ✔ **Treating all people with dignity and respect.**
- ✔ **The fact that people can change and that probation services are a viable means to affect positive change.**
- ✔ **Promoting and maintaining a positive, safe, and healthy community environment.**
- ✔ **The value of our positive relationships with our stakeholders.**
- ✔ **The importance of staff, as they are the greatest resource in accomplishing our mission.**

***MISSION* Statement**

To enhance the safety and well being of our neighborhoods.

We accomplish this through:

- ✔ **Working in partnership with the community to provide research-based prevention and intervention services;**
- ✔ **Assessing offenders' risk/needs in order to help guide Court decisions and to apply the appropriate level of supervision;**
- ✔ **Managing offender risk by enforcing Court orders, affording opportunities for pro-social change and expecting law-abiding behavior and personal accountability;**
- ✔ **Facilitating victim involvement and restorative justice services;**
- ✔ **Recognizing and rewarding staff performance and achievement;**
- ✔ **Providing training to enhance our professional skill and build leadership.**

MARICOPA COUNTY ADULT PROBATION

Evidence-Based Practice

The Crime and Justice Institute announced that the Department was one of two agencies chosen nationally to participate in the Implementing *Effective Correctional Management of Offenders in the Community Project*. The Department has been working on this two-year project with the National Institute of Corrections and the Crime and Justice Institute. The goal of the project is to assist agencies who have implemented an evidence-based practice initiative and to further advance the integrated model endorsed by the National Institute of Corrections. This initiative combines the use of evidence-based principles, collaboration and organizational development. During the past year, the Department had the opportunity to begin reviewing the results of assessments conducted to measure the organizational climate. As a result, the Department is utilizing the technical support from the grant to engage mid-managers in the decision-making process and improve the communication flow. It is believed that this will help increase the capacity of mid-managers and ownership in achieving organizational goals at all levels of the organization. The mid-manager committee, co chaired by two mid-managers (with two directors serving in a consultant role), has assumed responsibility for increasing buy-in of evidenced-based practices and developing the knowledge and skill level of all supervisors. Existing committees will increase mid-manager and line staff involvement and responsibility. The committees continue to work on graduated responses, curriculum development, performance appraisals, developing officer and supervisor core competencies, improving workforce through succession planning and improving the hiring and promotional practices, and improving internal and external organizational communication. These evidence-based principles are implemented in support of the department and Maricopa County's strategic plan and Managing for Results goals.



The Quality Assurance Team (QA) has remained focused on enhancing long term support for evidenced-based practices (EBP) within the organizational culture of the Department. Since being placed in their positions in August 2007, the QA Team has remained steadfast in their efforts to engage the Department in the practice of the first three concepts of EBP: assessments, motivation, and intervention. In addition to developing and presenting trainings throughout the Department on those concepts, the team has trained others within the Department to guide their colleagues in putting EBP into practice. In addition, the team has been concentrating on showing staff how EBP works in concert with the department's goals and strategic plan, namely Goal A: reducing recidivism. The team has continued to develop the EBP website and shares that information with other agencies. Coaching, mentoring, committee meetings and looking at a comprehensive training plan based on identified knowledge gaps within the Department are just some of the ways that EBP is being further infused into the culture of the agency.

MARICOPA COUNTY ADULT PROBATION

Managing For Results

In Maricopa County, achieving positive results has been the mandate of county government for the past eight years with an initiative called *Managing for Results (MFR)*. This is a comprehensive and integrated management system that focuses on achieving results for the customer and makes it possible for departments to demonstrate accountability to the taxpayers of Maricopa County.

Performance measures are designed to monitor agency performance in mission-critical areas, and should yield the following benefits:

- Generate information that is meaningful to internal and external stakeholders
- Return results that are actionable by agency personnel
- Provide the public a window into County operations and performance.

To accomplish its mission, the Maricopa County Adult Probation Department has established five MFR strategic goals.

- Goal A: *Crime Reduction*
- Goal B: *Retention and Compensation*
- Goal C: *Process Improvement*
- Goal D: *Customer Satisfaction*
- Goal E: *Solid and Sound Infrastructure*

The Department has developed targets over the next several years to measure achievement in these five goals. Key indicators include reducing the rate probationers commit new felony offenses, reducing the rate probationers are committed to the Department of Corrections, and improving the rate probationers and pretrial defendants successfully complete supervision.

The *Managing for Results* management system has assisted Maricopa County Adult Probation in making the following three statements:

1. *What we are doing today contributes to our strategic direction.* (Every division has a strategic goal linked to the operational plan.)
2. *We know what we have done has been effective.* (Performance measures are identified demonstrating the results produced.)
3. *We know how much it costs to deliver our programs effectively and efficiently.* (All human and financial resources are tied to the services delivered so we can tell how much they cost and how effectively and efficiently services are delivered.)

Maricopa County Adult Probation is committed to the success of pretrial participants and probationers throughout our Department. *Managing for Results* provides information to allow Maricopa County Adult Probation to continue its endeavors to be a data-driven organization.

MFR Goal A	MFR Goal D
Crime Reduction Results FY2009	Maricopa County Customer Satisfaction
Successful Rate of Completion from Probation	Survey Results FY2009
72%	Three out of four homes surveyed indicated they
Rate of New Felony Convictions	were <i>satisfied</i> with the services provided by
8%	Maricopa County Adult Probation.
Rate of Revoked to Department of Corrections	
25%	

MARICOPA COUNTY ADULT PROBATION

85041 Legacy Project

In partnership with the Arizona Department of Corrections and the Department of Economic Security, a collaborative model of supervision was developed for the South Phoenix area, specifically the 85041 zip code. Throughout the year, the Legacy/85041 model continued to address the high recidivism rate within this geographic area. Efforts have redefined the transition of prison releases to probation, implemented new programming for county jail releases, offered new field supervision strategies, and allowed for all partners to participate in a comprehensive training plan for evidence-based practice implementation. The training plan includes the popular “Put Yourself in the Probationer’s Shoes” series which allows participants to experience everyday living first hand by riding public transportation or hands-on participation in interactive Generational Poverty and Understanding Incarceration curriculum. In May 2009, the P.A.T.H. Re-entry Project (Progressive Alternatives Targeting Hindrances/Hazards) was implemented to enhance the Legacy/85041 Project and allow for a probation team to triage immediate prison release needs. The PATH goal is to provide pre-release and post-release discharge planning to address the barriers that greatly impact success upon release and reduce recidivism within the first months following release from prison.



85041 Legacy probation staff.

Global Positioning Monitoring (GPS)

The statutorily mandated Global Positioning Monitoring (GPS) for any person convicted of a Dangerous Crime Against Children after November 1, 2006, continues to be imposed for the duration of the individual’s probation grant. Along with three GPS monitoring analysts, the Adult Probation Department’s Communications Center staff have assisted in managing a 24/7 operation in order to adequately monitor and respond to the increasing number of violation alerts due to an increasing number of cases monitored on GPS. At the end of the fiscal year, the average monthly population of probationers being monitored on GPS was 106.



Average Monthly Population on Global
Positioning Monitoring (GPS)
FY 2009

106

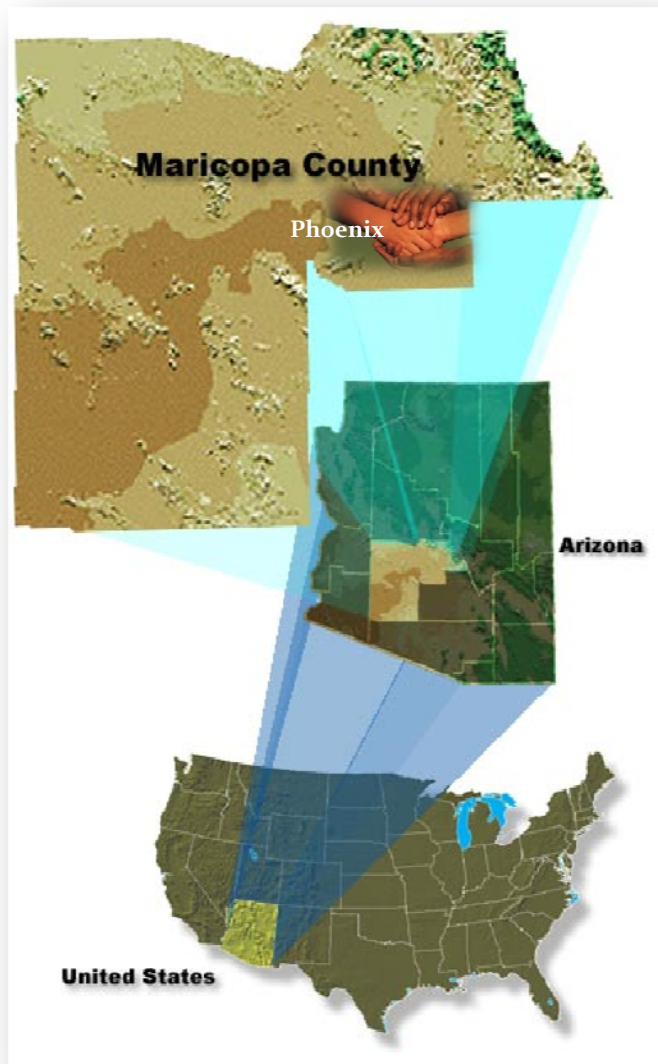
MARICOPA COUNTY ADULT PROBATION

General Information – Maricopa At A Glance FY2009

- ☛ Arizona has a population of over **6,500,180 people** (2008).
- ☛ Maricopa County has a population of over **3,954,598 people** (2008). It is the fourth most populous county in the nation and is home to more people than **twenty-one states** and the District of Columbia.
- ☛ Maricopa County has a land area of **9,226 square miles**, of which **1,441 square miles** are incorporated (15.6 percent) and **7,785 square miles** are unincorporated (84.4 percent).
- ☛ It is the largest of Arizona's fifteen counties, and the **fourteenth largest county** in the United States. Maricopa County is larger than seven states and the District of Columbia.
- ☛ The county measures **132 miles** from east to west and **103 miles** from north to south.
- ☛ **Twenty-four cities and towns** are located within Maricopa County's outer boundaries.

Maricopa County Adult Probation

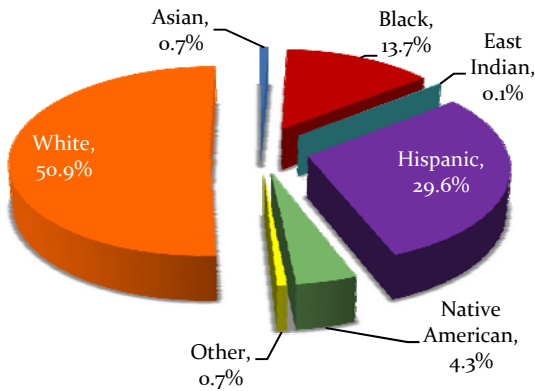
- ☛ Maricopa County Adult Probation was established in **1972**.
- ☛ **\$82,266,070** Annual Budget
- ☛ **1,043** Employees
- ☛ **17** Regional and Area Offices
- ☛ Average of **2,012** offenders under pretrial supervision per month
- ☛ **2,593** direct arrests by Fugitive Apprehension Unit
- ☛ **22,632** Standard Probationers
- ☛ **968** Intensive Probationers
- ☛ Average monthly total population of over **56,000**



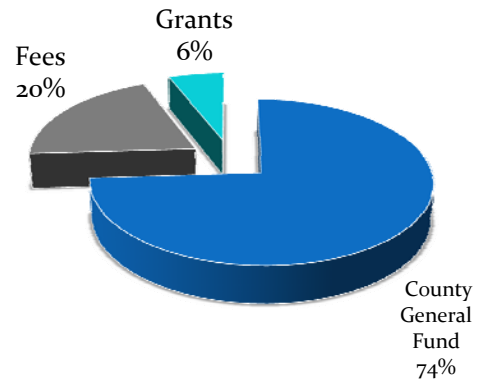
MARICOPA COUNTY ADULT PROBATION

General Information – Maricopa At A Glance Continued

Maricopa County Adult Probationer's Race/Ethnicity

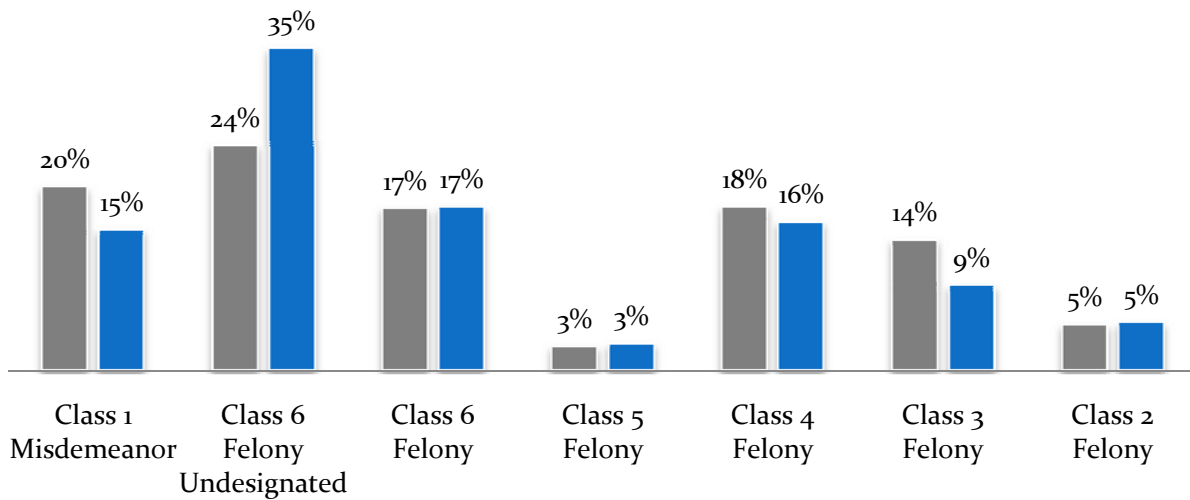


Maricopa County Adult Probationer's FY 2009 Annual Budget \$82,266,070



Maricopa County Adult Probationers' Offense Levels

■ Males ■ Females



Category	Total	Percentage
Class 1 Misdemeanor	4,250	19%
Class 6 Felony/ Undesignated	10,044	43%
Class 5 Felony	599	3%
Class 4 Felony	3,919	17%
Class 3 Felony	2,941	13%
Class 2 Felony	1,124	5%

Average Monthly Active Probation Population: **30,861**
81% percentage on probation for Felony Offenses

MARICOPA COUNTY ADULT PROBATION

Pretrial Services

The Pretrial Services Division has five primary responsibilities within Adult Probation. They conduct background checks on arrested defendants, which involves interviewing and information verification for persons booked into the Maricopa County jail system. They provide standard, intensive, and electronic monitoring services for defendants released to Pretrial Services and secure those defendants' appearance in Court. They track defendants who fail to appear. They refer defendants to needed social services, including drug treatment, and they complete bond modification investigations and reports for the Court.

Pretrial Services Jail Unit conducted 57,591 interviews of arrested defendants in the Maricopa County jail system in FY 2009. The Maricopa County Initial Appearance Court referred an average of 1,016 defendants a month to Pretrial release supervision.

The Pretrial Supervision Unit supervised an average of 2,012 defendants per month with an average of 635 under general supervision, 1,055 under intensive supervision, and 263 under electronic monitoring supervision. The unit completed an average of 542 initial intakes and 1,894 office visits per month during this fiscal year. The Bond Report Unit completed an average of 90 reports per month on in-custody defendants to assist the Court in determining the appropriateness of release modifications.

As a result of Pretrial Services' efforts, 764,698 jail days were saved with a savings of \$55,636,130 in jail costs.

Average Population FY2009	2,012
Average Daily Cost Per Defendant Supervised	\$4.84
Annual Program Cost FY2009	\$3,517,702
Electronic Monitoring Officer Caseload	1:44
General/Intensive Officer Caseload	1:78

Major Events

- Expanded jail interviewing and investigative duties to assure better-informed release decisions.
- Staffed the Initial Appearance Summons Court to provide judicial officers information on defendants appearing in Court via summons for initial appearances.
- Continued to expand and enhance the case management program in the Court-wide iCIS automated system to provide for a more integrated system.
- Explored obtaining or creating a risk instrument to better determine supervision levels for a differentiated case management system for defendants in the community.
- Refined use of a data link to determine if newly arrested defendants had ever been evaluated for Seriously Mentally Ill (SMI) services, if they were actively participating in the public behavioral health system and if it was possible to expedite treatment prior to loss of services, and to monitor those who could remain out of custody while undergoing evaluation and restoration services.
- Continued to work on modifying policies and procedures, as well as internal forms, to conform to best practices.
- Developed core competencies for each officer job function within Pretrial Services to be used for training, performance evaluations and professional development of officers.

Once you choose hope, anything's possible.

- Christopher Reeves

MARICOPA COUNTY ADULT PROBATION

Presentence Investigations

The Presentence Division prepares investigation reports on defendants who enter a guilty plea or are found guilty by a jury. These requests originate from the traditional Superior Court or from specialized sites including the Regional Court Center (RCC) and the Early Disposition Court (EDC). The primary purpose of the report is to provide the Court with objective, pertinent information and an objective sentencing recommendation to assist in sentencing the defendant. Cases processed through the EDC and RCC are typically set for sentencing one to fourteen days after a determination of guilt. Standard reports are usually set for sentencing 28 days after a finding of guilt. Officers and screeners administer assessments that determine offender risk and areas of needed intervention, compile criminal history information, and interview defendants, victims and other interested parties. This information assists judges with sentencing decisions and is utilized by field officers in developing supervision strategies for those sentenced to terms of probation.

The Criminal History Worksheet Project, which was the recipient of a 2008 NACo Achievement Award from the National Association of Counties, continues to be a critical part of the presentence investigation process. Enhancements to this new method of compiling criminal history information have been developed this year, which will provide even more complete criminal history data in a Court-ready format. Another vital tool in assessing defendant risk and need is the Offender Screening Tool (OST). The OST is a key component of the Department's Evidence-Based Practices initiative. All defendants sentenced to probation are administered this tool, which forms the basis of the case management plan utilized in supervising defendants and addressing their criminogenic needs. Other administered assessments gauge alcohol and substance use and abuse and reading ability.

In FY 2009, the Division completed 19,178 reports. Presentence continues to strive for excellence in the delivery of timely reports to the Court. There are currently 63 officers and 42 screeners operating at a success rate of 99.1% for on-time reporting, which contributes to reduced costs and the swift delivery of justice.

Number of Presentence Investigation Reports Completed in FY2009

19,178

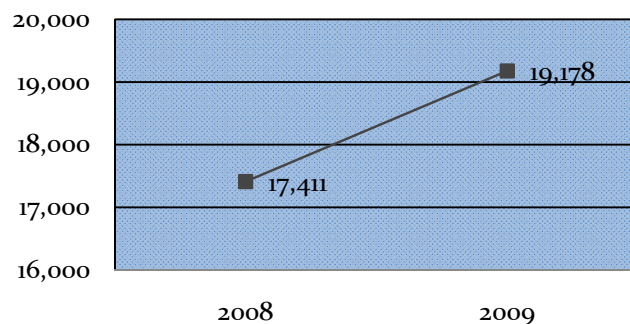
Average Cost Per Presentence Investigation Report

\$434.64

Annual Program Cost FY2009

\$8,329,118

Number of Presentence Reports Completed

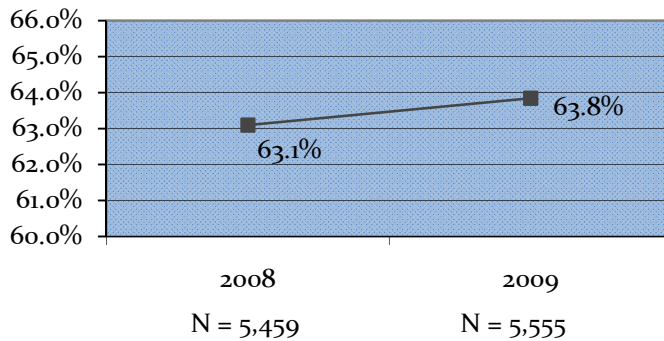


MARICOPA COUNTY ADULT PROBATION

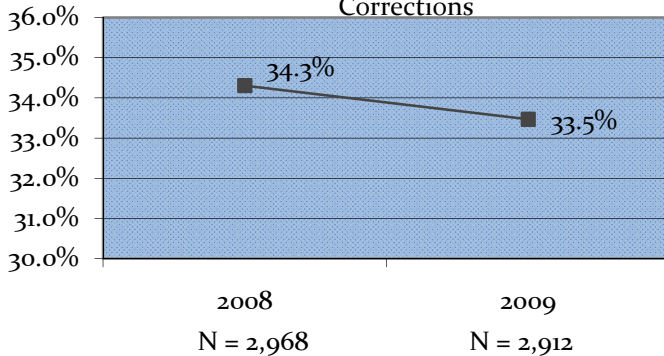
Standard Probation

Standard probation focuses on the eight principles of evidence-based practices (offender risk/need, enhance offender motivation, target interventions, address cognitive-behavioral functioning, provide positive reinforcement, provide ongoing support, measure outcome, provide quality assurance). Through application of these principles our goals are to encourage behavior change and reduce recidivism in probationers, collaborate with law enforcement and community agencies, enhance community safety and provide support for our Courts.

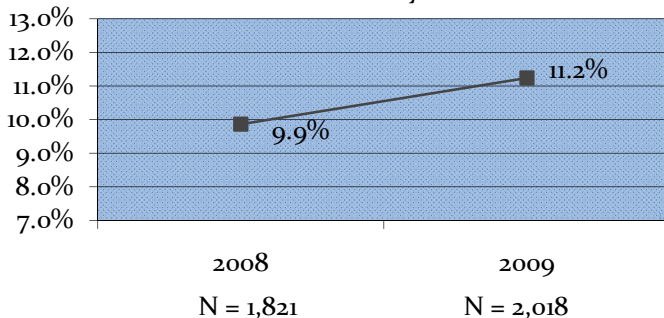
Rate of Successful Completion



Rate of Revoked to Department of Corrections



Rate of New Felony Convictions



Average Population
FY2009
17,992

Average Daily Cost Per
Probationer
\$4.13

Annual Program Cost FY2009
\$27,190,593

Average Caseload
1:60

Drug monitoring results indicate **69%**
of probationers were drug free during
FY 2009.

Community Work Hours
Completed by
Standard Probationers: **363,330**

Restitution Paid by Standard
Probationers:
\$ 8,665,490



MARICOPA COUNTY ADULT PROBATION

Sex Offenders

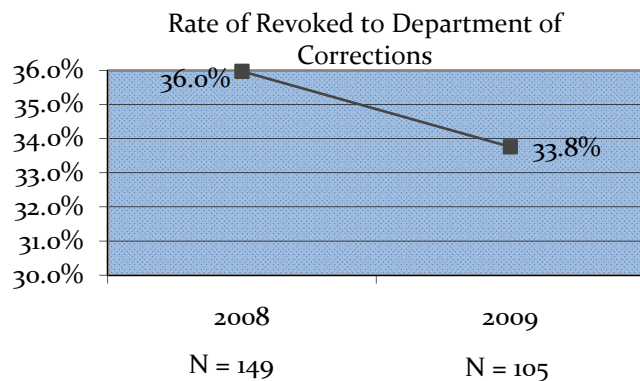
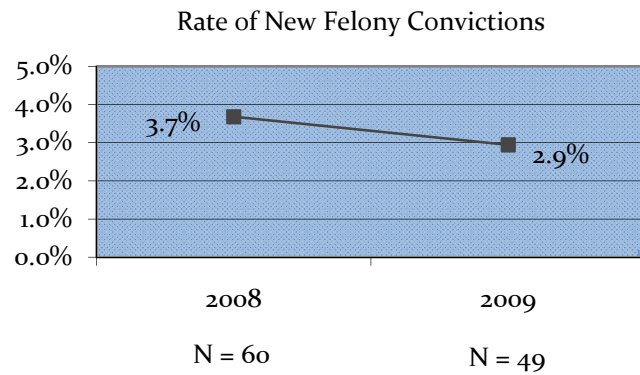
The Sex Offender Program includes five standard and two intensive probation supervision (IPS) sex offender units, which are managed by one division director and seven supervisors. Staff includes 28 standard probation officers, 28 standard surveillance officers, eight IPS probation officers, and nine IPS surveillance officers, one residential coordinator, one contract oversight administrator and three monitoring analysts.

The U.S. Bureau of Justice Assistance enhancement grant began July 1, 2007 and included continuation of the original Sex Offender Positive Re-entry Program (PRP) as well as an outcomes assessment of the PRP pilot group's performance on probation after release into the community from jail. There was a marked difference in positive outcomes during the first year of re-entry for PRP participants in comparison to the control group. The grant ended on June 30, 2009 and due to the positive outcome, the PRP program was continued under County funding.

Following the September 2008 division-wide, two-day training on polygraph process and practices, as presented by national expert Raymond Nelson, the Sex Offender Program took the opportunity to update and redefine many of the practices currently used in the polygraph/treatment process. A new sexual history packet was developed which has proven to be more comprehensive, broadening more into computer crimes. The sexual history process was also re-tooled, focusing more on the process of fully completing the sexual history packet and gathering as much information as possible ahead of the polygraph exam, rather than the focus being on the exam itself. The Division also updated the polygraph vendor contracts and through this process was able to add five new agencies to the list of available polygraph examiners.

Average Population FY2009 1,666
Average Daily Cost Per Probationer \$6.65
Annual Program Cost FY2009 \$3,984,742
Average Caseload 2:60

Drug monitoring results indicate 93.2% of sex offender probationers were drug free during FY 2009.



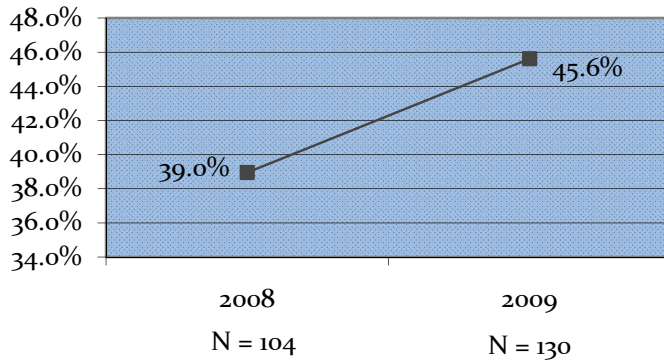
MARICOPA COUNTY ADULT PROBATION

Domestic Violence

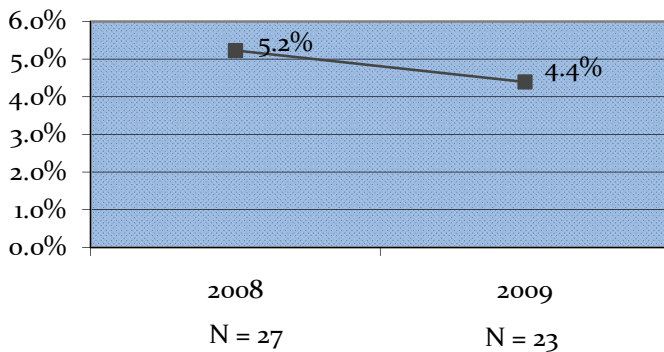
The DV program currently has eleven probation officer (PO) and surveillance officer (SO) teams with one team dedicated exclusively to the City of Phoenix Municipal Court. Staying in line with the program philosophy that victim and community safety are the main priorities in supervising violent offenders, officers made numerous arrests that had an immediate impact on victim safety.

A joint grant with the Chrysalis Shelter provides two full-time victim advocates that attend Domestic Violence Court weekly to assist the victims with the Court process. Additionally, the advocates offer services, individual counseling, and tools for empowerment to the victims.

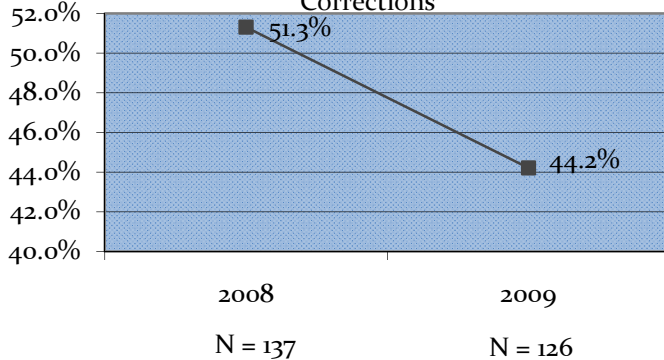
Rate of Successful Completion



Rate of New Felony Convictions



Rate of Revoked to Department of Corrections



Average Population
FY2009

630

Average Daily Cost Per
Probationer

\$5.49

Annual Program Cost FY2009

\$1,259,305

Average Caseload

2:51

Drug monitoring results indicate 75.6% of domestic violence probationers were drug free during FY 2009.



MARICOPA COUNTY ADULT PROBATION

Seriously Mentally Ill

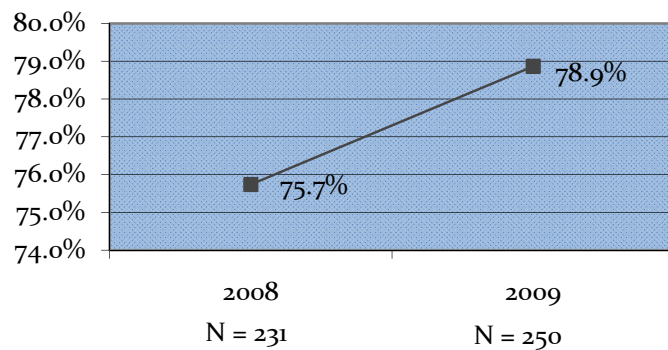
The purpose of the specialized mental health unit is to improve the Seriously Mentally Ill (SMI) offender's opportunities for success on probation through close supervision, timely case management, education and training, advocacy, and effective collaboration with community agencies. Two supervisors and 15 specialized probation officers are located throughout Maricopa County and work with an average of 520 SMI offenders at a ratio of one officer to 40 SMI probationers. These officers have unique training and skills and provide specialized supervision, intensive monitoring, and advocacy. The Maricopa County Adult Probation Department's specialized SMI unit has been recognized both nationally and locally for their work with the mentally ill. The SMI Unit has presented their model for specialized SMI supervision nationally at events in Austin, New York City, Boston, Phoenix, Las Vegas, and Anaheim.

Average Population FY2009 563
Average Daily Cost Per Probationer \$6.26
Annual Program Cost FY2009 \$1,282,948
Average Caseload 1:38

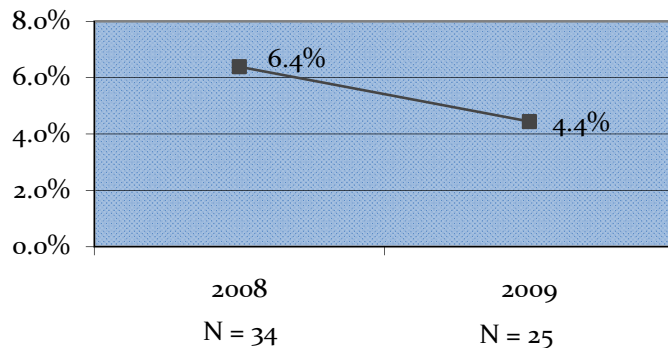
Drug monitoring results indicate 62.1% of seriously mentally ill probationers were drug free during FY 2009.



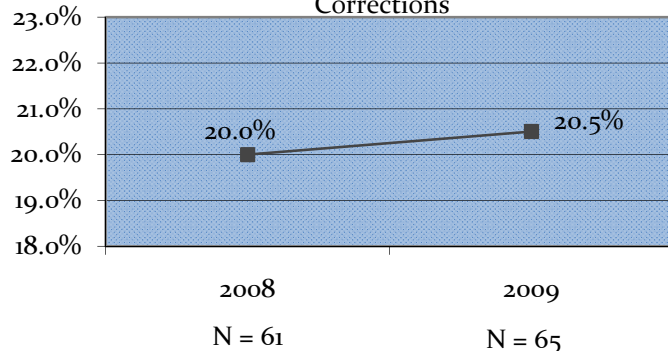
Rate of Successful Completion



Rate of New Felony Convictions



Rate of Revoked to Department of Corrections

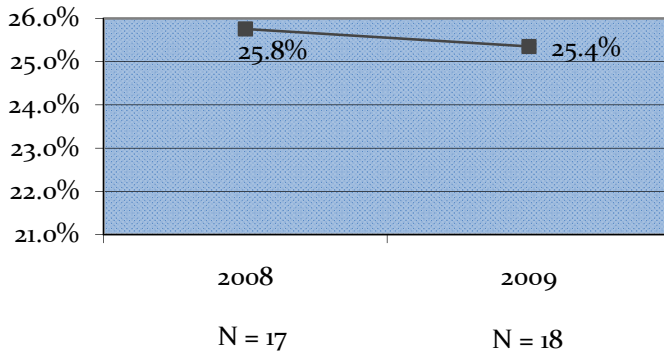


MARICOPA COUNTY ADULT PROBATION

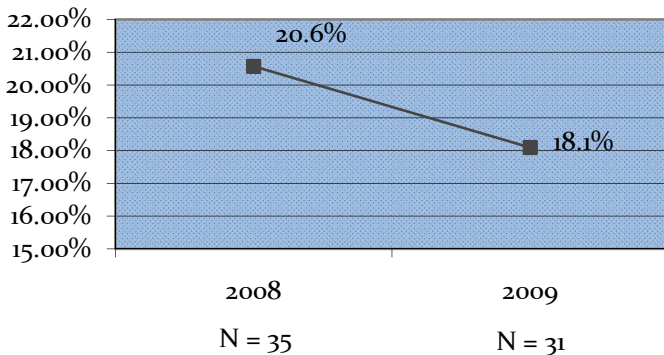
Transferred Youth

The purpose of the specialized Transferred Youth caseload is to provide the youthful probationer with an officer who possesses expertise in managing juveniles in the adult system and can coordinate the specialized services needed by this unique population. Because of the smaller caseload and the close working relationship with family, schools, and the probationer's peers, the officers are able to provide for a higher level of community safety. Currently the Adult Probation Department has assigned standard, intensive, and sex offender officers to the transferred youth caseload.

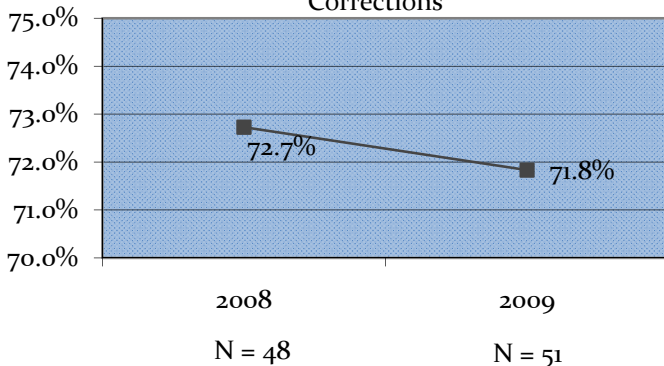
Rate of Successful Completion



Rate of New Felony Convictions



Rate of Revoked to Department of Corrections



Average Population
FY2009

171

Average Daily Cost Per
Probationer

\$5.40

Annual Program Cost FY2009

\$336,470

Average Caseload

1:43

Drug monitoring results indicate
62.5% of transferred youth
probationers were drug free during
FY 2009.



MARICOPA COUNTY ADULT PROBATION

Intensive Probation

The Adult Intensive Probation Supervision Program is a sentencing alternative for offenders who would otherwise have been incarcerated in the State Department of Corrections at initial sentencing or as a result of a technical violation of standard probation. Intensive Probation Supervision (IPS) is designed to provide strict control, surveillance, and supervision in a manner which will restrict and monitor the offender's movement and activities in the community while emphasizing the payment of restitution to victims.

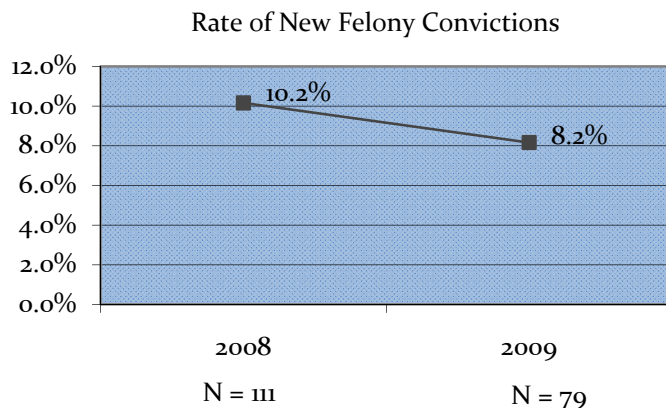
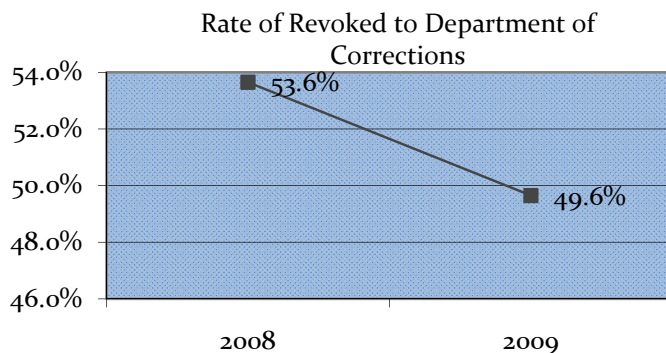
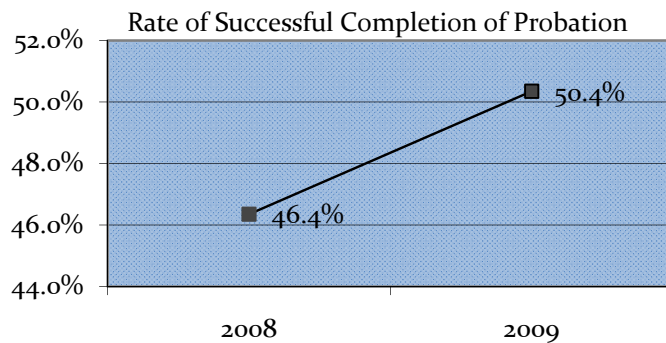
Offenders are under house arrest and are monitored by IPS teams consisting of one adult probation officer and one surveillance officer or a team of one probationer officer and two surveillance officers. The IPS team monitors the offenders by conducting visual contacts at least four times per week for Phase One clients. Weekly contacts may be reduced as the offender moves through the IPS phases. Offenders are required by statute to be employed, to submit their paychecks to IPS, and to complete 40 hours of community restitution per month. An offender who successfully completes the rigorous IPS Program is then graduated to Standard Probation.

Average Population FY2009	968
Average Daily Cost Per Probationer	\$25.28
Annual Program Cost FY2009	\$8,931,741
Average Caseload	2:25 3:40

Drug monitoring results indicate **68.6%** of IPS probationers were drug free during FY 2009.

Restitution Paid by
IPS Probationers:
\$ 122,728

Community Work Hours Completed
by IPS Probationers:
223,393



MARICOPA COUNTY ADULT PROBATION

Indirect Services

The Maricopa County Adult Probation Indirect Services Unit is the largest administrative unit in the State of Arizona. It is comprised of four caseloads: (1) the ADC caseload, numbering approximately 8,000 cases, which acts as a gatekeeper for those re-entering the community from the Arizona Department of Corrections (ADC) and who are required to complete a probation grant upon their release; (2) the Immigration & Customs Enforcement caseload (ICE), numbering approximately 8,000 cases, which is comprised of those who are either deported or in the process of deportation; (3) the Interstate Compact Outgoing caseload, numbering approximately 1,000 cases, which is comprised of those who commit crimes within Maricopa County but who either are legal residents of other states or who wish to apply to have their probation grants supervised by other states; and (4) the Inter-County Outgoing Transfer caseload, numbering approximately 1,000 cases, which is comprised of those who commit crimes within Maricopa County but who either are legal residents of another Arizona County or who wish to apply to have their probation grants supervised by another Arizona County.

Average Population
FY2009
18,033

Average Daily Cost Per
Probationer
\$.14

Annual Program Cost
FY2009
\$933,168



Drug monitoring results indicate 85.7% of Indirect Incoming probationers were drug free during FY 2009.

Interstate Compact

Probationers who commit offenses in other states and reside in Maricopa County are supervised by probation officers assigned to the Interstate Compact Incoming Unit. Officers conduct investigations on incoming transfer requests. They are required to perform the same services for Interstate Compact Incoming probationers as they would for probationers sentenced in Maricopa County Superior Court.

During FY 2009, the Interstate Compact Incoming Unit completed a total of 643 investigative reports. The on-time completion rate for the investigative reports averaged 88.5%. In October 2008, a national interstate offender database (ICOTS) was implemented, which has reduced the response time of correspondence between states. The implementation of this database created a need for additional training as well as time to learn the system. The number of investigation requests for Maricopa County continues to represent the vast majority of cases assigned to the state.

MARICOPA COUNTY ADULT PROBATION

Fugitive Apprehension

The Fugitive Apprehension Unit is comprised of two supervisors, nine probation officers and eight surveillance officers. A total of 6,581 probationers on warrant status were arrested during the fiscal year. Fugitive apprehension officers were involved in 4,053 (62%) of the arrests and other police agencies arrested an additional 2,528 probationers (38%) during this reporting period. An additional 471 cases were quashed or purged during the fiscal year. As of June 30, 2009, the number of outstanding warrants for Standard and Intensive Probation was 8,210.

The Fugitive Apprehension Unit has regular ongoing round-ups with the Arizona Department of Public Safety Violent Criminal Apprehension Team, Phoenix Police Fugitive Apprehension Unit, Glendale Police Department, U.S. Marshals, and MCSO / H.I.D.T.A Meth Lab Task Force. Round-ups for specific crimes such as Domestic Violence and Sex offenders have also been conducted with various agencies. One officer was assigned to work with the U.S. Marshal's Child Predator Unit and four officers were assigned to work with the U.S. Marshal's Arizona Wanted Unit. All sex offender cases are tracked by level and various agencies are used to assist in apprehending them.

Of the 6,353 active warrants issued in FY 2009, the Fugitive Apprehension Unit cleared 4,776 warrants within the same fiscal year, thus giving this unit a closure rate of 75%.



Total Number of New Warrant Cases
Received in FY2009

6,353

Total Number of New Warrants Cleared
In FY2009

4,776

“When you do nothing, you feel overwhelmed and powerless. But when you get involved, you feel the sense of hope and accomplishment that comes from knowing you are working to make things better.”

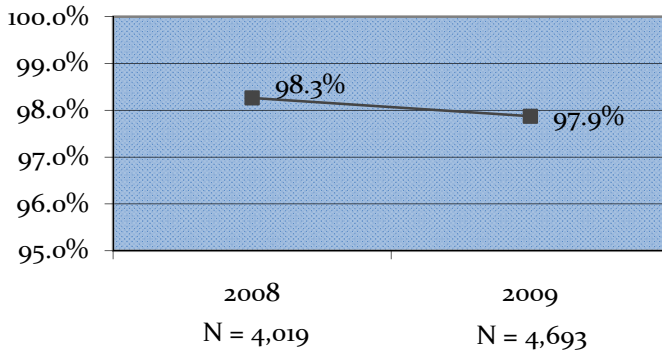
- Anonymous

MARICOPA COUNTY ADULT PROBATION

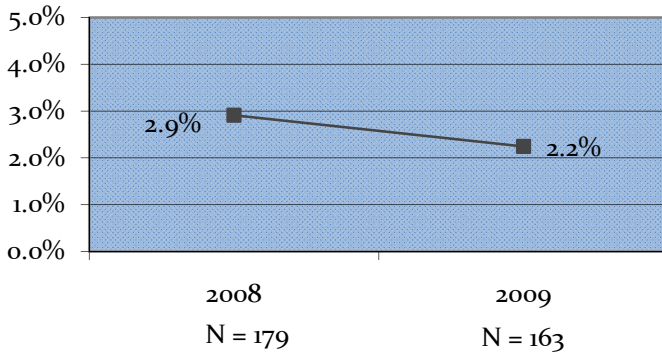
Compliance Monitoring

Compliance Monitoring provides case management for probationers who are low-risk unsupervised and/or have been on probation for a non-violent offense over an extended period of time and have obeyed the conditions of their probation. As of June 30, 2009, there were three Supervisors, 19 Probation Officers, 18 Case Administrators and two support staff managing a total of 10,023 cases. This division has saved approximately 58,000 supervision hours from the standard field units.

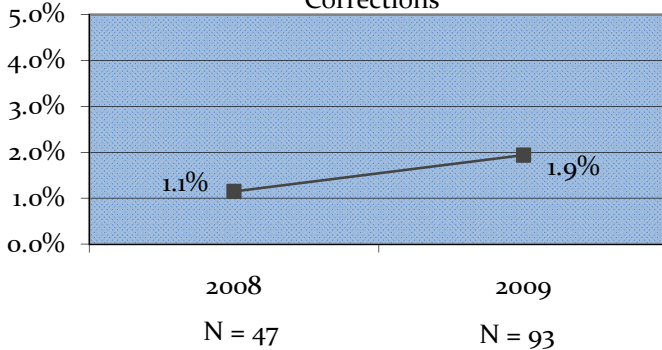
Rate of Successful Completion



Rate of New Felony Convictions



Rate of Revoked to Department of Corrections



Average Population
FY2009
7,261

Average Daily Cost Per
Probationer
\$1.16

Annual Program Cost FY2009
\$2,891,860

Average Caseload
2:330

Drug monitoring results indicate 84.0% of Compliance Monitoring probationers were drug free during FY 2009.



MARICOPA COUNTY ADULT PROBATION

Custody Management Unit & Work Furlough Program

During FY 2009, the Custody Management Unit (CMU) supervised an average of 786 in-custody probationers (standard and IPS) per month. The unit is comprised of ten probation officers (including five specialized caseloads; domestic violence, mental health, Spanish speaking, sex offender and intensive probation), and one caseload administrator who supervises short-term jail cases (less than 60 days).

The CMU unit monitors probationers' participation in the Maricopa County Sheriff's Office (MCSO) residential substance abuse treatment ALPHA program, makes referrals to Reach Out and Work Furlough.

In the last year CMU has implemented re-entry programs effecting Seriously Mentally Ill and Intensive probationers. Both programs include collaborations with various agencies such as Maricopa County Sheriff's Office (MCSO), Correctional Health Services, Mental Health Court, and Adult Probation Department field units. The IPS officers have recently started conducting pre-release address verifications and family orientations.

The CMU staff is looking at better ways to implement evidence-based re-entry services to all probationers and hope to offer new programs meant to aid in the reduction of recidivism. Two CMU staff were recently certified to facilitate the National Institute of Corrections *Thinking for a Change* curriculum and are currently conducting group sessions at the MCSO Tent Jail facility.



The Work Furlough Program is staffed with five probation officers. The primary function of the program is to allow probationers to maintain or obtain employment while serving a jail sentence.

During the past year, emphasis was placed on better preparing unemployed probationers who are released on job search and in helping probationers complete as many of the conditions of their probation as possible while still in custody. For example, Work Furlough staff has provided some community restitution work opportunities for probationers while incarcerated, such as the Jump Start Program and the Beaders Behind Bars program. Probationers are also allowed the opportunity to attend Mothers Against Drunk Drivers (MADD) Victim Impact Panels in the community when their work schedules allow it. In January 2009, Work Furlough staff developed a new monthly class for offenders to attend prior to their jail release. The one-time class called Jake's Ladder to Success focuses on the importance of reporting to their probation officer following release and using better judgment in decision-making.

Average Population
FY2009

837

Average Daily Cost Per
Probationer

\$6.88

Annual Program Cost FY2009

\$2,102,992

Total Work Furlough
Fees Collected
FY 2009

\$743,088

MARICOPA COUNTY ADULT PROBATION

Drug and DUI Courts

Drug Court is a non-adversarial program that utilizes a team approach to break the cycle of substance abuse and addiction. Through intensive treatment, drug testing, and frequent Court intervention, probationers are given the tools to lead a clean, sober, and crime-free lifestyle. The judge, prosecutor, defense attorney, probation officer, and treatment provider work together toward a goal of making the probationer successful in his or her recovery. Timely sanctions and motivational incentives assist in changing behavior, consistent with evidence-based practices.

Drug Court Average Population
466
(Monthly statistical data)

Annual Treatment Cost
FY2009
\$787,813

DUI Court Average Daily Population
366
(Monthly statistical data)

Annual Treatment Cost
FY2009
Probationer Self-Pay

Driving Under the Influence (DUI) Court targets the goal of changing decisions regarding alcohol use, in addition to changing drinking and driving behaviors. In effect, this reduces the probationer's risk to the community. Similar to the Drug Court model, probationers have monthly Court interaction, are monitored for alcohol use, and are expected to comply with probation directives and a treatment plan. Probationers attend a Mothers Against Drunk Drivers (MADD) Victim Impact Panel and report to the Court on their experience. DUI Court includes both English and Spanish-speaking Courts.

"Most of the important things in the world have been accomplished by people who have kept on trying when there seemed to be no hope at all."

- Dale Carnegie



MARICOPA COUNTY ADULT PROBATION

Education & Drug Treatment Education Fund (DTEF)

The Supreme Court and the Administrative Offices of the Court recognize that illiteracy impacts the Court system and is one of the contributing factors to recidivism in the probation and prison populations. In 1987, the Arizona Supreme Court established education centers for the juvenile and adult probation departments to combat illiteracy in these populations. The probation departments became the lead agencies in establishing LEARN (Literacy, Education, and Resource Network) education centers. LEARN enhances the probation departments' education programs.

The education programs are equipped with personal computers at each site. Adult Basic Education (ABE), GED preparation, ESOL (English for Speakers of other Languages), and Job-Find classes are taught. By providing an education continuum, the probationer's educational needs can be effectively met. Learning to speak English and receiving a GED diploma are essential to gaining permanent employment. Often, bleak economic factors lead a person to crime. Being literate can break the cycle of poverty, enhance self-esteem, and turn around a negative life-style associated with the majority of the probation and prison population.

Successful Completion of Education Goals

72%
(MFR data)

Annual Student Population

FY2009

556

Average Daily Cost Per Student

\$3.71

Annual Program Cost

\$725,457



DTEF Average Daily Population

351
(MFR Data)

Annual Treatment Cost FY2009

State Total
\$1,334,798

Grand Total

\$1,954,983

The Drug Treatment and Education Fund (DTEF) is a state program established to divert first-and second-time non-violent drug offenders from prison and provide substance abuse education or treatment services. DTEF funds are also used for substance abuse assessments, cognitive skills classes, and substance abuse counseling both in-house and in the community.

MARICOPA COUNTY ADULT PROBATION

Fiscal Year 2009 Awards



The Financial Compliance Program was selected for the 2008 American Probation and Parole Association's President's Award.

Financial Compliance Division Director
Tom O'Connell

Special Incident Reporting: A Management Tool for Staff Safety received a 2009 NACo Achievement Award from the National Association of Counties.



From Left to Right: Deputy Chief Mike Goss, Berta Aldrich, Chief Barbara Broderick, Cathy Wyse, & Deputy Chief Zach Dal Pra



The SMI Program was recognized by the Arizona Quality Alliance with a 2008 Showcase in Excellence Award.

From Left to Right: Cathy Wyse, Tom O'Connell, Chief Barbara Broderick, Rebecca Loftus, Michele Albo, Tammy Schroeder, Karen Spitler, & Rebekah Trexler

The MCAPD Education Program was selected as the Administrative Office of the Court's 2009 Literacy Education and Resource Network (L.E.A.R.N.) Lab of the Year.



From Left to Right: Dan Rodgers, Kathy Beal, Kristi Wimmer, Bill Pebler, Lindell Rhodes, & Dan Sitzler



The Garfield Probation Service Center received the City of Phoenix Neighborhood Services Department's Partnership Award.

Left to right: Tim Boling City of Phoenix, Roberto Fritz City of Phoenix, Paul Monroe APD, Dominick Bueti APD, Christi Seger APD, Vivian Ybanez City of Phoenix, Gary New City of Phoenix, & Jerome Miller City of Phoenix

MARICOPA COUNTY ADULT PROBATION

Executive Team



Seated from left to right: Deputy Chief Michael Goss, Deputy Chief Mary Walensa, Chief Barbara Broderick, and Deputy Chief Zach Dal Pra. **2nd row left to right:** Division Director's Saul Schoon, Penny Stinson, Jenifer Meiley, and Margaret Callaway. **3rd row left to right:** Division Director's Linda Ettari, Pam Morrow, Mark Hendershot, Donna Vittori, Mike Cimino, Vicki Biro and Tom O'Connell.

A Force for Positive 
CHANGE.