

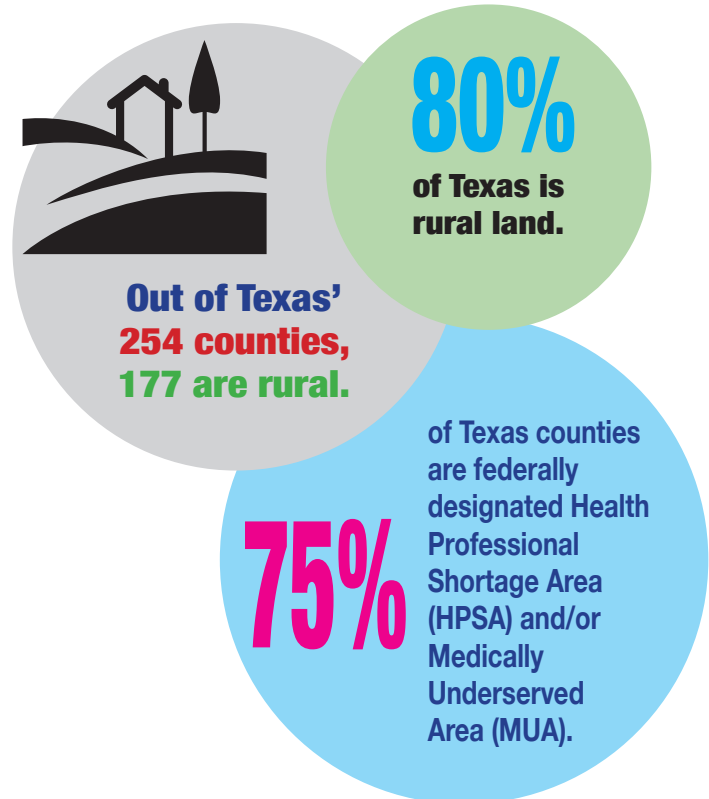
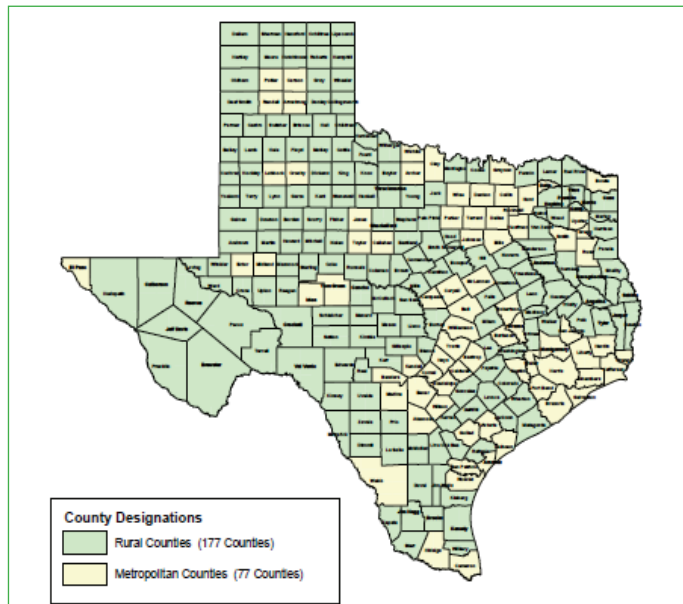


STATE OF HEALTH CARE IN RURAL TEXAS

15-20%
of all jobs in rural communities are in a health care field.



TEXAS DEPARTMENT OF AGRICULTURE
COMMISSIONER SID MILLER



HEALTH CARE PROVIDER SHORTAGES

50% of future doctors who leave Texas to receive medical residency training never return to the Lone Star state

\$150,000 annual training cost per physician

ACCESS TO CARE

64 Texas counties do not have a hospital

35 miles between critical access hospitals

25 counties do not have primary care physicians (PCP's)

FACT 1: Since 2010, **12 HOSPITALS** in rural Texas have closed.

FACT 2: Some Texans have to travel more than **100 MILES** to reach the nearest hospital.

FACT 3: The first **60 MINUTES** after a trauma or cardiac event could mean the difference between life and death.