

Recovery and Job Access Summit

DECEMBER 06, 2022



STATE OF VERMONT
Agency of Human Services

Welcome and Introductions



STATE OF VERMONT
Agency of Human Services

Partnership VTrans and AHS



State of Vermont

Agency of Human Services

MORE INFORMATION AVAILABLE AT:

[HTTPS://VTRANS.VERMONT.GOV/PUBLIC-TRANSIT/RECOVERY-JOB-ACCESS](https://vtrans.vermont.gov/public-transit/recovery-job-access)

[HTTPS://WWW.HEALTHVERMONT.GOV/ALCOHOL-DRUGS/SERVICES](https://www.healthvermont.gov/alcohol-drugs/services)



SUBSTANCE USE & MENTAL ILLNESS IN U.S. ADULTS (18+)

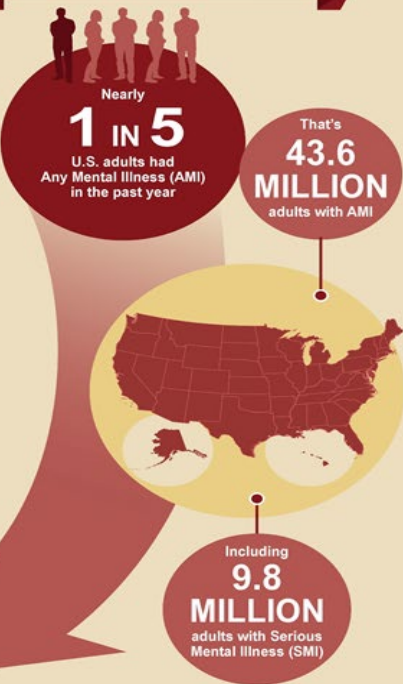
FROM THE 2014 NATIONAL SURVEY ON DRUG USE AND HEALTH (NSDUH)

Behavioral health (substance use and mental health) issues affect millions in the United States each year.

SUBSTANCE USE IN THE U.S.



MENTAL HEALTH IN THE U.S.



Co-Occurring Behavioral Health Disorders in the U.S.

1. Any Mental Illness (AMI) is defined as individuals having any mental, behavior, or emotional disorder in the past year that met DSM-IV criteria (excluding developmental and substance use disorders).

2. Serious Mental Illness (SMI) is defined as adults with any mental, behavior, or emotional disorder that substantially interfered with or limited one or more major life activities.

3. Substance Use Disorder (SUD): Individuals with alcohol or illicit drug dependence or abuse are defined as having SUD. The questions used to measure dependence and abuse are based on criteria in the fourth edition of the Diagnostic and Statistical Manual of Mental Disorders (DSM-IV).

SOURCE: Substance Abuse and Mental Health Services Administration, Center for Behavioral Health Statistics and Quality. 2014 National Survey on Drug Use and Health.



- Original pilot 160k Federal/160k State/320K total to cover costs for recovery and job access.
- Partnership between AHS and Vtrans to cover the 50% State match.
- Additional investment of 200k Federal and 200k State by AHS/VTrans in State Fiscal year 2023.
- Service began in September 2019 in partnership with Rural Community Transportation (RCT) and recovery centers in Newport, St. Johnsbury and Morrisville.



SUBSTANCE USE & MENTAL ILLNESS IN U.S. ADULTS (18+)

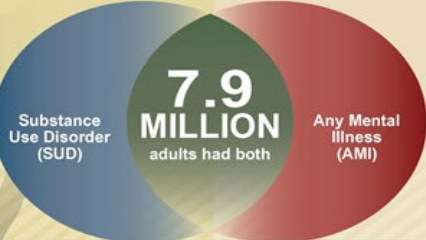
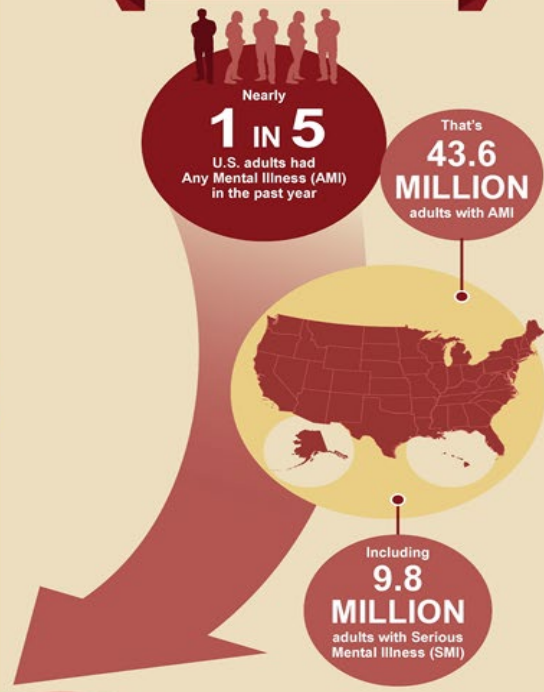
FROM THE 2014 NATIONAL SURVEY ON DRUG USE AND HEALTH (NSDUH)

Behavioral health (substance use and mental health) issues affect millions in the United States each year.

SUBSTANCE USE IN THE U.S.



MENTAL HEALTH IN THE U.S.



Co-Occurring Behavioral Health Disorders in the U.S.

1. Any Mental Illness (AMI) is defined as individuals having any mental, behavior, or emotional disorder in the past year that met DSM-IV criteria (excluding developmental and substance use disorders).

2. Serious Mental Illness (SMI) is defined as adults with any mental, behavior, or emotional disorder that substantially interfered with or limited one or more major life activities.

3. Substance Use Disorder (SUD): Individuals with alcohol or illicit drug dependence or abuse are defined as having SUD. The questions used to measure dependence and abuse are based on criteria in the fourth edition of the Diagnostic and Statistical Manual of Mental Disorders (DSM-IV).

SOURCE: Substance Abuse and Mental Health Services Administration, Center for Behavioral Health Statistics and Quality. 2014 National Survey on Drug Use and Health.



- Over 6,000 trips provided mostly by RCT in collaboration with the Recovery Centers
- Pilot expanded regionally for all rural locations of Vermont. Have not seen many trips provided in other regions of Vermont
- Have been meeting with key stakeholders by region to increase awareness and activity
- Chittenden County not covered under this program due to large fixed route service available in that region.



SUBSTANCE USE & MENTAL ILLNESS IN U.S. ADULTS (18+)

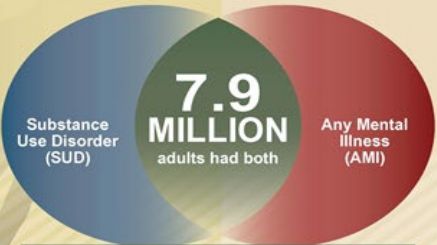
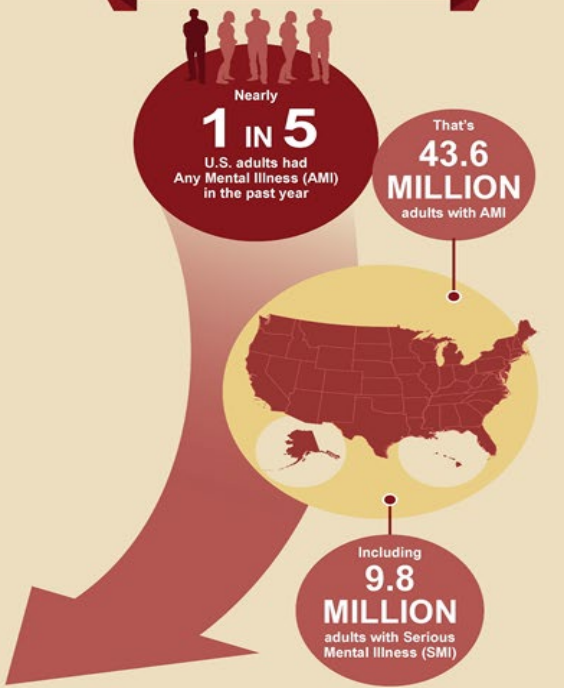
FROM THE 2014 NATIONAL SURVEY ON DRUG USE AND HEALTH (NSDUH)

Behavioral health (substance use and mental health) issues affect millions in the United States each year.

SUBSTANCE USE IN THE U.S.



MENTAL HEALTH IN THE U.S.



1. Any Mental Illness (AMI) is defined as individuals having any mental, behavior, or emotional disorder in the past year that met DSM-IV criteria (excluding developmental and substance use disorders).

2. Serious Mental Illness (SMI) is defined as adults with any mental, behavior, or emotional disorder that substantially interfered with or limited one or more major life activities.

3. Substance Use Disorder (SUD): Individuals with alcohol or illicit drug dependence or abuse are defined as having SUD. The questions used to measure dependence and abuse are based on criteria in the fourth edition of the Diagnostic and Statistical Manual of Mental Disorders (DSM-IV).

SOURCE: Substance Abuse and Mental Health Services Administration, Center for Behavioral Health Statistics and Quality. 2014 National Survey on Drug Use and Health.



- Pilot not intended to shift costs from Medicaid and Elders and Persons with Disabilities funding programs.
- Intent of pilot is to reduce barriers to transportation for those suffering from substance use or on the fence about entering a recovery program.
- Job access trips eligible for all Vermonters up to 30 days.
- Intended to cover initial job interview and commute for your clients.



SUBSTANCE USE & MENTAL ILLNESS IN U.S. ADULTS (18+)

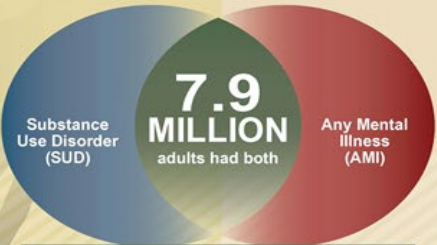
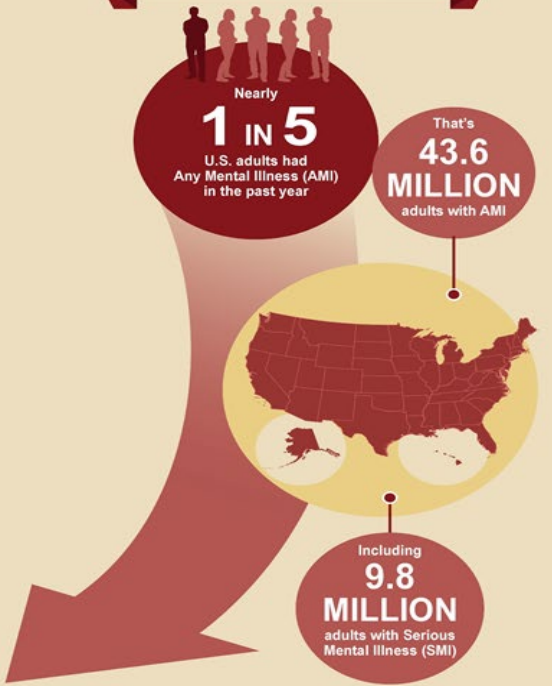
FROM THE 2014 NATIONAL SURVEY ON DRUG USE AND HEALTH (NSDUH)

Behavioral health (substance use and mental health) issues affect millions in the United States each year.

SUBSTANCE USE IN THE U.S.



MENTAL HEALTH IN THE U.S.



1. Any Mental Illness (AMI) is defined as individuals having any mental, behavior, or emotional disorder in the past year that met DSM-IV criteria (excluding developmental and substance use disorders).

2. Serious Mental Illness (SMI) is defined as adults with any mental, behavior, or emotional disorder that substantially interfered with or limited one or more major life activities.

3. Substance Use Disorder (SUD): Individuals with alcohol or illicit drug dependence or abuse are defined as having SUD. The questions used to measure dependence and abuse are based on criteria in the fourth edition of the Diagnostic and Statistical Manual of Mental Disorders (DSM-IV).

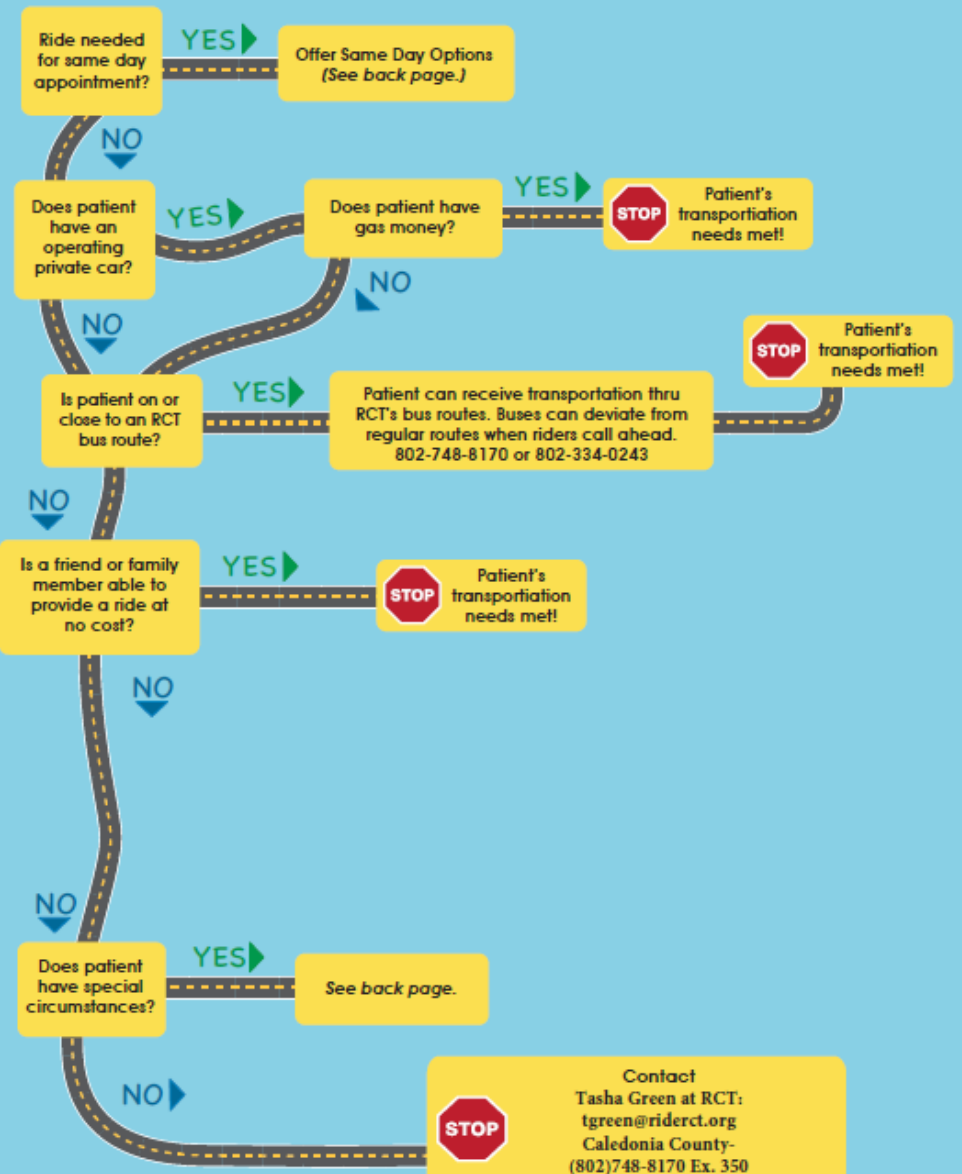
SOURCE: Substance Abuse and Mental Health Services Administration, Center for Behavioral Health Statistics and Quality. 2014 National Survey on Drug Use and Health.



- Standard eligibility decision tree (Roadmap) developed specific to each region .

“Recovery and Job Access” Roadmap

Essex, Caledonia, Orleans and Lamoille Counties



Contact
Tasha Green at RCT:
tgreen@riderct.org
Caledonia County-
(802)748-8170 Ex. 350
Orleans/Essex County
(802)334-0243 Ex. 150
Lamoille County
(802)888-6200 Ex. 250

Same Day Appointment Transportation Options:

There are limited resources for transportation needs identified as short notice. The Program Manager(s) at the Recovery Centers will work with RCT to accommodate as many of these trips as possible. These options may include RCT providing the trip, contacting a local cab provider or providing a gas card for patients that have a working vehicle and need financial assistance.

Special Circumstances

People having special circumstances may qualify for certain transportation services:

Visual Impairment: The Vermont Association for the Blind and Visually Impaired may be able to provide transportation for medical appointments, social services, and shopping. Call them at 1-877-350-8840.

Veterans: The VA can often help with transportation. Call the VA Outreach Specialist Rob at 802-359-2072.

Over 60 years of age or disabled: Call RCT directly at 802-748-8170 or 802-334-0243, or (802) 888-6200 Or call the NEK Council on Aging at 802-748-5182 or 802-334-2190.

People in Recovery: Journey to Recovery Center at (802) 624-4156 and Kingdom Recovery 802-751-8520.

Reach Up recipients: Call NEKCA at 802-748-6040 or 802-334-7316.

Churches: Some area churches will help members with transportation needs.

Rides to court: The Saint Johnsbury Community Restorative Justice Center may be able to help. Call 802-748-2977.

Vermont 2-1-1: Dial 2-1-1 for help with transportation for destinations outside our area.

Medicaid Special Circumstances:

People may be eligible for transportation under Medicaid if they have a vehicle, but it is not in working condition. They may need to get a letter from a licensed auto mechanic stating what is wrong with their vehicle and send the letter to Medicaid. If approved, RCT may be able to provide transportation.

People may also be eligible for mileage reimbursement if they cannot afford gas. There are requirements and restrictions that apply.

Other Resources:

Good News Garage has a limited number of vehicles for sale at low cost. They also provide low cost repair service for working adults. Restrictions apply. Visit goodnewsgarage.org or call 802-864-3667 for more information.



SUBSTANCE USE & MENTAL ILLNESS IN U.S. ADULTS (18+)

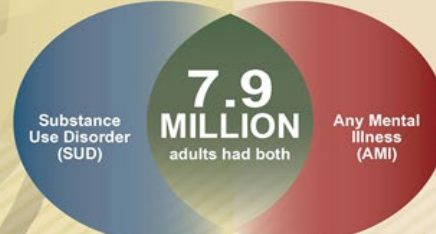
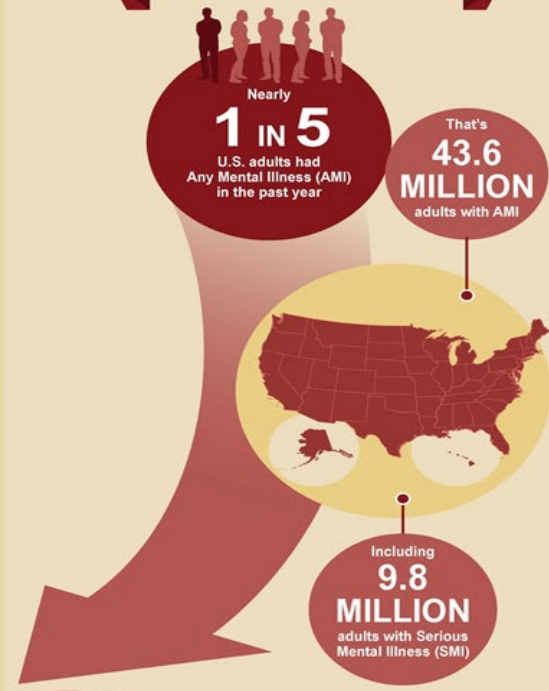
FROM THE 2014 NATIONAL SURVEY ON DRUG USE AND HEALTH (NSDUH)

Behavioral health (substance use and mental health) issues affect millions in the United States each year.

SUBSTANCE USE IN THE U.S.



MENTAL HEALTH IN THE U.S.



Co-Occurring Behavioral Health Disorders in the U.S.

1. Any Mental Illness (AMI) is defined as individuals having any mental, behavior, or emotional disorder in the past year that met DSM-IV criteria (excluding developmental and substance use disorders).

2. Serious Mental Illness (SMI) is defined as adults with any mental, behavior, or emotional disorder that substantially interfered with or limited one or more major life activities.

3. Substance Use Disorder (SUD): Individuals with alcohol or illicit drug dependence or abuse are defined as having SUD. The questions used to measure dependence and abuse are based on criteria in the fourth edition of the Diagnostic and Statistical Manual of Mental Disorders (DSM-IV).

SOURCE: Substance Abuse and Mental Health Services Administration, Center for Behavioral Health Statistics and Quality. 2014 National Survey on Drug Use and Health.



- Program not as stringent as Medicaid NEMT guidelines. No paperwork required from client. You work directly with transit providers in determining client eligibility.
- Recovery center personal choice drivers allowed for situations when a client needs a ride on short notice.
- Contact local transit providers to complete the necessary requirements for personal choice driver eligibility.



SUBSTANCE USE & MENTAL ILLNESS IN U.S. ADULTS (18+)

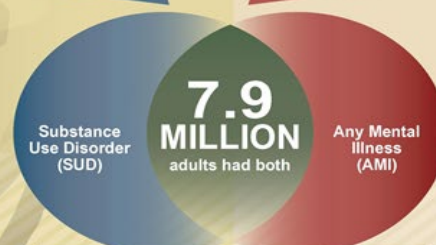
FROM THE 2014 NATIONAL SURVEY ON DRUG USE AND HEALTH (NSDUH)

Behavioral health (substance use and mental health) issues affect millions in the United States each year.

SUBSTANCE USE IN THE U.S.



MENTAL HEALTH IN THE U.S.



Co-Occurring Behavioral Health Disorders in the U.S.

1. Any Mental Illness (AMI) is defined as individuals having any mental, behavior, or emotional disorder in the past year that met DSM-IV criteria (excluding developmental and substance use disorders).

2. Serious Mental Illness (SMI) is defined as adults with any mental, behavior, or emotional disorder that substantially interfered with or limited one or more major life activities.

3. Substance Use Disorder (SUD): Individuals with alcohol or illicit drug dependence or abuse are defined as having SUD. The questions used to measure dependence and abuse are based on criteria in the fourth edition of the Diagnostic and Statistical Manual of Mental Disorders (DSM-IV).

SOURCE: Substance Abuse and Mental Health Services Administration, Center for Behavioral Health Statistics and Quality. 2014 National Survey on Drug Use and Health.



- Gas cards are an eligible expense, but they must be purely gas cards to avoid misuse. Cards can be purchased by either the transit provider or participating partner agency.
- We ask that all gas cards are issued in \$20 increments to eligible clients that have an available car in the household and need fuel assistance. Invoices for reimbursement must be submitted to the local transit provider.

Vermont transit providers participating in program

Green Mountain Community Network (GMCN)	Green Mountain Transit (GMT Rural)	Marble Valley Regional Transit District (MVRTD)	Rural Community Transportation (RCT)	Southeast Vermont Transit (SEVT)	Tri-Valley Transit (TVT)
--	---	--	---	---	--------------------------------

Who do I call for a ride or to determine eligibility?

Visit:

<https://www.connectingcommuters.org/information-and-schedules/bus-info/bus-providers/>




RJA Rides – What's Covered

- Group Meetings and Therapy sessions
- Access to Recovery Centers
- Access to Drug Testing sites
- Medical Appointments

RJA Rides – What's Covered

- Job Access (training, interviews, and initial commutes for 30 days)
- Gas cards for those with a vehicle that need fuel assistance

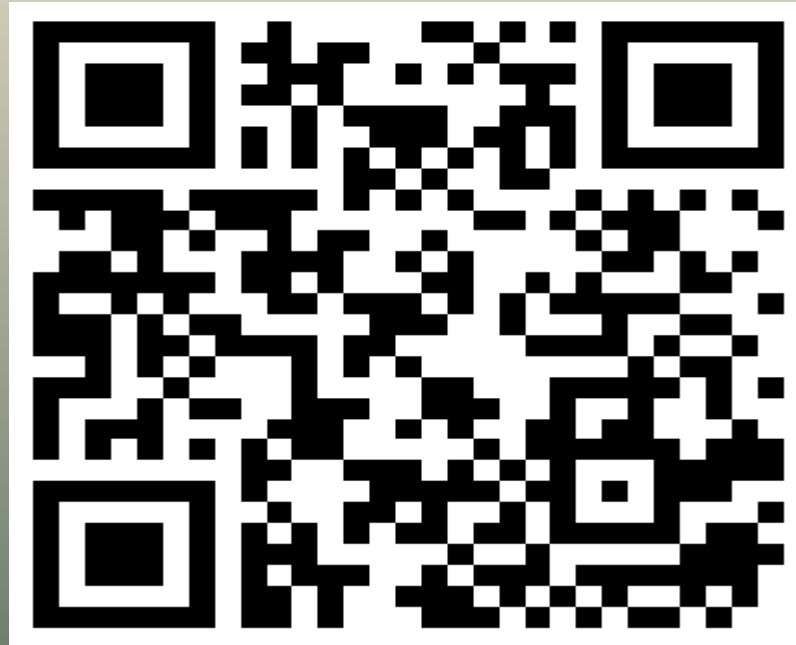
RJA client survey

VTrans/AHS is using a new survey tool. Here is a  link to a Google Forms survey. Please have each  rider who uses this service fill out  the survey.

<https://tinyurl.com/RJAVT>

RJA client survey

Here is a QR code to the survey link:



Open discussion and brainstorming

As stated, we have not seen a lot of activity regionally under this pilot to date.

What is working so well in RCT region that can be duplicated statewide?

How do we increase awareness and collaboration between key stakeholders by region?

Who are the key players?

Central Vermont Prevention Coalition just one example

<https://www.cvprevention.org/>



SUBSTANCE USE & MENTAL ILLNESS IN U.S. ADULTS (18+)

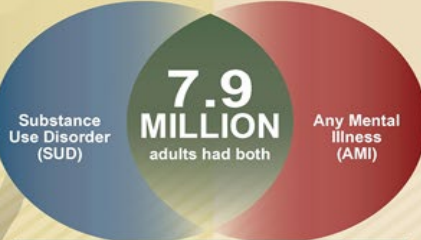
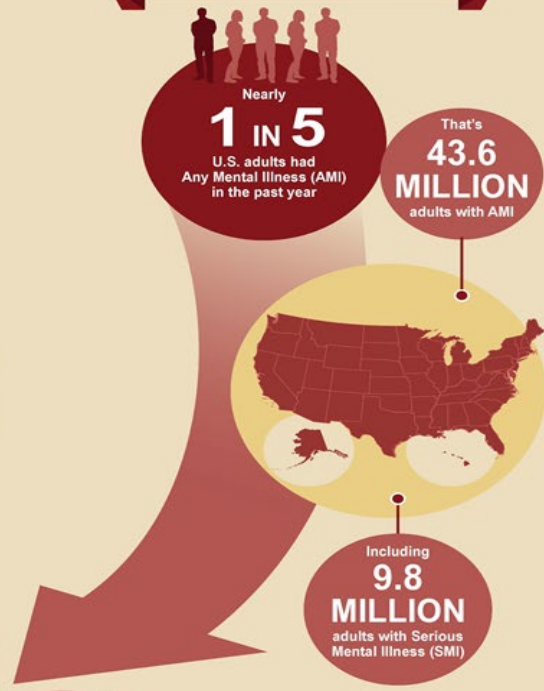
FROM THE 2014 NATIONAL SURVEY ON DRUG USE AND HEALTH (NSDUH)

Behavioral health (substance use and mental health) issues affect millions in the United States each year.

SUBSTANCE USE IN THE U.S.



MENTAL HEALTH IN THE U.S.



Co-Occurring Behavioral Health Disorders in the U.S.

- 1. Any Mental Illness (AMI)** is defined as individuals having any mental, behavior, or emotional disorder in the past year that met DSM-IV criteria (excluding developmental and substance use disorders).
- 2. Serious Mental Illness (SMI)** is defined as adults with any mental, behavior, or emotional disorder that substantially interfered with or limited one or more major life activities.
- 3. Substance Use Disorder (SUD):** Individuals with alcohol or illicit drug dependence or abuse are defined as having SUD. The questions used to measure dependence and abuse are based on criteria in the fourth edition of the Diagnostic and Statistical Manual of Mental Disorders (DSM-IV).

SOURCE: Substance Abuse and Mental Health Services Administration, Center for Behavioral Health Statistics and Quality. 2014 National Survey on Drug Use and Health.



Additional Questions?

THANK YOU

TIMOTHY BRADSHAW, VTRANS PUBLIC TRANSIT
COORDINATOR

TIMOTHY.BRADSHAW@VERMONT.GOV