

**Accenture** Life Sciences  
Patient Inspired. Outcomes Driven.

# **INTIENT.<sup>®</sup>** **AMBITION** **TO ACTION**

**Powering access to actionable insights  
to bring new treatments to patients faster.**



**accenture**

# The reality of New Science is driving change.



Based on a recent report from Accenture Research, biopharma companies are embracing New Science. This is an evolving, unique combination of the best in science and health technology (e.g., genomics, biomarkers, companion technologies, delivery methods, etc.) that is filling an unmet need and raising the standard of care.

## Compressive disruption in the biopharmaceutical industry

**51%** The decline in the amount of time a treatment retained a leadership position in the market from 2000–2017.

**61%** The decline seen in the three-year average pipeline replenishment ratio from 2012–2018.

## New Science is the antidote to compression

**6–7x** more investment is being made in digital, data and genomics by leaders in New Science compared to their peers.

**50%** higher Probability of Technical and Regulatory Success (PTRS) with New Science compared to other treatments.

To learn more, visit [accenture.com/NewScience](https://www.accenture.com/NewScience)

# Industry leaders are looking for a new approach.

## Strategically important

**94%**

Pharmaceutical and biotechnology leaders said the **ability to access data and easily use data** from across functional areas—and apply advanced analytics and/or artificial intelligence to that data—was important or very important to achieving their company's business strategy.

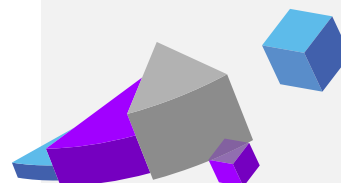
## Critical to success

**75%**

of pharmaceutical and biotechnology leaders feel that improving their ability to connect, share and analyze data from across the organization is **critical to their company's success**.

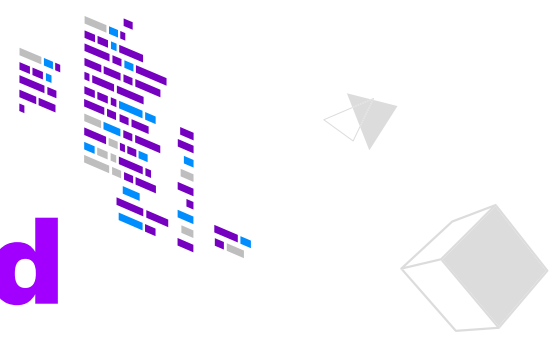
**50%**

Yet, **more than 50%** said they do not have a clear path toward achieving that goal.



Source: IDC Survey, sponsored by Accenture, The Case for Connectivity in the Life Sciences, 2019

# New market realities demand new solutions

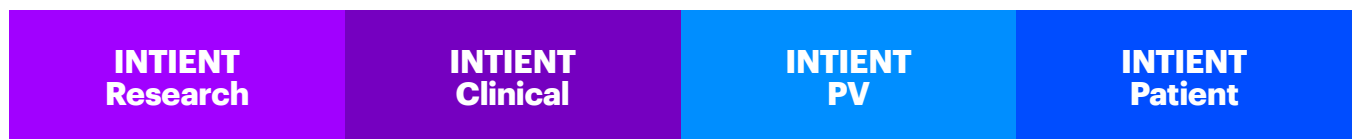


- | **New Data** – Increased complexity and volumes of data
- | **New Value Measures** – Pivot to the patient, with a focus on delivering a patient-centered experience
- | **New Therapeutic Solutions** – Move to precision medicine, with more personalized and digital therapeutics
- | **New Collaborations** – Need to collaborate closely across the business and beyond
- | **New Regulatory Environment** – Openness to new approaches driven by global need
- | **New Technologies** – End-to-end platform capabilities with an open architecture

## INTIENT™

A platform that enables insights and collaboration across life sciences & healthcare.

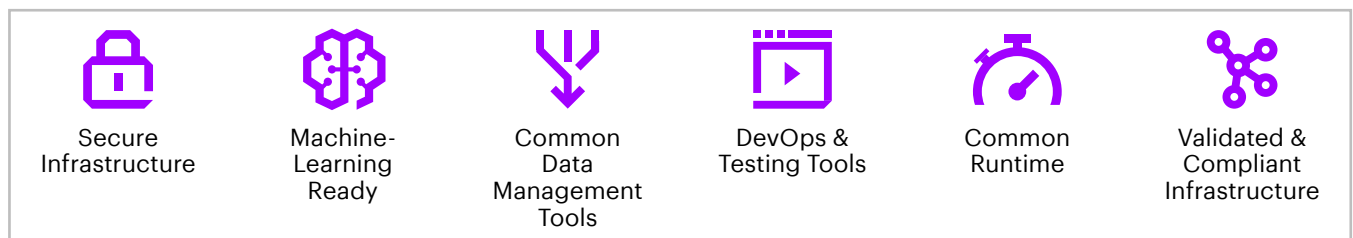
### PRODUCT SUITES



### INTIENT NETWORK

A partner ecosystem of digital innovation.

### CORE CAPABILITIES



### POWERED BY GOOGLE CLOUD



**Accenture** Life Sciences

# INTIENT

## Designed with an open architecture

INTIENT enables the continuity and flow of information throughout the enterprise through integration of the latest, most innovative technologies—all while reducing the complexity of the technology footprint and offering a single user interface.

## Driving action with insights

By maximizing data's potential through applied intelligence, smart automation and advanced analytics, INTIENT increases efficiency, enhances flexibility and helps users make better informed decisions to accelerate development of personalized patient solutions.



### Secure Storage

Offers trusted and compliant **health and patient data** ingestion, storage and processing across functions, geographies and regulatory agencies.



### Open & Extensible

Leverages industry-leading, cloud-based infrastructure with open interfaces to enable **flexible adoption with existing systems** and custom-developed extensions.



### Agility & Innovation

Provides ready access to our external partner **network of digital innovation**, removing barriers to entry for you and leading-edge technology, data and service providers.



### Seamless Collaboration

Empowers seamless, coordinated collaboration across the enterprise—**from research to commercial**—to unify teams with common insights and objectives.




### Intelligence Applied


Enables artificial intelligence, smart automation, machine learning and advanced analytics— at scale—**to discover and apply new insights.**


## We can help you drive better patient and economic outcomes.

View product suite demos at [accenture.com/INTIENT](https://www.accenture.com/INTIENT)

Learn more about our technology-enabled services at [accenture.com/R-DSolutions](https://www.accenture.com/R-DSolutions)

 /accenture\_life\_sciences

 @AccentureLifSci

 [accenture.com/lifesciencesblog](https://www.accenture.com/lifesciencesblog)

**Accenture** Life Sciences  
Patient Inspired. Outcomes Driven.

Copyright © 2020 Accenture. All rights reserved.