



Surveys on Patient Safety Culture™

EXECUTIVE SUMMARY 2018 HOSPITAL SURVEY DATABASE

This overview of survey findings summarizes how hospital employees perceive 12 areas of patient safety culture based on the 2018 Hospital Survey on Patient Safety Culture Database.



382,834 providers and staff respondents

12 areas of patient safety culture were assessed in the survey

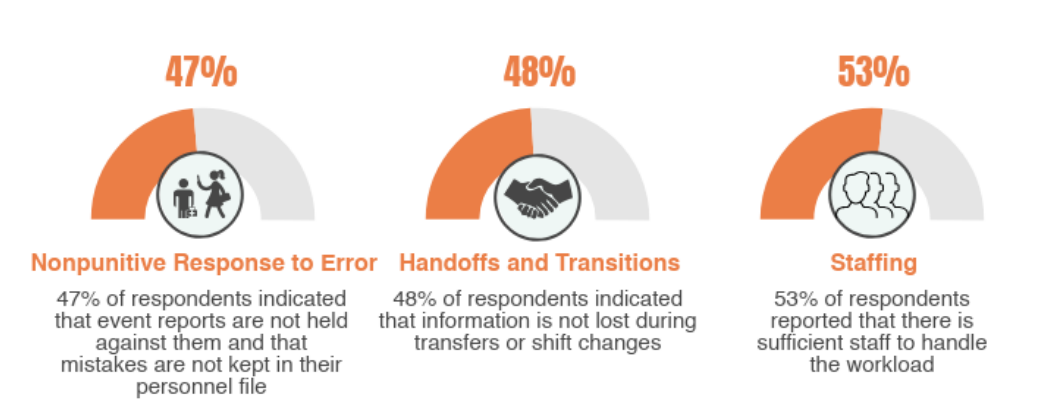


average percent positive across all 12 areas was **65%**

Areas of strength for most hospitals

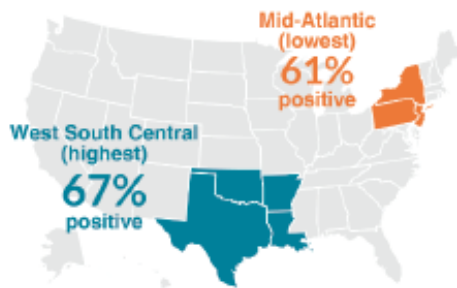


Areas of potential for improvement for most hospitals

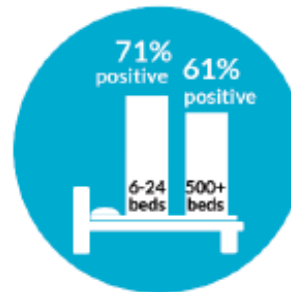


Other key findings

» Highest and lowest average percent positive across all composites by geographic region and bed size



Geographic Region

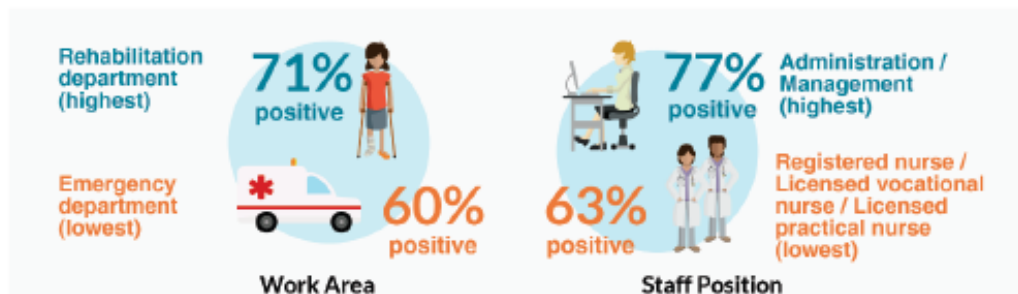


Bed Size

Smaller hospitals (6-24 beds) reported the highest percent positive

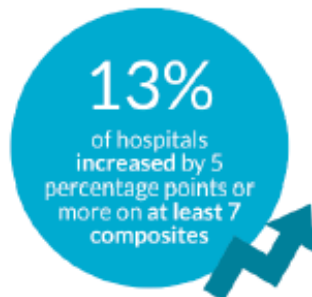
Larger hospitals (500+ beds) reported the lowest percent positive

» Highest and lowest average percent positive across all composites by work area and staff position



Comparing results over time

» Trending results for 306 hospitals that submitted to the 2016 and 2018 database



↑35% of hospitals increased by 5 percentage points or more on **Nonpunitive Response to Error**

↓21% of hospitals decreased by 5 percentage points or more on **Staffing**

What's next? Action planning for improvement

- 1 Define your goals
- 2 Plan your initiatives
- 3 Communicate your action plan

The *Action Planning Tool for the AHRQ Surveys on Patient Safety Culture* provides step-by-step guidance on how to develop an action plan to improve patient safety culture, available at www.ahrq.gov/sops.

Full report: <https://www.ahrq.gov/sops/databases/hospital/index.html>

Data submission information:

<https://www.ahrq.gov/sops/databases/hospital/databases/submission.html>

