

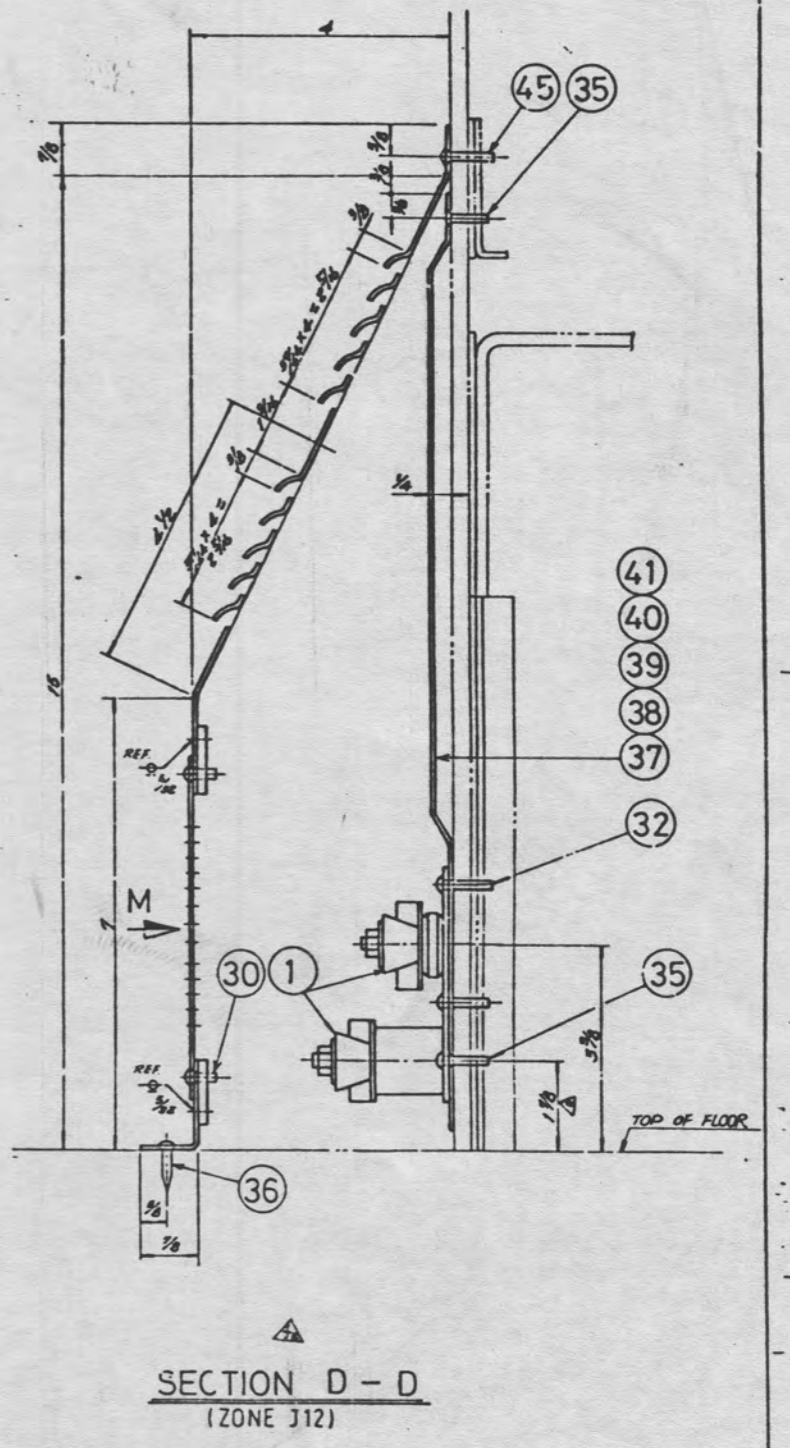
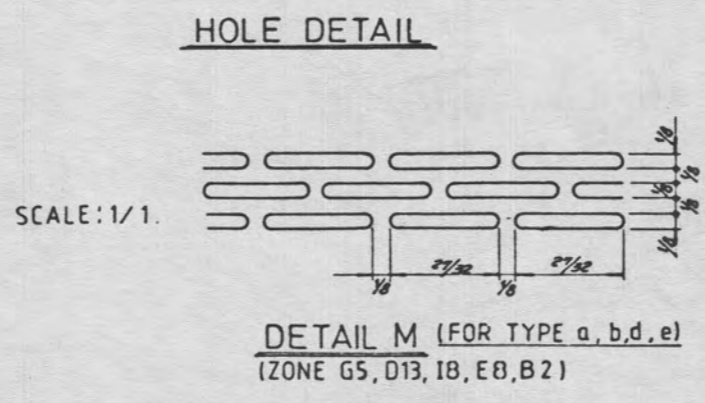
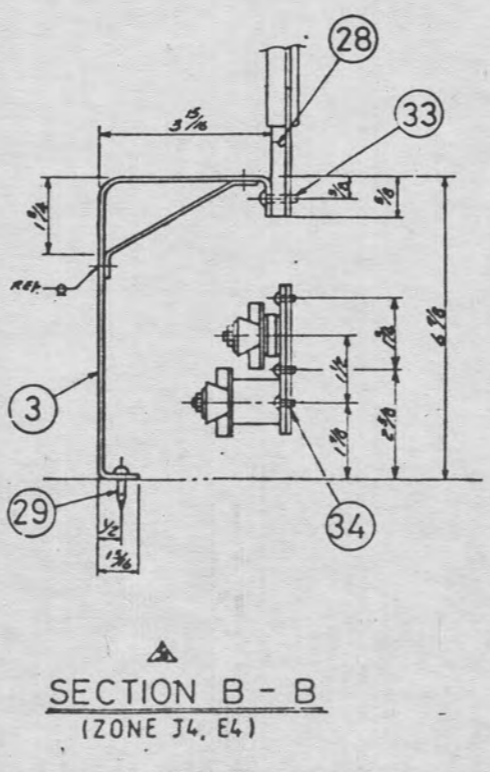
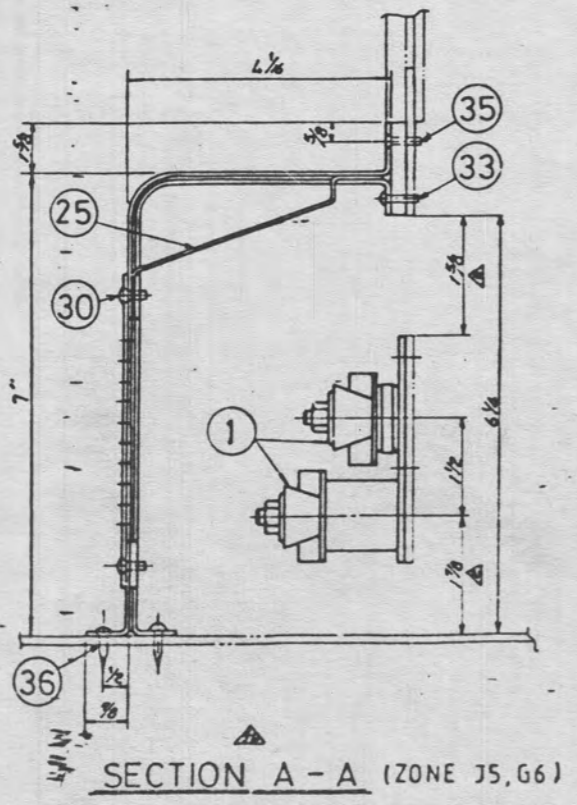
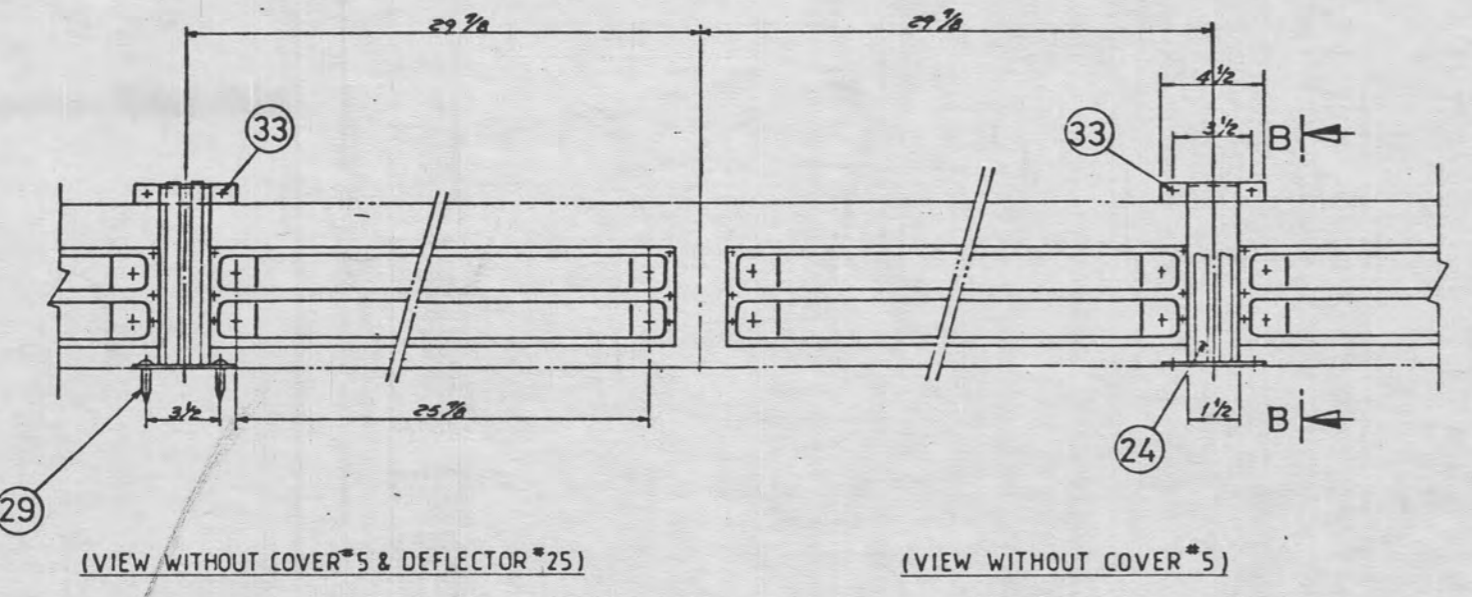
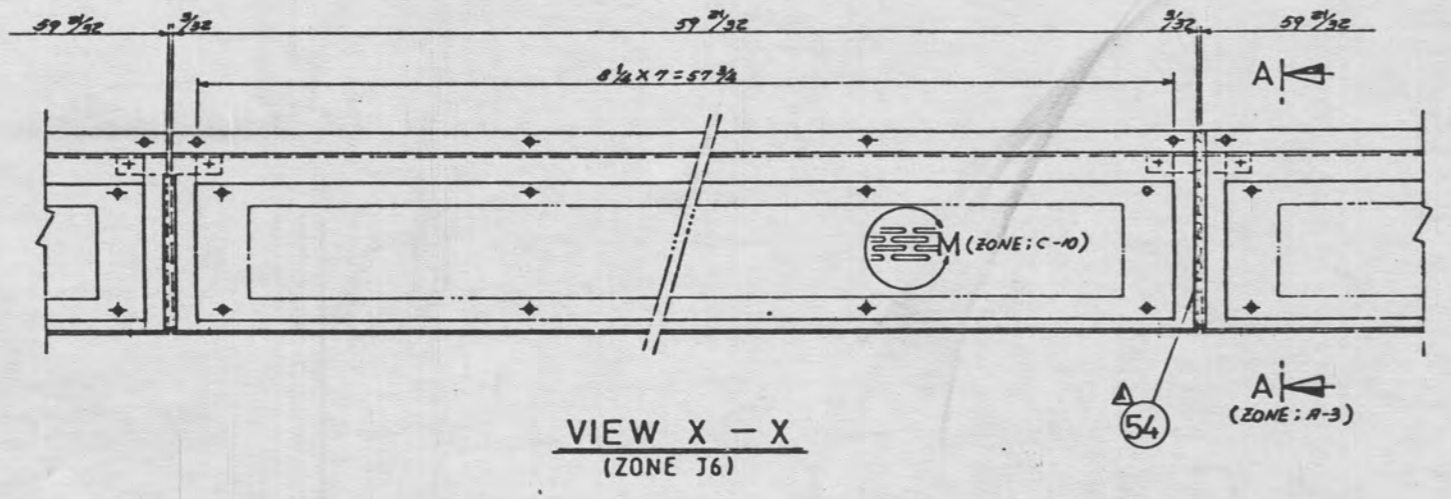
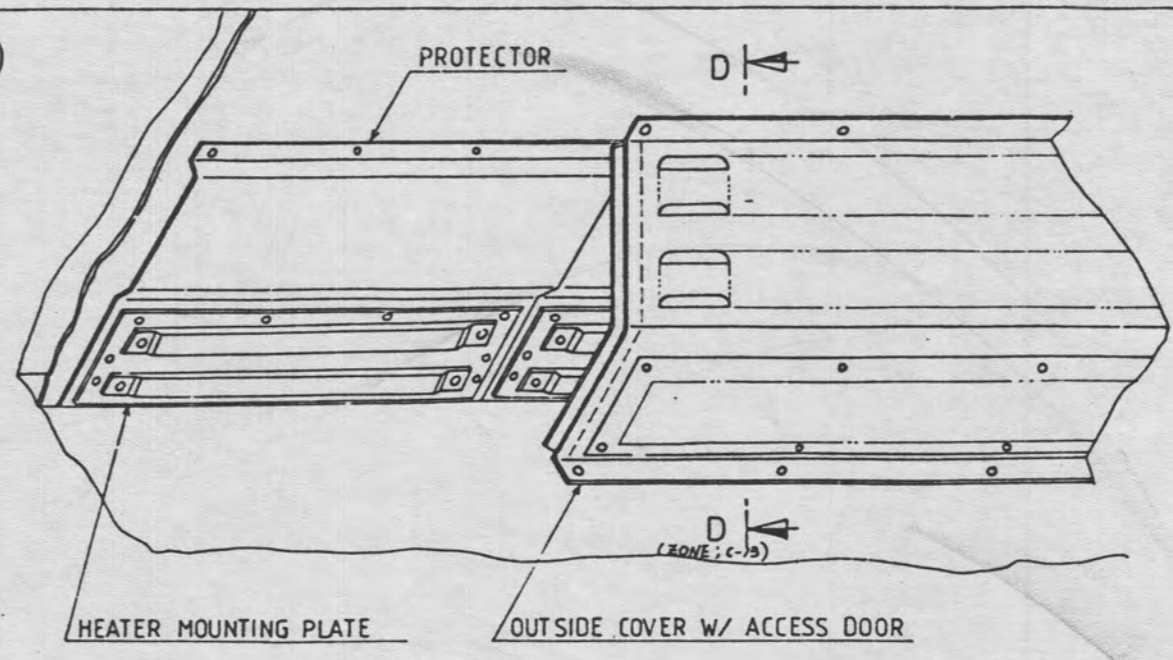
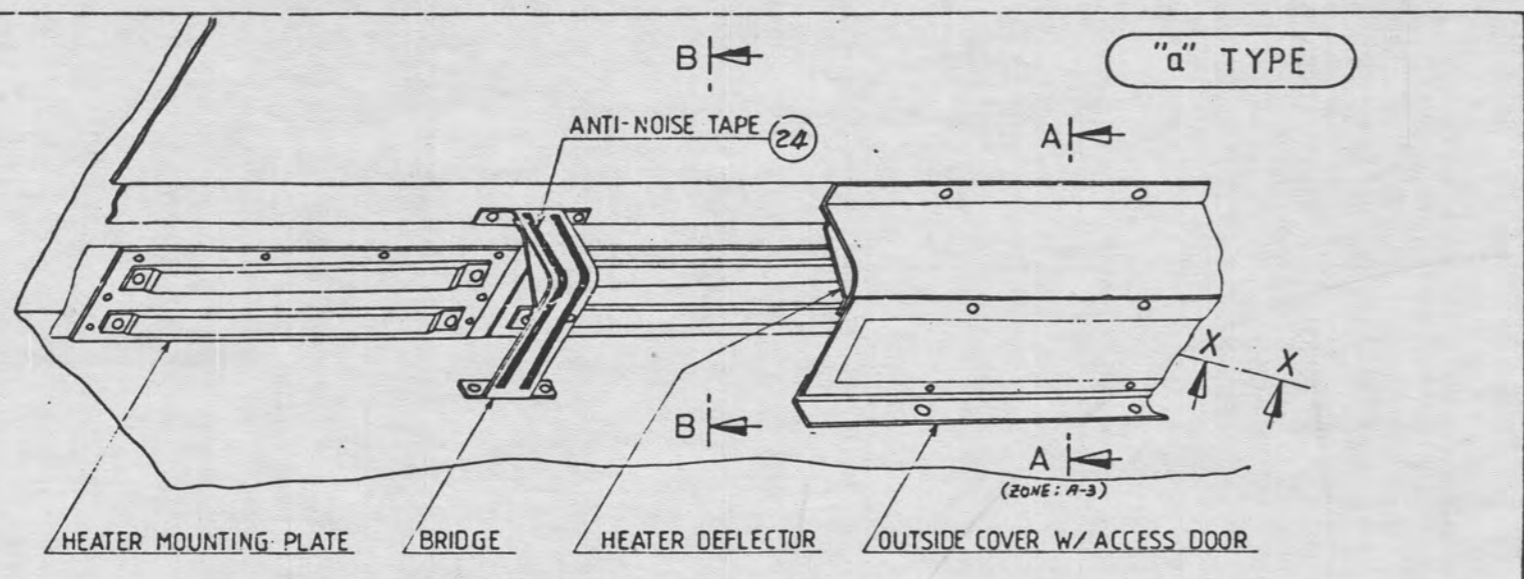
*DETAILS OF HEATER TYPES a-e ARE SHOWN IN SHEET 2/3 & 3/3.

KEY PLAN FOR HEAT

REVIEWED BY
 ENPROTECH CORP.

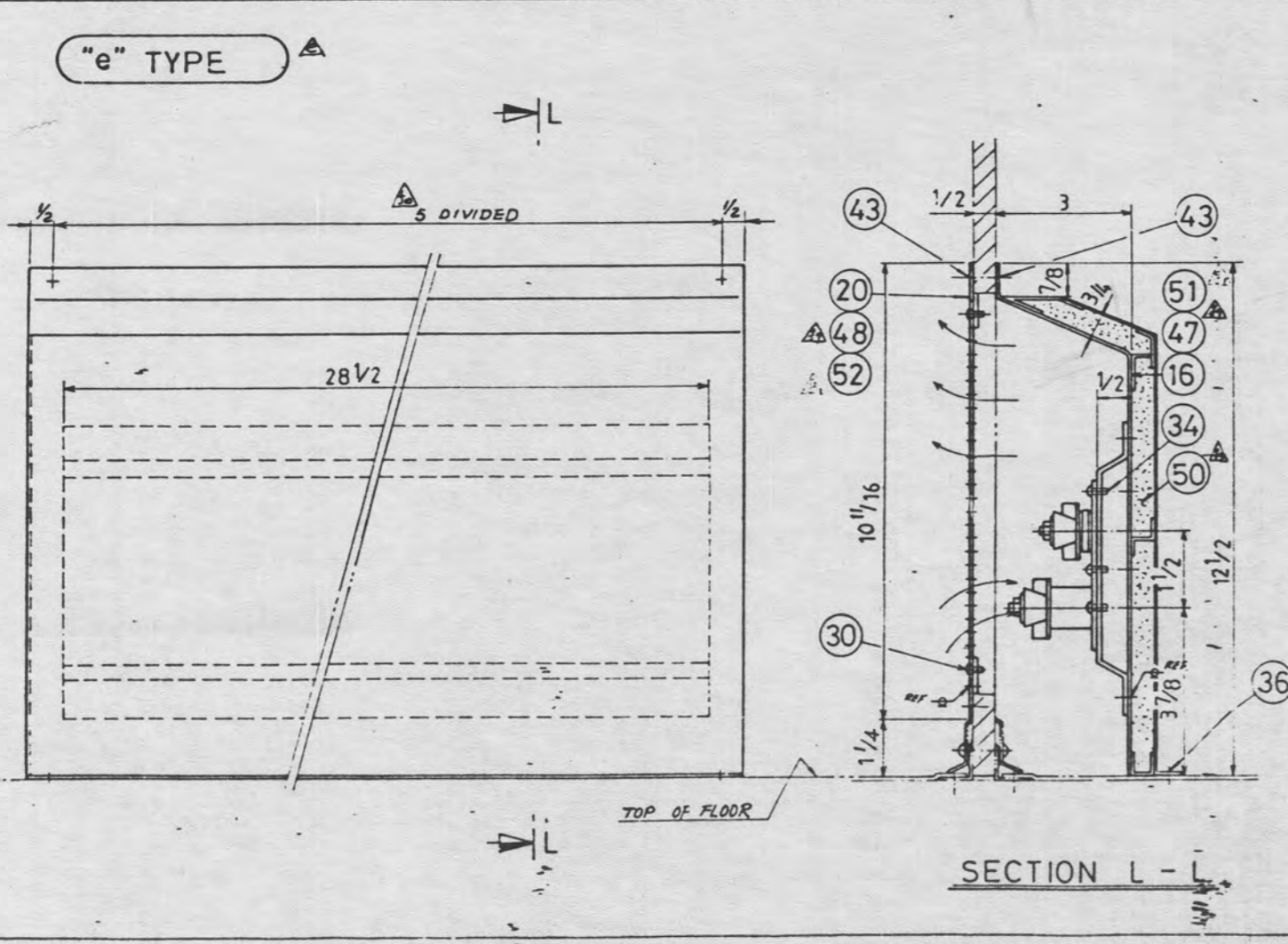
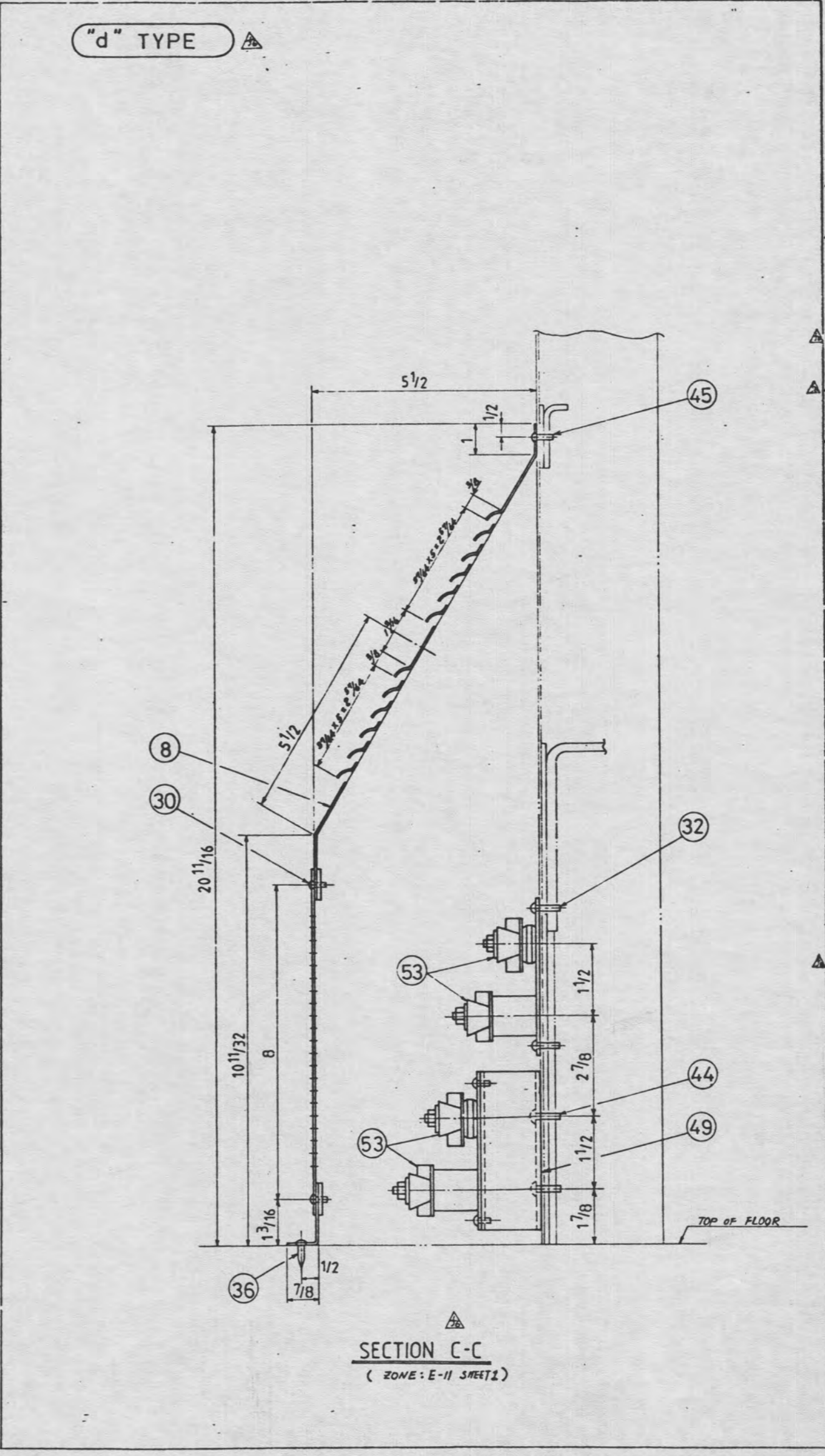
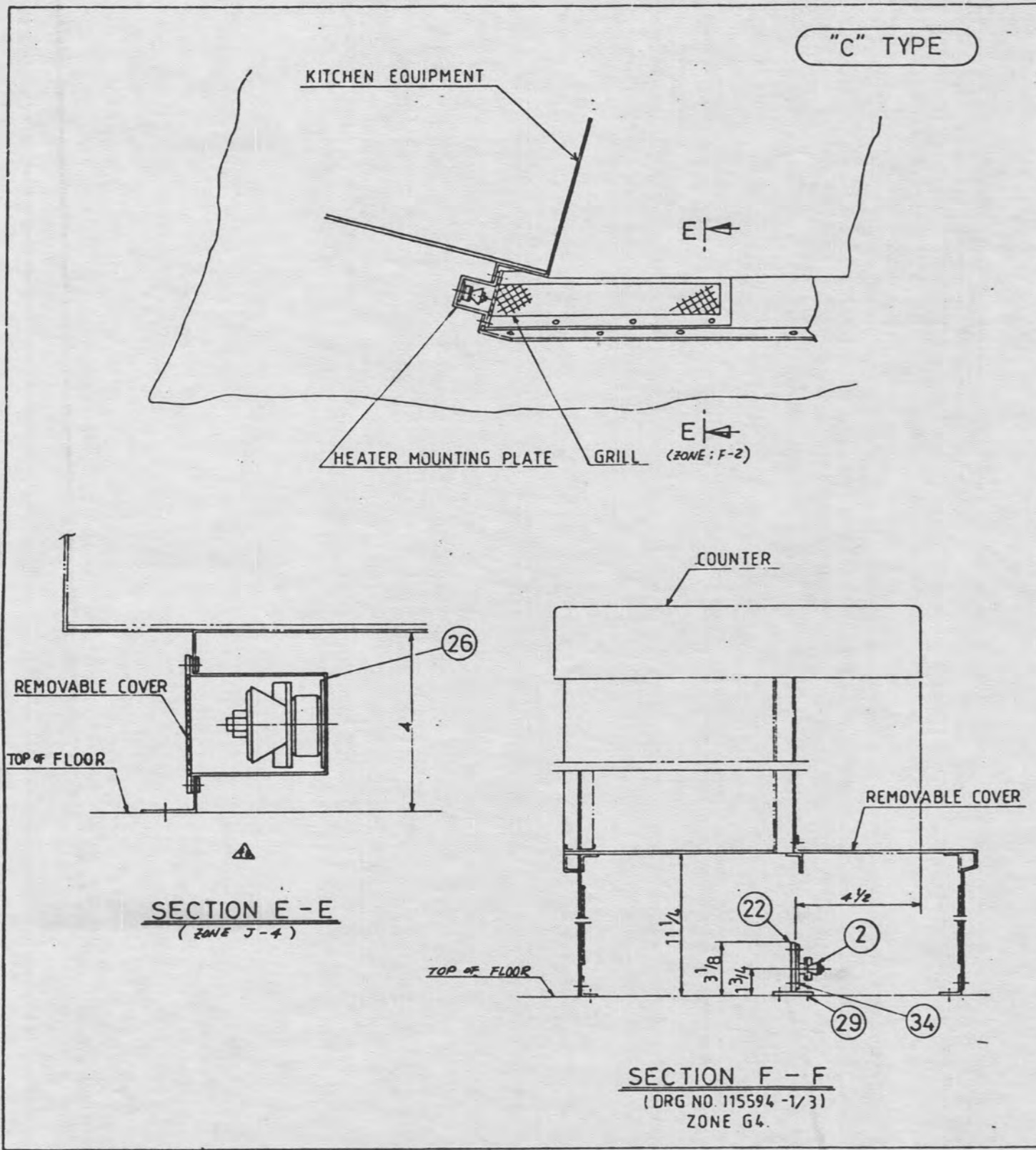
REV. NO.	DESCRIPTION	DATE	BY	CHECKED	APPROVED	SCALE	DATE
01	ISSUED					1/16"	1987.11.12
02	CHANGED LINE LUCKER HEATER, CHANGED ITEM NO. C1-E3						
03	ADDED DIMENSION, CHANGED ITEM NO. 44, 45 - 50. 10 CHANGED THE DIMENSIONS TO 50, 51, 52, 53 & 54 TYPE. 11 CHANGED THE DIMENSIONS TO 55, 56, 57, 58, 59, 60, 61, 62, 63, 64, 65, 66, 67, 68, 69, 70, 71, 72, 73, 74, 75, 76, 77, 78, 79, 80, 81, 82, 83, 84, 85, 86, 87, 88, 89, 90, 91, 92, 93, 94, 95, 96, 97, 98, 99, 100.						
04	REDESIGN: ADDED KEY SIGN AND HEATER TYPE a-e						
05	ADDED ITEM NO. 48 AND SECTION A-A, B-B.						
06	REARRANGED "B" END OF DINER						
07	CHANGED ITEM NO. 20						
08	CHANGED ITEM, AND ADDED DETAIL M.						
09	CHANGED HEATER BOARD AND HEATER AT BAR.						
10	ADD HEATER AT BAR/BEHIND SHIELD AREA						
11	ADDED ITEM NO. 54						

REF. NO.	PARTS NO.	DESCRIPTION	DATE	BY	CHECKED	APPROVED
01	J. S. Lee	APRC CONTRACT NO 970008				
02	J. S. Lee	FLOOR HEAT INSTALLATION (1/3)				
03	J. S. Lee	115594				
04	J. S. Lee	DAEWOO HEAVY INDUSTRIES LTD.				
05	J. S. Lee	SEUL				
06	J. S. Lee	KOREA				



REVIEWED BY
 ENFROTECH CORP.

△ 87.1.4	SEE SHEET (1/3)	REF NO	PART'S NO	DESCRIPTION	MAT.	QTY	UNIT	비고
△ 87.3.2	SEE SHEET (1/3)	APP	Y. J. OH	ARRC CONTRACT NO 970008				87-ARRC
△ 87.11.1	SEE SHEET (1/3)	CHK	H. R. Lee	FLOOR HEAT INSTALLATION (2/3)				P.D.C
△ 88.6.13	CHANGED PIPE "C" & "F" IN TOILET, AND HEATER HEIGHT	DRW	J. S. Lee	도면번호				H. - 1
△ 88.6.20	REDESIGN; ADDED KEY PLAN AND HEATER TYPE A-D	DRG NO	115594	실적번호				년도-주주회
△ 88.3.8	ADDED ITEM NO 45 AND SECTION N-N, B-O, CHANGED ITEM NO. 20.	SCALE	1/5	자 례				내분류-소분류
△ 88.2.10	CHANGED ITEM AND ADDED DETAIL M.	REV	1					관리번호
△ 87.12.22	CHANGED HOLE HEATER GUARD AND HEATER HT	DRW						
△ 87.12.22	SMR, ADDED HEATER ST BARRIER SHELL AREA	APP						



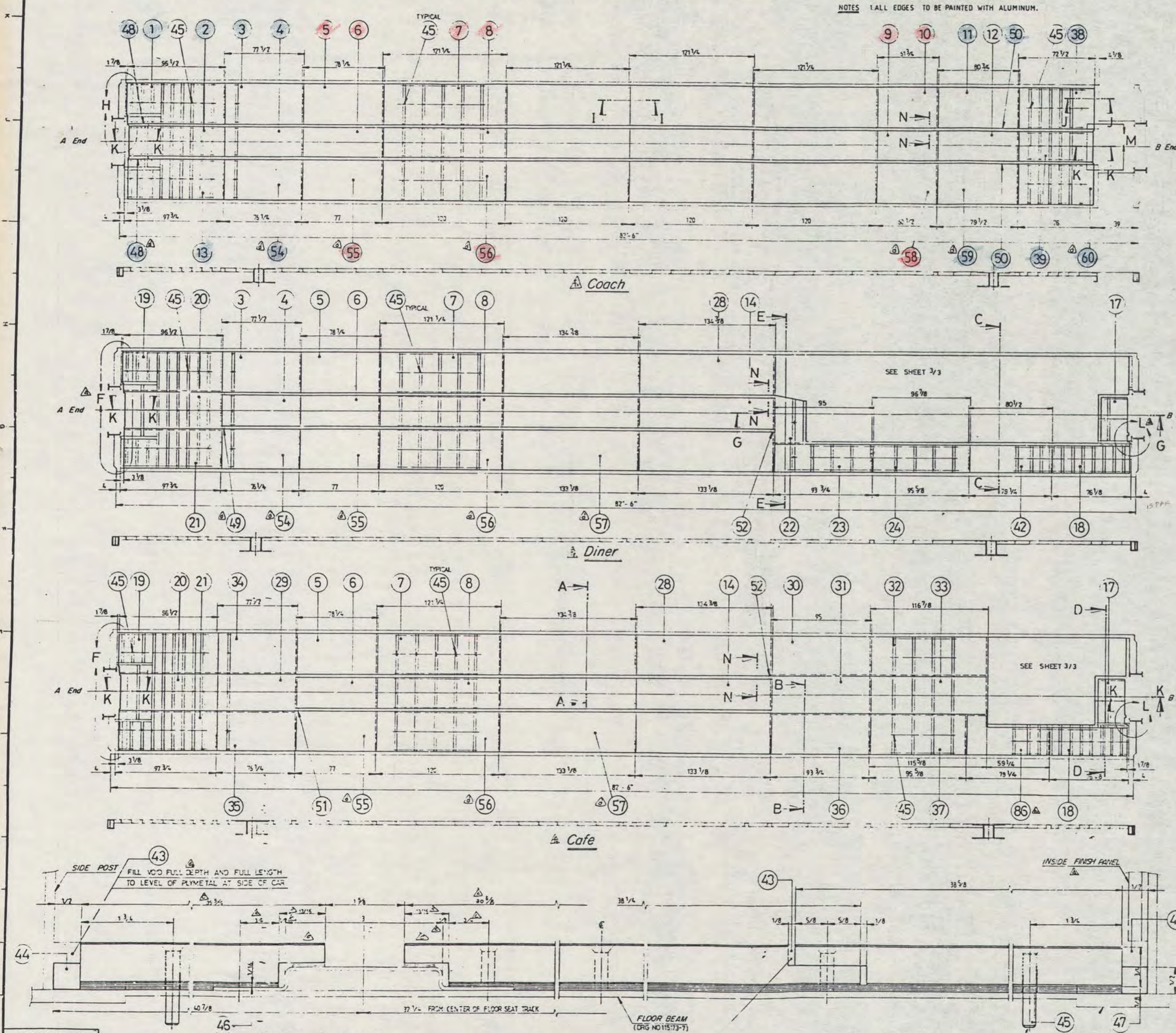
NO.	QTY	UNIT	DESCRIPTION	TYPE	DRG NO.	REMARKS
54	24	16	HOLDING	TYPE 3045.5.		1/2" x 1"
53	1	MT	HEATER	ASSY		324376
52	1	MT	COVER	TYPE 3045.5.		323050 - (D)
51	1	MT	COVER	TYPE 3045.5.		218270
50	1	MT	INSULATION	FIBER-GLASS		2 Lbs. DENSITY
49	1	MT	BRACKET	S.S.		323054
48	1	MT	COVER	TYPE 3045.5.		323050 - (1)
47	1	MT	COVER	TYPE 3045.5.		218269
46	1	MT	PROTECTOR	TYPE 3045.5.		323052
45	40	80	OVAL HEAD MACHINE SCREW	S.S.		8-32 x 1/2
44	6	MT	RD. HD. MACHINE SCREW	S.S.		1/4-20 x 3/8
43	30	30	OVAL HEAD SELF TAPPING SCREW	S.S.		8-32 x 1/2
42	3	1	HOLDING	TYPE 3045.5.		323034
41	1	MT	PROTECTOR	TYPE 3045.5.		323192 - (2)
40	1	MT	PROTECTOR	TYPE 3045.5.		323191 - (2)
39	1	MT	PROTECTOR	TYPE 3045.5.		323192 - (1)
38	3	3	PROTECTOR	TYPE 3045.5.		323032
37	1	MT	PROTECTOR	TYPE 3045.5.		323191 - (1)
36	300	300	OVAL HEAD SELF TAPPING SCREW	S.S.		8-32 x 3/8
35	250	200	FLAT HEAD MACHINE SCREW	S.S.		8-32 x 1/2
34	650	650	RD. HD. MACHINE SCREW	S.S.		8-32 x 1/2
33	120	120	RD. HD. MACHINE SCREW	S.S.		8-32 x 3/8
32	60	120	RD. HD. MACHINE SCREW	S.S.		8-32 x 1/2
31	4:2	4:2	HOLDING	TYPE 3045.5.		323033
30	300	300	OVAL HEAD MACHINE SCREW	S.S.		8-32 x 1/2
29	120	120	RD. HD. SELF TAPPING SCREW	S.S.		8-32 x 3/8
28	1	MT	PACKING	TYPE 3045.5.		1/2" x 2 3/8
27	2	1	PROTECTOR	TYPE 3045.5.		323190
26	4	6	BRACKET	TYPE 3045.5.		116815
25	50	36	DEFLECTOR	TYPE 3045.5.		217195 - (C)
24	125	125	ANTI-NOISE TAPE	TYPE 3045.5.		HART-RESISTANT TAPE
23	1:2	1:2	BRIDGE	TYPE 3045.5.		323026
22	2	2	BRACKET	TYPE 3045.5.		323030
21	1	MT	COVER	TYPE 3045.5.		323051
20	1	MT	COVER	TYPE 3045.5.		323050 - (1)
19	1	MT	COVER	TYPE 3045.5.		217198 - (2)
18	1	MT	COVER	TYPE 3045.5.		217197 - (2)
17	3	3	COVER	TYPE 3045.5.		217197 - (3)
16	1	MT	COVER	TYPE 3045.5.		217201
15	1	MT	COVER	TYPE 3045.5.		217198 - (1)
14	1	MT	COVER	TYPE 3045.5.		217197 - (1)
13	R:1 L:1	R:1 L:1	COVER	TYPE 3045.5.		217195 - (5)
12	R:1 L:1	R:1 L:1	COVER	TYPE 3045.5.		217195 - (2)
11	R:1 L:1	R:1 L:1	COVER	TYPE 3045.5.		217195 - (3)
10	R:1 L:1	R:1 L:1	COVER	TYPE 3045.5.		217195 - (2)
9	1	MT	COVER	TYPE 3045.5.		217202
8	1	MT	COVER	TYPE 3045.5.		217200
7	2	2	COVER	TYPE 3045.5.		217199
6	R:1 L:1	R:1 L:1	COVER	TYPE 3045.5.		217195 - (7)
5	22	14	COVER	TYPE 3045.5.		217195 - (6)
4	R:1 L:1	R:1 L:1	COVER	TYPE 3045.5.		217195 - (1)
3	48	35	BRIDGE	TYPE 3045.5.		323027
2	10	10	HEATER	ASSY		323036
1	54	50	HEATER	ASSY		323035

REVIEWED BY
 [Signature]
 4/21/88
 [Signature]

NO.	SYMBOL	DATE	REVISION	REMARKS
89.1.4				SEE SHEET (1/3)
89.3.2				SEE SHEET (1/3)
89.4.1				SEE SHEET (1/3)
88.6.13				CHANGED TYPE 'C' & 'F' IN TOILET AND HEATER ROOM.
88.4.20				REDESIGN, ADDED KEY PLAN AND HEATER TYPE A-C
88.3.8				ADDED ITEM NO. 25 AND SECTION N-N. B-D. CHANGED ITEM NO. 20
88.2.10				CHANGED ITEM AND ADDED DETAIL M.
87.4.22				CHANGED HEATER GUARD AND HEATER RT BRK. ADDED HEATER RT BRK. GUARD. CHANGE HEATER RT BRK.

ARRC CONTRACT NO 970008
 FLOOR HEAT INSTALLATION (3/3)
 115594
 ENFOTECH CORP.
 SOUL KOREA

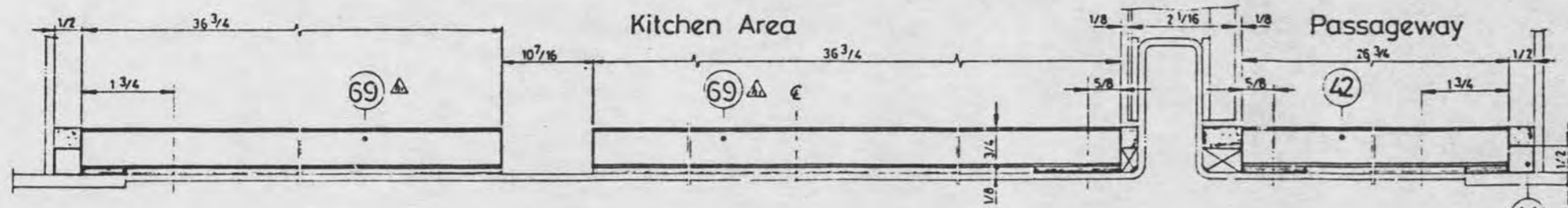
51 2.4 2.4 2.4 BRIGHT ALUMINUM PAINT
 DOLCHEM # 6053
 NOTES 1. ALL EDGES TO BE PAINTED WITH ALUMINUM.



NO	QTY	DESCRIPTION	MAT	PART	UNIT	REMARKS
60	1	FLOOR PANEL 3/4	PLYMETAL	323093		STAINLESS STEEL FACE
59	1			323093		STAINLESS STEEL FACE
58	1			323094		ALUMINUM FACE
57	2					
56	4					
55	1			323094		ALUMINUM FACE
54	1	FLOOR PANEL 3/4	PLYMETAL	323093		STAINLESS STEEL FACE
53	60	60 PLAT CSK HEAD MACHINE SCREW S.S.				1/4" - 20 x 3/4
52	2	SPACER	PLYMETAL	322838		ALUMINUM FACE
51	2			322838		ALUMINUM FACE
50	2			322836		STAINLESS STEEL FACE
49	2			322837		
48	2	SPACER	PLYMETAL	322835		STAINLESS STEEL FACE
47		PACKING	CORK TAPE			1/8
46		PACKING	CORK TAPE			1/16
45	489	489 PLAT CSK HEAD MACHINE SCREW S.S.				1/4" - 20 x 1 1/8
44		MASONITE				1/2 x 1/2
43		SEALER	DEXOTEX OR EQUITY			
42	1	FLOOR PANEL 3/4	PLYMETAL	327679		STAINLESS STEEL FACE
41						
40				323092		
39	1			322839		
38	1			327634		
37				327634		
36				327634		
35				327634		
34				327633		
33				327632		
32				327633		
31				327632		
30				327633		
29				327632		STAINLESS STEEL FACE
28	2			327617		ALUMINUM FACE
27	2					STAINLESS STEEL FACE
26						
25				327679		
24				327628		
23				327627		
22				327626		
21	1			327625		
20	1			327624		
19	1			327624		
18	1			327623		
17	1			327622		
16						
15						STAINLESS STEEL FACE
14	2			327618		ALUMINUM FACE
13	1			327618		STAINLESS STEEL FACE
12	1			327616		
11				327615		STAINLESS STEEL FACE
10				327617		ALUMINUM FACE
9	1			327618		
8	4			327618		
7	4			327617		ALUMINUM FACE
5	1			327617		
5	1			327617		ALUMINUM FACE
4	1			327616		STAINLESS STEEL FACE
3	1			327615		
2				327614		
1		FLOOR PANEL 3/4	PLYMETAL	327613		STAINLESS STEEL FACE

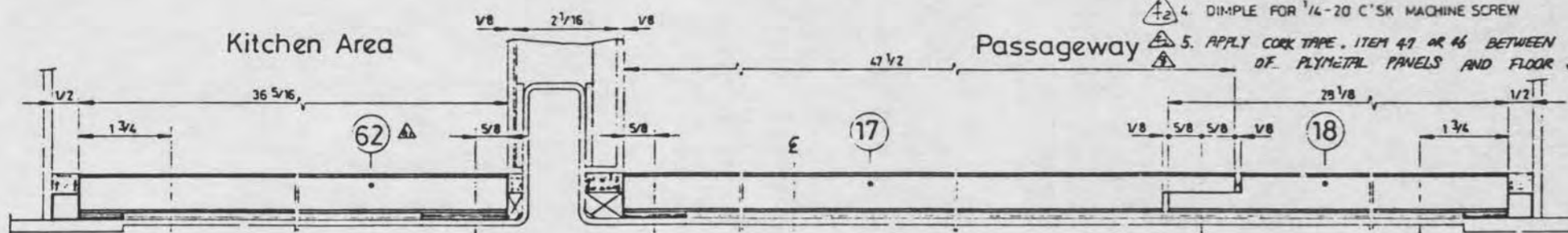
REVIEWED BY: [Signature] 11/19/87
 ENPROTECH CORP.
 Section A-A (0.6) (ALL COACHES)
 Section B-B (0.6) (ONLY DINER & CAFE)
 FLOOR BEAM (DRG NO 11573-7)
 TYPICAL SIDE SILL (DRG NO 11573-4)
 CHANGE LOG:
 87.3.21 21 CHANGED QTY
 87.3.21 22 DEL. ITEM NO. 15 TO 25 TO 27 AND 28
 87.3.21 23 ADDED SHEET 39
 87.3.21 24 CORRECTED SPELLING (COACH -> COCK, FLOOR -> FLOOR, ZONE: N1, N2)
 87.3.21 25 ADDED NOTE
 87.3.21 26 CHANGED WELDING OF CAR TYPE
 88.6.29 27 WORDING OF NOTE MODIFIED
 88.6.29 28 CHANGED THE QTY OF ITEM NO. 2, 3, 7, 8, 10, 11, 14, 15, 16, 17, 18, 19, 20, 21, 22, 23, 24, 25, 26, 27, 28, 29, 30, 31, 32, 33, 34, 35, 36, 37, 38, 39
 88.6.29 29 ADDED ITEM NO. 58-60
 88.6.29 30 CHANGED SHAPE OF FLOOR (FROM 1/2" TO 3/4")
 88.6.29 31 CHANGED WELDING OF CAR TYPE
 88.6.29 32 CHANGED WELDING OF CAR TYPE
 88.6.29 33 CHANGED WELDING OF CAR TYPE
 88.6.29 34 CHANGED WELDING OF CAR TYPE
 88.6.29 35 CHANGED WELDING OF CAR TYPE
 88.6.29 36 CHANGED WELDING OF CAR TYPE
 88.6.29 37 CHANGED WELDING OF CAR TYPE
 88.6.29 38 CHANGED WELDING OF CAR TYPE
 88.6.29 39 CHANGED WELDING OF CAR TYPE
 88.6.29 40 CHANGED WELDING OF CAR TYPE
 88.6.29 41 CHANGED WELDING OF CAR TYPE
 88.6.29 42 CHANGED WELDING OF CAR TYPE
 88.6.29 43 CHANGED WELDING OF CAR TYPE
 88.6.29 44 CHANGED WELDING OF CAR TYPE
 88.6.29 45 CHANGED WELDING OF CAR TYPE
 88.6.29 46 CHANGED WELDING OF CAR TYPE
 88.6.29 47 CHANGED WELDING OF CAR TYPE
 88.6.29 48 CHANGED WELDING OF CAR TYPE
 88.6.29 49 CHANGED WELDING OF CAR TYPE
 88.6.29 50 CHANGED WELDING OF CAR TYPE
 88.6.29 51 CHANGED WELDING OF CAR TYPE
 88.6.29 52 CHANGED WELDING OF CAR TYPE
 88.6.29 53 CHANGED WELDING OF CAR TYPE
 88.6.29 54 CHANGED WELDING OF CAR TYPE
 88.6.29 55 CHANGED WELDING OF CAR TYPE
 88.6.29 56 CHANGED WELDING OF CAR TYPE
 88.6.29 57 CHANGED WELDING OF CAR TYPE
 88.6.29 58 CHANGED WELDING OF CAR TYPE
 88.6.29 59 CHANGED WELDING OF CAR TYPE
 88.6.29 60 CHANGED WELDING OF CAR TYPE
 88.6.29 61 CHANGED WELDING OF CAR TYPE
 88.6.29 62 CHANGED WELDING OF CAR TYPE
 88.6.29 63 CHANGED WELDING OF CAR TYPE
 88.6.29 64 CHANGED WELDING OF CAR TYPE
 88.6.29 65 CHANGED WELDING OF CAR TYPE
 88.6.29 66 CHANGED WELDING OF CAR TYPE
 88.6.29 67 CHANGED WELDING OF CAR TYPE
 88.6.29 68 CHANGED WELDING OF CAR TYPE
 88.6.29 69 CHANGED WELDING OF CAR TYPE
 88.6.29 70 CHANGED WELDING OF CAR TYPE
 88.6.29 71 CHANGED WELDING OF CAR TYPE
 88.6.29 72 CHANGED WELDING OF CAR TYPE
 88.6.29 73 CHANGED WELDING OF CAR TYPE
 88.6.29 74 CHANGED WELDING OF CAR TYPE
 88.6.29 75 CHANGED WELDING OF CAR TYPE
 88.6.29 76 CHANGED WELDING OF CAR TYPE
 88.6.29 77 CHANGED WELDING OF CAR TYPE
 88.6.29 78 CHANGED WELDING OF CAR TYPE
 88.6.29 79 CHANGED WELDING OF CAR TYPE
 88.6.29 80 CHANGED WELDING OF CAR TYPE
 88.6.29 81 CHANGED WELDING OF CAR TYPE
 88.6.29 82 CHANGED WELDING OF CAR TYPE
 88.6.29 83 CHANGED WELDING OF CAR TYPE
 88.6.29 84 CHANGED WELDING OF CAR TYPE
 88.6.29 85 CHANGED WELDING OF CAR TYPE
 88.6.29 86 CHANGED WELDING OF CAR TYPE
 88.6.29 87 CHANGED WELDING OF CAR TYPE
 88.6.29 88 CHANGED WELDING OF CAR TYPE
 88.6.29 89 CHANGED WELDING OF CAR TYPE
 88.6.29 90 CHANGED WELDING OF CAR TYPE
 88.6.29 91 CHANGED WELDING OF CAR TYPE
 88.6.29 92 CHANGED WELDING OF CAR TYPE
 88.6.29 93 CHANGED WELDING OF CAR TYPE
 88.6.29 94 CHANGED WELDING OF CAR TYPE
 88.6.29 95 CHANGED WELDING OF CAR TYPE
 88.6.29 96 CHANGED WELDING OF CAR TYPE
 88.6.29 97 CHANGED WELDING OF CAR TYPE
 88.6.29 98 CHANGED WELDING OF CAR TYPE
 88.6.29 99 CHANGED WELDING OF CAR TYPE
 88.6.29 100 CHANGED WELDING OF CAR TYPE

ARRC CONTRACT NO 970008
 PLYMETAL FLOORING INSTALLATION (SHEET 1/3)
 115574
 ENPROTECH CORP.
 DAEWOO HEAVY INDUSTRIES LTD
 SEUL KOREA

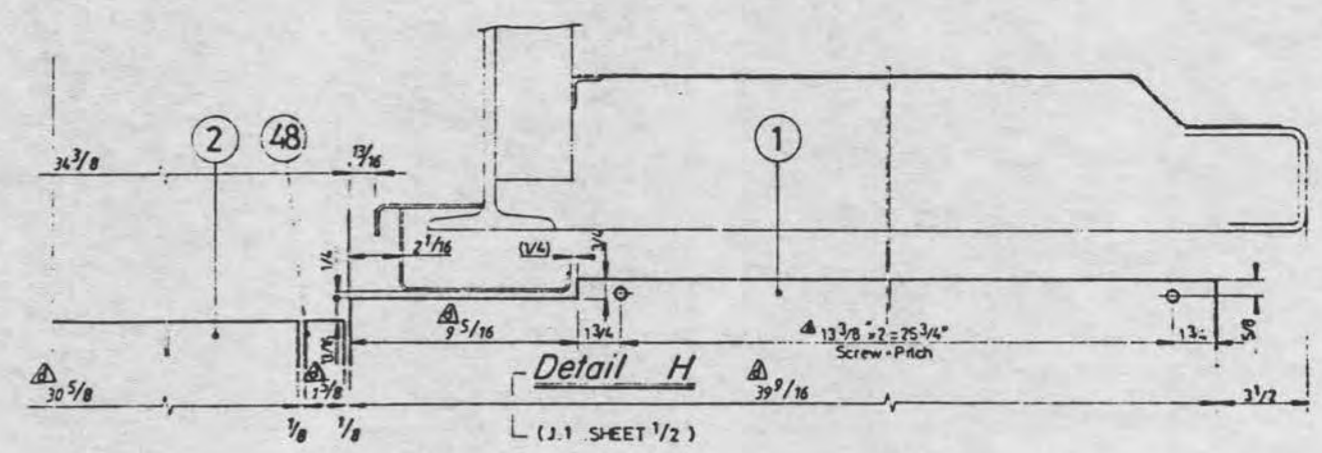


Section C-C
DINER & CAFE ONLY
(F. 10 SHEET 1/2)

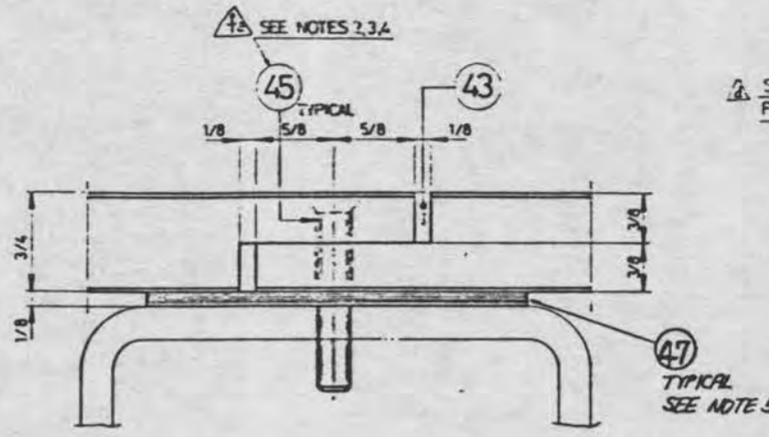
- NOTE**
1. SEE DRG. NO. 116062 AND 116063 FOR KITCHEN FLOOR-ARRANGEMENT AND HOLES
 2. PAINT UNSEALED EDGES OF PLYMETAL WITH ALUMINUM PAINT. (ITEM NO. 61)
 3. DRILL AND TAP FOR 1/4-20 MACHINE SCREW
 4. DIMPLE FOR 1/4-20 C'SK MACHINE SCREW
 5. APPLY CORK TAPE, ITEM 49 OR 46 BETWEEN FACING SURFACES OF PLYMETAL PANELS AND FLOOR STRUCTURE.



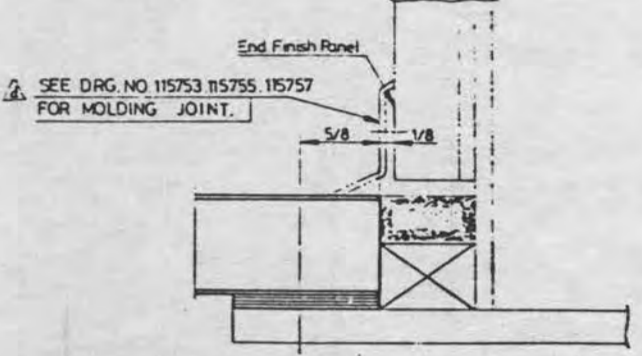
Section D-D
DINER & CAFE ONLY
(C. 11 SHEET 1/2)



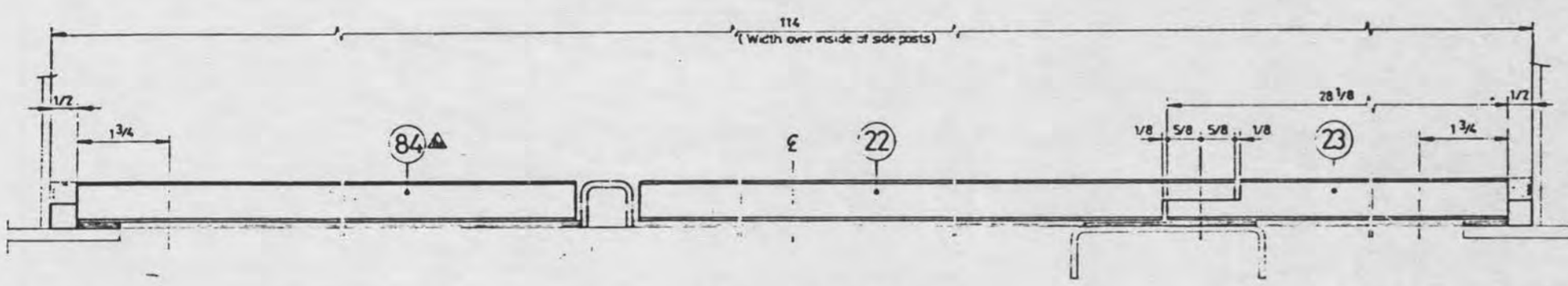
Detail H
(J. 1 SHEET 1/2)



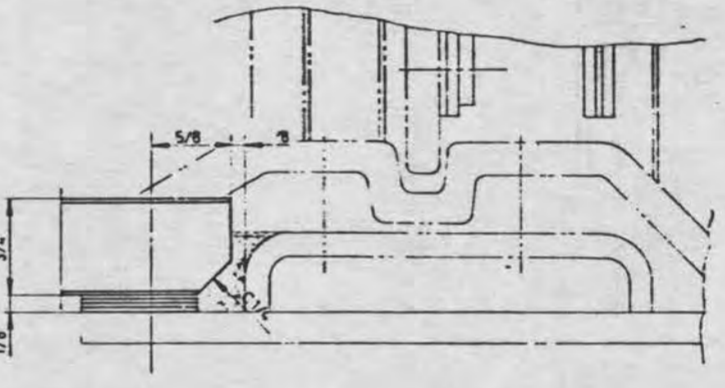
Section I-I
TYPICAL JOINT DETAIL
(I. 6 SHEET 1/2)



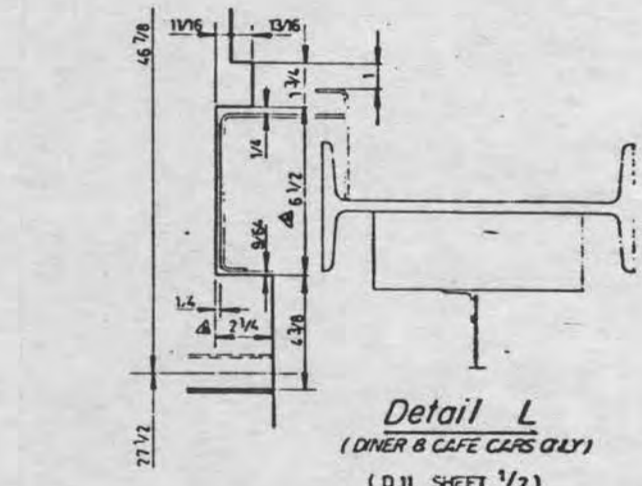
Section J-J
TYPICAL EDGE DETAIL
(J. 11 SHEET 1/2)



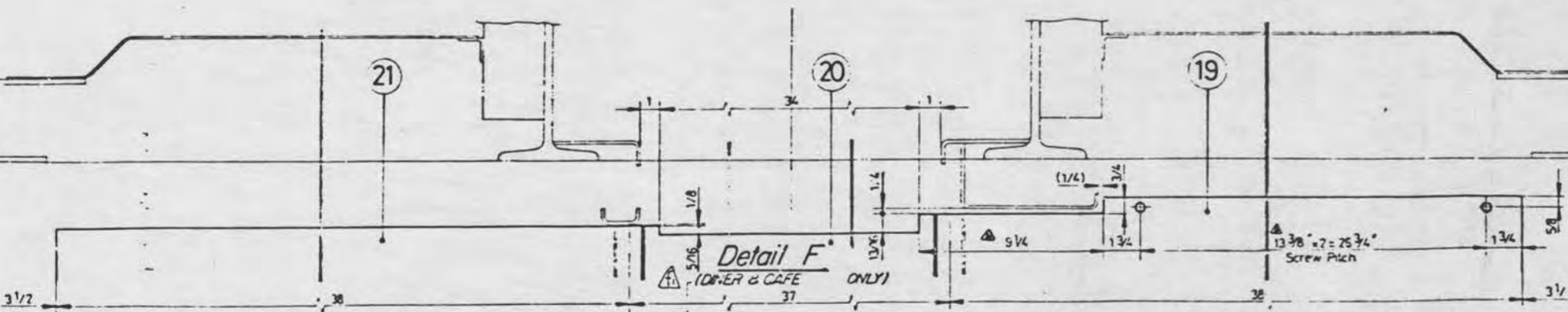
Section E-E
DINER & CAFE ONLY
(F. 8 SHEET 1/2)



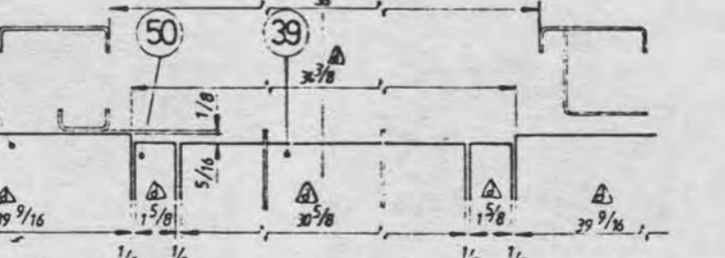
Section K-K
TYPICAL END PANEL
(D. 1 SHEET 1/2)



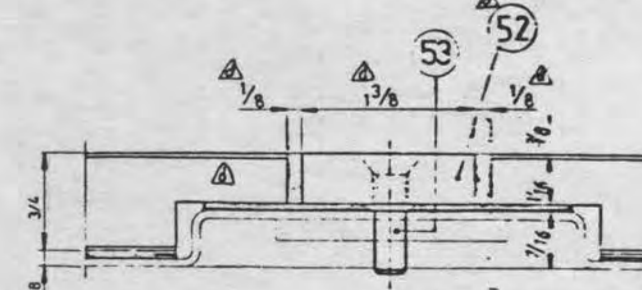
Detail L
DINER & CAFE CARS ONLY
(D. 11 SHEET 1/2)



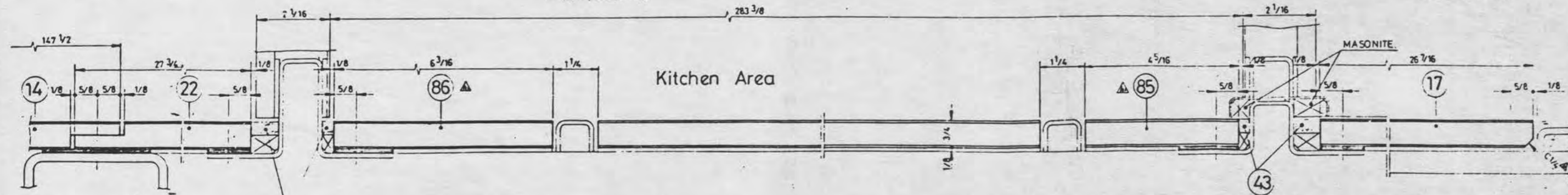
Detail F
DINER & CAFE ONLY
(G. 1 SHEET 1/2)



Detail M
(J. 11 SHEET 1/2)



Section N-N
TYPICAL SPACER SEC.
(E. 7 SHEET 1/2)



Section G-G
DINER ONLY
(G. 11 SHEET 1/2)

43 FILL VOID FULL DEPTH AND FULL LENGTH AT BOTH PARTITIONS

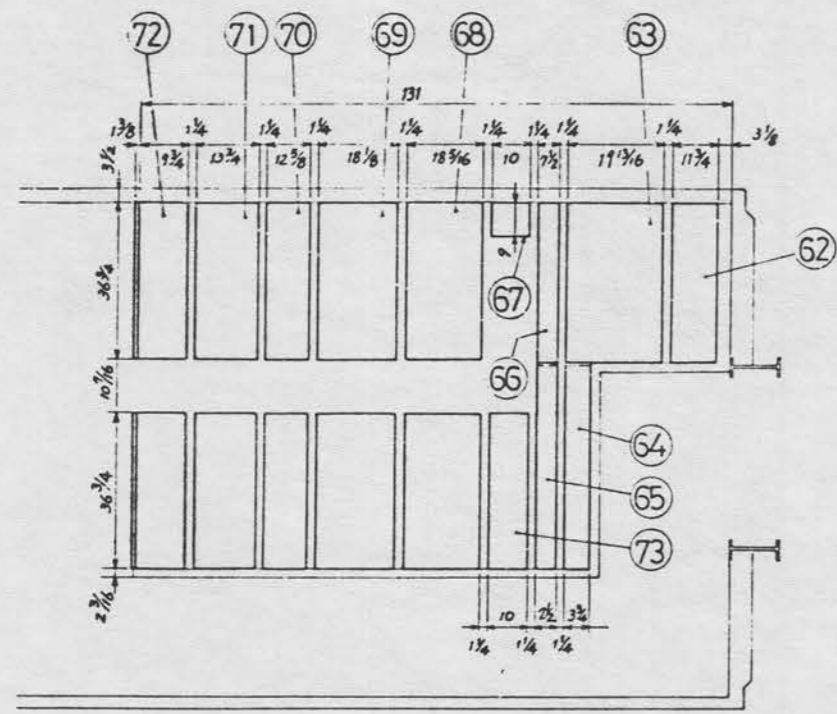
REVIEWED BY
ENPROTECH CORP.
11/19/87
2-8-84

01 3 c1 SEE SHEET 13
08 12.5 SEE SHEET 14

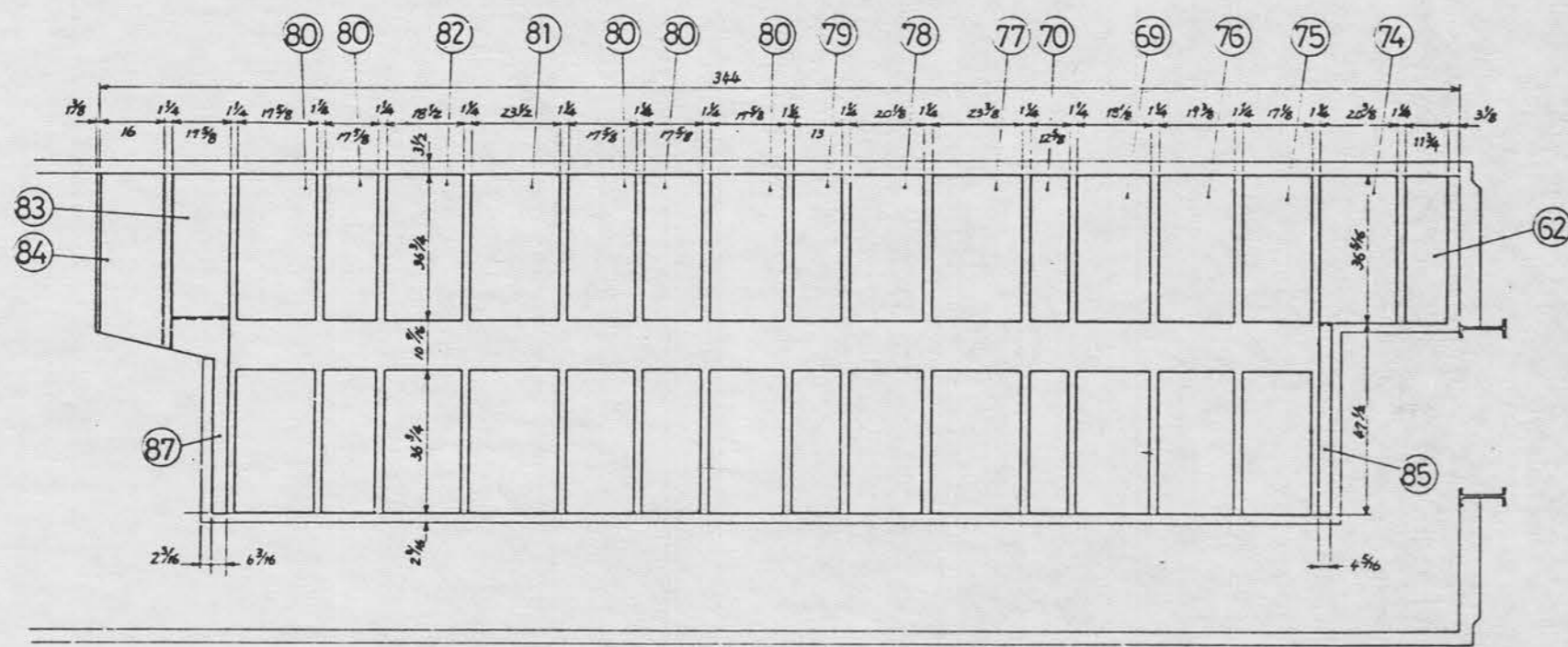
SEE SHEET 1/2
1700 6 29 1) WORDING MODIFIED. 2) ADDED ITEM NO. 61.
3) NOTE

NO.	DATE	REVISION	REMARKS
1	11/19/87	1	REVISION
2	11/19/87	2	REVISION
3	11/19/87	3	REVISION
4	11/19/87	4	REVISION
5	11/19/87	5	REVISION
6	11/19/87	6	REVISION
7	11/19/87	7	REVISION
8	11/19/87	8	REVISION
9	11/19/87	9	REVISION
10	11/19/87	10	REVISION
11	11/19/87	11	REVISION
12	11/19/87	12	REVISION
13	11/19/87	13	REVISION
14	11/19/87	14	REVISION
15	11/19/87	15	REVISION
16	11/19/87	16	REVISION
17	11/19/87	17	REVISION
18	11/19/87	18	REVISION
19	11/19/87	19	REVISION
20	11/19/87	20	REVISION
21	11/19/87	21	REVISION
22	11/19/87	22	REVISION
23	11/19/87	23	REVISION
24	11/19/87	24	REVISION
25	11/19/87	25	REVISION
26	11/19/87	26	REVISION
27	11/19/87	27	REVISION
28	11/19/87	28	REVISION
29	11/19/87	29	REVISION
30	11/19/87	30	REVISION
31	11/19/87	31	REVISION
32	11/19/87	32	REVISION
33	11/19/87	33	REVISION
34	11/19/87	34	REVISION
35	11/19/87	35	REVISION
36	11/19/87	36	REVISION
37	11/19/87	37	REVISION
38	11/19/87	38	REVISION
39	11/19/87	39	REVISION
40	11/19/87	40	REVISION
41	11/19/87	41	REVISION
42	11/19/87	42	REVISION
43	11/19/87	43	REVISION
44	11/19/87	44	REVISION
45	11/19/87	45	REVISION
46	11/19/87	46	REVISION
47	11/19/87	47	REVISION
48	11/19/87	48	REVISION
49	11/19/87	49	REVISION
50	11/19/87	50	REVISION
51	11/19/87	51	REVISION
52	11/19/87	52	REVISION
53	11/19/87	53	REVISION
54	11/19/87	54	REVISION
55	11/19/87	55	REVISION
56	11/19/87	56	REVISION
57	11/19/87	57	REVISION
58	11/19/87	58	REVISION
59	11/19/87	59	REVISION
60	11/19/87	60	REVISION
61	11/19/87	61	REVISION
62	11/19/87	62	REVISION
63	11/19/87	63	REVISION
64	11/19/87	64	REVISION
65	11/19/87	65	REVISION
66	11/19/87	66	REVISION
67	11/19/87	67	REVISION
68	11/19/87	68	REVISION
69	11/19/87	69	REVISION
70	11/19/87	70	REVISION
71	11/19/87	71	REVISION
72	11/19/87	72	REVISION
73	11/19/87	73	REVISION
74	11/19/87	74	REVISION
75	11/19/87	75	REVISION
76	11/19/87	76	REVISION
77	11/19/87	77	REVISION
78	11/19/87	78	REVISION
79	11/19/87	79	REVISION
80	11/19/87	80	REVISION
81	11/19/87	81	REVISION
82	11/19/87	82	REVISION
83	11/19/87	83	REVISION
84	11/19/87	84	REVISION
85	11/19/87	85	REVISION
86	11/19/87	86	REVISION
87	11/19/87	87	REVISION
88	11/19/87	88	REVISION
89	11/19/87	89	REVISION
90	11/19/87	90	REVISION
91	11/19/87	91	REVISION
92	11/19/87	92	REVISION
93	11/19/87	93	REVISION
94	11/19/87	94	REVISION
95	11/19/87	95	REVISION
96	11/19/87	96	REVISION
97	11/19/87	97	REVISION
98	11/19/87	98	REVISION
99	11/19/87	99	REVISION
100	11/19/87	100	REVISION

REF NO.	PARTS NO.	DESCRIPTION	MAT	QTY	UNIT	REMARKS
01	01	ARRC CONTRACT NO 970008				
02	02	PLYMETAL FLOORING-INSTALLATION				
03	03	(SHEET 1/3)				
04	04	115574				
05	05	ENPROTECH CORP.				
06	06	DAEWOO HEAVY INDUSTRIES LTD				
07	07	SEOUL KOREA				



CAFE



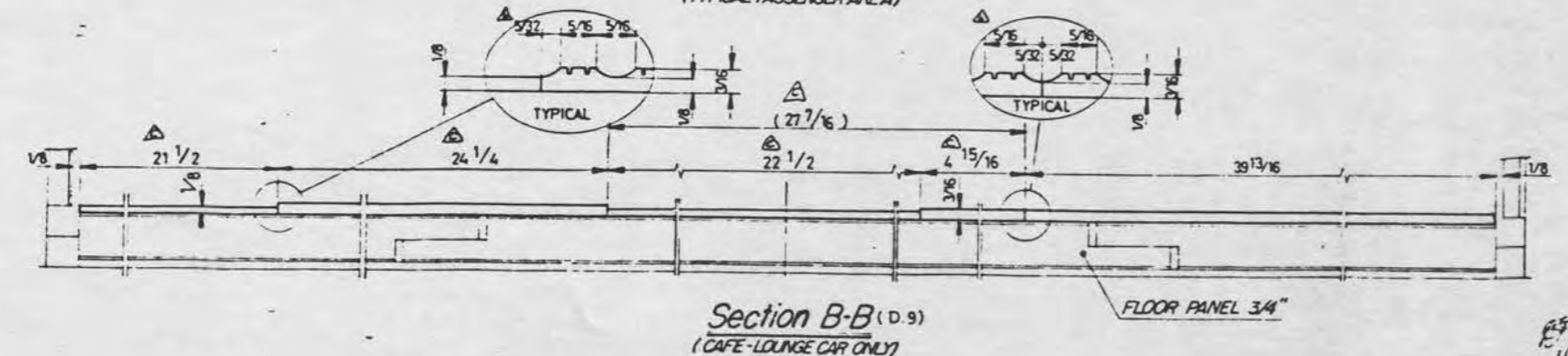
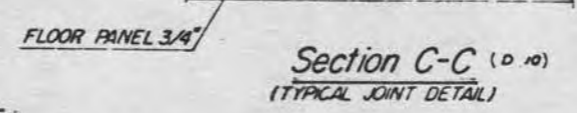
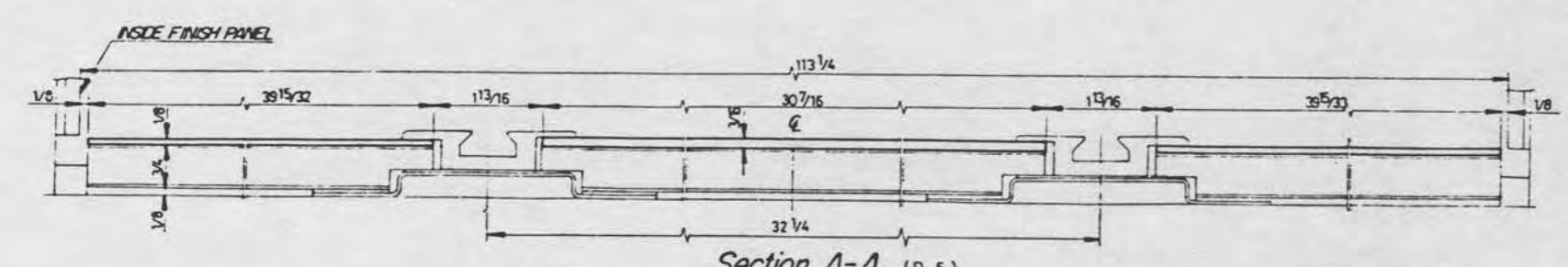
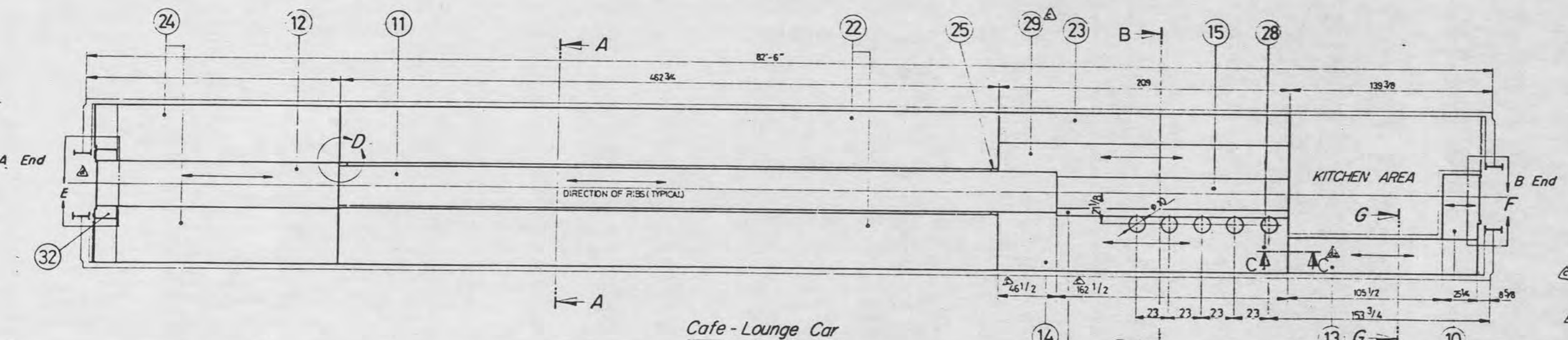
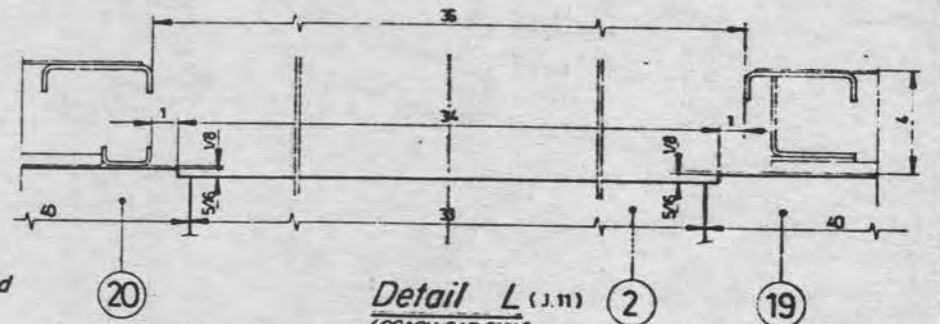
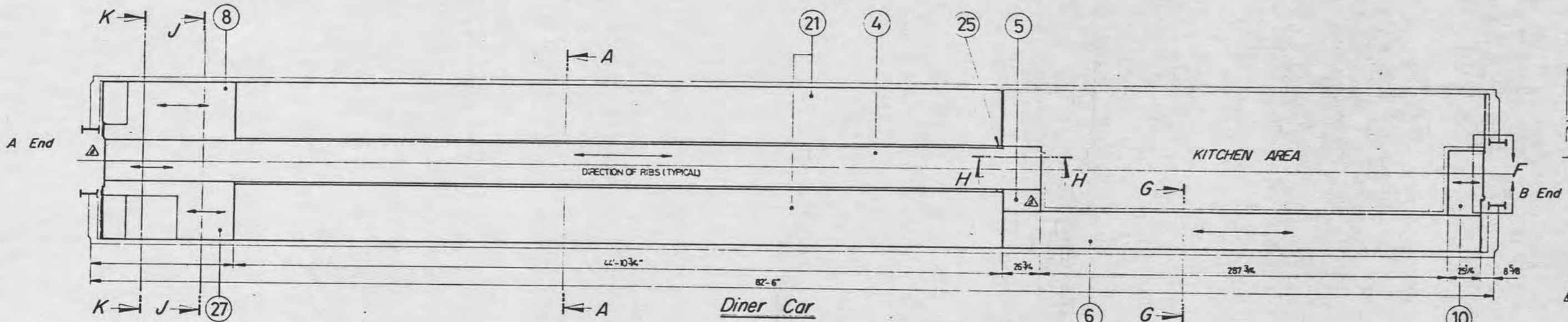
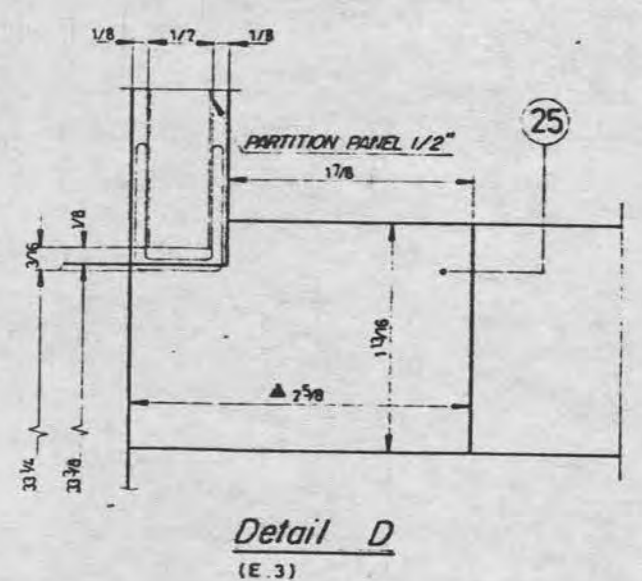
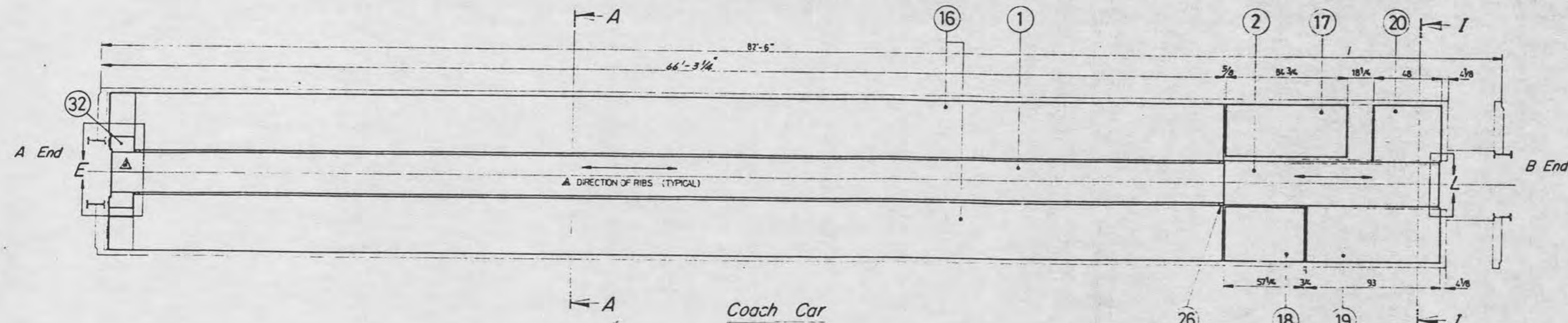
DINER

87	1	FLOOR PANEL 3/4	PLYMETAL 324658	STAINLESS STEEL FACE
86	1	FLOOR PANEL 3/4	PLYMETAL 322635	STAINLESS STEEL FACE
85	1		322621	
84	1		324660	
83	1		324657	
82	2			
81	2			
80	10			
79	2			
78	2			
77	2			
76	2			
75	2			
74	1		324656	
73	1			
72	2		324659	
71	2			
70	2			
69	2			
68	2			
67	1			
66	1		324657	
65	1		322621	
64	1		322621	
63	1		324656	
62	1	FLOOR PANEL 3/4	PLYMETAL	STAINLESS STEEL FACE

REF NO	QTY / CAR	DESCRIPTION	MAT	DRG NC	REMARKS
87-ARRC		ARRC CONTRACT NO. E70008			
ALL CORCH		PLYMETAL FLOORING INSTALLATION			
A-99		(SHEET 3/3)			
SCALE		1/15			
REV		REVISION			
DATE		89. 3. 21			

SYMBOL	DATE	REMARKS	DRW	DSG	CHK	APP
87. 3. 21	SEE SHEET 1/3					

대우중공업 주식회사
 DAEWOO HEAVY INDUSTRIES LTD.



NOTE
RUBBER SHEET SHALL BE INSTALLED WITH 3M * 1357 CONTACT CEMENT.

NO.	QTY	DESCRIPTION	MAT	QTY	WT	REMARKS
33	1	RIBBED RUBBER SHEET 3/16"				
32	R1, L1	R1, L1 RIBBED RUBBER SHEET 3/16"				
31		SMOOTH RUBBER SHEET 3/16"				
20	1	SMOOTH RUBBER SHEET 3/16"				
29	1	RIBBED RUBBER SHEET 3/16"				
28		SMOOTH RUBBER SHEET 1/8"				
27	1	RIBBED RUBBER SHEET 3/16"				
26	4					
25	R2, L2	R2, L2 RIBBED RUBBER SHEET 3/16"				
24	2	SMOOTH RUBBER SHEET 1/8"				
23	1					
22	2					
21	2					
20	1					
19	1					
18	1					
17	1					
16	2	SMOOTH RUBBER SHEET 1/8"				
15	1	SMOOTH RUBBER SHEET 1/8"				
14	1	RIBBED RUBBER SHEET 3/16"				
13	1					
12	1					
11	1					
10	1					
9		R1, L1				
8	1					
7						
6	1					
5	1					
4	1					
3		R1, L1				
2	1	RIBBED RUBBER SHEET 3/16"				

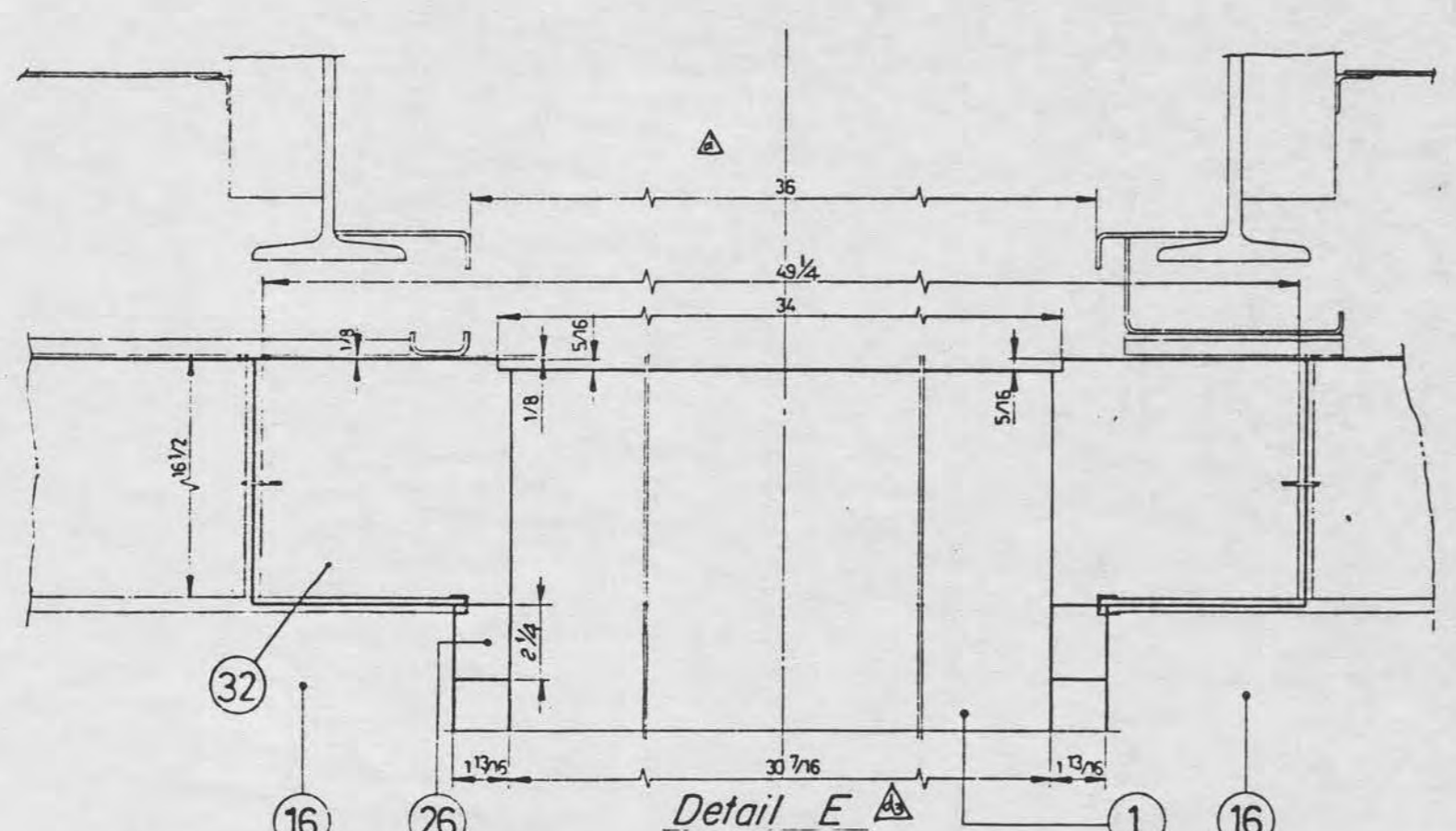
NO.	DATE	REVISION	REMARKS	DRW	DSG	CHK	APP
1	87.9.21	3) CHANGED SHAPE OF DRIVE "B" SECTION R-K AND TRENCH					
2	88.4.22	1) DELETED ITEM NO. 24-33. 2) MOVED SECTION C-C POSITION					
3	88.4.22	ADDED ITEM NO. 24-33. CHANGED ITEM NO. 15 & 15 EACH OTHER					
4	88.4.22	ADDED DIRECTION AND JOINT DETAIL - ADHESIVE TYPE					
5	87.11.24	ADDED DIRECTION OF RIBBED RUBBER					

REVIEWED BY
ENPROTECH CORP.
2-10-88

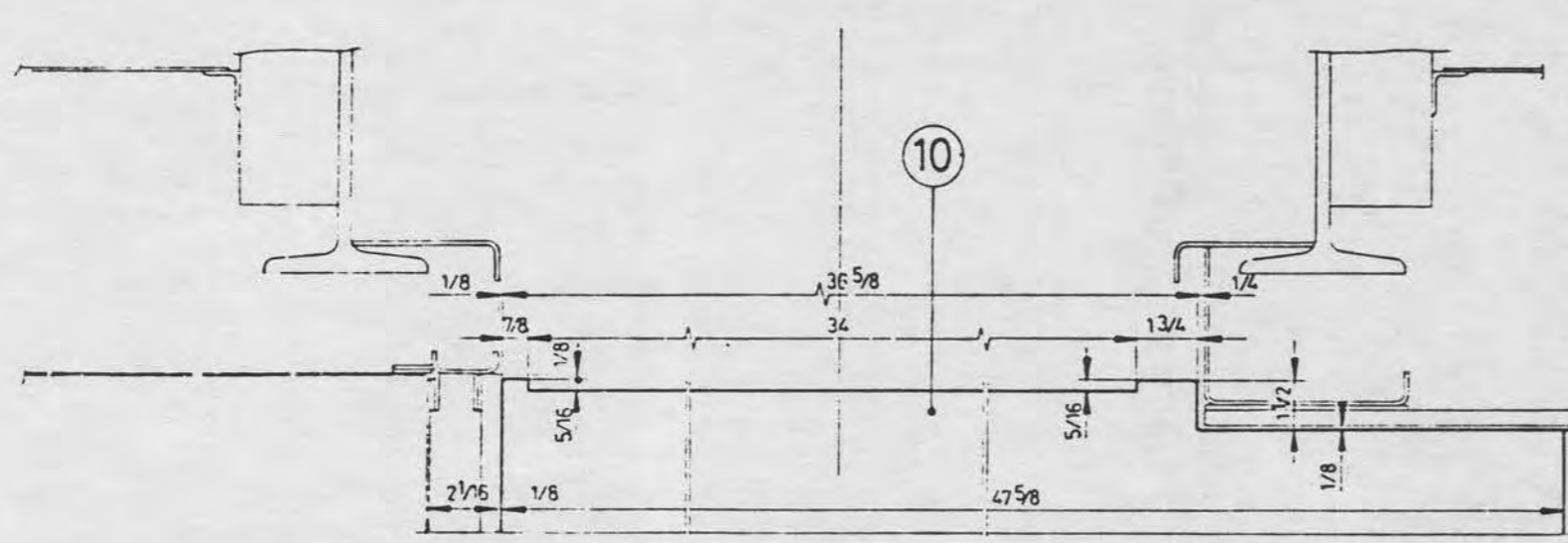
ARRC CONTRACT NO 970008
RUBBER FLOORING INSTALLATION (SHEET 1/2)

115632

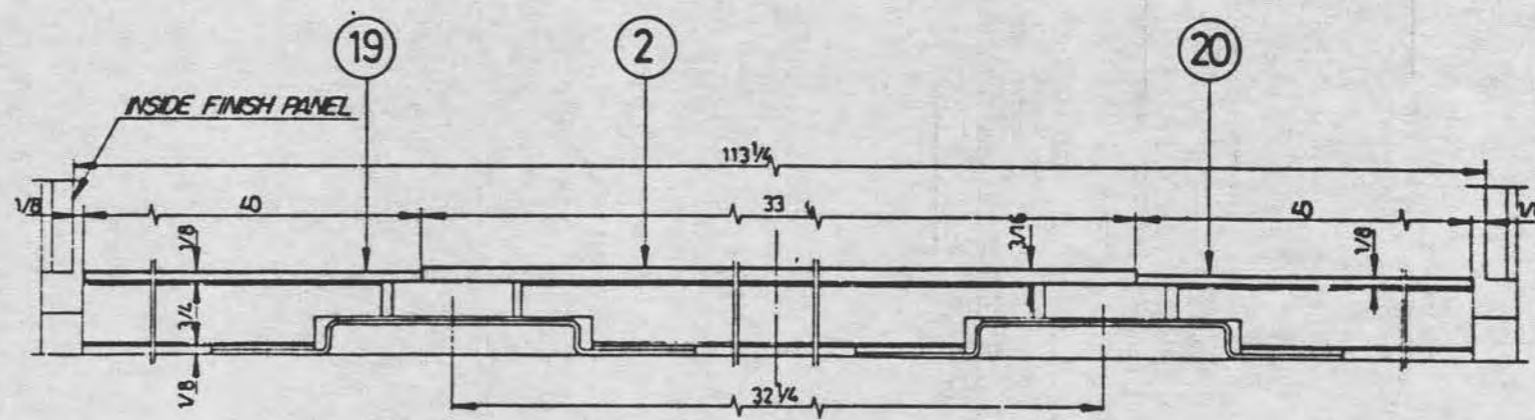
DAEWOO HEAVY INDUSTRIES LTD. SEUL KOREA



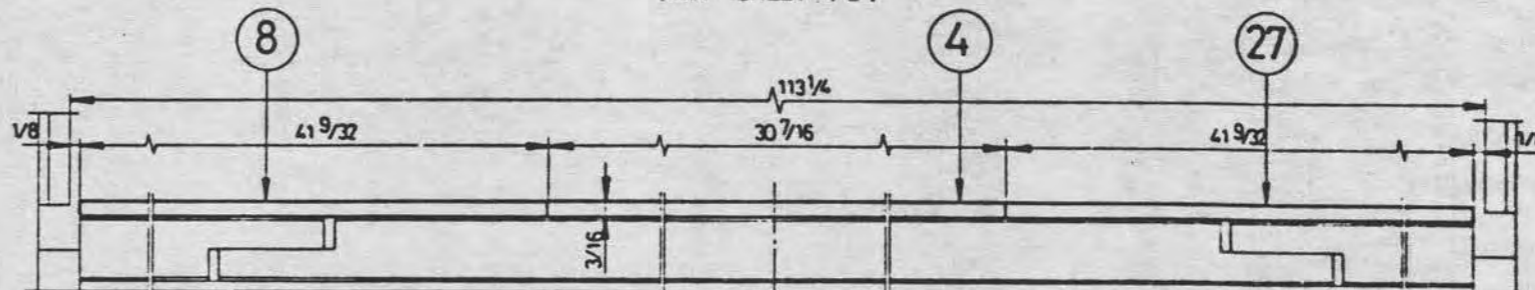
Detail E
TYPICAL A END
(J.1 SHEET 1/2)



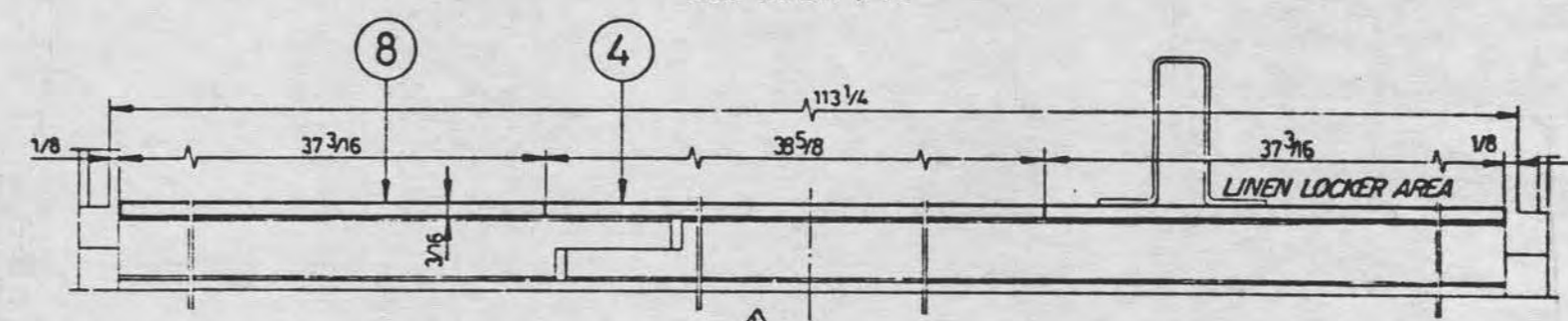
Detail F
(G.11 SHEET 1/2)



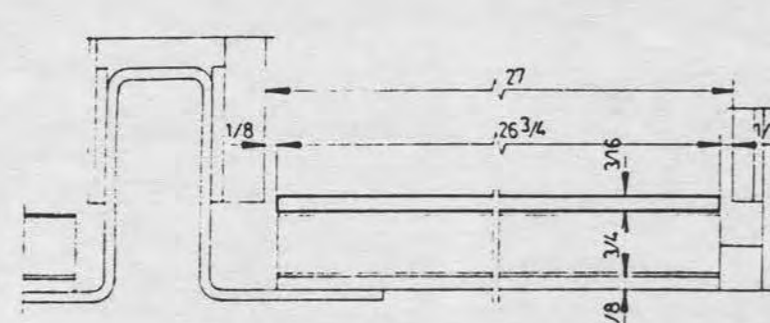
Section I-I
(COACH CAR ONLY)
(K.11 SHEET 1/2)



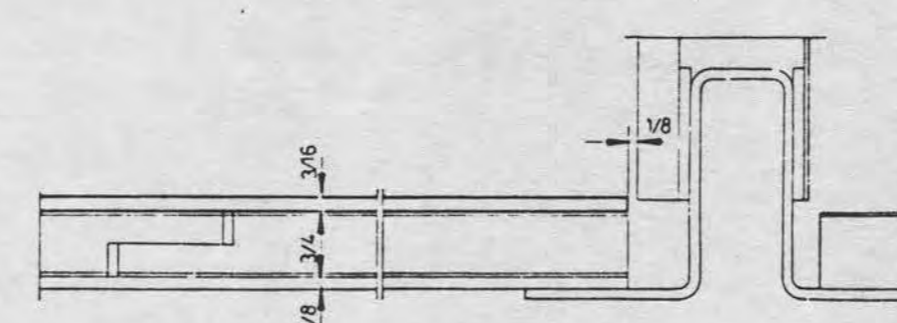
Section J-J
(DINER CAR ONLY)
(F.2 SHEET 1/2)



Section K-K
(DINER CAR ONLY)
(F.1 SHEET 1/2)



Section G-G
(D.10 SHEET 1/2)



Section H-H (H.8 SHEET 1/2)
(DINER CAR ONLY)

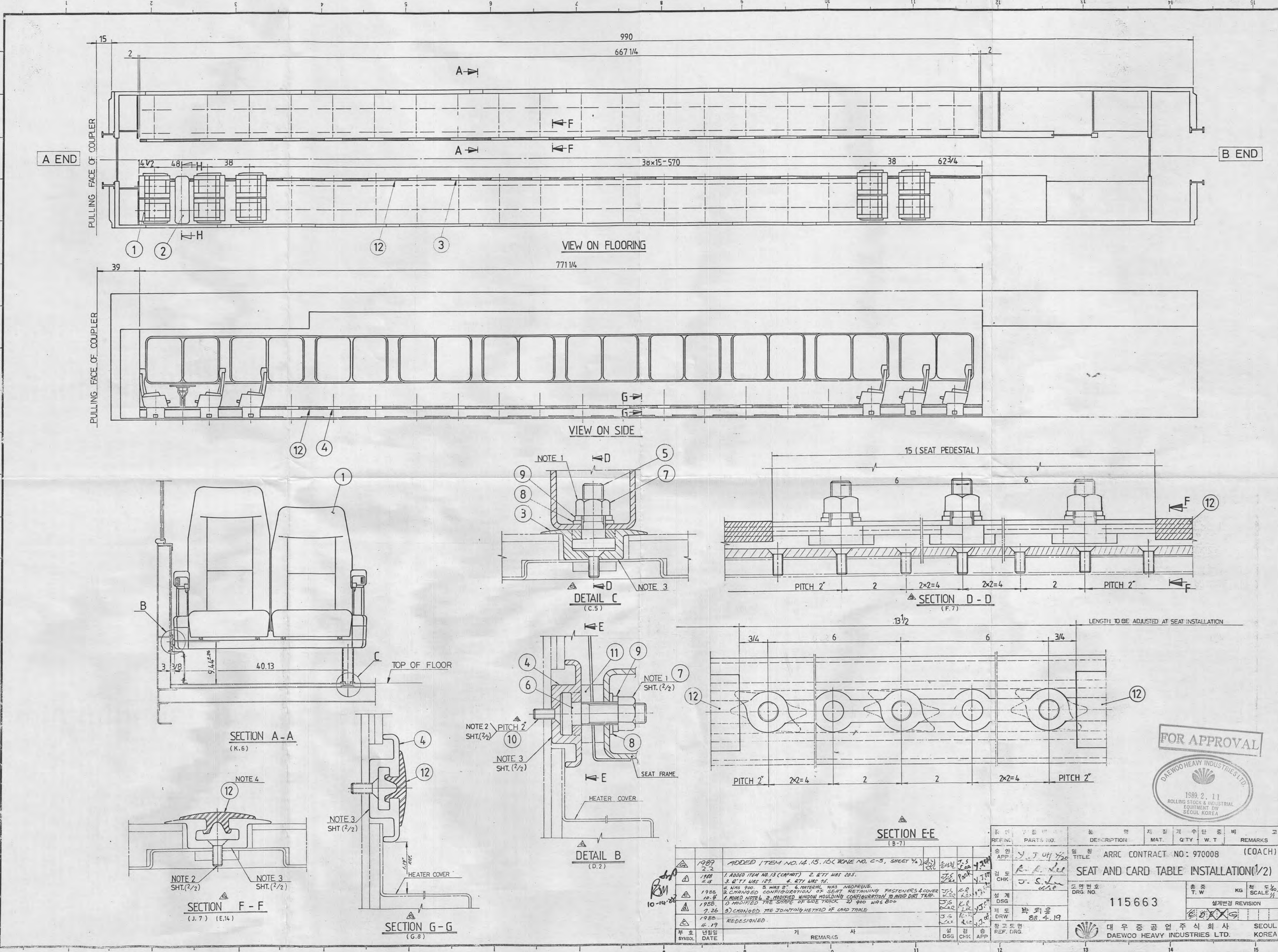
REVIEWED BY
Bill 12/4/87
BM 2-20-87

ENPROTECH CORP.

88.1.20 ADDED DIRECTION AND JOINT DETAIL, ADHESIVE TYPE
89.12.24 ADDED DIRECTION OF RIBBED RUBBER
88.12.24 ADDED ITEM NO 29-32, CHANGED ITEM NO. 13 & 15 EACH OTHER

NO.	DATE	REMARKS	DRW	DSG	CHK	APP
88.1.20		ADDED DIRECTION AND JOINT DETAIL, ADHESIVE TYPE	Hee	J.S.	K.P.	S
89.12.24		ADDED DIRECTION OF RIBBED RUBBER	Hee	J.S.	K.P.	J

REF NO	PARTS NO.	DESCRIPTION	MAT	QTY	W. T	REMARKS
APP	J. Song	ARRC CONTRACT NO 970008 RUBBER FLOORING INSTALLATION (SHEET 2/2)				
CHK	K. R. Lee J. S. Lee	도면번호 DRG. N.O. 115632				
DSG	권희준	중량 T. W KG 리도 SCALE 1:1				
DRW	DEC. 4 '87	실제변경 REVISION XXXX				
REF. DRG.		대우중공업 주식회사 SEUL KOREA DAEWOO HEAVY INDUSTRIES LTD.				



FOR APPROVAL



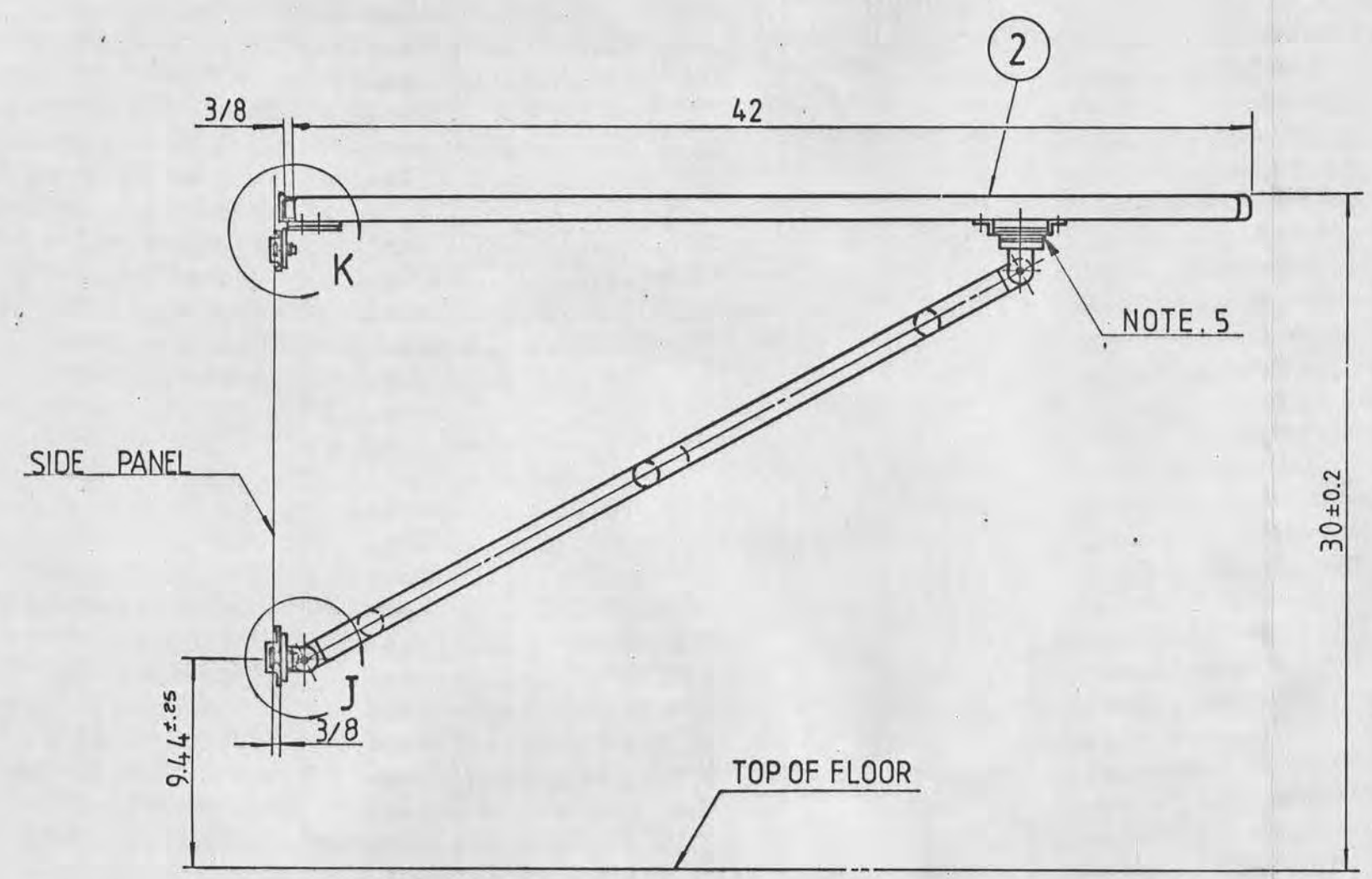
REF. NO.	DATE	REVISION	DESCRIPTION	BY	CHK	APP
1989	2.22	ADDED ITEM NO. 14, 15, 16 (ZONE NO. C-3, SHEET 1/2)				
1988	11.13	1. ADDED ITEM NO. 13 (CAPNET) 2. RTY WAS 205. 3. RTY WAS 122. 4. RTY WAS 91.				
1988	12.14	5. WAS 900. 6. WAS 2". 6. MATERIAL WAS NEOPRENE.				
1988	7.26	7. CHANGED CONFIGURATION OF SEAT RETAINING FASTENERS & COVER. 8. ADDED NOTE 2. MODIFIED WINDOW HOODING CONFIGURATION TO ADD DIRT TRAP. 9. MODIFIED THE SHAPE OF SIDE TRUCK TO 900 WAS 800.				
1988	11.19	10. CHANGED THE JOINTING METHOD OF CARD TABLE.				
		REDESIGNED.				

REF. NO.	DATE	REVISION	DESCRIPTION	BY	CHK	APP
1989	2.22	ADDED ITEM NO. 14, 15, 16 (ZONE NO. C-3, SHEET 1/2)				
1988	11.13	1. ADDED ITEM NO. 13 (CAPNET) 2. RTY WAS 205. 3. RTY WAS 122. 4. RTY WAS 91.				
1988	12.14	5. WAS 900. 6. WAS 2". 6. MATERIAL WAS NEOPRENE.				
1988	7.26	7. CHANGED CONFIGURATION OF SEAT RETAINING FASTENERS & COVER. 8. ADDED NOTE 2. MODIFIED WINDOW HOODING CONFIGURATION TO ADD DIRT TRAP. 9. MODIFIED THE SHAPE OF SIDE TRUCK TO 900 WAS 800.				
1988	11.19	10. CHANGED THE JOINTING METHOD OF CARD TABLE.				
		REDESIGNED.				

REF. NO.	DATE	REVISION	DESCRIPTION	BY	CHK	APP
1989	2.22	ADDED ITEM NO. 14, 15, 16 (ZONE NO. C-3, SHEET 1/2)				
1988	11.13	1. ADDED ITEM NO. 13 (CAPNET) 2. RTY WAS 205. 3. RTY WAS 122. 4. RTY WAS 91.				
1988	12.14	5. WAS 900. 6. WAS 2". 6. MATERIAL WAS NEOPRENE.				
1988	7.26	7. CHANGED CONFIGURATION OF SEAT RETAINING FASTENERS & COVER. 8. ADDED NOTE 2. MODIFIED WINDOW HOODING CONFIGURATION TO ADD DIRT TRAP. 9. MODIFIED THE SHAPE OF SIDE TRUCK TO 900 WAS 800.				
1988	11.19	10. CHANGED THE JOINTING METHOD OF CARD TABLE.				
		REDESIGNED.				

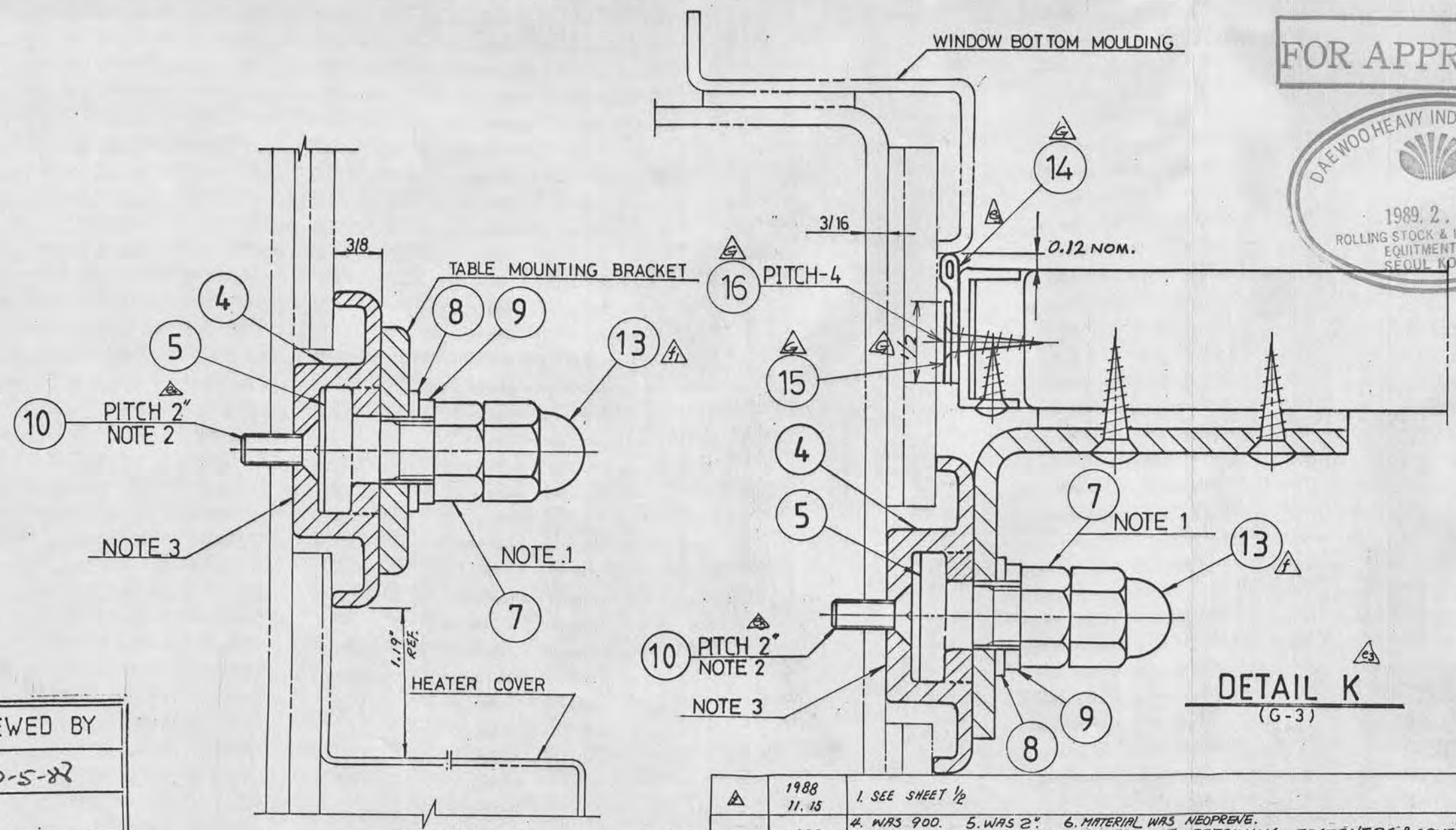
115663
 대우중공업 주식회사
 DAEWOO HEAVY INDUSTRIES LTD.
 SEOL KOREA

SYMBOL	DATE	REMARKS	DSG	CHK	CHK	APP
△	1989 2.2	SEE SHEET 1/2				



- NOTE**
- TORQUE TO 620 Lb-in. (750kg-cm)
 - DRILL AND TAP 1/4-20 AT INSTALLATION.
 - COAT WITH ZINC CHROMATE PASTE
 - ITEM NO.12 TO BE CUT TO LENGTH AT INSTALLATION.
 - SHIMS FOR HEIGHT ADJUSTMENT AT INSTALLATION.
 - REFER TO DRG. NO. 216952 FOR AISLE LIGHT INSTALLATION.

SECTION H-H
(1.2, SHEET 1/2)



REF NO	PARTS NO.	DESCRIPTION	MAT	Q'TY	W. T	REMARKS
16		FLAT CSK HEAD WOOD SCREW	SS.	6		#6-18 x 3/4 L
15		RUBBER SUPPORT	TYPE 304 SS.	2		+5/64 x 1/2 x 10 1/2 L
14		RUBBER	NEOPRENE	2		DRG. NO. 324343 COLOR: BLACK
13		HEX CAP NUT	ZINC PL. GRADE 5	12		1/2-13 UNC
12		COVER	PLASTIC	1 SET		DRG. NO. 322830
11		SPACER	S.S.	117		TAPERED TYPE
10		FLAT CSK HEAD MACHINE SCREW	S.S.	1350		1/4-20-5/8 LONG
9		SPRING WASHER	ZINC PL. GRADE 5	246		1/2
8		PLAIN WASHER	S.S.	246		1/2
7		HEX. NUT	ZINC PL. GRADE 5	246		1/2-13 UNC
6		SPECIAL BOLT	ASS'Y	117		DRG. NO. 322820-A
5		SPECIAL BOLT	ASS'Y	129		DRG. NO. 322820-B
4		TRACK (SIDE)	ALUM. 6063-T6	1 SET		DRG. NO. 322828
3		TRACK (FLOOR)	ALUM. 6063-T6	1 SET		DRG. NO. 322829
2		CARD TABLE	ASSY	2		DRG. NO. 115292
1		COACH SEAT ASSEMBLY	ASSY	39		DRG. NO. 115638

REF NO	PARTS NO.	DESCRIPTION	MAT	Q'TY	W. T	REMARKS
16		FLAT CSK HEAD WOOD SCREW	SS.	6		#6-18 x 3/4 L
15		RUBBER SUPPORT	TYPE 304 SS.	2		+5/64 x 1/2 x 10 1/2 L
14		RUBBER	NEOPRENE	2		DRG. NO. 324343 COLOR: BLACK
13		HEX CAP NUT	ZINC PL. GRADE 5	12		1/2-13 UNC
12		COVER	PLASTIC	1 SET		DRG. NO. 322830
11		SPACER	S.S.	117		TAPERED TYPE
10		FLAT CSK HEAD MACHINE SCREW	S.S.	1350		1/4-20-5/8 LONG
9		SPRING WASHER	ZINC PL. GRADE 5	246		1/2
8		PLAIN WASHER	S.S.	246		1/2
7		HEX. NUT	ZINC PL. GRADE 5	246		1/2-13 UNC
6		SPECIAL BOLT	ASS'Y	117		DRG. NO. 322820-A
5		SPECIAL BOLT	ASS'Y	129		DRG. NO. 322820-B
4		TRACK (SIDE)	ALUM. 6063-T6	1 SET		DRG. NO. 322828
3		TRACK (FLOOR)	ALUM. 6063-T6	1 SET		DRG. NO. 322829
2		CARD TABLE	ASSY	2		DRG. NO. 115292
1		COACH SEAT ASSEMBLY	ASSY	39		DRG. NO. 115638

REVIEWED BY
10-5-82
ENPROTECH CORP.

SYMBOL	DATE	REMARKS	DSG	CHK	APP
△	1988 11.15	1. SEE SHEET 1/2			
△	1988 10.4	4. WAS 900. 5. WAS 2". 6. MATERIAL WAS NEOPRENE. 3. CHANGED CONFIGURATION OF SEAT RETAINING FASTENERS & COVER	J.S. Lee	K.P. Lee	J.S. Lee
△	1988 7.26	1. ADDED NOTE 6 2. MODIFIED WINDOW MOULDING CONFORMATION. 1) MODIFIED THE SHAPE OF SIDE TRACK. 2) 900 WAS 800. 3) CHANGED THE JOINTING METHOD OF CARD TABLE.	J.S. Lee	K.P. Lee	J.S. Lee
△	1988 4.19	REDESIGNED	J.S. Lee	K.P. Lee	J.S. Lee