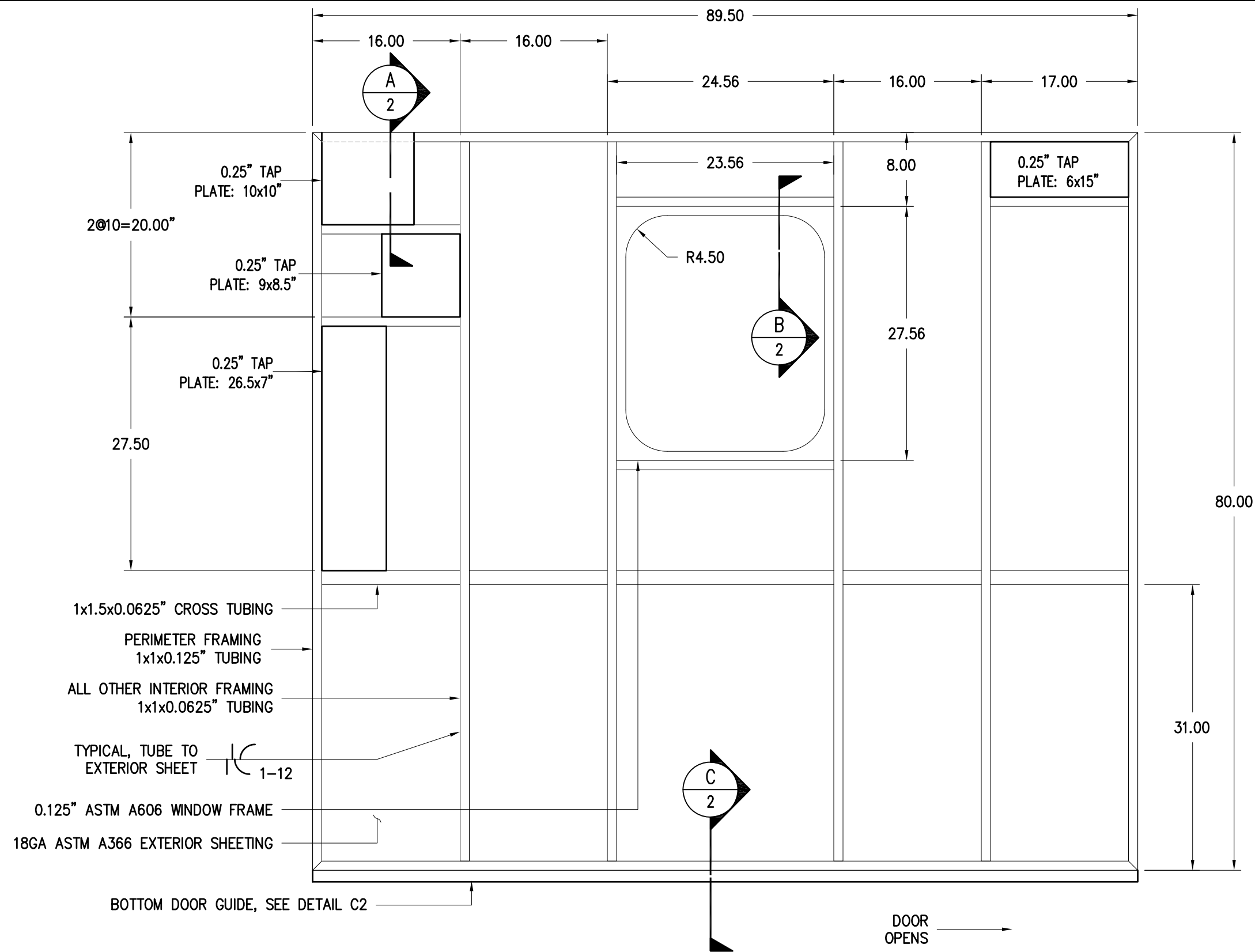



P:\Engineering\Motive Power and Equipment\2_Passenger\Passenger Equipment Rehab\2023 Projects\ARR 101 Paint and Repairs\ARR 101 Bagcar Paint and Repairs.dwg

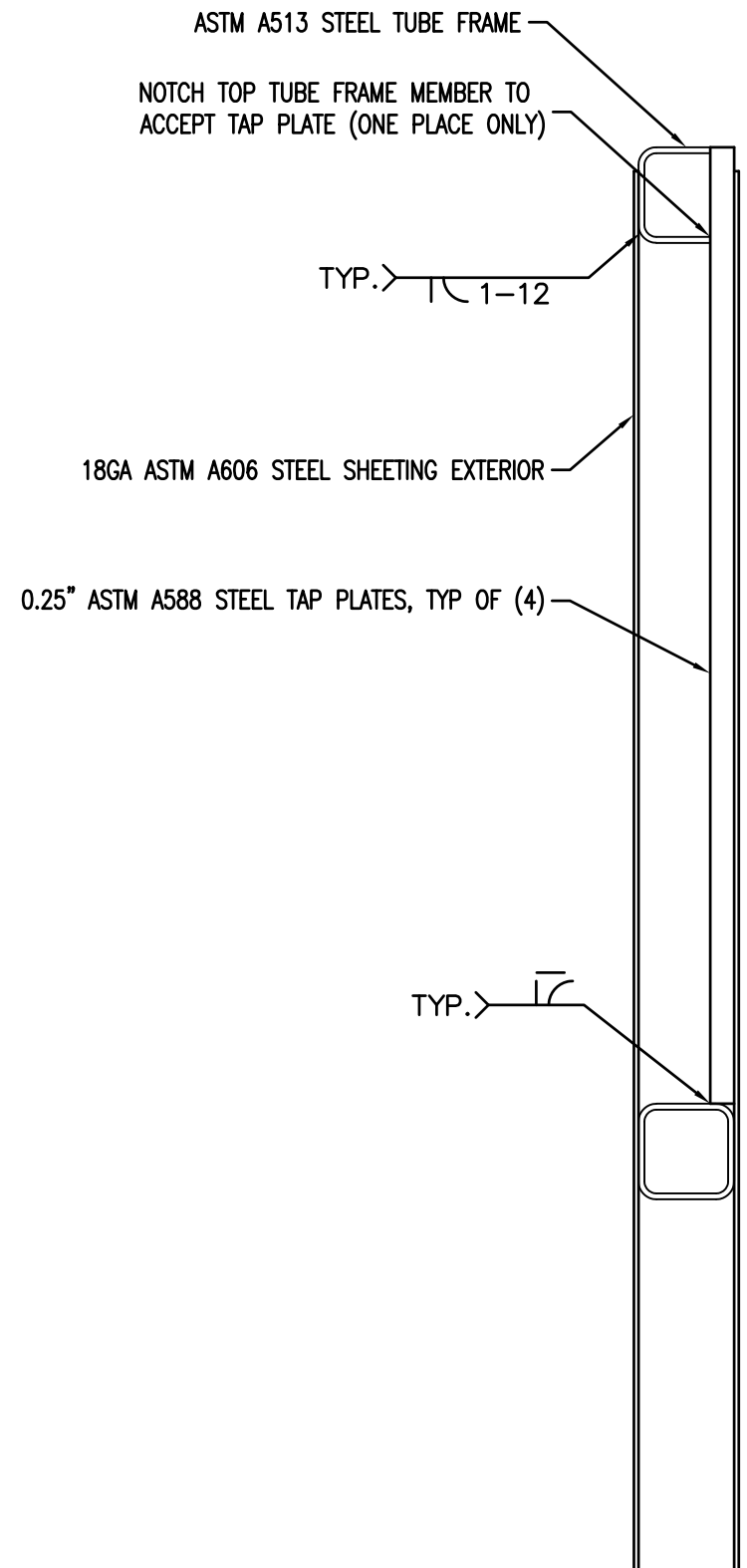


NOTE:
1. DOOR 1 & 4 SHOWN; MIRROR FRAMING AND TAP PLATE LOCATIONS FOR DOORS 2 & 3, OPENING IN OPPOSITE DIRECTION.

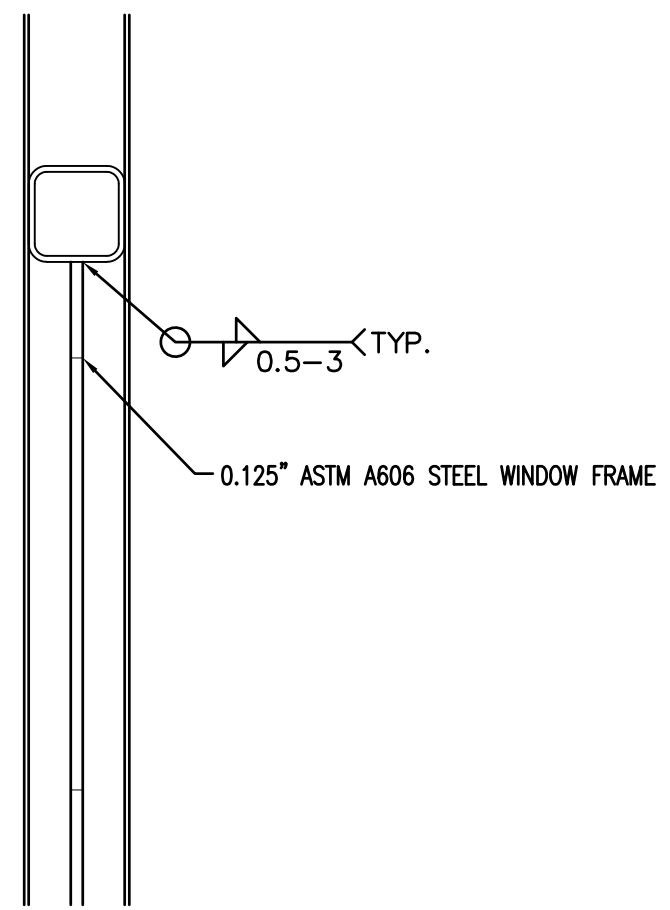
A
1 SIDE LOADING DOOR FRAMING ELEVATION
VIEW FROM INTERIOR

 ALASKA RAILROAD CORPORATION ENGINEERING SERVICES P.O. BOX 107500, ANCHORAGE, ALASKA 99510-7500		
PROJECT :		
MOTIVE POWER AND EQUIPMENT PASSENGER EQUIPMENT		
TITLE:		
ARR 101 SIDE DOOR FABRICATION FRAMING DETAIL		
DESIGNED BY: ARR	SCALE : NO SCALE	AFE NO.: 2023 FTA: 11070
DRAWN BY: ARR	DATE : JULY 2023	ACAD FILE:
CHECKED BY: ARR		DWG NO. 1 OF 3
APPROVED BY: ARR		

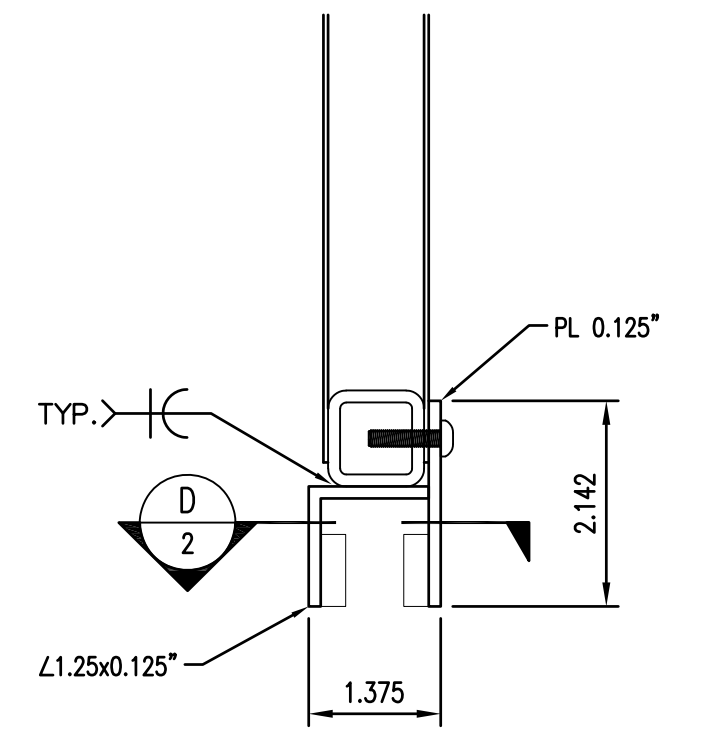
P:\Engineering\Motive Power and Equipment\2. Passenger Equipment Rehab\2023 Projects\ARR 101 Paint and Repairs\ARR 101 Bagcar Paint and Repairs.dwg



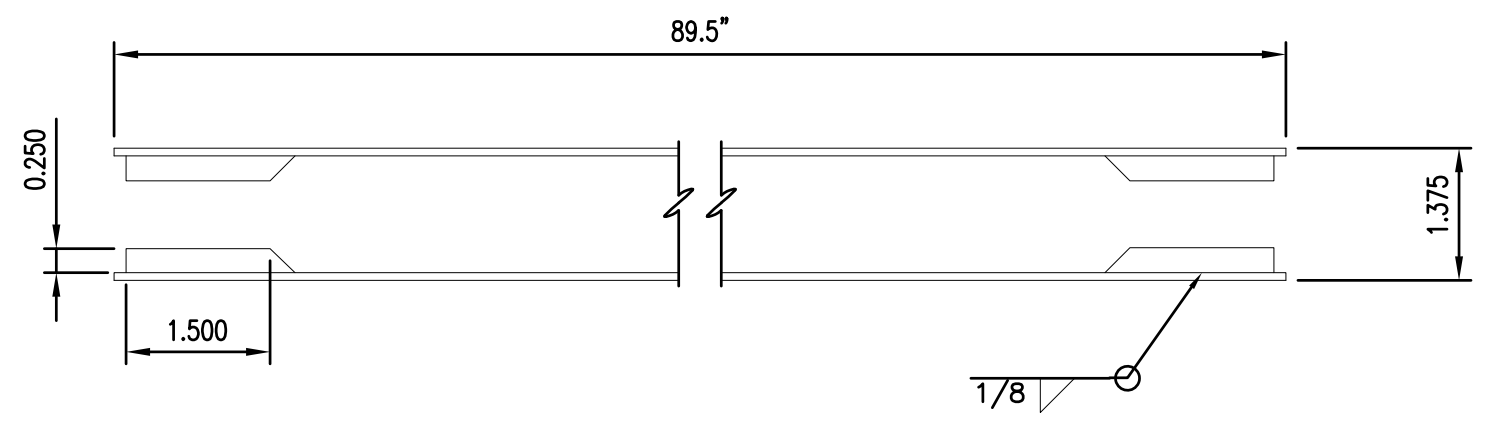
A
2 SIDE LOADING DOOR SECTION
WELDING DETAILS




B
2 SIDE LOADING DOOR SECTION
WELDING DETAILS



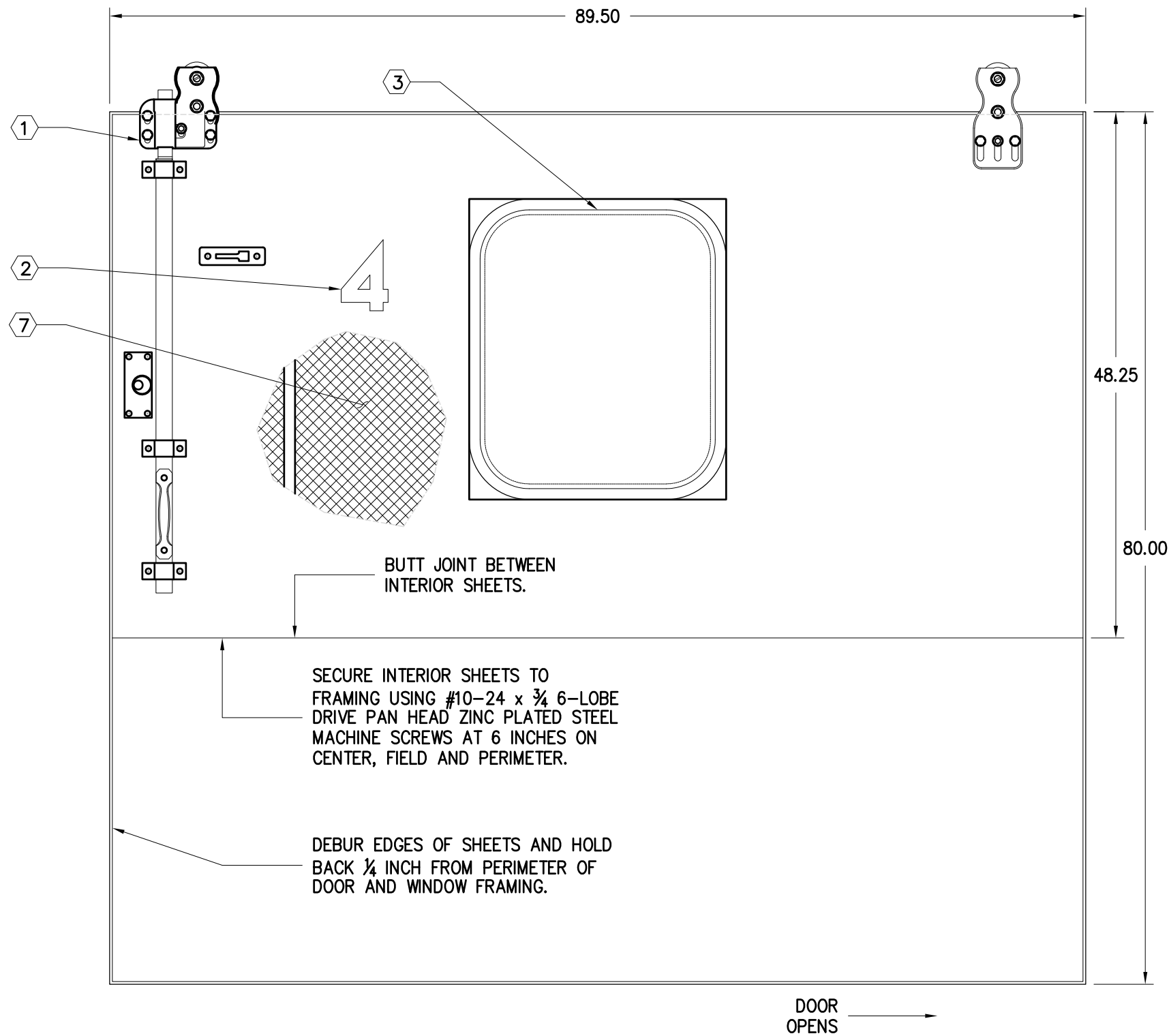
C
2 SIDE LOADING DOOR SECTION
WELDING DETAILS



D
2 SIDE LOADING DOOR SECTION
WELDING DETAILS

 ALASKA RAILROAD CORPORATION ENGINEERING SERVICES P.O. BOX 107500, ANCHORAGE, ALASKA 99510-7500		
PROJECT : MOTIVE POWER AND EQUIPMENT PASSENGER EQUIPMENT		
TITLE: ARR 101 SIDE DOOR FABRICATION ASSEMBLY AND WELDING DETAILS		
DESIGNED BY: ARR	SCALE : NO SCALE	AFE NO.: 2023 FTA: 11070
DRAWN BY: ARR	DATE : JULY 2023	ACAD FILE:
CHECKED BY: ARR		DWG NO.
APPROVED BY: ARR		2 OF 3


P:\Engineering\Motive Power and Equipment\2. Passenger Equipment Rehab\2023 Projects\ARR 101 Paint and Repairs\ARR 101 Bagcar Paint and Repairs.dwg



NOTES:

1. ORIGINAL DOOR HARDWARE TO BE REINSTALLED ONTO NEW DOOR BY PAINT CONTRACTOR.
2. PAINT CONTRACTOR TO STENCIL AND PAINT DOOR NUMBERS ON INSIDE OF DOORS.
3. WINDOW INSTALLATION BY PAINT CONTRACTOR.
4. 18 GAUGE SHEET METAL INTERIOR TO HAVE GALVANIZED STEEL FINISH.
5. 18 GAUGE SHEET METAL EXTERIOR TO BE COATED BY PAINT CONTRACTOR FOLLOWING DELIVERY.
6. FRAMING TO BE COATED WITH POR-15 RUST INHIBITING COATING OR APPROVED EQUAL BY FABRICATOR FOLLOWING WELDING.
7. FILL ALL DOOR CAVITIES WITH 1" MINERAL WOOL INSULATION PRIOR TO INSTALLATION OF INTERIOR SHEETING.
8. DOOR 1 & 4 SHOWN; DOORS 2 & 3 ARE MIRROR IMAGE OF SHOWN, OPENING IN OPPOSITE DIRECTION.

A
3 SIDE LOADING DOOR ASSEMBLY
VIEW FROM INTERIOR

 ALASKA RAILROAD CORPORATION ENGINEERING SERVICES P.O. BOX 107500, ANCHORAGE, ALASKA 99510-7500		
PROJECT : MOTIVE POWER AND EQUIPMENT PASSENGER EQUIPMENT		
TITLE: ARR 101 SIDE DOOR FABRICATION DOOR ASSEMBLY AND FINISHING		
DESIGNED BY: <u>ARR</u>	SCALE : NO SCALE	AFE NO.: 2023 FTA: 11070
DRAWN BY: <u>ARR</u>	DATE : JULY 2023	ACAD FILE:
CHECKED BY: <u>ARR</u>		DWG NO. 3 OF 3
APPROVED BY: <u>ARR</u>		