



Alaska Railroad Corporation
327 W. Ship Creek Ave.
Anchorage, AK 99501

February 22, 2024

Addendum 2
ITB #24-13-211648
60,000 lb GVWR Dump Truck

Addendum number 1 has been issued for answers to questions and provide pictures of sander connections and controls.

The Closing Date for this ITB has not been changed since addendum 1.
Bids will be received until **March 6, 2024 @ 2:00 PM Alaska time.**

1. You ask for a 20K front axle. Tire size will be key in determining actual capacity
385 tire size will get you 18k, 425 tire size will get you 20K –
 - a. **Yes, 425/65R22.5**

2. Do you have a preference in tire size? Or if you know the size on your existing dump truck and that is sufficient for you please state your preference.
 - a. **Answer in question 1.**

3. Do you want disc brakes or drum?
 - a. **front and rear drum brakes with brake chambers and ABS**

4. You ask for a full size spare tire. Is this referencing the front tire or the back tire?
 - a. **Front tire**

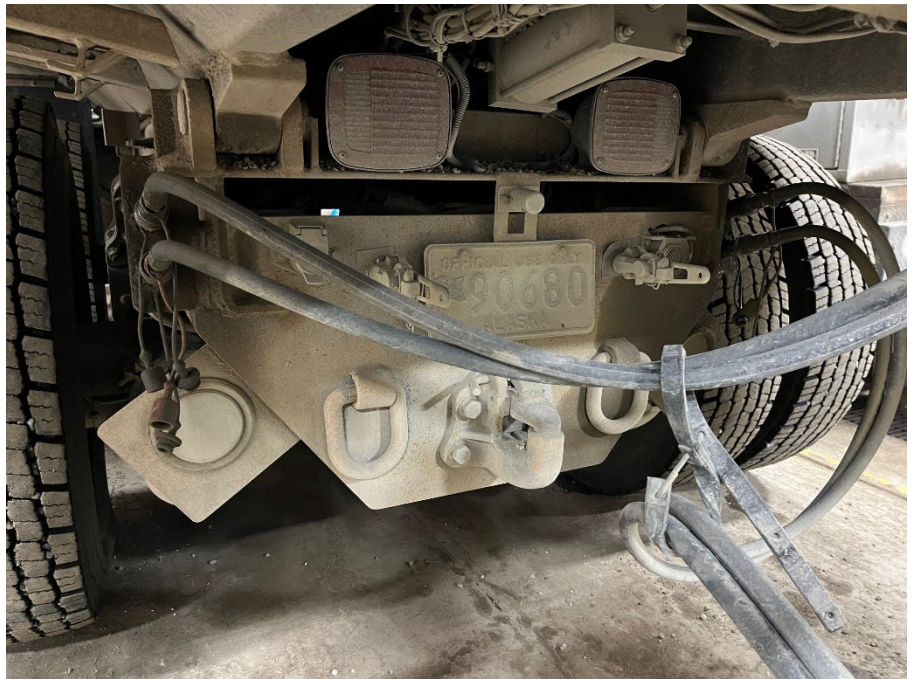
5. Pintle hitch. At what height do you want the hitch from ground level?
 - a. **Current dump truck is 20" from ground**

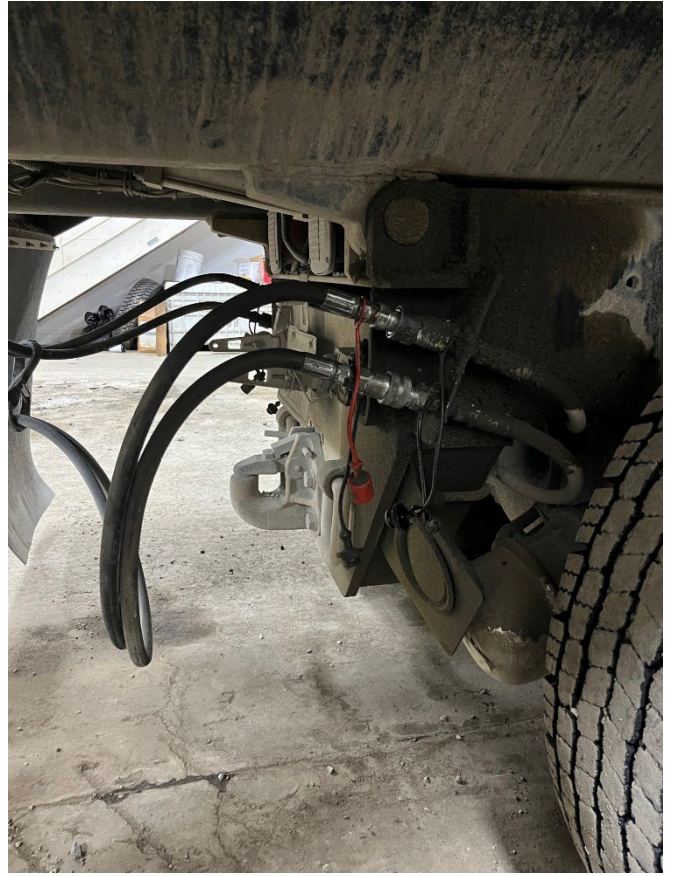
POWERTRAIN

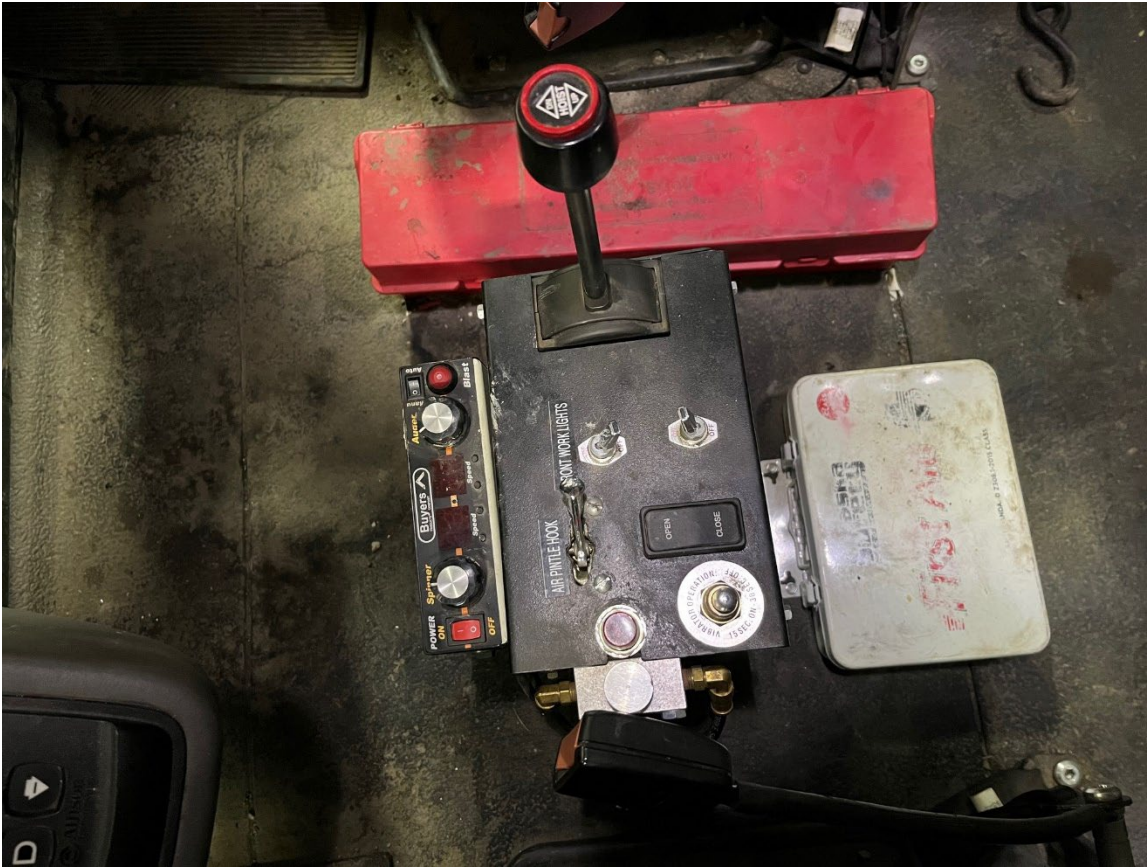
You ask for the Cummins 15 liter. This engine can range 450 horsepower up to 605 hp with the Allison 4500 series. With your request for a pintle hitch and the intent to tow something I would recommend the 525HP engine with 1850 torque. However if your existing dump truck is sufficient please give an idea of the horsepower you would want as a minimum.

450HP min is ok.

Cummins X15 comes standard with an Interbrake, no exhaust brake – **Intebrake is ok**







All other terms and conditions remain unchanged.
If there are any questions regarding this addendum please let me know.

Thank you,

Rob Walker
Logistics Manager
Alaska Railroad Corporation