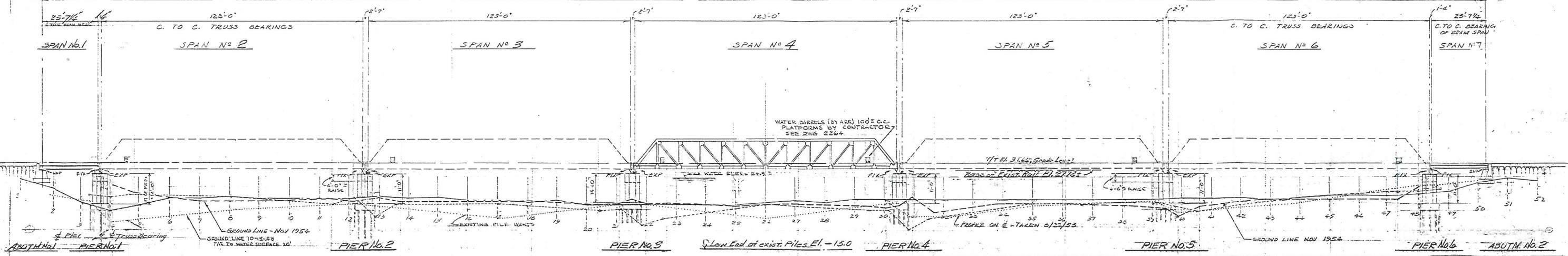


TO SEWARD

TO FAIRBANKS

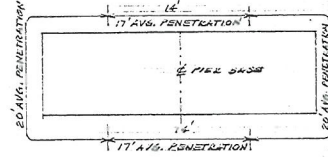
579'-2 1/2" C. TO C. BEARING ON ABUTMENTS



PIER NO	HEIGHT
1	14'-0"
2	14'-0"
3	11'-0"
4	11'-0"
5	11'-0"
6	11'-0"

### AS-BUILT DATA - BRIDGE 147.5

PIER NO	ELEV. TOP OF PIER BASE	ELEV. 3TH OF RAIL PILES
1	+15.66	-19.84
2	+15.66	-19.84
3	+15.24	-20.24
4	+15.49	-20.01
5	+15.41	-20.09
6	+15.25	-20.05



### SHEET PILING PENETRATION

NOTE: PENETRATION MEASURED FROM TOP OF PIER BASE

### ELEVATION

Scale: 1" = 20'

NOTE: PIERS 2, 4, 5 & 6 ARE NOT TO SCALE IN ELEVATION VIEW ABOVE

### ESTIMATED QUANTITIES

CONCRETE:  
 ABUTMENT NO. 1 300 CY  
 NO. 2 300  
 PIER NO. 1 89.4  
 NO. 2 70.5  
 NO. 3 82.2  
 NO. 4 76.5  
 NO. 5 70.5  
 NO. 6 76.5  
 TOTAL CONCRETE 579.6 CY

REINFORCING STEEL:  
 3/8" - 10000 LF = 3800 LB  
 1/2" - 500 LF = 340  
 5/8" - 8500 LF = 3710  
 3/4" - 2500 LF = 3500  
 TOTAL REIN. STEEL 11,650 LBS

LUMBER:  
 1400 LF OF 2x8 = 3,734 FBH  
 TIES: 12-8x10x10' = 12.80  
 50-8x10x10' = 34.54  
 50-6x8x10' = 2,600  
 42,148

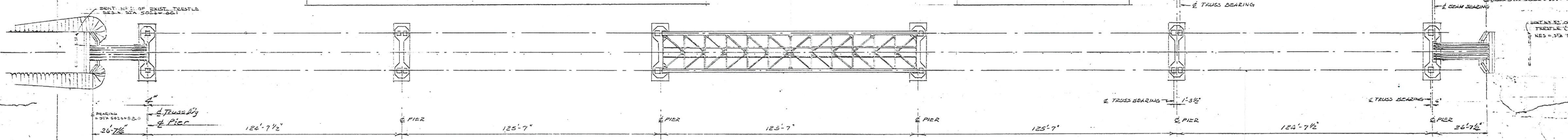
SEE DWG 2244 FOR MATL FOR WATER BARREL PLATFORMS  
 BY 2-BEAM RAILWAY BRIDGES AS PER DWG E 7.9, T = 15.6 TONS  
 ARMS-THRU TRUSS SPANS (123' @ 151T) 655 TONS  
 176 PILES (SEE DETAIL ON SHEET NO. 3)  
 SHEET PILING FOR COFFER DAMS (BASED ON AVG. LGTH. OF 22.5')  
 235 TYPE DP-2 (FURNISHED BY ARK)  
 24 TYPE CP-41 (FURNISHED BY CONTRACTOR)  
 80-1 1/2" x 2'-0" ANCHOR BOLTS WITH NUTS  
 32-7/8" x 2'-0" ANCHOR BOLTS WITH NUTS

550-HOOK BOLTS AS PER DETAIL  
 8-9x11x2" PLATES  
 24-8x11x0" PLATES  
 1250-5/8" x 6" LEWIS LAG SCREWS (UNCOATED)  
 1100-TIE PLATES AS PER DETAIL (BY ARK)  
 140-TIE PLATES (UNCOAT) BY ARK  
 1/4" THICK LEAD PLATES UNDER ALL BEARINGS

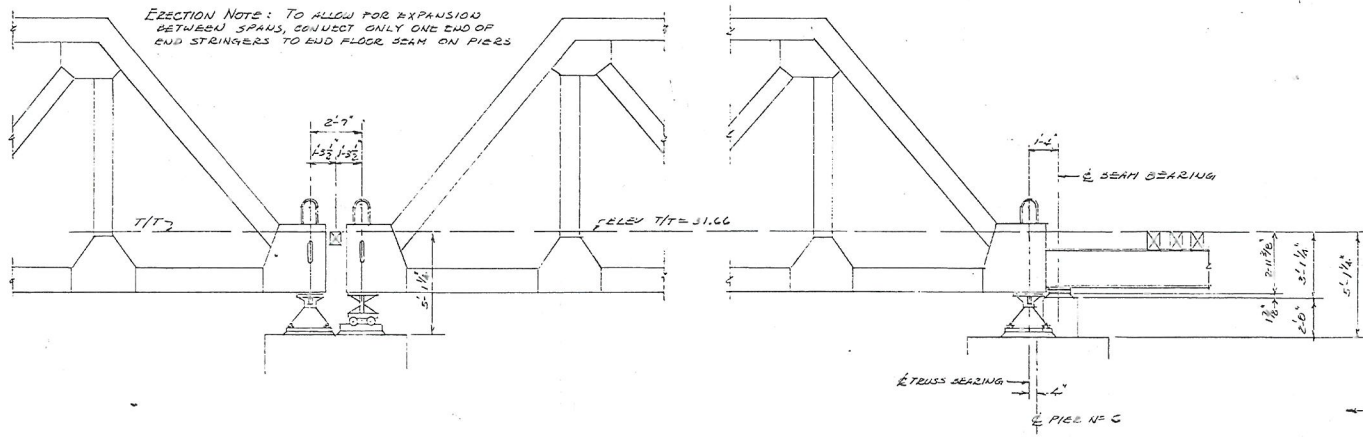
**131 TONS PER SPAN**

### PLAN

SCALE: 1" = 30'

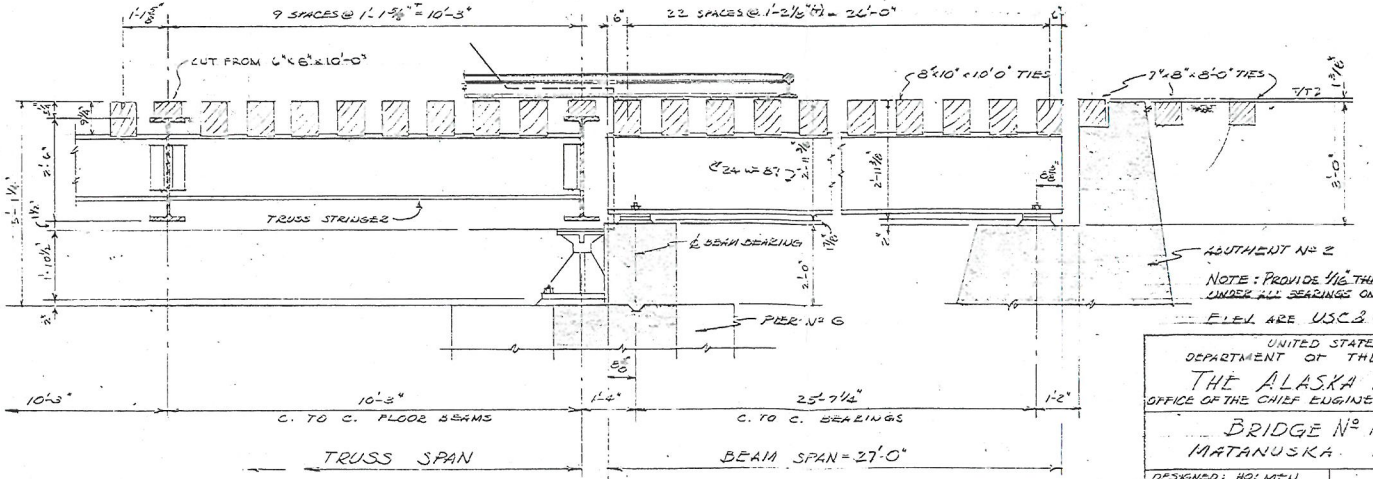


ERECTION NOTE: TO ALLOW FOR EXPANSION BETWEEN SPANS, CONNECT ONLY ONE END OF END STRINGERS TO END FLOOR BEAM ON PIERS



PIER NO. 5 TRUSS BEARING DETAILS SCALE: 1/2" = 1'-0"

PIER NO. 6



TIE SPACING AND DETAILS SCALE: 1/2" = 1'-0"

UNITED STATES DEPARTMENT OF THE INTERIOR  
 THE ALASKA RAILROAD  
 OFFICE OF THE CHIEF ENGINEER, ANCHORAGE  
 BRIDGE NO. 147.5  
 MATANUSKA RIVER  
 DESIGNED: HOLMSEN  
 RECOMMENDED:  
 ASSISTANT CHIEF ENGR  
 APPROVED:  
 CHIEF ENGINEER

SCALE: AS SHOWN  
 DATE: JUNE 1952  
 FILE NO. 147.5